



# the Kinney Cavalryman

Alamo Village  
Box 528  
City  
7

USPS 100-610

VOLUME 8 NUMBER 24

July 9, 1982

BRACKETTVILLE, TEXAS

## 4 H FASHION REVUE

### HEADLINERS

#### 4-H FASHION REVUE

Friday morning, June 25th, was the 1982 Kinney County 4-H Fashion Revue. Eight girls participated in this years event which took place on the lawn of the First Baptist Church in Brackettville.

Each 4-H'er dressed in her outfit, modeled first before a panel of judges and again for the 11:00 a.m. program. Alma Aguirre, a senior 4-H'er conducted the program. Alma was assisted by Melinda and Melissa Meyer, Tammy Frerich, Sheri White, Bonnie Frerich and Gloria Balderas. Special recognition was given to the five area adult leaders who helped the girls in this years project.

New catagories were added to the project this year. They entitled, Daytime Tailored, Daytime non-tailored, Active Sportswear, and Evening and Speciality Wear. All first place winners in these Divisions are eligible to participate in the District Fashion Revue to be held in Carrizo Springs, July 31, 1982.

This year preteen winners are: Melissa Meyer, who placed first in the Daytime Non-Tailored division, Melinda Meyer, first in evening and Speciality Wear and Gloria Balderas, first in Active Sportswear. Bonnie Frerich and Tammy Frerich were also blue ribbon winners in the Preteen Division.

Juniors, Yvette Buantello and Sheri White were first place winners in the Daytime Non-Tailored and Active Sportswear catagories respectively. Elida Balderas was the Blue Ribbon runner up.

Alma Aguirre modeled a pretty

pink dress of dotted swiss for her first place award in the senior division. The six first place winners will be receiving certificates from Jo Ann Fabrics of Del Rio in lieu of a trophy.  
\*\*\*\*\*

#### ERNEST ANGELO, REPUBLICAN CANDIDATE FOR STATE SENATOR VISITS KINNEY COUNTY

Ernest Angelo, Republican Party's candidate for State Senator recently paid a visit to Kinney County and was hosted to a lunch by Republican Party members, that organized by Wanda Schwander, his Kinney County representative for election.

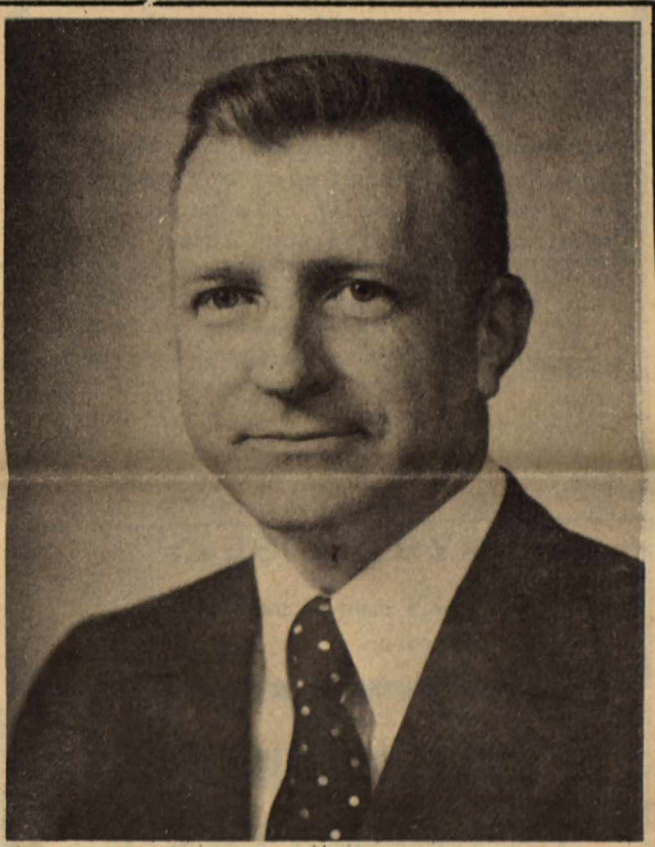
Angelo has served four terms as Mayor of Midland, Texas, is running for Senatorial seat vacated by "Pete" Snelson.

On his visit to the CAVALRYMAN office Angelo stated that his 25th district in the State Senate is the largest in Texas and larger than many of the U.S. states.

The conservative Republican stated, "The question of leadership may be the cornerstone issue of this campaign. Who can go to Austin and represent this district which covers 90,000 square miles and 38 different counties, and keep it from getting lost in the shuffle?"

"There are only 31 Senators in the Texas State Senate, but we have to send a leader to the Senate that can be more than just 1 of the 31 votes. We need an experienced leader who can work to put together a conservative majority in the Senate... a majority that will support our district's conservative positions...and give the 25th a voice in the State Senate of Texas."

"This is a clear cut issue My experience in business and in government, my close association



with the Clements and Reagan Administrations and my experience as the Mayor of Lidland for 8 years, qualify me to provide the leadership this district requires."  
\*\*\*\*\*

### Understanding Your Insurance

Facts From Experts At American Insurance Association

Q. If I make a claim, will they cancel my auto insurance or raise my rates?

A. Your policy will not be cancelled just because you make a claim. Cancellation of auto insurance usually occurs as a result of fraud or non-payment of premium or if your driver's license or car registration is suspended or revoked. However, drivers whose records show poor driving behavior may not have their regular insurance coverage renewed when their policy renewal date rolls around.

As for the effect of claim on rates, the answer depends on your personal

driving experience and that of others who regularly drive your car. If you have a "clean" record, you generally will have the lowest rates in your group of drivers. But if you have had recent "at-fault" accidents (or serious traffic law violations), you are regarded as more likely to become involved in a future crash. Insurance statistics classify you as a "higher risk." You may therefore have to pay higher rates for a certain period of time.

Shared roads mean shared risks and shared responsibilities. Insurance companies try to make sure that each group of policyholders bears a portion of the costs that reflects its accident potential.



# THE KINNEY CAVALRYMAN

USPS 100-610

P.O. DRAWER CQ  
BRACKETTVILLE, TEXAS 78832

(512) 563-2696

Judy Loos.....Publisher  
Geo. Loos.....Editor  
Geo. Loos.....Business Manager  
RoseMary Slubar.....Production  
Jean Hood.....Contrib. Editor  
Crystal Loos.....Production

Published every Friday. Entered by  
Second Class Mail at Brackettville,  
Texas, 78832.

Any erroneous reflection upon the  
character or standing of any person  
or firm appearing in this paper will  
be gladly corrected upon being called  
to the attention of the management  
and to the article in question.

MEMBER OF THE TEXAS PRESS ASSOCIATION

Subscription Rates:  
\$13.00 .....Out-Of-County  
\$12.00 .....In-Kinney-County

## CRYSTAL SEZ:

"There's many a good tune  
played on an old fiddle."

### HEARING IMPAIRED IN OLD AGE

Your chances of becoming hearing impaired when you grow older are good, according to a recent study compiled by the Texas Commission for the Deaf (TCD).

An estimated 61% of the 1.3 million Texans over the age 65 suffer hearing loss significant enough to interfere with daily living activities. Texas is the first state to collect data on the numbers of elderly deaf and hearing impaired, and the problems they encounter as disabled older Americans.

The report places the number of elderly hearing impaired Texans at over 835,000--a figure that comes from an aged population growing three times more rapidly than the national average. Between 1940-1970, the elderly population in Texas grew 170% compared to a 49% increase nationwide. Statistics indicate a need for services for greater than can be met through TCD's current level of funding.

According to the study, older deaf and hearing impaired Texans are characterized as lower income persons prone to illness and living in complete or growing isolation.

Many suffer from a common disorder of progressive hearing loss known as presbycusis. The disease is linked with the process of aging and involves not only a decrease in auditory sensitivity, but a decrease in the ability

to understand speech. Many symptoms of hearing loss in the elderly are incorrectly interpreted as senility and, as a result, a number of persons are in nursing homes simply because of their hearing impairment.

Problems for the elderly deaf and hearing impaired are compounded by unusually low income. Texas ranks 10th in states with the highest number of elderly people living below the poverty level. With nearly one quarter of all elderly Texans concentrated below the poverty line, many live in a survival situation where they literally must choose between food and heat.

While Medicare and Medicaid have made health care more accessible to older people, Medicare does not cover some of the most basic health expenses of old age. Medicare will pay for an evaluation of hearing loss, for instance, but will not pay to correct it.

In its budget for fiscal years 1984-85, the Commission has requested an increase in state appropriations to more fully meet the magnitude of elderly deaf concerns. The TCD study was compiled after a mandate by the 67th Texas Legislature to begin developing services for elderly deaf Texans. The commission has initiated direct services for identifying and locating older hearing impaired Texans, training for persons and agencies to assist them in including the older hearing impaired in their programs, and a public awareness

## C&L MINIMAX CELEBRATES!

Last weekend, July 1--4th, C&L Minimax celebrated their 1st Anniversary with lots of price cuts. Also to show their appreciation for all the many wonderful customers, they sponsored an Anniversary "Thank You" program.

The winners of the drawings held are as follows:

**GROCERY BASKETS**  
Inez Fuentes, Mark Land, Mrs. Ballantyne, Elia Gutierrez, Buster Schwandner, Robbi Curry, Elia Martinez, Susie Terrazas, Elena Sandoval, Elby Beard, and Marcus Tidwell.

**BRISKETS**  
Mark Land, J. Sandoval, Margaret Starzel, Susana Terrezas, Clyde Word.

From all of us at C&L Minimax, we say thank you for helping us celebrate our 1st Birthday.

\*\*\*\*\*

## THE SMITH-CORONA ULTRASONIC ELECTRONIC PORTABLE TYPEWRITER

- one-touch memory correction
- modern daisy printwheels
- pre-set standard letterform
- up to 16 programmable tabs
- fifty percent fewer parts
- drop-in ribbon cassettes
- memory speed cushion
- high-speed carrier return
- stationary paper carriage
- outstanding print quality

# UNDER \$600

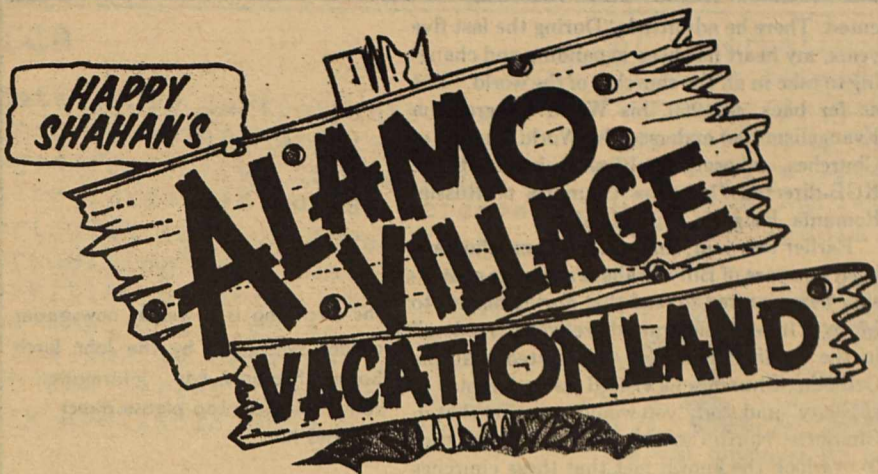
Call For an Appointment:

8--5.....563-2696

After 5..563-2005

**SCM SMITH-CORONA**





**OPENS MAY 1ST  
GATES OPEN: 9 AM TO 6 PM**

**4 SHOWS DAILY**

**10:30      2:30  
12:30      4:30**

**SEASON PASS AVAILABLE --  
\$25.00 FOR  
IMMEDIATE LIVE-IN FAMILY MEMBERS**



Enjoy the entertainment of MYRA PEARCE at the Cantina at Alamo Village daily.

campaign to promote the concept of providing services to this special population.  
\*\*\*\*\*

**KINNEY COUNTY  
PUBLIC LIBRARY**

"SPACE CAPERS", the Summer Reading Program offered by the Kinney County Public Library in conjunction with the Texas State Library shot off like a rocket last Monday through Friday with games, crafts, contests, prizes, films, records, cassettes, and books. Children ages 7 through 11 years attended the program and party on the last day. The library thanks C & L's Minimax and B & S Grocery for their donations to the children's activities. We also thank the parents who helped out with refreshments the last day of the program...Mrs. Wallace Dimery, Mrs. Freddie Frerich, Margarita McGhee, Mrs. Eddie Mayfield, Mrs. Bertha Sandoval, Mrs. Eddie Solis, and Mrs. Flavio Talamantez. Although the "Space Capers Program" is over the library will continue to have a "Story Hour" for all ages between 11:00 and 12:00 in the morning on weekdays. We have been quite happy to continue our quality of service to the community even though we are still unpacking boxes at our new location at the corner of Spring and Ellen St.

Respectfully Yours,  
Mrs. Charolette Corey  
County Librarian

**INTERNATIONAL/DOMESTIC SHEEP  
AND ANGORA GOAT INDUSTRY  
SURVEYED DURING IRR**

Six of Texas' premier sheep and Angora goat producers, two veterinarians and an international industry expert from Australia comprise much of the concurrent sessions for sheep and Angora goat producers during the International Ranchers Roundup here August 10-12.

Producers can choose between 12 talks including such topics as increasing kid survival, practical health programs, sheep and goat nutrition and supplementation, selection and breeding schemes for sheep Angora goats, and flock health management.

Of special interest to producers during these sessions will be a detailed analysis of the Australian sheep and Angora goat industry by Terry Mitchell of the Australian Department of Agriculture. Jack Groff, sheep and goat specialist with the Texas Agricultural Extension Service, will update American producers on other foreign developments in the industry. The Mexican Sheep industry, a prime importer of U.S. animals will be covered by a Mexican industry spokesman.

Sheep and goat raisers will also have the opportunity to attend simultaneous concurrent sessions that address key problems in beef cattle, brush management, and wildlife production

Female participants will be interested in this year's special topic "Women in Ranching".

Thus far over 100 speakers from 12 states and three countries have been confirmed to speak during the three days of educational sessions and entertainment festivities.

Keynote speakers who will appear during the IRR's three-day run include Raymond D. Lett, executive assistant to Agriculture Secretary John Block Charles G. Scruggs, vice-president and editor, Progressive Farmer magazine; Bob Bliss, general manager, cattle feeding division, Friona Industries; Susan G. McBee, Texas State Legislator; Allan Savory, Savory Grazing Method Range Consultants New Mexico; and John L. "Chip" Merrill, Texas Christian University Ranch Management Program.

Participants will have the option of ranch tours in Southwest Texas (August 9) and Mexico (August 13), but a maximum of 200 persons will be carried on each tour and tour participants must register for the entire IRR educational program. The tour deadline is July 15.

Registration material including tour information can be obtained by addressing inquiries to IRR, P.O. Box 1849, Uvalde, Texas 78801.

Last year's IRR, the largest of its kind ever held in the Southwest, attracted over 700 ranchers and industry leaders to the border area. This year plans are being made to accom-

*Continued to Page 5, Col. 1*



*The Birch Log***Kremlin Uses Billy Graham**

by John F. McManus

Belmont, Massachusetts — It must be a constant delight for the leaders of world Communism to note that the people whom they are working to enslave have so little appreciation of what Communism is all about.

The world should be well aware that Communism's fundamental premise is a denial of God and the supplanting of His law with rule of all by a few ruthless criminals. Communist morality is, of course, no morality, a tenet confirmed by Lenin as follows: "Our morality is entirely subordinated to the interests of the class struggle."

For most of the Twentieth Century, Communist leaders translated their words into actions by murdering churchmen and closing their churches. But when they either found or trained clergymen who would overlook Red crimes and preach socialism from pulpits, they began a working relationship with religion, not only in conquered nations but in the United States and elsewhere. Far from being a contradiction of Communism's real attitude about religion and morality, the use of churchmen to preach Communist goals or to foster a belief that it has mellowed has helped immeasurably to spread Red terror.

**Billy Graham Changes Tune**

Twenty-five years ago, Rev. Billy Graham clearly understood all of this. But the man who then declared that Communism was "inspired, directed and motivated by the Devil himself" has softened his attitudes tremendously. Years ago, he condemned America's leaders for "silence during the 1956 Hungarian rebellion" and for "failing to aid the Cuban freedom fighters at the Bay of Pigs." As late as 1965, he declared: "Communist China is the most dangerous enemy of freedom in the world."

By 1970, however, Graham was refusing to condemn Communism, saying instead: "I cannot go around the world and say who is right and who is not right." In 1972, he defended Richard Nixon's announced plan to visit Red China's bloody tyrants. One year later while in Japan, he proclaimed: "Mao Tse-tung's eight precepts are basically the same as the Ten Commandments." He then promptly denied that he had uttered such a blasphemy, but the journalist who reported it impressively stood by her story.

**Now Welcome In Red Territory**

In 1977, Graham conducted a religious crusade in Communist Hungary where Cardinal Mindzenty and so many others had been perse-

cuted. There he admitted: "During the last five years, my heart has been expanding and changing to take in all the churches of the world." But as far back as 1966, his World Congress on Evangelism had endorsed the World Council of Churches, whose membership included the KGB-directed Orthodox Churches of Russia, Romania, Bulgaria and Poland.

Earlier this year, many Americans who have been unaware of Billy Graham's strange conversion were shocked to read that during his trip to Moscow in May, he praised "religious freedom" in the Soviet Union. He also stated that the Orthodox Churches he visited "were jammed to capacity" and that "you would never get that in Charlotte, North Carolina." Even if he chooses to overlook the known fact that these churches in Russia are led by Kremlin-approved KGB functionaries in clergymen's garb, he ought to acknowledge that the few churches are full precisely because there are so few. Charlotte Pastor Charles Page responded by saying that his church was full and added: "I find it hard to believe that they (the Russian people) are not experiencing a great deal of suffering over there in order to worship."

Not in Russia on purely church business, Graham was there to take part in a Soviet-sponsored conference on nuclear weapons. Vice President Bush, acting in the name of President Reagan, had sought to persuade him to stay home. Their fear was that he would be used to promote Soviet aims. Perhaps they did not know that what they tried to prevent has been going on for a long time.

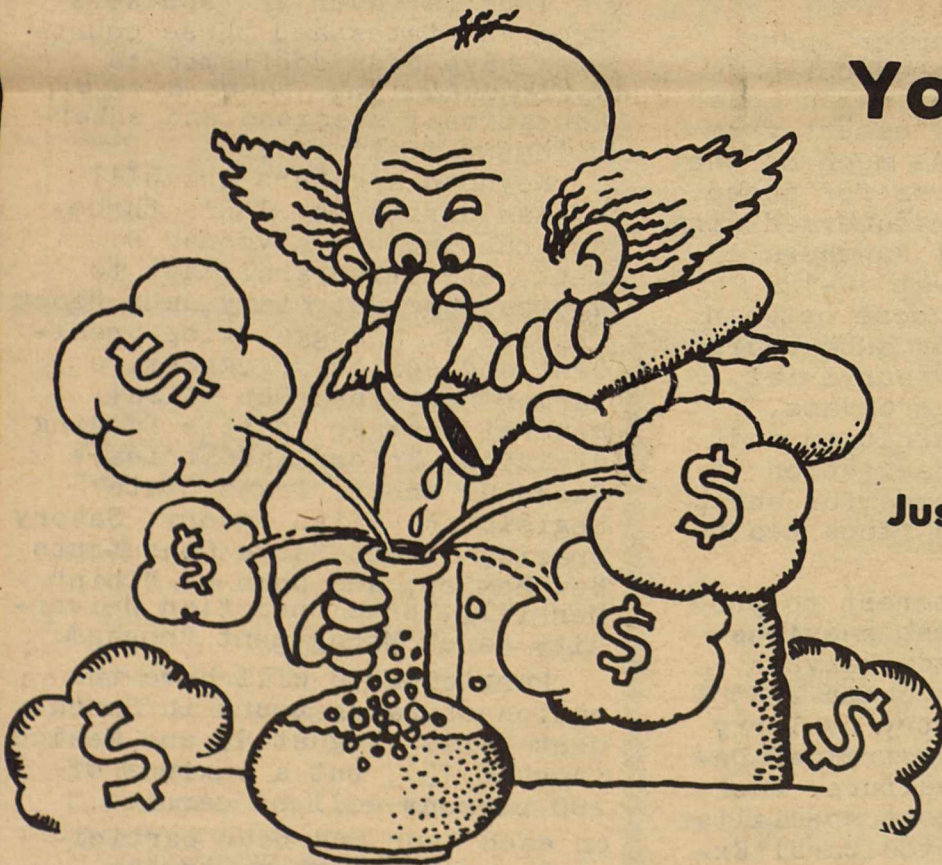
© 1982 The John Birch Society Features

The Birch Log is a weekly newspaper column syndicated by The John Birch Society Features. For information about The Birch Log please direct inquiries to:

**THE JOHN BIRCH SOCIETY FEATURES**

Belmont, Massachusetts 02178

San Marino, California 91108



## You Don't Need a Magic Formula to Make Money Grow!

Just regular deposits in a savings account will help make your money grow.

**THE  
FIRST STATE BANK**

563-2451

MEMBER  
FDIC**MONEY MARKET CERTIFICATE**

26 WEEK \$10,000 MINIMUM BASED  
ON AN ANNUAL RATE OF

**13.232%**

FEDERAL REGULATIONS PROHIBITS THE  
COMPOUNDING OF INTEREST AND REQUIRE A  
SUBSTANTIAL PENALTY FOR EARLY WITHDRAWAL  
RATE IS SUBJECT TO CHANGE AT RENEWAL.

**FDIC**



ICA

modate 1,000 participants. Response from ranchers last year ranged from "like taking the entire Texas A&M animal science curriculum in five days..Just overwhelming" to "Just so many activities occurring at the same time that I'd like to attend." The IRR is designed to present the latest industry technology available from an array

of international and U.S. experts It also provides the opportunity for idea exchange among ranchers experiencing similar problems. The entire program is coordinated by Texas Agricultural Extension Service specialists based in Uvalde.



The first dinosaurs it's believed were no larger than a modern turkey.

WILLIAM WESTNEY PIANO CONCERT TO FEATURE COMPOSITIONS BY MOZART, BRAHMS AND LISZT

Internationally recognized concert pianist William Westney will be performing a selection of waltzes and sonatas by such composers as Wolfgang Amadeus Mozart, Johannes Brahms and Franz Liszt for his Friday, July 16 concert here.

Westney will be performing on a Baldwin grand piano at the air-conditioned Del Rio High School Little Theatre on Friday July 16 at 8 p.m.

Tickets for the concert are on sale at The Firehouse, 120 East Garfield in downtown Del Rio and at Alamo Music at Plaza Del Sol Mall. All seats are \$4. Local piano teachers can obtain free tickets for their students by calling Lynn or Mike Stephens at Alamo Music.

The concert is partially funded by a grant from The National Piano Foundation. It is co-sponsored by The Del Rio Council for the Arts and Alamo Music. The Baldwin Piano Company is providing the piano.

For more information call 775-0888.

PROGRESS IN MEDICINE

Self-Responsibility Key To Healthier Americans

Many Americans are recognizing that they bear the major responsibility for their own health. Good news is the fact that they are doing something about it.



Self-responsibility is evident in many areas. Diet books lead the best seller list as more and more people become aware of good nutrition and the wisdom of counting calories.

done with chemically treated strips that enable patient and doctor to regulate insulin needs with speed and accuracy.

Doctors and patients alike are cooperating in preventive medicine. Checkups can test illnesses before they happen. Regular dental visits can stem future problems.

The blood monitoring test is known as Chemstrip bG. It's developed and produced by Boehringer Mannheim and distributed in the U.S. by Bio-Dynamics, through most retail pharmacies.

Diabetics are in the forefront when it comes to self-monitoring for good health. Since the development of insulin in the 1920s and, more recently, the awareness of checking blood sugar levels, the prognosis for diabetics has grown increasingly optimistic.

Many summer camp programs these days highlight specific health problems and how to cope with them. Camps for diabetics teach children the basics of food, exercise and managing blood sugar.

Many diabetics are managing their illness more easily these days, thanks to more than 70 blood sugar tests that can be done quickly, under almost any circumstances. They're

Chemstrip bG is provided free to all children at such camps. It all can be summed up in a few words—a healthier you is up to you!

THANK YOU

THE FAMILY OF KERMIT C. WATSON WOULD LIKE TO THANK EVERYONE FOR FLOWERS, FOOD AND ALL THE KIND WORDS AND LOVE GIVEN TO THEM IN THIS LOSS OF THEIR LOVED ONE.

THE FAMILY, WIFE, SONS, DAUGHTER, BROTHERS & FATHER

NOTICE OF BOARD OF REVIEW MEETING KINNEY COUNTY APPRAISAL

IN OBEDIENCE TO AN ORDER OF THE BOARD OF REVIEW REGULARLY CONVENEED AND SITTING, NOTICE IS HEREBY GIVEN THAT SAID BOARD OF REVIEW WILL BE IN SESSION AT ITS REGULAR MEETING PLACE AT KINNEY COUNTY APPRAISAL DISTRICT OFFICE IN THE CITY OF BRACKETTVILLE, KINNEY COUNTY, TEXAS, AT 9:30 O'CLOCK A.M., BEGINNING ON MONDAY, THE 12th DAY OF JULY 1982, FOR THE PURPOSES OF DETERMINING, FIXING, AND EQUALIZING THE VALUE OF ANY AND ALL TAXABLE PROPERTY SITUATED IN THE SAID KINNEY COUNTY APPRAISAL DISTRICT, UNTIL SUCH VALUES HAVE FINALLY BEEN DETERMINED FOR TAXABLE PURPOSES FOR THE YEAR 1982 AND ANY AND ALL PERSONS INTERESTED, OR HAVING BUSINESS WITH SAID BOARD, ARE HERE NOTIFIED TO BE PRESENT.

DONE BY ORDER OF THE BOARD OF REVIEW OF KINNEY COUNTY APPRAISAL DISTRICT, KINNEY COUNTY, TEXAS, AT BRACKETTVILLE, TEXAS, THE 14th DAY OF JUNE, 1982.

/s/ Joyce Hooten Secretary

KINNEY COUNTY APPRAISAL DISTRICT



**TOP TEXAS 4-H BEEF AWARDS**

An Independent Cattlemen's Association awards program for top Texas 4-H beef producers will begin this year, ICA President Roy Wheeler announced recently.

The program recognizes outstanding 4-H beef project participants on the county, district and state levels providing the state winner with a scholarship, an engraved pocket watch and an expense paid trip to the annual ICA convention, he said.

"Cattle producers of today must encourage and lead young people interested in agriculture to insure we have competent cattle producers of tomorrow," Wheeler told the ICA convention assembly. "Awarding scholarships employing these young people and including them in our county and statewide activities are a few days we can educate them to preserve our industry."

The program followed the association's eighth annual convention June 17-19 emphasizing youth involvement in agriculture. It will be conducted in cooperation with the Texas 4-H Youth Development Foundation in College Station.

In other convention business Wheeler was elected to his fifth term as proesident of the association. Elected to serve on the executive board with Wheeler were Dr. C.E. Payne of Byran, 1st Vice President; Donald Hoffman of Nixon, 2nd Vice president; H.C. Youmans of Beaumont, secretary; and Joe Conti, Jr., of Victoria, treasurer.

Elected to fill positions on teh ICA Board of Directors were Mike Broussard of Beaumont; T.W. BUCK of Del Valle; Les Fuhrman of Inez; J.B. Gary of Boling; Bill Holbein of Hebbonville; Chester Martin of Hico; Chic Powers of Tilden; Kenneth Shearer of Poteet; Cliff Wheeler of Tilden; Bill Whitehead of sonora and Jimmie Zesch of Mason

The ICA House of Delegates also passed 16 resolutions directing the work of the organization for the coming year. They resolved to ask Congress not to extend any bilateral trade agreements until the EEC and Japan ease their restrictions against high quality American beef.

~~They directed~~ Congress to ask USDA to fund the development of a "dead" brucellosis vaccine in a program of one test six months after vaccination, allowing free movement of all vaccinated animals after such test. They agreed to urge Congress to consider revival of the brucero program, strengthening the

border patrol or tightening visa eligibility rather than adopting proposed legislation requiring employers to prove workers' citizenship. And the group resolved to ask Congress to reduce the federal deficit from \$182 billion to \$100 billion or less in 1983 and to balance the budget in four years.

Wheeler closed the statewide meeting by urging all members to attend the statewide calf

sale in Hallettsville July 17 at 10 a.m. Proceeds from the sale will fund ICA work for the coming year.

\*\*\*\*\*



Nobody seems to know when man first started shaving, but it is recorded that the ancient Egyptians shaved for religious reasons.

## Public Notice

Southwestern Bell, in accordance with the rules of the Public Utility Commission of Texas, hereby gives notice of the company's intent to implement a new schedule of telephone rates in Texas, effective July 27, 1982, unless otherwise determined by the Commission.

It is expected that the requested rate schedule will furnish a 13.4 percent increase in the company's intrastate revenues.

A complete copy of the new rate schedule is on file with the Public Utility Commission at Austin, Texas, and with each affected municipality served by Southwestern Bell, and is available for inspection in each of the company's public business offices in Texas. The Commission staff has contended in the past that all rates are subject to change as a result of Southwestern Bell's rate application.

### Notice to El Paso Area Customers

Effective January 1, 1982, Southwestern Bell adopted the Mountain States tariffs in effect for El Paso County. Southwestern Bell proposes to merge the separate El Paso tariffs with its tariffs applicable to the rest of Texas. The resulting new rate schedule is on file with the PUC and the El Paso area municipalities served by Southwestern Bell, and is available for inspection at our El Paso business office.

### Notice to Customers of Other Telephone Companies

The filing includes, but is not limited to, proposals to increase rates for interexchange private line and foreign exchange (FX) service. Changes in such rates would also affect customers of other telephone companies because such companies provide interexchange private line and foreign exchange service in accordance with rates specified in Southwestern Bell's tariffs. While Southwestern Bell has proposed no increase in long distance rates, any change in those rates would also affect customers of other telephone companies.

## Aviso Público

Southwestern Bell, en conformidad a las reglas del Public Utility Commission (Comisión de Servicios Públicos) de Texas, por la presente hace saber su intención de establecer un nuevo arancel para servicio de teléfono en Texas con vigencia a partir del 27 de julio, 1982, a menos que la Comisión haga otra determinación.

Se espera que el nuevo arancel que se ha solicitado rendirá un aumento de 13.4 por ciento en los ingresos intraestatales de la compañía.

Una copia completa del nuevo arancel se ha archivado en las oficinas del Public Utility Commission en Austin, Texas, al igual que en cada municipalidad afectada y servida por Southwestern Bell, y cada una de las oficinas de la compañía para negocios con el público en Texas tiene una copia para lectura pública. En el pasado, la Comisión ha sostenido que toda tarifa está sujeta a cambios que resulten de la manera en la cual Southwestern Bell aplique sus tarifas.

### Aviso a Clientes en la Región de El Paso

Con vigencia a partir del 1o de enero de 1982, Southwestern Bell ha adoptado las tarifas de Mountain States efectivas en el condado de El Paso. Southwestern Bell propone unir las tarifas de El Paso con sus otras tarifas que se aplican al resto de Texas. El nuevo arancel que resulta de ésta union se ha archivado en la Comisión de Servicios Públicos (Public Utility Commission), al igual que en las municipalidades de la región de El Paso servidas por Southwestern Bell, y está disponible para inspección pública en nuestras oficinas de El Paso.

### Aviso a los Clientes de Otras Compañías de Teléfono

El registro incluye, pero no se limita a, propuestas para aumentar las tarifas para servicio de línea privada entre centrales telefónicas (interexchange private line) y servicio de central telefónica extranjera (foreign exchange FX). Cambios en dichas tarifas de servicio también afectarían a clientes de otras compañías de teléfono porque dichas compañías proveen los servicios ya mencionados en conformidad a tarifas especificadas por Southwestern Bell. Aunque Southwestern Bell no ha propuesto un aumento en las tarifas para larga distancia, cualquier cambio en las mismas también afectaría a los clientes de otras compañías de teléfono.

 **Southwestern Bell**



**PUBLIC NOTICES**

**NOTICE**

Due to a recent request by Southwestern Bell Telephone Co. for rate increases and the fact that THE ROCKSPRINGS & NUECES CANYON TELEPHONE COMPANY of Rocksprings, Texas, concurs in Southwestern Bell's tariffs for private line, FX type, WATS, and long distance, there exists a possibility that the Public Utility Commission may change those rates. Southwestern Bell has requested a change in private line and foreign exchange (FX) service rates, but has not requested a change in long distance or WATS rates. The Public Utility Commission though may decide to change them. This notice is circulated by our Company so that you, our customers, may be aware of the possibility that the rates may be changed. This notice is given in accordance with the Staff Policy of the Texas Public Utility Commission.

THE ROCKSPRINGS & NUECES CANYON TELEPHONE CO. 512/683-2111, Rocksprings, Texas 78880.

**STATEWIDE CALF SALE**

Hundreds of ranchers across the state have begun donating calves and other livestock for the Independent Cattlemen's Association statewide calf sale July 17 in Hallettsville.

Doc Hagan, owner of the Hallettsville Livstock Commission Company, has donated his facilities for the fund-raiser to begin at 10 a.m. Saturday.

ICA President Roy Wheeler invites all livestock producers to participate. Funds raised through the calf sale enable ICA to continue its work for legislation beneficial to the agriculture industry. Enforcing stricter imported meat inspection, delaying implementation of the 1982 brucellosis regulation and exempting livestock from taxation are a few of the results of ICA work made possible by funds from the 1981 statewide calf sale.

"We thank all of those who have helped with donations in the past and urge them to double their contributions this year," said Wheeler.

The sale will be preceded by a cattle drive party Friday, July 16 from 7-12 p.m. at the Knights of Columbus Hall in Hallettsville. Complimentary food, drinks and dancing will be offered to all calf donors and friends of ICA attending.

Auctioneer for the sale will be Clyde Holdcroft of Pleasanton

Transportation director is Sedley Martin of Leesville. to make arrangements to have calves transported to the sale, donors may contact Martin at 512-424-3381 or the association office at 512-836-1321.

\*\*\*\*\*

**EYE CARE CORNER**

**New Contact Lenses For Farsightedness**

New extended-wear soft contact lenses to correct hyperopia (farsightedness) have received clearance by the U.S. Food and Drug Administration (FDA).

The lenses are manufactured by Continuous Curve Contact Lenses, a subsidiary of Revlon, Inc. It is the only company to receive such clearance.

For this indication, extended-wear is defined as being able to wear the lenses all day and all night; however, the lenses must be removed for cleaning and disinfection once every two weeks, or more frequently, according to the directions of the eye care practitioner.

In July 1979, the FDA cleared Continuous Curve's contact lenses for aphakic (post-cataract) extended-wear and in early 1981, Continuous Curve was the first company in the United States to receive FDA clearance for extended-wear lenses for myopia (nearsightedness).

In making the announcement, a Revlon spokesman said that with this most recent approval of the Hydrocurve II<sub>55</sub> (bifilcon A) Contact Lens, Continuous Curve is now the only company that can successfully correct all refractive problems with its extended-wear lenses—aphakia, astigmatism, myopia and hyperopia.

**FIRST AID FACTS**

**Summertime At The Beach**

The beach is likely to win many family polls for favorite summer spot. Help make it a happier place by practicing rules of safety and common sense.



Beach time should be fun for the entire family.

• Swimming lessons should have top priority. Professional instruction usually works best. Never al-

low children to swim or play in water without adult supervision.

• Be wary about overexposure to the sun during the first few weeks at the beach. Keep hats, robes and cotton sweaters handy for covering up.

• For first degree sunburn (reddened skin), keep out of the sun until the tenderness is gone.

• Have children wear sandals to avoid sharp shells, broken glass or bottle tops hidden in the sand.

Cuts and scrapes do occur, even on the most care-free beach days. Keep a first aid kit as part of your regular beach gear. Care for minor wounds with these easy steps: **CLEANSE** with mild soap, running water and a sterile pad. **TREAT** with first aid cream or antibiotic ointment. **COVER** with a non-stick sterile pad or **BAND-AID** Brand Adhesive Bandage. **TAPE** securely to keep out dirt and germs.

Kids learn by example. Practice safety rules and common sense for a healthy and happy summer.



Very often, diuretics, or "water pills" are used to control this uncomplicated form of the disease. Increased loss of potassium is a frequent result of diuretic therapy. Low blood levels of potassium or hypokalemia has long been associated with muscular cramping, lethargy and weakness. Potassium-sparing diuretics which combine a drug to prevent loss of the mineral with a diuretic are often prescribed to deal with this problem.

Now available to doctors who treat patients with high blood pressure is a new diuretic / antihypertensive drug product that is highly effective in reducing high blood pressure while helping to prevent the loss of potassium. Called Moduretic, it was developed by Merck Sharp & Dohme, the pharmaceutical manufacturer. The new drug is used for patients with high blood pressure who develop hypokalemia. Not everyone can take this drug. Notable exceptions are those who are hypersensitive to it or to other sulfonamide drugs, have high potassium levels, are using other potassium-conserving agents, or are on a potassium-rich diet.

The once-a-day dosage form also means patients are more likely to take the medication as prescribed by the doctor.

**HEALTH HINTS**

Thanks to the effective management of mild high blood pressure thousands of lives are saved each year. About 17 percent of all Americans between the ages of 25 and 74 are estimated to be suffering from mild high blood pressure. Until recently, this generally symptomless condition was believed to require no treatment.

To rule out the possibility that you have this disease, the best thing to do is to visit a doctor.

**BRACKETTVILLE CHURCHES**

**FRONTIER BAPTIST CHURCH**

Sunday School 10:00 a.m.  
Worship Service 11:00 a.m.  
Prayer Meeting (Sun.) 7:30 p.m.  
Prayer Meeting (Wed) 7:30 p.m.

**CHURCH OF CHRIST**

Sunday School 9:30 a.m.  
Worship Service 10:30 a.m.  
Bible Study (Sun) 7:00 p.m.  
Bible Study (Wed) 7:00 p.m.

**UNITED METHODIST CHURCH**

Sunday School (Children) 9:45 a.m.  
Sunday School (Adult) 9:45 a.m.  
Mornng Worship 11:00 a.m.  
Morning Worship

BARRY COX, Pastor

**ST ANDREWS EPISCOPAL**

Church Services (Sun) 6:00 p.m.

REV. EDWARD P. BUSH



# CLASSIFIED ADS

TUESDAY 12 NOON DEADLINE

All Classified Ads--15¢ per word, 13 word minimum insertion--\$2.00. NO BILLING of Classifieds.

## KINNEY COUNTY LAND CO

(512)563-2446

Very neat 2 bedroom, 1 bath home, on corner Lot--beautiful shade trees garage, and storage shed.  
\*\*\*\*\*

House and Mobile Home in Spofford, perfect for hunting camp.  
\*\*\*\*\*

2100 ACRES in North Kinney County, Lots of Wildlife, good wells, and working pens, owner financing.  
\*\*\*\*\*

3 bedroom, 2 bath, Mobile Home on Fort Clark, \$18,000 with membership, \$6,000 down payment, 12% on balance.  
\*\*\*\*\*

## DON HOOD'S JEEPARTS & SERVICE

NOW FEATURES A COMPLETE LINE OF MECHANICAL WORK --EVEN GOLF CARTS

### BRACKETTVILLE TIRE CENTER

DON HOOD - OWNER

563-2125

## BRACKETTVILLE LAUNDRY & DRY CLEANERS

OPEN

9:00 a.m. til 4:00 p.m.

MONDAY, WEDNESDAY, FRIDAY

CLOSED For Lunch

11:30 --- 12:30

IN ADDITION TO LAUNDRY AND DRY CLEANING WE RENT TUXEDOS OVER 1,000 TO CHOOSE FROM 13 DIFFERENT COMBINATIONS.

On Tuesday, Thursday, Saturday you can drop your clothes at Amistad or Comet Cleaners in Del Rio for delivery in Brackett.

112 NORTH STREET

563-2193

### FOR SALE

\*\*\*\*\*  
ATTENTION DEER HUNTERS.....

Are you looking for a convenient Hunting Lodge in Brackett, setting on 2 Lots, all electric, stucco house, 3 big, big rooms, could be converted to 5 very easily, 2 full baths, complete kitchen, air-condition carpet, completely furnished, \$39,000 with \$10,000 down, owner financed at low interest rates, Call: 512/563-2005, after 5 p.m. or weekends, ask for Owen.

\*\*\*\*\*

\*\*\*\*\*  
FOR SALE... (BY OWNER)  
Lots in Brackettville and Spofford, owner financing. Call: 563-2462.

\*\*\*\*\*

\*\*\*\*\*  
110 ACRES, \$575 per acre with \$1,750 down, North of Uvalde, Heavily wooded, fenced on two sides, good hunting, owner-broker financed at 12% simple interest, \$744.11 per month. (512) 896-2525 nights and weekends, (512) 257-3001.

\*\*\*\*\*

\*\*\*\*\*  
FOR SALE.....  
Income producing property in Brackettville. Owner financing good terms. Call: 563-2462.

\*\*\*\*\*

\*\*\*\*\*  
FOR RENT.....  
Furnished Apartment, Fort Clark Springs. O'ROURKE REALTY, 563-2713.

\*\*\*\*\*

\*\*\*\*\*  
SAGEBRUSH SHOPPE II.....  
Half Price Plants and Silk Arrangements, hang baskets \$5.00--\$7.50. 563-2735.

\*\*\*\*\*

\*\*\*\*\*

EMPLOYMENT WANTED.....  
Want to do lawn mowing and trimming. Call: 563-2624, 563-2561 or 563-2446.

\*\*\*\*\*

\*\*\*\*\*  
Retired Citizens of Brackettville and Fort Clark--Brackettville Laundry and Dry Cleaners needs a person to take-in and let-out laundry, also dry cleaning at our 112 NORTH STREET location, Monday, Wednesday, Friday--off for lunch 11:30-12:30. Contact Buddy or Boots Love at the above location as soon as possible.

\*\*\*\*\*

### BUSINESSES

## DAVE'S TOWING SERVICE

563-2987

### Brackettville Auto Parts

Brackettville, Texas 78832

LOCALLY OWNED

113 Spring St.  
563-2258

Art Muñoz, Jr.  
OWNER

\*\*\*\*\*

### MASON SHOES & BOOTS

GUARANTEED LATEST STYLES MEN'S AND LADIES' HIGHEST QUALITY, GO FIRST CLASS, Reasonable Prices. Call: Robbie Robertson, 563-2993.

\*\*\*\*\*

### VANN'S SEAFOOD TRUCK

In Brackettville EVERY OTHER WEDNESDAY, 10 a.m. to 1 p.m. at EXXON STATION have a full line of SEAFOOD.

\*\*\*\*\*

## FOR AREA ASSISTANCE

AMBULANCE

563-2757

SHERIFF'S OFFICE

563-2688

COUNTY JAIL

563-2788

MEDICAL CLINIC

563-2434

CITY POLICE

563-2100

FIRE DEPT.

563-2233

TEXAS HIGHWAY PATROL

563-2788