



# the Kinney Cavalryman

25¢

VOLUME 11, NUMBER 25

JUNE 29, 1984

BRACKETTVILLE, TEXAS



## HAPPY BIRTHDAY, U.S.A.!



### VAL VERDE ANNUAL SHEEP & GOAT FIELD DAY - JUNE 29

The Val Verde Sheep Committee is sponsoring its Annual Sheep & Goat Field Day at the Martin Wardlaw Ranch, 15 miles N.W. of Loma Alta on Friday, June 29, 1984. Registration begins at 9:00 a.m. and a free lunch will be provided to all participants by the Wardlaw Family. Highlights of the days program will be a Computer Record System for sheep and a tour of the Savory Cell Grazing System on the Wardlaw Ranch.

There will be a number of timely topics and noted speakers. All area Sheep & Goat Producers are invited to attend. For more information: call the County Extension Office in Del Rio at 774-3621.

### BRACKETTVILLE COMMUNITY POOL NEWS

On Friday, June 29, Family Night will be held at the community pool, behind the Civic Center, from 8 p.m. to 10 pm. Admission will be \$5.00 for the whole family. Refreshments will be free. Children must be accompanied by parent or guardian.

New pool hours are from 12 noon til 7 p.m., Monday thru Saturday.

The pool is available for rent for private parties. The charge is \$25.00 for two hours. The person renting the pool must pay for a life guard to be on duty. For more information, contact Dee Dee Bowers, pool manager, 563-9707.

### HIGH WINDS, LIGHT RAIN IN DISTRICT 13

Farmers and ranchers in Southwest Texas welcomed the light rain which fell this past week, but high winds which whipped through the area sapped up much of the benefits.

The region is still lagging in the amount of annual moisture, having received only 30 - 40 % of its normal, according to Joe Pena, extension economist-management for the Texas Agricultural Extension Service, headquartered at Uvalde. Watermelon planting in the region is down substantially due to drought and only a limited amount is being harvested in the Pearsall/Cotulla area, Pena said.

"Irrigation wells are showing some weakening with constant use and no recharge to the aquifer," the economist said.

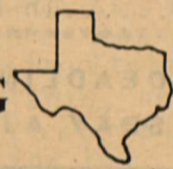
Recent rains have greened up pastures, but farms and ranches continue under severe drought stress, Pena said. Livestock numbers are down and ranchers are feeding heavily. Most dryland crops are being grazed or baled since it does not appear they will make a crop, he added.

The cantaloup harvest has begun, while onions and pickling cucumber harvesting is in full swing, he said. Corn is in the roasting ear stage, grain sorghum continues to bloom and peanuts are growing satisfactorily. Cotton remains relatively stunted after the recent record-breaking low temperatures.

### INDEPENDENCE DAY

WED., JULY 4TH

### TRAVELING TEXAS



JULY 1984

Texas Tourist Development Agency  
Richard Reynolds  
P.O. Box 12008  
Austin, Texas 78711  
512/475-4326



Gay Paresky of the Caldwell Zoo in Tyler shows off a beautiful blue and gold Macaw, just one of the many animals at the popular attraction in northeast Texas. Started in 1938 as a backyard menagerie, the zoo has been developed especially for the enjoyment of children. Admission is free. TTDA photo by Richard Reynolds.



# THE KINNEY CAVALRYMAN

USPS 100-610

P.O. DRAWER CQ  
BRACKETTVILLE, TX. 78832

512-563-2696

J. George Loos ...Editor  
Rosemary Slubar ..Production  
Monea L. Meck ....Production  
Crystal Loos .....Production  
\*\*\*\*\*

Published every Friday.  
Entered by SECOND CLASS MAIL  
at Brackettville, TX 78832.  
\*\*\*\*\*

Subscription Rates: per year  
\$15.00 .....Out-of-County  
\$14.00 .....In-County  
\*\*\*\*\*

DEADLINE:  
TUESDAY AT NOON



..."Any erroneous reflection upon the character or standing of any person or firm appearing in this paper will be gladly corrected - upon being called to the attention of the management and to the article in question." ...

*Crystal Sez...*

"Cheerfulness is the spice of all truth." Pestalozzi



The ancients are believed to have washed themselves with ashes and water, which was followed by an application of oil or grease to relieve the irritation caused by the ashes.

## CALENDAR OF EVENTS

\*\*\*\*\*

- JUN 29 Family Night at Brackettville Community Pool, 8 pm to 10 pm, \$5.00 per family.
- JUN 29 Kiln Building Workshop - JUL 1 The Firehouse, 120 E. Garfield, 9 a.m. to noon.
- JUN 30 Ft Clark Springs - Dance at Swim Park 9 p.m. to 1 a.m. (Members & Guests)
- JUL 1 Ft. Clark Springs - B-B-Q, 12 Noon Swim Park (Members & Guests)
- JUL 2 Ft. Clark Springs - Watermelon Feast, 1 p.m. (Members & Guests)
- JUL 4 INDEPENDENCE DAY !! Del Rio & Laughlin: Mayor's Fourth of July Celebration at Moore Park - B-B-Q - 12 Noon Booths - 1:00 p.m., food, drink, games Pecos River Band - 3:00 p.m. Red, White & Blue Revue - 7:30 p.m. Fireworks Display - 9:30 p.m.

## OBITUARY

Telitha Cordelia (Delia) Shipman, 88, Born January 27, 1896, died June 20, 1984, at 1:30 A.M. at the Mission Hospital at Lake Elsinore, California, following a car crash in which she and her son Joseph D. Shipman, were passengers. Funeral services were held at the Brackettville Church of Christ last Sunday, followed by burial at the Uvalde Cemetary where the body was placed in a family plot. Mrs. Shipman is survived by her two sons, Charles B. Shipman, Joseph D. Shipman, two daughters, Mrs Marjorie Lucelli, Mrs. Margaret Lenz, thirteen grandchildren, and twenty-seven great-grandchildren. Funeral arrangements were made with Hillcrest Funeral home of Brackettville. Pallbearers for the services were: Jim Lucchelli, Jr. (grandson), Theodore (Ted) Alexander (grandson) John Mark Shipman (grandson), Herbert Senne, Jr. (grandson), Robert (Bob) Corey (grandson-in-law), John Jones (church friend). Mr. Joseph Shipman, of Brackettville, received surgery due to a fractured pelvis, a dislocated hip socket, and other possible injuries at the Lake Elsinore Hospital in California. There are plans to fly him to the Veteran's Hospital in San Antonio, as soon as he is up to it.

The head-on crash occurred when they were traveling as passengers with another family in Lake Elsinore, California and another driver failed to stay in his own lane. Mrs Delia Shipman had recently enjoyed participating in a family reunion in Texas and then in California.

## LIBRARY NOTES

### CHAROLETTE COREY.

Next week, Frances Hernandez, Martin Lumbreras and volunteers will be running the library while I am in Dallas to attend a seminar. Please be patient with us. Our desire is to help fill your reading needs as soon as is possible.

My thanks goes out to all of you who have helped me and my family during the loss of my grandmother, Delila Shipman.

New 16mm films have arrived. Come by and check them out along with our 16mm projector.

Children and adults alike are finding the library an excellent place to find entertainment and beat the heat.

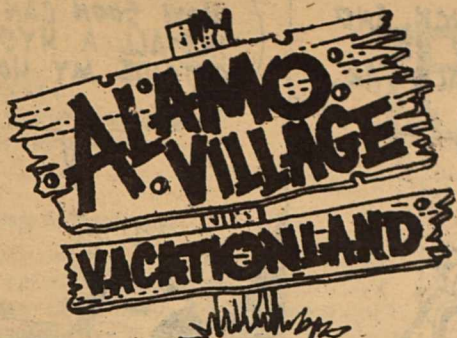
Give someone a hug and God bless you through Jesus Christ.

*Mrs. Lady's Salon*

your **HAIR CONDITIONED** by professionals

563-2698



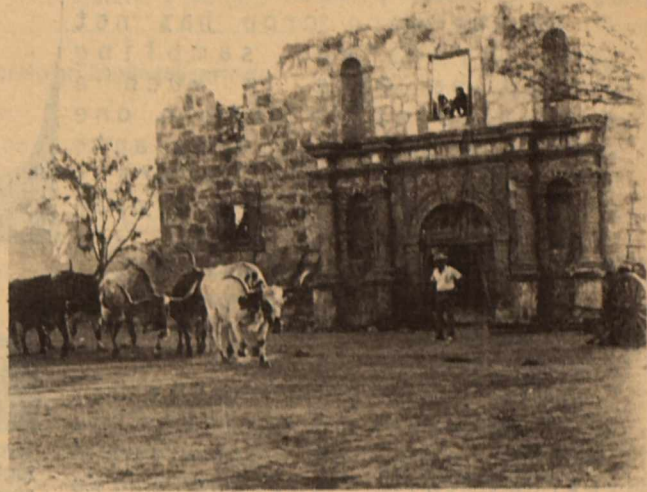


THE  
MOVIE CAPITAL  
OF TEXAS

YEARLY HOUSEHOLD FAMILY PASS - \$35  
for Kinney County Residents

OPEN DAILY:  
9:00 AM TO 6:00 PM

FEATURING:  
THE FULL-SIZE  
ALAMO  
REPLICA



512-563-2580

P.O. BOX 528 BRACKETTVILLE, TX 78832

**NITRATE POISONING  
STILLA DANGER**

Many Texas corn producers have experienced substantial reductions in yields due to limited rainfall since planting time. However, farmers and ranchers using corn for hay or grazing are facing the added risk of nitrate poisoning, said Dr. Noble Kearney, Extension agronomist with the Texas Agricultural Extension Service, headquartered at Uvalde.

"Corn plants which are stressed by drought may accumulate nitrates in lethal levels," Kearney said recently.

Therefore, he explained, it is very important for corn producers to have a nitrate test run on the plant tissue before it is either grazed or mechanically harvested for livestock consumption.

Corn plants that contain more than 1 percent nitrates (on a dry matter basis) may result in livestock death when fed or grazed, Kearney said.

"Even if animals survive this level of nitrates, other economic losses may occur such as abortion, weak and poor viability of recently born young, infertility and difficulty in conception, lameness and decreased milk production," the agronomist said.

However, no single level of nitrate in corn plants, however, is toxic under all conditions, Kearney explained. Many factors and conditions influence the degree of risks

from nitrates in plant tissue, he said.

"Obviously, the concentration of nitrates in plant tissue is a major factor. The physical condition of the animals and management of feed materials are also important," Kearney emphasized.

The nitrate level in corn plants is normally highest in the lower portions of the stalk and lowest in grain and upper leaves.

"This fact is important, because the theory of turning a few animals into a corn field for a short time to 'test the water' may provide to be an erroneous indicator of danger from high nitrates. The reason this practice does not work is that the animals graze only leaves easy to reach and which are lowest in nitrates," Kearney explained.

"Most likely, the animals will move through the field eating only leaves and not the stalks. Thus, they will consume only forage low in nitrates in this short period," he said.

However, heavy grazing of a corn field by many animals may result in animals eating the lower portions of the stalks where nitrate levels are highest.

"Under these conditions, adverse results may be absent at first, but increase with time," the agronomist said.

Certain weeds present in the field such as pigweed (frequently referred to as 'careless weed') may contain higher levels of nitrates than the corn plants. Under stress

conditions, they may be quite palatable when grazed, and if the corn crop is harvested as hay, these weeds may be consumed simultaneously with the corn plants, he said.

Once corn plants are harvested for hay, the nitrate levels remain unchanged with time.

"There is no known chemical that can be added to corn hay to reduce the nitrates," he said.

There are a few management practices that might help to modify, minimize or control the toxic effects of nitrates in corn hay. For example, partially feeding animals with feeds low in nitrates, especially those high in energy (such as grain) and/or thoroughly mixing the high nitrate material with other forages in which levels are low may reduce the risk of poisoning.

However, Kearney advised producers to consult a veterinarian before launching such a program.

It should be noted that if the corn crop is found to contain high nitrate levels before harvest, it is advisable to leave it in the field. A few days waiting after a heavy rain will usually lower the nitrate level sufficiently to allow for safe harvest of the corn plants as a hay crop.

Proper and careful sampling of corn hay or fields is critical in obtaining accurate and reliable information regarding the amount of

CONTINUED ON PG. 4



**POISONING - CONT'D**

nitrites in plant tissue. Composite samples from 10 hay bales should be obtained by using a "hay probe."

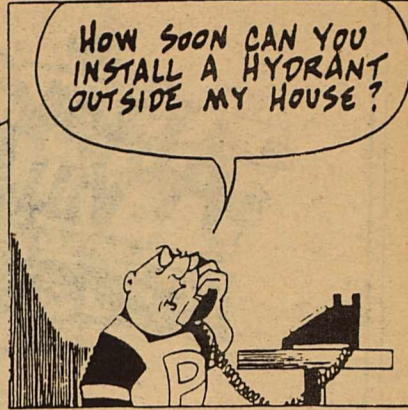
If the corn crop has not been harvested, sampling should be done in such a manner so as to obtain one sample from areas or plants that are the most severely stressed and a second sample from areas or plants that are least stressed. At least 6 whole plants should be included from each sampling area.

"The range of nitrites may be of interest in deciding how best to use the corn crop," Kearney said. "So, use extra care to obtain proper samples for analysis," he added.

A number of laboratories can determine nitrite levels in corn plants. Two laboratories are available at Texas A & M University, College Station - the Soil and Plant Testing Laboratory in the Soil and Crop Sciences Dept., or the Veterinary Medical Diagnostic Laboratories at the School of Veterinary Medicine. There are also several private laboratories equipped to run nitrite analyses in plant tissue.

**PHROG**

By George



Astronauts rarely wear spacesuits. On a mission from eight to 80 days, for instance, suits are worn for only a total of four to 20 hours.



**A "Firecracker" You'll Love to Eat**

Celebrate this Fourth of July with a bang by serving "Firecracker" on a Bun. This clever barbecue recipe echoes the festivities of the day in style.

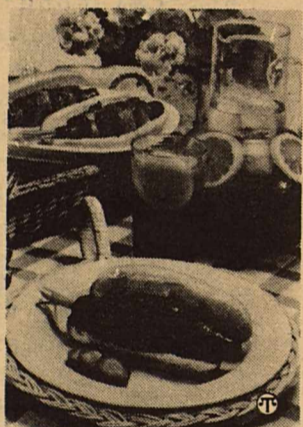
Developed by the home economists in the Wish-Bone test kitchen, this novel treat cleverly combines four typical barbecue flavors: bacon, cheese, hamburger and hot dog. The cheese and hamburger are wrapped around the hot dog and then secured with a strip of bacon. For grilling ease, convenient bottled Russian dressing is used as a barbecue basting sauce. Its special blend of seasonings adds a perfect flavor to this creation.

Just before serving, make a "fuse" by inserting a fringed scallion in one end of the frankfurter. Serve with all the traditional accompaniments: pickles, crisp raw vegetable sticks, potato chips and thirst-quenching iced tea.

This Independence Day, surprise your family and guests with "Firecracker" on a Bun. It's sure to light up your Fourth of July picnic!

**"FIRECRACKER" ON A BUN**

- 3/4 cup Wish-Bone® Russian Dressing
- 1 pound ground beef
- 1/4 cup soft bread crumbs
- 4 slices American cheese, halved



- 8 frankfurters
- 8 slices bacon
- 8 toasted frankfurter rolls

In medium bowl, thoroughly combine 1/4 cup Russian dressing, ground beef, and bread crumbs. On waxed paper, shape beef mixture into 8 rectangles (about 5" x 4"); top with cheese. Place frankfurter in center and wrap with beef mixture, sealing edge tightly. Wrap with bacon and secure each end with toothpick.

Grill or broil, turning and basting frequently with remaining Russian dressing, about 20 minutes or until done. Serve on frankfurter rolls and garnish, if desired, with scallions (green onions) or celery fans inserted into one end of frankfurter. Makes 8 "firecrackers."

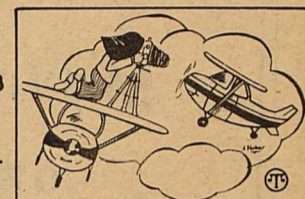
**1st CONTEST News & Notes**

**Aviation Photography Contest Announced**

The sky's the limit for photographers who are looking for opportunities to let their imaginations soar.

A special aviation photography contest is now underway and contestants are invited to submit their most creative images of aircraft — including fixed wing, balloons, ultralights, gliders, blimps and experimentals — as well as photographs taken in-flight of celestial subjects, topography and other aircraft.

The contest, entitled "Freedom of Flying," is sponsored by Jersey, Teterboro Airport, the Aviation Hall of Fame of New Jersey and Minolta Corpo-

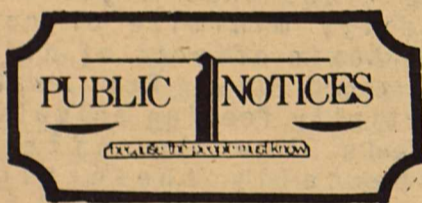


An aviation photography contest gets off to a flying start.

ration. It's open to amateur and professional photographers nationwide with Minolta photographic products offered as prizes.

**Free Brochure**

Information on how to enter the "Freedom of Flying" contest is available by writing or calling: Joyce Huber or Pat Reilly, Contest Coordinators, Aviation Hall of Fame of New Jersey, Teterboro Airport, Teterboro, New Jersey 07608, (201) 288-6344.



**PUBLIC NOTICE**

City of Brackettville is accepting applications for position of Patrolman with the City Police Department. Personnel interested in a Law Enforcement career please contact City Police Chief Dempkowski at City Hall for interview and explanation of benefits and requirements. Immediate employment available to qualified candidate.

PROPANE TANKS FOR SALE OR RENT

**Carroll Spiller**  
FT. CLARK UNIT 15 LOT 65

**Del Rio Gas Company**  
BOTTLES FILLED

BRACKETTVILLE, TEXAS 78832 512-563-9223

512-563-2006

**SHEPARD MOTORS**  
AUTO SALES  
PAUL SHEPARD  
P.O. Box 768  
Brackettville, Texas 78832

**True Value**  
HARDWARE STORES

**SPECIALS ON EXTERIOR HOUSE PAINTS**

**ALL 72 LINE PITTSBURGH EXTERIOR HOUSE PAINTS Regular \$16.69 - \$17.69 per Gallon**

**SPECIAL: \$12.96 per Gal.**

**DECORATOR LINE OF JONES BLAIR EXTERIOR HOUSE PAINTS Regular \$11.98 per Gal. SPECIAL: \$9.98 per Gal.**

**BARGAIN !!! - Mis-mixed Paints - \$5.00/ Gal. \$2.00/ Qt.**

**DAVIS HARDWARE & RANCH SUPPLY**  
512-563-2528



Keys for Keeping Your Summer Cool!

# TEXAS TUNE-UP



Volume 1 Number 1

## Keys for Air Conditioning Maintenance

### Doing It Yourself

These are eight easy keys to tuning-up your central air conditioning system that you can do yourself. The first two should be done with the air conditioning system "OFF". Others should be done with the system "ON", but cleaning or repair performed after these steps should be done with the system "OFF".

### Keys to Indoor Maintenance

#### 1. Filter

Make sure the system is off.

Check the filter monthly and clean or replace as needed. Do not attempt to clean a throw-away type filter.

Make sure that the filter fits snugly against the unit. Air blowing around the filter will dirty the evaporator coil, reduce system efficiency, and increase the potential for maintenance problems.

Never operate your unit without a filter.

#### 2. Blower

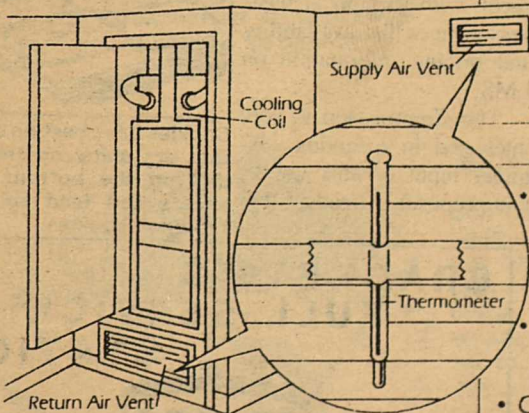
Make sure the system is off.

Most blower fans are driven directly by a motor, but some are driven by belts. If yours is belt driven, check for cracks or excessive wear. Replace the belt if it is badly deteriorated. Always keep a spare belt on hand. Check to see that the belt cannot easily be moved in or out more than one inch; tighten the belt if you find too much slack.

#### 3. Thermostat

Tape a glass bulb thermometer next to the thermostat. Compare the two readings to check the accuracy of the thermostat.

Make sure the thermostat is level and not in direct sunlight. Keep the setting as high as possible for acceptable comfort.



#### 4. Air Temperature

Tape a glass bulb thermometer to a supply air vent, and then to the return air

Just as you tune up your car before a long trip, you should tune-up your home's air conditioner before the long hot summer.

Neglecting your air conditioner will make it work harder, wear out sooner, and it will cost you more to cool your home.

vent. The temperature at the supply air vent should be 17°-20° cooler than the air at the return vent.

#### 5. Air Circulation

Stand several feet away from a room supply air vent and raise your hand to ceiling height. When your unit is on, you should feel the air flow from the vent.

#### 6. Ducts

Check for air leaks around the cooling coil (in the mechanical closet or attic), at all seams in the duct system, and at the supply air vents. Check the ducts wherever they are—in the attic or beneath your home. Leaking ducts are a common problem. You may discover that you have been cooling your attic unintentionally! Leaks at the seams or cooling coil should be sealed with hard-cast tape. Gaps between the duct and the supply vents can be caulked. Your duct system itself should be insulated.

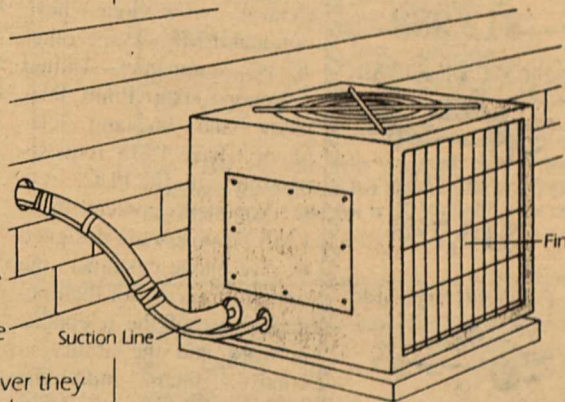
### Keys to Outdoor Maintenance

#### 7. Condenser

Make sure air flows freely through the fins. Air leaving the unit should feel warm. If air does not flow freely, your condenser may need a professional cleaning. Examine the fins around the condenser coil. There should be relatively uniform gaps for air passage between them. If they have been smashed or badly bent, have them straightened by a maintenance technician.

Clean any weeds or large objects from around the condenser. (Seed pods from cottonwood trees, for example, can collect on and clog the condenser.)

If the coil is dirty or clogged, at least clean the outside with a vacuum cleaner and soft brush attachment. If the unit remains clogged, you may also need a thorough, professional cleaning.



#### 8. Suction Line

The larger pipe running from the condenser to the house

The pipe should feel cold and damp to the touch and should be thoroughly insulated. Replace any damaged insulation. If the line is hot, your unit will need professional maintenance.

- Verify that air flow and temperature in the duct system is within reasonable ranges (supply temperature 58°-65°F; return temperature 78°-85°F).
- Check to see that thermostat and switching relays are performing properly.
- Check to see that compressor is delivering proper system pressures. Add or release refrigerant (Freon) as needed; leak-check system if low on refrigerant.
- Check condenser (outside) coil. Straighten and clean fins if required.
- Check compressor voltage and amperage.
- Check condition of wiring, fuses, and/or circuit breakers.

Look in the Yellow Pages under "Air Conditioning Equipment and Systems—Repairing" to locate service companies. Although the cost of a service check will vary depending on the age and condition of your unit, you can expect to pay in the range of \$30 to \$65 for a visual inspection, basic system check, and tune-up of a system that is in running condition. If there are no major problems with your system, a service check should take about an hour. If the check uncovers some problems, how-

ever, more time (and expense) will be required to service the unit.

Be sure to have the service inspector show you how and where to check and maintain your system properly. You may think the cost of a maintenance check is a lot to pay if your unit seems to be working, but a well-maintained system operates much more efficiently, uses less energy, and lasts longer than an air conditioner which is neglected.

### Room Air Conditioners

Room air conditioners are essentially the same as central units. The primary difference is that the indoor and outdoor equipment is packaged into one box, and air is discharged directly from the unit eliminating the need for ducts. As with central units, keeping filters and coils clean is very important. Service is much the same as that for central units, except that:

1. Units should be installed with a 1/4 to 1/2 inch slant toward the back, to allow condensate to drain properly.
2. Drain channels (outside) for discarding excess condensation must be kept clear.

For further information contact our toll-free information number: 1-800-643-SAVE



## Honor Bastille Day With A Summer Party

Looking for a different party theme? Whether you are of French descent or just an admiring Francophile, why not give a party to honor Bastille Day, say French makers of Benedictine and B&B liqueurs? This July 14 anniversary is a major French holiday that could well serve as the background for a delightful summer soiree or a simple backyard barbecue.



Tiny Eiffel Tower models might make decorations or favors at a Bastille Day party.

Plan decorations in red, white and blue (yes, the same colors as our flag). Petite models of the Eiffel Tower might serve as table decorations or even party favors.

Menus can be sweet and simple or Frenchly fantastic, depending on your party mood. Guests will enjoy "les hamburgers" on crusty French rolls or a fabulous coq au vin, if that's your specialty.

When it comes to dessert, there's an easy way to impress your guests. Put together a special coffee, liqueur and ice cream service. B&B liqueur is delicious in coffee, plain or with whipped cream. Or pour it over ice cream. (Measure in proportion to the amount of ice cream you're serving.) The subtle taste of B&B teams up particularly well with nutty ice cream flavors like butter pecan or almond for an elegant dessert with a decidedly French flair.



## GREEN GODDESS SALAD

- 1 can (13 oz.) Bumble Bee Solid White Tuna
- 2 avocados\*
- Crisp salad greens
- 1/2 cup mayonnaise
- 2 tablespoons tarragon vinegar
- 2 tablespoons sliced green onion
- 2 teaspoons anchovy paste
- 1 teaspoon sweet basil, crumbled
- 1 tomato, cut in wedges
- 2 hard-cooked eggs, quartered

Drain tuna. Halve, peel and seed avocados. Place each half on a salad plate lined with salad greens. Combine mayonnaise, vinegar, green onion, anchovy paste and basil. Fold in tuna. Spoon onto avocado halves. Garnish salad plates with tomato and eggs. Makes 4 servings.

\*Or use 4 tomatoes.



# HOOK IT TO HONDO

Where Leasing - Makes Sense



F-150 Styleside



2-Tone, 4-Speed, O.D., A.C., P.S., H.D. Battery, Aux Fuel, Tinted Glass, Gauges, More.

**\$8,988**

F-250 Styleside



131" W.B., 7.5 L, 8-cyl. Eng., 4-spd., A.C., Tinted Glass, Aux Fuel, Super Cooling, more.

**\$11,288**

Escort G.T. Hatchback



1.6 L. Engine, 5-Speed, P.B., AM/FM Stereo, Prem Sound System, Light Group, A.C., Tinted Glass.

**\$8,288**

F-150 S/C Styleside



6-cyl. Auto, A.C., Deluxe 2-Tone, Tinted Glass, Vinyl Kilt Seats.

**\$9,988**

F-250 Diesel Styleside



6.9 L. Cyl. Eng., 4-Spd. Trans., A.C., Aux Fuel, Slip, Trac Axle, Tinted Glass, Much More.

**\$13,588**

Bronco II XLT Wagon



V-6, Auto, Spd. Control, 2-Tone, Tilt Wheel, Privacy Glass, AM/FM Cassette.

**\$12,988**

Ford Thunderbird



Auto O.D., A.C., P.S., P.B., Tilt Wheel, AM/FM Stereo, Vinyl Roof, Spd. Control, more.

**\$10,988**

F-250 S/C Diesel 4X4



6.9 L. Diesel, 4-Spd., Deluxe 2-Tone, Super cooling, Exp. "C" Package, much more.

**\$16,788**

Dodge Ramcharger Wg.



318 Eng., Auto, Air, 2-Tone, 2 Wheel Dr., Chrome Wheels, Wide Tires, AM/FM Cassette.

**\$12,288**

F-250 S/C Styleside



Deluxe 2-Tone, 8-cyl. Auto O.D., Explorer "C" Pkg., Super Cooling, Deluxe Wheel Covers.

**\$11,788**

Dodge Power Ram 50



2.3 Liter Turbo Diesel, 4X4, 5-Spd., A.C., Spd. Control, AM/FM Stereo, Stripes, More.

**\$9,888**

Bronco XLT Wagon



8-cyl. Deluxe 2-Tone, Auto, Tilt Wheel, Spd. Control, A.C., AM/FM Stereo, Styled Steel Wheels.

**\$14,888**

Chrysler 5th Avenue



4-Dr. Auto, 318 Eng., 8-cyl. AM/FM Cassette, Leather Seats, Vinyl Roof, Lux Equip. Pkg.

**\$14,988**

F-150 S/C Styleside



8-cyl., 2-Tone, Captains Chairs, Explorer "C" Pkg., Auto, Super Cooling, Console, more.

**\$12,288**

Dodge D-100 P.U.



3188 Cyl. Eng., Auto, P.S., 131" W.B., Max Cooling, G.V.W. Pkg., Vinyl Trim Seat.

**\$7,988**

F-250 S/C Diesel



Explorer "C" Pkg., 8-cyl. Deluxe 2-Tone, 4-Spd., Super Cooling, Slip Trac Axle, more.

**\$15,688**

Add Only Tax, Title & License

## BILL HELLEN Ford-Chrysler

Big Selection Country Courtesy Mon-Friday 8am-7pm Saturday 8am-4pm Phone 426-3311 Hwy 90 W Hondo, Texas

## Public Utility Commission of Texas



### Consumer Update

Southwestern Bell, the state's largest telephone utility, is proposing that the PUC allow a new type of service called Local Measured Service (LMS) to be offered to its 5 million-plus customers on an optional basis. The PUC hearing on the SWB-LMS proposal is scheduled to begin Sept. 24 in Austin.

Already, customers of three Texas telephone companies—General Telephone, Continental Telephone and Central Telephone—have optional LMS. Three other Texas companies—United Telephone, Palo Pinto Telephone and Mustang Telephone—have LMS requests pending with the PUC.

Proponents contend these LMS proposals are designed to give phone customers the option of paying for their actual usage of the telephone network and the ability to control their individual costs. Critics say LMS would only benefit a few customers, while ultimately resulting in rate increases for most customers.

There are basically five parts to this proposal which will have to be considered:

1. Southwestern Bell's LMS proposal would allow residential and one-party business customers unlimited incoming calls. Outgoing

calls would be charged according to number of calls, distance, duration and time of day, just as long-distance calls currently are charged. Outgoing calls to the company's business or repair offices, and emergency (911) calls would not be charged.

2. Basic residential rates under the SWB-LMS proposal would vary by exchange rate group from \$5.90 to \$8.05 per month, about 75 percent of the current flat rate. Business measured one-party service would vary by exchange group from \$13.80 to \$20.65 under the SWB-LMS proposal. This also is about 75 percent of the existing flat-rate business charge.

3. A third pricing option would be a "LIFELINE" service targeted to the elderly (over 65) living at or below poverty levels defined by the Texas Department of Human Resources, or a comparable state/federal agency determined by the PUC. For those who qualify, the "LIFELINE" service would cost \$5 a month regardless of the rate group and would include an allowance for 25 outgoing calls, and unlimited incoming calls. Outgoing calls over 25 would be charged at 8 cents

per call.

4. The SWB proposal also would eliminate the current "economy" rate (also known as Measured Residence Service) which provides residential customers 25 free outgoing calls for \$5.21 (additional calls are billed at 8 cents). SWB only offers the "economy" rate in areas approved by the PUC which have electronic switching capability. Customers currently on the "economy" rate would be "grandfathered," meaning their rates would not be changed by the proposal.

5. If the LMS offerings are approved by the Commission, SWB customers could keep the "flat rate" monthly service currently available, or they could change to one of the new LMS pricing plans. LMS would be available at company offices which now serve more than 2.5 million customer lines. The remaining company offices would be equipped to handle LMS within two years. Customers would need to be sure and check with their local business offices for availability and pricing information on LMS.

The Commission is very interested in receiving customer input on this important proposal. Already, SWB

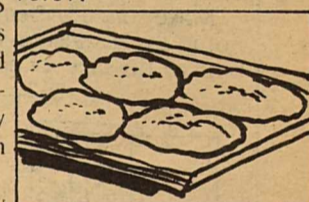
has surveyed its customers to determine interest in LMS. This survey was made at PUC direction.

Also, the Commission is holding a series of regional hearings in which phone customers across Texas will be able to comment about the LMS proposal. Hearings already have been held in Austin, Houston and San Antonio. Additional hearings are scheduled for:

- Dallas — 3:30 to 7 p.m., June 29, in the City Council Chambers.
- El Paso — 2 to 5 and 6:30 to 8:30 p.m., July 6, in the City Council Chambers.
- Amarillo — 3:30 to 7 p.m., July 12, in the City Council Chambers.
- Odessa — 3:30 to 7 p.m., July 16, in the City Council Chambers.
- Harlingen — 3:30 to 7 p.m., July 20, in the City Council Chambers.

We urge you to attend the hearings in your area and to give us your views about LMS. If you can't attend a hearing, write your comments to the Commission at the address listed below.

*Consumer Update is prepared and distributed by the Consumer Affairs Office of the Public Utility Commission of Texas. Our address is 7800 Shoal Creek Boulevard, Suite 450N, Austin, Texas 78757.*



Cookies bake best on sheets that are shiny on the top, dull on the bottom. Dark sheets can lead to over-browned cookies.

# SEARGEANT CONCRETE COMPANY

CONCRETE REDI-MIX SAND GRAVEL MASONRY SAND



HOURS: 8:00 a.m. to 5:00 p.m. Monday thru Friday

Hwy. 90 West P. O. Box 529 Brackettville, Texas 512-563-2405

## BRACKETT'S "FULL SERVICE" STATION!



T & A

SERVICE STATION

HWY. 90 563-9794

## DAVE'S TOWING SERVICE

563-2987



**LOANS AND OTHER EMERGENCY MEASURES AVAILABLE TO PRODUCERS IN DROUGHT-STRICKEN TEXAS COUNTIES**

Prolonged drought has had a devastating effect on agricultural production in Texas. The U.S. Department of Agriculture recently announced that 67 additional counties in Texas have been added to the list of those designated disaster areas, bringing the grim total to 166 counties eligible for emergency aid.

That aid comes in the form of Farmers Home Administration (FmHA) and Small Business Administration emergency loans and other measures, according

to Joe Pena, Extension Economist-Management with the Texas Agricultural Extension Service headquartered in Uvalde.

These measures were made possible by the Emergency Agricultural Credit Act of 1984, which was signed into law April 10 by President Reagan.

"It authorizes emergency loans for counties which are contiguous to counties already named as eligible for loans due to losses from natural disaster occurring after May 30, 1983," Pena explains.

Farmers and ranchers in all eligible counties may apply for emergency loans any time during an eight month period

following the date on which the last county in Texas is designated as eligible.

The U.S.D.A. also has announced a list of emergency measures to aid producers in areas still affected by drought and other adverse weather conditions. These measures include expansion of the Emergency Feed Assistance Program to allow producers to hay and/or graze cropland which was taken out of production in the 1984 farm programs. Haying and grazing cropland taken out of production is allowed in all Texas counties, the economist explained, but only those counties declared eligible for emergency assistance are currently eligible for low interest loans.

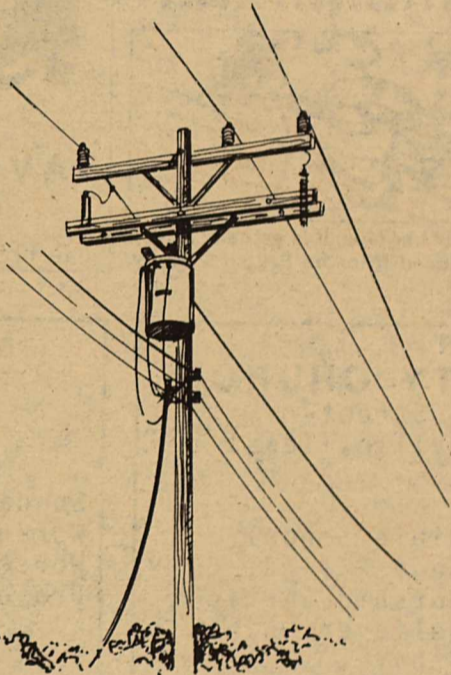
**Stay alert and stay clear—**

**AVOID POWER LINES**

Putting up the antenna for your TV set or for the base station of your CB radio can be dangerous unless you take certain precautions.

Plan the project carefully if you install the antenna yourself. First, know where all the power lines are—then stay well away from them. Any contact between a power line and you or your antenna can be serious.

Make sure you locate your antenna (including the supporting mast and guy wires) at least one and a half times its total height from all power lines. For example, an antenna 30 feet high should be 45 feet away from power lines in all directions.



Don't use a ladder near power lines—during an antenna installation or while performing any other task. The danger from using a metal ladder is obvious. But a wooden ladder can conduct electricity, too, if it's damp or if it has dirt or paint on it.

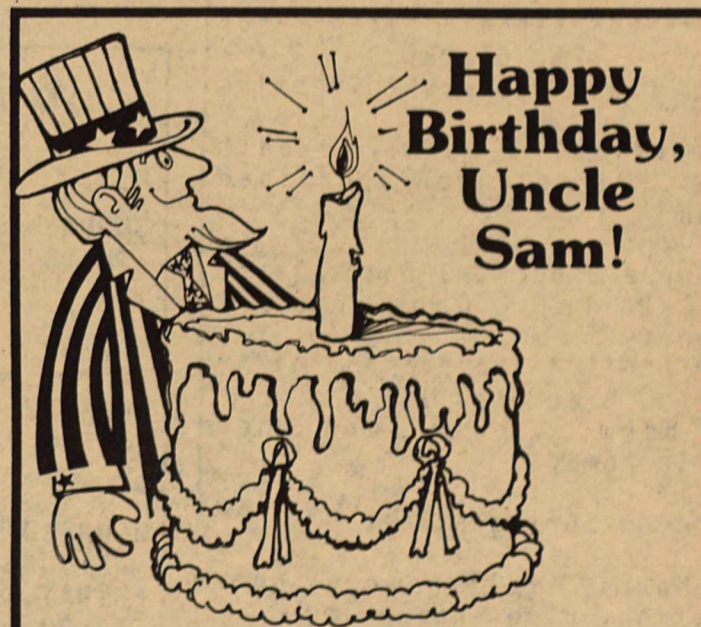
Electricity brings a more comfortable life to all of us, but it must be treated cautiously. Stay alert—and stay clear of power lines!



**CENTRAL POWER AND LIGHT COMPANY**  
A Member of the Central and South West System



The first bicycle trip around the world was made by Thomas Stevens, who started from San Francisco, Calif., on April, 22, 1884 on a 50-inch bicycle and returned January 4, 1887.



**Happy Birthday, Uncle Sam!**

A day when Americans unite as one to celebrate the birthday of our country's independence as a nation.

**LEGAL HOLIDAY  
INDEPENDENCE DAY, JULY 4TH**

**THE FIRST STATE BANK  
OF BRACKETTVILLE**

563-2451

MEMBER F.D.I.C.



**DEADLINE:**  
Tuesday  
at NOON

# CLASSIFIED ADS

All classified ads: \$.20 per word, 10 words minimum insertion ... \$2.00 per week. NO BILLING OF CLASSIFIEDS !!!

## KINNEY COUNTY LAND CO.

512-563-2446

\*\*\*\*\*  
New 3 bdrm, 2 b, brick home - on 2 lots, chain link fence, fireplace. North Brackett.  
\* Priced for Quick Sale \*  
\*\*\*\*\*  
Mobile Homes - on Fort Clark. From \$16,000. Financing available.  
\*\*\*\*\*  
100 acres - East of Brackett. 2 homes, swimming pool, stock tank, plentiful wildlife.  
\*\*\*\*\*  
Commercial bldg. - on Hwy 90. 1200 sq. ft. Priced below replacement cost.  
\*\*\*\*\*

## CLASSIFIEDS SELL!!

\*\*\*\*\*  
FOR SALE: 1972 Mercury, 4 door, runs good. Good Condition. \$400.00 - Firm. 563-2146  
\*\*\*\*\*  
FOR SALE: '82 Chevy 6.2 L Deisel Pickup. 4WD, Radio, CB, A/C, 2 Tanks, Shell oversized tires. Asking: \$8800. 563-2695  
\*\*\*\*\*  
FOR SALE: 1976 Chevy Malibu, 2 dr., excellent cond. '75 Chevy Estate Wagon, Good cond. - Best Offer. 563-2868.  
\*\*\*\*\*  
FOR SALE 10" Sears Radial Arm saw, like new. \$250. 563-2069  
\*\*\*\*\*

LIQUOR .. .. WINE

## DEASON'S PACKAGE STORE

"LOW PRICES ... FRIENDLY SERVICE!"  
'Conaco Station' Hwy 90  
512-562-2424

## MASON SHOES & BOOTS

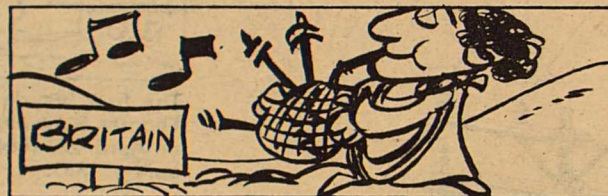


OVER 350 STYLES FOR MEN & WOMEN  
SAVE MONEY - ORDER DIRECT!  
Robbie Robertson 563-2993

## Voss Realty

563-2758

\*\*\*\*\*  
Ft. Clark  
\* Ft. Clark Membership resales  
\* Beautiful 3 bdrm., 2 bath home. Priced under appraised value.  
\* 49er - 3 bdrm, 1 bath, large fenced lot. Good rental property.  
\*\*\*\*\*  
Brackettville  
\* 2 bdrm, 1 bath furnished mobile home.  
\* Lot on Spring Street.  
\* 3 bdrm, 2 bath home in good location, nice shaded lot.  
\*\*\*\*\*



The Scots did not invent the bagpipe. It is actually a very ancient instrument, introduced into the British Isles by the Romans.

## THE COMMUNITY CHURCH

Ann Street  
Brackettville, Texas

**SUNDAY**  
10:00 a.m. Bible School (age 2 - gd. 6)  
11:00 a.m. Worship Service  
7:00 a.m. Believers Bible Study  
**TUESDAY**  
7:00 a.m. Mens Bible Study and Prayer (open to all men)  
**WEDNESDAY**  
7:00 p.m. Prayer and Praise  
**FRIDAY**  
10:00 a.m. Womens Tape Group (held at Debbie Esser's home: 3-2531)

GARY HOLCOMBE, Pastor  
315 El Paso  
3-9375

May we help you with:

- \*Christian Counseling (Bible based for Adults, Youth, Deliverance, Inner Healing)
- \* Physical Needs (Food, Clothes for Adults and Children)
- \* Prayer Needs (Crisis, Family, Illness)

## BRACKETTVILLE CHURCHES

### FIRST BAPTIST CHURCH (Southern Baptist)

Rev. Ronnie Watson  
Sunday School 9:45 am  
Worship Service 11:00 am  
Worship Ser. (Sun) 7:00 pm  
Prayer Meeting (Wed) 7:30 pm

\*\*\*\*\*

### FRONTIER BAPTIST CHURCH (Southern Baptist)

Rev. Joe Townsend  
Sunday School 10:00 am  
Worship Service 11:00 am  
Prayer Meeting (Sun) 7:30 pm  
Prayer Meeting (Wed) 7:30 pm

\*\*\*\*\*

### UNITED METHODIST CHURCH

Ron Kelly - Pastor  
Child. Sunday Schl. 10:00 am  
Adult Fellowship 10:30 am  
Worship 11:00 am

\*\*\*\*\*

### CHURCH OF CHRIST

Sunday School 9:30 am  
Worship Service 10:30 am  
Bible Study (Sun) 6:30 pm  
Bible Study (Wed) 7:30 pm

\*\*\*\*\*

## \$5,000 CASH REWARD

FOR INFORMATION LEADING TO THE ARREST & CONVICTION OF POACHERS ON THE PIÑON RANCH!

ALL INFORMATION WILL BE KEPT CONFIDENTIAL.

563-2883