



ALAMO VILLAGE  
P. O. BOX 528  
BRACKETTVILLE, TX 788320528

25¢

# the Kinney Cavalryman

VOLUME 12 NUMBER 6

FEBRUARY 8, 1985

BRACKETTVILLE, TEXAS

## FUGITIVE SOUGHT

### TEXAS MOST WANTED FUGITIVE #3

COAHOME, TX -- The people around the West Texas town of Coahoma say Anthony Ginnetti was a super salesman.

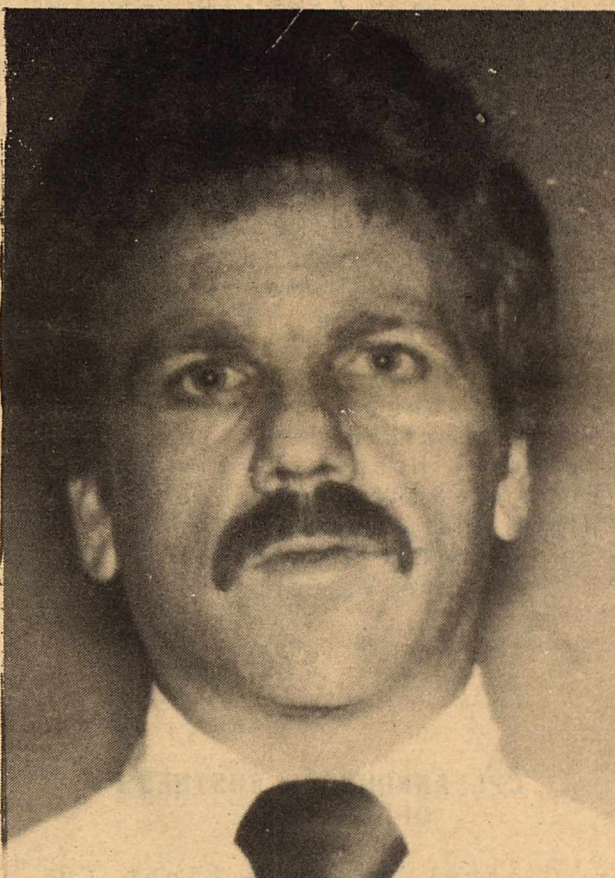
Investigators from the FBI, the Texas Dept. of Public Safety, and the Swisher and Howard County Sheriff's Dept. say the same thing. The only problem, they say, is that all Ginnetti sold was a "bill of goods."

Ginnetti, who also goes by the names of Terry Lee Ginnetti, Terry Lee Prero, Anthony Culpert, and Tony Argus, is wanted by state and federal law enforcement officials on charges of defrauding the Coahoma State Bank out of \$260,000 and a private individual out of some \$150,000.

The dapper looking 37 year old fugitive began negotiating with Coahoma State Bank in October, 1982, to secure an automobile "floor plan" for his Car City Auto Sales and Service business. The original agreement, say investigators, was for \$38,000 worth of automobile purchases. A total of \$20,000 was to be secured by a Certificate of Deposit held by the bank and the rest of the loan was to be secured by automobile titles held by the bank as collateral.

But detectives say that between October, 1982 and April, 1984, Ginnetti was able to get the floor plan raised to \$80,000, with \$30,000 in CD's and the remainder in automobile titles.

During the same period of time, say investigators,



Ginnetti was able to defraud the bank in the following manner:

- \* replacing all good automobile titles held by the bank with illegally acquired titles, thereby effectively reducing a portion of the collateral held by the bank.

- \* having the bank release liens on automobiles by telling them he had the vehicles sold and would return with the money. He would never deposit the money in the bank.

- \* by writing checks on collected funds which subsequently had "stop payment" placed on them.

- \* by purchasing a large number of automobiles or customer drafts which were

honored by the bank, despite the fact there was not sufficient funds on deposit at the bank.

- \* forging signatures on vehicle titles held by the bank.

- \* forging his partner's signature to checks and drafts which were honored by the bank.

Investigators caution that while Ginnetti might have left the State, there is a possibility that he might still be somewhere in Texas operating in the same manner.

Ginnetti is described as white male, 5-9, 175 pounds, with blonde hair and blue eyes.

This week Texas most wanted is offering a \$1,000 reward for information leading to Ginnetti's capture. To be eligible for the reward, citizens are asked to call Texas Crime Stoppers Advisory Council toll free at 1-800-252-8477 or their local crime stoppers program. Callers do not have to reveal their identities.

Texas Most wanted is a weekly cooperative effort between crime stoppers and the department of public safety and is designed to enlist the support of citizens in capturing dangerous fugitives.

As of January 16, 1985, the Dept. of public safety reported that Ginnetti is wanted on the following warrants:

Swisher County #1796, dated 4-18-84;

Howard County #3948 & 3949, dated 4-27-84;

FBI warrant dated 5-14-84, unlawful flight to avoid prosecution.

# THE KINNEY CAVALRYMAN

USPS 100-610  
P.O. DRAWER CQ  
BRACKETTVILLE, TX. 78832  
512-563-2696

J. George Loos ...Editor  
Monea L. Meck ....Production  
Lee Finch .....Production  
Crystal Loos .....Production  
\*\*\*\*\*

Published every Friday.  
Entered by SECOND CLASS MAIL  
at Brackettville, TX 78832.  
\*\*\*\*\*

Subscription Rates: per year  
\$15.00 .....Out-of-County  
\$14.00 .....In-County  
\*\*\*\*\*

DEADLINE:  
TUESDAY AT NOON



..."Any erroneous reflection upon the character or standing of any person or firm appearing in this paper will be gladly corrected - upon being called to the attention of the management and to the article in question." ...

*Crystal Sez...*

"Discussion: a method of confirming others in their errors." Ambrose Bierce

PROPANE

TANKS FOR SALE OR RENT

## Del Rio Gas Company

HWY 90 W

BOX 368 DEL RIO

775-3633

### LIBRARY NOTES

LIZ FRERICH  
HEAD LIBRARIAN

Dont forget on February 14 at 3:00 p.m. the library will have the major feature presentation "The Looney, Looney, Looney Bugs Bunny Movie". Also if you still have any Campbells soup labels for the library, please bring them by.

### CARD OF THANKS

The family of S.L. Vincent wishes to express their sincere appreciation and thanks to their many friends who expressed their love and sympathy in so many comforting ways during our recent loss.

Special thanks to the 5-EMS team from Brackettville who responded so quickly to Sunday's early morning call: to Don Nance, Mary Dean Brockman, Rev. John Weston, and Rev. Ron Kelley who were always there during these first terrible days; to Uvalde Memorial Hospitals Emergency Room team; to Dr. James R. Winn; and Claude Estes.

Thelma S. Vincent  
Yvonne V. Carpenter

### CPL ANNOUNCES BUSINESS OFFICE MOVE

Central Power & Light Co. 305 S. Main business office will be moved to 110 Chevrolet Dr. effective Monday Jan. 28. The new facility (just west of Howard Chevrolet on Chevrolet Dr) features two lanes for drive thru service and improved customer parking. Entrance to customer parking and drive thru lanes are off Chevrolet Dr.

According To CPL local manager Bill Cranford, "The new facility was built to improve service and office access for our customers. Both parking and drive thru facilities are greatly improved and will provide more efficient and faster service for the almost 14,000 customers now served from CPL's Del Rio Office."

Customers may continue to use the mail or one of three collection stations for convenience in making payments. Collection stations include HEB #1, 500 Pecan; Warehouse Groc. #318, 910 Ave. F; and Food City #319, La Villita Shopping Center.

CPL's mailing address, PO Box 420579, telephone numbers, 775-2474 (775-2476 after hours), remain unchanged.

### FACTS & TRIVIA CONCERNING TEXAS HIGHWAYS

More than 1,100 safety rest areas, roadside parks and scenic turnouts are located along the Texas Highway System.

\*\*\*\*\*

Nearly 218 million vehicle miles are travelled on Texas highways on an average day.

\*\*\*\*\*

Keeping Texas roadsides free of trash and litter cost taxpayers some \$22 million last year. Litter pickup costs have risen an average of 17 percent per year during the past five years.

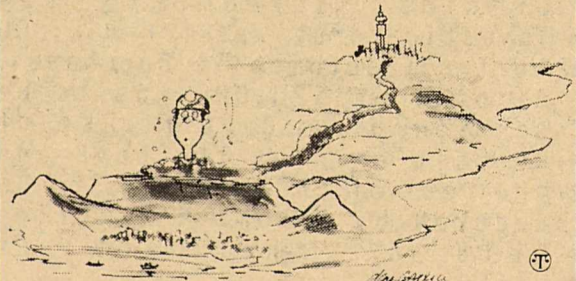
\*\*\*\*\*

In the late 1800s every able bodied male was required to work on Texas roads a specified number of days each year. Today, highway construction and maintenance are the responsibility of the State Dept. of Highways and Public Transportation.

\*\*\*\*\*

There are more than 70 thousand miles of designated highways in the Texas highway system, of which nearly 41 thousand miles are Farm-to Market Roads.

## IT'S A RECORD!



**AMAZING TUNNELS!** ACCORDING TO EXPERTS AT THE CHAMBER OF MINES OF SOUTH AFRICA, THE TRADE ASSOCIATION OF THE SOUTH AFRICAN MINING INDUSTRY, THE COMBINED LENGTH OF ALL THE TUNNELS IN A SINGLE LARGE GOLD MINE SUCH AS SOUTH AFRICA'S EAST RAND PROPRIETARY MINES OR VAAL REEFS WOULD EASILY STRETCH **932 MILES!** ALMOST THE DISTANCE BETWEEN NEW YORK AND ST. LOUIS! THESE TUNNELS ARE BLASTED OUT AT DEPTHS OF UP TO ALMOST 2 1/2 MILES IN SOLID, STRESSED **ROCK!** THERE IS NO TUNNELLING ON THIS SCALE AT THESE DEPTHS 'ANYWHERE' ELSE IN THE WORLD!



## THE SHERIFF'S CORNER

by Norman H. Hooten, Sheriff

Last week we started a summary of county government in Texas and covered the basic form of such and discussed the basic functions of the Commissioners Court. This week we will cover the various elected county officials and their basic duties under the law.

### COUNTY JUDGE:

The County Judge is the presiding officer of the Commissioners Court which is the policy-determining body of the county. The County Judge is a voting member of the Commissioners Court although in many counties, by custom, the judge votes only in case of a tie. A County Judge is usually the judge of the County Criminal Court, County Civil Court, and Probate Court. If the County Judge is an attorney, he may also serve as the judge of the Juvenile Court. The County Judge is also head of civil defense and disaster relief, county welfare, and in counties under 225,000 population the judge prepares the county budget along with the County Auditor or County Clerk.

AS an administrative official, the County Judge handles such widely varying matters as hearings for beer and wine license applications, hearings on admittance to state hospitals for the mentally ill and mentally retarded, waivers for marriage of persons under age, juvenile work permits and temporary guardianships for special purposes. The County Judge is also responsible for calling elections, posting election notices, and for receiving and canvassing the election returns. The County Judge is a Notary Public and may perform marriages.

### COUNTY COMMISSIONER:

Each county in Texas is divided into four commissioner's precincts. Each of the four Commissioners is directly elected by the voters of their precinct. As a member of the Commissioners Court, each Commissioner participates in all the decisions and work of that body. In most counties, the County Commissioner is solely and directly responsible for the administration of the road and bridge program in his precinct, but today, with increased administrative responsibilities, a County Commissioner is much more than a "road commissioner".

### DISTRICT CLERK:

Duties of the District Clerk in each county revolve around the District Court. Even though District Courts are state offices, they have become an integral part of county government. In general, the district Court will hear serious criminal cases, important civil cases, and most cases dealing with juvenile and domestic relations. The role of the District Clerk in supporting the District Court system is essential to its smooth operation. The District Clerk is recorder, registrar and custodian of all court pleadings, instruments, and papers that are part of any District Court case. The District Clerk is responsible for swearing and impaneling both petit and grand juries, recording verdicts, securing court records, maintaining dockets, and collecting filing fees. The District Clerk's Office also issues writs, warrants, citations, executions, notices to show cause and other papers involved in the trying and disposition of many kinds of lawsuits.

The District Clerk is also responsible for a significant number of miscellaneous duties such as receiving and dispersing child support payments and accepting passport applications in counties where there is no local passport agency.

In counties with a population of less than 8,000 the office of District Clerk is generally combined with the office of County Clerk unless voters have authorized

separate offices.

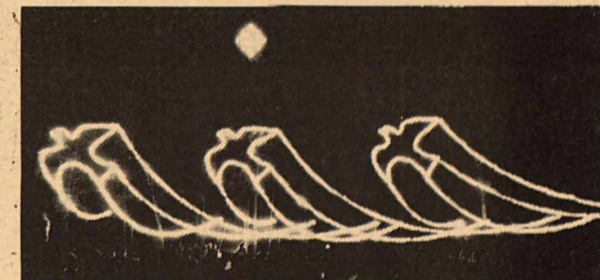
### COUNTY CLERK:

The County Clerk generally serves as clerk to both the Commissioners Court and the County Courts. The clerk in most counties keeps the records of the actions of the Commissioners Court, the Probate Court, the Criminal Court and the Civil Court. The clerk is responsible for the filing of all legal instruments affecting real property titles, such as deeds, deeds of trust, mortgages, contracts, etc. The clerk also records maps of all sub-divisions and all boundary lines established by the Commissioners Court. The County Clerk also records births and deaths delayed birth certificates, assists in jury selections, records livestock brands and marks, and issues and records marriage licenses. In most counties, the County Clerk also conducts elections for the county.

As we have run out of space for this week we will conclude our summary of the organization of county government in Texas and the duties of the various elected and appointed officials in next week's column.

## NEWS IN PICTURES

### LIGHTS OF CHRISTMAS



A spectacular new dove has been added to the dramatic 80-by-300 foot "Doves of Peace" sculpture that was presented as a Christmas gift last year to the residents of The Woodlands, a new city 27 miles north of downtown Houston, Texas.

The new dove, bearing a banner saying "Season's Greetings" and topped with a sparkling star, rises to a height of 60 feet off

the ground.

These international symbols of peace boast 30 foot wing spans and 2,146 lights, 1,500 feet of gold garlands and a 20-foot live tree base.

The new dove was constructed by Bailey and Company of Houston, and erected by The Woodlands Corporation, a division of Mitchell Energy & Development Corp., developers of the new community.



## TODAY'S HAIR SALON

APPOINTMENTS: 563-9718/2007

"STYLES FOR TODAY'S FAMILY"

## HILLCREST FUNERAL HOME

PRE-NEED SERVICE  
YEARS TO PAY WITH NO INTEREST  
NO SERVICE CHARGE!  
563-2438



**STATE DEPARTMENT OF HIGHWAYS  
AND  
PUBLIC TRANSPORTATION CONTRACT**

Sealed proposals for contract mowing in various counties will be received at the State Dept. of Highways and Public Transportation; San Angelo, TX, on the date and time indicated below; and then publicly opened and read.

February 27, 1985 10:00 a.m.  
Contract 075XXM1002 Sutton Co.  
Contract 075XXM1010 Crockett Co.

February 27, 1985 2:00 p.m.  
Contract 075XXM1007 Coke Co.  
Contract 075XXM1001 Runnels Co.  
Contract 075XXM1003 Concho Co.

February 28, 1985 10:00 a.m.  
Contract 075XXM1008 Kinney Co.  
Contract 075LXXM1005 Edwards Co.  
Contract 075XXM1009 Val Verde Co.

February 28, 1985 2:00 p.m.  
Contract 075XXM1006 Tom Green Co.  
Contract 075XXM1004 Sterling Co.

Plans, specifications and proposals are available at the office of Charlie F. Low, District Maintenance Engineer, San Angelo, TX. Prebidder Conference for all contracts will be held at the State Dept. of Highways & Public Transportation, San Angelo, Texas on February 13, 1985 at 10:00 a.m.

Usual right reserved.

**NOTICE OF DEPOSITORY**

NOTICE is hereby given, this the 21st day of January, A.D. 1985, in compliance with article 2544, T.R.C.P., by Kinney County Commissioners' Court, that said Court will accept applications from any banking Corporation, association or individual bank in Kinney County for depositing of the public funds of such county, in such bank or banks.

Contract will be awarded at February 15, 1985 Special Meeting of Kinney County Commissioners' Court to be held at 10:00 A.M.

COMMISSIONERS' COURT  
OF KINNEY COUNTY, TEXAS  
S/S  
ALBERT A. POSTELL-COUNTY JUDGE

**FIRST IN A SERIES OF  
"TAX-TIPS"**

Provided by the San Antonio Chapter of the Texas Society of Certified Public Accountants.

**Q. What are the tax laws concerning the filing of joint returns by married couples? Is it required that married persons file joint returns, or may each spouse file an individual return? Under what circumstances would it benefit a married couple to file jointly or individually.**

A. Married couples may file a joint return if they are not legally separated under a divorce decree or separate maintenance on the last day of the year. Although a joint return is not required, it almost always produces tax savings over filing separately. One case that might result in a lower total tax by filing separately is one in which one spouse has substantial medical expenses while the other has little or none. the tax should be computed both ways if there is any doubt which is lower.

**How do I deduct costs for drugs and medical insurance this year?**

A. Beginning this year, drugs are defined as only prescription drugs and insulin. You do not have to figure a separate limitation for drugs as you have had to do in the past. All of your medical expenses including drugs, medical insurance, doctor, dentist and hospital bills, etc. are totaled. The total is then reduced by five percent of your adjusted gross income with the remainder as a deduction.

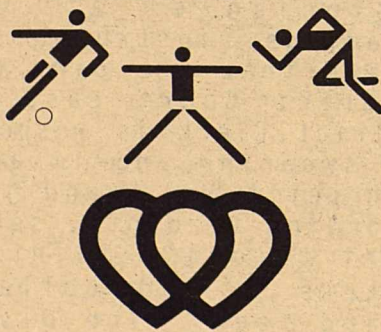
For example, if your adjusted gross income is \$30,000, you would be able to deduct only those medical expenses which are greater than \$1,500.

**Q. I am a retired person drawing social security. I have heard that social security benefits are taxable beginning 1984. Is this correct?**

A. Yes, but no more than one-half is taxable, depending on your income.

*Celebrate  
your good  
health!*

**Give Blood.**

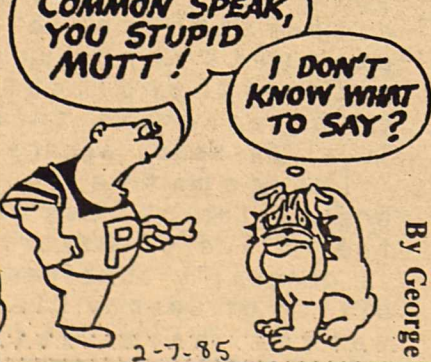


**South Texas Regional  
BLOOD BANK**

McCullough at Broadway  
San Antonio, TX 78212  
22-DONOR

1109 Sam Houston Drive  
Victoria, TX 77901  
(512) 576-3651

**PHROG**



BY GEORGE

By George

2-7-85

For married individuals filing joint returns, adjusted gross income plus tax-exempt interest income must exceed a base amount of \$32,000 before any Social Security is taxable. If a married couple files a separate return, Social Security becomes immediately taxable (unless they live apart). In all other cases, Social Security becomes taxable above \$25,000.

If your adjusted gross income plus tax-exempt interest income exceeds the base amount, the amount of taxable Social Security benefits is one half of the excess over the base amount of one half of your Social Security benefits, whichever is less.

**Q. My aunt is currently living with me. she has been a member of my household for eight months. Her stay with me is indefinite. May I claim her as a dependent on my tax return? How long may I claim her and what circumstances would require that I not claim her on my tax return?**

**A. You may claim a relative as a dependent and take a \$1,000 exemption AS LONG AS:**

\* you furnish more than one half of the total support during the calendar year (including lodging, food, clothing, medical, etc.)

\* the person is truly related, such as an aunt. Otherwise the person would have to live with you for the entire year to be claimed as your dependent.

\* the person is a U.S. citizen or resident or national of Canada or Mexico.

\* the person does not file a joint return with his/her spouse.

**YOU MAY NOT CLAIM A RELATIVE IF:**

\* the person has gross income of more than \$1,000 for the calendar year. (this does not include tax exempt income such as Social Security payments or dependents who are full time students.)



In parts of Indonesia, people once avoided making loud noises in the rice fields, lest it frighten the rice plants.

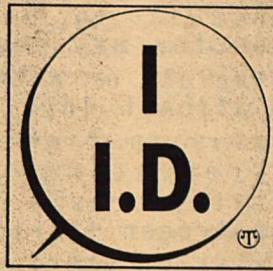


**DON'T DRIVE DRUNK**

An Action Program of the National Association of Convenience Stores

Those who retail alcoholic beverages are keenly aware of their responsibility to the American public on the problem of drunk driving. Many retailers are exploring more rigorous methods of age documentation as well as experimenting with posters aimed

This button shows that I.D.'s are checked at convenience stores that sell alcohol.



at deterring minors. All are working hard to educate their employees as to polite but assertive techniques useful in declining illegal sales.

The National Association of Convenience Stores (NACS) has announced the kick-off of a national campaign for convenience store operators against drunk driving. The program, called "DON'T DRIVE DRUNK," consists of an educational brochure for store employees, focusing on the law and company policy regarding alcohol

sales. The program also includes store decals, posters and buttons which carry the "DON'T DRIVE DRUNK" and "WE I.D." messages to customers.



In Malaya it was thought bad luck to see a rainbow.

CONSOLIDATED REPORT OF CONDITION OF The First State Bank of Brackettville, Texas And Foreign and Domestic Subsidiaries, at the close of business of this state and a member of the Federal Reserve System. Published in accordance with a call made by the State Banking Authority and by the Federal Reserve Bank of this District.

	C100		
	Mil	Thou	
Dollar Amounts in Thousands			
<b>ASSETS</b>			
1. Cash and balances due from depository institutions:			
a. Noninterest-bearing balances and currency and coin <sup>1,2</sup> .....	RCON 0081	605	1.a.
b. Interest-bearing balances.....	RCON 0071	1 111	1.b.
2. Securities (from Schedule RC-B).....	RCON 0390	3 389	2.
3. Federal funds sold and securities purchased under agreements to resell.....	RCON 1350	1 225	3.
4. Loans and lease financing receivables:			
a. Loans and leases, net of unearned income (from Schedule RC-C).....	RCON 2122	3 827	4.a.
b. LESS: Allowance for loan and lease losses.....	RCON 3123	66	4.b.
c. LESS: Allocated transfer risk reserve.....	RCON 3128	- 0-	4.c.
d. Loans and leases, net of unearned income, allowance, and reserve (item 4.a minus 4.b and 4.c).....	RCON 2122	3 761	4.d.
5. Assets held in trading accounts.....	RCON 2146	- 0-	5.
6. Premises and fixed assets (including capitalized leases).....	RCON 2145	343	6.
7. Other real estate owned.....	RCON 2150	47	7.
8. Investments in unconsolidated subsidiaries and associated companies.....	RCON 2130	- 0-	8.
9. Customers' liability to this bank on acceptances outstanding.....	RCON 2155	- 0-	9.
10. Intangible assets.....	RCON 2143	- 0-	10.
11. Other assets (from Schedule RC-F).....	RCON 2150	252	11.
12. Total assets (sum of items 1 through 11).....	RCON 2170	10 733	12.
Dollar Amounts in Thousands			
<b>LIABILITIES</b>			
13. Deposits:			
a. In domestic offices (sum of totals of columns A and C from Schedule RC-E):		9 850	13.a.
(1) Noninterest-bearing <sup>1</sup> .....	RCON 6131	1 914	13.a.(1)
(2) Interest-bearing.....	RCON 6136	7 936	13.a.(2)
b. In foreign offices, Edge and Agreement subsidiaries, and IBFs.....			
(1) Noninterest-bearing.....			
(2) Interest-bearing.....			
14. Federal funds purchased and securities sold under agreements to repurchase.....	RCON 2852	- 0-	14.
15. Demand notes issued to the U.S. Treasury.....	RCON 2840	- 0-	15.
16. Other borrowed money.....	RCON 2850	- 0-	16.
17. Mortgage indebtedness and obligations under capitalized leases.....	RCON 2910	- 0-	17.
18. Bank's liability on acceptances executed and outstanding.....	RCON 2920	- 0-	18.
19. Notes and debentures subordinated to deposits.....	RCON 3200	- 0-	19.
20. Other liabilities (from Schedule RC-G).....	RCON 2930	127	20.
21. Total liabilities (sum of items 13 through 20).....	RCON 2948	9 977	21.
22. Limited-life preferred stock.....	RCON 3282	- 0-	22.
<b>EQUITY CAPITAL</b>			
23. Perpetual preferred stock.....	RCON 3283	- 0-	23.
24. Common stock.....	RCON 3292	240	24.
25. Surplus.....	RCON 3246	250	25.
26. Undivided profits and capital reserves.....	RCON 3247	266	26.
27. Cumulative foreign currency translation adjustments.....			
28. Total equity capital (sum of items 23 through 27).....	RCON 3210	756	28.
29. Total liabilities, limited-life preferred stock, and equity capital (sum of items 21, 22, and 28).....	RCON 3300	10 733	29.

I, Wanda E. Schwandner  
Name and Title of Officer Authorized to Sign Report  
of the named bank do hereby declare that these Reports of Condition and Income (including the supporting schedules) have been prepared in conformance with the instructions issued by the appropriate Federal regulatory authority and are true to the best of my knowledge and belief.

Wanda E. Schwandner  
Signature of Officer Authorized to Sign Report

1-31-84  
Date of Signature

We, the undersigned directors, attest to the correctness of this Report of Condition (including the supporting schedules) and declare that it has been examined by us and to the best of our knowledge and belief has been prepared in conformance with the instructions issued by the appropriate Federal regulatory authority and is true and correct.

Director [Signature]  
Director [Signature]  
Director [Signature]

### OSTEOPOROSIS ATTACKS BONE

Cells that make up human bone are constantly breaking down old bone and replacing it with an equal amount of new bone. This balanced process renews the skeleton slowly but continuously.

Osteoporosis is a bone disorder that throws things out of kilter, says the Texas Medical Assn. Breakdown occurs faster than replacement, and bones become soft and weak.

Generally occurring in older people, osteoporosis increases the chances of broken bones. It is much more common in women than men, but it can often be controlled.

One reason for the loss of bone mass is a shortage of calcium. Bones contain 99 percent of the body's calcium. The mineral is stored there and drawn upon when the daily intake is not enough to meet the body's needs. Smoking and alcohol also can contribute to osteoporosis.

In women, another factor in bone loss is declining levels of the hormone estrogen during menopause. But estrogen loss is not the only reason why four times as many women as men over 55 suffer bone fractures. Women start out with 30 percent less bone mass.

Osteoporosis also may arise in one or more bones if a person is immobile for long periods because of a fracture or slipped disc. Some hormonal problems also may cause the disorder, but the most common cause is simply the aging process.

Osteoporosis usually has no symptoms unless the disorder attacks the vertebrae. In rare cases, a few vertebrae may collapse, producing a severe back pain.

**\$5,000  
CASH REWARD**  
FOR INFORMATION LEADING  
TO THE ARREST &  
CONVICTION OF POACHERS  
ON THE PIÑON RANCH!  
ALL INFORMATION WILL  
BE KEPT CONFIDENTIAL.

563-2883

These symptoms should be checked by a physician since a fracture of the spine could result in paralysis. The doctor may prescribe calcium tablets or estrogen, which the National Institutes of Health says is highly effective in preventing and stopping osteoporosis in women. But estrogen therapy increases the risk of uterine cancer.

Eating a balanced diet rich in calcium will help keep bones healthy. Milk and other dairy products, fish, oranges, leafy green vegetables, and broccoli are major sources of calcium. Exercise also keeps not only bones but muscles strong and healthy. Finally, loose rugs or electrical wires in walkways should be removed to prevent falls.

### Hints For Homeowners



Just 20 man-made logs are the fire-burning equivalent of 88 pieces of cordwood for about the same price.

Here's some hearth-warming news: man-made firelogs are available that save space, are non-toxic, clean burning and safe, and create no sparks. In addition, with these Amberglow logs, there's no need to chop down trees or haul cordwood.

A little over a decade ago, one company, Sebring Forest Industries, recognized the opportunity for a compact, neat and efficient manufactured firelog to replace real firewood. The firm's idea was to blend refined wood by-products (e.g. wood chips and saw-

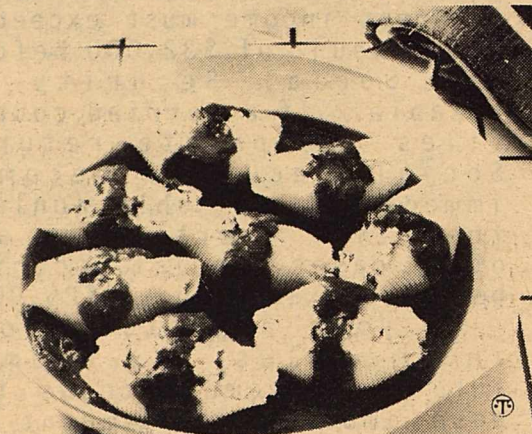
dust) with hot wax to make a firelog.

These wood/wax logs can be stored in a fraction of the space of all-wood logs. For example, a month's supply of the man-made logs takes up three cubic feet compared with 23 cubic feet of firewood. A three pound Amberglow log will burn as long as 20 pounds of firewood and contains no toxic additives such as salt or chemicals which some manufacturers add to get special burning effects like different colors.



In parts of France it was once considered good for the crops for the farmer's wife to be tossed in a blanket.

### Herbs And Spices Replace Salt In This Italian-Tasting Sauce



Excessive salt consumption is a national health issue that is not going away. For those consumers cutting back on salt or adhering to sodium restricted diets, Prego® No Salt Added Spaghetti Sauce offers homemade taste without added salt, sugar, starch, artificial colors, flavors or preservatives.

A deft use of authentic Italian herbs and spices is what gives Prego® No Salt Added Spaghetti Sauce its rich, robust flavor and aroma. With only 35 mg. sodium per serving, it is ideal to serve over cooked pasta, perfect for poultry, meat and fish, and superb as a base for more elaborate sauces.

#### STUFFED SHELLS IN RED SAUCE

- 8 jumbo shell macaroni
- 2 cups shredded low sodium Swiss cheese
- 1 cup dry curd cottage cheese
- 1/4 cup chopped parsley
- 1 jar (15 1/4 ounces) Prego No Salt Added Spaghetti Sauce (about 1 3/4 cups)
- 1/4 cup Burgundy wine or water
- 1/4 teaspoon fennel seed
- 1/8 teaspoon garlic powder

1. Cook shells according to package directions. Drain; set aside.
2. In small bowl combine cheeses and parsley. Stuff into shells.
3. In 10-inch skillet over medium heat, combine spaghetti sauce, wine, fennel and garlic. Bring to a boil.
4. Place shells in skillet. Reduce heat to low. Cover; simmer 10 minutes. Spoon sauce over shells. Makes 4 servings.

### AMERICA'S LEADERS



The President met recently with Marshall M. Parks, M.D., (left) a pediatric ophthalmologist who heads the National Children's Eye Care Foundation. Also attending the meeting were Marvin Address, a Washington insurance agency executive who is also executive director of the NCECF, and one of Dr. Parks' patients, two-year-old Caroline Murray of Potomac, MD.

Dr. Parks and the Foundation met with the President after receiving a letter of praise from the White House commending the NCECF for

its work in child eye care.

Caroline was born with a congenital cataract. She accompanied Dr. Parks as he spoke about the current developments to prevent blindness and restore the sight of infants and children. Dr. Parks described how Caroline's sight was restored and the beginning of the Foundation's nationwide education effort, which includes a vision screening campaign whereby eye charts for in-home testing are featured on milk and juice cartons throughout the country.

February 1985



The following events, selected by Mari Schnell of the Texas Tourist Development Agency, are but a few of the many excellent recreational opportunities offered by communities across the state.

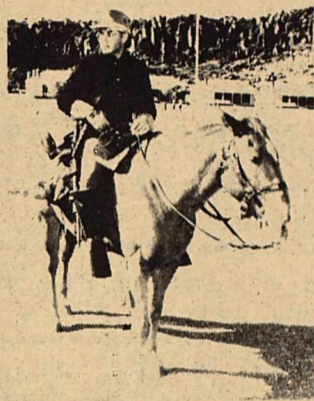
**Winter Schedule — 11 a.m. Wednesday - Sunday — Bald Eagle Expeditions, Burnet.** Bird watchers and camera buffs especially may enjoy the three-hour cruise on the upper sec-

tions of Lake Buchanan where the rare American bald eagles have again returned for the winter. Their exodus usually occurs during March. Besides eagles, a variety of wintering waterbirds such as cormorants, osprey and ducks join the year-round residents like the blue heron and kingfishers. The 60-foot tour boat "Texas Eagle" has a fully enclosed glass viewing area, heated, with restroom facilities, and an upper deck which affords the perfect vantage point for photographers. Bring a picnic lunch. Tickets: \$12 adults; \$10 students; senior adults; \$8 children under 12. For reservations and information contact Ed Low, Vanishing River Cruise, Box 901, Burnet 78611 (512-756-6986).



A charming collection of beautifully restored Victorian homes awaits the visitor to the town of Big Sandy in Northeast Texas. Impeccably-maintained lawns and gardens surround the complex known as "Annie's," which includes a bed and breakfast guest house, antique shop, tea room, and the national headquarters of a highly successful needlecraft company. TTDA photo by Richard Reynolds.

**Feb. 8-17 — Livestock Show and Rodeo, San Antonio.** Events begin with a downtown parade at 10 a.m. February 8. The stock show features prize cattle, sheep, swine and poultry. Rodeo performances are held nightly at 7:30, 2 p.m. on February 8-10 & 16-17, and 10 a.m. on February 9, with famous country-western entertainers on the bill. Special no-charge day activities such as square dancing and trick roping, art exhibit, food booths, carnival and nightly dances round out the schedule. For ticket and other information contact Livestock Exposition, Box 23038, San Antonio 78223 (512-225-5851).



A park ranger in full military dress re-creates a scene out of the mid-1800's at Fort Davis National Historic Site in West Texas. The one-time military outpost was established in 1854 to protect travelers through the vast and often hostile expanses of the Trans-Pecos region. Now superbly restored, the site is operated by the National Park Service. TTDA photo by Richard Reynolds.

**Feb. 16 - Mar. 3 — Houston Livestock Show and Rodeo, Astrodome, Houston.** A colorful downtown parade at 10 a.m. on February 16 opens the livestock show. Sheep, cattle, swine, poultry, goats, horses and rabbits compete in the largest stock exposition in the nation. Come early and watch as the animals are shampoed and prepared for judging. In the children's barnyard, mother animals will be nursing their young. Rodeo performances begin February 20 highlighted by major country-western entertainment. Schedule and ticket information from Dan Gattis, Livestock Show, Box 20070, Houston 77225 (713-791-9000).

**Feb. 19-24 — Washington's Birthday Celebration, Laredo.** This celebration began in 1898 when costumed townspeople held a mock battle in front of City Hall to pay tribute to one of our nation's favorite heroes, and has grown to become one of Texas' best known international events. In a carnival setting with pageants, parades, fireworks, ethnic foods, dances and a jalapeno eating contest, neighbors from both sides of the border gather in friendship. For details contact Washington's Birthday, Box 816, Laredo 78042 (512-722-0589).

## Gulf Coast Governors Decry Drug Smuggling

By Governor Mark White

AUSTIN—The governors of five Gulf Coast states met recently in New Orleans and adopted a resolution calling for a greater U.S. Defense Department role in protecting national borders against drug trafficking.

I called the meeting because the Gulf Coast states are losing the war against narcotics, and the casualties are as staggering as anything recorded since the Vietnam War.

In Texas today, 700,000 people need drug abuse treatment, and 14,000 young people become drug abusers each year. Texas prisons are filled with inmates who abused drugs before they abused the law. An alarming 45 percent of all Texas bank robberies are committed by drug users—and that is not surprising considering that narcotics addicts may need \$50,000 a year to support their habit.

Texas' lengthy coastline and 1,200 miles of shared international border with Mexico make it a prime target for drug smugglers. The Texas Department of Public Safety seized more than \$300 million worth of drugs in 1984—a six-fold increase over the previous year.

Over the past several years, the multi-agency drug enforcement efforts in South Florida have caused the cocaine distribution routes to shift westward along the Gulf Coast. Last August, DPS officers in Houston seized approximately 1,000 pounds of cocaine with an estimated street value of \$210 million—making that bust the largest in the state's history.

In the first nine months of 1984, DPS seized 12 times more cocaine than in all of 1983 and reported a 30 percent increase in marijuana seizures. Only a few weeks ago, the Mexican government found and destroyed 11,000

tons of marijuana in a small town across the border from Presidio—all of which was targeted for trafficking in Texas.

The governors of Texas, Louisiana, Mississippi, Alabama, and Florida agree that a coordinated regional strategy is needed to combat the drug problem. We also agree that the federal government needs to do more to protect the Gulf Coast states' borders against narcotics trafficking.

Our resolution to Congress calls on the federal government to channel the seized assets of drug smugglers into a new fund to underwrite the cost of drug control efforts.

Gulf coast governors are also insisting the military take a more active role in using sophisticated radar equipment to apprehend drug smugglers.

The United States is spending an unprecedented amount of taxpayers' dollars on a national defense, but our lack of defense against an invasion of drugs raises serious questions about our country's ability to stave off any kind of military attack.

How can we ever hope to stop sophisticated aircraft from entering this country, when we cannot pick up a single-engine plane making a nightly run of cocaine into Texas? We need to apply our most advanced military technology to combat the drug invasion.

States have a major responsibility in this area, and my budget proposal calls for spending \$1.5 million over the next two years to hire 20 additional narcotics investigators and support staff. I also support adopting a strong state anti-racketeering statute to take the profits out of drug trafficking.

With greater federal assistance in policing our borders, the Gulf Coast states can win the war on drugs.

For  
a brighter  
future, open an IRA  
TODAY!

Individual Retirement Accounts are attractive and sound investments . . . the perfect way to accumulate a reserve for retirement.

Stop in and find out the best IRA plan for you. You'll get a good return on your money with competitive rates.

THE FIRST STATE BANK  
OF BRACKETTVILLE

563-2451

MEMBER F.D.I.C.

DEADLINE:  
Tuesday  
at NOON

# CLASSIFIED ADS

All classified ads: \$.20 per word, 10 words minimum insertion ... \$2.00 per week. NO BILLING OF CLASSIFIEDS !!!

**BRACKETT'S  
"FULL SERVICE"  
STATION!**



**T & A  
SERVICE STATION**

HWY. 90 563-9794

**LIQUOR .. .. WINE**

**DEASON'S  
PACKAGE STORE**

"LOW PRICES ...  
FRIENDLY SERVICE!"  
'Conaco Station' Hwy 90  
512-562-2424

### BRACKETTVILLE CHURCHES

**FIRST BAPTIST CHURCH**  
(Southern Baptist)  
Rev. Ronnie Watson  
Sunday School 9:45 am  
Worship Service 11:00 am  
Worship Ser. (Sun) 7:00 pm  
Prayer Meeting (Wed) 7:00 pm

\*\*\*\*\*

**FRONTIER BAPTIST CHURCH**  
(Southern Baptist)  
Rev. Joe Townsend  
Sunday School 10:00 am  
Worship Service 11:00 am  
Prayer Meeting (Sun) 7:30 pm  
Prayer Meeting (Wed) 7:30 pm

\*\*\*\*\*

**UNITED METHODIST CHURCH**  
Ron Kelly - Pastor  
Child. Sunday Schl. 10:00 am  
Adult Fellowship 10:30 am  
Worship 11:00 am

\*\*\*\*\*

**CHURCH OF CHRIST**  
Sunday School 9:30 am  
Worship Service 10:30 am  
Bible Study (Sun) 6:30 pm  
Bible Study (Wed) 7:00 pm

\*\*\*\*\*

## KINNEY COUNTY LAND CO.

512-563-2446

BARGIN 3 bedroom 49er - just \$14,000 - buyers need their own membership.

\*\*\*\*\*  
Very attractive 1200 Sq.Ft. Commercial Bldg. - located on Hwy 90 - over an acre of land - only \$57,500.

\*\*\*\*\*  
3700 Acres - east of Brackett - reasonably priced.

\*\*\*\*\*  
9 X 9 "SENTEX" stg. Bldg. - excellent cond. - 8ft ceiling - \$500.

\*\*\*\*\*

## MASON SHOES & BOOTS



OVER 350 STYLES  
FOR MEN & WOMEN

**SAVE MONEY -  
ORDER DIRECT!**

Robbie Robertson 563-2993

### THE COMMUNITY CHURCH

Ann Street  
Brackettville, Texas  
563-9375  
Gary Holcombe, Pastor

#### SUNDAY

10:00 a.m. Bible School  
11:00 a.m. Worship Service  
7:00 a.m. Believers Bible Study

#### TUESDAY

7:00 p.m. Mens Bible and Prayer  
1:00 p.m. - 2:30 p.m. Clothes Closet

#### WEDNESDAY

7:00 p.m. Prayer & Praise

#### FRIDAY

10:30a.m. Ladies Tape/Prayer

Prayer, Counseling Assistance Available

## CLASSIFIEDS SELL!!

HOUSE FOR SALE - corner of Quintel and Rock - 1 bedroom - reasonable - also 150 Gal. Butane tank - call 563-2715.

\*\*\*\*\*  
"Does someone you love have a drinking problem? Al-anon can help you. Meetings available in Brackettville. Call 563-2094 for information."

\*\*\*\*\*  
For Sale by Owner 2 Bedroom, 1 bath - home on 2 large lots - Located at 409 Thorn St. - \$20,000 - contact David Green 563-2724.

\*\*\*\*\*  
Six hunters looking for deer lease for 1985 season - call Roger Garcia after 5 p.m. (512/921-1828).

\*\*\*\*\*  
For Sale by Owner 2 Bedroom, 1 bath - home on 2 large lots - Located at 409 Thorn St. - \$20,000 - contact David Green 563-2724.

\*\*\*\*\*

**DANCE CLASS**  
Miss Bonnie's of Del Rio is coming to Brackettville!

Classes for 3 yrs. & up. Starting Monday, January 14 For more information Call: 563-2009 or 563-2225

\*\*\*\*\*

**HAY FOR SALE** Alfalfa - \$150 per ton - Cane \$115 per ton - in barn - Jack Mimmey - Quemado, TX (512-757-1422)

\*\*\*\*\*

**BOAT & TRAILER FOR SALE:** 6 passenger, 5'6" x 15'. \$350.00 Call 563-2601

\*\*\*\*\*

**YARD SALE** Steve Fraziers yard sale - daily 9 - 5 - starting Feb. 1 - unit 15 lot #27 - Ft. Clark Springs - selling all household items.

\*\*\*\*\*



A person with ordinary vision can distinguish about 150 colors. An expert can tell more than 100,000 colors apart.