



TEXAS PRESS ASSOCIATION  
AWARD WINNER

JAMES T. SHAHAN  
P. O. BOX 528  
BRACKETTVILLE, TX 788320528

# the Kinney Cavalryman

VOLUME 12 NUMBER 29

JULY 19, 1985

BRACKETTVILLE, TEXAS

## CHILD STRUCK BY CAR



### THE SHERIFF'S CORNER

BY NORMAN H. HOOTEN, SHERIFF

A 9 year old Brackettville girl was struck by a car Thursday, July 11, at approx. 7:00 p.m. as she crossed Hwy. 90 in from of the Ft. Clark entrance gate.

Danielle Blum, daughter of Chuck and Carole Blum, all of Brackettville, was struck broadside by a car driven by Dianne Hill, also of Brackettville, as she crossed the highway from Ft. Clark. Danielle was treated at the scene by members of the Kinney County Volunteer Ambulance and then transported to Val Verde Memorial Hospital in Del Rio. She suffered a broken leg, a severe concussion, and other bruises and lacerations. Her bicycle was totally destroyed. She remains in the Intensive Care Unit at the Del Rio hospital at the time of this writing.

Investigation of evidence at the scene and statements from witnesses leads us to believe that Danielle did not see the car coming as she started across the highway. There is no evidence at this time to indicate that the driver of the vehicle which struck the girl was speeding or in violation of any other traffic laws.

The speed limit through Brackettville on Hwy. 90 is posted at 45 mph and I personally feel that this limit should be lowered and

strickly inforced. We have alot of local traffic entering Hwy. 90 from Brackettville and Ft. Clark and much foot and bicycle traffic by children crossing the highway entering and leaving Ft. Clark, especially during the summer months. At the very least warning lights and highly visible signs should be installed on each side of the entrance to Ft. Clark. A 30 mph zone through town would not be out of line and would not cause travelers passing through to lose more than a few minutes time. I feel that a few minutes is a small price to pay for the safety of our children and other citizens. Lynda and Larry Moore of Ft. Clark Springs reported that a bicycle had been stolen from Unit 15, Lot 73, sometime between July 3rd & July 10th. The bicycle was described as a brand new 10 speed, silver with black foam pads on the handle bars. The gear changer is bent, and the wheels and tires are blue. Anyone seeing a bike that fits this description is urged to contact me at the Sheriff's Office. The bike is valued at \$150.00.

W.C. Jackson, 67, of Brackettville was arrested on Kinney County warrants in Uvalde on July 12th. Jackson has been charged with two counts of DECEPTIVE BUSINESS PRACTICES. His bond was set at \$2,000.00 on each count. Jackson was returned to Kinney County by me on July 13th. He is also wanted by Kerrville Sheriff's Dept. on FELONY THEFT charges. Jackson made settlement with two local

women on the Deceptive Business Practices charges and those cases were dismissed. He was released on July 15th on \$5,000.00 bond on the Kerr County charges.

The Kinney County Commissioners Court voted to budget funds for me to hire a Chief Deputy to assist in law enforcement in Kinney County. The new deputy will start on October 1, 1985 which is the beginning of the Fiscal Year 85-86. This will greatly increase our ability to respond to calls for assistance and local patrols. No decision has been made as to who will be hired, but an experienced certified peace officer is preferred. As soon as a decision has been reached and the position has been filled, I will let you know through this column. The new deputy will patrol on a regular basis, primarily at night, the City of Brackettville, Ft. Clark Springs, and the rural areas and roads of Kinney County. This added patrol will hopefully aid in decreased criminal activities in our county.

#### "FORT CLARK ON STAGE"

\*\*\*\*\*

Three One-Act Plays have been re-scheduled for July 27, 8:30 p.m. at the Old Quarry Amphitheatre, Fort Clark Springs.

FEATURED PERFORMERS AT OLD QUARRY AMPHITHEATRE  
\*\*\*\*\*

"The Fire on the Mountain Cloggers," featured in the VIVA Magazine of the Sunday, July 7th edition of the San Antonio Light, will be appearing at the Old Quarry Amphitheatre, Fort Clark Springs, on August 10th.

**THE KINNEY CAVALRYMAN**

USPS 100-610  
P.O. DRAWER CQ  
BRACKETTVILLE, TX. 78832  
512-563-2696

J. GEORGE LOOS ...Editor  
MONEA L. MECK ....Asst. Editor

LEE FINCH .....Typography  
CRYSTAL LOOS .....Production  
\*\*\*\*\*

Published every Friday.  
Entered by SECOND CLASS MAIL  
at Brackettville, TX 78832.  
\*\*\*\*\*

Subscription Rates: per year  
\$15.00 .....Out-of-County  
\$14.00 .....In-County  
\*\*\*\*\*

DEADLINE:  
TUESDAY AT NOON



..."Any erroneous reflection upon the character or standing of any person or firm appearing in this paper will be gladly corrected - upon being called to the attention of the management and to the article in question." ...

*Crystal Sez...*

"A contented mind is a continual feast."  
English proverb

**LIBRARY NOTES**

LIZ FRERICH  
HEAD LIBRARIAN

On July 25th at 3:00 p.m., the library will have the major film presentation "Mr. Mom", rated PG.

NEW ADULT BOOKS

1. On and Off the Ice by Dorothy Hamill
2. Better Homes & Gardens New Decorating Book
3. Christmas with Southern Living 1984

NEW CHILDREN'S BOOKS

1. The Simon & Schuster Question & Answer Book on Computers by Daniel Cohen

FT. CLARK HISTORICAL SOCIETY  
\*\*\*\*\*

A pictorial history of Ft. Clark has been published. Co-authors Mike Cusack and Caleb Pirtle III have collaborated to produce, for the first time, a book exclusively about the Fort and its history. The book is titled "The Loney Sentinel: Fort Clark; on Texas Western Frontier."

The book is priced at \$16.95 plus tax. Local people will be given opportunity to meet the authors and have their copy of the book autographed at a no-host luncheon at La Moras Inn at noon on July 24th.

Everyone is cordially invited to attend to hear Mike Cusack speak, even if no book is purchased. A sign up sheet is at the adult center for the luncheon.

BENEFIT BAR-B-QUE  
FOR DANIELLE BLUM  
\*\*\*\*\*

A Benefit B.B.Q. for Danielle Blum, who was recently struck by a car while riding her bicycle, will be held at the Buckhorn Saloon patio, on Sunday July 21st, beginning at 12 noon. Price will be \$4.50 per plate, and all other donations welcome.

Danielle has been in a coma at the Val Verde Memorial Hospital since last Thursday.

WISH YOU A SPEEDY RECOVERY DANIELLE, AND WE'RE THINKING OF YOU.

OLD QUARRY SOCIETY FOR THE PERFORMING ARTS TO STAGE PRESENTATIONS  
\*\*\*\*\*

The Old Quarry Society for the Performing Arts will present "Fort Clark on Stage", a local talent revue of comedy, dance, and song, at 8:30 p.m., Saturday July 27th at the Old Quarry Amphitheatre, Fort Clark Springs.

An all-male cast will perform "If Men Played Cards as Women Do", written by George S. Kaufman and first presented in Irving Berlin's "Music Box Revue."

Directed by Don Parks, this grand slam comedy about bridge will star Art Norris, Harrell Floyd, Bob Lampkin and John Ward.

"And the Fullness Thereof" is a charming story of a conscientious mother's struggle against the I.R.S., written by Annabelle Irwin.

Cast in the role of the mother is Iola Jones; her daughters, Pat Parks and Wendy Lampkin; the terrifying investigator from the Internal Revenue Department, Lucille Schooler; and directed by Mary Curcio.

A collection of ballads composed by Hugh Smith, a resident of Fort Clark Springs, will be sung by Don Crowder, accompanied by his "Starfire Band", which include instrumentalists Rock Rochlin, Steve Parsons, and Doug Stiver.

Beauty and rhythm will be added to the program by Linda Dena and an ensemble of dancers from Miss Bonnie's School of Dance of Del Rio and Brackettville.

Tickets are available at the Fort Clark Springs Adult Center, phone 512-563-2024, and from members of the Old Quarry Society.

Admission is \$4.00 for adults, \$1.00 for children.

Adult tickets purchased before 5:00 p.m. July 19, are \$3.00.

THE PUBLIC IS INVITED TO ATTEND.

"What a child is taught on Sunday it will remember on Monday."  
Welsh proverb



Some people used to believe that if you placed fern-seed among money, the money would never decrease, no matter how much was spent.

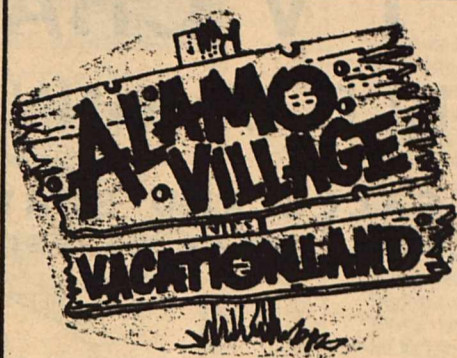
REP. DUDLEY HARRISON APPOINTED

AUSTIN-- State Reps. Robert Saunders, D-LaGrange, and Dudley Harrison, D-Sanderson, have been appointed by Speaker Gib Lewis to represent Texas on the Agriculture and Food Policy Committee of the State-Federal Assembly, National Conference of State Legislatures for 1985-86.

Saunders, who is chairman of the House Agriculture and Livestock Committee of the 69th Legislature, will serve as a committee member.

Harrison, Agriculture and Livestock Committee chairman for Budget and Oversight this session, will serve as an alternate member of the NCSL committee.

The NCSL State-Federal Assembly's 10 standing committees convene three or four times a year to meet with federal officials and develop recommendations on a full range of national issues affecting the relations



THE MOVIE CAPITAL OF TEXAS

512-563-2580



STREET SCENES FROM "UPHILL ALL THE WAY" FILMED AT ALAMO VILLAGE & SOON TO BE RELEASED!

between the states and the federal government.

Ensuring stability for state programs in federal agriculture policy has been the focus of NCSL's Agriculture Committee. The Committee on which Saunders

and Harrison will serve, will make a major effort to address the issues Congress will be grappling with in the 1985 Farm Bill, Lewis said in making the appointments.

THE FOOD & FITNESS CORNER

A RECIPE FOR FITNESS

By Kathie Scherb, R.D.

Judging from the millions of people exercising regularly, looking good and feeling fit is a healthy movement sweeping the nation. Although this sounds commendable, the President's Council on Physical Fitness reports that:

- 54 percent of adult Americans say they don't exercise at all.
• The average American adult spends 50 hours a week watching television, going to movies or in other passive forms of entertainment.
• A recent study reported that 62 percent of American adults are overweight and that perhaps half of these are obese, or overweight to the point that it constitutes a health risk.

When you start exercising for at least 30 consecutive minutes of nonstop activity each day, you're on your way to being fit. It doesn't matter what you do, and it doesn't have to mean drudgery and pain, as long as it fits your style and you keep moving briskly. How about setting aside 30 minutes each day for one of these?—outdoor aerobics, bicycling, brisk walking, jumping rope, mowing the lawn, patio calisthenics, hiking or raking leaves.

The next step to fitness is eating right. As a registered dietitian and exercise enthusiast, I endorse the two because regular exercise combined with good nutrition is the recipe for fitness. Many nutritionists, including myself, feel that Americans can improve their diets by following these guidelines:

- Eat more fruit, vegetables and whole grains.
• Eat less fatty meats and more poultry and fish.
• Cut down on sugar.
• Use less salt and eat fewer foods high in salt content.
• Substitute skim milk for whole milk.
• Maintain ideal weight by eating a variety of foods, with all foods eaten in moderation.

To help you meet these guidelines and still enjoy an occasional treat, here is a 50-calorie healthful snack that not only tastes great but can help replace some of the important fluids you lose during exercise.

Applesauce Yogurt Delight

- 1 package (4-serving size) Jell-O brand sugar free gelatin, any red flavor
1 cup boiling water
3/4 cup chilled unsweetened applesauce
1/4 teaspoon cinnamon
1/2 cup vanilla yogurt

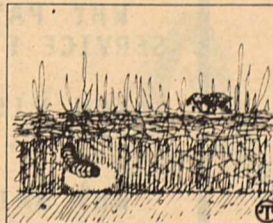
Dissolve gelatin in boiling water. Measure 3/4 cup; add applesauce and cinnamon and chill in 4 dessert glasses until set but not firm.

Chill remaining gelatin until slightly thickened, then blend in yogurt and spoon over gelatin in glasses. Chill until firm, about 2 hours. Garnish as desired. Makes 4 servings; 50 calories per serving.



LAWN AND GARDEN TIPS

Q. Something seems to be cutting my grass at night, which is damaging the lawn's appearance. How can I put a stop to this puzzling condition?



A. Your lawn may be infested with sod webworms. These are caterpillars that generally feed at night, chewing off grass blades close to the plant crown or chewing notches against the sides of grass blades. As the larvae mature, they construct tunnels or burrows through the thatch sometimes extending into the soil. The name sod webworm is derived from their habit of lining these tunnels with webs of silk-like material. These pests are a common problem throughout the United States, except for some of the arid plains areas. To control the sod webworm, apply an insecticide containing SEVIN brand carbaryl, as per label directions.

For a free brochure on controlling a wide variety of insect pests, write to Communications Dept., P.O. Box 12014, Research Triangle Park, NC 27709.

ROADRUNNER ENERGY, INC.



BUTANE PROPANE RENT TANKS

Office in Brackettville Ann & Crockett 563-2630

GOSPEL MEETING

JULY 23-26 7:30 PM

CHURCH OF CHRIST BRACKETTVILLE

PREACHING

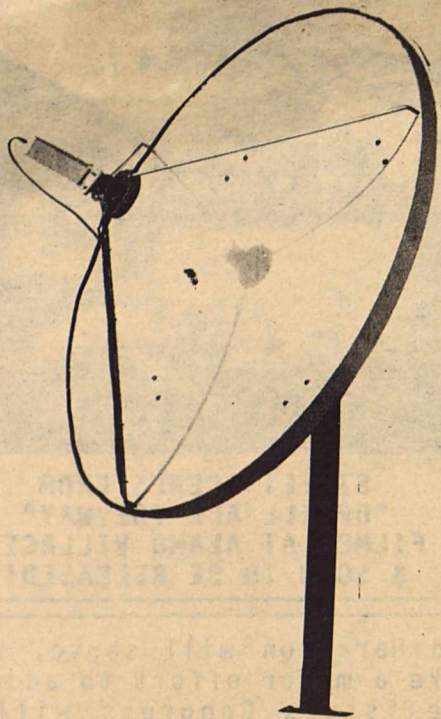
ROBERT BUCHANAN OF UVALDE

EVERYONE WELCOME, PLEASE COME

\*\*\*\*\*

# 100 + TV CHANNELS

## NOW AVAILABLE IN KINNEY COUNTY



LOCAL SALES AND SERVICE  
(WE SERVICE WHAT WE SELL!)

SPECIAL INTRODUCTORY PRICES

## CALL FOR A FREE DEMONSTRATION

THIS IS ALL TOP LINE EQUIPMENT...  
NO "MICKEY MOUSE" RECEIVERS  
OR "TIN FOIL" DISHES!

- \* MOVIES \* MOVIES \* MOVIES
- \* 24 HOUR NEWS
- \* NETWORK PROGRAMS
- \* SPORTS \* SPORTS \* SPORTS
- \* 24 HOUR WEATHER
- \* SPANISH PROGRAMS
- \* FINANCIAL NEWS
- \* RELIGIOUS CHANNELS
- \* EDUCATIONAL CHANNELS
- \* CHILDREN'S PROGRAMS
- \* ARMED FORCES NETWORK
- \* MANY FM MUSIC CHANNELS
- \* AND MUCH MORE

TO THE PEOPLE OF KINNEY COUNTY,

RECENT TECHNICAL DEVELOPMENTS IN SATELLITE RECEIVING SYSTEMS HAVE DRASTICALLY LOWERED PRICES AND INCREASED PERFORMANCE. PRICES ARE NOW DOWN TO WHERE THEY ARE PRACTICAL FOR THE AVERAGE FAMILY.

IF YOU WANT--THE HIGHEST QUALITY--LOWEST PRICED--SATELLITE SYSTEM WITH LOCAL SERVICE..PLEASE CALL US.

WHY PAY THE HIGH COSTS OF OUT-OF-TOWN SALES AND SERVICE FIRMS?

YOU WILL HAVE OUR GUARANTEE "WHAT WE SELL WE WILL SERVICE". PLUS--A ONE YEAR PARTS AND LABOR WARRANTY!

WHY WAIT ANY LONGER FOR YOU AND YOUR FAMILY TO ENJOY CLEAR, RELIABLE TV RECEPTION WITH THE MAXIMUM OF VIEWING PLEASURE?

THANK YOU,

*George*  
J. GEORGE LOOS, JR.

SUBSCRIPTIONS  
AVAILABLE

# OnSat™

--the best in satellite TV programming

- ★ Weekly Updated Listings
- ★ All Scheduled Channels
- ★ Complete Movie Listing
- ★ All Sports Specials
- ★ Prime Time Highlights

FOR A FREE SITE SURVEY AND QUOTATION CALL

GEORGE LOOS

563-2696

**NEWS**

**OF HEALTH**

**Oh, Your Aching Back—And How The Right Mattress Can Help You**

"Oh, my aching back!" Sooner or later, everybody says something like those words. Studies show virtually everyone suffers some sort of back pain during the course of his or her lifetime. Ironically, say doctors, the beds that many in pain hobble to and collapse into for relief can often make things worse.

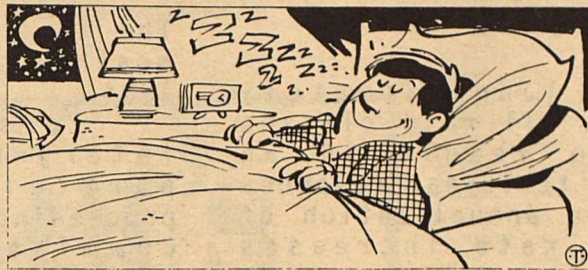
About 90 percent of all back problems are related to muscles and ligaments, says Dr. Joseph Fetto, an orthopedic surgeon at NYU Medical Center in New York.

"Our posture, except for when we are lying down, is maintained primarily by muscles and ligaments. It's only when we are lying down that the body has a chance to relax those muscles," explains Dr. Fetto.

That's why a firm mattress is important. While sleeping, you want to provide the maximum amount of rest to those muscles and avoid any stress and strain.

If a mattress is too soft, your back muscles will be working hard all night trying to maintain the normal posture of the back.

If you suspect your mattress may be letting you down, these simple tips can tell you



**Backaches? Your mattress may be letting you down. If it sags, it's too tired to offer firm support.**

if it's tired:

1. Look for an indentation or a sag in the middle.

2. Do you feel like you are falling into the mattress? The structure of the bed has probably failed.

If you've decided you need a new mattress, shop around. According to the experts at Arco Chemical, which supplies chemicals used to make polyurethane foam for the bedding industry, there are three basic types of bedding available today: innerspring, polyurethane foam and waterbeds.

Polyurethane foam mattresses offer very even support because of the open-cell nature of the foam. Even many innerspring producers are now using a topping layer of foam on their mattresses to

give the surfaces a softer and smoother feel. Some people are placing foam mattresses atop regular boxsprings or platform foundations — the best supports for minimizing back pain — or are making foam mattresses with top and bottom layers of soft foam around a firm core.

Anyone buying a foam mattress, advise experts, should insist on a polyurethane polymer density of 1.8 lbs. per cu. ft. or higher for durable support and comfort.

When shopping, lie on the mattress, roll around on it to be sure it's right for you.

The position in which you sleep can also contribute to back pain. Lying on your back is least stressful; lying on your stomach puts the most strain on your back.

**NOTICE OF INTENT TO IMPLEMENT RATES**

General Telephone Company of the Southwest in accordance with the Public Utility Regulatory Act and the Rules of the Public Utility Commission of Texas gives notice of its intent to implement new exchange access rates for the provision of shared tenant and tenant resale services.

These proposed rates are applicable to customers of General Telephone Company of the Southwest, excluding hotel/motel customers, who provide local exchange telephone service of General Telephone Company of the Southwest to their tenants or patrons on a resale or shared use basis. This resale or sharing arrangement is normally provided utilizing a customer-provided PABX or other similar stored control switch capable of common control processing or other features commonly associated with a PABX "Smart" switch.

These proposed rates are designed to recover costs on a usage basis for local exchange telephone service access and are identical to General Telephone's "Optional Measured Service" rates. The monthly access rate will be \$28.95 per trunk line and the usage rates are as follows:

Over	Up To and Including	Band	Set Up	Full Rate Period Each Minute
0	7 miles	A	\$ .025	\$ .015
7	14 miles	B	.035	.021
14	21 miles	C	.050	.030
21	28 miles	D	.070	.042
28		E	.090	.054

As this is a new service offering, we are unable to determine the number of customers who may be affected. Currently, there are no known prospective customers. Until any customer utilizes this new offering, there will be no effect on the revenues of the telephone company, and in any event, the telephone company does not expect revenues to be affected by more than 2 1/2 percent. These proposed rates, where applicable, will provide tariffed local exchange access to customers who then will provide shared or resale services to tenants.

These proposed rates have been suspended by the Public Utility Commission of Texas and will become effective as proposed or modified by order of the Commission on a date to be determined by the commission.

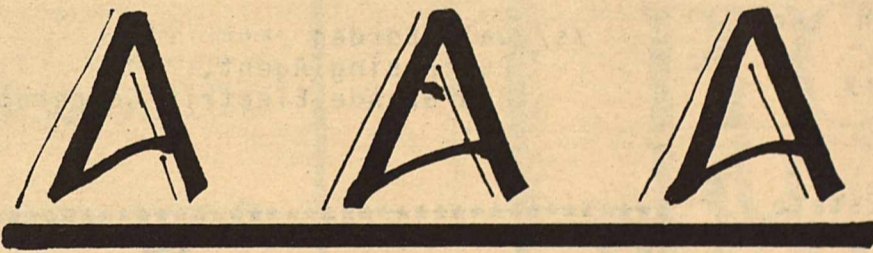
The proposed rate schedule is on file with the Commission for public inspection and is also available at any business office of General Telephone Company of the Southwest.

Persons who wish to intervene or otherwise participate in these proceedings should notify the commission as soon as possible. A request to intervene, participate, or for further information should be mailed to the Public Utility Commission of Texas, 7800 Shoal Creek Boulevard, Suite 400N Austin, Texas 78757. Further information may also be obtained by calling the Public Utility Commission Consumers Affairs Division at (512)458-0223 or (512)458-0227, or (512)458-0221 teletypewriter for the deaf.

General Telephone **GTE**

COMMERCIAL

RESIDENTIAL



**ROOFING SERVICE**

*Free Hail Damage Inspection*

512-563-2304

PETE PEREZ

BRACKETTVILLE, TEXAS

\*FREE ESTIMATES\*

**PUBLIC NOTICE**

\*\*\*\*\*

THANKS  
PEOPLE OF BRACKETTVILLE

Thanks for your good job of clean-up over Brackettville. Those of you who worked so hard have made our City look cleaner than before the clean-up campaign started. AND, those of you who didn't get a chance to clean up your property, or who need some more time to do a good job----let's get it done!

LET'S EXTEND THE CLEAN-UP WEEKS UNTIL JULY 31, 1985...

/s/ William Mendeke, Mayor

**NOTICE TO ALL PERSONS HAVING CLAIMS AGAINST THE ESTATE OF JOSE GARCIA**

Notice is hereby given that original Letters of Guardianship for the Estate of JOSE GARCIA were issued on July 3, 1985, in Cause No. 769, pending in the Probate Court of Kinney County, Texas, to Irma Garcia.

The residence of such Guardian is Kinney County, Texas. The post office address is Box 411, Brackettville, Texas, 78832.

All persons having claims against this Estate which is currently being administered are required to present them within the time and in the manner prescribed by law.

DATED the 8th day of July, 1985.

/s/ Tully Shahan  
Attorney of the Estate  
P.O. Box 367  
Brackettville, Texas  
78832  
SBN 18087500

**PUBLIC NOTICE**

**NOTICE OF RATE CHANGE REQUEST**

In compliance with Sec. 43(a) of Art. 1446c, V.A.C.S. and in accordance with the PUC Rules of Practice and Procedure, 21.22(b)(2) Central Power and Light Company hereby publishes NOTICE that it has filed its Statement of Intent to make changes in its retail rates charged for electricity and services sold and rendered inside and outside municipal jurisdictions. This proposed change will affect all retail

**PUBLIC NOTICE**

customers (approximately 500,000) in all rate classes and is to result in an increase to test year revenues adjusted for annualization of test year rate increases (none) and customer growth (and an increase to fully adjusted test year revenues including the effects of weather normalization and decreases in the base rates charged for fuel instituted after the end of the test year) as follows:

Filing Date July 9, 1985  
Proposed Effective Date August 13, 1985  
Proposed increase over fully adjusted test year revenues \$121,985,792 (14.1%)  
Proposed increase over test year revenues adjusted for

customer growth  
\$ 9,978,698 (1.0%)

The test year is the twelve months ending December 31, 1984.

Persons who wish to intervene or otherwise participate in these proceedings should notify the Commission as soon as possible. A request to intervene, participate, or for further information should be mailed to the PUBLIC UTILITY COMMISSION OF TEXAS, 7800 Shoal Creek Blvd., Suite 400N, Austin Texas 78757. Further information may also be obtained by calling the PUBLIC UTILITY COMMISSION CONSUMER AFFAIRS DIVISION at (512) 458-0223 or (512) 458-0227, or (512) 458-0221 TELETYPEWRITER FOR THE DEAF.

**\*\*\* SEALED BID SALE \*\*\***

- 1981 3/4 Ton Chev. Pickup, 4 speed manual trans. Lic. QD8423
- 1981 4 1/2 Ton GMC Truck Lic. QD8470
- 1983 3/4 Ton Ford Pickup, 4 wheel drive Lic. QD8529

These vehicles are being sold on an (as is) basis. Have your bids in this office on or before August 6th, 1985. We reserve the right to reject any or all bids. These units may be seen at the Rio Grande Elec. Cooperative, 101 E. Spring Street in Brackettville, beginning July 17th, 1985 from 8:00 A.M. thru 5:00 P.M. Mondays thru Fridays. Contact Dale Borden at 512-563-2444.

/s/ Dale Borden  
Purchasing Agent,  
Rio Grande Electric Cooperative, Inc.

\*\*\*\*\*  
**HILLCREST FUNERAL HOME**  
\*\*\*\*\*

**BOB & ROSEMARY RICE**

**PRE-NEED FUNERALS**

- \*\*\*\*\*
- No Interest nor Finance Charge
- Wide Selection of Caskets, Vaults & Services
- Up to 100 Months to Pay
- No One Turned Down for Any Reason
- \*\*\*\*\*

**MONUMENTS**

- \*\*\*\*\*
- All Sizes and Colors
- Prices Include Lettering, Delivery & Installation
- 6 to 8 Weeks Delivery

\*\*\*\*\*  
**"WE SERVE TO SERVE AGAIN" 563-2438**  
\*\*\*\*\*



Many people once considered it bad luck to mention the name of a king.



# Let's talk.

Information about your changing telephone service from Tom Graham, Manager

## Spotlight on Texas

Texas has become the envy of many other states. And it's not just because of our mouth-watering chili and mesquite-smoked barbecue.

Our state is now attracting more and more businesses to head-quarter or locate a major operation here. Corpus Christi was just chosen as the new U.S. Navy base for the battleship Wisconsin. And support warships will be stationed in the Houston-Galveston area. The annual economic impact is expected to top \$250 million.

No longer is our state a land of only oil and agriculture. While those industries still play major roles, they are now part of a varied big picture, which includes the banking, defense, computer, tourism and telecommunications industries, to name a few.

Regardless of their locations within Texas, the influx of new businesses is a boon to the whole state. New businesses increase the state's tax base and create new jobs for all Texans.

### Attracting new businesses

Helping to draw new businesses to Texas are the state's abundant resources, good climate, excellent transportation and hard-working residents.

For example, good transportation was a dominating reason for Southwestern Bell Telephone's recent decision to locate a major distribution warehouse in Lancaster, south of Dallas. The new 490,000 square foot complex will serve all five of our company's states.

In addition to transportation, telecommunications facilities are also important in many business relocation decisions.

Southwestern Bell Telephone is proud to offer top-notch telecommunications in the 450 towns it serves in Texas. For the eighth year in a row, we are investing more than \$1 billion in new construction to meet Texas' growth and to continue adding state-of-the art communications facilities.

### Reasonable phone rates

Also, Texas residential telephone rates are among the lowest in the nation. In fact, a recent study conducted by an investment brokerage firm — Smith Barney — found Texans had the lowest average monthly residence bill among the 18 states surveyed.

From 1975 to 1984, the average residential phone service for most Texans increased only 44 percent. During that time, the Consumer Price Index rose 93 percent, gasoline went up 117 percent, medical costs increased 184 percent, while natural gas prices rose 239 percent.

In fact, statistics show it actually takes a smaller percentage of earned income to pay for telephone service today than it did 25 years ago.

Even at our current proposed increases, Texans will continue to enjoy quality communications at affordable rates.

What makes Texas grow? It's a lot of factors, from its highways to its telecommunications services to its state government that actively works to promote economic development.

It's also good people, including Southwestern Bell Telephone's 35,000 Texas employees. We're proud of our traditions of service in the state since the late 1800s. And we're confident of our abilities to continue meeting the needs of our growing state.



Texans providing telecommunications for a growing state.

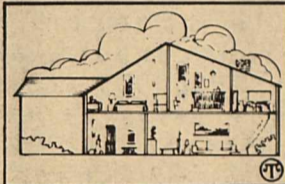
Tom Graham  
SW Bell Telephone  
4119 Broadway, Room 720-B  
San Antonio, TX 78209

## Hints for Homemakers

TIPS TO HELP YOU

A naturally occurring mineral composed of sodium, boron, oxygen and water first appeared in history some 4,000 years ago. Borax is generally found embedded deep in the ground along with clay and other substances and its non-laundry uses include cleaning and deodorizing your refrigerator and deodorizing your garbage pails.

\*\*\*




To remove wine and alcohol stains: Dissolve 1/2 cup of a product such as 20 Mule Team Borax in a pint of warm water. Sponge in the solution, wait 1/2 hour, then shampoo the spotted area. Let dry and vacuum. These stains are tough ones and your chances of complete success are better the sooner you treat them.

### FREE BOOKLET

For a free copy of "The Magic Crystal" booklet with general household uses and arts & crafts suggestions featuring borax, write: U.S. Borax, 3075 Wilshire Blvd., Los Angeles, CA 90010.



Springtime in Central Texas means bluebonnets, and one of the best areas to witness the annual floral display at its best is along the Highland Lakes Bluebonnet Trail. As its name implies, the trail winds around and between the chain of beautiful lakes along the Colorado River between Austin and Lake Buchanan.

TRAVELING  TEXAS

# SMART PEOPLE Buy & Bank at Home.

Money that remains at home provides jobs, growth, security, and happiness for everyone!

THE FIRST STATE BANK OF BRACKETTVILLE

563-2451

MEMBER F.D.I.C.

DEADLINE:  
Tuesday  
at NOON

# CLASSIFIED ADS

All classified ads: \$.20 per word, 10 words minimum insertion ... \$2.00 per week. NO BILLING OF CLASSIFIEDS !!!

**BRACKETT'S  
"FULL SERVICE"  
STATION!**



**T & A  
SERVICE STATION**  
HWY. 90 563-9794

**LIQUOR .. .. WINE**  
**DEASON'S  
PACKAGE STORE**

**"LOW PRICES ...  
FRIENDLY SERVICE!"**  
Conaco Station Hwy 90  
512-562-2424

### BRACKETTVILLE CHURCHES

**FIRST BAPTIST CHURCH**  
(Southern Baptist)  
Rev. Ronnie Watson

Sunday School 9:45 am  
Worship Service 11:00 am  
Worship Ser. (Sun) 7:00 pm  
Prayer Meeting (Wed) 7:00 pm

\*\*\*\*\*

**FRONTIER BAPTIST CHURCH**  
(Southern Baptist)  
Rev. Joe Townsend

Sunday School 10:00 am  
Worship Service 11:00 am  
Prayer Meeting (Sun) 7:30 pm  
Prayer Meeting (Wed) 7:30 pm

\*\*\*\*\*

**UNITED METHODIST CHURCH**  
Ron Kelly - Pastor

Child. Sunday Schl. 10:00 am  
Adult Fellowship 10:30 am  
Worship 11:00 am

\*\*\*\*\*

### CHURCH OF CHRIST

Sunday School 9:30 am  
Worship Service 10:30 am  
Bible Study (Sun) 6:30 pm  
Bible Study (Wed) 7:00 pm

\*\*\*\*\*

## KINNEY COUNTY LAND CO.

512-563-2446

\*\*\*\*\*  
Lovely custom built 14x70 mobile home on Ft. Clark. Covered carport and storage bldg. INCLUDES FCS MEMBERSHIP.  
\*\*\*\*\*  
Very attractive 14x80 mobile home on 2 shaded lots in Brackett. Carport/Fruit Trees.  
\*\*\*\*\*  
Two bdrm. townhouse on Ft. Clark. IN BEAUTIFUL CONDITION. All modern conveniences.....  
\*\*\*\*\*  
11,000 Ac., in Kinney County. PRIME HUNTING! Hunting lodge. COMPANIES INVITED!!  
\*\*\*\*\*



## MASON SHOES & BOOTS

**OVER 350 STYLES  
FOR MEN & WOMEN**  
**SAVE MONEY -  
ORDER DIRECT!**  
Robbie Robertson 563-2993

### THE COMMUNITY CHURCH

563-9375  
Gary Holcombe, Pastor

**SUNDAY**  
10:00 am Bible School  
11:00 am Worship Service  
6:00 pm Believers Bible Study

**MONDAY**  
7:00 am Mens Bible & Prayer

**WEDNESDAY**  
7:00 pm Prayer & Praise

**HOME MINISTRY GROUPS**  
meeting through the week.  
For Women, Seniors, Families.  
Call for information.

## CLASSIFIEDS SELL!!

\*\*\*\*\*  
Alcoholic Anonymous Meetings in Brackettville - every Thursday at 8:00 p.m. Al-Anon meetings every Monday 8:00 p.m. Call 563-2094 for information.  
\*\*\*\*\*

COME AND SEE CALVIN AT MILADY SALON. NO APPT. NECESSARY...

\*\*\*\*\*  
FOR SALE-- Apt. Range--\$100  
TELEPHONE- 563-2949....  
\*\*\*\*\*

FOR SALE-- 1981 Chevette 4 cyl., low mileage, standard shift, excellent for pulling behind motor home. FOR MORE INFO:3-2846.. \$2,000.00 CASH..  
\*\*\*\*\*

FOR SALE: 1969 Pontiac Station Wagon. GOOD TIRES..

ALSO, 1969 Chrysler Sedan, GOOD ENGINE & TRANSMISSION.

\*\*NEED BATTERIES.....  
IMMEDIATE SALE: Call 563-2382.  
\*\*\*\*\*

FOR SALE: 1973 V.W. Super Beetle- \$800. See at Lot #4, Kick-A-Poo Trailer Park on W. Fulton Street.  
\*\*\*\*\*

**MAC'S AUTO REPAIR**  
115 SPRING STREET

Lawn mower tune-up. Install new points, condenser, spark plug, sharpen & balance blade, change oil & adjust carburetor.  
\$25.00--PARTS INCLUDED...  
\*\*\*\*\*

\*\*\*\*\*  
Experienced Land Marketing Company looking for ranch property to market in the following counties: Duval, Edwards, LaSalle, Frio, Kinney, and Kimble counties. We can get you what you want for your land and then some. Brokers welcome.  
Write: 3-W Investment Co., Box 13309, San Antonio, Texas 78213.

**PROPANE TANKS MOTOR FUEL**  
for Sale  
or Rent

**Del Rio Gas Company**

HWY 90 WEST P.O. BOX 420654  
DEL RIO, TEXAS  
775-3633

Johnny Smith 563-9223