



ALAMO VILLAGE  
P. O. BOX 528  
BRACKETTVILLE, TX 788320528

# the Kinney Cavalryman

VOLUME 12 NUMBER 36

SEPTEMBER 6, 1985

BRACKETTVILLE, TEXAS

## 11TH ANNIVERSARY EDITION

### ELEVENTH ANNIVERSARY EDITION

Well, it has been eleven years, this week, that the KINNEY CAVALRYMAN has been in business. Since the beginning of the newspaper, the following business and organizations have also been added to our community:

- Moore's Barber shop
- AAA Roofing Service
- Glen T.V. Service
- Southwest Nursing
- Fort Clark Condominums
- Sagebrush Shoppe
- Satellite T.V. Sales & Service
- New School Annex
- New Rio Grande Electric Hdqtrs.(still under constr.)
- First Baptist Church Annex
- Frontier Gallery
- Dr. James Harbor DDS
- Kinney County Ambulance & Volunteer Ambulance Crew
- New Bank Building
- Paved Streets
- City Hall Annex
- Western Auto
- Kinney County Memorial Clinic
- Kinney County Land Company
- Bizzell Realty
- New County Jail
- Public Swimming Pool & Park
- Sergeant Concrete Ind.
- New Border Patrol Bldg.
- Direct Distance Dialing
- Frontier Baptist Church
- City Drainage System
- New Athletic Stadium
- Burger & Shake
- Kini-Mini Storage
- The Screendoor
- Dave's Towing Service
- Stop-N-Shop
- New County Park
- The Jug Store

CONT. PG. 2



### SAHAWA INDIAN DANCERS

The Old Quarry Society for the Performing Arts will present the internationally famous Sahawe Indian Dancers Saturday, September 14, at 8:00 p.m. at the Old Quarry Amphitheatre Fort Clark Springs.

In the setting of a Plains Indian village with teepees in a background enhanced by the natural beauty of the Old Quarry Amphitheatre, the Sahawes will entertain the audience with their colorful and exciting dances.

The ninety minute performance will consist of fifteen dances from tribes and

pueblos from all parts of our country and Mexico. Senior Chief Bill Dillahunt will narrate the background of the dances.

The Sahawe Indians are members of Explorer Post 181, Concho Valley Council, B.S.A., Uvalde, Texas and have been performing throughout Texas, Oklahoma, Louisiana, Missouri, and Mexico for over 30 years, almost 1,500 performances. The audience will find it hard to believe that these young men are "white indians" or "Sycamores", as their Indian friends call them.

Now billed as Uvalde's most colorful attraction, the Sahawes were organized in 1950 to provide worthwhile

CON.T PG. 3

# THE KINNEY CAVALRYMAN

USPS 100-610  
P.O. DRAWER CQ  
BRACKETTVILLE, TX. 78832

512-563-2696

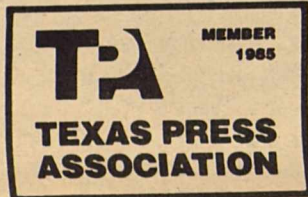
J. GEORGE LOOS ...Editor

CRYSTAL LOOS .....Production  
\*\*\*\*\*

Published every Friday.  
Entered by SECOND CLASS MAIL  
at Brackettville, TX 78832.  
\*\*\*\*\*

Subscription Rates: per year  
\$15.00 .....Out-of-County  
\$14.00 .....In-County  
\*\*\*\*\*

DEADLINE:  
TUESDAY AT NOON



..."Any erroneous reflection upon the character or standing of any person or firm appearing in this paper will be gladly corrected - upon being called to the attention of the management and to the article in question." ...

*Crystal Sez...*

"The years teach much which the days never know."

"What is easy is seldom excellent."  
Dr. Johnson

FROM PAGE 1

City Police  
County Community Center  
Street Signs  
House Numbers  
Senior Citizens Program  
Dr. Zack Davis D.V.M.  
Brackettville Dry Cleaners &

Laundry  
Thread Fare  
Ray's Grocery  
Woodson & Sons Welding  
World Championship Totilla Tossing Tournament  
Mason Shoe Dealer  
City Weather Warning System  
Firemen's Hall  
Paved, Lighted, Directional Raiood Facilities- Airport  
Yellowrock Square Dance Shop  
Red Cross Chapter  
Tully Shahan, Attorney at Law  
School Cafeteria  
Boy Scouts  
Dr. A. Luz, M.D.  
Ft. Clark Adult Center & Spa  
Jeeparts  
New Kinney County Library  
New City Dump  
O'Rourke Realty  
Republican Party  
Southwestern Bell Telephone Building Annex  
X-Ray & Defib Monitor Equip  
Dave's Used Cars & Trucks  
True Value (Davis Hardware & Ranch Supply)  
Hale's Auto/Diesel Repair  
R.E.A.'s Substation  
Satallite/Cable T.V.  
Cavalry Construction  
Finch Air Conditioning  
Community Church  
Fire Truck  
Gulf Station  
Rob's Car Wash  
Rob's Mini Shop Grocery  
Hillcrest Funeral Home  
Frontier Gun Shop  
R & L's Florist  
Clinic Pharmacy  
Ft. Clark Springs 18-Hole Golf Course, Club House & Pro Shop  
Amphitheatre  
Vito's Plumbing & Electrical  
Girl Scouts  
Coop Auto Sales  
Bill's Body & Paint Shop  
Mac's Auto Service  
Connie's Gym  
Frontier Advertising  
Touch Tone Dialing  
Wilson Construction  
New Welfare Bldg.

### AND THIS NEWSPAPER

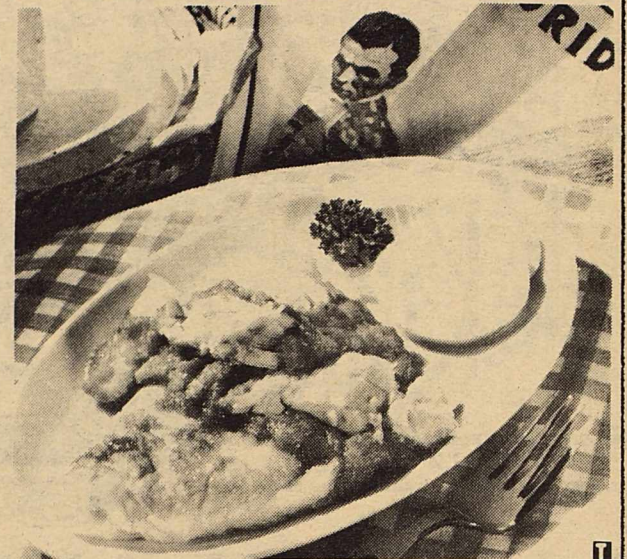
We hope we didn't miss anyone, if we did, we will be gald to include them in next week's issue.

CONGRATULATIONS KINNEY COUNTY AND BRACKETTVILLE ON A TERRIFIC GROWTH AND ON BEHALF OF THE KINNEY CAVALRYMAN.....

OVER 97 NEW BUSINESSES AND FACILITIES !

.....THANK YOU!!!!!!

## BEE Buzzwords

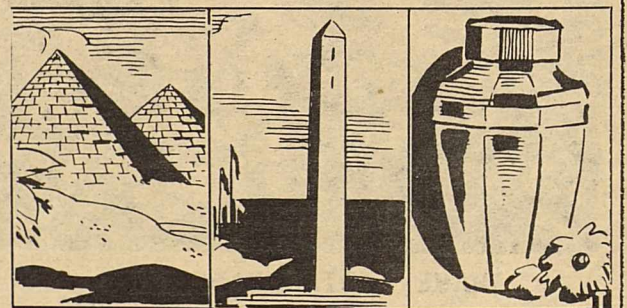


### SPANISH OMELET

- 1 can (7 oz.) Bumble Bee Solid White Tuna
- 1 medium onion, diced
- 1 medium green bell pepper, seeded, diced
- 1 clove garlic, pressed
- 1 tablespoon vegetable oil
- 1 can (15 oz.) tomato sauce
- 1/4 cup diced green chiles
- 1 tablespoon grated Parmesan cheese
- 1 teaspoon fines herbes, crumbled
- 1 teaspoon sugar
- 1/2 teaspoon salt
- 8 eggs
- 1 teaspoon ground cumin
- 1/4 cup butter
- Dairy sour cream

Drain tuna. In saucepan, sauté onion, green pepper and garlic in oil until vegetables are soft. Stir in tomato sauce, green chiles, cheese, fines herbes, sugar and salt. Simmer, uncovered, 10 minutes. Stir occasionally. Remove from heat. Stir in tuna. Cover. For each omelet, beat 2 eggs with 2 tablespoons water and 1/4 teaspoon cumin. Melt 1 tablespoon butter in 7-inch omelet pan until bubbly. Pour in egg batter. Cook over medium heat, lifting edges to allow uncooked portion to run un ler and brown. When brown and firm, yet moist in center, slide onto serving plate. Fold in half. Repeat with remaining eggs. Spoon sauce over each. Dollop with sour cream. Makes 4 servings.

### Memorials: Then And Now



The pyramids of Egypt, the Washington Monument, a family memorial urn — these help us remember ancient kings, a notable American and our own beloved.

Through the ages, people have memorialized those whom they've loved and respected.

In ancient Egypt some 100,000 workers toiled to create the huge pyramids for their pharaohs. In 19th century America, the world's tallest, all-stone structure, the Washington Monument, was created to honor the nation's first president.

Today people are not building pyramids or skyscraper monuments, but they are remembering loved ones in various ways. Those who have arranged for cremation of deceased family members often select urns for the permanent containment of the remains. These are placed in columbarium niches, in special urn gardens or in family cemetery lots.

Cremation and niche inurnment are growing tremendously and may well become the usual practice in America in years to come, say the experts at the Cremation Association of North America.

The organization's members emphasize that cremation is not final disposition, but preparation for memorialization. They suggest that when suffering a loss, the traditional rites of passage and the memorializing can be beneficial in assuaging grief and creating peace of mind.

#### Free Literature

For free copies of the leaflets, "Cremation Is Not the End" and "Cremation Explained," send a business-size, stamped envelope to CANA, 111 East Wacker Drive, Chicago, IL 60601.

**DANCERS FROM PG. 1**

activities for older youths (12-18.); 2) to teach leadership and responsibility through the activities of the Sahawes; 3) to promote and preserve the arts, crafts, history, dancing and music of the American Indian; 4) to provide entertainment to Uvalde and the surrounding area. While pursuing these aims, the members travel throughout the country, visit points of interest, meet people in all walks of life and have fun.

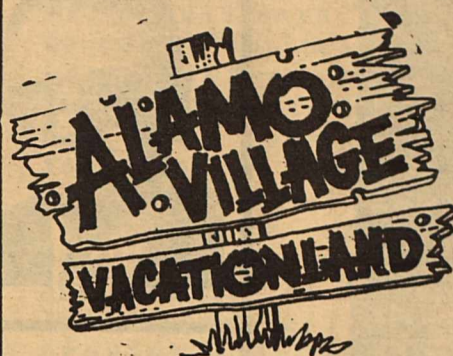
How does a boy become a Sahawe? Sixth graders are invited to become prospective members. For six months, they must labor over bead and leather work and strive to learn the intricate dance steps and dances. During this time, they are known as papooses.

Following this period, they are eligible to become warriors. Then comes more costume and dance work to reach the high standard set by the members themselves. Each member must read books from the Sahawe library on subjects of American Inidans to familiarize themselves with the history, customs, dances and costumes of the native Americans.

Finally, thos who work the hardest may become chiefs, the utmost honor of the Sahawes. No boy or leader receives any pay, as all funds earned go to help pay the expenses of the programs.

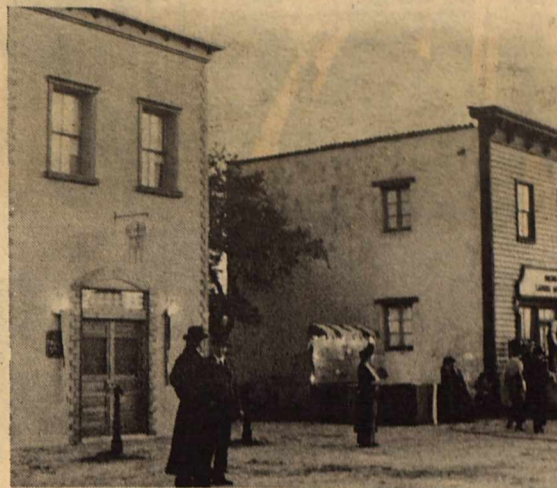
In addition to research from books, films and personal observation to assure authenticity, the Sahawes have attended Indian gatherings such as the Intertribal Ceremonies in Gallup, New Mexico, American Indian Exposition in Anadarka, Oklahoma, Pawnee Homecoming in Pawnee, Oklahoma and the Puye Cliff Ceremonials near Santa Clara Pueblo, New Mexico.

Many moons have passed since the great chiefs roamed the plains; the buffalo have faded away, never to return. Where teepees once stood, only an occasional arrowhead can be found. The ashes of council fires have mingled with the sands of time. The beauty and peace of the Indians must be entrusted to those who study their picture rocks, rekindle dead embers of their fires,



**THE  
MOVIE CAPITAL  
OF TEXAS**

**512-563-2580**



**STREET SCENES FROM  
"UPHILL ALL THE WAY"  
FILMED AT ALAMO VILLAGE  
& SOON TO BE RELEASED!**

tell their stories and dance their dances. Let the Sahawes turn back the hands of time for you.

Admission is \$3.00 for Adults & 75 cents for children. Advance tickets are \$2.00 and are available at the Ft. Clark Springs Adult Center, phone 1-512-563-2024.

THE PUBLIC IS INVITED.



**MISS KINNEY COUNTY DEPARTS  
FOR FIRST YEAR AT COLLEGE**

Prior to her departure for her freshman year at Texas Tech in Lubbock, the reigning Miss Kinney County, Shawn Ralston, shared some personal thoughts with us. She has found the experience very

rewarding and personally valuable in many ways. Probably most valuable was the opportunity to meet many people in our state as she travelled to other locales as Kinney County's representative. The travel was a lot of fun, particularly her trip to Carrizo Springs for competition. Reigning at the Frontier Fair was of particular pleasure, since she was able to meet so many new residents of the county, and she was received so well by all she met on those two March days.

"The pagent was alot of fun for me, and it opened the door to some good times," said Shawn in closing her remarks.

**SOUTHWEST ADDS  
NEW SERVICES**

**PHSICAL THERAPY**

**MR. KIRBY FOWLER, R.P.T.**

**AND**

**HOME PROVIDER SERVICES**

**FOR INFORMATION CALL:  
SOUTHWEST NURSING**

**&**

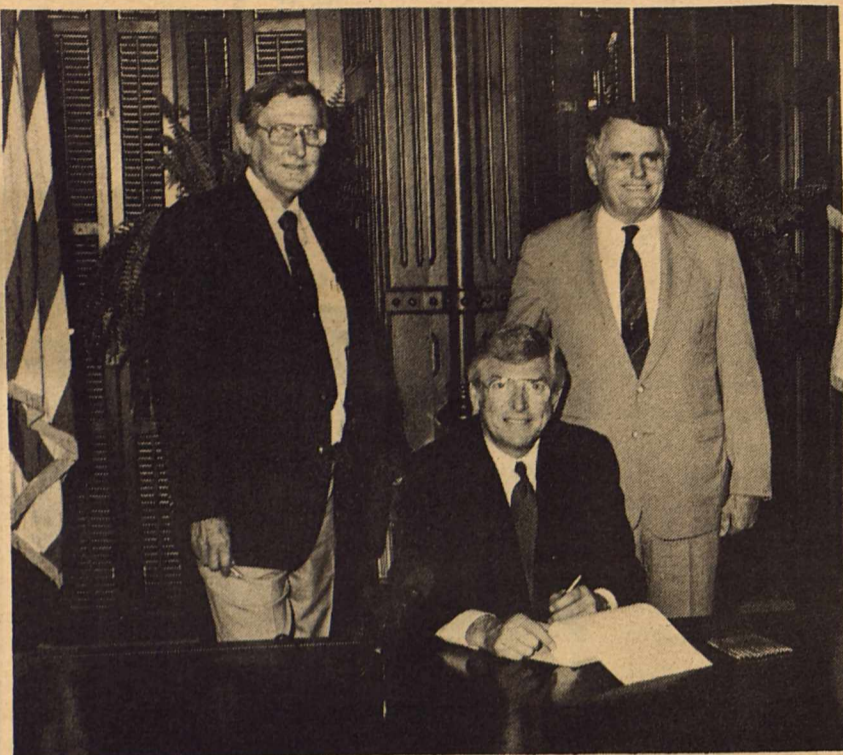
**HEALTH SERVICE, INC**

**563-2905 OR 563-9247**

**ALL SERVICES**

**RENDERED IN THE**

**PRIVACY OF YOUR HOME**



#### HARRISON SPONSORS BILL

AUSTIN--- Representative Dudley Harrison (D-Sanderson), shown here on left with Governor Mark White and Senator Bill Sims, was in Austin to attend signing of the bill which established The Texas Brush Control Program. The bill was sponsored by Harrison in the House. Its purpose is to allow the Soil and Water Conservation Board to determine the areas of the state where brush control is a major problem and to find the most effective methods of eliminating the needless waste of water by mesquite and other forms of brush. According to Harrison, "The program is especially important to the people of West Texas."

### Dr. Gill Brehm Urologist

Specializing in diseases of the kidneys, bladder, prostate gland and urinary system of men, women and children.  
Office Hours from 9:00 a.m. to 5:00 p.m.  
Monday through Friday.

710 Bedell  
Phone: 775-9525

Del Rio, Texas  
Emergencies: 774-3444

### UROLOGO DR. GILL BREHM

Especialista en enfermedades del riñon, vejiga, prostata y sistema urinario de adultos y niños.  
Se habla español.

Consulta de: 9:00 a.m. a 5:00 p.m. Lunes a Viernes

710 Bedell  
Telefono: 775-9525

Del Rio, Texas  
Emergencias: 774-3444



# Let's talk.

Information about your changing telephone service from Tom Graham, Manager

#### We've got the Sesquicentennial covered

If you would agree that Ma Ferguson was a famous Texan or that Jose Antonio Navarro brought in the first Texas oil well, you may need a Lone Star history refresher course.

We will have many opportunities to review our state's proud past during 1986, when we celebrate the 150-year birthday, or sesquicentennial, of Texas.

By the way, as history buffs know, Ma Ferguson was the first and only woman governor of Texas and was elected in 1925. In 1836, Jose Antonio Navarro was one of two native-born Hispanic Texans to sign the Texas Declaration of Independence, which he helped draft, and was later elected to the Texas Republic's Senate.

Ma Ferguson and Jose Antonio Navarro, along with other famous Texans and symbols of our state's heritage, will be featured on the cover of about nine million Southwestern Bell phone directories for 1986. To commemorate our state's 150-year birthday, Southwestern Bell Telephone recently conducted a statewide art contest for the Sesquicentennial year directories. We received more than 500 entries.

#### Statewide contest winner announced

And the winner is... Bill Hall of Arlington. Hall's colorful montage displays the rich texture of Texas. After much head-scratching, the six judges selected Hall's work as the best of many excellent entries.

At the end of 1985, Houston and Austin will be the first cities to receive new directories with the special artwork covers. Then, throughout 1986, the Sesquicentennial directories will be distributed to Southwestern Bell Telephone customers in more than 150 Texas cities.

Delivery of these special directories is just one event Texans may look forward to in 1986. Southwestern Bell Telephone will present a sneak preview of one major statewide Sesquicentennial activity at our exhibit at this year's State Fair of Texas, October 3-20 in Dallas. Hope some of you can pay a visit to our exhibit in the Grand Place (formerly called Women's Building) at Fair Park.

#### New toll-free service aids Hispanics

Southwestern Bell Telephone recently inaugurated a trial of an important new service for our Spanish-speaking customers throughout the state.

It is a toll-free number to give customers an opportunity to obtain general information and assistance from Spanish-speaking employees. If a customer needs specific information about an account, a bureau employee will call the customer's business office — with the customer on the line — and serve as an interpreter, if necessary.

The Spanish Service Bureau's toll-free number is 1-800-592-7726. If you forget the number, you can get it from an 800 Directory Assistance operator (1-800-555-1212).

Our business offices throughout Texas have always tried to help Spanish-speaking customers as much as possible. Sometimes, however, Spanish-speaking employees were not available. Now, we have specially trained employees dedicated to helping those who call the toll-free bureau.

Also to provide help for our Spanish-speaking customers, we have translated several booklets, including our popular series of Tele-Help (Tele-Ayuda) booklets, into Spanish. Those booklets cover such subjects as establishing local telephone service, using the telephone to make your home more secure, installing home telephone wiring and handling annoying phone calls. To order a Tele-Help booklet, in English or Spanish, customers may call this toll-free number: 1-800-325-2686, extension 86.

Although these booklets answer many questions, sometimes customers need the personal help of our employees. Meeting the telecommunications needs of all our customers is why we're in business. We are hopeful that the new Spanish Service Bureau will help us reach our goal of complete customer satisfaction.



Southwestern Bell  
Telephone

Texans providing telecommunications for a growing state.

Tom Graham  
SW Bell Telephone  
4119 Broadway, Room 720-B  
San Antonio, TX 78209



**BRACKETT I.S.D.  
TO PARTICIPATE IN FIRST  
INSTRUCTIONAL NETWORK  
'VIA SATELLITE'**

Brackett I.S.D. - Brackettville, Texas---- Bob McCall, Superintendent of Brackett Schools has announced that the school district has become a participant in the first satellite instructional network in the United States. The TI-IN Network system allows Brackett students and teachers to take high school honors courses, advanced academic training and certification courses as well as courses to prepare for the SAT, the exit level TEAMS test and the teacher competency test.

Programs are beamed to Brackett and 50 other school districts around the state from an uplink at Region 20 Education Service Center in San Antonio by way of the GTE TEL SAT Communications satellite.

All classroom and inservice programs are produced live. Students and teachers are able to converse directly with their instructors by means of a two way audio transmission. Exams, study guides and other printed material are transmitted to the participating schools by means of an integrated computer and printer.

This system will allow small districts such as Brackett to offer a range of courses never before possible. Courses offered this fall include, Calculas, German, French, Psychology, Economics, Elementary Analysis, Latin Probability and Statistics, Research and Technical Writing, Sociology, and Business and Consumer Law. Future expansion plans include the offering of college credit courses and inservice programs for private business.

A parent/student orientation program was held at the Brackett High School library on August 27 at 8:00 p.m. to familiarize parents and students with the new system and Brackett teachers have already availed themselves fo the opportunity to take part in a variety of inservice courses.

Mr. McCall says "The Brackett Board of Trustees have shown a very progressive attitude toward education. The apporval of this project is an indicator of the community's willingness to provide innovative educational opportunities for the children and teachers of this district. This system will, hopefully, provide a logical and cost effective means for school districts to meet the requirements of the educational reform laws (Chapter 75 and House Bill 72) now in effect in Texas.

**NEW DRUM MAJOR NAMED**

Hope Kelly has been named drum major of the 1985-86 Tiger Band, according the Band Director, Dorette Davis.

Hope is the daughter of Rev. Ron Kelley and Mrs. Judith Kelley. She resides at Ft. Clark Springs and has a brother Chris, and a sister Sarah. She has been active in band for three years, and has competed in piano competitions for the past five out of six years. This year she will compete in University Interscholastic League Piano Competition for the first year.

Ms. Davis reports that the position will be challenging due to the loss of most brass players to graduation, making this and next year rebuilding times for the depleted instrumental ranks.

**MAKING  
FAMILY LIFE  
MORE FUN**

Video means value and variety for American families today. The sights and sounds, love and laughter of being part of a family can be captured permanently thanks to a host of easy to operate video cassette recorders and video cameras.

One of the pioneers in both VCR's and video cameras is RCA and the firm is continuing to expand in these areas. Four of its ten VCR models in the new line feature VHS Hi-Fi stereo sound, including the VKP950-the first "Convertible" model to include this feature.



Another new feature found in four of the firm's VCR models is remote program-mability-allowing the user to set the clock and pre-program as many as eight events up to one year in advance from the convenience of an easy chair.

The company's camera line includes five models. The lead camera, CKC018, a compact, lightweight shoulder-mount, is open-listed and designed with the price-conscious home video enthusiast in mind. It has a 1/2-inch Saticon tube which features a detachable 1-inch electronic monochrome viewfinder, f1.2 lens with 6:1 power zoom and macro focus, automatic white balance and iris control.

Ideal for families, the smallest and lightest color camera ever, the CKC020 "Small Wonder" weighs only 2.2 pounds and is simple to operate indoors or outdoors with a constant automatic balance, solid-state MOS image sensor, 6:1 power zoom and a 1-inch electronic viewfinder which doubles as an "instant replay" monitor for quick reviews.

**SCHOOL MENU**

\*\*\*\*\*

**BREAKFAST:**

- Monday- orange juice, rice krispies, milk.
- Tuesday- apple 1/2, fr. toast, syrup, milk.
- Wednesday- fruit cocktail, scram. eggs, sausage link, toast, milk.
- Thursday- peaches, pancakes, syrup, milk.
- Friday- grape juice, sugar smacks, milk.

**LUNCH:**

- Monday- corn dog carrot & celery stix, oven Q's, red grapes, milk.
- Tuesday- grill cheese, pickle spears, cole slaw, fruit cocktail, milk, super pretzel.
- Wednesday- pizza, green beans, salad, peaches, milk, cinnamon roll.
- Thursday- over fried chicken, 1/2c. mash. potatoes. 1/4c. carrots coins, biscuit, milk.
- Friday- tacos w/cheese, lettuce-tomato, re-fried beans, corn bread, milk.

**LIBRARY NOTES**

BY LIZ FRERICH

\*\*\*\*\*

The following list of VCR Cassettes will be available for check out Sept. 9, 1985:

1. Backstate at the Kirov- 1984. 80 min. NR. (Documentary)
2. Butterflies Are Free- 1972. 109 min. PG. Goldie Hawn, Edward Albert (Comedy)
3. Four Seasons- 1981. 109 min. PG. Alan Alda, Carol Burnett (Comedy)
4. Interiors- 1978. 92 min. PG. Diane Keaton, Geraldine Page. (Drama)
5. Jezebel- 1938. 105 min. b/w NR. Bette Davis, George Brent (Drama)
6. Benji- 1973. 87 min. G. Benji, Peter Brek (Adventure)
7. Race For Your Life, Charlie Brown- 1977. 76 min. G. animated (Childrens)
8. Raiders of The Lost Ark- 1981. 115 min. captioned. PG. Harrison Ford, Karen Allen (Adventure)
9. Tameing of the Shrew- 1967. 122 min. NR. Elizabeth Taylor, Richard Burton (Comdedy)
10. South Pacific- 1958. NR. Mitzi Gaynor, Rossano Brazzi (Musical)

### UNITED STATES COAST GUARD ACADEMY NATIONWIDE COMPETITION

The United States Coast Guard Academy has announced that it is now accepting and processing applications for appointment as Cadet, U.S. Coast Guard, Class of 1990. Applications are being accepted for both men and women. Appointments as Coast Guard Cadets are tendered solely on the basis of an annual nationwide competition with no congressional appointments or geographical quotas. Applications for appointment must be submitted to the Director of Admissions, U.S. Coast Guard Academy, prior to December 15, 1985. Candidates must arrange to participate in either the College Board Scholastic Aptitude Test (SAT) or American College Testing Assessment (ACT) prior to or including the December 14, 1985 administration for the ACT, and the December 7, 1985 administration for the SAT. The competition for appointment as Cadet is based on the candidate's high school rank, performance on either the SAT or ACT, and extracurricular activities, community affairs and/or part-time employment. Most successful candidates rank in the top quarter of their high school class and demonstrate proficiency in both the mathematical and applied science fields.

To qualify for the competition, an applicant must be unmarried at the time of appointment, have no legal obligations resulting from

prior marriage, must have reached the age of 17 but not 22 by July 1, 1986. All applicants must be assured of high school graduation by June 30, 1985. Regulations stipulate that all applicants must have completed three units in English, and three in mathematics to include algebra and plane or coordinate geometry or their equivalents, and must fulfill basic physical requirements.

Coast Guard Cadets obtain an excellent undergraduate education at no personal expense. In addition, they receive pay and allowances fully adequate to fulfill their ordinary living expenses. The constantly updated Academy curriculum leads to a Bachelor of Science degree with a strong academic emphasis on engineering and science. The selected major studies, when combined with varied elective courses, establish a solid foundation for a challenging career. Graduates of the Academy are awarded a Bachelor of Science degree and are commissioned as Ensigns in the United States Coast Guard. Selected officers may pursue further postgraduate education and specialized training at many leading civilian and military graduate or professional schools, in such fields as aviation, business administration, electronics, engineering, law and oceanography.

The young Academy graduate can look forward to a varied, exciting, and demanding career as a regular

Coast Guard Officer. The Coast Guard performs essential humanitarian missions vital to the safety and saving of lives at sea. Under the Department of Transportation, the Coast Guard establishes and coordinates search and rescue operations by ship and plane, maintains advanced electronic and other aids to navigation scattered around the globe, operates the icebreakers which clear the way for all polar expeditions, and enforces marine law and all aspects of merchant marine safety. In addition, the Coast Guard has responsibility for boating safety and marine environmental protection.

For further information write: Director of Admissions, U.S. Coast Guard Academy, New London, CT 06320 or call (203) 444-8501.

### BACKGROUND ON BUSINESS

#### Spelling Skills Required For Success?

Are spelling skills necessary to get ahead in today's competitive business environment?

Enterprising young business persons are finding the answer is "no" with "smart" office software that actually corrects spelling errors and leaves more time for creative thinking.

Personal computers, outfitted with the CorrectStar software from MicroPro, phonetically recognize misspelled words and correct them at the touch of the key.

It allows business professionals to use the words they want, not just the ones they know how to spell. A writer can type words approximately, without interrupting either typing speed or train of thought, leaving the correc-



tions for the software.

The result: more time for creative thinking and documents that are letter perfect and worry free.

CorrectStar, which operates with the popular WordStar word processing program, is available for most popular desktop computers at computer stores throughout the country.

For the computer dealer in your area, call 800-443-0100, extension 672.

# Nash Dry Goods



## BACK TO SCHOOL SALE

WRANGLERS\* KIDS SIZES:  
1-3 REG. \$9.00 NOW \$7.50  
4-7 REG. \$10.00 NOW \$8.50  
8-14 REG. \$12.50 NOW \$10.00

STUDENT SIZES: REG. \$15.00 NOW \$13.50

MEN'S SIZES: REG. \$17.50 NOW \$15.50

MEN & BOYS SHORTS & SWIM WEAR: 1/2 PRICE...

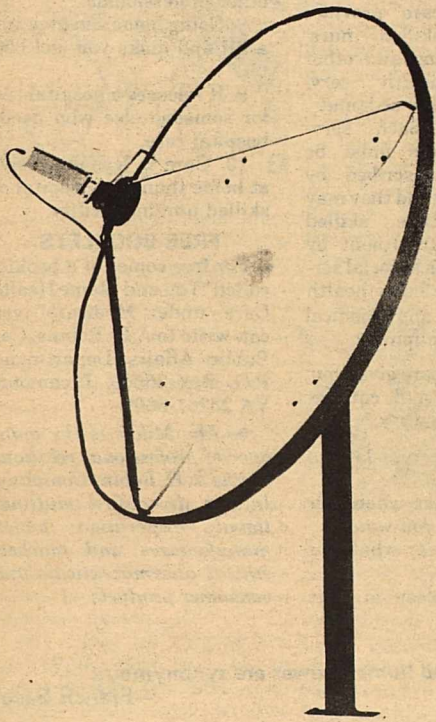
ALL CHILDREN'S & YOUTH'S TENNIS SHOES: 1/2 PRICE...

CONVERSE HIGH TOP TENNIS SHOES: \$16.97..

CITY CLEANERS: WILL PICK-UP & DELIVER  
LAUNDRY & DRY CLEANING ON MONDAY AND FRIDAY!!!!

# 100 + T V CHANNELS

## ASK THESE PEOPLE HOW THEY LIKE THE SATELLITE SYSTEM WE INSTALLED FOR THEM!



"BOBBY " AND DEBBIE GUIDRY

- \* MOVIES \* MOVIES \* MOVIES
- \* 24 HOUR NEWS
- \* NETWORK PROGRAMS
- \* SPORTS \* SPORTS \* SPORTS
- \* 24 HOUR WEATHER
- \* SPANISH PROGRAMS
- \* FINANCIAL NEWS
- \* RELIGIOUS CHANNELS
- \* EDUCATIONAL CHANNELS
- \* CHILDREN'S PROGRAMS
- \* ARMED FORCES NETWORK
- \* MANY FM MUSIC CHANNELS
- \* AND MUCH MORE

OR ASK THESE PEOPLE :

\*THE MALONE COMPANY

\*THE LARRY TUCKERS

\*THE BEN JONES

\*THE FRANCIS LARSONS

\*THE ROBT. HUCHERSONS

THE WM THURBERS

\*THE JIM BADERS

THE PH COATES

"WE SERVICE WHAT WE SELL"

FOR A FREE SITE SURVEY AND QUOTATION CALL

GEORGE LOOS

563-2696

**LOCAL CHURCH BEGINS NEW ACTIVITIES FOR MONTH OF SEPT.**

Several activities are scheduled to begin during the month of September at First United Methodist Church, Brackettville.

**NEW CLASS TO BEGIN-** Rev. Ron Kelly will begin teaching a class on history of the Christian church and Methodist Doctrine. The class will begin at 9:45 each Sunday morning and last 6-8 weeks. Beginning day is September 8.

**YOUTH ORGANIZATION-** All junior and senior high youth are invited to attend the yearly organizational meeting. The youth organization is open to all regardless of church affiliation. First meeting is a 6:00 function, Sept. 8.

**WOMEN'S ORGANIZATION-** An organizational meeting for church women will be held on Sept. 11. Time and place to be announced.

**CHOIR DINNER-** First meeting for the fall choir season will be a 6:30 catered dinner in the new church building across from the sanctuary. All area residents who enjoy singing and do not attend another church are encouraged to participate with the choir. Cathy Conrey, Director, may be reached at 563-2063, for further information.

All Kinney County residents are invited to a special Sunday service, Oct. 16, when the new church fellowship hall will be dedicated. A pot luck meal and entertainment are scheduled after the regular morning service on that day.

**ANNUAL PARISH BAZAAR SET**

St. Mary Magdalene Catholic Church, Brackettville, is having their Annual Parish Bazaar on Sunday September 15, beginning with a NOON Bar-B-Que of beef and sausage. There will be games, food booths, cake walk, bingo, baby contest for ages 1 through 3 years, and many other activities throughout the afternoon. Chris Gomez and Pat McKelvy are co-chairpersons for the event.

**SEMINOLE CELEBRATION SET**

The Seminole Indian Scout Cemetary Assoc. will hold it's Annual Celebration on Saturday Sept. 21 & Sunday Sept 22, at eh Caver School Picnic Grounds.

Saturday will be a day of Fun, Frolic, Singing & Speeches.

Sunday at 2 p.m., Memorial Services honoring the Scouts will be given at the Seminole Cemetary.

Refreshments at Carver School Grounds following.

For further information, call 563-2575 or 563-2862.

/s/ Louis Dimery,  
Chairman

**Making The Most Of Your Abilities**

**CONFRONTATION IS THE KEY TO OFFICE HARMONY**

Conflict between employees is a natural part of any work environment. An effective strategy for dealing with conflict in the office is direct confrontation.



Confronting a small problem early on will prevent it from developing into a major disruptive issue. Here are some guidelines for confronting office problems:

- Remember that confrontation should be used to clear the air and improve a relationship. Confronting a problem demonstrates that you care enough to iron out your problems.
  - Always plan what you will say before confronting someone. Otherwise, you're likely to bring out a whole list of grievances, whether related or not.
  - Use an explorative style of speech: "Help me understand..." or "I'm concerned about..." Don't be accusatory.
  - Expect a counter confrontation, but don't argue—instead let them present their point of view. This allows time to get your emotions under control and gives them the respect of being heard (something that is often at the root of the problem).
  - Thank them for telling you how they feel, and explain what you heard them say. Then, move back to your initial issue since you have now defused emotions. Don't stop until you have resolved the problem.
- Once you have learned how to conduct a confrontation on this efficient level, you should be able to defuse most office conflicts before they develop into serious problems.



During a lifetime the average human heart beats two and a half billion times.

**health hints**

**Medicare and Home Health Care**

by Jacob W. Miller, Pharmacist

There could be good news for many of America's elderly. Under the Medicare program for people age 65 or over, and for people who have been entitled to disability benefits for 24 months, "home health care" provides skilled nursing and other health services at home.



Such services must be prescribed by your physicians and they may include part-time skilled nursing care, treatment by therapists, medical social services, part-time home health aide services and medical supplies and equipment.

Home health care gives you more freedom, and can be beneficial in ten ways:

1. You can sleep as late as you please.
2. You can eat when you want and what you want.
3. You can wear what you want.
4. You can sleep in your own bed.

5. You can have your home as warm or cold as you like.
6. You can see your family and friends as often as you please.
7. You can still get the individual attention you need from nurses, technicians and other professionals.
8. Going home can give you a lift and make you feel better.
9. It releases a hospital bed for someone else who needs hospital care.
10. Care is less expensive at home than in a hospital or skilled nursing facility.

**FREE BOOKLETS**

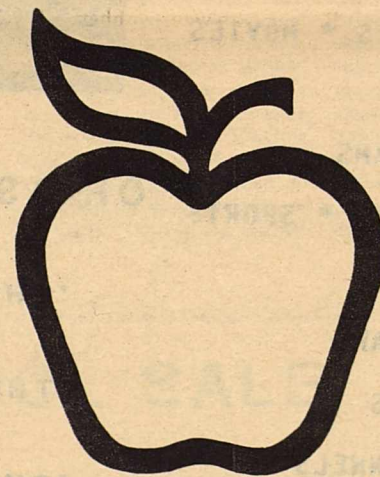
For free copies of a booklet called "You and Home Health Care" under Medicare" you can write to A.H. Robins, Co., Public Affairs Department, P.O. Box 26609, Richmond, VA 23261-6609.

Mr. Miller is the manager of professional relations for the A. H. Robins Company, Inc., a diversified multinational corporation which manufactures and markets ethical pharmaceuticals and consumer products.

"Knowledge and human power are synonymous."  
—Francis Bacon



**For smooth gravy, combine equal parts of flour and cornstarch. Put three or four tablespoons in a jar and add about a half-cup of water. Shake and in a few minutes you'll have a smooth paste to turn into gravy.**



**Welcome Back, Teachers!**

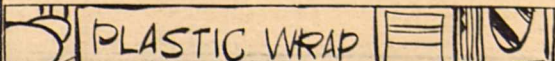
It's been a long, hot summer and once again we're delighted to turn our children over to your competent hands.

If there is any banking service we can perform that will help to lighten the load, we hope you will give us the opportunity to be helpful. Stop in soon.

**THE FIRST STATE BANK OF BRACKETTVILLE**

563-2451

MEMBER F.D.I.C.



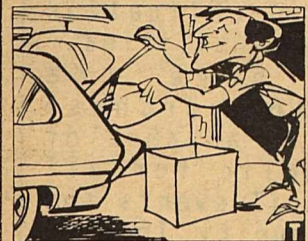
**PLASTIC WRAP**  
Clear plastic wrap is less likely to stick to itself if you keep it in the refrigerator.



CAR CARE CORNER



Have you ever had to prop up your hatchback with a stick or piece of wood to keep it open? Or had a worn out trunk come crashing down while you were about to load an armful of packages?



Now you can eliminate these problems. A new replacement product called Strong Arm Gas Charged Lift Supports can provide the right support needed for proper hatch and trunk operation. It's from Maremont Corporation, makers of Gabriel Shocks and Struts.

Available for most popular passenger vehicles, lift supports are sold in automotive stores as well as in numerous other retail outlets. Each comes with easy-to-follow instructions for simple installation in minutes using common household tools.

When your lift support lets you down, help may be in sight. Strong Arm lifts away worries about weak hatches and trunks.



The right lung takes in more air than the left.

YOUR FLOWERS AND PLANTS Helpful Hints

By Merlin Olsen

The cactus, unlike many other plants, likes strong sunlight, extreme heat, and very little water. In fact, it's been called the plant that "thrives on neglect."

FTD florists recommend watering cacti only about once every seven to ten days, and even less during the winter when they're not actively growing. The soil should be allowed to dry out between waterings.



Olsen

Their native climate forced cacti to find ways of surviving desert temperatures and scanty rainfall. They can

HINTS FOR HOMEOWNERS

Beware of Mildew

No one ever waxes a dirty car. But many people refinish their houses without first giving them a good bath.

Over time, houses accumulate a layer of dirt, grime, and tree sap and even mildew which should be thoroughly removed before repainting or staining.

Mildew is a particularly serious culprit. A living organism, it grows on both interior and exterior surfaces where there is moisture and little direct sunlight. On natural wood surfaces, it mars the natural beauty of the grain and, if severe enough, can cause rot. Unsightly mildew stains should never be painted or stained over. Mildew will continue to grow and eat through layers of paint and other finishes right into the wood or wallboard underneath.



Wherever mildew appears it should be removed by scrubbing with coarse rags or a stiff brush and heavy-duty cleaner in solution with liquid laundry bleach. TSP (trisodium phosphate) by Savogran is a good detergent and used in solution with liquid bleach it will kill mildew causing organisms and remove mildew stains from both exterior and interior surfaces.

Be sure to wear rubber gloves with turn-up cuffs to keep the solution from running down your arms. After scrubbing, rinse thoroughly with water and let dry before repainting. If the problem persists, use mildew resistant paints and finishes.

Free Booklet

For a free booklet detailing these and other handy Do-It-Yourself tips, write The Savogran Company, P.O. Box 130, Norwood, Ma 02062.

store water in their stems, which often are covered with wax, bristles or silky hair to further lessen water evaporation.

The cacti family includes approximately 2,000 species varying in size, shape and form. All have areoles, cushion-like structures on the stems from which leaves, spines and bell-shaped flowers grow in a variety of colors.

Cacti must be repotted when they grow too large for the tiny pots in which they often are sold.

When repotting, use a sweet, non-acid soil containing one-third sand, one-third loam, and one-third humus. Or, if you are using a general house plant mix, simply add an equal amount of sharp sand (mason or cement sand) for a well-drained soil.

IT'S ALL IN THE MIND

Dealing With Difficult People

By Dr. Earlene Castellaw

Many seem to feel that the secret to happy and harmonious relationships with others is a simple matter of tolerance. People speak of racial or religious tolerance as some ideal to aspire to.

Yet tolerance is not a virtue. Tolerance is a cop-out we use when we are not able to be loving. The people you see walking around with tight little smiles on their faces are practicing tolerance, not experiencing love or joy.

What is the source of this thing we call "tolerance"? Generally, it has its roots in our frustration with people who are not what we would like them to be, who do not behave as we wish they would behave, or who say things with which we disagree. Since we cannot change them, we tolerate them instead. Tolerance may be preferable to physical violence as a means of dealing with frustration, but it is just the opposite of loving acceptance or respect.

Our need to "tolerate" others, our frustration with them, comes from a mistaken idea about perfection. Many of us think of perfection as a sort of cosmic chess game where we choose the positions of each piece—we get our opponent's pieces if we want to, they can't get us back. But this is not perfection. The need to control the game this way is an avoidance of life. Perfection does not arise from any particular outcome. Rather, it rests in the rules by which the game is played; rules that work equally well for each player, whether the game is chess or life itself.

In the same way, perfect human relationships do not depend on getting someone to change his beliefs or ideas.



Dr. Earlene Castellaw

If you're getting wrapped up in proving your points, you're really missing the point. Perfection in relationships comes from the way that we deal with each other, from our basic love and respect for other people.

Oddly enough, when we stop trying to change others (or at least wishing we could do so), when we begin allowing ourselves to feel the love and respect for others that is already within us, people respond in kind—often changing their behavior in the process.

Next time you find yourself wishing someone would change in some way, try changing the standards by which you are judging that person. You can have perfect relationships right now, as soon as you change your idea of perfection.

There is a science of right thinking that has helped many people achieve their goals. If you would like to know more about this thought system, write to Dr. Earlene Castellaw, c/o Religious Science Informational Center, 3130 Fifth Avenue, San Diego, California 92103. Or call toll free, 800-633-7989 (from outside California); 800-633-7990 (inside the state).

CROP INSURANCE DEADLINE NEARS

HONDO, Texas- September 30 is the last day to apply for crop insurance for wheat in Kinney County, Texas, according to Tom Jean, a representative of the Federal Crop Insurance Corporation (FCIC).

Crop Insurance covers unavoidable loss of production resulting from adverse weather conditions, wildlife, earthquake, or fire.

"Three coverage levels (50, 65, or 75 percent) are available for insurance protection. Additionally, FCIC offers three optional price elections for valuing production lost or damaged," says Jean.

A new crop insurance plan, called Actual Production History (APH), is available this year to producers of wheat, barley, and oats in addition to corn, grain sorghum, peanuts, cotton, rice and other crops. Producers of these crops may now qualify for higher yield guarantees by proving their yield history. Rates have been developed to offer reduced premium for producers with above-average yields. "With the increased cost of producing a crop, it makes good sense to take a look at this new concept," said Jean.

To find out more about the APH Plan, producers should contact a local authorized agent. To select an agent, producers may check the list of agents at their local ASCS office. SEPTEMBER 30 IS THE FINAL DEADLINE FOR APPLICATIONS.

\*\*\*\*\*

HILLCREST FUNERAL HOME

\*\*\*\*\*

BOB & ROSEMARY RICE

\*\*\*\*\*

\*\*\*\*\*

PRE-NEED FUNERALS

\*\*\*\*\*

No Interest nor Finance Charge  
Wide Selection of Caskets, Vaults & Services  
Up to 100 Months to Pay  
No One Turned Down for Any Reason

\*\*\*\*\*

MONUMENTS

\*\*\*\*\*

All Sizes and Colors  
Prices Include Lettering, Delivery & Installation  
6 to 8 Weeks Delivery

"WE SERVE TO SERVE AGAIN" 563-2438

\*\*\*\*\*

## NOTICE

Houston Lighting and Power Company (HL&P), in conjunction with Central Power and Light Company (CP&L), has filed a petition with the Public Utility Commission of Texas seeking a declaratory order regarding the South Texas Nuclear Project. The petition has been assigned Docket No. 6325.

The Public Utility Commission has determined that the following issues will be considered in Docket No. 6325.

1. The reasonableness of the proposed settlement of the litigation between the owners of the STNP and Brown and Root;
2. The prudence and efficiency of HL&P and CP&L in the planning and management of the South Texas Nuclear Project during the Brown and Root period;
3. The reasonableness of the litigation expenses incurred by HL&P and CP&L in conjunction with the Brown and Root litigation;
4. The effect of the settlement on the investigation by the Commission into the prudence of continuing construction of Unit 2 of the South Texas Nuclear Project;

5. The appropriate accounting treatment of proceeds realized by HL&P and CP&L from the proposed settlement; and

6. The final or nonfinal nature of the findings reached in Docket No. 6325.

The results reached in Docket No. 6325 may have an impact in future proceeding on the rates charged to the customers of Houston Lighting and Power Company and Central Power and Light Company.

Persons who wish to intervene or otherwise participate in these proceedings should notify the Commission as soon as possible. A request to intervene, participate, or further information should be mailed to the Public Utility Commission of Texas, 7800 Shoal Creek Boulevard, Suite 400N, Austin, Texas 78757. Further information may also be obtained by calling the Public Utility Commission Consumer Affairs Officer at (512) 458-0223 or (512) 458-0227, or (512) 458-0221 teletypewriter for the deaf.



Freedom of the Press  
Is Everybody's Freedom

## MEMBERSHIPS EXPIRE AUG. 31

The Uvalde Arts Council announces that memberships for the Arts Council expire August 31.

Membership contributions enable the Uvalde Arts Council to provide a professional staff for the Opera House, to support scholarships in the performing arts, and to meet the new financial obligation for the building's utilities.

Members have the opportunity to purchase tickets a week in advance of the general public for all Uvalde Arts Council events and Uvalde Area Community Theatre (UACT) productions. Arts Council members also receive a \$5.00 discount on UACT season tickets, which entitles members to four (4) shows for the price of three (3).

The 1985-86 season will begin on Saturday, September 28, with the return of Texas Opera Theater to the Grand Opera House. Tickets will go on sale for Arts Council members Tuesday, Sept. 10. Tickets are \$7.50 for adults and \$5.00 for students (K-12). For further information on becoming a member of the Uvalde Arts Council or purchasing tickets for Texas Opera Theater, please call the Opera House at 278-4082.



Tea is the world's most popular drink.

## Take care before you dig: Power lines could be there

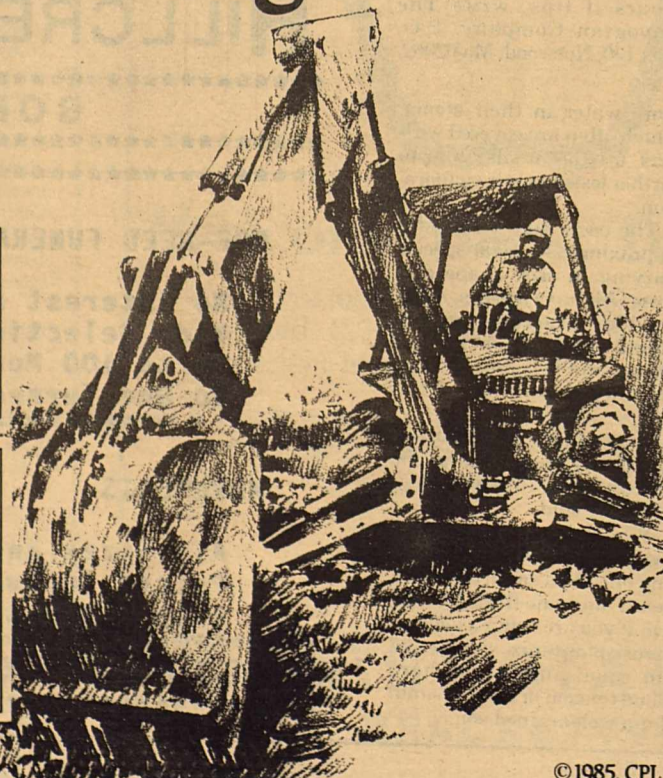
Make sure you know the location of underground power lines before you install an irrigation system or unclog drain or sewer lines. Even routine jobs like digging post holes can be dangerous if you get too close to lines that carry electricity.

Before you start the project, call your Central Power and Light office for advice on where underground electrical facilities on or near your property may be located.

It's wise to show a lot of respect for power lines—both underground and overhead—anytime you're involved in work that could bring you near them.

A fallen power line, of course, creates an especially hazardous situation. If you see a line downed by a storm, accident or other mishap, call CPL immediately for professional help. Stay away from the wire and everything it touches—and keep others away, too.

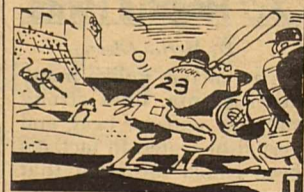
**CPL**  
people on the line for you  
CENTRAL POWER AND LIGHT COMPANY



## DID YOU KNOW?

Baseball will be a demonstration sport at the 1984 Summer Olympic Games in Los Angeles—placing it under consideration as an official event for future Olympics.

It's the first time that baseball has been played in a tournament format at the Olympics.



The United States Baseball Federation chose the USA Baseball Team from a series of 64 local tryout camps across the country. The finalists then went to Louisville, Kentucky, where the team's official sponsor, the Major Appliance Business Group of General Electric Company, hosted the national tryouts.

The 20 who survive the final June 1st cut will be among the best amateur ball players in the country. They'll compete against championship squads from South Korea, Italy, Cuba, Nicaragua and Chinese Taipei (Taiwan).

©1985, CPL



**PUBLIC NOTICE**

Brackett Independent School District offers Vocational Programs in Consumer Home Economics, Production Agriculture, and Pre-Employment Laboratory.

It is the policy of Brackett I.S.D. not to discriminate on the basis of sex, handicap, race, color and national origin in its educational programs, activities, or employment as required by Title IX, Section 504 and Title VI.

Brackett I.S.D. will take steps to assure that lack of English language skills will not be a barrier to admission and participation in all educational and vocational programs.

**NOTICE OF TAX RATE HEARING**

Date: Monday, September 9, 1985

Time: 6:30 P.M.

Place: Brackett I.S.D. Board Room

The Board of Trustees of Brackett Independent School District will hold a hearing during its regularly scheduled meeting prior to setting a school tax rate for the 1985-86 school year.

Visitors are welcome.

For more information, please call Bob McCall, Superintendent at (512) 563-2491.



The first pencil with an attached eraser was patented in Philadelphia in 1858.



It was once believed that the Devil combs goats' beards for them once a day.

KINNEY COUNTY

**NOTICE OF CALCULATION OF EFFECTIVE TAX RATE, ESTIMATED UNENCUMBERED FUND BALANCES, AND DEBT SCHEDULE**

I, MARCUS TIDWELL, TAX ASSESSOR/COLLECTOR FOR KINNEY COUNTY, in accordance with of Sec. 26.04, Property Tax Code, have calculated \$ .59783 per \$100 of value as the tax rate which may not be exceeded by more than three percent by the Commissioner Court of KINNEY County without holding a public hearing as required by the code.

\$ .05577 per \$100 for farm-to-market/flood control tax;

\$ .54206 per \$100 for the general fund, permanent improvement fund, and road & bridge tax

\$ -0- per \$100 for public road maintenance tax; thus

\$ .59783 per \$100 TOTAL COUNTY EFFECTIVE TAX RATE

The estimated unencumbered fund balances are as follows:

<u>Farm to Market/Flood Control</u>	<u>Public Road Maintenance</u>
Maintenance & Operation: \$ <u>20,000</u>	Maintenance & Operation \$ <u>-0-</u>
Interest & Sinking: \$ <u>-0-</u>	Interest & Sinking \$ <u>-0-</u>
<u>GENERAL FUND</u>	
Maintenance & Operation \$ <u>150,000</u>	
Interest & Sinking \$ <u>          </u>	

The following schedule list debt obligations that 1985 property taxes will pay:

PERMANENT IMPROVEMENT BONDS	PRINCIPAL	INTEREST	TOTAL
	\$20,000	\$4,950	\$24,950

*Marcus Tidwell* Tax/Assessor/Collector

8-30-85

**CALCULATIONS USED TO DETERMINE EFFECTIVE TAX RATE**

Separate calculations are performed for each type of tax levied by KINNEY County in order to determine a 1985 total effective tax rate. The following guide corresponds with the calculations shown: A. Farm-to-Market Road/Flood control tax; B. General Fund; C. Maintenance of Public Road Tax

I. DATA	TYPE OF TAX:	
	A	B
1. 1984 Total tax levy from the 1984 tax roll-----	\$43,143	\$424,236
2. 1984 Tax rate	\$.06 /\$100	\$.59 /\$100
3. 1984 DEBT service (I&S) levy	\$-0-	\$21,875
4. 1984 Maintenance & operation (M&O) levy	\$43,143	\$402,361
5. 1984 M&O taxes on property in territory that has ceased to be a part of unit in 1985	\$-0-	\$-0-
6. 1984 M&O taxes on property becoming exempt in 1985	\$417	\$4102
7. 1984 M&O taxes on taxable value lost because property is appraised at less than market value in 1985	\$-0-	\$-0-
8. 1985 Total taxable value of all property	\$77,884,939	\$79,278,849
9. 1985 Taxable value of new improvements added since Jan. 1, 1984	\$1,279,880	\$1,279,880
10. 1985 Taxable value of property annexed since Jan.1,1984	\$-0-	\$-0-
11. Tax levy needed to satisfy debt service (I&S)	\$-0-	\$24,950
12. Rate to raise 1984 tax levy due to appraisal roll errors (lost dollars divided by 1985 taxable values) (\$ <u>-0-</u> ÷ \$ <u>-0-</u> x 100)	\$ <u>-0-</u> /\$100	\$ <u>-0-</u> /\$100
13. Rate to regain taxes lost in 1984 due to appraisal roll errors (lost dollars divided by 1985 taxable value) (\$ <u>-0-</u> ÷ \$ <u>-0-</u> x 100)	\$ <u>-0-</u> /\$100	\$ <u>-0-</u> /\$100
14. 1984 M&O taxes used to regain lost 1983 levy	\$-0-	\$-0-

**II. CALCULATION**

**Maintenance and operation (M&O) TAX RATE**

1. (A) 1984 Total tax levy (Data 1)	\$43,143	\$424,236
(B) Subtract 1984 debt service levy (Data 3)	\$-0-	\$21,875
(C) Subtract 1984 taxes on property no longer in unit (DATA5)	\$-0-	\$-0-
(D) Subtract 1984 taxes for exemptions (Data 6)	\$417	\$4,102
(E) Subtract 1984 taxes for productivity value (DATA 7)	\$-0-	\$-0-
(F) Subtract 1984 taxes used to regain lost 1983 levy (DATA 14)	\$-0-	\$-0-
(G) Adjusted 1984 M&O levy	\$42,726	\$398,259
2. (A) 1985 Total taxable value of all property (DATA 8)	\$77,884,939	\$79,278,849
(B) Subtract 1985 value of new improvements (Data 9)	\$1,279,880	\$1,279,880
(C) Subtract 1985 value of annexed property (Data 10)	\$-0-	\$-0-
(D) Adjusted 1985 taxable value for M&O	\$76,605,059	\$77,998,969
3. (A) Divide the adjusted 1984 M&O levy (1-G above) by the 1985 adjusted 1985 taxable value for M&O (2-D above) (\$ <u>42,726</u> ÷ \$ <u>76,605,059</u> )	398,259	77,998,969
(B) Multiply by \$100 valuation	.x\$100	
(C) Effective M&O rate for 1985	\$.05577 /\$100	\$.51059 /\$100

**INTEREST AND SINKING (I&S) TAX RATE**

4. (A) 1985 I&S levy needed to satisfy debt (Data 11)	\$-0-	\$24,950
(B) 1985 Total taxable value of all property (Data 8)	\$-0-	\$79,278,849
(C) Divide the 1985 I&S levy (4-A above) by the 1985 total taxable value (4-B above)	\$-0-	\$.0003147
(D) Multiply by \$100 valuation	.x\$100	
(E) Effective I&S rate for 1985	\$-0-	\$.03147

**APPRAISAL ROLL ERROR RATE**

5. (A) Rate to raise 1984 levy due to appraisal errors (Data 12)	\$-0- /\$100	\$-0- /\$100
(B) Add rate to regain taxes lost due to errors (Data 13)	\$-0- /\$100	\$-0- /\$100
(C) Total rate to adjust for appraisal roll errors	\$-0- /\$100	\$-0- /\$100

**1985 EFFECTIVE TAX RATE FOR EACH TAX**

6. (A) Effective M&O rate (3-C above)	\$.05577 /\$100	\$.51059 /\$100
(B) Add effective I&S rate (4-E above)	\$-0- /\$100	\$.03147 /\$100
(C) Add rate to adjust for appraisal roll errors (5-C above)	\$-0- /\$100	\$-0- /\$100
(D) 1985 Effective Tax Rate for this tax	\$.05577 /\$100	\$.54206 /\$100

**TOTAL EFFECTIVE TAX RATE FOR 1985**

7. Add 1985 effective tax rate for each tax	\$ <u>.05577</u> /\$100 + \$ <u>.54206</u> /\$100 + \$ <u>-0-</u> /\$100 =	\$ <u>.59783</u> /\$100
---	--	-------------------------

1985 Effective Tax Rate for Each Tax Levied and the Total 1985 Effective Rate are the rates published as required by Sec. 26.04, Property Tax Code

DEADLINE: Tuesday at NOON

# CLASSIFIED ADS

All classified ads: \$.20 per word, 10 words minimum insertion ... \$2.00 per week. NO BILLING OF CLASSIFIEDS !!!

## THE COMMUNITY CHURCH

563-9375  
Gary Holcombe, Pastor

**SUNDAY**  
10:00 am Bible School  
11:00 am Worship Service  
6:00 pm Believers Bible Study

**MONDAY**  
7:00 am Mens Bible & Prayer

**WEDNESDAY**  
7:00 pm Prayer & Praise

HOME MINISTRY GROUPS meeting through the week. For Women, Seniors, Families. Call for information.

## BRACKETTVILLE CHURCHES

### FIRST BAPTIST CHURCH (Southern Baptist)

Rev. Ronnie Watson  
Sunday School 9:45 am  
Worship Service 11:00 am  
Worship Ser. (Sun) 7:00 pm  
Prayer Meeting (Wed) 7:00 pm

\*\*\*\*\*

### FRONTIER BAPTIST CHURCH (Southern Baptist)

Rev. Joe Townsend  
Sunday School 10:00 am  
Worship Service 11:00 am  
Prayer Meeting (Sun) 7:30 pm  
Prayer Meeting (Wed) 7:30 pm

\*\*\*\*\*

### UNITED METHODIST CHURCH

Ron Kelly - Pastor  
Child. Sunday Schl. 10:00 am  
Adult Fellowship 10:30 am  
Worship 11:00 am

\*\*\*\*\*

### CHURCH OF CHRIST

Sunday School 9:30 am  
Worship Service 10:30 am  
Bible Study (Sun) 6:30 pm  
Bible Study (Wed) 7:00 pm

\*\*\*\*\*

**MOORE'S BARBER SHOP**  
IN OLD JUAREZ BARBER SHOP  
BEHIND C & L'S MINIMX.

HOURS: 8:00 AM TO 6:00 PM  
MONDAY THRU FRIDAY  
SATURDAY- 8:00 AM 'TIL NOON.

## KINNEY COUNTY LAND CO.

512-563-2446

\*\*\*\*\*  
20 ac. with hunting cabin, satellite tv, good well, abundant wildlife-HWY. 334.

50 ac. 15 mile north of Bracketville. No Improvements.

Lovely Condos on Ft. Clark.. FROM \$39,500.00

Efficiency townhouse- just \$17,500.00. EXCELLENT RENTAL UNIT...

\*\*\*\*\*

## BRACKETT'S "FULL SERVICE" STATION!



T & A

## SERVICE STATION

HWY. 90 563-9794

Commercial Any Type Roof Residential

## AAA ROOFING SERVICE

P.O. Box 151 Free Roof Inspection  
Bracketville, TX Free Estimates

Repairs Guaranteed  
512-563-2304

## ROADRUNNER ENERGY, INC.



BUTANE PROPANE RENT TANKS

Office in Bracketville  
Ann & Crockett 563-2630

PROPANE TANKS MOTOR FUEL  
for Sale or Rent

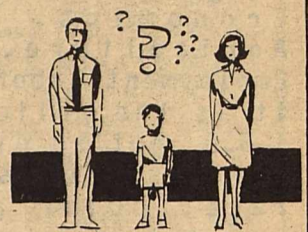
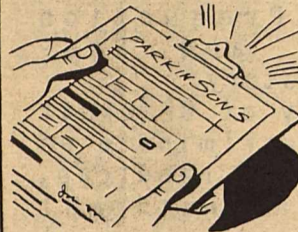
## Del Rio Gas Company

HWY 90 WEST P.O. BOX 420654  
DEL RIO, TEXAS  
775-3633

Johnny Smith 563-9223

## QUICK QUIZ

There's a lot of misinformation about Parkinson's Disease, an affliction that numbers one and a half million Americans as its current victims. Test your knowledge with this quiz.



1. What is Parkinson's? (a) shaking palsy (b) a chemical deficiency in the part of the brain that controls movement (c) a highly contagious disease (d) a "mental" illness (e) a fatal illness
2. Who gets Parkinson's? (a) people in their 50s or older (b) infants who inherit it from their parents (c) men

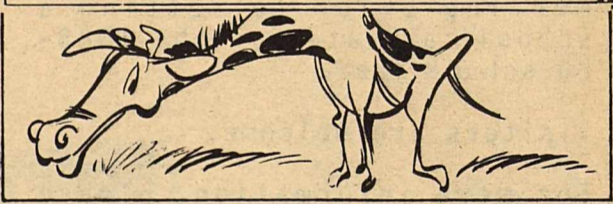


3. Is there a cure for Parkinson's? (a) Yes (b) No (c) Sometimes
4. Treatment for Parkinson's Disease includes (a) drugs (b) electric shock (c) warm baths (d) exercise

ANSWERS: 1. According to Dr. Stanley Fahn, Scientific Director of the Parkinson's Disease Foundation, the correct answer would be "b". The illness was often called shaking palsy years ago because some patients, not all, showed signs of uncontrollable tremors. It is not contagious, nor is it a "mental" illness, nor is it fatal. 2. (a) It strikes primarily among people in their 50s or older. Slightly more men than women are stricken and it occurs all over the world. 3. (b) The answer, according to Dr. Fahn, is no, at this time. However, the Foundation is engaged in ongoing research that promises hope in the future and offers much help at present for Parkinsonians and their families. 4. (a) and (d) Drug therapy and exercise both are important.

If you or someone you know has Parkinson's, seek advice. There are many people who can help you: rehabilitation therapists, self-help groups, community departments of social services. The Parkinson's Disease Foundation at Columbia University is involved in research to find the cause and cure.

For information about coping with Parkinson's, write to PEP/USA, P.O. Box 8440, Newport Beach, CA 92660 or call toll-free, 1-800-344-7872.



Giraffes walk by moving both legs on one side and then both legs on the other side. This movement is called pacing.



Cut macaroni dunked in assorted food colors make colorful beads. Drain and dry completely. Put beads into paper cups and let children make their own necklaces, etc.

\*\*\*\*\*  
ALCOHOLIC ANONYMOUS Meetings in Bracketville, every Thursday at 8:00 p.m... ALANON meetings every Monday at 8:00 p.m.. Call 563-2094 for more information.  
\*\*\*\*\*