

TEXAS PRESS  
ASSOCIATION  
AWARD WINNER

ALAMO VILLAGE  
P.O. BOX 528  
BRACKETTVILLE, TX 788320528

# the Kinney Cavalryman

VOLUME 12 NUMBER 42

OCTOBER 18, 1985

BRACKETTVILLE, TEXAS

## OLD IS BETTER



THIS PHOTO WAS TAKEN OVER TEN YEARS AGO BY THE CAVALRYMAN. THIS BUILDING WILL SOON BE RESTORED AS A MUSEUM FOR ALL TO ENJOY. GO BY SATURDAY AND SUNDAY AND SEE THE FANTASTIC SALES ON ANTIQUES AND ARTIFACTS. ASK THE LADIES THERE FOR INFORMATION ON HOW YOU CAN HELP OUT WITH THIS WORTHWHILE PROJECT. (This "Ole newspaper done been here bout 12 yars--not about to turn Belly Up yet!)

# THE KINNEY CAVALRYMAN

USPS 100-610  
P.O. DRAWER CQ  
BRACKETTVILLE, TX. 78832

512-563-2696

J. GEORGE LOOS ...Editor

DORTHY ROBERTS..ASST. EDITOR

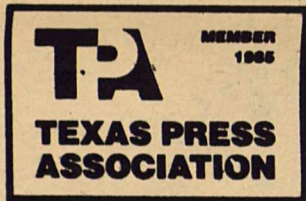
CRYSTAL LOOS .....Production

Published every Friday.  
Entered by SECOND CLASS MAIL  
at Brackettville, TX 78832.

Subscription Rates: per year  
\$15.00 .....Out-of-County  
\$14.00 .....In-County

DEADLINE:

TUESDAY AT NOON



..."Any erroneous reflection upon the character or standing of any person or firm appearing in this paper will be gladly corrected - upon being called to the attention of the management and to the article in question." ...

*Crystal Sez...*

"Whoever gossips to you will gossip of you."  
Spanish Proverb

"Old wine and an old friend are good provisions."  
George Herbert



Toys made over 2,000 years ago include dolls with movable joints, balls, clappers, sleds, kites, animals of clay and playthings on wheels.

1-10x13 (Wall Photo) 30  
1- 8x10 COLOR PHOTOS  
2- 5x7  
2- 3x5  
16-King Size Wallets  
8-Regular Size Wallets

10<sup>99</sup>

99¢ Deposit  
\$10.00 Due At Pick up Plus Tax

WE USE KODAK PAPER



AT  
C & L MINI MAX  
BRACKETTVILLE, TX

DATE:

FRIDAY NOV. 1, 1985

ONE DAY ONLY

GIVE OUR PICTURES FOR CHRISTMAS



*Shugart's*  
inc.

GROUP CHARGE COLOR PHOTOS  
99¢ per person

Kodak paper. For a Good Look at the Times of Your Life. TM

Pointers For Parents

Teenage Suicide

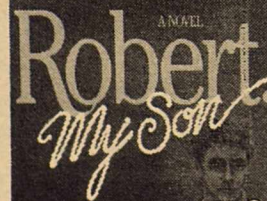
Many families around the country may be strengthened and inspired by a look at how one family deals with the mental problems and suicide attempt of a teenaged son.

A heartwarming novel has been written by Henry Denker, the author of such best-sellers as *Outrage, The Healers, and Kincaid*. Called *Robert, My Son* it tells the story of a model son—handsome, brilliant, athletic, a born leader. His father, a hard-driving executive for a major network, is immensely proud of Robbie; his mother simply adores him.

Then, in his mid-teens, Robbie suddenly begins to experience severe mood swings, from dangerously unrealistic euphoria to suicidal depression. Unexpectedly, the fact that he is adopted becomes of crucial importance: the key to his illness seems to lie buried in his unknown past, making it imperative that his parents learn more about their child's original family.

This story of love and commitment against fearful odds

HENRY DENKER  
author of *OUTRAGE, THE HEALERS, and KINCAID*



A new novel can give many families vital insight into the growing problem of teenage suicide.

is published by Morrow and sells for under seventeen dollars at bookstores around the country. It could be a good book for families to read together. Many parents and teenagers who would like to read this moving family portrait are asking local bookstores if it's in stock.

## LIBRARY NOTES

BY::FRANCES HERNANDEZ

I'd like to thank Special Ed. Substitute, Mrs. Sheedy and Special Ed. Aide, Miss Hernandez for bringing their High School English Class to the library. The class is studying library skills and have started a section in their notebooks labeled "Library" where they will keep information and notes on the library including those taken on this trip.

The students took a tour through the library starting with the non-fiction section by numerical classification. Then we toured through the biographies and fiction books. We also looked into the Texan section of the library.

Next the students were taught how to use the card catalog and microfiche reader. They received hands-on-material practice with the card catalog.

The students were very cooperative, answering to questions and also asking questions of their own.

I asked them to write a "Library Love Note" to let me know what they appreciated most about the library. I'd like to share one of the notes with you. It reads:

"The thing I love most about the library is that they have books that can help us make good grades. I love the library because they have confidence in people. They help us learn a lot of things."

Other love notes are posted at the library for the public to see.

I was informed that the students were also assigned to write a paragraph on their trip to the library. Copies of these paragraphs will also be posted at the library for you to read.

The teachers commented that they enjoyed "the very pleasant and orderly atmosphere of the library" and the "Inter-library Loan Arrangement."

I'd like to take this opportunity to invite other primary and secondary faculty members to bring their classes to the library.

HAVE A GOOD DAY!

"Laughter is sunshine in a house." Wm. M. Thackeray



### HALLOWEEN HINT *Halloween Safety Tips*

It's hard to say who is more scared on a spooky Halloween night—kids fearful of ghosts and goblins or parents fearful of candy and cavities. On Halloween night mothers with toothbrushes are as menacing as witches on broomsticks, and rightly so.

To ensure Halloween is a safe, as well as fun, holiday for your children, parental vigilance and neighborhood cooperation are essential.



According to the dentists who specialize in treating children, or pedodontists as they're called, parents can prevent most decay by allowing sweets under controlled conditions. The American Academy of Pedodontics counsels parents to serve sweets



Experts at M&M/MARS, the leading confectionery company in the U.S., offer these precautionary tips for the occasion:

- after dinner
- just before a child cleans his teeth.

If a child eats sweets, having them in conjunction with a meal can limit the occurrence of cavities. Food has its greatest decaying effect while it is in the mouth and immediately following. By restricting snacks and candies to mealtimes or times when a child can brush afterward, the period of danger to young teeth is reduced.

Pediatric dentists also caution parents to be watchful of the "stickies", which is not a band of kiddie monsters but foods that hold sugar to the tooth's surface. These foods include candies, sodas, sweet sauces, cakes and cookies, pastas, and dried fruits like raisins. When children eat such items, they should brush their teeth immediately.

Futher information about children's dental problems can be obtained by writing the American Academy of Pedodontics, 211 E. Chicago Ave., Suite 1235, Chicago, Illinois 60611, or by contacting your local pediatric dentist.

- Make sure your neighborhood is continuously supervised. Take turns with other parents keeping an eye on the block.
- Provide your children with a list of names and addresses where they can safely trick or treat and discourage visits to strangers' homes.
- Escort young children in particular from house to house. Encourage trick or treating during daylight hours.
- Allow your children to eat only the pre-packaged treats. Inspect even those to see that no one has tampered with the wrappers. Discard all fruit, cookies and anything else that is unwrapped or homemade.
- Dress your children in light-colored costumes to protect them from nighttime hazards, or attach reflector tape to visible parts of their clothing. And re-emphasize to them the importance of walking on the sidewalks and crossing the streets carefully.

Heed these hints and a safe and pleasant Halloween can be in the bag.

Heed these hints and a safe and pleasant Halloween can be in the bag.

Heed these hints and a safe and pleasant Halloween can be in the bag.

Heed these hints and a safe and pleasant Halloween can be in the bag.



The average person has somewhat less than five quarts of blood.

### HALLOWEEN SAFEGUARDS REDUCE HAZARDS \*\*\*

Modern-day Halloween can be more hazardous for the "tricker" than the "treater".

Certain safety precautions taken by parents, motorists, and homeowners can help prevent accidents, says the Texas Medical Association.

Parents should check all costumes and wigs for flameproof labels. Apply a natural mask of cosmetics or grease paint rather than have a child wear a mask which might restrict breathing or obscure vision.

Make sure a costume is not so long that a child can trip on it, or so loose that it may catch on fences or other obstacles.

Since dark costumes are difficult for motorist to see, insist tricksters wear light-colored or reflectorized costumes. Children also should carry flashlights to see, and be seen, more easily.

Parents should accompany young tricksters on their rounds while it is still light, and older children should travel in groups. Make sure children have enough change with them to call home if necessary.

An alternative, parents might encourage home parties and celebrations in place of trick-or-treating.

Motorists should slow down and drive with extra caution while in residential areas on Halloween.

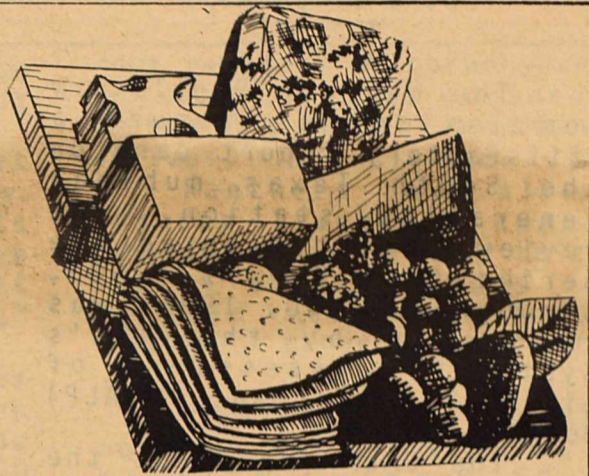
Homeowners receiving trick-or-treaters should have outside lights on as a sign of welcome. Remove anything that could be an obstacle from steps, lawns, and porches.

Finally, parents should emphasize that tricksters return home with their treats untouched until all candy has been thoroughly inspected for foreign material. Only wrapped candy and packaged baked goods should be eaten. Fruit should be thoroughly washed and cut open before being consumed.

Following these guidelines will help children enjoy a fun-filled yet safe Halloween.



An eagle's nest, found in Vermillion, Ohio, measured 12 feet deep and weighed two tons.



### B.I.S.D. CAFETERIA MENU (WEEK OF OCTOBER 21, 1985)

MENU CHANGES DUE TO CIRCUMSTANCES BEYOND OUR CONTROL...

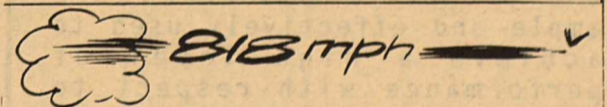
#### BREAKFAST

- MONDAY- Peaches, French Toast, Syrup, Milk.
- TUESDAY- Juice, Apple Jacks, Milk.
- WEDNESDAY- Applesauce Pancakes, Syrup, Milk.
- THURSDAY- Fruit Cocktail, Waffle, Syrup, Milk.
- FRIDAY- Pears, Biscuits & Gravy, Sausage, Milk.

#### LUNCH

- MONDAY- Bar-B-Que on a Bun, Potato Salad, Beans, Fruit Rol-ups, Milk.
- TUESDAY- Sloppy Joe, 1/2 Potato w/ mixed vegetables, Applesauce, Milk.
- WEDNESDAY- Spaghetti, California Mixed Vegetables, Jello w/ Fruit, Garlic Roll, Milk.
- THURSDAY- Pizza, Corn, Salad, Cookie, Milk.
- FRIDAY- Taco Chalupa, Lettuce-Tomato, School Beans, Orange 1/2, Milk.

\*\*\*\*\*



A tiny insect called the deer botfly is reportedly able to fly at the rate of 818 miles per hour!



The great French chef Escoffier is credited with the invention of 10,000 recipes



An old waiter's term for anything with whipped cream on it is "in the snow."

C.P. & L NEWS  
\*\*\*\*\*

The Nuclear Regulatory Commission has issued a satisfactory report card on the South Texas nuclear generating station. The review, which covered the period from Dec. 1, 1983, through June 30, 1985, was conducted by the NRC's Systematic Assessment of Licensee Performance (SALP) Board.

The SALP report is the most recent in a series of favorable reports on STP. The NRC's March 1984 Phase I licensing report noted project management had the "managerial competence and character" to merit an operating license, and that there was "reasonable assurance" that future structures will be built correctly. Eric Johnson, an NRC official who participated in the previous SALP report issued March 1984, noted the board was "pleased with the trends that we have seen."

In its new report, the SALP board states, "Overall performance at South Texas Project has been satisfactory." Some of the criteria the SALP team used in the study include: management involvement in assuring quality, responsiveness to NRC initiatives, staffing (including management), and training effectiveness and qualification.

Project performance was graded in 14 functional areas. On a scale of one to three, the nuclear plant received three "ones" in training, corrective action reporting, design and design change control. A one indicates management attention and involvement are aggressive, and the project's resources are ample and effectively used to achieve a high level of performance with respect to operational safety or construction.

The project received 11 two, indicating good performance which requires only normal NRC attention. The project received no threes, a category which would indicate a need for increased NRC attention.

The survey lauds STP's quality program and the administrative controls functional area. Project management recently created a self-assessment team to monitor the quality of STP's

construction contractors.

"This is an aggressive and energetic self-assessment team. Their assistance in the future will ensure superior quality control practices at all levels of construction," said Tom Shockley, CPL's vice president-power.

The South Texas Project is now 74 percent complete. Unit 1, which is 86.9 percent complete, is scheduled to come on line in June 1987, and Unit 2, 56.3 percent complete, in June 1989. Central Power and Light Co. owns 25.2 percent of STP. Other owners include Houston Lighting and Power, 30.8 percent; City Public Service Board of San Antonio, 28 percent; and the City of Austin, 16 percent.



## SEEDS FROM THE SOWER

By Michael A. Guido, Metter, Georgia

Do you make mistakes? F.W. Robertson. "It is a series of mistakes, and he is not the best Christian or the best general who makes the fewest false steps. He is best who wins the most splendid victories by the retrieval of mistakes."

Henry Ford built his first car without a reverse gear. But he did not give up. He built a better car.

Mistakes can and should be stepping stones, not stumbling blocks. From mistakes can come helpful experience; from experience—enlarged understanding; from understanding—mutual trust; from trust—exciting success.

"Life is like a war," wrote

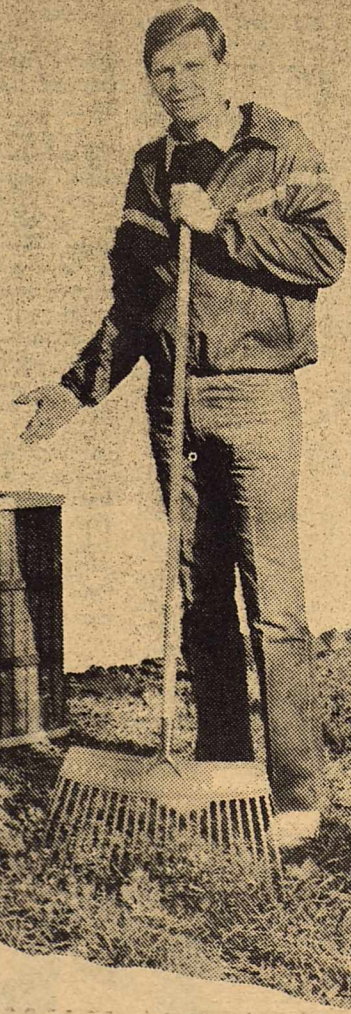
"The country of every man is that one where he lives best."  
Aristophanes

# Stay Warm with an Air Conditioner

Contradictory? Not at all, if the air conditioner is a versatile electric heat pump.

A remarkable two-in-one device, a heat pump keeps you comfortable year-round while also saving you money on utility bills. In summer, a heat pump works as an air conditioner to dehumidify your home and provide all the cool air you want. In winter, it reverses itself to become an efficient heating system.

If you're building a new home—or replacing your present heating and air conditioning system—consider installing a heat pump for maximum energy savings. For more information, just inquire at your CPL office.



CPL

people on the line for you

CENTRAL POWER AND LIGHT COMPANY  
© 1985, CPL

**"800 SPANISH SERVICE BUREAU" AVAILABLE.**  
\*\*\*\*\*

Southwestern Bell Telephone has made its "800 Spanish Bureau" available in South Texas, providing Spanish-speaking customers access to the telephone service information network.

To reach the 800 Spanish Service Bureau, customers can dial 1-800-592-7766 from anywhere in Texas. There is no charge for the call. Spanish-speaking telephone company employees will handle the calls, provide information, answer questions or act as interpreters as necessary for the customer and other telephone company employees.

"In the next 15 years, eight million more people will live in Texas. At least 25 percent of those people will be Hispanic," said Karen O'Neil, local Community Relations Manager. "Programs such as the Spanish Service Bureau demonstrate our concern for Hispanic customers and help us market our goods and services to them."

The El Paso-based bureau has handled an average of 100 calls a day since it opened August 1. Southwestern Bell made the service available to Texas customers at intervals across the state to ensure that the bureau handles calls in the most efficient manner.

Other customer-education programs include "Tele-Help," a series of booklets on telephone service available in English and Spanish. Called "Tele-Ayuda," more than 520,000 copies of the Spanish-language booklets have been distributed across Texas.

The "Customer Guide" and the "Your Rights as a Customer" booklets also are available in Spanish.

\*\*\*\*\*  
**NEW TELEPHONE DIRECTORIES**  
\*\*\*\*\*

The 1985-86 Brackettville telephone directory is to be distributed beginning October 15 according to Karen O'Neil, community relations manager, for Southwestern Bell Telephone.

O'Neil said 10,548 directories will be mailed to area residents between October 15 and October 22. Each residential customer is to receive one directory. For additional copies, customers can call their Southwestern

Bell Telephone business office during business hours Monday through Friday, O'Neil said.

O'Neil requested that customers not call right away. "If a friend across town gets a directory before you receive yours, you'll probably get yours within a few days," O'Neil said.]

This year 58 white pages and 93 yellow pages make up the Brackettville telephone directory. There are 8,850 white page listings.

Emergency telephone numbers have been placed on the inside front cover of the new directory. We are now listing business office and repair numbers for mobile telephone customers. We have added a Tele-Help section that lists available booklets and toll-free number. A map illustrates long-distance service areas within Texas.

The directory also contains listings for Batesville, La Pryor, Sabinal and Uvalde.

**RAINS WELCOME, BUT CAME TOO LATE FOR FALL FORAGE GROWTH.**  
\*\*\*\*\*

UVALDE, Texas -- The rains which recently fell in Southwest Texas were welcome, but probably came too late for forage growth on area ranches, said Dr. Larry Varner, associate professor-range nutrition with the Texas Agricultural Experiment Station here.

Therefore, producers have missed their third consecutive growing season and there probably won't be adequate winter forage this year, Varner said.

"At best, there are only about 35 to 40 growing days remaining before the average fall killing frost," he said. "Frequent droughts over the past few years, coupled with heavy grazing pressure, complicate the winter forage production picture in Southwest Texas."

In many pastures, the number of grass species has decreased and these have been replaced by less desirable species such as annual broomweed, which has no forage value for livestock or wildlife, Varner said. In addition, the grass species that are left are generally in a weakened condition, he added. "The combination of heavy grazing pressure and drought have not allowed these species to build up sufficient

root reserves of carbohydrates to allow them to respond to rainfall when moisture arrives," he explained.

Ranchers have already reduced livestock numbers substantially, but may have to adjust their numbers even further based on forage inventory projections, Varner said.

"Ranchers should consider not only available grass, but also the winter forage produced by evergreen shrubs such as guayacan," he said. Research at the Experiment Station in Uvalde, has shown that under certain conditions, these shrubs can make up to 60 percent of beef cattle diets. However, ranchers should also keep in mind that these shrubs also make up about 95 percent of the winter diet of deer.

"If heavy browsing on shrubs by cattle is evident, cattle numbers may have to be reduced to avoid some deer die-off," Varner said.

"Some ranchers have indicated that they plan to hold cattle they have on hand and hope for the best. These ranchers should plan to provide proper supplementation and/or filler, since it does not appear likely that sufficient forage will be produced to meet livestock requirements," he explained.

Varner encouraged ranchers to take advantage of the abundant supplies of feedstuffs such as grain and cotton by-products which are available at relatively attractive prices.

Not counting delivery charges, cotton seed is selling for about \$75 a ton and modules of gin trash for about \$12.50 per ton. "Whole cotton seed is an excellent source of protein, energy and phosphorus. Cotton gin trash serves better as a filler or grass stretcher since it is about equivalent in nutritive value to mature native range grass," Varner pointed out.



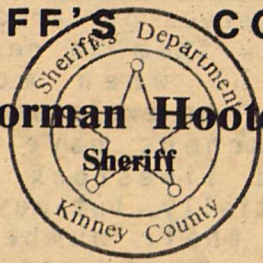
The largest cannon in the world is at the Kremlin. The huge gun has never been fired.



Words for "old" or "senior" gave us the words senator, elder, presbyter, guru and veteran.

## SHERIFF'S CORNER

Norman Hooten



A disturbance and resulting fight between four Brackettville men at a local bar early Saturday morning, October 12th, resulted in charges of Assault being filed against two Brackettville men.

At approx. 8:45 a.m. Saturday morning I arrested Jesus "Jesse" Estrada at his residence on a warrant issued by Justice of the Peace Raymond Talamantez. Estrada was taken before Judge Talamantez and released on a \$500 PR bond after pleading Not Guilty to the charges. He will be tried at a later date.

At approx. 10:30 a.m. Saturday morning I arrested Martin De Hoyos at his residence on El Paso Street on charges of Assault and Felony Delivery of Marijuana. The assault charge resulted from the above mentioned fight and the felony charges were the result of an Indictment handed down by the Kinney County Grand Jury last summer.

De Hoyos pled guilty to the Assault charge and was fined \$113.00 by Judge Talamantez. He was released on \$5,000 bond Monday on the Felony Delivery of Marijuana charges.

Another fight at a residence on Spring St. Sunday afternoon led to the arrest of Richard Guajardo of Brackettville on charges of Disorderly Conduct. He was placed in jail and tried before Judge Talamantez Monday morning. He was fined \$113.00 after pleading guilty to the charge.

Terry Fisher, a former Brackettville resident was sworn in as Deputy Sheriff Tuesday, October 15th, and is a welcome addition to the Kinney County Sheriff's Department. Terry recently completed the Basic Peace Officers Certification School held at Del Mar College in Corpus Christi and has been certified by the Texas Commission on Law Enforcement in Austin. After a short "break-in" period, he will begin regular patrol duties of Brackettville, Ft. Clark and the rest of Kinney County.

Terry is a graduate of Brackett High School and is

married to the former Karene Stein of Uvalde. He is no stranger to the Kinney County Sheriff's Department as he was employed by me as a jailer prior to going to work for the Nueces County Sheriff's Department in Corpus Christi in 1984.

## GREAT TEXAS GETAWAYS

Great Texas Getaways column provided by the Historic Hotel Association. Written by Ann Ruff, freelance writer and author of A GUIDE TO HISTORIC INNS & HOTELS (Lone Star Books, Houston, TX)

THE BADU HOUSE  
601 Bessemer  
Llano, TX 78643  
915-247-4304

Right in the heart of the fledgling Texas wine country in historic Llano stands a wonderful brick and granite building of Italian Renaissance character. Built in 1891 as a solid and imposing bank, The Badu House has survived storms, fires, and tornados. After the bank failed in 1898, a Frenchman named N.J. Badu bought the building and it became the Badu family residence. Now the

Badu House offers a lovely and romantic page from the past with beautiful dining rooms, a bar and eight exquisite guestrooms. As Ann Ruff, its owner, says, "At the Badu House we offer romance."

LA POSADA HOTEL  
100 N. Main  
McAllen, TX 78501  
1-800-292-5669

The bustling border town of McAllen has the sobriquet of "City of Palms" and it has a large share of the charm that makes the Magic Valley so special. Its fine hotel, La Posada, is brand new, but in 1918 this was the site of the showplace of the Valley, Casa del Palmas Hotel. After an extensive renovation and just ready for opening in 1974, a horrendous storm broke, lightning struck and the grand old building burned to the ground. So, even though the lovely La Posada is of today's vintage, its Spanish stucco architecture and red tiled roof give it the charm of old Colonial Spain.



The first matches had to be dipped in acid before they would light.

THANK YOU!

for your business

THE FIRST STATE BANK  
OF BRACKETTVILLE

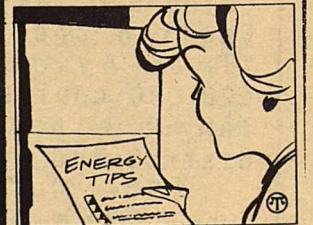
563-2451

MEMBER F.D.I.C.

**TIPS TO SAVE...**  
**TIME...**  
**ENERGY...**  
**MONEY**

**Keeping Your Cool—**  
**And Your Cold Cash**

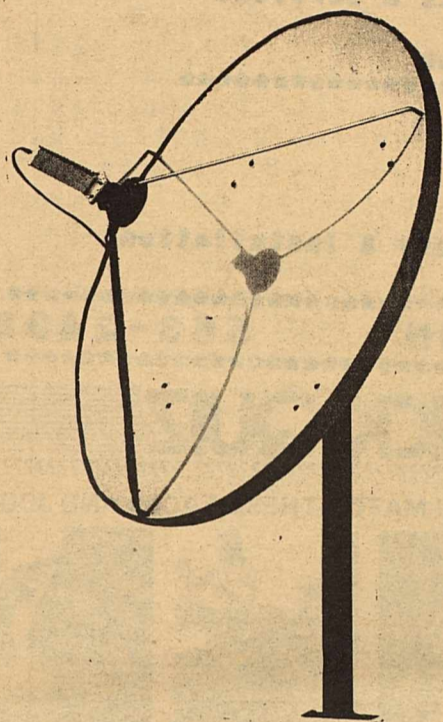
There are ways that consumers can control their electricity bills during the air conditioning season advise home economists from Whirlpool Corporation.



- Weather-strip doors and windows and keep tightly closed.
- Close all unnecessary openings such as fireplace dampers.
- Turn off electrical lights and appliances when they are not needed.
- Don't use heat producing appliances, such as irons and ovens, simultaneously.
- Avoid cooking, bathing, or using laundry equipment during the high heat hours.
- Clean or replace filters frequently.
- If you have a choice, locate the unit on the north or east side of the house.
- Draw drapes or blinds on the sunny side of the house, and don't block the air conditioner with drapes or an object in front of the unit.

# 100 + T V CHANNELS

## ASK THESE PEOPLE HOW THEY LIKE THE SATELLITE SYSTEM WE INSTALLED FOR THEM!



"BOBBY " AND DEBBIE GUIDRY

- \* MOVIES \* MOVIES \* MOVIES
- \* 24 HOUR NEWS
- \* NETWORK PROGRAMS
- \* SPORTS \* SPORTS \* SPORTS
- \* 24 HOUR WEATHER
- \* SPANISH PROGRAMS
- \* FINANCIAL NEWS
- \* RELIGIOUS CHANNELS
- \* EDUCATIONAL CHANNELS
- \* CHILDREN'S PROGRAMS
- \* ARMED FORCES NETWORK
- \* MANY FM MUSIC CHANNELS
- \* AND MUCH MORE

OR ASK THESE PEOPLE :

\*THE MALONE COMPANY

\*THE LARRY TUCKERS

\*THE BEN JONES

\*THE FRANCIS LARSONS

\*THE ROBT. HUCHERSONS

THE WM THURBERS

\*THE JIM BADERS

THE PH COATES

"WE SERVICE WHAT WE SELL"

FOR A FREE SITE SURVEY AND QUOTATION CALL

GEORGE LOOS

563-2696



Coordinator of Outreach Substance Abuse Services at the state hospital in San Antonio Ed Hahn, a licensed professional counselor, spoke at Southwest Texas Junior College last Tuesday in the first of the college's 1985-86 Student Development Seminar Series.

Other speakers and topics already scheduled in the series include a presentation on the new seat belt laws by Department of Public Safety Trooper Allen Kempf on October 17; "Ethics in the Media" by KENS-TV anchorman Chris Marrou on October 29; and the positive value of personal crisis by psychologist Felipe Gracia on November 7.

Also announced by Student Development Seminar Series Coordinator Minda Kone were a health planning and maintenance seminar by Texas State Department of Health representative Mary Dotson on November 14 and a "Health Careers Seminar" by Mike Garcia of the Texas Hospital Education and Research Foundation on November 19.

"We have an exciting series this year," Kone said. "We are very pleased that Chris Marrou agreed to speak and we hope to have San Antonio Mayor Henry Cisneros sometime this year."

Hahn spoke on his speciality, dealing with alcohol and drug abuse. He illustrated the powerful addictive quality of alcohol by relating his experiences in Vietnam as a civilian employee of the U.S. Defense Department from 1967-1970.

"Soldiers in Vietnam were allowed liquor rations, but when those ran out, I saw some pouring Old Spice shaving lotion into large cans of pineapple juice to maintain their alcohol habit," he said.

"Substance abuse is a progressive and incurable disease," he continued.

"Contrary to what has been believed for the last ten years, milder drugs such as marijuana are addicting and do lead to the use of harder drugs such as heroin and

# HILLCREST FUNERAL HOME

**BOB & ROSEMARY RICE**

## PRE-NEED FUNERALS

No Interest nor Finance Charge  
Wide Selection of Caskets, Vaults & Services  
Up to 100 Months to Pay  
No One Turned Down for Any Reason

## MONUMENTS

All Sizes and Colors  
Prices Include Lettering, Delivery & Installation  
6 to 8 Weeks Delivery

**"WE SERVE TO SERVE AGAIN" 563-2438**

cocaine."

According to Hahn, abusers begin using alcohol or drugs to avoid feelings of low esteem, to improve communication skills and/or feel loved by others. These individuals are usually unable to maintain relationships that are positive and meaningful.

"This problem is treatable," Hahn said, "but the basic tendency to abuse substances stays with the afflicted individual for life."

Further information on alcohol and drug abuse is available in the Uvalde area from the Wintergarder Council on Alcohol and Drug Abuse at 278-3422.

## Tools For Homeowners

Home Improvement Safety And Economy  
**TOOLS TO DO THE JOB RIGHT**

As a member of the growing army of do-it-yourselfers, you'll want to do the job right—right now. But if you have to spend time hunting down the tools—the screwdriver in the kitchen, the saw in the garage, the pliers in the car—that enthusiasm may wane. You may wind up putting off today what you may not even do tomorrow.

Before you start, check out your arsenal of tools. Do you have everything you need to do the job properly and safely? If not, visit your hardware store for help on the proper tools for the job.

Sometimes one tool does many jobs. An example is the Weller Mini-Shop and its vast array of accessories. It's one of the tools by Cooper the Toolmaker, which includes Crescent, Lufkin measuring tools, Nicholson saws and files, and Plumb hammers and axes.

To the Weller Mini-Shop, you can attach everything



Check out your arsenal of tools before you tackle the job.

from a drill bit and polishing brush to sanders and grinders for doing fine shop work.

There are tricks to the trade that make any job easier and safer. Example: a wood screw turns smoothly if the threads are first rubbed with soap, and if the screwdriver has an extra-large, non-slip handle like the Cushion Grip by Crescent.

Doing the job right, right from the start, requires three things: a little skill, determination, and the right tools.

## QUICK QUIZ

CAN YOU MATCH THESE FACES AND JOBS?



Just as you cannot tell a Wis., a company that takes book by its cover, so, too, considerable pride in maintaining the highest possible level of taste and quality in its beers.

1. (c) Brewing Technologist Elizabeth A. Aldrich assists in the development of new products. 2. (b) Robert L. Radue, a laboratory technician at Schlitz, uses recording thermometers to check the temperature in the brewery pasteurizer. 3. (b) Master Brewer Edward F. Koch applies his refined sense of taste to make sure beer meets his high standards of quality. 4. (c) Quality Assurance Supervisor Harold L. Dilley is one of a staff of 200 Schlitz specialists who test beer, including cans purchased at retail outlets across the country. 5. (a) Brewery Worker Ardre D. Williams monitors and operates filter equipment at the Schlitz brewery in Milwaukee. 6. (b) Assistant Master Brewer Kenneth W. Griffiths selects samples of barley malt for testing as the grain arrives at the Milwaukee brewery.

ANSWERS: The six people shown above are employed by Jos. Schlitz Brewing Company, Milwaukee,



### BOATING GROUP ENDORSES WATER PLAN PROPOSITIONS \*\*\*\*\*

A statewide association of marine industry businessmen has thrown its support behind passage of Constitutional Amendment Propositions 1 and 2 to be voted on November 5. If passed, the propositions will implement the 1985 Texas Water Act.

"We are very much in favor of the water quality, conservation and flood control provisions of this plan," said Pat Helton, president of the 700-member Boating Trades Association of Texas (BTAT). "Another vitally important and attractive part of this particular plan is that for the first time ever, the recreational value of new reservoirs has been officially recognized," he said.

The plan would require any entity applying for bond money for new reservoirs to present to the state a reasonable public access plan. Bond money could also be used to purchase land and facilities for such access.

Helton pointed out that planning recreational facilities at new reservoirs from the outset could save millions of tax dollars.

"Currently, when public demand for access to our waterways increases to the point where new facilities are needed, the city, county or state must purchase land at a greatly escalated price," he said. "Not only could these land purchases be made initially with bond money, but federal reimbursement could be possible in many cases."

Helton called the comprehensive legislation approved by both the Texas Senate and House of Representatives a compromise that is in the best interest of all Texas.

"Our 15-member Board of Directors from North, South, East and West Texas is in unanimous agreement this plan deserves our endorsement and active support," he said. "We are urging our members across the state to contact each and every boat owner and express to them the important recreational provisions of the water plan."

Texas Parks & Wildlife Department figures show there are approximately 600,000 registered boat owners in Texas, making it the third

largest boating state in the country.

The Boating Trades Association of Texas is a 25-year-old association comprised of Texas marine dealers, manufacturers, distributors and manufacturers' representatives dedicated to the enhancement of recreational boating in Texas.



### THC RELEASES NEW CATALOG OF HISTORIC TEXAS PROPERTIES

The physical evidence of Texas' colorful past is cataloged in a new publication from the Texas Historical Commission entitled a Catalog of Texas Properties in the National Register of Historic Places. The book describes more than 1,000 buildings, structures, objects, and archeological sites recognized for their historic significance.

For more than 15 years the THC has been nominating properties to the National Register and documenting their roles in national, state, and local heritage. The list began in 1969 with the best-known Texas landmarks, such as the State Capitol in Austin and the Bishop's Palace in Galveston.

Through the years, more obscure, but not less important, properties have been listed. The John Nance Garner House in Uvalde and the Caddoan Mounds of East Texas are not as famous as the Alamo or the Battleship Texas, but they all represent a significant contribution to Texas history.

The list of Texas properties in the National Register presents an interesting cross section of the development of this land. From prehistoric rock art to Art Deco skyscrapers, from the campsites of nomadic Indians to the opulent homes of cattle and oil barons, the Register documents a wide variety of cultural artifacts.

The new 250-page publication is the first updated catalog of National Register properties in Texas

since 1980; hundreds of properties listed since then have been added. A 3,500-entry index helps readers locate properties and more than 200 illustrations provide examples of architectural styles, archeological artifacts, and boundary maps of historic districts.

A Catalog of Texas Properties in the National Register of Historic Places is available free from the THC, National Register Dept., P.O. Box 12276, Austin, TX 78711, 512/475-3094.

GAGE HOTEL  
Highway 90  
Marathon, TX 79842  
915-385-4205

Marathon is barely a wide spot on Highway 90 on the way to Big Bend, but it offers the best oasis in scruffy West Texas at the Gage Hotel. Not only is its bar stocked with great spirits and its restaurant offers superb food, but its comfortable guest rooms are done in authentic Indian artifacts and western antiques, and the lobby is a treasure of Indian and western lore. While at the Gage, make arrangements to see Big Bend and the wilds of old Mexico by horseback, raft and jeep.

REIFFERT MUGGE INN  
304 W. Prairie Street  
Cuero, TX 77954  
512-275-2626

Goliad! Gonzales! These names ring through Texas' stirring days of the revolution. With the Sesquicentennial at hand you will want to tour these famous shinnies and relive those exciting events that created the Republic of Texas. Now, one of the "newest" historic inns has opened in nearby Cuero with the Reiffert Mugge Inn offering guest rooms in gaily decorated period furniture and a delightful continental breakfast. This 1868 mansion originally was built in the prosperous seaport of Indianola. The house survived the hurricane, but Indianola did not. Reiffert re-assembled his home in Cuero where it still stands today.

FOR MORE INFORMATION CONTACT:

Trudy O'Reilly  
President  
O'Reilly Advertising  
3600 Commerce, Suite C  
Dallas, Texas 75226  
(214) 828-0100

### HISTORICAL RANCHING TECHNIQUES WON'T PAY FOR MODERN LIVING

UVALDE, Texas -- Historical ranching techniques won't pay for modern living, according to Dr. Tom Troxel, livestock specialist with the Texas Agricultural Extension Service, Texas A&M University System.

"Many ranchers are ranching the same way their fathers and grandfathers did 50-80 years ago," Troxel said recently. "Even though there's nothing wrong with preserving history, the problem comes when people expect historical ranching to pay for a modern lifestyle," he said.

Ranchers of the past used one-herd continually-grazed pastures, did not keep herd records, had no vaccination programs, rounded up cattle once a year and had year-round seasons, did not fertility-test bulls, didn't give supplemental feed or minerals, had no financial or management planning, Troxel said.

"The ranching industry should look and learn from the successful industries through the United States. There is not one successful industry today that is operating the same way they operated 50 or 60 years ago. In order to stay in business those successful industries have had to change with the times," he added.

"Your father or grandfather went to town once a week or month, overhauled the old truck instead of buying a new one, built fences himself instead of contracting, didn't have air-conditioning and rarely took a trip. But although his ranching methods supported him, the old ranching techniques won't pay for the way ranchers live now," Troxel added.

Modern lifestyles often include a brick, air-conditioned house, a pick-up and two cars, trips to livestock shows and annual cattleman's meeting, and driving into town six times a week, Troxel said.

"The saddest part is that even modern ranching may never pay for a modern lifestyle," he added.

"Adopting new technology doesn't necessarily mean profits," he said. "Ranchers should improve their management policy instead. Overall management must be

improved and more importantly, goals and objectives need to be determined. Plans should be determined to improve the ranching business. In order for a ranch to survive, historical ranching needs to be history," Troxel said.

"The ranching way of life has got to become a ranching business for survival," he added.

### CULL OPEN, LATE-CALVING COWS

Farmers and ranchers who haven't already culled open, late-calving and poor performing cows should do so soon.

There's no need to put expensive winter feed into cows that are unproductive and inefficient, points out Esser, county agent with the Texas Agricultural Extension Service, The Texas A&M University System. Culling the cow herd now will also help you more effectively plan on feed supplies for the winter months.

The culling process should also "weed out" cows with bad eyes, udders or feet and legs, says Esser.

Also, pregnancy testing cows this fall may be a more profitable management tool than ever before.

Since it's difficult for a cow to produce a calf large enough to pay her annual maintenance bill and leave some profit for the producer, and open cow is surely losing money, emphasizes Esser. In addition, cows calving late and during the summer months wean calves 30 to 90 pounds lighter than their herd mates which calve at earlier times. For this reason it's advisable to cull cows which will calve late next year and buy a replacement which will calve early.

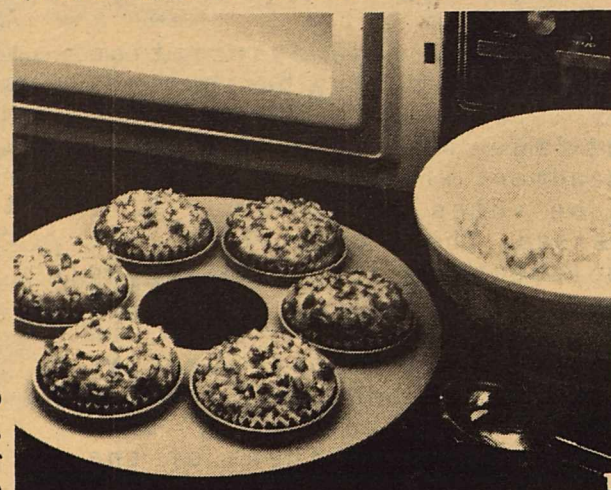
Whoever does the pregnancy diagnosis (usually your veterinarian) will be able to estimate the calving date on each animal and make it easy to identify next year's late-calving cows. Work toward a 60-day calving season or one that's certainly no longer than 90 days.

Removing barren and late-calving cows from the herd will increase both the herd's reproductive potential and pounds of calf weaned, contends Esser.

-wfb-

This material is supplied by Dr. Larry Boleman, Extension beef cattle specialist.

### Microwave A Muffin...In Minutes



Muffins from the microwave are a quick and easy treat. A handy way to fill muffin cups without spilling batter is to use a small ice-cream scoop. (A #24 which holds approximately 1/4 cup is best.)

At mealtime, snacktime or coffee break, muffins make a delicious treat. But in today's hurried world, there often isn't time for home baking.

Now, with the help of the microwave, home-baked foods are once more finding their way into the daily schedule. In fact, these delicious Oatmeal-Nut Muffins can be made in less than 5 minutes and from ingredients probably right on your cupboard shelves.

This delicious recipe makes just six muffins—the right amount for smaller families. When a crowd is expected, it can be doubled for a dozen delicious muffins.

So start the morning coffee. Almost before the coffee is perked, piping hot muffins will be ready to bring to the table.

#### OATMEAL-NUT MUFFINS

3/4 cup Bisquick® baking mix	1 tablespoon sugar
1/4 cup quick-cooking oats	2 tablespoons vegetable oil
1/4 cup finely chopped nuts	1 egg
1/4 cup water	1 tablespoon finely chopped nuts

Place paper liners in 6 microwaveproof muffin cups, 2 1/2 x 1 1/4 inches, or 6-ounce custard cups. Arrange cups in circle on 12-inch microwaveproof plate.

Mix all ingredients except 1 tablespoon nuts; beat vigorously 15 seconds. Fill muffin cups about 3/4 full. Sprinkle with nuts. Microwave uncovered on high (100%) 1 minute; rotate plate 1/2 turn. Microwave until tops spring back when touched lightly and are no longer doughy, 30 to 90 seconds longer. (Edges of muffins will appear moist.) Remove from cups. 6 muffins.

Note: Recipe can be doubled

High Altitude Directions (3500 to 6500 feet): No adjustments are necessary.

### Keep That Sweet Tooth!

#### ORANGE COOKIES

For those of us with a "sweet tooth," reducing sugar in the diet is difficult. But we know sugars contribute to the decay process.

There are ways to satisfy that sweet tooth without destroying teeth. How? By preparing sweet foods without refined sugar.

Many of the foods we eat contain sugar. When sugar is combined with plaque, softened butter, stir in the colorless film that coats our teeth, acids are formed. These acids attack the teeth, causing decay.

Brushing and flossing remove plaque are two important ways of protecting teeth. A third way is to keep sugar intake at a minimum. Here is a delicious, sugarless recipe for Orange Cookies to tickle your palate, compliment of the American Dental Hygienists' Association.

**BRYANT AND LELAND SCHEDULE CHILDREN'S TV HEARINGS IN DALLAS AND HOUSTON**  
\*\*\*\*\*

Congressman John Bryant announced today that he and his colleague from Houston, Congressman Mickey Leland, will jointly chair congressional field hearings on children's television programming and advertising in Dallas on Friday, October 25th, and in Houston on Monday, October 28th.

The Dallas hearing of the Telecommunications Subcommittee of the House Energy and Commerce Committee, which will be at 9:30 a.m. Friday in the Dallas City Council Chambers, will concentrate on educational programming for children, including "The Children's Television Education Act," legislation introduced August 1st by Bryant, Leland, and the Subcommittee Chairman Timothy Wirth. The Houston hearing, scheduled for 9:30 a.m. Monday in the Harris County Courthouse, will focus on "program length commercials" directed at children.

"The Children's Television Education Act" would require commercial television broadcasters to provide a minimum of seven hours a week, five of them airing Monday through Friday, of informative programming for children. The so-called "program length commercials" are a new trend in cartoon programming in which the characters are based on toys popular with children.

"Our most precious resource is our children," said Bryant and Leland. "And because, on average, our children spend more time in front of television sets -- 15,000 hours by the time most of them get out of high school -- than in the classroom, we as parents, lawmakers, educators and broadcasters should be especially sensitive to the impact of this powerful medium on our society and future generations of Americans."

Bryant and Leland pointed out that the Federal Communications Commission (FCC), which regulates the broadcasting industry, has declined to take effective steps to insure that the public interest -- and children's interests in particular -- are well served

by commercial broadcasters.

"By law, broadcasters -- who have free, exclusive, and highly profitable use of a portion of the public airwaves -- are required to address the needs and concerns of the communities the FCC licenses them to serve. They are encouraged to pay special attention to children, who are overwhelmingly influenced by television," the legislators said. "But they have not done so."

"After requiring television stations to make a meaningful effort to increase educational and informational programming for children in 1974, the FCC found in 1979 that the weekly average of children's programming had increased from 10.5 to 11.3 hours. The most recent congressional study, however, revealed a dramatic reversal. Today a weekly average of only 4.4 hours of such programming, all but about an hour of it cartoons, is aimed at children. The character, spirit, and mental health of an entire generation is at stake," Bryant and Leland noted.

It has not been an isolated phenomenon for a toy or series of toys to follow the successful introduction of a cartoon or live-action character on television, the Congressmen observed, but that trend has now been reversed with the emergence of "program length commercials". It is estimated that more than 20 Saturday morning programs this fall directed at children will feature toys as stars -- a questionable new programming decision and marketing tool aimed at children, our most vulnerable consumers," Bryant and Leland said.

"We support legislation that would direct the FCC to conduct an inquiry into the implications of programs which appear to have been created to promote toys and other products related to children's shows. Children, we believe, have difficulty enough distinguishing between programs and commercials without the introduction of 'program length commercials.' And any commercial arrangements that may exist between broadcasters and product-program developers only intensify our concern," they said.

Among those scheduled to present testimony at the

hearing are witnesses from the National Parent Teachers Association, the National Education Association, the National Broadcasters Association, a major television network, and local representatives of these and other organizations.



**eyes and answers**  
Weston A. Petty, O.D.

**IT'S A NEW DAY!**

Dear Dr. Petty: My hard contact lens bifocals have never been really comfortable, although I see well. Will they ever invent soft lens bifocals?

So many people have asked me that question, and the answer until now has been no. But, no longer. In recent months, the first generation of soft contact lens bifocals was offered the eye care professions. Some are made in the form of a "progressive add" in the bifocal section, the extra power being near the center of the main lens and increasing to maximum at or near the lower lens edge. Another type uses a concentric section of the outer portion of the lens for reading, revolving with no interference in vision.

I would hasten to tell you that I make no success claim for the new lens; it is too soon to know. But if past experience holds, this innovative advance in the vast vision care field will meet with success either now or quite soon. Optometrists and others must become proficient in fitting the new lenses. It is possible, too, that experience with many cases will demand some alteration in their fabrication by the manufacturers in order to meet the complete needs of patients.

Several laboratories will likely begin to process soft lens contact bifocals. That is good. More research laboratories entering the field will probably mean rapid advances in lens manufacture. That means better vision care for cases like yours.

You may be in for a most pleasant experience with a new pair of soft contact lens bifocals.

**WHAT IS ASTIGMATISM?**

Dear Dr. Petty: Would you please explain astigmatism? I have it but I don't understand it. All I know is I had a lot of eyestrain before I got my glasses, and now I don't.

Astigmatism is, simply described, a difference in the curves on the front surface of the eye, the cornea. The cornea is the curved, clear

"watch crystal" part of the eye just in front of the "watch face" iris, the colored part.

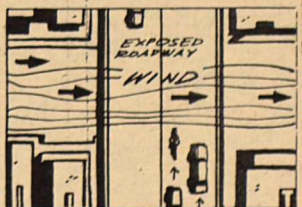
Those curves can best be described by asking you to compare the curves of a football to those of a basketball. The football has sharper curves up and down and flatter ones sideways, whereas the basketball's curves are the same in all directions. If the front of your eye has curves like a football--or even similar--then you have astigmatism.

Light cannot come to a good focus through astigmatic curves, causing the eyes to strain to focus better. The lens of the eye can focus only to a point like a magnifying glass, and trying to focus astigmatic rays of light is purely and simply an eyestrain. When you have lenses prescribed for an astigmatism, their curves are opposite to your eye curves. The lenses are designed to artificially give you a "basketball" curve so the light will come to more nearly a point focus.

If you had lived before 1900 A.D., your astigmatism couldn't have been corrected with spectacles--such lenses couldn't be accurately ground before then.

**FACTS & FIGURES**

Very few motorcycle accidents happen from the rear. Nearly two-thirds of them occur right in front of the rider. And, another 32 percent of the accidents involve the rider being hit from the side. Only seven percent of the accidents studied involved a rider being hit from behind.



The Motorcycle Safety Foundation warns that strong gusty winds can be a hazard for motorcyclists. A rider can actually be moved across a whole lane of traffic if not prepared to handle the sudden wind. Motorists should be aware of this fact when they are crossing stretches of exposed roadway along with motorcyclists.

DEADLINE:  
Tuesday  
at NOON

# CLASSIFIED ADS

All classified ads: \$.20 per word, 10 words minimum insertion ... \$2.00 per week. NO BILLING OF CLASSIFIEDS !!!

## THE COMMUNITY CHURCH

563-9375  
Gary Holcombe, Pastor

**SUNDAY**  
10:00 am Bible School  
11:00 am Worship Service  
6:00 pm Believers Bible Study

**MONDAY**  
7:00 am Mens Bible & Prayer

**WEDNESDAY**  
7:00 pm Prayer & Praise

**HOME MINISTRY GROUPS**  
meeting through the week.  
For Women, Seniors, Families.  
Call for information.

## BRACKETTVILLE CHURCHES

**FIRST BAPTIST CHURCH**  
(Southern Baptist)  
Rev. Ronnie Watson  
Sunday School 9:45 am  
Worship Service 11:00 am  
Worship Ser. (Sun) 7:00 pm  
Prayer Meeting (Wed) 7:00 pm

\*\*\*\*\*

**FRONTIER BAPTIST CHURCH**  
(Southern Baptist)  
Rev. Joe Townsend  
Sunday School 10:00 am  
Worship Service 11:00 am  
Prayer Meeting (Sun) 7:30 pm  
Prayer Meeting (Wed) 7:30 pm

\*\*\*\*\*

**CHURCH OF CHRIST**  
Sunday School 9:30 am  
Worship Service 10:30 am  
Bible Study (Sun) 6:30 pm  
Bible Study (Wed) 7:00 pm

\*\*\*\*\*

**UNITED METHODIST CHURCH**  
Ron Kelley- Pastor  
Sun: Church Education- 9:45am  
Morning Worship- 11:00am  
Wed: Bible Study- 7:00pm  
Thurs: Children's  
Choir Practice- 4:00pm  
Thurs: Adult's  
Choir Practice- 5:00pm

**MOORE'S BARBER SHOP**  
IN OLD JUAREZ BARBER SHOP  
BEHIND C & L'S MINIMX.

HOURS: 8:00 AM TO 6:00 PM  
MONDAY THRU FRIDAY  
SATURDAY- 8:00 AM 'TIL NOON.

\*\*\*\*\*

## CROSSCHECKING YOUR GROCERY BILL

Were you charged the right amount at the check-out counter for the last roast or dozen eggs you bought at the supermarket?

If you shopped at one of the more than 2,500 grocery stores now using electronic checkout systems, you can be sure the computer made no mistake. Not only does the computer know the right price of every item in the store, but these laser-beam systems provide an itemized receipt tape that speaks plain English, like "Green Beans, 15 oz., \$.69."

At these stores, a low-energy laser light beam, or scanning "eye," sweeps over your purchases at the checkstand, reading the Universal Product Code (UPC) found on almost all grocery products.

Information picked up by the scanner is fed into a computer, where the price is stored. The computer immediately sends the pricing information back to the front register, where a



When the computer system comes to most high-volume stores in America, long lines of shoppers may become a thing of the past.

printed receipt tape is issued.

Checkout time with these systems, such as the Data-checker system, manufactured by National Semiconductor, is greatly reduced. And there's no more waiting for "Price check on Aisle 9, please" delays. For the grocer himself, the system's blessings can be manifold. He can keep a closer check on inventory, monitor peak sales periods and expedite many routine activities.

Soon, many more supermarkets may pick up the potential for checking you out with computers.

**FORT CLARK GOLF AND COUNTRY CLUB RESTAURANT** now open from 6:30 a.m. until 7:00 p.m. (later upon request). Open until 9:00 p.m. on Friday and Saturday, Monday 5:00 p.m. until 9:00 p.m.

Jerry Elbert, Manager  
ph. 563-9204

## BRACKETT'S "FULL SERVICE" STATION!



T & A

**SERVICE STATION**

HWY. 90 563-9794

## ROADRUNNER ENERGY, INC.



BUTANE  
PROPANE  
RENT TANKS

Office in Brackettville  
Ann & Crockett 563-2630

PROPANE TANKS MOTOR FUEL  
for Sale  
or Rent

**Del Rio Gas Company**

HWY 90 WEST P.O. BOX 420654  
DEL RIO, TEXAS  
775-3633

JAMES SMITH 563-9223

**HOUSE FOR SALE** on Veltman St. Call Mary Terrazas, 563-2596.

\*\*\*\*\*  
**FOR RENT: 10 LOTS IN SPOFFORD**  
CALL COLLECT: (512) 433-7633

\*\*\*\*\*  
**HOUSE FOR SALE:** Needs lots of work. Northwest corner of Ross & Thorn. \$3,500.00.  
CALL-- 563-9305..

\*\*\*\*\*

## GOOD NEWS about

**GOOD SPORTS**

By Lynn Swann  
National Director  
Hi-C **GOOD SPORTS**

Possibly the most unusual home run ever was hit by Babe Ruth off Hod Lisenbee, pitcher for the Washington Senators in the 1920s. Lisenbee has claimed that Babe hit a screaming line drive that passed between his legs and then soared over the centerfield fence. \* \* \*



A fascinating story from the archives of American baseball tells how, in July 1931, Joe "Mule" Sprinz of the Cleveland Indians caught a baseball that had been tossed from a blimp stationed 800 feet up in the air. Receiving the ball in an

overstuffed catcher's mitt, Sprinz handled the job perfectly, but the ball's impact sent a shock wave through his body that broke his jaw. \* \* \*

One of the most unusual baseball games ever played was the contest between Texarkana and Corsicana of the Old Texas League on June 15, 1902. The final score was Corsicana 51, Texarkana 3. Stars of the game were the Corsicana slugger Clarke, who walloped eight home runs in as many times at bat, and Texarkana pitcher, C.B. DeWitt, who gave up all 51 runs. Clarke eventually made it to the majors. He played for various teams from 1905 through 1920 but hit only six homers in 1,536 times at bat. \* \* \*

For answers to your questions about sports feats and records, look on the backs of specially marked Hi-C labels or write to Lynn Swann, c/o Hi-C Good Sports, P.O. Box 3341, Houston, Texas 77001.

## DEAN C. DIMMITT, M.D.

announces the opening of his office for the practice of

**INTERNAL MEDICINE AND CARDIOLOGY**

at 121 South Street  
Uvalde, Texas 78801

Office Hours by Appointment  
Call 278-4576

Physician Referral  
Not Required..

**THE COMMUNITY CHURCH CLOTHES CLOSET** WILL BE OPEN THE FIRST AND THIRD WEDNESDAY OF EVERY MONTH FROM 1:00 - 2:30 P.M.

**ALCOHOLIC ANONYMOUS** Meetings in Brackettville, every Thursday at 8:00 p.m... ALANON meetings every Monday at 8:00 p.m.. Call 563-2094 for more information.

\*\*\*\*\*