

TEXAS PRESS  
ASSOCIATION  
AWARD WINNER

ALAMO VILLAGE  
P.O. BOX 528  
BRACKETTVILLE, TX 788320528

# the Kinney Cavalryman

VOLUME 12  
NUMBER 47

NOVEMBER 22, 1985

BRACKETTVILLE, TEXAS

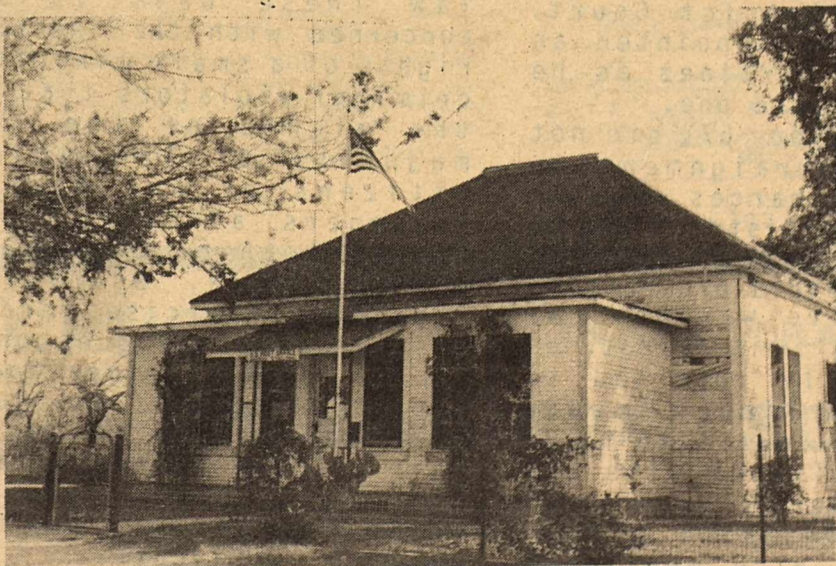
## SPOFFORD 1976



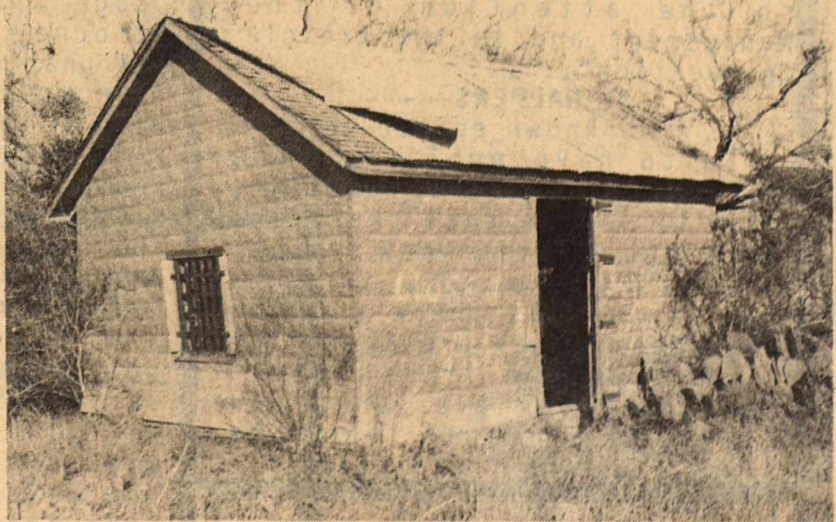
GAS STATION



WATER WORKS



U.S. POST OFFICE



JAIL



# THE KINNEY CAVALRYMAN

USPS 100-610  
P.O. DRAWER CQ  
BRACKETTVILLE, TEXAS  
78832  
512-563-2696

EDITOR: J. GEORGE LOOS  
PRODUCTION: CRYSTAL LOOS  
ASST. EDITOR:  
DOROTHY ROBERTS

PUBLISHED EVERY FRIDAY  
ENTERED BY SECOND CLASS MAIL  
AT BRACKETTVILLE, TEXAS 78832

\*\*\*\*\*

SUBSCRIPTION RATES: PER YEAR  
\$15.00 - OUT OF COUNTY  
\$14.00 IN COUNTY

DEADLINE EVERY  
TUESDAY AT NOON

**TA** MEMBER 1985  
TEXAS PRESS ASSOCIATION

"Any erroneous reflection upon the character or standing of any person or firm appearing in this paper will be gladly corrected, upon being called to the attention of the Management and to the article in question".....

#### IT HAPPENS-----

An unknown editor-hero is said to have published the following somewhere, sometime, "You'll notice that there are mistakes in this week's paper just as there were in last week's, and as there will be next week's. They are there for a purpose. We try to print something for everyone, and there are people who are always looking for mistakes".

*Crystal Loos* ...

"The art of pleasing consists in being pleased."  
William Hazlitt

## SHERIFF'S CORNER

Norman Hooten

Sheriff

Arraignment proceedings were held in District Court Friday November 15th. District Judge George Thurmond and District Attorney Tom Lee were present with Judge Thurmond presiding.

A pre-trial hearing was set for Louis Starzel, Kinney County Justice of the Peace who has been indicted by the Kinney County Grand Jury on charges of Felony Theft. The charges stem from an investigation and audit of his office which turned up missing public funds. The hearing was set for December 12th.

George Joseph Barber, 27, of Brackettville, who is charged with the homicide death of John Lee Titt, 37, also of Brackettville, which occurred on October 11th was instructed by Judge Thurmond to obtain an attorney and prepare for trial. Barber had requested a court-appointed attorney, that request was denied by the judge.

Francisco Martinez, 21, also of Brackettville was arraigned on charges of Violation of Probation of a 1983 Burglary conviction. Martinez had been sought by the Sheriff's Department on a warrant issued in February of this year. He was arrested on October 11th and has been held in the county jail without bond since that date pending a hearing in District Court. Judge Thurmond appointed an attorney for Martinez as he was unable to hire one.

W.C. Jackson, 67, did not appear for arraignment on Felony Theft charges pending against him in District Court. He is believed to have fled the state to avoid prosecution and a fugitive warrant has been issued on his arrest.

I recently reported to you that the Kinney County Jail had been certified to be in full compliance with the minimum standards required by the Texas Commission on Jail Standards. I also mentioned the fact that the huge majority of these standards are mandated by court decisions in favor of cases filed by inmates of various jails and prisons who are

demanding better living conditions while they are confined for their crimes against society. Kinney County has spent over \$100,000.00 above and beyond the original cost of the jail, which was completed in 1974, in order to bring the facility within compliance. We have met every requirement of the Commission at a great cost to the County (taxpayers), but finally reached the elusive level of compliance required by law.

Well, Guess What! The Commission now says that we have to install a light above the lavatory in every cell in the jail. The light has to be wired into a control panel in the Dispatcher's office so that the lights can be turned down low at night to provide a "night light" for the prisoners but won't be too bright to disturb their sleep. The inspector came by with his trusty little light meter and decided that the light now being provided by two 4 foot long lights in each cell was not adequate to provide the prisoners in those cells with enough light to shave by and/or have a night light.

We have received preliminary cost estimates of the system and this little project is going to cost the county (taxpayers) between \$2,500 and \$3,500. The Jail Commission has advised me that these lights must be installed by the time we have our next inspection or we will, once again, be in violation of state law and will lose our status as a Certified Jail. Where will it all end?

It seems to me that the law these days is more concerned with the individual rights of a small minority of criminal violators that with the rights of the large majority of law abiding citizens of our country. Prisoners already receive food, clothing, dental and medical care, educational programs, exercise, and the list of benefits goes on and on. The commit crimes against society, then society has to dig deeper to provide them with all the fringe benefits that they demand, and most often receive, through the courts. JUSTICE??

"It's the good loser that finally loses out."  
Kin Hubbard



# LIBRARY NOTES & BOOKS

BY:  
**FRANCES HERNANDEZ**

The new videocassettes have arrived! These will be available until December 10th. Five Christmas films will be received from our film circuit, these films will be available at the library on or before November 25th until December 10th. Five more will be received on or before December 12th and will be available until December 30th. Memorials received in October were for:

Mr. Frankie Veevaert  
Betty Jo Powers

In next week's column I'll explain about our Memorial Fund, for those of you not aware of it.

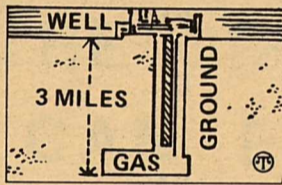
VISIT YOUR LIBRARY TODAY!!

## QUICK QUIZ

What exactly are you paying for when you pay your monthly natural gas bill? This quick quiz may enlighten you.

1. The cost of the natural gas itself accounts for about 40 percent of your bill? (a) True (b) False?
2. A natural gas well goes nearly three miles into the ground. (a) True (b) False?
3. By the time the natural gas reaches you, it hasn't changed hands yet. (a) True (b) False?

ANSWERS: 1. (a) True. Added to that is the cost of transporting the gas from the production field to the community; the cost of distributing the gas within the community; and state and local



taxes. 2. (a) True. According to Nicholas J. Bush, President of the Natural Gas Supply Association, oil producers sometimes produce gas from wells that go nearly three miles into the ground. 3. (b) False. By the time the natural gas reaches you, the ownership of it has changed hands at least twice. When gas is produced it is sold to a pipeline that ships it to the community. When it arrives it is sold again to a distributor.

## SEEDS FROM THE SOWER

By Michael A. Guido, Metter, Georgia



Prayer is the outlet of trouble and the inlet to triumph. It is the greatest force on earth. The power of God is illimitable and irresistible. We lay hold on it through prayer.

A king was in trouble. He did not turn to his army, however able; nor to his specialists, however sagacious; but to his God. He said in Psalm 57:2, "I will cry unto God most high; unto God that performeth all things for me."

The word "performeth" signifies "to perfect" and "to cease." When a task is performed and perfected, the agent ceases from working.

Gardening brings almost as many people to their knees as religion—only the words some use are a little different.

But your mind is like a garden. It may be cultivated or allowed to run wild. Whether it is cultivated or neglected, it will produce.

If you sow useful seeds, then useful flowers and plants will take over and you will be rewarded.

If you sow useless weed-seeds, then useless weed-seeds will take over and you will be ruined.

When Francis Bacon was

How thrilling! The child of God prays, and God performs; he waits, and God works; he believes, and God brings it to pass.

God leaves no "unfinished symphony." The commencement is the surety of the continuation until the completion. He who lays the foundation stone will most certainly lay the coping stone.

Here is a twofold cord upon which the child of God can hang his assurance: His almighty power and His abiding promises. Such a cord cannot be broken. Why not put your trust in the all-powerful and never-failing God?

asked what he thought was the outlook for the next generation, he declared, "Tell me what the young people are thinking, and I'll tell you."

Every day you are becoming more like your thoughts. You cannot escape the results of your thoughts. When there are unclean thoughts, unclean actions will follow. Where there are clean thoughts, clean action will follow.

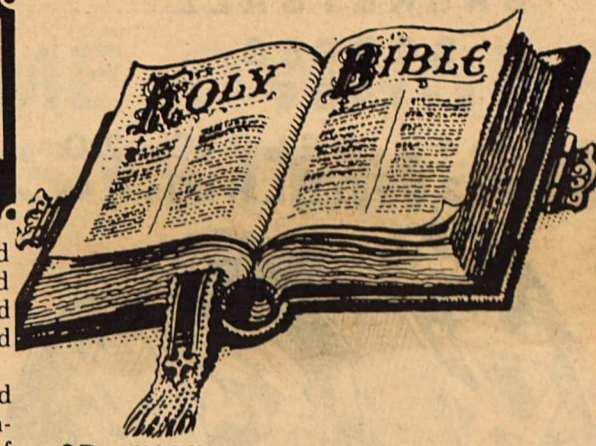
So David prayed in Psalm 119:11, "Thy Word have I hid in my heart, that I might not sin against Thee."



West Point, the military academy, was founded during the administration of President George Washington.



Cast-iron railroad rails were first produced in 1767 by a British foundry.



**ST. MARY MAGDALENE CHURCH  
TO HOST ECUMENICAL SERVICE  
OF THANKSGIVING, NOV. 24TH  
(7:00 P.M.)**

PRELUDE- Organist: Cathie Conrey.

WELCOME

OPENING HYMN: "All Hail the Power".

INVOCATION: Rev. Joe Townsend.

FIRST SCRIPTURE READING: Rev. Ron Kelly.

PSALM: Rev. Jim Cashin.

GOSPEL READING: Rev. Cary Holcombe.

HYMN: "Peace Prayer of St. Francis".

TESTIMONY: Member of First Baptist Church.

SPECIAL MUSIC: "Thanks Be To God" by Judy Hunnicutt & Voices of Ft. Clark.

MESSAGE: Rev. Joe Brockman.

CLOSING HYMN: "Blessed Be the Tie".

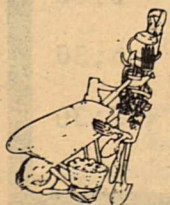
BENEDICTION: Rev. Ronnie Watson.

PLEASE NOTE: All are invited to the Ecumenical "get together" at the Parish Hall following the Thanksgiving service.

## "CHUCK'S" HAULING & TRASH SERVICES

---COMING REAL SOON---

TWICE WEEKLY PICKUP



CHUCK BLUM



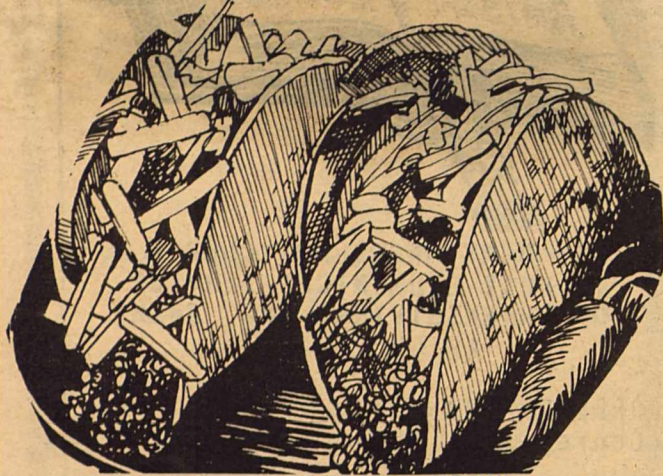
The United States contributes about two and a quarter times as much to the United Nations' budget as does the U.S.S.R.



**BASKETBALL  
SCORES**

11-18-1985

J.V.-13 DELRIO-20  
VAR.39-DELRIO.44



**B.I.S.D. CAFETERIA MENU**  
(week of November 25th)

MENU CHANGES DUE TO  
CIRCUMSTANCES BEYOND OUR  
CONTROL.

\*\*\*\*BREAKFAST\*\*\*\*

MONDAY- Pears, Waffles, Syrup,  
Milk.

TUESDAY- Fruit Cocktail,  
Pancakes, Syrup, Milk.

WEDNESDAY- Peaches, Sausage  
w/Biscuits & Gravy, Milk.

THURSDAY- HAPPY THANKSGIVING!

FRIDAY- GOBBLE, GOBBLE!!

\*\*\*\*LUNCH\*\*\*\*

MONDAY- Burrito w/Chili, Ranch  
Beans, Fruit Cocktail, Love-  
Boats, Milk.

TUESDAY- Hamburger Salad,  
French Fries, Jello w/pear  
1/2's, Milk.

WEDNESDAY- Turkey 'n Dressing,  
whipped potatoes, green beans,  
pumpkin pie, hot roll, milk.

THURSDAY- HAPPY THANKSGIVING!

FRIDAY- GOBBLE, GOBBLE!!!

\*\*\*\*\*

**THANKSGIVING  
SCHOOL HOLIDAY  
BEGIN WEDNESDAY  
NOV.27,1985  
AT 2:30  
BACK TO SCHOOL  
ON**

**MONDAY MORNING.**

**BASKETBALL SEASON BEGINS**  
MONDAY NOV.18,1985 AT 6:00

HERE AGAINST DELRIO

**1985 BASKETBALL  
SCHEDULE**



**B.I.S.D.  
JR. HIGH BASKETBALL  
SCHEDULE  
1985-86**

Nov. 25	La Pryor	5:30pm	H
Dec. 2	Del Rio	6:00pm	H
Dec. 7	Leakey Tourney		T
Dec. 9	Nueces Canyon	5:30	H
Dec. 16	Rocksprings	5:30	T
Jan. 8	Sacred Heart	5:00	T
Jan. 11	Brackett Tourn.		H
Jan. 15	Sacred Heart	5:00	H
Jan. 20	Nueces Canyon	5:30	T
Jan. 27	Rocksprings	5:30	H
Feb. 3	La Pryor	5:30	T

**B.I.S.D. HIGHSCHOOL BASKETBALL SCHEDULE**

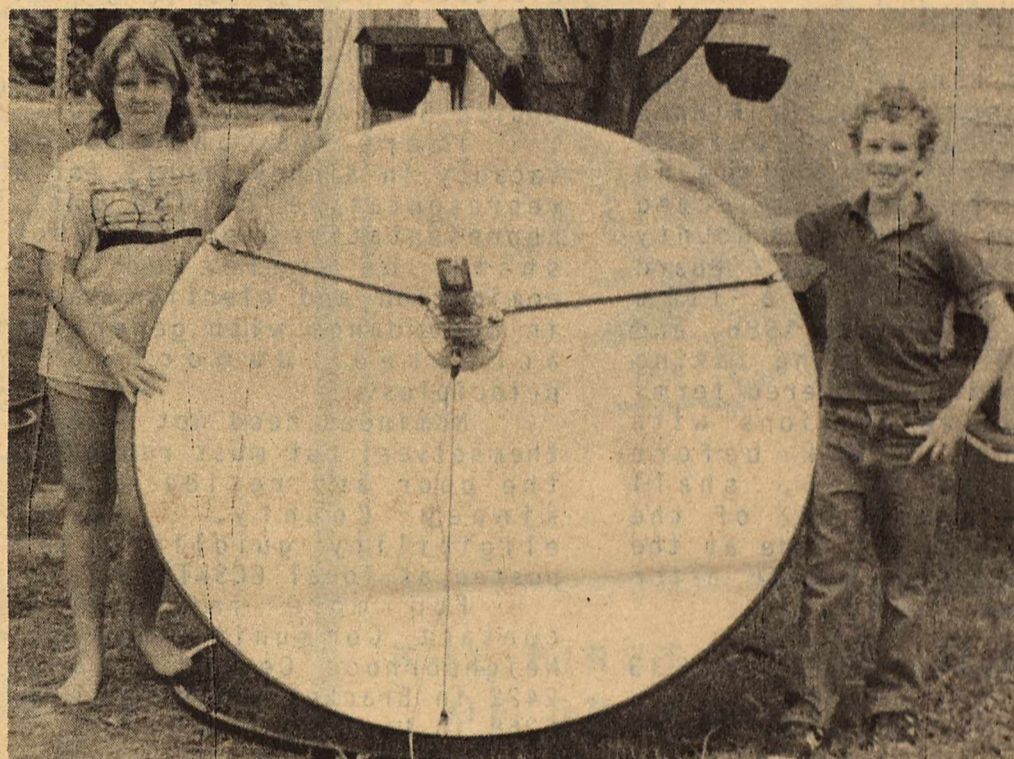
Nov 26	Eagle Pass	HERE	B(VAR & J.V.)	6:00
Dec 3	Knippa	THERE	B&G	6:00
Dec 10	*La Pryor	HERE	G	6:30
Dec 12,13,14	SWT Tournmt	THERE	B&G	T.B.A
Dec 17	*Dilley	THERE	G	6:30
Dec 19,20,21	Brackett Tournmt	HERE	B&G	
Jan 3	Sabinal	THERE	B&G	6:30
Jan 7	*Natalia	HERE	B&G	6:30
Jan 10	*Lackland	THERE	B	6:30
Jan 14	*Lytle	HERE	B&G	6:30
Jan 17	*La Pryor	THERE	B&G	6:30
Jan 21	*Dilley	HERE	B&G	6:30
Jan 24	*OPEN			
Jan 28	*Sabinal	HERE	B&G	6:30
Jan 31	*Natalia	THERE	B&G	6:30
Feb 4	*Lackland	HERE	B	6:30
Feb 7	*Lytle	THERE	B	6:30
Feb 11	*La Pryor	HERE	B	6:30
Feb 14	*Dilley	THERE	B	6:30

\*DENOTES DISTRICT GAMES



# HUNTERS-R.V.ERS- MOBILE HOME OWNERS PORTABLE SATELLITE SYSTEM SPECIAL! \$995.00

WHILE SUPPLIES LAST



"GIVE THE GIFT THAT YOU AND YOUR FAMILY  
CAN ENJOY 365 DAYS A YEAR!!"

**SYSTEM INCLUDES:**

1. YOUR CHOICE OF 4 1/2 FOOT FIBERGLASS OR 6 FOOT METAL  
BLACK MESH DISH.
2. 75 FEET OF MULTICONDUCTOR, WEATHER PROOF, BURIALABLE CABLE.
3. ALL CHANNEL SATELLITE RECEIVER.
4. SET ON YOUR SITE AND TESTED

"WE SERVICE WHAT WE SELL"

**GEORGE LOOS**

**563-2696**





**DOLORES RANEY**  
 DISTRICT AND COUNTY CLERK  
 KINNEY COUNTY  
 P. O. DRAWER 9 (512) 563-2521  
 BRACKETTVILLE, TEXAS 78832

THE STATE OF TEXAS,  
 COUNTY OF KINNEY:

I, Dolores Raney, Clerk of the County Court in and for Kinney County, Texas, do hereby certify that the following candidates have been elected to serve as the Kinney County Tax Appraisal District's Board of Directors for a term beginning January 1, 1986, and due to all the voting taxing units adopting staggered terms and filing resolutions with the County Clerk before October 10, 1985, shall implement Sec. 6.032 of the State Property Tax Code at the earliest practical date after January 1st, to-wit:

- Ralph Beard-Received 833 votes.
- Lloyd L. Davis, Sr.-Received 833 votes.
- Joe N. Garza- Received 834 votes.
- Hector Jimenez-Received 834 votes.
- Joe York, Jr. -Received 834 votes.

Witness my hand and seal of office this 14th day of November, A.D. 1985.

/s/Dolores Raney  
 County Clerk  
 Kinney County, Texas

**COMMUNITY COUNCIL  
 OF  
 SOUTHWEST TEXAS**

**PUBLIC NOTICE**

Community Council of Southwest Texas, Inc., (CCSWT) will hold a neighborhood meeting at the Texas Department of Human Resources office at 7:00 p.m. on Thursday, December 5, 1985. The purpose of the meeting will be to acquire input and evaluate the agency programs, and to accept nominations to fill a vacancy on the board of directors. Location: Allen and Louise St.

There is one board vacancy in Kinney County for a representative of the poor. Representatives of the poor shall be selected on a nomination and election basis in accordance with generally accepted democratic principles.

Nominees need not be poor themselves, but must represent the poor and reside within Kinney County. Income eligibility guidelines are posted at local CCSWT offices.

For more information contact Community Council Neighborhood Center at 563-2422 in Brackettville, or 278-6268 in Uvalde, TX.

\*\*\*\*\*

"A decision is what a man makes when he can't find anyone to serve on a committee." Fletcher Knebel

"As long as I have a want, I have a reason for living." George Bernard Shaw

**HAPPY  
 Wishes on  
 your Day!**

- 23<sup>rd</sup>  
 Jose Luis Cardenas  
 Blain Wills
- 24<sup>th</sup>  
 Anxio.  
 M/M Tommy D. Seargear
- 26<sup>th</sup>  
 Tom Pauell  
 Robert Nearse
- 28<sup>th</sup>  
 Gabby Martinez  
 Rexell Hobbs
- Anxio.  
 M-M Stuew. Coates

**SEVERE WEATHER WARNING**

3 to 5 minute STEADY siren (a severe weather warning, means very damaging hail and/or high wind in excess of 50 mph or a tornado, ONLY.)  
 \*\*\*\*\*

ALL CLEAR  
 30 to 45 second STEADY blast  
 \*\*\*\*\*

ENEMY ATTACK WARNING  
 3 to 5 minute WAVERING siren  
 \*\*\*\*\*

**WIND CHILL TEMPERATURE**

Wind Velocity (mph)

F°	3	5	10	15	20	25	35	50
60°	60	56	50	46	46	44	42	40
50°	50	45	37	33	30	28	24	22
40°	40	34	28	20	15	11	7	4
30°	30	24	17	3	-1	-6	-13	-16
20°	20	12	-4	-13	-18	-23	-28	-33
10°	10	0	-17	-27	-33	-38	-45	-50
0°	0	-13	-29	-40	-46	-53	-61	-65
-10°	-10	-23	-42	-53	-60	-68	-77	-83
-20°	-20	-33	-55	-67	-76	-85	-95	-101

**AREA ASSISTANCE**

AMBULANCE  
 563-2757

SHERIFF'S DEPT.  
 563-2788

MEDICAL CLINIC  
 563-2434

CITY POLICE  
 563-2100

FIRE DEPT.  
 563-2233

TEXAS HIGHWAY PATROL  
 563-2788

\*\*\*\*\*



# CORRECTION ON 1985 FALL BUSINESS REVIEW

Compiled by Consumer Media Services, Inc.

## AIRE-TEXX AIR CONDITIONING CO.

Mike Moore — Owner

As one of the area's leading specialists in all types of heating and air conditioning installations and repairs, the AIRE-TEXX AIR CONDITIONING CO. has gained an enviable reputation with contractors and homeowners alike.

This full service concern, located at 113 Hackberry in Del Rio, phone 775-1104, features skilled journeymen who are thoroughly schooled in all phases of ductwork and equipment installation. They feature famous Lennox heating and cooling units and can design a complete "weather control" system for your home or business. Call them today if you are planning to build or remodel.

Lennox dealer financing is available on any new Lennox system.

AIRE-TEXX AIR CONDITIONING CO. offers the lowest service rates available in the Del Rio area. They specialize in service to the Brackettville and Ft. Clark Springs area. Call collect for more information, 775-1104.

For "Big City Technology at Down Home Prices" on all sales, service and installation, call the AIRE-TEXX AIR CONDITIONING CO. in Del Rio. And t...



NOVEMBER



Valuables that are difficult or impossible to replace, belong only in one place . . . a safe deposit box in our bank.

Ask about them!

THE FIRST STATE BANK  
OF BRACKETTVILLE

563-2451

MEMBER F.D.I.C.

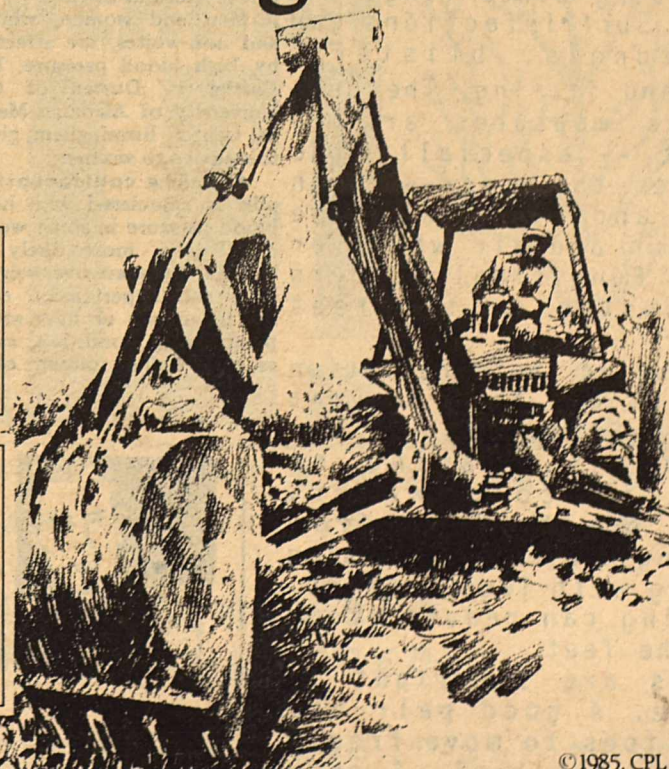
# Take care before you dig: Power lines could be there

Make sure you know the location of underground power lines before you install an irrigation system or unclog drain or sewer lines. Even routine jobs like digging post holes can be dangerous if you get too close to lines that carry electricity.

Before you start the project, call your Central Power and Light office for advice on where underground electrical facilities on or near your property may be located.

It's wise to show a lot of respect for power lines—both underground and overhead—anytime you're involved in work that could bring you near them.

A fallen power line, of course, creates an especially hazardous situation. If you see a line downed by a storm, accident or other mishap, call CPL immediately for professional help. Stay away from the wire and everything it touches—and keep others away, too.



**CPL**  
people on the line for you  
CENTRAL POWER AND LIGHT COMPANY

©1985, CPL



## TMA

Texas Medical Association

## CARING FOR YOUR FEET

In the course of a lifetime, an average person's feet bear a weight equal to several million tons and travel an estimated 70,000 miles. Proper foot care can help prevent a wide variety of foot problems, says the Texas Medical Association.

Corns and calluses appear on the skin as a response to repeated friction and pressure from shoes. The best prevention is to wear shoes that are wide at the instep and across the toes. Using a razor blade or acid preparation on corns and calluses is unwise. The thickened skin protects the foot from shoe pressure. If too much skin is removed, an ulcer can develop and lead to infection.

Bunions occur when big toe joints are out of line and become swollen and tender. Bunions may result from ill-fitting shoes pressing on a deformity or from an inherited weakness in the foot. Sandals, shoe with extra depth, and doughnut pads can help, but sometimes surgery is necessary.

Fungal and bacterial conditions -- including athlete's foot -- occur because the feet are usually enclosed in a dark, damp, warm environment, which is an ideal growing place for fungi and bacteria. Such infections can cause redness, blisters, peeling, and itching. The best preventive measures are to keep feet -- especially the area between the toes -- clean and dry, and to expose the feet to sun and air whenever possible. Fungicidal powders may be dusted on the feet daily.

Improving the circulation to the feet can help prevent problems. Exposure to cold temperatures, wading or bathing in cold water, pressure on the feet from shoes, long periods of resting or sitting with legs crossed, and smoking can reduce blood flow to the feet.

Shoes are important in foot care. A good pair has room for toes to move freely and a snug fit heel. A one-half to three-quarter inch

heel is best. A high heel crowds the toes, and a flat shoe or "negative" heel can strain the arch of the foot. Where foot protection is not needed, it is healthy to go barefoot. This exercises the muscles and joints of the feet.

# Help Your Heart



## High Blood Pressure in Women

Nearly 34 million Americans -- about one in six -- have high blood pressure. Only a small portion of all those who have this disease are being adequately treated. Does it really matter? Yes, because uncontrolled high blood pressure may lead to heart failure, stroke, kidney damage, and more.

**Help your heart!** Have your blood pressure checked. That's the only way you can tell whether you have high blood pressure. A reading of 120/80 is about normal for most people. A blood pressure reading of 160/95 is considered by most doctors to be high. If this reading stays high on repeated examinations, most physicians would begin therapy.

Doctors don't know what causes high blood pressure except in a few rare cases. Research scientists -- many of whom receive financial support from the American Heart Association, its affiliates and components -- are studying this mysterious disease.

Men and women, whites and non-whites, are affected by high blood pressure. Dr. Harriet P. Dustan of the University of Alabama Medical Center, Birmingham, gives this advice to women:

\* Taking contraceptives is associated with high blood pressure in some women. This is more likely to happen if you are overweight, have had hypertension during pregnancy or have a predisposing condition, such as mild kidney disease or a disease you can control.



## Ask Your Pharmacist

## Surviving The Sneezin' Season

Hay fever victims, take heart! Even though the fall allergy season is in full swing, relief is just around the corner.

Right now, ragweed plants are distributing close to a quarter-million tons of pollen into the air across the nation.\* Hay fever sufferers know this all too well from their stuffed-up, itchy or runny noses, swollen, itchy and watering eyes, sneezing and coughing.

If you are one of the 14 million Americans afflicted with hay fever, here are some things you can do while waiting for the first frost:

1. Escape! The central Adirondacks, the southern tip of Florida, northern Minnesota, New Hampshire, Maine, northern Michigan, California and the northern Cascade mountains are relatively ragweed-free.

2. Stay at home. Close your doors and windows; invest in an air conditioner or electrostatic air purifier. Get some professional advice about what type to buy, though, because some brands of air filters do not remove all the pollen particles from the air, and some of them generate ozone, which can make your symptoms worse!

3. Avoid uncut, weedy fields and rural areas. Postpone your drive in the country until pollination is over.

4. Do not set your air conditioner any colder than 12° below the air temperature outside. Extreme cold tends to irritate the nose and throat areas.

5. Take a walk at night, when there's less pollen in the air. Enjoy the rainy days!

6. Avoid known nasal irri-

tants such as hair sprays, perfumes, wave lotions, tobacco smoke, insecticides, paint fumes and chlorinated water in swimming pools.

7. If your allergy is non-seasonal ("perennial allergic rhinitis"), you may have to say goodbye to Fido, sleep on a foam instead of a feather pillow, change cosmetics or encase your mattress in plastic.



8. Spray musty, mold-prone areas (such as basements) with an anti-fungal disinfectant if you are allergic to mold spores.

9. Consult your pharmacist for an effective antihistamine or decongestant/antihistamine combination such as Chlor-Trimeton® for prompt, temporary relief of allergy symptoms.

10. Have your allergy diagnosed by a general physician or allergy specialist. You may be a candidate for immunotherapy—a long process, but well worth the years of relief.

11. Once your physician has specified the source of the allergen that causes your hay fever, learn to recognize it and steer clear of it whenever possible!

Good luck and God bless. Remember, your pharmacist is just around the corner. And around the next corner is the pollen-killing frost!

\*Allergy information courtesy of the Asthma & Allergy Foundation of America.

Q. Isn't athlete's foot just a problem for boys on sports teams?

A. No—anybody can get athlete's foot under certain conditions. Now that so many people are participating in all kinds of sports activities—jogging, bicycling, tennis, etc.—it's important for everyone to understand how athlete's foot develops and how to avoid and treat it.

Q. What causes athlete's foot and jock itch?

A. Both of these common conditions are caused by minute fungi which live on the dead skin cells shed continually by the body during normal activity, bathing and toweling. A related condition is body ringworm, which kids can pick up from the fur of puppies or kittens. All three types of fungal infections can be effectively treated with an over-the-counter (OTC) remedy such as Tinactin, the product most often recommended by pharmacists.

Q. Why do my kids always seem to pick up athlete's foot at school?

A. Shared locker room and shower facilities provide

ideal conditions for the growth of the fungi that cause athlete's foot and jock itch. These fungi love moist, dark environments. It's easy for athlete's foot to be



spread from person to person when kids are running around barefoot in a common locker room or shower.

Q. How can I prevent athlete's foot and jock itch?

A. (1) Use clean, dry towels, socks and underwear for sports activities. (2) Avoid going barefoot in places like locker rooms and showers. (3) If you are prone to frequent development of athlete's foot or jock itch, try using an antifungal powder such as Tinactin as a preventative. (4) During sports activity, wear loose-fitting clothing made of fabrics that "breathe." Plain cotton is better than many synthetics. (5) Never share towels.





**TEXAS  
HISTORICAL  
COMMISSION**

**1986 MAIN STREET CITIES**

At its quarterly meeting in San Angelo on October 28, 1985, the Texas Historical Commission designated the cities of Greenville, Palestine, Pittsburg, Pampa, and San Marcos as the 1986 Texas Main Street cities. These five communities will join a network of 35 cities working to revitalize their central business districts by developing the historic fabric of their downtowns.

Each designated Main Street city hires a full-time Main Street Manager for a three-year period to coordinate the project, using private sector techniques of marketing, management, and business development, as well as historic architectural design and landscape improvements. Local financial institutions lend support by setting up low-interest loan pools to encourage rehabilitation and reuse of existing historic buildings.

The Texas Main Street Project of the Texas Historical Commission is primarily a technical assistance program rather than a grant program. Many other state agencies, such as the Texas Economic Development Commission, the Texas Department of Community Affairs, the Texas Department of Agriculture, the Texas Tourist Development Agency, and the Governor's Office, provide additional assistance.

A key to success of the Main Street Project is the joining of historic preservation and economic development techniques to redevelop downtown as a viable marketplace. Since the beginning of the Texas Main Street Project in 1981, Main Street cities have seen a total of 1,020 downtown buildings rehabilitated, a net gain of 594 new businesses and 1,562 new jobs, and a private reinvestment in downtowns of more than \$96,400,000.

For more information, contact Anice Read or Susan Campbell, Texas Historical Commission, 512/475-4407.

**Technology In Our Lives**

SPELLING ERRORS CORRECTED—BY MACHINE!



Correct spelling was not always as important as it is today. In fact, it probably didn't matter at all to Shakespeare or his contemporaries. The few examples of our greatest playwright's signature that remain today are all spelled differently.

It was not until the mid-1700s that English spelling began to be systematized. The growing use of printed materials encouraged people to formalize spelling for a consistent written language.

Today we consider proper spelling the sign of a well-educated person. And in business, a misspelled word can mean confusion and even lost trade. Fortunately, modern technology has provided us with word processors that will spot and correct most spelling errors.

Advanced units — such as the Exxon 500 Series Information Processors — contain their own dictionaries with 50,000 words. That is far more than the 10,000 words in the average American's vocabulary.

Even more amazing is that one unit, the Exxon 520, can be adapted to another challenge of modern business language — jargon. This information processor has an additional 10,000 word "programmable" dictionary with the correct spellings of the specialized words of any user's profession. Now a lawyer's Latin phrase or a physician's "medicalese" need never be misspelled or out of place.

But teachers shouldn't despair — the average student still needs to know how to spell a word before he can look it up in the dictionary.

**Comet Tales**

**Halley's Comet:  
Little Known Facts**

For more than 2500 years, Halley's Comet has ticked off the centuries like a cosmic clock in 76-year orbital periods—and it's still going strong.



The brilliant comet is named for the English astronomer Edmund Halley. Halley was the first to believe that comets belonged to the solar system and took definite paths around the sun at regular intervals.

He found that the paths taken by certain comets in 1456, 1531, 1607 and 1682 were all identical. He decided that the same comet made all these paths, and correctly predicted its return in 1759—thus, the naming of "Halley's Comet."

Did you know that some strange creatures are hiding in the tail of Halley's Comet, and they plan to invade the Earth upon the Comet's return in 1985 and again in 1986? Not really—that's the legend behind the new action toys from Matchbox Toys called Parasites.

**IT'S A FACT!**



The first user of a tintype camera was its inventor, Hamilton Smith, a professor at Kenyon College. The photographs taken by this unusual camera, invented in 1856, were made directly on iron plates.



First-time users of 35mm single-lens reflex (SLR) cameras can now feel as creative as professionals. With one new automatic 35mm SLR, the Minolta X-370, the user simply sets the lens opening and the camera automatically sets the correct shutter speed for perfect exposures. Photographers nationwide report that this compact and lightweight camera is the simplest 35mm SLR around.

**DAVIS HARDWARE &  
RANCH SUPPLY**

**PITTSBURGH® PAINTS**

**END-OF-SEASON**

**SALE!**

**EXTERIOR SPEEDHIDE PAINT \$13.88/GALLON**

**INTERIOR SPEEDHIDE PAINT \$9.88/GALLON**

**ALL REMAING LAWNMOWERS  
DRASTICALLY REDUCED!!**

**563-2528 INQUIRE HERE ABOUT DAY HUNTING**

**CORNER OF SPRING & ANN STREET**





MISS TEXAS U.S. TEEN PAGEANT

Applications are now being accepted from girls 13 thru 19 for the Miss Texas U.S. Teen Pageant.

The Texas winner will receive \$250 in cash, 1 year college scholarship, all expense trip to the national pageant including airfare, watch, diamond pendant, color portrait, crown, banner, trophy, and a host of gifts and products.

In addition to the state title, awards will be given in leadership, friendship, and photogenic categories.

The Texas pageant will be held at the AMfac Hotel in Dallas. Judging is based on poise, personality, school, and community involvement.

Over \$100,000 in cash and tuition scholarships will be offered at the national pageant. Miss U.S. Teen will receive a \$5,000 cash scholarship, a 4 year college scholarship, one week Caribbean vacation, watch, fur, diamond pendant, perfume, numerous products and gifts, complete modeling portfolio, TV and personal appearances, crown, banner, trophy and a year of travel and excitement. The national pageant will be video taped for television.

For further information contact: Carole Clements, National Director, Miss U.S. Teen, P.O. Box 1229, Auburn, Al. 36830 or call (205) 745-6875.



The hummingbird's wings beat so rapidly they produce a faint humming sound.

BINGO NEWS

BINGO OPERATORS MAY LOSE THEIR LICENSES

AUSTIN, Tex.--- State Comptroller Bob Bullock Friday said a preliminary computer analysis of charity contributions from Texas bingo games shows as many as 200 operators may lose their licenses.

Bullock said requirements that charity bingo games contribute at least 35 percent of adjusted gross receipts to authorized charities will be strictly enforced in early 1986.

"We've given them warning after warning that bingo money is to go to charity. And, we've given them time to adjust their operations to meet that requirement," he said.

Stepped up enforcement efforts in January will coincide with requirements that at least 35 percent of the adjusted gross income from a game's third quarter operation this year be distributed to charity during the final three months of 1985.

Adjusted gross income is the amount left over from gross receipts of bingo games after prizes have been deducted.

Bullock said more than 1,500 groups hold licenses to operate charity bingo in Texas.

He said operators have been warned repeatedly of the 35 percent requirement by letters and informational brochures.

"We've given everyone enough time to get their house in order and our next

step will be to suspend the licenses of those who refuse to comply with the charity rules," Bullock said.

Bullock said agents from his office would raid bingo halls and revoke licenses as a last resort for games which continue to violate state bingo laws.

SAFETY SENSE

CLEAN YOUR WINDSHIELD WIPERS

A car's windshield wipers may falter during heavy rains, leaving a maze of streaks and smears before a driver's eyes—not a clear, clean path for vision.

In many cases, the wipers merely need a good cleaning to return them to safe operating conditions.

Larry Koles, service supervisor for Anco, manufacturer of windshield wiper products, suggests the following cleaning steps:

• Remove windshield wiper blade from the wiper arm. It is much easier to clean when not attached to the car.

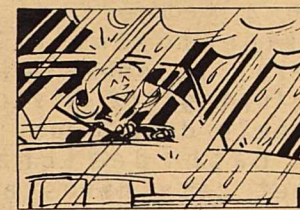
• Use a powder cleaner or detergent, one without gritty contaminants, which could later scratch the windshield. Make a paste of the cleaner.

• Wipe in an up and down motion along the rubber wiper's edge. The important section to clean is from the edge up to the first ridge of rubber.

• Rinse the wiper well.

• Clean the entire windshield, and return the blade to its place on the car.

When doing the cleaning, always use this opportunity to examine the wipers carefully.



fully, Mr. Koles recommends. Check for tears in the rubber, blades that are bent, and a smooth flexing action of the moveable parts of the blade. If the rubber element is torn, new refills are needed; if the metal portions are bent or damaged, the entire blade will have to be replaced.

"When the cleaned blades have been returned to their place on the car, squirt some water on the glass and try them," he said. "If the wiping quality is still lacking, the wipers are probably due for replacement."

The quality of the wiper provided by the windshield wipers is affected by wax from washes, grime and oils off the road, cleaners placed on vinyl tops, tar from the roads, and other dirt.

Periodic cleaning of your wipers will insure safe visibility.



Ladybugs hibernate in the winter.

RICE'S FUNERAL CHAPEL BOB & ROSEMARY RICE

PRE-NEED FUNERALS

\*\*\*\*\*

No Interest nor Finance Charge Wide Selection of Caskets, Vaults & Services Up to 100 Months to Pay No One Turned Down for Any Reason

\*\*\*\*\*

MONUMENTS

\*\*\*\*\*

All Sizes and Colors Prices Include Lettering, Delivery & Installation 6 to 8 Weeks Delivery

WE SERVE TO SERVE AGAIN 563 2438



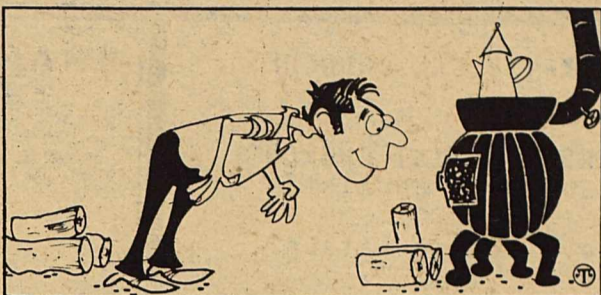
# TIPS FOR HOMEOWNERS

Around the country, homeowners are warming to the idea of taking a good look at their home heating equipment now.

An end-of-season cleanup of all types of heating equipment can go a long way toward keeping your family safe at home.

Fires involving wood and coal burning heating equipment have increased sharply in recent years, doubling in the years between 1978 and 1982 say experts at the U.S. Consumer Product Safety Commission. If you have a wood or coal burning stove, check it thoroughly at the end of each heating season. The stove pipe and chimney should also be cleaned and checked at this time. During the heating season, the pipe and chimney should have been checked frequently for creosote build up. Failure to keep the pipe and chimney pipe clear of creosote, a black, tarry substance, can lead to a fire hazard. Also, check the stove for cracks, faulty legs and hinges, and damaged or missing gaskets. It is a good idea to have the entire heating system inspected professionally once a year to ensure that all linings and parts of the chimney are intact and that the stove is properly adjusted and clean.

Portable electric heaters have also become popular, and, like wood and coal burning stoves, fire is a primary hazard with them. It's estimated that 3,300 fires in 1982 were associated with portable electric heater use. There must be a guard around the heating coil, as a wire grille or other



Wood burning stoves, like all space heaters should be carefully checked during warmer weather, for safety sake.

protection is essential to keep fingers or fabrics from touching the hot element. Also, if you have been using an extension cord, make sure it's one marked with a wattage rating at least as high as that on the label of the heater itself. Before storing your electric heater, see that any broken parts are replaced or repaired, and the cords are in good condition.

Gas room heaters are also increasingly popular but can cause carbon monoxide poisoning if not properly installed or maintained. If you have a vented gas heater be sure it is vented correctly, with a properly sized vent pipe that is free of leaks and blockages. Joints must be tight and both the heater and the vent pipe must be free of cracks through which carbon monoxide might leak. An undersized or clogged vent is also hazardous. Both vented and unvented heaters should be kept free of dust by vacuuming, and at the end of the season the gas supply to the appliance should be shut off. As an added measure of safety for consumers, unvented gas room heaters manufac-

ured in 1982 and later have a safety shut-off device that will automatically extinguish the heater when the room oxygen falls below the safe level.

If you have a kerosene or oil burning room heater, use only the fuel for which the heater was designed. Never use gasoline! Keep the wick clean and properly adjusted. Inspect these heaters annually to ensure that they are properly adjusted and clean. Before storing, drain the fuel from these heaters and do not store the fuel near living quarters or from year to year.

No matter what type of room heater you have been using, always refer to the manufacturer's instructions for proper use, maintenance and storage.

For more information about safe operation of wood and coal burning stoves, kerosene, gas or electric heaters, or to report a product hazard or product-related injury, please write to the U.S. Consumer Product Safety Commission, Washington, D.C. 20207 or call the toll free hotline, 800-638-CPSC.

caused some minor mass hysteria — people heard there were some poisonous gases in the tail and feared that the world might come to an end.

- During the 1910 appearance, much was learned about the comet for the first time. As it approached the Sun, its tail grew at the rate of a half million miles per day and was estimated to be 100 million miles at one time.

- The Comet hasn't come back yet, but strange stories about its reappearance are already getting started. Some youngsters, for instance, pretend a group of strange creatures are hiding in the Comet's tail, ready to invade Earth.

- Those cosmic creatures are the Parasites, new action toys from Matchbox Toys. They minimize their size by

folding and squeezing into their own vehicles—to hide from unsuspecting humans. Pull the vehicle apart and a Parasite emerges.

## Comet Tales

### The Last Time Halley's Comet Came By

- Halley's Comet is coming back! History's most famous comet is due to pass by the earth once more in 1985 and again in 1986.



- Did you know that the last time Halley's Comet appeared was in 1910? Sensational newspaper stories

# NEWS OF SAFETY

## TIPS ON WOOD BURNING STOVES

There's been a "back to wood" movement on among many homeowners in recent years as soaring costs and shortages of fuel oil and natural gas prompted the comeback of a primary 19th century heating source—the wood burning stove.



As recently as 1974, only about 310,000 wood or coal burning stoves were made in or imported into the United States. By 1978, the figure had climbed to 1.1 million. They are especially popular in the Midwest and the Northeast, where winters are cold and other fuels may be expensive.

But wood burning stoves sometimes carry a different, hidden price tag—the hazard of fire that can produce death and destruction. A 15-state survey by the National Fire Protection Association showed wood and coal burning stoves cause between 8,000 and 9,000 fires and 100 to 130 deaths each year. The Consumer Product Safety Commission says about 5,700 persons were injured through contact with such stoves in 1979.

State Farm says most wood burning stove fires are caused by either faulty installation or improper maintenance. The company offers these safety tips:

- It's best to buy a new stove from an experienced, reliable dealer. If you buy a used one, check it carefully for defects. Get one that's listed by Underwriters Laboratories Inc. or a similar organization.

- Check local fire and building codes. If you're not completely sure of in-

stallation requirements or procedures, get a reliable contractor to do the job. --Because these stoves produce large amounts of radiant heat, there must be adequate clearance (at least 36 inches) between the stove and its piping and combustible materials.

- Place the stove on a fire-resistant base.

- If you use an existing fireplace or chimney, it should be clean. To keep toxic gases from seeping into the room, seal off the fireplace or chimney openings after the stove pipe connector has been installed.

- Stove pipe should run straight and be as short as possible. Avoid 90-degree angles; use gentle 45-degree turns instead.

- Avoid passing stove pipe through a combustible wall or ceiling.

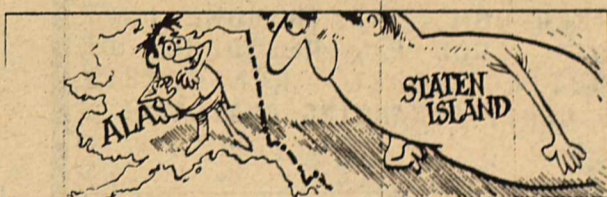
- Stove connector pipes and the chimney should be inspected by a professional at least once a year—and cleaned if necessary to avoid buildup of creosote, dust-like carbon deposits that may catch fire.

- Use dry, well-seasoned hardwood; this also reduces creosote buildup.

- When possible, use short, hot fires rather than long, smoldering ones. Don't leave the stove burning unattended overnight.



The first long railroad tunnel in America was completed in 1873, running through the Hoosac Mountains in northwestern Massachusetts.



The state of Alaska, the nation's largest, has a population smaller than New York City's borough of Staten Island.

## UROLOGO

### DR. GILL BREHM

Especialista en enfermedades del riñon, vejiga, prostata y sistema urinario de adultos y niños. Se habla español.

Consulta de: 9:00 a.m. a 5:00 p.m. Lunes a Viernes

710 Bedell  
Telefono: 775-9525
Del Rio, Texas  
Emergencias: 774-3444

## Dr. Gill Brehm

### Urologist

Specializing in diseases of the kidneys, bladder, prostate gland and urinary system of men, women and children.

Office Hours from 9:00 a.m. to 5:00 p.m.  
Monday through Friday.

710 Bedell  
Phone: 775-9525
Del Rio, Texas  
Emergencias: 774-3444



CLASSIFIED ADS DEADLINE TUESDAY NOON

ALL CLASSIFIED ADS: \$ .20 PER WORD. 10 WORDS MINIMUM INSERTION \$2.00 PER WEEK. NO BILLING OF CLASSIFIEDS!!!!

FOR SALE OR RENT

PIANO FOR SALE

WANTED: RESPONSIBLE PARTY TO ASSUME SMALL MONTHLY PAYMENTS ON PIANO. SEE LOCALLY... CALL 1-800-447-4266. \*\*\*\*\*

WANTED: DEPENDABLE PERSON TO DO YARDWORK.. COME BY THE CORNER OF GOVE & THOMAS STREETS. NO PHONE CALLS... \*\*\*\*\*

FOR SALE 1978 Starcraft, Pop-Up Camper Trailer-Sleeps 6, stove, water tank and L.P. Gas. 512-563-2318 after 5 p.m.

CALL FOR INFO. ON SEASON OR DAY HUNTING \*\*\*\*\* DAY HUNTING Does & Spike Bucks ONLY! PHONE (512) 563-2112. \*\*\*\*\*

KINNEY COUNTY LAND CO. 512 563 2446

2-BEDROOM, 2-BATH HOME ON 7 LOTS. GOOD FOR RESIDENCE OR HUNTING LODGE. REASONABLY PRICED.. FINANCING AVAILABLE.

Specialty Bldg. lot on Fort Clark in Historic location. All utilities available. Good dirt fill and retaining wall. Some owner financing.

10 acre with excellent well and fencing. Just 2 mi from Brackettville.

Day and Season hunting available.

Luxury condominiums. Daily and weekly rates.

BRACKETTVILLE CHURCHES

FIRST BAPTIST CHURCH (Southern Baptist)

Rev. Ronnie Watson

Sunday School 9:45 am
Worship Service 11:00 am
Worship Ser. (Sun) 7:00 pm
Prayer Meeting (Wed) 7:00 pm

\*\*\*\*\*

FRONTIER BAPTIST CHURCH (Southern Baptist)

Rev. Joe Townsend

Sunday School 10:30 am
Worship Service 11:00 am
Prayer Meeting (Sun) 7:00 pm
Prayer Meeting (Wed) 7:00 pm

\*\*\*\*\*

CHURCH OF CHRIST

Sunday School 9:30 am
Worship Service 10:30 am
Bible Study (Sun) 6:30 pm
Bible Study (Wed) 7:00 pm

\*\*\*\*\*

UNITED METHODIST CHURCH

Ron Kelly- Pastor

Sun: Church Education- 9:45am
Morning Worship- 11:00am
Wed: Bible Study- 7:00pm
Thurs: Children's Choir Practice- 4:00 pm
Thurs: Adult's Choir Practice 5:00 pm

\*\*\*\*\*

ST. MARY MAGDALENE CATHOLIC CHURCH

Fr. Jim Cashin

MASSES:
Monday 7:00 am
Wednesday 6:30 pm
Thursday-6:00pm, Spofford
Friday 7:00 am
Saturday 6:30 pm
Sunday-8 am & 10:30 am

\*\*\*\*\*

ALCOHOLIC ANNONYMOUS Meetings in Brackettville, every Thursday at 8:00 p.m... ALANON meetings every Monday at 8:00 p.m.. Call 563-2094 for more information. \*\*\*\*\*

BRACKETT'S "FULL SERVICE" STATION!



T & A SERVICE STATION

HWY. 90 563-9794

ROADRUNNER ENERGY, INC.



BUTANE PROPANE RENT TANKS

Office in Brackettville Ann & Crockett 563-2630

PROPANE TANKS MOTOR FUEL for Sale or Rent

Del Rio Gas Company

HWY 90 WEST P.O. BOX 420654 DEL RIO, TEXAS 775-3633

JAMES SMITH 563-9223



Texas A&M University Office of Public Information College Station, Texas 77843 409/845-4641

Turning trash into energy is subject of book from Texas A&M Press

COLLEGE STATION — A new book which documents how to turn biomass, such as hog manure and gin trash, into fuel has been published by the Texas A&M University Press.

Second in the Texas Engineering Experiment Station (TEES) Monograph Series, "Biomass Energy: A Monograph," reviews the status of biomass as an alternative energy source, with particular emphasis on The Texas A&M University System (TAMUS) energy research programs.

Biomass energy involves a broad range of feedstocks, including forest products, grains, oilseeds, residues, algae and animal manure, which can be transformed into energy through a dozen or more conversion processes. The millions of tons of biomass potentially available for fuel could provide up to 6 or 7 percent of the nation's energy needs, the editors indicate in their concluding remarks.

But if the current prices of fossil fuels such as petroleum, natural gas and coal prevail, biomass energy will not displace major quantities of fossil fuels in the next 10-20 years, as most biomass fuels are not economically viable under the current price structure.