

TEXAS PRESS
ASSOCIATION
AWARD WINNER

25¢

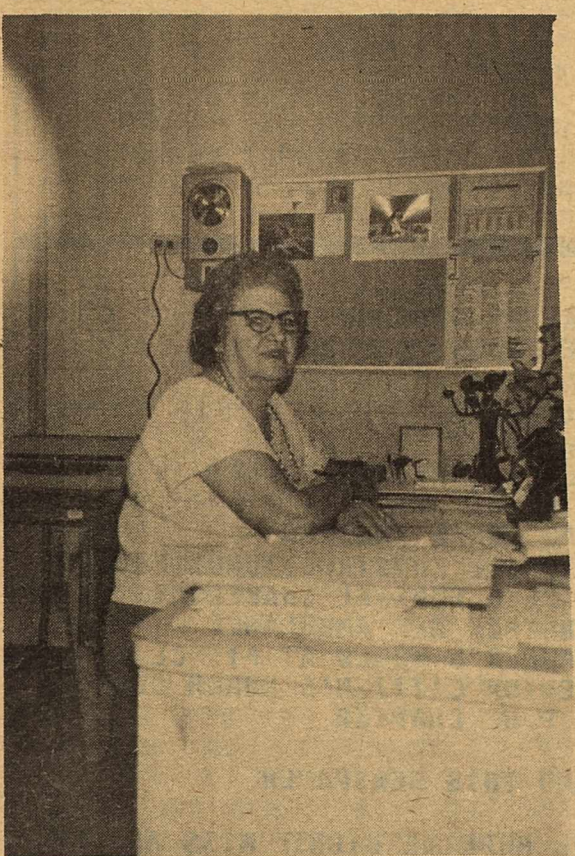
the Kinney Cavalryman

VOL. 13 NO. 33

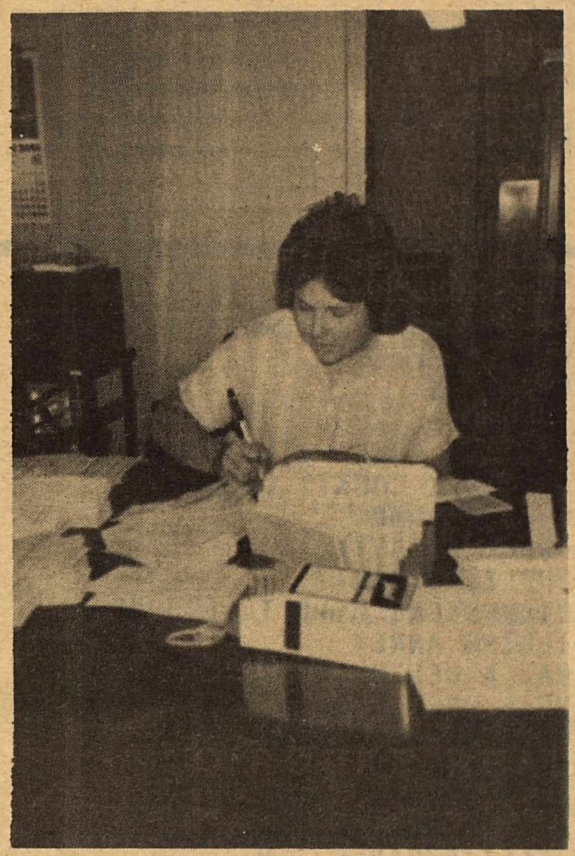
AUGUST 29, 1986

BRACKETTVILLE, TEXAS

12 TH ANNIVERSARY EDITION



Emma Swaim returns to her duties as High School secretary.



Season football ticket purchasers were greeted this year by new administrative secretary Cindy Bonner.



Judy Burks responds to a question during presentation of the lesson cycle training for Brackett teachers last week.

TWELFTH ANNIVERSARY EDITION

WELL, IT HAS BEEN TWELVE YEARS, THIS WEEK, THAT THE KINNEY CAVALRYMAN HAS BEEN IN BUSINESS. SINCE THE BEGINNING OF THE NEWSPAPER, THE FOLLOWING BUSINESSES AND ORGANIZATIONS HAVE ALSO BEEN ADDED TO OUR COMMUNITY:

- MOORE'S BARBER SHOP
- AAA ROOFING SERVICE
- FORT CLARK CONDOMINIUMS
- SAGEBRUSH SHOPPE
- SATELLITE T.V. SALES & SERVICE
- NEW SCHOOL ANNEX
- NEW RIO GRANDE ELECTRIC HDQTRS.
- FIRST BAPTIST CHURCH ANNEX
- DR. JAMES HARBOR DDS
- VOLUNTEER AMBULANCE CREW
- NEW BANK BUILDING
- PAVED STREETS
- CITY HALL ANNEX
- WESTERN AUTO
- KINNEY COUNTY MEMORIAL CLINIC
- KINNEY COUNTY LAND COMPANY
- BIZZELL REALTY
- NEW COUNTY JAIL
- PUBLIC SWIMMING POOL & PARK
- SEARGEANT CONCRETE IND.
- NEW BORDER PATROL BLDG.
- DIRECT DISTANCE DIALING
- FRONTIER BAPTIST CHURCH
- CITY DRAINAGE SYSTEM
- NEW ATHLETIC STADIUM
- BURGER & SHAKE
- KINI-MINI STORAGE
- THE SCREENDOOR
- DAVE'S TOWING SERVICE
- STOP-N-SHOP
- NEW COUNTY PARK
- THE JUG STORE
- CITY POLICE
- COUNTY COMMUNITY CENTER
- STREET SIGNS
- HOUSE NUMBERS

CONT. ON PAGE 2

TPA MEMBER
1986
TEXAS PRESS ASSOCIATION

The Kinney
Cavalryman
J. GEORGE LOOS, JR.
EDITOR

PUBLISHED EACH FRIDAY
USPS 100-610

DEADLINE FOR ALL COPY
NOON ON TUESDAY

P.O. BOX CQ
BRACKETTVILLE, TEXAS
78832
563-2696

SUBSCRIPTION RATES: PER YEAR

\$15.00 - OUT OF COUNTY
\$14.00 IN COUNTY

"Any erroneous reflection upon the character or standing of any person or firm appearing in this paper will be gladly corrected, upon being called to the attention of the Management and to the article in question".....



⊕ **LOOSISM** ⊕

GREAT SPIRITS HAVE
ALWAYS ENCOUNTERED
VIOLENT OPPOSITION
FROM MEDIOCRE
MINDS... EINSTEIN

CONT. FROM PAGE 1

SENIOR CITIZENS PROGRAM
DR. ZACK DAVIS D.V.M.
RAY'S GROCERY
WOODSON & SONS WELDING
WORLD CHAMPIONSHIP TORTILLA
TOSSING TOURNAMENT
MASON SHOE DEALER
CITY WEATHER WARNING SYSTEM
FIREMEN'S HALL
PAVED, LIGHTED, DIRECTIONAL
RADIO FACILITIES-AIRPORT
YELLOWROCK SQUARE DANCE SHOP
RED CROSS CHAPTER

GIRLS VOLLEYBALL

Competition against several area and district teams was insured as 14 girls reported for Brackett High School's volleyball workouts on August 11 at the high school gymnasium. Coach Nancy Chism noted that all games are scheduled for Saturdays and Tuesdays. There will be no conflict with varsity football, according to Coach Chism, so Brackett High supporters will be able to enjoy two fall sports for the first time in many years.

1986 VOLLEYBALL SCHEDULE

Aug. 11	First Day of Practice		
Aug. 30	Scrimmage - Eagle Pass Freshman		TBA
Sept. 6	Utopia Tournament		TBA
Sept. 13	Eagle Pass JV Tournament		TBA
Sept. 16	San Antonio Cole	Here	6:30
Sept. 23	Lytle	There	6:30
Sept. 30	Open		
Oct. 7	Dilley	Here	6:00
Oct. 14	Natalia	There	6:30
Oct. 21	Asherton	Here	6:00
Oct. 28	Lackland	There	6:30
Nov. 1	District Tourn.	Natalia	TBA

TULLY SHAHAN, ATTORNEY AT LAW
SCHOOL CAFETERIA
BOY SCOUTS
DR. A. LUZ, M.D.
FT. CLARK ADULT CTR. & SPA
NEW KINNEY COUNTY LIBRARY
NEW CITY DUMP
O'ROURKE REALTY
REPUBLICAN PARTY
SOUTHWESTERN BELL TELEPHONE
BUILDING ANNEX
X-RAY & DEFIB. MONITOR EQUIP.
DAYE'S USED CARS & TRUCKS
TRUE VALUE (DAVIS HARDWARE &
RANCH SUPPLY)
HALE'S AUTO/DIESEL REPAIR
R.E.A.'S SUBSTATION
SATELLITE/CABLE T.V.
FINCH AIR CONDITIONING
COMMUNITY CHURCH
FIRE TRUCK
GULF STATION
ROB'S CAR WASH
ROB'S MINI SHOP GROCERY
FRONTIER GUN SHOP
CLINIC PHARMACY
FT. CLARK SPGS. 18-HOLE GOLF
COURSE, CLUB HOUSE & PRO SHOP
AMPHITHEATRE
VITO'S PLUMBING & ELECTRICAL
GIRL SCOUTS
CONNIE'S GYM
FRONTIER ADVERTISING
TOUCH TONE DIALING
WILSON CONSTRUCTION
NEW WELFARE BLDG.
JERRY'S BBQ AND BUCKHORN
FRONTIER GALLERY
GOLD KEY REALTY
THE GARAGE
NEW CLINIC ADDITION
COURT HOUSE ANNEX

NAT MENDELSON RECREATION CTR.
METHODIST CHURCH ANNEX
GREEN'S VIDEO CENTER
HUNDREDS OF NEW FT. CLARK
RESIDENTS
SEVERAL MOVIES FILMED AT ALAMO
VILLAGE
LAS MORAS LANDING
BIZZELL CONSTRUCTIONOR EQUIP.
RICE'S FUNERAL CHAPELCKS
ANOTHER NEW AMBULANCE
CAMPER'S WORLD AT FT. CLARK
SENIOR CITIZEN'S LUNCH CENTER
V.F.W. CHAPTER

AND THIS NEWSPAPER

WE HOPE WE DIDN'T MISS ANYONE,
IF WE DID, WE WILL BE GLAD TO
INCLUDE THEM IN NEXT WEEK'S
ISSUE.

WE ARE PROUD , THAT IN THE 12
YEARS OF PUBLISHING THIS
NEWSPAPER THAT WE HAVE NEVER
HAD TO APOLOGIZE FOR PRINTING
INCORRECT INFORMATION AND WE
HAVE ONLY SKIPPED ONE REGULAR
PUBLICATION TO DATE IN THAT 12
YEAR PERIOD, EXCEPT FOR THE
AUGUST 15 ISSUE WHEN MY MOTHER
WAS EXTREMELY ILL.

CONGRATULATIONS KINNEY
COUNTY AND BRACKETTVILLE ON A
TERRIFIC GROWTH AND ON BEHALF
OF THE KINNEY COUNTY
CAVALRYMAN.....

OVER 105 NEW BUSINESSES
AND FACILITIES !

.....THANK YOU!!!!

SHERIFF'S CORNER

NORMAN HOOTEN
SHERIFF

DWI, three letters of the alphabet that represent crippling injuries and death on our highways and public roads at an ever increasing rate. More people were killed last year in alcohol related traffic accidents than in all other criminal incidents combined. Criminal? Yes, criminal! Driving an automobile on our public roads and highways while under the influence of alcohol or other substances to the extent that reflexes and judgement are impaired is a criminal offense, everybody knows that, or they should. Though considered in most cases to be a Class A Misdemeanor, the responsibility goes far beyond that.

Some of you may have seen the program about drunk driving that was broadcast on national television Sunday, August 24th. If the sight of broken bodies, deaths, and ruined lives that were the direct result of drunk drivers did not touch your heart and make you want to demand that something be done to stop the carnage on our highways, nothing ever will.

Sadly enough, the general public and our court systems for the most part seem to have a Ho-Hum attitude towards drunk drivers. Peace officers from law enforcement agencies throughout the state and nation work hard to detect and remove drunk drivers from our highways, but once the drunk is arrested and jailed, he comes under the jurisdiction of the court system. Let me show you below how most DWI cases are handled.

The drunk driver is arrested and jailed by an alert,

hardworking peace officer. Bond is set and in most cases the defendant posts that bond and is released. The proper paperwork is processed through the county attorney's office and the county clerk's office and his or her name is placed on the county court docket for trial at a later date. Once the case is called to court the county attorney and the probation officer get together with the defendant and start

trying to work out a plea bargain agreement. In most cases this agreement is to the advantage of the defendant in that he agrees to plead guilty and receives probation for the offense. Now not only does he or she receive a probated jail sentence, but also received up to two years to pay the fine imposed. In other words **CRIME ON CREDIT!** Seldom does the probated defendant meet the requirements of the probation and I have a stack of warrants in my office that Man 'O' War couldn't jump over to prove it.

Now you might ask yourself why all this effort is done to provide an easy out for violators that kill more people every year than any other criminal violators, do not receive the same benefits.

Well, those of us who have the responsibility of detecting and removing those drunks from our highways ask ourselves the same question over and over. It is especially frustrating to me as I receive a handful of warrants each week issued by the same court that probated the fines and jail terms for the violators in the first place. The probation program is not working, it never has. Why do the courts continue to grant these probated fines and

jail terms for this type of violation when it has proven not to work? Don't ask me. We have almost \$7,000.00 out in unpaid fines caused by this program and the stack of warrants in my office grows almost daily. Many of the probated violators will never be located and their fines never paid. They will most likely continue their habit of drinking and driving, and if the statistics prove themselves out, someday they will kill themselves or most tragic of all someone else.

DOTSON SALES AND SERVICES, INC.

THE GARAGE

563-2278

COMPLETE AUTO - TRUCK REPAIR - DIESEL
HWY 90 WEST NEXT TO PHILLIPS
66 HEAVY EQUIPMENT REPAIRS

AIR CONDITIONING - TIRES - SMALL ENGINES

PUBLIC NOTICES

The City of Brackettville will receive Bids for Constructing an addition to the Kinney County Memorial Clinic until 7:00 p.m. daylight savings time on the 8th day of September, 1986, at the Brackettville, Texas City Hall (P.O. Box 526, Brackettville, Texas 78832) at which time and place all bids will be publicly opened and read aloud.

Bids are invited upon the several items and quantities of work as follows:

Item 1. Construction, including all items, of an addition to the Kinney County Memorial Clinic located in the City of Brackettville. No site work, including parking, is included and should not be included in the bid.

Contract Documents, including Drawings and Technical Specifications, are on file at the office of City Manager at the Brackettville City Hall.

Copies of the Contract Documents may be obtained from City of Brackettville.

A certified check or bank draft, payable to the order of the City of Brackettville, negotiable U.S. Government bonds (at par value) of a satisfactory Bid Bond executed by the Bidder and an acceptable surety in an amount equal to five percent (5%) of the total Bid shall be submitted with each Bid.

Attention is called to the fact that not less than the federally determined prevailing wage rate, as issued by the Texas Department of Community Affairs and as set forth in the Contract Documents, must be paid on this project, and that the Contractor must ensure that employees and applicants for

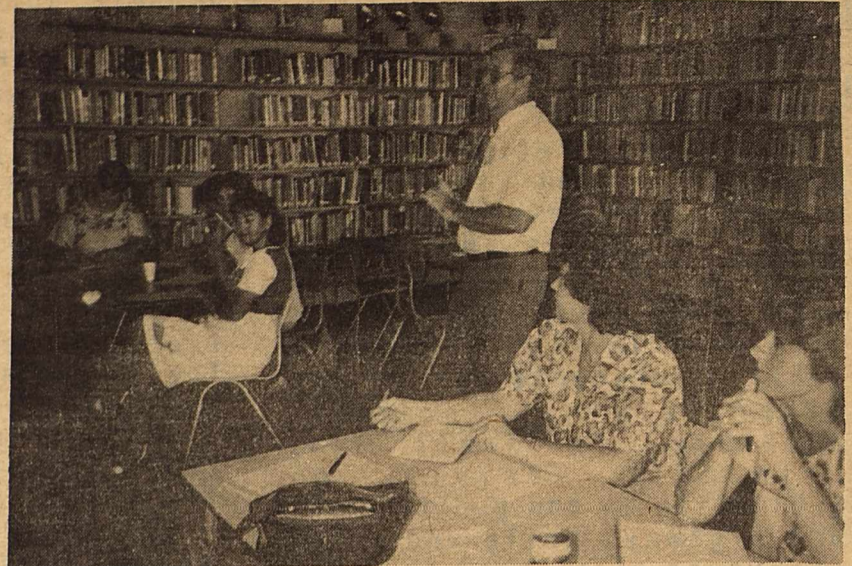
employment are not discriminated against because of their race, color, religion, sex or national origin.

In addition, if the prime contractor is not a minority-owned business, the prime contractor shall ensure that at least fifteen (15%) of the funds subcontracted under this

CONT. ON PAGE 5

NEW BIRTHING CENTER
 at Uvalde Memorial Hospital now open for deliveries.
 Accepting new obstetrical & gynecology patients.

Dr. Salar Aziz
 Fellow of the American College
 of Obstetricians and Gynecologists.
 1030 Garner Field Road — Uvalde, Texas
 Phone (512) 278-6600



BOB MC CALL



21 people attended the first meeting of the year for the Tiger Boosters Club. Meetings are planned for the 1st & 3rd Mondays of each month. Volleyball and football highlights will be spotlighted through November. Outgoing secretary-treasurer Nancy Frerich, Vice-President Tony Frerich and President Hector Pena are shown in the foreground. New secretary-treasurer Sharon White is facing the camera.



DORA JAVENS AND JANE HENNIGER

Rick's Furniture Co.
 WHERE YOU GET MORE THAN YOU
 PAY FOR ...SINCE 1947

FURNITURE WATERBEDS
BEDDING CARPETS

FREE DELIVERY TO BRACKETTVILLE

504 EAST 10TH ST
 DEL RIO, TEXAS



The Sun was 35 to 50 percent dimmer in its infancy—4.5 billion years ago — than it is today.



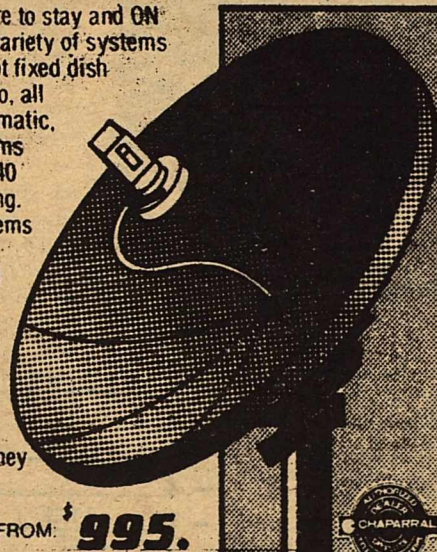
In the 19th century Karl Waetzel, an Austrian, invented a machine with which one man could play 378 instruments. The panominico, as he named it, numbered 150 flageolets, 150 flutes, 50 oboes, 18 trumpets, 5 fanfares, 3 drums and 2 kettledrums.



Satellite TV

SATELLITE SALE!

Satellite television is here to stay and ON SALE NOW. We have a variety of systems available from a five foot fixed dish that can sit on your patio, all the way up to fully automatic, remote-controlled systems that can receive up to 140 channels of programming. Satellite television systems are simple to use and completely legal. Signal reception is often better than broadcast TV and the picture quality is outstanding. You can enjoy the freedom and wide variety of satellite television and save money today.



COMPLETE SYSTEMS FROM: **\$995.**



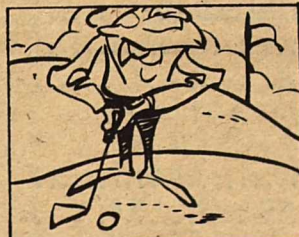
GEORGE LOOS

512-563-2696

BRACKETTVILLE, TEXAS



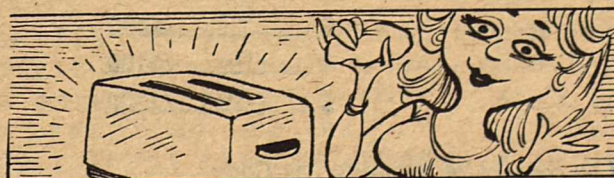
It is popularly believed that roots "nourish" the plant. The fact is most of the plant's food comes from carbon dioxide absorbed by the leaves.



North Carolina, often called "Golf State USA," has some 330 golf courses.



Ketchup was once sold as a medicine.



You can easily keep your toaster bright and shining by cleaning it with club soda. It sparkles!

THREE-PLUS REASONS FOR YOUR FAMILY...



KNOWING OUR FAMILY!

Money keeps young families going, growing, feeling secure. Come in & discuss all your needs with our friendly "family" banking institution. We pay the highest interest rates on insured savings...a little more money for those three plus good reasons of yours.

**FIRST STATE BANK
OF BRACKETTVILLE**
MEMBER F.D.I.C. 563 - 2451



There are 56 telephones per 100 people in the United States.

⊕ PUBLIC NOTICE ⊕

CITY OR SPECIAL DISTRICT: City of Brackettville

CALCULATION OF EFFECTIVE TAX RATE, ESTIMATED UNENCUMBERED FUND BALANCES, AND SCHEDULES

I, Marcus Tidwell, Assessor/Collector for Brackettville, in accordance with Sec. 26.04, Property Tax Code, have calculated \$.594 per \$100 of value as the tax rate which may not be exceeded by more than three percent by the governing body of the City without holding a public hearing as required by the code.

The estimated unencumbered fund balance for Maintenance & Operation fund: \$ 10,000
 The estimated unencumbered fund balance for Interest & Sinking fund: \$ -0-

Marcus Tidwell Assessor/Collector

August 20, 1986

CALCULATION OF EFFECTIVE TAX RATE

MAINTENANCE AND OPERATION (M&O) TAX RATE

1. 1985 total tax levy	\$ <u>89,794</u>
(1985 tax rate: M&O \$ <u>.60</u> + I&S \$ <u>0</u> = \$ <u>.60</u> /\$100)	
2. Subtract 1985 debt service (I&S) levy	- \$ <u>-0-</u>
3. Subtract 1985 taxes on property in territory no longer in unit in 1986	- \$ <u>-0-</u>
4. Subtract 1985 taxes for property becoming exempt in 1986	- \$ <u>182</u>
5. Subtract 1985 taxes for property appraised at less than market value in 1986 ..	- \$ <u>-0-</u>
6. Subtract 1985 taxes used to regain lost 1984 taxes because of appraisal roll errors	- \$ <u>-0-</u>
7. Adjusted 1985 M&O levy (subtract #2, #3, #4, #5, and #6 from #1)	\$ <u>89,612</u>
8. 1986 total taxable value of all property	\$ <u>15,321,226</u>
9. Subtract 1986 value of new improvements added since 1/1/85	- \$ <u>233,600</u>
10. Subtract 1986 value of annexed property added since 1/1/85	- \$ <u>-0-</u>
11. Adjusted 1986 taxable value for M&O (subtract #9 and #10 from #8)	\$ <u>15,087,626</u>
12. Divide the adjusted 1985 M&O levy (#7 above) by the adjusted 1986 taxable value for M&O (#11 above) (\$ <u>89,612</u> ÷ \$ <u>15,087,626</u>)	\$ <u>.00594</u>
13. Multiply by \$100 valuation	× \$100
14. Effective M&O rate for 1986	\$ <u>.594</u> /\$100

INTEREST AND SINKING (I&S) TAX RATE

15. 1986 I&S levy needed to satisfy debt	\$ <u>-0-</u>
16. 1986 total taxable value for all property	\$ <u>15,321,226</u>
17. Divide the 1986 I&S levy (#15 above) by the 1986 total taxable value (#16 above) (\$ <u>-0-</u> ÷ \$ <u>-0-</u>)	\$ <u>-0-</u>
18. Multiply by \$100 valuation	× \$100
19. Effective I&S rate for 1986	\$ <u>-0-</u> /\$100

APPRAISAL ROLL ERROR RATE

20. Rate to raise the 1985 levy because of appraisal roll errors (\$ <u>-0-</u> ÷ \$ <u>-0-</u>) × \$100	\$ <u>-0-</u> /\$100
21. Add rate to regain 1985 taxes lost because of appraisal roll errors (\$ <u>-0-</u> ÷ \$ <u>-0-</u>) × \$100	+ \$ <u>-0-</u> /\$100
22. Total rate to adjust for appraisal roll errors	\$ <u>-0-</u> /\$100

TOTAL EFFECTIVE TAX RATE FOR 1986

23. Effective M&O rate (#14 above)	\$ <u>.594</u> /\$100
24. Add effective I&S rate (#19 above)	+ \$ <u>-0-</u> /\$100
25. Add rate to adjust for appraisal roll errors (#22 above)	+ \$ <u>-0-</u> /\$100
26. 1986 Effective Tax Rate	\$ <u>.594</u> /\$100

1986 Effective Tax Rate is the tax rate published as required by Sec. 26.04, Property Tax Code.

27. Rate required for additional indigent health care services (\$ <u>-0-</u> ÷ \$ <u>-0-</u>) × \$100	\$ <u>-0-</u> /\$100
---	----------------------

Shahan Double Production

The 26th Annual Alamo Village Labor Day Cowboy Horse Races, Brackettville, Texas will be on schedule Monday, September 1st, where double productions have been going on for two movies, CBS, "Gone To Texas," Taft Entertainment and NBC, "Thirteen Days to Glory," Finnegan Associates.

Valentino and The Shahan Express Band, the latest in major attractions in the Southwest, will liven up the setting with a command performance during the full day of western entertainment. The summer band "Alamo Village Wild Catters," will fill in between performances and will be doing their side splitting, fun to watch skits (western melodrama).

A Texas Style Barbeque will be served at noon and the back yard "cowboy horse races," will begin shortly after lunch. Any real cowboy or cowgirl that can ride and thinks his or her horse can run may enter the races, (excluding stud horses and those that have been on the track). The winner of each race may try for the "Championship Trophy" in the final race of the day.

At all times during the day you may browse in the General Store, Indian Store and the Trading Post. The open buildings serve as walk-in museums where you see the props that dress the sets when movies are being made.

"A double production at the Alamo



Charles Richards, cameraman and Steen Stovall, newsman for KEDT TV 16, Corpus Christi, interview Happy Shahan, owner of Alamo Village Movie Location, for PBS History of Texas series "Lone Star."

Photo of the interview was taken by Darlene Shahan during a break in filming part of the recent movie, "Up Hill All the Way," with Roy Clark and Mel Tellis.

The movie location on Highway 674 near Brackettville, where double productions have been going on for two movies, has had the hammers banging, saws buzzing, and cameras clicking. The 26th Annual Alamo Village Labor Day Cowboy Horse Races will be on schedule, Monday, September 1st, as well as live entertainment and a Texas Style Barbeque at noon.

Village movie location has never happened before and may never happen again," says Happy Shahan, owner of Alamo Village on the Shahan HV Ranches in Brackettville. So, for the real feeling of how the

West was won, come out and see the town that was built to make movies. Have a great time with your family, visit with friends and neighbors; chances are you will probably run into a celebrity.

who is interested in owning a home to contact the Texas Housing Agency for program information," he added.

Prospective homebuyers may call (512) 472-7500 to obtain application information, a program brochure, and a list of participating lenders.

The Texas Housing Agency was created by the state legislature in 1979 to provide affordable home financing to low and moderate income families. Its programs are self supporting; the Agency receives no state or federal appropriations. Current program funds are expected to finance approximately 1,300 homes.

Consumer Information Department

HELPFUL HINTS ON CREDIT

Credit is a continuous process which starts with your very first application. You can establish a strong credit history by following a few simple tips.

If you're just applying for credit, newly married, or if you're a widow or divorcee, you might find it difficult to get a large loan if you suddenly need one. A good place to begin is to open a checking or savings account. Make regular deposits to the account, taking care not to overdraw it. After a while, you might want to open charge accounts at local department stores, and be sure to pay your bills on time.

Once you've demonstrated credit responsibility, you should consider applying for a line of credit at a local financial institution such as Avco Financial Services. Finance companies may be your best bet for an initial line of credit. In requesting this type of credit, keep in mind the factors most lenders consider before granting credit. These factors include customer stability, such as home ownership, checking and savings account history, employment record, and outstanding debts. If you're turned down by one lender, don't assume you'll be turned down by everyone else.

In applying for additional credit, it's always helpful to understand how lenders base their credit decisions. Credit files, maintained by a variety of credit bureaus, draw on several information sources. These sources can include banks, finance companies, insurance agencies, employers, department stores, and other credit bureaus. A profile includes very basic information, such as birth date, address,



The basics for establishing a good line of credit: Opening checking, savings and charge accounts.

social security number, credit accounts and limited information on lawsuits, tax liens and court judgements. Profiles do not include credit recommendations or evaluation of credit worthiness.

As a consumer, you have the right to get a copy of your credit record under the Fair Credit Reporting Act of 1971. Ask your creditor which bureau it uses, and ask the bureau for a copy. Any corrections should be sent to the credit bureau, while major disputes should be taken to the Bureau of Consumer Protection, Federal Trade Commission, Washington, D.C. 20580.

If you need to restore your credit rating, be sure to work with your creditor. Creditors are interested in helping customers meet their obligations. Prove you can handle your credit by paying off your bills and paying them on time.

By showing you can maintain a responsible credit relationship, you should find that department stores, finance companies, and other lenders are willing to extend you additional credit.

These tips are provided by Warren Lyons, Executive Vice President of Field Operations, for Avco Financial Services.

TEXAS HOUSING AGENCY TO OFFER 8.7% FHA-INSURED HOME LOANS

Approximately \$73 million in low interest mortgage loans will become available to homebuyers in Texas beginning August 18, 1986, a Texas Housing Agency official announced Thursday.

The FHA insured loans will be offered to eligible low and moderate income borrowers at a fixed payment rate of 8.7% for 30 years, with a three to five percent minimum downpayment, said Dan A. McNeil, Acting Executive Administrator of the Texas Housing Agency.

the housing agency has established maximum income limits and a ceiling on home prices to direct the program more effectively to households least able to afford conventional interest rates, McNeil said.

To qualify for the program, and individual applicant must have an adjusted gross income for the preceding tax year of \$33,000 or less; the combined income ceiling for a family is \$42,000. In addition, for homes in most areas of the

state, borrowers must be first time homebuyers or not have owned their principal residence in the past three years.

Borrowers may apply for the funds beginning August 18, 1986. At the time of application, a borrower will be expected to provide the lender with a copy of a valid sales contract on a house, copies of their tax returns for the preceding three years; general credit information; and a fee to cover application processing. Maximum loan and home price limits vary, depending on the location of the home.

"Over the past six years, our single family home purchase program has made homeownership possible for nearly 12,000 low to moderate income Texas families," McNeil said. "Last year, 70 percent of the families that participated in the program had a household income of less than \$30,000 a year."

"Low interest rates can make a big difference in a family's ability to qualify for a mortgage loan," McNeil said. "I would encourage everybody

PUBLIC NOTICE

KINNEY COUNTY

CALCULATION OF EFFECTIVE TAX RATE, ESTIMATED UNENCUMBERED FUND BALANCES, AND SCHEDULES

I, MARCUS TIDWELL, A/C for KINNEY County, in accordance with Sec. 26.04, Property Tax Code, have calculated \$ per \$100 of value as the tax rate which may not be exceeded by more than three percent by the Commissioners' Court of KINNEY County without holding a public hearing as required by the code.

\$.06368 per \$100 for farm-to-market/flood control tax; \$.58893 per \$100 for the general fund, permanent improvement fund, and road and bridge fund tax; + \$.0000 per \$100 for public road maintenance tax; thus \$.65261 per \$100 TOTAL COUNTY EFFECTIVE TAX RATE

The estimated unencumbered fund balances are as follows:

Farm to Market/Flood Control Maintenance & Operation: \$ 20,000 Public Road Maintenance Maintenance & Operation: \$ -0- Interest & Sinking: \$ -0- Interest & Sinking: \$ -0-

General Fund Maintenance & Operation: \$ 200,000 Interest & Sinking: \$ -0-

The following schedule lists debt obligations that 1986 property taxes will pay: [Expand worksheet as necessary to list debt obligations. If the unit needs additional space, refer the reader to the portion of the notice showing the debt schedule. See examples.]

The following schedule lists indigent health care services required of KINNEY COUNTY

Table with columns: A. Required services that 1986 taxes will pay; B. Required services that 1985 taxes paid; C. State reimbursement for required services; NET INCREASE FOR NEW SERVICES FOR 1986. Includes sub-columns for Continued Service Cost and New 1986 Service Cost.

Marcus Tidwell Assessor/Collector

August 20, 1986

CALCULATION OF EFFECTIVE TAX RATE

Separate calculations are performed for each type of tax levied by Kinney County in order to determine a 1986 total effective tax rate. The following guide corresponds with the calculations shown: A - Farm-to-Market Road/Flood Control Tax; B - General Fund Tax; C - Maintenance of Public Roads Tax.

MAINTENANCE AND OPERATION (M&O) TAX RATE. Table with columns: Type of Tax: A Farm to MKT Rd. 1. 1985 total tax levy \$ 46,728 2. Subtract 1985 debt service (I&S) levy \$ 0 3. Subtract 1985 taxes on property in territory no longer in unit in 1986 \$ 0 4. Subtract 1985 taxes for property becoming exempt in 1986 \$ 21 5. Subtract 1985 taxes for property appraised at less than market value in 1986 \$ 0 6. Subtract 1985 taxes used to regain lost 1984 taxes because of appraisal roll errors \$ 0 7. Adjusted 1985 M&O levy (subtract #2, #3, #4, #5, and #6 from #1) \$ 46,707 8. 1986 total taxable value of all property \$ 78,826,505 9. Subtract 1986 value of new improvements added since 1/1/85 \$ 1,720,290 10. Subtract 1986 value of annexed property added since 1/1/85 \$ 0 11. Adjusted 1986 taxable value for M&O (subtract #9 and #10 from #8) \$ 77,106,215 12. Divide the adjusted 1985 M&O levy (#7 above) by the adjusted 1986 taxable value for M&O (#11 above) (\$ 46,707 + \$ 77,106,215) \$.00061 13. Multiply by \$100 valuation x \$100 14. Effective M&O rate for 1986 \$.061 /\$100

MAINTENANCE AND OPERATION (M&O) TAX RATE. Table with columns: Type of Tax: B General Fund 1. 1985 total tax levy \$ 439,992 (1985 tax rate for type B: M&O \$.555 + I&S \$ 0 = \$.555 /\$100) 2. Subtract 1985 debt service (I&S) levy \$ 0 3. Subtract 1985 taxes on property in territory no longer in unit in 1986 \$ 0 4. Subtract 1985 taxes for property becoming exempt in 1986 \$ 194 5. Subtract 1985 taxes for property appraised at less than market value in 1986 \$ 0 6. Subtract 1985 taxes used to regain lost 1984 taxes because of appraisal roll errors \$ 0 7. Adjusted 1985 M&O levy (subtract #2, #3, #4, #5, and #6 from #1) \$ 439,798 8. 1986 total taxable value of all property \$ 79,745,723 9. Subtract 1986 value of new improvements added since 1/1/85 \$ 1,720,290 10. Subtract 1986 value of annexed property added since 1/1/85 \$ 0 11. Adjusted 1986 taxable value for M&O (subtract #9 and #10 from #8) \$ 78,025,433 12. Divide the adjusted 1985 M&O levy (#7 above) by the adjusted 1986 taxable value for M&O (#11 above) (\$ 439,798 + \$ 78,025,433) \$.0056366 13. Multiply by \$100 valuation x \$100 14. Effective M&O rate for 1986 \$.56366 /\$100

INTEREST AND SINKING (I&S) TAX RATE

15. 1986 I&S levy needed to satisfy debt \$ 0 16. 1986 total taxable value of all property \$ 79,745,723 17. Divide the 1986 I&S levy (#15 above) by the 1986 total taxable value (#16 above) (\$ 0 + \$ 79,745,723) \$ 0 18. Multiply by \$100 valuation x \$100 19. Effective I&S rate for 1986 \$ 0 /\$100

APPRAISAL ROLL ERROR RATE

20. Rate to raise 1985 levy because of appraisal roll errors (\$ 9,849 + \$ 78,025,433) x \$100 \$.01262 /\$100 21. Add rate to regain 1985 taxes lost because of appraisal roll errors (\$ 9,849 + \$ 78,025,433) x \$100 + \$.01262 /\$100 22. Total rate to adjust for appraisal roll errors \$.02524 /\$100

1986 EFFECTIVE TAX RATE FOR EACH TAX

23. Effective M&O rate (#14 above) \$.56369 /\$100 24. Add effective I&S rate (#19 above) + \$ 0 /\$100 25. Add rate to adjust for appraisal roll errors (#22 above) + \$.02524 /\$100 26. 1986 Effective Tax Rate for this tax \$.58893 /\$100

TOTAL EFFECTIVE TAX RATE FOR 1986

27. Add 1986 effective tax rate for each tax \$.06368 /\$100 + \$.58893 /\$100 + \$ -0- /\$100 \$.65261 /\$100

1986 Effective Tax Rate for Each Tax Levied and the Total 1986 Effective Tax Rate are the rates published as required by Sec. 26.04, Property Tax Code.

28. Rate required for additional indigent health care services in 1986 (\$ 44,000 + \$ 78,025,433) x \$100 \$.05639 /\$100

SCHOOL DISTRICT: BRACKETT

CALCULATION OF EFFECTIVE TAX RATE, ESTIMATED UNENCUMBERED FUND BALANCES, AND DEBT SCHEDULE

I, MARCUS TIDWELL, CHIEF APPRAISER for BRACKETT I.S.D., in accordance with Sec. 26.04, Property Tax Code, have calculated \$.76808 per \$100 of value as the tax rate which may not be exceeded by more than three percent by the governing body of the Brackett I.S.D. without holding a public hearing as required by the code.

The estimated unencumbered fund balance for Maintenance & Operation fund: \$ 333,016 The estimated unencumbered fund balance for Interest & Sinking fund: \$ -0-

The following schedule lists debt obligations that 1986 property taxes will pay:

General Improvements Principal Interest Total \$20,000 \$80,257 \$100,257

Marcus Tidwell-Assessor/Collector

August 20, 1986

CALCULATION OF EFFECTIVE TAX RATE

MAINTENANCE AND OPERATION (M&O) TAX RATE

1. 1985 total tax levy \$ 621,653 (1985 tax rate: M&O \$.59 + I&S \$.22 = \$.81 /\$100) 2. Subtract 1985 debt service (I&S) levy \$ 168,844 3. Subtract 1985 taxes on property in territory no longer in unit in 1986 \$ -0- 4. Subtract 1985 taxes for property becoming exempt in 1986 \$ -0- 5. Subtract 1985 taxes for property appraised at less than market value in 1986 \$ 25,528 6. Subtract frozen M&O levy of over-65 homesteads \$ 10,466 7. Subtract 1985 M&O taxes used to regain lost 1984 levy \$ -0- 8. Adjusted 1985 M&O levy (subtract #2, #3, #4, #5, #6, and #7 from #1) \$ 416,815 9. 1986 total taxable value of all property \$ 78,324,828 10. Subtract 1986 value of new improvements added since 1/1/85 \$ 1,720,290 11. Subtract 1986 value of annexed property added since 1/1/85 \$ -0- 12. Subtract 1986 value of over-65 homesteads with frozen taxes \$ 2,436,590 13. Adjusted 1986 taxable value for M&O (subtract #10, #11, and #12 from #9) \$ 74,167,948 14. Divide the adjusted 1985 M&O levy (#8 above) by the adjusted 1986 taxable value for M&O (#13 above) (\$ 416,815 + \$ 74,167,948) \$.56198 15. Multiply by \$100 valuation x \$100 16. Effective M&O rate for 1986 \$.56198 /\$100

INTEREST AND SINKING (I&S) TAX RATE

17. 1986 I&S levy needed to satisfy debt \$ 57,000 18. Subtract frozen I&S levy of over-65 homesteads \$ 3,901 19. Adjusted 1986 I&S levy (subtract #18 from #17) \$ 53,099 20. 1986 total taxable value of all property \$ 78,324,828 21. Subtract 1986 value of over-65 homesteads \$ 2,436,590 22. Adjusted 1986 taxable value for I&S (subtract #21 from #20) \$ 75,888,238 23. Divide the adjusted 1986 I&S levy (#19 above) by the adjusted 1986 taxable value for I&S (#22 above) (\$ 53,099 + \$ 75,888,238) \$.000699 24. Multiply by \$100 valuation x \$100 25. Effective I&S rate for 1986 \$.0699 /\$100

APPRAISAL ROLL ERROR RATE

26. Rate to raise the 1985 levy because of appraisal roll errors \$ 14,375 + (\$ 78,324,828 - \$ 2,436,590) x \$100 \$.01894 /\$100 27. Add rate to regain 1985 taxes lost because of appraisal roll errors \$ 14,375 + (\$ 78,324,828 - \$ 2,436,590) x \$100 + \$.01894 /\$100 28. Total rate to adjust for appraisal roll errors \$.03788 /\$100

TOTAL EFFECTIVE TAX RATE FOR 1986

29. Effective M&O rate (#16 above) \$.56198 /\$100 30. Add effective I&S rate (#25 above) + \$.06990 /\$100 31. Add rate to adjust for appraisal roll errors (#28 above) + \$.03788 /\$100 32. 1986 Effective Tax Rate \$.66976 /\$100

1986 Effective Tax Rate is the tax rate published as required by Sec. 26.04, Property Tax Code.

STATE AID/EQUALIZATION ENRICHMENT AID RATE

33. Rate to replace lost state aid or qualify for maximum equalization allotment \$ 74,619 + (\$ 78,324,828 - \$ 2,436,590) x \$100 \$.09832 /\$100

LEGAL NOTICE

HEALTH INSURANCE BIDS

The Kinney County Commissioners' Court is accepting bids on employees health insurance and life insurance.

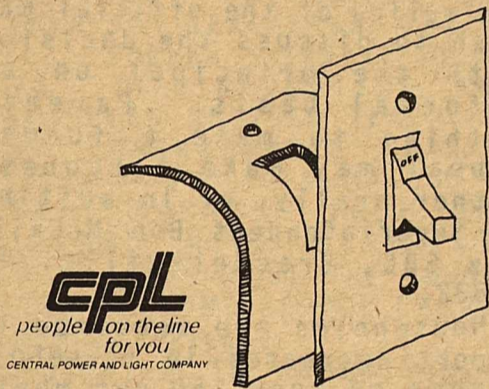
Bids will be opened September 8, 1986 at 11:00 a.m.

Mail Bids to:
Commissioners' Court
P.O. Box 348
Brackettville, Texas 78832

S/S Albert Postell, County Judge, Kinney County, Texas

CPL's Do-It-Yourself Energy Saver Tip #2

Put gaskets behind wall plugs and switch plates to plug air holes, save energy and money.



TEACHER TRAINING

Seventeen Brackett Independent School District teachers reported for a voluntary inservice given by Superintendent Bob McCall on August 19 and 20. McCall's instruction dealt with good lesson planning. Material was provided by the Texas Education Agency and is the result of several years of research by the agency into how the good teacher reaches students. Implementing every step in the lesson cycle is a crucial part in the agency's reform and improvement of the quality of education provided across the State of Texas. Teachers across the state will be evaluated by the same assessment material for the first time this year. Teacher appraisers will be looking for elements of McCall's instructions when observing teachers in the Brackett District.

SEVERE WEATHER WARNING

3 to 5 minute STEADY siren (a severe weather warning, means very damaging hail and/or high wind in excess of 50 mph or a tornado, ONLY.)

ALL CLEAR

30 to 45 second STEADY blast

ENEMY ATTACK WARNING

3 to 5 minute WAVERING siren

**CONT'D FROM PAGE 3
BID NOTICE**

contract are awarded to minority businesses. In the event that the prime contractor does not subcontract any portion of the construction work funded under this contract, the prime contractor does not subcontract any portion of the construction work funded under this contract, the prime contractor shall ensure that at least fifteen (15%) of the work force employed by such prime contractor is composed of minority group members.

For the purpose of definition, the following words and terms shall have the following meanings:

1. "Minority Business" means a corporation, partnership, sole proprietorship, or other legal entity formed for the purpose of making a profit, if at least 50 percent of the business is owned by minority group members or, in the case of a corporation, at least 51% of its shares are owned by minority group members.

2. "Minority Group Members" are Black Americans, Mexican Americans and other Americans of Hispanic origin, Asian Americans, American Indians, Pacific Islanders and Alaskan Natives.

The City of Brackettville reserves the right to reject any or all Bids or to waive any informalities in the bidding.

Bids may be held by the City of Brackettville for a period not to exceed thirty (30) days from the date of the opening for Bids for the purpose of reviewing the Bids and investigating the qualifications of Bidders, prior to awarding of the Contract.

Date 8-5-86 City of Brackettville
By William Mendeke, Mayor

FORT CLARK M.U.D. ESTIMATE OF UNENCUMBERED FUND BALANCE AND EFFECTIVE TAX RATE:

I, Marcus Tidwell, Tax Assessor/Collector for Fort Clark M.U.D., in accordance with the provisions of Sec. 26.04, Property Tax Code, have calculated the tax rate which may be exceeded by more than 3% by the governing body of Fort Clark M.U.D. without holding a public hearing as required by law. The rate is as follows: \$00.57 per \$100 of value. Estimated unencumbered fund balance for Interest & Sinking Fund: None.

Land Value	\$ 6,591,973
Improvements	13,752,220
Personal Property	1,132,084

Total Valuation	\$21,476,277
-----------------	--------------

Debt Service on Bonds	\$116,775
Kinney County Appraisal District	5,000

1986 Tax Rate	\$.65 (effective)
1987 Tax Rate	\$.57

August 25, 1986

S/S Marcus Tidwell



Tuna usually swim at a constant, steady rate of nine miles per hour. Estimates indicate that a 15-year-old tuna must have traveled one million miles in its lifetime.

**YOUNG ADULTS
&
TEENAGERS . . .
IF YOU ARE TIRED OF
BEING HASSLED BY
UNREASONABLE PARENTS
NOW IS THE TIME
FOR ACTION!!! —
LEAVE HOME AND
PAY YOUR OWN WAY WHILE YOU
STILL KNOW EVERYTHING!**

COURTESY OF JERRY'S BARBEQUE AND THE BUCKHORN

**BRACKETT INDEPENDENT SCHOOL
DISTRICT SCHOOL LUNCH PROGRAM**

The Brackett Independent School District announced its policy for free and reduced price meals for children unable to pay the full price of meals served under the National School Lunch Program and School Breakfast Program. Each school and the Food Service Department has a copy of the policy, which may be viewed by any interested party.

The household size and income criteria to be used for determining eligibility is in the graphic shown here. Applications are available at every school in the district with a letter to parents or guardians. To apply for free and reduced price meals, households should fill out the application and return it to the school that your child attends. Additional copies are available at the principal's office in each school. The information provided on the application will be used for the purpose of determining eligibility and may be verified at any time

during the school year by the school or other program officials.

For the school officials to determine eligibility, the household must provide the following information listed on the application: A) names of all household members; B) social security numbers of all adult household members, or a statement that the household member does not possess one; C) total household income or the household's food stamp case number, if they currently receive food stamps; and D) the signature of an adult household member (parent or guardian) certifying that the information provided is correct.

Applications may be submitted at any time during the school year. Under the provisions of the free and reduced price policy, campus principals will review applications and determine eligibility. Parents or guardians dissatisfied with the ruling of the official may wish to discuss the decision with the principal on an informal basis. Parents wishing to make a formal appeal may make a request either orally, or in writing to Superintendent Bob McCall, Box 586, Brackettville, TX 78832.

Households are required to report increases in household income of over \$50 per month or \$600 per year and decreases in household size. Also, if a household member becomes unemployed, or if the household size increases, the household should contact the school. Such changes may make the children of the household eligible for reduced price meals or for free meals, if the household's income falls at or below the levels shown on the income criteria eligibility chart.

In certain cases, foster children are also eligible for school meal benefits. If a household has foster children living with them, the household should contact the school for more information.

The information provided by the household is confidential and will be used only for purposes of determining eligibility and verifying data.



LIONS CLUB

THE BRACKETTVILLE LIONS CLUB HOSTED THEIR ANNUAL BARBECUE DINNER TO WELCOME ALL NEW AND RETURNING TEACHERS TO THE BRACKETTVILLE INDEPENDENT SCHOOL DISTRICT, INTRODUCE NEW MEMBERS OF THE FACULTY AND HONOR RETIRED TEACHERS ON AUGUST 21 AT THE FORT CLARK SPRINGS SWIM PARK.

142 SCHOOL ADMINISTRATORS, FACULTY, EMPLOYEES, BOARD MEMBERS, LIONS CLUB MEMBERS AND THEIR FAMILIES AND GUESTS ATTENDED THE BARBECUE. LIONS CLUB OFFICERS SAID "THIS WAS THE GREATEST TURNOUT EVER".

LION DON PARKS WAS THE MASTER OF CEREMONIES. SUPERINTENDENT BOB MCCALL INTRODUCED LEE SCHERMERHORN AND COURTENAY SCHWANDNER. SCHERMERHORN INTRODUCED THE HIGH SCHOOL FACULTY AND SCHWANDNER PRESENTED THE ELEMENTARY TEACHERS. MARION WILLS, FORMER SUPERINTENDENT, GAVE THE INVOCATION AND INTRODUCED RETIRED TEACHERS. MARY SCHERMERHORN GAVE A HISTORY OF PUBLIC SCHOOLING IN KINNEY COUNTY, FROM THE ORIGINAL NINE DISTRICTS LOCATED THROUGHOUT THE COUNTY TO THE PRESENT SCHOOL CAMPUS IN BRACKETTVILLE.

DEDICATED TO HUMANITARIAN SERVICE, LIONS CLUB INTERNATIONAL IS THE WORLDS LARGEST SERVICE CLUB ORGANIZATION. ALL MEMBERS ARE VOLUNTEERS. TRADITIONAL SERVICE EFFORTS OF LIONS CLUBS PROVIDE ASSISTANCE TO THE BLIND AND DEAF, BUT WORK IS ALSO DONE IN THE AREAS OF EDUCATION, PUBLIC SERVICE, THE ENVIRONMENT, INTERNATIONAL UNDERSTANDING, HEALTH, RECREATION AND SOCIAL SERVICES.

THIS SMALL AD drew your attention. If you have something to advertise you'll be noticed here too.

BRACKETT FOOTBALL

New Brackett Head Coach Doug Spring and Assistant Coaches Ron Green, Ken Mulligan, and Pete Van Maren greeted 39 Brackett High School grid prospects on the opening day of workouts, August 11. Initial turnouts were higher than the past two seasons. Enthusiasm and good concentration were evident, according to the coaches.

Varsity, junior varsity and junior high schedules have been released. Stony Burks returns to the helm of the Brackett Junior High School Cubs as coach after a one year absence.

1986 BRACKETT TIGERS FOOTBALL SCHEDULES

VARSITY SCHEDULE

DATE:	OPPONENT:	SITE:	TIME:
Aug.22	Ingram (scrimmage)	There	TBA
Aug.29	Cotulla (scrimmage)	There	TBA
Sept.5	Leakey	Here	8:00
Sept.12	Rocksprings	There	8:00
Sept.19	Nueces Canyon**	Here	8:00
Sept.26	*Sabinal	Here	8:00
Oct.3	*Natalia	There	8:00
Oct.10	Wimberly	Here	8:00
Oct.17	*Cole ***	Here	8:00
Oct.24	*Asherton	There	8:00
Oct.31	*Dilley	Here	8:00
Nov.7	*Lytle	There	8:00

*Denotes District Game **Denotes Homecoming
***Denotes Parents Night

JUNIOR VARSITY SCHEDULE

Sept.6	Open		
Sept.13	LaPryor	There	10:00
Sept.20	Lytle	Here	*11:00
Sept.27	Sabinal	There	10:00
Oct.4	Natalia	Here	10:00
Oct.11	Sabinal	Here	10:00
Oct.18	Cole	There	*11:00
Oct.25	Open		
Nov.1	Dilley	There	10:00
Nov.8	Lytle	Here	*11:00

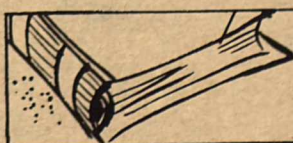
*Denotes 11:00 A.M. Starting time

JUNIOR HIGH SCHEDULE

Sept.11	D'Hanis (scrimmage)	Here	6:00
Sept.18	Rocksprings	There	6:00
Sept.25	Sabinal	There	6:00
Oct.2	Nueces Canyon	Here	6:00
Oct.9	Rocksprings	Here	6:00
Oct.16	LaPryor	Here	6:00
Oct.23	Nueces Canyon	There	6:00
Oct.30	LaPryor	There	6:00



Whippoorwills have been heard to give their call 1,088 times an hour.



Leather-bound books will benefit from periodic applications of saddlesoap, neats-foot oil or petroleum jelly.



Houseflies have taste-sensitive cells on their feet as well as on their mouths.

CLASSIFIED ADS

ALL CLASSIFIED ADS ARE DUE BY NOON ON EVERY TUESDAY. ALL CLASSIFIED ADS RUN .20 PER WORD OR \$2.00 PER WEEK FOR 10 WORD MINIMUM. NO BILLING ON CLASSIFIED.!!!

7 ft. Cream Colored Meditterean Couch for sale \$100. 2 Chairs - Green Rocker and Velvet Brown, \$30 a piece. Call Boogie at 563-2278 before 5 p.m.

MOBILE HOME MOVING.. KNIPPA, TEXAS 934-2133 OR 934-2256

3 Bdr 2 Bath Palm Harbor \$167.00

Appliances Furniture Residential Exterior Set-Up 16 Wide Low Rates Quick & Easy Financing HURRY Factory Summer Special..

SOUTHPORT HOMES 8575 Hwy 90 West at Loop 410 San Antonio 1-800-221-4371 only \$16,395.00 \$240.00 a month. 15% Down Payment 11.99 A.P.R.

soothe smoky dry eyes with... **Lavoptik** EYE WASH  at your local Pharmacy

CHURCHES OF BRACKETTVILLE

FIRST BAPTIST CHURCH (SOUTHERN BAPTIST)

SUNDAY SCHOOL 9:45 am
WORSHIP SERVICE 11:00 am
WORSHIP SERVICE (SUN) 7:00 pm
PRAYER MEETING (WED) 7:00 pm

REV. *****

FRONTIER BAPTIST CHURCH (SOUTHERN BAPTIST)

SUNDAY SCHOOL 10:30 am
WORSHIP SERVICE 11:00 am
PRAYER MEETING (SUN) 7:00 pm
PRAYER MEETING (WED) 7:00 pm

REV. JOE TOWNSEND *****

CHURCH OF CHRIST CHURCH

SUNDAY SCHOOL 9:30 am
WORSHIP SERVICE 10:30 am
BIBLE STUDY (SUN) 6:30 pm
BIBLE STUDY (WED) 7:00 pm

***** UNITED METHODIST CHURCH

SUNDAY.. CHURCH SCHOOL ... 9:45 A.M.
WORSHIP ... 11:45 A.M.
THURSDAY.. ADULT CHOIR ... 4:00 P.M.

PASTOR -- PHIL BELL *****



FOR SALE

REPO'S REPO'S

HUGE SELECTION TO CHOOSE FROM WITH PAYMENTS UNDER \$200. LIKE A 1982, 2 BEDROOM HOME WITH A SUNNY FRONT KITCHEN, INCLUDING A/C AND APPLIANCES ONLY \$499. DOWN WITH PAYMENTS OF \$158.00 15% APR, 96 MOS. INCLUDES DELIVERY AND SET-UP. CALL JENNY TODAY 1-800-292-1345. *****

BRACKETTVILLE ALA NON MEETS EVERY MONDAY AT 8:00 PM. FOR ALA NON INFORMATION CALL 563-2007. *****

REPO DOUBLEWIDES Several to choose from including a spacious 3 bedroom home with fireplace, patio door, all new appliances, air conditioner and storm windows. This beautiful home can be yours for as little as \$499 down. Call Jodi today 1-800-292-1345.

SPECIAL QUICK SALE PRICE

UNFURNISHED, AIR CONDITIONED 3 BEDROOM 1 AND 1/2 BATHS, SPACIOUS KITCHEN WITH CUSTOM MADE CABINETS.. LARGE PANNELED FAMILY ROOM. ON 2 AND 1/2 LARGE CITY CORNER LOTS TWO CAR GARAGE WITH LARGE ATTACHED AIR CONDITIONED WORK SHOP. TWO OUTSIDE STORAGE BUILDINGS, FRUIT TREES. SET UP FOR MOBILE HOME: CONCRETE SLABS, TIE DOWNS AND HOOK UPS FOR UTILITIES.

SATELLITE T. V. AND FURNITURE OPTIONAL.

LOCATED IN NICE NORTHSIDE BRACKETTVILLE RESIDENTIAL AREA.

PRICED IN MID THIRTYS

O'ROUKE REALTY

(512)563-2713



LOST

MAN'S LARGE SIMULATED GOLD RING WITH LARGE IMITATION DIAMOND. A REWARD IS OFFERED. THE RING IS NOT WORTH MUCH, BUT IT WAS MY FATHER'S AND HAS A SENTIMENTAL VALUE TO ME.

CALL 563-2696. *****

REWARD