

The

Borden Star

Borden ★ Dawson ★ Garza ★ Howard ★ Lynn ★ Scurry

Volumn XXXVI

May 7th, 2008



Gail FFA Livestock team members pose for a quick picture before competing at the State Livestock Contest at Texas A&M in April. Team members pictured are (left to right) Kimberly Proulx, alternate; Raylea Underwood, Shelby Roberts, Lacey Roberts and Jacie Eveland.

FFA Livestock Team Competes at State

By Buddy Wallace

The Gail FFA Livestock team was among 85 of the best teams in Texas on Saturday, April 26th at the State Livestock CDE Judging contest. This event, which took place at Texas A&M University in College Station, hosted the top teams competing for state honors.

Gail FFA members Shelby Roberts, Raylea Underwood, Lacey Roberts, and Jacie Eveland 64th among the 84 teams. This was a commend-

able feat considering the fact that some 400 plus livestock teams began their journey this year for a chance to participate in the state competition.

Mr. Wallace stated that he is proud of this year's Livestock team and even though the team will lose Shelby Roberts as a senior, they should be strong again next year.

Also attending the State Livestock Contest was alternate Kimberly Proulx.

Remember.....

Borden County remains under a Burn Ban. No burning trash or outdoor grilling. Please take precautions at all times.

Speak and Spell

Wallace & Wilson End UIL Careers in Style; Froman & Hensley Show Promise for Future

The trip to Austin once again proved successful as Borden County High School students returned from last weekend's UIL Academic State Meet with medals in their hands.

Seniors Kate Wallace and Rachel Wilson closed out their UIL careers by leading the Speech and Debate Team to an overall second place finish. Overall, BHS placed 7th at the State Meet out of over 350 1A schools who participate in UIL Academics across the state.

Individually, Wallace was named as the State Runner-Up in Extemporaneous Persuasive Speaking, while Wilson placed 4th in Extemporaneous Informative Speaking.

Junior Katherine Froman also performed well, placing 5th in Spelling and Vocabulary with a great score of 88 out of 100 on the test.

Joining these three young ladies was freshman John Hensley, who competed in Extemporaneous Persuasive Speaking. He barely missed advancing to the finals in a four-way tie for second.

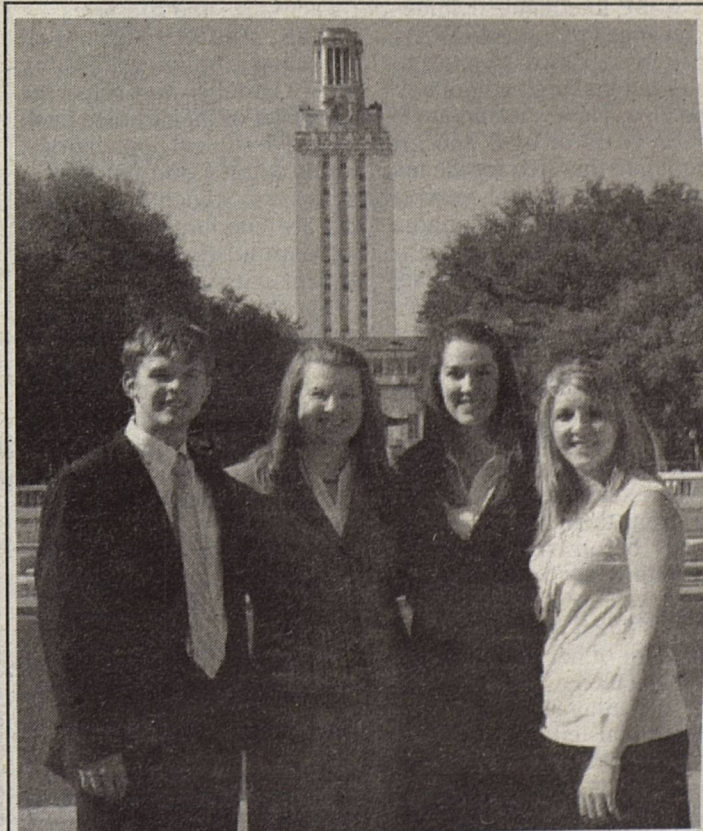
Wallace ended her UIL career with 6 state medals - 4 golds, 1 silver, and 1 bronze. Her success included being the 2006 & 2007 Extemporaneous Persuasive Speaking State Champion, the 2006 LD De-

bate State Champion, the 2008 CX State Champion, this year's silver in Persuasive Speaking, and the bronze in 2007 LD Debate.

Wilson closed her UIL career with 7 state medals of

her own - 3 golds, 1 silver, a 4th place, and a 5th place, and a 6th place. All three golds were as the 2005, 2007, & 2008 CX Debate State Champion. The silver was as the 2006 State

(Continued to Page 2)



Borden County UIL students competing in the UIL Academic State Meet in Austin are (left to right) John Hensley, Kate Wallace, Rachel Wilson and Katherine Froman.

Gail FFA "Shirt Off My Back" Campaign a Success

By Buddy Wallace

The Gail FFA Chapter "Shirt Off My Back" clothing drive had Gail FFA members collecting Jr. High and High School clothing and shoes for the needy. Gail FFA partnered with schools in their Lone Wolf District as they collected their items.

The Gail Chapter sponsored a social event in Snyder at the Snyder Lanes Bowling. Lone Wolf District chapters were invited to bring their donations and enjoy a bowling game. Each school had their items weighed and Gail FFA awarded prizes for the schools that weighed in the most collected goods.

At the end of the day, the Gail FFA Chapter delivered 1200 pounds of apparel and

shoes to Noah's Attic in Snyder. These items will be dispersed to needy families in the area through the services of Noah's Attic and Gateway of Snyder.

The Gail FFA Chapter wishes to express their thanks to Borden County community members, teachers, and students who supported this community service effort.

They would also like to thank Gateway and Noah's Attic for their support and for their continued mission of helping those in need.

And, of course, congratulations to Sharelle Gass, Baylee Benavidez, Derek Tatum and Hayden Holcomb for taking top score honors in the bowling competition!

Local Families Needed For Exchange Students

ASSE International Student Exchange Programs (ASSE) is seeking local host families for international high school boys and girls. These students are 15 to 18 years of age, and are coming to this area for the upcoming high school year or semester. These personable and academically select exchange students are conversant in English, are bright, curious and anxious to learn about this country through living as part of a family, attending high school and sharing their own culture and language with their newly adopted host family.

The exchange students arrive from their home country shortly before school begins and return at the end of the school year or semester. Each ASSE student is fully insured, brings his or her own personal spending money and expects to bear his or her share of household responsibilities, as well as being included in normal fam-

ily activities and lifestyles.

The students are well screened and qualified by ASSE. Families may select the youngster of their choice from extensive student applications, family photos and biographical essays. Students and families are encouraged to begin corresponding prior to the student's arrival.

Those persons interested in obtaining more information about becoming a host family should call toll free: 1-800-473-0696. There are hundreds of students to choose from, so call—and begin the process of selecting your new host son or daughter today!



The Borden Star (USPS or PUBLICATION No. 895-520) is published weekly except Christmas and New Year's week for \$12.00 per year by the Borden Star, PO Box 137, Gail, Texas, POSTMASTER: Send Change of Address to the



A success once again! Gail FFA members collect clothes for the needy.

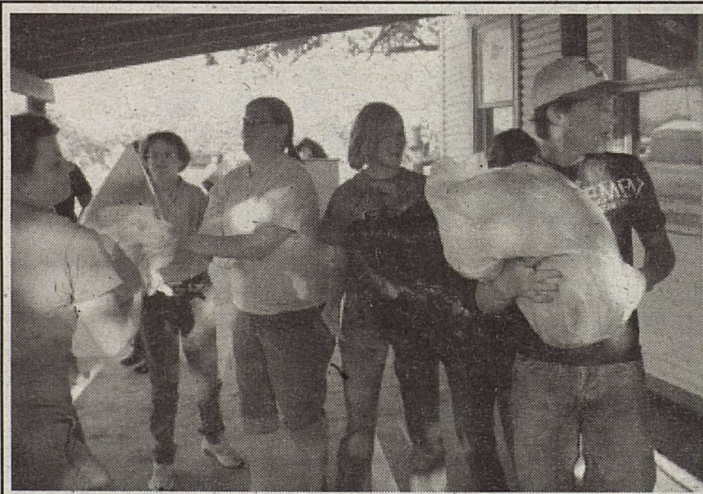
UIL State Meet...

(Continued from Page 1)

Runner-up in CX Debate. Both of her 4th & 5th place medals came in Extemporaneous Informative Speaking, while her 6th place medal was in Current Issues & Debate in 2007.

These students were coached this year by Cindy Herridge (Spelling & Vocabulary) and Darrin Ard (Speech & Debate). Joining them at the State Meet was Sue Jane Mayes, who was invited to judge LD Debate at the meet.

A special thank you goes to the parents of these students who were able to go to the State Meet to cheer on their children.



Gail FFA members unload delivered clothing to Noah's attic shelter in Snyder. Pictured are (left to right) Kate Wallace, Mandi Hudson, Jacie Eveland, Shelby Roberts, Baylee Benavidez and Miles Valentine.

Be sure to support our advertisers. Tell them you found out about them in the Borden Star

Spring Music Program May 22nd, 2008 at 7:00 p.m.

Borden County ISD will hold it's Spring Music Program on Thursday, May 22nd, at 7:00 p.m. in the School Auditorium. The program will begin with Kindergarten through fifth grade performing selections from "High School Musical". Fourth Grade will play several selections on their recorders, followed by Fifth grade band, Sixth and Seventh Grade band and concluding with the High School band. Come be a part of this wonderful enjoyable time of music and fellowship.



Got News?
Mail to:
P.O. Box 137
Gail, Tx. 79738
Call: 806/756-4313
Ext: 275
Email:
kdean@bcisd.net



Planting Time: Soil Temperature and Heat Unit Data Available Through PCG Website

By Shawn Wade

Farmers in West Texas never stop looking at the weather. With the First of May now come and gone, planting season is here and High Plains farmers are busy putting the final touches on plans for their 2008 crops.

Depending on the crop mix, some producers have had planters running for a few weeks while others are waiting for the right conditions to start. Although some have gotten started in recent days, most cotton producers haven't quite seen weather and soil conditions get to a level where the majority of growers are willing to start planting.

As Spring temperatures gain a stronger hold in the area, cotton planting should rapidly increase over the next two weeks with the area expected to be fully engaged by the middle of May.

Practically every element of a growers planting plan is dependent on the weather, either get-

ting the open weather and warm soil temperatures needed to ensure proper germination of early planted irrigated cotton acres, or getting the rainfall needed to plant non-irrigated cotton acres that are currently facing a significant moisture deficit in many areas.

WWW.PLAINSCOTTON.ORG Has Weather Info

Either way, the information growers need to keep track of current weather conditions and forecasts can quickly be accessed from one convenient location - the Plains Cotton Growers website. Just click the "Weather" link on the PCG Home page (www.plainscotton.org) and you are instantly transported to PCG's Weather Page.

There you will find 3- and 7-day forecast data, current conditions and a bevy of links on the left-hand side of the page through which growers can access data from the National Weather Ser-

vice (NWS) in both Amarillo and Lubbock as well as Texas Tech Mesonet. **Soil Temperature and Heat Unit Info**

Of primary concern to producers this time of year are soil temperatures and Heat Units. Growers can use the following direct link to the PCG website to get Lubbock NWS soil temperature information excerpted from the daily NWS weather summary: <http://www.plainscotton.org/weatherdata/index.php>

The best available source of Heat Unit data can be accessed through the PCG Home Page by clicking the "Deltapine Weather" link. Once there, just follow the instructions to create a comprehensive custom weather report containing cumulative weather data from a planting date you specify.

To view or download the weather data select the weather station closest to your field, enter the date that the cotton crop was planted. The report is automatically generated showing daily and accumulated precipitation information, maximum and minimum temperatures, wind speed and direction, crop water use, and many other critical crop management weather measurements.

The D&PL calculator will also calculate daily and cumulative Heat Units (DD-60) from the date entered and provides an easy way to keep track of Heat Unit accumulations during the growing season. Heat Unit calculations are made using West Texas Mesonet data provided courtesy of the Texas Tech University College of Engineering.

With 50 weather stations available across the High and Rolling Plains, growers or consultants can easily access locally relevant weather information to help manage their cotton crop.

Gail FFA Greenhouse Plants for Sale

By Buddy Wallace

The Gail FFA chapter now has plants available for spring planting!

These plants are available in the greenhouse, which is located north of the Ag. Building on the Borden County Campus.

Quality plants are a result of hard work by the Borden County Ag. Science Horticulture class.

Anyone wishing to purchase starter plants can contact Buddy Wallace at 806-756-4313 (School) or 806-756-4478 (Home).

Customers can also place orders with students of the Horticulture Class.

Students are:
Jacie Eveland, Tyrell Massingill, Clay Harding, Carlos Hernandez, Jake Cooley, Corey Teel, Bailey Benavediz

All plants are suitable size for ground planting. The Gail FFA chapter welcomes everyone to come view the plants and tour their greenhouse!

PLANTS AVAILABLE:

LARGE VARIETY TOMATOES

1. Better Boy
 2. Early Girl
- ROMA TOMATOES**

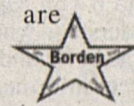
PEPPERS:

1. Bell
2. Jalepeno
3. Banana

STARTER FLOWERS

1. Marigold
2. Various

All plants are \$1.00 each



School Lunch Menu May 12 - 16, 2008

Monday - Breakfast: Muffin, Fruit Juice and Milk.
Lunch: Ham & Cheese Sandwich, Tossed Salad, Pinto Beans, Pears and Milk.

Tuesday - Breakfast: French Toast Sticks, Fruit Juice and Milk.
Lunch: Lasagna, Carrots, Tossed Salad, Pineapple, Garlic Toast and Milk.

Wednesday - Breakfast: Pancake Pup, Fruit Juice and Milk.
Lunch: Chicken Spaghetti, Green Beans, Tossed Salad, Garlic Biscuit, Pudding and Milk.

Thursday - Breakfast: Biscuit & Gravy, Fruit Juice and Milk.
Lunch: Corn Dog, Mac & Cheese, Broccoli w/ranch, Jell-o and Milk.

Friday - Breakfast: Cereal & Toast, Fruit Juice and Milk.
Lunch: BBQ Sandwich, Beans, French Fries, Surprise Cookie and Milk.

Subject to change

-In accordance with Federal law and U.S. Department of Agriculture policy, this institution is prohibited from discriminating on the basis of race, color, national origin, sex, age, or disability. To file a complaint of discrimination, write USDA, Director, Office of Civil Rights, 1400 Independence Avenue, SW Washington, D.C. 20250-9410 or call (800)795-3572 or (202)720-6382 (TTY). USDA is an equal opportunity provider and employer.

CADEN NOWLAIN MEMORIAL FISHING TOURNAMENT FISH FRY/AUCTION



MAY 10, 2008

6:00 P.M.

**AT THE CEDAR CREEK MARINA
IN BELTON, TX.**

TO REGISTER:

FISHING TOURNAMENT

CALL DARRELL NOWLAIN

254/405-2500

FOR FISH FRY/AUCTION

CALL:

CINDY HERRIDGE

806/756-4460

**ANYONE WISHING TO MAKE DONATIONS, PLEASE CONTACT
CINDY HERRIDGE AT 806/756-4460. ALL PROCEEDS GO TO
BORDEN COUNTY 2008 SENIOR SCHOLARSHIPS.**

Boost Club Meeting

The Borden County Booster Club will hold a meeting on Tuesday, May 13th at 5:30 pm in the Community Center

**** Scholarships Finalized**

**** Fund Appropriations**

**** Officer Elections**

The Booster Club supports, promotes, and encourages the students of Borden County School (BCS) in all school-related endeavors. Membership is open to anyone who would like to be involved in those efforts.

Got News?

Mail it to:

P.O. Box 137
Gail, TX 79738
806/756-4313

ext. 275


email:

kdean@bcisd.net

AgriLIFE EXTENSION
Texas A&M System

Heart and Home ...

by Julie Smith
Borden County Extension Agent—Family and Consumer Sciences



Educational programs of the Texas AgriLife Extension Service are open to all people without regard to race, color, sex, disability, religion, age, or national origin. The Texas A&M University System, U.S. Department of Agriculture, and the County Commissioners Courts of Texas Cooperating

Crack the Code

You've been seeing them your whole life, but have you ever taken the time to stop and read the labels on your food? And if you have, do you fully understand what you should be looking for and what all the different information means? It's not an easy task. There's so much to process — low fat vs. extra lean, Daily Values, serving size, nutrients, vitamins, and more. Read on for some help cracking this code!

Learning the Language

The secret behind reading food labels is understanding the label lingo. Once you've got that down, you'll find it much easier to make healthier purchases. You'll find the most important and reliable information on the Nutrition Facts Panel. Here's what you need to know about some of the terms you'll find:

* **Serving Size:** This information is vital to understanding everything else on the label. All of the numbers you'll see listed are for one serving only. So if you're drinking two glasses of milk, you'll have to double the calcium, protein and other vitamins and minerals.

* **Calories:** There's a lot of talk about carbs and fat, but calories are what count for weight control. That's why you want to look for the number of calories per serving. For a 2,000 calorie diet:

- 40 calories per serving is considered low
- 100 calories per serving is considered moderate
- 400 calories or more per serving is considered high

* **Sodium:** Healthy adults should aim for no more than 2,300 mg per day (less than 1 teaspoon of salt). Those with health problems or family histories of high blood pressure should shoot for only 1,500 mg.

* **% Daily Value (% DV):** The % DV is a guide to tell you how a single serving of food fits into your total daily

diet for the nutrients listed (based on a 2,000 calorie diet). As a general rule:

- Less than 5 percent is considered low
- 10 - 19% is considered a "good" source
- 20 percent or more is considered an "excellent" source

Seeing Through the Hype
The aisles of your grocery store are packed with different cans, bags and packages all fighting for your attention. Words like "fat-free" might win you over, or maybe you get pulled in by "low-sodium" products. But did you know fat-free isn't really fat-free? And "low-fat" might not be as low as you hoped. Let's take a look at the requirements foods must meet in order to use certain wordings on their packages:

- * **Free**
 - "Calorie-free": fewer than 5 calories per serving
 - "Fat-free": less than 0.5 grams of fat per serving
- * **Low**
 - "Low-saturated fat": 1 gram or less per serving; no more than 15% of calories from saturated fat
 - "Low-fat": 3 grams or less per serving
 - "Low-cholesterol": 20 milligrams or less and 2 grams or less saturated fat per serving
 - "Low-sodium": 140 milligrams or less per serving
 - "Low calorie": 40 calories or less per serving
- * **Lean and Extra-Lean**
 - "Lean": Less than 10 grams of fat and 4.5 grams or less of saturated fat, and less than 95 milligrams of cholesterol per serving
 - "Extra lean": Less than 5 grams of fat, less than 2 grams of saturated fat, and less than 95 milligrams of cholesterol per serving

Armed With the Knowledge
Now that you have a guide to reading these labels, the nutrition mysteries should be a little easier to solve. You're on your way to making healthier decisions at the store!

TxDOT Awards BC High School \$350 Grant for Project Celebration

To help defray the cost of their all-night high school graduation events, the Texas Department of Transportation is again awarding area high schools with a mini-grant.

Called Project Celebration 2008, Borden High School is among 29 high schools in the Abilene District taking part in TxDOT's graduation program. Each participating school will receive a \$350 mini-grant.

"As the Abilene District's traffic safety coordinator, I was so pleased when TxDOT decided to again support high schools across the

state with their organized and chaperoned graduation activities. By providing these funds, we are supporting communities in our district that provide a safe and sober occasion for their graduating students," Brenda Mitchell said.

Mitchell visited each of the 29 participating high schools in the district. In addition to the \$350 each school will receive, she presented the Project Celebration chairperson mementos for each of the graduates who attend their high school all night event. One of the mementos is a colorful backpack that bears a safety slogan.

According to the traffic safety coordinator, these mini-grants are not intended to fully fund a Project Celebration event, but to provide seed money for schools to start and support

alcohol and drug-free parties for high school students. The funds are to be used to cover expenses such as printing, materials, postage, supplies, room rentals, and the like.

Mitchell said this program, which began in 1984 with only two schools, is one of TxDOT's most popular and well-received projects offered throughout the state.

FARM AND RANCH WELDING

Call Jason Freeman
806/252-1184



Walk Across Texas!

Walk Across Texas Weeks 1 through 4

Walk Across Texas participants have been walking since March 31. Their progress for weeks 1 through 4 are as follows: County Cruisers = 91 miles; Joy Walkers = 99 and the Flat Footed Floozies = 197.5.

Branon Funeral Home

Understanding and Guidance When You Need it Most!

"Serving this area since 1922"

806/872-8335
Lamesa, Tx.

First Baptist Church Youth Car Wash

The Youth of First Baptist Church will have a car wash on May 17th from 10:00 am to 4:00 pm at the church to help raise money for pre-teen camp.

Moore-Rains Insurance



Happy Springtime

Frances Rains Stephens

701 8th. Street

O'Donnell, Tx

806/428-3335

AgriLIFE EXTENSION
Texas A&M System

Agriculture News
by Cody G. Hill
Borden County Extension Agent -
Agriculture

Educational programs of the Texas AgriLife Extension Service are open to all people without regard to race, color, sex, disability, religion, age, or national origin. The Texas A&M University System, U.S. Department of Agriculture, and the County Commissioners Courts of Texas Cooperating

The Price of Fertilizer Brings New Claims From Alternatives

During the past three years, the cost of traditional nitrogen (N), phosphorus (P) and potassium (K) fertilizers has increased dramatically. This has left many forage producers looking for alternatives to traditional inorganic fertilizer. Basically, the only alternatives include manures such as broiler litter (N-P-K), biosolids (waste water treatment sludge, N-P), and the use of forage legumes (N). Producers most impacted by high fertilizer prices are those who own property with a poor history of appropriate soil fertility and hay producers. Many producers are being offered non-traditional nutrient sources or application systems. Some of these approaches are based on questionable science or highly inflated claims of effectiveness.

Planning

The first step an agricultural producer should take prior to fertilizer application is to evaluate their property for production potential. The evaluation should include determining the yield potential of the acreage, obtaining soil samples and an analysis of each unique area of each field. Based on this evaluation the best use for each parcel of land should be determined. Dr. Tony Provin, director of the Texas AgriLife Extension Service Soil, Water and Forage Testing Laboratory, strongly recommends collecting 10-15 individual soil cores for each individual area of land that should be managed and fertilized separately. Provin also encourages producers to sample hay fields on a 10-acre basis, while grazing pastures should be sampled on a basis of not more than 40 acres per composited sample. Instructions for proper field sampling can be found at <http://soiltesting.tamu.edu>.

The physical process of collecting soil samples can provide important additional information to the producer. Provin stated that when obtaining soil samples, producers are encouraged to map their fields with

regard to weed pressure, percentage of cover, and level and depth of shallow compaction, if any compaction is present. Failure to address these additional issues may reduce the overall economic response to fertilization.

Once producers have obtained soil test recommendations and have developed field maps of their acreage, they should then consider both short-term and long-term management plans. Regarding some short-term management options, Dr. Larry Redmon, Texas AgriLife Extension Service State Forage Specialist has been a strong proponent of reducing hay acreage to only the highest yielding areas, maximizing hay yields through good nutrient and harvest management, while using other less productive acreage as grazing areas. The price to produce well-fertilized hay this year will likely approach \$125 per ton. Many producers, especially smaller producers, generally cannot justify the cost of purchasing and maintaining hay harvesting equipment. Couple this aspect with the cost for soil fertility associated with hay production and most producers will be better served simply purchasing their hay from reputable hay producers. Another cost savings approach that may be accomplished in the short term involves the construction of a round bale hay storage barn. Hay, even in tight round bales, loses dry matter and nutritive value rapidly when exposed to rainfall and poor storage conditions. Given the high prices of today's hay, Redmon has noted that hay barns often pay for themselves in just a few years simply by decreasing dry matter loss and forage nutritive value. Properly stored hay has been known to maintain its nutritive value for longer than 20 years. If a barn is not utilized, hay tarps can help minimize hay loss during storage.

Longer-term Management

Fertilizer prices are unlikely to drop in the future. Some pro-

ducers are looking toward the use of manures and biosolids to provide their soil nutrient requirements. While manures and biosolids, where available, can provide nutrients at a substantial cost savings, producers need to realize that P typically will begin to accumulate where these materials are used. Careful monitoring of the soil test P is necessary to ensure that the level does not build up beyond the accepted threshold of 200 ppm. Biosolids of interest should be those classified as Class A. These biosolids do not pose risks associated with heavy metals or pathogens. Provin recommends the application of manures and biosolids in late winter or very early spring, as there is some lag time in the breakdown of the organic compounds before the nutrients can be taken up by plants.

The use of forage legumes, which fix atmospheric N in their root systems, in grazing systems should be considered by all livestock producers. Provin suggested planning for legume establishment six to 12 months prior to the actual seeding of the legumes. Soil testing and correction of pH and nutrient deficiencies are critical in the establishment of legumes. Most legumes require a higher pH and a higher level of available P. Additionally, carryover of broadleaf herbicides containing picloram or metsulfuron may inhibit germination of legume seedlings and should not be used the year of legume establishment. Most forage legumes are cool-season clovers and medics. These are often planted in mid-fall, germinate and make most of their growth in early spring in a fashion similar to ryegrass. Redmon cautions producers that any cool-season annual, legumes included, can inhibit warm-season grass production in the spring and should be removed via grazing in a timely manner. While more money has probably been lost due to fear of bloat than actual bloat death loss, Redmon advises producers to be aware of the potential for bloat and understand the management implications necessary to reduce the incidence of bloat issues. While the legumes provide high value late winter and early spring forage grazing, the fixation of N by *Rhizobium* bacteria associated with legume roots has been the major reason producers have adopted legume systems. The amount of N fixed and

made available to the warm-season grass via nutrient recycling is dependent on the biomass production of the legume. This amount varies by soil, soil fertility and legume species and ranges from 25-100 lbs of N per acre per year. At the Texas AgriLife Research and Extension Center at Overton, some bermudagrass pastures have not received N fertilizer for over 24 years. Clover has been established each fall in the pastures and has provided the N requirement for the warm-season grass during the summer months, albeit at a slightly reduced stocking rate.

Fertilizer sources and application methods

Redmon has received numerous questions from producers about reducing fertilizer application rates. In some cases, producers who have practiced good nutrient management maybe able to reduce P and K applications for one or two years of hay harvests. In the long-term, however, failure to replace nutrients removed during hay harvests will significantly reduced yields and will result in decline of introduced forage stands. As a rule of thumb, each ton of forage removed in hay harvests will remove 14 lbs of P₂O₅ and 48 or more lbs of K₂O per acre. Nitrogen requirements to produce 12 percent crude protein hay are generally considered to be 50 lbs of N per ton. Redmon noted that typically, forage stand loss problems have been traced back to low soil pH and very low available soil P and K levels. In these cases, producers often failed to soil test their hay fields until these nutrients had been

mined to low levels. The result was a significant stand decline, loss of production, and increased weed infestation.

Redmon also cautioned producers to the claims of some fertilizer dealers about the use of foliar fertilizers. While the fertilizer grade liquid formulations percent N, P₂O₅ and K₂O, may be guaranteed, claims of super plant uptake efficiency of these nutrients is not backed up by research. In fact, most research suggests the opposite is true. Some claims of the use of foliar fertilizers also come with statements about reduced costs. This is usually obtained by using reduced amounts of actual N, P₂O₅, and K₂O applied. Producers should also be warned against attempting to apply foliar fertilizers themselves. Usually there are problems with delivery rates and potential corrosion of the pump. Producers should be aware regardless of form of fertilizer used, the correct amount of nutrients must still be required to achieve the desired yield. As they say, there is no such thing as a free lunch.

The above information has been written and provided by Dr. Tony Provin, director of the Texas AgriLife Extension Service Soil, Water and Forage Testing Laboratory and Dr. Larry Redmon, Texas AgriLife Extension Service State Forage Specialist.

For more information, contact Cody G. Hill, Borden County Extension Agent - Agriculture at (806) 756-4336.

Snyder
National
Bank



We're proud to be
a part of the area
since 1905.

Member FDIC

1715 25th
915/573-2681

Thought for the Day

*Funny how much
difficulty some have
learning the gospel
well enough to tell
others, but how
simple it is to
understand and
explain the latest
gossip about
someone else.*

Source: St. Louis Inspirational
Christian Connection.

Commissioners Meeting

WHEREAS, On this the 8th day of April, 2008, the Commissioners' Court of Borden County, Texas, convened in Regular Session in the Commissioners Court room in the courthouse of Gail, Texas, the following members of the court being present, to-wit: **VAN L. YORK**, County Judge; **MONTE SMITH**, Commissioner, Precinct No. 1; **RANDY ADCOCK**, Commissioner Precinct No. 2; **ERNEST REYES**, Commissioner, Precinct No. 3; **JOE BELEW**, Commissioner, Precinct No. 4; **JOYCE HERIDGE**, County Clerk and Ex-Officio of the Commissioners Court constituting a quorum, when the following proceedings were had, in accordance with the posted agenda.

TRAPPING CLUB

Joel Dennis and Rickey L. Gilliland with USDA Wildlife Services met with the Court concerning the future of Predator Control in Borden County. Borden County residents, John Anderson, R.D. Lewis, Bill Phinizy, Ray Herring, Doyle Newton, Sam Davenport, and Mike Valentine were present. Also present were Representatives of USDA Wildlife Services Dedeick D. Pesck, Mark Crabb, and John Kemp. No action was taken.

BORDEN COUNTY EMS

Mike Valentine, EMS Representative, visited with the Court concerning the purchase of 2 new Heart Defibrillator Monitors for the Borden County EMS. Commissioner Adcock made a motion for the County to approve a cost sharing purchase between Borden County ISD and Borden County EMS and the County paying \$16,000.00. Motion was seconded by Commissioner Belew. Motion carried.

MINUTES APPROVED

Minutes of the Commissioners Court meetings of March 21, 2008 were read. Commissioner Smith made a motion to approve said minutes. Motion was seconded by Commissioner Reyes. Motion carried.

BORDEN COUNTY CEMETERY

Dan Turner, Representative for the Borden County Cemetery Association, met with the Court discussing the Cemetery and requested a contribution to help with the surveying and plating of 2 acre Block, No. 17, Original Town site of Gail. Sadie Ludecke was also present. No action was taken.

COUNTY OFFICER REPORTS

After examination of the County Officer Reports, Commissioner Adcock made a motion to approve the

submitted County Officer Reports. Commissioner Belew seconded the motion. Motion carried.

TAX ABATEMENT

Orlando Puig, Richard Anderson, Jonathan Butcher and Matthew Baird, representatives of Eurus Energy, examined and discussed the Tax Abatement. After consideration, Commissioner Belew made a motion to approve the Tax Abatement Agreement between Borden County, Texas and Bull Creek Wind LLC. Commissioner Adcock seconded the motion. Motion carried.

FUEL LEGAL NOTICE

Commissioner Smith made a motion to advertise for bids on gasoline, diesel and propane for the year 2008. Bids will be opened May 13, 2008 at 9:00 am. Motion was seconded by Commissioner Belew. Motion carried.

(Continued to Page8)

PRE-KINDERGARTEN NOTIFICATION FOR THE 2008-2009 SCHOOL YEAR

Borden County School will offer the pre-kindergarten program during the 2008-2009 school year. The program will be for eligible students who are four years of age on or before September 1, 2008. Students can qualify for the program by meeting at least one of the following requirements:

1. Be economically disadvantaged
2. Be Limited English Proficient (LEP)
3. Be homeless

If you know of a child who qualifies for the program, notify Mr. Bart McMeans, Principal, Borden County School, P.O. Box 95, Gail, TX 79738, or call (806) 756-4313 to request a registration form. Complete and return the form by May 31, 2008.

DISCLAIMER

Borden County Elementary School will offer this program only if fifteen (15) or more students qualify.

ESL PROGRAM NOTIFICATION

Borden County Elementary School will offer an ESL program for LEP (Limited English Proficient) students during the summer of 2008. The program will be scheduled for a minimum of 120 hours and will conclude prior to August 1, 2008. The program is designed for students who will enter Kindergarten or First Grade in the fall of 2008-2009. Parents of eligible children will be responsible for transportation.

If you know of a child who qualifies for the program, notify Mr. Bart McMeans, Principal, Borden County School, P.O. Box 95, Gail, TX 79738, or call (806) 756-4313 to request a registration form. Complete and return the form by May 31, 2008.

DISCLAIMER

Borden County Elementary School will offer this program only if ten or more students qualify.

BORDEN COUNTY I.S.D. PUBLIC NOTICE

The Superintendent's Office, on behalf of the Board of Trustees of the Borden County Independent School District will sell the following vehicles at the Lubbock Auto Auction located at 1122 East 34th Street in Lubbock, Texas at 10:00 A.M. on Thursday, May 15, 2008:

1985 Chevrolet 1/2 Ton Pickup
Vin# 1GCDC14H2FJ103373

1988 Chevrolet 1/2 Ton Pickup
Vin# 1GCDC14K8JZ105778

1967 Ford 2 Ton Septic Pump Truck
Vin# F50AKB42432

1995 Chevrolet 1/2 Ton Pickup
Vin# 1GCEC14H7SZ256816

1996 Chevrolet Lumina Car
Vin# 2G1WL52M2V9122671

1999 Chevrolet Lumina Car
Vin# 2G1WL52M3X9194787

1994 GMC 16 passenger bus
Vin# 1GDHG31Y5RF533875

These vehicles may be viewed at the above address through May 14, 2008. Please contact Jimmy Thomas at (806) 756-4313 no later than 5:00 P.M. on May 14, 2008, if you would like to submit a bid on these vehicles. The Borden County I.S.D. Board of Trustees reserves the right to accept or reject any or all proposed bids, to waive any and all technicalities, and to accept the proposal that will best serve the needs of the district. Questions regarding additional information shall be directed to Jimmy Thomas by calling (806) 756-4313, e-mail jthomas@bcisd.net, or writing PO Box 95, Gail, Texas, 79738. Transmissions by fax may be sent to (806) 756-4310.

By order of the Board of Trustees
Borden County Independent School District
Joe Harding, Secretary

NOTICE TO ALL PERSONS HAVING CLAIMS AGAINST THE ESTATE OF MARTIN ALLEN PARKS, DECEASED

Notice is hereby given that Letters Testamentary were issued on the 28th day of January, 2008, by the County Court of Borden County, Texas, in a proceeding bearing Cause No. 375 styled "In Re: Estate of MARTIN ALLEN PARKS, Deceased," to DONNA MARIE ISAACS, DON MARTIN PARKS and EDDIE FRANK PARKS.

All persons having claims against said estate are required to present them within the time prescribed by law, either to the representatives of the estate, addressed as follows:

Estate of Martin Allen Parks, Deceased
c/o Donna Marie Isaacs, Don Martin Parks and Eddie Frank Parks

2008 CR 432

Fluvanna, Texas 79517

or in care of the representatives' attorney, addressed as follows:

Estate of Martin Allen Parks, Deceased
c/o Rod E. Wetsel, Wetsel & Carmichael, L.L.P.

Attorneys at Law

P.O. Box 78

Sweetwater, Texas 79556

SIGNED this the 28th day of January, 2008.

DONNA MARIE ISAACS, DON MARTIN PARKS and EDDIE FRANK PARKS

Co-Independent Executors of the

Estate of MARTIN ALLEN PARKS, Deceased

By: Rod E. Wetsel

State Bar No. 21235400

WETSEL & CARMICHAEL, L.L.P.

207 Oak Street, P.O. Box 78

Sweetwater, Texas 79556

(325)235-4944

Fax: (325)235-3526

ATTORNEYS FOR THE ESTATE OF MARTIN ALLEN PARKS, DECEASED

Memorial Scholarships

John Harding Memorial Scholarship

Applications are currently being accepted for the: **John Harding Memorial Scholarship**.

Applicants wishing to be considered must submit a formal letter of application prior to May 21st, 2008. Letters of application must be sent to the following address:

**John Harding
Memorial Scholarship
Committee
P.O. Box 95
Gail, Texas 79738**

The primary criteria used to determine the recipient of this scholarship is that the individual selected will be an outstanding young person that is a positive representative of the Borden County School Community as evidence by their respective moral character; service-minded attitude, dedication and participation in school activities as a student of Borden County High School.

Recipients must be a candidate for graduation or be a former graduate of Borden County High School.

Candidates must attend a state-accredited/Southern Association accredited college, university, or post-secondary institution to be eligible for consideration. The Select Committee will have sole authority to determine the candidate's eligibility status related to the post-secondary institution to be attended.

Financial need will not necessarily be a criterion for consideration; however, financial need may be considered by the Select Committee.

Members of the John Harding family will have no input into the selection process. Complete selection authority to waive all rules, regulations and formalities in order to select the candidates that the committee feels is most deserving.

Brandon Adcock Memorial Scholarship

Applications are currently being accepted for the: **Brandon Adcock Memorial Schol-**

arship.

Applicants wishing to be considered must submit a formal letter of application prior to May 21st, 2008. Letters of application must be sent to the following address:

**Brandon Adcock
Memorial Scholarship
Committee
P.O. Box 95
Gail, Texas 79738**

The primary criteria used to determine the recipient of this scholarship is that the individual selected will be an outstanding young person that is a positive representative of the Borden County School Community as evidence by their respective moral character, service-minded attitude, dedication and scholastic achievement.

Recipients must be a candidate for graduation or be a former graduate of Borden County High School.

Candidates must attend a state-accredited/Southern Association accredited college, university, or post-secondary institution to be eligible for consideration. The Select Committee will have sole authority to determine the candidate's eligibility status related to the post-secondary institution to be attended.

Financial need will not necessarily be a criterion for consideration; however, financial need may be considered by the Select Committee.

Members of the Brandon Adcock Family will have no input into the selection process. Complete selection authority has been delegated to the Selection Committee, and the Committee has the authority to waive all rules, regulations and formalities in order to select the candidates that the committee feels is most deserving.

J. Pat Porter Memorial Scholarship

Applications are currently being accepted for the: **J. Pat Porter Memorial Scholarship.**

Applicants wishing to be considered must submit a formal letter of application prior to May 21st, 2008. Letters of application must be sent to the following address:

J. Pat Porter

**Memorial Scholarship
Committee
P.O. Box 95
Gail, Texas 79738**

The primary criteria used to determine the recipient of this scholarship is that the individual selected will be an outstanding young person that is a positive representative of the Borden County School community as evidence by his/her high moral character, service minded attitude, dedication and determination to succeed along with maintaining passing grades.

Potential recipients must be a member in good standing of the current Borden County High School graduating class or must be a previous graduate of Borden County High School.

Candidates must attend a state-accredited/Southern Association accredited college, university, or post-secondary institution to be attended.

Financial need, will not necessarily be a criterion of consideration; however, financial need may be considered by the Select Committee.

Members of the Porter Family will have no input into the selection process. Complete selection authority has been delegated to the Selection Committee, and the Committee has the authority to waive all rules, regulations of formalities in order to select the candidates that the committee feels is most appropriate. The selection process is a subjective task that will be left to the discretion of the J. Pat Porter Scholarship Selection Committee. The committee feels is a signification of the positive attributes that were exhibited by the late J. Pat Porter.

**THANK
YOU
FOR
READING
THE
BORDEN
STAR**

Texas Stories

A Showcase of the Texas Spirit
Tumbleweed Smith

Big Symphony Orchestras in Small Towns


Texas has several small towns with full-fledged symphony orchestras. I live in one of them. The Big Spring Symphony Orchestra has at least four performances a year. I attended the final performance of the season last night. The stage of the acoustically-perfect Municipal Auditorium was filled with about 80 people playing and singing everything from Italian Opera to *Over The Rainbow*, with some Broadway show tunes in between.

The evening featured two guest soloists: Soprano Renay Peters Joubert and Tenor David Corman. Ms. Joubert is a graduate of the Manhattan School of Music and has sung in several American and European venues. She is a featured performer on PBS specials. David Corman holds a Masters from Yale and did graduate study at Julliard. He has performed opera on 1500 stages throughout the world and won numerous competitions. He is currently director of vocal studies at Odessa College. Members of the orchestra are from Big Spring and a 100-mile radius of the city, coming from Lubbock, Midland-Odessa, San Angelo and Abilene. They are sent the music to practice on their own, then come to town on a Friday and have a couple of rehearsals as a unit before their performance on Saturday. To hear them play, you would swear they had been performing together for years.

The musicians are always dressed in formal attire. The

audience, though small, is enthusiastic and the orchestra members enjoy coming to Big Spring and playing together. Many of them are teachers with doctorates in music and even though they may have teaching or playing obligations in other cities, they make sure they get to Big Spring for a concert. The city is fortunate to have a well-qualified conductor. Keith Graumann grew up in Big Spring and chose to return to his hometown after getting a Doctorate in Musical Arts and conducting orchestras and chorales in the southwest. He received a Fulbright scholarship to research Vivaldi in Italy and has studied with such notables as composer Aaron Copland. This year's season started with guest conductor Dr. John Giordano leading the orchestra in presenting some of the most recognizable classical music. Guest pianist Sijing Le performed Liszt's *Piano Concerto No.1*. In February the concert featured cello soloist Jeffrey Lastrappes playing *Concerto for Violincello*.

Next year's lineup promises to be interesting. It will feature the music of Mendelssohn, Tchaikovsky, Ravel, Bach, Beethoven and the cowboy poetry of Waddie Mitchell. Gotta have some real West Texas culture in there somewhere. I have been fortunate to see and hear some of the finest orchestras in the world, everything from the Berlin Philharmonic to the Boston Pops. I must say the Big Spring Symphony Orchestra measures up nicely.



ON SALE NOW!!!
First ever ALL COLOR 2008
YEARBOOK!!

Get yours today! On sale in the
front office.
\$20.00 each

Drive Safely. Watch for Children

Commissioners Meeting

(Continued from Page 6)

ROAD EQUIPMENT LEGAL NOTICE

Commissioner Reyes made a motion to advertise for bids on a new Truck in Precinct No. 1 and a new tractor for Precinct No. 4. Bids will be opened May 13, 2008 at 9:30 am. Commissioner Belew seconded the motion. Motion carried.

UPPER SOIL AND WATER CONSERVATION DISTRICT

Commissioner Adcock made a motion to approve the annual assistance to Upper Soil and Water Conservation District in the amount of \$500.00. Motion was seconded by

Commissioner Reyes. Motion carried.

RADIO COMMUNICATION

Commissioners discussed the need for Emergency radio communications for the County Road Crew.

SOIL CONSERVATION CONSTRUCTION

Applications for Soil Conservation Construction of fireguards were received from Bill Phinizy and Kenneth P. Bennett in Pre-cinct No. 2. Commissioner Adcock made a motion to approve the applications at the rate of \$35.00 per hour for a motor grader and \$65.00 per hour for

a dozer. Motion was seconded by Commissioner Reyes. Motion carried.

ACCOUNTS ALLOWED

The current accounts were examined. Commissioner Smith made a motion to approve and pay said accounts. Commissioner Adcock seconded the motion. Motion carried.

DISCUSSION ITEMS FOR FUTURE AGENDA

No new items were presented.

ADJOURN

A motion was made by Commissioner Reyes to adjourn. Motion was seconded by Commissioner Smith and approved unanimously.

THE FOREGOING MINUTES READ AND APPROVED THIS THE 22nd day of April, 2008.

LA NOTIFICACION DE PRE-KINDERGARTEN PARA EL AÑO ESCOLAR 2008-2009

La Escuela de Borden ofrecerá el programa del pre-kindergarten durante el año escolar 2008-2009. El programa será para los estudiantes elegibles que tienen cuatro años en o antes de 1 de septiembre, 2008. Los estudiantes pueden calificar por el programa resolviendo por lo menos uno de los requisitos siguientes:

1. Sea económicamente perjudicado
2. Este limitado experto ingles (LEP)
3. Sea destituido

Si usted conoce de un niño que califique por el programa, notifica a Bart McMeans, director, Borden County School, P.O. Box 95, Gail, TX 79738, o llame (806) 756-4313 para solicitar una forma de registro. Complete y regresa la forma antes del 31 de mayo, 2008.

LA DENEGACIÓN

La Escuela de Borden ofrecerá este programa solamente si quince (15) o más estudiantes califican.

ESL PROGRAMA NOTIFICACION

La Escuela de Borden ofrecerá un programa de ESL para los estudiantes del LEP (Experto Inglés Limitado) durante el verano de 2008. El programa será programado por un mínimo de 120 horas y concluirá antes del 1 de agosto, 2008. El programa esta diseñado para los estudiantes que entraran kindergarten o el primer grado en el otoño de 2008-2009. Los padres de niños elegibles serán responsables del transporte.

Si usted conoce de un niño que califique por el programa, notifica a Bart McMeans, director, Borden County School, P.O. Box 95, Gail, TX 79738, o llame (806) 756-4313 para solicitar una forma de registro. Complete y regresa la forma antes del 31 de mayo, 2008.

LA DENEGACIÓN

La Escuela de Borden ofrecerá este programa solamente si diez (10) o más estudiantes califican.



MAY 2008



Sunday	Monday	Tuesday	Wednesday	Thursday	Friday	Saturday
	***Driver's Education 4 p.m. - 6 p.m. daily May 5 th -19 th ***			1 TAKS Math 9 th TAKS Science 5 th , 8 th , 10 th , 11 th Cheerleading applications distributed	2 TAKS Social Studies 8 th , 10 th , 11 th Bi-District Baseball-Borden Co. vs. Morton @ Lubbock Christian High School 7 p.m.	3 Bi-District Baseball-Borden Co. vs. Morton @ Lubbock Christian High School 1 p.m. SAT Test (must have preregistered)
4	5 FFA Chapter Meeting @ 12:20 FFA Lone Wolf District Banquet	6 JH/HS 4-H Meeting @ lunch-Conf. Room Cool Clovers Meeting @ 3:45-Show Barn SAT Registration Deadline for June 7 test JH District Tennis @ Sweetwater	7 Group pictures: 1) All 07-08 UIL participants 2) FFA during tutorials	8 Cheerleading applications due	9 Progress Reports ACT Registration Deadline for June 14 test Band Trip	10
11	12 FFA Chapter meeting @ 12:20 FFA District Meeting	13 Athletic Supply- order letter jackets & patches @ noon	14 English I Field Trip	15 Cheerleading Tryouts 4:30 p.m.	16	17 Spanish III trip to Fort Worth
		Pre-Registration during Tutorials			FFA Area Convention	
18 Spanish III trip to Fort Worth	19 Senior Counseling Meeting - Tutorial Period	20 Driver's Ed. test in Lamesa 1:00 p.m. FFA Banquet 7:00 p.m.	21 Seniors' Local Scholarship Deadline @ 3:33 p.m.	22 Band Concert 7:00 p.m.	23 K-5 Field Trip U.I.L. Banquet 7:00 p.m.	24 Junior/Senior Banquet 6:30 p.m.
25 Baccalaureate 11:00 a.m.	26 Final 1 st period 8:05-9:05 FFA Cookout	27 Final 2 nd period 8:39-9:39 Final 4 th period 10:17- 11:17	28 Final 3 rd period 9:43- 10:43 Final 7 th period 1:10- 2:10 Awards Assembly 2:50 p.m.	29 Final 5 th period 11:06- 12:06 Final 8 th period 1:59-2:59 JH Graduation 7:00 p.m.	30 Final 9 th period 8:05-9:05 End of 6 th Six Weeks Elem. Track Meet 9:15 Early Dismissal 12:30 HS Graduation 7:00 p.m. Project Graduation	31 Senior Breakfast Work Day