

Bailey County Journal

'The Community of Opportunity — Where Water Makes the Difference

VOL. 3 — NO. 36

12 PAGES

Published Every Sunday At Muleshoe, Bailey County, Texas — 79347

SUNDAY, SEPT. 5, 1966

Schools Off To Busy Start; First Count Shows Substantial Gain

Muleshoe schools are off to a busy start of the 1965-66 school year with some half-hundred more pupils attending classes on the opening day this year than were present at the same time last year.

These figures were revealed by Superintendent Neal Dillman after Wednesday's opening day count, which has been completed.

"Several" more had turned up for 1965-66 school year by the end of the first three days of school.

To be specific, first day's enrollment was 57 higher than 1964's opening day.

Dillman said 2067 were counted on the first day of school last Wednesday, as compared with 2010 on the opening day in 1964.

However, the superintendent does not expect the peak for the year to be reached until November. "We usually have two peak periods each year," the superintendent explained.

"One comes in November after most of the autumn harvests are complete. The second peak is reached in April after spring planting is over. Those two months always are our biggest months."

Despite the fact that the school's building program is not quite complete, new units are being used successfully. The new seniorjunior high cafeteria, seating 600 or more, went into service on the first day of school despite the fact that many minor installations are yet to be completed.

Other units being used to DeShazo's elaborate new elementary building has been completed, but the razing of the two old DeShazo buildings is still far from complete. This leaves DeShazo pupils shy on playground areas.

Work also is progressing on the junior high gymnasium which is not due for completion until well into the present semester.

The new agri-auto building, an annex on the south end of the senior high school, is being used and new classes are being offered for the first time in Muleshoe schools. One of these is auto mechanics.

The opening day's enrollments showed senior and junior high schools running neck-and-neck. However, the junior high total was boosted by the moving of all sixth-grade pupils to that unit this year for the first time.

Senior high showed an opening day's total of 529 and junior high had 523 enrolled at the outset.

By classes, enrollment was as follows: Seniors, 108; juniors, 114; sophomores, 158 and freshmen, 149.

Junior high figures were: Eighth grade, 170; seventh grade, 179, and sixth grade, 174.

DeShazo Elementary school had a total enrollment for the first day of 459, while Richland Hills tallied 509.

By grades, enrollment at DeShazo was as follows: Fifth grade, 83; fourth grade, 83; third grade, 90; second grade, 93, and first grade 100. Seven were enrolled in special education classes.

Richland Hills figures were: fifth grade, 104; fourth grade, 93; third grade, 107; second grade, 102; and first grade, 103.

The Hilton, 10 were enrolled in the fifth grade, 14 in the fourth grade, eight in the third grade and 15 in the second grade for a total of 47. Other grades formerly served by the Hilton have been moved to other schools as desegregation for city schools neared an end.

The 2067 figure on the opening day was 27 higher than school officials had estimated the figure would be. They had based their 2040 prediction on advance enrollment in all schools a week ago.

The 2067 enrollment shows a steady growth for the district, but not a "boom" type expansion.

Blast By Rifle Wipes DWI Case Off Court Books

A new page in the Bailey county criminal ledger at the courthouse bears this curt notation: "Case closed; defendant deceased."

Last Monday a 59-year-old Portales brick-layer was arrested here by city officers and charged with driving while intoxicated.

Arraigned that afternoon before County Judge Glen Williams, the defendant pleaded not guilty and bond was set at \$750.

He was released a short time later.

Early the next morning he was found dead in his automobile near the Portales city pound.

Roosevelt officers ruled suicide, the death instrument a single-action .30-30 rifle. A note pinned against the glove compartment door said simply: "I have had accident."

But Assistant District Attorney Fred Boone said the man's wound would have brought almost instant death, making it impossible for him to have written the note after he pulled the trigger.

A wife, son, six brothers and three sisters survive.

Commented Bailey County Attorney Roger C. Gorrell: "One of the fastest cases ever disposed of here; from filing to finish in less than 24 hours."

17 To Get US 'Greetings'; 75 Take Physicals

Seventeen young men will be inducted into the armed services this month from Bailey, Cochran and Lamb counties, and 75 others will receive their physical exams.

This was announced by the Draft board headquarters here while at state headquarters, a slightly higher October call was sounded. The October local quota had not been received, draft board here said.

The October state quota was set at 1504 as compared with 1459 during September, Col. Morris S. Schwartz, state director, said Friday.

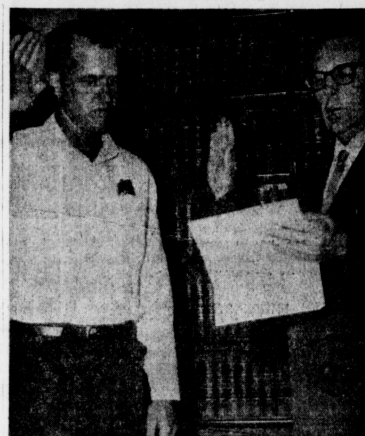
In early August, state Selective Service headquarters was advised by the national headquarters to estimate its October quota at 1700. The call for 1504 is an adjustment of this earlier estimate.

Both quotas came after the president's announcement in late July that he was doubling the draft calls, monthly calls in Texas in the months immediately prior to the presidential announcement ranged from 700 to 900.

More than 9000 men will be sent for pre-induction mental and physical examinations this month Col. Schwartz said, and he estimates the October number at 7500. The local quota is to be mailed Sept. 10.

Both the September and October quotas will be filled with volunteers under 28 years old and non-volunteers 19 through 25. Most of them will be 20-21 years old.

President Johnson signed an executive order late in August which will permit the drafting of childless married men who marry after midnight Aug. 26,



NEW DEPUTY SHERIFF — Bailey county's new officer, Claude A. (Buddy) Black was sworn into office this past week. He succeeds John Moore, who resigned as deputy sheriff to become a city police officer. Here Black is administered the oath by County Judge Glen Williams. (Journal Photo)

Black Becomes Deputy Sheriff, Succeeds Moore

Claude A. (Buddy) Black, a resident of Muleshoe practically all his life, was sworn in this past week as a new deputy sheriff, he succeeds John Moore who resigned to accept a post with the city police department.

Black, the son of Mr. and Mrs. Pete Black, Muleshoe, was born in Clovis but moved to the Muleshoe area when a small boy. He graduated from Muleshoe High school and attended Texas Tech for 2½ years, majoring in animal husbandry and agricultural economics.

Black is a member of the Baptist Church, and is a licensed auctioneer. He has farmed in the Muleshoe area for several years, and for the past year, he and his mother have been operating an insurance business here.

Black is married to the former Susan Allison, and they have three children - Loveta Jo, 5; Carol Sue, 4; and Edward Lynn, 2.

Wayne McNatt, son of Ernest McNatt, will be going to Tech again this year. Wayne will be a junior.

The C. E. Fox family have been visiting in Kansas most of the summer months. Mrs. Fox's father is recovering from surgery.

Mr. and Mrs. Carl Ellington and family have returned from visiting a brother in Eugene, Ore. The Ellingtons were away about two weeks.

First Methodist Church will launch "Sunday Evening Encounter Hour" series at 6 o'clock tonight, opening with a supper in Fellowship Hall. The Rev. J. Frank Peery, pastor, announced. Fees will be 60 cents per plate. Features on the after-dinner program will be a singsong, "encounter time," worship in the sanctuary and prayer time, the concluding feature at 8 p.m. Groups for encounter time will include infants and toddlers, pre-school, church choir, carol choir, junior, senior, high and older youths and adults.

No mail deliveries are planned, and windows at the post office will remain closed all day. Boxes, however, will be "worked".

Mr. and Mrs. Horace Blackburn and her mother, Mrs. Effie Bray, visited Mr. and Mrs. Bernice Bray in Dallas recently. Blackburn attended the

(See MULESHOE, Page 5)



SWINT SNARED — Ronnie Swint, full-back for the Mules, grabbed the ball in this early-stanza of Friday night's Muleshoe-Dimmitt game, and headed in the general direction of the goalline, some 25 yards away. Here the speedy Swint is brought down by just about half the Bobcat squad. (Journal Photo)

Mules Take Season's Opener, Sweep Past Dimmitt, 20-6

By JAY SPAIN

The Muleshoe Mules started the 1965 grid season Friday night with a 20 to 6 victory over the Dimmitt Bobcats at Benny Douglas Field.

Joe Adams' try for extra point was partially blocked and the Muleshoe Mules were on their way with a 6-point lead. Dimmitt received the kick, but with three downs, lost back to their 25 yard line and punted to the Bobcat 46 yard line. The Mules moved the ball back to the Dimmitt 25 yard line and handed it over on downs.

Dimmitt moved out to the 42 yard line on the third play from scrimmage fumbled and Ronnie Swint fell on the pigskin on the Bobcat 27 yard line. Ransom Jones moved the ball to the 17 yard line, then Swint plowed his way to the one yard line. Jones then broke over for the touchdown with six minutes left in the quarter.

Mayor Backing Jaycees' Drive On Weeds, Trash

Muleshoe Jaycees have served notice they are declaring war on weeds, trash and debris in general, and Mayor W. B. LaVaque is backing up the campaign by declaring September as Muleshoe Clean-up Week, Sylvester Languma is chairman of the campaign.

The proclamation issued by the mayor reads:

"Whereas: There are many vacant lots with weeds which are health manaces, primarily encephalitis;

"AND WHEREAS: There are many blind corners due to tall weeds making driving at these corners hazardous;

"AND WHEREAS: There has been debris and trash thrown from passing cars;

"AND WHEREAS: After frost, tall weeds everywhere will furnish fire hazards;

"AND WHEREAS, the Muleshoe Jaycees have voted to conduct a clean-up campaign during the month of September;

"NOW THEREFORE, I, the mayor of Muleshoe do hereby on this 2nd day of September, 1965, proclaim the month of September as "Clean-up Muleshoe Month."

Harold Hinn, chairman of the board, in scheduling the board session, announced that major business will be the adoption of the research program and the budget for 1966. That afternoon board members will act as hosts in the various tours and events scheduled.

Tours to be conducted, in addition to the field tour of the research farm, will include exhibits of agricultural services in the registration tent, the new

On the second play from scrimmage the Mules fumbled again on the Muleshoe 40 yard line. Dimmitt moved the ball to the 15 yard line before punting to Jones on the Muleshoe 16 yard line and he raced it back to the Muleshoe 31 yard line.

Dimmitt moved the ball to the Mule 44 yard line before punting to Jones on the Muleshoe 15 yard line and he raced it back to the Muleshoe 31 yard line.

The Mules failed to gain momentum and punted to the Dimmitt 38 yard line. With time running out The Bobcats went to the air but completed only one to the Muleshoe 45 yard line before handing the ball over to the Mules.

The Mules threw one incomplete and a second try was intercepted by Robbie Lindsey on the Dimmitt 49 yard line.

Dimmitt threw four incomplete passes as the half ended with the score 6-0 in favor of the Mules. (See MULES, Page 5)

Wichita Falls To Clovis Area Possible Amendment's Failure Would Add 10 Counties To District

If Texas voters next Tuesday turn down a proposed amendment to enlarge the Texas senate from 31 to 39 members, Bailey county will join a number of other counties to form a senatorial district stretching

all the way from Wichita Falls to the Texas-New Mexico line. This was pointed out Saturday by organizations which are lining up in support of the proposed amendment. In general, farming areas favor the proposal; organized labor and most urban voters oppose the enlargement proposal.

Farm Bureau and Farmers Union, frequently on opposite sides of the fence, have joined ranks to favor the proposal.

If the amendment is not approved next Tuesday, a redistricting plan will go into effect which would put this county in the same district with Wichita Falls. If the amendment is defeated, these counties would be added to the 30th district: Cottle, Harteman, Wilbarger, Wichita, Dickens, King, Knox, Ford, Baylor and Archer. Counties which would be switched from district 30 to district 31 would be Deaf Smith, Armstrong, Donley and Collingsworth.

Temperatures

	High	Low	Rain
Sept. 1	89	69	
Sept. 2	86	58	
Sept. 3	86	69	.07
Sept. 4	88	57	
	Sunrise	Sunset	
Sept. 5	6:24	7:08	
Sept. 6	6:24	7:07	
Sept. 7	6:25	7:05	
Sept. 8	6:26	7:04	

Willham To Talk At High Plains' 9th Field Tour

Thousands of persons, including many from Muleshoe and Bailey county, are expected to attend next Thursday's 9th annual field day at the High Plains Research Foundation at Halfway, slated to start at 1 p.m. Preceding the tour, the board of trustees will stage its meeting.

Harold Hinn, chairman of the board, in scheduling the board session, announced that major business will be the adoption of the research program and the budget for 1966. That afternoon board members will act as hosts in the various tours and events scheduled.

Tours to be conducted, in addition to the field tour of the research farm, will include exhibits of agricultural services in the registration tent, the new



PROCLAMATION — Mayor Wilbur LaVaque this past week officially proclaimed September as Clean-up month in Muleshoe. The campaign is sponsored by Muleshoe Jaycees with Sylvester Tanguma (left) as chairman. Also watching was Jaycee President Kenneth Henry. (Journal Photo)



Monday Is \$1 Day

O.E.S. Friendship Night Draws Many From District

Mary Farley registered 105 persons at the annual friendship night for the Muleshoe Eastern Star Lodge held in the Maudie Hall here Tuesday at 7:30 p.m.

Fourteen chapters were represented which included Sudan, Earth, Clovis, Prisma, Dimmit, Herford, Littlefield, Prairieview, Petersburg, Silverton, Bovina, Olton, Portales and Muleshoe. Also among were here from Wichita Falls, Virginia and Missouri.

Three Grand Officers were present for the friendship night. Mrs. Vera Armstrong, Past Grand Matron of the Grand Jurisdiction of New Mexico.

Following the salad supper the group was entertained with several selections from the Gosspears from Muleshoe. Nine Ed Bovell gave an impressive reading followed by group singing of "America" and "Bless Be The Tie That Binds", led by Tye Young with Wayland Ethridge at the piano.

A speech was given by the Worthy Matron, Lois Norwood, and each chapter was recognized. All Grand Officers were introduced, along with Alton Epp, Worshipful Master of the Muleshoe Lodge No. 1237 AF&AM, Muleshoe O.E.S. officers, and Nine Ed Bovell, Past Worthy Advisor of the Muleshoe Assembly of Rainbow for Girls.

Friendship Club Hears Director Of Girlstown

Marshall W. Cooper, Managing Director of Girlstown U.S.A. was guest speaker Thursday night for the Friendship Clubs regular and social meeting which was held in the community room of the Muleshoe State Bank at 7:30 p.m.

Cooper outlined how the home carried on, number in the home and also answered questions from the floor as to the needs of the home.

The club voted to give \$25 per month to Girlstown U.S.A. at Whiteface.

Sixteen members and five guests were present for the

Hunts Home From Vacation

Mr. and Mrs. Robert Hunt, Sheila, Curtis and Tori have returned from a nine-day vacation in parts of New Mexico, Colorado, Wyoming and South Dakota. While visiting in New Mexico and Colorado they visited some of Roberts' friends whom he hunts with each year. The meeting. Guests included Marshall W. Cooper, Linda Neil and Amanda Rush, girls from Girlstown. Mrs. Ray Martin, President of the Muleshoe Study Club and Mrs. Kenneth Hicks.

Refreshments of coffee, punch and cake were served by the hostesses Mrs. Burt Mathis and Mrs. Webb Watts.

Miss Burford, Banquet Speaker

Miss Betty Burford, vice-president of the Texas Classroom Teachers Association will be the speaker for Muleshoe Classroom Teachers Association Public Relations Banquet to be held Tuesday night at 7:30 in the High School Cafeteria here, according to Glyna Maston.

She is a high school counselor in the Plainview Public Schools. She has been a classroom teacher for the past seventeen years with the majority of her work being in the areas of English and Journalism. For several years she was adviser for the school newspaper and yearbook. She also has served as chairman of the English department.

Her professional training includes graduation from Abilene Christian College where she majored in English and Journalism. She took her masters from the University of Colorado, with a major in School Public Relations. She is a certified counselor and has done post-graduate work at Texas Tech, University of Colorado, and Sul Ross State. Attending to her academic excellence, she is a member of Kapa Delta Pi.

Regarding professional organizations, Miss Burford's record has been one of consistent faithfulness. For eleven years she was an officer in the Parent Teacher Association and was awarded life membership in this organization on the basis of her service. Additionally, she has been a member of the National Council of Teachers of English and the National Association of Journalism Teachers. In Plainview she was an organizer and charter member of the Hale County Teachers Federal Credit Union and is currently serving as secretary of the Board of Directors.



Miss Allison Presents Recital

Miss Veta Allison made her debut as a piano teacher Tuesday night when she presented ten of her summer pupils in recital, in the home of her parents Mr. and Mrs. Harold Allison.

Students who played two numbers each were Delinda Henry, daughter of Mr. and Mrs. Earl Henry, Kim Clodfelter, daughter of Mr. and Mrs. Bob Clodfelter, Belinda Nickels, daughter of Mr. and Mrs. Allen Haley, Teri Durben, daughter of Mr. and Mrs. Mike Durben, and Kathy Wittner, daughter of Mr. and Mrs. Adolph Wittner.

The students announced their names during the name of the piece, the composers name, and the time and key signature.

Miss Allison played two solos on the program, one which she had played on her first recital in college. Veta and her sister Caroloy also played a duet. Some 45 guests enjoyed the music program.

Mary Edminston Is Monthly Queen

Mary Edminston was pronounced "queen for the month" at Thursday night's TOPS meeting held in the Bailey County Community Room at 7:30, with 14 members present as Cecile Cunningham presided over the meeting.

The usual pledge and fellowship song was observed to open the meeting.

A salad supper was enjoyed from a table decorated with cut flowers by Zora Mae Beller.

Queen for the week was Anna McDonald who received a gift and commensures were Ruby Ward, Jewell Peeler and Essie Hall.

Marjorie Platt received her TOPS pin for attending eight consecutive meetings and Evelyn Harris and Jewell Peeler received their scrapbooks for attending 16 consecutive meetings.

Marjorie Platt had a birthday and received a gift.

Treasurers report for the month of August was given by the treasurer and the group decided to continue their social contest for the following two months.

Pals for the next two months consecutive meetings and Evelyn Harris and Jewell Peeler served and the meeting dismissed.



Miss Lewis Sets October Wedding

Peggy Lewis, daughter of Mr. and Mrs. R. L. Lewis will be married to W. E. Carter, son of Mr. and Mrs. Jack Carter all of San Jon, N. M.

Vows will be repeated Oct. 8 at 6 p.m. in the First Baptist Church at San Jon.

The wedding is to be attended by friends and relatives of the couple.

WALLACE THEATRE
GENERAL ADMISSION
75c Adult 25c Child
SUN. MON. TUES. SEPT. 5-6-7
THE GIRLS ON THE BEACH
"COLOR"
WED. - THUR. - FRI. SEPT. 8-9-10
4 FOR TEXAS
FRANK SINATRA
DEAN MARTIN
JOEY Bishop
TECHNICOLOR
SAT. SEPT. 11
MORNING VOYAGE TO END OF UNIVERSE
EVENING WAR GODS OF THE DEEP

BUY NOW AND SAVE!
TICKETS INCLUDE ADMISSION TO THE FAIR WHEN PURCHASED IN ADVANCE OF THE OPENING DATE
Sept. 27 thru Oct. 2 Mon. thru Sat.
Performances Nightly at 7:30
Matinees 2 p.m. Mon. & Sat.
DURING THE SOUTH PLAINS FAIR — LUBBOCK

MORRIS CHALFEN'S WORLD FAMOUS 20th ANNIVERSARY EDITION
HOLIDAY ON ICE INTERNATIONAL

ORDER BY MAIL NOW!

SOUTH PLAINS FAIR
Box 208
Lubbock, Texas

Enclosed is check—Money Order—Totaling \$ _____
For _____ Adult Tickets at \$ _____
_____ Children's Tickets at \$ _____
Time _____ Day _____ Date _____
Name _____
Address _____
City _____ Zone _____ State _____
Enclose self-addressed stamped envelope for prompt ticket return. Make all checks payable to South Plains Fair.

All seats reserved: \$2.00—\$2.50—\$3.00—\$3.50
Children (12 and Under) half price all performances.

**6 DAZZLING PRODUCTIONS
A SHOW FOR THE ENTIRE FAMILY!
FAIR PARK COLISEUM**

Anthony's C.R. ANTHONY CO.

DOLLAR DAYS - MON. - TUES. - WED.

MENS SHIRTS CLEAN UP SALE \$1 Ea.

ENTIRE STOCK MENS \$3.98

WHITE DRESS SHIRTS \$7 2 For 3 DAYS ONLY

OXFORD CLOTH OR DACRON & COTTON

SPECIAL PURCHASE LONG OR SHORT SLEEVE

SPORT SHIRTS \$2 VALUES TO \$4.98 3 DAYS ONLY

MENS' LONG SLEEVE CHAMBRAY \$1

WORK SHIRTS BLUE ONLY 2 POCKET 3 DAYS ONLY \$1

SPECIAL PURCHASE 72 x 90 CHATHAM BLANKETS Irregulars of Regular \$4.98 & \$5.98 BLANKET YOUR CHOICE \$2.99 3 DAYS ONLY

FALL SPECIAL BOYS OR GIRLS CORDUROY CREEPERS OR BOXER PANTS SPECIAL PURCHASE REG. \$1.79 VALUE \$1 EA.

24 x 36 RUGS REG. \$1.98 \$1

LADIES 100 per cent NYLON HALF SLIPS WHITE OR COLORS REG. \$2.98 \$2 3 DAYS ONLY

LADIES 100 per cent NYLON PANTIES \$1 2 For 3 DAY SALE

3 DAY SALE LADIES CORDUROY COVERALLS \$4 REG. \$6.98 3 DAY SALE

SPECIAL PURCHASE 53 PIECE DINNER SET IMPORTED CHINA 2 LOVELY NEAT PATTERNS WHILE THEY LAST REG. \$29.95 \$20

GIRLS SEERSUCKER PAJAMAS REG. \$1.98 \$1

MISSES OR LADIES VINYL SANDLES 2 Pr \$1

SPECIAL PURCHASE 72 x 90 SOLID OR FLORAL 24x36 BATH TOWELS BY MARTEX REG. \$2.98 & \$3.98 3 DAYS ONLY \$3

LADIES TEXSHEEN OR LORRAINE SLEEP WEAR VALUES TO \$5.00 PAJAMAS OR GOWNS 3 DAY SALE \$3

LADIES 100 per cent NYLON DUSTERS REG. \$3.98 NEW FALL COLORS \$2 For 3 DAYS ONLY \$5



QUEENS RECOGNIZED — Left - right are Lana Washington, Walta Buice, Linda Fowler, Nelda Finley and Johanna Shelton who were recognized Sunday night at the GA Coronation. Lana Washington and Johanna Shelton are queens with septers and Walta Buice, Linda Fowler and Nelda Finley are queens. (Journal Photo)

GA's Coronation Ceremony Held

Girls' Auxiliary of the First Baptist Church had their annual coronation service Sunday evening. The theme of the Coronation service this year was "Go — Tell." The program was opened with the singing of the Girl's Auxiliary Hymn "We've A Story To Tell."

The introduction and presentations of the girls were given by Mrs. Don Murray, GA Director. A challenge to each was given by Mrs. Verney Towns, president of Woman's Missionary Union of the First Baptist Church.

Recognized were maidens, Branda Lane, Jacque Turner and Denise Glenn. Ladies-in-waiting were Donna Grimsley, Karen Hamilton, Kathy Schuster, Ruby Neil Page, Debbie Schuster, Linda Lambert, Nanette Morris and Belinda Hartley. Princesses were Dolores Cowan. Queens were Walta Buice and Nelda Finley. Queen-with-a-septer, Johanna Shelton and Lana Washington. Queen Regent, Beverly Phipps and Linda Fowler.

Straton, Barber Exchange Vows

Miss Donita Gwen Straton and Ronald Lee Barber exchanged vows Friday in Clovis, N. M. with the Rev. C. C. Morgan officiating at the wedding.

Parents of the couple are Mr. and Mrs. H. L. Straton and Mr. and Mrs. J. W. Barber all of Muleshoe.

Miss Janet Straton served her sister as maid-of-honor. Donald Peel served as best man for the groom.



Mary Ellen Wedel

Mary Ellen Wedel Sets Wedding

Mary Ellen Wedel, daughter of Mr. and Mrs. James P. Wedel, Muleshoe, will be married to Paul Albert Stanton, son of Mr. and Mrs. Harold W. Stanton, Mountain Home, Ark. in the Cooper Creek Methodist Church Jan. 29.

The future bride will be graduating from North Texas State University at Denton in January.

Coffee Honors New Teachers

Muleshoe Classroom Teachers Association honored the new teachers for the new year with a coffee in the Junior High Library from 7:45 to 8:45 Monday morning. Several other teachers and administration personnel were present for the party.

Coffee was served throughout the day in Mrs. Watson's office by the CTA.

Pictured in Thursday's Muleshoe Journal were some of the new teachers who attended the coffee. Others teachers not pictured were James T. Perry, Norma Jo Prather, Eloise Wilson, Ted Weaver, A. L. Burchel, Dorothy Burchel and Duke Frisbie.

Please pick up your forms for your weddings and announcements at the Journal office. We would be glad to help you with your story if you will come by the office. Glossy prints may be used for your weddings. Also, if you will contact The Journal on your wedding shower, a picture can be arranged. Also forms are available for your club reporters at the office.

Latoyia Howell In California

Latoyia Howell, a fourth-grade teacher in the Richland Hills Elementary School here last year, is now affiliated with Hoover School in Indio, Calif. where she will teach the second and third grades beginning Sept. 13.

SHOP MULESHOE FIRST

WE WILL BE
CLOSED
MONDAY
SEPTEMBER 6

MULESHOE STATE BANK FIRST NATIONAL BANK

as and the Southern Baptist Convention. It is the largest missionary organization for girls in the world.

Party Honors School Personnel

The Homecoming cottage at the Lashbodie School was the scene of a dessert party given by Mrs. Earl Ellis in honor of the school personnel.

Marilyn Barnes, and Jeanie Beach greeted the guests by giving each their first report card of the year.

In attendance were the superintendent and Mrs. Sam Barnes, principal and Mrs. Harley Ethridge, principal and Mrs. Fred Wilbanks, Mr. and Mrs. Larry Kent, Bruce Rhodes, Mr. and Mrs. Paul Thurmond, Mr. and Mrs. Bert Bergstrom, Mrs. Pearl Holt, Mr. and Mrs. Tolo Byrd, Mr. and Mrs. E. C. Ketchem, Everett Maxwell, Mr. and Mrs. Edwina Bridges, Mrs. Ruth Williams, Mr. and Mrs. Scotty Windam, Mrs. Ruth Wilson, Don Richards and Earl Ellis.

Study Club Will Begin New Year

Sept. 9 is the time set for the Muleshoe Study Club to open its fall activities under the direction of the new president, Mrs. Ray Martin.

The meeting will be in the home of Mrs. S. L. Benefield, 609 W. Ave. D at 4:30 p.m. Mrs. Martin will outline the program for the following year.

The club will continue with aid to the Muleshoe Public Library, awarding a scholarship to a Muleshoe High School student, encouraging art participation in the Hallmark Art Scholarship and assist in community improvement projects.

BUFFALO LAKE ESTATES
NEAR UMBARGER

A SUBDIVISION WITH A BEAUTIFUL VIEW OF BUFFALO LAKE NEAR THE DAM.

REASONABLY PRICED AND UP TO 72 MONTHS TO PAY.

GRAND OPENING
SPECIAL ALL SEPTEMBER
YOU WILL MAKE A BIG SAVING BY SELECTING YOUR LOT EARLY

JACKSON REALTY CO. INC.
BOX 325 CANYON, TEXAS

CITY WIDE DOLLAR DAY IN MULESHOE

MONDAY, SEPTEMBER 6

<p>St. Clair's WHITE LEE JEANS REG. \$4.98 2 FOR \$8.00 PLUS 6 BTL. CTN. COKES FREE</p>	<p>L & H GROCERY CHOICE BEEF CHUCK ROAST LB. 39c</p>	<p>CASHWAY GROCERY PICKNEYS JUMBO PAC FRANKS 3 LB. \$1.00</p>	<p>BEN FRANKLIN MENS' BANLON STRETCH COTTON & NYLON CREW STRETCH, ORLON SOCKS REG. 79c PR. 55c PR.</p>	<p>JOHNSON - POOL FURNITURE AND APPLIANCE RECORDS ALL HI-FI AND STEREO A LARGE SELECTION OF 45's REG. \$4.98 \$3.97</p>
<p>Anthony's SPECIAL PURCHASE MARTEX TOWELS REG. \$2.98 & \$3.98 2 FOR \$3.00</p>	<p>THE FAIR STORE LADIES DRESSES VALUES UP TO \$10.00 \$5.99 2 FOR \$11.00</p>	<p>BOVELL MOTOR SUPPLY HALF TON CHAIN HOIST \$39.50</p>	<p>ECONO MART MEN'S DRESS FELT HATS REG. \$10.95 & \$12.95 \$6.77</p>	<p>HARVEY BASS APPLIANCE AUTHORIZED DEALER FOR . FRIGIDARE . SINGER . NECCHI . RCA VICTOR . MOTOROLA "WE SERVICE WHAT WE SELL"</p>
<p>SHOP FOR DOLLAR DAY SAVINGS WITH THE FIRMS LISTED HERE</p>	<p>CASHWAY GROCERY BANQUET FROZEN CHERRYPIES 4 FOR \$1.00</p>	<p>MULESHOE PUBLISHING CO. 500 PRINTED ENVELOPES NO. 10 OR 6% WINDOW \$5</p>	<p>PERRY'S TIP TOP BRUSH HAIR ROLLERS REG. \$1.00 66c</p>	<p>WESTERN AUTO WILSON FOOTBALL OFFICIAL SIZE AND WEIGHT REG. \$3.19 \$2.69</p>

Local Jaycees Back Proposed 39-Man Senate

Muleshoe Jaycees are in favor of the proposed enlargement of the Texas senate from 31 to 39 members, and have adopted a resolution to that effect. Kenneth Henry, president, said Friday.

The organization also is sponsoring a "get out the vote" campaign, and will offer transportation to and from the polls for next Tuesday's special election. Persons in need of rides were asked to call Curtis Walker at 3-1629.

The Jaycee resolution follows:

WHEREAS, in 1876 a Texas Constitution was adopted with a provision providing for 31 State Senators and 159 members of the House of Representatives; and 89 years later, in 1965, Texas still has only 31 Senators; and
WHEREAS, in 1876 each Senator represented 26,000 people; but in 1960, according to census figures of that year, each Senator represented 309,002 people; and

WHEREAS, we believe in effective representation in both the House and the Senate and ample opportunity for each citizen of a Senatorial District to know their Senators; and

WHEREAS, only one state has more people per Senator than Texas and only one state has more area than Texas and that there are 15 states with a combined less than Texas which are represented by a total of 41 Senators and another 15 states with a combined area less than Texas which are represented by a total of 58 Senators; and
WHEREAS, there are 21 proposed Texas Senatorial Districts larger than one or more entire state and 10 districts larger than any of 9 states; and

WHEREAS, one Texas Dis-

trict is larger than any 17 states including such sizable states as Tennessee, Ohio, and Virginia, and it is larger than the combined area of New Hampshire, Massachusetts, New Jersey, Hawaii, Connecticut, Rhode Island, and three Delaware's; and

WHEREAS, Believing in a check and balance system of State Government and realizing the need for a conservative, honest, efficient, dedicated Senate Majority to preserve that check and balance system and declining the Supreme Court Edict of one man-vote for both Houses of the State Legislature; and

RESOLVED, That we the Muleshoe Jaycees go on record and take an active part in support of the passage of the 39 man Senate Constitutional Amendment; and be it further resolved that a copy of this resolution be sent to each of the State Offices, State Directors, and Jaycee Clubs in the State of Texas and urge each to take like action.

Directors Meet For Dinner

Farm Bureau board of directors met Thursday at Paul's Fine Foods for dinner, with 15 directors and office personnel present and four guests, Jimmy Black and Ben Roming of the Young Farmers group, who reported on SMV program, and Connie Connell and Carol Hair, reporting on seminary they attended at Sam Houston Teachers College.

Buster Kittrell, county legislature chairman, reported on a policy development meeting held in conjunction with the queen's contest.

Ben Cockerell gave a report on insurance.
Next meeting for the group will be Oct. 7.

Classifieds Get Results!

LEGAL NOTICE

STATEMENT OF OWNERSHIP, MANAGEMENT AND CIRCULATION (Act of October 23, 1962, Section 4309, Title 39, United States Code)

1. Date of filing 9-5-65.
2. Title of Publication Bailey County Journal.
3. Frequency of issue, weekly.
4. Location of known office of publication (street, city, county, state, zip code, 364 West Second Muleshoe, Texas 79347.
5. Location of the headquarters or general business offices of the publishers (Not printers), 394 West Second, Muleshoe, Texas 79347.
6. Names and addresses of publisher, editor, and managing editor. Publisher (Name and address) L. B. Hall, Box 449, Muleshoe, Texas 79347. Managing editor. Publisher (Name and address) L. B. Hall, Box 449, Muleshoe, Texas 79347.
7. Owner (If owned by a corporation its name and address must be stated and also immediately thereunder the names and addresses of stockholders owning or holding 1 percent or more of total amount of stock. If not owned by a corporation, the names and addresses of the individual owners must be given. If owned by a partnership or other unincorporated firm, its name and address, as well as that of each individual must be given.) L. B. Hall, Box 449, Muleshoe, Texas 79347.
(Mrs.) Jessica P. Hall, Box 449, Muleshoe, Texas.
E. Q. Perry, 908 West 9, Plainview, Texas.
8. Known bondholders, mortgagees, and other security holders owning or holding 1 percent or more of total amount of bonds, mortgages or other securities are: (If there are none so state). None.
9. Paragraphs 7 and 8 include in cases where the stockholder or security holder appears upon the books of the company as

trustee or in any other fiduciary relation, the name of the person or corporation for whom such trustee is acting, also the statements in the two paragraphs show the affiant's full knowledge and belief as to the circumstances and conditions under which stockholders and security holders who do not appear upon the books of the company as trustees, hold stock and securities in a capacity other than that of a bona fide owner. Names and addresses of individuals who are stockholders of a corporation which itself is a stockholder or holder of bonds, mortgages or other securities of the publishing corporation have been included in paragraphs 7 and 8 when the interests of such individuals are equivalent to 1 percent or more of the total amount of the stock or securities of publishing corporation.

10. This item must be completed for all publications except those which do not carry advertising other than the publisher's own and which are named in sections 132.231, 132.232, and 132.233, postal manual (Sections 4355a, 4355b, and 4356 of Title 39, United States Code).

A. Total no. copies printed (Net Press Run). Average no. copies each issue during preceding 12 months, 2390. Single issue nearest filing date, 2330.
B. Paid circulation:
1. Sales through dealers and carriers, street vendors and counter sales. Average no. copies each issue during preceding 12 months, 610. Single issue nearest to filing date, 630.
2. Mail subscriptions. Average no. copies each issue during preceding 12 months, 1520. Single issue nearest to filing date, 1540.
C. Total paid circulation. Average no. copies each issue during preceding 12 months, 2130. Single issue nearest to filing date, 2170.

D. Free distribution (including samples, by mail, carrier delivery, or by other means. Average no. copies each issue during preceding 12 months, 20. Single issue nearest to filing date, 50.
E. Total distribution. Sum of C and D. Average no. copies each issue during preceding 12 months, 2150. Single issue nearest to filing date, 2120.
F. Office use, left-over, unaccounted, spoiled after printing. Average no. copies each issue during preceding 12 months, 150. Single issue nearest to filing date, 110.
G. Total sum of E & F — should equal net press run shown in A). Average no. copies each issue during preceding 12 months, 2300. Single issue nearest to filing date, 2330.

I certify that the statements made by me above are correct and complete.

Signed: L. B. Hall

365-11p



CLOWN PICTURE — Mrs. Bill Ellis, Friona has been painting since childhood and has never received any lessons other than high school. This picture, hanging at Paul's Restaurant, is one of a pair done in oils on red burllap. (Journal Photo)



IMPRESSIONISTIC — Mary (Tiny) Forbes has a picture of Mrs. Rachael Sterling hanging at Paul's Restaurant. Mrs. Forbes has taken painting from Dr. Emilio Cabellero and has been painting for approximately five years. (Journal Photo)

Mass Of Labor Bills Frightens PCG Manager

"An ominous, almost frightening group of labor bills with overlapping provisions gravely affecting cotton farmers and all agriculture are now pending in Congress."

This statement is from Donald A. Johnson, Executive Vice President of Plains Cotton Growers, Inc., who adds that farm leaders across the nation agree that passage of the bills would severely cut net farm income and reduce the number of available farm jobs.

Primarily, Johnson was discussing H. R. 10618 by Representative James Roosevelt (D-Cal.) which has been cleared by the House Labor Committee and is due consideration on the floor of the House in September. This bill, along with H. R. 77 to repeal the "right-to-work" section of the Taft-Hartley Law, which has already passed the House, are most critical to agriculture at the moment, Johnson feels. However, in addition to these, he referred to H. R. 8109 and 8259 in the House and to Senate Bills S-1864 through S-1869. Bills on the Senate side are sired by Senator Harrison Williams, (D-N.J.).

Collectively, here is Johnson's analysis of what they would mean to the farmer if passed into law.

1. They would bring farm workers for the first time under minimum wage regulation. All temporary and seasonal workers (those working 12 consecutive weeks or less for an employer) and all regular hired hands on farms where four or more workers were used. The

minimum would initially be set for farm workers at \$1.15 and would work up to \$1.25 per hour within two years.

2. They would raise the industrial minimum wage from \$1.25 to \$1.75. The cost of production inputs in agriculture would rise immediately, and the minimum for farm labor could not be expected to remain below the industrial minimum for long.

3. They would extend collective bargaining coverage to farm workers by amending the Labor-Management Relations Act.

4. They would give the Secretary of Labor authority to set up a massive recruiting system for U. S. farm workers. The Secretary would be empowered to furnish recruits — at farmer expense — with physical examinations, medical care, transportation, food and housing.

5. They would eliminate all minimum wage exemptions and narrow the maximum hour exemptions for compresses, warehouses and cottonseed crushing mills, and in four years would increase the overtime rate for all non-exempt workers over 45 hours per week from time-and-a-half to double-time. This would substantially increase labor costs in these service and processing industries, and the farmer would get the bill.

6. They would deprive all men and women of the right to work without joining a union, regardless of any laws passed by states guaranteeing that right and regardless of how corrupt the union in question might be, by repealing Section 14-B of the Taft-Hartley Law. Farmer would be subjected to the pressures of organized labor, either in his own operation or indirectly through related industries.

"The increased costs to the

most 2400 years ago Euripides said: "The tongue hath sworn, but the mind is unsworn."

How can we persuade a man's mind to deliver what his tongue has promised? In an earlier day, the law relied mainly on the witness' dread of immediate divine retribution. But few people nowadays are kept honest by the fear of a heavenly thunderbolt.

Accordingly, the law now seeks to harness the power of the witness' own conscience. To that end, the form of the oath may vary somewhat to fit the particular creed of the individual.

Thus a Christian may swear on the New Testament, a Jew on the Old Testament, and a Mohammedan on the Koran. And a Quaker to whom swearing is abhorrent may merely "affirm" that he will tell the truth.

On occasion, courts have even allowed such exotic procedures as blowing out a candle ("If I do not tell the truth, may I be snuffed out as was the candle").

The modern oath has a fuller use, beyond engaging the conscience of the witness. It also serves to convert a lie into an crime. Lying under oath is the crime of perjury.

It is not often that a witness is convicted of perjury. The requirements for such a conviction are strict. For the law fears that, if the club of perjury is wielded too freely, it could frighten even an honest witness into silence.

Thus, it is not purjury to give false testimony without realizing its falsity — even if there is a degree of negligence on the part of the witness.

But if there is sufficient evidence of a deliberate lie, told with evil purpose, the courts take a serious view indeed of the matter.

For the witness who commits perjury not only offends his own conscience. And he not only breaks his own oath. He also, in the words of a federal court, "pollutes the stream of justice at its source."

A public service feature of the American Bar Association and the State Bar of Texas. Written by Will Bernard.

Ever make individual ham loaves by baking the meat mixture in muffin pans?

FREE FILM

You will receive a FREE ROLL of FILM for each roll of color or black and white film you bring to our store to be developed.

NO SLIDES OR MOVIES

PERRY'S

Announcing Betty Melton

BEAUTICIAN
BETTY WILL TAKE APPOINTMENTS
SIX DAYS A WEEK
SHE IS EXPERIENCED
IN 4 WAY HAIR CUTTING
AND THE LATEST IN HAIR STYLING

B. BERNICE DARLA SUE BETTY



MAIN STREET BEAUTY SALON

115 MAIN

PHONE 3-4480

SHOP MULESHOE FIRST

DOLLAR DAY

Savings

LADIES ORLON
SWEATERS LARGE SELECTION
OF ORLON SWEATERS. IDEAL FOR THESE COOL MORNINGS

REG. \$6.98 NOW \$3.99

LADIES CANTRECE HOSE

STOCK UP NOW ON THESE HOSE. REGULARS OR LONGS

REG. 89c 3 PAIR \$2.25

MENS BANLON SOCKS

LARGE SELECTION OF COLORS
ONE SIZE FITS ALL. REG. \$1.00 PR.

2 PR. \$1.50

GIRLS
CREW SOCKS LARGE STOCK OF
GIRLS CREW SOCKS REG. 69c 49c

MENS
DUROLENE SHIRTS
100% POLYESTER DRESS SHIRTS
NEVER NEEDS IRONING, WHITES
OR COLORED

REG. \$5.95 DOLLAR DAY \$4.99



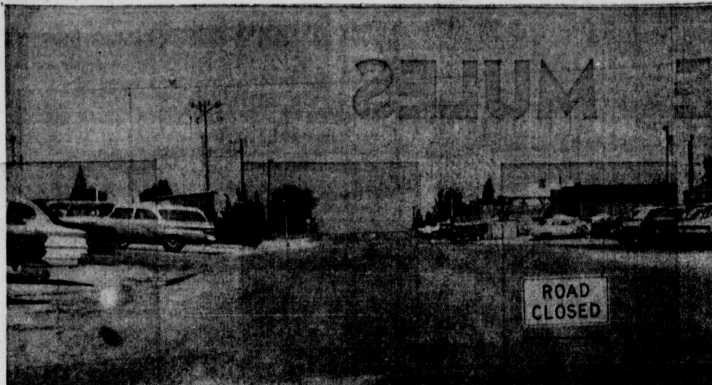
When You Plan Your Wedding...

LET US HELP YOU WITH INVITATIONS AND ANNOUNCEMENTS

ENGRAVED AND RAISED PRINTING . BRIDAL BOOKS . GUEST BOOKS . INFORMAL CALLING CARDS

MULESHOE PUBLISHING CO.





SAFETY CLOSING — Something new in the way of traffic controls is being tried this year for the first time; the street between junior and senior high schools

is being closed from 8 until 4 o'clock each school day. Cars shown in the picture were parked before 8 a.m., can't be removed before 4 p.m. (Journal Photo)

Amendment--

(Continued from Page One)
the state convention of the farm organization.
Chester Self, president of the Bailey County group, in making the announcement, said "This amendment would decrease the number of constituents necessary for each senator to serve, thereby giving better representation to farmers, agricultural areas, and agribusiness."

Among individuals who have lined up in favor of the amendment is State Representative Jesse T. George, whose district now includes this county under the new re-districting plan.
George said "the proposed constitutional amendment, the first of 27 passed by the 59th legislature, actually has two major purposes." The first change would remove from the Constitution the restriction that "no single county shall be entitled to more than one senator."

George said that the constitution of 1876 was drafted at a time when the Texas Grange had a membership of almost 50,000, and this body and its members played an important role in the selection of delegates, as well as in the drafting and ratification of the Constitution. The dominance of the Grangers naturally resulted in a document which protected rural interests.

Legislation enacted by the 59th Legislature has drawn new senatorial district lines which retain the 31-member status but make major changes designed to increase representation for the heavily-populated urban area. George emphasized, "Because of the vast size of Texas, this redistricting measure results in several extremely large districts from the standpoint of area, districts in which it has been impossible to maintain community of interest as well as meet the formula of division based upon population. Therefore, a larger membership in the upper house could serve to alleviate this problem as well as give assurance of their proper representation to the cities."

Mules--

(Continued from Page One)
Mules.
With the second half starting Dimmitt received the kick on their 35 yard line. Three plays later they were still on their 35 yard line and as they were punting a tough Mule got his hands on the ball and blocked it. The Mules took over on the Dimmitt 32 yard line. Adams moved it to the 23 yard line. Swint moved it to the 15 yard line. Adams slipped to the four. Jones to the one, and Swint crashed through for pay dirt.

With seven minutes left on the clock of the third quarter, Adams put the ball through the uprights for one point.
Dimmitt received the kick on their 24 yard line and moved to their own 33 yard line before punting to the Mule 17 yard line.

Muleshoe failed to click and punted to the Dimmitt 41 yard line. The Bobcats ran two plays for a total of four yards lost before Joe Adams recovered a fumble on the Dimmitt 37 yard line.
The Mules pushed to the 27 yard line, lost back to the 30 yard line and were penalized on

Tour--

(Continued from Page One)
Moody Memorial Education and Communication Building in which will be located the library and a large room for future expansion, the Kilgore Memorial Building and laboratory; the Jim Hill Greenhouse; lawn grass display and shrubbery tours; the Foundation Seed Laboratory; the Cotton Products exhibit; and the 20-saw laboratory gin; and the farm equipment display.
The barbecue will be served by Lions' Clubs of the area. Hosts for the meal are the Hall County State Bank and the Plainview Coop. Comm. The Plainview Barber Shop Music Association will entertain the visitors at the conclusion of the barbecue.
Dr. Olive S. William, President of Oklahoma State University, Stillwater, will be the principal speaker at the evening program. The day's activities will close with a drawing for prizes from registration cards. Prizes include: cotton tupper, courtesy of Cole and Price, Inc. of Canyon; hand weed burner, courtesy of Gene Bumpus, Inc., Plainview; and 5 bushels of "shortseason" soy beans. High Plains Research Foundation, Hallway.

Tour--

Board Members from this area who will be acting as hosts during the afternoon are: Jesse Osborn, Muleshoe, host in the Kilgore building and laboratory and the Jim Hill greenhouse; Jack Schuster, Muleshoe, host in the registration and agricultural service display tent; Jim Wedel, Muleshoe, host at the 20-saw laboratory gin and cotton identities, which are embraced in the infinite Mind and forever reflected. These ideas range from the infinitesimal to infinity, and the highest ideas are the sons and daughters of God" (Science and Health with Key to the Scriptures, p.502).
The Golden Text is from Daniel in the Old Testament: "O man greatly beloved, fear not: creation consists of the unfolding of spiritual ideas, and their year, be strong."

SCHOOL MENUS

MONDAY
Milk
Meat loaf
Green beans
Creamed potatoes
Lettuce & tomato salad
Bread, butter and fruit cake

TUESDAY
Milk

Muleshoe--
(Continued from Page One)
Chevrolet show while there Mrs. Blackburn and Mr. Bray are twin brother and sister.

Muleshoe Eastern Star officers will practice Monday at 7:30 p.m. in the Masonic Hall here for the purpose of initiation, according to Lois Norwood.

Mr. and Mrs. A. B. Harris and son, Roy, are visiting A. J. Shover this week. The Harrises are from Artesia, N. M.

Farmers can get a four-cent-per-gallon refund on each gallon of gasoline used for farming purposes during the 12-month period ending June 30 by filing a claim with the Internal Revenue Service, says J. K. Adams, Bailey county agent. Forms for refunds can be secured at his office.

Army Sgt. Wilson H. Evans, son of Mr. and Mrs. Wilson H. Evans, Friona, participated in a four-weeks' field training exercise at Hohenfels, Germany. He is a squad leader in Company B, 2nd battalion of the 3rd armored division's 48th infantry near Gelnhausen, Germany.
ton products display: Eddie Wallace, Enochs, and Jarvis Angeley, Earth, hosts at the farm equipment display. R. L. (Sport) Byers, Springlake, host at the seed processing laboratory, offices and shops; and F. M. Smith, Sudan, host at the lawngrass display and shrubbery tour.

Tuna salad
Pork & beans
Lettuce and tomato wedges
Bread, butter
Pear half and ginger cookies
WEDNESDAY

Milk
Steak fingers
Potato salad
Carrot sticks
Buttered English peas
Hot rolls and butter
Honey
THURSDAY

Milk
Cornedogs
Vegetable beef soup
Crackers, bread, butter
Apricot cobbler
FRIDAY

Milk
Fish sticks
Cabbage & apple salad
Black-eyed peas with bacon
Buttered corn
Hot rolls and butter
And peach preserves

Mrs. Robinson Given Surprise Birthday Party

By Mrs. H. W. Garvin

THREE WAY — Friends of Mrs. A. E. Robinson surprised her last Sunday with a birthday party on her 80th birthday. She has been a resident of Maple community since 1928 and has been active in community activities. Many called during the afternoon.

Mr. and Mrs. Johnnie Wheeler and Mr. and Mrs. H. W. Garvin attended the Lea County Fair and Fatstock show in Lovington, N. M. recently.

Diekie Wheeler, the Wheelers' grandson, won the title for showmanship at the fair.

Mrs. Loyd Warren was a patient in the Morton hospital the past week.
Mr. and Mrs. Bill Dupler and daughter are on vacation this week.

Mr. and Mrs. R. L. Reeves, Mr. and Mrs. Jack Reeves and children, Mr. and Mrs. Sid Conners and children, Post Mrs. Dutch Harrison and son, DeLeon and Mrs. Bill Davis and children spent the weekend in Ruidoso, N. M.

Mr. and Mrs. H. W. Garvin spent the weekend at McAdoo with Mr. and Mrs. A. G. Fox. They returned by way of Littlefield and visited Mr. and Mrs. Carol Fleming Sunday evening. School opened here this past Monday with a full schedule of activities observed. Many new improvements have been made to the school plant.

SHOP MULESHOE FIRST

ANNOUNCEMENTS

MONDAY, Sept. 6
AMERICAN LEGION HALL
American Legion Meeting - 7:30 p.m.

PAUL'S RESTAURANT
Jaycees-noon
FIRST NATIONAL BANK
AAUW Salad Supper-7:30 p.m.

LEGION HALL
Rotary Club-noon
WEDNESDAY, Sept. 8
LEGION HALL

LIANS-noon
FIRST NATIONAL BANK
Jean Martin-2 p.m.
Donita Barber-24 p.m.

THURSDAY, Sept. 9
PAUL'S RESTAURANT
Amarillo-7:30 p.m.

BAILEY COUNTY COMMUNITY ROOM
TOPS-7:30 p.m.
MULESHOE STATE BANK
Athletic Boosters-7:30 p.m.

BRIDGE CLUB
Progressive Homes Club
SATURDAY Sept. 11
LEGION HALL

Youth Center Dance-8 p.m.



RAIN...ON Labor Day!

The hay fever sufferers would appreciate it. By the way, great new medicines to lessen hay fever and allergies have been developed - ask your doctor and druggist about them.

Western DRUG
Your Walgreen Agency
PHONE 3-1060 MULESHOE, TEXAS

Science Theme Is 'God's Image'

The concept of man as made "in the image of God" will be presented in the Bible Lesson Sermon at all Christian Science services today. The subject is "Man."

The following passage from the Christian Science textbook by Mary Baker Eddy will be included: "There is but one creator and one creation, this creation consists of the unfolding of spiritual ideas, and their year, be strong."

Science Theme Is 'God's Image'

identities, which are embraced in the infinite Mind and forever reflected. These ideas range from the infinitesimal to infinity, and the highest ideas are the sons and daughters of God" (Science and Health with Key to the Scriptures, p.502).
The Golden Text is from Daniel in the Old Testament: "O man greatly beloved, fear not: creation consists of the unfolding of spiritual ideas, and their year, be strong."

identities, which are embraced in the infinite Mind and forever reflected. These ideas range from the infinitesimal to infinity, and the highest ideas are the sons and daughters of God" (Science and Health with Key to the Scriptures, p.502).
The Golden Text is from Daniel in the Old Testament: "O man greatly beloved, fear not: creation consists of the unfolding of spiritual ideas, and their year, be strong."

ATTENTION FARMERS!
BEFORE YOU BUY YOUR TANDEM DISK HARROWS CHECK THE DAVIES IMPLEMENT FOR PRICES AND QUALITIES SEE OUR WIDE SWEEP STUBBLE MULCH TOOL "DEMONSTRATIONS WITHOUT OBLIGATIONS" SEE OUR IMPLEMENTS AT RESEARCH FOUNDATION FIELD DAY, SEPTEMBER 9, 1965 AT HALFWAY

HARVESTER PLOW CO.
PRATT, KANSAS
CONTACT
FRED AUSTIN, REPRESENTATIVE
Box 48 Earth Ph. Laz. 965-2461

EXERCISE YOUR RIGHT TO VOTE
WE URGE THE CITIZENS OF BAILEY COUNTY TO VOTE
TUESDAY, SEPT. 7, 1965
RESIDENTS EAST MULESHOE...
BOX A CITY HALL
BOX 1 300 BLOCK W. 2nd.
BOX 2 WEST CAMP
BOX 3 MAYS
BOX 4 THREE WAY
BOX 5 NEEDMORE
BOX 6 BULA
MULESHOE STATE BANK
MEMBER FDIC

Shopping? Vacationing? Sightseeing? Business? Races? **EL PASO** the exciting international city invites you to visit . . . stay at the **PLAZA MOTOR HOTEL** Formerly THE HILTON HOTEL
Overlooking the historic Plaza in the heart of downtown. Within walking distance of fine stores and everything downtown . . . just a stone's throw from Juarez, Mexico . . . miles away from North America's most beautiful dog and horse track . . . the Plaza offers you the convenience of free parking, comfortable rooms, gracious service, fine food, and reasonable rates.
On your next trip to El Paso, combine luxury comfort with the utmost in convenience. Make the Plaza Motor Hotel—Oregon at Mills—your El Paso address.
Phone, wire or write JACK GREGORY, Gen. Mgr. For reservations Phone 532-5661

MULESHOE MULES



JOE VELA



CURTIS BALL



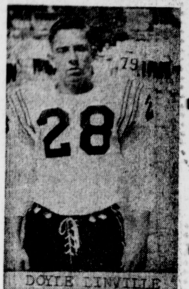
RAMON GONZALES



GARY SULLIVAN



ALVIN WALKER



DOYLE DINVILLE



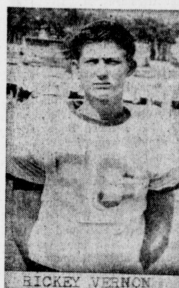
31

TERRY FIELD



32

BOBBY JULIAN

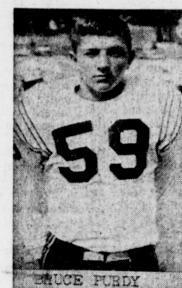


HICKEY VERNON



51

DAVEY HENRY



59

BRUCE PURDY



62

JAMES MORGAN



64

TAFT FINCH



66

MIKE RASARA



68

GARY PURDY

YOU ARE A WINNER WHEN YOU BANK AT FIRST NATIONAL BANK

Member FDIC

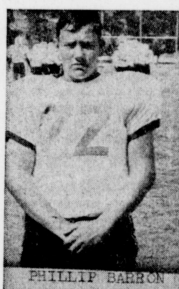


NEAL KNIGHT



71

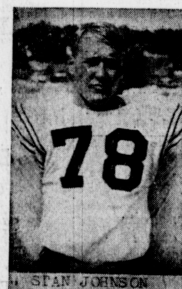
BUDDY SAMIS



PHILLIP BARRON

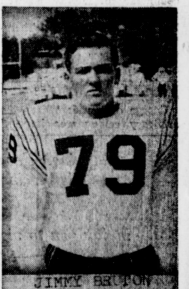


JERRY LUMPKIN



78

STAN JOHNSON



79

JIMMY BEUPOU



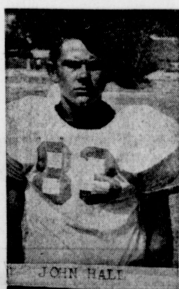
80

GARY BARCH



81

GARY STEALAN



83

JOHN HALL



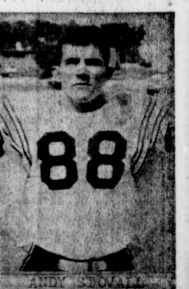
85

DENNIS SMITH



86

BILLY BARCH



88

ANDY STOVALL

CITIZENS OF THE MULESHOE AREA

PROTECT THE RURAL VOICE IN OUR STATE GOVERNMENT

**GO TO THE POLLS TUESDAY
AND**

VOTE FOR

**THE CONSTITUTIONAL AMENDMENT
TO ENLARGE OUR STATE SENATE FROM 31 TO 39 MEMBERS**

DON'T BE CONFUSED: A VOTE FOR THIS AMENDMENT WILL HELP PRESERVE THE REPRESENTATION OF THE FARMER, RURAL RESIDENT, AND SMALL TOWN IN OUR STATE LEGISLATURE. A VOTE FOR THIS AMENDMENT WILL HELP PREVENT THE CREATION OF MAMMOTH SENATORIAL DISTRICTS MADE UP OF AREAS GEOGRAPHICALLY REMOTE FROM EACH OTHER AND HAVING LITTLE IN COMMON.

DON'T FORGET TO VOTE TUESDAY - AND VOTE FOR

THIS MESSAGE SPONSORED IN THE PUBLIC INTEREST BY THE FOLLOWING:

**MULESHOE CHAMBER
OF COMMERCE
BAILEY COUNTY
FARM BUREAU**

**BAILEY COUNTY ELECTRIC
Cooperative Association
MULESHOE PUBLISHING
COMPANY**

Church Schedule

Assembly of God
517 S. First - Phone 3-9840
J. W. Farmer, Evangelist

Calvary Baptist Church
1733 W. Ave. C.
Rev. Bill Felts, Pastor

Spanish Assembly of God
East 6th and Ave. F.
Rev. Enock Ramirez

Richland Hills Baptist Church
17th and West Ave. D
Rev. Ira Waddell, Pastor

Primitive Baptist Church
621 S. First
Afton Richards, Pastor

Trinity Baptist Church
314 E. Ave. B.
Troy Walker, Pastor

St. Matthew Baptist Church
W. Third
Rev. E. McFrazier, Pastor

Spanish Baptist Mission
409 E. Ave F.

Immaculate Conception Catholic Church
(Fr.) Clifton J. Corcoran
Northeast of City

First Christian Church
130 W. Ave. G.
Charles M. Grow, Minister

Jehovah's Witness
Fiona Lowery
Boyd Lowery, Minister

Muleshoe Church of Christ
Cloviss Hwy.
D. L. Thompson, Minister

Northside Church of Christ
117 E. Birch Street
Frank Duckworth, Evangelist

Church of Christ
West Birch and Chicago
H.R. Stevens, Minister

First Methodist Church
507 W. Second
J. Frank Peery, Pastor

St. John Lutheran
Lariat, Texas
Herbert E. Peiman

Latin American Methodist Mission
Ave. D & 5th St.
E.C. Puqueno, Pastor

Church of the Nazarene
Ninth & Ave C.
Alvin Keswater, Pastor

First Presbyterian Church
Morton Highway
Don Boles, Pastor

Spanish Assembly of God
East 6th and Ave. F.
Rev. Enock Ramirez

Young People - Friday 8 p.m.
Sunday School - 10:00 a.m.
Worship Service - 11:00 a.m.
Evangelistic Service - 8:00 p.m.

Richland Hills Baptist Church
17th and West Ave. D
Rev. Ira Waddell, Pastor

Sunday School - 10:00 a.m.
Morning Worship - 11:00 a.m.
Training Service - 6:00 p.m.

St. Matthew Baptist Church
W. Third
Rev. E. McFrazier, Pastor

Evening Worship - 7:00 p.m.
Midweek Prayer Ser. 7:45 p.m.
Sat. KMUL Program - 9:45 a.m.

Richland Hills Baptist Church
will begin a study course Monday and will continue through Friday. Meeting time is 7:30 p.m.

A guest missionary speaker
will be present for the Sunday night meeting. The Rev. Jack Bateman, Tyland, was a prisoner in world war II and came

to the states where he then attended Jacksonville Baptist College in Jacksonville. He is also a member of the North American Baptist Association. Mr. Bateman's family will be with him. All are invited to attend the services.

Northside Church of Christ
117 E. Birch St. - Ph. 3-4110

Sunday Services - 10:30 a.m.
Night - 6:30 p.m.
Wednesday - 8:00 p.m.

First Methodist Church
507 W. Second Ph. 8470
J. Frank Peery, Pastor

Morning Worship - 10:30 a.m.
KMUL Radio Prog. - 8:30 a.m.
Youth Fellowship - 6 p.m.
Sunday School - 9:45 a.m.
Evening Worship - 7 p.m.
Wednesday Service - 8 p.m.
Dial-A-Prayer - Ph. 6490

Juniors, who left earlier in the week for Ceta Canyon, returned Friday afternoon. They reported a good time.

First Baptist Church
220 W. Ave. E. - Ph: 6900
Rev. Don Murray, Pastor

Sunday School - 9:45 a.m.
Morning Worship - 11:00 a.m.
Training Union - 6:00 p.m.
Evening Worship - 7:00 p.m.

Midweek Services:
Teachers & Officers - 7:30 p.m.
Bible Study & Prayer-8:00 p.m.
Choir Rehearsal - 9:00 p.m.

Primitive Baptist Church
621 S. First

Afton Richards, Pastor

1st and 3rd Weeks:
Saturday Services - 7:30 p.m.
Sun. Morn Ser. - 10:30 a.m.

4th Sundays
Elder Jimmy Bass - 7:30 p.m.
Wed Midweek Ser. 7:30 p.m.

Trinity Baptist Church
—A Southern Baptist Church—
314 East Ave. B. — Phone 4794
Troy Walker, Pastor

Sunday School - 9:45 a.m.
Training Union - 6:30 p.m.
Wed. Prayer Meet. - 7:30 p.m.
W. M. S. Thurs. - 9:30 a.m.

Spanish Baptist Mission
Sunday School - 9:45 a.m.
Morning Worship - 11:00 a.m.
Sun. Evening Ser. - 6:30 p.m.
Training Union - 7:00 p.m.
KMUL Sun. Radio - 5:30 p.m.
Midweek Ser. Wed. - 7:30 p.m.

First Christian Church
130 W. Ave. G.
Phone 3-4380 or 7310
Charles M. Grow, Minister

Church School - 10:00 a.m.
and Morning Worship - 11:00 a.m.
Evening Worship - 6:00 p.m.
Youth Meeting - 5:00 p.m.
C. W. F. Meeting - 2nd and 4th Tuesdays - 2:00 p.m.

Jehovah's Witness
Kingdom Hall
Boyd Lowery, Minister
Phone 965-2291

Sunday - Watchtower - 4 p.m.
Tuesday - Bible Study - 8 a.m.
Thursday - Service Meeting and Ministers School - 7:30 p.m.

Immaculate Conception Catholic
(Fr.) Clifton J. Corcoran
Northeast of City

Sunday Masses:
8:30 a.m. - Mass Dialogue
12:15 p.m. - High Mass
Daily Masses:
Mon. - 4 p.m.
Wed. - 7:30 p.m.
Other Days - 8 a.m.

Christian Doctrine Classes
Sun. - After 8:30 a.m. Mass
Mon. - 4 p.m.
Choir Practice - 8 p.m.

Muleshoe Church of Christ
Cloviss Hwy. - Phone 3-0700
D. L. Thompson, Minister

Sunday:
Radio Prog. KMUL - 8 a.m.
Bible Class for all - 9:30 a.m.
Morning Worship - 10:20 a.m.
Evening Worship - 6:30 p.m.
Wednesday:
Mid-week Meeting - 8 p.m.

Church of the Nazarene
Ninth & Ave. C. - Ph. 3214
Alvin Keswater, Pastor

Sunday School - 10:00 a.m.
Morning Worship - 11:00 a.m.
N. Y. P. S. - 7:00 p.m.
Sun. Evening Wor. - 7:30 p.m.
Mid-Week Ser. Wed. - 8:00 p.m.

Church of Christ
West Birch and Chicago
H. R. Stevens, Minister

Bible Class - 10:00 a.m.
Evening Class - 6:00 p.m.
Morning Worship - 11:00 a.m.
Evening Worship - 7:00 p.m.
Men's Training Class - 5 p.m.
Tuesday, Bible Class - 8 p.m.

First Presbyterian Church
Morton Highway Phone 3-0180
Don Boles, Pastor

Sunday School - 9:45 a.m.

ATTEND THE CHURCH OF YOUR CHOICE THIS SUNDAY

the
RIGHT LIGHT

THE PROFESSIONAL PHOTOGRAPHER gives careful thought and study to lighting his subject. Contrasts must be right and reflections must be right to achieve the best effects.

Individuals' lives reflect how they think and what they believe. Our lives count most, when we attend church regularly and walk in the light of the Lord.

EVERYONE IN THE CHURCH
THE CHURCH IN EVERYONE

© Coleman Adv. Serv.

The Church is God's appointed agency in this world for spreading the knowledge of His love for man and of His demand for man to respond to that love by loving his neighbor. Without this grounding in the love of God, no government or society or way of life will long persevere and the freedoms which we hold so dear will inevitably perish. Therefore, even from a selfish point of view, one should support the Church for the sake of the welfare of himself and his family. Beyond that, however, every person should uphold and participate in the Church because it tells the truth about man's life, death and destiny; the truth which alone will set him free to live as a child of God.



QUEEN REGENT IN SERVICE — Beverly Phipps was recognized as queen regent in service Sunday night at the GA Coronation held in the First Baptist Church here. (Journal Photo)

Halls Entertain With Hamburger Party At Enochs

By Mrs. Jerome Cash ENOCHS — Those enjoying a hamburger fry and ice cream at the Carl Hall's home Saturday night were Mr. and Mrs. Cleo Hall and family; Mr. and Mrs. Bill Burriss and family; Wellman; Mr. and Mrs. J. E. Layton and sons, and Mr. and Mrs. J. D. Bayless.

Nita Jo and Carol Sue Milsap, Muleshoe, are visiting their grandparents this week. Mr. and Mrs. Joe Milsap.

Mr. and Mrs. E. N. McCall and Dolores visited last week in Harlingen with his brother and family. Mr. and Mrs. Dick McCall.

Those visiting in the J. D. Bayless home Sunday were Mr. and Mrs. Cleo Hall and family; Mr. and Mrs. Bill Burriss and family; Wellman; Mr. and Mrs. Leeland Fidelity and family; Lubbock; Mr. and Mrs. Bill Dick; Portales; N. M.; Mr. and Mrs. Ikey Bayless; Mr. and Mrs. Roy Bayless, both of Muleshoe, and Mr. and Mrs. J. E. Layton and sons and Mr. and Mrs. Carl Hall.

Visiting in the Alma Altman home Sunday were a nephew and family; Mr. and Mrs. Wellman Toews, and his mother, Mrs. Raymond Darow, all of Hereford.

Mr. and Mrs. Kenneth Coats and family; Mr. and Mrs. R. H. Baker and family, and Mr. and Mrs. Wayland Altman and family; Three Way.

Mr. and Mrs. Avery Payne

Morning Worship - 11 a.m.
Youth Fellowship - 7:30 p.m.
Jr. Activities - 7:30 p.m.
Adult Study - 7:30 p.m.

Latin American Methodist
Ave. D & 5th St. - Ph. 3-8229
E. C. Puqueno, Pastor

Sunday School - 10:00 a.m.
Morning Service - 11:00 a.m.
Evening Service - 7:30 p.m.

SHOP MULESHOE FIRST

Modern cooking directions to the contrary, many good cooks believe in pricking the skin of a duck as it is roasting to help the fat drain off. However, some of these cooks say that only the skin over the back and around the tail needs the pricking.

Convenience

IS OUR BUSINESS

A checking account at First National saves you time, footwork, energy. The cost is low, convenience great!

FIRST NATIONAL BANK

MEMBER FDIC

Heathington Lumber Co.
814 W. American Blvd.

Muleshoe State Bank
304 Main

Main Street Beauty Salon
115 Main

Western Drug
114 Main

Perry's
322 Main

Muleshoe Motor
106 S. 1st.

Bovell Motor Supply
107 E. Ave B.

Higginbotham Bartlett Co.
215 Main

Muleshoe Antenna Co.
Muleshoe

St. Clair's

Cashway Gro.
402 Main

Western Auto Store
228 Main

The Fashion Shop
OF MULESHOE

Pool Insurance Agency
114 E. Ave. C.

First National Bank
1st. & Ave B

Charles Lenau Lumber Co.
202 E. Ash

Ben Franklin
128 Main

Spudnut Shop
328 Main

James Jennings Insurance
115 E. Ave. D.

Dari Delite
210 N. 1st.

Bub Shafer Bell Service
Cloviss Road

Piggly Wiggly Super Mkt
4th. & American Blvd.

Paul's Fine Foods
Cloviss Rd.

Tri-Co-Bowl
Cloviss Road

Fry & Cox
401 S. 1st.

L & H Gro.
414 W. American Blvd.

Muleshoe Co-Op Gins
Muleshoe

Cobb's

Cox Drive-In
Theatre, Friona Hwy.

Muleshoe Church of Christ
Cloviss Hwy. - Phone 3-0700
D. L. Thompson, Minister

Sunday:
Radio Prog. KMUL - 8 a.m.
Bible Class for all - 9:30 a.m.
Morning Worship - 10:20 a.m.
Evening Worship - 6:30 p.m.
Wednesday:
Mid-week Meeting - 8 p.m.

Church of the Nazarene
Ninth & Ave. C. - Ph. 3214
Alvin Keswater, Pastor

Sunday School - 10:00 a.m.
Morning Worship - 11:00 a.m.
N. Y. P. S. - 7:00 p.m.
Sun. Evening Wor. - 7:30 p.m.
Mid-Week Ser. Wed. - 8:00 p.m.

Church of Christ
West Birch and Chicago
H. R. Stevens, Minister

Bible Class - 10:00 a.m.
Evening Class - 6:00 p.m.
Morning Worship - 11:00 a.m.
Evening Worship - 7:00 p.m.
Men's Training Class - 5 p.m.
Tuesday, Bible Class - 8 p.m.

First Presbyterian Church
Morton Highway Phone 3-0180
Don Boles, Pastor

Sunday School - 9:45 a.m.



GA CORONATION — Pictured above are the girls and their sponsors who took part in the GA Coronation ceremony Sunday night at the First Baptist Church. Bottom left-right are Mrs. Don Murray, Denise Glenn, Jacque Turner, Brenda Lane, Mrs. Verney Towns. 2nd. row Belinda Martley, Nanette Morris, Linda Lambert,

Debbie Schuster, Ruby Nell Page, Kathy Schuster, Karan Hamilton and Donna Grimsley. 3rd. row - Nelda Finley, Johanna Shelton, Linda Fowler, Beverly Phipps, Delores Cowan, Lanna Washington and Walta Buice. (Journal Photo)

Area Democratic Women Hear Talk By George On Election Issues

A discussion of Texas government highlighted a meeting of the Cochran County Area Women Democrats Wednesday when State Representative Jesse T. George gave a talk on the proposed constitutional amendments to be submitted to Texas voters during the next two years.

Lawmaker George, who represents Cochran, Hockley, Terry, Yoakum, and now Bailey Counties, concentrated a major portion of his comments on four of the 11 amendments to be voted on in 1965. George urged heavy voter turnout Tuesday to support the proposed constitutional amendment enlarging the Texas senate from 31 to 39 members.

"Adoption of the 39 member Senate amendment will mean a continuation of the rural voice in our Texas Senate; defeat could result in a concentration of metropolitan-oriented legislation at the expense of rural areas like West Texas," George emphasized.

George continued by stating that public support of Amendment No. 3, Nov. 2, 1965, enabling the legislature to enact appropriate legislation which would permit Texas to continue cooperating with the federal government in providing assistance and medical care benefits to certain aged, needy, and handicapped persons should be viewed in the light that the federal tax burden upon Texas whether or not the amendment is adopted.

George added: "There is no reason to place Texas in a position whereby it cannot have some of its taxes returned in benefits for medical purposes. Public approval of this amendment will assure us of this needed protection."

Representative George presented a historical background on the length of terms for state-wide elected officials and explained the proposed amendment to change the present two year tenure of state-wide officials to four years. George stated that he favored a four year term for governor if voters

approve the companion amendment extending members of the House of representatives to four years. "This is not a selfish motive, but in order to keep an equal balance of power between the executive and legislative branches of state government. I feel that equivalent length of term is necessary, on a two-year term or a four-year term," the lawmaker emphasized.

"The 59th Legislature took a progressive step forward when it passed the proposed constitutional amendment providing the issuance of bonds to be used as a loan fund for Texas students attending public and private institutions of higher education within the State. Public support of this important measure Nov. 2 will enable Texas and Texans to utilize the full potential of her greatest single natural resource, the young people," George stressed.

He continued by saying, "This program, to be known as the Texas Opportunity Plan Fund, provides for repayment of the principal as well as interest, and is actually no cost to taxpayers, and its approval would further ensure that Texas' future state developments would be in the hands of those best qualified for service." Representative George, a co-author of the educational measure, stated, "This is one amendment I intend to actively support as a tool of opportunity for Texas youth through expanded educational facilities."

Approximately 35 women attended the meet, presided over by the club president, Mrs. H. B. (Dorothy) Barker.

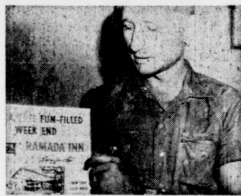
Bula Revival Services Set

A revival will begin Sunday at the Bula Methodist Church with the Rev. C. C. Dorn, Hartley, doing the preaching. Services will begin at 10 a.m. and 8 p.m. and will end Sept. 12, according to the pastor of the Bula Methodist Church, The Rev. Harvey Whittenburg.

Broiled hamburgers will taste extra good if you add cream — light or heavy — to the ground beef. For a pound of lean beef, you may add as much as a quarter cup of cream.

SHOP MULESHOE FIRST

Wayne Peterson
CONTEST
WINNER



CONTEST
RULES

1. Winner to receive a free week-end at participating Ramada Inns.
2. Weekend includes two nights lodging and food for an individual family of up to five members. Meals include two Breakfasts, Saturday Lunch, Saturday Evening Dinner, and Sunday Dinner For each member of the party.
3. Winning family will provide own transportation to and from.
4. You may enter in as many stores as you wish each week. No purchase necessary.
5. Winner must be married or of legal age, reside in trade area.
6. One preliminary winner will be drawn each week at each participating store. These winners from each store will then be placed in the final prize drawing that week. New contest each week for 10 weeks.
7. Winners must give the Journal two weeks notice before taking their trip.

WIN A FREE FUN-FILLED WEEK END

NEW TRIP
EACH WEEK

RAMADA INN

"Luxury for Less"

FOR YOUR
FAMILY

Name Drawn Doyle King
AQUA NET AND MANY
OTHER BRANDS

HAIR SPRAY
47c

5 & 10 PERRY'S 10 & 25
322 MAIN PHONE 3-1500

Name Drawn Mrs. Ted Allen
For Low Prices,
Quality and Pleasant
Surroundings,
TRY US!
Gunn Bros. Stamp Store
"Where Friends Meet and Prices Talk"
CASHWAY GROCERY
402 MAIN PHONE 2440

Name Drawn Ernest Martin
Auto Supplies and Auto Parts
For All Models
HEADQUARTERS FOR:
UNITED DELCO, AUTO LITE, HASTINGS,
McQUAY-NORRIS, VICTOR, CHAMPION,
MONROE, THOMPSON — MANY MORE
PLAINS AUTO PARTS
421 MAIN PHONE 2840 or 7150

Name Drawn Dene W. Edwards
GET YOUR PICNIC SUPPLIES
FOR YOUR HOLIDAY,
WEEK-END
EVERYTHING AVAILABLE
L & H GROCERY
414 W. Amer. Blvd Muleshoe, Texas

Name Drawn Melvin Seymore
Authorized
OLDSMOBILE & BUICK
Dealer
SALES & SERVICE
WIDE SELECTION OF
CLEAN USED CARS
BROCK MOTOR CO. INC.
422 N. 1st. PHONE 3-5920 or 6450

Name Drawn Lola Pellham
**Flowers For
Every Occasion**
• Delivery Service •
"WE WIRE FLOWERS"
BEAVERS FLOWERLAND
Phone Day or Night
520 S. 1st. Phone 3-1160

Winner Wayne Peterson
SANDWICHES
SOFT DRINKS
CALL IN YOUR ORDER
PICK IT UP AT OUR
WINDOW
DARI DELITE
210 N. 1st. PHONE 4829

Name Drawn W.B. Harlan
SEEDS
■ ALFALFA
■ OATS
■ RYE
■ WHEAT
"BUY OR STORE YOUR
GRAIN WITH CONFIDENCE"
RAY GRIFFITHS and SONS
121 W. Amer. Blvd PHONE 3-1100

Name Drawn Willie Radford
**SHOP COBB'S
FOR THE
LATEST STYLES
IN
DRESS & SPORTSWEAR**
Of
Cobb's MULESHOE
PHONE
4090

Name Drawn Horace Edwards
Anthony's
72 x 90 CHATHAM
BLANKETS
\$2.99

Name Drawn Helen Hall
NOW OPEN
**LET US TAKE CARE
OF YOUR CAR**
WE ARE EQUIPPED TO WASH, GREASE
AND SERVICE ANY MAKE OR MODEL.
"Service You Can Trust"
Tommy Bush, Mgr.
RICHLAND HILLS TEXACO STA.
CLOVIS HWY. PHONE 5860

Name Drawn Mrs. L.V. Julian
HOME LOANS — INSURED SAVINGS
4 1/2% Dividend
PER ANNUM PAID QUARTERLY
ANTICIPATED RATE
Tri-County
SAVINGS AND LOAN ASSOCIATION
Phone 3-3330 Muleshoe

Name Drawn Maurine Ivey
MULESHOES'
SPECIALITY SHOP
UNSURPASSED QUALITY
FOR THE
DISCRIMINATING SHOPPER
The Fashion Shop
OF MULESHOE
206 MAIN

Lake Meredith Gets Blueprint For Recreation

By Walter Rogers
Member of Congress

I have received from the National Park Service its proposed recreation facilities development plan for Lake Meredith. The report presents Park Service recommendations for spending \$1.1 million authorized by the Rogers Bill passed in 1963 to insure proper recreation development at the reservoir. The

plan will be reviewed by the House Committee, on Interior and Insular Affairs, with special attention to be given by my Reclamation, which has initial legislative jurisdiction over Federal reclamation projects such as that on the Canadian River. Construction will begin after changes, if any, are made following committee review and contracts are let.

Now, construction is completed or underway on projects cost \$790,000. This was the amount authorized several years ago for access roads, boat ramps, and other projects to insure adequate access and accommodation of the public for fish and wildlife use of the reservoir. The \$1.1

million total provided by my bill enacted last year will provide supplemental facilities. The National Park Service report presents in detail its plan for developing the eight designated shoreline recreation sites — Sanford-Yake, Blue West, Fritch Fortress, Albatos, McBride, Plum Creek, Bugbee, and Blue East. Work under the fish and wildlife authorization has begun at the first six of these areas; the new plan provides for completing these developments as well as providing initial developments at Bugbee and Blue East, both of which are located on the north shore of the reservoir not far from Sanford Dam.

Meanwhile, in Washington and Santa Fe offices of the Park Service a prospectus is being prepared for mailing to prospective concessioners who would make private enterprise investments in facilities at the reservoir. The bid invitations, I understand, will be ready to go out sometime this fall. The suggested concessioner program at Lake Meredith includes over-night accommodations; meal services; grocery or general store operations to provide camping, picnicking, fishing, boating, and sporting goods; souvenir or curio shops; transportation, boat rentals and sales; operation of mechanical boat-launching facilities; mar-

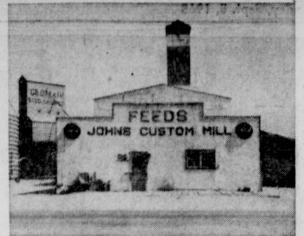
ina or dock operations; marine fueling stations; automobile and boat repair services; trailer park facilities — and, perhaps, a helicopter and small plane landing strip. Park Service policy is not to suggest concessioner developments inside recreation areas when similar accommodations or services exist because this area is now perhaps most familiar of all to the general public. Thousands of persons have viewed the dam in

stages of construction from the Sanford-Yake vista point high above the river bed. In this area, \$173,000 is being spent from the fish and wildlife allocation and \$15,000 is the proposed expenditure from the \$1.1 authorization for roads, launching ramp, parking areas, water supply, sanitary facilities, picnic area and other projects. An interpretive shelter (presumably containing a map of the project area and explanatory information) and extensive picnicking facilities are planned for the former overlook. The concession plan, when completed, may call for a concessioner-operated marina there. Another of the recreation sites already familiar to thousands of Panhandle residents is Fritch Fortress, also on the reservoir's south shore, a high peninsula providing a spectacular view of the lake and surrounding land. In addition to roads, launch facilities, picnic areas and so forth mentioned in the report, the view that Fritch Fortress would be well suited for "a concessioner lodge or similar development which will attract visitors who want the comforts and conveniences of luxurious facilities and who expect to pay for extra services." The report notes also that a marina, a golf course, and landing strip would be other likely concessioner projects.

As many of you know, Congressional action was completed in recent days on my bills to name the reservoir "Lake Meredith," in memory of that great conservationist and Berger citizen, A. A. Meredith, and to establish the Albatos Flint Quarries National Monument in conjunction with the Albatos recreation area.

For a party, you might like to serve cooked shrimp this way. Choose a leafy green cabbage and loosen the outside leaves; fold them back; petal-fashion. Insert a wooden pick into each shrimp and then force the bottom of the pick into the cabbage. Serve a cocktail sauce so guests can dip the shrimp into it.

To keep a knob of fresh ginger, leave it unpeeled and cover it with sherry. Use a glass jar with a screw-top cover and keep the sherried ginger in the refrigerator. Cut off a slice as needed.



FEED MILL—Shown above is John's Custom Feed Mill located at 523 American Blvd. in Muleshoe.

John's Feed Mill Has Special Mix

Anyone having livestock and even birds. You can also wanting the right kind of feed buy manure, salt and insecticides here.

Mr. Fried milled oats, milo, cotton seed cake and laying mash in addition to the other feeds. Some cow feeds are mixed with syrup which makes it more desirable to the cow. He mixes any type of feed the customer wants, and knows what the animals like best.

Mr. Fried also raises hogs on his hog farm near here and usually has about 50 to 100 head on hand at any time. He sells them to a packing plant in Clovis and to individual buyers as well. He also buys and sells metal.

Starting in 1941 Mr. Fried has built up a thriving business and is widely known through this part of West Texas. He has many customers who have been buying from him for twenty years or more and his business is expanding. He has three employees in addition to himself and the four of them run the feed mill.

Mr. Fried mixed special types of feed for dairy cows as this feed makes them healthier and more productive. His many years of experience in this business has taught him what types of feed various animals like and what type makes them fat and healthy.

No matter what your feed problems are, take them to John Fried and he can certainly help you to find the right mixture for your livestock.

BUSINESS SERVICES DIRECTORY

MULESHOE MACHINE AND WELDING

- GENERAL MACHINE AND REPAIR WORK
- IRRIGATION SERVICES... PUMPS AND GEAR HEADS
- 15 YRS. EXPERIENCE

DALE BURDEN
Plainview Hwy. & N. Fr
PHONE 3-1450

Phone 3-0780

— the number to call to save money on your new office, store, warehouse

Headquarters for attractive Inland steel buildings. Pre-engineered in any length, any width. Enclosed with colorful metal wall panels, glass, or other materials. Fast erection saves money.

INLAND STEEL BUILDINGS

B & C BUILDERS, INC.
217 E. Ave. B Muleshoe, Texas

MULESHOE COVER SHOP

SEAT COVERS

All Types Furniture Work
All Types Auto Work
All Types Canvas Work

CLOVIS ROAD
Phone 3-5860
MULESHOE, TEXAS

MISS YOUR PAPER?

Call 2350

Weekdays 8 to 5

CONOCO

FILL UP AT
FIRST STREET CONOCO STATION
1st & American Blvd.

- FAST SERVICE
- PICK-UP & DELIVERY
- TIRES & BATTERIES

J. A. MILLS, Dealer
Phone 7920

Save Money On Auto Parts!

BOVELL MOTOR SUPPLY
107 East Ave. B — Dial 2880
W. T. BOVELL, Owner

Filter Queen Sales - Service
Call 3-1630 after 6:00 p. m.

J. R. Otwell
Muleshoe, Texas

★ ★ ★
Classifieds Get Results!
★ ★ ★

EXCEPTIONAL VINYL VALUE!

NEW Armstrong

DECOLON

VINYL RUGS

ONLY \$8.95
9 X 12 SIZE

There's never been a better vinyl value! Tough, long-lasting, sparkling bright! Decolon Vinyl Rugs. And a new low price—from Armstrong, the name you know and trust for quality floors!

E. R. HART CO.

- DOMESTIC PUMPS & SMALL IRRIGATION WELLS
- COLMAN HEATING EQUIPMENT
- FARM SUPPLIES

212 E 3rd
Phone 3-3300

INSURANCE

COMPLETE INSURANCE SERVICE

- AUTO
- LIFE
- FIRE
- INSURANCE

Jennings Ins.
115 E Ave. D. Ph. 3-4970

Homer Millsap Motors

- GENERAL AUTO REPAIR
- IRRIGATION ENGINE REPAIR
- IRRIGATION ENGINES FOR SALE

EXPERIENCED MECHANICS
402 N. FIRST PLAINVIEW HWY.

WILLIAMS SEED CLEANING CO.

HEATHINGTON LUMBER COMPANY
Lumber, Paint, Builders Hardware
Clovis Rd. - Ph. 7970

For Classified Ads
Dial 2350

JOHNSON - POOL HDWR. & APPL.

BERRY ELECTRIC CO.

ELECTRIC WIRING and REPAIRS

REFRIGERATION SERVICE

104 E. AVE. B
Phone 3-3750

CONTACT MULESHOE PUBLISHING COMPANY FOR ALL OF YOUR PRINTING NEEDS

Dial 2350

For Classified Ads

SINGLETON FUNERAL HOME

24 HOUR AMBULANCE SERVICE
PHONE 2860 — MULESHOE

"FIRST IN FASHIONS"

Permanents — Styling
Tinting — Shaping
Revlon Cosmetics

MAIN STREET BEAUTY SALON
Bernice Holdeman
115 Main — Muleshoe
Dial 3-4480

REAVER'S FLOWERLAND

Real and Artificial Flowers — Corsages
Pot Plants — Banquets
Funeral Designs
520 S. First St.
Ph. 3-1160 — Muleshoe

THIS SPACE FOR SALE

LOWE DRILLING CO.

HOUSE WELL SERVICE

- DRILLING
- PULLING & SETTING
- SUBMERSIBLE PUMPS

EXPERIENCED CREW

CLOVIS HWY.
PHONE 5970

FOR FHA, GI and FARM LOANS AND THE

BEST INSURANCE

SEE—
POOL INSURANCE COMPANY

Phone 2950 — Muleshoe
W. M. POOL, JR. — LEE R POOL

For Classified Ads
Dial 2350

FOR A CLASSIFIED AD

Ask For Polly Or Liz. Phone 2350

W. O. CASEY GENERAL INSURANCE

Let Our Complete Coverage Take Care of All Your Insurance Problems

Muleshoe State Bank Bldg. — Phone 2540

JOHN'S CUSTOM FEED MILL
523 E. American Blvd. Phone 5730
Custom Grinding & Mixing, Bulk Feed Delivery
Feeds for Cows, Horses, Chickens, & Birds

WELCOME TO MULESHOE

Miles Caudle

We welcome Miles Caudle, newcomer, to Muleshoe. Caudle and his family moved from Olton where he was a mechanic for the International dealer. He is the new shop foreman for Johnson - Nix. Caudle and his wife, Mildred, have two sons: Jimmy, 16 and Jo David, 9. They live on West 9th and attend the Baptist Church. The following merchants extend a cordial welcome to the Caudles!

CASHWAY GROCERY

402 Main Phone 2440

James B. Glaze
Insurance - Real Estate - Loans

DAMRON DRUG CO. REXALL

308 Main Phone 2100

MULESHOE STATE BANK

304 Main Phone 2540

MULESHOE MOTOR CO.
"At The Crossroads"

POOL INSURANCE AGENCY
114 E. Ave C Ph. 2950

BUY and SELL WANT BETTER JOBS ADS LOST and FOUND BUSINESS LEADS REAL ESTATE

WANT ADS -- PHONE 2350

1 time per word — 4c 3 times per word — 10c
 2 times per word — 7c 4 times per word — 13c
 After 1st issue, 3c per word each additional time.
 Minimum charge 50c
 Card of Thanks \$1.00

DEADLINE FOR CLASSIFIED ADVERTISING PAGE:
 For Thursday's Issues: Monday, 12 Noon
 For Sunday's Issues: Thursday, 12 Noon

TO LATE TO CLASSIFY
 Thursday Issue — Tuesday 5 P.M.
 Sunday Issue — Friday 3 p.m.
 Double Rate for Blind Ads.

I. Personals

LUZIER'S COSMETICS
 Free Demonstration
 Satisfaction Guaranteed
MRS. E. E. HOLLAND
 Ph. Off. 3-2930 - Res. 3-2930
 121 American Blvd.
 1-498-tfc

Sewing wanted in home, call 965-2140. 1-331-tfc

Will do baby sitting or ironing in my home, 413 West 10th. 1-341-tfc

FOR RENT: 15 ft. camper by day or week, call 3-1630. 1-358-tfc

Will do baby sitting in my home, close to Richland Hills School. Phone 5022. 1-358-tfc

For all your special cookies and decorated cakes, call 3-5510. Sharon Pierce. 1-498-stfc

Wanted: ironing Phone 4774 Mrs. Rip Taylor, 1216 Ave. C. 1-541-tfc

CARD OF THANKS

We wish to take this means to thank everyone for the food, flowers, and every act of kindness shown us during our hour of sorrow. J. H. Wisenbut hour. 1-368-1tp

Piano tuning and repair. Arlie W. Green, Sept. 13 to Sept. 18, call 3-1330 for appointment, Muleshoe, Texas. 1-368-2tc

2. LOST & FOUND

LOST: Hydraulic Cylinder for UB Moline between 3 miles west of Lazbuddie and 11 miles west of Dimmitt. Finder call 3-2551 Muleshoe, 415 West 6th. L. R. Watson. 3-228-tfc

3. Help Wanted

Wanted - Watkins Dealers, Full-time or part time. Age unimportant. Must be active and eager to earn above average income. Write Mrs. G. D. Harlan, Rt. 1, Littlefield or call 383-4265. 3-368-2tp

4. Houses for Rent

FOR RENT: 3 room house furnished, air conditioned, Layne Apartments, Phone 49-60. 4-311-tfc

5. Apts. for Rent

FOR RENT: Two bedroom apartment, carpeted, draped, built-in. Phone 3-4960 or 3-3350. 5-288-tfc

6. Rooms for Rent

FOR RENT: 3 room furnished apartment, trailer space. 323 West Ave. E. Phone 8120. 5-318-tfc

7. Real Estate for Sale

FOR SALE: 3 bedroom brick, medallion, bath and 3/4, fenced and patio, 602 Chicago St. Phone 3-3959. 8-321-tfc

8. Real Estate for Sale

FOR SALE: 3 bedroom brick, medallion, bath and 3/4, fenced and patio, 602 Chicago St. Phone 3-3959. 8-321-tfc

9. Autos for Sale

FOR SALE: 1964 Blue Super Sports, slick shift - 300 HP Motor - Loaded, \$1985, Buford Bates, Phone 946-2418. 9-358-tfc

10. Farm Equip for sale

Wanted: 6" to 10" electric or gas irrigation pump - 150 ft. 12" casing - 35 to 70 joints of 4" irrigation sprinkler pipe - 450-900 ft. 6" lead pipe. G. Adams Concrete, Rt. 3 Box 3, Clovis, N. M. 10-368-1tp

11. For Sale or Trade

FOR SALE: Riding tractor, 7 1/2 hp or 10 hp. Call Lonnie Merritt Day 3-6110 after 7 p.m. 3-4854. 11-321-tfc

12. Household Goods

Wanted responsible party to take over payments on late model Singer sewing machine in Muleshoe area. Will zig-zag, fancy stitching, etc. 5 payments \$4.95 or \$25.00 cash. Write Credit Department, 1114 19th Street, Lubbock, Texas. 12-341-tfc

15. Miscellaneous

Am interested in making loans and buying first and second lien notes secured with farm and ranch lands. J. J. Steele, Citizens Bank Building, Clovis, N. M. Dial 763-4471 or 763-6455. 15-358-tfc

Blue Lustre not only rides carpets of soil but leaves pile soft and lofty. Rent electric shampooer. \$1. Higginbotham Bartlett. 15-368-tfc

80 acres of land for sale, three bedroom home on it. Double garage, pressure pump, good 8" well, good allotment. Call 925-3232, or see D. O. Burelsmith. 8-341-8tp

FOR RENT: A nice quiet bedroom. Rosie McMillip, 410 W. 2nd. Phone 3-9280. 6-358-tfc

Bedroom for rent - See Ida Tapp. Last house north of Calvert's grocery. 6-48-tfc

FOR SALE: 177 acre choice irrigated farm on paved road, five miles north of Amberst on Earth Road. For information contact E. S. Kelton, 112 N. Margaret, Carlsbad, N. M. Phone TU 5-8364. 8-348-tfc

Home 413 East Dallas IS NOW FOR SALE Located in Lenau addition, with school bus stop at "front door". Three bedroom home, 18 foot by 18 foot living room, 1 1/2 bathrooms, newly floored and cabinet topped kitchen; utility room, garage - Trees, flowers, lawns back yard is fenced. Occupancy sometime after Sept. 15; upon completion of new home. Shown by appointment, please. Phone or see: L. B. Hall 413 East Dallas Home: 7490 Office: 2330 8-348-tfp

3 Brick Homes 1-2 Bedroom double garage 1-2 Bedroom single garage 1-2 Bedroom double garage C. W. Wilhite Phone 3-5589 8-348-tfc

FOR SALE: 2 bedroom and den house and 2 baths, located at 619 W. Ave. E. E. W. Evans. Phone 3-4450. 8-358-tfc

3 bedroom brick house for sale or trade, call Lubbock SW 5-5467 after 6 p.m. 8-351-tfp

FOR SALE: 1964 Blue Super Sports, slick shift - 300 HP Motor - Loaded, \$1985, Buford Bates, Phone 946-2418. 9-358-tfc

HOUSES FOR SALE

Redi-Built or BRICK, 3-BEDROOMS, 2-BATHS, 90-FT. LOT APARTMENTS FOR RENT Licensed Plumber for all your needs CALL—

BILLY MORRISON
 Ph. 4850 or 3-2130

3 bedroom, 2 baths, 2 car garage, carpeted, built-ins, Richland Hills, \$13,850. Brick, 2 baths, 1 car garage, Richland Hills, \$10,700. 30 A. close in with improvements, priced to sell. 240 acres well located. 2 good wells underground tile fully allotted. This one you need to see. We are in need of listings in Bailey, Farmer, Lamb and Castro Counties. We are associated with more than 250 brokers giving your property tremendous exposure. Your listing appreciated. Eddie Lane Real Estate P. O. Drawer 610 Phone Res. 3-5741 - 4390 8-351-tfc

FOR SALE —3 bedroom, 2 bath, carpeted, nice, woodburning fireplace, central heat and refrigerated air, complete electric kitchen, choice location. \$28,500. —3 bedroom, 2 bath, brick 2 - car garage, woodburning fireplace, small down payment, would trade \$21,500. —New 3 bedroom, 2 baths, fireplace, 2 - car garage, central heat and air conditioned, easy terms. \$18,500. —3 bedrooms, 2 baths, carpet, 2 - car garage, Brick, Richland Hills Addition Small down payment will trade. \$17,500. Call 3-4960 or 3-3350 8-241-tfc

NEW HOMES

100% Financing 1 - 2 - 3 Bedrooms Built on your lot - or - acreage, or Farm, anywhere - or. We will buy you a lot. Prices \$2500 - \$8,000. Payments - \$48.55 - \$9.00 Mo. Ph. 3-1910 KREBBS REAL ESTATE COMPANY Res. Ph. 5881 or 8420 8-288-tfc

FOR SALE: New 3 bedroom brick home. Call 3-4300 or 3-3472 8-161-tfc

For sale, Dallam County 240 acres irrigation well - good growing crop 3 1/2 miles South and West of Perico, Box 1300, Amarillo, Texas. 8-388-2tc

Singer twin-needle late model sewing machine in nice console cabinet. Zig Zags, buttonholes, sews on buttons, monograms, blind hems, embroiders, etc. All without attachments. Need someone to take this machine for finance bill of \$97 total, or party with good credit can pay this out at \$7.77 month. Write directions to your home to Charles Collier, Claims Adjuster, 2417 - 34th, Lubbock. 15-351-tfc

DO YOU HAVE ROACHES!! CALL 3-3050 or 3-9040 Akin Exterminating Co. Home Owned & Operated 15-321-tfc

Browning veal chops in bacon fat gives the meat fine flavor.

OTWELL'S VACUUM CLEANER REPAIR Filter Queen Distributor Disposable Bags For All Makes SERVICE All Vacuum Cleaners New and Used Repaired After 6 p.m. or before 8 a.m. Phone 3-1630 918 East Hickory

Good Merchandise Buena Mercancia Economart Main Street Mayur Calle Muleshoe, Texas - 79347 15-271-tfc

Ask for information on Retirement Income, Family Income, Educational Plans, Mortgage Cancellation, Life, Hospitalization and Funeral Ins. Contact - C. D. GILBERT 7714 Ave. F., Muleshoe, Phone 5022. 15-288-2tp-s

FOR SALE: Hens - on foot 25 cents, dressed 75 cents. Call James Wedel 925-3141. 15-358-2tc

FOR SALE: Early Sumac Case Seed. Phone 965-2675, Morris McMillip. 17-228-tfc

FOR SALE: Balboa Rye Seed - \$3.50 C. W. T. 9 miles north 1 1/2 West of Muleshoe, Ph. 965-2372. Clarence R. Mason. 17-341-4tp

FOR SALE - Hay. Call 965-2140 or contact Weldon Slayton, 6 miles north Muleshoe. 17-398-tfc

Have your cream out of the refrigerator and at room temperature before you add it to a fat gives the meat fine flavor.

FOR SALE: 3 bedroom brick, medallion, bath and 3/4, fenced and patio, 602 Chicago St. Phone 3-3959. 8-321-tfc

Wanted low cost lots, phone 3-1910 or 5881. 8-318-tfc

FOR SALE: 2 bedroom, Lenau addition. Call 3-4300 or 3-3472 for appointment. 8-161-tfc

HOUSEHOLD GOODS

Wanted responsible party to take over payments on late model Singer sewing machine in Muleshoe area. Will zig-zag, fancy stitching, etc. 5 payments \$4.95 or \$25.00 cash. Write Credit Department, 1114 19th Street, Lubbock, Texas. 12-341-tfc

HOUSEHOLD GOODS

Wanted responsible party to take over payments on late model Singer sewing machine in Muleshoe area. Will zig-zag, fancy stitching, etc. 5 payments \$4.95 or \$25.00 cash. Write Credit Department, 1114 19th Street, Lubbock, Texas. 12-341-tfc

HOUSEHOLD GOODS

Wanted responsible party to take over payments on late model Singer sewing machine in Muleshoe area. Will zig-zag, fancy stitching, etc. 5 payments \$4.95 or \$25.00 cash. Write Credit Department, 1114 19th Street, Lubbock, Texas. 12-341-tfc

HOUSEHOLD GOODS

Wanted responsible party to take over payments on late model Singer sewing machine in Muleshoe area. Will zig-zag, fancy stitching, etc. 5 payments \$4.95 or \$25.00 cash. Write Credit Department, 1114 19th Street, Lubbock, Texas. 12-341-tfc

HOUSEHOLD GOODS

Wanted responsible party to take over payments on late model Singer sewing machine in Muleshoe area. Will zig-zag, fancy stitching, etc. 5 payments \$4.95 or \$25.00 cash. Write Credit Department, 1114 19th Street, Lubbock, Texas. 12-341-tfc

HOUSEHOLD GOODS

Wanted responsible party to take over payments on late model Singer sewing machine in Muleshoe area. Will zig-zag, fancy stitching, etc. 5 payments \$4.95 or \$25.00 cash. Write Credit Department, 1114 19th Street, Lubbock, Texas. 12-341-tfc

HOUSEHOLD GOODS

Wanted responsible party to take over payments on late model Singer sewing machine in Muleshoe area. Will zig-zag, fancy stitching, etc. 5 payments \$4.95 or \$25.00 cash. Write Credit Department, 1114 19th Street, Lubbock, Texas. 12-341-tfc

HOUSEHOLD GOODS

Wanted responsible party to take over payments on late model Singer sewing machine in Muleshoe area. Will zig-zag, fancy stitching, etc. 5 payments \$4.95 or \$25.00 cash. Write Credit Department, 1114 19th Street, Lubbock, Texas. 12-341-tfc

HOUSEHOLD GOODS

Wanted responsible party to take over payments on late model Singer sewing machine in Muleshoe area. Will zig-zag, fancy stitching, etc. 5 payments \$4.95 or \$25.00 cash. Write Credit Department, 1114 19th Street, Lubbock, Texas. 12-341-tfc

HOUSEHOLD GOODS

Wanted responsible party to take over payments on late model Singer sewing machine in Muleshoe area. Will zig-zag, fancy stitching, etc. 5 payments \$4.95 or \$25.00 cash. Write Credit Department, 1114 19th Street, Lubbock, Texas. 12-341-tfc

HOUSEHOLD GOODS

Wanted responsible party to take over payments on late model Singer sewing machine in Muleshoe area. Will zig-zag, fancy stitching, etc. 5 payments \$4.95 or \$25.00 cash. Write Credit Department, 1114 19th Street, Lubbock, Texas. 12-341-tfc

HOUSEHOLD GOODS

Wanted responsible party to take over payments on late model Singer sewing machine in Muleshoe area. Will zig-zag, fancy stitching, etc. 5 payments \$4.95 or \$25.00 cash. Write Credit Department, 1114 19th Street, Lubbock, Texas. 12-341-tfc

FOR SALE: Hens - on foot 25 cents, dressed 75 cents. Call James Wedel 925-3141. 15-358-2tc

FOR SALE: Early Sumac Case Seed. Phone 965-2675, Morris McMillip. 17-228-tfc

FOR SALE: Balboa Rye Seed - \$3.50 C. W. T. 9 miles north 1 1/2 West of Muleshoe, Ph. 965-2372. Clarence R. Mason. 17-341-4tp

FOR SALE - Hay. Call 965-2140 or contact Weldon Slayton, 6 miles north Muleshoe. 17-398-tfc

Have your cream out of the refrigerator and at room temperature before you add it to a fat gives the meat fine flavor.

FOR SALE: 3 bedroom brick, medallion, bath and 3/4, fenced and patio, 602 Chicago St. Phone 3-3959. 8-321-tfc

Wanted low cost lots, phone 3-1910 or 5881. 8-318-tfc

FOR SALE: 2 bedroom, Lenau addition. Call 3-4300 or 3-3472 for appointment. 8-161-tfc

HOUSEHOLD GOODS

Wanted responsible party to take over payments on late model Singer sewing machine in Muleshoe area. Will zig-zag, fancy stitching, etc. 5 payments \$4.95 or \$25.00 cash. Write Credit Department, 1114 19th Street, Lubbock, Texas. 12-341-tfc

HOUSEHOLD GOODS

Wanted responsible party to take over payments on late model Singer sewing machine in Muleshoe area. Will zig-zag, fancy stitching, etc. 5 payments \$4.95 or \$25.00 cash. Write Credit Department, 1114 19th Street, Lubbock, Texas. 12-341-tfc

HOUSEHOLD GOODS

Wanted responsible party to take over payments on late model Singer sewing machine in Muleshoe area. Will zig-zag, fancy stitching, etc. 5 payments \$4.95 or \$25.00 cash. Write Credit Department, 1114 19th Street, Lubbock, Texas. 12-341-tfc

HOUSEHOLD GOODS

Wanted responsible party to take over payments on late model Singer sewing machine in Muleshoe area. Will zig-zag, fancy stitching, etc. 5 payments \$4.95 or \$25.00 cash. Write Credit Department, 1114 19th Street, Lubbock, Texas. 12-341-tfc

HOUSEHOLD GOODS

Wanted responsible party to take over payments on late model Singer sewing machine in Muleshoe area. Will zig-zag, fancy stitching, etc. 5 payments \$4.95 or \$25.00 cash. Write Credit Department, 1114 19th Street, Lubbock, Texas. 12-341-tfc

HOUSEHOLD GOODS

Wanted responsible party to take over payments on late model Singer sewing machine in Muleshoe area. Will zig-zag, fancy stitching, etc. 5 payments \$4.95 or \$25.00 cash. Write Credit Department, 1114 19th Street, Lubbock, Texas. 12-341-tfc

HOUSEHOLD GOODS

Wanted responsible party to take over payments on late model Singer sewing machine in Muleshoe area. Will zig-zag, fancy stitching, etc. 5 payments \$4.95 or \$25.00 cash. Write Credit Department, 1114 19th Street, Lubbock, Texas. 12-341-tfc

HOUSEHOLD GOODS

Wanted responsible party to take over payments on late model Singer sewing machine in Muleshoe area. Will zig-zag, fancy stitching, etc. 5 payments \$4.95 or \$25.00 cash. Write Credit Department, 1114 19th Street, Lubbock, Texas. 12-341-tfc

HOUSEHOLD GOODS

Wanted responsible party to take over payments on late model Singer sewing machine in Muleshoe area. Will zig-zag, fancy stitching, etc. 5 payments \$4.95 or \$25.00 cash. Write Credit Department, 1114 19th Street, Lubbock, Texas. 12-341-tfc

HOUSEHOLD GOODS

Wanted responsible party to take over payments on late model Singer sewing machine in Muleshoe area. Will zig-zag, fancy stitching, etc. 5 payments \$4.95 or \$25.00 cash. Write Credit Department, 1114 19th Street, Lubbock, Texas. 12-341-tfc

HOUSEHOLD GOODS

Wanted responsible party to take over payments on late model Singer sewing machine in Muleshoe area. Will zig-zag, fancy stitching, etc. 5 payments \$4.95 or \$25.00 cash. Write Credit Department, 1114 19th Street, Lubbock, Texas. 12-341-tfc

HOUSEHOLD GOODS

Wanted responsible party to take over payments on late model Singer sewing machine in Muleshoe area. Will zig-zag, fancy stitching, etc. 5 payments \$4.95 or \$25.00 cash. Write Credit Department, 1114 19th Street, Lubbock, Texas. 12-341-tfc

HOUSEHOLD GOODS

Wanted responsible party to take over payments on late model Singer sewing machine in Muleshoe area. Will zig-zag, fancy stitching, etc. 5 payments \$4.95 or \$25.00 cash. Write Credit Department, 1114 19th Street, Lubbock, Texas. 12-341-tfc

HOUSEHOLD GOODS

Wanted responsible party to take over payments on late model Singer sewing machine in Muleshoe area. Will zig-zag, fancy stitching, etc. 5 payments \$4.95 or \$25.00 cash. Write Credit Department, 1114 19th Street, Lubbock, Texas. 12-341-tfc

HOUSEHOLD GOODS

Wanted responsible party to take over payments on late model Singer sewing machine in Muleshoe area. Will zig-zag, fancy stitching, etc. 5 payments \$4.95 or \$25.00 cash. Write Credit Department, 1114 19th Street, Lubbock, Texas. 12-341-tfc

FOR SALE: Hens - on foot 25 cents, dressed 75 cents. Call James Wedel 925-3141. 15-358-2tc

FOR SALE: Early Sumac Case Seed. Phone 965-2675, Morris McMillip. 17-228-tfc

FOR SALE: Balboa Rye Seed - \$3.50 C. W. T. 9 miles north 1 1/2 West of Muleshoe, Ph. 965-2372. Clarence R. Mason. 17-341-4tp

FOR SALE - Hay. Call 965-2140 or contact Weldon Slayton, 6 miles north Muleshoe. 17-398-tfc

Have your cream out of the refrigerator and at room temperature before you add it to a fat gives the meat fine flavor.

FOR SALE: 3 bedroom brick, medallion, bath and 3/4, fenced and patio, 602 Chicago St. Phone 3-3959. 8-321-tfc

Wanted low cost lots, phone 3-1910 or 5881. 8-318-tfc

FOR SALE: 2 bedroom, Lenau addition. Call 3-4300 or 3-3472 for appointment. 8-161-tfc

HOUSEHOLD GOODS

Wanted responsible party to take over payments on late model Singer sewing machine in Muleshoe area. Will zig-zag, fancy stitching, etc. 5 payments \$4.95 or \$25.00 cash. Write Credit Department, 1114 19th Street, Lubbock, Texas. 12-341-tfc

HOUSEHOLD GOODS

Wanted responsible party to take over payments on late model Singer sewing machine in Muleshoe area. Will zig-zag, fancy stitching, etc. 5 payments \$4.95 or \$25.00 cash. Write Credit Department, 1114 19th Street, Lubbock, Texas. 12-341-tfc

HOUSEHOLD GOODS

Wanted responsible party to take over payments on late model Singer sewing machine in Muleshoe area. Will zig-zag, fancy stitching, etc. 5 payments \$4.95 or \$25.00 cash. Write Credit Department, 1114 19th Street, Lubbock, Texas. 12-341-tfc

HOUSEHOLD GOODS

Wanted responsible party to take over payments on late model Singer sewing machine in Muleshoe area. Will zig-zag, fancy stitching, etc. 5 payments \$4.95 or \$25.00 cash. Write Credit Department, 1114 19th Street, Lubbock, Texas. 12-341-tfc

HOUSEHOLD GOODS

Wanted responsible party to take over payments on late model Singer sewing machine in Muleshoe area. Will zig-zag, fancy stitching, etc. 5 payments \$4.95 or \$25.00 cash. Write Credit Department, 1114 19th Street, Lubbock, Texas. 12-341-tfc

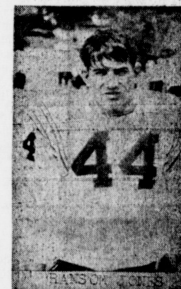
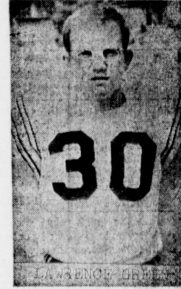
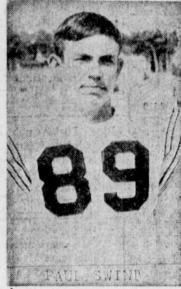
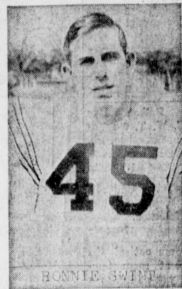
HOUSEHOLD GOODS

Wanted responsible party to take over payments on late model Singer sewing machine in Muleshoe area. Will zig-zag, fancy stitching, etc. 5 payments \$4.95 or \$25.00 cash. Write Credit Department, 1114 19th Street, Lubbock, Texas. 12-341-tfc

HOUSEHOLD GOODS

Wanted responsible party to take over payments on late model Singer sewing machine in Muleshoe area. Will zig-zag, fancy stitching, etc. 5 payments \$4.95 or \$25.00 cash. Write Credit Department, 111

MULESHOE MULES



THERES A WINNER FOR YOU
AT

MULESHOE MOTOR CO.

"Car Capital of the West Plains"

