

Yoakum County Library
Box 1052
Plains, Texas

Public invited to attend open house at school



STUDENT LOAN GIFT---The Student Loan Fund of Plains High School was enriched by \$50 Tuesday as Archie Glover, president of Iota Pi, presented a check to Superintendent G. D. Kennedy in behalf of her organization. At right is Margaret Taylor, chairman of Iota Pi's Welfare Committee.

To Climax Week-Long Observance

Open house at the Plains schools Friday will climax a week-long observance of Public School Week.

All parents, as well as other residents of the Plains area, are invited to attend the open house which begins at 6 p. m. and continues until 7:30.

Superintendent G. D. Kennedy suggested that guests visit the primary building first, then work their ways through the junior and senior high buildings.

This will enable them to complete their tour at the auditorium where a speech program begins at 7:30. Printed tour guides will be available to all visitors and registration facilities provided at each of the buildings.

Refreshments will be served in the cafeteria. The superintendent and all members of the faculty and the Board of Education joined in the invitation to the public to attend the open house.

Public School Week marks the 107th year of public schools in Texas.



PAINTER TO SPEAK---"Marinell", winner of hundreds of trophies, cups, ribbons and other awards for her black and white and painted portraits, designer of a color harmony wheel used by schools and colleges from coast to coast, is to speak Monday night at a meeting of the Tsa Mo Ga. The program begins at 8 p. m. in the Tsa Mo Ga Clubhouse.

Famous Painter To Appear Here

A Titian-red haired, prize-winning photographer, portrait painter and authority on color harmony is to be the speaker at the Monday night meeting of Tsa Mo Ga Study Club, it has been announced by Mrs. Garland Swann, president of the group.

The speaker, professionally known as "Marinell", has received every honor that can be bestowed upon a photographer, has taught portrait painting in California and in her studio in Slaton and has designed a color wheel which is used by schools and colleges from coast to coast.

Title of her presentation is "From Here to a Rainbow." Marinell, who in private life is Mrs. Fredric de Vries, says, "You no longer need to guess what colors go well together... if you understand the color wheel, it's as simple as ABC to be right every time."

Marinell has spoken before hundreds of professional and club groups. She uses hundreds of props to illustrate the points covered in her talk, which is said to be as colorful as the title.

Anyone interested in attending the Tsa Mo Ga program is invited to call any club member. The program is to be at the Tsa Mo Ga Clubhouse, beginning at 8 p. m.

Yoakum County 4-H members have two beef calves and five barrows entered in the South Plains Junior Fat Stock Show to be held in Lubbock March 20, 21 and 22.

Calves are being entered by D'Lynn McGinty and Ty Earl Powell. Each fed three calves during the year, only two of which were eligible for entry in the local show.

Those entering barrows in the Lubbock show are Kent Welch, Oscar Henard and Morris J. Rushing. Welch has two Polaris Chinas. Henard has a Polaris China and a Hampshire and Rushing is entering Hampshire.

Animals will be taken to the show Saturday, March 18, and will be ready for the sifting which takes place Sunday. Beef calves will be judged Monday and barrows Tuesday.

The sale will be Wednesday morning.

4-Hers to Enter Stock At Lubbock

Friends of Fred and Loreen Copper will shower the couple with gifts next Thursday, March 16. Gift selections may be made at Moore and Oden.

The Coppers lost their clothing recently in a fire which destroyed their car.

Tumbleweed Drive-In will close after business Tuesday night in order that the building may be torn down and completely rebuilt. When the business reopens after the project is completed, many new features will be available.

Two Are Killed In Wreck Friday

The Plains area counted its first traffic fatalities of the year Friday afternoon when a grueling head-on collision six miles south of Plains left two dead.

Killed instantly were Dorothy Delores Dixon, 29, of Plains and Larry Leon Lindsey, 25, of Brownfield. Each was driving alone.

Rescuers worked more than two hours to free the body of the Dixon woman from the wreckage.

Investigators said that a pickup truck, driven by Lindsey, was going north on State Highway 214 and the Dixon woman's vehicle was traveling south when they collided in the west land of traffic during a severe dust storm.

Skid marks, of about 100 feet indicated that Lindsey lost control of his pickup as it skidded to the opposite side of the road. There was no evidence of tire blowout, but officers surmised the high wind may have caused the vehicle to veer.

Lindsey's pickup pushed the woman's truck back about 10 feet after the impact and the vehicles came to rest in an east-west position.

Miss Dixon sustained multiple injuries while Lindsey suffered deep cuts about the head, skull fracture, crushed chest and leg injury.

The Dixon woman had lived in Plains only a short time, moving here from Denver City.

Lindsey was a foreman for Brownfield delinting firm and the father of three small children. He was the son of Mr. and Mrs. W. E. Lindsey.

For Annual Session Monday

Stock Show Sponsors Will Meet

Annual meeting of members of the Yoakum County Livestock and Agriculture Improvement Association will be held Monday night in the district court room of the new courthouse.

The meeting is scheduled to begin at 8 p. m. with a showing of movies taken during the Ninth Annual Junior Fat Stock Show held Feb. 17 and 18.

Following the film, a business meeting will be conducted and new directors elected. The group has 11 directors, each elected to a two-year

term. Five or six are elected each year.

Voluntary donations also will be pledged for next year. Directors will receive pledges of those who want to donate a heifer, gilt and a ewe lamb to be given to exhibitors of the grand champions in each division. Pledges for showmanship awards and gain contest awards

Scout Circus

Cub Scouts of Plains will participate in the annual Scout Circus in Lubbock Friday and Saturday. Tickets to the event now are being sold by the local group.

The circus will be held in the Lubbock Municipal Coliseum. Sponsored by the South Plains Council, its theme will be "Strengthen America, Character Counts."

also will be accepted. Representatives of Plains State Bank and Allison Implement Co. of Brownfield will be present to make their presentations to exhibitors in the 1961 show. Each exhibitor will receive a

cash award. All are expected to be present. The public is invited to Monday's meeting. By paying his annual dues of \$5, anyone can become a member of the organization.

Four From Here to Attend National Farm Convention

Four from here will leave early Friday morning for Washington to attend the National Farmers Union Convention, scheduled Monday through Thursday of next week.

Mrs. L. L. Smith, Sandra Smith and Mr. and Mrs. Carl Lowrey, representing the local Farmers Union, will board a special bus at Plainview at 5:30 a. m. Friday.

They will be joined by other Farmers Union delegates of this area for the trip to Washington. Four buses are making the trip from Texas.

Among highlights of the visit will be sessions with President Kennedy, Secretary of Agriculture Orville Freeman and Congressman George Mahon.

The local group will return March 19.

I'm as guilty as anyone, but wouldn't it be nice if everyone who parks in front of the post office, would not park right at the corner when other space is available? It would cut down considerably on the amount of maneuvering a lot of people have to do to get a parking slot.

Speaking of parking, I read something one time which helped me a lot with my parallel parking. I'll pass it on for the benefit of those who have no formula.

Imagine a clock on your dash, and then take a piece of tape, and as if it were hands for the clock, set the clock at seven minutes after seven. This, of course, will give you a straight line.

CONTINUED ON PAGE 2

Is Red Check By Your Name?

If a red check mark appears by your name on this week's Record, you are one of some 200 persons who have been receiving weekly issues of The Yoakum County Review for which no record of a current subscription can be found.

As has been announced, The Record has purchased the subscription list of The Review. The transaction did not include

the names of those who have been receiving The Review without charge.

After this week, only paid subscribers will receive The Record.

A list of paid Review subscribers appeared in last week's Record. It did not include new subscribers of this newspaper.

To subscribe to The Record, just fill in the coupon below and mail.

● **To: The Plains Record**

Please enter my subscription to

The Plains Record

for _____ year(s). I enclose \$ _____

Name _____

Address _____

RATES: \$3 in Yoakum & Terry Counties, \$4 Elsewhere \$2.50 per year for 2 or more years in Yoakum County



VOLLEYBALL GIRLS---Members of the Plains High School volleyball team are, top row from left, Sonnie Smith, Marsha White, Roberta Snodgrass, Shirley Gayle, Neta Meixner; bottom row, Sandra Williams, Linda Fitzgerald, Dixie McClellan and Ann Lattimore. The team beat Denver City, 28-23, here Tuesday night. The B team also won, 24-22. Plains played in the Lamesa tournament last weekend, beating Lamesa B, winning over Pecos and losing to Snyder and Colorado City.

The Plains Record

AND THE YOAKUM COUNTY REVIEW
Published Each Thursday at Plains, Texas

WENDELL AND PAT FAUGHT, PUBLISHERS

Entered as second class matter at the Post Office in Plains, Texas, under the act of Congress of March 3, 1879. Second class postage paid at Plains, Texas. Application for re-entry now pending.

Plains Talk

Pull up parallel to the car in front of the space where you wish to park, leaving about 18 inches of room between the two vehicles. When the front of your car is about even with the front of the other car, stop.

Then, cutting your wheels to the right, back up slowly. When the hand on the clock is pointed straight up and down the street, cut your wheels sharply to the left and continue backing up. If you do it correctly, you can bring your car to rest within a slot not much longer than your vehicle.

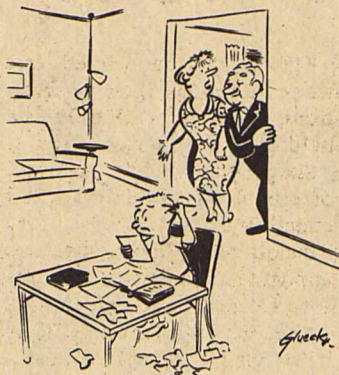
If you bang up a fender, don't come crawling on me. You'll know you just fouled up somewhere---just as I do nearly every time I try it.



FEB '61 Form 229

THE PANTRY UNIT shown here is the latest addition to the Kitchen Maid line of cabinets and is available in a choice of contemporary wood stains or enamel finishes. It's 84" by 42"; depth 24".

My Neighbors



"Now, Senator, do you think it was fair to slip your fiscal problems in with his homework?"

Choose Heat System with Special Care

Functional comfortable living is the byword in today's modern house. And a good heating system is a "must" if the home owner is to receive maximum comfort in his home.

There are two main points to consider according to the Air Distribution Institute, an association of manufacturers making duct work.

The first is to be sure that the heating system has the necessary capacity to comfortably heat your home even on the coldest winter days.

The other is the proper installation of the duct work or pipes so that each room gets its proper share of the distributed heat.

Modern heating systems provide functional control that will permit proper temperatures throughout the house in daytime and night.

The heating system in your home may prove to be the most important single item for better living. There isn't much glamour in a heating system but don't make the mistake of ignoring it.

Livability requires good heat control during the long winter months and if the house is uncomfortable because of an improper heating system, a costly remodeling project may result.

CONTRACTORS' NOTICE OF TEXAS HIGHWAY CONSTRUCTION

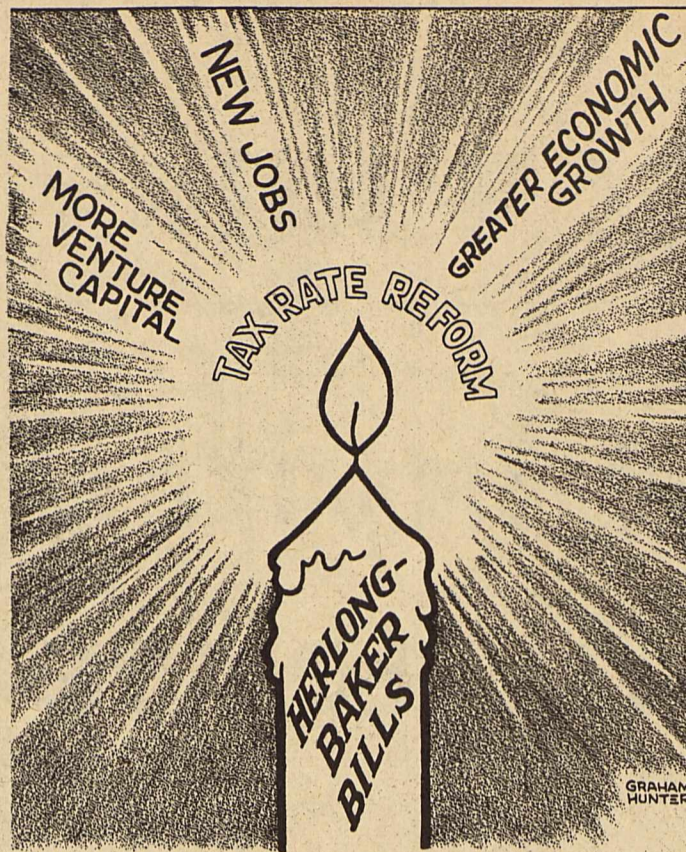
Sealed proposals for constructing 345.255 miles of Dist. 5 Seal Coat

From SH 86 in Dimmitt to N. C. L. of Dimmitt., From Lamb C/L to SH 194 near Dimmitt., From West C. L. of Dimmitt to US 385 in Dimmitt., From US 385 in Dimmitt to East C. L. of Dimmitt., From SH 86 in Dimmitt Southeast 8.0 Miles., From 8.0 Mi. Southeast of Dimmitt to Swisher C/L., FR: SH 194 to Hart, South to Lamb C/L., From FM 301, South to Yoakum C/L., From SH 214, East to Hockley C/L., From US 82 in Ralls, South to Garza C/L., From FM 378 South of Lorenzo to FM 122 S. of Ralls., From FM 1831 to FM 651 South of Crosbyton., From US 62 & 82, North 5.0 Miles to County Road., From Gaines C/L to SH 349 at Patricia., From US 87 at Arvana to 3.2 Miles East., From US 180 to 2.7 Miles North of Mungerville., From US 87, East to Borden C/L., From SH 349 South of Lamesa to US 87., From 5.0 Miles West of SH 137, East to SH 137., From 11.6 Miles N. Floydada to Briscoe C/L., From Briscoe C/L., South 2.5 Miles., From Hale C/L., East to Barwise., From SH 207, East to Fairview School., From 5.3 Miles N. of US 70, South to US 70., From Martin C/L to Dawson C/L., From Main St. in Post, North to 15th St., From Main St. in Post, South to 3rd St., From US 84, 0.5 Miles East in Southland., From US 380 in Post, South 0.4 Miles., From US 380 in Post, North to 12th St., From FM 669 to US 380 in Post., From US 84 at Southland, South 4.9 Miles., From Lynn C/L to US 84., From 4.6 Miles North of US 380 to US 380., From Swisher C/L., Southeast 4.5 Miles., From FM 594, West 2.0 Miles., From 1.0 Miles N. FM 784, South to FM 54., From Cochran C/L to US 385., From FM 597 to SH 116., From US 84 in Sudan to FM 1055., From US 70 in Springlake to FM 1842., From Traffic Circle, South to Lynn C/L., From FM 40m, North to US 62 & 82., From 0.6 Miles East of Hockley C/L to US 87., From 5.0 Miles N. of US 380, South to US 380., From US 380, South to FM 1313., From US 87 to FM 1054., From Lubbock C/L to FM 211., From Gordon, East to Garza C/L., From Deaf Smith C/L to US 60 at Friona., From Castro C/L to Hale C/L., From US 87, West 7.0 Miles., From US 87, East 7.0 Miles., From FM 300 to US 385., From New Mexico State Line to Plains and From SH 214, East to Terry C/L on Highway No. 5. US 385, SH 86, SH 194, FM 168, FM 1780, FM 597, FM 122, FM 40, FM 2236, FM 703, FM 180, FM 1064, FM 1584, FM 2052, FM 2054, SH 207, FM 1065, FM 784, FM 786, FM 28, FM 703, US 84, Loop 45, Loop 46, FM 122, FM 1313, FM 2106, FM 2282, FM 2008, FM 1071, FM 789, FM 301, FM 2130, FM 1843, FM 2080, US 87, FM 400, FM 1294, FM 1656, FM 212, FM 2053, FM 2192, FM 2282, FM 1412, FM 928, FM 1881, FM 211, US 380 & FM 396, covered by C 226-6-11, C 227-1-10, C 302-2-9, C 302-3-15, C 439-1-8, C 439-2-8, C874-1-7, C 967-3-6, C 969-1-4, C 453-4-6, C 644-3-3, C 644-4-4, C 2177-1-2, C 354-7-3, C 960-1-3, C 1255-1-6, C 1503-3-2, C 1905-1-2, C 1962-2-2, C 453-7-4, C 740-2-13, C 800-1-6, C 1128-2-3, C 2179-2-2, C 354-8-2, C 53-4-19, C 53-5-24, C 53-13-2, C 53-14-7, C 453-5-5, C 453-10-4, C 2043-1-2, C 2124-2-2, C 2180-2-3, C 439-4-9, C 565-2-4, C 1126-1-6, C 885-2-5, C 1630-1-4, C 1783-1-2, C 1908-1-2, C 68-1-21, C 1041-2-15, C 1866-1-5, C 933-3-3, C 1055-1-4, C 1966-3-3, C 2082-2-2, C 2124-1-2, C 1491-3-2, C 439-3-6, C 1635-1-5, C 1977-1-3, C 721-2-5, C 297-1-4, & C 879-1-4 in Castro, Cochran, Crosby, Dawson, Floyd, Gaines, Garza, Hale, Hockley, Lamb, Lubbock, Lynn, Parmer, Swisher, Terry & Yoakum Counties, will be received at the Highway Department, Austin, until 9:00 A. M., March 17, 1961, and then publicly opened and read.

Plans and specifications including minimum wage rates as provided by Law are available at the office of H. Bruce Bryan, Resident Engineer, Lubbock, Texas and Texas Highway Department, Austin. Usual rights reserved.

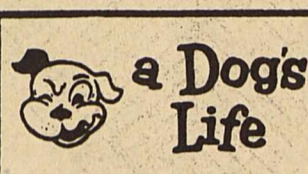
Room dividers are one of the easiest ways to give your rooms the look of added space and privacy without interfering with existing walls. The basic unit of one of the most versatile types consists of two floor-to-ceiling steel poles, between which go an assortment of shelves and steel filigree panels to complete the divider.

LIGHT UP!



"IT IS BETTER TO LIGHT A CANDLE THAN TO CURSE THE DARKNESS."

— OLD CHINESE PROVERB.



a Dog's Life

CURING GUN SHYNESS

By Bob Bartos
Manager, Friskies Research Kennels

Contrary to popular belief, gun shyness may be curable. But it most often is a long and drawn-out process and will succeed only if the dog's owner is willing to expend plenty of time and patience.

The first step is to win your dog's confidence. One way is to keep him with you as much as possible until he gets to really know and trust you.

Your next step is to take him out in the field. But leave your gun at home. The purpose of the field trip is for your dog to relax and enjoy himself. The very sight of the gun may tense him up... make him wary. Such fun-only field trips should be repeated often. Let the dog ramble around and explore. Be extravagant with your praise whenever he locates game.

When you feel that your dog is completely confident and shows a zest for hunting, take your gun along. Pick the right moment to fire it... a moment when your dog is concentrating on his quarry... a moment when the quarry presents a sure-fire shot.



Remember that a good part of the therapy depends on your skill as a marksman. The dog must be able to associate the sound of the gun, which he fears, with the drop of the bird or rabbit, so that he can actually see it, sniff it and touch it. It is then that his love of the game will outweigh his fear of the sound of the gun.

There's a good chance that af-



Pray for one another.

—(James 5:16).

Prayer is a power because through prayer we reach past human thought, past human limitation and touch the invisible source of all life, all energy, all substance. Our prayers help and heal another because they awaken the Spirit of God in him.



"Good deans never die. They lose their faculties."—Harvard Law School dean E. N. Griswold.

"No wonder women live longer than men. Look how long they're girls."—T. Bits, London.

"Life in some parts of the world is a regular riot."—Carey Williams.

"A feed store is the only place left where you can get a chicken dinner for a dime."—Times-Press, Hartford, Wisc.

"Scientists are afraid that impetuous politicians may strike while the ion is hot."—Edith Ogutsch.

"Too many people make cemeteries of their lives by burying their talents."—Edward Campbell.

"Those ape-carrying satellites don't come with a monkey-back guarantee."—H. E. Martz.

"A man can wear his hair three ways: parted, unparted, departed."—Sunshine Magazine.

"America is still the wealthiest nation. Where else could you have such a prosperous recession?"—Franklin P. Jones.

"Being fat usually is the result of living from hand to mouth, hand to mouth."—Walt Sterlightiff.

"You can always reason with an obstreperous child... provided you first get his undivided attention with a strap."—Farm Journal.

Star Dust

"Some day I would like to stand on the moon, look down through a quarter million miles of space, and say, 'There certainly is a beautiful earth out tonight'."—Lt. Col. William Rankin, USMC.

A-1 CAR BARGAINS!

1960 FORD COUNTRY SEDAN \$2185
6 passenger station wagon, V8 engine, fordomatic, R,H, w/w tires. SEE THIS ONE TODAY

1959 FORD CUSTOM 300 \$1485
4 door, V8, fordomatic, R, H, factory air, power steering, light blue, GOOD VALUE

1956 FORD FAIRLANE TOWN SEDAN \$785
T-Bird engine, R, H, fordomatic, new seat covers, solid black. REALLY TOPS

1955 DODGE HARDTOP COUPE \$575
2 door, R, H, automatic transmission, equipped with w/w tires. REAL NICE

ROSS FORD SALES

Corner of 4th & Hill

Brownfield

Certified Hybrid Sorghum Seed

GROWN BY TERRY COUNTY FARMERS

Purtell Seed Farms . . . Waters Bros.

Winfred H. Tucker

CHOOSE THESE CERTIFIED HYBRID SEED . . .

Texas 601 . . . RS 608 . . . RS 610

Texas 620 . . . Texas 630 . . . Texas 660.

Texas Certified and Registered COTTONSEED

AUSTIN — REGISTERED and CERTIFIED . . .

ANTON 99 — CERTIFIED . . . REX — CERTIFIED . . .

GREGG . . . NORTHERN STAR . . .

ACALA 1517-BR1 . . . LANKART 57 & 611

ALL SEED PRICED TO SAVE YOU MONEY

See the Seed Man at

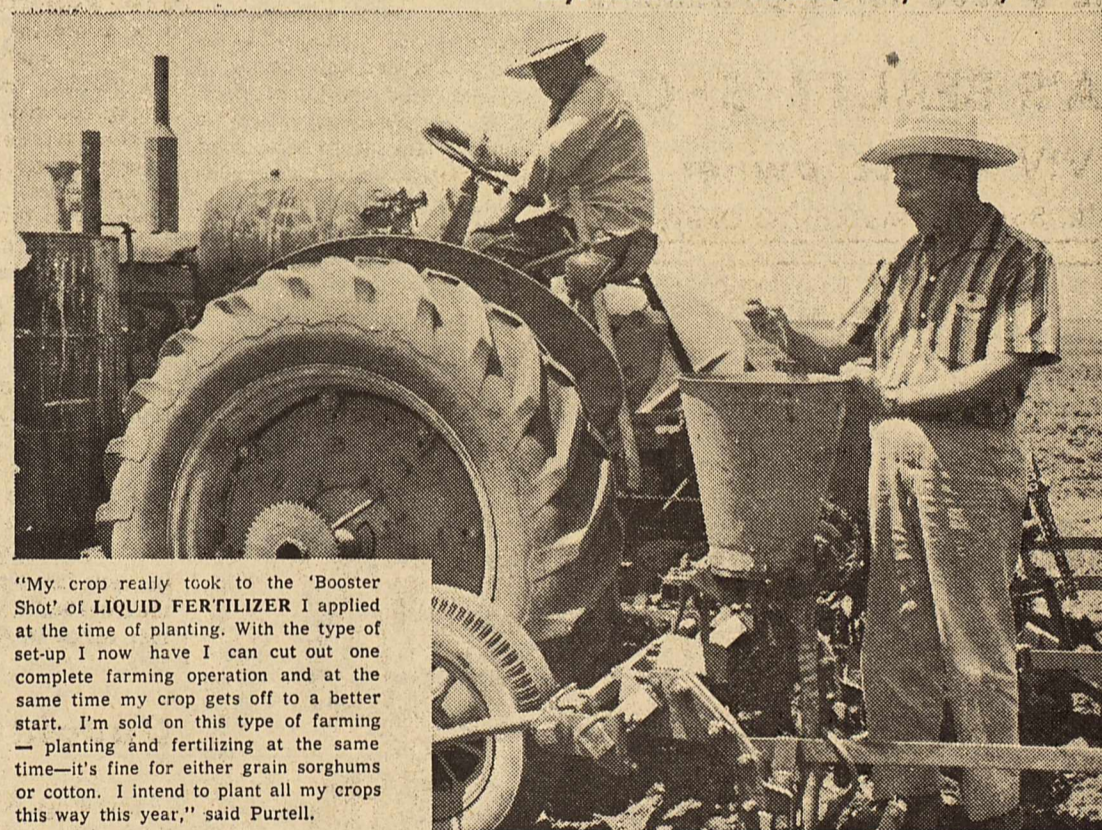
Goodpasture Grain & Milling Co.,

PLAINS, TEXAS

"ARE YOU FARMING FOR A PROFIT?"

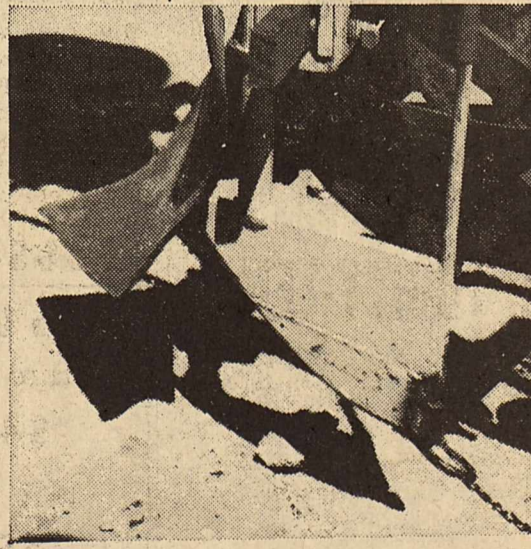
Give Your Crop a Booster Shot! "Fertilize As You Plant..."

— Says KENNETH PURTELL, Terry County Farmer



"My crop really took to the 'Booster Shot' of LIQUID FERTILIZER I applied at the time of planting. With the type of set-up I now have I can cut out one complete farming operation and at the same time my crop gets off to a better start. I'm sold on this type of farming — planting and fertilizing at the same time—it's fine for either grain sorghums or cotton. I intend to plant all my crops this way this year," said Purtell.

Here's How Purtell Does It!...



Purtell added: "It is easy to convert your planter to handle LIQUID FERTILIZER at the time you do your planting. You use the usual opening plows on the planter feet, plus a 3/8" fertilizer knife—4" to the right of the foot, as shown at the left. Weld a pipe on the back of the knife to connect the fertilizer tube to the fertilizer. The fertilizer is put down about 1" deeper than the seed. The barrels for the fertilizer are located 'saddle-tank' style on the sides of the tractor. With this set-up I have cut out one complete farming operation, plus reducing the amount of pneumatic packing of my farm land. The cost of converting your planter to this type of operation is nominal."

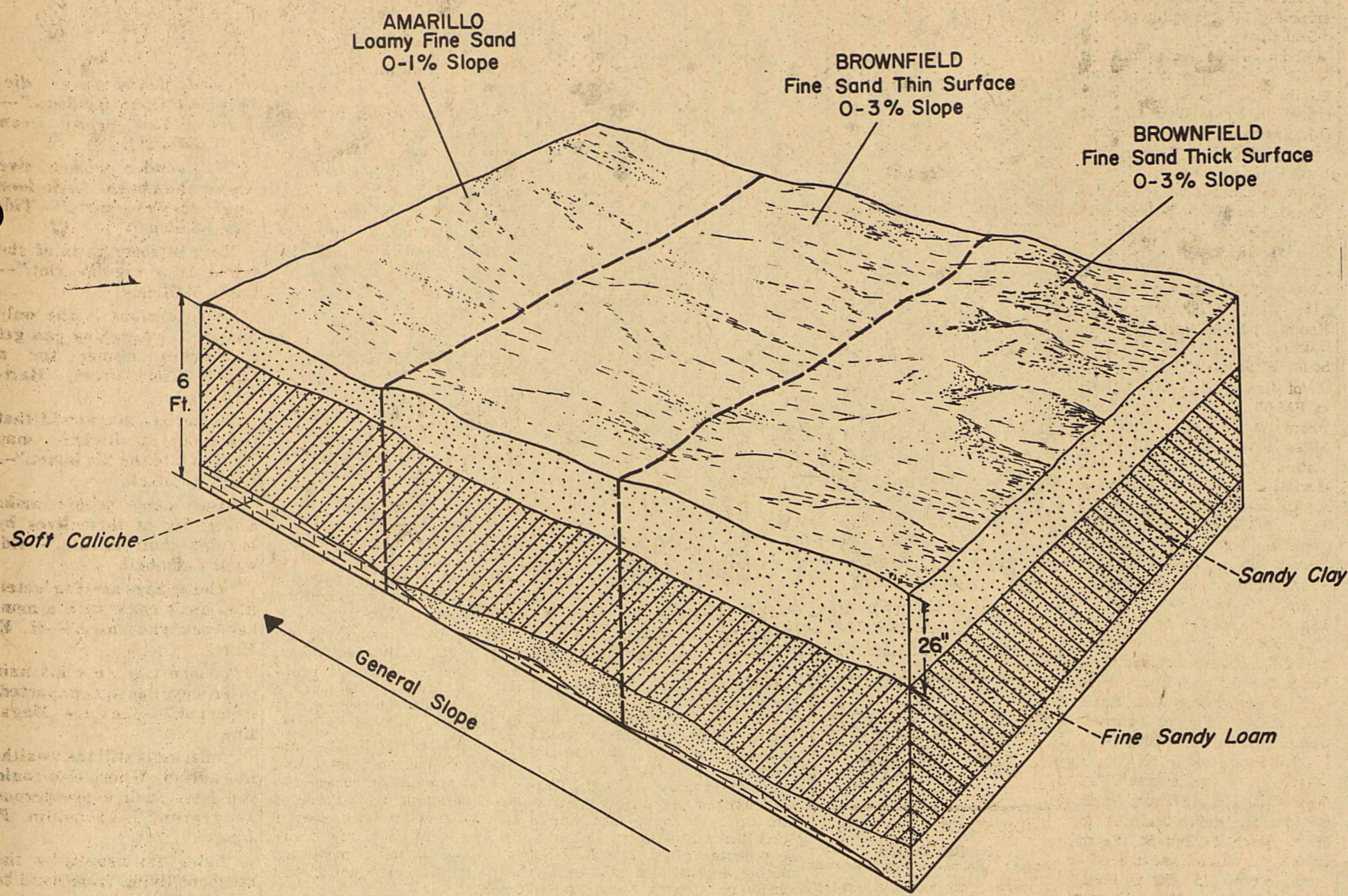
If you are already using LIQUID FERTILIZER, come by and let us show you how easy and inexpensive it is to do both — planting and fertilizing — at the same time. If you are not a user of Goodpasture LIQUID FERTILIZER then you are in for a treat. LIQUID FERTILIZER takes the 'work' out of fertilizing, plus saving you money.

Remember! We have a SOLUTION for any fertilizer problem. See your nearest Goodpasture LIQUID FERTILIZER dealer for more details about modern fertilizing . . . the safe, fast, economical way.

Goodpasture Grain & Milling Co., Inc

PLAINS, TEXAS

AMARILLO - BROWNFIELD SOILS - YOAKUM COUNTY, TEXAS



Developed by W. H. Dittmore, SCS, Plains, Texas
U. S. DEPARTMENT OF AGRICULTURE, SOIL CONSERVATION SERVICE, Temple, Texas

Revised 1-61

Brownfield-Amarillo Soils Popular

By W. H. DITTEMORE
The Brownfield-Amarillo soils make up 335,000 acres of Yo-

kum county. About 90 per cent of this area is suited for cultivation, but most of it has a high susceptibility to the hazards of

wind erosion. These soils have a sandy surface 12 to 18 inches thick. Subsoils are a red sandy clay loam. Parent materials may be a soft caliche layer from four to eight feet deep or may be a red fine sandy loam. This is shown on the accompanying diagram.

Soils respond favorably to fertilizer under irrigation. They should be protected with plant residues or roughness and cloddiness during the spring blow season. Deep plowing is a widely used practice to control wind erosion and by mixing the clay loam subsoil with

the sandy surface, holding capacity of the soil is increased. Only efficient way to irrigate these soils is with a sprinkler irrigation system using underground pipe. Cotton stalks do not produce enough residue to control wind erosion on these soils. A winter cover crop of small grains should be planted in the fall to control wind erosion. Cover crops should be fertilized and irrigated.

The Yoakum County Soil Survey report will have detailed sections on different tillage practices to control wind erosion, such as stubble mulching, crop residue utilization, strip-cropping, contour farming, terracing and irrigation.

Brownfield-Amarillo soils are in the most extensively farmed areas in the county. Principal crops are cotton and grain sorgham.

There will also be a table of yield estimates in the Soil Survey report. This table will give expected yields under both low and high levels of management. The definition of a high level of management under irrigation is:

Maintain soil condition to increase water intake rate, fertilize according to crop needs and a soil analysis, include a soil building crop in rotation, irrigate not only cash crops but soils improving and cover crops, includes livestock in the farming operations.

Under a high level of management, soils of the Brownfield-Amarillo area should produce from 675 to 850 pounds of cotton and 4500 to 6000 pounds of grain sorghum per acre, irrigated, and about one-half that amount on dryland.

Farmers and ranchers of the Yoakum Soil Conservation District may secure further detailed information on their soils and a good conservation plan on their farms or ranches from the local Soil Conservation Service office in Plains.

Daughter Born

A new daughter was born Feb. 25 to Mr. and Mrs. Chuck Lewis. The baby was born at 9:58 p. m. in Methodist Hospital, Lubbock.

The baby weighed 7 pounds and 15 1/2 ounces and has been named Sheri Pat.

Mrs. Lewis is the former Miss Marcia June Spencer, daughter of Mr. and Mrs. Frank B. Spencer of Plains.

SUBSCRIBE

Deep Breaking

12 TO 15 INCHES

\$4.00

15 TO 18 INCHES

\$5.00

Contact

M. A. Hinson

RT. 1
BROWNFIELD
PHONE 3983

School, City Elections Set

Filing periods closed last week for school and city elections, both scheduled to be held early next month.

Six persons filed for positions of school trustees before filing ended Wednesday. For City Council posts, five candidates qualified for places on the ballot prior to Saturday's deadline.

The school election will be held April 1, with Incumbents Olen Edwards and Garland Swann both seeking new terms on the board. Morris Lowe, presently serving as a trustee, did not file for re-election.

Other candidates for the school board are C. L. Gayle, H. W. Taunton, Pat Henard and Bill Gray. Three will be elected.

E. O. Winkles, a present member of the City Council, filed late last week to bring the total number of city candidates to five. Winkles was elected to the council in December's special election. He is filling out the unexpired term of Amos Smith.

Other candidates are Joe Curry, Buford Duff, Ralph McClellan and J. E. Cooke. None of these are presently serving on the council.

The city election is scheduled for April 4. Three councilmen will be named.

Also to be elected is a city judge, a post now held by G. P. Beane, who is unopposed for re-election.



ALL-TOURNAMENT---Linda Fitzgerald added another volley ball honor to her growing collection last weekend after she was named to the all-tournament team at Lamesa.

Try Us First!

ARE YOU THINKING OF BUILDING OR REPAIRING?

YOUR LOCAL BUILDING-SUPPLY HEADQUARTERS

CAN HELP YOU. WE WELCOME THE OPPORTUN-

ITY TO BID ON ANY PROJECT.

°FREE ESTIMATES

°TITLE I. LOANS

Cooke Lumber Co

Home-Owned

Home-Operate

Drop In and See Our NEW SHOP

We Like It — We Think You Will Too

Come by for a visit

IT PLEASURES US TO SERVE YOU

Call GL 6-4500 for appointments

VIVA'S BEAUTY SHOP

VIVA HALE, owner

1 blk. South of Methodist Church



55 h.p.

in the all-new John Deere THIRTY-TEN

In Thirty-Ten Series Tractors—whether you're a row-crop farmer, a grain grower or a combination of both—there's a tractor just right for you. For your 4- and 6-row operations choose the "3010" Row-Crop, above, or the "3010" Row-Crop Utility . . . for down-to-earth lugging ability on grain operations, the "3010" Standard. Choose gasoline, Diesel, or LP-Gas engine.

PLAINS FARM SUPPLY



TITLE INSURANCE and ABSTRACT SERVICE

McGINTY ABSTRACT COMPANY
Gus Malmsten, Manager

Claude Freeman
Plains
GL 6-8606

Don Hancock
Denver City
LY 2-2125

Subscribe Now

Overnight visitors Monday in the home of the Rev. and Mrs. C. J. Coffman were the Rev. and Mrs. C. H. Moore of Me-

na, Ark. The Rev. Mr. Moore performed the ceremony at the wedding of the Coffmans.

Syrup Waffle Syrup 1 1/2 pint 39¢

Sunshine 13 3/4 oz. Graham Crackers Crumbs 25¢

BLUE CHEER Reg. Size 29¢

BLUE CHEER GIANT SIZE 69¢

Lemons 12 1-2¢

Bacon Wilson Corn King 1 lb. Pkg. 53¢

CHEESE SPREAD Shurfresh 2 lb. Box 69¢

BANANAS Golden Ripe lb. 12 1/2¢

Mix Pillsbury Pancake 2 lbs. 35¢

Biscuits Shurfresh 3 cans 25¢

Eagle Brand Milk Borden's 29¢

TOMATOES LB. Cello Carton 19¢

MACKEREL Van Camp No. 1 Tall 19¢

Onions Green 2 bunches 15¢

Fryers Fresh Dressed lb. 39¢

Peanut Butter Big Top, 10 oz. Decorated Tumbler 39¢

RADISHES Fresh 2 bunches 15¢

Clorox Quart 17¢

HAWKINS FOOD MARKET

Phone GL 6-3434

"Your Friendly Cash Grocery"

PLAINS, Texa

Conservation Program Accepts New Applicants

New Gardens are Planted 'Pots and All' for Growth

Just imagine! Plants and flowers that grow bigger, taller, more profusely! The results like these have prompted a revolution among gardeners and trowel set. Vegetable and flower seed home gardens can be planted in the peat moss pots commercial growers use so successfully.

This new boon to home gardeners, called the Jack Pot, is made of organic peat moss and growth nutrients added. The roots easily penetrate the walls of the peat moss pot, when it's time to transplant, the plant and pot are pulled together.

Shock and growth retardants that usually occur during transplanting are eliminated because the tender roots are not disturbed. The pot disintegrates in the ground to become

a good grade of humus, and in the process also releases chemical nutrients that stimulate growth.

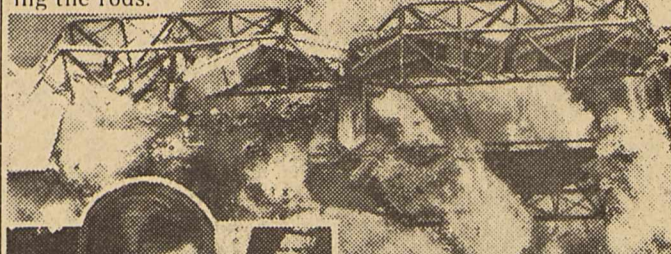
Stronger and faster-growing flowers and vegetables result, according to the Jack Pot Experimental Station which is maintained by the Willis-Reynolds Corp., Lebanon, Ind., manufacturer of these pots.

Field tests have shown that plants started in the new pots grow two to four weeks faster than plants started in ordinary pots. Of particular interest to home gardeners is that the entire transplanting process is speeded up, and gardening is made easier and cleaner.

Peat moss pots are much the same shape and size as clay or plastic plant pots, but weigh only a fraction as much. A package of twelve 2 1/4" pots weighs less than three ounces.

People, Spots In The News

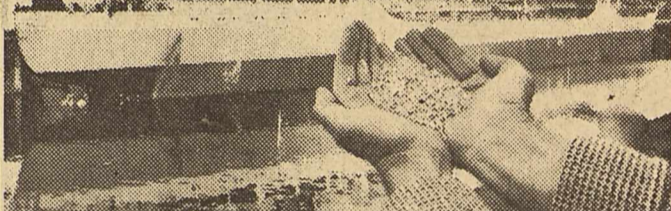
BRAVE BRIDGE! over Gasconade river near Newburg, Mo. still bears up despite zig-zag smashing of freight cars in 21-car derailment. Only injury: one transient who was "riding the rods."



WRITE-HANDED pitcher Jim Brosnan of Cincinnati Reds works on his second book at his home in Morton Grove, Ill. His first sold 20,000 copies.



JACQUELINE! New First Lady caught in characteristic mood, having a ball at a ball.



U.S. RECORD cargo of barley—1,773,000 bushels—loads at Cargill elevator at Portland, Ore. for trip to Poland via Panama Canal. In foreground is a handful of the grain, from Montana, Oregon, Idaho and Washington, as the 40,000-ton "Transeastern" is loaded. Shipment is under U.S. Government's P.L. 480 export program.

By C. MURRELL THOMPSON

W. B. White, Robert Chambliss, J. W. O. Alldridge and Bobby White are among the applicants for Conservation work in the Great Plains Conservation program.

Grass planting on land that is more likely to blow seems to be one of the big jobs. Under ground pipe to help do a better job of irrigating crops along with aerial spraying of brush on range land are two other jobs that are taking hold.

W. B. White plans to plant about 135 acres to weeping love grass for grazing while shinnery is poisoned, Bobby White plans to reclaim some badly eroded land and hold it with grass. Robert Chambliss plans to establish 50-75 acres of Bermuda as irrigated pasture and to control wind erosion. He also plans to seed some Alfalfa for hay and pasture.

Maps have been received on Ty Fields New Mexico ranch and work on a Conservation program has begun on this land.

M. W. Luna has received assistance in revising the Conservation plan on his home place and maps have been ordered for the South Mill Place.

Your Soil Conservation District now has a radio program each Saturday at 12:15 noon over KSML Seminole.

Some of the choice annuals for this purpose are petunias, zinnias, marigolds, sweet alyssum, cornflower, cleome, salpiglossis, scabiosa, and nicotiana.

Flowering Trees Add Real Beauty

The fascinating of a specimen flowering tree in its flowering season is one of the most delightful experiences of living to many home owners.

In selecting your flowering tree, do not do it haphazardly, advises the American Association of Nurserymen. You are going to have this tree for many years, and for it to be a continuous delight each year, make sure you get what you really want. It costs no more to do this.

Try this. Study mail order nursery catalogues and visit local nurseries until you find the tree with ornamental flowers which will give your family the most pleasure. There are many strikingly beautiful flowering trees. Perhaps your neighbor has one you have admired, or take a drive during tree flowering time in the finest residential area of your town, noting the most beautiful specimens.

Once you have the name of the tree you want, (you usually can get the name from your nurseryman if you have carefully noted flowers, color and other characteristics of the tree) select a good-sized tree in healthy condition. Pay a little more for it and get the best; it's worth it.

Plant the tree carefully, according to instructions and care for it well particularly during the first year.

Landscaping offers two ways to attain privacy on the property. The first is to plant a hedge. The second is to landscape in depth so that the view from outside is blocked off, while maintaining an "open" look.

The latter is easily attained by planting specimen trees and shrubs at various locations in such a manner that each tends

to complement the other in achieving privacy in the area desired, without being planted in a row like hedge.

Your RIGHT TO VOTE

MR. AND MRS. VOTER, do you feel that you should have an opportunity to vote on legalizing Parimutuel Horse Race Betting?

A constitutional amendment (H.J.R. #4) is being considered whereby Texas will be given an opportunity to legalize horse race betting in Dallas, Tarrant, Harris, Galveston, Bexar, Midland, Hidalgo, Cameron and Webb counties, subject to approval by LOCAL OPTION.

H.J.R. #4 provides for distribution, ANNUALLY, among all counties that do not have race tracks, one-half of the STATE TAX REVENUE obtained from horse racing. Each county would receive approximately \$1.00 per capita population the first year. Counties where the tracks are located would receive 2% of parimutuel handle. The state's tax income from horse racing alone would run close to \$12,000,000 the very first year—possibly more—besides all the income tourists would bring to Texas—which would amount to millions of dollars, plus a great ad valorem tax on race tracks, breeding farms and many valuable race horses.

Please express your opinion by checking the appropriate box below. You do not have to sign your name unless you like, but we would refer it.

YES: I feel that the people should have an opportunity to vote on horse race parimutuel betting.

NO: I am not in favor of letting the people vote on the subject.

Check Your Choice and Mail This Coupon Today

NAME _____
 ADDRESS _____ TEXAS
 CITY _____
 ADDRESS YOUR ENVELOPE TO:
 P. O. BOX 4534
 AUSTIN 51, TEXAS

Voters Survey

MASSEY FERGUSON MACHINERY

"The Only Tractor With The Ferguson System"

The Complete Farm Store

WE CAN SAVE YOU MONEY

30-GALLON GAS-LINED HOT WATER HEATER, 10 Yr. Guarantee.....\$65
 20-GALLON GAS-LINED HOT WATER HEATER, 10 Yr. Guarantee.....\$55

Plains Tractor & Hardware Co.

PHONE GL-8555 PLAINS, TEXAS

1961 Motor Vehicle LICENSES

are now available at both
 Plains office and Denver City office and
 must be on vehicle by April 1st

Be sure to bring 1960 Registration Receipt and Certificate of Title

as it is a strict requirement that information from both be shown on 1961 Licenses Receipt

E. W. CRAIG Tax Collector

CLASSIFIED ADS

Buying or Selling a Farm? Consult your area representative in association of realtors West Texas Farm Multiple 1503 Avenue J, Lubbock, Tex.

FINISH HIGH SCHOOL OR GRADE SCHOOL at home, spare time. Books furnished. Diplomas awarded. Start where you left school. Write Columbia School, Box 5061, Lubbock, Texas.

Notice MATTRESS MAKING Old mattresses renovated, all kinds of new mattresses, Bob kinds of new mattresses, Box springs, foam rubber, big trade-in for your old mattress. Call Mrs. W. E. Smith, Plains agent for Direct Mattress Co. of Lubbock. DIAL GL 6-3932

STRAYED---Four cows, one been gone 6 weeks, other three gone 3 weeks, from 5 miles south of Plains. Brand MLC. Notify A. B. McInloe, Phone 89-44313, Levelland.

Still waxing floors? Try the new acrylic finish called Seal Gloss for vinyl and linoleum. Cogburn-Young.

LOST bright carpet colors... restore them with Blue Lustre carpet and upholstery cleaner. Rent our Blue Lustre electric shampoo machine. Cogburn-Young.

TANK FOR SALE---Tank trailer. American Standard Steel, 90 barrels, 1100 by 20 tires, good shape, air brakes. Phone GL 6-8188, Plains, Texas.

FOR SALE---Figurama, like new--\$150. Call GL 6-3224.

OLD MASTERS LIQUID WOOD Modernize & Re-Finish Old Dark Stained and Painted Furniture and Woodwork Without Removing Old Finish, Scraping or Bleaching. Cogburn-Young.

CARD OF THANKS
 My sincere thanks to all who sent flowers, cards and to those who visited and assisted in so many ways during my recent illness.
 Mrs. Jack Pierce

BROWNFIELD FUNERAL HOME
 Phone 2525
 Air Conditioned Chapels and Ambulances—Oxygen Equipped
 Funeral Insurance
 Roy B. Collier, Owner
 120 West Tate St.
 Brownfield, Texas

A repair in time may save you "9"!

SEE US FOR EXPERT TV REPAIR SERVICE

Have minor repairs made before they become serious ones. Our service is fast, rates are low; we get to the source of trouble in a hurry! Call

PHONE 6-8374

Plains Electronics

BOWL!

*LEAGUE AND OPEN BOWLING, MEN AND WOMEN
 *SNACK BAR
 *AMF AUTOMATIC PIN-SPOTTERS

PHONE LY 2-2432 FOR RESERVATIONS
 We sell and Rent a Complete Line of Equipment

Denver City Bowling Club

Located at the "Y" East of Denver City
 W. S. "Bill" Smith, Manager

SCIENCE, VITAMINS AND YOU

Years of careful study continue to point up the value of vitamins as a health-aid and diet supplement. We have a wide variety of vitamins for children, expectant mothers, the average adult and geriatric needs. Come in and see us. It's another service we offer you along with prescriptions.

PRESCRIPTIONS DELIVERED... CALL

Curry-Edwards Pharmacy

PLAINS, TEXAS

BEST NEW CAR DEALS

We're Back In Plains At The Same Old Stand
 —SELLING NEW CARS—

Chevrolet Corvair Pontiac Tempest Oldsmobile F-85

AND A WIDE SELECTION OF USED CARS

Complete Service Department

MOST MODERN EQUIPMENT

Bear Wheel Alignment

AUTO GLASS INSTALLED-REPAIRED

Ammco Brake Machine

Jack Holder, Clyde Riley, Mechanics

We're Here to Serve You

Short Motor Co.

VIRGIL SHORT ARCHIE WHITAKER JACK HOLDER CLYDE RILEY

Buying a Home Then Check This List

If you check these items prior to moving into your new home, considerable moving pains can be eliminated, and more pleasure is in store for you.

- Plumbing fixtures and faucets.
- Outside utility connections.
- Check all floors extremely carefully.
- If there are built-in kitchen fixtures, check each individual compartment or cabinet to see if all doors work properly, that all partitions are in place. See that there are no smudges remaining on wall finishes. (You should be able to move into a spotless new home.) Check all windows to be sure they raise and lower naturally.

Although you may not use all your electric outlets as soon as you move in, all should be tested anyway for workability.

• Check all doors to see that they swing properly: a drag-

ging door not only is a nuisance, but it ruins the floor. If you have central heating or air-conditioning — or both — make sure you understand how they operate and that they are in operable condition. If there's an attic fan, check that it works properly. And be sure your thermostat functions.

• Finally, how about the yard and premises generally? If shrubbery was included in your arrangements, see that all plants and shrubs are living and growing. See that all waste materials have been cleared from the lot.

SAVING TIP

If you remind your builder, or the man who sold you your house, and insist that these things be accomplished by subcontractors before you sign final papers and move in, you go a long way toward avoiding those "new home blues."

SOCIETY - CLUBS - PERSONALITIES

For Society Editor Call GL 6-4116 Before Noon Wednesday



HONOR ROLL STUDENTS---Members of the junior high school honor roll for the fourth six-week period are, from left, Debra Harrison, Charlene Upton, Rodney Trout, Jean Stroud, Alton McGinty, Sarah Field, Moody Meixner, Rita Snodgrass, Linda Harbour and Sylvia McGinty.

14 Are Present For Meeting Of Brotherhood

Fourteen were present Monday night when the Brotherhood of the First Baptist Church held its regular meeting in Fellowship Hall.

In charge of the program was Joe Bass, president.

The group discussed plans for the Brotherhood Revival, to begin March 26 and close Easter Sunday. First day of the revival will be "Break the Record Sunday" with all classes participating.

Dave Blevins gave the invocation and Punk Culwell led the group in singing. Odus Walsler gave an inspiring talk.

The Rev. C. H. Moore of Mena, Ark., was a special guest.

Rules for Bare Root Plantings

Man couldn't live on earth without trees and shrubs to produce the oxygen we breathe, although ordinarily we think of trees and shrubs only for the welcome shade, the flowers, the fruits and the general beauty they bring into our lives.

Planting of bare root nursery stock is fairly simple, if a few rules are observed.

1. Holes should be roomy enough to accommodate the roots without cramping.
2. Good soil should be put at the bottom of the hole around the roots.
4. Drainage should be good.
5. Stock should be protected from wind and sun before planting.
6. Top should be pruned back one-third to compensate for root damage.

Youth Officer Will Address County Group

All persons interested in the Youth Center being started at Denver City are invited to attend a meeting next Thursday, March 16, at which Gerald Woodard, director of the Youth Center in Andrews, will speak.

According to Mrs. P. W. St. Romain, secretary of the Adult Advisory Board, Woodard will explain the functions of the Andrews group. All parents are especially invited to attend.

The meeting begins at 7:30 p. m. in the Denver City Community Building.

Plans for the countywide Youth Center have been in progress for several weeks, and it is hoped the center can be in operation real soon, Mrs. St. Romain said.

Tentative plans call for various forms of entertainment, under adult supervision.

The Youth Center is to be for the benefit of all boys and girls of high school age in both Plains and Denver City.

Local members of the Advisory Board include Mrs. St. Romain,

Mrs. Tom Warren and Leo White.

Your nurseryman can point out the shrubs which are best suitable for the purposes of privacy.

Library NEWS

Have you been by the Library this week? Mrs. Sloan and La-trell McDonnell are trying to be helpful with the school during School Week. There are posters special made for this occasion.

The library also has received some more new books. One that has been in demand by many readers for several months that the library has just received is "To Kill a Mockingbird" by Lee.

If you have some spare time you should go by the library and mill around. You are bound to find something you will enjoy and this is one of the best ways for us to educate ourselves these days.

One of the books filled with essays that is new by Hubbard has "A Message to Garcia", this is a message to all working people or any one with any kind of responsibility. One great thought in this message is "My Heart goes out to the man who does his work when the "boss" is away, as well as when he is at home."

Mrs. Barron Hostess to SS Class

Mrs. Darrell Barron was hostess Thursday to a meeting of the Homemakers Class of the First Baptist Church.

Devotional was given by Mrs. Sylvia Fannin.

Devotional, based on Matthew 10-27-33, was given by Mrs. Sylvia Fannin. The social program was led by Mrs. Myrna White. Secret pal gifts were exchanged.

Refreshments of punch, cake, nuts and mints were served to Mrs. Fannin, Mrs. White, Mrs. Phyllis Addison, Mrs. Willie Mae Addison, Mrs. Sue Barron, Mrs. Jackie Hayes, Mrs. Glenda Hobbs, Mrs. Rheda Hinkle, Mrs. Pat Hinkle, Mrs. Helen Nelms, Mrs. Avis Robertson and the teacher, Mrs. Bertie Tingle.

Locals....

Mr. and Mrs. I. F. Kennedy of Ruidosa, N. M., were guests this week in the home of the Johnnie R. Robertson family.

Mrs. Frank Whitlock, who has been visiting for the past two weeks in the home of her daughter, Mrs. Jack Pierce, returned to her home in Plainview Wednesday. Mr. Whitlock came Tuesday night to pick her up. They were accompanied home by their grandchildren, Chris and Penny Pierce.

42 Party Held In Murphy Home

Mr. and Mrs. Spencer Murphy were host and hostess Tuesday night to a 42 party held in their home.

Attending were Mr. and Mrs. Bob Loe, Mr. and Mrs. Bob Mason, Mr. and Mrs. Gene Young, Dr. and Mrs. Bill McCollough, Mr. and Mrs. Chas. Roseberry, Mr. and Mrs. Jack Palmer, Mr. and Mrs. Vennum Fitzgerald, Mr. and Mrs. Leonard Heald and Mr. and Mrs. Murphy.

Darrell Barrons To Be Honored

A house warming for Darrell and Sue Barron will be held Saturday afternoon in their home.

Friends of the couple are invited to call between 3 and 5 p. m.

Gifts are on display at various stores in Plains.

FREE BOOKLET OFFER

As many homeowners have discovered there's more to indoor-outdoor living than a patio and a sliding glass wall off the living area.

For the fullest enjoyment, according to many home planning experts, indoor and outdoor areas should harmonize with each other.

Two new color booklets are

Iota Pi Meets

In Clubroom

The County Clubroom was the scene Tuesday night of the regular meeting of Iota Pi of Epsilon Sigma Alpha.

Program Director Elsie Nordyke presented a style show with Jo Warren, Renee Hendricks, Suzahn St. Romain, Sue Bookout, Betty Borland, Kay Weatherford and Mary Johnson serving as models.

Hostesses were Mary Lee Swann, Mary Jo St. Romain and Gwen Short.

Attending were Archie Glover, Virginia Lindt, Billie Blundell, Pat Faught, Melba Duke, Juanita Cooke, Margaret Taylor, Idell Murphy, Ann Green, Dorothy Edwards, Helen Hunter, Emma Lewis, Elsie Nordyke and the hostesses.

now available to homeowners seeking design and building ideas for house or garden projects.

For free copy of new GARDEN IDEAS or REDWOOD HOMES booklet, write Homeowners' Library, California Redwood Association, 576 Sacramento Street, San Francisco 11, California.

COSDEN PRODUCTS

Prompt Delivery

* BUTANE

* GASOLINE

* PROPANE



* OIL

* DIESEL FUEL

* KEROSENE

Wholesale - Retail

US Royal Tires, Tubes, Batteries - AC Oil Filters, Spark Plugs

PLAINS OIL CO.

PHONE GL6-3777

JAMES WARREN, MGR.

PLAINS, TEXAS

Sale

Lombardy POPLARS

20 FEET TALL!

As Long As They Last . . .

2.95 EACH

NOW IS THE TIME TO BUY THESE

Fruit Trees

BALLED IN BURLAP

- APRICOT
- PLUM
- PEAR
- COMPASS CHERRY

YOUR CHOICE.....

4.50

We have ALL TYPES

- Flowering Shrubs
- Arizona Cypress (Green or Grey)
- Evergreen Shrubs
- Shade Trees
- Fruit & Pecan Trees

CALIFORNIA Patented Roses are ready!

- ★ FLORIBUNDAS
- ★ HYBRID TEAS
- ★ GRANDIFLORALS
- ★ CLIMBERS

BUY ALL YOUR GARDEN NEEDS FROM A REPUTABLE FIRM WHICH WILL BE HERE TOMORROW TO BACK ITS GUARANTEES!

WESTERN GARDENS

Nursery Division of Western Grain ★ 5th & Stewart ★ Phone 3737 Brownfield, Texas

CALL US for Complete BEAUTY CARE

Blanche...Elsie...Jan

LET US DESIGN A NEW HAIR-STYLE FOR YOU!

We'll study your features to see if your face is "round, square, oblong, or oval," and then custom design a style that is "beautifully" yours alone!

MODERN Beauty Salon

DON'T Take Chances with your planting seed!

WET ACID DELINTING

USE WET ACID for precision planting.

- USE WET ACID for better germination.
- USE OUR GRADER TABLE for elimination of weak plants.
- TAKE ADVANTAGE OF RESEARCH on cotton seed for higher yields.

BOOK YOUR ORDERS NOW FOR HIGH VITALITY & GERMINATION PLANTING SEED!

COTTON GROWERS DELINTING CO.

1/2 MILE WEST OF PLAINS ON LOVINGTON HIGHWAY

Phone GL 6-8420 Nite Phones GL 6-2585 or GL 6-3282

Adequate Hot Water Supply is Essential Need

Some water heaters are like "old soldiers" . . . they never die, just fade away.

With gas water heaters, on the other hand, there's never any "fading" because gas replenishes hot water as fast as it's used.

Speed is essential to plentiful supplies of hot water. It can often be more important than the size of the tank. Fast recovery 30-gallon gas heaters, for instance, will recover their entire capacity in about 50 minutes to provide more hot water per hour than 80-gallon tanks using other fuels.

Because gas is so fast, smaller tanks can be used. This saves on purchase price, installation and operating costs. Very large families, or homes using unusually large amounts of hot water, may require a 40 or 50-gallon gas heater. These, too, are faster and more economical than all other types.

One remarkable new gas heater can be increased from 30-gallon capacity up to 50-gallons simply by turning a dial. The answer: fast recovery, of course. This can be a tremendous advantage when a family installs a new bathroom,

adds an automatic appliance requiring large amounts of hot water, or has house guests for an extended visit.

Nearly all automatic gas heaters now come equipped with convenient dial-like controls for instantly increasing the temperature of the water — up to 180 degrees — when needed. Thus, lower, more economical temperatures can be maintained for normal use with very hot water available for dishwashing and laundering at a minute's notice.

The good looks and modern styling of gas water heaters make them an attractive addition to the laundry or utility room. They can also be installed in a closet, in the kitchen. Some are round, some square and some are counter height for placement alongside other appliances.

For expert advice on all phases of water heating, homeowners should consult their local gas company or gas appliance dealer.

SUBSCRIBE

Texas Gets 84% of March of Dimes Funds



THE FIGHT AGAINST CRIPPLING goes forward on many fronts with funds raised through the March of Dimes. The scientist in the laboratory seeks answers on the slides under a powerful microscope. The doctor in his office brings to bear all of medicine's present knowledge to relieve pain and crippling for the individual patient.

NEW YORK, N. Y.—The state of Texas has been the principal beneficiary in the allocation of March of Dimes funds raised in the state over the past 23 years. It was disclosed today in a financial summary prepared by The National Foundation.

More than 84 cents of every dollar from Texas' March of Dimes has been put to use in

aiding the state's disease victims and in research and education projects conducted by Texas institutions. Of the remaining 16 per cent accruing to the national headquarters, a large portion also has come back to Texas in shipments of polio vaccine and gamma globulin and in other nationwide services conducted by The National Foundation.

The summary covers the period since the first March of Dimes was held in January, 1938, and compares the net total of funds raised in the state

with amounts made available to Texas through September 30, 1960.

In this period, Texas chapters of the March of Dimes organization raised a net total of \$28,255,310.30 at an average fund-raising cost of less than 7 per cent. Of this amount, \$20,878,742.57 has been available to the county chapters in carrying out their extensive patient aid programs, including advances of \$8,592,351.71 from the national office to meet local emergency situations.

In addition, 65 grants totaling \$2,946,564.11 have been made in support of research and professional education projects at Texas institutions. Principal beneficiaries of these grants have been: Baylor University, \$1,748,928.28; Jefferson Davis Hospital, \$654,797.54; University of Texas, \$332,781.57 and the Texas Institute for Rehabilitation and Research, \$162,179.85. The latter institution also has benefited to the extent of \$1,514,672.42 from those grants made to Baylor University and Jefferson Davis Hospital.

Over and above the 84 per cent used by institutions and county chapters in the state, The National Foundation has financed within the state projects such as the historic field trials which proved the effectiveness of the Salk vaccine, epidemiological studies and scholarship and fellowship grants to Texas residents. National headquarters' expenditures for the vaccine trials in Texas amounted to \$359,726.07. In addition, the national office has sent into Texas \$291,718.84 worth of Salk vaccine and 654,924 cc's of gamma globulin in support of its polio prevention programs.

Two years ago, the National Foundation for Infantile Paralysis changed its name to The National Foundation in expanding its areas of interest beyond polio to include birth defects and arthritis, using the scientific knowledge and experience gained in the fight against polio.

NOTICE OF CITY OFFICERS' ELECTION

THE STATE OF TEXAS
CITY OF PLAINS

TO THE RESIDENT QUALIFIED VOTERS OF THE CITY OF PLAINS, TEXAS:

TAKE NOTICE that an election will be held on the 4th day of April, 1961, in the City of Plains, Texas, at the place, in the manner, and for the officials set forth in the attached copy of an order for City Officers' Election, duly adopted by the Mayor of said City on the 19th day of January, 1961. Said attached order for City Officers' Election being made a part of this notice for all intents and purposes.

Bob Loe,
City Secretary

ORDER FOR CITY OFFICERS' ELECTION

THE STATE OF TEXAS
CITY OF PLAINS

I, R. S. Faulkenberry, in my capacity as Mayor of the City of Plains, Texas, do hereby order that an election be held in said City on the 4th day of April, 1961, for the purpose of electing the following officials for said city:

3 Aldermen
1 City Judge
That in accordance with an

order adopted by the City Council/Commission of said City, said election shall be held at the following place in said City, and the following named persons are hereby appointed officers for said election.

In Election Precinct No. 1, at City Hall Building, in said City, with Mabel Camp as Presiding Judge, Nancy White as Judge, and Dorothy Edwards, Clerk.

That said election shall be held in accordance with the Election Code of this state and only resident qualified voters of said city shall be eligible to vote at said election.

That the City Secretary/Clerk shall give notice of said election by posting a copy of this order in each of the election precincts of said city, which posting shall be done not less than 30 days prior to date fixed for said election.

That immediately after said election is held, the officers holding the same shall make

returns of the result thereof to the City Council/Commission of this city as required by the Election Code of this state.

A copy of this order shall also serve as a writ of election which shall be delivered to the above appointed Presiding Judge, for said election.

R. S. Faulkenberry,
Mayor

Ideal for Fix-U

The "Hot Blast" Paint Scraper, a new propane torch that blisters and peels off old paint in one easy operation, has recently been introduced by Turner Corporation of Sycamore, Illinois. This new lightweight unit consists of a small cylinder of propane gas, burner assembly and steel scraper blade.

Easy to handle, this new paint scraper offers one hand operation as it quickly peels off many layers of old paint. The scraper unit and replaceable fuel cylinders are available at most hardware stores.

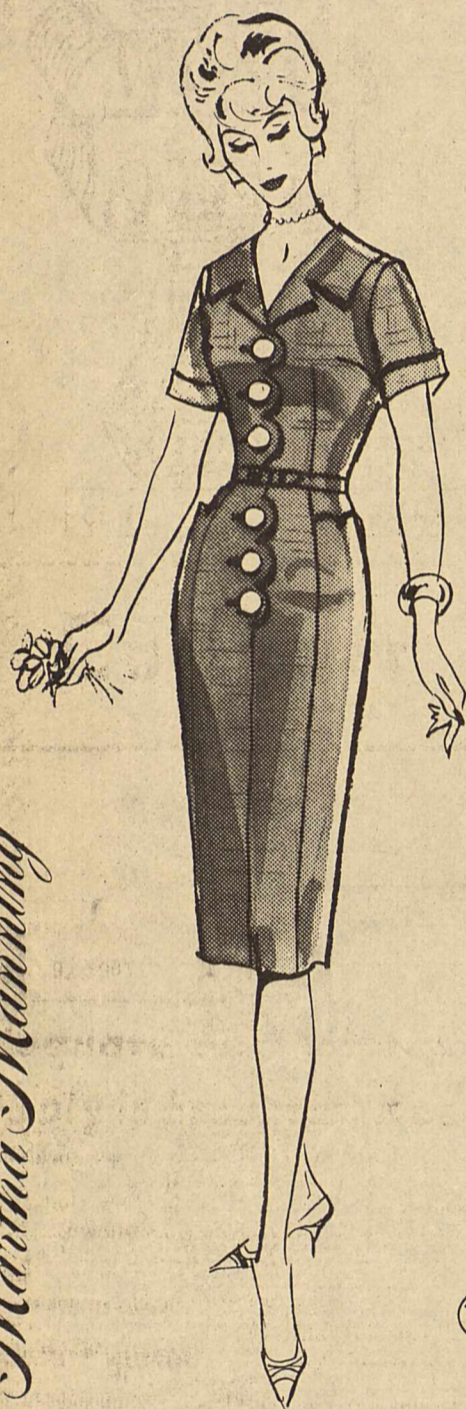
ELLIOTT & WALDRON Abstract Companies, Inc. Plains, Texas

Abstracts Prepared Titles Insured

Vernon Townes — Paul New

PHONES

Plains: GL 6-3377 Denver City: LY 2-2129



\$14.95

smooth figuring! Spring chic, shaped with calculated flattery in a fabric blend of rayon-acetate-and-cotton for your day-after-day step-in casual. So charming, the grouped scallops at the button front closing, again at the pockets. Choose yours in black, navy, pebble tan 14½-24½.

MOORE & ODEN
Dry Goods & Ready-to-Wear

PITTSBURGH PAINTS WALLHIDE CONTEST

\$100,000 in Prizes

Over 1,000 Prizes to Win

GRAND PRIZE • 2 RAMBLERS
AMERICAN CONVERTIBLE AND STATION WAGON

2 SECOND PRIZES • Rambler American Convertibles
2 THIRD PRIZES • Rambler American Station Wagons

- 6 Rambler Americans go to lucky winners—two of them to the winner of the Grand Prize, which could easily be you!
- 8 HARDMAN Duo PLAYER-PIANOS
- 11 REVCO Built-in REFRIGERATOR-FREEZERS
- 28 SPEED QUEEN WASHER-DRYERS
- 34 WESTINGHOUSE Deluxe Automatic ELECTRIC RANGES
- 43 SETS OF WINFIELD CHINA
- 400 MEEKER Leather HANDBAGS
- 500 Electric SUPREME KNIFE SHARPENERS

Here's All You Do to Win!
Just write in 25 words or less why you like to paint with Pittsburgh WALLHIDE Wall Paint or Enamel and attach the name WALLHIDE from label of any Wallhide can.

Come in Today!
for official entry blanks and complete rules of this contest. Contest closes midnight, May 13, 1961.

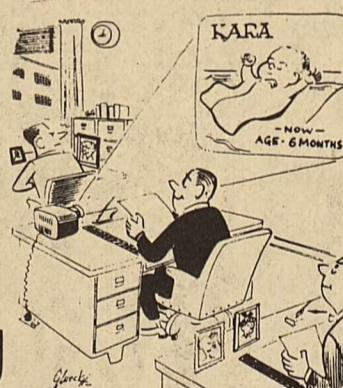
Cogburn-Young Hardware-Furniture-Appliances

"Where your \$\$\$ have more \$\$\$"

O. S. Wallpaint as low as \$3.50 per Gallon

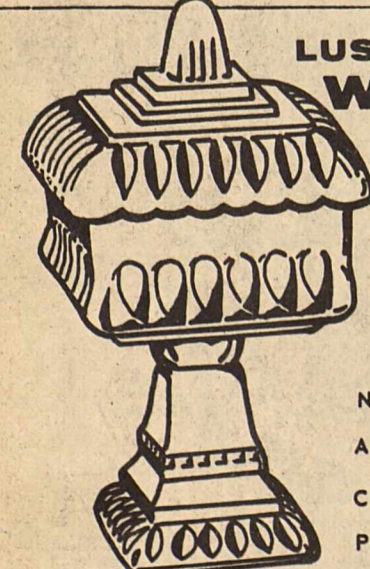
PITTSBURGH® PAINTS

My Neighbors



The word turnpike came from an early American custom of blocking toll roads with pikes or poles. When the toll fee had been duly paid, the pikes or poles were lowered.

YOUR SPECIAL 'EARLY BIRD' COUPON



LUSTROUS "Shell Pink" GLASS WEDDING BOWL

Only **49¢** WITH COUPON

Lustrous Opaque Pink glass.....Charming decorative piece. Only 8" high. With cover included. Get yours while our supply lasts. (No. 64).

NAME _____
ADDRESS _____
CITY _____
PHONE _____

CLIP THIS COUPONBRING IT TO OUR STORE TODAY



SEE US TODAY and SAVE MORE

Texas FARM BUREAU Insurance

Big dividends are yours

BUY THE BEST
Why settle for less

°LIFE
°AUTO °FIRE
°CROP HAIL °CL

Geo. R. Burke
Phone GL 6-8622
Plains

lb. Home Made Sausage **47¢**

Lean Pork Steak lb. **47¢**

PORK ROAST lb. **45¢**

PLAINS FROZEN FOOD

Cogburn Young Hardware-Furniture