



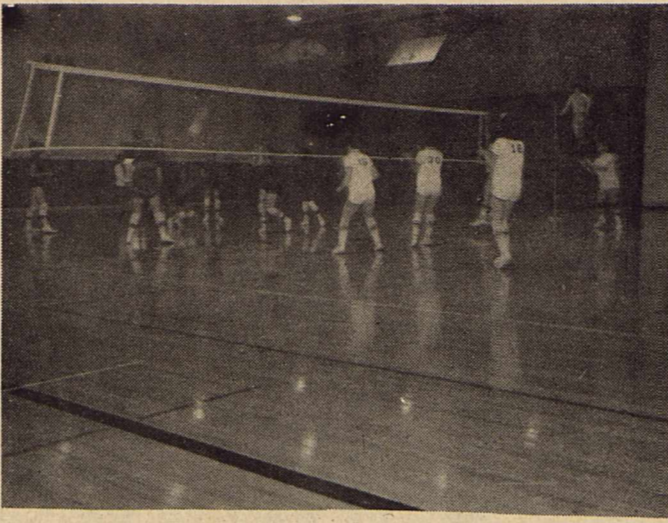
5th and 6th GRADE HONOR STUDENTS

Honor Roll
FROM PAGE 1

6th Grade
Debbie Addison
Bobby Blundell
Cheryl Johnson
Cynthia Jones
Shelly Williams

7th Grade
Tony Chandler
Beth Ann Hale
Pat Milstead
Susan Simpson

8th Grade
Jo Warren
Shelly Simpson
Judy Smith
James Stewart
Rolan Taylor
Tommy Beal
Randy Fitzgerald
Kevin Guterersloh
Rojanna Harvey



COWGIRLS IN ACTION AGAINST CRANE



7th and 8th GRADE HONOR STUDENTS

Sign Up
FROM PAGE 1

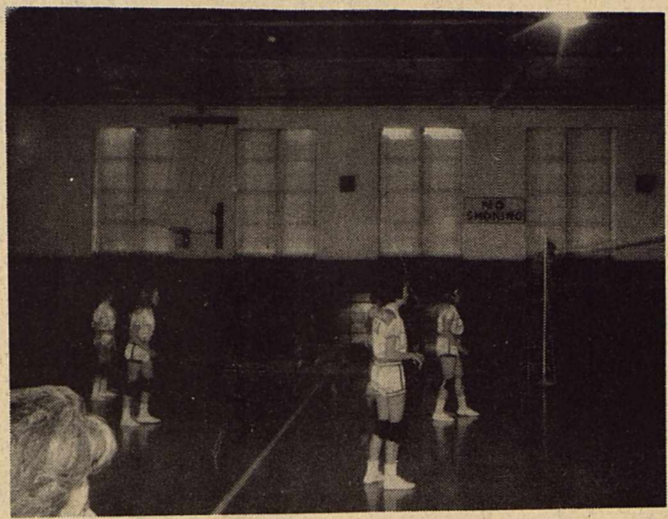
percent, some have signed to reduce 5 percent and plant 95 percent, some have signed to reduce 35 percent and plant 65 percent and others have signed to reduce an amount somewhere between 5 and 35 percent. Regardless of the reduction made the price support payment to be made is only on 65 percent of the effective allotment. The feed grain sign up averages a reduction of approximately 47 percent.

PEANUT ALLOTMENT TRANSFERS. Congress made effective for the 1968 crop year a law permitting transfers by sale, lease and ownership of peanut acreage allotments. This program is similar to the cotton allotment transfer program; other than it is limited to within county transfers and allotment may be transferred to a farm that does not have an effective peanut allotment. The peanut regulations in regard to transfers of peanut allotment, new grower allotment, etc., are the same in all counties.

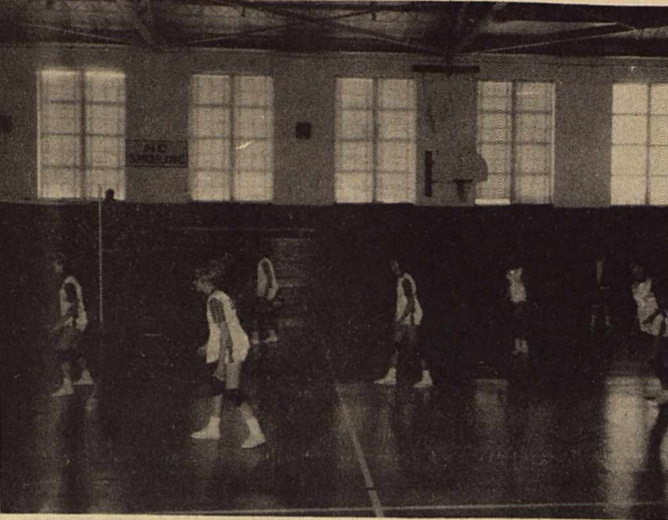
Planting Rates Discussed Here

By Leo White, County Agent

Planting time is just around the corner and farmers need to plan now for planting operation. In the producer meetings held last week, Dr. Robert Metzger brought out the fact that grain sorghum yields were often hampered by having the crop too thick. The recommended seeding rate for grain sorghum in Yoakum County is two to five pounds per acre, and some fields would be better off with a seeding rate of less than two pounds per acre. The correct seeding rate is to plant one pound of seed for one thousand pounds of expected production, and then the crop must be almost completely free of weeds. The main idea is to have few plants in the row for the root system to develop and cover a large area. The more extensive root system can draw the moisture from the larger soil area and do a better job of surviving through a dry spell. Five pounds of seed per acre is about right for irrigated land, and it is easier and less expensive to make a six thousand pound per acre yield from an eight pound



WINS FIRST GAMES: The seventh grade Cowgirls traveled to Seminole Monday for their first volleyball game of the season. The girls won two out of three hard fought games. The scores were Seminole, 1st game 15-9 and Plains, 15-14 and 15-13.



LOSES TO SEMINOLE: The 8th grade volleyball team lost to Seminole in two out of three hard fought games in play Monday evening. The team won 15-12 in the first game and then lost with scores of 15-3 and 15-13.

Library News

New books are coming in every day for the Public's reading enjoyment. Books for young and the Adult groups. A series of books that would especially interest the Junior girls are the "Barbie Series."

per acre seeding rate.

One Yoakum County farmer made the statement that if you plant for a dry year, you will be right at least four years out of five. Everyone likes to see a good stand, but the good stand may be the thin looking stand that pretty well stays out of trouble during the dry weather in July and August.

Kindness is a language everyone understands

Tax Office Cited

E. W. Craig and staff of the Yoakum County Tax Assessor Collector office recently received a personal note of appreciation from the Texas Highway Department. In the letter, R. W. Townsley, director of the Motor Vehicle Division and J. C. Dingwall, state highway engineer, stated:

Dear Sir:

We wish to extend a personal note of appreciation to you and your very able staff for the proficient manner in which you handled your certificate of title transactions during 1967. As previously announced, the overall state average of rejected title applications for 1967 was 4.4%. The 1967 average for your particular county was only 2.2% of 2,192 applications submitted.

The excellent record established this past year is a credit to your office and indicative of your sincere efforts to provide the citizens of your county the type of service to which they are entitled. We commend you for this fine record, and we know you will make every effort to continue this good work.

Butch Gaines Wins Trophy

Butch Gaines, son of Mr. and Mrs. Aaron Gaines, at Bronco, won the Bowler of the Week honors and a trophy at Oakwood Lanes in Lubbock. He had the high game of the tournament with a score of 254 and a 681 series. This honor gives him the privilege of participating in a play-off tournament later in the year.

Butch was a 1967 graduate of Plains High School and is now attending Texas Tech.

Buy U.S. Savings Bonds

ATTEND YOUR LOCAL 4-H CLUB

1968 Motor Vehicle LICENSES

are now available and

must be on vehicle by April 1st

THIS AD PAID FOR BY

RAY TRENT

CANDIDATE FOR

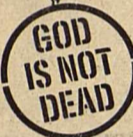
COUNTY TAX ASSESSOR-COLLECTOR

Owners should bring to the tax collector's office the 1967 license receipt and certificate of title



Christ Lives For You

Through His Death and Resurrection He provided a Plan for Your Salvation... He Lives As Proof of His Divinity and Abounding Love.

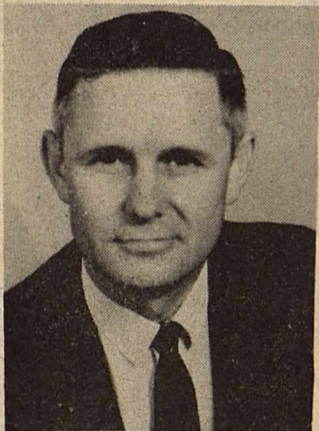


ATTEND THE SPECIAL SERVICES

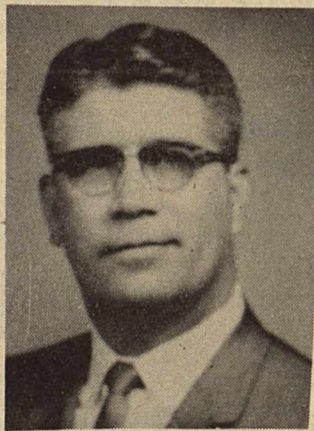
FIRST BAPTIST CHURCH
Plains, Texas

MARCH 17-24

10:00 A. M. - 7:30 P. M.



T. J. Ozburn - Evangelist



Gayle Bowen-Singer

NURSERY PROVIDED

A GREAT BIG THANK YOU

to everyone in this area for your past support

come in any time and try that GOOD FINA SERVICE

Martin Flores, Manager
Box 664 Plains, Texas

FLORES FINA STATION

VOTE FOR

RAY TRENT
County Tax Assessor Collector
MAY 4

from the staff and management
KKUB-1300

ON YOUR RADIO DIAL

Give Us A Listen!

Shurfine YOUNG MOTHER HUBBARD
12 DAYS of RECORD-BREAKING LOW PRICES!
JOIN THE U.S.A. EATING TEAM
SALE
BETTER VALUES! All your favorite brands here.
SHOP with CONFIDENCE You're a favored customer here!

SHURFINE SALE

continues through Saturday, March 9

TEXAS RUBY RED
Grapefruit 10¢ lb.

Lettuce 10¢ lb.

BUNCHES
Green Onions 2/15¢

BUNCHES
Radishes 2/15¢

FRESH
PORK ROAST 49¢ lb.

CENTER CUT
PORK CHOPS 69¢ lb.

FIRST CUT
PORK CHOPS 55¢ lb.

WILSON'S ALL MEAT
BOLOGNA 49¢
Pound

The Better Things Are Yours! with GOLD BOND Stamps!

Low Everyday Prices

Hawkins Food Market