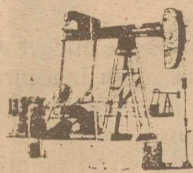


Plains Library
Box 419
Plains, TX 79355



The Plains Pride



Plains, Yoakum County, Texas
JUNE 22, 1986

VOLUME 2 NUMBER 12

TWENTY-FIVE CENTS



"AND THE RAINS CAME TUMBLING DOWN" -- Witnessing the "downpour" is five-year-old Kayla Redman, daughter of Mr. and Mrs. Jeff Redman.

FmHA Committee Members To Be Elected June 30

Election of two Farmers Home Administration County Committee members will take place Monday, June 30, County Supervisor Ross James has announced.

"This is a somewhat historic occasion," James said. "It is the first time that FmHA county committee members have been elected. Until now, they have been appointed by the agency. The 1985 farm bill calls for two elected and one appointed member on the committee."

The FmHA county committee assists the county office in reviewing applications for farm loans.

Farmers who live in Yoakum County, are of legal voting age and derive the principale part of their in-

come from farming are eligible to vote.

Nominees for the Yoakum County FmHA County Committee are Ray E. Bearden and R.M. (Bob) Jones.

"This time, we will elect two committee members," James said. "One will serve for one year and the other will serve two years. In the future, all three members will serve three year terms on a staggered basis, with one position to be filled each year."

Voting ballots are available from the FmHA county office at 605 9th Stree, Plains. Market ballots must be mailed or dropped off at the FmHA office by June 30.

Calendar Deadline Is Approaching

Deadline for purchasing a community calendar is Monday, June 23. Interested persons may pick up order forms at Yoakum County Library or call Paula McMinn at 456-3111. The calendar is an annual project of the Plains Cowboy Band Boosters.

Family listings include birthdays of all family members living at home and wedding anniversary.

Listings will also include meeting dates of organizations, school activities and such. The calendars complete with listings, are \$4 each.

Extra listings are available at 50 cents each; extra calendars are \$2 each.

Supreme Cleaners Opens Branch Here

Supreme Cleaners, of Brownfield is to open a branch service here Monday, June 30. Located next door to Plains Cable TV, the "drop-off" will be managed by Mrs. Annie Asebedo.

Offering dry cleaning and a full service laundry, business hours will be from 8 a.m. until 5:30 p.m.

As an "Opening Special", Supreme Cleaners will offer, for a limited time, all dry cleaning at half price.

4-H Horse Show To Be In Abilene

The 1986 Texas 4-H Horse Show at Abilene July 21-26 will be dedicated to B.F. Yeates, longtime horse specialist with the Texas Agricultural Extension Service. Yeates, whose career with the Extension Service spans 28 years, has given outstanding leadership to youth and adult horse programs in Texas for the past 20 years, says the Extension Service's state 4-H program leader. Through his efforts the Texas 4-H Horse Show is at the pinnacle of success following its meager beginning on the Texas A&M University campus in 1963.

Dumpster Trash Is City Property

Complaints from residents of persons going through dumpsters and removing objects have been registered with the City Hall. In checking, it was learned through the Texas State Department of Health, this must stop or charges will be filed against violaters.

One of the main reasons for enforcing this is the threat of spreading disease.

Once garbage has been placed in the dumpster, it becomes the property of the City. The City can then file charges of trespassing or theft.

Persons have inquired if there is an ordinance that trash must be put in plastic bags. This is not an ordinance but it is recommended, especially in summer months, since it is more sanitary and flies would not be such a problem.

Texas Department of Heath requires a city employee accompany anyone going to the city landfill (dump ground) to dump trash. Persons must go through City Hall in order to use the dump ground. There is a charge for dumping.

THE PLAINS PRIDE

Joe & Debbie Alcorta - Publisher/Editor

The Plains Pride (USPS 757-130) is published weekly at 716 Main Street, Olton, Lamb County, TX 79064. Second Class Permit paid at Olton, TX 79064. POSTMASTER: Send address changes to THE PLAINS PRIDE, P.O. BOX 774, OLTON, TEXAS 79064-0774.

Any erroneous reflection upon the character or standing of any person or firm appearing in this paper will gladly and promptly be corrected, upon being called to the attention of the management.

—YEARLY SUBSCRIPTION RATES—
Yoakum County & Surrounding Counties, tax included \$15
Elsewhere, tax included \$16

**Seminole Man
Named To Board**

Ted Higginbotham of Seminole has been elected to serve as director representing District 2 on the Texas Peanut Producers Board. Certifying his election was Commissioner Jim Hightower.

He will serve a six-year term ending May 1, 1992.

Texas Peanut Producers Board held its biennial election April 30 to elect three board members for districts two, three and four.

A referendum was also held April 30 on the issue of whether or not to increase the present assessment from \$1 to \$2 per ton. The referendum failed to pass by the required two-thirds majority of those voting.

Pictures used in The Plains Pride are left at the Plains Library

**Firemen To Give Away
Battery Operated Truck**

Plains Volunteer Firemen are accepting contributions for a child's battery powered toy fire truck which will be given away Friday, July 4 at the annual 4th of July Celebration in Yoakum County Park.

Contributions of \$1 may be made to any member of Plains Volunteer Fire Department of their spouse.

The toy fire truck will be displayed at Yoakum County Federal Credit Union, Plains State Bank and Yoakum County Library in Plains. It will also be displayed at the park July 4.

The lucky winner does not have to be present in order to claim the prize.

**Volunteers Needed
For Ambulance Crew**

Persons are being sought who will train and serve with the ambulance service in Plains. The City of Plains is making plans to sponsor an ECA course to qualify these persons. It is scheduled for the first week in August.

Anyone interested in taking the course and becoming a part of the ambulance service is asked to contact City Hall, 456-2288.

A meeting is being planned for sometime in July when interested persons can ask questions and learn more about plans.

The small number of persons presently working with the ambulance service is a grave concern of the city and the people of Plains. Denver City recently has been taking most of the ambulance calls for Plains, but this cannot continue. Quite a few Plains residents have trained in the three schools that have been previously held but have become disinterested. A plea is issued now for those persons genuinely interested in serving, to take the training courses and offer their time and support to the ambulance service.

**Commissioners
Court**

Special session of Yoakum County Commissioners Court convened June 16 at 10 a.m. All members were present.

An amendment of the budget was approved because of an inaccurate budget estimate of statement of facts disbursements.

Approval was also given a motion to advertise for bids for public officials and employees liability with bids to be received July 7.

Extra hire and other miscellaneous bills were approved for payment.

The court also approved Criminal District Attorney Warren New's changes moving Vicki Blundell from first deputy salary to third deputy full time salary with county benefits and Judy Addison to first deputy salary, temporarily until the first of the year.

Pam Redman
news or ads

456-7403

The Plains Pride

**Final Deadline
for purchasing
A Band Calendar
Monday, June 23**

Forms are available at
Yoakum County Library

Watch

—“*Our Family Time*”—

every Sunday morning at 9:30 a.m.
On
KLBK Channel 13
featuring *Rex Boyles*

Pulpit Minister/Sunset Church of Christ in Lubbock

—WANT TO MOW LAWNS—
CALL STEVE CRUTCHER
456-7433

**New Shipment
Of**



Balls, Bats

Tennis rackets

Drop in and browse.

**Plains
Appliance Center**
Sue Randall, Mgr
456-3565

Mon-Sat 8-6

SUBSCRIBE TODAY!

1 year (Yoakum & surrounding counties) \$15
2 years (Yoakum & surrounding counties) \$25

1 year (outside county) \$16
2 years (outside county) \$26

SUBSCRIPTION
The Plains Pride
Box 1139
Plains, Tx. 79355

SUBSCRIBER'S NAME (Please Print) _____

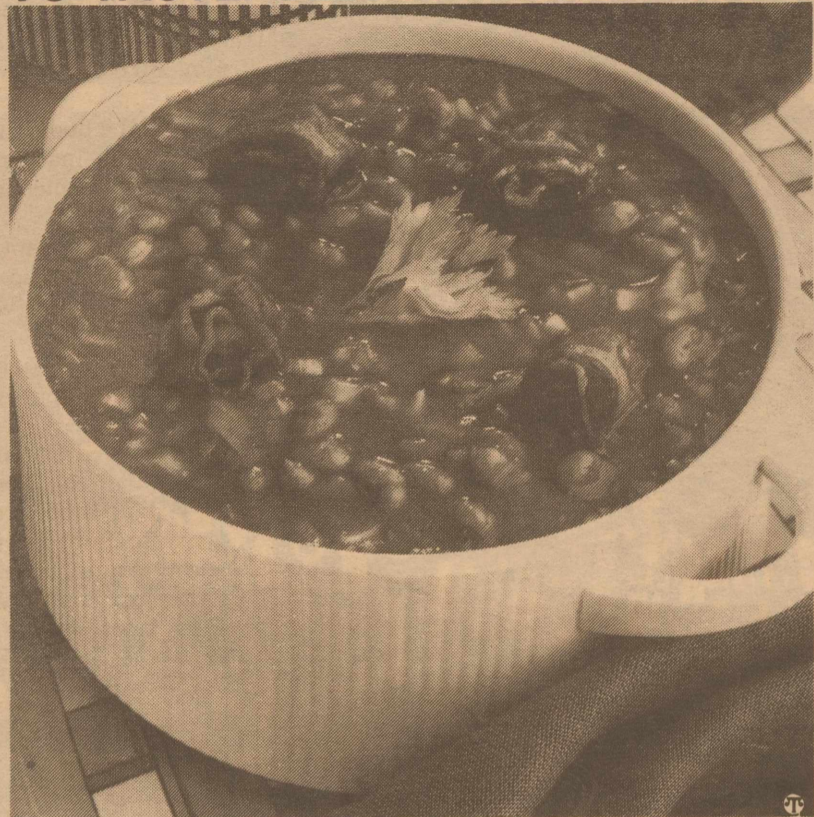
Box Number or Route _____

Town and Zip Code _____

Years _____ New Subscriber

Amount _____ Date _____

BAKED BEANS ARE GOOD REASON TO TASTEFULLY CELEBRATE JULY



July is always a time to celebrate and this year it's a celebration of taste—National Baked Bean Month.

For generations, Americans have linked baked beans to Boston, like cheesesteaks to Philadelphia. Although the ritual Saturday baked bean suppers which date back to the Puritans are no longer common practice in Boston, baked beans are still a favorite among New Englanders.

Today, baked beans are an all-American food, terrific with summer staples like grilled hamburgers and hot dogs. To liven a traditional July barbecue, try Savory Baked Beans with Bacon. It's easy to make with a headstart from Campbell's Pork & Beans in Tomato Sauce.

This interesting side dish has the rich flavor of all-day cooking, yet it takes only 30 minutes. Serve Savory Baked Beans with Bacon on the menu at your next summer barbecue or picnic—it's sure to be a crowd-pleaser.

SAVORY BAKED BEANS WITH BACON

- | | |
|---|----------------------------------|
| 2 cans (16 ounces each)
Campbell's Pork & Beans
in Tomato Sauce | 1 tablespoon prepared mustard |
| 1/2 cup chopped onion | 1 tablespoon brown sugar |
| 1/4 cup barbecue sauce | 4 slices bacon, partially cooked |
| | Celery leaves for garnish |

- In 1 1/2-quart casserole, stir together all ingredients except bacon. Roll up bacon and place on top.
- Bake at 350°F. for 30 minutes. Garnish with celery leaves. Makes 4 cups or 8 servings.

Kristi Stephens Honored With Bridal Courtesy

A bridal courtesy Saturday in the Heritage Room of Yoakum County Library in Plains honored Kristi Stephens, bride-elect of Steve Jones.

Honor guests were mothers of the betrothed couple, Sheila Stephens and Margaret Jones of Floydada. Other special guests were Louise Smith, grandmother of the bride; Mrs. McClure of Floydada, grandmother of the prospective groom and Kim Van Dyke of Hobbs, N.M., sister of the honoree.

Laid with a beige lace cutwork cloth accented with peach, the party table was adorned with an arrangement of peach colored rosebuds and fern leaves and two porcelain

rosebuds belonging to Mrs. R.B. Jones.

Dorothy Johnson and Sheila Ashburn presided, serving fruit plates, cookies, nuts, mints and frozen lime punch.

Hostesses presented the honoree with a corsage of peach roses accented by small kitchen gadgets and a vacuum.

Assisting with hostess duties were Wanda Smith, Myrna White, Jeanette Head, Dolores Davis, Jimmie Bayer, Mary Dale Williams, Linda Powell, Sarah Jane Field, Sarah K. Burrus, Nita Williams, Annette Cleveland, China Crump and Phyliss House.

Shower To Fete Lesa Crutcher

Miss Lesa Crutcher, bride-elect of Jones Arnett, will be complimented with a bridal courtesy Sunday, June 29 in the Heritage Room of Yoakum County Library in Plains.

Calling hours are 2 to 4:30 p.m. Selections may be found with local merchants.

Friends and relatives are invited.

**Regal
Twin Theatre**
Brownfield

—SCREEN I—
"Short Circuit"
Rated PG

—SCREEN II—
"The Money Pit"
Rated PG

Showing Now Through Thursday, June 26

For Recorded Showtimes
Call 637-2848

NOTICE OF ELECTION

The Farmers Home Administration (FmHA) County Committee election this year will be held on June 30, 1986. The ballot below must be filled out, detached and mailed and received or returned in person to 605 9th, P.O. Box 547, Plains, TX 79355, not later than June 30, 1986. If you do not vote in person you should mail your ballot inside a blank envelope marked ballot to ensure a secret ballot. This blank envelope should be placed inside the envelope you use to mail your ballot. Your name and address must be legible on the outer envelope. Failure to provide this information will render your ballot invalid. Ballots and envelopes may also be obtained from your local FmHA office.

The slate of nominees for Yoakum County Committee are listed in the ballot below. The qualifications of persons voting are described in the "Voter Certification Statement". For further information regarding voting and voter eligibility, see the county office listed above. FmHA elections are open to all eligible voters without regard to race, color, religion, national origin, age, political affiliation, marital status, sex and/or handicap.

U.S. DEPARTMENT OF AGRICULTURE FARMERS HOME ADMINISTRATION BALLOT FOR COUNTY COMMITTEE MEMBER(S)

State (Name) _____ County (Name) _____

*Candidate(s) Ray E. Bearden

R.M. (Bob) Jones

***ONLY VOTE FOR 2 CANDIDATES**

Please detach this notice before voting ballot

VOTER CERTIFICATION STATEMENT

Subpart W of Part 2054 of Title 7, Code of Federal Regulations requires that all voters for FmHA county or area committee elections meet the following eligibility requirements: (a) be farmers; (b) derive the principal part of their income from farming (that is more than 50 percent of their gross income must come from agricultural production); (c) have their principal farming operation within the county or area for which the election is being held.

By submitting this ballot, I attest that I meet the criteria to vote.

ADD LIVING SPACE

If you're adding a room, or expanding existing space, we can help! Expert advise & all the materials you'll need. Lumber, paneling, nails, insulation & tiles.

DO-IT YOURSELF CENTER

**BAYER
LUMBER & HARDWARE
CO.**

456-4800 Plains



Plains Independent School District

From The Superintendent's Desk

DEAN ANDREWS



Many of the nation's school children ride a bus to school each day and school bus safety is always a concern with educators. There has been much debate recently concerning seat belts on school buses. Recent school bus crash tests conducted by Thomas Built found that in a frontal impact, dummies restrained by lap seat belts pivoted forward about their hips and slammed violently into the back of the seats in front. As their foreheads impacted, slow motion film showed that necks and backbones would have snapped. Unbelted dummies in the same crash test showed impact forces dissipated throughout the body. Stresses were so far below the life-threatening threshold - 41 percent below average - that even the experts were surprised.

The National Safety Council rates school buses the safest form of passenger transportation year after year...safer than airlines, railroads and municipal buses, and 14 times safer than the family automobile.

Seat belt opponents argue that belts could delay evacuation in case of fire or stalling on a railroad crossing. Another concern is that students could use a belt with a buckle on the end as an effective weapon.

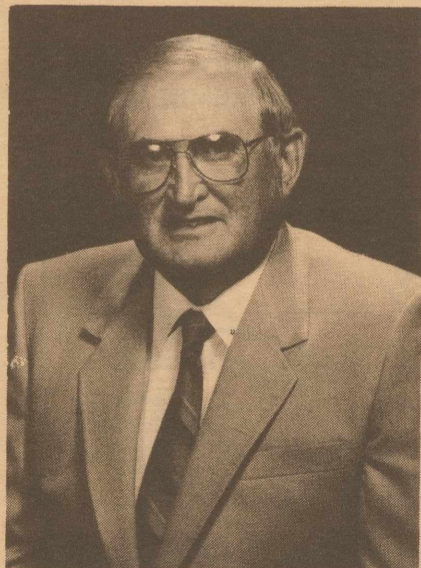
Many school safety officials are also concentrating on the danger zone around the stopped school bus. Nine out of ten children killed in school bus transport are killed outside the bus. Seventy percent of these fatalities occur in the 5-8 year old age group. Stop arms with flashing lights were installed on ten buses in a pilot study recently conducted by Dallas County Schools. Drivers reported that stop arms, which swing out and flash when the door is opened, cause oncoming traffic to stop more consistently. All Dallas County school buses are currently being fitted with stop arms.

We are monitoring this program in Dallas and you may possibly see the stop arms on Plains I.S.D. buses in the near future.



SECOND PLACE FINISH -- These Plains Little Dribblers were runners-up against Southwest Louisiana in the National Tournament. Left to right, first row, Misty Willett, Rhonda Cowart, Amber Bryan, Sandy Sainz, Jennifer Day and Shandy Willett. Middle row, Heather Bowlin and Belen Coronado, Penny Green, Jodie Gayle, Nieves Garza. Third row, Amy Crutcher, Janie Cowart and Ronnie Cowart.

Thanks Again!



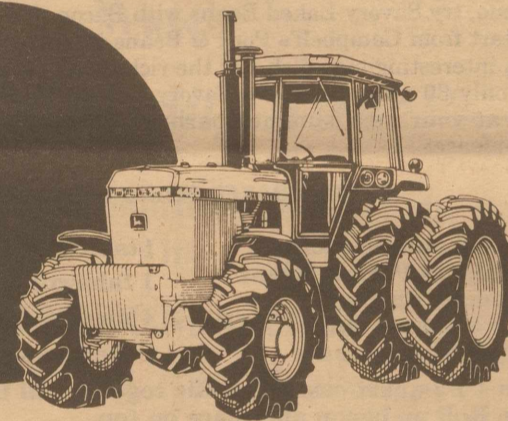
Please accept my sincere thanks for the heartwarming show of support in the recent democratic run-off election for county judge.

I am deeply grateful for all of those who worked with me in my campaign, just as I am to all the voters who took time to show their support and concern.

It has been an experience and privilege to meet so many of the fine people who reside in our county. I will do my very best to maintain the trust and confidence you have placed in me.

Thanks again,
Dallas Brewer

"The sooner you buy the bigger you save" SALE



John Deere row-crop tractor savings countdown

We have a good selection of John Deere 4050 through 4850 Row-Crop Tractors that you can buy at huge savings. The earlier you buy, the more you can save. See us for details.

- Interest-free financing* until January 1, 1987 on new models. (October 1, 1986 on used models).
- Discount in lieu of finance waiver on new models.
- Very attractive factory discounts passed on to you.

*Availability of John Deere financing subject to approval of credit.

See us right away-the sooner the better



PLAINS FARM SUPPLY, INC.

Plains
806/456-2877

Denver City
806/592-5454

CLASSIFIED ADVERTISING

FOR SALE

FOR SALE: 3 bedroom house, 1301 Ave B in Plains. Over 1100 sq. feet. Newly landscaped, remodeled & fenced. A **REAL STEAL!** Priced under \$20,000. **MUST SELL IMMEDIATELY!** Call 505-392-4885; 505-393-0886 or 806-456-3600. 52/12tc

FOR SALE: Large Upright Deep Freeze. Call 456-7460 12/1tpd

For Rent

FOR RENT: 3 Bedroom, 1 bath house located 8 miles west on Highway 82. Call 456-3322 before 4 p.m.; 456-7450 after 4:30 p.m. 12/2tpd



Contact
Dan or Linda
Wall

SHOP WITHOUT
GOING SHOPPING

FOR SALE

3 Bedroom, 2 Bath, Brick, 2 Car Carport, Central Heat/Air. Corner Lot.

3 Bedroom, 2 Bath, 2 Car Garage, Brick. Fenced Yard on Corner Lot. Central Heat/Air.

3 Bedroom, 2 Bath w/Fireplace. Fenced Yard, Corner Lot. Sellers Will Pay Closing Cost.

3 Bedroom, 2 Bath, Brick. Fenced Yard on Corner Lot. \$12,000 Under Appraised Price. Make Us An Offer!!

3 Bedroom, 1 Bath, 1 Car Garage w/Fenced Yard. On Corner Lot.

Excellent Building Site — ¼ Block Northeast Part of Plains.

5 Lots. Highway Frontage; Excellent Location. \$5,000.

**Raybon
Real Estate**

—Wayne House—
456-3900

—Yvonne Spencer—
456-8116



You can

- buy or sell a canoe
- board a horse
- sell your car
- meet a new friend
- find your lost dog
- rent a house
- hire a tradesman

Read and advertise
in our Classifieds!

456-7403

**THE
PLAINS PRIDE**

Two J-S Flying Service

Aerial Applicators



806/456-3580

Jack Cobb
456-7452

Yoakum Co. Airport

Plains, TX
79355

Movies

Rent 2 Movies
- Any Day
**BRING THIS AD IN
& Get 3rd
MOVIE FREE!**

New Titles...
"Back To The Future"
Death Wish III
Agnes of God
Cocoon
Rocky IV

Plains Shamrock

(Unleaded — Regular — Diesel)

Ken Wilson/Owner 806/456-8001

PROFESSIONAL DIRECTORY

RICHARD CLARK
ATTORNEY AT LAW

810 E Brdwy
First Nat'l Bank Bldg

806/592-3039

Box 749
Denver City, TX 79323

LOVE, HAYS & SCHAFFNER
CERTIFIED PUBLIC ACCOUNTANTS

408 W Tate
Brownfield, TX 79316

P.O. Box 791
806/637-3566

LINDA SHOEMAKER LOWREY

Attorney At Law

—Across The Street From The Yoakum County Courthouse—
PLAINS, TX 79355 P.O. BOX 669 806-456-7404

Competitive Prices . . . Special Discounts

Custom Application 2.25/Acre

AGRICULTURE SERVICES

All Your Planting Needs...

- Paymaster Milo
- Conlee Milo & Haygrazer
- Coker Milo Rohm & Haas Seed
- Golden Harvest Hybrids
- Sterile Hay grazer \$16/Bag



**Golden
Harvest**

**Come By & Pick Up
A FREE Bag Of Golden Harvest**

'We Don't Sell Service — We Give Service'

T-TEX Fertilizer

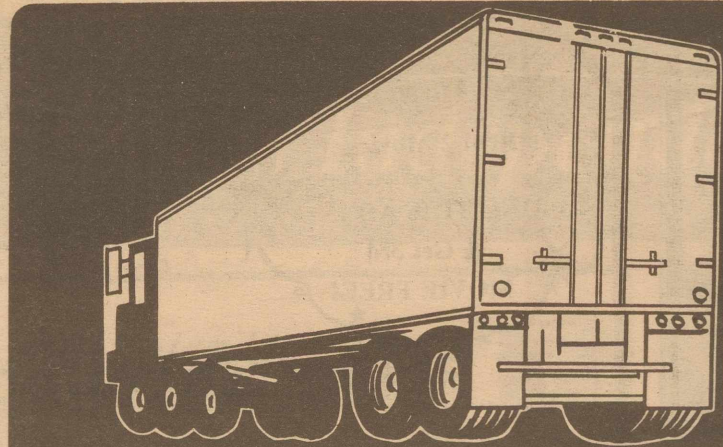
Goodpasture Elevator

Roswell Highway

Days
456-8833

Bruce Lester/Mgr

Nights
456-6575



KIMBERLY-CLARK TRUCKLOAD SALE

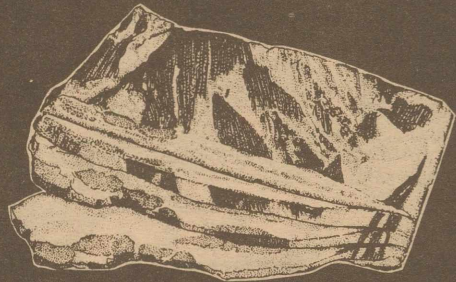
HILLS BROS. INSTANT COFFEE
4 OZ. JAR \$2.19

Tea Bags
24 QT. LIPTON FAMILY SIZE

Lipton \$1.79

Coffee
HILLS BROS. ALL GRINDS
\$2.89
1 LB. CAN

Kool-Aid
2 QT. PKG. SWEETENED ASST.
59¢



WRIGHT'S HICKORY SMOKED SLICED

Slab Bacon \$1.39
LB.

Topping
5.6 OZ. BOX DREAM WHIP
\$1.19

SUGAR FREE ASST. KOOL-AID
2 QT. PKG. 69¢



- WILSON'S 20% LESS FAT SMOKED REG./POL./BEEF SAUSAGE LB. \$1.99
- GOOD'S MEXICAN STYLE HOT LINKS LB. \$1.39
- PRICE SAVER CHICKEN MEAT FRANKS 1 LB. PKG. 79¢
- PRICE SAVER CHICKEN MEAT SLICED BOLOGNA 1 LB. PKG. 89¢
- OSCAR MAYER SLICED MEAT BOLOGNA 8 OZ. PKG. 99¢
- OSCAR MAYER SLICED BEEF BOLOGNA 8 OZ. PKG. \$1.09

GROCERY SPECIALS
CATTLEMAN'S ORIG. OR SMOKEY B-B-Q SAUCE 15 OZ. JAR 99¢

Kool-Aid
SUGAR FREE ASSORTED
\$2.29
8 QT. CTN.

8-7/8" HEFTY PLATES 50 CT. PKG. \$1.19

60" OFF LABEL SNUGGLE 96 OZ. BTL. \$2.99

STRONG HEFTY BOWLS 30 CT. PKG. 89¢

LIQUID TIDE 64 OZ. BTL. \$2.39

LIQUID PINSOL CLEANER 15 OZ. BTL. \$1.19

60" OFF LABEL CASCADE 85 OZ. BOX \$3.39

7" OFF LABEL AJAX CLEANSER 14 OZ. CANS 2.89¢

75" OFF LABEL TIDE DETERGENT 72 OZ. BOX \$2.89

4" OFF LABEL DOVE SOAP 69¢
BATH BAR

HEALTH & BEAUTY AIDS

TYLENOL CAPLETS 50 CT. BTL. \$3.79

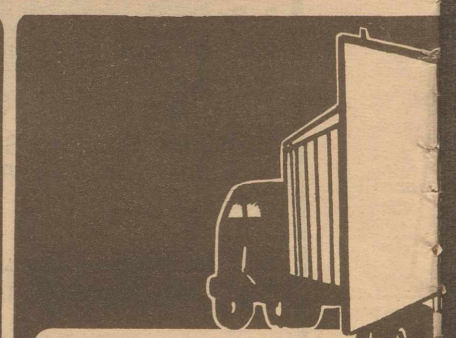
FRENCH'S YELLOW MUSTARD 24 OZ. BTL. 89¢

COMPLETE SKIN LOTION 6 OZ. BTL. \$1.79

- DEL MONTE CATSUP 32 OZ. BTL. 89¢
- WELCH'S SQUEEZEABLE GRAPE JELLY 22 OZ. BTL. \$1.29
- WELCH'S SQUEEZEABLE STRAWBERRY PRESERVES 22 OZ. BTL. \$1.89
- GAINES GRAVY TRAIN 25 LB. BAG \$7.99
- DOG FOOD 6.5 OZ. CAN 69¢
- GAINES TASTE TE CHUNK BEEFCHICKEN 6.5 OZ. CAN 69¢
- FOR LAUNDRY WISK GAL. JUG \$4.89
- PLANTERS D/R, D/R UNSALTED, COCKTAILS 12 OZ. JAR \$1.69
- PEANUTS UNSALTED 12 OZ. JAR \$1.69

Enjoy Coke
Coke

Coke PLUS DEPOSIT
\$2.59
32 OZ. BTL.



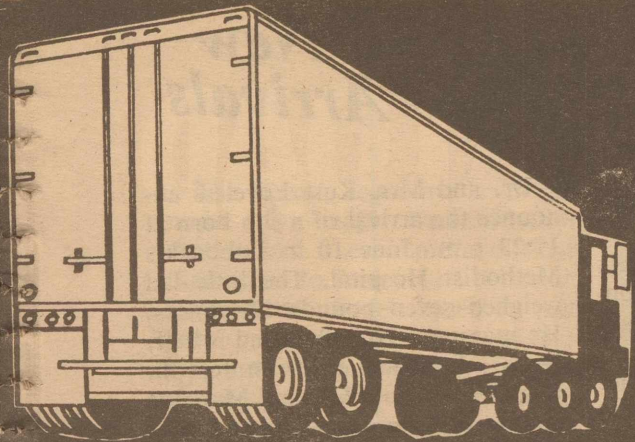
KIMBERLY-CLARK TRUCKLOAD SALE

KLEENEX FACIAL TISSUE
175 CT. CTN. 69¢

DELSEY BATH TISSUE 4 ROLL PKG. 97¢

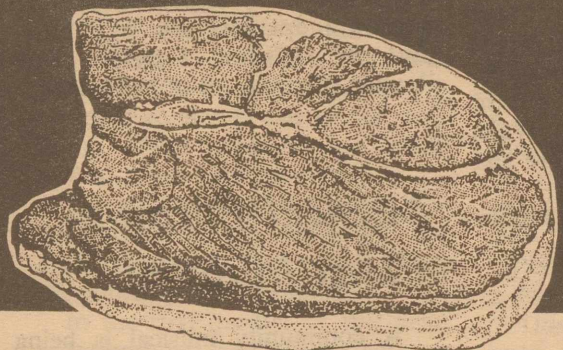


PRICES EFFECTIVE: JUNE 23-28, 1986
WE RESERVE THE RIGHT TO LIMIT QUANTITIES.



Pay-n-Save

QUALITY AND SERVICE



HEAVY GRAIN FED BEEF BONELESS

Round Steak

\$1.89

LB.

ROYAL OAK
CHARCOAL
20 LB. BAG \$4.59

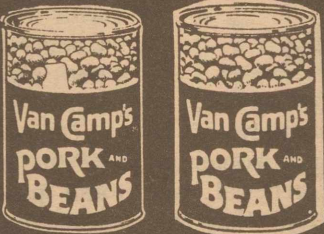
Charcoal
10 LB. BAG ROYAL OAK PLUS
\$2.69

REYNOLDS GIANT
FOIL
ROLL \$3.59
72x200

Foil
18x37 1/2 REYNOLDS X-HEAVY DUTY
\$1.59



Doritos
ALL TYPES
\$1.49
REG. \$2.19



Pork & Beans
VAN CAMP
3 \$1
16 OZ. CANS



Milk
14 OZ. CAN EAGLE BRAND
\$1.19

FROZEN FOOD & DAIRY

DOWNYFLAKE
BREAKFAST WAFFLES 12 OZ. PKG. **79¢**

KRAFT
LA CREME TOPPING 8 OZ. BOWL **79¢**

FROZEN & DAIRY

BORDEN FRUIT DRINK GAL. JUG **89¢**
BORDEN HOMO MILK 1/2 GAL. CTN. **99¢**
ORIG./TOFFEE CRISPY FROSTIX 6 CT. PKG. **95¢**
FLEISCHMANN'S 1 LB. QTRS. **89¢**
BANQUET FRIED CHICKEN 32 OZ. BOX **\$2.79**
BANQUET CREAM PIES 14 OZ. CTN. **79¢**

WELCH'S GRAPE JUICE 12 OZ. JAR **89¢**

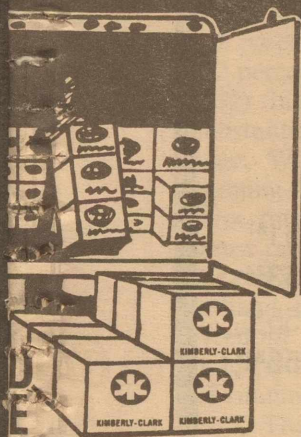
WELCH'S APPLE/GRAPE NATURAL JUICE 12 OZ. BTL. **89¢**

HARVEST BLEND WELCH'S JUICES 12 OZ. BTL. **89¢**

TOTINO CRISP CRUST Party Pizza 12 OZ. CTN. **99¢**



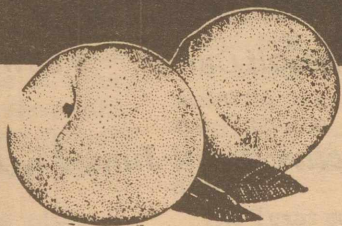
Dressing
SEVEN-SEAS BUTTERMILK
\$1.19
16 OZ. BTL.



HI-DRI
PAPER TOWELS
47¢
ROLL

33 TOD./48 DAY/66 NEWB./40 X-AB. MED.
HUGGIE DIAPERS BOX **\$8.87**

PRODUCE



CALIFORNIA SUN RIPE PEACHES
59¢
LB.



CALIFORNIA CRISPY CARROTS
33¢
1 LB. PKG.

TEXAS ZUCCHINI OR YELLOW SQUASH
39¢
LB.



TEXAS GREEN CABBAGE
15¢
LB.



CELEBRATES 80th BIRTHDAY -- Opal Smith was feted with a birthday party recently in the Yoakum County Library, in honor of her 80th birthday.

Milk Versus A Calcium Supplement

Milk has been found to be a better source of calcium for older persons than carbonate supplements. Research published in a 1985 issue of *Geriatrics*, showed that a high percentage of the elderly lack the stomach acid necessary to absorb

the carbonate. The study of 22 healthy postmenopausal women indicated that bone renewal was enhanced more with milk than carbonate. In addition, milk is a less expensive way for older people to get their calcium.

ABWA Changes Summer Meetings

American Business Women's Association met Monday, June 16 in the Heritage Room of Plains Library.

Cindy Davis presided. Career talk was by Linda Wall. Latrell McDonnell gave a program on the library and new books at the library.

Meetings through the summer months were changed to the third Thursday of each month.

Members attending were Linda Cole, Linda Lowrey, Cindy Davis, Clara Williams, Latrell McDonnell, Sonnie Stephens, Debbie Smith, Barbara Brown, Linda Wall, Janelle Brantley, Kay McClure and Jean Patton.

Next meeting will be July 17 in the Heritage Room.



New Arrivals

Dr. and Mrs. Kurt Loveless announce the arrival of a son born at 11:23 p.m. June 10 in Lubbock's Methodist Hospital. The little lad weighed seven pounds 12 ounces. He measured 20 inches and a half. He has been named Kolin Joseph. Grandparents are Mr. and Mrs. Joe Crump of Plains and Mr. and Mrs. Kim Loveless of Kansas City, Mo. Great-grandparents are W.B. Abbott Jr., Ernest Loveless and Pauline Clanton, all of Lubbock.

Musical Evening Plans Initiated

A community musical is being planned for late summer. Persons with musical talent are invited to begin making plans to enter the entertaining event.

Those wishing to participate should have some association with the community (resident of Plains, former resident, college student, etc.) The group may perform as long as one member meets those requirements. Persons interested should contact Pam Redman by July 14 at 456-6675.

The community musical will be an excellent way for the talents of local persons to be recognized and enjoyed. It is planned for August.

Party Honors Opal Smith

Opal Smith was feted Wednesday with a birthday party in Yoakum County Library. Helping celebrate her eightieth birthday, friends honored her with a money tree.

Mauve and blue silk flowers graced the party table. Napkins, cups and plates carried out the color scheme. Cake and punch were served.

The honoree was presented a silk corsage.

Child Welfare Board Meets

Yoakum County Child Welfare Board met Tuesday in the library. Guest speaker was Carol Gary, Director of Family Outreach of Hockley County. She spoke on "Family Outreach."

Other special guests were Wilma Manning, Regional Program Director, of Lubbock; Kathy Irwin of Brownfield, D.H.S. Supervisor; and Candi Seaton, caseworker.

Plans were made to sponsor a softball tournament in August.

Board members attending were Jenny Coston, chairman; Peggy Squyres, vice chairman; Anna Gonzales, secretary-treasurer; Cathy Minchew, Cory Estrada, Lisa Switzer, Toni Jones and Dorothy Anderson.

Next meeting will be July 15 at 7 p.m. in Denver City Civic Center.



RICHARDSON INSURANCE AGENCY
 Box 558, 503 3rd St.
 Plains, Texas 79355
 A. C. 806 456-8888

AUTO • FIRE • LIFE • COMMERCIAL

LEE TIRE SALE

	P185/75R14\$48 ⁰⁵	P205/75R15\$51 ⁸⁷
	P195/75R14\$48 ⁶⁵	P215/75R15\$53 ²⁴
	P205/75R14\$50 ⁴⁷	P225/75R15\$55 ⁴⁷
	P215/75R14\$52 ³⁷	P235/75R15\$56 ⁸⁴

*Lifetime Road Hazard

General Farm Tires w/4 Year Field Hazard

- Steer-Rib 3 (F-2)
- Farm Grip (R-1)
- Steer-Rib 4 (F-2)
- Tree Logger (LS-1)

Armstrong Tires

- Boat Trailers
- Golf Carts
- Lawn & Garden

—Prices Effective Until June 25, 1986—

T & B Exxon

We Can Save You Money Call Today!

456-7141





Outlook For Texas Oil Prices

TRL/Analysis

The Texas economy is in the midst of a major transformation that makes it even more difficult than usual to forecast its behavior. Econometric models based on past relationships between key variables may not fully capture the structural changes underway. These changes have important implications for Texas government and business.

In the near term, the outlook for the Texas economy depends primarily on what happens to the national economy and to the price of oil. There is reason for modest optimism on both accounts.

The national economy appears to be maintaining its momentum and even picking up steam as it enters the fourth year of expansion.

In the first quarter of this year, inflation-adjusted GNP increased at a remarkable 3.7 percent annual rate—far higher than most analysts had predicted and substantially above the 2.0 percent rate of growth experienced in 1985. Prior to the release of the first quarter figures, the consensus forecast was for the economy to remain sluggish until midyear, but to rebound in the second half to perhaps a 3.5 percent to 4.0 percent annual growth rate. The strong first quarter performance adds credibility to that forecast.

Three factors are providing momentum to the economy.

(1) Inflation appears under control. The price level actually declined in the February to April period due mainly to falling gasoline prices. Other basic commodity prices remain depressed. Capacity utilization rates are moderate, while wage settlements—which averaged 9.2 percent in 1980—averaged only 2.2 percent in 1985.

(2) Interest rates have declined substantially since the first of the year. With short term rates now running around 6 percent and long term rates around 7.5 percent, interest rates may have bottomed out for the year. But with inflation well in hand, the Federal Reserve has the freedom to provide sufficient liquidity to give the economy plenty of running room.

(3) The value of the dollar continues to fall due to the concerted efforts of the Administration and the cooperation of our major trading partners. While the falling dollar has yet to have its intended effect of stimulating American exports, most analysts believe this will happen in the second half of the year.

Buoyed by low inflation, relatively low interest rates, and a dollar that continues to decline in value, the economy appears to have sufficient momentum to move forward at a very good rate well into 1987.

At the height of the oil-boom years, oil and gas accounted for about 28 percent of the state's gross economic output. Today that figure is closer to 20 percent and is falling. Yet, oil prices remain a key determinant of the shortrun outlook for the Texas economy.

After peaking at over \$37 a barrel in 1981, oil prices began to fall—dropping to around \$27 a barrel by late 1985. Market forces

would have pushed prices even lower except for production restraints by OPEC. As demand stagnated—world oil consumption fell by 8 percent between 1979 and 1984—and non-OPEC supply steadily rose, OPEC reduced its production with the Saudis bearing most of the burden.

By midsummer of 1985, Saudi output had fallen to about 2.3 million barrels a day, down from a peak of more than 10 million barrels a day in 1981. The Saudis realized that further production cuts would be needed to maintain the existing price. They made a strategic decision to increase output to their OPEC quota of 4.35 million barrels a day.

This additional supply coming onto a delicately balanced market resulted in a precipitous decline in oil prices. Between the end of November and the first of April, oil prices plunged more than 50 percent. For a brief period on April 1, West Texas Intermediate—the domestic benchmark—traded on the spot market as low as \$9.75 a barrel.

Oil prices have since rebounded—trading at times above \$16 a barrel. Posted prices for West Texas Intermediate now are in the \$14 to \$15 a barrel range.

Industry analysts are far from unanimous in their projections of oil prices for the remainder of the year. Many believe that prices will stabilize later this year in the \$18 to \$20 a barrel range. Others foresee prices at \$15 a barrel or below for the indefinite future.

There are good reasons for accepting the more optimistic forecasts, however. Market forces supporting a moderate rise in the price of oil include:

*Modest demand growth due to increased motoring in response to lower gasoline prices and higher personal incomes, particularly in the United States.

*Some curtailment of supply as stripper wells in the United States are shut in and high cost production across the world is discouraged.

At the same time, political forces also appear to be favorable toward some firming of oil prices. As one of the world's last remaining monarchies, the Saudis must walk a delicate line between maintaining momentum for domestic development while not generating instability among their neighbors—many of whom also are dependent on oil. The Saudis also are concerned to maintain good relations with the West. Thus they are unlikely to see a prolonged price war as in their best interest.

The Texas economy appears dead in the water and is likely to remain so for the remainder of this year. If oil prices firm to \$18 a barrel and the national economy performs well, economic growth in Texas could resume in early 1987. However, even under this optimistic scenario, the rate of growth promises to be quite modest—certainly below that of the nation—for at least the next two years.

If oil prices fail to stabilize—remaining at \$15 a barrel or below, recovery of the Texas economy will be delayed beyond the end of the next year.

Over the longer run, economic prosperity in Texas will depend on expanding employment in basic industries that export goods and services to the rest of the nation and abroad. Unfortunately, restructuring of an economy takes time.

It is encouraging to note that the process of economic diversification in Texas has been underway for some time, and has accelerated since oil prices peaked in 1981. Most of the recent employment growth, however, has been in services and government—two sectors that provide little basis for future growth.

The economic future of Texas will depend much more on the development of its human resources, than on exploitation of its natural resources. Investments in public

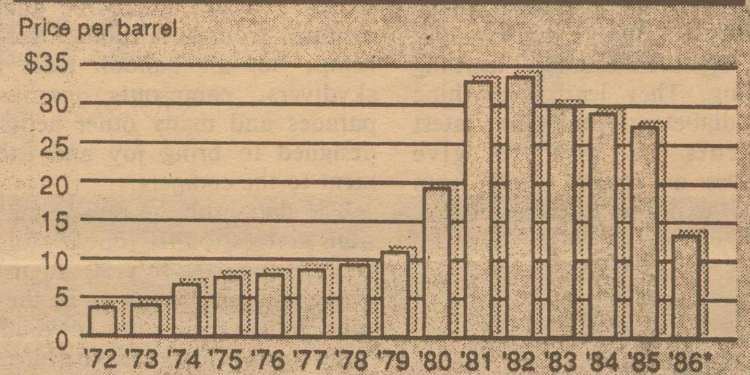
education and our colleges and universities as well as in physical infrastructure—highways, water supply and water treatment—are essential to that long term prosperity.

Thus, Texas is confronted with a serious challenge. In a time of fiscal constraint, it must find a way to continue its public investments that provide the basis for its future development. At the same time, it must guard against destroying the state's good business climate.

To accomplish both goals, Texas will have to ensure that public spending is efficient and effective by setting clear priorities, eliminating waste and duplication, and improving accountability. Reallocation of funds can provide a means of achieving state objectives without massive increases in spending.

If new revenues are required, care should be taken to ensure that they are generated with minimum negative impact on the economy.

Texas oil prices Yearly average, fiscal years 1972-86



Source: Comptroller of Public Accounts

World oil consumption

	Millions of barrels per day			Change
	1973	1979	1984	
North America	18.6	19.8	16.6	-16%
Western Europe	15.2	15.0	12.3	-18%
Japan	5.5	5.5	4.6	-16%
Russia & Eastern Europe	8.4	11.1	11.4	+3%
Latin America	3.4	4.2	4.5	+7%
Other Asia/Oceania	3.9	5.6	5.8	+4%
Middle East	1.2	1.5	1.9	+27%
Africa	1.0	1.4	1.7	+21%
Total	57.1	64.1	58.9	-8%

Source: BP Statistical Review of World Energy

EMERGENCY
WATER EXTRACTION
CARPET GUARD
SOIL PROTECTION

Pro Cleaning

CARPET AND UPHOLSTERY CLEANING

Denver City

DENNIS & TERI WHITE
BOX 261
FREE ESTIMATES
(806) 592-2932

PERSONAL LIFE INSURANCE

- *Life
- *Health
- *Retirement Income

- *Educational Funds
- *Major Medical
- *Hospitalization

- *Cancer
- *Surgical
- *Mortgage Cancellation

BUSINESS LIFE INSURANCE

- *Key-Man
- *Partnership

- *Group Insurance
- *Pension Plans

L. CALVIN STEWART, CLU
Chartered Financial Consultant
Denver City, Texas
Phone: 592-2878



Children With Diabetes Can Attend 'Special Camp'

With faces full of anticipation of the fun to come, children have begun streaming into Camp Sweeney on June 8, for the first of three sessions to be held this summer. This year will mark the 37th year of operations for the Camp.

Camp Sweeney is sponsored by the Southwestern Diabetic Foundation, located in Gainesville, Texas. The camp itself is located 10 miles northeast of Gainesville, not far from the Oklahoma border, nestled in the green, wooded hills of North Central Texas. The Foundation is a United Way Agency.

Camp Sweeney is one of the few places in the U.S. where diabetic children between the ages of 6 and 18 can go to a summer camp that is designed with diabetic children in mind. In addition to the normal summer camp fare of hiking, swimming, sailing, fishing, arts and crafts, archery, riflery, campfires and other activities, Camp Sweeney helps its campers to deal with their lifelong companion in a healthy, balanced manner.

Time is set aside each day for educational classes that are so much fun that the campers don't realize that they are actually learning something. They learn everything about diabetes from the latest treatments to how to give themselves an insulin shot; from learning the proper balances in diet,

exercise and medication to how to recognize the danger signs concerning not enough insulin - or too much insulin.

The approximately 100 campers that attend each session are closely supervised by a trained medical staff and experienced counselors. The medical staff helps to educate the children, as well as make several rounds per night through cabins to check on the campers, help to keep the campers in good spirits. Many of them are former campers themselves. They live in the cabins with the campers and are always there, for guidance, discipline or just a shoulder to lean on.

The camp also has an experienced kitchen staff, led by a registered dietician. Meals are individually prepared to meet each camper's specific dietary needs. There are also occasional "treats" for the campers, who are taught how to balance these treats with their regular routine.

Some of the activities that are planned for this summer include visits by Dallas Mavericks, "Gum Drops", where sugar-free gum is dropped from an airplane over the camp, hot air balloon rides and skydivers, camp-outs, carnivals, parades and many other activities designed to bring joy and excitement to the campers.

The dates for the remaining sessions are Session II: June 29-July 18 and Session III: July 20-August 8. There are still openings in the second and third sessions for diabetic children ages 6 to 18. No child has ever been turned away from Camp Sweeney for inability to pay, or because of race, color, religion or nationality.

Anyone interested in attending the camp should contact the Southwestern Diabetic Foundation, P.O. Box 918, Gainesville, TX 76240 or call them at 817/665-9502.

spotlight on health

Your Own Blood: The Best For You

Your blood is valuable—don't waste it. You can be your own source in case you ever need a transfusion. That's safest. You don't run the risk of contracting diseases, such as hepatitis or even AIDS which other people's blood may contain. Second, since your body composition is unique, the best way to match it is with your own blood.

Today, a new, simple method is being used to give a patient back his own blood in many surgical procedures. It's been hailed as an amazing breakthrough for doctors and patients.

With this device, the surgeon can collect the blood lost during the operation. Later, the surgeon will be able to replace much of the blood lost during surgery, with this safe and fresh blood—the patient's own. A simple, inexpensive device has been found to be an important breakthrough in surgical operating procedure.

The surgeon can hold and operate the unique device with one hand, in any operating room that has a plug-in vacuum source. No additional equipment is necessary. Called Solcotrans by Solco Basle Inc., Rockland, Ma., it's lightweight and each unit is sterile and comes ready for immediate use. With it, people can now contribute something valuable to their own surgery—their own blood. Ask your surgeon.

Flowers With A Flair



Custom designed floral arrangements for any occasion. Ask about our wedding party package.

Leaf & Petal

456-4016

914 Ave E

short story

Leslie Flynn tells of one Saturday night when a young couple was involved in an automobile accident. The car went out of control, killing the young man and seriously injuring the seventeen year old girl.

Reaching the hospital, the girl's parents learned that the couple had been drinking. The father left the hospital in a rage, muttering, "if I could find the person who sold my daughter that liquor I would take him to court and have him locked up forever!"

When the man returned home he went to his liquor cabinet to get something to "settle his nerves." There on the shelf inside the cabinet he found a note in his daughter's handwriting. It read: "Dear Dad, we hope you won't mind us taking your bottle tonight."

What might not hurt us might be the destruction of someone else. What we can handle might be beyond those that we influence. Be careful! You are setting an example for someone.

MISSION BAPTISTA NUEVA VIDA
Raymond Asebedo, Pastor
Sunday School: 9:45 a.m.
Morning Worship: 11:00 a.m.
Church Training: 5:00 p.m.
Evening Worship: 8:00 p.m.
Wednesday: 7:30 p.m.

FIRST UNITED METHODIST
1202 Ave G
Louis Crenshaw, Pastor
Sunday School: 10:00 a.m.
Morning Worship: 11:00 a.m.
Evening Worship: 8:00 p.m.
Wednesday Choir: 6:00 p.m.

ANTIOCH BAPTIST
Lovington Highway/State Line
Neil Parks, Pastor
Sunday School: 10:00 a.m.
Morning Worship: 11 a.m.
(Texas Time)

TOKIO BAPTIST
Tokio, Tx.
Alton West, Pastor
Sunday School: 10:00 a.m.
Morning Worship: 11:00 a.m.
Church Training: 6:00 p.m.
Evening Worship: 7:00 p.m.

PLEASANT HILL UNION ASSEMBLY
Pleasant Hill
Sunday School: 10:00 a.m.
Sunday Night: 7:00 p.m.
Wednesday Night: 7:30 p.m.

HILLSIDE CHURCH OF CHRIST
1502 Copeland Ave
Les Carey, Minister
Bible Class: 9 a.m.
Morning Worship: 10:00 a.m.
Sunday Evening: 6:00 p.m.
Wednesday: 7:00 p.m.

SACRED HEART CATHOLIC
1301 11th Street
Father Tom V. Parampl
Sunday
Holy Mass: 9-10 a.m.
C.C.D. Class (Bible Study): 10-11 a.m.
Sacrament of Reconciliation: 8-9 a.m.

Wednesday
Holy Mass: 8 p.m.
Baptism Instruction: 7 p.m.
Marriage Counseling: 9 p.m.
C.Y.O.: 7 p.m.
C.C.D.: 4 p.m.
Ultrea: 9 p.m.
Sacrament of Reconciliation: 7 p.m.

Friday
Prayer Meeting & Bible Study: 8 p.m.

ASSEMBLY OF GOD
1102 Ave J
L.D. Hinson, Pastor
Sunday School: 9:45 a.m.
Morning Worship: 10:45 a.m.
Sunday Evening: 6:00 p.m.
Wednesday: 7:00 p.m.

FIRST BAPTIST CHURCH
902 Ave D
Ken Horn, Pastor
Sunday School: 9:45
Morning Worship: 11:00 a.m.
Church Training: 6:00 p.m.
Evening Worship: 7:00 p.m.
Wednesday: 7:00 p.m.

This Directory Is Sponsored By:



SPONSOR NEEDED

The Plains Pride

Chamber Of Commerce

Pay-N-Save Grocery

Goodpasture Elevator

Two J-S Flying Service

Judge Paul Cobb



NAMED ALL-STAR -- Justin Dale Alcorta, six-year-old son of Joe and Debbie Alcorta of Olton was recently selected as Most Improved Player and named to the Pee-Wee All-Star Team. A hindcatcher, Justin played for Thompson Implement. He is the grandson of Rico and Lovelia Alcorta.



Filmtime

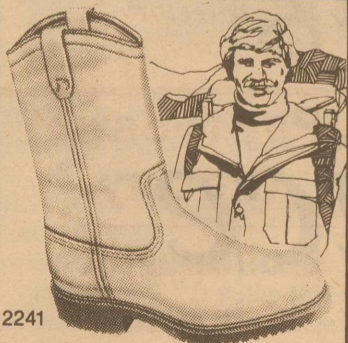
Yoakum County Library will show films each Monday afternoon at 3 p.m. for school age children during summer months. With the swimming pool closed Mondays, the library is a good place to spend some time.

Two new films have been obtained from West Texas Library System to be shown during filmtime. One is the story of two little girls who see their neighbor giving the dog a bath. The little girls decide to give their kitty a bath but the cat is wise to their intentions and a battle begins.

The second film shows a little girl telling police her brother is lost. They look at airports, zoos, amusement parks and more only to find she does not have a little brother.

Each film is about 40 minutes. Everyone is urged to come out to the library Monday afternoons.

Library personnel urge readers to join the summer reading program and win a transfer that can be ironed on a tee shirt. The transfers say "Celebrate Texas" and have a western dressed armadillo.



2241

THIS SAFETY BOOT HAS A WARM PERSONALITY. (IT'S INSULATED)

ANTHONY'S

Denver City



Red Wings

TRY OUR NEW BIG 4 OZ. FRUIT BARS

FrozFruit

79¢

SINGLE BAR



PRICES EFFECTIVE JUNE 20-21-22, 1986

WHILE SUPPLIES LAST



ICE-MILK-COOKED FOODS-SNACKS-CHIPS & DIPS-FILM & FLASH-COLD DRINKS-SELF SERVE GAS

ALLSUP'S
CONVENIENCE STORES



REGULAR, NACHO CHEESE, OR COOL RANCH

Doritos Chips REGULAR \$1.59

\$1.29

SUPPORT SPECIAL OLYMPICS BY PURCHASING DECKER PRODUCTS AT ALLSUP'S CONVENIENCE STORES



DECKER SLICED Bacon \$1.49 1 LB.

DECKER SLICED Bologna 12 OZ. PKG. 99¢

ALLSUP'S 30 YEAR COMMEMORATIVE Mug FILLED WITH YOUR FAVORITE FOUNTAIN DRINK

99¢
ONLY REFILLED FOR 49¢

GET A FREE 1/2 LB. LOAF OF ALLSUP'S BREAD WITH THE PURCHASE OF A WHOLE

BBQ Chicken \$2.99
2 to 3 LBS. AVG.

ALLSUP'S Ice 8 LB. BAG \$1.09

BORDEN'S ASST. FLAVORS Yogurt 2 8 OZ. CTNS. 69¢

USE OUR Money Orders 19¢

BORDEN'S FROSTY POPS OR Fudge Pops 24 CT. PKG. \$1.59

BORDEN'S ASST. FLAVORS Fruit Drinks GAL. JUG 89¢

ORIGINAL OR CRISPY Frosticks SINGLE BARS 3 FOR \$1

MOVIE & VCR RENTALS

The Very Best in Home Video Entertainment!

ALL YOU NEED IS YOUR TV!



COKES

\$1.19

2 LITER

Opening

June 30, 1986

8:30 until 5:30 p.m.



Supreme Cleaners

*Dry Cleaning —
Full Service Laundry*



Opening Special

*All
Dry Cleaning
1/2 Price*

Mrs. Annie Asebedo/Manager

(Located Next Door To Cable TV)