

Plains Library
Box 419
Plains, TX. 79355

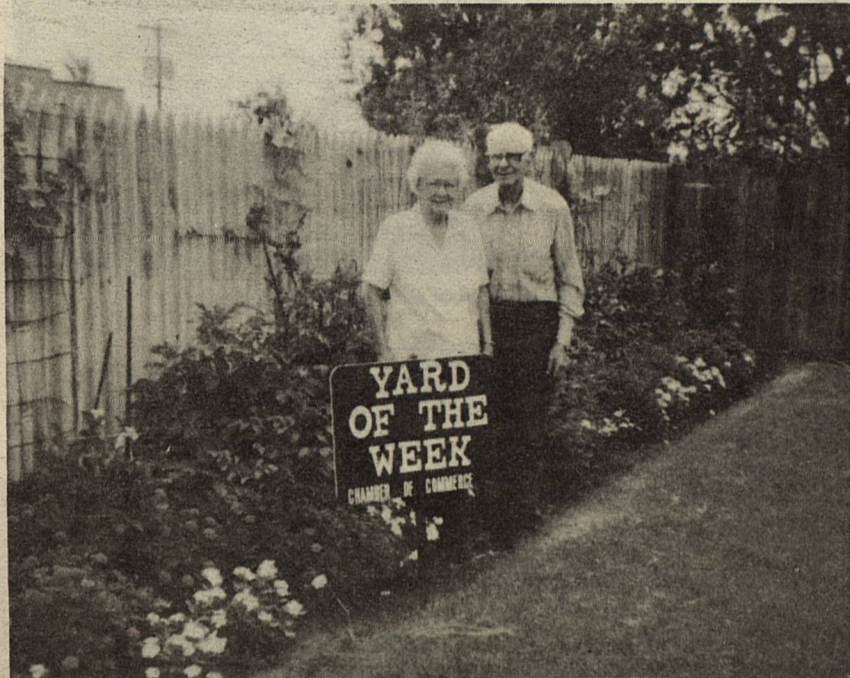
THE PLAINS PRIDE

PLAINS, YOAKUM COUNTY, TEXAS

SUNDAY, AUGUST 27, 1989

VOLUME 5, NUMBER 21

30¢



PICTURED ABOVE IS THIS WEEK'S "Yard of the Week" presented to Robert and Ita Young.

Organizational Meeting Set For Girls Interested In Scouts

Girls interested in the Girl Scout program are invited to attend with their parents an organizational meeting Sept. 5 at 7 p.m. in the Heritage Room of Yoakum County Library.

Membership dues are \$4 annually. A small troop fee is also charged at each meeting to help cover cost of supplies.

Plans are being made to have Daisy Scouts for kindergarten girls; Brownies for girls in the first through third grades and Junior Girl Scouts for

those in the fourth through sixth grades.

Volunteers are needed to help with these groups. Anyone interested in helping should contact Dean Richardson for further details. All girls are urged to attend this meeting so they may be enrolled at the beginning of the Scout year. Those who cannot attend may join at any time however.

Parents interested in more information may call Mrs. Richardson at 456-8888.

Benefit Golf Tournament Nets Child Welfare \$1010

Yoakum County Child Welfare Board met this week in Denver City's Youth Center. Presiding was Mavis Sessions, chairman. Others attending were Tanya Warren, vice chairman; Janie Crawford, secretary; Mary Nell Maynard, Peggy Squyres, Jenny Coston, and Kathy Irwin of Lubbock, DHS Area Supervisor.

It was reported the annual golf tournament netted profits of \$1010.96. This figure also includes a donation from the Volunteer Fire Department and proceeds of a raffle of a new set of golf clubs and bag, donated to the board by Dale Carter of Denver City.

Ms. Irwin reported on all the children in the Board's care. Four have been placed with grandparents since the last meeting. The Board is still responsible for seven foster children. Purchase of school supplies and clothes for the seven children were discussed.

Announcement was made of upcoming events including the Regional Council meeting at 7 p.m. Sept. 28 in Lubbock and the 10th Annual Children Who Wait Conference Oct. 16-18 in Dallas.

Next regular meeting of the Child Welfare Board is 7 p.m. Sept. 19 in the Heritage Room of Plains Library.

The Board extends thanks to Pay-n-Save Grocery and Bob's Grocery for donations of food for the concession stand at the golf tournament and to Plains State Bank, Plains Farm Supply and Plains Variety for donation of boxes of gold balls to be given away in the circle chances.

'Rest Stop' Slated By Plains VFD

Plains Volunteer Fire Department is again sponsoring a Labor Day Rest Stop. It is the group's third annual observance.

Coffee, tea, lemonade, cookies and sandwiches will be offered at no charge but donations to MDA and "Jerry's Kids" will be accepted.

In addition, Volunteer Firemen will be wearing buttons in a door-to-door drive Monday, Sept. 4 to collect donations for MDA. All donations, large or small, will be appreciated.

Plains Trackmen Compete In State TAAF Track Meet

Michael Sainz captured first place in the 800 and 1500 meter runs in his age division in the Lubbock Regional Qualifiers Meet in preparation for the TAAF State Meet in La Porte.

Other Plains trackmen competing in the qualifying meet were Junior Lira who placed second in the 800 and 1500 runs; Lacy McAdams, third in the 800 and Jose Ramirez, third in the 200.

Also competing were Matt Morgan and his father, Byron Morgan. Matt won the 400 meter run and placed second in the shot put. Byron was third in the shot and also competed in the discus.

The State Meet found Sainz bringing home a third place medal in the 800 and fourth in the 1500. McAdams placed sixth in the 800 and Lira turned in a good performance in the 1500.

During their trip, the group visited the Space Center in Houston and en-

joyed an outing to the Gulf of Mexico at Galveston.

Tutor Training To Be Held Here

Heritage Room of Yoakum County Library will be the setting for a Tutor Training Workshop Sept. 15-16.

Judy Higginbotham of Lubbock will conduct the workshop which is sponsored by West Texas Library System.

Anyone interested in Literacy for Americans should call 456-8725 to make arrangements to attend.

The American government is spending many dollars to help people learn to read, says a library spokesman.

Hours for the workshop will be 5:30 to 9 p.m. Friday, Sept. 15 and 9 a.m. to 3:30 p.m. Saturday, Sept. 16.



PARTICIPATING IN THE RECENT TAAF STATE MEET held in La Porte and bringing home a third and fourth place medal was Michael Sainz.

Library Personnel Attend Workshop

Library personnel Latrell McDonnell and Dolores Davis attended an Interlibrary Loan Workshop Friday in Hockley County Memorial Library in Levelland.

Nancy Hill, Jo Amandes and Norma Reger of West-Texas Library System in Lubbock directed the program.

Library personnel remind parents that the Filmtime program will begin Sept. 6. Held from 10 to 11 a.m. each Wednesday, the program is opened to all pre-schoolers. "Don't miss out on the fun" they say to the little people.

A thank you is given to Dawn Dearing and Melody Record who helped make the library an enjoyable experience this summer for all youngsters who took part in their special programs.

Agricultural Biotechnology To Make Impact On Economy

Agricultural biotechnology will be an important part of the Texas economy in the 1990s with county extension agents playing a critical role in transferring this technology to farmers.

That was the message Dr. Charles Arntzen, deputy chancellor for agriculture of the Texas A&M University System, delivered to more than 250 extension agents attending the annual meeting of the Texas County Agricultural Agents Association (TCAAA) held recently in Corpus Christi.

Arntzen told the agents, "Biotechnology will contribute to agricultural profitability by making it more cost-effective and productive while bringing environmental benefits."

Genetically engineered organisms that prevent frost from forming on plants, the development of drought and insect resistant plants and the creation of safer animal disease vaccines are some of the biotechnology advances coming on the market Arntzen told the agents.

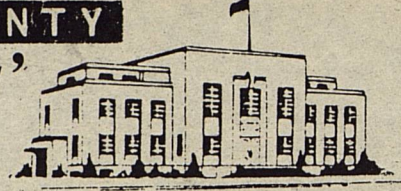
He said, "Biotechnology is a high-stakes economic game for the U.S. as a whole and for states like Texas that want to attract economic development. "The current \$1.2 billion value of U.S. viotechnology products could rise to \$15 to 40 billion by the year 2000. Rapid transfer of knowledge about the new technologies to farmers and ranchers will be critical to keep Texas agriculture competitive."

Arntzen called for enhanced education of county agents in biotechnology and for more teamwork among county agents, researchers and Texas A&M faculty in applying new technologies.

The deputy chancellor said that the addition of Laredo State, Corpus Christi State and Texas A&I universities to the A&M system will provide greater opportunities for cooperative efforts in biotechnology research, development and education in south Texas.

In a second address, Dr. Zerle Carpenter, director of the Texas Agricultural Extension Service, noted that the Extension Service has a 75-year

YOAKUM COUNTY Commissioners' Court



Yoakum County Commissioners Court met in special session Monday. All members were present.

Extra hire and disbursements were read and approved for payment including a \$20,000 transfer to the hospital fund.

DPS Trooper Danny Crawford presented price quotes from General Telephone for installing a phone line for an Intoxylizer 5000 and relayed a request by DPS for the County to pay the charges. Installation was 124; monthly charges, with repair warranty, is \$28.95 and monthly charges without repair warrant, \$27.70. The Court voted to pay for the installation and monthly fee with repair warranty.

Crime Doesn't Pay Crimeline Does CRIMELINE

592-3232

Judge Dallas Brewer announced that a tour and inspection of the new hospital will be at 2:30 p.m. Wednesday, Aug. 23 with the hospital board. Open House is set for Aug. 27.

1989 Property Tax Rates in CITY OF PLAINS

This notice concerns 1989 property tax rates for City of Plains. It presents information about three tax rates. Last year's tax rate is the actual rate the taxing unit used to determine property taxes last year. This year's effective tax rate would impose the same total taxes as last year if you compare properties taxed in both years. This year's rollback tax rate is the highest tax rate the taxing unit can set before taxpayers can start tax rollback procedures. In each case these rates are found by dividing the total amount of taxes by the tax base (the total value of taxable property) with adjustments as required by state law. The rates are given per \$100 of property value.

Last year's tax rate:	
Last year's operating taxes	\$ 3,356
+ Last year's debt taxes	\$ 70,077
= Last year's total taxes	\$ 73,433
+ Last year's tax base	\$ 16,369,520
= Last year's total tax rate	\$ 4.486 /\$100

This year's effective tax rate:	
Last year's adjusted taxes (after subtracting taxes on lost property)	\$ 73,292
+ This year's adjusted tax base (after subtracting taxes on new property)	\$ 16,342,370
= This year's effective tax rate	\$ 4.485 /\$100

A city that adopted the additional sales tax in a 1989 election must include the following lines:

- Sales tax adjustment rate	\$ N/A	/ \$100
= Effective tax rate	\$ N/A	/ \$100
x 1.03 = maximum rate unless unit publishes notices and holds hearing	\$ 4.620	/ \$100

This year's rollback tax rate:	
Last year's adjusted operating taxes (after subtracting taxes on lost property)	\$ 3,356
+ This year's adjusted tax base	\$ 16,342,370
= This year's effective operating rate	\$.0206 /\$100
x 1.08 = this year's maximum operating rate	\$.0222 /\$100
+ This year's debt rate	\$.4563 /\$100
= This year's rollback rate	\$ 4.785 /\$100

A city that imposes the additional sales tax must include these lines, regardless of when it held the election:

- Sales tax adjustment rate	\$ N/A	/ \$100
= Rollback tax rate	\$ N/A	/ \$100

SCHEDULE A: Unencumbered Fund Balances

The following balances will probably be left in the unit's property tax accounts at the end of the fiscal year. These balances are not encumbered by a corresponding debt obligation.

Type of Property Tax Fund	Balance
General	-0-

SCHEDULE B: 1989 Debt Service

The unit plans to pay the following amounts for long-term debts that are secured by property taxes. These amounts will be paid from property tax revenues (or additional sales tax revenues, if applicable).

Description of Debt	Principal or Contract Payment to be Paid	Interest to be Paid	Other Amounts to be Paid	Total Payment
Sewer Lift Sta.	\$9,414.	\$474.00		\$9,888.
Gb. Truck	\$21,609.	\$5943.00		\$27,552.
Water Imp.				\$21,000.
Sewer Pond Imp.				\$20,000.
Total required for 1989 debt service		\$78,440.		
- Amount (if any) paid from funds listed in Schedule A		0		
- Excess collections last year		962		
= Total to be paid from taxes in 1989		\$77,478		
+ Amount added in anticipation that the unit will collect only 100% of its taxes in 1989		0		
= Total Debt Service Levy		\$77,478		

SCHEDULE C: Expected Revenue from Additional Sales Tax

(For counties and cities with additional 1/2 cent sales tax)

In calculating its effective and rollback tax rates, the unit estimated that it will receive \$ N/A in additional sales and use tax revenues.

This notice contains a summary of actual effective and rollback tax rate calculations. You can inspect a copy of the full calculations at City Hall, 601 11th St., Plains, Texas 79355

Name of person preparing this notice Ruth Murphree

Title Tax A/C

Date prepared August 10, 1989

What's Cooking At School



BREAKFAST

MONDAY - Toast, oatmeal, grape juice and milk.

TUESDAY - Cheese toast, apple juice and milk.

WEDNESDAY - Toast, scrambled eggs, orange juice and milk.

THURSDAY - Waffles, syrup, butter, tomato juice and milk.

FRIDAY - Cereal, toast, pineapple juice and milk.

LUNCH

MONDAY - Pizzaburger, French fries w/catsup, fruit, banana bread and milk.

TUESDAY - Fish nuggets w/tartar sauce, mashed potatoes, green peas, hot rolls, spiced applesauce w/butter and milk.

WEDNESDAY - Hamburgers, lettuce, pickles, onions, potato chips, fruit, chocolate chip cookies and milk.

THURSDAY - Taco salad w/taco sauce, lettuce, tomatoes & cheese, pinto beans, crackers, cherry cobbler and milk.

FRIDAY - Fried chicken w/gravy, green beans, lettuce wedge, hot rolls, peaches and milk.

THE PLAINS PRIDE

The Plains Pride (USPS 757-130) is published weekly at 716 Main Street, Olton, Lamb County, TX 79064. Second Class Permit paid at Olton, TX 79064. POSTMASTER: Send address changes to THE PLAINS PRIDE, P.O. BOX 774, OLTON, TEXAS 79064-0774.



DONNA MILLER & K. PAUL HOLT

Wedding Plans Revealed

Wedding vows will be pledged in a 2 p.m. ceremony Oct. 14 in St. Paul's Episcopal Church in Waco by Miss Donna G. Miller and K. Paul Holt.

Mr. and Mrs. T.J. Miller are parents of the bride-elect. Holt is the son of Mr. and Mrs. M.K. Holt of Atlanta.

Miss Miller was salutatorian of the 1976 graduating class of Plains High School. She attended the University of Texas at Arlington and received a Bachelor of Science degree in education from Baylor University in 1980. She received a DDS degree from Baylor College of Dentistry in 1985 and has her own dental practice in Waco.

The prospective groom graduated from Atlanta High School in 1972. He graduated from Baylor University with a bachelor's degree in religion and math in 1976 and did graduate work in social psychology. He is executive director of The Freeman Center, a residential treatment center for substance abuse recovery.

Seven Texas Leaders Honored By TCAAA At Corpus Christi

Seven Texans have been honored and presented the "1988 Man of the Year in Texas Agriculture Award" by the Texas County Agricultural Agents Association in session at Corpus Christi.

The awards are presented annually to outstanding leaders in agriculture and related industries who have supported educational programs conducted by the Texas Agricultural Extension Service.

The award recognizes contributions made by these individuals to improve agricultural income as well as levels of living and economic growth in their communities, counties, the state and nation.

Duery Menzies, Gillespie County Extension Agent presented this year's recipients which included Texas State Representative Jim D. Rudd of Brownfield, of South Plains Extension District 2; Clifford Williams of Frost, Navarro County, representing North Central Extension District 4; Pleas L. Childress, III, a Crockett County rancher representing Far West Extension District 6; Texas State Senator Robert J. Glasgow, Stephenville, representing Central Extension District 8; Calvin Rinn of Thrall, manager of the Stiles Farm, representing South Central Ex-

son, farmer and owner of Starr Produce, Inc., representing South Extension District 12; and Errol John Dietze, Sr., Cuero, representing Coastal Bend Extension District 14.

Lions Club Hears Conference Report

Nancy Wolf, Vee Ann Fitzgerald and Madawn Sherrin presented Thursday's program for Plains Lions Club members and their guests.

The trio reported on the leadership conference they attended on the TCU campus in Fort Worth. Ms. Wolf was adult representative for Yoakum County senior high youth. In addition to Misses Fitzgerald and Sherrin, six Denver City youth also attended from Yoakum County.

Theme of the conference, they reported, was building self-confidence. The conference brought out that self-confidence is vital in helping young people to say no to drugs and alcohol.

Announcement was made of the club's annual broom sale Sept. 7.

Members attending were L.J. Sanders, Frank Spencer, Pete St. Ro-

BACK TO SCHOOL SALE

Carnations \$15
1/2 dozen arranged in a vase

Homecoming Mums
"Made Just For You"

Lots of New Gift Items
Arriving Daily

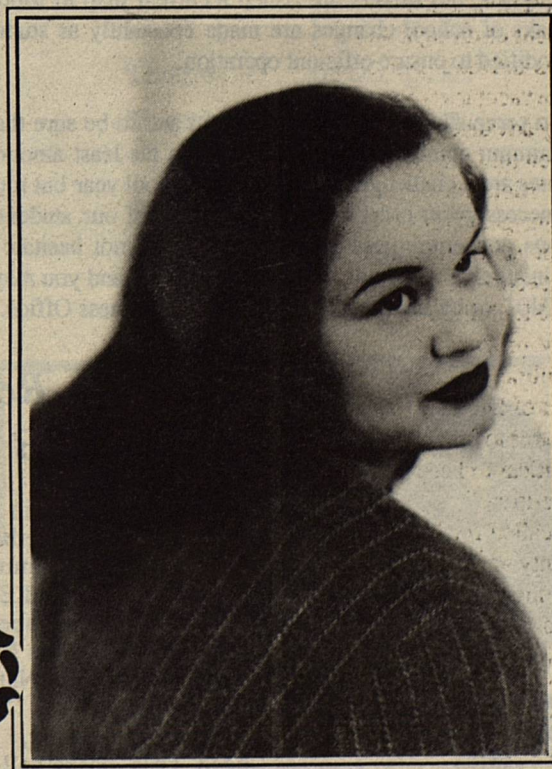
Yoakum County
Florist & Gifts

Robert & Mary Knowles

Hwy 214 & Broadway
Denver City

592-8047
After Hours: 592-8458

"Happy Birthday, LaVerne, Mom, & Mama"



Love You Lots!
Joe, Jerry, Gail,
Sterling, & Corie



Plains Independent School District

'Home of the Cowboys & Cowgirls'

From The Superintendent's Desk

Dean Andrews



As we begin the new school year we are aware of the many hours spent in preparation in order to be ready for our students who arrive on Monday, August 28th. We are now ready and are excited that our students will return on Monday. We would like to take this opportunity to welcome all students, those that are new to our school system as well as those who are returning.

Being ready for the new school year does not necessarily mean that things will not change. As the school year progresses we continue to make changes in programs in order to best meet the needs of our students. One area which needs constant revision and change is the transportation of students to and from school. Bus routes have tentatively been set, but changes are necessary throughout the school year as students enroll and check out, or change address. Transportation of students is important not only to us but to students and parents so I would like to talk about our transportation program this week.

In the transportation of students, our first concern is the safety of students. Our bus drivers are all certified through the Texas Education Agency by successfully completing required bus driver courses. Each driver must have a valid bus driver card issued by the Education Service Center which states his ability to drive a bus. In addition a driver license check is run on each driver by T.E.A., and each driver must have a yearly physical examination. Buses are thoroughly checked and inspected on a daily basis to ensure that the bus is in excellent condition.

Bus routes require much attention and care to ensure that each student is transported safely and efficiently to and from school. Setting up a bus route may be compared to completing a jigsaw puzzle in that there are many pieces that must all fit together to make a complete picture. Routes are planned so that the amount of time and number of miles that each student rides is kept to minimum. Initially, routes are outlined on a large country map and changes are made as necessary - new stops are added and previous stops deleted as students move away from the area. Once the map is tentatively complete and routes outlined, school personnel drive the route. Information concerning students is often gained from along the route and the map is changed accordingly. Then on the first day of classes, bus drivers are issued a current map to follow. During the first two weeks of school changes are made constantly as students enroll and routes are modified to ensure efficient operation.

Our goal is to serve students with this program and to be sure that each student rides the minimum number of miles, and spends the least amount of time on a bus. Bus routes are a challenge throughout the school year but routes are altered as often as necessary in order to meet the needs of our students. Should you have questions concerning this program, please do not hesitate to call. Larry Devitt, Administrative Assistant, directs this program and you may reach him by calling 456-7401, or by stopping by Plains I.S.D. Business Office.



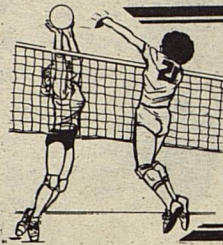
TESSA ST. ROMAIN

Tessa St. Romain Attends BB Camp

Tessa St. Romain attended the 1989 Fillies Basketball Camp in Denver City this summer. She is the daughter of Joe and Elouise St. Romain and a member of Plains' Junior League Girls Little Dribblers team which won Nationals earlier this summer.

Scott Alexander, Denver City head girls basketball coach, conducted the camp with the assistance of Darla Alexander, David Mitchell and Vicki McKenzie.

Thirty-five girls from Denver City, Plains and Wellman participated. They were taught how to improve basketball skills and techniques for use in next year's basketball season.



Volleyball Results

JUNIOR VARSITY

JV Cowgirl volleyball got their season off to a good start Tuesday by posting homecourt victories over Andrews and Coronado.

Amy Jones recorded two kills in the Cowgirls 15-3 15-9 win over the Andrews Mustangs. Kemi Cobb and Stephanie Cole combined for two kills. Amy and Kemi led in service points with seven each. Stephanie added six points. Shannon Squyres recorded one block for the Cowgirl defense.

After a 7-15 loss to Coronado in the first game, the Cowgirls bounced back to take the next two games 15-7 15-12. Cowgirl hitting included Shannon Squyres, five kills; Amy Jones, three kills; Stephanie Cole, two kills; Lupita Ramos, two kills; Kemi Cobb, one kill and Leslie Gonzales, one kill. Stephanie recorded 16 service points followed by Kemi with nine points. Shannon had two blocks defensively. Other JV players include Kristi Baize and Ashlee Winn.

The JV traveled to Lubbock Thursday to take on Monterey. They will return to Lubbock Tuesday, Aug. 29 for a 6:30 p.m. match with Lubbock High.

VARSITY

Varsity Cowgirls overcame a one game deficit enroute to a 10-15 15-12 15-7 victory over Andrews in their season opener Tuesday afternoon but lost a close contest to Lubbock Coronado in late action Tuesday night.

Leslie Patton led the Cowgirl offense against Andrews with six kills and 12 service points. Marsha Farnham and Melissa Green followed with four kills each. Martha Rivera recorded two kills and Rena McElroy and Corie Spencer combined for two kills. Marsha had three blocks defensively. Rena and Leslie added two blocks each.

Plains took the first game against Coronado 15-12 but the Mustangs evened it up with a 15-3 win in the second game. In the final game of the match the Cowgirls reached game point at 15-14 but Coronado forced a side out and went ahead 17-15 for the win. Cowgirl hitting included Corie Spencer, seven kills; Marsha Farnham, six kills; Leslie Patton, six kills; Rena McElroy, four kills; Melissa Green, three kills; Martha Rivera, three kills. Rena sparked the defense with four blocks. Melissa and Marsha combined for two blocks. Leslie led in service points with ten. Completing the varsity squad are Vee Ann Fitzgerald, Michelle Lowe, Jo Lena Powell and Sandra Ramos.

The Cowgirls competed against Lubbock Monterey in out-of-town competition Thursday and will be in Lubbock again Tuesday Aug. 29 for a match with Lubbock High.

School Events

TUESDAY - Volleyball, Lubbock High, T - V, JV at 6:30 p.m.

THURSDAY - Yoakum County Co-op Gin meeting in Cafeteria at 7 p.m.

FRIDAY - Football, Sudan Scrimmage, There at 7 p.m.

New Back-to-School Merchandise (Not On Sale)

Kids Cups & Canteens
(School Lunch Boxes, Canteens & School Bags)
Country Girl Potpourri
Russberrie Stuffed Animals
Many "Cowboy" Items

Mary's Country Flowers & Gifts

9:30 to 5:30 Monday thru Friday
456-3945





Plains Cowgirls 1989 Volleyball Schedule

DATE	OPPONENT	PLACE	TIME	TEAM
Mon. Aug. 21	Scrimmage - Colorado City	There	9:00 a.m.	JV-V
Tues. Aug. 22	Coronado - Andrews	Here	2:00 p.m.	JV-V
Thurs. Aug. 24	Lubbock Monterey	There	6:30 p.m.	JV-V
Tues. Aug. 29	Lubbock High	There	6:30 p.m.	JV-V
Fri.-Sat. Sept. 1-2	DENVER CITY TOURNAMENT			9-JV-V
Tues. Sept. 5	Snyder	Here	5:00 p.m.	9-JV-V
Sat. Sept. 9	Wink	There	1:00 p.m.	JV-V
Tues. Sept. 12	Denver City	There	5:00 p.m.	9-JV-V
Sat. Sept. 16	SNYDER TOURNAMENT			9-JV
" "	GRAND FALLS TOURNAMENT			V
Tues. Sept. 19	Brownfield	There	5:00 p.m.	9-JV-V
Sat. Sept. 23	COLORADO CITY TOURNAMENT			V
" "	LAMESA TOURNAMENT			JV
Tues. Sept. 26	Jal	Here	6:00 p.m.	JV-V
Sat. Sept. 30	Brownfield	Here	1:00 p.m.	9-JV-V
Tues. Oct. 3	Denver City	Here	5:00 p.m.	9-JV-V
Sat. Oct. 7	Lamesa	Here	10:00 a.m.	JV-V
" "	LAMESA TOURNAMENT			9th
Thurs. Oct. 12	Jal	There	6:00 p.m.	JV-V
Sat. Oct. 14	Lubbock Christian	Here	2:00 p.m.	9-JV
" "	Three Way	Here	5:00 p.m.	V
Mon. Oct. 16	Floyd	There	6:00 p.m.	JV-V
Thurs. Oct. 19	Lubbock Christian	There	5:00 p.m.	9th
Sat. Oct. 21	Open			
Tues. Oct. 24	Three Way	There	5:00 p.m.	V
Sat. Oct. 28	Odessa - Alpine	Odessa	TBA	V
Tues. Oct. 31	Seminole	There	7:00 p.m.	V
Sat. Nov. 4	Bi-district			
Tues. Nov. 7	Area			
Sat. Nov. 11	Regional Tournament			
Fri.-Sat. Nov. 17-18	State Tournament			

Sponsored By:

Plains Farm Supply, Inc.

**Mustang Country
Chevrolet-Buick-Olds**

**Yoakum County
Federal Credit Union**

CP National, an Alltel Co.
Your Local Telephone Company

Pay-n-Save

Melvin & Linda Lowrey

Yoakum County Co-op Gin

Fitzgerald's

Linda's Boutique

Gift Coffee Compliments Kendra Turnbow Recently

Mrs. Donnell Welch, nee Kendra Turnbow, was recently complimented with a gift coffee in the home of Bonnie Earnest.

Honored guests were Fern Turnbow of Midland and Peggy Welch, mothers of the betrothed couple. Other special guests were Rainie Knapp of Midland, sister of the bride-elect; Melissa Welch, sister of the prospective groom; Darla Welch, sister-in-law of the groom-to-be and Jean and Ira Seaton of Brownfield, aunt and uncle of the prospective groom.

Silk gardenia corsages were presented to the honoree and mothers.

Laid with white lace over blue, the party table was appointed in crystal and gold. An arrangement of silk flowers in blue and beige with

mauve grapes graced the table. Billie Howell presided at the table, serving sausage balls, fruit plate and dip, donut centers, orange juice, cranberry-apple juice and coffee.

Hostesses presented the honoree with the party table centerpiece, a comforter and pillow shams.

Assisting with hostess duties were Lorelei Andrews, JoAnn Barron, Pat Bowlin, Jean Craft, Melba Crutcher, Carolyn Culwell, Dolores Davis, Wadonna Davis, Bonnie Earnest, Marietta Guetersloh, Billie Howell, Connie McWhirter, Reta Nance, Mary Dale Williams, Jeanette Young and Sue Randall.

Plains '42' Club Holds Fellowship

An evening of fellowship and covered dish supper was held Saturday by members of Plains "42" Club. Hostesses for the evening were Edna Chambliss and Maurene Smith.

Games of Skip Bo and "42" were enjoyed by Bert Bartlett, Ann Chadwick, Annette and G.W. Cleveland, Rhuey and Bob Edwards, Ola and Johnnie Layton, Wilma and Bob McDonnell, Dick McGinty, Alma Lynn McGinty, Sherm Tingle, Sudie and Joe Henry Thompson, Gladys Thompson, Ita and Robert Young, Esther Holland, Allene Carnohan and Marcene and Claude Beattie.



KENDRA TURNBOW RECENTLY HONORED - Pictured at the home of Eddie and Bonnie Earnest are ltr, Darla Welch, Melissa Welch, Peggy Welch, Kendra Turnbow, Fern Turnbow and Rainie Knapp.

Baptists Mark 75th Anniversary

Tokio Baptist Church celebrated its 75th Anniversary with special services Sunday. Some 246 persons registered for the day's events.

Rev. Alton West, pastor, presided. Calvin Beach brought the morning message. Dell Knight was in charge of the music services in the morning with Sharon Williams Stephens and Pat Milstead Wynn at the piano and organ, respectively. Special music was also provided by the Russ Stephens family and Gloria Barr.

Afternoon music was led by Glenn Waters with Teresa Johnson Waters and Becky Waters Smith at the piano and organ. Special music was presented by Paula Kelley Ward, Debbie Kelley Ritter, Rhonda Brantley Cox, Randy Brantley, Melba Earnest Crutcher, Barbara West Smith, Alton West and Gloria Barr.

Testimony was led by Buddy Brantley. Ken Barr read the scripture and Horace Kennedy gave the church history. Rev. Jess Little gave the devotion.

Miss Pearl Rushing was the only charter member present. She was presented a pink carnation.



Cheryl and Brady Phillips of Canyon announce the arrival of a son born Aug. 1 at 10:20 a.m. in St. Mary's Hospital in Lubbock. Weighing eight pounds three ounces and measuring 22 inches long, the little fellow has been named Todd Brady. He has a sister, Jennifer, five. Grandparents are Cherry and B.T. Spears of Amarillo and Maurcene Lowe and Gene Phillips. Mr. and Mrs. Hershel Groff of Lubbock, Morris Lowe and Mr. and Mrs. V.E. Phillips of Big Spring are great grandparents.

Lollar Family Attends Reunion

David and Jerri Lollar, Jennifer and Jeffrey attended the second annual Will and Mamie Merritt Reunion Aug. 4-6 in Brownwood State Park. Forty family members and two guests attended.

Others attending included Ruth Lollar, Jane, C.D., Sean, Tammy, Chris and Shara James, Sallie O'Carroll and Richard Hogue, all of San Antonio; Gene, Pat, Mandy and James Lollar of Houston; Pam

Lollar of Clyde; Tess and Floyd Mauldin, Tom, Sharon, Jennifer, Josh and Charlie Mauldin, Scott, Laurie and Allen Langlois, all of Lafayette, La.; Clarence and Jimmie Cummings, Tommy and Mary Lue Farris, all of Snyder; Rick, Sandi, Matthew and Sam Harrison of El Paso and Will, Maryann and Andrew Farris of Garland.

Guests were Troy Portis of San Antonio and Gil Dunn of Clyde.

City of Plains

P. O. Box 550
Plains, Texas 79355

INVITATION TO BID

This is your notice that sealed bids will be received in the office of the City Administrator until 5:00 P.M. on Tuesday, September 12, 1989, and then publicly opened for those items listed below:

Ruth Murphree
CITY ADMINISTRATOR - Ruth Murphree

BID INFORMATION:

Concrete work at light plant building located at Ave. G and 7th St. in Plains, Texas. The job will consist of tearing out some concrete and adding approximately 2 inches of sand and 4 inches of concrete making the finish on the concrete as close or similar to that on the existing floor. Request that steele mesh or rebar be used in concrete. You haul and clean up and dispose of old concrete. The City will furnish the sand.

SPECIFICATIONS:

Tear out 3 (9ft. X 21ft.) blocks 6 inches below floor level (these three blocks are partially torn out) and add 2 inches of sand and pour concrete flush to existing floor. Tear out 1 (4ft. X 8ft.) block 6 inches below floor level and fill with 2 inches of sand and with concrete flush with existing floor. Tear out 1 (2ft. X 4ft.) block 6 inches below floor level and fill with 2 inches of sand and fill with concrete flush with existing floor. Tear out 2 (7ft. X 20ft.) blocks 6 inches below floor level and fill with 2 inches of sand and concrete flush with existing floor. Pour sand and concrete in 2ft. wide X 12ft. long (6 inches thick) hole by north wall. East wall, tear out 17ft. X 27ft. block 6 inches below floor level and fill with 2 inches of sand and concrete flush with existing floor.

Further specifications, if necessary, can be obtained in the office of the City Administrator. THE CITY RESERVES THE RIGHT TO REJECT ANY OR ALL BIDS.

All bids submitted must be plainly marked on the outside as follows:

"BID ON CONCRETE WORK LIGHT PLANT BUILDING"

"OPENING DATE - September 12, 1989"

Young Farmers Program Given On Water District

L.J. Sanders presented a program on the new water district for Yoakum County Young Farmers Monday evening. Made possible by a bill passed by the Texas Legislature, the new district will be titled Sandy Land Water Conservation District.

Election of five board members will be Nov. 7, Sanders said. If approved, the district will need \$250,000 to operate or about \$0.01 per \$100 of tax base. Sanders noted that \$0.25 will be asked, however, to accommodate possible future financial obligations.

Those present agreed to the formation of the new district and discussed the Area Convention in Brownfield Sept. 15-16. A meeting was set for Sept. 9 to include a discussion of the 1989 disaster program. Gary Six will be program leader.

Attending were members Don Parrish, Steve Crump, Tracy

Welch, Rickey Bearden, Tim Addison, Ben Anderson, Ron Craft, Steve Jones, Wayne Davis and Kirk Lewis. Guests attending were Mario Morales, Ky Lewis and Sanders.

ATTENTION FIRST TIME HOME BUYERS - No credit needed. Low down payment. Over 100 homes to choose from. Call 806-894-7217. 11/4tc

REPOS — REPOS — REPOS
Two and three bedrooms. Finance Company desperate to sell. No credit, no problem. We deliver. Call 806-894-8187. 11/4tc

NOTICE TO BIDDERS

Plains Ind. School District will accept bids for upgrading the school's IBM System 36 to a 200 MB Disk Storage until 2 p.m. on Sept. 7, 1989. Bid specifications may be obtained by contacting Larry Devitt, Administrative Assistant, at 806-456-7401 or P.O. Box 479, Plains, Texas 79355. Plains I.S.D. reserves the right to accept or reject any or all bids.

Regal Theatre

206 South 5th in Brownfield

SCREEN I
"Turner & Hooch"
Rated PG
SCREEN II
"Friday the 13th Part VIII"
Rated R

FOR RECORDED SHOWTIMES:
Call 637-2848

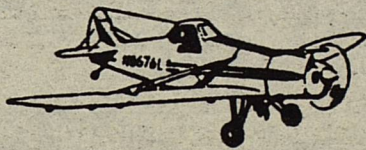


RICHARDSON INSURANCE AGENCY
Box 558, 503 3rd St.
Plains, Texas 79355
A. C. 806 456-8888

AUTO • FIRE
• LIFE • COMMERCIAL

Two J-S Flying Service

Aerial Applicators



(806) 456-3580

JACK COBB
456-7452

YOAKUM COUNTY AIRPORT
PLAINS, TX

MIKE COBB
456-7165

ALAN D. ROW, M.D.

Lubbock, Tx.

announces a new office

708 E. Felt
Brownfield, Tx.
(806) 637-4704

for the practice of

EYE SURGERY

Wanted

NEED A BABYSITTER during school year, call Sylvia Martinez, 456-7135 or come by at 607 7th Street. 21/1tc

Ryburn's Muffler Shop

Custom Exhausts
Oil, Filters, & Lube

1320 Tahoka Road
Brownfield
637-8291

*Like a good neighbor,
State Farm is there.*

See me for car, home, life and health insurance.

LARRY HOLDER, AGENT
310 N. MAIN
DENVER CITY, TX
(806) 592-9316



State Farm Insurance Companies
Home Offices
Bloomington, Illinois

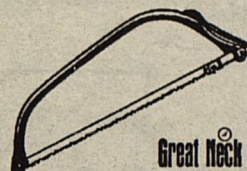


CURE-IT PLUS

Yard Trash Bags

33 Gal. 40 count. 5 bushel capacity, heavy 1.1 mil plastic for more puncture resistance. Super value roll pack. 6013

Special Price **\$4.88**



21" Bow Saw

Steel blade, tubular steel frame with lever action blade tightener and release. BB21

Special Price **\$3.66**



Warp's

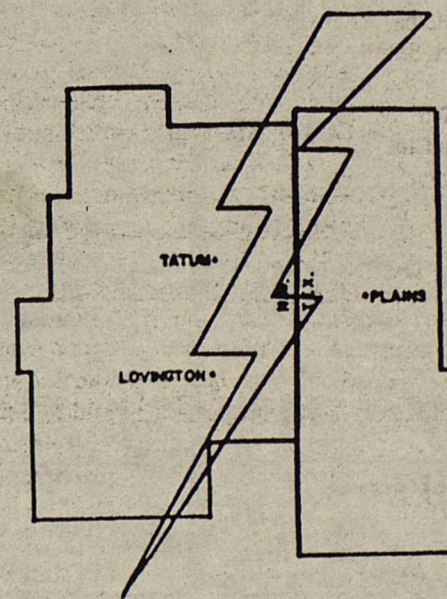
Coverall Storage Bags

Tough 2 mil plastic, heavy weight to resist tears and punctures. CB36,40, 45, 60

Special Price **\$2.99**

Bayer Lumber

PLAINS, TEXAS
456-4800



OTHER ENERGY POSSIBILITIES - SUNSAT

Satellite power stations consisting of large numbers of photovoltaic cells could convert sunlight into electricity and send it to earth using microwave beams. Years of research & testing lie ahead to make this potential alternative commercially attractive.

LEA COUNTY ELECTRIC COOPERATIVE, INC.

Lovington/Tatum, NM

Plains, TX

"OWNED BY THOSE WE SERVE"



Dr. Pepper
6 PAK CANS
\$1.89



POTATO CHIPS
Lay's®
REGULAR \$1.49
87¢



ASSORTED PAPER TOWELS
SpillMate
JUMBO ROLL
69¢



ASSORTED GRINDS COFFEE
Hills Bros.
13 OZ. CAN
\$1.89

LAUNDRY DETERGENT
REGULAR/UNSCENTED/W-BLEACH
Tide
147 OZ. BOX
\$5.69

ASSORTED BATHROOM TISSUE
Charmin
4 ROLL PKG.
\$1.19

SUPER TRIM DIAPERS
Huggies
66 SML/48 MED/32 LGE
\$8.99

VAN CAMP
Pork & Beans
16 OZ. CANS
2 FOR **2.79¢**

GROCERY SPECIALS

DEL MONTE 32 OZ. JUG OR 28 OZ. SQUEEZE KETCHUP **99¢ EACH**

DEL MONTE SWEET PICKLE RELISH 12 OZ. JAR **99¢**

FRUIT JUICY RED/TROP. FRUIT/WILD FRUIT HAWAIIAN PUNCH 3 CT. PACK **69¢**

FRUIT JUICY RED HAWAIIAN PUNCH 48 OZ. CAN **87¢**

DEL MONTE ASSORTED FRUIT CUPS 4 CT. PACK **\$1.49**

DEL MONTE ASSORTED PUDDING CUPS 4 CT. PACK **99¢**

DEL MONTE ASSORTED YOGURT CUPS 4 CT. PACK **\$1.57**

DEL MONTE SEEDLESS RAISINS 8 CT. PACK **79¢**

DEL MONTE DRIED APPLES 8 OZ. PKG. **\$1.59**

DEL MONTE DRIED PEACHES 8 OZ. PKG. **\$1.69**

GENERAL MILLS COUNTRY CORN FLAKES 15 OZ. BOX **\$2.19**

REGULAR SARAN WRAP 50 FT. ROLL **\$1.29**

REGULAR OR LOW SALT KEEBLER'S CLUB CRACKERS 16 OZ. BOX **\$1.49**

FRANCO-AMERICAN WITH MEATBALLS TEDDY-O'S OR SPORTY-O'S 14 OZ. CAN **69¢**

FRANCO-AMERICAN SPORTY-O'S OR TEDDY-O'S 15 OZ. CAN **2.89¢**

BETTY CROCKER ASSORTED PASTA SALAD 5.2 TO 6.25 OZ. BOX **\$1.39**

AIR FRESHENER HONEY-SUCKLE/CRYSTAL BAY RENUZIT SHELL 2.2 OZ. PKG. **\$1.57**

Salute TO AMERICA'S WORK FORCE

WATCH FOR YELLOW T.P.C. SIGNS

WE WILL NOT INTENTIONALLY SELL ANY GROUND BEEF UNDER 80% LEAN AND WE PLEDGE TO MAKE OUR GROUND BEEF AT LEAST TWICE A DAY.

HEAVY GRAIN FED BEEF BONELESS ARM
Shoulder Roast
\$1.69 LB.

FRESH 80% LEAN FAMILY PACK
GROUND BEEF
\$1.39 LB.

BAR-S BRAND SLICED BACON 1 LB. PKG.	\$1.59	HEAVY GRAIN FED BEEF BONELESS CHUCK STEAK 3 LB. BOX	\$1.79
BAR-S SLICED MEAT BOLOGNA 12 OZ. PKG.	\$1.19	BUTTERMILK STYLE BREADED CHICKEN BREAST TENDERS 3 LB. BOX	\$9.49
BAR-S MEAT FRANKS 12 OZ. PKG.	\$1.19	BREADED CHICKEN NUGGETS 3 LB. BOX	\$8.88
BAR-S SLICED COOKED HAM 4 OZ. PKG.	98¢	BREADED CHICKEN PATTIES 3 LB. BOX	\$8.88

SHELF SPECIALS

QUAKER MASA HARINA 5 LB. BAG **\$1.99**

QUAKER MASA TRIGO 4 LB. BAG **\$1.59**

\$1.50 OFF LABEL RALSTON PURINA CHUCK WAGON 20 LB. BAG **\$6.89**

FRENCH'S YELLOW SQUEEZE MUSTARD 16 OZ. BTL. **89¢**

FROZEN FOODS & DAIRY

CHUN KING ASSORTED EGG ROLLS 6 OZ. PKG. **99¢**

BROC-CORN-RED PEPI/ BROC-CAULF-CARROT/ BROC-BEANS-ONIONS-PEPP. BIRDSEYE 16 OZ. PKG. **\$1.29**

ASSORTED MEXICAN DINNERS EL CHARRITO 14 OZ. BOX **\$1.29**

SOFT SPREAD BLUE BONNET 3 LB. TUB **\$1.37**

PAY-N-SAVE HOMOGENIZED MILK 1/2 GAL. JUG **99¢**

SHURFINE BUTTERMILK 1 QT. CTN. **57¢**

HEALTH & BEAUTY

ASSORTED 15 OZ. SHAMPOO OR CONDITIONER OR 7 OZ. AERONON-AERO. HAIRSPRAY SALON SELECTIVE EACH **\$1.99**

CHOC/VAN/STRAWBERRY SLIMFAST DRINK 15 OZ. CAN **\$3.99**

DIMETAPP TABLETS OR DIMETAPP CAPLETS 24 CT. PKG. **\$3.59**

ASSORTED VITAMINS SESAME STREET 60 CT. BTL. **\$3.99**

ASSORTED SHOWER TO SHOWER 8 OZ. SHAKER **99¢**

REGULAR OR EXTRA DRY JERGENS LOTION 10 OZ. BTL. **\$1.99**

TYLENOL BUY ONE 50 CT. BTL. AT \$3.59 GET ANOTHER FREE TYLENOL CAPLETS 50 CT. BTL. **FREE**

PRODUCE SPECIALS

U.S. NO. 1 RUSSET POTATOES 10 LB. BAG **\$2.39**

CALIFORNIA FRESH BROCCOLI 1 LB. **59¢**

CALIFORNIA CRISP CELERY 2 STALKS **99¢**

RED RIPE SALAD TOMATOES 4 CT. CELLO **79¢**

FRESH WHITE ONIONS 2 LBS. **79¢**

RED DELICIOUS X-FANCY APPLES 3 LB. BAG **\$1.29**

SWEET JUICY CALIFORNIA ORANGES 3 LB. BAG **599¢**

GOLDEN RIPE Bananas 3 LBS. **3.99¢**

Cumberland Stoneware by Hearthside

5-Pc. Place Setting
Dinner Plate, Cup, Saucer, Salad Plate, Cereal Bowl
Only **\$3.99** with \$10 Purchase

Sole Price Without Purchase
Dinner Plate \$2.99
Cup decorated \$1.99
Saucer \$1.29
Cereal Bowl \$1.79
Salad Plate decorated \$1.99

DECORATED matching accessory pieces in beautiful new shapes... and at money-saving low prices



WE RESERVE THE RIGHT TO LIMIT QUANTITIES