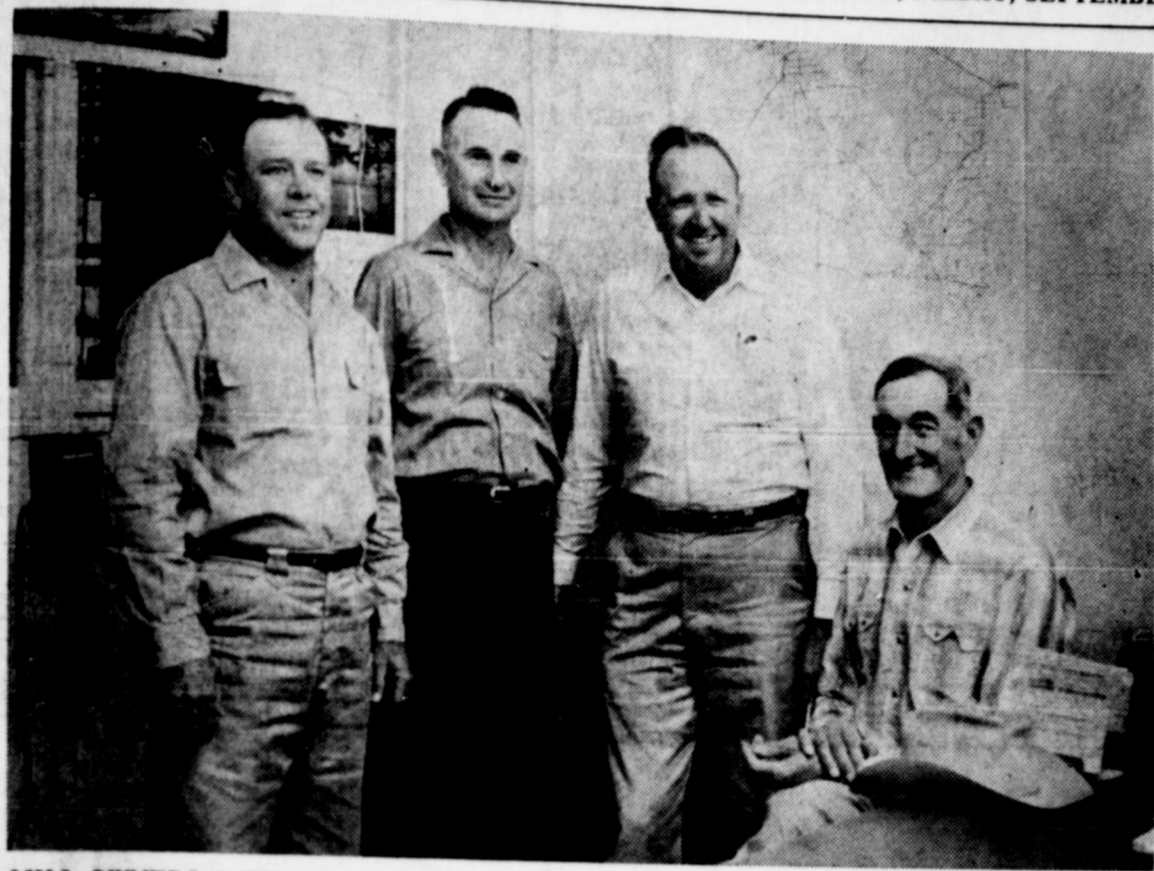


The Winters Enterprise

BUY IT IN WINTERS!

WINTERS, TEXAS, FRIDAY, SEPTEMBER 29, 1961

NUMBER 27



MILL OWNERS — These four men are owners of the newly organized and remodeled Alderman-Cave Milling and Grain Co. Left to right, they are James Snyder, Weldon Edwards, Ray Alderman, and Charlie Cave. Alderman is the resident manager of the company. The company is holding their grand opening Saturday afternoon, and will at that time show visitors through the entire plant, which includes new elevators and grain handling facilities, and a modern push-button feed mill. (Little photo).

Alderman-Cave Open House Slated Saturday Afternoon

Alderman-Cave Milling and Grain Co. will hold their grand opening and open house for the general public Saturday, in their recently remodeled quarters on West Dale St.

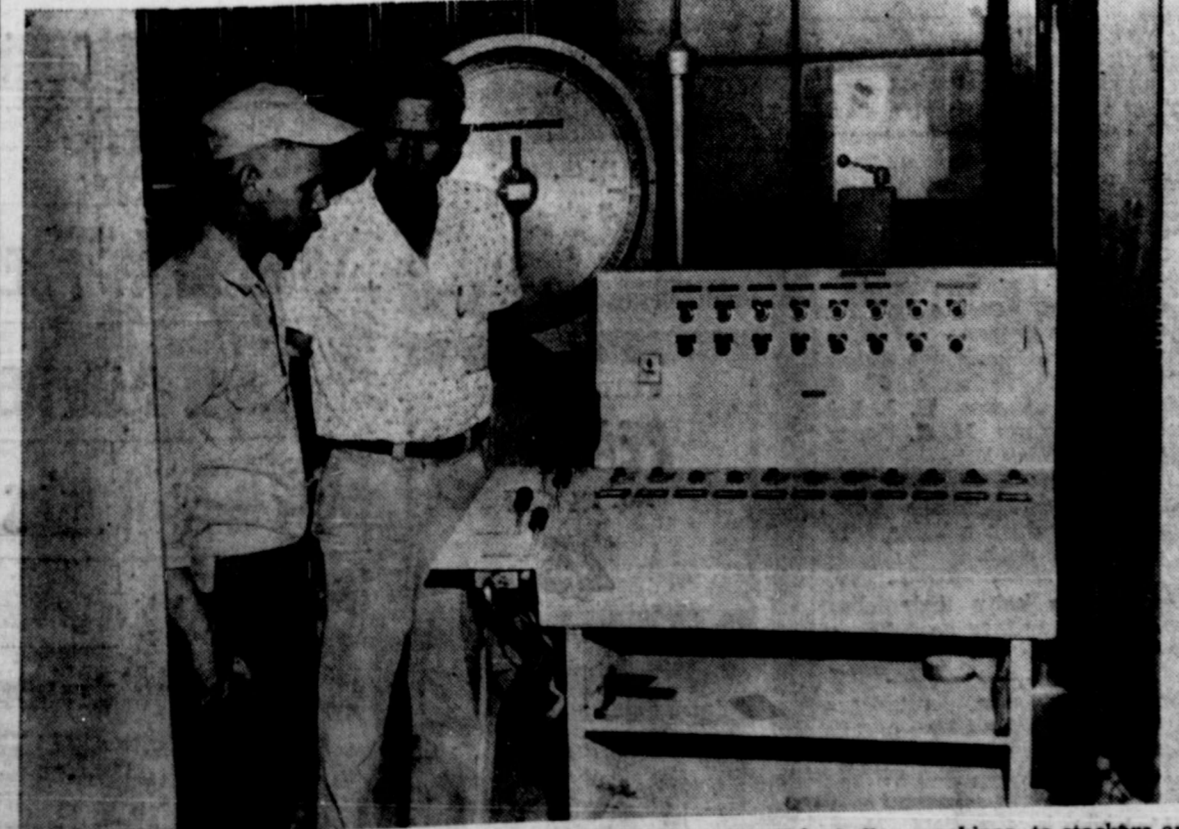
The public has been invited to visit the mill and elevator from 2 to 4 o'clock Saturday afternoon. Refreshments will be served, and door prizes given. Visitors will be taken on a tour of the new elevator facilities and the remodeled feed mill.

Alderman-Cave have been in operation in Winters since last February, when they bought the facilities of C. L. Green Milling and Grain Co. Owners of the company, which is incorporated, include Ray Alderman, who is resident manager of the plant, James Snyder of Baird, Weldon Edwards, of Clyde, and Charlie Cave, rancher of the Blackwell and Hylton communities.

Alderman was formerly manager of the Callahan County Farmers Cooperative Feed Mills in Baird and Clyde. He is a graduate of Texas A. and M., and is a veteran of the Korean War, having been a jet pilot during that conflict.

Snyder is a Callahan County rancher, and Edwards has ranching and farming interests in Callahan and Dickens Counties.

Early in the spring, after acquiring the mill and elevator, the company built additional grain handling facilities and added more grain storage space. This was done in time for the small grain harvest. They added another elevator leg, and the latest type truck scales. Later they increased their grain storage space until at present they have a grain storage capacity of 130,000 bushels, two grain dumps and elevators, and two sets of scales. During the peak of the maize harvest, both



PUSHBUTTON ERA — Bill Arnold, mill superintendent at Alderman-Cave Milling and Grain Co., explains to Norman Wustinger, another employee, the operations of the central control panel in the feed mill. From this control panel, which has several control levers and buttons and lights, grain and ingredients for mixed feed may be routed to any of several locations in the plant, from storage bins to grinding machines, to stackers and elevators. This panel is the "brain center" of the modern feed mill and may be seen in operation during the company's open house Saturday afternoon. (Little photo).

Runnels SCS Will Hold Supervisor Election Tuesday

An election to name a supervisor from sub-division 3 of the Runnels Soil Conservation District will be held at the Norton School Tuesday, October 3, Bill Minzemayer, vice chairman of the district, has announced. Election will be held at 7:30 p. m. Tuesday.

Minzemayer said that landowners will elect a man to represent them on the Board of Supervisors from the sub-division. Zone 3 of the district is all that land in Runnels County north of the Colorado River and West of the Ballinger-Winters highway, and south of the Winters - Oak Creek road. Kirby Robinson is incumbent supervisor from this zone.

Runnels County Agent C. T. Parker will be in charge of arrangements for the election. He has announced an educational program to follow the election, and will give the results of this year's crop yield test that he has conducted throughout the county.

All people, including man and wife, who own land in zone 3 and live in Runnels County are eligible to vote. No poll tax is required, it was announced.

To be eligible to be a supervisor a person must own land in zone 3 and be actively engaged in farming or ranching.

Parker has urged every landowner in this zone to have some one in mind to carry on this work of this important post. He said that a Soil Conservation District is not a Federal agency, but a government subdivision of the state and public body corporate and politic. For this reason it is important that the people keep a Soil Conservation District strong, he said.

Mrs. James Crockett Held VFW Auxiliary Instruction School

Mrs. James Crockett of Winters, President of District 22 of the Ladies Auxiliary to the Veterans of Foreign Wars, held a school of instruction for all district officers at the VFW post home in San Angelo Monday. Instructions were held on floor work of the organization and the duties of officers.

Accompanying Mrs. Crockett from Winters were Miss Nevell Fisher, senior vice president of the district, and Mrs. W. L. Collins, local president. District officers were present from Eden and San Angelo.

James C. Wright Has Been Promoted In Rank In R. O. T. C.

Cadet James C. Wright has been promoted to Cadet second Lieutenant of the Reserve Officers Training Corps for the coming year. Wright will be platoon leader for 1st Platoon Company "C" according to Major Charles W. Howard, acting professor of military science at Hardin-Simmons University.

Boys 4-H Club To Be Organized At City Hall Thursday Night

An organization meeting of the Winters Boys 4-H Club will be held on Thursday night, October 5, at 8:00 p. m., at the City Hall in Winters. 4-H Club work is available to all boys between the ages of 9-21.

All boys in this age group are urged to attend this organizational meeting. An explanation of the opportunities of 4-H work will be made. Officers will be elected and plans made for the coming year. If there are any questions concerning the 4-H program, please contact F. G. Brown, Assistant County Agent in Ballinger, or Mr. and Mrs. Floyd Sims, organization leaders of the Winters Club.

TO SAN ANTONIO
County Commissioner Melvin Mapes and Mrs. Mapes, Mr. and Mrs. Clyde Chapman of Ballinger attended the County Judges and Commissioners meeting in San Antonio the first of the week. Mr. Chapman is commissioner of Precinct 1. They heard vice President Lyndon Johnson speak at noon Tuesday.

Hamlin Gridsters Here Friday Night

The Winters High School Blizzard football team will meet the Hamlin Pied Pipers here Friday night for their third home game of the season. Kick-off time will be 8 o'clock.

The Blizzards, with only one win out of our starts for the season, are training furiously for a trip up the comeback trail, determined to knock Hamlin from the top of their 6-AA perch. Hamlin has a season's record of four wins with no losses.

The Blizzards, even though they've been dropped to the bottom of the District 7-AA chart, gave a good accounting of themselves a-

gainst the Albany state single-A champions last week.

Coach L. G. Wilson probably will field his regular string of starters, under generalship of Johnny Caskey as QB for offense.

Hamlin will be out to avenge the ruination of their homecoming game last year, when Winters beat them, and to add another service stripe to their column for the season.

Winters Boosters will celebrate Dad-Son night Friday, when dads of Blizzard players to be recognized prior to the game. All booster have been urged to attend, and form a cheering section before the game.

BLIZZARDS WILL GO TO COLORADO CITY SATURDAY, OCTOBER 7 FOR GAME

The Winters High School Blizzard football team will go to Colorado City Saturday night, Oct. 7, to play the Colorado City Lobos. Game time is 8 p. m.

Tickets will go on sale at the Winters Independent School business office on Wednesday, Oct. 4. Tickets may be purchased between the hours of 8 a. m. and 5 p. m. each day, through Friday.

Elsewhere over the District 7-AA area, other conference teams took beatings last week. Ballinger was the only 7-AA team to come away with a win Friday night, swamping the Post Antelopes 42-8. Ballinger now sports a 2-2 record. They meet Comanche Friday.

Coleman, who went into last Friday night's game against Brady with a 2-1 record, was swallowed by the raging Brady Bulldogs, 28-0. The Bluecats will meet Albany this week.

Ranger, with a record of 1 win, 2 losses and 1 tie, will meet Dublin. They were whipped 29-8 by DeLeon last Friday night. Cisco will play DeLeon this week. They lost to Anson last week 19-0, and now have a 2-2 record.

Friday night's encounter, and then a game against Colorado City next Saturday night at CC, will wind up the Blizzards' pre-conference schedule. Their first conference game will be against Ranger here Oct. 13.

Winters VFW and Auxiliary Help Carla Victims

Winters Post of the Veterans of Foreign Wars and its Auxiliary joined the national veterans organization in sending aid to victims of Hurricane Carla, Mrs. W. L. Collins. Community service chairman for the local post and auxiliary, has announced. Money collected by the local post was sent to the Department of Texas Headquarters. Many boxes of food and clothing have been sent.

C. of C. and Fire Dep't. Will Hold Fire Prevention Study

The Winter Chamber of Commerce and the Volunteer Fire Department will cooperate in the presentation of a fire prevention study program in the Winters school, organization heads said this week. The program will begin Oct. 8 and continue through Oct. 14, to coincide with Public School Week.

Pupils in two groups at the school, intermediate and primary, will compete for big cash prizes to be awarded for the best fire prevention poster made by individuals. Also, a total of ten ribbons will be presented for posters.

Cash awards will be made to each group, with pupils preparing winning posters to receive \$10, for first place; \$7.50, second place; and \$5.00, third place. There will be two first place awards, one for intermediates and one for primary pupils. A total of \$45 in cash awards will be given.

In addition to the cash prizes, the three top winners in each group will receive a ribbon and there will also be seven honorable mention ribbons presented in each group.

Poster must be prepared by the individual pupils, and cannot be made by groups. Sizes of posters must be either 14x22, or 22x28. Sponsoring organizations said that under rules of fire insurance

companies, the city of Winters will receive a 3 percent credit off the key rate if this fire prevention program is conducted in the public schools. It will mean an actual reduction in the premium paid by residents of Winters, insurance men said. The amount would depend on individual circumstances, it was said.

Winners in the fire prevention poster contest at the school will be announced following judging during Public School Week, or shortly thereafter.

Heading the fire prevention program for the chamber of commerce will be John Norman. Others on the committee will be Raymond Lloyd, C. P. Alfrey, Fred Young and A. W. Libbe.

Committee members from the Fire Department will include D. Waggoner, Rankin Pace and J. C. Wilkerson.

Waggoner will be in charge of operation of the program at the school, it was said, and will issue instructions, rules, and other information.

In line with this program, it was also announced that residents of Winters who desire to have their property inspected for fire hazards may call Fire Chief Waggoner. There will be no charge for this service, it was understood.

TIME TO

RESTOCK YOUR PANTRY



US Good Round
STEAK lb. **69^c**

LOIN
STEAK lb. **59^c**

BROWN ROAST lb. **39^c**

BUCK ROAST lb. **39^c**

HAMBURGER 3 lbs. **\$1.00**

SPECIAL THIS WEEK!

HAM-M-M

Gooch's Blue Ribbon $\frac{1}{2}$ or whole
HAM lb. **49^c**

Center Cuts
HAM lb. **89^c**

CENTER CUT
PORK CHOPS lb. **69^c**

Calf **LIVER** lb. **39^c**



PRODUCE

TOMATOES lb. **10^c**

APPLES 2 $\frac{1}{2}$ **25^c**

POTATOES 10 $\frac{1}{2}$ **29^c**

CABBAGE lb. **4^c**

Sweet
POTATOES lb. **7^c**

Bell
PEPPERS lb. **15^c**

COFFEE With \$7.50 Purchase
Excluding Cigarettes lb. **39^c**

MELLORINE GANDY'S **39^c**

LIGHT CRUST
FLOUR 25 lbs. **\$1.89**

REGULAR
TIDE Box. **29^c**

SUGAR 10 lbs. **98^c**

ARMOUR'S VEGETOLE
SHORTENING 3 lbs. **59^c**

COMET
RICE 2 lbs. **39^c**

HUNT'S
TOMATO JUICE 4 for **\$1.00**

GOLD COAST SPICED
PEACHES No. 2 $\frac{1}{2}$ **19^c**

BIG BOY
DOG FOOD 3 for **25^c**

KRAFT
VELVEETA 2 lbs. **89^c**

MOUNTAIN PASS
Tomato SAUCE 3 for **25^c**

SWIFT
PURE LARD 3 lbs. **39^c**

PINTO BEANS 4 lbs. **49^c**

Kleenex TOWELS 2 Packs **42^c**

VANILLA AND CHOCOLATE
Kraft FUDGIES 10-oz. **25^c**

KRAFT
Parkay OLEO lb. **29^c**

GANDY'S
MILK GALLON JUG **95^c**

CASHWAY FOOD STORE

200 East Tinkle

Phone PL4-2734

We Deliver

TIPS for OUTDOORSMEN

that snags the fish, cutting the line rather than going for the hooties.

If you expect to score well in fishing, you've got to do a bit more than just keep your hooks sharp. Give some thought to that "weighty" problem of using the right sinker.

Never look inside a sandwich. If it is served in a good restaurant you don't need to, if in a bad one you're better off not knowing.—Salt Lake Tribune.

look at the groups.

FISHING — Here the is enough weight to the bottom. In shallow current, a quarter might do the job. offshore at one of the banks where the water is 30 feet deep with a running, you might need a pound of weight to get the bait to the bottom.

casting, where dis- the sinker should

Special sinkers for trolling. They must be holes, depressions or could cause bubbles through the water. bubbles serve only to attention of the fish bait. Trolling sinkers are cigar-shaped so they will not spin. spins, it will cause things—the line to line to unravel. Either your line.

in the world isn't if the sinker fails to place. In an angular or undertow the shift- supplied with the force of current often will sink and sinker parallel at a fast clip. Some will actually wash the sinker right up onto the for this kind of fish- and sinker with large sinkers that won't bury in the shift- You can get by with but only if several

speaking the best surf fishing are the pyramid, diamond and

few species of fish to be hooked the instant the bait. There are also species that must be al- like the bait a few sec- striking. In either sinkers or rigs are you expect to score on

at surf fishing as an heavy surf is run- heavy sinkers are used. man often will be un- the fish touching the of the weight of the by the same token there fish that will promptly the bait if they feel the sinker on the line.

get around this prob- what is known as a fish- Just slip your line or through the sinker eye. The sinker, being able to slip the sinker instead of pull- it, enables the angler touch of the fish on Thus he can immedi- hook. Or in the case fishing for redfish he can fish to mouth the bait ends before setting the

fish-finder rig, your buried in the sand in while the current moves hook around freely. fishing a bottom where a lot of snags, then use that don't have sharp corners. Sinkers of the egg type are best for fishing.

times when it is nec- use sinkers with plugs. do this, place the sink- feet ahead of the plug to spoil the action of the place the sinker right the lure.

one sinker-lure combin- is deadly on black bass fish are in weed patches. fishing plug, but with a heavy enough to pull the The sinker will rest bottom, but the plug will over the top of the weeds. is a current running, the faster and undulate like

you simply pull the the bottom. Every time you switch the rod tip the sinker jump off the that way you can make up and down. This is a way of fishing a without having to resort to type lures.

caution about this kind Don't use shiny sinkers may hit at them rather lure. The word about also goes for trolling

new would-be mack- man lose five hooties because he insisted on trolling sinkers. The trolling the sinkers and

Local Reservists Members of Angelo Recovery Squadron

Two Winters men are members of a reserve Air Force Squadron with headquarters in San Angelo which would become a vital part of a retaliatory force in the event of attack on the United States by enemy forces.

Dr. Z. I. Hale, who is a Lieutenant Colonel in the Air Force Reserve, and Jerry D. Watkins, an Airman Reservist, are members of the 9413 Air Force Reserve Recovery Squadron, Mathis Field, San Angelo. They are part of a "Force in Being," trained and

ready to go into action immediately, replacing a slowly mobilized reserve system.

These recovery units were organized because any air base from which the United States might launch a counter attack to stop the aggressor could be knocked out or damaged to the extent that aircraft returning from combat would be unable to land. Recovery units would provide a safe place for aircraft to land, either on civilian airports or bare landing strips.

Recovery unit reservists must be skilled in the use of and have on hand or immediately available, a variety of equipment, including fire fighting equipment, medical care and transportation to hospitals for wounded crews, communications facilities, refueling facili-

ties, aircraft maintenance and repair, decontamination equipment for aircraft maintenance and repair, decontamination equipment for craft exposed to nuclear radiation, runway lighting and navigational aids at abandoned strips, bulldozers, trucks, light planes, housing and food facilities.

Some of these services and equipment will be contracted from local suppliers.

The skilled men to operate this unit come from the immediate area so that they will be available on short notice. In case of an alert, or recall to active duty, this unit will serve as a unit and will be stationed at Mathis Field.

According to Lt. Elliott J. Kemp, information officer for the unit, a number of men are needed to bring this outfit up to full strength.

Girl Scout Troop Making Plans For Year's Work

Girl Scout Troop 3 met Tuesday evening, September 26, at the Presbyterian Church building to discuss plans for this year.

The leaders are Mrs. George R. Hill and Mrs. Wlatter Spill. Those attending were: Beth Spill, Dickie Hale, Martha Hale, Joyce Allen, and Doris Allen.

Men who are interested in becoming a part of this vitally important segment of the reserve forces are asked to contact Lt. Kemp.

Use Enterprise Classified Ads.



WE MAKE OUR OWN BOOTS IN ABILENE TO ORDER, OR IN STOCK—None Better. See our new fall stock Western Wear.

Quality Brands, Everything Western

LEDDY BOOT SHOP
460 Pine Avenue

OUR BETTER BUYS BUILD BETTER FOOD BUDGETS

PILLSBURY FLOUR 25-lb. sack \$1.69

FOREMOST BIG DIP 1/2-gal. 49c

SWIFT VIENNA SAUSAGE 2 CANS 39c

PILLSBURY CAKE MIX Box 19c

PINK LIQUID VEL GIANT SIZE 49c

SUPREME CRACKERS 1-lb. Box 28c

Mead's BISCUITS 4 cans 35c

WHITE SWAN PORK & BEANS 2 1/2 can 2 for 39c

PET MILK 6 for 89c

PARKAY OLEO lb. 29c



SUGAR 5 lbs. 29c

With \$7.50 purchase of other groceries.
(Excluding Cigarettes)

Libby's Peaches 303 Can 2 for 39c

Frisky DOG FOOD 2 for 25c

Cut Rite Paper 125-ft. roll 29c

NEW SALVO Small Box 35c

Hunt's CATSUP Big 20-oz. bottle 29c

Russett SPUDS Graded No. 1 10 lbs 49c

HAM WHAT AM! SHANK END . lb 47c
WHOLE . . . lb 49c
BUTT END . . lb 52c

HEARTY EATING! PORK ROASTS Semi-boneless lb. 43c

SAUSAGE Flavor Wright 2 lbs. 69c

Lean PORK RIBS lb. 49c

Lean PORK CUTLETS lb. 69c

BACON SWIFT PREMIUM lb. 69c

BEST PRODUCE BUYS

Seedless GRAPES No. 1, pound 15c

Fresh Sweet POTATOES lb. 10c

CARROTS No. 1 Cello 10c

BANANAS POUND 10c

California LEMONS POUND 15c

DOUBLE FRONTIER STAMPS ON WEDNESDAY WITH CASH PURCHASES OF \$2.50 OR MORE!

ECONOMY Food Store

USE OUR FREE PARKING ANNEX—WHILE SHOPPING OUR STORE!



Best Buys at Piggly Wiggly!

DOUBLE S. & H. GREEN STAMPS
ON WEDNESDAY
With \$2.50 or More Purchase!

Gold Coast
SPICED PEACHES 2 1/2 Can **19c**

Shedd's
PEANUT BUTTER Big 3-lb. Jar Only **99c**

LOOK! EXTRA SPECIAL
**BIG DOUBLE DIP
ICE CREAM
CONES** Only **5c** Each
Friday and Saturday

RED FLAME
TOKAY GRAPES 2 lbs. **25c**

RED DELICIOUS
APPLES 10 lb. Sack **\$1.00**

BIG SWEET PODS
Bell Pepper lb. **15c**

SWEET
POTATOES Pound **10c**

NO. 1 DIAMOND
TOMATOES Can **10c**

4-OZ. SCHILLING PURE
Black Pepper Can **35c**

BLUE SEAL
OLEO Pound **15c**

LIPTON'S
TEA 1/4-lb. Pkg. **39c**

Gandy's Pure
ICE CREAM
1/2 Gallon Carton
69c

Note Book
FILLER
Regular 98c Seller
Only
59c

Swift's Silver Leaf
PURE LARD 3-lb. Carton **39c**

SWIFT'S CORN DOGS
Served "Hot" - Ready to Go All Day Saturday!
Regular 15c Seller
6 FOR 59c

Pillsbury's or Ballard
BISCUITS
ONLY **5c** CAN
Limit 10 Cans Please, at this low price

25-lb. Sack Pillsbury's
FLOUR
1 Box Pillsbury's Cake Mix FREE!
ONLY
\$1.59

Beautiful Nylon ROSE 15c With \$5.00 purchase! INCLUDE

Swift Premium
PICNICS Fully Cooked lb. **35c**



Swift's Premium
FRANKS
12-oz. Pkg.
39c

Fresh Ground
MEAT
Pound
29c

SWIFT PREMIUM SLICED
BACON lb. **65c**

Choice
LOIN STEAK lb. **69c**

Fine to Broil
T-BONE STEAK lb. **69c**

Family Style
STEAK lb. **49c**

YOU JUST CAN'T BEAT that GOOD GRAIN FED Piggly Wiggly BABY BEEF for Tenderness, for Flavor, for SAVINGS!

CHOICE CHUCK
ROAST Pound **43c**

TENDER ARM
ROAST Pound **49c**

TENDER RUMP
ROAST Pound **55c**

PIKES PEAK
ROAST Pound **65c**

TENDER - To Chicken Fry
ROUND STEAK Pound **69c**

Runnels Ass'n. Will Purchase New "TB Gun"

Directors of the Runnels County Tuberculosis Association Thursday evening voted to buy a tuberculin testing sterneedle gun to be used in testing for tuberculosis.

At a meeting of the association in Pierce Cafeteria Thursday evening, Mrs. Jane Barnard, school nurse from San Angelo, spoke on "New Aspects of TB Skin Testing Program," and explained the mass tuberculin testing sterneedle gun with disposable sterneedle cartridges. She told how the automatic case-finding device is an improved multiple puncture apparatus for rapid intradermal tuberculin testing. Based on the Dr. Heaf principle of multiple puncture, six needles, contained within the sterneedle cartridge, are mechanically and painlessly driven into the skin through a previously applied film of a stabilized solution of tuberculin.

Mrs. Barnard said that the skin testing program had been carried out in the San Angelo schools and was successful at a low cost.

Following Mrs. Barnard's talk, the association voted to purchase this much-needed testing equipment for use in Runnels County.

Mrs. Barnard was introduced by Mrs. Katherine Rodgers, executive secretary of the Tom Green County TB Association.

Approximately 30 directors and members attended the meeting. John Purifoy of Ballinger gave the invocation and Miss Ruth Morgan, vice president, was in charge of the business. Purifoy, the association treasurer, reported that the cash balance on hand as of Sept. 21 was \$1,326.27.

Dr. Green will be county chairman of the Christmas Seal Sale which will begin Nov. 15, and Bob McGarvey will serve as publicity chairman. Community chairmen will be named for the Seal Sale Drive at a later date.

Mrs. Bryan reported on the Seal Sale Conference held in Lubbock recently. Mrs. Bryan, and Dr. and Mrs. Green attended that meeting.

Attending the meeting from Winters were Mr. and Mrs. Al Libbe, and Mrs. Fred Young. From Crews were Mr. and Mrs. R. P. Petrie and Mr. and Mrs. Chester McBeth.

Home Town Talk—

(Continued from page 1)
ing situations throughout the world, we thought the following little story we picked up would be quite appropriate:

A man went bear hunting, and found a bear on the hillside. As he raised his rifle, the bear called out, "Can't we talk this over like two sober human beings?"

The hunter lowered his gun, "What's to talk over?" he asked.

"Can't we talk over?" said the bear, "What do you want me to shoot for?"

"Simple," replied the hunter, "I want a fur coat."

"All I want is a good breakfast," smiled the bear. "I am sure we can get together on this."

So the two sat down to work out an agreement. After a while, the bear got up—all alone.

They had reached a compromise. The bear had his breakfast, and the hunter was inside a fur coat.

Failed to have our football game predictions last week, but don't suppose it matters a whole lot, because seems we've dropped the thread somehow and get caught way off base: missed three of eight the week before. Done a little research, however, and believe the results this weekend will look like this:

Air Force over Kansas State.
Iowa over California.
Texas A and M over LSU.
Lamar Tech over ACC.
TCU over Ohio State.
Pittsburgh over Baylor.
Texas over Texas Tech.
Army over Boston.
Notre Dame over Oklahoma.
West Texas over Texas Western.

Pastor of Our Lady Of Mt. Carmel Church Moves To San Antonio

Father Julius Johnson, pastor of St. Mary's Catholic Church in Ballinger and in charge of Our Lady of Mt. Carmel Church in Winters, has been transferred to St. Mary's Parish San Antonio effective immediately, it has been announced. He has served in Winters for the past 4 years.

Father Johnson is a native of Texas and is graduate of St. Anthony's High and Junior College in San Antonio. He is a graduate of the Seminary of Philosophical and Theological Studies at the Demagenod Seminary in San Antonio.

Father Robert Knebsberger will replace the former pastor.

CARD OF THANKS

I am deeply grateful to the friends and neighbors who were so kind and thoughtful during my illness while at the hospital and since I have returned home. Your cards, letters, gifts and flowers were sincerely appreciated. My family joins me in expressing thanks to each of you. Mrs. Travis Downing 1tp

MEN'S OR LADIES'

PLASTIC RAIN COATS \$1.00

Each

NEW PLAIDS

LADIES' CAPRI PANTS \$1.00

LADIES' WASHABLE COTTON, Pair

SUPER KNIT

MEN'S KNIT BRIEFS

100% Quality Yarn. Regular 49c.

3 PAIR

DOUBLE \$ DAYS

See What \$ Buys

LADIES' PANTIES

BRIEF STYLE

Reg. 59c Pair, in Pink, Blue or White.

Sizes 5 to 9.

3 for

\$1.00

\$ DAY SPECIAL

BOYS' BELTS

WESTERN STYLE

All Leather!

Black and Tan!

SPECIAL!!

\$1.00

BEST \$ BUYS

Men's STRETCH SOX

DARK COLOR!

One size fits everyone!

3 Pairs

\$1.00

See What \$ B

FLOUR SACK SQUA

Big

Full Size

Bleached

5 for

\$1.00

70x90 BLEACHED

WHITE SHEET BLANKETS \$1.00

Each

FLUFFY

FEATHER PILLOWS \$1.00

Each

SALE! Solid Color . . . 100% Cotton Sanforized

MEN'S DRESS SHIRTS \$2.98

Blue, Tan, Grey, \$2.98 each

2 FOR

CORDUROY PIECE GOODS

Regular 98c Value! All Colors!
Special at . . .

79c Yard

Boys' or Girls'

Stretch ANKLETS

3 PAIR \$1.00



DOUBLE SEAT Combed Cotton Girls PANTIES

Regular 49c — White or Colors

3 PAIR \$1.00

MEN'S WHITE HANDKERCHIEFS

Nicely Hemmed!

10 FOR \$1.00

Winters Blizzard Hooded Sweat Shirts

White with Royal Blue Emblem!

\$2.98 each

BLUE OR GREY CHAMBRAY WORK SHIRTS

\$1.00 each



EXCITING

Sweaters

TOP EVERYTHING THIS FALL

SPECIAL PURCHASE! Newest Styles, Colors, Fabrics!
• BULKY SLIP-ONS • JAQUARDS • SLIP-ONS

\$2.98 to \$6.95

Save from \$1.00 to \$3.00 on every one!



Solid Color and Fancy Prints Sportswear FABRICS

The Best Buy we have had in this type of material . . . ALL VALUES TO 98c, NOW . . .

2 Yards \$1.00

LADIES' FLATS

\$2.98 Big selection . . .
Black, Red, Brown!
All new fall styles!



SPECIAL PURCHASE!

Girls'

Hooded CAR COATS

Sizes 3 to 6x . . . \$5.95

Sizes 7 to 14 . . . \$7.95

MEN'S WORK DUNGAREES

10-oz. Sanforized, Pair . . . \$1.98

LADIES' CAPRI PANTS

Finest textured cottons — guaranteed washable — perfect fit — invisible zipper closing — assorted colors. Sizes 10 to 18 . . .

\$2.98 Pr.



CHILDREN'S

CORDUROY CAPRI PANTS

Sizes 7 to 14 — Special

\$1.98 Pair

LADIES' SOLID COLOR ITALIAN WOOLEN SKIRTS

Sizes 10 to 18 \$2.98

PRE-SHRUNK . . . 90% WOOL — 10% COTTON

LADIES' SLACKS

Beautiful Plaids

\$3.98 Pair

Woolen Western COATS

"Land-N-Lakes" . . . Big Plaids . . . Solids
BIG POCKETS — FANCY YOKE BACK

\$19.95 ea.

WOOLENS 54 Inches Wide NEW FALL COLORS

\$1.98 Yd.

Get Yours Now!

Leatherlike Vinyl SURCOATS

Reg. \$8.95 Value
Gold, Biege, Green
Black

\$6.95

6 to 16

BIG TABLE COTTON PIECE GOODS

3 Yards
\$1.00

Boys' Corduroy

LONGIES

All Colors

98c Pair

Boxer Top

Sizes 3 to 8

HEIDENHEIMER'S

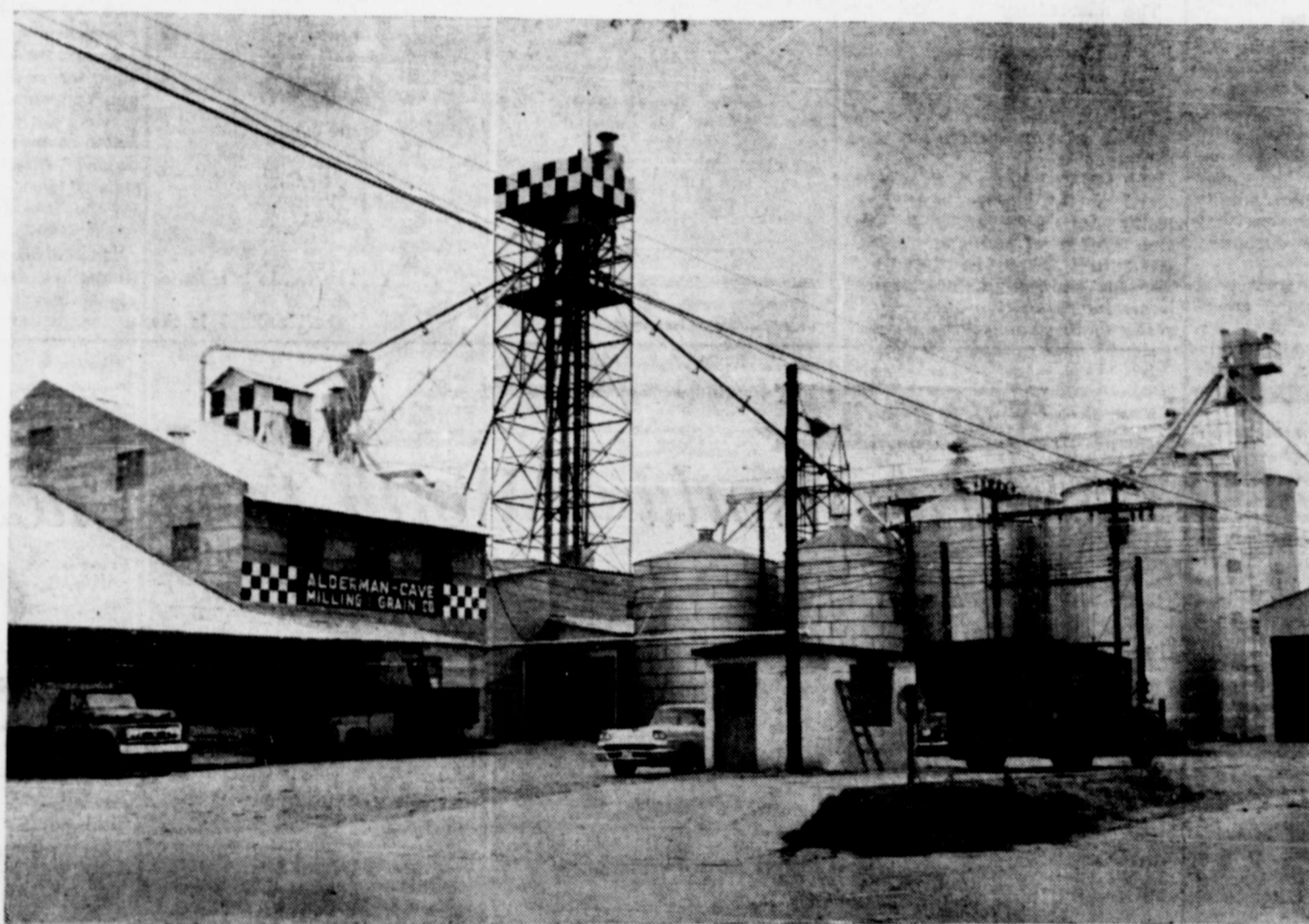
GRAND OPENING

SATURDAY,

SEPTEMBER 30TH

2 P. M. TO 4 P. M.

YOU'RE INVITED



Drawing for
Door Prize!

Coffee,
Cold Drinks,
Doughnuts!

YOUR PURINA DEALER!



MILL OWNERS: James Snyder, Weldon Edwards, Ray Alderman, and Charlie Cave.

Meet
Our
Staff!



MILL PERSONNEL: Front row, left to right: Fred Cortez, Doyle Newcomb, Mrs. Graydon Dean, Ray Alderman, Norman Wuisting; back row, left to right: Bill Arnold, Preston Barker, Oscar Brown, Albert Wuisting, Robert Bruns.

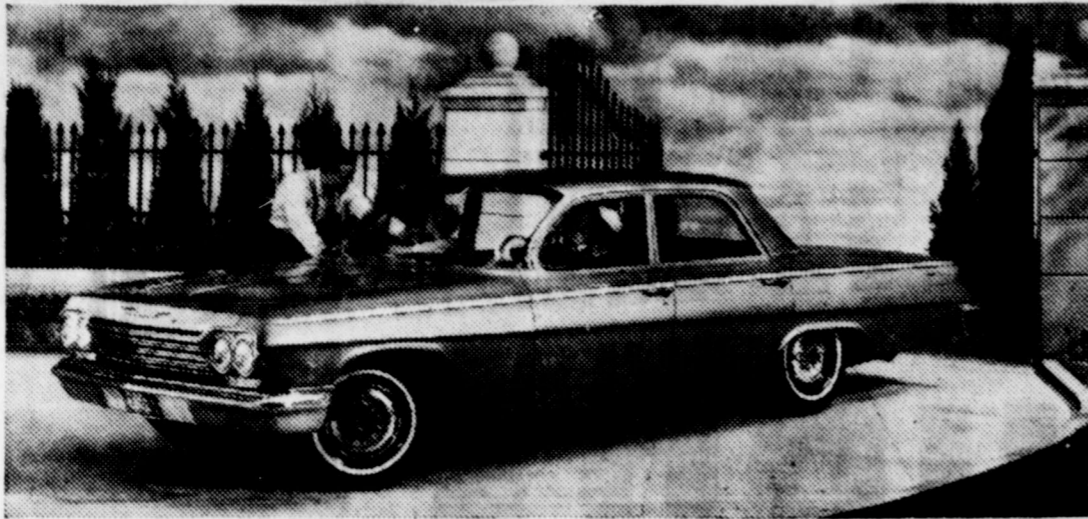
ALDERMAN-CAVE Milling & Grain Co.

West Dale Avenue

PURINA CHOWS

Winters, Texas

This Bel Air sedan is
One of 14 New 1962 Chevrolet Models



A distinctively new styling touch in both the front and rear end of the 1962 Chevrolets is a sharp departure from the sloping hood formerly used. The Bel Air 4-Door Sedan with twin wind splits on the hood is one of 14 new standard size passenger cars offered by Chevrolet in '62. The Bel Air models are exquisite, with new luxurious interiors and appointments. A new Chevy II series will also be shown by Chevrolet dealers when the 1962 passenger car lines go on display Sept. 29.

Chevrolet's 1962 Models Will Feature Extensive Restyling, Mechanical Change

Chevrolet's passenger car line-up for 1962 features extensive restyling and major mechanical changes for its standard models plus a new complete line of smaller cars to be known as Chevy II.

This will bring the company's 1962 passenger car line-up to 32 models - highest in history - available in Corvair, Corvette, Chevy II and standard Chevrolet lines. These cars will be displayed in Chevrolet dealerships beginning Friday, September 29.

The new Chevy II is larger than the Corvair but smaller than Chevrolet's regular car. Station wagons, a hardtop sport coupe and a convertible are included among nine models in the new line which emphasizes simplicity in styling and maximum functionality in design.

Although the Chevy II design is basically conventional, it offers new front-mounted four- and six-cylinder engines, integral frame and body construction with bolt-on front end and an industry exclusive in tapered plate rear springs. Both three-speed manual and automatic transmissions will be available.

From a styling standpoint, the standard Chevrolet for 1962 reflects the greatest change, although Corvair models and the Corvette will also feature a number of appearance changes as well as new exterior colors and interiors.

The new standard Chevrolet features a crisp, tailored look. The 1962 models have completely new sheet metal, grille work, bumpers and ornamentation, as well as new exterior colors and restyled interiors. New roof lines for sedans and the Impala sport coupe also highlight the new styling.

A number of mechanical changes and modifications will improve performance, durability and economy of 1962 models.

Among the major changes are a new 327 cu. in. V8 engine, a new weight-saving Powerglide automatic transmission and tires with advanced two-ply design.

The new 8 engine is rated at 250 horsepower. It replaces the 348 cu. in. engine except for use in heavy trucks. Its performance equals the 348, but fuel economy and engine operating efficiency are both improved.

The redesigned Powerglide will be used with the new V8 engine and both the four- and six-cylinder engines of the Chevy II line. Extensive use of aluminum helps save 85 pounds of weight.

The new tires give improved fuel economy and ride quality while retaining load carrying abilities, strength and durability of four-ply tires.

Heaters and built-in front seat belt anchors are standard equipment on all 1962 Chevrolet cars. A limited slip differential and air-conditioning are also available throughout the line of 32 passenger car models.

Adding to its fresh styling appearance, Corvair will have new twin ornamental grilles in front plus restyled emblems, tail lights and engine exhaust grille. As a result of the strong popularity of the sporty Monza models, the Corvair 500 station wagon will be replaced by a luxurious Monza station wagon with optional bucket seats.

Corvette for 1962 will display a different look through a new body side cove treatment, as well as new radiator grille and emblems. The higher powered 327 cu. in. V8 engine will replace the 283 cu. in. engine in this popular American sports car.

The new Chevy II, while being slightly larger on the outside than the Corvair, is designed to give passenger car and luggage space more nearly equal that of the standard Chevrolet. The car is 153 inches long and has a 110-inch wheelbase. It is 70.8 inches wide and 55 inches high.

We're proud to join in extending a big WELCOME

to
ALDERMAN-CAVE Milling & Grain Co.

Best Wishes on Your
GRAND OPENING

Saturday,
September 30

SPILL BROS. CO.

leaf and coil springs while providing friction-free ride quality.

The new rear springs are mounted in heavy rubber insulators for maximum noise isolation. The spring is a steel bar five feet long with variation in thickness and width to provide uniform stress distribution.

Economy of operation is emphasized in both the four-cylinder and six-cylinder engines designed specifically for the Chevy II. This will mark the first time since 1928 that Chevrolet has offered a four-cylinder power plant. The four-cylinder engine has a 153 cu. in. displacement and is rated at 90 horsepower. The six-cylinder unit has 194 cu. in. displacement and generates 120 horsepower.

Both automatic and three-speed manual transmissions are available in the Chevy II.

The body-frame integral design used by Chevy II provides unusual strength and torsional rigidity as well as weight savings. The highly functional design of the entire car allows maximum conversion of exterior size to usable interior space for passenger comfort and luggage storage. In addition, the unitized front end structure will decrease maintenance costs because of easier access of components and parts for maintenance, repair or replacement.

The wide customer choice available in the Chevy II is further accentuated by the 14 exterior colors which will be available along with color-keyed interiors. A full line of comfort and safety options will be available, including power steering and brakes.

VISITED IN DALLAS

Mr. and Mrs. V. E. Colburn returned home Sunday from a few days visit in the home of their son, Mr. and Mrs. Ben Colburn in Dallas. Mr. Colburn, a reserve in the 49th Division, is to report to Fort Polk Louisiana, October 15.

Waste of time is the most extravagant and costly of all expenses.—Theophrastus.

Smooth flowing lines accent
Chevrolet's Newest Line—the Chevy II



One of the nine models of Chevrolet's newest passenger car line, the Chevy II series, is this 4-door sedan which proudly reflects straight flowing lines with simply sculptured details. Reccessed single unit headlamps, a choice of four- or six-cylinder engines, and manual or automatic transmission are but a few of the many features found in this new line. The Chevy II's, along with the complete array of 1962 Chevrolet cars, make their public appearance on September 29.

Health Letter

More than 9,000 Texas men and women were fatally stricken last year by strokes. That is one of the most ominous words in the language today. What does it really mean?

The medical term is "cerebral vascular accident," because it is caused by cerebral vascular disease. The body's cerebral vascular system is the brain's network of blood vessels. Thus, cerebral vascular disease refers to diseases of vessels in the brain.

Brain cells require a good blood supply in order to work properly—more so than most other body cells. When something happens to that blood supply, the brain itself is impaired.

That something could be a hemorrhage, thrombus, embolus or a spasm. Each one of those key words is a major cause of strokes.

A hemorrhage (bleeding) is the

The Winters Enterprise, Winters, Texas, Friday, September 29, 1961

result of a break in a brain artery which allows blood to escape and damage surrounding brain tissue. Another name for strokes of this type is "apoplexy."

A thrombus is caused by a clot of blood forming in a brain artery, stopping the flow of blood to the part of the brain it supplies. But when a clot is formed in a diseased heart or elsewhere in the body and pumped to the brain to plug an artery, it is called an embolus.

A tumor, swollen brain tissue, or a large clot in another vessel may press upon a brain vessel to stop the flow of blood. This is called compression. A spasm is caused when a muscular artery constricts or tightens up, reducing the flow of blood to a particular brain area.

Most strokes do not produce immediate death. A large number of victims live for many years. An estimated two million people

who have had strokes in the United States live in them disabled because of them.

Present medical knowledge prevents some but not all. Certain conditions cause cerebral vascular disease—pressure, for example, and several conditions with blood clot formation to anti-clotting drugs. Vessel defects with which children are born can be corrected by surgery.

However difficult it is you like doing it, it is yet however effortless it may be, if you don't do it, it is work.

A florist who delivers arrangements is likely much tin foil and ribbon posies don't have a chance.

TODAY

A New World of Worth from Chevrolet for '62!



'62 Impala Sport Coupe—with a roof line that looks like a convertible's

'62 CHEVROLET Rich new styling with Jet-smooth ride!

Here's everything a car fancier could want. Fresh-minted style that comes to a climax in the sportiest sport coupe you've seen yet. A road-gentling Jet-smooth ride. A new choice of V8 skedaddle. Rich Body by Fisher interiors. Beauty that's specially built to stay beautiful. Here in '62 is more than ever to please you from the make that pleases most people.

It's like owning an expensive car without the expense. Check it over from its clean-thrusting prow to its rakish rear deck. Then—head for the open highway. That sittin'-on-satin feeling you get is Chevrolet's famous Jet-smooth ride at work. The standard six and V8 are triggered to do special things on regular gas, and for real hair-trigger reflexes you have a choice of four optional-at-extra-cost V8's with out-

put all the way up to 409 hp. ■ New steel front fender underskirts guard against corrosion. Even the heater and defroster come as standard equipment this year. This is the kind of car that will make you feel luxurious all over, and your Chevrolet dealer will be only too happy to show you how easy it is to have one of your own.



Corvair Monza Club Coupe

THE '62 CORVAIR MONZA

The car that puts sport in the driver's seat!

Step right up and meet the latest version of the car that's proved its mettle in the fiercest competition going—'62 Corvair. Bigger new brakes team up with Corvair's renowned rear-engine traction for just about the surest footed going on the road. A new Monza Station Wagon makes its debut. And all models sport freshly tailored upholstery inside matched by savvy new styling accents outside.



Chevy II 300 2-Door Sedan

HERE'S THE NEW CHEVY II

Modern basic transportation in a totally new line of cars

Here are all the solid, time-tested virtues you know you can count on from all the Chevrolet family—plus some surprises you've never seen on any car before. A full line of savvy new size models, each built a new way for easier service and maintenance. Thrifty? Choice of a frugal 4- or spunky 6-cylinder engine (in most models). Roomy? Sedans seat six solid citizens. Price? A real pleasant surprise!

See the '62 Chevrolets, the new Chevy II's and '62 Corvairs at your local authorized Chevrolet dealer's

WADDELL CHEVROLET COMPANY

WINTERS, TEXAS



OUTDOORS IN TEXAS

fisherman—not the fish—broke that 36-pound test line. Here's how it happened. When the fish made its run for freedom, the angler feared he might not have enough line on the reel. So he hauled back as hard as he could to check the run. Naturally the strain of the fish pulling in one direction, and the angler jerking in the other, parted the line.

Fish losses like this happen every day. It's the result of excitement and inexperience. Usually the angler could have landed the fish by playing it. Redfish aren't noted for long runs. Their runs are short, 20 to 30 yards at most, before they change directions.

So if that angler, who felt that the line was getting near the end of the spool, would have walked down the beach with the fish—or even waded out into the water, he might have landed it.

Many line breaks occur because the angler fails to periodically check the line for frayed spots. Let me point out here that line fraying usually occurs in the first few feet of the line. And here's why.

Every time you cast out, tremendous pressure is exerted on the line where it comes in contact with the rod-tip top. Eventually this will fray and weaken the line. Play it safe by cutting off a few feet of line every time you make a trip. Thus you will get rid of that part of the line subjected to heavy pressure and the greatest wear in casting.

You should frequently check the rod-tip top—particularly if you use nylon or monofilament line. These lines are extremely hard and in heavy fishing will wear grooves in the tip top.

Agate tip tops will crack and chip, and the sharp edges will cut the line. Replace faulty tip tops immediately.

Rust on the metal tip top will ruin a line. If you can't clean the rust off, replace the tip top.

Line comes in various pound tests. Its strength will remain constant unless the line is abused. This is particularly true with linen lines used in salt water fishing. Linen line stored wet will rot quickly.

It's better to practice good line maintenance than to lose a fish because of line neglect.

Regardless of the strength of the line, you weaken it every time you tie a knot in it. The degree of weakening, however, can be minimized by learning to use the proper knots.

The simple, ordinary square knot will cut line strength about 50 percent. Obviously a line testing out at 36-pounds will break at about 18 pounds at the point of

the knot. Best knot to use is the blood or jam knot. It's tied simply by running one end through the hook eye. Twist this end at least five times (preferably eight or ten times) around the standing end of the line. Then slip the end back through the loop between the hook eye and the first twist. Now run the end back through the big loop just formed and pull the knot tight.

It's easy to tie. It forms a neat knot that will not slip. But more important it decreases line strength at the point of the knot only by about 20 percent.

For example, with 36-pound-test line, this knot will reduce line strength at the point of the knot by a little more than seven pounds. For the sake of round numbers, let's say eight pounds. The weight needed to break the line would then be 28 pounds—which is a long way from the 18 pounds required to snap the line if a square knot is used.

A rod with the wrong kind of tip action will cause an angler to break lines.

The rod tip is a shock absorber. It takes up the shock transmitted by a fish on a sudden run, or the shock transmitted when the angler hauls back hard to bed the hook in the fish's mouth.

A springy tip allows the strain of the sudden shock to be transmitted to the line gradually.

With a very stiff tip, the strain on the line is quite sudden. Result: Pop goes the line and the fish goes free.

Next time you lose a fish, don't blame it all on the size of the fish. Stop and consider how you played the fish.

Then examine your tackle. If your tackle is okay and you "played it" right—perhaps you did lose a big one. Maybe even a record-breaker!

About the only two things a child will share willingly are communicable diseases, and his mother's age.—Wall Street Journal.

Almost every woman I have ever known says she has plenty of chances but her principles made her what she is today, a good woman.

How many of us feel that arbitrating when we feel sure we can lick the other fellow.

Use Enterprise Classified Ads.

fisherman—not the fish—broke that 36-pound test line. Here's how it happened. When the fish made its run for freedom, the angler feared he might not have enough line on the reel. So he hauled back as hard as he could to check the run. Naturally the strain of the fish pulling in one direction, and the angler jerking in the other, parted the line.

Fish losses like this happen every day. It's the result of excitement and inexperience. Usually the angler could have landed the fish by playing it. Redfish aren't noted for long runs. Their runs are short, 20 to 30 yards at most, before they change directions.

So if that angler, who felt that the line was getting near the end of the spool, would have walked down the beach with the fish—or even waded out into the water, he might have landed it.

Many line breaks occur because the angler fails to periodically check the line for frayed spots. Let me point out here that line fraying usually occurs in the first few feet of the line. And here's why.

Every time you cast out, tremendous pressure is exerted on the line where it comes in contact with the rod-tip top. Eventually this will fray and weaken the line. Play it safe by cutting off a few feet of line every time you make a trip. Thus you will get rid of that part of the line subjected to heavy pressure and the greatest wear in casting.

You should frequently check the rod-tip top—particularly if you use nylon or monofilament line. These lines are extremely hard and in heavy fishing will wear grooves in the tip top.

Agate tip tops will crack and chip, and the sharp edges will cut the line. Replace faulty tip tops immediately.

Rust on the metal tip top will ruin a line. If you can't clean the rust off, replace the tip top.

Line comes in various pound tests. Its strength will remain constant unless the line is abused. This is particularly true with linen lines used in salt water fishing. Linen line stored wet will rot quickly.

It's better to practice good line maintenance than to lose a fish because of line neglect.

Regardless of the strength of the line, you weaken it every time you tie a knot in it. The degree of weakening, however, can be minimized by learning to use the proper knots.

The simple, ordinary square knot will cut line strength about 50 percent. Obviously a line testing out at 36-pounds will break at about 18 pounds at the point of

Knock Out 1962 Root Rot Now

To reduce "dying-off" or root rot, a cotton farmer needs to know when dry weather is expected for 10 days or 2 weeks. When dry weather follows deep plowing, root rot will be reduced, says Harlan E. Smith, extension plant pathologist.

Soil should be plowed 6 to 18 inches with a disk or moldboard type. The drying of the soil that

follows help to kill the root rot fungus. Deep plowing and drying helps to kill old cotton roots and roots of susceptible weeds that harbor the root rot fungus.

Deep plowing plus the turning under of a large tonnage of old crop straw, stalks or leaves will give added insurance against root rot, Smith continues. The deep plowing and turning under of organic matter can often be done in one operation. Grain sorghum, small grains, clovers and winter peas, where adapted, are often turned under to supply organic

matter. Cotton burs have also been used. The organic matter must be turned under deep in order to be effective against root rot the following season.

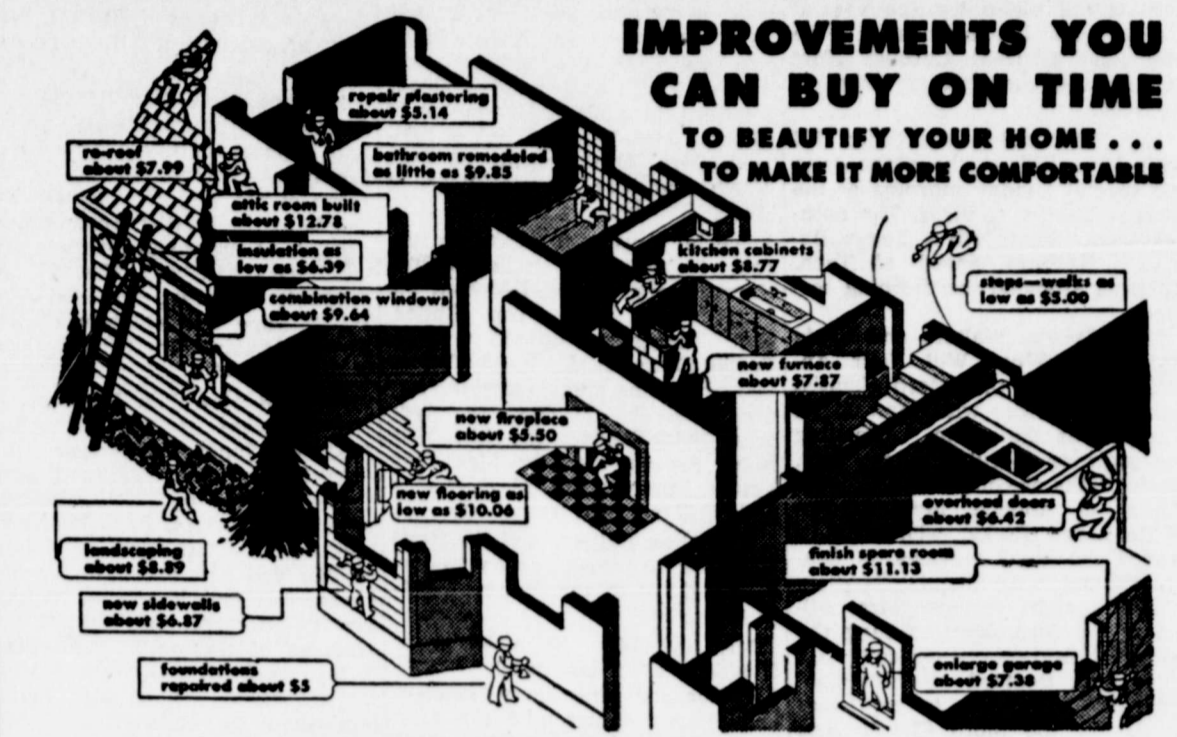
Following the deep plowing, rain may occur before the soil dries. When this happens the deep plowing should be repeated or a resistant crop should be planted, explains Smith. Crop rotation in itself will not reduce root rot. However, a rotation using deep plowing and burying of organic matter will reduce root rot.

We Don't File You Away:

INSURANCE PROTECTION CONSTANTLY REVIEWED

living costs rise, your insurance coverage does not rise. If you took out coverage several years ago, for example, chances are that it is not enough today. We never let such an occasion occur, because we review our client's insurance periodically. That means extra protection for you!

JNO. W. NOR MAN
The Insurance MAN



ABOVE FIGURES ARE APPROXIMATE MONTHLY PAYMENTS

Whether it's a small repair job or extensive remodeling or installation work, have it done now . . . enjoy the comfort of needed improvements while paying for them on easy monthly instalments.

Don't delay any longer...use our ABC Budget Payment Plan...payments arranged to fit your income...and you don't start payments until the work is completed to your satisfaction.

We are ready to help you with plans and valuable information. Come in and talk it over.

WINTERS LUMBER COMPANY
"HOME OWNED FOR HOME OWNERS"
P. O. BOX 836 — TELEPHONE PL4-5888
WINTERS, TEXAS

Thank You

ALDERMAN - CAVE Milling & Grain Co.

for asking us to furnish the Electric Motors & Start-Equipment installed for your new mill. We wish you much success on your . . .

Grand Opening

SEPTEMBER 30th

and through many years to come!

NATIONAL Electric & Manufacturing Co.
2099 Abilene, Texas

COME SEE

new Ford Trucks for '62

America's best selling van—and small wonder! Priced far under popular conventional 6½-ft. panels but has larger loadspace (204 cu. ft.)! It can save \$100 a year on gas, oil, tires.

Exclusive one-piece cab-body design gives Ford Styleside Pickups extra capacity and extra strength. Heavy duty in every way for heavy going all day! Carlisle riding comfort, too.

New 262-cu. in. Big Six for Ford Mediums includes more heavy-duty engine features than any other Six of its size. Good gas economy, too!

COME SAVE

with full-time economy

Come meet the trucks that make saving money a full-time business . . . the new Ford Trucks for '62 . . . a selection of over 600 models in all! Come see the truck that's right for your job, whatever your job. Come see the trucks you can buy and operate at lower cost . . . trucks that can save you money mile after mile, load after load, year after year!

Ford's full-time economy only starts with low price. It includes savings on gas and oil. It includes savings on tires and on maintenance—wherever there's a chance to save. **FORD TRUCKS COST LESS**

WORK OUT A DEAL.

COME IN!!!!

CROCKETT FORD SALES
WINTERS, TEXAS

MOVIES

"The Snake Woman"
The cinematic history of the snake-woman has been "struck" with such terror as with the insidious horror of the new edge-of-the-seat only at the State Theatre that a beautiful woman is a serpent! In "The Snake Woman," released through Artists, beautiful Susan Hayward portrays the torrid teen-age creature in a manner calculated to turn the blood of audiences as cold as her own.

the characteristics of the scientist's reptiles: unblinking eyes, cold-blood. When the superstitious townspeople burn the doctor's laboratory and house (scene is the moors of Northumberland at the end of the 19th century) the girl is raised in seclusion by a shepherd. Shortly after her disappearance, the legend of a snake woman rears Scotland Yard, and a scoffing, scientifically minded young investigator (John McCarthy) becomes involved with matters science does not yet understand.

"By Love Possessed"
The book which was hailed by critics as a major literary achievement and zoomed to the top of

the best-seller lists, has been made into a motion picture calculated to stir up an equally controversial storm of reaction. "By Love Possessed," starring Lana Turner, Efreem Zimbalist, Jr., Jason Robards, Jr. and Barbara Bel Geddes, opens in color Wednesday at the State Theatre, through United Artists release.

The theme of this story is love. Love viewed in all its aspects, from filial to fraternal, connubial to concupiscent. Threaded into this theme is the story of a staid and respectable lawyer whose safe and stolid world is threatened by a series of events that probe the heart of his private and professional existence. As Majorie Penrose, Lana Turner, one of the screen's most glamorous and popular personalities, plays the passionate woman who is torn between love for her husband—and for his best friend. As the husband, Jason Robards, Jr. brings to the screen all of the emotional voltage that electrified Broadway audiences with his work in "The Iceman Cometh," "Long Day's



Vincent Price, rear center, as Robur the Conqueror, surveys the havoc wrought by his fantastic flying ship in the year 1848, with his kidnapped prisoners, left to right, Henry Hull, Mary Webster, David Frankham and Charles Bronson, in scenes from American International's filmization of the Jules Verne classic, "Master of the World," opening Sunday at the State Theatre.

"The Rat Race"
The hard-hitting story of young moderns caught in the competitive rat race for survival in today's hectic world, which was dramatized so successfully in Garson Kanin's hit Broadway play, has been adapted by the film production team of Perleberg-Seaton into the Technicolor Paramount picture, "The Rat Race," due Saturday and Sunday at the Fiesta Drive In Theatre. Starring Tony Curtis and Debbie Reynolds, the romantic drama co-stars Jack Oakie, Kay Medford and Don Rickles with a trio of jazz favorites, Joe Bushkin, Sam Butera and Gerry Mulligan.

"The Rat Race" tells specifically of jazz musician Tony Curtis, who leaves his home town of Milwaukee to seek a career in New York City. There in the lower West Side slum neighborhood he rents a room from which Debbie Reynolds has just been dispossessed for non-payment of rent. Debbie is a disillusioned, cynical failure. Her show business ambitions stymied, she has been reduced to earning her living as a dime-a-dance hall girl. Since she has no place to go, the soft-hearted Tony, whom she considers a square, sells her on the idea of sharing the room with him, on a strictly platonic basis. She has no alternative but to accept his generous offer.

The sharp-tongued landlady, played by stage and screen star Kay Medford, has no objections as long as she is paid on time.

The harrowing experiences the young people have and the development of their romance, built on a growing admiration and respect of each other's principles, all played against the excitement of New York's "rat race," constitute one of the season's top motion pictures.

"Master of the World"
"Master of the World," filmization of the amazing Jules Verne story, marks the first time that American International Pictures president James H. Nicholson has produced a film. He has served several times as executive producer on pictures, however.

The famous Verne classic has always been a great favorite with Nicholson, whose company has consistently furnished the public with exciting film entertainment. For his first production chore he spared no expense and the film has the biggest AIP budget to date. He assembled a superior cast and all details of the film, including those of the fabulous airship were given the most meticulous attention. The result is a motion picture that can only add to the lustre of Verne's imaginative genius.

Starred in the film are Vincent Price, Charles Bronson, Henry Hull, Mary Webster and David Frankham. William Witney directed.

Richard Matheson scripted from the Verne materials, Les Baxter wrote the musical score and Daniel Haller designed the unique sets.

IN GEHRELS HOME

Mrs. Argene Hodge and children, Lisa and Linda, of Odessa came Friday to attend the Winters-Albany football game. They visited in the home of her parents, Mr. and Mrs. R. M. Gehrels and with Mrs. H. J. Hodge and other relatives and friends in Winters and Ballinger.

HERE FROM DALLAS

Mrs. Paul Eisenstein and children, Sharon and Donald of Dallas are visiting in the home of her parents, Mr. and Mrs. Harry Herman. Mrs. Jake Butler of Corsicana is also a visitor in the Herman home this week.

TO ENTER SERVICE

Doyle Buchanan of Bradshaw is leaving October 15, for Fort Gordon, Georgia, where he will be stationed with the 390th Civil Military Unit of Abilene.

**We extend a hearty
WELCOME
to
ALDERMAN-CAVE
Milling & Grain Co.
on the occasion of your
GRAND
OPENING
Saturday,
September 30
MAIN DRUG CO.
Main Radio TV**

**Get these—
1961 CHEVROLETS
at CLOSE-OUT PRICES!**

- ✓ Chevrolet Passenger Cars.
- ✓ Chevrolet Pickups.
- ✓ Chevrolet Demonstrator.

WADDELL CHEVROLET CO.
WINTERS, TEXAS PHONE PL4-5870

Congratulations

ALDERMAN - CAVE MILLING & GRAIN CO.

On the Event of Your

Grand Opening

SATURDAY, SEPTEMBER 30th

RIZA MANUFACTURING COMPANY

CLEBURNE, TEXAS

We wish to express our sincere gratitude for being asked to build and erect your new Washbutton Feed Mill. We wish you much success with your new modern facility. The service you are providing will strengthen the economy of the entire community and merits the best wishes of us all.



The Winters Enterprise

HILL & THOMAS, Publishers

Entered at Post Office, Winters, Texas, as Second-Class Mail Matter

SUBSCRIPTION RATES

One Year, in Rannels and Adjoining Counties \$2.00
Other Counties and States \$3.00

Any erroneous reflection upon the character, standing or reputation of any person, firm or corporation which may appear in the columns of this paper, will be gladly corrected upon due notice of same being given to the editor personally at this office.

Roger Babson

"How Many People Should a Bomb Shelter Accomodate For Two Weeks?"

Babson Park, Mass.— A featured article in Life Magazine for September 15, 1961 makes some statements regarding "fall-out" which need careful checking and analysis.

WHAT PRESIDENT KENNEDY DID NOT SAY

In the President's letter which preceded the article, the President said: "The government is moving to improve the protection afforded you in your communities through civil defense. We have begun, and will be continuing throughout the next year and a half, a survey of all public buildings with fallout shelter potential, and the marking of those with adequate shelter for 50 persons or more. We are providing fallout shelter in new and in some existing federal buildings. We are stocking these shelters with one week's food and medical supplies and two weeks' water supply for the shelter occupants."

Neither the President nor Life Magazine made clear the difference between the effect of the explosion of an H-Bomb and the resultant fallout. If an H-Bomb should strike a city, the blast would probably kill 97 percent of the

people. No ordinary "Fallout shelter" would be of any use. But the fallout which would drift from this explosion would also be deadly. However, if all the nation's people had proper shelters, 97 percent of the people not killed by the blast might survive the fall-out drifts.

COST OF FALLOUT SHELTERS

Even 3 percent of those in shelters who might die from fright or from other causes in the course of two weeks amount to about 5,000,000 people. Hence, the scope of the entire project of shelters is stupendous. I have had a survey made of an average home shelter; the minimum cost quoted is \$1850. This is for a shelter in a basement 100 miles from the center of a large city which might be bombed. As the distance becomes less than 150 miles, the price of the shelter increases. No shelter within five miles of where the bomb hits would be of any use. At least 90 percent of those within this radius of five miles would be killed under any conditions—shelters or no shelters.

WHAT DO INHABITANTS OF BERLIN WANT?

We are constantly told what Mr. Khrushchev wants; also what President Kennedy wants; but we have never heard what the people of Berlin want, or do not want. Of course they want food, water, and heat. They feel that the West Germans will see that they get these. But they certainly do not want a "shooting war" between

All Is Ready To Make '61 State Fair Biggest In History

All is ready for the 1961 State Fair of Texas, the most eagerly awaited event of the year for millions of Texans young and old. The Fair will present its 16-day "Exposition of Music" Oct. 7 through 22.

Theatrical highlights are Rodgers and Hammerstein's Broadway hit, "The Sound of Music," and the all-new edition of "Ice Capades of 1961."

There will be a spectacular "Torchtlight Parade of Music" around the fairgrounds each evening, with bands, beauty queens and floats representing many cities from all over the state in the line of march.

Twenty-five breeds of purebred beef and dairy cattle, swine, sheep and goats will be on exhibit in the Pan-American Livestock Exposition Oct. 7-15. The Junior Livestock Show will take place the second week of the fair. Fine show horses, Shetland ponies, Cutting horses, Quarter horses and Arabians will perform in the free horse shows in the Livestock Coliseum.

At least a dozen foreign countries will have exhibits in the Texas International Trade Fair, which also features an exotic International Bazaar. Most of the new 1962 model cars will be on display in the Automobile Show. The Agriculture Show will show how "Agriculture Touches You." Other exhibits ranging from art to astronautics include a full-size replica of the "Project Mercury" space capsule. The Future Farmers will have a "children's barnyard."

For the ladies, there will be model kitchens, free fashion shows several times daily, exhibits of the latest gas and electric appliances, and a fully furnished model home that promises to be a "house of surprises." The Women's Building will, of course, house prize-winning displays of needlework, foods, arts and crafts.

Russia and the Western Allies, with Berlin getting the worst of it all in the center of the fighting.

Therefore, as a practical matter, should one build a shelter here in the U. S. A. until it is learned that the well-to-do families in Berlin (both West and East Berlin) are building shelters? Another awkward question: How many people should such a shelter be built to accommodate for two weeks? Those living on farms and having no near neighbors can answer this question quickly; but in small cities or towns the answer is very difficult, where all are neighbors and friends of one another. It is one thing for a neighborhood or community to build a shelter which would accommodate several hundred; but to build for just one's own small family would, I should think, make one feel rather selfish.

WILL THERE BE A NUCLEAR WORLD WAR III?

All of the above boils down to the question of whether missiles with hydrogen bomb heads will be thrown at cities of the U. S. A. to cause their destruction? I don't believe they will be for many years to come. When I was in Berlin, Poland, and Russia two years ago, I was told by high Berlin officials that there must first be developed an accurate anti-missile missile.

There is none such now. Only bombs launched from airplanes or submarines have an accurate enough aim to destroy a large city. Such a city must be relatively near the seacoast. We are building up the defenses of these cities as fast as possible so that we will be in a position to use "anti-missile missiles" when we have them in storage. Such defense missiles are what Russia is now testing and it is silly to talk about such tests underground either by Russia or by the U. S. A.



MOUSE CHARMER—Striking the pose of an Oriental snake charmer, 11-year-old Heather Wilding plays a concert on her recorder. Her pet mouse, "Mozart," just loves the tune. She's from England.

There'll be free aerial acts twice daily, scores of band concerts and other special events and, naturally, a monster Midway with every conceivable type of amusement ride.

College and professional football in the Cotton Bowl includes SMU-Air Force Oct. 7, Texas-Oklahoma Oct. 14 and the Dallas Cowboys vs. the New York Giants Oct. 15 and the Philadelphia Eagles Oct. 22.

Highlight events include a gospel song festival Oct. 9, music festival Oct. 10, circus night Oct. 12, Dallas symphony spectacular Oct. 13, East Texas pageant Oct. 17 and western music jamboree Oct. 19.

FROM NEW MEXICO

Mr. and Mrs. Clifton Poe and children of Eunice, New Mexico were visitors here last week with their parents, Mrs. Fred Poe, Mr. and Mrs. F. C. Mills.

Use Enterprise Classified Ads.

HEALTH LETTER

'High Risk Groups' Should Get Flu Immunization

Between now and mid-December is the critical period for taking immunizing shots against influenza—particularly for people in "high risk groups."

Health and medical authorities are in unanimous agreement as to the probability of an upswing in influenza this fall and winter. Especially vulnerable, say the experts, are people with heart disease, pulmonary disease, diabetes and other chronic illnesses, persons over 65, and pregnant women.

Recommended vaccinations procedures, drawn up by the national advisory committee on influenza, have been mailed from the State Department of Health to all local health officials throughout the state.

Most of the 86,000 flu-triggered deaths between September 1957 and March 1960, were among people in these categories, the record shows.

Some Asian flu outbreaks are expected, since they come in two to three year cycles. Also, Texas is due for Type B flu outbreaks, which usually come in four to six year cycles.

Asian influenza has been dormant in Texas since March 1960, and it has been more than six

years since Type B has caused much of a flurry.

State Health Department officials say susceptible persons should be vaccinated early for maximum protection. Generally, the most troublesome time for flu in Texas is toward the latter part of December.

To reduce the hazards to persons in high risk categories, it is recommended that they be immunized with a multiple-virus vaccine—a product which will protect

against more than one disease—well before of the flu season.

Protective antibodies develop within two weeks of vaccination, so it is in the vaccine be administered before epidemics occur.

A second dose is approximately two weeks after the first. Persons immunized should be with a single booster year.

Subscribe Now To
THE ABILENE REPORTER - NEWS
"FIRST IN WEST TEXAS"

Morning, Evening and Sunday, \$2.50

Delivered anywhere in the City. You'll be as well posted News as your neighbors or anyone else.

BUFORD OWENS, AGENT
DIAL PL4-4786 — PL4-4711

AUTO INSURANCE

This could happen to the most careful driver! Don't risk heavy financial loss from auto accidents!

See us now sound, complete automobile insurance program

BEDFORD Insurance Agency

PROFESSIONAL DIRECTORY

Jno. W. Norman
ATTORNEY-AT-LAW
Winters - - - Texas

Bedford and Underwood
Attorneys-At-Law
General Practice - Winters, Texas

Dr. L. LaVarta Bellis
CHIROPRACTOR
X-RAY
Phone PL4-1212, Winters, Texas

BALLINGER MEMORIAL COMPANY
South Ballinger
P. O. BOX 655 TELEPHONE 2-4782
Monuments, Markers, Curbing, Vases and Statuettes.

H. D. HARWELL Sales Manager SCOTTIE DANFORD Representative NETTIE G. LUSK Office Manager 41eow

Congratulations--

ALDERMAN-CAVE Milling & Grain Co.

on the

GRAND OPENING

of your new
MILL AND ELEVATOR
Saturday,
September 30

WADDELL CHEVROLET CO.

24 HOUR AMBULANCE SERVICE

Dial
PL4-2331

Day or Night Including Sundays or Holidays!

WHEN DESIRED AIR AMBULANCE CAN BE ARRANGED ANY TIME! — ANY PLACE!

SPILL BROS. CO.
Winters, Texas

Now! Here's a NEW kind of bread . . . totally NEW! . . . totally DIFFERENT . . . totally WONDERFUL! You can actually SEE the difference! . . . FEEL the DIFFERENCE! . . . Yes . . . and you can TASTE the DIFFERENCE, too!

it's Miracle Mixed!

Every slice LOOKS just like CAKE!

No Holes!
No Streaks!

MEAD'S FINE BREAD
"It's Miracle Mixed!"

"THAT'S WHAT AN SAID!
it's Miracle Mixed!"

than on before son. Antibody two we it is be adri s occur ose is two rsons p uld be boost

NE

\$2.

well pos

ENT

NO

us now and, co mobile e progr

ura ger



This Falcon four-door sedan highlights the compact car's new styling for 1962. It still "distinctively Falcon" the top-selling Ford compact features a new grille, front fenders and hood and larger taillights, but still retains the inside-outside dimensions of its predecessors. On the interior, the instrument cluster has been revamped and there are new fabrics, styles and colors for all models. The new Falcon line, to be introduced by Ford dealers on September 29, will feature a total of 12 models.



The 1962 Ford Galaxie line features a crisp, fresh approach to Ford's classic styling. Shown here is the Galaxie 500 Sunliner convertible, one of twelve models in the Galaxie line. While the new Galaxie is slightly shorter and fractionally narrower than the 1961 model, the large passenger compartment is the same as 1961. Tailgate openings, coupled with Ford's convenient two-position door stops, make entering and leaving the Galaxie an easy and natural movement. The Sunliner top is stored at each roof bow to prevent "ballooning" when underway. The vinyl top is stowed under a color-keyed boot.

Ford's Will Feature Straight-Line Twice-A-Year Maintenance

With a crisp, fresh approach to Ford's classic styling, the 1962 Ford Galaxie features major engineering improvements that reduce owner maintenance to a "twice-a-year" level. For the first time, the popular Galaxie is being offered in two series: The new Galaxie "500" and the new Galaxie "500".

The Galaxie is the first production vehicle in automotive history to have a factory-installed 6,000-mile service interval.

Lee A. Iacocca, Ford Motor Company vice president and general manager of the Ford Division, said that in addition to the many self-maintenance features introduced on the Galaxie last year, 1962 Galaxies will offer:

- 30,000 mile lubrication for wheel bearings.
- A factory installed radiator coolant good for 35 degrees below zero and with a normal change interval of 30,000 miles or two years.
- Extended fuel filter life of 30,000 miles.

A recommended oil change interval of 6,000 miles.

"These features, coupled with our 30,000-mile major lubrication schedule, self-adjusting brakes, double-wrapped aluminized muffler, and specially processed underbody parts," Mr. Iacocca said, "mean that the average 12,000-mile-a-year Galaxie owner will require normal maintenance on his vehicle only once every six months."

All twelve 1962 Ford Galaxie models will be introduced in Ford dealer showrooms Friday, September 29.

STYLING

The sculptured body of the 1962 Galaxie gives the appearance of actual motion to its unmistakably classic Ford lines. This appearance of movement is emphasized in the recessed Thunderbird-like rear window, and in the forward thrust of the roof itself.

The rear fenders, with a peak line in their upper surface, parallel the roof line to further the impression of forward movement and envelop the large circular taillight in the rear. Three sculptured wind splits, one on each fender and another running lengthwise through the center of the hood, are repeated in effect in the rear deck lid and rear fenders.

While the new Galaxie is slightly shorter and fractionally narrower than the 1961 model, the large passenger compartment is the same size as 1961. Large door openings, coupled with Ford's convenient two-position door stops, make entering and leaving the Galaxie an easy and natural movement.

MODELS

There are 12 models in the Galaxie and Galaxie 500 series: Galaxie 2-and 4-door sedans; Galaxie 500 2-and 4-door sedans and hardtops and a convertible. In the station wagon series five spacious vehicles are offered: the 4-door 6-passenger Ranch wagon, 4-door 6- and 9-passenger Country Sedans, and 4-door 6- and 9-passenger Country Squires.

STATION WAGONS

All five new Galaxie station wagons have an easy-to-operate roll-down rear window in the tailgate. A power operated rear window is standard in both of the Country Squires and in the 9-passenger Country Sedan, and optional in the other two station wagon models.

The Galaxie 9-passenger wagons have the only forward facing third seat in the low priced car field, and the new, easy-to-fold second and third seats can instantly be converted into a flat, level cargo floor.

Tailgate openings on all of the wagons are more than 50 inches wide and the wagon's spacious interiors easily accommodate full-size 4-foot by 8-foot plywood boards even with the tailgate closed.

The Ford Falcon for 1962 boasts new styling, an expansion of the economy and maintenance-free features that have made it the best selling compact car in the country, and the addition of two new models.

The new models are a Falcon Squire station wagon and a Deluxe Club Wagon.

While describing the compact car's new styling as still "distinctively Falcon," Matthew S. McLaughlin, general sales manager of Ford Motor Company's Ford Division, pointed out that the Falcon has a new grille, new front fenders and hood, and larger taillights, but still retains the inside-outside dimensions of its predecessors.

On the interior, the instrument cluster has been revamped and there are new fabrics, styles and colors for all models.

In addition, Mr. McLaughlin stated, 62 engineering improvements have been incorporated into the 1962 models.

FROM AUSTIN

Mrs. Z. B. Morgan, former residents of Winters, visited friends here the past weekend.

HERE FROM AUSTIN

Kleta Gerhart, student in Texas University at Austin, visited her parents, Mr. and Mrs. H. F. Gerhart the past weekend.

A man in Georgia has invented a mechanical listener to help public speakers develop confidence and relieve tension. If the gadget can be perfected to say "Yes, Dear" every five minutes, it could become a necessity in every home. — Cleveland Plain Dealer.

Prison Rodeo Will Offer Double Feature Attraction

Huntsville—A double feature attraction, plus the best in convict contests will highlight the opening performance of the 30th Annual Texas Prison Rodeo here Sunday, Oct. 1, at 2 p. m. in the prison's 30,000-seat stadium.

Fats Domino, nationally-famous jazz pianist and singer, will make a personal appearance, as will lovely Gee Gee Powell and her team of Alaskan Huskies from St. Peter, Minnesota. Gee Gee has the only group of performing Huskies today who have enjoyed success in numerous appearances over the nation.

Along with the star performers, 40 of the prison's toughest inmate riders will attempt to tame tougher prison rodeo stock—the best assembled in the prison's \$1 million arena.

There will also be several inmate entertainment groups featured and the Goree Girls from the women's unit of the Texas Department of Corrections.

clude calf roping, a girl's barrel race, trick riding and a top flight mounted quadrille.

For the succeeding Sunday rodeos, the artists making personal appearances will be Rex Allen and his horse Koko on Oct. 8; Ernest Tubb, folk song star, on Oct. 15; U. S. Bonds, recording artist and Clu Gulager (Billy The Kid) on Oct. 22; with Chuck Connors of "The Rifleman" TV series on Oct. 29.

Net proceeds from rodeo ticket sales are placed in the inmates' welfare fund which makes it possible to furnish rehabilitative services not allocated by the state.

The hardest thing for many a young mother to learn is that other people have perfect children, too.—Arcadia (Wis.) News-Leader.

It's the American free enterprise system in action: The home with the uncut lawn is where the boy lives who has the power mower over at the neighbors where he gets paid for his work.—Fairfield (Ia.) Ledger.

We don't care for chaos, but if it's less expensive we might be willing to try it.

BIG IEH HOMES READY TO LIVE IN

For as little as

\$42⁰⁰ per month

Less Than You'd Pay For A "Shell" Alone

NO CASH NEEDED ON YOUR LAND
See Model Home Display
On the Novice Highway

ALFREY Lumber Co.

Congratulations

ALDERMAN - CAVE Milling & Grain Co.

on the occasion of the

Grand Opening

of your NEW MILL and ELEVATOR
and RETAIL FARM STORE

We are glad to be associated with you in offering to the
Livestock Raisers and Farmers the Best in Insecticides!

RES-TEX Insecticides, Inc.

Box 664 San Angelo, Texas

The Ford in your future is here today!

Starting today at your Ford Dealer's, you will discover a line of Fords so long, so new, so varied that everyone will find his personal Ford—the car that fits his pleasure and his needs *precisely!* ■ For those who want a true luxury car, there are two distinguished new series of Galaxies—both swift as a rumor, silent as a secret. With Thunderbird styling, and quality that sets a new industry standard, the 1962 Galaxies give you every essential feature of far costlier cars. ■ If you are looking for economy without

compromise, look to America's favorite compact: this year there are more Falcons than ever to choose from—13 in all. ■ Wagon fanciers will find unprecedented variety—from a new wagon that seats eight to a Falcon Squire Wagon with the rich woodlike finish of the famous Country Squire. ■ Pick the Ford in your future with this confidence: every 1962 Ford is built to a standard of quality so high that it will change all your ideas of how fine, how quiet, how enduring a car can be.



GALAXIE / 500 CLUB VICTORIA (foreground)
... GALAXIE TOWN SEDAN (background)
... The Galaxie / 500—new in name, new in luxury—is for those who want all of the elegant extras. The 1962 Galaxie makes

it easier than ever to move up to fine-car luxury—at the low Ford price. All Galaxies are beautifully built to be more service-free. They go 30,000 miles between major lubrications, 6,000 miles between oil

changes and minor lubrications. Brakes adjust themselves automatically.



FALCON SQUIRE WAGON ... Brand new for '62, it's sleek and sophisticated. Inside, it is available with Futura bucket seats and console! Outside, it has elegant woodlike steel side paneling.



FALCON FORDOR SEDAN ... Just one of 13 Falcons for 1962, this 4-door sedan has an improved version of the Falcon Six engine that last spring recorded the best gas mileage for a Six or Eight in the 25-year history of the Mobilgas Economy Run.



Features of the future—now

CROCKETT FORD SALES

WINTERS, TEXAS

State Capital Highlights

There Are Many Reasons Why Gov. Price Daniel May Call Special Session

By VERN SANFORD
Texas Press Association

As the weeks go by and new emergencies arise, Gov. Price Daniel finds more reasons for calling Texas Legislators back to Austin for another special session. In addition to the Governor's unfinished program, Hurricane Carla has produced other reasons. It is definite now that the Governor will ask for more money for the Highway Patrol and for the National Guard. He had to advance money to the Guard, from his emergency fund, to pay salaries and expenses of Guard units called up for hurricane duty.

Major General James E. Taylor, the state adjutant general, said that the 2,300 men and 800 vehicles called out for hurricane duty made up the largest peacetime operation in Guard history. After Governor Daniel's aerial tour of the hurricane-struck coastal area, he estimated that some 3,000 lives would have been lost had it not been for the organization of civil defense, coordinating with local groups, to evacuate the area.

He also estimated \$400,000,000 loss to public and private property. "I can see now that we need to provide more money for the National Guard and we need to provide more Highway Patrolmen, too," said the Governor. "I am sure I will add those to the call for a special session."

Rep. C. W. Pearcey Jr. of Temple proposed that the legislature permit cities and counties to issue bonds to make loans to disaster victims.

Speaker James A. Turman asked the House general investigating committee to start an inquiry into the payment of insurance claims as a result of Carla. He said many hurricane victims were surprised to learn that much of the damage was not covered by insurance. Adjusters held that their windstorm and hurricane policies did not include flood damage even though caused by the hurricane.

Governor Daniel, irked over the adjusters' interpretations, urged

policy holders not to be too hasty in settling their claims.

STORM CROP DAMAGE

The U. S. Department of Agriculture at Austin says the recent hurricane caused the most extensive wind and rain damage to crops, fields and pastures, ever experienced.

Of the prospective 100,000 bales of cotton in the fields, about \$11,000,000 worth was probably lost, the USDA said. Additional losses will result from grade reductions, the agency states.

JANUARY SESSION TALKED

Chances are that Daniel will have legislators back in Austin during January.

Rep. Murray Watson of Mart suggests that Daniel set up a grass-roots committee of citizens to bring in proposals for removing inequities in the new sales tax law for action at the special session.

Comptroller Robert S. Calvert continues to explain the law. He ruled that the American Red Cross is exempt from the sales tax on its purchases, since it is an agency of the Federal government.

Calvert is studying a request from some large industrial firms that they be allowed to be "direct" payers of the tax. Theory is that life would be simpler if they could keep records and pay the tax once each quarter, instead of paying it hundreds of times a day in the normal course of business.

TAX DOLLAR ANALYZED

Texas Legislative council has taken a new look at where the State's tax dollar comes from and where it goes.

Study reveals that 52 percent of it is derived from the several types of sales taxes levied in the state, including 15.8 percent from the new 2 percent limited sales tax.

Oil and gas production and severance taxes account for 19.1 percent business taxes 11.4 percent motor vehicle registration fees 9.5 percent, state property taxes 4.1 percent, inheritance tax 1.3 percent, others 2.6 percent.

Motorist get tapped for 33.9 percent of the tax dollar, including

the motor fuel tax at 21.4 percent, the sales tax at 3 percent, and registration fees at 9.5 percent. Nine percent comes from tobacco taxes and 2.2 percent from alcoholic beverage levies.

Our free public school system is taking 33.9 percent of the tax dollar. Hi-ways and roads are next at 26.8 percent. Public welfare gets 15.8 percent. Higher education comes in for 9.6 percent, while health, hospitals and special schools account for 4.5 percent.

NEW FARM ROADS IMPROVED

A one year program calling for construction of 613 miles of new farm to market roads costing \$15,000,000 for this purpose in the second half of the biennial appropriations bill.

Governor Daniel cut out the second year allocation in order that more flexibility might be attained in providing maintenance for the farm roads system.

Since 1949, under the Colson-Briscoe act \$15,000,000 annually have been earmarked for the construction of farm to market roads, causing all maintenance costs to come out of trunk highway funds.

While this arrangement was necessary for many years, to build up farm road mileage, the highway commission says the problem now is financing the maintenance of these roads. Therefore, at least a portion of the earmarked funds needs to go for this purpose.

Action on this matter is expected in the next special session of the legislature.

OIL PRODUCTION CUT

Allowable oil production in Texas for October has been reduced by an estimated 48,490 barrels per day, on order of the Railroad Commission. Order was based on estimated market demands.

An eight-day producing pattern was ordered for most of the state. This will result in a total allowable production of 2,683,214 barrels daily.

Eleven out of 12 major purchasers of Texas crude oil had recommended the eight-day pattern. Sun Oil Company suggested nine days of production.

TEXAS GETS MOON ROCKET LAB

Selection of Texas as the site for a laboratory to develop the nation's first moon rocket was hailed by Governor Daniel as one of the most important signs pointing to future progress for the state.

The Federal government's choice of Harris County for the \$600,000,000 space laboratory

means that some of the world's most important work in the peaceful conquest of outer space will be undertaken at the location near Houston," said Daniel.

"It will attract scientific personnel and plants to the state and increase the importance of the Houston area as a center of civilian, military, space and medical research," he observed.

RETAIL SALES INCREASE

Retail sales increased seven percent during August, the Bureau of Business Research at UT reported. The impending sales tax which went into effect September 1 was called a major factor in the increase. Namely, buying before the tax went into effect.

It was referred to as a "brisk rise" compared to the two percent decline sales took during July.

Furniture and appliance stores led the field with a 23 percent increase for August, where the usual increase from July to August is one percent.

Apparel stores also increased, primarily with the back to school rush for clothes. Steady increases were forecast because of a Texas birth rate considerably higher than the national average.

Births in the first six months of this year totaled 121,796 compared with 115,730 during the first half of 1960.

NEW MEDICAL SCIENCE

Two University of Texas scientists are looking into a new branch of medical science through which it may some day be possible to determine in advance a person's susceptibility to certain diseases and ailments.

Drs. Robert J. Miller and Frank L. Seigel, reporting on the new science called "propetology" in the American Journal of Medicine, say the technique needs only to be developed, that it must be based on increased knowledge about individuality in the areas of anatomy, physiology and biochemistry.

Knowing in advance who might get what, the scientists say it may be possible to avoid such diseases as gout, arthritis, atherosclerosis, muscular dystrophy, multiple sclerosis, cardiac and circulatory diseases, cancer, allergies and num-

erous other types of diseases and ailments.

"There is probably no single disease among those mentioned that might not be prevented, at least to a substantial degree, if we knew what the roots of resistance are and took appropriate measures," they said.

Zone 3 Soil Conservation District Elections Set

Zone 3 residents of the State's 182 soil conservation districts are reminded by Lynn Pittard, extension soil and water conservation specialist, of the importance of the election coming up on October 3. The farmer or ranchman elected will serve on the Soil Conservation District Board for the next five years.

Pittard explained that a qualified voter is a Zone 3 landowner who is 21 years of age or older. Wives of eligible landowners can vote and should, said the specialist, because they have an interest in their soil conservation district and its programs.

Soil conservation districts are political sub-divisions of the State of Texas, and by law their governing boards are charged with the responsibility of carrying out a soil and water conservation program in their districts. Through them such items as technical service, equipment, leadership in small watershed projects and by law their governing boards are charged with the responsibility of carrying out a soil and water conservation program in their districts. Through them such items as technical service, equipment, leadership in small watershed projects and many other services are provided to cooperating landowners.

Local county agents or soil conservation district supervisors can supply information on the election and also on how interested farmers or ranchmen may become district cooperators, Pittard said.

No Texas hunting or fishing license is transferable.

Congratulations
ALDERMAN-CAVE
Milling & Grain Co.

on the occasion of the

OPENING
GRAND

of your new and modern

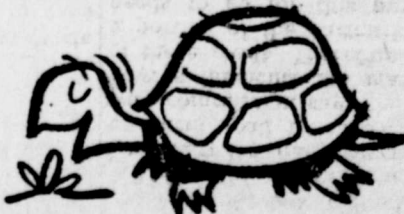
Mill and Elevator

WINTERS
LUMBER CO



COST OF LIVING?
'way up here!

PRICE OF ELECTRICITY?
'way down here!



21% DOWN

Since 1950, living costs have been going up, up, up.

Since 1950, the average cost of a kilowatt hour of electric service to residential customers served by West Texas Utilities Company has gone down 21%!

Electricity costs so little - you can afford to use lots of it. Start living better electrically, today.



Congratulations

ALDERMAN-CAVE Milling & Grain Co., on the

GRAND OPENING

of your new and modern

MILL and ELEVATOR

SEPTEMBER 30th

We thank you for asking us to help the engineering and building of one of West Texas' Finest and Most Modern Milling and Elevator systems

We wish you much success in your venture!

AMERICAN CONVEYOR CORP.

Box 288

Ft. Worth, Texas

Phone AX 3-156