



BAILEY COUNTY JOURNAL

'The Community of Opportunity-Where Water Makes the Difference'

Weather

	HIGH	LOW	Prec.
September 15	81	56	
September 14	85	55	
September 13	85	57	
September 12	85	57	0.48

Rainfall Year to Date: 13.23

VOL. 10 No. 37

10 PAGES

Published Every Sunday at Muleshoe, Bailey County, Texas 79347

10 CENTS

Sunday, September 16, 1973

around muleshoe with the journal staff

The Sherman Imans recently spent ten days vacationing in the Ozark Mountains in north-west Arkansas. While there they visited the Walter Harrisons, who recently moved there. The Imans report a wonderful time with the Harrisons, boating and fishing at Leaver Lake on Labor Day.

Recent visitors in the home of Mr. and Mrs. Weldon Eagle were her parents Mr. and Mrs. T.C. McWilliams of Sudan and her brother, Mr. and Mrs. Mike McWilliams of Lubbock.

Mr. and Mrs. Jimmy Evans of Wichita Falls visited their parents, Mr. and Mrs. Bill Loyd and Mr. and Mrs. J.D. Evans. They were enroute to Red River and will return this weekend on their way home.

Mrs. Jessie Robinson visited from Thursday until Sunday with her daughter and grandchildren, Mrs. James R. Boron of Lubbock.

Mrs. Lorena Evans of Huntsville, Ark. is visiting her son Mr. and Mrs. J.D. Evans and granddaughter Mr. and Mrs. R.G. Bennett III and children.

Cont. on Page 3, col. 1



BELL PEPPERS MOVING OUT Ed Peace, sales manager and Dave Rogers l to r, partner and general manager are shown checking out this area's super 1973 bell pepper harvest. Trucks have been leaving this shipping point to deliver peppers as far away as New York City.

Area Bell Pepper Harvest Underway

Season Payroll Hits \$25,000 Weekly High

Beef Prices Thaw

AMARILLO, Tex.--Prices on beef have been officially thawed by the Cost of Living Council. But it is too early to tell what the immediate effect is going to be, says Dr. Charles Smallwood, dean of the West Texas State University's School of Agriculture.

"We really are experiencing a kind of indefinite situation," Smallwood says. "In the very near future, within the next few days, we should probably see an increase in price because people will be beginning buying beef again."

"When that happens, wholesalers and retailers are going to have to stock up again, because they have been a little short."

Local Talent To Star In Musical

The Lubbock Theater Center is preparing for its season opener, the captivating musical "The Unsinkable Molly Brown". The music and lyrics are by Meredith Wilson and the play skims the high points of Molly Brown's life from the very poor days in Hannibal, Missouri to the pinnacle of her reknown after she survives the sinking of the Titanic. Molly is played by Jane Branscum Burrows. She is the daughter of Mr. and Mrs. Thuro Branscum of Route 4 and the daughter-in-law of Mr. and Mrs. Olan Burrows of Muleshoe.

The Muleshoe area bell pepper harvest is now in full swing with truckloads of bell peppers being shipped throughout Texas and the eastern United States.

The firm of Robert Ruiz, Inc. have been shipping bell peppers not only to wholesalers in Texas but to the Kroger Company of Cincinnati, Ohio who is the third largest grocery chain in the United States. Also peppers are being shipped to Winn-Dixie, a large grocery chain in Jacksonville, FL, as well as to wholesalers in New York. The shippers expect to have Muleshoe bell peppers on the West Coast in Las Angeles, CA, before season end.

Forty people are employed in the local Ruiz packing shed plus 150 employees harvesting in the field. Robert Ruiz and Dave Rogers, owners of the local shipping operation, report that their volume has doubled each year for the past three years. Also it has been reported that the operation maintains a \$25,000 payroll during the two to two and one-half month harvest period.

\$500 an acre. The Muleshoe area peppers are estimated to produce approximately 10 tons or 20,000 pounds per acre. This is approximately twice the average yield per acre in the valley.

A recent visitor of Muleshoe who inspected the bell peppers operation was Jerry Kachtik from Weslaco, Texas, Kachtik is head buyer for Texas and the south west area for the Kroger Company.

This year 150 acres of peppers were planted in this area along with 75 acres of cucumbers. This is a 60 acre increase in peppers and 25 acre increase in cucumbers over last year.

A Robert Ruiz, Inc. spokesman said the shipping facilities were to be expanded for the 1974 year. It was reported that an increase in the number of acres to be planted in bell peppers in 1974 was anticipated and the plant would be equipped to process 900 bushels of peppers per hour. At the present 400 bushels per hour is the maximum that can be processed.

The peppers are shipped out in refrigerated trucks and kept at a temperature between 38-40 degrees until they reach the market.

Harry Lee, local vegetable grower, is the area representative for Robert Ruiz, Inc. whose headquarters in Edinburg, Texas.

The operators of the ship-

Cont. on Page 3, col. 3

Mules Run Past Mustangs 32-16

Muleshoe evened their record this season, 1-1, by cruising to an easy victory over Olton, 32-16. The Mules were in control of the game from the very start as David Wheat, tailback for Muleshoe, pounded out ground consuming runs. Wheat finished the game with 136 yards and two touchdowns. The defense of the Mules was in Olton's back field nearly as often as were Olton's backs, sacking

the quarterback for huge losses and causing three interceptions. In the first quarter, Muleshoe capped a short drive with a 5 yard TD run by Wheat, all set up by the Mule's Joe Ellzarraz interception of an Olton pass. On the PAT, Olton was penalized half the distance to the goal for roughing the kicker. OB Don Long then took it in from the first yard line. In the first quarter Muleshoe defense held Olton to a mealy 14 yards.

During the second quarter Wheat capped a 51 yard drive with an 11 yard TD run. On the PAT try Long fumbled the snap from center but picked up the ball and ran it in for the 2 point conversion. Muleshoe's final first half score came on a 34 yard scoring pass from QB Dong Long to TE Perry Stockard. Wheat kicked the extra point. First half score Muleshoe 23, Olton 0.

Muleshoe built their lead when Olton forced to kick from their own end zone, mishandled the snap for a safety. Later in the quarter, FB Terry Stewart bulled his way for a three yard TD run, ending a long drive. Olton scored all 16 points while Muleshoe's reserves were getting in the action during the fourth quarter. The most spectacular of which was a 52 yard TD run by Olton's LB Glen Johnson with a stolen pitchout. OLTION 0 0 0 16-16 MULESHOE 8 15 9 0-32 MULES

First Downs	10
Rushing	201 yards
Passing	60 yards

Passing Att.	8	Compl.	2
Passes Intercepted	3	Fumbles Lost	1
Penalties	9 for 80 yards		

OLTON

First Downs	4		
Rushing	84 yards		
Passing	27 yards		
Passing Att.	14	Compl.	4
Passes Intercepted	4	Fumbles Lost	2
Penalties	5 for 25 yards		

Local TSTA Attends Meeting In Lubbock

Officers and Committee Chairmen of the Muleshoe Local Texas State Teachers Association attended a District 17 Workshop in Lubbock Wednesday evening.

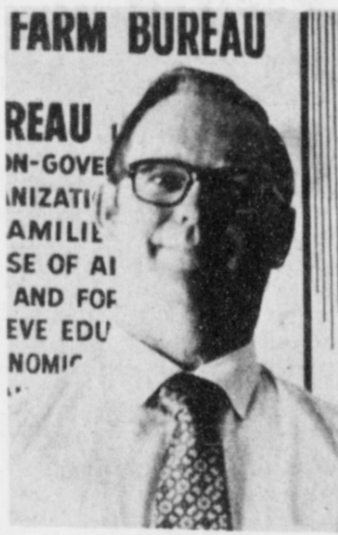
Johnny Clark, State TSTA President from Baytown, was the keynote speaker at the general assembly and gave an inspiring talk on "This Is What We Want The Workshop To Mean To You". After the keynote address, our own Lucy Faye Smith, District President Elect, gave the location of the rooms for various discussion groups. Individual members then attended the discussion group that pertained to their particular responsibilities.

Those teachers and administrators attending from Muleshoe were: Neal Dillman, Tom Jinks, Elizabeth Watson, High School: Bob Graves, Marcus

Cont. on Page 3, col. 3

Muleshoe Gas Retailers Partially Closed Saturday

On Saturday morning in Muleshoe, various gas station retailers closed for an undetermined length of time to protest the government price ceiling on retail gasoline. Government regulations have allowed the gasoline wholesaler to increase their price one cent per gallon. However, retailers, due to government regulations are unable to pass this raise onto the consumer.



LOUIS STALLINGS

Hunters In Colorado Must Have Certificate

Anyone wishing to hunt in Colorado and several other states this year and was born on or after January 1, 1949 will have to have a Hunter Safety certificate before he or she will be eligible to hunt.

This Hunter Safety certification will eventually be nation wide. It is sponsored by the National Rifle Association.

Cont. on Page 3, Col. 7

Baptist To Hold Revival Sept. 20-30

The Longview Baptist Church will hold a revival September 20 thru September 30 with only night services beginning at 8:00 p.m. W.B. Kittrell will lead the singing. Rev. P.A. Mitchom is the new pastor.

Special music will be presented every service along with prayer service. Young people will meet at 7:30 till 8:00 p.m. The meeting will end with a covered dish dinner September 30.

The new minister, P.A. Mitchom, recently moved to the Longview community from the Fairview Baptist Church in Seminole. He has been in the ministry for 20 years and has a son and a daughter who are both married.

Stallings Awarded CLU

Louis Stallings, Agency Manager, Bailey County Farm Bureau was awarded the coveted Chartered Life Underwriter designation at National Conference Exercises of the American College of Life Underwriters in Philadelphia, Pennsylvania on September 7.

The American College of Life Underwriters grants the CLU designation to persons engaged in activities relating to the insuring of human life values and who pass a series of professional examinations and meet the stringent experience and ethical requirements of the College. This year more than 2,300 men and women will be awarded the designation, bringing to 30,000 the number of people who have received it since the College was founded in 1927.

The CLU program was established to meet the professional education needs of the men and women who provide life and health insurance service for the public. The courses cover such areas as: fundamentals of life and health insurance; group insurance, health insurance and pensions; law, trusts and taxation; economics and finance; and business in-

Cont. on Page 3, col. 2

Payments Limited To \$20,000 And No Set-Aside Required

The Bailey County office of ASC has announced the following major provisions released by the US Department of Agriculture of 1974 Upland Cotton and Feed Grain Programs.

1974 Upland Cotton program announcement: The National Base Acreage Allotment is 11,000,000 acres for 1974.

There are no set-aside requirements for 1974.

There are no conserving base requirements for 1974 through 1977.

There will be no preliminary payments. Any payment due will be made after January 1, 1975.

Any program payments to be made will be based on the target price of 38 cents per pound for 1974. If the average market price received by farmers during the 1974 calendar year is at or above 38 cents per pound, no deficiency payment will be made. However, if the average price is below 38 cents, the producers will receive a payment which will be the difference between 38 cents and the higher of the

average market price or the loan level.

The planting of cotton is still required in order to be eligible for payment, except that the allotment acreage not planted because of drought, flood, other natural disaster, or condition beyond the control of the producer is eligible for payment.

A farm may qualify for a special payment if any part of the allotment was prevented from being planted or the farm does not produce two-thirds of the farm's expected production because of drought, flood, other natural disaster or conditions beyond the producer's control. Details regarding this special payment will be included in an amendment to 5-PA.

The 1973 Act limits the total payments to any one person under one or more of the annual programs for Upland Cotton, Feed Grains, and Wheat to \$20,000. This limitation does not apply to loans; however, it does include both the

deficiency and special payments.

A preliminary loan rate of 25.26 cents per pound, applicable to middling one-inch upland cotton (micronaire 3.5 through 4.9) net weight, at average location in the United States. The preliminary weight, States. The preliminary loan rate may be adjusted downward if world prices should decline.

The skip-row planting rules are unchanged from those in effect for 1971 through 1973 crops.

The 90 percent planting provision and loss of allotment are the same as under the 1970 Act.

The new Act authorized transfers by lease, sale or owner to nonallotment farms.

Producers may substitute any non-conserving crop (excluding Marketing quota and sugar crops) to protect the allotment and may also protect the allotment with a conserving crop used for hay or for grazing.

Feed grains for 1974-77 will include corn, grain sorghums and barley.

Cont. on Page 3, col. 1



WHEAT SCORES..... TB David Wheat scampers for one of his two touchdowns during the game with Olton. Muleshoe defeated the light but game team.



PLANE CRASHES An Amarillo Lawyer, Ronnie Posey, was critically injured Wednesday when his light Cessna 150 took off from Muleshoe Airport, slamming into the redwood fence at the Henry Carrion home at the east edge of colored town. The craft took off on runway number 26 headed for Hereford, then

hit three power lines and a steel supported telephone cable. The impact of the crash into the phone line caused a wheel to break off the plane. Officers had to break the windshield of the plane to get Posey out. He remained strapped in his seat. Posey was in Muleshoe to confer with a client in the Bailey County Jail.

STATE CAPITAL Highlights AND Sidelights

by Bill Boykin
TEXAS PRESS ASSOCIATION

AUSTIN, Tex. -- An executive order has been issued by Gov. Dolph Briscoe creating the Division of Rural Community Services in the Texas Department of Community Affairs.

Governor Briscoe, who has listed rural development as one of the priorities of his administration, created the new division in response to what he termed "the urgent needs of rural areas."

In announcing the new rural services office, Governor Briscoe said the role of the Texas Department of Community Affairs is to make all state resources available and accessible to local communities as they strive to help themselves.

The Rural Community Services Division will provide information and technical assistance to rural communities and will

assist in development of a state policy for rural development, the governor said.

The new office will serve as a clearing house and will be a central state office that rural communities can go to for help, said Briscoe.

Raymond L. Prewett, executive director of the Texas Rural Development Commission, has been named to head up the Division of Rural Community Services.

A major part of his new duties, said the Governor, will be to assist rural communities in their relations with state and federal agencies and to direct communities with specific problems to the appropriate agencies.

Along the same line, the Governor has acted to expand the Texas Industrial Commission to include three members from ru-

ral areas. In the past, membership on the Commission has been two employers of labor, two employees or laborers and five members from the general public.

The Texas Industrial Commission is responsible for planning, organizing and operating a program for attracting and locating new industries and to promote the expansion of existing industries in Texas.

New rural members of the TIC are James Hunt of Sonora, president of Stockman's Feed Company; James B. Bond of Navasota, an attorney and director of the Navasota Industrial Foundation; and William A. Porter of Terrell, a farmer and businessman.

REVISION COMMISSION REVERSES ITSELF -- The Texas Constitutional Revision Commission reversed its August 25 decision -- that the Texas Legislature should meet annually -- and voted that the proposed new Constitution should require the legislature to meet once every two years.

But the time and duration of session or sessions would be set by the lawmakers themselves.

POT LAW RULING DUE -- The Texas Court of Criminal Appeals is expected to rule later this fall on an amendment to the state's criminal code to allow resentencing of persons

previously convicted of possession of marijuana.

Travis County Dist. Atty. Bob Smith, who argues against implementation of the resentencing provision, claims it amounts to commutation of sentence, a power which the constitution gives only to the governor.

"Just because a horse a cow doesn't make it a cow", Smith told the Criminal Appeals Court. "Just because they (the Legislature) call it a resentence doesn't mean it's not a commutation," said Smith.

Lawyers on the other side of the question claim the resentencing provision is an authorization for the courts to review sentences, upon request from the defendant, and amend them, if justified.

About 800 persons serving terms in Texas could be affected by the outcome of the ruling. Conviction of possession of marijuana carried possible sentence of up to life imprisonment prior to revision by the 63rd Legislature to reduce first-possessions penalties.

Ag opinions -- Present county commissioners may serve out their terms of office without residing in the new districts established by redistricting, Attorney General John Hill held.

Areas affected by redistricting will retain their wet or dry status enjoyed prior to an re-

districting of the commissioners court -- until an election is called to change the county from wet to dry or vice versa, Hill held in the same opinion.

In other recent opinions Hill ruled:

- * The Commissioners Court of Navarro County may pay the district judge no more and no less than \$4,000 per year for performing the duties of judge of the juvenile court.
- * A court may direct the payment of a probation fee of a misdemeanor defendant who has been placed on probation, such fee to be collected by or under the direction of the court.
- * The Galveston Ship Channel is a "pass" within the meaning of the Texas Shrimp Conservation Act and shrimp may not be taken from it.
- * An independent school district has the power to contract with a city for construction and use of recreational facilities to be used by the district and may in exchange convey title to surplus school land to the city if both agree paramount use of the land would be its use as a public park for benefit of all residents.

WARM UP THE WEDDING BELLS -- It's a December wedding in the Governor's Mansion for Janey, daughter of Gov. and Mrs. Dolph Briscoe. The December 29 wedding date was

set as Gov. and Mrs. Briscoe announced Janey's engagement to Edward Vaguhn of Hillsboro. The groom-to-be is a junior law student at St. Mary's University in San Antonio. His parents are Mr. and Mrs. S.J. Vaguhn III of Hillsboro.

APPOINTMENTS -- Mrs. Robert M. Ayers Jr. of San Antonio has been appointed to a six-year term on the Texas Youth Council. She replaces Louis Henry of Austin, whose term expired.

Governor Briscoe named Amarillo attorney Edward B. Nobles to the 103rd Judicial District Court bench. Nobles has been serving as Potter County Judge in Maricello.

James Arnold has been named acting director of the Governor's Office of Traffic Safety.

The Governor has appointed Frank Manning of El Paso to the Commission on Law Enforcement Officers and Standards and Education.

Bolin Mahaffey of Corpus Christi has been reappointed by the Governor to a two-year term on the State Depository Board.

He also has named Edward N. Wischamper, editor of the Abilene Reporter-News, and Robert H. Burck, Dallas, to the Texas Tourist Development Board.

He reappointed George F. Dillman of Dallas, whose terms will expire in 1975.

Engineer retires -- Charles W. (Chil) Smith, district engineer of the Texas Highway Department in Maricello, will retire October 1, State Highway Engineer Luther DeBerry has announced.

Replacing Smith, who is closing out a 42-year career with the Highway Department, will be Alvie L. McKee, district maintenance engineer at Abilene.

SHORT SNORTS
U.S. Sen. John Tower reports the Environmental Protection Agency will award a \$2,150,348 grant to the Texas Air Control Board to enable the state agency to continue its air pollution control program.

Governor Briscoe spent a week in Japan encouraging Japanese investors to consider building mills in Texas to process cotton fiber at its source before exporting to Japan.

Roy Coffee, Jr., administrative assistant to Governor Briscoe, has resigned to return to his Dallas law practice. Coffee had served for the past eight months as Briscoe's legislative liaison officer.

State Republican Chairman George Willeford fixes published reports of his retirement. Says Willeford, the GOP State executive committee will be the first to know if and when he decides to retire.



DON'T LOOK NOW, BUT ISN'T THAT DOCTOR WERNHER VON BRAUN?

'KEEP ON TRUCKING'
Missouri Beef Packers, Inc. is now accepting applications for live cattle truck drivers 25 years or older with good driving records. Apply personnel office Missouri Beef Packers, Inc., Friona, Tex. or Personnel Office, Plainview, Tex.
EQUAL OPPORTUNITY EMPLOYER.

OPEN
9 AM-8 PM
WEEKDAYS
CLOSED
SUNDAYS

WHERE YOU ALWAYS BUY THE BEST FOR LESS

GIBSON'S

DISCOUNT CENTER

1723 WEST AMERICAN BLVD
MULESHOE, TEXAS

SALE STARTS
MONDAY
SEPT. 17th
GOOD THRU
SATURDAY
SEPT. 22nd

SALE

SEPTEMBER

SWAN'S
DOWN
CAKE MIX'S
ANGLE FOOD
NOT INCLUDED
29
18 1/2 oz.

SONIC IV



\$14.97

SUPER DELUXE SONIC IV STEREO HEADPHONES



\$7.97

CARTRIDGE CAROUSEL

A great way to store and carry your 8-Track and Cassette cartridges. Holds 24 8-Track and/or cassettes. Add-on units available -- can build up to 60 capacity.



DOUBLE KNIT FABRICS

OUR REG. 2.88 yd
\$2.22 YD

1 To 6 yd. LENGTHS

COLD POWER DETERGENT

GIANT SIZE BOX **67¢**





29¢

STRETCH'N SEAL

50 SQ FT ROLL



\$19.88

LLOYD'S AM/FM DIGITAL CLOCK RADIO

WAKE TO MUSIC NO. J-615

CASH LAYAWAY -OR- MASTER CHARGE

NEW FROM COLGATE PALMOLIVE

WOODCRAFTER

FURNITURE POLISH

CONTAINS MONTAN AND CARNAUBA WAXES NATURAL WOOD OR LEMON FRAGRANCES

14 oz. CAN **99¢**



36¢

BO-PEEP AMMONIA

50 SQ FT ROLL

Cashmere Bouquet

39¢

CASHMERE BOUQUET BAR SOAP

4 BAR PKG BATH SIZE



67¢

BARDAHL NO. 2

FOR OLDER CARS REDUCES OIL BURNING UP TO 100%

15 oz. CAN

29¢

6-PACK OVAL SPONGES

FOR MANY USES ONLY



\$1

SCENICS FACIAL TISSUE

200 CT. 2-PLY

4 for **1**

29¢

GIBSON'S SKIN CARE LOTION

16 OZ.

29¢

CRYSTAL CLEAR WINDOW CLEANER AND DEFOGGER

15 oz. CAN



15.88

SKIL

7 1/2" SKILSHOP -- CIRCULAR SAW -- Turns tough sawing jobs into fast, easy fun. Made by Skil. Has 1 HP motor, cuts from 90 to 45 degree angles. Includes blade, sawdust ejection system, control guides.

23¢

CROWN ZEE NAPKINS

2 for **23¢**

60 CT.

88¢

BAN ROLL-ON DEODORANT

1 1/2 oz.

REGULAR OR UNSCENTED

1.09

VITALIS HAIR TONIC

GROOMS WITHOUT GREASE

12oz. BOTTLE ONLY



19¢

ALL AMERICAN COMBS

VALUES TO for 39¢ PKG OF 2 COMBS

4.27



TIGER MUFFLER

The Tiger Performance muffler, one of the most popular. Fits Fords, Chevrolets, Plymouths and most other popular cars. Easy installation, good quality, great low price!

\$1

CROWN ZEE TOILET TISSUE

3 (4 ROLL PKGS)

1.19

EXCEDRIN

100 ct. EXTRA-STRENGTH PAIN RELIEVER

26¢

NEW!! Caress BAR SOAP

BODY BAR WITH BATH OIL

BATH SIZE

Payments...

Cont. from Page 1

There will be no set-aside requirement for 1974 and no conserving base requirement for 1974-77.

A national feed grain allotment is set at 89 million acres. This allotment represents the estimated number of acres needed to produce the estimated amount of feed grains that will be used domestically and for export during the 1974-75 marketing year. Feed grain allotments do not limit production. They are used only to determine the acres for payment when payments are applicable.

Farm allotment instead of farm bases will be established for 1974 by factoring established 1974 preliminary farm bases to the county allotment acreage for factoring. The 1974 farm allotments will be about 68 percent of last year's bases. Payments will be computed on the full allotment for 1974 rather than on 50 percent of the base as in 1973.

Target prices are established at per bushel rates of \$1.38 for corn, \$1.31 for grain sorghum (\$2.34 per cwt.), and \$1.13 for barley. Payment rates will be the amount that the target price exceeds the larger of the loan rate or the five-month national average price. Producers will receive no payment unless the five-month national average price is less than the target price, except as explained in the next paragraph.

Muleshoe...

Cont. from Page 1

Boswell and Crafton of Lubbock, a highway construction firm, reports that work on surfacing of Peanut Road from Bailey County to Portales will start the latter part of November and should be completed in the spring of 1974.

equipment operators!



Here's a man's boot every step of the way! Rugged, handsome, ready for a rough day's work anytime. Easy on the feet, too. Stop in — try on Pecos.

RED WING
Cobb's



THAT'S MY BOY — Tovarich, Siberian tiger cub, is a guest of Kumba, a young gorilla, on Kumba's third birthday at the Chicago zoo. They seem to get along better than people.

Producers who, because of a national disaster, are prevented from planting their feed grain allotment to feed grains or other non-conserving crops, or obtain a crop yield of less than two-thirds the expected production, may be considered for payment at a special rate to offset their crop loss. Details regarding this disaster payment will be included in an amendment to 5-PA. A similar provision applies to wheat.

There will be no preliminary payment. Any payment due will be paid after March 1, 1975.

Total feed grain, wheat and upland cotton payment to a person for all farms is limited to \$20,000.

Producers may substitute any nonconserving crop (excluding marketing quota and sugar crops) in order to preserve their feed grain allotment without loss of payment or may preserve it with a conserving crop used for hay or for grazing without loss of payment. Commodity loans will be available on the farm's entire production on participating farms. National average loan rates will be \$1.10 per bushel for corn; \$1.05 per bushel (\$1.88

CLU...

Cont. from Page 1
insurance and estate planning. The typical candidate for the CLU designation enrolls in a special study class at a college or university and spends four to five years in the program. Persons who attain the Chartered Life Underwriter designation are privileged to use the term or its abbreviation (CLU) after their names and to wear the CLU key. They are also eligible to apply for membership in the American Society of Chartered Life Underwriters, a professional body whose principal objective is to maintain high standards of insurance service to the public.

Singleton-Ellis Funeral Home
24 Hour Ambulance Service
Ph. 272-4574
Muleshoe

Huntsville Rodeo

HUNTSVILLE--The rodeo at Huntsville each Sunday in October is unique in a lot of ways.

First of all, it's a prison rodeo, which makes it one of a kind in Texas. Convict women competing in featured events adds yet another dimension, while the presence of a group called the "redshirts" ties it all up in a neat bow.

These three groups--the cowboys, cowgirls and redshirts comprise the featured main attractions in the rodeo arena.

Well, not quite. The Texas Prison Rodeo--in its 42nd year is unique in another way, too. Free-wilders heading to Huntsville in October can make it an all-day affair by visiting a midway complex in front of the main prison unit located ad-

acent to the rodeo stadium starting at 9 a.m. each Sunday. If your musical taste runs in the country western vein, you're in luck--three cow inmate groups alternate every 30 minutes in the real crowd-pleaser on the midway.

"Behind the Walls" a stereo album featuring original songs written composed and orchestrated by Texas Department of Corrections inmates, will be sold at the midway for \$4--a first for the prison rodeo. Other midway attractions include:

--A weightlifting exhibition featuring TDC's best lifters, --A precision drill team from the prison system's Retrieve Unit--named the High Rollers-- will return for the second year in a row on the midway entertainment card.

--A photo booth that features a "prison cell" as a background for rodeo patrons to purchase polaroid pictures. This booth is operated by the Inmate Welfare Club, an inmate supported and oriented organization.

Senator Nelson criticizes drug industry prices.

TELEX. Hearing Aids
Clovis Hearing Aid Center
Batteries & Molds. Free Tests.
Service All Makes.
416 Mitchell Phone 763-6900
Clovis, N.M.

Hunters...

Cont. from Page 1

Anyone interested in taking this course should contact Kenneth Sjogren, Olton, Texas, Phone 285-2409 after 8 p.m. Sjogren will start a class on September 18 at 8 p.m.

Congress urges to split major oil companies.

HELP WANTED

Missouri Beef Packers, Inc. is now accepting applications for beef loggers, production workmen, maintenance men & kill floors personnel. We offer year around employment, paid holidays, paid vacations, company paid group hospital insurance, and good wages. No experience necessary.

Apply at the personnel office, Missouri Beef Packers Inc. 4 miles west of Friona on Highway 60. EQUAL OPPORTUNITY EMPLOYER.

Food Savings

PRICES GOOD SEPT. 16-22

Crafted in Staffordshire, England
Doverstone
Fine Imported Stoneware.



This week's featured item:
CUP 49¢

COCA COLA 5 for \$1
28 oz. bottle

Giant Size MC² DETERGENT 49¢

Shurfine SUGAR 69¢
5 lb. bag

Cascade DISHWASHING SOAP 59¢
Giant Size

3 lb. can CRISCO 79¢
with purchase of 3 boxes Duncan Hines cake mix

Fresh Dressed FRYERS 49¢
lb.

Shurfine Canned HAMS \$4.29
Can

Shurfine Canned POPS 10¢
12 oz. Can

WHITE POTATOES 69¢
10 lb. bag

Shurfine Early Harvest PEAS #303 CAN 4 FOR 88¢

Hunt's 15oz. CAN TOMATO SAUCE 4 for \$1

Shurfine CATSUP 14 OZ. BOTTLE 22¢

Mrs. Breck HAIR SPRAY 13OZ. CAN 69¢

Shurfine CRACKERS LB. BOX 22¢

TEXAS GREEN CABBAGE 9¢
lb.



Jim's Pay N' Save

FRIENDLIEST STORE IN TOWN

8am-10pm 7days a week

QUALITY MERCHANDISE AT LOWEST PRICES



201 S. 1st. Street

per cwt.) for grain sorghums; and 90 cents per bushel for barley. The per bushel average loan rates are established at 54 cents for oats, 89 cents for rye, and \$2.25 for soybeans.

TSTA...

Cont. from Page 1

Gist, Eric Smith, Lucy Faye Smith and Tom Smith, Junior High School: Wayland Ethridge, Ronnie Jones, LaVonne McKillip, Barbara Milburn, Jean Moore and Michael Richardson. Mary DeShazo Elementary School: Esther Marie Dillman, Edith Henderson, Jo Pierce, Jane Rudd, and Inogene Tiller. Richland Hills Primary School: Virginia Bowers and Jo Jinks.

Pepper...

Cont. from Page 1

ping firm commented that while living in Muleshoe they have enjoyed the recreational facilities of the tennis courts and the Country Club. They further said it was unusual to find first class facilities in a town this size and it seemed indicative of the anticipated growth of which this area should undoubtedly experience.

Bailey County Journal
Established March 31, 1900
Published by Muleshoe Publishing Co., Inc.
Every Sunday at 304 W. Second Box 449
Muleshoe, Texas 79347
Second class postage paid at Muleshoe, Texas
Muleshoe, Texas 79347

TEXAS PRESS ASSOCIATION
Member Since 1973

L. R. Hall, President
Jessie P. Hall, Sec.-Treas.
L. R. Hall - Managing Editor
Katie Beckwith, News Reporter
Tom Engle, Sports Reporter
Delinda Alton, Advertising
Polly Devita, Office

SUBSCRIPTIONS:
Zone 1--Bailey--Parmer--Cochran--Lamb counties, \$4.00 per year, \$4.50 per year by carrier, with Thursday Muleshoe Journal, both papers \$8.50 per year, \$9.00 per year by carrier.
Zone 2--Out-of-Territory: with Thursday Muleshoe Journal, both papers, \$6.25 per year. Monthly, by carrier--\$6; single copies--10¢. Advertising rate card on application.

SALE STARTS MONDAY **perry's** **SALE STARTS MONDAY**
SALE STARTS MONDAY 3 BIG DAYS MON, TUE, WED

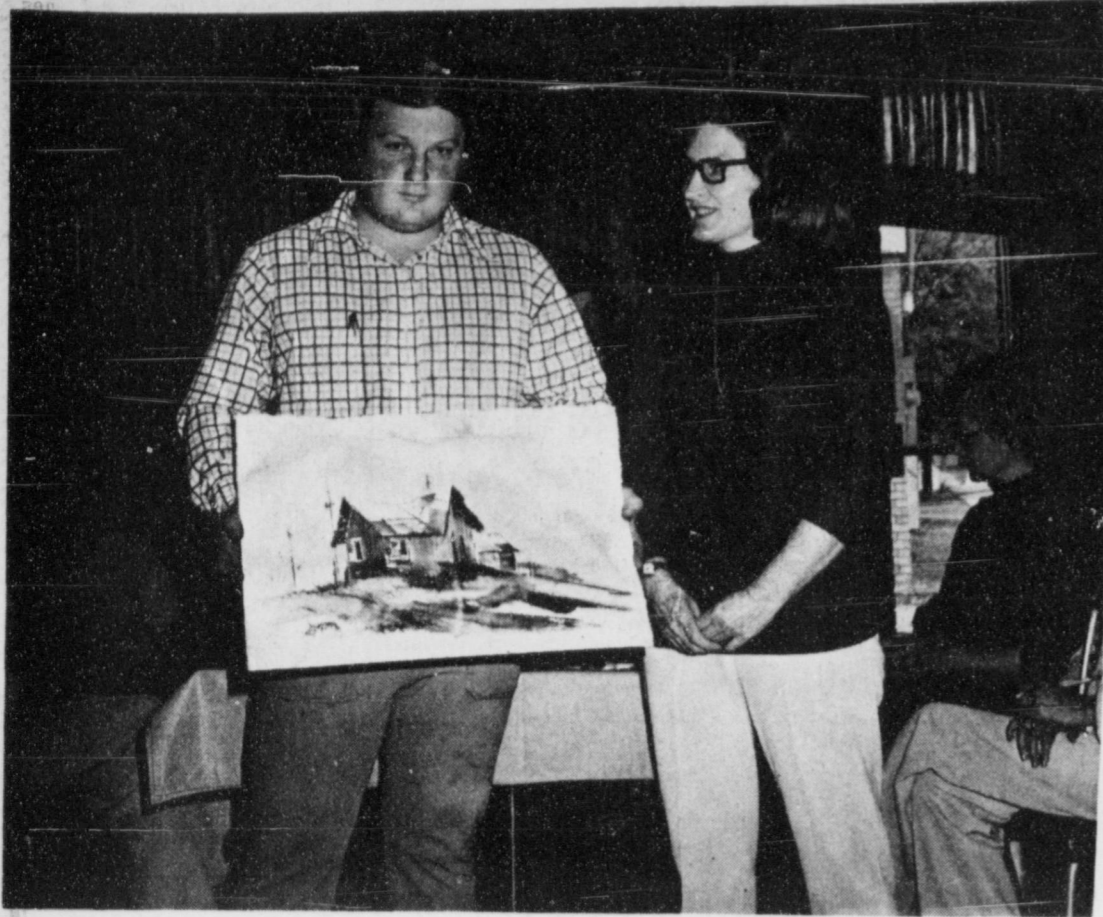
DOUBLE KNIT DAYS

Super Sale... Super Savings! Our entire stock of 100% Polyester Double Knits has been drastically reduced for this special event! Hundreds of yards, endless colors and designs, 60" wide and all on full bolts. Crepes, Jacquards, Two Tones, Multi-colored Prints, Ponte de Roma, Twills and more... they're all on sale at Perry's now!

WHILE QUANTITIES LAST \$2.88 PER YARD

COME EARLY FOR BEST SELECTION

SALE STARTS MONDAY 3 BIG DAYS MON, TUE, WED
perry's



MULESHOE ART ASSOCIATION The Muleshoe Art Association met Tuesday, September 11 at 9:30 in the community room of the Muleshoe State Bank. Special guest was Johnny Branum of Lubbock.

Llano Estacado Plans Hoedown

The Llano Estacado Civic Club met Tuesday evening, September 11 at 8:00 p.m. in the First National Bank. Three guests were present, Mrs. Steve Hamilton, Mrs. Ronald Ashford and Mrs. Jimmy Mills. The upcoming hoedown was discussed. The date is November 10 at 9:00 p.m. till 1:00

a.m. at the UFW Hall. The Maines Brothers will play and the theme will be "The Mine." Mrs. Larry Goree was elected historian by acclamation. Hostesses were Mrs. Jimmy Bruton and Mrs. Richard Loter. Members present were Mrs. Jim Barnes, Mrs. Ricky Barrett, Mrs. Ronnie Black, Mrs. Jimmy Bruton, Mrs. Larry Goree, Mrs. Richard Loter, Mrs. Wayne Peterson, Mrs. Odell Rasco, Mrs. H.E. Reeder, Mrs. Billy Reese, Mrs. Pat Suttentuff, Mrs. Gary Banks, and Mrs. Jim Tucker.

Gives \$400

In addition to the pledges given to the Muscular Dystrophy Telethon on Labor Day by the Three Way area another \$400 will be sent. During the telethon Mrs. W.C. McVeiry, Mrs. Homer Richardson, Mrs. Bill Dolle and Mrs. Buck Ragsdale made calls to get more pledges and over \$400 was pledged.

Branum Shows Technique

The new president, Beth Watson, called the first meeting of the year to order promptly on time at 9:30 a.m. Tuesday, September 11, in the meeting room of the Muleshoe State Bank. Twenty four members were present with three guests. Business was taken care of and the announcement made that anyone that has not joined the Art Association and would like to, should get their names to Blanch Lenderson, as the year books are being printed this next week. Ruth Painmoch introduced the guest artist, Johnny Branum of Lubbock, who showed slides of his work, before beginning his demonstration. Johnny is a young artist who works entirely in the water color media. Being new in this field has not prevented him from winning his share of awards in art. Having won three Texas Fine Art Association awards, he also received men-

4-H Club To Meet

The Progress 4-H Club will hold its first meeting of the club year on Tuesday night September 18, at the Lariat Lutheran Church Parish Hall. All boys and girls between the ages of 9 and 19 who are interested in being a member of this organization are invited to come and enroll. The meeting will begin at 7:30 p.m. and will be over at 9:00 p.m. The County Extension Agents will be present to assist with the enrollment. Officers and leaders of the club will be chosen at this time.

Homemakers Elect Officers

The Young Homemakers and Young Farmers of Texas Week begins September 16 thru September 22. The week will be observed by all chapters in the Young Homemakers and Young Farmers by scheduling special programs and making their respective communities aware of their projects and worthwhile activities. The purposes of the Young Homemakers of Texas are: To develop skills and gain information on new and improved methods of homemaking, and keep informed on matters affecting people engaged in homemaking, to develop a deeper understanding of the home and its influence upon the community, to provide wholesome social and recreational activities, to become better acquainted with the products and information of current consumer trends. To plan and carry out a program for recognizing and honoring local members and others for outstanding achievements, to support the Future Homemakers of America and other groups working for the improvement of homemaking, to maintain spiritual values of the home and to encourage democracy in home and community life.

CWF Plans Programs

The Christian Women's Fellowship of The First Christian Church met Tuesday, September 11, 1973 at 4:00 p.m. in the home of Mrs. T.R. White. Mrs. White, president, called the meeting to order. The yearbooks were distributed and plans for the year's programs and projects were discussed. The year's study will be the Beatitudes. Each member will answer roll call with a personal idea on the Beatitude studied for that meeting. Mrs. Walter Barthol, Sr. discussed the first Beatitude, "Blessed are the poor in spirit: for their's is the kingdom of heaven." She compared the wording of it in several Bibles and the interpretations of several religious writers. Those present were Mrs. Lula Gorrell, Mrs. R.F. Wright, Mrs. Bobby McGee, Mrs. Walter Barthol, Sr., Mrs. Joe Costen, and Mrs. T.R. White.

WEST PLAINS HOSPITAL

Hospital Briefs

ADMISSIONS: Mrs. Amanda Bergstrom, Russell Dan Smith, Marvin Davenport, Angel Vettran, Ben Grambling, Jesus Maldonado, and Gabriel Lule. **DISMISSALS:** Mrs. Gene Scarbrough, Lee Magby, Mrs. R.M. Gibson, R. Dan Smith, Mrs. Dee Brown, Mrs. Danny Kelley and baby girl and Miss Rosa Linda Muniz.

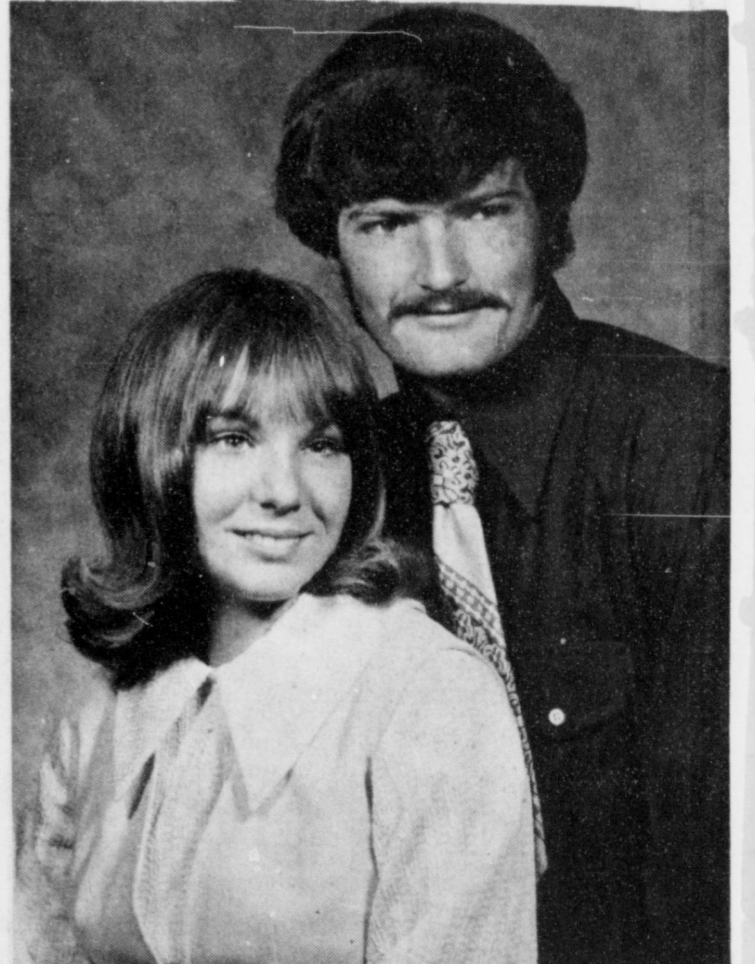
When your cutting board by rubbing briskly with the inside of lemon rinds. Wash with warm water and dry thoroughly.

Meeting Scheduled

The Goodland Bible Study Club will meet Tuesday September 18 at 2:00 in Mrs. Don Sewer's home. The Book of Romans will be studied.



NOVEMBER WEDDING PLANNED Mr. and Mrs. J.H. Evins of Route 3, Muleshoe, announce the engagement and approaching marriage of their daughter Beverly Ann to Gary Dreyer son of Mr. and Mrs. Henry Dreyer of Crosbyton. A November wedding is planned.



ENGAGEMENT Mr. and Mrs. William H. Flowers of Edwards, Mo. announce the engagement and approaching marriage of their daughter, Debra Lynn, to Michael Monroe Henderson, son of Mr. and Mrs. Sam Henderson of Warsaw, Mo. The couple will exchange vows October 6 in the home of the bride's parents.

SOURCES OF ENERGY



Man first began using energy when he discovered fire and the benefits that fire could give him. Cooking and warmth in the winter.

As time went on and man learned more, he started using animal and whale oil to light the lamps to see by at night. Next, came coal, then oil from the ground and, in the process, natural gas. This replaced manufactured gas because it was cheap and, many thought, plentiful.

But then the natural gas started to run out and suddenly there was an energy crisis . . . and people worried about the future.

The great hope for the future was left to electricity.

But, you say, it takes gas to make electricity. Yes, in our plants we do use natural gas but there ARE other sources of things from which to make electricity.

Coal is one — and that's what our next plant, about to be built, will use . . . low sulphur western coal with the most advanced pollution control equipment.

Is there enough coal? Yes, we have under contract a fifty year supply.

What other sources are there? Beyond the fossil fuels there is nuclear energy. The breeder reactor will actually make more fuel than it uses. The fusion process will use seawater for fuel — that supply is unlimited.

So, it's obvious that the big source of energy now and for the future for industry, agriculture, business and the home is electricity.

With electricity you can be sure that the electric appliances you buy today can still be used in the future . . . no shortage, no obsolescence with clean electricity.



Your future is ELECTRIC!

This is your INVITATION to discover THE LOVLIER YOU

Deeya

COSMETIC STUDIO
Let us show you how much prettier you can be with DEEYA'S remarkable "natural look" cosmetics. This invitation entitles you to a 30 minute beauty analysis by one of DEEYA'S experts. It's free and we do not ask you to buy a thing. We even give you FREE SAMPLES.

Deeya COSMETIC STUDIO

WELLBORN BEAUTY SHOP
101 Ave. J
Muleshoe, Texas
Phone 272-3404



MRS. WESLEY OWEN POOL
nee MISS SANDRA KAY SIMPSON

Miss Simpson, Pool United

Miss Sandra Kay Simpson became the bride of Wesley Owen Pool of Lingo, N.M., September 15, at 10:00 a.m. in the garden of the brides grandparents, Mr. and Mrs. J.S. Simpson of Maple, Texas. Rev. Don E. Jones officiated in the double ring ceremony.

Parents of the couple are Mr. and Mrs. W.T. Simpson of Goodland and Mr. and Mrs. Gene Pool of Lingo, N.M.

The ceremony took place under a Mulberry tree. The musical selections were "Wedding Prayer" and "The Twelfth of Never". A duet was presented by Mr. and Mrs. Bill Hughes accompanied by pianist, Miss Karen Corkery.

Given in marriage by her father the bride wore a formal length gown of polyester crepe featuring a high neckline and ruffles on the collar, sleeves, bodice and around the bottom. The bride's head piece was a cornet of garden flowers with ribbons down the back. Her bouquet was of garden flowers. The bride will wear a cameo borrowed from her maternal grandmother and a blue garter.

Miss Cheryl Abbe attended the bride as maid of honor with Miss Susan Fair as bridesmaid. Flower girls were Miss Lori Carlisle, Miss Michelle Parkman and Lorin Corkery. Attendants wore orchid dotted swiss with elbow length puffed sleeves and circle skirts. They carried garden flowers for bouquets and wore matching coronets of orchid garden flowers.

The flower girls wore orchid dotted swiss floorlength dresses with white lace trimmed pinafores over them. They wore white bonnets featuring orchid flowers.

The groom's father, Gene Pool served as best man. Kim Merchant was groomsman.

A reception followed the ceremony in the garden. Registering guests was Miss Connie Richardson. The house party consisted of Mrs. Freddie Parkman, Mrs. Nelson Carlisle, Mrs. Terry Hutton, Mrs. Bill Dolle, Mrs. Darrell Corkery, Mrs. R.L. Daris and Mrs. Wayland Altman.

For the wedding trip to Dallas the bride chose a blue and white knit dress with sweater battle jacket and white sandals. The couple will reside at Box 123, Lingo, N.M. after September 19.

The bride is a 1972 graduate of Three Way High School and a Junior at Eastern New Mexico University in Portales. The groom is a 1970 graduate of Cousey High School. He has attended New Mexico State University and is now a Junior at Eastern New Mexico University. He is currently engaged in farming and ranching activities with his father. The rehearsal party was a barbecue at the home of the groom's parents.

Nursing Home News by Myrtle Guinn

Mr. and Mrs. Leon Lewis came in Friday morning to spend some time with his mother, Mrs. Lewis.

Mr. and Mrs. Stevenson came in Friday to see her mother, Mrs. Nicholson.

This rain is wonderful for some of the crops and I know it is appreciated.

Mr. and Mrs. Earl Gilmer of Ben Wheeler, Texas spent a few days with his sister, Myrtle Guinn.

Mrs. Minnie Fitchgerald and her daughter, Mrs. Modine Martin of west of town visited their old friend, Mrs. Epperly, on Sunday. They hadn't seen each other for several years and were formally old neighbors and friends.

Miss Seale came Sunday afternoon to see her sister, Mrs. Williams.

Mr. and Mrs. Roy Epperly Jr. of Portales, came Saturday to visit his grandmother Epperly.

Mr. Perry had the following company last week and Sunday, Mr. and Mrs. Ewell Porter and daughter, Mary Jo from Alamo, Tennessee; her daughter Mr. Ora Martin from Littlefield; Mr. and Mrs. Cliff Odorn and also Mrs. Bonnie Haberer.

Mr. Lena Hight, Mrs. Morgan, Mrs. Jackson and Mrs. Bonnie Haberer all visited Mrs. Whitford Sunday afternoon.

The pastor Rev. Harvey and singers from the Calvary Baptist Church, came Sunday afternoon to read the Bible and sing songs for us, which was enjoyed by all of us. We hope they will come again when ever they can.

Mr. Lewis' son, Leon and Mrs. Menners came to see her

Monday. *****
Mrs. Jackson's daughter, Mrs. Barry and Little girl visited her Sunday. *****
Mrs. Bryant came Wednesday afternoon to see her dad Mr. Denny. *****
Mr. and Mrs. Robert Brotherton of Milton, came to see Mr. and Mrs. Pugh one day recently. *****

Mrs. Wiseman has not been feeling very well lately, we hope she is better soon and able to be up. *****
Mrs. Goodin has a nice new black leather lounge chair which she has enjoyed very much. *****

Mrs. Browns daughter, Mrs. E.E. Simpson, came Monday and took her mother out to dinner. *****

Mrs. Jackson and Mrs. Reed came Wednesday afternoon and visited Mrs. Lewis. *****

Mrs. Lavada Lassiter came early Thursday to spend some time with her mother, Mrs. Newton. *****

Mrs. Lewis went out to her son's to spend the day Thursday. She feels some better. *****

I have the deep inner conviction that I really am a child of God, We are responsible for

the care of our loved ones, and their welfare, and yet I know we are all in his hands. We need to do the best in every situation. It is great to know that our inadequacy is always his opportunity to show he loves us and to know he is ever mindful of us and is near to help us if we falter or stumble along the way. *****

For a delicious ham glaze, combine three-fourths cup dark corn syrup, three tablespoons vinegar, about two tablespoons dry mustard, and bring to a boil.

Sculptress
BRA
& Nutri-Metic
Cosmetics
Ruby Harris
Rt.3 Box130
Muleshoe
Texas 79347
Phone 965-2410

TUTU'S SCHOOL
of BALLET
announcing registration to begin
THURSDAY AUG. 30
with
classes to begin Monday, Sept. 10, 1973
Dancercize in Social Dancing
Modern Jazz Tumbling (Boys & Girls)
Ballot Gymnastics
Classes for ages 4 through adult.
501 Main Sudan

Cause and Effort
Mother: Willie, sit down and tell your sister a story.
Willie: I can't sit down; I just told daddy a story.

Hope
Smith: "Hope is really a wonderful thing."
Jones: "True. One little nibble keeps a man fishing all day."

Added Attraction
Pretty Girl-May I try on that two piece suit in the window?
Store Manager--Go right ahead. It might help business.

Delta Kappa Gamma Meets In Amherst

The Epsilon Delta Chapter of the Delta Kappa Gamma Society met Saturday, September 8, in Amherst in the home of Mrs. Ray Blessing. Hostesses with Mrs. Blessing for the tea preceding the meeting included Mrs. Willis Hedges and Mrs. W.C. Risinger of Amherst and Mrs. Howard Cummings and Mrs. Gladys Parrish of Springlake-Earth. Mrs. Parrish served at the refreshment table which featured an arrangement of fall flowers, Cookies, finger sandwiches, and punch were served.

A business meeting was held with the president, Mrs. Deany Barnett of Olton, presiding. The Regional Convention was announced. It will be held in Amarillo on October 13, and there will be no October meeting of the Epsilon Delta Chapter. Mrs. James Settle of Littlefield is the program chairman for Epsilon Delta's section of the program; and there will be an exhibit featuring the outstanding work of the members of the Region. The program topic for the Saturday meeting was "Audio Visual 'Wearers of the Key.'" The program was given in two parts. Mrs. Jack Obenhaus gave a television-style program entitled "Dear Delta Ann" on Fellowship in Delta Kappa Gamma.

Mrs. Harry Ford and Mrs. Pat Donnelly gave a very clever presentation stressing basic purposes of Delta Kappa Gamma and how members should take a good look at themselves and get rid of those things which do not contribute to membership in the Society just as they would clean their closets of old, worn, dirty, or out of style garments.

Members in attendance from Muleshoe were Mrs. Obenhaus, Mrs. Joe Costen, and Mrs. Eric J. Smith.



Franciscan Once a Year Sale!

September 16-29, 1973

Save \$6.05
on 20 piece sets
of Earthenware.
12 favorite patterns. Regularly \$41.00,
now \$34.95.

Save \$2.05
on single 5 piece
Earthenware
place settings.
Regularly \$11.00, now just \$8.95.

Save 20%
on the 8
serving dishes
you use most:
sugar with lid, creamer, medium and
large vegetables, 1-quart pitcher, salt/
pepper, soup/cereal bowl, salad plate.

Save 20%
on Madeira
Casual Crystal.
All 6 regular shapes, except Rancho Ruby.

It's the sale you wait all year for!
Your one chance all year to save on
Franciscan Earthenware and Madeira
Casual Crystal. Your best chance all year
to start your set or add to it.

Come in before
the sale ends.

Your table and
your budget
will both
be happier.

LINDSEY CREDIT JEWELERS
202 MAIN

Muleshoe State Bank
Member FDIC
PHONE 272-3355

PUBLIC NOTICE

SUMMARY OF PROPOSED CONSTITUTIONAL AMENDMENTS SPECIAL ELECTION NOVEMBER 6, 1973

NUMBER ONE ON THE BALLOT (S.J.R. 8)

Article III, Sections 5, 24 and 49a and Article VIII, Section 6 of the Texas Constitution are amended to:

Provide for regular annual sessions of the Legislature. The regular session in each odd-numbered year would be for a period not to exceed 180 days. The regular session in each even numbered year would be for a period not to exceed 60 days and would be limited to consideration of fiscal matters and any emergency matters submitted by the Governor. The 60 day session could be extended by the Governor for a period not to exceed 30 days.

Provide an annual salary for members of the Legislature not exceeding \$15,000 per year and a per diem not exceeding \$18 per day for each day of each regular session or special session.

Provide that no appropriation of money shall be made for a longer term than one year and direct the Comptroller to make annual estimates of anticipated revenue rather than biennial estimates.

The wording of the proposed amendment as it will appear on the ballot is as follows:

"The constitutional amendment to provide for annual regular sessions of the legislature; and to provide an annual salary of \$15,000 and per diem for the members of the legislature, effective in January, 1975."

NUMBER TWO ON THE BALLOT (H.J.R. 7)

Article XVI, Sections 50 and 51 of the Texas Constitution are amended to:

Include within the scope of homestead protection the real property of a single adult person which meets the other requirements of homestead property, and to provide that a family homestead may not be abandoned except with the consent of both spouses.

Presently a single adult person is not entitled to claim a homestead exemption and a married man can abandon a family homestead without the consent of his wife.

The wording of the proposed amendment as it will appear on the ballot is as follows:

"The constitutional amendment to include within the scope of homestead protection the real property of a single adult person which meets the other requirements of homestead property, and to provide that a family homestead may not be abandoned except with the consent of both spouses."

NUMBER THREE ON THE BALLOT (S.J.R. 13)

Article VIII, Sections 1-a and 1-b of the Texas Constitution are amended to:

Extend the \$3,000 ad valorem tax exemption to the residential homesteads of unmarried adults.

The wording of the proposed amendment as it will appear on the ballot is as follows:

"The constitutional amendment to extend the \$3,000 ad valorem tax exemption to the homesteads of unmarried adults."

NUMBER FOUR ON THE BALLOT (S.J.R. 1)

Article XVI, Section 59, of the Texas Constitution is amended by adding a new Subsection (e) which reads:

"Provide that no law creating a conservation and reclamation district shall be passed unless a copy of the proposed law is delivered to the commissioners court of each county and to the governing body of each incorporated city or town in whose jurisdiction said district or any part thereof is or will be located. Each such commissioners court and governing body may file its written consent or opposition to the proposed law with the Governor, Lieutenant Governor and Speaker of the House of Representatives. Each special law creating such a district must comply with general law, then in effect relating to consent by political subdivisions to the creation of such districts.

The wording of the proposed amendment as it will appear on the ballot is as follows:

"The constitutional amendment establishing certain requirements relative to the enactment of laws creating certain conservation and reclamation districts."

NUMBER FIVE ON THE BALLOT (S.J.R. 12)

Article XI, Section 7 of the Texas Constitution is amended to:

Provide that all counties and cities bordering on the coast of the Gulf of Mexico are authorized to levy a tax to pay for bonds issued for the construction of sea walls and breakwaters upon a majority vote of the resident property tax-payers. Counties and cities are presently authorized to levy such taxes and this amendment only changes the required vote from a two-thirds majority to a simple majority.

The wording of the proposed amendment as it will appear on the ballot is as follows:

"The constitutional amendment authorizing counties and cities bordering on the Gulf of Mexico to issue bonds

for the construction of sea walls and breakwaters upon a vote of the resident property tax-payers.

NUMBER SIX ON THE BALLOT (S.J.R. 26)

Article V, Section 8 of the Texas Constitution is amended by adding a new paragraph which reads:

"Provides that the district court, concurrently with the county court, shall have the general jurisdiction of a probate court and in a probate proceeding shall also have the jurisdiction otherwise conferred on it by law. It also provides that the legislature may increase, diminish, or eliminate the jurisdiction of the district court or county court in probate matters, may adopt rules governing the filing, distribution, or transfer of cases and proceedings as between the courts having jurisdiction of probate matters, and may provide that all appeals in probate matters shall be to the courts of civil appeals.

The wording of the proposed constitutional amendment as it will appear on the ballot is as follows:

"The constitutional amendment stating that the district court concurrently with the county court shall have the general jurisdiction of a probate court, and providing the jurisdiction thereof, and further providing that in any probate proceeding the district court shall also have jurisdiction otherwise conferred upon it by law, and further providing that the legislature may increase, diminish or eliminate the jurisdiction of the district court or county court in probate matters, and further providing that the legislature shall have power to adopt rules governing the filing, distribution and transfer of all such cases and proceedings as between district courts, county courts, and other courts having jurisdiction thereof, and further providing that the legislature may provide that all appeals in such matters shall be to the courts of (civil) appeals."

NUMBER SEVEN ON THE BALLOT (H.J.R. 6)

Article III, Section 49-b of the Texas Constitution is amended to:

Provide for an additional \$100 million in bonds or obligations of the State of Texas for the Veterans' Land Fund. This amendment increases the present \$400 million authorization to \$500 million;

Remove the present provision which permits buying of land only by those veterans who served between September 16, 1940 and the date of formal withdrawal of United States troops from the armed conflict in Viet Nam. This amendment would allow all veterans who served after September 16, 1940 to buy land from the Veterans' Land Fund, provided they are otherwise qualified;

Provide that, in the event of the death of an eligible

Texas veteran after the veteran has filed with the Board an application and contract of sale to purchase through the Board the tract selected by him or her and before the purchase has been completed, then the surviving spouse may complete the transaction.

The wording of the proposed amendment as it will appear on the ballot is as follows:

"The constitutional amendment to provide for an additional \$100 million in bonds or obligations of the State of Texas for the Veterans' Land Fund."

NUMBER EIGHT ON THE BALLOT (S.J.R. 29)

Article XI, of the Texas Constitution is amended by adding a new Section 5(a) which reads:

"Authorizes and requires incorporated cities, towns, and villages, regardless of population and notwithstanding the constitutional limitations on total tax rates, to levy such annual ad valorem taxes on the taxable property in the city, town, or village as are necessary to pay the principal of and interest on, when due, the general obligations hereinafter issued by the city, town, or village. The legislature is empowered to limit by general or special law the total principal amount of general obligations which may be issued, but unless and until the legislature acts to do so, the limitations established by statute with respect to the total principal amount of bonds which may be issued by independent school districts shall apply as the rate limitation on cities, towns, and villages.

The wording of the proposed constitutional amendment as it appears on the ballot is as follows:

"The constitutional amendment to authorize cities, towns, and villages to levy such ad valorem taxes as are sufficient to pay the principal of and interest on their general obligations hereafter issued subject to the restrictions provided by law."

NUMBER NINE ON THE BALLOT (S.J.R. 25)

Article VIII of the Texas Constitution is amended by adding a new Section 2C which reads:

Allows the Legislature, by general law, to exempt all real and personal property used by non-profit water supply corporations or cooperatives from all property taxes. The exemption would apply only to such property as is reasonably necessary to conduct the business of a non-profit water supply corporation or cooperative.

The wording of the proposed constitutional amendment as it will appear on the ballot is as follows:

"The constitutional amendment authorizing the legislature to exempt from property taxes certain property used by a non-profit water supply corporation or a non-profit water supply cooperative."



MULE'S TALE



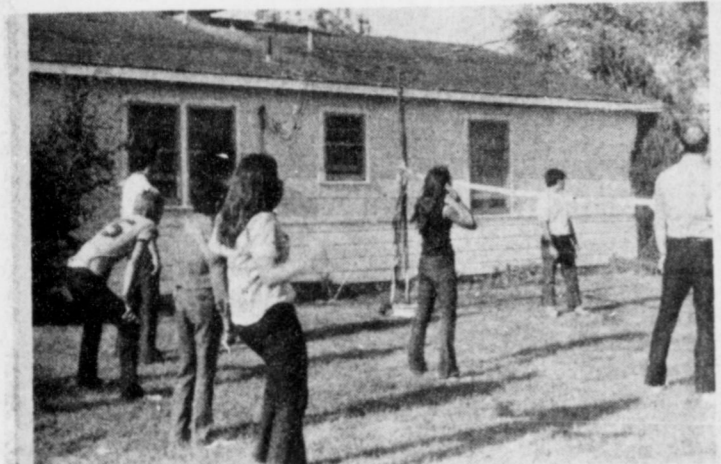
Official Publication of Muleshoe High School Written and Edited by Students of the Muleshoe Schools

Coaches Comments On Mule's Season

FHA On The Move

This year for FHA is one of excitement and testing. The Sophomore Roseblossom Chapter and the Junior and Senior Rose Chapter have united to form a stronger and more workable chapter.

Everyone is to meet at the school promptly at 6:15 to go out together. All older girls with driver's licenses are asked to bring cars to transport people, if at all possible.



WHERE OH WHERE IS THE BALL . . . The Speech class played volleyball as well as touch football and croquet at the annual 'In' party held in the Lewis Vinson home.

"In" Party Held For Speech Students

This past Saturday evening, Muleshoe High's Speech class and Thespian Troupe had their annual "in" party at the Lewis Vinson home north of Muleshoe.

leymball, touch football, and croquet were played. The "in" party is traditional to kick off a new year.

Library Opens With New Books

dusting the pages . . . The library opens with a hearty welcome to all incoming freshmen! The freshmen were initiated on the various uses of the library.

We hope to have our best year ever in circulation. Everyone is welcome! Please come.

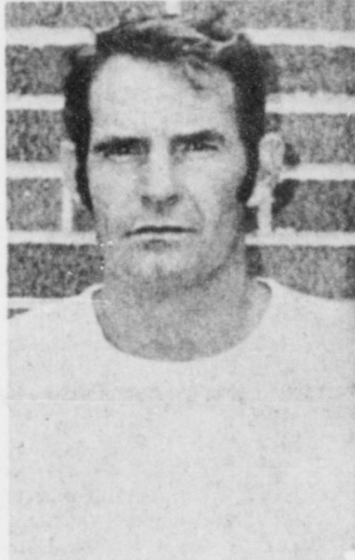
- MONDAY, SEPTEMBER 17 Spanish Club, Orientation
- TUESDAY, SEPTEMBER 18 Senior Class Meeting, Orientation
- WEDNESDAY, SEPTEMBER 19 Thespian Meeting, Orientation
- THURSDAY, SEPTEMBER 20 Latin Club, Orientation
- FRIDAY, SEPTEMBER 21 Freshmen Class meeting--Orientation

Junior Varsity Cheerleaders

This year's J.V. Cheerleaders are Head Cheerleader, Cynthia Rogers, D'Anne Clark, Cammie Wagoner, Teresa Hamilton, and Marilyn Black.



JUNIOR VARSITY CHEERLEADERS . . . Pictured left to right are Cammie Eggner, Cynthia Rogers, Marilyn Black, D'Anne Clark and Teresa Hamilton.



FRED HEDGECOKE



RAYMOND SCHROEDER



CURTIS DIDWAY



CHUCK STOUT

Fieldhouse Features Dedicated Leaders

This week the Mules Tale is featuring the coaches for the Muleshoe Mules. These men are dedicated leaders and these are their comments about the season:

Chuck Stout: "Although the season is young, I have been impressed with dedication and desire shown by the players. With continued hard work and dedication, I am sure they will have a successful year."



PAY UP TIME . . . Kelly St. Clair and Danny Brown are working hard to collect dues for the FTA. These dues must be paid if you plan to take an active part in FTA.

Active Year Ahead for FTA

FTA Ready for Active Year by Jana Oyler FTA had its first called meeting Wednesday, September 12, in the auditorium.

School Menu

- Sept. 17--21--1973 MONDAY Milk Oven Fried Chicken Buttered Greens Potatoes in Cream Sauce Hot Rolls Watermelon
- TUESDAY Milk Charburger Pickles--Onions Lettuce and Tomato Salad Oven Baked Doughnuts Cantaloupe
- WEDNESDAY Milk Spagetti with Meat Sauce Cabbage and Pepper Slaw Peanut Butter Honey Whip Watermelon Whole Wheat Muffins
- THURSDAY Milk Tamales Buttered Squash Stuffed Celery Dill Pickles Banana Pudding Corn Bread
- FRIDAY Milk Ham-Chicken Sandwich Lettuce and Tomato Salad Potato Soup Unbelievable Peanut Butter Cookies

"Super" Sophs Have Meeting

"Super" Sophs Have Meeting by Marilyn Black On Thursday, September 13, the Sophomore Class had its second class meeting of the year.

Band Sells Magazines

The Muleshoe High School Band will begin its annual magazine sale on September 20. In the past this has been a great money-making project, and hopefully this year will be the best yet.

MHS Choir Off To Good Start This Year

By Terina Whalin The high school choir is getting off to a good start with all the members showing more enthusiasm than ever.



GAYLA HOOTEN

District FFA Meeting Held at Sudan

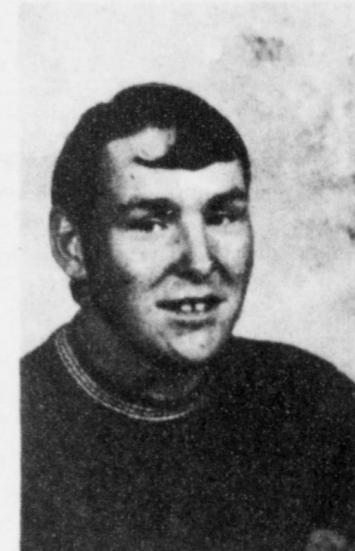
by Johnny Ramage On Wednesday, September 12, the Littlefield District FFA held the first District meeting at Sudan.

"Best of MHS"

Congratulations to Gayla Hooten who has been selected by Thespian Troupe 714 as "Best of MHS" for this week.



GENE ROGERS



STEVE BENEKE



GWEN CROUCH

New Students At MHS

Have you seen any new faces at M.H.S.? We have, so we thought you might like to meet them.

I have lived." You can see Gwen at the football games, twirling Debbie Berggren moved here from Morton.

Student Council Officers

An executive meeting of the Student Council officers was held Thursday morning in the gym.

projects were discussed for the coming year. The first general meeting will be held here all Student Council senators are elected.

Young Homemakers Select Cindy Chandler as Little Sister



CINDY CHANDLER

Cindy Chandler, senior at MHS, was chosen Little Sister to the Muleshoe Young Homemakers in May, 1973.

DECA Elects Officers

During the past two weeks, DECA has had three meetings. During the first meeting, Wednesday, September 5, the following officers were elected to serve for the 1973-74 school year.

Monday, September 10, a new parliamentarian was elected. Nominated were Lynda Vinson Phillip Yruegas, and Lewl Reed. Elected was Lewis Reed.



CLASSIFIED ADS

THE PLACE TO LOOK



WANT ADS PH.272-4536

CLASSIFIED RATES

OPEN RATES

First insertion, per word-9c
 Second and additional insertions-6c
NATIONAL RATES
 First insertion, per word-11c
 Second and additional insertions-7c
 Minimum Charge-

CARD OF THANKS.....\$2.00

Classified Display \$1.12 per col. inch
 Double rate for Blind Ads \$1.15 per col. inch for Reverses

DEADLINE FOR INSERTION

Thursday's Muleshoe Journal-Noon Tuesday
 Sunday's Bailey County Journal-Noon Friday

The Journals reserve the right to classify, revise or reject any classified ad.

Check advertisement and report any error immediately. Journals are not responsible for error after ad has already run once.

FOR SALE: 1969 Riviera 47,000 miles 272-3384 or 272-3800.
 9-37s-tfc

FOR SALE: 1964 Chev. van. Call 272-4340.
 9-37s-tfc

10. FARM EQUIP. FOR SALE
 FOR SALE: '77 Model John Deere stripper and John Deere Basket. Call 965-2154.
 10-35t-6tc

FOR SALE: 1968 510 Massey Ferguson Combine, equipped with 4 row Corn header and 20 foot maize header. Call J.R. Johnson at 965-2730.
 37t-10tc

WE PAY CASH for tractor and equipment of all kinds. Tom Flowers Auction, Inc. Day 272-4154 Night 16-2s-tfc

11. FOR SALE OR TRADE
 FOR SALE: 200 ft. of galvanized 2 inch pipe and sucker rod and two 7/8 working barrel. Call 227-6741 Sudan. 11-36s-4tp

FOR SALE: 1971 350 Honda XL. Call 272-3138 or see at 117 Main, Wilson Appliance 11-36t-tfc

FOR SALE: 1/2 price 2 year old Wayside Trailer House, 12X 60. \$200. down and take up payments of \$91 a month. Call 806-225-4192 or 806-238-1187.
 11-36s-6tc

12. HOUSEHOLD GOODS
 FOR SALE: New and used furniture. Call 272-4340.
 12-26s-tfc

BRACE yourself for a thrill the first time you use Blue Lustre to clean rugs. Rent our Blue Lustre electric shampoo machine, Perry's 128 Main.

CARPETS A FRIGHT? Make them a beautiful sight with Blue Lustre. It's marvelous. Rent our Blue Lustre electric shampoo machine. Perry's 128 Main.

13. MISCELLANEOUS
OFFICE SPACE FOR RENT: 1614 West American Blvd. Next door to Farm Bureau Office. Contact Farm Bureau office for further information. Phone 272-4567.
 15-29s-tfc

WILL KEEP two small children in my home Monday thru Friday. Call 272-3795
 15-37t-4tc

***Expert and Colorful Weddings**
***Family Groups**
Anywhere, Anytime
PHOTOGRAPHY
 by Oecia
 CALL 385-6083
 Littlefield 409 W. 2nd

Thinking about buying used furniture?
We Have It At The Swap Shop
 Call 272-3074
 213 S. Main
 Muleshoe, Texas

For Sale
 Vine Ripe Tomatoes
 Contact J.K. Adams

VALLEY SELF PROPELLED
 SPRINKLER SYSTEMS
 standard and reversing. Let us talk with you about our new 6-8-10 year lease. Programs which now include PVC plastic pipe. AVI, Inc. 1534 W. American Blvd. Muleshoe, Tex. Phone 806-272-3565.
 10-33t-tfc

FOR SALE
 New & Rebuilt Kirby's
 Carolyn Duncan
 Ph 272-4182 220 W. 10

KREBBS REAL ESTATE
 210 S. 1st PH.272-3191

2. LOST & FOUND
 Lost-One black 500 pound heifer branded 55 on left hip. If seen contact 825-2103
 2-37T-4TC

3. HELP WANTED
 WANTED: Beautician at Dee Dee Coiffure Fantasies, Phone 272-4375.
 3-16s-tfc

ROUTE SALES Milk route openings now available. Good benefits. Apply at Bell Dairy Products, Inc. 201 University Avenue, Lubbock, Tex. or call 806-765-8833.
 3-35t-tfc

Outstanding opportunity in agriculture sales. Generous salary plus commission and car allowance. Send resume to 106 E. Halsell in Dimmitt, Tex. 79027 or for appointment 647-3170 American Bioculture Inc. Farm Division.
 3-37s-3tc

Applications are now being accepted for route salesman. Experience helpful but not required. Must have Commercial Operators license. Apply in person at Texaco Inc. 224 W American Blvd.
 3-36t-tfc

5. APTS. FOR RENT
 FRIONA APTS, now have available 1, 2, & 3 bedrooms. Call 247-3666 or come by 1300 Walnut Street.
 5-29s-tfc

FOR RENT: 2 bedroom furnished apartment. Phone 272-4838 Smallwood Real Estate, 5-47s-tfc

7. WANTED TO RENT
 Want to lease wheat pasture, call 272-3866
 7-36t-4tp

Want to rent irrigated land. Contact John Mitchell, 965-2160.
 7-37t-tfc

REAL ESTATE FOR SALE

FOR SALE BY OWNER: 2 bedroom house close to high school. Fully carpeted. J.A. Rushing Sharp 225-6155.
 8-35s-8tp

FOR SALE: 2 bedroom house at 316 West 10th. Call 272-4871
 8-27t-tfc

FOR SALE: 160 acres dry land, will rent 160 with it. Call 272-3191 or 272-3685.
 8-33t-tfc

FOR SALE: 3 bedroom, 1 3/4 bath, brick home in Richland Hills. Call 272-4376.
 8-22t-tfc

FOR SALE
 30 acres exclusive near town. New 8 inch well in alfalfa. NEED LISTINGS FOR HOUSES AND ACREAGE.
 Two brick three bedroom homes in Richland Hills. HOLLAND REAL ESTATE 113 W. Ave D
 Phone 272-3293 day or night 32t-tfc

JAMES GLAZE COMPANY
 REAL ESTATE AND
 FARM & RANCH
 LOANS
 Phone 272-4549 219 S. 1st.
 42t-tfc

POOL REAL ESTATE
 For Sale: 1 section good irrigated land. Would appreciate your listings on houses, farms and ranches. Pool Real Estate 214 East American Blvd. Phone 272-4716 Lee Pool 272-3136 Woody Goforth 272-3079

FOR SALE: 3 bedroom house, 1 full bath, 1 car garage. 1725 Ave. B. Phone 272-4709.
 8-34s-tfc

FOR SALE BY OWNER: 2 bedroom house with den. Carpeted and fully plumbed. Fenced back yard. 618 Austin or call 272-4031.
 8-36t-tfc

Minimum Capitol required to buy thriving ladies dress shop. Call 272-4766 or 272-4412.
 8-35s-tfc

FOR SALE by owner new brick, three bedroom, two baths, den, living room and utility. Single car garage. Call 272-4039.
 8-37t-tfc

FOR SALE by owner three bedroom, large den and living room, two baths, utility room, double garage. See at 323 W Ave. J. or call 272-5584.
 8-37t-tfc

Cess Pool Cleaning
 Acid for Cess Pool Available
 ELMER DAVIS
 Phone 272-3677 or 272-3467

8. AUTO BILLEN FOR SALE

YL METHODIST CHURCH
 Rt. 1, Muleshoe
 Arron L. Mitchell, Minister

ZION REST
 PRIMITIVE BAPTIST CHURCH
 207 E. Ave. G
 Glen Williams, Elder

PRIMITIVE BAPTIST CHURCH
 621 S. First
 Afton Richards, Elder

FIRST CHRISTIAN CHURCH
 130 W. Ave. G
 S. S. Class - 9:45
 Church - 11:00
 Dick Farr, Pastor

LATIN AMERICAN
 METHODIST MISSION
 Ave. D & 5th Street
 Esteban Lara, Pastor

FIRST PRESBYTERIAN
 Morton Highway
 Edwin L. Manning, Pastor
 Sunday Morning Service

CHURCH OF
 THE NAZARENE
 Ninth & Ave. C
 Robert Bybee, Pastor

CALVARY BAPTIST CHURCH
 1733 W. Ave. C.
 Charles Kenneth Harvey, Pastor

TRINITY BAPTIST CHURCH
 314 E. Ave. B
 V.L. Huggins, Pastor

MULESHOE
 ASSEMBLY OF GOD
 517 S. First
 H.D. Hunter, Pastor

JEHOVAH'S WITNESS
 Friona Highway
 Boyd Lowery, Minister

RICHLAND HILLS
 BAPTIST CHURCH
 17th & West Ave. D

SEASONS CHANGE

For a time leaves are green, then in early fall they become brilliant with many colors. Finally they turn brown and fall from the trees, leaving them drab and lonely looking.

God never changes, he is an ever present help.

"For I am the Lord, I change not"

Attend church and learn more of God's wonderful and never changing love.

The Church is God's appointed agency in this world for spreading the knowledge of His love for man and of His demand for man to respond to that love by loving his neighbor. Without this grounding in the love of God, no government or society or way of life will long persevere and the freedoms which we hold so dear will inevitably perish. Therefore, even from a selfish point of view, one should support the Church for the sake of the welfare of himself and his family. Beyond that, however, every person should uphold and participate in the Church because it tells the truth about man's life, death and destiny; the truth which alone will set him free to live as a child of God.

EVERYONE IN THE CHURCH
 THE CHURCH IN EVERYONE

Coleman Adv. Serv.

Lambert Cleaners
 Steam Carpet Cleaning
 Drapery Cleaning
 123 Main St. 272-4726

City Cleaners
 Quality & Fast Service
 119 Ave. C
 272-3248

Muleshoe Co-op Gin

B & S Irrigation Company

Art Craft Printing Co.
 105 E. Avenue D.

Clinical Masseuse
 Exercise Program for a Feather-Like Figure
 109 S. First 272-3677

Whitt-Watts & Rempe Implement Co.
 "John Deere Dealers"
 Muleshoe, Texas 272-4297

Decorators 216 Floral
 "Flowers Express The Handiwork of God"
 216 S. First 272-4340

Bailey County Memorial Park
 "Every Service A Sacred Trust"

Dairy Queen
 1201 West American
 272-3412

Dial 272-3737 for better turnouts, better samples with
Progress Gin
 7 1/2 miles west of Muleshoe on Clovis Highway

Dari-Delite Drive-In
 210 N. First
 Take Out Orders 272-4482

Chow-Tex Feed Lot
 "Complete Feed Program"
 Route 1, Box 134
 Muleshoe 965-2900

Gibson's Discount Center
 1723 West American Blvd.
 272-4306

Homer Redwine Phillips 66
 715 West American 272-4424

Bob's Safety Center
 Wheel Aligning, Brakework & Automotive Air Conditioning

Bratcher Motor Supply
 107 E. Ave. B
 272-4288

Kemp Pump Service
 Sales & Service for Pumps
 272-4175

St. Clair's
 110 Main

San Francisco Cafe
 "Tortilla Factory"
 121 Main St. 272-3502

White's Cashway Grocery
 "Where Friends Meet and Price Is Talk"
 402 Main

Western Drug
 114 Main

Dinner Bell Cafe
 Compliments of Joe & Rena Carroll
 272-3460

A & B Plumbing, Heating & Air Conditioning
 We Sell the Best and Service the Rest
 272-3734

White's Cashway Grocery

Muleshoe State Bank
 304 W. Second

Cobb's Dept. Store
 218 Main

Cobb's Dept. Store

TFU Blames Low Price Support For Texas Farmers Losses

Texas Farmers Union President Jay Naman of Waco blamed low farm program price support levels for millions of dollars of losses which Texas farmers have sustained by future contracting. In a statement released from the Waco office, he said that Texas farmers have been "blackjacked" into contracting by the failure of the federal farm program to protect farm income.

"Farmers have sold too cheap or have contracted too low because their costs are high and price support levels are so low that they discourage orderly marketing. Farmers

are forced by their financial obligations to resort to the security of a future contract, because the farm program does not provide a realistic floor under their prices. Much of the Texas cotton and feed grains has been sold at levels substantially below present market prices," Naman said.

"The traditional function of the Commodity Credit Corporation loan, to protect farm prices at harvest time and to encourage a farmer to market in an orderly manner, was destroyed in the weak 1970 Farm Act and the low levels set by

the Nixon Administration. The new farm program is just as objectionable or worse, and gives the Secretary the discretionary power to continue his low price support policy," according to the state farm organization president.

Naman pointed out that the charges and countercharges between the farmers and buyers are failing to focus on the shortcomings in the commodity marketing system which encourages uncontrolled speculation and erratic farm prices.

"Farmers Union has put together a task force on domestic economic problems and foreign trade to work on improving the present system of marketing farm products. Our task force members, farmers from across the state, will be meeting regularly during the

fall and winter to work out a better marketing system and to devise better ways of forecasting both domestic and export markets," Naman said.

School Menu

LAZBUDDIE

Week of Sept. 17-21

MONDAY

Hamburger Steak

Creamed Potatoes

Green Beans

Cabbage Slaw

Rolls-Butter & Jelly

TUESDAY

Burritos

Pinto Beans

Sliced Tomatoes

Shredded Lettuce

Cornbread-Butter
Peach Cobbler
Milk
WEDNESDAY
Veg. Beef Stew
Buttered Rice
Cheese Sticks
Fruit Rolls
Crackers
Milk
THURSDAY
Hamburgers on Bun
Sloppy Joes
Sliced Tomatoes
Lettuce & Pickles
French Fries
Peanut Butter Cookies
Milk
FRIDAY
Fish Krispies
Buttered Corn
Harvard Beets
Tossed Salad
Rolls & Butter
Jelly

Orange Juice & Milk
One half oz. peanut butter with

each Menu
(Menu Subject to change)

Shop Muleshoe FIRST!!

Seven days a week dead stock removal
please call as soon as possible



ATTENTION MULESHOE AREA CATTLEMEN

... In regard to dead stock removal...
If you have had a problem with service... whether in the
feedyard or on the farm... please give us a chance!

Your local used cow dealer is
muleshoe bi-products

Thank you
Phone-965-2903
Mobil Phone 965-2429

PIGGLY WIGGLY



Crisp, Head
Lettuce
25¢

- | | | |
|-----------------------------|---------------|-------------------------------|
| Head | Lb. | |
| California Avocados | 13¢ | Fresh Green Onions 2/39¢ |
| Delicious Yellow Squash | Lb. 39¢ | Colorful Juicy Plums Lb. 19¢ |
| Seedless Grapes | Lb. 19¢ | Firm, Fresh Cucumbers Lb. 33¢ |
| Tasty, Firm Jonathan Apples | Lb. 29¢ | |
| Vitamin Rich Cello Carrots | 2 Lb. Bag 29¢ | |

OPEN 7AM-12 PM 7 Days A Week

Superb Valu Trim
Sirloin Steak
\$1.39

- | | |
|------------------------------------|---------|
| Lb. | 98¢ |
| USDA Inspected Fresh Fryer Breasts | Lb. 98¢ |
| USDA Inspected Fresh Fryer Thighs | Lb. 98¢ |
| USDA Inspected Fresh Fryer Drums | Lb. 61¢ |
| USDA Inspected Fresh Cut-Up Fryers | |

FAMILY PAK
PORK CHOPS
\$1.19



Superb Valu Trim
Rib Steak
\$1.39

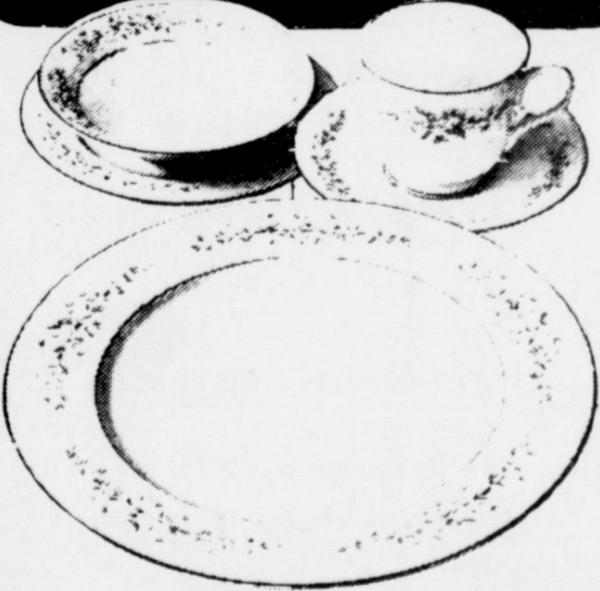
- | | | |
|---|-------------|-----|
| Pkg. | 12-oz. Pkg. | 89¢ |
| Decker Breaded Beef Patties | 3-oz. Pkg. | 39¢ |
| Farmer Jones Wafer Thin 5 Varieties Lunch Meats | 6oz. PKG. | 59¢ |
| All Beef Bologna, Liver Cheese, Spiced Sliced Lunch Meats | 8-oz. Pkg. | 67¢ |
| Kraft American Single Sliced Cheese | | |

Superb Valu
Round Steak
\$1.39

PIGGLY WIGGLY SOFT DRINKS
No Deposit No Return
6 \$1

- | | |
|----------------|--------|
| 11-oz. Box | 33¢ |
| 6-oz. Pkg. | 47¢ |
| 5-oz. Jar | 37¢ |
| 10 1/4-oz. Can | 39¢ |
| 3 8-oz. Ctns. | \$1.00 |
| 8-oz. Pkg. | 39¢ |
- Sun-Glo All Varieties, Reg. 49¢, Snack Chips

IMPORTED FINE
Carolyn
PORCELAIN CHINA
BY CROWN VICTORIA



This Weeks Feature
Dessert Plate Ea. **49¢**
with each \$3.00 purchase

Wear-Ever Super-Chef Cookware
with Teflon II
This Weeks Feature
2 Qt. Covered Sauce Pan

\$3.99
Only with each \$3.00 purchase



Cream of Chicken, Chicken Noodle, Chicken & Rice or Chicken & Stars
Campbell's Soup

6 \$1
10 1/2-oz. Cans

- | | | |
|--|-------------|-----|
| Murray Soup & Chili Crackers | 11-oz. Pkg. | 29¢ |
| Piggly Wiggly Evaporated Canned Milk | 13-oz. Can | 20¢ |
| Arrow Long Grain Fancy Rice | Lb. Pkg. | 27¢ |
| Piggly Wiggly Pure Ground Black Pepper | 4-oz. Can | 35¢ |
| Baking Bisquick Mix | 40-oz. Box | 69¢ |
| Keebler's Zesta Saltine Crackers | Lb. Box | 39¢ |



Ranch Style
Beans

6 \$1
15-oz. Cans

- | | | |
|---|-------------|-----|
| White House Apple Sauce | 25-oz. Jar | 43¢ |
| Piggly Wiggly Hawaiian Juice Pack Chunk Pineapple | 15-oz. Can | 29¢ |
| Piggly Wiggly French Style Beans | 16-oz. Can | 25¢ |
| Kounty Kist Whole Kernel Golden Corn | 12-oz. Can | 20¢ |
| Piggly Wiggly Garden Fresh Green Peas | 16-oz. Can | 24¢ |
| Zee Asst'd. Colors Bath Tissue | 4-Roll Pkg. | 39¢ |



Piggly Wiggly 100% Pure Florida Frozen

Orange Juice
6 \$1
6-oz. Cans
Limit 6, please

- | | | |
|--|--------------------|--------|
| Piggly Wiggly Frozen Cut Corn | 10-oz. Pkg. | 25¢ |
| Morton's Frozen Turkey or Chicken Pot Pies | 8-oz. Pkgs. | 27¢ |
| Morton's Frozen Beef Dinners | 11-oz. Pkg. | 59¢ |
| Ole South Frozen Cherry Cobbler | 2-Lb. Pkg. | \$1.09 |
| Piggly Wiggly All Grinds Coffee | Lb. Can | 98¢ |
| White Rain Hair Spray | 13-oz. Aerosol Can | 79¢ |