

The Carbon Messenger

Volume 47

Carbon, Eastland County, Texas, Thursday, August 21, 1958

Number 24

Personals

Mrs. J. L. Black and Mrs. Truman Ben and daughters visited Jack Black and family of Brady last week.

Mrs. Allie Campbell is visiting her daughter, Mrs. Bewel McGaha, and husband of Morenci, Ariz.

Mrs. E. R. Butler and son, Gene Butler and family visited Bryan L. Butler and family of College Station last week end.

Raymond Camp and wife of Fort Worth visited F. J. Stubble field and wife Sunday.

Mrs. W. O. Hamilton of Cisco visited relatives here Sunday and attended services at the Baptist Church.

Babe Mitchell and family of Munday visited his parents, R. F. Mitchell and wife and her mother, Mrs. Laura Foley, last week.

H. R. Gilbert and wife attended the funeral of her niece, Mrs. J. L. Watson, in Rising Star Sunday.

Mrs. A. C. Underwood visited in Graham last Wednesday.

Addie Lee Campbell has returned home from a visit with her sister, Mrs. Jerry Bell, and husband of Salina, Kan.

visited her son Rev. Roger Butler, and family Tuesday.

Mrs. J. C. Poe of Eastland visited her parents, O. Stone and wife, Monday.

A. T. Mosier of Pleasanton visited his son, Grover Mosier, and family this week.

Mrs. J. L. Black is visiting her daughter, Mrs. Rayneal Baze, and family of Ranger this week.

Back To School

Have a good supply of all school needs, Zipper note books, and every school need. Also plenty to eat. Your trade is appreciated.—Mrs. Ruth Craighead.

J. E. McGlothlin Passes Away

Funeral services for John Edward McGlothlin, 80, were held at the Carbon Church of Christ Wednesday at 2 p. m. with Otto Johnson, Minister of the Eastland Church of Christ, officiating. Burial was in the Rising Star cemetery.

Mr. McGlothlin passed away Monday afternoon in the Kirk Nursing Home in Gorman after a lingering illness following a stroke. He had been a resident of Carbon for many years, having formerly owned the Carbon Telephone Exchange and at the time of his death was in the Grocery Business.

Survivors include his wife, Mrs. Jo Ella McGlothlin of Kermit and the following children: Herchel McGlothlin of Abilene, Mrs. R. A. Henderson of Savannah, Ga., W. E. McGlothlin of Friona, Mrs. Ora Graves of Killeen, Cecil McGlothlin of Fort Worth and Mrs. J. C. Parnell of Corpus Christi. Also two step children, Billy Scudder of Kermit and Mrs. Duane Walden of Jal, N. M.; five sisters and two brothers.

Pallbearers were Collin Campbell, George Putnam, Leroy Park, J. H. Weaver, L. B. Lewis, and Clyde Campbell.

Methodist Revival Begins Sunday

Sunday August 24 and will continue through Friday night, Aug. 29. Services will be held every night with the pastor, Rev. John Wylie, doing the preaching. Everyone has a cordial invitation to attend these services.

Community Night

A Community Night will be held next Tuesday night at the Center Point school house. Games will be played and refreshments will be served. Everyone invited.

Mrs. C. H. Aiken of San Marcus is visiting her aunt, Mrs. H. R. Gilbert, and Mr. Gilbert this week.

School To Open With Assembly

The Carbon School will open August 29 at 8:30. There will be a short assembly program in the High School Auditorium on the opening day about 8:40 and the public is invited. Buses will run at the regular time and school will continue the better part of the day, with lunch being served in the lunchroom.

There will be no school Monday, September 1. Classes will resume September 2 on regular schedule.

Lunch fees will be 25c for elementary and high school students

Our football season opens September 5, with a game at Moran.

Below is the schedule for this year's season:

Sept. 5-Moran there
Sept. 11 Iredell there
Sept. 18-Open
Sept. 25-Brocksmith here
Oct. 2-Gustine there
Oct. 9 Sidney there
Oct. 16-Open
Oct. 23-Star here
Oct. 30-Pottsville here
Nov. 6-Predry here
Nov. 13-Mullin here

All boys interested in playing football should report to the high school gym Monday morning, August 25, between 9 and 10 o'clock. Weights start at 7:00 p. m.

For Tax Refunds

Approximately 45,000 North Texas farmers are expected to file a claim for the refund of the Federal excise tax on gasoline, according to A. E. Fogle, Jr., Administrative Officer of the Abilene office.

Under the law enacted on April 2, 1956, farmers are entitled to claim refund each year for the three cents a gallon Federal excise tax on gasoline used on a farm for farming purposes. Farmers can obtain Publication No. 308 from their local Internal Revenue Service office or from their County Agent. This 15 page pamphlet explains in detail how to file the claim for refund.

Forms 2240, the farmers' gas tax refund claim form, is also available at County Agent's offices as well as Internal Revenue Service offices. September 30 is the deadline for filing a claim for refund on the taxes covering the fiscal year from July 1, 1957 through June 30, 1958.

Productive Soil Needs Good Cover For Maximum Results

STUBBLE MULCH TILLAGE — Small grain stubble left on the land through proper tillage forms a natural mulch for keeping the earth cool and saving moisture.

SCS News



Productive soil cannot exist for long without protection. Uncover soil and the wind and rain will blow or wash it away. Keep it covered and there is less soil loss and less loss of the moisture in it. Small grain straw left on the land is a natural soil mulch which can do much to keep the earth cool and save moisture.

Proper management of small grain residue is one of our most important conservation practices. The present summer season is a critical period in the management of stubble mulches. Benefit to

the land from straw or other plant residue is in proportion to the amount of residue left on the surface in tillage operations. Any tillage method in preparing a seed bed for fall sowing that leaves the residue on or at least near the surface will give the best protection to the soil. Best jobs are usually done with chisel or sweep type implements. However good work is often done with disc implements provided the discs are run at the correct angle to not turn the soil excessively and cover too much residue.

An important factor in stubble management of course is in the management of grazing in order to leave sufficient residue for soil protection. In addition protection of stubble from fire can be awfully important.

Chief benefits from stubble mulches is in the role of the mulch serving as a cover to the soil. Cover serves to reduce

extremes and evaporation, reduce surface crusting, and reduce erosion. One of the primary benefits from good crop residue management come from the physical effects of organic material on the land as influenced by the weather. The organic content of the top six inches of soil is greater where residues are left on the surface as compared to where residues are completely turned under. When crop residues are completely buried the following crop often suffers from nitrogen starvation because of the available nitrogen in the soil being used to decay the plant material. This effect can be lessened by leaving the residue on or near the surface, where a more gradual decomposition of the material will take place. As time goes on with a continuous process of decomposition, aided by tillage, the tilth of the soil may be improved to great depths.

HOME MAKERS

Views and News

Editor: Editor, Carbon Messenger, Carbon, Texas

Steak makes any outdoor meal or picnic a real occasion. In selecting a steak for broiling over a charcoal fire, look for a well-marbled steak. By marbling they mean a steak when fat is interspersed with the lean. A well marbled steak will usually be tender and juicy when broiled — if it came from a young beef animal.

The food shopper has no way of judging this last point but federal meat graders do — and the shopper can take advantage of their knowledge by using U. S. grades as a guide in selecting a picnic steak.

USDA Prime and Choice grades provide steaks which are best for broiling. You can easily tell if beef is Federally graded. On the fat covering you will find one or more purple shield-shaped stamps enclosing the grade name and the letters USDA. This shield grade mark is registered in the U. S. Patent Office for your protection.

Special Sale

Special Sale on Friedman Shelby Childrens Shoes
Broken sizes 3.00 & 4.00 Values

1.00

A complete stock of Dickies Jeans for the Boys

Make Our Store Your Shopping Center

Carbon Trading Company

Dixie Drive-In

Hi-way 80—2 mi. east of Eastland

Box office opens 7:30

First showing 8:00

Box Office closes 10:00

Admission 50c

Children under 12 Free

Fri. Sat.

"The Iron Sheriff"

Sterling Hayden

Sun. Mon

"Let's Be Happy"

Tony Martin

Vera Eden

Tues.

"The Ride Back"

Anthony Quinn

William Conrad

Wed. Thurs.

"The Sun Also Rises"

Tyrone Power

Ava Gardner

Mel Ferrer

Errol Flynn

Specials

Friday and Saturday

Kimbell Biscuits 2 for 19c

Folgers Coffee lb 83c

Mellorine 1-2 Gal 49c

Cheer, Giant Size 75c

Kimbell Shortening 3 lb 63c

School Supplies

Carbon Trading Company

Auto Insurance Rates In Texas To Increase August 1

"Automobile insurance rates will be raised effective August 1, 1958, the State Board of Insurance said this week. These increases result directly from an increasing number of automobile collisions, higher costs of repairs, larger medical costs, and higher jury awards in actions for damages.

"The average rate increase, state-wide for all classes combined, will be approximately 19% for liability insurance and approximately 17% for collision in-

surance on private passenger cars. It is emphasized that these percentages are only the average increases, are based on Texas experience alone, and will vary widely among the different rating territories of the State and among the different classes of insureds. The State Board of Insurance, as required by law, has set these rates after a public hearing in Austin on June 20, and after careful study of statistics collected on automobile losses in Texas.

"After these increases become effective, liability rates in Texas still will be below the majority of other states, and Texans will have the lowest rate among the eight states having the largest number of registered motor vehicles. The increase in rates is

necessary because of the highest underwriting costs in history. Over the nation, leading stock automobile insurance companies last year paid out \$116.70 for every \$100.00 received in policy premiums.

"The driving public must realize that neither the State Board of Insurance nor the insurance companies determine automobile insurance rates. Instead, the drivers themselves determine what the rates are going to be from year to year. Rates drop when accident costs decrease; rates must rise when accident costs increase.

"The law enforcement agencies, the judiciary, and other officials can help this situation by a firm and aggressive law enforcement campaign against traffic law vio-

lations. Punishment for violations should be swift and just. A 'get-tough' policy could show surprising results in reducing automobile insurance rates."

Two new provisions permit reductions in rates in certain instances. By using a \$50 deductible provision on comprehensive physical damage (not including collision) the motorist can reduce his rate on this coverage 50%. Another new provision approved by the Board will benefit owners of two or more cars if all cars are insured under a single policy and if there are no drivers in the household under age 25. This permits a reduction of 25% in the rate on the lowest rated vehicle for collision, liability, and medical payments insurance.

New Mobile Mill

Kincaid Feed and Turkey Hatchery, prominent Eastland County business firm, has announced the purpose of a new Daffin mobile feed mill, shown mill will be available for custom work throughout the area. It was described as "a complete feed processing plant on wheels."

The Kincaids are well known. Alvin and Robert Kincaid reside on turkey ranches northwest of Cisco, Don Kincaid has a similar ranch just east of Cisco, and Aubrey Kincaid operates a turkey ranching business at Ranger. Don and Aubrey recently went to Pennsylvania and drove the new mill truck back to Eastland

Entertaining is more fun...



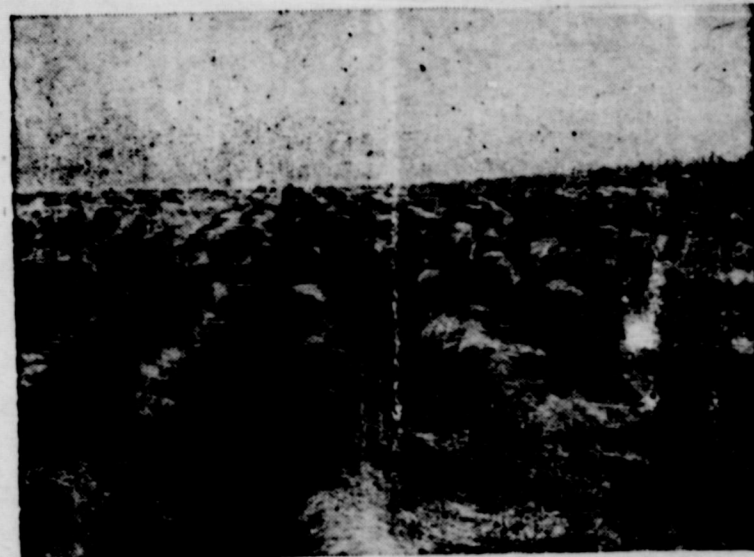
when dishwashing is done **ELECTRICALLY**



You can relax and enjoy your guests, without concern about dirty dishes, when you have an Electric Dishwasher. After party meals or every-day meals, it takes only a few minutes to load and set your Electric Dishwasher and your dishes are washed and dried sparkling bright and hygienically clean... automatically. Your kitchen stays tidier, your hands stay lovelier, and you have more time to spend doing other things. See your appliance dealer soon for an Electric Dishwasher that will help you LIVE BETTER... ELECTRICALLY!

TEXAS ELECTRIC SERVICE COMPANY
T. J. HALLMARK, Manager

Contour Farming



Contour farming on terraced lands holds the maximum rainfall in place for crop production and reduces soil loss resulting from run-off. A good vegetation program makes the above practices more effective.

First National Bank
Member F. D. I. C. Gorman

Carload or New Seiberling Rejects
Come Early and get Your Pick

Sizes 6.00x 16 10.80
Sizes 6.70x15 13.48
Including tax

We have sizes to fit every car or truck.

Jin Horton Tire Service
East Main Eastland

Lighting the way of men to betterment is the finest profession known.

Methodist Church

Rev. John Wylie, pastor
Services each 2nd and 4th Sunday
Sunday School 10:00 a. m.
Morning Worship 11:00 a. m.
Youth meeting 6:30
Evening Services 7:30 p. m.
W.S. C.S. 2:30 p. m. Mon

Church Of Christ

Bible Study 10:00 a. m.
Preaching 11:00 a. m.
Lord's Supper 11:40 a. m.
Preaching 7:30 p. m.
Wed. Bible Class 7:00 p. m.
You are invited to be with us at any time
Mitchell L. Embry, Minister

The dahlia was named after the Swedish botanist Dahl.

The English Channel lies between Great Britain and France.

Araname College at Goliad, Texas, closed its doors when the entire student body enlisted in the

The name, Minnesota, is derived from the two Sioux Indian words meaning "sky colored water."

We Invite You To
See us when in Town

See Us for a complete line of
V Belts and Genuine Case Parts

Keith

Implement Company
Case Dealer Do Leon Texas

There are exactly 100 varieties of cacti.

Be Sure To Get Our Prices On Admiral Freezers

Serviceable And Dependable

Several sizes to choose from
Come in and see these new
Freezers and Refrigerators
And Get Our Low Prices

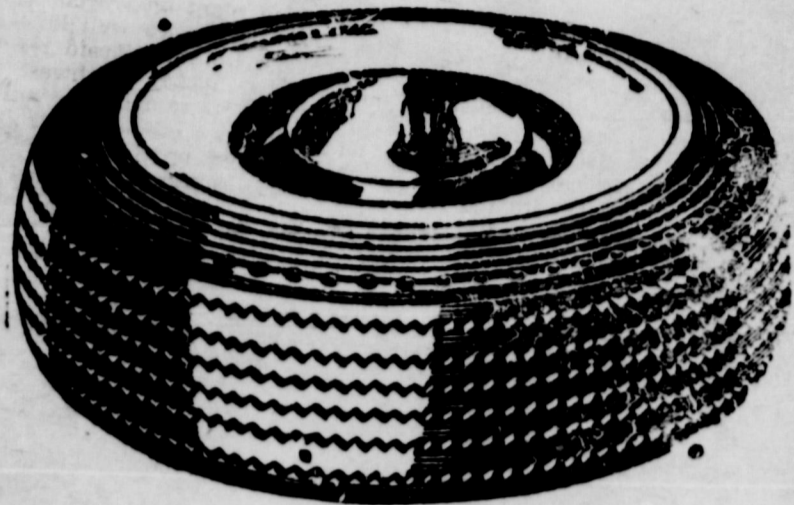
Cisco Locker Plant
Locker Rental & Meat Processing
Cisco, Texas

See Us
For Your
Cleaning & Pressing
Needs

Expert and Courteous
Service At All Times

Pool's
Dry Cleaners
Eastland, Texas

**Buy Your Tires At WHOLESALE PRICES
AND SAVE MONEY**



We carry a very large stock of Passenger, Pick-up, Truck or Tractor Tires. Nylon or Rayon.
New Tires, Used tires, Retreads, Rejects—Name it and we will try to satisfy you
A modern recap and repair shop in connection is at your service. Good, quick work.
Prices reasonable.
A short drive to Eastland can save you money!

Jim Horton Tire Service

Your Sciberling Dealer

East Main St.

Eastland Texas

School News

Solve all your School Shopping Problems Here
You will find a complete selection of school clothes
for each member of your family, shop here and Save

New Fall Wardrobe

See Our New Fall Hats, Skirts, Blouses and Bags
We have just what your new Fall Wardrobe Needs

Visit Our Store For Outstanding Value For
The Entire Family

Wonderful Handbags Now at Great Saving To You
1-2 Price

AK Ladies Summer Shoes Greatly Reduced
Large selection of Dress Materials Prints, Silks,
Linen and many other kinds of Materials
At Greatly Reduced Prices
Costume Jewelry Reduced To 1-2 Price

Higginbotham
German, Texas

Notice

Have several puppies that want a home. See Mrs. Baldie Harris Rt. 1, Eastland, phone 749w4.

For SALE

J. J. Case wire or twine, Hay
alers and Supplies
Henry A. Schaefer
Cisco, Texas

HALF HO UR

Laundry Service

Automatic coin operated
washers and dryers
open 24 hours every day
WASHERS 20c per load
DRYERS 25c for 2 washer loads

LAUNDROMAT

In Old Tip Top Cafe Bldg.
Eastland, Texas

For Your Furniture Needs

Fine furniture, Floor coverings, G. E. appliances. Free
delivery and convenient terms. Good Trade-ins, too!

Coats Furniture and Carpet Ltd.

— Eastland —

Used Cars

See us for the best Used Car

Buy In Town

Also expert mechanics in our Shop

King Motor Company

Eastland, Texas

EASTLAND NATIONAL BANK

"On The Square"

Member F. D. I. C.

Eastland, Texas

For Your Tractor

A complete stock of front and
rear tires at lowest prices plus
over 100 used tires
Jim Horton Tire Service

The Carbon Messenger
Dated Thursday At Carbon
Eastland County, Texas

Entered as second class matter at
the Post Office at Carbon, Texas
as under the act of Congress
March 3rd 1879
W. M. Dunn, publisher

First Baptist Church

Rev. Roger Butler, Pastor
Sunday School 10:00 a. m.
J. E. Jackson, Superintendent
Morning worship 11:00 a. m.
Training Union 7:00 p. m.
Evening worship 8:00 p. m.
W. M. U. Monday 2:00 p. m.
Prayer meeting Wed. 8:00 p. m.

Note: The Brotherhood will be
glad to take the elderly people
home from church
morning and night.

Ambulance Service

Air Conditioned by Refrigeration

Wylie Funeral Home

Dial HI 2-2333

Cisco

Complete Modern Funeral Home

Including New Chapel

Available Day or Night

Higginbotham Funeral Home

Day Phone 11 Night Phone 24J

German, Texas

Back TO School CLOTHES

See our large selection of school clothes for school and college
Clothes any Girl will appreciate
New Fall Ready-To-Wear Is
Arriving Daily

Aitmans

- Eastland -

Back To School

Visit Our Store For Your
School Supplies

Our stock is complete and
and at money saving prices

Wilson's

Variety Store

EASTLAND, TEXAS

Price Support Of \$209 Is Announced

Prospects for a good farm income year for Eastland County and this West Central Texas area appeared bright today as reports indicated a good peanut yield and price. Grain and hay crops have been better than usual.

The outlook for the peanut crop appears brighter than in a good many years, according to Emmett Powell, office manager for the county Agricultural Stabilization Committee. Places in the county are beginning to need rain, he added.

Mr. Powell said his office expects to complete measuring the peanut crop in about ten days. It appears that there will be between 27,000 and 29,000 acres in peanuts this year. The Eastland County quota is 33,000 acres.

Support price on 1958 Spanish peanuts grown in the southwest will be \$209.60 per ton, the U. S. Department of Agriculture announced last week. The loan price, which is the basis for buying in the southwest and other areas, will be about \$9.00 less than the support price or approximately \$200.60 or \$3.008 per bushel.

The support price is below the national average, and again Southwest growers will be paid less for their peanuts than growers in the Southeast and Virginia.

Support price on Virginia peanuts will be \$222.74. Southeast peanuts will be supported at \$218.28 and runner type peanuts at \$202.22. The national average will be \$213.20.

The \$213.20 average was announced March 31. Price differentials have just been announced, however.

The support price on peanuts grown in Eastland County is also lower than the recommendation made by the industrial group, composed of representatives from all areas.

Southwestern Peanut Growers Association explained that peanut grower and sheller representative met in Washington July 22 in an attempt to reach agreement with respect to price support differentials.

The by types range both over and under the national average," SWPGA pointed out.

"Establishing these prices to conform to the national average is an administration function of the USDA. However, USDA officials asked for recommendations of the industry group. The following recommendations were adopted by the industry representatives in the recent meeting.

"Being unable to agree on any better basis of establishing price differentials on peanuts of various types, he it resolved that we support the recommendations of the Department as set forth in a bulletin dated July 10, 1958, and request that it be adopted for the 1958 season, with the further recommendation that a study be continued to determine method of determining differentials in 1959."

The July 10 USDA bulletin recommended Southwest peanuts be supported at \$210.30 per ton, Southeast peanuts at \$218.28 per ton, Virginia peanuts at \$222.74 per ton and runner peanuts at \$202.22 per ton.

A check shows that since the July 10 bulletin was released, the USDA further penalized Southwest growers to the advantage of Southeast growers.

The county has only about 600 acres in cotton as most of the 7,000 acre quota has been placed in the soil bank, Mr. Powell said.

The Hall of Fame for Great Americans was established in 1900

Corsica, an island 100 miles off the French coast, is famed as the birthplace of Napoleon.

Implements For Sale

Several good used Ferguson Tractors. "Long" peanut combines, worlds most advanced combine. - Comanche County Tractor Co. Massey Ferguson Dealer, M. E. Stephens, De Leon, Tex.

OPPORTUNITY MAN OR WOMAN

Responsible person from this area to service and collect from cigarette dispensers. No selling. Age not essential. Car, references, and \$600.00 to \$1800.00 investment necessary. 7 to 12 hours weekly net up to \$360.00 monthly income. Possibility fulltime work. For local interview give phone and particulars. Write International Distributing Co., P. O. Box 865, Okla. City, Okla.

Notice

Used Super C Farmall Fast Hitch with row tools and single disc Harrow.
Perkins Implement Co.
Eastland, Texas

RELIABLE PARTY MALE OR FEMALE

wanted to service and collect from a route of CIGARETTE machines. No selling. Route is fully established for operator. Full or part time. Up to \$300 per month to start. \$1,000 to \$2,000 cash required which is secured. Write, giving full particulars and phone number to P. O. Box 9552, Dallas 6, Texas

Election, Saturday

Saturday, August 23, our second Primary election will be held. Our Commissioner's race will be decided then for Precinct No. 2 between B. M. Bennett, present Commissioner, and A. M. Thurman. It is your privilege, so every eligible voter go to the polls and cast your vote.

CITATION BY PUBLICATION THE STATE OF TEXAS

To any Sheriff or any Constable within the State of Texas - GREETING:

You are hereby commanded to cause to be published once each week for four consecutive weeks, the first publication to be at least twenty-eight days before the return day thereof, in a newspaper printed in Eastland County, Texas, the accompanying citation, of which the herein below following is a true copy.

CITATION BY PUBLICATION THE STATE OF TEXAS TO

Thomas Edward Eldredge defendant, Greeting:

YOU ARE HEREBY COMMANDED to appear before the Honorable 91st District Court of Eastland County at the Court-house thereof, in Eastland, Texas, by filing a written answer at or before 10 o'clock A. M. of the first Monday next after the expiration of forty-two days from the date of the issuance of this Citation, same being the 29th day of September A. D. 1958, to plaintiff's petition filed in said court, on the 5th day of August A. D. 1957, in this cause, numbered 22,545 on the docket of said court and styled Mrs. Ooley Eldridge, plaintiff, vs. Thomas Edward Eldredge, defendant.

A brief statement of the nature of this suit is as follows, to-wit: This is a suit for divorce, and custody of minor child.

as is more fully shown by plaintiff's petition on file in this suit. If this citation is not served within ninety days after the date of its issuance, it shall be returned unserved.

The officer executing this writ shall promptly serve the same according to requirements of law, and the mandates hereof, and make due return to the law directs.

Issued and given under my hand and the seal of said court at Eastland, Texas, on the 13th day of August A. D. 1958.

Attest: Roy L. Lane
Clerk, 91st District Court
Eastland County, Texas
By Nelda Rutherford, Deputy.
(SEAL)

Dr. C. M. Cleveland

OPTOMETRIST

First Door So. of Postoffice
Cisco, Texas

See me for satisfactory barber work, Your business is appreciated.

Floyd Jay, Gorman, Texas

Mobile Feed mill Now In Operation



Our complete Mobile Mill will be Accompanied by a Feed Service Truck carrying supplements salt, concentrates, minerals and farm supplies

We Can Auger Your Feed Directly To Your Bins:

Kincaid Feed Store

Eastland, Texas

To Voters Of Precinct 2

In the closing days of my campaign for County Commissioner of Pct. 2, there are so many things that should be mentioned.

One of the first things would be to compliment my opponent for the fairness he has shown all through this campaign.

The next thing would be to thank my many friends who helped me lead the ticket in the first primary.

If I am elected on Saturday to serve you the next four years as County Commissioner, I shall always be constantly reminded of my duties to you and Eastland County.

Thanks to each and every one of you and I earnestly urge you to use your own privilege to vote Saturday, August 23.

B. M. Bennett