

THE DAILY LEDGER.

VOLUME XI

MEMBER UNITED PRES.

BALLINGER, RANNELS COUNTY, TEXAS, THURSDAY, NOVEMBER 9, 1916.

Price 5 Cents.

Why Not Buy
The Best Oil Stove

Perfection

Heaters
Cook
Ranges

Van Pelt, Kirk & Mack

Tell the Truth
Advertisers

WILSON

DEMOCRATS WILL CONTROL CONGRESS

The latest election returns from New York by the United Press forecast a majority for the Democrats in the next House. With 29 districts to hear from, the returns show that the next House of Representatives will have 201 Democrats and 199 Republicans. Of the remaining 29 districts, 20 are credited with being Democratic and 9 Republican.

The Republicans concede that the Democrats will have a working majority in the next House. The latest returns also show that there will be no Republican increase in the Senate. Demerene, Democratic was re-elected from Ohio, defeating Herrick, the republican candidate, and aiding in giving Ohio to Wilson.

Mr. and Mrs. W. T. Routh and son Oscar, and daughter Miss Erie, left Thursday morning for Glasscock county, where they will spend two or three days on the ranch with Kenzie and Tom Routh.

4 STATES SLIP INTO THE DRY COLUMN

CHICAGO, Ill., Nov. 9.—Oliver W. Stewart, national prohibition campaign manager, expressed gratification over the result of wet and dry fights in states today. "Returns indicate that the drys have added four states—Michigan, South Dakota, Nebraska and Montana—to the dry column," said Mr. Stewart. "We saved Arkansas to the array of nineteen dry states with which we entered the campaign. The election of Babberger as governor of Utah, a democrat favoring prohibition, I think means prohibition by statute out there."

With the swinging into the dry column of the four states noted above, twenty-three of the total of forty-nine states of the union are now dry. And since large portions of the remaining twenty-six wet states were under local option, this means that considerably more than half of the United States will prohibit the sale of intoxicating liquors from now on, or rather from the date in which the new law becomes effective in the newly dry states.

ONE COUNTY BOX VOTES FOR HUGHES

The Olfin box, a German community in the southern part of this county, polled almost a solid vote for the republican candidate for president, and cast 20 votes for Ferguson, democratic nominee for governor and 11 votes for Creagor, the republican nominee for governor. Notwithstanding that this box participated in the democratic primary and the voters pledged themselves to support the nominees of the democratic ticket, the above republican vote was polled Tuesday.

Fourteen election precincts out of 24 precincts in Rannels County had made complete returns up to noon Thursday. Of this number only 1257 votes had been polled, indicating that about two-thirds of the total vote of the county participated in the general election. The socialist vote decreased and the republican vote increased over the vote polled two years ago, indicating that the republican party is stronger in the county than the socialist party, but it is believed that this is due to the interest in the presidential race.

The school tax amendment received a death blow, every box out side of Ballinger polling a big majority against the amendment. Hurdleston, the candidate placed on the ticket by the Democratic Executive Committee for railroad commissioner, which act has been declared by the supreme court to be illegal, received a majority over Gilmore for this office.

The vote for the fourteen boxes reported up to noon Thursday is as follows:

No. 1 Ballinger: democrats 238; republicans 10; socialist 8; Gilmore 76; Hurdleston 41; for amendment 127; against amendment 68.

Pearce School House: democrats 26; republicans 5; socialist 5; for amendment 6; against 17.

Benoit: democrats 32; republicans 3; socialist 5; amendment 6; against 12.

Wingate: democrats 57; republicans 5; Hurdleston 6; for amendment 15; against 36.

Wilmett: democrats 40; republicans 3; socialists 3; Gilmore 1; Hurdleston 7; for amendment 13; against 23.

Miles: democrats 162; republicans 16; socialist 15; Gilmore 22; Hurdleston 29; for amendment 75; against 92.

Cochran: democrats 19; republicans 7; socialist 7; for amendment 8; against 15.

Olfin: republicans 30; democrats 3; Hurdleston 23; for a-

ment 0; against amendment 30.

Winters: democrats 225; republicans 10; socialist 15; Gilmore 2; Hurdleston 12; amendment 57; against 93.

Antelope: democrats 10; republicans 1; Hurdleston 12; for amendment 2; against 8.

Rovena: democrats 81; republicans 39; socialist 7; Hurdleston 700; amendment 23; against 73.

Hatchel: democrats 46; republicans 2; socialist 5; Hurdleston 48; amendment 15; against 25.

South Norton: democrats 25; republicans 4; socialists 3; amendment 5; against 18.

Marie: democrats 19; republicans 1; socialists 1; Hurdleston 9; amendment 3; against 17.

STATE VOTE BRINGS LITTLE SURPRISE

As the returns from voting in Texas slowly come in, as sent out of Dallas by the United Press, it is shown that the Democratic ticket was voted solidly, with the exception of a few counties along the border and a few small precincts in other counties.

On account of the interest in the presidential election and the vote on the constitutional amendment, the heaviest vote in sixteen years for general elections was polled, and it is estimated that about two-thirds of the total vote of Texas was cast.

Hurdleston of course polled a much larger vote than Gilmore for the unexpired term of railroad commissioner. This was due to a great extent on account of the name of Hurdleston being printed on the tickets before the supreme court ruled that such action was illegal on the part of the democratic executive committee, and too late to have the tickets reprinted. Hurdleston appointed by Ferguson to serve out the unexpired term of Commissioner Williams who died a few months ago, and he was nominated by the executive committee, which the court has held was illegal. It is expected that a contest will result.

The latest returns up to Thursday afternoon indicated that the amendment permitting school districts to increase their taxes, had lost. The early vote, which came from the cities gave the amendment a lead, but rural votes reduced the majority until if it carries it will be by a very small majority, and it is not believed that it will carry.

The interest in the presidential election detracted from the socialist ticket, and many socialists, it is believed, voted the state socialist ticket, but voted for Wilson for president, as the socialist vote will be the smallest polled in Texas in many years.

Prof. Otis Allen of Winters, was transacting business in Ballinger Wednesday.

NEW YORK, Nov. 9.3:45—The tide for Wilson set in so strong in California and Minnesota this afternoon that it appears that those states will both go for the President, and at three forty-five o'clock everything indicated that Wilson would be re-elected.

The Evening Ledger and The North American, two Philadelphia republican newspapers which supported Hughes, concede this afternoon that Wilson has been re-elected. In California Wilson is leading by 5055 with 175 precincts missing. In Minnesota Hughes is leading by 811 with 289 precincts missing. In New Hampshire Hughes is leading by 297 with 46 precincts missing. In New Mexico Hughes is leading by 256 with 302 precincts missing.

MEXICO ARMY BASE GOES FOR WILSON
ALBUQUERQUE, N. M., Nov. 9.—Complete returns from Luna county, where Columbus is located, gives Wilson a plurality of 399 votes. Columbus is the base of the United States army operating in Mexico.

PHILADELPHIA, Nov. 9.—At two-thirty this afternoon the North American, a republican newspaper, posted bulletins conceding the election of Woodrow Wilson.

ST. PAUL, MINN., Nov. 9.—The St. Paul News on the strength of telephone and telegraphic returns received by it from over this state, with many missing precincts, tabulates Wilson's vote as 169,810 and the Hughes vote as 168,481, giving Wilson a lead of 1329. These figures are not official, but from official sources.

NEW YORK, Nov. 9, 2:13 p. m.—President Wilson is within ten electoral votes of re-election. Hughes must gain twenty-three votes to defeat the president. With 256 votes indicated for Wilson at one o'clock this afternoon, California or Minnesota alone would be sufficient to give the president victory. Hughes must carry both of these states in order to be elected. California with 5,531 precincts out of 5,867 gives Hughes 440,947; Wilson 444,480. Unofficial returns with 363 precincts missing cuts Hughes majority in Minnesota to 336. Of 638 precincts in New Mexico gives Hughes a lead over Wilson of 258. New Hampshire is claimed by both parties with a plurality of about 100 and an official count of that state is necessary to decide which column the state shall be placed in.

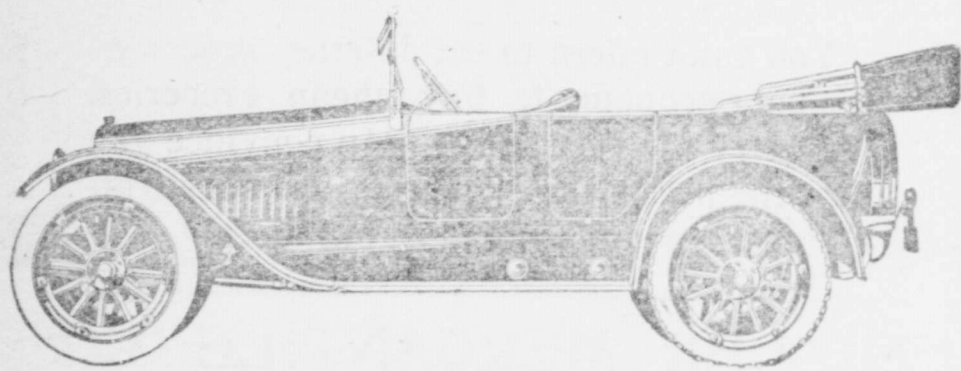
WILSON GAINING IN MINNESOTA.
ST. PAUL, Nov. 9.—Out of the 346 precincts still out 230 of them are in counties where partial returns gave President Wilson the best of it. 51 counties in the state practically tie. 65 counties show a decided lead for Hughes of 510. Wilson

(Continued on last page.)

W. A. Nance
393

NIGHT PHONES

Henry Jones
556



MITCHELL CARS

You had better see the Mitchell before you buy!

Willard and A. S. L. battery service station. We rebuild any kind of battery and have man that knows the business and our guarantee is worth something. Better see us.

We cut the price on everything for the Automobile!

Champion X Plugs 35c

Tires, any kind of standard makes 10 per cent off.

We will do your repairing for less and have men that know how.

Storage Battery Service Station.

BALLINGER AUTO COMPANY

Opposite Court House Lawn.

Telephone Number 505

