



WEATHER

April 2	66	45
April 3	78	42
April 4	66	27
April 5	77	31

BAILEY COUNTY JOURNAL

'The Community Of Opportunity-Where Water Makes the Difference'

Vol. 24 No. 14

12 Pages Today

Published Every Sunday at Muleshoe, Bailey County, Texas 79347

Sunday, April 6, 1986

Russian Wheat Aphid Found Here

First U.S. Sightings In SW Bailey County

Bailey County has a new, and very dubious distinction, with a recent finding in a field in southwest Bailey County, near

Stegall. Bailey County wheat farmers face a new threat to their crop from an aphid which has come half way around the world to make its first appearance in the United States, says County Agent Spencer Tanksley.

Brandi Estep Wins Big Honor At History Fair

A total of five Muleshoe youngsters from Watson Junior High School were recipients of awards during the 15th annual Regional History Fair last weekend at Wayland Baptist University, Plainview.

The list of Muleshoe winners includes three first-place recipients and two second-place winners during the two-day event, which was held in Wayland's new Special Events Center.

Topping the list was Brandi Estep, who won a first-place ribbon and medallion as well as the Earl O'Keefe Award for her "Dogtrot Cabin" model. The latter was one of 12 special achievement awards presented to outstanding first-place winners.

Also receiving first-place ribbons and medallions were Collin Robison and Shawn Green.

Recipients of second-place ribbons were Tami Randall and Jeremy Bruns.

The Regional History Fair is sponsored each year by the Plains American Heritage Program at Wayland.

Stride, Ride For Diabetes Is Coming Up

Local volunteers plan to raise \$2,500 to help fight diabetes according to an announcement made by Buck Campbell, chairman for the Great Republic of Texas Ride and Stride for Diabetes. To reach this goal, Campbell estimates 50 people will participate in the event on Saturday, April 19, 9 a.m.-1 p.m.

The Great Republic of Texas Ride and Stride for Diabetes is a pledge event where participants walk, jog or ride to raise funds for the American Diabetes Association.

To assist in reaching these goals, Campbell announced the following have been recruited to serve as chairman of the various committees:

Paul Poynor and Lonnie Adrain, route; Bill Liles and Charlie Isaac, race coordinators; Frank Ellis, prizes; Max King, publicity; Terry Hutto, refreshments.

Cont. Page 6, Col. 5

First Graders Will Be Given TEAMS Tests

H. John Fuller, superintendent of the Muleshoe ISD, has announced that the TEAM Tests (Texas Educational Assessment of Minimum Skills) will be given to first grade students in Dillman Elementary School on April 8, 9 and 10.

Beginning with the 1985-86 school year, the Texas Educational Assessment of Minimum Skills (TEAMS) was instituted to measure minimum basic skills in mathematics, reading and writing in Grades 1, 3, 5, 7, 9 and 11.

Students in grades 3, 5, 7, 9 and 11 have already taken the TEAMS, but testing for first graders was scheduled to be given in April. This allows students more time to learn basic skills in the areas of reading, writing and math.

Mrs. Barbara Finney, principal at Dillman, suggests that parents support the school by seeing that the students are present on these dates and by encouraging their children to get plenty of rest before and during this testing period.



RUSSIAN INVADE BAILEY COUNTY--Russian wheat aphids, that is! First sighting of the Russian wheat aphid in the United States was two weeks ago in a wheat field similar to this one in southwestern Bailey County, near Stegall.

Library Week Activities Set

National Library Week-1986, is coming up this week, April 6-12, and will be open house all week at the Muleshoe, Area Public Library, says Anne Camp, librarian. "It will have a Sesquicentennial 'flavor' this year," said Mrs. Camp, "with lots to see and do.

"There will be on display ten of the award winning history projects from Waton Junior High School, and they are extra good this year. There will be bookmarks and balloons for the children, and they will be watching an animated filmstrip, provided by the American Heart Association, to be shown in the children's area of the library."

The librarian continued, "We are very pleased to have in the display case this week, hand-crafted items by Joe Harbin, a former member and past president of the Library Board."

Scheduled for this week, include the following:

MONDAY - Sesquicentennial quilt display. Everyone who has a pretty quilt, old or new, and especially sought are quilts with a "Texas pattern, such as the Texas Star. Other quilts to be displayed will be quilts made in the early days of Texas; or with a unique pattern. The quilts will be judged with first through third place ribbons to be presented.

TUESDAY-At night, the movie "Texas-More Than A State Of Mind," will be shown at the civic center to the Jennyslippers and prospective members.

A reminder was issued that every woman in Muleshoe is a prospective member of the Jennyslippers.

The same movie will be presented to residents of the Muleshoe Nursing Home on Friday morning.

WEDNESDAY-A Storyhour will be held for the Day Care Center children, who visit the

Cont. Page 6, Col. 3



HISTORY FAIR WINNER--Brandi Estep of Muleshoe was a big winner in the 15th annual Regional History Fair last weekend at Wayland Baptist University. She was named recipient of one of 12 special achievement awards, winning the Earl O'Keefe Award for her "Dogtrot Cabin" model. The 12 special awards went to outstanding first-place winners. A total of five Muleshoe students won awards during the two-day event.

Ambulance Service Explains Patient Transfer Policies

"We most definitely will take patients to another facility without stopping at West Plains Medical Center first," said Richelle Watkins, supervisor of the WPMC Ambulance Service.

"However, we must have the cooperation of the people we serve," she continued. "First, we must have a doctor willing to take the responsibility at the other end (another hospital or facility) and he must be contacted prior to any transfer. Also, we have to know they have knowledge prior to the transfer, and approve the transfer without stopping at the nearest hospital.

"And," she continued, "any transfer must be cleared with the other facility and we must be assured they will receive the patient once we arrive. It is terrible to have a hospital, perhaps as far away as Lubbock General, not be expecting the patient and turn us down when we arrive. In that case, we just have to return perhaps a desperately ill patient to Muleshoe."

Mrs. Watkins said special situations could arise that prevent the transfer of a patient

without bypassing WPMC and stopping in Muleshoe. This happens when the ambulance personnel make an assessment of the patient on board, and determine they need to see a doctor at the nearest hospital first. The patient must be stabilized prior to making a

Jennyslippers Plan Walkathon As Fundraiser

It's that time again - time for the Jennyslipper's annual 'Miles For Muleshoe Walkathon.' It has been planned for Saturday, April 19, at 2 p.m.

A two and one half mile route around the New City Park is being used, and participants will be allowed to walk to as many as 10 miles.

Proceeds from the Walkathon are used for local community projects, with the largest among them being the 4th of July fireworks. This is expected to cost in excess of \$2,500. The goal of the Jennyslippers is to be able to donate all of that amount this year.

In 1984, the Jennyslippers donated \$2,000 toward the purchase of the 4th of July fireworks. Last year, they were able to donate only about \$1,200. This year, they say they are working a little harder - trying to make their Walkathon a little more appealing to everyone.

A variety of prizes are being offered, and this year, participants bringing in as little as \$25 in pledges will win a Black Sport/Travel Bag and everyone who participates, regardless of the amount of pledges they bring in, will receive an "I Love Muleshoe" iron-on transfer. Other prizes available range from a basketball for \$50 in pledges to an AM/FM Dual Cassette Jam Box (for \$275 in pledges).

In addition, trophies will be presented to those participants bringing in the most pledges, in three categories: 1. Child; 2. Adult and 3. Business/Organization. Jennyslipper members will be walking and they are issuing a challenge to all the local businesses and organizations to come out and take that trophy away from them.

Be sure to pick up your sponsor sheets. They are available at the Muleshoe Area Public Library.

Around Muleshoe

Muleshoe High School Band Director Anthony Gibson said the MHS Mighty 'M' Band will compete in contest in Lubbock on Wednesday, April 9.

The contest will be conducted at the Texas Tech University Recital Hall in the music building on the Tech campus at 11 a.m.

Muleshoe will be the third band to perform that morning and will present their contest tunes, as well as do sight reading.

The band director said the contest is open to the public at no charge, and he has encouraged all the local support possible for the contest.

'Natural Childbirth' classes are scheduled for Wednesday, April 9, at 7 p.m. in the big lobby (clinic) at West Plains Medical Center.

For further information, call Dee King at 227-2274; Margaret Kimbrough at 272-5071 or WPMC at 272-4524, extension 107.

Dr. Barry Cowart said a 'Hunter Safety Course' will be conducted in Muleshoe April 27, 28 and 29 in the community room of the Muleshoe State Bank, 7-10 p.m. each night.

He suggests that anyone planning to attend the class to pre-register by April 15.

For further information, or to register, call Dr. Cowart at 272-3061 or at night, at 272-5045; or call Terry Hutto at 272-4303.

A special meeting of the MISD Board of Trustees will be held in the school administration building at 7 p.m. on Monday, April 7.

H. John Fuller, superintendent, said items on the agenda

Cont. Page 6, Col. 4

Jennyslippers And Prospects Meeting Tuesday

Muleshoe's Jennyslippers will hold their quarterly 'night meeting' on Tuesday, April 8 at 7 p.m. in the banquet room of the Bailey County coliseum.

This meeting will be a membership drive, and every member is urged to bring a visitor. Nelda Merriott, membership chairman, has set a goal of 100 members for the Jennyslippers during this year. At this time, there are 58 members, she said.

The meeting starts off with a style show by the 4-H at 7 p.m. This will be followed by a 26-minute movie entitled, "Texas, More Than A State of Mind," commemorating the Sesquicentennial.

Concluding the meeting will be a short business meeting.

"All women in the community are invited to attend," said Mrs. Merriott. "especially if you have ever thought of joining the Jennyslippers. Refreshments will be served, and we would love to have a large crowd."

Miss Rodeo Texas And Teen Pageant Scheduled In June

The 1986 Miss Rodeo Texas and Miss Rodeo Texas Teen Pageant is scheduled for June 11-15 in Fort Worth. The annual event will be headquartered at the Worthington Hotel (formerly the Americana). The Round-Up Inn at Will Rogers Coliseum will be the site of the June 14 Coronation.

The contestants, aged 18-24 for Miss Rodeo Texas and 13-17 for Miss Rodeo Texas Teen, will be judged in three categories: Horsemanship, Personality and Western Attire. The new Miss Rodeo Texas will receive a \$2,000 scholarship and a \$1,000 scholarship will be awarded to Miss Rodeo Texas Teen. Each also will receive a trophy, a hand-tooled saddle, an engraved belt buckle and a complete Western wardrobe.

Winners of the Miss Rodeo Texas and Miss Rodeo Texas Teen Pageant also earn the opportunity to travel throughout the state to numerous rodeos and special events. Goodwill trips, however, are not limited to Texas, or even the United States. The current Miss Rodeo Texas, Carla Sterling of Nederland, visited Australia in January as part of an exchange program between Texas, which is celebrating its sesquicentennial, and South Australia, which is observing its Jubilee 150.

Miss Rodeo Texas Teen 1985 is Paige Surls of Malakoff.

Candidates interested in participating in the pageant must be legal residents of Texas and never have been married. Each contestant must have a sponsor and a current title. Information and entry forms can be obtained by writing to Miss Rodeo Texas Pageant, P. O. Box 906, Stephenville, TX. 76401. Deadline for entries is May 10, 1986.

Denim Art Festival To Be Presented At Littlefield

At the crossroads of HWY 385 and HWY 84 lies Littlefield, the Denim Capitol of the West and home of the Denim Art Festival, presented by the Lamb County Council for the Arts.

At 10:00 a.m., Saturday, June 7th in downtown Littlefield the festival begins with an Art Show and Sale. If possible all entries should be completed by 7:00 p.m. Friday, June 6th but will be accepted until 11:00 a.m. on Saturday with judging to begin at noon. There will be works in painting, pottery, and needlework, to name a few. All works will be original. "Come and enjoy the variety and quality of art in Littlefield and Lamb County," says Jennifer Rike.

Performing artists will be featured several times during the day highlighting talents in dance, theatre, and music.

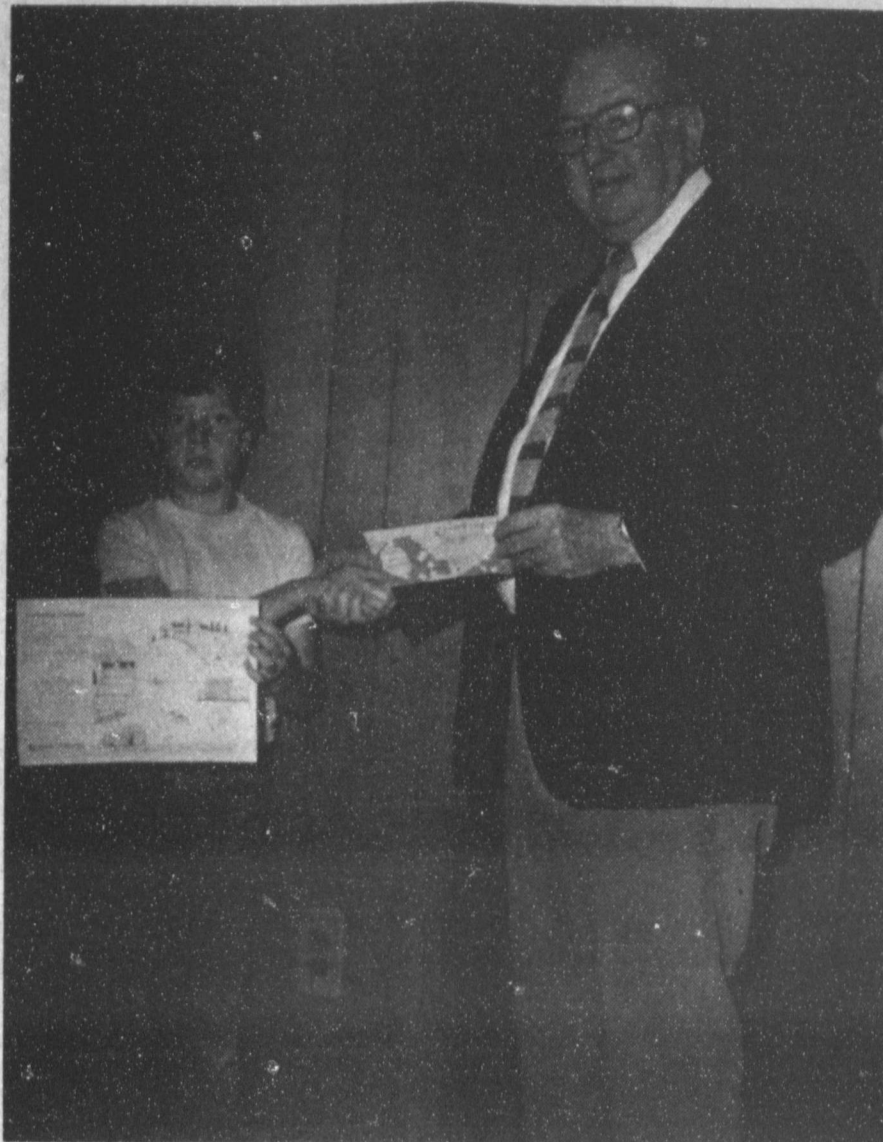
Rounding out the Denim Art Festival is the West Texas Bluegrass, a musical showcase featuring area performers in Country, Gospel and Bluegrass. To be held at the Lamb County Ag and Community Center, the show begins at 7:00 p.m.; no admission charge.

A highlight of the Denim Art Festival will be the performance of the Country Caravan, a musical revue, at 7:30 p.m. or dusk on Friday, June 6th at Laguna Park.

For more information contact Judy White at (806) 385-3700 or Jennifer Rike at (806) 385-4328.

Everything that is new or uncommon raises a pleasure in the imagination...

-Joseph Addison.



SECOND IN STATE COLORING CONTEST--Todd Shipman, 8 year old son of Gary and Sheri Shipman, of Muleshoe was second in the state of Texas in a recent painting contest sponsored by National Farmers Union Insurance Companies. As a prize he was awarded a \$75.00 United States Savings Bond. Todd is a third grade student at Mary DeShazo. Roy Whitt, local agent for NFUI presented Todd with his bond. Whitt says "Congratulations for being second in the state for his age group"

Junior Dept. Visits In Doty Home

The Junior Dept. of the First Baptist Church met in the home of Mrs. Evah Doty during their regular Sunday School hour Sunday, March 23. Louzell Serratt gave the opening prayer and afterwards Mary Ann Gordon led the group in singing "To God Be The Glory" and "He Keeps Me Singing." Kim Powell read from the Bible, Matthew 27: 59-61 and John 2: 21-22. During the month of March the class has been studying about "Choosing to Obey God," while Sunday's lesson was entitled Jesus' Trials. The memory verse was "We ought to obey God rather than men," Acts 5:29.

Louzell reviewed and asked questions to the class on "Jesus' Entry into Jerusalem," "Jesus' Prayer in Gethsemane," "Jesus' Arrest," and taught the lesson for that Sunday on Jesus' Trials. The

group then sang "The Battle Hymn of Republic" and the closing prayer was led by Jason Bellar.

Those attending were Amie Adams, Heather Harrison, Misty Miller, Mandy Davis, Randy Gregg, Clay Carr, Kyle Edwards, Jason Bellar, and a visitor Brad Hanna, and teachers Louzell Serratt, Kim Moss, and Mary Ann Gordon.

GOLDEN GLEAMS

Quarreling is the weapon of the weak.
-Hebrew Proverb.

When two quarrel, both are to blame.
-Dutch Proverb.

None but cats and dogs are allowed to quarrel in my house.
-H.G. Bohn.

Vacuum-Packaged Beef New At Meat Counter

Vacuum-packed beef is an innovation in packaging that can help consumers save money while they enjoy their favorite meat cuts.

Nutritionist Mary K. Sweeten explains that vacuum-packaged beef is a boneless section of beef that is trimmed of excess fat. It is packaged in a plastic "shrink-wrap" bag at the processing plant under strict sanitation controls.

Vacuum-packaged beef may also be referred to as bulk beef, beef-in-a-bag, cryovac beef, beef subprimals or mini-subprimals, says the Texas A&M University Agricultural Extension Service (TAEX) specialist.

She explains that from the processing plant, the vacuum-packed beef is shipped to the supermarket in boxes. The retailer can open the vacuum-packed beef, cut it into smaller portions, put the pieces in trays and wrap and price them for the meat case.

Or a retailer may simply

remove the vacuum packed beef from the box, price and display it alongside the individual retail packages in the meat case.

By buying bulk vacuum-packaged beef, consumers can save from 20 to 50 cents per pound, Sweeten says.

According to the specialist, vacuum-packaged beef is slightly darker in color than traditional beef cuts. But once the bag is open and the beef is exposed to air, the meat will take on a bright red beef color.

Meat that is vacuum-packaged can be stored two or three times as long as conventionally-packaged cuts, she says. But as with other meat, it should be kept refrigerated and used soon after the "sell-by" date on the label.

Hobby Club

Muleshoe Hobby Club met Thursday, April 3 at 2 p.m. in the community room of Muleshoe State Bank with Ruth Bass as hostess. Fourteen members were present.

Those present included: Sammie Ethridge, Mable Caldwell, Vickie Hendricks, Ruth Bass, Fiddle Shafer, Ethel Julian, Edna Willoughby, Frances Bruns, Blanche Awbrey, LaDema Wright, Opal Robison, Edith Fox, Nan Gatlin and Rita Sauer.

The hostess gift was won by Ethel Julian. The next meeting will be Thursday, April 17 at 2 p.m. in the community room of Muleshoe State Bank.

BEST OF PRESS

Wiser

Wise people believe half of what they hear; wiser ones know which half to believe.

-Press, Denmark, Wis.

Fun

Wouldn't it be fun, if a husband could do all the things his wife suspects he does?

-News, McAlester, Okla.

New Arrivals



Melinda Dawn Smith

Melinda Dawn Smith was born to Shawn Patria Smith of Farwell on Wednesday, April 2 at 12:15 a.m. in West Plains Medical Center.

The young lady weighed seven pounds and eight ounces. She has a brother, Justin Lynn, five years of age.

Grandparents are Stella Smith of Farwell and Lloyd and Mary Smith of Texico, N.M.

Great grandparents are Linnie Crook of Farwell and Bonnie Smith of Corsicana, Tx.

Journal Policy

A processing charge of \$3 is made when a photo accompanies any wedding, engagement, or anniversary with the exception of anniversary of 50 years or more.

Five dollars will be charged for any shower picture taken by the Journal and \$3 charged for any shower picture accompanying a story. Pictures may be picked up after the article appears in the paper.

Wedding, engagement, and anniversary stories must be in the Journal office by Monday noon for the Thursday paper, and by Thursday noon for the Sunday paper.

After that time, stories will be run on a space available basis. Any wedding more than two weeks old, when received, will be edited and only the basic information will be included.

Shower pictures will not be taken without a 24 hour notice and copy must be in the office by 5 p.m. Monday for the Thursday paper and 5 p.m. Thursday, for the Sunday paper.

Bailey County Journal

Established March 31, 1963. Published by Muleshoe Publishing Co., Inc. Every Sunday at 304 W. Second, Box 449, Muleshoe, Texas, 79347. Second Class Postage paid at Muleshoe, Texas 79347.

MEMBER 1986 TEXAS PRESS ASSOCIATION

L.B. Hall - President & Publisher
Sammie Hall - Vice President & Controller
Ceta Williams - News
Fuchsie Harris - Secretary
Holly Milhap - Advertising
Little Nino - Bookkeeping

SUBSCRIPTIONS:

Muleshoe Journal and Bailey County Journal
Bailey and surrounding counties \$12.45
Muleshoe Journal and Bailey County Journal
Elsewhere in Texas \$13.45
Muleshoe Journal and Bailey County Journal
Outside of Texas \$14.75
Yearly by Carrier \$17.50
Advertising rate card on application.

Attention Home Owners.... Interest Rates Have Dropped!! Lowest Since 1978 !

If you are currently financed with a savings and loan,
Federal Land Bank, or any other Financial Institution, we can
show you where we can save you money, in interest, in monthly
payments, and put money in your pocket. Let us make your
home less of a struggle!

Come by, we can make it work for you!

MULESHOE STATE BANK

MEMBER FDIC

EQUAL HOUSING
LENDER

101 West American Blvd. Phone 806/272-4561

Ellis Funeral Home

Pre-Need Funeral Plans
Supervised By Texas Department of Banking
Price Frozen At Time Of Purchase



HATTIE KINARD

Hattie Kinard Honored With Gift Coffee

Hattie Kinard, bride elect of Charles Jones, was honored with a gift coffee Saturday, March 29 from 2:30 to 3:30 p.m. in the home of Ladema Wright.

Guests were greeted by the honoree, DeeAnn Grumbles and Jeniwee Stith and registered by Claudine Embry.

Connie James and DeeAnn Grumbles served cookies, coffee and punch from crystal appointments.

The serving table was covered with a white woven linen tablecloth and accented with a silk flower arrangement in shades of burgundy and pink. The honoree's corsage consisted of burgundy and pink silk flowers.

Special guests included: DeeAnn Grumbles, daughter of the honoree; Jeniwee Stith and Jana McCarty, sisters of the honoree.

The hostesses gifts were the

centerpiece and lingerie. Hostesses for the occasion included Claudine Embry, Marie Lane, Elinor Yerby, Mary Hunt, Lona Embry, Della Puckett, Sandy Turner, Ladema Wright, Frieda Locker, Nora Burch, Johnnie Ferris, Cap Goodwin, Connie James and Glenda Dale.

Rebekah Lodge

Muleshoe Rebekah Lodge No. 114 met at 7:30 p.m. Tuesday, April 1 at the Lodge Hall. Lodge was opened with Noble Grand, Mary Franklin in the chair. Terrie Snell opened with a prayer and the American flag was presented by Ruby Garner. Following roll call the minutes of the previous meeting were read by Patsy Chance.

A letter was read from the South Plains Association stating that the lodge will meet on Saturday, April 12 in Levelland. The competition drill will begin at approximately 4 p.m.

A letter was read from the South Plains Association stating that the lodge will meet on Saturday, April 12 in Levelland. The competition drill will begin at approximately 4 p.m.

Schlyer Colfax, founder will be honored at the next regular meeting. Adele Tompkins, Lena Hawkins and Dimple Sims will be in charge of the program.

Sandra Robinson and Fern Davis were presented with their commissions as Lodge Deputy and District Deputy President respectively.

Novella Price was placed in charge of the tickets for the American Flag Afghan.

A report on the Rebekah Grand Assembly held in San Antonio in March was given by Sandi Robinson. It was reported that the report was enjoyed by everyone present.

With no further business, the meeting was adjourned.

GOLDEN GLEAMS

There is no new thing under the sun.
-Ecclesiastes 1:9-

The green new broom sweepeth clean.
-John Heywood.



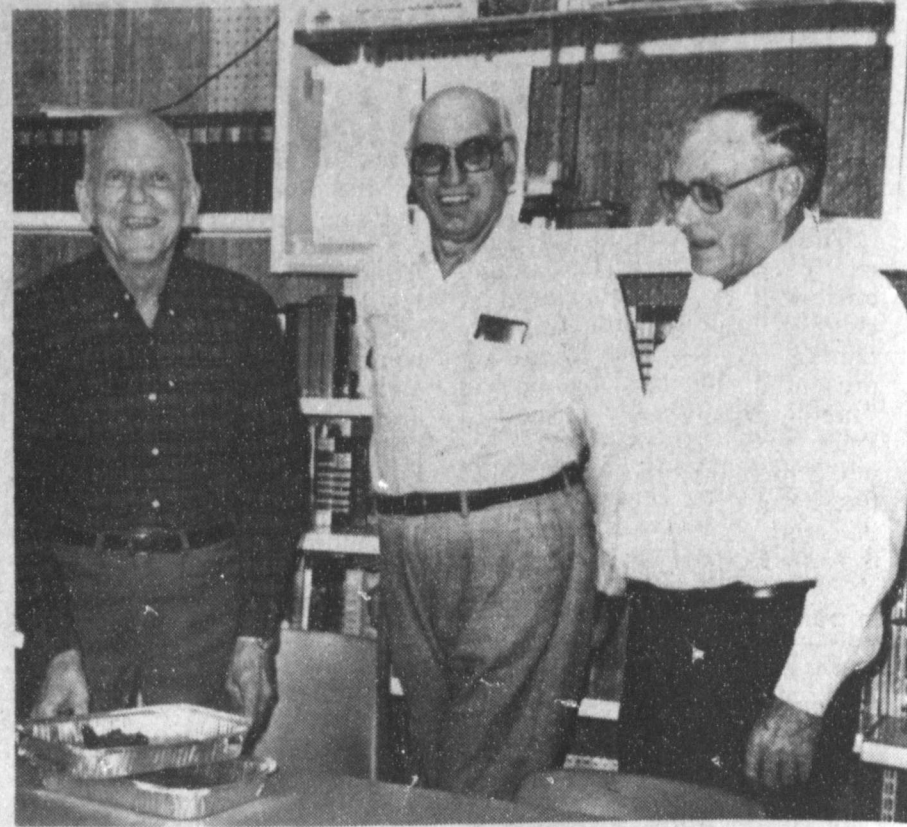
When every calorie counts, you may want to think of what's in your hamburger as well as what kind of condiments you put on it. Not all ground beef is created equal -- different categories of leanness will determine the calories in the meat. The label on the meat package states the amount of leanness for the ground beef inside.

By law, ground beef cannot be less than 70% lean. Meat in this 70% category usually comes from portions of the chuck, shank, brisket, plate of flank. At 70% lean, a 3 ounce cooked serving will contain about 251 calories. The beef used in fast food restaurant hamburgers generally fit into this 70% lean category.

Lean ground beef contains not less than 80% lean. It is commonly called "ground chuck" because much of it comes from that cut.

A 3 ounce cooked serving of lean ground beef contains about 232 calories. Extra-lean ground beef has not less than 90% It comes mostly from the round and other lean cuts and contains about 225 calories per 3 ounce cooked serving.

You can also hold the calories down on all types of ground beef by broiling instead of frying patties, and making sure crumbled meat is well-drained before it's added to casseroles or other dishes.



MORTGAGE BURNING--Sudan Area Senior Citizens burned the mortgage to the Senior Citizens Building Monday night. Hoyt Robertson, Truman Parrish and Marvin Tollett were those who struck a match and burned the note. The group has made the final payment on the building and are now the owners. The building is located in the original town of Sudan. This group has worked hard to finish paying off the note of \$15,000.00 in a short time since the beginning of the Sudan Senior Citizens organization.

Birthday Party Honors Jackelyn Ford

Jackelyn Ford was honored Friday afternoon on her first birthday with a party held in the home of her parents, Mr. and Mrs. Jay Ford.

Special guests included her parents; grandmother, Mrs. John Williams and great grandmother, Mrs. Estelle Lowe.

Others attending were Ginger Harper and Jennifer, Shelley Gore, Cecie Edwards, Erik and Lisa, Bonnie Rowe and Joshua, Evelyn Ritchie, Kim Rylant, Patsy Kent, Donna Lance, Danya and Macie, Connie Edwards and Guthrie, Marge

Cardwell, Danielle and Christa Nettles, Stephanie West, LaShae, Shawna and Shannon, Bonita West and Jill Reid.

Birthday Bear, Care Bear, cake, Cokes and ice cream were served to some 29 guests.

New things are most looked at.
-Thomas Fuller.

There is nothing new save that which has been forgotten.
-MME. Bertin.

Muleshoe Study Club Plans Annual Book Sale

Muleshoe Study Club met in the home of Mrs. Rufus Gilbreath on Thursday, March 28 at 4 p.m.

The program for the day was presented by Mrs. Hurbert Griffiths, assisted by Mrs. J. Feagley from the Muleshoe Alon Association. The film was a Chalk Talk by Father Martin who is a priest and is a recovered alcoholic.

He gave the different ways a person can become an alcoholic. He compared it to Thirst--We drink water; Milk--is for health; Cokes--try it you might like it; coffee--acquire a taste; alcohol is learned through curiosity (social custom), conventionality, escape, the main reason being euphoria.

"The greatest myth is 'Let's send him to a Dr. to see why he drinks'. Father Martin said that the liver can only handle three fourths ounce of alcohol an hour and the rest goes directly to the blood stream.

"The saying that you cannot help an alcoholic unless he helps himself has been proven not to be true. You can prepare yourself by learning what you can and cannot do for someone who is an alcoholic. Alon is a good source of helping with this training.

"If you have someone close to you that you want to help, you are invited to attend the Alon meetings held here in Muleshoe or one of the surrounding towns."

The roll call was answered by nine members, those being Mrs. Wilma Thompson, Mrs. J.G. Arnn, Mrs. H.S. Sanders, Mrs. Wesley Glover, Mrs. Joe Costen, Mrs. John Agee, Mrs. Betty Carpenter, Mrs. T.R. White and the hostess.

Visitors for the meeting were Mrs. Griffiths, Mrs. Feagley and her mother in law, Mrs. Miller and Mrs. Harold Wyr.

A short business session was conducted and a discussion of the coming library book sale was held. This will be held April 11 and 12, in the meeting room of the library.

Along with the book sale will be a bazaar held by the club members. There will be hand-made items and also some baked goods.

"Come and select some of these items along with a selection of reading materials," said a spokesman of the group.

The next meeting will be at the library working on the book sale on April 10.

Wanted Middle Age Couple

Retired or soon to be, couple to live in comfortable friendly Retirement Center. Need to be young at heart and ready to make new friends. Reasonable Rates, Delicious Food, And 24-Hour Security, come live with us at South Plains Retirement Center, Inc. In Quiet, Peaceful Amherst, Texas.

Call 246-7714 For Your Reservation.

Introducing Cuddle Club's SHORT-STAY

Having a baby is a unique celebration of life and an experience of joy.

To make the birth of your baby an even more pleasurable event, Clovis High Plains Hospital offers our low-cost SHORT-STAY Plan with our family-centered Cuddle Club maternity program.

With Cuddle Club's SHORT-STAY Plan, you can take advantage of our personalized, quality maternity care at a very special price. For only \$950*, you'll be able to take advantage of our tender care maternity services for mothers-to-be, such as prenatal classes, "early bird" classes, and "preparation for labor" classes. Each new mother and father

will be served a complimentary gourmet dinner for two -- an important part of the special attention new parents deserve.

Short-Stay qualifications

- 🐾 Your doctor agrees that you are eligible for a short stay.
- 🐾 You and your baby are healthy.
- 🐾 Your delivery is uncomplicated.
- 🐾 Your stay is short.
- 🐾 Your pre-register and pay at least seven days in advance.

Give us a call

For more information about SHORT-STAY, call us. Come join the leader in maternity care for the "cuddliest" experience of your life.

*If you are covered by insurance, we'll reduce the co-insurance payment and the deductible portion of your bill by 50 percent, or \$300, whichever is less.

Cuddle Club

Clovis High Plains Hospital
2100 N. Thomas P.O. Box 1688, Clovis, NM 88101 (505) 769-2141 ext. 196

Baby Week Sale

Entire Stock Baby Furniture

20% off

Prices Good Thru April 12

Quality is part of the bargain.

ANTHONY'S

272-3478 Sun. 1-5 p.m. Mon.-Sat. 8 a.m. - 6 p.m. 321 Main

Creative Living with Sheryl Borden

Three topics will be presented on "Creative Living on April 8 and 12. Quality time with children, and other topics pertaining to parenting will be presented by Kay Willis, a "mothering expert" to Fisher-Price Toys. Much of what she will present is based on first-hand experience, as Kay is the mother of ten children. She is from Rutherford, NJ. Before she's done, Kay says she wants to transform motherhood from a "Bewildering, self-sacrificing role into a career that adds to a woman's self esteem", and she will tell how she hopes to accomplish this.

Another guest serves as a color consultant and representative to 800-FLOWERS. Dominique Isbecque will discuss 800-FLOWERS, a nationwide flowers-by-phone service that enables consumers to order top-quality floral arrangements--satisfaction guaranteed--anytime day or night. She will also discuss new trends in flowers.

Finally, Dulcie Simonds, Public Relations Supervisor with Rubbermaid Co. from Wooster, Ohio will discuss proper and safe food storage.

One of the most popular topics we feature each year is the Festive Foods program by Connie Moyers, Marketing Home Economist with Southwestern Public Service Co. in Clovis. This year's presentation will be on April 10 and Connie will demonstrate a variety of recipes from their 1985 Festive Foods booklet, which is the 22nd edition of the booklet. Some of the recipes include Raw Radish Dip, Sausage Vegetable Dinner, Puttin' on the Ritz Cookies, Butter Milk Salad, Pull Apart Coffee Cake and Pina Colada Punch.

"Creative Living" is produced and hosted by Sheryl Borden. The show airs on KENW-TV, Channel 3 in Portales on Tuesday and Thursday at 12 noon and at 2 pm on Saturday. (All times are Mountain Standard). Viewers can request copies of printed materials offered on the show by calling on KENW-TV's toll-free telephone lines. In New Mexico, the number is 1-800-432-2361, out-of-state: 1-800-545-2359, and Portales and Roosevelt County: 562-2112.

FESTIVE FOODS FAVORITES SIX-LAYER DIP

3 avocados, peeled, 2 tablespoons lemon juice, salt and pepper, 1 cup sour cream, 1/2 cup mayonnaise, 2 cans (9ozs. ea.) bean dip, 3 tomatoes, chopped, 1 can (8 ozs.) black olives, sliced, 1 pkg. (8 ozs.) sharp Cheddar Cheese, grated, 1 cup Picante sauce and 1 cup green onions with tops, sliced. Mash avocados and lemon juice in the food processor or by

hand. Stir on salt and pepper to taste. Combine the sour cream and mayonnaise together. Spread the bean dip in a 13X9-inch or 2-quart dish; top with the avocado mixture. Layer with the sour cream. Sprinkle with green onions, tomatoes, and olives. Cover with cheese and top with Picante sauce. Serve with chips.

CHEESECAKE DREAMS

1/2 cup brown sugar, 1 cup flour, 1/2 cup margarine, melted, 1/2 cup chopped walnuts, 1 pkg. (8 ozs.) cream cheese, 1/4 cup sugar, 1 egg, 1 tablespoon milk, 1 tablespoon lemon juice and 1 teaspoon vanilla.

Combine brown sugar, flour, margarine, and nuts until crumbly; reserve 1/2 cup for topping. Press remaining crumbs into a greased 8-inch square dish. Bake at 350 degrees for 20 minutes. Combine cream cheese, sugar, egg, milk, lemon juice, and vanilla together; blend until creamy. Pour cream filling over crust. Top with the remaining crumbs and bake 25 minutes at 350 degrees. Cut into 2-inch squares and then in half for triangles.

MICROWAVE: Prepare crust as above and microwave on "HIGH" 4 minutes. Top with filling and crumbs. Microwave 6 minutes on medium-high, turning dish once after 3 minutes.

SAVORY CRESCENT CHICKEN SQUARES

1 pkg. (3 ozs.) cream cheese, 2 tablespoons melted margarine, 2 cups cooked chicken or turkey, cubed, 1/2 teaspoon salt, 1/8 teaspoon pepper, 2 tablespoons milk, 1 tablespoon chives or onion, 1 tablespoon pimento, 1 can (8 ozs.) crescent rolls, 1 tablespoon melted margarine and 1/2 cup seasoned croutons, crushed.

Blend cream cheese and margarine until smooth. Add chicken or turkey, salt, pepper, milk, chives or onion, and pimento; mix well. Separate rolls into 4 rectangles; seal perforations. Spoon 1/2 cup chicken or turkey mixture onto center of each rectangle; pull 4 corners of dough to center and seal. Brush tops with 1 tablespoon melted margarine and dip in crushed croutons. Bake on ungreased cookie sheet at 350 degrees for 20 to 25 minutes or until golden brown. Makes 4 servings.

Teresa Williams In Senior Spotlight

Teresa Williams, 18 year old daughter of Mr. and Mrs. Dwight Williams is featured in this week's Sudan Senior Spotlight. She was born in Muleshoe on July 10, 1967, and has brown hair and brown eyes. Her family which also consists of a sister, Pamela, and a brother, Charles,



ENGAGEMENT ANNOUNCED--Mrs. Arnold Boatright and Mr. and Mrs. Richard Andrade announce the engagement and approaching marriage of their children, Karen Kay Boatright and Rick Authur Andrade. Vows will be exchanged Saturday, May 24 at 2 p.m. in the First Christian Church of Dodge City, Kansas. A native of Muleshoe, Andrade attended Farwell Elementary School, Dodge City High School and Dodge City Community College. The couple plans to make their home in Dodge City following a wedding trip.

'Do You Really Care' Talent Show Presented

The Lamb County Vocational Training Center and Children's Protective Services of Lamb County sponsored a Talent Show "Do You Really Care" on Saturday, March 22 in the Sudan High School Auditorium.

Bill Coleman of Littlefield served as master of ceremonies for the event and introduced the judges for the talent entries and prior to the first competition, he presented a solo "Do You Really Care."

Among contestants were Latrell Houk, who presented two solos. Following her singing, members of the Academy of Dance of Littlefield presented a "Beginner's" skit, under the direction of Jennifer Wright. Presenting the skit were Nina Goss 10, Melissa White 8, and Angela Carpenter 9. Eight year old James Steffey of Spade pantomimed to "Gonna Have a Party."

The next competition and subsequent first place winners were Mike and Tammy Garrett of Anton who sang a duet and Mike presented a solo. They were given a \$50.00 cash prize.

Tutu's School of Dance members closed out the competition and were second place winners with a \$35.00 cash prize. The girls presented two ballet jazz dances. Members of this group

are the most important people in her life. Teresa is a member of the Sudan Church of Christ and plans on attending South Plains College when she gets out of high school.

"My goal in life is to be happy in whatever I do," says Teresa. It was reported that she does just that, being happy while doing her best at cooking, sewing and working at the United Supermarket.

A night out on the town would be supper to start with a steak dinner. Then her favorite movie, "The Breakfast Club" would be great. To turn on the TV and watch "The Cosby Show" would probably start a nice evening at home for Teresa. Afterwards she might watch a movie with either Sally Fields or Clint Eastwood in it. If not a movie, she might snuggle up in a pink (her favorite color) blanket and listen to the song "Never Surrender" or to Bruce Springsteen.

Her favorite season is summer, and her favorite month is July. She also likes to attend football games.

Teresa's favorite teachers are Mrs. Kleman, Coach Gaston and Mrs. Pierce, who teaches her favorite subject, home economics. She says that "FHA has been the most important organization in my high school years at SHS and I think I'm very lucky to have gone to the FHA State Convention four years in a row".

When she was asked for any other comments, she replied, "I have enjoyed going to SHS, but you can always have too much of a good thing".

BIBLE VERSE

Woe unto him that giveth his neighbor drink.

1. Where is this verse found in the Bible?
2. Who was the author?
3. What does the word "woe" mean?

Answers

1. Habakkuk 2:15.
2. One of the Old Testament Prophets.
3. Sorrow or grief will come to him that tempts another to drink.

Baby Shower Honors Mrs. Ralph Granger

Mrs. Ralph (Kathy) Granger was honored Saturday with a baby shower held in the home of Pee Wee Lance in Sudan.

The serving table was covered with a white linen cloth and accented with a fresh floral arrangement of pink, blue and yellow daisies, interspersed with baby's breath. The honoree's corsage was of pink, yellow and blue daisies.

Breads, a fruit plate, coffee and punch were served from china and silver appointments.

Special guests included Josephine Fisher, mother of the honoree; Missy, sister of the honoree; and Mrs. Patsy Fisher and Tanya, sister in law and niece of the honoree.

Penny Mills of Austin and Sheryl Morris of Muleshoe were also special guests and former classmates of the honoree and assisted in opening and re-ording of the gifts.

The hostesses gave Mrs. Granger a money tree. Hostesses for the occasion included: Elsie Cate, Sara Woods, Sue Chester, Jimmie Humphreys,

Sheryl Morris, Donna Lance, Winona Dudgeon, Louise Parrish, Bill Bellar and Pee Wee Lance.

Muleshoe Area Art Association

To Meet Tuesday

Muleshoe Area Art Association will meet Tuesday, April 8 a 2 p.m. in the community room of Muleshoe State Bank. Staci Arms of Littlefield will be guest artist for the day and will demonstrate a landscape in oils. Betty Embry has been named April Artist of the Month at the Muleshoe Public Library and some of her paintings will be on display during the month.

All members of the Muleshoe Area Art Association are asked to take a picture to be auctioned off for the Heritage Foundation Saturday, May 4 at Channel 6. Even though all members are asked to take a painting it was reported that it is optional.

Ben Franklin
Better quality for less

2104 WEST AMERICAN BLVD. PH. 272-3955
Mon-Sat 8a.m. - 8 p.m. Sunday 12-5p.m.

GARDEN CENTER

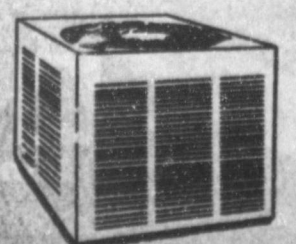
 Peat Moss 1.25 cu. ft. \$1.99 bag	Bedding Plants 99¢ 6 pack
---	---



Even great ideas become outdated

Get Up-To-Date With A HEAT PUMP

The heat pump is the modern way to heat and cool your home. With the heat pump, you get top efficiency, so you save on operating costs. And, it has an average life of over twenty years! A heat pump offers you high-tech comfort... no blasts of hot or cold air, just year-round gentle, quiet comfort. It's electric, so you know it's clean. The heat pump: the state of the art in home heating and cooling.



Let your heat pump dealer bring you up-to-date.

There Are Three Reasons Why You Should Have Your Child Delivered At West Plains Medical Center

Located At 801 S. 1st
Muleshoe, Texas

1. Low Prices OB Services

- a.) One Day.....\$900 *
- b.) Two Days.....\$1500 *
- * Uncomplicated
- c.) Caeserean.....\$2374

2. Professional Service

- a.) A Great Medical Staff
- b.) Personal Care From The Obstetrics Nursing Staff And Physicans, Dr. Jack McCarty and Dr. Bruce Purdy.

3. Meals

- a.) A Champagne Dinner With A Choice Of Lobster or Steak For The Mother & Father Of The Child.

At West Plains Medical Center,
We Care About You ---- And We Intend To Show You!

Embezzlement / Fraud Trial Ends; Mis-Trial

At 12:20 p.m. Friday, Federal Judge Halbert O. Woodward declared the embezzlement-fraud trial of Donald W. Harmon, Wanda Harmon and Steve McGinnis a mistrial. The Harmones are former Muleshoe residents.

This action was taken following some three hours of deliberation by a federal jury on Thursday, and nearly three hours of deliberation again on Friday morning.

It was reported that jurors were deadlocked 10-2 at the end of deliberations on Thursday, and stayed deadlocked at 11-1 ending the trial. A spokesman for the jury said the 11-1 was for finding the trio 'guilty' of the charges against them.

Federal prosecutors will now have 70 days to schedule another trial if they choose to re-try the trio.

The following story is from the Friday, April 4, edition of the Lubbock Avalanche-Journal: By PAT GRAVES

Avalanche-Journal Staff
"A federal jury deliberated more than three hours Thursday afternoon without reaching a verdict in the embezzling-fraud trial of two former officers and a former director of Plainview Savings & Loan Association.

"U.S. District Judge Halbert O. Woodward sent the jurors home shortly after 5 p.m. and told them to resume deliberations at 9:30 a.m. today. The jury took no breaks Thursday and sent no notes to the judge.

"The twelve men and women must decide whether Donald and Wanda Harmon of Ruidoso, N.M., embezzled more than \$467,000 from PSLA in 1981 and whether Stephen "Bud" McGinnis, a Dallas real estate developer, defrauded PSLA out of \$520,000.

"Evidence has shown that the sum the Harmones allegedly misused came from the half million dollars. The defendants have admitted that the money was borrowed by PSLA, transferred to McGinnis and spent on two of the Harmones' loans and on stock bought by McGinnis.

"The defendants also are accused of aiding each other in the alleged scam. If convicted on all counts, each of them could face up to seven years in prison and \$15,000 in fines.

"Defense attorneys Alton Griffin and Michael Gibson emphasized during summations that their clients did not intend to defraud PSLA. The attorneys pointed out that Harmon and McGinnis left a "paper trail" of cashier's checks and bank records.

"Prosecutor Clint Averitte insisted that the defendants set

up a phony escrow agreement to conceal their plan to arrange a loan preventing the Harmones' from defaulting on notes. McGinnis, Averitte claimed, wanted to protect his financing source for a lucrative Dallas land deal.

"The association put up the \$520,000 toward an option on 3.5 acres of the 20-acre tract, evidence showed, but the board of directors was not told about the loan. The option later was bought for an additional \$1.38 million, but the option was not exercised.

"The defense was not allowed to bring out that McGinnis refunded the entire amount plus interest to PSLA.

"Averitte insisted that the escrow deposit - which witnesses said never was made - was never needed.

"McGinnis' attorney admitted rewording the escrow agreement weeks after the money transfer. But another former director, Gordon Green of Muleshoe, testified, that the loan arrangement was decided upon on or before the escrow agreement was drafted, not afterward as the defendants claimed.

"The defense questioned why Green was not indicted, if the so-called scam by McGinnis and the Harmones was so poor. Green admitted being present when the loan arrangement and escrow agreement were agreed upon, stating that there actually were two simultaneous agreements in operation."

Nursing Home News

By: Joy Stancell

Clara Weaver was visited by Iva Carpenter, Glenda Jennings and Mrs. Pruitt.

Margaret Beard was taken to the dentist Mon. by her brother.

Our thanks to Lois Cantrell for bringing the beautiful large bouquet of flowers from the United Kingdom Hall.

Emma Schuster was visited by her grandson and his wife Mr. and Mrs. Gary Wrinkle Wed. afternoon, they are from Houston.

Wayland Ethridge and his group will entertain in the Nursing Home Day Room. Thurs. April 3rd. at 6:00 p.m. We invite you to attend and enjoy the this special time with us.

Wheat...

Con't From Page 1

tillers lie almost parallel to the ground.

"The aphids are found mainly on the newest growth of the wheat plant, generally at the base of the tightly curled last leaf," added Tanksley. In later growth stages, the aphids infest the flag leaf. Emerging wheat heads may become bent and white.

Showing up at this time are whitish circles in the fields, three to five feet in diameter, where the aphids had begun to kill the wheat. Fields are being checked to see how heavy the infestations are, and how much tolerance the plants have, according to how heavy the infestation is reported to be.

Tanksley said very little research has been done on the pest, and that was in South Africa under conditions quite unlike those of this area. Now that the aphid has been identified on the South Plains, Tanksley said the Texas Agricultural Experiment Station at Lubbock and Halfway has begun studies on chemical control measures and to determine if the aphid also feeds on grain sorghum and corn.

The Extension agent said the recommended treatment at present is a combination of a

Library....

Con't From Page 1

library on the second Wednesday of each month. They will also make a bookmark with the library symbol; and each will be given a 'Texas' coloring page.

THURSDAY-The Study Club members will be at the library for a meeting and to prepare for the big book sale on Friday, 10 a.m.-6 p.m. and on Saturday, 9 a.m.-5 p.m.

The Library Family of the Year will be honored at 5 p.m. Thursday. Mrs. Camp said this will be a family who have regularly used the library, enjoy reading and have a good library record. The Muleshoe Study Club will present a gift to the chosen family.

In conjunction with the book sale, the library will have on display a set of Encyclopedia Americana; along with several other sets of reference books which will go to the highest bidder. Mrs. Camp added that all of the reference books are in excellent 'pre-read' condition, and as with the book sale proceeds, all proceeds from the auction will be used to help improve the library.

"A Big TEXAS 'Y'all Come' and visit the library during this special week concluded Mrs. Anne Camp. "Oh, yes! No fines will be charged on overdue books the whole week...a once a year chance to clear your library record."

contact insecticide, such as parathion, plus a systemic insecticide (disyston and cyagon). Limited information indicates that greatest benefit is obtained by applying the insecticide before the flag leaf become visible, he said.

"We're running a little scared right now," strongly cautioned Tanksley "and I can't warn wheat producers enough-check your fields very closely. At this point, we just don't know what we have here, and how much damage it will do to your wheat fields. We also don't know if the aphid will 'jump' to young grain sorghum, and especially corn." Tanksley said the Texas Agricultural Extension Service will continue to monitor the problem and its potential for moving into the Panhandle and Rolling Plains.

Muleshoe...

Con't From Page 1

include canvass election results from the April 5, Trustee Election; administer oath of office to newly elected members; re-organization of Trustees for the 1986-87 school year, elect president, vice president and secretary and review goals for Trustees.

Ambulance...

Con't From Page 1

law requires that the ambulance take the patient to the nearest facility.

Further, explained Mrs. Watkins, when the patient is unconscious or delirious, it is the responsibility of the ambulance personnel to take the patient to the closest facility for care.

One other way families, friends and others can help before the ambulance arrives, is to have the name of the facility where they are to be taken, as well as the name of the patient's doctor, along with their telephone numbers ready

for the ambulance personnel. In the event the patient does not have a regular doctor, the ambulance personnel must have clearance from the facility, and the emergency room doctor on call before the patient can be transferred, she concluded.

"So many things can go wrong, even with an injury or illness that may appear to be rather minor," she said. "Our responsibility, the very first one, is to the patient, and their care."

Is Yours?

Some minds are like concrete--all mixed up and permanently set.

-U.S. Coast Guard.

Friday Night Buffet
South Plains Retirement Center
Amherst, Texas
All You Can Eat!
Catfish - Chicken - Steakfingers
5-9 p.m. Children: \$2.00
Adults: \$4.00
Take Out Orders 246-7714



For dryland, limited water or full irrigation... Pioneer has you covered!

8493
We just can't say enough good things about the performance this hybrid has shown under dryland or limited water conditions. On farm after farm, it produced outstanding yields of high test weight, hard textured grain - even under extreme heat! 8493 has excellent root and stalk strength and outstanding resistance to Biotype C and E greenbugs. If you grow sorghum on the Plains, try this one!

8333
When you're pouring on the water and pushing for top sorghum yields, this hybrid will come along with you to make the most of everything you put into the crop. And it has the heat and drought tolerance to withstand the tough summers you've come to expect. Outstanding resistance to Biotype C greenbugs, very good root and stalk strength. Performance characteristics you need to grow good sorghum on the Plains. It's all yours with 8333 from Pioneer

See one of these Pioneer dealers right away.

 Francis Franks, Jr. 925-6454	 Gene Franks 925-6454	 Jeri Wiedebush 272-4611	 Gene Paul Jarman 995-2340
--	--	---	---

Bill Hunt 272-3474
Gene McGuire 5544

ASK FOR SORGHUM HYBRIDS TREATED WITH PIONEER BRAND SEEDS
Pioneer® brand products are sold subject to the terms and conditions of sale which are part of the labeling and sale documents. Pioneer is a brand name; numbers identify varieties. ©1985 Pioneer



Get high yields with Stauffer Seeds™ brand seeds.

Ask me, your Stauffer Seeds™ seedsman, for details, and judge for yourself. I've got a full line of top-performing hybrids I think you should see. Compare them with the brands you've been planting. I think you'll find a Stauffer Seeds hybrid that performs better for you. Stauffer Seeds hybrids have outstanding yield potential.

drydown, stalk and root strength, and test weight at harvest. I've got all the facts. So make your own comparisons. Once you've seen what Stauffer Seeds hybrids have to offer, I think you'll switch.

StaufferSeeds™

Cattle Raisers Heritage Sale Gross \$223,950

Quality commands price, be it in cattle, Quarter horses or Western art. The Cattle Raisers Heritage Sale proved that Monday night in San Antonio. Fifty lots grossed \$223,950 to average \$4,479, according to Don C. King, secretary-general manager of Texas and Southwestern Cattle Raisers Association. The seventh annual Heritage Sale was held in conjunction with TSCRA's 109th annual convention in San Antonio.

Twenty-two Quarter horses grossed \$50,800 to average \$2,309.09. Ten bulls of various breeds grossed \$112,900 to average \$11,290. Fifty-five F-1 Braford and commercial Santa Gertrudis heifers grossed \$28,800 to average \$523.63. Twelve pieces of Western art brought \$14,350 to average \$1,195.83. Three special lots, whose proceeds were donated to Texas and Southwestern Cattle Raisers Foundation, brought \$17,100 to average \$5,700, King said.

High-selling lot a \$50,000 was a one-tenth undivided semen interest with no possession of RCC L Bar's Vision 3/5, a Nov. 1, 1984 Braford bull consigned by L Bar Ranches of Buda, Texas. Buyer was L.C. Whitehead of Dallas, Texas.

The second high-selling lot was Mr. V8 131/3, a gray Brahman bull consigned by V8 Ranch of Hungerford, Texas. The March 30, 1984 bull brought \$32,000 on a bid from Dixie Patterson of Smithville, Texas.

On the female side, 25 F-1 Braford heifers consigned by Flat Top Ranch of Walnut Springs, Texas, were purchased on a bid of \$15,000 by Donald Conlee of Bryan. The mid-October 1984 to January 1985 heifers were sold in pens of five and commanded top prices among the heifer consignments.

Topping the sale of Quarter horses was Tennessees Badger, a 1984 sorrel stallion that fetched \$7,500 from Jim Eller of Granada Equine Services of Bryan, Texas. Consigned by Burnett Ranches, Inc., of Fort Worth, Texas, the royally-bred two-year-old has been nominated to the 1988 Bonanza Cutting and is eligible for the National Cutting Horse Association's Futurity, Super Stakes, and other contests.

Dripping Spring, Texas artist Ragan Gennusa led the art consignors with his watercolor titled "Windy Day." The 20" x 30" depiction of several horses bunched together with their backs to the wind brought \$3,000 from Jim Stephenson of Dallas, Texas. Gennusa, a Heritage Sale consignor for six years, was the Texas State Artist of 1985.

In the special lot division, a Jeep Comanche X pickup, donated by Jeep Corporation, sold for \$10,000.00 to Dr. Thomas Dorrell of Crockett, Texas. Jeep Corporation donated the 4-wheel drive pickup to Texas and Southwestern Cattle Raisers Foundation in recognition of its strong ties to the ranching industry.

TSCRF was created in 1979 to preserve and protect the heritage of the cattle industry. It was also designed to encourage new ideas for cattlemen and future generations of cattlemen through educational, developmental and research programs. TSCRF is headquartered in Fort Worth.

In honor of the Texas Sesquicentennial, the North Fort Worth Historical Society commissioned nationally-recognized artist Lisa Perry of Springtown, Texas, to create a heroic-sized

bronze sculpture titled "The First Bulldogger, Bill Pickett." A limited edition replica, cast No. 1 at one-seventh scale, sold for \$3,700 to B.J. "Red" McCombs of San Antonio. The consignment was donated to TSCRF by Houston businessman J. Paul Pomeroy.

Mr. and Mrs. S.R. Schaar of Victoria had the winning bid of \$3,400 on a TSCRF donation of a matched pair of Texas Sesquicentennial Commemorative pistols. The registered edition of two matching pistols, with consecutively numbered serial numbers 21 and 22, were auctioned with the proceeds going to TSCRF.

One of the real highlights of the Heritage Sale, King said, was the awarding of a Jeep Grand Wagoneer to a lucky convention registrant, compliments of Jeep Corporation. The winner of the \$23,000 4-wheel drive vehicle was Frank Graham of Hebbroville.

"Our president, Jack Shelton, has designated the Jeep Grand Wagoneer as TSCRA's official vehicle for 1986," King said. "We also want to thank our auctioneer, Ruben Reyes of San Antonio, and our Heritage Sale sponsors Stafford-Lowdon Printing Co. of Fort Worth, B.J. "Red" McCombs and Grand Land and Cattle Co. of Wheelock, Texas, as well as Jeep Corporation."

Three-Way News by Mrs. H.W. Garvin

Robin Kindle, a student at Angelo State University, spent the past week visiting her parents and sister, Bobby Kindle family.

Mr. and Mrs. Jack Lane were in Clovis Sunday to visit their daughter, the Rodger Hatchers.

Mr. and Mrs. Adolph Wittner visited Naoma Julian in Cook Memorial hospital in Levelland Saturday and Wittners sister in South Park hospital in Lubbock.

The Three Way Baptist attended church at Enochs Sunday and on to Muleshoe Sunday night to attend a musical.

Mrs. H.W. Garvin was a dinner guest in the home of her brother Mr. and Mrs. George Tyson Sunday.

RECIPE

By Sarah Ann Sheridan
STRAWBERRY TARTS
 6 individual tart shells
 3 c strawberries
 1/2 c sugar
 1 t cornstarch
 red coloring
 thick boiled custard
 Sweeten strawberries. Let stand 30 minutes. Strain and reserve the juice from the strawberries. To the juice add the sugar which has been mixed with the cornstarch. Add red vegetable coloring as desired.

Cook over low heat, stirring constantly until thick and transparent. Cool. Arrange in tart shell a layer of thick boiled custard. Pile with fresh strawberries and pour over the glaze. Chill thoroughly and serve.

Courthouse News

WARRANTY DEEDS
 W.L. Donald and wife, Bonnie Donald to Viola Wright Batteas---All of Lot Number (10) in Block Number (19), of the Goodland Townsite in Bailey County, Texas.
 Jack P. Martin, Sr. and wife.

Nursing Home

By Joy Stancell

Two rose bushes were set out this week in the Nursing Home Patio with the expertise of Beryl Hollis and the help of Lois Ethridge, Helen and Bobby Free.

 We congratulate ourselves and Peggy Bates on the hatching of two baby chicks (at this time) we are looking for several more by the end of this Easter weekend.

In Fashion
 Prints are back in the spring fashion scene. Splashing bold prints and bright colors will be seen on everything from swimsuits to casual sportswear and even cocktail dresses.

Fern R. Martin to Socorro M. Sanchez and wife, Juana Sanchez---All of Lot (2), and the (N.5') of Lot (3), Block (8), Warren Addition No. (1), An Addition to the City of Muleshoe, Bailey County, Texas.

Sammy McKelvy, Shirley Edith Turner, Wm Edward Bass, Brandy Bass, Brandon Bass, and Burgundy Bass to J.L. and Steve Land and Cattle, Inc., a Texas Corporation---All of the (S/2) of Section (27) of the R.M. Ellerd Subdivision of Leagues 105, 106, 107, and 108, Fisher County School Land, Bailey County, Texas.

Ed Bellar and wife, Modena Bellar to John Randall King and Tom A. King, III---All of Labor Number (3), League (208), Ochiltre County School Land, in Bailey County, Texas; save and except 6.37 acres out of the Northeast corner thereof.

Warner Lowell Desautell to Beverly Ann Desautell---Labor Number (1), in League Number 197, of the Lubbock County School Lands, Bailey County, Texas.

Ben D. Roming and wife, Judy Roming to Keva Coffman, Danita Jo Williams and Benetta Ann Jones---An undivided 3/4 interest in and all of Labor (6) and the West (89) acres of Labor Number (15), in League Number (175), Sutton County School Lands, Bailey County, Texas.

Ben Roming and wife, Judy Roming to Keva Coffman, Danita Jo Williams and Benetta Ann Jones---An undivided three fourths interest in and to all of Labor Number (13), League Number (175), Sutton County School Lands, in Bailey County, Texas.

Ben D. Roming and wife, Judy Roming, Keva Coffman, Danita Jo Williams and Benetta Ann Jones to B.R. and D. Farms, Inc.---All of Labor Number (6), and the West (89) acres of Labor (15), in League Number (175), Sutton County School Lands, Bailey County, Texas.

Ben D. Roming and wife, Judy Roming, Keva Coffman, Danita Jo Williams and Benetta Ann Jones to B.R. and D. Farms, Inc.---All of Labor Number (13), League Number (175), Sutton County School Lands in Bailey County, Texas.

D.T. Garth to Vernice Upton Garth---An undivided one fourth interest in all of one house at 516 East 3rd, Muleshoe, Bailey County, Texas; further described as Number 60' 18-22, Block 36 Original Town of Muleshoe, Bailey County, Texas.

Robert L. Flanary and wife, Jo Ann Flanary to Larry W. Chapman and wife, Jeri S. Chapman---All of Lot Number (5), of Block Number (2), Legion Addition to City of Muleshoe, Bailey County, Texas.

MARRIAGE LICENSE

FREE HEARING TESTS FOR SENIOR CITIZENS
 MEET AT WESTERN DRUG - MULESHOE
 114 MAIN
 WEDNESDAY ONLY APRIL 9TH
 COME BY OR CALL 272-3106 9:30 a.m. - 10:30 a.m.
 10 DAY FREE TRIAL 12 BRANDS TO CHOOSE FROM
 SATISFACTION GUARANTEED

Sponsored by
LIVINGSTON HEARING AID CENTER
 1903 19TH LUBBOCK, TX 79401 806 762-2951
 606-B QUINCY PLAINVIEW, TX 79072 806 293-8874

Daniel Jajera and Mary Susan Zamora, Portales, N.M.
COUNTY COURT ORDER OF DISMISSAL
 Jackie Warren Speed, Edward Fernandez, Jackie Lobough, Lupe Olnos, Raul Cantu Gonzalez, Frank Saldana and Janie Saldana, Jose Muniz, Pedro Hernandez, Moises Ancira, Julio Flores, Rolando Sauseda and Andy Duran.

ORDER DISCHARGING DEFENDANT FROM PROBATION
 Cal Ray Hood, Gilbert Vela, Billy Dale Simpson.

DISTRICT COURT
 Donna L. Thompson VS Carol Joe Thompson, Contempt Order and Writ of Commitment.
 Anita Perez VS Roy Perez, Contempt Order and Writ of Commitment.

Three Way Independent School District, ET AL VS Dale Middlebrooks, Notice of Dismissal.
 Bailey County Appraisal District ET AL VS Larry D. Ross 'ET AL Order of Dismissal.

NEW VEHICLES
 Roger Haberer, 1986 Ford PU, Muleshoe Mtr. Co., Inc.

ShIPLEY Furniture's 6th ANNIVERSARY SALE

LA-Z-BOY RECLINERS
 PRICES START AT
\$299

WALL UNITS
 3 PC. SETS
 REGULAR PRICE \$999
 1290.00
BURLINGTON, HOOKER, VAUGHAN BEDROOM SUITES
 GREATLY REDUCED!

SLEEPER SOFAS
FLEX STEEL & LA-Z-BOY
 BUY ANY SLEEPER AT SALE PRICE & HAVE YOUR CHOICE OF ANY CHAIR OR RECLINER AT **1/2 PRICE**

ROLL TOP DESK
\$399 UP

SWIVEL ROCKERS
 ASSORTMENT OF COLORS
 STARTING AT
\$199

RATTAN SOFA, LOVE SEAT, CHAIR, COFFEE & END TABLE
\$1599
 5 PC. REG. '2322

LAMP & ACCESSORIES
20% OFF

DINING ROOM SUITE BY BURLINGTON, TELL CITY, HIBRITIAN
 ROUND TABLE, SOLID WOOD TABLE & 4 BOW BACK CH.
\$799

LARGE SELECTION MIRRORS
20% OFF

WOODEN ROCKERS
 STARTING AT
\$99

ALL BRASS BEDS
 AND BRASS HEADBOARDS IN STOCK
1/2 PRICE

GUN CABINETS
 6, 8 & 10 PLACE
\$399
 STARTING

BROYHILL 4 PC. BEDROOM
\$799

VAUGHAN 4 PC. BEDROOM
\$999


MATTRESS & BOX SPRING SETS
 FULL - QUEEN - KING
1/2 PRICE

DECORATOR SERVICE AVAILABLE!
 VISA & MASTER CARD OR TAX RETURNS ACCEPTED!

ShIPLEY Furniture 1305 MAIN ST. Clovis, N.M.

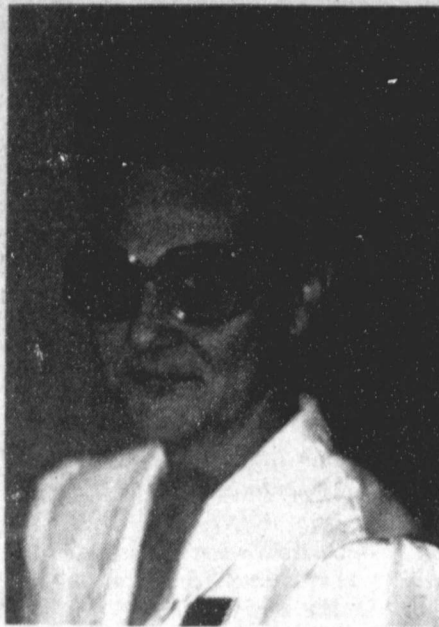
Get A Grip On Top Yields

PLANT NC+ HYBRIDS



2% Discount Through April 30.
 Excellent Supply of Large Rounds In 5990, 6190, & 6881.

Matt Phelps
 925-6485
 Rt. 5 Muleshoe



MARY WILLIAMS, LVN

Angels Of Mercy of West Plains Medical Center

Steady as a rock describes Mary Williams LVN. If you were in the hospital in the last 2 years, it is very likely that Mrs. Williams took care of you between the hours of 11 pm and 7 am in the morning. She has been working night shift ever since she graduated from South Plains College School of Vocational Nursing 2 years ago. Mrs. Williams has lived in Muleshoe for the past 5 1/2 years. Last year she and her husband, James, moved to Farwell where she continues to commute 20 miles each day to work. A lot of things make Mrs. Williams a unique individual, not the least of which is the fact that she returned to nursing school 24 years after she graduated from high school. Of her work she says, "I enjoy my work very much. I like to feel worthwhile and working as a nurse helps me feel good about myself." She is an employee who is reliable and willing to work whenever and wherever she is needed. Her goal is to give the best care she can possibly give regardless of the situation that her patient is in. Mrs. Williams is a Special Lady. She is an Angel of Mercy. T. Wilson RN DON

Sudan Hornets Place Second In Track Meet

Sudan Hornets placed second in the Canyon Invitational Track meet held in Canyon Saturday. Perryton was first with 132; White Deer 107; Sudan 85; Kress 51; Lazbuddie 50; Tascosa JV 43; Nazareth 39; Coronada JV 35; Caprock 10. Joann Wooley was first in shot put with 42-10 and second in discus with 119-5. Perryton was first with 119-10. Provence was second in the running events with 13:29.64 in the 3200. In the 400, Sudan's Williams was third with 66.4 while White Deer was first with 63:01. In the 200, Peck was second with 27.7. Sudan placed second in the 1600 relay with 4:20.6 while White Deer was first with 4:18.3. In the boys division, Perryton was first with 140 1/4; Sudan 79 1/2; Kress 70 & 3/4; Lazbuddie 46; Dubar JV 45; White Deer 32; Clovis JV 22; Canyon JV 21 1/2; Nazareth 20; Coronado JV 13; Happy 8; Dumas JV 5. Kirkland was third in the pole vault with 12.0. Glasscock was first in the 3200 with 11:08.15 while Epperson of Coronado JV was second with 11:17.00. Vincent was second in the 800 with 2:10.1 and Barron was 2:10.2 for 3rd. Williams was first in the 500 with 50.8 and Sudan was second in the 1600 relay with 3:31.9 while Perryton was first with 3:31.1.

Sudan News by Evelyn Ritchie

Visiting this week with Mr. and Mrs. Calvin Baker has been their grand daughter, Marlea Wood, daughter of Mr. and Mrs. Billy Jack Wood of Brownfield. She has also visited her aunt, Mr. and Mrs. Damon Provence and family.

Visiting this week with Mr. and Mrs. Billy Chester have been their grandchildren, Brad, Ryan and Stacy Masten of Evans, Colo. They also visited with their other grandparents, Mr. and Mrs. Dale Hanna and Mr. and Mrs. W.C. Masten.

Mr. and Mrs. R.B. Knox have returned home from vacationing the past several days.

Mrs. O.O. Baker was in Hereford Sunday afternoon to visit her brother Charlie Walsler and to help him observe his 98 birthday. Going with her were her son Dexter and daughter Pee Wee Lance.

Mr. and Mrs. Arnold Vereen of Albuquerque, N.M. spent several days this week with his sisters, Bertha Vereen, Mrs. J.W. Olds & Mrs. Radney Nichols.

Lonnie Narramore has been a patient in the South Plains Hospital in Amherst for the past several days.

Visiting during the weekend with Mr. and Mrs. Ted Walker were his sisters, Miss Opal Walker, Mrs. Itha Dismore and Mrs. Lois Dismore all of Ballinger. They were here to attend the 50th wedding anniversary of the Walkers on Sun.

Visiting last week with Mr. and Mrs. Buford Walsler were their daughter, Sharon Roberts and Cindy & Britton of Stephenville. They also visited with Bonnie Roberts and family.

Mr. and Mrs. Raymond Harper were in Odessa during the weekend to visit their daughter, Mr. and Mrs. Tom Mills.

Mr. and Mrs. Don Ham of Lubbock were Sudan visitors Sunday and attended the receptions for Mr. and Mrs. Ted Walker on their 50th wedding ann. and the reception in honor of Mr. and Mrs. Pudd Wiseman's 25th anniversary.

Mr. and Mrs. Wayne West & Kylie of Hobbs, N.M. visited Sunday with Mr. and Mrs. John Williams and visiting this week with them are Ken and Marilyn who are enroute to Blackwell, Okla where he has accepted a position there.

Shelley Gore of College Station and Tammy Gore of San Angelo State were home for the spring break with their parents, Mr. and Mrs. James Gore.

Gary Fields was home for the spring break at Tarleton State U in Stephenville with his parents, Mr. and Mrs. L.S. Fields.

Penny Mills of Austin visited during the weekend with her parents, Mr. and Mrs. Wiley Mudgett and was here to attend the baby shower for Kathy Granger.

Sheryl Morris of Muleshoe visited Saturday with her parents, Mr. and Mrs. Norman Humphreys and was here to attend the baby shower for Kathy Granger.

Mr. and Mrs. Kenny Wilson and children of San Antonio visited for the past several days with her parents, Mr. and Mrs. Bernard Wilson.

Laura Powell was home from WTSU in Canyon for spring break with her parents, Mr. and Mrs. Donald Powell.

Mr. and Mrs. Joe Ellison and Lee were in San Antonio last week while LeeAnne was out of college on spring break.

Dr. and Mrs. Thurmon Bryant of Richmond, Va. were overnight guests of Mr. and Mrs. Nolan Parrish Monday. They were here to attend funeral services for her mother, Mrs. Lillie Morris who died last Thursday.

Pete Shupe recently accompanied her mother, Mrs. Oleta Reece to Alabama to visit friends and relatives and also visited in Diane with their sister and daughter Mariene Thomas and family.

Jerry Dodson, Perry Kent, Missy Fisher were among college students home during the spring break.

Mrs. Curtis Chester and boys of Farwell were weekend visitors with her parents Mr. and Mrs. Jim Bob Hargrove and family.

Visiting with Mr. and Mrs. Bob Summer have been his parents of Albuquerque, N.M.

Rosemary Seymore is a patient in the St. Mary's Hospital and has been there for several

days. Her daughters, Mr. and Mrs. Eddie Bond and children of Vega and Mr. and Mrs. Bill Thornton and children of Friona have been here to visit with them.

Susan Nettles, daughter of Mr. and Mrs. Glen Cardwell is a patient in the St. Mary's Hospital. Her daughters, Danielle and Krista are staying here with the Cardwells.

Visiting with Bonnie Roberts a few days last week were her grandchildren, daughters of Mr. and Mrs. Daryl Roberts of Burnet.

Mr. and Mrs. Lloyd Seymore have returned home from vacationing a few days last week in Kerrville.

Visiting overnight last week with Mr. and Mrs. G.C. Ritchie were her brother, Rev. Don Corley, Burson and Deanna and Rev. Bob McLarry of Farmington, N.M.

Mrs. Mike Fisher and Tanya and Shannon spent the Easter holidays in San Angelo with her parents, Mr. and Mrs. William Jackson

Becky Byerley of Lewisville visited during the Easter break with her parents, Mr. and Mrs. Elray Rasco and Gayla. Brad of Texas Tech also was home for the holidays.

Josephine Fisher has returned home from Kansas City where she went to watch her daughter, Missy when she was among team members of the Wayland Flying Queens play in the

tournament there. Her son, Comm. Radney Fisher of New Orleans joined them there. Also visiting with the group from Sudan was Mary May.

Robert Wells of Chicago has been here visiting his dad, J.C. Wells and other family members including Mr. and Mrs. Wayne Doty and Mr. and Mrs. Glen Chester and families.

The National Association of Intercollegiate Athletics District 8 recently released their Academic All-District team.

Missy Fisher who plays for the Wayland Flying Queens was one of the nine girls making this prestigious team. To make the team, the player must be a sophomore and must make a significant contribution to the teams' play.

Missy made the team with a 3.78 GPA, the highest average of any All-District team mem-

ber. Also, making the team was Missy's team mate, Kim Couch who as a Senior had a 3.5 GPA. Other girls on the team came from Texas Wesleyan College, Lubbock Christian College, Midwestern and Paul Quinn College. Missy is the daughter of Josephine Fisher and is a 1984 graduate of Sudan High School.

For All Your Local News Or Club Activities Call 272-4536 Or Come By The Journal Office

H & R BLOCK GUARANTEES TAX RETURN PREPARATION

"If we make any error in the preparation of your tax return that costs you any interest or penalty on additional taxes due, while we do not assume the liability for the additional taxes, WE WILL PAY THAT INTEREST AND PENALTY. Furthermore, if your return is audited, we will accompany you, at NO EXTRA COST, to the Internal Revenue Service and explain how your return was prepared, even though we will not act as your legal representative."

If everyone was perfect, we would not need to guarantee our tax return preparation. Block has consistently protected their clients from paying more than is rightly owed if a mistake is made by H & R Block on the tax return.

We'll even guarantee to find you the biggest refund — or your return is free.

224 w. 2nd 272-3332

wk days 9-6 Sat. 9-5

True Value HARDWARE STORES

Your local independently owned True Value® Hardware Store has national chain-buying power.

spring & summer Savers

<p>LAWN CHIEF</p> <p>3.5-HP 21-Inch Rear-Bagging Mower with fully-baffled deck and high-lift blade that create a powerful vacuum action to clean the lawn as you mow. 5-position lever-action height adjusters, deluxe folding handles. Easy on/off bag. 81</p> <p>199.88</p> <p>MEETS CPSC BLADE SAFETY REQUIREMENTS</p>	<p>WEED EATER</p> <p>Gas Trimmer easily trims and edges. With Tap-N-Go® line advance, adjustable handle, 15-in. cutting path, 40-ft. line. XR20</p> <p>96.88</p>	<p>Sunbeam Master Chef</p> <p>Master Chef® Gas Grill has dual stainless-steel burners, Lite-A-Matic ignition, tables, LP tank, more. Unassembled. 31MC</p> <p>169.88</p>
<p>BLACK & DECKER</p> <p>Dustbuster Plus™ Cordless Vacuum cleans up lots of little messes on a single charge. Comes with batts., charger base. 9334</p> <p>34.99</p>	<p>weber The one. The only.</p> <p>Sidekick™ Table hooks on to grill for a durable maple work surface for carving, chopping or trimming at the grill. 1800</p> <p>15.99</p>	<p>12-Qt. Cooler & 1/2-Gal. Jug is the perfect combination for your family outings. With thick polyurethane insulation, more. 036-010TV</p> <p>9.99</p>
<p>GREEN THUMB</p> <p>TIRE CORD REINFORCED VINYL HOSE 60' 5/8" 156299</p> <p>9.99</p>	<p>32-Gal. Heavy-Duty Trash Can features long-life construction, tight-fitting, lock-on lid, carrying handles. Brown/beige. 7332BN</p> <p>8.88</p>	<p>100-Ft. Indoor/Outdoor Extension Cord takes you to the farthest parts of your lawn in any weather. Round. 16/2 wire. 239327</p> <p>6.99</p>
		<p>Fluorescent Lantern for camping and indoor/outdoor work. Long-lasting construction. Runs on 6-volt batts. (not incl). 5209</p> <p>9.99</p>

Tony's Little Gulf Special Of The Month Wash & Grease Oil & Filter Change

(Limit of 6 Qts)

\$25.00

Good Thru April 30

272-4929

Come And See Us 206 W. Amer. Blvd.

Fry & Cox, Inc.

401 S. 1st. 272-4511

MasterCard VISA

Nursing Home News

by Jo Stancell

Our thanks to the Hospital and Nursing Home Auxiliary and the Mary Martha Sunday School class for their donation to our activity fund. You make a lot of fun things possible.

Mr. and Mrs. C.W. Wilhite visited D.J. Gage Wed. morning. Lena Hawkins visited Wed. afternoon.

Mrs. Hickman's daughter, Virginia Moyer, visited her Wed. Virginia played the piano for Mr. and Mrs. Hickman and the residents before supper. Mrs. Hickman's grandson, Doug Moyer, visited her Fri.

We would like to welcome our new residents they are Eva Ashford. Mrs. Ashford was born in Cloud Chief, Okla. Feb. 22, 1905. She is a member of the Trinity Bapt. Church. Arthur Miller, he was born in Okla. Aug. 14, 1903. He is a Baptist. He came to the Nursing Home from Earth, Tex. Welcome Mrs. Ashford and Mr. Miller to our Nursing Home Family.

Beryl Hollis was visited by Ruth McCarty Wed. afternoon.

Our thanks to Jackie Johnson for decorating our birthday bulletin board.

Fri. afternoon ladies of the Assembly of God Church hosted our Easter Party Devotional. Special music was one of the high lights of the event. Refreshments were served from a beautiful decorated table of Easter bunnies, eggs and a basket. Favors of jelly bird eggs all tied up in yellow net with a colorful ribbon were given to the residents as they were leaving for their rooms.

Our thanks to the F.H.A. class of Muleshoe High for making and bringing Easter corsages and boutonnières for our residents they were beautiful.

Mrs. Patricia Angeley's 4th grade class of Mary De Shazo school made Easter baskets filled with goodies for the residents.

The King Kids concert has been postponed to Tues. April 8th at 6:00 p.m. We invite anyone who likes good music to come and join us.

Leis Ethridge was visited by Peggy, Maxine and Pearl Dunlap this week.

Mary Nunn will be bringing a group of young people from the Methodist Church to sing Wed. April 23rd at 4:10 p.m. We invite you to come.

The Gospel notes from the Muleshoe Church of Christ will be coming to sing to us on every 5th Sun. at 3:00.

D.J. Gage and Alpha Laney attended the A.A.R.P. meeting at the Civic Center Fri. We really enjoyed the fellowship, the meal and the program. We thank them for their hospitality.

Lewis Shafer went out to his home in Needmore Sun. he was visited by his wife and Jimmie Crawford in the Nursing Home Wed.

Emma Schuster's son, Elmer Schuster, came and got her over the weekend and took her for a visit in his home in Tucumcari, N.M.

Gil Lamb visited the Nursing Home Wed. afternoon.

Emmett Dean returned to the Nursing Home Wed. after being hospitalized in W.P.M.C. a few days. Welcome back Mr. Dean.

Jay Burge was visited this week by several of his family members.

Our thanks to Irene Steinbock for helping in the Beauty Shop Tues.

Ruth Brisco Memorial Services Held In Farwell

Memorial services for Ruth Brisco, 68, of Farwell, were held Thursday morning at Farwell Convalescent Home. Officiating was the Rev. Pat Riley of Farwell.

Arrangements were under direction of Ellis Funeral Home of Muleshoe.

The body was donated to the Texas Tech University Medical School.

She died Tuesday in Farwell Convalescent Center after a lengthy illness.

She was born in Tipton, Okla. Survivors include her husband, Roy, of Farwell; a son, Roy Jr. of Dallas and a daughter, Reha Braniff of Mexico City.

Muleshoe School Menu

BREAKFAST
MONDAY
Milk, Cereal, Toast, Fruit
TUESDAY
Milk, Honey Buns, Juice
WEDNESDAY
Milk, Toast, Jelly, Fruit
THURSDAY
Milk, Cheese Toast, Fruit
FRIDAY
Milk, Biscuits, Gravy, Sausage, Fruit

LUNCH
MONDAY
Milk, Steak & Gravy, Green Beans, Creamed Potatoes, Hot Rolls, Fruit
TUESDAY
Milk, Hamburgers, Lettuce & Tomato, Pickles & Onions, Tater Tots, Cookies
WEDNESDAY
Milk, Enchallada Casserole, Beans, Corn, Corn Bread, Fruit
THURSDAY
Milk, Hot Dogs, Potato Salad, Pork & Beans, Cake
FRIDAY
Milk, Fish, Macaroni & Cheese, Eng. Peas, Hot Rolls, Fruit

COMBO LINE
MONDAY
Milk or Tea, Pizza, Mixed Vegetables, Pickles, Fruit
TUESDAY
Milk or Tea, Hamburgers, Lettuce & Tomato, Pickles & Onions, Tater Tots, Cookies
WEDNESDAY
Milk or Tea, Cheese Nacho's, Beans, Corn, Corn Bread, Fruit
THURSDAY
Milk or Tea, Frito Pie, Potato Salad, Pork & Beans, Cheese, Cake

FRIDAY
Milk or Tea, Chicken Pot Pie, Cheese Stick, Fried Okra, Fruit

Top-Of-The-Line Heifers To Be Featured At Sale

Plenty of fancy, top-of-the-line heifers will be for sale at the second Capital of Texas Commercial Replacement Heifer Show and Sale in Austin, April 9-10.

"We have about 120 pens of heifers (three to a pen) consigned for the show and sale, and most of the animals are bred and ready to go to pasture," points out Wade Hibler, Travis County agent with the Texas Agricultural Extension Service, who is assisting with the event.

"Cattlemen looking for top quality replacement heifers won't want to miss this opportunity," emphasizes Hibler. "We believe we will have some of the best heifers in Texas for sale."

The show and sale will be at the Texas Exhibition and Heritage Center which is east of Austin about three-and-a-half miles south of U.S. 290 on FM 3177 (Decker Lane).

Heifers in the show and sale will be of three classes: Brahman influence crosses, F1 certified, and purebred and other crosses.

Judging will be on April 9 beginning at 2 p.m., and the sale will begin at noon the next day. Hibler points out, Charles Rollins of Fort Worth will be the auctioneer.

Further details about this show and sale of top quality heifers can be obtained from Hibler at 512-473-9600.

West Plains Hospital Report

PATIENTS IN WEST PLAINS MEDICAL CENTER

April 1, LaTonia Pruitt, Ray Edwards, Emmitt Dean, Ola Ragsdale, Lora Dale, Viola Lockridge, Florence Lackey, Celestine Coone and Larry Parker, Muleshoe. Dixie Gonsor, Clovis, Clint Tharp, Fern Tharp, Roy Stanton and Maggie McIntosh, Texico. Barbara Goodwin, Earth.

April 2, Mary Splawn, Abigail Vega, Larry Parker, Emmitt Dean, Ola Ragsdale, Lora Dale, Celestien Coone and LaTonia Pruitt, Muleshoe. Fern Tharp, Clint Tharp and Maggie McIntosh, Texico. Dixie Gonsor, Clovis. Maris Andozola, Frona. Barbara Goodwin, Earth. Ray Edwards, Muleshoe. Shawn Smith and Baby Girl Smith, Farwell.

April 3, Larry Parker, Maria Hernandez, Ola Ragsdale, Ray Edwards, Celestine Coone and Abigail Vega, Muleshoe. Fern Tharp and Maggie McIntosh, Texico. Dixie Gonsor, Clovis. Maria Andozola, Frona.

McCarty Services Held Friday In Sudan


Funeral services for Alice Glasscock McCarty, 67, and Lendle McCarty, 68, of Sudan were held at 3 p.m. Friday, April 4 in the Sudan First Baptist Church with the Rev. Jerry Dodson officiating.

Burial was in the Sudan Cemetery under the direction of Hammons Funeral Home. McCarty apparently shot his wife to death Wednesday morning before taking his own life, according to authorities.


McCarty was born in Dickens and Mrs. McCarty was born in Clinton. She was a housewife and he was retired from Southwestern Public Service. He was a member of the Masonic Lodge. They were Baptists.

Survivors include two daughters, Lenda Ann Fair of Cedar Park and Rena Kay Adams of Wichita Falls; five grandchildren; and a great grandchild.

McCarty is also survived by four sisters, Ruth Braiser of Marble Falls, Laura Blanchard of Kingsland and Hugh Nora Marcy and Pearl Mitchell, both of Lubbock; and a brother, Herman of San Antonio.




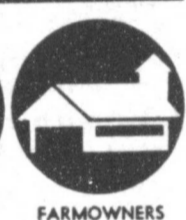






ROY WHITT Insurance



201 Main 272-3611

Offering Multiple-Line Insurance Service

			
AUTO	FARM AND PERSONAL LIABILITY	HOMEOWNERS	FARMOWNERS
			
CROP HAIL	FIRE	COMMERCIAL	LIFE

One-Stop Insurance Service for Home, Family and Farm

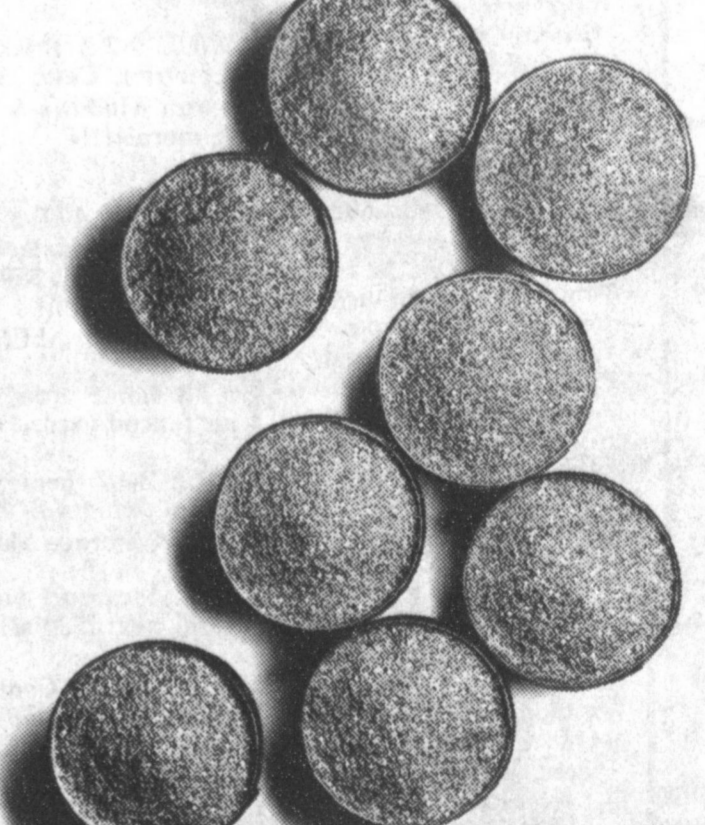


• A 26% crude protein dog food.
• Formulated for hard working dogs.
• For peak conditioning and performance.

Golden Super may cost more by the pound, but it's less by the bushel.



Typical cost increase per acre over bulk blend



Typical yield increase per acre over bulk blend

Some things it just doesn't pay to save money on. Corn starter's one of them. Compare the real cost of a 10-30-5 bulk blend to that of Golden Super 10-30-5. It costs you about two dollars an acre less than Golden Super. But according to our field tests conducted over the years, it'll also cost you about eight bushels of corn. Golden Super gives you better results because its 7 percent

Sulfur and 2 percent Zinc make for more efficient protein synthesis and improved nitrogen and phosphorus uptake. The mono-ammonium phosphate in Golden Super is equally important because it is highly soluble and can be used efficiently by the crop. This promotes the vigorous early growth that is necessary for high yields. Our 10-30-5 also gives you more uniform application than a

bulk blend because every granule is a homogenous mixture of nutrients. See your Grace dealer. He'll help you work up a Golden Super program to bring down your cost per bushel. Because you can't reach maximum economic yield by cutting back on the one thing that's most likely to get you there.

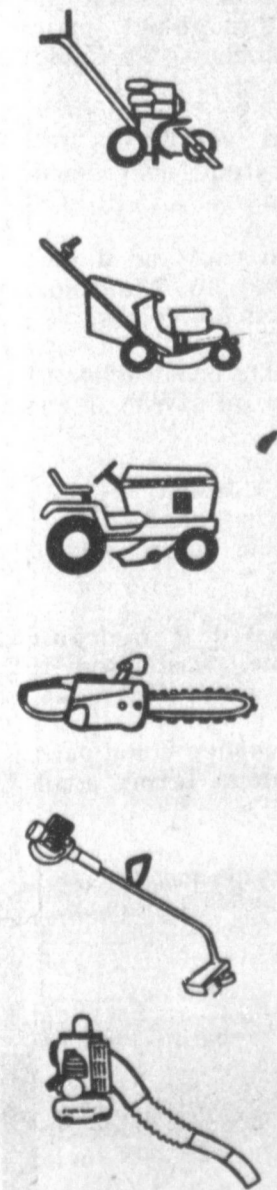
GRACE

Not just the right fertilizers. The right people.
W.R. Grace & Co., Agricultural Chemical Group



Ride off on a Deere.

Enter our Deere Season Giveaway.



Spring is just around the corner, so now is the time to visit your John Deere dealer to stock up on the latest equipment from Deere's complete lawn and garden line. And while you're there, go ahead and sign up for the Deere Season Giveaway, your chance to win a 100 Series Lawn Tractor, 21-inch self-propelled lawn mower, edgers, trimmers, blowers and a whole lot more. No purchase is necessary, and you don't even have to be present to win. One hundred lawn and garden prizes are up for grabs, so don't miss out on the action at your John Deere dealer. The Deere Season Giveaway. It starts March 1 at your local John Deere dealer. And remember, you can't win if you don't enter, so hurry and sign up today for your chance to win.

 Participating John Deere Dealers

Dent & Co.

Hwy 84 West 272-4297

Entry forms are available at all participating John Deere Dealers. No purchase is necessary. Contest ends April 30, 1986. All entries will be forwarded to John Deere Company, Branch Office, Dallas, Texas for a random drawing on May 16, 1986. Winners will be notified in writing. One prize per person. Employees of John Deere, its dealers and its advertising agency and their immediate families are not eligible to win.

**Bailey County
Journal**

Classified

Call 272-4536

CLASSIFIED RATES
 First Insertion
 Per Word.....\$1.15
 Minimum Charge \$2.30
 Consecutive Insertions
 Per Word.....\$1.13
 Minimum Charge \$2.00

CLASSIFIED DISPLAY RATES
 \$1.75
 Per Column Inch

BLIND AD RATES
 50% More

DEADLINES
 12 noon Tues.
 For Thursday Paper
 12 noon Fri.
 For Sunday Paper

We reserve the right to classify, revise, or reject any ad. Not responsible for any error after ad has run once.

1. Personals

WE HAVE several buyers looking for good dry land or irrigated farm land. If interested, in selling call H.D. Bennett - Bennett Land Company P.O. Drawer B Clovis, N.M. 88101. (505) 762-3388 day or nite.
 1-12s-5tp

HOME REPAIRS
 F.M. Saldana Construction, licensed and bonded plumber. Specialized in cement, carpenter work, remodeling, painting, acoustical ceilings.
 272-4955.
 s1-16s-tfc

FURNITURE Upholstering & repairs. Burrows Upholstery Shop - 209 W. 2nd Phone 272-4255 Home Phone 272-5722.
 b1-41t-tfc

LATHE & STUCCO work. Do jobs or patch work professionals. free estimates, call 965-2871.
 s1-12t-4tsc

WANT to buy a 1930 Muleshoe High School Annual 272-3224. Alice Ragsdale O'Brien. 1-13s-3tp

MARY KAY COSMETICS Josie Flowers 272-3865 1-40s-tfc

HERBAL A WAY OF LIFE
 Weight control 100% Satisfaction guaranteed.
 Betty Steinbock
 965-2866.
 s1-14s-4tsc

FRANK'S REFRIGERATION AND APPLIANCE SERVICE
 Parts and Repair
 104 E. Ave. B
 Muleshoe, Texas
 Bus. Ph. 272-5090
 Home Ph. 272-3822

Kenneth Evans' Handyman Service
 Painting Remodeling Repairing, And more
 Call: 965-2759
 Muleshoe, Texas 79347

DAVIS COMMERCIAL PUMPING SERVICE
 Cess pools, Grease pits, Mud pits, Septic tanks, 20 ft. elevator boots, Bacteria & Enzyme. Digestant-stocked.
 We stress maintenance for your best results. Call us.
 806-272-4673
 806-272-3467
 Muleshoe, Texas
 TX Dept. of Health reg. # TDH-02009
 1-8s-stfc

1. Personals

STORAGE
 Rooms Available For Storage \$25.00 - \$30.00 per month
 Ted Barnhill 272-4903
 b1-42s-stfc

OPEN YOUR OWN beautiful discount shoe store. Ladies - Childrens - Mens. Nationally known brands *Liz Claiborne *Evan Picone *9 West *Amalfi *Nike *Old Main Trotter *Naturalizer *Famolare *Adidas *Converse *Andrew Geller *Gloria Vanderbilt and many more. \$21,900.00 to \$39,000.00 includes beginning inventory - training - fixtures - grand opening promotions and round trip air fare. All first quality merchandise. Call today. Prestige Fashions 501-329-2362.
 1-14s-1tpts

CONCERNED About Someone's Drinking? HELP IS AVAILABLE through Al-Anon Call 227-2350 or 965-2870 or call 227-2350 or come to visit Tuesday nights, 8:00 p.m. or Saturday mornings at 10:30 a.m. at 1116 W. American Blvd., Muleshoe.
 2-14s-3tp

2. Lost & Found

Lost 8 600 lb. Heifers with the circle a brand on the left hip. About 11 on East 84. Phone Gene Atkins at 272-5813.
 g2-13s-4tp

STRAYED FROM 5 miles west of Muleshoe 29 head of mixed breed steers. Branded J on left side. May be in smaller bunches. Call 925-6732.
 2-14s-3tp

3. Help Wanted

OPPORTUNITY Exciting, new party plan - Christmas Around the World. Be a Supervisor. Hire, train people from home July-Dec. No investment! Free training! Call collect 915-692-7542.
 3-14s-2tpts

Now taking applications for several positions. Part-time and full-time available. Apply in person Muleshoe Country Club. An equal opportunity employer.
 m3-13t-4tsc

EASY ASSEMBLY WORK! \$14.00 per 100. Guaranteed payment. No sales. Details-send stamped envelope: ELAN-6469 3418 Enterprise, Ft. Pierce, FL 33482
 3-13s-8tpts

PART-TIME for LVN, RN or EMT to take health history for insurance companies in Muleshoe. Call Portamedic 806-747-3223.
 h3-14t-2tc

RESPONSIBLE PERSON
 Wanted to own and operate candy vending route. Pleasant business with high profit items. Can start part time. Cash investment of \$3396 to \$12,996. Call 1-800-328-0723
EAGLE INDUSTRIES
 26 Years of Service.
 3-14s-2tpts

4. Houses For Rent

RUIDOSO CHALET: 4 bedroom for rent by day, weekend, or weekly. Call 505-257-2622 or 915-943-4261. Owner Dr. Albertson. a4-49t-tfc

3 bedroom house for rent. Been repainted and new linoleum. Call 272-3215.
 s4-12s-4tp

5. Apts. For Rent

FOR RENT: Nice 1-2 bedroom apartments. Some bills paid. Call 272-4969 or 272-4754 after 5 p.m.
 s5-4s-tfc

8. Real Estate

FOR SALE: by owner 3 bdrm, 1 bath, garage. Country Club Addition, \$35,000.00 272-5414.
 j8-6s-stfc

COUNTRY HOME for sale or rent. Call 1-352-5599 "collect" between 10:00 A.M. & 2:00 P.M.
 s8-14t-8tc

8. Real Estate

8. Real Estate

FOR SALE BY OWNER: 3 bdr. - 2 Bath brick home in Country Club Addition. Fireplace, sunken den, nice fenced yard, central A&H. 906 Juniper. 272-5421, or (806) 637-6616 m8-2s-tfc

HOUSE FOR SALE BY OWNER: Owner will carry papers. 3 bedroom, formal living & dining room, large den, garage and many accessories. Call 505-356-5026. Portales, N.M. 8-14t-2tp

TOP QUALITY HOME!
 Beautiful custom-built, brick home only 6 yr. old! Approx. 2500 Sq. Ft. Living area; plus enclosed, insulated shop area. Many extra-walk-in closets, custom cabinetry, sprinkler system, 2 covered patios, beautiful view. 1515 W. Ave. J. 272-5334.
 b8-9s-stfc

Despite what some people say, most of us want to do the right thing, even though we don't do it.

8. Real Estate

8. Real Estate

DON'T GIVE it away
 Let us appraise it 272-3191
 Krebbs Real Estate. k8-7s-tfc

11. For Sale Or Trade

FOR SALE 160 ft. Chain link fence & Materials 4 ft. high 965-2303.
 11-13t-4tp

1973 Mustang Grande good school car. In Lubbock call 794-6712. L11-14t-2tc

HALF PRICE! Flashing arrow signs \$299! Lighted, non-arrow \$279! Nonlighted \$229! Free letters! Only few left. See locally. 1 (800) 423-0163, anytime.
 11-15t-1tpts

FOR SALE: 1984 Suburban Silverado package. Low mileage. Call after 6 pm 272-5077.
 b11-14t-4tc

FOR SALE: 2 side roll sprinklers, 1 36" spring tooth like new. Phone 965-2160.
 m11-14t-4tc

15 Misc.

CREDIT PROBLEMS? Come see Don at A1 MOBILE HOMES. I can put you in your own home. Call 763-5319 collect. a15-12t-8tc

7.77 PERCENT ANNUAL PERCENTAGE rate on any new home from A1. Ask about 7-7-7 program. Call Don at 763-5319 collect.
 a15-12t-8tc

16. Livestock

CALL YOUR LOCAL Used Cow Dealer for 7-day a week free dead stock removal. 806-965-2903 collect 1-800-692-4435. h16-33t-tfc

BIBLE VERSE
 By this my Father glorified, that you bear much fruit, and so prove to be my disciples.

1. Who is the author of this statement?
 2. To whom was he speaking?
Answers
 1. Jesus.
 2. To the eleven disciples.

8. Real Estate For Sale

8. Real Estate For Sale

JIMMIE CRAWFORD
 Real Estate & Ins.
 1725 W. Ave. E
 Muleshoe, Texas
 Phone 272-3666

2-1 3/4-2 brick house on 10 acres with many improvements. Very nice country home.

4-1 house on 18 acres 9 Mi. N.E. of town. Lots of barns. Make offer.

3-1 3/4-2 stucco house by Nursing Home. Chain link fence and storage Bldg.

COMMERCIAL PROPERTY. 3 lots on highway 84 with 125' frontage west of town.

Have other dryland & irrigated farm listings. Call for more details.

8. Real Estate For Sale

1. Who is the author of this statement?
 2. To whom was he speaking?
Answers
 1. Jesus.
 2. To the eleven disciples.

8. Real Estate For Sale

6 room house on 50x13' lot on Hwy in town. 0-H-9

2-1 at edge of town 50x130' lot. 0H-8

OVER 2000 SF living space 3 Bedroom brick home in Richland Hills - (1) Full bath, (1) 1/2 Bath, Fireplace, Refrigerated air, Central Heat, Patio-It's time to buy this one. 50H-9

OVER 2000 SF living space Highland Addition - Brick, Fireplace, Large carport, beautiful yard, Patio, Large storage, storm cellar, 3 Bedroom, Appraised Value-\$73,000 for quick sale-will take \$64,000. 50H-10
 Interest rates - 9 1/2% - FHA. VA.

BINGHAM & NIEMAN REALTY
 116 E. Ave. C
 272-5285---272-5286

COUNTRY LIVING HOMES

3-1-1 home on 1 acre, close to town, nice workshop-storage bldg. & attached shed. \$30's!!!!

JUST LISTED-3-1-1 home on pavement close to town on approx. 6/10 acre, storage bldg., workshop, unfinished basement.

3-1 3/4-2 carport (Brick Home) on 1 acre, close to town, built-ins, Cent. A&H, fireplace, approx. 24' x 70' bldg. for storage, workshop, etc., fruit trees, & more!!!!

1-3 bdrm. & 1-2 bdrm. homes on approx. 1 acre on pavement close to town. PRICED TO SELL at \$32,000!!!!

RICHLAND HILLS

3-1 1/4-2 Brick, Cent. heat, Evap. air, built-ins, nice earth tone carpets, new vinyl flooring, fenced yard & lots more!!! \$60's

NICE 3-2-2 Brick, (energy Efficient-Total Electric), Cent. A&H, built-ins, fireplace, storm windows & doors, utility, nice patio & more!!!!

IMMACULATE 3-1 1/4-2 Brick, Cent. A&H, built-ins, fireplace, fenced yard, storage bldg. & more. \$50's!!!!

LENAU ADD.

3-1-1 home corner lot, Cent. heat, Evap. air fenced yard. \$30's.....

NICE 2-1-1 home, wall furnace, evap. air storm windows & doors, utility, fenced yard & storage bldg. \$30's!!!!

3-1 1/4-1 carport home, nice carpet, fenced yard, neat. \$30's!!!!

2-1-1 Brick, Cent. A&H, built-ins, fireplace, Comb. den-office, fenced yard with 2 nice pecan trees, corner lot!!!!

3-1 1/2-1 home, cent. heat, evap. air, storm windows & doors, well insulated, water softener, fenced yard, storage. Let's look at this one!!!!

JUST LISTED-3-1 1/2-2 carport home, Cent. A&H, woodburning stove, fenced yard, & nice heated workshop-storage bldg. \$30's!!!
HIGH SCHOOL AREA

IMMACULATE 3-1 3/4-1 Brick home, built-ins, Cent. A&H, 2 fireplaces, nice finished basement, earthtone carpets, undergrd. sprinkler, & much more. \$60's!!!!

JUST LISTED-3-1 1/2-1 carport home on corner lot, wall furnace heat, evap. air, nice location, close to school. \$29,900!!!

NICE 3-1+1 carport Home on corner lot. Nice carpets, wall furnace heat, evap. air, fenced yard and storage bldg. \$30's!!!!

"WE APPRECIATE YOUR BUSINESS!"
 GEORGE NIEMAN, BROKER
 DIANNE NIEMAN, BROKER

3-1 1/4 Brick Home, with approx. 2750 sq. ft. of lv. area, Cent. A&H, built-ins, beamed ceiling in living room, nice den with ash paneling, large utility, fenced yard, storage bldg., & more!!!!

3-1-1 home, corner lot, Cent. heat, Evap. air, fenced yard. \$30's!!!!

3-1 1/4-1 home, corner lot, Cent. A&H, 1800+ sq. ft. of lv. area, sprinkler sys., & also has a nice 2 room & bath rental unit. \$40's!!!! 10% Owner financing.

2-1 home on 20 acres, 20 hp. sub. pump, domestic well, large barn & corrals, 1/4 mile sprinkler pipe, & more. \$42,500...

JUST LISTED-3-2-1 detached garage home on corner lot, floor & wall furnace heat, evap. air, built-ins, ceiling fans, fenced yard, storage, approx. 2450 sq. ft. of lv. area. \$47,500!!!!

JUST LISTED-3-1-1 car detached garage home on corner lot, wall furnace, evap. air, utility, fenced yard, storage, cellar, & also has a nice one bedroom rental unit. \$39,000!!!!

GOOD RENTAL PROPERTY-2 houses (2 bdrm., 1 bath, unfurnished & a 1 bdrm., 1 bath furnished) all on one lot. \$25,000 Sales Price with a \$400 per month income!!!!

JUST LISTED-3-1-1 carport home, wall furnace heat, evap. air, gas log fireplace, 2 storage areas, fenced yard. \$30's!!!!

NICE Mobile Home, hookups, fenced yard & storage bldg. \$11!!!
 SOLD

BUILDING ON 2 LOTS, approx. 2350 sq. ft., paved parking...

NICE FASHION & FABRIC shop. Very good business with good potential. Priced to Sell.

PRICE REDUCED-Nice brick office bldg., approx. 4,000 sq. ft. Very nice offices and reception area, central A&H paved parking.

YL-Approx. 400 acres, 4 wells, underground tile, 3-1 1/4-2 home, 2 large barns, 2-1 tenant house. \$750.00 per acre.

BAILEYBORO-2 Labors, 4 elect. wells, 3 bdrm., 2 bath home, barns, corrals, approx. 55 acres of pasture land, on pavement.....

FAIRVIEW AREA-2 good dryland labors on pavement. Priced to Sell!!!!

JUST LISTED 3-1 1/2 home, Cent. A&H, built-ins, fireplace, fenced yard, 16' x 32' insulated workshop-garage. \$40's!!!!

3-2 Brick, Cent. A&H, built-ins, fenced yard, corner lot. \$30's!!!!

JUST LISTED-3-1-1 home on corner lot, Cent. heat, evap. air, earthtone carpet, fenced yard. \$20's!!!!

Whitt-Reid
 Real Estate & Insurance
 201 Main - Ph. 272-3611

3-1 1/4-1 dining, bar utility, dishwasher, range-oven, disposal, new carpet, in mint condition. 50H-12

6 room house on 50x13' lot on Hwy in town. 0-H-9

2-1 at edge of town 50x130' lot. 0H-8

OVER 2000 SF living space 3 Bedroom brick home in Richland Hills - (1) Full bath, (1) 1/2 Bath, Fireplace, Refrigerated air, Central Heat, Patio-It's time to buy this one. 50H-9

OVER 2000 SF living space Highland Addition - Brick, Fireplace, Large carport, beautiful yard, Patio, Large storage, storm cellar, 3 Bedroom, Appraised Value-\$73,000 for quick sale-will take \$64,000. 50H-10
 Interest rates - 9 1/2% - FHA. VA.

"If You Want It Sold - See Us"
H.C. Reid Broker
Roy Whitt 272-3058
Thursie Reid 272-5318
Joy Whitt 272-3058
Lucille Harp 272-4693

HENRY REALTY
 111 W. Ave. B
 Muleshoe, Texas
 272-4581

COUNTRY living, close to town. A 3-Bedroom, 2-bath, large den with fireplace, central air/heat, located on one-acre tract. Carpet throughout, many built-in appliances in kitchen. TV-Cable. See to appreciate.

4 BR, 2 BATH, 2 car garage, central heat/air, large utility, carpet, near downtown. Excellent condition.

150 ACRES with 6 inch well and 4 inch well. On highway close to Muleshoe. Underground line connects both wells.

ONE ACRE sites for home construction. 3 miles East of Muleshoe on HWY. 3 lots remain.

JUST COMPLETED 3 bedroom, 2 bath, large living room, kitchen and dining. Excellent condition, near high school. Priced to sell.

COMPLETELY REMODELED 2 bedroom home. Ideal for investment, must see to appreciate. Negotiation with F.H.A. loan.

APARTMENT complex, mobile home park, vacant land for expansion. Terms available.

COMMERCIAL PROPERTY on Main Street, over 4,000 sq. ft., income producing property.

COMMERCIAL PROPERTY - Excellent rental income from 4 separate offices. Lease agreements in force.

3 BR, 2 BATH, spacious home outside city limits, near city on highway. 29'x40' metal building. Lot 85'x602'

3 BR, 1 BATH, completely remodeled, edge of city on highway.

County Club Addition - 3 BR - 2 bath - Brick Veneer Corner Lot and Central H/AC, well insulated with storm doors and windows. Call today for an appointment.

Mobile Homes Affected By Tax Legislation

Beginning this year, a taxpayer applying for a homestead exemption on a mobile home must also submit a copy of the title to the home. "This is one of several new property tax laws, that all affect mobile home owners," said Ron Patterson, executive director of the State Property Tax Board (SPTB).

Patterson said the new laws also provide both tax collectors and lenders with a means of ensuring payment of property taxes on mobile homes.

He explained that county appraisal districts require title documents in two instances. "If you haven't had a homestead exemption on your mobile home before now, you must provide a copy of the title to your home with the exemption application," Patterson said. "If you already receive an exemption on a mobile home, the appraisal district may ask you to show a title or other proof of ownership," he added, "but the

district must have sent you written notice of the requirement before February 1."

Patterson pointed out that mobile home owners must meet the same qualifications for homestead exemptions as other homeowners. They must own the home on January 1 and use it as their primary residence on January 1. "The title shows the appraisal district that the applicant does, in fact, own the mobile home," he said.

Homeowners who don't currently receive a homestead exemption have until April 30 to apply with their county appraisal districts.

Another new law helps tax collectors enforce property tax liens on mobile homes. It allows tax collectors to file a tax lien notice with the Texas Department of Labor and Standards, which is the agency that records

and issues mobile home titles. The lien notice remains in effect until the taxes are paid in full.

"The lien notice warns future purchasers that there are unpaid property taxes on the mobile home," Patterson explained. "This empowers the collector to foreclose on the lien and seize the home if the taxes become delinquent. In the past, a tax collector could not seize a mobile home for delinquent taxes if it had been sold to someone who was unaware of the unpaid taxes."

"Because of this new law," he added, "people should take unpaid property taxes into account when buying or selling a mobile home."

In a related law change, lenders such as banks and mortgage companies can now require a mobile home purchaser to pay property taxes on the

home through an escrow account, thus assuring the lender that the tax collector won't seize the home because of unpaid taxes.

Elementary Youth End B-Ball Play

Muleshoe State Bank, under the guidance of coaches Frank Torres and Jonnie Estep edged out Poynor's Coached by Terry and Charlotte Field, for top honors in the third and fourth grade division of youth basketball during post season tournament action.

Winner of the first place in the fifth and sixth grade division was Western '66' coached by Mike Roberts and James Atwood. They beat out Wilson Appliance, with coaches Randy Pickering and Joe Gear.

Winding up the youth basketball season will be the Muleshoe All-Star Invitational Tournament, scheduled to begin at 5:30 p.m. Thursday, April 10, at Watson junior High School Gym.

Third and fourth grade All-Stars are Jimmy Guana, Pay 'N Save; Craig Smyer, Muleshoe State Bank; Chad Montgomery, Serv-All Thriftway; Kris Fuller, Poynor's; Chad Freeman, Muleshoe State Bank; Freddy Perez, First Bank; Evan Kelly, Pay 'N Save; Scott Springfield, First Bank; Chad McCormick, Poynor's and Gage Angeley, Pay 'N Save; with alternates, Mason Conklin and Andy Perez, both from Poynor's team.

For the fifth and sixth grades, All-Stars include George Torres, Wilson Appliance; Ricky Flores, Irrigation Pump and Power; Sean Roberts, Western '66'; Justin Morris, Western '66'; Clint Knowles, Wilson Appliance; Johnny Noble, Irrigation Pump and Power; Arturo Ruiz, Western '66'; Corley Hutton, Spudnut Shop; Steven Noble, Sonic and David Quintana, Adrian Photography; with alternates, Eric McElroy, Irrigation Pump and Power and Marcus Bryan, Fair Store.

During the regular season, the teams finished as follows for the third and fourth grade players and their coaches: Poynor's, first, Terry Field and Charlotte Field; Muleshoe State Bank, second, Frank Torres and Johnnie Estep; Pay 'N Save, third, Ronnie Barrett and Robbie Barrett; Serv-All Thriftway, fourth, Robert Montgomery and Gary Shipman and First Bank, fifth, Ronnie Perez.

Fifth and sixth grade regular season ended in this manner for the teams and their coaches: Western '66', first, Mike Roberts and James Atwood; Irrigation Pump and Power, second, Danny Noble and Don McElroy; Wilson Appliance, third; Randy Pickering and Joe Gear; Sonic, fourth, Leroy Hurtado; Fair Store, fifth, Joel Sinclair and Richard Ring; Adrian Photography, sixth, Larry Rasco and Bo Long and Spudnut Shop, seventh, Gary Elliott and Raymond Davenport.

So True

The man who thinks he knows everything always irritates those of us who do.
-Record, Columbia, S.C.

NEWS VIEWS

Ronald Reagan, President, on Contra aid:
"To delay or reduce the aid we have requested for the freedom fighters could be to send too little too late."

Malcolm Baldrige, Commerce Secretary:
"There are literally hundreds of mergers that never get out of the stall because of fear of antitrust laws."

T. Franklin Williams, National Institute on Aging, on ban on mandatory retirement:
"There is no convincing medical evidence to support a specific age for mandatory retirement...each person and each situation should be considered on its merits."

Three-Way News

by Mrs. H.W. Garvin

Mrs. H.W. Garvin was a dinner guest in the home of her brother Mr. and Mrs. George Tyson Sunday.

Mr. and Mrs. Baxter Vaughan from Plainview spent the week end with her parents the Adolph Wittner.

Mr. and Mrs. George Tyson spent Monday with their daughter, the Tommy Durhams, in Lubbock.

The Elanco Chemical Company had a steak dinner Tuesday night at the Three Way school cafeteria honoring the farmers and their families.

Dwayne Williams from Lubbock visited his grandparents, the George Tyson, Thursday.

Mrs. J.T. Lemons from Roswell spent the weekend with her daughter, the Bobby Kindles.

The Three Way high school had a volleyball tournament the past weekend with 30 teams playing.

Mr. and Mrs. S.G. Long spent the past week in Canyon and Amarillo visiting their children.

Mr. and Mrs. D.A. Williams from Enochs was a supper guest in the home of her parents, the George Tysons, Thursday night.

The community Easter sunrise service was held at the Baptist church Sunday morning.

Mr. and Mrs. H.C. Toombs was in Lubbock Saturday shopping.

MEET THE CANDIDATES
Bailey County
County Clerk
Barbara McCamish
District Clerk
Nelda Merriott
287th District Judge
Jack Young
Justice Of The Peace
Precinct 1
Jack Bates
County Treasurer
Dorothy Turner
County Commissioner
Precinct 2
Roy Whitt
Bill C. Vinson
Don Seales
Precinct 4
Rudolph Moran



8. Real Estate For Sale

8. Real Estate For Sale

SMALLWOOD REAL ESTATE
BROKER
 232 Main 272-4838
 3 Bedroom, 2 Bath, Stucco all carpeted.

 2 Bedroom, 1 Bath, metal siding has water well.

 APTS, 2 Bedroom, 2 Bath, Small downpayment. Owner will finance.

 2 Bedroom, 1 Bath house for rent.
 8-9s-stfc

Judderth Realty, Inc.
 Drawer 887
 Farwell, Tx 79325
 Ph. 806-481-3288
 177 acres irrigated with zimmatic sprinkler near Lazbuddie. Good water area, Owner says sell.

 Excellent existing agri-Business. Ideal family operation. Located on highway in the heart of farming area in the Farwell-Bovina-Oklahoma Lane area. Would trade for home or land as part down payment.

 160 Acres irrigated, 3 wells, near West Camp.

 160 Acres irrigated, 3 wells, circle sprinkler, nice home with extra large barn on highway North of Muleshoe.

 City home with country view very nice brick 3 bdrm, 2 bath, 2 car garage, fireplace, central heat & refrigerated air, underground sprinkler system, must be to appreciate owner says sell.

 320 acres, irrigated, 2 - 8" wells. Small house. Feed lot, approximately 180 acres of wheat, priced to sell at \$525 per acre. Located NE of Clay's Corner.

JAMES F. HAYES & CO.
AGRICULTURAL REAL ESTATE
 Vic Coker - Agent
 (806) 965-2468

 320 ACRES Northwestern Lamb County. Very good water and soils, 3 irrigation wells, 1 domestic well, steel cattle pens, 335 Acre.

 160 ACRES 4 miles N. west of Earth. 2 wells, very good soil, seller financed note may be assum.d. Make offer.

 1275 ACRES north of Lazbuddie on Running Water. Draw. 370 acres central pivot irrigated, 250 acres row irrigated, balance is good buffalo grass and gamma grass. Improved. 2 houses, barn, small feed lot, excellent fences and other improvements. \$325 per acre.

 335 Acres-5 miles east of Lazbuddie. Pavement on 2 sides. Good soil, good water. House & acreage can be sold separately.

 480 Acres near Lazbuddie. Very good soils & water, 3 electric sprinklers, assumable note, \$825/Acre. will divide.

 480 Acres-Dodd community, nice home 2 electric sprinklers, 180 acres in wheat, very good 198/soil, & yields. EXCELLENT WATER. \$750/ acre

 311 Acres Northwest of Springlake. Electric sprinklers water, good soils \$625/Acre.

 320 Acres Northwest of Springlake. Electric sprinklers, in storage, Hand House, 625/Acre. SOLD

 668 acres Northwest of Muleshoe Excellent water. Very good soils, House barn, 2 Electric sprinklers, make offer.

11. For Sale Or Trade

FOR SALE PROM DRESSES
 1 - Tea Length Dress- Michele Piccione design Sapphire Blue taffeta dress w/Sweetheart neckline, puffed sleeves w/shoulder ruffle accent, fitted bodice, pointed waist. Accented w/four self fabric roses. Matching shoes.

 1 -Southern Belle Dress-Pink satin and chiffon. Ruffled "V" neckline fitted bodice. Skirt accented w/bows, Hoop slip & hat included.

 1 - Tea Length Dress-Pale yellow taffeta dress w/sweetheart neckline, puffed sleeves, gathered waist, fitted bodice, self fabric cumberband and roses to accent.

 1 - Full length evening gown -Copper quiana knit off one shoulder - left shoulder accented w/3 spaghetti straps. Chiffon cape, that comes to a point in front & back. Self fabric spaghetti belt. Very soft & elegant.
 Each dress has been worn only once as a bridesmaid in out of town weddings. For more information call LaDelle Gowens 272-5419. g11-14t-2tc

BUSINESS OUTLOOK

By Edward Thorlund
 April is to be a key month in persuading investors and economists how strong the 1986 business year will be.
 After the 15th, IRA money which has been going into the stock market will slacken. More important, earnings reports for the first quarter will be released in April.
 Some disappointments are certain, along with the good news.
 The stock market-- which no one seems to be able to explain--may react to some of these earnings. It may react to less IRA fueling.
 But some believe most companies will earn fast profits this year, because of the absence of inflation, lower fuel and transportation costs and lower interest rates.
 These are all bullish indicators for business. The question is whether they have already been taken into account by the very strong market of the first quarter.
 That may begin to become apparent after the 15th.
In Fashion
 An ensemble in black and white soft wool with good but simple lines is elegant for spring.
 The white sheath dress featuring a deep V-neckline is banded in black.
 A 7/8-length cardigan coat, banded in black, fits loosely to complete the sophisticated look.

15 Misc.

15. Misc.

OLD TIMER LOG HOMES
 "A Leader in the Industry"
 Seeks District Dealers
UNLIMITED INCOME POTENTIAL OFFERING:
 • 8", 10", 12" Uniform logs in white pine, fir, yellow pine and poplar.
 • Tongue and groove construction
 • "KILN Dried" logs.
 • Any style log requested available.
 • Factory guidance and assistance to ensure your success.
 • Packages from log kits to complete houses.
 • Substantial Dealer Rebate Program.
 • Two-day paid factory training program.
INVESTMENT 100% SECURED BY MODEL HOME
 Individual selected must have ability to purchase or mortgage a model home; prices starting at \$13,800. Call Mr. Wilson, (615) 832-6220 person-to-person COLLECT! Old Timer Log Homes, 442 Metroplex Dr., Suite 105, Bldg. D, Nashville, TN. 37211

Buy your new home and your own land today at A1, and we will finance both for you. Low interest FHA financing. One easy monthly payment, come by A1 MOBILE HOMES in Lubbock or call Don at 763-5319 collect. Let me put you in the home of your dreams.
 a15-12t-8tc

SHOP AROUND FOR THE BEST PRICE THEN SEE OUR PRICES
 60% OFF 14K GOLD & DIAMONDS EVERY DAY
Bi-Wize Health Mart
 902 Main Friona, Texas
 247-3010

A new 3/2 double wide 7 year pay out. 7 percent down. 7.77 percent annual percentage rate. Payments as low as \$327.00. Buy any new home and have it paid for in 7 years. Ask about our 7-7-7 program for qualified buyers. Take advantage of this new program today. Call Don at A1 MOBILE HOMES-today. 763-5319 collect.
 a15-12t-8tc

Lazbuddie School Lunch

BREAKFAST MONDAY
 Toast, Oatmeal, Juice, Milk
TUESDAY
 Cereal, Juice, Milk
WEDNESDAY
 Toast, Sausage, Juice, Milk
THURSDAY
 Cinnamon Rolls, Applesauce, Milk
FRIDAY
 French Toast, Bacon, Juice, Milk
LUNCH MONDAY
 Hamburgers, French Fries, Lettuce, Onions, Pickles, Fruit, Milk
TUESDAY
 Spaghetti & Meat Sauce, Green Salad, Green Beans, Garlic Bread, Cobbler, Milk
WEDNESDAY
 Steak Nuggets/Gravy, Creamed Potatoes, Green Peas, Hot Rolls, Fruit, Milk
THURSDAY
 Pan Pizza, Green Salad, Corn, Cookies, Milk
FRIDAY
 Hamburgers, French Fries, Lettuce, Onions, Pickles, Cobbler, Milk
SALADS MONDAY
 Chef Salad with Ham
TUESDAY
 Tuna Salad
WEDNESDAY
 Fresh Vegetable Salad
THURSDAY
 Cottage Cheese Salad
FRIDAY
 Chef Salad with Turkey

VOTE!
Parmer County Political Calendar
County Commissioner Precinct 4
Raymond McGehee
County Treasurer Anne Norton

Spring Special
Oil Change, Filter, Grease & Lube
All Brands Of Oil Flats
Minor Tune Ups
 7-9 Weekdays 10-9 Sundays
 1108 W. Amer. Blvd. (Next To K-Bobs)
Ray's Fina
Ray & Lou Manasco
 "Here To Stay & We Appreciate Your Business"