

PAGE ONE

A QUICK READ OF THE NEWS

Drug dealers taxed

Two convicted Calgary, Alberta, drug dealers got news they didn't want to hear while they were in the slammer.

Canada Customs had just caught up with them for not paying tax on the profits they made from their drug trafficking.

Last week, the pair appeared in Calgary provincial court where they pleaded guilty to tax evasion.

On the original charges, one had been fined just under \$100,000 and the other just over \$50,000 — and each must serve more jail time if they don't cough up the money.

In June of last year, Tien Trinh was convicted of trafficking in a narcotic and sentenced to five years in prison. He later was convicted of laundering the proceeds of crime, jailed for a year and fined \$50,000.

A few days later, Trung Quach was convicted of conspiracy to traffic in a narcotic and sent to prison for six years.

"It was disclosed the two men failed to report the income they derived from the sale of drugs," said Gordon Luchia of the Canada Customs and Revenue Agency after the men's latest court appearance.

"By doing so, Trinh attempted to evade the payment of \$97,749 of federal income tax, and Quach attempted to evade the payment of \$50,483 of federal income tax."

Trinh was fined \$97,749 or nine months in jail on default.

Quach was fined \$50,483 or six months in jail on default.



Drawing date: Saturday, Jan. 31
Winning numbers: 7-21-25-44-46-54
Estimated jackpot: \$4 million
Winners: 0
Next drawing: Wednesday, Feb. 3
Estimated jackpot: \$6 million

On this date in history

Jan. 29— Texas' Permanent School Fund is set up by the Fifth Legislature (1854).

Also Jan. 29 — Confederate gunboats capture U.S. warships near Sabine Pass, Texas (1863).

Feb. 1— Rutgersville College, near present-day LaGrange, opens its doors and becomes the first Texas college worthy of the name (1840).

LOCAL WEATHER

As of Friday, forecasters were expecting a nice Sunday and Monday with high temperatures reaching the 60s and skies only partly cloudy. Tuesday should cool down to about 55 and Wednesday to about 55, with the possibility of rain and snow. Thursday should bring clearing skies but a cool temperature of about 48. Morning lows should be in the 20s throughout the period.

Editor Ronn Smith can be reached at 272-4536 or ctyankee@fivearea.com

Missed your paper? Call carrier Melissa Flores at 272-6719 or the Journal during business hours, 8:30 a.m.-5 p.m.

Lack of available prisoners delays jail project

JOURNAL STAFF REPORT

The head of a company that plans to build a new county jail south of Muleshoe said Wednesday that the faces some delay because there are "not sufficient clear sources of prisoners" at this time.

James Parkey of Corplan said the delay on the jail does not affect plans for a prison, for which he

said "every day, the situation gets better."

Parkey and county officials had hoped to have the jail operating in just over a year, whereas the prison is a more long-term prospect.

County Judge Marilyn Cox said Friday that the delay comes with a cost. "Personally, I'm very disappointed that we aren't going to

have this jail by the time originally stated," she said. "Our county employees all need substantial raises, and this jail was going to give them those raises. I have not given up — it's just going to take longer than I had hoped."

The jail would house U.S. marshal's prisoners, and for now both Lubbock and Amarillo are

handling in the load from those offices.

As for the prison, Parkey has been encouraging the county to look at handling older prisoners (50 and above). One reason, he said, is the county's proximity to the Texas Tech Medical School, already providing half the prison medical care in the state.

Disaster aid applications being taken

Kim Hanlin, county executive director of the Farm Service Agency, announced recently that the local office is accepting applications for the new Crop Disaster Program.

This program provides financial assistance for farmers eligible for compensation for crop losses directly attributed to adverse weather and related conditions.

"Natural disasters are a constant threat to our farmers," Hanlin said. "This program will help those who suffered losses last year. The signup period began Jan. 18 and the end of the signup will be announced at a later date."

According to Hanlin, the payments will be calculated at 65 percent of the county rate for insured and non-insurable crops. For crops that are insurable in the county, but for which the producer did not purchase insurance, the payment will be calculated at 60 percent of the county rate.

"Funding for the 2000 Crop Disaster Program is not limited, unlike last year," Hanlin said. "Because it was fully funded, farmers will receive 100 percent of the final calculated payments as soon as program regulations are published — provided that their county office committee has approved their application and the producer has provided all the necessary . . . documentation."

More information is available by calling 272-45838 or visiting the Internet at www.fsa.usda.gov.



Journal photos: Beatrice Morin



Preparing for college

Seeking information at Thursday's Financial Aid Seminar sponsored by the Jennyslippers are (above) Muleshoe senior Stephanie Kirk (right) and her mother, Donna, talking with South Plains College grant coordinator Glenda Hensley, and (at left) junior Sheena Shipley with Wayland Baptist University financial aid counselor Mary Ellen Devin. The annual event was held in the Muleshoe High School cafeteria.

Bealls' parent putting 118 leases up for sale

Houston-based Stage Stores announced Friday that it will offer its leased 118 stores in 16 states — including the one in Muleshoe — at auction, probably in March.

The move, which requires bankruptcy-court approval, comes on the heels of the company's bankruptcy

filing in June.

Many of the store sites are concentrated in Indiana, Illinois and Ohio as well as Texas. "Given the price and location of these leases, it is a tremendous opportunity for a retailer who is looking to expand into these areas," said Matthew

Bordwin, vice president of Keen Realty, one of the firms handling the sale for Stage Stores.

Leases may be sold individually. Inquiries may be directed to Keen Realty, 60 Cutter Mill Road, Great Neck, N.Y. (telephone 516-482-2700).

Lady Mules are tied for second in district

By DELTON WILHITE
Journal correspondent

The Lady Mules moved into a three-way tie for second in the district with a 64-34 romp over Littlefield's Lady Wildcats on Tuesday night.

Lady Mule coach Shana Simms "guaranteed a victory," and the team delivered. Fans were happy to see the return of the Lady Mule team that had dominated their opponents early in the district race.

Muleshoe overcame the first-quarter jitters when Britni Gartin (who scored 20 points in the game) tipped a Lady 'Cat pass to Annie Cox, who dribbled the ball twice as Gartin streaked to the Lady Mule basket. Cox delivered a perfect pass and Gartin's layup gave Muleshoe a 10-8 lead as the first period ended.

Muleshoe never looked back, outscoring Littlefield 19-11 in the second frame. The Lady Mules tightened the defensive pressure on Littlefield and created scoring opportunities off



Journal photo: Beatrice Morin

A welcome visit

Muleshoe senior Jeff King visits with Riehl Williams during the Mule athletes' visit to Muleshoe Area Healthcare Center on Jan. 26.

see **LADY MULES** on page 2

AROUND MULESHOE

Singing Valentines available

Members of the Muleshoe High School Chorale will be performing singing Valentines from 10 a.m. to 2:30 p.m. Feb. 14. The cost will be \$10.

Order forms are available from any chorale member or by calling the office at 272-7307.

Valentine cookie sale in progress

The women and youth of Calvary Baptist Church are selling 9-inch decorated heart-shaped Valentine cookies to be delivered with a personal message for \$5.

Orders will be taken through Feb. 10.

More information is available by calling 272-4012.

Driver's license office to be closed

The Muleshoe driver's license office will be closed Feb. 5.

Regular hours will resume Feb. 6.

Public calendar

Feb. 4 — 6:30 p.m. Johnny Ray Watson in concert at First United Methodist Church.

Feb. 6 — Muleshoe Economic Development Corp., in the

council chambers at city hall.

Feb. 7 — 4:30 p.m. Muleshoe parents of high school seniors will meet to discuss Project Graduation, at the Muleshoe Church of Christ, 2201 W. American Blvd.

March 8 — Deadline for Muleshoe students to apply for the Kristy M. Landers Memorial Scholarship; application forms are available at the high school counseling office.

LADY MULES

from page 1

Wildcat turnovers.

Eight of the Lady Mules' second-quarter points came from getting rebounding position on offense and putting back rebounds for points.

Muleshoe finished the game with a 7-1 scoring run with Myndi Heathington striking from behind the three-point arc,

Cox nailing a 12-foot jumper and Jessica Carpenter delivering an entry pass to Shani Rasco for the final points of the game.

Helping Gartin were Rasco with 10 points, Cox with nine, Mindy Locker eight, Heathington seven, Megan Tipps four and Carpenter, Candace Hutto and Tommie Hernández two each.

OBITUARIES

ELTON GULLEY

Services were held Wednesday at the First Baptist Church of Sunnyside, Texas, for Elton Gulley, 77, of Earth. Burial was in Muleshoe Memorial Park.

Parsons-Ellis Funeral Home of Earth handled arrangements.

Mr. Gulley was born Nov. 9, 1923, at Becton, Texas. He died Jan. 28 in Castro County.

He married Norma Grace Keeling on Jan. 9, 1943, in Wellington. She died April 17, 1989.

He was a World War II veteran and a member of the Progress Baptist Church. He moved to Earth in 1989 from Magazine, Ark.

Mr. Gulley is survived by two sons, Larry Gulley of Springlake and Dan Gulley of San Antonio; two daughters, Jane Cookson of Van Buren, Ark., and Becky Ott of Earth; a sister, Nettie Beth of Lubbock; 10 grandchildren; and 14 great-grandchildren.

He was preceded in death by a brother, Burl Frank Gulley.

DOLORES SHIPMAN

Memorial services were held Jan. 26 at Broadview Baptist Church in Lubbock for former Muleshoe resident Dolores Thurman Shipman, 76. Burial was in Rockford, Ill.

Mrs. Shipman was born April 23, 1924, in Electra, Texas. She died Jan. 23 at Covenant Medical Center in Lubbock.

She served in the SPARS during World War II.

She is survived by a son, Norris Edward Selsmeyer, hometown unavailable; two daughters, Margaret Krueger of Rockford and Connie Devine of LaCrosse, Wis.; six sisters, Virginia Jara of Dallas, Pansy Welch of Shallowater, Betty Crew of West Jordan, Utah, and June Little, Linda McIntyre and Bobbie Wilson, all of Lubbock; and two grandchildren.

She was preceded in death by four brothers.

AUGUSTINE SABALA

Services were held Friday at St. Ann's Catholic Church in Morton for Augustine "Augie" Sabala, 63, of Morton. The Rev. Ricardo Salditos was the celebrant. Burial was in Morton Memorial Cemetery.

Ellis Funeral Home of Morton handled arrangements.

Mr. Sabala was born Aug. 28, 1937, in Coleman, Texas. He died Monday in Covenant Medical Center at Lubbock.

He had been a resident of Morton since 1941, when he moved there from Coleman. He married Pilar Gómez in Morton on Dec. 23, 1958.

He was a member of St. Ann's

Catholic Church and was employed by Cochran County for 43 years, serving at various times as a law enforcement officer, animal control officer and courthouse custodian.

Mr. Sabala is survived by his wife; four sons, Tino Sabala of Morton, Robert Sabala of Indio, Calif., and Buzzy Sabala and Pat Sabala, both of Levelland; two daughters, Toni Sabala and Wanda Sabala, both of Morton; five sisters, Patsy Gonzales of Bayard, Neb., Concha Bautista of Phoenix, Annie Flores of Muleshoe, and Dominga Artega and Pilar Soliz, both of Morton; a brother, Espirión Sabala of Morton; and nine grandchildren. He was preceded in death by a daughter, Benina Bautista, in 1982.

ESTELLE BARTON

Services were held Saturday at the First Baptist Church of Morton for Estelle "Kat" Barton, 86, of Morton. The Rev. Glen Smith officiated. Burial was in Morton Memorial Cemetery.

Ellis Funeral Home of Morton handled arrangements.

Mrs. Barton was born Aug. 16, 1914, in Madill, Okla. She died Tuesday at Cochran Me-

morial Hospital in Morton.

She married Ott Barton in Hollis, Okla., on May 30, 1931. They moved to Morton in 1944 from Mangum, Okla., and he died Aug. 16, 1994.

They farmed in the Morton area for several years and she was employed at Cobb's Department Store in Morton. She and her husband also owned the Shamrock service station and Barton's 7-to-11 Grocery in Morton. After retiring in 1969, they moved to Phoenix for about four years.

She was a Baptist, and her hobbies included cooking and photography.

Mrs. Barton is survived by two daughters and sons-in-law, Patsy and Corky Evans of Levelland and Barbara and Lonnie Allsup of Clovis; three grandchildren; and six great-grandchildren.

She was preceded in death by a brother and a grandson.

The family suggests memorials to the Cochran County Unit of the American Cancer Society (c/o Glynn Merritt, 1841 CR 84, Morton 79346) or the Cochran County Museum Fund (c/o Dorothy Barker, 602 E. Lincoln, Morton 79346).

SE HABLA ESPAÑOL
¡PRESTAMOS!
LOANS! LOANS!
\$100 TO \$467
 Loans while you wait.
 Credit Starter Loans
 Call and apply today.
CONTINENTAL CREDIT
 206 S. Main Street 272-3673
 Mon.-Thurs. 8:30 am-5:30 pm Fri. 8:30 am-6 pm

Bailey County Journal USPS 040-200
 Established March 31, 1963. Published by Triple S Publishing, Inc.
 Every Sunday at 304 W. Second, Box 449, Muleshoe, TX 79347.
 Second Class Postage paid at Muleshoe, TX.
 POSTMASTER: Send address changes to the Bailey County Journal, P.O. Box 449, Muleshoe, TX 79347.
 We are qualified members of:
 Panhandle Press Association, National Newspaper Association,
 West Texas Press Association and Texas Press Association

WEST TEXAS PRESS ASSOCIATION
 MEMBER 2000
 PPA
 Panhandle Press Association

Scot Stinnett, Publisher
 Lisa Stinnett, Vice-President/Comptroller
 Ronn Smith, Editor
 Beatrice Morin, Classifieds
 Leah Bell, Advertising

© 1990
 SUBSCRIPTIONS: Muleshoe Journal and Bailey County Journal
 By Carrier Yearly - \$22.00
 Bailey County — by mail - \$24.00
 Elsewhere - \$26.00
 Advertising Rate Cards on Application

Advertisers should check their ad the first day of insertion. The Journals will not be liable for failure to publish an ad or for a typographical error or errors in publications except to the extent of the cost of the ad for the first day of insertion. Adjustment for errors will be limited to the cost of that portion of the ad where the error occurred.

BANANA'S VIDEO
 804 West American Blvd. • 272-4334

Rent Any **NEW RELEASE** And Get An **OLDER RELEASE FREE EVERY DAY!**

7 MOVIES 7 DAYS \$5.00 EVERY DAY
 (Older Titles Only)

DVD MOVIES NOW AVAILABLE

NEW RELEASES
 Dinosaur
 What Lies Beneath
 The Kid
 Bait

New **Spray Center**

WYLIE

SPRAYERS

"Now Open"

Wylie Sprayers of Earth
 600 N. Amherst
 Earth, Texas

See the New Wylie Spray Hood

806-257-3461 800-305-2655
 Michael Harris, Mgr.
 8-5 Mon. - Fri.

Ask About \$1,000 Monsanto Cash Rebate

Classic Digital Cable.

The entertainment keeps getting bigger!

- More Special Interest Channels
- Digital Music
- More Premium Channels
- On-Screen Navigator
- More Pay-Per-View Channels
- Parental Control Option

Call now to order Classic Digital Cable through our "Classic Dish" and get:

- Installation for just \$24.95
- One low price, guaranteed through January 2002
- No long-term contract to sign

Call toll-free:
1-888-202-5660

Classic DIGITAL CABLE®

Offer expires 2/28/01. Not valid in conjunction with any other offers. Some services not available in some areas. Other restrictions may apply. Digital terminal required to receive Digital Cable.

Lazbuddie High School honors three students for December

Honored as Lazbuddie High School's students of the month for December were Kati Mimms, Brady Mimms, Mandy Haney and Jerry Medrano.

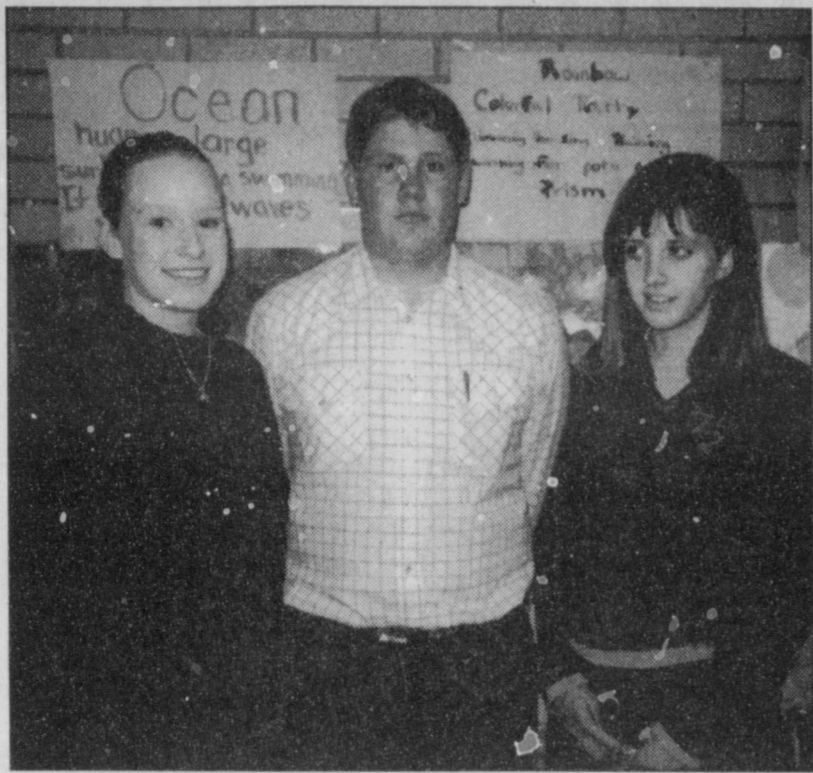
Kati Mimms, 17, and Brady Mimms, 16, are the children of Clay and Reta Mimms.

Kati, born May 13 (a Taurus), states that her goals include graduating, having fun and becoming a teacher in Alaska.

Her personal motto is "Be a first-rate version of yourself rather than a second-rate version of somebody else." Similarly, her tip for surviving high school is to "be yourself" and her pet peeve is "people trying to act like someone else just to be cool."

To make the world a better place, she thinks that a good influence on others is important.

She favors the song "Arms Wide Open" by Creed, Lubbock Christian University,



Lazbuddie High School's honored students for December are (from left) Kati Mimms, Brady Mimms and Mandy Haney. Not pictured is Jerry Medrano.

Little Women, Julia Roberts, M&Ms and the color yellow.

Her pet peeve is "people trying to act like someone else just to be cool."

Brady, born Oct. 28 (a Scor-

pio), says his goals are to get good grades, graduate from high school and attend college.

His personal motto is "No one ever drowned in their own sweat," and his tip for high

school is "Don't act up, and do all your work."

He thinks the world would be a better place if everyone would get along with one another.

He also favors Lubbock Christian University, along with *Smokey the Cowhorse*, hamburgers and fries, and the color green.

His pet peeve is people who complain all the time.

Mandy is the 13-year-old daughter of Greg and Netta Haney. She was born June 2 under the sign of Gemini.

She says the things that are important to her are family, friends, God and Jesus. She is unsure of her long-range plans but wants to graduate from high school.

Her personal motto is "Be yourself, and don't be afraid to do anything." Her survival tip for junior high is not to be rude or obnoxious.

She feels the world would be made better by giving poor

people food and shelter.

She also favors "Arms Wide Open," but leans toward Texas Tech, *Seventeen*, Julia Stiles, cherries and popcorn, and the colors blue and green.

Her pet peeve is when people say she said something that she knows she didn't say.

Jerry, 13, is the son of Jerry and Kathy Medrano. He is a Sagittarius, born Nov. 26.

His goal is to pass all his classes and go to college.

His personal motto is "go fish," and his survival tip for junior high is "Do your work and pass your classes."

He would make the world a better place by cleaning oceans, rivers, lakes, ponds and creeks.

He likes Dragula, Bass Master, Nicholas Cage, Nestlé's Crunch bars and the color navy blue.

His pet peeve is spiders.

Cellular Phone Service At It's Best!
2000 MINUTES
 for \$**39.99**
 Call Susan for details!
 Phone Applications Accepted.
 Offer Ends Soon! Some Restrictions Apply.
 For A Limited Time Only!
STARTAC
3000
 with activation
99¢
 Ask Us About Our Other Offers At
CELLULAR 2000
 202 Main Street • Muleshoe
 272-7523/272-5153
 CELLULARONE Open: 10:00 am to 5:30 pm
 Authorized Dealer

Studies prove that reading increases knowledge.

STUDENT-COMMUNITY ACTION CLUB

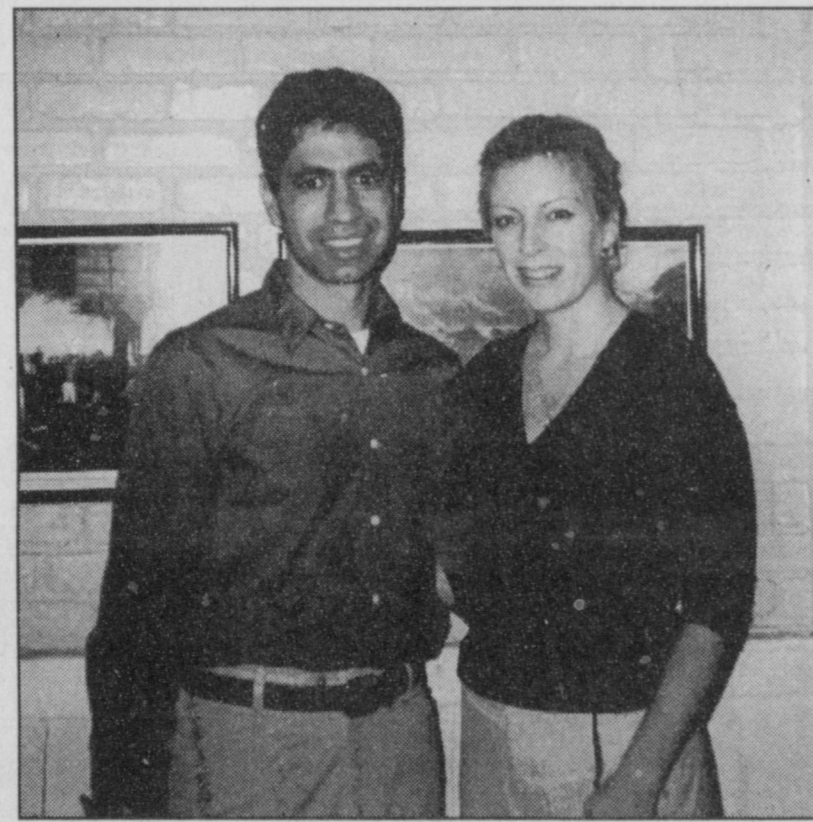
The Student-Community Action Club met recently in the home of Megan Tipps. A meal was served before the meeting began.

The president, Tommie Hernández, conducted the business meeting. Secretary Letti Barrera read the minutes, which were approved.

Old business included a report about the airplane contest to be held soon at a basketball game as a money-making project. It was also decided to begin advertising soon for the annual bake-auction over Channel 6, to be held on a Saturday near Easter to benefit the Muleshoe Heritage Center.

Nominations were taken for the club's February citizen of the month. Tipps will notify this person soon.

The next meeting will be held Feb. 19 in the home of Megan Barrett, at a time to



Debbie and Victor Leal are the Student-Community Action Club's citizens of the month for January. Married in 1987 with two sons, they are both active in the community. He is the mayor of Muleshoe and has helped with the "Tour de Muleshoe" bike ride for several years. She has served on the PTA Board for three years (treasurer this year) and has been on the board of the industrial foundation for three years. They also sponsor the Angel Tree at Leal's Restaurant to collect toys for needy children.

be announced later.

It was announced that the January citizens of the month are Debbie and Victor Leal, who recently attended presidential inauguration festivities along with about 15 other Muleshoe residents. Although they were unable to attend the meeting, Rendi Hodge delivered a corsage and a boutonniere the next day at Leal's Restaurant.

Victor Leal noted that being named the club's citizens of the month is doubly important to him because his younger sister, Laura, was one of 10 senior students whose interest in saving the Muleshoe depot led to the organization of the Student-Community Action Organization in 1983. Club members assist at all Heritage Center activities, as well as with other community projects.

Littlefield Wildcats edge Muleshoe Mules 48-45

By DELTON WILHITE
 Journal correspondent

The Mules lost a hard-fought seasaw struggle with Littlefield on Tuesday night, 48-45.

The momentum and lead changed hands several times, especially in the final two minutes of the contest. Lincoln Riley sank a baseline jumper to give Muleshoe a 45-44 lead with 1:25 remaining in the game, but Littlefield answered from behind the three-point arc as the clock ran below a minute.

Jeff Shelburne was fouled trying to score in the paint with 54 seconds showing. He missed the first free-throw attempt and Littlefield called time-out to try to freeze him. The ploy worked, and Littlefield grabbed the rebound and spread the floor after crossing the time line.

The Mules were forced to foul when the clock ran below 10 seconds. The Wildcats sank the first charity toss, but the second rimmed out. Shelburne claimed the rebound, dribbled across midcourt and called time-out with five ticks left on the clock.

Coach Ralph Mason drew up the inbound play for the Mules. The ball went to Darrell Lewis in the corner, but his three-point attempt just missed the mark, giving Littlefield the game.

Muleshoe opened the game strong, but the Wildcats put in seven points to cut the Mules' early lead to three points as the first period ended. Littlefield's scoring run continued in the second frame, giving the Wildcats a 17-14 lead at the five-minute mark of the second frame and a 27-22 halftime advantage.

Shelburne, Riley and Lewis gave the Mules a two-point lead 90 seconds into the third quarter, and the teams traded buckets for the rest of the period.

Kyle Atwood picked a Wildcat's

pocket four minutes into the final period and got the ball to Sonny Chávez, who made an eight-foot fall-away jump shot to put the Mules out front 45-39.

The 'Cats then put up five unanswered points to take the lead as the time ran below two minutes.

The district race is a logjam, with any team still a possibility for the playoffs with four games remaining in the season. Dimmitt leads the pack with a 5-1 record, Cooper is next at 4-2, Shallowater at 3-3, and Muleshoe, Roosevelt and Littlefield are tied at 2-4.

Lewis led Muleshoe scoring with 14 points, followed closely by Shelburne at 12. Lincoln Riley dropped in six, Chávez four, Atwood three and Joey Tucker, Dan Williams and D.J. Domínguez two each.

The team collected 30 rebounds (Riley 10, Shelburne eight) and made 11 of 18 free throws, two steals, two blocked shots and 14 turnovers, and had 18 called fouls.

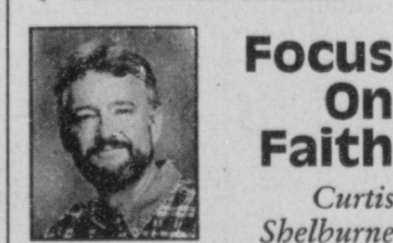
Dimmitt was scheduled to visit Muleshoe on Friday and the Mules are to travel to Shallowater on Tuesday.

Dr. and Mrs. Homer Allgood
 celebrated their
25th Wedding Anniversary
 on Wednesday,
January 24, 2001
 They were joined by
 family at the
 Roosevelt Restaurant
 in Portales, N.M.

AgriFlex Credit
OPERATING FINANCING
 Name Brand Crop Inputs
 Flexible Credit Package
 Agronomic Advice
 Marketing Advice
 Crop Insurance
 Leasing
 All from one source...
 Contact your local representative:
Terry Moore
 Plainview, TX
806-296-5679
 Ag Services of America, Inc.
 www.agservices.com 1-800-395-8505

Do the Super Bowl and Snowy Sundays Just Go Together?

So what is it, pray tell, about the Super Bowl and snow? Why, at least in our area, do they seem so often to go together? Last Sunday was the second time in recent years when Super Bowl Sunday was also Snow Sunday, and we ended up cancelling our morning worship because of the white stuff. It was also the second Sunday in recent years when folks asked, "Well, we cancelled morning worship. What about the afternoon Super Bowl



Focus On Faith
 Curtis Shelburne

Party? Is it cancelled, too?"

What? Are you kidding? Cancel the Super Bowl Party? Now that is heresy! No, we just decided to wait and see what the weather and road conditions would be come kickoff time and then, well, stay home if you shouldn't be out in the snow, or come if you're young and adventurous and more concerned about missing the fun than slipping around on the roads.

And some wisely stayed home. And some bravely (and not, in my opinion, particularly unwisely) braved the snow and ice.

And I presume that both had a lovely time. I know I did.

Yes, I like snow. And, I admit it, I don't mind an occasional snow Sunday. Oh, I love worship and I'm serious about church attendance. And I do believe that when we choose very often not to go, we're hurting ourselves and our commu-

nity more than we realize. Small town folks who have a genuine community of love and support because of the small town itself may not realize what a deep blessing they are missing if they've chosen not to be part of one of the local churches. We may not realize at times what a stake we all have in keeping the doors of our community's churches open (and how hard that is for some of them). I personally think Paul Harvey was right when he once said that even folks who don't go to church ought to send a check to a local church occasionally just to be sure that church could keep on doing its work. No matter our denomination, non-denomination, or complete lack of affiliation, we all have a stake in that work.) I believe in the church, in local churches, and in regular church attendance and worship.

BUT I still think a good snowy Sunday once a year or so reminds us that, well, as Jesus once said (and he chapped some nauseatingly religious folks pretty thoroughly when he said it), "The Sabbath was made for man, and not man for the Sabbath." (Yes, I know the Sabbath was Saturday, but you know what I mean.) I doubt it's fatal for even a preacher occasionally to get to sleep way late on a Sunday, sit in front of the fire, and then slip & slide to church and pig out at a Super Bowl Party.

I think the Lord would've enjoyed our party. I think he did. His very religious, very unsmiling, detractors often criticized Christ by saying that he wasn't religious enough and that he had far too much fun with his friends.

Personally, I give him very high marks on both counts. Pass the cheese dip, please.

Curtis Shelburne is minister of the 18th & D Church of Christ in Muleshoe.

The Pieces Fit...
 Bring your W-2 form to Muleshoe Motor Company. We'll have a professional tax service prepare your 2000 taxes. Then use your anticipated refund for a down payment or to pay the TT&L on a new vehicle. You might even decide to purchase one of our quality used cars.
No more puzzling over what to do with that extra cash.
 Now...interest rates as low as 0.9% on 2001 Ford Taurus. And interest rates starting at 3.9% on all 1/2 tons, including Supercabs and Supercruws.
MULESHOE MOTOR CO.
 See our complete vehicle lineup at muleshoemotor.com
1225 West American Blvd. • 272-4251 • 1-800-432-7617

BAILEY COUNTY DEVOTIONAL PAGE

Boehning Dairy
DRINK MORE MILK.
 Brian Boehning Earth, Texas

AG AVIATION
 2 1/2 miles North on HWY 214
 272-3066 FAX 272-3534
 P.O. Box 68 • Muleshoe, TX

MV ALLEY West Hiway 84
 272-4266 Muleshoe
 STEVE STANCELL - OWNER

Two locations to serve you
 1900 W. American Blvd. 272-5337
 107 E. American Blvd. 272-3978
 Town & Country Muleshoe, TX

Lowe's MARKETPLACE
 401 W. American Blvd. • Muleshoe • 272-4585

Leal's 107 E. Ash Muleshoe, TX 272-5772
 Tortilla Factory, Inc.

WINKLES TRUCKS, INC.
 Box 757 (806) 247-2724 Friona, TX

SAIN IRRIGATION & MACHINES
 Complete Pump Service
 W. American Blvd. 272-4397
 Walt Sain Muleshoe, TX 272-4148

CENTRAL COMPRESS & WAREHOUSE
 SUDAN, TEXAS

PACO FEED YARD, LTD.
 Commercial Cattle Feeders
 P.O. Box 956 265-3281 Friona, TX
 Feller Hughs-Mgr.

BAILEY COUNTY ELECTRIC COOPERATIVE ASSN.
 Muleshoe — 272-4504 Morton — 266-8600

MAPLE COOP GIN
 927-5501
 Maple, Texas

ST BANK MEMBER FDIC
 202 South First 272-4515

Muleshoe Feed Barn
 311 W. American Blvd. Muleshoe, TX 272-5626
 HI-PRO FEEDS

WES-TEX FEED YARDS, INC.
 Custom Cattle Feeding
 272-7555 Muleshoe, TX

Decorators Floral & Gifts
 616 South First 272-4340 Muleshoe, TX

T.J.'s Donuts
 328 S. Main St. Muleshoe 272-3542
 Open Monday thru Friday, 5 am to 2 pm • Saturday, 5 am to 1 pm

MULESHOE LIVESTOCK AUCTION
 Muleshoe, TX • Sale Every Saturday
 Clayton, C.L. & Thurman Myers • 272-4201

minsa corporation
 P.O. Box 484 272-5545 Muleshoe, TX
 FAX (806) 272-5135 (800) 852-8291

United Supermarkets

Facts About The BIBLE BY JOHN LEHTI
 HOW DAVID IS FINALLY MADE KING
 THE NEWS OF KING SAUL'S DEFEAT AND DEATH AT THE HANDS OF THE PHILISTINES, ON MOUNT GILBOA, WAS RECEIVED SORROWFULLY BY DAVID AND HIS MEN...

THEIR MOURNING IS SINCERE AND DEEP FOR, THOUGH SAUL HAD ATTEMPTED TO DESTROY DAVID, STILL HE WAS THEIR KING!

...AND NOW, IN DEEP PRIVACY, DAVID ASKS OF THE LORD... SHALL I GO UP INTO ANY OF THE CITIES OF JUDAH? GO UP! WHITHER SHALL I GO UP? UNTO HEBRON!

SO DAVID, ACTING UPON THE LORD'S COMMAND, LEADS HIS ARMY FORTH FROM THE WILDERNESS! AND WITH THEM COME THE WIVES AND FAMILIES OF ALL THE MEN—FOR THERE WILL BE NO TURNING BACK—HEBRON IS DAVID'S GOAL....

JOHN LEHTI

237 SAVE THIS FOR YOUR SUNDAY SCHOOL SCRAPBOOK

This devotional & directory is made possible by these businesses who encourage all of us to attend worship services.

ASSEMBLY OF GOD
 FIRST ASSEMBLY OF GOD
 521 South First Street • 272-3017
 Jack Stone, Min. • 272-3984
 S.S. 9:45 am, W.S. 11 am & 6:30 pm, Wed. 7:30 pm

EL BUEN PASTOR
 415 E. Ave. F • Pastor Felix Cadena
 S.S. 9:45 am, W.S. 11 am & 6 pm; Wed. 7 pm

BAPTIST
CALVARY BAPTIST
 1733 W. Ave. C. Rev. Jeff Coffman
CIRCLE BACK BAPTIST
 Intersection FM 3397 & FM 298
 Jessie Shaver, Min • 946-3676
FIRST BAPTIST
 220 West Ave. E., Dr. Stacy Conner
FIRST BAPTIST
 Lazbuddie • 965-2126
PRIMERA IGLESIA BAUTISTA
 223 E. Ave. E, Rev. Greg Guzman
PRIMITIVE BAPTIST
 621 South First, Elder Cleveland Bass, Min.
PROGRESS BAPTIST
 Progress, TX
 Bro. O.J. Bewley
PROGRESS SECOND BAPTIST
 Arthur Hays, Min.
 1st & 3rd Sundays
RICHLAND HILLS BAPTIST
 17th & West Ave. D, Randy Tucker, Pastor
ST. MATTHEWS BAPTIST
 Corner of W. Boston & W. Birch
 Floyd R. Monroe, Min.
THREE WAY BAPTIST
 927-5467
TRINITY BAPTIST
 314 E. Ave. B, Robert Brown, Min.

CATHOLIC
IMMACULATE CONCEPTION CATHOLIC CHURCH
 805 E. Hickory, Joseph Augustine, Min.

CHARISMATIC EPISCOPAL ST. CLEMENTS
 1536 W. American Blvd. • 272-5954
 Father Sergio Leal
 Sun. W.S. 10:30 am

CHRISTIAN TRINITY CHRISTIAN CENTER
 1723 W. American Blvd. • 272-3877
 Reydon Stanford, Min.

CHURCH OF CHRIST
LARIAT CHURCH OF CHRIST
 Sam Billingsley, Min.
 S.S. 10 a.m.; W.S. 11 a.m. & 6 p.m., Wed. 7 p.m.

LAZBUDDIE CHURCH OF CHRIST
 Nathan Crawford, Min.
 S.S. 9:30 am; W.S. 10:20 am & 5 pm; Wed. 7 pm

MULESHOE CHURCH OF CHRIST
 22nd & W. American Blvd.
 Harry Riggs, Min.
 S.S. 9:30 am; W.S. 10:20 am & 6 pm; Wed. 7:30 pm

16th & AVE. D CHURCH OF CHRIST
 Curtis Shelburne, Min. • 272-4619
 S.S. 10:30 am & 1:30 pm; Wed. 7:00 pm

LUTHERAN
ST. JOHN LUTHERAN
 Lariat, TX-David Symm, Min.
 S.S. 10:30 am; W.S. 9:30 am

METHODIST
FIRST UNITED METHODIST HISPANIC MINISTRIES
 E. 5th and E. Ave. D
 Pastor Benito Cavazos
FIRST UNITED METHODIST
 507 W. 2nd St.
 Pastor Brad Reeves
LAZBUDDIE METHODIST
 965-2121
EL DIVINO SALVADOR U.M.C.
 619 E. 5th Street & Ave. G, Muleshoe, TX
 Raul Martinez, Pastor

NAZARENE
NEW VISION CHURCH OF THE NAZARENE
 814 W. Ave. C • 272-3622
 William Perhealth, Pastor-S.S. 10 & 11 am; W.S. 7 pm

PENTECOSTAL
UNITED PENTECOSTAL LIGHTHOUSE
 207 East Ave. G • 1-800-454-6051
 Pastor McKibben, S.S. 10 am
 Thursday, Bible Study 7 pm

INTER DENOMINATIONAL
NEW COVENANT
 Plainview Hwy.
 Steve Claybrook, Pastor
 W.S. 10 am; Wed. 7 pm

MULESHOE PEA & BEAN, INC.
 RR 2 Box 297 272-5589 Muleshoe, TX

WEST CAMP GIN, INC.
 Better Ginning & Courteous Service
 James & Phyllis Shepard Rt. 2 Box 1000 • 925-6681 Muleshoe, TX

THE TRINITY COMPANY
 MULESHOE, TEXAS
FIRST AG CREDIT MULESHOE
 "Serving Parmer & Bailey Counties"
 272-3010 • Fax 272-5388
 316 Main • P.O. Box 424 • Muleshoe, TX

MOHAWK AUTO PARTS
 1701 W. American Blvd. 272-4425 Muleshoe, TX

New Tex Truck Parts & Service
 107 E. 5th St. • Muleshoe 272-4106 or 800-918-9048
 4200 Mabry Drive • Clovis, NM (505) 762-7186 or (877) 762-9112

MULESHOE MOTOR CO.
 1225 W. American Blvd. 272-4251

MULESHOE ANIMAL CLINIC
 GENERAL PRACTICE
 1430 US Hwy. 84 • Muleshoe, TX Office: 272-4990

IRRIGATION PUMPS & POWER
ZIMMATIC CENTER-PIVOTS
 W. Hwy. 84 272-4483

WESTERN DRUG
 & Something Special Gifts.
 1411 W. American Blvd. 272-3106 Muleshoe

PARMER CO. COTTON GROWERS CO-OP GIN
 825-3701
 RON RILEY-GENERAL MGR. FARWELL, TX

Henry Insurance Agency
 "Serving You Since 1964"
 111 West Avenue B 272-4581 Muleshoe, TX

"THE FIVE AREA TELEPHONE COOPERATIVE, INC."
 West Plains Telecommunications, Inc.
 Five Area Systems, Inc., Plateau Wireless
 Five Area Long Distance - Five Area Internet
 302 Uvalde Muleshoe, USA (806) 272-5533

AGRO DISTRIBUTION
 Hwy. 84 • 272-4203
 Muleshoe, Texas Bruce Bruns - Mgr.

"Do All" Family Enterprises
 203 S. Main St. • 272-4725 • Muleshoe
 Gift Wrapping Shipping Via UPS Catering & Floral Design
 Now doing Auto Repair! Minor Home Repair & Remodeling
 Party Planning & Remodeling
 New Location!

FARMERS CO-OP ASS'N
 of ENOCHS
 "Your Farmers Owned Gin"
 Chemicals • Seed • Fuel & Oil • Fertilizer
 806-927-5511 Wade Baker, Mgr.

Antiques & Fine Things
 of Muleshoe
 2104 W. American Blvd. • 272-4217

McCormick Seeds, Inc.
 400 East Ash • Muleshoe, Texas 272-3156
 A complete line of field seeds
 Tim McCormick Roland McCormick

Ellis Funeral Homes
 Muleshoe - Morton - Earth - Sudan Texas
 1-800-299-4574

1315 W. American Blvd. 272-3333 Muleshoe, TX
McDonald's

TEXAS FARM BUREAU INSURANCE CO.
 1612 W. American Blvd. • 272-4567 • Muleshoe
 Life-Auto-Home-Crop FARM BUREAU INSURANCE

GOODYEAR JAMES CRANE TIRE CO., INC.
 Mike Hahn 107 Main 272-4594 Muleshoe, TX

Jarman Seed
 801 W. American Blvd. Muleshoe, TX • 272-5985

Leo's Blacksmith & Machine Shop
 "Family Owned Since 1966"
 • WELDING - SHOP OR FIELD • REBUSH TRACTOR FRONT ENDS
 • ALL TYPES OF STEEL • BOLTS • AGRI BEARINGS
 • FABRICATING PARTS & EQUIPMENT
 310 W. American Blvd. • 272-4418 • Muleshoe



Journal photo: Beatrice Morin

Dillman superkids

Named superkids at Dillman Elementary School for January are (back row, from left) first-graders Adriana Guerra and Mateo Castillo, and second-grader Alejandra Montejano; (front row, from left) pre-kindergartner Arthur Recio, kindergartner Kirk Williams and pre-kindergartner Britton Beall. Not shown are kindergartner Michelle Lira and second-grader Esteban Vidaña.

NURSING HOME NEWS

Buster and Wanda Kittrell visited her mother, Grace Plyler, Friday afternoon. Buster gave the men haircuts and shaves a day early because of the bad weather that was forecast.

Webb Watts was taken out for lunch Friday by his family, and W.E. Myers visited him Friday afternoon.

Lawrence and Doris Jackson visited the care center Friday and reported that Minnie Underdown, who recently moved to Bender Terrace in Lubbock, is doing well.

Anna B. Lane visited Nettie Quesberry Friday. Lane hasn't been well and has not been able to visit for several days.

Jane Reeder and her mother, Roma Davis, visited in the day room Friday.

Mildred Bartley was visited by her daughter and son-in-law, Ronald and Linda Elliott, and daughter, Barbara Hall, this week.

Nancy Barnhill visited Cecil Davis on Tuesday. He was visited Wednesday by relatives from Clovis.

Happy February birthday to John Neiv (Feb. 7, 1923) and Kathryn Hancock (Feb. 15).

Upcoming events: The valentine party will be hosted by the First Assembly of God at 3 p.m. Feb. 9 and the valentine banquet will be at 5 p.m. Feb. 16. The February birthday party is scheduled for 3 p.m. Feb. 22.

Winnie Orcutt and Ruby Everette are in the local hospital and ask to be remembered in prayer.

Velta Fyie delivered catalogs and magazines Tuesday

for the residents to look at.

Clara Coffman was visited by Mrs. Frank Parker visited Clara Coffman last week and brought *Texas Highways* magazines for the residents to read and look through.

Thursday morning, Pastor Felix Cadena of the Spanish Assembly of God and Zona Gatewood directed the devotional.

The families of Janetta Hukill and Webb Watts hosted the January birthday party in their honor.

Aline Locke and Grace Scarbrough, the assistant activity directors for Friday morning, directed that day's activities.

Friday afternoon who but the Muleshoe Mules, the cheerleaders and also Coach

Wildflower wheel identifies plants along Texas highways

SPECIAL TO THE JOURNAL COLLEGE STATION — There's more to Texas wildflowers than just roadside beauty: Native Americans made tea from a Texas wildflower, plains coreopsis, to strengthen their blood.

When the bluebonnet was chosen to be the Texas state flower, the runners-up were the prickly pear cactus and the open cotton boll.

Gayfeather is also called snakeroot because part of it was once used to treat rattlesnake bites.

These are some of the little-known facts about wildflowers featured on "Texas Wildflowers," an identification wheel produced by the Texas Agricultural Extension Service.

The wheel was created to help people identify and learn more about the flowers they see along Texas highways each year.

It features photographs of 16 of the most common wildflowers in the state: black-eyed Susan, bluebonnet, coreopsis, Drummond phlox, gayfeather, Indian blanket, Indian paint-

brush, lemon mint, Maximilian sunflower, mealy cup sage, Mexican hat, pink evening primrose, verbena, bluebell, standing cypress and wine cup.

To help gardeners trying to grow wildflowers, both the blossom and the seedling are pictured for each species.

The wheel also makes a perfect companion for those spring drives to view wildflowers.

"Texas has a worldwide reputation for its wildflowers," said Doug Welsh, Extension horticulturist. "The wildflower wheel will help Texans, new and old, identify and grow these Lone Star natives."

The wheels cost \$10.95 each and can be viewed on the web and ordered at <http://agpublications.tamu.edu/> or, for credit card orders, by calling toll-free (888)900-2577.

The wheel also provides tips for growing wildflowers, including:

- Fall is the best time to plant them;
- Select a site that drains well and gets at least five hours of

sunlight each day;

- Remove weeds from the site;
- Rake or lightly till the soil surface to a depth of 1 inch;

• Thoroughly mix one part wildflower seed with four parts sand or potting soil;

- Scatter the seeds uniformly over the prepared area;

• Press the seed into the soil by walking over the area. Do not cover seed any deeper than 1/16 inch. Some seeds will remain visible, but they must be in firm contact with the soil to germinate; and

• Most wildflowers do well without regular watering, but if there is a prolonged dry spell, give wildflowers a drink.

Jenda S. Bruns
Registered Representative

STOCKS - BONDS
MUTUAL FUNDS
IRAs
RESEARCH & ANALYSIS
GOVERNMENT SECURITIES
MUNICIPAL BONDS
PORTFOLIO REVIEW

272-4243

RAYMOND JAMES
FINANCIAL SERVICES, INC.
Member NASD/SIPC
1905 W. Ave. E • Muleshoe

by Joy Stancell

Wood attended our Super Mule Bowl. Volunteers Plus treated the team, the cheerleader and residents to a pizza and Coke party. Melvin and Wanda Griffin, Mary Jo Walker and Donna Locke were on the greeting team as well as the serving team.

Aline Locke's daughters, Mary Jo Walker and Donna Locke, visited her last week.

Ozell Cherry was visited recently by her children, Clyde and Janie Phillips and Linda and Duane White.

The Muleshoe A.A.R.P. gave a donation to the center.

Beverly Wagnon, Claudine Embry, Pat Watson, Ann Williams, Dorothy Turner, Linda Elliott and Josie Ovalle from Main Street Beauty Shop shampooed and set the ladies' hair Tuesday.

Buster and Wanda Kittrell and Loyce Killingsworth served coffee, juice and doughnuts to the residents at coffee time. Buster Kittrell directed the table talk and discussion. The Rev. William Perhealth, pastor of the Nazarene Church. Buster Kittrell and Loyce Killingsworth directed the devotional Wednesday morning.

Glenda Jennings and Jackie Scoggins directed a sing-along and puppet show Wednesday afternoon.

Florence Harvey was visited recently by her son and daughter-in-law, Gene and Allene Harvey.

J.C. Shanks received a visit last week from L.E. Shanks of Portales. Gerald and Lula Maye Shanks visit him several times a week.

HOSPITAL NEWS

Muleshoe Area Medical Center has released the following patient information:

Jan. 25 — Helen Beaver, Josie Guerrero, Kasey Hearn, Dorothy Hood, Mary Madrigal, Joely Meléndez, William Millen, Manuela Rejino and Christopher Toscano.

Jan. 26 — None reported.

Jan. 27 — None reported.

Jan. 28 — Helen Beaver, Dor-

othy Hood, William Millen, Manuela Rejino and Cristyl Spriggs.

Jan. 29 — Donna Ellis, Ruby Everett, Dorothy Hood, Natalie Leal, Baby Girl Leal, Manuela Rejino, Zara Rivas, Cristyl Spriggs, Billy Tosh and Caleb Wood.

Jan. 30 — Miranda Armendaris, Donna Ellis, Ruby Everett, Dorothy Hood, Natalie Leal, Baby

Girl Leal, Winifred Orcutt, Minnie Parham, Zara Rivas, Jorge Soto and Caleb Wood.

Jan. 31 — Miranda Armendaris, Donna Ellis, Ruby Everett, Dorothy Hood, William Hulcy, Anna B. Lane, Natalie Leal, Baby Girl Leal, Dale Newsom, Winifred Orcutt, Minnie Parham, Zara Rivas, Fermín Rosas, Erma Smith, Jorge Soto and Caleb Wood.

Nique and Blue just turned 2 years old!
So, Nique and Blue are now entering the "terrible 2s!"
Nique has eyes of mischief and a smile to make your day. Blue has big brown puppy-dog eyes that just melt away all wrongdoing. For them, life is just beginning and time will tell the story for Wedito and Sugar.

Gammy, Poppy, Miko, Manda & Buffy Love You Both! Happy Birthday!

12/29/98
"Nique"
Son of Mary Helen Orozco & Cesar Saenz

1/26/99
"Blue"
Son of Jessica Orozco & Alfredo Vara

NO ONE ELSE SELLS FOR LESS!

No other dealer in Eastern New Mexico or West Texas sells for less than Richard Barton.

RICHARD BARTON
A familiar name known for service, honesty, and easy dealing!
3300 Mabry Drive Clovis, NM 88101 505-762-2986 / 1-888-569-1900

Our Planned Lower Prices Bring You In. Our Award-winning Service Always Brings You Back!

Choose From The Area's Greatest Selection Of Quality New And Used Cars And Trucks.

<p>2001 Pontiac Grand Am SE \$219 or \$16,750 a month Cash Sale Price WALK AWAY FOR \$250</p>	<p>2001 GMC Jimmy 2 door 2x2 \$230 or \$19,950 a month Cash Sale Price WALK AWAY FOR \$250</p>
<p>2001 GMC Sonoma SLE \$174 or \$13,950 a month Cash Sale Price WALK AWAY FOR \$250</p>	<p>2001 Buick LeSabre \$24,450 Cash Sale Price \$2,060 OFF LIST PRICE</p>
<p>2001 Pontiac Sunfire SE Coupe \$14,650 Cash Sale Price \$2,503 OFF LIST PRICE</p>	<p>2001 GMC Sierra SLE X-Cab 4 door 2x2 \$268 or \$23,950 a month Cash Sale Price WALK AWAY FOR \$250</p>
<p>2000 GMC Yukon XL 4x4 \$5,498 Off List Price</p>	

Other dealers offer savings ... we control our overhead costs to give you PLANNED lower prices!

REBATE: Rebate returned by dealer, all vehicles subject to prior sale & lenders approval. WAC. 48 month Smart Buy 20% down cash/or trade plus T&L. 9.74% APR. 20¢ per mile over 12K per year.

JV Lady Mules notch two more victories

By DELTON WILHITE
Journal correspondent

Defense has been the mainstay for the junior varsity Lady Mules this season, and the Jan. 26 victims were the Lubbock Cooper Lady Pirates, who fell by a score of 50-34.

The damage usually comes in the second half, when the Lady Mules run the opposition out of gas, but this game was a little different — Muleshoe did most of its damage in the second quarter. The Lady Mules did not allow Cooper to score until only three and a half minutes remained in the first quarter.

Missed scoring opportunities and eight turnovers kept the score close in the first quarter.

The action for Muleshoe included Tori Barton picking off a Cooper pass and hitting Tiffany Flores for a breakaway layup to get the Lady Mules on the board, Sarah Benham grabbing a Cooper pass on the Lady Pirates' free-throw line and dribbled the length of the court for a layup, and Gradee Adrian driving the baseline for two points and converting the free throw to give Muleshoe a 7-3 first-quarter lead.

The Lady Mules' first-period jitters disappeared with the arrival of the second quarter.

When Tabettha Obenhaus put back a rebound with four and a half minutes remaining in the period, Muleshoe owned a 20-3 advantage. Sarah Sheets added a free throw before Cooper put eight unanswered points on the board to cut Muleshoe's lead to 21-11 as the second period ended.

After the half, Cooper cut five more off the Lady Mule lead before Jodi Hawkins finished a fast break. Johnna Cleavinger had started the break with a long outlet pass to Hawkins. Muleshoe pushed their lead to 37-23 when Megan Barrett found Benham open on a fast break at the end of the third quarter.

Muleshoe put 13 points on the board in the final frame to 11 for Cooper. Summer Daniel grabbed a defensive rebound and got the ball down court to a running Barton for two points. Barton would add another two points to end the scoring with Muleshoe leading 50-34.

Flores led the scoring for Muleshoe with 10 points, Hawkins and Barton added nine each, Cleavinger eight, Benham six, Obenhaus four, Adrian three and Sheets one.

The Lady Mules claimed 33 rebounds (Flores and Benham

six each, Cleavinger and Hawkins five each), made 10 of 27 free throws and stole the ball 16 times (Barrett and Cleavinger three each).

The Lady Mules are 17-6 for the season and 6-1 in district play.

Muleshoe 65 Shallowater 40

After trailing the Shallowater Lady Mustangs 15-11 in the initial period, the junior varsity Lady Mules amplified the defensive pressure and outran Shallowater to a 65-40 final score on Jan. 19.

Early in the first quarter, Megan Barrett and Tiffany Flores sandwiched three-pointers around a Shallowater bucket. The Lady Mules' shooting went cold and Shallowater was able to initiate its first run. Sara Benham began to heat up the defense with back-to-back blocked shots to prevent the Lady Mustangs from continuing their scoring run.

Benham continued her harassment in the second period by stealing a Shallowater pass and getting the ball to Tori Barton for a fast-break layup. The Lady Mules' intense defense did not allow Shallowater to score until Muleshoe had

put 15 points on the board and only three minutes remained in the first half. Barrett added her second three and Pylant drove the lane to give the Lady Mules a 34-22 cushion at half-time.

The teams traded points for most of the third quarter, until Johnna Cleavinger, Eva Pylant and Jodi Hawkins added six points to the Lady Mule lead.

The defensive pressure and running game had taken the fight out of the Lady Mustangs, and Muleshoe outscored them 15-8 in the final quarter. Barton and Sarah Sheets provided most of the scoring punch in the period by completing fast breaks. Tabettha Obenhaus muscled up a rebound for two points to end the Lady Mule onslaught.

Muleshoe scoring was spread evenly among the players — Barton 12, Pylant 11, Barrett nine, Benham seven, Cleavinger six, Flores five, Hawkins and Sheets four each, Obenhaus three and Kylie Henderson and Gradee Adrian two each.

Muleshoe grabbed 28 rebounds (Benham six, Adrian three), made 14 of 20 free throws and was called for 21 fouls.

JV Mules lose game to Cooper Pirates 63-44

By DELTON WILHITE
Journal correspondent

The junior varsity Mules fought back from a nine-point deficit in the final quarter, but Lubbock Cooper knocked down 20 of 26 free throws and that was the difference Jan. 26 as the Pirates beat the Mules 63-44.

Cooper began with three shots from behind the three-point line to take a first-period lead of 15-10. Stephan Shelburne hit from behind the arc and Brennan Broyles made three the hard way, a bucket and a free throw, during the period.

In the second frame, the Pirates nailed a pair of threes in adding 15 points and taking a 30-18 halftime cushion. Broyles and Chance Turney each had two buckets for the

Mules.

The teams traded blows in the third period, with Shelburne adding a three, Luis Sánchez a bucket and Broyles and Turney a free throw each. The quarter ended with Cooper leading 37-25.

The Mule defense held the Pirates to only three buckets in the final frame, but put Cooper on the line 26 times. Muleshoe's 19 fourth-quarter points were not enough to overcome the Cooper lead.

Shelburne led the Mules with 12 points, Broyles had 10, Matt Luna eight, Turney five, Valentine Colunga four, Sánchez three and Jordan Dale made two.

The Mules pulled down 22 rebounds and were called for 25 fouls.

Lubbock Roosevelt 59

Muleshoe 43

Four three-pointers and a 20-point performance by Stephan Shelburne were not enough to lift the junior varsity Mules over Lubbock Roosevelt on Jan. 23. The final score was 59-43.

The Eagles jumped to a 21-8 first-period lead, but the Mules cut that lead to seven points late in the second quarter. Matt Luna drove the lane for a bucket and James Hancock made a free throw to draw the Mules that close. Roosevelt answered with a bucket as the second quarter ended.

Shelburne made two threes in the third period, but Roosevelt still pushed its lead to 43-31.

Brennan Broyles made eight of his 10 points in the final stanza, but Roosevelt con-

verted nine of 13 free throws in the final minutes to expand its lead even further.

Helping Shelburne with the scoring were Broyles with 10, Luna with five, Hancock with three, Jordan Dale and Valentine Colunga with two each, and Andy Scott with one.

KENW-TV

Public Television

FRONTLINE SINKING THE LUSITANIA

The *RMS Lusitania* was the most luxurious and impressive passenger liner of its day. When the ship set sail in 1915, those aboard expected a routine transatlantic voyage. Instead, their journey ended in a tragedy that laid bare the savagery of 20th-century war. *Sinking the Lusitania* transports viewers to a time of dramatic maritime politics and intrigue.

In 1907, England created the largest, fastest, most elegant ship the world had ever seen — the *Lusitania*. The first-class accommodations rivaled the most exquisite of Europe's fine hotels. However, this extravagance came at such a cost that the maritime company, Cunard, asked the British government for a loan. In exchange, the government stipulated that in the event of war, Cunard's entire merchant fleet would be at the Royal Navy's disposal.

On the morning of May 1st, 1915, Germany posted a warning in a New York newspaper—those sailing the British seas did so at their own risk. That same morning, the *Lusitania* prepared to set sail from New York to Liverpool, England, with nearly 2,000 passengers on board, including 197 Americans. Unbeknownst to the passengers, the *Lusitania* was also shuttling military supplies and munitions to England—more than 46 tons of highly combustible munitions.

A German U-boat was en route around the English Channel, attacking British ships. The *Lusitania* received vague warnings that a German sub was active in the area, but the *Lusitania's* captain, like the rest of the world, believed that "a torpedo can't get the *Lusitania*." But on the blue-skied afternoon of May 7th, within sight of the Irish Coast, the U-boat spotted and fired upon the *Lusitania*. Sixty seconds later, an explosion rocked the ship.

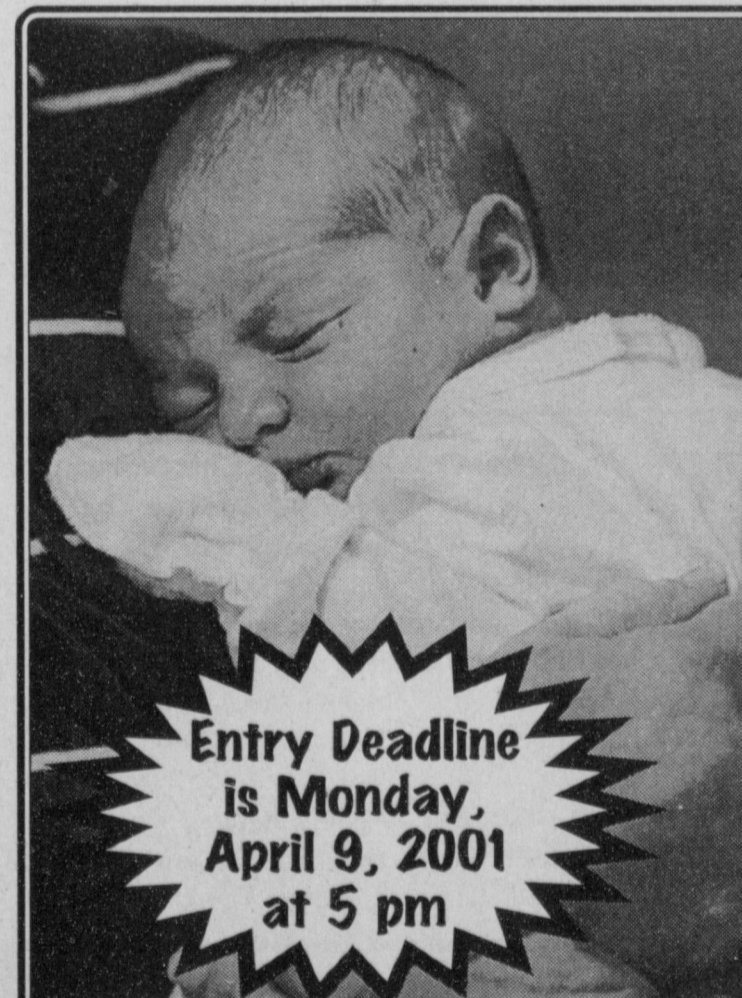
Panicked passengers rushed into ill-manned lifeboats; some jumped into the ocean. Others were trapped inside the ship, which sank in 20 minutes: 1,198 people died; 764 survived. Of the 22 lifeboats, only six made it to shore. Overnight, Germany was demonized.

The Kaiser, shaken by international disgust with Germany, ordered U-boat captains to refrain from surprise attacks on merchant ships and passenger liners. Meanwhile, the British continued their blockade. In the winter of 1916 alone, 121,000 German civilians died of starvation related diseases. Soon, the Kaiser declared "unrestricted submarine warfare"—all ships were fair game.

Sinking the Lusitania will be broadcast Monday, February 5th at 10:00 p.m.

Channel 3 Television from
Eastern New Mexico University, Portales, New Mexico

You Snooze, You Lose. Read the News!



Entry Deadline
is Monday,
April 9, 2001
at 5 pm

The Muleshoe Journal's 7th Annual CUTEST BABY CONTEST

Enter any child
born in 2000
who you fell in love
with at first sight -
children, grandchildren,
nieces, nephews,
friends, etc.

WINNER WILL RECEIVE A \$50 SAVINGS BOND FOR BEING SELECTED 2000'S CUTEST BABY!

This year's contestants will appear in the April 15 edition of the Bailey County Journal. A panel of unbiased judges will pick the most attractive picture to be the 2000 Cutest Baby. All baby pictures will be printed. Babies need not be born in this area.

Bring your favorite photo along with \$12 to the Muleshoe Journal office at 304 W. 2nd Street, Monday-Friday between 8:30 a.m. and 5:00 p.m. or mail the coupon below along with your child's photo and \$12 to Cutest Baby Contest, c/o Muleshoe Journal, P.O. Box 449, Muleshoe, Texas 79347. You may pick up your baby's picture during office hours after Monday, April 16, 2001. Arrangements must be made to return photos by mail.

Please provide phone number or address (it will not be published) so that we may contact you if we need additional information.

Baby's Name: _____

Date of Birth: _____

Weight at Birth: _____

Length at Birth: _____

Place of Birth: _____

Mom & Dad's Name: _____

Grandparent's Name: _____

Buying first home is the experience of a lifetime

SPECIAL TO THE JOURNAL

Just remember that beauty is only skin deep. A home's least glamorous features such as the structure, furnace or electrical systems are often the most expensive to fix.

"Anxiety over the contract plus the anticipation of moving in can sometimes keep a homebuyer from paying attention to very important details," says Richard Roll, president of the American Homeowners Association.

"What exactly is the home's true condition? You need a professional home inspector to find out, before you go to closing," he added.

Every home inspection should cover all the major systems, including plumbing, drainage, heating and cooling; the structural condition, including the roof; and the electrical system.

One of the most chronic conditions is a roofing problem, due to aging, wear or improper installation. The good news is roof problems are frequently

cured with a repair job, not replacement.

Water or moisture problems also occur frequently in basements or crawlspaces due to ground water conditions or faulty drainage. Don't take this problem lightly.

The solution can be as straightforward as regrading the exterior ground or fixing the gutters, but water damage can be extensive if not controlled.

Structural damage from rotted wood at building exteriors and around plumbing fixtures can happen in areas where wood remains wet for long periods, e.g., roof eaves, exterior trim, decks, around tubs and showers, or elsewhere in a building.

And be sure to check for unsafe fireplace and chimney conditions, faulty installation of water heaters and hazardous conditions involving gas heaters or furnaces. All create serious health and safety problems.

Finally, when the inspection

report is received, make sure someone actually reads it. If something isn't clear, get the inspector to explain it.

More information on any aspect of buying or owning a home is available at www.ahahome.com, the web site for American Homeowners Association.

HONORS WT GRADUATES

Six Muleshoe-area students were among those graduating from West Texas A&M University in Canyon at the end of the fall semester.

They are Rocio Aguilar of Lazbuddie, bachelor of business administration in accounting; Monty Turney of Enochs, bachelor of science in plant science (agronomy); and from Muleshoe, Cynthia Bessire, master of education in education diagnostics; Dana Wright, master of education in counseling; Lance Latham, bachelor of science in agriculture; and Jessie Villareal, bachelor of general studies.

NATIONAL BRANDS SALE

PRICES EFFECTIVE JANUARY 31-FEBRUARY 6, 2001

MEAT

- Preferred Trim Boneless Beef
Chuck Roast lb. **\$1.89**
- Preferred Trim Boneless Beef
Chuck Steak lb. **\$1.99**
- Fresh
Ground Chuck lb. **\$1.79**
- Preferred Trim Boneless
Family Pack Pork
Sirloin Roast lb. **\$1.29**
- Tenderized Pork
Cube Steak lb. **\$2.39**
- Preferred Trim
Boneless Sirloin
Pork Chops lb. **\$1.59**
- Boneless
Pork for Stir Fry lb. **\$1.99**
- Boneless Pork
Stew Meat lb. **\$1.99**
- Pilgrim's Pride
Jumbo Pack Split
Fryer Breasts lb. **89¢**
- Shank Portion Bone-In
Cook's Ham lb. **89¢**
- Butt Portion Bone-In
Cook's Ham lb. **\$1.09**
- All Varieties Fully Cooked
Ready To Eat
Hormel Entrees.. 17 oz. pkg **\$4.69**
- Hormel Links or Patties
Little Sizzlers 10-12 oz. pkg **99¢**
- Hillshire Farm All Varieties
Smoked Sausage ... 1 lb. **\$1.99**
- Decker
Sliced Bacon 12 oz. pkg **\$1.39**
- Decker
Meat Franks 12 oz. pkg **69¢**
- Decker Reg. or Thick Sliced
Meat Bologna 12 oz. pkg **99¢**
- Decker Luncheon Meat
Variety Pack..... 1 lb. pkg **\$1.99**
- Decker
Cooked Ham..... 10 oz. pkg **\$1.99**
- Decker
Chopped Ham 10 oz. pkg **\$1.59**
- All Varieties Decker Sliced
White Turkey 1 lb. pkg **\$1.99**
- Owens Reg. or Hot
Breakfast Sausage 2 lb. roll **\$3.39**
- Owens All Varieties
Breakfast Sausage 1 lb. roll **\$1.69**
- Owens Reg. or Hot
Sausage & Biscuits 12 oz. pkg **\$1.99**

PRODUCE

- Cello Wrapped Large
Iceberg Lettuceheads **2/\$1**
- U.S. No. 1
Baking Potatoes lbs. **3/\$1**
- Large Stalk
Celery..... 2/\$1
- Garden Fresh Crisp
Broccoli..... lb. **79¢**
- Cello Pack Whole
Mushrooms 8 oz. **99¢**
- Super Select Crisp
Cucumbers..... 2/\$1
- Extra Large Green
Bell Peppers..... 2/\$1
- Cello
Carrots 1 lb. pkg **2/\$1**
- Large Navel
Oranges..... lbs. **2/\$1**
- Red Seedless
Grapes..... lb. **\$1.29**
- Sweet Juicy
Cantaloupe..... lb. **49¢**
- Large Red Ripe
Tomatoes lb. **99¢**
- Select Group Luncheon Meat
Spam 12 oz. **\$1.89**
- Hunt's Tomato
Ketchup..... 24 oz. btl **99¢**
- Hunt's Asstd.
Spaghetti Sauce ..26-26.5 oz. **89¢**
- Kraft Reg. or Hickory
BBQ Sauce 28 oz. **\$1.69**
- 12 oz. Trix, 14 oz. Lucky Charms
or 13.7 oz. Cocoa Puffs
General Mills Cereal..... your choice **2/\$4**
- Quaker Asstd. Instant
Oatmeal 11.8-16.2 oz. **2/\$5**
- Old Fashioned or Quick
Quaker Oats 18 oz. box **2/\$3**
- Select Group
Shake 'n Bake 5-7.7 oz. **2/\$3**
- Swiss Miss Instant Reg.
or w/Marshmallows
Hot Cocoa Mix 10 ct. **2/\$3**
- Hunt's Asstd. Juicy
Gels or Pudding
Snack Pack 4 pk. **99¢**
- Long Grain
Wonder Rice 42 oz. **2/\$3**
- Rotel Asstd.
Pico de Gallo..... 16 oz. **2/\$3**
- Dinty Moore
Beef Stew 24 oz. **\$1.99**
- Select Group Rotel
Tomatoes 10 oz. **69¢**
- Select Group Hunt's
Tomato Sauce 8 oz. cans **4/\$1**
- Chun King Asstd.
Chow Mein 42 oz. **\$2.99**
- Chun King Teriyaki Sauce or
Soy Sauce 10 oz. **\$1.29**
- Chun King Noodles/Bamboo
Shoots/Sliced or Whole
Water Chestnuts ... 5-8 oz. **99¢**
- Select Group Kraft Salad
Dressing 14-16 oz. **2/\$4**
- Schilling Asstd.
Chili Seasoning 1.25 oz. **79¢**
- Schilling
Black Pepper..... 4 oz. **\$1.99**
- Pre-Priced \$2.29
Fritos® or Chee'tos 2/\$3

FROZEN & DAIRY

- Plains Reg., Non Fat
or Slim N' Trim
Cottage Cheese 24 oz. **\$1.99**
- Lowfat chocolate or Buttermilk
Plains Milk 1/2 gal. **\$1.59**
- Asstd. Country Crock
Shedd's Spread 48 oz. **2/\$3**
- 1/2 Moon Longhorn Colby/
Colby Jack/Cheddar
Kraft Cheese 10 oz. **\$1.99**
- Kraft Reg. or Extra Thick Sliced
Velveeta Cheese ... 12 oz. **\$1.99**
- Blue Bunny Asstd.
Ice Cream 1/2 gal. squares **\$2.99**
- Plains
Orange Juice gal. **\$2.99**
- Asstd. Punch
Tampico 128 oz. **99¢**
- Select Group Bird's Eye
• Broc./Carrots w/Chestnuts
• Pepper or Broc. Stir Fry
• Broccoli & Cauliflower
• Broc./Caul./Carrots
• Broc./Beans/Onions/Pep.
• Broc./Corn/Red Pepper
Vegetable Blends 16 oz. **2/\$3**
- Select Group Bird's Eye
Voila! 20 oz. **2/\$7**
- Select Group
José Olé Bowls 12 oz. **\$2.99**
- José Olé Select Group
10.6 oz. Wraps or 12 oz. Burritos
Wraps or Burritos your choice **\$1.99**
- José Olé Beef or Chicken
Chimichangas 20 oz. **\$2.99**
- Select Group Lean Pockets or
Hot Pockets 9-11.5 oz. **2/\$4**
- Select Group
Toaster Breaks..... 12.7-12.9 oz. **2/\$4**
- Select Group Ore-Ida
Bagel Bites 7 oz. **2/\$3**
- Select Group Michelina's
Dinners 8-9.2 oz. **99¢**
- Fisher Boy
Fish Sticks 16 oz. **2/\$5**
- Fisher Boy Pub Style
Fish Fillets 12 oz. **2/\$5**
- Betty Crocker Asstd.
Roll-Ups, Fruit By The Foot or
Fruit Snacks..... 4.5-9 oz. pkg **2/\$3**
- Tree Top Apple Cider/
Apple Juice 64 oz. **2/\$4**
- Ocean Spray Ruby Red Bold
or Ruby Red Strawberry Grapefruit
Juices..... 64 oz. **2/\$4**
- Select Group Ocean Spray
Cranberry Blends.. 64 oz. **2/\$5**
- Select Group Ranch Style
Beans 15 oz. cans **2/\$1**
- Select Group Rosarita
Refried Beans 15.5-16 oz. **69¢**
- Betty Crocker Select
Group Specialty
Potatoes 5-7.5 oz. **99¢**
- Oil or Water Pack Chunk Light
Star-Kist Tuna 6 oz. **2/\$1**
- Select Group Kid's Pastas
Chef Boyardee 15 oz. **2/\$1**
- Select Group With Meat
Chef Boyardee .. 14.7-15.5 oz. **99¢**
- Hormel Reg. or Hot
Tamales 15 oz. **99¢**

HEALTH & BEAUTY

- 8.5 oz. Deep Treatment/
13.5 oz. Pantene Pro-V
Shampoo or Conditioner your choice **\$3.89**
- Asstd. Scope
Mouthwash 33 oz. **\$3.99**
- Select Group
Drixoral 10-12 ct. **\$4.48**
- Original No Drip
Afrin 15 ML **\$4.99**
- 12 oz. Reg./8 oz. Max. Str.
Pepto Bismol..... your choice **\$3.99**
- Select Group Solid
Arrid XX 1.7-2 oz. **2/\$3**
- Select Group Colgate
Shave Cream..... 11 oz. **99¢**
- Med. or Soft Large Angle Crest
Toothbrush ea. **2/\$3**
- Select Group Crest
Toothpaste 4.6 oz. **2/\$3**
- Economy Size
Polident Tablets.... 40 ct. **\$1.99**
- Charmin White or Ultra
Double Roll
Bath Tissue 4 roll pkg. **\$2.19**
- Charmin White Reg. Roll
Bath Tissue 4 roll pkg. **99¢**
- Reg. Roll Coronet Print
Paper Towels rolls **2/\$1**
- 100 oz. Asstd. Ultra Liquid or
87 oz. Ultra 2 Powder
Tide Detergent.. your choice **\$5.99**
- Reg. or With Bleach
Surf Ultra 80-81 oz. box **\$3.99**
- Reg. or Free-Liquid
All Ultra 100 oz. btl **\$3.99**
- Asstd. Glass Cleaner
Windex 26 oz. btl **2/\$5**
- Reg./Spring Blossom
40 oz. Ultra Liquid/80 ct.
Reg./Scented Sheets
Snuggle your choice **\$2.99**
- Store It With
Glad Wrap 200 ft. **2/\$4**
- 15 ct. Gal. Freezer • 20 ct.
Gal. Storage • 20 ct. Qt. Freezer
• 12 ct. Qt. Standup • 9 ct. 1/2
Gal. Standup • 10 ct. Trash Q/Tie
• 15 ct. Tall Kitchen Q/Tie • 18 ct.
Med. Garbage • 8 ct. Trash H/Tie
Glad Bags..... your choice **2/\$4**
- Select Group Hershey's
Candy Bars..... reg. size **4/\$1**
- Keebler
Zesta Crackers 16 oz. **99¢**
- Select Group FAC
Excludes Decaf.
Folgers Coffee ... 34.5-39 oz. **\$4.99**
- Corn, Canola or
Right Blend Mazola
Cooking Oil 48 oz. **\$1.69**
- Select Group
Hamburger Helper Dinners ... 6.25-9.3 oz. **99¢**
- Campbell's
Tomato or Chicken Noodle Soup..... 10.7 oz. **59¢**
- Kraft
Mac & Cheese Dinners 7.25 oz. **59¢**
- Hormel Brand Reg. with
Beans/Reg./Hot No Beans
Chili 19 oz. can **99¢**
- Asstd. Citrus Punch
Sunny Delight..... 64 oz. **99¢**



All Types-Asstd. Varieties

PEPSI & MOUNTAIN DEW ... 6 pk. cans **3/\$5**

All Types-Asstd. Varieties

PEPSI & MOUNTAIN DEW 2 liter btl **99¢**

Lowe's
MARKETPLACE

401 W. American Blvd. Muleshoe 272-4585

WESTERN MONEY UNION TRANSFERSM
"The fastest way to send money"

AFFILIATED FOODS INC.
MEMBER STORE
AT PARTICIPATING STORES

WE RESERVE THE RIGHT
TO LIMIT QUANTITIES
IN TEXAS