

J. W. Spencer, E. H. Carter, J. C. Franklin
S. P. Tucker, Longview, Nashville,
Fort Worth, Texas, Tenn.

Fort Worth Grocer Co.
(Successors to SPENCER & TUCKER.)
GROCERIES
—AND—
Wholesale Produce,
407, 409 and 411 Main Street,
FORT WORTH, TEXAS.

Ranch Supplies a Specialty.

TEXAS LIVE STOCK JOURNAL

Consolidated with the Texas Wool Grower, September 13, 1884.

VOL. 7.

FORT WORTH, TEXAS, SATURDAY, JUNE 19, 1886.

NO. 8.

Texas Live Stock Journal.

\$2.00 PER ANNUM,
The First Range and Live Stock
Paper of the Southwest.

THE
STOCK JOURNAL
Publishing Company,
FORT WORTH, TEXAS.

W. A. GARNER, Manager,
P. H. HALE, Secretary,
JNO. O. FORD, Treasurer.

CHAS. H. FRY,
207 Houston St., Fort. Worth, Texas.

WATCHES, DIAMONDS, JEWELRY, SILVERWARE CLOCKS, &C.
Orders for goods carefully filled, subject to inspection. Work in all departments carefully done. All work and goods guaranteed



OPEN ORDERS
WILL BE GIVEN
SPECIAL ATTENTION.

T. L. MARSALIS & CO., WHOLESALE GROCERS, DALLAS, TEXAS.

JOS. H. BROWN,

Wholesale Grocer,
Manufacturer of the Celebrated

SILVER LOAF BAKING POWDER,



Fort Worth, Texas.

We Carry the Largest Stock of
Wrought-Iron Casing
AND PIPE
IN THE STATE.

General Agents for the
Jarecki Artesian Well
PUMPS,
Which can be used to a depth of 1000 ft.

IMPROVED ARTESIAN WELL DRILLING-MACHINE,

As operated by tumbling rod from the horse-power. It is intended for drilling to a depth of 600 feet; has the patent improved tool-holder and sand-pump attachment and feeder, all the holing being done by the power.
The price of this machine, complete, with extra heavy horse-power and two lengths of tumbling-rod, two sweeps, two lead poles, four links to stake down horse-power, one tool box with lock and key, containing one sledge, the monkey-wrench, one hammer, one oil-can, one extra wheel pinion, one extra traveler and roller, one 6-inch 2 bit, one 3-inch built-rod with rope socket all screwed for welded together, one 4-inch sand-bucket, two wrenches for coupling rods, all complete, except the rope, for \$240. If horse-power is not wanted, deduct \$70. Add for steam-power attachments \$20.
The machine has been operated extensively in Western Texas and Colorado, where deep drilling was necessary to make flowing wells, and has always been the most popular machine used.
We make this same pattern of machine much heavier, called special size, for drilling 1200 feet. Prices on application.

W. A. HUFFMAN IMPLEMENT COMPANY,
State Agents, Ft. Worth, Tex.
Correspondence Solicited.

JOHNSON'S ANODYNE LINIMENT
FOR INTERNAL AND EXTERNAL USE.
THE MOST WONDERFUL FAMILY REMEDY EVER KNOWN.
Sufferers with Rheumatism, Gout, Sprains, Bruises, Burns, Scalds, Cuts, Swellings, Stomachic Distress, Headache, Toothache, Neuralgia, Sciatica, Lumbago, Pains in the Back, Neck, and Limbs, and all other kinds of Rheumatism, will find relief in this liniment. It is a powerful and highly concentrated preparation of the most valuable medicinal plants, and is a most reliable and safe remedy for all the above-mentioned ailments. It is sold in small bottles, and is always ready to be used. Price, 25 cents per bottle. Sold by all druggists and grocers.

PERCHERON HORSES!
500 PURE-BRED MARES & STALLIONS
Of the most popular families, all recorded with Extended Pedigrees in the Percheron Stud-Books of France and America, now on hand at Oaklawn Farm.
The Percheron is the only French breed possessing a Stud-Book in both France and America, whose eligibility to entry is based on authentic individual excellence (but not eligible to entry at half the price of pedigreed animals of equal appearance). 100-page Catalogue, illustrated with engravings, sent by mail free on application. Address, M. W. DUNHAM, 25 West Second St., St. Louis, Mo.

PARSONS' MAKE PILLS
NEW, RICH BLOOD.
These pills were a wonderful discovery. No others like them in the world. Will positively cure or relieve all manner of diseases. The information around each box is worth ten times the cost of a box of pills. Find out about them and you will always be thankful. One will do. Disinfectant, purifier, and blood purifier. Sold everywhere. Sent by mail for 25c, in stamps. Dr. J. S. JOHNSON & CO., 22 CHE. ST., BOSTON.

CHICKERING
And other first-class Pianos for sale by
C. H. EDWARDS,
No. 733 and 735 Main Street,
DALLAS, TEXAS.
Send for catalogue and prices before buying elsewhere.

S. E. WOOD, JAS. WOOD, E. A. WOOD, R. NASH
WOOD BROTHERS,
Commission Merchants,
For the sale of All Kinds of LIVE STOCK.
ADDRESS
Telephone No. 9248. CHICAGO.

G. W. Brooks,
Dealer in—
Carriages, Buggies, Spring
Wagons of every description.
Agents for E. M. Miller & Co's. fine Carriages and Buggies, Carriages and Wagons repaired. Repairing and painting Farmers' and Stockmen's buggies a specialty.
West Weatherford Street, Ft. Worth.

MADDOX & POWELL
Office MANSION HOUSE,
FORT WORTH, TEXAS.

VARIETY BULL BARN,
One Block East Mansion Hotel.
In addition to keeping on hand large and superior stock of blooded bulls and heifers, we make a specialty of fitting up in car load lots,
of every description, and for all purposes, from
MULES
MULE COLTS TO GROWN MULES.

We also furnish all kinds of Horse Stock, making a specialty of Fancy Broke riding or driving ponies. Mules for street cars and for coal purposes on hand at all times.
JAMES H. POLK, LUCIUS J. POLK.
Polk Stock Yards,
Situated south of Union Depot on Leuda street, between Missouri Pacific, Santa Fe and Fort Worth and New Orleans railroads, with side tracks front each.
We make a specialty of feeding all classes of stock for Shippers and traders. Blooded cattle can be loaded, and unloaded in our yards without coming in contact with others. Besides box and stalls, we have pens 6x10 feet, all under roof, with water in them. We keep constantly on hand for sale singly or by the car load
HEREFORD, POLLED ANGUS, GALLOWAY, SHORT HORN, JERSEY, HOLSTEIN CATTLE, SADDLE & HARNESS HORSES, STALLIONS, BROOD MARES, MULES & JACKS.
POLK BROS.
Fort Worth, Texas.

MITCHELL BRO'S.
In connection with their regular line of
LIVERY BUSINESS,
Will keep on hand for sale cow ponies, ranch mules in any number desired. Will contract horses, mules and ponies by the car-load (delivered) on the car. Reference Business men of Fort Worth.
JNO. S. ANDREWS & CO.
FORT WORTH, TEXAS.
Dealers in Real Estate & Live Stock,
610 MAIN STREET,
We have on our books 1,000,000 acres of fine grazing land located in Northern Texas in tracts from 5,000 acres to 100,000 acres good winter protection for stock, and an abundance pure living water. We do not offer to sell any but strictly first-class properties suitable for ranch purposes.
We have a desirable list of ranch properties stocked with cattle, horses or sheep, which we offer on reasonable terms and low prices.
We keep on hand at all seasons the year fat cow ponies, Hereford and Durham grade and thoroughbred bulls, and respectfully ask purchasers to inspect the same before buying in the Texas market.
We make a specialty of contracting for future delivery stock cattle and yearling, or two year old steers and heifers. We can furnish any number required from East, South, West or North Texas, either steers or heifers, or mixed lots, and we are now prepared to enter into contracts for spring delivery at very low prices.
WRITE TO OR SEE
JNO. S. ANDREWS & CO.,
Refer to all the Banks of Fort Worth, Texas.

MILLER & CO.,
Land Agents.
Ranches and Pastures, State and County School Lands and Railroad Lands for Sale or Lease.
Lands rendered and Taxes Paid. Lands for Sale in every county in Northwest Texas N. B.—We control the sale of railroad and school land along the line of the extension of the Fort Worth & DeWitt City railroad, in Wichita, Wilbarger, Hardeman, Cullbertson and Hall counties.
Box 85 Wichita Falls and Harrold Texas.

MARLIN MAGAZINE RIFLE
Best in the World
55 grains; 40 cal. 60 grains; 44 cal. 70 and 85 grains. The strongest shooting rifle made. Perfect accuracy guaranteed and the only absolutely safe rifle made. All styles, sizes, all weights. Prices reduced.
BAILLARD Gallery, Sporting and Target Rifle, world renowned. The standard for target shooting, hunting, and shooting galleries. All calibers from 22 to 45. Made in fourteen different styles, prices from \$12.00 to \$100.00. Write for catalogue. MARLIN FIRE ARMS CO., NEW HAVEN, CONN.

STERT'S GUN AND AMMUNITION STORE
Wholesale and Retail.
2 6 Main Street, Fort Worth, Texas.
Universally acknowledged to be the Lowest Priced House in Texas.
Pistol outfit 45 Cal. Blue and Rubber Colt's Pistol best Leather Belt and Scabbard, Price \$15.00
Winchester 44 Cal., Scabbard and Belt 19.00
Without Scabbard and Belt 16.50
Sole Agents for the Winchester Arms Co., in North Texas.

LIVE STOCK MARKETS.

Latest From Principal Centers.

CHICAGO MARKET.
UNION STOCK YARDS,
CHICAGO, ILL., June 17, 1886.
Special to Texas Live Stock Journal:

Moderate receipts of Texans to-day but offerings of low grade stock generally excessive. Prices 15 to 25 cents lower than best prices last week. Sales were 27 cows, 663 pounds \$2.25 to \$2.15; grassers 900 pounds, \$3.00; 81 grassers 897 pounds, \$3.00; 23 grassers 844 pounds, \$3.15; 15 grassers 853, \$3.15; 8 grassers 734 pounds, 3.15; 19 mixed 872 pounds, \$3.25; 6 mixed 941 pounds \$3.35; 363 Indians, 1056 pounds, \$4.75; 23 grassers 823 pounds, \$3.20; 44 grassers 869 pounds, \$3.30; 23 grassers 924 pounds, \$3.30; 16 grassers 909 pounds, \$3.55; 47 grassers 965 pounds, \$3.75. Texas sheep firm at \$2.25 to 3.40. There is danger of a rush when double deck are used and sheep shippers should be careful not to ship their sheep by the train load.
U. S. YARDS, CHICAGO, ILL., June 18.
Special to TEXAS LIVE STOCK JOURNAL.
General receipts of cattle fairly large. Native cattle market dull and weak. Texans in light supply; demand fair and values steady. Sales to-day were 51 Indians 682 lbs., \$2.40; 52 Indians 676 lbs., \$2.40; 29 Indian 680 lbs., \$2.40; 23 Texan cows 686 lbs., \$2.65; 49 Texan cows 785 lbs., \$3.00; 63 cornfed Texans 958, \$4.00; 123 cornfed Texans 949 lbs., \$4.05; 91 Indian cornfed 1029 lb., \$4.50; 93 Indian cornfed 1010 lbs., \$4.50; 136 Indian cornfed 1022 lbs., \$4.50.

ST. LOUIS MARKET.

NATIONAL STOCK YARDS,
EAST ST. LOUIS, June 17, 1886.
Special to Texas Live Stock Journal.
The run of grass and cornfed Texas cattle very large, the past three days and to-day some one hundred and twenty-five cars in the pens. Quality not very good, the bulk consisting of thin steers; however, transfers are quite fair. Prices off ten cents to-day and twenty yesterday. Decent cattle bring fair prices. Here are a few of to-day's sales: Cornfed Texas of 1,176 lbs at \$4.75; 1,106 lbs at \$4.65; 1,045 lbs at \$4.40; 1,050 lbs at \$4.20; 1,020 lbs at \$3.80; 858 lbs at \$3.75; 922 lbs at \$3.70; 980 lbs at \$3.65; grass Texas of 863 lbs at \$3.50; 840 lbs at \$3.40; 810 lbs at \$3; 880 lbs at \$2.80; 740 lbs at \$2.40. Texas bulls of 900 lbs at \$1.80; cows of 780 lbs at \$2.20; sealawags of 770 at 2 cents.
Hogs slow and weak at former quotations.
Texas sheep in fair supply and quality common. To-day a lot of Concho county sheep 754 of 73 lbs average, sold at \$2.12 per hundred lbs and 975 of 76 lbs sold at \$1.90 per hundred lbs. The sheep were thin and were bought by an Illinois feeder.

ST. LOUIS, MO., June 18, 1886.

Special to TEXAS LIVE STOCK JOURNAL:
The run of Texas cattle to-day small; some forty car loads. The quality not very good. Prices are a little stronger on good stock in car lots and larger. Texas steers of 880 lbs sold at \$3.70; 980 lbs at \$3.35; 886 lbs at \$3.30; 892 lbs at \$3.15; 660-lb cows at \$2.75; 640 lbs at \$2.40; 620 lbs at \$2.20.
Hogs steady.
Texas sheep a little better, offerings small: 42 head of 72 lbs sold for \$2.60; 468 head of 78 lbs at \$2.75. The Concho county sheep sold yesterday. Fifteen hundred sheep arrived in seven double deck cars and the transportation and other charges was fifty cents per head.

KANSAS CITY MARKET.

KANSAS CITY, MO., June 17, 1886.
Special to Texas Live Stock Journal.
Receipts of live stock of all description for the past two days, 31,944 with market a shade duller upon all grades of cattle. Yesterday's sales embraced 54 cornfed Texas half breeds of 1189 lbs, \$4.80; 50 Colorado cornfed of 1327 lbs, \$4.80. One lot of sheep average weight 78 lbs sold at \$3.25 and 160 Texas cornfed steers were sold to-day by McCoy & Underwood, average weight 1311 lbs at \$5.00, this class of cattle always sell at the top of the market.
CHICAGO MARKET LETTER.
Stampede Over—Opposed to Taxing Oleo—The Sheep Business—Indications.
UNION STOCK YARDS, CHICAGO, ILL., June 14, '86.
[Regular Correspondence TEXAS LIVE STOCK JOURNAL.]
The arrivals of cattle are only moderately large. The stampede of meatless cattle frames from the southwest has been checked; better cattle are coming and they are bringing better

prices. The fact is that the only salvation for southwestern cattlemen is to hold back the fattening cattle and send to market cattle good enough to go in to the dressed beef ranks. There will always be enough canning stock even if every body tries to send in dressed beef and shipping grades. The general cattle market has lately been a trifle stronger under the influence of lighter receipts. People just now seem to be coming to the conclusion that there won't be any more good cattle than the demand calls for. The prospects are that northwestern grass cattle will be somewhat behind this season.
The Chicago Live Stock Exchange, the board of trade and business men generally are opposed to having a tax levied upon buttermilk. The principle is wrong. It will not prevent people from eating it unknowingly, and that is the great object to be achieved.
The receipts of hogs on the opening day of this week were about 43,000, being the highest receipts ever known in June. The demand on packing account was never so strong and healthy as it is this year.
The hogs throughout the country are now perfectly healthy. The ravages of disease last winter seem to have cleared out all hogs that were liable to disease. At any rate there is now not a word about disease and the hogs are making good use of the large supply of corn in the country. Buyers want hogs with more lean and less fat than it is possible to get. The fact is that fat pork is gradually but surely going out of fashion.
Saturday there was a meeting, here of the following men to consider rates on sheep, double decks, etc.: Kansas City was represented by A. J. McCoy, A. E. Burnside and R. P. Woodbury; St. Louis by E. B. Overstreet and W. L. Tamblin, and Chicago by Elmer Washburn, W. T. Keenan and J. H. Campbell. Representatives of the railroads were Horace Tucker, of the Illinois Central and Vandavia lines, H. H. Courtwright, of the Alton, Paul Morton, of the C., B. & Q., and C. L. Wellington, of the Wabash. Col. I. H. Knox, for the National Stock Yards and the Hon. Irus Coy for the Union Stock Yards.

The conference was not entirely satisfactory, but an equitable adjustment will be made before the matter is allowed to subside. It is understood that the main question is now between the railroads. The Mississippi river roads are willing to make a rate of \$17 for single decks, being a reduction of \$5.50 per car. They do that in preference to hauling double-decks. At Hannibal and St. Louis they will load ten double-decks in fifteen single decks. This they are willing to do providing the Missouri Pacific roads will reduce their proposed rates from \$100 to \$98 per car from Texas points. Thus it will be seen there is only \$2 per car difference between the railroads. As soon as this is settled then Texas sheepmen can rejoice and ship sheep without giving them to the railroads for the hauling. A reduction in yardage and other charges is likely to follow the settlement of this matter.

One thing is certain sheep men will have better rates, and when they get them they do not want to fail to consign direct to the greatest live stock market in the world.
Really good to choice fat cattle are scarce. A good many so called good cattle are coming, but ripe, smooth cornfed steers are not to be had in sufficiently large numbers to fully supply the demand. Just now choice cornfed natives are selling a little higher than one year ago, while all kinds of grassers and low grades are anywhere from 15 to 50 cents lower. All of the indications point to low prices for good stock and good rates for common stock.
HALLIWELL.

The Standard Cattle company of this city, has made a contract with Dr. Willis, of Des Moines, to spray 2,000 heifers on their Belle Fourche and Little Powder ranges, and will possibly have some sprayed at the home ranch on the Chug. The doctor is now at work for the Continental company in Texas, but will commence for the Standard on July 1st.—[N. W. Live Stock Journal.]
The long and anxiously looked for rain arrived last Wednesday evening, and it has rained nearly every day since, much to the gratification of the stockmen and farmers. Everyone is in good humor and the prospects are all that one could wish, and leaves county has redeemed herself and her stock raisers are making their preparations for branding, which will shortly commence.—[Pecos Valley Star.]

A. H. Leith, of Chihuahua, but formerly a resident of this county and partner in the firm of Frost & Leith, was here early in the week and bought from Jefferson, Miller & Ellis and Jefferson & Erskine, three hundred heifer yearlings and two hundred steer yearlings at \$9, all round, delivered at the railroad. Last year yearlings brought \$11 and \$12 delivered here.—[San Angelo Enterprise.]

SALE OR EXCHANGE

Advertising in "For Sale or Exchange" columns will be inserted at 50c per line for each subsequent insertion. Seven words make a line. No advertisement inserted for less than \$2 for one time or \$5 for one month. Discounts on advertising to run longer than one month according to number of lines and time to run.

MONEY TO LOAN

On Farm and Ranch Property Equitable Mortgage Co. DALLAS, TEXAS.

TO SWAP OR SELL

I have two Confederate certificates for 1200 acres each; dated October 4th and 31st, 1862, issued to individuals and not to heirs; also 20 lots in an addition to Fort Worth...

STOCK RANGES FOR SALE

We have a large number of ranches, with stock for sale, and with and without stock for sale. We also have a number of ranches for sale for stock at fair figures.

FOR SALE

The finest little ranch in Texas, situated in Chambers county, on Calveston Bay, well set with grass, plenty of timber and water...

NEW MEXICO RANCH

We have for sale on liberal terms, a first class ranch property in New Mexico, containing about 100,000 acres of land.

LEASE OF SCHOOL LANDS

In accordance with an order made by the commissioners' court of Williamson county, Texas, on the 10th day of May, 1886...

WANTED

Give under my hand and seal of office, this the 14th day of June, A. D. 1886.

STOCKMEN

Don't you want 10,000 acres of first class range in South Florida for \$7,000? If so send your name. Address: ROYCE AGENCY...

TO CATTLEMEN & CAPITALISTS

We have just had placed in our hands for sale, a magnificent cattle range in New Mexico. All the water is held in fee simple...

STOCK CATTLE WANTED

A client of ours owns the water and controls range in New Mexico to abundance of the best grazing range in the world...

SALE OF ANGUS AND GALLOWAY CATTLE

25 Angus and Galloway cows, heifers, and young bulls and 2 car loads of yearling grade Angus bulls will be offered for public sale on Thursday, June 24th at Kansas City...

Webb, Campbell & Hill

Webb & Webb and Campbell & Hill, ALBANY, Shackelford county, TEXAS. Land and Live Stock Agents.

Highland Hereford Farm

Our young Texas cows and grade heifers all with calf by our best Hereford bulls, also a number of grade bull calves and our entire crop of this year's pure bred bull calves.

C. O. Whitman

Terrell, Texas. Fifteen Hamiltonian stallions from New York mares, sired by Dictator Jr. He Dictator sires Jay-Eye-See and Phalaris. These stallions are one to three years old and raised in Parker county.

Wanted Cattle or Horse

Having a larger number of Sheep than we care to run in our pasture, we will exchange on a strictly cash basis 5000 head (head) of our cattle or horse stock. Most of the wethers are now marketable. Address: Station 10, S. A. S. SPRING LAND & LIVE STOCK ASSOCIATION, Ft. McKavett, Tex.

Notice to Cattle Buyers

I will sell and deliver, wherever purchasers may want them delivered, 500 head of 1 and 2 year old steers and heifers, and any number of stock cattle to be graded at my place. W. S. Beard, Weatherford, Tex.

Ranch for Sale

In Live Oak county, on the Frio river, containing about 15,000 acres under fence. Good building, wells, tanks, etc. Also EIGHT HUNDRED HEAD OF CATTLE now on the ranch. Cattle will be sold separately and ranch leased to purchaser if desired. Address: W. H. J. S. Lockwood & Raymond, San Antonio, Texas.

SALE OR EXCHANGE

RANCH AND CATTLE FOR SALE. We are authorized to offer for a limited time one of the best cattle ranches in Arizona, located in the southern part of the territory...

FOR SALE

2,000,000 acres of first quality grass land well watered in Mexico, at \$2 per acre. 3,000,000 acres in Florida and Texas, well grassed and watered. \$1.25 per acre.

Live Stock & Lands

A. F. TRUITT & CO., LAND AND LIVE STOCK BROKERS, FORT WORTH, TEXAS.

Southmayd Stock Farm

Breeders of and dealers in thoroughbred and grade Hereford and Shorthorn cattle. Post-office Burlington, Kansas.

FINCH, LORD & NELSON

Breeders of and dealers in thoroughbred and grade Hereford and Shorthorn cattle. Post-office Burlington, Kansas.

Jersey Red Hogs

Angora Goats, Shepherd Dogs, Plymouth Rock fowls, and White Holland turkeys, bred and for sale by A. H. Peacock, Fort Worth, Texas.

ANGORA GOATS

Stock for sale. The finest in the West, high on the horns, the best stock of California, and guaranteed.

STRAYED OR STOLEN

WEATHERFORD, TEXAS. The horse hunter of seven years experience. Refers to Judge Hood, the Sheriff and county clerk. He will find lost, strayed or stolen horses.

STRAYED OR STOLEN

From my stables in Brownwood, Texas, on February 12th, 1886, two sorrel horses about 15 1/2 months old, one black and one bay, on left hind, the other branded H counter-branded on left shoulder, also B on neck.

Important to Stockmen

On July 1st and thereafter the TEXAS LIVE STOCK JOURNAL will publish a daily market report edition, giving the sales of Texas cattle, hogs and sheep at the principal market centers on the same day. The price is \$5.00 per annum. Send in your subscription and get the first issue.

Hereford Stock Farm

Hereford Calves. for sale, sired by PURE BRED HEREFORD BULLS.

GRADE HEREFORD AND DURHAM AND SELECTED TEXAS COWS

Write to W. S. BEARD, Henrietta, Texas.

Hereford Ranch, Wise County, Texas

For sale, Texas raised grade bulls, out of Shorthorn and Hereford grade cows, by imported Hereford bulls. E. M. HODGES, Decatur, Texas; ranch on line of Fort Worth and Denver road.

G. W. PARSONS

Feed and Dealer in Short Horn Cattle. Bulls for Sale. P. O. Grand Prairie, Dallas Co., Tex.

STOCK BREEDERS

Rainbow Live Stock Association. DR. J. V. BEAN, Manager, HOWARD - KANSAS.

HEREFORD CATTLE

Importers and breeders of choicest strains. Supplying ranches with thoroughbred or choice grades a specialty. Also, on hand a number of fine draft or coach stallions, or standard trotting horses, either sex, apply to DR. BEAN.

BACON & CAMPBELL

Breeders of Holstein Cattle and Plymouth Rock Fowls "LOCUST RETREAT" FARM, Manchester, St. Louis county, Missouri.

Thoroughbred and Grade Herefords

of HALL CO. TEX. and BURLINGAME, KAN.

FINCH, LORD & NELSON

Breeders of and dealers in thoroughbred and grade Hereford and Shorthorn cattle. Post-office Burlington, Kansas.

Southmayd Stock Farm

Breeders of and dealers in thoroughbred and grade Hereford and Shorthorn cattle. Post-office Burlington, Kansas.

Jersey Red Hogs

Angora Goats, Shepherd Dogs, Plymouth Rock fowls, and White Holland turkeys, bred and for sale by A. H. Peacock, Fort Worth, Texas.

ANGORA GOATS

Stock for sale. The finest in the West, high on the horns, the best stock of California, and guaranteed.

STRAYED OR STOLEN

WEATHERFORD, TEXAS. The horse hunter of seven years experience. Refers to Judge Hood, the Sheriff and county clerk. He will find lost, strayed or stolen horses.

STRAYED OR STOLEN

From my stables in Brownwood, Texas, on February 12th, 1886, two sorrel horses about 15 1/2 months old, one black and one bay, on left hind, the other branded H counter-branded on left shoulder, also B on neck.

Important to Stockmen

On July 1st and thereafter the TEXAS LIVE STOCK JOURNAL will publish a daily market report edition, giving the sales of Texas cattle, hogs and sheep at the principal market centers on the same day. The price is \$5.00 per annum. Send in your subscription and get the first issue.

Hereford Stock Farm

Hereford Calves. for sale, sired by PURE BRED HEREFORD BULLS.

GRADE HEREFORD AND DURHAM AND SELECTED TEXAS COWS

Write to W. S. BEARD, Henrietta, Texas.

Hereford Ranch, Wise County, Texas

For sale, Texas raised grade bulls, out of Shorthorn and Hereford grade cows, by imported Hereford bulls. E. M. HODGES, Decatur, Texas; ranch on line of Fort Worth and Denver road.

G. W. PARSONS

Feed and Dealer in Short Horn Cattle. Bulls for Sale. P. O. Grand Prairie, Dallas Co., Tex.

SLADE IN MONTANA

Public Explanation—On Tongue River—The Sun Dance That Makes a Brace.

(Special Correspondence TEXAS LIVE STOCK JOURNAL)

The public will want the long deep silence that has characterized my connection with your paper explained, and you may say that the difference of opinion heretofore existing between myself and the management of the TEXAS LIVE STOCK JOURNAL concerning the market value of the product of my brain has been the real cause of my heavy silence, but that difference having been happily adjusted by my writing me that you were willing to pay sixty cents each time for my contributions that I will henceforth make your paper radiant with wisdom. I would not have the great live stock public think I am sordid or grasping for a not. I confess, however, to have been able to change socks once a week and to wear my hair cut by a barber instead of having it sawed off by my wife who has not learned to be so kind and so considerate as to immediately foregoing is a mean low down pun, and this I can not do when compelled to market my manuscript at three cents a pound or six-pits a yard. Hence my silence—and the want of interest the people take in the TEXAS LIVE STOCK JOURNAL.

This is the blessed Sabbath day, and contrary to my usual custom of nesting close up in the amen corner of a church, I am away up on Tongue river surrounded by Mrs. Slade, a whole lot of blue snappers, a big iron basket. It's a kind of joint pie-nic and piscatorial excursion. I have just been angling for the unsuspecting catfish, I had plenty of bites—bites on every part of my body by every kind of bugs known to natural history. I have had some fun and excitement, though; my eldest boy fell in the river and I had to spend half an hour fishing him out and emptying the water out of him, to say nothing of having to use more than half of the medicine brought along to take care of snake bites and induce him to remain in this troublesome world. Then my little girl swallowed a kind of three-cornered bug with wings and I enjoyed myself probing for it awhile, besides wasting some more of the snake bite medicine. Afterwards I stood on my tall-fish while my angling spouse scraped a lemon custard off my new spring clothing and scolded me for carelessness in sitting down in bad places. My next recreation was dragging the baby out of an ant bed upon which it had been peacefully sleeping, and which we have had good deal of fun. Not enough to make one wild with delight, considering that we had to use the rest of the snake antidote to allay the sufferings of the ant-eaten baby. It has not been a very good day for fishing and the largest one I caught weighed only 1 1/2 pounds. Each of the nine others weighed a few pounds less than this.

The snow has gone from our hills, the ice has broken up in the rivers, the grass has come and the season of pleasure has fairly opened. The first grand society event of the season is now in progress some seventy-five miles further up the river, but pressing business engagements prevents me from gratifying the participants by grace the occasion with my presence. Yes, a few miles further up the river, on which I am camped the festive Sioux, the Urbane Cheyenne and the voluble Arapahoe are mixing in the giddy whirl of society and having a way-up time, and the river here is quite muddy. Whether this is caused by the rise in the river caused by snow melting on the mountains, or whether a few bucks have fallen in the river and taken an unwilling bath I am not prepared to say. The water is hardly muddy enough to indicate that any squaws had fallen in, and it don't smell bad enough either.

But as I said before all is revelry up the river where several hundred Indians are mixing in the mazy intricacies of the Sun dance, the bontosest and most superbly recherche society event known to the circles. The figures of this dance are excruciatingly sublime. For instance, a buck hangs himself up by a hook stuck through the flesh in his breast and wriggles around until the flesh gives way and he falls to the ground—and he mustn't even say "ouch" else he is not fit to go on the war-path and steal horses. And the squaws wouldn't think of getting mashed on his shape; or the gay reveler attaches a heavy weight to himself by means of a raw hide rope and a hook piercing the flesh and waltzes around until the hook tears out, all this time he must appear to be enjoying himself immensely. Prior to these fascinating pleasures the participants must have gone without food three days. The costumes worn on these state occasions are of the most elaborate. I have seen a buck mingle in the intoxicating whirl of the dance dressed only in a pair of earrings and a coat of dirt, and have been present when a squaw sashed into the mazy dance clothed in her own innocence. Yet it will not be the truth to say that the Indian is devoid of pride. Give a buck a few brass rings to put on his arms and a string of sleigh-bells to jingle from his legs and he is vainer than a country boy with oil on his hair, or a dude when he has first learned to part his hair in the middle.

Speaking of Montana stock interests I may say that the roundups are in full blast and that the calf crop is larger than ever known before, and that this fact is solely due to the other fact that Montana stockmen last year put plenty of good bulls on the range.

The country has been very dry, but not dry enough to interfere with work very seriously—at least not dry enough to stop work. The grass however is not so good as it was last year, and Montana buyers will not get to market so early and probably not so fat as last year. We will ship a great many more this year however. Losses in this country last winter and this spring have not been heavy enough to count for anything, but we do not know how our farmer will be blessed with bountiful crops of the earth, or grasshoppers ravage the land and then have a vigorous winter such as sometimes comes up here, there is no question but losses would be serious.

Slade

A party who was at the river all day Monday, took the trouble to count the cattle that floated by. There were just two and no more. There were not quite so many thousands bogged been as have reported, else the present high water would be covered with their carcasses.—Pecos Valley Star.

And now that the show season is about to begin, the subject deserves consideration. In the case of cattle, grooming need not be commenced until within three months of the date of the show. The cattle, it is presumed, have for some time previous been well fed, and kept in clean lairs. In this condition to begin with, three months' grooming should put them in form.

Cattle, it is true, come into the show-yard with all kinds of coats, some with long hair, others short, and worst of all some with the hair partly off. But half the game in showing cattle is in having them good in their coats, and stockowners who fail to handle their animals so as to make them look their very best, need not expect to win against those who do. When the show happens to be about midsummer, the spring shedding of the coat will save the trouble of having to take it off by other means, but when the exhibitions take place late or early in the year, then we adopt measures to cause the hair to shed and the new hair to be again well up, and shining like the new spring coat, even in midwinter.

Provide a good warm rug, the same as are used for horse clothing, and about three months previous to the show put one on each of the animals to be on all the time, but as much as possible, may be taken off during the night, or when the cattle go to pasture, or are turned out into the yards for exercise, when they are apt to get torn. If the blankets are kept on about twelve or fourteen hours daily, they will soon do their work in taking the old hair off.

A good washing with carbolic soap and tepid water should be given at the commencement of the sheeting period. This will help to lessen the dandruff in the hide. Once a month will be often enough to wash if the bedding be well looked after. There is a great difference in the skins of cattle for being easily cleaned. Some are rough, and so full of dandruff that it needs special means to get them into good condition. An extra washing, however, and a heavier blanket will help to smooth them down, and with a little oil rubbed in, will soon raise all the scurf clean off the skin. Until the scurf be thoroughly got rid of the coat will never shine. It takes rubbing and brushing, brushing and rubbing, day after day, and a great amount of elbow grease to put on the shine. Cattle have far finer coats and take on a brighter polish than horses; yet we generally see horses brighter-coated than cattle. The reason is, the cattle do not get the same amount of rubbing.

A dandy brush, a soft brush, and a chamoin skin are the tools required for putting on the polish. The skin becomes soft under this treatment, and a currycomb should never be used but for the purpose of combing down the hair when necessary, as the comb, unless very lightly applied, is certain to scratch and irritate the skin. In rubbing down with the cloth, it must be done quickly. The friction raises a certain amount of heat on the surface of the thing polished, and this heat is the main agent in putting on the shine. It takes an enormous amount of rubbing to make the skins of cattle shine, but nothing else will do it.

For putting on the final touch, no brush or cloth can equal the bare hand. The heat of the hand is more effective than that produced by friction with a brush or cloth, and as a man can rub considerably quicker without either of these appliances, the bare palms make the best polishing paste that can be used. Hand rubbing will also take off the old hair quicker than either comb or brush. It is not easy to say when grooming is perfect, but when the skin will no longer soil a white kid glove with either dust or hair, there is not too much to complain of. This condition is not, however, reached without many days of careful sheeting and rubbing. Some fancy they can, with one washing and a few times groomed, do all that can be done; but it is a mistake. There is the greatest difference imaginable between the one that has been prepared by months of labor, and the other hastily got up. The one article is genuine, and will last; the other will fade between the stall and the ring.

Cheshire Swine

Kansas City Live Stock Record. The Poland-China, Chester White, Duroc-Jersey, Victoria and Cheshire swine are of American origin. Each are distinct breeds, originating in different states, and like all breeds that ever existed were first formed by a combination, and since bred pure, or else you cannot strictly class them with any breed.

The Cheshire originated in Jefferson county, New York, Mr. A. C. Clark being the most prominent breeder and exhibitor of the same at the New York State fair in 1859, and in 1870 they won the pork packers prize of \$500 at the St. Louis fair. They are pure white, having erect ears like the Berkshire, with a longer snout, and are not so square, blocky built, the Cheshire being the larger. The flesh is claimed to be superior, and yields an extra amount of mess pork in proportion to the amount of offal. They mature early, and as they have strong digestive powers, have been made to weigh from 400 to 500 pounds at one year of age.

A party who was at the river all day Monday, took the trouble to count the cattle that floated by. There were just two and no more. There were not quite so many thousands bogged been as have reported, else the present high water would be covered with their carcasses.—Pecos Valley Star.

BULL'S SARSAPARILLA

THE LIVER. Secretes the bile and acts like a filter to cleanse impurities of the blood. Irregularity in its action or suspensions of its functions, bile poisons the blood, causing jaundice, yellow complexion, weak eyes, bilious diarrhoea, a languid, weary feeling, and many other distressing symptoms generally termed liver troubles. These are cleared at once by the use of BULL'S SARSAPARILLA the great blood resolvent.

THE BLOOD. Are the great secretory organs of the body. Into and through the kidneys flow the waste fluids containing poisonous matter taken from the system. If the kidneys do not act properly this matter is retained and poisons the blood, causing headache, weakness, pain in the small of back and loins, flushes of heat, chills, and disordered stomach and bowels. BULL'S SARSAPARILLA acts as a diuretic on the kidneys and bowels, and directly on the blood as well, causing the great excretion of the body to resume their natural functions, and health is at once restored.

THE SCROFULA. Is a peculiar morbid condition of the system, caused directly by impurities in the blood or the lack of sufficient nourishment furnished to the system through the blood, usually affecting the glands, often resulting in swellings, enlarged joints, abscesses, sores of eyes, strictly eruptions on the face or neck, Erysipelas is akin to it and is often mistaken for Scrofula as it comes from the same cause. BULL'S SARSAPARILLA by purifying the blood and toning up the system forces the impurities from the blood and cleanses the system through the regular channels.

Dr. J. M. Moore, Louisville, Ky. Dr. J. M. Moore, Louisville, Ky. Dr. J. M. Moore, Louisville, Ky. Dr. J. M. Moore, Louisville, Ky. Dr. J. M. Moore, Louisville, Ky.

FORT WORTH CHINA COMPANY

SILVER-PLATED WARE, FRENCH, CHINA, DINNER AND TEA SETS, Corner Houston and Third Streets.

CHARLES SCHEUBER, CHAS. SCHEUBER & CO., WHOLESALE LIQUORS AND CIGARS.

Agents for Champagne, Schlitz and Anthony & Kuhn's Bottled Beer, and Sole Agents for "Waukesha (Silurian) Water."

W. F. LAKE, WHOLESALE DEALER IN HARDWARE, STOVES AND TINWARE, QUEENSWARE, CROCKERY AND GLASSWARE.

G. J. MORTIMER & COMPANY, LAND AND GENERAL AGENTS.

City and country property bought, sold and rented. Handle Live Stock on Commission. Refers by permission to B. C. Evans Co., Taylor & Barr, Hon. H. Brookes mayor, J. P. Smith ex-mayor, Houston and Dallas.

Fort Worth, Texas. Correspondence Solicited.

MARTIN CASEY, Wholesale Dealers in Whiskies, Wines, all kinds of Liquors and Cigars.

Importers of Ale, Porter and Apollinaris Water, Sole agents for Schlitz's Celebrated Bottled Beer, bottled at Brewery, Milwaukee, and Lempi's Bottled and Keg Beer.

Fort Worth, - - - Texas. R. L. GREER & BROS., BREEDERS OF THOROUGHBRED AND GRADE Galloway, Angus, Shorthorn and Hereford Cattle.

Aullville, Lafayette County, Mo. SPECIALTY MADE OF CAR LOTS. On Sedalia and Lexington Branch, Missouri Pacific Railway.

TEACH ANY ONE CAN SCHOOL

Become so thoroughly posted in three weeks' reviewing with the COMMON SCHOOL QUESTION BOOK.

As to successfully pass the most difficult and technical examinations for teachers' certificates by its aid thousands of young people can now obtain and improve their education. It is the most popular educational work published. Useful to every teacher, indispensable to school-teachers.

CERTIFICATES CAN BE OBTAINED. A better review can be made from this book in one week than from Text Books in three months. In preparing for examinations it has no equal.

PARLIAMENTARY RULES ARE WORTH THE PRICE. It does not deal in proofs or arguments. Questions are stated, and short and comprehensive answers are given. Each branch is reviewed in a separate book, and the books are so arranged that a teacher can review any branch taught in his school, without recourse to the tedious process of examining the text books from beginning to end. It is a complete and practical review of the entire course of study in the common schools. It is the best and most reliable review in the market. It is the only one that has been so long and so extensively used. It is the only one that has been so long and so extensively used.

3500 QUESTIONS ANSWERS. Each branch reviewed in a separate book, and the books are so arranged that a teacher can review any branch taught in his school, without recourse to the tedious process of examining the text books from beginning to end. It is a complete and practical review of the entire course of study in the common schools. It is the best and most reliable review in the market. It is the only one that has been so long and so extensively used.

Extracts from Letters to A. E. Craig, representing thousands of recommendations. Each branch reviewed in a separate book, and the books are so arranged that a teacher can review any branch taught in his school, without recourse to the tedious process of examining the text books from beginning to end. It is a complete and practical review of the entire course of study in the common schools. It is the best and most reliable review in the market. It is the only one that has been so long and so extensively used.

Fort Worth Printing House, PRINTERS, STATIONERS, BLANK BOOK MANUFACTURERS, 312 Houston Street, FORT WORTH, TEXAS.

Orders for ranch stationery promptly attended to on satisfaction guaranteed. Address J. K. Miller, Manager.

TOWER'S SLICKER

The Best Waterproof Coat. The First Brand Slicker was introduced, and will keep you dry in the heaviest storm. The new FISH BRAND Slicker is a perfect coat, and covers the entire saddle. Warranted waterproof. None put out without the "Fish Brand" trade-mark. A. J. Tower, Boston, Mass.

G. H. DASHWOOD, DASHWOOD & OESCH, DRUGGISTS, Under Burt & Field's Office, 314 Main Street, Fort Worth, OPEN ALL NIGHT.

Important to Stockmen. On July 1st and thereafter the TEXAS LIVE STOCK JOURNAL will publish a daily market report edition, giving the sales of Texas cattle, hogs and sheep at the principal market centers on the same day. The price is \$5.00 per annum. Send in your subscription and get the first issue.

KANSAS CITY LETTER.

Strong Demand for Fat Cattle—Receipts Increasing—Few Texas—The First California Shipment.

BRANCH OFFICE TEXAS LIVE STOCK JOURNAL: KANSAS CITY, MO. June 15, 1886. (Regular Correspondence TEXAS LIVE STOCK JOURNAL.)

There is yet a good demand for fat cattle at this market, and the prices are from 10 to 15 cents better than last week at this time. The receipts of live stock for the past week, while not in excess of the demand, is above what they were last week. The outlook for an increasing demand at this growing market is most hopeful, and the sales made as a rule satisfactory to the shippers, though shippers cannot at all times be satisfied with sales, it matters not how good the prices are upon the grades of stock sold. In many instances the shrinkage on live stock while in transit is much greater than could have been expected under ordinary circumstances, and again the market for some unlooked-for cause may be a shade lower than upon the day preceding a given sale. But such fluctuations are without the fault of the market, nor of those who make the sales. Last Saturday 201 Texas half-breed cornfeds of 1,350 lbs sold for \$5. The sales of native shippers yesterday ranged from \$4.65 to 5.

CALIFORNIA CATTLE. The arrival of twenty-three car loads of California grass fed cattle in the city yesterday, marked the opening of a heretofore undeveloped branch of the cattle trade, one which bids fair to develop to large proportions. The cattle were consigned to the Fish & Keck company, and were the first that have ever been shipped this far East. Notwithstanding the long and tedious journey they appeared in good condition and above the average in weight. They sold for \$4.25 per hundred and were shipped by G. D. Bliss, of Tulare county, Cal. The cattle from this state are high grade, and it is believed this experiment of shipping them to Kansas City will prove a success.

The Fish & Keck company, to whom the cattle were consigned, are prominent among the many enterprising firms of Kansas City who advertise in the TEXAS LIVE STOCK JOURNAL, and fully merit that success with which their efforts are being rewarded. Mr. G. D. Bliss, the California shipper, resides in San Francisco, Cal., and is the owner of three ranches, two of which are in California and the other in Nevada. He has heretofore shipped to San Francisco, but since trying this market expresses himself well pleased with it.

Sheep receipts for the past week have been 10 per cent lighter than for the week previous with prices steady; fair to good muttons selling from \$2.80 to 3.25. The demand for Texas horses continues good, and prices are steady at our last quotations. Geo. Shipley, of San Antonio, is here with 5 cars of Texas horses, consigned to F. E. Short & Co. of the stock yards.

J. H. Neff has purchased from Geo. E. Marsh & Co., the Daily Live Stock Record and Daily Telegram, and will continue its publication at the old stand near the stock yards.

In a difficulty which took place yesterday between Dr. Munford, of the "Times," and W. D. Carlie, of this city, Mr. John E. Hale, a most popular man at the stock exchange was severely and perhaps fatally wounded in the head, while sitting near Dr. Munford in the cable cars.

The TEXAS LIVE STOCK JOURNAL is becoming more popular as it becomes better known. J. W. C.

The Pig. Kansas City Live Stock Record. There were about 10,000 less hogs sent to Chicago for the year ending last May, than for the preceding year, and the number killed by packers decreased in the same time, 159,000. This cannot mean a lower price for pork, but the opposite. The favorite hog for market weighs about 250 pounds. With our improved, early maturing hogs, it won't take long to raise a pig of that weight, and only pigs are profitably sold now-a-days. Hogs are kept for breeders. Another good outlook is that the poor French workmen are petitioning their government to permit the importation of American pork. They must have cheap meat, and the embargo must soon be lifted, and pork will advance.

Consumption can be Cured. Not by any secret remedy, but by proper, healthful exercise and the judicious use of Scott's Emulsion of Cod Liver Oil and Hypophosphites, containing the healing and strength-giving virtues of these two valuable specifics in their fullest form. Prescribed universally by physicians. Take no other.

Attention is called to the advertisement of Dr. H. J. Whittier of Kansas City, which appears in this issue of the JOURNAL. He makes a specialty of skin and blood diseases.

Itch, Mange and scratches of every kind cured in 30 minutes by Woolford's Sanitary Lotion. This never fails. Sold by Fred L. King, druggist, Fort Worth.

IRWIN, ALLEN & COMPANY. Kansas City Stock Yards, Kansas City, Mo. (Office: Rooms Nos. 1 and 2 Live Stock Exchange building.) LIVE STOCK COMMISSION MERCHANTS.

REFERENCES—Bankers and business men of Kansas City, Mo., and stock men generally. All sales cash delivery. Remittance made promptly. Make a specialty of handling Western cattle. Reliable connection in all Eastern markets. Correspondence and consignments solicited. J. A. Ligon, Soliciting Agent. J. T. Megredy, Book-keeper.

Kansas City Stock Yards. KANSAS CITY. Are by far the most commodious and best appointed yards in the Missouri Valley, with ample capacity for feeding, weighing and shipping Cattle, Hogs, Sheep, Horses and Mules. No yards are better watered, and in none is there a better system of drainage.

YEAR	Cattle	Hogs	Sheep	Horses & Mules	Cars
1871	130827	41099	4527	809	6923
1872	146289	46711	2948	2948	13110
1873	227089	221815	5975	4392	14603
1874	207080	212532	8855	3679	13370
1875	174754	233846	2927	9065	9463
1876	183378	153777	59945	5333	11892
1877	215788	192945	42190	4279	13068
1878	123789	42177	37083	10736	18783
1879	211415	588698	61884	15829	39702
1880	144709	67747	59911	10364	22704
1881	258593	1014304	79924	12599	26989
1882	439671	963029	90724	11716	34969
1883	390780	1379491	119925	12898	45470
1884	533326	1723596	237954	27163	55227
1885	506627	2358718	221801	24506	62313
TOTAL	4224233	10122001	137063	160150	370105

HIGHER PRICES ARE REALIZED Here than in the markets east. All the roads running into Kansas City have direct connection with the yards, which thus afford the best accommodations for stock coming from the great grazing grounds of Texas, Colorado, New Mexico and Kansas, and also for stock destined for Eastern markets. Parties wishing to improve their stock will find blooded stock here at all times. There are numerous public sales during the spring and autumn months of each year, of the finest blooded stock from the choicest herds in this country and Europe. Stockmen have found here, and will continue to find, that they get all that their stock is worth with the least possible delay. This company has established in connection with the yards an extensive Horse and Mule market. Knows the

F. E. SHORT & CO., Managers, FRANK E. SHORT, CAPT. W. S. TOUGE. Have always on hand a large stock of all grades of HORSES AND MULES which are bought and sold on commission by the head and in car-load lots. In connection with the Sales Market, are

Large Feed Stables and Pens, Where all stock will receive the best of care. Special attention given to receiving and forwarding. The facilities for handling this class of stock are unsurpassed at any stable in this country. Consignments are solicited with the guarantee that prompt settlement will be made when stock is sold.

General Manager: E. E. RICHARDSON, Treasurer and Secretary: H. P. CHILD, Superintendent: DAVIS THOMSON, M. K. STEWART, Cattle salesman, W. M. EPPERSON, Hog salesman, D. THOMSON & CO. -Live Stock-

COMMISSION MERCHANTS, By consigning your stock direct to us, it will meet with prompt attention. We are at all times prepared to furnish money to assist in marketing your stock. Stock Exchange, Rooms 35 & 36, KANSAS CITY, MO.

REFERENCES—Stock Yard Bank, Kansas City, Mo.; Stock Yards Bank, Chicago, Ill. C. L. JONES, Cattle Salesman, L. S. JONES, Office, Hog Salesman, R. H. WISE, G. E. JONES.

D. L. JONES & BROS. COMMISSION LIVE STOCK MERCHANTS. Market reports furnished free. Room 4, Exchange Building, Kansas City Stock Yards. REFERENCE—Emporia National Bank, Osage County Bank, Kansas City Stock Yards Bank.

THE FISH & KECK CO., (INCORPORATED.) LIVE STOCK COMMISSION MERCHANTS, KANSAS CITY STOCK YARDS.

We have the experienced working force of the late firm of Andy J. Salter & Co., as follows: GEO. O. KECK, FRANK O. FISH, W. C. MURRAY, W. M. GARDNER, CATTLE SALESMAN, Bookkeeper, Yardman, HARRY HILL, LOUIS KURTH, also W. C. MURRAY, Hog Salesman, S. H. WOOD, Solicitor. We will be represented at Western shipping points during the range season. Authorized agents for sale of traps of Pan Handle Stock Growers Association.

R. C. WHITE, GEO. HOLMES, WHITE & HOLMES, LIVE STOCK COMMISSION MERCHANTS Kansas Stock Yards, Kansas City, Mo.

C. G. MEANS, W. W. MEANS, C. H. MEANS, C. G. MEANS & SONS, CATTLE SALESMEN—C. G. MEANS, F. P. WELLS, HOG SALESMEN—W. W. MEANS, C. H. MEANS.

Live Stock Commission Merchants, Rooms 33, 34 Ex. Building, Kansas City Stock Yards REFERENCES—Stock Yards and Business Men Generally.

Correspondence and Consignments Solicited. A. J. MCCOY, F. W. MCCOY, D. S. UNDERWOOD, Cattle Salesman, Office, Hog Salesman, JAMES KEENEY, MCCOY & UNDERWOOD, Live Stock Commission Merchants, 32 Exchange Building, KANSAS CITY STOCK YARDS. REFERENCE—Bank of Kansas City, Kansas City Stock Yards Bank, First National Bank, Garnett, Kansas.

D. AUSTIN & COMPANY, Jobbers in Iron, Wood and Chain Pumps, Wind Mills, Tanks, Towers and Well Machines for boring Wells. Write for Catalogue and Prices. D. Austin & Co. 614 Delaware street, Kansas City, Mo.

The Oldest Jewelry House in Kansas City. We have as large a stock of Diamonds, Watches & Jewelry as is carried in the west. We want the trade of the stockmen and will give low prices and as good goods as can be had in any city east or west. M. B. WRIGHT, Kansas City, - Missouri.

Furniture, Carpets ---AND--- CURTAINS. The Largest Stock, The Lowest Prices.

We have a double building SIX STORIES HIGH ---Full of--- All the Latest Styles

CALL AND SEE ME North Orrison & Co. Corner 6th and Main street. KANSAS CITY, MISSOURI. Send for Price List.

Kansas City's Largest and Best Clothing House. To Range and Stockmen,

And wearers of clothes. In making our bow to the 28000 readers of this JOURNAL we want to say we are white men and Americans, in name and nature. Our stock consists of clothing for Men Boys and Children. Suits, Pants, Spring-Overcoats, from medium to fine Tailor-Made Clothing. Their Shirt waists, ages 4 to 13 years, 50 cts. to \$2.25 each. In Gents Furnishing Goods, we have always on stock full lines. In brief we are out-fitters to mankind and boykind. When in our city we would be glad to see you. If you can't come your orders will receive careful and prompt attention.

In ordering for clothing give weight, height, size around chest and around waist, around hips inside seam, sleeves from center back to center hand elbow bent. Take measure carefully. For Shirts size collar and length of sleeve. We carry all the qualities belonging to our trade. Now then when you get acquainted with us and our way of doing business, you will be pleased to know us. For we are Square Dealers, tireless, restless workers after trade with strictly one price.

Herrick Clothing Co. 601 MAIN ST. CORNER OF 6th. Kansas City, Mo. P. S. Send for our rules for self measurement.

Centropolis Hotel. Finest Hotel in the City Good Sample Rooms. J. C. DUNN, Prop., KANSAS CITY, MISSOURI.

The Robert Keith Furniture and Carpet Co. Nos. 811 and 813 Main Street, Kansas City, Missouri.

The National Kansas City Business College. Ninth and Main Sts. Kansas City, Mo. Address PROF. H. COON, PRES. LIGHTNING HAY PRESS!

Adapted for Baling Hay, Straw, Wool, Cotton, Hemp and Hair. Cheapest, most rapid, and easiest operated of any Press in the market. MANUFACTURED BY KANSAS CITY HAY PRESS CO., Sixth and Mill Streets, KANSAS CITY, MO.

Dr. WHITTIER, 10 West Ninth St., Kansas City, The Leading and Most Successful Physician and Surgeon IN THE WEST. By his advanced and Scientific Method of Treatment, Cures when all Others Fail. DISEASES OF THE BLOOD, and Skin, as Scrofula, Eczema, Syphilis, etc., causing pain in bones, mucous patches in mouth, falling hair, and many other symptoms, are quickly removed, and all poison thoroughly and permanently eradicated from the system, by a purely Vegetable Specific. No Mercury administered. URINARY, Kidney and Bladder troubles, weak back, incontinence, and Gonorrhoea, Gleet and Stricture, are quickly and thoroughly cured. NERVOUS DEBILITY. Spermatorrhoea, Impotency, etc., resulting from abuse in youth or indiscretion and excess in matured years, and other causes, producing in YOUNG AND MIDDLE-AGED MEN some of the following effects, dizziness, confusion of ideas, defective memory, aversion to society, blotches, emissions, exhaustion, loss of manly vigor, and many other symptoms, are permanently cured. Medicine sufficient for 30 days treatment, especially prepared for the absolute and perfect cure, of any of the above named diseases will be shipped to any address, secure from observation, on receipt of \$10.00. State your case fully and order at once, as "delays are dangerous." Dr. WHITTIER'S life-long experience devoted exclusively to his specialty enables him to cure, when all others fail. ADDRESS H. J. WHITTIER, M. D. 10 West Ninth Street, P. O. Bix 352. KANSAS CITY, MO.

FIRST NATIONAL BANK OF KANSAS CITY. Paid Up Capital, \$250,000 Authorized Capital, \$1,000,000 OFFICERS AND DIRECTORS: James L. Lombard, Pres.; Witten McDonald, Vice-Pres.; Chas. H. V. Lewis, Cashier; Jas. L. Abernathy, Asst. Cashier; Directors: Geo. R. Barse, Geo. E. Barse & Co. Live Stock Commission Merchants; Benj. Lombard, Jr., Pres. Lombard Investment Co., Boston; Geo. B. Barse, Joseph S. Loose, Pres. Corie Cracker & Confectionery Co.; Geo. W. Murray, General Counsel; T. S. & F. R. R.; Geo. H. Nettleton, General Manager K. C. Ft. S. & G. R. R.; Jno. F. Richards, President Richards & Conover Hardware Co.; Wm. E. Thorne, Artists' Materials; Robert L. Yeager, Peck & Yeager, Attorneys.

NATIONAL Bank of Kansas City! S. E. Corner Fifth and Delaware. Capital Paid in \$1,000,000 OFFICERS: J. S. Chick, President; W. H. Chick, Vice-President; W. J. Anderson, Cashier; Geo. R. Barse, Asst. Cashier; Directors: W. L. Stevens, R. W. Moore, H. C. Harper, Wm. Byer, W. J. Anderson, W. S. Gregory, R. H. Keith, J. S. Chick, W. C. S. Gregory, Geo. B. Barse, J. S. Grimes, J. C. James, William Eyley, Adam Long, T. F. Willis.

G. W. PANGLE, M. D. 18 Years' Experience. READER OF DISEASES OF MEN AND WOMEN. World's Herbal Dispensary of Medicine.

I treat the following diseases: Catarrh of the Head, Throat and Lungs; Diseases of the Eye and Ear; Piles and Apoplexy; Heart Disease; Liver Complaint; Kidney Complaint; Nervous Debility; Mental Depression; Impotency; Diabetes; Bright's Disease; Vitæ Disease; Gonorrhoea; Paralysis; White Swelling; Scrofula; Fever Sore; Cancer; Ulcers; Patches; Herpes; and all the eruptions of the skin. I also treat the disease of drawing a drop of blood. Drops cured without tapping, and all attention given to Private Diseases of all kinds.

LADIES! Your attention is especially called to DR. PANGLE'S PAINLESS TREATMENT OF THE DISEASES SO COMMON TO YOUR SEX. I positively cure the following diseases: Vaginal and Uterine Discharges; Menstrual Disorders; Sterility and Retention; Hypertrophy; Ovarian Amenorrhoea; Menorrhagia; Clitidis; Heart Disease, and all derangements of the Nervous System.

Ladies, Call and be Convinced. The only Physician who can tell what ails a person without asking a question. All correspondence strictly confidential. Medicines sent by express. Address all letters to G. W. PANGLE, M. D., No. 65 MAIN STREET, Kansas City, Mo. I charge \$5 for reading or diagnosing Disease. \$10 for medicine in stamps for reply.

COLUMBUS BUGGY COMPANY, Columbus, Ohio. Largest Manufacturers in the World of Light Vehicles of Every description.

Warranted Strictly First-class Throughout. Stand the Severest Use. Absolutely Reliable, Style & Finish Unequaled. Write for catalogue and name of nearest dealer. Our sign, "COLUMBUS BUGGY CO.'S BUGGIES," in every town. Look out for it!

At New Orleans' World's Exposition was awarded First Premium for finest display of vehicles against sixty-four competitors. Kansas City Branch, 306 Walnut St. A. ZARTMAN, - Manager

Spalding's Commercial College. Largest, Cheapest, Best. Kansas City, Mo. J. F. SPALDING, PRES. COMMERCIAL BLOCK, Cor. 11th and Main Sts. Established October 21st, 1862. Courses: Artistic, Mechanical, and Commercial. Unvaried Course of Study and Advantages at Lowest Rates, Day and Night Schools. No Vacations. Catalogues free. Send for one, or address this College before going elsewhere.

Calvin Toomey, Kansas City, Mo. Sole manufacturer of the Toomey Tread Sulkey Road and Break Cart, Road and Pole Cart, Break Wagon, and all kinds of agricultural machinery. Price \$28.00.

CITY HOTEL. CHICAGO, Cor. State and 16th Sts. SHELL RATE TO STOCKMEN, \$1.30 PER DAY. Nearest hotel, on a side the yards. Table and Rooms first-class. State St., Archer av., or L. S. & M. S. Dunn, give the house to all parts of city and depot. W. F. ORCUTT, Proprietor.

A TRUE TEST. "Repeated chemical tests" have placed first one brand of baking powders then another at the head of the list, but the most satisfactory test of all is that of the practical housewife who uses Silver Leaf and never fails to make light and wholesome bread. She cannot be imposed upon, and the powder peddler who attempts to palm off something else on her as a better grade of goods will have reason to believe that he has missed his calling.

MANUFACTURED BY J. H. BROWN, FORT WORTH. R. F. Tackabery,

The popular saddle and harness manufacturer of Fort Worth, Texas. Mail orders a specialty.

TEXAS. S. B. BURNETT, Postoffice, Fort Worth, Texas. Ranch, Wichita county, Texas. Ranch postoffice, Galt, Texas. Horses branded on left shoulder.

T. M. & T. A. COLEMAN, P. O. Corpus Christi.

CHILDRESS LAND AND CATTLE COMPANY. Postoffice, Fort Worth; Range, Childress County. Maj. T. A. Tidball, Secretary and Treas. T. B. Ellison, General Manager. Ranch postoffice, Kirkland, Hardeman county. This brand kept up on both sides. Horn brand same on left.

thigh. Cattle also branded LIZ on left side and marked crop above cut. WBM on left side and 74 on hip, marked crop and overbit left two swallowforse right. Also cattle in various marks and other old brands.

CRESCENT H. RANCH, HOLSTEIN BROS, ALBANY, TEXAS.

Cattle brands, crescent H on left hip, and crescent on left shoulder. Steer brands crescent H on left hip, ear marks kept up, small lowfork left ear. The cattle are in various marks and brands, but all have above described brands on hip or shoulder. Information as to the whereabouts of any stray stock in any of these brands will be thankfully received and suitably rewarded by W. S. Cooke, manager, Albany, Texas.

DICKEY CATTLE COMPANY. All increase branded as above, on left side. Horses brand, any place on animal as above, on left side. Other cattle brands, LLL on right side, L7L on right side.

Range on North Canadian river, Indian Territory. Ranch postoffice, Centerville, Indian Territory. Home office, Good Building, La Salle Street, Room 50, Chicago, Ill.

ESTADO LAND AND CATTLE CO. R. M. Gano, president and general manager; C. W. Gano, secretary and treasurer; J. B. Gillette, ranch superintendent. Principal office No. 147 Elm Street, Dallas, Texas. Ranch on Palo Verde creek, Presidio county, Texas.

Or hip. This brand kept up, marked underside right and left. Horse brand 64 on left hip. Also cattle branded as follows: BAL on left side, L on left side, LUN on BAL left side, L7 SPS on left side. Various marks on left side. \$20 will be paid for the conviction of any person illegally handling any of this company's stock. All O A cattle and horses belong to this com 64 ranch.

THE ESPUELA LAND & CATTLE CO. (Limited). S. W. Loomis, Manager, Post Office, Dockums, Dickens Co. Texas.

Ranch in Dickens Co., Texas. Cross by Kenilworth, Ga. coar-tails.

This brand kept up. Also cattle in the following brands: COE, GED, ROP, ROX, MAP, HX, L-D, LAD, 79, 72, DHL.

GEORGETOWN RANCH COMPANY, Of Georgetown, Kentucky. Ranch 5 miles southwest of Abilene, Taylor county, Texas. Address, Georgetown (Ky.) Ranch Co., Mt. Moro, Tex. Cattle brands: HD on left side, O on left shoulder and on left hip. Horses also branded on left hip. Horses brands, O on left shoulder and on left hip. S. H. Kistay, General Manager, Mt. Moro, Texas.

TEXAS LIVE STOCK JOURNAL
ESTABLISHED APRIL, 1880.
Consolidated with
TEXAS WOOL GROWER
ISSUED EVERY SATURDAY
The Stock Journal Publishing Company,
FORT WORTH, TEXAS.

Subscription \$2 per Annum.
W. A. GARNER, Manager.
J. M. G. FORD, Treasurer.
PHILIP H. HALL, Secretary and Editor.
Office of Publication and Business, on Main Street, between Fifth and Sixth, Fort Worth, Texas.

Important to Stockmen.
On July 1st and thereafter the TEXAS LIVE STOCK JOURNAL will publish a daily market report edition, giving the sales of Texas cattle, hogs and sheep at the principal market centers on the same day.

To Our Patrons.
It is becoming necessary that the live stock interests of Texas should be better served in the matter of telegraphic advices from the markets.

We require the support of all active stockmen and live stock shippers, and have put the price down to such a figure as will make it to their advantage to take the paper.

The Grass Beef Market.
The first run of grass beef to market was caused by the drought. The cattle were not in good condition, and there was no guarantee of any great improvement before the rain set in.

The Dwyer Purchase.
A letter appears in this issue from Mr. Ike T. Pryor, of Austin, concerning the Dwyer purchase of cattle and it is respectfully submitted to our readers in Texas and New Mexico.

The Oleomargarine War.
The oleo and butterine business can be settled justly and fairly by a law requiring all imitations of butter to be marked as such on every package sold.

Fort Worth.
When it comes to figuring numbers of cattle the state of Texas can show an output that will astonish the world. It is the only range country having a surplus.

Growers association come after cattle, we know that the thing is a farce, and is merely a measure to secure to the owner of a water hole the outside range which belongs as much to one man as another.

We Defy Competition.
When it comes to figuring numbers of cattle the state of Texas can show an output that will astonish the world. It is the only range country having a surplus.

Fort Worth.
The Fort Worth and New Orleans railroad is now approaching completion. Some vexatious delays growing out of differences between the New Orleans and Santa Fe roads, over right of way matters are now adjusted.

Fort Worth.
The Fort Worth and New Orleans railroad is now approaching completion. Some vexatious delays growing out of differences between the New Orleans and Santa Fe roads, over right of way matters are now adjusted.

Fort Worth.
The Fort Worth and New Orleans railroad is now approaching completion. Some vexatious delays growing out of differences between the New Orleans and Santa Fe roads, over right of way matters are now adjusted.

Fort Worth.
The Fort Worth and New Orleans railroad is now approaching completion. Some vexatious delays growing out of differences between the New Orleans and Santa Fe roads, over right of way matters are now adjusted.

Fort Worth.
The Fort Worth and New Orleans railroad is now approaching completion. Some vexatious delays growing out of differences between the New Orleans and Santa Fe roads, over right of way matters are now adjusted.

Fort Worth.
The Fort Worth and New Orleans railroad is now approaching completion. Some vexatious delays growing out of differences between the New Orleans and Santa Fe roads, over right of way matters are now adjusted.

Mr. M. S. Gordon, of Jack county, was in town during the week and inspecting the blooded stock on hand at the Fort. He was in the notion to purchase Herefords and went to the Houts ranch.

Mr. R. E. McAulity, ranching in Greer county, in from his ranch last week, reported good rains recently there, plenty of water all over the county, grass good and thinks that he can sell big fat heaves by the middle of July.

Major W. V. Johnson, of the Magnolia Cattle company, bought of Major D. Portwood, of this city, six handsome Texas raised mules at \$168 per head. The mules are to be used on the Magnolia ranch for making tanks in furtherance of the policy to bring grass and water together, and to save cattle traveling long distances.

Mr. W. H. Forry, of Bosque county, was a visitor at the Journal office this week. His stock are principally Whitefaces and Shorthorns, and he introduced them to Texas last spring with the loss of some, but as he says, not more than he expected.

The intention on the part of the Texas Live Stock Journal to issue a daily market report edition, dating from July 1st, is received with much favor amongst the active stockmen and shippers. The paper is also receiving a strong line of advertising from the prominent and energetic business men of the city.

Mr. G. W. Arrington, sheriff of Wheeler and several attached counties and a rancher in Wheeler county, spent a few days in the city this week. Mr. A. is very enthusiastic over the prospects of Wheeler county and the Panhandle generally, both as an agricultural and pastoral country. He reports settlers coming into the county quite lively from Kansas and other North-western states.

Messrs. S. L. Elam and T. P. Weathered of Hill county, brought to the city a fine lot of grade Shorthorn bulls and ones and two steer cattle last Tuesday, all of which were sold to Mr. A. S. Nicholson on arrival.

C. H. McGinnis, of McGinnis & Son, land agents, Colorado City, is here on business for his firm.

A. F. Fruit & Co. sold this week the thoroughbred Hereford bull "Oklahoma" for \$300 and ten head grade Herefords at \$45 each.

The Fort Worth and Denver railroad made Mr. C. B. Willingham of the Hansford cattle company a low freight rate to Harrold on the 2000 head of cattle sold him by A. S. Nicholson and in consequence of the low rate Mr. W. concluded to ship instead of driving. Mr. Schloss purchased 225 ones and twos of A. S. Nicholson which he shipped to Harrold. The Carhart Cattle company, also bought of Mr. Nicholson 60 grade bulls and 200 heifers two-year-olds, which were shipped to Harrold. All these cattle go to the Panhandle country.

Mr. J. M. Kuhlen, the horse man of firm of Andrews Bros. & Co., is for want of better occupation, still breaking horses. The sales by the firm amount to a few cowhorses, and a few teams.

MONEY TO LOAN
We will loan money in any sum desired on first-class real estate security, from three to five years time. We also buy vendors lien notes.

SOMMERVILLE & CHASE,
508 MAIN ST. - FT. WORTH.

A. S. NICHOLSON
Offers some Valuable REAL ESTATE

In COLORADO CITY, Texas, also three sections of land in NOLAN COUNTY, Texas, which will trade for cattle. All classes of cattle bought and sold on short notice.

508 MAIN STREET,
Fort Worth, Texas.

Mangum & Williams,
Commission dealers in LAND AND LIVE STOCK.

Parties having lands or stock for sale, will do well to place them in our hands. Office 511 Houston St., Ft. Worth.

FROM AUSTIN.
About the Dwyer Purchase.

AUSTIN, TEXAS, June 11.—I notice an extract from your paper copied by the New Mexico Stock Grower which does Col. J. W. Dwyer, (who by the way is a great benefit to the stock interest of the West), a very great injustice by accusing him of buying "sand lappers and dogies" on the coast, and expect to take them into New Mexico.

I wish to state through the columns of your paper that I made a contract with Dwyer to put him up one herd of heifers (3,000 head), and he would not under any consideration buy them south of San Saba, Mason and Menard counties, "said the quarantine laws were very strict and he did not care to take any chance on violating them."

I have put the cattle up ready for the trail and assert that they were all born and raised in Mason, San Saba and Menard counties and in a good healthy condition. Now if they are to be condemned by our home papers and called "sand lappers and dogies," then I had better move my ranch.

For I fully recognize the power of the press and when they turn against such cattle as Col. Dwyer has now on the trail, we will all have to stop raising cattle south of the Texas & Pacific railroad. I write that you may be able to correct any false impression regarding my purchase in this state. Let us wish him a safe and speedy trip, for this last lot makes 12,000 he has bought in our state, including his purchase in 1884, and he is liable to want many more. I am yours respectfully,
IKE T. PRYOR.

ROUND-UPS.
Not being satisfied with the weather clerk, who had charge of the rainfall in this section, he was discharged and another one appointed. The first official act of the new clerk was to order a general rain, which has put new faces on all classes of people, though business is quiet at present.—[Pecos Valley Star.]

Albert H. Leith, owner of the El Alamo ranch, Chihuahua, Mexico, and about four years ago, being one of the firm of Frost & Leith, proprietors of the Berrendo ranch, this county, arrived last Saturday and on Monday bought 300 heifers and 200 steers, all yearlings, from Johnson, Miller & Ellis for \$4,500. This bunch of cattle is to be made up out of the J. W. Stirrup C and cross U brands, and is to be delivered at any point on the T. & P. between Abilene and Big Springs about September 1st. Mr. Leith returned on Tuesday morning accompanied as far as El Paso by Doc Bolton.—[San Angelo Standard.]

Mr. J. M. Kuhlen, the horse man of firm of Andrews Bros. & Co., is for want of better occupation, still breaking horses. The sales by the firm amount to a few cowhorses, and a few teams.

MONEY TO LOAN
We will loan money in any sum desired on first-class real estate security, from three to five years time. We also buy vendors lien notes.

SOMMERVILLE & CHASE,
508 MAIN ST. - FT. WORTH.

A. S. NICHOLSON
Offers some Valuable REAL ESTATE

In COLORADO CITY, Texas, also three sections of land in NOLAN COUNTY, Texas, which will trade for cattle. All classes of cattle bought and sold on short notice.

508 MAIN STREET,
Fort Worth, Texas.

Mangum & Williams,
Commission dealers in LAND AND LIVE STOCK.

Parties having lands or stock for sale, will do well to place them in our hands. Office 511 Houston St., Ft. Worth.

FROM AUSTIN.
About the Dwyer Purchase.

AUSTIN, TEXAS, June 11.—I notice an extract from your paper copied by the New Mexico Stock Grower which does Col. J. W. Dwyer, (who by the way is a great benefit to the stock interest of the West), a very great injustice by accusing him of buying "sand lappers and dogies" on the coast, and expect to take them into New Mexico.

I wish to state through the columns of your paper that I made a contract with Dwyer to put him up one herd of heifers (3,000 head), and he would not under any consideration buy them south of San Saba, Mason and Menard counties, "said the quarantine laws were very strict and he did not care to take any chance on violating them."

I have put the cattle up ready for the trail and assert that they were all born and raised in Mason, San Saba and Menard counties and in a good healthy condition. Now if they are to be condemned by our home papers and called "sand lappers and dogies," then I had better move my ranch.

For I fully recognize the power of the press and when they turn against such cattle as Col. Dwyer has now on the trail, we will all have to stop raising cattle south of the Texas & Pacific railroad. I write that you may be able to correct any false impression regarding my purchase in this state. Let us wish him a safe and speedy trip, for this last lot makes 12,000 he has bought in our state, including his purchase in 1884, and he is liable to want many more. I am yours respectfully,
IKE T. PRYOR.

ROUND-UPS.
Not being satisfied with the weather clerk, who had charge of the rainfall in this section, he was discharged and another one appointed. The first official act of the new clerk was to order a general rain, which has put new faces on all classes of people, though business is quiet at present.—[Pecos Valley Star.]

Albert H. Leith, owner of the El Alamo ranch, Chihuahua, Mexico, and about four years ago, being one of the firm of Frost & Leith, proprietors of the Berrendo ranch, this county, arrived last Saturday and on Monday bought 300 heifers and 200 steers, all yearlings, from Johnson, Miller & Ellis for \$4,500. This bunch of cattle is to be made up out of the J. W. Stirrup C and cross U brands, and is to be delivered at any point on the T. & P. between Abilene and Big Springs about September 1st. Mr. Leith returned on Tuesday morning accompanied as far as El Paso by Doc Bolton.—[San Angelo Standard.]

DAVID BOAZ. S. A. HATCHER.
BOAZ & HATCHER,
-DEALERS IN-
CATTLE RANCHES AND LAND
FORT WORTH, TEXAS.

THE BIRD WIND MILL
Strong, Simple, Always Perfectly Balanced.
Out of, and in gear, warranted to stand the highest winds and pump from the deepest wells. For full information about Windmills, Pumps, Piping, Tanks, Etc. Apply to local agent or write to address BIRD WIND MILL CO. Fort Worth, Texas. H. B. Colman, Manager.

COMMISSION MERCHANTS.
HALL BROS. & CO.,
LIVE STOCK COMMISSION MERCHANTS.
Rooms 134 and 136 Exchange Building,
UNION STOCK YARDS, CHICAGO, ILL.

CHARLES R. BENSLEY. CHARLES W. HINKLEY.
BENSLEY, HINKLEY & CO.
Live Stock Commission.
66 Exchange Building, Union Stock Yards, Chicago.
Special attention given to Texas cattle and markets furnished promptly on request.

JAMES H. CAMPBELL & CO.,
LIVE STOCK COMMISSION MERCHANTS.
UNION STOCK YARDS, Chicago, Illinois.
NATIONAL STOCK YARDS, East St. Louis, Illinois.
KANSAS CITY STOCK YARDS, Kansas City, Missouri.

CROCHERON & CO.
Live Stock Commission Merchants.
P. O. Box 488. Galveston, Texas.
ALBERT MONTGOMERY,
COMMISSION MERCHANT FOR THE SALE OF LIVE STOCK, STOCK LANDING
Postoffice Box 3006, New Orleans, La.

JOHN MUMFORD, Successor to R. L. MUMFORD & CO.,
Commission Merchant,
For the sale of CATTLE, HOGS and SHEEP, STOCK LANDING
P. O. Box 8190. - New Orleans, La.

WHEELER, JAMES & CO.,
LIVE STOCK COMMISSION MERCHANTS,
UNION STOCK YARDS, ST. LOUIS, MO.
THE LIVE STOCK MARKET
-Of St. Louis-

The St. Louis National Stock Yards.
Located at East St. Louis, Illinois, directly opposite the City of St. Louis.
Shippers should see that their stock is billed directly to the
"National Stock Yards."
ISAAC H. KNOX, CHAS. T. JONES,
PRESIDENT. SUPERINTENDENT.

D. C. WAGNER. A. F. BOILEAU. M. E. PERRY.
WAGNER BROS. & CO.
Union Stock Yards, Chicago.
Commission Merchants for the sale of Cattle, Hogs and Sheep.
Texas Representatives.
W. L. Davis, Grandview, agent for Central Texas. Geo. W. Waddell, Colorado City, agent for Western Texas. Reasonable advances made on consignments.

HULL, BROWN & CO.
Live Stock Commission Merchants.
NATIONAL STOCK YARDS, East St. Louis, Ill.
Scaling & Tambllyn,
LIVE STOCK COMMISSION MERCHANTS
For the sale of Cattle, Hogs and Sheep. Nat. Stock Yards, East St. Louis, Ills.
A. C. CASSIDY, Cattle (T. B. PATTON, Hog and Sheep (N. M. MOODY, Salesmen. W. L. CASSIDY, Salesmen.
CASSIDY BROS. & CO.,
-SUCCESSORS TO-
IRONS & CASSIDY AND SCRUGGS & CASSIDY
"Consolidated"
Live Stock Commission Merchants,
AND FORWARDING AGENTS,
National Stock Yards, St. Clair County, Ill.
R. D. HUNTER, A. G. EVANS, M. P. BUEL,
Saint Louis, Kansas City, Chicago.
HUNTER, EVANS & CO.
LIVE STOCK COMMISSION MERCHANTS.
KANSAS CITY, CHICAGO, ST. LOUIS.
National Stock Yards, Ill. Union Stock Yards, Chicago Ill.
Kansas City Stock Yards, Kansas City, Missouri.
Cash Advances on Consignments.

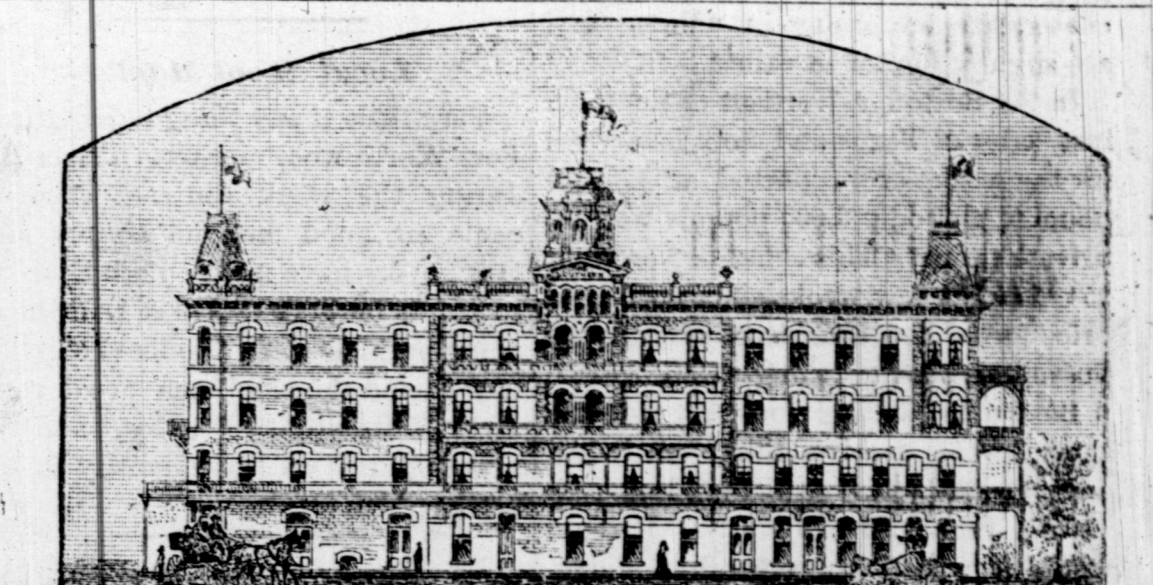
ESTABLISHED 1875.

W. C. MORGAN'S LAND AND CATTLE COMPANY, TEXAS.

Buy and sell land and cattle on commission. Render and pay taxes on land. Large orders for cattle promptly filled. Correspondence solicited. Have for sale 14,000 acres of land in tracts to suit purchasers.

W. C. MORGAN'S BRAND. ED. STEVES & SONS, Wholesale and Retail Dealers in Lumber, Shingles, Sash, Doors, Blinds, Etc.

Special Price on Large Bills to Stockmen. Yards at I. & G. N. Railroad, and at G. H. & S. A. Railroad track, Commercial Street, San Antonio.



SOUTHERN HOTEL, SAN ANTONIO, TEXAS. J. F. HICKMAN, Proprietor.

HAMBLETON & DICNOWITZ, General Land and Investment Agents.

No. 1 West Houston St. San Antonio, Texas. Have For Sale: STOCK RANGES—1st class in every particular, from 500 to 300,000 acres.

Worcester's Patent Wire Fence Stay Adjustable Tension Attachm'ts

EFFICIENT, CHEAP, DURABLE, EASILY APPLIED. By their use fewer posts are required, a better fence is secured and at a less cost than any other method.

P. G. MARCH & CO. Sole Licensees & Manufacturers

CINCINNATI OHIO. The leading clothing house in the West. PANCOAST & SON, San Antonio, Texas.

SEEDS

ALBERT DICKINSON, Dealer in Timothy, Clover, Flax, Hungarian, Millet, Red Top, Blue Grass, Lawn Grass, Orchard Grass, etc.

Short Cattle Route

SOUTHWEST TEXAS TO ST. LOUIS, KANSAS CITY, NEW ORLEANS AND OREGON. The SAN ANTONIO & ARANSAS PASS RAILWAY is now open for business.

A Pancoast & Son. Valuable Ranch For Sale on Easy Terms.

400 acre ranch, permanent running water, all enclosed with good fence. Apply to Brennan & Ferguson, attorneys, 32 Soledad street—San Antonio.

ONE OF THE WORST CASES. We have been selling your Cuticura Remedies for years.

VARIKOLED SORE LEGS. My wife used the Cuticura Remedies for a sore leg.

GOOD STOCK BARGAINS. Hines Clark & Sons of San Antonio, Texas, have the following kinds of stock for sale.

FOR SALE. 3000 acres in pasture, two miles of Baird.

NO ACHE, OR PAIN, OR BRUISE, OR STRAIN, OR MUSCULAR WEAKNESS, BUT YIELDS TO THE PRESSURE OF THE CUTICURA REMEDIES.

HORSE TALK.

There are only fourteen stock sales in this city, with the outside yards yet to hear from, devoted almost exclusively to the horse and mule trade.

L. H. Buck, of Jackson county, Miss., bought two car loads of mares from the late J. H. King stock, Gertrude's ranch, Nueces county, a stock that is justly celebrated for their breed.

Col. A. Belknap, president of the street railway in this city, alderman, God-father of a crack militia company, reputable paper owner, and prominent citizen, recently tried his hand at horse trading.

Jose Ramirez, of Starr county, arrived Saturday with 100 head of mares and 50 saddle horses, which he puts on the market.

A Mexican scullion brand depreciates the price of a horse 25 per cent. Mexicans raising horses for this market should keep that fact before them.

Government agents were here last week and bought 50 head of saddle horses, paying about \$50 a head. They were intended for Indian fighting in the northern and New Mexico.

Hord & David sold one car load of fillies of their own raising on their ranch at the price of \$15 a head.

R. F. George, of Illinois, is here for mares and is very apt to get them. W. A. Faires, of Memphis, Tenn., are at the Southern, while here after horses.

W. R. Prince and C. Beard, of Kansas, are here for some fine mares and will fill their orders by the last of the week. Frank Leach, of Nebraska, is buying three car loads of mares.

E. L. Moore, of Alta, Iowa, is after one car of mares. C. E. Parker, Redbush, Ky., shipped a car load of mares on Monday night.

W. B. Mullen, of this city, shipped a car load of mares to East St. Louis. R. D. Incho sent a car load of fine mares to Adrian, Mich.

C. E. Hicks, of El Paso, came here and got two car loads of crack mares which he shipped to Emporia, Kan. Mr. Oakley shipped a car load of mares to New Jersey, having received an order for the same.

Don Camillo Saens, will send 600 saddle horses to Vernon by rail. Don Camillo is one of the best breeders in this market, and has earned a merited reputation for good stock. His ranch is in Starr county.

E. F. Banner, of Kyle, a prominent horse shipper, is down for another bunch. Shad White, of Eagle Pass, is here sampling the good things of the Alamo city.

SAN ANTONIO.

BRANCH OFFICE TEXAS LIVE STOCK JOURNAL, 220 Dolorosa Street, opposite Southern Hotel, L. A. Heil, Manager.

Papers on File. The ranchmen of the southwest will find their county papers on file in the branch office of the TEXAS LIVE STOCK JOURNAL, No. 220 Dolorosa street, opposite the Southern Hotel, San Antonio.

Another Wool Market. Rumors have been set afloat, just from what source or authority it has been impossible to ascertain to a certainty, to the effect that an attempt will be made to establish another wool market in Texas.

The San Antonio Wool Market. The spring wool market of 1886 is now practically over, very little wool is here unsold, and all the foreign wool buyers except one have left.

Montrose Cloets, an Englishman, dropped in on the JOURNAL last Tuesday. He is contemplating a location in the ranch business somewhere in the southern part of the TEXAS, and extends to him a hearty welcome.

J. D. Wilson, a practical mineralogist who makes his headquarters at Eagle Pass, called and paid his respects to the great stock paper of the Southwest.

W. E. Wheeler reports grass and water in abundance at his great ranch twelve miles west of Floresville. He says he is doing top. He will probably break between one thousand and fifteen hundred calves this season.

Henry Shiner, after living twenty years at Sweet Home, Lavaca county, has returned to his native place to make San Antonio his permanent home.

A. T. Oakley, rancher in Northern Coahuila, Mexico, who has been East for several months for his health, has returned much improved, and will go on to his ranch.

Will Jones, one of the Bee county babies, was up the early part of this week, and says that they are getting used to the scream of the iron horse.

Look into the sales and bargains advertising columns and see what Hines Clark has got for you. The market master's report for May shows that our city consumed for May 1455 beefs; 1875 cattle; 2547 hogs; 924 sheep.

"Cattle" is good. The majority of beefs sold here should come under that head, as it is in the hands of men who classify such scallawags as goon the butcher stalls of this city with them.

J. M. and W. T. Kilgore, of Medina county, women, were in the city a few days ago. The large and commodious stock pens at Beville, were completed this week and more stock will be shipped from that point than from any other in Southwestern Texas, except San Antonio and possibly Victoria.

J. P. Doddridge, of Corpus Christi, drove 15 car loads of grass beves from near Corpus Christi to Beville, to ship over the Aransas Pass railroad. They go to Chicago.

Tom Dewees shipped some 14 cars of grass beves from Floresville to Chicago over the Aransas Pass and I. & G. N. railroads.

customer of his, but forgot to call at the captain's residence and settle for King the beves, which were gone into the pen to the point in that great Apache General Jim did not have him arrested, thinking that a man so powerful as a cowboy like Sam might be somewhat obstreperous, and should be allowed to serve a warrant on him.

A gentleman from El Paso says that the Southern Pacific is fencing in the road through Presidio county, as the claims for stock killed all thoroughbreds. It is likely to break them up it is factiously stated that the stock started widely in five miles of the track is charged to the road.

Messrs. Payne & Briscoe shipped three car loads of cattle to Chicago this week. Col. A. Heil, Manager.

Capit. Dick Jordan, of LaSalle county, paid his respects to the JOURNAL, and says that his corner of the world is in a good fix since the recent rains.

Dan Taylor puts on a line of hacks from Beville to Corpus Christi in connection with the San Antonio and Aransas Pass railroad, and will keep on ahead of the news as to what is going on in five miles of the track is charged to the road, over that via Laredo, where one has to wait over all night.

John McAllen, one of the few Americans who has been able to maintain his position as ranchman on the lower Rio Grande, left for his ranch, the Santa Anita, in Hidalgo county, on Saturday morning, after a couple of days' visit to his daughter, Mrs. John Young. Mr. McAllen is practically in the heart of Mexico, as far as the Rio Grande is concerned, and owing to the peculiar protection that the Rio Grande affords to refugees, his position has been much more perilous in the troublous days of our civil war than ever past, but he has lived through them all and is contemplating the removal to this city to enjoy his quiet years with the competency gained.

John McAllen, one of the few Americans who has been able to maintain his position as ranchman on the lower Rio Grande, left for his ranch, the Santa Anita, in Hidalgo county, on Saturday morning, after a couple of days' visit to his daughter, Mrs. John Young. Mr. McAllen is practically in the heart of Mexico, as far as the Rio Grande is concerned, and owing to the peculiar protection that the Rio Grande affords to refugees, his position has been much more perilous in the troublous days of our civil war than ever past, but he has lived through them all and is contemplating the removal to this city to enjoy his quiet years with the competency gained.

John McAllen, one of the few Americans who has been able to maintain his position as ranchman on the lower Rio Grande, left for his ranch, the Santa Anita, in Hidalgo county, on Saturday morning, after a couple of days' visit to his daughter, Mrs. John Young. Mr. McAllen is practically in the heart of Mexico, as far as the Rio Grande is concerned, and owing to the peculiar protection that the Rio Grande affords to refugees, his position has been much more perilous in the troublous days of our civil war than ever past, but he has lived through them all and is contemplating the removal to this city to enjoy his quiet years with the competency gained.

John McAllen, one of the few Americans who has been able to maintain his position as ranchman on the lower Rio Grande, left for his ranch, the Santa Anita, in Hidalgo county, on Saturday morning, after a couple of days' visit to his daughter, Mrs. John Young. Mr. McAllen is practically in the heart of Mexico, as far as the Rio Grande is concerned, and owing to the peculiar protection that the Rio Grande affords to refugees, his position has been much more perilous in the troublous days of our civil war than ever past, but he has lived through them all and is contemplating the removal to this city to enjoy his quiet years with the competency gained.

John McAllen, one of the few Americans who has been able to maintain his position as ranchman on the lower Rio Grande, left for his ranch, the Santa Anita, in Hidalgo county, on Saturday morning, after a couple of days' visit to his daughter, Mrs. John Young. Mr. McAllen is practically in the heart of Mexico, as far as the Rio Grande is concerned, and owing to the peculiar protection that the Rio Grande affords to refugees, his position has been much more perilous in the troublous days of our civil war than ever past, but he has lived through them all and is contemplating the removal to this city to enjoy his quiet years with the competency gained.

John McAllen, one of the few Americans who has been able to maintain his position as ranchman on the lower Rio Grande, left for his ranch, the Santa Anita, in Hidalgo county, on Saturday morning, after a couple of days' visit to his daughter, Mrs. John Young. Mr. McAllen is practically in the heart of Mexico, as far as the Rio Grande is concerned, and owing to the peculiar protection that the Rio Grande affords to refugees, his position has been much more perilous in the troublous days of our civil war than ever past, but he has lived through them all and is contemplating the removal to this city to enjoy his quiet years with the competency gained.

John McAllen, one of the few Americans who has been able to maintain his position as ranchman on the lower Rio Grande, left for his ranch, the Santa Anita, in Hidalgo county, on Saturday morning, after a couple of days' visit to his daughter, Mrs. John Young. Mr. McAllen is practically in the heart of Mexico, as far as the Rio Grande is concerned, and owing to the peculiar protection that the Rio Grande affords to refugees, his position has been much more perilous in the troublous days of our civil war than ever past, but he has lived through them all and is contemplating the removal to this city to enjoy his quiet years with the competency gained.

John McAllen, one of the few Americans who has been able to maintain his position as ranchman on the lower Rio Grande, left for his ranch, the Santa Anita, in Hidalgo county, on Saturday morning, after a couple of days' visit to his daughter, Mrs. John Young. Mr. McAllen is practically in the heart of Mexico, as far as the Rio Grande is concerned, and owing to the peculiar protection that the Rio Grande affords to refugees, his position has been much more perilous in the troublous days of our civil war than ever past, but he has lived through them all and is contemplating the removal to this city to enjoy his quiet years with the competency gained.

John McAllen, one of the few Americans who has been able to maintain his position as ranchman on the lower Rio Grande, left for his ranch, the Santa Anita, in Hidalgo county, on Saturday morning, after a couple of days' visit to his daughter, Mrs. John Young. Mr. McAllen is practically in the heart of Mexico, as far as the Rio Grande is concerned, and owing to the peculiar protection that the Rio Grande affords to refugees, his position has been much more perilous in the troublous days of our civil war than ever past, but he has lived through them all and is contemplating the removal to this city to enjoy his quiet years with the competency gained.

John McAllen, one of the few Americans who has been able to maintain his position as ranchman on the lower Rio Grande, left for his ranch, the Santa Anita, in Hidalgo county, on Saturday morning, after a couple of days' visit to his daughter, Mrs. John Young. Mr. McAllen is practically in the heart of Mexico, as far as the Rio Grande is concerned, and owing to the peculiar protection that the Rio Grande affords to refugees, his position has been much more perilous in the troublous days of our civil war than ever past, but he has lived through them all and is contemplating the removal to this city to enjoy his quiet years with the competency gained.

customer of his, but forgot to call at the captain's residence and settle for King the beves, which were gone into the pen to the point in that great Apache General Jim did not have him arrested, thinking that a man so powerful as a cowboy like Sam might be somewhat obstreperous, and should be allowed to serve a warrant on him.

A gentleman from El Paso says that the Southern Pacific is fencing in the road through Presidio county, as the claims for stock killed all thoroughbreds. It is likely to break them up it is factiously stated that the stock started widely in five miles of the track is charged to the road, over that via Laredo, where one has to wait over all night.

Messrs. Payne & Briscoe shipped three car loads of cattle to Chicago this week. Col. A. Heil, Manager.

Capit. Dick Jordan, of LaSalle county, paid his respects to the JOURNAL, and says that his corner of the world is in a good fix since the recent rains.

Dan Taylor puts on a line of hacks from Beville to Corpus Christi in connection with the San Antonio and Aransas Pass railroad, and will keep on ahead of the news as to what is going on in five miles of the track is charged to the road, over that via Laredo, where one has to wait over all night.

John McAllen, one of the few Americans who has been able to maintain his position as ranchman on the lower Rio Grande, left for his ranch, the Santa Anita, in Hidalgo county, on Saturday morning, after a couple of days' visit to his daughter, Mrs. John Young. Mr. McAllen is practically in the heart of Mexico, as far as the Rio Grande is concerned, and owing to the peculiar protection that the Rio Grande affords to refugees, his position has been much more perilous in the troublous days of our civil war than ever past, but he has lived through them all and is contemplating the removal to this city to enjoy his quiet years with the competency gained.

John McAllen, one of the few Americans who has been able to maintain his position as ranchman on the lower Rio Grande, left for his ranch, the Santa Anita, in Hidalgo county, on Saturday morning, after a couple of days' visit to his daughter, Mrs. John Young. Mr. McAllen is practically in the heart of Mexico, as far as the Rio Grande is concerned, and owing to the peculiar protection that the Rio Grande affords to refugees, his position has been much more perilous in the troublous days of our civil war than ever past, but he has lived through them all and is contemplating the removal to this city to enjoy his quiet years with the competency gained.

John McAllen, one of the few Americans who has been able to maintain his position as ranchman on the lower Rio Grande, left for his ranch, the Santa Anita, in Hidalgo county, on Saturday morning, after a couple of days' visit to his daughter, Mrs. John Young. Mr. McAllen is practically in the heart of Mexico, as far as the Rio Grande is concerned, and owing to the peculiar protection that the Rio Grande affords to refugees, his position has been much more perilous in the troublous days of our civil war than ever past, but he has lived through them all and is contemplating the removal to this city to enjoy his quiet years with the competency gained.

John McAllen, one of the few Americans who has been able to maintain his position as ranchman on the lower Rio Grande, left for his ranch, the Santa Anita, in Hidalgo county, on Saturday morning, after a couple of days' visit to his daughter, Mrs. John Young. Mr. McAllen is practically in the heart of Mexico, as far as the Rio Grande is concerned, and owing to the peculiar protection that the Rio Grande affords to refugees, his position has been much more perilous in the troublous days of our civil war than ever past, but he has lived through them all and is contemplating the removal to this city to enjoy his quiet years with the competency gained.

John McAllen, one of the few Americans who has been able to maintain his position as ranchman on the lower Rio Grande, left for his ranch, the Santa Anita, in Hidalgo county, on Saturday morning, after a couple of days' visit to his daughter, Mrs. John Young. Mr. McAllen is practically in the heart of Mexico, as far as the Rio Grande is concerned, and owing to the peculiar protection that the Rio Grande affords to refugees, his position has been much more perilous in the troublous days of our civil war than ever past, but he has lived through them all and is contemplating the removal to this city to enjoy his quiet years with the competency gained.

John McAllen, one of the few Americans who has been able to maintain his position as ranchman on the lower Rio Grande, left for his ranch, the Santa Anita, in Hidalgo county, on Saturday morning, after a couple of days' visit to his daughter, Mrs. John Young. Mr. McAllen is practically in the heart of Mexico, as far as the Rio Grande is concerned, and owing to the peculiar protection that the Rio Grande affords to refugees, his position has been much more perilous in the troublous days of our civil war than ever past, but he has lived through them all and is contemplating the removal to this city to enjoy his quiet years with the competency gained.

John McAllen, one of the few Americans who has been able to maintain his position as ranchman on the lower Rio Grande, left for his ranch, the Santa Anita, in Hidalgo county, on Saturday morning, after a couple of days' visit to his daughter, Mrs. John Young. Mr. McAllen is practically in the heart of Mexico, as far as the Rio Grande is concerned, and owing to the peculiar protection that the Rio Grande affords to refugees, his position has been much more perilous in the troublous days of our civil war than ever past, but he has lived through them all and is contemplating the removal to this city to enjoy his quiet years with the competency gained.

John McAllen, one of the few Americans who has been able to maintain his position as ranchman on the lower Rio Grande, left for his ranch, the Santa Anita, in Hidalgo county, on Saturday morning, after a couple of days' visit to his daughter, Mrs. John Young. Mr. McAllen is practically in the heart of Mexico, as far as the Rio Grande is concerned, and owing to the peculiar protection that the Rio Grande affords to refugees, his position has been much more perilous in the troublous days of our civil war than ever past, but he has lived through them all and is contemplating the removal to this city to enjoy his quiet years with the competency gained.

John McAllen, one of the few Americans who has been able to maintain his position as ranchman on the lower Rio Grande, left for his ranch, the Santa Anita, in Hidalgo county, on Saturday morning, after a couple of days' visit to his daughter, Mrs. John Young. Mr. McAllen is practically in the heart of Mexico, as far as the Rio Grande is concerned, and owing to the peculiar protection that the Rio Grande affords to refugees, his position has been much more perilous in the troublous days of our civil war than ever past, but he has lived through them all and is contemplating the removal to this city to enjoy his quiet years with the competency gained.

John McAllen, one of the few Americans who has been able to maintain his position as ranchman on the lower Rio Grande, left for his ranch, the Santa Anita, in Hidalgo county, on Saturday morning, after a couple of days' visit to his daughter, Mrs. John Young. Mr. McAllen is practically in the heart of Mexico, as far as the Rio Grande is concerned, and owing to the peculiar protection that the Rio Grande affords to refugees, his position has been much more perilous in the troublous days of our civil war than ever past, but he has lived through them all and is contemplating the removal to this city to enjoy his quiet years with the competency gained.

customer of his, but forgot to call at the captain's residence and settle for King the beves, which were gone into the pen to the point in that great Apache General Jim did not have him arrested, thinking that a man so powerful as a cowboy like Sam might be somewhat obstreperous, and should be allowed to serve a warrant on him.

A gentleman from El Paso says that the Southern Pacific is fencing in the road through Presidio county, as the claims for stock killed all thoroughbreds. It is likely to break them up it is factiously stated that the stock started widely in five miles of the track is charged to the road, over that via Laredo, where one has to wait over all night.

Messrs. Payne & Briscoe shipped three car loads of cattle to Chicago this week. Col. A. Heil, Manager.

Capit. Dick Jordan, of LaSalle county, paid his respects to the JOURNAL, and says that his corner of the world is in a good fix since the recent rains.

Dan Taylor puts on a line of hacks from Beville to Corpus Christi in connection with the San Antonio and Aransas Pass railroad, and will keep on ahead of the news as to what is going on in five miles of the track is charged to the road, over that via Laredo, where one has to wait over all night.

John McAllen, one of the few Americans who has been able to maintain his position as ranchman on the lower Rio Grande, left for his ranch, the Santa Anita, in Hidalgo county, on Saturday morning, after a couple of days' visit to his daughter, Mrs. John Young. Mr. McAllen is practically in the heart of Mexico, as far as the Rio Grande is concerned, and owing to the peculiar protection that the Rio Grande affords to refugees, his position has been much more perilous in the troublous days of our civil war than ever past, but he has lived through them all and is contemplating the removal to this city to enjoy his quiet years with the competency gained.

John McAllen, one of the few Americans who has been able to maintain his position as ranchman on the lower Rio Grande, left for his ranch, the Santa Anita, in Hidalgo county, on Saturday morning, after a couple of days' visit to his daughter, Mrs. John Young. Mr. McAllen is practically in the heart of Mexico, as far as the Rio Grande is concerned, and owing to the peculiar protection that the Rio Grande affords to refugees, his position has been much more perilous in the troublous days of our civil war than ever past, but he has lived through them all and is contemplating the removal to this city to enjoy his quiet years with the competency gained.

John McAllen, one of the few Americans who has been able to maintain his position as ranchman on the lower Rio Grande, left for his ranch, the Santa Anita, in Hidalgo county, on Saturday morning, after a couple of days' visit to his daughter, Mrs. John Young. Mr. McAllen is practically in the heart of Mexico, as far as the Rio Grande is concerned, and owing to the peculiar protection that the Rio Grande affords to refugees, his position has been much more perilous in the troublous days of our civil war than ever past, but he has lived through them all and is contemplating the removal to this city to enjoy his quiet years with the competency gained.

John McAllen, one of the few Americans who has been able to maintain his position as ranchman on the lower Rio Grande, left for his ranch, the Santa Anita, in Hidalgo county, on Saturday morning, after a couple of days' visit to his daughter, Mrs. John Young. Mr. McAllen is practically in the heart of Mexico, as far as the Rio Grande is concerned, and owing to the peculiar protection that the Rio Grande affords to refugees, his position has been much more perilous in the troublous days of our civil war than ever past, but he has lived through them all and is contemplating the removal to this city to enjoy his quiet years with the competency gained.

John McAllen, one of the few Americans who has been able to maintain his position as ranchman on the lower Rio Grande, left for his ranch, the Santa Anita, in Hidalgo county, on Saturday morning, after a couple of days' visit to his daughter, Mrs. John Young. Mr. McAllen is practically in the heart of Mexico, as far as the Rio Grande is concerned, and owing to the peculiar protection that the Rio Grande affords to refugees, his position has been much more perilous in the troublous days of our civil war than ever past, but he has lived through them all and is contemplating the removal to this city to enjoy his quiet years with the competency gained.

John McAllen, one of the few Americans who has been able to maintain his position as ranchman on the lower Rio Grande, left for his ranch, the Santa Anita, in Hidalgo county, on Saturday morning, after a couple of days' visit to his daughter, Mrs. John Young. Mr. McAllen is practically in the heart of Mexico, as far as the Rio Grande is concerned, and owing to the peculiar protection that the Rio Grande affords to refugees, his position has been much more perilous in the troublous days of our civil war than ever past, but he has lived through them all and is contemplating the removal to this city to enjoy his quiet years with the competency gained.

John McAllen, one of the few Americans who has been able to maintain his position as ranchman on the lower Rio Grande, left for his ranch, the Santa Anita, in Hidalgo county, on Saturday morning, after a couple of days' visit to his daughter, Mrs. John Young. Mr. McAllen is practically in the heart of Mexico, as far as the Rio Grande is concerned, and owing to the peculiar protection that the Rio Grande affords to refugees, his position has been much more perilous in the troublous days of our civil war than ever past, but he has lived through them all and is contemplating the removal to this city to enjoy his quiet years with the competency gained.

John McAllen, one of the few Americans who has been able to maintain his position as ranchman on the lower Rio Grande, left for his ranch, the Santa Anita, in Hidalgo county, on Saturday morning, after a couple of days' visit to his daughter, Mrs. John Young. Mr. McAllen is practically in the heart of Mexico, as far as the Rio Grande is concerned, and owing to the peculiar protection that the Rio Grande affords to refugees, his position has been much more perilous in the troublous days of our civil war than ever past, but he has lived through them all and is contemplating the removal to this city to enjoy his quiet years with the competency gained.

John McAllen, one of the few Americans who has been able to maintain his position as ranchman on the lower Rio Grande, left for his ranch, the Santa Anita, in Hidalgo county, on Saturday morning, after a couple of days' visit to his daughter, Mrs. John Young. Mr. McAllen is practically in the heart of Mexico, as far as the Rio Grande is concerned, and owing to the peculiar protection that the Rio Grande affords to refugees, his position has been much more perilous in the troublous days of our civil war than ever past, but he has lived through them all and is contemplating the removal to this city to enjoy his quiet years with the competency gained.

John McAllen, one of the few Americans who has been able to maintain his position as ranchman on the lower Rio Grande, left for his ranch, the Santa Anita, in Hidalgo county, on Saturday morning, after a couple of days' visit to his daughter, Mrs. John Young. Mr. McAllen is practically in the heart of Mexico, as far as the Rio Grande is concerned, and owing to the peculiar protection that the Rio Grande affords to refugees, his position has been much more perilous in the troublous days of our civil war than ever past, but he has lived through them all and is contemplating the removal to this city to enjoy his quiet years with the competency gained.

customer of his, but forgot to call at the captain's residence and settle for King the beves, which were gone into the pen to the point in that great Apache General Jim did not have him arrested, thinking that a man so powerful as a cowboy like Sam might be somewhat obstreperous, and should be allowed to serve a warrant on him.

A gentleman from El Paso says that the Southern Pacific is fencing in the road through Presidio county, as the claims for stock killed all thoroughbreds. It is likely to break them up it is factiously stated that the stock started widely in five miles of the track is charged to the road, over that via Laredo, where one has to wait over all night.

Messrs. Payne & Briscoe shipped three car loads of cattle to Chicago this week. Col. A. Heil, Manager.

Capit. Dick Jordan, of LaSalle county, paid his respects to the JOURNAL, and says that his corner of the world is in a good fix since the recent rains.

Dan Taylor puts on a line of hacks from Beville to Corpus Christi in connection with the San Antonio and Aransas Pass railroad, and will keep on ahead of the news as to what is going on in five miles of the track is charged to the road, over that via Laredo, where one has to wait over all night.

John McAllen, one of the few Americans who has been able to maintain his position as ranchman on the lower Rio Grande, left for his ranch, the Santa Anita, in Hidalgo county, on Saturday morning, after a couple of days' visit to his daughter, Mrs. John Young. Mr. McAllen is practically in the heart of Mexico, as far as the Rio Grande is concerned, and owing to the peculiar protection that the Rio Grande affords to refugees, his position has been much more perilous in the troublous days of our civil war than ever past, but he has lived through them all and is contemplating the removal to this city to enjoy his quiet years with the competency gained.

John McAllen, one of the few Americans who has been able to maintain his position as ranchman on the lower Rio Grande, left for his ranch, the Santa Anita, in Hidalgo county, on Saturday morning, after a couple of days' visit to his daughter, Mrs. John Young. Mr. McAllen is practically in the heart of Mexico, as far as the Rio Grande is concerned, and owing to the peculiar protection that the Rio Grande affords to refugees, his position has been much more perilous in the troublous days of our civil war than ever past, but he has lived through them all and is contemplating the removal to this city to enjoy his quiet years with the competency gained.

John McAllen, one of the few Americans who has been able to maintain his position as ranchman on the lower Rio Grande, left for his ranch, the Santa Anita, in Hidalgo county, on Saturday morning, after a couple of days' visit to his daughter, Mrs. John Young. Mr. McAllen is practically in the heart of Mexico, as far as the Rio Grande is concerned, and owing to the peculiar protection that the Rio Grande affords to refugees, his position has been much more perilous in the troublous days of our civil war than ever past, but he has lived through them all and is contemplating the removal to this city to enjoy his quiet years with the competency gained.

John McAllen, one of the few Americans who has been able to maintain his position as ranchman on the lower Rio Grande, left for his ranch, the Santa Anita, in Hidalgo county, on Saturday morning, after a couple of days' visit to his daughter, Mrs. John Young. Mr. McAllen is practically in the heart of Mexico, as far as the Rio Grande is concerned, and owing to the peculiar protection that the Rio Grande affords to refugees, his position has been much more perilous in the troublous days of our civil war than ever past, but he has lived through them all and is contemplating the removal to this city to enjoy his quiet years with the competency gained.

John McAllen, one of the few Americans who has been able to maintain his position as ranchman on the lower Rio Grande, left for his ranch, the Santa Anita, in Hidalgo county, on Saturday morning, after a couple of days' visit to his daughter, Mrs. John Young. Mr. McAllen is practically in the heart of Mexico, as far as the Rio Grande is concerned, and owing to the peculiar protection that the Rio Grande affords to refugees, his position has been much more perilous in the troublous days of our civil war than ever past, but he has lived through them all and is contemplating the removal to this city to enjoy his quiet years with the competency gained.

John McAllen, one of the few Americans who has been able to maintain his position as ranchman on the lower Rio Grande, left for his ranch, the Santa Anita, in Hidalgo county, on Saturday morning, after a couple of days' visit to his daughter, Mrs. John Young. Mr. McAllen is practically in the heart of Mexico, as far as the Rio Grande is concerned, and owing to the peculiar protection that the Rio Grande affords to refugees, his position has been much more perilous in the troublous days of our civil war than ever past, but he has lived through them all and is contemplating the removal to this city to enjoy his quiet years with the competency gained.

John McAllen, one of the few Americans who has been able to maintain his position as ranchman on the lower Rio Grande, left for his ranch, the Santa Anita, in Hidalgo county, on Saturday morning, after a couple of days' visit to his daughter, Mrs. John Young. Mr. McAllen is practically in the heart of Mexico, as far as the Rio Grande is concerned, and owing to the peculiar protection that the Rio Grande affords to refugees, his position has been much more perilous in the troublous days of our civil war than ever past, but he has lived through them all and is contemplating the removal to this city to enjoy his quiet years with the competency gained.

John McAllen, one of the few Americans who has been able to maintain his position as ranchman on the lower Rio Grande, left for his ranch, the Santa Anita, in Hidalgo county, on Saturday morning, after a couple of days' visit to his daughter, Mrs. John Young. Mr. McAllen is practically in the heart of Mexico, as far as the Rio Grande is concerned, and owing to the peculiar protection that the Rio Grande affords to refugees, his position has been much more perilous in the troublous days of our civil war than ever past, but he has lived through them all and is contemplating the removal to this city to enjoy his quiet years with the competency gained.

John McAllen, one of the few Americans who has been able to maintain his position as ranchman on the lower Rio Grande, left for his ranch, the Santa Anita, in Hidalgo county, on Saturday morning, after a couple of days' visit to his daughter, Mrs. John Young. Mr. McAllen is practically in the heart of Mexico, as far as the Rio Grande is concerned, and owing to the peculiar protection that the Rio Grande affords to refugees, his position has been much more perilous in the troublous days of our civil war than ever past, but he has lived through them all and is contemplating the removal to this city to enjoy his quiet years with the competency gained.

John McAllen

Texas Wool Grower ESTABLISHED JUNE, 1882. Consolidated with Texas Live Stock Journal, SEPTEMBER 15, 1884. ISSUED EVERY SATURDAY BY THE STOCK JOURNAL PUBLISHING COMPANY, FORT WORTH, TEXAS. Subscription \$2 per Annum.

The Wool Tariff.

Telegraphic dispatches to the daily papers announce that the congressional committee of ways and means are divided, the majority report disapproving the restoration of the tariff of 1867, and the minority urging it.

The majority claim to advocate free trade, but are not so honest as that. The report ends with this sentence: "That the duties on wool should be repealed, and the duties on woolen manufactures be reduced at least an equal extent."

Here is a juggle of words. The wool growers will insist that if the wool tariff is repealed, the woolen goods tariff shall be repealed.

If tariffs are wrong in principle, and we have to go back to first principles, let us all be ruined together and let a new generation of wool manufacturers and wool growers arise on the true basis.

The wool growing interest is strong enough to insist that there shall be no change towards a reduction of the wool tariff.

Local Wool Market.

Very little if anything is doing in the Fort Worth wool market. Prices paid during the week did not exceed 18 cents for good medium county clips.

WEEKLY CLIP.

The last week has been the best of the season, a large amount being received and many sales made at good prices. During the week Coman & Shear sold something over 150,000 pounds to Boston parties at prices ranging from 15 to 17 1/2 cents.

The Wool Trade.

To the wool growers who have not disposed of their clips, the wool trade is again interesting. Sales in Eastern centers are increasing in volume and are slightly higher in values.

In the Boston Advertiser of the 15th inst. sales of Texas and Southern wool for the week are reported at 175,000 pounds, and only 3,000 pounds not on private terms. This small lot brought 25 cents. A few weeks since so high a price was not considered within the possibilities for anything from Texas.

Boston as clearing house for wool is short, having received thirty-one thousand bales less this year than last, that is from January 1 to June 11. Foreign wools have amply supplied the deficiency and it is reported that several thousand bales went across the herring pond a second time, being outward bound for a stronger market.

There is a significant movement denoting strength in the world's wool market, and more likely to strengthen values of American fleeces than the gradual decrease in production of the home article.

Foreign goods and yarns continue to arrive freely, showing conclusively that the duties do not, keep out the cheap manufactures of England. With such figures before us as the statement of imports, it is difficult to see why every Englishman should not be a free trader and why every American should not be a protectionist.

The goods market must have great influence upon our wool market, and heavy imports of yarns and dress goods, and also of foreign wools—all this means less call, less need for domestic wool, and those who are blind to this influence may live to regret it.

The wool clip of Mr. T. H. Poag and Huffmeier Bros. topped the market this season. Their 1,800 head of sheep sheared 37,000 pounds of wool (six months' clip), which was sold for 18 1/2 cents.

Capt. McGill returned from San Antonio on Friday having disposed of his wool (12 months) at 19 cents. The captain informs us that his wool was poor, owing to scab in his flock.

Wood shipments: A. J. Nations, 8,000; C. D. Mulholland, 3,000; C. P. Fuller, 4,000; W. H. Fusch, 15,000; H. N. Brown, 10,000; J. A. Garrett, 15,000; Al. Garrett, 10,000; H. N. Garrett, 10,000; Dan Leary, 1,000; J. Taylor Bradley, 10,000; J. B. McGill, 8,000; B. Heck, 3,000; J. W. Chapman, 2,000; T. J. Mullins, 8,500; E. Emmitt, 11,000; J. Cook, 4,000; Humphrey & Wainsley, 5,500. [Market News]

The general prospect of the wool trade is that prices will be restored to the figures of last fall, which reached the indefinite importing point and slightly overstepped it. These figures would place our exceptionally good years clips at 20 to 23 cents, Texas valuation, with the general average somewhere near 20 cents.

The Boston Commercial Bulletin says: "Texas wool is in much better movement and as high as twenty-four cents has been paid during the week for fine year's growth. Medium eight-months wool has sold during the week at 25c."

We advanced quotations: Texas fine, 12 mos., 19 to 21c; Do do 6 to 8 mos., 19 to 21c; Texas medium, 12 mos., 20 to 25c; Do do 6 to 8 mos., 20 to 25c; Texas full fine, 12 mos., 16 to 18c; Texas full medium, 12 mos., 18 to 20c.

The Boston Commercial Bulletin says: "Texas wool is in much better movement and as high as twenty-four cents has been paid during the week for fine year's growth. Medium eight-months wool has sold during the week at 25c."

The request called for double deck cars for sheep at the cattle transportation rate, and the result is a double deck car for sheep, at 20 per cent in excess of the cattle rate, or to come down to the exact basis, it is \$85 for cattle and \$100 for sheep from Texas to St. Louis.

So far, it is understood that the sheep will go beyond St. Louis in single decks, at a rate of \$17 per car, which amounts to \$154.00 per double deck from Texas to Chicago, as against the old rate of \$82 for single decks.

The Texas and Pacific railroad is now prepared to handle sheep, in double-deck cars, when destined to following points: St. Louis, Mo.; Junction City, Kan.; East St. Louis, Ill.; Emporia Junction, Kan.; Hannibal, Mo.; New Orleans, La.; Kansas City, Mo.; Memphis, Tenn.; Atebison, Kan.; Columbus, Ky.; St. Joseph, Mo.; Cairo, Ill.; Leavenworth, Kan.; Little Rock, Ark.

OUR ST. LOUIS LETTER.

Good Sheep Selling—Range of Prices—Double Deckers.

ST. LOUIS, Mo., June 14, 1886. Regular Correspondence Texas Live Stock Journal.

The old saying that a good article always sells well is truly exemplified in the case of Texas sheep. Strictly fat and fancy nuttons, Texas, Kansas, Colorado or natives are wanted and bring, all things considered, pretty decent figures.

Table with 4 columns: No., Grade, Av., Pr. It lists prices for various grades of sheep, including 664 Prime Texas sheep at \$3.65, 707 " " " " at 3.40, 176 good " " " at 3.74, etc.

From the above it will be seen that fair Texas sheep of 65 lbs or thereabouts are only taken for stockers and at stocker prices, which are very low indeed.

Texas stockmasters and farmers should make a note of this and ship only selected stock. But few sales of common sheep of 60 lbs took place and brought from \$1.50 to 2.00 per 100 lbs.

The double deck cars for sheep are being turned out of the shops of the Missouri Pacific in rather small numbers. Mr. W. H. Newman, the traffic manager, informed the undersigned that this is the experimental stage of the proceedings, and it is policy to make haste slowly.

The receipts of wool of the past week were 1,250,000 lbs, all of which found sale at strong prices: 244,200 lbs of the receipts were Texas wool. The demand is very large and for all grades above common.

The following is from the St. Louis Daily Market Reporter: "There were ready buyers for every available lot, at full quotations; market buoyant and advancing throughout. Most of this year's Missouri and Illinois growth has been received; considerable Kansas, Nebraska, Texas and Territory wools have arrived also, but the clips from these latter sections have only begun to move."

We quote Texas wool: Medium clothing, long, 23 to 24; Medium clothing, short, 18 to 20; Light fine, long, 19 to 20; Light fine, short, 17 to 18; Heavy fine, 14 to 17; Low, sandy, earthy, etc., 13 to 15; All burry, 13 to 19; Black, 16 to 19; Cottled, 14 to 16.

Killing Valuable Sheep. Correspondence American Rural Home. MELBOURNE, AUST., April 22, 1886.

The destruction of eight imported Leicester sheep, valued at \$2,500, by the government of Victoria, on the 6th of present month, is a matter of international importance.

"What's the matter?" asked a passenger on a Dakota train as they began to run considerably faster. "Why you see there's a blamed cow running ahead of us on the track and we're trying to catch her."

sheep from different stud farms in England. They reached Melbourne on the steamship Paramatta, on the 17th of March, but were not allowed to land. They were then carried to Sydney and refused foothold in New South Wales.

An Extraordinary Fleece. In publishing the following certificate, two weeks ago, it was said that the fleece was the heaviest ever cleaned. It should have been stated that it yielded the largest percentage of scoured wool of any fleece of which there is any record.

MIDDLEBURY, Vt., May 27, 1886. We have cleaned a fleece shorn from the ram Wool Grower, No. 475, owned by Virtulon Rich. The fleece weighed 23 lbs 6 oz., which cleaned 9 lbs, 1 1/2 oz. of scoured wool.

This powder never varies. A marvel of purity, strength and wholesomeness. More economical than the ordinary kinds, and cannot be sold in competition with the multitude of low test, short weight, alum or phosphate powders.

The first of the double-deck sheep cars came in Friday and yesterday the United Trading company shipped 3,000 head of sheep in the new cars to the Chicago market.

A petition will be presented to our commissioner's court next Monday praying for an election to determine whether sheep, hogs and goats shall be permitted to run at large in precinct No. 1.

A petition will be presented to our commissioner's court next Monday praying for an election to determine whether sheep, hogs and goats shall be permitted to run at large in precinct No. 1.

A petition will be presented to our commissioner's court next Monday praying for an election to determine whether sheep, hogs and goats shall be permitted to run at large in precinct No. 1.

A petition will be presented to our commissioner's court next Monday praying for an election to determine whether sheep, hogs and goats shall be permitted to run at large in precinct No. 1.

A petition will be presented to our commissioner's court next Monday praying for an election to determine whether sheep, hogs and goats shall be permitted to run at large in precinct No. 1.

A petition will be presented to our commissioner's court next Monday praying for an election to determine whether sheep, hogs and goats shall be permitted to run at large in precinct No. 1.

A petition will be presented to our commissioner's court next Monday praying for an election to determine whether sheep, hogs and goats shall be permitted to run at large in precinct No. 1.

A petition will be presented to our commissioner's court next Monday praying for an election to determine whether sheep, hogs and goats shall be permitted to run at large in precinct No. 1.

A petition will be presented to our commissioner's court next Monday praying for an election to determine whether sheep, hogs and goats shall be permitted to run at large in precinct No. 1.

A petition will be presented to our commissioner's court next Monday praying for an election to determine whether sheep, hogs and goats shall be permitted to run at large in precinct No. 1.

A petition will be presented to our commissioner's court next Monday praying for an election to determine whether sheep, hogs and goats shall be permitted to run at large in precinct No. 1.

A petition will be presented to our commissioner's court next Monday praying for an election to determine whether sheep, hogs and goats shall be permitted to run at large in precinct No. 1.

A petition will be presented to our commissioner's court next Monday praying for an election to determine whether sheep, hogs and goats shall be permitted to run at large in precinct No. 1.

A petition will be presented to our commissioner's court next Monday praying for an election to determine whether sheep, hogs and goats shall be permitted to run at large in precinct No. 1.

A petition will be presented to our commissioner's court next Monday praying for an election to determine whether sheep, hogs and goats shall be permitted to run at large in precinct No. 1.

A petition will be presented to our commissioner's court next Monday praying for an election to determine whether sheep, hogs and goats shall be permitted to run at large in precinct No. 1.

James H. Martindale, IMPORTING TAILOR, 304 Main Street, Fort Worth, Texas. MANSION HOTEL, W. W. DUNN, Proprietor.

MARTIN-BROWN COMPANY, Exclusively Wholesale Dealers in Dry Goods, Notions, Clothing, BOOTS, SHOES and HATS, Fort Worth, Texas. GOLD LEAF Sheep Dip, A PURE EXTRACT OF TOBACCO. ALWAYS THE SAME. ALWAYS RELIABLE.

ROYAL BAKING POWDER, Absolutely Pure. This powder never varies. A marvel of purity, strength and wholesomeness. More economical than the ordinary kinds, and cannot be sold in competition with the multitude of low test, short weight, alum or phosphate powders.

Wool HIDES AND WOOL, Kansas City, Missouri. Prompt attention given to consignments and returns made on day of receipt at highest market prices.

Wool Weatherford St., Ft. Worth, Texas. Will be on hand to buy the North Texas Clip, paying highest cash price.

Wool Commission Merchants, 318 N. Commercial street, St. Louis, Mo. For the sale of Wool, Hides, Pelts, Tallow, Furs, Etc.

Wool DENNY, RICE & CO., No 132 Federal Street, Boston, Wool Commission Merchants. For the sale of Domestic Wools.

Wool EDWARD A. GREENE & CO., Wool Commission Merchants, 44 and 46 S. Front St., Philadelphia, 122 and 124 Federal St., Boston.

Wool J. C. CROWDUS & CO., Hides, Wool, Peltries, Etc. Corner Weatherford and Taylor Streets, Fort Worth, Texas.

Wool WESTERN WOOL COMMISSION CO., Exclusive Handlers of Wool, 117 N. Main Street, ST. LOUIS, MO. CASH ADVANCES on Consignments.

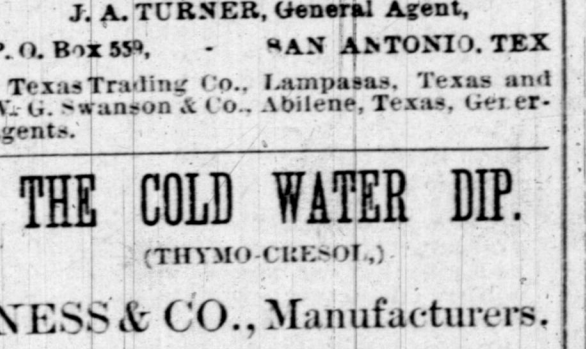
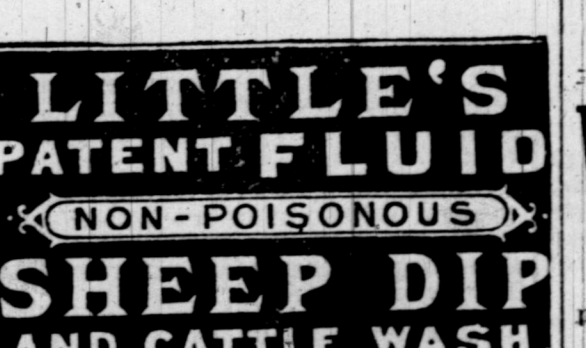
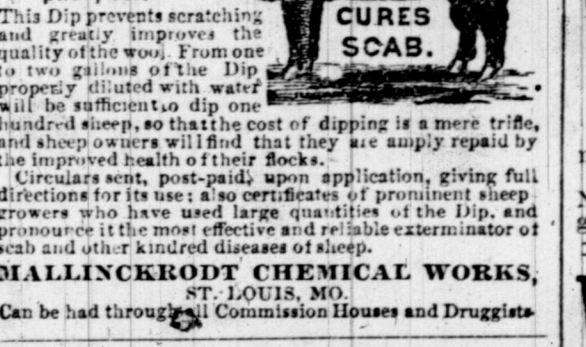
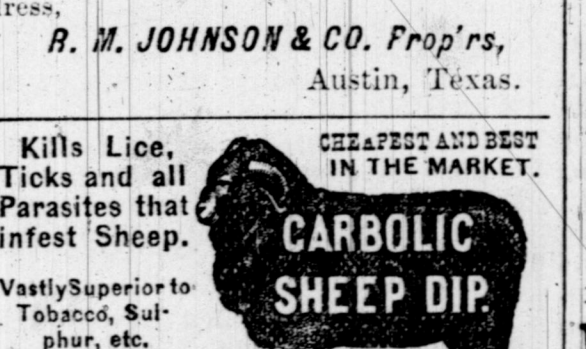
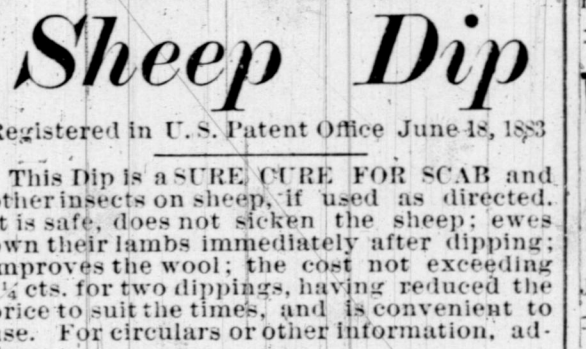
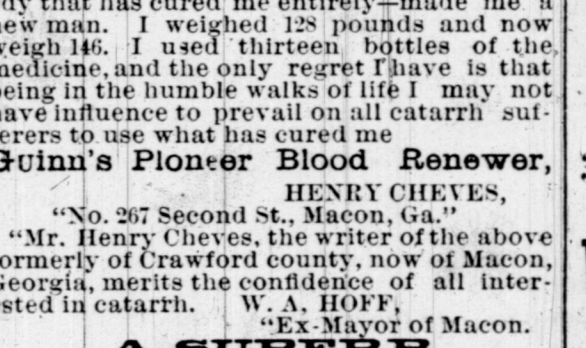
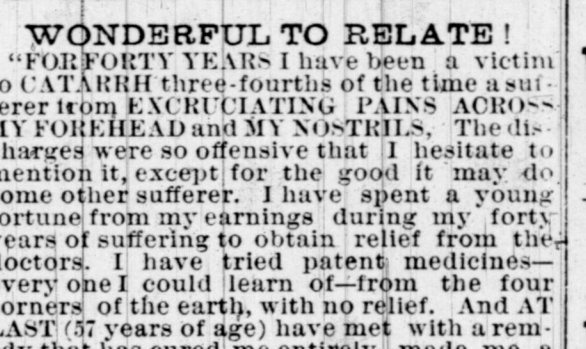
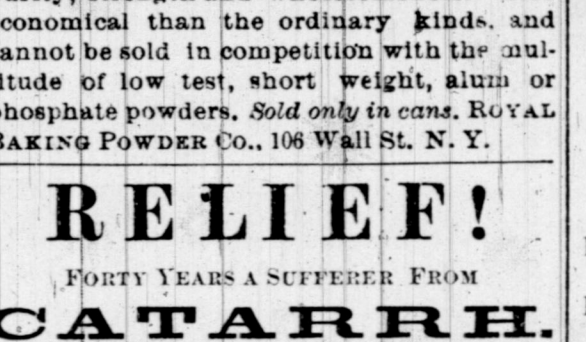
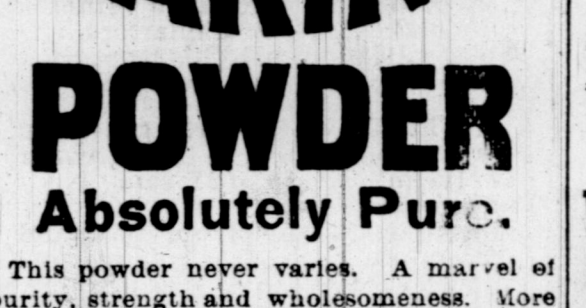
Wool W. A. ALLEN & CO., 142, 144, 146 Kinzie, Chicago. Commission and all charges except interest on advances 1c per lb.

Wool JUSTICE, BATEMAN & CO., Philadelphia, Wool Commission Merchants. Commission and all charges except interest on advances 1c per lb.

Wool FENNO BROTHERS & CHILDS, Wool Commission Merchants, 117 Federal Street, Boston, Mass. Liberal cash advances made on consignments.

Wool HOBBS and GRAHAM, Wool Growers Agents, 243 Broadway, New York. Wool marketed direct from the grower.

MILK OIL SHEEP DIP, THE GREAT REDUCTION IN PRICE MAKES IT THE MOST ECONOMICAL IN THE WORLD. DAHLMAN BROS. Clothiers and Gent's Furnishers. A FULL LINE OF STOCKMEN'S GOODS ALWAYS ON HAND.



Help! Help! Help! Peoples Employment Office.

CAPERA & BROTHER, Confectioneries.

J. T. HARNES, Land and Live Stock Broker.

A. WYSCHEZKI & CO., Land and General Agents.

BOOK-KEEPING.

SHORTHAND.

BARNES & HAYWARD, Short-Hand and Business College.

HARTSOOK & PATTON, Lawyers.

TEXAS LAND AND CATTLE COMPANY (LIMITED).

\$300.00 REWARD.

Will be paid for the arrest and conviction of any person or persons having in their possession, illegally, cattle or horses belonging to this company, or for information that will lead to the conviction of persons tampering with stock in these marks and brands.

GLOSS MOUNTAIN RANCH.

Other prominent brands.

HORSE-SHOE RANCH.

Other prominent brands.

RANCHO DE LOS LAURELES.

Other prominent brands.

Other prominent brands.

Other prominent brands.

Other prominent brands.

Other prominent brands.

Other prominent brands.

Other prominent brands.

Other prominent brands.

Other prominent brands.

Other prominent brands.

Other prominent brands.

Other prominent brands.

Other prominent brands.

Other prominent brands.

Other prominent brands.

Other prominent brands.

Other prominent brands.

Other prominent brands.

Other prominent brands.

Other prominent brands.

Other prominent brands.

Other prominent brands.

Other prominent brands.

Other prominent brands.

Other prominent brands.

Other prominent brands.

Other prominent brands.

Other prominent brands.

Other prominent brands.

Other prominent brands.

J. C. SCOTT, Attorney at Law.

R. M. WYNNE, Attorney at Law.

G. W. Alexander, Notary Public and Abstract of Titles.

The City National Bank.

The First National Bank.

The Panhandle National Bank.

Winfred Scott.

First National Bank.

Important to Stockmen.

The Dairy.

Cheese-Making on a Small Scale.

For making cheese on a small scale.

For making cheese on a small scale.

For making cheese on a small scale.

For making cheese on a small scale.

For making cheese on a small scale.

For making cheese on a small scale.

For making cheese on a small scale.

For making cheese on a small scale.

For making cheese on a small scale.

For making cheese on a small scale.

For making cheese on a small scale.

For making cheese on a small scale.

For making cheese on a small scale.

For making cheese on a small scale.

For making cheese on a small scale.

For making cheese on a small scale.

For making cheese on a small scale.

For making cheese on a small scale.

For making cheese on a small scale.

For making cheese on a small scale.

For making cheese on a small scale.

For making cheese on a small scale.

For making cheese on a small scale.

For making cheese on a small scale.

For making cheese on a small scale.

For making cheese on a small scale.

For making cheese on a small scale.

For making cheese on a small scale.

For making cheese on a small scale.

For making cheese on a small scale.

For making cheese on a small scale.

For making cheese on a small scale.

For making cheese on a small scale.

For making cheese on a small scale.

is enough. Use more, however, if needed to make the warm milk curd thoroughly within an hour after adding it.

Now put a cheese cloth over the hoop, so that when settled to the bottom it will cover the sides and leave enough to spread over the top.

Then put around the circumference of the cheese a bandage wide enough to lap over the two circular pieces about two inches.

Dr. James D. Hopkins, Territorial Veterinarian of Wyoming, has addressed the following to the Journal, which we publish for the benefit of the public.

Dr. James D. Hopkins, Territorial Veterinarian of Wyoming, has addressed the following to the Journal, which we publish for the benefit of the public.

Dr. James D. Hopkins, Territorial Veterinarian of Wyoming, has addressed the following to the Journal, which we publish for the benefit of the public.

WHAT SCIENCE SAYS. The "Fearful and Wonderful" Mechanism of the Human System Graphically Portrayed.

In the editorial columns of the New York Analyst, H. Lassing, M. D., editor, writes the following beautiful description of the laboratory of the human system.

"Man is the greatest of all chemical laboratories." Magnify the smallest cell of the body and what a factory is spread before the eyes!

"These organs which we have described thus at length, because they are really the most important ones in the human system, the ones in which a large majority of human ailments originate and are sustained, are the kidneys."

Such writing ought not only to please but to carry conviction that what Editor Lassing, M. D.,—so high an authority—says is true, and that his counsel is worthy the attention and heed of all prudent, right-minded people.

Gentlemen who have come in from ranches on the head of the river this week report heavy rains, sufficient water falling to fill all the creeks.

RED STAR COUGH CURE. Absolutely Free from Opium, Emetics and Poison.

OPIUM and WHISKY HABITS cured. Now BUY YOUR GUNS.

Manhood Restored. REMEDY FREE—A victim of youthful indiscretion.

Dr. Bly's Celebrated PATENT ARTIFICIAL LIMBS.

CHALLENGE. WIND MILLS never blow small can show.

FREE! ONE YEAR'S SUBSCRIPTION TO "SOUTH AND WEST".

DO YOU FARMERS' NAMES WANT and addresses in any or all the States and Territories in the United States?

THE SANTA FE CATTLE TRAIL. The Gulf, Colorado and Santa Fe Railway offers inducements of Quick Time, the best Shipping and Feeding Plans.

The FRANCKLYN Land & Cattle Co.

Leading mark and brand of this herd is crop off left ear, X left jaw and X left side and hip, and into which all increase is put.

ROAD BRANDS. N 7 H R. AMERICAN BRAND. Horse and Mule Brands.

J. J. HITTSON. Postoffice Weatherford, Texas. Range on Double Mountain Fork.

MONTGOMERY & CO. Fort Worth, Texas. Ranch on Little Red Creek.

MELISSA RANCH COMPANY. Postoffice Kerrville, Kerr Co., Texas.

NAVE McCORD CATTLE CO. ABRAM NAVE, President and General Manager, Fort Worth, Texas.

LOVING CATTLE COMPANY. Ranch postoffice, Jackboro, Texas.

Also in various marks: MOT on either side, marked as above.

MATADOR LAND AND CATTLE CO. H. H. CAMPBELL, Superintendent.

MOLLOY CATTLE COMPANY. J. H. McCarty, President; W. P. Homan, Secretary and Treasurer.

MARTIN, ESTIS & CO. Postoffice Colorado, Mitchell county, Texas.

NEGRO CATTLE COMPANY. Ranch postoffice Patterson, Bossard county, New Mexico.

A. C. RIDGLE. Postoffice Waco, Cattie ranch 1/2 mile East of Waco.

