

TEXAS LIVE STOCK JOURNAL



VOL. 9.

FORT WORTH, SATURDAY, SEPTEMBER 22, 1888.

No. 8

James H. Campbell, President, Jerome F. Wares, Vice-President, J. H. McFarland, Sec'y and Treas., Chicago, Ill.; H. F. Parry, Manager and Cashier, National Stock Yards, Ill.; G. W. Campbell, D. L. Campbell, Managing Directors, Kansas City, Mo.

The James H. Campbell Co.

INCORPORATED.

LIVE STOCK COMMISSION MERCHANTS,

Union Stock Yards, Chicago, Ill.,

National Stock Yards, East St. Louis, Ill.

Kansas City Stock Yards, Kansas City, Mo.,

We solicit your business and invite correspondence.

THE FISH & KECK CO.,

(INCORPORATED.)

LIVE STOCK COMMISSION MERCHANTS,
KANSAS CITY STOCK YARDS.

We have the experienced working force of the late firm of Andy J. Sailer & Co., as follows:
GEO. S. KECK, Cattle Salesman. FRANK O. FISH, Office. W. C. MURRAY, Bookkeeper. WM. SUMMERS, Yardman.
HARRY HILL, Solicitor. LOUIS KUETH, also W. J. CUMMINGS, Hog Salesman.
We will be represented at Western shipping points during the range season.
Authorized agents for sale of strays of Pan Handle Stock Growers Association.

J. E. GREER.

FRANK O. MILLS.

GREER, MILLS & CO.

Live Stock Commission Dealers,

Room 47 Exchange, Union Stock Yards, - - - - CHICAGO, ILLINOIS

A. C. CASSIDY, } Cattle Salesmen. { G. W. GOERR, } Cashier. { N. M. MOODY, } Hog and Sheep
T. F. TIMMONS, } A. L. KEECHLER, } E. S. CODDINGTON, } Salesmen.

CASSIDY BROS. & CO.,

LIVE STOCK COMMISSION MERCHANTS

And Forwarding Agents,

National Stock Yards, St. Clair County, Ills.

SEEDS

J. G. PEPPARD, 1220 UNION AVENUE,
MILLET A SPECIALTY. (One block from Union Depot)
Red, White, Alfalfa & Alsike Clovers,
Timothy, Blue Grass, Orchard Grass, Red Top,
Onion Sets, Tree Seeds, Cane Seed, Etc. KANSAS CITY, MO.

Z. T. WINFREE.

A. P. NORMAN.

WILEY T. PEARSON.

WINFREE, NORMAN & PEARSON,
Commission Merchants for the Sale of Live Stock,
Stock Yards, GALVESTON, TEXAS.

We respectfully solicit patronage of stock shippers. We make liberal cash advances on bills lading, and will faithfully endeavor to the best of our ability to subserve the interests of our patrons. Correspondence solicited.

ALBERT MONTGOMERY

Commission Merchant for the Sale of Live Stock, Stock Landing
Postoffice Box 3006, New Orleans, La.

R. M. FLAUTT.

C. H. CROWLEY.

R. M. FLAUTT & CO.,

Commission Merchants for the Sale of Live Stock,
Stock Landing, New Orleans, La.

THE Union Stock Yards,

CHICAGO, ILLINOIS.

The Largest and Best Live Stock Market in the World

The entire system of the Railways of the West centers here, making the Union Stock Yards the most accessible point in the country. The capacity of the yards, the facilities for unloading, feeding, reshipping, or for the sale of stock are unlimited. There is no point in the United States where stock will find as satisfactory market and sale to the shipper as the Union Stock Yards.

The quality of feed and accommodations given cannot be surpassed at any point in the country. The great city of packing houses that are located here, the large bank capital and the large number of buyers for the Eastern market constantly on hand, make this a quick, active and independent market. Cattle from the North, West and Southwest should reach this market without fail, in order to procure the best prices. There is now established a direct Cattle, Hog, Sheep and Horse trade between these yards and the most important markets in Europe. Agents constantly here from London, Paris, Hamburg, Liverpool and Manchester. The daily shipments from these yards to Europe are from one to two steamerloads. THIS IS STRICTLY A CASH MARKET.

N. THAYER, President. ELMER WASHBURN, Gen'l Superintendent.
GEO. T. WILLIAMS, Secretary and Treas. J. C. DENISON, Ass't Sec. Ass't Treas.
J. B. SHERMAN, Vice-Pres. and Gen'l Manager.

ALLEN GREGORY.

H. H. COOLEY.

L. R. HASTINGS.

GREGORY, COOLEY & CO.

Commission Dealers in Live Stock,

Rooms 58 and 60, Exchange Building, Union Stock Yards, CHICAGO, ILL.

The Pioneer House in the Texas trade. Personal attention given consignments. Business solicited.

President, WM. M. WARREN, Banker, New Berlin, Ill. Secretary and Treasurer, LEVI B. DOUD.
Cashier, CHAS. KELLY. Managers, T. B. LEE, THOS. KELLY

Chicago Live Stock Commission Company,

Incorporated. Capital Stock \$25,000.

Special attention given to the sale of Texas Cattle and Sheep. Write us for market reports.
Office 41 Exchange Building, Union Stock Yards, Chicago, Ill.

REFERENCES—Drovers' Nat. Bank, Union Stock Yards Nat. Bank, Chicago; Bank of Atlantic, Atlantic, Ia., Bank of Roodhouse, Roodhouse, Ill.

SAM'L SCALING, St. Louis.

W. L. TAMBLYN, Chicago.

SCALING & TAMBLYN, Live Stock Commission Merchants,

National Stock Yards, East St. Louis, Ill. Union Stock Yards, Chicago, Ill.

R. T. WHEELER.

C. JAMES.

J. S. MCKINNON

WHEELER, JAMES & CO.
Live Stock Commission Merchants,
Union Stock Yards, ST. LOUIS, MO.

M. O. LYNN,

W. C. BROWN.

Agent for

E. E. BROWN.

BROWN BROTHERS,
COMMISSION MERCHANTS IN LIVE STOCK,
Union Stock Yards, Chicago, Ill.

Refer by permission to National Live Stock Bank, U. S. Yards, Chicago.

JOHN MUNFORD,

Successor to R. L. MAUPIN & CO.,

Commission Merchant for the Sale of Cattle, Hogs and Sheep, - - STOCK LANDING
P. O. BOX 3190, NEW ORLEANS, LA.

FOR SALE OR EXCHANGE.

MONEY TO LEND

On improved lands on long time,
At Ten Per Cent. Per Annum.

**STEERS,
JACKS, HORSES,
LAND,**

For sale by—

R. E. MADDOX & CO.,

Fort Worth, Texas.

Office on Front Street, south of J. H. Brown Building.

If you are buying or selling, call on us, or correspond.

Choice Lot of Two-Year-Old Steers For Sale.

Hereford Cattle.



William Powell of Beecher, Ill., breeder of Hereford cattle, will have for sale at the Texas State Fair at Dallas, some Hereford

BULLS AND HEIFERS

of his own raising. Some will be recent importations, and others acclimated in Texas.

FOR TRADE.

A 3400-acre ranch in Ness county, Kansas, on Walnut creek, all fenced, title perfect, to trade for stock of cattle in Western Texas. Address G. KINNEY, Ness City, Kansas.

Devon Cattle.

Edward D. Hicks, breeder of Registered Devon Cattle, Devon Farm, Nashville, Tennessee, will have a car-load of young Devon bulls and heifers at Dallas, Texas, for sale, about 10th October, 1888.

BARGAINS.

\$45,000 improved and productive business property in St. Louis to exchange for fenced and watered ranch.

\$25,000. Handsome residence in Austin to exchange for cattle.

\$20,000 improved and paying property in St. Louis to exchange for ranch or cattle.

\$15,000 residence and grounds in Austin to exchange for cattle or ranch and cattle.

CHEAP LANDS for sale, and other properties for exchange.

MONEY to lend on favorable terms, in amounts of \$1000 to \$100,000.

S. M. SMITH, Austin, Texas.

FOR SALE OR EXCHANGE.



Holstein-Friesian cattle, for good farming lands. For particulars address

J. L. NORRIS, Eminence, Henry County, Kentucky.

Feeding Steers.



Parties wanting feeders will do well to see A. S. Nicholson of Fort Worth, Texas, as he has some choice three and four-year-old steers to sell.

To Exchange.

Plant for manufacture of engines and boilers, at Springfield, Ohio; also, stock of engines, to exchange for ranch or Western lands.

A. T. BYERS, Fort Worth, Texas.

PUBLIC SALE

—OF—

Norman Horses and Shorthorn Cattle

We will sell at public auction at our farm, Blackwater, Cooper County, Missouri, on Booneville and Lexington branch Mo. P. railroad, on

October 4th, 1888,

75 stallions, mares and geldings; 6 young jacks, and 4 jennets bred to imported jack; also, 175 head thoroughbred and high-grade Shorthorn cattle—bulls, cows and heifers. Nine months credit with 8 per cent. interest, bond and approved security.

JOHN A. FRAY & SONS.

S. A. HATCHER.

J. P. WOODS.

CHAS. COPPINGER.

HATCHER, WOODS & COPPINGER,

Make a specialty of handling

American Mares, Geldings, 1 and 2-year-old Horses and Fillies, 1, 2 and 3-year-old Steers and Stock Cattle.

Have a large number of cattle for sale; also 1000 head of good American mares and horses. Can furnish any class of stock on short notice. Land and city property. We guarantee satisfaction. Prices given on application. 406 Main St., FORT WORTH, TEXAS.

M. S. PETERS & CO.

M. S. PETERS, ED. E. PETERS, W. G. PETERS.

Live Stock Commission Merchants,

All stock consigned to us will have the personal attention of some member of the firm. Reference, Stock Yards Bank and Nat. Bank of Kansas City.

Office 11 and 11½ Stock Exchange,

Stock Yards, - - - KANSAS CITY, MO.

De G ROAT & CO.,

LIVE STOCK COMMISSION MERCHANTS

Stock Landing, - (P. O. Box 2510.) - New Orleans, La.

FOR SALE OR EXCHANGE.

RANCHES FOR SALE.

One of 12,000 acres in Clay county, near Henrietta, and one of 8000 acres in Archer and Jack counties, near Antelope. Both newly fenced and have good grass and water. Also, quite a variety of smaller tracts, including a number of splendid farms in the best farming localities in the state. Easy terms. C. E. WELLESLEY, Dallas, Texas.

RECEIVER'S SALE OF THOROUGH-BRED HEREFORD CATTLE.

Notice is hereby given that by virtue of an order and judgment made by the district court of the First judicial district of the Territory of Wyoming, sitting within and for the county of Laramie, in a certain cause therein pending, wherein Charles E. Anthony and Cliff and M. Anthony are plaintiffs, and the Wyoming Hereford Association, Sir Charles Clifford and Colin J. McKenzie are defendants, and wherein the undersigned was by said court appointed receiver, which said order and judgment was made upon the application of the Stock Growers' National Bank of Cheyenne, the undersigned as such receiver will, on the 27th day of September, A. D. 1888, at the ranch of the said Wyoming Hereford Association, in said county of Laramie, about six miles southeast of Cheyenne city, offer for sale and sell for cash to the highest bidder about six hundred and ninety (690) head of Hereford cattle, of which all but about forty head are thoroughbred, pedigree animals, registered in the English or American herd books, the remainder being high-grade superior Hereford cattle. Said sale will commence at 10 a. m., September 27th, 1888, and will be continued from day to day until completed, and will be made in lots calculated to carry into effect said order of court. COLIN HUNTER, Receiver. Cheyenne, Wyo., July 19, 1888.

Horses for Sale.

The well-known Northwest Texas Horse Company have placed in our hands for sale:

- Mares and colts, ... 100 head
- Dr. Mares, ... 100 "
- Geldings, unbroke, ... 100 "
- Two-year-old geldings and fillies, ... 100 "
- One-year-old geldings and fillies, nearly all unbranded, 40 "

We also have in our pastures near Albany all classes of horse stock, and can fill any size order desired on short notice. Call on or address WEBB, CAMPBELL & HILL, Albany, Texas

Feeding Steers.

We have for sale 500 head of Hardeman county four and five-year-old steers, to be sold half cash and balance on time; also, 5000 southwestern steers at a bargain. RICHARDSON & HACKETT, Fort Worth, Texas.

Jersey Cattle For Sale.

I have for sale a herd of 30 Jersey dairy cattle, mostly cows in milk. Will sell all or in numbers to suit purchaser.

L. H. DURHAM, Fort Worth, Texas.

Ask at Journal office for location of herd.

FOR SALE OR EXCHANGE.



REYNOLDS & DAVED, MULVANE, KAN.,

Breeders of National and Vermont Spanish Merino Sheep, from Baby Lord, Rip Van Winkle and Lord Wool Stock.

Rams and Ewes at prices to suit the times

COW-HORSES FOR SALE.

50 head of well-broke young cow-horses, wintered through on corn. Will sell on time, good security. Address, E. G. SANDEFUR, Box 484 Sherman Texas.

Feeding Steers.

We invite correspondence with regard to feeding steers. Have some good steers for sale at fair prices, and may require some more. RICHARDSON & HACKETT, Fort Worth, Texas.

C. F. ESTILL,

Live Stock Commission Dealers, Fort Worth, Texas.

Yards on Calhoun St., between 7th and 8th. Office at Yards. Live stock of every description boarded and yarded, and sold on commission. We solicit consignments.

Land, Cattle, Horses and Sheep.

Range cattle, horses, sheep and choice farming and ranch lands for sale by

E. H. WILKES & CO., Law, Land and Live Stock Agency, Santa Anna, Coleman County, Texas.

W. C. ROGERS,

Breeder of and dealer in thoroughbred

Hereford and Shorthorn Cattle.

A nice lot of bull and heifer calves for sale or trade, on terms to suit purchaser. Can furnish any kind of blooded cattle in any number. Address Mansion Hotel, Ft. Worth Peach Orchard Ranch, Vineyard, Jack Co., Tex.



C. B. WALKER,

Millsap, Parker county, Tex., importer and breeder of pure-bred Angora Goats. Pure-bred and high-grade bucks and ewes for sale.



Chester White, Berkshire and Poland China Pigs. Fine Setter Dogs, Scotch Collies, Fox Hounds and Beagles, Sheep and Pou try bred and for sale by W. GIBBONS & Co., West Chester, Chester county, Pa. Send stamp for Circular and Price List.

WRIGHT & HANNAH.

Live Stock Commission Merchants, KANSAS CITY STOCK YARDS. Market Reports Free. Range Trade solicited.

FOR SALE OR EXCHANGE.

Blooded Stock for Mexico.



HALBERT & CARLISLE, 213 San Antonio Street, El Paso, Texas, agents for blooded cattle, Berkshire hogs and fine chickens. Correspondence solicited. We have agents in the City of Mexico, and four other important places in the Republic of Mexico, and constantly in need of blooded stock. Name prices stock delivered in El Paso.

Holstein-Fresians.

Oak Glen Holstein-Friesian herd numbers seventy head of thoroughbred cattle, aged from calves to four years. I am prepared to sell from one animal to a car-load. Prices as low as can be found anywhere for this class of cattle.

S. B. HOWARD,

BONHAM, - - - TEXAS.

Spaying and Dehorning.

Will make engagements to spay and dehorn cattle. Will guarantee that heifers spayed by me will be perfectly quiet thereafter. Correspondence solicited.

J. B. ELLIOTT,

Mansion Hotel, Fort Worth, Texas.

FINE CATTLE FOR SALE.

About 100 head stock cattle, including 25 head full-blood Durham, the balance ½, ¾, etc., Durham. Will trade for horses or steers. WM. D. RICHARDSON, Mountain Peak, Ellis County, Texas.

FEEDING STEERS.

Jno. S. Andrews & Company of Dallas, Texas, invite correspondence with those who desire to purchase feeding steers or to contract for cattle for future delivery.

Ranch Properties.

A few extensive and select ranch properties for sale by

JNO. S. ANDREWS & CO.,

Dallas, Texas.

Southdown Buck Lambs.

I have a fine lot of thoroughbred Southdown buck lambs, also a number of high-grades, which I will sell low down.

H. O. SAMUELL,

Mesquite, Dallas County, Texas.

To Sheepmen.

A stock of groceries worth \$6000 and a dwelling in a live railroad town in exchange for sheep. Will put them in towards paying for a large herd. Will pay some cash. Will furnish hay, range and 25-cent corn on a trade for sheep or cattle, or will exchange above for sheep or cattle. GEO. W. WEST, Paul's Valley, I. T.

Imported Percheron Horses



STALLIONS

—AND—

MARES.

From 6 months to 8 years old. As grand a lot as ever left France; all registered, guaranteed breeders. Terms easy, prices low as any in America. Address or call on

C. V. HOLDER, Bloomington, Ill.

New York Rams.

New York Rams for sale, in lots to suit the purchaser. Shropshire-downs, Oxfordshire-downs, South-downs, Cotswolds, and big, strong, woolly Merinos. Prefer to sell in car lots. Will deliver at any station on railroad in U. S. Our prices are right. We guarantee satisfaction.

GEO. A. & R. I. PAGE, East Bethany, New York.

TELEGRAPHIC MARKETS.

Latest Reports by Wire From the Market Centers.

CHICAGO.

Special to the Live Stock Journal.

CHICAGO, ILL., Sept. 21, '88.

Receipts of all kinds of cattle this week heaviest on record. Texans selling 35c lower than last week.

W. W. Shearer & Co. sold for H. Benson, 47 cows, 888 lbs, \$2.10; 52, 714 lbs, \$2.10; 27, 578 lbs, \$1.80.

Scaling & Tamblyn sold 23 cows, 791 lbs, \$2.10; 59, 772 lbs, \$2.10; 37, 678 lbs, \$1.87 1/2; 30, 731 lbs, \$1.55; Childs, S. & S., 234 Indians, 998 lbs, \$3.35; 144, 1001 lbs, \$3.30; J. T. S. Wilson, 23, 940 lbs, \$3.40; 92, 944 lbs, \$3.40; J. T. Martin, 46, 945 lbs, \$3.

Hunter, Evans & Co. sold 22 steers, 993 lbs, \$3.35; 242, 1012 lbs, \$3.35; B. L. Nails, 225, 1098 lbs, \$3.75; Tuttle, 147, 1172 lbs, \$4; 16, 1076 lbs, \$3.45.

Wood Bros. sold for P. J. Donovan, 179 sheep, 87 lbs, \$8.35.

Gregory, Cooley & Co. sold 28 steers, 924 lbs, \$3.10; 21 cows, 843 lbs, \$2.12 1/2; 28 steers, 901 lbs, \$3; 203, 878 lbs, \$3.20; 206, 871 lbs, 3.20.

The James H. Campbell Co. sold for York, 103 Indians, 1167 lbs, \$3.50; 177, 1149 lbs, \$3.25; Belcher & C. 271, 1091 lbs, \$3.10; 20, 1024 lbs, \$3.10; 312, 1027 lbs, \$3.15.

Greer, Mills & Co. sold for Blessingame, 21 Indians, 920 lbs, \$2.70; Gunter, 277, 990 lbs, \$3.35; 14, 838 lbs, \$3; 180, 872 lbs, \$3; 12 cows, 818 lbs, \$2.30; J. Harris, 24 Indians, 995 lbs, \$3.20; 21 bulls, 1103 lbs, \$1.80; Earnest, 66 cows, 800 lbs, \$2.15; 24 steers, 933 lbs, \$2.90; Robertson, 23, 985 lbs, \$3.50; 16 calves, 114 lbs, \$4.37 1/2.

W. W. McIlhany & Co. sold 40 steers, 1038 lbs, \$2.75; 24, 984 lbs, \$2.55; 53, 990 lbs, \$2.55; 18 cows, 732 lbs, \$2; D. Harrold, 41 steers, 1034 lbs, \$2.65; Blessingame, 21, 906 lbs, \$2.75; 21, 913 lbs, \$2.75; 21, 900 lbs, \$2.60; 15, 760 lbs, \$2.50.

KANSAS CITY.

Special to the Texas Live Stock Journal.

KANSAS CITY, Sept. 21.—Receipts of cattle for the week, 36,352 head. The continued excessive receipts both here and at other markets almost paralyzed trade, especially on common grass rangers. Good dressed beef and shipping steers hold up well, and are selling from \$4.25 to \$5.50. On Texans the decline for the week up to Wednesday was 20 to 25c from last week's report.

Receipts to-day 5800. Market sluggish, prices lower, common unsaleable.

M. S. Peters & Co. sold for J. P. Holliday, 60 Indians, 779 lbs, \$2.05; S. M. Huntly, 54 Indian calves at \$8.50 each; 31 cows, 806 lbs, \$2.10; 22 same, 540 lbs, \$1.75; 25 same, 540 lbs, \$1.75; 15 steers, 1000 lbs, \$2.85; W. H. H. Addington, 27 cows, 740 lbs, \$2; D. T. Lacy, 25 cows, 740 lbs, \$2; 32 same, 740 lbs, \$2; O'Hair & Singlete, 19 steers, 1366 lbs, \$3.65; W. C. Dent, 28 Texas cows, 766 lbs, \$2.05; McShaw & Sherwood, 27 Indian heifers, 654 lbs, \$1.80; 31 same, 617 lbs, \$1.80.

Wright & Hannah sold for John Murray, Purcell, I. T., 24 Indian cows, 842 lbs, \$2.10.

Hunter, Evans & Co. sold for G. R. Landers, Corwin, Kan., 140 calves at \$6.10; 132 same, \$6.40 each, 65 cows, 778 lbs, \$2; Fairmount Cattle Co., Red Rock, I. T., 369 steers, 934 lbs, \$2.80; 47 steers, 1038 lbs, \$2.50; Childress County Land & C. Co., Elgin, Kan., 130 steers, 1148 lbs, \$3.30; A. J. Day, Winthrop, I. T., 65 cows, 673 lbs, \$2.20; Z. Mulhall, Corwin, Kan., 100 calves at \$6.50 each; M. A. Taylor, Winthrop, I. T., 25 calves at \$6.75 each; 27 cows, 818 lbs, \$2.20; 37 cows, 570 lbs, \$2.15; 37 steers, 916 lbs, \$2.80; 28 steers, 931 lbs, \$2.85; 51 steers, 791 lbs, \$2.25; J. V. Andrews, Woodward, I. T., 72 cows, 675 lbs, \$2.20; A. J. Day, Winthrop, I. T., 62 calves, \$7.15 each.

The Fish & Keck Co. sold for Cedar Valley L. & C. Co., Osage Nation, 170 Texas heifers, 765 lbs, \$1.90; J. C. Pryor, Cherokee Nation, 24 gr. H. B. cows, 939 lbs, \$2.40; 34 yearling heifers, 581 lbs, \$2.10; 40 steers, 1173 lbs, \$3.40; T. F. Pryor, Cherokee Nation, 26 cows, 860 lbs, \$2.30; 22 steers, 1030 lbs, \$3.45; 33 yearling heifers, 581 lbs, \$2.10; Hance & Bennett, Cherokee Nation, 43 Texas steers, 1059 lbs, \$3.05; Moot & Moffet, Cherokee Nation, 18 steers, 1154 lbs, \$3.90; 88 steers, 1190 lbs, \$3.60; J. A. Blair, Cherokee Nation, 44 steers, 1042 lbs, \$3.40; 55 steers, 884 lbs, \$2.30; J. F. Robertson, Cherokee Nation, 44 steers, 1032 lbs, \$3.05; 200 steers, 1149 lbs, \$3.25; Greever, H. & Co., Cherokee Nation, 217 steers, 994 lbs, \$2.75; 243 cows, 827 lbs, \$2.17 1/2; 90 cows, 880 lbs, \$2.35; Hood, Hewins & Co., Cherokee Nation, 400 calves, \$6.75 each; 79 calves, \$5.50 each; R. Wycks, Cherokee Nation, 22 cows, 854 lbs, \$2.10; Nickerson L. S. Co., Kan., 22 steers, 980 lbs, \$3; 17 steers, 1084 lbs, \$3.35; B. P. Cole, Medicine Lodge, 23 cows, 908 lbs, \$2.10; Gunter & Munson, Ardmore, I. T., 162 cows, 761 lbs, \$2.10; M. L.

Kramer, Neutral Strip, 42 steers, 1065 lbs, \$2.50; Ives & Doyle, Cherokee Strip, 30 steers, 1008 lbs, \$3.10; 68 steers, 1008 lbs, \$3.10; 38 steers, 1008 lbs, \$3.10; 68 steers, 1008 lbs, \$3.10; 38 bulls, 1305 lbs, \$1.70; 43 steers, 987 lbs, \$2.90.

ST. LOUIS.

Special to the Live Stock Journal.

ST. LOUIS, Sept. 21.—The run today was light, some 40 car-loads of range cattle being on the market, half of which only found sale. Market dull at decline of yesterday. Steers \$2.50 @3.40; cows \$1.65@2.10; mixed \$1.75 @2.25. Sheep scarce and good ones wanted, common dull, prices range from \$2.50@3.65.

NEW ORLEANS.

Special to the Live Stock Journal.

NEW ORLEANS, Sept. 21.—Good fat heeves and fat cows in light supply. Prices firm, calves and yearlings in fair supply. Movement active. Good corn-fed hogs and fat sheep in fair request.

QUOTATIONS:—Choice heeves, per pound gross, 3@3 1/2c; common to fair, 2 1/2@2 3/4c; good fat cows, 2@2 1/2c; common to fair, \$10@15; calves, \$5@8; yearlings, \$8@12; good fat corn-fed hogs, per lb gross 6@7c; common to fair 4 1/2@5 1/2c; good fat sheep, each \$2.50 @3.50; common to fair, \$1@2.

GALVESTON.

[Reported by Winfree, Norman & Pearson].

BEEVES AND COWS—Choice, per lb, gross, 2@2 1/4c; common, per head, \$8@10; 2-year-olds, choice, per head, \$8@10; common, per head, \$6@7; yearlings, choice, per head, \$6@7; common, per head, \$4@5; calves, choice, per lb, gross, 2@2 1/4c; common, per head, \$3.00 @3.50.

SHEEP—Choice, per lb, gross, 3@3 1/2c. REMARKS.—Market well supplied with common cattle, calves and yearlings. The demand for fat mutton is unabated, a car-load would bring top quotations. Try us!!

SAN ANTONIO.

The local market developed no new features this week, except a little better demand for shipping stock stimulated by the improving prices in the Northern markets. Cows continue at mercy of the local butchers. Hogs are in fair demand, with every prospect of bringing good prices in the winter. Sheep are dull.

Quotations are as follows: CATTLE—Steers, shippers and butchers, \$14@18; cows, fat, from \$10@12; light, at \$7@10; yearlings, \$5@6.50; calves, \$3@4. SHEEP—Muttons, \$1.00@2.00. Goats, average stock 50c@1.25 per head. Hogs—Natives \$3.50@4.

Sales at Polk's stock yards, Fort Worth, Texas:—C. B. Stone to Jno. Adams, 6 cows, av. 780 lbs. at 1 1/2c; Ferd Slocum to butchers, 22 cows at 1 1/2c; R. B. Cannon to Tom Smith, 7 cows at 1 1/2c; Richardson & Hackett to Kemper, 96 sheep, av 85 lbs. at 2 1/2c; Getz & Sims to Kemper, 8 cows av. 775 lbs at 1 1/2c. 10 calves at \$5 per head; Getz & Sims to Canto- 8 cows at \$12; Getz & Sims to Bill Newman, 3 heifers, av. 700 lbs. at 1 1/2c; Trade this week has been dull. There is a good demand for stock hogs at 5 1/2c., mutton sheep at 2 1/2c. The cattle coming in are in fine fix. Several parties were here this week looking after feeders.

E. R. HUNTER, formerly cattle buyer for Monroe in St. Louis. R. H. LEE. W. M. DUNHAM.

E. R. HUNTER & CO.

Live Stock Commission Merchants, Union Stock Yards, CHICAGO, ILL.

Refer to Drovers' Nat'l Bank, and Nels Morris Chicago J. S. Hughes & Co., bankers, Richmond, Mo. Market reports by mail or wire.

S. E. WOOD. JAMES WOOD. R. A. WOOD

WOOD BROTHERS, Live Stock Commission

Union Stock Yards, Chicago.

Established 1871

W. W. McILHANY & CO.

LIVE STOCK Commission Merchants

Union Stock Yards, CHICAGO, - - ILLINOIS.

Our Mr. C. C. FRENCH, at Fort Worth Texas, will attend to Texas business.

We solicit consignments of Texas cattle, sheep and hogs, and specially invite consignments of Texas horses.

W. W. SHEARER & CO., LIVE STOCK

Commission Merchants

128 Exchange Building, Union Stock Yards, - - CHICAGO, ILL.

REFERENCES: Union Stock Yard National Bank, and Drovers' National Bank, Chicago, Ill.

ROBERT STRAHORN. JESSE SHERWOOD. Established 1861.

R. STRAHORN & CO., Live Stock

Commission.

Room 85, Union Stock Yards, CHICAGO, - - - ILLINOIS.

J. C. RICHARDSON, Fort Worth, General Agent for the State of Texas.

H. C. (HANK) MALLORY. CHAS. A. MALLORY. Established 1862.

MALLORY & SON, Live Stock Commission,

Rooms 113 & 115 Exchange Building, Union Stock Yards, CHICAGO, - - ILLINOIS.

Howard Bland of Taylor, Texas, agent for East Texas. C. A. Lyford of San Antonio agent for South Texas.

J. H. STEPHENS, JNO. D. DOBYNS, (Uncle Henry.) Kansas City, Chicago, Ill.

STEPHENS & DOBYNS, LIVE STOCK

Commission Merchants

Kansas City, Mo. and Chicago, Ill.

We make a specialty of the Texas and Western cattle and ranch trade. Are prepared to make contracts for the delivery of Texas cattle for 1889. Consignments and correspondence solicited.



Commission Merchants

For the sale of

CATTLE, HOGS AND SHEEP.

Rooms 9 and 10 Exchange Building,

KANSAS CITY STOCK YARDS.

Prompt and correct market reports furnished by mail or wire. Consignments solicited. Correspondence given immediate attention.

ROUND-UPS.

ROUND-UPS.

Silver City Enterprise:—Lyons & Campbell have purchased 1200 head of beef cattle from the Aztec company of Arizona for \$2.15 per hundred. They are to top the herd at that price.

Silver City Enterprise:—G. L. Brooks of Socorro expects to make a big shipment of cattle from his ranch at Springer, N. M., to Phoenix, Arizona, to feed for the California market.

CALDWELL, KAN., Sept. 18.—The Cherokee Strip Live Stock association has adjourned after passing resolutions turning over to the Cherokee council all improvements, fences, etc., in the Strip leased by the association. This action was taken in view of the failure of the association to secure a renewal of the lease, which expires October 1. The loss to the syndicate is heavy, but cannot be estimated.

CHICAGO, ILL., Sept. 18.—The railroads entering Chicago from the West, Northwest and Southwest, have agreed on a rate to apply to live stock shipments under the weighing system. The rates from Omaha and Kansas City to Chicago on cattle and sheep will be 27½¢ a hundred pounds; on hogs, 27½¢ from Omaha and 25¢ from Kansas City. These rates will take the place of the present rates per carload and will go into effect October 10.

Silver City Enterprise:—Lyons & Campbell shipped 220 steers in the Palace stock cars last Saturday to Los Angeles. They were shipped over the Santa Fe road by way of Albuquerque, and it is expected that they will go through in 36 hours. With past experience no company can afford to ship over the Southern Pacific. It might do to start yearlings with the expectation of getting them to market by the time they matured; in that way some business might be done if the Southern Pacific road furnished Palace cars to allow them to mature in.

Mobile Prize, How—Where—When.

Mobile, (Ala.) Register, July 15.

Mr. Frank McKeon, a clever gentleman of McKeon & Menkin, who operate a restaurant, said that it was a fact he and Mr. Beyle held one-twentieth of ticket No. 53,469, the second capital prize of 100,000 in the last drawing of the Louisiana State Lottery. "The prize came in good time, as I needed the money badly, as you know how I have had plenty of bad luck. We were burned out last fall. Another misfortune was losing \$306 in a recent bank failure. The Southern Express company collected it for Messrs. McKeon and Beyle.

An Open Letter.

CHICAGO, ALTON & ST. LOUIS R. R. CO. }
OFFICE GEN'L LIVE STOCK AGT., }
ST. LOUIS, July 20, 1888. }

The undersigned, as the live stock representative of the old reliable and well-known Alton road, respectfully calls the attention of live stock shippers to the improved fast time now being made by this line from St. Louis, Kansas City and Higbee to Chicago. The cars of this line are uniform in size, and the roof is higher and better ventilated than any other ordinary stock cars now in use on other lines. In addition, the Alton is furnishing more of the improved palace stock cars to Texas shippers than all other lines combined. The Chicago & Alton

makes a specialty of the handling of live stock, and in the past five years shipments have largely increased each year, which shows to all fair-minded people that we give attention to our patrons. No other line in the country transports as much live stock as the C. & A. in proportion to mileage. The books of the stock yards at St. Louis and Chicago will verify this. I can say, without fear of successful contradiction, that the C. & A. in the past has done some good work in behalf of live stock shippers so far as rates are concerned. The officers of this company have at all times looked upon the prosperity of stockmen as being beneficial to the road. The success of one was prosperity for both. I respectfully solicit of shippers a good share of their consignments, and promise them good treatment, fast time and rates as low as any first-class road makes.

I sincerely thank live stock shippers for the large patronage given our line in the past, and ask for their friendship and support in the future.

Shippers desiring any information or favors, by addressing me at St. Louis, will receive prompt replies.

JNO. NESBITT,
Gen. Live Stock Agent.

Chinese in the Beef Trade.

A San Francisco paper of late date has the following item:

The boss butchers met at B'nai B'rith hall last evening, Mark Strouse presiding. A boycott was ordered on the shops of Adam H. Leips at 24th and Guerrero streets, and Joseph Kelly at 1159 Howard street, for dealing in Chinese pork, they have been detected in doing so by Detective Mooney. It was also ordered that the boycott on M. Vocke of the Grand Paradise market at Eighth and Bryant steets be continued. Active preparations are being made for the picnic and barbecue to be held at Badger's park, Oakland, on Sept. 23d. The German butchers, Joureyman butchers, San Francisco butchers, the Butchers' Protective union and the Bosses will turn out strong on that day. They will be met at Oakland by the butchers of Oakland, Berkeley and Alameda and escorted to the park. Captain George A. Raabe will act as grand marshal of the day.

Mangled by Cattle.

Drovers' Telegram.

WICHITA, Kas., Sept. 12.—Robert Somerville, a leading cattleman living in the southwest part of the county, about 20 miles from here, was salting his cattle last evening, when he was attacked by a mad bull and knocked down before he saw him, and before he could get up the animal was trying to stamp him to pieces with his fore feet. In a moment Somerville drew his revolver and began to shoot at the animal the third bullet brought him to the ground.

Somerville was unable to get up. His son, who was about a half a mile away, saw the fight, but before he could reach the scenes the other cattle which had been excited by the shooting and smell of blood gathered about the prostrate man and killed him. The cattle then went to fighting each other, and as there was over two hundred in the herd, several were severely injured.

The body of Somerville was frightfully mangled, having been gored in many places. It was some time before the son was able to rescue it.

ONE OF THE FOUR.

Stockholders in the Hammond Meat Company Dissatisfied with the Management.

DETROIT, MICH., Sept. 11.—There is trouble among the stockholders of the Hammond Meat company. The capital stock is \$2,100,000, a majority of which is held by the Hammond estate of Detroit. The late George H. Hammond started the business in a small way in 1871. Several years later slaughter and packing houses were started in Chicago and a company formed. When Mr. Hammond died a few months ago his son, George H. Jr., took the management. The other stockholders were not satisfied with his work. Yesterday at a meeting of stockholders a dividend of 30 per cent. was declared—5 per cent. payable immediately and 25 per cent. in thirty days. This was objected to by Hammond, who thought a dividend of 5 per cent. would simply cover the net profits of the year, although the books showed an earning of 30 per cent. Mr. Hammond argued that the wear and tear of machinery, buildings, etc., and other expenses would consume the 25 per cent. Another reason for his objection was that there is only \$230,000 cash on hand, and it is necessary, he asserted, to have at least \$150,000 on hand to carry on the business. Checks for the 5 per cent. dividend were to be drawn this morning, but Mr. Hammond, for his father's estate, obtained an injunction from the circuit court preventing it.

Bucklin's Arnica Salve.

The best salve in the world for cuts, bruises, sores, ulcers, salt rheum, fever sores, tetter, chapped hands, chilblains, corns, and all skin eruptions, and positively cures piles, or no pay required. Is guaranteed to give perfect satisfaction, or money refunded. Price 25 cents per box. For sale by H. W. Williams & Co.

Sale of Holstein-Durham Bulls.

H. G. Seeligson of Galveston Ranch, Nueces county, sold this week to the King ranch, another lot of five yearling bulls, the get of 3 and full blood Durham cows and registered Holstein bulls. Mr. Seeligson says the Durhams are an old favorite for beef and the Holsteins, noted for their hardiness and big bone, are fast growing in popularity; when crossed with other breeds they do not give more milk than the calf will take. The Holstein and Durham make an excellent cross to raise beef cattle.

Scenes in the Rocky Mountains.

The scenery in the Rockies is grand beyond description. To give an idea of it the Denver & Rio Grande R. R. has just issued four elegant tint views, showing "Curcanti Needle," "The Portal," "Sultan Mountain" and "The Second Tunnel, Canon of the Grand River." These pictures are on cardboard mounts 11x13 inches in size, and will be sent prepaid to any address on receipt of forty cents in postage stamps for the set, or ten cents in stamps each for any one or more of the views. Address, S. K. Hooper, G. P. & T. Agt., D. & R. G. R. R., Denver, Colo.

Farmers, Ranchmen and Hotels,

Sending their address to Turner & McClure, wholesale and retail grocers, Fort Worth, Texas, will receive by return mail their very low price list.

UNPRECEDENTED ATTRACTIONS!
OVER A MILLION DISTRIBUTED

L.S.L.

Louisiana State Lottery Company.

Incorporated by the Legislature in 1868, for Educational and Charitable purposes, and its franchise made a part of the present State Constitution, in 1879, by an overwhelming popular vote.

Its GRAND EXTRAORDINARY Drawings take place Semi-Annually, (June and December), and its GRAND SINGLE NUMBER Drawings take place on each of the other ten months in the year, and are all drawn in public, at the Academy of Music, New Orleans, La.

"We do hereby certify that we supervise the arrangements for all the Monthly and quarterly Drawings of the Louisiana State Lottery Company, and in person manage and control the drawings themselves, and that the same are conducted with honesty, fairness, and in good faith toward all parties, and we authorize the company to use this certificate, with fac-similes of our signatures attached, in its advertisements."

E. J. Secour
J. F. Early

Commissioners.

We, the undersigned Banks and Bankers will pay all Prizes drawn in the Louisiana State Lotteries which may be presented at our counters.

R. M. WALMSLEY, Pres. Louisiana Nat. Bk.
PIERRE LANAUX, Pres. State Nat'l Bk.
A. BALDWIN, Pres. New Orleans Nat'l Bk.
CARL KOHN, Pres. Union National Bank.

GRAND MONTHLY DRAWING

In the Academy of Music, New Orleans,
Tuesday, October 9, 1888.

Capital Prize, \$300,000

100,000 Tickets at Twenty Dollars each. Halves \$10; Quarters \$5; Tenths \$2; Twentieths \$1.

LIST OF PRIZES.

1 PRIZE OF \$300,000 is.....	\$300,000
1 PRIZE OF 100,000 is.....	100,000
1 PRIZE OF 50,000 is.....	50,000
1 PRIZE OF 25,000 is.....	25,000
2 PRIZES OF 10,000 are.....	20,000
5 PRIZES OF 5,000 are.....	25,000
25 PRIZES OF 1,000 are.....	25,000
100 PRIZES OF 500 are.....	50,000
200 PRIZES OF 300 are.....	60,000
500 PRIZES OF 200 are.....	100,000
APPROXIMATION PRIZES.	
100 Prizes of \$500 are.....	50,000
100 Prizes of \$300 are.....	30,000
100 Prizes of \$200 are.....	20,000
TERMINAL PRIZES.	
999 Prizes of \$100 are.....	99,900
999 Prizes of \$100 are.....	99,900

3134 Prizes, amounting to.....\$1,054,800

NOTE—Tickets drawing capital prizes are not entitled to terminal prizes.

For Club Rates, or any further information desired, write legibly to the undersigned, clearly stating your residence, with state, county, street and number.

More rapid return mail delivery will be insured by your inclosing an envelope bearing your full address.

Send Postal Notes, Express Money Orders, or New York Exchange in ordinary letter. Currency by express (at our expense) addressed to

M. A. DAUPHIN,
New Orleans, La.

or M. A. DAUPHIN,
Washington, D. C.

Address Registered Letters to

NEW ORLEANS NATIONAL BANK,
New Orleans, La.

REMEMBER That the presence of Generals Beauregard and Early, who are in charge of the drawings, is a guarantee of absolute fairness and integrity, that the chances are all equal, and that no one can possibly divine what number will draw a prize.

REMEMBER that the payment of all prizes is GUARANTEED BY FOUR NATIONAL BANKS of New Orleans, and the tickets are signed by the president of an institution whose chartered rights are recognized in the highest courts; therefore, beware of any imitations or anonymous schemes.

GOLD You can live at home and make more money at work than at anything else in the world. Either sex; all ages. Sent FREE. Terms FREE. Address, TRUE & CO., Augusta.

MUSTANG LINIMENT

MEXICAN MUSTANG LINIMENT, Penetrates Muscles to the Very Bone! Wonderful! TRY IT.

MUSTANG LINIMENT

MEXICAN MUSTANG LINIMENT cures PILES, OLD SORES, CAKED BREASTS—all INFLAMMATION.

MUSTANG LINIMENT

MEXICAN MUSTANG LINIMENT conquers SPAIN, SCRATCHES and SPRAINS in HORSES and MULES.

MUSTANG LINIMENT

MEXICAN MUSTANG LINIMENT, for MAN and BEAST. Greatest Curative discovery ever made.

THE CLIP.

Bob Crowds is out on the Texas Pacific road to buy wool for the Fort Worth house.

Texas wool quotations from the Boston Commercial Bulletin: Texas fine, 12 months, 15@22c; do do 6 to 8 months, 15@16c; Texas medium, 12 months, 20@24c; do do 6 to 8 months, 17@18c.

There will be a meeting of the Wool Growers association of San Saba county at the courthouse, San Saba, Texas, on Saturday, October 6, 1888. A full attendance is desired. G. G. Walker, chairman.

The Northwestern Live Stock Journal says:—W. W. Gleason, manager of the Warren Live Stock company has just returned from Michigan with a car-load of blooded Shropshire rams, which the company are going to use to improve the size of their sheep.

Three lots of Texas sheep sold at St. Louis on Tuesday. There were 432, average 85 pounds at \$3.35; 209 Texas sheep, 78 pounds at \$3.15; 116 Texas sheep, 70 lbs, at \$3. If wethers can be bought in Texas on the above basis there ought to be money in feeding them.

Boston Commercial Bulletin:—There have been only moderate sales of Texas wools, and Oregon wools have sold moderately also. In California wool, however, there have been large sales and quite an interesting market. The greater part of the sales have been from 15@18c, about 100,000 lbs of Northern wool being sold at about 21 cents.

A Colorado City special says: Notwithstanding the low price of wool, the sheep trade is lively, and sales are of daily occurrence. Starker Bros., of Hannibal, Mo., have been buying large numbers this week for the purpose of feeding before putting on the market. They bought 2500 head from J. D. Lucas, at \$1.85, and 500 head from E. B. Weaver at \$1.60. They were shipped to Hannibal. Lucas and Parks bought 600 head of sheep from Williams & Speer at \$1.50. One fall clip of wool was sold at 13c.

Boston Advertiser:—The present tone of the market is firm and some houses are still inclined to think that values are going higher. As a rule, however, most dealers are willing to sell at present prices, except in cases where the wool is consigned and the Western shipper has withdrawn from the market until after the election, which is the case in numbers of instances. All realize that even at the advance which has taken place during the past month values are still several cents below the figures ruling a year ago and now that there appears to be less likelihood of wool going on the free list for this year, at least, there is more confidence in the situation. Those mills who have not got in much wool have to come and buy and as a rule they have to pay well up to quotations for their supplies.

U. S. Economist reports the following wool sales at New York: 10,000 lbs spring Texas at 18 to 18½c; 10,000 lbs spring do (12 months' growth) above 20c; 15,000 lbs do do (do) at 20c; 10,000 lbs do Westerns do (6 months' growth) at 12½ to 14c; 10,000 lbs do low grade at 14c; 7000 lbs black Texas on private terms; 28,000 lbs Texas bucks at 10c; 9500 lbs scoured Texas at 43 to 46c; 21,000 lbs spring Texas at 13 to 18c; 25,000 lbs do do at 21 to 22c; 20,000 lbs do California on private terms; 10,000 lbs scoured Oregon (good and clear) at 53c; 2000 lbs do do at 48c; 5000 lbs do California (defective) at 40c; 12,000 lbs fine medium Territory at 46c; 5000 lbs do do at 50c; 56,000 lbs scoured territory, 9000 lbs do black, 2500 lbs do Texas on terms not disclosed.

Boston Advertiser:—While the greater part of the activity in wools seems to be over for the present, there is still a fair amount of business reported, although some of the sales are of lots sold previously and are only now being delivered. Most of the larger mills bought freely at the start and got in quite liberal stocks before the advance, and consequently they are not disposed to do much at present. There was also considerable speculative trading done during the excitement of the recent bulge, and thus all of the business reported did not represent that that much wool had gone into consumption. As near as can be learned the greater part of the sales made were to manufacturers, but several million pounds changed hands with dealers, as is generally the case on a bulge, as the excitement tends to encourage speculation.

Pacific Rural Press:—Wool rates, General Manager W. A. Bissell of the Atlantic & Pacific on last Friday received a telegram from Chairman Leeds of the Transcontinental Association requesting him to modify tariff No. 9 in the matter of wool. Prior to the last transcontinental meeting, wool was freighted from California to New York and intermediate points on a basis of its own value. The last transcontinental tariff made two rates. One was \$1.50 per 100 pounds for all grease wool worth less than 12 cents; the other was \$1.60 for all wool over 12 cents. As a matter of fact, more than nine-tenths of all the California wool was worth 16 or 18 cents per pound, and its shipment cost \$1.60 per hundred. The wool-grower thought this too much and complained to the association. The modification consists of having but one rate—\$1.60.—for all kinds of wool.

How's This?

We offer one hundred dollars reward for any case of catarrh that can not be cured by taking Hall's Catarrh Cure.

F. J. CHENEY & Co., Proprietors, Toledo, Ohio.

We, the undersigned, have known F. J. Cheney for the last 15 years, and believe him perfectly honorable in all business transactions, and financially able to carry out any obligation made by their firm.

WEST & TRUAX, Wholesale druggists, Toledo, Ohio.
WALDING, KINNAN & MARVIN, Wholesale druggists, Toledo, Ohio.
E. H. VAN HOESEN, Cashier, Toledo National Bank, Toledo, Ohio.

Hall's Catarrh Cure is taken internally, acting directly upon the blood and mucous surfaces of the system. Price 75c. per bottle. Sold by all druggists.

A Grave Charge.

O. H. O. in Farm and Fireside.

Our Merino sheep—the American Merino—may be considered overbred. We have gone too far in certain directions for general purposes and common usefulness with the average farmer. We have overdone some characteristics which for certain purposes are valuable. We have gotten too much of a good thing. We have largely lost sight of usefulness for the general purpose. The specific purpose for stud flocks has been adopted by the general flockmaster, and at a serious and national loss. Merino sheep raising has too much merit on fancy paper; too much merit that remains in the vats of the woolen mills; too much merit that is not useful to the common farmer. In short, it is too artificial for times of depression and low prices of wool. The blessings of our Merino sheep are fully appreciated by all who would improve the wool products of their flocks. It has added millions to the value of our flocks and to the flocks of the

world. But when certain merits have become too conspicuous, out of which the masses can make no profits, something is wrong, and it is time to call a halt and consider the matter.

With all due deference to the claims of pedigree, wrinkles and grease, aside from the specific uses for which they have been and are valuable, there is need of more varied and broader views of the breed. These three characteristics do not, have not, nor never can be made to stand for true American sheep husbandry without damaging the industry. The advocates of such a sheep husbandry are on the wrong track; and are largely responsible for the scare and disgust of the times. There is more than one side to this question. There are men who are making more money out of sheep raising than any other one industry of the farm. They are not tied to one idea or one method or one purpose. If they ever were, they have broken loose from the traditions and practices of the past and caught on to the demands and expedients of the present, and gone abreast of the times without cause of complaint or murmur. They have been called cranks by the relics of the past, but they are making money out of sheep. They are respectable among the sheep fraternity in every respect—politically and otherwise, they want a tariff, as do 90 per cent. of sheep men, but they have used business sense, business discretion, and are spoiling old theories, but making money by it.

The Verdict Unanimous.

W. D. Sult, druggist, Bippus, Ind., testifies: "I can recommend Electric Bitters as the very best remedy. Every bottle sold has given relief in every case. One man took six bottles and was cured of rheumatism of 10 years' standing." Abraham Hare, druggist, Belville, Ohio, affirms: "The best selling medicine I have ever handled in my 20 years' experience, is Electric Bitters." Thousands of others have added their testimony, so that the verdict is unanimous that Electric Bitters do cure all diseases of the Liver, Kidneys or Blood. Only a half-dollar a bottle at H. W. Williams & Co.'s drug store.

The Breeders' Journal recommends a light harness for breachy cattle, made as follows: Procure a common head halter without a leading strap; in place of the strap tie to the ring a half inch rope eleven feet long; about three feet back, more or less, according to the size of the animal, tie a small ring firmly to the rope; pass the rope back between the forelegs, which will bring the ring directly under the waist or girth of the animal; pass the loose end up over the back and down to the ring and tie. This makes a harness that will keep the animal from getting its head high enough to jump a fence, while it does not injure or annoy unreasonably. Only a little practice will be required for finding the proper length for each of the parts.

Rock Salt.

Messrs. Turner, McClure & Co. of Fort Worth have en route a car-load of the celebrated rock salt, which is the best salt that can be used for cattle, horses, and all kinds of stock. Cattle like the rock salt and prefer it to all other. They cannot eat enough to hurt them, as it is as hard as a rock and must be licked. Messrs. Turner, McClure & Co. will fill orders by mail promptly, either in large or small quantity. Send a trial order. TURNER, MCCLURE & Co.

Largest stock of tin plate, metals, sheet iron, iron roofing and siding in Western Texas, Piper & Schulthess, San Antonio, Texas. We sell at factory prices, only freight added.



This powder never varies. A marvel of purity, strength and wholesomeness. More economical than the ordinary kinds, and cannot be sold in competition with the multitude of low-test, short-weight alum or phosphate powders. Sold only in cans. ROYAL BAKING POWDER CO., 106 Wall St., N. Y.

E. WM. GRUENDLER, GALVESTON, TEX.

Wool and Sheepskins

Handled for Manufacturers' and Pullers' Orders. Consignments and Correspondence Solicited.

—[ESTABLISHED 1830.]— DENNY, RICE & Co. Nos. 606 to 610 Atlantic Avenue, BOSTON, MASS.

-WOOL- Commission Merchants. Prompt information given by mail or telegraph by applying to their Texas representative, C. G. HUBBARD. SAN ANTONIO, TEX. Cash advances made on consignments. Also make Texas Wool Growers Cash Advances on Wool at Eight Per Cent. Per Annum, at any time during the year.

J. R. POLLOCK, M. D. 401 Main Street, FORT WORTH, TEXAS.

Chronic Diseases a Specialty

Piles, Fistula, Fissure and all diseases of the rectum successfully treated. Oxygen and Electricity for the treatment of catarrh, bronchitis, consumption, dyspepsia, constipation and all diseases of the nervous system. Best of city references given upon application. Correspondence solicited.

CITY HOTEL, - CHICAGO. Cor. State and 16th Sts.

SPECIAL RATE TO STOCKMEN, \$1.50 PER DAY. Nearest hotel outside the yards. Table and Rooms first-class. State st., Archer av or L. S. & M. S. Dummy pass the house to a parts of city and depots. W F ORCUTT, Proprietor

SAN ANTONIO.

WRITES a subscriber in Nueces county: "I find your paper the most reliable in giving market reports and actual sales of live stock." That is the unanimous verdict of the unprejudiced public.

THE sagacios pretend to see the handwriting on the wall to the effect that in a few years Texas must prepare her meat surplus within her own borders. Then the deep water question will be a very interesting subject to Texas rancheros.

AS AN encouraging indication that the ranch business in Southwest Texas is again on the ascending scale in the public estimation the fact has but to be mentioned that it is of common occurrence now adays to receive propositions from all over the country to trade for ranches and stock in this section.

IT is said that another advance of freight in live stock and dressed meat is contemplated by the trunk railroad lines. Pile it on, as this is about the only way that the Texas harbor schemes can be forced into activity. When the last grain breaks the camel's back, we will all pull together and make a port and ship by water.

THE branding question is taking a strong hold on the Texas ranchero. Fenced pastures does not make it so necessary as of old to put on a brand that can be read a mile. Branding on the jaw, inside of the legs, and other places where no disfiguring takes place will answer all purposes of proving proverty, and will be in practice in the near future.

MANY a man has been ruined by trusts. It is usually the ready trust of the saloon, grocery, tailor, etc., that has been the bane of the average citizen, but now we are threatened by the "trusts" of every necessary of life in the shape of combines that conspire against the public generally. If a conspiracy law can be made to operate against trade unions, why can't they be equally effective against a conspiracy of capitalists against a consuming public?

DIVERSITY of crops has long ago been recognized as the only safe and really profitable system of agriculture. Why then is not diversity of stock fully as practical? Undoubtedly the greatest return from stock farming can be got through raising all classes of domestic stock. It is only left to the practical judgment to determine the proper number of each kind that can secure the greatest return per acre. Texas could be made a wonderful country if it was made to produce its full capacity.

IT APPEARS that the Texas Immigration association has had a man among the Anarchists, socialists, etc. ists, of Chicago, inducing immigration to Texas. In the name of humanity, let them come to the Southwest, as here they will be disposed of without attorney fee and months of imprisonment. In

some things we are slow, but it is safe to assure them that in ridding ourselves of anarchists we can be as "previous" as they may desire. Let the agent come along with them, and he shall receive the same hearty welcome that will be accorded his proteges.

THE English government has ordered that all cattle must be slaughtered before leaving the city if import. How would it do for this government to issue the same kind of order? not only as to the mother country, but also the colonies, Canada included. How would it affect their pedigreed stock breeding? We are now in pretty fair shape to take care of our selves in that line. England don't believe in protection when she is protected against, but when she is the protected, "es otra cosa." We believe in maintaining a friendly relation with every foreign country, but we believe more in being treated in a fair and honorable manner, or having no intercourse whatever.

San Antonio Wool Market.

The wool market, from present indications, will open comparatively early, with prospects of an easy market and fair prices under the circumstances of the political agitations. Some 100 or more sacks of spring wools were disposed of during the past week, being the leavings, at private terms, but rumor has it about 13c. The receipts are rapidly increasing, with over 1500 sacks already in.

San Antonio Horse Market.

The horsemen report a dull week, with few buyers in except local pasture men who only buy when a good "spec" is in sight. Prices are lowered on common and ordinary stock, but on well bred and fat stock they are well maintained, and mules are in fair demand, good ones with small American brands are sought after, and prices are firm with a prospect of a possible advance inside of a month. The supply of common and scrub is exceeding the demand with advices of it coming in even more plentiful. The prospects for this class are not encouraging for some months to come. The retail trade is reported unusually dull there being little or no demand for any kind of work or saddle horses. The shipments were 1069 as against 1009 the week previous.

Quotations are as follows:

Scrub and poor mares, 12 to 13 1/2 hands.	\$ 8@12
Scrub fair conditioned, 12 to 13 1/2 hands.	11@ 14
Medium mares, 13 to 14 hands, fat.	17@ 20
Medium mares, 13 to 14 hands, thin.	14@ 16
Yearling fillies, branded.	8@ 9
Yearling fillies, unbranded.	10@ 12
Two-year-old fillies, branded.	10@ 13
Two-year-old fillies, unbranded.	12@ 14
Texas improved mares, 14 to 15 hands.	30@ 40
American carriage horses, 15 1/2 to 16 1/2.	75@200
Saddle horses, good, 13 to 14 1/2 hands.	20@ 30
Saddle horses, poor, 13 to 14 1/2 hands.	16@ 22
Unbroke horses, 13 to 14 1/2 hands.	15@ 23
Weaned, unbranded colts.	4.50@ 6
Mules, Mexican, 12 to 13 1/2 hands.	27@ 46
Mules improved, 13 1/2 to 14 hands.	45@ 65
Yearling mule colts, improved.	25@ 30
Two-year mule colts, improved.	30@ 40
Yearling mule colts, Mexican.	15@ 20
Two-year mule colts, Mexican.	20@ 30

HORNS AND HOOF.

The horse men complained of ennui this week.

Read advertisement of Devon cattle by E. D. Hicks.

The Colvin Bros. of Louisiana are here after horses.

Scrub horse stock is now at a very low ebb on the market.

Tom and Ike Stevens made a hurried

visit to the Alamo city during the week.

Read advertisement of Kansas ranch for sale or trade for Southwest Texas cattle.

H. S. Tom, Fairview, Wilson county, was in the city the early part of the week.

The Seale Bros. of Wilson county shipped two car-loads of horses to Vicksburg last week.

B. F. Dane of Kendall county, who has some very fine horse stock, is having an Almont colt trained in this city.

This is a good time to buy horse stock on the San Antonio market and hold it on good grass for next springs market.

C. E. Hicks came in from Nueces county with a couple car-loads of W 6 horse stock, which he placed on this market.

Capt. Joe Shely is up from the lower Rio Grande country, bringing with him 240 head of horse and mule stock for this market.

John T. Lytle is here. Mr. Lytle says that the people need not worry about the dangerous tendency of the American Cattle trust.

Thos. Roderiguez of Atascosa county was in town last Saturday and reports his county is as good a fix as he has ever seen it for this time of year.

Maj. Alex. Moore, who is well known as a thorough ranchero, is back from his Northern summer sojourn, ready for the winter's business in Texas.

J. M. Pettus of Goliad county was in town this week. Mr. Pettus says that his fodder crop, especially sorghum, was something prodigious this year.

Thirty-three car-loads of cattle went north over the I. & G. N. last Monday from off the S. A. & A. P. railroad. Shipments like that are rare now-a-days.

Joe V. Shiner left for the Sabinas ranch, state of Coahuila, Mexico. This is the extensive ranch managed by W. Broderick Cloete, who is now in England.

Some big trading is reported to be on the tapis, and the STOCK JOURNAL readers shall have the particulars as soon as they are ripe for cracking open.

Wm. Ragland left Friday for Fort Stockton, where he will receive the balance of the beeves in which he is interested, and will accompany them to the Chicago market.

Chas. Emmet, merchant and stockman of Corpus Christi, passed on home on Tuesday from Manita, Colorado, much improved in health. He spent nearly two months in that delightful resort.

Wm. Votaw has just brought his family back to town for the winter. He says that prospects for good spring beeves is better with him than it has ever been, and he will have a goodly bunch of them for sale.

C. Alexander of Missouri, who is an old time operator on this horse market, is back looking about. He has an eye on mules, and a lot of these long-eared hybrids will probably soon take a northern trip in his charge.

H. B. Clarke & Co., 76 Union street, Memphis, Tenn., are prepared to feed horse stock in any numbers at reasonable prices. All stock transferred free of charge. They solicit the patronage of all who ship by way of Memphis.

G. A. Ray of Goliad county, was in town this week feeling of the mule market. Mr. Ray is raising mules from Kentucky jacks and improved mares, with a small jaw brand, and

wants all that they are worth. Such mules will sell along side of Missouri mules.

Tom O'Connor of O'Connor Bros., Refugio county, was in town the early part of the week. They have just began boring on the second artesian well, the first still continues to flow as strong as ever. He says that it has been raining for the last ten days, and they could stand a little dry weather just now.

Shippers of horse stock and mules to the Southern market will do well to call on Ben Darlington at the Southern hotel, San Antonio, Texas, who is a member of the firm of H. B. Clarke & Co., Memphis, Tenn., live stock commission merchants.

T. Y. Pettus passed through this city on his way home from Mexico, where he has a stock of cattle opposite of Del Rio. He is bringing a lot of his steers back to Goliad county, where they will be prepared for the market next spring. He says that the range in the part of Mexico where he has his stock is becoming somewhat overstocked.

It is reported that in the sale of the Dr. A. E. Carothers ranch, recently consummated in this city, that the price was \$2 per acre for 40,000 acres without improvements, which were inventoried and sold separate to the same purchaser, J. S. Alexander of San Antonio. The stock cattle, 4500 head, book count, brought \$7 per head. This is one of the best ranches in LaSalle county.

Marfa New Era:—DuBois & Wentworth of Murphyville, will have about 2000 beeves for market this fall. They are on fine grass and are looking well. These gentlemen expect to put in some 500 fillies, and have bought a good many stock cattle this year and materially increased their landed property. They have come to stay, and we believe are putting in their cash at the right time, and where it will do the most good.

Cotulla Ledger:—From Mr. Henry Earnest we learn that Mr. J. S. Alexander of San Antonio has purchased the two leased ranches of Dr. A. E. Carothers, and the Carothers ranch also. The sale of the Carothers ranch, however, is conditional, Dr. Carothers being given six months time in which to redeem said property if he desires. Mr. Earnest has been employed by Mr. Alexander to take charge of this ranch for the present, and will remove his family thereto very soon.

Col. John A. White has received 35 head of fine horses, stallions and mares, from California, his former home. Mr. White came here from California some two years ago, with a car-load of thoroughbred and draft stallions, which he has been breeding to select Texas mares. He is so well satisfied with the result that he makes this valuable addition to his stock. His place is near Boerne, Kendall county. A few more men of his enterprise and energy are badly needed in this section of country.

Morin Bros. make the following report of sales for the week: 26 horses and mares at \$17.50 per head; 25 horses and mares, \$25.00; 24 horses and mares, \$13.50; 26 horses and mares, \$15; 19 horses and mares, \$11.75; 28 horses and mares, \$15.75; 44 horses and mares, \$14.25; 49 horses and mares, \$15.50; 35 horses and mares, \$15; 44 horses and mares, \$15.25; 130 mares, \$10; 100 horses and mares, \$18.50; 100 mares, \$12.50; 55 horses and mares, \$13.75; 30 horses, \$26.50; 40 horses, \$15; 5 mares, \$13.25; 27 mares, \$9; 24 horses and mares, \$13.25.

Mrs. Bertha Bowen has fallen heir to the Cotulla Ledger, while "hubby" is filling "a long felt want" in trying to run a daily paper in Laredo. A

lucky dog is that Bowen to have drawn such a prize in the matrimonial lottery. When the "want" is filled in Laredo, and the buttons are all off his shirt, or perhaps the shirt is off their buttons, then he will be coming home to get fixed up again by his wife who will tend to him in the intervals of writing a leading editorial of the great needs of the country, setting a stick of type, and minding the baby. The Ledger is one of the best exchanges that comes to the table of the South end of the STOCK JOURNAL.

THE WOOL SACK.

The Adams Bros. of Nueces county have been buying some fine rams.

The buck market continues dull, with only a bare possibility of an improvement after shearing.

The "leavings over" of the spring clip will be all out of the way before the fall wools are on the market.

It is suggested that fall Texas wools this season be classed as "scoured" as the heavy rains just previous to shearing gave them such a cleaning as they never before had.

Zeno Fielder of Fielder & Sons, Pecos county, says that their clip of some 80 bags has gone to Galveston. This will probably be the first complete clip that Galveston has got this fall.

P. Thompson of J. T. Lytle & Co., wool growers of Maverick county, was in town this week. He says that their clip, which is one of the largest in the country, will again go to Galveston this fall.

Mr. Francis, the Boston wool buyer arrived last Saturday, the first of the Northern buyers this fall. Mr. Francis thinks that prices will be at least as good as they were in the spring, which certainly is not too encouraging.

J. T. Lytle & Co., Maverick county, has sent 2000 muttons to the City of Mexico, where they find a better market than in Chicago. That is business, and this fall and winter we will probably have California here again as a competitor of Chicago.

B. H. Ross, the mutton buyer of Kerrville, passed through home on Monday from a two and a half months' visit to the Pacific coast. From the fresh and vigorous appearance one would conclude that the air of the Golden state agreed with him. He is ready to go to business with renewed activity.

Wilkins Bros. of Langtry, Val Verde county, have been the largest operators in sheep this season in the Southwest. They have bought some 25,000 head which are being sheared this fall. These are in addition to those on hand, which went way up into the thousands. They are always on hand when muttons bring a good price.

G. Hellemann has started up the scouring works near this city, which have laid idle for some time. Mr. Hellemann is a practical wool man, and has for years been one of the largest buyers on this market. A scouring mill is a very important factor in a wool market, especially in working off the "undesirable" clips.

Galveston Wool Market.

GALVESTON, TEX., Sept. 18, 1888.
Editor Live Stock Journal:

Fall wools are beginning to arrive, and from what has come to hand it would seem that they are light in shrinkage, light in color, but short in staple, and from middle Texas reports rather seedy on skirts, from Southwest Texas reports come of considerable burrs. Part of the Thompson & Lytle clip, in all over 600 sacks, has arrived.

Some 20 sacks of new fall were sold to-day by Mr. H. Kempner at 15½¢ @ 16½¢, Mr. A. S. Exline being the purchaser. All indications point to an active demand for fall wools, at a reasonable range of prices. Col. John Owens, manager for Adoue & Lobit, has returned from the East, bringing very cheerful accounts of the markets there. He denies, however, having had anything to do with creating the recent spurt, as he was charged by some of his friends. PELICAN.

Dr. J. H. Gibbs,

Practice limited to the treatment of the diseases of the eye, ear, nose and throat. Office No. 505 Main street, Dallas, Texas.

Lincoln (N. M.) Independent:—Billy Mathews of the CA-outfit, spent a couple of days in Lincoln this week. He says the grass on the Penasco is as fine as he ever saw it, and cattle are in splendid condition. The company is now rounding up a herd of about 1500 steers to be driven to Las Vegas about October 1 for shipment to feeders in Missouri, to whom they have been contracted.

Piper & Schultness are headquarters for all kinds of fence wire, 33 and 35 W. Commerce street, San Antonio, Texas.

FOR SALE OR EXCHANGE.

FOR SALE OR LEASE.

Pasture of 18,000 acres under good wire fence, to lease at 12½ cents per acre, with 2000 head of steer cattle for sale at market price. 17,000-acre pasture in Kinney county, to lease at 12½ cents per acre. 17,280 acres in alternate sections in Starr county, for sale at 75 cents per acre. 1860 acres of land under fence; good improvements, 500 head of cattle, 30 miles from San Antonio; price, \$10,500. C. W. DUNN, San Antonio, Texas.

SPANISH MERINO RAMS FOR SALE.

The undersigned has about 800 head of fine Vermont and Michigan rams for sale in San Antonio. Sheepmen are cordially invited to call and see same. HENRY BURNS, San Antonio, Texas.

POLAND CHINA HOGS.

Breeders of and for sale pure-bred native-born and acclimated Poland China hogs. DR. J. P. KLING & SONS, Box 369, San Antonio, Texas.

J. W. MADDOX. THOS. N. DEVINE.

MADDOX & DEVINE,

-:Real Estate:-

AND Live Stock Commission Agts

First Floor Kampmann Block, SAN ANTONIO, -- TEXAS.

Specialty made of Ranch Properties and handling Imported Fine Stock. Loans negotiated; correspondence solicited.

LONE STAR

:.SADDLERY:.

Manufacture all kinds of Saddles and Harness. Cowboys' Outfits a Specialty. First-class work in all branches.

A. VARGA, Agent,

Dolorosa Street, opposite Southern Hotel, SAN ANTONIO, TEXAS.

SHEDD'S

Apparatus for

Training Range Horses!

Important improvements have recently been made, and the cost of building very much reduced.

Address

C. F. SHEDD,

BOISE CITY, - - - IDAHO.

THE CLOSING-OUT SALE

Of the bulk of

Trotting and Pacing Horses and Ponies at Ewell Farm

Is fixed for Wednesday, October 3, 1888.

Ewell Farm is 30 miles south of Nashville, Tenn., on the Louisville & Nashville road; Ewell Station is on the farm. Four daily trains each way. Sale at stable, 300 yards from station.

85-HEAD OF TROTTING AND PACING HORSES-85

By such sires as Nutwood, 2:18¾; Lord Russell, full brother to Maud S. 2:38¾; Wedgewood, 2:19, sire of Favonia, 2:15; Belmont, sire of Nutwood and Wedgewood; Enfield, 2:29; Brighton, by Harry Clay, sire of Green Mountain Maid; Tennessee Wilkes, trial 2:25; Victor Von Bismarck; Hylas, 2:24½, sire of Susie S., 2:20, at three years; Brown Hal, 2:13, fastest stallion record; Tom Hal, sire of Little Brown Jug, 2:11¾, 2:11¾, 2:12¾, fastest three heats in harness.

The offerings consist of stallions, brood mares, one, two and three-year-old fillies and fast roadsters. Catalogues now ready. Write to

CAMPBELL BROWN, Spring Hill, Tenn.

Traders' National Stock Yards!

J. E. PRICE, Proprietor,

Near I. & G. N. Shipping Pens, - - SAN ANTONIO, TEXAS.

Best and most commodious stock yards in the state. Built expressly for the accommodation of the stockmen. All pens shedded and with hay-rack, and fresh water. Charges same as other yards. Best buyers on the market always on hand for good stock.

JESSE H. PRESNALL. HINES CLARK. JAMES F. SCOTT. J

PRESNALL, CLARK & SCOTT

Live Stock Commission Merchants,

COLLINS, NUECES COUNTY, TEXAS.

Do a general live stock commission business. Special attention paid to putting up stock on order.

The Southern Hotel,

J. P. HICKMAN, Prop.,

San Antonio, Texas.

BELL BROS.,

(Established in 1852.)

DIAMONDS, WATCHES, JEWELRY,

No. 281 Commerce Street, San Antonio, Texas.

Watches and Jewelry Repaired. Engraving Done.

MOORE, SNOWDEN & LYFORD,

LIVE STOCK COMMISSION MERCHANTS,

San Antonio, Texas.

Yards at end of South Flores Street-Railway track. Liberal advances made on consignments. Commodious Stock Yards.

THOS. H. MORIN.

J. L. MORIN.

MORIN BROTHERS,

Live Stock Commission Merchants, San Antonio, Texas.

Feed and Sales Yards, South Flores street. Make a specialty of handling Spanish stock of all kinds. Will contract, sell and deliver stock at any railway station in Southwest Texas.

MONEY TO LOAN

In Southwestern Texas, on Farms and Ranches.

Reasonable rates, time to suit borrowers; also, Farms and Ranches for sale. E. B. CHANDLER, No. 4 Kampmann Building, SAN ANTONIO, TEXAS

GEO. W. SAUNDERS,

LIVE STOCK COMMISSION MERCHANT,

SAN ANTONIO STOCK YARDS.

Prompt sales and quick returns. Market reports and information as to shipping cheerfully given. Correspondence solicited. Telephone No. 401.

SAN ANTONIO STOCK YARDS,

Situated on S. A. & A. P. and I. & G. N. railroads, large and commodious pens, and feed charges moderate. Shedd's horse-breaking machine attached to yards.

SAUNDERS & HENRY, Proprietors.

GEO. LOELOFF, SAN ANTONIO, TEX.

Manufacturer of the—

CELEBRATED SAN ANTONIO SADDLE TREES.

Makes all kinds of Natural-Fork Saddle Trees, Texas, Colorado and California patterns. None genuine without my name on cantel. Look out for imitations.

L. S. BRACKETT,

MANUFACTURER OF SADDLES, HARNESS, BRIDLES, ETC.

No bogus Northern penitentiary or combination saddle trees sold or rigged, but a specialty made of strong, reliable, honest goods at a reasonable price. Also sell the best farm wagon in the

South Side of Military Plaza. San Antonio, Texas



ESTABLISHED APRIL, 1880.

Consolidated with

TEXAS WOOL GROWER

SEPTEMBER 13, 1884.

ISSUED EVERY SATURDAY.

—BY—

The Stock Journal Publishing Company,

—AT—

Fort Worth, Dallas and San Antonio.

FORT WORTH OFFICE, 210 West Second Street. W. A. GARNER, Manager.

DALLAS OFFICE, 702 Main St. FRANK POWELL, Manager.

SAN ANTONIO OFFICE, Room No. 2, Beze Building. L. A. HEIL, Manager.

SUBSCRIPTION PRICE.Weekly Edition per annum.....\$1 50
Monthly Stock Farmers' Edition..... 75

Entered at the Postoffice, Fort Worth, Texas, as second-class matter.

Entered at the Postoffice, San Antonio, Texas, as second-class matter.

Entered at the Postoffice, Dallas, Texas, as second-class matter.

SUBSCRIPTIONS to the TEXAS LIVE STOCK JOURNAL are solicited upon the ground that the information given is worth the money to any man in Texas who is either raising, dealing in, or feeding any description of live stock in Texas, Louisiana, the Indian Territory, or any section of the range country. The weekly edition costs but \$1.50 per year. We ask those who are subscribers to renew promptly and those who are not subscribers to give the paper a yearly trial. Subscriptions can be sent direct to the TEXAS LIVE STOCK JOURNAL.

The cattlemen were getting the benefit of the cut rate by glutting the markets and knocking off a half cent per pound on beef.

It is said that the Cherokee Strip Cattle association has dissolved. For all this the Cherokee Strip will again be offered for lease and will be leased.

The large runs on the markets denote nothing except that men who need money will sell anything they have. Cattle are becoming reasonably scarce in Texas.

TURF, FIELD AND FARM, revised edition, of 2.30 or better, just published by the J. A. Wilbour printing house of Philadelphia, gives the name, sex, color and pedigree of over 3500 trotters and pacers who have done 2:30 or better, from the earliest days of the turf to the present time, including full lists of those who have made or lowered their records during the present season up to August 15. Price 10 cents, obtainable of trackmen, news agents or mailed to any address on receipt of price by the publishers.

Holsteins at Denver.

The enterprising firm of Geo. L.

Goulding & Co. will sell at auction on the 26th inst at their city yards, Denver, Colorado, forty-seven head of Holstein Friesian cattle, the property of Buchanan Bros. of Chicago, Ill. This is the entire herd of the proprietors, who reserve nothing. It is one of the best herds in the country and most of them are members of the celebrated Netherland family, and closely related to the Aaggie, Echo and Mercedes strains. The stock is all registered, and full registry and transfer papers be furnished with each animal.

Whoever may desire to obtain some of the very best dairy cattle in the United States should attend the sale and bid freely.

They All Do It.

Says the Stock Grower of New Mexico:

"The TEXAS LIVE STOCK JOURNAL threw a little brand New Mexicoward in the following item: 'A prominent stockman late of Texas who has evaded the New Mexico quarantine by drifting his Eastern Texas dogies over the border, and who has about assured himself of having beaten the inspector, now writes to his Texas friends that New Mexico is a great cattle country, and in addition to having grass and water in abundance the country is free from all diseases and is not contaminated or endangered by fevered Texas stock. 'We New Mexican stockmen' says he 'are careful to protect our range, and will maintain our rights at any cost.' If there is any such nomad within the borders of New Mexico he has certainly whistled before he got out of the woods. In the language of Mr. Jay Gould, 'his hide will be 'on the fence' before the Cattle Sanitary board get through with him. Will the JOURNAL kindly watch the columns of this paper for the second chapter in the history of the coast cattleman from Texas 'who drifted across the New Mexico border, and who has about assured himself of having beaten the inspector?'"

Yes, the JOURNAL will watch and see the New Mexico Sanitary board get the wrong sow by the ear. But it don't matter; when a Texas stock raiser gets over the border he becomes of very little account—like the New Mexico cattle ranges.

The Mortgage Companies.

The cry against the loaning companies receiving land as collateral which has been so common of late, is likely to be of detriment to Western interests, unless the cry is offset by influential papers presenting the other side of the subject.

To read the objections to farm loans and the list of farms sold under mortgage would lead people to the conclusion that the loaning companies want to secure the land, whereas the reverse is the case; they do not want the land, but they do want the interest paid regularly and to keep the money out at interest all the time.

These loaning companies are the only means of furnishing cash to Western men for a period longer than ninety days, or at the legal rates of interest, and they furnish the only money available for loans on the only first-class collateral the Western country is in possession of, which is land.

The mortgage companies furnish the

HUNTER, EVANS & CO.NATIONAL STOCK YARDS
ST. CLAIR CO., ILL.Each office in charge of
a member of the firm.15 YEARS' ACTIVE EXPERIENCE in Live
Stock Commission Business, Market Re-
ports reg'r and special, and all other information incident
to the business, will be furnished FREE by each house.KANSAS CITY STOCK YARDS
KANSAS CITY, MO.Correspondence always
has prompt attention.Parties having Stock to market, in large or small num-
bers, will do well to confer with us before making arrangem'tsUNION STOCK YARDS
CHICAGO, ILL.**LIVE STOCK COMMISSION MERCHANTS.**J. R. JETER,
Atty-at-Law.

J. E. COOPER.

**J. R. JETER & CO.,
Land and Investment Agents**

405 Main St., Fort Worth, Tex.,

Have for sale

Cheap Lands for Home-Seekers.

1. 8257 acres fine land in center Hutchinson county, at \$2.50 per acre.
 2. 10,000 acres in Hardeman county, from 1/2 to 10 miles from railroad, in tracts to suit, from \$2 to \$1 per acre.
 3. The best improved stock farm in Texas of 3000 acres; well watered and fenced, residence, barn, orchard and all necessary improvements, 300 to 500 acres in cultivation. Price, for 60 days, \$6 per acre; terms easy.
 4. 7500 acres in Wichita county; fine farming land near railroad station, fine location for colony; from \$3 to \$4.50 per acre.
 5. Ranch 3000 acres in Zavalla county, 3 miles from county seat, all rich valley land, fenced; \$10,000 on easy terms, or will trade for big young mares or mules at cash value.
 6. Ranch 1500 acres in Bosque county, 200 acres in Bosque valley, 3 miles railroad town; 2-story modern residence, 2-story barn 80x120 ft., and \$4 00 worth fine stock, etc. Price for land, stock and improvements, \$10,000, on very easy terms.
 8. City property in Fort Worth, Houston and Temple, to trade for desirable North Texas lands.
 9. Valuable city property in Northern city, rented, to trade for large bodies North Texas land, clear of incumbrance.
- Many other bargains in farm, ranch and timber lands. Lands for sale and exchange, in all sections of the state, in any size tract desired. State what you want; we can furnish land to suit.

R. G. HEAD, PRES'T.

J. G. HOPKINS, SEC. T. H. LAWRENCE, TR.

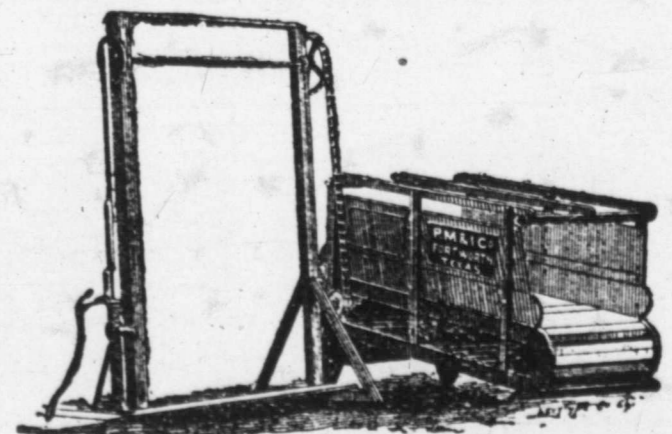
**The R. G. Head
Brokerage and Investment Company.**Rooms 72 and 73 Barclay Block,
Denver, Col.

Buy and sell all kinds of live stock, ranch properties, farms, lands, land grants, stocks and bonds of cattle companies, and real estate. Make a specialty of handling young steers.

Make examinations, surveys of and written reports on land grants and ranch properties anywhere in the United States and Mexico.

We have for sale desirable tracts of land, large bodies solid blocks in Texas, New Mexico, and Mexico, specially adapted to agriculture, stock farming and colonization.

Our commissions on cattle sales will be based upon a percentage of prices obtained. Schedule of rates furnished on application.

**The Marshall Pumping Power.**

The best and most economical horse power for pumping. A pair of ponies, burros, Texas steers, or anything which can walk and has weight will do the work and without a driver. No pulling, just a walk up hill. Used for raising water for irrigation, watering stock and brick making. Will handle pump in any depth of well. Send for prices.

THE PANHANDLE M. & I. CO.,

Fort Worth and Colorado, Texas.

cheapest money, the largest amounts, also the longest loans, will always renew, and will not make a loan in amount over 40 per cent. on the value of a property, unless the agent is deceived by the party making application for the loan as to the value of the farm. In Texas the farmer cannot borrow money on the first 200 acres of his possessions unless he gives a lien as part of the purchasing consideration.

These land loaning companies have actually reduced the rate of interest in Texas from a discount rate of 24 per cent. per annum to two per cent. below the legal rate. This has been done by competition in money circles and solely owing to Eastern and foreign money becoming available in the state. Only five per cent. of the people emigrating to the West have any considerable amount of means of their own; they having to depend on the opportunities presented them, the very first thing they do after acquiring a property is to borrow money to develop it. In such consists the opportunities of the West, for the great number of immigrants that once having found opportunity to make money with money, are very fortunate if the cash is available.

To-day we want the money cheaper, and the only way to get it as we want it is to encourage the loaning companies. What we have to do is to gain the confidence of the money centers by promptly meeting all obligations. Money will come here in plenty and the rate of interest will be reduced. We will then pack beef where beef is produced, we will manufacture wool where the sheep are grown, and the cotton manufactories will be established in the midst of the cotton fields.

Texas is in especial need of cheaper money for the development of her territory and is just gaining confidence of monied interests, and the increasing values of Texas lands enables land loans to be carried lightly.

The land mortgage company is a very good institution, is of a legitimate benefit to the people, but each individual must judge for himself if he can use it to his own advantage. These companies do not come to steal farms or ranches, but to do a simple banking business with land as security.

Don't buy the Missouri penitentiary saddle trees, but buy the genuine Loeloff, for sale by L. S. Brackett, San Antonio, Texas.

From New Mexico.

New Mexico Stock Grower.

The 112 steers put on the Kansas City market recently by Upcher, Stevens & Burr of Socorro county, from their Kansas pasture, netted the firm \$16 per head, their average weight being 862 lbs.

Coolidge, Kansas, is no longer a market for the sale of the range herds; its glory has departed. There is now drifting back from that point to the New Mexico range a herd of 1400 prime yearling and two-year-old heifers, which has been held there the past three months seeking a buyer. The LFD cattle will reach their range, near Fort Sumner, about October 1st. This is the first instance within the memory of the writer when a buyer could not be obtained for a lot of prime heifers that had been put on the open market at low prices. The open range business is undergoing a change without doubt.

All Lincoln county cattlemen as well as those from other parts of the territory who have patronized the Texas Pacific railroad in shipping to market, will be protecting their interests hereafter in their shipments by sending their steers forward over roads that are not known as Texas roads. Since the recent regulations regarding the segregation of Texas cattle in pens by themselves went into effect in the Chicago, St. Louis and Kansas City markets, owing to Texas fever, all New Mexico cattle passing over Texas roads outside the Panhandle road, are sent at once to the Texas pens. Only the slaughterers patronize these pens, the feeders and butchers holding aloof. New Mexico cattle are sound, free from disease and are adapted to better use than for sale as canners. Ship over the northern roads and put the steers into the open market and not among the diseased cattle of Texas.

The spaying craze is still rampant upon many parts of the range. Montana and Wyoming cattlemen have submitted much of their she stock to the knife, in preparing for the change which so many of them are convinced should be made, wherein steer stock is taking the place of breeding stock. It is computed that 50,000 cows and heifers have been spayed in Montana, Wyoming, Colorado, New Mexico and Arizona this season. The work goes on. In Texas the Continental Cattle company is having a large number of cows operated on; in Arizona the Erie Cattle company will have 3000 head spayed, and other companies in that territory will use the knife freely. With the many causes that have been are now in operation besides the spaying tool to deplete the herds throughout the range country, the prophet, who says that the day is not far distant when a tremendous reaction in cattle values will be seen, is possessed of ordinary discernment surely in his forecasts.

Arizona Cattle Raisers Looking to Los Angeles.

Los Angeles Times.

Some days ago the times referred to a project on foot among a number of extensive cattle raisers in Arizona, to establish a wholesale butchering establishment in Los Angeles. It is understood that the ranchmen believe that there is too much margin between the prices paid them for meat on the hoof and retail prices realized here. They believe that Los Angeles offers an excellent market, and they may as well dispense with some of the middlemen and take in a good share of the profits themselves.

Yesterday a times reporter encountered L. A. Gormley, the prime mover in the new project, and questioned him at length concerning his venture. Mr. Gormley acknowledged that his intentions are to open a wholesale butchering establishment, but he said he would not dabble with the re-

tail trade unless he was obliged to do so to place his meats in the hands of consumers. When asked whether other cattlemen of Southern Arizona were with him in the movement, he said they were. "About how many will your cattle syndicate represent?"

"I cannot say exactly, but probably from 70,000 to 80,000 head."

How many beef steers will a herd of that size furnish a year?"

"From 7000 to 8000."

"Do you have fat cattle all the year in your country?"

"No. In ordinary years we have good beef for five or six months. Of course, if we start in this business we expect to keep up our supply the year round. We shall probably feed from 2000 to 3000 head on alfalfa for the winter and spring markets."

"Where will you do your slaughtering?"

"At some place west of town. We have not secured our location yet."

In answer to a question, Mr. Gormley said that W. L. Vail, the largest individual cattle raiser in Arizona, joins ranches with him, and may go into the project, though he has not yet fully decided to do so.

The new enterprise will mean cheaper and probably better beef for Los Angeles, and a new business which will put lots of money in circulation.

Matador Land and Cattle Company.

(Limited.)

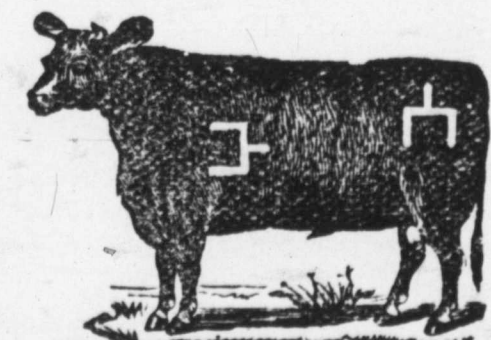


H. H. CAMPBELL, superintendent. P. O., Teepe City, Motley county. Also cattle branded **V** left side, **U** the right side, also **NN** right side and **N** hip, marked crop right, underbit left; also **INK** left side, **T** hip, marked crop the left and crop and split right; also **T41** on left side, marked underslope left; also **T** on each side, some of which have **K** on left jaw or **Ton** on each hip, marked under-half crop in each ear; also, same mark, branded **71** left side and **TIL** right side. Some of these also **TIL** have **K** on right jaw. Also **50** left side, **M** hip, or **A** on right hip, **W** side, **M** in various marks; also **7** on **W** left shoulder, **7** on side, **7** hip, marked crop left ear; and also **NOX** on left side, in various marks, or marked crop and two splits in left and swallowfork in right, or crop and two splits in left only, or swallowfork in left and underbit in right. Also **V** or **U** in various marks.

The Espuela Land and Cattle Company.

(Limited.)

Postoffice, Dockums, Dickens County, Texas
S. W. LOMAX, Manager.



Have for sale two-year-old and yearling steers and heifers of their own raising, got by Shorthorn and Hereford bulls, in the straight Spur mark and brand. Horses branded **V** on left hip.

Best and Cheapest-Cold Water Sheep Dip



Prepared Roofing,
Cheap, durable, easily applied.
TEXAS STORAGE CO., 829 Main St., Dallas, Texas

J. B. LITTLEJOHN,
Manager Insurance Department.

THOMAS P. MARTIN,
Attorney-at-Law, Manager Land Dep't

LITTLEJOHN & MARTIN,

Insurance, Loan and Real Estate Agents,

513 Main Street, Fort Worth, Texas.

Buy and sell (on commission only) lands in all parts of Texas and City real estate. Property rendered and taxes paid on same. Lands examined and divided. Patents obtained, titles examined and perfected. A specialty made of business with the different state departments at Austin. A general and business transacted. Commissions reasonable.

J. Q. SANDIDGE, Pres.

MAX ELSER, Cashier.

CITY NATIONAL BANK,

FORT WORTH, TEXAS.

Capital Paid in and Surplus, \$200,000.

DIRECTORS—J. Q. Sandidge, Max Elser, Chas. Scheuber, C. M. Crane, T. T. D. Andrews.

M. B. LOYD, President.

D. C. BENNETT, Vice-President.

E. B. HARROLD, Cashier.

FIRST NATIONAL BANK,

Corner Houston & Second Streets, - - - Fort Worth, Texas.

CASH CAPITAL AND SURPLUS, \$375,000.

DIRECTORS—J. S. Godwin, M. B. Loyd, J. D. Reed, Zane Cetti, D. C. Bennett, George Jackson, S. B. Barnett, E. B. Harrold and E. F. Ikard.

POLK STOCK YARDS,
POLK BROTHERS, Proprietors.

Hereford, Shorthorn, Polled Angus, Devon, Holstein and Jerseys, Saddle Horses, Mares, Mules and Jacks. Shipments Solicited.

Fort Worth,

Texas.

We Sell on Commission.

C. H. COOPER.

E. H. ROBERTSON.

COOPER & ROBERTSON,

Real Estate and Rental Agts.

702 MAIN STREET, DALLAS, TEXAS.

Are now preparing their annual catalogue of Dallas City, Farm and Ranch properties, Wild Lands, Timber and Mineral, many thousands of which will be distributed during the coming State Fair at Dallas. Those having properties for sale or exchange, can have description of same inserted free of charge by corresponding with them.

WM. HENRY & CO.,

--Dealers in Stoves and Hardware--

513 and 515 Houston Street, Fort Worth, Texas.

AGENTS—Fire and Burglar Proof Safes and Vault Doors, Lath & Sand Powder Co., Glidden Steel Barb Wire, Iron and Slate Mantels and Grates, &c.

Hardware & Queensware.

W. F. LAKE,

Cor. 2nd and Houston Sts.

Wholesale and Retail.

Wholesale Dry Goods.

THE MARTIN-BROWN CO

Cor. 4th and Main Streets.

The only exclusively wholesale dry goods house in the city.

THE LIVE STOCK MARKET

—Of St. Louis.—

The Louis National Stock Yards,

Located at East St. Louis, Illinois, directly opposite the City of St. Louis.

Shippers should see that their stock is billed directly to the

"NATIONAL STOCK YARDS,"

ISAAC H. KNOX,

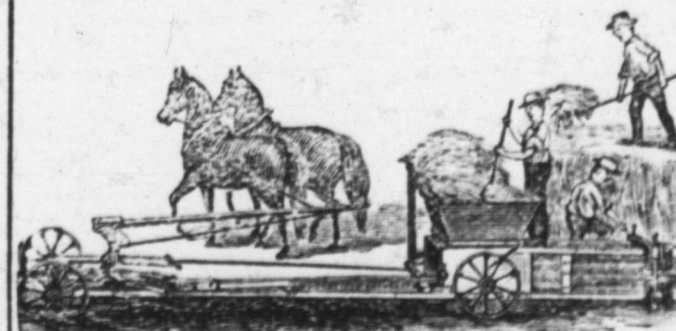
CHAS. T. JONES,

PRESIDENT.

SUPERINTENDENT

The Lightning Hay Press.

Full Circle.



Kansas City Hay Press and Foundry Co.

Send for circulars.] Kansas City, Mo

KEEP COOL.

Summer Cook Stoves,

FOR WOOD, COAL or COBS.

Cheaper and Safer than Oil or Gasoline.

Five cents a day to cook, bake, wash, iron for entire family. They save their cost in one season. Every farmer has waste fuel enough to heat his house and cook his food. The cobs from 3 acres of corn will run his cook stove. These stoves have refrigerator cases that confine the heat to its work. Before you buy elsewhere send for circulars. We make several sizes.

Double Quick, Price, \$5.60.

GEO. H. HESS CO.,
210 Van Buren St., Chicago



ESTABLISHED APRIL, 1880.

Consolidated with

TEXAS WOOL GROWER

SEPTEMBER 13, 1884.

ISSUED EVERY SATURDAY.

—BY—

The Stock Journal Publishing Company,

—AT—

Fort Worth, Dallas and San Antonio.

FORT WORTH OFFICE, 210 West Second Street. W. A. GARNER, Manager.**DALLAS OFFICE**, 702 Main St. FRANK POWELL, Manager.**SAN ANTONIO OFFICE**, Room No. 2, Beze Building. L. A. HEIL, Manager.**SUBSCRIPTION PRICE.**Weekly Edition per annum.....\$1 50
Monthly Stock Farmers' Edition..... 75

Entered at the Postoffice, Fort Worth, Texas, as second-class matter.

Entered at the Postoffice, San Antonio, Texas, as second-class matter.

Entered at the Postoffice, Dallas, Texas, as second-class matter.

SUBSCRIPTIONS to the TEXAS LIVE STOCK JOURNAL are solicited upon the ground that the information given is worth the money to any man in Texas who is either raising, dealing in, or feeding any description of live stock in Texas, Louisiana, the Indian Territory, or any section of the range country. The weekly edition costs but \$1.50 per year. We ask those who are subscribers to renew promptly and those who are not subscribers to give the paper a yearly trial. Subscriptions can be sent direct to the TEXAS LIVE STOCK JOURNAL.

THE cattlemen were getting the benefit of the cut rate by glutting the markets and knocking off a half cent per pound on beef.

IT is said that the Cherokee Strip Cattle association has dissolved. For all this the Cherokee Strip will again be offered for lease and will be leased.

THE large runs on the markets denote nothing except that men who need money will sell anything they have. Cattle are becoming reasonably scarce in Texas.

TURF, FIELD AND FARM, revised edition, of 2.30 or better, just published by the J. A. Wilbour printing house of Philadelphia, gives the name, sex, color and pedigree of over 3500 trotters and pacers who have done 2:30 or better, from the earliest days of the turf to the present time, including full lists of those who have made or lowered their records during the present season up to August 15. Price 10 cents, obtainable of trackmen, news agents or mailed to any address on receipt of price by the publishers.

Holsteins at Denver.

The enterprising firm of Geo. L.

Goulding & Co. will sell at auction on the 26th inst at their city yards, Denver, Colorado, forty-seven head of Holstein Friesian cattle, the property of Buchanan Bros. of Chicago, Ill. This is the entire herd of the proprietors, who reserve nothing. It is one of the best herds in the country and most of them are members of the celebrated Netherland family, and closely related to the Aaggie, Echo and Mercedes strains. The stock is all registered, and full registry and transfer papers be furnished with each animal.

Whoever may desire to obtain some of the very best dairy cattle in the United States should attend the sale and bid freely.

They All Do It.

Says the Stock Grower of New Mexico:

"THE TEXAS LIVE STOCK JOURNAL threw a little brand New Mexicoward in the following item: 'A prominent stockman late of Texas who has evaded the New Mexico quarantine by drifting his Eastern Texas dogies over the border, and who has about assured himself of having beaten the inspector, now writes to his Texas friends that New Mexico is a great cattle country, and in addition to having grass and water in abundance the country is free from all diseases and is not contaminated or endangered by fevered Texas stock. 'We New Mexican stockmen' says he 'are careful to protect our range, and will maintain our rights at any cost.' If there is any such nomad within the borders of New Mexico he has certainly whistled before he got out of the woods. In the language of Mr. Jay Gould, 'his hide will be on the fence' before the Cattle Sanitary board get through with him. Will the JOURNAL kindly watch the columns of this paper for the second chapter in the history of the coast cattleman from Texas 'who drifted across the New Mexico border, and who has about assured himself of having beaten the inspector?'"

Yes, the JOURNAL will watch and see the New Mexico Sanitary board get the wrong sow by the ear. But it don't matter; when a Texas stock raiser gets over the border he becomes of very little account—like the New Mexico cattle ranges.

The Mortgage Companies.

The cry against the loaning companies receiving land as collateral which has been so common of late, is likely to be of detriment to Western interests, unless the cry is offset by influential papers presenting the other side of the subject.

To read the objections to farm loans and the list of farms sold under mortgage would lead people to the conclusion that the loaning companies want to secure the land, whereas the reverse is the case; they do not want the land, but they do want the interest paid regularly and to keep the money out at interest all the time.

These loaning companies are the only means of furnishing cash to Western men for a period longer than ninety days, or at the legal rates of interest, and they furnish the only money available for loans on the only first-class collateral the Western country is in possession of, which is land.

The mortgage companies furnish the

HUNTER, EVANS & CO.

NATIONAL STOCK YARDS | 15 YEARS' ACTIVE EXPERIENCE in Live Stock Commission Business, Market Reports reg'r and special, and all other information incident to the business, will be furnished FREE by each house.
ST. CLAIR CO., ILL.

Each office in charge of a member of the firm. | **KANSAS CITY STOCK YARDS** | Correspondence always has prompt attention.
KANSAS CITY, MO.

Parties having stock to market, in large or small numbers, will do well to confer with us before making arrangements | **UNION STOCK YARDS**
CHICAGO, ILL.

LIVE STOCK COMMISSION MERCHANTS.

cheapest money, the largest amounts, also the longest loans, will always renew, and will not make a loan in amount over 40 per cent. on the value of a property, unless the agent is deceived by the party making application for the loan as to the value of the farm. In Texas the farmer cannot borrow money on the first 200 acres of his possessions unless he gives a lien as part of the purchasing consideration.

These land loaning companies have actually reduced the rate of interest in Texas from a discount rate of 24 per cent. per annum to two per cent. below the legal rate. This has been done by competition in money circles and solely owing to Eastern and foreign money becoming available in the state. Only five per cent. of the people emigrating to the West have any considerable amount of means of their own; they having to depend on the opportunities presented them, the very first thing they do after acquiring a property is to borrow money to develop it. In such consists the opportunities of the West, for the great number of immigrants that once having found opportunity to make money with money, are very fortunate if the cash is available.

To-day we want the money cheaper, and the only way to get it as we want it is to encourage the loaning companies. What we have to do is to gain the confidence of the money centers by promptly meeting all obligations. Money will come here in plenty and the rate of interest will be reduced. We will then pack beef where beef is produced, we will manufacture wool where the sheep are grown, and the cotton manufactories will be established in the midst of the cotton fields.

Texas is in especial need of cheaper money for the development of her territory and is just gaining confidence of monied interests, and the increasing values of Texas lands enables land loans to be carried lightly.

The land mortgage company is a very good institution, is of a legitimate benefit to the people, but each individual must judge for himself if he can use it to his own advantage. These companies do not come to steal farms or ranches, but to do a simple banking business with land as security.

Don't buy the Missouri penitentiary saddle trees, but buy the genuine Loeloff, for sale by L. S. Brackett, San Antonio, Texas.

J. R. JETER,
Atty-at-Law.

J. E. COOPER.

**J. R. JETER & CO.,
Land and Investment Agents**

405 Main St., Fort Worth, Tex.,

Have for sale

Cheap Lands for Home-Seekers.

1. 8257 acres fine land in center Hutchinson county, at \$2.50 per acre.
 2. 10,000 acres in Hardeman county, from 1/2 to 10 miles from railroad, in tracts to suit, from \$2 to \$1 per acre.
 3. The best improved stock farm in Texas of 3000 acres; well watered and fenced, residence, barn, orchard and all necessary improvements, 300 to 500 acres in cultivation. Price, for 60 days, \$6 per acre; terms easy.
 4. 7500 acres in Wichita county; fine farming land near railroad station, fine location for colony; from \$3 to \$1.50 per acre.
 5. Ranch 3000 acres in Zavalla county, 3 miles from county seat, all rich valley land, fenced; \$10,000 on easy terms, or will trade for big young mares or mules at cash value.
 6. Ranch 1500 acres in Bosque county, 200 acres in Bosque valley, 3 miles railroad town; 2-story modern residence, 2-story barn 80x120 ft., and \$4 00 worth fine stock, etc. Price for land, stock and improvements, \$10,000, on very easy terms.
 8. City property in Fort Worth, Houston and Temple, to trade for desirable North Texas lands.
 9. Valuable city property in Northern city, rented, to trade for large bodies North Texas land, clear of incumbrance.
- Many other bargains in farm, ranch and timber lands. Lands for sale and exchange, in all sections of the state, in any size tract desired. State what you want; we can furnish land to suit.

R. G. HEAD, PRES'T.

J. G. HOPKINS, SEC. T. H. LAWRENCE, TR.

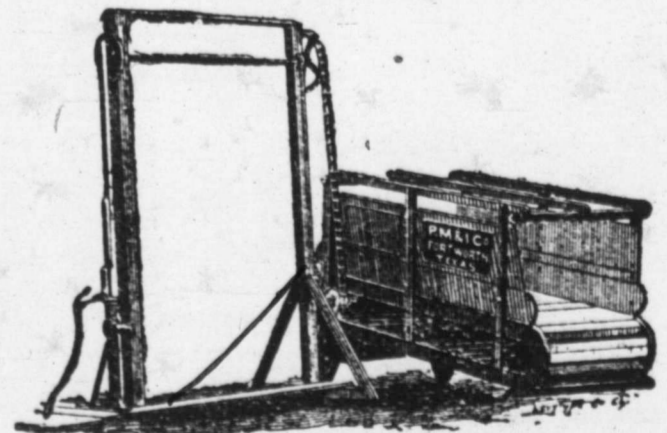
**The R. G. Head
Brokerage and Investment Company.**Rooms 72 and 73 Barclay Block,
Denver, Col.

Buy and sell all kinds of live stock, ranch properties, farms, lands, land grants, stocks and bonds of cattle companies, and real estate. Make a specialty of handling young steers.

Make examinations, surveys of and write ten reports on land grants and ranch properties anywhere in the United States and Mexico.

We have for sale desirable tracts of land, large bodies sold blocks in Texas, New Mexico, and Mexico, specially adapted to agriculture, stock farming and colonization.

Our commissions on cattle sales will be based upon a percentage of prices obtained. Schedule of rates furnished on application.

**The Marshall Pumping Power.**

The best and most economical horse power for pumping. A pair of ponies, burros, Texas steers, or anything which can walk and has weight will do the work and without a driver. No pulling, just a walk up hill. Used for raising water for irrigation, watering stock and brick making. Will handle pump in any depth of well. Send for prices.

THE PANHANDLE M. & I. CO.,

Fort Worth and Colorado, Texas.

From New Mexico.

New Mexico Stock Grower.

The 112 steers put on the Kansas City market recently by Upcher, Stevens & Burr of Socorro county, from their Kansas pasture, netted the firm \$16 per head, their average weight being 862 lbs.

Coolidge, Kansas, is no longer a market for the sale of the range herds; its glory has departed. There is now drifting back from that point to the New Mexico range a herd of 1400 prime yearling and two-year-old heifers, which has been held there the past three months seeking a buyer. The LFD cattle will reach their range, near Fort Sumner, about October 1st. This is the first instance within the memory of the writer when a buyer could not be obtained for a lot of prime heifers that had been put on the open market at low prices. The open range business is undergoing a change without doubt.

All Lincoln county cattlemen as well as those from other parts of the territory who have patronized the Texas Pacific railroad in shipping to market, will be protecting their interests hereafter in their shipments by sending their steers forward over roads that are not known as Texas roads. Since the recent regulations regarding the segregation of Texas cattle in pens by themselves went into effect in the Chicago, St. Louis and Kansas City markets, owing to Texas fever, all New Mexico cattle passing over Texas roads outside the Panhandle road, are sent at once to the Texas pens. Only the slaughterers patronize these pens, the feeders and butchers holding aloof. New Mexico cattle are sound, free from disease and are adapted to better use than for sale as canners. Ship over the northern roads and put the steers into the open market and not among the diseased cattle of Texas.

The spaying craze is still rampant upon many parts of the range. Montana and Wyoming cattlemen have submitted much of their she stock to the knife, in preparing for the change which so many of them are convinced should be made, wherein steer stock is taking the place of breeding stock. It is computed that 50,000 cows and heifers have been spayed in Montana, Wyoming, Colorado, New Mexico and Arizona this season. The work goes on. In Texas the Continental Cattle company is having a large number of cows operated on; in Arizona the Eric Cattle company will have 3000 head spayed, and other companies in that territory will use the knife freely. With the many causes that have been are now in operation besides the spaying tool to deplete the herds throughout the range country, the prophet, who says that the day is not far distant when a tremendous reaction in cattle values will be seen, is possessed of ordinary discernment surely in his forecasts.

Arizona Cattle Raisers Looking to Los Angeles.

Los Angeles Times.

Some days ago the times referred to a project on foot among a number of extensive cattle raisers in Arizona, to establish a wholesale butchering establishment in Los Angeles. It is understood that the ranchmen believe that there is too much margin between the prices paid them for meat on the hoof and retail prices realized here. They believe that Los Angeles offers an excellent market, and they may as well dispense with some of the middlemen and take in a good share of the profits themselves.

Yesterday a times reporter encountered L. A. Gormley, the prime mover in the new project, and questioned him at length concerning his venture. Mr. Gormley acknowledged that his intentions are to open a large wholesale butchering establishment, but he said he would not dabble with the re-

tail trade unless he was obliged to do so to place his meats in the hands of consumers. When asked whether other cattlemen of Southern Arizona were with him in the movement, he said they were. "About how many will your cattle syndicate represent?"

"I cannot say exactly, but probably from 70,000 to 80,000 head."

"How many beef steers will a herd of that size furnish a year?"

"From 7000 to 8000."

"Do you have fat cattle all the year in your country?"

"No. In ordinary years we have good beef for five or six months. Of course, if we start in this business we expect to keep up our supply the year round. We shall probably feed from 2000 to 3000 head on alfalfa for the winter and spring markets."

"Where will you do your slaughtering?"

"At some place west of town. We have not secured our location yet."

In answer to a question, Mr. Gormley said that W. L. Vail, the largest individual cattle raiser in Arizona, joins ranches with him, and may go into the project, though he has not yet fully decided to do so.

The new enterprise will mean cheaper and probably better beef for Los Angeles, and a new business which will put lots of money in circulation.

Matador Land and Cattle Company.

(Limited.)

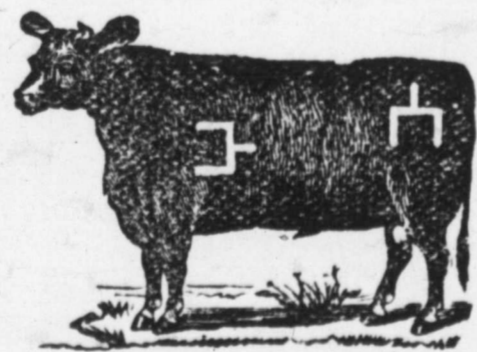


H. H. CAMPBELL, Superintendent. P. O., Teepe City, Motley county. Also cattle branded on left side, also NN right side and N hip, marked crop right, underbit left; also INK left side, T hip, marked crop the left and crop and split right; also T41 on left side, marked underslope left; also T on each side, some of which have K on T left jaw or T on each hip, marked under-half-crop in each ear; also, same mark, branded 71 left side and TIL right side. Some of these also TIL have K on right jaw. Also 50 left side, M hip, or A on right hip, side in various marks; also 7 on left shoulder, on side, 7 marked crop left ear; and also AOA on left side, in various marks, or marked crop and two splits in left and swallowfork in right, or crop and two splits in left only, or swallowfork in left and underbit in right. Also V or 0 in various marks.

The Espuela Land and Cattle Company.

(Limited.)

Postoffice, Dockums, Dickens county, Texas
S. W. LOMAX, Manager.



Have for sale two-year-old and yearling steers and heifers of their own raising, got by Shorthorn and Hereford bulls, in the straight Spur mark and brand. Horses branded on left hip.

Best and Cheapest-Cold Water Sheep Dip



Prepared Roofing,
Cheap, durable, easily applied.
TEXAS STORAGE CO., 829 Main St., Dallas, Texas

J. B. LITTLEJOHN,
Manager Insurance Department.

THOMAS P. MARTIN,
Attorney-at-Law, Manager Land Dep't

LITTLEJOHN & MARTIN,

Insurance, Loan and Real Estate Agents,

513 Main Street, Fort Worth, Texas.

Buy and sell (on commission only) lands in all parts of Texas and City real estate. Property rendered and taxes paid on same. Lands examined and divided. Patents obtained, titles examined and perfected. A specialty made of business with the different state departments at Austin. A general and business transacted. Commissions reasonable.

J. Q. SANDIDGE, Pres.

MAX ELSEER, Cashier.

CITY NATIONAL BANK,

FORT WORTH, TEXAS.

Capital Paid in and Surplus, \$200,000.

DIRECTORS—J. Q. Sandidge, Max Elser, Chas. Scheuber, C. M. Crane, T. T. D. Andrews.

M. B. LOYD, President.

D. C. BENNETT, Vice-President.

E. B. HARROLD, Cashier.

FIRST NATIONAL BANK,

Corner Houston & Second Streets, - - - Fort Worth, Texas.

CASH CAPITAL AND SURPLUS, \$375,000.

DIRECTORS—J. S. Godwin, M. B. Loyd, J. D. Reed, Zane Cetti, D. C. Bennett, George Jackson, S. B. Barnett, E. B. Harrold and E. F. Ikard.

POLK STOCK YARDS,

POLK BROTHERS, Proprietors.

Hereford, Shorthorn, Polled Angus, Devon, Holstein and Jerseys, Saddle Horses, Mares, Mules and Jacks. Shipments Solicited.

Fort Worth,

Texas.

We Sell on Commission.

C. H. COOPER.

E. H. ROBERTSON.

COOPER & ROBERTSON,

Real Estate and Rental Agts.

702 MAIN STREET, DALLAS, TEXAS.

Are now preparing their annual catalogue of Dallas City, Farm and Ranch properties, Wild Lands, Timber and Mineral, many thousands of which will be distributed during the coming State Fair at Dallas. Those having properties for sale or exchange, can have description of same inserted free of charge by corresponding with them.

WM. HENRY & CO.,

--Dealers in Stoves and Hardware--

513 and 515 Houston Street, Fort Worth, Texas.

AGENTS—Fire and Burglar Proof Safes and Vault Doors, Laffin & Rand Powder Co., Glidden Steel Barb Wire, Iron and Slate Mantels and Grates, &c.

Hardware & Queensware.

W. F. LAKE,

Cor. 2nd and Houston Sts.

Wholesale and Retail.

Wholesale Dry Goods.

THE MARTIN-BROWN CO

Cor. 4th and Main Streets.

The only exclusively wholesale dry goods house in the city.

THE LIVE STOCK MARKET

—Of St. Louis.—

The Louis National Stock Yards,

Located at East St. Louis, Illinois, directly opposite the City of St. Louis.

Shippers should see that their stock is billed directly to the

"NATIONAL STOCK YARDS,"

ISAAC H. KNOX,

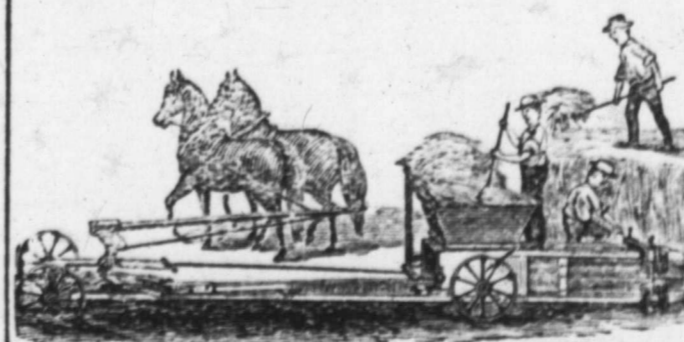
CHAS. T. JONES,

PRESIDENT.

SUPERINTENDENT

The Lightning Hay Press.

Full Circle.



Kansas City Hay Press and Foundry Co.

Send for circulars.]

Kansas City, Mo

KEEP COOL.

Summer Cook Stoves,

FOR WOOD, COAL or COBS.

Cheaper and Safer than Oil or Gasoline.

Five cents a day to cook, bake, wash, iron for entire family. They save their cost in one season. Every farmer has waste fuel enough to heat his house and cook his food. The cobs from 3 acres of corn will run his cook stove. These stoves have refrigerator cases that confine the heat to its work. Before you buy elsewhere send for circulars. We make several sizes.

Double Quick,
Price, \$5.00.

GEO. H. HESS CO.,
210 Van Buren St., Chicago

THE St. Louis meeting of butchers and cattlemen announced for the 20th of November will be largely attended. The senate committee will be on hand after a session at Chicago, and will reach St. Louis about the 18th or 19th of November.

MR. J. H. ELLIOTT of Denison, an experienced railroad man, has suggested that cattle shippers should unite to employ a man to look after their cattle shipping interests and that he should be that man. He claims that he can secure fast time, uniformly low rates, adoption of stable cars, see that the railroad pens are kept clean, and in good order at all times, etc., etc. Mr. Elliott desires to meet Texas cattlemen in a body some time during the Texas fair at Dallas to formulate a plan of campaign upon the lines that shippers should act in accord for their own mutual benefit and protection. The suggestion of Mr. Elliott is eminently practical one and may lead to the establishment of a Cattle Shippers association.

FORT WORTH NOTES.

A. S. Nicholson is advertising feeding steers, three and four years old.

Mr. G. W. Weaver of Plano, Collin county, was here to purchase some more steers.

Geo. Kinney of Ness City, Kansas, is offering to trade a Kansas ranch for Western Texas cattle.

Major J. W. Burgess has returned to Fort Worth after making a tour of Kentucky and Missouri fairs.

The cattle markets were full on Monday last, there being 3000 in St. Louis, 7900 in Kansas City and \$15,000 in Chicago.

It is reported from Colorado City that Mr. A. W. Dunn purchased a small stock of cattle containing no beef steers at \$7 around.

The fall rains commenced in Tarrant county on Friday, and came from the southwest. So far as heard from the rain appears to be general.

P. R. Clark of Comanche county was here to sell some good feeding steers, but appeared to think two cents was not enough, and up to date had not sold.

Messrs. Hatcher, Woods & Coppinger have sold 200 more young colts at \$5 per head, fifty of them go to Illinois and the remaining 150 will be matured in this vicinity.

Mr. Jno. Nesbitt, general live stock agent of the Chicago & Alton railroad, was in Fort Worth for several days and left on Monday night for the northern ranch districts.

Mr. C. F. Estill of Fort Worth, who is in the live stock business, has named his yards the Kentucky stables, and solicits consignments of blooded stock for sale on commission.

Mr. R. H. Sellers, real estate operator, Fort Worth, has been making a business tour of Young, Jack, Parker and Wise counties, and reports that district in excellent condition.

Halbert & Carlisle of El Paso, agents for the sale of blooded stock in have an advertisement in the JOURNAL which will be found in the For Sale or Exchange column.

A. P. Bush, jr., manager of the Alabama and Texas Cattle company, has just sold 1200 yearlings to M. Harrold to be delivered at Ruthford on the Fort

Worth & Denver road. The price is not mentioned by Mr. A. S. Nicholson who made the trade.

Mr. G. W. Henry of Rosland Park, near Chicago, another of the leading Hereford cattle breeders, will have some fine stock on sale at Fort Worth in connection with the offerings of Mr. Powell.

Mr. J. L. Norris of Eminence, Kentucky, breeder of Holstein cattle, joins the forces using the For Sale or Exchange columns of the JOURNAL. He wants to trade Holsteins for farming lands.

The drive to Kansas may as well stop at once. The rates are not restored, but to-day the cattle rate between Kansas City and Chicago is to be raised to \$50 instead of \$60 as it was before the cut.

Mr. A. P. Bush, who has passed a couple of months in the vicinity of Kansas City, says that the market is continually over supplied with cows and calves, and that the packers are killing cows instead of steers.

Turner, McClure & Company of Fort Worth are advertising a fine lot of turnip seed, and as farmers and ranchmen make a practice of putting in turnipseed in the fall, the firm is doing a good business in this line.

Imported Percherons, both stallions and mares, from 6 months to 8 years old are advertised by Mr. C. V. Molder of Bloomington, Ill. The card will be found in the For Sale or Exchange columns. Mr. Molder says terms are easy and prices are low.

B. T. Leonard of Cisco has been to Brown and adjoining counties to purchase two-year-olds, and while he secured some to place in a pasture in Palo Pinto county, he announces, with some feeling, that either cattle have gone up or money has gone way down.

Mr. F. M. Houts of Hereford Ranch has just received 26 head of pure-bred Hereford calves from Mr. Wm. Powell of Beecher, Ill., and Mr. Houts continues to keep on hand the largest herd of pure-bred Herefords in the state of Texas. Samples will be seen at the fairs.

Col. W. C. Young returned from the ranch of the Llano Cattle company and says grass is very fine and none of the ranches are overstocked. The beef supply is not very large and will be held back until rather late in the fall. Col. Young will return to the ranch in a few days.

The Fort Worth Western railway project is now reported as having assumed a satisfactory shape, and the projectors announce that the road will be built at once. This will be good news for Jack, Young and Throckmorton counties, since the people have waited for it a long, long time.

Mr. Brent, the creamery man, has been working at Wills Point and at Terrell. At the latter place Mr. Matthew Cartwright, one of the leading cattlemen, has been appointed a committee to investigate the business and visit several creameries. If his report is favorable a creamery will be operated at Terrell.

S. M. Smith, land dealer of Austin, Texas, is advertising some special properties to exchange for ranches and cattle. The notice will be found in the For Sale or Exchange column. The properties advertised by Mr. Smith are first-class and worthy the inspection of anyone disposed to relieve himself of his ranch interests.

Mr. Jerome F. Wares, president of the James H. Campbell Co., came to Fort Worth during the early part of the week. Mr. Wares states that the Chicago market is receiving very much attention from live cattle shippers and

that the market is in a very healthy condition. His company is doing an excellent business.

The wagon spring advertised by the American Bolster Spring company of St. Louis can be best appreciated by sending for a circular. The invention makes a common farm wagon a very comfortable wagon to ride in. The invention has been adopted by the army, and is now in use on the government wagons, used on the frontier.

Mr. J. T. Fleming of Clarksville, Red River county, one of the old time cattle traders, came to town to attend the Republican convention. Of late he has been engaged in shipping cattle into the feeding districts of Kansas and Nebraska from the Choctaw Nation. He says two-year-olds in the Choctaw Nation are worth a strong \$12, and the demand exceeds the supply.

William Powell of Beecher, Ill., breeder of Hereford cattle, was in town during the week, having been at Rhome, on the Fort Worth & Denver road, where he is acclimating a lot of young Herefords. Mr. Powell is announcing that he will have a good lot of Herefords of his own raising at the Dallas fair, some being recent importations and others acclimated stock.

Mr. Edward D. Hicks of Nashville, Tenn., another breeder, intends to reach Dallas on the 10th of October to take in the fair and sell some Devon cattle. Mr. Hicks is one of the leading breeders of Devons, having a pioneer herd of these beautiful cattle. He is president of the American Devon cattle club and an enthusiastic advocate of the excellent qualities of the breed.

Messrs. Jno. A. Fray & Sons of Cooper county, Missouri, announces a sale of 75 Norman stallions, mares and geldings, 6 young jacks, and 4 jennets bred to an imported jack, also 175 head of thoroughbred and high-grade Short-horn cattle. The sale will take place on October 4th on the farm at Blackwater, on the Booneville branch of the Missouri Pacific railroad. The terms of sale are most reasonable and the advertisement will be found in the columns of the JOURNAL.

Messrs. Polk Bros. of Fort Worth, Texas, have on hand a very fine black pacing stallion, also a two-year-old trotting-bred filly and 30 Texas-raised Jersey heifers due to calve this fall. All this stock will be taken to the Dallas fair.

H. M. Kidwell of Weatherford, whose Western ranch is on Double Mountain Fork of the Brazos, has returned from a 20-day round-up. While gone he purchased the only 200 head of beeves in his district, and he reports cattle and grass doing finely. Mr. Kidwell says of his own knowledge that Western Texas cannot begin to round-up anything near the number of cattle ranged a few years ago, and as for beef the crop is very short.

Mr. G. W. Weaver of Plano, Collin county, has just paid \$20 around for some blooded two-year-old steers, as against about \$12 which is the top notch common cattle are bringing on the market.

Hatcher, Woods & Coppinger sold a car-load of horses and mules to Mr. Murphy of Louisiana, and closed out the last of their colts.

Jno. S. Powell sold to T. N. Warner of Alabama, 30 head of horses and mares at prices ranging from \$15 to \$25.

Richardson & Hackett are offering 1500 yearlings at \$7.50, half cash, balance on time.

Mr. L. Hastings of Gregory, Cooley & Co. of Chicago is at the Pickwick hotel.

T. S. Bugbee of Kansas City, was at the Pickwick.

J. P. SMITH,
President.

FRANKLIN B. HOUGH
Secretary.

THE GRANITIC ROOFING

Factory at

Fort Worth, Tex



Better than the best, cheaper than the cheapest roofing offered in Texas. Suitable for steep or flat roofs.

Cheap enough to cover a hen coop; good enough to roof a palace. Specially adapted to stockmen's barns and out-buildings. Shingles, tin and corrugated iron must give way before our goods. For further particulars write to our office.

Fort Worth Granitic Roofing Co

11th and Rusk Sts., Fort Worth, Tex

JNO. S. POWELL & CO

Office, Mansion Hotel,



Fort Worth, Texas.

Offer for sale choice thoroughbred and high-grade Hereford, Polled-Angus, Durham, Holsteins and Jersey Bulls and Heifers. Stock on hand and for sale on very reasonable terms.

Elmwood Poultry Yard!

R. A. CORBETT & SONS,

Breeders and shippers of

FINE POULTRY.



Eggs for hatching, from pure-bred and carefully mated prize-winning birds at Texas State Fair at Dallas. Will sell from the following varieties: Plymouth Rock, \$2 per setting of 13; Brown Leghorns, \$2; White Leghorns, \$2; Silver Spangled Hamburgs, \$2.50; White Minorcas, \$4. Send your orders at once; we guarantee square dealing, safe arrival and good stock. Stock for sale after Aug. 1. Write for prices.

We also have on our ranch a few high-grade Holstein bulls, Shackelford county raised, for sale. Address

R. A. CORBETT & SONS,
Albany, Texas.

W. F. SOMMERVILLE, Pres. A. R. MABRY, Sec.
SAM'L KERR, V. Pres. and Treas.

Western Securities Co.

FORT WORTH, TEXAS.

CAPITAL \$250,000.

Loans on Farms, Ranches and Improved City Property, at Moderate Interest.

W. C. YOUNG, of the Llano Live Stock Co.
T. C. ANDREWS. J. M. KUHEN.

YOUNG, ANDREWS & KUHEN,

Dealers in

LIVE STOCK

Tenth and Houston Sts.,

FORT WORTH, - - TEXAS.

Cattle contracted for spring delivery. Horses of every description in yards and pastures. Cow-horses a specialty. Horses, mares, mules and jacks for sale at all times. We are prepared to enter into contracts for the delivery of cattle, horses, mares and mules at any point in Texas, and solicit correspondence.

DALLAS.

Selling Corn at 25c a Bushel.

The STOCK JOURNAL has from time to time in the past referred to the extreme scarcity of hogs, in view of the fine corn prospects in store, and though not claiming to be a "prophet or the son," etc., the condition at this time—the ratio of corn to the supply of hogs, is sadly out of proportion. Every farmer has, as a rule, plenty of corn, and it is very few who have hogs, the demand for which, that is the consumption of pork, is doubling every year or two. Brighter is the day when the farmer in Texas will see to it that he has, every year on hand at least a sufficiency of hogs for his own consumption.

For instance, take the farmers to-day about Dallas; they are now hauling their corn into town and selling it from the wagon at 25c a bushel, and with the proceeds they will go right to their grocer and buy Chicago cured pork at from 8c to 16c a pound steeped in salt, say upon an average of 12½c. Say he buys 300 lbs of pork, which will cost him \$37.50. It is conceded by about the best authority, that 30 bushels of corn will produce 300 lbs of net, good pork. Now, the 30 bushels of corn at 25c brings the farmer \$7.50. It must be remembered that corn and pork are synonymous terms. So in selling 30 bushels of corn for \$7.50, the farmer mostly sells 300 lbs of pork that is worth \$37.50 for \$7.50, losing in the transaction just \$30. Instead of going to market with his corn, he should be going with his pork. Again, should the farmer be wiser still and have a Johnson grass or alfalfa run for his hogs he could with certainty reduce the amount of corn from 30 bushels to 16 bushels and less. These are not merely theoretical conclusions, but straight, stubborn facts, occurring right along.

Admitting that the country is severely cursed to-day by the effects of class legislation, trusts, etc., how insignificant a part do such political derangements play in shaping the destiny of the farmer when compared with the fruits of his own indifference, to call it by no harder name.

The remedy is through reading, and reading closely one or more standard agricultural papers, regularly. Trusts are bad enough, but selling corn at 25c a bushel when hogs are 7c, spot cash on the streets of Dallas to-day carries upon its face the evidence of general debility among the industrial interests of our country. Indeed, it is anything but a hopeful commentary on the enterprise and intelligence of our farmers, but the STOCK JOURNAL is inclined to the belief that a revolution of methods is near at hand, and, though its frequent discussions of these points, seem monotonous to the casual reader, criticisms therefrom will be patiently borne in the light of its convictions of duty to the end that it may at least prove the means of leading farmers to know more of the relative values of their products to other articles of commerce.

Market Notes.

Cotton is selling at \$8.75, about 130 bales having been received to date. The best authorities quote the Dallas crop this year at 20,000 bales in excess of last year. Wheat at the Mills is quoted at 90c.; oats at 27c. and corn at 25 cents per bushel.

DALLAS DOTS.

The dairymen about Dallas pooled their issues this week and raised the price of their products about 25 per cent.

Captain T. H. Whitely of Dallas has been in the pineries in East Texas for several months buying razor-back hogs. He stated to the JOURNAL man that he had corralled about 2000 head.

J. C. Garrison, a local Dallas stockman has just returned from a trip through Jack and other counties West. He reports stock generally in fine fix and as to hogs, "why" says he, "they are worth 6c, more than they were ever worth before out there."

Col. C. C. Slaughter is just in from a trip through the Panhandle and the North. He reports the ranges in a better condition than for several years, and stock of all kinds are in splendid shape. He speaks by the card, having seen personally that about which he speaks. As stated before, a month or so ago, to the STOCK JOURNAL, there is a great scarcity of 3-year-old steers, and indeed it is an exception when one will see steers older than that, and really, the output of 2-year-olds, is far below the average, the shrinkage being in the main due to the great amount of paper maturing in the spring causing stockmen to draw unusually heavy upon their herds to meet obligations. To supply this deficiency a great many fat cows are going to market. Steers, he says, are bringing from \$4 to \$10 more per head than for several years, which of course causes a demand for steers, due, perhaps to the large corn crops, and the pre-arranged plans of feeders. He says the market this year has been a very unstable one, and therefore, unsafe for speculators, the fluctuations being constant and for the most part unwarranted by the natural law of supply and demand. The Colonel looks forward to the St. Louis convention which convenes Nov. the 20th, with the hope that some means will be adopted to at least, measurably squelch the manipulations, and influence of the Big Four on the market.

Fair Notes.

Henry W. Grady, editor of the Atlanta Constitution, to whom an invitation was extended by the State fair management, to be present on Press day, October 18th, wires that he will be on hand. Henry Waterson, the Star-eyed Goddess of the Louisville Courier Journal, is also invited to attend, and though no definite response has been received to date, it is believed he will be on the ground. Many other noted members of the press and politicians of national reputation have been invited, and it is expected that the representation will be large.

FINE STOCK.

The exhibit of fine stock this year will perhaps double that of last year, for there are very few states in the Union that will not be represented, horses and cattle being the principal classes from without the limits of the state, although many sheep and swine exhibits from remote points in the Union have been assigned stalls. Kansas and Kentucky doubtless take the lead among the states outside of Texas, in extent and variety of stock. As to poultry, well, it is simply from everywhere, and consists of as many different kinds and classes.

President Armstrong seems to be the right man in the right place, possessing a discipline of procedure throughout the executive management that carries conviction of itself and the outlook for a great fair is unmistakable.

Sales of Cattle at Carter & Sons' Stock Yards, Dallas, Texas.

S. J. Morgan sold 38 cows at \$12@14 per head

D. F. Strange sold 13 cows at \$11.50 per head.

O. K. Meadows sold 19 cows at \$11.50 @13.

J. D. Oaks of Mineral Wells, Palo Pinto county, sold 24 fair cows at an average price of \$11.75.

J. C. Labatt sold 75 head of mixed cattle at \$6.10 per head, mostly yearlings and calves.

R. S. Grogeing sold 50 head of fair sheep to Noland Bros. at \$2 per head, average weight, 81 lbs.

H. R. Night of Kaufman county, sold on local market 42 head of cows and yearlings; cows averaged \$12.25 per head, yearlings \$6.

H. O. Samuels of Mesquite, Dallas county, sold a bunch of fat calves at \$5@6.

L. James sold 6 steers at \$18.50 per head to feeders.

Shilman Bros. sold 47 mixed cattle at \$5.50 per head.

D. E. James sold 8 cows at \$12.50 per head.

H. F. Osborn sold 5 milch cows at \$25@30.

F. M. Melton sold 8 veal calves at 2½@3 cts.

Mr. T. Jardan sold 6 yearlings at \$5 per head, and 7 2-year-olds at \$6.25.

J. T. Williams sold 11 cows at \$11.25 per head.

Sam Peterman sold 2 cows and veal calves at \$30.

G. E. Gross sold 2 milch cows at \$23. per head.

D. J. Newsom sold 13 cows \$11.75 per head.

Depew White sold 6 bulls at 1c. per pound.

Wool and Hides.

Reported by H. G. Brady & Co., Dallas.

WOOL.

12 months medium, 18 to 20c; do do light fine, 15 to 18c; 6 to 8 months medium, 15 to 18c; 6 to 8 months light fine, 12 to 14c; heavy fine, 8 to 11c.

HIDES.

No. 1 dry flint, 8c; No. 2 do do 5c; No. 1 do salted 6½c; No. 2 do do 4½c; No. 1 green salted 4½c; No. 2 do do 3½c; No. 1 do butcher 3½c; bulls and bad damaged ½ price.

PELVTRY.

Sheep skins 25 to 50c each; shearlings 10 to 20c; deer skins prime dry 30c per lb.; antelope do 22c.

CAUTION.—Buy only Dr. Isaac Thompson's Eye Water. Carefully examine the outside wrapper. None other genuine

Butchers' and Drovers' Stock Yards, Dallas, Tex.

CARTER & SONS, Props.,

LIVE STOCK COMMISSION MERCHANTS.

Largest and best yards in Dallas. Only yards having the facilities for shipping and receiving from all the railroads. Office at the yards. Street cars to pens. Liberal advances made on all consignments. Stock scales a pens. Telephone connections.

DR. VAL RILEY,

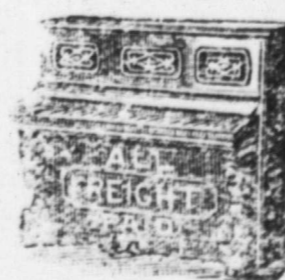
Practice confined to

CATARRH

Of the Air Passages, Ear and Eye.

Office 912 Elm Street,

DALLAS, TEXAS.



PIANOS GRAND Summer Sale ORGANS

CASH PRICES—PAY WHEN COTTON IS SOLD. GRAND OFFER. 1,000 Pianos and Organs to be sold in August, September and October, at ROCK BOTTOM PRICES. PIANOS, payable \$100 cash or \$25 cash. ORGANS only \$10 cash. And finance Dec. 1, no interest or advance on low cash price. Buy now and pay when Cotton is sold. Pianos \$200, \$225, \$250. Organs \$24, \$30, \$50, \$60. In makers 300 styles. Delivery at point, 10 days' test trial. Reduced prices. Write for Mid-Summer Sale Circular. L. B. BATES, SOUTHERN MUSIC HOUSE SAVANNAH, GA. The Great P. & O. Depot of the South.

REDDING'S RUSSIA SALVE
 SORE EYES, SORE LIPS, SORE NIPPLES, SORE CUTS, SORE HANDS, CHAPPED HANDS, BUNIONS, CHILBLAINS, SCALDS.
IS COOLING, SOOTHING AND CURES

DR. GEO. WILKINS, DENTIST.



Does everything in the way of dentistry. Besides filling teeth and putting in artificial ones, he makes a specialty of treating, saving and making useful and durable teeth of those that are diseased, aching and badly decayed, such as are generally extracted. Call and see the new method.

Teeth without plates that will not drop or get loose. See samples of porcelain continuous gum teeth, enamel fronts and crowns made to match your own teeth. Porcelain fillings a specialty.

Cor. Elm and Harwood Streets. DALLAS, TEXAS.

DR. O. B. HEWETT, THE DENTIST. Dallas, Texas. Teeth extracted without pain. The BEST is the CHEAPEST.

DALLAS DENTAL PARLORS! PRICE CHEANEY, D.D.S., PROP. 709, 711 Elm St., Dallas, Tex. Call, write or telephone and make appointments in order to have the me reserved for your work.

D. A. WILLIAMS, Candidate for County Attorney Dallas Co. Election Nov. 6, 1888.

BEV. SCOTT, Candidate for County Clerk Dallas County. Election Nov. 6, 1888.

JOHN P. GILLESPIE, Candidate for County Attorney of Dallas County. Election Nov. 6, 1888.

The JOURNAL is authorized to announce JAMES D. FARMER as a candidate for the office of County Clerk of Tarrant County. at the election to be held Nov. 6.

JOHN W. SAUNDERS, Candidate for Assessor of Taxes of Dallas County. Election Nov. 6, 1888.

LEE H. HUGHES, Candidate for County Clerk, Dallas County. Election November 6, 1888.

THOMAS F. McENNIS, Candidate for County Clerk, Dallas County. Election Nov. 6, 1888.

HENRY H. SMITH, Treasurer of Dallas County Candidate or re-election. Election Nov. 6, 1888.

The Difference.

Hoof and Horn, Prescott, Arizona.

In the face of the attempt now being made to take the nominal import due now placed on beef cattle shipped into the United States, it is interesting to note the effort being made in England to discourage the importation of American beef into that country, in order that the British cattle raiser may have all the benefits of his home beef market. Indeed, the American steer seems to be raising as much of a disturbance in England as the American hog did in Germany. According to the latest London dispatches, American beef has come to be considerable of a bugaboo to the British legislator, and succeeded in keeping that body of venerable fossils, the house of lords, awake for a considerable time the other evening. The noble lords, in the course of their debate over what they call the foreign meat bill, paid our beef several high compliments. It seems that the British public want our meat and are willing to pay for it, and so great has been the demand for it that the price of it has been advanced. This has also had a tendency to raise the price of the native production as well. The fact that the American meat is superior to the British and that the public of England appreciate the fact is demonstrated by the objections which were raised in the highest legislative body of Great Britain to the methods proposed and in use for its suppression. One of these was to require butchers to put up a notice stating that they sold the objectionable article. But it was shown by one of the noble speakers with half the alphabet at the end of his name, that this plan would not work any better than the others. American beef was eaten and would be eaten by an appreciative public in spite of all attempts to the contrary. Although the speaker did not use just those words, it did not require a very powerful pair of spectacles to read the meaning between the lines. Another method proposed was to license the butchers who sold foreign meat, and that, too, was demonstrated to be of no avail. The Britishers might as well give up first as last all efforts to put down American meat. It stands on its own merits, and as long as our cattle raisers and butchers keep it up to its present standard it has nothing to fear. In fact, about the only serious accusation the English butchers have against our beef is that its superior quality commands a higher price than the native production, and they are obliged in consequence to put the latter up to save themselves. This causes an angry protest from the people, and the American beef is to blame, whereas the whole fault lies at the door of the British meat on account of its inferior quality.

Missouri Pacific Railway and Iron Mountain Route
offer a choice of routes to St. Louis and all points north and east; the Iron Mountain Route through Arkansas and Missouri, and the M., K. & T. through the Beautiful Indian Territory. Pullman buffet sleeping cars run through via both routes without change. This is also the direct line to Kansas City, St. Joseph and Omaha, and the Colorado Short Line from Kansas City to Pueblo and Denver.

To the Afflicted.

We call the attention of our readers to the advertisement of Dr. J. R. Pollock in this issue of the JOURNAL. To those who are afflicted with rectal troubles we can recommend the doctor as a specialist in that particular; he having effected some remarkable cures in cases which had become chronic. Dr. Pollock successfully treats consumption, bronchitis, catarrh, dyspepsia and all other chronic diseases with oxygen and electricity. Correspond with the doctor if you need the services of a reliable physician who can give the best of references.

ECZEMA

And Every Species of Itching and Burning Diseases Cured by Cuticura.

I have been afflicted since last March with a skin disease the doctors called Eczema. My face was covered with scabs and sores, and the itching and burning were almost unbearable. Seeing your CUTICURA REMEDIES so highly recommended, concluded to give them a trial, using the CUTICURA and CUTICURA SOAP externally, and RESOLVENT internally, for four months. I call myself cured, in gratitude for which I make this public statement.

Mrs. CLARA A. FREDERICK.
Broad Brook, Conn.

Eczema.

Your most valuable CUTICURA REMEDIES have done my children so much good that I feel like saying this for the benefit of those troubled with skin disease. My little girl was troubled with Eczema, and I tried several doctors and medicines, but did not do her any good until I used the CUTICURA REMEDIES, which speedily cured her, for which I owe you many thanks and many nights of rest.

ANTON BOSSIMER,
Edinburg, Ind.

Eczema.

I was afflicted with Eczema on the scalp, face, ears and neck, which the druggist where I got your remedies pronounced one of the worst cases that had come under his notice. He advised me to try your CUTICURA REMEDIES, and after five days' use my scalp and part of my face were entirely cured, and I hope in another week to have my ears, neck and the other part of my face cured.

HERMAN SLADE, 120 E. 4th St., N. Y.

Eczema.

I gratefully acknowledge a cure of Eczema or Salt Rheum on head, neck, face, arms and legs for seventeen years; not able to walk except on hands and knees for one year; not able to help myself for eight years; tried hundreds of remedies; doctors pronounced my case hopeless; permanently cured by the CUTICURA REMEDIES.

WILL McDONALD,
2542 Dearborn Street, Chicago, Ill.

Sold everywhere Price, CUTICURA, 50 cts.; SOAP, 25 cts.; RESOLVENT, \$1. Prepared by the POTTER DRUG AND CHEMICAL CO., Boston, Mass.

Send for "How to Cure Skin Diseases." 64 pages, 50 illustrations and 100 testimonials.

BABY'S Skin and Scalp preserved and beautified by Cuticura Medicated Soap.

STRAINS, PAINS

In the Back, Kidneys, Hip, Sides or Chest relieved in **one minute** by the **Cuticura Anti-Pain Plaster**. The first and only pain-killing plaster. New, instantaneous, infallible. 25 cents.

CHAS. I. EVANS. G. J. GOOCH.

EVANS & GOOCH,
Attorneys-at-Law,

505 Elm Street,
DALLAS, TEXAS.

J. C. SCOTT,
Attorney-at-Law,

304 MAIN STREET, FORT WORTH, TEX.
Land and Commercial Law.

Refers by permission to Hon. Henry M. Teller, Sec. Interior, Washington, D. C.; Valley National Bank, St. Louis, Mo.; H. M. Truehart & Co., Galveston, Tex.; Gen. B. C. Ludlow, Col. Int. Rev., Austin, Tex.; City National Bank, Fort Worth, Tex.; First National Bank, Fort Worth, Texas.

THOS. F. WEST,

Late of Jacksboro,
Attorney-at-Law,

311 Main Street,
FORT WORTH, TEXAS.
Special attention to Land and Live Stock Litigation.

N. A. STEDMAN. EDWARD F. WARREN,
City Attorney.

STEDMAN & WARREN,
Lawyers,

Corner of Main Street and Public Square
FORT WORTH, TEXAS.

JOHN Practical

912 Main St.,
Hats blocked, stiff, soft and cleaned and to new. Best state. Work warranted first-class. or express promptly attended to.



KLEIN, Hatter,

Dallas, Texas
while waiting straw hats stiffened equal facilities in the state. Orders by mail.

OPIUM Morphine Habit Cured in 10 to 20 days. No pay till cured. Dr. J. Stephens, Lebanon, Ohio

CHAS. H. FRY,

DEALER IN

Watches, Diamonds, Jewelry, Clocks,
SILVERWARE, ETC.

212 Main St., Fort Worth, Texas.

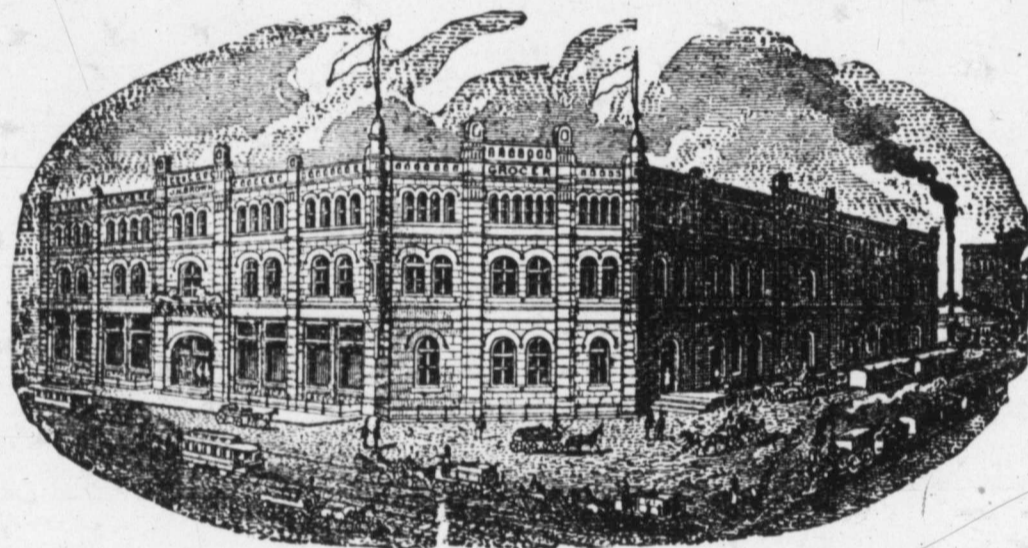
Orders for goods carefully filled, subject to inspection. Work in all departments carefully done. All work and goods guaranteed.

JOSEPH H. BROWN.

Wholesale Grocer,

Manufacturer of the Celebrated

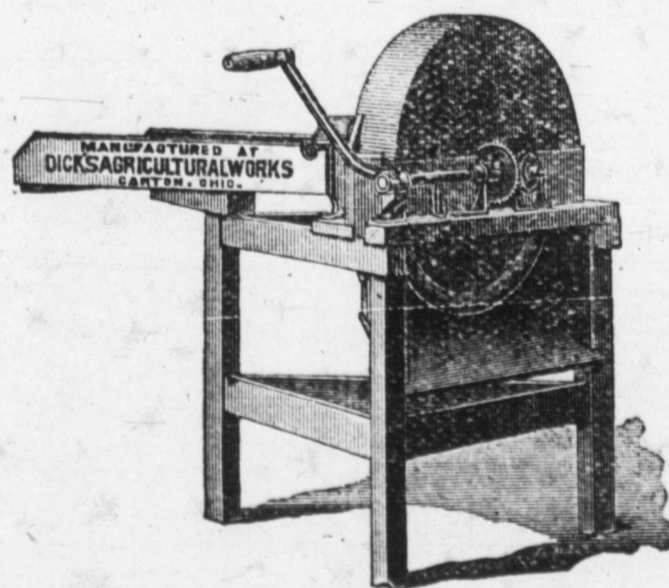
SILVER LOAF BAKING POWDER.



-: Sultan Roasted Coffee :-
FORT WORTH, TEX.

This Cut Represents

Dick's Famous Feed Cutter



Will run with less power and do more cutting than any other style made. Its cutting capacity is perfectly simple and condensed. The knives are located on the balance wheel, thereby saving power. It is the only cutter made to which can be attached a corn stalk splitting attachment.

Write for Prices.

W. A. HUFFMAN IMPLEMENT CO.,

STATE AGENTS

Fort Worth, Texas.

A VALUABLE BREED.

Facts About Devon Cattle in Middle Tennessee.

Tennessee Farmer.

Probably the largest herd of Devons in the United States is owned by Ed D. Hicks, Esq., president of the American Devon Cattle club, which has a membership of 100 breeders. He lives ten miles southwest of Nashville. His herd numbers 140 head. He has been breeding since 1876. Up to 1888 he had bought but 29 head. Up to 1888 he had sold 150 head, and had at that time 110 head on hand.

Among the different breeds of cattle in Tennessee the Devon has been less widely distributed than many others. In this article will be presented a succinct statement of the more important points of superiority claimed for the Devon and the traits which are claimed to make the breed the most desirable for the general farmer who requires an all-purpose variety, no less than the specialist who breeds either for the dairy or for the butcher exclusively.

In color Devons are red, without white except the switch and occasionally a white udder, and are admitted to be the descendants of a breed of red cattle in England, which has existed from time immemorial. They have possessed all of their essential virtues ever since English writers began to make observations on subjects pertaining to agriculture; consequently their type and prepotency are most enduring and fixed.

Devons are claimed to be pre-eminent in hardness, as is evidenced by the fact that they are successfully handled in all of the varieties of climate on this continent from Texas to British America, there being Devon herds in every state in the Union and every province in the Dominion of Canada. This hardness is largely due to their superior muscularity and to this extreme portion of muscle in their physical structure is due their strength, activity, great weight in proportion to size, strong digestive power and the superior nutritive quality of their flesh. They are specially fitted to graze on rough and hilly pastures. Blood-likeness, or ability to preserve its characteristic features unimpaired through unlimited generations is a widely known strong point of the Devon, and is a factor of very great importance known to every breeder of cattle.

Aptitude to fatten is an invaluable quality in which the Devon enjoys a marked pre-eminence. If proof were needed to this, attention would have to be called only to the fact that in regions where the soil is least productive, and as a consequence feed is most expensive and its economical use a matter of great importance, Devons are most popular. A breeder of large experience with different breeds of cattle, says: "Devons will thrive where other cattle would starve, yet they will repay good care and feeding as well as the best."

Mr. Youatt speaks of the aptitude to fatten of this breed as being unequalled, and the general experience of breeders who have handled them, is the ease and economy with which they may be made and kept in good condition.

BEEF.

The Devon will not only take on flesh rapidly, giving better results in proportion to feed and care, and consequently pay the producer a larger profit than other breeds, but in the great markets of England notably in those of London (the capital of the "beef-eaters,") the flesh of the Devon ranks second only in quality to the little Highland ox, and is recognized as of superior value, both to the butcher and the consumer; to the butcher because it is weighty in those parts which bring the highest price, and that the Devon dresses a larger proportion of clean meat to the weight of the living animal, or in other words there is less loss of offal than with other breeds, and to the consumer because the meat is more perfectly mottled, the fat and lean being so mingled as to make it the ideal of beef.

MILK.

The milk of the Devon is rich in casein and butter, yields its cream slowly and is for drinking purposes superior to that of any of the breeds of cattle. In product of quantity of butter it is second only to the Jersey, and in quality second to none.

DRAFT.

Devons are favorites wherever cattle are used for draft. They make the most handsome oxen as to form, the very best as to strength, sagacity, quickness of movement and docility.

The uniformity of color, size and general appearance gives to a herd of Devons greater beauty than any other

breed of cattle and the cattle are more uniformly good specimens of the breed. Their docility is remarkable and a vicious Devon bull is exceedingly rare.

While Devons were probably imported into the New England colonies at an early day, the first herd of purely bred Devons was founded in 1817 by the gift of Mr. Coke, afterwards Earl of Leicester, to Mr. Patterson of Baltimore, of six heifers and a bull. Mr. Patterson imported bulls at different times to use in his herd and the herd is kept in its purity by descendants of his family to this time. Other breeders made importations into New York and New England and the breed is now generally disseminated throughout the country.

Middle Tennessee breeders are Messrs. Edward D. Hicks, W. W. Berry and J. H. Ambrose of Davidson county, Mr. T. B. Wilson of Sumner; T. H. Williams and R. J. Baugus of Maury, and N. F. Burns of Wayne, besides many scattered animals.

A Woman's Discovery.

"Another wonderful discovery has been made and that, too, by a lady in this country. Disease fastened its clutches upon her and for seven years she withstood its severest tests, but her vital organs were undermined and death seemed imminent. For three months she coughed incessantly and could not sleep. She bought of us a bottle of Dr. King's New Discovery for Consumption and was so much relieved on taking first dose that she slept all night and with one bottle has been miraculously cured. Her name is Mrs. Luther Lutz." Thus write W. C. Hamrick & Co. of Shelby, N. C.—Get a free trial bottle at H. W. Williams & Co.'s drug store.

Feeding Pigs.

In response to a correspondent about feeding pigs seven months old, Prof. Stewart replies in the Country Gentleman as follows:

The following will be a good combination of food to feed them: 100 lbs corn meal, 100 lbs, wheat middlings, and 100 lbs wheat bran. Mix these thoroughly together dry, and then feed 2 lbs of this mixture with one gallon skim milk per day, and if each pig gets two gallons of skim milk per day it will also get four pounds of this mixed feed. If each pig gets more than two gallons of milk, still it may require it all. This ration will require increase as they grow older. As soon as clover gets large enough to cut, give about three quarts of this green clover in the feed for each pig per day. This will keep them healthy and increase their gain. They should gain about one and a half pounds per day.

Extraordinary but nevertheless true. We refer to the announcement of B. F. Johnson & Co. of Richmond, Va., in which they propose to show working and energetic men how to make from \$75 to \$250 a month above expenses.

Open Orders Solicited.

Messrs. Turner, McClure & Co., the wholesale and retail grocers of Fort Worth, Texas, are making low prices on all goods in their line, and have a full and complete stock. They make a specialty of sending goods all over the country, and stockmen can save a big per cent. on their purchases by sending the firm open orders for goods. A letter received by them is given the same attention as if you visited them personally, and satisfaction is guaranteed in every case. Send for their price list at once. Address
TURNER, McCLURE & Co.,
Fort Worth, Texas.

The Best Wire Fence

for farms, railroads and ranch purposes. Send for illustrations. Address,
GHOLSON FENCING Co.,
114 East Pearl St., Cincinnati, O.
B. F. Gholson, Fort Worth, Texas,
State Agent

DRS. BETTS & BETTS

Corner Champa and Seventeenth Sts.
DENVER, - - - COLORADO.



NERVOUS Debility, Spermatorrhoea, Seminal Losses, Night Emissions, Loss of Vital Powers, Sleeplessness, Despondency, Loss of Memory, Confusion of Ideas, Lassitude, Gloominess, Depression of Spirits, Aversion to Society, Easily Discouraged, Lack of Confidence, Dull, Listless, Unfit for Study or business, and finds life a burden, SAFELY, PERMANENTLY and PRIVATELY CURED.

BLOOD AND SKIN Diseases, Syphilis, a disease most horrible in its results, completely eradicated without the use of mercury. Scrofulous, Erysipelas, Fever Sores, Blotches, Pimples, Ulcers, Pains in the Head and Bones, Syphilitic Sore Throat, Mouth and Tongue, Catarrh, etc., PERMANENTLY CURED WHEN OTHERS HAVE FAILED.

URINARY Kidney and Bladder Troubles, Weak Back, Burning Urine, Frequency of Urinating, Urine high colored or with milky sediment on standing, Gonorrhoea, Gleet, Cystitis, etc, promptly and safely cured. Charges reasonable.

TO YOUNG AND MIDDLE-AGED MEN.

A SURE CURE The awful effects of early vice, which brings Organic Weakness, destroying both mind and body, with all its dreadful ills, permanently cured. **URETHRAL STRICTURE** permanently cured, removal complete—neither knife, caustic nor dilation—without pain or injury. Proof indisputable.

DRS. BETTS address those who have by improper indulgence and solitary habits, which ruin both body and mind, unfitting them for business, study or marriage.

MARRIED MEN, or those entering on that happy life, aware of physical debility, quickly assisted.

OUR SUCCESS

is based upon facts. First—Practical experience. Second—Every case is especially studied; thus starting aright. Third—Medicines are prepared in our laboratory exactly to suit each case, thus effecting cures without injury.

Send 6 cents postage for celebrated works on Chronic, Nervous and Delicate Diseases. Thousands cured. A friendly letter or call may save future suffering and shame, and add golden years to life. No letters answered unless accompanied by 4 cents in stamps. Address or call on

DRS. BETTS & BETTS,
Corner Champa and Seventeenth Sts,
DENVER, - - - COLORADO.

—:WARREN:—

FEMALE INSTITUTE

A boarding and day school of high order, for young ladies and girls.

Fifth Annual Session

of thirty-two weeks, commences
SEPT. 3, 1888.

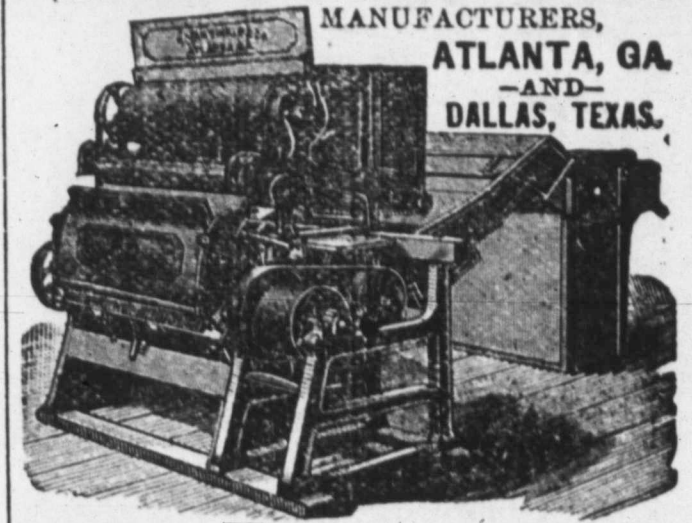
Faculty complete in every department. Eleven teachers employed. Send for catalogue.

Mrs. ED. F. WARREN, Principal,
Fort Worth, Texas.

\$75 to \$250 A MONTH can be made working for us. Agents preferred who can furnish a horse and give their whole time to the business. Spare moments may be profitably employed also. A few vacancies in towns and cities. B. F. JOHNSON & CO., 1009 Main St., Richmond, Va.

E. VAN WINKLE & CO.

MANUFACTURERS,
ATLANTA, GA.
—AND—
DALLAS, TEXAS.



COTTON GINS and PRESSES,

Cotton Seed Oil Mills, Cotton Seed Linters, Cane Mills, Saw Mills, Shafting, Pulleys, Hangers, Wind Mills and Castings, Pumps and Tanks.

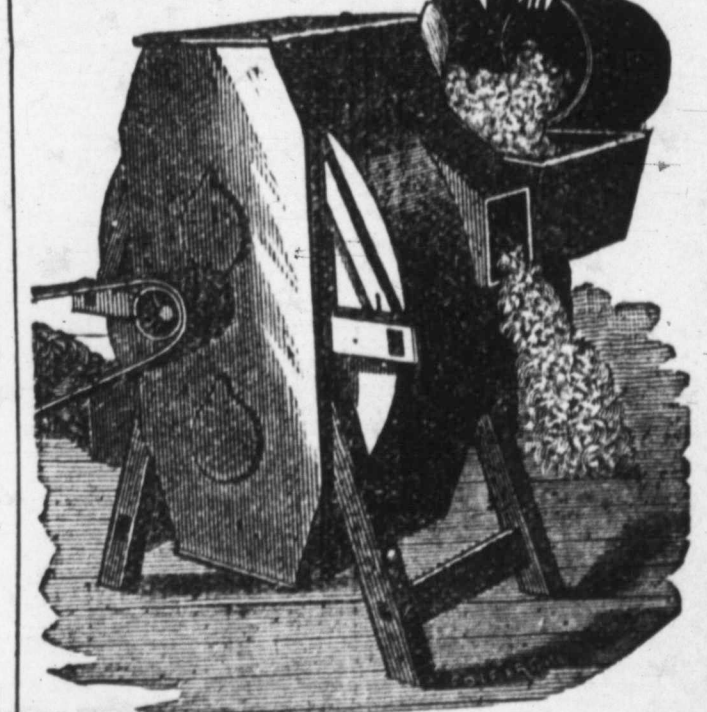
E. VAN WINKLE & CO.,



COTTON PRESSES.

E. VAN WINKLE & CO.

ATLANTA, GA.
AND
DALLAS, TEXAS.



Patented 1878. Improved 1881. Patented 1882.
Prices reduced to one-half former prices.

No. 1 Mach. \$30.00 | No. 2 Mach. \$40.00
Best Cleaner for Seed Cotton in the market. No Ginner can afford to be without one.

E. VAN WINKLE & CO., Manufacturers,
Atlanta, Ga.

AND ALSO - -

Seed Cotton Cleaners

Of equal merit. Send for catalogue and prices.

E. VAN WINKLE & CO.,

Box 146,
DALLAS, - - - TEXAS

Responsible agents wanted. Name this paper.

ST. LOUIS MARKET LETTER.

Liberal Offerings of Cows and Range Cattle—A Little Strength in Wool.

Regular Correspondence Texas Live Stock Journal.

EAST ST. LOUIS, ILLS., }
Sept. 18, 1888.

Another season of liberal offerings of range cattle was witnessed. To say the least, the run was excessive, and prices had to come down somewhat, which will be seen from the sales given below.

Once more cows are bringing from \$1.85 to \$2.20 per 100 lbs. She stock is in over abundance, and in decent flesh and are fit for canners' use. At the present writing all the leading stock centers of the country are filled to overflowing.

Cassidy Bros. & Co. sold for P. N. Blackstone, Muskogee, 51 steers, 992 lbs, \$3.25; 20 steers, 1052 lbs, \$3.25. For G. W. Taylor, Taylor, 22 steers 888 lbs, \$2.40. Rice & Moore, Prairie City, 20 steers, 853 lbs, \$2.75; 29 steers, 831 lbs, \$2.75. Prant & Martin, Fall River, 51 head, 794 lbs, \$2.50; 24 head, 1050 lbs, \$2.40; Wm. Hittson, Abilene, 111 cows, 655 lbs, \$2.20; 53 cows, 685 lbs, \$2.30; 55 cows, 679 lbs, \$2.25; 57 cows, 702 lbs, \$2.25; 29 cows, 676 lbs, \$2.25; 32 cows, 653 lbs, \$2.20. Sweet & Co., Fall River 85 steers, 805 lbs, \$2.60. H. Schlinski, Texarkana, 12 head, 733 lbs, \$2.45; 54 head, 811 lbs, \$2.65; D. L. Denney, Clarimore, 22 cows, 715 lbs, \$2.37½; 24 calves at \$7.50 each; Forsythe Land and Cattle company, Hunnewell, 253 cows, 733 lbs, \$2.25; 27 cows, 772 lbs, \$2.25; 131 calves, \$7.62½ each; Wm. Morris, Lone Oak, 14 head, 862 lbs, \$2.25; 21 head, 816 lbs, \$2.12½; Fry & Woodward, Denton, 20 steers, 902 lbs, \$2.90; 35 head, 560 lbs, \$2; 24 calves at \$6.50 each; Ball & Biffle, Gainesville, 37 cows, 779 lbs, \$2.12½.

Scaling & Tamblyn sold for H. D. Field, St. Jo, 27 cows, 691 lbs, \$2.15; W. H. Man, Archer City, 96 steers, 953 lbs, \$3.10; Webb & Houston, Gainesville, 11 head, 803 lbs, \$2.37½; A. S. Nicholson, Fort Worth, 23 head, 800 lbs, \$2.50; 27 head, 805 lbs, \$2.45; 26 head, 821 lbs, \$2.45; 162 head, 894 lbs, \$2.90; 46 head, 859 lbs, \$2.90; Jess Garven, Buffalo Springs, 12 steers, 872 lbs, \$3.10; O. A. Hoskins, Neal, Kan., 42 steers, 1347 lbs, \$4.40; 27 cows, 780 lbs, \$2.65; 52 cows, 1004 lbs, \$2.50; 24 cows, 941 lbs, \$2.50; 51 cows, 947 lbs, \$2.40; John T. Walker, Gainesville, 75 steers, 881 lbs, \$2.80; 23 steers, 900 lbs, \$2.75; 13 cows, 820 lbs, \$2.30; 23 cows, 753 lbs, \$2.25; J. T. Spears, Gainesville, 23 cows, 827 lbs, \$2.25; Sanborn & Wilson, Antelope, 14 steers, 1002 lbs, \$3.15; S. S. Newman, Bellevue, 27 steers, 938 lbs, \$3.15; O. M. Bivens, Terrell, 24 steers, 920 lbs, \$3.15; 24 head, 916 lbs, \$3; J. O. Hall, Adair, 23 steers, 1006 lbs, \$3.30; 26 head, 854 lbs, \$2.25; 28 cows, 790 lbs, \$2.20.

Hunter, Evans & Co. sold for G. C. Little, Beeville, 21 steers, 809 lbs, at \$2.65; D. B. Sloan, Hillsboro, 39 steers, 852 lbs, \$2.80; Sloan & Lany, Hillsboro, 22 head, 792 lbs, \$2.20; J. T. Frazier, Hillsboro, 23 cows, 756 lbs, \$2.20; G. J. Terrell, Paris, 28 head, 832 lbs, \$2.35; 26 head, 827 lbs, \$2.50; 21 head, 819 lbs, \$2.50; 22 head, 995 lbs, \$4; F. M. Dougherty, Gainesville, 88 steers, 815 lbs, \$3.05; 14 head, 857 lbs, \$2; B. B. Yarborough, Sherman, 34 steers, 914 lbs, \$2.87½; 10 head, 760 lbs, \$2; 13 head, 795 lbs, \$2.25; C. M. Rogers, Austin, 65 cows, 780 lbs, \$1.85.

The James H. Campbell Co. sold for Winfield Cattle Co., Winfield, 23 steers, 959 lbs, \$3.30; 49 steers, 844 lbs, \$2.75; Matador Cattle Co., 113 head, 751 lbs,

\$2.05; C. W. Turner, Muskogee, 47 steers, 885 lbs, \$2.55; Davis & Boyd, Red Fork, 35 steers, 1040 lbs, \$4.10; 49 steers, 1070 lbs, \$3.95; F. B. Severs, Red Fork, 106 steers, 1232 lbs, \$4.50; Belcher, Belcherville, 180 steers, 1122 lbs, \$3.40; J. Moyer, Nelson, 11 steers, 946 lbs, \$2.90; 14 cows, 709 lbs, \$2; V. M. Locke, Nelson, 11 steers, 933 lbs, \$2.90; N. Skinner, Vinita, 99 calves, \$8 each; Jordan & B., Nacona, 33 steers, 945 lbs, \$3.35; 10 cows; 896 lbs, \$2.35; Belcher & B., Belcherville, 20 steers, 1025 lbs, \$3.35; G. W. Miller, Winfield, 240 steers, 1019 lbs, \$3.25.

The sheep market continues steady on decent to good grades. The run of Texas sheep was very light, and sales ranged in extremes from \$2.60 to \$3.50 per 100 lbs for stockers to good 85-lb sheep. To-day sales were 417 head, 85 lbs, \$3.35; 209 head, 72 lbs, \$3; 165 stockers, 69 lbs, \$2.85; 116 head, 70 lbs, \$3; 190 head, 85 lbs, \$3.50. But few good sheep were offered.

Hunter, Evans, & Co. sold for Sloan & Lacy, Hillsboro, 133 sheep of 84 lbs at \$3.20.

There is no change to note in the Texas horse market; the supply continues fair, while demand is moderate and mainly for good mares. Prices are quiet at \$18 to \$30 per head. This is all that Sam A. White has to report this week.

The wool market is active and buoyant, with only a moderate amount of Texas wool coming in. The demand is quite large, and some sales of six months growth were made at 23½¢ per pound.

RATTLER.

CHICAGO MARKET LETTER.

60,000 Cattle in one Week—14,500 in one day—Where are the Old Cows Coming From? Western Rangers not Coming so Good—Texas Cattle Market Steady.

Regular Correspondence Texas Live Stock Journal.

U. S. YARDS, }
CHICAGO, ILL., Sept. 17, '88.

Last week's receipts of cattle were 60,301 head, being the largest number on record for a week with the exception of the week ended Nov. 26, 1887, when 62,493 cattle came to market.

Arrivals included 19,600 Texas and Indian and 13,500 Western rangers against 16,500 Texas and Indians and 14,500 Western rangers the week previous. The total receipts were 6000 heavier than the week before and the increase was mainly of old cows from this and adjoining states.

The receipts of calves last week were also the second largest on record being 3774 head, largely from Texas.

The tip top price on hogs this week was \$6.90 the highest of the year.

There seems to be a fine prospect for hogs this winter. Even the packers have given up the idea of getting hogs as low as \$5 during the first half of the winter.

The writer of these letters has many times contended that hog raising in Texas could be made to pay well, and he sees no reason for changing his mind.

The best native beeves sold the past week here at \$6.50@6.75, only a few cars, but enough to show that strictly good cattle bring good prices.

Nels Morris has lately been shipping in a good many of his Texas and Territory cattle. They are all sold to other buyers.

The very best Western range cattle sold the past week at \$5.20. They are

not coming quite so good in quality but it is said there are plenty of good ones to come before the middle of October.

The Texas cattle market is steady at \$2.40@3.60 for steers; Indians, \$3@4.25; cows, \$2@2.50.

Texas sheep not selling very well. Too many common westerns. Sales \$2.50@3.50; Oregon and Montana sheep, 110 to 120 lbs, selling at \$3.40@3.60 to feeders and \$3.60@4.05 for mutton.

A lot of 121 Angora goats sold here at \$1.50 per head.

J. P. Donovan marketed to-day 271 Texas sheep, 86 lbs at \$3.35.

B. Simpson, 198 sheep, 88 lbs, \$3.25, also 678 head, 78 lbs, \$3.25.

A Minnesota fine stock and dairy man writes that the heavy runs of native cows and young stock at market indicates that farmers are making a "strike" against low prices and declares that men in his section who wintered 60 cattle last year will only keep three to five cows this winter.

British markets report heavier runs of cattle this week and a decline in American cattle from 13c to 12c estimated dead weight.

John R. Cameron of Canton, Miss., writes that he intends to ship cattle to Chicago this winter.

Native beef steers are selling here at \$3.50@5 for grassers and \$5@6.70 for corn-fed.

Chicago city butchers instead of driving their cattle through the streets have to pay \$3 per car to get them shipped to their slaughter houses down town. This fact has been commented upon unfavorably it seems by some who must have jumped to the conclusion that this "extra \$3" comes out of the pockets of the producers. This would be true if it were not for the fact that shipping cattle in that way does not cost the butchers any more if as much as the old method of driving through the streets. There is less danger of accident and much less shrinkage and the leading butchers with whom the writer has conversed, all agree that they are perfectly satisfied with the new plan.

A. C. HALLIWELL.

Turnip Seed.

We have just received a shipment of new-crop turnip seed.

TURNER, MCCLURE & CO.

J. B. ASKEW.

Manufacturer and Dealer in

Saddles, Harness, Leather, Etc.,
FORT WORTH, TEX.

Stock Saddles and Hand-Made Harness a Specialty.

Any style of saddle, plain or full stamped, made to order. Harness, from the lightest buggy to the heaviest float. Workmanship and material all first-class. C. E. Moore, late foreman for R. F. Packebury, will have charge of the saddle department. Every good saddle will be fitted out with a pair of Packebury's Improved Lightning Cowboy Cinch Fasteners. All orders by mail will receive prompt attention.

Reference—W. J. Boaz, Pres. Traders' National Bank; R. E. Maddox, Breeder and Dealer in Blooded Stock, Fort Worth

P. A. HUFFMAN, Ft. Worth, Texas.
A. W. JONES, Late of Burlington, Kas.
J. M. HENDERSON, Jr., Athens, Tenn.

P. A. HUFFMAN & CO.

Successors to Huffman, Sellers & Co.,
Real Estate, Loan

AND
INVESTMENT AGENTS,
506 Main Street, Fort Worth, Texas.

Land Titles Investigated, Taxes Paid and Collections Made for Non-Residents. Correspondence Solicited. P. O. Box 197.

WE REFER BY PERMISSION TO

K. M. Van Zandt, president Ft. Worth National Bank; Capt. M. B. Loyd, president First National Bank of Ft. Worth; A. M. Britton, president City National Bank, Ft. Worth; Col. W. M. Harrison, president State National Bank, Ft. Worth; W. J. Boaz, president Traders' National Bank, Ft. Worth; Dr. H. S. Broiles, Mayor of Ft. Worth; Col. J. P. Smith, ex-Mayor of Ft. Worth; W. A. Huffman of W. A. Huffman Implement Co., Ft. Worth; J. H. Brown, wholesale grocer, Ft. Worth; Capt. Sidney Martin, president the Martin-Brown Co., Ft. Worth; Col. Morgan Jones, president Ft. Worth & Denver City railway, Ft. Worth; People's National Bank, Burlington, Kas.

U. S. Solid Wheel Halladay Standard Wind Mills
EUREKA

HORSE POWERS, tread or sweep,
PUMPING JACKS, best in market,

Feed Cutters, Pear Cutters,
Iron Pipe, Well Casing, Engines,
Farm Pumps, Ranch Pumps,
Hose, Belting, Brass Goods,
Tanks, Well Drilling
Machines,
Grinding Machinery.

If you want any of the above, or if you want farm or ranch fitted with a water supply outfit, get our prices and our catalogues. It will cost you but little and may pay you well.

THE PANHANDLE
Machinery and Improvement Co.,

Corner Throckmorton and First Sts.,
FORT WORTH, TEXAS.

Branch House, Colorado, Texas.

Active Agents wanted in every county in the state.

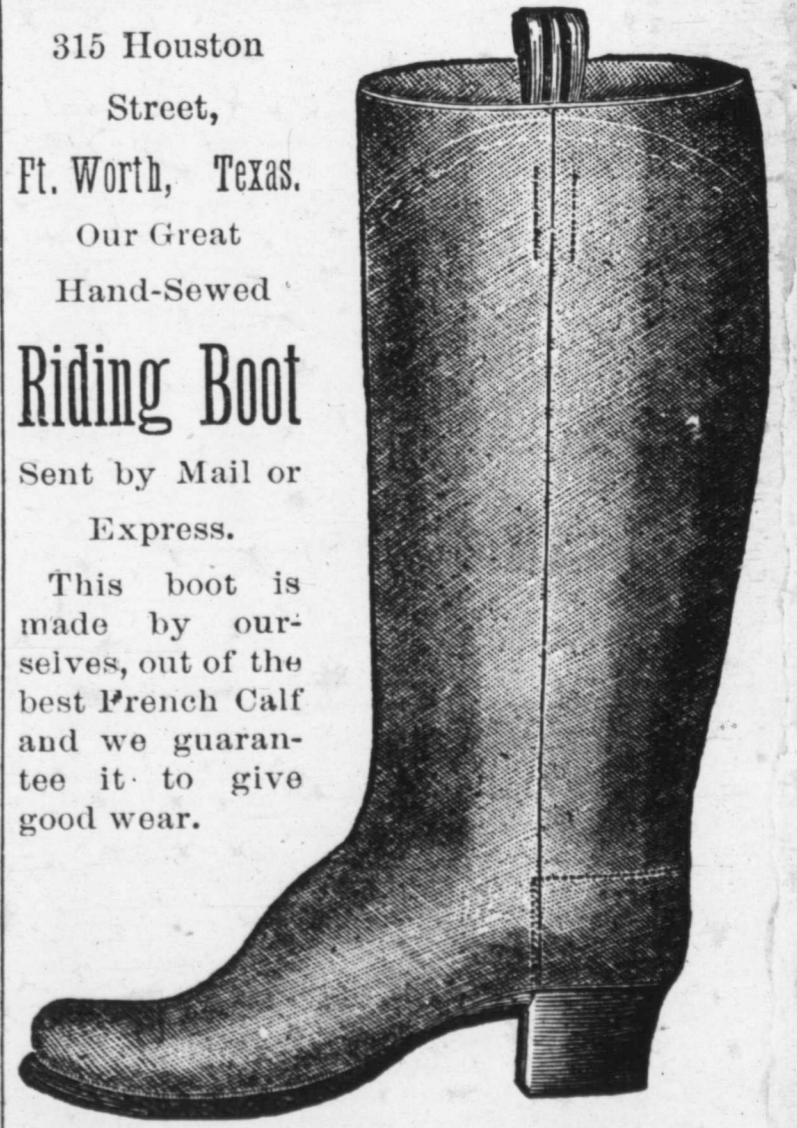
LOGAN, EVANS & SMITH,

315 Houston
Street,
Ft. Worth, Texas.
Our Great
Hand-Sewed

Riding Boot

Sent by Mail or
Express.

This boot is
made by our-
selves, out of the
best French Calf
and we guaran-
tee it to give
good wear.

100 ACRES. 13 GREENHOUSES.
TREES AND PLANTS

We offer for the Fall trade a large and fine stock of every description of FRUIT and Ornamental TREES, Shrubs, Roses, Vines, SMALL FRUITS, Hedge Plants, Fruit Tree Seedlings and Forest Tree Seedlings. Priced Catalogue, Fall of 1888, mailed free. Established 1852.

BLOOMINGTON (PHENIX) NURSERY
SIDNEY TUTTLE & CO. Proprietors, BLOOMINGTON, ILL.

EDITORIAL CORRESPONDENCE.

The Upper Range Country—Getting Ready for the Texas Surplus.

OGDEN, UTAH, Sept. 14, 1888.
From Cheyenne to Ogden, the Union Pacific railroad passes through a country that is very bare, and is worthless except for grazing. Shortly before reaching Utah the Weber river canyon is reached, and here the traveler finds a narrow valley, well watered, every foot of which is utilized, and which looks like a very garden, as compared with the barren prairies of Wyoming over which he has just passed. The valley is filled with small farms, and and nearly every farm has a little bunch of cattle or flock of sheep. In the aggregate they make up the live stock wealth of Utah, which is very considerable, for there are numbers of these valleys scattered over the territory. It is only in the Southern part of the territory that we find ranches of any magnitude.

Utah has never suffered as Montana and Wyoming and Texas have suffered, by the loss of cattle and sheep on account of drouth, cold, and overstocked ranges. There are few cattlemen here who are not prepared to feed, and they are thus able to tide over an ill-favored season. Their herds are well graded, and though few in number, are not among the least valuable portion of the public wealth. So far as I can gather, the range country and the valleys are pretty well filled, but are not overrun with cattle. No statistics can be had to show the exact number now on hand, and I can find no one who will make an approximate estimate. But as the Texas cattlemen have never done a large business in supplying Utah with yearlings, it is not of the first importance to them what the condition of the industry and the prospects of trade may be here.

Laramie, Wyoming, has declined somewhat as a cattle shipping point, and Rawlins has that trade. There are several stations along the line of the Union Pacific that ship a great many cattle to market during the shipping season, and the Union Pacific railroad is well provided with shippingpens and other accommodations for the handling of stock. But in Wyoming there is not much movement of cattle to market now, because there are so few in the territory. Those that I saw in the stock cars were in excellent condition, and the sheep, especially, were fine looking. They will bring prices in Chicago that will make the Texas cattle-grower sigh, and wish he had some like them.

In spite of the dullness of the business, however, there is a good strong feeling among cattlemen, and while they look blue they do not feel discouraged. In Western Wyoming, the same can be said as of Eastern Wyoming in my letter from Cheyenne, that the people all keep a "stiff upper lip," and look for better times soon. They know that the scarcity of beeves must presently affect the market, and cause a general rise in stock. Cattlemen who have the means do not hesitate to buy

You May Remove

Those unsightly Blotches, Pimples, and Sores by a faithful and persistent use of **Ayer's Sarsaparilla**, the best and most reliable Alterative and Blood-purifier ever discovered. **I was troubled, for a long time, with a humor, which appeared on my face in

UGLY PIMPLES

and blotches. Ayer's Sarsaparilla cured me.—Charles H. Smith, North Craftsbury, Vt.

"Until recently," writes Alice E. Charles, of Bath, Me., "my face has been covered with pimples ever since I was fifteen years old. I took four bottles of Ayer's Sarsaparilla, and my skin became as fair as could be desired."

Ayer's Sarsaparilla,

Prepared by Dr. J. C. Ayer & Co., Lowell, Mass. Price \$1; six bottles, \$5. Worth \$5 a bottle.

WAGON SPRINGS.

The best and cheapest on earth, for \$5.00. Capacity 1500 to 4500 pounds, according to size. Any farmer can put it on. Send postal order and width of bolster inside of standard over iron.

AMERICAN BOLSTER SPRING CO.,
220 N. Commercial Street, St. Louis, Mo.

Ohio Improved Chesters
WARRANTED CHOLERA PROOF.
EXPRESS PREPAID. WING 187
PRIZES IN U. S. & FOREIGN COUNTRIES. 2 WEIGHED 2808 LBS.
SEND FOR DESCRIPTION & PRICE OF THESE FAMOUS HORSE, ALSO FOWLS.
L. B. SILVER CO. CLEVELAND, O.
(This Company sold 973 head for breeding purposes in 1887. Send for facts and mention this paper.)

more stock, and if all of them were able to buy as their judgment inclines, the Texas surplus would come northward with a rush. And as the Texas surplus is not such a surplus as it used to be, on account of losses on the range, spaying of heifers and forced sales, this demand from the Northwest, when it does come, will not find the stock that it wants, and competition will ensue, with satisfaction to the Texas breeder at the rise in prices.

C. E. LEE.

Milk for Pigs.

One who claims to know whereof he affirms states that when skim milk and buttermilk are fed to pigs they are worth one-fourth as much as corn meal. Fed to calves they are worth on an average 25 cents per 100. For feeding, warm to 98 degrees, feed three times a day, and feed sweet. As the calf grows add oatmeal gruel, and finally clear oatmeal. The skim milk of one good cow and \$2 worth of oatmeal will raise two calves through the season, spring to fall.

Lincoln, (N. M.) Independent:—Capt. J. C. Lea passed through town this week on the way to his Roswell home, after a lengthy trip to various points east and west. The captain says the market for good feeding steers is now quite active, though buyers are not willing to raise last year's prices. Fat cattle are selling well in the eastern markets, but poor stock will prove unprofitable to shippers. In regard to the railroad prospects for Lincoln county, he renewed the assurances already given that the White Oaks and El Paso road, of which he is director, will be built according to published announcements, and said that, while no positive information was obtainable, he felt certain from what he had heard, that arrangements are being made to push the completion of the Southern Kansas, now at Panhandle City, southwest to El Paso, and the Gulf, Colorado & Santa Fe, now at Abeline, northwest to Albuquerque, both roads to run through Lincoln county.

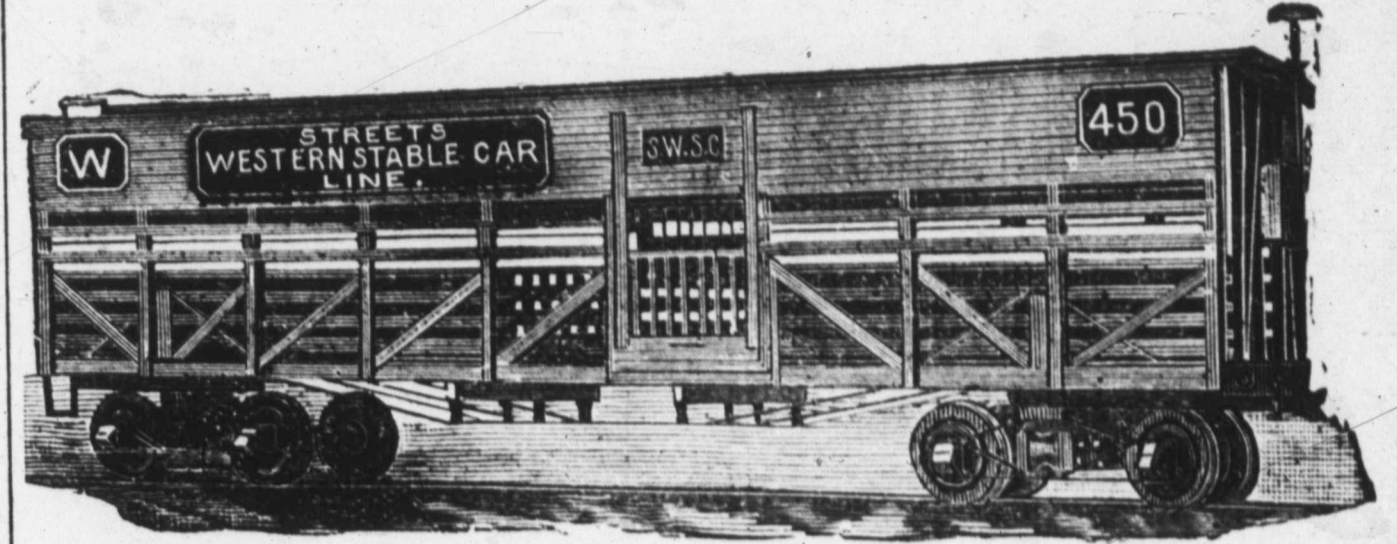
A. NATHAN, Pres.

J. W. STREET, Vice-Pres.

S. M. FISCHER, Gen'l Man'r.
L. D. KNEELAND, Secretary and Auditor.

Street's Western Stable Car Line,

GENERAL OFFICE, RIALTO BUILDING, CHICAGO.



Our line of Stable Cars running to markets, carrying horses and cattle, give food, water and rest to animals without unloading. For further particulars address,

S. M. FISCHER, General Manager.

GEORGE L. GAUSE,

[Successor to FLENNER & GAUSE.]

UNDERTAKER

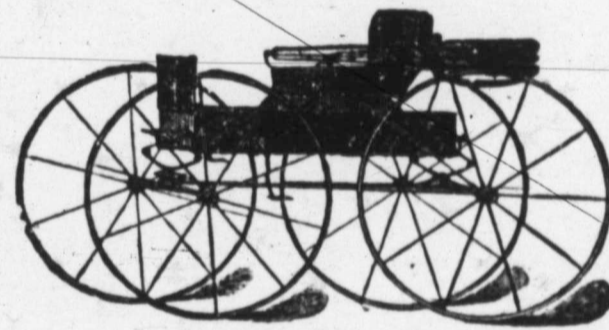
314 W. Weatherford St., FORT WORTH, TEX.

Open Day and Night. Orders by telegraph receive prompt attention.

E. H. KELLER,

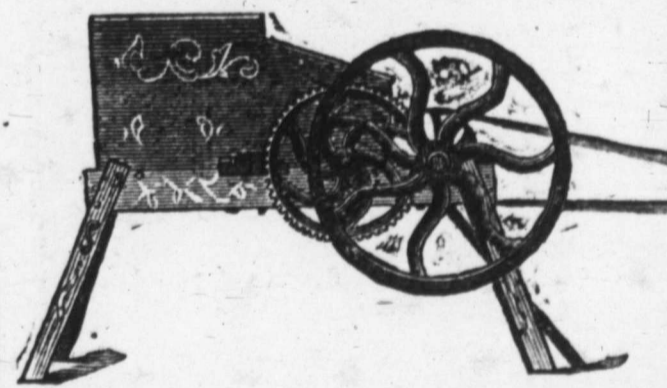
Salesroom 208, Shops 210 and 212 Throckmorton Street

FORT WORTH TEXAS.



Columbus Buggy Company's Buggies, Col umbus, Ohio. E. M. Miller & Co., Quincy, Ill. Buck-Boards and Spring Wagons. Tops, Dashes, Cushions, Fine Trimming Painting and Repairing a Specialty.

Cattle Feeding Machine.



Crushing corn with shuck on or off, wet or dry, hard or soft, at the rate of 100 bushels per hour with two-horse power. Circulars free. Address

E. A. PORTER & BROS.,
Bowling Green, Ky.

TERRY, WRIGHT & LENOIR,

Fort Worth, Texas,

REAL ESTATE AGENTS,

Have some choice

Farm Ranch and City Properties
FOR SALE.

And invite correspondence from buyers and sellers.

T. P. LENOIR, Live Stock Broker, will contract horses, cattle or other live stock.

SURE CURE for Epilepsy or Fits in 24 hours. Free to poor. Dr. KRUSE, M.C., 2336 Hickory St., St. Louis, Mo

F. M. HOUTS,

Proprietor of

HEREFORD RANCH, WISE COUNTY!

P. O., Decatur, Texas.

Breeder of

HEREFORD CATTLE.

100 head of grade **HEREFORD BULLS** Texas raised and ready for service. A few choice thoroughbred **HEREFORD BULLS** and some grade **HEREFORD HEIFERS**.

The above I will sell at a reasonable price and on easy terms

My ranch is on the Fort Worth & Denver railroad, near Decatur in Wyo. the stock can be shown any day.

F. M. HOUTS,

DECATUR, TEXAS.

VICTORIOUS EVERYWHERE
COMBINED

Cotton Seed Huller, Corn and Cob Grinder

WILL GRIND
CORN MEAL
Equal to Burr Stone.
Thousands in Use
26 SIZES AND STYLES.
EVERY MILL WARRANTED.
Send for Catalogue and Price List.
Panhandle Machinery and Improvement Co.,
FORT WORTH, TEXAS.

Chickering, Wheelock, Mathushek
PIANOS

Largest stock and best line in the state at

C. H. EDWARDS,

733 and 735 Main St.,

DALLAS, TEXAS.

Send for prices before purchasing elsewhere.

W. J. HAYNES.

H. F. LANGENBERG.

G. F. LANGENBERG.

W. J. HAYNES & CO.,
WOOL COMMISSION

Cor. Market and Commercial Streets,
ST. LOUIS, MO.

Liberal Advances on Consignments of WOOL, HIDES, PELTS, ETC.

REFERENCES: St. Louis Nat'l Bank, Dunn's and Bradstreet's Commercial Agencies

J. J. FUNSTEN.

W. F. FUNSTEN.

FUNSTEN & COMPANY,
Wool Commission,
ST. LOUIS, MO.

References—First Nat. Bank, Abilene, Texas; First Nat. Bank, Albany, Texas; Belton Nat. Bank, Belton, Texas; First Nat. Bank, Coleman, Texas; First Nat. Bank, Denison, Texas; First Nat. Bank, Taylor, Texas; Waco Nat. Bank, Waco, Texas; Texas Live Stock Journal, Fort Worth, Texas; St. Louis Nat. Bank, St. Louis, Mo.

Liberal advances made on consignments of wool, hides, etc.

A. ARMENTROUT,

Corner of Weatherford and Throckmorton and corner of Weatherford and Lamar Streets
FORT WORTH, TEXAS.

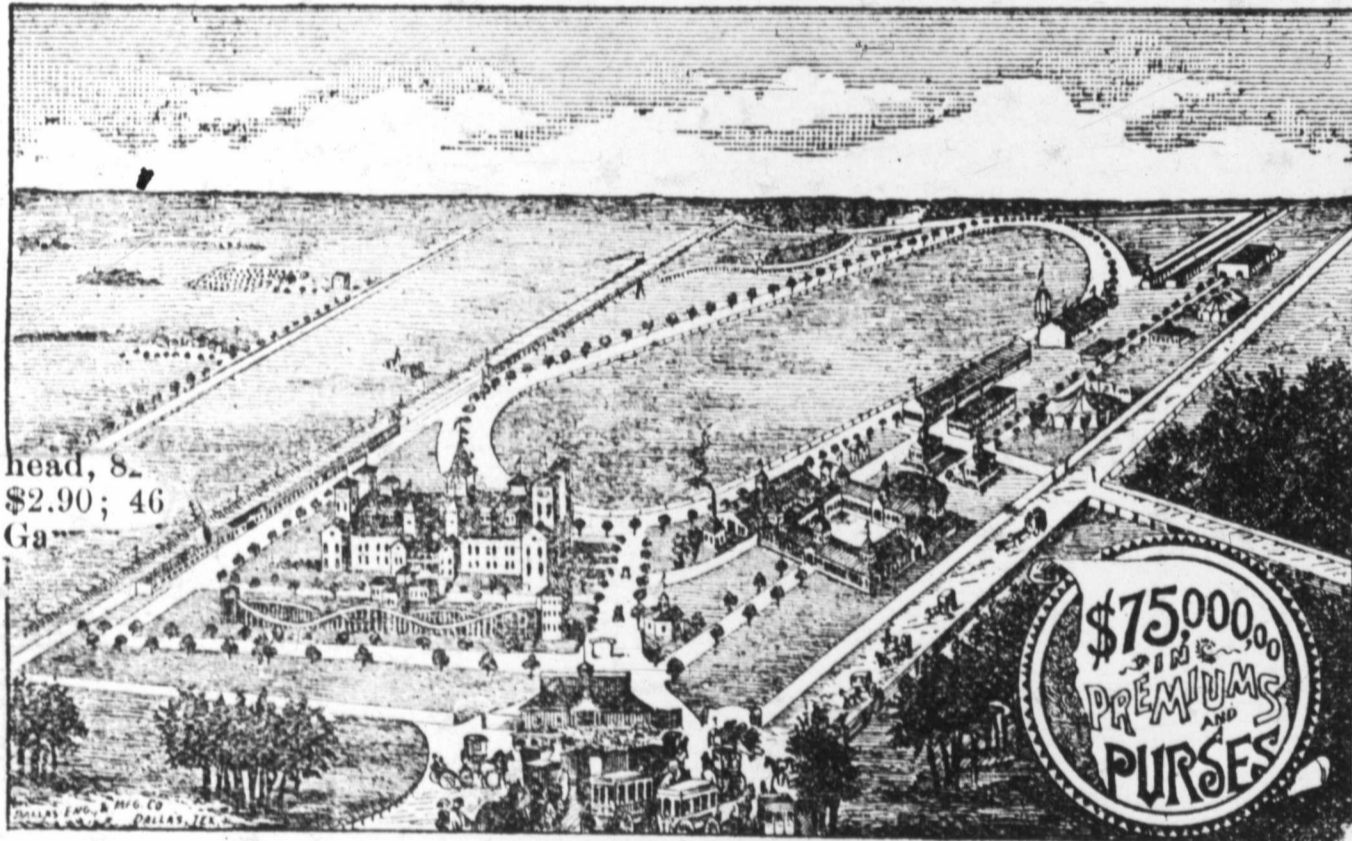
Dealer in Wool, Hides, Etc.

Also keeps in stock a full line of

WEIR PLOW COMPANY'S FARM IMPLEMENTS,

Tennessee Wagons, manufactured by Cherry, Morlow & Co., Nashville, Tenn.; Bain Wagons, H. W. Davis & Co.'s Buggies, Cincinnati, Ohio; The E. M. Miller Buggies, Quincy, Ill.; Cook & Co.'s Buggies, Cincinnati, Ohio; The Racine Spring Wagons and Carriages; The Minnesota Chief Thresher, and Traction Engines.

Texas State Fair and Dallas Exposition.
1888. October 11 to 31. 1888.
At DALLAS, TEXAS.



The coming Fair and Exposition will, beyond doubt, excel in point of attractiveness, numbers and variety of exhibits any heretofore held. The County Exhibit Department promises to be the most attractive feature, one never before attempted by any State. Over forty counties up to date have secured space, and more still to enter. The exhibits these counties will present will be something that will astonish visitors. Every variety of attractions has been provided for, and the musical treat we have in store for visitors will be presided over by the world renowned Cornetist, Prof. A. Liberal. The purses offered in the Race Department cover \$20,000, and will be competed for by the best racers in the land. The management of this department propose to give during the Fair and Exposition the finest races ever given in the South. We desire to call the attention of counties to the fact that now is the time to get up their exhibits, when grain, fruits, etc., are ripening, and not wait until it is too late. Space in the County Exhibit Department is free, and no county of our State can afford not to be represented. There will be more people here than ever before, and we want them all to see the varied resources of our great State. To exhibitors in general we can promise them the finest opportunity ever offered to make displays, from which will return good results, and to visitors we can assure them of the grandest entertainment ever given in the Southwest.

Remember the Fair and Exposition Opens on Oct. 11.
This day will be an occasion unheard of in this section of country.

Excursion Rates on all Railroads.

Full information mailed on application.

SYDNEY SMITH, Secretary, | **J. S. ARMSTRONG, President.**

DR. J. R. BRIGGS,

Practice limited exclusively to diseases of the EYE, EAR, THROAT and NOSE. A large assortment of artificial eyes constantly on hand, the finest in the market. Broken eyes duplicated by mail. Price \$10. Call on or address

DR. J. R. BRIGGS,

904 Elm Street, Room 2 and 3, up stairs.

Dallas, Texas.

THE

KANSAS CITY STOCK YARDS

Are by far the most commodious and best appointed in the Missouri Valley, with ample capacity for feeding, weighing and shipping Cattle, Hogs, Sheep, Horses and Mules. They are planked throughout, no yards are better watered, and in none is there a better system of drainage. The fact that

HIGHER PRICES ARE REALIZED HERE

Than in the East is due to the location at these yards of

EIGHT PACKING HOUSES,

with an aggregate daily capacity of 3300 cattle and 27,200 hogs, and the regular attendance of sharp, competitive buyers for the packing houses of Omaha, Chicago, St. Louis, Indianapolis, Cincinnati, New York and Boston.

All the sixteen roads running into Kansas City have direct connection with the yards, affording the best accommodation for stock coming from the great grazing grounds of all the Western states and territories, and also for stock destined for Eastern markets.

The business of the yards is done systematically and with the utmost promptness, so that there is no delay and no clashing, and stockmen have found here, and will continue to find, that they get all their stock is worth with the least possible delay

C. F. MORSE, E. E. RICHARDSON, H. P. CHILD,

Gen'l Manager.

Treasurer and Secretary.

Superintendent.

G. H. DASHWOOD.

E. D. OESCH.

Dashwood & Oesch,
DRUGGISTS,

Under Burt & Field's Office, 314 Main St., Fort Worth.

OPEN ALL NIGHT.

Wm Macnaughtan Sons,
Wool Commission Merchants,
168 & 170 South Fifth Avenue
New York
Mohair

J. M. FROST, President.

T. S. FOSTER, Vice-President.

CHAS. WIGGINS, Treas.

WESTERN WOOL COMMISSION COMPANY,

Commission Merchants for exclusive sale of

WOOL

104-106 North Main St., 105-107 North Commerce St., **ST. LOUIS, MO.**
Liberal advances made on consignments. Information gladly furnished by mail or telegraph.

WOOL **W. B. WESTCOTT & CO.** **HIDES**
Commission Merchants,
Soliciting consignments of Hides, Wool, etc.
Write for market reports.

202 North Main Street.

ST. LOUIS, MO.

Refer to Texas Live Stock Journal.