

TEXAS LIVE STOCK JOURNAL



VOL. 10. FORT WORTH, SATURDAY, MAY 4, 1889. No. 3.

James H. Campbell, President, Jerome F. Wares, Vice-President, J. H. McFarland, Sec'y and Treas., Chicago, Ill.; H. F. Parry, Manager and Cashier, National Stock Yards, Ill.; G. W. Campbell, D. L. Campbell, Managing Directors, Kansas City, Mo.

The James H. Campbell Co.
 INCORPORATED.
LIVE STOCK COMMISSION MERCHANTS,
Union Stock Yards, Chicago, Ill.,
National Stock Yards, East St. Louis, Ill.
Kansas City Stock Yards, Kansas City, Mo.,
 We solicit your business and invite correspondence.

Fish & Keck Co

(INCORPORATED)

LIVE STOCK COMMISSION MERCHANTS
KANSAS CITY STOCK YARDS

CONSIGNMENTS SOLICITED.

J. E. GREER. FRANK O. MILLS.
GREER, MILLS & CO.
 Live Stock Commission Dealers,
 Room 47 Exchange, Union Stock Yards, - - - CHICAGO, ILLINOIS

A. C. CASSIDY, } Cattle Salesmen. { G. W. DOERR, } N. M. MOODY, } Hog and Sheep
 T. F. TIMMONS, } { W. L. CASSIDY, } { W. L. CASSIDY, } { W. L. CASSIDY, }
 A. L. KERCHLER, } { E. S. CODDINGTON, } { E. S. CODDINGTON, } { E. S. CODDINGTON, } Salesmen.
CASSIDY BROS. & CO.,
LIVE STOCK COMMISSION MERCHANTS
 And Forwarding Agents,
 National Stock Yards, - - - St. Clair County, Ills.

SEEDS J. C. PEPPARD, 1220 UNION AVENUE,
 MILLET A SPECIALTY. (One block from Union Depot)
 Red, White, Alfalfa & Alsike Clovers, KANSAS CITY, MO.
 Timothy, Blue Grass, Orchard Grass, Red Top,
 Onion Sets, Tree Seeds, Cane Seed, Etc.

Z. T. WINFREE. A. P. NORMAN. WILEY T. PEARSON.
WINFREE, NORMAN & PEARSON,
 Commission Merchants for the Sale of Live Stock,
 Stock Yards, GALVESTON, TEXAS.
 We respectfully solicit patronage of stock shippers. We make liberal cash advances on bills lading, and will faithfully endeavor to the best of our ability to subserve the interests of our patrons. Correspondence solicited.

ALBERT MONTGOMERY
 Commission Merchant for the Sale of Live Stock, Stock Landing
 Postoffice Box 3006, New Orleans, La.

JOHN MUNFORD.
 Commission Merchant for the Sale of Cattle, Hogs and Sheep, - - STOCK LANDING
 P. O. BOX 684, NEW ORLEANS, LA.

THE LIVE STOCK MARKET
 -Of St. Louis.-

The St. Louis National Stock Yards,
 Located at East St. Louis, Illinois, directly opposite the City of St. Louis.

Shippers should see that their stock is billed directly to the
"NATIONAL STOCK YARDS."
C. G. KNOX, **CHAS. T. JONES,**
 President. Superintendent.


S. E. WOOD. JAMES WOOD. E. A. WOOD. R. NASH.
WOOD BROTHERS,
LIVE STOCK COMMISSION MERCHANTS,
Union Stock Yards, CHICAGO.

Established 1867. Special attention given to the Texas trade. Correspondence Invited.

ALLEN GREGORY. H. COOLEY. L. R. HASTINGS.
GREGORY, COOLEY & CO.
Commission Dealers in Live Stock,
 Rooms 58 and 60 Exchange Building, Union Stock Yards, CHICAGO, ILL.
 The Pioneer House in the Texas trade. Personal attention given consignments. Business solicited.

President, WM. M. WARREN, Banker, New Berlin, Ill. Secretary and Treasurer, LEVI B. DOUD.
 Cashier, CHAS. KELLY. Managers, T. B. LEE, THOS. KELLY
Chicago Live Stock Commission Company,
 Incorporated. Capital Stock \$25,000.
 Special attention given to the sale of Texas Cattle and Sheep. Write us for market reports.
 Office 41 Exchange Building, Union Stock Yards, Chicago, Ill.
 REFERENCES—Drovers' Nat. Bank, Union Stock Yards Nat. Bank, Chicago; Bank of Atlantic, Atlantic, Ia., Bank of Roodhouse, Roodhouse, Ill.

SAM'L SCALING, St. Louis. W. L. TAMBLYN, Chicago.
SCALING & TAMBLYN.
Live Stock Commission Merchants,
 National Stock Yards, East St. Louis, Ill. Union Stock Yards, Chicago, Ill.

[TRADE MARK.] JNO. W. PAXSON. CHAS. L. SHATTUCK.

PAXSON, SHATTUCK & CO
LIVE STOCK
Commission Merchants
 Union Stock Yards,
CHICAGO, - - - ILLINOIS.
 General Agents for the State of Texas: CAPT. E. F. IKARD, Headquarters at Ft. Worth; JOSEPH COLLINS, Headquarters at Goliad.

R. T. WHEELER. O. JAMES. J. S. MCKINNON.
WHEELER, JAMES & CO.
Live Stock Commission Merchants,
 Union Stock Yards, ST. LOUIS, MO.

FOR SALE OR EXCHANGE.

STEERS!

700 two-year-old steers for sale on ranch in Mitchell county. For particulars address
A. G. ANDERSON,
Colorado, Texas

Cattle Wanted.

I want to take in two thousand (2000) steers to pasture this summer. Range on Red Rock, Cherokee Strip, Indian Territory. Good grass and plenty of water.

Address D. A. CONSTABLE,
Hunnewell, Kansas.

San Juan, 1876.

St. Louis, 1888.

JEAN F. WEBB,
MINING LAWYER!
220 N. Broadway, St. Louis, Mo.

Long practical experience as attorney, manager and superintendent of mines. Mines and mine titles examined. Will act as attorney or associate counsel in mining matters. Correspondence solicited.

For Lease!

The Childress County, Texas school land, leagues Nos. 121, 122, 123 and 124, containing about 17,000 acres, is offered for lease for three or five years, payable annually in advance. The land lies in Bailey county, Texas. Sealed bids will be received at the office of the county clerk of Childress county up to the 14th day of May, 1889, and all bids will be opened May 15th, 1889. The right is reserved to reject any or all bids.

FRED M. CAMPBELL,
County Judge C. C. T.
CHILDRESS, TEXAS, April 13, 1889.

For Sale.

Sixty head young Texas-raised high-grade Hereford bulls. Special inducements offered when bought in car lots.

W. W. MUMFORD,
Taylor, Texas.

Professional Spayer.

Will spay this season for parties wanting such work done. Have spayed in Kansas, Colorado, New Mexico and Arizona with good success. Reference furnished, and expert work guaranteed.

FRANK ARNOLD,
Cottonwood Falls, Chase County, Kansas.

NOTICE!

Any one desiring to buy 300 head of 2-year-old cattle, steers, in fine order, will write to
J. E. BARRON,
Thornton, Limestone County, Texas.

Stallions and Stock Horses.

150 head of good stock horses and three No. 1 stallions to sell, or will exchange for cow horses. Address
IOWA RANCH,
Lubbock, Texas.

Pasture to Lease.

25-section Pasture, on head of North Concho, Tom Green county, well watered and fenced, 8-room house, to lease for three, four or five years. Apply to
GRAHAM KENNEDY,
Box 43, Colorado, Tex.

Cattle For Sale.

I will contract to deliver one and two-year-old steers and she cattle by the herd, at any point in Texas. Correspondence solicited.
FELIX MANN,
Menardville, Texas.

WANTED!**3000 Yearling Steers,**

—ALSO—

1000 Three-Year-Old Steers.

BEGGS & HACKETT,
Fort Worth, Texas.

For Sale.

Five fine pedigreed registered Hereford bulls, two and three years old, (two years in the state) for sale cheap. Twelve months time if wished.
DR. O. B. HEWETT, The Dentist,
Dallas, Texas.

For Sale.**1000 Hay Presses,**
At \$100 Each,

F. O. B. at Walnut, Texas. For further information address
B. F. RUSSELL,
Walnut, Texas.

FOR SALE OR EXCHANGE.

W. F. SOMMERVILLE, Pres.
SAM'L KERR, V. Pres. and Treas.

Western Securities Co.

FORT WORTH, TEXAS.

CAPITAL \$250,000.

Loans on Farms, Ranches and Improved City Property, at Moderate Interest.

Range For Sale.

Best Equipped Range on Cherokee Strip, I. T., with good pasture, well fenced, for 8000 head of cattle; also, barns, houses, sheds and corrals—the best on the Strip—and 1000 head of cattle and 100 head of horses, situated on the A., T. & S. F. railroad 18 miles south of Arkansas City, Kan. Unsurpassed shipping facilities. For prices and further information, address
W. B. ROBERTS,
Titusville, Pennsylvania.

**The BOSS and STAR CHURNS—**

Best Churns in the World

A child can work them. No churn cleans so easy. No dashers or paddles, no inside fixtures. Will make 10 per cent. more Butter. One or two churns at wholesale prices where we have no agents. Write for catalogue M and prices. Agents wanted. Mention this paper.

JOHN McDERMAID, Rockford, Illinois.

Stockmen of Texas

Can buy GROCERIES at Wholesale by addressing

JOHN DEVLIN & CO.,

24 & 26 E. Randolph Street, Chicago, Ill.
Mention the Journal. Write for price-list, or send list of groceries wanted and ask for estimate.

Chicago Improved Property.

\$50,000 to \$100,000 worth to exchange for ranches well stocked with cattle. Would assume a reasonable incumbrance. North and Central Texas preferred.
FRANK R. BAKER,
232 La Salle Street, Chicago, Ill.

STEERS**For Spring Delivery.**

I have for sale some special large lots of Central, North and West Texas steers, and will quote prices and terms upon application.

A. S. NICHOLSON,

Main Street, Fort Worth, Tex.

**C. B. WALKER,**

Millsap, Parker county, Texas. I have for sale 750 head of Angora goats, including very fine pure-bred bucks and ewes.

Steer Cattle, Etc.

W. S. & M. Kard, Henrietta, Tex., live stock commission merchants, will contract to deliver steer cattle, or choice selections of Northwest Texas stock cattle. Have also for sale thoroughbred and grade Hereford bulls, some of which are fully acclimated. Will fill orders for Northwest Texas cattle and horses.

Johnson Grass Seed,

\$1 per bushel; sound and reliable. Early Amber Sorghum seed, \$1 per bu. Remit by postal order or draft on Dallas, and orders will receive prompt attention. Reference, National Exchange Bank, Dallas, Texas. Address,
WM. D. RICHARDSON,
Mountain, Peak, Ellis County, Texas.

FOR SALE OR EXCHANGE.

The R. G. Head**Brokerage and Investment Company**

Rooms 72 and 73 Barclay Block,

Denver, Colo.

Buy and sell all kinds of live stock, ranch properties, farms, lands, land grants, stocks and bonds of cattle companies, and real estate. Make a specialty of handling young steers.

Make examinations, surveys of and written reports on land grants and ranch properties anywhere in the United States and Mexico.

We have for sale desirable tracts of land, large bodies in solid blocks in Texas, New Mexico and Mexico, specially adapted to agriculture, stock farming and colonizing.

Our commissions on cattle sales will be based upon a percentage of prices obtained. Schedule of rates furnished on application.

Missouri Horse Exchange

Opposite Iron Mountain Freight Depot,
ST. LOUIS, MO.

The largest and most complete horse and carriage repository in the United States.

Regular auction sales every Tuesday and Friday at 10 o'clock.

Private sales of horses, carriages and harness of every description daily.

Special terms made in handling large consignments.

Particular attention given to country sales, executors' sales, breeders' stock, etc.

GEO. GRAY, HARRY ASHMAN,
President. Secretary.

IXL WINDMILLS.

OVER 18,000

In Use.

POWER,

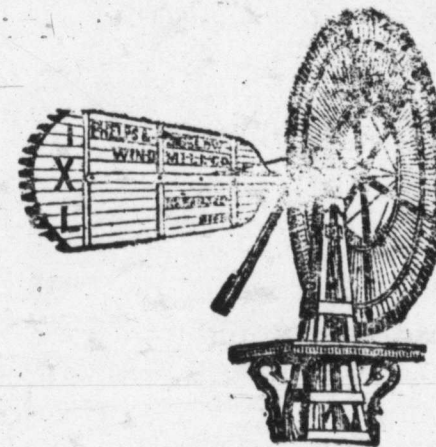
Wind Engines,

Pumps, Pipes,

TANKS,

Shellers, Grinders,

Etc., Etc.



Write for catalogue to

The Phelps & Bigelow Windmill Co.
1215 West 9th St., Kansas City, Mo.
All Texas orders filled from Dallas, Texas.

Lands Wanted

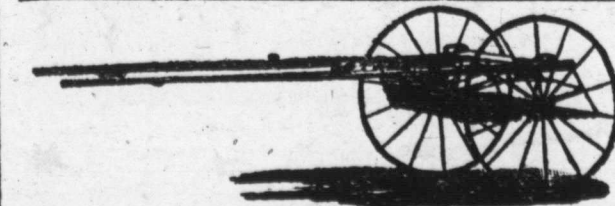
Parties having for sale large tracts of Texas farm and pasture lands at a bargain will do well to address

F. M. FERRIS,

505 Exchange Building, Kansas City, Mo.

CATTLE!

Messrs. Hatcher, Woods & Coppinger of Fort Worth, Texas, office in Mansion Hotel, are prepared to contract for delivery on the railroads in North Texas any number of North and Northwest Texas steers or stock cattle. Correspondence solicited.

**Breaking Carts and Sulkies**

Our perfect riding buggies are the best made. We do not compete with cheap makes. Address
BOHANNON CARRIAGE CO.
161 and 163 Ogden Av., Chicago, Ill.
Mention the JOURNAL and ask for particulars and description of the Celebrated Bohannon Breaking Cart.

STEERS!

We have for sale in pasture within 9 miles of Abilene shipping pens, 2000 two-year-old steers, and 1000 threes and fours. Cattle wintering strong.

STERRETT & SONS,
Abilene.

For Sale.

A lot of fine Jacks for sale. Address,
COFFIN BROS.,
Care of Polk Stock Yards, Fort Worth, Tex.
Or, Itasca, Tex.

FOR SALE OR EXCHANGE.

BARGAINS.

\$40,000. 1300 acres in one tract, 4 miles from the capitol building and State University; fenced, watered by streams, 100 acres cultivated, all good tillable land, nice residence and other good improvements.

\$10,000. 4944 acres in Uvalde county; 4680 acres of this in one tract, fenced by itself, well watered by good everlasting streams and springs, plenty of good mesquite grass.

\$25,000 to \$50,000 in good improved and renting business property in St. Louis, Kansas City and elsewhere to exchange for ranches and for unimproved lands.

Parties wanting to sell, buy or exchange property may find what suits them by writing to me.

\$1000 to \$100,000 to lend on real estate on favorable terms. Special inducements to borrowers of large amounts of money on choice securities.

S. M. SMITH,
Austin, Texas.

HARNESSES

Send to Headquarters for catalogues & prices. Consumers Harness & Saddle Co., 371 Wabash Ave, Chicago.

HORSES!

Messrs. Hatcher, Woods & Coppinger of Fort Worth, Texas, office in Mansion Hotel building, are dealers in horses and mares, and handle the best North Texas stock exclusively. They will quote prices for horses mares, yearlings, two-year-olds and colts. Correspondence promptly attended to.

Creamery Package Manufact'g Co.,

Kansas City, Mo.,

Manufacturers of Butter Tubs, Egg Cases,

—AND—

CREAMERY AND CHEESE FACTORY**SUPPLIES.**

Our 100-page catalogue for 1889 is just out. If you are interested, send us four cents in stamps for same.

SPLENDID RANCH**FOR SALE.**

I offer for sale the Arbita Ranch Property, situated in Jones County, on the Clear Fork of the Brazos, several miles on both sides of the stream. It includes 3800 acres of land, 2000 of which are under fence, 225 head of horses, good improvements, everlasting water, rich land for agricultural and other purposes. Altogether, this is one of the finest and most desirable pieces of property in Northwest Texas.

Also about 8000 acres of Pine Lands in Montgomery County.

Wm. D. CLEVELAND,**HOUSTON.**

E. YOYALL,
Denver, Colorado.
Wholesale dealer in fat sheep and lambs.

Jersey Cattle!

A. J. C. C. Jerseys for sale cheap, young acclimated bulls and heifers. Choicest butter strains.
F. J. GATES,
Box 29, Denton, Texas.

W. G. BROWN,

Established 1874.

E. E. BROWN.

BROWN BROS.,

Commission Merchants in Live Stock,

Rooms 100 and 102 Exchange Building, Union Stock Yards, CHICAGO.
Refer by permission to National Live Stock Bank, Chicago.

Agents in Texas—J. D. Beauchamp, Ennis; Capt. H. G. Carter, Milam; Col. J. T. Har-
ess, Colorado City.

Wm. F. MOORE,
N. T. JACKMAN,

KANSAS CITY.

Established 1873.

J. METCALF,
E. J. SENSENEY,

ST. LOUIS.

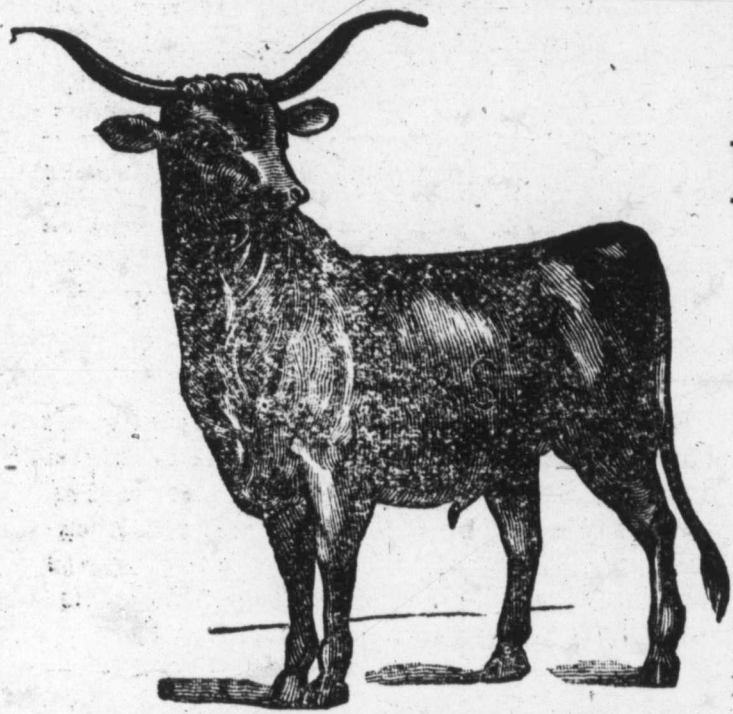
METCALF, MOORE & CO.,

LIVE STOCK COMMISSION MERCHANTS,

Kansas City Stock Yards, KANSAS CITY, MO. St. Louis National Stock Yards, ILLINOIS.

Letters and telegrams addressed to us at either yard will receive prompt attention.

Represented by L. L. TACKITT.



**KEENAN & SONS,
LIVE STOCK COMMISSION
MERCHANTS,**

Union Stock Yards, CHICAGO.

Consign your stock direct to us; it
will meet with
PROMPT ATTENTION.

Correspondence Solicited.

Have made the sale of Texas cattle
a specialty for Twenty-Five Years.

REFERENCE:—The National Live Stock
Bank of Chicago.

TELEGRAPHIC MARKETS.

Latest Reports by Wire From the
Market Centers.

CHICAGO.

Special to the Live Stock Journal.

CHICAGO, ILL., May 3, '89.

Cattle about steady. Woolled sheep
\$3.75@4.12½; shorn, \$3@3.65.

Brown Bros. sold for Davidson, 789
wooled sheep, 78 lbs, \$4.35@5; tailing
sheep, 78 lbs, \$3.50.

Wood Bros. sold for M. R. Hoxie,
40 steers, 1012 lbs, \$3.75; S. Bradley,
51, 983 lbs, \$3.40; R. J. Hill, 55, 1188
lbs, \$3.70; T. A. H., 60 steers, 740 lbs,
\$3.25.

Paxson, Shattuck & Co. sold for
Woods, 19 thin 964-lb bulls, \$1.80;
Chas. Kluge, 20 steers, 982 lbs, \$3.65;
Waco Cattle Co., 66 steers, 934 lbs,
\$3.12½; D. Small, 20 stags, 1015 lbs,
\$2.90; 55 bulls, 1273 lbs, \$2.50.

The James H. Campbell Co. sold for
J. T. Olin, 63 steers, 1083 lbs, \$3.55;
J. T. Garrison, 29 steers, 1052 lbs,
\$3.45; Joe Wallace, 77, 1026 lbs, \$3.35;
W. L. Armstrong, 19, 941 lbs, \$3.30;
M. Pace, Belton, 47 steers, 872 lbs,
\$2.65; 26 steers, 742 steers, \$2.60; H.
T. Higginbotham, 106 shorn sheep, 69
lbs, \$3.20; 391 shorn 69 pounds \$3.15;
Wm. Ragland, 304 shorn sheep,
70 lbs, \$3.62½; 101 shorn, 79 lbs,
\$3.40; 129 shorn, 69 lbs, \$3.37½; 235
shorn, 70 lbs, \$3.35; Hobbs, 67 grass
steers, 829 lbs, \$2.60; 82 fed, 991 lbs,
\$4.25; 21, 1089 lbs, \$2.90.

Keenan & Sons sold for J. W. Thorn-
ton, 38, 1014 lbs, \$3.60; Caldwell, 54,
1075 lbs, \$3.70.

R. Strahorn & Co. sold for Vick, 315
steers, 1046 lbs, \$3.65; 31 bulls, 1197
lbs, \$2.50.

Scaling & Tamblin sold for Dewees,
42 grassers, 986 lbs, \$3.05.

The Evans-Snider-Buel Co. sold 113
grassers, 885 lbs, \$2.90; for J. T.
Breckenridge, 31 steers, 1136 lbs,
\$3.65.

Cattle market closing 10@15c higher.
All sold.

ST. LOUIS.

St. Louis, May 3.—But few Texas
cattle were offered to-day. The mar-
ket was slow and prices lower, some
good Texas steers of 850 lbs bringing
\$3.40. Common, dull.

The arrivals of Texas clipped sheep
were quite large for the past three
days, the bulk of which were billed
through. Good Texas clipped sell
readily.

Evans-Snider-Buel Co. sold for
Boyce Little of Friotown quite a string
of 75 to 87-lb, for which he obtained
\$3.25@3.75 per 100 lbs.

76-lb Texas sheep brought \$3.37½;
145 Texas stockers, 72 lbs, \$2.40.
Common sheep dull.

KANSAS CITY.

KANSAS CITY, May 3.—Receipts for
the week ending Thursday were 15,
000 cattle. Monday to Wednesday
the market was strong, and weakened
Thursday. Texans and Indians were
sold as follows:

D. C. Paxson & Co. sold 328 Texans,
931 lbs, at \$3.05.

Quinlan, Montgomery & Co. sold 48
Indians, 958 lbs, at \$3.25.

The Fish & Keck Co. sold 210 Tex-
ans for Garvin, 1073 lbs, at \$3.35@
3.60; also a string of bulls from Col-
bert, I. T., 1332 lbs, at \$2.30; also 49
Texas steers, 952 lbs, at \$3.35; 80 do,
1002 lbs, at \$3.35; 11 head, 817 lbs, at
\$2.90; 73 do, 1013 lbs, at \$3.35.

[Note—The JOURNAL is not respon-
sible for the exactness of above tele-
gram, as it arrived in very bad shape
and the office had to guess at one-half
of it.]

Receipts of cattle Friday, 2300. Mar-
ket closing active and 10c higher.

The Evans-Snider-Buel Co. sold 76
Texans, 1170 lbs, at \$3.50.

NEW ORLEANS.

NEW ORLEANS, May 3.—Market
firm and outlook favorable for beeves,
cows, calves and yearlings. Hog mar-
ket quiet. Sheep market supplied.

QUOTATIONS.—Choice corn-fed
beeves, per pound gross, 3@3½c;
choice grass-fed beeves, 2½@3½c;
good fat cows, 2½@3c; com-
mon to fair, \$10@15; calves, \$6@10;
yearlings, \$9@13; good fat corn-fed
hogs, per lb gross, 4½@5½c; common to
fair, 3½@4½c; good fat sheep, each \$2.75
@3.50; common to fair, \$1.25@2.50.

GALVESTON.

[Reported by Winfree, Norman & Pearson,
Live Stock Commission Merchants.]

BEEVES AND COWS—Choice, per lb,
gross, corn-fed, 2½@3c; choice, per
lb, gross, grass-fed 2½@2¾; 2-year-olds,
choice, per head, \$3@12; common, per
head, \$6@8; yearlings, choice, per
head, \$6@8; common, per head, \$5@
\$5.50; calves, choice, per lb, gross,
2½@3½c; springers, choice, per lb gross,
4@4½c.

SHEEP—Choice, per lb, gross, 3@4c.
Good fat grass beeves and cows in fair
demand at quotations.

Calves—Active. Prices firm.
Sheep—Market overstocked.

SAN ANTONIO.

The market has been very unsatisfac-
tory to sellers, and several shipments
have been made north by local commis-
sion men to relieve the glut. No one
should send stock into the San Antonio
market without first advising with a re-
sponsible commission firm.

Quotations are as follows:
CATTLE—Steers, shippers \$16@22, or
\$1.75@2.25 per 100 lbs; and butchers, \$13@
17; cows, fat, from \$12.50@14; light, at \$9
@12; yearlings, \$6@7.00; calves, \$4.50@6.
SHEEP—Muttons, \$1.50@2.25. Goats,
average stock \$1.00@1.50 per head.
Hogs—Natives \$3.50@4.

DALLAS.

CATTLE.—Choice corn-fed steers, 2¾@
3c; common to fair, 2¼@2½c; choice
corn-fed cows 2@2½c; common to fair,
1¾@2c; choice fat yearlings, \$6@9.00
choice veal calves, 3¾@4c; bulls, 1¼@
1½c; milch cows, \$20@30.

SHEEP.—Choice corn-fed sheep, 3½@
4c; common to fair, 2¾@3½c.

Hogs.—Choice corn-fed hogs, 3¾@4c.
GOATS—\$1.50@2.00.

JOHN D. DOBYNS & CO.,

Successors to Stephens & Dobyns,

LIVE STOCK

Commission Merchants

Kansas City, Mo. and Chicago, Ill.

We make a specialty of the Texas and
Western cattle and ranch trade. Are pre-
pared to make contracts for the delivery of
Texas cattle for 1889. Consignments and
correspondence solicited.

ROBERT STRAHORN.

JESSE SHERWOOD.

Established 1861.

R. STRAHORN & CO.,

Live Stock

Commission.

Room 85, Union Stock Yards,

CHICAGO, ILLINOIS.

E. H. EAST, Agent for points on the
Fort Worth & Denver City railway.

B. HACKETT and GEO. BEGGS Agents for
Fort Worth and all points East South and
West.

H. C. (HANK) MALLORY. CHAS. A. MALLORY

—Established 1862.—

MALLORY & SON,

Live Stock Commission,

Rooms 116 & 115 Exchange Building,
Union Stock Yards,

CHICAGO, ILLINOIS.

E. H. EAST, Agent for points on the
Fort Worth & Denver City railway.

B. HACKETT and GEO. BEGGS Agents for
Fort Worth and all points East South and
West.

W. W. McIlhany.

Frank Bishop.

C. Warren Scott.

H. W. McIlhany.

W. W. McILHANY & CO.,

Commission Dealers in

Live Stock

Union Stock Yards, CHICAGO, ILL.

BRANCH OFFICES:

National Stock Yards, East St. Louis, Ill.
Kansas City Stock Yards, Kansas City, Mo.

We solicit consignments of Texas cattle,
sheep and hogs.

REFERENCES—National Live Stock Bank,
Chicago, Ill.; C. D. Hudson, Marshall, Mo.

W. W. SHEARER,
Gen'l Manager.

F. B. McDOWELL,
Cashier.

W. W. SHEARER & CO.,

LIVE STOCK

COMMISSION MERCHANTS,

Union Stock Yards, CHICAGO, ILL.

REFERENCES: The National Live Stock Bank,
Chicago; The Drovers' National Bank, Chicago

Cattle and Sheep Salesman, Heg Salesman,
W. W. SHEARER. JNO. FILGER.

Horses For Sale.

SPREAD EAGLE.—A perfect saddle and
harness stallion, 16 hands high, and
weighs in condition 1150.

TWO trotting-bred young stallions, both
broke to harness and good movers.
MARES from 13½ to 15 hands high, broke to
halter, some to saddle and harness.

LEBON.—A Clydesdale stallion, 17 hands
high, weighs in condition 1900 lbs; accli-
mated and a uniform producer.

YOUNG ENTERPRISE.—An English Shire
stallion, 16½ hands high, weighs in condi-
tion 1650 lbs. Very handsome and a sure
foal getter.

TWO high-bred jacks, one 15 hands, the oth-
er about 13½, both young and good per-
formers.

The above are for sale at Pleasant Valley
Horse Ranch, P. O., Crafton, Wise county,
Railroad station, Sunset, on Fort Worth &
Denver. All stock guaranteed.

Address PERRYMAN & MARSHALL,
Crafton, Texas.

Texas Blue Grass Sets,

Hand-stripped extra cleaned Johnson Grass
seed, Bermuda Grass seed, Japan Clover,
and other field seeds, for sale by

H. POST,

SELMA, ALABAMA.



TRADE MARK

Commission Merchants

For the sale of

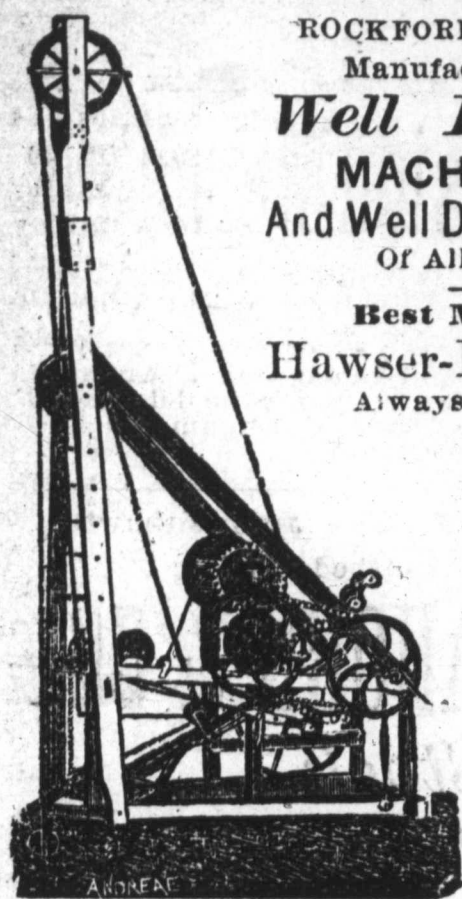
CATTLE, HOGS AND SHEEP,

Rooms 9 and 10 Exchange Building,

KANSAS CITY STOCK YARDS.

Prompt and correct market reports fur-
nished by mail or wire. Consignments so-
licited. Correspondence given immediate
attention.

Utter Manufacturing Co.,



ROCKFORD, ILLINOIS.
Manufacturers of
Well Drilling
MACHINERY
And Well Drilling Tools
Of All Kinds.

Best Manila
Hawser-Laid Rope
Always in stock.

Send for Circular.

GENERAL AGENTS FOR TEXAS:
F. M. ROWE, San Antonio; P. T. MOREY,
Belton; FORD, WEAKLY & JOHNSON, De-
catur. Mention this paper.

KINGSLAND & DOUGLAS
MANUFACTURING CO.
ST. LOUIS, MO.



THRESHERS
PLAIN AND TRACTION
ENGINES.

SEND FOR CATALOGUE.

Mention this paper.

J. B. ASKEW,

Successor to R. F. TACKABERY.
Manufacturer, Wholesale and Retail Dealer in
Saddles, Harness, Leather, Etc.
Also, a well selected stock of
Road Carts, Buggies, Phaetons, Carriages, Etc.
107 and 109 Houston St.,
Fort Worth, Texas.



The Tackabery Saddle beats all competitors. During the past year mail orders were received from ten states and four territories for this popular saddle. Send for photos and price list. Also manufacture large quantities of wagon, express, carriage and buggy harness. We buy our buggies, phaetons and carriages from the largest wholesale manufacturers in the United States, and can sell you as good goods and on as reasonable terms as any house in Texas. Call and examine for yourself. Mail orders will receive prompt attention. Three car loads just received.

ROUND-UPS.

Rawlins Journal:—A yearling buffalo bull was brought in a few days ago from Cooper's ranch, on the Sweetwater, and is now at Rankins' stable. Ben Northington purchased it for Richard Savage, paying \$125.

McKavett Breeze:—F. Mayer & Sons sold Majpr Wm. Black 600 head of stock cattle for \$7 round. The cattle will be delivered to-day. They also sold to a Missouri firm 800 head of yearlings, to be delivered in Tom Green county the first of June at \$7 a head.

N. M. Stock Grower:—The Southern Pacific railway which has held shipping rates for cattle at an excessive point in the estimation of cattlemen, has recently modified its tariff and is now giving a car rate of \$32.80 to Deming. It is thought this will result in the road moving 10,000 head of steers.

Rio Grande Republican:—J. C. Delany and Capt. J. C. Lea four years ago bought 4500 acres of offered land at the Las Cruces land office, for \$1.25 per acre. The land is on the Hondo in the Roswell country and they have recently refused \$20 per acre for it. There is money to be made in New Mexico lands.

N. W. Live Stock Journal:—A gentleman from the Chugwater reports grass there as being a month in advance of the ordinary season, but says some fears are entertained as to the future on account of the light snow-fall the past winter. Grass has to date suffered nothing and has made a fine growth, but must have rain to do much from now on.

Northwestern Live Stock Journal:—A letter received here this week by one of our land and live stock brokers in Texas offers an entire brand of cattle in that state at \$12.50 all around. The stock is represented as being to some extent graded up, and the number is placed at about 32,000 head and is located on the south line of the Pan handle.

SHERMAN, TEX., April 29.—During a heavy storm to-night lightning struck the barn of Kerr & Williams' dairy farm, in the north part of town. A horse tied in the barn was killed. Another horse and a fine Jersey cow were severely shocked, but soon recovered. The barn and contents, a lot of hay and corn, were entirely consumed. The loss amounts to about \$700; no insurance.

Denver Field and Farm:—A good price for a Shetland: At the Goulding public sale, the present week, Mr. F. A. Moore of this city purchased the seven-year-old Shetland stallion "Moir," and for which he paid \$425. It is said this is one of the finest stallions of the breed ever imported to America. Captain Hoag expected the little horse to have brought him an even thousand dollars.

N. M. Stock Grower:—Irrigation enterprises now have the lead in New Mexico and the Southwest generally as favorite investments. Many cattlemen are utilizing the arable portion of their land holdings by the construction of ditches. The latest organization for this purpose is the Fort Sumner Land & Ditch company which has been capitalized at \$100,000, with Lon Horn, D. L. Taylor and Sam Doss of Trinidad, A. T. Bacon of Greeley, Colorado, and F. A. Manzanara of Las Vegas as directors. The property to be improved is the old Fort Sumner reservation which, comprises about 10,000 acres of irrigable land.

N. M. Stock Grower:—F. W. Smith of Columbia, Mo., passed down the road Tuesday with seventy-four head of young bulls for J. H. Hampson's ranch on Eagle creek, Arizona. The

lot running in ages from eight to twenty-four months was the produce of Dictator, the head of Mr. Smith's herd, one of the now famous Herefords of the country. The average price paid by Mr. Hampson was \$65, the same class of bulls selling a few years ago at \$400 per head. Mr. Hampson will send to his range next fall another lot of Hereford bulls, but they will be youngsterf, as he believes they acclimate and do much better when put on the range as calves.

KANSAS CITY, Mo., April 29.—Judge George W. McCrary, ex-United States circuit judge, and Wallace Pratt, after a careful investigation of the question of the constitutionality of the proposed local inspection law, have given as their opinion that no state can prohibit the importation of wholesome meats. The opinion was given at the request of the Armour Packing company, and with especial reference to the New Mexican beef inspection law, but it covers the proposed inspection laws in all other territories and states. It takes up the question of inter-state commerce, and holds that under the constitution and decisions of the supreme court on many similar matters, no state or territory can shut out the products of another state; that such a measure is an improper exercise of the police power of a state or territory, and that the local inspection law exceeds the constitutional limits in that it makes no distinction between pure, healthful food products and impure, diseased articles.

Mother.

If the little darling is sleeping nights, slowly and pitifully wasting away from the effect of teething, give Dr. Biggers' Huckleberry Cordial and a cure will result.

Dorsey's Ranch.

Daily News, Denver, Col.

"Was I ever on a cattle ranch? Well I should smile. And it is a fairly good life—sometimes," and the cowboy of five months smiled as he straightened his leather breeches and looked at his young brother from Boston who had just arrived. They were in the Windsor rotunda.

"Where am I working? Why, didn't you know I was down on Dorsey's ranch in New Mexico, not far from Springer? I just came up from there yesterday in order to meet you here. What sort of a ranch has Dorsey? It is not a bad ranch. It is built of stone; there is hot and cold water throughout the house; also gas; it is furnished inside in natural woods; the floors are covered with Turkey carpets and Daghestan rugs; the walls are hung with choice paintings; there is a French chef there; a splendid library; a large retinue of servants. It is a fairly comfortable place for a cattle-man."

"Does Dorsey come there?"
"Oh, yes! He is not fond of luxury, and comes down there as often as he can with Mrs. Dorsey to get away from New York. She is a splendid lady; all the cowboys are crazy about her, and when they have a cowboy dance, they all try to dance with her."

"Have you any church near?"
"Not exactly. But Bob Ingersoll's ranch is next to Dorsey's."

Catarrh Cured.

A clergyman, after years of suffering from that loathsome disease, Catarrh, and vainly trying every known remedy, at last found a receipt which completely cured and saved him from death. Any sufferer from this dreadful disease sending a self addressed stamped envelope to Prof. J. A. Lawrence, 88 Warren street, New York City, will receive the recipe free of charge.

C. H. Edwards' music house of Fort Worth has removed from No. 308 to No. 409 Houston street.

—[ESTABLISHED 1830.]—

DENNY, RICE & Co.

Nos. 606 to 610 Atlantic Avenue,

BOSTON, MASS..

-WOOL-

Commission Merchants.

Prompt information given by mail or telegraph by applying to their Texas representative,

C. G. HUBBARD.

SAN ANTONIO, TEX.

Cash advances made on consignments.

The Co-Operative Wool Association

An economical medium between
Producers and Consumers.

Superior facilities for selling

Scoured or Grease Wools.

Attend to receiving and forwarding wools shipped here for scouring.

Negotiate Cash Loans or Supplies for Growers.

Correspondents wanted in every county in the state. Address,

E. Wm. GRUENDLER, Manager,
Galveston, Texas.

E. S. BROOKS & CO.,

WOOL

Commission Merchants,

100 and 102 N. Main Street, Corner of Chestnut,

ST. LOUIS, MO.

We solicit consignments of Texas and Southwestern wools, and will make proper advances on all wools consigned to us. Correspondence promptly attended to.

JONH OWENS, Manager,

Wool Department.

ADOUE & LOBIT,
BANKERS

WOOL Commission Merchants,

GALVESTON, TEX.

Consignments solicited from wool growers and dealers. Advances made from clip to clip.

A. ROEMER.

H. RIEDEL.

A. ROEMER & RIEDEL,

GENERAL

Commission Merchants

And Wholesale Dealers,

173 Strand, Galveston, Tex.

Solicit consignments of

-WOOL-

Hides and other Country Produce. Will make reasonable advances in cash or supplies, at lowest rates.

WOOL SCOURING MILLS
—AT—
Galveston, Texas.

THEO. HOWARD, Proprietor.

Wool Scouring Done for Wool Growers and Dealers.

N. B.—Order your commission firm to have your wools scoured.

WOOL!

WESTERN WOOL COMMISSION CO.
ST. LOUIS, MO.

Consignments of Wool Solicited.
Cash returns made within six days after receipt of wool. Liberal Advances made on Consignments.

References: Dun's and Bradstreet's Agencies and Local Banks.
Send for Circular and Price Current.
Represented in Texas by ED. MACKECHNIE, San Antonio.

FUNSTEN & CO.,
St. Louis.

WOOL

Sacks and Twine Furnished at Cost.

TEXAS REFERENCES:—First National Bank, Abilene; First National Bank, Albany; Belton National Bank, Belton; First National Bank, Coleman; First National Bank, Denison; First National Bank, Taylor; Waco National Bank, Waco; Texas Live Stock Journal, Fort Worth.

Liberal Advances Made.

W. A. ALLEN. M. EVANS.
Established 1854.

W. A. ALLEN & CO.,
142, 144 & 146 Kinzie St., Cor. La Salle Ave.,
CHICAGO, ILL.

WOOL

Commission Merchants.

Liberal advances made on consignments. Full advice of market furnished on request. Prompt and faithful attention to the interests of consignors is our rule.

W. B. Westcott & Co.
Commission Merchants,
Soliciting consignments of

Wool, Hides, Etc.

Write for market reports.

202 North Main Street, - ST. LOUIS, MO.
Refer to Texas Live Stock Journal.

E. C. KRUSE & CO.

Commission Merchants,
For the sale of

Wool

Hides, Pelts, Tallow, Furs, etc.

318 N. Commercial St., - ST. LOUIS, MO.

Wm. M. Price Commission Company,
108 and 110 North Main Street.

ST. LOUIS,
Solicit consignments of

WOOL

Fifteen years experience in the St. Louis wool market.

Quick Sales. Prompt Returns.

Reasonable advances on shipments.

J. D. SKINNER and SON,

GALVESTON, TEX.,

SOLICIT CONSIGNMENTS OF

WOOL AND COTTON.

A. S. EXLINE

207 Strand,

GALVESTON, TEX.,

WOOL BUYER.

Correspondence solicited with Wool Growers and Dealers in the Interior.

Hide and Wool Buyer

Wants a situation to buy in Texas, New Mexico and Kansas or either of them. 15 years experience. Reference given. Address,

J. T. HICKEY,

Fort Worth, Texas.

THE CLIP.

Up to April 27 the Standard reports receipts of wool at San Angelo as amounting to 172,478 pounds.

A rather cold norther setting in on Monday night, April 29th, was a trifle rough on Northern Texas shorn sheep.

The Sulphur Springs wool will be offered for sale on May 22, and there is expected to be about 60,000 pounds in sight on that date.

San Angelo:—John Loomis, probably the largest ranch owner in the Concho country, was in the city Monday. He will bring his 90,000-lb clip to Angelo.

At present the wool trade does not know the price of wool. Eastern authorities vary 2c to 3c in quotations. The foreign markets are strong and the Western markets uncertain.

Mr. A. F. Hardie of Dallas, Tex., wool-buyer for the Wesson mills, Miss., has started on his travels and expects to purchase about 200,000 pounds of long staple fine medium, as usual.

Denver Field and Farm:—There is no domestic animal that responds to feed more quickly than does the sheep, and it is doubtful if there is any that pays better for that which it eats.

Mr. E. Yoxall, wholesale dealer in fat sheep and lambs has a card in the For Sale columns of the JOURNAL. Sheep raisers having fat sheep or lambs are advised to communicate with him as he is an extensive operator and means business.

Vernon Guard:—Messrs. Winans Bros. of the southern part of the county brought in their spring clip of wool one day this week, amounting to over 10,000. They received therefor a fraction over 17c per pound, making in the aggregate a little over \$1700.

It is no use taking much notice of Eastern quotations for wool until more wool reaches the seaboard. There is not much Texas wool East just now and what there is does not amount to a selection. The Eastern wool quotations are for the present nominal and variable.

Mr. Paul Giraud of Fairy, Hamilton county, owner of one of the prettiest properties in Hamilton county and running a fine flock of sheep was in town. He will commence shearing May 10th and will have about 12,000 pounds of wool. Mr. Giraud is not dissatisfied with the sheep business.

Chicago-Drovers' Journal:—Peter Jansen of Jansen, Neb., was here with 643 head 107-lb fed sheep, which sold at \$5. This is the last of 9000 which

he has fed and marketed the past season. Mr. Jansen says there are about 50,000 sheep in Nebraska—certainly not a large crop unless other sections come to the front freely.

San Angelo Standard:—C. H. Beall and W. C. Kinsolving, stockmen of Coryell county, were in the city Wednesday. They are up here looking out a sheep ranch, the land of Coryell being too valuable on which to run sheep. They appear to be well pleased with the prospects, and will almost surely move their stock out here in a few months.

Messrs. W. A. Allen & Co. of Chicago, Ill., quote Texas wools as follows: Bright 12 months—Fine heavy to light (bucks 10@12), 18@24c; medium heavy to light, 22@28c; 1/4 blood, heavy to light, 22@27c; coarse heavy to light, 20@22c. Short or dingy—Fine heavy to light (bucks 10@12), 14@20c; medium, heavy to light, 17@20c; 1/4 blood, heavy to light, 17@23c; coarse, heavy to light, 17@20c; kempy, heavy to light, 12@16c. Burry, 1/4 to 1/2 less; earthy and heavy, quotable about 12c to 14c.

Boston Commercial Bulletin:—Texas wools are in such small supply as to be scarcely quotable. There has not been as yet that rush of buyers to Texas that was anticipated, and the local magnates have cooled a little. Prices, however, still show a handsome advance over last year, and the best wools, costing 21@22 cents, will have to sell here at 25 cents to make purchasing desirable to dealers. Six to eight months Texas purchased there at present prices costs 55 cents landed here without a profit.

Del Rio Record:—Mr. David M. Clarkson, a prominent wool grower of this county, was in town this week. He has recently delivered a lot of mutton, for which he obtained \$4 per head. He sold last year at the same price, ranch delivery. These figures may seem fabulous to the average wool grower, but nevertheless they were obtained and the buyer considered he had made a bargain in getting them. Mr. Clarkson raises nothing but the finest grade Merinos, and this accounts for the high price his mutton brings.

Boston Commercial Bulletin:—The treasury department is still hampering business through the failure of its subordinates to act in one way or the other. The conference of appraisers has recommended that worsteds be classed as woolens, but no collector has done so, and Collector Magone of New York is about to go through the farce of having both sides thresh out the old straw of the arguments for and against the classification before him. The evidence on both sides has been given and published so many times, that this delay seems quite absurd and unnecessary. Until the new collector gets to work in New York, the new appraiser and collector being alike in favor of revising the duty, there is not much likelihood of any action.

Denver Field and Farm:—Sheep shearing in Bernalillo and Valencia counties, N. M., is now under full headway. The clip, though good in quality, will fall quite largely when quantity is considered, owing to the death of so many sheep in that vicinity during the past winter. Such wool as is being bought by the Albuquerque merchants brings from 12 1/2c to 13 1/2c per pound. The latter price is paid for white Navajo wool, H. M. Hosick & Co. paying that price for a large lot the other day. It is the opinion of Solomon Bibo of Grants that the clip on the Atlantic & Pacific this season will not average up with the past several years, owing to heavy losses in that country during the past winter. He says shearing will also be late. These losses are due to exceedingly

heavy snow storms which came on suddenly.

Boston Commercial Bulletin:—The usual condition of spring business is now upon us, and it would not be unnatural to expect what has usually been the result; a dull and drooping market from now until the middle of the clip, followed by a slight advance caused by competition of buyers among the farmers. Whether a subsequent reaction will come in July or December is, of course, largely dependent on the condition of the manufacturers and of the foreign market. At present American wool is suffering from the presence of a full supply of foreign wool bought for importation when American wool was higher and foreign lower. The London market is active and advancing, and the same is true of Western centers, where prices are from 2 to 3 cents above last year, while Boston quotations on both domestic and foreign wools are from 1 to 3 cents below the cost of similar wools laid down here to-day from either direction.

Don't Hawk, Spit, Cough,

suffer dizziness, indigestion, inflammation of the eyes, headache, lassitude, inability to perform mental work and indisposition for bodily labor, and annoy and disgust your friends and acquaintances with your nasal twang and offensive breath and constant efforts to clean your nose and throat, when Dr. Sage's "Catarrh Remedy" will promptly relieve you of discomfort and suffering, and your friends of the disgusting and needless inflictions of your loathesomr disease?

WOOL GROWERS.

Annual Meeting to be Held by the State Association at Galveston, June 4th.

MARATHON, TEX., March 18, '89.

To the Wool Growers of Texas:

The annual meeting of the state association of Texas wool growers will be held on Tuesday, June 4th, at Galveston, Texas. I name this place at the request of every one who has written or spoken to me in regard to their wishes in the matter, so far not even one having named any other place. It is important that all growers that possibly can should attend this meeting, not only members of the association but wool growers in general, as matters of importance to them will come up at this time that need their attention as much so as any other part or branch of their business.

Respectfully,

A. E. SHEPARD,
President Texas Wool Growers' Association.

Eupepsy.

This is what you ought to have, in fact, you must have it, to fully enjoy life. Thousands are searching for it daily, and mourning because they find it not. Thousands upon thousands of dollars are spent annually by our people in the hope that they may attain this boon. And yet it may be had by all. We guarantee that Electric Bitters, if used according to directions and the use persisted in, will bring you good digestion and oust the demon dyspepsia and install instead eupepsy. We recommend Electric Bitters for dyspepsia and all diseases of liver, stomach and kidneys. Sold at 50c and \$1 per bottle by H. W. Williams & Co., druggists.

A Fair Trial

is all that is asked for Dr. Pierce's Golden Medical discovery in all blood taints, or skin diseases, eruptions, blotches, pimples, and scrofulous sores and swellings. If it don't cure, you get your money back.

SAN ANTONIO.

POULTRY is being sold in St. Louis by weight. Every class of stock and beef cattle ought to be sold by weight in Texas.

IT is suggested that while Southwest Texas is altogether too full of scrub stock, the corresponding number of stock owners is fully up to the average, and that the two keep very close company.

THERE is danger that the present year of superabundance may tend to cause a return to the methods of careless shiftlessness which have been the curse of the stock business of the Southwest. The true policy is to provide in seasons of plenty for those of scarcity.

A NEW phase of the inspection scheme is to make it local option, and Michigan has passed the law in that shape. This is certainly the least objectionable shape in which it can be put, and it is safe to predict that few communities will ever vote it upon themselves and thereby create a local butchers' monopoly.

WHEN any disease breaks out among domestic stock of any kind and no other cause can readily be given, it is always charged to Texas. The latest is that Texas ponies have given the glanders to the horses of Webster county, Georgia. We are willing to wager a thoroughbred trotter against a jack rabbit that a thorough investigation of this matter would prove the falsity of the charge, or that the ponies contracted the disease after leaving the state. Glanders do not exist on Texas ranges.

THE agricultural bureau reports 1,323,867 head of horses in Texas, 232,631 head more than Illinois, which has 1,091,236, the next highest number. The percentage of loss during the winter was 2 per cent., which is fifth on the list, in Florida, Arkansas, Nevada and New Mexico the loss being heavier, and in the latter it was 3.7 per cent., the highest loss in the Union, while Maine and Vermont were the lowest, which was 1 per cent.

THE latest reports of the agricultural department place Texas at the head of the list in the number of cattle, giving her 7,923,690, the next being Iowa with 3,388,348, or 4,535,242 less. Thus it will be seen that Texas has much more than double the number of cattle of any one other state or territory in the Union. The losses for the past winter in Texas are put down at 3.5 per cent., while that of Florida, the heaviest, was 5.5, and New Mexico 4.2 per cent. Rhode Island and Massachusetts only sustained a loss of 1 per cent. each.

SAYS Ed Corkill, a ranchman at Realitos, that he would be willing to contract to furnish fat cattle for the English beef contract at figures below current prices, just to encourage the enterprise and insure it against failure as its success would be an encour-

agement to others, and eventually a home market for all our cattle, free from a long haul and heavy shrinkage, excessive railroad freights, quarantines, etc. In fact, a relief from many of the most serious drawbacks now encountered in the ranch stock business. With such liberal views by a sufficient number of our rancheros, the result of the starting up of our local refrigerators is already favorably assured.

TO THOSE who have an idea that real estate bring no income in this section of country, it will be mentioned that the prairie grass from 600 acres of land eight miles from San Antonio was sold for this year at \$1200, with the privilege to the lessor of pasturing fifty head of stock on it. The grass is for hay.

INTERESTED parties are continually harping about the ruinous policy of growers in patronizing local markets, but its increasing popularity with intelligent and practical wool growers is proof that it pays. It is more satisfactory, at least, and undoubtedly yields greater net receipts, or the establishment of more local wool markets would not be made. It is of no interest to the grower to sell at a big price and have the expenses run up to lower the net results for the benefit of middle men. The unmortgaged prefers a home market.

San Antonio Horse Market.

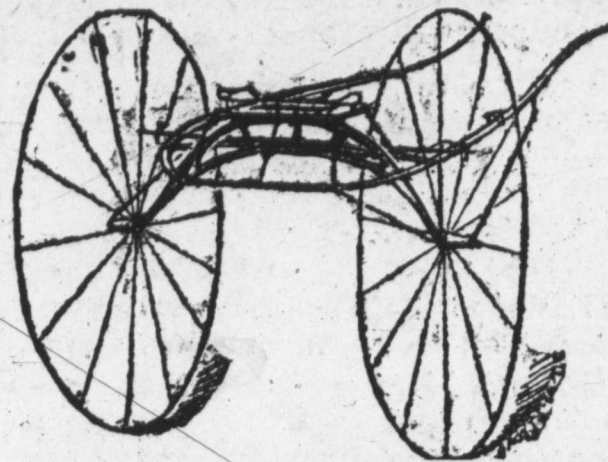
The market continues to improve, although not so rapidly as many would like. There are a goodly number of buyers in the market, and fat stock held at reasonable figures go off like hot cakes. The demand continues to increase for young stock of all kinds, including young mules. Mares are most in demand among the grown stock, and when fat sell readily. The shipments for the week aggregated 1192, against 914 head the week previous.

Quotations are as follows:

Scrub and poor mares, 12 to 13½ hands.	\$10@13
Scrub fair conditioned, 12 to 13½ hands.	14@ 18
Medium mares, 13 to 14 hands, fat.	17@ 22
Medium mares, 13 to 14 hands, thin.	14@ 17
Yearling fillies, branded.	8@ 9
Yearling fillies, unbranded.	10@ 12
Two-year-old fillies, branded.	10@ 13
Two-year-old fillies, unbranded.	12@ 14
Texas improved mares, 14 to 15 hands.	30@ 40
American carriage horses, 15½ to 16½.	75@200
Saddle horses, good, 13 to 14½ hands.	30@ 40
Saddle horses, poor, 13 to 14½ hands.	17@ 22
Unbroke horses, 13 to 14½ hands.	15@ 23
Weaned, unbranded colts.	4.50@ 6
Mules, Mexican, 12 to 13½ hands.	20@ 35
Mules, improved, 13½ to 14 hands.	40@ 55
Yearling mule colts, improved.	22@ 30
Two-year mule colts, improved.	30@ 40
Yearling mule colts, Mexican.	14@ 20
Two-year mule colts, Mexican.	15@ 27

San Antonio Wool Market.

The receipts have been steady, although not so heavy as last year at this time, the frequent rains continuing the slowness of shearing. While prices have not yet been established, still the sale of the Carr clip is always looked upon as a good starter. The price realized (20c) at Encinal is equal to 22c in San Antonio, taking into consideration the local freight, drayage, commission, storage and insurance incident to this market, and will strengthen the policy of selling near at home. No important sales have taken place in this city, the aggregate sales not exceeding 150 sacks in small lots, and these at private terms, the buyers being very anxious to keep the public



CALVIN TOOMEY

KANSAS CITY, MO.,

Carriages, Buggies and Speed Wagons,
TRACK SULKIES,

ROAD, POLE AND BREAKING CARTS

And Sulky Cushions with weight pocket. No sulky perfect without the Wheel Guard Rail; it prevents collisions and stiffens the sulky throughout, making it run true and steady. send for catalogue.

GEO. B. JOHNSTON & CO.

21 Main Plaza, San Antonio.

Real Estate and Live Stock

Ranches specialty. Fine stock on hand. FOR SALE.—A herd of Registered Herefords and cross bloods. It is a Texas raised show herd.

A CARD

—TO—

Wool Growers!

We will from now on and in our own name carry on a Wool Business, as conducted heretofore by our Senior, F. Lammers, as manager of the Wool Factors' Association, which has been dissolved by mutual consent. We solicit the continued good will of old friends and are prepared to negotiate with all disposed to intrust the sale of wool to our care.

Wool sacks at cost to shippers.

LAMMERS & FLINT

GALVESTON.

February 16, 1889.

JNO. S. POWELL & CO



Offer for sale choice thoroughbred and high-grade Hereford, Polled-Angus, Durham, Holsteins and Jersey Bulls and Heifers. Stock on hand and for sale on very reasonable terms.

LOANS

offering Money on Farms, Ranches —AND— City Property

on the most reasonable terms.

Funds loaned at three, four or five years and on installment plan if desired. No delay. JAMES B. SIMPSON, 735 Elm Street, Dallas, Texas.

LONE STAR

SADDLERY.

Manufacture all kinds of Saddles and Harness. Cowboys' Outfits a Specialty. First-class work in all branches.

A. VARGA, Agent,

Dolorosa Street, opposite Southern Hotel, SAN ANTONIO, TEXAS.

JESSE K. LLOYD,
Dealer in LIVE STOCK of All Kinds.
Sold on Commission in car lots. Wholesale and retail at the yards, 220 S. Flores street, near Military Plaza.
SAN ANTONIO, TEXAS.

in the dark, which indicates good prices. Quite a number of buyers, both local and northern, are quietly visiting the smaller markets and ranches, which fact also points to a possible rising market. The wool on hand probably aggregates 1,500,000 pounds.

Williamson County Fair.

The fifth annual fair of the Williamson County Live Stock Fair Association took place at Taylor on Wednesday, Thursday and Friday, May 1, 2 and 3. Every elementary condition was favorable, including the unprecedentedly prosperous season, and the people responded liberally by turning out en masse. The exhibits were even fuller than at previous similar occasions, and every class of fine domestic animals was well represented. The noticeable feature of the cattle show was the small number of Shorthorns compared with previous fairs, and the increased number of Holsteins. The horse department was full, and the feature of this department was the exhibit of a couple of imported Cleveland bays by G. H. Pearson. These fine animals challenged the admiration of all lovers of the noble equine. Mr. Pearson also had a pen of imported Shropshire sheep which were much admired by sheepmen generally. The list of exhibits was too large to give in this issue, and the premiums will be published in our next. Several advantageous sales were made, and the amusement feature of the fair gave entire satisfaction. Taking the fair as a whole it was an unqualified success, to be repeated from year to year.

HORNS AND HOOFS.

Isaac Hart, Shelbyville, Ill., was here after horse stock this week.

N. C. Stallworth, a horse buyer from Mobile, Ala., is here after a shipment.

Dr. Carver left with a car-load of bucking and roping ponies for his wild West.

W. J. Packard of Canton, Miss., came in after some horse stock in this market.

Dock Pegues is after a consignment of Texas horses. He registers from Jackson, Miss.

E. F. Ikard, Fort Worth, is here again, and is inquiring around after steers.

S. B. Burnett of Fort Worth passed en route to the lower country, presumably after steers.

F. A. Robinson, Harkins, Ohio, secured a bunch of horse stock for the Northern market.

The spring movement of cattle from Southwest Texas to the Northern markets is now coming on.

Clarence Clark is just in with a couple car-loads of select horse stock from Collins, Texas.

H. C. Singer shipped a couple car-

loads of horses to Quincy, Ill., the latter part of last week.

Major B. F. Buzard is in town after a hard week's work shipping cattle at Uvalde for the Territory.

L. P. Alexander left for New York with a car-load of horses that he carefully selected for that market.

O. Fuller of Muskogee, I. T., bought about 500 head of yearling steers at Floresville, which go to the territory.

John R. Mahone left with two car-loads of young mules on Thursday. He purchased them about Kleberg.

O. Fuller bought about 400 head of two and three-year-old steers of E. B. Flowers of Lockhart, which go to the Territory.

P. N. Blackstone of Muskogee, I. T., bought 500 head of steers of Ed Corkill and 1200 of M. Half. Prices are not stated.

Ed Corkill of Realitos, Duval county, sold 1000 yearlings to J. S. Powell & Co., Fort Worth, for \$5 per head, June delivery.

Chas. Moss of Zapata county went to see if he could find some Hereford bulls. Mr. Moss is now intent on raising good stock or none.

Jesse K. Lloyd, the commission man, reports among his sales 24 horses, \$18; 25 mares, \$16.50; 30 mares and horses, \$18; 25 horses, \$20.

Col. John O'Neil, sheriff of Jackson county, and breeder of Brahma cattle, Port Lavaca, is again spending a few in the Alamo city.

Bud Hildebrand is just back from a trip to Mexico below Saltillo, bringing back 86 head of horse stock, which were sold before he had them in town six hours.

The best place in San Antonio to buy carriages, buggies, etc., is at Hick's repository, West Nueva street. Rice's coil spring vehicles a specialty.

Judge E. U. Cook of the Keystone Land & Cattle company, is in the city. He says that the company is getting ready to forward fat steers to market.

Taylor Texan:—Mr. Johnson, foreman of the stock yards, says there has been over seven hundred car-loads of stock shipped through Taylor during past month.

Johnson & Jennings begin forwarding some 1500 beeves, the remainder of the A. B. Frank lot, about the middle of next week, sending them to Chicago via New Orleans.

Henry Cupples, ranch manager of the Keystone Land and Cattle company, Frio county, was in the city this week. This company will soon begin shipping stock to market.

Dr. A. E. Carothers, who was here on a visit to his family returned to Mexico on Wednesday. He says that owing to the heavy losses from heat, he thinks that the hog trade with that city is about at an end till cold weather.

Eagle Pass correspondence in San Antonio Express:—John Blocker and Ike Stevens imported 1100 head of cattle from Mexico yesterday. The former gentleman is going to take his cattle out of Mexico and return to Texas; he says the range there is not so good as it is here.

W. C. Irwin the model ranchero of LaSalle county spent a few days in town. He has already laid by 100 acres of corn which is tasseling, and harvested 25 acres of oats, which were volunteered, but the yield was exceptionally large.

Col. R. E. Stafford, the Columbus, refrigerator man, who is also in on the English beef contract, was in town several days last week. The colonel is looking about as to a steady beef

supply for when he begins to slaughter, which will probably be in August.

The trade of 4000 head of young steers between James L. Harris and McAllen & Young of Hidalgo county, is off. The stock had already been started from the ranch to Kleberg for shipment, when word came that the Cherokees would quarantine them, and Mr. Harris would not receive them.

Captain James B. Gillett, a well-known ranger and for some years ranch manager for the Llano Land & Cattle company, Brewster county, was married in San Marcos on the night of the first. The captain is now in the ranch business on his own account, and will make his home in Alpine. His many friends join in wishing the new firm a happy and long career.

The first artesian well yet sunk in Southwest Texas is that at the Crystal Ice factory in San Antonio. At a depth of 700 feet a stream was struck that raised the drill, and a steady flow of sweet soft free stone water has continued undiminished, to the extent of 1,500,000 gallons per day. Artesian wells are now becoming too common to deserve individual mention, where a few years ago they were considered impossible.

James H. David sold a span of mare mules, four years old and 15 hands high, broken, raised by the Adams brothers of Nueces county to Tom Dewees of Wilson county for \$225. This shows what can be done with good breeding. The average price of mules in this market of that age is \$40 per head, or \$80 for the span, add \$5 a piece for breaking and you have \$90, leaving a clean profit of \$135 for select breeding, which would go far towards paying for a Kentucky proof jack.

Realitos Correspondence in Corpus Christi Caller:—We had last week here looking around for fat cattle a buyer from the City of Mexico, Don Decoroso Ramirez, Capt. Jos. Sheely accompanied him and was showing him the different ranches. Ramirez is a nice gentleman and has started quite an enterprise and a good thing for our stockmen (if it proves to be a success and the indications are good that it will be) and that is the shipment of cattle from Texas to the city of Mexico to be slaughtered there. He has already contracted for quite a number of cattle in this and Nueces county for that market, shipping last week one train-load, and I understand the shipment got through in excellent condition and were very readily sold at a handsome profit. If the stockmen of this part of Texas can get to supply Mexico with beef it will help them out wonderfully and if the Mexican people want cattle this country along the Mexican National railroad ought to supply them as we are closest to them. Let us all wish the new enterprise success for Mr. Ramirez means better prices for our cattle.

THE WOOL SACK.

The Kirkpatrick clip is reported sold at Encinal at 20 cents per pound.

Mr. McFadden of Encinal sold 500 head of sheared muttons at \$2 per head.

John J. Burke, the Maverick county sheep raiser spent a few days in town last week.

A large number of muttons went through here for the northern market, all shorn.

Frank Dillard is up from Cotulla, where he has been shipping steers to the northern market.

Wool has been reported selling at 21½ cents per pound in Austin, but the quality is not stated.

Davis, Caden & Co. of Corpus Christi and Mr. Hirsch of the same

J. E. PRICE.

FRANK P. HORD.

I. A. DEWEES.

Traders' National Stock Yards!

J. E. PRICE & CO., Proprietors,

Near I. & G. N. Shipping Pens,

SAN ANTONIO, TEXAS.

Best and most commodious stock yards in the state. Built expressly for the accommodation of the stockmen. All pens shedded and with hay-racks and fresh water. Charges same as other yards. Best buyers on the market always on hand for good stock.

THOS. H. MORIN.

J. L. MORIN.

MORIN BROTHERS,

W. L. LUBBOCK, Manager,

Live Stock Commission Merchants, San Antonio, Texas.

Feed and Sales Yards, South Flores street. Make a specialty of handling Spanish stock of all kinds. We offer for sale all classes of live stock, at any point in Southwest Texas and Mexico.

JESSE H. PRESNALL.

HINES CLARK.

JAMES F. SCOTT.

PRESNALL, CLARK & SCOTT

Live Stock Commission Merchants,

COLLINS, NUECES COUNTY, TEXAS.

Do a general live stock commission business. Special attention paid to putting up stock on order.

The Southern Hotel,

J. P. HICKMAN, Prop.,

San Antonio, Texas.

GEO. LOELOFF, SAN ANTONIO, TEX.

Manufacturer of the

CELEBRATED SAN ANTONIO SADDLE TREES.

Makes all kinds of Natural-Fork Saddle Trees, Texas, Colorado and California patterns. None genuine without my name on cantel. Look out for imitations.

Brackett & Holman,

MANUFACTURERS OF SADDLES, HARNESS, BRIDLES, ETC.

No bogus Northern penitentiary or combination saddle trees sold or rigged, but a specialty made of strong, reliable, honest goods at a reasonable price. Also sell the best farm wagon made.

South Side of Military Plaza.

San Antonio, Texas.

G. W. Saunders & Co.

LIVE STOCK COMMISSION MERCHANTS

SAN ANTONIO STOCK YARDS.

Prompt sales and quick returns. Market reports and information as to shipping cheerfully given. Correspondence solicited. Telephone No. 401.

place are along the line of the Texas-Mexican road buying wool.

It is reported that 20 cents per pound has been refused for the Callahan clip at Encinal. This is one of the largest clips in the United States.

D. H. Ainsworth sold his four-year-old steers from his Dimmit county pasture for \$25 per head, and the three-year-olds at \$22. They were in excellent condition.

C. W. Wilkins of Wilkins Bros., extensive wool growers of Val Verde county, is here on business in connection with the spring marketing of their wool.

Uvalde News:—N. C. Tindall has sold out his interest in his sheep to his partner in the business, Mr. Harper Simpson. The price paid was \$1.50 all around after shearing, Mr. Tindall retaining his interest in the spring clip.

John Adams the well-known wool buyer, has been in the lower country all the way from Corpus Christi to Laredo along the Texas-Mexican railway, looking after wool. It is reported that he had made a few purchases, but the particulars must be reserved for a later date.

C. G. Hubbard, Texas representative of Denny, Rice & Co., is just back from trip to San Diego, Laredo and Corpus Christi, and reports quite a number of buyers in that section, but as yet few transactions in wool have taken place. Owing to frequent rains shearing is progressing slowly.

Judge J. A. Bonnet of Eagle Pass, a large sheep owner, was with us this week, returning from a trip to Fort Worth, where he was captured by the energy and enterprise of that city, and he will be an important factor in working for railway connection between Eagle Pass and Fort Worth.

The J. A. Carr clip of Webb county, one of the largest in Texas, was sold at Encinal for 20c per pound. It was a six months clip, and has been sold in San Antonio for years, and last year brought about 19c in San Antonio. The sale of 20c in Encinal will net the seller about what 22c would here, which makes this sale about 3c per pound more than last year to the grower, if condition is the same.

San Antonio Express:—A substantial recognition of the services of a business man in building up the wool trade of this city was seen yesterday in the presentation of a fine residence lot in Palermo Elmendorf's addition, to Col. T. H. Zanderson. Mr. Henry Elmendorf was the appreciative donor, and in making this gift he did honor to himself as well as honoring one who has labored long and faithfully for San Antonio, even when offered attractive inducements to give his valuable services to rival business points.

Don't buy the Missouri penitentiary saddle trees, but buy the genuine Loeloff, for sale by Brackett & Holman, San Antonio, Texas.

TEXAS LIVE STOCK JOURNAL

ESTABLISHED APRIL, 1880.

Consolidated with

TEXAS WOOL GROWER

SEPTEMBER 13, 1884.

ISSUED EVERY SATURDAY.

—BY—

The Stock Journal Publishing Company,

—AT—

Fort Worth, Texas.

FORT WORTH OFFICE, 210 West Second Street. W. A. GARNER, Manager.

DALLAS OFFICE, 735 Elm Street, W. HUGHES, Manager.

SAN ANTONIO OFFICE, No. 21 Main Plaza. L. A. HEIL, Manager.

EL PASO OFFICE, Ground Floor, Central Hotel Building. G. B. LOVING, Manager.

Subscription, \$1.50 Per Annum.

Entered at the Postoffice, Fort Worth, Texas, as second-class matter.

Notice to Subscribers.

Our subscribers who may receive sample copies of this paper will understand that the extra copy is sent without charge, to be handed to a neighbor, who will likely subscribe.

Any person sending us three subscribers at one time will be furnished the paper one year for his trouble.

We Solicit.

We solicit your subscription to the **TEXAS LIVE STOCK JOURNAL** if you are not already receiving the paper. It is the cheapest and at the same time is the oldest, best and most reliable market reporter in the Southwest. Your postmaster will forward the subscription if you will hand it to him. The price is \$1.50 per annum.

The department of agriculture is said to be figuring on giving us some closer figures in regard to the cattle supply. We need them badly.

Mr. FREMONT E. WOOD of Yucca, Arizona Territory has patented an improved lightning conductor for wire fences. The Scientific American published a description of it in the issue of April 27th.

The cattlemen of the Cherokee Strip will not go wrong by asking President Harrison, and the secretary of the interior, how long they are to be allowed peaceable possession of the Cherokee lease. The government of the U. S. is not given to making a study of cattlemen's affairs and may not be aware that it is important for the cattle to graze quietly until they are fattened, and fit for market. If the boomers over-run the Strip and the military run them out a time or two and the cattle are disturbed again and again, cattlemen will not make much money out of their grazing privileges. Better ask a plain question of the authorities and try to get a plain answer. Then possibly the boomers may learn that they cannot possibly stop in the

Strip until congress opens it up by legal enactment and the president by proclamation. A few words at the right time may save a world of trouble. The cattlemen ought to know of a surety what to expect, and the boomers will not be hurt if they become equally as well informed.

A Ranch Wedding.

Captain J. C. Lea of Roswell, N. M., and Mrs. Mabel Day of Coleman, Texas, were united in marriage at the Day ranch in Coleman county on April 29th by the Rev. Mr. Robinett of Brownwood, Texas. The happy couple are receiving hearty and sincere congratulations from many friends within the live stock circles of Texas and New Mexico and the **JOURNAL** joins in the united desire for their continued welfare and happiness. Captain J. C. Lea is identified with the ranch interests of New Mexico as successful manager of important properties, being regarded as one of the foremost ranchmen of the territory. The lady is largely interested in Texas ranch properties and is distinguished as "Cattle Queen," a title accorded the lady by the suffrages of her fellow ranchmen and due more to her regal appearance and womanly qualities than to the simple possession of extensive herds of cattle. The **JOURNAL** hopes to learn that the happy pair will permanently reside on their beautiful Texas property to increase the number of ranches in Texas now progressing from ordinary ranch headquarters to elegant homesteads supplied with comforts and the elegances of rural life, as it is enjoyed in the older states. The **JOURNAL** is also to be congratulated as having predicted the joyous event some time ago.

THE RAMIE PLANT.

A Source of Wealth, from Agriculture, Easily and Profitably Cultivated in Texas.

The ramie plant furnishes a fiber which enters into the manufacture of many fabrics, having more uses than any other fibrous plant in existence. It is a substitute for cotton, wool, flax, silk, mohair, alpaca, etc., and in each specialty has some advantage or quality to render it desirable as a substitute, or as the second material constituting a fabric. Mixed goods of ramie and silk are very choice, and ramie and wool is a splendid mixture for blankets and lighter goods of that character.

In the **JOURNAL** office recently there was offered for inspection a line of goods made of the ramie fiber too large and too varied to be appreciated without a personal examination. There were German and English laces, window curtains, shawls, upholstery goods, sail cloths, blankets, Lisle thread, French goods made of silk and ramie, table cloths, towels, embroideries, plushes, thread, silver floss, yarns for embroideries and for all kinds of cloth, samples of seersucker, ducking, white goods, and finally, celluloid articles made principally from the ramie plant.

Whoever may have traveled through

EVANS-SNIDER-BUEL CO.,

(INCORPORATED)

SUCCESSOR TO HUNTER, EVANS & CO.

CAPITAL STOCK, - - - \$200,000.

KANSAS CITY STOCK YARDS,
KANSAS CITY, MO.

Each Office in charge of a member of the company.

17 YEARS' ACTIVE EXPERIENCE in Live Stock Commission Business, Market Reports regular and special, and all other information incident to the business, will be furnished FREE by each house.

UNION STOCK YARDS,
CHICAGO, ILL.

Correspondence always has prompt attention.

DIRECTORS { A. G. EVANS, President. M. P. BUEL, Vice President.
C. A. SNIDER, Treasurer. A. T. ATWATER, Secretary.
F. W. FLATO, JR. IKE T. PRYOR.

NATIONAL STOCK YARDS,
ST. CLAIR CO., ILL.

LIVE STOCK COMMISSION MERCHANTS.

the Texas river bottoms and observed the long, rank grasses, with stems so large as to almost appear like fine cane, has seen something like wild ramie, and probably observed the plant itself, as authorities say it grows wild in Texas.

The plant ramie is a perennial, and is propagated from roots, shoots or seed, the roots being the best. The valuable fibers consist of a bark or peeling, which is covered on the outside with a gum or resinous matter. To obtain the fibrous covering in marketable condition, the plant, we understand, has to be relieved of the resinous matter by a process called ungumming, or degumming. Then the fibrous matter is peeled off by one of the various machines called decorticators. This leaves the fibers in marketable condition. These fibers are now worth in Texas 5 cents per pound, and the yield is computed to be sufficient to sell for \$200 and to pay a clean profit of over \$100 per acre.

The object of this article is to invite the attention of those who are interested in the prosperity of Texas agriculture to the ramie plant, its uses and cultivation, and to ask that a patient hearing be given to those who, desiring to benefit the state of Texas as well as themselves, have experimented with the ramie plant and are in a position to demonstrate that it can be raised in Texas in sufficient quantity per acre and be disposed of at such a figure as to open up a new industry for Texas agriculturists, and one that will add additional value to all the light sandy or alluvial soils in the state, and furnish double reason for increasing the number of irrigable farms.

The only organized effort to propagate the ramie plant in the United States that we know of is at Yorktown, Tex., where the Texas Ramie Planting association is organized. The ramie nursery is under the supervision of Prof. Felix Fremery, a gentleman who has made fibrous plants a continual study for many years. He has devoted much time to the cultivation of ramie, and to inventing and improving machinery necessary to prepare the farm crops for market. He has watched the growth of the ramie industry from the first important exhibit of ramie fabrics in London, at the first international exhibition in 1851. Since then in England, France and other European countries the manufacture of ramie goods has grown to immense industries, and he has observed the introduction of the same manufactures in the United

States, and their growth and development to respectable proportions, solely dependent, however, on foreign fibers, while, as he says, so thoroughly is Texas adapted to the cultivation of ramie and other fibrous plants that a few hundred thousand acres of Texas soil will be sufficient to supply the whole world. Later the **JOURNAL** may be able to give further particulars concerning the ramie plant and its cultivation in Texas.

THE DETROIT FAIR.

A Great Fair and Exhibition.

DETROIT, MICH., April 15, 1889.

Well to the front in the development of agricultural industries and pursuits stands the state of Michigan. Her broad acres yield some of the finest crops in the United States; while her orchards and her gardens are among the most productive of which our land can boast. Her agricultural college, ranking with the best in our older states, annually sends out scores of young men trained to the most progressive methods in that noble vocation symbolized of old by the plow and pruning hook. Another feature which has brought Michigan prominently forward at representative expositions throughout the country, is her fine blooded stock; and competitors have usually found that the wolverine state has, in the past, been unusually favored with the blue ribbon awards. Michigan's home exhibits have always been marked for their enterprise and fine quality of displays. Her reputation for uniform and high-class excellence in the agricultural industries being, as has been intimated, the very best, it is not surprising, therefore that she should readily embark in any new scheme that might foster and still more generally attract interest toward this important feature of her commonwealth. Thus, profiting by the experience of the most progressive agricultural element, and determined not to be outdone by any efforts in the exposition line heretofore made by sister states, Michigan has decided on a fair and exposition of such magnitude as shall invite the world to enter and compete for her awards. She has decided upon an exposition whose scope and importance shall be international in character. This undertaking has resulted in the formation the "Detroit International Fair and Exposition association," an organization comprised of several scores of Michigan's most substantial citizens

Among those who are deeply interested in the success of the new departure are men of such wide reputation as United States Senator James McMillan, president; Hon. R. A. Alger, ex-governor of Michigan; Hon. Thos. W. Palmer, president State Agricultural society, president American Percheron Horse Breeders' association, ex-U. S. senator and newly appointed minister to Spain; E. W. Cottrell, prominent exhibitor throughout the United States and ex-secretary State Agricultural society; Messrs. Savage & Farnum, extensive breeders of Percheron and French coach horses; D. M. Ferry, famous seed merchant and head of the largest seed business in the world, vice-president of the association, and C. W. Robinson, secretary and manager of the Buffalo International fair, who also assists in the work. All the gentlemen mentioned will be active in the management of the Detroit association, the dates of whose exposition will be from Sept. 17th to 27th inclusive. One of the first departures made by the board was to invest \$150,000 in a superb site, adjacent to the city, reached by rail, street car, electric railway and steamboat, and so pleasantly located on high commanding ground as to permit a delightful view of the beautiful river Detroit with its ever-changing of the commerce of the great lakes. Negotiations are now being pushed to erect at once, buildings of such enormous size that they will cover fourteen to sixteen acres of ground. The cost will not be less than a quarter of a million. Details in regard to awards have not yet been arranged, but it has been decided to give \$100,000 in cash prizes. This handsome figure will undoubtedly provoke the widest attention.

That the prospects of the Detroit exposition are decidedly flattering will at once be manifest to anyone who reads of the favorable circumstances under which the new departure has been prosecuted; and of those who are permitted to embark in the affair, no one, it would appear, will be so greatly rejoiced, or so directly benefitted by the good results which always flow from such grand exposition projects, as will the agricultural community of the United States. T. H. G.

Transfers of Jersey Cattle.

The following is a list of the transfers of Jersey cattle to purchasers in Texas, as reported by the American Jersey Cattle club, No. 1 Broadway, New York, for the week ending April 16, 1889:

BULLS.

Rioter of Fair Play, 23332—J. O. Jackson to M. P. Glass; Jefferson, Texas.

Silkstone 2323—J. L. & G. S. Spoford to T. W. House, Houston, Texas.

Silkstone 2323—T. W. House to J. E. Faires, Flatonia, Texas.

COWS.

Lottie Trigg 54040—C. T. Cheek to D. W. Claywell, Troy, Texas.

Ora Buford, 54039—C. T. Cheek to J. H. Strange, Troy, Texas.

Rioter Le Brocq's Maud, 45811—J. O. Jackson to M. P. Glass, Jefferson, Texas.

Rioter's Amy, 32015—C. T. Cheek to W. T. Wallace, Troy, Texas.

A Rich Legacy.

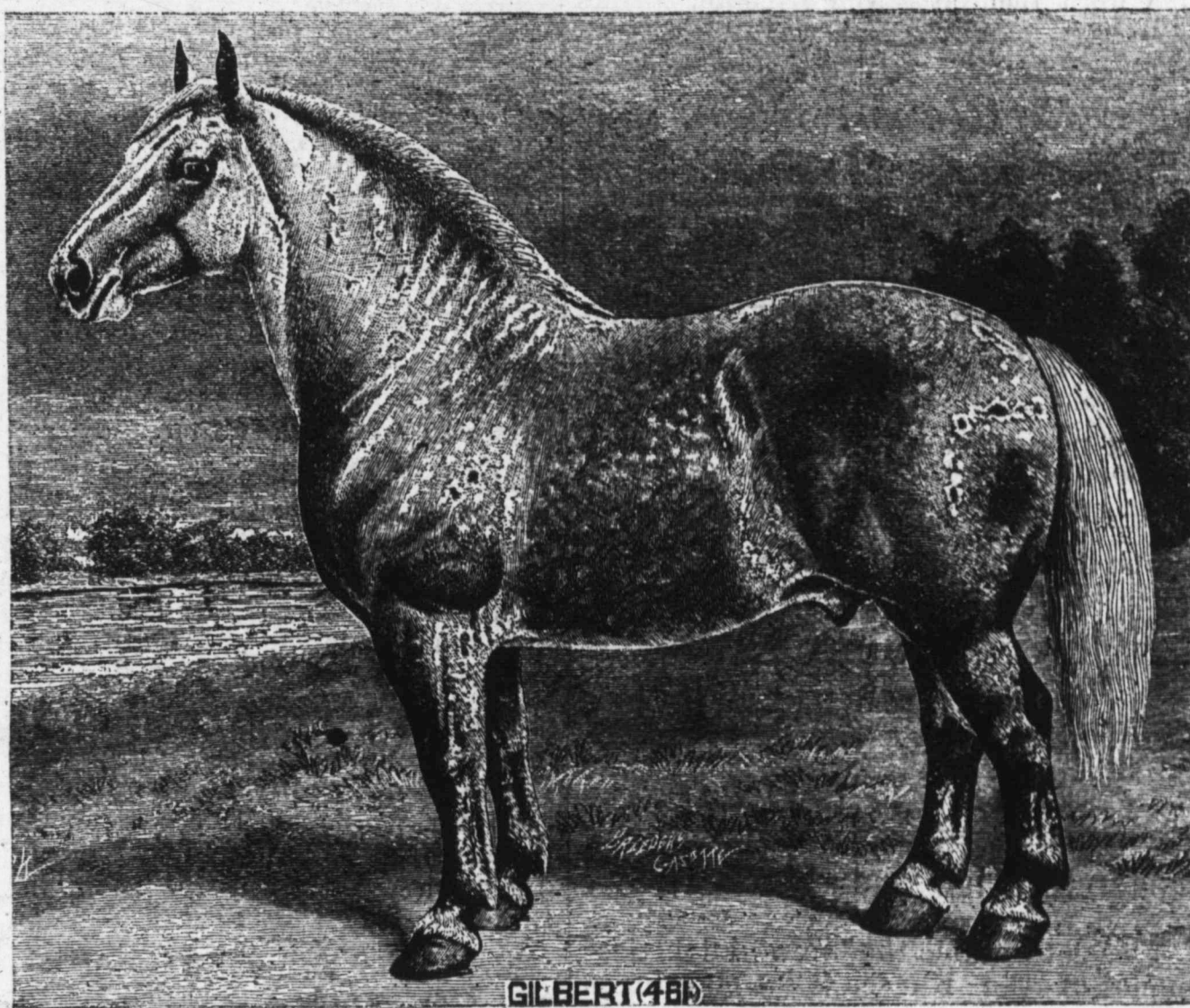
The attorney of the Pullman Sleeping Car Co., Ex-Chief Justice Lochrane, says that old Dr. Biggers could leave no better legacy than his Huckleberry Cordial for all bowel affections.

An Imported Percheron.

The illustration in this issue represents Gilbert (461) an imported Percheron stallion brought from France by Mr. Leonard Johnson of Northfield, Ill. The sketch was made by Mr. Lou Burk for the Chicago Breeders' Gazette and the illustration in larger form appeared in the Gazette March 6, 1889, with the following remarks:

The likeness does not bring out quite as we would like to see the massive draft horse proportions which are so characteristic of Gilbert. He has won numerous prizes over strong competition on various occasions in this country, and it is certainly safe to say that he has never yet won a ribbon that he was not fairly entitled to. He is a dark gray, foaled 1882, bred by M. Ernest Perriot of Nogent-le-Rotrou,

France, and was got by Mr. Dunham's famous black stallion Brilliant 755. He has already developed wonderful qualities as a sire, and the draft-horse interest of the Northwest is to be congratulated upon possessing such a remarkably fine specimen of the breed. Mr. Leonard Johnson is generally recognized as one of the best judges of draft horses in America, and he is also credited with being one of the most modest of men. Consequently our readers may get some idea of the merits of this horse when we state that Mr. Johnson (in conversation with the senior editor of the Gazette not long since) expressed the opinion that if he could afford to take Gilbert to the Paris show this year he certainly would do so, as he felt certain there was not a horse in all France that could beat him on his merits.



GILBERT (461)

Transfers of Berkshires.

Phil M. Springer, secretary American Berkshire association, Springfield, Ill., sends the following transfers of recorded Berkshires:

Fancy Bride, 21,006, W. S. Ikard, Henrietta, to Edward Dwyer, San Antonio.

Ned, 21,114, James H. Jones, Floyd, to Mrs. Kate Gillespie, Mexia.

Seemrow, 21,115, James H. Jones to Joseph Peoples, Mexia.

Sallie Cardiff, 21,149, A. G. Epler, Ill.; to W. S. Ikard, Henrietta.

Charmer XXVI, 21,168, and Handsome V, 21,169, N. H. Gentry, Sedalia, Mo., to Willie S. and J. B. Ikard, Henrietta.

An Open Letter.

CHICAGO, ALTON & ST. LOUIS R. R. CO. }
OFFICE GEN'L LIVE STOCK AGT., }
ST. LOUIS, July 20, 1888. }

The undersigned, as the live stock representative of the old reliable and well-known Alton road, respectfully calls the attention of live stock shippers to the improved fast time now being made by this line from St. Louis, Kansas City and Higbee to Chicago. The cars of this line are uniform in size, and the roof is higher and better ventilated than any other ordinary stock cars now in use on other lines. In addition, the Alton is furnishing

more of the improved palace stock cars to Texas shippers than all other lines combined. The Chicago & Alton makes a specialty of the handling of live stock, and in the past five years shipments have largely increased each year, which shows to all fair-minded people that we give attention to our patrons. No other line in the country transports as much live stock as the C. & A. in proportion to mileage. The books of the stock yards at St. Louis and Chicago will verify this. I can say, without fear of successful contradiction, that the C. & A. in the past has done some good work in behalf of live stock shippers so far as rates are concerned. The officers of this company have at all times looked upon the prosperity of stockmen as being beneficial to the road. The success of one was prosperity for both. I respectfully solicit of shippers a good share of their consignments, and promise them good treatment, fast time and rates as low as any first-class road makes.

I sincerely thank live stock shippers for the large patronage given our line in the past, and ask for their friendship and support in the future.

Shippers desiring any information or favors, by addressing me at St. Louis, will receive prompt replies.

JNO. NESBITT,
Gen. Live Stock Agent.

Matador Land and Cattle Company.

(Limited.)



RANCH BRAND.
grade bulls. Correspondence solicited from cattle buyers.

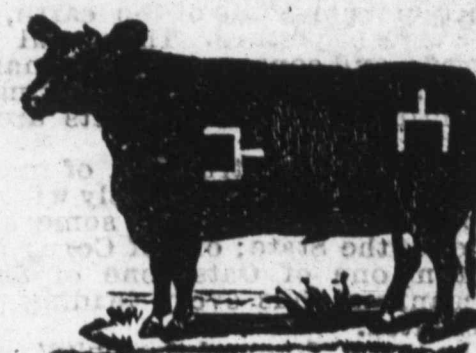
W. F. SOMMERVILLE,
Manager, Fort Worth,
Texas; H. H. CAMP-
BELL, superintendent,
P. O., Matador, Tex.

We have for sale at all times yearling, two and three-year-old steers, all in our own mark and brand and from the best

The Espuela Land and Cattle Company.

(Limited.)

Postoffice, Dockums, Dickens county, Texas
S. W. LOMAX, Manager.



Have for sale two-year-old and yearling steers and heifers of their own raising, go by Shorthorn and Hereford bulls, in the straight Spur mark and brand Horses Branded on left hip.

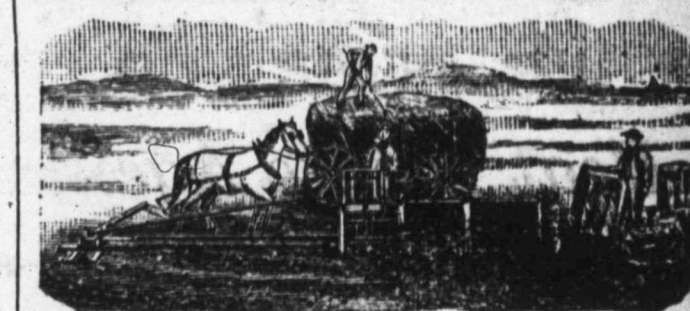
BEST STEEL WIRE WOVEN WIRE FENCING



80c TO \$2 PER ROD.
All sizes and widths. Gates to match. Sold by us or dealers in this line of goods. FREIGHT PAID. Information free.

THE McMULLEN WOVEN WIRE FENCE CO.,
North Market and Ontario Sts., Chicago, Ill.

Mention this paper.



When you want a Hay Press write us for price of

THE GEORGIA PRESS,

A full circle press, simple, strong, effective. Price less than half that of other presses of same capacity. It will pay you to send for a circular and price.

The Panhandle Machinery & Improvement Co.,
FORT WORTH, TEXAS.



-:ALFALFA:-

Johnson Grass, Sorghum,
Millet and other
SEEDS!

For prices, mention this paper and address

W. F. PATTERSON,
FORT WORTH, TEXAS.



The Texas Spring Palace

At Fort Worth is a magnificent structure built entirely of the products of Texas. It is a picture of Texas, made from the products and displaying the material resources of Texas.

The name is from two Greek words—Karpōs, products or fruits of the earth, and Orāma, a view or picture. The plural is Karpōramata, and consequently the many pictures on the inside of the Texas Spring Palace made entirely of Texas products are named Karpōramata.

The dome of this structure of marvelous beauty will be covered entirely with wheat. The towers made of each of some separate product of the State; one of Corn; another of Cotton; one of Oats; one of Shells of the Ocean, and thus every leading product be presented.

On the lower floors of the building will be arranged in family groups, Minerals, Grains, Grasses, Fruits and Vegetables.

The upper floors or galleries will be devoted to the work of the women of Texas, and to Flowers, Birds, Historical and Archaeological exhibits, together with pictures of Farming, Stock-Raising, Domestic Life and History.

This grand and glorious object lesson will show the world in a day a study, a glance as it were, what Texas is, and what she has to offer to capital and emigration.

The world-renowned Elgin Watch Factory Band, of over sixty pieces, led by the composer, Hecker, will furnish the orchestral music, and three daily concerts will be given of an hour and a half each. These concerts will be surpassed by nothing which can be produced on this continent.

The presidents of the United States and Mexico have been invited by special commissions are expected to meet and shake hands in The Spring Palace.

The Railroads will make an excursion rate of one fare for the round trip. Opens May 29th and closes June 20th.

W. F. SOMMERVILLE, Director-Gen'l,
WILLIS H. POST, Secretary,
Fort Worth, Texas.

J. R. JETER & CO.,

Real Estate Agents

405 Main St., Fort Worth, Tex.,

"MONEY TO LEND"

On Real Estate. Vender's Lien Notes Bought.

Special Properties.

Eight single 640 acre tracts in Wichita county, rich lands at reasonable prices.

40,000 acres in Wheeler county, solid body, \$3.00 per acre.

168,000 acres on the plains, under fence and cross fences, \$2.50 per acre.

130,000-acre ranch with 12,000 head of cattle in Southwest Texas, for sale at a bargain or exchange for New York city property.

We have on our books various other good tracts of land, improved and unimproved, ranging in extent from 1000 to 10,000 acres.

J. P. SMITH,
President.

W. P. CONNER,
Gen. Man'g.

THE GRANITIC ROOFING

Factory at
Fort Worth, Tex

Better than the best, cheaper than the cheapest roofing offered in Texas. Suitable for steep or flat roofs.

Cheap enough to

cover a hen coop; good enough to roof a palace. Specially adapted to stockmen's barns and out-buildings. Shingles, tin and corrugated iron must give way before our goods. For further particulars write to our office.

Fort Worth Granitic Roofing Co.

11th and Bask Sts., Fort Worth, Tex.

P. J. WILLIS & BRO., "WOOL"

CONSIGNMENTS

GALVESTON,

TEXAS.

SOLICITED.

Notice to Cattle Buyers

The undersigned will have for sale and delivery on May 25th over one hundred head of kind stock cattle, consisting of some good and trained milch cows; some three-year-old heaves, but mostly young cattle of both sex. They will be in pen May 25, three miles from the town of Grapevine, Tarrant county, Texas, where they may be shipped by rail if sold.

Parties interested in buying can address me until then at Bayou Lachute, Caddo Pa., La. M. A. BONNER.

Cattle for Sale.

Three hundred three and four-year-old steers for sale. Correspondence solicited.
HUGHES & OLDHAM,
Bonham, Texas

DEVON CATTLE

Polk Bros. of Fort Worth have for sale a car-load of pure-bred and

ACCLIMATED

Devon cows, two to three years old. The only car-load of acclimated Devons in Texas. Have been here a full year. Address

POLK'S STOCK YARDS,

FORT WORTH, TEXAS.

FORT WORTH.

General Range and Stock Notes.

Please to notice the new advertisement of the Kansas City Hay Press company.

Beggs & Hackett of Fort Worth are shipping hogs to El Paso and cattle to the Panhandle.

General A. G. Molloy of Dallas, has been appointed Texas agent of the Bureau of Animal Industry.

Major W. A. Towers of Kansas City was in town and went westward. He is said to be after a few steers.

Butchers of Fort Worth quote steers at 2 1/2@3c; cows, 2 1/2@2 3/4c; sheep, 2 1/2c; hogs, 3@3 1/2c; calves, \$2.50@4.00 per head.

A. G. Anson of Colorado City has a good string of two-year-old steers for sale. His notice is in the For Sale or Exchange columns.

Mr. R. A. Riddels of Alvarado, with big string of cattle, says he is waiting upon the markets, and hopes that an advance will let him out.

Messrs. Wright & Lenoir of Fort Worth have sold forty acres of the James Sanderson survey, east of Fort Worth, for \$19,000.

Do not fail to notice the For Sale or Exchange columns. The Childress county school lands are offered for lease, and bids will be opened May 15.

Beggs & Hackett of Fort Worth, Texas, want to buy 3000 yearling steers, also 1000 three-year-old steers. Their notice is in the For Sale column.

Captain G. B. Paxton, formerly of Alvarado, has been elected permanent secretary of the Union Stock Yards company of Fort Worth, and is now actively employed on the works.

Mr. Wm. Powell came down from Childress where he had been to look at his Herefords and is making temporary headquarters at the Pickwick. His cattle are in good condition.

Young, Andrews & Kuhen sold 40 head of cow-horses to Messrs. Hubbard & Simpson of Dakota. The horses were delivered at Giles, Texas and will go to Wendover by rail with cattle.

The Arbita ranch property in Jones county, a splendid Western Texas estate, is offered for sale by Mr. Wm. D. Cleveland of Houston. The notice will be found in the For Sale or Exchange column.

Gentlemen returning from many different Western ranges are unanimous in their reports that the condition of the Western country is unusually good and the prospect for fattening all kinds of stock is far better than usual.

Mr. E. C. Sooy, president of the Kansas City Hay Press and Foundry company, was in town, stopping at the Pickwick. His company do a large business in Texas, and Mr. Sooy is now making large shipments into this state.

Mr. A. F. Hardie, representing the Wesson Mills, Miss., purchased the Blandin clip, 10,000 pounds of fine medium wool, at 19 cents per pound, delivered at Weatherford. This is a Jack county clip and one of the largest there.

Mr. Jno. N. Simpson of Dallas, manager of the Continental Cattle company was in town during the week and the first time since his serious spell of sickness. He is looking well and his many friends in Fort Worth are very much pleased to see that his health is restored.

Mr. J. B. Mitchell of Travis county who received a very handsome consignment of Holstein cattle during last fall and winter was in Fort Worth during the past week, and seems to be satisfied with the result. He imported cattle of all ages and his few losses were in two-year-old heifers and grown cows.

Messrs. John S. Powell & Co. of Fort Worth have sold to Mr. E. E. Bryan of Giddings a thoroughbred Holstein bull for \$100; to Mr. S. O. Moodie of Tarrant county three extra fine jennets for \$100 each, and to a Southern Texas stockman one car of grade Hereford bulls at \$30 and a car of Shorthorns at \$42.50 per head.

W. J. Boaz advertised some Jersey Red hogs for sale in the JOURNAL, and he says now, "Please stop my advertisement for a short time until I get some more hogs, as I have more orders on hand than I have hogs." He will have a nice lot of imported hogs soon, and will offer them for sale through this paper.

The Panhandle Machinery & Improvement company of Fort Worth has increased the space used for its advertising in the JOURNAL in order to give more prominence to the extensive supplies on hand. The company has state agencies for a number of agricultural implement specialties and

can assist ranchmen materially in the economical use of water supply.

Mr. O. H. Brown, commercial agent of the A. T. & S. F. railway, and Eli Titus, live stock agent arrived in Fort Worth on Wednesday, and while here paid a visit to the new stock yards. Mr. Titus informed the JOURNAL that about two-thirds of the cattle movement into the Territory is accomplished and the remainder would soon be moved in good shape.

Mr. L. L. Tackett, Texas representative for the firm of Metcalf, Moore & Co. of Kansas City and St. Louis, was in town during the week and paid an appreciated visit to the JOURNAL office. Capt. Tackett is well and favorably known in Texas as an experienced cowman, and from his long service as cattle inspector for the Northwest Texas Cattle Raisers' association.

Mr. H. P. Child, superintendent of the Kansas City stock yards is in Texas, and stopped two days in Fort Worth. Mr. Child was invited to view the union stock yards of Fort Worth. He said that the site of the yards was an excellent one in his opinion, and seemed to be satisfied that in a reasonable time a large business can be concentrated here. Mr. Child also viewed other places of interest in the city.

The Sierra Bonita Land and Stock company of Wilcox, Arizona, sold on the 30th to H. S. Boice, manager of the Berry Cattle company, limited, of Montana 1000 two-year-old steers, to be delivered at Deming, N. M., on May 25, at \$11.25 per head. These steers are out of one of the finest herds in Arizona. This is regarded as the cheapest bargain and best purchase for the buyer yet made. The sale was made by the International Investment agency of El Paso.

Eagle Pass Guide:—Judge J. A. Bonnet has returned from Fort Worth, which he says is on a boom. He did not complete the sale of the county school lands located in Hockley county, because the purchasers would not consent to take them unless permitted by the deed to pay up the purchase money notes at any time after the making of the first payment. To this Judge Bonnet saw no objection, and returned to obtain power to make the desired change in the deed. Why are the purchasers so anxious to obtain this privilege of prepayment? We hope the county is making a good bargain, but this move on the part of the buyers would indicate that they expect to realize the purchase money on the lands long before it falls due.

\$100 Reward. \$100.

The readers of the JOURNAL will be pleased to learn that there is at least one dreaded disease that science has been able to cure in all its stages, and that is Catarrh. Hall's Catarrh Cure is the only positive cure now known to the medical fraternity. Catarrh being a constitutional disease, requires a constitutional treatment. Hall's Catarrh Cure is taken internally, acting directly upon the blood and mucus surfaces of the system, thereby destroying the foundation of the disease, and giving the patient strength, by building up the constitution and assisting nature in doing its work. The proprietors have so much faith in its curative powers that they offer One Hundred Dollars for any case that it fails to cure. Send for list of testimonials. Address

F. J. CHENEY & CO., Toledo, O.
Sold by Druggists. 75c.

Subscribe for the Stock Journal.

DALLAS.

DALLAS DOTS.

Taylor Bros. of this county sold a lot of mixed cows and yearlings at 2@2 1/2c.

E. Fitzgerald of Denton, Tex., shipped one car of veals to Dallas and found ready sale at 4c.

A. T. Coon of this county sold a fine lot of corn-fed sheep.

S. J. Mathews of Lebanon, Collin county, sold a choice bunch of corn-fed sheep at 4c.

J. E. Emerson of Pilot Point arrived on market with one car of choice sheep.

J. B. Wilson of Dallas was on the local market with 35 head of butcher stock.

Mr. Hollifield of Mesquite was on the local market with 9 head of butcher cattle.

T. Nolan of Dallas was on the local market with 90 head of porkers.

S. Sample of this city was on the local market with 27 head of cattle.

Samuel Peterman of this city was on the local market with 35 beef cattle.

Live stock of every kind is very scarce at all of the stock yards in this city, and therefore prices are advanced.

The second mortgage bonds of the Texas State Fair and Dallas Exposition have been taken, and the fair is now in a flourishing condition to be even better than for two years, and the history of those two years is fully understood by the people of Texas.

The dummy on the Rapid Transit got away from the engineer a few days ago, and was soon of the end of the track by the opera house and made a reasonably successful run for at least one block over the bois d'arc pavement without doing any harm save the demolishing of a carriage and partially crippling the team.

H. C. Clark of this city sold Thomas Coleman of Cottle county 2000 steers, three and four years old, a few days ago. The JOURNAL is not positive as to price.

The proprietors of the stock yards say business has been very light in their line for the past ten days, which they attribute to the farmers being at home putting their crops in proper condition, which, to say the least, is a very sensible thing for them to do.

The people of Dallas are quite friendly to the Spring Palace enterprise of Fort Worth, and will attend it very largely when it opens in May, so the JOURNAL predicts.

Bucklin's Arnica Salve.

The best salve in the world for cuts, bruises, sores, ulcers, salt rheum, fever sores, tetter, chapped hands, chilblains, corns, and all skin eruptions, and positively cures piles, or no pay required. It is guaranteed to give perfect satisfaction, or money refunded. Price 25 cents per box. For sale by H. W. Williams & Co.

Open Orders Solicited.

Messrs. Turner, McClure & Co., the wholesale and retail grocers of Fort Worth, Texas, are making low prices on all goods in their line, and have a full and complete stock. They make a specialty of sending goods all over the country, and stockmen can save a big per cent. on their purchases by sending the firm open orders for goods. A letter received by them is given the same attention as if you visited them personally, and satisfaction is guaranteed in every case. Send for their price list at once. Address TURNER, MCCLURE & Co., Fort Worth, Texas.

For Cure of
SPRAINS & STRAINS
use
St. Jacobs Oil
Cures
PROMPTLY AND PERMANENTLY
WITHOUT RETURN OF PAIN.
AT DRUGGISTS AND DEALERS EVERYWHERE
THE CHAS. A. VOBELER CO. BALTO.-MD.

Sales of Cattle at Carter & Son's Stock Yards, Dallas, Texas.

S. J. Mathews of Lebanon sold a bunch of sheep to local butchers at 4c av. 90 lbs.

Taylor Bros. of Dallas county sold a bunch of cows and yearlings at \$2.25@2.85 per 100 lbs.

C. J. Wiseman of Denton county sold 7 steers, 947 lbs, \$2.85.

L. E. Murphey of Cedar Hill sold 11 cows at \$16 and \$19 per head.

O. T. Gray sold 29 choice corn-fed sheep, 96 lbs, at 4c.

J. B. Miller sold 21 hogs, 139 lbs, at \$3.75 to \$4.

P. J. Sweeny sold 3 milch cows at \$25 per head.

C. K. Davis sold 10 cows, 830 lbs, \$2.25.

W. Wilson of Richardson sold a bunch of mixed cattle to local butchers at \$2.25@2.85 per 100 lbs.

Sam McCullough sold 2 bulls at 1 1/2c.

James Mosely of Kaufman county sold 13 cows at 2 to 2 1/2c.

F. Riddle of Tarrant county sold 18 lambs at \$2.25 per head.

B. C. Hendricks of Collin county sold 7 veal calves, 230 lbs, at 3 1/2c.

E. Fitzgerald of Denton, Texas, sold 13 choice veal calves at 4c, av. about 157 lbs.

J. E. Emberson of Pilot Point has a car of muttons on the market.

K. J. Ewing sold 2 milch cows and calves at \$27.50 per head.

Chas. Jones of Kaufman county sold 5 choice corn-fed steers, 1080 lbs, \$3.

Mat Burgess sold 1 bull at 1 1/2c.

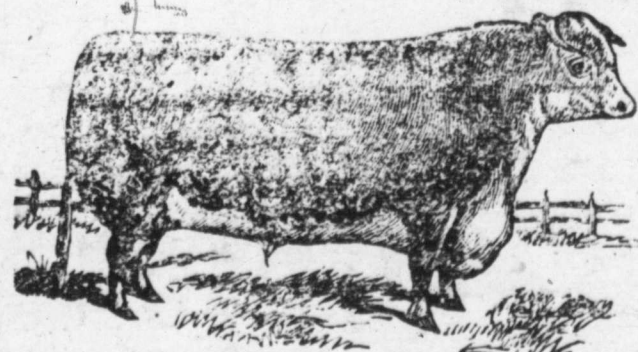
H. Bond sold 9 hogs at 4c.

Burt Mays sold 14 choice lambs at \$2.50 per head.

L. Craig sold 7 cows for butcher purposes at \$13 per head.

G. McFlinn sold 2 steers at \$23 per head.

C. O. Hill of Tarrant county sold 18 cows at 2 to 2 1/2c.



Herefords!

We have for sale 240 head of pure bred registered bulls and heifers in the Brown pasture at Childress, Texas, a few miles from the Fort Worth & Denver road. Will sell singly or in car lots on favorable terms and at reasonable prices. Some of these cattle are acclimated. Address by letter.

HENRY & POWELL,
Pickwick Hotel, Fort Worth, Texas.

CHAS. I. EVANS. J. GOOCH.
EVANS & GOOCH,
Attorneys-at-Law,
Cor. Commerce and Lamar Sts.,
DALLAS, TEXAS.

Butchers' and Drovers' Stock Yards Dallas, Tex.

CARTER & SON, Props.,

Live Stock Commission Merchants.

Largest and best yards in Dallas. Only yards having the facilities for shipping and receiving from all the railroads. Office at theyards. Street cars to pens. Liberal advances made on all consignments. Stock scales at pens. Telephone connections.

A. SCHLAECHTER.

C. F. MYERS.

THE U. S. CARRIAGE CO.,

Builders of Fine Buggies, Carriages, Phaetons, and Carriage Parts.

Nos. 251, 253, 255, 257, 259 and 261 South Fourth St., COLUMBUS, OHIO, U. S. A.

G. V. KANE, State Agent, DALLAS, TEXAS.

FOR SALE OR EXCHANGE.

To Lease.

Throckmorton County will lease her school lands, four leagues in Tom Green county, for a term of five or ten years. Address C. E. SMITH, County Judge Throckmorton County, Throckmorton, Texas.

\$2,500,000 TO LOAN ON REAL ESTATE at 10 per cent. straight

WRIGHT & LENOIR,

At Mansion Hotel, Fort Worth, Tex.

Also have some choice

Farm Ranch and City Properties

FOR SALE.

And invite correspondence from buyers and sellers.

T. P. LENOIR, Live Stock Broker, will contract horses, cattle or other live stock.

W. C. YOUNG, of the Llano Live Stock Co., T. C. ANDREWS. J. M. KUHEN.

YOUNG, ANDREWS & KUHEN,

Dealers in

LIVE STOCK.

Tenth and Houston Sts.,

FORT WORTH, TEXAS.

Cattle contracted for spring delivery. Horses of every description in yards and pastures. Cow-horses a specialty. Horses, mares, mules and jacks for sale at all times. We are prepared to enter into contracts for the delivery of cattle, horses, mares and mules at any point in Texas, and solicit correspondence.

Berkshire Pigs.

I have pure-bred Berkshire pigs for sale, one to five months old, all from choice, hardy importations. W. S. IKARD, Henrietta, Texas.

Panhandle Pasture.

A good well watered mesquite grass Panhandle pasture, 20,000 acres in extent, and no stock on it now. Can be had on reasonable terms to pasture yearlings at a price per head per year. Will not take over 1600. For particulars address PASTURE, Care Stock Journal, Fort Worth, Texas.

Herefords and Shorthorns For Sale.

400 bulls, high graded Herefords and Shorthorns, for sale. A herd of 56 head on exhibition at the fair. Every animal is Texas raised and fully guaranteed against splenic or Texas fever. For further particulars address LEE HALL, San Antonio, Texas.

Shorthorn Bulls For Sale.

100 head of Shorthorn yearling bulls and heifers; also 1 car-load of two-year-old bulls, all reds and raised at Blue Mound Stock Farm. For prices address J. W. BURGESS, Fort Worth, Texas.

C. F. ESTILL,

Live Stock Commission Dealer, Fort Worth, Texas.

Yards on Calhoun St., between 7th and 8th. Office at Yards. Live stock of every description boarded and yarded, and sold on commission. We solicit consignments.

FOR SALE OR EXCHANGE.

J. W. FIELDS. TOBE ODEM. FIELDS & ODEM,

Real Estate and Live Stock Agents,

Do a general Commission Business. Pay freight on all stock consigned to us. Butchers' stock a specialty.

Office at St. James Hotel, Main Street, Dallas, Texas.

We Wish to Sell Our Entire Herd of Horses,

Which has been improved by using



DRAFT STALLIONS

Will sell any age, or stallions separate, if so desired; also, have a small well-improved ranch for sale.

B. P. STERRETT,

Hulltown, Shackelford County, Texas.



Warranted the Best. Easiest rider made. Tight Foot Rack to prevent dust. Made for two passengers; carries one easier than all others. Delivered anywhere in Texas. \$20 cash with order. PARLIN & ORENDORFF CO., Dallas, Texas.

Central Stock Yards, WALLACE & BLACK.

Successors to J. W. Thomas & Son, Commission Dealers in Live Stock. We have facilities for transferring from stock pens of all railroads. Liberal advances made on all consignments. Accommodations first class. Telephone connection. Street cars by office. East Dallas, Tex.

DR. O. B. HEWETT, THE DENTIST, Dallas, Texas. Teeth extracted without pain. The BEST is the CAEAPEST.

JOHN KLEIN, Practical Hatter,

912 Main St., Dallas, Texas. Silk hats blocked white and soft hats cleaned, stiffened and re-equal to new for \$1.35. Work warranted first class. Orders by mail or express promptly attended to.

CITY HOTEL, - CHICAGO.

Cor. State and 16th Sts.

SPECIAL RATE TO STOCKMEN, \$1.50 PER DAY. Nearest hotel outside the yards. Table and Rooms first-class. State st., Archer av or L. S. & M. S. Dummy pass the house to a part of city and depots. W. F. OECUTT, Proprietor

Chester White, Berkshire and Poland China Pigs, Fine Setter Dogs, Scotch Collies, Fox Hounds and Beagles, Sheep and Poultry bred and for sale by W. GIBBONS & CO., West Chester, Pa. Send stamp for Circulars and Price List.

Quarantine Regulations Governing the Admission of Cattle to New Mexico.

The quarantine regulations of the territory of New Mexico go into effect on March 15th of each year and continue in force until November 15th of the same year, whereby all cattle coming from south and east of the below described line in Texas and from the district in Mexico as outlined are prohibited admission, to-wit: South and east of a line extending the southern boundary line of New Mexico east to Mitchell county, Texas, thence north along the west side of Mitchell, thence east along the southern line of Scurry, Fisher and Jones counties, thence north along the western lines of Shackelford and Throckmorton counties, thence east along the north boundary line of Throckmorton county, and thence north, crossing the Denver, Texas & Fort Worth railway near Wichita and on to the 36th parallel in the Indian Territory; as well as all cattle from that portion of Mexico lying east of the Mexican Central railway from El Paso, Texas, to the 26th parallel of latitude, are absolutely prohibited admission into New Mexico, except cattle that are destined to points outside of the territory and being transported all the way through New Mexico by rail without unloading except into designated quarantine stock yards provided by the railway companies.

If any person, persons, company or corporation shall violate the provisions of the foregoing sections, the penalty imposed is not less than \$100 nor more than \$5000 for each offense, as well as further liability in such civil action as may be instituted by reason of damages that may result from such action.

It is necessary for any one bringing cattle into New Mexico to first obtain a written permit either from the board, veterinary surgeon, or its employees, who are designated as inspectors. Failure to comply with this provision is punishable by a fine not less than \$500 nor more than \$5000 and, besides, the person so violating the law is liable personally for all loss and damages sustained by reason of the introduction of any contagious or infectious disease from cattle unlawfully imported into the territory. Any person may require the person in charge of cattle to produce for his inspection the permit granted by the board. A refusal to produce said permit upon demand at any time within a year from the time the cattle were driven in shall be subject to all the penalty named in the foregoing sections. For all cattle, the owner or person in charge of which desires to have inspected at any place other than the designated points of inspection, the application for such inspection must be made at least ten days in advance of the time specified for such inspection. The applicant for such inspection must pay all expenses of inspection and investigation, including per diem and traveling expenses of the person or officer making the same and designated for that purpose by the board.

Cattle brought into New Mexico in violation of any of the provisions of the law of quarantine are not only subject to all of the aforesaid penalties, but they can be seized and held for the payment of said penalties. These liens take precedence over any other lien or incumbrance on such cattle existing at the time of their unlawful importation. Said liens become effective also as security for ultimate payment without further legal proceeding, except the foreclosure by sale of the cattle on execution.

The places of inspection on the eastern boundary line of New Mexico for Texas and other cattle are at El Paso, P. Mothersill, inspector; the point where the river crosses the line of New Mexico, Geo. H. Williams, inspector; the point where the Fort Sumner and Texas road crosses the New Mexico line, R. C. Temple, inspector; the point where the Canadian river crosses the New Mexico line, T. G. Duncan, inspector; at Clayton and Raton, N. M., G. E. Lyon, inspector.

Address all communications to the office of the secretary of the cattle sanitary board of New Mexico, at Las Vegas, N. M.

Lewis Lutz,
President, East Las Vegas, N. M.
J. E. SAINT,
Albuquerque, N. M.
S. S. JACKSON,
Kingston, N. M.
J. D. WARNER,
Secretary, Las Vegas, N. M.

Subscribe for the Stock Journal.

Wool Growers Out of the Woods.

Chicago Breeders' Gazette.

With the close of the Fiftieth congress at 12 o'clock noon, March 4, 1889, was verified the correctness of the Gazette's prediction—made more than a year since, when many contemporary journals insisted to the contrary—that the existing tariff on foreign wools would neither be repealed nor materially modified. Both the newly inaugurated president and a majority of the congressmen-elect are too decidedly committed to the policy of protection to home industries to leave room for suspicion that the wool tariff will be either repealed or reduced during the ensuing two years.

In this announcement the Gazette finds somewhat more than ordinary satisfaction. This for two reasons: (1) It will serve to allay the fears of timid flock-owners who have been led to believe that the threat of tariff reduction was the main cause for depression in prices in wool, and (2) because the Gazette was repeatedly and sometimes severely criticised by its contemporaries for not joining with them in encouraging the stampede among wool growers, but on the other hand insisting that danger of tariff reduction was neither so immediate nor the effects of reduction likely to prove so disastrous as some chose to predict.

While in these facts could be found ample excuse for self-laudation, the Gazette is content to have the lesson of the past few years' experience taken home by flock owners and kept in mind for future service. It makes no claim to journalistic infallibility or prophetic forecast; but it does claim some ability to compare facts, trace effects to their causes, make reasonable deductions therefrom, and to add to these a requisite candor to state conclusions reached regardless of their temporary popularity.

Now that the Gazette's prediction concerning the repeal of the tariff on wools has been vindicated, it may be well to recur to its other prediction that, however much desired by wool growers, there is not much likelihood that the existing tariff will be increased, and from this to reiterate the insistence that wool growing should, be, and can be, made fairly remunerative under present conditions of law. The tariff of 10 cents per pound on unwashed clothing wools for the fiscal year ending in 1888 was in round figures about 50 per cent upon foreign valuation (officially reported at the average of 49.03 per cent). With the menace of reduction in tariff past, the prospect of an increase exceedingly remote, if at all possible, and the price of domestic wool about as low as it can go, the flock owners of the United States have something they can "tie to." They have but to bring wool production up to a paying point under existing conditions, and future depressions in their business will prove much less disastrous than that from which they are now emerging. How this can be done has been frequently pointed out in these columns; and that it can be achieved by the majority of flock owners need not for a moment be doubted.

The newly organized National Wool Growers' association has the opportunity for greatly improving upon the past record of that organization by proving that it has a usefulness beyond that of watching congress—a duty which need not be neglected while instilling into the minds of its followers the fact that profit in wool growing depends more upon skill in flock management and observance of all economies of wool and mutton production than upon efforts at influencing national legislation, however successful, and periodical enunciations, however well based upon equity as between domestic growers and their foreign competitors. With the future reasonably assured the present is the time for the flock owners of the country to firmly face the situation and make ready for a forward movement.

Correspondence Solicited.

Live men (merchants preferred) wanted in Texas, to act as local agents for engines and boilers, mills, cotton gins, scales and belting, by the special representative of several large manufacturers. Address H. W. Hubbard, Dallas, Texas.

The Silo.

Theo Munson in Rural World.

My experience with the silo is that I think that no farmer who keeps twenty head or more of cattle either for milk or beef can afford to do without it.

Where corn sells for more than 25 cents per bushel (and can be raised for

that) or hay over \$5 per ton, the silo will fit, both for health and economy. The silo levels up the former in localities where feed costs more than others, so he can compete with the cheap feed.

Corn ensilage is an excellent feed for horses; we are keeping eight head of work horses, and have not fed them a pound of hay this winter. They look well, and are standing up to the work. This spring we are feeding sheaf oats cut (with a little bran) with corn and corn ensilage to our horses; to our young cattle, ensilage, ear corn and fodder, sheaf oats (cut) for a change; to our cows we feed ensilage, corn and cob meal, cotton seed meal, bran and cut sheaf oats and fodder. In my fifteen years' experience in the dairy the above combination feed is the best. I have no experience with clover ensilage, but I think it must be good. Clover hay is all right when it is right, but most of the time it is wrong on account of rain.

There are so many ways to build a silo, that any farmer can suit himself to his location and circumstances. I have one built inside a log barn, two by six studding fourteen feet long, set three feet apart on end, spiked to the logs, sealed inside with rough boards, filled in between logs and ceiling with clay, lath and plastered with cement; size twenty-four feet square; another one built the same without the cement plaster; both keep well. Shall build another this summer, frame boarded and battened outside, tarred paper and flooring inside, coated with pitch; shall use one for clover hay.

Farmers are well along with their work, some planting corn; wheat looks well. Cattle in good condition. Hogs not plenty but healthy. A good many farmers say the farm does not pay, and want to sell and try somewhere or something else. No millionaires among the farmers. We are called grumblers; we have something to grumble for. Hard work, close competition and isolation are some of the things to complain of, but with a few good papers, close attention to soil, the weather and stick and hang, we manage to pull along.

NEW MEMPHIS LINE.

Via Iron Mountain Route From All Points in Texas.

The daily trains, one solid consisting of coaches and free reclining chair car are now being run between Texarkana and Memphis via the Iron Mountain route and Bald Knob. Through sleeping car from all principal points in Texas run through to Little Rock on the other train and at that point make connection with similar equipment through to Memphis. Direct connection is made at Memphis with all lines to the East and Southeast. This is a revolution in transportation service to Memphis. Ask your agent for a ticket via this route.

Dr. Pierce's Pellets, or Anti-bilious Granules, have no equals. 25 cents a dose. Cures headache, constipation, biliousness and indigestion.

CAUTION.—Buy only Dr. Isaac Thompson's Eye Water. Carefully examine the outside wrapper. None other genuine.

STOCKMEN

Of Texas and the Indian Territory, or elsewhere, who are visiting St. Louis and Chicago, can save money by purchasing their

CLOTHING

In St. Louis of us.

We are the Leading Clothiers of St. Louis, carry the largest stock of fine goods, and will make a suit to order, on short notice, cheaper and better by thirty-five per cent. than you get a similar suit at home.

Call on us, mention the Texas Live Stock Journal, and your purchases will be expressed at our expense. Send for an Illustrated Catalogue; mailed free.

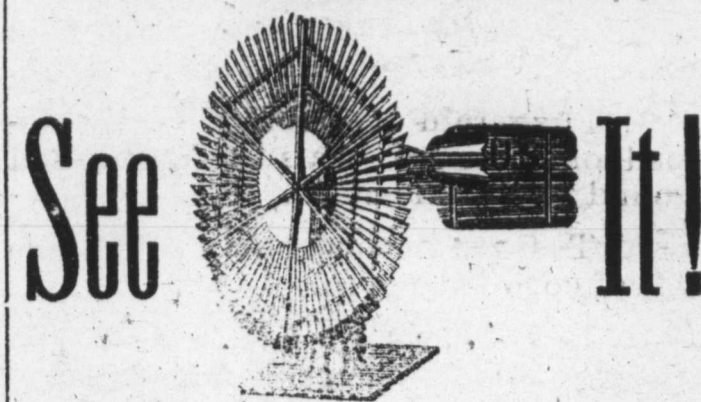
F. W. HUMPHREY & CO.,

Corner Broadway and Pine,

ST. LOUIS, MISSOURI.

U. S. Solid Wheel Halladay Standard Wind Mills EUREKA

THE U. S. SOLID WHEEL,



It is the best and most successful pumping Wind Mill ever made.

LONG STROKE,
SOLID and
DURABLE.

HORSE POWERS, tread or sweep,
PUMPING JACKS, best in market,

Feed Cutters, Pear Cutters,
Iron Pipe, Well Casing, Engines,
Farm Pumps, Ranch Pumps,
Hose, Belting, Brass Goods,
Tanks, Well Drilling
Machines,
Grinding Machinery.

If you want any of the above, or if you want farm or ranch fitted with a water supply outfit, get our prices and our catalogues. It will cost you but little and may pay you well.

THE PANHANDLE Machinery and Improvement Co.

Corner Throckmorton and First Sts.,

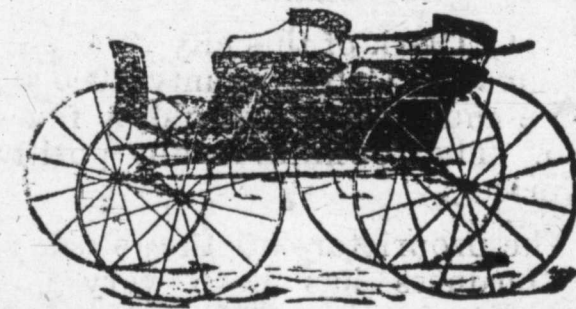
FORT WORTH, TEXAS.

Branch House, Colorado, Texas.

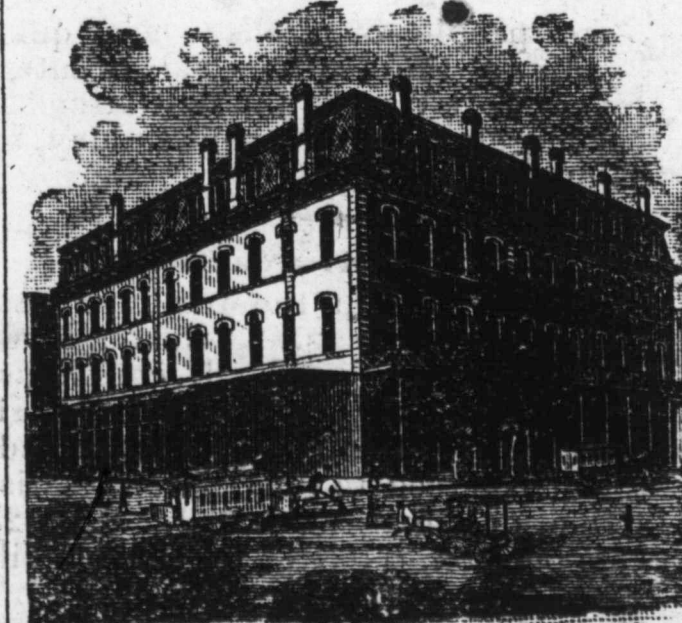
Active Agents wanted in every county in the state.

E. H. KELLER,

Salesroom 208, Shops 210 & 212, Throckmorton St.,
FORT WORTH, TEXAS.



Columbus Buggy Co.'s Buggies, Columbus, Ohio.
E. M. Miller & Co., Quincy, Ill., Truckboards
and Spring Wagons, Tops, Dashes, Cushions,
Fine Trimming, Painting and
Repairing a Specialty.



ELLIS HOTEL

Fort Worth, Texas.

The best appointed hotel in the South.
Commercial travel solicited.

ED. MUELLER,

Proprietor.

Summer Cook Stoves.

FOR WOOD, COAL OR COBS.

cheaper and Safer than Oil
or Gasoline.

Why Not confine heat in a
stove, as in cold in a re-
frigerator, and use the same
stove for Summer as well as
Winter? Price, \$7 and up.

HESS STOVE WORKS,
210 Van Buren St., Chicago, Ill.



ABOUT POULTRY.

Notes from a Texas Breeder.

NECHESVILLE, TEX., April 22, '89.
 Editor Texas Live Stock Journal:
 Our egg account for March: Average for Red Caps, 22 eggs for each hen; Blk. Minorcas, 17; Bro. Leghorns, 18; Shawlneck games, 16; P. Rocks, 17; Langshans, 10; Wyandotts, 17, or an average of 17 eggs for each hen in our yards. From 1st to 20th of this month we credit: R. Caps, 15; B. Minorcas, 14; Bro. Leghorns, 10; Shawl. Games, 13; B. B. Red Games, 13; P. Rocks, 10; Langshans, 10; Wyandotts, 10, or an average of 12 eggs for each hen. We use no fractions, but nearest whole number. Not eggs enough. Hens too fat, especially so Langshans and Minorcas. P. Rocks so fat eggs did not hatch well, still did not prevent them from laying as many as any of the larger breeds. Failed to practice what we preached in January "a variety of food judiciously fed and plenty of exercise are the secrets of success in making poultry profitable. Fat hens do not lay many eggs." It's good doctrine, anyway. We did not have the practical experience in feeding fowls kept in an 80x80-foot pen; we are learning right along.

More fowls and chicks are killed by lice and vermin than by all diseases they are heir to. Use whitewash freely, with a little sulphuric or carbolic acid in it; use it on the nests, inside and outside of house, everywhere.

Filth fosters vermin and disease. Clean out hen house often; the manure, if saved, will pay for the time; burn sulphur in it occasionally. Lime washes on the floor is good; better have dingy legs and healthy fowls than sick ones with yellow legs. Clean out the nests, burn the straw—they are regular lice incubators.

Don't kill your young chicks by stuffing them with raw dough; feed them corn bread until two weeks old, never more than they will clean up.

If you have hatched chicks from thoroughbred eggs, don't kill them with too much feed or salty bread. You are sure to say fine fowls are not healthy. Often times you would hit the nail on the head, for they are by some bred in-and-in too much and at expense of the constitution. Fowls rapidly degenerate when kept closely related too long.

Plenty of shade, water and cleanliness will give you healthy fowls. If you cannot give them this, nor become interested in them, don't invest in them; you will lose your money.

If you are going to purchase thoroughbred fowls, go at it as you would in purchasing a Jersey cow—use proper precautions. Don't buy from "Agt. Smith Poultry company," or any other poultry company that fails to show up who compose the concern. Don't buy from a "Cheap John." You may set the "Agents" and "Cheap Johns" down as hucksters. They do not know a standard fowl when they see it. Don't let a big ad. in a journal published in another state catch you, but look up your home papers. If they do not use them you can safely conclude they cannot say so much at home. Some hucksters (so-called breeders) advertise a long list of

breeds and fill their orders from yards of families living in the towns and oftentimes such fowls mix with neighbor breeds. We have plenty of honest breeders in Texas, but we have some hucksters and frauds. They are hard to locate. They advertise big, borrow fowls from town and city fanciers that win at the fairs, join the associations, and their cheek and wind pushes them sometimes into office, which helps them to practice their tricks and rascality. Be sure you purchase from a home breeder, a home advertiser, and satisfy yourself that he breeds what he advertises. You will have to pay him more than you would "agent" or a Cheap John, but it is always cheapest to buy the best.

J. G. McREYNOLDS.

A Scrap of Paper Saves Her Life.

It was just an ordinary scrap of wrapping paper, but it saved her life. She was in the last stages of consumption, told by physicians that she was incurable and could live only a short time; she weighed only seventy pounds. On a piece of wrapping paper she read of Dr. King's New Discovery, and got a sample bottle; it helped her, she bought a large bottle, it helped her more, bought another and grew better fast, continued its use and is now strong, healthy, rosy, plump, weighing 140 pounds. For fuller particulars send stamp to W. H. Cole, druggist, Fort Smith. Trial bottles of this wonderful discovery free at H. W. Williams & Co.'s drug store.

Ohio Improved Chesters.

The Ohio Farmer has made an investigation of the L. B. Silver company, visiting several farms where the Silver Chester hogs were bred and raised. The Ohio Farmer says in conclusion: We still believe, and so does the L. B. Silver company, that the Ohio Improved Chesters could get the cholera under certain conditions, but we think them less liable to take it than most breeding stock on account of their being fed and cared for to guard against it, and if the company chooses to guarantee its hogs, offering to replace any that die of the disease, we think they should not be condemned for so doing.

A Milk Trust Comes to Grief.

Rural World.

The middlemen of Pittsburgh, Pa., and Allegheny City, who have been obtaining milk from farmers and selling it to families, hotels and other consumers, began to consider recently the wisdom of forming a trust. They thought they could simplify the business and secure better profits, but while they were planning how to form their trust the farmers got together and decided that if a trust was to be formed they would form it themselves. The farmers of seven counties were at the meeting. They represented 411 dairies in the country surrounding Pittsburgh, and they associated themselves under the title of the "Milk Producers' Union of Western Pennsylvania." The 411 farmers decided that each member of the union should ignore the middlemen and ship their milk to one concern, the Chartiers Creamery company, which is to act as an agent of each individual milk shipper. The president of this company is Frank C. Reed, and by the terms of his agreement with the Milk Producers' Union, he stands alone between the people and the farmers. The many milk dealers who used to handle the 20,000 or 30,000 gallons of milk arriving each day in Pittsburgh are knocked out. The farmers are bound to send all their milk to Mr. Reed's company. He will pay them 12c a gallon in summer and 18c in winter. The retail dealers will have to buy from him. Heretofore they have bought from farmers for 11c, but now they will have to pay 13c, and

SORE FROM KNEE TO ANKLE.

Skin entirely gone. Flesh a mass of disease. Leg diminished one third in size. Condition hopeless. Cured by the Cuticura Remedies in two months. Not a sign of disease now to be seen.

For three years I was almost crippled with an awful sore leg from my knee down to my ankle; the skin was entirely gone and the flesh was one mass of disease. Some physicians pronounced it incurable. It had diminished about one-third the size of the other, and I was in a hopeless condition. After trying all kinds of remedies and spending hundreds of dollars, from which I got no relief whatever, I was persuaded to try your CUTICURA REMEDIES, and the result was as follows: After three days I noticed a decided change for the better, and at the end of two months I was completely cured. My flesh was purified, and the bone (which had been exposed for over a year) got sound. The flesh began to grow, and to-day, and for nearly two years past, my leg is as well as ever it was, sound in every respect, and not a sign of the disease to be seen.

S. G. AHERN, Dubois, Dodge Co., Ga.

Terrible Suffering from Skin Diseases.

I have been a terrible sufferer for years from diseases of the skin and blood, and have been obliged to shun public places by reason of my disfiguring humors. Have had the best of physicians and spent hundreds of dollars, but got no relief until I used the CUTICURA REMEDIES, which have cured me, and left my skin as clear and my blood as pure as a child's.

IDA MAY BASS, Olive Branch P. O., Miss.

Marvelous Cure of Skin Disease.

The CUTICURA, CUTICURA RESOLVENT, and CUTICURA SOAP have brought about a marvelous cure in the case of a skin disease on my little son eight years old. I have tried almost all remedies and also the most eminent doctors, all alike failing, except the wonderful CUTICURA REMEDIES.

ED. N. BROWN, 720 N. 16th street, Omaha, Neb.

Cuticura Remedies

CUTICURA, the great Skin Cure, and CUTICURA SOAP, an exquisite Skin Beautifier, externally, and CUTICURA RESOLVENT, the new Blood Purifier, internally, are a positive cure for every form of Skin and Blood disease, from Pimples to Scrofula.

Sold everywhere. Price, CUTICURA, 50 cts.; SOAP, 25 cts.; RESOLVENT, \$1. Prepared by the POTTER DRUG AND CHEMICAL CORPORATION, Boston, Mass.

Send for "How to Cure Skin Diseases," 64 pages, 50 illustrations and 100 testimonials

BABY'S Skin and Scalp preserved and beautified by Cuticura Medicated Soap.

HOW MY BACK ACHES

Back-Ache, Kidney Pains and Weakness, Soreness, Lameness, Strains and pain relieved in one minute by the Cuticura Anti-Pain Plaster. The first and only pain-killing plaster. 25 cents.

they object to that so strongly that they may tie up their trade for a few days or so, and there will be a milk famine. The Reed company declare that milk under the new deal will be cheaper. The retailers have been charging 24c to 32c a gallon, affording a profit of 100 per cent. The new distributing company makes butter and will use each day's surplus supply of milk, and this will insure fresh milk for families every day.

Free School for Blind Persons.

At Austin there is a large free school for the blind children of Texas, where they can pursue all studies of the ordinary schools, and besides, if they have talent for it, can study all branches of music. They may also learn how to make brooms, mattresses and pillows and to bottom chairs with cane or rattan. Girls can learn to sew by hand or machine, and do crochet and bead work. The buildings are large, roomy and well furnished. No charge will be made for board, tuition, washing or use of books and instruments—everything is free. Clothing and railroad fare will be furnished for those who are unable to furnish money for those items. Please address

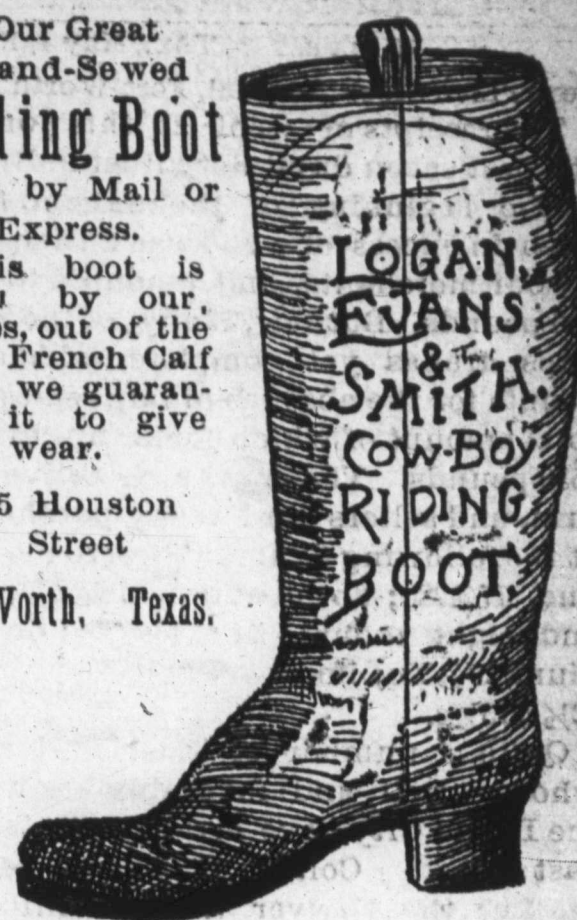
DR. FRANK RAINEY, Sup't, Austin, Tex.

Our Great Hand-Sewed Riding Boot Sent by Mail or Express.

This boot is made by our selves, out of the best French Calf and we guarantee it to give good wear.

315 Houston Street

Ft. Worth, Texas.



Steel Stay Guards For



WIRE FENCES.
WHY NOT USE
 Large smooth wire and our Stay Guards, and build the cheapest, strongest and most durable harmless fence ever put up? Can be made hog or sheep-tight. For information write
WIRE FENCE IMPROVEMENT CO.,
 325 Dearborn Street, Chicago, Ill.
 Mention this Paper.

WHITMAN'S NEW PATENT GUARANTEED SUPERIOR TO ANY LEVER PRESS NOW MADE



Received First Premium at N. Y. State Fair, 1880, 1881, 1882, 1883 and 1885, including the Grand Gold Medal and two Silver Medals, over Dederick and others; also World's Fair at New Orleans, California State Fair, New England and Dallas (Texas) State, 1886. The most rapid, powerful and durable press made; puts over ten tons in car; bale every three minutes; fully warranted and protected; three bales to any other press's two. Also Horse Powers Cider Mills, Corn Shellers, Feed Cutters, &c. Send for illustrated circulars. Address
WHITMAN AGRIC'L CO., St. Louis, Mo.

We also make the best Steam Press in America, and Full Circle Steel, guaranteed.

PIANOS and ORGANS

Direct to customers from headquarters, at wholesale prices. All goods guaranteed. No money asked until instruments are received and fully tested. Write us before purchasing. An investment of 2 cts. may save you many dollars. Address

Jesse French Piano & Organ Co., NASHVILLE, TENN.

Wheeler's Practical Fence Stay PERFECT HOG FENCE

Patented June 23d, 1886. Patented August 23d, 1887.
WHEELER & CO., 7-21 38th St., Chicago. W. A. HOFFMAN IMP. CO., Ft. Worth, Tex.

Fort Worth Grocer Co.

We can save you money on your next bill of groceries. Give us a trial.

Fort Worth Grocer Co.

We keep in stock ROCK SALT. Orders for car lots or in small quantities filled promptly.

Fort Worth Grocer Co.

Send us a trial order for anything in the grocery line. Fresh goods at low prices.

Fort Worth Grocer Co.

Ranchmen can depend upon us, or any supplies needed. Orders by mail given special attention.

Galveston Wool Market.

GALVESTON, TEX., May 1, 1889.

Texas Live Stock Journal, Fort Worth.

The receipts of wool at this port for the past seven days, notwithstanding it is the beginning of the season, have been in excess of what was anticipated by our merchants, and amounts to 293,800 pounds. But few, if any, of the large clips are as yet complete, which accounts for the absence of large sales, the total amount of which foots up to but 8530 pounds. The market is active and firm, and sellers find ready purchasers at the following figures: Twelve months fine, 17@22c; do medium, 18@23c; six and eight months fine, 15@21c; do medium, 17@22c; improved, 16@18c; carpet, 12½@13½c.

Quite a number of Eastern buyers who are well and favorably known in the Island City have arrived within the past week. Col. W. K. Sharp, representing the Sawyer Woolen mills of Dover, N. H.; Major Tom Scollard of the firm of Nichols, Dupee & Co., Capt. Balch and Col. Putnam have just arrived from the Hub, and Col. Jake Wood and Capt. I. Loyd of Philadelphia, Pa., are also in the city, while many others are looked for at an early day. Col. Lammers of the reliable firm of Lammers & Flint, is at present in Western Texas, looking after the interests of the wool department of his house, and reports that the prospects are bright for Galveston to more than double her receipts of wool this season as compared with those of the year previous, while information from many other sources is quite as encouraging.

Col. John Owens, in charge of the wool department of Adoue & Lobit, returned from San Antonio on the 29th, at which point he stopped for a week, reports that the entire western and southwestern portion of the state is overrun with buyers, and that 20c has been offered for six months clips in the Encinal and Laredo districts. Col. Owens also reports that his house has just received a lot of 73 bags of wool from Brownsville, which he thinks is the first shipment that Galveston has received from that point for many years.

The wool growers and dealers in Texas are invited to look over the list of firms in the wool trade of Galveston whose cards appear in the TEXAS LIVE STOCK JOURNAL. W. N. BAXTER.

To the Cattlemen of Western Texas.

You will please note that the quarantine line established by the cattle sanitary board of New Mexico against Texas as published by the TEXAS LIVE STOCK JOURNAL is the south line of New Mexico prolonged into Texas to the Southwest corner of Mitchell county, thence by county lines Northeastly to Red river. It will thus be seen that only the cattle of the Panhandle of Texas, are permitted to enter New Mexico at all times of the year while all the rest of our state is cut off from that market except from the 15th of November to the 15th of March, months in which cattle cannot be driven. This arbitrary action has doubtless taken to a great degree by the influence of the cattle owners in the Panhandle. Observing this great injustice to the cattle interest of our state, I took it upon myself to open correspondence with Hon. J. D. Warner, secretary of the New Mexico Sanitary board whose courteous reply is found published herewith. In my long residence in West Texas I have never known of a

single case of Texas fever originating by contact with our cattle. Let us deal fairly and honorably with our friends in New Mexico, and if such a case is known by any one let it be stated. By a truthful showing of the healthfulness of our cattle I am convinced that the New Mexico Sanitary board will extend their line so as to include in the non-infected district the counties of Kinney, Val Verde and all north and west thereof. We have not time to call a representative meeting of the cattlemen to lay a conference report before the New Mexico board at their next meeting the 1st of May, and I would therefore respectfully suggest that those interested would individually address the board to the end that wider and fuller commerce may be opened between our state and that territory to their mutual benefit. The gods help those who help themselves, and I am confident if a true showing is made that their quarantine line will be made to embrace only infected districts and that our mountain counties will have the restriction removed.

The quarantine line of Colorado, Wyoming, Montana and Dakota against Texas commences on Red river at the Northwest corner of Wichita county, Texas, thence Southwesterly to the Southwest corner of Val Verde county. Thus it is that the new quarantine area, in Texas for the above states and territories is twice as great as the non-quarantine area for New Mexico. Both lines, however, throw the mountain counties of Val Verde, Kinney, Edwards and others into the assumed infected district. The cattle owners of these healthful mountain counties should bestir themselves and show to our Northern brethren the injustice of the lines as now established and have them so changed that a larger area can be thrown open to Northern buyers and that a greater freedom of trade can prevail between the healthy cattle raising districts.

Respectively submitted,

C. S. BRODBENT,
Del Rio, Texas.

West Texas papers please copy.

LAS VEGAS, N. M., April 20, 1889.

C. S. Brodbent, Esq., Del Rio, Tex.:

DEAR SIR: I am in receipt of your favor of the 16th instant, calling the attention of our board to the present quarantine limits of the New Mexico law of quarantine. I shall take pleasure in laying your letter before the board at their next meeting, which will be held at Kingston about the 1st of May. I can say this much in advance of any action being taken by the board, that New Mexico only desires to quarantine against such districts in Texas as are known to be the centers of disease. If our line includes a perfectly healthy district, the line should be changed. We should be glad to hear from you in detail upon this point for the section you speak of. Very truly yours,

J. D. WARNER, Sec'y.

**Standard-Bred Poultry.**

J. G. McReynolds & Co.,
Nechesville, Texas, breeds English Red Caps, Black Minorcas, Ga. Shawneck Pit Games, Brown Leghorns, Langshans, Wyandottes and Plymouth Rocks. Bred strictly to the standard. The most complete poultry farm in the state. Write for wants.

CHAMPION, PENNINGTON & CO.,

Real Estate and Live Stock Brokers,

Werbiski Building, 12th Street.

P. O. Box 42, BROWNSVILLE, TEXAS.

THE
OSGOOD
U.S.
STANDARD SCALES.

Sent on Trial, Freight Paid
—TO ANY—
R. R. STATION IN TEXAS.
Guaranteed Correct.
3 TON WAGON SCALES
\$35.00
WARRANTED FOR FIVE YEARS.
Send for Circulars and Prices.
H. W. HUBBARD,
Manufacturers' Special Agent,
936 Commerce St., DALLAS, TEX.
Engines, Boilers, Belting, Gins, Mills, &c.

M. W. DUNHAM'S
OAKLAWN FARM.

3,000 PERCHERON
FRENCH COACH HORSES,
IMPORTED.
STOCK ON HAND:
300 STALLIONS
of serviceable age.
150 COLTS
superior individuals, with choice pedigrees.
200 IMPORTED BROOD
MARES

(80 in foal by Brilliant, the most famous living sire).

ALL STOCK SOLD FULLY GUARANTEED.

Best Quality. Prices Reasonable.

Terms Easy. Don't Buy without inspecting this Greatest and Most Successful Breeding Establishment of America.

Address, for 250-page catalogue, free,
M. W. DUNHAM, WAYNE, ILLINOIS.

35 miles west of Chicago on C. & N.-W. R'y.

between Turner Junction and Elgin.



LOWEST PRICES IN AMERICA.

Standard, Reliable Instruments at Lowest prices known

No competition with Cheap, inferior Instruments.

REDUCED PRICES, SPECIAL OFFERS.

PIANOS \$200. | ORGANS \$65.

¾ Oct Upright, 3 Stringed. Four Sets Reeds, Eleven

Rich Rosewood Case. Stops, Couplers, Fine Case.

STOOL, COVER, INSTRUCTOR—ALL FREIGHT PAID.

Largest Stock South. 200 Styles and Prices.

Pianos—\$10 Monthly. Organs—\$5 Monthly.

Low Time Prices—Fair Contract—No Risk—No Forfeiture

of Cash paid. SIX SPECIAL OFFERS. Send for

Free Paper. "Sharps and Flats," giving full information.

LUDDEN & BATES,

SOUTHERN MUSIC HOUSE, SAVANNAH, GA.

FT. WORTH IRON WORKS

FORT WORTH, TEX.,

Manufacturers of the Celebrated

Ft. Worth Well Drilling Machine,

And dealers in

Steam Pumps for Boiler Feeding, Artesian Well Pumps and Pumping Jacks, Shafting, Pulleys, Gearing, Pillow Blocks, Couplings, Engines and Boilers.

COTTON PRESSES,

Cheap Screw Presses, Hydraulic Presses and Direct Acting Steam Cylinder Presses.

Furnishers of Complete Ginning Plants.

Estimates made on Roller Flouring Mills in sizes from 50 to 100 barrels per day.

Architectural Iron Works of all Kinds Made to Order,**Land, Cattle, Horses and Sheep.**

Range cattle, horses, sheep and choice arming and ranch lands for sale by

E. H. WILKES & CO.,
Law, Land and Live Stock Agency
Santa Anna, Coleman County, Texas**Drs. Pollock & Keller,**401 Main Street,
FORT WORTH, TEXAS.**Chronic Diseases a Specialty**

MRS. M. E. KELLER, M. D., specialty diseases of women and children.

DR. J. R. POLLOCK successfully treats Piles, Fistula, Fissure and all diseases of the rectum.

Oxygen and Electricity

for the treatment of catarrh, bronchitis, consumption, dyspepsia, constipation and all diseases of the nervous system. Best of our patients given upon application. Correspondence solicited.

1876.

1889.

BAZAAR OF FASHION.Millinery, Fancy Goods and Dressmaking,
FORT WORTH, TEXAS.

This well-known resort for Ladies' Attire is situated on the Corner of Third and Houston streets, the most central and accessible location in the city; directly opposite the City National Bank.

With thirteen years experience in the art of selecting the best and most elegant materials, combining colors, arranging draperies and trimmings, and with skilled artists as helpers, the manager again invites the Ladies of Fort Worth and North Texas to come and see and test the qualities and styles of her new goods, and compare her prices with those of other houses.

Chickering, Wheelock, Mall ushek
PIANOSLargest stock and best
in the state at**C. H. EDWARDS,**733 and 735 Main St.,
DALLAS, TEXAS.

Send for prices before purchasing elsewhere.

J. C. SCOTT.
Attorney-at-Law,304 MAIN STREET, FORT WORTH, TEX.
Land and Commercial Law.

Refers by permission to Hon. Henry M. Teller, Sec. Interior, Washington, D. C.; Valley National Bank, St. Louis, Mo.; H. M. Truehart & Co. Galveston, Tex.; Gen. B. C. Ludlow, Col. Int. Rev., Austin, Tex.; City National Bank, Fort Worth, Tex.; First National Bank, Fort Worth, Texas.

THOS. F. WEST,

Late of Jacksboro,

Attorney-at-Law,

311 Main Street,

FORT WORTH, - - TEXAS!

Special attention to Land and Live Stock Litigation.

J. W. MADDOX.

THOS. N. DEVINE.

MADDOX & DEVINE,

-:Real Estate:-

AND

Live Stock Commission Agts

First Floor Kampmann Block,

SAN ANTONIO, - - TEXAS.

Specialty made of Ranch Properties an handling imported fine stock. Loans negotiated; correspondence solicited

CHICAGO MARKET LETTER.

Texas Fed Cattle, \$3 to \$3.75—Hogs, \$4 to \$4.50—Sheep, Clipped \$2.85 to \$3.90; Woolled, \$3.50 to \$4.25—Danger of Losing Palace Cars—Personal and General Notes.

U. S. YARDS, }
CHICAGO, ILL., April 29, '89. }
Regular Correspondence Texas Live Stock Journal.

The Texas cattle market last week was as good as it could be with the fat native beef cattle market as it was.

Last week's receipts were 46,500, against 52,127 the previous week and 45,694 the corresponding week last year.

This week opened with 10,000 cattle, 16,000 hogs and 3000 sheep. Cattle and sheep advanced 10c.

Col. Lew Hastings of Gregory, Cooley & Co. got home this week, and says Texas is in good shape.

There is danger that the railroads may succeed in their effort to throw the patent cattle cars off of their lines. They are doing it in the East, and the cattle men of the West want to look sharp, or they will have a chance to return to the old-fashioned stock car. It looks like a scheme of the roads to get control of the patent cars without rendering the proper equivalent.

The Texas hog market has not been so good of late. Several shipments sold the past week at \$4@4.40, or not as high relatively as native hogs. The bulk and the best of the latter, however, sold at about \$4.70.

Native cattle sold to-day at \$3.40@4.25 for poor to good. The bulk of the fat 1200@1400-lb steers sold at about \$3.90@4.10. Cows sold at \$1.50@3.40, with the bulk at \$2.35@2.65. The stock and feeding cattle are selling at \$2.40@3.60.

J. Short & R. marketed a lot of 200 corn-fed 1348-lb Colorado cattle at \$3.90.

Among to-day's sales of Texas stock were 50 steers, 1002 lbs, at \$3.40; 23 steers, 992 lbs, at \$3.40.

Keenan & Sons sold for A. & W. a lot fall clipped Texas sheep as follows: 323 head, 74 lbs, \$3.90; 172 head, 70 lbs, \$4.

The sheep market was 10c higher to-day than at the close of last week. Quotations for Texas woolled, \$3.50@4.25; clipped, \$2.85@3.90.

Wood Bros. sold for A. J. Vick & Co. 18 head of 1261-lb bulls at \$2.65.

Faxon, Shattuck & Co. sold 59 1013-lb steers at \$3.70; 100 steers, 968 lbs \$3.25; 18 stags, 1060 lbs, \$2.50; 72 steers, 932 lbs, \$3.50.

R. Strahorn & Co. sold for Beggs & Hackett of Hillsboro 39 steers, 1148 lbs, \$3.60. For J. LaCroix of Memphis 20 fed cattle, 1251 lbs, \$3.75; 148 head, 1007 lbs, \$3.45; 25 head, 928 lbs, \$3.35.

Brown Bros. sold for J. M. Dudley of Ennis 57 fed steers, 10.7 lbs, at \$3.65.

J. M. Gilpin of Ennis, Tex., writes: "Our feeding cattle are now on luxuriant grass, taking on the big fat, waiting till the market gets a little better; then shipping will begin briskly. This place will probably ship 150 cars."

Mallory & Son say: "Distillery-fed cattle will begin to move soon, but as they are all controlled by a few men they are worked off with but little perceptible effect upon the general market. We are still inclined to think that the worst is passed, and while we do not anticipate any decided boom in prices in the near future, we believe the outlook is more encouraging. If holders will not get excited when the market advances and rush too many cattle to market, we think we can establish some advance, as the demand is good for all qualities. Texas cattle have only been in moderate supply, and all have sold readily for comparatively good prices, but we look for larger receipts soon,

when we can better test the market and establish prices that will be reliable."

Keenan & Sons say to their customers: "Shippers should bear in mind that the old standard values of cattle are largely done away with in consequence of the multiplicity of buying interests, each buyer having in view only the wants of the retail trade which he supplies. He who would be successful in the buying and shipping of cattle must closely watch the market to see what classes of cattle are most in demand from time to time, and not buy on his judgment of what ought to sell best. The best demand just now seems to be for blocky, fine boned, fat cattle of 1150@1250 lbs average. Texans, corn-fed, have sold well during the week, when fat and of fine quality, bringing \$3.75@3.90. Rough Texans, even if fat, do not sell as well as smooth, fat, light grades. Some 1100-pound Texans, fat but rough, sold at \$3.40@3.60; half fatted, light and heavy selling at \$3@3.40. A lot of very thin grass Texans sold to-day at \$2.25, averaging 746 lbs. Texas shippers should pay more attention to the quality of their cattle, bear in mind that this is a market for fat cattle, and ship none but fat ones, whether light or heavy. The better you have them the higher the price you can realize."

Lump-jawed cattle are being condemned in large numbers. That is, all are being condemned and sometimes thirty to forty arrive here in a week.

A. C. HALLIWELL.

Rock Salt.

Messrs. Turner, McClure & Co. of Fort Worth have on hand a car-load of the celebrated rock salt, which is the best salt that can be used for cattle, horses, and all kinds of stock. Cattle like the rock salt and prefer it to all other. They cannot eat enough to hurt them, as it is as hard as a rock and must be licked. Messrs. Turner, McClure & Co. will fill orders by mail promptly, either in large or small quantity. Send a trial order.

TURNER, MCCLURE & Co.

ST. LOUIS MARKET LETTER.

EAST ST. LOUIS, ILL., }
April 30, 1888. }

Regular Correspondence Texas Live Stock Journal.

Corn-fed Texas, wintered Texas and warmed-over Texas have been coming forward in fair enough numbers. Many found disposal here, but some being billed through, went on. The quality, as a general thing, was not of the best, yet was pretty fair, but toward the close deteriorated somewhat, and was not as good as before. It seems the tops have already come in, and from this on steers of lesser weight and lesser fat make their appearance. Some fine 1200-lb steers brought \$3.85, but they were few, however, the bulk going at \$3.25@3.40 per 100 lbs, and some as low as \$2.90@3 per 100 lbs. Good fat Texas steers were wanted and brought fair enough figures, and thin cattle were slow, and there is a great difference between fat steers and thin ones. Only a couple of bunches of grass Texas steers came in, and as they were light they met with slow disposal at low prices, the range being from \$2.40@2.65 per 100 lbs.

From this it will be seen that it does not pay to send common and medium Texas cattle to market, for these come into competition with native and Southwest cow and heifer stock, and such

kind of stuff goes for very low figures—say from \$2 to \$2.75 per 100 lbs.

Texas shippers should by all means keep back light and thin stock until they are fat or in a decent condition.

Good native steers of 900 to 1200 lbs were in steady demand throughout, while extra heavy steers were dull; so it will be seen that poor cattle are very low and extra beeves are slow. The happy medium is the desired kind.

Good fat Texas hogs of 190 to 260 lbs were in steady inquiry and scarce, and the few offered brought from \$4.20@4.55 per 100 lbs. Common and mast-fed hogs dull at \$4@4.25 per 100 pounds.

The season of Texas clipped sheep has fairly opened it can be said, and the receipts were quite large. A goodly number found disposal at this point, while a large number went on through in first hands. Prices paid ranged from \$3.25@3.85 per 100 lbs, with the bulk of sales going at \$3.25@3.50 per 100 lbs. Thin and common Texas sheep, fit only for stockers, were dull of disposal at very low prices, the range being from \$2.75@3 per 100 lbs. Common sheep are only fit for stock sheep, and the demand for these is limited indeed.

Texas horses and mares have started coming in quite freely the past two or three days. Sam A. White says there is a fair demand for good grades at about steady prices. Common and thin slow. He says, however, it is yet too early to say how the market will go.

The wool market is slow and quiet. The demand is very moderate, and all classes of buyers are cautious in their movements.

RATTLER.

Valley View Stock Farm.

W. P. PATTILLO, Prop., Atlanta, Ga.

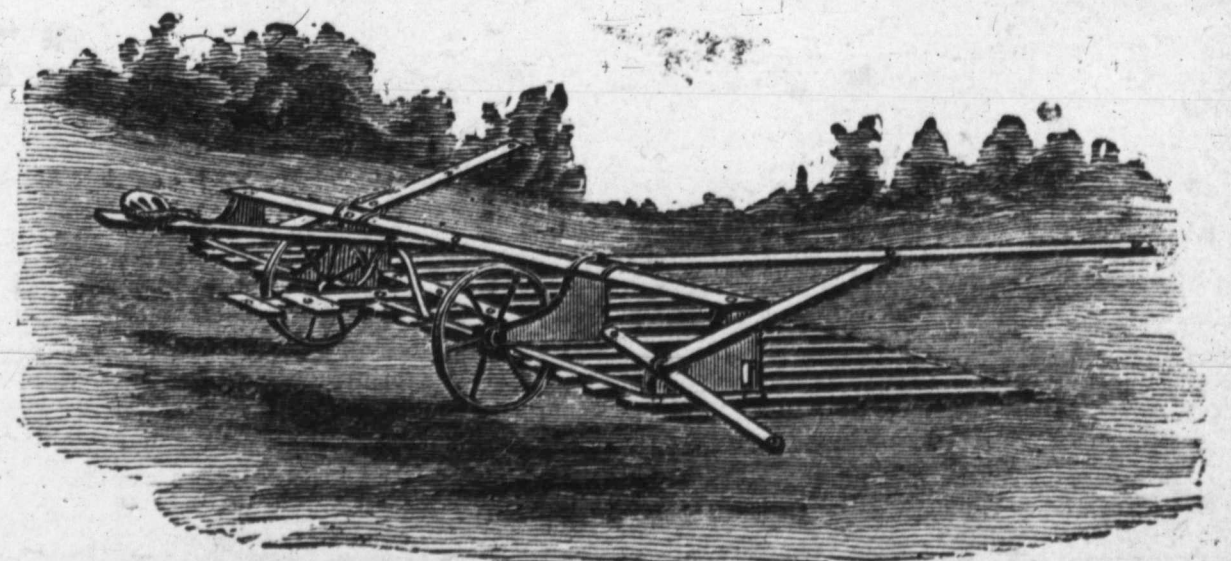
12 miles southeast from Gordon, in Erath county, Texas.

Percherons, Clydes, Herefords, Angoras and Poland Chinas on hand and for sale.

A special bargain is offered in full-blood and grade Angora Goats, grade male Hereford cattle, and cows bred to Hereford bulls.

Come and see, or write to

J. W. HOOKER, Manager,
Gordon, Texas.



THE DAIN HAY GATHERERS.

Stockmen and hay growers everywhere are using this Gatherer in preference to any other, as it does away with winnowing, shocking and hauling the hay. It gathers the hay from the swath and delivers it to the stack; being twelve feet wide, will take 600 to 800 pounds at a load. Write the

T. R. & A. MANUFACTURING CO., Kansas City, Mo.,

For descriptive circulars and price list.

RUSSIA SALVE
FARMERS AND OTHER FAMILIES LIVING AT

a distance from stores should by all means keep a supply of Redding's Russia Salve handy in case of accidents. It is without question the greatest healing and soothing remedy in the land, clean and pure, excellent for sore Eyes or Lips. Price 25 cents.

Well Drilling Machinery
SOLD ON TRIAL.

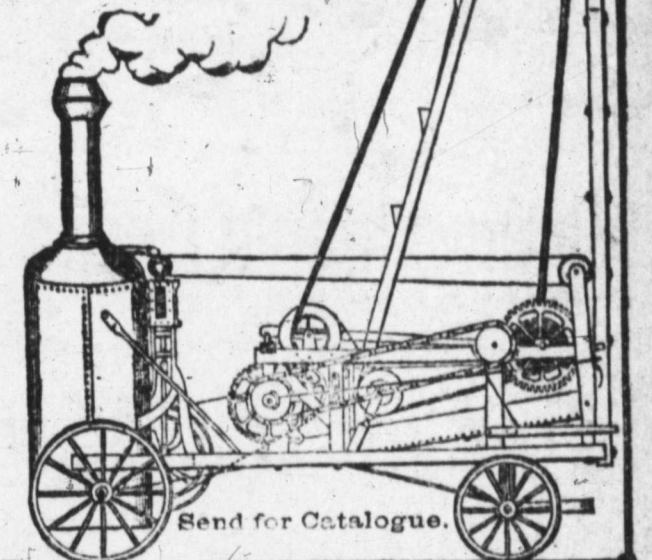
No Cash Payment—or settlement kind—until after a

SATISFACTORY TEST.

Machinery and Tools
Guaranteed to make Wells anywhere,

and at the rate of 3 ft. to every 2 ft. by any other machine, or no sale.

THE BEST is always THE CHEAPEST.



EMPIRE WELL AUGER CO.,
ITHACA, N. Y.

WELL DRILLING
Machinery & Tools

ST. LOUIS VISE & ARTESIAN TOOL CO.,
Catalogue Free: ST. LOUIS, MO.

Mention this paper.

Cedar Fence Posts!

We keep on hand a large supply of Cedar Fence Posts, 2, 3, 4, 5, 6, 8, 10, 12, 14 and 16 feet long; also House Blocks. We can give special rates for car-load lots to all points in the state.

JOHNSON BROS.,
Strawn, Palo Pinto County, Texas.

W. J. HAYNES & CO.

H. F. LANGENBERG.

G. F. LANGENBERG.

W. J. HAYNES & CO.,

WOOL COMMISSION

Cor. Market and Commercial Streets,

ST. LOUIS, MO.

Liberal Advances on Consignments of WOOL, HIDES, PELTS, ETC.

REFERENCES: St. Louis Nat'l Bank, Dunn's and Bradstreet's Commercial Agencies

ARMENTROUT & FRAZER,

Corner of Weatherford and Throckmorton and corner of Weatherford and Lamar Streets
FORT WORTH, TEXAS.

Dealers in Wool, Hides, Etc.

Also keep in stock a full line of

WEIR PLOW COMPANY'S FARM IMPLEMENTS,

Tennessee Wagons, manufactured by Cherry, Morrow & Co., Nashville, Tenn.; Bain Wagons, H. W. Davis & Co.'s Buggies, Cincinnati, Ohio; The E. M. Miller Buggies, Quincy, Ill.; Cook & Co.'s Buggies, Cincinnati, Ohio; The Racine Spring Wagons and Carriages; The Minnesota Chief Thresher, and Traction Engines.

GEORGE L. GAUSE.

[Successor to FLENNER & GAUSE.]

UNDERTAKER

314 W. Weatherford St., FORT WORTH, TEX.

Open Day and Night. Orders by telegraph receive prompt attention.

Wholesale Dry Goods. **THE MARTIN-BROWN CO**
Cor. 4th and Main Streets.
The only exclusively wholesale dry goods house in the city.

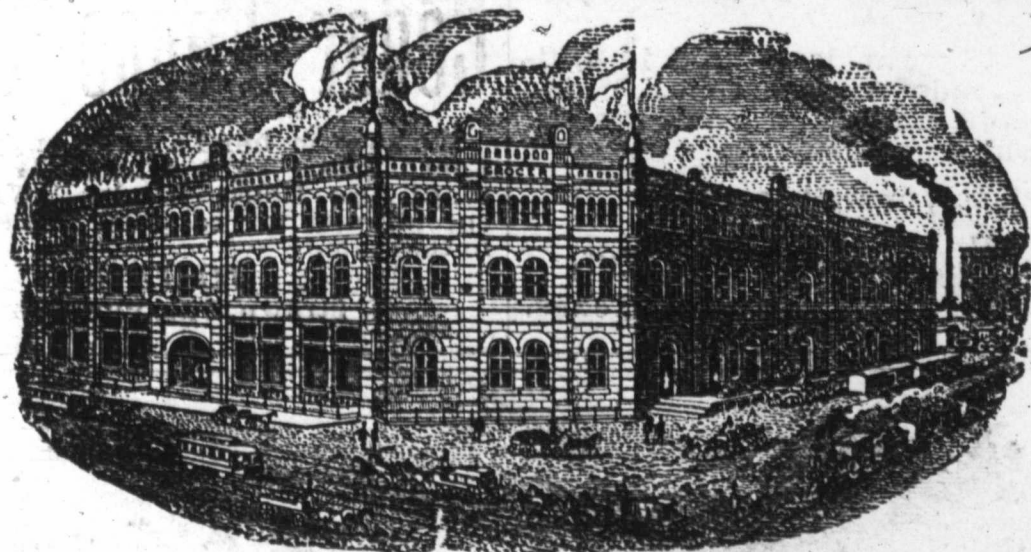
Hardware & Queensware. **W. F. LAKE,**
Cor. 2nd and Houston Sts. Wholesale and Retail.

JOSEPH H. BROWN.

Wholesale Grocer,

Manufacturer of the Celebrated

SILVER LOAF BAKING POWDER.



- Sultan Roasted Coffee: -
FORT WORTH, TEX.

J. Q. SANDIDGE, Pres.

MAX ELSER, Cashier

CITY NATIONAL BANK,
FORT WORTH, TEXAS.

Capital Paid in and Surplus, \$200,000.

DIRECTORS—J. Q. Sandidge, Chas. Scheuber, Max Elser, C. M. Crane, T. T. D. Andrews, R. E. McAnulty, Jas. W. Swayne, T. R. Sandidge.

M. B. LOYD, President.

D. C. BENNETT, Vice-President.

E. B. HARROLD, Cashier.

FIRST NATIONAL BANK,

Corner Houston & Second Streets, - - - Fort Worth, Texas.

CASH CAPITAL AND SURPLUS, \$375,000.

DIRECTORS—J. S. Godwin, M. B. Loyd, J. D. Reed, Zane Cetti, D. C. Bennett, George Jackson, S. B. Burnett, E. B. Harrold and E. F. Uard.

PURE

TRUMBULL, REYNOLDS & ALLEN.
GRASS, FIELD, GARDEN & TREE SEEDS,
FERTILIZERS, Etc.
Send for Catalogue. Mailed free.
1426-1428 St. Louis Ave., Kansas City, Mo.

SEEDS

THE KANSAS CITY STOCK YARDS

Receipts for 1888: Cattle, 1,056,086; Hogs, 2,008,984; Sheep, 351,050; Horses and Mules, 27,650.

These yards are by far the most commodious and best appointed in the Missouri Valley, with ample capacity for feeding, weighing and shipping Cattle, Hogs, Sheep, Horses and Mules. They are planked throughout, no yards are better watered, and in none is there a better system of drainage. The fact that higher prices are realized here than in the East is due to the location at these yards of eight packing houses, with an aggregate daily capacity of 3300 cattle and 27,200 hogs, and the regular attendance of sharp, competitive buyers for the packing houses of Omaha, Chicago, St. Louis, Indianapolis, Cincinnati, New York and Boston.

All the sixteen roads running into Kansas City have direct connection with the yards, affording the best accommodation for stock coming from the great grazing grounds of all the Western States and Territories, and also for stock destined for Eastern markets.

The business of the yards is done systematically and with the utmost promptness, so there is no delay and no clashing, and stockmen have found here, and will continue to find, that they get all their stock is worth, with the least possible delay.

Kansas City Stock Yards Company

HORSE AND MULE MARKET

FRANK E. SHORT. { FRANK E. SHORT & CO., Managers. } CAPT. E. S. TOUGH.

This company has established in connection with the yards an extensive Horse and Mule Market, known as the KANSAS CITY STOCK YARDS COMPANY HORSE AND MULE MARKET. Have always on hand a large stock of all grades of Horses and Mules, which are bought and sold on commission in car-load lots.

In connection with the Sales Market are large feed stables and pens, where all stock will receive the best of care.

Special attention given to receiving and forwarding.

The facilities for handling this kind of stock are unsurpassed at any stable in this country.

Consignments are solicited with the guarantee that prompt settlement will be made when stock is sold.

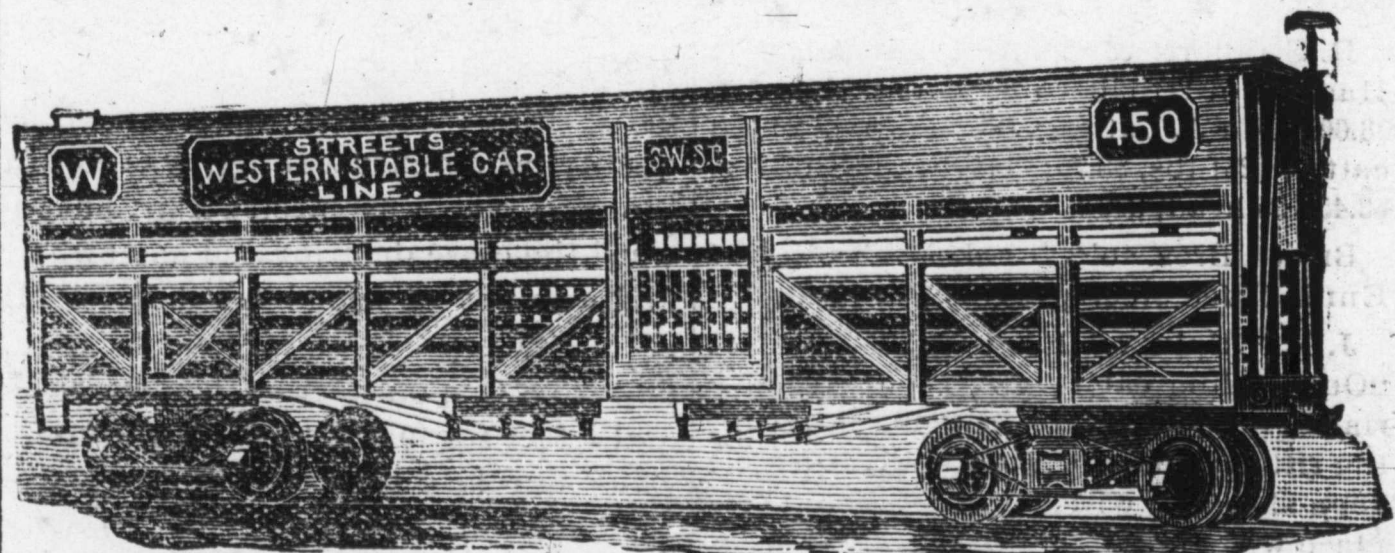
C. F. MORSE, Gen'l Manager. **E. E. RICHARDSON,** Treasurer and Secretary. **H. P. CHILD,** Superintendent.

STREET'S STABLE CAR LINES,

GENERAL OFFICE, RIALTO BUILDING, CHICAGO, ILLS.

S. M. FISCHER, President.

L. D. KNEELAND, Gen. Traffic Manager.



Our lines of Stable Cars, operating east and west of St. Louis and Chicago, carrying horses and cattle to market, give food, water and rest to animals without unloading. For particulars, address

L. D. VOAK, GENERAL AGENT,

For Missouri, Kansas, Colorado, Arkansas, Indian Territory, Texas, New Mexico and Arizona.

FORT WORTH, TEXAS.

C. H. EDWARDS MUSIC HOUSE,

09 Houston St., Fort Worth, Texas.

Clickering, Wheelock, Mathushak PIANOS Mason & Hamlin, Western Cottage and Kimball ORGANS

Lowest prices and easiest terms.

Call and see them before buying.