

# TEXAS LIVE STOCK JOURNAL



THIS PAPER COSTS BUT \$1.50 A YEAR and is well worth the money. Hand your subscription to your Postmaster and he will forward it.

VOL. 10.

FORT WORTH, SATURDAY, AUGUST 17, 1889.

NO. 18.

James H. Campbell, President, Jerome F. Wares, Vice-President, J. H. McFarland, Sec'y and Treas., Chicago, Ill.; H. F. Parry, Manager and Cashier, National Stock Yards, Ill.; G. W. Campbell, D. L. Campbell, Managing Directors, Kansas City, Mo.

## The James H. Campbell Co.

INCORPORATED.

LIVE STOCK COMMISSION MERCHANTS,

Union Stock Yards, Chicago, Ill.,

National Stock Yards, East St. Louis, Ill.

Kansas City Stock Yards, Kansas City, Mo.,

We solicit your business and invite correspondence.

## Fish & Keck Co.

(INCORPORATED)

LIVE STOCK COMMISSION MERCHANTS

KANSAS CITY STOCK YARDS

CONSIGNMENTS SOLICITED.

J. E. GREER, } CHICAGO.  
F. O. MILLS, }

KANSAS CITY, } A. ADLER,  
Manager.

## GREER, MILLS & CO.

Live Stock Commission Merchants,

Union Stock Yards,  
CHICAGO.

Kansas City Stock Yards,  
KANSAS CITY.

A. C. CASSIDY, } Cattle Salesmen. { G. W. D. } N. M. MOODY, } Hog and Sheep  
T. F. TIMMONS, } Cashier. { W. L. CASSIDY, } Salesmen.  
A. L. KEECHLER, }

## CASSIDY BROS. & CO.,

LIVE STOCK COMMISSION MERCHANTS

And Forwarding Agents,

National Stock Yards,

St. Clair County, Ills.

Z. T. WINFREE.

A. P. NORMAN.

WILEY T. PEARSON.

## WINFREE, NORMAN & PEARSON,

Commission Merchants for the Sale of Live Stock,  
Stock Yards, GALVESTON, TEXAS.

We respectfully solicit patronage of stock shippers. We make liberal cash advances on bills lading, and will faithfully endeavor to the best of our ability to subserve the interests of our patrons. Correspondence solicited.

## ALBERT MONTGOMERY

Commission Merchant for the Sale of Live Stock, Stock Landing

Postoffice Box 3006, New Orleans, La.

## JOHN MUNFORD.

Commission Merchant for the Sale of Cattle, Hogs and Sheep, STOCK LANDING

P. O. BOX 684, NEW ORLEANS, LA.

## THE LIVE STOCK MARKET

—Of St. Louis.—

## The St. Louis National Stock Yards,

Kansas Historical Society, St. Louis, Illinois, directly opposite the City of St. Louis.

Shippers should see that their stock is billed directly to the

“NATIONAL STOCK YARDS.”

C. G. KNOX,

CHAS. T. JONES,

President.

Superintendent.

S. E. WOOD.

JAMES WOOD.

E. A. WOOD.

R. NASH.

## WOOD BROTHERS,

LIVE STOCK COMMISSION MERCHANTS,

Union Stock Yards, CHICAGO.

Established 1867. Special attention given to the Texas trade. Correspondence invited.

ALLEN GREGORY.

H. COOLEY.

L. R. HASTINGS.

## GREGORY, COOLEY & CO.

Commission Dealers in Live Stock,

Rooms 58 and 60 Exchange Building, Union Stock Yards, CHICAGO, ILL.

The Pioneer House in the Texas trade. Personal attention given consignments. Business solicited.

President, WM. M. WARREN, Banker, New Berlin, Ill. Secretary and Treasurer, LEVI B. DOUD.  
Cashier, CHAS. KELLY. Managers, T. B. LEE, THOS. KELLY

## Chicago Live Stock Commission Company,

Incorporated. Capital Stock \$25,000.

Special attention given to the sale of Texas Cattle and Sheep. Write us for market reports.  
Office 41 Exchange Building, Union Stock Yards, Chicago, Ill.

REFERENCES—Drovers' Nat. Bank, Union Stock Yards Nat. Bank, Chicago; Bank of Atlantic, Atlantic, Ia., Bank of Roodhouse, Roodhouse, Ill.

SAM'L SCALING, St. Louis.

W. L. TAMBLYN, Chicago.

## SCALING & TAMBLYN.

Live Stock Commission Merchants,

National Stock Yards, East St. Louis, Ill.

Union Stock Yards, Chicago, Ill.

JNO. W. PAXSON.

CHAS. L. SHATTUCK.

## PAXSON, SHATTUCK & CO

LIVE STOCK

Commission Merchants

Union Stock Yards,

CHICAGO, - - - ILLINOIS.

General Agents for the State of Texas: CAPT. E. F. IKARD, Headquarters at Ft. Worth; JOSEPH COLLINS, Headquarters at Goliad.

R. T. WHEELER.

O. JAMES.

J. S. MCKINNON

## WHEELER, JAMES & CO.

Live Stock Commission Merchants,

Union Stock Yards, ST. LOUIS, MO.



W. BROWN, Established 1874. E. E. BROWN.  
**BROWN BROS.,**  
 Commission Merchants in Live Stock,  
 Rooms 100 and 102 Exchange Building, Union Stock Yards, CHICAGO.  
 Refer by permission to National Live Stock Bank, Chicago.  
 Agents in Texas—J. D. Beauchamp, Ennis; Capt. H. G. Carter, Milam; Col. J. T. Har-  
 ess, Colorado City.

W. F. MOORE, { KANSAS CITY. Established 1873. J. METCALF, { ST. LOUIS.  
 N. T. JACKMAN, { E. J. SENSENEY, {  
**METCALF, MOORE & CO.,**  
**LIVE STOCK COMMISSION MERCHANTS,**  
 Kansas City Stock Yards, KANSAS CITY, MO. St. Louis National Stock Yards, ILLINOIS.  
 Letters and telegrams addressed to us at either yard will receive prompt attention.  
 Represented by L. L. TACKITT.



**KEENAN & SONS,**  
**LIVE STOCK COMMISSION**  
**MERCHANTS,**  
 Union Stock Yards, CHICAGO.  
 Consign your stock direct to us; it  
 will meet with  
**PROMPT ATTENTION.**  
*Correspondence Solicited.*  
 Have made the sale of Texas cattle  
 a specialty for Twenty-Five Years.  
 REFERENCE—The National Live Stock  
 Bank of Chicago.

H. W. CRESSWELL, President, } H. D. ROGERS, Manager, Chicago.  
 SAM LAZARUS, Vice-President, } KANSAS CITY. J. H. STEPHENS, Manager, Kansas City.  
 PAUL PHILLIPS, Treasurer, } A. P. BRAINARD, Salesman, Kansas City.  
 J. W. T. GRAY, Secretary, }

**AMERICAN**  
**Live Stock Commission Co.**  
 KANSAS CITY STOCK YARDS,  
 UNION STOCK YARDS, Chicago, Ill. KANSAS CITY,  
 NATIONAL STOCK YARDS, East St. Louis, Ill.  
 DIRECTORS: H. W. Cresswell, F. B. York, A. B. Gregory, R. M. Smith, D.  
 R. Fant, T. S. Bugbee, Sam Lazarus, Paul Phillips, Jot Gunter, A. Rowe, W.  
 A. Towers.

CHARLES R. BENSLEY. N. G. HARDY.  
**BENSLEY, HARDY & CO.**  
*Live Stock Commission,*  
 66 Exchange Building, Union Stock Yards, CHICAGO.

C. F. REYNOLDS, { Cattle Salesmen. JOHN HOSBURY, { N. S. ARCHER,  
 A. CRILL, { Cashier. Hog Salesman.  
**REYNOLDS & GRILL,**  
 —:LIVE STOCK COMMISSION SALESMEN:—  
 Union Stock Yards, CHICAGO, ILL.  
*Consignments Solicited.*

W. H. GODAIR, CHAS. E. HARDING. E. M. CAMPBELL.  
**GODAIR, HARDING & CO.,**  
**LIVE STOCK COMMISSION MERCHANTS,**  
 Room 144 Exchange Building, Union Stock Yards,  
 CHICAGO.  
 Kansas City Correspondents, OFFUTT, ELMORE & COOPER. REFERENCE—National  
 Live Stock Bank, Union Stock Yards.

C. C. QUINLAN. P. MONTGOMERY. S. G. BURNSIDE.  
**QUINLAN, MONTGOMERY & CO.,**  
*Commission Merchants in Live Stock,*  
 Rooms 25 and 26 Exchange Building, Kansas City Stock Yards.  
 The Pioneer House in the Trade. Will advance money to feeders and shippers at all  
 times on cattle. Personal attention given to sales of all stock consigned to us.

**W. F. LAKE,**  
 —WHOLESALE DEALER IN—  
**HARDWARE, STOVES, TINWARE,**  
*Queensware, Crockery and Glassware,*  
 Corner Houston and Second Streets. FORT WORTH, TEXAS.

**TELEGRAPHIC MARKETS.**

Latest Reports by Wire-From the  
 Market Centers.

CHICAGO.

Special to the Live Stock Journal.

CHICAGO, ILL., Aug. 16, '89.  
 Paxton, Shattuck & Co sold 18 steers,  
 938 lbs, \$2.70; 6 steers, 868 lbs, \$2.70; 18  
 stags, 1198 lbs, \$2.05.

The Chicago Live Stock Commission  
 Co. sold 108 cows, 730 lbs, \$2.10; 20 cows,  
 779 lbs, \$2.10.

The Evans-Snyder-Buel Co sold for  
 Humes & Carothers, 96 steers, 943 lbs,  
 \$2.90; Ike T Prvor, 21 steers, 942 lbs, \$2.85;  
 25 cows, 860 lbs, \$2.10; 46 yearlings, 609  
 lbs \$2.20, and 203 cows, 782 lbs, \$2.10; C.W  
 Gano, 135 steers, 1041 lbs, \$2.70; 154 cattle,  
 813 lbs, \$2.45.

The James H. Campbell Co sold 105  
 calves, 167 lbs, \$3.75; 42 steers, 1122 lbs,  
 \$2.90; 57, 1173 lbs, \$3.30; 20, 1128 lbs, \$3.05;  
 190, 878 lbs, \$2.60; 12, 890 lbs, \$2.60; 26, 862  
 lbs, \$2.60; 26, 884 lbs, \$2.60; 28, 909 lbs,  
 \$2.55, 22, 1060 lbs, \$2.50; 27 cows, 953 lbs,  
 \$2.15, 57, 815 lbs, \$2.10; 217, 909 lbs, \$2.07;  
 98, 900 lbs, \$2; 42 steers, 1130 lbs, \$3.25; 99  
 cows, 877 lbs, \$2.50; 42 bulls, 1280 lbs, \$1.65.

Sealing & Tamblin sold 24 steers, 930  
 lbs, \$2.90; 273, 1019 lbs, \$2.90; 50, 981 lbs,  
 \$2.70; 15, 1032 lbs, \$2.70; 43, 1038 lbs, \$2.75;  
 23, 870 lbs, \$2.50; 48, 851 lbs, \$2.40; 45 cows,  
 880 lbs, \$2.20.

W W Shearer & Co sold 80 steers, 979  
 lbs, \$2.70; 15 steers, 910 lbs, \$2.60.

The American Live Stock Commission  
 Co sold for H G Williams 25 steers, 814  
 lbs, \$2.45; J M Daugherty, 47 steers, 940  
 lbs, \$2.62½; 11 steers, 734 lbs, \$2.30; 16  
 cows, 738 lbs, \$2.10.

Reynolds & Crill sold for T C Sterrett,  
 48 steers, 815 lbs, \$2.65; 84 cows, 761 lbs,  
 \$2.15; J A Hallman, 49 cows, 769 lbs, \$2.

R. Strahorn & Co sold for S B Burnett,  
 230 steers, 1020 lbs, \$3.10; 53, 1034 lbs,  
 \$3.15; Harrold & East, 241 steers, 1071 lbs,  
 \$2.90; 332 steers, 977 lbs, \$2.80; 39 steers,  
 1108 lbs, \$2.65; Kimberlin Co, 111 steers,  
 1050 lbs, \$3; J A Hallman, 14 steers, 1052  
 lbs, \$2.70; 56 cows, 836 lbs, \$3.15.

Keenan & Sons sold 174 steers, 900 lbs,  
 \$2.75; J Houghton, 24 steers, 931 lbs,  
 \$2.90; Reedy & D, 12 steers, 171 lbs, \$3;  
 30 steers, 962 lbs, \$2.85; 6 cows, 860 lbs,  
 \$2.15; J W Russell, 26 cows, 659 lbs,  
 \$1.95.

Gregory, Cooley & Co sold for W H  
 Portwood, 21 steers, 1046 lbs, \$2.80; H H  
 Halsell, 23, 951 lbs, \$2.70; L R H, 78, 920  
 lbs, \$2.70; Stevens & Worham, 83 steers,  
 1025 lbs, \$2.90; J P Moore, 24 steers, 898  
 lbs, \$2.65; Indian Co, 259 steers, 965 lbs,  
 \$2.90; 40 steers, 997 lbs, \$2.85; 90 cows, 816  
 lbs, \$2.20.

Greer, Mills & Co sold 24 steers, 975 lbs,  
 \$2.65; 41 steers, 1014 lbs, \$2.60; for F G  
 Oxier, 25 steers, 884 lbs, \$2.70; Ward  
 Bros, 20 steers, 1060 lbs, \$2.90; R K Wy-  
 lie, 44 steers, 1106 lbs, \$3; 22, 1073 lbs,  
 \$3.05; McKenzie & S, 51 cattle, 873 lbs,  
 \$2.45; J M Gilliland, 25 cows, 784 lbs,  
 \$2.05; 28 steers, 837 lbs, \$2.60; C Burnett,  
 75 cattle, 994 lbs, \$2.40; J Harris, 22  
 steers, 1023 lbs, \$7.65; R D Moore, 70, 973  
 lbs, 2.90; W Scott, 158, 938 lbs, \$2.80; 11  
 yearlings, 589 lbs, \$2.20; 107 cows, 765 lbs,  
 \$2.50; 31 yearlings, 571 lbs, \$2.20; for A A  
 Spangler, 16 steers, 931 lbs, \$2.80; J  
 Scharbour, 1163 sheep, 83 lbs, \$4; 800  
 same, 84 lbs, \$4.10; Canan & D, 564 sheep,  
 77 lbs, \$3.90; 176 sheep, 74 lbs, \$3.60.

SALES TO-DAY.

Cattle week, but strong as last week.  
 Sheep firm at \$3.50@4.10.

The Chicago Live Stock Commission  
 Co. sold 180 steers, 1023 lbs, \$2.90.

Keenan & Sons sold for D R Fant, 194  
 steers, 959 lbs \$2.65; 1004 lbs, \$2.65; 19, 1030  
 lbs, \$2.60; 22 cows, 813 lbs, \$2.10.

Wood Bros. sold for M S Peters, 165  
 steers, 1018 lbs, \$2.90; 143, 978 lbs, \$2.75.

The American Live Stock Commis-  
 sion Co. sold for Sam Lazarus, 287 steers  
 902 lbs, \$2.60; H C Harlenson, 48, 1102  
 lbs, \$2.67½.

Scaling & Tamblin sold 25 steers, 96  
 lbs, \$2.67½; 22, 1131 lbs, \$3.10.

The James H. Campbell Co. sold 74  
 steers, 1112 lbs, \$3.05; 221 calves, 165 lbs,  
 \$3.90; for Chicago and Colorado Co., 238  
 steers, 968 lbs, \$2.75.

Greer, Mills & Co. sold for M B Pull-  
 iam, 17 steers, 1293 lbs, \$2.85; R R Wade,  
 70, 944 lbs, \$2.75; 137, 990 lbs, \$2.70.

Gregory, Cooley & Co. sold 25 steers,  
 978 lbs, \$2.75; 149, 961 lbs, \$2.65; J. H.  
 Stephens, 42 steers, 1083 lbs, \$3; D Hart,  
 39 calves, 180 lbs, \$3.40; York & Hart, 10  
 cows, 778 lbs, \$2.10; 12 cows, 600 lbs, \$1.90.

KANSAS CITY.

KANSAS CITY, August 16.—Cattle re-  
 ceipts for the past week 31,185 head  
 7456 more than last week.

Monday Texas and Indians sold ac-  
 tive and steady for choice, common and  
 medium weak and 1c lower than Fri-  
 day and Saturday; cows 5c lower.

Tuesday, Best steers steady to strong,  
 others weak.

Wednesday's market was slow, weak  
 and 5@10c lower, few Texas steers sold.  
 361 from Kiowa, Kansas, 1111 lbs, (a little  
 rough) sold for \$2.65; 144 head, 930 lbs,  
 \$2.60@2.65; cows, \$1.50@1.85.

Following sales from first class hous-  
 es give range of prices:

The Evans-Snyder-Buel Co. sold for J  
 R Washington, Marietta, I. T., 28 cows,  
 691 lbs, \$1.75; 32 calves, \$5.50 each; J M  
 Nance, Cale, Kansas, 49 steers, 868 lbs,  
 \$2.30; Ben Garland, Caldwell, Kansas,  
 52 steers, 1050 lbs, \$3; 50 steers, 1166 lbs,  
 \$3; 29 steers, 956 lbs, \$2.70; W Corzine, do,  
 21 steers, 998 lbs, \$2.70; 23 steers, 1069  
 lbs, \$2.75; 28 cows, 879 lbs, \$2.15; 48 steers,  
 1238 lbs, \$3; W E Malaley, do, 38 heit-  
 ers, 540 lbs, \$1.50; 27 steers, 861 lbs, \$2; 48  
 steers, 102½ lbs, \$2.70; 139 calves, \$6.25  
 each; L Musgrove, do, 26 steers, 1057 lbs,  
 \$2.80; F M Dougherty, Purcell, I. T., 296  
 steers, 941 lbs, \$2.40; 76 cows, 751 lbs, \$2;  
 125 steers, 744 lbs, \$1.90; 188 steers, 875 lbs,  
 \$2.25; 41 steers, 943 lbs, \$2.25; 35 steers,  
 1018 lbs, \$2.35; C Burnett, Woodward, I.  
 T., 113 steers, 772 lbs, \$1.60; 25 steers, 1002  
 lbs, \$2.10; 53 steers, 828 lbs, \$1.70; C W  
 Gano, Chillico, I. T., 26 steers, 864 lbs,  
 \$1.75; R K and O D Halsell, Alfred, I. T.,  
 1083 lbs, \$3; J R Gober, Amarilla, Tex.,  
 25 steers, 948 lbs, \$1.90; D R Fant, Wood-  
 ward, I. T., 25 cows, 877 lbs, \$2; Peter-  
 son & G., Clifton, Texas, 35 cows, 730  
 lbs, \$1.65; 54 cows, 714 lbs, \$1.62½.

The Fish & Keck Co. sold for F Y Ew-  
 ing, 43 Texas steers, 1077 lbs, \$2.90; Mil-  
 lett Bros., 128 do steers, 923 lbs, \$2.60; S J  
 Blocker, 18 do cows, 755 lbs, \$1.75; D F  
 Garrettson, 236 do calves, \$5.80 each; J A  
 Blair, 308 Indian steers, 888 lbs, \$2.75; 72  
 Texas calves, \$5.80 each; Colorado Ranch  
 Co., 66 half-breed Colorado steers, 1213  
 lbs, \$2.75; American Pastoral Co., 300 do,  
 1049 lbs, \$2.75; V B Dickey, 22 Texas cows  
 751 lbs, \$1.70; 21 do steers, 1027 lbs, \$2.50;  
 D F Harness, 48 do steers, 1086 lbs, \$2.75;  
 S J Blocker, 57 do cows, 788 lbs, \$1.67½;  
 Ives & Doyle, 89 do steers, 1098 lbs, \$2.85;  
 217 do cows, 910 lbs, \$1.80; Harrold &  
 East, 145 do calves, \$7 each; E H East,  
 20 do bulls, 1183 lbs, \$1.65; J H Will-  
 iams, 41 Indian steers, 902 lbs, \$2.40; E M  
 Hewins, 53 Texas, cows, 821 lbs, \$1.70; 35  
 do calves, \$1.50; 186 do, \$4.75; B H Camp-  
 bell, 78 do cows, 827 lbs, \$1.85; 158 do  
 calves, \$6 each; Lynch & Boder, 382, do  
 steers, 1133 lbs, \$2.95; J Gaynor, 95 do, 1084  
 lbs, \$2.50; Millett Bros., 120 N. M. steers,  
 922 lbs, \$2.37½.

The American Live Stock Commis-  
 sion Co. sold for C C Slaughter, 99 Texas  
 steers, 1119 lbs, \$3.05; Nance, 118 do cows,  
 821 lbs, \$1.85; 7 do bulls, 1161 lbs, \$1.70; 59  
 calves, 169 lbs, \$3.35; Williams, 21 do  
 steers, 736 lbs, \$2.20; 24 do steers, 942 lbs,  
 \$2.20; Jas. McKenzie, 236 calves \$7.20 each

54 steers, 1172 lbs, \$2.80; 116 cows, 940 lbs, \$1.80; 75 cows, 950 lbs, \$1.75; J M Nance, 52 cows, 792 lbs, \$1.70; 20 steers, 867 lbs, \$2.30; A P Bush, 19 steers, 1076 lbs, \$2.70; 99 cows, 913 lbs, \$1.75; 267 calves, \$6.25 each; D M Hargreaves, 42 steers, 1131 lbs, \$2.55; Jas. McKenzie, 20 steers, 1115 lbs, \$2.45; F B York, 110 calves, \$7 each; 22 bulls, 1289 lbs, \$1.50; 97 cows, 894 lbs, \$1.70; Sam Lazarus, 20 steers, 1229 lbs, \$3.15; 23 steers, 1026 lbs, \$2.70; 369 steers, 993 lbs, \$2.55; J M Nace, 32 calves \$6 each; 97 do, \$5.25; Jas. McKenzie, 115 do, \$6.60; 125 do, \$6.60; A J Brown, 38 cows, 504 lbs, \$1.60; 77 cows, 770 lbs, \$1.75; 63 calves, \$6.25 each; Sam Lazarus, 80 steers, 926 lbs, \$2.60; 64, 935 lbs, \$2.65; Reynolds & Clark, 34 yearling heifers, 687 lbs, \$1.85; 24 cows, 739 lbs, \$1.75; 62 calves, \$6.25 each; F B York, 97 cows, 871 lbs, \$1.75; Medlin & Clark, 24 cows, 810 lbs, \$1.75; J M Day, 105 calves, \$5.75 each.

Greer, Mills & Co. sold for B W Jones, Quanah, Texas, 537 sheep, 81 lbs, \$4. This is the top price on Texas sheep for the year 1889. For N Williams, Ponca, I. T., 24 steers, 878 lbs, \$2.45; Winfield Scott, Colorado City, Texas, 22 steers, 951 lbs, \$2.55; 54 calves, \$5.25 per head, 10 do, \$4 each; 24 do, \$6 each.

The Jas. H. Campbell Co. sold for Miller, 36 steers, 838 lbs, \$2.40; 260 do, 1003 lbs, \$2.70; Williams, 44 do, 832 lbs, \$2.35; Streeter, 142 do, 1210 lbs, \$3.25; 160 do, 1080 lbs, \$3.10; 56 cows, 929 lbs, \$2; Defers, 18 do, 941 lbs, \$2.05; J B Wilson, 128 calves, each \$5.80; Lewis Jefferson, 27 steers, 947 lbs, \$2.55; 29 do, 852 lbs, \$2.30; 73 do, 806 lbs, \$2.30; 23 cows, 779 lbs, \$1.62½; Gaddis, 81 steers, 1091 lbs, \$2.90; McClure, 20 bulls, 1326 lbs, \$1.65; Pond, 30 steers, 803 lbs, \$2.40; 26 cows, 831 lbs, \$2.10; Wilson, 23 cows, 1066 lbs, \$2; George, 31 do, 922 lbs, \$2.05; O B Wilson 297 steers, 1090 lbs, \$3.05; Daugherty, 29 cows, 634 lbs, \$1.55; Lacy, 90 steers, 940 lbs, \$2.45; Grayson Bros., 22 steers, 1067 lbs, \$2.50; Mapes, 15 steers, 860 lbs, \$2.12½; Hutton, 121 steers, 1132 lbs, \$2.80; Colson & McAttee, 48 steers, 1134 lbs, \$2.90; 56 cows, 938 lbs, \$1.95; Kinsey, 47 cows, 831 lbs, \$1.85.

Fifty two hundred cattle here to-day. Texas cattle 10c lower than Wednesday, and cows lowest of the season.

**ST. LOUIS.**

St. Louis, Mo., Aug. 16.—The run of range cattle to-day was small, and canners, interior buyers and others could not do much. The demand was large. Sales were made at \$1.75 to \$2.15 for Texas cows, and \$2.25 to \$2.80 for Texas steers. Indian steers sold at \$2.50 to \$3.

Sheep are in active demand, but prices easier.



**Commission Merchants**

For the sale of

**CATTLE, HOGS AND SHEEP,**  
Rooms 9 and 10 Exchange Building,

**KANSAS CITY STOCK YARDS.**

Prompt and correct market reports furnished by mail or wire. Consignments solicited. Correspondence given immediate attention.

**NEW ORLEANS.**

NEW ORLEANS, Aug. 16.—Market supplied with common to fair beef cattle. Good fat beeves and fat straight cows active and firm. Calves and yearlings in full supply; good fat calves firm, and yearlings dull. Hog market steady. Sheep market quiet; fat muttons firm.

QUOTATIONS:—Choice beeves, per lb. gross, 2½@3c; common to fair beeves, 2@2½c; good fat cows, 2@2½c; common to fair, \$9@13; calves, \$4.50@7.50; yearlings, \$6@10; good fat corn-fed hogs, per lb gross, 5@5½c; common to fair, 4@4½c; good fat sheep, each \$2.50@3.00; common to fair, \$1@2 each.

**GALVESTON.**

[Reported by Winfree, Norman & Pearson, Live Stock Commission Merchants].

**BEEVES & COWS**—Choice, per lb, gross, 2@2½c; common 1½@1¾; 2-year-olds, choice, per head, \$8@10; common, per head, \$6@8; yearlings, choice, per head, \$6@8; common, per head, \$4.50@5.50; calves, choice, per lb, gross, 2@2½c; common, per head, \$3@3.50.

**SHEEP**—Choice, per lb. gross, 3@3½c. Market full of common cattle. Choice beeves and cows in demand. Market fair for fat calves and yearlings. A car of choice muttons would find ready sale.

**SAN ANTONIO.**

The market is overstocked and the outside demand is not sufficient to work off the supplies, forcing the pasturing of the overplus near the city.

**CATTLE**—Steers, shippers \$13@18, or \$1.25@1.50 per 100 lbs; and butchers, \$12@15; cows, fat, from \$9.00@11; light, at \$7@9; yearlings, \$4.00@5.50; calves, \$3.50@4.50 **SHEEP**—Muttons, \$1.50@2.25. Goats, average stock \$1.00@1.50 per head.

Hogs—Natives \$3.50@4.

**DALLAS.**

Reported by Carter & Son, Live Stock Commission Merchants.

**CATTLE**—Choice fat grass steers, 1¼@2c; common to fair, 1½@1.65; choice fat cows, 1½@1¾; common to fair, 1¼@1½c; yearlings, \$4@7; choice veal calves, 3@3½c; bulls, 1@1½c; milch cows, \$20@30.

**SHEEP**—Choice fat muttons, 3@3½c; common to fair, 2½@2¾c.

**GOATS**—\$1.25@1.75.

Good muttons are very scarce, and find ready sale at ¾c. Choice veal calves are very scarce; also good milch cows find ready sale at \$25 to \$30, and are very scarce.

**Galveston Wool Market.**

GALVESTON, TEX., Aug. 14, 1889. Texas Live Stock Journal, Fort Worth.

The market for the past week has been very quiet and dull with light demand, hence sales have been less than those of any previous week this season.

The wool men of Galveston give the opinion that the dull market at present and the sudden falling-off of sales, is mainly in consequence of the large failures which have taken place in Eastern cities recently.

The following are quotations of the market to-day:

Twelve months fine, 19@21c; do medium, 21@24c; six and eight months fine, 17@20c; do medium, 19@21c; Mexican improved, 15@18c; do carpet, 12½@13½c.

The receipts for the week ending to-day a 3 o'clock p. m. amount to 26,250 pounds, and sales for the same time 75,000 pounds.

The receipts for the season foot up to 14,420,569 lbs, and shipments amount to 13,609,006 lbs, thus leaving on hand a stock of 1,160,906 pounds.

Mr. C. Palmer of whom I spoke in my letter of last week, is still in the city and his home for the future.

Col. John Owens of the wool department of that old, and popular banking and commission house of Adoue & Lobit on Saturday will leave for the Eastern wool markets, to look after the interest of his house in this line. The colonel will be absent about thirty days and will return chuck full of wool news.

The additional machinery for the wool scouring mill will arrive on the next Mallory steamer, which is due next Saturday or Sunday. W. N. BAXTER.

**ST. LOUIS MARKET LETTER.**

EAST ST. LOUIS, ILLS.,  
Aug. 13, 1889.

Regular Correspondence Texas Live Stock Journal.

Prices on range cattle have appreciated some the past week, and at the present writing top Indian steers bring \$3, and top Texas steers, \$2.87½ per 100 lbs. In fact all grades of range cattle bring better prices and more of them are wanted. For some reason or other there has been a let up in the receipts of Texas and Indian cattle, and buyers for the last few days can not get as many as they wanted. Texas cows in light to good flesh bring from \$1.70 to \$2.20 per 100 lbs.

Cassidy Bros. & Co. sold for B F Milstead, Muskogee, 28 cows, 794 lbs, \$1.87½; 26 steers, 961 lbs, \$2.80; 24, 727 lbs, \$2.35; 30, 784 lbs, \$2.20; E H East, Archer City, 79 steers, 993 lbs, \$2.70; 92 cows, 822 lbs, \$2.15; L Z Eddleman, Vernon, 134 steers, 1023 lbs, \$2.50; 10, 919 lbs, \$2.20; 64 calves, \$7.25 each; Warren, Davidson & Brown, Doss, 88 steers, 1014 lbs, \$2.75; Blackstone & Co., Muskogee, 1126 lbs, \$2.55.

Scaling & Tamblin sold for J O Hall, Vinita, 91 steers, 1043 lbs, \$2.75; 93 steers, 1029 lbs, \$2.60; 276 steers, 1073 lbs, \$2.75; 24 cows, 770 lbs, \$2.15; J T Smitt, Otta, 17 steers, 833 lbs, \$2.35; 10 cows, 745 lbs, \$1.90; L S Carter, Otta, 24 steers, 934 lbs, \$2.55; C L Carter, Otta, 24 steers, 919 lbs, \$2.42½; 56 cows, 667 lbs, \$1.87½; Cash & Allingham, Harrod, 24 steers, 933 lbs, \$2.55; F L Easley, Otta, 50 steers, 26 cows, 783 lbs, \$1.87½; Stewart Bros., Jack county, 20 steers, 935 lbs, \$2.55; 28 yearlings, 525 lbs, \$2; 23 cows, 765 lbs, \$2.10; W Q Richards, Otta, 50 steers, 911 lbs, \$2.50; 27 cows, 740 lbs, \$1.62½; J F Spears, Quanah, 26 steers, 870 lbs, \$2.50; Wilson & Butler, Antelope, 23 cows, 761 lbs, \$2.25; H B Bowen, do, 47 steers, 970 lbs, \$2.65; F A Bounds & Bro., Wortham, 24 cows, 731 lbs, \$1.65; 46 mixed, 777 lbs, \$2.10; J F Taylor, Coleman, 15 steers, 1042 lbs, \$2.35; J R Washington, Bellevue, 19 cows, 670 lbs, \$1.90; M M Boyer, Bellevue, 57 calves, \$6 each; J F Prater, Bellevue, 20 mixed, 713 lbs, \$1.95; 44 steers, 990 lbs, \$2.40; Weldon & Hailep, Wagoner, 25 steers, 1004 lbs, \$2.70.

The James H. Campbell & Co. sold for N Skinner, Vinita, 23 steers, 1126 lbs, \$2.85; H C Hall, Tulsa, 25, 872 lbs, \$2.40; Wheeler & Son, Waco, 72 steers, 881 lbs, \$2.40; J T Wright, Goodland, 26 steers, 924 lbs, \$2.50; 20, 903 lbs, \$2.21; C W-Turner, Muskogee, 27 cows, 810 lbs, \$1.95; 72 calves, \$5.75 each; 48 steers, 1024 lbs, \$2.55; Rney & Fields, San Angelo, 40 steers, 1075 lbs, \$2.37½; J R Raney, do, 68, 945 lbs, \$2.25; A J Sykes, San Angelo, 52 steers, 862 lbs, \$2.15; Thos. Ball, San Angelo, 21 cows, 797 lbs, \$2; Hailey & Weldon, Liberatta, 48 steers, 1042 lbs, \$2.65.

Metcalf, Moore & Co. sold for W C Patton & Co., Vinita, 48 steers, 887 lbs, \$2.35; 29 cows, 742 lbs, \$2.15; 23 steers, 1003 lbs, \$2.40; R P Lindsey, Choteau, 21 cows, 791 lbs, \$1.35; 16 cows, 813 lbs, \$2.20; 23 calves, \$6.50 each; 12 hogs, 215 lbs, \$4.50; W C Patton & Co., Vinita, 49 steers, 940 lbs, \$2.40; J C Hogan, Adair, 28 steers, 1123 lbs, \$3; 23 steers, 1054 lbs, \$2.75.

There was a fair run of sheep and the demand as urgent as ever for all grades. Common and thin sheep sell well as stockers and bring from \$ @3.40 per 100 lbs. Fat Texas sheep bring \$3.75@4.25 per 100 lbs.

The James H. Campbell & Co, sold for M S Carson of Alexander, 180 coars sheep, 84 lbs, \$3.55.

Scaling & Tamblin sold for Robertson, Simpson & Co., Colorado City, 79 head of Texas ewes of 84 lbs, at \$3.80 per 100 lbs. This is a good price indeed for ewes, and shows what a good sheep market that is being enjoyed at present.

The Texas horse market continue quiet and unchanged. There is a fair run and moderate demand only at prices ranging from \$18@30 each.

The wool market is quiet and price weak.

The Allerton house and the restaurant in the Exchange building have change hands and are now presided over, not by the prince among good fellows, but are under the sway of the Queen-Caterers, Mrs. Kingsberry. Both places have been overhauled and improvements made in all departments, not the least is the placing of a pretty cress who demurely makes change with winning grace. Miss Emma is voted success in her position. RATTLER.

**Choice New Crop Turnip Seed.**

Red or purple top strap leaf (summer), mammoth purple top, new variety, (winter), Pomereanean white globe (winter), yellow or amber globe (winter) and other choice varieties suitable to Texas climate and soil, for sale large or small quantities at Turner McClure & Co's., Fort Worth, Tex.

**JOHN D. DOBYNS & CO.**

Successors to Stephens & Dobyns,

**LIVE STOCK**

**Commission Merchants**

Kansas City, Mo. and Chicago

We make a specialty of the Texas Western cattle and ranch trade. Are prepared to make contracts for the delivery of Texas cattle for 1889. Consignments and correspondence solicited.

ROBERT STRAHORN. JESSE SHERWOOD  
Established 1861.

**R. STRAHORN & CO**

**Live Stock**

**Commission**

Room 85, Union Stock Yards,  
CHICAGO, ILLINOIS

E. H. EAST, Agent for points on Fort Worth & Denver City railway.  
B. HACKETT and GEO. BEGGS Agents Fort Worth and all points East South West.

W. W. SHEARER, F. B. McDOWELL  
Gen'l Manager. Cash

**W. W. SHEARER & CO.,**  
LIVE STOCK

**COMMISSION MERCHANTS**

Union Stock Yards, CHICAGO.  
REFERENCES: The National Live Stock Bank, Chicago; The Drovers' National Bank, Chicago.  
Cattle and Sheep Salesman, Hog Salesman  
W. W. SHEARER. JNO. FILL

H. C. (HANK) MALLORY. CHAS. A. MALLORY  
—Established 1867.—

**MALLORY & SON,**  
**Live Stock Commission**

Rooms 115 and 116 Exchange Building,  
Union Stock Yards,  
CHICAGO, - - ILLINOIS  
Geo. W. Seiver of Taylor, Texas, agent

**PERKINS WIND MILL.**  
 Buy the **BEST** and **Save Money.**  
 Has been in constant use 15 years, with a record equaled by none.  
 Warranted not to blow down unless the tower goes with it; or against any wind that does not dislodge substantial farm buildings; to be perfect; to outlast and do better work than any other mill made. **AGENTS WANTED.**  
 Send for Storm Scene Circular and Prices. Address **H. W. HUBBARD,** Gen. Agt. Dallas, Tex. Corn & Feed Mills, Pumps, Tanks, & Wind Mill supplies.  
**The "New Design"**  
**MUNSON**  
 Portable Corn and Feed **MILLS.**  
 With French Burr Stone. The Best for all kinds of Feed Grinding. **PRICES ROCK BOTTOM.**  
**AGENTS WANTED.**  
 Send for particulars. Address **H. W. HUBBARD,** GENERAL AGENT, **DALLAS, TEXAS.** Corn and Cob Crushers—Engines—Boilers—Wagon Scales—Belting, &c.



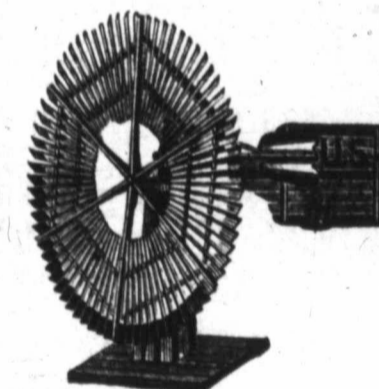
J. P. SMITH, President. W. P. CONNER, Gen. Man'g.

**THE GRANITIC ROOFING.**

Factory at **Fort Worth, Tex.**  
 Better than the best, cheaper than the cheapest roofing offered in Texas. Suitable for steep or flat roofs. Cheap enough to cover a hen coop; good enough to roof a palace. Specially adapted to stockmen's barns and out-buildings. Shingles, tin and corrugated iron must give way before our goods. For further particulars write to our office.  
**Fort Worth Granitic Roofing Co**  
 11th and Rusk Sts., Fort Worth, T

**U. S. Solid Wheel**  
 Halladay Standard **Wind Mills**  
**EUREKA**  
**THE U. S. SOLID WHEEL,**

**See It!**



It is the best and most successful pumping Wind Mill ever made.

**LONG STROKE, SOLID and DURABLE.**  
**HORSE POWERS, tread or sweep, PUMPING JACKS, best in market,**  
 Feed Cutters, Pear Cutters, Iron Pipe, Well Casing, Engines, Farm Pumps, Ranch Pumps, Hose, Belting, Brass Goods, Tanks, Well Drilling Machines, Grinding Machinery.

If you want any of the above, or if you want farm or ranch fitted with a water supply outfit, get our prices and our catalogues. It will cost you but little and may pay you well.

**THE PANHANDLE Machinery and Improvement Co.**  
 Corner Throckmorton and First Sts., **FORT WORTH, TEXAS.**  
 Branch House, Colorado, Texas.

Active Agents wanted in every county in the state.

**CANCER** & Tumors cured; no knife; cure guaranteed. Koehler Cancer Hospital Co., Grand Av., K. C., Mo.

**ROUND-UPS.**

**Amorilla Champion:**—Charlie Ware has been appointed assistant live stock agent of the Fort Worth & Denver railroad. This is a good position, and we congratulate him on his good fortune. Charlie is the man for the position, and will do good work for the road.

**Henrietta Independent:**—W. S. Ikard has sold nine of his fine Berkshire pigs in the last week—six at \$15 and three at \$10 each. Douglass Bros. are moving 500 head of cattle from their ranch near Bellevue, to Wilbarger county. N. S. Douglass is superintending the removal.

**Cheyenne Live Stock Journal:**—Billy Carroll, a cook for the 44 outfit, was killed by lightning during a late storm, while driving along in the wagon in the Bell Fourche country. Another man near by was prostrated by the same shock, as were also the team, but the other man and the animals recovered.

**Montana Live Stock Journal:**—The firm of Towers & Gudgeon, whose range is on Beaver creek, near Glendive, will ship one hundred car-loads of beef teers to market this season. They will also place 10,000 more cattle on t e range, 5000 having already arrived. There are no Eiffel towers in Montana—the Beaver creek towers stand high enough for us.

**Pueblo Review:**—Mr. Theo. R. Jones has sold to the Pawnee Cattle company for Eddy Bros., 1200 head of one and two year-old steers; \$9.50 for yearlings, \$14 for two year-olds. They are to be delivered to-day at Cucharas, whence they go to the Pawnee Cattle company range. M. Theo. R. Jones has sold 24 head of beef cattle to Walter S. Grant of this city.

**HAMMOND, IND., Aug. 10.**—At 4 o'clock this morning the large packing house of George H. Hammond & Co. was destroyed by fire. The blaze was caused by the careless striking of a match near a barrel of benzine in the oil house. Within two hours the entire establishment, with the exception of the new killing department, was burned to the ground. The fire throws 700 men out of employment. Loss \$300,000.

**San Angelo Enterprise:**—S. W. Titus says that while on his recent trip to Concho county he saw some of the finest crops he ever saw in his life. All the crops he saw were good, but he specially mentioned those on the Bustin, Hoskins and Malloy Cattle company ranches. On the Bustin ranch 100 tons of cane have been gathered from 25 acres and 4 1/2 tons of millet to the acre have been made.

**New Mexico Stock Grower:**—This paper has been asked to express itself as to the number of three and four year-old steers in New Mexico to-day. After careful investigation we place the number at 70,000 and are confident that the true figure will not vary five thousand head from the amount we state. A wager has been made, on our authority, that not over 60,000 head of steers; three years and over, will be marketed in Chicago and Kansas City from New Mexico this fall.

**Cheyenne Live Stock Journal:**—It was the confident prediction of ranchmen that a heavy rain would follow immediately after the smoke caused by the forest fires cleared away. The smoke has gone, and all anxiously await the fulfillment of the prophesy. Never before in the history of the country has the range been more dry than at present, and all would be immensely pleased could the ranges receive a soaking, which could not help but brighten the present prospects for winter feed.

**Eagle Pass Guide:**—The mule trade is brisk, but alas for the American capitalists and laborers interested in Mexican mines! Mr. C. A. Hoover, who passed through the city last Thursday with three car-loads of mules bought in Chihuahua, says that he everywhere saw evidences of the ruin of American enterprises in Mexico, wrought by the notorious Window circular. At the Rinoles mine a young American, who had just sunk his entire patrimony in American machinery, was shutting down the mines, then hardly opened, and preparing to leave the district—beggared by the ukase of his insolent countryman.

The first San Angelo monthly stock sales occurred last Saturday, Aug. 3, and was a decided success. The results were so satisfactory that we predict the next sale, Sept. 7, will exceed the public's most sanguine expectations. The following is a list of the property sold: John Fulton, 2 cows, \$18; 2 horses, \$47;

Capt. Turner, 2 horses, \$60 J T Thomson, 5 milk goats, \$7; 2 horses, \$100; M C Barfield, 12 head cattle, \$120; Ben Ryan, 1 mule, \$13; Joseph Tweedy, 1 burro, \$12; J S Delaney, 2 horses, \$95; G B Jackson, 1 horse, \$45; M E Bennie, 1 horse, \$30; S H Riley, 2 horses, \$95; Patterson & W, 2800 sheep, \$5,600; R O Smith, 10 bucks, \$100; J J Farmer, 250 sheep, \$500; I G Yates, 21 cattle, \$210; second-hand plunder, \$399; total, \$7,061.

**Cattle Drives.**—Winnemucca Silver State:—Miller & Lux, who own extensive tracts of land in the vicinity of Summit lake, have contracted with Cummings & Murdock, extensive cattle owners themselves, to drive 2000 head of cattle from the ranges in this county to the Feather river, in Yuba county, Cal. The first drive will start about August 15th and the next will follow before September 1st. In consequence of the prolonged drought, feed is scarcer in Nevada than ever before and cattlemen are afraid to take the chances of getting stock through the winter on their ranges. Thousands of head have been driven or shipped out of the state this summer, those from Elko county going to Idaho or Montana, and those from this county principally to California. Brandenstein & Co. have shipped two or three train-loads to California, and Miller & Lux may drive more than the number above mentioned over the mountains, though by reclaiming lands and judiciously using water they have doubled their hay crop this season.

By its mild, soothing and healing properties, Dr. Sage's Catarrh Remedy cures the worst cases of nasal catarrh, also, "cold in the head," coryza, and catarrhal headaches. 50 cents, by druggists.

**"Limited" Corporations.**  
 Exchange.

It has become somewhat common now-a-days to see the word "limited," in parenthesis, after the titles of corporations, and it is safe to say that people generally do not understand the significance of the term, though of course business men do. An explanation of it may therefore be of general interest. The old principle of corporations created by legislative act, was that the entire property of every stockholder was liable for the whole of the company, as the whole property of every member of a general partnership is still liable for the debts of the firm. This system made every shareholder responsible for bad management, of which he might not be guilty, and deterred wealthy men from becoming interested in the shares of corporations. To remove this objection the principle of limited responsibility was introduced, and in order to notify the public that only the separate property of the corporation was liable for the debts of the corporation, the English law requires that the word "limited" shall be used in every case by the company in connection with its title.

Most American corporations are constituted on the principle of limited liability; but few, if any, of the states enjoin the companies formed under their laws to append the word "limited" to their corporate titles. The matter is so generally understood in this country by business men, however, that it is not deemed necessary, though many companies do it of their own accord. The most noteworthy exception to the general rule is the case of national banks, but even in this instance liability is limited to an amount equal to the par value of the shares held; that is, if the national bank fails, each stockholder may not only lose what he has invested, but \$100 more for each share of the stock he holds, if so much is necessary to pay the debts of the bank.

Until within a few years all the Scottish banks were organized with unlimited liability, and when, some eight or ten years ago, a Glasgow bank failed disastrously, there were cases of men who only owned a share or two, valued before the failure at not much more than \$100, who were assessed thousands of pounds sterling to meet the debts of the bank. Since that time the Scottish banks have been allowed to reorganize on a limited liability basis.

**Electric Belt Free.**

To introduce it and obtain agents the undersigned firm will give away a few of their \$5 German Electric Belts, invented by Prof. Vander Weyde, Pres. of the New York Electrical Society (U. S. Pat. 257,647 a positive cure for Nervous Debility, Rheumatism, Loss of Power, etc. Address Electric Agency, P. O. Box 178, Brooklyn, N. Y. Write to them to-day.

**UNPRECEDENTED ATTRACTION OVER A MILLION DISTRIBUTED.**



**Louisiana State Lottery Company.**

Incorporated by the Legislature, for Educational and Charitable purposes, and its franchise made a part of the present State constitution in 1879, by an overwhelming popular vote.

Its **MAMMOTH DRAWINGS** take place **Semi-Annually, June and December, and its GRAND SINGLE NUMBER DRAWINGS** take place in each of the other ten months of the year, and are all drawn in public, at the Academy of Music, New Orleans.

**FAMED FOR TWENTY YEARS**  
**For Integrity of its Drawings, and Prompt Payment of Prizes.**

Attested as follows:  
 "We do hereby certify that we supervise the arrangements for all the Monthly and Semi-Annual Drawings of the Louisiana State Lottery Company, and in person manage and control the Drawings themselves, and that the same are conducted with honesty, fairness, and in good faith toward all parties, and we authorize the Company to use this certificate, with facsimiles of our signatures attached, in its advertisements."

*Ed. Deering*  
*J. F. Early*

Commissioners.

We, the undersigned Banks and Bankers, will pay all prizes drawn in the Louisiana State Lotteries which may be presented at our counters.

**R. M. WALMSLEY, Pres. Louisiana Nat. Bk.**  
**PIERRE LANAUX, Pres. State Nat'l Bk.**  
**A. BALDWIN, Pres. New Orleans Nat'l Bk.**  
**CARL KOHN, Pres. Union National Bank**

**GRAND MONTHLY DRAWING**

At the Academy of Music, New Orleans, Tuesday, September 10, 1889.

**Capital Prize, \$300,000**

**100,000 Tickets at Twenty Dollars each. Halves \$10; Quarter \$5; Tenths \$2; Twentieths \$1.**

**LIST OF PRIZES.**

1 PRIZE OF 300,000 is.....	300,000
1 PRIZE OF 100,000 is.....	100,000
1 PRIZE OF 50,000 is.....	50,000
1 PRIZE OF 25,000 is.....	25,000
2 PRIZES OF 10,000 are.....	20,000
5 PRIZES OF 5,000 are.....	25,000
25 PRIZES OF 1,000 are.....	25,000
100 PRIZES OF 500 are.....	50,000
200 PRIZES OF 300 are.....	60,000
500 PRIZES OF 200 are.....	100,000
<b>APPROXIMATION PRIZES.</b>	
100 Prizes of \$500 are.....	50,000
100 Prizes of 300 are.....	30,000
100 Prizes of 200 are.....	20,000
<b>TERMINAL PRIZES.</b>	
999 prizes of \$100 are.....	99,900
999 prizes of 100 are.....	99,900
3,134 prizes, amounting to.....	\$1,054,000

NOTE—Tickets drawing Capital Prizes are not entitled to terminal prizes.

**AGENTS WANTED.**

For CLUB RATES, or any further information, write legibly to the undersigned, clearly stating your residence, with State, County, Street and Number. More rapid return mail delivery will be assured by your enclosing an envelope bearing your full address.

**IMPORTANT.**

Address **M. A. DAUPHIN,** New Orleans, La., or **M. A. DAUPHIN,** Washington, D. C.

By ordinary letter, containing **Money Order** issued by all Express Companies, New York Exchange, Draft or Postal Note.

Address Registered Letter containing **Currency** To **NEW ORLEANS NATIONAL BANK,** New Orleans, La.

**REMEMBER** that the payment of all prizes is **GUARANTEED BY FOUR NATIONAL BANKS** of New Orleans, and the tickets are signed by the president of an institution whose chartered rights are recognized in the highest courts therefore, beware of any limitations or anonymous schemes.

**ONE DOLLAR** is the price of the smallest part or fraction of a ticket issued by us in any drawing. Anything in our name offered for less than a Dollar is a swindle.

**AGENTS \$75 per month and expenses** paid any active man or woman to sell our goods by sample and live at home. Salary paid promptly and expenses in advance. Particulars and sample case **FREE.** We mean what we say. Stand **SALARY.** and Silverware Co., Boston, Mass.

# WOOL!

WESTERN WOOL COMMISSION CO.

ST. LOUIS, MO.

Consignments of Wool Solicited. Cash returns made within six days after receipt of wool. Liberal Advances made on Consignments.

References: Dun's and Bradstreet's Agencies and Local Banks.

Send for Circular and Price Current. Represented in Texas by ED. MACKREHNIE, San Antonio.

[ESTABLISHED 1830.]

DENNY, RICE & Co.

Nos. 606 to 610 Atlantic Avenue,

BOSTON, MASS..

# -WOOL-

Commission Merchants.

Prompt information given by mail or telegraph by applying to their Texas representative,

C. G. HUBBARD.

SAN ANTONIO, TEX.

Cash advances made on consignments.

E. S. BROOKS & CO.,

# WOOL

Commission Merchants,

100 and 102 N. Main Street, Corner of Chestnut,

ST. LOUIS, MO.

We solicit consignments of Texas and Southwestern wools, and will make proper advances on all wools consigned to us. Correspondence promptly attended to.

## CONSIGNMENTS

—OF—

# W-O-O-L

SOLICITED

—BY—

P. J. WILLIS & BRO.,

GALVESTON, TEXAS.

JONH OWENS, Manager,

Wool Department.

ADOUE & LOBIT,

BANKERS

—AND—

WOOL Commission Merchants,

GALVESTON, TEX.

Consignments solicited from wool growers and dealers. Advances made from clip to clip.

J. D. SKINNER and SON,

GALVESTON, TEX.,

SOLICIT CONSIGNMENTS OF

WOOL AND COTTON.

W. B. Westcott & Co.

Commission Merchants,  
Soliciting consignments of

# Wool, Hides, Etc.

Write for market reports.

202 North Main Street, - ST. LOUIS, MO.

Refer to Texas Live Stock Journal.

FUNSTEN & CO.,  
St. Louis.

# WOOL

Sacks and Twine Furnished at Cost.

TEXAS REFERENCES:—First National Bank, Abilene; First National Bank, Albany; Belton National Bank, Belton; First National Bank, Colman; First National Bank, Denton; First National Bank, Taylor; Waco National Bank, Waco; Texas Live Stock Journal, Fort Worth.

Liberal Advances Made.

W. A. ALLEN. Established 1854. M. EVANS.

W. A. ALLEN & CO.,

142, 144 & 146 Kinzie St., Cor. La Salle Ave.,  
CHICAGO, ILL.

# WOOL

Commission Merchants.

Liberal advances made on consignments. Full advices of market furnished on request. Prompt and faithful attention to the interests of consignors is our rule.

## THE CLIP.

San Angelo Standard:—Lewis & Mauzy of San Angelo, bought 440 head of sheep from R. H. Overall of Coleman at \$2.25.

San Angelo Standard:—Lewis & Mauzy, Thursday, sold 460 Concho county sheep in Pittsburg, Pa., at \$4.40, and 600 at Buffalo, N. Y. at 4.50 per hundred.

Forty millions sheep in the United States in 1880, 50,500,000 in 1884 and 42,000,000 in 1888, is the way Justice Bateman & Co. figure the increase and decrease of sheep.

San Angelo Standard:—J. I. Huffman, Wednesday, sold 600 wethers to G. B. Jackson for \$1.90. These are the same sheep that Mr. Huffman bought from Messrs. Gary and Lancaster, of Coleman county, last week.

Quotations from Boston Advertiser.—Texas Southern wools: Texas spring medium (12 mos.) 24@26c; Texas spring fine, 23@24c; Texas spring fine (six to eight mos.), 18@23c; Texas spring medium (six to eight mos.), 22@25c; Texas fall fine, 17@20c; Texas fall medium, 17@20c.

The American Wool Reporter says:—Mr. J. B. Cherbino of Middlebury, Vermont, started for Texas on Tuesday, with a car-load of stock rams. Among the lot are 24 fine Shropshires, bought of Wilcox Bros. of Bridport, and a French Merino purchased of Mr. H. E. Taylor of West Cornwall.

“San Angelo Standard:—There has been more demand for sheep this year than there has been for many years,” says Jack Meara, “the demand is still on the increase and stock sheep is sure to go up.” He thinks in the neighborhood of 1,000,000 pounds of fall wool will be marketed in San Angelo this fall. All the buyers that were here this spring will buy in San Angelo this fall and prices are expected to range about the same as they were then.

MINNEAPOLIS, MINN., August 9.—Mr. Benjamin McLean of Kansas City dropped dead in the dining-room of the Hotel St. Louis, Minnetonka, this afternoon while eating his dinner. Death was caused by apoplexy. Mr. McLean resided in Kansas City ever since the war, and for twenty-five years was successfully engaged in the wool and hide business.

A few years ago he relinquished his business to his son. He is rated at about half million. He had been at the Hotel St. Louis for about two weeks and was in good health. He was chatting about minor matters when he was attacked.

Boston Advertiser:—Montana wools are meeting with a light sale owing to the high prices by receivers. Fine Montana wools are still held here on the scoured basis of about 67c. and above, but sales could not be made above 63@65c, while other territories with choice 12-month's growth (California and Texas spring wools are not quotable above 62@65c. for fine, 60@62 for fine medium and 65@67 for medium. Six to eight month's growth Texas and California spring wools command scoured about 3 to 5c. less than 12 months' growth. The slack demand is causing an easier tone for all grades, and with buyers holding back, it only seems to be a matter of time before some sellers will be disposed to make concessions.

Boston Commercial Bulletin:—The imports of wool show that our carpet mills require more and more wool, and that the increase in their material necessarily comes from abroad. The short supply in the spring and rapid advance in the imports of American wool, has increased the imports of clothing wool, but the month of June shows a marked shrinkage from last year. Clothing, dress goods and waste show an increase over last year. The imports of waste being double those of last year. It is surprising that, in spite of the high price of yarns, the imports for the month of June show a marked increase, and that in spite of new rulings there has also been an increase for the month in the imports of cloths and waste.

Mr. Pancho Alegria, the large sheep raiser, has been finally vindicated in the case of Sanchez Bros. vs. Algeria in the Laredo courts. The suit arose out of an attempt of Sanchez Bros. to collect from Mr. Alegria a second time a sum which had already been credited to him on their books, for wool sold to Ed Buckley, but which the sudden business collapse of that merchant prevented them from realizing. The case has been tried several times and always decided in favor of the defendant; but the plaintiffs have so far always succeeded in getting a new trial. This time, however, the decision is final, and the case cannot be reinstated. The sum involved in the suit was about \$6,000.—Eagle Pass Guide.

Boston Commercial Bulletin:—The market is under a cloud, more from sympathy than from suffering. The heavy embarrassment, described elsewhere, of the Riverside and Oswego mills and of the wool house of Brown, Steese & Clarke, has of course shaken the trade to its center, but the actual losses sustained have fallen upon houses who are able to bear them, and no other wool failures are expected. There are mills, however, among the firm's creditors who had loaned them money to buy wool in Ohio, and until some definite understanding of the firm's condition is made public, distrust is likely to increase rather than diminish. The unfortunate disappearance of Mr. Brown, the financial member of the firm, leaves the amount of the firm's endorsements and liabilities in a state of fog. There is much sympathy expressed for Mr. Brown, who was almost universally popular, and the trade is generally loath to believe rumors of financial irregularities.

Boston Advertiser:—The market shows a dull tone this week and the effect of the lighter demand is noticeable in a perceptible weakness in prices. This weakness as yet is entirely confined to domestic wools as foreign grades are still firm in sympathy with the strong tone abroad. The general unfavorable tone to the goods market has caused less demand for the raw material on the part of manufacturers, and the failure of the large woolen company in Providence, together with the embarrassment of a large Boston wool house, makes the situation that much worse. As yet no one can tell what effect the failures will have on the market, as but little inside information can be obtained. Mr. Brown, the treasurer of the Oswego and Riverside mills, and the head of the firm of Brown, Steese & Clark, has not been seen since the trouble began, and without he can be found to give an explanation of the situation, it will take some time to tell how these companies stand. In the meanwhile it is expected that the firm of Brown, Steese & Clark will make an assignment and settle up matters.

Outting Rates, Kansas City to Chicago.

CHICAGO, Aug. 8.—It is understood that the Chicago, St. Paul & Milwaukee road has given notice of its intention to reduce the rate on cattle 3/4c per 100 pounds, Kansas City to Chicago, when shipments are made in the common stock cars owned by company, maintaining the regular rate of 22 cents on shipment in patent stock cars controlled by shippers. The notice will be considered at the Western Freight association next Tuesday.

The Missouri Pacific had notified Chairman Midgley that it proposed to adopt car-load rates on live stock from Kansas City to St. Louis, instead of billing by weight. This will have the effect of cutting the rate between Kansas City and Chicago.

## Consumption Surely Cured.

To the Editor:—Please inform your readers that I have a positive remedy for consumption. By its timely use thousands of hopeless cases have been permanently cured. I shall be glad to send two bottles of my remedy FREE to any of your readers who have consumption if they will send me their Express and P. O. Address. Respectfully, T. A. SLOCUM, M. C., 181, Pearl street, N. Y.

**WIND MILLS**  
THE HALLADAY PUMPING MILL is acknowledged the Standard Wind Mill of the World and is made in 18 sizes, 8 to 60 ft. diameter, 1 man to 40 horse power. It is adapted to pumping water for Stock and Dairy Farms, Ornamental and Village Water Supply and Fire Protection, Railway Water Stations, Irrigation, Drainage, etc.

THE HALLADAY is made upon honor and guaranteed THE MOST POWERFUL, DURABLE and BEST REGULATED STORM DEFYING Wind Mill Made.

**U. S. SOLID WHEEL WIND MILL**  
7 sizes, 10 to 22 feet diameter. Not cheaply made but heavy and strong in construction. These Mills are taking the lead of all Solid Wheels on the market, and are guaranteed the Best of their class.

**PUMPS**  
We make a very complete line of WIND MILL, HAND AND POWER PUMPS IRON, BRASS AND BRASS LINED CYLINDERS. Our 3 Way Force Pumps have no equal.

**TANKS**  
We make the largest assortment of Tanks on the market, consisting of Round, Half-Round and Square Stock Tanks, Milk Cooling Tanks, Storage and House Tanks. Special sizes made to order.

**STANDARD HAY TOOLS**  
For stacking out in fields and moving away in barns. The use of a good Hay Carrier and Fork a few hours before a storm, may save many times their cost. We make the most complete line of Horse Hay Tools on the market, consisting of Anti-Friction, Swivel, Reversible and Rod Hay Carriers, Harpoon and Grapple Hay Forks, Pulleys, Floor Hooks, etc.

We also make the HALLADAY STANDARD GRADED WIND MILL, in 11 sizes, 1 1/2 to 40-horse power, Corn Shellers, Horse Powers and Jacks, Stalk Cutters, Feed Grinders, Saw Tables, Tank Heaters, &c. All goods guaranteed. Send for Catalogue and Prices. Reliable Agents Wanted in all unassigned Territory.

**U. S. WIND ENGINE & PUMP CO.**  
BATAVIA, ILLINOIS, U. S. A.  
BRANCH HOUSES:—Kansas City, Mo., Omaha, Neb., Fort Worth, Tex., Boston, Mass.  
Fort Worth Branch in charge of the  
**Panhandle Machinery and Improvement Co.**  
FORT WORTH, TEXAS.

**YOUNG AND MIDDLE AGED MEN**  
Suffering from the effects of Youthful Polls, Indiscretion, Excess or Indulgence, producing Nervousness, Debility, Dimness of Sight, Self Distrust, Failing Memory, Physical Decay, Pimples on Face, Aversion to Society, Loss of Ambition, Unfitness to Marry, Dyspepsia, Stunted Development, Pains in Back, Milky Urine, Night Losses, Unnatural Drains and Lost Manhood, you can be CURED TO STAY CURED. Relief at once, all exhausting drains stopped, weak parts strengthened and enlarged. Treatment tested 32 years and in thousands of cases, Question List NO. 1, FREE, in PLAIN ENVELOPE. Ad. JAMES WHITTIER, M. D., 215 W. Ninth St., KANSAS CITY, MO.

**TANSY PILLS!**  
Safe and Sure. Send 4c. for "WOMAN'S SAFE GUARD." Wilcox Specific Co., Phila., Pa.

**SAN ANTONIO.**

**JESSE K. LLOYD,**  
Live Stock Commission Merchant.  
Liberal advances made on consignments.  
Office and Yards, 220 South Flores St.,  
SAN ANTONIO, TEXAS.

**For Rent.**

A number of residences, stores and warehouses at Fort Concho, Tom Green county, Texas. For terms apply to

ED LERCH,  
Fort Concho, Texas.  
Or to HENRY LAAGER,  
San Antonio, Texas,  
Agents for Adams & Wickes.

**Herefords and Shorthorns  
For Sale.**

400 bulls, high graded Herefords and Shorthorns, for sale. A herd of 56 head on exhibition at the fair. Every animal is Texas raised and fully guaranteed against splenic or Texas fever. For further particulars address  
LEE HALL,  
San Antonio, Texas.

**INSCHO, SHITH & REDMON,  
LIVE STOCK****Commission Merchants,**

Office and Yards opposite I. & G. N. shipping pens,  
San Antonio, - - - Texas.

Liberal advances on consignments.

Correspondence solicited.

Fish in open water tanks will go a long way to purify the water and keep it wholesome for stock.

In the heat of midsummer a revival of horse trading is experienced here; an unprecedented occurrence.

THE vital reforms that are now most prominent before the ranch interests of Texas is the per centum commission for selling live stock; the selling all kinds of meat producing live stock of whatever age by weight, and the handling of improved live stock cars by the railroads without additional charge, the same as the railroads haul these cars in other states.

THE Texas railroads have not yet reduced the minimum weight on car-load live stock freights to conform with the northern end of the Chicago routes, and while from the Mississippi river you are not charged for 20,000 for a 30 foot car when you have only 19,000 pounds, the Texas railroads continue to make this charge. When will Texas shippers take proper measures to get the same treatment accorded other shippers.

A MAN to raise a healthy family thinks it very important to provide wholesome water, as without that, good health, vigorous development, and bright intelligence are considered impossible. But, how can the same man expect to raise fine well-developed and healthy meat-producing cattle if he provides only water impregnated with filth that nothing but the direst necessity forces an animal to drink to keep from famishing? The water system has not hitherto received the attention at the hands of Texas ranchmen that it deserves.

THE rancheros of the Southwest

would like to have the light of the countenance of the new agent of the bureau of animal industry shine upon them and receive from his wise lips knowledge on the dreaded Texas fever question. There are many important places for him to visit in San Antonio where he could pursue his studies, such as the Ranch, the Turf, Alberts, where thoroughbred and high-grades can be found, and scrubs resort without number. The Hon. Nat. Q. is known to be an expert in matters pertaining to this class of ranching, and it is but right, seeing that he is a Texan, that he should give us the benefit of his valuable services.

**San Antonio Horse Market.**

The week just past has not been quite so lively as the one next preceeding, but very fair for midsummer. There is a scarcity of good stock, and as usual, a light demand for scrubs of any class. The demand is strong for young stock of all kinds, but especially for young unbranded mules, for which a good premium will be paid. Small grown mules are slow sale, and only can be worked off into eastern gulf states. From the present outlook the market will continue in its present shape for some weeks to come.

Shipments for the week were 836 head, as against 1030 for the week previous

**Quotations are as follows:**

Scrub and poor mares, 12 to 13½ hands.	\$10@13
Scrub fair conditioned, 12 to 13½ hands.	14@ 16
Medium mares, 13 to 14 hands, fat.	17@ 20
Medium mares, 13 to 14 hands, thin.	14@ 17
Yearling fillies, branded.	7@ 9
Yearling fillies, unbranded.	9@ 12
Two-year-old fillies, branded.	9@ 12
Two-year-old fillies, unbranded.	12@ 14
Texas improved mares, 14 to 15 hands.	25@ 35
American carriage horses, 15½ to 16½.	75@200
Saddle horses, good, 13 to 14½ hands.	23@ 30
Saddle horses, poor, 13 to 14½ hands.	17@ 22
Unbroke horses, 13 to 14½ hands.	15@ 23
Weaned, unbranded colts.	4.50@ 6
Mules, Mexican, 12 to 13½ hands.	20@ 35
Mules improved, 13½ to 14 hands.	37@ 50
Yearling mule colts, improved.	22@ 30
Two-year mule colts, improved.	30@ 40
Yearling mule colts, Mexican.	14@ 20
Two-year mule colts, Mexican.	15@ 27

**HORNS AND HOOF.**

E. E. Bauner of Kyle came down last week to take a hand in the horse market.

V. L. James, after visiting relatives in the city returned to the ranch in Uvalde county.

E. L. Rudolph and R. A. Gregory left for Nashville, Tennessee, with a car-load of horses each.

Captain C. L. Nevill, Marfa, stopped off here with some mules, and then went on to Florida with them.

Richard Ball and Thomas Alexander, Pine Level, Fla., were here the first of the week and bought some horse stock.

Ike Stephens passed through to his home in Georgetown, coming from the Rio Grande, where he has large stock interests.

Capt. Joe Shely, now of Corpus Christi, came up on Friday of last week with 100 head of horse stock which he sold on this market.

Senor Don Carlos M. Smith has just returned from the land of God and Liberty with a bunch of horse stock which he put on the local market.

Ira Johnson, the well-known cattle buyer, left for a visit to Iowa on Wednesday, taking a furlough till the beef market improves in Chicago.

The best place in San Antonio to buy carriages, buggies, etc., is at Hick's repository, West Nueva street. Rice's coil spring vehicles a specialty.

John Tod, manager of the Texas Land & Cattle company and now a resident on Laureles ranch, Nueces county, spent several days in the city this week.

C. H. Holly, Pensacola, Fla., a regular buyer in this market, bought a bunch last week, and shipped them out. Only

# Union Stock Yards, FORT WORTH. THE LIVE STOCK MARKET OF TEXAS!

The management of the Union Stock Yards Company of Fort Worth with pleasure announce to the stockmen of Texas that these yards are open for feeding purposes, and that all stock delivered at the yards will receive every care in unloading and reloading, be held in spacious, well drained pens, amply supplied with artesian water and the best of feed. Ample hotel-facilities at the yards for stockmen.

As the yards are on the direct line of traffic to greater markets, stockmen can avail themselves of the ample facilities afforded at these yards without increase in expense or loss of time. Twenty-two cars can be unloaded at once.

The Union Stock Yards Company of Fort Worth confidently rely upon the earnest co-operation of the stock raisers of Texas in the effort to build and operate a large home market in their interest. To do so, stockmen should insist that all stock passing through Fort Worth be unloaded and fed at these yards.

On September 1st the further announcement will be made that the yards are open for the sale of horses and mules, and for the sale of cattle, hogs and sheep. By that date the connections and approaches will be completed, the Stock Yards National Bank open, all offices occupied, and a good number of the leading commission houses represented at the yards.

**JNO. R. HOXIE,**

President.

**J. C. McCARTHY,**

Vice President and General Manager.

**G. B. PAXTON,**

Secretary.

Visitors will be welcome. Electric Street Car Line from Main Street direct to the Stock Yards Exchange.

a couple of loads, which he sold like hot cakes.

C. A. Hoover is back from a trip to the Southern portion of the state of Chihuahua, bringing with him three car-loads of mules which were sold on this market.

Ed. C. Lasater of Live Oak, ranchero and beef buyer, was in the city the first of the week. He is taking a day off on the business, and is attending to the raising of them himself.

J. E. Price of J. E. Price & Co., Traders' National stock yards, returned last week from several weeks sojourn at Los Hermanos and San Lucas Springs, Mexico, and is much improved in health.

J. E. Price of the firm of J. E. Price & Co., Traders' National stock yards, returned home last week from a several-weeks' visit to the Los Hermanos and San Luis Springs, Mexico, much improved in health.

A brother of Maud S is on the ranch of Broderick Cloete on the Sabinas river, state of Coahuila, Mexico. Besides this fine stallion, Mr. Cloete has many others of the finest strains of the United States and England.

Del Rio Dots in S. A. Express:—Ike Stevens and partner, extensive stock stock deal rs, made a trade with Del DeWees and James Stone yesterday, to take 200 head of heaves from them a week. The heaves will be shipped from here to the City of Mexico.

Dr. J. E. Breeding, dentist, has established himself at 231 E. Houston street, opposite the Belknap armory. His appointments are first class in every respect. He is prepared to do anything in the line of dentistry. Teeth without plates, gold crowns, bridges, etc.

John J. Young returned from the lower country on Friday, last week, with 77 head of horse stock of his own raising, and sold them inside of a few hours after their arrival. He says now that the "JY" brand is becoming known they are being appreciated at their proper value.

San Antonio Express:—G. H. Garland of Paint Rock, who has been at the Southern hotel a day or two, left this afternoon for home. During the time he was here he contracted for 600 head of yearling steers at \$5 per head, to be delivered next month. He will take them to his ranch as feeders.

Kerrville News:—Judge J. Vining, who lives in the upper portion of this county, made a visit to San Antonio last Monday to sell out his entire stock of cattle, consisting of about 1100 head.

He was offered eight dollars all round, and out for the purchaser stipulating their delivery in the Panhandle the Judge would have closed the trade.

D. R. Fant, after marketing about 1200 head of the steers that he bought of the O'Connor Bros. of Refugio county, has concluded to hold up with the remaining 9000 head till the market improves. They made the run from Goliad to Chicago over 1400 miles in four days, 6 hours, taking off and feeding three times. They went via New Orleans.

Uvalde items in San Antonio Express:—J. N. Heard has just cut a crop of sorghum cane from nine acres planted in June, and made thirty-one tons. Mr. Heard paid one-third for the rent of the land, never did any work himself and yet realized a profit of \$75 in the two months time, and still people say nothing can be made by tilling the soil in West Texas. Mr. Heard intends planting another crop at once, and will realize a much greater profit as he will not have the expense of cleaning the land.

B. F. Darlington has bought out the interest of I. A. Dewees, in the firm of J. E. Price & Co., proprietors of the Traders' National Stock yards, San Antonio, and the horse dealing business. Mr. Darlington has been the book-keeper for the firm for some time, and is thoroughly familiar with the business and has a life-long experience in the different branches of the live stock business with an extensive acquaintance. This is a valuable acquisition to the leading firm of horse dealers in the Southwest.

NEW BIRMINGHAM, TEX., Aug. 9, '89.  
My wife is improving from using Southern Germicide. She has been an invalid for twelve years, or nearly an invalid, in very poor health; in one week's use she is much improved, and I think it will cure her. Yours truly,  
M. A. SKIDMORE.

**THE WOOL SACK.**

N. W. Gorsuch of Abilene is here, and will probably have a hand in the fall buck trade.

Already the wool growers in the lower country are taking the first steps toward preparing for the fall shearing.

The buck season is now upon us, and the smiling countenance of the wool-grower will shine in welcome places in and about Sautone.

B. H. Ross of Kerrville, an extensive mutton dealer and wool grower, has returned from several weeks' visit to the

Pacific coast, accompanied by his wife. He appears greatly refreshed by his recreation, and will begin the fall work with renewed energy.

Henry Burns is back from his trip to the North, and in a few days the sheepmen will be informed of his success in securing them good bucks.

Now that buck buying will engross wool-growers' attention they should not forget that mutton qualities in sheep are not to be lost sight of, as it was a few years ago.

Eagle Pass Guide—Capt. S. J. Woodhull has purchased Mrs. Alexandra Cloete de Lopez's entire sheep interest. Her rancho is situated about thirty miles up the river from Piedras Negras. Eighteen hundred of the sheep were passed over the river and through the custom house last Thursday and the remainder were crossed this morning.

ROANOAK, DENTON Co., TEX.,  
Aug. 2, '89.

Southern Germicide Manufacturing Co.:

Gentlemen: Southern Germicide cured my daughter of a severe case of chills and fever, gave her a good appetite and caused her to have a better color in her face than she has had for a number of years. Yours truly,

AMOS SANDIFER.

**Things in Mexico.**

The following is a letter received by a Texan from a friend in Central Mexico:

"My Dear Friend—Last, but not least, I come to you, though I believe I made no promises of writing, but out of pure gratitude toward you for being the only man who made correct statements as to the condition of things here, I feel like giving you a few dots. Since my arrival I have been very busy, in fact too much so to allow me to even think of friends I left behind me. Texas, or any other part of the United States, need have no fears of any competition from Mexico in the stock or wool business. The country is entirely too dry and unproductive, and not only are the landed owners wanting in enterprise, but their quality of all kinds of stock is very inferior, and would leave them away behind in a competitive race on products. However, there are some quite desirable haciendas to be found, but when grazing results of the lands are compared with those of Texas, the Texas lands are the cheapest. There is a demand here for all ranch products at remunerative prices, and as for security of life and property, it is about on a par with Texas at present.

"I am not well posted on things outside the reduction of ore, and that industry seems to be flourishing, although the low value of the metal is preventing the working of many mines which formerly paid good dividends. The old Mexican way of reducing the ore is fast disappearing, and where the natives succeed in getting competent men from the states, they do away entirely with their crude system, and adopt the more modern and cheaper system of the United States. On coming here this small mill occupied 120 men. We now have but 48, with a total reduction of some \$50 a day in expenses.

"All this of course brought down the ill will of the men, and to right matters in their truly Mexican way, four of them on last Monday morning at 1 o'clock, after beating and tying down the guard at the door, entered my room adjoining the offices, and had I

not awoke instantly, I would of course fall a victim to their devilish wishes, but thanks to my immediate action and heavy blows, I threw them into confusion. As there were four of them, they of course beat me up pretty badly, but used only chunks of iron and their pistols. I received some thirty cuts and punctures, but after a short but brisk entertainment, they thought best to retreat, and I assure you they had my consent to withdraw. I fought the demons as best I could in the darkness of the night, and punished them, I think, enough so that I have no fears in future. They probably not only wanted to teach me the result of introducing modern machinery, but would have robbed the company of all they could have found, and on that night there was over \$4000 available.

"Now, my friend, of all the men who informed me of affairs in Mexico, you were the only one who stated things truthfully. A land of half-starved, vermin-covered mortals, but little elevated above the wild Indians of our own Rockies, in fact they much resemble the Digger Indians of California.

The very small per cent. of the better class—I would say about 5 per cent.—are very pleasant, and are very easy to get along with in business; I say more so than our own countrymen, but I can say nothing of their families or their home circles, as I have not entered one of them, nor do I expect to if I remain here five years. They live—or the female portion of the family does—entirely excluded and isolated from this outside and contaminating world, but can be seen coming out of mass on Sunday mornings, though I have not taken this pious step yet.

"Horses here are higher than in Texas, in fact there is a scarcity of them, and to my knowledge, none go to the north for sale. They command better prices toward the Pacific coast. Beeves and muttons command about one-third more here than in Texas. Wool sold at the haciendas at 18c Mexican money, which, considering the cost of herding, etc., is about as good as Texas, and much better than Texas under a free-trade Democratic administration. "B. W. C."

**Wool and Cotton Firm.**

The firm of Wood, Holloway & Co. of Galveston, are wool and cotton buyers. The firm is thoroughly reliable and stand high commercially. Mr. F. H. Holloway is well known as one of the most extensive and liberal operators in the state, and will soon be on hand when called to inspect wool or cotton at any point. Liberal advances are made at all times and prompt attention to all business are characteristic of the firm. When you have a disposition to sell just drop a line to Wood, Holloway & Co., Galveston, Texas.

The TEXAS LIVE STOCK JOURNAL for one year and all of the works of Charles Dickens, 15 volumes in all, can be had by sending \$2.50 to the STOCK JOURNAL, Fort Worth, Texas. This is the best clubbing arrangement we have ever made, as the 15 volumes of Dickens works are worth at lowest valuation a clean five-dollar bill.

PAINLESS EFFECTUAL  
**BEECHAM'S**  
THE GREAT ENGLISH MEDICINE  
**PILLS** WORTH A GUINEA A BOX

For Weak Stomach—Impaired Digestion—Disordered Liver.

SOLD BY ALL DRUGGISTS.

PRICE 25 CENTS PER BOX.

Prepared only by THOS. BEECHAM, St. Helens, Lancashire, England.

B. F. ALLEN & CO., Sole Agents

FOR UNITED STATES, 365 & 367 CANAL ST., NEW YORK.

Who (if your druggist does not keep them) will mail Beecham's Pills on receipt of price—but inquire first. (Please mention this paper.)

J. E. PRICE.

FRANK P. HORD.

B. F. DARLINGTON.

**Traders' National Stock Yards!**

J. E. PRICE & CO., Proprietors,

Near I. & G. N. Shipping Pens, SAN ANTONIO, TEXAS.

Best and most commodious stock yards in the state. Built expressly for the accommodation of the stockmen. All pens shedded and with hay-racks and fresh water. Charges same as other yards. Best buyers on the market always on hand for good stock.

THOS. H. MORIN.

J. L. MORIN.

**MORIN BROTHERS,**

W. L. LUBBOCK, Manager,

**Live Stock Commission Merchants, San Antonio, Texas.**

Feed and Sales Yards, South Flores street. Make a specialty of handling Spanish stock of all kinds. We offer for sale all classes of live stock, at any point in Southwest Texas and Mexico.

**GEO. LOELOFF, SAN ANTONIO, TEX.**

—Manufacturer of the—

**CELEBRATED SAN ANTONIO SADDLE TREES.**

Makes all kinds of Natural-Fork Saddle Trees, Texas, Colorado and California patterns. None genuine without my name on cantel. Look out for imitations.

**Brackett & Holman,**

MANUFACTURERS OF SADDLES, HARNESS, BRIDLES, ETC.

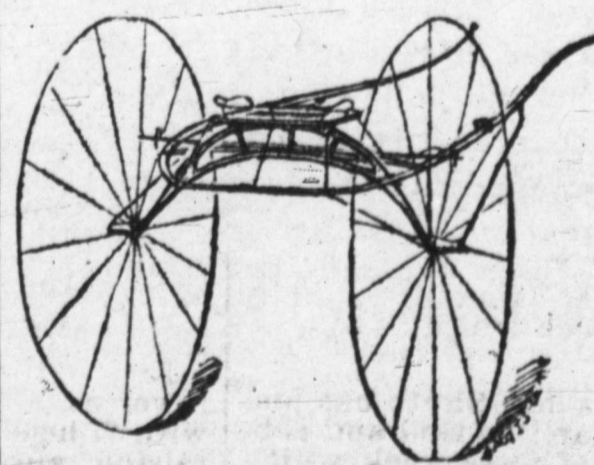
No bogus Northern penitentiary or combination saddle trees sold or rigged, but a specialty made of strong, reliable, honest goods at a reasonable price. Also sell the best farm wagon made. South Side of Military Plaza. San Antonio, Texas

**G. W. Saunders & Co.**

**LIVE STOCK COMMISSION MERCHANTS**

SAN ANTONIO STOCK YARDS.

Prompt sales and quick returns. Market reports and information as to supplies cheerfully given. Correspondence solicited. Telephone No. 401.



**CALVIN TOOMEY,**

KANSAS CITY, MO.,

Carriages, Buggies and Speed Wagons.

TRACK SULKIES,

ROAD, POLE AND BREAKING CARTS

And Sulky Cushions with weight pocket. No sulky perfect without the Wheel Guard Rail; it prevents collisions and stiffens the sulky throughout, making it run true and steady. send for catalogue.

**Wholesale Dry Goods.**

**THE MARTIN-BROWN CO**

Cor. 4th and Main Streets. The only exclusively wholesale dry goods house in the city.



**SLICKER** The Best Waterproof Coat.

The FISH BRAND SLICKER is warranted waterproof, and will keep you dry in the hardest storm. The new POMMEL SLICKER is a perfect riding coat, and covers the entire saddle. Beware of imitations. None genuine without the "Fish Brand" trade-mark. Illustrated Catalogue free. A. J. Tower, Boston, Mass.



ESTABLISHED APRIL, 1880.

Consolidated with

**TEXAS WOOL GROWER**

SEPTEMBER 13, 1884.

ISSUED EVERY SATURDAY.

—BY—

The Stock Journal Publishing Company,

—AT—

Fort Worth, Texas.

FORT WORTH OFFICE, 210 West Second Street. W. A. GARNER, Manager.

DALLAS OFFICE, 723 Main Street, W. HUGHES, Manager.

SAN ANTONIO OFFICE, No. 21 Main Plaza. L. A. HEIL, Manager.

EL PASO OFFICE, Ground Floor, Central Hotel Building. GEO. B. LOVING, Manager.

Subscription, \$1.50 Per Annum.

Entered at the Postoffice, Fort Worth, Texas, as second-class matter.

It appears that the Cherokee Strip is in more danger of being closed than it was of being opened. Now that Chief Mayes has about decided to postpone action until the regular session convenes in November, it is announced as the government policy to settle the strip with Cheyennes, Wichitas, Kiowas and Comanches, vacating the western reservations and piling in the wild Indians on top of the Cherokees. This can be done under an old treaty. The whole subject resolves itself into a question of opening up all spare Indian country in a year or two.

HAMMOND'S—one of the "Big Four" establishments—was burned down last Saturday, but the Drovers Journal remarks that the business will continue either at Hammond, Indiana, or at Chicago. The stockmen of Texas, so far as the JOURNAL has been able to ascertain, are not very much elated over this misfortune of the Hammonds, and seem to think that a few packing houses are not detrimental to their interests. According to the old butcher arguments, the burning of the Hammond establishment should cause a quick rise in cattle values, as the live stock shippers and butchers returned to the field.

A LETTER from T. L. Miller in Hoof and Horn is pertinent reading, but does not cover the situation. Unless those men who handle the best grade of cattle are growling for nothing, the best bred and best fed cattle are losing the most money. The cattle markets are in such a deplorable condition now that quality is not paid for, and a scrub steer, off good grass, selling low, loses less money than the well-fed and highly bred short-legged steer weighing 1300 pounds and selling at \$4.45. Such a steer brings, gross, \$57.85, and not \$70, as Mr. Miller figures. The Dakota and Montana fairly graded cattle, from grass alone, are selling pretty close up to

**EVANS-SNIDER-BUEL CO.,**

(INCORPORATED)

SUCCESSOR TO HUNTER, EVANS &amp; CO.

CAPITAL STOCK, - - - \$200,000.

KANSAS CITY STOCK YARDS,  
KANSAS CITY, MO.Each Office in charge of a  
member of the company.

17 YEARS' ACTIVE EXPERIENCE in Live Stock Commission Business, Market Reports regular and special, and all other information incident to the business, will be furnished FREE by each house.

UNION STOCK YARDS,  
CHICAGO, ILL.Correspondence always has  
prompt attention.DIRECTORS { A. G. EVANS, President. M. P. BUEL, Vice President.  
C. A. SNIDER, Treasurer. A. T. ATWATER, Secretary.  
F. W. FLATO, Jr. IKE T. PRYOR.NATIONAL STOCK YARDS,  
ST. CLAIR CO., ILL.**LIVE STOCK COMMISSION MERCHANTS.**

summer-fed highest quality natives. The fact is the cheap grass the cattle eat is paid for, but at present the breeding and corn-feeding is not.

THE Omaha Drovers Journal of August 8 contains a lengthy article sustaining Gov. Thayer's quarantine proclamation against the Kansas City stock yards, and among the head-lines above the article are the following:

**"South Omaha Is Now the Only Absolute Safe Market for Buyers of Export Cattle and Feeders and Stockers, There Being No Possibility of Contagion with Texas Fever."**

This is one of the straws to show the way the wind is blowing. The isolation of Texas cattle in separate pens at all the yards is known to be sufficient security against all the real or fancied danger from contact with any Texas cattle, but business interests seem to demand that Omaha should be able to claim a special exemption from disease.

In one of his arguments Gov. Thayer says:

"In consideration of the Kansas City stock yards question the opportunity has been afforded me for observing how much the judgment of people is influenced by what affects favorably or unfavorably their own special interests, and without a proper regard for the interests of the public."

These remarks seem to apply to Omaha just as well as to Kansas City. If Omaha received the run of Texas cattle that Kansas City does, Omaha would be just as anxious as Kansas City to protect the trade.

**The Butter Separator.**

The recent Swedish invention has been mentioned in the JOURNAL several times, but the following from the American Dairyman is the only report made in the American press from actual observation:

We have seen the milk put in, and drank some of it to see that it was of ordinary quality and loaded with cream, tested it with a thermometer to determine its temperature, saw the machine put in motion, and, while we could not count the revolutions, we were sufficiently familiar with the buzz and hum of the separator to know that it ran at about the same speed as that machine. We saw the skim milk appear and drank some of it, and it tasted just as skim milk does from the separator. Out of another tube came in just four minutes—the time necessary to get the machine at full speed—from the time the machine started, the first appearance of butter, which was instantaneous with the turning in of the milk in the extractor, such as a result after grinding at the churn

for thirty or forty minutes. Then the substance thickened, and in a minute or less after this the granular butter began to appear. The operator touched a lever, and the butter came slower but thicker, and as he moved this lever around a continuous stream of butter in granular form came slowly out of the tube. In about ten minutes the twenty-one gallons of milk was all run through, and over seven pounds of as fine butter as we ever saw was ready for the work table.

As an old expert in judging the best specimens of butter made in this country, the writer pronounces it as fine butter as anything he was ever called upon to pass judgment on. A very intelligent Swedish lady, who has taken a number of prizes in Sweden as a butter maker, was present, and pronounced this as fine butter as she had ever handled. She worked up a quantity of it with her own hands.

Prof. Bergstrand's (of Stockholm) analyses show the skim milk to contain 0.19 per cent. of fat. The casein in the butter made by the extractor was only 1.86 per cent.

The butter, as it comes from the machine, is, of course, perfectly sweet; but if it is desired to have sour butter, then a slight washing of the granulated butter in sour milk accomplishes this end. At an estimate made at the above time, it required about twenty two pounds of ordinary milk to make a pound of butter, which is excellent work. This machine has the same excellent method of removing all the fibrine and filth from the milk that is common to all centrifugal machines.

**The Waste Question.**

Messrs. Justice, Bateman & Co., Philadelphia, furnish the JOURNAL with a statement of the Waste question as follows:

In the month of March last, Secretary Windom made a ruling on certain lots of broken tops, classifying them as dutiable at 60c per pound, being such stock as the previous administration had admitted as waste, at 10c per pound. In the month of June last, Col. Tichenor, assistant secretary of the treasury, also ruled that laps, which also had been admitted under the previous administration as waste, were, in point of fact, "scoured wool, changed from its usual and ordinary condition," and therefore dutiable at 60c per pound. In consequence of these rulings, the impression prevailed in the wool markets, among those who were not importing, that all wastes of high value were to be excluded, but under the United States district court's interpretation of the tariff law, it appears that the appraisers of the various ports are still admitting at 10c duty, such waste as they consider the court's decision entitles them to consider as legitimate waste. This includes thread waste, ring waste, and laps, when the latter are sufficiently soiled and mixed with bits of thread,

to indicate such waste as was made in the manufacturing of scoured wool into yarn.

The department at Washington, as yet, has taken no action on these three classes of waste, although their value varies from 50 to 60c per pound and upwards. It is presumed they have accepted the court's interpretation of the law on these three articles.

The recent action of the appraisers in New York has in no sense been any modification of the attitude of the department on the Waste question; but on the other hand, it raised the classification on garnetted waste, which is thread or yarn waste, restored to the condition of scoured wool. This article had been admitted under the previous administration at 10c per pound, but the New York convention of appraisers classified it as scoured wool, under the "similitude" clause, making it dutiable at 30c per pound, instead of 10c per pound, as heretofore.

The attitude of the government towards waste in its construction of the tariff law, was understood by the trade to be such, that no wastes were now admitted except "refuse wool of little or no value," and such being the belief they were surprised and somewhat alarmed when it was made public that the New York convention of appraisers had agreed to continue the admission of so-called legitimate wastes at 10c per pound, when they believe the article is legitimately made in the manufacture of scoured wool into yarn. As the trade supposed that all such valuable articles of scoured wool had already been classified for duty at 60c per pound, they regarded this announcement of the appraisers as a change from its former position, and for a few days, until the matter was understood, it caused considerable uneasiness.

The wastes that are supposed to be made in manufacturing scoured wool into yarn are generally more valuable than the scoured wool itself, and they cannot by any proper interpretation, be considered as a "refuse wool of little value." The matter is now better understood all over the country by reason of the recent discussion, and if it is not corrected at the next session of congress, the responsibility must rest with the representatives from the wool sections, as the wool growers are the ones most interested in a change of the law.

**Premiums for Jerseys.**

OFFICE OF THE AMERICAN JERSEY CATTLE CLUB, NO. 1 BROADWAY, NEW YORK, AUG. 17, 1889.

Editor Texas Live Stock Journal:

Dear Sir:—At a meeting of the board of directors on Aug. 7th the following resolution respecting the thousand dollars appropriated for premiums by the annual meeting, was passed:

"Resolved, that for the year 1890 this club give to the five state fair associations, whose official catalogues this year show the largest number of entries of Jersey cattle—two of said associations to be east of the Alleghanies and three west of the Alleghanies, and one prize only to go to one state—\$150 for the bull three years old and over that is shown with four of his progeny (two the these progeny to be in milk and the other two over six months old), which progeny need not be owned by the exhibitor; and \$50 for the best Jersey cow three years old and over."

Very respectfully,

F. W. WICKS, Sec.

C. H. Edwards' music house of Fort Worth has removed from No. 308 to No. 409 Houston street.



**R. H. SELLERS & CO.,**  
*Real Estate and Loan Agents,*  
**FORT WORTH, TEX.**

All Classes of City and Country Property for Sale. Large  
 Ranches in Texas and Mexico. Mining and  
 Coal Properties.

**-: -MONEY TO LOAN-: -**

We do a Real Estate Business in all of its branches, and promise to give prompt a  
 careful attention to matters intrusted to us.

We refer to the Banks and Leading Business Men of Fort Worth; H. M. Trueheart  
 & Co., Real Estate Agents, Galveston, Texas; Jno. D. Rogers & Co., Cotton Factors,  
 Galveston; A. L. Nelson, President Bank of Lexington, Va.; W. L. Moody, President  
 National Bank of Texas, Galveston.

**DAIRY AND CREAMERY.**

**Cows for Milk, Butter or Cheese.**

Prof. Henry E. Alvord in Farm and Home.

We may say, generally speaking, that milk which is good for butter-making is good for cheese, though it is not true that milk which is good for cheese is always good for butter-making purposes. Stock may be selected whose milk will be of great amount and most economical for cheese-making, which will not be at all adapted to butter-making. If we wish to produce butter, it is economy to get those animals which will produce such fluid as will give us the greatest amount of butter from the least quantity of milk. The richest milk is what we want for butter-making; rich in its solids, and especially rich in its proportion of fat. An animal which will give us milk of which seven or eight quarts will make a pound of butter is far better adapted to butter-making than an animal which will give much more milk, but milk which will require 12 or 13 quarts to make a pound of butter. So we must watch carefully for the cow that will give us 9000 or 10,000 lbs of milk in a year may be decidedly less profitable, in a butter dairy, than another cow that will give only 5000 or 6000 lbs in the same time. Again, that milk is better for butter-making purposes from which the cream separates easily and quickly. That is the case where the globules are of the largest size. While it is difficult to examine milk in bulk and determine whether the globules are large or small, you can tell easily when the cream on the milk forms quickly. This rapid cream "rising," as we call it, indicates large globules, and that is good milk for butter-making. Milk from a rich butter-making cow often shows a collection of butter at the top of the pail even before it is strained.

If we want milk for sale or for cheese—large production and small globules—it is the best policy to select cows that through a long line of generations have been bred for, and now are noted for just those quantities. By way of speci-

fication, the Ayrshire, Holstein-Friesian and Shorthorn—any of these. If we want milk especially for cheese-making, we want a large percentage of the solid contents of the milk. To produce a reasonable quantity, rich in solids, I would look to the Ayrshire and Shorthorn, as well as the Devon (which is not appreciated in this country) and the Swiss cow, which is comparatively unknown as yet. If we want especially butter-making qualities, we have to select a cow which gives from the last quantity of milk the greatest proportion of butter fat in large globules that separate easily and make butter of a high quality. To get these we must select from stock which has been especially bred through long years for this object. For this purpose nothing compares with the cattle of the Channel islands—Guernseys or Jerseys.

If you call to mind a model dairy cow, or give a good description of one and omit the two points of color and size, that description will apply just as well to an Ayrshire as to a Guernsey, just as well to a Holstein as to a Jersey. The pure-bred milch cow is an animal type, confined to no one breed. The dairy cow has something about her which is fixed in this capacity for producing milk and which necessarily assigns her to a distinct class of cattle. But don't let me be understood as insisting upon pure bred stock. Pure blood is by no means necessary to dairying. Grade stock usually does fully as well. It is, however, to the pure-bred stock that we must look with certainty for a reproduction of the animals which we want. I believe we have in the native cows of this country the very best foundation, with constitution and general capacity, for building up profitable dairy herds by the use of pure-bred males. They should be carefully selected and from a line of ancestors noted for dairy purposes and for the special dairy purpose required. If we choose to cross breeds, or breed grades, then I think there is no doubt, it cannot be laid down as a rule, but is certainly indicated, and a probability, that we may depend upon

generally getting the quality in our milk product from the male side, and the shape and character of the animal, with capacity and quantity and of production in the cow, from the female side.

**Look Here, Friend, Are You Sick?**

Do you suffer from Dyspepsia, Indigestion, Sour Stomach, Liver Complaint, Nervousness, Loss of Appetite, Biliousness, Exhaustion or tired feeling, Pains in Chest or Lungs, Dry Cough, Night Sweats, or any form of Consumption? If so, send to Prof. Hart, 88 Warren St., New York, who will send you free, by mail, a bottle of Floraplexion, which is a sure cure. Send to-day.

**An Oft Told Tale of Daring.**

Here is the result of 230th Grand Monthly Drawing of the Louisiana State Lottery, which took place at New Orleans, La., on Tuesday, July 16th, 1889. Ticket No. 42,758 drew the first capital prize of \$300,000. It was sold in fractional parts of twentieths at \$1 each sent to M. A. Dauphin, New Orleans, La. Two went to Herman Fisher, St. Louis, Mo.; one to a correspondent through Wells, Fargo & Co's Bank, San Francisco, Cal.; one to Ike Lurie, Chicago, Ill.; one to a depositor Union National Bank, New Orleans, La.; one to Eugene Chretien, J., 425 Chartres St., New Orleans, La.; one to Miss Amanda Fisher, 201 Champlaine St., Detroit, Mich.; one to Abraham Weinger, 401 S. Canal St., Chicago, Ill.; one to Preston National Bank, Detroit, Mich.; one to Manufacturers' National Bank, Boston, Mass.; one to F. Miles James, Boston, Mass.; one to First Nat. Bank, Cheyenne, Wyo., Ter.; one to Bank of Cozad, Cozad, Neb., etc., etc. Ticket No. 58,607 drew the second capital prize of \$100,000, also sold in fractional twentieths at \$1 each: one to Hugh T. Carlisle, 262 Magazine St., New Orleans, La.; one to Geo. N. Davenport, Springfield, Ill.; one to Henry Luce, Mint Saloon, Salt Lake City, Utah; one to F. C. Paff, Bellows Falls, Vt.; one to C. H.

Briggs, Galion, Ohio; one to H. G. Keaschner, Bethlehem, Pa.; one to a correspondent through Wells, Fargo & Co's Bank, San Francisco, Cal.; one to S. Weil, Meridian, Miss.; one to Reutschler & Greashaber, Reading, Pa., etc., etc. Ticket No. 15,166 drew the third capital prize of \$50,000, also sold in fractional parts: five to Max Stadler, 461 Broadway, New York; N. Y., five to Clark & Anderson, 604 S. 13th St., Omaha, Neb. Any further information can be had on application to M. A. Dauphin, New Orleans, La.

**Texas Fever Cattle at Chicago.**

Omaha Drivers' Journal.

The Chicago Live Stock Exchange is having considerable trouble and meeting with poor success in trying to keep Texas fever cattle out of that market. Says the Chicago Drivers' Journal:

"The precautionary measures which the Stock Yard commission men are trying to have taken against splenic fever troubles, have aroused considerable interest. A committee of the new stock exchange held a lengthy session yesterday with the Illinois Live Stock commissioners. It was claimed that the law compelling railroads to preserve the original billing of cattle coming from quarantined districts was not being executed. The commissioners claimed that they had no jurisdiction outside of the state."

The exchange also appointed a committee of seven to call on the governor of Illinois.

Piper & Schulthess are headquarters for all kinds of fence wire, 34 and 35 W. Commerce street, San Antonio, Texas.

Beecham's Pills act like magic on a weak stomach.

## FORT WORTH.

## The Minimums Reduced.

Supplement No. 5 cancelling supplement No. 6, issued by the Texas roads reduces the minimum weights charged on cattle, horses, calves and sheep in double-decks to conform to the recent reductions announced by the Chicago Alton railroad.

## IT SAYS.

"On shipments of live stock destined to Chicago the following minimum weights per length internal measurement will govern instead of those named in Supplement No. 5 between East St. Louis and Chicago:

	Pounds.
Cars 31 feet and under.....	19,000
Cars 33 feet and 6 in. and over 31 feet.....	20,500
Cars over 33 feet 6 in.....	22,000

The cancelled No. 5 gave the old minimums commencing at 20,000 lbs. for cars 28 feet 6 inches, and running up to 23,000 pounds for cars over 34 feet.

This is an act of justice to Texas shippers and will be highly appreciated. When the high figures were placed as the minimum weights for loading Texas stock it was done in good faith, upon figures obtained by competent authority, but as the investigation took too wide a range the figures arrived at were above the amount Texas stockmen were able to load in the cars.

The tariff reducing the weights was effective August 10th.

## General Range and Stock Notes.

Mr. G. W. Weaver of Collin county was in Fort Worth, coming from the East.

Wm. Hunter, representing the Evans-Snyder-Buel Company, was in town Friday.

D. Waggoner & Son are making an occasional shipment of Texas cattle to the Denver market.

Texas has had good clear dry weather for a week or two, but the rains are commencing in the East again.

Col. H. M. Taylor and Maj. J. D. Warner of Las Vegas paid a short visit to Fort Worth during the week.

Jno. W. Gamel, a stockman of Mason county, who also ranges cattle in the Panhandle, was in town Friday.

Col. P. A. Huffman of P. A. Huffman & Co. has spent some time on his seaside property near Galveston bay.

Mr. R. H. Sellers of Fort Worth, a prominent real estate operator, has gone north on important business.

The stockmen ranging near the Indian Territory line are crossing over to get the reduced rate to Kansas City & Chicago.

D. B. Gardner of the Pitchfork ranch sold to Ed East a string of cows and steers, which were sold at Kansas City and Chicago.

Ed East of Archer and D. B. Gardner of the Pitchfork ranch, went up the Santa Fe into the Nation on a cattle-shipping expedition.

If a man has a lump-jawed steer, he need not ship it to Chicago, St. Louis or Kansas City. Such a steer will not pay freight or commissions.

Mr. W. A. Garner, manager of the TEXAS LIVE STOCK JOURNAL, who had been North and East on a business trip, returned to Fort Worth on Monday.

Hatcher & Woods of Fort Worth can sell mares and horses by the car-load, and by colors also—bays, sorrels, grays or paints. They prefer to quote prices direct to buyers.

W. T. Mallery, Huntsville, Tex.; J. P. Gist, Willsborough, Tex., and N. A. Davis, Jacksonville, Texas, appear upon the records as recent purchasers of pure bred Jersey cattle.

## HORSES and MARES

## HATCHER &amp; WOODS

Office 506 Main Street,

Fort Worth, Texas.

Have 2500 head of the largest and best selected bunch of Northwest Texas brood mares and horses on the market; also one and two-year-old fillies. Will contract Northwest Texas cattle for future delivery.

ADD-RAN CHRISTIAN UNIVERSITY,  
THORP'S SPRING, TEXAS.

This university is the outgrowth of the religious development and material prosperity of a God-fearing and bible-reading people. The work in its various departments will have its foundation in Christian principle. Co-education. A "Girls' Home," in care of excellent matron. Excellent Preparatory school. Moral tone. Health, water and scenery unsurpassed. University Station, Granbury, 40 miles from Fort Worth.

For further particulars address,

A. CLARK, President,

The Union Stock Yards and the roads leading thereto show rapid progress towards completion, and the entire stock yards district looks like business. As yet the yards are only feeding cattle in transit, but the regular opening is announced for Sept. 2, 1889.

The stockmen and stock dealers ask for news and there is no news. Trading is very quiet, and although there are plenty of horses and mules in and around Fort Worth, and for sale at reasonable prices, the hot weather has quieted everything down.

A. S. Nicholson returned to Fort Worth after a trip to the San Saba country. He had confidence enough to buy 500 large steers, to be received at Fort Worth by September 1st. He does not expect to ship them out, but will hold them for sale as feeding cattle.

The stockmen who are driving into the Indian Territory to ship their cattle seem to be well satisfied with the result, they get a much lower rate than from Texas, and a run to Chicago in 35 to 40 hours. The Santa Fe is handling much of this business in a satisfactory manner.

Captain J. P. Moore, general live stock agent of the Texas & Pacific railroad said to the JOURNAL man that the minimum weights were reduced to St. Louis and Kansas City as well as to Chicago, in fact that the reduction governs all live stock shipping business from Texas.

WANTED—A young man as working foreman on a large stock farm in North Texas—18,000 acres inclosed, 150 acres in cultivation—must be sober, industrious and understand the breeding of horses and cattle. Address with references, and wages desired, box 45, Albany, Tex.

A young man, single, book keeper, brought up in the country, who is at present out of employment, seeks a situation in a cattle firm. Not afraid of hard work. Would also like to go on a ranch. Best references. Address Book-keeper, care of STOCK JOURNAL, Fort Worth, Texas.

Mr. W. F. Sommerville of the Matarador company and president of the Western Securities company of Fort Worth, started on the return trip from Liverpool on the 14th inst. He writes the company that all the money necessary for farm and pasture loans is obtainable at somewhat lower rates than heretofore.

Stockmen who hope that some day there will be a good central live stock market in Texas, can assist the movement materially by throwing all the business they can into the Union Stock Yards at Fort Worth. There is nothing like working for ourselves when we want anything done.

The Fort Worth butcher market is very dull. Offerings are sufficient for all requirements, and cows are sold at 1 1/2¢ per pound. Steers are not wanted. Sheep sell at 2 to 2 1/4¢, according to quality. Calves sell at \$3.50 to \$4. Hogs have no place on the market at present, but will soon be interesting again.

Mr. J. C. Loving, secretary of the Northern Texas Cattle Raisers' association, was in town coming from the range in Jack county, of which he give good account. He expresses a determination to hang and rattle with the cattle business until there is some profit in it, even though the time may be a long way off.

When a freight convention is held for the ostensible purpose of arranging with railroads for equitable freight rates, the actual purpose is found to be to secure discriminations in favor of a few larger shippers. So it is in the live stock trade; the larger performers are

always juggling for a special advantage, and the great mass pay a higher rate to even the rates up to a good average.

Attention is invited to the card of Miss Alice C. Conkling to be found in this issue. The young ladies seminary advertised is one of the new educational institutions in Fort Worth, and is devoted to training and educating young ladies in the preparatory and higher courses. Music, art and modern languages are taught by competent assistants.

A great combination sale of horses is announced for October 22, 1889, by Dil on Bros. of Normal, Ill. The offerings consist of all breeds, including draft, roadsters, driving and trotting stock. The high standing and reputation of the Dillons is a guarantee that the offerings will be of superior quality and worthy of examination.

W. F. Patterson of Fort Worth, who had gone to Amorilla for his health, returned during the week to close out his 500-acre farm to the Denver capitalists, who have invested several hundred thousand dollars in West Fort Worth. We hope that his health will improve and become on as sound a basis as his financial affairs.

The Missouri Horse-Exchange of St. Louis, Mo., announce that good draft horses, 5 to 6 years old, and weighing 1300 to 1600 pounds, cost \$575 to \$300; good family horses at \$135 to \$200 and good matched teams at \$275 to \$700. None of the horses are Texas stock, but the Missouri Horse-Exchange is a good place to look up such horses as are needed in Texas for breeding up Texas horses, and also a good place to sell some of our better class of stock.

The JOURNAL has a sample of corn raised by the Liberty Cattle company in Dawson county, Texas, on the plains, (P. O. Chicago, Texas). They have 25 acres that will average 25 bushels to the acre. This corn was raised from sod land. Last year and the year previous their corn averaged fully as much from land near this piece. The company have 65 acres in rye, wheat, sorghum, watermelons, pumpkins, millet, Johnson grass, Colorado grass and garden truck. All making good yield and first-class crops and the yield has been fully as good for the past three years.

We are offering a full set of Charles Dickens works, 15 volumes, in paper covers and the TEXAS LIVE STOCK JOURNAL one year for \$2.50. The books alone are worth twice the money, but we have made a wholesale trade and secure these books at less than the original cost. Our patrons should avail themselves of this offer.

The Texas shipments of cattle except from the Panhandle appear to be light. Those who solicit consignments are all complaining and the shippers are saying many uncomplimentary things of the market.

Messrs. Young & Kuhlen of Ft. Worth have sold a number of single drivers and teams of late, but say trade at wholesale amounts to nothing. They have a good line of horse stock on the market.

Mr. J. C. Mearthy, manager of the Fort Worth Union Stock yards returned to Fort Worth after a trip to Kansas City.

A. Silverstein of Dallas was over to the Fort on cattle business.

STATE OF OHIO, CITY OF TOLEDO,  
LUCAS COUNTY, S. S.

FRANK J. CHENEY makes oath that he is the senior partner of the firm of F. J. CHENEY & Co., doing business in the

City of Toledo, county and state aforesaid, and that said firm will pay the sum of ONE HUNDRED DOLLARS for each and every case of CATARRH that cannot be cured by the use of HALL'S CATARRH CURE.

FRANK J. CHENEY.

Sworn to before me and subscribed in my presence this 6th day of December, A. D. 1886.

A. W. GLEASON,  
Notary Public.

SEAL

Hall's Catarrh Cure is taken internally and acts directly on the blood and mucus surfaces of the system. Send for testimonials, free.

F. J. CHENEY & CO.,  
Toledo, Ohio.

Sold by druggists; 75c.

-WARREN-  
Female Institute!A Boarding and Day School for  
Young Ladies and Girls.

1008 Jennings Ave., FORT WORTH, TEX.

Sixth annual session of thirty-eight weeks commences on Monday, Sept. 2, 1889. Send for catalogue.

MRS. E. F. WARREN, Principal.

YOUNG LADIES'  
SEMINARY.

Miss Alice C. Conkling

Respectfully announces that she will open in Fort Worth on

MONDAY, SEPTEMBER 9th,

a Young Ladies' Seminary, devoted to the training of young ladies, embracing preparatory, academic and collegiate courses affording the very highest social and scholastic culture. Music, Art and Modern Languages taught by the most accomplished assistants. Long experience in the best institutes of the country, a guarantee of satisfaction. For further particulars and terms address, Miss Alice C. Conkling, Fort Worth, Tex.

## JNO. S. POWELL &amp; CO

Office, Mansion Hotel,



Fort Worth, Texas.

Offer for sale choice thoroughbred and high-grade Hereford, Polled-Angus, Durham, Holsteins and Jersey Bulls and Heifers. Stock on hand and for sale on very reasonable terms.

## Citation by Publication.

The State of Texas in the justice court September term, A. D. 1889, to the sheriff or any constable of Tarrant county, greeting:

You are hereby commanded that by making publication of this citation in some newspaper published in the county of Tarrant, if there be a newspaper published in said county, but if not then in the nearest county where a newspaper is published, for four weeks previous to the return day hereof, you summon Mrs. M. F. Davis, whose residence is unknown, to be and appear before the justice court, to be holden in and for Precinct No. 1, County of Tarrant, at my office in Fort Worth, on the second Monday in September, 1889, the same being the 9th day thereof, at a regular term of said court, file number being 405, then and there to answer the complaint of Turner, McClure & Co., a firm composed of J. K. Turner, J. D. McClure and A. S. Dingee, filed in said court on the 7th day of August, A. D. 1889, against the said Mrs. M. F. Davis, and alleging in substance as follows, to-wit: Suit being upon verified account for the sum of \$120.00.

Herein fail not, but have you then and there before said court this writ, with your return thereon, showing how you have executed the same.

Given under my hand of said court in Fort Worth this 7th day of August, A. D. 1889.

C. B. REYNOLDS, J. P.,  
Precinct No. 1, Tarrant County, Texas.

**DALLAS.**

**DALLAS DOTS.**

E. E. Flippen of Pilot Point arrived in the city with 30 head of good beef cattle.

Clark & Herndon of Dallas county arrived on local market with 90 head of grass cows.

Muttons, as well as hogs, are reported scarce at the stock yards and would command a good price if brought in soon.

J. E. Clark has gone to Cottle county to look after the big tract of land and the twelve hundred cows he recently purchased of Col. J. B. Simpson.

Several of the Bonhamites greeted the JOURNAL man on the streets lately. Bonham is getting well represented in Dallas and most of them have come to stay.

The thousand head of cattle that J. J. Giddings bought of H. C. Clark passed through here from the ranch of the latter to Ennis this week, for delivery to Mr. Giddings.

The popularity of the Mac Collin Opera company have induced the Land & Loan company to contract with them till September 1st to play at the Oak Cliff summer theater. This is the company that has played at Oak Cliff since July 1st.

Hogs of all kinds are very scarce in this market. Stock hogs are said to be ready sale at 4 1/2 @ 5c, and light weight fat porkers are worth from 6 1/2 @ 7c. The scarcity of hogs, especially porkers, may be attributed to the numerous shipments to Mexico since the beginning of this year. If any of our readers have a surplus of stock or fat hogs Dallas will be a good market for them.

H. C. Clark, who is a large dealer in cattle, besides owning several ranches, in a conversation with the writer the other day said that the demand would have to get nearer the supply before there would be any material change in the prices of cattle. This confirms the opinion of the JOURNAL as expressed time and again and is, without doubt, the only way to size the matter up from a strictly business standpoint.

DALLAS, TEX., Aug. 2, 1889.

Southern Germicide Manufacturing Co.

Gentlemen:—I am an old man in my 82<sup>nd</sup> year. I have suffered long years with nervous sick head ache. At times so intense was the pain in my head that I was almost crazed. My liver and digestive organs were all badly deranged, and I heard of the wonderful cures made by Southern Germicide, and procured some of it, and I am actually ashamed to tell you how soon I was permanently cured of the pain in my head. I am now well, my digestive organs and liver are all right and I feel better than I have felt before in fifty years. I don't think there is such a remedy in existence as Southern Germicide. I most heartily and conscientiously recommend it to the afflicted. Yours respectfully,  
THOMAS DIDWORT.

Sales of Cattle at Carter & Son's Stock Yards, Dallas, Texas.

Clark & Herndon of Dallas sold 90 head choice cows at 1 1/2 to 1 3/4c.

J. M. Bird sold 26 cows at \$13 per head.

D. L. McKinney sold 13 cows at 1 1/4c, av. 740 lbs.

R. E. Williams sold 17 yearlings at \$6 per head.

E. E. Flippen of Dallas sold 29 mixed cattle at 1 1/2 to 1 3/4c.

C. T. Coats sold 7 cows at \$12 per head,

Thomason & Wilson of Denton county arrived on market with 35 choice mixed cattle, and found very ready sale.

C. B. King sold 39 choice fat sheep at 3 1/4c, av. 86 lbs.

Sam Davis of Ellis county sold 49 goats at \$1.75 per head.

M. R. Blithe sold 3 milch cows at \$27 per head.

F. R. Dodison sold 3 milch cows at \$22.50 per head.

E. M. Tate sold 3 bulls at 1 1/4c, L. E. Reading sold 7 yearlings at \$6.25 per head.

J. J. Tallcott of Dallas county sold 11 veal calves at 3 to 3 1/4c, av. 168 lbs.

K. T. Hendricks sold 8 cows at \$13.26 per head.

J. D. Eli sold 7 veal calves at 3c, av. 184 lbs.

B. B. Pope sold 11 cows at \$10 per head, and 6 yearlings at \$5.25 per head.

H. B. Sanders of Collin county sold 54 sheep at 3c, av. 76 lbs.

C. R. Cowan sold 4 milch cows at \$23 per head.

M. B. Jackson of Rockwall county sold 22 cows at 1 1/4c, av. 860 lbs.

W. H. Myers sold 5 steers at 1 1/4c, av. 740 lbs.

Joe Wolfenberger of Grand Prairie sold 10 choice cows at 1 1/4c, av. 780 lbs.

Harry Hill of Collin county sold 13 cows at \$12 per head.

B. J. Miller sold 16 steers at 1 1/4c, av. 730 lbs.

C. J. Huntley sold 37 sheep at 3c, av. 87 lbs.

R. H. Lawrence sold 26 choice sheep at 2 1/4c, av. 68 lbs.

DALLAS, TEX., Aug. 10, '89.

Southern Germicide Manufacturing Co.

Gentlemen—I have had consumption about nine years. I have been unable to work for three years, having been an invalid during all that time. It was impossible for me to get a good night's sleep an account of an incessant cough and severe pain in my breast. I had wasted away to almost a skeleton, and my friends, as well as myself, thought I was bound to die, for I was a helpless and confirmed invalid, from a severe case of genuine consumption. I chanced to get a one-gallon jug of Southern Germicide, and within three days after I began using it I felt much better and have improved most rapidly ever since. I sleep better than I have slept in three years. My digestion is far better than it has been for years; the pain in my lungs has almost left me, and I have gone to work at the well-boring business, and make a regular hand drawing dirt. Before I began using Germicide I had to take purgative pills almost every night, and when I commenced using Germicide I quit the use of all purgatives, for the Southern Germicide took the place of all medicines with me. My appetite is better now than it has been for three years. Before I took Southern Germicide I had chills about twice a week for two years, and they grew worse on me all the time, and since using your wonderful medicine about six weeks the chills have all left me. Your Germicide has been a God-send to me. I am a new man. Dallas is my home. Yours,  
THOS WILSON.

Sworn and subscribed to before me, to certify which I hereunto sign my name and affix my seal of office this 10th day of August, A. D. 1889.

R. E. BUMPAS,  
Notary Public, D. C., T.

**Rock Salt.**

Messrs. Turner, McClure & Co. of Fort Worth have on hand a car-load of the celebrated rock salt, which is the best salt that can be used for cattle, horses, and all kinds of stock. Cattle like the rock salt and prefer it to all other. They cannot eat enough to hurt them, as it is as hard as a rock and must be licked. Messrs. Turner, McClure & Co. will fill orders by mail promptly, either in large or small quantity. Send a trial order.  
TURNER, MCCLURE & Co

**Butchers' and Drovers' Stock Yards Dallas, Tex.**

**CARTER & SON, Props.,**

**Live Stock Commission Merchants.**

Largest and best yards in Dallas. Only yards having the facilities for shipping and receiving from all the railroads. Office at theyards. Street cars to pens. Liberal advances made on all consignments. Stock scales at pens. Telephone connections.

**The Mutual Life Insurance Co. of New York.**

The Oldest Life Insurance Company in America. The Largest Life Insurance Company in the World. The Most Successful Life Insurance Co. ever organized.

**Assets, \$127,000,000.**

C. G. MORGAN, District Manager,

723 Main Street, DALLAS, TEXAS.

**Southern Germicide.**

This wonderful medicine is guaranteed to cure Catarrh, Rheumatism, Asthma, Consumption, Kidney Troubles, Bright's Disease, Gravel, Bronchial Affections, Dysentery, Diphtheria, Scrofula, Small Pox, Malarial Fever, Venereal Diseases of long standing, Sick Headache, Biliousness, Constipated Bowels, Chills and Fever, Mountain Fever, Lost Manhood, all kinds of Female Diseases, kills Tapeworm, will kill Yellow Fever germ, a cure for Hydrophobia, Snake Bites, and all kinds of Poison, Palpitation of the heart, relieves Dropsy, never fails to cure Syphilis in its worst stages. Send for circulars and testimonials. Price, \$3 per gallon, in jugs. Buy no other medicine but the

**SOUTHERN GERMICIDE,**

Manufactured and sold only by

**The Southern Germicide Manufacturing Company,**

721 Elm Street,

DALLAS, TEXAS.

Live agents wanted in every part of the United States, to whom liberal commissions will be paid.



**GRAND COMBINATION SALE OF HORSES OF**

All Breeds including Draft, Roadster, Driving and Trotting Stock

Of All Classes and Ages, to be held under the direction, and at the Sale Stables of

**DILLON BROS., NORMAL, ILL., OCT. 22d, 23d & 24th, 1889**

STOCK SOLICITED FROM ALL PARTS OF THE COUNTRY.

A grand opportunity for both **SELLERS AND BUYERS.** Some of the best stock produced in the country will be sold at this sale. From 75 to 100 head of horses will be disposed of each day of the sale. Ample accommodations. No postponement on account of the weather. **ENTRY BOOKS NOW OPEN AND WILL BE CLOSED SEPT. 20th.** Catalogues ready Sept. 25th. For circulars and blank applications giving full information, address

**DILLON BROTHERS Normal Illinois.**

**Eclipse & Star Mills.**

We make a specialty of water supply for ranches, stock farms, city factories or residences. Furnish horse-powers, pumping jacks and well drilling machinery. The STAR and new improved long stroke ECLIPSE mills are the best in the market. Agents for Fairbanks' scales, Blake's steam pumps, &c. We repair boilers, engines and all kinds of machinery. The pioneer house in Texas.

F. F. COLLINS MANUFACTURING CO.  
Fort Worth and San Antonio, Tex.

DALLAS, TEXAS.

Southern Germicide Manufacturing Co., Dallas, Texas:

Gentlemen:—I take pleasure in saying to you that I had ugly warts on my hands and have used different caustics and various remedies to no avail. I was offered one ounce of Concentrated Germicide by Dr. T. L. Scruggs to try it, and am freed from warts. I rubbed it on my hands night and morning about a week, when I discovered they were getting less, and some small ones gone; they go off without pain or soreness, and leave no scar. I can't tell how they did go, but I can say they are gone. I would recommend everybody that have warts on their hands, to go to 721 Elm street, Dallas, and call for a small bottle, and do as I have done.

E. N. MESEROLE.

**Warranted First-Class.**

Forty years experience has led to perfection in the Osgood U. S. Standard scale. Only \$35 for 3-ton wagon scales, freight paid; warranted for 5 years. Agents wanted. Write to H. W. Hubbard, Dallas, Texas.

CAUTION.—Buy only Dr. Isaac Thompson's Eye Water. Carefully examine the outside wrapper. None other genuine

**DR. O. B. HEWETT,**  
THE DENTIST,  
Dallas, Texas.  
Teeth extracted without pain.  
The BEST is the CHEAPEST.

**JOHN KLEIN, Practical Hatter,**

912 Main St., Dallas, Texas  
Silk hats blocked white waiting. Stiff and soft hats cleaned, stiffened and re-trimmed for \$1.35. Work warranted first class. Orders by mail or express promptly attended to.

**SLIPPER ROAD**

Warranted the Best, Easiest rider made. Tight Foot Rack to prevent dust. Made for two passengers; carries one easier than all others. Delivered anywhere in Texas, \$20 cash with order.  
PARLIN & ORENDORFF CO., Dallas, Texas.

**NEW MEMPHIS LINE.**

Via Iron Mountain Route From All Points in Texas.

The daily trains, one solid consisting of coaches and free reclining chair car are now being run between Texarkana and Memphis via the Iron Mountain route and Bald Knob. Through sleeping car from all principal points in Texas run through to Little Rock on the other train and at that point make connection with similar equipment through to Memphis. Direct connection is made at Memphis with all lines to the East and Southeast. This is a revolution in transportation service to Memphis. Ask your agent for a ticket via this route.

**CHICAGO MARKET LETTER.**

U. S. YARDS,  
CHICAGO, ILL., July 29, '89.  
Regular Correspondence Texas Live Stock Journal.

To-day's receipts, 16,000 cattle, including 4000 Texans, 2200 Westerns, 4000 stockers and feeders and 2000 cows leaving not more than 4000 beef cattle.

The market opened strong on good native beeves at \$4.40@4.70; weak on common at \$3.50@4. Firm on Texans, \$2.40@3.20 for steers, \$1.60@2.30 for cows; steady on Western ranges, \$3.30@4.10; slow on stockers and feeders at \$2@3.20; dull and lower on cows at \$1.25@2.90.

The American Live Stock Commission Co. sold for J H Stevens, 208 steers, 987 lbs, \$2.90.

Scaling & Tamblyn sold 79 cows, 816 lbs, \$2.05; 281 steers, 1016 lbs, \$3; 22, 1177 lbs, \$2.75; 245 calves, 208 lbs, \$3.35.

The Evans-Snyder-Buel Co. sold for Humes & Co., 144 steers, 956 lbs, \$2.90.

The James H. Campbell Co. sold 37 yearlings, 583 lbs, \$1.25; 118 cows, 808 lbs, \$2.05; 24 steers, 1045 lbs, \$2.75; 100, 885 lbs, \$2.65; 20 bulls, 1310 lbs, \$1.80; 272 steers, 938 lbs, \$2.65; 73 steers, 1029 lbs, \$2.65; 49, 864 lbs, \$2.50.

Gregory, Cooley & Co. sold 17 cows, 802 lbs, \$1.90; 39 cows, 809 lbs, \$1.90; 187 steers, 971 lbs, \$2.65; for B U Blair, 219 cattle, 813 lbs, \$2.35; Hume & R., 48 steers, 929 lbs, \$2.85; 144, 968 lbs, \$2.90; Forsythe, 167 steers, 1053 lbs, \$3; 72 do, 1076 lbs, \$3; A Armstrong, 90 steers, 1001 lbs, \$3.10.

R. Strahorn & Co. sold for the Kimberlin Cattle company, 18 bulls, 1270 lbs, \$1.75; 109 cows, 821 lbs, \$2.10; for D Waggoner & Son, 15 cattle, 956 lbs, \$2.75; 15 cows, 870 lbs, \$2.15; 59 steers, 1115 lbs, \$3.30; 40, 1111 lbs, \$3.30; 20, 1065 lbs, \$3.30; 36, 1012 lbs, \$3.30; 242 calves, 199 lbs, \$3.35; B Gillespie, 152 cattle, 1110 lbs, \$2.60.

Greer, Mills & Co. sold for 7 Rivers Cattle company, 21 cattle, 1077 lbs, \$2.70; 25 cows, 800 lbs, \$1.80; Coates, 25 cattle, 821 lbs, \$2.40; R K Wiley, 24 cattle, 1064 lbs, \$2.90; F Richards, 24 steers, 1010 lbs, \$3; Dunn & E, 73 steers, 857 lbs, \$2.65; J W Edens, 99, 939 lbs, \$2.70; J J Stencil, 42 cattle, 839 lbs, \$2.45; W B Sweetman, 26 cattle, 814 lbs, \$2.50; G W Breedlove, 220 cattle, 820 lbs, \$2.85; 48, 837 lbs, \$2.55; J Harris, 26 cattle, 914 lbs, \$2.55; 21 cows, 846 lbs, \$1.70; 22 calves, 144 lbs, \$4.25; J T Welder, 70 calves, 129 lbs, \$3.35; 67, 209 lbs, \$3.35; McKenzie & S., 24 cattle 999 lbs \$2.80; 27 cows, 829 lbs, \$1.80.

A. C. HALLIWELL.

**The Southdown Premiums.**

By favor of the committee appointed by the American Southdown association at its last annual meeting I am allowed to say the association will make no special exhibition of Southdown sheep this fall. The secretary, however has been instructed to confer with several of the leading fair associations with a view to their co-operation in making a grand display of Southdowns in 1890.

It is much with the breeders of Southdown sheep as with many a youthful heir to fortune. The latter depends on his good start in life to carry him safely

and leisurely through. The Southdown breeders seem to think the undisputed testimony of all who know much about sheep to the effect that the Southdown is the best mutton sheep in the world, and in many localities the best of all known breeds for wool and mutton combined, justifies them in expecting while laying on their ears, they will drift on the gentle stream of general utility full-handed into port. Apparently they act on the belief that mankind as a whole, must instinctively know and take to using of the best.

This might have been the right way along back in the days of old before newspapers and fairs were as common as now. But, however, good or useful, are even the best of domestic animals, they cannot be kept at the front by reliance on merit alone. Other breeds of inferior worth are sure to pass them in the race, and the great masses of the people never know of the better things they might have and might enjoy, but for the reticence of those who fail to keep pace with the times in matters of advertising, by means of the press and the public exhibition.

We must aim not only to have the best of their kinds in sheep and other improved stock, but we must let it be known where they are and wherein they excel. Nor must we tell it only once or twice or three times, but every day, all the year round, in all the good papers we can reach and at all the fairs at which we can exhibit.

The association of Southdown breeders has undoubtedly the best field of its kind in existence, which if rightly cultivated will in a few years greatly affect the meat-producing industries of America, by giving us more good mutton per capita, and less poor pork.

PHIL THRIFFTON.

**How Intelligent Women Decide,**

When the question has to be met as to what is the best course to adopt to secure a sure, safe and agreeable remedy for those organic diseases and weaknesses which afflict the female sex, there is but one wise decision, viz: a course of self-treatment with Dr. Pierce's Favorite Prescription. It is an unerring specific for periodical pains, misplacement, internal inflammation, and all functional disorders that render the lives of so many women miserable and joyless. They who try it, praise it. Of druggists.

**Shippers Want Patent Stock Cars.**  
Omaha Drivers' Journal.

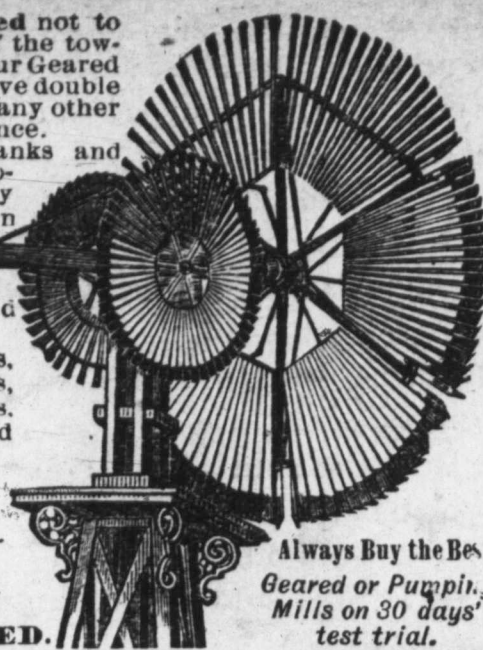
The reason given by the Milwaukee road for cutting the cattle car-load rate 3 1/2 c per 100 pounds when shipped in the company's cars, is to offer shippers an inducement to use the common stock cars owned by the road instead of the palace cars controlled by private concerns. At present the rate is the same on all roads, whether private or common cars are used, and as shippers insist on using patent cars the railroad companies are all forced to pay mileage for the use of rolling stock belonging to other people while their own cars are lying idle on side tracks. A short time ago the Alton found a way to utilize its idle cars. It entered into a deal with the American Live Stock Commission company, a wealthy Texas syndicate, by which the latter leased all the Alton's stock cars, numbering over 500. By this move the live stock company escapes paying a big price for the use of cars owned by private concerns, and the Alton derives a revenue from property that was previously yielding nothing. The deal, of course, aroused the indignation of the commission companies controlling the patent cars, and caused some feeling among railroads that are in competition with the Alton. It is understood that the proposition of the St. Paul to make a less rate on cattle, when shipped in its own cars, is one of the consequences of the above mentioned deal, and is intended to offset, in a measure, the advantage gained by the Alton.

Warranted not to slow down of the tower, and that our Geared Windmills have double the power of any other mill in existence.

Mfrs. of Tanks and Windmill supplies of every description and the Celebrated Challenge Feed Grinders, Horse Powers, Corn Shellers, Pumps and Brass Cylinders. Send for Catalogues and Prices.

GOOD AGENTS WANTED.

Challenge Wind Mill & Feed Mill Co.,  
Batavia, Kane Co., Ill



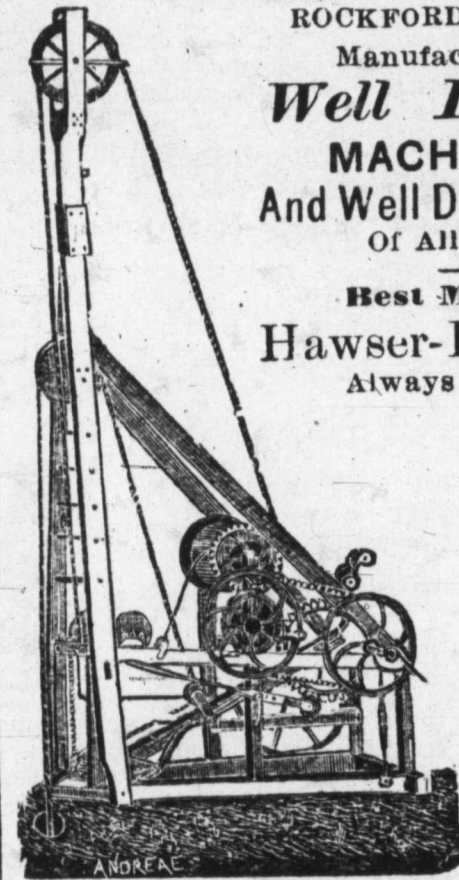
Always Buy the Best Geared or Puppis Mills on 30 days' test trial.

**Utter Manufacturing Co.,**

ROCKFORD, ILLINOIS.  
Manufacturers of  
**Well Drilling MACHINERY**  
And Well Drilling Tools  
Of All Kinds.

Best Manila  
**Hawser-Laid Rope**  
Always in stock.

Send for Circular.



GENERAL AGENTS FOR TEXAS:

F. M. ROWE, San Antonio; P. T. MOREY, Belton; FORD, WEAKLY & JOHNSON, Decatur. Mention this paper.



**ELLIS HOTEL**

Fort Worth, Texas.

The best appointed hotel in the South. Commercial travel solicited.

ED. MUELLER, Proprietor.

**I CURE FITS!**

When I say cure I do not mean merely to stop them for a time and then have them return again. I mean a radical cure. I have made the disease of FITS, EPILEPSY, or FALLING SICKNESS a life-long study. I warrant my remedy to cure the worst cases. Because others have failed is no reason for not now receiving a cure. Send at once for a treatise and a Free Bottle of my infallible remedy. Give Express and Post Office.  
H. G. ROOT, M. C., 183 Pearl St., N. Y.

ROOT'S PURGATIVE PILLS cure all Blood Diseases, Constipation and Biliousness.



**WELL DRILLS**  
for all purposes.

Send 20 cts. for mailing catalogues with full particulars.  
CARPENTER ST. AND CARROLL AVE.

**H. H. KELLER,**  
Salesroom 208, Shops 210 & 212 Throckmorton St.,  
FORT WORTH, TEXAS.



Columbus Buggy Co.'s Buggies. Columbus, Ohio  
E. M. Miller & Co., Quincy, Ill. Truckboards and Spring Wagons, Tops, Ashes, Cushions. Fine Trimming, Painting and Repairing a Specialty.

**FT. WORTH IRON WORKS**

FORT WORTH, TEX.,

Manufacturers of the Celebrated Fort Worth Well Drilling Machine. And dealers in Steam Pumps for Boiler feeding, Artesian Well Pumps and Pumping Jacks, Shot-boring, Pulleys, Gearing, Pillow Blocks, Couplings, Engines and Boilers, Cheap Screw Presses, Hydraulic Presses and Direct Acting Steam Cylinders. Estimates made on complete Flouring Mills in sizes from 50 to 100 barrels per day.

Cotton Presses. Architectural Iron Work of all kinds Made to Order.

**LIGHTNING HAY PRESS.**  
FULL CIRCLE.  
TWO FEEDS TO CIRCLE.

STEEL. MOST RAPID AND POWERFUL ADDRESS: K. HAY PRESS CO. KANSAS CITY, MO.

**WELL DRILLING MACHINERY & TOOLS**

ST. LOUIS VISE & ARTESIAN TOOL CO.,  
Catalogue Free: ST. LOUIS, MO.

**Wheeler's Practical Fence Stay**  
MAKES A PERFECT HOG FENCE

Patented June 23d, 1888. Patented August 23d, 1887.  
WHEELER & CO., 7-21 38th St., Chicago.  
W. A. HOFFMAN IMP. CO., Ft. Worth, Tex.

**PIANOS**

Largest stock and best in the state at

**C. H. EDWARDS,**

733 and 735 Main St.,  
DALLAS, TEXAS.  
Send for prices before purchasing elsewhere.

STANDARD FOR TWENTY YEARS.

**BUCHAN'S**  
*Cresylic Ointment.*

Sure Death to Screw Worms. and will Cure Foot Rot.

It will quickly heal wounds and sores on Cattle, Horses and other animals. Put up in 4 oz. bottles, 1/2 lb., 1 lb., 3 and 5-lb cans. Ask for BUCHAN'S CRESYLIC OINTMENT. Take no other. Sold by all Druggists and Grocers.

CARBOLIC SOAP CO., Manufacturers, NEW YORK CITY.

**KANSAS CITY CORRESPONDENCE**

KANSAS CITY, Mo., Aug. 8, '89.  
Editor Texas Live Stock Journal.

I have now been here nearly a week and during all that time have been able to learn but little of anything that will prove of interest to you.

The cattle market continues dull. I have seen several lots of Texas steers fattened in the Indian Territory sell at from \$2.65@2.80 per 100 lbs. They were good steers weighing 1000 lbs, in good condition, but not thick fat. I have also seen several lots of thick fat wintered Texans, sold at from \$3.15@3.25. One very nice fat lot of heifer yearlings weighed 566 lbs and brought 2c per lb. I also noticed one extra fat lot of wintered cows sell at 2c. while a through bunch not so fat were being offered at \$1.25.

There is a difference of opinion among those in a position to know as to how the market will run the balance of the season. I am of the opinion that fat cattle will bring better prices later in the fall. The corn crop is very fine all over the corn country including all the feeding states, for this reason a great many cattle in the locality referred to will be held for feeders instead of being run on the market this fall, which will to some extent lighten the run and have a tendency to improve the market. These heavy corn crops will give the South-western range country a market for her half fat steers, and by keeping a great many native cattle off the market this fall will be in this way some advantage to range men; this temporary help will be more than offset by the heavy runs and larger supply of corn-fed cattle next spring, in fact I think these heavy corn crops have and always will have a tendency to make cheap beef and for this reason I consider that a total failure of the corn crop throughout the entire feeding country would prove a great blessing to the rangemen and at once cause a very material advance in the price of beef.

Of course everybody knows all about Kansas City, consequently I could hardly hope to interest your readers by telling them anything about this bustling young city. Will say, however, for the edification of those who have not been here for the past two years, that Kansas City can now boast of one of the very best hotels in the United States or elsewhere. In addition to having all the other modern improvements, the Midland hotel has made its dining room doubly attractive by putting it on the last floor, but one. The building is eight stories high, thus elevating the dining room above the noise, bustle and dust of the streets, and making it in every way more pleasant and attractive.

The employes and servants are very attentive and the service therefore first-class. The one, however, who seems to have the most difficult job, but performs the duties without making a mistake, is the colored hat man in the hall at the entrance of the dining room. It was a great mystery to me. I could not understand how this man could receive the hats of all these gentlemen numbering in the hundreds and nearly all entire strangers and without any check mark returned instantly and without a bobble or mistake each hat to its proper owner as they came out from their meals. I tried to interview him and learn how it was done. He did not tell me and I suppose he thought I wanted his job.

Kansas City has more miles of cable railway and runs more cars than any town of its size in the world. They seem to run on almost all the streets

and in every direction: notwithstanding the large number in use I learn they pay handsomely and the stock sell at a nice premium. I stood on the corner of of Main and Ninth streets where two of these lines cross for half an hour yesterday waiting to see a collision or some fellow get run over. I wasted the half hour as they always managed to get out of the way just on time.

Since my sojourn in this city have met quite a number of prominent cattlemen, among whom I may mention Capt. A. G. Evans, president of the well known and popular Evans Snider-Buel Co. This firm do a good business.

Uncle Henry Stephens manages the affairs of the American Live Stock Commission Co. at this place, was also seen. He believes in the business as strongly as he does in baptism and Democracy. Uncle Henry is very enthusiastic in his work and is sure to make it win. The office is presided over by J. W. T. Gray, formerly of Henrietta, Texas. Mr. Gray is very popular and proving himself the right man for the place.

Among the Texas cattlemen who are here, I remember having met D. R. Fant of Gollad; M. Z. Schissen of Colorado; Jim Taylor and Wm. Buntor of Austin, and Charley Word of Wichita Falls. They all seem to be in good health and fine spirits.

I think I can congratulate the JOURNAL upon the extent and character of the patronage it receives in Kansas City. I find the JOURNAL in the live stock commission offices and in many of the business houses and banks up town. I hear many favorable comments upon the JOURNAL market reports, and the extent, variety and pertinence of its news features, correspondence, etc. Out of the long list of firms doing business at the yards none stand higher than the firms soliciting consignments through the columns of the JOURNAL. The two I have mentioned are on the list, also such firms as the Fish & Keck company, Quinlan, Montgomery & Co., J. D. Dobyns & Co., Metcalf, Moore & Co., The James H. Campbell company, and D. C. Paxson & Co. To these can be added the recently established branch of Greer, Mills & Co., the main house being at Chicago.

Such a representation stamps the JOURNAL as a valuable medium, and could not be sustained without a circulation reaching into the Indian Territory and close up to the gates of Kansas City, as well as the close connection with the stockmen of Texas.

GEO. B. LOVING,  
Of El Paso, Texas.

**Beauty Without Paint.**

"What makes my skin so dark and muddy? My cheeks were once so smooth and ruddy! I used the best cosmetic made," Is what a lovely maiden said.

"That's not the cure, my charming Miss," The doctor said—"remember this: If you your skin would keep from taint, Discard the powder and the paint."

"The proper thing for all such ills Is this," remarked the man of pills: "Enrich the blood and make it pure— In this you find the only cure."

Dr. Pierce's Golden Medical Discovery will do this without fail. It has no equal. All druggists.

**Where is Chas. D. Burk?**

Any one knowing the whereabouts of one Chas. D. Burk, who came to Texas about one year ago and last fall attended the Dallas fair in charge of Mr. F. M. Houts' cattle can confer a great favor by addressing his mother at the Lindell hotel, Fort Worth, Texas.

MRS. MARTHA A. BURK.

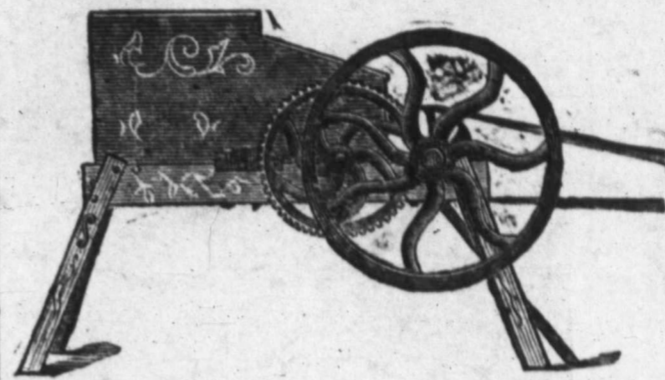
Largest stock of tin plate, metals, sheet iron, iron roofing and siding in Western Texas, Piper & Schulthess, San Antonio, Texas. We sell at factory prices, only freight added.

**ST. JACOBS OIL**  
TRADE MARK  
**THE GREAT REMEDY FOR PAIN**  
IT CONQUERS PAIN.

Relieves and cures HEADACHE, RHEUMATISM, Toothache, Sprains, NEURALGIA, BRUISES, Sciatica, Lumbago. Burns and Scalds.

At Druggists and Dealers.  
THE CHARLES A. VOELKER CO., Baltimore, Md.

**CATTLE FEEDING MACHINE.**



Crushing corn with shuck on or off, wet or dry, hard or soft, at the rate of 100 bushels per hour with two-horse power. Circulars free. Address

**E. A. PORTER & BROS.,**  
Bowling Green, Ky.

**PIANOS and ORGANS**



Direct to customers from headquarters, at wholesale prices. All goods guaranteed. No money asked until instruments are received and fully tested. Write us before purchasing. An investment of 2 cts. may save you many dollars. Address

**Jesse French Piano & Organ Co.,**  
NASHVILLE, TENN.

**Drs. Pollock & Keller,**

401 Main Street,  
FORT WORTH, TEXAS.

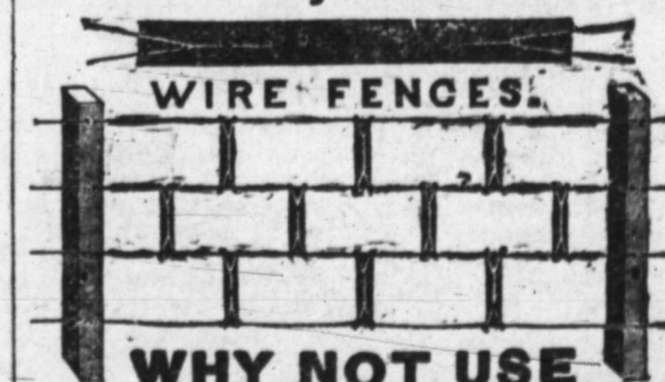
**Chronic Diseases a Specialty**

MRS. M. E. KELLER, M. D., specialty diseases of women and children.  
DR. J. R. POLLOCK successfully treats Piles, Fistula, Fissure and all diseases of the rectum.

**Oxygen and Electricity**

for the treatment of catarrh, bronchitis, consumption, dyspepsia, constipation and all diseases of the nervous system. Best of city refertees given upon application. Correspondence solicited.

**Steel Stay Guards For**



**WHY NOT USE**

Large smooth wire and our Stay Guards, and build the cheapest, strongest and most durable harmless fence ever put up? Can be made hog or sheep-tight. For information write

**WIRE FENCE IMPROVEMENT CO.,**  
325 Dearborn Street, Chicago, Ill.  
Mention this Paper

**Ohio Improved Chesters**  
WARRANTED CHOLERA PROOF.  
EXPRESS PREPAID. WINS 1ST PRIZES IN U. S. & FOREIGN COUNTRIES. 2 WEIGHED 2808 LBS.  
SEND FOR DESCRIPTION & PRICE OF THESE FAMOUS HOBS, ALSO FOWLS L. B. SILVER CO. CLEVELAND, O.  
(This Company sold 973 head for breeding purposes in 1887. Send for facts and mention this paper.)



When you want a Hay Press write us for price of

**THE GEORGIA PRESS,**

A full circle press, simple, strong, effective. Price less than half that of other presses of same capacity. It will pay you to send for a circular and price.

The Panhandle Machinery & Improvement Co.  
FORT WORTH, TEXAS.

**J. B. ASKEW.**

Successor to R. F. TACKBERRY.  
Manufacturer, Wholesale and Retail Dealer in Saddles, Harness, Leather, Etc  
Also, a well selected stock of Road Carts, Buggies, Phaetons, Carriages, Etc.  
107 and 109 Houston St.,  
Fort Worth, Texas.



The Tackbery Saddle is all competitors. During the past year mail orders were received from ten states and four territories for this popular saddle. Send for photos and price list. I also manufacture large quantities of wagon, express, carriage and buggy harness.  
We buy our buggies, phaetons and carriages from the largest wholesale manufacturers in the United States, and can sell you as good goods and on as reasonable terms as any house in Texas. Call and examine for your self. Mail orders will receive prompt attention. Three car-loads just received.

**J. C. SCOTT.**

Attorney-at-Law,  
304 MAIN STREET, FORT WORTH, TEX.  
Land and Commercial Law.

Refers by permission to Hon. Henry M. Teller, Sec. Interior, Washington, D. C.; Valley National Bank, St. Louis, Mo.; H. M. Truheart & Co., Galveston, Tex.; Gen. B. C. Ludlow, Col. Int. Rev., Austin, Tex.; City National Bank, Fort Worth, Tex.; First National Bank, Fort Worth, Texas.

**THOS. F. WEST,**

Late of Jacksboro,  
Attorney-at-Law,  
311 Main Street,  
FORT WORTH, TEXAS.  
Special attention to Land and Live Stock Litigation.

R. M. Wynne, Robt. McCart, N. A. Steadman.

**WYNNE, MCCART & STEADMAN,**  
Attorneys at Law,  
311 MAIN STREET,  
FORT WORTH, TEXAS.

**CITY HOTEL, - CHICAGO.**

Cor. State and 16th Sts.  
SPECIAL RATE TO STOCKMEN, \$1.50 PER DAY. Nearest hotel outside the yards. Table and Rooms first-class. State st., Archer av or L. S. & M. S. Dummy pass the house to a of city and depots.  
W F OBOUTT, Proprietor

**FOR SALE OR EXCHANGE.**

**PATENTS** If you want to secure a patent, write to H. H. KERR, Solicitor, Fort Worth, Texas, Formerly an examiner of applications for patents U. S. Patent office, Washington, D. C.

**Cattle for Land.**

Fifteen hundred good North-west Texas stock cattle in exchange for land. Address STOCKER, Care Stock Journal, Fort Worth, Texas.

**Cattle For Sale.**

2000 stock cattle, mostly she stock, well graded up, in pasture in Western Texas, above the fever line. Will sell part cash and balance on favorable terms. Will deliver at any reasonable distance. Address YEARLING, Care Stock Journal, Fort Worth, Texas.

**Southdown Buck Lambs.**

Twenty head of very fine Southdown buck lambs. Write F. M. YOUNG, Lock Box 217, Fort Worth, Texas.

**Public Sale of Fine Cattle.**

On the 10th day of September, 1889, I will sell about 100 head of Durham cattle at auction at my farm, near Covington, Hill county, Texas. These cattle consist of cows, calves, yearlings, twos and three-year-olds. All she cattle except nine head, graded from thoroughbred pedigreed bulls. Terms made known on day of sale.

P. GATHINGS, Covington, Texas.

**Wanted to Buy.**

500 two-year-old steers, from Tarrant and adjoining counties, or westward of Fort Worth.

BEGGS & HACKETT, Fort Worth, Texas.

**Pasture to Lease.**

18,000-acre pasture, on head of North Concho, Tom Green county, with 8 roomed house, to lease for two or three years. Apply to GRAHAM KENNEDY, Montvale, Texas.

**Splendid Ranch For Sale.**

I offer for sale the Arbita Ranch Property, situated in Jones County, on the Clear Fork of the Brazos, several miles on both sides of the stream. It includes 3800 acres of land, 2000 of which are under fence, 225 head of horses, good improvements, everlasting water, rich land for agricultural and other purposes. Altogether, this is one of the finest and most desirable pieces of property in Northwest Texas.

Also about 8000 acres of Pine Lands in Montgomery County.

WM. D. CLEVELAND, Houston, Texas.

(Incorporated.)

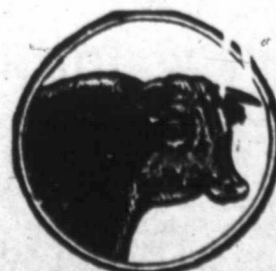
**International Investment Agency,**  
GEO. B. LOVING, Manager,  
EL PASO, TEXAS.

Do a general real estate, live stock, mine and investment brokerage business.

The sale of wild lands in large bodies, ranches, cattle and mines in Texas, New Mexico, Arizona and the Republic of Mexico a specialty.

**Herefordsto Exchange for Steers.**

Twenty-two head of thoroughbred Hereford cows and heifers, all registered in A. H. R., to exchange for yearling steers. Price \$40 per head, including three bulls, one imported. The price is about one-eighth of what the same quality of cattle would have brought four years ago. Will furnish pedigrees to any one desiring them.



R. M. MOORE, Las Animas, Colorado

**FOR SALE OR EXCHANGE.**

W. F. SOMMERVILLE, Pres.  
J. C. BIDDLE, V. Pres. and Treas.

**Western Securities Co.**

FORT WORTH, TEXAS.  
CAPITAL \$250,000.

Loans on Farms, Ranches and Improved City Property, at Moderate Interest.

**Mules For Sale.**

80 mules, 3 to 6 years old.  
J. W. BURGESS, Fort Worth, Texas.



**California Rams.**

Kirkpatrick & Whittaker of Stockton, Cal., have on hand and for sale the largest stock of rams on the coast. Over 500 two-year-old Spanish Merinos, and 1000 yearlings. Also, 500 French-Spanish cross-bred rams, good size. Choice thoroughbred French Merinos. Will deliver at any railroad point. Write for prices in car lots.

**For Sale.**

**HORSES, MULES AND COLTS.**

25 mule colts, from 1 to 3 years old, broke and unbroke.  
25 brood mares, well bred, from 4 to 9 years old.  
25 horse colts and fillies, from 1 to 4 years old, broke and unbroke.  
1 stallion, Norman and Steedust, 5 years old.  
1 stallion, Incomode and Rebel, 5 years old. Mares all bred in spring of 1888 to above stallions, and most all in foal.  
Will sell for \$60 per head, cash or on time. Stock can be seen on ranch, 3 miles from Corsicana. Inquire of A. E. MORSE or GEO. B. WALKER, June 1 1889. Corsicana, Texas.

W. C. YOUNG, of the Llano Live Stock Co.  
J. M. KUHEN.

**YOUNG & KUHEN,**

Dealers in

**-LIVE STOCK-**

Tenth and Houston Sts.,  
FORT WORTH, - - TEXAS.

Cattle contracted for spring delivery. Horses of every description in yards and pastures. Cow-horses a specialty. Horses, mares, mules and jacks for sale at all times. We are prepared to enter into contracts for the delivery of cattle, horses, mares and mules at any point in Texas, and solicit correspondence.

**Rams, Ram, Rams!**

G. A. & R. I. of Oakland Farm, East Bethany, N. Y., offer to sell, delivered at any point in Texas 300 thoroughbred Merino and Shropshire Down Rams, in lots to suit customers. The Merinos were specially selected by them from the Delaine flock with regard to size, form and vitality. Prices right for the times and stock. Yours truly,  
G. A. & R. I. PAGE.

**Farms For Exchange.**

six good stock farms, of 400, 565, 2300, 3750, 4750 and 5000 acres, valued at \$5,000, \$8,500, \$14,000, \$25,000, \$35,000 and \$50,000. All well improved and a large per cent. of each good farming land. Will exchange for good city property on a fair basis.

B. F. RUSSELL, Walnut, Bosque County, Texas.

**C. F. ESTILL,**

**Live Stock Commission Dealer,**  
Fort Worth, Texas.

Yards on Calhoun St., between 7th and 8th. Office at Yards. Live stock of every description boarded and yarded, and sold on commission. We solicit consignments.

**FOR SALE OR EXCHANGE.**

L. B. IMBODEN, L. G. HAMILTON.

**IMBODEN & HAMILTON,**  
Investment Bankers,

FORT WORTH, - - - TEXAS.

Office Corner Fourth and Houston Sts.

Money always on hand to loan upon farms, ranches, vendors' lien notes and city property at lowest current rates. Loans closed quickly. Correspondence invited.

**For Sale.**

I can furnish 100 first-class Merino Rams, and a few Shropshires. Will quote prices here or delivered. W. C. VANDERCOOK, Cherry Valley, Ills.

P. A. HUFFMAN, A. W. JONES, S. T. NESBITT, Ft. Worth, Tex. Late of Burlington, Kan. Late of Springfield, Ill.

**P. A. HUFFMAN & CO.,**

REAL ESTATE

AND

**Investment Agents**

506 Main Street,

FORT WORTH, - - - TEXAS.

Postoffice Box 197.

Land titles investigated, taxes paid and collections made for non-residents.

Correspondence solicited.

**Lands Wanted,**

Parties having for sale large tracts of Texas farm and pasture lands at a bargain will do well to address

F. M. FERRIS,

505 Exchange Building, Kansas City, Mo.

**The Valley Stock Farm**

Terrell, Texas, offers for sale

Grade Holstein and Jersey Cattle and purebred registered Berkshire and Jersey Red hogs of the very best strains. Write for circulars and prices.

J. O. TERRELL, Proprietor.

**Creamery Package Manufact'g Co.,**

Kansas City, Mo.,

Manufacturers of Butter Tubs, Egg Cases,

-AND-

**CREAMERY AND CHEESE FACTORY SUPPLIES.**

Our 100-page catalogue for 1889 is just out. If you are interested, send us four cents in stamps for same.

**Stockmen of Texas**

Can buy GROCERIES at Wholesale by addressing

JOHN DEVLIN & CO.,

24 & 26 E. Randolph Street, Chicago, Ill.

Mention the Journal. Write for price-list, or send list of groceries wanted and ask for estimate.

San Juan, 1876. St. Louis, 1888.

JEAN F. WEBB,

**MINING LAWYER!**

220 N. Broadway, St. Louis, Mo.

Long practical experience as attorney, manager and superintendent of mines. Mines and mine titles examined. Will act as attorney or associate counsel in mining matters. Correspondence solicited.

**Berkshire Pigs.**



I have pure-bred Berkshire pigs for sale, one to five months old, all from choice, hardy importations.  
W. S. IKARD, Henrietta, Texas.

**FOR SALE OR EXCHANGE.**

**BARGAINS.**

10,000 acre fenced and watered pasture in a solid body; 50 miles north of Austin, timber enough for shelter, a good winter and summer range. For sale at a low price.

38,000 acre Texas ranch, in a solid tract, (can be 68,000 acres) on Gulf coast, near Aransas Pass. Well improved; mostly smooth prairie, good soil, excellent grass. No feeding needed, no winter; Gulf breeze makes summer pleasant, locality healthy, ranch well stocked with cattle raised on it and, if wanted, sold with land at market price. Land \$3 per acre. Send for complete description.

Parties wanting to sell, buy or exchange property may find what suits them by communicating with me.

\$1000 to \$100,000 to lend on real estate on favorable terms. Special inducements to borrowers of large amounts of money on choice securities.

S. M. SMITH, Austin, Texas.

**Cedar Fence Posts!**

We keep on hand a large supply of Cedar Fence Posts, 1/2, 8, 9, 10, 12 14 and 16 feet long; also House Blocks. We can give special rates for car-load lots to all points in the state.

JOHNSON BROS.,

Strawn, Palo Pinto County, Texas

**CHAMPION, PENNINGTON & CO.,**

Real Estate and Live Stock Brokers,

Werbiskl Building, 12th Street.

P. O. Box 42, BROWNSVILLE, TEXAS.

**IXL WINDMILLS.**

OVER 18,000

In Use.

POWER,

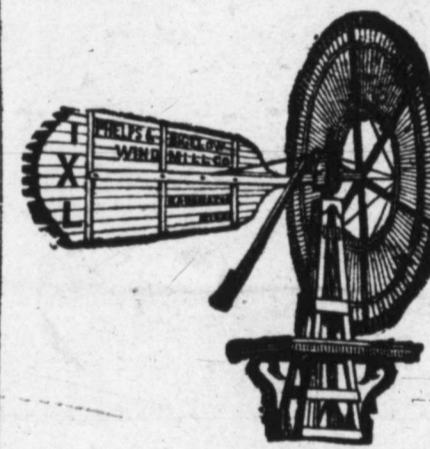
Wind Engines,

Pumps, Pipes.

TANKS,

Shellers, Grinders,

Etc., Etc.



Write for catalogue to

The Phelps & Bigelow Windmill Co.  
1215 West 9th St., Kansas City, Mo.

All Texas orders filled from Dallas, Texas.

**For Exchange.**

Two thousand acres of good pasture land for sale or exchange for cattle. Has a good 5-wire fence, posts 20 feet apart. Black land, fine grass and water; title perfect. For further particulars, address Box 100, Decatur, Texas. The land is 10 miles east from Decatur, near Denton county line.

**Steer Cattle, Etc.**

W. S. & M. Ikard, Henrietta, Tex., live stock commission merchants, will contract to deliver steer cattle, or choice selections of Northwest Texas stock cattle. Have also for sale thoroughbred and grade Hereford bulls, some of which are fully acclimated. Will fill orders for Northwest Texas cattle and horses.

**Special Announcement to Breeders.**

Important Auction Sale of Trotting Stock.

THE MISSOURI HORSE EXCHANGE

Will hold its Annual

Breeders' Sale

-OF-

**High-Bred Trotting Stock**

(Limited to 300 head),

on the six days from SEPTEMBER 30 TOBBER 5, inclusive, during the week of the great

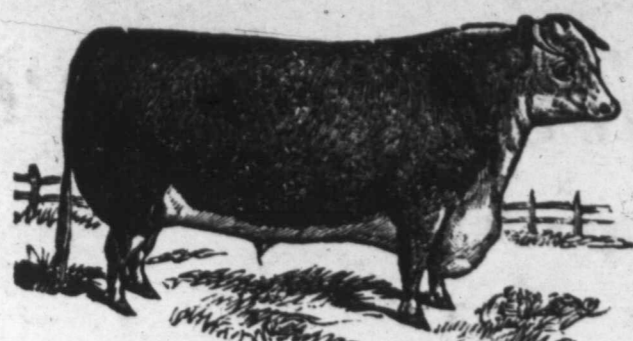
**St. Louis Trotting Meeting,**

And confidently solicit well-selected consignments from breeders. This sale is the best opportunity of the year for owners to realize on well-bred offerings.

For further particulars as to special advantages and liberal terms, address MISSOURI HORSE EXCHANGE COMPANY, ST. LOUIS, MO.

GEORGE GREY, President.  
HARRY ASHMAN, Auctioneer.  
A. J. MESTON, Secretary of the Sale

**FOR SALE OR EXCHANGE.**



**Herefords!**

I have for sale 240 head of pure bred registered bulls and heifers in the Brown pasture at Childress, Texas, a few miles from the Fort Worth & Denver road. Will sell singly or in car lots on favorable terms and at reasonable prices. Some of these cattle are acclimated. Address by letter.

WM. POWELL,  
Pickwick Hotel, Fort Worth, Texas.

**STEERS**

For Spring Delivery.

I have for sale some special large lots of Central, North and West Texas steers, and will quote prices and terms upon application.

A. S. NICHOLSON,  
Main Street, Fort Worth, Tex.

**We Still Have For Sale**



54 choice Texas mares,  
14 Texas mares, 4 years old,  
10 draft mares, 3 years old,  
5 draft mares, 2 years old,  
22 draft mares, 1 year old,  
18 draft geldings, 3 year old,  
34 draft geldings, 2 years old,  
20 draft geldings, 1 year old,  
7 fine draft stallions.

Also, a large number sucking colts and mares in foal again.

This bunch has not been topped.  
B. P. STERRETT,  
Albany, Texas

**J. R. JETER & CO.,  
Real Estate Agents**

405 Main St., Fort Worth, Tex..

**MONEY TO LEND**  
On Real Estate. Vender's Lien Notes Bought.

**Special Properties For Sale.**  
Eight single 640-acre tracts in Wichita county, rich lands at reasonable prices.

40,000 acres in Wheeler county, solid body, \$3.00 per acre.

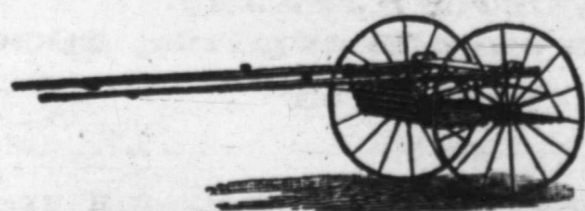
168,000 acres on the plains, under fence and cross fences, \$2.50 per acre.

130,000-acre ranch with 12,000 head of cattle in Southwest Texas, for sale at a bargain or exchange for New York city property.

1280 acres 20 miles from railroad town, half farming land, balance good grass, 300 acres can be irrigated from springs on the place, pecan and other varieties of timber. Product of the pecan trees will pay interest on price of land. Price \$3000, \$1720 cash and balance on long time.

80 acres 4 miles from railroad town, 50 acres in cultivation; well watered, farm implements, stock, etc. Will sell at reasonable price.

We have on our books various other good tracts of land, improved and unimproved, ranging in extent from 1000 to 10,000 acres.



**Breaking Carts and Sulkies**

Our perfect riding buggies are the best made. We do not compete with cheap makes. Address BOHANON CARriage CO., 161 and 163 Ogden Av., Chicago, Ill. Mention the JOURNAL and ask for particulars and description of the Celebrated Bohanon Breaking Cart.

**FOR SALE OR EXCHANGE.**



**National and Vermont REGISTERED Spanish Merino SHEEP.**

Our flock has produced the following heaviest fleeces on record: Ram, any age, 52 lbs, 381 days growth; ram yearling, 28 lbs; ewe, Lady Hoffman, 30 lbs, 363 days; scoured fleece by Lord Wool, 13 lbs 4 oz, original weight, 33 lbs, scoured by Jacksonville woolen mills. Average of entire flock, 18 lbs 12 oz. Rams and ewes for sale. Latch string always out. REYNOLDS & DAVED, Mulvane Kansas.

I HAVE FOR SALE

**400 Head Full-Blood Merino Sheep.**

These sheep have averaged 13 lbs 6 oz wool. All Texas raised and bred from Michigan sheep. Will take \$3 per head around if sold before Aug. 1. Also 20 head of high-grade Jersey heifers and cows, and one pure-bred Jersey bull. Must be sold at once. Write for further particulars to C. F. MILLS, Sowers, Dallas County, Texas.

**Valley View Stock Farm.**

W. P. PATTILLO, Prop., Atlanta, Ga.

12 miles southeast from Gordon, in Erath county, Texas.

Percherons, Clydes, Herefords, Angoras and Poland Chinas on hand and for sale.

A special bargain is offered in full-blood and grade Angora Goats, grade male Hereford cattle, and cows bred to Hereford bulls.

Come and see, or write to W. P. PATILLO, Atlanta, Ga., or Gordon, Texas.



**Standard-Bred Poultry.**

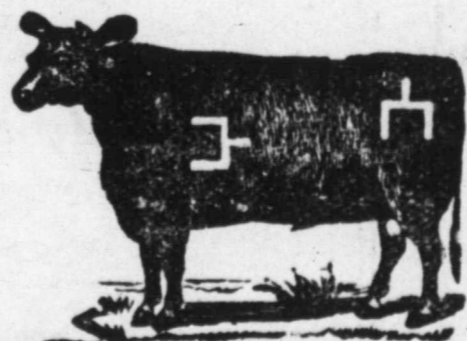
J. G. McReynolds & Co., Nechesville, Texas, breeds English Red Caps, Black Minorcas, Ga. Shawneck Pit Games, Brown Leghorns, Langshans, Wyandottes and Plymouth Rocks. Bred strictly to the standard. The most complete poultry farm in the state. Write for wants.



Chester White, Berkshire and Poland China Pigs, Fine Setter Dogs, Scotch Collies, Fox Hounds and Beagles, Sheep and Poultry bred and for sale by W. GIBBONS & Co., West Chester, Chester county, Pa. Send stamp for Circular and Price List.

**The Espuela Land and Cattle Company.**

(Limited.)  
Postoffice, Dockums, Dickens County, Texas  
FRED HORSBRUGH, Manager.



Have for sale two-year-old and yearling steers and heifers of their own raising, go by Shorthorn and Hereford bulls, in the straight-spur mark and brand. Horses branded on left hip.

**Matador Land and Cattle Company.**

(Limited.)  
W. F. SOMMERVILLE, Manager, Fort Worth, Texas; H. H. CAMP BELL, superintendent, P. O. Matador, Tex. We have for sale at all times yearling, two and three-year-old steers, all in our own mark and brand and from the best grade bulls. Correspondence solicited from cattle buyers.

Don't buy the Missouri penitentiary saddle trees, but buy the genuine Loeloff, for sale by Brackett & Holman, San Antonio, Texas.

**CATTLE RAISING IN MONTANA.**

**Railroads Taking the Place of Trails and Cowboys.**  
St. Louis Globe Democrat.

The romance has gone from the cattle industry in Montana. The business is, in all its features, from capitalist to cowboy, severely and sternly practical. In reducing the business to a rigid system the stockmen of Montana have classified themselves into "stermen" and "she-stockmen." The steermen are increasing. They are those who realizing that this is rather a grazing country than a breeding country are tending out of stock raising as fast as they can make the change. They furnish the market for the cowmen of Texas, New Mexico and Arizona. They are ready to buy all of the 2-year-old steers the Southwest breeders can supply, and they pay cash. They turn these young steers upon the Montana ranges, graze them there two years and then market them for beef. Montana-Texans sold in Chicago the other day averaged 1150 pounds and brought \$3.60 per 100 lbs. On the same day, Texans of the same age, which had been matured in their native state, averaged between 900 and 1000 pounds and sold for \$2.75 in the same market, Montana maturity means 200 pounds in weight and from 50 cents to \$1 per 100 lbs increase in price for quality. In that margin is found the explanation of the close relationship which is developing between the southwestern and northern stockmen.

Perhaps some one wonders how the 150,000 or more southwestern steers reach the northern ranges, whether the transfer isn't pretty expensive and what is to be done when the country settles up between the sections, thus obliterating the trail. Well, the cowmen have virtually discounted the trail obstructions. Steers, if they are young and only on the way from one range to another, now travel by rail. The Southwestern breeders began by driving their young steers north. Then they discovered that by saving time and getting them on the northern range they could put them into the winter in better form and with less danger of losses. Some herds still come by the old way, weeks on the trail. But the more popular method (now is to drive to the railroad in the Panhandle of Texas, put the steers aboard the cars there, bring them north the whole length of Colorado, and almost to the center of Wyoming, to a place called Wendover. There they are taken from the cars because it is the northern terminus of the railroad and driven 150 miles north to Montana. But it is only the question of a year or two when the needs of this transfer between the southern and northern ranges will prompt the building of one or more lines of road northward through Wyoming into Montana, then the train loads of young Texans will come all the way through by rail, reaching these incomparable ranges in time for the May grass.

But the item of expense? A 2-year-old steer now makes the entire trip from Texas or New Mexico to Central Montana for less than \$3. Add to that the cost of keeping him two years in Montana at \$2 a year, and estimate the risk of the winter on his life. Subtract that aggregate from the 200 lbs. of additional weight, and fifty cents to \$1 a hundred for extra quality, the result of his northern grazing. You have the margin, which is the sure profit on grazing Texans and Mexicans in Montana. The steermen have already figured it out, and are putting the profits in their pockets. They have occupied the ranges about up to the limit.

**Arizona Cattle at Kansas City.**

T. L. Miller in Hoof and Horn. I find in your paper a quotation from the live stock indicator (Kansas City)

to the effect that "45 Arizona steers, average weight 1202 lbs, sold for \$2.50, and that eight Arizona steers whose average weight was 1120 pounds brought \$2.25. With such figures prevailing, it is not to be wondered at that cattlemen feel streaked and dejected."

Well, what could they expect? That same day cattle sold in Kansas City for \$4 per hundred. What is the difference? It is because one lot was bred in Arizona and the other in Kansas? I think this will not account for it. If the owner had been there with the Arizona cattle, he would have found that the \$4 steer had a smooth, heavy-fleshed body on short legs while his had not.

I have a report from Union Stock yards, Chicago, of July 25th. Thirteen thousand cattle were received on that day. The native steers sold at prices ranging from \$3 to \$4.45, and the average weight was about 1300 pounds. On the same day there were 2000 Texas and Indian Territory steers on the market that brought from \$2.25@3.05, and weighed about 1000 lbs.

Of the natives, the \$3 steer brought about \$35; the \$4.45 steer brought about \$70; the Texas steer that brought \$2.25 yielded about \$20; those that brought \$3.05 yielded \$30.

Of the native steers that brought \$35, the cost, probably, was as much to raise and put on the market as was the cost of the \$70 steer. If there had been 2000 Arizona steers on the market, they would have made about the same money that the Texas steers made. Now, the question is a live one, why is this large margin or difference in values? Is it not largely in the breeding, and for range cattle is it not almost entirely in the breeding?

The range cattle depend upon favorable seasons; this is true to a great extent, but nearly every season has a time when cattle can make (growth and beef. This year Nevada has a severe drought, which shortens both feed and water. Arizona, for the most part, has both feed and water.

The use of good thoroughbred Hereford bulls in Arizona will be a guarantee of good beef. Cattlemen cannot expect to get paying prices for scrub cattle. Arizona, with its range and valleys, can make cattle that will go to Eastern markets and reach very close to the top figures, if Arizonians will breed and improve their opportunities

**The Great Popular Route**

—Between—

**TEXAS & PACIFIC RAILWAY.**

Pullman Buffet Sleeping Cars through between St. Louis (via Texarkana) and Deming, New Mexico; also Pullman Palace Sleeping Cars between Fort Worth and New Orleans without change. Only one change to

CHICAGO, CINCINNATI, WASHINGTON, BALTIMORE, PHILADELPHIA, NEW YORK AND OTHER PRINCIPAL CITIES.

For full information or tickets call on

H. C. ARCHER, Passenger Agt., Dallas, Texas  
C. D. LUSK, Ticket Agt., Union Depot, Fort Worth.  
J. F. ZURN, Ticket Agent, City Office, 317 Main Street.  
B. W. McCULLOUGH, G. P. & T. A., Dallas, Texas

**The New Through Line**

**TEXAS TO THE NORTH & EAST**

**—Cotton Belt Route—**

Pullman Buffet Sleepers, Free Reclining Chair Cars, Elegant Day Coaches between Texas and St. Louis, connecting in Union depot at St. Louis with trains to all points North and East. No change of cars to Cairo, Memphis or St. Louis. The shortest route via Memphis to all points in the Southeast. Double daily trains. Unexcelled service.

If you wish to save time and distance, not purchase a ticket to any point until you have consulted an agent of the St. Louis ARKANSAS & TEXAS RAILWAY, OR D. MILLER, E. W. LAURENCE, Gen'l Pass'r Agt., St. Louis, Mo. W. H. WINFIELD, Gen'l Agt. Pass'r Department, Texarkana, Tex.

W. J. HAYNES.

H. F. LANGENBERG.

G. F. LANGENBERG.

**W. J. HAYNES & CO.,**  
**WOOL COMMISSION**

Cor. Market and Commercial Streets,  
**ST. LOUIS, MO.**

Liberal Advances on Consignments of WOOL, HIDES, PELTS, ETC.

REFERENCES: St. Louis Nat'l Bank, Dunn's and Bradstreet's Commercial Agencies

**THE KANSAS CITY STOCK YARDS**

Receipts for 1888: Cattle, 1,056,086; Hogs, 2,008,984; Sheep, 351,050; Horses and Mules, 27,650.

These yards are by far the most commodious and best appointed in the Missouri Valley, with ample capacity for feeding, weighing and shipping Cattle, Hogs, Sheep, Horses and Mules. They are planked throughout, no yards are better watered, and in none is there a better system of drainage. The fact that higher prices are realized here than in the East is due to the location at these yards of eight packing houses, with an aggregate daily capacity of 3300 cattle and 27,200 hogs, and the regular attendance of sharp, competitive buyers for the packing houses of Omaha, Chicago, St. Louis, Indianapolis, Cincinnati, New York and Boston.

All the sixteen roads running into Kansas City have direct connection with the yards, affording the best accommodation for stock coming from the great grazing grounds of all the Western States and Territories, and also for stock destined for Eastern markets.

The business of the yards is done systematically and with the utmost promptness, so there is no delay and no clashing, and stockmen have found here, and will continue to find, that they get all their stock is worth, with the least possible delay.

*Kansas City Stock Yards Company*

**HORSE AND MULE MARKET**

FRANK E. SHORT. { FRANK E. SHORT & CO., Managers. } CAPT. E. S. TOUGH.

This company has established in connection with the yards an extensive Horse and Mule Market, known as the KANSAS CITY STOCK YARDS COMPANY HORSE AND MULE MARKET. Have always on hand a large stock of all grades of Horses and Mules, which are bought and sold on commission in ear-load lots.

In connection with the Sales Market are large feed stables and pens, where all stock will receive the best of care.

Special attention given to receiving and forwarding.

The facilities for handling this kind of stock are unsurpassed at any stable in this country.

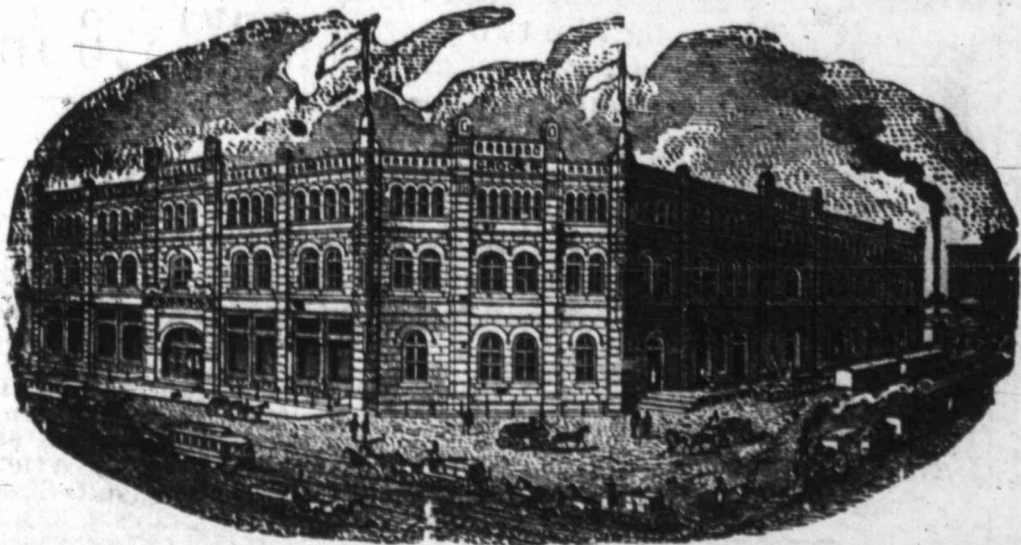
Consignments are solicited with the guarantee that prompt settlement will be made when stock is sold.

**C. F. MORSE,** Gen'l Manager. **E. E. RICHARDSON,** Treasurer and Secretary. **H. P. CHILD,** Superintendent.

**JOSEPH H. BROWN,**  
*Wholesale Grocer,*

[Manufacturer of the Celebrated

**SILVER LOAF BAKING POWDER.**



*-; Sultan Roasted Coffee:-*  
**FORT WORTH, TEX.**

— THE —

**Union Stock Yards,**

CHICAGO, ILLINOIS.

**The Largest and Best Live Stock Market in the World.**

The entire system of the Railways of the West centers here, making the Union Stock Yards the most accessible point in the country. The capacity of the yards, the facilities for unloading, feeding, reshipping, or for the sale of stock are unlimited. There is no point in the United States where stock will find as satisfactory market and sale to the shipper as the Union Stock Yards.

The quality of feed and accommodations given cannot be surpassed at any point in the country. The great city of packing houses that are located here, the large bank capital and the large number of buyers for the Eastern market constantly on hand, make this a quick, active and independent market. Cattle from the North, West and Southwest should reach this market without fail, in order to procure the best prices. There is now established a direct Cattle, Hog, Sheep and Horse trade between these yards and the most important markets in Europe. Agents constantly here from London, Paris, Hamburg, Liverpool and Manchester. The daily shipments from these yards to Europe are from one to two steamer loads. THIS IS STRICTLY A CASH MARKET.

**N. THAYER,**

**JNO. B. SHERMAN,**

President.

V.-P., Gen'l Mang'r and Gen'l Sup't.

**J. H. ASHBY,**

**J. C. DENISON,**

**GEO. T. WILLIAMS,**

Ass't Sup't.

Ass't Sec. and Treas.

Sec. and Treas.

**C. H. EDWARDS MUSIC HOUSE,**

409 Houston St., Fort Worth, Texas.

Chickering, Wheelock, Mathushek **PIANOS** Mason & Hamlin, Western Cottage and Kimball **ORGANS**

Lowest prices and easiest terms.

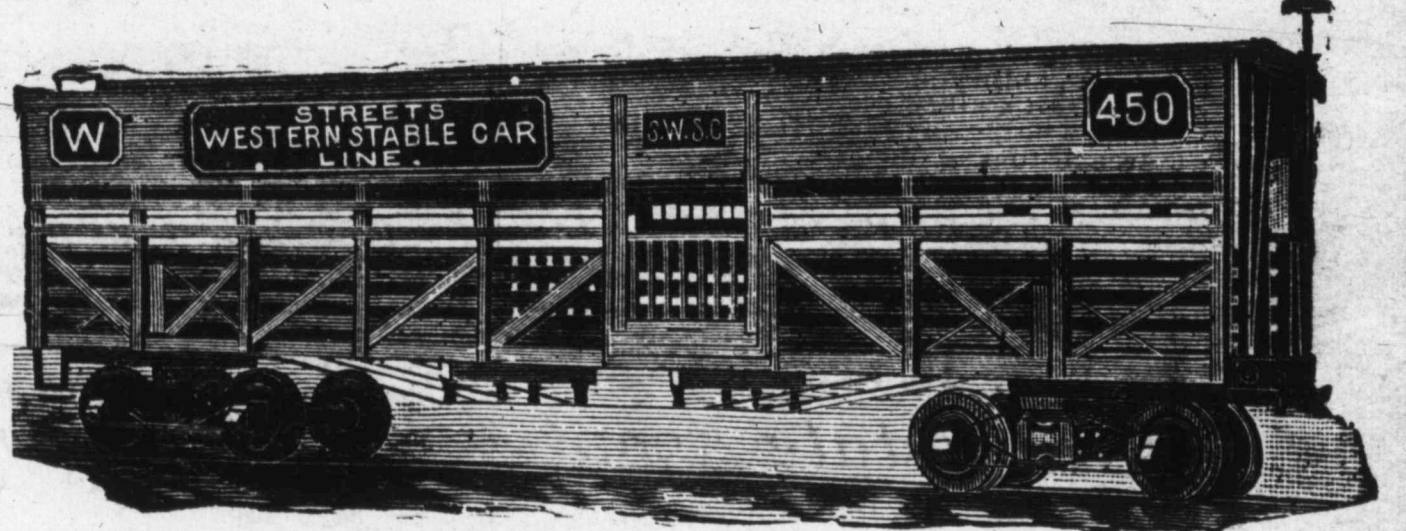
Call and see them before buying.

**STREET'S STABLE CAR LINES,**

GENERAL OFFICE, RIALTO BUILDING, CHICAGO, ILLS.

S. M. FISCHER, President.

L. D. KNEELAND, Gen. Traffic Manager.



Our lines of Stable Cars, operating east and west of St. Louis and Chicago, carrying horses and cattle to market, give food, water and rest to animals without unloading. For particulars, address

**L. D. VOAOK, GENERAL AGENT,**

For Missouri, Kansas, Colorado, Arkansas, Indian Territory, Texas, New Mexico and Arizona.

**FORT WORTH, TEXAS.**

**GEORGE L. GAUSE.**

Successor to FLENNER & GAUSE.

**UNDERTAKER**

314 W. Weatherford St., FORT WORTH, TEX.

Open Day and Night. Orders by telegraph receive prompt attention.

J. Q. SANDIDGE, Pres.

MAX ELSER, Cashier.

**CITY NATIONAL BANK,**  
FORT WORTH, TEXAS.

Capital Paid in and Surplus, \$200,000.

DIRECTORS—J. Q. Sandidge, Chas. Scheuber, Max Elser, C. M. Crane, T. T. D. Andrews, R. C. McNulty, Jas. W. Swayne, T. R. Sandidge.

M. B. LOYD, President.

D. C. BENNETT, Vice-President.

E. B. HARROLD, Cashier.

**FIRST NATIONAL BANK,**

Corner Houston & Second Streets, - - - Fort Worth, Texas.

CASH CAPITAL AND SURPLUS, \$375,000.

DIRECTORS—J. S. Godwin, M. B. Lloyd, J. W. Reed, Zane Cetti, D. C. Bennett, George Jackson, S. W. Harrold and E. F. Ikard.