

# The Goldthwaite Eagle

ESTABLISHED 1894

AND THE MULLIN ENTERPRISE

GOLDTHWAITE, MILLS COUNTY, TEXAS

SINGLE COPY, 10¢

THURSDAY, OCTOBER 24, 1963

NO. 19

## CATTLE MARKET

October 18, 1963

Very active—steady to

steer calves, \$28.00-

medium steer calves,

heavy steer calves,

21.00-24.00.

heifer calves, 23.50-

medium heifer calves,

heavy heifer calves,

19.00-21.50.

numbered heifers and

18.50-22.00

and

8.00-12.00

12.50-14.50

140.00-165.00

12.50-17.10

100.00-146.50

110.00-165.00

(Choice Pairs Offered)

## FFA Members

### Attend Leadership

### Training School

Officers of the Star

of Future Farmers of

attended a Leadership

School at Lampasas

officer received special

in the duties and re-

of his particular

with chapter offi-

17 Future Farmer

in the San Saba Dis-

VII.

from Star Chapter

president, John Ben-

secretary, Norman

and treasurer, Darrell

Class

Martha J. Moody has

from San Antonio

attended the County

Demonstration Agents'

of Texas meeting.

## David Watters

### Re-Elected

### Chorus Head

Watters was re-elected

of the American An-

breeders Association

meeting held in Rock-

last Tuesday. All other

were also re-elected.

Godbold of Leakey,

president; S. S. Shank-

second vice

and Mrs. Thomas L.

of Rock Springs, sec-

treasurer.

Barrows of Barks-

became a director, suc-

the late Joe M. Gard-

is the first woman to

director since the time

Mrs. M. Armer Kings-

was the president in

1919.

registrations during

total 12,323, an increase

over the previous year,

to be announced by

Taylor. The association

made 4,218 transfers, an

increase of 1,628. The associa-

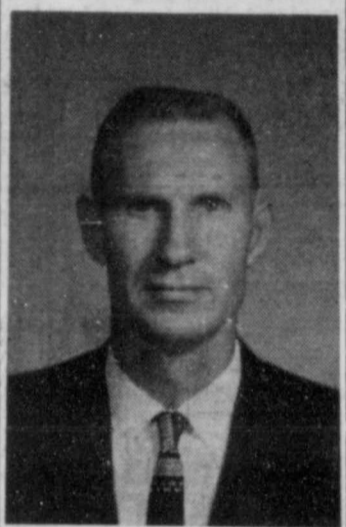
tion has a membership of 1,171.

## M. A. Childress Named Chairman Of Boy Scout Finance Campaign

Plans have been made, key members of the campaign organization have been recruited, and the necessary steps are being taken to conduct the annual drive for funds for the support of the Boy Scout movement in Goldthwaite, according to Warren P. Duren, Finance Chairman for the Comanche Trail Council, Boy Scouts of America. Dr. M. A. Childress is serving this year as the Goldthwaite Campaign Chairman. Members of his steering committee are: Warren Duren, Special Gifts Chairman; Harold Yarborough, General Solicitation; Raymond Summy, Prospects and Evaluation; Audit, Glynn Collier; Publicity and Promotion, Vic E. Koleber; and C. D. McLean, Kickoff and Report Meetings.

be asked to make more than five contacts, and this goal can be easily reached.

"Further information about the purposes for which the



DR. M. A. CHILDRESS

The special gifts group will begin their solicitation about November 4, and the general solicitation kickoff will be held on Tuesday, November 12. It is hoped that the drive can be 90% completed by 5:00 p. m. that day. If all the needed workers are recruited, no one person will

money is to be used will be released through the Eagle, and in a direct mailing to all persons whose names have been placed on the prospect list," Dr. Childress concluded. "We hope everyone will inform themselves about the needs of this fine organization and give it their maximum support."

## Little Politics Talked In County With 1964 Election Coming Early

There is little talk "officially" to date of politics in Mills County in spite of the fact that the 1964 primary election will again be held more than two months earlier.

The State Legislature changed the primary election dates four years ago from July and August to May and June. The first primary election will be held on the first Saturday in May instead of the last Saturday in July. The run-off primary will be held in June instead of August, which was customary for Texans for many years.

Along with the primary elections being moved up two months the filing deadline also is moved up from May to February. It used to be customary for candidates to make their announcements in the paper, starting January 1. This has also been moved up to give the

candidates their normal amount of time for campaigning.

At this time there is not too much talk about county politics with four offices to be filled for a four year term and one office with an un-expired term. The four places up for election this coming year are county commissioners, precinct one and three, county attorney and sheriff and tax assessor-collector. The place of county surveyor will be up for the un-expired term of the late J. C. Long.

There will also be the district and state offices to be filled, along with this next year being a presidential general election. Claudia Cockrum, chairman, Mills County Democratic Executive Committee, announced this week that while there is not much talk about politics yet, she has had some inquiries. She states that the early primary election with early filing deadline will mean that those who have plans or aspirations politically for the coming year will have to start earlier than in former years.

With the early filing deadline and primary election the political announcement column in the Eagle will be opened on November 1.

## Baptists To Have School Of Music Here Next Week

Mills County Baptists will have an association school of music for choir members and all those interested in church music at the First Baptist Church in Goldthwaite next week.

The four day sessions will be conducted from 7 to 9 p. m., Tuesday through Friday, October 29, through November 1, according to Bill Taylor, Minister of Music for the Goldthwaite church, who will serve as Dean of the school.

Guest director for the school will be Mr. Samuel Shanko, Instrumental Consultant, of the Southern Baptist Convention, Nashville, Tenn.

There will be classes for all age groups from juniors through adults. A special class for Organ and Piano will be arranged for the afternoons.

All choir members and those interested in the church choirs are invited and urged to attend this school of music, according to Taylor.

## Eagles Defeat Burnet Bulldogs 8-0; Now Holding Top Place In District

### Mark Daniel Shows Reserve Champion

A medium weight Shorthorn steer shown by Mark Daniel of Goldthwaite was judged reserve champion Shorthorn steer of the junior livestock show at the State Fair of Texas.

He took first place in the 850-950 pound Shorthorn steer class.

Other area winners were Lynda Cook of Star, second in her class for Angus steers weighing 750-1050 pounds.

Rhonda Cook, also of Star, eighth in a class for Hereford steers weighing 950-1050 pounds.

### Mullin Takes Pottsville 40-16

Mullin Bulldogs won their first conference game of the season Thursday night by a score of 40-16 when they met the Pottsville Bobcats on Mullin field.

John Reeves was high scorer for the Bulldogs with 34 points. Tommy Ethridge made the remaining six points when he received a pass tossed by Reeves.

Tonight (Thursday), the Mullin Bulldogs will journey to Sidney where they will tangle with the Sidney Eagles on Eagle Field at 7:30 P. M.

## Fighting Eagles To Tackle Bangs In Fourth District Game Friday

By SAMMY DENNARD

The Goldthwaite Eagles now hold sole possession of the District 9-A lead after scoring a touchdown early in Friday night's game and then holding the Burnet Bulldogs to an 8-0 victory.

With 22 seconds remaining in the first quarter, quarterback Gene Gray plunged over from the one ending a 66-yard Eagle drive. Gray then passed to half-back Cecil Campbell for two points, and the scoring was over.

Before the first half ended the Eagles had begun another drive, but were forced to punt from the Bulldog 47.

With 1:29 remaining in the half Burnet began a long drive from their own 11. Quarterback Mike Sawyer completed three passes for a total of 39 yards, while Dudley Kinsey provided the running yardage. They moved to the Eagle 20 before time finally ran out.

Early in the second half the Eagles moved the ball to the Bulldog 41 before they were stopped. The Bulldogs, following a 22 yard pass, marched to the Eagle 29 where they lost the ball on downs.

The Eagle defense held the remainder of the game making their 8 point lead stand up.

The Eagles now hold a 3-0 district record and a 7-0 mark for the season. They remain the only undefeated team in the district.

Leading ground gainers in Friday's action were Harlan Jernigan picking up 71 yards in 14 carries, Cecil Campbell 58 yards, Gene Gray 45, Jim Childress 38 and Jimmy Ball 17.

| GAME AT A GLANCE |                          |
|------------------|--------------------------|
| Goldthwaite      | Burnet                   |
| 16               | First Downs 7            |
| 229              | Yards Rushing 50         |
| 0                | Yards Passing 70         |
| 0 of 1           | Passes Completed 5 of 15 |
| 3 for 15         | Penalties 2 for 10       |
| 4 for 26.7       | Punts, Avg. 5 for 32     |
| 0 of 1           | Fumbles-Lost 0           |

| SCORE BY QUARTERS |           |
|-------------------|-----------|
| Goldthwaite       | 8 0 0 0-8 |
| Burnet            | 0 0 0 0-0 |

### EAGLES PLAY BANGS THIS FRIDAY NIGHT

This Friday night the Eagles take on the Bangs Dragons in Bangs. Back the Fighting Eagles and be there. Game time is 8:00 o'clock.

## Youth To Conduct CROP Drive Next Wednesday Night

It is again time for the Youth of Goldthwaite to collect for CROP.

Next Wednesday night, October 30 at 6:30, they will assemble at the Youth Center and divide into groups and go from house to house.

Texas youth have come to identify CROP with Halloween and have made this "All Saints Eve" a time of Christian sharing.

They have turned to collecting for others rather than themselves and are doing their share in a Christian ministry of relief and rehabilitation to over half of the world's population.

Funds collected by the young people will be used to help meet the nutritional requirements of under-nourished people in many lands, for food as partial payment of wages for workers in self-help projects, and for agricultural resource improvement for people who yearn to stand on their own feet.

In some cases the funds will be used to assist in the local CROP county commodity appeal such as is conducted in several counties of the state.

## Improvement Committee Is Formed; First Project Playground Equipment

Through the initiative and leadership of the Lions Club the Goldthwaite Civic Improvement Committee was organized Monday night at special meeting in the community room of Mills County State Bank.

The committee was formed for the purpose of making a concerted effort toward any civic improvement project that the five clubs have in common.

Members of the committee represent the Lions Club, Art and Civic Club, Garden Club, Self Culture Club and Tuesday Study Club.

The following officers were elected: C. S. Cruzcosa, chairman; Mrs. D. W. Arnold, secretary; Mrs. W. P. Duren, treasurer and Vic E. Koleber, promotion.

Members present for the meeting and the clubs they represent are as follows:

Lions Club—Dr. C. S. Cruzcosa, W. P. Duren and Ray Duren.

Art & Civic Club—Mrs. Milton Schwartz, Mrs. C. S. Cruzcosa and Mrs. D. W. Arnold.

Garden Club—Mrs. G. C. Head, Mrs. Malcolm Jernigan and Mrs. Vance Cornelius.

Self Culture Club—Mrs. Marvin Hodges, Miss Annie Laurie Petsack and Mrs. John Hester.

Tuesday Study Club—Mrs. Warren P. Duren and Mrs. Roy Wilkins. Mrs. Jim Weatherby, also representing the Tuesday Study Club, was not present.

The first project the newly formed committee has undertaken is to provide Mills County Park with playground equipment.

Parks in other cities were cited as examples. The committee decided to sponsor a series

of activities to get funds to buy well built equipment that the community can be proud of, according to announcement by Chairman C. S. Cruzcosa.

### FIRST PROJECT PANCAKE SUPPER

As the first project for this cause the committee will sponsor a pancake supper next Friday, November 1, before the GHS homecoming football game. It will be at the high school luncheon room from 5 to 7 p. m.

Ry Duren is chairman of the ticket sales committee, assisted by Mrs. John Hester, Mrs. Vance Cornelius, Mrs. Warren Duren and Mrs. C. S. Cruzcosa.

Tickets will go on sale this Friday and can be obtained from any member of the committee. Tickets will also be sold at the luncheon next Friday, November 1.

The committee hopes that the community will give wholehearted support to this project that will be of special benefit to the town and county, Chairman Cruzcosa stated.

## Farm Bureau Holds Annual Meeting; Hardgrave Is Re-Elected President

Members of the Mills County Farm Bureau held their sixth annual meeting Saturday night in the high school lunchroom.

A Barbecue supper prepared by W. W. Fox was served to a large group of farmers and ranchers.

Minister and Mrs. Harold G. Hunt were guests of the Bureau and Bro. Hunt gave the invocation.

After the supper President Allen Hardgrave had members meet in precinct groups and to choose their director.

### DIRECTORS NAMED

Directors elected were the following: precinct 1, W. G. Bishop; precinct 2, Arnold Head; precinct 3, Allen Hardgrave; precinct 4, Floyd Sykes.

The group changed their by-laws to elect the president and vice president from the floor.

### OFFICERS ELECTED

Allen Hardgrave was re-elected president; W. G. Bishop re-elected vice president and W. W. Fox was re-elected secretary-treasurer.

Mrs. W. G. Bishop was elected publicity chairman. The state convention will be held at Fort Worth November 10 through 13. Delegates who will represent Mills County at the convention will be Allen Hardgrave, Mr. and Mrs. P. R. Reid and Mr. and Mrs. Clyde Kerby. Alternates are Bertram

Geeslin and Roger Sanders.

Policies formulated in the different precincts were presented to the membership by Arnold Head, chairman, for their approval.

Mrs. James McClement was introduced as the new office secretary. She will be in the office Monday through Friday in the afternoons. The office is open on Saturday mornings with David Watters, service agent, in charge.



ALLEN HARDGRAVE  
... Re-Elected President



THE GOLDTHWAITE EAGLE  
AND  
THE MULLIN ENTERPRISE

Published Every Thursday at Goldthwaite, Mills County, Texas

Victor E. Koleber Editor and Publisher



AN INDEPENDENT NEWSPAPER

SUBSCRIPTION RATES

Mills and adjoining counties — one year, \$3.50; six months, \$2.00. Elsewhere in Texas — per year, \$4.00; six months, \$2.25. Outside Texas and Overseas — per year, \$5.00; six months, \$2.75. Single copy, 10¢. No charge for changes of address.

SUBSCRIPTIONS DISCONTINUED UPON EXPIRATION

Entered as Second-class Mail Matter at the Post Office in Goldthwaite, Texas, under the Act of Congress, March 3, 1879.

CENTRAL TEXAS POLLED HEREFORD SHOW & SALE

Clifton, Texas — Oct. 31, Nov. 1 & 2, 1963

SHOW — FRIDAY, NOV. 1 AT 9 A. M.

SALE — SATURDAY, NOV. 2 AT 1 P. M.

JUDGE — Paul Murphy, Jr., Meridian, Texas.

AUCTIONEER — Walter Britten, College Station

50 HEAD — 32 BULLS — 18 HEIFERS

Glen & Lillian Allen, Hillsboro; Sam Belyeu, Walnut Springs; Barnett's Polled Herefords, Melvin; Dr. C. B. Cathey, Hamilton; Bruce Chaney, Valley Mills; E. Grady Davis, Valley Mills; C. P. Downing, Jr., China Springs; E. L. Ficklin, Valley Mills; Jim & Fay Gill, Coleman; A. L. Haster, Valley Mills; Aldon Nash, Jacksboro; M. E. Parr & Sons, Grandview; Poe & Sons, Waco; Sam Radde, Meridian; S. & S. Cattle Ranch, Teague; Charlie Shelley, Hillsboro; Storm Ranch, Dripping Springs; and Vance Golden Hoof Farms, Coleman.

For Catalogues Write: WILL KRUEGER, JR.  
BOX 162, CLIFTON, TEXAS

CHECKERBOARD  
**service bulletin**

HOW 16 HOGMEN  
LEARNED IT PAYS  
TO FEED THE  
**PURINA  
WAY**

Kentucky hogmen . . . who feed their hogs the Purina Way . . . recently made their cost records available as a service to other hogmen. Here are the feeding FACTS!

SUMMARY

|                             |  |
|-----------------------------|--|
| 16 FARMS                    | } AV. LBS. FEED<br>PER LB. GAIN . . . 3.76     |
| 1904 HOGS                   |  |
| 42.65 LBS. AV. STARTING WT. |  |
| 209.6 LBS. AV. FINISH WT.   | AV. FEED COST PER<br>LB. GAIN . . . . . 10.26¢ |

Feed cost includes Purina Hog Chows used, corn (at local market price when fed), grinding and mixing and delivery charges, routine medication, and hogs lost.

See us. Let us show you how the Purina Program may help you feed hogs more profitably. Pay us a visit . . . and make it soon!

**Cornelius Feed Company**

Charles Cornelius

Phone MI 8-2235 — Goldthwaite, Texas

**WHEN THE OLD BIRD  
WAS YOUNGER**

10 YEARS AGO—

(Taken from The Eagle Files of October 22, 1953)

Fire of undetermined origin caused considerable damage to Mills County Commission Company Auction Barn last night. Fire was discovered about 8:00 o'clock by Jack Long who was driving along the highway and noticed fire inside the cafe section of the barn and smoke coming from the windows.

The Goldthwaite High School gymnasium was the scene for a gala Home-Coming for the Ex-Students and Teachers of Goldthwaite on Saturday night, October 10. Graduates and teachers attending this get-together ranged from the class of 1897 to the present class of 1953-54.

Miss Marjorie Whit and her uncle, Abijah Stark, were honored last Sunday with a birthday dinner by relatives and friends in the home of Mr. and Mrs. Abijah Stark.

Mrs. Henry Owen and daughter, Rose Mary, of Willis Point visited Mr. and Mrs. Elmer Scooby, while en route home from Brady, where they visited Mrs. Owen's son.

Funeral services for James Alfred Lock were held last Friday afternoon at 2:00 o'clock, at the First Baptist Church. Rev. J. T. Ayers of Gatesville conducted the services.

Funeral services for John Gates Schooler, 74, were held last Sunday at Newby-Davis Funeral Chapel in Ballinger. Dr. T. C. Conway Wharton, pastor of the First Presbyterian Church conducted the services.

Mr. and Mrs. F. E. Burkett attended funeral services for Mr. Baker in Lometa last Thursday.

Mrs. Ann Northington of Weatherford is visiting her sister, Mrs. Maria Stark and other relatives here.

25 YEARS AGO—

(Taken from The Eagle Files of October 21, 1938)

Mr. and Mrs. J. Frank Dennis announce the marriage of their

NEW  
GENERAL ELECTRIC  
*Custom*  
GAS FURNACE



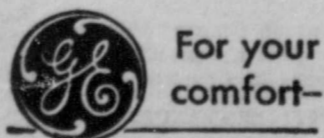
SAVES  
YOU  
MONEY  
2 WAYS

**1 Low First Cost**  
Matter of fact, this entirely new General Electric Gas Furnace costs as little as \$7 a month. Costs no more than ordinary furnaces.

**2 Low Operating Cost**  
Maximum efficiency on minimum use of fuel. Inexpensive to service and maintain. Clean, quiet, compact — easily "grows" into year "round, whole-house air conditioning. For a survey and estimate of your heating requirements, call us today.

GENERAL ELECTRIC

Phone MI 8-2424  
For  
Free Estimates



A & A Paint  
And  
Supply Company

TRUETT AULDRIDGE  
General Contractor  
Goldthwaite, Texas

50 YEARS AGO—

(Taken from The Eagle Files of October 25, 1913)

W. T. Kirby and Miss Besse Moreland were married at the home of the bride's brother, Mr. Hugh Moreland, in this city Thursday afternoon, Rev. L. J. Vann officiating. The young people live in the Pleasant Grove community, but they

daughter, Madeline to Jesse C. Moreland, Saturday night, October 15, at 8:00 o'clock, in a quiet home wedding at the Methodist parsonage. The ceremony was performed by Rev. Fred J. Brucks with only a few close friends present.

Mills County's tax roll for 1938 has been completed and forwarded to the State Comptroller at Austin. The total values for 1938 amount to \$4,526,335 of which the largest single items are provided by the railroad, \$377,655, and pipe lines, \$245,870.

429,895 acres of land have been rendered for \$2,508,975, an average of \$5.83 an acre, and 45,575 acres are on the unrendered roll for \$266,055. Town lots are rendered for \$282,725 and unrendered lots assessed at \$13,265.

On Friday morning, October 14, Mr. Otto Lorenz of Chappell Hill was called in death, after only an hour's illness. He was 57 years of age and had lived in Mills County 30 years.

As a courtesy to Mrs. Jesse C. Moreland, a recent bride, Mrs. Maston Pribble entertained Wednesday afternoon with a bridge party and miscellaneous shower.

W. P. Weaver, County Agent, took five 4-H boys to the Dallas Fair, Monday, where they will be guests of the management for three days, and will enjoy all the sights.

The boys, who are presidents of their respective clubs, are: Kenneth Geeslin, Center City; Clyde Smith, Mt. Olive; Sherman Perry, Center Point; Ernest Lynn Fisher, Mullin; and L. E. Dupuy, Jr., of Big Valley.

have many friends and acquaintances in this city as well as in their home community.

L. B. Ashley was badly hurt Tuesday morning when his horse fell with him. He was assisting Blake Forehand corral a mule when his horse stepped upon a round rock or in some other way was thrown. Mr. Forehand continued in pursuit of the mule until his horse fell hurting him badly. The gentlemen were not dangerously injured, but their hurts were painful.

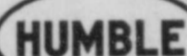
Mrs. Katy Smith, (nee King), wife of C. M. Smith, was born January 9, 1865, in Arkansas; died at the family residence in Pickens Springs community Mills County, October 13, 1913, and was buried the following day at 11:00 o'clock in Oak View Cemetery, Mullin, Texas.

Floyd Jackson, who is now a fireman on the Santa Fe, was a passenger on the west bound train Thursday morning en route to Brownwood, having been given a run on the Sweetwater division of the road. Floyd is another of the Mills County boys making good.

R. F. McDermott has bought the Noble real estate business in Temple and has moved to that city. He is sure to succeed, for he is the kind of man that

S & H  
GREEN STAMPS

Double Stamps  
On Tuesday.



WELCH  
Service Station

At the South "Y"  
Goldthwaite, Texas

deserves success and goes after it.

R. W. Geeslin of Caradan has bought a fine piano for his family from J. B. Denman.

Rev. C. C. Dooley, who has been pastor of the Presbyterian Church for some time, expects to leave next week for Weatherford to enter Trinity College.

HOW MUCH  
COMFORT  
DO YOU  
GET WITH  
AN  
ANTIQUATED  
SYSTEM?



Let's face it — that's like driving a Pierce Arrow. Period pieces are fine, but they're an expensive hobby. Replace that worn-out system with truly modern heating equipment tailored to your specific needs. A CARRIER Winter Weathermaker gives you balanced automatic heat even on coldest days. It's easy to service, too. Carrier installations are so designed that you can replace the filter in the Weathermaker, for instance, in a matter of seconds without the expense of a service call.

CARRIER'S WINTER WEATHERMAKER "FURNACE WITH A FUTURE" LETS YOU ADD AIR CONDITIONING NOW OR LATER FOR YEAR-ROUND COMFORT CONTROL.

Get the facts from our Carrier sales engineer. At no obligation to you he'll check your home, analyze your requirements, determine the system best suited to do the job. And at the same time, you can get rid of that moss covered water tower out in the yard! Update that antiquated water cooled air-conditioning by attaching matching air-cooled equipment to your CARRIER Winter Weathermaker to enjoy wonderful year-round Carrier comfort control.

NO MONEY-DOWN — FIRST PAYMENT APRIL 1964



PAUL BROWN ELECTRIC  
411 South Pecan Street  
Lampasas, Texas

Put 'er there pal!



There's only one place you can discover Ford's new total performance '64...the driver's seat...and your Ford Dealer invites you to put 'er there today!

What's Total Performance?

It's the end result of knowledge gained in open competition... a new ride, ruggedness and response bred into every '64 Ford.

But words alone can't tell you how much Fords have changed. You have to test-drive the cars themselves. The seat of your pants may not be very scientific...but you'll get the message!



'64 Super Torque Ford—hundreds of pounds heavier, it's smoother, stronger than any in its field!



'64 Fairlane—new family car with sports-car feel!



'64 Falcon—the completely new compact!

**Landrum & Collins Motor Company**  
Goldthwaite, Texas



**84 DRIVE-IN THEATRE**  
GOLDTHWAITE, TEXAS

THURSDAY & SATURDAY  
IN COLOR  
RICHARD TODD  
ANNE AUBREY

**"THE HELLIONS"**  
PLUS

BURT LANCASTER  
**"THE YOUNG SAVAGES"**

FRIDAY & MONDAY  
IN COLOR  
ROBERT TAYLOR  
JOAN CAULFIELD

**"CATTLE KING"**

**Big Halloween Show October 31**

Mr. and Mrs. Raymond Mitchell and daughters, Linann Boyette of Amarillo and Mrs. Gerald Harris of Goldthwaite spent the weekend with Mrs. John Dellis.

**Star FHA Chapter Names New Officers**



**LYNDA COOK**

Star Chapter of Future Home makers had their first meeting September 4th. New officers were elected as follows:

President, Lynda Cook; vice-president, Nan Duncan; secretary, Charlotte Miles; treasurer, Marsha Harper; parliamentarian, Judy Carswell; historian, Teresa Beard, and reporter, Sheryll Casbeer.

Regular meeting will be held on the first Wednesday of each month.

— IT PAYS TO ADVERTISE —

**Miss Beatrice Sanders Becomes Bride Of Gary A. Leverett, Friday**

Miss Beatrice Sanders and Gary A. Leverett exchanged wedding vows at 8:00 p. m. Friday, October 11, in the home of the bride's brother, with Minister Ripley Marcette performing the double ring ceremony.

The parents of the bride are Mr. and Mrs. T. H. Sanders of

Jayton, and Mrs. Inez Leverett of Goldthwaite is the mother of the groom.

Given in marriage by her brother, the bride wore a beige two-piece ensemble, with matching accessories.

Mrs. Bill Halley, friend of the bride, was matron of honor and Bill Halley was best man.

The bride attended Jayton High School and is a 1958 graduate. She is now an employee of the Dunlap Corporation.

The groom attended Goldthwaite High School and graduated in 1959, and attended Abilene Christian College. He is employed as manager of Millams Toyland.

The couple will reside at 2504 26th Street, Lubbock.

**Thurman Scrivners Dinner Honorees**

Mr. and Mrs. C. N. Scrivner honored their son, A/2c and Mrs. Thurman Scrivner with a turkey dinner at their home Sunday, October 13. Those present were:

The honorees, A/2c and Mrs. Scrivner, Mr. and Mrs. N. L. Mosier, Vicki and Lynn, Mr. and Mrs. A. J. Adams, Mr. and Mrs. Bobby Hunt, Mr. and Mrs. Glynn Calder, Darlene and Ronald, all of Mullin; Mr. and Mrs. Glynn Gavin and Thresa of Midland; Mr. Leonard Breeding of Goldthwaite.

Airman Scrivner left Wednesday morning for Tokyo, Japan, where he will be stationed for the next two years. Mrs. Scrivner, the former Betty Adams, plans to join her husband in the near future.

**Fish Fry Honors Thurman Scrivners**

Mr. and Mrs. A. J. Adams of Mullin were hosts for a fish fry honoring A/2c and Mrs. Thurman Scrivner last Monday night at Mullin Park. Those present were:

Airman 2c and Mrs. Scrivner, Mr. and Mrs. C. N. Scrivner and Mr. Leonard Breeding of Goldthwaite; Mr. and Mrs. Bobby Hunt, Mr. and Mrs. Wilburn Keating and Suzette, all of Mullin.

**MRS. TATUM, LYNN MEDFORD EXCHANGE WEDDING VOWS**

Mrs. Merle Tatum of Fort Worth became the bride of Lynn Medford of Goldthwaite, October 15, at the home of her son in Dallas.

The couple is now at home on the Priddy Road in Goldthwaite.

**MILLER HOMECOMING SCHEDULED SUNDAY**

Dan Miller and family will gather at the Goldthwaite American Legion Hall Sunday, October 27th. A basket lunch will be served at the noon hour. All friends and relatives are invited to attend.



**WEDDING DATE SET—Mr. and Mrs. Roy Dellis of Goldthwaite have announced the forthcoming marriage of their daughter, Miss Carol Dianne Dellis, to Robert W. Phillips.**

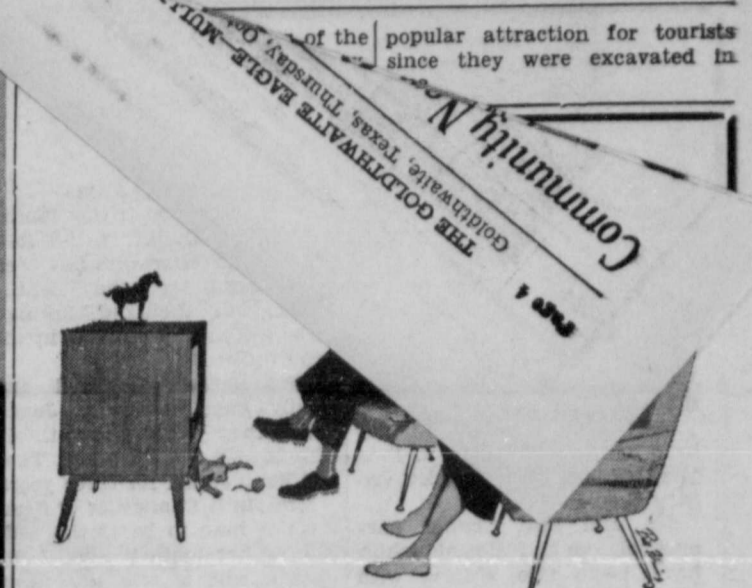
The wedding will be held November 2, 1963, at 7:00 p. m., in the First Baptist Church of Goldthwaite. A reception will be held in the banquet room immediately following the ceremony.

**BIRTHS**

Mr. and Mrs. Joe Bill Johnson of El Monte, California, announce the arrival of twin sons, Kevin Glenn and Timmy Lynn, born Tuesday, October 15, 1963, in El Monte.

Grandparents are Mr. and Mrs. Glenn Johnson of El Paso. Great-grandparents are Mr. and Mrs. Walter Robertson of Big Spring and Mrs. J. G. Boatwright of Goldthwaite.

Mr. and Mrs. Lonnie Lee Brown of Goldthwaite are the parents of a daughter, Brenda Gail Brown, born at Childress and Cruzcosa Clinic and Hospital, Goldthwaite, October 18,



The man suffering "a touch of indigestion" is a full-fledged member of our largest ill-health club. (It's said that possibly, 25 percent of our adult population could qualify for membership.)

You will find, too, that he has one outstanding trait: a readiness to try almost any sort of treatment he reads or hears about. And yet, proper treatment of digestive disturbances . . . whether it be by diet, drugs or other measures . . . can be given only by a physician after careful diagnosis.

When symptoms occur frequently, it's the better part of wisdom to see your doctor before you try someone's pet remedy. While your trouble may be simply and easily corrected, it could signal peptic ulcer, gall bladder disease, or something much more serious.

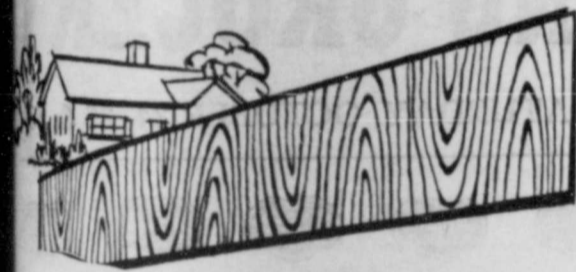
A digestive disturbance can easily edge over into the danger zone when you neglect it or try to treat it yourself . . . while getting prompt and proper medical care may well turn out to be one of the biggest bargains of your life.—Reprinted from a copyrighted advertisement published by Parke, Davis & Company, Detroit 32, Michigan.

**HUDSON DRUG**

"What You Want When You Want It."

1963, at 10:45 p. m. She weighed seven pounds and 12 ounces. Maternal grandparents are Mr. and Mrs. Troy Boyette of Goldthwaite and paternal grandparents are Mr. and Mrs. Marshall Brown of Mullin. Maternal great-grandparents are Mr. and Mrs. Tom Branson of Goldthwaite and Daniel Webster, also of Goldthwaite, is the paternal great-grandfather.

THINKING OF INSTALLING  
**Insulated Siding**  
ON YOUR HOUSE?



**BARNES & McCULLOUGH CAN SAVE YOU MONEY!**  
You can have Insulated Siding installed on your home of approximately 1,000 square feet

FOR LESS THAN  
**\$50000**

Financing can be arranged with Easy Monthly Payments as low as **\$15.97**

Let Us Give You An Estimate On Your Needs.

**BARNES & McCULLOUGH**  
Phone MI 8-2411  
"Everything To Build Anything."

**What To Do In The Garden**

Fall Bulbs should be planted now. Cover your bed or border with leaves or some fibrous material after planting. Water the bed well and beautiful blooms will follow.

**Padgett Floral**  
Phone MI 8-2612

NOW BOOKING  
**RANGE CUBES**  
Creep Feed And  
38% Protein Blocks

It  
**Pays to Feed**

**Paymaster**

See Us For FIELD SEEDS --  
Wheat, Oats, Rye, and Fertilizer.  
Phone MI 8-3311  
**Boykin Feed Store**  
Your PAYMASTER Feed Dealer  
Goldthwaite, Texas

**ADD SECURITY**

**ADD PHONES**

**Southwestern States Telephone**

**Three Day Stock Reduction Sale!**

PRICES GOOD THURSDAY, FRIDAY AND SATURDAY

|   |   |  |
|---|---|--|
| NEW 240<br><b>Farmall TRACTOR</b><br>\$17500<br>A Real Bargain  | One Only MAYTAG<br><b>Electric DRYER</b><br>Regular \$249.95<br>Only<br><b>\$16900</b>  | One Only, 5 Cu. Ft.<br><b>WHIRLPOOL Chest Type FREEZER</b><br>Regular \$189.00<br>Only<br><b>\$14900</b> |
| One Only WHIRLPOOL<br>Portable<br><b>Dishwasher</b><br>Regular \$195.00<br>Only<br><b>\$14900</b>           | One Only, 16 Cu. Ft.<br><b>DELUXE WHIRLPOOL Chest Type FREEZER</b><br>Regular \$319.00<br>Only<br><b>\$21900</b>              | One Only, NEW<br><b>WHIRLPOOL Wringer Type WASHER</b><br><b>\$7500</b>                                   |
| One Only, 2-Speed, 6-Cycle<br><b>WHIRLPOOL Electric DRYER</b><br>Regular \$189.95<br>Only<br><b>\$13900</b> | One Only, 14 Cu. Ft.<br><b>WHIRLPOOL ICE - MATIC Refrigerator</b><br>Regular \$349.00<br>Only<br><b>\$24900</b><br>Plus Trade | <b>EXTERIOR WHITE HOUSE PAINT</b><br>Regular \$5.95 Gal.<br>Only<br><b>\$4.25</b>                        |

Many Other Bargains. All Prices Plus Sales Taxes.

We Service What We Sell  
**Duren Equipment Company**  
Dealers For  
International • Maytag • Whirlpool • Aermotor



**News From Mullin**

By MRS. JOHNNIE HOLLAND

My husband and I spent last week in Houston and Austin; however, he was not able at the present time to have surgery due to a heart condition. Lots of asthma and emphysema patients are having the surgery with good results. We hope for Johnnie to be able to have it in the near future.

Mr. and Mrs. T. C. Chaney have had Mrs. Chaney's mother, Mrs. Mitchell of Alexander visiting them.

Mr. and Mrs. Connie Carmichael and little daughter have been here visiting with his mother, Mrs. J. B. Harper and Mr. Harper.

Mr. and Mrs. Frank Wortman of Tuttle, Oklahoma, are here visiting with Mrs. W. H. Baskin, Mrs. L. J. Vann, Mr. and Mrs. G. W. Chancellor and other friends.

Mr. and Mrs. Wortman, Mr. and Mrs. Willie Wasserman, and Mr. and Mrs. G. W. Chancellor all attended the fiftieth Wedding Anniversary of Mr. and Mrs. E. W. Dechert of Mason last Sunday. Mr. Dechert was an instructor in the Mullin School when these students graduated in 1915. The class was invited to attend the wedding anniversary.

Mrs. Grover Dalton has returned home after recent surgery in a Fort Worth hospital. Mrs. Dalton had surgery quite a while ago on one of her ears to restore the hearing. She had surgery this time on the other ear for the same purpose. We surely hope her hearing will be restored.

Mrs. Mattie Anderson is recovering from a recent fall she received. No bones were broken in the fall.

Mr. and Mrs. Leslie Pickens of Lometa attended the Baptist Church in Mullin last Sunday night to hear the Rev. John Allen preach. They are relatives

of Rev. and Mrs. Allen. The new pastor of the Baptist Church in Mullin is the Rev. Chester Sylvester who has been the pastor of the Baptist Church in Richland Springs. They will move to Mullin in the near future.

Mrs. Herbert Rothwell and family have arrived in Japan where they joined Mr. Rothwell who is with the Air Force. They will be in Japan for three years.

Mrs. Ruth Chancellor of Semipole is here to be at the bedside of her mother, Mrs. J. W. Ratliff, who is critically ill in a Brownwood rest home.

Mr. and Mrs. Johnnie Cuneo of Austin visited last Sunday in Mullin with Mr. and Mrs. W. L. Barker. Mrs. Cuneo is a niece of Mr. Barker.

Mrs. Dudley Holland and family of Sherman visited last weekend in Mullin with her mother, Mrs. Margaret Tolliver.

Mr. and Mrs. Billy Joe Chancellor and son of Florida have been visiting in Mullin with his parents, Mr. and Mrs. G. W. Chancellor.

Mr. and Mrs. Chris Hagelstein of Sanderson have a new son, born October 9. He has been named Chris Hagelstein III. Mrs. Hagelstein is the former El Dora Edmondson, daughter of Mr. and Mrs. Dennis Edmondson of Mullin.

Mr. and Mrs. Derrell Creek of Coleman were weekend visitors in Mullin with Mr. and Mrs. Lynn Roberts.

Mr. and Mrs. Myron Hillman, Belinda and Debbie, of Manhattan, Kansas, spent part of last week here visiting with his parents, Mr. and Mrs. J. L. Hillman. Myron was on his way to Louisiana to judge at the Fair. Aubrey Louis, his wife and little daughter Jill also spent the weekend with Mr. and Mrs. Hillman.

**Mullin Ladies Make Cancer Dressings**

The ladies of the Mullin community met at the G. I. Building, Thursday afternoon, and made 70 cancer dressings.

Since the last meeting, Mrs. A. A. Reynolds and Mrs. A. H. Pickens have donated three sheets. Mrs. Reynolds and Mrs. Tolliver furnished machines and Mrs. Cooksey and Mrs. Dorbandt furnished the irons.

The club would appreciate the donations of old sheets for this work.

Those present were Mrs. A. A. Reynolds, Mrs. Verna Lee Dudley, Mrs. Janie Dorbandt, Mrs. O. F. Cooksey, Mrs. C. A. Warren and Suzette, Mrs. Maggie Tolliver, Mrs. Gossett Roberts, Mrs. Addie Cox and Mrs. Lizzie Roberts.

Next meeting date will be announced later as there is now a supply of dressings on hand.

Mr. and Mrs. Johnny Shaw and Mr. and Mrs. David Coleman of Waco were guests of their cousins, Mr. and Mrs. Dan Covington and their aunt, Mrs. Freida Hilbut, Thursday.



**Johnny's Service Station**  
At The North "Y"  
Goldthwaite, Texas

OPEN 24 HOURS  
Mechanic Available  
JOHNNY TRUITT

**Goldthwaite Garden Club has Program On Culture Of Bulbs**

The Goldthwaite Garden Club met in the Jennie Trent Dew Library, Wednesday afternoon, October 16, at 3:00 o'clock. Hostesses were Mmes. Jack Elms, Haskell Alexander and Woodrow Boykin.

Mrs. Roy Wilkins, president, presided at the business meeting. Reports were given by the committee chairmen.

Mrs. V. Z. Cornelius, Flower Show Chairman, discussed the Table and Flower Show, to be held in the American Legion Hall, November 20.

Mrs. Warren P. Duren, Park Committee Chairman, announced that the large consignment of bulbs, ordered by the Garden Club would be planted at Mills County Park, Tuesday afternoon, October 29, at 2:30 o'clock. The club gave Padgett Floral a rising vote of thanks for their cooperation in obtaining the

bulbs. Plans were completed for the "Bake Sale," to be held October 26.

Mrs. Logan Adams was appointed secretary, to replace Mrs. Loyd King, who resigned as secretary and was placed on the associate list. Mrs. Walter Doggett's resignation was accepted with regrets.

Mrs. Cornelius, Civic Chairman, announced that the yard of Mr. and Mrs. C. E. Heatherly was selected as the Yard-of-the-Month for October. The home is located at 1803 Live Oak Street. The Yard of the Month marker was placed in their yard for a month.

Honorable mention went to Miss Norma Lee Robertson, 1615 Parker Street.

The Goldthwaite Garden Club Judges select an outstanding yard each month in order to

promote city beautification through well maintained yards. Mrs. C. A. Keeler was leader for the program, "Sow Today—Reap Tomorrow."

Mrs. Walter Bryant discussed the Identity and Culture of the Narcissus Family, and Mrs. Walton Daniel discussed the Lilies, Tulip, Amarillis, Madonna and Daylily.

Mrs. Wilkins gave information on the Identity and Culture of Iris, Bearded, Beardless, and Bulbous.

Refreshments of coffee and cookies were served by the hos-

**Local FHA Meets Tuesday Afternoon**

The Goldthwaite F. H. A. Chapter met Tuesday afternoon in the high school auditorium.

In the business meeting plans were made to collect Christmas Cards to be sent to the Tuberculosis Hospitals. The

esses at the conclusion of the program.

chapter will also fix a basket for a Thanksgiving

ject. During the program

"A Backward Glance," presented, directed by Helen. The leading characters

Linda Ruth Geeslin, Jordan, Phyllis Westwood, Jeannie Stewart.

Marge Spradley gave

on the F. H. A. Convention

in Kansas City last year

which she attended.

**Drs. Ellis & Ellis**  
OPTOMETRISTS  
298 Citizens Nat'l Bank Bldg.  
Brownwood, Texas  
Glasses or Contact Lenses  
Fitted. We grind all lenses.  
Call Milton 3-0184 or write  
P. O. Box 149  
For Appointment.

**Battery Special!**  
★ Republic ★ Willard ★ Southland  
12 to 48  
Months  
Guarantee  
As Low As \$7.25  
Plus Your Old Battery  
Shelton Bros. Motor Company  
2nd and Fisher  
Goldthwaite, Texas

Big values all through our store...  
**DEL MONTE ROUND-UP**  
Ride on down! Take advantage of the year's biggest canned food event!  
CELEBRATING OUR 16TH ANNIVERSARY  
**LOY LONG GROCERY**  
SPECIALS GOOD THREE DAYS - THURSDAY, FRIDAY & SATURDAY, OCTOBER 24, 25 & 26

Only **GOLD BOND** the largest International Stamp Company offers you... gifts both from America's finest manufacturers plus the most wanted gifts from 20 foreign countries.  
**GOLD BOND STAMPS** LIFE

Del Monte  
**Catsup** 5 14-oz. Bottles \$1.00  
Del Monte - Cream Style or Whole Kernel  
**Corn** 6 303 Cans \$1.00  
Del Monte Early Garden **PEAS** 5 No. 303 Cans \$1.00  
Del Monte Chunk Style **TUNA** 4 No. 1/2's Cans \$1.00

Del Monte **SPINACH** 6 No. 303 Cans \$1.00  
Lily - Pink **SALMON** No. 1 Tall Can 59¢  
**Crisco** 3 lb. Can 69¢  
Sweet Tokay **GRAPES** 2 lbs. 25¢  
Kimbell's **BISCUITS** 3 Cans 25¢

Del Monte Cut **BEANS** 4 No. 303 Cans \$1.00  
Del Monte **PINEAPPLE- GRAPEFRUIT DRINK** 3 46-oz. Cans \$1.00  
**Tide** Reg. Size Box 29¢  
Delicious (Extra Good) **APPLES** Pound 15¢  
Kimbell's **OLEO** 2 Pounds 39¢

Del Monte **FRUIT COCKTAIL** 4 No. 303 Cans \$1.00  
Del Monte **TOMATO SAUCE** 10 8-oz. Cans \$1.00  
Pillsbury's **Flour** 25 lb. Sack \$1.49  
Crunchy **CARROTS** Cello Bag 10¢  
Fresh Vine Ripened **TOMATOES** Pound 19¢

PICNIC (Whole Only) **Hams** Lb. 29¢ **Bacon** 3 Lbs. \$1.00  
PORK **ROAST** Lb. 43¢ BONELESS BEEF **ROAST** Lb. 65¢ FRESH GROUND **HAMBURGER** Lb. 49¢

**LP GAS**  
For All Modern Needs  
Campbell Gas Company  
Butane - Propane  
Sales and Service  
Phone MI 8-2712  
Goldthwaite, Texas

Enjoy Modern living in every room!  
**Year-Round AIR CONDITIONING**  
Summer Cooling Winter Heating  
Let Us Give You AN ESTIMATE On Your Needs.  
Call Us For Winter Furnace Check-Up Service.  
★ Filter Change  
★ Oil Motor  
★ Adjust Burners  
**A & A Paint and Supply Company**  
Goldthwaite, Texas  
Truett Auldridge  
General Contractor

A good place to buy nationally advertised TAYLOR MADE **MORNING GLORY**  
Mattresses - Sofa Sleepers, Etc.  
Spradley's Furniture & Upholstery  
Fisher Street - Goldthwaite, Texas

GOLDTHWAITE Goldthwaite  
Senior Hi...  
With One I...  
RONNIE AU...  
Goldthwaite Jun...  
have been dol...  
football sc...  
won 6 out of...  
team is ma...  
fifteen 8th...  
with gradua...  
members of th...  
Jones, Center...  
Guard; Far...  
Notice  
OF INTE...  
THE  
MILLI...  
OF-WAY I...  
NOTICE I...  
ORDER pa...  
Texas, on...  
October, A. D...  
is of recor...  
court,  
of court of...  
will on the...  
member, A. D. 194...  
session a...  
in the C...  
room in th...  
Goldthwaite, Te...  
bearing time...  
Texas, to...  
No. 15, 0...  
the town of G...  
Mills Coun...  
the propos...  
shall be kno...  
RIGHT...  
WARRANT...  
shall be n...  
from...  
RIGHT...  
and shall...  
of \$1.00...  
Warrants...  
First day of D...  
have a maxi...  
of 1974, and...  
at the rat...  
three...  
per centum...  
Cecil...  
Mills Co...  
October...  
Goldthwaite



## Senior High Eagles Undefeated With One More Game On Schedule

**RONNIE AULDRIDGE**  
Goldthwaite Junior High Eagles have been doing very good in their football schedule. They have won 6 out of 6 games. The team is made up of 21 players, fifteen 8th graders and five 9th graders.

Members of the team are: Jones, Center; Kent Gees-Guard; Farrel Whitley, Guard; Mac Rowlett, Tackle; Dale Straley, Tackle; Tommy Watson, End; Sam Campbell, End; Ronnie Aldridge, Linebacker; Mike Conrad, Quarterback; Gary Warlick, Halfback; Danny Spradley, Wingback; Lynn Berry, Wingback; Danny Humphries, Guard; Charles McCasland, Guard; Doug Doggett, Center; Mike Wright, Halfback; Ray Hill, Linebacker; Charles Hopper, Tackle; Gary Page, Tackle; Stonie Taylor, Guard; and Larry Pierce, Fullback.

## Notice OF INTENTION TO REVOKE THE ISSUANCE OF 1963-64 MILLS COUNTY DEED-OF-WAY PURCHASE WARRANTS OF 1963

NOTICE that pursuant to an ORDER passed by the Commissioners' Court of Mills County, Texas, on the 14th day of October, A. D. 1963, which is of record in the Minutes of said Court, the Commission of said Court, the Commission of said Court, Mills County, Texas, will on the 11th day of November, A. D. 1963, convene in regular session at a regular session in the Commissioners' Court room in the Courthouse, Goldthwaite, Texas, and will there issue warrants of intention to revoke the issuance of interlocking time Warrants on Goldthwaite and credit of Mills County, Texas, to the extent of \$1,000.00 for the purpose of cancelling all valid claims incurred by the acquisition of right-of-way, widening the present right-of-way, and the fencing of State Highway No. 84, Mills County, Texas, from the town of Goldthwaite, Texas, to the town of Goldthwaite, Texas, Mills County, Texas.

The proposed coupon warrants shall be known as "MILLS COUNTY RIGHT-OF-WAY PURCHASE WARRANTS OF 1963" and shall be numbered consecutively from ONE (1) to EIGHTY-EIGHT (88) both inclusive, and shall be of the denomination of \$1,000.00 each. Said warrants shall be dated the first day of December, 1963, and shall have a maximum maturity of 10 years, and shall bear interest at the rate of not exceeding three and one-half percent per annum.

(Signed) Cecil Egger,  
County Judge,  
Mills County, Texas.  
Published October 17 & 24, 1963  
Goldthwaite Eagle

### "Western Party" Slated At Star

The Star Junior class will sponsor a "Western Party" Friday night, October 25, at 7:00 o'clock at the Star Gym.

Special events will include a Chuck Wagon Race, Calf Scramble, Cutting Horse Contest, Dominoes and other games. Refreshments will also be available.

Everyone is urged to come out and enjoy the fun.

### Frigidaire Appliance Service

Washers  
Refrigerators  
Freezers  
Ranges

### Moreland Hardware And Appliance

Phone MI 8-2229  
Allen Moreland

## The New 1964 Fords Are Here!

But We Still Have  
Some 1963 Models  
To Be Sold At  
**DEALER COST!**

NO KIDDING ---  
WE'RE SERIOUS!

### Landrum & Collins Motor Co.

Your Friendly Ford Dealer  
Goldthwaite, Texas

## Deer Permits To Be Issued

Antlerless deer hunting permits will be issued this fall to landowners in many Texas counties under the Parks and Wildlife Department's regulatory responsibility program.

Deer census is not completed in all areas. However, based on the data now at hand, the following schedule of permit issuance places and dates should be noted by landowners concerned:

Permits will be issued in Mills County on November 6, at the Courthouse, the announcement stated.

Time of permit issuance is 8 a. m. to 5 p. m.

Only those landowners whose holdings lie in areas of the counties where an over-population of deer exists will be eligible for permits, which allow the harvesting of antlerless deer in the areas of surplus.

For additional information concerning permit issuance landowners should consult their local game wardens or other Parks and Wildlife Department field personnel in the areas involved.

## SINGINGS

A Singing will be held at the Center City Baptist Church tonight (Thursday), at 7:00 p. m. Everyone in this and surrounding communities is invited to attend.

The McCulloch County Singing Convention will meet at 2 o'clock Sunday afternoon, October 27, in the Baptist Church at Voca. Everyone is invited to attend.

### AMBULANCE SERVICE

PHONE MI 8-2255

### Roy Wilkins Funeral Home

GOLDTHWAITE, TEXAS

## SWIFT'S FEEDS

Quality that makes 'em bounce

RESEARCH FARM CHECKED  
PROVED IN THIS COMMUNITY

Swift FEEDS

Now Booking  
SWIFT'S  
Range Cubes

See Us For  
Your Fall and Winter  
Supply Of  
36%  
Supplement  
Blocks  
AND  
Medicated  
Cattle Primer

### Service Mill

Your  
Swift Feed Dealer  
Priddy, Texas

# Shurfine CARNIVAL

The *Savingest* Time of the Year!

AT  
**Schwartz Food Store**  
In Goldthwaite, Texas  
6 DAYS TO SHOP SPECIALS—  
Prices Good Thurs., Oct. 24 Thru Wed., Oct. 30.



Carnival Special  
**WESTCLOX** ELECTRIC ALARM  
WITH THE FULL SECOND SWEEP AND LUMINOUS HANDS  
**\$2.79**  
PLUS FEDERAL TAX  
WITH \$6.00 FOOD PURCHASE

### Shurfine - Premium Quality

## Coffee

lb. **49¢**

5-Lb. Bag **2.99**



### Shurfine Whole GREEN BEANS

No. 303 Cans **\$1.00**

### Soflin NAPKINS

Box Of 80 **13¢**

Less Than 4c lb.  
**RED POTATOES** 25 lbs. **99¢**

### New Crop Colorado

## Pintos

2 Lb. Bag **25¢**

"A GARDEN IN YOUR FREEZER"

## Mix or Match at 6 - \$1

CUT Or WHOLE OKRA  
LEAF Or CHOPPED SPINACH  
FRENCH FRIED POTATOES  
BROCCOLI SPEARS  
GARDEN PEAS


10-oz. Pkgs. - Any 6 for \$1



Mix With  
Other  
Vegetables

7 Cans **\$1.00**

"Let's Go - Last Quarter To Play Football!"  
Nine Days Left. Nov. 2 Last Day.  
64 Persons Have Won. 10 Winners  
Will Win \$113 This Week - Play Hard.



### Shurfine

3-Lb. Can **49¢**

ROXEY "In Handy 12-Pack"  
**DOG FOOD** 12 Cans **89¢**

**Catsup** Del Monte **\$1.00**  
5 - 14-oz.



4 No. 2 1/2 Cans **\$1.00**

### Tall Korn

## Bacon

Lb. **49¢**

Fresh Tasty  
**PORK ROAST** Pound **43¢**

Chuck or Arm  
**ROAST** Tasty and Tender Pound **59¢**

Mohawk - Ready To Eat  
**Picnics** 3-Lb. Can **\$1.69**  
"No Waste"

Shurfresh - Buttermilk or Sweet  
**Biscuits** 6 Cans **49¢**

|   |  |  |
|---|--|--|
| 50 BONUS S & H<br>Green Stamps with purchase of 2-lb. Box Pillsbury PANCAKE MIX | 50 FREE S & H<br>Green Stamps with purchase of Each 4-oz. Can of 100% Pure FRENCH'S PEPPER | 50 EXTRA S & H<br>Green Stamps with purchase of Each 10-Lb. Bag POTATOES |
|---|--|--|



**TO RENT TO LOST-FOUND for SERVICE TO HIRE TO BUY & SELL TO TRADE**  
**YOU'LL FIND IT IN THE WANT ADS!**

**Classified Rates**

5c per word including name and address, for first insertion and 3c per word for each subsequent insertion. Count initials as one word.  
 Minimum charge 75c first week and 50c each subsequent insertion.

Legal notices same as above rates.

"Black face" readers, 25c per line. Memorial tributes or Resolutions of Respect and all other matter not news will be charged for at regular advertising rates. No charge is made for news of Church or other public gatherings where no admission is levied. Where admission is charged or where goods or wares are offered for sale, the regular advertising rates will be applied.

Cards of Thanks, \$2.00.  
**DISPLAY ADVERTISING**  
 Rates on Request.  
 All advertising is cash with order except where accounts have been established.

**Announcement**

**FISH BAIT:** Live minnows, worms, goldfish, and crawfish. Frozen shad gizzards, shad, shrimp, liver. Also blood bait. A. C. Williams Bait Station, Waco Highway, Goldthwaite, 4-18-tfc

For an everlasting tribute to your loved one, select a monument of any description from Stacy Monuments, across from Funeral Home. (5-2-tfc)

**AUTOMOTIVE**

City Block of Used Trucks, Trailers, New International Scouts, Pickups, Trucks. Used Truck & Trailer Parts, Winches, Axles, Wheels, Etc. Johnston Truck & Supply, 725-2181, Box 638, Cross Plains. 10-24-6tc

**JEEP FOR SALE:** 4 Wheel Drive Pickup. Call Big Valley WE 8-2381. 10-10-tfc

**FOR SALE:** 1951 GMC Pickup. Good tires and in fair condition. Can be seen at my home from 1:00 to 4:00 p. m. Mrs. J. C. Long. 10-24-1tp

**FOR SALE:** 5 New 4-Wheel Drive Trucks; 6 New I. H. Pickups & Scouts with discounts from \$300.00 up over 30 Used Trucks from 1/2 to 5 Ton and gobs of New & Used Truck and Trailer Parts, Trailers, Winches, etc. Everything reduced, our 4 acres are full—Bank account empty—Don't miss this sale at Johnston Truck & Supply, Cross Plains. (Closed Sundays). 10-17-3tc

**Business Services**

**FOR YOUR Refrigeration and Appliance Parts and Service** Call Raymond Wilcox, MI 8-3133 or WI 8-2465. 10-24-2tc

**RUBBER STAMPS:** Fast service, reasonable prices. No order too large or too small to get our personal attention. Eagle office. 1-3-tf

**Southside Laundry**

And **Dry Cleaning Linen Service**  
 806 Austin, Brownwood, Tex.

Our Truck is Through Goldthwaite on Monday and Thursday.

Call Collect **Milton 3-4240**  
 FOR **Pickup & Delivery**

Call **L. J. PIGG**  
 For **SEPTIC TANK CLEANING** And **TERMITE CONTROL**  
 Phone DU 6-3873 or DU 6-5475  
 Route 3, Hamilton, Texas

**Farm & Ranch Conservation Work**

**Mask Brothers**  
 P. O. BOX 277  
 Rietland Springs, Texas  
**E. M. MASK — M. C. MASK**  
 Phone 45-2-3262 Phone 45-2-3271

**Business Services**

**DEAD ANIMAL SERVICE**—As near as your nearest telephone. Phone (Area Code 817) DUDLEY 8-3303, if no answer try DUDLEY 8-3642. Hamilton Rendering Co., Inc., Hamilton, Texas. 7-18-tfc

**ICE — WORMS and MINNOWS**  
**WE DELIVER**  
**Coy's Ice House**  
 Fisher Street, Goldthwaite

**Radio & TV Service**  
 Phone MI 8-3346  
**J & J Electronics**  
 Moreland Hardware

**FLOWERS**  
 Pot Plants, Cut Flowers, Corsages. Also Artificial Arrangements.  
 Phone MI 8-2698  
**Oak Grove Flower Shop**  
 Free Delivery

A COMPLETE Lock and Key Service now in Mills County. Keys made, Locks repaired. Service calls, reasonable rates. Jim Fowler at Loy Long Grocery. 9-26-tfc

For **Pump & Windmill Service & Repairs**  
 Phone SK 2-3360  
 We Move and Put Up Mills  
**W. L. "Dub" Wells**  
 Box 93  
 Lometa, Texas

FOR **Pump & Windmill Service**  
 SEE **Frank Cook**  
 Phone WI 8-2380  
 Also **WELL DRILLING** With **Hap Arrowood Rig**

**BOOKKEEPING SERVICE**  
 Phone MI 8-3116  
**Bruce Archer**  
 Home Phone MI 8-2673

**Card Of Thanks**

**CARD OF THANKS**  
 To the many friends and neighbors who have been so very kind and thoughtful in the illness and passing of our husband and father, W. I. Raley, go our eternal thanks. For the flowers, food, care, and loving words we will be ever grateful. Without you, our friends, the road would be rougher. May God's richest blessings be yours.  
 Mrs. W. I. Raley  
 Dr. and Mrs. R. Glynn Raley, Rev. and Mrs. D. D. Shaw and Family,  
 Mr. and Mrs. Charles K. Raley and Kent,  
 Rev. and Mrs. John J. Thomas and Family. 10-24-1tc

**City Property**

**FOR SALE:** Five room house on large corner lot, paved street. (The former Douglas Humphries house on Moline Road.) Terms. See O. O. Smith at Barnes & McCullough, phone MI 8-2411, Goldthwaite. 8-8-tfc

**FOR SALE:** Three bedroom, 2 bath house. Like new inside. New carpet, drapes and tile. Large lot. See or call Curtis Ripley, MI 8-3331. 8-15-tfc

**HOUSE FOR SALE:** Seven rooms and bath, with six acres land, on Live Oak St. in Goldthwaite. Two blocks from school. \$8,500.00. Fred Perry, 3328 Hla-watha Trail, Fort Worth, Texas. Phone CE 7-2598. 10-17-2tp

**FOR SALE:** The Mrs. A. W. Savoy house in Mullin, at a Bargain. L. B. Porter. 10-24-1tc

**EMPLOYMENT**

**WAITRESS WANTED**—Apply in person at Burl Holland's Restaurant, Goldthwaite. 10-10-tfc

**Farm and Ranch**

**IDEAL Farm & Ranch Book-keeping System** will help keep your records of income and expenses up for tax reporting. Only \$4.95 at the Eagle office. 1-3-tf

**FOR SALE:** Frank Dennis place, 5 miles east on Waco Highway, 150 acres, 68 in cultivation. See Jesse Moreland, phone MI 8-2276, Goldthwaite. 8-22-tfc

**FOR SALE:** My home in Center City, house only six months old; have 6 1/3 acres of land. J. M. "Red" Teague. 10-17-3tp

**Ranch Listings Wanted**

Phone YU 5-2532  
**Barney Welch**  
 Nationwide Real Estate Company  
 Mullin, Texas

**IF INTERESTED** in Farm and Ranch Land contact Joe Green, Center City — Route 3, Goldthwaite, Texas. 6-19-tfc.

**FOR YOUR BEDDING** or Planting, or Custom Plowing. Four row equipment. Call YU 5-2635, W. A. (Alton) Runnels. 9-19-tfc

**FOR NEW AND USED FORD Tractors and equipment** see San Saba Tractor Company, Phone 232 for free pickup and delivery of major overhaul. 10-6-tfc.

**FOR SALE**

**FOR SALE:** Close Out on Kelvinator Automatic Washers. Check with us for bargain prices. Spradley's Furniture & Upholstery, Fisher Street, Goldthwaite. 10-10-tfc

**USED TYPEWRITER SPECIAL**—One standard Typewriter, been cleaned, oiled and adjusted. Reduced to \$29.50. See it at the Eagle office. 10-3-TP

**FOR SALE:** Six foot steel posts, 65c each. Barnes & McCullough, phone MI 8-2411, Goldthwaite. 4-25-tfc

Large Stock of Every Day office supply needs. Paper Clips, Rubber Cement, Staples, ink pads, typewriter ribbons, ink pads, adding machine paper, columnar pads, file folders, letter files and storage files. Eagle Office. 1-3-tf

**GOAT FEED** easily cut with a McCullough Chain Saw. \$124.95 up, at the Post Yard. Robert Burdette. 10-3-tfc

Storage Binders, Post Binders, Ledger Sheets, A-Z Index guides, all sizes and many other bookkeeping supplies. Eagle office. 1-3-tf

**DINETTE SUITE SPECIALS:** A few Dinette Suites on the floor going at real big discounts. Some at cost and below to make room for new stock. Spradley's Furniture & Upholstery, Fisher Street, Goldthwaite. 10-10-tfc

**LIVESTOCK**

**FOR SALE:** Black Angus Bull, coming three year old. Two Black Angus Cows, one four, one six, heavy springers. Phone MI 8-3341, 81d Roberts. 10-24-2tp

**If you need drenching** done for goats and sheep, contact Stone Shipman, Phone MI 8-2774. 3-18-tfc.

**FOR SALE:** Registered Columbia Sheep, 20 Ewes, one stud Ram, 27 Lambs. Will take \$20.00 per head. Will make excellent project for some boy or girl. See Campbell at Campbell Gas Company. 9-19-tfc

**PERSONAL**

Wedding Invitations and Announcements, printed or engraved, cost no more at the Eagle office. Full line of samples to choose from. 1-3-tf

Household Budget Record Book, saves time and taxes. America's foremost simplified book, only \$1.00 at the Eagle office. 1-3-tf

**NOW IS THE TIME** to start Oral Cold Tablets. Get your supply now from Hudson Drug. 10-17-2tc

**LEGAL NOTICES**

**Legal Notice**

**CITATION BY PUBLICATION THE STATE OF TEXAS**  
 TO: Maury Hearne, Rodney L. Hearne, Otis H. Hearne, Claudye Hearne, Colyer Hearne, Buell Hearne, Alpha Hearne Crane, W. C. Crane, John Hearne, Elsa Hearne Gilmore, K. W. Gilmore, Knox W. Gilmore, Kate Hearne, Ruby D. Hearne, O. B. Hearne and W. F. Hearne and the unknown heirs, legal representatives and devisees of said above named persons.  
**GREETING:**  
 You and each of you are commanded to appear by filing a written answer to the plaintiff's petition at or before 10 o'clock A. M. of the first Monday after the expiration of 42 days from the date of issuance of this Citation, the same being Monday the 18th day of November, A. D. 1963, at or before 10 o'clock A. M. before the Honorable District Court of Mills County, at the Court House in Goldthwaite, Texas.

Said plaintiff's petition was filed on the 5th day of October, 1963.  
 The file number of said suit being No. 3369.  
 The names of the parties in said suit are: Mrs. Hersey May Featherston and H. M. Featherston are Plaintiffs, and those persons first herein named in this Citation and to whom it is directed are Defendants. Said cause being styled Mrs. Hersey May Featherston and H. M. Featherston vs. Maury Hearne et al, Defendants.

The nature of said suit being substantially as follows, to-wit: Plaintiff's Petition alleges a cause of action in Trespass to Try Title seeking the recovery of title and possession from the above named defendants of all that certain real estate, lying and being situated in Mills County, Texas, described as follows, to-wit: A part of the Hearne Addition, and being Lots Nos. One (1) and Four (4) in Block No. Five (5), and Lots Nos. One (1) and Two (2) in Block No. Twelve (12) in said Hearne Addition according to the plat thereof as made by W. A. McIntosh of record in the deed records of Mills County, Texas.

Plaintiffs allege title to the said land under and by virtue of the statute of ten year's limitation, which statute is fully pleaded in Plaintiff's petition, on file in this suit.

If this Citation is not served within 90 days after the date of its issuance, it shall be returned unserved.  
 Issued this 5th day of October A. D. 1963.  
 Witness: Walter A. Bryant, Clerk of the District Court of Mills County, Texas.  
 Given under my hand and seal of said Court, at office in Goldthwaite, Texas, this 5th day of October A. D. 1963.  
 (Signed) Walter A. Bryant, Clerk, District Court (Seal) Mills County, Texas.  
 Published Oct. 10, 17, 24, 31, 1963  
 The Goldthwaite Eagle.

**Legal Notice**  
**ADVERTISEMENT FOR BIDS**  
 First Baptist Church parsonage, three bedroom, one bath, two refrigerated air window units, with lot on Reynolds Street will be sold to highest bidder.  
 Inspection by appointment with Pastor.  
 Sealed bids will be received until Tuesday, November 5th., at 10:00 A. M.  
 Bids may be mailed to W. P. Duren, % Mills County State Bank, Goldthwaite. The Committee reserves the right to reject any or all bids.

**Parsonage Sale Committee**  
 First Baptist Church  
 Goldthwaite, Texas

**OFFICE SUPPLIES**

**MIMEO Paper**, all colors, 16 and 20 weight. Typing Bond, second sheets, onion skin and Erasable bond in stock at the Eagle office. 1-3-tf

A New Filing Cabinet will help you keep your records in order, make your office work easier. Reasonable prices and quick delivery on any size file. Eagle Office. 1-3-tf

**IDEAL BOOKKEEPING SYSTEMS**, for most all business classification. Good selection in stock; also extra filler sheets. Eagle Office. 1-3-tf

**RENTALS**

**FOR RENT:** Small four room house, newly decorated. Adults only. 808 S. Reynolds, telephone MI 8-3227. 10-3-tfc

**FOR RENT:** Five room house with large service room in Goldthwaite. Corner lot on pavement. Call Grover Dalton, YU 5-2769, Mullin. 10-24-2tc

**Miscellaneous**

**PADGETT FLORAL** will make daily delivery of flowers to hospital. Call MI 8-2612 and place your order. 6-9-tfc

**FOR SALE:** Reclining Chairs, good selection to choose from. Regular \$69.50 value, special only \$49.95. Spradley's Furniture & Upholstery, Fisher Street, Goldthwaite. 10-10-tfc

**BIG TRADE-IN Allowance** on your old refrigerator on a New Kelvinator. We need good used refrigerators and NOW is the time to trade. Spradley's Furniture & Upholstery, Fisher Street, Goldthwaite. 6-27-tfc

**FOR SALE:** Good used standard typewriters. Reconditioned ready to go. New platens and new plastic covers. The best buys in a long time. Phone MI 8-2244, Eagle Office, Goldthwaite. 10-3-TF

**FOR MONUMENTS** of Distinction and quality see or call Mrs. Jess Massey, MI 8-2491, Goldthwaite. 11-9-tfc

**FOR ALL YOUR FURNITURE** and Carpeting needs, see Higginbotham Bros., at Comanche, good bargains; terms or cash; free estimates and delivery 7-7-tfc

**FOR SALE:** Invitation trays, bride's books, 50th anniversary and guest books, albums, picture frames, also napkins imprinted. Wicker Studio, Phone MI 8-2471. 2-2-tfc

**FOR SALE:** Bundy Trumpet, in excellent condition, with case. Phone MI 8-3378, Ed Thornton. 10-24-tfc

**TV ANTENNAS** and Accessories, any size or type. Reasonable Prices. J & J Electronics, phone MI 8-3346, at Moreland Hardware. 10-10-tfc

**CUSTOM MADE DRAPERIES**—Now available in Goldthwaite. Full line samples on display to choose from in our store. Draperies tailored in Dallas with 10 day delivery. Spradley's Furniture & Upholstery, Fisher Street, Goldthwaite. 3-28-tfc

**BEDROOM SUITE BARGAIN:** One only, three piece solid maple bedroom suite, with Formica top, only \$149.50. Spradley's Furniture & Upholstery, Fisher Street, Goldthwaite. 10-10-tfc

**FOR SALE:** Good used wringer type washers, \$25.00 to \$50.00. Duren Equipment Company, "We Service What We Sell" Goldthwaite. 10-24-tfc

**FOR SALE:** 35 Inch Imported Goat Wire, \$9.95 per 20 rod roll. Barnes & McCullough, phone MI 8-2411, Goldthwaite. 4-25-tfc

**WANTED**

**WE NEED** good used home Freezers and will give liberal trade-in allowance for your old freezer on a New Whirlpool Home Freezer. See us now. Duren Equipment Company, Goldthwaite. 7-13-tfc

**Quality Upholstering**  
 Furniture and Auto Free Pickup and Delivery

**Spradley's Upholstery Shop**  
 Dial MI 8-2961

**IT PAYS TO ADVERTISE**

**Manuel's Carpenter Shop**  
**Floyd Mann**

- CABINETS
- WINDOW FRAMES
- ANYTHING OF WOOD
- SAWS RECONDITIONED

Open Saturday All Evenings On Week Days  
 West Side Square Goldthwaite

**TEXACO**

**GAS AND OIL**  
 Firestone Tires and Tubes  
 Washing & Greasing  
 ROAD SERVICE  
**TEXACO**  
 Service Station  
 Dial MI 8-2585 - Goldthwaite  
 Johnson Brothers

**HAUNTING for THRIFTY TREATS?**  
**SHOP OUR HALLOWEEN FOOD SALE!**  
 Prices Good Friday and Sat., October 25 And 26

|                                       |                    |               |  |                 |               |
|---------------------------------------|--------------------|---------------|--|-----------------|---------------|
| <b>ROUND STEAK</b>                    | lb.                | <b>69¢</b>    | <b>Thick Sliced Wicklow BACON</b>        | 2 lbs.          | <b>98¢</b>    |
| <b>Armour's HAMS</b>                  | 1/2 Or Whole Pound | <b>49¢</b>    | <b>Pork SAUSAGE</b>                      | lb.             | <b>39¢</b>    |
| <b>HAMBURGER</b>                      | lb.                | <b>49¢</b>    | <b>FRYERS</b>                            | lb.             | <b>39¢</b>    |
| <b>Velveeta CHEESE</b>                | 2-lb. Box          | <b>79¢</b>    | <b>Tom Scott MIXED NUTS</b>              | 13-oz.          | <b>59¢</b>    |
| <b>Maxwell House COFFEE</b>           | 1-lb.              | <b>59¢</b>    | <b>PET or CARNATION MILK</b>             | Large 2 for     | <b>29¢</b>    |
| <b>Gladiola FLOUR</b>                 | 25-lb. Sack        | <b>\$1.69</b> | <b>Kimbell's CHILI</b>                   | No. 2           | <b>55¢</b>    |
| <b>SNOWDRIFT SHORTENING</b>           | 3-lb. Can          | <b>49¢</b>    | <b>Supreme CRACKERS</b>                  | 1-lb. Box       | <b>30¢</b>    |
| <b>Hunt's Tomato JUICE</b>            | 46-oz.             | <b>29¢</b>    | <b>Libby's Frozen Whole Strawberries</b> | 20-oz.          | <b>53¢</b>    |
| <b>Del Monte Fruit COCKTAIL</b>       | No. 303 4 for      | <b>89¢</b>    | <b>Pure Milk Mellorine or FROZAN</b>     | 1/2-gal. 3 for  | <b>\$1.00</b> |
| <b>No. 303 Eatmor CRANBERRY SAUCE</b> | 2 for              | <b>45¢</b>    | <b>CARROTS</b>                           | Cello Bag 2 For | <b>19¢</b>    |
| <b>BISCUITS</b>                       | Kimbell's 3 Cans   | <b>25¢</b>    | <b>Red POTATOES</b>                      | 25-lb. Bag      | <b>98¢</b>    |
| <b>OLEO</b>                           | Kimbell's 2 lbs.   | <b>39¢</b>    | <b>Fancy Cooking APPLES</b>              | Pound           | <b>12¢</b>    |

**DUREN GRO.**  
 MI 8-2614 DELIVER 9 A.M. TO 11 A.M.





**Kissin' Trees**  
offers an added attraction to out-of-state tourists. An abundance of mistletoe seasonally found growing among the trees in both town and country. It is a common sight to see mistletoe in the windows of homes and businesses. But to many out-of-state tourists, mistletoe is seen only at Christmas time . . . and then in small bunches . . . bought at high prices.

that was used to kill the Sun God, Balder, in Norse mythology. It also was known as a medical charm to Europeans who once carried it around for good luck, as well as a cure for ulcers, epilepsy, and infertility. But Texans and the rest of the nation seem to prefer the modern use for mistletoe — an excuse to kiss some fair lady.

**Houston Has Three**  
There are two good reasons why Houston is the only city

west of the Mississippi, with three independently-owned newspapers . . . namely The Chronicle, The Post and The Press.

First, Texas enjoys a truly free-enterprise economy where opportunity is unlimited, competition is strong, and the rewards of success can come to any who are willing to work hard.

Second, there is more to write about in Texas than there is elsewhere.

**Tour The Governor's Mansion**

Near the entrance to the capitol grounds in Austin, you can see the white brick Governor's mansion standing just one block to the southwest.

As you approach the distinguished abode, with its well-kept lawn covering an entire block, you observe six huge Ionic columns prominently standing in front. These columns are made of cedar logs hauled from Bastrop, Texas, in 1856, when the mansion was built.

Upon entering the mansion, you see a spiral staircase rising at the back of the hall. Mounting the stairs you enter the mansion's most famous room — the Sam Houston Room.

Here you see the bed used by Sam Houston, the man who served Texas both as its President and as its Governor. In the same room you also will see the mahogany desk of Stephen F. Austin.

Of all the features of this great mansion, the Sam Houston Room is best remembered by its visitors.

**Old Fort At Mexia**

Mexia, a thriving little city in Central Texas, Limestone County, fast is becoming a business-minded, industrial center.

This is far removed from its history as an early oilboom town.

You can imagine what happens when an oil strike abruptly changes a town of 4,000 into a town of 50,000. That's what happened to Mexia. But things are stable and settled now.

Another site, with a stormy history, still stands nearby though—Old Fort Parker.

The Parker's young daughter, Cynthia Ann, was kidnapped by the Comanche Indians. She lived with them nearly 24 years and became the mother of Quannah Parker, one of the most noted Comanche warrior leaders.

Cynthia was recaptured by the whites but never was happy. She died in 1884, four years after her return to live in the white man's world.

**Panhandle Oil Plentiful**

There are many areas in Texas where you can see Texas' fabulous oil industry in action. An excellent spot is in the Texas Panhandle.

In the short, 28-mile trip between Pampa and Borger, you'll find most all phases of this huge petroleum industry.

There are hundreds and hundreds of wells, not to mention refineries, carbon black plants and other structures familiar to oil and gas production.

Seeing so many facets of this industry in such a small area enables one to more fully appreciate the great influence and benefit this industry has been to the Lone Star State.

**Confederate Guns**

From East Texas  
Eight miles west of Rusk, Texas, is the site of a former Confederate Gun Factory. Built in 1862, the factory was

unable to secure the materials and tools necessary to manufacture rifles. As an alternative it produced Colt-model pistols.

Now, all that stands is a marker that gives a unique postscript to the life of this Confederate gun factory.

"A number of Negroes were employed," says the marker.

**Let It Not Happen Again**

A unique title heads the memorial located some 23 miles northwest of Brownsville on U. S. Highway 281 at the southern tip of Texas.

A grim reminder of history, it serves notice to all Americans to be thankful for our blessings through times of world strife. And warns not to let history repeat itself.

Site is where Capt. Seth Thornton and 62 Dragoons were attacked by Mexican Troops.

The thought provoking title reads: "American Blood was Shed on American Soil."

**Indian Hotel?**

Forty miles northwest of Amarillo in Oldham County is a strange hotel — the Pueblo Indian ruins. Ruins are located at Saddleback Mountain near Old Tascosa on the Canadian River.

These old "hotel size" Indian ruins have 33 rooms at staggered levels.

**CIVIL DEFENSE APPROVED FALLOUT SHELTER**

**\$5.00 up**

No Charge for Children Under 18  
24-Hour Coffee Shop  
Radio-Television  
Completely Air Conditioned  
**FREE INSIDE PARKING**

**AAA HOTEL**

**HOTEL Southland**  
Commerce-Murphy-Main Streets  
Telephone: Riverside 2-6431  
Dallas, Texas

Perhaps the forerunner of the popular attraction for tourists multi-level homes of today, since they were excavated in these hillside ruins have been a 1932.



**FASTER - BETTER - and at LESS COST to YOU!**

Here's the practical, LOW COST, way to secure greater returns from your cattle, sheep and goats . . . Feed our quality West Brand Protein Blocks. Every block is packed with Body Building Proteins, Vitamin A & D and other essential Vitamins and Minerals to protect health and promote bacterial activity in the rumen for better, more efficient utilization of grass.

Growth and production at the most favorable level is obtained only when the essential Nutrient Needs of livestock are fully met. However, range grasses vary widely in nutrient value as a result of weather conditions, stage of growth and growing conditions.

Feeding our West Brand Protein Blocks takes the guess work out of maintaining Nutritionally adequate ration for your livestock and aids in obtaining faster, better, low cost gains. Yes, it's a more practical, profitable feeding program for you — so this year feed . . .

**WEST BRAND PROTEIN BLOCKS**

**\$1.45 Block - 37%** *make the one-season test . . . be convinced!*

**\$1.55 Block - 38%, with Vitamin A And Aureomycin**

See Us For WEST BRAND  
**20% Breeder Cubes - 20% Range Cubes**

**D & M Feed Store**

— Feed — Seed — Fertilizer —  
Southside Square - Goldthwaite, Texas

**CATTLE SALE**  
Every Friday at 1:00 P. M.

Plenty Corral Room—  
Individual Buyer's Pens,  
Plenty Good Water, Clean Troughs,  
Excellent Care of Your Stock.

**Buyers Come To Lometa**  
Expecting to Pay More to Get  
Good Fresh Country Cattle.

Our run consists almost entirely of  
fresh country cattle — — — and they bring  
More Money at Lometa.

Under Federal Supervision  
Completely Bonded.

**ALWAYS A BETTER MARKET  
YOUR BUSINESS APPRECIATED**

**Lometa Commission Co.**  
Lometa, Texas  
J. H. (Judge) Harrell - Owner  
BUS. PHONE SK 2-3168 — RES. PHONE SK 2-3169

**BURIAL INSURANCE**  
For All Ages  
Infants Through  
Old Age  
Reasonable Rates

Payable  
Monthly,  
Quarterly  
or Annually

Stop In, Write or Phone  
for Application Blanks  
or Information.

**WILKINS  
Burial Association**  
PHONE MI 8-2255  
GOLDTHWAITE, TEXAS

**Know you've PAID**

**PAY BY CHECK**

**EASIEST, SUREST WAY TO RECORD TAX DEDUCTIONS**

The butcher, the baker, the candlestick-maker . . . pay them all by check and you'll have an accurate record of expenditures, and legal proof of payment!

At income tax time your cancelled checks are especially important. For example, you can't deduct the actual cost of your food, but you can deduct a certain portion of what you paid, because it was tax. With cancelled checks you can accurately figure that deduction — and prove it's valid!

**OPEN YOUR CHECKING ACCOUNT NOW — AT YOUR FRIENDLY**

**MILLS COUNTY STATE BANK**  
GOLDTHWAITE, TEXAS  
Serving Mills County 73 Years

**Now five kinds of Chevrolets for all kinds of people!**



**JET-SMOOTH LUXURY CHEVROLET**—For luxury-loving people. Rich new styling, finer appointments in all four series and 15 models. Engines up to 425 hp\*, manual or Powerglide\* transmissions.

**NEW CHEVELLE**—For pacesetter people. A totally new kind of car with small-car handling, big-car comfort! Styling that makes expensive cars jealous. Three series and 11 models, and a full choice of engine and transmission teams!

**CHEVY II**—For practical people. Chevy II with new V8 power\* for fun-on-a-shoestring. Stretches the shoestring further with 4- and 6-cylinder engines. Chevy II's six models in two series all act like they're bigger, more expensive cars!

**CORVAIR**—For fun-loving people. More fun than ever from Corvair's new bigger engine! Same Corvair handling and riding ease in 9 models—including the 150-hp Turbocharged Spydors!

**CORVETTE**—For sports-minded people. Corvette now rides softer, smoother—but loses none of its gusto because its big V8 offers versions from 250 to 375 hp\*!

Want to get together with other car-loving people? Go see your Chevrolet dealer. . . he likes all kinds! *\*optional at extra cost*

See five entirely different lines of cars at your Chevrolet Showroom — CHEVROLET, CHEVELLE, CHEVY II, CORVAIR & CORVETTE.

**SAYLOR CHEVROLET COMPANY**  
Phone MI 8-2588 Goldthwaite, Texas Fisher & Third Sts.



# KICK OFF TIME!

**Friday Night  
8:00 O'clock**

**At Bangs**

Lets Go!  
**EAGLES**



## SCHEDULE

- Sept. 6 - Goldthwaite 26, San Saba 20
  - Sept. 13 - Goldthwaite 18, Dublin 12
  - Sept. 20 - Goldthwaite 52, Evant 6
  - Sept. 27 - Goldthwaite 38, Comanche 0
  - \*Oct. 4 - Goldthwaite 51, Santa Anna 0
  - \*Oct. 11 - Goldthwaite 24, Cop. Cove 6
  - \*Oct. 18 - Goldthwaite 8, Burnet 0
  - \*Oct. 25 - Bangs ----- There
  - \*Nov. 1 - Early ----- Here
  - Nov. 8 - Open Date
  - \*Nov. 15 - Marble Falls ----- There
- \* Denotes Conference Games



**GHS EAGLE SQUAD AND COACHES**—Pictured here are 22 members of the Goldthwaite High School Eagle squad for 1963 and their coaches. They are, front row, from left: Kenneth Kelly, Jerry Rountree, Tommy Hudson, Gene Gray, Bill Blackwell, Cecil Campbell, Ronnie Allison and Owen Yarborough. Second row from left: Bob Frazier, Jim Childress, Jim Carter, James Cook, Harlan Jernigan, Jim Ball, Bill Miller and John Hammond. Back row, from left: head coach Jackie Williams, DeWayne McCasland, Clyde Cockrum, Gene Auldrige, Delton Ripley, Phil Duren, Tom Duren and assistant coach Roy T. Byrd.

# Goldthwaite VS Bangs



The Following Civic-Minded Merchants and Individuals Urge You To Support Our Team. Their Success Brings Credit and Recognition To Our Community Cheer Them On To Victory.

- |   |   |   |
|---|---|---|
| Gerald Head                             | Glamourette Beauty Shop                   | The Diary Cup<br>Judy and Jimmy Wigley              |
| Mills County State Bank                 | Duren Equipment Company                   | Raley Clinic<br>Dr. and Mrs. R. Glynn Raley & Staff |
| Central Tex. Tele. Co-op                | Welch Service Station                     | Production Credit Ass'n                             |
| Roy Wilkins Funeral Home                | Barnes & McCullough                       | Leroy Miller Conoco Station                         |
| L & H Welding Shop                      | Childress & Cruzcosa<br>Clinic & Hospital | The Goldthwaite Eagle                               |
| Pure Milk Co. - Doug Collier            | David Watters<br>Farm Bureau Insurance    | R V's Cafe  |
| Wicker Studio                           | Johnson Bros. Texaco Stn.                 | Woody Drug Store                                    |
| Burl Holland's Restaurant               | H. B. Davis 5, 10, 25c Store              | 84 Drive-In Theatre<br>Mr. and Mrs. Phillip Nickols |
| Blackwell Wool & Mohair                 | Williams Texaco Station                   | Spradley's Furniture<br>& Upholstery                |
| Whitley's Gulf Station                  | McLean Coffee Shop<br>Charlene and C. D.  | Southside Grocery                                   |
| Horton Lumber Company                   | Don Geeslin Turkey Farm                   | Cornelius Feed Company                              |
| Maunel's Carpenter Shop<br>Floyd Manuel | Bobby Johnson Texaco Stn.                 |   |

**Support The Eagles!! Attend The Games!!**



# ATTENTION!!!

We have just installed a new Puff - Set Machine and Spotting Board To Serve You Better

## CITY CLEANERS

MEMBER DRY CLEANERS INSTITUTE OF TEXAS  
GOLDTHWAITE, TEXAS  
Phone MI 8-2260

### Last Rites For Wickliffe I. Raley Are Held In Miles, Friday Afternoon

Funeral services for Wickliffe (Wick) I. Raley, 75, of Goldthwaite were held in the First Baptist Church of Miles, Friday afternoon, October 18, at 3:00 o'clock. Services were conducted by Rev. Dwaine Greene, pastor of the First Baptist Church of Goldthwaite, and Rev. J. E. Meeks, pastor of the First Baptist Church of Miles. Burial was in the Miles Cemetery under the direction of the Roy Wilkins Funeral Home of Goldthwaite.

Pallbearers were the deacons of the First Baptist Church of Miles, J. D. Keys, L. T. Balkum, Herman Miller, Lester Jeschke,

James Wright, Melvin Horner, J. B. Tonguett, Bill Holland, L. B. Elam and Jim Blackwell.

Mr. Raley, son of the late Mr. and Mrs. Jordan Jefferson Raley, was born March 12, 1888, in Ruston, Louisiana. He passed away Wednesday morning, October 16, 1963, at his home in Goldthwaite. He was a member of the First Baptist Church of Goldthwaite and the Masonic Lodge at Miles.

He had lived in Miles 60 years and had served as deacon of the First Baptist Church there for 51 years; also a druggist at Miles for 40 years. He moved

to Goldthwaite August 15, 1963.

On October 13, 1910 he was married to Callie Mae Knudson at Blanket.

Survivors are his wife, Mrs. Callie Mae Raley of Goldthwaite; two sons, Dr. R. Glynn Raley of Goldthwaite and C. K. Raley of Dallas; two daughters, Mrs. Marie Shaw of San Bernardino, California and Mrs. Callie Mae Thomas of Fairbanks, Alaska; ten grandchildren, one great-grandchild and a host of friends.

#### Hillside Mission

By LIDA BYRNE

Our Bible tells us in Proverbs 15:24: "The way of life is above to the wise, that he may depart from hell beneath."



## HUNTERS! INSURE

Before  
You Go!

### Stacy's Insurance Agency

INSURANCE — REAL ESTATE — LOANS  
Phone MI 8-2481 Goldthwaite, Texas

#### Goldthwaite

##### FIRST METHODIST CHURCH

Rev. Charles Runk  
Church School, 9:45 a.m.  
Morning Worship, 10:50 a.m.  
Bible Fellowship, 5:30 p.m.  
Evening Service, 7:30 p.m.  
M.Y.F. each Monday, 3:00 p.m.  
Wednesday, Prayer Meeting,  
8:00 p.m.  
Special meeting, 1st Thursday of  
each month, 7:00 p.m.

##### FIRST BAPTIST CHURCH

Rev. Dwaine Greene  
Church School, 9:45 a.m.  
Morning Worship, 10:50 a.m.  
Training Union, 7:00 p.m.  
Evening Worship, 8:00 p.m.  
Wednesday, Prayer Meeting and  
Bible Study, 7:30 p.m.  
M.Y.F., 4:00 p.m., Monday  
Fellowship, 3rd Monday night  
each month

##### CARADAN MISSION

Tommy Bells, Pastor  
Sunday Services, 10:00 a.m.  
Other Sundays, 10 - 11:00 a.m.

##### ST. PETER'S CATHOLIC CHURCH

Father Emil Gerlich, Pastor  
Mass Sunday in each month,  
8:00 p.m.

##### CHURCH OF CHRIST

Harold Hunt, Minister  
Bible Study, 10:00 a.m.  
Morning Worship, 10:50 a.m.  
Evening Worship, 7:00 p.m.  
Bible Class, Monday, 2:30 p.m.  
Wednesday Prayer Meeting, 7:00 p.m.

##### THE CHURCH OF THE NAZARENE

Rev. E. F. Waskom, Pastor  
Church School, 9:45 a.m.  
Worship Service, 10:45 a.m.  
Evangelistic Service, 7:00 p.m.  
Wednesday Prayer Meeting,  
8:00 p.m.  
Fasting and Fasting at Noon  
each Friday.

##### ASSEMBLY OF GOD

Rev. Bedford F. Renfro, Pastor  
Church School, 10:00 a.m.  
Worship, 11:00 a.m.  
Sunday Night, 7:30 p.m.  
Thursday Night, 7:30 p.m.

#### Star

##### CHURCH OF CHRIST

Bob Marden, Minister  
Bible Study, 10:00 a.m.  
Morning Worship, 11:00 a.m.  
Evening Worship, 8:00 p.m.  
Wednesday Prayer Meeting, 8:00 p.m.

##### BAPTIST CHURCH

Services 2nd and 4th Sundays  
Church School, 10:00 a.m.  
Morning Worship, 11:00 a.m.  
Evening Worship, 8:00 p.m.

##### METHODIST CHURCH

Rev. Bob Johnson  
Church School, 10:00 a.m.  
M.Y.F. each Sunday, 6:30 p.m.  
Worship Services 1st and 3rd  
Sundays  
8:00 a.m. and 7:30 p.m.

##### PLEASANT GROVE METHODIST CHURCH

Rev. Bob Johnson  
Church School, 10:00 a.m.  
Morning Worship, 11:00 a.m., 4th  
Sunday  
Evening Worship, 7:45 p.m., each  
4th Saturday and Sunday.

##### PRIMITIVE BAPTIST CHURCH CARADAN

Elder Elmer Isham  
Services First Saturday and  
Sunday Each Month, 11:00 a.m.

##### LONG COVE BAPTIST CHURCH

Rev. George Brown, Pastor  
Sunday School—10:00 a.m.  
Morning Worship, 11:00 a.m.  
Evening Worship, 8:00 p.m.

##### TRIGGER MOUNTAIN BAPTIST CHURCH

Rev. Don Caldwell, Pastor  
Comanche, Texas  
Sunday School, 10:00 a.m.  
Morning Worship, 11:00 a.m.  
Evening Worship, 7:00 p.m.

##### SCALLOREN BAPTIST CHURCH

Rev. Ray Rogers, Pastor  
Sunday School, 10:00 a.m.  
Morning Worship, 11:00 a.m.  
Evening Worship, 8:00 p.m.

##### PRIMITIVE BAPTIST CHURCH MT. OLIVE

Elder C. L. Casey  
Rt. 1, Eastland, Texas  
Services each 3rd Sunday at  
11:00 a.m. and on Saturday  
preceding at 11:00 a.m. and 8:00  
p.m.

##### POMPEY MT. (DUREN) CONGREGATIONAL METHODIST CHURCH

Rev. Billy Vaughan, Pastor  
Church Each Sunday  
(Except on Fifth Sunday)  
Sunday School, 10 a.m. Each  
Sunday  
Preaching Services—  
11:00 a.m. and 7:00 p.m.  
Prayer Meeting, Thurs. Night  
Singing each 4th Sat. Night—  
(except months of July & Aug.)



## "And on the seventh day..."

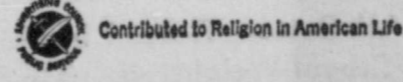
"... God ended His work which He had made; and He rested on the seventh day from all His work which He had made.

"And God blessed the seventh day, and sanctified it: because that in it He had rested from all His work which God created and made."

Worship together this week at your church or synagogue.



You can live your life...  
Worship this week



This Series of Ads is Being Published in The Eagle  
Each Month Under the Auspices of the Mills County Ministers' Association  
and is Sponsored by the following Individuals and Business Establishments

- Central Texas Tel. Coop.
- Yarborough & Duren
- City Cleaners
- Woody Drug Store
- Whitley's Gulf Service

- Roy Wilkins Funeral Home
- Mills County State Bank
- Service Mill-Priddy
- Barnes & McCullough
- Hi-Way Garage-Priddy

- Johnson Bros. Texaco Sta.
- Carothers Motor Company
- D & M Feed Store
- The Goldthwaite Eagle
- Shelton Bros. Motor Company

#### Mullin

##### BAPTIST CHURCH

Sunday School, 10:00 a.m.  
Morning Worship, 11:00 a.m.  
Training Union, 7:30 p.m.  
Evening Worship, 8:15 p.m.  
Wednesday, Prayer Meeting, 7:45 p.m.

##### METHODIST CHURCH

Rev. Jimmy Reedy, Pastor  
Morning Worship, 9:30 a.m.  
Sunday School, 10:30 a.m.  
Evening Worship, 8:00 p.m.  
2nd, 4th, and 5th Sundays

##### CHURCH OF CHRIST

Geo. Ewing, Minister  
Bible Study 10:00 a.m.  
Morning Worship, 11:00 a.m.  
Evening Worship, 7:00 p.m.

##### BETHEL METHODIST CHURCH (Caradan Road)

Rev. Charles Runk  
Services 2nd and 5th Sundays at  
3:00 p.m.

#### Center City

##### BAPTIST CHURCH

Services Every Sunday  
Rev. Bob Farrell, Pastor  
Sunday School, 10:00 a.m.  
Morning Worship, 11:00 a.m.  
Evening Worship, 7:00 P. M.

##### METHODIST CHURCH

Rev. Bob Johnson  
Church School each Sunday,  
10:00 a.m.  
Morning Worship, 2nd & 5th  
Sundays, 11:00 a.m.  
M.Y.F., 6:00 p.m., each Sunday  
Evening Worship, 2nd & 5th  
Sunday, 7:30 p.m.

#### Priddy

##### ZION LUTHERAN CHURCH

Rev. John Striepe, Pastor  
Sunday  
Sunday School, 9:00 a.m.  
Worship Service, 10:00 a.m.  
Monday  
Choir Rehearsal, 7:00 p.m.

##### BAPTIST CHURCH

David T. Strong, Pastor  
Sunday School, 10:00 a.m.  
Morning Worship, 11:00 a.m.  
Evening Services, 7:00 p.m.

#### Big Valley

##### CHURCH OF CHRIST

Ronny Hitchcock, Minister  
Bible Study, 10:00 a.m.  
Morning Worship, 10:45 a.m.  
Evening Worship, 7:00 p.m.  
Wed.—Prayer Meeting, 7:30 p.m.

##### BAPTIST CHURCH

Rev. Phillip Watson  
Sunday School, 10:00 a.m.  
Morning Worship, 11:00 a.m.  
Training Union, 6:00 p.m.  
Evening Worship, 7:00 p.m.  
Thurs., Prayer Meeting, 7 p.m.

- Goldthwaite City Utilities
- Childress & Cruzcosa
- Clinic & Hospital
- Cornelius Feed Company
- Taylor Chevrolet Company



## Bake Sale — Cakes and Pies

Saturday, Oct. 26, Starting 9 A. M.

AT

CAMPBELL GAS COMPANY

For Special Orders Phone MI 8-3210

Sponsored By

Goldthwaite Garden Club

## FREE\* BICYCLE



When you buy a

### GEHL Mix-All

There's a free \$50 value Roadmaster Bike waiting for your youngster. Waiting for you is the best feedmaking possible on the farm. You get both when you order your Gehl Mix-All before Dec. 1, 1963.

The Mix-All features more thin, steel hammers (66) and larger grinding surface (507 sq. inches) than any other farm mill. Together they turn out uniformly textured roughage and grain that can blend thoroughly with supplements in Gehl's 2-ton mixing hopper.

A swinging auger feeder and exclusive crusher head, plus many other features, add to the high quality of the finished ration.

Stop in today for details. Better yet, order your Mix-All and make two people happy. You and your youngster (or your favorite niece or nephew).



\*Free bonus bike offer ends Dec. 1, 1963. Choice of boy's or girl's 26 in. bike.

## Harper Implement Co.

Your John Deere Dealer

Phone MI 8-2272 — Goldthwaite, Texas

## Junior And Senior High School Honor Roll For First Six Weeks

Hoyett Browning, high school principal, has announced the honor roll for the Goldthwaite Junior and Senior High School for the first six-weeks period. In order to make the A honor roll a student must have a grade not less than 90. In order to make the B honor roll a student must have a grade not less than 80. The following students have been named.

### "A" HONOR ROLL

Seventh Grade—Byron Har-

### Childress & Cruzcosa Clinic & Hospital News Release

(Information released with permission of patient or a member of the family.)

Tuesday, October 15  
Admitted—Ed Knight, Goldthwaite.

Wednesday, October 16  
Admitted—Carl Kauhs, Goldthwaite; Able Remetus, Lometa.  
Discharged—Mrs. Mattie Anderson; Mrs. Jeff Reese.

Thursday, October 17  
Admitted — Carl Wharton, Goldthwaite.  
Discharged—Ed Knight; Carl Kauhs; Able Remetus.

Friday, October 18  
Admitted—Mrs. Lonnie Lee Brown, Goldthwaite; C. W. Jones, Goldthwaite; Douglas Meier, Priddy; Baby Girl Brown.

Saturday, October 19  
Discharged—Mrs. Irk Black.

Sunday, October 20  
Discharged—Mrs. Lonnie Lee Brown and Baby Girl Brown.

Monday, October 21  
Admitted—Mrs. H. F. Bethel, Goldthwaite.  
Discharged—Mrs. Mary Ellen Faulkner.

Ninth Grade—Sammy Hudson.

Tenth Grade — Margaret Stokes; Anita Rhoades and Suzanne Cockrell.

Eleventh Grade—Betty Miller; Marty Wrinkle; Beverly Rhoades and Helen Head.

Twelfth Grade—Bill Blackwell, Cecil Campbell, Harlan Jerhigan, Clyde Cockrum, Sammy Dennard, Marj Spradley, Sandra Arnold, Donna Doggett and Linda Martin.

### "B" HONOR ROLL

Seventh Grade—Glenda Geeslin, Ray Hill, Patricia Elaine Taylor, Jolene Kemp, Roberta Childress, Rebecca Berry, Frances Hammond, Gaylon Jerhigan and Charles Hopper.

Eighth Grade—Flossie Jordan, Debbie Langford, Melissa McLain, Charlotte Dalton, Mac Rowlett, Mike Conrad, Ronnie Auldridge, Lynn Berry, Gay Geeslin, Mary Ann Corona and Diane McKenzie.

Ninth Grade—Bill Phillips, Dennis Moreland, Billy Summy, Gary Holcomb, Charles Blackburn, Wayne House, Jamie Ledbetter, Phyllis Wesson, Mary Muse and Mary Standley.

Tenth Grade — Donna Hardgrave, Del Sears, Phillip Nickols, Lee Robertson, Jeanie Stewart, and Janis Tubbs.

Eleventh Grade—Jimmy Ball, Phil Duren, Stanley Doggett, Judy Tubbs, Janice Watters, Rocky King, Johna Dryman, Patsy Thomison and Sue Childress.

Twelfth Grade—Deanna Archer, Ronnie Allison, Jan Parker, Rodney House, Barbara Thomison, Mary Lou Martinez, Linda Gayle Geeslin, Darlain Sherwood, Gené Gray and Billie Gayle Kemp.

### Sidney Edges

By Star 26-24

By HENRY SIMS

Star Tigers lost their homecoming game to the Sidney Eagles by the score of 26-24. As the game ended Star had the ball on the Eagles' 1-yard line.

The Tigers gave up two quick TD's in the first period, but came back to lead 16-13 at the half.

In the 3rd quarter Sidney scored two more quick TD's, but the Tigers came back to score 8 points and make the final score 26-24.

Starting Tiger line-up was as follows:

Left End—Garry Boykin, 125-lbs., Sophomore.  
Center—Norman Lee, 205-lbs., Junior.  
RE—Felton Wright, 160-lbs., Junior.  
QB—Darrell Hunt, 135-lbs., Junior.

Junior.  
RT. HB—John Benningfield, 130-lbs., Senior.  
LFT. HB—Bert Geeslin, 175-lbs., Sophomore.  
Defensive LE—Earl Wall, 160-lbs., Sophomore.  
Larry Thurber also saw action in this game.

Scoring for Tigers:  
Bert Geeslin dashed around right end for 20 yards, scoring 6 points.  
Darrell Hunt passed five yds. to Felton Wright and another 6 points.  
Norman Lee slashed through the line for 3 yards and another 6 points. Lee also kicked the three extra PATS for another 6 points.

Coach Ronnie Stephens reports that all of the Tigers played an exceptionally fine game.  
The Tigers have an open date this week but on October 31 the

Tigers travel to Pottsville to tangle with the Bobcats.  
SCORES BY QUARTERS  
Star 0 16 0 8  
Sidney 13 0 13 0

## RV's CAFE

at The North "Y"  
Goldthwaite Texas

Serving  
The Best Food

24 Hours A Day

MR. and MRS. RV GEESLIN



## Only Nine More Saturdays Before Christmas

### Lay-Away A Gift A Day

While Our Stock Is Complete  
Avoid That Last Minute Rush.

USE OUR EASY LAY-AWAY PLAN

## YARBOROUGH & DUREN

"The Friendly Store Where Your Money Buys More."

### B & B Electric Shop

E. F. BROWNRIGG

Phone MI 8-2252

Gatlin Bldg. — Goldthwaite

- Table Model Radios And Clock Radios
- Electrical Wiring Contracting

### New Shipment GIRLS' SLACKS

All Cotton, fleeced inside for warmth  
Without Weight, sizes 3 to 6x and 7 to 14

Long Sleeve Turtle Neck  
Knit Shirts and Pajamas  
All Sizes

COTTON and NYLON Stretch Socks  
All Sizes  
Also Girls' Knee Length Socks

Lay-Away  
Nylon Christmas Pajamas NOW.

Visit Your  
Tots And Teens Shop

Jane Hamilton Phone MI 8-2264



## Captured! Cardinal RED by LORRAINE

IN LOVELY NYLON TRICOT. Feel daring? Start wearing "Cardinal Red"! Bright as neon, BUT so delicately done. Naturally! That's always true of Lorraine. Plus this: You're happy with the styles, fabrics, seamanship—even the prices! See "Cardinal Red"—for yourself, for gifts. (Other colors, too!)

Also available in matching briefs, Petti Pants, petticoats, slips, peignoirs.

# Little's

"SINCE 1898"

## Announces

### 2 Revolutionary new interior paints



- One coat covers
- Easier to apply
- Dries faster
- Goes further
- Exciting new colors
- Odorless enamel for wood trim, kitchen and bathroom walls, furniture
- Easy to apply
- No brush drag
- Over 1,000 custom-mixed colors
- Extremely durable and washable

Horton Lumber Company

Mr. and Mrs. M. F. Horton

"Look for the cans with the Gold Top"

PITTSBURGH PAINTS  
keep that **JUST PAINTED** look longer