

The Goldthwaite Eagle

ESTABLISHED 1894

GOLDTHWAITE, MILLS COUNTY, TEXAS

AND THE MULLIN ENTERPRISE

SINGLE COPY, 10¢

THURSDAY, MAY 7, 1964

Soil Conservation
Issue
Twenty Pages
In
Two Sections
SECTION ONE

NO. 47

LOCAL MARKETS

LIVESTOCK MARKET

META COMMISSION CO.

May 1, 1964

Market unevenly lower.

Light steer calves, 250-300-lbs., \$17.50; medium steer calves, 400-lbs., 21.50-24.00; heavy steer calves, 400-500-lbs., 20-00-

Medium steers, 500-700-lbs., 21-00-

Medium heifers, 450-600-lbs., 18-50-

Light heifer calves, 250-325-lbs., 12.00-14.00; medium heifer calves, 325-400-lbs., 19.00-22.00; heavy heifer calves, 400-500-lbs., 20-00-

Calves— 130.00-181.00

15.00-16.50

9.00-13.00

14.00-17.50

14.00-17.50

14.00-17.50

14.00-17.50

14.00-17.50

14.00-17.50

14.00-17.50

14.00-17.50

14.00-17.50

14.00-17.50

14.00-17.50

14.00-17.50

14.00-17.50

14.00-17.50

14.00-17.50

14.00-17.50

14.00-17.50

14.00-17.50

14.00-17.50

14.00-17.50

14.00-17.50

14.00-17.50

14.00-17.50

14.00-17.50

14.00-17.50

14.00-17.50

14.00-17.50

14.00-17.50

14.00-17.50

14.00-17.50

14.00-17.50

14.00-17.50

14.00-17.50

14.00-17.50

14.00-17.50

14.00-17.50

14.00-17.50

14.00-17.50

14.00-17.50

14.00-17.50

14.00-17.50

14.00-17.50

14.00-17.50

14.00-17.50

14.00-17.50

14.00-17.50

14.00-17.50

14.00-17.50

14.00-17.50

14.00-17.50

14.00-17.50

14.00-17.50

14.00-17.50

14.00-17.50

14.00-17.50

14.00-17.50

14.00-17.50

14.00-17.50

14.00-17.50

14.00-17.50

14.00-17.50

14.00-17.50

14.00-17.50

14.00-17.50

14.00-17.50

14.00-17.50

14.00-17.50

14.00-17.50



DISTRICT WIDE WINNER—Cary Owens, right, and Elgin Smith, local work unit conservationist assisting the Brown-Mills SCD, discuss the program of brush control with goats.

Mr. Owens was chosen the outstanding conservationist for the district in 1963. He started his brush control program in 1945. Careful management, controlling the number of goats, and when and where they grazed, has resulted in trading brush for grass.

Owens' conservation program really began in the early 1940's while engaged in sheep and cattle ranching with his brother, J. S. Owens. Continuous heavy grazing was giving lower

weaning weights and less wool. They decided something had to be done. This was about the time the Brown-Mills SCD was organized. They asked for and received assistance from the newly created soil conservation district in planning a conservation program.

Since that time Cary Owens has continued to expand on his original plan using the ACP cost-share program as well as the help from his local SCD. The results of his efforts and decisions is an improved ranch in the Grand Prairie with a "Sea of Grass" as described by the early agriculture commissioners as they traveled through this area in the 1870's.

Brooks Wins Sheriff's Race

Horace G. Brooks defeated C. F. Stubblefield by 66 votes in the race for Mills County Sheriff, Tax Assessor and Collector in the Democratic Primary election held last Saturday.

Brooks polled 1,083 votes while incumbent Stubblefield, got 1,017 according to official returns. Stubblefield is serving his 14th year.

Over 2,100 county voters turned out to cast their ballots in the primary election which gave a favorable vote to Governor John Connally and a majority to Gordon McLendon over Ralph W. Yarborough for the U. S. Senate seat.

State Representative Terry

Townsend received a big majority from Mills County voters over his opponent Tom Henry.

Following is complete list of votes as tabulated and certified by the Democratic Executive Committee which canvassed returns.



HORACE G. BROOKS

Childress & Cruzcosa Clinic & Hospital News Release

(Information released with permission of patient or a member of the family.)

Tuesday, April 28

Admitted—Mrs. Willie Stinnett, Lampasas; Jaydra Larue Stinnett; Mrs. P. R. Reid, Goldthwaite; Henry S. Davenport, Goldthwaite; Mrs. C. C. Smith, Goldthwaite.

Discharged—M. C. Clary.

Wednesday, April 29

Admitted—Mrs. J. M. (Bessie) Stacy, Goldthwaite; Mrs. Hulda Newman, Comanche; Mrs. Kenneth D. Taylor, Goldthwaite; Baby Girl Taylor; Mrs. Eula B. Nickols, Goldthwaite.

Discharged—Edwina Burns; Mrs. Maggie M. Neal; Mrs. Willie Stinnett; Jaydra Larue Stinnett.

Thursday, April 30

Admitted—Mrs. Joe LeMay, Goldthwaite; Miss Minnie J. Anderson, Goldthwaite.

Discharged—Mrs. Kenneth D. Taylor; Baby Girl Taylor; Walter Williams; Mrs. Sarah T. Jones; Henry S. Davenport.

Friday, May 1

Admitted—Mrs. Minnie Soules, Goldthwaite; Miss Exa Sanders, Mullin; Mrs. Frank R. Hines, Goldthwaite.

Discharged—Mrs. Sam Self; Mrs. John Newman; Mrs. C. C. Smith; Mrs. P. R. Reid.

Saturday, May 2

Admitted—William W. Perkins, Goldthwaite; Mrs. M. E. Covey, Goldthwaite; Mrs. P. R. Reid, Goldthwaite.

Discharged—Miss Minnie J. Anderson; Mrs. Minnie Soules.

Sunday, May 3

Admitted—Henry S. Davenport, Goldthwaite.

Monday, May 4

Admitted—Mrs. Stacy McCasland, Goldthwaite; Mrs. Glen Geeslin, Goldthwaite; Clifford O. Burks, Goldthwaite.

Discharged—Mrs. Marvin E. Covey; Mrs. P. R. Reid; Clabe Locklear.

Gospel Meeting At Ridge, May 7-8

The Ridge Singing Class will sponsor a Gospel meeting at the Ridge Community House Thursday and Friday nights, May 7 and 8, at 7:30 o'clock.

There will be different guest speakers each night.

Everyone in the surrounding areas is most cordially invited to attend each night.

Mullin Homecoming Scheduled Saturday

The annual Mullin School District Homecoming will be held this Saturday, May 9, at the Mullin School.

A business meeting at 8:00 p. m. will be followed by a social hour and refreshments will be served.

All ex-students, teachers, relatives and friends are cordially invited to attend.

Council And Water Board Meet In Joint Session Monday Night

The City Council and the Board of Directors for Mills County Fresh Water Supply District No. 1, met in joint session Monday night in the city hall.

The two groups heard progress report on construction of the water project from Bob King, engineer, and Don Blevins, engineer-inspector, for the project.

The two groups accepted bid

from U. S. Steel Corporation, Fort Worth, to construct fence around the off-channel storage reservoir property. The firm submitted the low bid in the amount of \$7,364.50.

King reported that the entire project is coming along on schedule.

Pumping water into the storage reservoir has been started and the reservoir will be filled before the end of May.

Pipe line construction is nearing completion and work on the filter plant is progressing on schedule.

The council certified election returns from the recently held city election. Monthly operating reports of receipts and disbursements for the various departments were presented to the council by D. W. Arnold and Dale Allen, in the absence of City Manager W. C. Barnett.

Barnett is recuperating at home after being hospitalized recently with a heart condition. He is reportedly making satisfactory progress.

Ray Duren was elected Mayor Pro Tem for the new year. Council committees were instructed by Mayor Howard B. Campbell to function in the same order as they were the past year.

Glynn Collier was appointed city secretary and W. C. Barnett was appointed city tax assessor-collector and city treasurer.

17 Votes Cast In Republican Primary

Seventeen votes were cast in the Republican Primary election held here last Saturday.

The party ballot fielded candidates for most of the top state offices and for U. S. Senator and Congressman-At-Large.

George Bush of Harris County received 17 votes for U. S. Senator, the only office contested for nomination with four candidates.

In the Presidential preferential vote Barry M. Goldwater received 16 votes while Rockefeller, Smith and Stassen received none. Richard Nixon, whose name was not on the ballot, received one write-in vote.

Successes To Have Charter Night, Installation Of Officers Saturday

The newly organized Goldthwaite Junior Chamber of Commerce will have Charter Night and installation of officers this Saturday night at 8 p. m. in the Goldthwaite High School Gym.

Plans have been completed for the event, ticket sales are good, and a large crowd is expected for the occasion. Many visitors representing Jaycee organizations from surrounding areas are expected to be on hand.

FIRST PROJECT

First project of the Jaycees was undertaken last Saturday night when the group provided soft drinks to the crowd attending the election night party on the courthouse lawn. After the party the group cleaned up the courthouse lawn.



CARL 'COTTON' DAVIS
Jaycees President

Fifty-four boys took part in the three groups who played ball during the evening.

Sammy Watson won the baseball contest conducted for the Little Leaguers.

The committee praised the ladies who supplied sandwiches for the concession stand. These ladies included the following: Mrs. Y. B. Johnson, Mrs. Charlie McLean, Mrs. C. D. McLean, Mrs. L. V. Benningfield, Mrs. Raymond Casbeer, Mrs. Roy Dells, Mrs. LeRoy Miller, Mrs. Jerry Covington, Mrs. Lee Roy Stacy, Mrs. Allen Hardgrave, Mrs. Glenn Miller and Mrs. Alex Shaw.

Little League Meeting To Be Held Tonight

There will be a Little League meeting Thursday, May 7, (tonight), at 7:30 p. m. at the Lone Star Gas office. All interested persons are urged to attend.

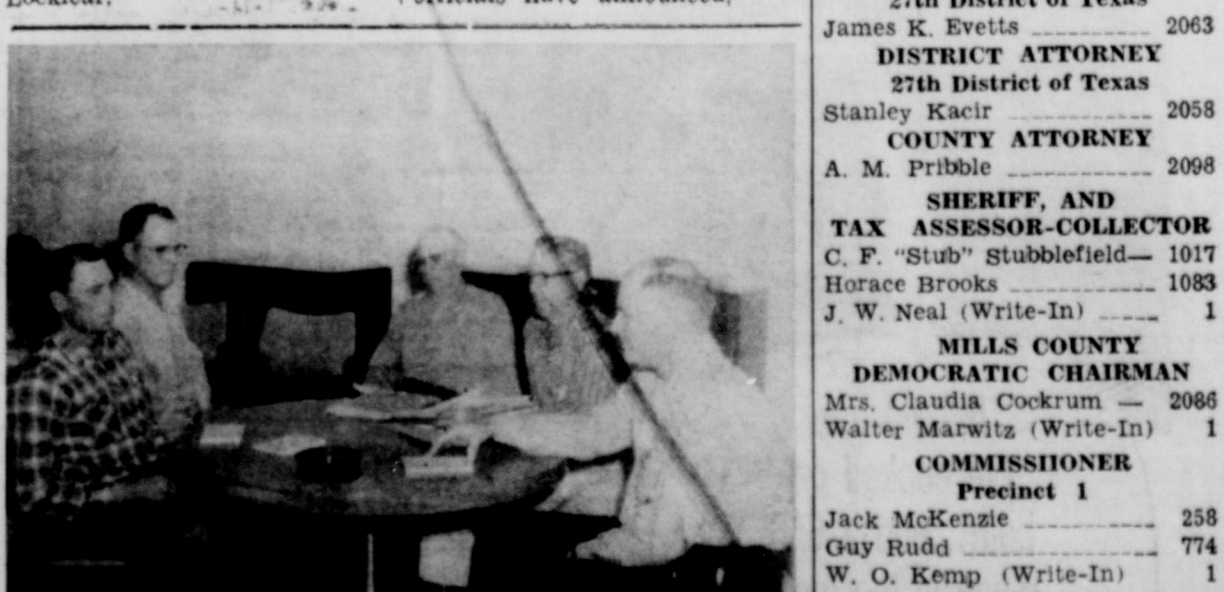
Lee Doggett and John Warlick attended a meeting in Lampasas Tuesday night to enter local Teen-age boys in the Centex Teen-Age League. These boys will be in the age group from 15 years through 18 years. The teams they will be playing are Lampasas, Hamilton, San Saba, Burnet, and Bertram.

Managing the Teen-Age team will be Lee Doggett and John Warlick.

Baseball fans are invited to support local teams by coming out to see them play.

Prospects are bright for some good and interesting ball games this year.

The Teen-Age team will be affiliated this year and can go to State—if they are that good, officials have announced.



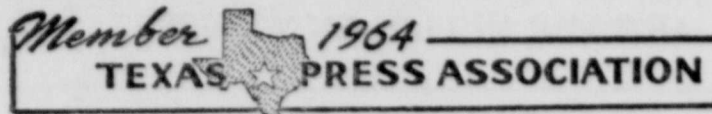
SCD BOARD OF SUPERVISORS—Pictured here are the five members of the board of supervisors who are elected to represent the five zones in Brown-Mills Soil Conservation District. They are, from left: Wilford Witzsche, Priddy, zone 3; Walter Fry, Bynoke-smith, zone 5; B. U. Ross, May, zone 1; Scott Lanford, Blanket, zone 2, chairman of the board, and Wm. G. Bishop, Goldthwaite, zone 4.

GOVERNOR	
Johnnie Mae Hackworth—	19
John Connally	1368
Don Yarborough	499
M. T. Banks	25
LIEUTENANT GOVERNOR	
Albert Fuentes, Jr.	261
Preston Smith	1577
UNITED STATE SENATOR	
Gordon McLendon	998
Ralph W. Yarborough—	910
UNITED STATES Representative-At-Large	
Dan Sullivan	298
Bill Elkins	119
Bob Looney	156
Joe Pool	741
Robert W. Baker	260
ATTORNEY GENERAL	
Waggoner Carr	2045
Walter A. Bryant	1
(Write-In)	
COMMISSIONER OF AGRICULTURE	
John C. White	1148
Millard Shivers	623
COMMISSIONER OF THE GENERAL LAND OFFICE	
Fred H. Williams	443
Jerry Sadler	1340
COMPTROLLER OF PUBLIC ACCOUNTS	
Robert S. Calvert	2059
STATE TREASURER	
Jesse James	2033
RAILROAD COMMISSIONER	
Ben Ramsey	2042
RAILROAD COMMISSIONER (Un-Expired Term)	
Jim C. Langdon	945
Jesse Owens	735
SUPREME COURT (Associate Justice, Place 1)	
Sears McGee	599
Jack Pope	929
SUPREME COURT (Associate Justice, Place 2)	
Ruel C. Walker	2027
SUPREME COURT (Associate Justice, Place 3)	
Robert W. Hamilton	2024
COURT CRIMINAL APPEALS (Presiding Judge)	
K. K. Woodley	2025
COURT OF CIVIL APPEALS, 3rd Supreme Judicial District: Associate Justice	
Robert G. Hughes	2046
CONGRESSMAN, 21st District	
O. C. Fisher	2047
REPRESENTATIVE, Dist. 65	
Tom Henry	610
Terry Townsend	1304
DISTRICT JUDGE, 27th District of Texas	
James K. Everts	2063
DISTRICT ATTORNEY 27th District of Texas	
Stanley Kacir	2058
COUNTY ATTORNEY	
A. M. Pribble	2098
SHERIFF AND TAX ASSESSOR-COLLECTOR	
C. F. "Stub" Stubblefield—	1017
Horace Brooks	1083
J. W. Neal (Write-In)	1
MILLS COUNTY DEMOCRATIC CHAIRMAN	
Mrs. Claudia Cockrum	2086
Walter Marwitz (Write-In)	1
COMMISSIONER Precinct 1	
Jack McKenzie	258
Guy Rudd	774
W. O. Kemp (Write-In)	1
COMMISSIONER Precinct 3	
W. R. Lindsey	459
Whitt M. Hodges	141
COMMISSIONER Precinct 4	
A. R. Rowlett	149
Fred Nowell (Write-In)	4

THE GOLDTHWAITE EAGLE
AND
THE MULLIN ENTERPRISE

Published Every Thursday at Goldthwaite, Mills County, Texas

Victor E. Koleber Editor and Publisher



AN INDEPENDENT NEWSPAPER

SUBSCRIPTION RATES

Mills and adjoining counties — one year, \$3.50; six months, \$2.00. Elsewhere in Texas — per year, \$4.00; six months, \$2.25. Outside Texas and Overseas — per year, \$5.00; six months, \$2.75. Single copy, 10¢. No charge for changes of address.

SUBSCRIPTIONS DISCONTINUED UPON EXPIRATION

Entered as Second-class Mail Matter at the Post Office in Goldthwaite, Texas, under the Act of Congress, March 3, 1879.

Crop Hail Insurance

Phone MI 8-2481

Stacy's Insurance Agency
INSURANCE — REAL ESTATE — LOANS
Goldthwaite, Texas

IT'S TIME TO GET YOUR WINTER CLOTHES

Cleaned and Ready for
Summer Storage

CITY CLEANERS

MEMBER DRY CLEANERS INSTITUTE OF TEXAS
GOLDTHWAITE, TEXAS
Phone MI 8-2260

WHEN THE OLD BIRD WAS YOUNGER

10 YEARS AGO—

(Taken from The Eagle
Files of May 6, 1954)

Open house was held in the Mills County Youth Center last Sunday afternoon from 3:00 o'clock until 5:00 o'clock honoring Mr. and Mrs. W. J. Shaw on their 50th wedding anniversary.

B. F. "Cotton" Humphries, 51, was killed by a tractor mishap Wednesday afternoon on his farm just north of the city of Goldthwaite.

Mrs. Annie Armstrong of Goldthwaite was pleasantly pleased to hear her son, Glendon L. Armstrong, has been promoted to Captain in the United States Air Force.

Captain and Mrs. Glendon L. Armstrong and daughter, Glena are stationed at Goose Bay, Labrador, Canada.

Glynn Collier was elected city secretary by unanimous vote of the city council at their regular meeting Monday night of this week when a number of committees were appointed for the new year. All members of the council were present.

Sherri DeVoll, two year old daughter of Minister and Mrs. George DeVoll was badly bitten about the face and head by a dog late Monday afternoon. She, with her sister and the Hardgrave children, were playing in the yard at the Hardgrave home when the attack occurred. The dog was immediately killed and the head carried to Austin where a test for rabies was to be made.

The Brownwood District Teachers' Music Association presented Miss Martha Carolyn Graves and Lathan Jernigan, local pianists, at their annual luncheon Monday in the Club Room of Hotel Brownwood.

Mrs. Webb Laughlin and Mrs. Daisy Laughlin honored Mrs. Cora Ford with a birthday dinner Sunday, April 25, in observance of her 84th birthday.

25 YEARS AGO—

(Taken from The Eagle
Files of May 5, 1939)

E. R. Eudaly, Silo Specialist, will hold a meeting at Ben Shield's silo May 11, at 2:30 p.m.

Painters and contractors of Goldthwaite and surrounding area were guests at Barnes and McCullough Lumber Company and E. I. Dupont Paint Company Monday night, at a meeting where new ideas in the painting industry were discussed. Billy Saylor had the misfor-

50 YEARS AGO—

(Taken from The Eagle
Files of May 9, 1914)

An order has been issued for a daily mail route for Priddy and the service begins July 1. The mail goes from Comanche to Democrat and thence to Priddy, reaching that place late in the afternoon.

The building in which Hudson and Rahl have conducted a

tune to shoot himself in the foot last Saturday at Lake Merritt. The accident occurred on the dam, and, as he was alone, he had to walk all the way to the keeper's house for help. He has suffered considerably, but it is believed that he will make a complete recovery.

The last word in comfort and safety described the new buses put on the Creamer Stage Line this week, according to J. C. Creamer, manager. This popular bus line is completing its thirteenth year of service between San Antonio and Eastland via Goldthwaite and has never had a passenger injured in the entire time.

Musical numbers and folk dances by children in the primary grades enlivened the annual May Fete of the Goldthwaite school on last Tuesday evening. Dukes and duchesses from each grade assisted in coronation of Eloise Slaughter as May Queen. A gay Maypole concluded the program.

B. F. Geeslin is having his building on Fisher Street remodeled and redecorated to be occupied by V. C. Bradford's Western Auto Store.

The Goldthwaite Garden Club has beautified the court house lawn. Flower beds have been made and shrubs planted. The band stand has new cement seats, and a new lighting system will be installed soon.



Phone MI 8-3111

Mills County
Locker

Joe S. Langford - Goldthwaite

meat market for more than twenty years is being torn away to make room for a modern stone building and Messrs. Hudson and Rahl have retired from business. This change marks the removal of one of the oldest firms from the business circles and one of the oldest business houses from Fisher Street.

A storm which reached the proportions of a cyclone or tornado struck the Caradan section Monday morning at an early hour, doing considerable damage. Mr. Bess Conway's residence was completely overturned and Mrs. Conway was painfully hurt, although her injuries were not serious. In the same community Mr. S. O. Koen's residence was blown from the foundation and a number of trees about the place were broken off or blown down.

Mrs. Sarah Cates, wife of Mr. Tom Cates, died at the home of her brother, Major D. H. Trent, last Saturday afternoon at 6:00 o'clock and her remains were laid to rest in the Odd Fellows Cemetery Sunday afternoon.

Joe Fisherman arrived from New York the first of the week for a visit to his brother, Sam Fisherman, and family. He is well pleased with this city and the business conditions and it is likely he will decide to locate

here. Goldthwaite is not quite so large as New York, but is a much better town.

The school board at its meeting Tuesday night elected offi-

cers as follows: B. F. Geeslin, president; R. E. Clements, vice president; J. V. Cockrum, secretary; W. P. McCullough, assistant secretary.

It's Planting Time— See Us For Your Field Seeds

and Fertilizer

We Have Complete Stock
Ready For You

It
Pays to Feed



RANGE CUBES

Creep Feed And
38% Protein Blocks

Phone MI 8-3311

Boykin Feed Store

Your PAYMASTER Feed Dealer
Goldthwaite, Texas

Jet-smooth Luxury Chevrolet makes crooked roads feel like going straight

Chevrolet's Full Coil suspension makes the crookedest S-curve seem on the level. With a double-acting shock absorber in each corner, it takes the jumps out of bumps. With 4-link leveling control, you get away with Jet-smooth acceleration. With built-in anti-dive control, you come to Jet-smooth stops. And with low-friction Ball-Race steering, you waltz over twisting roads as gracefully as a ballerina.



FOR THE GREAT HIGHWAY PERFORMERS

All seven Chevrolet engines are precision balanced for smooth operation. And because your Chevrolet has over 700 insulators and sound deadeners, you don't have to shout to have yourself heard.

It's Trade 'N' Travel Time at your Chevrolet dealer's—the perfect time to try the Jet-smooth ride. Find the meanest stretch of road you can. Then see for yourself how straight a crooked road can feel.



Chevrolet Impala Super Sport Coupe

CHECK THE T-N-T DEALS ON CHEVROLET • CHEVELLE • CHEVY II • CORVAIR AND CORVETTE NOW AT YOUR CHEVROLET DEALER'S

42 3299

SAYLOR CHEVROLET COMPANY

Phone MI 8-2588

Goldthwaite, Texas

Fisher & Third Sts.



Believe me,
I've cooked on
both...and a GAS
range is the most
automatic. It has
Burner-with-a-Brain

Mrs. Dorothy J. Smith has cooked on gas and electric ranges and she knows from experience. The Burner-with-a-Brain lets you set your recipe temperature and forget it. No burned food or boil-overs. Also, there's the Cook n' Keep oven that turns itself down to ideal serving temperature. See these gas ranges—on sale at your gas appliance dealers!

Festival of Gas Range Sale at Gas Appliance Dealers

Miss Vireta Alexander Wed To Charles Parker In Church Ceremony

Miss Vireta Alexander of Austin became the bride of Charles Parker of Kermit in the Star of Christ, Saturday evening, April 18, at 7:30 o'clock. Dawmen Newton of Abilene officiating.

The bride is the daughter of Mrs. W. L. Alexander of Star and the groom is the son of Mr. and Mrs. Lee Parker of Caradan.

Vows were exchanged before an altar decorated with a large arrangement of white gladioli, pom poms, candelabras with tall white tapers and palms.

Mrs. Charlie Sheldon was soloist and sang "Whither Thou Goest" and "I Love You Truly."

The bride wore a white street length dress featuring a lace jacket over a fitted bodice with rounded neckline, and very full skirt. Her circular veil was attached to a bow of the self material. She carried an arrangement of white gladioli and white feathered carnations atop a white Bible.

Miss Kay Coffman of Austin, cousin of the bride, was maid of honor. She wore a pink dress and a pink head piece with a circular veil. She carried a bouquet of pink carnations.

Wayne Knight of Goldthwaite served as best man.

Immediately following the ceremony a reception was held in the Alexander home. Refreshments of cake and punch were served by Misses Jan Par-



SHALLOW CROPLAND TO PASTURE—Maurine Soules, Star, remembers when this Sideoats Grama pasture was a shallow cropland field.

A little over 5 years ago Mrs. Soules decided to put her cropland into the Soil Bank program administered by the ASCS and the local ACP County Committee.

SCS technicians helped with the selection of the kind of grass to plant and the adjusting of the grass drill for the correct seeding rate.

A grass "seeder-cultipacker" was leased from the Brown-Mills Soil Conservation District to plant the grass.

Mrs. Soules, a cooperator with the local Soil Conservation District, has not yet grazed this field but has some 125 acres of Sideoats Grama plantings, part of which is being grazed since completion of the Soil Bank contract.

ker, sister of the groom, and LaJuana Denman, cousin of the groom.

The new Mrs. Parker was employed by Texas State Board for Engineers in Austin. Mr. Parker is an employee of the City of Kermit, where the couple will make their home.

Art & Civic Club To Meet May 12

The Art and Civic Club will close out the club year May 12, at 2:00 p. m. with a program, "A Trip To Japan," by Mrs. J. D. Harper, and "Japanese Flower Arrangement," by Mrs. Bruce Eklund. Both Mrs. Harper and Mrs. Eklund have toured Japan in recent years.

The meeting will be held in the Civic Room of Mills County State Bank with Mrs. Kellis Landrum as hostess. Anyone interested in attending this program is cordially invited.

COLONIAL TV



RCA VICTOR New Vista TV
• 23" tube (overall diag.)—282 sq. in. picture • Super-powerful "New Vista" Tuner • 22,500 volts of picture power (design average)
• Bonded-on glare-proof safety window • Dependable Space Age Sealed Circuitry • Extended-range Duo-Cone speaker • One-set VHF Fine Tuning control

10%

Discount

On All 1964
RCA VICTOR
Radios and TV Sets

Select Any
RCA Victor
Radio Or TV
and Receive
FREE

"Fun - In - The - Sun"
Beach Kit

B & B

Electric Shop

Phone MI 8-2252

Gatlin Bldg. — Goldthwaite

THE BETTER WE PRODUCE THE BETTER WE LIVE



SOIL IS THE GREATEST PRODUCTION PLANT IN THE WORLD

When a manufacturer or company fails to keep his machinery in condition to be operated efficiently his plant soon becomes run down, and production declines. His profits decline and he is likely to face an extreme slump in business.

THE FARMER AND RANCHER also is a producer, and can face a similar situation. The SOIL is his manufacturing plant. If he fails to follow SOIL and WATER CONSERVATION practices, which will keep his land in good condition, his production is certain to decline. The farmer, too, may meet with financial disaster.

WE ALL HAVE A STAKE IN THE LAND — LET'S WORK TO CONSERVE OUR SOIL. See the supervisors of the local Soil Conservation District, or the representative of the Soil Conservation Service in your area about a complete planned Soil and Water Conservation program for your land.

Your Ralston Purina

Checkerboard Headquarters

Cornelius Feed Company

Phone MI 8-2235 Charles Cornelius Goldthwaite, Texas

Shop Our Many Mother's Day Gift Items!



Mother gets a special thrill when her loving family remembers with Pangburn's Chocolates. Choose her favorite today.

Specially priced for "gift giving."



LENEL OFFERS CARESSANT
BATH POWDER & SKIN & BATH PERFUME
AT A SPECIAL PRICE!

Smooth, silky 5-ounce Bath Powder with gay, fluffy puff and 1-dram Lenel's Sensational Skin & Bath Perfume.

Regular \$4.75 Value

BOTH FOR ONLY \$2.50

plus tax

HUDSON DRUG

"What You Want When You Want It."

Mr., Mrs. W. G. King To Observe Fiftieth Wedding Anniversary

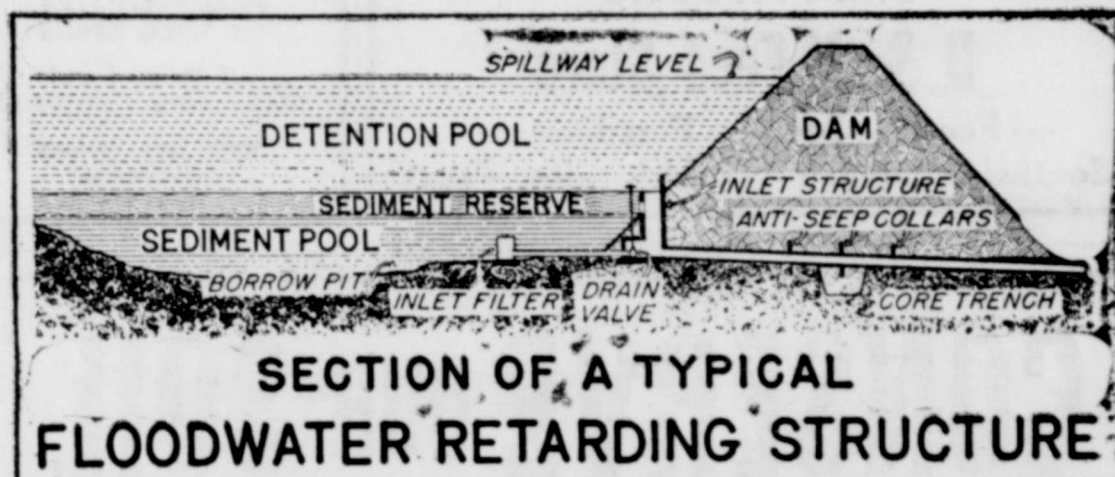
Mr. and Mrs. W. G. "Guy"

King of Route 1, Mullin, will be honored with open house at their home Sunday afternoon, May 10th from 2:00 until 5:00 o'clock, on their 50th Wedding Anniversary.

Hosts will be the couple's children.

All friends and relatives are invited to call during the appointed hours.

— IT PAYS TO ADVERTISE —



Structures Such As This Cross Section Illustrated Here Can Be Had Throughout the Entire Bennett Creek Watershed

Estimates are that three-fourths of the 12 to 15 structures will be on the upper two-thirds of the watershed.

The Cooperation and Support of all property owners of the Watershed will insure earlier action on designation with priority for planning

Of The Bennett Creek Program

Board of Directors

JIM SOULES, President ARNOLD HEAD, Vice President
J. SHERWOOD OWENS, Secretary - Treasurer
HOMER McCASLAND WALTER TUBBS

KIMBELL'S



BLOCKS

PREVENT THE BREEDING OF HORN FLIES

BAR-FLY prevents the breeding of horn flies . . . halts infestations before the damage is done, not after!

Simple to use, BAR-FLY is available in livestock feed products. As cattle eat, BAR-FLY passes harmlessly through the digestive system, concentrates in fresh droppings—the only place horn flies lay their eggs. As eggs hatch, emerging larvae are destroyed without ever sprouting a wing . . . or pestering a steer!

Tests at one of the nation's leading agricultural colleges prove BAR-FLY effectively prevents the breeding of 90% of all horn flies, 75% of all face flies. Moreover, BAR-FLY is recognized by both state and federal agencies as safe and effective in preventing the breeding of horn flies.

Important—there is only one genuine BAR-FLY program, developed by Interstate Chemical Company. Guaranteed to prevent the breeding of 90% or more of all horn flies!

KIMBELL'S BAR-FLY BLOCK is your assurance of the latest . . . and best . . . in oral insecticides—and the most effective birth control for flies.

Phone MI 8-2276

D & M Feed Store

— Feed — Seed — Fertilizers —
Southside Square — Goldthwaite, Texas

Library Board Meets And Dates For Summer Reading Program Set

The Jennie Trent Dew Library Board of Directors met Tuesday morning, April 26th, in the Commissioners' Court Room in regular meeting.

Reports were made about the open house and Silver Tea, that was held last week at the Library, sponsored by all the organizations in the county with the Self Culture Club in charge. Each school in the county was responsible for a short program during some part of the afternoon, and each one was well received. The Board went on record offering appreciation to every person that had a part in making this affair a success, both financially and with their presence.

Repairs and remodeling at the Library are finished, and everything is in fine shape. New shelves have been added, which will relieve the crowded condition so very much.

The Librarian, Mrs. Bradford, reported that plans are well underway for the summer reading program conducted every summer for all pre-school and school children in the county. The State Library co-sponsors this program along with the local library, by furnishing reading logs and certificates. Warren Duren, president of Mills County State Bank, has given a

new Texas Almanac that will be given as one of the prizes to the person reading the most books during the program, June 1 to September 1. Two of these books will be given.

A number of new memorial books are on order at the present time, and Mr. and Mrs. H. F. Bethel, Mrs. D. A. Trent, Miss Love Gatlin, Mrs. Flora Bowles, and Miss Mary Sue Rahl have given the Library used books during the month. Mrs. Adeline Little Parsons also gave a 10 volume set of The World's Popular Encyclopedia. The Library is always happy to receive books of any kind, both new and used.

Two hundred and fifty-eight adult books have been checked out during April and 489 for children, making a total of 747 books circulated during the month. Library days are Monday, Wednesday and Saturday

afternoons from 2:30 until 5:30 p. m.

New books added to the Library during April were:

"Portrait Of John F. Kennedy," Lowe; "John F. Kennedy, President," Sidney; "A Savage Place," Slaughter; "Stan Musial," Broeg; "The Fringe On

Top," Evans; "A Child's Friend," Trent; "The Story Of Jesus," Glover; "Snow White and the Seven Dwarfs," Disney; "Little Red Riding Hood," Stella; "Bible Stories," Segner; "Young Readers Dictionary," Parke; and "Everybody Has A House," Green.

MT. OLIVE CEMETERY WORKING THIS SATURDAY

An all day Cemetery Work will be held this Saturday, May 9, at Mt. Olive. A business meeting will be held at 10:30 a. m. Everyone is urged to bring their tools and a bar lunch.

Manuel's Carpenter Shop Floyd Manuel

- CABINETS
- ANYTHING OF WOOD
- SAWS RECONDITIONED

FREE ESTIMATES ON YOUR NEEDS
All Material and Workmanship Guaranteed
West Side Square Goldthwaite

BURIAL INSURANCE

For All Ages
Infants Through
Old Age
Reasonable Rates

Payable Monthly,
Quarterly
or Annually

Stop In, Write or Phone for Application Blanks or Information.

WILKINS
Burial Association
PHONE MI 8-2255
GOLDTHWAITE, TEXAS



ELBON RYE AND WINTER PEAS—This picture made on my farm near Goldthwaite shows the spread of Elbon Rye to see shorter growing Winter Peas.

I have 85 acres of winter cover crop of Rye and Peas. Spring rains brought such lush growth to the Rye and Peas that I was able to put 45 cows and 30 calves on this field. The cattle

had been grazing this field about 45 days when the picture was made. The Rye now is approximately four feet high and fully headed. You can just see the back of the cattle as they

go across the field now, grazing it. The residue from this crop is being returned to soil surface for organic matter and plant food.

Let's Keep Up Our Conservation Work

W. O. KEMP — Distributor

Gulf Oil Corporation Products

CONSERVE OUR SOIL



We, at Johnson Bros., are vitally interested in the work carried on by the various Soil and Water Conservation groups and urge that they receive the whole-hearted support of every individual.

Your future — our future will depend on fertile, productive land and adequate water

A "Save-the-Soil" program, actively applied, can save Texas!

Cooperation with your Soil Conservation Service personnel will be a big step toward improving our land.



And Here's Another Tip To Farmers And Ranchers For Best Results From Your Mechanical Equipment Let Us Supply You with Those Famous Texaco Products.

Johnson Brothers

Wholesale — Texaco — Retail

FARMERS -- RANCHERS

Brush Invasion Is Becoming The No. 1 Problem Of Texas Agriculture

1964 Mills County Brush Infestation Survey

Type	Acres
Mesquite	145,422
Liveoak	163,016
Shinoak	60,388
Tasajillo & Prickly Pear	52,568
Cedar	45,856
White Brush	25,832



Un-Controlled Controlled

A Perfect Tribute To Your Skill As A Farmer Or Rancher Is A Complete Soil and Water Conservation Program On Your Land

Brown - Mills Soil Conservation District

Supervisors

Scott Lanford, Chm.
Blanket

Walter Fry
Brooksmith

B. U. Ross
May

Wilford Witzsche
Friddy

W. G. Bishop
Goldthwaite

SAVE \$50 TO \$100 ON HEARING AID

Mr. Treadway will hold his regular Hearing Clinic at the Manney Courts in Goldthwaite Monday, May 11th, from 4 P. M. to 8 P. M.

If you have a hearing problem of any kind, or you need service on your aid, we invite you to come in. We offer you professional, experienced service.

Hearing test at no cost to you. We fit you with the latest Hearing Aids, Nerve Instruments and the new Hearing Device that has nothing in the ear. We are always able to save you from \$50 to \$100 on your Aid instrument.

We carry a complete line of aids, batteries, earmolds, speakers, and tubing for all makes of aids and you can always save and more.

We do repair service on any make aid. Batteries mailed anywhere postage paid.

If hearing is your problem, we have the answer at a price you can afford.

Mr. Treadway is in the Temple office every Thursday and Friday from 9 A. M. to 5 P. M.

Temple
Hearing Center
128 N. 3rd TEMPLE

Chappell Hill

By PEARL CRAWFORD

We received 3.8 inches of rain during last week. Others who reported rain and hail damage Friday afternoon were W. P. Ledbetter, Albert Evans, A. L. Crawford and Melvin Bessent.

O. L. Brown was a business visitor at the Lometa Stock Sale Friday.

A. L. Crawford was a business visitor at the Comanche Stock Sale Saturday.

Mrs. Hugh Nowell attended Sunday School at the First Baptist Church in Goldthwaite Sunday.

Mr. and Mrs. William Ivy and Weldon came Friday afternoon during the stormy weather to be with Mrs. J. S. Ivy.

Mr. and Mrs. Sterling Casey of Dallas visited Mr. and Mrs. W. O. Oden Saturday afternoon.



GOOD GRASS IN FLOOD PLAIN—Livestock are shown here grazing an excellent growth of grass in the flood plain of flood prevention structure in Deep Creek, San Saba-Brady Soil Conservation District. The area pictured is temporarily inundated during high intensity rains while the principal spillway releases water in a controlled manner. Since the water normally stands on this area no more than a few hours or days the same effect is achieved as is obtained in flood irrigation. —(SCS Photo)

The Caseys came to Mullin to visit relatives and attend the rodeo.

Mrs. Stone Shipman and Nita visited Mrs. Marshall Brown and family and Mrs. Pearl Shipman, Sunday afternoon.

Enera Ledbetter is absent from school at Goldthwaite suffering with a sore foot. He is at the home of his grandfather and his Aunt Alma is taking care of him.

Pearl Crawford visited Mrs. Sam Self at the local hospital Saturday. We wish all the sick folk a speedy recovery.

Mr. and Mrs. Floyd Daniel and Mark visited Mr. and Mrs. R. F. Daniel Sunday afternoon.

Mr. and Mrs. Morgan Smithers visited Mr. and Mrs. Hugh Nowell Friday.

Wayne Ratliff of Austin spent the weekend with Mr. and Mrs. W. W. Ratliff and Steve.

Mr. and Mrs. O. L. Brown visited Mr. and Mrs. Dale Allen Sunday night.

Mrs. M. Y. Stokes Shows Mental Health Film At P-TA Meeting

The Goldthwaite P-TA met in the Elementary lunchroom Monday night, April 20.

Col. M. Y. Stokes gave the devotional. He stated that the church, school, and P-TA were doing more to help prevent juvenile delinquency than any of the other organizations.

Mrs. Stokes presented a film on Mental Health, showing the advances made in the last decade. With the present day therapy now available adults and children can again lead a normal and happy life.

The association voted to pay \$60.00 for Educational films and \$60.00 for library books for the elementary school as a P-TA project for the past year. Mr. Hoyett Browning asked

Mrs. W. W. Robbins was appointed first vice president to replace Mrs. C. S. Cruzcosa, who resigned.

Mrs. M. L. Burnham reported that Mrs. Roth Robertson had

received the Blue Bonnet Award for selling subscriptions of the State P-TA magazine, being the first time this award has ever been won by Goldthwaite.

HORTON LUMBER COMPANY

Mr. and Mrs. M. F. Horton
Goldthwaite, Texas

Dividends From Your Farm and Ranch

CONSERVATION on your farm and ranch PAYS OFF in increased income. Follow the rules of sound farming.

CONSERVING YOUR SOIL WILL PAY DIVIDENDS

Consult Your

Soil Conservation Technicians

See Us For


Your Building Needs

We Have Large Stock

Lumber and Building Supplies

- Wire
- Steel Posts
- Fencing of All Kinds
- Metal Gates
- Well Supplies
- V-Drain Roofing

Home of

PITTSBURGH PAINTS keep that  look longer



Johnny's
Service Station
At The North "Y"
Goldthwaite, Texas

OPEN 24 HOURS
Mechanic Available
JOHNNY TRUITT

HOOVER CONSTELLATION
The conister that offers more of what you want in a cleaner.



\$44.50

HOOVER POLISHER-SCRUBBER
Gives your floors that handrubbed look. Also scrubs the floor.



\$29.95

Moreland Hardware & Appliance
Sales And Service

Conserve Our Soil For Those Generations Yet To Come---

THEIR FUTURE PROSPERITY
DEPENDS ON YOU!

Good Conservation
Depends Upon
the Farmer or Rancher
and His Equipment

Machinery Plays
A Vital Role
In Sound
Conservation
Practices



**AND -- We Can Help You
Keep Your Machinery In Shape**

With Our
Complete Machine Shop Service

See Us For Your Needs

METAL MASTERS MACHINE SHOP

Manufacturers of

PECAN HARVESTING EQUIPMENT

Route 1 Phone MI 8-2656 Goldthwaite, Texas
O. E. Sides W. L. Sides C. N. Sides

Over All The Land

"Over all the land . . .
And over all the waters
Earth and the fruits of earth
For all her sons and daughters."



Four Short Lines That Spell Out
The Full Meaning Of

Soil Conservation

A Farm and Ranch Program That ---

- Starts with a scientific analysis of the land
- Adapts operations to fit the natural requirements of every acre
- Conserves soil and water resources
- Pays its own way by increasing farm income

We recommend the Brown-Mills Soil Conservation District for its leadership in providing a scientific and successful method of protecting our lands against damage.

Consult your Soil Conservation Service Representative for a program of Farm and Ranch Conservation that will fit into your program and needs.

Brownwood Cattle Auction

For Information Call:
Office: MI 3-0654
Night: MI 3-0744

Brownwood, Texas

Barney Edmondson
Ranch at Locker, Texas
Phone 623-7444

NOTICE!

Dr. C. S. Cruzcosa

Will Be Out Of His Office

Friday, May 15th

Through

Sunday, June 7th

**CHILDRESS & CRUZCOSA
CLINIC & HOSPITAL**

Thank You Folks!

I want to take this opportunity to thank all of the voters in Commissioner's precinct one for the fine support and vote in my behalf in the first primary election last Saturday.

It has been a pleasure to call on so many during the campaign and I know it will be a pleasure to serve you as commissioner for another term.

I will do my best to serve each and all residents of the precinct and county to the best of my ability.

Sincerely,

GUY RUDD

**Diversion Payments Offered
Through 1964 Wheat Program**

The diversion payment growers may earn under the 1964 voluntary wheat program will be based on a percentage of the county loan rate, E. L. Burkett, Chairman, Agricultural Stabilization and Conservation County Committee, explained today. The Mills County loan rate is \$1.36 per bushel. The Chairman said that the diversion payment per acre for

a farm will be 20 per cent of the county loan rate per bushel, multiplied by the normal yield per acre of wheat for the farm. This times the number of diverted acres will give the total diversion payment for a farm.

A grower will qualify for the diversion payment if he diverts to conservation uses as many acres as he indicates in the intention-to-participate form at the time he signs up and if he carries out other program provisions. The minimum diversion is 11.11 per cent of the farm wheat allotment; provision is also made for additional diversion. If the grower fails to divert all the acreage he signs up for, he loses the diversion payment.

However, he still may receive credit for marketing certificates provided he meets minimum diversion and other provisions of

the wheat program.

Mr. Burkett pointed out that the minimum participation includes staying within the farm's 1964 wheat allotment, devoting to conserving use an acreage equal to at least 11.11 per cent of this farm allotment in addition to maintaining the normal acreage in conserving use; staying within the allotment for any other allotment crop on the

farm; and staying within the wheat allotment on any other farm in which the producer has an interest in the wheat.

Mr. and Mrs. Charles Porter Jr. and son of Austin spent Friday night with her parents, Mr. and Mrs. Luther Ward.

Mrs. Myrtle Richards of Alamogordo, New Mexico, visited

Mrs. Arthur Cline and friends here last week.

Mr. and Mrs. Larry M. Land of Pittsburg were of Mrs. H. P. Harris and relatives here Sunday.

Mrs. A. B. Spradling of is a guest of her sisters Clayton Shaw and Mrs. Whitley.

**Tarleton Cast
Will Present
"Oklahoma!"**

"Oklahoma!" the great musical show that set modern musical patterns, will play on the Tarleton State College campus Friday and Saturday, May 8 and 9, at 8 p. m.

Students and faculty members and wives have spent weeks rehearsing for the big musical show.

"Oklahoma!" has a cast of 42. Included in the musical arrangements for the famous comedy are: "Oh What a Beautiful Morning," "Surrey With the Fringe on Top," "People Will Say We're In Love," "Many A New Day," and others.

**Earlene's
Antique Shop**
Parker Street
Goldthwaite, Texas

OPEN
10:00 A. M. To 5:00 P. M.
Weekdays
1:00 To 5:00 P. M. Sunday

**EARLENE HOLLAND
LORENE MANUEL**

**REGISTERED
Angus Females**
"You Don't Buy Angus
Females, You Invest in them!"
**HEART OF TEXAS
ANGUS ASSOCIATION**
**All Female
SALE**
At Brownwood, Texas
May 15 - 1 P. M.
Is Your Opportunity Now.
Consignments by leading
Central Texas breeders assure
something for everyone.
PLEASE COME

Gifts of **CANDY** for MOTHER

Select A Nice Box
of
**Mother's Day
Candy**

From Our Big
New and Fresh
Selection



Also Many Other Nice Mother's Day Gift Items

Come in and just look around.

WOODY DRUG STORE
Your REXALL Store

**Charter
Night
Banquet**



Goldthwaite Jaycees

Saturday, May 9th - 8:00 P. M.

At The

Goldthwaite High School Gym

\$2.00 Per Person

Open To The Public

Tickets May Be Purchased
From Any Member of the

Goldthwaite Jaycees

SALUTE-TO-MOTHER FOOD SALE

Loy Long Grocery

PRICES GOOD THURS. NOON, MAY 7TH, THRU SAT., MAY 9TH

Kimbell's SALAD DRESSING Quart 29¢	IMPERIAL SUGAR 10 Lb. Bag 98¢ LIMIT	Quart 39¢
3 - 18-oz. Glasses RED PLUM \$1.00	Lipton's Instant TEA 4 1/2-Oz. Jar \$1.19 3-Oz. Jar 79¢	NEW - RING O ORANGE DRINK 4 46-oz. Cans \$1.00
Premium Crackers 1-lb. Box 30¢	VEGETOLE 3-lb. Ctn. 45¢	GLADIOLA FLOUR 5 Pound Bag 39¢
50 FREE Gold Bond Stamps with purchase of Large Size JERGEN'S LOTION	Reg. \$2.50 size Pond's Angel Skin Hand Cream \$1.25 plus tax and 50 Free Gold Bond Stamps	French's Black PEPPER 1/4-lb. Can 39¢
New Blue CHEER Giant Box 69¢	Folger's COFFEE 1-lb. Can 75¢	Idaho Potatoes 10-lb. Bag 49¢
Fresh Crunchy CARROTS 2 Cel. Bags 19¢	Large Crisp CELERY Stalk 15¢	Boneless Chuck Roast lb. 59¢
PICNIC (Whole Only) Ham lb. 25¢	Bulk FRANKS lb. 39¢	Korn Kist BACON 2 lbs. 69¢
		Grade A FRYERS lb. 39¢

It's REVOLUTIONARY!



AERMOTOR Submersible HOME WATER SYSTEM

We don't want to start any wars. But we're so confident this pump can win your battle for more "Water Where You Want It," that we'll guarantee it for five solid years against any and all conditions. Come on in and ask us about it.

Free Estimates
On Your Needs.

We Service What We Sell
Duren Equipment Company

Dealers For
International • Maytag • Whirlpool • Aermotor

Report of Condition of MILLS COUNTY STATE BANK

Goldthwaite, Mills County, Texas, at the close of business on April 15, 1964.
Bank No. 369 Federal Reserve District No. 11

ASSETS

Cash balances with other banks, and cash items in process of collection (Schedule D, item 7)	\$ 850,915.95
United States Government obligations, direct and guaranteed (Schedule B, item 10)	1,767,648.44
Shares of States and political subdivisions	827,702.75
U.S. Government bonds, notes, and debentures (including \$NO securities of Federal agencies and corporations not guaranteed by U. S.)	10,000.00
Loans and discount (including \$4,430.63 overdrafts) (Schedule A, item 10)	3,191,287.01
Real premises owned \$92,981.45, furniture and fixtures \$32,562.59	125,544.04
Real estate owned other than bank premises	1.00
Other assets (Item 6 of "Other Assets" schedule)	3,956.65
TOTAL ASSETS	\$6,777,055.84

LIABILITIES

Deposits of individuals, partnerships, and corporations (Schedule E, item 3)	3,148,932.23
Time and savings deposits of individuals, partnerships, and corporations (Schedule F, item 5)	2,135,612.86
Deposits of United States Government (including postal savings) (Schedule E, item 4, and Schedule F, item 6)	75,779.69
Deposits of States and political subdivisions (Schedule E, item 5, and Schedule F, item 7)	596,895.37
Deposits of banks (Schedule E, items 6 and 7, and Schedule F, items 8 and 9)	264,675.96
Officers' and directors' checks, etc. (Schedule E, item 8)	12,435.63
TOTAL DEPOSITS (Items 13 to 18)	\$6,234,331.74
(a) Total demand deposits (item 9 of Schedule E)	3,910,200.13
(b) Total time and savings deposits (item 10 of Schedule F)	2,324,131.61
Other liabilities (item 7 of "Other Liabilities" schedule)	30,904.91
TOTAL LIABILITIES	\$6,265,236.65

CAPITAL ACCOUNTS

Capital:	
(a) Common stock, total par value \$125,000.00	125,000.00
Reserves	125,000.00
Undivided profits	261,819.19
TOTAL CAPITAL ACCOUNTS	511,819.19

TOTAL LIABILITIES AND CAPITAL ACCOUNTS \$6,777,055.84

MEMORANDA

Assets pledged or assigned to secure liabilities and for other purposes (including notes and bills rediscounted and securities sold with agreement to repurchase) \$21,000.00
Loans as shown above are after deduction of valuation reserves of (Schedule A, item 9) 65,327.00

I, Glynn Collier, Vice President of the above-named bank, do hereby swear that this report of condition is true and correct to the best of my knowledge and belief.

GLYNN COLLIER

Attest:
W. P. Duren
T. C. Graves
E. B. Gilliam, Jr. DIRECTORS
STATE OF TEXAS, COUNTY OF MILLS ss:
Sworn to and subscribed before me this 24 day of April, 1964, and I hereby certify that I am not an officer or director of the bank.
My commission expires June 1, 1965.
Zelda K. Johnson,
Notary Public.

Junior-Senior Banquet Held In American Legion Hall Friday Night

The annual Junior-Senior Banquet of Goldthwaite High School was held in the American Legion Hall Friday night, April 24, at 8:00 o'clock.

RV's CAFE

at The North "Y" Goldthwaite Texas

Serving
The Best Food

24 Hours A Day
RV and ALICE GEESLIN

The Legion Hall was made into a beautiful garden setting under starry skies, carrying out the theme, "Under the Magnolias."

Tables were decorated with artistically dressed dolls and magnolia blossom candles. Twelve sophomore boys dressed as "Plantation Darkies," served the mint juleps and the meal.

Marty Wrinkle, Junior Class president, was master of ceremonies. Anita Rhoades, Jeanie Stewart, Donna Hardgrave and Pat Wesson sang "Under the Southern Skies" and "Basin Street Blues." Suzanne Cockrell gave a reading, "Marriage-Lucifers."

Rodney House read the Senior Class Will and Helen Head read the Junior Class Prophecy.

Highlight of the evening was the Hall of Fame presentation by Neil Chamberlain to the Seniors and by Layton Black to the Juniors, as follows:

SENIORS

Gay Ketchum, most beautiful girl; Harlan Jernigan, most handsome boy; Donna Doggett and Ronnie Allison, most popular; Wanda Warlick and Gene Aldridge, most athletic; Sandra Arnold and Bill Blackwell, best all-around; Jan Yeager and Sammy Dennard, most likely to succeed; and Darlain Sherwood and DeWayne McCasland, friendliest.

THE GOLDTHWAITE EAGLE—MULLIN ENTERPRISE Page 7
Goldthwaite, Texas, Thursday, May 7, 1964

JUNIORS

Beverly Rhoades, most beautiful girl; Jordan Tully, most handsome boy; Helen Head and Jimmy Ball, most popular; Linda Ruth Geeslin and Phil Duren, most athletic; Sue Childress and Marty Wrinkle, most likely to succeed; Sandra Jordan and Stanley Doggett, best all-around; Janice Watters and Jimmy Don Daniel, friendliest.

Mr. and Mrs. W. W. Williams of Hamilton visited friends here one day last week.

MATTRESSES RENOVATED
Using only the cotton from your present mattress after it is Cleaned, Felted and Combined with a New Inner-Spring Unit, we will build you a Mattress that will give you Lasting Comfort.

WESTERN MATTRESS CO.

Box 5288 San Angelo, Texas
In Goldthwaite call MI 8-2617
Holland's Cafe

On Your
Mother's Day Foods
at Schwartz Food Store

Food King Solid OLEO lb.	10¢	Bama Strawberry Preserves 18-oz. Glass	39¢
------------------------------------	------------	--	------------

Another "Bell Ringer" from Your Affiliated Food Store
Affiliated "All You Want"

Mellorine 4 1/2-Gallon **\$1.00**

All Orange Prices Reduced 15%
 4 6-oz. Cans **\$1**
WE GIVE GREEN STAMPS

Extra Nice Large Heads Lettuce Each	15¢	"From The Texas Valley" Corn on Cob 3 Ears	19¢
---	------------	--	------------

Salad
CUKES Pound **15¢**
Best in Meats

3 Lbs. **49¢**
Tender Veal
Cutlets lb. **79¢**

Sunny Isle Sliced
4 No. 2 **\$1.00**
Mohawk—Boneless, Fatless,
Fully Cooked—Ready To Eat
Picnics 3-lb. Can **\$1.49**

NEW! NO KEY CAN SPECIAL 6 POUND CAN **69¢**
Hormel's Range
Bacon 2-Lb. Box **79¢**

Children's or Ladies'
RUBBER THONGS Pair **39¢**
Quality Bulk
Franks 3-lb. **\$1**

Giant Size **59¢**
Lean, Fresh
GROUND BEEF lb. **49¢**

Prices Good Thurs. Noon, May 7, Thru Sat., May 9th

Mother's Day DINNER SPECIAL

Sunday, May 10, Is Mother's Day.
Treat Mom to Sunday Dinner -- Bring her and the family to RV's Cafe

Complete Dinner With Drink and Dessert **\$1.00**
Child's Plate only 75¢

RV'S CAFE

RV and Alice Geeslin
At the North "Y" - Goldthwaite, Texas

CORNELIUS FEED COMPANY

CHECKERBOARD service bulletin

It Will Pay You
To Feed

Checkerboard

See Us For Your Needs In

☆ Range Minerals ☆

☆ Stock Salt ☆

Complete Line of
Purina Products

Available
At Your Checkerboard Store

See Us For Your

☆ Drenching Needs ☆

Complete Line
Dr. Rogers and Thibenzole Drenches
Range Cattle Spray

Cornelius Feed Company

Charles Cornelius
Phone MI 8-2235 - Goldthwaite, Texas

Star News

By WANDA HENRY

Miss Merry Frances Brown of Lake Jackson was a weekend guest of Miss Shirley Hamilton. Mr. and Mrs. Eddie Blake Hamilton and family of Beeville also spent the weekend with

Mr. and Mrs. Jim Hamilton and Shirley.

Mrs. Izora Franks and Julia Stubbs of Abilene spent the weekend with Mrs. T. L. Adams. Weekend visitors of Mr. and Mrs. Winifred Sheldon were Mr. and Mrs. Doyle Channell and Cindy. Mrs. Fred Shave and Mrs. Burnell, all of Evant, and



CROPLAND FOR GRASSLAND—Milton Schwartz is shown here in a Side Oats Grama and K. R. Bluestem planting,—traded cropland for grassland by seeding native grasses on his ranch near Goldthwaite. Grass farming is finding a place in the Brown-Mills Soil Conservation District as land owners trade mechanical harvesters for "Four Legged Combines." Cost-share is available in February and March through the ACP program.—(SCS Photo)

Mr. and Mrs. Huntis Black of Scallorn.

Mrs. Vic Prince of Granbury spent the weekend with Mr. and Mrs. Slim Hurst.

Mr. and Mrs. G. C. Kinchele and family of Odessa were weekend visitors in the homes of Mr. and Mrs. Grover Kinchele and Mr. and Mrs. Pete Miles.

Mrs. Dave Thompson, Mr. and Mrs. Horace Webb and Mrs. Fred Shave and Mrs. Burnell of Evant were visitors in the home of Mr. and Mrs. Albert Power, Sunday.

Mr. and Mrs. Johnny Soules of San Angelo came Sunday night to Mrs. John Hamilton's to visit with her.

Dinner guests Sunday of Mr. and Mrs. Bob Black were Mr. and Mrs. Bobby Huckabee and family, Mr. and Mrs. Thomas Huckabee and Mr. and Mrs. Jim Yeager. Other visitors Sunday afternoon were Mrs. J. D. Hunt and boys.

Mr. and Mrs. Russell Boyd and family were supper guests of Mr. and Mrs. Bill Sanders and boys Sunday night.

**Drs. Ellis & Ellis
OPTOMETRISTS**

308 Citizens Nat'l Bank Bldg.
Brownwood, Texas

Glasses or Contact Lenses
Fitted. We grind all lenses.

Call Milton 3-0184 or write

P. O. Box 149
For Appointment.



SEEDING GRASS—Barney Welch of Mullin used the district drill to seed Side Oats Grama and Green Sprangle Top following Mesquite brush control. The grass drill shown has depth band gauges and double disc openers, important in proper placement of grass seed. About 250 acres of grass were seeded with this equipment this spring. —(SCS Photo)

Benefit "Tea" Held At Jennie Trent Dew Library Thursday

A Silver Tea and Open House was held at the Jennie Trent Dew Library from three until six o'clock, Thursday afternoon, April 23.

Miss Annie Laurie Petsick, outgoing president of the Self Culture Club, welcomed representatives of the different schools of the county, and expressed appreciation for their cooperation in this county wide venture.

Mrs. John Hester paid tribute to Mrs. Jennie Trent Dew, founder of the library, and also to Mrs. Sam Sullivan, a representative of the Trent family. The permanent members of the library board, Mrs. John Berry, Mrs. E. B. Gilliam and W. C. Barnett, were mentioned with appreciation for their continuing good work. Mrs. Hester paid a special tribute to the librarian, Mrs. Hazel Bradford.

The library was beautifully decorated with floral arrangements by the Garden Club. The tea table was especially attrac-

tive with a cutwork cloth and an arrangement of spring flowers and silver appointments.

A special feature of the decorations was an arrangement of calla lilies, given by Mr. and Mrs. John Berry, under the picture of Mrs. Jennie Trent Dew.

Mrs. Norman Duren introduced the program from Mullin consisting of piano numbers, song and dance by Inez Kirkpatrick, Kay Fisher, Vicki Mosier and Woody Egger.

For the next seated program Neil Chamberlain played "Brahms Rhapsody Op. 72 No. 2" and "Rustles of Spring." Twenty-five members of the Methodist Junior Choir, directed by Mrs. Joe S. Langford, sang several numbers.

Star school pupils, Marsha Harper, Sheryl Casbeer and Nan Duncan, contributed to the program with poetry interpretation.

Priddy presented a most interesting musical program consisting of accordion solo, trio

of boys on the guitar and songs from the Spanish class.

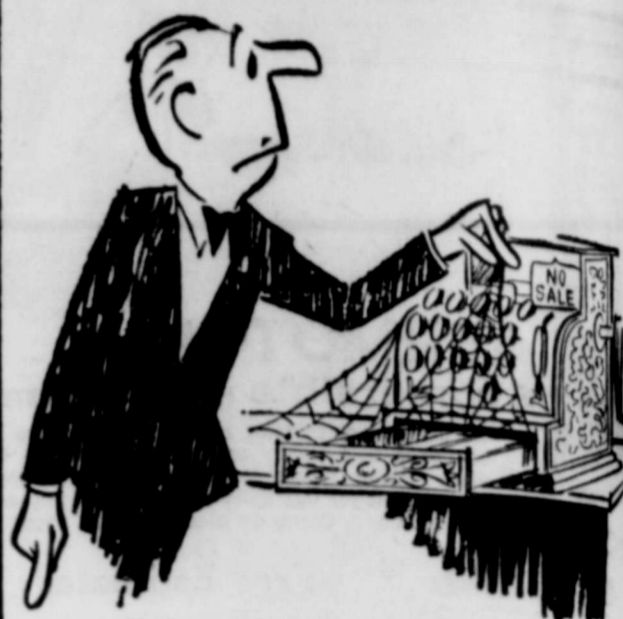
The Methodist Youth Bell Choir, directed by Charles Childress, presented several numbers.

A special feature of the program was the tea time music presented by pupils of Mrs. Sam Sullivan, Mrs. Talbot Ledbetter, Mrs. Thurman Head, and Mrs. Glen Delapp.

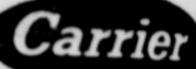
The tea was sponsored by the Self Culture Club with the operation and assistance of every club in the county. The president was given the opportunity of appearing in the receiving line and being seated at different hours. Without exception they were all present.

— IT PAYS TO ADVERTISE

sales down?



due to poor air conditioning?
Now's the time to convert to



Antiquated air conditioning keeps customers away. And that's not all. Inadequate air conditioning is costing you money. Your operating costs are unnecessarily high... breakdowns are more frequent. Remember, your present equipment will never have more trade-in value than it has now. Why convert to modern Carrier equipment? You'll have lower operating cost / increased cooling capacity / quieter, more dependable operation / new equipment warranty / increased property value / plus, your customers deserve Total Comfort.

Call us today for complete information...

PAUL BROWN ELECTRIC
411 South Pecan Street
Lampasas, Texas



**ALL LIFE IS DEPENDENT UPON
SIX INCHES OF EARTH!**

The land we live on is covered by six inches of rich top soil. Without it, all life would cease—Nature's bountiful gifts of water, woodland and farmland become wasteland!

Fire, flood, drought and improper planting can all lead to soil erosion. It is up to each of us to protect against these hazards. Follow the rules of fire safety; aid in flood and water control programs; and if you farm, be sure to follow scientific soil-prevention programs.

DO YOUR PART...

FOR FREE INFORMATION AND HELP, CALL YOUR

SOIL CONSERVATION SERVICE
SPONSORED IN THE PUBLIC INTEREST BY

Lometa Commission Co.

Lometa, Texas

J. H. (Judge) Harrell - Owner

Bus. Phone SK 2-3168 - Res. Phone SK 2-3169



**WHAT'S YOUR
DEFINITION?**

Webster's Unabridged Dictionary says: "Conservation: a conserving, preserving, a guarding, or protecting."

A smaller dictionary says it even better: "Conservation: the act of keeping from decay, loss or injury."

President William Howard Taft said: "Conservation is the preservation of our natural resources for economical use; so as to secure the greatest good to the largest number for the longest time."

Conservation Is Not Dis-use; It Is Wise Use

**WATER
Is
MONEY--
Use It
WISELY!**

Wise use of your natural resources of soil and water is the protection of your investment in the future, the future of your family, the community and the nation. See the representatives of the Soil Conservation Service for a plan for this wise use.

We heartily approve a sound Soil Conservation program and recommend it to Mills County farmers and ranchers.

Harper Implement Company

Your Mills County John Deere Dealer

Goldthwaite, Texas



THE TOWNSENDS

THANK YOU!

Our family is grateful for the wonderful support the 10th District, in general, and Mills County, in particular, have given me for re-election as your State Representative. To win by a two to one margin, carrying six counties in the district and receiving 48.5% in my opponent's home county, makes the help of many people. I will continue to serve all the people of our district to the best of my ability.

Rep. Terry Townsend

Spring Sale

Of

New FORD

CARS and TRUCKS

If You Want To Save Money,
Now Is The Time To See Us
For A Trade.

Landrum & Collins Motor Co.

Your Friendly Ford Dealer
Goldthwaite, Texas



AUSTRIAN WINTER PEAS—V. D. "Buster" Ables, who farms north of Caradan, has grazed this field of Austrian Winter Peas with cattle. The peas were inoculated before planting and had many nodules on the roots which add available nitrogen to the soil for following crops. —(SCS Photo)

Last Rites For Mrs. Joe LeMay Conducted Friday Afternoon

Funeral services for Mrs. Joe LeMay of Goldthwaite were held in Stevens Memorial Chapel in Coleman, Friday afternoon, May 1, at 4:00 o'clock. Services were conducted by Rev. G. N. Seipp, pastor of Trinity Methodist Church, and Rev. Lester Probst, pastor of First Baptist Church. Burial was in the Coleman Cemetery under the direction of the Roy Wilkins Funeral Home of Goldthwaite.

Pallbearers were Sherman Perry, Harry Welch, R. L. Steen, Ferman Pauley, Wade Hemp-

hill, Simon Horne, B. M. Mitchell and Edgar Nealey.

Mrs. Laura Leola LeMay was born January 13, 1895 in Coleman County, daughter of the late Mr. and Mrs. T. M. Griffis. She passed away in Childress and Cruzcosa Clinic and Hospital Thursday morning, April 30, 1964. She was married to Joe LeMay February 13, 1927 in Coleman. They moved to Mills County in 1949. A graduate of Howard Payne College and a member of the Baptist Church, she taught school for 20 years.

Survivors are the husband, Joe LeMay of Goldthwaite; two brothers, Theo Griffis and Bill Griffis, both of Coleman; five sisters, Mrs. Joe Nixon of Coleman, Mrs. Jack Minatra of Amarillo, Mrs. Raymond Mathis of Floresville, Mrs. Neal Cook of

CEMETERY WORKING AT PLEASANT GROVE

Tuesday morning, May 12, has been set as the time to work the Pleasant Grove Cemetery. Anyone that can is asked to bring lawn mowers and tools and help with this work.

Crane and Mrs. Geraldine Lovelace of Wichita Falls; other relatives and a host of friends.

THE GOLDTHWAITE EAGLE—MULLIN ENTERPRISE Page 9
Goldthwaite, Texas, Thursday, May 7, 1964

Miss Wanda Soules To Be Honored With Bridal Shower

Miss Wanda Soules of Moline, bride-elect of Franklin Rind, will be complimented with a bridal shower, Friday night,

May 15, at 8:00 o'clock, in the home of Mrs. H. G. Duncan, at the Baugh Ranch.

Hostesses are Mrs. H. G. Duncan, Mrs. Woodson Clary, Mrs. Pat Carswell, Mrs. Bill Sanders and Mrs. J. D. Hunt.

All friends and relatives are invited.

To My Friends

I wish to express my deep appreciation for the support of my true friends for their loyalty over the past 14 years.

Always know that my family and I will hold you in the highest esteem.

Thanks,

C. F. "Stub" Stubblefield

YOU CAN TELL A CONSERVATION RANCHER



BY HIS IMPROVEMENTS

When you see a well improved place, it's a good indication its owner has tried conservation and found that it pays.

CONSERVATION PAYS FOR
EVERYBODY!

**COMPLETE
LUMBER**
& BUILDING SUPPLIES

For Those Farm and Ranch REPAIRS
or New BUILDINGS

Barnes & McCullough

Phone MI 8-2411

"Everything To Build Anything."

A SOUND INVESTMENT

Root Plowing and Seeding Rangeland Plus Deferred Grazing Means
DOLLARS IN THE BANK



BEST IN EQUIPMENT

2 - D-7 CATERPILLAR CATS 10,000-POUND CHAIN
MESQUITE GRUBBER — The Most Modern for Mesquite
or Any Other Allied Infestation.

SKILLED WORKMEN

EXPERIENCED DOZER OPERATORS
READY TO GET THE JOB DONE RIGHT

HIGHEST INTEGRITY

YOU GET THE MOST FOR YOUR DOZER DOLLAR
... WHEN YOU DEPEND ON US!

Range Conservation pays off — Brings More Grass, Better Grass — Produces More Pounds of Beef and Mutton Per Acre . . . which in turn Means More Dollars. Let us Improve Your Land! Free Estimates.

J. L. "Jim" Aldridge

Land Improvement Contractor
DEMOCRAT, TEXAS

Mailing Address: Rt. 1, Mullin, Texas — Phone YU 5-2170

BULLDOZING

. . . By The Modern Chain Method

TANK WORK — GRUBBING

. . . With Latest Equipment

ROOT - PLOWING

. . . With Latest Model
Fleco Plow

CUSTOM FARMING

. . . 871 Ford Diesel Farm
Tractor With All Modern
Equipment to do Your Job.

We'll Gladly Give You
FREE ESTIMATES
On Work You Need Done
JUST GIVE US A CALL

NTALS
Small four
Mrs. Annie
Small four
Phone MI
oody.
TO ADVERTI
THOR.
R-FLY
I-TROL
CENTRATE
n aid
control of...
N FLIES
E FLIES
OT ROY
PY JAW
L PARASIT
mix with all
ifts, or have
t. Anchor 348-R
concentrate is
special new
Average results
92% reduction
LY CON-TROL
year-round use
spring and
low and
round-play 9
of deficiencies.
of Anchor 348-R
concentrate
requirements of
and on including
MI 8-3311
YKIN
D STORE
waite, Texas
98¢
69¢
5¢
\$10
gal.
nte 89¢
for
Roll 23¢
back
ell's 25¢
ans
ll's 39¢
lbs.
Bag 45¢
lb. 30¢
Box
or Whole
45¢
lb. 39¢
39¢
nd
A.M.

Southland
Murphy-Main Streets
Riverside 2-6431
Deloit, Texas

CIVIL DEFENSE APPROVED FALLOUT SHELTER

\$5.00 up

for Children Under 18
Hour Coffee Shop
Radio-Television
Daily Air Conditioned
INSIDE PARKING

Battery Special!

Republic ☆ Willard ☆ Southland

12 to 48 Months Guarantee

As Low As **\$725** and Up

Plus Your Old Battery

Shelton Bros. Motor Company
and Fisher Goldthwaite, Texas

The Family Hour Begins at 9

Keeping in touch by long distance has never cost less than it does after 9 P.M. You can call anywhere in the U.S. for \$1.00 or less.* And with convenient Direct Distance Dialing it's easier than ever. So if you're away on business, away at school or just lonely for the sound of a loved one's voice, go ahead—enjoy yourself—when the low cost family hour begins at 9.

**station-to-station, plus federal excise tax*

Southwestern States Telephone

MRS. ORA BLACK
rain which fell here last week measured inches, and was very beneficial to feed and grain crops.

spending two weeks visitatives in Hot Springs, Ark. Mr. and Mrs. Dick returned here to their last week. Al Hughes, a who resides in California accompanied them. While

in Arkansas the Hughes did some fishing from the shores of Lake Hamilton.

Mrs. G. W. Bishop spent a few days last week in the Goldthwaite hospital.

Mrs. Luther Brown had two of her granddaughters from San Saba visit with her last week.

Rev. Ray Rogers and family of Brownwood were Sunday luncheon guests of Mr. and Mrs. Bill Bishop and family.

We're glad to report Mrs. Arlie O'Bannon is recuperating at her home, after being confined to her bed for two weeks.

Mrs. Jane Johnston is home from Memorial Hospital in San Saba, after almost nine months stay.

Mrs. Lila Ward of Goldthwaite visited here last Tuesday with Mrs. Lora Maund and Ed Evans.

We were sorry to learn of Mr. Jimmy Head's passing. Years ago he taught a singing class at the Scallorn Baptist Church. In later years he carried the mail from Lometa to the people of the Scallorn community.

Mr. and Mrs. Earl Brown of Coleman called in our home recently. Earl is a cousin of ours and will be remembered by all who attended C. H. Black's birthday barbecue, as the fellow who recorded the "doings" at the party.

Gene Turbiville from Llano was a visitor in the C. H. Black home Wednesday. Mr. Turbiville was superintendent of the Scallorn Sunday School for several years.

Mrs. Earl Blake, Billy Black and mother called on Layton Black Tuesday afternoon in Goldthwaite. Layton is nursing a case of mumps.



CONSERVATIONIST EXAMINES GRASS—This pasture planting of Coastal Bermuda grass was sodded and irrigated in 1960 by Arthur Wilcox. The pasture was not irrigated in 1961. Elgin Smith, Conservationist from the Goldthwaite SCS office examines the growth made during the growing season to the date picture was made in September 1961. —(SCS Photo)

Center City News
By MRS. JOE GREEN

I will try and send in some news as I have been working and haven't had time.

There was church at both churches here Sunday, with a good attendance at each church. There was also singing here Sunday afternoon.

Kayvon Coffman is home on vacation. She is working in Austin. My, how time flies, she has been working a year.

Eva Faye and Eddie Joe spent a few days with us recently. Our grandson is walking and trying to talk. He is a dandy in our book. Of course he is the only boy in our family and I guess that makes some difference.

Jim Green spent an afternoon with us one day last week. Jim has had surgery and is just now getting able to drive his car. He is still weak but I think he is doing okay, hope so.

We extend our deepest sympathy to the Welch Family, the Brown Family and the Kemp Family in their loss. May God be with them in their sorrow; also all the other families that

have lost loved ones.

Well it is not going to be long until all the schools will be out. I know the children will be glad to have a vacation.

Mr. and Mrs. Walter Frank and Harold visited Walter's mother one day last week. Mrs. Frank has been on the sick list but is better at this time.

Mrs. Charles Griffin hasn't been feeling well these days. I sure hope she is soon feeling better.

Mr. and Mrs. W. Huggins of Brownwood visited Mrs. C. M. Head and Truett one day last week.

I am one of the committee to solicit funds for the Salvation Army Drive at Center City. If anyone wishes to donate will they please leave their donation at the store, as I do not have time to get out and contact everyone.

Congratulations and good wishes to Mr. and Mrs. Charles Parker. Vireta is one of our home girls and we wish for them all the happiness in the world.

I will sign off this time and try to do better next time.

— IT PAYS TO ADVERTISE —

Priddy Members Attend State FHA Meeting In Austin
By BARBARA MARWITZ

Doris Bufe, Carolyn Schrader, Evelyn Seilheimer, and Imogene Stegemoller, members of the Priddy F. H. A. Chapter of Priddy High School, attended the State F. H. A. Meeting in Austin May 1 and 2nd.

Two members, Carolyn Schrader and Evelyn Seilheimer, received the State Degree of Achievement.

Doris Bufe, selected by the chapter (through the points system) was voting delegate and Imogene Stegemoller was alternate.

Mrs. Dorothy Diddle, Vocational Homemaking Teacher, accompanied the group to Austin.

Local FHA Members Attend Austin Meet

Beverly Rhoades, president of the Goldthwaite FHA Chapter and Judy Tubbs, voting delegate, attended the State FHA meeting in Austin Thursday through Saturday of last week.

Mrs. Wallace Johnson, FHA Teacher, accompanied the members to Austin.

SURE DEATH

... to those pesky insects with this powerful insecticide! Effective control of flower pests, fleas, lawn and garden insects. Ideal for pecan groves, orchards, poultry farms and termite control. Can be diluted with water or oil. Kill-Ko makes a complete line of emulsifiable concentrates for all uses.

KILL-KO
50% MALATHION EMULSIFIABLE CONCENTRATE

KILL-KO
SATISFACTION GUARANTEED

THE GOLDTHWAITE EAGLE—MULLIN ENTERPRISE Page 11
Goldthwaite, Texas, Thursday, May 7, 1964

Announcing

Rodgers' and Hammerstein's OKLAHOMA!

Tarleton State College
May 8th and 9th -- 8:00 P. M.

Main Auditorium

Adult Tickets \$1.00 — Student Tickets 50¢

Student Delegations from Nearby Schools Are Especially Invited!

LOMETA CATTLE SALE

Every Friday at 1:00 P. M.

Plenty Corral Room—
Individual Buyer's Pens,
Plenty Good Water, Clean Troughs,
Excellent Care of Your Stock.

Buyers Come To Lometa

Expecting to Pay More to Get Good Fresh Country Cattle.

Our run consists almost entirely of fresh country cattle — — — and they bring More Money at Lometa.

Under Federal Supervision
Completely Bonded.

ALWAYS A BETTER MARKET
YOUR BUSINESS APPRECIATED

Lometa Commission Co.
Lometa, Texas
J. H. (Judge) Harrell — Owner
BUS. PHONE SK 2-3168 — RES. PHONE SK 2-3169

SWIFT'S FEEDS

Quality that makes 'em bounce

RESEARCH FARM CHECKED
PROVED IN THIS COMMUNITY

Swift's Chick Starter
... gives your chicks a new kind of lift in life for more egg-boosting returns next fall. Made with the Pick of the Proteins from Swift's own sources of supply and CALO-GEN, too, Swift's energy ingredient with 2½ times as much energy as grain. Get Swift's Chick Starter today.

Swift's Swine Concentrate
... puts more bounce into those last stages of hog feeding for better payoff at the market. Made with the Pick of the Proteins, including plenty of animal proteins. Contains CALO-GEN, too. Swift's super-energy ingredient for more efficient gains. Order yours today.

Service Mill
Your Swift Feed Dealer
Priddy, Texas

The Security of Your Family
Is Dependent On
Security of Your Land

Tomorrow's Business Depends On how well we use our Soil Today

AIM AT . . .

1. Sound Land Use
2. Building Soil Productivity
3. Using the right soil saving measures on each acre.
4. Providing economically sound Conservation Methods

YOU, PLUS YOUR SOIL CONSERVATION SERVICE, CAN HANDLE YOUR SOIL BEST!

Next week has been designated as SOIL CONSERVATION WEEK — a period in which emphasis will be placed on importance of conserving and improving the productivity of the soil for crop and pasture.

We are glad to cooperate with the Soil District supervisors here, and with other representative groups in emphasizing the importance of this program!

Graves & Son Ranch
Cooperators with Brown-Mills Soil Conservation District



A Graduation Remembrance

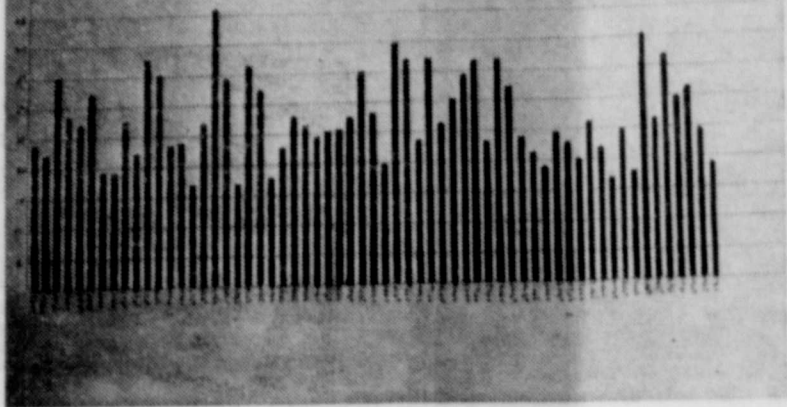
Perpetuate the happy memories of your graduation day . . . share them with family and friends . . . in a portrait.

PHONE MI 8-2471 FOR APPOINTMENT

WICKER STUDIO

North Parker Street Goldthwaite, Texas
Open 8 a. m. to 7 p. m., Monday Through Saturday

**ANNUAL RAINFALL SINCE 1903
GOLDTHWAITE, TEXAS**



RAINFALL SINCE 1903—This chart shows the annual rainfall for Goldthwaite from 1903 through 1963.

The chart shows 18.80 inches of rainfall recorded here in 1963. This was considerably less than 24.37 inches recorded in 1962 and 31.31 inches in 1961.

It is interesting to note that rainfall recorded in 1957 was the second highest in the 60 year record. In 1957 Goldthwaite recorded 40.08 inches. Highest rainfall recorded here was in 1919 when it measured more than 45 inches.

The chart shows that prior to 1957 there were 11 years of below normal rainfall. From 1946 through 1956 the amount of rainfall recorded here was below the long term normal average of 30.14 inches. The year 1954 was the record low of below 16.80 inches.

MOTHER'S DAY

Beautiful Seamless HOSE \$100

HANDBAGS \$2.99 to \$5.99

PLAY SUITS \$4.29 to \$11.98

For Young Mothers

A New Hat For Mothers Of All Ages

Buy Now While They Are 1/2 PRICE

Visit Your

Tots And Teens Shop

Jane Hamilton Phone MI 8-2264

Mullin FFA Rodeo Held Last Week

First place in the Mullin FFA Invitational Rodeo was won by Lometa, and Gustine came in second for the high school hon-

ors. Grade school first was Mullin, with Goldthwaite second.

Winners in the high school division were as follows:

Bull Riding — Kenny Waites, Lometa.

Bronc Riding—Tied were Ken Pope of Coleman and Cayetano Hernandez of Gustine.

Girls' Ribbon Roping—Linda Edgar, Blanket.

Tie Down Roping—Tooter Waites, Lometa.

Girls' Barrel Race — Tinker Shaw, Blanket.

GRADE SCHOOL

Calf Riding — Larry Minica, Mullin.

Break-Away Roping — John Carl Smith, Mullin.

Girls' Barrel Race — Merrill Adams, Goldthwaite.

Boys' Barrel Race — Kent Geeslin, Goldthwaite.

Pig Scramble—Carl Ray Hertz, Mullin.

Bill Lee of May was presented a trophy for best all-around high school cowboy, and Larry Minica of Mullin received the grammar school trophy.

Mrs. Charles Ford of Kenedy spent the weekend with her parents, Mr. and Mrs. F. M. Stephens.

MOTHER'S DAY Gift Specials

CHOOSE A GIFT FOR YOUR LEADING LADY **NOW**

- ☆ LINGERIE
- ☆ HOUSE SHOES
- ☆ HANDBAGS
- ☆ GLOVES
- ☆ BLOUSES
- ☆ JEWELRY
- ☆ HOSE
- ☆ LINENS
- ☆ GOWNS
- ☆ PAJAMAS
- ☆ SLIPS
- ☆ PANTIES
- ☆ SCARVES
- ☆ HOUSE COATS
- ☆ WESTERN WEAR
- ☆ DRESSES
- ☆ SPORTSWEAR
- ☆ ALL-WEATHER COATS
- ☆ SHIFTS
- ☆ JUMP SUITS



Little's

"SINCE 1898"

Piano Pupils To Be Presented In Spring Recital

Mrs. Thurman Head will present her piano pupils in Spring Recital next week. Elementary pupils will be presented Tuesday evening, May 12, and Junior

and Senior pupils Friday evening, May 15. Both recitals will be at 8:00 p. m. in the High School Auditorium.

The public is invited to attend each recital.

Mrs. W. W. Thompson of Whitney was a guest of Mrs. Loy Long and other friends here last weekend.

Piano Recital Friday Night

Mrs. Talbot Ledbetter present her students in a Piano Recital Friday night, 8, at 8:00 o'clock, in the School Auditorium. The public is most cordially invited to attend.

GIFTS To please Mom

Only 3 More Days To Select Your Mother's Day Gifts

From our unusually fine selection of gift merchandise.

MOTHER'S DAY

MAY 10



And let us remind you we also have Just what you need to take care of the -----



YARBOROUGH & DUREN

"The Friendly Store Where Your Money Buys More."

THANK YOU!

I want to thank the people of Mills County for their vote and support in the primary election last Saturday.

My special thanks and gratitude to all the residents of the county for their courtesy and kind treatment accorded me during my campaign for the office of Sheriff, Tax Assessor and Collector.

If I failed to see anyone in the county during the campaign it was purely un-intentional, or un-avoidable, since I made a special effort to see all of you.

I will appreciate the help and cooperation of all of the citizens of the county in carrying out the duties of the office of Sheriff, Tax Assessor and Collector, after taking office.

I plan to attend the Sheriff's and Tax Assessor and Collector's short course of instruction at A&M University this summer and I assure you that I will serve you to the best of my ability.

Again I thank all of you.

Sincerely,

HORACE G. BROOKS

The Goldthwaite Eagle



ESTABLISHED 1894

AND THE MULLIN ENTERPRISE

GOLDTHWAITE, MILLS COUNTY, TEXAS

SINGLE COPY, 10¢

THURSDAY, MAY 7, 1964

Soil Conservation

DEFINITION
A Texas Soil Conservation District is a sub-division of state government organized under the Texas State Soil Conservation Law by resident landowners through the democratic procedure of petition and referendum.

By means of a soil conservation district farmers and ranchers have authority to exercise cooperatively their own initiative and responsibilities in achieving soil conservation district is governed by a board of five supervisors or ranchers in the district and who are elected by the other landowners.

In accomplishing their purpose, soil conservation districts may cooperate with other soil conservation districts and may cooperate with and obtain aid from federal, state and local agencies, and private individuals.

OBJECTIVE
Use each acre of land within its capabilities and treat each acre according to its need for protection, maintenance, or improvement. Accomplish this with a complete coordinated conservation plan.

feed than do weak stands. Everyone who values grass keeps plenty of leaf growth so the food factory can work properly.

Soil Conservation District Democracy In Action
You develop a basic conservation plan on your farm or

ranch with technical assistance provided by the district.

You apply conservation practices on your farm or ranch with assistance available to the district as needed.

District Supervisors:—
1. One from each of the 5 zones to represent you; 2. Lives

in the District; 3. Terms are rotated; 4. No salary—but some expenses; 5. Meet once a month.

Assisting Soil Conservation Districts are: U. S. Soil Conservation Service; Extension Service; F. H. A.; Vocational Agriculture; A. S. C. S. and local people.

Emergency Gun Cleaning Rod

A piece of fishing line about four feet long loaded with a half-dozen split-shot sinkers and an oiled patch at one end makes an excellent emergency gun cleaning rod that can be carried afield.



SCS WORK UNIT STAFF—Four members make up the Soil Conservation Service work unit staff in Goldthwaite. They are (left) Elgin Smith, Work Unit Conservationist; Millard Schuster, Soil Conservationist; Carl Casbeer, Conservation Technician; and Bobby Wilcox, Conservation Aid. —(SCS Photo)

How Grass Makes Food for Growth

Grass makes food for growth in its leaves. The food factory in its leaves, stores food stored in the roots while it is dormant to make new growth in the spring.

ture enough food to maintain a thriving root system, a thick stand, and good top growth.

Roots are the highways that bring water and nutrients from the soil to the leaves.

From the air the leaves get carbon and oxygen, using energy from the sun the leaves combine all these elements into the sugars, starches and proteins that the plant uses to grow and reproduce itself.

Thick, healthy deep-rooted grasses give better protection from wind and water erosion and provide better livestock

Raise More Grass ----- Sell More Meat
Grow Better Crops - - - - Sell More Grain



And Buy A New

★ BUICK ★ OLDSMOBILE ★ PONTIAC

From

HOMER DOGGETT ----- Mills County Representative

For

Shaw Motors

San Saba, Texas

Your Authorized Buick, Pontiac & Oldsmobile Dealer

CONSERVATION IS EVERYONE'S JOB!

All of us, farmer and city-dweller alike, have been greatly blessed in the rich, fertile soil that covers our land. And all of us have a responsibility and obligation to make sure that the generations to follow us will be equally blessed with abundant harvests every year. We can all do our part to make sure the land of the free will always be the land of plenty!



PRACTICE SOIL CONSERVATION — WHENEVER, WHEREVER YOU CAN!

See Us For

Farm and Ranch Conservation Work

Land Leveling-

We Have The Equipment And Know How To Do Any Size Job.

Spring is Here and it's time to plan your land leveling needs And Get the Job Done Before Planting Time.

Mesquite Plowing
Root Plowing - Dozing
Brush Raking - Brush Chaining
Carry-All For Tank Rebuilding



Now Working With

TWO D-8 and TWO D-7 CATS
ALSO MOTOR GRADER

Plenty of Equipment to take care of any size job -- Large or Small.

Call us for Estimates.

Mask Brothers

E. M. Mask
Phone 452-3262

Phone 452-3333
P. O. Box 277, Richland Springs, Texas

M. C. Mask
Phone 452-3271

Let Residue Work For You!

By MILLARD SCHUCHART
When small grain harvest is completed, we then turn to preparing the land for the next crop. Each farmer has his own way of preparing his land. Of the methods used, each is usually the one the operator believes will benefit him most. Some of the practices used are: deep breaking, shallow plowing with one-way and chiseling.

Some small grain crops have quite a bit of straw and stubble residue left after the harvest. If this residue is handled right, it can protect the soil from the heat and the high intensity rains we sometimes get. In the San Saba-Brady and Concho Soil Conservation District we have become accustomed to an annual summer drought. To compete with these hot dry spells we need a good cover on the ground to protect it from excessive heat and evaporation. Deep breaking usually results in most of the residue turned

under. The residue under the ground will temporarily tie up nutrients needed for following crops. The surface soil is left exposed to the elements: wind, rain, and hot sunshine.

Shallow plowing with a one-way will leave about half the residue on top. This gives fairly good protection, but repeated plowing will turn another 50% under each time until the surface may be left bare again.

A chisel type plow will tear up the soil and leave it in shape to receive the rain. It will leave about 90% of the residue on top of the soil where it will do the most good. If we keep the residue on top and keep the soil cool, the organisms in the soil will take care of breaking the residue down and putting the nutrients back in the soil where they belong.

Some of the benefits of keeping litter on top are:
1. Protection from wind — wind velocity is cut to nearly



TANKS FOR WATER CONSERVATION—This picture of a recently constructed tank on the Loyd King ranch South of Goldthwaite is a good example of water conservation practice. This tank had several feet of crystal clear water from underground source soon after completion before rains came to provide run-off. Tanks such as this provide for good fishing in addition to water conservation. —(SCS Photo)

Basic Tips For Soil Improvement

Are your soils run down? Are your acres hard to work and slow in absorbing water? Are crop yields going down instead of up? Are washes showing up after every rain?

Want to improve the soil and get the production up and the debt down? Then take a lesson

zero at the soil surface. This cuts erosion from wind to practically nothing and evaporation is cut considerably.

2. Protection from rain drop splash erosion — due to raindrops falling on the cover instead of directly on the soil. Reduces crusting.

3. Rainfall runoff is slowed down by the cover — increases infiltration and reduces erosion.

4. Insulates the soil—it stays cooler in summer and warmer in the winter.

5. Helps maintain organic matter content—decaying residue increases organic matter and less organic matter is burned out by the heat.

from Mother Nature. Nature's method of building soils is a good prescription to follow in building production and protection into a soil. The following principles of Nature's method of building soil will bring those sick, lazy acres back into production.

COVER—Keep the land covered with litter or growing crops as much as possible for protection.

ORGANIC MATTER — Grow crops for organic matter supply and leave all residue on the soil surface.

FERTILITY — Add fertilizer where needed.

MINIMUM TILLAGE — Keep livestock and equipment off the fields when wet to keep soil from packing.

STRUCTURE — Follow all above principles and grow deep-rooted legumes to encourage worms and bacteria and to improve air, water and root movement.

RIGHT LAND USE—Grow the kind of crop suited to the land.

TERRACES OR DIVERSIONS —Where needed in addition to above principles. Maximum production and good protection will be obtained if these principles are applied to the land.



ESTABLISHING COASTAL BERMUDA GRASS—SCS Conservation Technician Carl Casbeer, left, and Floyd Daniel look at the results obtained by Daniel to establish Coastal Bermuda grass on his ranch near Goldthwaite. The local Soil Conservation office staff provided assistance to Daniel in planning the land use change from cropland to pasture and cost-share from the ACP Program helped defer the total cost of establishing the grass. —(SCS Photo)

Grass Comes First



**OUR BUSINESS IS
MARKETING YOUR WOOL...**

The demand your wool will meet when we present it to a prospective buyer is determined, in part, by the condition of your pastures. It takes good grass to grow good wool.

THAT'S HOW CONSERVATION PAYS

By Saving Your Soil, You Grow More Grass; By Growing More Grass, You Produce Better Wool.

YES, CONSERVATION PAYS!

It Pays You. It Pays Us. It Pays Everybody!

Sam H. Rahl & Co.
WOOL — MOHAIR — PECANS

Our Responsibility!

To Leave our Land as Productive and Fertile as — or more so than — we received it.

In doing this it is necessary to condition our land to hold the water that falls.

A good method of conditioning our land is by root plowing and seeding. A 100 acre tract we root plowed and seeded in early 1959 and 1960 showed exceptionally fine results by July, and continues to show improvement each year.



This picture shows some of my Angus herd grazing on irrigated pasture Southwest of City Limits of Goldthwaite. Pasture has good cover of Bermuda grass during Summer growing season and Rescue Grass during Winter months.



This picture taken in April shows good stand of Bermuda grass coming along to take over for the Spring and Summer season as Rescue grass starts fading out. This is a highly palatable and nutritious crop ideal for animals that may require special attention.

By including range and field crops that will build and conserve favorable soil condition and fertility.

I want to recommend the program to all Mills County farmers and ranchers. Soil Conservation will pay dividends.

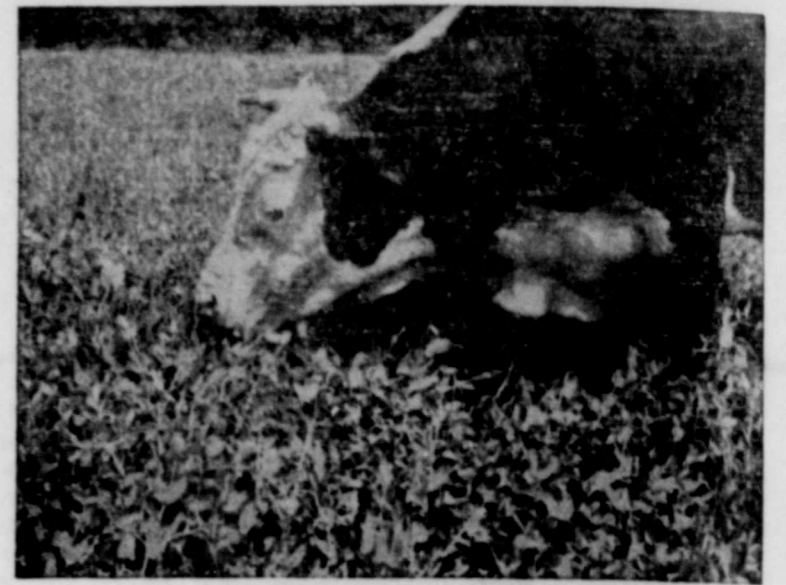
L. B. BURNHAM

Cooperator with Brown-Mills Soil Conservation District

SOIL CONSERVATION PRACTICES

Will Pay Dividends

To All Farmers and Ranchers



We Recommend To Every
Land Owner and Operator

To Become A Member

Of The

Soil Conservation District Program

AND WE INVITE YOU TO
COME IN AND LET US SERVE YOU

D & M FEED STORE

Charles Dennard

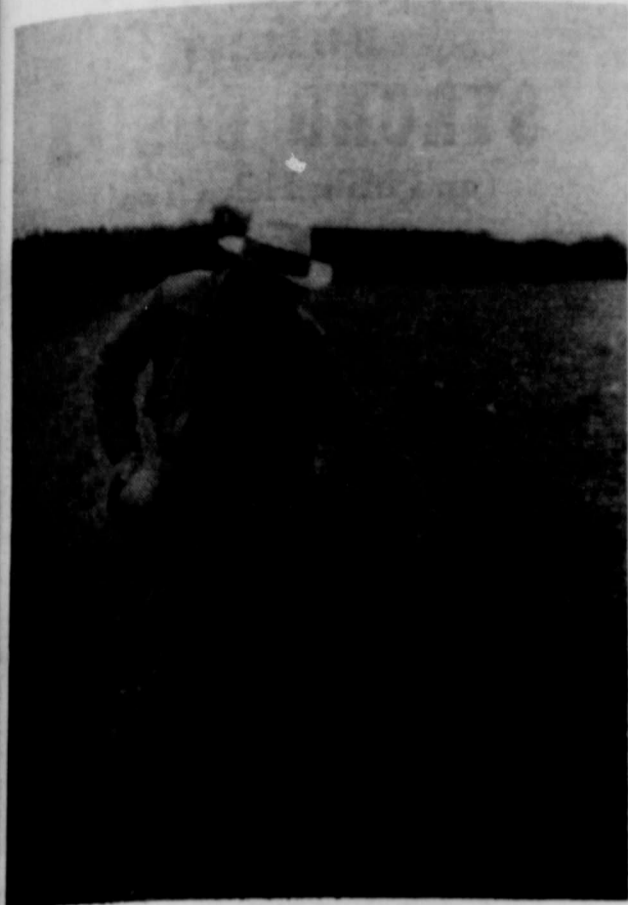
Jesse Moreland

FEED — SEED — FERTILIZER

KIMBELL AND WEST BRAND FEEDS

South Side Square

Goldthwaite, Texas



FERTILIZER AND WINTER PEAS—S. R. "Tot" Casbeer of Goldthwaite City points to the line where double application of fertilizer and winter peas began on the left. Results such as this from winter seeding and fertilizing in the district has done a better job of soil conditioning and maintenance. —(SCS Photo)

Sherwood And Carey Owens Stress Advantages Of Lighter Grazing

Sherwood and Cary Owens, local ranchmen who found that grazing no more than 50 percent of the leaves of a grass plant is highly important. "It makes the difference between gain and loss," they said.

In a single year of close grazing, the yield of bluestem was reduced next year's yield of the grass by 75 per cent. The average production of this grass is about 5,000 pounds per acre. By grazing the plant close this year, the next year's yield is reduced to only 1,250 pounds per acre. The plant uses its leaves to

make food for growth. Sunlight and carbon dioxide from the air join with water and soil nutrients in the leaf to manufacture this food. Five per cent of this food material comes from the soil, 95 per cent comes from the air. Water enters and departs from the plant and aids in the process.

With this explanation, it's easy to see why the plant must have 50 per cent or more of its leaves if it is to produce efficiently. Continued heavy use can kill the plant. Three years may be required to recover from one year of heavy use.

A Perfect Tribute



...to your skill as a farmer and rancher is a completed **SOIL CONSERVATION** program on your acreage.

The Brown-Mills Soil Conservation District and SCS technicians are available and ready to help you!

And

We Can Help You Too,
When It Comes To

**Welding and
Steel Fabrication**

Come In To See Us

L & H Welding Shop

Carl Letbetter

DeWayne Henry

Goldthwaite, Texas

Conservation Pays Off To You!

YOUR SOIL...

IS MONEY



Don't let erosion or depletion rob your soil of its productivity. Terrace and contour-plow for adequate drainage. Rotate crops scientifically. Follow the proved techniques of soil conservation to safeguard the future of your land.

Soil conservation not only helps to protect and improve the land, but helps lower the cost of farm production. For both the present and future, it pays off handsomely!

Like any business, a farm must conserve its resources if it is to pay. We have confidence in the wisdom of our country's farmers. Many of them have already begun a program of soil and water conservation on their land.

If you are not already following conservation measures on your farm, call the Soil Conservation Supervisor of this county today. He will be glad to advise you on a program for your own land — and you'll reap the profits.

As your bank we invite you to come in and let us help you with your financial problems. If you plan to expand, buy a car, truck, tractor, Farm machinery, or improve your home, we want you to know we will be happy to discuss with you your credit needs.



**MILLS COUNTY
STATE BANK**

Goldthwaite, Texas

Serving Mills County 74 Years

Proper Range Use Will Pay Two To Five Times More Than Overuse

By PAT TREW
Range Conservationist
Soil Conservation Service

Practicing proper range use along with other needed conservation treatment pays off with extra profits.

Sixteen different groups of ranchmen in Soil Conservation Districts in Central Texas who participated in the development of cost return information said proper use paid two to five times more than overuse. Expenses were less, animals performed better, and profits were

greater with proper use.

A range is considered to be properly used when 50 per cent or less of the annual growth of the major forage plants have been grazed by livestock, according to technicians of the Soil Conservation Service. Livestock of course do not graze evenly, so the properly used range will not look like a mowed lawn or field. Instead, the appearance will be uneven with some plants getting more grazing than others. Some may be grazed 70, others 50 per cent,



FROM CROPLAND TO PASTURE—This picture shows a good stand of Coastal Bermuda grass on the Arthur Wilcox farm West of Goldthwaite. Millard Schuchart, Soil Conservationist, is shown examining the grass stand.

Prior to 1960, this area was rotated with peanuts, Milo Maize and small grain. Production was in line with county average, but supplemental grazing for livestock was needed in the summer. Coastal Bermuda grass was sprigged in May of 1960, with ACP cost--share. The Soil Conservation District's sprigger was used.

The area was first grazed in the fall of 1960—a change from machine harvest to livestock. There was less labor required the next year; no seedbed to prepare, no seeding or machine harvesting. —(SCS Photo)

IN OBSERVANCE OF SOIL CONSERVATION WEEK

Next week has been designated as Soil Conservation Week — a period in which emphasis will be placed on the importance of conserving and improving the productivity of the soil for crop and pasture.

We are glad to cooperate with the Soil Conservation District supervisors here, with other representative groups, in emphasizing this program.

LET'S CONSERVE AND BUILD OUR SOIL

It's a practical, worthwhile and profitable plan — Mills County's future depends on the Soil.

Mills County Farm Bureau

COOPERATOR WITH
BROWN-MILLS SOIL CONSERVATION
DISTRICT

David Watters — Service Agent

Farm Bureau Insurance

Phone MI 8-2262 — Goldthwaite, Texas
1 to 5 Monday Through Friday — 8 to 12 Saturday

while some may not be grazed at all. The degree of use of the major forage plants added together and averaged will be 50 per cent or less when the range is properly used.

Using more than 50 per cent of the annual growth is not only harmful to the plant and wasteful of soil, water and plant resources, but it is unprofitable.

The plant uses its leaves to make food for growth. Sunlight and carbon dioxide from the air join with water and soil nutrients in the leaf to manufacture this food. Five per cent of this food material comes from the soil; 95 comes from the air. Water enters and leaves the plant and aids in the process.

With that explanation, it's easy to see why the plant must have ample leaves if it is to

produce efficiently. Buffalo-grass plants with 80 per cent or more of the leaves remaining can produce up to 3,000 pounds per acre. The extra amount of leaf surface accounts for the difference in increased production. Plants with enough leaves produce efficiently just as the tractor firing on all cylinders will pull its capacity load.

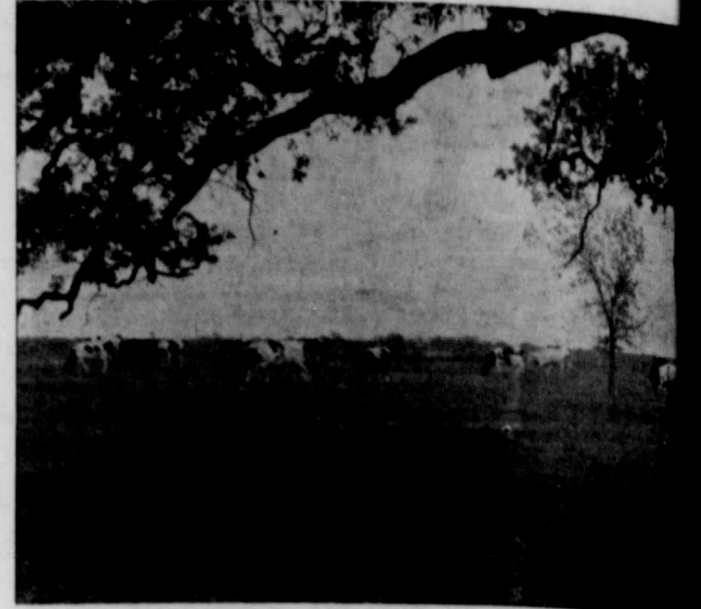
Proper use promotes the accumulation of cover and litter necessary to get water into the soil and prevent erosion. It's the rain you keep that counts. Cover and litter also reduce soil temperatures and evaporation. On bare or near bare land when soil temperatures go over 105 degrees, plant growth is reduced and may even stop with higher temperatures.

Root growth, length, and the

ability of the plant to take moisture from the soil remain favorable with proper use. With continued heavy overuse, root systems may be shortened and growth may stop for certain periods. During mild dry weather, the plant may be unable to take moisture from the soil.

Most important to the ranchman is the net profit realized after all expenses are paid. Numerous groups of ranchmen in the central part of Texas have participated in cost-return meetings where proper and heavy use have been compared. In every case, proper use produced two to five times greater profit than overuse. Individual animal performance was better and expenses were less. These two items made the big difference. Less labor was required with proper use. A ranchman with more profit and more leisure time says he enjoys life more.

STRONG SOIL BUILDS STRONG BODIES (and Milk Helps Too!)



WE REMAIN STRONG as a nation only so long as **OUR SOILS REMAIN FERTILE**. Poor soils cannot form a strong nation.

Unless we take steps to increase the amount of soil building and reduce the amount of soil erosion, this nation will follow other great nations of the past who totally exhausted their soils and become only historic ruins.

**We Recommend
Soil Conservation Practices
To Our Friends and Neighbors**

Arnold Head Dairy Farm Center City

**"You Never Outgrow Your
Need For Milk"**

Cooperator with Brown-Mills
Soil Conservation District

SOIL CONSERVATION PAYS

**THE DEMAND'S GREAT
THE REWARDS GREATER**

Your land is like any other business, it demands proper management for good profits. Keep following your sound soil conservation program. For added information or details — be sure to consult with the soil conservation office nearest you.



We Invite You To Let Us Serve You

With General Run Of

ACP and Soil Conservation Practice Jobs

- ☆ Tanks
- ☆ Terraces
- ☆ Brush Work
- ☆ Chaining and Up-Rooting Mesquite and Cedar

FREE Estimates On Your Needs

Louie D. Mask

CONSERVATION CONTRACTOR

1031 San Benito Drive — Ph. MI 2-7818, Brownwood, Tex.

Member of Conservation Contractors Association Of Texas.



Soil Conservation

MEANS BETTER PRODUCTION

Better Production

MEANS BETTER LIVING



SURE! We can boast the best standard of living of any nation in the world. **BUT** we didn't get it by sitting back in a comfortable rut. We got it by working together in an atmosphere of freedom where the best is considered only something to be improved.

If our Nation, State, and Area are to remain prosperous, if we are to continue vigorous and leaders in world affairs — if we are to endure at all — we must **STOP WASTE OF ERODING SOIL.**

LUCIUS M. STEPHENS & COMPANY BONDED WAREHOUSE

Dealers In Wool, Mohair, Grain and Pecans

Lometa, Texas

Gordon McCann—Lucius M. Stephens—G. W. McMahan

Calf Weights Can Be Used As Stocking Guide

A drop in weaning weight of calves may indicate that range is being over utilized, even though the cows don't seem to be losing weight.

The conclusion comes from a study of beef cattle stocking at USDA's Southern Plains Experimental Range near Woodward, Oklahoma.

Not only does a deteriorating range lower a cow's weight but a study showed that the calf's weaning weight is affected by the number of acres per animal.

In the study, weaning weights averaged from 404 pounds for calves from cows

Facts About Fertilizer, How To Make It Pay More

Today the question about fertilizers is not, "Will it pay?", but "How can I make it pay more?" Answers to a few other questions will help answer the basic

one. How can I make fertilizer pay?

"What is in a sack of fertilizer that counts?" The average bag of fertilizer contains from one to three elements of plant food. A complete fertilizer contains nitrogen, phosphorus and potash. Other fertilizers may contain only one or two plant foods. The amounts of these nutrients are designated by large numerals on the sack. For example, the numerals 12-24-12 would designate twelve per cent nitrogen, twenty-four per cent phosphoric acid and twelve per cent potash. The numerals 15-15-0

would indicate that a 100 pound sack contained fifteen pounds of nitrogen, 15 pounds of phosphoric acid and no potash.

"As a farmer or rancher, how can I know which fertilizers are best for my crops?" A soil analysis will furnish the best information about fertilizer needs for specific soils. Also, the local Soil Conservation Service technician or the county agent can make recommendations for specific soil types. These technicians base their suggestions on research and local experience. The information furnished by them is tied to specific soil types through the use of soil surveys. Soil surveys are provided by the local Soil Conservation Service through the Soil Conservation District.

"Where in the ground should I place fertilizer so that my crops can use it most efficiently?" Ideal placement of fertilizer is two or three inches to the side and two or three inches below the seed. This permits feeder roots to get to the plant food rapidly. It enables tap rooted plants to develop the tap root without damage from the fertilizer. Placement three or four inches below the seed is applied a few weeks prior to planting. Fertilizers can be broadcast and plowed into the soil but placement is better.

stocked at an animal unit per 12 acres to 512 pounds for calves from cows at a stocking rate of 22 acres per cow.

Calf weights aren't useful as a gauge for stocking if they and their mothers are given the extra feed such as would come from creep feeding. Unless extra feeding is done the study showed that calving percentages are higher from proper stocking.

When the question about fertilizers is not, "Will it pay?", but "How can I make it pay more?" Answers to a few other questions will help answer the basic one. How can I make fertilizer pay?

"What is in a sack of fertilizer that counts?" The average bag of fertilizer contains from one to three elements of plant food. A complete fertilizer contains nitrogen, phosphorus and potash. Other fertilizers may contain only one or two plant foods. The amounts of these nutrients are designated by large numerals on the sack. For example, the numerals 12-24-12 would designate twelve per cent nitrogen, twenty-four per cent phosphoric acid and twelve per cent potash. The numerals 15-15-0

This is an effective method for drilled crops. Row crops will use broadcast fertilizer, but more slowly than if it is placed close to the seed.

Nitrogen and potash fertilizers are readily soluble in water. They can be used for topdressing crops such as small grain and perennial grasses. Phosphate fertilizer becomes soluble slowly. For this reason it should be put into the soil. Also, phosphate fertilizer will become unavailable to plants in a calcareous soil. When used in calcareous soils, it should be placed in concentrated bands so that it will come into contact with less soil. A soil survey would indicate if soils are calcareous or not.

"When and how often should I fertilize?" on deep sands, fertilizer should be applied in small amounts two or three times a year. If all of the fertilizer is applied at planting time, some of it may be leached from the soil and lost. Annual applications are adequate on loamy soils and clay soils. Even on loams and clay it may be desirable to split the application. A small amount of nitrogen and all of the phosphorus could be applied at planting time. Then nitrogen could be topdressed or sidedressed later, if moisture conditions were good.

"Even if I do everything right," one may ask, "how can I be sure fertilizing is making me a profit?" An unfertilized area in each field should be left as a check. Also, double applications on a small area should be made in each field to determine effects of heavier application. Then the differences in

yield can be measured. Many times a five hundred pound difference in grain sorghum yields, for example, cannot be detected unless the grain is weighed.

To determine merits of fertilizer, apply. Leave check areas. Check the difference in yield. Do a good job of farming the

crop. Chances for success are good if every operation is done well.

Bobbypins For Clothespins
Bobbypins make handy clothespins in camp. Ordinary fishing line will serve as a clothesline.

SOIL CONSERVATION MEANS PLANNING A BETTER FARM AND A BETTER FUTURE

There's nothing haphazard about successful farming. It takes planning and foresight to increase your yield and protect your land so that it will continue to grow good crops year after year! When you make plans to control erosion, and how to conserve your land for the future, while increasing its production now, you're practicing soil conservation for a better farm and a better future!

Mr. and Mrs. Ernest Kohler
Priddy, Texas
Cooperators With
Brown-Mills Soil Conservation District

Successful Farming Begins With Soil Conservation

Profits start with production and to produce we must keep improving our soil. Plant cover crops both winter and summer. Fertilize your pastures for better grazing. Your Soil Conservation Supervisor will be glad to help you set up a good workable program for your own land. Don't Wait! Get started now, for greater farm profits year after year!

And Here's What Will Help You Have A More Profitable Farm Operation

A New FORD Tractor



See The New 1964 Ford Tractors In Our Showrooms!
New Low Cost Diesel Power

You Can Buy A FORD Tractor For Several Hundred Dollars Less Than Any Other Diesel Tractor In Its Power Class.

2-3 and 4 Plow Models Available.

BUILD PRODUCTION ON A CONTOURED AND TERRACED FIELD --- USING A . . . Ford Tractor

. . . and WE HAVE THE FARM EQUIPMENT --- to help you do the job easier, faster, and more economical!

Long Payment Terms --- Up To 4 Years To Pay

San Saba Tractor Company

Phone 372-5222

Max Mahan

San Saba, Texas

GRASS, STEERS AND CONSERVATION—Steers are shown here grazing Bermuda grass on the Murray farm near Mullin. Six steers were grazed on two acres for four months. This two acre tract yielded 120 bales of hay the same growing season. The pasture received supplemental irrigation by sprinkling. Also, there has been no soil movement or loss, the land is preserved for future use. This is the ultimate goal in conservation—high production with sustained yield and no erosion. (SCS Photo)



GRASS Is Vital To Life

"GRASS is the forgiveness of Nature—her constant benediction. Forests decay, harvests perish, flowers vanish, but grass is immortal. Its tenacious fibers hold the earth in place and prevent its soluble components from washing into the wasting sea." Senator John J. Ingalls of Kansas, 1872.

GRASS has provided animals with basic food since time immemorial. Good grass means better stock.

REGULATED grazing means better grass and more meat per animal. Practice proper grazing.

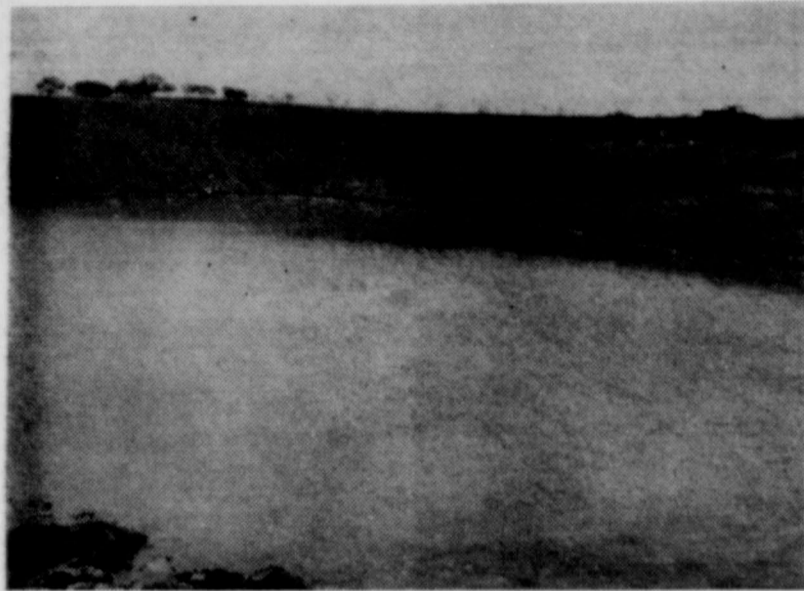
ALL flesh is grass—Isaiah. The vitality of a Nation is determined by the vitality of its grass.

SOIL and grass are as inseparable as bread and butter. Good grass prevents erosion of our precious soil.

SEE the supervisors of the Soil Conservation District or your Soil Conservation Service representatives about a soil and water conservation program to improve and protect your grass.

Citizens State Bank

LOMETA, TEXAS



WATER CONSERVATION WITH TANK—Shown here is a good example of water conservation with a tank recently constructed in Mills County. This new tank was built on the C. D. Owens ranch South of Star and Center City. This tank had a number of feet of crystal clear water from underground source soon after completion before rainfall made run-off possible. In addition to water conservation tanks like this one also provide for good fishing.

—(SCS Photo)

Better Fish Will Be Produced If Farm Pond Water Fertilized

By ELGIN SMITH

Bass do not grow satisfactorily unless they have small fish, such as bluegill or bream, to feed on. Pond fertilization provides a constant diet for bream and in addition is an aid in keeping down undesirable water vegetation.

Fishing waters need nitrogen, phosphate, and potash to grow vast numbers of microscopic plants. Fish do not eat the fertilizer, nor do they eat the tiny plants to any extent. But they do eat the insect larvae and other tiny water animals that feed on these microscopic plants.

It takes about 4 pounds of insects and insect larvae for each pound of bream; in turn it takes about 4 pounds of little bream for each pound of bass. Thus the more pounds of microscopic plants the more insect

larvae and more fish.

It should be noted that under fertilization a pond is limited to the total pounds of bass it can produce by its depth and size.

A local pond was stocked with 50 bass and 50 bream, the recommended rate. An additional 50 bass were added and a fertilization program applied.

One year later the pond had 100 one-half pound bass. Had a program of fertilization not been applied, the pond would have yielded 100, one-fourth pound bass. Better yet, if the recommended stocking rate of 50 bass had been adhered to the pond in one year would have produced 50 one-pound bass. Due to size and depth the pond's production was limited to 50 pounds of bass — this is why proper stocking is also important.

With a properly applied fer-



SOME GOOD FISHING—Properly fertilized and well cared for farm ponds provide some excellent fishing, as is demonstrated by the catch of the small fry pictured here.

tilization program the water in a pond should become dark or "soupy" looking and remain so throughout the warm months.

With ample fertilization, millions of microscopic plants can be grown which colors the water cutting off sunlight from

the algae or moss. Most of these submerged water plants cannot grow without this light. Further, without weed protect them, all mosquito larvae are eaten by the bass bluegill reducing a public nuisance.

Fertilizers to use include 20-0, 5-10-5, and 12-24-12. Ratios are sometimes better not usually available on notice. Approximately 20 pounds of fertilizer is per surface acre of water. Fertilizing in March continues through October. The heat of summer if the becomes low and receive run-off, fertilization should because of the danger the oxygen may be depleted.

Candles For Heat

Take along with you the next deer camp a couple of those thick, heavy-wax candles used by plumbers. Some night or early morning find they can take the candles a fairly large tent or trailer a surprisingly short time.

Stubble MULCH--



Picture of Good SOIL

NO NATION!

NO COUNTRY!
NO COMMUNITY!

CAN OUTLIVE ITS SOIL

LET'S TAKE CARE of what we have left by
Practicing CONSERVATION!

Learn about the general SOIL CONSERVATION
program . . . it will put money in your pocket!

SOIL CONSERVATION
DOESN'T COST — IT PAYS!

See your Soil Conservation District
Representative for Full Details.

SERVICE MILL

Your Mills County
Kimbell's Feed Dealer
Priddy, Texas

Remember The Time?



Yes, there was a time, about the time when the telephone first made its appearance as a vital link between town and country, a farmer or rancher could move on to new ground when his acreage slowed down in production. The need for protecting and conserving the soil was given little thought in those days.

But! Times Have Changed...

Yes times have changed alright. We have made much progress in farming and ranching as well as in our telephones. Farmers and ranchers are practicing soil conservation in increasing numbers and improving their economy just as the telephone has improved into this new modern dial system that is now available to Central Texas farmers and ranchers. All in all it means better living for all our families, both in town and country.



We salute the soil conservation staff of this area and we heartily endorse and recommend better soil conservation methods.

And, we also invite your inquiry and recommend that you get in on the advantages offered through our modern dial telephone system.

Central Texas Telephone Co-operative, Inc.

SERVING THE RURAL AREA OF CENTRAL TEXAS

You, And Conservation



WILL MAKE HAY—Ben Schrank and sons, of Priddy, are as they examined a 90 day old stand of NK-37 Bermuda that has been cut for hay and then grazed. (SCS Photo 1962)

Eight acre field made 27 of hay per acre approximately 90 days after seeding. Field was fertilized and irrigated. In 1963, 111 bales of was made per acre from cuttings.

Year (1963) the field was with 150 pounds of and sprinkled. The May yielded 320 bales. It was fertilized with 125 pounds

Most experts agree that it takes 2½ acres of productive land to grow food and shelter for one person in the United States using today's living standards. Is there enough land to keep pace with the rising living standard and population increase?

The late H. H. Bennett while chief of the U. S. Soil Conservation Service said, "We Americans have ruined more good land in less time than any other nation recorded in history. We have wasted, worn out, and discarded one million acres—mostly in the last 50 years. It is time we ask ourselves where our next meal is coming from."

Originally the average depth of the topsoil in the U. S. was 9 inches. Today 1/3 has been washed or blown away leaving 6 inches and this becomes less and less each year.

We have a set amount of land area which must supply space, plus farm and forestry products for a growing population over the indefinite future. Conservation is everyone's insurance that our resources are utilized according to need for protection and improvement and a sus-

tained production. Soil Conservation was first started on an organized basis by what is now the Soil Conservation Service. Today the SCS provides technical assistance to landowners through local Soil Conservation Districts. Progress in conservation has been increasing through the efforts of those supporting local SCD's and their programs.

To anyone approaching the subject for the first time, the term "soil conservation" is not sufficiently descriptive. It is inadequate to express all the subject is meant to express. One of the most encouraging things about soil, water, and plant conservation is that it stimulates thinking; it causes men to re-examine old ideas and explore and establish new ones. Basically, it gets results by setting up conditions that are favorable to the processes of nature rather than working

against nature. In the control of erosion most conservation measures have the dual purpose of (1) reducing runoff of water to a minimum and (2) keeping possible soil loss to a minimum.

At the top of the list of conservation measures important in preventing erosion is vegetative cover. On range or cropland, grasses and legumes break the force of rainfall and hold the soil in place. All other measures complement this basic practice. On cropland we terrace, fertilize, stubble mulch, and rotate crops — on rangeland we rest or defer, practice proper range use, control brush, and seed grasses.

Our main objective remains providing cover and organic matter to protect and sustain each acre's production—whether it's rangeland or cropland, to insure each person's two and 1/2 acres remains in production.



BRUSH CONTROL—Brush control is often necessary to get ranches into grass production. This scene on the Willard Mosier place north of Mullin is an excellent example of proper range use following brush control. After the mesquites were killed the area was rested to allow the grasses to regain vigor and spread to the areas previously occupied by Mesquite. —(SCS Photo)

The Good Earth

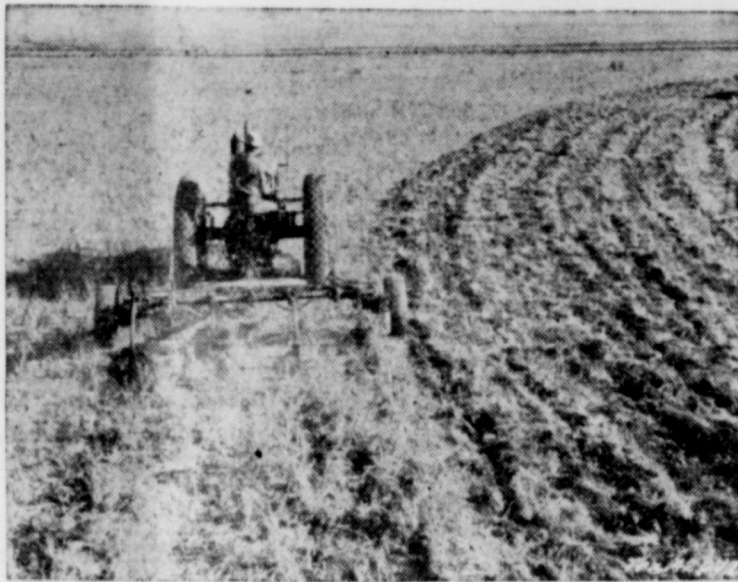


It smells good. It feels good. Treated properly and tenderly with care, it provides our food and our income. Handled without thought for the future, it withers and grows poor . . . depriving us of our livelihood.

Agricultural science has shown us the way to farm security by discovering new ways of soil conservation.

This week is SOIL CONSERVATION WEEK—and we are glad to cooperate with the Soil District supervisors here, and with other representative groups in emphasizing the importance of this program.

SAN SABA
PRODUCTION
CREDIT ASSOCIATION



SAVE YOUR SOIL

And Your Soil
Will Save You!

Apply Coordinated Soil-Saving Practices,
Get A Farm Plan. Hold on to your Top Soil.

— Remember Too —

Contour Cultivation and Strip Cropping Will Help Control Erosion

BUILD PRODUCTION ON A CONTOURED
AND TERRACED FIELD . . . USING A

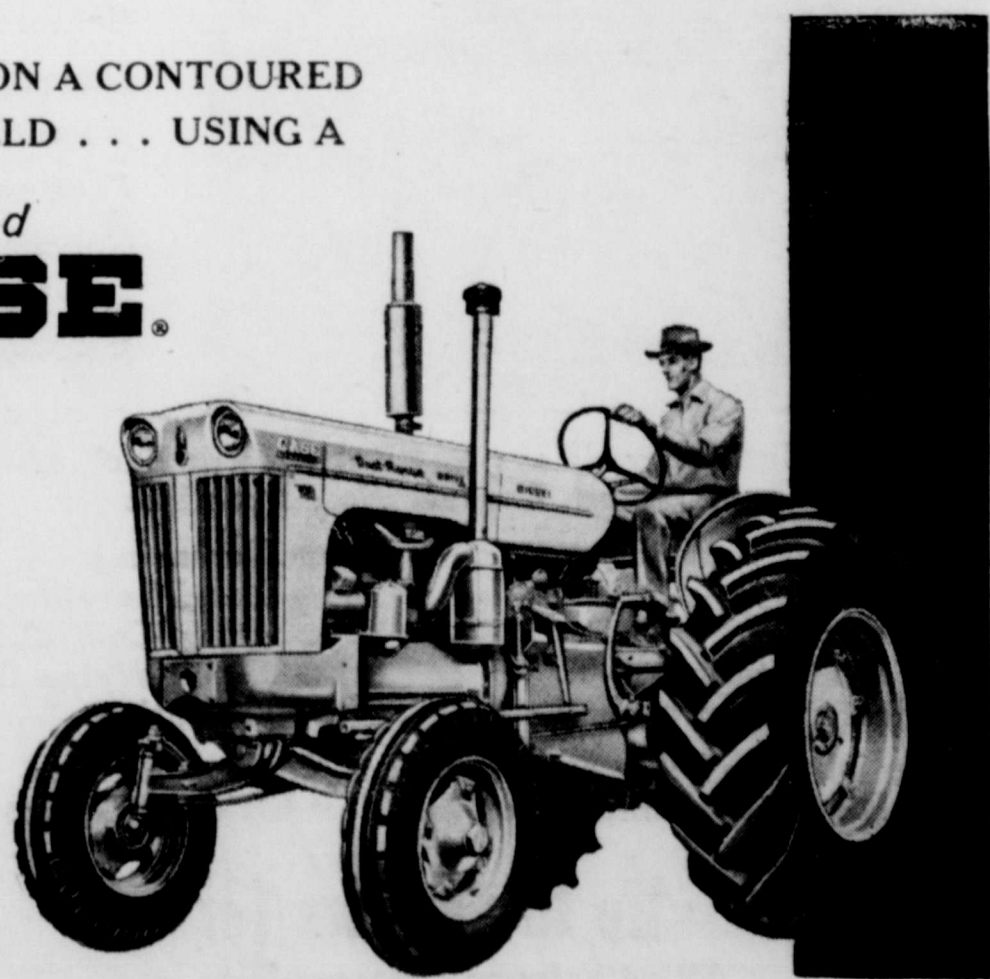
Sleek-lined
CASE

TRACTOR
WITH
CASE EQUIPMENT

Made by the J. I. CASE COMPANY, over 100 years of experience in manufacturing of Farm Machinery!

Depend on CASE

The Modern Way
To Farm Profits.



Hi-Way Garage & Implement Co.

Your Case Farm Machinery Dealer
Priddy, Texas



Picture Of Grassland Is Changed By Invaders

During the past half century, the encroachment upon native grasslands of timber and woody shrubs has reached alarming proportions. To the most casual observer this invasion has become obvious. To the operator of agricultural lands it presents a problem that becomes more serious with each year's passing. Recognizing the urgent need for developing a formula for destroying and driving out the invaders, many researchers are working diligently to find solutions to the problem. In the meantime, it is important that operators of infested lands understand their problems so that they can intelligently apply control measures as they are developed.

Examination of literature and the reports of early day observers lead to the conclusion that this section was at one time a tall and mid-grass prairie with timber occurring only in localized areas—mostly along the rivers and streams. There are those still living who can remember riding horseback for hours without seeing a tree at close hand. What, then, caused the rapid increase of these undesirable plants?

Authorities generally agree that the door was opened to the invaders with the weakening of the natural range cover of deep-rooted grasses. No single factor can be pointed to as the culprit, but there can be no doubt that over-utilization by livestock of the grass cover contributed largely to the general invasion. This knowledge should be a strong tool in the hands of the operator who is now faced with the task of "reclaiming" his grazing lands.

Knowing the primary cause of brush infestation, namely the overuse of the range grasses, it would seem fundamental that any method used by the rancher to eliminate or control brush must be supplemented by a management plan that would maintain maximum ground cover of good grasses. A heavy stand of vigorous climax grasses (grasses that existed on a site before it was disturbed) apparently creates an environment unfavorable to the growth and development of most species of brush. The reason for this is probably that young brush sprouts cannot compete for water with a dense turf. This fact is demonstrated by the lack of seedling brush in many old mesquite pastures that have been allowed to come back to a high state of grass cover.

Brush eradication in itself does not necessarily mean high production. And in some cases, it only leads to further deterioration of the range forage. On many poor condition ranges the thorny brush is protecting the last remnant of the better grasses. Unless grazing is excluded long enough to allow these grasses to become established, removal of the brush could lead to a complete loss of the source of seed for natural revegetation. A period of deferment before control measures are started will further improve the chances of rapid recovery of the grass.

How long these periods of non-use should be will depend upon the kinds and amounts of the grasses present. Generally speaking, a brush eradication program should be delayed until the range is brought back to a fairly high state of production by sensible management. Brush should then be removed as a part of the plan. Brush

control is not a substitute for sound range management. And in the long run, control work will be effective only as far as the natural defenses of the range are strengthened by proper use of the grasses.

all, a good soaking rain in August. He is not much for droughts, gullies, throughways, weeds, the 8-hour day, grasshoppers, or helping with housework. Farmers are found in fields—plowing up, seeding down, rotating from, planting to, fertilizing with, spraying for, and harvesting. Wives help them, little boys follow them, city relatives visit them, salesmen detain them and wait for them, weather can delay them, but it takes Heaven to stop them. A farmer is both Faith and Fatalist—he must have faith to continually meet the challenges of his capacities amid an ever-present possibility that a late spring, an early frost, tornado, flood, drought, disease, or bugs can bring his business to a standstill. He is your countryman—a denium-dressed, businesswise, fast-growing statesman of stature. And when he comes in at noon, having spent the energy of his hopes and dreams, he can be recharged with the magic words: "The market's up."

control is not a substitute for sound range management. And in the long run, control work will be effective only as far as the natural defenses of the range are strengthened by proper use of the grasses.

control is not a substitute for sound range management. And in the long run, control work will be effective only as far as the natural defenses of the range are strengthened by proper use of the grasses.

control is not a substitute for sound range management. And in the long run, control work will be effective only as far as the natural defenses of the range are strengthened by proper use of the grasses.



COUNTY AGENT TALKS FERTILIZER—Priddy farmers hear a discussion on fertilizer by County Agent George Reese. This group attended one of the various field days sponsored by the Brown-Mills Soil Conservation District each year. Local businesses sponsor the programs used to emphasize the importance of conservation practices. —(SCS Photo)

Soil Conservation

A Subject Very Close to the Heart . . . the Welfare . . . and the Conscience of our Entire Organization.



Good Conservation Depends Upon the Farmer or Rancher and His Equipment

Machinery Plays a Vital Role in Each of These Sound Conservation Practices

- Farming
- Cropping
- Field Operations
- Soil Improvement
- Terracing
- Land Leveling
- Gully Control
- Stock Water Dams
- Irrigation

Help you select the Right Machines with the Right Attachments for the Most Efficient Operation.

We Are Dealers For
 Deere, Massey-Ferguson,
 Case and New Holland
 and Farm Equipment

Company

Phone 372-3644
 Highway, San Saba, Texas

What Is A Farmer?

"What is a farmer?" A farmer is a paradox—he is an executive with his home his office; a scientist using fertilizer attachments; a purchasing agent in an old straw hat; a personnel director with grease under his fingernails; a dietitian with a passion for alfalfa, amines, and antibiotics; a production expert with a surplus; and a manager battling a price-cost squeeze.

He manages more capital than most of the businessmen in town.

He likes sunshine, good food, State fairs, dinner at noon, auctions, his neighbors, his shirt collar unbuttoned and, above

control is not a substitute for sound range management. And in the long run, control work will be effective only as far as the natural defenses of the range are strengthened by proper use of the grasses.

all, a good soaking rain in August. He is not much for droughts, gullies, throughways, weeds, the 8-hour day, grasshoppers, or helping with housework.

Farmers are found in fields—plowing up, seeding down, rotating from, planting to, fertilizing with, spraying for, and harvesting. Wives help them, little boys follow them, city relatives visit them, salesmen detain them and wait for them, weather can delay them, but it takes Heaven to stop them.

A farmer is both Faith and Fatalist—he must have faith to continually meet the challenges of his capacities amid an ever-present possibility that a late spring, an early frost, tornado, flood, drought, disease, or bugs can bring his business to a standstill.

He is your countryman—a denium-dressed, businesswise, fast-growing statesman of stature. And when he comes in at noon, having spent the energy of his hopes and dreams, he can be recharged with the magic words: "The market's up."



REST IS GOOD FOR PASTURE—This picture story from side to the other shows the need for resting a pasture and can be accomplished if this practice is followed. Dr. T. C. Gray Goldthwaite Dentist and Rancher, long time cooperator with Soil Conservation District, was able to rest this pasture shown the left during the 1962 growing season and results accomplished can be seen from one side of the fence to the other.—(SCS Photo)

Ours IS EVERYBODY'S Country

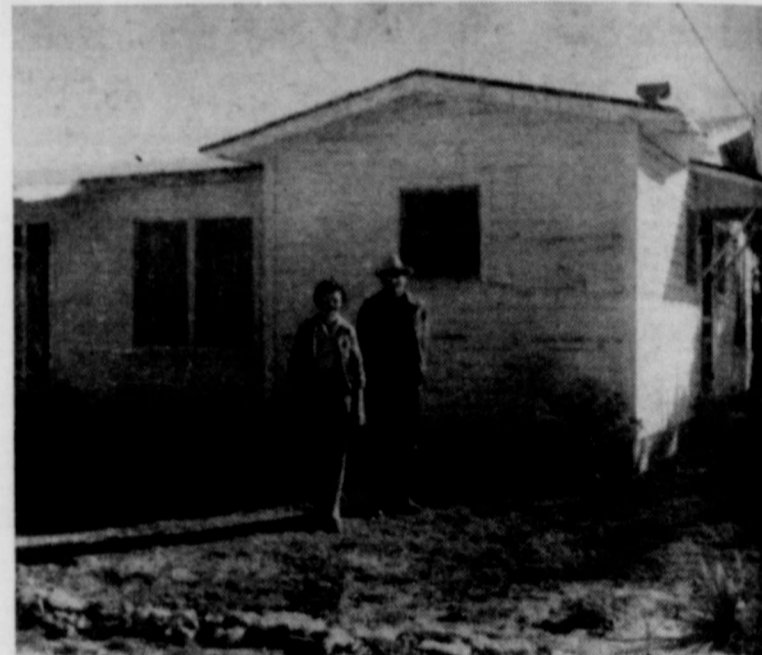
THIS INCLUDES CENTRAL TEXAS

THE BETTER WE PRODUCE
 THE BETTER WE LIVE

WE AMERICANS like to think of our country as belonging to everybody. The seas, the lakes, the mountains, the millions of producing acres—all these are our heritage. They make us great . . . nowhere else in the world is there such a combination!

HERE IN AMERICA it took 500 to 1,000 years to form one inch of top soil. A heavy rain . . . or wind erosion on a dry cultivated field can undo in one single afternoon, what it took 1,000 years to create!

PROPER SOIL AND WATER CONSERVATION methods will do much to enable you to conserve valuable moisture . . . organic matter — and thereby get greater crop yields!



SOIL CONSERVATION BOOSTERS—Mr. and Mrs. C. D. Owens in front of their ranch home. They are cooperators and supporters of the Brown-Mills Soil Conservation District and its program.

But here are a few startling facts about this America of ours that we ought to be thinking about. Of our two billion acres of agriculturally useful land, 60% of it is either ruined or badly damaged.

Despite soil conservation work, we are putting back into our land, only one-third of the fertility which wind, rain, heat and crops take from it each year!



RANGE SEEDING—A wet low draw on the C. D. Owens ranch was covered with grasses low in palatability. The area was overseeded with Dallis grass and got a good stand. Mr. Owens is shown here standing in this small meadow of a grass from East Texas normally found this far west only under irrigation.



WHAT IS GOOD FOR THE SOIL
 IS GOOD FOR THE SOUL

C. D. Owens Ranch

Mr. And Mrs. C. D. Owens

Cooperators with Brown-Mills Soil Conservation District