

Soil Conservation Is . . . *Everybody's Business*

**The Goldthwaite Eagle**

Established in 1894

And The Mullin Enterprise

Volume 78 — Number 8

Goldthwaite, Mills County, Texas 76844

Single Copy 15¢

Thursday, May 30, 1974

**Over \$1 Million Spent On Retarding Structures**

**GPCP Shares Conservation Practices  
Cost On 20,162 Local Acres**

The Great Plains Conservation Program (GPCP) is a program in which the Federal Government shares the cost of conservation practices with a farmer or rancher. The farmer or rancher must sign a contract with the Secretary of Agriculture using a conservation plan as a basis for cost-sharing.

GPCP became available to Mills County producers in July 1970 and the first contract was signed by M. C. Kirkpatrick on July 14, 1970. A total of 26 contracts covering 20,162 acres and obligating \$166,618.00 have been signed. There are 80 unserved applications covering about 75,000 acres.

One contract is complete and has expired. This is on O. L. Harris. His plan included planting coastal bermuda and klein grass, building a cross fence and digging a farm pond as well as the management practices which are essential to good grass production.

The major cost-share practices are re-establishing grasslands and establishment of permanent vegetative cover. These two practices account for more than 60 percent of the \$85,000 spent during the first three years of GPCP in Mills County. About 2800 acres of old fields and low production rangeland have been planted to coastal

bermuda grass and klein grass. How much do you suppose this will reduce wind and water erosion which pollutes our streams and ponds?

Other practices which have been done are 14 miles of parallel terraces, 13 miles of cross fences, 4 miles of livestock water pipelines, 1200 acres of brush control, 5 farm ponds, 11 concrete water storage facilities and 54 acres of critical area treatment.

All these practices work together to maintain adequate cover on the ground to control erosion and conserve moisture which means that we have a cleaner environment in which to live.



The above photo shows seedbed preparation on the Jimmy Welch Structure east of Goldthwaite. Site 1, Bennett Creek, was seeded in January, 1974.

**Two Left To Be Built**

Since 1971, ten floodwater retarding structures have been built in Mills County, stated Charles Studer, District Conservationist with the Soil Conservation Service at Goldthwaite, involving well over one million dollars. This work has been accomplished due to the continuing efforts of the Directors of the Brown-Mills Soil & Water Conservation District, the Mills County Commissioners Court and the Bennett Creek Water Control and Improvement District. We still lack two structures completing all the planned structures, said Studer. We are working on one presently and hope to start construction of the other one in the next few months. With the four structures in Bennett Creek that were completed some 7-8 years ago, this brings to 14 the total number of flood prevention dams in Mills County.

Mills County is fortunate to have this many structures. Many groups and units of governments throughout the United States have made application for watershed funds from SCS. Each year a small amount of funds are released for construction according to demands and competition is keen for these funds. Only through continued efforts of local people giving of their time and money can worthwhile projects be realized.

The dams are designed to help keep sedimentation to a minimum in our streams and rivers. They

provide floodwater protection to our soil, animals, roads, bridges and fences. They provide a place for wildlife habitat and in most cases a place of recreation.

The Brown-Mills SWCD feels that this is money well spent and invested by the taxpayer. The benefits of these type measures will last for many generations. The Brown-Mills SWCD Board wish to thank all the people who have helped in any way.

**Special Thanks!**

This Soil Conservation Edition was prepared in recognition of the work in conservation by the United States Soil Conservation Service and the Brown-Mills Soil Conservation District as a reminder to the public of the importance of conservation of all natural resources.

The articles produced herein have been prepared by the District Conservation Staff.

The publisher of the Eagle wishes to publicly thank the staff and the advertisers for their assistance in compiling and supporting this worthwhile issue.

**30,000 Mills County Acres  
Planted In Improved Grasses**

An estimated 30,000 acres of improved grasses such as coastal bermuda, klein grass, winter green hardinggrass, and weeping lovegrass have been planted in Mills County. These grasses are capable of producing enough grazing on one acre for an animal unit for 4 to 6 months - an animal unit being a cow and her calf or five ewes with lambs. This requires a difference in management compared to our rangeland which in general will produce enough grazing on one acre for one animal unit for one month.

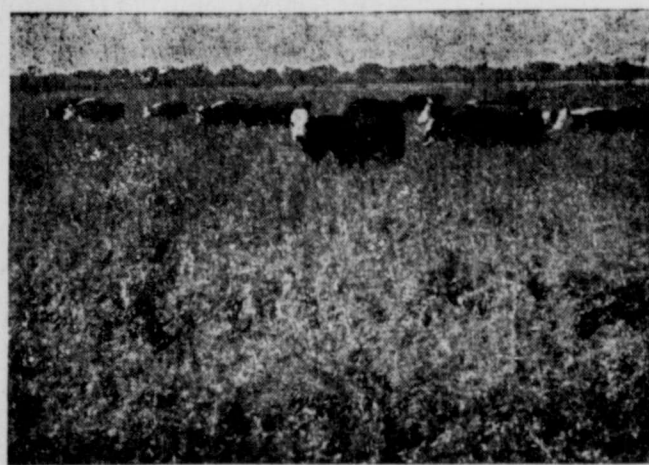
These improved grasses have a shorter growth cycle than range grasses - with adequate moisture and fertility coastal will mature in about 30 days. To get top production and good quality it should be harvested every 30 days. This can be done by cross fencing into two pastures and grazing two weeks and resting two weeks. With three or four pastures, rotation would be every week or 10 days. Other improved grasses vary in rotation needs.

Some essentials for good pasture management are weed control, an adequate fertilizer program and proper grazing height. Coastal, wintergreen harding and weeping love grasses should be allowed to reach 8 inches before grazing and should be grazed no shorter than 4 to 6 inches. Klein grass should reach 16 inches before grazing and should be grazed no shorter than 6 to 8 inches.

Some operations may require additional fencing and water development because larger numbers of livestock will be concentrated on smaller areas of land.

Planning help to decide on kind and amount of grass to plant, management needs, fences and livestock water development is available from the Soil Conservation Service through the Brown-Mills Soil and Water Conservation District.

**Growing Concern About Growing**



Soil depletion is everyone's concern . . . because soil depletion not only endangers personal prosperity, but community growth as well. We heartily endorse the practices of all Professional Agricultural Agencies.

**CHILDRESS RANCH**

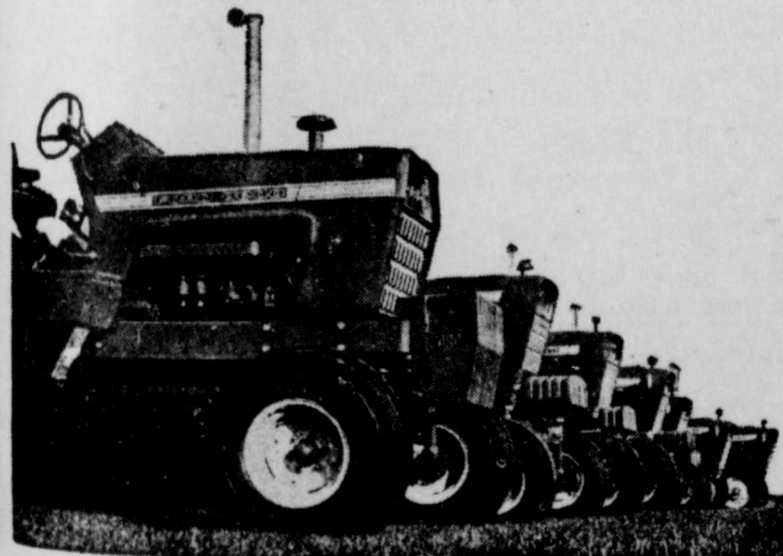
**M. A. CHILDRESS**

A Cooperator With The Brown-Mills Soil And Water Conservation District

**Successful Farming Begins With Soil Conservation  
And Here's What Will Help You  
Have A More Profitable Farm Operation**

**A New FORD Tractor**

**THEY'RE HERE! New Size FORDS!**



**Six Power Sizes - -**

**Ford 2000**

**Ford 3000**

**Ford 4000**

**Ford 5000**

**Ford 8000**

**And The Newest  
FORD 9000**

**See The New 1974 Ford Tractors In Our Showrooms!**

**BUILD PRODUCTION ON A CONTOURED AND TERRACED FIELD . . . USING . . . Ford Tractor**

**. . . and WE HAVE THE FARM EQUIPMENT — to help you do the job easier, faster, and more economical!**

**San Saba Tractor Company**

MAHAN & JOHNSON

Phone 372-5146

San Saba, Texas





The above photo shows an area of rangeland on which the practices of brush management and livestock water development have been applied. Note the pattern

of brush controlled, leaving adequate amounts of browse plants as food and cover for wildlife. The pond shown behind the

brush in right center can serve the dual purpose of fish production and recreation as well as water for livestock and wildlife.

## Rangeland — An Important Resource In Mills County

BY BUD SAATHOFF

The term "range management" covers a lot of ground, so to speak. Even with the emphasis placed on cropland and the development of improved pastureland in Mills County and the Brown-Mills Soil and Water Conservation District, by far the large majority of the land is still used as native rangeland. It is an important resource and provides a large portion of the grazable forage produced in the County each year.

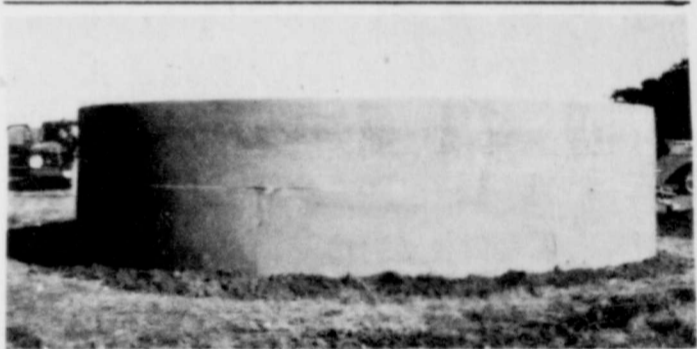
Development of a good range management program for a ranch or operating unit is not always a simple undertaking. Many facets must be considered. The basic resource of soils and plants must be determined. The rancher's problems, interests and goals must be identified. The type of livestock operation and classes or kinds of livestock to be grazed are important, and desirable to give consideration to the maintenance or improvement of the wildlife habitat provided by rangeland.

A management program for the improvement of rangeland may consist of several practices. The proper grazing use of forage plants is essential in any program. A planned grazing system is an excellent practice to achieve a regular schedule of grazing and rest periods that

are so beneficial to plant growth. It also aids in obtaining a balance between livestock numbers and yearly forage production. A planned grazing system can easily incorporate the seasonal use of forage produced on cropland and pastureland as well as rangeland. Supplementary practices such as brush management, cross-fencing, range seeding and

livestock water development are often needed for a successful range management program.

The local office of the Soil Conservation Service is available to assist landowners in developing a program for range improvement as part of a basic conservation plan for their farm or ranch.



A MODERN WATER STORAGE FACILITY

## Ponds Provide Way Of Furnishing Water

An essential element of ranching is water and the development of it. One of the best ways of furnishing water for livestock is

a farm pond. It requires very little maintenance and properly constructed with an adequate spillway will last a number of years.

Nature plays a large roll in finding a place for a good pond. The soil should be a water holding soil, such as a clay. The spillway should be large enough to handle the peak flow of water and not erode. Sometimes it is necessary to "level out" or cut the spillway to make it large enough to carry the excess water.

The drainage area of the pond should be in proportion to the water storage. A pond on a large drainage area increases the silt build up and water is dirty a few days after a rain.

Some parts of the Brown-Mills Soil and Water Conservation District do not have suitable soil for pond construction. Water then has to be supplied by other means, such as wells, springs or pipelines to deliver water from wells to desired locations.

A water storage facility is usually built of steel reinforced concrete and should be large enough to hold a 14 day supply of water for the number of livestock the unit has forage to carry. When a landowner has a dependable supply of water, a pipeline is an economical way to deliver water to other places. Pipelines should be large enough to carry three gallons of water per minute to a water trough. The pipeline should be buried a minimum of twelve inches and all sharp rocks removed from ditch to prevent damage to pipe.

Some ponds are built mainly for recreation. These ponds are built with the same specifications as livestock water ponds, except the area around the waters edge is worked in such a manner that shallow water is held to a minimum. Shallow water is not desirable in a recreation area because this area is where moss and other water plants grow. By sloping the banks around the pond, plant growth along the waters edge is held to a minimum.

### Soil Conservation

Means Better Production

### Better Production

Means Better Living

**SURE!** We can boast the best standard of living of any nation in the world. **BUT** we didn't get it by sitting back in a comfortable rut. We got it by working together in an atmosphere of freedom where the best is considered only something to be improved.

If our Nation, State, and Area are to remain prosperous, if we are to continue vigorous and leaders in world affairs — if we are to endure at all — we must **STOP WASTE OF ERODING SOIL.**

**McCulloch**

**Electric Cooperative**

Phone 597-2161

Brady, Texas

# Conservation Pays Off To You!

## YOUR SOIL...

## IS MONEY



Don't let erosion or depletion rob your soil of its productivity. Terrace and contour-plow for adequate drainage. Rotate crops scientifically. Follow the proved techniques of soil conservation to safeguard the future of your land.

Soil conservation not only helps to protect and improve the land, but helps lower the cost of farm production. For both the present and future, it pays off handsomely!

Like any business, a farm must conserve its resources if it is to pay. We have confidence in the wisdom of our country's farmers. Many of them have already begun a program of soil and water conservation on their land.

If you are not already following conservation measures on your farm, call the Soil Conservation Supervisor of this county today. He will be glad to advise you on a program for you own land — and you'll reap the profits.

As your bank we invite you to come in and let us help you with your financial problems. If you plan to expand, buy a car, truck, tractor, Farm machinery, or improve your home, we want you to know we will be happy to discuss with you your credit needs.



## Mills County State Bank

Serving Mills County Over 85 Years





### SCS District Board

The Brown-Mills Soil and Water Conservation District Board meets on the third Thursday of each month. They alternate meeting sites between Goldthwaite and Brownwood. The Brown-Mills SWCD is a legal subdivision of state government with soil and water conservation re-

sponsibilities. With the expanding emphasis on environmental quality, additional responsibilities are being assumed by Districts throughout the United States. They are now working with the city people as well as the country people to encourage the safe and proper use of our natural resources. The Board

consist of (l to r) W. G. "Bill" Bishop of Goldthwaite, Kenneth "Buster" Boyd of Brownwood, Betty Bucy of Brownwood, O. B. Byrd of Brownwood and Hubert Meyer of Mullin, Texas.

The Board develops long range soil & water conservation work plans and set priority for work

that is provided by the Soil Conservation Service.

The District is a co-sponsor of the Watershed and the Resource Conservation and Development Programs in Mills and Brown Counties. They review Great Plains Conservation Program Contract for quality of treatment and needs.

### The Race Against Waste

... the race between education and erosion, between wisdom and waste, has not run its course ... Each generation must deal anew with the raiders, with the scramble to use public resources for private profit, and with the tendency to prefer shortrun profits to longrun necessities. The nation's battle to preserve the common estate is far from won. . . . The crisis may be quiet, but it is urgent. We must do in our own day what Theodore Roosevelt did sixty years ago and Franklin Roosevelt did thirty years ago; we must expand the concept of conservation to meet the imperious problems of the new age . . .

... John F. Kennedy

# L. B. Burnham "Outstanding Conservation Rancher"

L. B. Burnham has been selected by the Brown-Mills Soil and Water Conservation District Board as the "Outstanding Conservation Rancher" in the Mills Portion of the District. L. B. along with Glen and Emmitt Miller operate nearly 2600 acres in Mills County. L. B. has been a

cooperator with the District since 1948. Over the years he has controlled brush on some 1000 acres. The brush work is normally done in a pattern beneficial to wildlife. He has constructed 9 farm ponds, established 62 acres to improved grasses and constructed 1260 feet of diversion terraces.

L. B. carries out a good management system on his cropland, rangeland and pastureland. He watches his grass and evaluates production monthly to determine if stock should be moved before damaging his choice grass. "If all landowners were as pleasant to work with as L. B. and would manage their grass like he does, it would make our job most satisfying," stated Charles Studer, District Conservationist with the Soil Conservation Service at Goldthwaite. L. B. has worked closely with SCS technicians since 1949 to keep his forage and livestock in balance.

L. B. was recently awarded an "Excellent in Grazing Management Certificate" by the Texas Section of the American Society of Range Management. This award is made to select stockmen throughout the State of Texas who do an outstanding job of manipulating livestock to keep choice grasses in a vigorous condition. This allows the plants to produce efficiently and provides cover for the control of erosion.

Whenever we have a new employee in the SCS Office, we send him out to L.B.'s because we know he will see conservation being applied and will benefit from L.B.'s sound knowledge of ranching operation, said Studer.



L. B. BURNHAM

## SCS - A Definition

### What Is A Soil and Water Conservation District

Our District is a legal subdivision of the State of Texas. It is governed by a five-man board of directors. Directors are elected by local land owners. The term of office for a director is five years. Regular elections are held each October. Resident land owners are eligible to cast a ballot in the election. The District is a non-profit organization. We get some money from the State for operations. Mills County

Commissioners Court has helped us in the past from a financial stand point. Also, the local businesses that sponsor newsletters have helped in this way. We have no power of taxation.

### What Is The SCS

The SCS is a federal agency assisting the Mills SWCD through a memorandum of understanding with the District and the United States Department of Agriculture. The purpose of the memorandum is that the SCS technicians assist the District Cooperators with such technical

assistance as needed to carry out a conservation plan on their farm or ranch. Conservation practices are engineered and designed by these technicians. The SCS has evolved from the Old Wind Erosion Service and Wind Erosion Districts of the 1930's. SCS technicians have the latest information and know how to help farmers and ranchers with their conservation problems. Assistance by the SCS is gained by a request through the District. The SCS also administers the Great Plains Conservation program.



### Endangered Species

Photo taken in Mills County of Rare and Endangered plant, White Honeysuckle (Lonicera) is a native to Central Texas and is a preferred browse plant by livestock and deer. Its range has

been greatly reduced by overgrazing and it now occurs primarily along roadsides and protected areas and on well managed rangeland.

## Where Does Our Water Come From ?

Precipitation (rain, snow, hail, and sleet) is the source of our water supply.

The "water cycle" from the clouds in the sky to land and ocean and back to the sky again constantly renews the water supply. As the water falls on the ground, some runs off over the surface, some is held in the soil and some percolates to ground water. Water in the soil is used to grow crops, pastures, forests and all other vegetation that covers the land.

In the aggregate, about 70 percent of the national water supply is transpired by plants or evaporates directly from the soil and other surfaces. Surface runoff and ground water serve direct human needs in homes, industries, irrigation, recreation, and so on. Nationwide, about 80 percent comes from surface sources and 20 percent comes from ground water.

The water cycle does not bring the same amount of water to all communities. Precipita-

tion is not spread evenly over the country. It ranges from 120 inches a year along the northwest and close to less than five inches in the arid southwest.

What happens to precipitation therefore is greatly influenced by the management of watershed lands. The farmers and ranchmen who control our farmland, rangelands and woodlands also control to an important degree the movement of the water that falls on their land.

Streams, lakes, and reservoirs are the major sources of available water. They supply about 70 percent of the water used by cities, towns, and by farmers for irrigation.

Water needs are expected to double by 1980, while population increases 45 percent. Average daily use for all purposes increased from 600 gallons per capita in 1900 to 1,500 gallons in 1960. By 1980, the country will be using 2,300 gallons of water a day for every man, woman, and child.

**THE GOOD LAND**  
STOP SOIL EROSION!  
LET'S KEEP IT THAT WAY

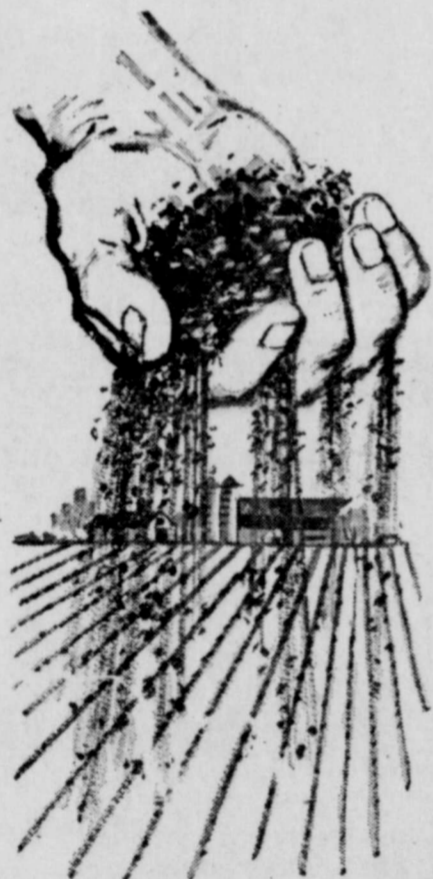
## A Note Of Our Appreciation

We take this means to express our thanks to all those who have unselfishly given their time and efforts in conserving our natural resources. The cooperation has been unparalleled between the SCS and local farmers and ranchers and units of government for the betterment of all.

SOIL CONSERVATION STAFF

Goldthwaite, Texas

In Your Hands  
The Future  
of  
Your Soil . . .



# CONSERVE



Don't let your soil go hungry . . . hungry for the proper maintenance and management. Learn what's new in modern soil conservation. Visit your Soil Conservation Service office and discuss a sound conservation program you may need. Plan now for a successful farming year and for the years to come.

**Ranchers  
Feed & Supply**

Phone 648-2235

Goldthwaite, Texas







### Inspects Site

Shown above are Don Petty, Goldthwaite City Manager, and Eugene Williams, Soil Conservation Service Construction Inspector evaluating quality of construction of the plunge basin on Site 4, Bennett Creek. This Site is located on the Clyde Kerby Ranch northeast of Goldthwaite.

Shown above are Don Petty, Goldthwaite City Manager, and Eugene Williams, Soil Conservation Service Construction Inspector evaluating quality of construction of the plunge basin on Site 4, Bennett Creek. This Site is located on the Clyde Kerby Ranch northeast of Goldthwaite.

Shown above are Don Petty, Goldthwaite City Manager, and Eugene Williams, Soil Conservation Service Construction Inspector evaluating quality of construction of the plunge basin on Site 4, Bennett Creek. This Site is located on the Clyde Kerby Ranch northeast of Goldthwaite.

Shown above are Don Petty, Goldthwaite City Manager, and Eugene Williams, Soil Conservation Service Construction Inspector evaluating quality of construction of the plunge basin on Site 4, Bennett Creek. This Site is located on the Clyde Kerby Ranch northeast of Goldthwaite.

## Grazing Distribution Can Be A Problem

Livestock are lazy. They repeatedly graze convenient areas close to water, salt, bedgrounds, shade and loafing places. Only when the plants they prefer are eaten from such places will they move further away.

Sheep and goats tend to graze into the wind and will often over use the end of pasture from which the prevailing wind comes from. Cattle try to avoid rough, steep, or stony land, while sheep and goats use such areas more readily.

Although deer use level, open grasslands, they like to spend much of their time in the protection of brush, trees, or rocky ledges.

Because of these grazing habits, if there are any over used areas in a pasture, they are around places of animal concentration. Often it happens that part of a pasture is severely over used, while another part of the same pasture is under used because of poor distribution of livestock

grazing. Light, or no use, of part of a pasture will not make up for over use of another part of the same pasture.

Some problems of grazing distribution cannot be completely corrected, but there are more grazing problems that can be corrected than those that cannot be corrected. Developing watering facilities in parts of a pasture which have been under used helps take the grazing pressure off of areas over used. Cross

fencing to reduce pasture size can help if pastures are too large, or if they include two or more kinds of land, or range sites, which livestock do not use to the same degree.

Whenever practical, cross fences should follow the boundaries between different kinds, or range sites, of grasslands. Salt and minerals should be placed at a distance from source of livestock water, or on sites animals normally do not

## Kleingrass Comes From Africa

Kleingrass is a warm-seasoned perennial bunchgrass introduced into this country from Africa. Selection 75 is a variety that is recognized as the variety that is best adapted to Texas soil and climatic conditions. It is a fine stemmed, leafy, and grows to a height of three to four feet at maturity. It is highly palatable to livestock as either green forage or cured hay. The grass is also planted for use as a food and cover crop for wildlife, especially for quail and turkey.

Kleingrass should be planted on a clean firm, well-prepared seedbed that is free of weeds. Seeding should be done in the spring after danger of frost is past, during March 1 to April 30. A planting mechanism that is capable of handling small seed is necessary, such as a grass drill or a vegetable planter. Preferably a grass planter equipped with double coulters, disk furrow openers, depth bands and press wheels should be used.

The grass can be planted in 38 to 42 inch rows at a rate of about 0.8 pounds of pure live seed per acre or can be close - drilled or broadcast at a rate of 2.0 pounds of pure live seed per acre. The seed should be planted flat or low beds and covered about 1/2 inch deep. If the planter is not equipped with press wheels, the seedbed should be cultipacked after planting.

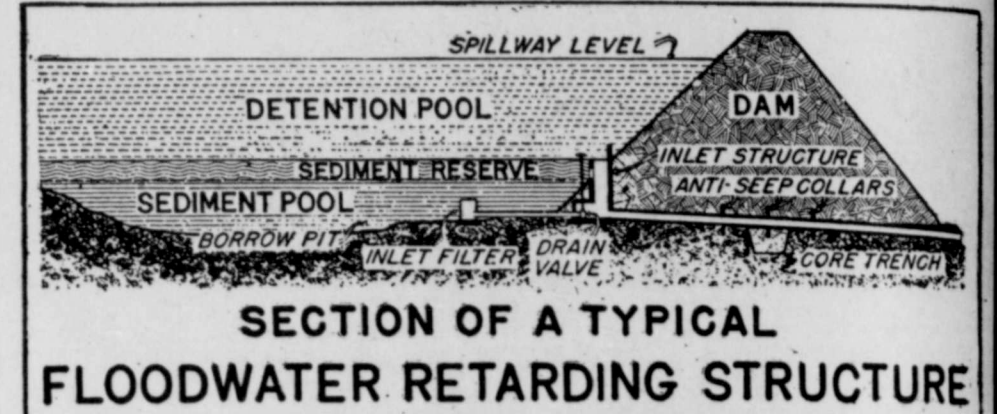
Fertilization for establishment should be based on a current soil test. The fertilizer is best applied in bands at planting time a few inches to either side and below the point of seed placement. Top-dressing of the fertilizer on the established grass is sometimes needed where weed competition is a serious problem.

Initial seedling development is slow, so weed control is highly important during the early growth stages. In row plantings weeds can be reduced by cultivating.

Broadcast or close drilled plantings may have to be sprayed with approved chemicals, but only after grass seedlings obtain at least six to eight leaves, or about 8 to 10 inch height. Grazing should be restricted until new plants are well established; which is, normally, one growing season, or about 16 inches in height, and it is best to allow the new plants to go through one complete growth cycle, by allowing the plants to reach

maturity and produce a seed crop, or through first killing frost. If weeds become too competitive before the grass plants reach the stage to allow application of chemicals, the only other alternative would be to shred no lower than six inches from the ground surface.

Your local Soil Conservation Service field office can advise you on the suitability of Kleingrass for your particular soils and type of operation.



SECTION OF A TYPICAL FLOODWATER RETARDING STRUCTURE

Structures Such As This Cross Section Illustrated Here Will Be The Type Built In The

## Bennet Creek Watershed

Two flood prevention sites have been completed.

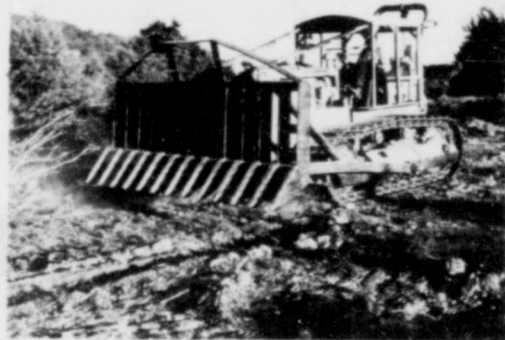
One site is under presently under construction.

Hopefully, the one remaining site will be advertised for bids in the near future.

### Mills County Water Control & Improvement Dist. No. 1

Board of Directors

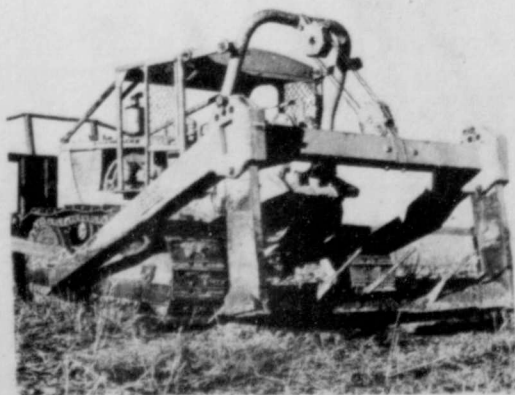
JIM SOULES, President      ARNOLD HEAD, Vice President  
J. SHERWOOD OWENS, Secretary-Treasurer  
HOMER McCASLAND      WALTER TUBBS



Brush Rake



Tree Plow



Root Plow

## SOIL IS LIFE

PRESERVE & PROTECT IT!



John Deere Paddle Wheel Scraper

- Chaining
- Raking
- Tree Plowing
- Root Plowing
- Tank Work

## Everett A. Kirby

Box 206  
Lometa, Texas 76853

512 - 752-3171

"It is fortunate that today there is a growing recognition on the part of land users and the public generally of the need to strengthen conservation in our upstream watersheds and to minimize flood damage." - Dwight D. Eisenhower.

"Soil and water are two of our most important natural resources, producing foods, fibers, and innumerable products necessary to life and happiness." - Gov. Carl E. Sanders of Ga.

YOU, PLUS YOUR SOIL CONSERVATION SERVICE, CAN HANDLE YOUR SOIL BEST!

Emphasis should be placed on the importance of conserving and improving the quality and productivity of our soil for crops and pastures.

We are glad to cooperate with the Soil and Water Conservation District supervisors here, and with other representative groups in emphasizing the importance of this program!

### The Security of Your Family

Is Dependent On The

### Security of Your Land

- AIMAT . . . .
1. Sound Land Use
  2. Building Soil Productivity
  3. Using the right soil saving measures on each acre.
  4. Providing economically sound Conservation Methods

## Graves & Son Ranch

Cooperator with Brown-Mills Soil Conservation District  
Goldthwaite, Texas





## Conservation Mangement Means Good Wildlie Mangement

Hunting and fishing are two of America's best-loved sports. The animals and birds which we like to hunt or observe as we travel through the country require three elements in their habitat - food,

water and cover. Wildlife populations vary depending upon the availability of these three elements. Private farms and ranches provide the home for our wildlife and the

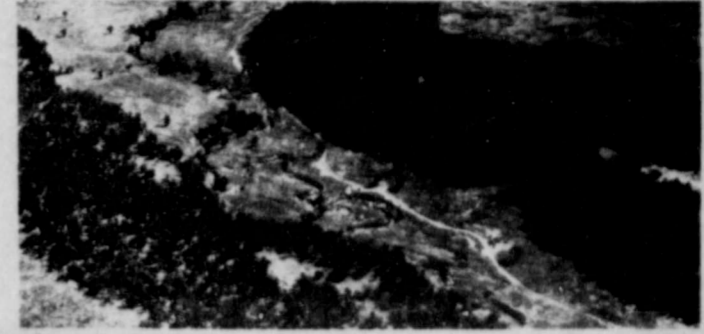
better the management the better the home.

Good conservation management is good wildlife management. Overgrazing results in erosion and silt in the pond - this is not good,

but a good cover of grass results in clean water in the pond. Well managed ponds provide good fishing as well as water for wildlife. Special watering devices are installed by some farmers to make it easier for small wildlife to get a drink. Fields are terraced and resi-

due is left on the land to control erosion. Crop residue also provides waste grain and weed seeds for small game birds. Some farmers leave a row or two of grain unharvested to provide wildlife food through the winter. Others allow fence rows to grow up in weeds to provide cover and food.

Thick stands of brush can be opened up to resemble somewhat a pattern mother nature once had. The deep productive soils can be used to grow grass, legumes and weeds which make up most of the forage used (poundage wise) by livestock and wildlife. Thin, steep, rocky or other unproductive areas should be left in brush and trees for browse and cover for wildlife.



Bill Bishop, Howard Campbell, Bert Meyer, J. S. Owens, Roy Adams and G. L. Kemp look over first-year planting of kleingrass on the Don Geeslin farm.

Kleingrass seed is an excellent food for quail, dove and other birds. This grass grows tall and

with proper management provides good cover for birds, rabbits and other small wildlife animals.

### SOIL CONSERVATION

#### A Challenge that Grows

A priceless legacy is at stake . . . The rewards of proper soil conservation are many and great . . . Practice proper soil management and start prospering.



Let us band together and use every means available to us to combat soil depletion and erosion. To have a well organized soil conservation program, for valuable advice, visit your local soil conservation district office. Only you can save your soil.

#### FOREMOST

Milk and Ice Cream

James B. Harkey - Distributor

Corky Poe - Route Man

## Wildlife: A Renewable Resource

The various forms of wildlife, from song birds to big game animals, that occur on our native rangelands, are an important natural resource. Fortunately, most species of wildlife respond well to management and can be termed a renewable natural resource. When we check even closer into the realm of wildlife management we find that one of the most important phases is the proper use and management of our soil and plant resources. For these basic resources provide the essentials on which all wildlife depends - food and cover.

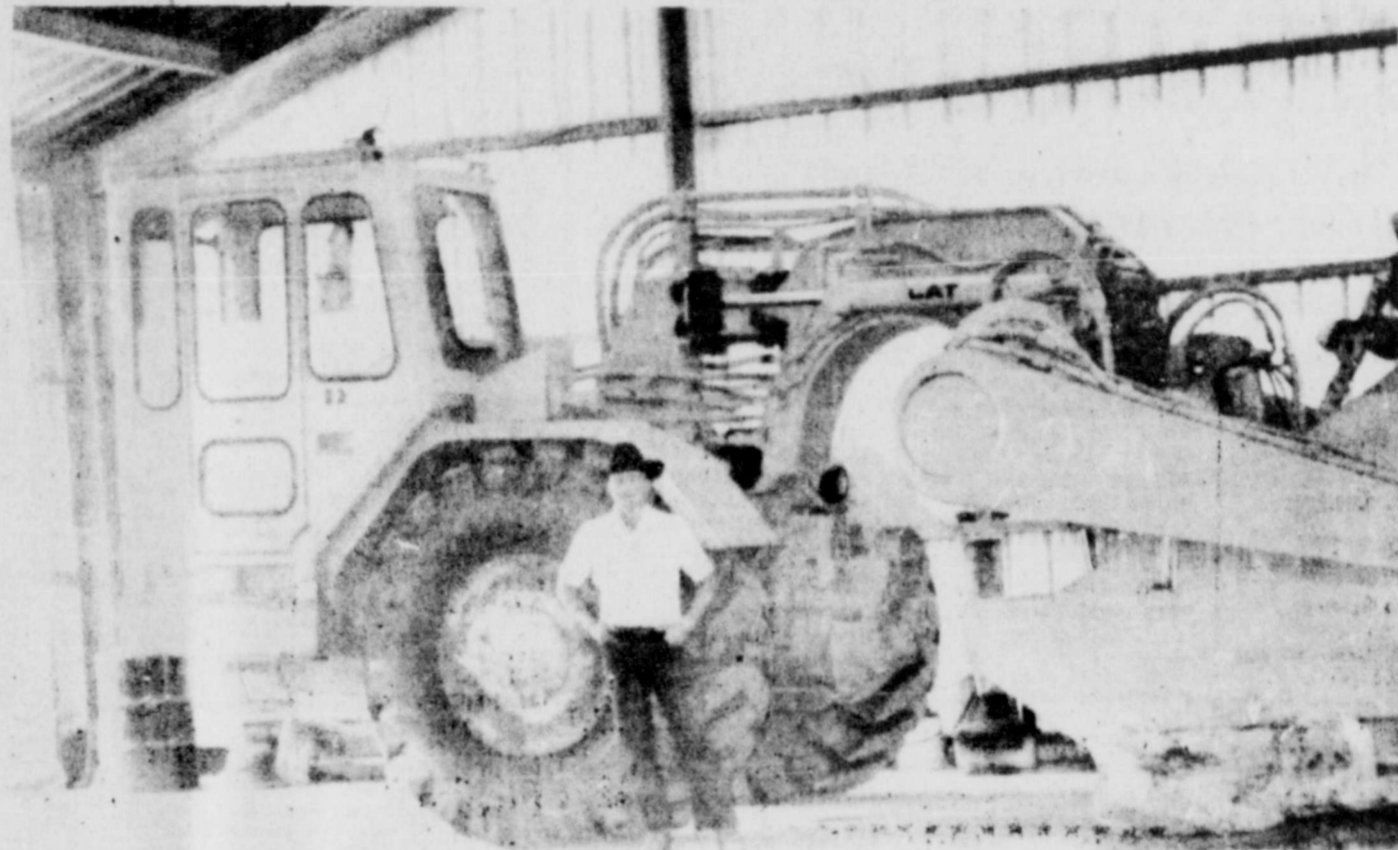
Over much of Texas, in Mills County and the Brown-Mills Soil and Water Conservation District in particular, the Whitetail deer is one of the most well known and popular forms of wildlife. This animal has probably caused more landowners to consider starting some form of wildlife habitat management than any other. Often during the planning of habitat management for deer the subject of brush control arises.

On first thought, we often feel that any form of brush control would be detrimental to the deer habitat. In many cases it would be wise to have a second thought and change the term "brush control" to "brush management" or "brush manipulation". Normally, high populations of deer can usually be maintained as well as adequate grass produced for livestock when 25 to 35 per cent of the land is left in brush cover, if the location of the brush is properly arranged to satisfy the deer's requirements. In some situations, as high as 50 per cent or more of the land area should be left in brush. The amount of woody plant cover needed to sustain desired wildlife populations varies with the kind and quality of the cover, topography, soils and the grazing needs of both livestock and wildlife.

Brush should always be left along draws and creeks, on steep slopes, near watering places and turkey roosting sites and on other areas most attractive to wildlife. Desirable browse plants may be left in motts or other natural patterns. Uniform stands of brush may be controlled in strips or blocks alternating with uncleaned areas. Managing brush in such patterns greatly increases the edge areas, the junction of brushy and open areas, available to wildlife. Land treated in such patterns has a much better balance of food and cover plants than where entire pastures are either left in thick brush or are entirely cleared of woody plants.

An alternative to controlling brush in patterns is the thinning of the stand of brush. This is a more selective method where undesirable trees and shrubs are controlled with minimum disturbance to the desirable wildlife browse plants. An example would be where mesquite is controlled by individual tree dozing or basal spraying, leaving such preferred species as Oak, Hackberry, Bumelia, and others undisturbed to provide food and cover for wildlife.

## Let Us Help You With Your SOIL CONSERVATION



CLAUDE PRATER STANDS BESIDE SCRAPER—DIRT—MOVING BUGGY

WE NOW HAVE . . .  
**FINANCING AVAILABLE**

---on the Customer's Request---

We Will Be Happy To Talk To You About Financing  
Your Conservation Project At the Bank Rate.

## We Do All Kinds of Bulldozing

Tank Dams --- Brush Pushing

Terracing -- Disk Plowing

and Other Earth Moving With

Free Estimates on Your Jobs

PRACTICE SOIL CONSERVATION Wherever and Whenever You Can

Dozers and Heavy Duty Scrapers

**CLAUDE PRATER**

Comanche, Texas

Phone 356-2410

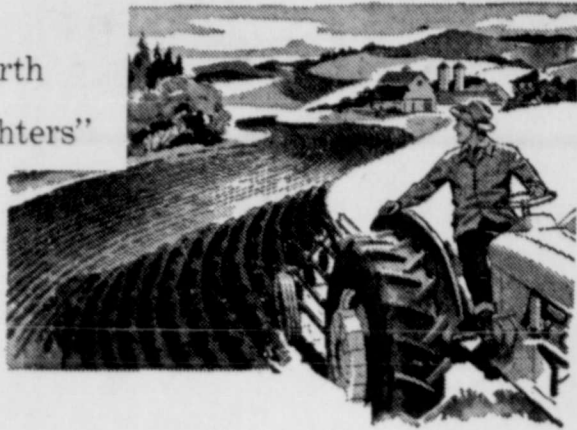


# Soil Conservation Service Assistance Extended To Non-Farm Landowners

## OVER ALL THE LAND

"Over all the land . . .  
And over all the waters  
Earth and the fruits of earth  
For all her sons and daughters"

Four Short Lines  
That Spell Out  
The  
Full Meaning of



### Soil Conservation A Farm and Ranch Program That ---

- Starts with a scientific analysis of the land
- Adapts operations to fit the natural requirements of every acre
- Conserves soil and water resources
- Pays its own way by increasing farm income

Consult your Soil Conservation Service Representative for a program of Farm and Ranch Conservation that will fit into your program and needs.

**Harper Implement Co.**

Your Mills County John Deere Dealer  
Goldthwaite, Texas



For many years, the technical assistance of the Soil Conservation Service and the programs of the local Soil and Water Conservation Districts were provided primarily to farmers and ranchers and other agricultural producers. In more recent years however,

## Farmers Home Administration Helps Build Rural America

The FmHA of the U. S. Department of Agriculture has 19 different loan programs that are available to farmers, rural residents, and communities.

The major purposes of FmHA's rural credit programs are:

- To help build the family farm system, the economic and social base of many rural communities;

- To expand business and industry, increase income and employment, and control or abate pollution;

- To install water and waste disposal systems and other community facilities that will help rural areas upgrade the quality of living and promote economic

development and growth;  
- To provide or improve modest homes in suitable rural environments at prices and on terms that families of low or moderate income can afford.

Most of these programs fall into two categories:

**GUARANTEED LOANS**, in which the loan is made and serviced by a private lender. FmHA guarantees to limit any loss to a specified percentage. Interest rates are determined between borrower and lender unless the rate is established by law, and secondly by:

**INSURED LOANS** that are originated, made, and serviced by the personnel of FmHA.



there has been a trend for many people other than farmers and ranchers to use the services and information available from SCS.

Local units of government such as state, county and city governments have found the SCS and SWCD to have information needed by their planning departments. A good example is the Standard Soil Survey compiled by the soil scientists of the SCS. Counties and cities often find this information beneficial in planning, building locations, parks, sewage and water pipelines, sanitary landfills, locating uses. The SCS and SWCD have joined forces with cities, counties and other organizations in providing watershed protection and flood prevention in many areas over the State.

Urban homeowners and other individuals with small plots of land also find SCS information very useful. As with units of government, individuals find the soil survey helpful in determining soil suitability for home foundations, septic tank filter fields, underground utility lines, fence construction and many more uses. Homeowners can also find assistance on methods of taking soil samples to be sent for analysis, fertilizer needs for lawns and

gardens, selection of native and introduced plants for landscaping yards, shrubs and other plants for the yard or garden that are attractive to birds and other wildlife as food and cover plants and other interesting and useful data on soils, water, plants and wildlife.

Additional groups who may not be happy to provide any information and assistance that we have available to anyone who is truly interested in the Conservation treatment and management of our soil, water, plant and wildlife resources.

involved with land management through hunting and fishing leases. Much information and assistance is available on pond construction, fish pond management, wildlife habitat development and management to landowners and sportsmen.



Soil survey information and resource data can be an effective tool in land use planning by county governments.

"Rapidly increasing local community interest in small watershed development throughout the country is one reflection of public insistence upon vigorous resource conservation action." -- D. A. Williams, Administrator, Soil Conservation Service.



All of us, farmer and city-dweller alike, have been greatly blessed in the rich, fertile soil that covers our land. And all of us have a responsibility and obligation to make sure that the generations to follow us will be equally blessed with abundant harvests every year. We can all do our part to make sure the land of the free will always be the land of plenty!



PRACTICE SOIL CONSERVATION -  
WHENEVER, WHEREVER YOU CAN!

**A Perfect Tribute  
To Your Skill As A Farmer Or Rancher  
Is A Complete  
Soil and Water Conservation Program On Your Land**

**Brown - Mills Soil And Water Conservation District**

Betty Bucy  
ZONE TWO  
Lee Roy Schwartz  
ZONE THREE

O. B. Byrd  
ZONE ONE

Kenneth Boyd, Chr.  
ZONE FIVE  
W. G. Bishop  
ZONE FOUR

Mills County "FmHA" Committee meet to certify loans for rural residents of Mills County. Pictured from left to right are Committee Chairman, Delton Barnett; Committeeman, C. R. Emdy; Assistant County Supervisor, Bobby L. Mobley. Committeeman, Elton Bufe was not available for this picture.

## "Produce And Protect" For Home Gardeners

Reducing food bills is just one good reason for having a home garden, according to a local soil conservationist.

"Many young people, and adults too, have never had the satisfying educational experience of cultivating the soil," Charles Studer, district conservationist with the Soil Conservation Service said. "Children are pretty sick these days of being told that they are living in a pre-packaged, quick-frozen world - - even if it is true. A small garden can teach a lot about soil-plant relationships, soil and water conservation, and an appreciation for the productivity of the earth," Studer continued. "This is good enough reason for having a home garden."

"Another thing you hear a lot about these days is 'quality of life,'" Studer said. "And it is my view that the superb flavor of your own fresh wilted-lettuce salad, corn-on-the-cob, and home-grown tomatoes improve your quality of life. This is another good reason for having a home garden."

"When you put in your garden, don't forget the need for soil and water conservation," Studer said. "Contact my office, and I will provide you with two little leaflets that will give you some good suggestions on home-garden conservation. If you have questions on garden pests, varieties, or diseases, you should contact your University Extension Service Office."

"It is our task to hold the rich heritage of our land in trust for future generations. What we do with it now will determine its productivity for generations to come. We must make it an instrument for progress and prosperity. If we care for and nurture the land, there is plenty. If we neglect the land, there is poverty. This is the essence of stewardship." -- President Lyndon B. Johnson.

# PREVENT SOIL EROSION



EROSION OF SOIL COSTS YOU  
TIME AND MONEY AND YOU  
CAN STOP IT!

When soil erosion is not corrected and gets out of hand it becomes a big job to get it back in shape for crop production. You wouldn't allow a thief to take your money but it all adds up to the same thing when you let erosion take its costly toll in productive acreage

If ever there was a time for the correct use of land . . . it's now. Our land is limited. It's fixed in place; it's fixed in amount. It must be conserved. Only through proper conservation can we use it wisely or lose it.



**MILLS COUNTY  
COMMISSION**  
JUNE CLIFTON — Owner

PHONE 915-648-2285  
GOLDTHWAITE, TEXAS





### Waste Holding Ponds

Charles Studer and Don Geeslin inspect the holding ponds on Goldthwaite's place north of Goldthwaite. Geeslin constructed the ponds to catch and hold the waste from his lamb feedlots. A strip of bermuda grass between the ponds and the holding ponds filters out the solid waste. This waste is utilized by the grass. The water and solid waste that

gets through the grass is caught in the pond. The system was designed by Bob Rothe, Agriculture Engineer, with the Soil Conservation Service at Brownwood. The holding pond was laid out and checked out by Carl Casbeer, Conservation Technician with SCS at Goldthwaite. It appears that a system of this type will be effective in the abate-

ment of pollution to our streams and rivers. Three other landowners in the Mills Portion of the Brown-Mills Soil and Water Conservation District have installed pollution abatement systems similar to this one. They are Layton Black, Hollis and Bill Blackwell, and Harold Limmer.

During the last two years there has been new interest generated in the identification and preservation of rare or endangered species of plants and animals. This interest is not limited to Texas, but is nationwide. In some instances with a few species of migratory birds and animals, the concern is necessarily international.

In Texas, an organization has been formed and named the "Texas Organization for Endangered Species" (TOES) and is made up of federal and state agencies, universities and private groups. The eventual goal of the Organization is to coordinate efforts to identify and preserve threatened species and to monitor their numbers and habitat.

As explained by James Henson, Biologist, Soil Conservation Service at San Angelo, "Many plant and animal species of the United States are so reduced in numbers, or have such specialized habitat and limited distribution, that they are in danger of extinction. The disappearance of any species would be a biological, cultural and in some instances, an economical loss. Their existence contributes to scientific knowledge and under-

standing and their presence adds interest and variety to life." It is certainly recognized that the gradual evolution of species is a natural thing. This we all learned at an early age in the study of prehistoric plants and animals. By no stretch of the imagination could we believe that these species could have been preserved to exist through time. While there is much to be learned from the study of the past, we must be and are concerned about the present and future of existing species.

The rapid expansion of the human population has had a tremendous effect on the environment and habitat of all living things, including people themselves. Basically, this is the principal reason for our concern for rare or endangered plants and animals. To preserve and improve a portion of the human environment. As pointed out by Henson, "The principal hazard to present rare and endangered plants and animals is the destruction or deterioration of habitat resulting from human activities—expanding and intensified agriculture, lumbering, recreation, transportation, industrialization, urbanization and the like. These essential activities of man will continue and the necessity of recognizing their adverse environmental impacts and selecting alternatives that minimize such impacts become increasingly important." It has been found that some form of "people management" must be considered important in the preservation of some species.

One of the problems confronting biologists, conservationists and others working on the problem of rare endangered species is that for some plants and animals, little is known about their distribution and habitat requirements.

Some of the native plants of Mills and surrounding counties which are included on the list of Rare and Endangered Species are grasses such as Big Bluestem (Andropogon), Canada Wildrye (Elymus), Texas Bluegrass (Poa), Yellow Indiangrass (Sorghastrum) and Eastern Gama-grass (Tripsacum). Perennial Forbs such as Engelmann Daisy (Engelmannia), Showy prairie-plantain or bluebells (Eustoma) and Halfshrub Sundrops (Oenothera). Also shrubs or woody plants such as Texas Kidneywood (Eysenhardtia) and White Honey-suckle (Lonicera).

Animals and birds considered rare or endangered in this area may include the Blacktail prairie dog (Cynomys) and the Golden-cheeked warbler (Dendroica).



### Inspects Site

W. G. Bishop examines construction on Site 4, Bennett Creek, located on the Clyde Kerby Farm seven miles east of Goldthwaite.

Bishop is a Director of the Brown-Mills Soil and Water Conservation District. The District is responsible for the operation of these structures when they

are completed. This photo shows west part of dam being back-filled after it was cored.

## Ponds Prone Attractive, Safety Factors Important

Ponds, like any body of water, attract people. When the two come together, there always is a chance of a drowning or boating accident.

"Ponds are an asset to the environment and have many uses," Charles Studer, District Conservationist for the U. S. Soil Conservation Service in Goldthwaite stated. "During the past 30 years, Texas landowners have built more than 350,000 ponds as part of their soil and water conservation plans. Some 1500 have been built in this area."

"Families and friends are attracted to ponds because they are nice places to picnic, swim, boat or fish," Studer said. "But the small boy passing by who is attracted by the water may do almost anything. This is why, keeping ponds safe is so important."

Here are some pond safety suggestions listed by Studer:

- + Before construction, find out about your liability: You may need to protect yourself with insurance and have your pond built by a reliable contractor who will follow engineering specifications.
- + During construction, remove trees, brush and anything else that might hinder safe boating or swimming. Eliminate sudden dropoffs and deep holes in the swimming area.

Once a pond is completed, mark the safe swimming areas and put warning signs at danger points. Tell swimmers not to swim alone, and post safety instructions for swimming and boating. Use boats that will float

if swamped or capsized, and warn swimmers and boaters to stay out of ponds during storms and when spillways are flowing. Above all, recognize that farm ponds are hazards to small children.



## Mr. America, 2000 What Will His Heritage Be?

WE ALL AGREE that the land is a God-given heritage, that we have a stewardship to use and PRESERVE THE SOIL — not to mine and destroy!

OUR STURDY PIONEER FOREFATHERS handed down to us uncounted millions of acres of virgin soil. With reckless abandon we moved in, mined the good earth, dissipated its value and moved ever Westward. New frontiers of untilled land seemed inexhaustible. But now we know that this great heritage of ours should not have been wastefully used.

AMERICA HAS GROWN UP, matured and become great among nations, largely because of our natural resources. With no new frontiers to open, we now pause, as thinking intelligent people should. We ponder at the threshold of a new destiny. We know that land misuse and abuse has already ruined more than 100 million acres of formerly good crop land for further food production, and that another 100 million acres have been seriously damaged, with top-soil still being destroyed faster than it is being repaired or created.

EROSION HAS TAKEN a third of our precious topsoil. As our original topsoil averaged only nine inches—that leaves us only six inches from living on denuded ground. If we keep up the present rate of thoughtless soil practices, we will be living on a desert within another 50 years.

WE HAVE A RENDEZVOUS with posterity. Let us band together as forthright Americans, and use every means available to combat the No. 1 enemy of America today, which is soil depletion and erosion.

Let's All Work Together  
and  
Help Conserve The Soil

So, That We May Have  
Better Living Today, Tomorrow  
And in the Years to Come.



## C. D. Owens Ranch

C. D. OWENS

Cooperator with Brown-Mills Soil And Water Conservation District

### Don't Throw Away Clips

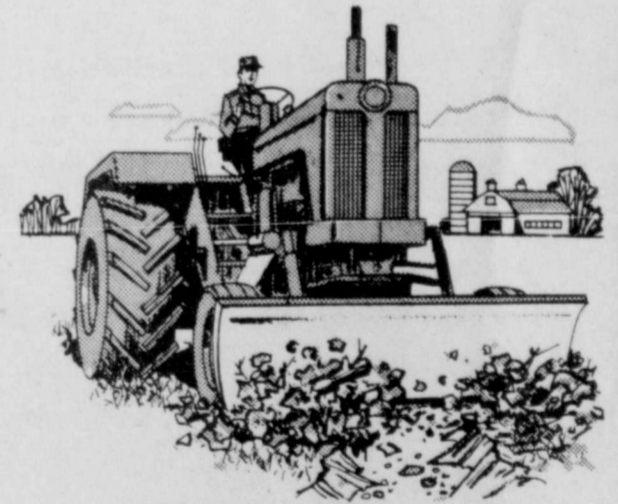
"Sending grass clippings away with the garbage wastes energy." These words are from Charles Studer, district conservationist with the USDA's Soil Conservation Service.

"Chemical fertilizers require a lot of energy to produce," Studer said. "So we buy plant food in a bag, put it on our yards, clip the grass, and send all that energy to the landfill. And the garbage trucks burn more energy taking the bulky clippings away."

"This is especially ironic because this material is so easy to save and convert into valuable organic fertilizer at home," Studer continued. "Anyone can build a home recycling plant for this stuff. Make a compost heap with a little wire or scrap lumber, and this summer's grass clippings or fall's leaves can be next spring's organic fertilizer and soil conditioner."

"I'm not going to try to give details of composting in this news item," Studer said, "but if you will call or write my office, I will send you a dandy little leaflet, Mulches for Your Garden, which tells how to make and use compost."

More than twenty times as much plant food is removed from sloping land by erosion as is removed by crops. It requires about 500 years for nature to build an inch of soil. That same soil can be washed away by a single heavy rain.



We Invite You To Let Us Serve You

### ACP and Soil Conservation Practice Jobs

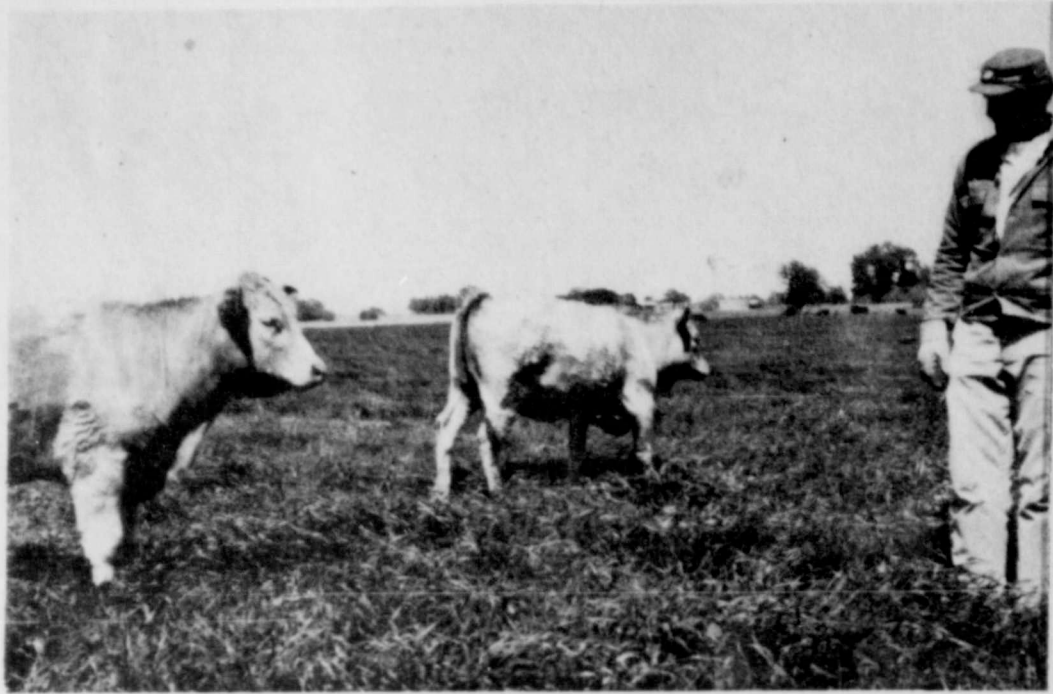
- ☆ Tanks
- ☆ Terraces
- ☆ Brush Work
- ☆ Chaining and Up-Rooting Mesquite and Cedar
- ☆ Also Grass Seeding

## Louie D. Mask

CONSERVATION CONTRACTOR

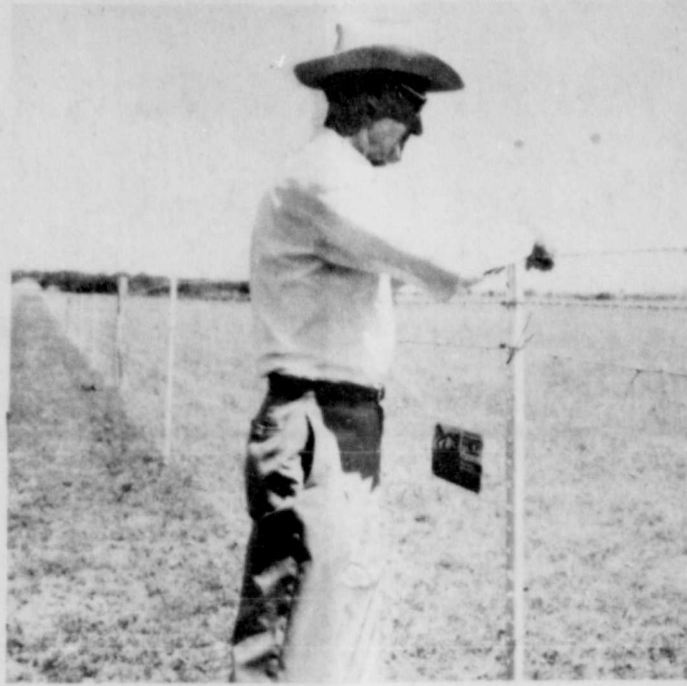
1031 San Benito Drive Ph. 643-6524, Brownwood, Texas  
Member of Conservation Contractors Association Of Texas





### Harding Grass

Improved pastures are a common site in Mills County, M. C. Kirkpatrick planted this winter green harding grass in the fall of 1972.



### Cross-Fencing

A cross fence built by Mr. O. L. Harris was part of his conservation plan in which he rotates grazing on coastal bermuda, Klein grass and native rangeland.



### ASC Committee And Director

Pictured above is the Mills County Agricultural Stabilization Committee and the County Director. From left: Blake English, Lee Roy Schwartz, J. D. Berry and Howard Ethridge. These farmer elected committeemen are actively engaged in farming in various sectors of the county. Lee Roy Schwartz, Vice-chairman, farms small grains and feed grain plus livestock in the Priddy Community. J. D. Berry, Chairman, produces small grains and livestock in the river. Howard Ethridge of Democrat Community is engaged in livestock production.



The above photo shows coastal after 8 months of growth on the Geeslin farm located on the Colorado River southwest of Goldthwaite.

## Remember The Time?



Yes, there was a time, about the time when the telephone first made its appearance as a vital link between town and country, a farmer or rancher could move on to new ground when his acreage slowed down in production. The need for protecting and conserving the soil was given little thought in those days.

## But! Times Have Changed...

Yes times have changed alright. We have made much progress in farming and ranching as well as in our telephones. Farmers and ranchers are practicing soil conservation in increasing numbers and improving their economy just as the telephone has improved into this new modern dial system that is now available to Central Texas farmers and ranchers. All in all it means better living for all our families, both in town and country.



We salute the soil conservation staff of this area and we heartily endorse and recommend better soil conservation methods.

And, we also invite your inquiry and recommend that you get in on the advantages offered through our modern dial telephone system.

## Central Texas Telephone Co-operative, Inc.

SERVING THE RURAL AREA OF CENTRAL TEXAS

## Coastal And Kleingrass For Hay

By: Carl Casbeer

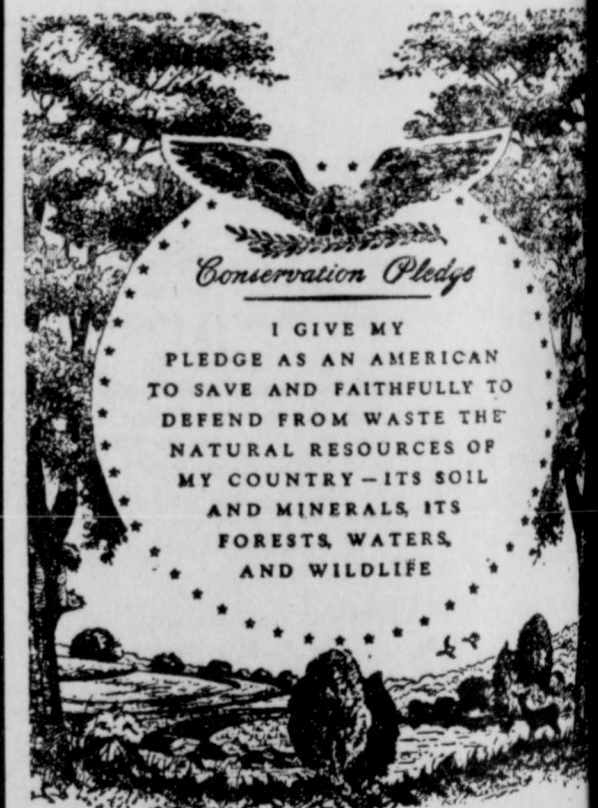
On many farms and ranches, coastal and kleingrass are being used for hay. These grasses do not have to have a seedbed prepared and planted each year. This reduces the cost of producing hay. For hay production, the fertilizer requirement is usually higher than when grazing these grasses. Fertilizer should be applied after each cutting. Fertilizer requirements vary with different soils. It takes 110 lbs. of nitrogen and 30 lbs. of phosphorus on heavy bottomland soils to produce 3.5 tons of bermudagrass hay. On deep sandy soil it would take 160 pounds of nitrogen and 40 pounds of phosphorus and 40 pounds of potash to produce the same 3.5 tons of hay.

Kleingrass does not produce as much hay per acre as does coastal, but does not need as much fertilizer. The requirements for 2.5 tons of hay on clay soil is 80 pounds of nitrogen and 20 pounds of phosphorus. Both of these grasses when fertilized properly will produce high quality forage. Tests have shown them to be as high as 15 percent protein with 12-13 percent as normal.

When cutting coastal for hay it should be cut in early boot stage or when 14-16 inches tall and cut at a height of 4 inches. When mowed close the plant does not have the leaf surface for reproduction and the hot sun draws more moisture when the soil is exposed. Hay is usually cut 21-32 days after last cutting if moisture is available. Bermuda should not be cut for hay after October 1.

Kleingrass is handled the same way as coastal, but should not be cut lower than 6 inches and not after September 15th.

By following these rules of management you will prolong the life of your grass, improve the quality and quantity of forage and provide soil protection and reduce water loss.



We Heartily Endorse the Conservation Pledge And Invite Our Farmers and Ranchers To Take Part In A Sound Soil Conservation Program.

## Comanche County Electric Cooperative Association

Phone 356-2533  
Comanche, Texas



## High Intensity, Low Frequency

A new grazing technique is proving valuable on Texas ranches. Increased production, reduced labor cost, easier handling of livestock and marked grassland improvement are some of the benefits. If the technique continues to be successful as early reports indicate, it may revolutionize grassland management in the Southwest.

The new technique is called the short-duration grazing system, the high intensity - low frequency grazing system, or the one herd system.

The idea is to concentrate cattle in one pasture instead of several. When the forage is grazed down, the herd is moved to the next pasture in the rotation. As a result, a pasture is intensively grazed several weeks then rested six to 10 months.

Over 150 ranchers in Texas are using the technique.

The short duration grazing system is so flexible that it can fit almost any livestock operation. It doesn't matter if some pastures are two or three times as large as other ones in the system. You merely leave the cattle in a pasture until the grass is grazed down, then you move them. That is nature's way of grazing. The buffalo roamed in herds - they would graze an area then move on.

One reason the grazing season works so well is that it permits the utilization of less desirable grasses. Under the usual continuous year long grazing, the cattle are more selective and tend to over use the more palatable plants. This not only punishes the desirable plants but it also allows the less palatable one to go largely untouched. Then when the choice grasses start regrowth they have to compete for moisture and sunlight with plants that have been underutilized. This is a cycle that the short duration system helps break. Grass improves rapidly in a short duration grazing system because the better plants have less competition from the less desirable grasses.

The new system can help break any livestock parasite cycle that exist on the ranch. It also reduces the number of bulls needed. On the other hand individual bulls can be bred to specific cows by breaking up the herd into small, pasture size groups for a few months during the breeding season, then the entire herd can be regrouped.

It is best to harvest the grass in 60 days or less. This keeps the better grasses from being over grazed. The grazing dates should be recorded so a pasture will not be grazed the same time each year.

A short duration grazing system works best with six or more pastures. With fewer, the grazing periods would be too long and the rest periods would be too short to be effective.

This system is not a cure all for over stocking. Only properly stocked pastures should be considered for short duration grazing.

The most impressive thing about the system is the way it helps grass get better each year. Some ranches have doubled the carrying capacity of the ranch in only 3 years by use of the short duration grazing system and no hay has been fed.



Seedbed Prepared

Shown above is seedbed preparation being completed on Site 5A, Brown-Mullin Watershed Project, located on the Weatherby Ranch seven miles north of Goldthwaite.

In accordance with agreement between the Mills County Commissioners Court, the Brown-Mills Soil and Water Conservation District and the Soil Conservation Service, the SCS advertizes and awards contract for establishing the floodwater retarding structure to permanent grass. The SCS also provides for an inspector to see that quality requirements of the job are met.

Del Davis of Comanche was awarded the vegetative contract on this site. Notice that the truck is used as an anchor for the man and machine as it plows the deep slopes of the dam.

"Those who labor in the earth are the chosen people of God, if ever He had a chosen people, whose breasts He has made His peculiar deposit for substantial and genuine virtue." - Thomas Jefferson

"I know of no pursuit in which more real and important service can be rendered to any country than by improving its agriculture." - George Washington

"Nothing, in my opinion, would contribute more to the welfare of the States than the proper management of the lands." - George Washington

For Quality  
**Soil Conservation Work**  
of All Types  
Let Us Help You

**Mack Maxcey**

Phone 452-3204

Box 51 Richland Springs, Texas  
"Over 40 Years of Experience"



Field Office Staff

Shown above is the Goldthwaite Field Office Staff of the Soil Conservation Service. From left to right are N. S. Ward, Soil

conservationist; Norvell G. "Bud" Saathoff, Range Conservationist; Phyllis Featherston, Clerk-Typist Trainee; Carl Cas-

beer, Conservation Technician, and Charles Studer, District Conservationist.

assists the Brown-Mills Soil and Water Conservation District on their program and work plan.

## Conservationist Is A Person Who . . .

The Land  
Different Kinds  
Condition  
Which of Nature's Laws  
Have been violated  
Treatment needs  
Proper use  
Understands What He Sees  
The Land Is the Lord's

1. and the fullness thereof
2. Second only to Heaven in the order of Creation
3. The source of food, clothing, and shelter
4. God's greatest material gift to man
5. With the right to own goes the duty to conserve

- Works With Understanding
1. Uses the land for what it is best suited
  2. Treats it according to its needs
  3. Improves its productivity
  4. Cooperates with nature and obeys her laws
  5. Learns to love the land

6. Always leaves it better than he found it

Wise use of your natural resources of soil and water is the protection of your investment in the future, the future of your family, the community and the nation. Ours is a fertile land, the richest land on earth, where the seeds of progress flourish as in no other land.

But we cannot remain free and strong if we fail to recognize the responsibilities that go with our freedom.

We are duty bound to conserve our soil, putting as much back into it as we take out each year through a conscientious soil conservation program.

The Mills County Soil and Water Conservation District is Here to Help You!

"He who knows what sweets and virtues are in the ground, the waters, the plants, the heavens, and how to come at these enchantments, is the rich and royal man." - Ralph Waldo Emerson

My greatest opportunity is to be thought the first farmer of America." - George Washington

## Let Us Help You With Your Soil Conservation Work

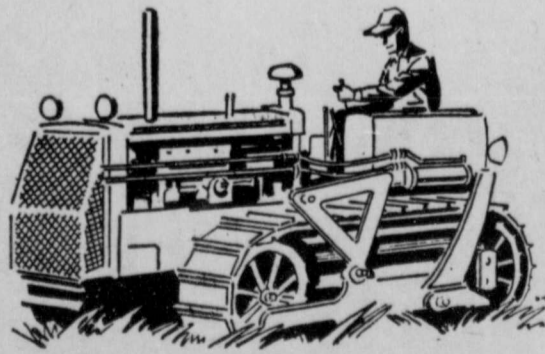
We Do  
All Kinds of  
**Bull-Dozing**



## Brush Pushing - Tank Dams And Other Earth Moving With Good Equipment

- Dozer
- Scraper
- Maintainer

Practice  
Soil Conservation  
Whenever, and  
Wherever You Can!



FREE Estimates On Your Jobs

# Forrest Jernigan

Phone 648-2440

Goldthwaite, Texas



Some prior planning and application of simple conservation measures by the contractor and the lot owner could probably have prevented this severe erosion in a newly developed suburban area.

## SOIL CONSERVATION

## A Challenge that Grows

Soil and Water Conservation Pays Dividends  
Whether It's on Farm Land or Rangeland.

Along with Your Conservation Practices Let  
Us Help You Achieve Top Production  
With

### Arcadian Liquid Fertilizer

Feed Grass and Kill Weeds  
In One Application.

Custom Application or Do It Yourself.

See Us For Your Needs - Your Business Appreciated

### Duncan's Liquid Feed And Fertilizer

Doyle Duncan - Phone 648-3565 or 648-3205  
South Fisher Goldthwaite, Texas



# Read Rangeland In Winter

Most good grasses cure to a darker color than less desirable grasses. Moreover, these grasses cure out in late fall and early winter.

The pioneers who settled the vast rangelands wrote of the tall crimson colored grass belly deep on horses. For various reasons (primarily overgrazing) the plants that were dominant when the pioneers lived are generally much less abundant now. They have been replaced by brush, unpalatable perennial grasses and annuals. When warm season grasses become dormant, it is easy to spot the location of the more desirable grasses that cure to a darker color than the surrounding less desirable grasses.

The extent of a stand of dark-colored desirable grasses is very important. A single bunch of sideots grama cured to a crimson

color is very evident in a pasture of threeawns cured to a pale white, but most certainly does not indicate an area supporting a good grass cover. This color variation is most reliable in the early winter because in the late winter months all species may appear light colored because of leaching by rainfall.

Generally, the earlier a pasture greens up in the spring, the worse shape it is in. Annuals are able to survive in stressing situations because they germinate, grow to maturity and set seed in very little time. Annuals increase as rangeland condition decreases because they are usually the only grasses able to survive under the stressing situation created by overgrazing.

Overgrazed native rangeland greens up early in the spring because of the high

percentage of annuals. Rescue grass, generally known as wildrye, filaree and little barley are annual invaders often responsible for this early bloom which may last up to six weeks depending on rainfall. However, this early bloom which may last up to six weeks depending on rainfall. However, this early bloom which may last up to six weeks depending on rainfall. However, this early bloom which may last up to six weeks depending on rainfall.

Rangeland in good condition carrying a large percentage of good perennial grasses like sideots grama and little bluestem will green up later than rangeland in poor condition con-

sisting of mostly annuals, but will still produce more forage. Perennial grasses have deep and extensive root systems which supply needed water during the dry summer months. Thus production continues throughout the growing season, providing cattle with a constant supply of good edible forage.

The Soil Conservation Service urges each farmer and rancher to notice which areas on his place carry the crimson color in the fall and which areas green up first in the spring. Chances are the areas around feed troughs, barns, water holes and other places where overgrazing is unavoidable will be first to green up. If the remainder of the rangeland does not green up noticeably until later, chances are that it is in better condition.

## The Good Earth



*It smells good. It feels good. Treated properly and tenderly with care, it provides our food and our income. Handled without thought for the future, it withers and grows poor . . . depriving us of our livelihood.*

Agricultural science has shown us the way to farm security by discovering new ways of soil conservation.

We are glad to cooperate with the Soil and Water Conservation District supervisors here, and with other representative groups in emphasizing the importance of this program.

### CATTLEMAN'S

PRODUCTION CREDIT ASSOCIATION

### Tractor Safety Very Essential For Farmers

Whenever anyone pushes himself to the limit, as many farmers will be doing this spring, he becomes more accident-prone. This means that tractor safety, always important, has added importance this year.

In the United States, tractor accidents account for 800 to 1,000 deaths each year. In addition, tens of thousands of farmers suffer disabling injuries, and millions of dollars are taken in property damage, medical costs, time off from work, lost earning power, and insurance costs.

It is appropriate that tractor safety is the theme in the U.S.

Department of Agriculture's year - round safety campaign. In keeping with this theme, the following tips for safer tractor operation are offered:

- Stay clear of ditches, embankments, holes, etc., to avoid upset.

- Keep children and other "passengers" off and away from the tractor.

- Cut speed when turning, crossing slopes, or when on rough, slick or muddy surfaces.

- Stay off hills and slopes too steep for safe operation.

- Engage clutch slowly with heavy loads to avoid backward tipping and don't overload.

- Hitch heavy loads only to drawbar and use front weights to balance tractor, if needed.

- If drawbar is on 3-point hitch, set it no higher than fixed drawbar.

- Keep power take-off shields in place and turn off PTO before unclogging, adjusting or servicing equipment.

- Set wheels as wide apart as practical for the job for better stability.

- When stopped, take tractor out of gear, firmly set brakes, and/or use park lock. Take the key with you.

USDA initiated a year-round safety campaign in 1972 to encourage special activities and timely safety practices each month.

The program is coordinated with the National Safety Council. In past years USDA has promoted National Farm Safety Week during July, and Fire Prevention Week in October.

"Of all pursuits from which profit accrues, nothing is superior to agriculture, nothing more productive, nothing more enjoyable, nothing more worthy of a free man." - Cicero

"If this nation is to hold the basis for its future greatness, each generation must preserve and enhance the soil resources for use of generations to come." - Chester C. Davis

"The history of every nation is eventually written in the way in which it cares for its soil." - Franklin D. Roosevelt.

## CITY OF GOLDTHWAITE SANITARY LANDFILL

Open: Tues.-Thurs. 3p.m. till 7pm. - Sat. 8a.m. till noon

### • CHARGES •

CARS	+.50
PICKUPS	+\$1.00
W/ TRAILER	+\$1.50
3/4 & 1 1/2 TON TRK.	+\$2.00
1 1/2 TON & LARGER	+\$3.00
TRAILER TRUCKS	+\$5.00

DEAD ANIMALS.....	
SMALL	+.50
MEDIUM	+\$2.00
LARGE	+\$5.00

**No CAR BODIES!**

### New Sanitary Landfill

The City of Goldthwaite has recently developed their new sanitary landfill west of Goldthwaite. The Brown-Mills Soil and Water Conservation District Board wish to express to the City Council and City Manager their appreciation for this improvement to our

telling impact on environmental quality.

The District Directors believe that a high standard of living for this community can be realized without losing those resources that make this area a good place to live when measures, such as the

environment.

Every citizen has had a part in creating the kind of environment we all live in, and he has both the chance and the responsibility to help improve it. The District believes that projects, such as the city landfill, make a

landfill, are developed. To this place a good place to live there must be a will and willingness to pay the cost. We are confident this area will make it if we individually and collectively work toward the goal.

## SOIL CONSERVATION THE GOOD RULE OF THE LAND

### MEANS...

- Better Land • Better Stock
- More Grass • Better Crops
- More Stock • More \$\$\$  
In the Bank



We Do All Forms Of

## Soil Conservation Jobs

Operating Caterpillar Equipment

See Us For

- ★ Tanks
- ★ Terraces
- ★ Disc Plowing
- ★ Brush Pushing
- ★ Uprooting Mesquite and Cedar



OUR BRUSH RAKE FOR D-7 "CAT"

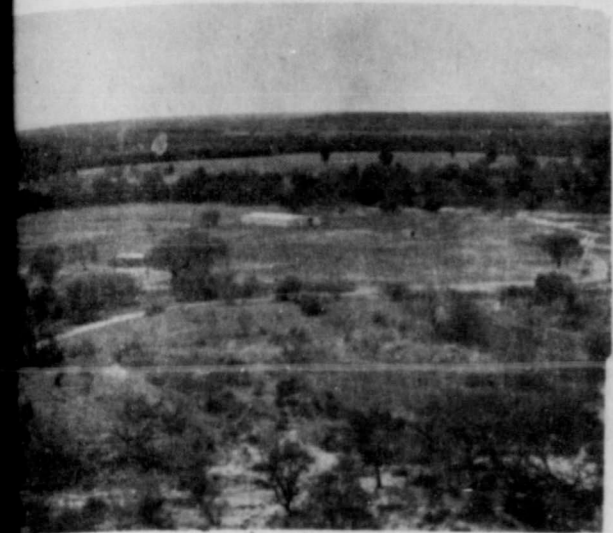
We Will Appreciate  
Your Call  
For A  
Free Estimate.

### J. C. Partin

Conservation Contractor  
Phone 966-3710 Priddy, Texas

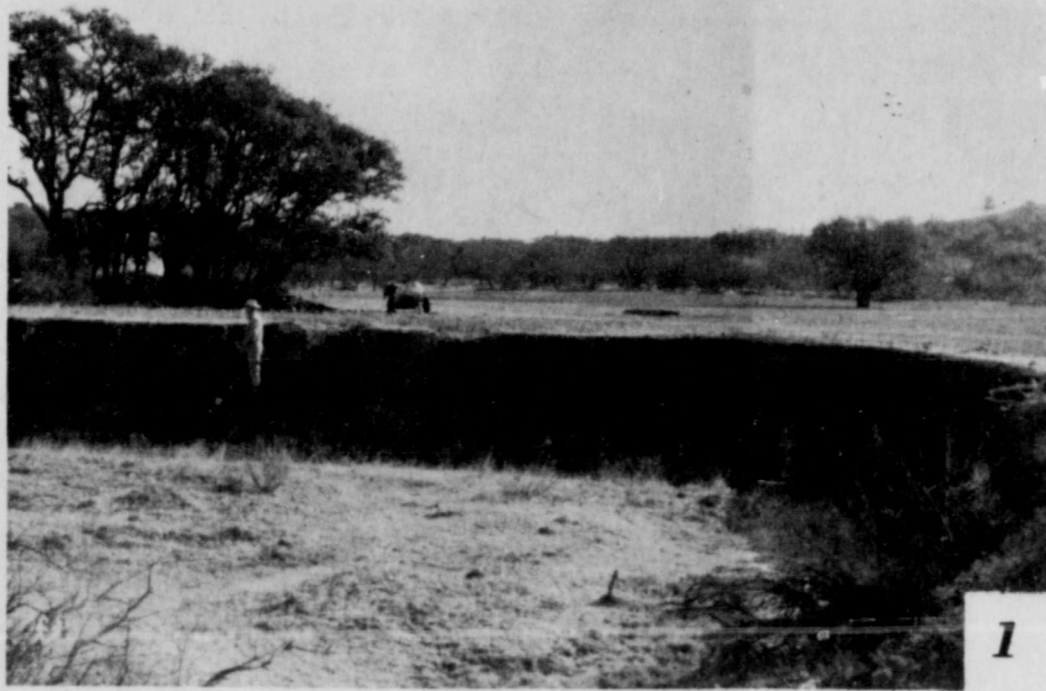


# SOIL CONSERVATION for the GOOD LAND



was controlled and land  
to klein grass in front of  
and a cross draw behind  
water green harding grass  
the left of the shed. Brush

was left along draw through klein  
grass for wildlife cover. Work was  
done on Kenneth D. Wesson through  
GPCP.



1



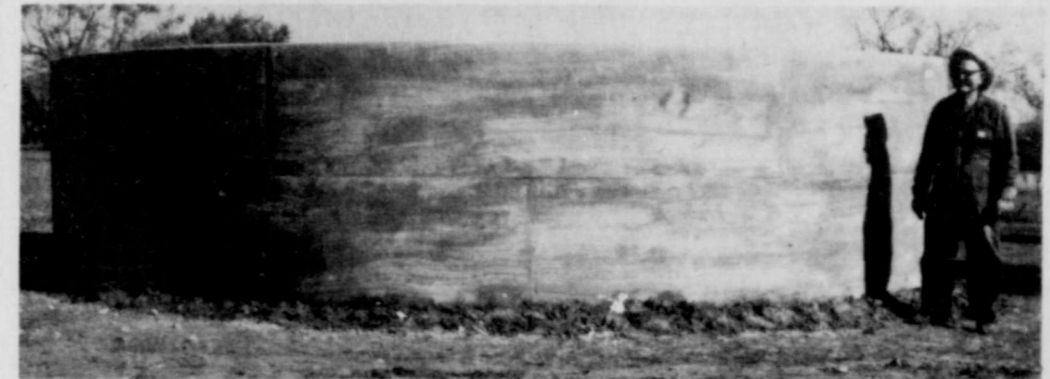
2

## It's Easy as 1, 2, 3

Critical areas are high silt producing areas which deposit tons of silt in streams, rivers and lakes. There are many such areas in Mills county but our farmers and ranchers are trying at the rate of about 30 acres per year

to control them. The cost of shaping will vary from \$90.00 to 400.00 per acre. Plowing, double sprigging and fertilizing will add another \$75.00 per acre. These photos show the change

that took place on Kenneth Wesson's ranch last year. This was a 10 acre critical area that was shaped by Hawley and Sig Jerri-gan. It was sprigged to coastal bermudagrass and is no longer a silt producing area.



3

Additional livestock water is usually needed when developing improved grasses such as coastal bermuda and klein grass. This reinforced concrete tank holds almost 12,000 gallons. It was built on Mr. & Mrs. J. A. Cawyer's place with cost-share through the GPCP.

Your Land is an Important Investment!  
Let's use it wisely

# SOIL CONSERVATION for the GOOD LAND

SHELTON

Fertilizer  
Company

Phone 985-3652  
Mullin, Texas



3

Soil - Water - Plant and Wildlife

## CONSERVATION PAYS!



-- L. B. BURNHAM --

Cooperator with Brown-Mills Soil And Water Conservation District  
Goldthwaite, Texas

## Mud Is Main Cause Of Pollution

MUD! It's a major cause of water pollution here in the Brown-Mills Soil and Water Conservation District today. Mud washes off the surrounding countryside into the lakes. But just as much or more so, mud-polluted water comes from nude roadside cuts, unpaved streets, poor drainage systems, neglected parks and lots in and around cities, towns, and subdivisions.

Muddy water is caused by soil erosion. When the rain starts, bare soil particles having no protector to hold to, reluctantly follows wherever the forceful water choose to lead. Together as muddy water, they twist and roll with the turn of the gully until they barge unwanted into the lake's clear water. And once it's there, mud-snakes its way up through the pipelines to the local water system and right on into the house. Who wants to use mud polluted water in their home for cooking? Washing? Or Drinking?

Meanwhile back at the ranch and on the farm in the Brown-Mills District conservation ranchers' and farmers' are doing their part to abate mud pollution of area lakes. Last year many thousands of acres were applied to deferred grazing and conservation cropping systems, which are soil conservation treatments designed to halt erosion.

In addition to helping ranchers and farmers, the SCS can provide technical assistance to county and city planning commissions on problems relating to soil and water management.

One of the more popular forms of technical assistance from the SCS for use by city planners are the soil surveys. These surveys graphically illustrate for the planners which soils that are suitable for road construction, which are not; those soils that are corrosive to pipelines, those that are not; and what soils are satisfactory for building sites, septic tank locations and what ones are not.

Properly applied soil conservation practices whether on the farm or in the city mesh together to impede soil erosion, the main cause of that water coming from the kitchen tap being muddy. So whether in town or not, mud is everybody's business!



## ALL LIFE IS DEPENDENT UPON SIX INCHES OF EARTH!

The land we live on is covered by six inches of rich top soil. Without it, all life would cease - Nature's bountiful gifts of water, woodland and farmland would become wasteland!

Fire, flood, drought and improper planting can all lead to soil erosion. It is up to each of us to protect against these hazards. Follow the rules of fire safety; aid in flood and water control programs; and if you farm, be sure to follow scientific soil-preservation programs.



DO YOUR PART . . .

FOR FREE INFORMATION AND HELP, CALL YOUR  
**SOIL CONSERVATION SERVICE**

SPONSORED IN THE PUBLIC INTEREST BY:

**Lometa Commission Co.**

Lometa, Texas

Bud Harrell  
Brady, Texas  
915-597-2981

Mrs. J. H. Harrell  
Lometa, Texas  
512-SK 2-3168



# Your Soil Is Money!

## IT'S UP TO YOU!



Save  
Soil ---

Save  
Money

Put Your Savings

### Where The Smart Money Grows!

HIGHEST INTEREST  
ALL DEPOSITS MADE BY THE 10th OF THE MONTH  
EARN DIVIDENDS FROM THE FIRST!

We invite you to call or come by and let us explain the many advantages of an Insured Savings Account . . . Earn top interest . . . we pay the highest allowed by Federal regulations for insured accounts.

## LAMPASAS FEDERAL SAVINGS

AND LOAN ASSOCIATION  
405 East Second Street  
Lampasas, Texas



Phone 556-3627



### County Supports Conservation

The above picture shows members of the Mills County Commissioners Court. They are (l. to r.) Hawley Jernigan, Fred Wall, Cecil Egger, W. R. Lindsey and Burthel Roberts. The Court is a joint sponsor of the watershed program and the Resource Conservation and Development Program with the Brown-Mills Soil and Water Conserva-

tion District. The Bennett Creek Water Control and Improvement District is a joint sponsor on the Bennett Creek Watershed project.

The Brown-Mills SWCD wish to thank the Court for the cooperation they have given to the construction of these works of improvement. The flood control program has already saved the

people of Mills County thousands of dollars as a result of the protection the dams have furnished to roads, bridges, fences, livestock and cropland fields.

To realize a project of this nature, it takes the cooperation of all units of governments, as well as many organizations and individuals.

### Wild Turkeys On Increase In Texas

The native, or wild, turkey is native to the southwestern and eastern states, and is the origin of our domestic turkeys. This large game bird stands three feet in height. Hens weigh from 8 to 12 pounds, with gobblers weighing 12 to 20 pounds, depending upon available food.

Turkeys are found in extensive woodland areas in Mills County, usually in oak or mix oak, and bottomlands. Good cover for turkeys include three six, inches, or larger, in diameter and at least 20 feet in height.

The birds roost in trees, usually in the largest trees, along streams. Woodland should have an open understory, since turkeys do not range very well through heavy underbrush. Wild turkeys feed on oak acorns, hackberry berries, agarita berries, Engelmandaisy seed, croton seed, various legume seed, green foliage of grasses, forbs, grasshoppers, crickets, and other insects; and of course, domestic field crops, such as higeri, sorghums, small grains, and etc.

In a natural woodland habitat, a flock of wild turkeys usually ranges over a tract of 5,000 to 10,000 acres. With dependable water sources, choice foods, and good roosting trees, you can attract and maintain a turkey flock on tracts of land of 500 to 2,000 acres.

The food available to wild turkeys can be increased by planting grasses, grains and legumes on field edges or near wooded areas and by managing woodland to increase natural cover and food.

Fields planted to clovers, winter grains, and grasses provide green forage grazing and nutritious food in the late fall, winter and early spring. The tender blades of these plants are higher in protein than most fruits, nuts and buds of native trees and shrubs. These fields will also provide good summer range where the turkeys can forage for insects, as well as grain and weed seeds.

Turkeys drink daily, usually from surface waters, therefore dependable year-round drinking water should be well distributed throughout the turkey range. A nesting hen should have drinking water within 400 feet of her nest.

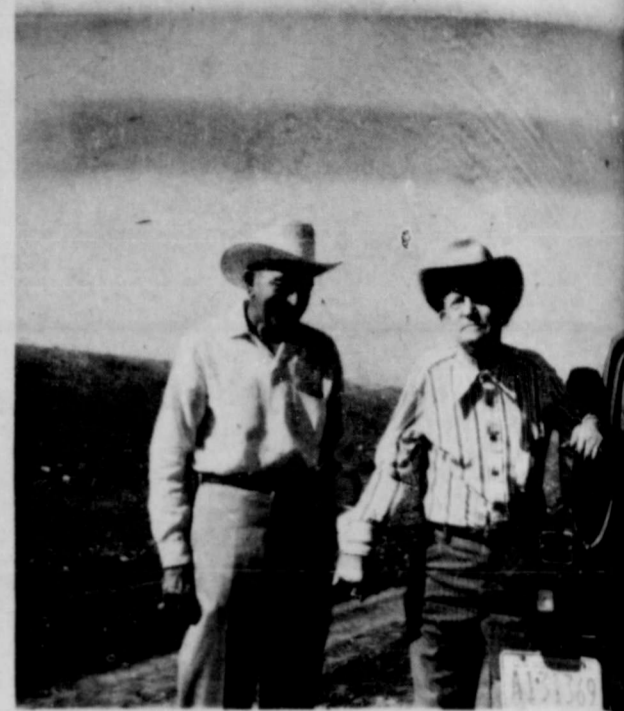
Ponds and wells with windmills can be located over the turkey range to assure a supply of water year-round. If surface water is not available during droughts, turkeys will leave any range seeking water supply.

Whenever possible, curtail all activities around watering places during nesting months. This protection is especially necessary during the early nesting season from March to early May in Mills County. The turkey hen prefers to nest at the edge of openings, such as fields, edges of woodlands, and along old roads. She often deserts her nest if flushed from it during the three week egg laying period or first few days of the 28 day incubation period.

The wild turkey is able to escape most predators except

free-ranging dogs, which are among its worst enemies. Fox and bobcats seldom prey on wild turkeys. Racoons, skunks, and crows destroy many turkey eggs annually. However, these predators can be controlled by trapping and hunting within local and state game laws.

Hunting of wild turkeys must be carefully adjusted to their annual increase. About one-third of a fall production can usually be taken safely. If there has been any poaching, the number of turkeys that can be harvested will be reduced or possibly eliminated.



### Bennett Creek Directors

Two members of the Bennett Creek Water Control and Improvement District who gave a lot of time to obtain the Bennett Creek Watershed Project are J. S. Owens and Jim Soules. These two have served on the Bennett Creek WCID Board since

it was organized. In this picture Sherwood shows Jim the dam constructed on the Jimmy Hill Farm east of Goldthwaite. The members of the WCID Board are Walter Tubbs, Homer McCaleb and Arnold Head.



Fertilizing is an essential element of good pastureland management. These men are observing one method of applying fertilizer.

## JIM & ED'S TRAILER Sales & Service

Salutes the  
Soil Conservation Service

Special, 16 ft. Gooseneck Stock Trailer  
\$1395<sup>00</sup> with controls

Flat Beds, Bumper Pulls & Custom from  
10 to 50 feet long

Fuel tanks for pick-ups. Under fender & in bed.

We service & repair trailers.

Phone Business 915/648-3341  
Ed Hecox 915/938-5316  
Jim McCoy 915/938-5361



Goldthwaite,  
Texas 76844



### Ray Standley Resigns As Principal

Ray Standley, who has served as principal of the Goldthwaite High School during the 1973-74 school year, has chosen not to accept the job for another year. Mr. Standley has served the schools of Goldthwaite as Head Teacher and several years as Elementary School principal, in addition to this past year's duty. The local principal's post was vacant late last summer when Mr. Hoyt Browning resigned to accept the county-wide cooperative counselor position. Standley was a member of the Goldthwaite Ind. School District's Board of Trustees at the time he was prevailed upon by the members of this board to fill the vacancy for at least one year.

Mr. Standley is a graduate of Texas Christian University in Fort Worth and played football for the nation's number one team there in 1938.

Mr. and Mrs. Standley have had three children graduate from Goldthwaite High School. This year's graduate was Tommy.

They plan to continue living in this friendly, family-sized community and continue to ranch, which they love it here.

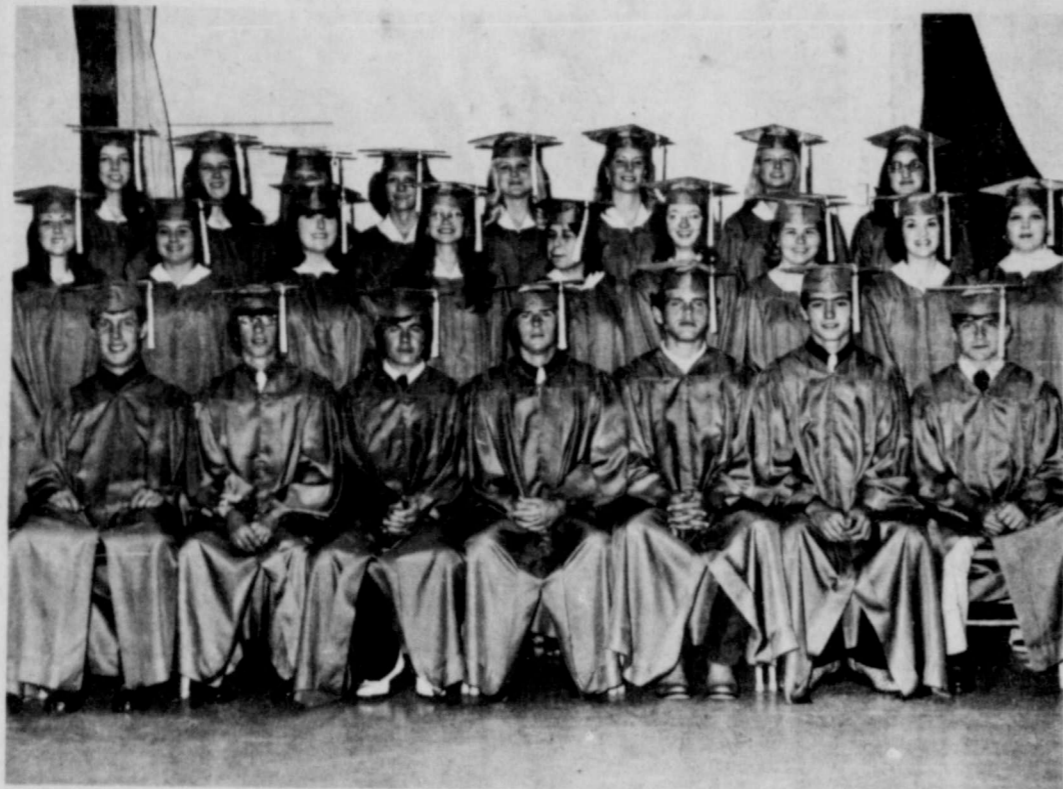
Mr. Standley feels that good schools don't "just happen". They require wise administrators, dedicated faculty members who love youngsters, and principals who are willing to support these educator-employees in every way. Let not let permissiveness cripple our children's future.

# The Goldthwaite Eagle

Established in 1894

And The Mullin Enterprise

Volume 78 — Number 8 Goldthwaite, Mills County, Texas 76844 Single Copy 15¢ Thursday, May 30, 1974



### '74 Graduating GHS Seniors

**GOLDTHWAITE SENIOR CLASS**  
Members of the 1974 graduating class are shown above.

They are, back row left to right, Dianne Tischler, Gail Berry, Brenda Geeslin, Liz Truitt, Lavina Casbeer, Lee Ann Audridge, Sally Saylor and Kathy Koen.

Middle row left to right, Carla Tatum, Patty Padgett, Sarah Masters, Kathy Cook, Rose Saplen, Glenda Maddux, Ora Lee Green, Susan Morrow, and Sandra Jensen.

Front row left to right, Richard Duncan, Randy Riekel, Steve Gist, Lee Browning, Larry Elliott, Mike Simon, and Tommy Standley.

-- Laughlin Studio Photo

## CRA Approved Rodeo Slated At T. A. Head Arena This Weekend

The Central Rodeo Association approved rodeo will be held at the T. A. Head Rodeo Arena Thursday, Friday and Saturday, May 30, 31, and June 1.

Performances each night will begin at 8 p. m.

Events will include bareback bronc riding, calf roping, bull dogging, bull riding, barrel racing, steer roping and Mills Co. calf roping.

Bob Jenkins is the producer of the CRA approved rodeo. Entry fee for each event in the rodeo is \$20. To enter call 915 648-2718 before 12:00 noon Thursday (today). Books will close at that time.

Local cowboys and cowgirls are urged to enter in the events.

For three nights of entertaining rodeo excitement, attend the CRA Rodeo at the local rodeo arena.

### Two-Vehicle Accident Friday Results In Minor Injuries

Friday evening around 7:15 p. m. on U.S. 84 seven tenths of a mile east of Goldthwaite, a two-vehicle accident resulted in minor injuries to two persons.

A 1973 Volkswagen driven by Daniel Tyler of Belton was attempting to turn in front of the '65 Ford driven by Larry Blasingame when the side of the Tyler car collided with the front of the Blasingame auto.

Vehicles received moderate damage and minor injuries were sustained by Tyler and Dorothy Blasingame, passenger in the '65 Ford.

Bobby Wilcox, highway patrolman, investigated with the assistance of Mills County Sheriff H. G. Brooks and Deputy Randal Ratliff. Brooks and Ratliff directed traffic following the accident.



### Memorial Observance

Monday in observance of the Memorial Day Holiday, Novis Williams of Goldthwaite (left) and Edwin Rackow of Priddy (right) placed a wreath on the Memorial Marker in the Goldthwaite Memorial Cemetery in honor of the Veterans of World War I and II.

Williams is the Commander of the Legion Post of Goldthwaite and Rackow is the adjutant for the Priddy Legion Post.

-- Laughlin Studio Photo

### Billy Griffin, Jr. SCSO Trainee

"Billy C. Griffin, Jr. of Temple, Texas, has been assigned to the Goldthwaite Soil Conservation Service Office for summer training," stated Charles Studer, District Conservationist. Griffin will be a sophomore next year at Texas A&M University where he is majoring in Range Science and minoring in Wildlife Science. Billy's parents are Mr. and Mrs. Billy C. Griffin of Temple. He is a member of the Church of Christ. Billy likes hunting and fishing and hopes to obtain his B.S. Degree from A&M and work for the SCS. "We are pleased to have a young man of Billy's caliber working with us this summer," stated Studer.

Griffin will be receiving special training in providing technical assistance on planning and implementation of conservation measures to land-users in the Brown-Mills Soil and Water Conservation District.



BILLY GRIFFIN, JR.  
... SCSO Trainee

### Swimmers Enjoy Opening Day At Local Pool

Approximately 168 swimmers enjoyed a cool dip in the Mills County Swimming Pool Saturday afternoon. Saturday was the opening day for the pool.

Mondays through Saturdays the pool will be open from 2 p. m. until 8 p. m. On Sundays the hours are from 2 p. m. until 6 p. m.

Watch the Eagle for the announcement of swimming classes which will be coming up soon.



### Mullin Seniors

Pictured above are members of the Mullin High School graduating class of 1974. They are, back row, l. to r., Johnny Windham, Gary Harris, Danny Whisenhunt, Tommy Mangham, Craig Smith and Johnny Reiger.

Front row, l. to r., Robin Dean, Melba Jo Singleton, Diann Gary Freeman.

-- Laughlin Studio Photo



### Kindergarten Club

**KINDERGARTEN GRADUATES**  
Pictured above are the members of the Goldthwaite First Baptist Kindergarten. Those wearing caps and gowns will attend the first grade this coming fall.

They are, back row, Julianne Saathoff, Mrs. Bennie Schriver, kindergarten teacher; Penna Petty, Leslie Muse, Chad Gray, Lisa Fisher, Melissa Carey, Chad Boykin, Jason Allen, Jamie Wigley, Dan Connally, pastor of the church; and Brian Whitt.

-- Laughlin Studio Photo

### Two Businesses Burglarized Here

Two Goldthwaite businesses were broken into over the Memorial Day Weekend, Friday night and Saturday morning.

Bar T Western Wear, located in downtown Goldthwaite, was burglarized and \$100 in money and a pair of boots were stolen. Entrance was made through the roof and apparently escape was made the same way.

Sunday night the cafe at the Mills County Commission Auction Barn was broken into. Meat, water and bread were the things missing from the establishment. Entrance was made by cutting the screen off the front door.

Investigating the burglaries are Mills County Sheriff H. G. Brooks and Deputy Randal Ratliff.

### \$312 Donated To Park Drive

A total of \$312.00 has been contributed to the Mills County Park Fund following last week's appeal to the public from the committee of the park.

Those who have contributed are:

Mr. and Mrs. Hollis Blackwell, Mr. and Mrs. Wyatt Berry, Elizabeth Hamrick, Mr. and Mrs. Glenn Collier, Mr. and Mrs. W. P. Duren, Mr. and Mrs. W. P. Egan, Mrs. Ellen Galloway, Mrs. Emily Gilliam, Mills County Bank, Mr. and Mrs. Donnie M. Saba, Mr. and Mrs. Harry Shapley, Mr. and Mrs. M. Stephens of Lometa, and Mrs. Harold Yarbor.

Members of the park committee hope that interested persons will respond generously with their donations in order to secure necessary help to keep the park maintained.

**Tennis Lessons**  
Anyone interested in learning to play tennis or improve their tennis is invited to report to the tennis courts at the Methodist Church next Friday, May 31, at 6:00 p. m.

The lessons will be available through adults. This project is sponsored by the Methodist Church and there will be a fee for the lessons.

### Patty's Of Texas Open House June 7th

Patty's of Texas, Inc. and their factory outlet store "The Bag House", will have an open house Friday, June 7th, from 7:30 p. m. until 9:30 p. m. according to announcement received this week.

Recently, the factory moved from 1116 Fisher Street to the old Landrum Ford building. An outlet store has been opened up next to the factory where blouses and piece goods can be purchased.

Patty's of Texas has three factories. They are located in Hamilton, McKinney and Goldthwaite. The factory here was started approximately sixteen years ago.

### Baptist Mission Revival Services This Weekend

Special evening services are going to be held at 7:30 p. m. at the Baptist Mission here in Goldthwaite, May 31 through June 2. Speaker for the services will be Ruben Gonzales. He is now Pastor of Calvary Baptist Church in San Saba, Texas. He graduated from the Mexican Bible Institute in San Antonio, Texas, this past May. Special music will be provided. Transportation for those persons needing a ride to the services will also be provided.



RUBEN GONZALES  
... Evangelist

### GHS Pep Squad Bake Sale

The Goldthwaite High School Pep Squad will sponsor a bake sale, Saturday, June 1. The bake sale will be conducted at the Mills County State Bank and Jack's Supermarket. For special orders phone 948-3315.




**The Goldthwaite Eagle**  
AND THE MULLIN ENTERPRISE

Published every Thursday at Goldthwaite, Mills County, Texas  
PHONE 915-648-2244

G. Frank Bridges . . . . . Editor and Publisher

AN INDEPENDENT NEWSPAPER



SUBSCRIPTION RATES —

	Amount	Tax	Total
Mills and adjoining Counties, one year . . . . .	\$5.00	.25	\$5.25
Elsewhere in Texas, one year . . . . .	\$6.00	.30	\$6.30
Outside of Texas, one year . . . . .	\$7.00		\$7.00
Single copy . . . . .	.15	.01	.16

SUBSCRIPTIONS DISCONTINUED UPON EXPIRATION

Entered as Second-class Mail Matter at the Post Office in Goldthwaite, Texas 76844, under the Act of Congress of March 3, 1879.

### Services For Mrs. Alta Frizzelle Conducted May 28

Funeral services for Mrs. Alta Frizzelle of Goldthwaite were conducted Tuesday, May 28, 74, at 2 p. m. in the Wilkins Funeral Chapel. Rev. Gordon Wilkins officiated. Interment was in the Goldthwaite Memorial Cemetery. Arrangements were under the direction of Wilkins Funeral Home.

Mrs. Frizzelle, the daughter of the late F. D. Webb and Minnie Elsie Hague Webb, passed away Sunday, May 26, 1974, at 3 p. m. in the Scott and White Hospital in Temple.

On September 2, 1922, she was married to Charles Edwin Frizzelle in Hamilton, Texas.

Mrs. Frizzelle was a member of the First United Methodist Church, Goldthwaite Garden Club and the Brownwood Art Association.

She is preceded in death by her husband November 7, 1965. Mrs. Frizzelle retired from the General Telephone Co. after 42 years of service. Most of this time she spent as chief operator and as the office manager.

Survivors include four sisters, Mrs. Walter Reed, Lometa; Mrs. Eunice Steele and Mrs. Ruby Sullivan, both of San Angelo, and Mrs. Charles Hicks, Midland.

Pallbearers were Glynn Collier, Wallace Johnson, Frank McClung, Jack Rutland, W. A. Bryant, and Carl Kauh.

How does a boy know just how much soap and water to use so that most of the dirt will come off on the towel?

Children are natural mimics. They act like their parents in spite of every effort of their folks to teach them good manners.

### Mills County Lumber



ART AND CRAFT SUPPLIES

- Grumbacher art supplies
- Ceramic supplies
- Decoupage & decal-it supplies

Ph. 648-3400 Goldthwaite



### When The Old Bird Was Younger

#### 10 Years Ago —

10 YEARS AGO  
(Taken From The Eagle Files Of May 14, 1964)

Mrs. Allen Moreland has been elected band director for Goldthwaite schools. She succeeds Nell Chamberlain who resigned the post.

Ray Standley, principal of Goldthwaite Elementary school, was elected president of the Mills Co. Teachers Assn. Other officers are: Mrs. Charlene Mosier of Mullin, secretary; Mrs. Chas. Schrader of Priddy, vice-president; and Mrs. M. Y. Stokes of Goldthwaite, treas.

C. F. Stubblefield, Mills Co. sheriff, was recently appointed to the board of directors of the Sheriff's Assn. of Texas. This is the nation's oldest law enforcement organization.

Two members of the GHS track team went to the Regional meet in Denton. They were Kenneth Hollingshead, high jump; and Phil Duren who finished 3rd in the 880 yard dash.

Mrs. A. T. Pribble, who has been a bed patient since the 23rd of last May, received a number of visitors last Wednesday who came to help her celebrate her 92nd birthday.

Mrs. Hugh Taylor was included in the Phi Chi Letter Awards at Howard Payne College recently.

uable citizens of Mills Co., passed away Wednesday afternoon in a Brownwood hospital. As a special honor the business houses and all the county offices were closed during the funeral.

Goldthwaite toppled the league-leading Llano Cowboys last Sunday when they handed the visiting rivals a sound 22 to 3 trouncing.

The Jr. - Sr. classes of GHS were entertained Tuesday night with a banquet in the Weatherby Auto Co. showroom. Ted Kirby, president of the Sr. class, served as toastmaster. Music was furnished by the Blue Rhythm Band. The Sr. class is composed of 36 members, which is one of the largest ever graduated from this school.

#### Former Resident Passes Away

Walter Oral (Buster) Brown, 61, of 420 Center Way, Lake Jackson, passed away Tuesday in a Freeport Hospital.

Mr. Brown attended Center Point School and Goldthwaite High School. He left here in 1930 and finished his education in Sam Houston High, Houston, Texas.

He was a veteran of World War II and part owner of the Dahl and Company in Freeport.

Survivors include his wife, Mrs. Pepita Brown; a son, David Edward Brown; a daughter, Miss Maite Nere Brown; two brothers, George Brown, Houston; and Lessly Brown, New Caney.

#### 25 Years Ago —

(Taken From The Eagle Files Of May 13, 1949)

Mr. and Mrs. M. L. Lindsay sold their ranch home near South Bennett to H. M. Musgrove of Eldorado last week. They have moved to town, on Seventh St.

Goldthwaite, a city of 2,000 people located 8 miles from the exact geographical center of Texas, is experiencing the greatest building boom in its history. Main causes are the \$25,000 to be expended by the City Council in an additional water supply, and the assurance of the Lone Star Gas Co. that natural gas will be available before Xmas.

Two cases of smallpox have been discovered in Mills County. Dr. Ruel Slaughter, City-County Health Officer, has quarantined a man and his wife.

Coleman Walton of Goldthwaite, a student at Sam Houston State College, will receive a B. S. degree at commencement exercises there on May 22.

A wedding dinner was given in honor of Mr. and Mrs. Bill Morris, also a birthday dinner in honor of Mrs. Weldon Sheldon in the home of the bride's parents, Mr. and Mrs. Jim Soules.

#### 40 Years Ago —

(Taken From The Eagle Files Of May 11, 1934)

Friends of Mr. and Mrs. T. Robertson and Mrs. Harvey Dunkle surprised them last Friday night with a party. The evening was spent in singing and various table games were played.

Judge L. E. Patterson, one of the best loved and most val-

### Sixth Midway School Reunion Held Recently

The 6th Midway School reunion met May 26 at the American Legion Hall.

A short business session was held just before noon. The meeting was opened with a prayer for the ones we had lost the last year. They were:

Alberta Gerald, Velma Denman, Bernice Wicker, Mary Vaughn, Oscar Denton, Hassie Fallon, Bill Horton.

Clarence Koen led "America" and "How Great Thou Art." We soon adjourned and everyone was ready for a big noon meal. The following attended:

Mr. and Mrs. Gifford Johnson and sons, Miss Ora Bryant, Earl T. Jackson, Rita Sommerfeld,

Bessie Lee Jackson, Earl and Lois Templin, Drue Huckabee, Addie Maye (Templin) McCaw, Nina Hale, Raymond Hale, Mr. and Mrs. Cecil Scott, Naomi Ward, Helen Rose, Mr. and Mrs. Bud Hill, Mr. and Mrs. Omer Hill, Mr. and Mrs. Jim Conway, Mr. and Mrs. Noble Doggett, Mr. and Mrs. Herman McNeil, Amelia Warren, Jessie Wicker, Mrs. Evie Denton, Mrs. W. A. Heath, Mrs. Nina Booker, Opal McKenzie, Fred McNeil, Mr. and Mrs. Charles W. Hill, Mr. and Mrs. H. A. Doggett, Homer Doggett, Mr. and Mrs. Alfred Parker, Mr. and Mrs. Clyde

Kerby, Pat Parker, A. J. Hill, Lena Reynolds, Mr. and Mrs. Clarence Koen, Floy Burns, Harold Beard, Mr. and Mrs. Joe Anderson, Gail Owens and Ray, Mrs. Maude Parker, Mr. and Mrs. Herman Eilers and boys, W. C. Couch Jr., W. C. Couch Sr., Evelyn Couch, Mr. and Mrs. Alton Koen, Mr. and Mrs. Elton Huckabee, Mr. and Mrs. T. W. Huckabee, Mr. and Mrs. Bobby Koen, Mr. and Mrs. Doyce T. Horton, Lee Parker, Audra Mae Anderson, Mr. and Mrs. Morgan McNeil, Roy Hill, Don Prater, Jawanda Russell, Clarence Hill, Elton Horton, Don and Darlene Prater and boys, Mr. and Mrs. Glynn Collier, Tommy Ray Collier, Glenda Ray Collier, Carrie Gray, Mrs. Lafon Saylor, Mr. and Mrs. Bob Parker.

The Will Hill family is holding their reunion on Saturday and Saturday night before the Midway School reunion on Sunday. Everyone is invited to attend their reunion. The 4th Sunday in May will be the time for the school's meeting date in '75.

### Retired Teachers Sponsor Trip

The Mills County Retired Teachers are sponsoring a bus trip to Palo Duro Pageant, Canyon, Texas, on July 9 and 10. The group will arrive in time to be taken on a tour of the canyon and behind the scenes of the pageant, and will also enjoy a barbecue supper in the canyon before the pageant. The arrangements for the tickets and motel reservations have been made. On the return trip, the group will stop at Texas Tech and enjoy a tour of the museum and observatory.

Several people have inquired concerning the trip, but teachers will be given first preference and then others as the space is available. Teachers may make their reservations with Mrs. Clyde Cockrum, Sr. soon and money will be refunded if they are unable to make the trip. Others will then be notified if space is available.

#### PERSONAL --

Mr. and Mrs. Hal Shandrew of San Francisco visited Mrs. Shandrew's cousins, John and Pat Fallon, in Goldthwaite this week.

The four visited Mrs. Joseph Elder in Brady where they enjoyed a delightful buffet served in Mrs. Elder's flower garden.

Mr. and Mrs. Shandrew have a breeding ranch in Yuba City, Calif., and feature quarter horses, Morgans, and Arabians. In San Francisco Mr. Shandrew is an electrical engineer and Mrs. Shandrew is an accountant and personnel manager. Mrs. Shandrew often visited Goldthwaite as a child to visit her Uncle Jimmy's ranch. He was known at that time as James D. Fallon.

#### PERSONAL --

Roy Lee Hill, a resident of the Center City community, received a bad fall Monday morning at his home which resulted in a broken hip.

Mr. Hill, who was employed at the Eagle Office for twenty-seven years, is now confined to the Childress Hospital where he is undergoing treatment.

## HALLIBURTON IS LOOKING FOR THE UNCOMMON INDIVIDUAL— COULD IT BE YOU?

Halliburton Services is looking for ambitious individuals with these qualifications: 21 or over, in good health, high school education or the equivalent, some mechanical aptitude and the desire to get ahead in life.

We are the world's largest oil field service organization and recently the demand for our services has come close to exceeding the supply.

So we've set up a training program lasting about eight months to train capable people to work as oil well cementers, one of the basic oil field services required by oil and gas producers. When you complete this training

you are assigned to Halliburton locations either in the U.S. or foreign countries.

During the classroom training you receive excellent pay as well as all lodging, meals and transportation. After completing training and starting as a cementer, you'll get a salary increase and moving costs to your new location.

If you go abroad you'll also get living and family housing allowances and a differential pay increase. There are important tax advantages, too.

Our work is truly unusual. Every assignment is different. A cementer works outside with big, high-powered equipment. The

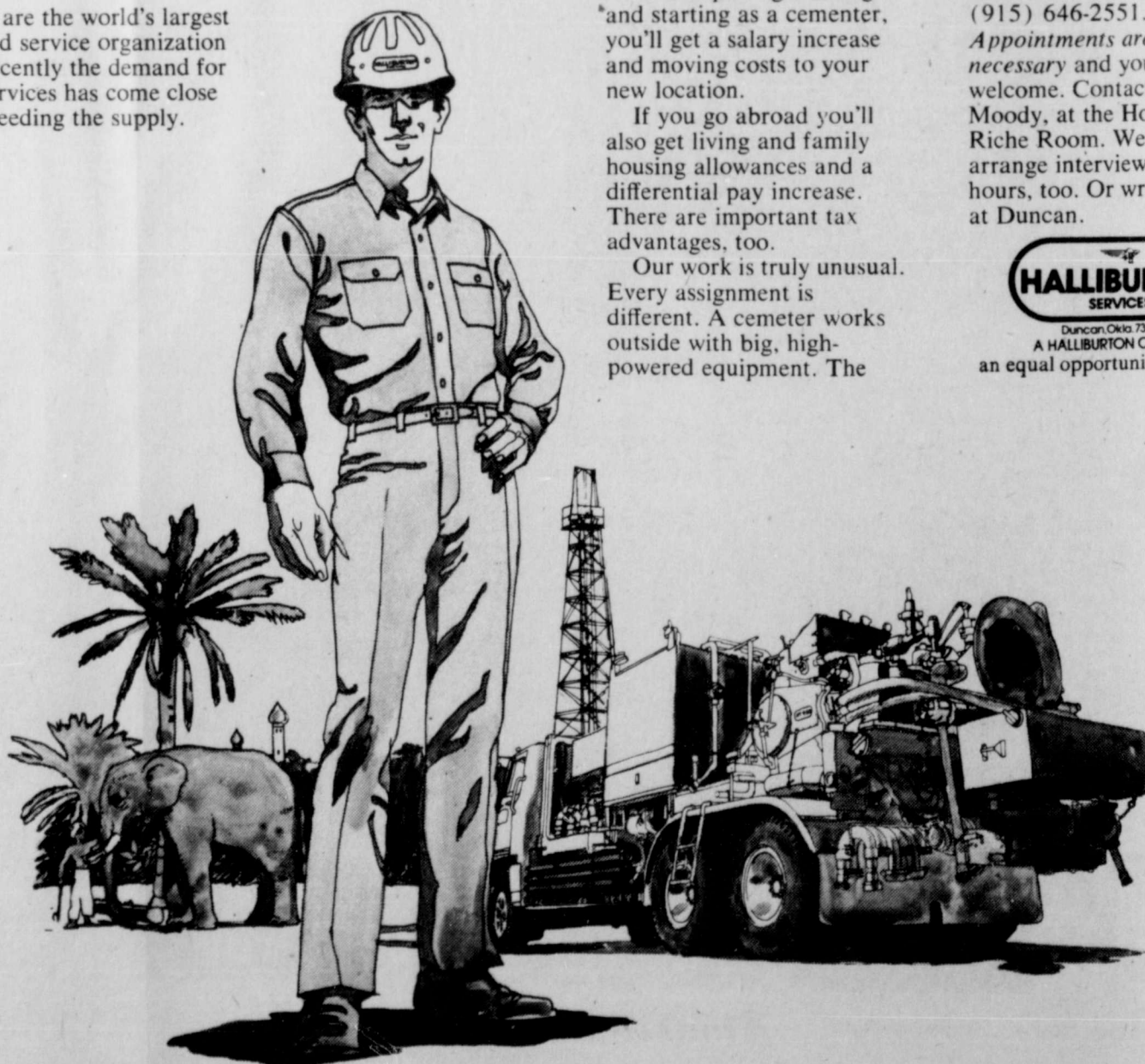
responsibility is yours.

If you're interested, Halliburton Services representatives are interviewing from 8 a.m. to 6 p.m., Saturday and Sunday, June 1 and 2 at the Holiday Inn on U. S. 67 east of Brownwood, telephone (915) 646-2551.

Appointments are not necessary and your family is welcome. Contact Felix Moody, at the Holiday Inn's Riche Room. We can arrange interviews at other hours, too. Or write us at Duncan.



Duncan, Okla. 73533  
A HALLIBURTON Company  
an equal opportunity employer



- |           |          |          |           |          |             |             |              |                |                |
|-----------|----------|----------|-----------|----------|-------------|-------------|--------------|----------------|----------------|
| Algeria   | Bahrain  | Colombia | Ghana     | Japan    | Mexico      | Nigeria     | Qatar        | Southeast Asia | United Kingdom |
| Angola    | Bolivia  | Denmark  | Indonesia | Kenya    | Mozambique  | Norway      | Saudi Arabia | Spain          | United States  |
| Argentina | Brazil   | Ecuador  | Iran      | Kuwait   | Netherlands | Peru        | Senegal      | Trinidad       | Venezuela      |
| Australia | Cameroon | Egypt    | Ireland   | Libya    | New Guinea  | Philippines | Sicily       | Trinidad       | West Germany   |
| Austria   | Canada   | France   | Italy     | Malaysia | New Zealand | Puerto Rico | South Africa | Turkey         |                |

## COMING SOON!



### THE JERICHO SINGERS FROM VICTORIA, TEXAS

WHERE The Baptist Mission  
WHEN June 2, 1974  
TIME 10:00 a.m. (worship service)

The Best in Gospel Singing



## News From Senior Citizens Of Mullin

It was a wonderful and glorious Monday, May 27, for the Mullin Senior Citizens who held their regular meeting at the Mullin Community Center. Some of the Mullin folk met with the Senior Citizens and saw many of their old-time friends. A delicious lunch was served

at the noon hour with James Driskell giving the Devotion. Just after lunch a group gathered around the piano and had a good, long singing session. Mrs. Thelma then sang a "Clown" solo. The work period consisted of finger painting various items. This was very interesting and enjoyable.

Games were played throughout the day, with Mrs. Georgia McClanahan winning the grand prize. Lots of visiting and talking was also enjoyed.

We had lots of visitors which we always welcome to our meetings. They were Mrs. Thelma (Herrington) Wortman and husband Frank of Tuttle, Okla.; Mrs. (Herrington) Cobb and husband Wesley of Longview. Mrs. Wortman and Mrs. Cobb are daughters of the late Dr. and Mrs. J. L. Herrington who lived here.

Also, Mrs. Lucille (Tyson) Preston of Midland and two daughters; Mrs. Joyce (Preston) Gross and Mrs. Wilma (Preston) Firneno both of Mesquite. All of these are well remembered by Mullin folks, and we were happy to have them visit with the Sr. Citizens.

Other visitors were Mrs. Georgia McClanahan and Mrs. Jessie Gilmer, both of Brownwood; Mr. and Mrs. Henry Drunehammer, Mrs. Frieda Schank, both of Priddy; Mrs. H. P. Harris, Mrs. Ethel Massey and Morgan McNeil, all of Goldthwaite; Mr. and Mrs. Geo. French of Sidney; Mr. and Mrs. James Driskell of Zephyr.

Mullin visitors were Mr. and Mrs. W. H. Wasserman, Mr. and Mrs. Glenn Hamilton and three children, Miss Marie Wallace, Mrs. Grady Hancock and Mrs. Eva Bell Roberts.

The next meeting will be held at the same place on June 10. If you can be present at this appointed time, bring a covered dish and enjoy the fellowship with old friends.

A wealthy Houstonian had his check sent back from the bank marked "insufficient funds." Then the bank added, "ours, not yours."

From the 'Record' (Taneytown, Md.): "The way the new jets go, you can have dinner on one continent and heartburn on the next."

From the 'Record' (Mt. Vernon, Mo.): "One of the delicate jobs in life is teaching the kids how to avoid hurting other people's feelings without being liars."

## Gayla Damron Outstanding Student At A&M

According to Philip A. Limbacher, Dean of Educational Curricula and Instruction at Texas A&M University, Gayla Ann Damron has been named Outstanding Student in the field of Education by Phi Delta Kappa educational fraternity. This award is based on academic achievement and success in the student teaching experience.

Gayla is a senior elementary education major at Texas A&M and has a specialization in music. She has maintained a 4.0 grade point average.

A 1970 graduate of Goldthwaite High School, she is the daughter of Mr. and Mrs. James M. Green of 17 Snell Drive, Lampasas. Her husband, Larry G. Damron, is a student at Texas A&M School of Veterinary Medicine.

## Ridge Singing Sunday, June 2

The Ridge Singing will be held at the Ridge Community Building on Sunday, June 2, from 1:30 to 4:00 p. m. Singers are asked to come.

The Singing at Ridge was discontinued for 2 months due to other singings, but will now meet each first Sunday of the month. Glenn Nickles, president, extends a special invitation for all to be present at the singings. You will enjoy it, so come!

## --Hickman Notes--



"NO LIFE IS A FAILURE THAT HAS GIVEN HAPPINESS TO ANOTHER." - a quote which makes us think of all the "successful" people we know - the many who have brought happiness to us.

Hickman Nursing Home's regular volunteers were honored guests on Thursday evening, May 16.

Certificates of appreciation were presented to Janell Britton, Glenda Lemke, Gladys Cockrum, Edith Smith, Barbara Jernigan, Glenda and Tommy Collier, Vada Shipman, T. B. Oglesby, Stanley Bessent, Carol Holloway, B. F. Rainey, Albert Spinks, Betty Rountree, and the girls of the Priddy Junior Class.

Also, to Ruth Dumas and the Retired Senior Volunteer Program; The Mills County Ministerial Alliance, The Men's Downtown Bible Class; Judy Beavers and the Mills County Committee on Aging, the boys of Camp Pecan Bayou and the Square Dealers Square Dance Club.

Barbara Jernigan, who served also as mistress of ceremonies for the program, is shown accepting her award from Granville Cassil who made the presentations.

ENTERTAINMENT FOR THE EVENING - included the Goldthwaite High School twirlers, Liz Truitt, Kathy Koen, Camille Bryant, and Melissa Coats.

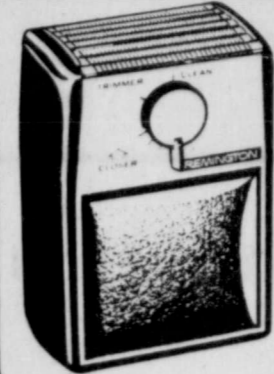
PIONEER NEWS-OBSERVERS perfect for our "Pioneer Days" theme, were used by Gladys Cockrum during National Nursing Home Week. Mrs. Cockrum always provides interesting and appropriate material for our reading group.

WAS GREAT TO HAVE - Janell Britton back with us Friday morning. We had certainly missed her. THE RACKETEERS - Senior Citizen kitchen band from Evant, accompanied by Mildred Anderson, really had a fine show for us. We discovered multiple talents in this group. For instance, Dutch Lee, who is director of the band, is also a great teller of tall tales and Ethel Thompson is a good Minnie Pearl. We hope to have them return again soon.

MORGAN McNEIL - was not only here for the Men's Downtown Bible Class singing on Thursday evening, he and Mrs. McNeil came back Friday afternoon to play tapes of more beautiful music for us.

AN EXAMPLE OF YOUTH - doing something nice for others was seen this week when Glenda Collier and Beverly Carothers came to entertain. We are looking forward to their next visit.

**\$500 REFUND** from **REMINGTON** on the Purchase of any REMINGTON MARK™ or SOFT FOIL™ Shaver



**REMINGTON® MARK IV™ WORLD-WIDE Rechargeable Shaver.**

**\$39.95**

The deluxe, WORLD-WIDE® rechargeable shaver. Recharges on 120/220 volt A.C. outlet. Free set of Replacement Blades. Mirrored travel case.

REMINGTON® MARK III™ The deluxe cord shaver. 4 25.95  
REMINGTON® MARK I™ Economy priced cord shaver. 4 position comfort dial. 29.95

### REMINGTON SHAVERS \$5.00 REFUND OFFER

Gentlemen! I have purchased a REMINGTON® MK-4, MK-C, MK-3, MK-1, F-2 or SF-2 Men's shaver during the period of April 15 and June 15, 1974, and have enclosed the Sales Slip and Warranty Card as proof of purchase. Please send me a check for \$5.00.

Name \_\_\_\_\_  
Address \_\_\_\_\_  
City \_\_\_\_\_ State \_\_\_\_\_ Zip \_\_\_\_\_

Limit one coupon per family. Allow 4 weeks for your check to arrive. Offer expires June 15, 1974. Requests for refund must be postmarked no later than June 30, 1974. Include zip code for prompt delivery.

Mail to: Remington Shaver Refund Offer  
P.O. Box 183  
West Haven, Conn. 06516

**HUDSON DRUG**  
Goldthwaite SPERRY-REMINGTON

# WANTED --- NOW!

SAD!, But True --



**The Park Maintenance Fund IS BROKE!**

## Goldthwaite & Mills County

PEOPLE - PEOPLE - PEOPLE - PEOPLE - PEOPLE  
**PEOPLE**  
PEOPLE - PEOPLE - PEOPLE - PEOPLE - PEOPLE

Who Are Interested In Goldthwaite and Mills County, and Who Have The Mills County Park At Heart,

To Contribute

**\$1800 or More**

**TO INSURE PARK MAINTENANCE THROUGH THIS YEAR**

The additional funds are needed to purchase new equipment and repair present playground equipment

Make your check payable to The Park Fund - Turn it in to any member of the Park Committee - or mail it to the Mills County State Bank.

# Mills County Park Committee

W. P. DUREN, Chairman

Charles Conradt  
Houston Duren

Ed Thornton  
Lewis T. Hudson

Harold Yarborough  
Lee Roy Stacy

# TALK LIKE A TYCOON.



Call your banker or your butcher with equal dignity Ask for our Bigshot walnut Chest Phone.

**GTE**  
**GENERAL TELEPHONE**



# READ and USE CLASSIFIED ADS

## CLASSIFIED RATES

5c per word including name and address, for first insertion and 3c per word for each subsequent insertion. Count initials as one word.  
Minimum charge \$1.25.  
Legal notices same as above rates.  
Memorial tributes or Resolutions of Respect and all other matter not news will be charged for at regular advertising rates. No charge is made for news of Church or other public gatherings where no admission is levied. Where admission is charged or where goods or wares are offered for sale, the regular advertising rates will be applied.  
Cards of Thanks, \$4.00.  
All advertising is cash with order except where accounts have been established.

## FOR SALE

Second hand furniture for sale.  
A. A. CLINE REAL ESTATE  
Phone 648-2292, Res. 648-3177  
Goldthwaite, Texas 76844  
2-8-tfc  
FOR SALE - Metal Storage Tanks, Dal-Worth Paint, Fischer's House of Color Goldthwaite, Texas 76844  
FOR SALE - Three used push mowers, Two used water pumps, and one practically new riding mower. D & I, Small Engine Sales and Service, Ph. 648-3406, 5-2-tfc  
SPECIAL - Loe Latex Paint, \$3.39 a gallon, Barnes & McCullough Lumber Co., Goldthwaite, 3-1-tfc

## REAL ESTATE

See Us For All Your REAL ESTATE NEEDS  
Your Real Estate Sales, Is Our Business, Not A Side Line.  
We give our Full Time and Attention to serve your needs.  
Listings wanted and appreciated.  
A. A. CLINE  
REAL ESTATE BROKER  
Phone 648-2292, Res. 648-3177  
Goldthwaite, Texas  
FLORRIE BURRUS  
Real Estate Sales  
Phone 938-5327 6-29-tfc  
FARM AND RANCH Sales or Trades. Listings appreciated. If interested contact Joe Green, Center City, Rt. 3, Goldthwaite, Texas. Phone 948-3311  
FOR SALE - One large lot, 160 ft. front, Approximately 3 acres of land. Located on West Fourth Street. Call 985-3584 in Mullin. 2-28-tfc  
FOR SALE - Clean, 8 X 40 Dixie Queen Trailer House, Central air and heat. Good tires. To be moved. Priced at \$3750. A. A. Cline Real Estate. 3-28-tfc  
FOR SALE - Used color TV's. Plenty of sizes to choose from. 12 in. to 23 in. Head Electric, Goldthwaite. 2-28-tfc  
HOT AIN'T IT - Cool it with whirlpool air conditioning units. All sizes from 5,000 to 3 ton. HEAD'S Electric, Goldthwaite. 5-16-tfc  
HEAD ELECTRIC has used black and white color TV sets. Ph. 648-3133, Goldthwaite. 5-30-tfc  
CUSTOM BRITCHES BY BRANDOM  
Completely prefinished cabinets in your choice of stains in Birch or ash wood at prices you can afford.  
We can install in your new or existing homes. All types vanities, desk, bookcase, hutch, pantry and storage cabinets. All elegantly styled with formica tops, non-warping doors and glue and tenon joints. We have used Brandom Cabinets on all our commercial and residential jobs for the past three years with complete satisfaction and can now install these units for you anywhere in Mills Co.  
For planning designs and estimates call 648-2424 for Truett or Ronnie or see samples at A & A Paint & Supply on Caradon Road. 5-23-2tc  
NEED A USED COLOR TV? Head Electric in Goldthwaite has them now. Ph. 648-3133. 5-30-tfc  
FOR SALE - 13 ft. Lone Star Sailboat and trailer. Contact James Boykin at 648-3473, home or 648-3311, office. 5-23-2tc  
FOR SALE together or separately. 22 ft. Mobile Scout travel trailer, fully equipped, with air -- and 1972 Jeep Wagoneer, loaded, 4-wheel drive, air. Shown by appointment. Ph. 648-3163. 5-30-2tc  
FOR SALE - Take up payments of \$108 a month on 12 X 64 ft. mobile home. Excellent condition. Ready for quick sale. 648-2680 or 865-5305. 5-30-tfc  
FOR SALE - Store Fixtures, tables, racks, etc. MARP'S Tots & Teens, 648-2264 or 648-3137, Goldthwaite. 5-30-tfc

## MISCELLANEOUS

GIFTS - Frames, glassware, bisque porcelain birds, large and miniature frames, western art, paper weights, custom made frames and books. Wicker Studio. 1-10-tfc  
For all your furniture upholstery work. Extra large stock of fabrics to choose from to fit your budget. Come see us or call 648-2261. Spradley's Furniture & Upholstery, on Fisher Street in Goldthwaite. 4-11-tfc  
Asphalt paving, parking lots and drive ways. Free estimates. Call Gaillyan Smith at 372-3057, San Saba. 7-26-tfc  
Singer Sewing Machine - Equipped to zig-zag. Slightly used. Makes buttonholes, sews on buttons, appliques, decorative zig-zags, etc. Guaranteed. Pay balance of \$39.88 or take over small monthly payments. Call 948-3666. 4-4-tfc  
FISH BAIT: Live minnows, worms; goldfish, and crawfish. Frozen shad gizzards, shad, liver, shrimp. Also blood bait. A. C. Williams Bait Station on Waco Highway, Goldthwaite. 4-18-tfc  
WE BUY junk lawn mowers, D & I. Small Engine Sales and Service, San Saba Highway. 4-25-tfc  
UPHOLSTERING  
ALL TYPES, furniture, cars, pickups, boats. See our samples at Rind's Upholstery, Phone 648-2717, 1208 Hanna Valley Road. 6-19-tfc  
FOR SALE - '73 Ford one ton flatbed truck, 390 A-8 4 speed, power steering, power brakes and air conditioning. Has electric brakes and gooseneck ball. Also 24 foot flatbed gooseneck trailer for sale. Both in excellent condition. Also camper cover for long wheel base, wide bed pickup. \$275. Mills County Lumber and Supply, Phone 648-3400, Goldthwaite, Texas. 4-18-tfc  
SCULPTRESS BRAS - Fashion Figure Control, Jeunique Fashions, Nutri-Clean, Nutri-Metics, Food Supplements. Judith Kinsey 817 643-2544. 5-9-5tc  
FOR SALE - Club Car golf cart. See at 712 E. Front, Lena V. Lindsey, Phone 648-2418. 5-30-tfc  
FOR SALE - 16 foot walk through Cruise Craft Boat, '73 model; 140 Case Wire Baler; 5 cars to pick from; 1 2-ton dump truck; 2 pickups - one 1973 model, 1/2 ton Ford, loaded; '57 Chevrolet 1/2 ton 6 cylinder, standard transmission; Industrial air compressor, gasoline motor driven; Tractor loader.  
Also one and one-half acres of irrigated truck patch. Free from spray - organic. If interested, call 648-3318 or come by 84 Drive-In, Brownwood Highway, C. L. Featherston, Owner. 5-30-tfc  
SWIMMING POOLS - Kiddies Polyethylene Swimming Pools. Sturdy plastic. Also beach toys, air mattresses, etc. BLACKBURN'S Dept. Store, Goldthwaite. 5-30-tfc  
NOW AT HEAD ELECTRIC - We have a serviceman with 19 years experience for all your TV & Antenna Service Needs. Call 648-3133 in Goldthwaite. 5-30-tfc  
WHY PAY MORE? Contact us for your best buys in mobile homes, ranging in all sizes. A special buy now in double wides. Riverside Mobile Home Sales, 1303 Early Blvd., Brownwood, Texas. Past Early High School AC 915-646-8032. 5-30-2tc

## WANTED

WANTED - Responsible party to take up payments on a used electric organ, now in storage. Can be seen in this vicinity. Cash or terms to responsible party. Write: Credit Manager Mulders Music Co., Inc., Business Office, 8900 Shoal Creek, Suite 33, Austin, Texas 78758. 4-26-tfc  
WANTED - Old coins of all descriptions, U. S. or foreign. Will pay 50 per cent above face value for U. S. coins before 1964. Pay \$20.00 for 1909S Indian Head Cent. Pay \$50.00 for good 1877 Indian Head Cent. Pay \$2.50 for good U. S. Silver Dollars. I will make offer on any gold coins. Contact Jack Morgan at 648-3401, 902 1st St. 6-14-tfc  
WAITRESS NEEDED - \$2 an hour. Start immediately. Call Phillip Carr, 648-2277. 5-16-tfc  
WANTED - L.V.N. Top salary for this area. Pleasant working conditions. Contact Marie Hamilton, Hickman Nursing Home, 648-2247. 5-23-2tc  
HELP WANTED - Reliable party to distribute San Angelo Standard Times in Goldthwaite. Good transportation essential. For details call Rex Hutcherson, Llano 915 247-5216 or write 803 E. Wallace, Llano, Texas 78643. 5-30-tfc  
NEEDED - L.V.N.'s. Excellent salary, fringe benefits, and working conditions. Phone 648-2258 or come by Heritage Nursing Home. 5-30-3tc  
NEEDED - Nurses aides. Above minimum wage. Excellent working conditions. Phone 648-2258 or come by Heritage Nursing Home. 5-30-3tc  
Do your hand-embroidery in one-fourth the time with Tri-Chem Liquid Embroidery. Washable, dry cleanable. Will not fade. Get your pain free. Judith Kinsey 817 643-2544. 5-9-5tc

## MISCELLANEOUS

WE HAVE carpets, linoleum and tile; also Kirby Vacuum sales and service. BOYD CARPETS, 1100 W. Central, Bus. phone 915-356-3813, Comanche, Texas 76442. 2-7-tfc  
NEED EXTRA MONEY? Wonderful opportunity. No experience necessary. Full or part-time. Call NOW. Judith Kinsey, 817 643-2544. 5-2-5tc  
HEARING MD SERVICE in Goldthwaite the 2nd Monday of each month at the Mauney Motel from 1:30 to 3:00 p. m. Repairs, Batteries, Cleaning, and Hearing Test. Joe Treadway Hearing Service of Hamilton. (In the Hamilton Office every Friday from 10 a. m. til 1 p. m.) 5-9-tfc  
TO GIVE AWAY - Two small female dogs. One is a dachshund. For more information call 966-3370. Will be put to sleep Friday if homes are not found. 5-30-tfp  
GRAN TRUCKS & TRAILERS  
4 New 1600 Int. w 16 ft. grain dump  
2 New I H Tandems w new 20 & 22 ft. grain dumps available May 25  
65 Chev Tandem, 22 ft. grain bed  
68 5500 GMC with new grain bed & hoist  
74 New American Tandem Hopper Dump  
2 New 40 ft. Fontaine Tandems  
64 Lufkin tandem 40 ft. grain w tarp  
33 ft. Hobbs Tandem Grain Trailer  
18 New 1/2, 3/4 & 1 ton I H Trucks  
35 Other trucks of all sizes  
5 New I H Tandem Diesels  
We buy, sell, trade & finance Johnston Truck, Cross Plains, Tex. Toll Free 1-800-792-2942 5-30-3tc  
74 MARK IV CONTINENTAL Beautiful Metallic Blue & White with all available options except sun roof, 6,000 miles, \$8,500. Dan Johnston 817-725-2181, Cross Plains. 5-30-tfc  
WINCH TRUCKS - LOBOYS ETC.  
4 Tandem diesel winch trucks  
5 Single axle winch trucks  
2 3-axle loboys, 10X15 tires, 1 Det. & 1 folding gooseneck, 40 & 50 ton  
2 35 & 50 ton tandem loboys, 10 X 20 tires, folding gooseneck  
1 50 ton Det. gooseneck 10X20  
1 40 ft. Tandem loyob 40 ton, 10 X 15, rolling tail, 28 ft. steel deck.  
3 Single axle oil field trailers  
4 Tandem oilfield trailers  
We have so many trucks (57) & Trailers (31) & truck & trailer related parts, equip, tires, winches, vans, 18 new pickups & 3 acres of other stuff that you are bound to like some of them. For information dial toll free 1-800-792-2942, Johnston Truck, Cross Plains. 5-30-3tc  
FOR SALE - 1968 Mercury Montclair. Call 985-3540. 5-30-3tc  
ITCHY, BURNING TOES! EASE FIERY PAIN!  
In One Hour or your 59c back. Apply quick-drying T-4-L, strong fungicide, to quiet itch, burn in Minutes. Also fine for sweaty, odorous feet. Try it for happy relief! NOW at HUDSON DRUG. 5-16-3tc  
Don't Scratch That Itch! USE ITCH-ME-NOT - In Just 15 Minutes, if the itch needs scratching, your 59c back at any drug counter. Quick-drying ITCH-ME-NOT quiets itch in minutes; kills germs to speed healing. Fine for eczema, insect bites, foot itch, other surface rashes. NOW at HUDSON DRUG. 5-16-3tc  
RENRO CABINET SHOP  
1101 Parker St., Goldthwaite  
Phone 648-3254  
Custom-Made Cabinets  
Store Fixtures

## Check These

266 acres F of Goldthwaite with nice 3 bedroom ranch style rock home, 3 wells, 4 tanks and good fences, \$315 per acre.  
768 acres 5 miles W of Goldthwaite that is well timbered and has several creeks running through it. Plenty of deer and turkey, \$350 per acre.  
1175 acres on Pecan Bayou S of Mullin, very scenic and has a great abundance of deer and turkey, \$400 per acre. Owner will sell smaller tracts at higher per acre prices.  
139 and 143 acre tracts\* 6 miles NW of Goldthwaite both with 1/2 mile highway frontage and lots of trees, nice building sites on each tract. \$425 per acre, low down payment. Will consider selling smaller tracts.

### Terry Smith Real Estate

Box 622 Goldthwaite, Texas  
Office (915) 648-2767  
Home (915) 985-3339

## FOR RENT

APARTMENT FOR RENT - Will be vacant June 1. Two furnished rooms and private bath. Woman or elderly couple preferred. 1110 2nd Street, Ph. 648-2729. 5-30-tfc  
FOR RENT - Trailer house, located at 712 E. Front St. Contact Lena V. Lindsey, Ph. 648-2418. 5-16-tfc

## LEGAL NOTICES

NOTICE  
The Equalization Board of the Zephyr ISD will be in session on Thursday, June 13, and Friday, June 14, from 6:30 until 9 p.m. each day at the Zephyr High School Library. Anyone desiring to meet with the above board is advised to do so on these dates. 5-30-tfc

## CARDS OF THANKS

We wish to thank all of our friends for their cards, flowers and kind words in the death of our father, Lloyd Atherton. It means so much in our time of grief. Thanks again.  
Marvin and Pat Lindsay  
Mrs. Catherine Atherton  
Mrs. Sherry Young 5-30-tfp

We, the Goldthwaite Garden Club members, want to thank Mr. and Mrs. Frank Bridges and Eagle publishing staff for the publicity, and the printing of Year Books. Without the Eagle we could not have won District and State First place awards on our Press and Scrap Book. We appreciate you. 5-30-tfp  
We wish to express our sincere thanks and appreciation for the flowers, cards, and personal visits during Mr. Kohler's stay in Childrens Hospital. We especially wish to thank the doctors, nurses, and hospital staff. Also, a sincere thanks to those who helped with the work at home.  
Mr. and Mrs. Ernest Kohler  
Dawn Seilheimer 5-30-tfp

### Paint and Body Shop

AUTOMOTIVE REPAIRS  
Gene Shelton  
Body Shop  
And Garage  
Phone 648-3226  
On San Saba Highway

### Dr. Merie M. Ellis

OPTOMETRIST  
305 Citizens  
Natl'l Bank Bldg.  
Brownwood, Texas  
Glasses - Contact Lens  
Call 646-8778 or write  
P. O. Box 149  
For Appointment

### QUALITY REUPHOLSTERY

Furniture and Auto  
Free Pickup and Delivery  
Spradley's Shop  
Upholstery Shop  
Dial 648-2261  
Fisher St. - Goldthwaite

### AMBULANCE SERVICE

PHONE 648-2255  
Roy Wilkins  
Funeral Home  
GOLDTHWAITE, TEXAS

### Jim & Ed's Trailers

Goosenecks Flat Beds  
Custom Trailers  
Pickup Fuel Tanks  
4 Way Valves  
All types of trailer repairs  
WELDING  
Auto Air Conditioners  
For Sale  
IN GOLDTHWAITE  
(Across from Boykin Feed)  
Call 915/ 648-3341

### WATER WELL REPAIR AND SERVICE

N. D. Wright, Operator  
Call nights after 7 p.m.  
985-3349

## FARM & RANCH

DEAD ANIMAL SERVICE - As near as your nearest telephone. Phone (Area Code 817) 386-3303, if no answer try 386-3642. Service charge \$3.00 under 50 miles and 15c per mile over 50 miles from Hamilton. Hamilton Rendering Co., Inc., Hamilton, Texas. 2-22-tfc  
New brilliant grass seeder. Klein lovegrass seeding. Also coastal sprigging. Call Willard Partin, 372-4646 Pottsville ex. 1-10-tfc

IRRIGATION EQUIPMENT  
A complete line of irrigation equipment. Pump, pipe, fittings, volume guns and circular systems.  
Let us help you with your irrigation needs. Largest supply in Central Texas. KIMMELL IRRIGATION SUPPLY INC., HIGHWAY 36  
DELEON, TEXAS 76444  
PHONE 817 893-6266 2-28-27tp

FOR SALE - 30 yearling Suffolk bucks. Avery Poe, Ph. 915 948-3827, Star Exchange. 5-9-4tp

HALE LIVESTOCK TRAILERS  
All sizes and types available - Horse, Covered, Open-top and Gooseneck. Mills County Lumber and Supply, Phone 648-3400, Goldthwaite, Texas. 5-2-tfc  
FOR SALE - Brown-Swiss bulls weighing 600 to 800 lbs. Hill County Store, Phone 915 648-2737. 5-16-tfc

JUST RECEIVED - 1000 bags Hybrid Sudan. Will sell for \$9 cwt, as long as it lasts. Ranchers Feed and Supply. Phone 8-2235. 3-14-tfc

HAY HAULING WANTED - Call Steve Gist, 648-2223, or Terry McLean, 648-2600. Have truck and loader available. 6-6-5tp

NOW AVAILABLE - Registered quarter horse stallion, \$QHA, \$75.00 per mare. Call Gene Williams after 6 p. m., 985-3542. 5-9-8tp

FOR SALE - Good selection of Registered Angus bulls, range condition, tested, ready for service. Herring & Son, Lometa, Ph. 752-3676 or 752-3435. 5-23-tfc

HAY HAULING WANTED - Contact Donnie Humphries at 648-2524 or Dale Page at 948-3350. 5-23-tfc

### SPECIAL

New 5 x 16  
Gooseneck  
STOCK TRAILER  
\$1395.00  
OTHER SIZES AVAILABLE  
Jim & Ed's Trailer Sales & Service  
Goldthwaite, Texas 76844  
Phone AC 915-648-3341

## CITY PROPERTY

Building lots for sale. All utilities available. Call Dale Allen, 648-2563. 5-16-tfc  
FOR SALE - The Grandma Partridge house located on 2nd and Lynch St. Priced reasonably. Cline Real Estate, 648-2292. 5-14-tfc  
FOR SALE - 6 Acres in city limits. STACY - CAMPBELL REAL ESTATE, Goldthwaite. 5-28-tfc  
FOR SALE - 7 room house on black corner lot. See Mrs. Alma Williams or call 648-2665. 4-25-tfc  
FOR SALE - The Ada Tadlock house on Hanna Valley Road. Priced to sell. A. A. Cline Real Estate, 648-2292, Res. 648-3177, Goldthwaite. 4-11-tfc  
Building Lots for sale. Call Mills County Lumber Company. Telephone 648-3400. 6-29-tfc  
FOR SALE - Two bedroom, one bath house. Carpeted, carport, separate garage and storeroom. Large lot. Located at 1504 Hanna Valley Rd. Call M. A. Campbell 648-3368. 5-2-tfc  
FOR SALE - Brick home, 4 bedrooms, 2 baths, living room, den and kitchen combination, carport. Fully carpeted, central heat and air. Near school. Shown by appointment. Phone 648-3428. 5-23-tfc  
FOR SALE - Two bedroom home, one bath, fully carpeted living room, large lot, priced right. Contact Danny Spradley, Telephone 648-3490. 5-9-tfc

### QUALITY DRY CLEANING

CITY CLEANERS  
Member Dry Cleaners  
Institute Of Texas  
Phone 648-2266  
Goldthwaite, Texas

### Land Clearing and Dirt Work

J. C. Partin  
Phone 966-3710  
Priddy, Texas  
FAST, DEPENDABLE  
Film Developing  
Hudson Drug

### Cook's Water Well Drilling & Well Service

GOULDS PUMPS  
SALES & SERVICE  
Frank & Andy  
Call 948-3523

JUNE CLIFTON - T. W. WINTERS - T. E. WINTERS

### Lampasas Livestock Auction

Lampasas, Texas

## CATTLE

WEDNESDAYS 12:00 O'clock Noon  
Phone, Day or Night  
Area Code 512-556-3611  
Or Mills County Area,  
Big Valley Ex. 938-5388



## Mullin Community News

By: Mrs. Johnnie Holland

Funeral services for Ralph ... were held at Watson ... on Saturday, May 18, ... 10 o'clock. His death was ... to pneumonia and a ... He was the husband ... Rosa Meek Fletcher ... up here.

Mosier of Carlsbad, ... and Artie Mosier of ... were the honored guests ... day dinner at the home ... Mrs. Dale Mosier ... and Mrs. Dale Mosier ... afternoon. Chick ... and all the trimmings ... served, plus "good ... made ice cream" for ...

Following were present ... to enjoy the celebra- ... Noble Mosier of Mul- ... and Mrs. B. O. Mus- ... of Coleman; Mrs. Edna ... of Goldthwaite; Johnnie ... of Carlsbad; Mr. ... Raymond Mosier and ... of Nacogdoches; and Bryan ... Mosier of the home. ... Mullin High School class ... met for a class re- ... of the Community Center ... last Saturday after- ... 4:30 p. m. This was ... reunion since grad- ... 40 years ago.

group met and visited ... at scrap books, made ... and just had a real ... together once more. ... was served to close ... to the following class ... and their spouses: ... and Mrs. Darrell Shel- ... (Julie Crockett) of ... Dr. and Mrs. Mearl ...

Ellis (Tootsie Hancock) also of Brownwood; Glynn Edmondson of Eldorado; Mr. and Mrs. Wayne Henry of Clyde; Mr. and Mrs. Joe Hugh Fletcher (Iva Lou Daniels) of Walforth; Mrs. Aleene (Ince) Rascoe; Mrs. Ozella (Ince) Jones; Mr. and Mrs. James May (Grace Perkins); and Mr. and Mrs. Dusty Durst (Leta Williams). Mrs. Ince and Bill Jones were unable to attend the reunion, but I know those who were here were made happy for "having been together once more". I might mention that Joe Fletcher and his wife were both members of this class.

The annual Mullin Homecoming was held Saturday night at the High School auditorium. A nice crowd was present for the occasion. Steve Williams was master of ceremonies.

Awards (fun ones) were given to the oldest students there. Mr. Elzie Smith received this award. The award for the youngest student went to Kelly Spinks, son of Mr. and Mrs. Doug Spinks. Joe Herrington received the award for the longest distance away - California. The ones present from different classes were recognized.

The group plans to meet at the same time next year.

The following officers were elected: Belve Bean (Sonny), president; and Grace (Perkins) May, secretary.

Out-of-Mullin people there included: Mrs. Lucille Preston of Midland and three of her daughters: Joe Herrington, Calif.; also

Happy Herrington of Weatherford; Walter Kemp, J. P. Sanders, and his sister Mollie Lou, Warren and Oleta Duren of Goldthwaite, and numerous others. All of the class of '34 attended. Refreshments of lemonade and cookies were served, and about 10 o'clock bad lightening began, so the crowd left for safer grounds. That was all we got out of the clouds - no rain. Children of the late Dr. and Mrs. Herrington, former Mullin residents, invited friends and acquaintances to visit with them from 3 until 5 o'clock Sunday at the Holiday Inn in Brownwood. The children were Joe and Happy, Mrs. Thelma Wortman and Arlene Cobb. Another one of them, Gaylord, was unable to be here. A large crowd visited with them at the appointed hours.

They all attended church services at the Baptist Church in Mullin Sunday. Mrs. Jewell Baskin returned to Brownwood with them and was their guest for the day.

Mrs. Cleo Hodges and Bud; also Mrs. Ruth Tullis, visited last Sunday in Waco with Mr. and Mrs. Rex Tullis and Sam; also with Mr. and Mrs. Jimmy Rex Tullis, Natalie and Christopher. Jimmy Rex and family returned home with them and spent Memorial Day with Ruth Tullis.

Visitors over the weekend in the Will Sanders home were: Mrs. Julia Seaborn of Mesquite; Mrs. Lela Elkins of Dallas; Walter Sanders; J. P. Sanders and Mollie Lou Garren all of San Antonio; Mr. and Mrs. Danny Hoover and Chris of Houston; Mr. and Mrs. Mike Alldredge and Jan of Zephyr; Prentice Sanders of Austin; Mrs. John Herrington of Dallas; Mrs. Lucille Preston of Midland; Joyce Gross and Wilma Fernis of Mesquite; and Mrs. Whitehead of Mullin.

Mullin has had quite a busy weekend, and today (Memorial Day) the Herrington family, plus other ex-Mullin people plan to attend the Senior Citizen Day at the Community Center. This will wrap up the different meetings, and Mullin will return to normal come Tuesday.

## Stacy's Insurance Agency

Lee Roy Stacy-Cecil Campbell

DON'T PUT THAT BOAT IN THE WATER WITHOUT CHECKING WITH US FOR ADEQUATE INSURANCE COVERAGE. IT PAYS TO BE PROTECTED . . . ALSO, CHECK WITH US ABOUT COVERAGE FOR YOUR TRAVEL TRAILER.

See us today!

We have a pharmacist on duty to take care of all your prescription needs.  
**WOODY DRUG**

DON'T MISS THE BIG C. R. A. APPROVED

# RODEO

## MAY 30, 31 & JUNE 1

**T. A. Head Arena  
GOLDTHWAITE, TEXAS**

**8:00 Each Night**

- Bareback Broncs
- Barrel Racing
- Calf Roping
- Steer Roping
- Bull-Dogging
- Mills County Calf Roping
- Bull Riding

Admission: Adults, \$2.00 - Children, \$1.00

**Bob Jenkins, Producer**

Books open Wednesday, May 29 from 12 noon to 5 p.

and Thursday, May 30 from 9 a.m. until 12 noon

To Enter Call 915/648-2718

Entry Fee - \$20 Each Event



Arrow,  
dry  
Pinto

**Beans** 1-lb bag **59¢**

Burleson, Strained **\$1.19**

**Honey** 24 oz. Jar **1.19**

Kraft's Barbeque **Sauce** 18 oz. jar **47¢**

Heartland Natural Grain **Cereal** 16 oz box **69¢**

Wagner Breakfast **Drink** 3 qts **\$1.10**

Shurfine 14 oz. size **Catsup** 4 - **\$1.10**

A. F. Complete 2 Pkg **Cornbread MIX** **29¢**

Sunshine Cookies **Hydrox** 15 oz. pkg **49¢**

A.F. Reg. 69¢ **Panty Hose** **39¢ ea**

84 oz. King size **Fab** Save 40¢ Box **\$1.29**

For quality foods, fair prices, fast courteous service, weekly specials, plus that added bonus of S&H Green Stamps

Bake-Rite 3 lb can **99¢**  
Limit 1 with \$5 purchase



Frozen Chicken, Turkey, Steak, Spagetti

**39¢**

Limit 6

El Paso **Taco Shells** Box of 10 **39¢**



**10¢** Box

6-Flavors

**\$1.05** 5 cans

Stainless **Razor Blades**

**Gillette** Reg. 89¢ pkg

**58¢**

"Better Meat Buys"

Silver Spur, **Bacon** Lb. **69¢**

Grade A **Fryers** lb **39¢**

A.F. boneless Cooked, 2-3 lb size Dinner

**Hams** lb **\$1.49**

Fresh Ground Beef

Protein

**Patti-Mix** lb. **79¢**



SHURFRESH MEDIUM EGGS

3 dozen



Pound Cup

**58¢**

Prices good Thursday, May 30 thru Wednesday, June 5, 1974



# SCHWARTZ FOOD STORE

Goldthwaite, Texas













**March Of Dimes Dance Friday**

Friday night the Mills County March of Dimes Chapter along with the Square Dealers Square Dance Club of Goldthwaite will host their third annual Street Square Dance.

The dance, which will be held on the square in Goldthwaite, will feature callers from the Central Texas area.

All admission proceeds from the dance and the concessions will go to the March of Dimes.

PAGE 8 THE GOLDTHWAITE EAGLE-MULLIN ENTERPRISE Goldthwaite, Texas, Thursday, May 30, 1974

**1 Day To 180 Days**  
C & F TRIP, ACCIDENT,  
AND BAGGAGE INSURANCE  
**G. C. HEAD**  
INSURANCE  
Goldthwaite

**San Saba**  
**RCA Rodeo**  
June 6-7-8  
8 p.m. Rogan Field

Professional championship rodeo at its finest - Produced by Tommy Streiner - Known throughout the world for producing the most exciting rodeos ever to be seen.

DANCE AT LEGION HALL FOLLOWING EACH PERFORMANCE

**END OF MONTH SALE**

Big Group

Ladies Shoes,  
Dresses,  
Pants  
and Tops

**1/3 OFF**

**Yarborough's**



CAROLE HICKMAN

**Mullin Jr. High Honor Students**

Carole Hickman is the valedictorian for the Mullin eighth grade with a grade average of 96.5. She is the daughter of Mr. and Mrs. Wallace Hickman. Carole played basketball and volley ball and exhibited lambs in various shows. She was chosen Miss

MJH, pep squad drummer, and secretary-treasurer of her class. Jimmy Johnson, son of Mr. and Mrs. Jerry Johnson, is salutatorian with a grade average of 95.93. He was president of his class, was chosen for the citizenship award, and showed lambs in the stock shows.

**Heritage Nursing Home**

"HAPPENINGS"



JIMMY JOHNSON



A group of approximately 20 senior citizens from Evant entertained us a few days ago with

some very entertaining music and acts. Many of these people were our seniors; however, they were certainly a lively group. Our thanks to a fine group for their interest and time spent with us.

The Square Dealers will return again on Monday, June 3, 1974, at 7:30 p. m. Everyone is cordially invited to come to our living room for the evening of entertainment.

A special welcome was extended this week to our two new residents, Mrs. Lottie Rudd and Mrs. Curtis Long. They were certainly no strangers to all of us and we look forward to their company.

Mrs. Emma Hein and Mr. C. W. "Bud" Jones returned from the hospital this week. Mr. R. F. Daniel is still a patient in the local hospital.

All of us are looking forward to the return visit of the G. A.'s from the First Baptist Church next week. This group always seems to find eager residents for their program and attention!

**Market Report**

Lometa Commission Co.

Lometa, Texas

BUD HARBELL, Owner

May 24, 1974

RECEIPTS: 685

Light Weight Steer Calves, 50,00-60,00; Medium Weight Steer Calves, 45,00-50,00; Heavy Weight Steer Calves, 40,00-44,00.

Light Weight Heifer Calves, 45,00-50,00; Medium Weight Heifer Calves, 36,00-40,00; Heavy Weight Heifer Calves, 34,00-36,50.

Feeder Heifers - 34,00-36,00  
Feeder Steers - 38,00-44,00  
Heiferettes - 32,00-34,00  
Stocker Cows - 33,00-38,00  
Cows and Calves, 300,00-394,00  
Bull Calves - 38,50-45,00  
Bull Yearlings - 37,50-45,00  
Packer Bulls - 34,00-42,00  
Packer Cows - 24,00-33,00

Choice 350 to 450 pound steer and heifer calves steady to \$1 higher. Heavy weight, 500 pound bull calves \$1 to \$2 lower. Packer cows slow to \$1 lower. Packer bulls steady. Cows and calves steady.

We had excellent buyer attendance.

REMEMBER, Our Sale Starts At 12:00 Noon On Friday.



**ROBERT WORTLEY TO HOLD HEARING AID CONSULTATION AT GOLDTHWAITE**

**YES!**

WE WILL BE AT MAUNEY-MOTEL

MONDAY

June 3

**RADIOEAR**

for better hearing... naturally!

**BROWNWOOD Hearing Aid Center**

109 E. Anderson, Ph. 644-8226 Robert Wortley, Owner

All the efficiencies of local loan service.



What do you expect from an agricultural loan? Long terms? Reasonable charges? These traditional advantages have been offered by the Federal Land Bank for over a half-century. But the Land Bank also provides personal attention and prompt service. We're the local lender who understands local needs. Come to the Land Bank... for many good reasons.

Tommy Head, Mgr.

In Goldthwaite each Tuesday



Brownwood, Texas

Big new stock just received

**PRE-FINISHED Paneling**

(In 4 x 8 Sheets)

Canterbury Decor,  
Alpine Decor and  
Weathered White

\$ 3<sup>59</sup> only a sheet

Light Pacesetter \$4.95 a sheet

Honey \$5.75 a sheet

Birch & Maple \$7.95 a sheet

Pre-Finished Moldings To Match!

**Barnes & McCullough**

"Everything To Build Anything!"  
Phone 648-2411 Goldthwaite

You Are Invited To Attend The

**OPEN HOUSE**

of

**PATTY'S OF TEXAS, INC.**

also

The Rag House

**Friday, June 7**

from 7:30 p.m. until 9:30 p.m.