

TAX PAYERS TO MEET FRIDAY AFTERNOON

Co. Organization To Meet Here For The Third Session

Committees To Make Report On All Resolutions

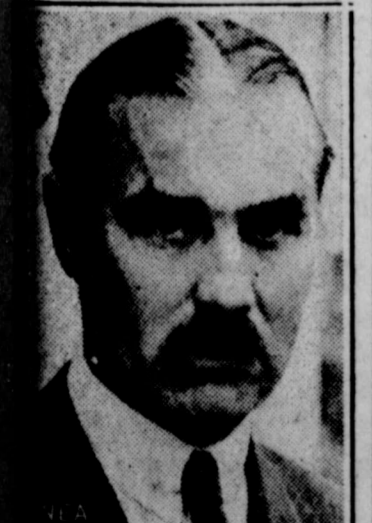
The Eastland County Tax Payers League is scheduled to meet at the courthouse in Eastland today (Friday) afternoon at 2:00 o'clock at which time reports from committees appointed at previous meetings will be heard and discussed.

District-County Candidates For Public Offices

Oliver Cunningham of Abilene announced that he will be a candidate to succeed himself as state senator of the 24th senatorial district, which includes Eastland county. Senator Cunningham advocates the payment of interest and sinking fund on county road bonds out of the state treasury, as a part of the highway income from gasoline taxes.

Merritt F. Hines, Eastland attorney, will be a candidate for representative from Eastland county. His formal announcement may be expected soon. J. W. Cokerill, Gorman editor, is also a candidate for the place. Tom J. Cunningham, present incumbent, who is now at Corpus Christi for the benefit of his son's health, is considered certain to be a candidate for re-election while O. F. Mastain of Eastland has announced his intention of making his race.

S. Envoy to Japan



The critical post of United States ambassador to Japan has been awarded to Joseph C. Grew, (above) of New Hampshire. Now ambassador to Turkey, he has been appointed by President Hoover to succeed W. Cameron Forbes of Massachusetts at Tokio.

A Girl of Note



There's a musical twist to that intriguing curl on dark-eyed Mlle. Edith Rosner's forehead. Three days a week the well known European soprano wears it in the shape of a treble clef; on three other days, in the form of a bass clef. On Sundays, when she doesn't sing, the curl vanishes!

Bible Class To Hold Open House Sunday 9:49 A.M.

The Men's 9:49 Bible Class will hold "open house" next Sunday, Feb. 21st. All members are requested to bring their mothers, wives, sisters, sweethearts and friends and an earnest invitation is extended to the general public to be present.

Optometrists In Brownwood Meet

Dr. E. A. Beskow, Eastland optometrist, attended the meeting of optometrists for this, the 14th district, which met last Sunday in Brownwood. It was a regular monthly meeting and was well attended. A splendid program, which included talks on various problems of the optometrists, was rendered.

Rev. W. H. Muston To Speak Sunday

Rev. W. H. Muston of Eastland will occupy the pulpit at both the morning and evening services of the Baptist church Sunday. At the morning service it is planned for the church to again take up the matter of calling a pastor.



Masons To Have Washington Day Program Feb. 25

The Eastland Masonic Lodge will have a Washington Birthday program February 25 at the Eastland Masonic Hall. Every Mason and his family is extended a special invitation.

N. H. Pierce At Eastland Lions Meet Tuesday

N. H. Pierce, district governor of Southwest Lions clubs was the honor guest at the weekly Lions club luncheon Tuesday on the Connelley hotel roof garden.

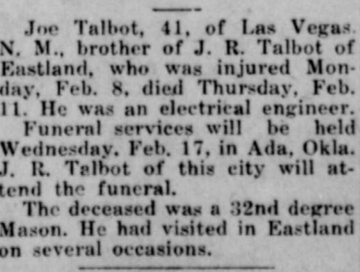
Tax Experts To Visit Eastland

This paper is in receipt of a letter from F. E. Vickery, deputy collector of internal revenue with offices at Abilene saying that a representative of the income tax division will be in Eastland on March 3 to assist in preparing income tax returns for the year 1931.

Brother of Eastland Man Fatally Hurt

Joe Talbot, 41, of Las Vegas, N. M., brother of J. R. Talbot of Eastland, who was injured Monday, Feb. 8, died Thursday, Feb. 11. He was an electrical engineer.

For Congressman



Pink L. Parrish of Lubbock, who has announced his candidacy as congressman-at-large. He was once a candidate for governor of Texas.

Miss Opal Hunt For County Clerk

Miss Opal Hunt of Eastland this week formally announces her candidacy for the Democratic nomination for county clerk.

Dr. Shearer To Speak On Life Of Washington

Dr. Geo. W. Shearer, pastor of the Methodist church, announces that he will deliver a special sermon Sunday morning at 11:00 o'clock dealing with the life of George Washington. His subject will be "Washington's Message to This Generation."

Geo. Ingram Gets Suspension Of Liquor Sentence

George Ingram, tried previously on a liquor charge when the jury couldn't agree, waived a jury before Judge Davenport and pleaded guilty.

Wilson Funeral At Santa Anna

Funeral services for Jack Wilson, who died Saturday at a Ranger hospital, were held Sunday afternoon at Santa Anna, Coleman county.

K. P. Home Girls To Be At Gorman

The Mandolin and Harmonica Club, consisting of 20 girls from the Knights of Pythias Home at Weatherford, will give a free concert at the Methodist church in Gorman tonight (Friday, Feb. 19th) celebrating the 65th anniversary of the founding of the Knights of Pythias.

All members of the K. P. lodges and Pythian Sisters of this section are especially urged to attend this meeting and others who are not Pythians are cordially invited.

Plans For Lower City Taxes Are In The Making

Prettiest Bride



It was Hungary's most important wedding of the winter when countess Katalin Nadassy (above) was married to Count George Karolyi the other day. And no wonder—for she has been described as "the prettiest bride in Central Europe," and he is a member of the most famous family in Budapest.

City Commission Considers Taxes And Bonds at Meet

At a regular meeting of the Eastland City Commission Monday afternoon a committee was appointed to devise ways and means for handling outstanding obligations of the city in the way of bonds. This committee is composed of Carl P. Springer, Jas. A. Beard, Allen D. Dabney, Earl Conner, J. E. Lewis and Harry Brelsford.

Another matter brought before the commission at the Monday meeting was the matter of the removal of buildings from the city when back taxes were due and unpaid on them. It was pointed out that buildings and merchandise stock as well should not be moved from the city limits until all taxes due, including taxes for 1932, had been paid.

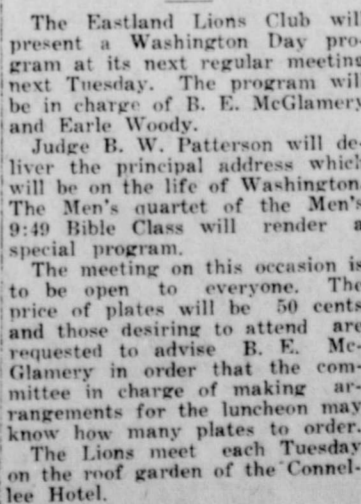
J. W. Fairbairn, 68, Was Buried Sunday Afternoon

John W. Fairbairn, 68, Eastland county pioneer, died Saturday, Feb. 13, at Loraine, where he had for the past several years made his home and where he had been engaged in business. Burial was in the Eastland cemetery at 4:00 o'clock Sunday afternoon following funeral services at the Loraine Methodist church.

Lions To Have Washington Day Program Tuesday

The Eastland Lions Club will present a Washington Day program at its next regular meeting next Tuesday. The program will be in charge of B. E. McGlamery and Earle Woody.

A Martyr to Peace



Peace no less than war has its heroes. Such a one was Junnosuke Inouye, former Japanese Minister of Finance, who was assassinated in Tokio because of his opposition to Japan's military activities in China.

Burkett To Open Campaign With Speech Here Apr. 1

Senator Joe Burkett of San Antonio, who was in Eastland last Friday, stated that he would make his opening speech for congressman-at-large here April 1. Senator Burkett visited Abilene and other points in West Texas before returning to San Antonio.

Wilson Funeral At Santa Anna

Funeral services for Jack Wilson, who died Saturday at a Ranger hospital, were held Sunday afternoon at Santa Anna, Coleman county.

K. P. Home Girls To Be At Gorman

The Mandolin and Harmonica Club, consisting of 20 girls from the Knights of Pythias Home at Weatherford, will give a free concert at the Methodist church in Gorman tonight (Friday, Feb. 19th) celebrating the 65th anniversary of the founding of the Knights of Pythias.

Killed by Train

The body of an unidentified man about 27 years of age was buried in Strawn Sunday afternoon following an accident in which he was killed.

Weekly Chronicle

Published Every Friday

Frank Allen Jones, Publisher

Office of Publication: 106 East Flummer Street—Telephone 981

NOTICE TO THE PUBLIC

Any erroneous reflection upon the character, standing or reputation of any person, firm or corporation which may appear in the columns of this paper will be gladly corrected upon being brought to the attention of the publishers.

Obituaries, cards of thanks, notices of lodge meetings, etc., are charged for at regular advertising rates which will be furnished upon application.

Entered as second class matter at the postoffice at Eastland, Texas, under Act of March, 1879.

SUBSCRIPTION RATES:

Single Copies \$.25
Three Months .75
Six Months 1.50
One Year 3.00
All subscriptions are payable in advance.

Warner Memorial University Notes

Play is Success. The play, "A Wild Flower of the Hills," given by W. M. U. Friday night was a success. There were about 450 or 500 people out to see it. At the end of the first act negro spirituals were sung by a quintette. These songs fitted in well with the setting of the play. A free-will offering was taken at the close of the second act.

The cast represented several states—Ohio, California, Louisiana, Texas, Oklahoma, and Minnesota.

The play was sponsored by the Girls' Athletic club. We are expecting to reproduce the play again at different places soon.

Juniors Enjoy a Steak Fry. On the evening of Feb. 13, the junior class hiked to a small lake about four miles south of the campus. Everyone joined in gathering firewood, and a supper of fried steak was enjoyed. Later, a huge bonfire was built, around which ghost stories were told. The guests of the party were Prof. Kardatzke and Miss June Seth.

"That Fish Party." The "fish" of W. M. U. gave a valentine party at the home of Rev. J. W. Baidorf last Saturday evening in honor of our two new members and our new sponsor.

Initiating the new members, Mabel and Ellen Abernathy, and our new sponsor, Prof. W. E. Barnett, was the principal entertainment of the evening. We decided though that our new sponsor could do us about as much as we could do him. Our two new members are sisters, and we have decided since we saw a fight between them that one can get the best of the other without trying much at all. We have accepted them into our class and believe that they will be loyal and co-operative members.

After the initiating, sandwiches, coffee, and cookies were served by Lydia Courvisier, Ruth Bruner, Ruth Hamon and "Mit" Kardatzke. Each one also received a comic valentine which they were asked to show in turn.

Our class was well represented; everyone being present except Leis Morgan, Judy Smith, Nina Mae Williams, Foy Thomas, and John McAlister. We had as special guests Rev. and Mrs. John Baidorf and Miss Bonnie Belle Smith from Ballinger, who was visiting at W. M. U. Saturday and Sunday.

We are hoping that everyone enjoyed the party and hope we will have some more "good fun" in the near future.

Campus. Rev. Wolf, from West Virginia, was a visitor at the dormitory over the week-end. He officiated in the morning service Feb. 14 at the Church of God.

J. R. Hale dropped in for a few days. We hear he brought some interesting things about Oklahoma.

Miss Irene Smith and Ruth Bruner have been exchanging visits. Ruth Bruner spent the night with Miss Smith Thursday and Miss Smith with Ruth Friday night.

Miss Bonnie Bell Smith was a week-end visitor. We all like to see Bonnie. She is one of our former students from Ballinger, Texas.

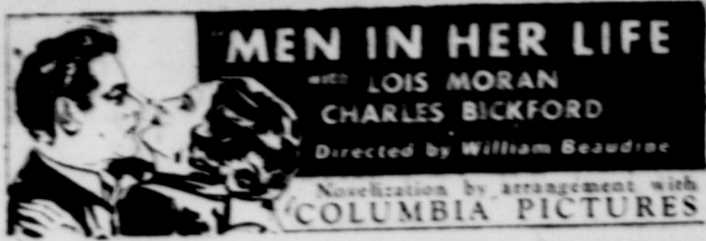
NOTICE TO DEPOSITORS AND CREDITORS

TEXAS STATE BANK OF EASTLAND, EASTLAND, TEXAS

Texas State Bank of Eastland, Eastland, Texas, closed its doors on the 2nd day of October, A. D. 1931 and is now being liquidated by me as provided by law. If you have a claim against said bank, you are hereby notified to present the same with legal proof thereof to me at Austin, Texas, within ninety days after the 27th day of November A. D. 1931.

For info proof of claim will be mailed to every known creditor, and additional forms may be procured from the office of the Banking Commissioner, Austin, Texas.

JAMES SHAW, Banking Commissioner of Texas. Dated at Austin, Texas this 27th day of November A. D. 1931. 11-27 2-26



WHAT HAS HAPPENED. Julia Crossingham, pretty and grade-school society girl, who was rubbed and left stranded in a small French village by Capt. Jim Madden, is asked by Dick Webster, school teacher, who comes to organize a course. She agrees to teach him the art of a gentleman and she goes to France where Dick goes to find her.

Having coached him in the clothes he should wear, the etiquette of society and the language proper in the best social circles, Julia took Flash to the Cafe de Paris for his first contact with society. When they were seated at one of the sidewalk tables their conversation was interrupted by a youth projecting himself like a bullet from the interior of the cafe. He landed on the sidewalk by their table, looked up in a surprised manner or as surprised as an intoxicated lad can look. "Julia Caravanagh! Beautiful! How gorgeous, my old Julie—how are you?" she exclaimed rising and still clinging to a wine bottle.



"I want you to meet Mr. Madden," said Julia and then to Flash, "This is Dick Webster."

"Dick!" The girl was extremely delighted. Then she laughed. "Was that you creating all that excitement?"

The lad took a seat without being invited. "I was just showing my foreign friends something about football."

"I want you to meet Mr. Madden," said Julia and then to Flash, "This is Dick Webster."

Greetings were exchanged and Madden added: "Dick Webster? Oh, I read a lot about you, Mr. Webster. You're the famous Harvard quarterback, aren't you?"

"Ouch!" Dick exclaimed screwing his face up.

Julia smiled. "Yale, Mr. Madden." "You want to look out for Julie," Dick cautioned. "I've been madly in love with her for years. Look at me. I'm a wreck because she refused me. But do you think I'm alone? No. The woods are full of jilted lovers. They're pining away in all quarters of the globe. You're not one of her victims, are you, Mr. Madden?"

"Not yet."

"The Mulhollands from Boston are in town. Dick volunteered by way of changing the subject. "I got a date with them. How about coming along and making my life miserable?"

Julia was delighted and was about to accept when she remembered Flash. "But Mr. Madden and I were—"

The Kardatzkes (Mrs. C. H. Kardatzke and family) still insist on eating ice cream. We have found out when and where they

have it, so we are going to visit them.

Mr. and Mrs. E. O. Bailey entertained Mr. Aubrey Forrest and Lester Cross, Miss Ruth Hamon,

Frances June Seth, and Nina Mae Williams, with a chicken dinner Sunday.

SPORTS

Stags Win Over Dothan. On Tuesday night the Stags met the Dothan five in their second encounter of the season. The Stags walked away with their opponents. The final score showed Warner 55, Dothan 23. McClusky was high point man and he played a fine game on the defensive also.

This Friday Randolph will come here to play the third game of the season. We hope the team and pep squad are in fine condition.

Tennis Club Meets. The tennis club met Monday morning after chapel and elected the following officers: President, Mrs. C. Kardatzke; secretary and treasurer, Miss Purdie Hamon; advisor, Prof. H. H. Ward. These officers will have charge of the court and the arrangement of games in the final tournaments this spring.

Girls Finish Payment on Suits. The girls will not have to worry any more for a few years about basketball suits. Enough money was taken in from the play given last Friday night to finish the payment on the suits. We wish to thank everyone for his help toward this.

Tennis Progressing. A tennis court has been completed, a new net bought and a tennis club organized so everything is ready to begin tennis in earnest. A tournament will be held later in the season, which will add zest to the game.

Chapel Notes. Wednesday, Feb. 10, Mrs. Hale talked on "Your Ideals," in chapel. She gave many helpful ideas that one might use to better his ideals.

Sketches of the play, "A Wild Flower of the Hills," which was given in the university auditorium Friday night, were given in chapel on Friday morning. The scenes between Zack and Chloe and that of John and "Mammy" were presented. The program was enjoyed by all present.

Dr. Wilson talked on world conditions, Monday morning. In this he brought out the idea that there

will not be another war soon, as great as the last World war, because of the conditions of the world.

Flower Garden Started. On the south side of the university some excavation has been done and a border for a flower garden constructed of rustic stones. This garden is to be filled with lawn and flower plants set out. A search is being made for plants suitable for this garden. The early spring-blooming flowers are preferred. All donations will be appreciated. Mrs. McAlister from Gorman has given a tub full of phlox, petunias and pansy plants.

Burkett To Open Campaign With Speech Here Apr. 1

(Continued from page 1) candidate for criminal district attorney, Frank Judkins of Eastland and Grady Owen of Eastland are avowed candidates for the office.

J. C. Allison of Eastland is a candidate for county commissioner from Precinct No. 1. V. V. Cooper, present incumbent, is declared to be a candidate. John Thurman and Henry Davenport, both of Ranger, are candidates.

LESSON-SERMON GIVEN. "Soul" was the lesson-sermon subject in all Churches of Christ, Scientist, Sunday, Feb. 14.

The golden text was from Lamentations 3:25, 26. "The Lord is good unto them that wait for him, to the soul that seeketh him. It is good that a man should both hope and quietly wait for the salvation of the Lord."

Passages from the Bible included these from Psalms 63:1, 2: "O God, thou art my God; early will I seek thee; my soul thirsteth for thee, my flesh longeth for thee in a dry and thirsty land, where no water is; To see thy power and thy glory, so as I have seen thee in the sanctuary."

The service also included the following from "Science and Health with Key to the Scriptures," by Mary Baker Eddy (p. 390):

"It is our ignorance of God, the divine Principle, which produces apparent discord, and the right un-

derstanding of Him restores the money. Truth will at length compel us all to exchange the pleasures and pains of sense for the joys of Soul."

The jury before which Fred Taylor was tried on a liquor charge Tuesday in the 91st district court failed to reach an agreement and was discharged by Judge Davesport this morning.

ATTENTION. Owing to the financial depression, the United Brotherhood of Carpenters and Joiners of Eastland Local Union No. 2016 has granted privilege to all of its members to work for \$5.00 per day, until this privilege is revoked by order of the Union. Respectfully, Local Union No. 2016.

FERTILIZER. Big load well rotted barnyard fertilizer, ideal for flower garden beds and lawns. \$1.50 delivered. Full line garden and flower seed. SEED POTATOES. TEXAS FARM PRODUCTS CO. South Seaman St. Next to Prairie Bldg.

Our Resale Department Can now accept a limited number of subscriptions for TEXAS ELECTRIC SERVICE CO.

\$6 Preferred Stock (NOT A NEW ISSUE)

A DIVIDEND PAYING INVESTMENT

NOT A SPECULATION

Points Regarding the Desirability of this Stock as an Investment

- Company Serves A Necessity. Electricity is used by almost everybody daily. It is necessary to the growth and development of every modern community.
Property of Company Substantial and Permanent. Power plants, lines and other property can always be seen—they are here to stay and are constantly maintained and kept in the best possible condition.
Convenience to Stockholders. Dividends are paid to stockholders by check mailed to the address of stockholders any place reached by the mails. The stockholder does not have to collect the earnings on his money.
Experienced Management. Men directly responsible for the operation of the Company have been in the business for many years—many are devoting their entire lifetime to it.
Electricity Used At All Times. The Company operates in a wide territory serving many different activities and, since electricity is such a necessity, the Company's service is always in demand.
Efficiency of Operation. Men in charge have the advantage of the best methods developed in the industry throughout the United States.
No Inventories to Depreciate. Electricity cannot be stored, it must be generated as used. No supply accumulates which may depreciate in value.
New Applications of Electricity. This means a constantly enlarging field of operations.

DIVIDEND DATES:

January 1, April 1, July 1, October 1

No more than 25 shares are to be sold to any one person. Subscriptions will be filled in the order they are received

A. J. DUNCAN - - FORT WORTH

Shares are also for sale at any office or through any employee of

Texas Electric Service Co.

STANDARD WEIGHT

Electric Irons

ST. REGIS

\$4.50 Value For Only

\$1.98

CORNER DRUG STORE

OF COURSE

Phone 588 EASTLAND N.W. Cor. Square

Agricultural Extension News Of Interest to the Farmers

Compiled in the Offices of the County Agent and County Home Demonstration Agent

Some Facts About the Cotton Outlook for 1932

The principal facts of the cotton situation have been summarized to aid Southern farmers in planning their crop production for 1932. Local and individual circumstances will largely control each farmer's plans but the following facts compiled by the United States Department of Agriculture may help to decide the best course to follow during the next year or two.

The decline in cotton prices during the last two years has resulted from greatly reduced demand and large supplies of cotton, and from general conditions that have accused a lowering of price levels in the United States and in foreign countries.

The world business depression not only reduced the price of cotton but also greatly retarded consumption.

World production has not been reduced in line with the declining consumption and large stocks of cotton have accumulated. The combined carry-over and current crop taken together form the largest supply of America on record.

Cotton farmers in the United States reduced their acreage 10 percent and used less fertilizer in 1932, but the weather was favorable and weevil damage was small, hence the yield was one of the highest on record.

Although cotton acreage in some of the foreign producing countries has been cut because of low prices, world production is still relatively high. The low buying power of consumers, and financial difficulties have continued to depress trade to the present. Since 1921 the expansion in acreage has been largely in Texas and Oklahoma. Seven million acres have been added to the cotton area in Texas alone since 1921.

Some Suggestions on Southern Farm Adjustments in 1932

Consider the advisability of growing some other cash crops. Each farm should have, if possible, at least one other cash enterprise, supplementing receipts from cotton. In seeking such enterprises, however, consideration should be given to the fact that many other crops are already overproduced. Drastic changes may require additional expenditures and usually involve considerable risk.

Reduce the cost of producing cotton (1) by planting cotton on only the land best suited to its production, using poor cotton land for other enterprises; (2) by using good seed of a variety recommended by the state experiment station as high yielding and of good quality; (3) by early plowing, close spacing, and good cultivation.

Reduce cash costs on the farm whenever this can be done. Adjust crop acreages and livestock numbers to keep regular workers busy throughout the year with a minimum of hired help. Repair old machinery to make it last another year if possible. Make that farm produce as much of the family living as it can. This leaves the cash income to pay such fixed charges as rent, interest, and taxes, and assures a better diet when vegetables, dairy

products, and meats are grown on the farm, than is obtainable if the cash income is depended upon to supply these foods.

Consider keeping more livestock for home and local consumption but do not overlook the present low market prices of livestock products. Experience and considerable equipment are necessary to get good results from livestock.

Grow legumes if feasible to be plowed under or pastured in order to build up fields not planted to crops for sale. Permanent pasture crops, including legumes, may be started at this time for future use.

Make a plan and budget for the year's operations and try to live up to the plan. Borrow as little as possible. Foresight and careful planning are especially important in times like these.

Study the Agricultural Outlook for the Southern States, which is published in Miscellaneous Publication No. 137 by the United States Department of Agriculture, Washington, D. C., and the various state outlook publications. These can be obtained from the county agent.

Keep Farm Cost Accounts

From time to time attention has been called through this column to the fact that the county agent has for free distribution farm record books for keeping a complete record of the farming operations. These records are for free distribution to those who desire to keep an accurate record of 1932 farm income and expense items.

Control of Peach Borers

Investigators of the United States Department of Agriculture have finally discovered an effective and simple method of controlling borers in fruit trees. The so-called lesser peach tree borer and some other borers that operate in the trunk and limbs of fruit trees may be killed out by the simple method of painting the wounds and bruises with a preparation composed of one pound of paradichlorobenzene to one gallon of crude cotton seed oil. The entire tree must not be so painted, only the infected spots. Formerly the only recommendation we had was digging the worms out with a knife or wire or else using high life in the borer channel. Both of these methods were unpractical and seldom used. The new method will find great favor with orchardists.

Sidney Fox And Paul Lucas At Lyric Sun.-Mon.

Love can place a girl (or man for that matter) in a very difficult position. For Cupid's unerring arrow often strikes quickly and unexpectedly.

Consider for instance Universal's engaging adaptation of the popular New York stage success, "Strictly Dishonorable." The heroine of the play, Isabelle, a charming and innocent young girl engaged to one man, finds herself in love with another whom she knows does not want to marry her. Furthermore, this man, a distinguished opera singer, admits quite candidly that his intentions toward her are not

Thrice A Year Income Makes Good Ranch Business



Sheep and turkeys make a good ranch combination according to Ben Sigal (top picture above) of Ovalo, Taylor county, because wool sales in early summer and turkey and lamb sales in fall and winter furnish an income three times a year. On this 2600-acre ranch Mrs. Sigal (lower right) has charge of the turkeys of which she sold 700 last season hatched in a hatchery from eggs from 46 hens. This unique ranch system was begun in 1930 with the help of C. M. Heald, county agent, who is shown in the lower left inset figuring up the sheep end of the business with Mr. Sigal, and of Miss Caroline Cham-

bers, home demonstration agent, who appears in the lower right showing Mrs. Sigal how to select U. S. No. 1 turkeys.

"Nothing but No. 1 turkeys are sold from the ranch. The flock was fed and fattened on corn, wheat, barley and maize, mostly raised on the ranch. Only a small amount of grain was fed during the summer, just enough to keep the flock coming home. Mrs. Sigal estimates that it cost 16 cents apiece for incubation and for feed until October 1st when the birds averaged eight pounds each. Only 25 were lost from disease. Mrs. Sigal plans to hatch the eggs from 60 hens this year to

secure a flock of 1000 turkeys.

Mr. Sigal owns 1150 young Rambouillet ewes which averaged seven pounds of wool per head last year but which he expects to increase to eight pounds or more as they gain in age. From the lamb crop 875 head were put on feed in a Dublin feed lot in early fall to fatten out for late fall market on a ration of maize, barley, peanut hay, cottonseed hulls and blackstrap molasses. They weighed about 75 pounds when sold. He grows feed on the ranch for turkeys, ewes, teams and saddle horses. To keep down the brush Mr. Sigal plans to stock 500 goats soon.

Meeker, William Ricciardi and Sidney Toler. "Strictly Dishonorable" will be presented at the Lyric Theatre Sunday and Monday.

Miss Charlene Harrison, student in Texas University, spent last week-end with her parents, Mr. and Mrs. John Harrison.

MEMBERSHIP APPLICATION BLANK

MICKEY MOUSE CLUB

I want to join the Mickey Mouse Club and agree to observe the Mickey Mouse Club Creed and the instructions of the Chief Mickey Mouse, so I can enjoy the privileges and benefits to be extended members in good standing.

Print name plainly _____

Street Number and City _____

Age _____ Birth Date _____ School _____ Grade _____

Proceedings In The Court Of Civil Appeals

The following proceedings were had in the Court of Civil Appeals for the Eleventh Supreme Judicial District:

Reversed and Remanded—Ed S. Hughes Co. vs. L. W. Scott, Taylor; Panhandle & Santa Fe Railway Co. of Texas vs. Belon Sedberry, Nolan.

Cases Submitted—Texas Pacific Coal & Oil Co. vs. W. D. Taylor, Eastland; C. B. Dakan et al. vs. Mary A. Dukan, Eastland; Farm & Home Saving & Loan Assn., of Nevada, Mo., vs. Nathan Landau et al., Taylor.

Motions Submitted—J. C. Hillburn et al. vs. Lela Dalton, administratrix, appellant's motion for rehearing on motion to file record; Claude H. Allen vs. Lela Dalton, administratrix, appellant's motion for rehearing on motion to file record; Mattie Williams et al. vs. Farmers State Bank of Merkel, et al., appellant's motion for rehearing on motion to file record; Maryland Casualty Co. vs. Mrs. Ania B. Stevens et al., appellee's motion for certiorari; Humble Oil & Refining Co. vs. T. R. Butler et ux., appellant's motion for rehearing; Humble Oil & Refining Co. vs. D. C. Ooley et al., appellant's motion for rehearing; Humble Oil & Refining Co. vs. D. C. Ooley, appellant's motion for rehearing; Humble Oil & Refining Co. vs. T. R. Butler et ux., appellee's motion for rehearing; N. H. Jones et ux. vs. W. C. Bedford et al., agreed motion to file supplemental statement of facts.

Motions Overruled—Langford Motor Co. vs. McClung Construction Co., Inc., appellant's motion for rehearing and in the alternative to certify to the supreme court; Pearl Norris vs. Mrs. H. W. Stoneham, appellant's motion for rehearing; Hincley-Tandy Leath-

POLITICAL ANNOUNCEMENTS

The Weekly Chronicle is authorized to make the following announcements subject to action of the Democratic primaries:

All announcement fees are payable in advance, and do not include subscription to the paper.

RATES

City	\$ 5.00
Precinct	\$10.00
County	\$15.00
District	\$15.00
State	\$ 5.00

For COUNTY CLERK: TURNER COLLIE, WALTER GRAY, W. C. BEDFORD, (Miss) OPAL HUNT.

For SHERIFF: VIRGE FOSTER

For JUDGE 88th DIST. COURT: J. D. BARKER, B. W. PATTERSON, FRANK SPARKS

For TAX ASSESSOR: T. J. (Tom) HALEY

For DISTRICT CLERK: P. L. (Lewis) CROSSLEY.

er Co., et al. vs. W. W. Hazlewood, appellants' motion for rehearing.

Motions Granted—Maryland Casualty Co. vs. Mrs. Ania B. Stevens et al., appellee's motion for certiorari; N. H. Jones et ux. vs. W. C. Bedford et al., agreed motion to file supplemental statement of facts.

Cases to Be Submitted Feb. 19, 1932—West Texas Construction Co. vs. Liberty National Bank of Oklahoma City et al., Taylor; W. E. Braddock vs. Mrs. Ula Brockman, Stephens; Farmers National Bank et al. vs. Dublin National Bank, Erath; Southwest Gas Co. vs. John P. Hoff et al., Comanche.

Nurse Tells How To Sleep Sound, Stop Gas

Nurse V. Fletcher says: "Stomach gas bloated me so bad I could not sleep. One spoonful Ad-lerika brought out all the gas and now I sleep well and feel fine." Corner Drug Store.

Dr. E. R. Townsend

Special Attention Given EYE, EAR, NOSE, THROAT Office 201-3 Texas State Bank Office Hours, 9:00 a. m. to 6:00 p. m. EASTLAND, TEXAS

PITZER'S Grade A Dairy

Fresh Pure and Rich Milk from Tested Jersey Cows
Sweet Milk, qt. 10c
Sweet Milk, pt. 5c
Mother's Churned Butter, qt. 10c
Whipping Cream 20c
Use Pitzer's Milk and Watch Your Baby Grow

BUS TICKETS



Save

ON EVERY TRIP THIS YEAR GO BY GREYHOUND

It is surprising how much money you can save during the year, when you take all your trips by Greyhound bus. Thousands have found it to be the most convenient and interesting way, too. Call on your Greyhound agent for complete information regarding low fares, convenient schedules, and scenic highway routes.

LOW ROUND TRIPS

Fort Worth	\$4.20
Abilene	2.40
El Paso	19.40
Dallas	5.55

ONE WAY FARES

Los Angeles	\$28.50
Kansas City	16.15

TERMINAL CONNELLEE HOTEL Phone 700

SOUTHLAND GREYHOUND Lines

THIS CURIOUS WORLD . . . PORTRAYED IN PICTURES

AMERICA'S FIRST PROHIBITION OFFICER WAS AN INDIAN..

CHIEF ORATAM, IN 1662, WAS APPOINTED PROHIBITION AGENT, BY THE DUTCH GOVERNOR OF NEW NETHERLANDS.

WHEN THE FAMOUS OLD CHARTER OAK BLEW DOWN, IN 1856, IT WAS GIVEN A FUNERAL SERVICE BY PATRIOTIC CITIZENS OF CONNECTICUT.

© 1932 BY SEA SERVICE, INC.

The ROBIN IS FAR FROM DEPENDABLE AS A HARBINGER OF SPRING. MANY OF THESE BIRDS DO NOT GO SOUTH FOR THE WINTER, PROVIDING THEY CAN FIND PLENTY OF FOOD AND A WELL PROTECTED SHELTER.

The BAGPIPE WAS INTRODUCED INTO THE BRITISH ISLES BY THE ROMANS.

A TWO-HEADED SNAKE LIVED FOR MONTHS, IN THE N.Y. ZOOLOGICAL PARK... WHEN IT WAS FED, A CARDBOARD WAS ALWAYS PLACED BETWEEN THE TWO HEADS SO THAT ONE WOULD NOT GET THE OTHER'S FOOD.

© 1932 BY SEA SERVICE, INC.

IN AUSTRALIA, THE USUAL PRACTICE OF THE BUSHMAN IS TO MARRY THE DAUGHTER OF HIS MOTHER'S BROTHER, OR HIS MOTHER'S MOTHER'S BROTHER'S DAUGHTER.

WOODPECKERS IN THE DESERTS BORE THEIR NESTS IN THE GIANT CACTUS.

OKLAHOMA

FOR FORTY YEARS, 1850-1890, THE "PANHANDLE" OF OKLAHOMA WAS NO MAN'S LAND. IT BELONGED TO NO STATE OR TERRITORY, AND HAD NO GOVERNMENT OF ANY KIND.

© 1932 BY SEA SERVICE, INC.

