

LARGEST PAID and FREE CIRCULATION of any paper in this section

EASTLAND COUNTY WEEKLY RECORD

EVERY DOLLAR YOU SPEND WITH THE RECORD IS KEPT HERE IN EASTLAND

Only Newspaper Printed In Eastland

VOLUME 2.—Number 20.

Eastland, Texas, Friday, August 5, 1932.

Owned and Operated by Eastland Men.

EASTLAND

By JOE THOMAS COOK

Candidates who have been wondering how popular they are in Tudor, one of the polling boxes in this county, have at last found out. Returns from the Tudor box were the last ones to be tabulated in the first primary. The Eastlander has been told that the reason for the tardiness of the returns was that the only means of communication between Tudor and the outside world is by donkey, since the country around Tudor is so rough and mountainous. County Chairman Ed T. Cox, however, finally made the trip in his car last Friday, almost a week after the election was held, and brought the returns to Eastland.

People of Eastland county are preparing to live at home if statistics reported by Miss Ruth Ramey, county home demonstration agent, are an indication. She says that one million containers for the canning of fruits and vegetables had been bought in this county up to August 1 this year. This includes canning by individuals, canneries sponsored by the chambers of commerce, and by church organizations, which this year have been active in canning. These figures indicate that Eastland county will have at least one-third more home-canned goods this year than last. The depression has been a boon to all of us since it has brought us back to one of the most fundamental laws of nature—the one that the ant learned several thousand years ago.

J. L. Reid, Eastland boy who is employed at the Beaty Drug Store, has implored the Eastlander to get him some relief from the accusing finger of the public. In Wednesday's Eastland Telegram appeared the story of J. L. Reid's arraignment in Justice of the Peace Newman's court on two charges of petty theft, allegedly shoplifting. Now J. L. points out that in the first place he spells his name differently, that the accused lives in Ranger, and in the third place that he is not the one against whom charges have been filed. Since the Eastlander knows J. L. as a man of integrity and strictest probity of character, he is delighted to inform the uninformed public that they are uninformed.

A great deal of comment is being made in Eastland on the work of the board of equalization, which has been in session for two weeks hearing cases on property renditions. Almost without exception the taxpayers who have appeared before the board have been pleased with the rendition of their property and their wonderful treatment by the board. In times like these, depression-ridden citizens appreciate the attitude of the board of equalization. We congratulate you Mr. Little, Mr. Ferguson and Mr. Bendy for your good work on the board. An editorial, "Rehabilitation of Property Values," relating to property values in Eastland appears on the editorial page of this issue of the Record.

The City Commission voted in its meeting last Monday to have the weeds cut along main streets, street intersections, and on vacant lots. Of course it is not the purpose of the City to try to cut all the weeds in town, but if it can clear off some of the worst looking lots near the business section of the city, the appearance of the town will be helped considerably. We suggest that some of the most thriving weed patches that need attention will be found between the square and the railroad station on North Lamar street.

And while we are talking of improvements we might mention that the commission notified the local representative of the owners of the Bida property that unless that lot is cleared off before August 15, the City will have it done and charge the cost against the property. This is an action that will meet with the approval of the whole town. The Bida building ruins have been one of the greatest eyesores we have ever seen in Eastland. The Lions Club now has the permission of the City to dynamite, with the necessary precaution, the old concrete steps on the high school grounds that have reared their heads

(Continued on page 6)

Delegates to Short Course are Serious, Patterson Observes

Attendance at Farmers' Meeting Normal Despite Economic Conditions

"A remarkable seriousness of purpose was shown by the delegates to the 23rd annual Farmers' Short Course which was held at A. and M. College last week," J. C. Patterson, county agent, said on his return to Eastland.

"Heretofore there have been hundreds of boys and girls attending the short course each year who went merely for the enjoyment of the excursion trip and they were not interested in the benefits that they might get from the programs of the short course," Mr. Patterson continued. This year an entirely different attitude was shown, he said, and those who attended the meeting went for the knowledge and instruction they could receive from the short course.

The attendance at the short course this year held its own against the depression and about the same number attended this year as in previous years. This Mr. Paterson estimated at approximately 4,000. About 500 of this number lived in temporary camps around the A. and M. campus because they could not afford the board and lodging charge made at the college. This was pointed to as another indication of the seriousness of the delegates to the short course.

Thank Eastland County.

A vote of thanks was given by the executive organization of the short course to Eastland county for the use

(Continued on page 6)

Medical Society Plans to Be Host

Plans were made Tuesday night at a meeting of the Eastland County Medical Society at the local chamber of commerce office for a medical meeting to be held in Ranger September 13, when the county society will be host to the district association.

Committees were appointed and preliminary arrangements made for the one day and night's entertainment, the scientific program to be taken care of by the district officers. The district society meets each March and September.

Dr. T. L. Lauderdale of Ranger is general chairman of arrangements. He will be assisted by Drs. F. C. Payne of Rising Star, C. H. Carter of Eastland, E. L. Graham of Cisco, and M. L. Stubblefield of Gorman.

Dr. Harry Logsdon of Ranger will serve as chairman of the entertainment committee, and Dr. P. M. Kuykendall, also of Ranger, will have charge of the refreshment committee.

Mrs. T. L. Lauderdale of Ranger, vice president of the district ladies' auxiliary, is chairman of the committee to arrange entertainment for the ladies, both members of the auxiliary and visiting wives of the physicians. She will be assisted by Mmes. F. C. Payne of Rising Star, E. R. Townsend of Eastland, E. L. Graham of Cisco, M. L. Stubblefield of Gorman, T. G. Jackson of Carbon, and the wives of all Ranger doctors.

Dr. F. C. Payne, secretary of the Eastland county society, will have charge of registration.

A large attendance of doctors from over the district is expected, according to Dr. J. H. Caton of Eastland, president of the county society. The district extends from Fort Worth south to Eastland, north to the Red River, and west to include Vernon, and is comprised of seventeen counties.

HICKMAN RALLY CALLED

The Ranger friends of Judge J. E. Hickman, candidate for associate justice of the Supreme Court of Texas, have called a mass meeting of Judge Hickman's Eastland County friends for Friday night at 8 o'clock in the 91st district courtroom in the courthouse here. Everybody who wishes to see Judge Hickman elected is urged to attend.

EASTLAND'S FAVORITE SONS



Wilbourne B. Collie, left, and Judge J. E. Hickman who are Eastland's favorite sons in the run-off for district and state offices. Mr. Collie will contend with Oliver Cunningham of Abilene for State Senator from the 24th district and Judge Hickman is opposed by Judge William Pierson for associate justice of the Supreme Court of Texas.

Trades Day Monday Most Successful So Far, Johnson States

The Trades Day last Monday was the most successful that has been held up to this time, Carl Johnson, chairman of the entertainment committee said. The number of people attending the program and the interest shown, it outstripped the two previous Trades Days, held in June and July.

Sig Faircloth of Ranger won first place in the goat roping contest, which was part of the rodeo program held in connection with Trades Day. His time was ten seconds. Second place went to John Webb of Eastland, whose time was 12 seconds. L. W. Wallace of Ranger and "Slim" Maynard of Putnam were the other entries in this contest.

Three entries, Squires, Phelps, and "Wild Bill," each received a \$1 prize in the bronc riding contest during the afternoon. Sug Robinson of Eastland was the winner of first place in the saddle race.

Most of the merchants of the town reported much greater sales on this Trades Day than on the previous two, and they are definitely in favor of continuing the event on the first Monday of each month.

NEW ARRIVALS IN EASTLAND

Three new babies, two girls and one boy, have made their arrivals at Eastland homes this week.

Mr. and Mrs. Tom Harris were made the parents of a twelve-pound boy Tuesday, August 2. A seven-pound girl arrived at the home of Mr. and Mrs. Walter Green Wednesday, August 3, and a girl weighing eight pounds arrived the same day to make her home with Mr. and Mrs. J. C. Creamer.

Steele Hill, deputy sheriff of this county, is in Corpus Christi on a ten-day vacation trip.

McCarty, Laurent, Collie, and Russell Winners in County Tennis Tournament

Finals in three events of the Eastland County Tennis Tournament have been played and only one more match remains to be played. Milburn McCarty, Jr., was winner of the junior men's singles, and he and Laurent took the junior men's doubles. P. G. Russell and B. M. Collie defeated H. S. Von Roeder and Joe Martin of Ranger to win the senior men's doubles, and the champion in senior men's singles will be decided when the final match is played between P. G. Russell and B. M. Collie, who have both advanced to the finals. This match will be played sometime this week-end.

Prizes and trophies will be awarded the winners in each event and consolation prizes will also be given. Registration of the tournament was handled by Hamilton McRae and Allan Key had charge of play.

Contract Let On Cut-Off Portion In Parker County

The Texas Highway Commission Tuesday let a contract to the Thurber Construction Company of Fort Worth to construct a portion of the Weatherford-Ranger cut-off on Highway 1 the construction of 17 miles of grading and drainage structure in Parker county on highway 89.

For a time last May the Highway Commission was restrained from proceeding with the work on the cut-off in Palo Pinto county. This temporary restraining order expired, however, and work has been progressing since that time.

The cut-off, which has been designated as highway 89, will be 45.64 miles in length and will decrease the distance from Ranger to Weatherford by 14.21 miles. Not only will mileage be saved but the driving time will be reduced by almost an hour, authorities say. The new highway is straight, less dangerous than the other, and eliminates four hazardous railroad crossings.

Fire Department Answers Two Calls

The Eastland fire department answered two calls during the past week according to Fire Chief Henessee. An old two-story store building on West Commerce, formerly occupied by R. J. Raines, was partially burned last Saturday morning. The building is owned by B. Alsoroff of Breckenridge and the owner carried no insurance on the property.

A small out-building belonging to the property just south of the Church of God on South Lamar street was destroyed Sunday afternoon. The fire department was not summoned soon enough to prevent the building's burning completely.

City Commission Works For Relief On High Gas Rates

County Convention Gives Endorsement To Demo Nominees

Candidates receiving a majority in the first Democratic primary held Saturday, July 23, were given endorsement by the Eastland County Democratic Convention which was held last Saturday afternoon in the 91st district court room. In races in which no candidate received a clear majority, the highest two candidates were certified to enter the run-off primary, which will be held August 27.

Milburn McCarty was made chairman of the convention here Saturday and L. R. Pearson of Ranger was chosen secretary. Judge McCarty appointed Mrs. R. Q. Lee, J. J. Butts, and Frank Killough on the resolutions committee. Earl Conner, H. L. McRae, and Leslie Hagaman were named as credentials committee and Mrs. M. H. Hagaman, Will St. John, and J. O. Russell were appointed to compose the committee on delegates.

Judge McCarty announced this week the list of delegates elected from Eastland County to the State Demo-

Stressing the opinion that the gas rates in Eastland are excessive at the present time, the City Commission Monday afternoon voted to instruct Carl Springer, city attorney, to proceed with whatever action he thinks necessary to obtain relief for the city on gas rates.

During the first part of this year the Community Natural Gas Company, which holds the franchise in this city, filed an appeal with the Railroad Commission after the City Commission had voted to reduce the gas rate in Eastland to 50 cents a thousand. The appeal to the Railroad Commission held that the 50-cent rate was much too low and that it was confiscatory in nature.

A hearing on the gas rates before the Railroad Commission was asked by the gas company, but later the company and the city commission agreed not to pursue the matter further unless one would give the other at least 30 days notice. The Railroad Commission convenes September 6, and there is a possibility that the case of gas rates in Eastland may be brought before it.

Contract Approved.

A five-year water contract with the Arab Gasoline Corporation was approved by the City Commission in its semi-monthly meeting Monday afternoon. A few minor changes were minimum that has been in the contract for the last five years was reduced to \$200.

Several delinquent tax cases were presented to the commission for adjustment, and discussion was held on the percentage to be paid the collector of delinquent taxes. Frank Castleberry and Neil A. Moore were appointed to confer with Marshall McCullough, delinquent tax collector, and make an agreement on the commission to be paid for this work.

The commission voted to notify the local representative of the owners of the Bida building that, unless the property was cleared off by August 15, the city would have the work done and charge it against the property. Members of the commission instructed City Manager Marlow to have the weeds cut along the right-of-way, at the street intersections, and on vacant lots in the city.

Commissioner Alex Clark presided at the commission meeting. Others present were Commissioners Morris Keasler, T. M. Johnson, Frank Castleberry, and Neil A. Moore. City Manager Marlow was also present.

Commission Buys New 'Stop' Signs

The purchase of new "stop," "school," and "slow" signs for the city was approved by the City Commission in its semi-monthly meeting Monday afternoon of this week.

Thirteen signs had been ordered later in the week, City Manager Marlow said. Four of these signs will be "school" signs, two to be installed in the south ward district and the other two in the high school-west ward district. The other nine signs are "slow" and "stop" to be installed on the square and at certain street intersections.

The signs are approximately two feet long and one and one-half foot wide, oval in shape, and constructed of heavy metal. The signs are not as visible as the present rubber signs, which stand perpendicular to the street surface, but they are guaranteed permanent and are much more economical than are the present rubber signs. Each sign has two "cat eyes" which stand several inches above the surface of the street and will reflect the automobile headlights at night. The lettering of the signs is of bright nickel with plain, Gothic letters.

The signs will cost approximately \$8.40 each, with the possibility of a about \$2 extra credit on each of the present rubber signs that the company is able to sell for the city, Mr. Marlow said.

Eastland Tax Roll Reduced Over Half

The tax roll of the City of Eastland will be reduced from \$4,160,000 to approximately \$1,600,000 this year, members of the board of equalization have estimated. This is an average reduction of much more than 50 per cent and is in keeping with the promises of the City Commission and the sentiment of the town.

Several hundred taxpayers have appeared before the board and agreed on valuation adjustments for 1932 assessments. Last week taxpayers on the rendered rolls of the city were scheduled to appear and this week those on the unrendered rolls have come before the board. Anyone on the rendered rolls who failed to appear last week were given a hearing this week.

Approximately 800 renditions have been made by the board by the middle of this week, Theodore Ferguson, member of the board, said. The board has been adjusting all property valuations regardless of whether the owners came before the board or not.

The board, which is working under the supervision of the City Commission, is composed of Mr. Ferguson, J. F. Little, and A. F. Bendy. The adjustments made by the board have almost without exception been agreeable to the property owners, and the reductions on most of the property valuations have ranged from 33 1-3 to 50 per cent.

Joe W. Bailey, Jr. Speaks Here Today

Joseph Weldon Bailey, Jr., candidate for Congressman at Large, Place No. 2, will speak in behalf of his candidacy in the 91st district court room at 3 o'clock Friday afternoon, August 5.

Mr. Bailey is the son of the late Joseph Weldon Bailey who for a number of years was an outstanding figure in State and national politics, and who during his life had a number of close friends and admirers in Eastland county.

Mr. Bailey will be in the run-off with J. H. (Cyclone) Davis, who also has been prominent in political activities for many years.

Mrs. Elizabeth Pettit, mother of Mrs. Frank Castleberry, celebrated her eightieth birthday Tuesday. Mrs. Pettit has been ill about a month, but is now improving.

EASTLAND SOCIAL EVENTS and CHURCH NEWS

Phone Your News to The Record—Phone 205

Tate and Brymers Entertain Lions

Entertainment by Mr. and Mrs. Clyde Brymer and W. A. Tate of Carbon was the feature of the weekly luncheon of the Lions Club held Tuesday noon on the Connellee roof.

Mr. Brymer gave vocal, trumpet, violin, and guitar solos accompanied by his wife on the piano. Among them were "My Sugar," "Do Something," and "By My Side." Several duets were played with Mr. Tate on the violin and Mr. Brymer on the guitar. E. E. Freyschlag was chairman of the entertainment committee for the luncheon.

President George Harper presented the club Dr. Tanner's request for more cans for the Chamber of Commerce connerly. This was referred to the club's finance committee. President Harper also suggested cooperation of the club with the Chamber of Commerce in the matter of providing sheet iron for an airplane hanger.

L. R. Pearson of Ranger and Jeff Elmore of Abilene were guests at the club luncheon. Twenty-two members were present.

Horace Condley, district governor of Lions clubs and member of the local club, will make a report at the luncheon next Tuesday on the Lions International Convention held last week at Los Angeles. Condley and Dr. W. S. Poe attended the convention from the local club.

Baptist WMS Has Business Meet

The Baptist Woman's Missionary Society met at the church Monday afternoon for the monthly business meeting with the president, Mrs. S. C. Walker, presiding.

The opening song, "Close to Thee," was sung, after which the devotional was brought by Miss Sally Morris from Psalm 21. The minutes were read by the secretary, Mrs. W. A. Queen. Reports were heard from the various chairmen. Mrs. L. V. Simmons, personal service, Mrs. J. B. Overton, benevolence, and Mrs. J. P. Truly and Mrs. L. J. Lambert, young people's work. Encouraging reports from the circles were brought by Mrs. L. J. Lambert, circle one, Mrs. W. P. Palm, circle two, Mrs. J. B. Overton, circle three, and Mrs. R. L. Young, circle four.

The following members were present: Mmes. Jess Seibert, Nora Andrews, A. J. Campbell, W. A. Owen, S. C. Walker, R. L. Young, W. P. Palm, L. V. Simmons, J. B. Overton, J. P. Truly, L. J. Lambert, Tucker, and Miss Sally Morris.

The monthly Bible lesson will be given by the Rev. O. B. Darby, pastor, at the meeting to be held at the church next Monday.

METHODIST CHURCH

The following program of worship will be observed Sunday at the Eastland Methodist church:

Morning Worship 11 a. m.
Prelude, Clara June Kimble.
Call to worship, choir.
Hymn No. 458, "Jesus I My Cross Have Taken."
Pastoral Prayer.
Responsive Reading, Psalm No. 62, Gloria Patri.
Special, choir.
Sermon, pastor.
Hymn No. 631, "Jesus Shall Reign."
Benediction.
Postlude, Clara June Kimble.

Evening Worship 8:15 p. m.
For the last two Sunday nights we have been worshipping with the Church of God in their camp meeting at the University. This revival closed last Sunday night with much to show for the effort made by these good people. We are to worship Sunday night on the lawn just south of the Methodist church. These meetings have been well attended and the people have been greatly blessed who have participated in the services. Pray for the evening service. Men and women should be converted at these services.—George W. Shearer, pastor.

RECOVERING FROM INJURY

Enahee Hart is reported to be recovering nicely from an arm injury received several days ago. She fell from a table about two and one-half feet high and broke both bones in her left arm. The little girl is the daughter of Mr. and Mrs. H. M. Hart.

FIRST PRESBYTERIAN CHURCH

Sunday school, 9:45.
Preaching service at 11. The sermon theme will be "The Law of Compensation."
You are invited to attend the union lawn service at 8 p. m.

For Afternoon Wear



For afternoon wear Anita Louise, RKO Radio player, chooses this white linen suit with swaggar coat of the same material. The marine coat, with brass buttons and double-breasted, is semi-fitting. A striped Roman scarf of red, white and blue is tied about the neck. Accessories are of white.

Visitors Entertain 9:49 Class

Miss Sarah Blair of Austin entertained members of the Men's 9:49 Bible Class with two vocal solos last Sunday. Miss Ora Fay Hensley of Abilene and Miss Margaret Hart accompanied the song service with their violins.

J. E. Hickman, teacher of the class, and the song service was led by T. M. Collie. W. O. Butler, class president, was present to take charge of the meeting after a month's absence.

Visitors present were: Clarence Tilley, John Ragland, D. S. Wright of Weatherford, and Mrs. T. H. Conner of Fort Worth.

Those in attendance were: John M. Knox, G. W. Maynard, A. L. Agate, L. W. Ferguson, W. H. Mullings, J. M. Harrell, W. O. Butler, Joe J. Mickel, J. E. Graham and wife, T. M. Johnson, E. L. Amis, T. J. Amis, W. L. Van Geem, J. A. Watzan, J. E. Hickman, Walter Gray, G. W. Pace, Leroy Patterson, O. L. Duckett, V. T. Seaberry, M. E. Lawrence, B. M. Collie, N. A. Moore, Margaret Hart, Ora Fay Hensley, A. B. Cornelius, J. W. Harrell, Frank Judkins, Earl Bender, A. E. Herring, Clarence Tilley, L. B. Lippard, J. C. Stephens, W. F. Greiger, W. B. Collie, F. M. Jones, Joe Gray, Tom Amis, Hubert Toombs, T. A. Shanley, Ben Hamner, George Brogden, June Kimble, Melville Wahl, W. W. Kelly, Rob Roy Sparr, Frank Sparks, N. N. Rosenquest, Cyrus B. Frost, Erle Mayo, R. S. Harris, W. A. Harris, L. R. Gray, Jack Frost, William A. Leslie, Ward Mullings, John W. Turner, John Ragland, D. S. Wright, Weatherford, R. N. Grisham, Miss Sarah Blair, Mrs. Frank Sparks, Mrs. T. L. Haley, E. C. Satterwhite, Mrs. H. T. Conner.

Christian WMS Has Mission Study

The Woman's Missionary Society of the First Christian Church met Monday afternoon at the church for a program of mission studies.

Mrs. M. C. Franklin, vice-president, presided in the absence of the president, Mrs. C. A. Peterson, who has been ill for some time. She was reported to be improving but unable to attend the meeting. Mrs. N. L. Smitham was leader for the program. Mrs. M. C. Franklin conducted the devotional service and Mrs. D. J. Fiensy led the response.

Members present were: Mmes. J. R. Gilbreath, T. L. Cooper, T. A. Bandy, N. L. Smitham, M. C. Franklin, and D. J. Fiensy.

The next meeting of the society will be held September 5 at the church, at which time Mrs. C. R. Johnston will conduct the devotional and Mrs. Fiensy will have charge of the program.

D. R. Gilbreath, who has been employed by the Sherwin Paint Company at Amarillo, for the last six years, is visiting his father here, J. R. Gilbreath.

Miss Ramey Gives Popular Recipes

Recipes for grape juice and for concentrated vegetable soup have been prepared by Miss Ruth Ramey, county home demonstration agent, and are given as follows:

Grape Juice.

3 gallons grape juice, 4 quarts sugar.

Pick and wash the grapes, place in a large enameled kettle and just cover with water. Cook until the grapes are tender and the skins broken. Strain through a heavy flannel bag. Combine sugar and grape juice and boil 20-25 minutes. Seal while juice is boiling hot in glass bottles, jars or earthen jugs which have been thoroughly sterilized.

Concentrated Vegetable Soup Mixture

1 quart tomato pulp, 1 pint lima beans, 1 pint beans (snap), 1 cup onions (chopped fine), 1 pint corn, 1 pint peas, 1 pint okra, 1½ teaspoons salt.

Cook together tomatoes, peppers and onions put through a sieve to remove seed, and cook to the consistency of catsup. Add corn and other vegetables which have been prepared for canning. Bring to boil and pack hot. Process No. 2 cans 50 minutes at ten pounds pressure; No. 3 cans sixty minutes at ten pounds pressure. Cool quickly when removed from cooker.

Miss Graham Is Bridge Hostess

Miss Hassie Graham was hostess Friday night at a bridge party at the home of her parents, Mr. and Mrs. Lon Graham, 212 South Connellee street.

Two tables of bridge were played on the front porch of the home, with a color scheme of pink and green carried out in novelty tallies, decorations and refreshments. High score was won by Miss Floy O'Neill, who received a bath towel set. Low score prize, a novelty match holder, went to Miss Naomi M. Beth of Rising Star.

Cantaloupe cups filled with ice cream were served to the following guests: Misses Floy O'Neill, Evelyn Peterson, Mona Pritchard, Ione Rains, Lorraine Taylor, Mrs. Walter Greene, Mrs. L. L. Cooper, and Mrs. F. L. Cooper.

Juniors Honor Mrs. Truly

The Junior Missionary Society of the Baptist church surprised their leader, Mrs. J. P. Truly, with a birthday party at the church Wednesday afternoon.

On being invited to the church, Mrs. Truly was greeted by a group of Juniors singing "Happy Birthday to You." The children had decorated the classroom in purple and gold. Morning glories were arranged at the windows and a table was set with a large coconut cake baked by a member of the group. After cake and iced lemonade were served, a social hour was enjoyed.

CHRISTIAN SCIENCE CHURCHES

The lesson-sermon subject was "Love" in all Church of Christ, Scientist, Sunday, July 31.

The golden text was from 1 John 4:16. "We have known and believed in the love that God hath to us. God is love; and he that dwelleth in love dwelleth in God, and God in him."

Passages from the Scriptures included the following from James 2:8: "If ye fulfill the royal law according to the scripture, Thou shalt love thy neighbor as thyself, ye do well."

The service also embraced the following citation from the Christian Science textbook, "Science and Health with Key to the Scriptures," by Mary Baker Eddy (pp. 384, 385).

"Let us reassure ourselves with the law of Love. God never punishes man for doing right, for honest labor, or for deeds of kindness, though they expose him to fatigue, cold, heat, contagion. . . . Let us remember that the eternal law of right, though it can never annul the law which makes sin its own executioner, exempts man from all penalties but those due for wrong-doing."

MRS. PIPKIN RETURNS

Mrs. Grady Pipkin returned Sunday night from Hillsboro, where she has been at the bedside of her father, J. M. Turk, who was injured Tuesday morning of last week in a twenty-foot fall from a ladder. Mrs. Pipkin said Wednesday that last reports from the hospital there were more favorable than could be hoped for at first. She plans to return to be with him within a few days.

Mrs. James Graham, and nephew, Shirley Morgan of Lubbock, are visiting in Fort Worth this week-end.



A dress especially designed for the woman with hips three inches larger than the average. Crinkly silk crepe is the material recommended for this design, with its slenderizing hip line.

The suspender dress for the young girl is a skirt and suspender model in soft blue linen with a gumpie in blue and white dotted swiss.—Woman's Home Companion.

Mrs. Harkrider Honors Son

Mrs. N. A. Harkrider of Ranger gave a birthday party for her 4-year-old son, Harold Gene, Monday afternoon at the home of her sister, Mrs. street.

L. B. Lippard, 205 South Walnut Lemonade, ice cream and vanilla wafers were served to the following children: Myrlene Griffin, Dorothea and W. A. Beavers, James Fields, Betty Ann Harkrider, Coy Ann Thomson, Robert and Don Harkrider, Doris and Lillian Hennessee, Frances Richardson, Merle Hodge, Max Harvey, Billy Floy Hunt, Hayden Fry, J. D. Fulcher, all of Eastland, Norma Lee Matthews, Evelyn and Betty Jean Majors of Ranger.

and entertainment of the children.

SWIMMING PARTY GIVEN

A picnic supper and swimming party was given for the employees of L. C. Burr & Company store and their friends by W. V. Tunnicliff, manager of the local store, last Friday night. The party went to the Willows pool in Ranger for the swim and picnic. Those attending are as follows: Mrs. W. W. Walters, Howard Harris, Pauline Walters, Thelma Woods, Howard Gaston, Dorothy McCanlies, Joe T. Cook, and Mr. and Mrs. W. V. Tunnicliff.

Surprise Party Given For Miss Tucker

Mr. and Mrs. M. S. Warren entertained the friends of Miss L. G. Tucker with a surprise birthday party Tuesday evening at their home at 1023 West Main street.

Games were played on the lawn and iced watermelons and cake were served to the following: Misses Marie Pierce, Earline Harvey, Frances Harrell, Irene Collins, Juanita Burkett of Sweetwater, Ouida Collins, Lottie Rogers, Faye Tucker, Hazel Harrell and L. G. Tucker. Messrs. A. G. Gary, Douglas Jones, Herschel Miller, Hollis Bennett, T. G. Jackson, of Carbon, Billy Satterwhite, Billy Doss, Morgan Bennett and Elmer Todd of Gorman, Mr. and Mrs. T. Oscar Adir, Mr. and Mrs. J. Frank Tucker, and Mr. and Mrs. M. S. Warren.

PICNIC HELD

A swimming party and picnic were enjoyed Monday night by several couples from Eastland and Ranger. Members of the party swam in the Trianon pool during the early part of the evening and then spread a picnic supper.

Those in the group were as follows: Mr. and Mrs. Montie Hayes, Mr. and Mrs. Carl Johnson, Mr. and Mrs. E. R. Buchanan, and Webb Grubb and Miss Ollie Ware, both of Ranger.

OFFERED INSTRUCTORSHIP

A. J. Campbell, Eastland band director, has been offered a place as instructor in the Southwestern Conservatory of Music at Dallas for the ten-day course of study in band work next summer. Mr. Campbell has just returned from Dallas where he has been attending the course this summer. Joseph De Luca of Rome, Italy, is directing the work, and about twenty teachers comprise his staff.

N. T. Johnson is away on a ten-day business trip to Borger.

Amona Class Has Business Meet

The Amona Class, a Sunday school class for young business women of the First Baptist Church, met for a special business session Tuesday evening at 7 o'clock in the home of their teacher, Mrs. W. J. Herrington.

Much enthusiasm was shown in plans discussed for a contest to promote interest in the class.

Refreshments of French ice cream and caramel cake were served to the following: Misses Allean Williams, Opal Hunt, Mamie Armstrong, Irene Williams, W. J. Herrington, superintendent of the young people's department, Mrs. J. B. Tompkins, mother of the hostess, and Mrs. W. J. Herrington, hostess.

UNDERGOES OPERATION

Mrs. C. H. Carter, wife of Dr. C. H. Carter, underwent an operation for acute appendicitis Thursday afternoon at the Payne Hospital, following a sudden attack Wednesday night. Reports from the hospital Thursday night said she was doing nicely.

Pierce Beauty Shop

Bean Apts. — Phone 207

10-DAY SPECIAL

on Spiral or Croquignole
Permanent Waves

We have just installed a new Croquignole Wave machine and are making the following special prices—

Oil of Tulip Wave	\$6
Starnes Perm Oil	\$5
Eugenes	\$4
Steam Oil, \$5. now 2 for	\$5
Henna Pack	\$1
Eye Lash and Brow Dye	50c
\$2.50 Facial	\$1
Hair Bleaching	\$1.50
Manicuring	35c

We have added a high grade line of cosmetics

BURR'S Challenge Values

"Burr's REGULAR Prices Are Others' SALE Prices"

COMPARE THE PRICES AND THE QUALITY

You will find that others' so-called "CLEARANCE SALE" prices are the regular, everyday prices at Burr's. Why wait for 'sales' when you can trade here and enjoy REAL savings every day of the year!

SILK DRESSES New Sensational Savings All of our beautiful frocks regrouped into new price ranges.	HOUSE FROCKS Fast colors — sheer materials — full run of sizes. While they last—
98c Other Groups \$1.98 and \$2.98	3 for— \$1.00



AUGUST BLANKET EVENT

Use Burr's Lay-Away Plan and save money. A small deposit will hold any item.

SEE THESE VALUES IN OUR WINDOWS BEFORE BUYING YOUR WINTER SUPPLY

Double Cotton Blankets 70 by 80	Single Part Wool Blankets 70 by 80
98c	98c
Plaid Part Wool Blankets 66 by 80 double	Plaid Part Wool Blankets 72 by 80 double
\$1.39	\$1.98

MEN'S WORK CLOTHES

OVERALLS Full cut, 220 weight	SHIRTS Full cut, coat style—two pockets.
39c	25c
BOY'S OVERALLS—25c	

L. C. BURR & CO.

EASTLAND, TEXAS

SUCH IS LIFE
By Charles Sughroe
THE WORLD'S OLDEST JOKE

SO YOU'RE THE FELLOW WHO DRAWS THAT "SUCH IS LIFE" FUNNY? WELL, WHY AINT YA DRAWING?

BECAUSE I CANT THINK OF AN IDEA AND I'M LATE AND IN A BAD

WELL, I GOT A GOOD IDEA—DRAW A FELLER SAYIN' "WHO WAS THAT LADY I SEEN YOU WITH LAST NIGHT?" AN' TH' OTHER FELLER SEZ "THAT WASNT NO LADY—THAT WAS MY WIFE!"

HA! HA! HA!

AND I WAS TRYING TO HELP HIM "SUCH IS LIFE"

Demonstration Club Holds Meeting

The Yellow Mound and Morton Valley Home Demonstration club met last Wednesday afternoon at the home of Mrs. Tom Butler.

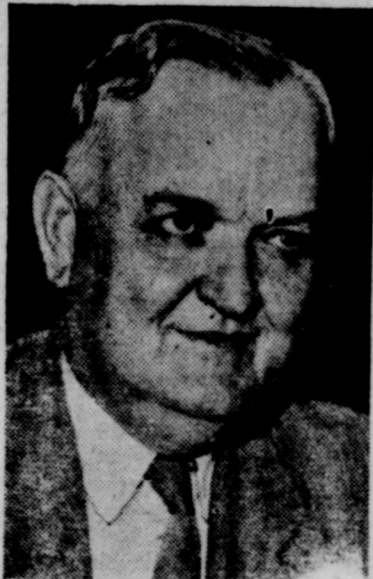
After about two hours of "forty-two" a business meeting was called to order by Mrs. Roy Harbin, president. The minutes were read by Mrs. Lee Littleton and a report was given by the committees. After discussing several plans to raise money, the club adjourned to meet next Wednesday with Mrs. Tobe Hamilton.

Those enjoying the afternoon were Mrs. Tobe Hamilton, Robert Sneed, Tom Bridges, Roy Harbin, Eva Butler, Myrtle Johnson, Lee Littleton, Charley Jones, Guy Stoker and the hostess, Mrs. Tom Butler.—Mrs. Guy Stoker, reporter.

RETURNS HOME

Miss Blanche L. Tanner, daughter of Dr. and Mrs. H. B. Tanner, who has been visiting her relatives and friends in Eastland, left Monday for Seattle, Wash., where she is principal of a school. Miss Tanner went from Abilene to Los Angeles, Calif., by airplane, and will drive her car from there to Seattle.

New Head of Kiwanis



In a spirited election session at Detroit, 4000 members of the Kiwanis International chose Carl E. Endicott of Huntington, Ind., as the new president of the organization. He succeeds William O. Harris of Los Angeles.

Expansion In Dairy Industry Forecast

Increased production of dairy products this fall and winter as a result of relatively large numbers of cows on farms, low prices of feed grains in relation to dairy products, increased fall freshening, and prospective increases in feed supplies, is to be expected, says the U. S. Department of Agriculture reporting on the dairy outlook.

The Bureau of Agricultural Economics says that unless the decrease in consumer incomes is checked, the ratio between prices of feed and prices of dairy products will probably be even less favorable for dairying in deficit areas than for the last two seasons. In surplus feed areas, however, the ratio, it is expected, will be more favorable. Prices of fluid milk have declined during the last year at about the same rate as have prices of manufactured dairy products, but the bureau points out that base prices for fluid milk are still relatively higher than wholesale prices of the manufactured product.

The number of milk cows on farms has continued to increase during the first half of 1932 at a more rapid rate than in the same months of 1931, but it is expected that the present rate of increase will not continue because the numbers of heifers being raised has begun to decline. Poor pastures, local feed shortages, a higher percentage of low-producing cows in herds, and a marked shift toward fall freshening are stated as reasons why total milk production the first half of 1932 was somewhat lighter than for the same period in 1931, despite an increased number of cows.

FIRES DAMAGE YOUNG PINES
Measurements on burned and unburned longleaf pine in North Carolina show that annual woods burning retards the growth of the trees, the United States Forest Service states. For 13 years, two plots were observed, one of which was burned over annually and the other kept free from fire. On the unburned plot the trees grew 19 per cent faster in height, 9 per cent faster in diameter, and 22 per cent faster in volume.

USE RECORD WANT ADS

SHERIFF'S SALE

THE STATE OF TEXAS COUNTY OF EASTLAND
By virtue of a certain Execution and Order of Sale issued out of the Honorable 45th District Court of Bexar County, on the 7th day of July, 1932, by Hart McCormick, clerk of said Court, upon a judgment in favor of Mrs. E. S. Maury for the sum of Two Thousand Sixty-Two and 50-100 (\$2062.50) Dollars and costs of suit, in cause No. B-66972 in said Court, styled Mrs. E. S. Maury, versus W. F. Warren, Allie Mae Warren, E. A. Hurst, jointly and severally, and placed in my hands for service, I, Virge Foster, as Sheriff of Eastland County, Texas, did on the 11th day of July, 1932, levy on certain Real Estate situated in Eastland county described as follows, to-wit: against all of the defendants herein, W. F. Warren, Allie Mae Warren, E. A. Hurst, H. T. Wick and Jane Wick, on the following described property, to-wit:

All that certain tract or parcel of land, lying and being situated in the town or city of Cisco, Eastland County, Texas, being described as follows, to-wit:

All that certain tract, or parcel of land, lying or being situated in Cisco, Eastland County, Texas, and being a part of Lot No. 2, Block P, described as follows:

Beginning 138 feet West of the N. E. corner of said Lot No. 2, on the N. B. line thereof.

Thence at right angles in a Southerly direction 100 feet for corner;

Thence at right angles in a Westerly direction 50 feet for corner;

Thence at right angles in a Northerly direction 100 feet for corner;

Thence at right angles in an Easterly direction with the N. B. line of said Lot No. 2, 50 feet to place of beginning; being the same line described in a certain instrument now of record in the office of the County Clerk of Eastland County, Texas, in Volume 305, page 465, in the Deed Records of Eastland County, Texas, to which record reference is here made.

Foreclosure of plaintiff's lien, as the same existed on the 30th day of October, 1926, and levied upon as the property of said W. F. Warren, Allie Mae Warren, E. A. Hurst, H. T. Wick, and Jane Wick, and on Tuesday, the 6th day of September, 1932, at the Court House door of Eastland County, in the city of Eastland, Texas, between the hours of 10 a. m. and 4 p. m., I will sell said Real Estate at public vendue, for cash, to the highest bidder, as the property of said above named defendants by virtue of said levy and said Execution and Order of Sale.

And in compliance with law, I give this notice by publication, in the English language, one a week for three consecutive weeks immediately preceding said day of sale in the Weekly Record, a newspaper published in Eastland County.

Witness my hand, this 11th day of July, A. D., 1932.

VIRGE FOSTER,
Sheriff, Eastland County, Texas.
By D. J. JOBE, Deputy.

REPRODUCE RECIPES IN BRAILLE FOR THE BLIND

Blind women all over the country can now have a cookbook of their own, something they have needed for a long time. Aunt Sammy's Radio Recipes, published two years ago by the United States Department of Agriculture (now out of print) has been reproduced in Braille, thus becoming the first cookbook to be press printed for those who cannot see.

These recipes, worked out and tested in the laboratories of the Bureau of Home Economics of the Department of Agriculture, are an important feature of the department's daily broadcasts for housewives. Sightless cooks are finding them as valuable as the members of the radio audience have, according to the many letters received. It is now possible, they say, for them to use any recipe a second time without depending on memory or outside aid. The many new dishes described and the simple menus suggested are winning favorable comment.

Despite their handicap, blind women find it necessary to prepare meals for their families and many are excellent cooks. They are quick to establish fixed habits in the kitchen and can depend on their highly-developed sense of touch and smell. Specially shaped containers for salt, pepper, sugar, and other staples assist them in their culinary operations. The new cookbook was put into Braille by the Library of Congress, the official body in charge of the expenditure of \$100,000 appropriated by Congress for the publication of books for the adult blind. Copies have been placed in all libraries for the blind in the country. Those who desire to buy copies at 50 cents each can make arrangement to do so through their nearest library. The department has none for sale.

K. R. Griffin, Jr., formerly of Eastland and now of Fort Stockton, has been visiting friends here this week. He had been in Fort Worth with his father, who is ill there.

REAGAN

A group of young people gave Inez Hearn a surprise party at her home Thursday evening.

Mr. and Mrs. Hearn's daughter, Mrs. Veda Reese of Graham, visited with them this week end.

Mr. and Mrs. Hensley motored to San Angelo last week-end and brought Mrs. Hensley's mother back with them to spend a week. She returned to San Angelo with Mrs. F. W. Mitchell Friday.

Mr. and Mrs. Bud Green of Ranger spent Sunday with Mr. Green's parents, Mr. and Mrs. B. H. Green of this community.

Mr. and Mrs. Frank Hensley, Mr. and Mrs. H. Tankersley visited Mr. and Mrs. Elmos Hensley Sunday.

Mr. Roy Boyd of this community is visiting in Hill county.

Miss Joyce Boyd of Cisco is visiting Mrs. Roy Boyd.

Mr. and Mrs. Babe Nicholas motored to Abilene last week.

Mr. and Mrs. Nick Grey and their son Rex of Levelland and Mrs. John Seaborn of Grapevine visited Mr. and Mrs. T. E. Seaborn Thursday.

Mrs. Clifford Fehl of Eastland visited Mrs. Frank Hensley Wednesday. George and Jack Lowrance went to Sedwick last week to help their brother Andrew with his threshing.

Miss Annis Lowrance spent last week with Mrs. George Lowrance of Yellow Mound.

Methodists to Hold Quarterly Meeting

The third quarterly rally of the laymen and pastors of the Methodist Cisco District will meet at Carbon Monday at 10 o'clock. Reports will be made by the pastors and laymen for all the charges of the district.

Dr. J. W. Hunt, president of McMurray college, will preach the sermon at 11 o'clock. The ladies of the Carbon church will serve meals at 25c. Dr. Cullom H. Booth, presiding elder for this district, will preside over the meeting.

A large delegation from over the district is expected, according to the Rev. George W. Shearer, local Methodist pastor, who urged that people his congregation attend.

Creep Fed Calves Make Gains

COLLEGE STATION—The value of creep feeding beef calves while they nurse their mothers is given added confirmation by the final results of the first creep feeding experiment in Texas recently completed on the Callaghan Ranch in Webb County. Calves fed grain in creeps for a 160-day period, followed by an 86-day hand feeding period on pasture, gained 381 pounds at a feed cost of 3.2 cents per pound of gain. Similar calves not creep fed but handled in the usual ranch style gained only 105 pounds. The creep fed calves weighed 654 pounds when sold locally for slaughter at \$5 per hundred. The calves not creep fed weighed an average of 380 pounds delivered to a Kansas feeder and brought slightly less per hundred than the others. The experiment was conducted co-operatively with the ranch by the Texas Agricultural Experiment Station, the Texas A. and M. College Extension Service, and the U. S. Bureau of Animal Industry.

BURR OFFICIAL VISIT

Edward E. Johnson, head of the operating department of the L. C. Burr & Company organization, whose headquarters are in Chicago, and T. L. Dickey, district superintendent of the company, were in Eastland Monday.

POTPOURRI

Air Traveler

The Yellowlegs, a common American snipe, travels approximately 10,000 miles in its migration and is said to be the greatest air traveler among birds. It migrates from the Arctic circle, where it spends the summer, to as far south as Argentina. It has black-and-white markings, long yellow legs, and is found among the lowlands and marshes. (© 1932, Western Newspaper Union.)

Skillet Champion



In a contest staged at Fort Thomas, Kentucky, Mrs. Charles M. Pommering of that town won the skillet throwing championship, hitting a dummy husband four times out of six. More than fifty women of that region competed, and all expressed regret that they had to throw at dummies, as the men unchivalrously refused to act as targets.

Bender Discusses History of Rotary

Earl Bender spoke to the members of the Rotary Club Monday at the weekly luncheon at the Connellee roof garden on "The History of Rotary." Mr. Bender explained different phases of the work, the code of ethics, and the objects of Rotarianism.

Visitors were John Thurman, J. C. Smith, Fred Yonkers, H. S. Von Roder, all of Ranger, and John Mouser of Eastland.

The program was arranged by Earl Bender and Julius Krause. Next Monday's program will be in charge of F. O. Hunter and Curtis Hertig.

Only two members of the club were absent Monday, one being reported ill and the other out of town.

Charlie Fall of Rising Star was a visitor in Eastland Tuesday.

EAGLE PASS—City Barber Shop moved to new location on Main Street.

Father Sage Says:

The easiest way to avoid being troubled by life insurance agents is to reach middle age and wish you could get some more insurance.

Fifth Shipment of Flour Arrives Here

The fifth carload of Red Cross flour was received in Eastland Friday. The flour was hauled from Cisco by Harry Wood after J. E. Spencer, county Red Cross chairman, had notified Dr. H. B. Tanner, local Chamber of Commerce secretary, of its arrival there.

The load contained 400 sacks of 24 1/2 pounds each, and was stored at Harrison's Grocery and Sunshine Grocery from which it is being distributed.

No orders for the flour were issued at the Chamber of Commerce Saturday, since the records were being placed in order, but distribution was resumed Monday and 29 orders received.

Airplane Purchased By Mrs. Agnes Doyle

An airplane, purchased last week by Mrs. Agnes Harwood Doyle, is now stationed in Eastland. Mrs. Doyle and a government mechanic from the Harlingen school brought the plane from Dallas to Eastland Saturday night.

The plane, a "Command-Air" with a seven cylinder radial Warner motor, is a three-place ship. The wings are yellow while the body and fuselage are red and black.

Miss Mona Pritchard is spending the week with friends in Fort Worth.

GOLDTHWAITE—Construction of sidewalk on two sides of school campus to start soon.

Political

Announcements

This paper is authorized to make the following announcements, subject to the action of the Democratic Primary.

District Clerk: P. L. (Lewis) CROSSLEY.

Sheriff: VIRGE FOSTER. (Re-election)

Judge, 88th District Court: FRANK SPARKS BURETTE W. PATTERSON

County Judge: CLYRE L. GARRETT (Re-election)

Representative, 107th Flatorial Dist. B. L. RUSSELL, JR.

Tax Collector: T. L. COOPER. Re-election, Second Term.

MIKE TO TOM---



I just heard that Weaver Hague is opening the Sanitary Barber Shop where Ed Bills Tailor Shop was. Let's give him part of our business.

Sure Mike—for he always did appreciate his customers.

NOW OPEN FOR BUSINESS

EASTLAND'S NEWEST AND MOST MODERN BARBER SHOP — ABSOLUTELY SANITARY THROUGHOUT. FIRST CLASS WORKMEN CATERING TO BOTH LADIES AND GENTS.

HAIR CUT 25c

Sanitary Barber Shop

WEAVER HAGUE

2 Doors South Piggly Wiggly

PANGBURN'S
Pure Food
ICE CREAM
AT
Eastland's Favorite Drinking Place
CORNER DRUG STORE
NORTHWEST CORNER SQUARE

WEEKLY RECORD

Published Each Friday
by the
Eastland Printing Company
207 South Lamar—Phone 205
Eastland, Texas

Owners and Publishers
V. O. Hatcher, Eastland
Earl T. Williams, Eastland

Editor: Joe Thomas Cook

Friday, August 5, 1932.

The Record is delivered free over Eastland's trade territory, 1280 copies in the City of Eastland and surrounding oil camps, 616 copies on rural routes and suburban towns, a total of over 7500 readers. All potential buyers in Eastland.

REHABILITATION OF PROPERTY VALUES

The City Commission and the board of equalization, working under the commission, are now doing a commendable job of rehabilitating the property values of the City of Eastland. This restoration of property values is being effected by the reduction of property valuation. A paradoxical statement, indeed, but it is true.

The City Commission is reducing the property valuations for the taxpayers and making it profitable for them to own property. This has not been true for the past several years in Eastland. While the cost of living and the values of everything else were dropping rapidly, the property valuations of this city were maintained at their boom-day standard. Property owners found that the rent from their buildings would not pay their taxes; they learned that the taxes on their homes amounted to more each year than if they were renting their homes. Property value in Eastland had consequently come to a complete standstill, as it were. Buyers could not be found for property that made no returns to the owner. The property could not be sold at any price, because people knew that the taxes would "eat it up."

Members of the City Commission, however, true to their promises during the past, have been cooperating with the property owners and granting as much as 50 per cent reductions in property valuations for 1932. The board of equalization, which is working for, and under the direction of, the commission, has been in session for almost two weeks hearing the individual cases of all taxpayers who wished to appear before the board. The reductions granted by the board have ranged from 33 1/3 to 50 per cent. In almost every case the board and the taxpayer has come to a complete and acceptable agreement on the valuation, and nothing but good will has resulted from the decisions of the board during the past two weeks. There have been only one or two cases in which a protest has resulted and in which there has been a failure to agree.

This wholesale reduction in property valuations is significant from several standpoints. It lends a healthy incentive to citizens to own their homes. The high taxes resulting from the high valuations in the past have prevented hundreds of families from buying homes and have forced them to remain in the class of renters. This town and any other town depends upon its home for its solidarity and for its progress, and individual ownership is an indispensable asset to any town.

During the present economic conditions values have dropped in every field, and retrenchment has been made in private business and industry. It is fair to the citizens of this country that there be a corresponding decrease in the cost of city, state and national government. The cost of the government of the City of Eastland can and should be brought within the revenues coming from this reduced property valuation.

The City Commission should be commended for its active stand in the reduction of city taxes.

Buddy Baker, formerly of Eastland and now of Oklahoma City, is visiting friends here this week.

NOTICE OF RESULTS OF DEMOCRATIC PRIMARY ELECTION

I, Ed. T. Cox, chairman of the Democratic Executive Committee for Eastland County, Texas, do hereby certify that the following named candidates for State offices and for district offices where the districts were comprised of more than one county received the number of votes set opposite each name at the Democratic Primary Election held July 23, 1932.

For Governor:
C. A. Frakes of Jefferson County, 14.

M. H. Wolf of Dallas County, 123.
Miriam A. Ferguson of Travis County, 2034.

J. Ed. Glenn of Bosque County, 13.
R. S. Sterling of Harris County, 1768.

Tom F. Hunter of Wichita County, 2611.

Frank Putnam of Harris County, 12.

Roger Q. Evans of Bexar County, 23.

For Lieutenant Governor:
Edgar E. Witt of McLennan County, 6632.

For Attorney General:
Clem Calhoun of Potter County, 2213.

James V. Allred of Wichita County, 3749.

Ernest Becker of Dallas County, 467.

For State Comptroller of Public Accounts:
George H. Sheppard of Nolan County, 6627.

For State Treasurer:
Charley Lockhart of Travis County, 6611.

For State Superintendent of Public Instruction:
Charles N. Shaver of Walker County, 3031.

L. A. Woods of McLennan County, 2744.

For Commissioner of Agriculture:
J. E. McDonald of Ellis County, 4609.

L. A. Seymour of Travis County, 1489.

For Commissioner of the General Land Office:
J. H. Walker of Hill County, 6593.

For State Railroad Commissioner (4-year unexpired term):
Ernest O. Thompson of Potter County, 2812.

C. A. De Ware of Washington County, 205.

Olin Culberson of Jackson County, 805.

Ed. T. Murphy of Polk County, 444.

W. Gregory Hatcher of Dallas County, 1796.

For State Railroad Commissioner (6-year term):
Roy I. Tennant of Bell County, 960.

J. J. Jack Patterson of Bexar County, 614.

C. V. Terrell of Wise County, 2154.

Lee Satterwhite of Ector County, 2458.

For Judge of Court of Criminal Appeals:
F. L. Hawkins of Ellis County, 6512.

For Congressman at Large: Place No. 1
Lawrence Westbrook of McLennan County, 1075.

Pink Parrish of Lubbock County, 781.

R. B. Hood of Parker County, 694.

Mrs. Alex L. Adams of Bexar County, 155.

Ida M. Darden of Tarrant County, 251.

E. G. Senter of Tarrant County, 270.

George B. Terrell of Cherokee County, 325.

W. Seldon Reed of Travis County, 75.

Ernest C. Ozro Cox of Travis County, 420.

W. Erskine Williams of Tarrant County, 546.

George J. Schleicher of DeWitt County, 47.

Sherman Nelson of Montgomery County, 57.

Chesley W. Journey of McLennan County, 135.

For Congressman At Large: Place No. 2
J. H. (Cyclone) Davis of Hopkins County, 1202.

B. D. Sartin of Wichita County, 640.

W. E. Myres of Tarrant County, 195.

Lamar Gill of Willacy County, 27.

P. L. Downs of Bell County, 609.

Oscar F. Holcombe of Harris County, 176.

W. H. Hawkins of Erath County, 558.

ODD THINGS AND NEW—By Lane Bode

Ranger Team Takes Match Sunday, 19-3

The Ranger golf team defeated the Eastland Golf and Country Club team on the local course here Sunday afternoon by a count of 19-3 to break a 10-10 tie which resulted from a match between the two teams on May 1.

The match Sunday between the two teams made the match score 2-0 in favor of Ranger, since the Ranger team won another match July 24. Eastland will play the Phil-Pe-Co team here next Sunday.

Eastland victories in the match last Sunday were scored by George Meredith, J. S. Barnett, and Bill Gupton. The individual scores of the match follow:

James Phillips lost to S. J. Barnett, 1-up; D. A. Hardrider lost to George Meredith, 3-2; James Smith won from Scott Key, 1-up; Gid Faircloth won from Doug Jones, 4-3; Sam Brimberry, won from Fred Blatt, 7-6; H. H. Vaughn won from Storey, 1-up; Clint Davis won from Blair Lewis, 2-1; Less Swofford won from Allen Key, 1-up; Bladen defeated Francis Jones, 3-2; Ray Trammel won from Joe C. Stephen, 1-up; Major Thompson lost to Bill Gupton, 4-3; E. C. Byars defeated Harry Porter, 1-up; C. D. Hartnett defeated John Mouser, 4-2; Bob Earnest defeated Harkrider, 2-1; Martin Walker won from Bill McDonald, 2-1; Pleas Moore defeated Charles Fields, 4-2.

Haig Johnson defeated J. O. Earnest, 2-1 Jack Mooney, Jr., won from Marshall McCullough, Jr., 2-up; Dr. H. A. Logsdon defeated Judge O. C. Funderburk, 3-2; Nath Pirkle defeated Beeson, 4-2; Jack Mooney, Sr., defeated Tom Lott, 2-1; Clyde Davis won from Lonnie King, 5-4.

LABELS ON CANNED BERRIES ASSURE BUYER OF QUALITY

Pie, without berries, would be much weakened as an American institution. Blackberries, blueberries, huckleberries, and other bush fruits, compete strongly with apples, cherries, and mincemeat for popularity in the making of this famous American dessert. And it is possible today for the housewife to buy from the corner grocery store almost any kind of canned berries she wants, according to V. B. Bonney of the Federal Food and Drug Administration.

"While most berries are canned in large No. 10 cans and in a limited number of smaller containers, the housewife usually is not familiar with just how much fruit these tins contain," says Bonney. "Her guide is the net-weight statement required by the pure food law to be printed on the labels of all canned and packaged foods.

"Most canned berries are sold under grade specifications drawn up by the Northwest Cannery Association, since the bulk of canned berries are packed in that region. These grade designations are usually printed on labels. Loganberries, for example, are graded as Fancy, Choice, and Water, or Pie. The grade designation depends on the size and fleshiness of the fruit and on the quantity of sugar added when the berries were packed. These grades apply, in general, for red raspberries which run from Fancy, Choice, Standards, and Seconds, to Water or Pie.

"The grades for strawberries are identical, as are those for raspberries, cranberries, blackberries, and black raspberries, although the concentration of sugar in the solution in the case of the latter two is lower than in the others mentioned. Understand these grades, a purchaser, by reading the label, can get what she wants."

MACHINERY CUTS CORN GROWING LABOR IN HALF

The actual man labor needed in the Corn Belt to grow an acre of corn has been cut in half in the last two decades and the amount of land a man can care for has been increased approximately a fourth, figures gathered by the United States Department of Agriculture indicate.

The department found that an acre of corn can now be grown with from 7 to 8 hours of man labor, while formerly it took about 15 hours. The acreage cared for by one man has increased in different states from 15 to 37 per cent.

Increased machinery is largely responsible for this, especially on farms of more than 100 acres. Farms smaller than this do not benefit as much from mechanization as do the larger farms.

The Corn Belt has more tractors for its farms than the average for the country as a whole. There is one tractor for every 7 farms in the United States. Iowa and Illinois have a tractor to every 3 farms, Indiana and Ohio one in every 4, Michigan one in 5, and Missouri one in 10. One farm in 10 of more than 100 acres in the Corn Belt has a tractor-cultivator, while the same percentage has a corn-picking machine.

Officials Are Busy Preparing Budgets

City, county, and school officials in Eastland have been busy for the past few weeks preparing budgets for the next year as a result of the new budget law enacted last year by the 42nd Texas Legislature, requiring city, county, common school districts, and independent school districts to make up budgets each year.

Judge C. L. Garrett, county judge, assisted by W. S. Michael, county auditor, is preparing the budgets for the county. W. C. Marlow, city manager, is making up the budget for the City of Eastland, B. E. McGlamery, county superintendent, for the common school districts, and K. B. Tanner, president of the Eastland school board, for the Eastland Independent School District. Since the adoption of the present city charter, the city has had a budgetary provision and this has been adhered to each year. On the other hand, Eastland County has never operated on a budget plan.

The new law was designed to place the government of the city, county, and school districts on a more business-like basis. It provides that each of these officials prepare a budget in July of each year for the ensuing year. In the preparation of the budget the budgetary officer in each case must take into consideration the revenues and expenditures of the previous years, he must estimate the possible sources of revenue for the ensuing year, and he must also consider the tax rate in each case.

After the budget is adopted and put into effect each year, all expenditures must be made in strict adherence to this plan and only under unusual circumstances can a change be made in it.

HUGE CHINESE MARKET DEPENDS ON LOW PRICES

The tremendous possibilities of the Chinese market are predicated upon essential goods of wide use and low prices, as indicated by the sale of cotton, wheat, and cigarettes there, says the Bureau of Agricultural Economics of the United States Department of Agriculture.

The Chinese are developing a decided and growing preference for low-priced cigarettes made with American flue-cured tobacco, but it is only when the cigarettes are sold at extremely low prices that any large number of Chinese buy them. Although individual purchases of an article may be small, the very large population in China makes the total volume of sales high.

Although cigarettes are an outstanding example of American products sold in China, that nation is also a market for other essential American products. Chief among these are cotton for the spinning mills, wheat and flour from the Pacific Northwest, and fresh and canned fruit from the Pacific Coast. American canned goods are highly prized because of their excellent quality and are given as gifts at the celebration of the Chinese New Year.

Because her internal communications are undeveloped, most of China's trade with America is confined to the coast ports and regions.

Mr. and Mrs. H. T. Huffman and sons Billy and Kenneth, spent the week-end in Weatherford and Fort Worth. Billy and Kenneth remained in Weatherford to visit with their grand parents, Mr and Mrs. W. L. Daugherty.

ABSENCE AND AFFECTION

By THOMAS ARKLE CLARK
Emeritus Dean of Men,
University of Illinois.

"Absence makes the heart grow fonder," the poet said, and when we repeat the lines we generally have in mind young lovers whom chance or duty or some other influence has for a time kept apart. It is possibly true of those sentimentally drawn to each other, but a poet sees into the inner workings of the emotions more deeply than ordinary men, and I am sure he had in mind other people and other situations, than mere youth falling in love. Absence gives us time to think out the meaning of scenes and relationships which before, perhaps, we have never had time to realize the meaning or the importance of. It might be a good thing for all of us if for a time we could get away from the people with whom we are in daily relationship, or the business or the scenes which may have become to us quite commonplace.

Mrs. Gray goes off by herself at least once a year and leaves her husband to look after himself. There is nothing sinister in this, nothing which indicates domestic irregularity or discontent. The Grays are really very devoted to each other, but sitting across the table from each other three times a day for at least twenty-eight days in the month, there develops in time monotony. Mrs. Gray wants a change; she likes, for a week or two, to plan her own affairs, to be by herself, to think her own thoughts. She comes back refreshed, stimulated, more in love with her home and her husband than she has ever been before. She says that husbands and wives and children sometimes see too much of each other and so grow tired each of the other. Maybe there is something in it.

One never so fully appreciates his own country until he has visited another and has seen the conditions under which citizens of other lands exist. The man who comes into New York harbor from a trip abroad and does not feel a thrill of happiness and appreciation such as he has never felt before, as he sees the statue of Liberty and the Stars and Stripes flying, is a hopelessly dull and stupid soul. It is good for a man for a time to be absent from his country.

Mr. and Mrs. R. M. Sparks of Fort Worth visited here last week-end in the home of Mr. Sparks' brothers, M. H. Sparks.

BEWARE OF OLD CANDIES
Eat the Best—Always Fresh
Wholesale and Retail
Cold Drinks and Tobacco
C. T. NELSON CANDY COMPANY
Eastland, Texas

A NEW FAD
Today they are driving by and taking ice cream home with them.
GOLD MEDAL ICE CREAM
PINTS, 15c QUARTS, 25c
FEDERAL ICE CREAM
304 South Green Street

TO THE PEOPLE OF EASTLAND COUNTY

Friends, you have honored me with the nomination for a second term to the office of Tax Collector, for which I am most grateful.

Your hearty and loyal support has made me very happy and I assure you that I shall put forth every effort possible to merit and retain the confidence and trust you have placed in me.

Yours sincerely,
T. L. COOPER

Hamner Undertaking Company
Day Ph. 17--Night Ph. 564
AMBULANCE SERVICE
Day or Night

POTPOURRI
Origin of Mourning
Our custom of wearing black and going into seclusion out of respect for our dead is said to go back to the savage. To evade evil spirits which he imagined took possession of dead bodies he painted himself black, or if black painted himself white, and hid in his cave to avoid being found.
(© 1932 Western Newspaper Union)

How Does Texas Rank in Education?

By B. E. McGlamery, County School Superintendent

What are the facts? In the Research Bulletin for the National Education Association for May, 1932, five factors related to school efficiency and indicative of the present educational situation in the 48 states are discussed. Copies of this bulletin should be in the hands of all interested persons. The figures given in the tables are as accurate and comparable as possible when comparisons between the states are attempted. The reports of two United States official agencies, the Census Bureau and the Office of Education, are the only sources used in securing data.

1. The proportion of children reached.
2. The holding power of the schools.
3. The quality of teaching provided.
4. The material school environment.
5. Percentage of literacy.
6. Per capita appropriation for schools.

However excellent the educational facilities provided by a state, they are effective only to the extent that they reach those for whom schools are primarily provided. Hence, the amount of school attendance is a preliminary measure of the effectiveness of a school system. In this matter for the year 1930 the rank of Texas among the states was 40th.

The power of a school system to hold its pupils in school during the period of their school careers when the task becomes especially difficult is a strong indication of its efficiency. The holding of the schools in the age range of 14 to 17 years for the year 1930 was such as to rank Texas as 32nd among the states.

The education provided by a state school system depends primarily upon the kind of teachers employed. The influence of the teacher on the school has so long been recognized that it has become proverbial: As the teacher so is the school. There is a close relationship between the education and efficiency of the teachers and the average annual salaries paid teachers, principals and supervisors. The districts and states pay-

ing the better salaries are getting the better teachers. The average annual salaries of teachers, supervisors, and principals in Texas for 1930 was \$924. In quality of teaching provided, as indicated by salaries paid teachers, supervisors and principals, the rank of Texas for 1930 was 37th.

Other things being equal, schools providing comfortable and attractive buildings and adequate equipment can produce better results than those having the opposite environmental conditions. Lack of suitable conditions and textbooks impedes progress. Good work depends upon good tools. In school environment as indicated by the value of public school property per child enrolled in 1930 the rank of Texas is 36th.

The minimum acceptable achievement for a state school system would certainly include its ability to read and write on the part of every youth and adult in the population. This is indeed a very low educational goal. The percentage of literacy reflects not merely the available amount of education generally offered throughout the state but also the minimum amount of education offered to its remote and handicapped citizens. In the percentage of literacy among native born persons 10 years old and older, the rank of Texas among the states is 35th.

In the report of the Commission to Survey Public Education, State of New Jersey, 1930, we find that not fewer than 21 states had a per capita appropriation greater than the \$17.50 per capita apportionment in Texas. In ten states the per capita apportionment for public schools was above \$19.75. In Nevada the apportionment was \$22.61 and in North Dakota it was \$33.66.

City Offices Are Moved This Week

The offices of the city water department, the city tax department, and of the city manager were moved this week across the hall to the room formerly used by the city court at the city hall. The city courtroom will occupy the room vacated by these city departments.

The new offices of the city manager and of the departments will be much cooler, since the new location is on the south side of the building, City Manager Marlow pointed out. Less heat will be required by the offices during the winter than was needed when the offices were on the north side of the building, and the new location will eliminate the noise of traffic along West Commerce street.

FIREMEN TO MEET

A watermelon feast will be given for the volunteer firemen at their monthly meeting Friday night in the city courtroom at the city hall, Fire Chief Mack Hennessee, said this week. All volunteer firemen and their wives are urged to attend the meeting and watermelon party.

LAIRD RETURNED

Frank Laird, who is charged with theft of an automobile in Cisco July 27, was arrested this week at Valley Springs in Llano County by Deputy Loss Woods and returned to Eastland.

Mr. and Mrs. Herbert Reed and little daughters, Gloria and Ruth, are visiting relatives in Rochester from Friday until Sunday.

J. V. Tarvin of the commercial department of Texas Electric Service Company, Fort Worth, was a business visitor in Eastland Thursday.

Legion Discusses Ex-Service Men

Ex-service men were the subject of discussion Tuesday night at the regular meeting of the American Legion. The next meeting of the Legion will be held Tuesday night, August 16, at the Elks Club. Every ex-service man in the county is invited and urged to be present.

Much was accomplished at the last meeting and much enthusiasm was in evidence, with the result that the post has definitely decided that a permanent home and club rooms are to be arranged for at once.

Members expressed the opinion that the legion has been unselfish in the past, all of its efforts being directed toward the betterment of the community, with the result that the welfare of the post has been neglected.

Members believe that the club will be in a better position to render service to the community if this program is carried out.

Other important matters to come before the meeting were discussions of service to the ex-service men regardless of whether they are members of the Legion or not.

All these subjects will be discussed further and action taken at the next meeting. Every ex-service man is urged to remember the date and be present Tuesday night, August 16, at the Elks Club on East Commerce street.

TAXPAYERS TO MEET

A meeting of the Eastland County Taxpayers Association has been set for Saturday of this week at 2 o'clock in the 88th district courtroom, D. J. Neill, president, has announced. Taxpayers whether members or not are invited to attend this meeting. It is not a speaking date for candidates, the president said.

New Barber Shop Will Open Friday

Opening of the Sanitary Barber Shop Friday morning of this week was announced by Weaver Hague, owner. The shop will be located in the Weekly Record building, just South of the Piggly Wiggly store. Plumbers, carpenters and painters have been busy for the past several weeks putting the building into shape for the barber shop.

Mr. Hague has lived in Eastland most of his life. For the past sixteen months he has been operating a barber shop at Gladewater in East Texas. During the first part of the oil boom in Eastland, Mr. Hague owned the only barber shop in the city. Since that time he has operated shops in different locations in town.

BYPU PROGRAM

An interesting program will be given Sunday night in the Intermediate BYPU with Wendell Seibert presiding. The subject for discussion is "Ye Shall Be My Witnesses." The aim of the lesson is to encourage the intermediates in their efforts to win lost people to Jesus and to give them a vision of the world as their field. The program follows:

- Song, "Amazing Grace."
- Prayer by the leader.
- Song, "I Love to Tell the Story."
- "Witnesses for Christ," Wendell Seibert.
- "When Shall We Begin to Win Souls?" Mary F. Hunter.
- "Jesus, A Savior From Sin," Curtis Terrell.
- "When Does Jesus Save? Repent of Sin," Beulah Drake; "Believe on Jesus," Bennie Kate Wood.
- "Where Shall We Witness?" L. J. Lambert.
- Leader's ten minutes, Miss Mamie Armstrong.
- We extend a special invitation to

the parents to visit the BYPU. Boys and girls between the ages of 13 and 17 are invited. We had 26 present last Sunday night. Come on. Intermediates; let's have 30 Sunday night! Meeting begins promptly at 7 o'clock. —Reporter.

VISIT ON RANCH

Mrs. Claud Maynard and daughter, Norma Jean, and nephew, Doyle, left Thursday of last week for a visit with Doyle's father, T. C. Maynard, on the O-Bar-O Ranch near Jayton. They returned home Tuesday. Mrs. Maynard and T. C. Maynard expect to leave Saturday for Valley Springs, where they will attend a week's encampment.

WANT AD RATES

2c per word for first insertion; minimum of 30c. 1c per word for additional insertions.

CASH IN ADVANCE
No Ads Charged.
Try Record Want Ads. Every home in Eastland, Olden, Carbon and the rural routes receives the paper. It is a most unusual medium. It reaches the entire territory both in and out of town.

You are helping to make it possible for us to send the Record to you FREE when you tell the merchants you saw it in the Record.

FOR SALE — 125 volt Tork electric time switch, 8 day spring clock, first class condition. — Weekly Record.

FOR RENT — Desirable sleeping room with adjoining bath, three blocks from square on pavement. Also garage. Apply 300 West Moss. — 20-1tc

FOR RENT — Four-room southeast apartment, furnished. Private bath. Phone 702. — 1tc

WATERMELONS on ice every day, 20c and up. Open all day Sundays. — Curb Service Fruit Stand, South Seaman. — 1tc

Eastland County Runs Above Average in Indebtedness, Auditor's Report Shows

Eastland county is \$167.30 above the average Texas county in indebtedness per inhabitant and it \$23.18 above the average county in indebtedness for each \$100 of assessed valuations, the annual report of the financial condition of the State made by Moore Lynn, State auditor and efficiency expert, made this week showed.

The indebtedness of Eastland county per inhabitant is \$371.43, while that of the average county is only \$104.13. The indebtedness of this county on each \$100 of assessed valuations amount to \$37.88, while that of the average Texas county is \$14.70.

The tax collections during the last fiscal year for each inhabitant, including state and county taxes, amounted to \$42.10, and the amount of the assessed valuations per inhabitant was \$980.59, the report revealed.

The report of the auditor for Eastland county contains the following figures:

- State and county assessed valuations, 1931—\$43,492,910.
- Net indebtedness—\$12,686,721.
- Tax collections, including state and county taxes—\$1,438,138.
- Dollars of indebtedness on each \$100 of assessed valuations—\$37.88.
- Dollars of indebtedness to each inhabitant—\$371.43.
- Dollars of tax collections to each inhabitant, including state and county taxes—\$42.10.
- Dollars of assessed valuations to each inhabitant—\$980.59.
- Tax Collections Given.
- Taxes collected for all purposes: County to September, 30, 1930, \$817,418.09; cities, various dates, \$323,114.92; common school districts, to Aug-

ust, 1931, \$59,153.72; independent school districts, to August 31, 1931, \$238,050.95. Total, \$1,438,137.68.

Delinquent taxes: County, \$431,100.70; cities, \$501,506.36; common school districts, \$15,550.74; independent school districts, \$210,752.98. Total, \$1,158,910.78.

Outstanding current warrants: County, \$3,282.66; cities, \$36,435.03; common school districts, \$2,868.00; independent school districts, \$35,639.04. Total, \$78,224.73.

Outstanding time warrants: County, \$288,968.58; cities, \$90,597.15; common school districts, \$2,746.00; independent school districts, \$45,961.91. Total, \$428,273.04.

Outstanding bonded indebtedness: County, \$3,717,000; cities, \$7,389,500; common school districts, \$50,440; independent school districts, \$1,433,500; Total, \$12,590,440.

Amount to credit of sinking funds to retire bonds and time warrants: County, \$228,718.94; cities, \$33,525.56; common school districts, \$19,772.83; independent school districts, \$49,975.60. Total, \$331,992.93.

SUNDAY SCHOOL ATTENDANCE
Sunday school attendance reported at the following Eastland churches Sunday was:

- Baptist, 286; Methodist, 285; Church of Christ, 109; Presbyterian, 64.

Mrs. W. C. Marlow and daughter, Bessie, and son, Thomas, and Mrs. R. C. Ruffner drove to Iran last week, returning here Wednesday. The trip was made to be with Mr. and Mrs. Starr of that city, Mr. Starr having been ill. Mrs. Starr is a sister of City Manager W. C. Marlow.

WATCH YOUR STEP

YOU MAY BE THE PERSON TO RECEIVE
The Free Credit Slip

Old folk, young folk, everyone alike, watch your step. Look over the list below and see if you are among those receiving a free credit slip this week.

The free credit slips which are to be given are worth 50c each, to apply on office supplies, want ads, job printing, or display advertising, but will not be redeemed for cash.

Here's a free chance for the housewife to rent that vacant room, sell that extra piece of furniture or have calling cards printed.

RECORD WANT ADS BRING BETTER RESULTS

If the blond young man whose attraction to a neighboring city was so great that he hitch hiked there on one of the hottest Sunday afternoon of the summer will call he will receive a free credit slip.

If the parents of all the babies born in Eastland this week will call they will receive free credit slips.

If the young lady who celebrated her birthday with a watermelon feast at her place of business Thursday afternoon will call she will receive a free credit slip.

A HISTORY MAKER! PENNEY'S MID-SUMMER

Blanket Event

Values THAT SMASH ALL RECORDS!

Save AS NEVER BEFORE!

YES, now's the time to buy blankets! Chilly nights will soon be here—and never before in Penney's history have blanket prices been so low—or values so great! Come! Buy the blankets you've wanted for years! And SAVE—unbelievably—on every one, at PENNEY'S!

Buy on our Lay-Away Plan, if you like— a small deposit holds any purchase!

S-A-V-E on These Thick, Warm



Part Wool BLANKETS

Made especially for Penney's during the manufacturer's slack season. We pass the savings along to you! Thick, soft cotton-and-wool core-yarn construction. Block plaids — sateen-bound — newest bouclor colors. *Extraordinary Value!*

OVERSIZE—72x84 in. HEAVY WEIGHT!

\$2.44 pr.

1930 Price, \$3.49

Blanket-Wise Folks Will Recognize This VALUE!

Part Wool Blankets

of a quality that sold for \$1.39 in 1930

Core-yarn construction gives the cotton-and-wool blend extra warmth and strength! Block plaid designs! New attractive stripe borders.

Colors: Rose, Blue, Gold, Green, Orchid.

NOW only 79c EA.



72 x 80 in.

Buy Now! Save!

Part Wool BLANKETS

Warm and light! New core-yarn construction. Block plaid designs. Sateen bound.

98c EACH

Full Double Bed Size

Penney's Largest!



the BIG BOY

Part Wool BLANKETS

80 x 90 in.!

Plenty of extra tuck-in! You'll be proud to own one! Warm, thick! Block plaids.

2.98 Pair

Buy! Save!



All Cotton 70x80 SINGLE BLANKETS

Soft, warm, inexpensive

47c



100% PURE AMERICAN COTTON

Heavy Weight

Plaid Double BLANKETS

Full double-bed size, 70x80 in.!

Strongly woven! 4 lb. weight. Block plaids, stripe border.

\$1.49 pair

J.C. PENNEY CO. INC.

Eastland Gun Club Plans Inter-City Shoot August 14

The inter-city shoot, which has been planned by the Eastland Gun Club for the past few weeks, has been set definitely for Sunday, August 14, W. J. Peters, who has charge of arrangements, said this week.

Cash prizes amounting to \$30 will be offered along with prizes in merchandise to the winners of each division of the shoot. At least three divisions will be made in the marksmen who participate in the shoot. Class A will include those who are recognized as the best, Class B will be made up of those who have fair scores and Class C will include the shooters with the low scores. This division of the participants is thought to be fair and meets with the approval of those entered, Mr. Peters said.

Most of the shooters from this section of the state, including those from Ranger, Cisco and Breckenridge especially, have promised to attend the shoot. A barbecue is being planned to be given visitors and their families on the day of the tournament.

In the shoot last Sunday Fred Hutton won the rifle event with 48x50; E. M. Anderson was first in the pistol with 93x100; and James Horton was high in skeet with 47x50.

The individual scores in rifle are as follows:

Fred Hutton	48x50
Jim Horton	46x50
Tom Harris	44x50
Horace Horton	43x50
Roy Allen	42x50
J. J. Coffman	41x50
K. B. Tanner	40x50
E. A. Hatten	40x50
Mrs. Horton	39x50
Boyd Tanner	39x50
W. J. Peters	38x50
E. M. Anderson	38x50
Bobbie Dwyer	37x50
Sam Butler	27x50
Aubrey Cheatham	36x50
W. V. Tunnell	33x50
Dolores Tanner	27x50
Harry Burgess	27x50

Pistol scores are as follows:

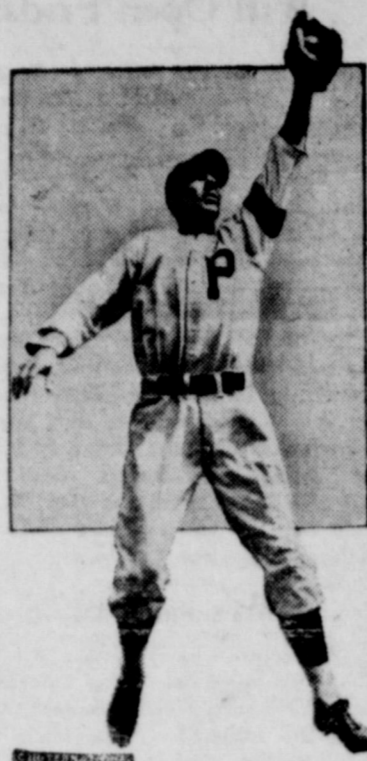
E. M. Anderson	93x100
Jim Horton	93x100
Dolores Tanner	91x100
Mrs. Anderson	82x100
C. E. Hutchins	75x100
W. V. Tunnell	54x100

Scores in the skeet event are as follows:

Jim Horton	47x50
Mrs. Horton	46x50
Brewer, Breckenridge	39x50
Roy Allen	38x50
K. B. Tanner	37x50
Sam Butler	36x50
W. J. Peters	16x25

Marvin Grubb and Gene Buchanan of Fort Worth visited in Eastland last week-end.

"Only a Rookie"



Tony Piet is classed as a rookie, but this youthful second baseman of the Pittsburgh Pirates has been doing rather more than his part in keeping his team at or near the top of the National league column this season.

Returns from Box At Tudor Available

Returns from the Tudor box in the Democratic primary held a week from last Saturday were available this week after they were too late to be included in most of the tabulations of returns in this county.

Returns from most of the boxes in the county were in the hands of the Democratic chairman by Wednesday of last week but the voting results at Tudor were not known until Friday after Ed T. Cox, county chairman, made a trip to Tudor.

In the vote at Tudor Ferguson received a large majority for governor with 16 votes to Sterling's 4 and Hunter's 6. In the county races McDonald received 15 votes to Crossley's 13 for district clerk, and Virge Foster was beaten decisively by Hammett with the votes Foster 8, Hammett 15, and Miller 5. Satterwhite received more votes than did Cooper who was returned to the tax collector's office in this first primary.

Returns from Tudor in some of the more important races are as follows: Governor: Ferguson, 16; Sterling, 4; Hunter, 6. Supreme Court: Hickman, 21; Speer, 2; Pierson, 3. Congressman, 17th District: Jones, 12; Blanton, 16. State Senator, 24th District: Collie, 18; Thomason, 2; Cunningham, 5; and Howsley, 3.

Paschall-Texas Purchases Lyric

The recent announcement from Paramount-Public Corporation's office that W. E. Paschall of Dallas has acquired control of the Lyric Theatre of this city formerly operated by Public Theatres Corporation, was officially confirmed this week by John A. Burke, resident manager of the Lyric Theatre.

"Mr. Paschall has organized a Texas corporation of Paschall-Texas Theatres, Inc., and this corporation will hereafter operate this theatre," Mr. Burke said. "In officially confirming the transaction, Mr. Paschall expressed much happiness in again having a personal interest in these theatres. His many friends will recall that he was general manager for Dent Theatres of Texas which company preceded the Public Theatre Corporation in the operation of the Lyric Theatre.

In commenting on the change of operation of this theatre, Manager Burke said, "My staff and I are happy that Mr. Paschall has indicated that he will make every effort to retain all of us here to manage his interests. He, being a Texan by birth and his continued residence here, his former experience in operating these theatres, will enable him to provide the best possible amusement for this city and community. The fact that the Lyric Theatre was included by Mr. Paschall's company is evidence of his faith in our city. I am sure that the theatre-goers will have the highest type of entertainment available in this theatre and that every effort will be made by him to better the class of educational as well as amusement value.

"Mr. Paschall's idea of theatre operation is that the theatre is the entertainment center of city or community and that it will prosper only when it provides that class of entertainment desired by the polite public. He greatly appreciates the fact that the patronage must be considered in the building of its programs. He frankly acknowledges that it is human to err and that while he and his staff of managers devote their time exclusively to providing, yet they will make some mistakes.

"In order to minimize the lack of popularity and reception that theatre programs receive he urges that all patrons feel free to make suggestions from time to time and to criticize if in their opinion the situation deserves it, with his assurance that all suggestions and criticisms will be seriously considered by him. He expressly wants patrons to feel that the theatre is theirs and it is his constant effort to create such a respect for his theatres that will enable the citizens of our city to point to them with pride."

Court of Civil Appeals, 11th District. Overshiner, 10; Funderburk, 15. Representative, 106th District: Threatt, 1; Hendricks, 1; Cockerill, 3; Chastain, 8; Carr, 1; Been, 4; Russell, 5.

88th District Court: Patterson, 8; Barker, 3; Sparks, 17. 91st District Court: Davenport, 17; Dabney, 10.

Criminal District Attorney: Owen, 18; Adamson, 5; Judkins, 3; Lawrence, 2.

County Judge: Burnett, 7; Garrett, 9; Bryant, 13.

District Clerk: Crossley, 13; McDonald, 15.

County Clerk: Collie, 16; Bedford, 7; Hunt, 1; Gray, 4.

Sheriff: Foster, 8; Hammett, 15; Miller, 5.

Tax Collector: Satterwhite, 16; Cooper, 11.

Tax Assessor: Wood, 9; Haley, 5; Hart, 12.

Eastland--

(Continued from page 1) now for four years like the fallen angels of "Paradise Lost." We hope that the club can convert the grounds into that bed of blue bonnets that Lion McGlamery has told us so much about.

Texas may have the recognition of producing the greatest woman athletic star of all time. "Babe" Didrickson of Dallas has already broken two Olympic records and will have a chance at even more. The new records she set are in the javelin throw and the 80-meter hurdles.

The hope for a bank in Eastland is still alive in the minds of many of the citizens. Some propose that the American Legion sponsor the establishment of a bank since they have been successful in several other civic undertakings.

Benjamin Ramey of Sulphur Springs visited his sister, Miss Ruth Ramey, here this week.

Delegates--

(Continued From Page 1)

of this county's carnival equipment. Mr. Patterson went to College Station several days early to supervise the erection of this carnival equipment on the A. and M. campus for the night entertainment program of the meeting.

This carnival equipment not only served as free entertainment for the people attending the short course but it was also a demonstration of what a Texas county has done for its county fair. Mr. Patterson said he found many suggestions for improvements in the Eastland County Fair entertainment program and suggestions for entirely new features.

The highlights of the short course were found in speeches by men prominent in agricultural work and related lines in the United States. Some of them are as follows: R. C. Jones, senior extension dairyman, Department of Agriculture, Washington, D. C.; Dr. C. A. Burmeister, Bureau of Agricultural Economics; C. O. Moser, secretary of the American Cotton Cooperative Association; and Dr. Verne Scott, veterinarian at John Tarleton College.

Two demonstration schools were arranged by Mr. Patterson while he was at College Station. Sometime in November Roy Snyder, a meat specialist with the Extension Service of A and M., will come to Eastland and give a demonstration of the curing of beef. Sometime during the fall E. R. Eudaly, a dairy specialist from A. and M. college, will be brought to Eastland for a school on the feeding of dairy animals.

13 Women Attend.

Thirteen women attended the short course from Eastland county, Miss Ruth Ramey, home demonstration agent, reported. Twelve of these women were sent by various home demonstration clubs over the county. The expenses of one was paid by the County Federation of Women's Clubs and the expenses of the other were paid by her own home demonstration club.

Eastland county was represented by twelve delegates at the State Home Demonstration Association meeting, which was held during the short course, Miss Ramey said. Mrs. Lewis Pitcock, vice chairman of the county council gave a report of the club work in Eastland county.

Miss Johnnie Foster of the Flat-

woods club, winner of third place in district competition in the bedroom demonstration contest, attended the banquet given for the bedroom demonstration winners and made a report of her work. She was given a piece of pottery for her placing in the district competition.

The home demonstration women who attended the short course will make reports at a meeting of all the home demonstration members of the county in the 91st district courtroom next Saturday, July 13.

County Convention--

(Continued From Page 1)

cratic Convention to be held in Lubbock September 13. They are as follows:

Delegates Named.

H. P. Brelsford, Sr., Earl Conner, Milburn McCarty, John D. McRae, Will St. John, Elzo Been, George L. Davenport, Earl Conner, Jr., Hamilton McRae, J. E. Hickman, W. P. Leslie, O. C. Funderburk, Frank Judkins, Mrs. R. Q. Lee, Frank Killough, D. K. Scott, S. B. Wright, W. J. Armstrong, Mrs. John M. Gholson, Will Tyler, L. R. Pearson, L. H. Flewelling, Gus Coleman, Walter Murray, Dr. W. E. Kimble.

Silliman Evans, Ray Holder, Jed Adams, Maury Hughes, W. H. Kittrell, Jr., J. J. Butts, Forrest Wright, Mrs. C. U. Connelley, Oscar Chastain, Mrs. M. H. Hagaman, Omar Burkett, George Davison, Leslie Hagaman, Joe H. Jones, Frank Sparks, John W. Thurman, Cyrus B. Frost, J. M. Williams, L. B. Campbell, Ghent Sandeford, Walter Harwell, J. Y. Jordan.

Delegates elected from Eastland County to the convention of the 24th senatorial district follow: R. N. Grisham, Leslie Hagaman, J. W. Cockerill, Lee Owens, Howard Gholson, J. V. Heyser.

The resolutions adopted by the convention Saturday are as follows:

We, your resolutions committee, beg to submit the following resolutions:

Be it, resolved by Democrats of Eastland County, Texas, in convention assembled:

First, That the delegates to the state convention be and they are hereby instructed to vote and use their best efforts to secure the adoption of a resolution asking the legislature to submit to the voters of the state the question, Whether or not Section 20 of Article 16 of the constitution

of the State of Texas shall be repealed.

Second, That the delegates to the state convention vote for and use their best efforts to have adopted by the state convention a resolution asking the legislature to so amend Article 667 of the penal code of the State as to permit the manufacture, sale, barter, and transportation of spirituous, vinous, and malt liquors containing alcohol in volume not in excess of 3 1/2 per cent.

Third, That the delegates to the state convention be and they are hereby instructed to vote as a unit on all questions that may come before the convention; and the county convention instruct the state convention to vote as a unit on all questions that may come before that convention.

MRS. R. Q. LEE,
J. J. BUTTS
FRANK KILLOUGH.

Be it resolved that this convention assembled commend the Democratic national convention held in Chicago for its splendid choice of standard-bearers in the persons of Hon. Franklin D. Roosevelt of New York for President and the Hon. John N. Garner of Texas for Vice President of the United States.

MRS. R. Q. LEE
J. J. BUTTS
FRANK KILLOUGH.

Million Containers Sold by August 1

More than one million containers used in canning activities in this county had been sold up to August 1, Miss Ruth Ramey, county home demonstration agent, said this week after making a survey of the mercantile. This number of new containers together with the odd containers being used a second and third time will give Eastland county one-third more home canned goods than it had last year.

Three hundred and ninety-seven cookers and 237 sealers had also been sold up to August 1 by merchants in Eastland, Ranger, Cisco, Gorman, Carbon, Olden and Rising Star, Miss Ramey said. This canning activity is being carried on by individuals, canning plants operated and sponsored by chambers of commerce and by church organizations. The canning plants and church organizations alone have filled more than 20,000 cans of fruits and vegetables.

The ECONOMY STORE

Eastland, Texas

OFFERS PRICE

CLEAN-UP ON ALL

Summer Merchandise

READ AND COMPARE THESE PRICES

PRINTS

A limited amount, our popular 10c value—

Now 5c

Voiles & Batistes

Patterns that sold for 29c a yard—

Now 15c

BED SPREADS

Fancy colors, size 80x105, while they last—

49c each

BIAS TAPE

All colors, 6 yard lengths—

Now 5c

HOSE

Regular \$1.50 value. Better Maids, clean-up price—

79c

For SHOES

See us—school shoes for boys and girls—

Now 98c

Clean Up on All Summer Shoes

Many styles to choose from

Now \$1.00

New Fall Shoes

In black and brown straps and pumps, all sizes—

Now \$2.98

New Fall Dresses

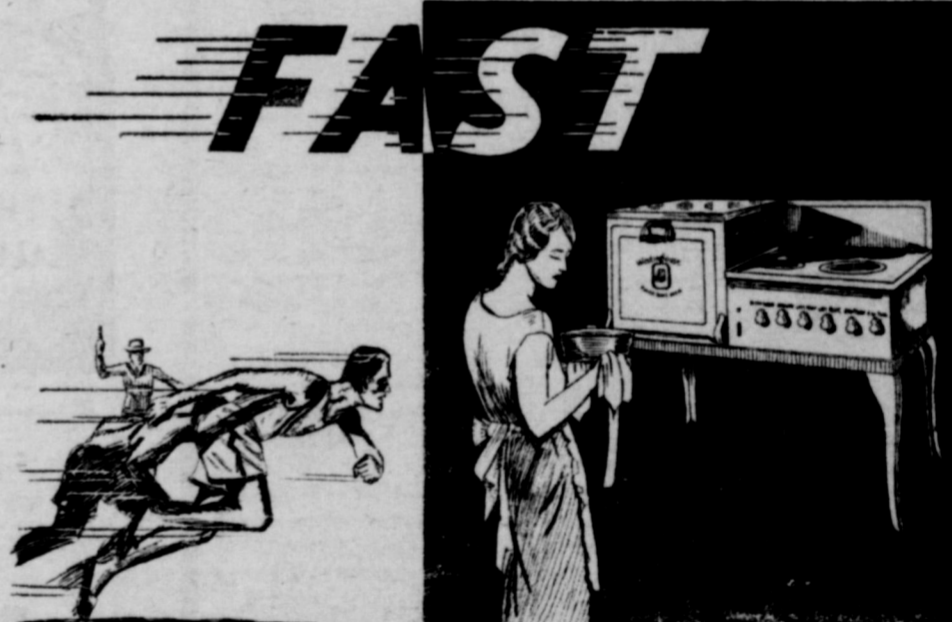
A new shipment arrived this week. Values to \$10—

Now \$5.00

House Dresses

All sizes and styles. Hundred to choose from—

49c to 98c

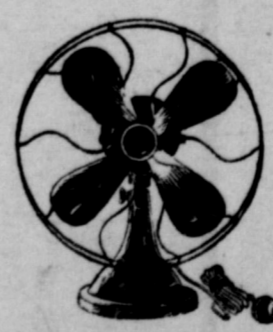


WESTINGHOUSE AUTOMATIC ELECTRIC RANGE

\$14.50
COMPLETELY INSTALLED

Speed is paramount this month at the Olympic Games—athletes from all over the world will exert their best efforts to break speed records that already appear to be almost phenomenal. By the same token, electric range manufacturers have for years striven to set new speed records in cooking—and the new Westinghouse Automatic electric range is the realization of this ambition. Order yours today—you'll wonder how you ever did without it.

Don't Miss These Two Bargains



Bargain No. 1 is the best hot weather comfort-creator you ever saw—the new style electric fan. Day and night, a fan wags a never ceasing fight against high temperatures that makes you forget otherwise well-nigh unbearable heat. And the prices this year are lower than ever.

Bargain No. 2 is an electric percolator that formerly sold as high as \$10.00, which now sells for \$3.95. Summer or winter, coffee is just the thing for breakfast and really fills an important place in our everyday diet. If your coffee is not just as you like it, order your "perc" today.



\$4.95 and Up Special \$3.95

TEXAS ELECTRIC SERVICE COMPANY