

THE WEEKLY CHRONICLE

Established Nov. 1, 1887

Entered as second-class matter at the postoffice at Eastland, Texas, under Act of March, 1879

Published Every Friday Office of Publication: 106 East Plummer Street. Phone 601

NOTICE TO THE PUBLIC

Any erroneous reflection upon the character, standing or reputation of any person, firm or corporation, which may appear in the columns of this paper, will be gladly corrected upon being brought to the attention of the publisher.

Obituaries, cards of thanks, notices of lodge meetings, etc., are charged for at the regular advertising rates, which will be furnished upon application.

Man Still Must Bow To Power of Nature

The drought in the northwest, coming as it does in a year when the rival parties are preparing once more to "do something for the farmer," is a timely little reminder that the old proverb is still true. Man proposes, but God disposes.

We can make plans, arrange finances, and erect protective walls until we are blue in the face, but in the end Nature has the last word. Whether the farmers of a given territory are to have a good or a bad year depends, in the last analysis, on mysterious forces which we cannot control and which we only begin to understand.

A great deal has been written about the extreme aridity of the last few years in the northwest. We have very properly been reminded that our use of our soil has been unwise and improvident, that we have removed our forest cover too fast, and that we have given erosion a helping hand by faulty methods of cultivation.

But the wind, as a writer in ancient Palestine remarked, bloweth where it listeth; and if it blows dry and hot, week after week and month after month, with never a rain cloud to ride on its crest the people underneath it are going to suffer, whether they have farmed their land wisely or foolishly.

And perhaps it is not altogether a bad thing for us to rediscover this old truth. It may take a little of the twentieth century cockiness out of us.

We have a habit of talking these days as if our destinies were entirely in our own hands. We see the millennium just over the skyline, and although we may differ violently about the way to get there, we are pretty well convinced that a way does exist and that we can find it if we just hunt hard enough.

We may be right. But underneath all his modern science and invention, man is fundamentally what he was in the days of Abraham; a lonely and rather helpless creature bent down beneath a high sky through whose blue emptiness his vision cannot pierce.

He takes what the world lets him take and no more; and now and then Nature smites him with a tornado, or shrugs her shoulders in an earthquake, or bakes and parches him with a long drought, to remind him of that little fact.

When such things happen, our modern civilization can pick up the pieces and repair the damage faster than the civilization of our forefathers.

But it can do no more than they could do to keep the damage from being done. Like them, we are here on sufferance.

Wild and Woolly Campaign For Governor Predicted By Writer

DALLAS.—If the estimated 10,000,000 Centennial visitors to Texas this summer wish to see natives quite as wild and woolly as Texas are reputed to be, they can take time to watch the campaign for governor.

The state's highest office (with a \$4,000-a-year salary) has received bids from five Democratic candidates. One of the five will be elected since Texas is a dyed-in-the-wool Democrat stronghold as far as state and local politics are concerned.

Tax reform will be the principal campaign issue, although personalities always stand out above platforms in Texas elections. The taxes considered with be those to pay old age assistance, the state's first attempt at large-scale social security legislation. The old age assistance law, estimated to be given 50,000 needy citizens past 65 years old, calls for an initial payment by July 1.

Orville S. Carpenter, director of old age assistance, estimated that \$20 a month will be the amount first given those who qualify. The money is to be contributed jointly by state and federal governments.

Revenues from liquor taxes at present is being diverted to pay old age pensions. Opponents of Gov. James V. Allred, the youthful incumbent who is seeking a second term, advocate other methods of payment.

Fred W. Fischer, Tyler oil man-

attorney, has been the most active campaigner thus far. His platform calls for a 15-cent a barrel oil tax and increased levies on other natural resources.

Many observers have named Fischer as the man Allred must beat for re-election. The Tyler man is vigorous, imposing and has been described as a possible successor to colorful "Farmer Jim" Ferguson, ex-governor, and director of two successful campaigns to elect his wife as governor of the largest state.

No state political campaign in 20 years has been without Ferguson. This year is no exception, and his support is expected to bring a large following to state Sen. Roy Sanderford, Belton, seeking election as governor on a platform asking a general 3 per cent sales tax.

How large the Ferguson-Sanderford following will be July 25 when Democrats hold their first primary, none can predict. Many believe Ferguson's "vest pocket vote"—some 200,000 farmers to whom Farmer Jim's word was gospel—has dwindled to a fraction of its former size.

Tom Hunter, fellow townsman of Allred at Wichita Falls, is a fourth major candidate. Hunter has been a paradox of Texas politics for six years. His three campaigns for the governorship have been unsuccessful, but his 1934 drive brought him into the party run-off.

Thus far Hunter's tactics have

POINTER ON '40 RACE



Already the 1940 presidential booms are echoing, despite reports President Roosevelt will seek a third term if re-elected next fall. Governors George H. Earle of Pennsylvania and James Curley of Massachusetts have been widely publicized as possible Roosevelt successors, but it is Jesse Jones of Texas, chairman of the R.F.C. (pictured at Philadelphia) who is pointed out by party leaders as best long-range bet for the candidacy.

been mainly to criticize the governor's Centennial-year traveling. He has dubbed Allred "Jaunty Jimmy." His opposition to the present administration of old age pensions also has been bitter. Hunter proposes a state tax on incomes of more than \$6,000 as a source of revenue to pay the pensions.

ernor seems to have maintained the support that twice elected him to the attorney general's office and once as governor. A forceful, active campaign, Allred's numerous appearances since his election as governor have given his views wide publicity.

'Commodore' Says He Saved People Billions of Dollars

HOUSTON, Tex. — "Commodore" B. M. Hatfield, 300-pound inland seaman and candidate for Governor of Texas, believes his preaching against soil erosion has saved America a "billion dollars."

"I don't know whether I'm nutty or not," boomed the ex-skipper of the Texas Steer—Fort Worth to St. Louis seow.

"I always took the broad Utopian view of things. Soil erosion is ruining the country—the top four inches of soil constitutes the nations wealth. If we retard the water as it runs off, we will save the soil," he said.

"I've probably saved the people a billion dollars by getting them interested in soil erosion," Hatfield said during a recent visit.

The picturesque "commodore" denied that he was no longer a candidate for governor.

"I couldn't raise the \$100 filing fee," he said, "but I'm still in the race if anybody wants to write my name in."

GIRL FARMERS PREFERRED

HAMILTON CITY, Cal.—Agricultural preparation seems to be

the best road to matrimony here. Out of nine girls who started in this year's high school agricultural class, four have married and one is engaged.

Vagatbles Grown On Arctic Fringe

WINNIPEG, Man.—Great Slave Lake settlers, living in mining villages on the fringe of the frigid Arctic, grow their own vegetables. Austin Cumming, government mining inspector, revealed during a visit here.

Cumming said the settlers managed to grow enough fresh vegetables in the few fertile areas around the lake to meet their own requirements, and sometimes even to export some to settlements further north. The "farming season" begins in June and extends into August.

America Seen Buying More Precious Stones

NEW YORK.—More precious stones are being bought in America, reports K. Ikeda, Japanese industrialist affiliated with the Far Eastern pearl trade.

Ikeda is on a world tour. He found that in many countries precious stones are exclusively the property of the wealthy. That situation does not exist in the United States, he says.

LOOK YOUR BEST

improve your skin. Relieve the irritation of pimples and blotches with soothing, scientifically medicated Resinol

Modern Gas Cookery RETAINS HEALTHFUL VITAMINS AND MINERAL OILS. Illustration of a man and woman at a table with a gas stove.

5-step instructions for modern gas cookery: 1. Cooking vegetables... 2. Place vegetables in pan... 3. Place covered pan over simmer burner... 4. After cooking is completed... 5. Gas simmer cookery is clean and labor saving.

Community Natural Gas Co. Lone Star Gas System. Tune In... WFAA... Tuesday Mornings... 10:45

Colorful New Interiors NOW BEAUTIFY THE FORD V-8. Advertisement for Ford V-8 cars featuring interior details and exterior views.

Rolling the same "makin's" brand for 20 years! E. C. CRESSON has favored Prince Albert for 20 years. OUR OFFER: Roll yourself 30 swell cigarettes from Prince Albert.

FORT WORTH FRONTIER CENTENNIAL. WILD and WHOOP-pee NOW OPEN. TRIP TO FORT WORTH FREE and HOW to GET IT. COME to FORT WORTH for ENTERTAINMENT Go Elsewhere for Education.

CHEANEY

W. F. Barton, wife and son, was at Cheaney Saturday evening. Mrs. Flora Blackwell is able to be around again after a 2 weeks sickness.

ALAMEDA

The farmers have their crops about laid by and are needing rain. There was a large crowd at the picnic near the Mansker lake Saturday.

LEGAL RECORDS

Marriage Licenses Issued: Morris Williams and Lucille Naron, Rising Star. Roy Mercer and Ila Stewart, Rising Star.

LEGAL RECORDS

Marriage Licenses Issued: Morris Williams and Lucille Naron, Rising Star. Roy Mercer and Ila Stewart, Rising Star.

Two Licenses For One Couple Puzzle

MARSILLON, O.—Two marriage licenses were issued to one couple here, but officials were a little uncertain why, although the couple explained the licenses were to be used in two different counties.

Lions Ready For Club's Ball Game

The Lions Club announced Thursday that its members are ready to play the Rotarians in a softball game, the challenge for which was issued by the former team recently.

Three Families In Eastland Buy Homes

Mr. and Mrs. L. R. Barnsides and Mr. and Mrs. Frank T. Crossell have purchased homes on North Amerman Street.

PLANES DISRPUT MOVIES

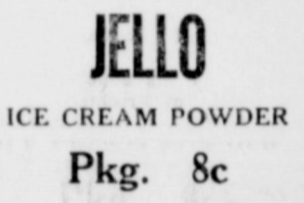
LONDON.—Because the noise of planes frequently holds up production in moving picture studios around London, it has been decided to fit all studios with special soundproof roofs.

Second-hand Lumber and Sheet Iron For Sale at Bargain Prices. Unlimited supply—Location, Prairie Tank Farm Adjoining Ranger Airport.

Libby's Pineapple Juice 3 Cans 25c. Quachita Ginger Ale 24 oz. Bottle 10c Plus Deposit.



Pipkin's Special COFFEE 3 Lbs. 50c. PICKLES Dill or Sour Qt. Jar 15c. JELLO ICE CREAM POWDER Pkg. 8c.



FRESH PRUNES No. 10. Cans 29c. Fruits - Vegetables: Lemons Doz. 27c, Tomatoes Lb. 5c, Peas Lb. 3c.

Deer Brand Green Beans No. 2 Cans 25c. White Swan Luncheon Peas No. 2 Cans 19c. Corn 2 No. 2 Cans 19c.

California Oranges Full of Juice Doz. 23c. New Crop Gravenstine Apples Doz. 29c.

P & G Soap 6 For 25c. Hy Pro For Bleaching and Cleaning 17c. Texas King Flour 24 Lbs. 84c, 48 Lbs. \$1.59.

MARKET SPECIALS: BABY BEEF LOIN or T-BONE STEAKS 25c, BOLOGNA LB. 15c.

MARKET SPECIALS: BACON LB. 20c, SEVEN ROAST LB. 18c, Full Cream CHEESE Lb. 25c.

PIPKIN BROS. Piggly Wiggly logo.

GRANDVIEW

We have been having somewhat dry weather, and everyone would appreciate a good rain. Mr. and Mrs. A. D. Lewis and family of Rule have been visiting her parents, Mr. and Mrs. C. M. Prestidge.

SAND NEWS

This community is very much in need of a rain, even though the tanks still contain quite a bit of water. The ground is dry and the weather hot.

FLATWOOD

J. B. Caudle and family have gone to Granbury to visit his mother. Mrs. Kenneth Garrett and sons and Mrs. Cyrus Lyerla were Kokona visitors Wednesday afternoon.

General Coxy May Join With Circus

MARSILLON, O.—Jacob S. Coxy, the "general" who led a march of the unemployed on Washington 42 years ago, is thinking about joining the circus as a headline attraction.

LEGAL RECORDS

Marriage Licenses Issued: Morris Williams and Lucille Naron, Rising Star. Roy Mercer and Ila Stewart, Rising Star.

U. S. Retrieves a Boat from Reservoir

BOULDER CITY, Nev.—The Arabesque, a power boat sunk in 40 feet of water in Lake Mead, impounded by Boulder Dam, was recovered recently by Albert Straub, federal life guard, with a diving outfit improvised from a tin bucket and some siphon hose.

SAVE - SAVE Saturday At Penney's

Cretonne 10c, Cotton Batts 39c, Bleached Sheets 69c, RAYON PANTIES 19c, Unsleached Sheeting 6 1/2c ya., Silk Hosiery 49c, Scrim 10c.

A&P logo. Sultana Peanut Butter. 1 Lb. 15c, 2 Lbs. 25c.

Popeye Spinach, No. 2 2 Cans 29c. Encore Spaghetti, 16 oz. 3 Cans 20c. Rajah Salad Dressing, Qts. 29c. Skinner's Raisin Bran, 2 Pkgs. 25c. Del Monte Sliced Pineapple, 2 Cans 35c.

Another Heinz Special Week. BEANS, 12 oz. 3 cans 23c, BEANS, 18 oz. 10c, CIDER VINEGAR pints 10c, CIDER VINEGAR qts. 18c, Prepared Spaghetti 1 1/2 qt. 3 cans 23c, CUCUMBER PICKLES 21c.

For Energy! LARGE WHITE 16 oz. 7¢. A&P BREAD logo.

Fresh FRUITS and VEGETABLES. Idaho Red Potatoes, 5 Lbs. 21c, Carrots, 2 Bunches 9c, Tomatoes, Lb. 5c, Oranges, Med. Size, Doz. 25c.

Nectar TEA 17c, White House MILK 19c. 1/2 Lb. 29c, 3 lge. cans 19c.

Distilled Vinegar, Gal. 19c. See Our Prices On Flour - Sugar - Compound

Quality Market Specials. Salt Bacon, No. 1 Lb. 20c, Smoke Bacon, Squares Lb. 24c, Baby Beef Seven Roast lb. 18c, Loin or T-Bone Steak Lb. 25c, Decker's Tall Korn Bacon Lb. 31c, Large Bologna Lb. 15c.

A&P MARKET OWNED AND OPERATED BY ZED KILBORN. WATCH OUR WINDOWS For ADDED SPECIALS.

First Aid for Constipation. Nyal Mineral Oil. A non-habit forming relief for constipation and irregular movements. Pure, tasteless and odorless. Full Pint 59c.

Nyal Mineral Oil. A non-habit forming relief for constipation and irregular movements. Pure, tasteless and odorless. Full Pint 59c.

Hammer Undertaking Co. Phones 17 and 564 DAY OR NIGHT AMBULANCE SERVICE.

Printed Sheer WASH FROCKS Smart New Styles! 3 for \$1. Fast colors! Easy to launder! Short sleeves or sleeveless styles. Trimmed with organdy ruffles and contrasting bindings. Sizes 14 to 44.

PENNEY'S I. C. PENNEY COMPANY, Incorporated

Social Insurance Becomes Reality

SAN ANTONIO, Texas, July 21—For the first time in America a governmental system of old age

retirement annuities (for other than governmental employees) began to function July 13 in the payment of annuities, when the United States Treasury, on certification of the railroad retirement board, placed the first check for 18 recipients of such annuities in the mail, according to a communication just received by the regional

office of the social security board from Oscar M. Powell, who is now in Washington attending a conference of all regional directors.

Murray W. Latimer, chairman of the railroad retirement board, and director of the bureau of old-age benefits, social security board, told the regional director that these checks to retired railroad workers represent the first of a series of monthly payments to which, under the railroad retirement act, the recipients will be entitled as long as they live. Some 4,000 railroad workers are immediately eligible for such annuities; more than 20,000 other railroad workers have made application for these annuities. The railroad retirement board, according to Mr. Powell, is proceeding at top speed to secure the data necessary to certify to the United States Treasury annuity payments for all railroad workers who are eligible.

Of the first 18 annuities certified to the United States Treasury by the railroad retirement board, Mr. Latimer said the largest was \$91.04 per month, and the smallest was \$13.55—the others ranging from \$49 to \$70 per month. The largest, \$91.04, goes to Thomas Biddle Strain, 510 West Locust street, Johnson City, Tennessee. Mr. Strain, who recently celebrated his 73rd birthday, has worked on the railroads of America for 54 years. He was retired from employment on the East Tennessee and Western North Carolina railroad on May 31 of this year. One of the 18 was Mrs. Cora Miranda Jones, who retired in April of this year from her position as station agent of the Wichita Northwestern railway at Iuka, Kansas.

Mr. Powell said Mr. Latimer pointed out that "The payments which are being made today have great historical significance, not only to railroad workers but to workers of all sorts in America, because they forecast what is in store for 26,000,000 to 30,000,000 American working men and women for whom similar annuities begin to accrue on January 1, 1937, under the Social Security Act." "At that time," said Mr. Powell, "all employees in Texas, Louisiana, and New Mexico, as well as those in all other states, Alaska and Hawaii, except those groups in service excluded from terms of the Social Security Act, will begin to accrue annuities which will be paid to them each month as long as they live after they reach the age of 65."

Mr. Powell, who left San Antonio on July 14, will return to his headquarters here by way of New Orleans and Houston, following adjournment of the regional directors conference.

Connellee - 11 P. M. Saturday Night



All bedecked in the finery of King Arthur's court you see WILL ROGERS in the Fox picture, "A Connecticut Yankee". MYRNA LOY plays the principal featured role in the picturization of Mark Twain's romantic comedy.

ALL OUT
Close-Out
Sale

OF MEN'S SUITS

We are discontinuing our Men's Suit Department

Values to \$24.50

\$9.90 TWO Pair Pants

\$7.95 ONE Pair Pants

Startling Close-out reductions like these are our way of saying "Opportunity" in a loud and emphatic voice! You'll save tremendously, as indicated above, by attending this big clearance disposal! Be down bright and early, and choose carefully from many patterns, colors, styles.

Burr's
EASTLAND'S PROGRESSIVE DEPT. STORE

Air Conditioning Of Western Trains Changes Fashions

CHICAGO, July 21.—"Something old, something dark," used to be the standard prescription for travel clothes—and it always induced "something blue" in the traveler's mood. For when a girl is spending a good part of her vacation aboard a train and has to keep her bright new wardrobe packed in her suitcase, it's not much fun!

Today, she leaves the old dark things behind, and when she boards the train she looks like a holiday and not like a funeral. While this fashion business may mean nothing to the engineering fraternity, they are the fathers of the new travel style, since they developed air-conditioning.

Clean, washed air and sealed windows that keep out dust and soot mean that a white glove can stay white from Chicago to California. Regulated temperature means that crisp cottons and summery fabrics won't curl up and wilt. The result? A revolution in travel fashions.

The vacation crowds now rolling to mountains, woods and lakes on the western railroads give the impression of a summer resort on wheels. Bright flower prints, cool dark chiffrons, summer suits in the new fabrics which combine enough linen for body and enough "synthetics" to keep them from wrinkling, are especially popular. The smartest summer suits in all-white, maize or pale pastels are frequently accented by bindings, lacings or buttons of brown, wine or marine blue.

Fashion decrees brilliant color and soft, feminine frills for this summer, and fortunately, the advance of air-conditioning makes it possible for the traveler to follow the decrees. This not only makes for better dressed traveling but for more comfortable traveling. Luggage is lightened because the passenger does not need one wardrobe for the train and another for the destination. Cool, informal clothes increase the pleasure of the trip. And at the end of a train ride, you don't have a bundle of grimy clothes to dash to the cleaner.

Even the men are getting heady under the influence of brighter train rides. On the western holiday trains, many of the masculine passengers are blossoming into lighter summer suits, Panamas and light colored shoes, because even a white linen suit can whiz through a dust storm unscathed in an air-conditioned car.

Johnson's Team Wins Extended Game Wednesday

Two extra periods in what was scheduled as a nine-inning game resulted in the defeat of Baptist soft ball team by Carl Johnson, 9 to 8, at Eastland Fire Department field Wednesday night.

Eastland Chief To Attend Course

W. J. Peters, Eastland police chief, will attend the annual officers' short course at College Station Monday through Thursday. Ed Sparr will be added to the Eastland force during Peters' absence.

202
WILD and WHOOP-pee!

Out Where the Fun Begins

FRONTIER
Centennial

Billy Rose
Director General

CASA MANANA, Largest Cafe-Theatre on Earth... Billy Rose's JUMBO, Direct from New York Hippodrome... THE LAST FRONTIER, A Vivid Virgil, Visual Saga of the old West... Billy Rose's NUDE RANCH... PIONEER PALACE... and 95 others.

NOW OPEN **100 SHOWS**

GENERAL ELECTRIC REFRIGERATOR

LET A G-E THRIFT UNIT REFRIGERATOR SAVE YOU MONEY THIS SUMMER

YOU'LL ALWAYS BE GLAD YOU BOUGHT A G-E

terms
AS LOW AS
\$5.00
Down
Only \$5.00
Per Month

YOU'LL SAVE MORE MONEY this summer with a General Electric Refrigerator in your kitchen. You can prove it yourself in ten days. The famous G-E sealed-in-steel Thrift Unit—in both Flatop and Monitor Top models—now produces double the cold with even less current than ever before.

Harper's Music and Battery Co.
West Main Street Eastland

Supplies of Gold Are Squared With Needs of World

WASHINGTON.—The movement for consideration of a restored gold standard has received additional impetus with publication of a Brookings Institute study of the adequacy of gold supply.

The report, written by Dr. Charles O. Hardy, held that no existing or prospective deficiency in the world gold supply stands in the way of restoration of an international gold standard, whenever such a step is considered advantageous.

On the contrary, Hardy held that the chief dangers are an excessive supply of the metal. From this arises the problem of preventing undue credit expansion without stepping up gold reserve requirements to a level where proportionately increased increments of gold will be needed to take care of future growth.

Inadequacy of gold supply was not a factor contributing to the decline of prices before 1924 and 1929, Hardy held, and there was no immediate prospect of a serious drop in gold production before the depression.

Two high officials of the Federal Reserve System—Dr. E. A. Goldenweiser, chief economist, and Adolph C. Miller, former governor and special member—recently made speeches heralding such a return in modified form.

Secretary Henry Morgenthau, Jr., of the treasury, has said that the United States will co-operate in such a movement as soon as the rest of the world is ready. Treasury officials have said they believe that the world is economically ready because the balance of international payments has attained a relative stability, but that unsettled conditions abroad—aided immeasurably by war fears—are holding back any concerted efforts.

Hardy's book said that although the gold delegation of the League of Nations in 1929 forecast production of \$2,749,000,000 of gold in 1931-1934, inclusive, actual production amounted to 3,485,000,000 (both figures in present dollars of reduced gold equivalence).

Candidate



George B. Terrell of Cherokee County, here Wednesday in the interest of his candidacy for commissioner of agriculture.

Johnson's Team Wins Extended Game Wednesday

Two extra periods in what was scheduled as a nine-inning game resulted in the defeat of Baptist soft ball team by Carl Johnson, 9 to 8, at Eastland Fire Department field Wednesday night.

The score was tied 8 to 8 in the ninth and Johnson's men got the extra run in the eleventh.

202
WILD and WHOOP-pee!

Out Where the Fun Begins

FRONTIER
Centennial

Billy Rose
Director General

CASA MANANA, Largest Cafe-Theatre on Earth... Billy Rose's JUMBO, Direct from New York Hippodrome... THE LAST FRONTIER, A Vivid Virgil, Visual Saga of the old West... Billy Rose's NUDE RANCH... PIONEER PALACE... and 95 others.

NOW OPEN **100 SHOWS**

YOUR HOME IS YOUR CASTLE

There is nothing quite so satisfying as the thought that the house you live in is not for sale. You don't have to worry about the constant fear of the landlord dropping in to advise that he has sold the house and must have possession at once. Moving from place to place is not only expensive but inconvenient for most people. Others are getting the bargains and the best buys. The longer the delay in buying the less the chance of getting what you want. Time is slipping by, so are the best bargains and the choice locations. **BUY NOW!**

Standard Savings & Loan Association
EARL BENDER & COMPANY
Local Representative—Phone 15

Pounds Issues a Statement to the Voters of Precinct

W. G. Pounds, candidate for county commissioner from Precinct 1, has issued the following statement to the voters of the precinct:

To the Voters of Precinct 1, Eastland county:

In making my announcement for commissioner of Precinct 1, I promised to make a statement later on in the campaign. I have not made you any rash promises as to what I would do if elected, but have promised to do the very best that I can with the funds available, and not to show any favors to a special few.

I believe that your commissioner should at all times see that each locality gets its pro rata of work and that the funds should be as evenly distributed as possible.

I have at all times advocated a balanced budget where possible to do so.

I believe in a living wage for the working man and will go on record to attain this end, when given an opportunity to vote on same.

I wish to express my regrets not being able to attend the meetings in this precinct, on account of having no way to go all don't think it advisable to go in my home town after having missed other dates.

I also wish to thank the people of this precinct for counting shown me in this campaign. I hope you will see fit to give a vote next Saturday, July 25.

—W. G. Pounds, Candidate for Commissioner, Precinct 1, Eastland County.

TRY Our Want-Ads

"To insure SAFETY, COMFORT and ON-TIME SCHEDULES for our 30,000,000 PASSENGERS, Firestone GUM-DIPPED TIRES are used on Greyhound Buses"

FOLLOW the lead of big tire users who buy only on proof of performance.

Last year Greyhound buses traveled 138,000,000 miles from Coast to Coast and from Canada to the Gulf across deserts and over winding mountain roads.

They have won the National Safety Council's highest award in inter-city bus operation for the past four years. This is indeed a tribute to careful driving, efficient equipment and the reserve safety of Firestone Tires made possible by the Firestone Patented Process of Gum-Dipping which prevents internal friction and heat.

Firestone Gum-Dipped Tires run up to 28° cooler and give greatest blowout protection—the scientifically designed non-skid tread will stop your car up to 25% quicker and give you 50% longer non-skid mileage.

Take no chances! Buy your tires on proof of performance. Let us equip your car today with Firestone Gum-Dipped Tires, the Masterpiece of Tire Construction!

Visit the Firestone Exhibits at the Great Lakes Exposition in Cleveland and the Texas Centennial in Dallas.

FOR 25% LONGER TIRE MILEAGE EQUIP YOUR CAR WITH Firestone SEALTYTE TUBES

A special compound on inside of tube seals the inner surface against leakage. By maintaining a constant air pressure, Firestone SealTYTE Tubes will increase your tire mileage 25%.

SIZE	PRICE
4.50-21	\$8.60
4.75-19	9.10
5.25-18	10.85
5.50-17	11.90
6.00-17H.D.	15.90
FOR TRUCKS	
6.00-20	18.85
30x5 Truck Type	18.75
32x6 H. D.	40.25

Other Sizes Priced Proportionately Low.

Firestone BATTERIES Greater starting power. Exchange \$6.25

SPARK PLUGS Firestone 58° spark plugs. Each give longer life. Sets spark, longer mileage.

AUTO SUPPLIES KOOL KOOLINGS \$2.59, FLOOR MATS \$1.49, SEAT COVERS \$1.79, HOUSE FANS \$1.29, MATCHED TWIN TRUMPET \$6.25

SEAT COVERS 79¢ COUPES, \$1.69, \$1.69

INSECT SCREEN 69¢, **SUN GLASSES** 10¢ UP

BRAKE LINING Firestone brake lining gives positive brake control. \$3.30 PER SET UP Labor Extra

AUTO RADIOS Firestone Stewart Warner six tube radio gives eight tube performance. \$37.95

OVER 2,000 AUTO SUPPLY NEEDS AT MONEY SAVING PRICES

Listen to the Voice of Firestone—featuring Margaret Speaks, Soprano, with the Firestone Choral Symphony, and William Daly's Orchestra—every Monday night over N.B.C. Nationalwide Network.

GUY PATTERSON TIRE SERVICE
MAIN AND SEAMAN
PHONE 80

THE FASHION URGES YOU TO ATTEND IT'S GIGANTIC VALUE DEMONSTRATION IN OUR MID-SUMMER



BIG Final

CLEARANCE



SALE NOW ON

GLOVES
Wash and Kid
\$1.00 to \$3.95 Values
ONE-HALF PRICE
Limit 2 to Customer

SALE

PURSES
ALL WHITE AND PASTEL
BAGS
ONE-HALF PRICE!

SALE NOW ON

SUPER SALE!
PRICES THAT SAY
BUY NOW!

ONE GROUP SILK AND LACE
DRESSES **\$1**
EXTRA SPECIAL, CHOICE

WASH FROCKS **\$1**
EVERY REGULAR \$1.95 VALUE
Nelly Don, Marcy Lee and La Grace
Limit 2 to Customer

FINAL CLEARANCE
ALL SUMMER
MERCHANDISE
at **COST** or **LESS!**

FOUR GROUPS

Spectacular Reductions
DRESSES
That You Can Wear Thru
July, August and September

- LeVine
- Snyder Knit Suits
- Madame Rinauld
- Marjorie
- Montgomery
- Reich
- Franklin
- And Nelly Don

None Reserved
None Higher

Values from \$7.95 to \$29.50

FOUR PRICES

\$3.33
\$5.55
\$7.77
and
\$9.99

This Sale Is One That We Can Truthfully Say
Will Give You the Best Values You Will Find
Anywhere!

No Refunds—No Exchanges—No Approvals—All Sales Final

CLEARANCE SALE
—OF—
HATS
38c 68c 99c

ALL BETTER HATS
Were \$4.98 and \$6.98
\$1.98

DOBBS AND CHALFONTE
ONE-HALF PRICE!

Final Clearance
of **ALL SUMMER SHOES**

DRASTIC PRICE REDUCTIONS
ON EVERY PAIR IN STOCK!

ONE LOT
200 PAIR
SANDALS
To Clear Out
89c

NATURAL BRIDGE
Regular \$6.00 Value
\$3.89

ALL WHITE SHOES
All Styles, Up to \$4.95 Value
Broken \$2.49
Sizes **2**
One Lot **SANDALS**
Up to \$2.95 Values
\$1.49

No Refunds... No Exchanges... All Sales Final!

MARVELOUS SAVINGS



PURE LINEN SUITS
Pilot Brand
Values to \$5.95
\$1.98
and
\$2.98
Tans, Browns, Whites

Your Last Chance
AT THESE
BARGAINS

PHENOMENAL VALUES

ONE GROUP WASH DRESSES
Values to \$3.95
CHOICE
\$1.98



THE FASHION

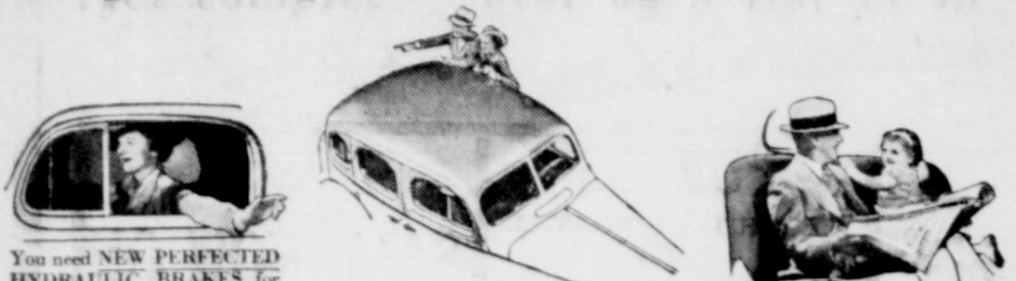
NORTH SIDE SQUARE

EASTLAND

You need all these modern features



to get complete motoring satisfaction

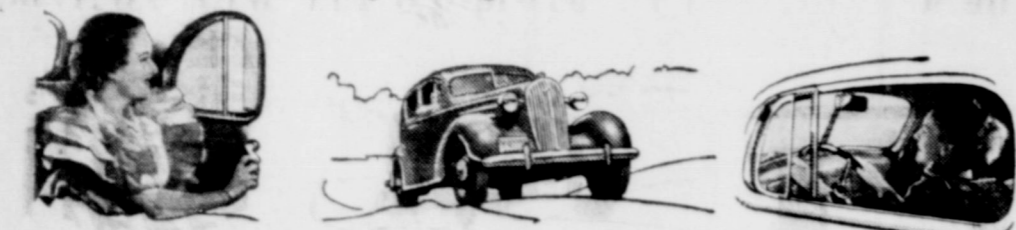


You need NEW PERFECTED HYDRAULIC BRAKES for your own safety and the safety of others...

You need a SOLID STEEL one-piece TURRET TOP for complete overhead protection...

You need KNEE-ACTION WHEELS for maximum safety as well as maximum riding comfort...

Chevrolet is the only low-priced car that has them all



You need GENUINE FISHER NO DRAFT VENTILATION for correct air conditioning in all weather...

You need a HIGH-COMPRESSION VALVE-IN-HEAD ENGINE for the finest combination of performance and economy...

You need SHOCKPROOF STEERING for real driving ease on those long trips you are planning this summer...

\$495 AND UP. List price of New Standard Coupe at Flint, Michigan. With bumpers, spare tire and tire lock, the list price is \$20 additional.

FOR ECONOMIC TRANSPORTATION A GENERAL MOTOR CHEVROLET

The only complete low-priced cars

CHEVROLET

Keep Cool... Chevrolet's Exhibit at the Texas Centennial Only Air-Conditioned Building on Grounds

HARVEY CHEVROLET CO.



USE THE RAILROAD

Enjoy

AIR-CONDITIONING

Sample Low Fares

Now you can travel anywhere by train—in safety and comfort—and

Table with columns: From Eastland, To, Round Trips, Coach, Pullman. Lists fares to Chicago, Dallas, Denver, Ft. Worth, Los Angeles, Mexico City, Minneapolis, New Orleans, St. Louis, St. Paul, San Francisco, Portland, Seattle.

There's no travel-weariness when you ride in a cool, clean, healthful air-conditioned car. It's the newest thrill in traveling, and costs nothing extra.

Air-conditioning controls temperature and humidity inside the car to ideal degree, regardless of thunder storms, dust, high winds or sultry summer heat.

Save money—fares lowest in history—substantial reductions on round trip tickets—new coach comforts, world's finest sleeping cars and service, economy meals, faster schedules, dependability, safety.

Shippers: Use new Free pick-up-and-delivery of LCL freight.

Proud of our achievements, we appreciate the public's good will and increased patronage, and pledge continued progress

WESTERN RAILROADS AND THE PULLMAN COMPANY

WPA Projects Are Now Operating Under Slightly Revised Regulations

ABILENE, Tex.—With the adjustments brought about by the close of the fiscal year ending June 30 completed, Works Progress Administration projects in District No. 13 are operating under slightly altered regulations for the new year.

Under the new wage scale which was originated in the State Works Progress office, San Antonio, and based on prevailing wage rates in the various communities, workers will work fewer hours but will receive the same monthly wage as formerly paid them.

Reduced hours of the new schedule will result in the consolidation of many projects in order to properly maintain remaining ones. In most instances, it is planned to work two shifts in order to carry work and supervision uniformly.

With prospects for a bumper crop, a heavy seasonal decline in workers is anticipated, which may cause shut-downs as cotton picking nears.

Under a recent ruling, relief owner and operated trucks will receive as much per hour for truck and driver as is paid non-relief trucks and drivers.

Brazil Cotton Creates Riches

MEMPHIS, Tenn.—Brazil, where cotton plants grow taller than men, today potentially is capable of raising annually enough cotton to supply the world's needs, in the opinion of Dr. R. D. Daffin, Presbyterian minister, who spent 30 years as a missionary in the South African country.

Dr. Daffin pointed out, however that although such production was possible, North American growers need have little fear of such an eventuality for at least 40 years. At present, he said, lack of agri-

CLASSIFIED ADS

SACRIFICING 20,000 papershell budded pecan trees to pay debts. Free peach trees with pecan trees, to unload. No better trees. Best bank references. Request prices. Bargain Nursery, Box 922, Abilene, Texas.

Political Announcements

The Weekly Chronicle is authorized to announce the following candidates for office, subject to the Democratic Primary Election July 25, 1936.

For Judge 91st Judicial District: GEORGE L. DAVENPORT

For Judge 88th District Court: BURETTE W. PATTERSON

For Criminal District Attorney: EARL CONNER, JR. GRADY OWEN

Floterial Representative, 107th District (Eastland and Callahan Counties): T. S. (Tip) ROSS E. M. (Ed) CUREY CECIL A. LOTIEF

Representative, 106th District: ED T. COX GEORGE A. DAVISSON JR. (Re-election)

For District Clerk: P. L. CROSSLEY

For County Judge: T. L. COOPER W. S. ADAMSON W. D. R. OWEN

For Sheriff: STEELE HILL LOSS WOODS A. D. CARROLL G. W. (DICK) RUST A. D. (RED) McFARLANE J. W. (Jess) NOBLE

Tax Assessor and Collector: C. H. O'BRIEN CLYDE S. KARKALITS

For County Clerk: TURNER COLLIE R. L. (Bob) DAVENPORT R. V. (Rip) GALLOWAY

Commissioner Precinct 1: H. V. DAVENPORT (Re-election) W. G. POUNDS

cultural tools and machinery and a general ignorance of efficient farming methods was holding down production.

"There has been traditional friendship between Brazil and the United States," he declared. "I don't think we need to begrudge them the cotton they are growing. It will be a long time before they have enough gins and plows."

The Brazilian government is encouraging the growth of cotton because it needs exchange, Dr. Daffin said. Cotton offers South American growers a second "money crop" to augment coffee and rubber production. Brazil's coffee production already is far higher than world consumption requires.

"With cotton worth 5 or 6 cents a pound to them in American money, the peons, tenant farmers and large plantation owners are rolling in money," Dr. Daffin said. "Due to the drop in the exchange rate, their cotton actually is bringing them more money than ever before."

"WHITE COLLAR" MINER

OHIO, Cal.—E. E. D. Snell, 78, claims to be the only "white collar" gold miner in the business. Aside from having lost an Alaska gold fortune that forced him to return to mining, DeSnell now refuses to divest himself of a white collar as he puns for gold in the Butte Creek canyon near here.

Bloodhounds Are Sensitive but Not Vicious Hunters

ANGOLA, La.—Bloodhounds, says Capt. Fred C. Ball, have to be trained like children. Most people think the dogs are natural-born manhunters, but the fact is less than half of them ever can be taught to follow a trail.

The secret of a good bloodhound is the shape of its nose, if long and narrow, the dog's scent nerve is unusually sensitive, explains Ball. And for all their persistence on the hunt, they are not vicious and seldom attack their prey.

"The best dogs will get a man cornered, then stand off and bay him," declares Ball.

Ball is trainer and handler of dogs at the state prison farm here. Convict trustees, called "dog sergeants," are detailed to help him. The dogs and their handlers are continually in demand throughout the state for trailing murderers, robbers and jail-breakers.

When convicts escape from the prison farm into the surrounding Tanica hills, the dogs are indispensable. For the hunt, they are usually chained in pairs, with their handlers following on horseback, for if the trail is "hot," the dogs set a fast pace, with their noses skimming the ground and their long ears flopping to their patters.

Bloodhounds have been Ball's lifelong interest. Nothing is sweeter music, he says, than the sound of a dog as he hits a trail and races 10 to 12 miles an hour at full bay.

The perfect trail is one left just after a rain, and the worst is one made just before a rain. But a real dog will not be stopped. He needs only the faintest scent of a man's footprint.

"You really should be able to let the dogs smell a piece of clothing of the man being hunted, or the bed he has slept in, or even a cash register he has robbed," Capt. Ball said. "But even that isn't necessary for a good bloodhound. He can strike a trail from footprint."

The captain started training dogs in his boyhood. His uncle, Ben Ball, had the most famous track in the Ozark Mountains years ago. Once he trailed the James boys. Uncle Ben gave the nephew a pup and told him how to train it. The boy started by hiding behind trees and letting the pup find him. The trails must be easy at first, or the dog gets discouraged.

"Red" a lean dog with a long nose and burnished red coat, is Ball's present favorite, "the smartest of the Angola pack," he calls him.

... CC NG

... CC NG

... CC NG

... CC NG

... CC NG

... CC NG

... CC NG

... CC NG

... CC NG

... CC NG

... CC NG

... CC NG

... CC NG

... CC NG

... CC NG

... CC NG

... CC NG

... CC NG

... CC NG



A BIG BUY

QUALITY TIRE BARGAINS! that mean a real saving for every motorist

To you thrifty tire buyers who have waited to obtain the most tire for the very least money, here is your chance to make a big buy. In order to stay in business, we've got to sell tires. But more than that, we know that we've got to sell good tires. To attract the thrifty tire buyers of this town to our store we have bought direct from the Seiberling Factory, a big, fresh stock of better quality Seiberling tires. Then, we have priced them at frankly just pennies of profit. If it takes tire values to bring you in, here they are.

Table with columns: PORTAGE TYPE, Tire Size, Price. Lists various tire sizes and their corresponding prices.

JIM HORTON TIRE SERVICE

East Main Street Eastland

A Fan is Cheap Insurance Against Hot Days and Nights



The cheapness of electric service is never better illustrated than the cost of running an electric fan, for 1/4 cent an hour is all it costs on your low electric rate. Let it run all night in hot weather, and you've used only two cents worth of electricity! See the new fans displayed at our store, or at your electrical dealer's. You can pay for a fan on convenient monthly terms.

ELECTRICITY IS YOUR BIGGEST BARGAIN See Your Electrical Dealer or TEXAS ELECTRIC SERVICE COMPANY J. E. LEWIS, Manager



SEIBERLING TIRES

COOLED TRAINS OF WEST BRING MILADY'S TRAVELROBE



Engineering brethren who are fathers of a revolution in air-conditioning are giving the impression of a fashionable summer resort on wheels. Bright flowered prints, cool dark chiffons and summer suits in the newest fabrics are exceptionally popular.

Clean, washed air and sealed windows that keep out dust and soot mean that a white glove can stay white from Chicago to California. Regulated temperature means that crisp cottons and summery fabrics won't curl up and wilt. The result? A revolution in travel fashions.

The vacation crowds this year, riding over the rails to mountains, woods and lakes throughout the West, give the impression of a fashionable summer resort on wheels. Bright flowered prints, cool dark chiffons and summer suits in the newest fabrics are exceptionally popular.

Clean, washed air and sealed windows that keep out dust and soot mean that a white glove can stay white from Chicago to California. Regulated temperature means that crisp cottons and summery fabrics won't curl up and wilt. The result? A revolution in travel fashions.

Connellee Thursday



Karen Morley, Gene Morgan and Richard Dix in "Devil's Squadron"—A Columbia Picture

To Teach Class



Judge J. E. Hickman, member of the commission of appeals, assisting body of the Supreme Court of Texas at Austin, will resume his role of teacher of the undenominational Men's 9:49 Bible class at the Methodist church in Eastland Sunday morning. Mr. and Mrs. Hickman are former residents of Eastland, where he was chief justice of the Eleventh Court of Civil Appeals, will vote Saturday.

Breck, San Saba Teams Will Play In Eastland Field

Hanon soft ball team of Breckenridge and San Saba All-Stars, both reported as undefeated, will meet at Eastland Tuesday night at the Fire Department Field in Eastland. The San Saba team is reported to have won all games the last two years.

Another game between Eastland teams is being arranged.

Roberson Buys A Business Site

According to records in the county clerk's office Frank D. Roberson has purchased the business location at the corner of Main and Walnut. Situated on the Bankhead highway and near the business section, the location is considered ideal for the type of business in which the owner is engaged. Mr. Roberson has one of the largest automobile repair shops in the city and also deals extensively in farm machinery.

Laurent's Group To Meet Abilene Saturday Evening

Joe Laurent's All-Star team will meet a selected Abilene team Saturday night at 8:30 on the Fire Department Field in Eastland. Election returns will be broadcast through a loud speaker during the game. It was stated.

Eastland Girls Will Play Fast North Tex. Team

Burr's Burrettes, Eastland girls' team which started from scratch this season, will participate in "big time" softball play the second time this year when it meets the Wichita Falls Northwestern Rookies.

feminine group favored to win the state championship, at Eastland Wednesday night.

The Burrettes were defeated 7 to 4 at Wichita Falls recently.

Eastland Grist Mill Planned

R. E. Head of Brownwood has closed a deal whereby he becomes

the owner of a home at 1011 West Main street.

Head intends to move to Eastland as soon as he can get possession of the property about the first of August.

He announced that he was in the

grist mill business and intended to give Eastland a mill second to none in this entire section. Earl Bender & Co., Eastland realtors, handled the real estate transaction.

Try Our Want-Ads!

GUS GULFSPRAY



Gulfspray knocks 'em dead—doesn't just stun 'em. Flies, moths, mosquitoes and gnats never wiggle again after Gulfspray hits them. Will not stain. It has a mild, pleasant odor. 49c a pint at neighborhood and department stores or Good Gulf dealers.

GULFSPRAY
INSECT KILLER

As Is the Usual Custom This Bank Will Be Closed

SATURDAY, JULY 25TH
Account ELECTION DAY



EASTLAND NATIONAL BANK



CONGRESSMAN THOMAS L. BLANTON

From Dr. C. C. Coleman, then pastor of the First Baptist Church, of Abilene, but later of the First Baptist Church, of San Antonio, Texas:

Abilene, Texas, January 16, 1911.

JUDGE THOMAS L. BLANTON, Abilene, Texas.

DEAR SIR AND BROTHER: I wish to say that your course on the bench has given me a world of fresh hope for our institutions. You have demonstrated that a fearless, patriotic judge can do wonders in spite of cumbersome precedents and methods of procedure and a prevailing laxity of public opinion. I have often thanked God that we have you on this bench. I have lived in sections of the State where the judge had a very different spirit from yours, and all who stood for law and order keenly felt the difference. Wishing you increasing influence and usefulness.

Heartily yours,

C. C. COLEMAN.

BAPTIST MAGAZINE

[From the Western Evangel, Abilene, Tex. Issue of Mar. 13, 1912]

Mr. BLANTON, although the youngest district judge in Texas at present, has been in active practice of law for 15 years. His public record and private life are very commendable. It is in order to say that Judge BLANTON is a staunch prohibitionist, and is one of the wisest, most earnest, conscientious supporters of the cause. He is always on the right side of every moral question, he being a true Christian gentleman.

From the Family Publication at Dallas, Tex., August, 1912.

THE HOME AND STATE

JUDGE BLANTON, of Abilene, was triumphantly reelected district judge of that district. He has been one of the most faithful officials, administering the laws fairly and justly to all alike, and the people have again rewarded him for faithful service. When men like Judge BLANTON are on the bench the law and order of the community are in safe hands.

SPEAKERS OF HOUSE PRAISE BLANTON

In fighting congressional perquisites many years ago, Blanton had a tilt with Garner. Enemies have tried to make it appear that they were still unfriendly, when just the opposite is true. While he was Speaker, Garner frequently had Blanton preside for him over the House. The following shows the true situation:

THE SPEAKER'S ROOM,
HOUSE OF REPRESENTATIVES,
Washington, D. C., July 4, 1932.

MR. THOMAS L. BLANTON, JR., Albany, Texas.

MY DEAR MR. BLANTON: This will acknowledge yours of July 2, and I thank you for your good wishes and kind thoughts.

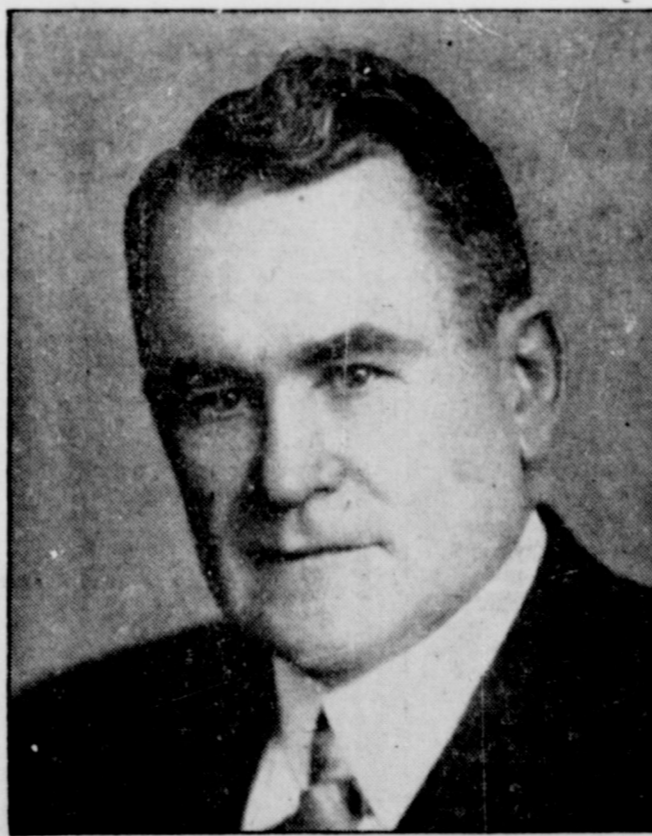
I note what you say in regard to your father, my good friend, the Honorable THOMAS L. BLANTON, with whom it has been my privilege to serve in Congress for many years.

As you know, your father is one of the best friends I have and I consider him a very valuable Congressman. To take anything I have said in the past concerning him, under very distressing conditions, would be unjust to him at the present time in view of the service he is now rendering.

With kindest regards and many thanks for your gracious letter, I am,

Yours very truly,

JOHN N. GARNER.



Congressman Thomas L. Blanton

FROM THE LATE SPEAKER BYRNS:

OFFICE OF THE MAJORITY LEADER,
HOUSE OF REPRESENTATIVES, UNITED STATES,
Washington, D. C., June 5, 1933.

HON. THOMAS L. BLANTON, House of Representatives, Washington, D. C.

MY DEAR TOM: As we approach the close of the session, I do not wish to fail to express my deep appreciation for your kindness and valuable support.

In this connection, may I say that during all my long service I have never served with a Member who was more diligent in his effort to render real service to the people, not only of his district but of the entire Nation, and who watched appropriations and expenditures more closely than yourself. It will never be known just how much money you have saved to the people by your watchful care, your ability, as well as your close knowledge of parliamentary procedure and governmental affairs. It has enabled you to render a real and a great service.

With best wishes, I am, sincerely yours,

JO BYRNS.

FROM PRESENT SPEAKER BANKHEAD:

Jasper, Ala., August 17, 1932.

HON. THOMAS L. BLANTON, Abilene, Texas.

MY DEAR FRIEND: I have been extremely solicitous about the result of your primary and now that I have received definite information of your renomination I write to express my warm congratulations to you upon your victory. I felt assured all the time that the people of your district would not displace you at this important period in our legislative affairs.

With cordial regards and best wishes, I am,

Your friend,

W. B. BANKHEAD.

HOUSE OF REPRESENTATIVES, UNITED STATES,
Washington, D. C., June 3, 1926.

REV. MILLARD A. JENKENS, Pastor First Baptist Church, Abilene, Texas.

MY DEAR JENKENS: Knowing your natural admiration for spunky loyalty to the things that are highest and best, I feel like I must congratulate you in particular, and the people of your congressional district in general, on the superb and heroic work which has been done, and is now being done, by your hard-working, plucky, and able Congressman, Judge THOMAS L. BLANTON.

BLANTON has grown marvelously. His poise, his amazing industry, and his utter abandonment to his concept of public duty have become more and more the inspiration of every Member of Congress who believes in the triumph of personal and national honesty.

He has done a work lasting through many weary days and weeks and months, for which some lawyers would have been paid anywhere from \$10,000 to \$50,000, if it had been handled from that standpoint. But with unselfish devotion to the cause of truth and humanity he has exposed fraud and championed the cause of unfortunate veterans in a way not only to force remedial legislation in Washington, but to act as a wholesale deterrent against evil officials all over America. And your city and district, and indeed the whole State of Texas, ought to be proud of THOMAS L. BLANTON.

With warmest greetings to all of my Abilene friends, and praying God to make you and your great church an increasing blessing to Abilene, to Texas, and the world, I am,

Cordially yours,

WM. D. UPSHAW.

Representative, Fifth District, Georgia.

—Political Advertisement

DO YOU KNOW

You can buy from us a real **GOOD YEAR** as **46¢** a week as **ON EASY TERMS** as **46¢** a week as **ON EASY TERMS** as **46¢** a week as **ON EASY TERMS**

SPEEDWAY

Big, husky, handsome Goodyear 1936 Ribbon Prize Value!

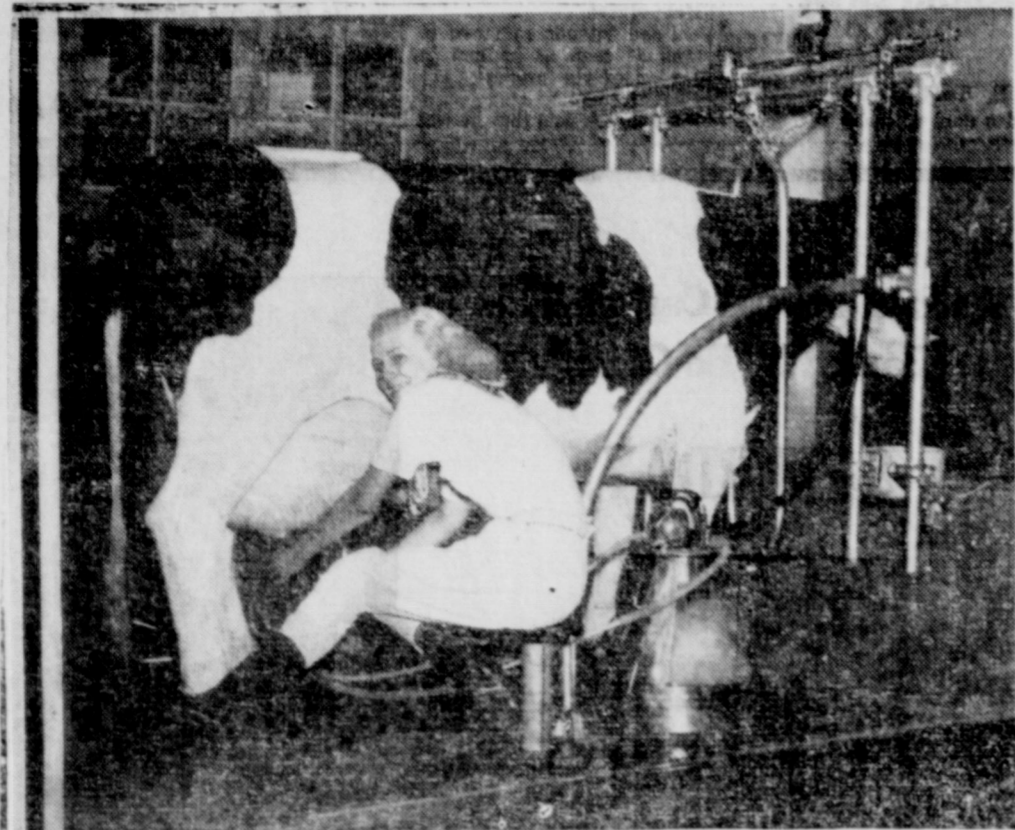
What you get:

- GOODYEAR MARGIN OF SAFETY—Center for quick-stopping (let us show you!)
- TOUGH, LONG-MILEAGE TREAD—Lowest service per mile (proved by our customers' records)
- OUT PROTECTED IN EVERY PLY—by patented SUPERTWIST Cord—extra springy, enduring (ask us to demonstrate!)

Remember—ours is the place to get your best's worth and then some—in tires service!

LUCAS SERVICE STATION
C. T. LUCAS
Phone 50

International Harvester Has Dallas Exhibit



Gwendolyn Rupe, a Rangerette, tries to hold the International Harvester milker as it milks the mechanical cow in the Hall of Transportation at the Texas Centennial Exposition in Dallas. Frank Roberson is the local dealer for International Harvester products.

The International Harvester Company exhibit at the Texas Centennial Central Exposition occupies all of the west wing of the Transportation Building—an area comprising 10,810 square feet of floor space. This exhibit includes displays of historic and educational interest not only to users of farm machines, motor trucks, and industrial power equipment made by the Harvester Company, but also to all men, women, and children interested in the social and economic progress of the past century.

A replica of the first reaper, built in 1831 by Cyrus Hall McCormick, is on display, as well as models of many of the machines that evolved from the reaper. A full-sized 16-foot McCormick-Deering harvester-thresher is displayed operating slowly so that visitors can see how each part functions. This mighty monarch of the harvest fields can cut, thresh, and clean the grain from 40 to 50 acres a day.

Much of the progress of the past century is a direct result of American ingenuity in perfecting not only the modern grain binder but

also a successful method of making satisfactory, low-priced binder twine. Although large quantities of twine are used in the wheat sections of Texas, few wheat growers have had an opportunity to see how binder twine is made. Accordingly, throughout each day of the exposition there are complete demonstrations of the spinning and balling of binder twine—using the same equipment and the same people who operate the machines in International Harvester twine mills. Also in continuous, slow-motion operation is the knotting mechanism of a modern grain binder—showing just how this ingenious invention of 55 years ago, still in extensive use, loops the twine around a sheaf of grain, ties the knot, and then cuts the twine when the knot is completed.

Of interest to the dairyman is a milk cooler, a new product of International Harvester, as well as a variety of cream separators and milking machines—several of them in operation and cut away to show their mechanism. An outstanding attraction, of interest to every one, is the mechanical cow—an accurately reproduced Holstein that chews its cud, blinks its eyes, moves its head and ears, switches its tail, breathes, moos, and gives milk in a most realistic manner.

Various sizes and types of farm tractors are shown as well as machines of the quick-attachable type that are used with these tractors.

Throughout each day there are demonstrations of how many of these modern machines can be attached or detached from a tractor in from two to five minutes each. In continuous operation is a tractor-operated two-row cultivator, demonstrating the ease with which the modern equipped cotton grower can cultivate 25 acres a day—cultivating close to growing crops without damaging them even though the rows may be quite crooked.

There also is an extensive display of stationary power units and wheel-type and crawler-type tractors made by International Harvester for use in oil fields, lumbering, road building and maintenance, and for various other industrial purposes. In continuous operation is an International Diesel engine cut away to show how it starts on gasoline and then shifts automatically to operation on Diesel fuel.

An important part of the progress in transportation featured in this building is an extensive variety of motor trucks displayed in the International Harvester wing. These include four and six-wheel trucks with panel, stake, and oil tank bodies, as well as one of the latest types of school buses.

A complete description of the variety of displays in the International Harvester exhibit would reveal a great many other items of historic interest and educational

DYNAMITE DRAMA OF 'WHITE ANGEL' AT CONNELLEE TUES.

What is heralded as one of the outstanding productions of the screen, "The White Angel," a First National picture portraying the life story of the immortal

POPULAR PAIR ARE REUNITED IN NEW FILM

"The Princess Comes Across," first film to reunite the screen sweethearts who make their bow together in "Hands Across the Table," is bright, sparkling entertainment of the romantic comedy order.

Fred MacMurray and Carole Lombard skip their way through a story kept a high-tension by intrigue and a double murder mystery.

The picture, which opens today at the Connellee Theatre, presents Miss Lombard as a beautiful American girl who poses as a Swedish princess in order to land a film contract. Aboard a trans-Atlantic liner, on which all the action of the picture takes place, she meets MacMurray, the leader of a swing band.

The romance begins immediately after the concertina-playing band leader and the phony princess bicker for the ship's royal suite. It is disrupted almost at once by the first of two murders.

Five international detectives, en route to New York to attend a convention, are enlisted in a hunt for the criminal. Never for a moment slackening its fast comedy pace, the story leaps from suspense to romance; from blackmail to concertina serenades; from a ship's party and swing music to drama.

Additional comedy is provided by the wisecracking of Allison Skipworth, a trouper posing as lady-in-waiting to "Princess Olga," and William Frawley, general manager for MacMurray's band.

The supporting cast, in addition to Frawley and Miss Skipworth, includes Douglass Dumbrille, Porter Hall, George Barbier and a score of others.

RETURN FAMED ROGERS COMEDY

In days of old, when knights were bold—and told dreadful fibs—is when the action of "A Connecticut Yankee," starring Will Rogers and coming Saturday night to the Connellee Theatre, is set.

Brought back in response to the requests of millions of Will Rogers fans who considered it his greatest picture, "A Connecticut Yankee" is a droll, fanciful story, full of riotous comedy and adventure.

The plot of the story begins when Rogers goes back to the days of King Arthur in a dream. Just as much surprised by the knights as they are by him, Rogers gets the supper hand when he starts showing a little modern magic.

There are some hilarious episodes as Rogers conquers villainous opponents, installs bathtubs in Merry England. But the punch of the picture is reserved for the close when Rogers rides off to save a damsel fair from the clutches of Queen Morgan Le Fay, played by Myrna Loy.

David Butler directed the picture which features Maureen O'Sullivan, William Farnum and Frank Albertson in the principal supporting roles.

FIRST PRESBYTERIAN CHURCH

Charles W. Estes, Pastor
Sunday, July 26
Sunday School, 10 o'clock. This Sunday will close the contest. Everyone should be present and share in definite plans for the big picnic soon.

The pastor will be in Strawn this Sunday for the regular service.

Strangers and visitors cordially invited to attend our school and make this your church home.

This church exists for the good of the whole community.

Former Eastland Resident is Dead

Mrs. Mary E. Kendall, formerly of Eastland county but for the past two years of Shawnee, Okla., died suddenly in that city Monday evening.

Mrs. Kendall was about 65 years old. For many years she lived on a farm two miles north of Eastland. Two years ago the Kendalls left for Shawnee where they engaged in the furniture business. She is survived by her husband, J. A. Kendall. Interment will be at Shawnee and funeral services held today.

Fire Does Damage To Eastland Home

Fire of undetermined origin did considerable damage to the interior and house furnishings of the Ira L. Hanna home at 300 West Moss street, Eastland, at 12:30 a. m., Monday. The furniture was partially covered by insurance.

"Wifehood is a state not lightly to be approached." Two others, for jobless itinerants at least, are California and Colorado.

value not only to farmers but also to city people. The careful farmer will find that he can profitably spend several hours in the west wing of the Transportation Building studying the many International Harvester displays.

Lyric Now Playing



Edward Arnold shows Binnie Barnes the first gold nugget found by John Sutter, in the Universal picture, "Sutter's Gold."

nurse, Florence Nightingale, opens at the Connellee Theatre Tuesday with Kay Francis in the stellar role.

The picture paints in fiery drama the fight of Florence Nightingale, a wealthy English society girl, to remedy conditions in army field hospitals and the neglect of dying soldiers. All the tragedy and pathos of the battlefield is pictured in the film, as well as the beauty of the life of sacrifice of Florence Nightingale and her specially picked nurses.

The film is set in the middle of the last century during the Crimean war, and the most thrilling scenes take place at the base hospital at Scutari, a small Turkish town on the north shore of the Bosphorus, and at Balaklava, where the immoral six hundred of

the Light Brigade rode "into the jaws of death."

No more powerful nor romantic theme could have been selected by First National than that of the life of the great nurse who gave her all to humanity by revolutionizing the hospitalization system of the world, and whose efforts laid the groundwork for the establishment of the Red Cross.

The picture is enacted by an exceptionally talented cast of principals, with more than one thousand persons in extra roles. Ian Hunter, famous on the London stage and in films, and Donald Woods have the two leading masculine roles.

Others in the cast include actors famous in America and abroad, among them being Nigel Bruce, Donald Crisp, Henry O'Neill, Billy

Lyric Sunday



Bette Davis, the soul wrecker of "Of Human Bondage," and the man who is "Dorsetown," now is teamed with Franchot Tone, who'll prove whether the right man can make her turn soft when the Warner Bros. drama "Dangerous" opens at the Lyric Theatre on Sunday.

LYRIC Today and Saturday

SUTTER'S GOLD

starring **EDWARD ARNOLD**

with **LEE TRACY**, **BINNIE BARNES**, **KATHARINE ALEXANDER**, **MONTAGU LOVE**

THE PICTURE THAT CAN NEVER DIE!

—Plus—
Tarzan Serial — Novelty

Sunday Only

"DANGEROUS"

with **FRANCHOT TONE** and **BETTE DAVIS**

In a bolt of drama that'll blow the fuses!

—Plus—
Spotlight — Comedy

Mauch, Charles Croker - King, Phoebe Foster, George Curzon, Georgia Caine, Ara Gerald, Halliwell Hobbes, Eily Malyon, Lilian Cooper and Egon Bros. William Dieterle directed production from the story by Mordaunt Shairp.

CONNELLEEE Today and Saturday

THEY LAUGH AT LOVE!

AND EACH OTHER!
It's as mad as it is merry!!

Carole **LOMBARD**
Fred **MACMURRAY**

"The PRINCESS COMES ACROSS"

with **DOUGLASS DUMBRILLE**

A Paramount Picture

11 P. M. Saturday Night and Sunday Only

WE'VE GOT IT FOR YOU!

The Will Rogers picture you wanted to see again because it shows him with all the qualities that made him so well loved!

Will ROGERS

in **MARK TWAIN'S**

A Connecticut Yankee

with **MYRNA LOY**

MAUREEN O'SULLIVAN

Directed by David Butler

—Plus—
Meglon Kiddies — News — Cartoons

Monday Only

"Absolute Quiet"

With **Stuart Erwin** — **Irene Hervey**

Tuesday — Wednesday

Kay Francis

In **"The White Angel"**

Thursday Only

Richard Dix

In **"Devil's Squadron"**

Coming Friday, July 31st

"San Francisco"

With **Jeannette MacDonald** and **Clark Gable**

FARMING IS MUCH EASIER AND CHEAPER WHEN A FARMALL Does the Work McCORMICK-DEERING

Speed and flexibility are brought to the row-crop farm by the Farmall Tractor. It is so far ahead of horses when it comes to planting, cultivating, and doing other row-crop and general farming work that there is no comparison. And most important of all, Farmall farming means lower-cost farming.

Until you own and operate a Farmall you cannot appreciate the benefits and advantages of it. But just ask any Farmall owner about it. He is the man who is enthusiastic about the Farmall. He KNOWS. He has farmed with horses and with the Farmall and you can bet that he isn't going back to horses.

If you want a real demonstration of the Farmall, call us up and we will arrange one for you.

Frank Roberson Garage

Eastland County Distributors for International Trucks, Tractors and Farm Machinery

West Main Street Phone 620 Eastland