



THE WEEKLY CHRONICLE

Established Nov. 1, 1887

Entered as second-class matter at the postoffice at Eastland, Texas, under Act of March, 1879.

Published Every Friday Office of Publication: 106 East Plummer Street Phone 601

NOTICE TO THE PUBLIC

Any erroneous reflection upon the character, standing or reputation of any person, firm or corporation, which may appear in the columns of this paper, will be gladly corrected upon being brought to the attention of the publisher.

Obituaries, cards of thanks, notices of lodge meetings, etc., are charged for at the regular advertising rates, which will be furnished upon application.

Mother Carey's Chickens Come Home to Roost

Sometimes it takes chickens a long time to come home to roost. But eventually they come. Belatedly, 20 years afterward, some chickens now come home to roost in the rigging of the British maritime power.

British merchant ships have been halted off the China coast by Japanese war vessels, boarded, and made to give an account of themselves. The British don't like it at all. They have lodged a strong protest with the Japanese government.

It is just 25 years ago that American ships were being halted off the European coast, boarded, and made to give an account of themselves. The United States didn't like it at all. It lodged a strong protest—with the British government.

That wasn't all. The United States had to sit and watch the rights of neutrals whittled away. Contraband, before 1914, had meant supplies and munitions definitely and directly useful to the armed forces. The British expanded the term to mean anything at all except hair tonic and billiard balls.

The doctrine of "continuous voyage" was devised, by which it was assumed that goods shipped to neutral countries were really destined for the German army. American ships were not only halted, but forcibly taken into neutral or Allied ports for examination. The U. S. mails were broken into and searched.

The United States didn't like it. It protested. At one time the country was measurably close to war with Britain over British denial of what had been thought of as "freedom of the seas."

The British justified all on grounds fairly stated like this: "After all, we are fighting for our lives in a righteous cause. We cannot respect 'rights' of neutrals which conflict. We must make new rules to fit the present game."

And now Britain is confronted with a Japan which, desperately involved in her Chinese venture, says blandly, "It is not a question of having the right to search these ships. It is necessary, and we are doing it. So what?"

It is not enough to grin at this particular dilemma of the British, confronted by the absence of rights of neutrals which they themselves helped to abolish. The United States may be confronted with the same problem at any moment. The liner President Coolidge is now in the Japanese "search zone." It, too, may be halted.

But if it is, the United States government may well choose to consider the incident, not in terms of what one used to think "international law" guaranteed as the rights of neutrals, but in terms of what 1914-1917 taught that the desperation of necessity may allow to neutrals.

There is reason to believe that the Chinese adventure is not going too well for the Japanese. They are getting desperate. Though there is little American sympathy for the Japanese cause, to the Japanese it is becoming a life and death matter.

And what warring countries will do to the theoretical "rights of neutrals" when they are desperate has already been learned in a grim school whose term was between 1914 and 1917, and one of whose best teachers was none other than Britain herself.

Washington Letter

(Continued from Page 1).

pictured neither as a scalping "savage," nor as a member of a dying race "at the end of the trail," but as a vital human being passing through the transitions required by the invasion of an overwhelming foreign civilization; this is the portrayal of Indian Life in the murals of Maynard Dixon, just put on view in the Indian Office section of the New Department of the Interior Building. Mr. Dixon, an old friend and staunch advocate of the Indian, was chosen from a large field of aspirants for the difficult and exacting task of painting the Indian as he is today and as he was at the close of the period of military conquest. The first group of murals shows a scout, carrying a Sharp's rifle and a soldier, resting on his sword, facing two Indians. One has a war-club, the other a pipe of peace. The second mural, shows the white man teaching the Indian the arts of peace and civilization. A farm agent holds a handful of soil, explaining to an Indian boy, new agricultural methods and techniques, while his parents, representing the former culture looks on.

Cases Are Assigned In Eastland Court

Five settings were made Tuesday by George L. Davenport, judge of 91st district court. The cases were set as follows: for June 12, E. L. Clements vs. Austin Construction company; June 14, hearing on plea of abatement in case of Mrs. Callie Elliott vs. G. R. Mitchell; for June 21, Lola Harrell et vir vs. Allied Underwriters, and for June 29, C. M. Caldwell vs. Plier.

Five Eastlandites At Spa City Meet

Five from Eastland attended business sessions of the Mineral Wells district legion convention, Sunday. They were H. J. Tanner, Henry Pullman, Herbert Reed, J. F. Mitchell and J. Syd Lowry. George Barber was chosen district 17 commander. He is from Sweetwater.

Ranger Youth Will Start Internship

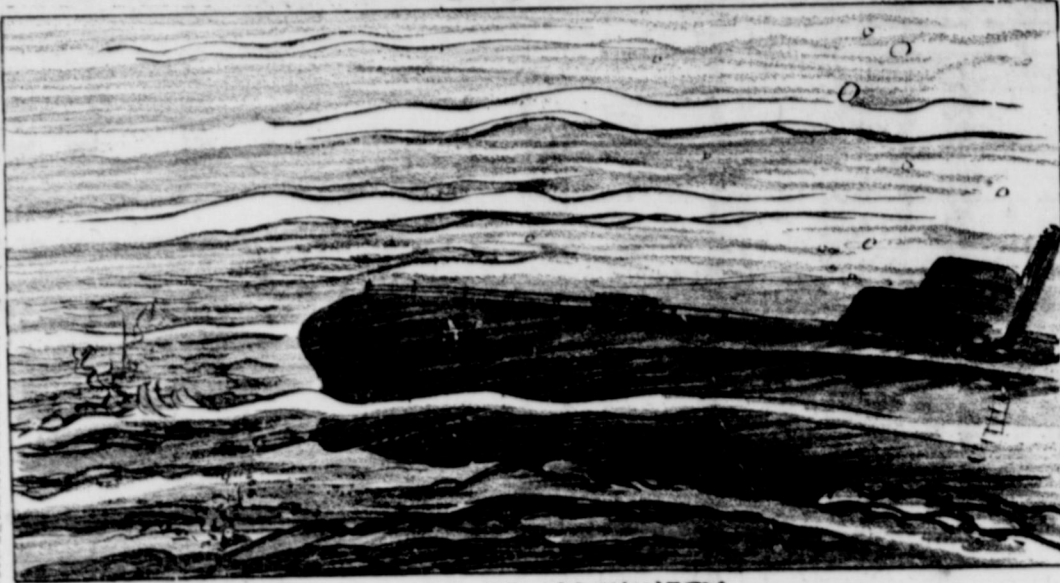
Tom Lauderdale of Ranger, who has graduated from Baylor Medical College at Dallas, left this morning for El Paso, where he will spend a few days visiting his father. After a visit in El Paso he will be assigned to the Shreveport Charity Hospital, at Shreveport, La., where he will serve his internship.

WPA Exhibit To Be In Ranger June 16

A WPA exhibit, covering seven adjoining counties, will be held in Ranger on Friday, June 16, it was announced here today. Exhibits from sewing rooms, housekeeping aid projects and nursery schools will be placed on exhibition in the Ranger National Guard armory, where they may be seen throughout the day, the announcement stated.

SIGNS ON TEAM Weldon Kellett, formerly of Eastland, has been signed to play first base for the Lincoln Life Insurance team in the major city softball league in Fort Worth. Recently married, he plays left-handed at the plate and at first.

Tragedy at Sea



FAILURE OF MACHINERY



FAILURE OF MAN

Hittler's Grave



The body of Adolf Hitler lies beneath this tombstone in a Jewish cemetery of Bucharest, Rumania. But it's not the Nazi Fuehrer—note that extra "t" Like his famous namesake, this Hittler was an Austrian, and, ironically, a Jew. He died in 1892.

W. O. W. Meeting Is Held In Ranger

Ranger Woodmen of the World Camp No. 685 had the officers and degree team of Cisco, as guests for initiatory ceremonies at the I. O. O. F. hall, Monday night. Consul Commander W. C. Clements, presiding and Sov. E. L. Wisdom leading the degree team. Arrangements for the meeting were planned by Sov. Roy Curry, district deputy of Waxahachie. Ranger Camp was officially represented by Consul Commander, V. V. Cooper, Sr., Dr. A. K. Wier, physician and Chas. Ashcraft, secretary. Following the business session and initiation ceremonies several good talks were made by different members. After the close of business refreshments were enjoyed by those present. Others attending than those above mentioned included H. L. Kunkel, F. E. Shepard, L. E. Sublett, J. E. Sublett, C. J. Stephens, C. B. Hill, W. E. Morris, G. L. Bailey and L. B. Mayhew, Cisco, Lloyd Scott of Eastland, Jack Blackwell, Jas. B. Robinson and H. O. Woods Jr., of Ranger and William Wilson.

Newspapers, Told Of Responsibility In Preventing War

LUBBOCK, June 8.—American newspapers have a great responsibility in using their influence to keep this country out of possible wars, President Deakin Wells told the Texas Publishers Association today. The press also has responsibility "to restore the confidence of the average man in himself, our institutions and the country," he said. Almost 200 persons were registered at noon as the association began its three-day meeting. This is the largest early registration in the history of the organization, Secretary Sam Harben said. He expected 450 persons to register before the meeting ends. The publishers were to hold their first business session this afternoon.

Attorney General Calls Off Probe Of Loan Sharks

AUSTIN, June 8.—Attorney General Gerald C. Mann today announced he had abandoned statewide "loan shark" investigation, conducted by his department. Because of yesterday's ruling by the state supreme court that injunctions may not be sought against users, the investigation must be discontinued until the legislature changes the law. Mann said that the investigations already made had disclosed "widespread violations of the usury law."

Loser in Suit Against Fishbein



Dr. Asa Brunson, above, lost El Paso, Texas, suit against Dr. Morris Fishbein, NEA Service health columnist and editor of Journal of American Medical Association, when he failed to prove Fishbein damaged his reputation in criticism of Dr. Brunson's tuberculosis treatment.

Breckenridge Boy Gets U. of T. Award

AUSTIN, Texas—Star players in intramurals at The University of Texas received recognition in the "Intramural Pow-Wow" annual report to managers of intramural teams. Awards listed in the "Pow-Wow include the following: Fourth place in competition for trophy and title of "Best All Pound Intramural Athlete"—Tie, John Stephens of Waco, Delta Kappa Epsilon; George Juneman of Galveston, Beta Theta Pi; and Ross Elliott of Breckenridge, Delta Tau Delta.

SALES TAX IS DEFEATED IN HOUSE AGAIN

AUSTIN, June 8.—Senate Joint Resolution No. 12, the sales and natural resources program for social security, advocated by Gov. W. Lee O'Daniel and the Senate, this afternoon failed to obtain the necessary vote in the house of representatives to submit it to a vote of the people in an election this summer.

AUSTIN, June 8.—The Texas House of Representatives today took up for a showdown vote a sales and natural resource tax constitutional amendment for social security revenues. The vote in the house of representatives on the tax program, which has been adopted by the senate and endorsed by Gov. W. Lee O'Daniel, was expected to be the climax of the legislative session as it reached its 150th day, 30 more than the regulation term. The object was senate joint resolution No. 12, a proposed constitutional amendment by which the voters may decide whether they want a two per cent retail sales tax and approximately one-third higher production taxes on oil, natural gas and sulphur, to pay for the social security projects.

Ranger Armory Is Given High Praise By Two Inspectors

J. P. Caporal and Ned Haney, who have been inspecting National Guard armories for the army for several years, completed an inspection of the armory in Ranger Monday. At the conclusion of the inspection they pronounced it one of the best in the state. Caporal stated that he found the condition of the armory very satisfactory, with indications of a high degree of efficiency in taking care of the equipment. He gave Capt. J. E. Fletcher and Lt. Herschel Angus credit for the splendid condition of the armory and equipment, and had high praise for the members of the company, too. "Ranger should feel proud of such a company, and such an armory," Caporal stated Monday afternoon, after completing the inspection, which took most of the day. "I have been inspecting armories in Texas for several years and it is seldom that such a degree of efficiency is noted throughout an inspection." From Ranger the two inspectors went to Mineral Wells and from there to Stephenville for an inspection. This is the second inspection of the Ranger unit that has drawn exceptional praise, as a company inspection by high-ranking army and national guard officers, held recently, drew the same kind of praise for the efficiency of the company. The Ranger unit has ranked high in the Texas National Guard since it was established in 1928.

D. JOSEPH ASSUMES OWNERSHIP OF HOTEL GHOLSON IN RANGER

D. Joseph of Ranger today assumed ownership of the Gholson Hotel, which he has purchased from National Hotels of Galveston, the purchase having been approved and active ownership assumed by Joseph as of midnight, Monday, June 5. Negotiations for the purchase were started about three weeks ago, but some time was consumed in preparing papers for the transfer of the property. In purchasing the hotel Joseph manifests a keen belief in the future of Ranger, as he already has large interests in the city, including the largest department store between Fort Worth and Abilene. He stated this morning that Elton Jennings had been named manager of the hotel, to assume his duties immediately, and that the coffee shop had been leased to Tony Toti, who had been chef of the cafe for some time. Toti took over active management of the coffee shop this morning. Joseph stated that he would start remodeling the hotel as soon as possible, though the work would be done in small installments, as he planned. He stated that rooms for transient guests would be ready for occupancy as he could get them. R. W. Rowland, former manager of the hotel, will report to the office of the new manager, and the former owner will retain whether he is to stay in the management of the hotel. Driver Education Course in SILVER CITY in driver education train high school safety methods. Mexico State here. The course is kind to be offered.

Advertisement for Firestone Auto Supply & Service Station, featuring 'EASY TERMS' and 'An Easy Plan'.

Advertisement for SEAT COVERS, COUPES, COACHES - SEDANS, priced at \$1.39 and \$3.39.

Advertisement for SUPER RAY LIGHT SPARK PLUGS, priced at \$8.95 and \$17.50.

Advertisement for LAWN MOWERS, priced at 75¢.

Advertisement for 1939 Firestone AIR CHIEF AUTO RADIO, priced at \$200.

Advertisement for Firestone tires, 'Easy To Buy - Easy To Live'.

Advertisement for CHAMPION OUTBOARD MOTOR, priced at \$399.50.

Advertisement for JIM HORTON TIRE SERVICE, located at 409 East Main St., Phone 258.

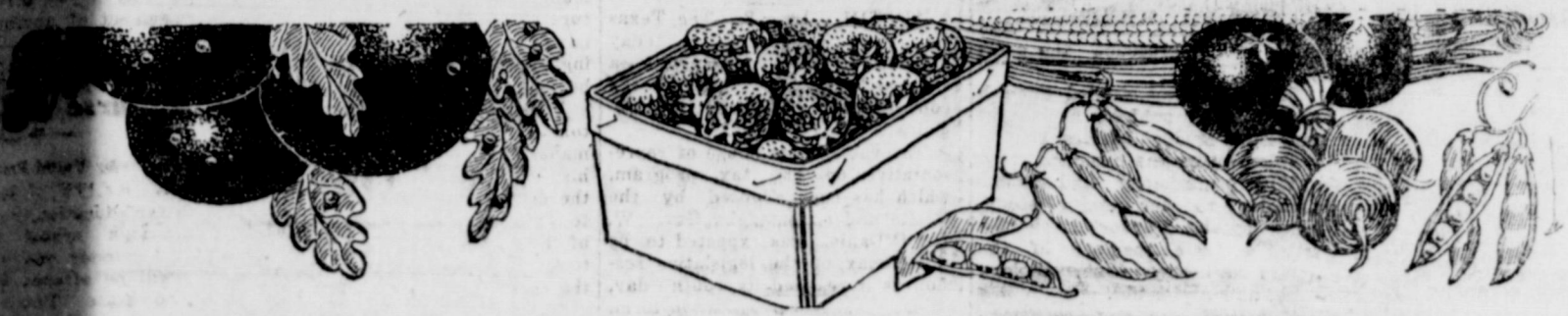
Large advertisement for 'LOOK! FREE!' featuring 'The Old Man of the Mountain AND THE Entertainers ARE PUTTING ON A BIG FREE SHOW'.

PIGGLY WIGGLY PIGGLY WIGGLY



# PRODUCE

**Fresh FROM THE GOOD EARTH**



The peak of the season's crops—at the time when these health-building home-grown fruits, berries and vegetables are most plentiful and most economical—in bountiful variety—at real savings!

- APPLES** 5 to 6 1/2 Lb. Avg. DOZ. \$1.39—EACH **12c**
- SWEET CORN** 6 Ears ..... **15c**
- New Spuds** 5 lbs. **19c**
- ORANGES** Large Size ..... Doz. **25c**

**LETTUCE**  
2 Large Heads .... **11c**

SUNKIST  
**LEMONS**  
Large Size—Doz. . . **17c**

SOUTH TEXAS  
**TOMATOES**  
2 Lbs. .... **13c**

EXTRA FANCY WINESAP  
**APPLES**  
Per Dozen ..... **33c**

**CALUMET**  
BAKING POWDER  
1 Lb. Can ..... **19c**

**LIBBY'S VIENNA SAUSAGE**  
3 Cans ..... **25c**

- TOWELS ... Roll **10c**
- FT DINNER . Pkg. **15c**
- 3-1 1/2 lb. boxes ... **10c**
- COFFEE** Pound **25c**
- PEPPER** Qt. Bot. **15c**
- TEA** No. 2 Can **5c**
- PEKOE AND ORANGE PEKOE
- TEA** 1/4 Lb. Pkg. . . **13c**
- 1/2 Lb. Pkg. . . **25c**
- FOODS . . 3 Cans **25c**

- CAMPBELL'S **PORK AND BEANS** 23 OUNCE CANS ..... **10c**
- CAMPBELL'S **TOMATO JUICE** 3 14 Oz. Cans .... **21c**
- Texas King **FLOUR** 24 Lb. Sack ..... **59c**
- Libby's **PEACHES** 2 Tall Cans **21c**
- COMPOUND** 8 Pound Carton ..... **72c**
- Ranch Style **BEANS** 3 Cans ..... **25c**
- BLUE SPOT—IT'S TENDER, FANCY
- WHOLE GREEN BEANS** ..... No. 2 Cans **15c**

**WATER GROUND Coffee TASTES BETTER**

are's perfect seal against of strength, flavor and in the coffee bean. So your coffee in the have it ground as you it right when you buy That's why we have Pig-

gly Wiggly coffee only in the whole bean, and grind it only as it's sold. Try a pound today.

Ground for pot, 19c Lb. percolator or drip brew.

- Betty Brand Sour **Pickles**, full quart ... **15c**
- Cookies**, 1 lb. pkg. ... **15c**
- Krunchetts**, pkg. .... **15c**
- Libby's Whole Kernel Golden Bantam **Corn** 303 Can **10c**
- Matches**, 6 Box Crt. . **15c**
- PIPKIN'S BEST **FLOUR** 12 Lb. Bag **39c**

PET **MILK** 3 Tall or 6 Small **18c**

- GRAPEFRUIT JUICE** NO. 2 CANS ..... **5c**
- BEECHNUT SPAGHETTI** 3 Cans ..... **25c**
- PIPKIN'S PIGGLY WIGGLY**

# PIPKIN'S PIGGLY WIGGLY

EASTLAND, TEXAS We Reserve the Right To Limit Quantities! FRIDAY & SATURDAY JUNE 9th & 10th

BAMA PURE FRUIT **PRESERVES** 2 Lb. Jars Peach, Blackberry **33c**

MILLER'S **CORN FLAKES** 3 Large Pkgs. .... **25c**

PLYMOUTH **COFFEE** The Taste Tells the Story 2 Lbs. **29c**

EVANGALINE **GREEN BEANS and NEW POTATOES** 3 No. 2 Cans ..... **25c**

**OYYDOL** Reg. 25c Pkg. **19c** **LUX SOAP** 3 Bars .. **17c**

PIGGLY WIGGLY **BEVERAGES**  
• Ginger Ale - Cola  
• Lime Rickey - Club Soda  
• Strawberry  
• Root Beer  
• Lemon Soda  
24 Oz. Bottle **10c**  
NO DEPOSIT!

— QUALITY MEATS —

**HAMS** PICNIC—Tenderized POUND ..... **19c**

**PORK** ROAST, Lean Shoulder Lb. **17c**  
CHOPS ..... Lb. **22c**

**HENS & FRYERS PRICED RIGHT!**



BEEF OR VEAL **ROAST** Seven Cut—Lb. **18c**

**SLICED BACON** CORN KING ..... Lb. **28c**  
SUGAR CURED, We Slice It ..... Lb. **19c**

**OLEO** 2 Pounds **25c** **STEAK** Veal Seven Pound **19c**

DRY **SALT JOWLS** Pound **9c** **CHEESE** Longhorn Pound **20c**

SALT **BACON** No. 1 Sides End Cuts, Lb. **10c** **BOLOCNA** Pound **10c**

SUGAR CURED BACON **PORK LIVER** Lb. **15c**

**SQUARES** Pound **15c** PHILADELPHIA CREAM **CHEESE** 2 For **15c**

# BOB SIKES AGAIN IS WINNER AT RANGER BY DOWNING SAM CONNER

Bob Sikes of Eastland, defending champion of the Ranger Invitation Golf tournament and medalist in the 1939 tourney, was extended all the way Sunday by Sam Conner, also of Eastland, before he won on the 19th hole to take his second consecutive championship over the nine-hole course.

Sikes defeated G. C. Rainey of Big Spring in his first match, downed Bob Hafele of Fort Worth in his second, then took Alton Pope of Mineral Wells before meeting Conner. Conner won from A. G. Harrell of South Bend, J. R. Dickey, Weatherford and J. T. Hammett of Rising Star to go into the finals.

The match was even throughout, Sikes being one up at the turn, only to have Conner even the match in the second round.

J. L. Helm of Brownwood won second flight honors from Jack Mooney, Jr.; H. G. Foy of Cisco won the third flight from Bob Earnest; fourth flight honors went to Jack Spangler of Graham, who won from Len Creager of Mineral Wells; J. W. Thornton of South Bend won the fifth flight from Steve Cozby of Breckenridge; W. R. Cole defeated L. P. Clark, Breckenridge in the sixth and Charles Conley defeated Frank Champion, Jr., in the seventh flight.

Trophies were awarded at the conclusion of the matches.

Final and semi-final results in all flights were as follows:

Championship Flight—Bobby Sikes, Eastland, defeated Alton Pope, Mineral Wells, 3-1; Sam Conner, Eastland, laced J. T. Hammett, Pioneer, 5-3.

Second Flight—J. L. Helm, Jr., Brownwood, defeated Jack Mooney, Jr., Ranger, 5-4; R. V. Cole, Ranger, downed Amos Melton, Ft. Worth, one up.

Third Flight—H. G. Foy, Cisco, defeated Bob Earnest, 3-1; Jack Lippen, Wayland, won over Blair Lewis, Eastland, 2-1.

Fourth Flight—Jack Spangler, Graham, took Logan Creager, Mineral Wells, 4-3; Frank Conley, Austin, beat Dr. Bob Estes, Abilene, 1 up.

Fifth Flight—J. W. Thornton, South Bend, bested Steve Cozby, Breckenridge, 1 up. John Harvey, Eastland, lost to Bobby Powell, Ranger, 2-1.

Sixth Flight—W. R. Cole, Ranger, defeated L. P. Clark, Breckenridge, 5-4; E. F. Latham, Ranger, downed Martin Walker, Brownwood, 3-2.

Seventh Flight—Charles Conley, Ranger, defeated Frank Champion, Jr., Ranger, 5-4; F. B. Joyce, Frankell, downed Jessie Milburn, Ranger, 2-1.

## Funeral Services Held For Pritchard

Funeral services were held this week at Gorman for J. H. Pritchard, 75, who died Saturday.

Mr. Pritchard, a retired farmer, had lived near Gorman 52 years. He was a royal arch Mason, a member of the Baptist church and had been Sunday school superintendent at the Midway church near Gorman for 30 years.

Those attending services included Mr. and Mrs. Ed Pritchard, Sr., and Mr. and Mrs. Ed Pritchard, Jr., of Fort Worth.

## John Mouser Is Eastland Visitor

John Allen Mouser, Sr., and son, John Allen, formerly of Eastland, were visitors Tuesday in Eastland.

Mouser is with the Mid-States Oil Company and in the past has been located at Tulsa, Okla. He stated that beginning June 15 the family will be permanently located at Houston, where he will be in the land department of the firm.

Mouser before leaving Eastland was prominent in the city's civic affairs. Business at Abilene took Mr. Mouser and his son to Eastland.

## \$250,000 Pair of Hose



Half a million dollars went into duPont company research to develop the synthetic yarn called Nylon, used in the sheer, cobwebby hose that adorn the legs of Miss Naomi Anderson, above. Nylon, made of coal, air and water, resists runs, has great elasticity, fits trimly. Development of Nylon has the Japanese silk industry worried, offers a serious competitive threat to the traditional silk hose. No Nylon hose have been sold yet, although employes and wives of duPont executives have been wearing them.

## Two Of Eastland Get Degrees In Exercises At TSCW

Graduating with the largest class in the history of the college, Misses Marie Galloway, daughter of Mr. and Mrs. R. V. Galloway, and Carolyn Cox, daughter of Mr. and Mrs. Ed T. Cox, received their bachelor's degrees Monday, June 5, at the 36th annual commencement exercises of Texas State College for Women at Denton.

The traditional commencement speaker, President L. H. Hubbard, addressed the 350 graduates whom Dean E. V. White recommended as candidates for degrees. Honoring the seniors, a three-day program of teas, receptions, and other affairs preceded the exercises.

Miss Galloway studied Spanish as her major subject. Active in numerous student affairs, she is well-known on the campus.

With bacteriology and clinical pathology as her major study, Miss Cox also did work in chemistry. She was a member of the James H. Lowry Club, Biology Club, and Alpha Chi.

The government is investigating high building prices. To begin with, boys, just the initial cost of building is a lot.

**Hamner Undertaking Co.**  
Phones 17 and 564  
DAY OR NIGHT AMBULANCE SERVICE

## CLASSIFIED

Double Oil Permanents ... \$1.00  
Mackinac Waves ... \$1.50 up.  
— JONES BEAUTY SHOP, 319 W. Elm St., Ranger, Texas.

LANDSCAPE, architect, nurseryman. — SHERMAN NURSERY CO. See B. C. Bogard, Eastland.

LOST: Brown Persian grey cat. Call 37.

## ELECTRICAL APPLIANCES

Texas Electric Service Co.  
DR. E. P. TOWNSEND  
Special Attention Given To Eye - Ear - Nose and Throat Eye Examinations  
Glasses Scientifically Fitted  
312 Exch. Bldg. - Phone 348

## Norge

REFRIGERATORS, GAS RANGES, WASHERS, IRONERS AND HOT WATER HEATERS  
C. I. HYATT  
Phone 19 Olden  
Serving Eastland and Ranger

## Aerial Survey Maps Received

C. W. Mainer, AAA administrative assistant at Eastland, has received 400 picture-maps of the county which represents the outcome of an aerial survey last year.

The aerial survey was made by the Kargl Aerial Survey Company of San Antonio.

The maps will be used to check compliance in the government farm programs. Federal farm officials have found that the aerial survey method of checking compliance in the program is cheaper than other methods and is more efficient.

## G. B. T. Innerspring Mattresses

1. Every Mattress Carefully Hand Made
2. Every Mattress Sterilized.
3. Every Mattress Cleaned
4. Every Mattress Guaranteed.

When Better Mattresses are Built Go Build Them  
WE ALSO CLEAN RUGS

## GRUBB'S MATTRESS

"INVEST IN BEST OF BEST"  
ABILENE, TEXAS  
310 Pine St. Eastland, Texas  
1009 West Commerce St.

# Announcing CHANGE OF OWNERSHIP TYSON FURNITURE CO. NOW Eastland Furniture

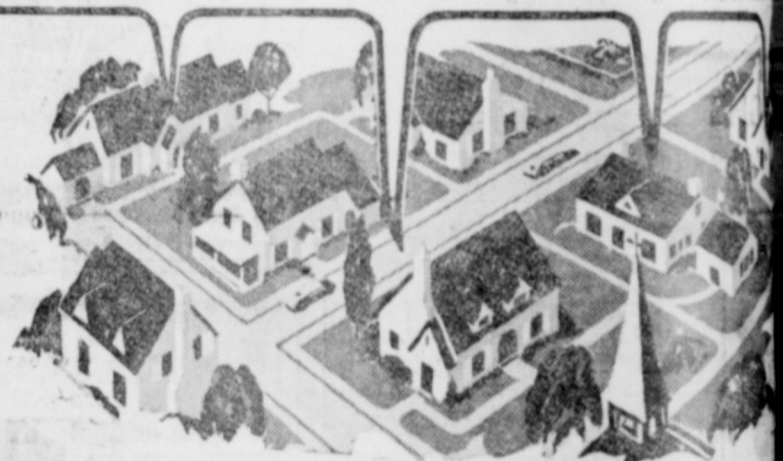
WISE HOMEMAKERS WILL WELCOME OUR COMPLETE LINE OF FURNITURE OF EVERY DESCRIPTION WHETHER INDOORS or OUT — AT RIGHT PRICES — BE SURE AND SEE US FIRST — WE WANT TO SERVE YOU!

## TO THE HOME FOLKS OF EASTLAND AND COMMUNITY.

We are grateful for the privilege of becoming actively interested in the future and progress of Eastland and would appreciate a visit from the citizens of the entire community in order that we may get acquainted with you. We share the progressive spirit of the citizenship here and feel sure that you will like it. It is our intention to give merchandise, service and values as good as the best. We give special attention to individual orders on any kind of needs from the home needs to a palatial mansion.

May we have the privilege to serve you?

FRED C. HARDIN, Owner.



## Eastland Furniture

310 W. MAIN ST.

# Used Cars

LOW PRICE DOES NOT ALWAYS MEAN QUALITY ... BUT WE HAVE BOTH!

- |   |  |
|---|--|
| 1935 Deluxe Six Pontiac 4-door Touring sedan, new paint, quiet motor, seat covers, good tires ... <b>\$385</b>  | 1931 Cadillac 4-door Sedan, runs and looks good ... <b>\$85</b>  |
| 1936 Chevrolet 2-door Deluxe sedan, equipped with new tires, Goodyear Life Guard tubes heater and radio, lots of other extras. Actual mileage 22,000 miles ... <b>\$425</b> | 1936 Pontiac 4-door Sedan, good tires, equipped with heater and radio ... <b>\$465</b>   |
| 1935 Chevrolet Pickup, new paint, runs and looks good ... <b>\$185</b>  | 1928 FORD Coach ... <b>\$50</b>  |
| 1936 Dodge 4-door Touring Sedan, new paint, beautiful gold-on-brown, good tires, quiet motor ... <b>\$425</b>   | 1932 Olds 6 Sedan, runs perfect ... <b>\$165</b>   |
| 1929 NASH Sedan ... <b>\$60</b>   | 1934 Chevrolet 4-door Sedan, A-1 mechanically, practically new tires ... <b>\$265</b>  |
| 1933 Chrysler 4-door Deluxe Sedan A-1 Condition ... <b>\$185</b>  | 1928 Cadillac Sedan, Old one but a good one ... <b>\$65</b>  |
| 1932 Buick light "8" four door sedan, new paint, good tires, quiet motor ... <b>\$195</b>   | 1936 Olds 6 4-door touring sedan, heater and radio equipped, looks good, and A-1 mechanically ... <b>\$450</b>                                 |
| 1929 FORD Sedan ... <b>\$65</b>   | 1936 Plymouth 4-door touring sedan, new Goodyear tires, new paint, quiet motor, A-1 in every way. Actual mileage 22,000 miles ... <b>\$425</b> |
| 1933 Pontiac 4-door Sedan, new paint, runs like new and has good tires ... <b>\$225</b>   | 1931 Buick, 4-door Sedan ... <b>\$85</b>   |
|   | 1934 Plymouth 4-door Sedan, good tires, new paint and seat covers, quiet motor ... <b>\$265</b>  |

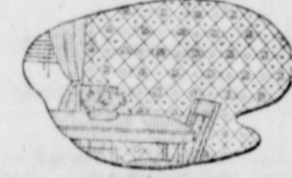
## MUIRHEAD MOTOR CO.

East Main St. Phone 692 Eastland, Texas

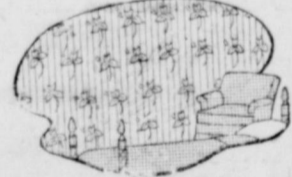
It's Smart It's New It's Colorful



Living Rooms take on a new beauty when they're dressed appropriately. You'll find your pattern among the styles in our huge selection!



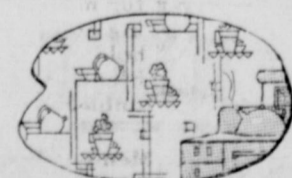
Dining Rooms need charming wallpaper to look their best. Choose from dainty florals, modern geometrics, smart stripes, and grains!



Bedrooms look sunnier, cozier with gay, youthful wallpaper. We have designs for tots, children, and adults, too. Over 100 samples!



Bathrooms depend on the wallpaper used for their sparkling appearance. We offer you dozens of washable, fadeproof styles for choice!



Kitchens benefit from bright, cheery patterns—and so do housewives. See our really huge selection of "gloom-chaser" patterns and styles!

CHOOSE YOUR SUN-TESTED WASHABLE WALL PAPER

Give your home a thorough, though economical, beauty treatment today with distinctive late-styled wallpaper! We have a complete selection of up-to-the-minute patterns—all fadeproof, washable, durable, beautiful! Get yours now for best choice!

SEE OUR SPECIAL OFFER

For a Limited Time Only We Will Give

**FREE**

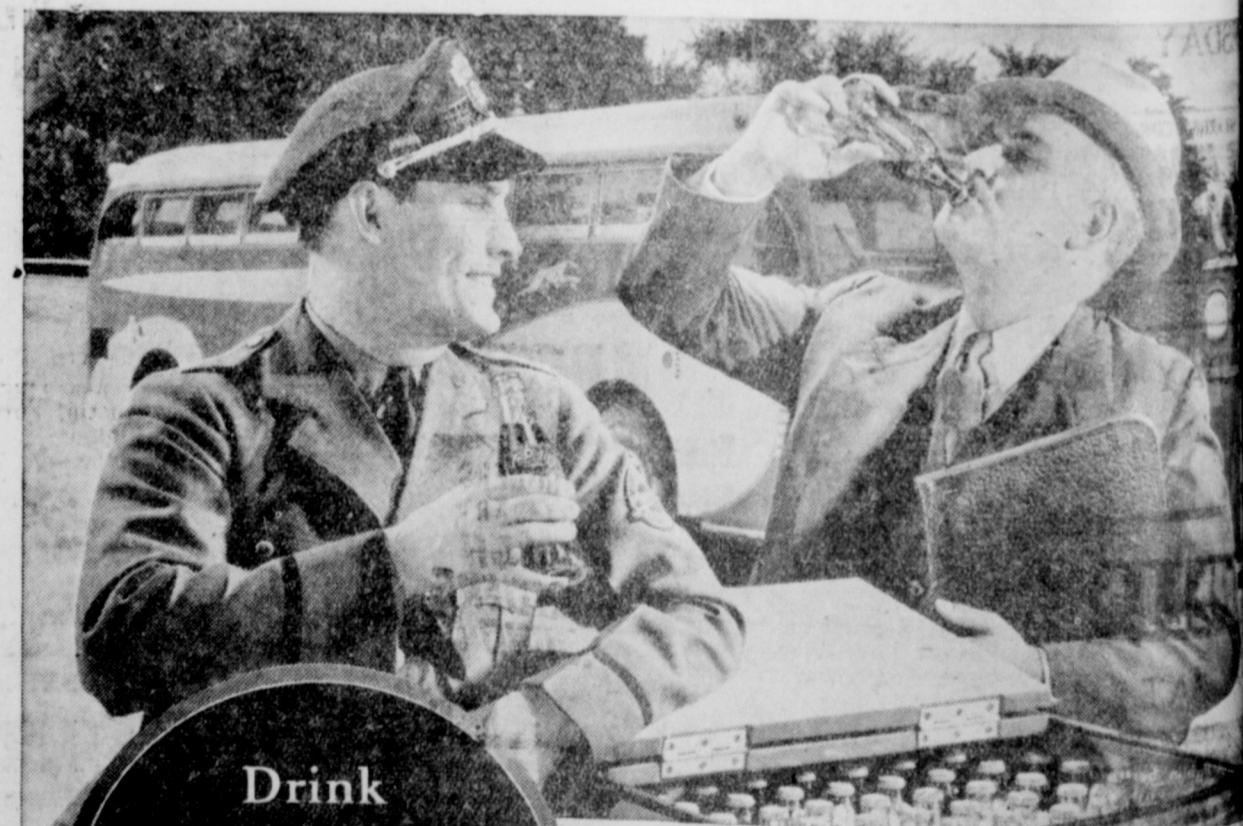
One Pair Beautiful Pervel Celluprintz DRAPERIES

With Each Room You Purchase of our Sun-tested Washable WALLPAPER

Extra Pairs, only . . . 59c

## CROWELL LUMBER CO.

722 W. Main St. Phone 300 Eastland



Drink **Coca-Cola** The pause that refreshes ... wherever you go

Happy places to pause dot the road maps of the nation. And familiar red coolers for ice-cold Coca-Cola are there ... inviting you to pause ... refresh ... and be on your way.

5c

TEXAS COCA-COLA BOTTLING CO.

TRY A WANT-AD—IT ALWAYS PAYS!

# PRODUCTION FOR NEW TEST STAKED NEAR CARBON

Development trend in this section continued this week as activities did not rival past weeks.

Two miles southwest of Carbon county, W. T. Luttrell located a 3,100-foot No. 1 Beon in 2,000 feet on west line and 2,050 feet on south line of section 13, H&TC survey.

No. 1 Beon is three miles from W. J. Dobbs No. 1 which recently found 60 per cent gas day production.

Remainder of the old oil days in

this section was furnished when Fitzer and West of Breckenridge announced that the firm would drill No. 2-A Gonzolus, just east of the Christian Church in Breckenridge. The townsite well is near a well which recently had produced for 17 years. Production in the other well finally ceased because of cave-ins.

One of Eastland County's newest projects, J. D. Cawley et al No. 1 Elzo Beon, northwest of Okra, was drilling at 200 feet in the Stoker survey.

Northwest of Flatwood, Eastland county, G. M. Groce was shut down at 100 feet on No. 1

Yancey, section 15, block 2, H&TC survey.

Two miles northeast of Pioneer, also in Eastland county, completion was awaited on Harry Trentman No. 1 A. A. Tyler, section 21, ETRR survey, which had been given acid between 2,453-2,501 feet.

Hoffmann and Page No. 1 C. E. Hathcock, W. M. Rinks survey, nine miles southeast of Eastland and south of Ranger, was drilling at 2,315 feet in shale.

**Stephens County**

Wittmer, Knight and Ewing No. 1 Loving, section 66, EAL survey, deep try in Stephens county, was drilling at 250 feet.

Leonard Simon et al on the Beck farm, Stephens county, section 1, block 6, T&P survey, three miles north of Caddo, at 1,600 feet was drilling.

Lone Star Gas Company No. 1 O'Connor, section 51, block 7,

### Army Announces Hawaii Vacancies

Colonel Telesphor G. Gottschalk, Army Recruiting Officer on duty at Dallas, announces forty Army vacancies in the Hawaiian Islands.

These vacancies in foreign service have just become available and they will be filled the first ten days of this month. Either previous service men or men desiring to make their initial enlistment should contact any one of the soldiers on duty at the U. S. Army Recruiting Station located in the Federal Building. Those living outside Dallas should contact the Recruiting Offices located in the Post Office Buildings at Fort Worth, Abilene, Tyler, Sherman, Waco, Paris or Texarkana.

### Rising Star Men Leave for Europe

**RISING STAR.**—G. A. Dunn, Jr., minister of the Church of Christ here, and Ike Hickman, who has been attending Texas A. & M., left to begin a tour which will take them to Paris, France, several other European capitals, and the Holy Land.

The pair boarded a train in Fort Worth for New York City and will sail from that port Wednesday.

Dunn, who is completing work on his Ph.D. degree in history at the University of Texas, plans to do research work in libraries in Europe for material to use in preparing the thesis for his degree.

Among other things, Dunn will attempt to interview the former Kaiser Wilhelm, now in exile at Doorn, Holland. He has letters and credentials from the department of history at the University of Texas and will try to gain first hand from the kaiser information pertaining to subjects on which he is going to do research.

Dunn and Hickman plan to be gone some three months, returning to the United States about the first of September.

### Son Of Eastland Citizens In Baylor Hospital at Dallas

Collin Gilbreath, son of Mr. and Mrs. J. R. Gilbreath of Eastland, is recovering satisfactorily from an oilfield accident in Baylor Hospital at Dallas.

The accident occurred recently while Gilbreath was with a crew repairing a gas line near Wink. At first he was sent to a hospital at Odessa, where he headquartersed while working for the Atlantic Refining Company, then was sent to Dallas. His room number in Baylor Hospital is 345.

First reports that the accident included gas explosion burns were erroneous. Instead, in some manner his leg was struck by a heavy pipe. It will be several months before his recovery will be complete.

EAT - DRINK - AND LIVE AT

# ROOTS

BAR-B-CUE PIT  
Air - Conditioned  
COOL AND PLEASANT  
ALL KINDS

Sandwiches - Ice Cold Beer

The Best Barbecue Lunch You Ever Tasted **25c**

Beef Bar-B-cue Sandwiches . . 10c

FREE CASH PRIZES  
Every Saturday Night

Conveniently Located  
WEST MAIN STREET EASTLAND

# TYRONE

EASTLAND, TEXAS

PROGRAM — WEEK OF JUNE 9th

FRIDAY and SATURDAY

CECIL B. De MILLE'S  
**"UNION PACIFIC"**  
Starring BARBARA JOEL  
STANWYCK McCREA

PLUS CARTOON AND NEWS

NIGHT SHOW SATURDAY  
REGULAR RUN SUNDAY - MONDAY

HENRY  
**FONDA**  
(OF "JESSE JAMES" FAME)  
IN HIS GREATEST ROLE  
**"THE YOUNG MR. LINCOLN"**

"THE GOLDFISH" — COLOR CARTOON  
"NEWS OF THE DAY"

THURSDAY and WEDNESDAY

ARTHUR CONAN DOYLE'S  
**"HOUND OF BASKERVILLES"**  
STARRING RATHBONE WENDY BARRIE

FRIDAY 15c — BARGAIN DAY

ST LINDSAY  
in **"ON TRIAL"**

ADMISSION 10c and 15c

SUNDAY

**Grey's SITAGE THE SERT**

Picture with D WOODS VENABLE L HAYDEN Lesley Selander man Production

Darryl F. Zanuck's production of  
**JESSE JAMES**  
IN TECHNICOLOR  
starring TYRONE POWER HENRY FONDA NANCY KELLY

WEEK OF  
JUNE 16th

Friday - Saturday  
June 16 - 17

**BAER NOVA**  
Fight Pictures  
PLUS

WARNER BAXTER in  
**"THE RETURN OF THE CISCO KID"**

SUNDAY - MONDAY  
JUNE 18 - 19

**Bette Davis**  
**"Dark Victory"**  
NEW TRIBUTE!  
NEW TRIUMPH!  
NEW GLORY!

Tuesday - Wednesday  
JUNE 20 - 21

**GRACIE ALLEN**  
**"MURDER CASE"**  
GRACIE ALLEN WARREN WILLIAM

THURS., JUNE 22

JANE  
**WITHERS**  
— in —  
**"Boy Friend"**

CONNELLEE  
ADM. — 10c - 15c

FRIDAY - SATURDAY  
JUNE 16 - 17

**ROY ROGERS MARY HART**  
**"ROUGH RIDERS ROUND-UP"**  
LYMOND HUTTON

SUNDAY, JUNE 18  
(FIRST RUN)

Drummond's greatest case... your biggest screen thrill!

**"BULLDOG DRUMMOND'S SECRET POLICE"**  
JOHN HOWARD HEATHER ANGEL  
Directed by JAMES HOGAN

Here's a Real SPECIAL

Cash And Carry For Quick Sale!

WEEK-END BARGAINS

Table Lamps - End Tables  
Only a Limited Supply at This Price!  
Brighten Your Home With These Values—

Regular \$1.95 Value  
Your Choice of Either WHILE THEY LAST \$1.19

SEE US FOR SPECIALS ON USED FURNITURE VALUES -

YOU ARE INVITED TO COME AND LOOK OVER OUR MANY HOME FURNITURE NEEDS AT ATTRACTIVE PRICES!

**EASTLAND FURNITURE CO.**  
Fred C. Hardin, Owner  
West Main St. Eastland

In the Service of its Readers . . . in News, Editorial, Feature and Entertainment Content— Greater Than Ever in Its History . . .

## THE DALLAS MORNING NEWS

"Texas' No. 1 Newspaper"

The News' staff of reporters, artists and feature writers, augmented since July 1, give our readers the greatest coverage of local and sectional news and pictorial interests of any newspaper published in Texas.

Full Associated Press wire service, including news and Wirephotos. Also United Press wire news service. The News also maintains its exclusively own Washington, Austin, Fort Worth, Waco and East Texas correspondents.

38 pages, or more, of recreational reading in

### THE BIG SUNDAY NEWS

Including  
ROTOGRAVURE Picture Section  
"THIS WEEK," Colorgravure Magazine.  
16-PAGE COMIC SECTION in Full Colors.  
Also: The American Institute of Public Opinion, with Dr. Gallup's Weekly Polls  
Clip This Coupon and Mail Today

**THE DALLAS NEWS**  
Dallas, Texas  
Gentlemen:

Herewith my remittance \$ . . . . . to cover subscription to The Dallas News (one year by mail) (six months by mail).

Name . . . . .  
Post Office . . . . .  
R. F. D. . . . . State . . . . .

Subscription rates By mail, daily and Sunday, one year \$9.00; six months, \$5.00; three months, \$2.50; one month 85c. These prices effective only in Texas.

## 2nd Big Week - PENNEY'S SUMMER WHITE VALUES

Buy a Supply Now!

Men's SHORTS Sanforized printed shorts 15c	<b>SHEETS</b> <b>67c</b> 81x99. You get more service for less money when you buy Nation-Wide® sheets—they're year in, year out values for thrifty homes! *Reg. U. S. Pat. Off.	Facial TISSUES 500 to box. Fine quality. 2 boxes for 35c
<b>TOWELS</b> Don't miss this big value. Extra large, heavy double terry Towels. Now you can save at Penney's <b>15c</b>	<b>CRETONNE</b> New patterns, attractive colors at a new low price. Buy at Penney's now <b>7 1/2c</b>	
Avenue PRINTS Another large assortment just received for this big promotion. Don't miss this big table of values <b>10c</b>	Men's All-Purpose SHIRTS <b>25c</b> Favorites the country over for comfort and savings! Sturdy weight full combed cotton in white with blue, maroon or green trimming.	
<b>SCRIM</b> Buy your summer drapery now, thirty-six full bolts of colorful scrim. Save during this promotion <b>5c</b>	<b>DURO SHEETS</b> Size 81 x 99, clean white sheets. Just think of it! A big value always <b>50c</b>	
<b>REMNANTS</b> Standard Muslin 5c yd.	Low Bargain Price Bedspreads <b>49c</b> An almost unheard of low price for these cotton crinkle spreads. Ideal for homes, camps and cottages. Pastel colors! Size 80"x105".	Pillow Cases An unusual value and saving. Size 42 x 36. See this big savings at Penney's <b>8c</b>
Sensational bargain! A good quality for many sewing and household uses. Bleached and unbleached! <b>25c</b>	Attractive Porto Rican gowns. Embroidered in pastel colors <b>25c</b>	The name Nation - Wide means more value for your money! Soft and serviceable! 42"x36" <b>15c</b>
Men's PANTS Slub weave pants extra value at this low price <b>89c</b>	PRINTS Large assortment of new prints in summer colors <b>7 1/2c</b>	PANTIES Women's Panties in four styles, tailored and lace trim effects <b>15c</b>

**PENNEY'S**  
PENNEY COMPANY, INC. EASTLAND, TEXAS  
Across from the Connellee

LOCAL—EASTLAND—SOCIAL

PHONE 601

BESSIE TAYLOR, Editor

Seaberry-Toombs Marriage Rites Performed Thursday

Miss Reva Seaberry became the bride of Mr. F. H. Toombs in the impressive ring ceremony performed Thursday morning, June 8, at 9:15, in the home of V. T. Seaberry, her brother, and Mrs. Seaberry.

Rev. Philip W. Walker, pastor of First Methodist Church, officiated before an improvised altar of white gladioli, white peonies, and jasmine. The home was decorated throughout with matching flowers.

The bride was dressed in a traveling frock of blue crepe with dusty pink accessories. She wore a shoulder corsage of pink sweet-heart roses. Music for the ceremony was furnished by a violin trio, composed of Glenna Johnson, Nancy Seaberry and Elaine Crossley, accompanied by Clara June Kimble.

The trio first played "Ava Maria" preceding the ceremony. This was followed by a violin solo, "O Promise Me," played by Nancy Seaberry. The trio then played "The Wedding March," to be followed by a solo by Nancy Seaberry playing "Drink to Me Only With Thine Eyes," during the ceremony. Following the ceremony the trio played "The Bells of St. Mary's".

Only members of the two families were present, Mrs. Layton Eppler and son, James Eppler, student of A. & M., Mrs. James Cheatham and daughter, Betty, Mrs. Elsie Hampton of Fort Worth, and Mr. and Mrs. Seaberry and Nancy and Virgil, Jr.

The couple left immediately after the ceremony for a short wedding trip and on their return Monday will be at home at 201 South Ammerman.

Compliments Margaret Ann On Third Birthday

Mrs. William J. Starr entertained a group of children with a party at her home at 500 Foch street Tuesday afternoon to celebrate the third anniversary of her daughter, Margaret Ann.

Various games were played by the children, after which they were served ice cream, birthday cake and cookies, on the lawn under trees gaily decorated with brightly colored balloons. Peppermint sticks and balloons were given as favors. Margaret Ann's guests were Bobby Vaught, Bert Hawley, Elizabeth Ann Anderson, Melba Ray Watson, Bobby Burton, Bobby Guy and Gladine Womack, of Eastland, and Carl Williams Bailey, Betty Jane Starr, Donald Wayne Starr and Alan Travis Starr, all of Cisco.

Other guests present were, Mrs. Disappearance of Mrs. Edna Smith, above, 22-year-old Boston school teacher and wife of Harvard graduate student, is being investigated by G-men after relatives expressed fear she may have been kidnaped. Last word from her was telegram to husband she would arrive in Boston May 23 from New York.

Teacher Kidnaped?



Disappearance of Mrs. Edna Smith, above, 22-year-old Boston school teacher and wife of Harvard graduate student, is being investigated by G-men after relatives expressed fear she may have been kidnaped. Last word from her was telegram to husband she would arrive in Boston May 23 from New York.

Methodist Bible School Opening Slated On Monday

The daily Vacation Bible School of the First Methodist Church will begin Monday, June 12, for a two-week period and will close Friday, June 23, officials stated today.

The session will be held each morning from 9 until 11 o'clock from Monday through Friday of each week, and is open to all children of Eastland between the ages of 4 and 14 inclusive.

Work of the school will be carried on in four departments with Mrs. J. U. Johnson as general director. She will be assisted by the four superintendents of the regular church school.

Mrs. R. A. P. Poole will have charge of the beginners, with a study subject on Our Happy Work, and will be assisted by Mrs. Ed Willman, Mrs. Roy Birmingham, Mrs. Charles Harry, Miss Mary Young.

Mrs. F. L. Dragoon will have charge of the primaries who will study "Bible Homes and Homes Today." She will be assisted by Mrs. Frank Pierce, Mrs. Bert Hawley, Mrs. Garner Kinard, Mrs. M. C. Clyatt, Miss Frankie Mae Pierce.

The junior department, with study on "What Is In Your Bible," will be directed by Mrs. Wade Thomas with the assistance of Mrs. Frank Castleberry, Mrs. R. V. Freeman, Jr., Mrs. A. J. Treadwell, Miss Beatrice Young, Miss Christine Davis of Lampasas.

Mrs. Bert McGlamery will have charge of the intermediates, with course of study on "Oh Come Let Us Worship," and will be assisted by Mrs. Earl Bender, Mrs. H. O. Satterwhite, Mrs. K. K. McElroy, Jane Ferguson, June Hyer, and Mrs. A. C. Simmons.

Mrs. J. E. Bicknell and Miss Marie Plummer will assist in the music in all departments.

The two hour program held each morning will consist of one hour class study and the remainder period in handicraft, worship and play. Twenty hours of religious education, as well as training in service and recreation, is promised through the school.

County Agent On Vacation From Work

Elmo V. Cook, county agent, Mrs. Cook and children Saturday began a one-week vacation. Places to be visited included Meridian, where Cook once was Bosque County agricultural agent.

Fred Heinemann and Fred Heinemann, Jr., of Marshall; Mrs. Jim Watson, Mrs. E. M. Anderson, Mrs. W. G. Womack, Mrs. Donald Hawley, Mrs. W. B. Starr, Mrs. R. F. Starr, Mrs. J. V. Starr and Mrs. Carl Bailey

Eastland Personal

Mrs. C. W. Hampton of Fort Worth is a guest in the home of Miss Roberta Kinnaird this week. Mr. and Mrs. Bill McDonald of Austin are visiting in Eastland this week.

Mrs. Fred Heinemann and son, Fred, Jr., who have been visiting Mr. and Mrs. Wm. J. Starr and daughter, Margaret Ann, will return to their home in Marshall on Sunday.

Mr. and Mrs. James C. McKelvin announced Thursday the birth of a son, named James C. McKelvin, Jr., Tuesday night at Payne Hospital in Eastland. The son weighed seven pounds and 11 ounces.

Funeral Service Is Held For A Ranger Girl On Thursday

Funeral services for Altha Mae Bearden, 19, of Ranger, who died Wednesday, were to be conducted at Colony School this afternoon at 4 o'clock, with burial in the Colony cemetery following the services, which were to be conducted by Rev. K. C. Edmonds.

The deceased was born in Ranger July 23, 1920, and had lived in this part of the county all her life. She was a member of the New Hope Baptist Church.

Survivors include her parents, Mr. and Mrs. C. C. Bearden, two brothers, W. H. and J. C. Bearden, three sisters, Claire Dell, Bonnie Lois and Frankie Nell Bearden, all of Ranger.

Church Of God's School Success

The daily Vacation Bible School, which has been in progress at the Church of God for the past two weeks, has been a success from every angle, according to Rev. H. C. Hathcoat, pastor of the church. Around 75 have enrolled for this first endeavor of the church and the daily attendance was reported good.

The last study session will end Friday morning at 11:20 and the entire school will have a picnic at City Park Friday afternoon at 2 o'clock. Closing exercises will be held at the church Friday night at 8 o'clock and will be open to the public.

Exhibits of handicraft and recitations of memory work together with the awarding of certificates.

Small Pessimistic About This Session

AUSTIN, Texas—Sen. Clint C. Small takes a pessimistic view of the accomplishments of the Texas Legislature. Summing up its activities for the benefit of his fellow members, Small remarked that the Legislature has failed to reduce the cost of state government, voted to increase the old age pension load \$20,000,000 a year, and remitted ad valorem taxes while the state has a deficit.

Sen. Albert Stone of Brenham reminded the Senate that the Legislature was reversing the usual process of doctoring a bankruptcy concern. A receiver, he remarked, will go to make up the program.

marked, with the outstanding as has \$200,000 (taxes) before expenditures. Either some decided that the history of the state government in the memory.

Washington curbs in the king and queen first time, leaving how

Don't C Law It's just Sharpening

Bring it to latest modern to sharpen pair it if it take chance fooling with We fix all ture. Do awning with

WE CAN FIX IT!

RO PENTE West EAST

Bring it to latest modern to sharpen pair it if it take chance fooling with We fix all ture. Do awning with

WE CAN FIX IT!

RO PENTE West EAST

Bring it to latest modern to sharpen pair it if it take chance fooling with We fix all ture. Do awning with

WE CAN FIX IT!

RO PENTE West EAST

Bring it to latest modern to sharpen pair it if it take chance fooling with We fix all ture. Do awning with

WE CAN FIX IT!

RO PENTE West EAST

Bring it to latest modern to sharpen pair it if it take chance fooling with We fix all ture. Do awning with

WE CAN FIX IT!

RO PENTE West EAST

Bring it to latest modern to sharpen pair it if it take chance fooling with We fix all ture. Do awning with

WE CAN FIX IT!

RO PENTE West EAST

Bring it to latest modern to sharpen pair it if it take chance fooling with We fix all ture. Do awning with

WE CAN FIX IT!

RO PENTE West EAST

Bring it to latest modern to sharpen pair it if it take chance fooling with We fix all ture. Do awning with

WE CAN FIX IT!

HELLO FOLKS! LOTS OF VALUES! BACON, Star Sliced, lb. 29c BACON, Kora Gold, 1 lb. pkg. 25c BACON SQUARES, Not Jowls, lb. 17c BACON, Salt Pork, No. 1, lb. 12 1/2c BABY BEEF ROAST, choice cuts, lb. 18c Baby Beef Loin, Shoulder, Round, T-bone, lb. 25c Baby Beef Stew or Ground Meat, lb. 15c BOLOGNA and SALT JOWLS, lb. 10c FRYERS, large kind, pen fed, lb. 23c HAMS, Tenderized, half or whole, lb. 25c HAMS, center slices, lb. 35c HAMS, hock ends, lb. 15c HOT BARBECUE, cooked daily, lb. 30c WE HAVE A GOOD ASSORTMENT OF LUNCH MEATS AND CHEESES PHONE 70 OWNED AND OPERATED BY S. L. (LEON) BOURLAND Market Located in A. & P. Store

CLOVER FARM STORES MEATS GREEN BEANS lb. 5c LINES Per Dozen 10c LETTUCE TWO HEADS 9c LEMONS Dozen 19c CELERY Stalk 12c BANANAS TWO Dozen 25c SQUASH 3 Lbs. 10c ORANGES TWO Dozen 35c TOMATOES 4 Lbs. 19c PEACHES Dozen 10c FRESH CORN 6 for 13c BEETS THREE Bunches 10c PURE LARD 4 Lb. Carton 35c COFFEE, Clover Farm—The Taste Tells Lb. 25c CLOVER FARM TEA, Real Flavor, Glass Free 1/4 Lb. 23c AFRICOTS 2 NO. 1 CANS 25c MILK 8 SMALL or 3 TALL 19c PINEAPPLE 25c SALMON, PINK 2 CANS 25c GRAPEFRUIT JUICE 15c PORK & BEANS 5c CLOVER FARM—2 CANS 15c CORN FLAKES 9c PEANUT BUTTER QUART 25c LARGE PACKAGE 9c VINEGAR Apple Cider—64 Oz. 25c Water Bottle—Each 25c COFFEE Red Cup 2 Lbs. 29c Fresh Ground 2 Lbs. 29c TOMATOES Hand Packed 25c 4 No. 2 Cans 25c CRISCO 49c LIFEBUOY 3 BARS 19c 3 LB. CAN 25c P. & G. SOAP 5 BARS 19c PENJELL 2 PKGS. 25c TOILET TISSUE 4 ROLLS 19c PAPER NAPKINS 3 PKGS. 25c WAX PAPER 2 ROLLS 15c PAPER PLATES DOZEN 10c VINEGAR Distilled—GAL. 19c FORKS 2 DOZEN 10c VINEGAR APPLE CIDER—GAL. 30c SPOONS 2 DOZEN 10c FRUIT JARS, TIN CANS, CAN TOPS, JAR LIDS AND PARAFFIN WE CARRY A VARIETY OF MEATS TO SERVE ANY OCCASION! SALT PORK Lb. 10c SLICED BACON Lb. 23c For Hot Weather—HAM SALT JOWL Lb. 9c PATTIES Lb. 25c SEVEN ROAST Cut From Swift's Premium Beef—Pound 18c PORK ASSORTED Lb. LUNCH MEAT 25c SAUSAGE Lb. 15c 2 LBS. LAMB MARGARINE 25c SHOULDER Lb. 18c

Crown June With a Major Accomplishment! June is one of the most delightful months of the year. It is noted for its cool breezes, beautiful flowers and a plentiful supply of vegetables from many gardens. It's vacation time, too, and many folks will pass up the eleven other months of the year just to be married in June. The fisherman fish, the golfers golf, and nearly everybody waits for June to let down and relax. Did you ever read the historical facts about June? They are interesting, if you like figures as they relate to history. For instance, you would be surprised to learn how many people buy homes in June. It's the banner month for important decisions. So crown June with a major accomplishment. Buy one of the homes listed below, or one of the others we have listed for sale: 811 W. Valley, Cor. Main and Oaklawn, 505 S. Seaman, 417 Pershing, 325 and 327 Oaklawn, 401 Oaklawn, 1206 S. Seaman. EARL BENDER & COMPANY Abstracts — Insurance — Real Estate — Rentals

COME TO Burrs DEPARTMENT STORE SPECIAL June VALUE EVENING DRESSES Smartest Fashions! Priced low for immediate clearance. Real values in Dresses while you have lots of time to wear them. All knockout values! Values to \$2.98 Values to \$3.98 Now \$1.37 Now \$1.57 Values to \$5.95, now \$2.57 Ladies' 2-PIECE SUITS Man-tailored Congo Cloth. Just right for vacation trips, and at a marvelous saving. You have to see these Suits to really appreciate the fine quality and style. Values to \$6.95 Now— \$1.77 ea. ANOTHER GREAT FROCK EVENT 100 NEW PRINTS At a price that is almost unbelievable. Full cut, smartly tailored for long life. Fast color. All sizes 44c ea. Ladies' Full-Fashioned HOSIERY Three thread in season's newest shades— 49c Pr. DRESS LENGTH All crown tested fabric—chartruse, coral, western—small floral patterns. Friday and Saturday— Now Only \$1.19

Week-End Specials On Towels and Wash Cloths . . . SHOP OUR WINDOWS — — — COME EARLY! — — — TURKISH TOWELS Size 18" x 34". Check design. Color of blue, pink, gold and green. Your choice 8c TURKISH TOWELS Size 20" x 40" double thread colored border. You'll want several at this money saving price. All colors. 13c ea. TURKISH TOWELS Size 20" x 40" double thread colored border. In colors of blue, gold, red and green. For the thrifty housewife. A real bargain. Regular 25c value— 17c ea. Wash Cloths Size 12" x 12" fast and stripe— 3 for 10c OTHERS at 5c

Men's Khaki Suits The well-known brand, "Dickie" Friday and Saturday only— SUIT \$2:17 Burrs DEPARTMENT STORE West Side Square Eastland Men's Work Color, black and white them by the dozen and 5c Pr