

ONE OF A FLEET FOR YOUR SERVICE

(Shop Shown in Back Ground)



Dependable as the dawn...

We specialize in hauling Natural Gasoline in any quantity work all hours to *deliver* the products of petroleum where and when they are needed—in any weather, in any emergency. As local businessmen, we pride ourselves on knowing what kind of products and services our neighbors want. With usage of oil products at an all-time high, we are now tackling our biggest job ever. This is our pledge that we will continue to serve you and our community well.

Phillips Transport Company Covers a Radius of 300 mile Radius of Eastland, Texas, To and From All Points.

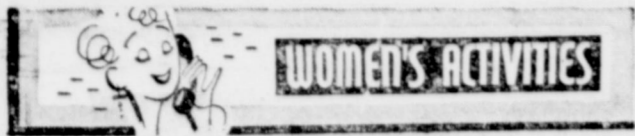
PHILLIPS TRANSPORT CO.

Royce A. Phillips, Owner
Phones 646 or 353

Ranger, Texas
Phones 646 or 353



YOUR PROGRESS AND OIL PROGRESS GO HAND IN HAND



WOMEN'S ACTIVITIES

TELEPHONE NEWS TO 601-223

Alpha Delphian Study Club Opens Season With Buffet Dinner, Thurs.

The Alpha Delphian Study Club opened its year's work Thursday evening at 7 o'clock with a buffet dinner, at the Woman's Club.

M. Oakley, J. H. Parker, Leroy Patterson, E. S. Perdue, E. M. Pritchard, E. J. Turner, Henry Van Geem, Maurice Vaughn, W. C. Vickers, W. B. White, R. L. Young, and Miss Mabel Hart.

Martha Dorcas Class Holds Prayer Meeting

The Martha Dorcas prayer group of the First Methodist Church met in the class room Friday morning at 9 o'clock.

Opening song was "Have Thine Own Way Lord". Mrs. W. P. Leslie, leader, read the Third Chapter of Revelation, followed by a prayer in unison.

Closing song, "There Shall be Showers of Blessings." Present were: Mmes. Leslie, Ida Foster, J. A. Doyle, R. E. Sikes, E. R. Townsend, O. M. White, Guy Quinn, Sr., Roy Stokes, Ora B. Jones, and J. L. Cottingham.

The next meeting will be Friday morning Oct. 19, when Mrs. Bender will be leader.

Mmes. Artie Liles and O. L. Hooper entertained Thursday with a Round-Robin party in the home of Mrs. Artie Liles.

Guests were Mmes. Roy Lawson, W. W. Walters, Earl Stephens, Tom Lovelace, J. E. Turner, and A. L. Seay.

Scale Runners Music Club Review Recent District Convention, Wed.

Members of the Scale Runners Juvenile Music Club met Wednesday afternoon in the home of Mr. and Mrs. Andy Taylor, with their daughter, Sandy as hostess.

Sue Stoker, president, presided and opened the meeting with the singing of "Come, Holy Ghost in Love", national federation hymn.

Nancy Gann gave the minutes of the previous meeting and Evelyn Bailey led the group in the National Junior Pledge. Mary Vaughan led the members in repeating the club collect.

Sandy Taylor opened the afternoon's program with a piano solo "Fido". Mary Vaughan gave an article on, "Overcoming Stage Fright."

Glenna Kilgore gave a report on the district convention held last weekend in Brownwood and read the report of the club, that was given at the convention, in which the report rated 139 points by the National Federation rating sheet.

Julia Inzer played Sonata No. 2, by Beethoven, as she played on the luncheon program at the convention to represent the Club.

The Club's scrapbook, which won first place at the convention was displayed. It is designed in the Club's color of green and white and was made by Mrs. H. B. MacNoy and Mrs. Dalton with the assistance of their daughters, Carol MacNoy and Linda Dalton.

A musical game conducted by Mrs. A. F. Taylor, counselor concluded the program.

A refreshment plate of ice cream and cookies was served to the 25 members attending.

Mrs. Marvin Hutto accompanied by Mrs. T. M. Morgan and their father, O. B. Crowley are spending the week-end in Littlefield.

Marriage Of C. P. Williams Announced Here

Miss Dorothy Howard of Humble, Texas will be married to Charlie Paul Williams of Eastland Saturday evening Oct. 13 at 7:30 in the First Baptist Church parsonage of Humble.

The Rev. Baiver, pastor of the Church will officiate. Charlie Paul is the son of Mr. and Mrs. J. F. Williams of Eastland.

Personals

Mrs. G. L. Wingate was hostess Wednesday afternoon when she entertained with a Round Robin party.

Attending were: Mmes. Wilbur Laney, J. A. Beard, B. M. Griffin, and J. D. Parsons.

Mmes. Roy Lawson, O. L. Hooper, and W. W. Walters were visitors in Abilene Thursday.

Mr. and Mrs. Owen Merriman of Carthage visited Mrs. T. L. Morgan and Marilyn Friday.

Mr. and Mrs. Aubrey Van Hoy have returned from a vacation trip after visiting friends in Abilene and Fort Worth, attending the State Fair in Dallas, and visiting their son and daughter, Connor and Charlotte, who are students at the University of Texas.

Mrs. Claud Boles of Los Angeles is the guest here in the home of Mr. and Mrs. H. P. Pentecost.

Mrs. Mary Lawrence of Dallas is the guest here in the home of her sister and mother, Mrs. R. E. Sikes and Mrs. Sam Day.

Mr. and Mrs. Neil Day, Mr. and Mrs. Bob King and Mr. and Mrs. John D. Harvey of Robert Lee attended the Texas University and the Oklahoma University football game in the cottonbowl at Dallas, Saturday.

Misses Eileen Vaughn, Mabel Grimes and Sally Cooper spent the week-end in Lubbock and attended the TCU - Tech ball game Saturday afternoon.

Mr. and Mrs. Victor Cornelius and Mr. and Mrs. Jack Germany attended the Texas University and



"GOLDEN CIRCLE" PLAYERS

Movie Stars Will Be Here Monday, 15th

Six rising young movie stars, members of Paramount's Golden Circle group of young players will appear in Eastland, Monday at 2:00 p. m. in connection with the "MovieTime in Texas" star tour.

The program will be held on the square in Eastland. These stars include Mary Murphy, Ann Robin, Joan Taylor, Virginia Hall, Laura Elliot and Peter Hanson.

Through the "Golden Circle" project, Paramount Pictures hopes to find the new personalities desired by the public and theatre exhibitors throughout the country. The new players will be groomed for stardom by studio executives, producers, directors and writers, according to Y. Frank Freeman, Paramount vice presi-

dent and studio head.

Adolph Zukor, veteran motion picture show man and founder of Paramount, aided in organizing the Golden Circle. Mr. Zukor, who is credited with having developed the "star" system on which motion pictures were built, lauds this latest effort on the part of his company as a movie that will revitalize motion picture attendance. He is most enthusiastic about its possibilities and feels that the young people selected to launch the project have definite potentials of becoming important film personalities.

Conrad Brady will act as master of ceremonies.

Benelux is a compound name composed of the first syllables of Belgium, the Netherlands and Luxembourg.

WANTED: Roofing work and asbestos siding. Free estimates. Phone 733 Eastland Roofing Company

BUY SEVEN-UP



BY THE CARTON

OUR PRESS FOR TIN HAS ARRIVED WE ARE IN THE MARKET FOR ALL KINDS OF SCRAP METAL AND IRON AND ALL KINDS OF SCRAP TIN. Mixed Scrap Iron \$20.00 Ton Mixed Cast Iron \$30.00 Ton Mixed Scrap Tin \$10.00 Ton EASTLAND IRON AND METAL CO. Phone 270 Eastland East Main St. Hy. 80

Marine Corps Officers Are Now In Demand

College graduates of the Eastland area have an opportunity to become Marine Corps officers under an expanded officer training program just announced.

Technical Sergeant Wims of the Marine Corps recruiting station in Abilene said graduates 20 to 27 years of age, including married men, are being sought to meet the expanding needs of the Marines and to fill vacancies caused by the release of reservists. The Marine Corps has openings for 1,000 officer candidates immediately, according to Sergeant Wims.

The next officer candidate course will begin Nov. 29 with a quota of 450. Application for this course must be received at Marine Corps Headquarters by Nov. 1.

College graduates accepted will be enlisted as privates and ordered to a 19-week basic training course at the Marine Corps

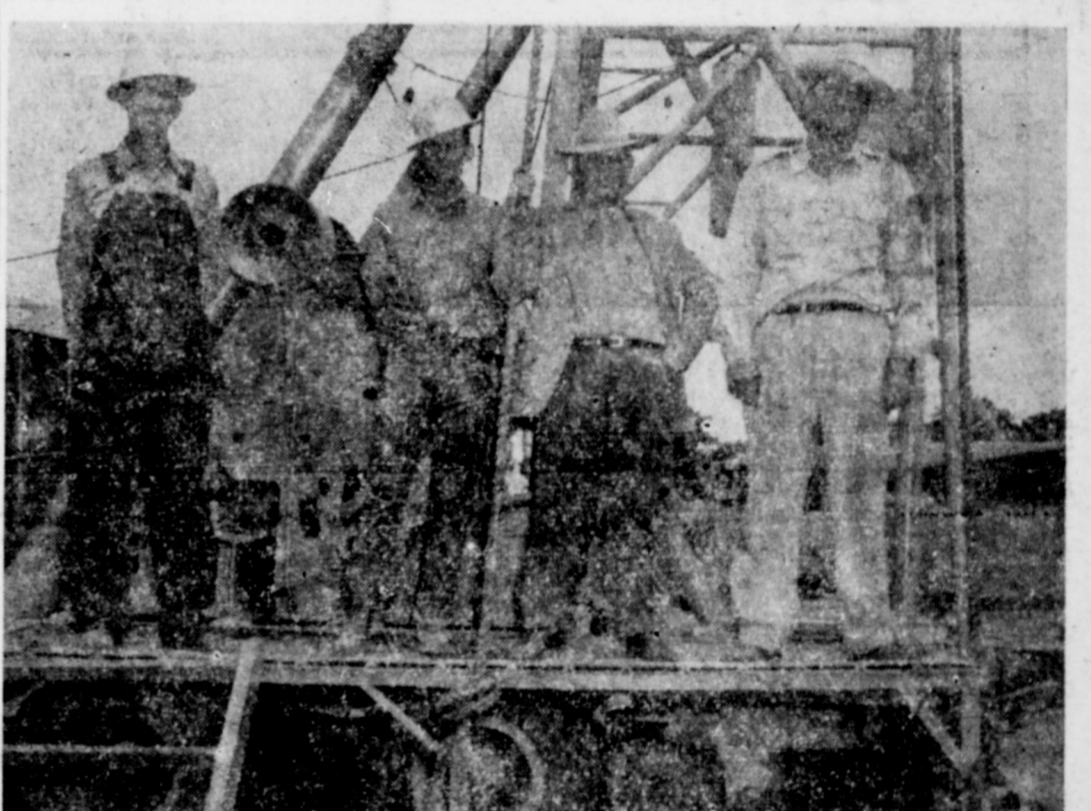
Schools, Quantico, Va. Married men will receive family allowances. Upon successful completion of this training, candidates will be commissioned sec. lieutenants in the Marine Corps reserve and then given an additional five months of specialized officer training.

Applicants must be at least 20 years of age and not over 27 on July 1, 1952, and must be in good

The Finest in Portraiture LIVE FOREVER FOR YOUR FAMILY... Just think of the pleasure you get when you receive a photo of some one dear to you! Give that very same pleasure to your dear ones, with a camera-portrait of you. CANARIS STUDIO Joe Canaris Phone 647 Bill Jacobs

Let Us Take Care Of YOUR TIRE TROUBLES Jim Horton Tire Service East Main Eastland

RIDE WITH SMOOTH COMFORT SEAT COVERS CUT IN OUR SHOP TO FIT YOUR CAR FIBER OR PLASTIC NEW, SMART PATTERNS Door Panels Made To Order BLEVINS MOTOR CO. 305 W. COMMERCE ST. PHONE 308



U. S. Strengthened by Oil Industry's 10 Billion Dollar Outlay

We are proud of our part in the oil industry's 10 billion dollar postwar investment program.

This investment has boosted the capacity of the industry by one-fourth—providing up to 2500 gallons of oil products a year for every American family.

Today's new facilities make it possible to supply petroleum products for U.S. Armed Forces and still meet record-breaking civilian demands. To continue to meet America's growing needs, expansion this year in oil production, transportation, refining, research and marketing will be even greater than in 1950.

In peace or war, the public gets the finest oil products at the world's fourth—providing up to 2500 gallons of oil products a year for every among America's thousands of privately-managed oil companies.

Oil Progress Week - October 14 - 20 GENEVA PETROLEUM CO. JACK CHAMBERLIAN EASTLAND YOUR PROGRESS AND OIL PROGRESS GO HAND IN HAND

EASTLAND'S MANUFACTURING PLANTS

Horton Ceramics, Made Here, Sell From Cuba To Canada

That Eastland is a manufacturing center is an established fact. True, there are not any great number of plants, but there are several here, and it could be they are not appreciated as much as they should be. Each plant adds to our economic wealth by increasing payrolls. And payroll spells prosperity do far as local retail dealers are concerned. It is our intention to ferret out facts concerning these manufacturing plants, and pass them on to our readers.

Why, there are many people in this county who probably do not know anything about Horton Ceramics. We didn't either until

Mr. Tanner of the chamber of commerce took us over to visit the plant.

Owned and operated by Mr. and Mrs. Horace E. Horton, this manufacturing plant is one of the largest and most modern to be found anywhere in the Southwest. Some very beautiful pieces of chinaware are made, and it is all of the better type. Their products and there are many varieties, are not to be confused with cheap plaster mouldings found all up and down Texas highways. Articles made by the Hortons will stand the acid test, and some of the prettiest, vases and novelties we have ever seen were found in their stock.

A New York columnist, Whitney Bolton, in a special article which appeared in the Ft. Worth Star Telegram Tuesday had the following to say: "Note from a lady in Weatherford, Tex., points out that recent comments here on the sleazy pottery ware for sale at Texas roadsides was justifiable but incomplete. . . . The sleazy stuff is Plaster-of-Paris, but true native pottery of excellent design and character is made at Eastland, from local clays. . . . As a man who believes that native wools are as good as British, and domestic china as fine as imported, I'm glad to throw a pitch for Eastland."

Domestic and other clays are used by the Hortons, for their products must be the very best. And, to, we must mention new equipment that has been added at this time. This includes a new kiln or furnace where the firing is done. An article receives the most minute preparation before

**T. L. FAGG
R. L. JONES**
Real Estate
Property Management
Home and Farm Loans

this operation, a temperature of 200 degrees is used in the beginning, but this is increased from time to time until the thermometer registers 2400 degrees fahrenheit. When it is gradually lowered until it leaves the oven.

All sculpture work is done by Mrs. Horton, while Mr. Horton looks after other departments. Department stores, florists, etc., are their largest customers which are scattered from Cuba to Alaska, with many in Canada.

The building contains more than 16,000 square feet of floor space and it is all occupied.

At this time they employ about twelve or fourteen assistants, and their sales compare to grow. The new equipment added at this time will almost triple the present capacity.

Flattering rams were enormous weapons by the time the Roman Empire reached its zenith. One of the largest described in Roman writings required 300 oxen to transport it and 1,500 men to swing it against assaulted walls.

Sweet corn is sweet, research reveals, because about five per cent of each kernel is sugar when ripe. Hot weather, however, may convert more than half the sugar to starch in the first 24 hours after the corn is picked.

READ THE CLASSIFIEDS

Joy Drive In
Cisco & Eastland Highway
Friday and Saturday
October 12 - 13

MARGARET O'BRIEN
Her First Romance
ALLEN MARTIN, J. - JIMMY HUNT
"SMOKEY ROFFERTI"
A COLUMBIA PICTURE

PLUS
CHARLES STARRETT
Action
RIDIN' THE OUTLAW TRAIL
SMILEY BURNETTE
A COLUMBIA PICTURE

News and Cartoon
Sunday and Monday
October 14 - 15

Big Family Entertainment
GREAT GUNS, WHAT LAUGHS!
DEAN MARTIN
and
JERRY LEWIS
AT WAR WITH THE ARMY
POLLY BERGEN

PLUS
Days of JESSE JAMES!
THE GREAT MISSOURI RAID
Color by TECHNICOLOR
Starring
MACDONALD CAREY - WENDELL COREY
BRUCE BENNETT - ELLEN DREW

News and Cartoon



Chill Wills

Chill Wills To Be Seen Monday

Chill Wills, who got his first name ironically because he happened to be born on the hottest July 18th in Sengoville, in Texas history, entered movie work after first putting in 15 years in vaudeville and burlesque. He was playing Hollywood's famed Trocadero night club when called for his first film role, a western part. He's been making pictures ever since.

He has often been referred to as "A Walter Brennan with Teeth" or "a poor man's Will Rogers."

Chill has been the voice of "Francis" the mule in two recent Universal-International pictures, "Francis" and "Francis Goes to the Races." Chill says he can

get along without Francis, but then jokingly asks the question, "Can Francis get along without me?" He recently has gained new screen fame as the "voice" of the performing mule.

In his latest picture "Cattle Drive" in technicolor, with Joel McCrea, Wills is seen on the screen as Dallas, cowhand cook on a lengthy cattle drive through three states.

"I like to keep reminding the fans what Chill Wills looks like," laughs Chill. "Just being thought

SECOND HAND BARGAINS
We Buy, Sell and Trade
Mrs. Margie Craig
208 W. Commerce

of as the voice of Francis could become hazardous.

"What if Francis really started to talk? Then what would happen to Chill Wills?"

The public is requested to see this Monday afternoon, to be held on the square.

Wonsan, North Korean port and bomb-blasted industrial center, was both an air and submarine base for the Japanese in World War II.

BARGAIN OFFER
The Abilene Reporter News
ONE YEAR BY MAIL \$10.95
IN WEST TEXAS

FARMS - RANCHES
Pentecost & Johnson
REAL ESTATE
Ltry Property

PALACE CISCO, TEXAS

Saturday Only
October 13

Cuban Fireball
Starring ESTELITA RODRIGUEZ
PLUS
Home NALE
THE MISSOURIANS
Serial and Cartoon

Dixie Drive Inn
Eastland-Ranger Highway
Friday and Saturday
October 12 - 13

APACHE DRUMS
Technicolor
Starring MARY McLELLAN - CAROL GRAY
with MILTON PARKER - ARNOLD SWEET
A UNIVERSAL INTERNATIONAL PICTURE

Also Selected Short Subjects

Sunday and Monday
October 14 - 15

DAMON RUNYON'S The LEMON DROP KID
Starring BOB HOPE
A Paramount Picture

Also Selected Short Subjects

DON'T BE A Put-up Girl!
ON WASHDAY

Complete laundry services at reasonable prices. Take it easy next washday . . . let us do the work for you. Phone 60 for pick-up.

- Family Finishing
- Shirt Finishing
- Rough Dry
- 3 Day Service

CISCO LAUNDRY SERVICE
Don Doyle Eastland Phone 60

A GENERAL ELECTRIC WASHER
gets clothes really clean!

Easy Terms

The General Electric Washer is built for just one thing—"Quick-Clean" washing all the time!

This is what you'll like about the improved General Electric Washer. The time-tested, "three-zone" Activator gets out all the dirt—gently, but thoroughly. The One-control wringer gives the correct pressure for every fabric. The adjustable timer watches the washing for you.

When you see that first snow-white wash—and every one from then on—you'll bless the day you bought a General Electric Washer.

Come in for a demonstration of "Quick-clean" washing—see why we're so proud of this washer.

*Trade-mark Reg. U. S. Pat. Off.

MORE IMPROVED FEATURES

- 8-lb. capacity
- Self-filling drainboard
- Durable balloon rolls
- Quick-emptying pump
- Full-length protective skirt
- Permanently lubricated G-E motor
- One-year written warranty

See the "Quick-Clean" G-E Washer at
LUCAS'S
304 E. Main APPLIANCE STORE Phone 666



Oil Progress means more to Texans!

This week the United States will focus its attention on the oil industry's contributions to the high American standard of living, to the nation's industrial progress, and to the national defense. *This is Oil Progress Week.*

Texans know the story well: as home folks in the oil country, they share the oil industry's pride in supplying the resource that powers a major share of the country's industries, all its airplanes and automobiles, most of its ships and trains.

Texans realize, moreover, that oil's progress means even more to them than it does to many other Americans. For example, the value of the crude oil produced in West Texas* in 1950 was approximately a billion dollars. This is not "boom money." West Texas uses it to pay taxes, salaries and wages; it buys homes, groceries, light and heat; doctors collect a portion of it; landowners receive

royalty and lease payments; a sizable portion of it is reinvested in the further development of the region's oil resources.

In a word, the progressive development of the petroleum resources of West Texas has enormously stimulated its thriving industrial, commercial and agricultural development, and this is the *more*, the *plus*, that oil's progress means to West Texans. Modern, efficient production practices will conserve the oil and gas resources of the region, and oil's progress will continue to mean more to West Texas for many years ahead.

* The shaded area is the region called West Texas by the West Texas Chamber of Commerce.



HUMBLE OIL & REFINING COMPANY
HUMBLE PIPE LINE COMPANY

