

Eastland Telegram

AND WEEKLY CHRONICLE

A PINT OF BLOOD
may not be much, though it
may save a life.
DO YOUR DUTY

A PINT OF BLOOD
may not be much, though it
may save a life.
DO YOUR DUTY

VOLUME TWENTY-FOUR

No. 127

UNITED PRESS WIRE SERVICE

EASTLAND, TEXAS, THURSDAY, NOVEMBER 20, 1952

NEA FEATURE SERVICE

PRICE FIVE CENTS

Around The Square

With Mack

Ike and Harry have had their "get together", and according to the big Dailies, no casualties have been reported. Ike didn't ask for anything and Harry didn't put anything out—not even a recipe for Red Herring soup. They spoke, shook hands and got down to cold business, with both of them probably smarting under pains originating during the recent campaign.

So far as Harry is concerned, he has little to worry about. All he will have to do is close his mouth and go into seclusion—eternal seclusion, while Ike is just getting ready to slip into the harness for the biggest job the world has ever known.

It wouldn't take long for America to forget Harry, only for the fact that he has bequeathed us a handful of gentle reminders. Income Tax is one of the reminders we won't be able to forget at any early date. Most of us will see "red" everytime we bundle up a major portion of our earnings and ship it to Washington "in memory of Harry." We can't forget.

Another thing that will linger in our minds is Harry's OPS, a highly paid organization whose service seems to have been limited to the mis-carrying of right and decency, to say nothing of justice and mercy. So far as we are concerned the only group ever to be benefited by the OPS, is the OPS itself. They (the agents) drew high salaries, and we paid the bill. It's very expensive is one reason for high taxes.

As Eisenhower appears on the scene, we are refreshed. His record for honesty, justice and fair dealing is as clean as a hound's tooth. He hasn't been in politics long enough to have accumulated a great gang of "patronage seekers." He doesn't owe anybody anything. People tried to draw him out during the campaign—they wanted promises and pledges, but the bronzed General wasn't to be taken in by anybody. He stated, that if elected, he would devote his every effort to the unbuilding of America, and that is all.

Ike knows the difference between right and wrong, and for almost half a century he has been practicing "Right." Ike admits the power of God, and his early training was rather rigid along religious lines. Ike admits this, but doesn't take any credit for his "proper" education." He also knows that man's power is limited, and when the end is reached, Ike knows just where to go for additional strength and wisdom. Ike believes in God, and in his power, and he is brave enough to seek His aid when storm clouds arise.

We have an idea that Ike and Mamie are too big and too well seasoned to fall for flattery or to be seeking personal glory. They have had this all their lives. Dwight D. Eisenhower has more friends today than any other man, living or dead, who has lived or is living, under the canopy of Heaven. He is America's Hero—the World's Odeal. He is bigger than all the political parties on earth. He is loved almost to the point of "worship" by teeming millions in a hundred foreign lands. Ike is a God fearing man—the highest tribute that may come to any individual.

While other politicians have been talking, Ike has been thinking, and when the time to act arrives, he will be ready. Even Joe Stalin isn't dumb enough to overlook this.

We do not think of Eisenhower as a Democrat or a Republican, but rather as a "great deliverer" of the American people. He is not worried about honor or glory—he has had enough to last a man.

(Continued On Page 8)

Drive An Oldsmobile Before You Buy! Eastland, Texas OSBORNE MOTOR CO.

W. H. Mullings Be Buried Friday

W. H. Mullings, 80, pioneer resident of Eastland, passed away at the family home on West Main Street Wednesday night following an illness of many months duration. Funeral services will be conducted from the Hamner Funeral Chapel, in Eastland, at 2 p. m. Friday, with Rev. Morris Bailey, Methodist pastor, in charge. Interment will be made in Eastland Cemetery.

Deceased was well and favorably known in Eastland, a carpenter by trade, but a tireless worker in the Methodist Church. He was born March 24, 1872 at Emory, Texas, but had spent many years in this county.

He is survived by his widow, Mrs. Mullings, of the home address, two sons, F. W. Mullings of Galveston, and W. M. Mullings of Garland; one daughter, Mrs. Neina Baker of Cleburne, and a brother in Selinas, Calif. He also leaves four grandchildren and two great grandchildren.



FOURTH FOR MICKEY—Mickey Rooney tries to be serious as he carries his bride, the former Elaine Mahnen, from the chartered plane that returned them to Los Angeles following their marriage in Las Vegas November 18. This is the second marriage for Elaine and the fourth for Rooney.

Jurors Urge Audit Of County's Books

Irene Hanna, 68, Will Be Buried Friday, 10 A. M.

Mrs. Irene Hanna, 68, passed away at 11 p. m. Wednesday evening at her home at 307 West Patterson, following a severe heart attack. Funeral services will be conducted from the Church of Christ at 10 o'clock tomorrow (Friday) morning, with interment in Eastland cemetery.

Mrs. Hanna had suffered an earlier attack some several weeks ago, but it was thought she had completely recovered. She was apparently in the best of health yesterday, and her passing came as a shock to the family and her many friends.

She was born in Nacogdoches county, and spent her girlhood days there. In 1906 she was married to O. H. Hanna, though they continued to make their residence in Nacogdoches, until 1938 when they moved to Eastland. Mr. Hanna preceded her in death several years ago.

Deceased was a devout Christian and a member of the Eastland Church of Christ.

Other than a host of friends she leaves the following: three sons, Bernard, Minton and Ira Hanna, all of Eastland.



COMPROMISE PROPOSAL—Soviet delegate to the UN Andrei Gromyko, left, talks with Krishna Menon of the Indian delegation at the United Nations Headquarters. India formally put before the UN a compromise Korean proposal that would ban the use of force either to repatriate war prisoners or force their return home.

Single Car Often Costs A Fortune, Warren Declares

Ever so often his company turns out a single automobile costing from \$50,000 to \$75,000 Warren Motor Co., local Studebaker dealer, revealed today in discussing the history of vehicle design in the Studebaker Corporation which is celebrating its 100th anniversary.

The high unit cost doesn't represent "gold-plating" for "rajahs" or princes, although the company does on occasion build special jobs for potentates. Instead, these expensive models are strictly for Mr. and Mrs. America, he explained, although they never see them. They are the fore-runners, the test models, of the standard cars which eventually appear in his showroom.

The complex motor car of today with its 13,000 separate parts and with its horsepower built under the hood, requires more than 150,000 blueprints in the making. The first car from such blueprints is built by hand and is the unit that may cost up to \$75,000. But it is only by building such a model and submitting it to rigorous tests that Studebaker is sure it will meet the company's high standards of quality and performance.

"Body designing," Mr. Warren explained, "starts with the designers' sketches. Engineers then determine their practicality and sales experts evaluate their appeal to the buying public. Next the designers build up a clay model to full size and it is finally copied in wood. From the wood models, a metal copy is laboriously hammered out by hand, the power plant is installed, wheels are added, and the prototype is ready for testing."

"When the model has passed all tests, giant dies are fashioned that in a matter of seconds transform sheets of steel into the flowing, molded lines of today's motor cars. These dies, coupled with the cost-cutting advantages of hundreds of other machines along the assembly lines, bring the cost of the \$75,000 car, with all the qualities of the original intact, within the family budget."

GETS EARLY WORKOUT
HOWELLS, Neb.—Howells got its new fire truck just in time. While the truck and new fire station were being dedicated here a country fire alarm sounded. The firemen jumped into their new vehicle and sped to a cornfield, where they extinguished a troublesome blaze.

Donate Blood; It Won't Hurt, But Will Help

He's afraid to give blood—afraid it will hurt.

Yet the giving of blood is less painful than a mosquito bite, and about as painful as a flea bite.

If you haven't signed a Blood Bank pledge card, you are urged to do so, and at once. The Bloodmobile will be in Eastland next Tuesday. It will be at the Methodist Church between the hours of 10:00 a. m. and 4:00 p. m. Sign your card, and state your hour preference, and all will be well.

Our boys in Korea need the blood, and you have it and to spare. It won't cost you anything other than a few moments time.

Call your Red Cross, or Homer Smith, if you have failed to get a pledge card. And the Chamber of Commerce will be happy to supply you with one.

7 Eastlanders On SMU Alumni

DALLAS — Seven Eastland residents, active members of the Southern Methodist University Alumni Association, have been extended personal invitations to attend SMU's annual homecoming celebration Nov. 21-23.

More than 18,000 former students of SMU throughout the nation have been invited back to the Dallas campus for the event, and the university is looking for its biggest group of visitors yet to these yearly affairs.

The three-day celebration, to be the most ambitious and colorful in the school's history of reunions, will have a circus motif. George E. Bushong, executive secretary of the SMU Alumni Association, says that this homecoming is intended to be "the greatest show on earth."

The program begins Friday noon, Nov. 21, with registration at the Student Union, and continues through noon Sunday, closing with a special homecoming convocation at the Highland Park Methodist Church on the SMU campus.

Over the big week-end, exes will attend receptions, open houses, pep rallies, traditional undergraduate contests, barbecues, parades, the 1952 Pigskin Revue, the football game Saturday afternoon, Nov. 22, between SMU and Baylor University, and go on guided tours of the campus to acquaint themselves with their university's many new buildings.

Saturday from 11 a. m. to 1:30 p. m., alumni will have a pre-gamie picnic in the Agricultural Building, near the Cotton Bowl. Entertainment at the picnic and at the football game's half-time will develop the circus atmosphere.

"Homecoming this year will be literally a three-ring circus," Bushong promises. Eastland residents who have received invitations are The Reverend J. Morris Bailey, Mrs. Claude Bell, Bill Gilkey, Jack D. Howell, James Clyde Kuykendall, Theo B. Lamb and Mrs. Ed F. Willman.

Majestic Gives Benefit Show For School Annual

When you buy a ticket to the Majestic Theatre on Thursday of this week, remember it is a "benefit" show, and that for a second time this season, one half of the net proceeds will go to the high school "annual fund."

With high prices for printing and with cash none too plentiful, students have been rather hard put. For a time it appeared that the annual would not be published this year, but some much needed relief has been coming in. With some cash donations and a couple of benefit shows by the Majestic, it is now thought the annual will be completed.

Dr. Harris Is Elected To Head Medical Group



DR. CALVIN W. HARRIS

Dr. Calvin W. Harris of Ranger is the newly elected president of the Eastland-Callahan-Stephens-Shackelford-Throckmorton Counties Medical Society, it was announced Wednesday.

The Ranger physician was elected to head the group for the coming 1953 year during a meeting held in Cisco Tuesday evening, Nov. 18, at the Victor Hotel.

Approximately 30 area physicians, surgeons and their wives from the five counties were present for the session.

Featured on the program prior to the business meeting were two addresses by Abilene physicians. Dr. Milton Bessire spoke on "Anti-Pics in Children," and Dr. Fate, also of Abilene, addressed the medical assemblage on the subject, "Urological Problems in Children."

The election of officers for 1953 followed the program of the evening.

Other officers chosen were Dr. R. L. Holmes of Breckenridge, vice president; Dr. E. E. Addy, Jr., Cisco, secretary-treasurer; Dr. D. Ball, Cisco, censor; and

A native of San Antonio, Dr. Harris has been a Ranger resident for more than six years. He is a graduate of Baylor University Medical School and served his internship at the Robert B. Green Hospital in San Antonio. Later he served for three years as an officer in the U. S. Army Medical Corps and was stationed in the Aleutian Islands. He moved to Ranger and began his practice shortly after his separation from the Medical Corps.

Prominent in Ranger civic and religious affairs, Dr. Harris makes his home at 808 Cherry Street, Ranger. He is married and the father of three daughters—Marjorie, Annette and Vicki.

Dr. Holmes of Breckenridge, the vice president-elect, succeeds Dr. Howle of Albany.

The new secretary-treasurer, Dr. Addy of Cisco, will succeed Dr. W. P. Watkins of Ranger. The five-county medical organization is five years old. Forerunner of the present group was the Eastland-Callahan Medical Society which was originally founded 30 years ago.

Stab Victim Is Out Of Danger, Will Recover

Angel Renteria, 37-year-old Ranger Latin American resident and victim of an early Sunday morning stabbing late, Wednesday was reported out of danger and on the road to recovery in a Ranger hospital.

Renteria entered the hospital about 2 a. m. Sunday following wounds received in an altercation at a North Rusk Street residence where a party had been in progress Saturday night and into the early Sunday morning hours.

Renteria was knifed and received critical wounds. Two other Ranger Latin Americans, age 19 and 30, were arrested by city officers at the scene of the stabbing. A third man, alleged to have been involved in the fight, was taken into custody Sunday about noon.

All three of the men, two of them allegedly Renteria's assailants, were turned over to Sheriff Frank Tucker at Eastland. The trio was placed in the county jail but later were freed under bond.

Eddie Haines Is Building Record

Eddie Haines from Eastland will be on McMurry College's traveling squad going to Kingsville, Nov. 22, in an effort to bring home a part of the Texas Conference crown.

If the Indians beat the A&I Javelinas and Howard Payne happens to upset undefeated Abilene Christian College Nov. 26, then McMurry and ACC will have an equal share of the Texas Conference championship. The Indians will take second place in the conference with A&I, each with a 2-2 record if they lose to the Javelinas, while Howard Payne will wind up in third place if beaten by the Wildcats.

Corch Wilford Moore and a squad of 30 will leave Abilene Friday morning to journey to Kingsville for their last game of the season.

The McMurrians have a 2-1 record for conference play, having won over Austin College and Howard Payne, while losing to Abilene Christian College. In non-conference play they beat New Mexico A&M, managed a tie with Eastern New Mexico but lost to Sul Ross, Midwestern and West Texas.

Did You Know?



Have you read the November McCall's? It has an article by Eastland high school graduate, Milburn McCarty, Jr., and his wife, Eleanor. The title is "Other Presidents Have Been Smeared." It is good to know the outcome of some of the Eastland men and women who have already gone from the Alma Mater.

Another EHS graduate is the former Betty Weigand, now Mrs. Elizabeth Graham and under this name many articles have appeared with the Home Companion. Did you know when you saw her receive her diploma the future she might carve for herself?

Saturday night, Nov. 22, 7:30 p. m. the senior class of EHS will receive their rings, you are invited to attend the presentation and by your presence they may be inspired to strive for the highest awards that life may hold. Let's go!

'Baby Norther' Sneaks In, Puts Nip In Area Air

The air over Eastland County had a nip in it early Thursday, following a "baby norther" which moved in the area late Wednesday.

Continued dry weather for the section was forecast this morning by the U. S. Weather Bureau.

Today's report:

"Generally fair and a little warmer today and tonight."

"Partly cloudy and mild Friday."

Today's highest temperature, the weatherman said, will probably be 65 degrees, and tonight it'll be a chilly, slightly above freezing—in the upper 30s or lower 40s.

A slightly warmer temperature is forecast for Friday with the mercury due to reach the 70-degree mark.

Nine Eastland Men Inducted Into Army, AF

Nine Eastland Countians are among the 64 registrants from the six draft board areas who were processed for induction at the U. S. Army - U. S. Air Force Recruiting-Induction Station, Abilene Tuesday and Wednesday, it was reported today.

Boards sending men in addition to Eastland were Lamesa, Gatesville, McCamey, Midland and Graham.

The Eastland draftees: Bobby Warren, Glen Martin, Billy Townsen, Alex Hughes, Bryce Harrison, Charles Walton, Jr., Elmer Harris, Kenneth Malone, and John Jones.

Plymouth Prices Being Lowered

Four of the outstanding cars in the new 1953 Plymouth line are priced substantially lower than in 1952. John P. Mansfield, Plymouth Motor Corporation President, announced today, and no models are increased in price despite great advances in engineering and design throughout.

"Lower prices of the four body types this year give the most sensational Plymouth value in history," Mansfield said. Substantial reductions have been made in the factory retail price at factory, Detroit, Mich., of the 1953 Cranbrook Belvedere and Cranbrook Convertible. The convertible at \$2120.00, is priced \$38.08 lower than the 1952 model and the Belvedere, at \$1975.00 has been reduced \$78.46.

The popular Plymouth Suburban, which appeared in the 1952 Concord line with a price of \$2002.06, is available in the finer Cambridge line for 1953 and is priced at \$1925.00. The Savoy, which also was a Concord model in 1952 selling at \$2117.13 is available in Plymouth's top Cranbrook line for 1953, priced at \$2058.00.

Prices of the 1953 Cranbrook 4-door Sedan, Cranbrook Club Coupe and Cambridge 4-door Sedan are unchanged or nominally reduced.

The Cambridge club sedan and the Cambridge business coupe are new in the 1953 Plymouth line, which does not include the Concord models offered in 1952.

Drive An Oldsmobile Before You Buy! OSBORNE MOTOR CO. Eastland, Texas

Rangers End Season Against Schreiner Saturday

Stiff daily drill sessions out at Ranger Junior College practice acres were underway this week at Coach Boone Yarborough and Assistant Mentor H. C. Henderson read their Purple & White Rangers for their final battle of the 1952 campaign.

The squad will travel to Schreiner at Kerrville Saturday where under the ares there Saturday night at 8 p. m. they'll collide with the Schreiner Junior College

Mountaineers in a Pioneer Conference clash.

The Rangers, who've enjoyed a better-than-average season this fall, nearly traveled down the glamour-paved trail to the 1952 PC championship. Enroute, however, they were tipped, 7-6, by Tarleton State and later were tied, 13-13 by Arlington State.

The all-important extra points, in both those encounters, could have made a whale of a difference in the picture today.

The Rangers are rated the best defensive team in the five-member loop, having been scored on but four times in circuit play. Non-conference foes have been able to count but a total of 5 TDs against the Purple & Whites. Offensively, the RJCers have scored 31 points in PC play, and their total season tally points is 123.

The charges of Coaches Yarborough and Henderson are slight favorites to cop the Saturday nite contest at Kerrville.

A victory there might help bring them a cinch for second spot in the loop winding standings for '52. That is, if Arlington State defeats Tarleton in Saturday's championship classic at Stephenville.

As Pioneer Conference play heads toward the finish this week, the cellar dwelling San Angelo Rams appear to have produced a back who will win a lion's

share of honors in several phases of individual play.

He's Gene Henderson, Ram quarterback, who now leads the Conference in kick-off returns and running a. d ranks second in punting, punt returning, a n d scoring.

Henderson has returned seven kick-offs for 208 yards, an average of 29.3 yards per return; and in rushing he has 64 carries for 615 yards, an average of 8.05 yards per carry.

In addition he's punted 40 times for 1,466 yards, returned 12 punts for 365 yards, and scored 8 touchdowns for 48 points.

Sam Howard, ASC quarterback, is far in front of the passers with 57 completions in 143 tosses for 992 yards, an average of 17.4 yards per completion. He's trailed by Bobby Bownser of Schreiner who has completed 37 of 74 pitches for 529 yards.

Jube Bicher, San Angelo end, leads the pass receivers with 25

catches for 363 yards, an average of 14.53 yards per catch. He is only two yards ahead of James Brazell of Schreiner who has caught 27 for 361 yards.

Tarleton State's fine punter, Joe Bill Fox, is still ahead in punting with 27 kicks for 1,056 yards, an average of 39.2 per punt.

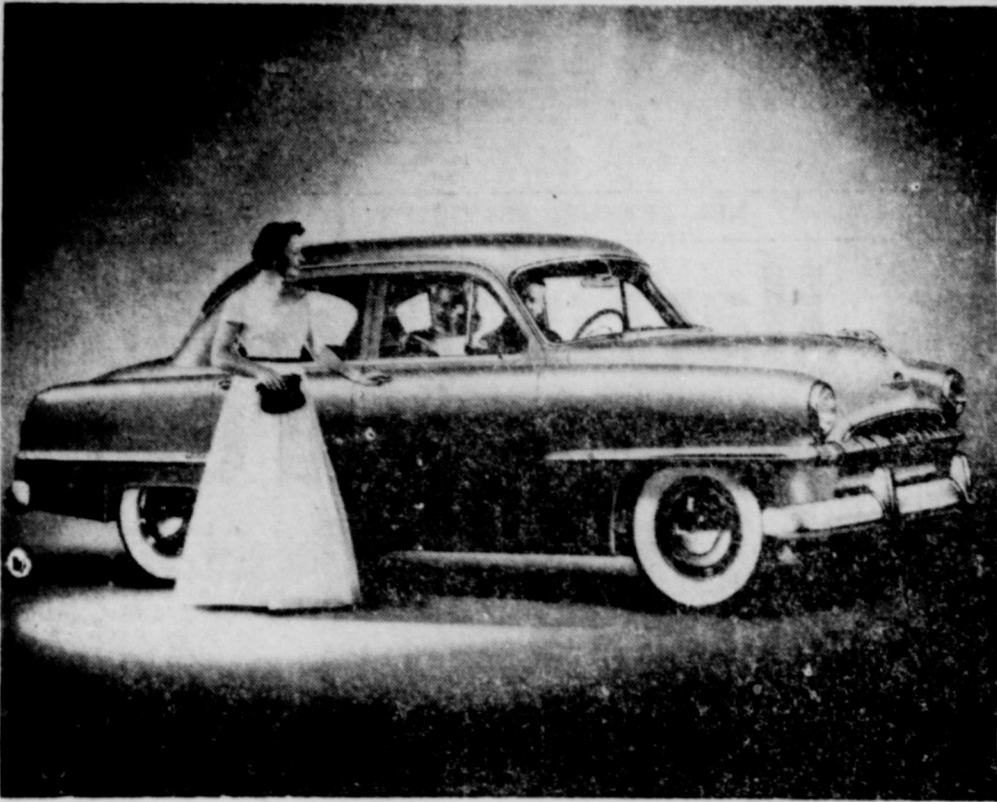
Johnny Cozart, fleet Rebel half-back, is the leading punt returner, 19 for 383 yards, an average of 20.2 yards per return. His teammate Ken Vavra still leads in

scoring with six touchdowns and 26 conversions for 62 points.

Arlington State continues to be the leading offensive team with a total net gain of 3,032 yards in nine games, an average of 326 yards per game.

Ranger is the leading defensive team holding nine opponents to 58 points, intercepting 32 passes, and allowing the opposition about 175 yards per game.

Plymouth's '53 Cranbrook Features Styling



Chrome trim is integrated as part of the design to further enhance the long, low, wide appearance of the 1953 Plymouth. This Cranbrook Four-Door Sedan shows also the horizontal character lines that are incorporated into the sheet metal of front and rear fenders. Box type seat trim gives both front and rear seats a smart appearance. Upholstery, interior molding and trim are available in a wide variety of harmonizing hues to blend with the buyer's choice of exterior body colors.

Maintenance Of Tractor Should Get Attention

Tractor fuel worth \$24 million is wasted annually because of

poorly adjusted carburetors. Poor carburetor adjustment can cost the operator \$2 every day the tractor is used. Failure to winterize equipment properly can depreciate a tractor 30 percent in a single year.

These are only a few of the reasons why the 4-H tractor mainten-

ance program is one of the nation's fastest growing youth movements, according to an article in Capper's Farmer. The program was organized in 1945 in 14 Mid-west states. Now tractor clubs are common from coast to coast with a total of 209,564 4-H members and 21,545 farmer-instructors.

The 4-H'ers learn to spot trouble early so a skilled serviceman can prevent a costly breakdown. They also practice safety rules in the field and on public roads. Eight oil companies sponsor the program which is encouraged by agriculture, industry and government to cut the cost of mechanized farm power.

Key objective of the tractor club member is to learn to adjust a carburetor so the fuel mixture isn't too lean or too rich. The year-round program also trains him to service the air cleaner, cooling and ignition systems and other parts to prevent waste of power.

The three-year course is featured by tractor demonstration contests in many localities. Club members compete for county, state and national honors. They are judged on their record books as well as reports from leaders and county agents.

But the big prize is increased farm profits resulting from lowered cost of operating tractors—a big item when you consider that the tractor population of the United States has jumped from 1 1/2 million in 1941 to the present count of over 4 million.

BOOK TO COST \$176

LONDON—A book selling for 60 guineas (176.40) a copy and weighing 14 pounds is on sale in Britain. It is called "The Royal Philatelic Collection." In it is told the story of the 250,000 stamps collected by George V and George VI, with a detailed catalogue and illustrations (in photo lithography). The book has taken nearly six years to produce. The royal collections is valued at not less than £1,000,000 (\$2,800,000.)

When the gang gets together...

A Lift...for Life!



No other drink picks you up like **Dr. Pepper**

The special sparkle of Dr. Pepper adds to everybody's fun, everywhere you go. Enjoy it in the six-bottle carton or the 12-bottle carton; buy it by the case... and look for it at soda fountains and vending machines, too.

At 10, 2 and 4!

Get Your Home Ready FOR WINTER

FOR WINTER

To Meet Cold Weather Ahead!
Put Your Home In Good Trim...

See Us For Free Estimates - No Obligation!

NO DOWN PAYMENT

- 36 -

MONTHS TO PAY

"Better Homes for Better Living"

Crowell Lumber Co.

722 W. Main

Phone 300



WOMEN WITH IDEAS...

SHOP HERE FOR THE BEST MENU SUGGESTIONS!



SERRA MISSION

Peaches

No. 2 1/2 Can **25c**

MAXWELL HOUSE

Coffee

Pound Can **79c**

SUNSHINE CRACKERS

Hi - Ho

One Pound Box **29c**

Wizard—6 Oz. Bot.

WICK 36c

Prell—60c Size

SHAMPOO 53c

Vel

BEAUTY BAR 19c

Red Heart—Can

DOG FOOD 15c

Hartz—Pkg.

DOG YUMMIES 17c

7 Oz. Pkg.

CORN KIX 17c

12 Oz. Pkg.

COMET RICE 15c

Sunshine—1 Lb. Box

CRACKERS 25c

Walker-Austex—15 oz. can

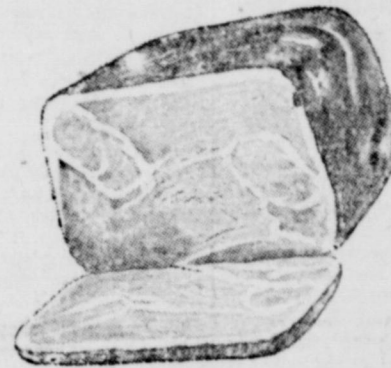
PLAIN CHILI 43c

Time to Order... **TURKEY FOR THANKSGIVING**

PORK

Spare Ribs

Lb. **49c**



CENTER CUT

Pork Chops

Lb. **65c**

SLICED

Bacon

Lb. **49c**

YOUR CHILDREN'S TABLE MANNERS ARE SHOWING...

If this problem is handled like a game of fun, future dividends are sure to be good.

NOVEMBER **EVERYWOMAN'S**



Phillip Morris Metal Package Holders and matches **FREE** when you buy a package or a carton of Phillip Morris.

Light Crust

Flour

10-Lb. Bag ... **79c**

SUGARPE MEDIUM

Peaches 1-Lb. Bag **44c**

DROMEDARY PITTED

Dates Loose Pack 16 oz. Pkg. **37c**

NONE SUCH

Mince Meat 9-Oz. Pkg. **25c**

DIAMOND

WAX PAPER roll **27c**

KAISER ALUMINUM

FOIL roll **29c**

LISTERINE 1 1/2 oz. bottle **79c**

WE GIVE

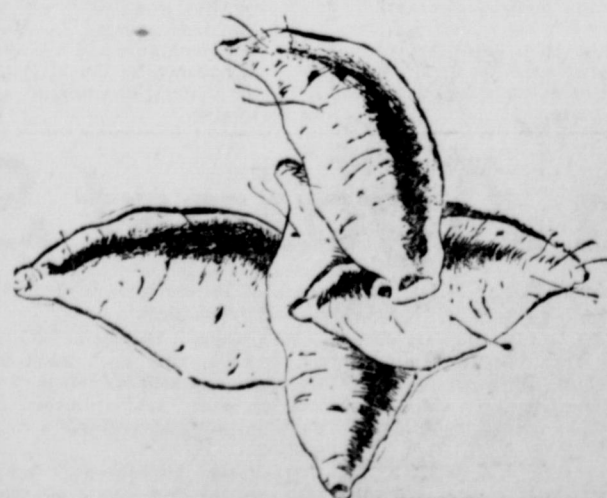
D.N.

GREEN STAMPS

PASCAL

Celery

Large Stalk **19c**



SUNKIST

LEMONS

Pound **17c**

TEXAS

ORANGES

Pound **9c**



This Ad Effective Friday and Saturday Only

CLASSIFIED

Advertising Rates—(Minimum Ad Sale 70c)
1 Time per word 3c
2 Times per word 5c
3 Times per word 7c
4 Times per word 9c
5 Times per word 11c
6 Times per word 13c
7 Times per word 15c
8 Times per word 17c

This rate applies to consecutive editions. Skip runs as must take the one-time insertion rate.

FOR SALE

FOR SALE: Good peanut hay, 106 E. Valley.

FOR SALE OR RENT: Nice six room house with double garage. Ideal corner lot on pavement. Call 134-W.

FOR SALE: Dr. Ross Hodges place, modern house, 2 baths, 2 garages, automatic furnace, air conditioner, 100 ft. lot, joining 50 ft. corner lot, Hodges Oak Park, 906 Cherry, Ranger.

FOR SALE: Good, clean, used clothing. At rear Singer Sewing Machine Bldg.

WANTED

WANTED: Quilting to do, plain or fancy, prices reasonable. Mrs. R. A. Latham, Rt. 1, Cisco.

WANTED: To buy building suitable for church, to be moved. Write Temple Caudle or F. E. Fox, Rt. 3, Gorman.

Woman with car to give Stanley Demonstrations full or parttime—\$50 to \$150 per week. Write P. O. Box 891, Fort Worth.

FOR SALE: Quilts and quilt tops. D. W. Boatwright, Carbon.

NOTICE

NOTICE: Barbecued chicken, pies and cakes will be served at home of Odell O'Neal, 108 E. Patterson Saturday, Nov. 22nd, 11 a.m. until. Proceeds will be used for the building fund for Baptist Church.

STOPOVER DISALLOWED

CHICAGO—Judge Oscar S. Caplan acquitted Mrs. Mary DeStefano of a charge of resisting arrest because the arresting officer stopped on the way to the station to buy some cigars.

For MONUMENTS Of Distinction call MRS. ED AYCOCK
Our years of experience enables us to give you prompt and courteous service. See display at 206 Ave. E. or call 183 for appointment (Cisco)

Will Hold A New SEIBERLING BIKE Until Christmas
Make your selection early while our stock of all sizes is complete. JIM HORTON TIRE SERVICE 409 E. Main Phone 258

SEAT COVERS Special... Special
ALL COLORS PLASTIC Sedans and Coupes \$19.95
FRONT SEATS ONLY And Coupes \$10.95
MAROON FIBERS Sedans and Coupes \$10.95
FRONT SEATS ONLY And Coupes \$5.95
EASTLAND AUTO PARTS 300 S. Seaman St. Phone 711

FOR RENT

FOR RENT: Furnished apartment and bedrooms. Wayne Jackson Auto Supply, Phone 894.

FOR RENT: Downtown upstairs apartment, newly decorated, furnished. Bills paid \$45 month. Phone 692.

FOR RENT: Unfurnished apt. Call 394-J.

FOR RENT: One and two bedroom apartments, furnished. 612 W. Plummer.

FOR RENT: Furnished and unfurnished apartments, East side of square. Phone 638.

FOR RENT: Furnished apartment, Hillside Apartments. Phone 9520.

FOR RENT: Modern furnished apartment, 302 E. Main.

FOR RENT: Newly furnished garage apartment. Call 363-W.

FOR RENT: Two apartments just out of city limits on Carbon highway, Jim Jordan.

FOR RENT: 3 bedroom house unfurnished. 212 So. Connellee — Call 446-J.

FOR RENT: Furnished apartment, three rooms, private bath, close in. Apply 119 E. Plummer.

FOR RENT: Front bed room. 203 South Walnut.

FOR RENT: 4 room house and bath. 411 South Walnut. See at 409 South Walnut. Phone 462-J.

FOR RENT: 3 room furnished apartment. 608 South Daugherty.

FOR RENT: Nicely furnished apartment, close in. 209 W. Patterson.

FOR RENT: Apartments: Three large rooms furnished, new electric refrigerator. Unfurnished with private bath. All close in on pavement. Phone 320 or 713-J. Address 790 South Seaman.

FOR RENT: 3 room house with bath. Call 154-W.

FOR RENT: 6 room house, 909 S. Bassett. A-1 condition, large yard. Phone Gene Young, 145-M or 142.

Refrigerator Service
W. S. (Bill) KENDALL Office at Walton Electric
For service on any make electric refrigerator or appliance call... Company, Cisco, Texas Day Phone 281 Night Phone 355

Real Estate And Rentals
MRS. J. C. ALLISON Phone 347 - 920 W. Commerce

DEAD ANIMALS
Removed free
CALL COLLECT
Eastland: 288 or Brownwood 9494 BROWNWOOD RENDERING CO.

Social Calendar

THURSDAY, NOV. 20—Thursday Afternoon Study Club, 3 p.m., Woman's Club. Chamber of Commerce Board of Directors, 7:30 p.m.

SAURDAY, NOV. 22—Senior Ring Presentation — High School Gym, 7:30 p.m. Bake Sale, Ladies Christian Church Annex. Beta Sigma Phi. Hobo Party, Eddie Hooker residence.

MONDAY, NOV. 24—Xi Alpha Zeta Beta Sigma Phi, Mrs. Milton Fullen, hostess. Monday, Nov. 24—Pythian Sisters regular meeting Castle Hall, 7:30 p.m. Rotary and Lions Joint Luncheon, Hotel Roof, 12 noon. W. L. White and Bruce Pipkin, presidents.

TUESDAY, NOV. 25—South Ward PTA 3:15 p.m., W. G. Womack, speaker.

TUESDAY, NOV. 25—Zeta Pi Beta Sigma Phi, 7:30 p.m., Mrs. Bob King hostess. Mr. and Mrs. Ed Willman are planning to spend Sunday with their son, Jim Ed, who is attending SMU this year. They will be in Dallas for the day.

MONDAY, DEC. 1—Pythian Sisters, Castle Hall at 7:30 p.m.

Las Leales Club, Woman's Club 7:30 p.m. Mrs. H. L. Hassell, Pres.

Fellowship Tea, First Christian Church, Mrs. Fred Maxey, leader.

Rotary Club Hotel Roof, 12:15 Bill White Pres.

TUESDAY, DEC. 2—Lions Club, Methodist Church — Bruce Pipkin Pres.

WEDNESDAY, DEC. 3—Music Study Club Woman's Club, 3:30 p.m., Mrs. Donald Kinnaird president. Mrs. E. H. Culbertson, Chrmn.

THURSDAY, DEC. 4—Thursday Club, Woman's Club, 3 p.m. Mrs. Arthur Murrell president.

MONDAY, DEC. 8—Rotary Club, 12:15 Hotel Roof, Bill White Pres. Zeta Pi Beta Sigma Phi, Mrs. Bob King president. Pythian Sisters, 7:30 Castle Hall.

TUESDAY, DEC. 9—Lions Club, 12 noon Methodist Church Bruce Pipkin, Pres. Xi Alpha Zeta—Beta—Sigma Phi, Pres. Frances Estes, hostess. Home Makers Class Party 7 p.m. Baptist Church. Mrs. O. L. Hooper, chairman.

WEDNESDAY, DEC. 10—Civic League and Garden Club, 3 p.m. Woman's Club, Mrs. Buda Butler, Pres. Rev. Otto Marshall speaker.

THURSDAY, DEC. 11—Delphian Christmas Party—Womans Club 7:30 p.m. Mrs. R. L. Carpenter Chairman. Mrs. Geo. Lane Pres.

MONDAY, DEC. 15—Las Leales Christmas Party, Mrs. Horace Horton, Chrmn. Mrs. H. L. Hassell President. Rotary Club, Hotel Roof, 12:15 noon, Bill White Pres. Pythian Sisters—7:30 p.m. Castle Hall, Mrs. J. C. Poe Most Excellent Chief.

TUESDAY, DEC. 16—Music Study Club, Woman's Club, Husbands Party. Mrs. H. M. Hart Chairman, Mrs. Donald Kinnaird Pres. Lions Club, Methodist Church 12 noon, Bruce Pipkin Pres.

THURSDAY, DEC. 18—Thursday Club Annual Christmas Dinner Honoring Husbands. Mrs. Arthur Murrell President.

FRIDAY, DEC. 19—Winter Wonderland Party for Beta Sigma Phi's & Husbands, 7:30 p.m. Art Johnson's host, 414 Hillcrest. School classes for holiday until Jan. 5th, 1953.

SUNDAY, DEC. 21—Annual Co-Ed Tea for friends and mothers. Art Johnson residence, 414 Hillcrest.

CALL 601 FOR CLASSIFIED CLASSIFIEDS

NEWS FROM Desdemona

Now that the season is open, "deer hunting" is the general topic. Walter Greenshaw was one of the first to come in with an 11-point buck. Jimmy Heeter reported a 10-point buck.

This writer forgot to report last week that Mr. and Mrs. H. Ficklen of Dallas, had visited her parents, Mr. and Mrs. Anse Brown.

Mr. and Mrs. M. J. Keith have as guests, their sons, Mr. and Mrs. D. M. Keith, and Micki Yvonne, and Mr. and Mrs. Mack Keith all of Odessa.

Mrs. Lena Rogers who has been visiting her mother, "Granny" Wimberly, and sister, Mrs. Joe Quinn for the past 10 days, has returned to her home in Pampa.

Mrs. Elizabeth Williams of Dallas, visited over the week end with her parents, Mr. and Mrs. Tom Northcutt, and also Sammie Marine and children of Strawn were visitors in the Northcutt home.

A-C2 Ernest C. Key, of the Air Force, and his wife, visited with his mother, Mrs. Ethel May and Nita and Larry this week.

Rates Duke of Odessa is visiting this week with his parents, Mr. and Mrs. Rufus Duke.

Mrs. George Moore underwent minor surgery at the Gorman hospital last week.

Ray Ashburn is visiting with Raymond Joiner.

Mr. and Mrs. S. W. Walker of San Angelo, visited Saturday with her parents, Mr. and Mrs. R. H. Able.

Mr. and Mrs. Brandy Lohman visited over the week end with his mother, Mrs. Nina Lohman, and his grandmother, Aunt Sally Eaton and sister, Mrs. Juanita Filgim.

Mr. and Mrs. Paul Stanley Arnold and daughter of Midland, visited over the weekend with his parents, Mr. and Mrs. John Arnold.

Mr. and Mrs. Delbert Williams of Kermit, are visiting this week with his parents, Mr. and Mrs. Howard Williams.

CALL 601 FOR CLASSIFIED AD SERVICE

Hail Typewriter
Adding Machines Sales - Service
27 Years in Eastland
803 W. VALLEY
PHONE 310-M

Alex Rawlins & Sons MONUMENTS
WEATHERFORD, TEX.
Serving This Community For More Than 68 Years

of all the pleasures Christmas brings... only you can give this gift! YOUR PORTRAIT

RELIABLE Group 1 battery. Fits most Cars. \$9.95 Exchange JIM HORTON TIRE SERVICE East Main Phone 258 PICTURE FRAMING Shultz Studio

NEWS FROM STAFF

By Mrs. M. O. Hazard

Mr. and Mrs. Maurice Hazard and Donald of Eastland, were visiting Armistice Day, with their parents, the M. O. Hazards and R. A. Parkers.

Mr. and Mrs. T. E. Pope spent Wednesday in the home of their niece, Mrs. Walter Mitchell and Mr. Mitchell of Strawn.

Mrs. J. L. Little visited in Eastland Saturday afternoon.

Mr. and Mrs. M. O. Hazard were in Eastland Thursday where they visited with his sister, Mrs. Pearl Bourland.

Mmes. Floyd Crowley and J. W. Mounce visited with friends and relatives in Gorman, Friday.

Mr. and Mrs. A. E. Fox, Elizabeth and Carol were visiting in Eastland Saturday.

Mr. and Mrs. Walter Duncan were in attendance at the Workers' Conference at the East Baptist Church in Cisco, Tuesday.

Gene Parker and family from Colorado City, were guests of his aunt, Mrs. Floyd Crowley and Mr. Crowley, Wednesday.

Mr. and Mrs. W. E. Downing had as their guests Tuesday, their son, Rev. Ellis Hillard and Gary Shaffer of Comanche.

R. M. Hines of San Angelo, is a visitor this week in the home of his daughter, Mrs. John M. White. Mrs. White has been ill in a Ranger hospital for the past week.

T. E. Pore and wife were business visitors in Rising Star Thursday.

E. G. Henderson of Fort Worth visited his parents, the C. L. Hendersons, over the weekend.

Mr. and Mrs. June Bond of Wichita Falls, were the week end

guests of her parents, Mr. and Mrs. Oliver Canet.

Rev. Clifford Hampton of Brownwood filled his regular appointment at the Baptist Church, Sunday, and was the guest of Mr. and Mrs. Floyd Crowley.

Mr. and Mrs. Jim Coon, John M. White, Mr. and Mrs. Oliver Canet and Mr. and Mrs. M. O. Hazard were among those attending Trades Day in Eastland.

Driving On Ice, Snow, Dangerous

Brains plus chains equal sound advice on snow and ice!

That is a streamlined summary of the many important recommendations contained in "Basic Winter Driving Rules," a new booklet just published by the National Safety Council which sets down for the first time the results of 11 years of test research by the Council's Committee on Winter Driving Hazards.

The booklet is aimed at reducing the high death and accident rates resulting from inadequate traction and reduced visibility—the major winter driving problems from November through February.

Six basic rules for safe winter driving are offered:

- 1. Get the feel of the road. Try your brakes occasionally, while driving slowly and away from other traffic, to find out just how slippery the road is.
2. Slow down. Adjust your speed to road and weather conditions so that you can stop or maneuver safely.
3. Keep windshield clear. You must see danger to avoid it, so be sure your headlights, windshield wiper blades and defrosters are in top-notch condition.
4. Use tire chains on snow and ice.

FARMS - RANCHES Pentecost & Johnson REAL ESTATE City Property

EASTLAND TELEGRAM AND WEEKLY CHRONICLE

Eastland County Record established in 1931, consolidated Aug. 31, 1951. Chronicle established 1887, Telegram established 1923. Entered as second class matter at the Postoffice at Eastland, Texas under the act of Congress of March 3, 1879.

O. H. Dick, Manager Ray B. McCorkle, Editor TIMES PUBLISHING COMPANY O. H. Dick and Joe Dennis, Publishers

Published Daily Afternoons (Except Saturday and Monday) and Sunday Morning.

Table with subscription rates: One week by carrier in city .20, One month by carrier in city .85, One year by mail in county 2.95, One year by mail in state 4.50, One year by mail out of state 7.50

NOTICE TO PUBLIC—Any erroneous reflection upon the character, standing or reputation of any person, firm or corporation which may appear in the columns of this newspaper will be gladly corrected upon being brought to the attention of the publishers.

ice. They cut stopping distances about in half, and increase starting and hill-climbing traction by four to seven times. Even with the help of chains, however, lower than normal speeds are a must on snow and ice.
5. Pump your brakes to slow down or stop. Jamming them on can lock the wheels and throw your car into a dangerous skid.

The U. S. Military Academy was established at West Point, U. Y., March 16, 1802.

POLIO POLICY
PAYS UP TO \$10,000.00 to each insured for treatment of these 10 costly diseases.
Pollomyelitis, Encephalitis, Diphtheria, Smallpox, Rabies, Scarlet Fever, Leukemia, Tetanus, Spinal Meningitis, Typhoid Fever
Plus—\$500 to each insured in event of accidental death
TOTAL YEARLY COST IS ONLY—\$5.00 — \$12.00
Non-Cancellable Guaranteed Renewable For Life
D. L. KINNAIRD INS. AGENCY Since 1919
206 Exchange Building Phone 385

Another Great Frigidaire Porcelain Pair!
Every Frigidaire Electric Range is finished in Lifetime Porcelain—inside and out!
Cyclo-matic De Luxe and Master Refrigerators now available with porcelain exterior finish.
Exclusive Lifetime Porcelain Finish combines Lasting Beauty with Outstanding Convenience
Finest Finish Known!
Resists scuffing and scraping Heat won't scorch or discolor it Even iodine can't stain it Scouring powders can't scratch it Cleans as easy as a china dish
Be sure to ask about the NEW and WONDERFUL PORCELAIN PAIR for your Laundry... FRIGIDAIRE'S FAMOUS AUTOMATIC WASHER and NEW FILTRA-MATIC CLOTHES DRYER
FULLEN MOTOR COMPANY Sales—CHEVROLET—Service 305 EAST MAIN PHONE 44

COURTHOUSE NEWS AND RECORDS

Real Estate Transfers, Marriages
Suits Filed, Court Judgments
Orders, Etc.

INSTRUMENTS FILED

The following instruments were filed for record in the County Clerk's office last week:
Alameda School to State of Texas, right of way.
Mrs. R. R. Armstrong to Ralph Lowe, oil and gas lease.
Ray Bullock to R. C. Pressley, warranty deed.
Ralph Butler to The Public, proof of heirship.
Mrs. J. W. Blackwell to State of Texas, right of way.
Mrs. Jack Blackwell to State of Texas, right of way.

J. S. Brown to State of Texas, right of way.
James F. Bagwell to The Public, for removal of disabilities.
Mrs. Bagwell to The Public, guardianship.
J. F. Bagwell to James L. Anderson, oil and gas lease.
J. S. Burnam to J. E. Burnam, release of vendor's lien.
J. W. Cooper Jr. to Jimmy Parton, warranty deed.
J. W. Case to State of Texas, right of way.
Hudson Collins to State of Texas, right of way.
Mrs. Denale Cozart to State of Texas, right of way.
Claude Corn to J. E. Connally, oil and gas lease.
Joe C. Carrington dba Motor Carriers Insurance Agency to State of Texas, right of way.

Johnnie Aaron, dba West Texas Transportation Co. release of judgment.
J. W. Duke to Leatha Flippo, release of vendor's lien.
T. E. Downton to Florence B. Gribham, warranty deed.
B. E. Diffee to Curtis A. Dawson, warranty deed.
B. E. Diffee to Curtis A. Dawson, quit claim deed.
Curtis A. Dawson to First Federal S&L Assn., deed of trust.
Eastland County to State of Texas, right of way.
Don Estes to State of Texas, right of way.
First State Bank, Rising Star to Ruby Benner Bond, warranty deed.
First State Bank, Rising Star to T. L. Vannoy, transfer of deed of trust.
Federal Land Bank of Houston to J. C. Wheatley, sub. of lien.
Mrs. T. M. Goodwin to State of Texas, right of way.
M. D. Gibson to Charlotte Beth Gibson, warranty deed.
E. M. Howard to W. E. Tyler, assignment.
Edward I. Harrison to State of Texas, right of way.
Mrs. Eula M. Hart to State of Texas, right of way.
Gayle Hardin to Herman L. Walter, release of vendor's lien.
A. W. Hartfield to Lois Brown, warranty deed.
G. F. Harper to The Public, proof of heirship.
W. D. Harper to James L. Anderson, oil and gas lease.
S. W. Hughes v. R. E. Land, writ of attachment.
L. P. Hammond to W. M. Jarrell, oil and gas lease.

D. W. Henke to Mrs. John W. Bank, Rising Star, extension of deed of trust.
J. W. Ryon to J. E. Ryon, warranty deed.
J. E. Ryon to J. W. Ryon, warranty deed.
Fred Rodgers to State of Texas, right of way.
N. G. Robertson to G. F. Harper, release of oil and gas lease.
Mrs. Lizzie Scott to State of Texas, right of way.
Claude Tucker to State of Texas, right of way.
W. D. Thurman to J. E. Connally, oil and gas lease.
Milton Underwood to State of Texas, right of way.
Walter Underwood to State of Texas, right of way.
Bob Vaught to John Fidel, assignment of oil and gas lease.
Hall Walker to B. M. Jobe, MD J. M. Westmoreland to State of Texas, right of way.
W. G. Westmoreland to State of Texas, right of way.
W. P. Westmoreland to State of Texas, right of way.
James C. Whittington to Grady Pipkin, warranty deed.

Clifford C. Goforth v. Verna Goforth, divorce.
ORDERS and JUDGMENTS:
The following orders and judgments were rendered from the 91st District Court last week:
Elizabeth Vaught v. Bob Vaught, judgment.
Higginbotham Bros. & Co. v. T. S. Holder, order to dismiss case.
E. Stanley Stinson, et al v. Vern W. Bailey, et al, order appointing substitute trustee.
E. Stanley Stinson, et al v. Vern W. Bailey, et al, judgment.
Betty Jane Dietrick Rhoads v. Marshall R. Rhoads, judgment.
Della B. Reynolds vs. F. H. Williams, Sr., et al, order of dismissal.
Billie Jean Grice v. James T. Grice, order.
Archie Leroy Maynard v. Della Lee Maynard, order for custody of minor children.
Order appointing Jury Commissioners for December Term, 1952.
Order Empaneling Jury Commissioners for December Term, 1952.

Subscribe to
THE ABILENE REPORTER-NEWS
at the
Fall Bargain Offer
Daily & Sunday \$10.95
Daily only \$ 9.95
One Year—By Mail
Anywhere in West Texas

Real Estate and Rentals
MRS. M. P. HERRING
1002 S. Seaman Phone 726-W

OUR... SPECIAL

To 1942 up to 1948 FORD Owners
month of
NOVEMBER ONLY
All For

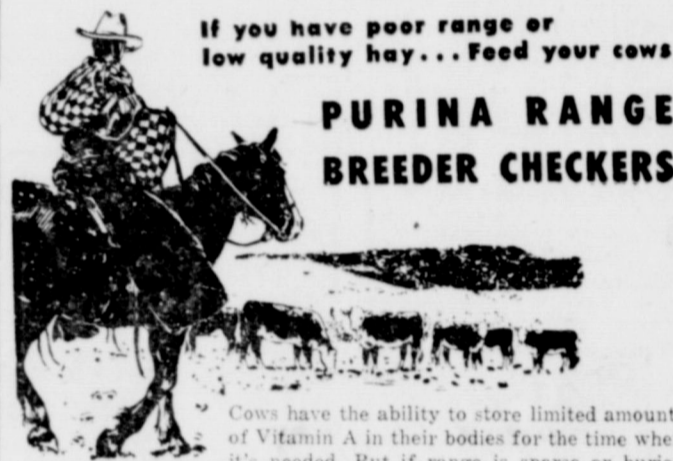
\$49.95

1949 up, Slightly More
Ring and Insert Job, Complete.
Filler Cartridge included, plus
gaskets and oil

See Us For
ANTI FREEZE

KING MOTOR COMPANY

100 E. Main Phone 44



If you have poor range or low quality hay... Feed your cows

PURINA RANGE BREEDER CHECKERS



Cows have the ability to store limited amounts of Vitamin A in their bodies for the time when it's needed. But if range is sparse or buried deep in snow, this reserve supply may be used. This is dangerous! Vitamin A is needed to help the brood cow maintain her own body and build her calf. Purina Range Breeder Checkers, fortified with extra Vitamin A, were developed by Purina Research for the time when other sources of Vitamin A are low. Make sure your cows are getting their requirements of Vitamin A. See us today for your cattle needs—

WILSON FEED AND SEED

204 NORTH SEAMAN PHONE 175

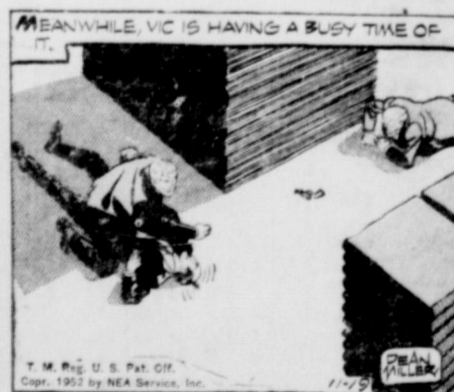
FRECKLES AND HIS FRIENDS

By Merrill Blosser



VIC FLINT

By Michael O'Malley and Ralph Lane



ALLEY OOP

By V. T. Hamlin

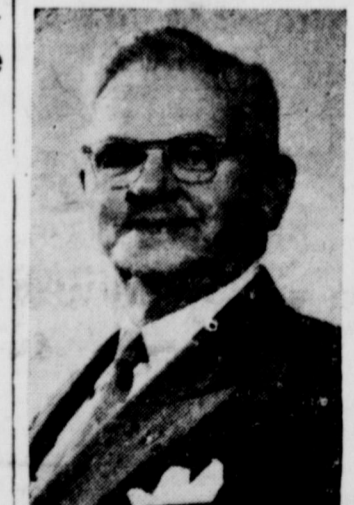


Overseas Veterans Welcome
Post No. 4156
VETERANS OF FOREIGN WARS
Meets 2nd and 4th Thursday
8:00 p.m.
Karl and Boyd Tanner



WE'LL WASH YOUR CAR NICE AND NEAT AND IF YOU LIKE WE'LL SCRUB YOUR FEET.

WE HAVE A WELL!
We will pick them up, and deliver Them Back
Gulf Service Station
East Main Phone 9536
D. L. TUCKER



E. O. WOOD
Grand Master E. O. Wood, of the Independent Order of Odd Fellows of Texas, will pay his official visit to Eastland Lodge No. 120, Thursday night, November 20 at 7:30 o'clock at the American Legion Hall. This will be an open meeting for Brothers, Sisters and Friends. There will be a very interesting motion picture shown.
Bro. E. K. Henderson will be master of ceremonies. Sam Herring, N.G., R. E. Smith, Sec. and B. W. Howell, Treas.



AZALEA
OLEO
19c
Pound

CARNATION
Milk
2
LARGE CANS
29c

KIMBELL'S BEST FLOUR 25 Pound Bag \$1.79

KIMBELL'S SHORTENING 59c | **KIMBELL'S GRAPEFRUIT JUICE** 19c
3 Pound Carton 46 Oz. Can

Fresh Green BEANS lb. 19c
R. B. TURNIPS lb. 8c
Florida ORANGES 5 lb bag 35c
Russett—Mesh Bag POTATOES 10 lbs. 65c

GRADE A SLICED BACON lb. 47c
SMOKED PICNIC lb. 39c
BONELESS PORK ROAST lb. 49c
Fresh Ground HAMBURGER MEAT lb. 39c
U. S. GOOD BEEF CHUCK ROAST lb. 49c

DEL MONTE FRUIT COCKTAIL No. 303 Can 25c
DEL MONTE SPINACH .. No. 2 can 15c
PRIMROSE CORN No. 303 Can 21c
MARSHALL SWEET PEAS No. 303 Can 19c
DEL HAVEN TOMATO JUICE 46 oz. can 25c
GERBER'S BABY FOOD 3 cans 29c
Kimbell's Pure Strawberry
PRESERVES 12 oz. jar 32c
WALDROF TOILET TISSUE 2 rolls 19c
PINTO BEANS 2 lbs. 25c

THESE PRICES EFFECTIVE FRIDAY AND SATURDAY ONLY
FOOD QUALITY MARKET
James Watson, Mgr.
400 SOUTH SEAMAN EASTLAND

Court Of Civil Appeals Eleventh District

The following proceedings were had in the Court of Civil Appeals, Eleventh Supreme Judicial District:

Affirmed
Traders & General Insurance Company vs. James L. Batson. (Opinion by Judge Collings)
Johnnie Oliver Rutherford, guardian of the Estate of Mrs. H. E. Oliver vs. C. B. Nicholas. (Opinion by Judge Long)
Lamesa Rural High School District, et al vs. Cecil Speck. (Opinion by Judge Collings)
G. F. Stubbs vs. Heirs of W. A. Lowrey, deceased. (Opinion by Judge Long)

Reversed and Remanded
Clayton Whitfield vs. Clarence M. Gay. (Opinion by Judge Grissom)
Mrs. T. E. Mercer, et al vs. Lennie Elvy Wiley, et al. (Opinion by Judge Grissom)

Reversed and Rendered
Roy Kendrick, et ux vs. Binley White. (Opinion by Judge Grissom)

Motions Submitted
C. E. Eldridge, et al vs. J. W. Edmondson, et al Appellee's motion for rehearing.
Buckner Orphans Home vs. Eula Mae Mabon, et al. Appellant's motion for rehearing.
Toledo Society for Crippled Children, et al vs. Clarence H. Hickok, et al. Appellants' motion for rehearing.

Motions Overruled
C. S. Eldridge, et al vs. J. W. Edmondson, et al. Appellees' motion for rehearing.
Buckner Orphans Home vs. Eula Mae Mabon, et al. Appellant's motion for rehearing.
Toledo Society for Crippled Children, et al vs. Clarence H. Hickok, et al. Appellants' motion for rehearing.

Hickok, et al. Appellant's motion for rehearing.
Texas Employers Insurance Association vs. Doyle A. Agan. Appellant's motion for rehearing.
Central West Texas Cooperative Marketing Association, Inc. vs. Banner Dairies. Appellant's motion for rehearing.

Cases Submitted
George Tufner, et al vs. Beatrice Jackson, et al.
Anchor Casualty Co. vs. C. M. Chia.
Texas Employers Insurance Association vs. H. H. Phillips.
Texas Employers Insurance Association vs. Donald Wayne Mincey.

Cases Set for Submission Nov. 21, 1952
Gary-Nees Lumber Co. vs. J. C. McKinney, et al.
Karl W. Klinger vs. Mildred G. Klinger.
Premier Petroleum Co. vs. W. E. Box, Jr.

Cases Set for Submission Jan. 23, 1953
Empire Southern Gas Co. vs. Fred Hyer, et al.
Traders & General Insurance Co. vs. C. C. Lyles.
P. H. Lesley vs. City of Rule.
Orval S. Davis vs. Texas Employers' Insurance Association.
W. C. Kimbrough vs. Mrs. Marjorie Harvey Neill, et al.
C. J. O'Connor vs. Fred M. Manning, Inc.

SLIGHTLY CROWDED
HARTFORD, Conn.—Charles Pertillar, 52, says "things are getting a little crowded" around the family hearth. His wife Clara, 46, returned home after giving birth to her twentieth child. Fourteen of the children live in the Pertillar's six-room apartment.

CALL 601 FOR CLASSIFIED AD SERVICE

ATHLETES FOOT GERM HOW TO KILL IT. IN ONE HOUR.

If not pleased, your 40c back. This STRONG fungicide SLOUGHS OFF the outer skin to expose buried fungi. Kills it on contact. Get Greaseless, instant-drying T-4-L at any drug store. Today at Eastland Drug.

INTRODUCING PAT
1 year old "Fullback" for the V. H. Henderson's says:



"Confidentially Mr. Schultz I'm proud of my four teeth and I'd like a picture that my Grandma can really show—so I'll pass the ball to you!"

Your baby too will take a lovely picture.

SHULTZ STUDIO
Over The Corner Drug

NEWS FROM CARBON

Mrs. A. J. Woodard visited Mr. and Mrs. Jack Noel and Mrs. Nannie Noel in Dublin last Saturday.

Mr. and Mrs. O. E. Payne were visiting her sister, Mrs. Dick Murray and Rev. Murray in Colorado City last weekend.

Cecil Daugherty of Ft. Worth, visited his sister, Mrs. Charley Walker, Sunday.

Supt. and Mrs. H. L. Mullins and children, spent the week-end in Waco with his parents.

Mr. and Mrs. Edgar White of Odessa, were week-end guests of his parents, Mr. and Mrs. Wade White.

Mrs. W. E. Trimble of Indianapolis, Ind., is here for an extended visit with Mrs. E. R. Trimble and other relatives.

Billy Wyatt of Fort Worth, visited his parents, Mr. and Mrs. Ray Wyatt, Sunday.

Mr. and Mrs. Sidney Roff of Eastland, visited Mrs. J. T. Clements Sunday.

Mr. and Mrs. Mack Stubblefield were in College Station Saturday, where they attended the football game between A&M and Rice.

Mrs. W. J. Stacks and Tommy Stacks of Fort Worth, spent the weekend with Mr. and Mrs. W. M. Medford.

Mr. and Mrs. C. B. Dudley and family of Brownwood, were week-end guests of her mother, Mrs. Charley Walker.

Mr. and Mrs. Paul Bradley of Big Spring, Mrs. Alice Hanson of Eastland, and Mr. and Mrs. John Reed were dinner guests Sunday, of Mr. and Mrs. Bill Edmondson.

Mr. and Mrs. Tommy Woody and daughter of Stamford, visited her mother, Mrs. W. O. Hamilton, Sunday. She returned home with them.

Mr. and Mrs. James King and son of Monahans, spent the week-end with his parents, Mr. and Mrs. J. C. King.

Mr. and Mrs. Elzie Capers and daughter of Ranger, visited her mother, Mrs. J. S. Jackson, Sunday.

Mr. and Mrs. Lothar Harris of Lubbock, visited his mother, Mrs. Willie D. Harris, over the weekend.

Mr. and Mrs. J. L. Bigby and

daughter of Colorado City, were weekend guest of her parents, Mr. and Mrs. Henry Collins.

Mr. and Mrs. Bud Clack and son of Cisco, spent Sunday with her parents, Mr. and Mrs. Wade White.

Mr. and Mrs. Ray Sterling and daughter of Weatherford, visited Mr. and Mrs. Joe Barron over the weekend.

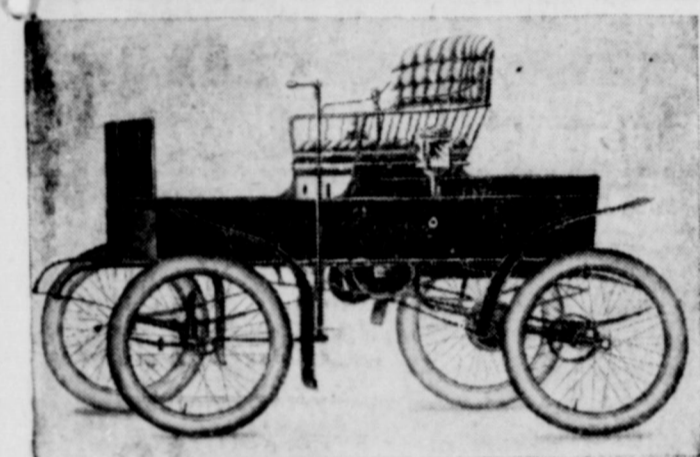
Mr. and Mrs. Pat McLauren of

Fort Worth, visited Mrs. J. W. Ransom and Miss Reba Ransom, last weekend.

Mrs. E. R. Trimble is visiting friends in Abilene this week.

HOUSE HITS CAR
FORT WORTH — A. E. Dick-ey claims a first in the house-hits-car department. A house being moved down a street in front of his home sideswiped his parked automobile, taking off part of a fender.

BABIES LIKE IT LIKE THEM



IN 1852...

... half a century before the automobile, Studebaker began to build transportation for the roadways of the world.

Fifty years later, this 1902 Studebaker electric runabout was the height of fashion. It drew admiring glances from young and old alike—just as the new Studebakers do today.

People of that early period dreamed of quicker, easier, more economical and dependable personal transportation. And no company has made a greater contribution to the realization of those dreams than the 100 year old Studebaker Corporation.

We invite you to drive a new Studebaker ... to see for yourself why it best fits your personal needs ... why it is a real dream car come true!

WARREN MOTOR COMPANY

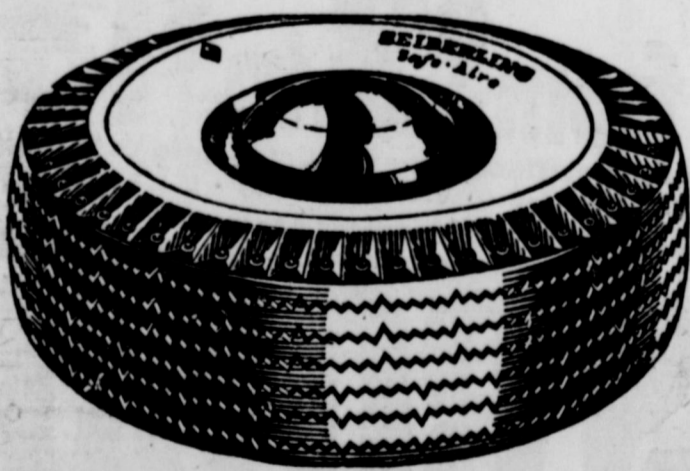
STUDEBAKER SALES AND SERVICE

306 East Main Eastland Phone 616



STUDEBAKER CENTENNIAL

"HEAT VENTS" (patented)



No other tire but Sieberling can have them. They make the tire look better, ride smoother, run cooler and last longer.

Get the best at no extra cost.

"We Have The Best Tire Deal In Town!"

Jim Horton Tire Service

East Main Phone 258 Eastland

It's Time to Get Ready - THANKSGIVING FOODS

7 18 19 20 21 22
4 25 26 27 28 29

TIME TO SAVE

Prepare for a Thanksgiving dinner that your family will never forget by shopping at Clover Farm. You'll like our fresh and bountiful produce selections and the many other tasty foods from the abundant stocks in our stores. You'll find our prices right, too!

Armour's Star Picnic HAMS

6 to 8 lb. Average Lb. **39c**

Glendale TUNA

No. 1/2 Can **29c**

Clover Farm **PUMPKIN**
2 No. 300 Cans..... **29c**

Clover Farm **MINCE MEAT**
9 Oz. Box... **21c**

Clover Farm **CHERRIES**
Red Sour Pitted No. 2 Cans..... **49c**

Glendale **PEACHES**
Sliced or Halves No. 2 1/2 Can... **29c**

Clover Farm **OYSTERS**
4 2/3-Oz. Can..... **45c**

Imperial Cane **SUGAR**
5 Lb. Box... **49c**

Clover Farm **CATSUP**
14-Oz. Bottle..... **19c**

MRS. TUCKERS **Shortening 3** Lbs. **65c**

BETTY CROCKER **Cake Mix** 20 Oz. Pkg. **29c**

CLOVER FARM **Coffee** Lb. **79c**

PUFFIN **Biscuits 5** Cans **55c**

CLOVER FARM **Apple Jelly** 12 Oz. Glass **15c**

CLOVER FARM **Milk** 2 Tall Cans **27c**

Oleo CLOVER FARM Lb. **19c**

Peas CLOVER FARM No 303 Early June Can **21c**

Corn CLOVER FARM No. 303 Whole Kernel Can **19c**

NOW IN STOCK
Miss Kings **TEXAS PECAN CABE MIS-DIP CHOCOLATES GLAZE FRUITS - NUTS**

Get Your Entry Blanks From Us!
WIN \$1000 in WESTINGHOUSE APPLIANCES!
in Aunt Jemima's \$10,000 Brag-About-Texas Contest
FREE AUNT JEMIMA FAMILY FLOUR **75c**

Choice Fresh Meats

Shortribs U. S. Good Veal Lb. **39c**

Roast, Seven U. S. Good Veal Lb. **49c**

T-BONE STEAK U. S. Good Veal Lb. **79c**

FRESH SHOULDER PORK ROAST Lb. **37c**

Bacon, Sliced Dealer's Pack Lb. **45c**

Sausage Pure Pork, Armour's Star Country Style Lb. **49c**

Bologna All Meat Lb. **45c**

CHEESE Longhorn, Lb. **52c**

Calf Brains Fine Scrambled with Eggs Lb. **21c**

Pop Corn White Swan 10-Oz. Can **19c** | **Jell-O** All Flavors 3-4-Oz. Pkgs. **25c** | **Candy** Chocolate-Covered Cherries, White Swan 1-Lb. Box **63c**

FOODS CLOVER FARM STORES MEATS

NEWS FROM OLDEN

Mrs. J. M. Moore and children returned home from Dallas last week, after a 10-day visit with her parents, Mr. and Mrs. Henry Rhodes.

Mrs. Christine Howell of Breckenridge, spent last Wednesday here with her mother, Mrs. Annie Wilkerson.

The PTA Calendars are now ready to go on sale. Some will be

placed at the store, or see Mrs. Bryan.

Mrs. Dick Yielding spent several days this week in Grand Prairie and Fort Worth with relatives. She also did some Christmas shopping and returned home Sunday.

Bro. Bob Rigdon of ACC was dinner guest Sunday in the home of Mr. and Mrs. T. L. Lockhart.

Mmes. Truman Bryan and Dick Yielding visited Mrs. Hervey Fox in the Staff community, Monday afternoon.

Miss Edwina Martin became the bride of Jone Eugene McFarland Saturday night. The couple left after the ceremony for their home in Denton.

Visiting in the home of Mr. and Mrs. E. A. Norton over the weekend were Mrs. Shelton and children, Mrs. Lingle and children and Tiny Northcutt, all of Olden.

Mr. and Mrs. Jack Hunt and children of Odessa, are spending a vacation here with his parents, Mr. and Mrs. O. T. Hunt.

Mrs. Nettie Fox is visiting her



H-BOMB EXPERIMENTS SUCCESSFUL—Gordon Dean, Chairman of the Atomic Energy Commission, spots the Eniwetok proving ground on a map in his office in Washington after announcing the AEC had staged successful H-bomb "experiments" near that Pacific Island. Dean also announced that investigations were under way "leading to possible disciplinary action or prosecution" for members of the task force that sent home eye-witness reports of the experiments.

sister, Mrs. Ray, in Fort Worth, and will attend the Shrine Circus while there.

Mr. and Mrs. Carl Crone have returned from a trip to Louisiana, where they visited their son Billy and family.

Mrs. Truman Bryan of Olden, and Mrs. Bonnie Garner of Eastland, left Wednesday for Wichita Falls, to attend the State Convention.

Mrs. C. C. Martin and daughter and Mrs. Everett, were shopping in Breckenridge Friday, and were dinner guests of Mrs. Bill Bannister.

Visiting in the home of Mrs. Ethel Rouch over the weekend, were Mr. and Mrs. Woodrow Rouch and children of Holliday.

Mrs. Stella Jarrett visited her children in Lubbock Sunday.

Mrs. Jaileen Hicks and Mrs.

T. L. FAGG
R. L. JONES
Real Estate
Property Management
Home and Farm Loans

Kidney Slow-Down May Bring Restless Nights
When kidney function slows down, many folks complain of nagging backache, head-aches, dizziness and loss of pep and energy. Don't suffer restless nights with these discomforts if reduced kidney function is getting you down—due to such common causes as stress and strain, over-exertion or exposure to cold. Minor bladder irritations due to cold or wrong diet may cause getting up nights or frequent passages. Don't neglect your kidneys if these conditions bother you. Try Doan's Pills—a mild diuretic. Used successfully by millions for over 50 years. It's amazing how many times Doan's give happy relief from these discomforts—help the 15 miles of kidney tubes and filters flush out waste. Get Doan's Pills today!

Clyde Garrett of Eastland, visited friends in Olden Tuesday afternoon.

Red Adams who is stationed in California, is spending a 30-day furlough here with his parents.

Mr. and Mrs. W. C. Stark have returned from a visit in Ft. Worth. Mrs. Stark's sister, Mrs. C. L. White, accompanied them home.

Mrs. J. T. Sims of Odessa, and Mr. and Mrs. Voris Dick and Winston, also of Odessa, are visiting their parents, Mr. and Mrs. Jess Dick.

Rev. Alfred Nelson spoke to the Baptist Brotherhood in Cisco, Monday evening.

Baby's IQ No Test, Professor Says

Your baby's high IQ doesn't mean a thing so far as his later intelligence is concerned and neither does a low IQ rating.

Prof. Benjamin Mehlman, Kent State University psychologist, says babies just a few months old do not have enough intelligence to make any kind of report accurate.

"Below two years old, most psychologists would feel squeamish about saying this child has such and such intelligence quotient," he said. "We can make predictions about his intelligence but the science is still imperfect in many ways."

Measurement of a baby's intelligence is usually done by testing his ability to learn or to grasp problem solutions—extremely simple solutions, of course.

MODEL T STILL GOOD
SCITUATE, Mass. —Mr. and Mrs. Charles Lane drive a 1910 Model T Ford. They won a prize at an exhibition for having the best restored antique car.

ATTEND CHURCH SUNDAY

Hike In Carton Price Of Fags Is Authorized

The Office of Price Stabilization has issued an order which has the effect of slightly raising cigarette ceiling prices from one to three cents a carton.

Frank C. Tomlinson, OPS regional restaurant and foods chief, announced in Dallas that his agency did not expect the authorized ceiling price adjustment to have any effect on the price of an individual pack of cigarettes.

Mr. Tomlinson declared that a recently completed OPS survey indicates it is necessary for cigarette distributors to include the November, 1951 excise tax increase as part of their cost if they are to realize their "customary percentage margins" as required by the Herlong amendment to the Defense Production Act.

Accordingly, the OPS action allows wholesale and retail cigarette distributors to include all the Federal excise tax as part of

their cost in applying customary percentage markups to determine their ceiling prices.

Under the new order, distributors are now permitted to include the ten-cent a carton increase in the Federal excise tax which went into effect November

1, 1951, as part of their cost before applying their Markups. Heretofore, they have been permitted merely to tack on the exact amount of this increase after the markups were computed.

READ THE CLASSIFIEDS

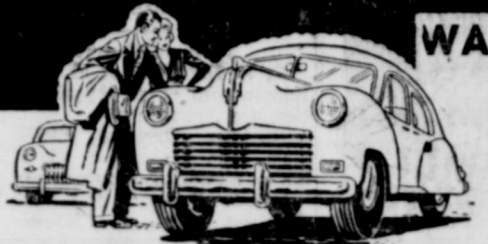
STEAM CURED

HAYDITE LIGHT WEIGHT BUILDING BLOCKS
Now you can enjoy low first cost. Quicker Construction. Less Up-keep Expense. Smaller Insurance Premiums. Savings on Cooling and Heating.

Grimes Brothers Block Co.

Phone 620

USED CARS WANTED



We Will Pay You

TOP CASH FOR YOUR CAR

BLEVINS MOTOR COMPANY

305 W. Commerce

Phone 308

To and from EASTLAND and all West Texas.....

GREYHOUND

has the Service!



6 schedules daily to Fort Worth, Dallas and intermediate points.

7 schedules daily to Abilene, Big Spring, Odessa, Pecos, El Paso and points enroute.

3 thru buses daily (same bus all the way, no changes) to Los Angeles—including thru bus service to Phoenix, Tucson, San Diego and points enroute.

Thru bus daily to Waco, Houston and points enroute.

Direct connections at Dallas with thru buses to Memphis, Birmingham, Atlanta, St. Louis, Chicago and points enroute.

No matter what your travel needs—long trip, short trip—across the county or across the country, you'll find Greyhound has the service for you. Check with your friendly Greyhound agent the very next trip you plan. You'll find Greyhound's service plus Greyhound Super-Coach comfort plus extra low fares truly make Greyhound "today's best buy in travel."

GREYHOUND TERMINAL

114 N. Lamar

Phone 84

GREYHOUND



Dry Clothes Fast...

AT YOUR OWN CONVENIENCE



It's always fair weather when you have an electric clothes dryer right in your home. Wonderful to turn on the sunshine anytime... to dry your clothes fast... easily... economically, and at your own convenience. It's amazing how well the colors last with the kind treatment an electric clothes dryer gives! Why, you can throw away your clothespins... take down the clothes lines! Just take the clothes out of your washer and pop them into the dryer! Reddy Kilowatt will see that you have fresh, sweet-smelling... DRY clothes in a matter of minutes, ready to fold or iron!

See your favorite electric appliance dealer for the electric clothes dryer that fits your needs... and have dry clothes, quickly... regardless of the weather!



'GET ALL 3' AND SEE HOW EASY WASHDAY CAN BE!

Washday will be 3 times easier when you have an automatic electric washer, dryer and ironer!

TEXAS ELECTRIC SERVICE COMPANY
W. B. PICKENS, Manager



ALL WINTER -AND ALL YEAR!

The Safest Roads You Can Ride On

- ★ MAKE the slickest road a safe road with the U. S. Royal Master's exclusive Royaltex Tread!
- ★ LET its 3,000 gripping edges give you winter skid protection and stopping power never known before!
- ★ STAY super-safe for twice as many miles—with the only renewable safety tread in the world!

NOW! For Your Present Tires!
We are allowing

from \$3 to \$13

on the purchase of new, winter-safe U. S. Royals.
U. S. Royal Master • U. S. Royal Air Ride • U. S. Royal De Luxe
plus generous allowances for your present tubes

U.S. ROYALS
World's Foremost Safety Tires

Muirhead Motor Co.

Sales—BUICK • PONTIAC—Service

304 W. Main

Phone 692



ROUGHNESS AND PILING ON

Red Graham



Service Station

We Give S&H Green Stamps



East Side of Square

WE GIVE S & H GREEN STAMPS



PERSONAL FOUL

Modern Dry Cleaners



Phone 132

Free Pick-up and Delivery

Gasoline — Oil — Grease



Oil Corp.

M. L. Keasler, Dist.

Ph. 69, Cisco Ph. 660, Eastland



FORWARD PASS OR KICK WATCHING INTERFERENCE



DELAY OF GAME

Warren Motor Company

STUDEBAKER Sales—Service

Higginbotham-

Bartlett Lumber Co.

301 W. Main Phone 112

V. F. W. Post No. 4136

Eastland, Texas

Phone 693-W-3



OFFSIDE

Go To The Football Game And Back The Mavericks

DUBLIN VS. MAVERICK

Night Game 7:30 P.M. Friday, November 21st, There



ILLEGAL MOTION OR SHIFT

Eastland Chamber of Commerce

Paul Daniel Motor Company

Sales—MERCURY—Service

Howell and Rogers Grocery

6:30 a.m. week days 8:00 p.m. Closed On Sundays

First Baptist Church

Smith Plumbing and Tin Shop

110 N. Walnut Phone 304

Davis - Maxey Drug

Doc Davis Fred Maxey

Mr and Mrs. Victor Cornelius

Majestic Theatre "Movies are Better Than Ever"



ILLEGALLY PASSING OR HANDING BALL FORWARD



ILLEGAL POSITION OR PROCEDURE



DEFENSIVE HOLDING



ILLEGAL USE OF HANDS AND ARMS



TOUCHDOWN OR FIELD GOAL



CLIPPING

EASTLAND HIGH SCHOOL MAVERICKS

10	*Meroney	152	B
	McAllister	135	B
12	Collins	137	B
13	Harris	158	G
14	*Watson	146	C
15	Grimes	130	B
16	Moore	143	E
17	Williamson	143	B
18	Blackmon	175	T
19	Martin	155	T
20	Pittman	119	B
21	Williams	121	B
22	*Jessop	152	B
23	Edwards	163	T
24	Cooper	167	G
25	Hogan	148	G
26	Van Geem	137	T
	Brown	133	E
28	Johnson	151	G
29	Greer	115	E
30	*Chrisman	125	E
31	Harris	140	E
32	Franklin	135	E
33	*Hanson	157	E
34	*Muirhead	170	T
35	Lane	126	B
	Jordan	140	E
37	Tankersley	140	E
38	Warren	147	G
39	*Roff	195	T
36	Webb	143	T
	Akers	115	E
	Harris	140	G
27	L. Tankersley	163	T
	Massengale	111	B
	Cook	125	B
11	Sims	120	E
	Sims	104	B
37	Evatt	136	E
	Laney	138	B

*Denotes Letterman

Coaches: Ed Hooker, Texas A&M

Gene Young, Texas Tech

Managers: Don Jordan, Pit Linkenhoger.

1952 Schedule Of The Eastland Mavericks

- Sept. 12—Eastland 6, Cisco 20
- Sept. 19—Eastland 6, Coleman 39
- Sept. 26—Eastland 0, Ranger 47
- Oct. 3—Eastland 7, Rising Star 0
- Oct. 10—Open
- Oct. 17—Eastland 12, Cross Plains 7
- Oct. 24—Eastland 41, Santa Anna 27
- Oct. 31—Eastland 0, De Leon 33
- Nov. 7—Eastland 42, Wylie 31
- Nov. 14—Eastland 7, Bangs, 13
- Nov. 21—Eastland vs. Dublin, there (C)

(C) Denotes conference games

Games starting with Oct. 17 begin at 7:30

Hollywood Corset Factories

Stella Grigsby, Manager

Altman's Style Shop

We Give S&H Green Stamps

Western Auto Associate Store

Phone 38 Herbert Ekrot, Owner

Crowell Lumber Company

"Your Home Builders" 722 W. Main Phone 300

Freyschlag Insurance Agency

For Your Protection

Muirhead Motor Company

BUICK - PONTIAC Sales and Service

Scott Paint and Body Works

Phone 977

POE FLORAL

When It's Flowers Say It With Ours

Lovelace Transfer & Storage

'Since 1929'

Call on Us Day or Night 305 E. Commerce Phone 314

McGraw Motor Company

DODGE - PLYMOUTH Sales and Service

Elliott - Waldron Abstract Co.

Phil Laws Insurance Real Estate

American Legion Dulin Daniel

POST NO. 70 Eastland, Texas

When It's Lumber Phone Our Number

HANNA'S

203 N. Seaman Phone 70

Feed Purina Wilson Feed and Seed

204 N. Seaman Phone 175

Manhattan Cafe "Food You'll Enjoy"

100 W. Main Phone 9522

Willy - Willys Furniture Mart

305 South Seaman Ph. 585



WEST MAIN ST. EASTLAND



ROUGHING



BALL ILLEGALLY TOUCHED KICKED OR BATTED



CRAWLING HELPING THE RUNNER OR INTERLOCKED INTERFERENCE



INTENTIONAL GROUNDING



TIME-OUT



SAFETY



INELIGIBLE RECEIVER DOWN FIELD ON PASS



BALL DEAD; IF HAND IS MOVED FROM SIDE TO SIDE TOUCHBACK



START THE CLOCK OR NO MORE TIME-OUTS ALLOWED



INCOMPLETE FORWARD PASS, PENALTY DECLINED, NO PLAY, OR NO SCORE



Helping build West Texas

Phone 10



UNSPORTSMANLIKE CONDUCT

TIP-TOP CAFE

TOPS IN FOOD COCA-COLA—5c



BALL READY-FOR-PLAY



FIRST DOWN

Church... Society ... Clubs

Mary Circle Meets In J. E. Freese Home

The Mary Circle of the First Christian Church met in the home of Mrs. J. E. Freese, 501 South Bassett.

Mrs. T. L. Cooper opened the meeting in the absence of the president, Mrs. E. K. Henderson. Mrs. B. F. Hanna conducted the business meeting and brought the lesson in round table with all members, the subject, "Loss of Perseus."

Lucke-Maxwell Nuptials

Miss Christine Lucke, daughter of Mrs. Gladys Lucke, Gorman, was married to Mr. Calvin Maxwell Nov. 18th at 7 p.m. in the home of the bride.

The bride's dress of blue and white and she wore a corsage of white roses. She attended Gorman high school. Mr. Maxwell is a graduate of Eastland high school. The couple left immediately for Borger where he is employed by the Phillips Petroleum Co.

Senior Class's Mothers at Work

The mothers of the senior class are leaving no stone unturned to make the Ring Presentation at the Eastland high school gymnasium one of the nicest occasions of the year. Mrs. D. E. Webb is general chairman and has a specific committee but all the mothers are doing their bit to help. Saturday night at 7:30 p.m. the public is cordially invited to see this momentous ceremony and to enjoy the "wonders of art performed" for the setting.

The seniors this year include:

Dorothy-Charlene Black, James Philbert Kendrick, Joe Aubrey Brown, Jr., Margaret Ann Langlitz, Don Fowler Christman, Frankie Marie McDonald, Sallie Ann Cooper, Donald Paul Martin, Marcell Dean Maxwell, Pauline Fay Cogburn, Edith Fay Cox, Jewell Erlene Miller, James Douglas Crabtree, Joseph William Muirhead, Wilbur Lee Dean, Jr., Norma Gail Parsons, Jane Beth Dutton, Rose Janice Patton, Mary Elizabeth Franklin, Wanda Hagar Peel.

Mary Ann Garrett, Patsy Lou Vogue, Janice Garrison, Bettye Joyce Robinson, James Burke Greer, Donald Gene Roff, Mable Elizabeth Grimes, Patricia Ann Simpson, Dorita Mae Harbin, Anna Yvonne Tankersley, Mary Annette Henderson, Marcia Christine Fugle, Robert Gale Hogan, Mary Maxine Ward, Loreta Jane Haddraft, Delores May Warden, Norman George Watson, Marilyn Rhea Hart, Robert Steele Jones, Jr., Jane Aliene Weaver, Bobby Don Webb.

Don Webb is president of the class, Bobby Jones, vice president, Delores Warden, secretary.

Mr. and Mrs. E. C. Nix, Sr. of Seminole, visited in Eastland Friday, Mrs. W. T. Rutherford and daughter, Mrs. L. C. Harlow. Other recent visitors were Mr. and Mrs. Lawrence Jobs and daughter, Lynn, of Hillsboro. Mr. Jobs is a grandson of Mrs. Rutherford.

BRIDGE PARTY?
Serve your guests
ROYAL CROWN COLA
BEST BY TASTE-TEST

CES Honor High Officials

The Eastland Chapter of the Order of Eastern Star, No. 28 honored the new officials in the section with a tea at the Woman Club Sunday, Nov. 16, three to five p.m.

Mrs. R. L. Carpenter of Eastland who recently received her appointment as Deputy Grand Matron, Section 4, Dist. 3, and Mrs. Agnes Lee Howard of Albany who was elected Grand Exemplar of District 3. Both received their offices at the Grand Chapter of Texas meeting recently held in Amarillo.

In the receiving line Mrs. D. E. Finney, treasurer of the Eastland Chapter presented the guests to the worthy Matron Mrs. Archie Campbell of Olden and the honoree's next in line.

Miss Christine Garrard was a guest.

The tea table had decor of the chapter colors, yellow and gold chrysanthemums with green candles. Mrs. Carl Timmons and Mrs. Pebble Bolds alternated at the service. The hospitality committee who served plates were Mrs. Hannah L. Busby, Mrs. J. V. Cox, Mrs. Geneva Howell, Mrs. Corrine Weathersby, Mrs. L. J. Lambert, Mrs. Mildred Amos.

Musical interlude was beautiful and inspiring and the artists were Mrs. Donald Kinnaird, piano, Mrs. Eldress Gattis violin and Mrs. Christine Beskow, piano.

The honorees wore matching dresses of Amytheat Satin and Nylon tulle, leaf applique velvet and sequins. The Chapter Jewel colors are Amytheat, Emerald and Tezaz.

District 3 has fourteen chapters most of which were represented on this occasion. They are Ranger, Cisco, Strawn, Gorman, DeLeon, Albany, Clyde, Moran, Baird, Spring Star, Dublin, Sipe Springs, and the hostess chapter, Eastland.

West Ward PTA Met Nov. 18th

The West Ward PTA met in the Cafeteria at 3:15 Nov. 18th with Mrs. E. E. Garner the president, officiating. The meeting was opened by the Parent and Teachers prayer being repeated in unison. Secretary, Mrs. Tom Cox read reports. Treasurer, Mrs. T. O. in avelace reported a financial gain from the Halloween Carnival netting \$105.98.

Mrs. A. W. Cogburn, chairman of membership drive gave some interesting notes on the co-operation between teachers and students, describing the posters and viting competition between rooms for the greatest percentage of parent members gained. The 4th Grade room, teacher, Mrs. Eugene Green, won the prize of \$2.50. A vote of thanks went to the teachers for this splendid work.

The 2nd Grade room teacher, Miss Louise Snoddy, won the prize for more mothers present, \$2.00. Announcement for the Blood bank in Eastland Nov. 25th was stressed. Also that this is School visitation month.

A card of thanks from Mrs. Fern Green, expressing thanks to the group for their kindness when she was ill, was read.

The Club's project is carried on by Chairman Mrs. D. E. Webb who is selling Christmas cards for the PTA.

Study Club will meet Tuesday, Dec. 2nd, 9:30 a.m. with Mrs. J. B. McDonnell, corner of 80 and Commerce. Mrs. Bill Beason in charge.

Mrs. R. D. Estes, vice president, introduced the speaker, Mr. E. C. Johnston, who gave a most interesting talk on "What becomes of the school taxes in our town." A tea table was arranged by the 4th Grade mothers who used floral arrangements of yellow chrysanthemums.

PERSONALS

Stell Hill of Houston is in Eastland at this time, visiting his mother and other relatives and friends.

Mr. and Mrs. Norman Guess of San Angelo, have just moved to Eastland are now at home at 205 S. Walnut. Mr. Guess is parts manager at the Osborne Motor Co.

Mr. and Mrs. Dick Sparks and family will spend the week end in Eastland visiting the old home town and having the holidays with his family here. Mr. Frank Sparks, his father and the Joe Sparks family.

Mr. and Mrs. J. R. Edwards had as guests over the last week end Mrs. Edwards' father, Mr. L. A. Ferrell and family, of Dallas.

Mr. Josh Trotman was home for the week end with his family. They have been transferred to Dallas but Mrs. Trotman who teaches is gracious enough to stay until another teacher may be found to replace her.

Mr. and Mrs. Phil Laws are to spend several weeks in East Texas on business.

The W. W. Linkenbeger spent Sunday with Mr. Linkenbeger's mother and father, Mr. and Mrs. W. H. Linkenbeger, who were celebrating their fiftieth wedding anniversary. All the children were with them for a quiet reunion of the family.

Mrs. Morris Keasler was hostess to the Readers Luncheon Club on Tuesday, Nov. 18.

For best production, apple trees should be pruned either in the fall, winter or early spring. Trees should be trimmed so that some sunlight can reach all the branches.

Homemade Chest Solves Problem Of Toy Storage

Christmas toys for the children this year will run the gamut from blocks to trains and from dolls to books. Since children often receive numerous playthings, in many homes there will arise a post-Christmas problem: "Where can we keep all these toys?"

The Dad with a flair for home-crafting can solve this common dilemma by providing a toy chest. This one additional present will be welcomed by the entire household as a wonderful storage place for an overabundance of toys.

Instead of pushing the toys under the bed, into a corner or a closet, the child can learn to place them in the chest. In that way, the parents can teach the youngsters the rudiments of orderliness.

A sturdy and handsome toy chest can be built in the home workshop by any Dad who can wield a saw and hammer. Funda-

mentally, it's merely a framework of pine lumber covered with an embossed hardboard that looks like Spanish-grain leather. It has wheels and wheelbarrow handles, too, for easy moving about. A working drawing for the construction may be obtained free by writing the Home Service Bureau, Suite 2039, 111 West Washington St., Chicago 2, Ill., and requesting Plain No. AE-196.

Sides, bottom, ends and top of the chest are covered with Masonite Leatherwood. Just one-eighth of an inch thick, this handsome material may be bent to form the rounded top. Leatherwood is splinter-free and extremely durable, so this toy chest will last for years. It is available at any lumberyard.

Dark in color like leather, the hardboard may be left unfinished,

or it may be lacquered or enameled any color desired. In fact, the grain of Leatherwood is accented by colorful paint. Costing just a few dollars and some evening hours in the workshop, this toy chest has been found by many families to be an investment that pays rich dividends in better trained children and a more tidy home.


The first message over the first telegraph line was sent from the United States Supreme Court room in the Capitol of Baltimore.

One Day Service
Bring Your Kodak Film To
SHULTZ STUDIO
Plus Free Entertainment
EASTLAND

DEAD STOCK

CENTRAL HIDE & RENDERING CO.
For Immediate Service
Phone CR 1257
141 Eastland, Texas

MAJESTIC
Thursday Only
THEY WRECKED THE MIGHT OF THE SPANISH MAIN!
YANKEE BUCCANEER
color by Technicolor
Starring
JEFF CHANDLER · SCOTT BRADY · SUZAN BALL
Part of Thursday's Proceeds Go To Eastland High School Annual.
Plus Surprise Picture

PALACE
THEATRE - IN CISCO, TEXAS
Thursday & Friday
November 20 - 21

THE STORY OF WILL ROGERS
with WILL ROGERS, Jr. - Jane WYMAN
with BOBIE CANTOE - James Gleason
News and Cartoon

BRIDGE PARTY?
Serve your guests
ROYAL CROWN COLA
BEST BY TASTE-TEST

Miss Martin Wed To Mr. McFarland

Miss Edwina Martin, daughter of Mrs. C. C. Martin of Olden, became the bride of Mr. Eugene McFarland son of Mr. and Mrs. Paul McFarland of Eastland, Saturday 6:30 p.m. in the home of Rev. J. Morris Bailey, pastor of the First Methodist Church.

The groom's brothers were his attendants, Roland as best man and Pete as groomsmen who escorted Miss Charlotte Black as bridesmaid. Following the ceremony they left immediately for Denton where they will make their home. Mrs. McFarland is a graduate of Olden high school and was formerly employed by the Bell Telephone Co. Mr. McFarland is a graduate of Eastland high school and is salesman for Armour & Co., Ft. Worth office.

AROUND—

(Continued From Page 1)
for a half dozen life times. Silver and gold are not in his dreams—he is no suffering. Ike's heart and mind are filled with a great desire to render service to mankind—especially to America.

Forces of evil may attack him, but in the end we feel that he will overcome all obstacles and will conquer through Him, who has loved us all.

Demand!
7up
ACCEPT NO IMITATION

Nation's Fire Losses for 1951—
... are way up according to report of National Board of Fire Underwriters just released. Three quarter billion dollars went up in smoke, an increase of 12.3%, and more than 11,000 persons lost their lives. The causes are listed as about the same as previous years with careless use of matches and smoking accounting for 27%. Misuse of electricity, overheated chimneys and flues, lightning, spontaneous combustion and explosions are others in order.

If it's Insurance, we write it!
Earl Bender & Company
Eastland Insurance Since 1924 Texas

JOY DRIVE-IN

CISCO — EASTLAND HIGHWAY
THURSDAY ONLY
Thursday Is Buck Nite. \$1.00 Per Car

YVONNE DE CARLO
Where Beauty and Danger Met
... as armies clashed on the burning sands!
HOTEL SAHARA
ADDED PETER USTINGOV - DAVID TOMLINSON

Kirk DOUGLAS
THE BIG CARNIVAL
with JAN STERLING
Plus Cartoon

Martha Circle Meet Mon. 17th

The Martha Circle of the First Christian Church met in the home of Mrs. Nell Day, Monday. The meeting was opened with the hymn, "Standing on the Promises." Mrs. Otto Marshall gave the devotional and the lesson which was selected from "The Pagan World." The meeting closed with a prayer. There were twelve members present.

MAJESTIC
Thursday Only
YANKEE BUCCANEER
color by Technicolor
Starring
JEFF CHANDLER · SCOTT BRADY · SUZAN BALL
with JOSEPH CALLEN
Friday - Saturday
HORIZONS WEST
color by Technicolor
Starring
ROBERT DYAN · JULIA ADAMS · ROCK HUDSON
with JOHN VAUGHAN · HUGH DOWN · EDWARD DUBOIS
Selected Shorts with each Program

Dixie Drive-In
Eastland-Ranger Highway
ADMISSION:
Adults 40c, Tax Inc.
Children Under 12 Free
Wednesday - Thursday

KATIE DID IT!
and was it FUN!
Starring
ANN BLYTH · MARK STEVENS
with CECIL BELLAMY - A Universal International Picture
Also Selected Short Subjects

PRE-THANKSGIVING SALE
Our Last Sale This Year
All Sales Final—All Sales Cash—No Approvals
FRIDAY AND SATURDAY ONLY — DOORS OPEN 9 A.M.

IN THIS SALE WE WILL HAVE A

25¢ Table and includes a lot of good merchandise	\$1.00 Table... don't overlook these bargains.
One Group DRESSES Values to \$5.00 39.95	One Group DRESSES Values to \$2.98 25.00
BRASSIERES \$1.00 Closing Out Line	Children's DRESSES REDUCED
FALL HATS \$1.00	HOSE 51 Gauge 15 Denier pr 89¢
ALL SKIRTS REDUCED ALL BLOUSES REDUCED MANY OTHER ITEMS REDUCED	
D. L. HOULE SHOP South Side of Square	

BURRS
A BUTLER BROTHERS STORE

It's Your Advantage... to
Layaway Robes
for Misses, Women, Children

Whether you're a mother looking after her brood, a "mere" male anticipating the gift season, or a career gal dreaming of cozy evenings at home—this is your chance to reserve your choice of these newest mite-priced, indoor fashions.

Quilted cotton, full-sweep cocoon robe with roomy pockets. Assorted colors. Sizes 10-18. **9.98**

Pay only a small deposit... balance in easy monthly payments.

Contrast-lined rayon crepe robe, quilted for warmth. Sizes 12-20. 9.98	Women's cotton print quilted robes. Sizes: 14 to 40. 6.98	Gay duster of patchwork-pattern cotton quilted for comfort. Sizes 7 to 14. 3.98	Bemberg duster in sheer gold print. Nylonized for beauty, service, 12-18. 9.98
BURRS A BUTLER BROTHERS STORE		Girls' pinwale Chenille Robes. Sizes 8 to 16. 3.98	Seersucker duster; checked lining, trim. Quilted and warm! 10-18. 8.98