

Friendliness

You may feel perfectly free to stop in at the Bank, to talk over money or other matters.

Whether you bank here or not, you will find us ever ready to cooperate, and interested in the things you are interested in. For we cannot assist you to a larger progress without sooner or later benefitting this Bank.

THIS FRIENDLY BANK WELCOMES YOU!

The Farmers State Bank

OFFICERS AND DIRECTORS:

J. S. SWANN, President	HERBERT PATTERSON, Assistant Cashier
R. O. ANDERSON, V. Pres.	B. L. HAMILTON, Assistant Cashier
DAVID HENDRICKS, V. Pres.	
W. L. DILTZ, Jr., Cashier.	

WHAT'S DOING In West Texas

Jayton will soon see a modern brick building replace the old iron building adjoining the Palace theater. The latter building is being torn down and the general merchandise store owned by G. Coury which will take its place will be run with the idea of giving sanitary goods, with high quality and the best price to the public.

Rochester is seeing some road work done by the state highway department. Low places on the main thoroughfare which stood in water after every rain have been filled in. It is planned to fix other streets in the near future.

Portales, N. M. will be the home of the Eastern New Mexico division of the West Texas Chamber of Commerce, according to present plans. The Portales chamber of commerce plans to furnish office space and extend the services of their secretary, Sam Seay, to the regional organization.

Happy's new Methodist church is being constructed in a hurry. The excavation has been completed and the rough part of the plumbing done. Work has been started on the first floor. A nursery, kitchen, banquet hall, lavatory rooms, pastor's study and assembly room for the choir have been included in the plans for the house of worship.

Coleman's latest improvement is the light signal that has been installed as a warning to traffic when the fire alarm is turned in and the engines need clear streets. When the automatic switch goes into operation at the station, the yellow light comes on and the bell stops traffic for two minutes.

Winter's survey of Saturday traffic revealed 377 cars parked on the streets and 233 of them Ford's. Chevrolet was second with a total of 53, and Dodge and Whippet with 18 each. Chrysler was represented 7 times, Pontiac 6, Oakland 6, Nash 5, Buicks 4, Hudsons 2, Oldsmobiles 2, Stars 2, and DeSoto, Franklin, Dort, Willys-Knight and Cadillacs once each.

T. & P. Adds Passport Service for Patrons

The Texas and Pacific Railway announces an added service to its patrons who are planning a trip to Europe and other foreign countries, said Frank Jensen, General Passenger Agent, Dallas.

After a passenger has secured his passport, said Mr. Jensen, same can be turned over to any Texas and Pacific Railway Agent, who will forward the passport to its port representative, who will have the various Consuls of the countries to be visited visa it.

This will save Texas and Pacific patrons, said Mr. Jensen, the time they would consume if they were compelled to personally call on the various Consuls.

This new service, which is without charge to Texas and Pacific patrons, promises to prove very popular, and is an innovation in passenger service.

IT'S AN EXPENSIVE ONE

London.—It's few couples who celebrate their radium wedding anniversary—for it comes in the seventieth year of wedded bliss. However, John Bailey bought his wife a nice little present recently to celebrate their radium anniversary. Both are 90 years old.

AND ALL WERE EMPTY.

Los Angeles, Calif.—Prohibition has brought wealth to more than bootleggers. After they have sold their stuff, Jake Timberg, bottle dealer goes around and collects the empties. After a recent convention, Jake collected \$3800 worth of empty gin, Scotch, ginger ale, champagne, beer and other bottles from 18 hotels with which he had exclusive concessions.

The 1929 commercial tomato crop of Texas brought an estimated return of \$3,500,000, more than twice the value of the 1928 crop.

Crystal City, in the Winter Garden district, is the largest shipping point of spinach in the world. In the 1928-29 season spinach shipments out of the Winter Garden area totaled 4,300 cars.

Read the advertisements in this paper. There's a message in every one of them that may enable you to save money. At least you will know where to find what you want without doing a lot of hunting and asking questions, and you also know the merchants appreciate your patronage because they solicit your business and make special offers.

Try a Classified Ad in the Mail

Your Kind of Bank

Both farming and banking have changed in the past few years—they have been forced to meet changing conditions.

Old Methods of banking are being eliminated. The better banks today are more careful in their business, more strict in their loan policies, more conservative in their investments, and carry larger reserves for the protection of their depositors.

The statement of condition which we issued to the Banking Department as of June 30th, 1929 showed that we had nearly 50 per cent of our deposits in Government Bonds and Cash. We had NO Borrowed Money, Bills Payable, or Re-discounts.

First and foremost a bank's service consists of safeguarding its depositors. We have always adhered to this ideal, and yet have always extended credit to those entitled to legitimate financing.

Depositors of the Farmers & Merchants National Bank enjoy the peace of mind and pride which comes from doing business with a bank that has a high ideal of conservative banking and lives up to it.

Any time we can serve you we shall be happy for the opportunity.

The Old Reliable

Farmers & Merchants National Bank

Merkel, Texas

THEY'RE HERE AND AWAY "IN NO TIME" BECAUSE WE GIVE

REAL SERVICE

Once you join the procession of satisfied customers that streams through our entrance you'll be our customer for life.

Let us change the transmission and differential oil, clean the spark plugs and give your car the grease gun at every point.

In addition to carrying a full line of oils and greases, as well as accessories, we carry a complete line of GOODYEAR TIRES AND TUBES.

FREE ROAD SERVICE

Highway Service Station

J. C. White, Prop.
Phone 254



HAWK
BRAND
WORK CLOTHES

THEY WEAR
—LONGER

JONES DRY GOODS, Merkel, Texas

MERKEL MAIL WANT ADS FOR RESULTS

Chevrolet Announces New, Closed Models

Rounding out its line of six cylinder valve-in-head cars, the Chevrolet Motor company today announces two new closed models: the Imperial Sedan and the Sport Coupe. Officials point out that despite the scores of improvements incorporated in these new models prices have been kept within the low Chevrolet price range, the Imperial Sedan listing at \$2995 and the Sport Coupe at \$2645, both f.o.b. factory, Flint, Mich.

The new Imperial Sedan is introduced because of a widespread demand for a style car in the low-price field. On this model the famous Fisher Body designers have lavished their skill with very noticeable success. It has smart concave front pillars with a rationally molded visor and in the rear quarters are stylishly finished with Landau bows. The interior is smartly upholstered in deep tufted plush, and the car is equipped with an adjustable driver's seat and other items commonly found in smart cars of this type such as completely equipped instrument panel, smoking set, etc. It is finished in lustrous black with molding in Saginaw green and striping in tusk ivory. Exterior bright work, such as radiator, head lamps and Landau bows are chromium plated.

The new Sport Coupe is also offered in response to a demand for a style car for two passengers and includes a comfortable rumble seat in the rear and a rear window that is easily raised and lowered by means of a convenient Turnstedt regulator.

Introduction of these two new models come simultaneously with the announcement that more than 950,000 of the new sixes have already been delivered into the hands of owners and that Chevrolet factories are operating on the biggest summer production level in the history of the company.

Production of the new models has been underway for several weeks. Meanwhile thousands of the new cars have been shipped to dealers. Officials predict that the entire nation-wide dealer organization will be sampled with the new cars in two weeks or less. In many of the larger centers, the new cars are already on display. As a result of the introduction of these two new models, the Chevrolet passenger car line embraces seven cars, five closed and two open models.

The Texas honey crop of 1928 was 6,000,000 pounds with honey valued at \$180,000 from an investment of \$1,247,430 in the 249,027 colonies of bees.

Send sheets at Merkel Mail office.

Try a Classified Ad for Results

Sore Gums-Pyorrhea

Foul breath, loose teeth or sore gums are disgusting to behold, all will agree. Leto's Pyorrhea Remedy is highly recommended by leading dentists and never disappoints. Druggists return money if it fails. Phillips Drug Store.

STRENGTH, VIRILITY, PEP

Whatever your condition is, we may be able to help you. We have helped thousands of others among whom are those who were suffering with liver, kidney and stomach troubles, headaches, insomnia, catarrh, goitre, nervousness, rheumatism in various forms, neuralgia, anemia, poor circulation, constipation, female disorders, general debilitated conditions. In fact our work assists nature in building—Strength, Virility and Pep, all of which are essential in the maintenance of GOOD HEALTH.

JOE E. BUSBY, D. C.

Mims Building Abilene, Texas



Chiropractic
Message

Inventor of Disc Phonograph Dies

Washington.—Emile Berliner, 79, inventor of the disc record talking machine and the telephone transmitter, died Saturday at his home here.

Adding machine rolls at Merkel Mail office.



A Fast Worker

A speedy boy is Dapper Dan, The clever cleaning-dyeing man; He makes your clothes look neat and spiffy And brings them to you in a jiffy!

We challenge anybody on earth to give faster service than we do. One of our boasts is that we do the best cleaning and dyeing in town. The other is that we deliver the finished job in jig-time. That's why our business is constantly growing.

MODERN DRY CLEANERS OF COURSE

Phone 3

Across from Postoffice You'll like the plan of Dapper Dan, The clever Cleaning-Dyeing man!

123 Miles Transmission Lines Built Since Jan. 1 by W. T. U. Co.

Abilene, Texas, Aug. 8.—That West Texas is well under way on its march to break last year's record of \$200,000,000 oil production is evidenced by the great oil field construction program now being carried on by the West Texas Utilities company.

This company has built since January 1 more than 123 miles of new transmission lines and is engaged in building many more miles at this time. The oil field power load on July 1 was 30,533 horsepower, as compared with 23,470 horsepower on January 1 showing a net gain of 30 per cent in the first six months of this year.

Anticipating one of the greatest years in the history of the oil industry in West Texas, and to be ready to adequately care for the rapidly increasing oil field load, this company's construction gangs are working overtime building new extensions

and strengthening old distribution systems.

Following are some of the more important projects now under way or for which orders have been approved: Construction of 18 miles of 12,000 volt transmission line from Miles, Texas, to the Atlantic Pipeline company's pump station near Bronte and installation of a bank of four 667 kva transformers to permit loop service to Bronte and Wilmeth.

Building of 450 kva-2200 volt substation at Shell-McMahan gathering station at Iraan in Yates Oil field to take care of added load.

Install four 333 kva transformers at Big Lake substation.

Install four 333 kva transformers at Hamlin Shell station, replacing three 250 kva transformers.

Extend 13,000 volt transmission line eight miles from the town of Imperial, west to serve oil field.

Construction of 17 miles of 12,000 volt line northeast from Lueders to a point in the southeastern part of Haskell county providing rural service to Colbert's Clear Fork ranch, rural

customers enroute and to serve oil field load in Reynolds county.

Construction 3,000 feet 12,000 volt line to serve oil field power load in South Vernon; 4200 feet 12,000 volt line for power load in South Vernon; 3.6 miles 12,000 volt line to serve Phillips Camp, South Vernon; 3750 feet 2300 volt line to serve rural community of Hilltop in South Vernon Field.

Construction 5800 feet 13,000 volt line to serve rural customers north of Quanah.

Construction 2400 feet 2300 volt primary and 1950 feet secondary lines in Humble Oil and Refining Company's camp near McCamey.

Construction 2300 volt primary line and build transformer rack to serve Dempsey Gin at Turkey.

Construction three miles 13,000 volt line from Wellington-Dodsonville line south to serve a gin and 12 rural customers at Loco.

Construction 6600 volt rural line 18,000 feet south from Christoval to take care of new rural customers.

Use The Mail Want Ads.

Seattle Boy Chosen In Edison Contest

West Orange, N. J., Aug. 8.—A bespectacled 16-year-old boy who finds marine biology an interesting hobby was selected as the portage of Thomas A. Edison.

Chosen first out of a field of competitors from the 48 states and the District of Columbia, Wilbur S. Huston, of Seattle, Wash., will spend the next four years at the Massachusetts Institute of Technology, the school of his choice, with all expenses paid by the inventor.

He is the son of Bishop and Mrs. S. A. Hutson of the Episcopal diocese of Olympia, Wash. They expressed themselves as overjoyed at their son's selection as the winner.

Dr. Charles King Bliss, principal of the Lakeside school for boys which young Huston attended, said: "Young Huston's lack of interest in language was a great disappointment to his father. It was not until the lad got into physics, chemistry and mathematics that he began to wake

up. His father was disappointed but preferred to let the boy find himself. Wilbur received fairly good grades in his Latin, foreign languages and literature, but his heart was not in these subjects."

The committee announced that four boys, who rated high in the examinations, would be given scholarships of four years in technical institutions. They were Charles A. Brunissen of West Redding, Conn., Ivan A. Getling of Pittsburg, James Seth of Phoenix, Ariz., and Bernard Sturgis of Butler, Ind.

Huston's average in the test was 92. The other four averaged between 88 and 92.

With 589 different species, Texas has a greater variety of bird life than any State in the Union.

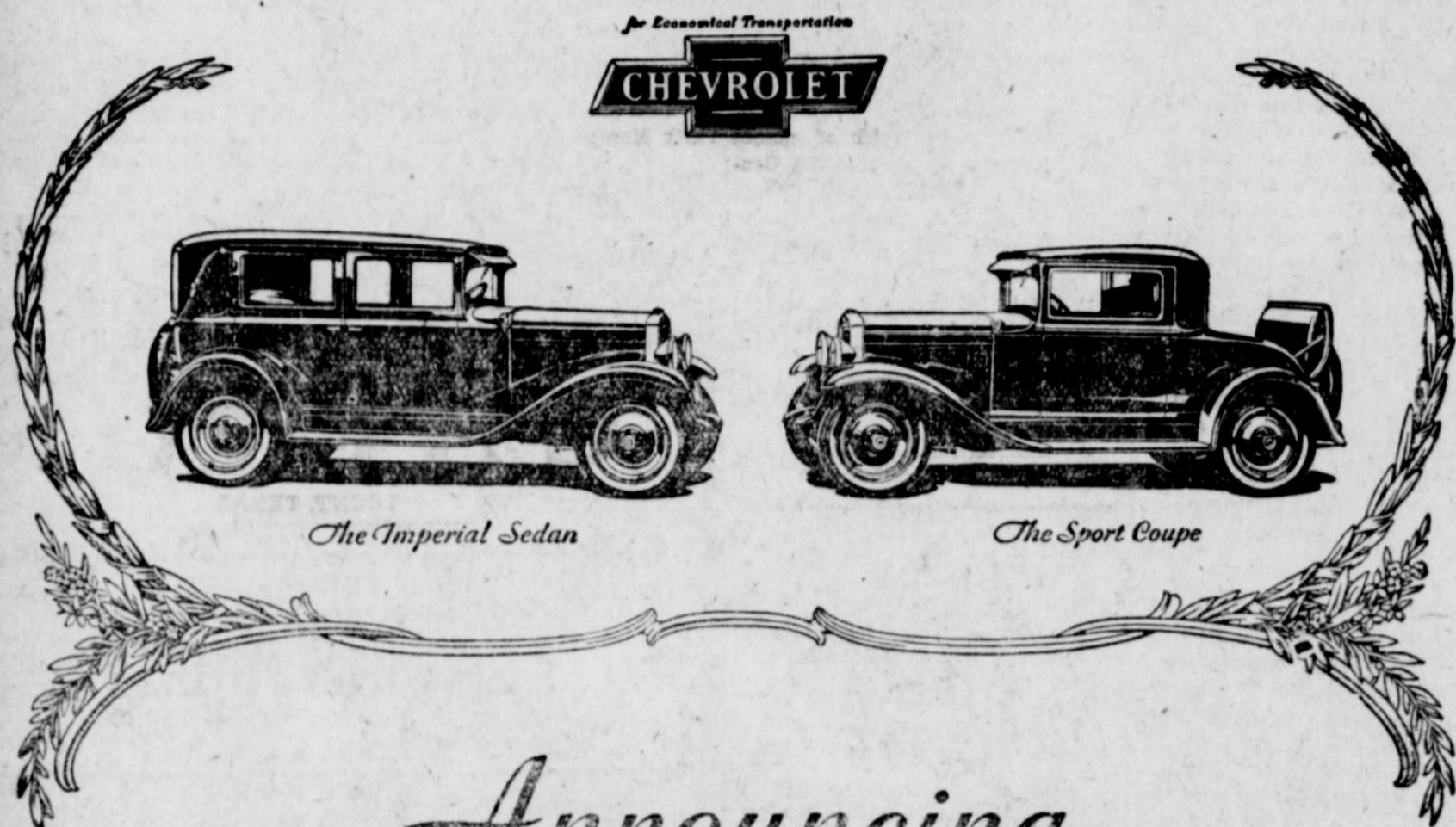
Try a Classified Ad in The Mail.

Fine Arts Building To Be Ready for Use

Abilene, August 8.—When the West Texas Fair opens on September 23 for its six-day showing for this year, the new Fine Arts Building, a \$20,000 fireproof structure, will be ready for use as the exhibit hall for the women's department, the art show and various other features of the exposition.

The new building is now under construction and the work is being rushed. It will be a substantial, well arranged and imposing edifice, and one of the most modern exhibit halls in the southwest.

Bargains: We have connections with oil companies, oil brokers and investors in real estate. It will pay you to list your holdings with us. L. R. Thompson



Announcing Two New Models of the CHEVROLET SIX

Broadening the appeal of a line of cars which has already won over 950,000 buyers since January 1st, Chevrolet presents two distinguished new enclosed models of the Chevrolet Six—the Imperial Sedan and the Sport Coupe. With beautiful new Bodies by Fisher available in a variety of striking color combinations and with numerous advanced convenience features—these new models provide in abundant measure, those elements of distinction ordinarily associated with more expensive automobiles.

When you examine the new Imperial Sedan and Sport Coupe

you will be impressed by their individuality and completeness. But you cannot fully realize what an achievement they represent until you get behind the wheel and drive! For here are all the qualities of six-cylinder smoothness, power and acceleration which Chevrolet alone provides in the price range of the four—combined with economy of better than twenty miles to the gallon of gasoline!

Come in today Learn for yourself the new standards of quality and luxury that Chevrolet has made available in six-cylinder cars—at prices within the reach of all!

The Roadster, \$525; The Phaeton, \$525; The Coupe, \$595; The Coach, \$595; The Sport Coupe, \$645; The Sedan, \$675; The Imperial Sedan, \$695; The Sedan Delivery, \$595; The Light Delivery Chassis, \$400; The 1 1/2 Ton Chassis, \$545; The 1 1/2 Ton Chassis with Cab, \$650. All prices f.o.b. factory, Flint, Mich.

COMPARE the delivered price as well as the list price in considering automobile values. Chevrolet's delivered prices include only reasonable charges for delivery and financing.

Delaney-Delmer Chevrolet Co.

Merkel, Texas

MASSEY-WOODS CHEVROLET CO., TRENT, TEXAS

A SIX IN THE PRICE RANGE OF THE FOUR

Proper Lubrication adds to the Resale Value of Your Car

THE NEW



Motor Oils

Ask any automobile dealer and he will tell you how proper lubrication lengthens the life and adds to the value of your car.

Sold by the Following Courteous Pierce Dealers

M. B. MOORE, Agent

WALLIS SERVICE STATION

Merkel, Texas

L. C. HIGGINS SERVICE STATION

GEORGE HOWELL SERVICE STATION

Trent, Texas

W. R. SUMPTER

Stith Highway

Pierce Petroleum Corporation

St. Louis * Little Rock * Oklahoma City * Dallas * Tulsa

The DAIRY

SWEET CLOVER IN FAVOR FOR COWS

Sweet clover hay is a satisfactory substitute for alfalfa in the ration of the dairy cow, say dairy specialists of South Dakota State college. If it is well cured and not too coarse it supplies nutrients quite similar to alfalfa hay in quality and quantity. It is not as palatable a dairy feed as is alfalfa and because it is somewhat coarse and stemmy the high-producing milk cow should not be required to clean up all that she is fed. In localities where both legumes can be grown successfully the usual practice of dairymen is that of relying upon the alfalfa crop for hay and upon sweet clover for pasture.

With a few exceptions sweet clover seems to give excellent results as a pasture crop. While the number of trials to determine its value are limited in number several experiment stations report no ill effects on dairy cattle when pastured on sweet clover. Furthermore these reports show that milk flow was maintained satisfactorily and no complaints were received reporting the odor or flavor of the milk as being disagreeable. Occasionally the loss of a cow from bloat is reported when sweet clover is pastured. But bloat seems to occur more frequently on alfalfa pasture. Unless the crop is pastured closely the growth will become rank, coarse and unpalatable.

It is estimated that sweet clover makes equally as nutritious silage as alfalfa. The amount of moisture in the legumes as cut for hay is usually high and if silage is made of this green material it is advisable to let it become slightly more mature than when cut for hay. One South Dakota dairymen reported satisfactory results with sweet clover silage last summer. There is, however, not enough evidence in support of this practice to warrant more than a reference to it.

Calves Thrive on Skim Milk if Supplemented

Under most conditions in Colorado the price of butter fat makes many dairymen hesitate to feed whole milk to their calves.

Whole milk is nature's food for the calf, but skim milk, properly supplemented will, in the light of many experiments, make a feed which is equally as good. Whole milk may make a better calf than skim milk, but not necessarily a better cow. Skim milk is the whole milk after the fat has been removed by the farm separator. It may be supplemented with feeds which are high in energy-giving nutrients called carbohydrates and fat. Such supplements are corn meal, kafir meal, ground barley and like feeds. The following ration is one suggested in the feeding of skim milk to calves: ground oats, one part; ground barley, one part; wheat bran, one part; skim milk and hay.

Corn meal or kafir meal may be substituted for the ground barley in the above grain mixture.—Extension Bulletin 226A Colorado Agricultural College.

Skill in Getting Most Milk From Herd of Cows

Knowing how to calculate good rations does not constitute all the skill in getting the most milk from a herd of cows at the least cost and with the least wear and tear on the cows. Knowing feeds and the calculation of rations and not knowing cows is much like the theoretical agricultural economist who knows the theories of co-operative marketing without knowing the American farmer and his agriculture. There are thousands of dairymen who are doing a good job of getting a lot of milk from a herd of cows who do not know the arithmetic of calculating good rations, but these are men who know cows.

Dairy Facts

Watch the bags of the cows about to calve, and make sure they don't become so congested as to be injured. Better to milk out a little than to have a caked bag.

The cow which freshens during the fall may be expected to produce from 10 to 20 per cent more milk than does the cow which freshens during the spring months.

A good variety of feeds in the grain mixture will be appreciated by the dairy cow. Successful dairymen use corn, oats, bran, gluten feed, oil meal and cottonseed meal.

Calves should have fresh water even though they are receiving milk.

A small amount of ground limestone in the ration of a dairy cow, one-half to one per cent of the ration, can be fed to advantage, especially if alfalfa is not used.

The symptoms of scours are profuse bowel discharges of exceedingly offensive matter. The calf shows intense suffering and usually dies within 24 to 36 hours.

DAIRY FACTS

BACTERIAL COUNT IN MILK PLANTS

(Prepared by the United States Department of Agriculture.)

In an effort to help the average milk-plant operator locate the causes of sudden "hops" in the bacterial content of bottled milk, Ernest Kelly, in charge of market milk investigations, bureau of dairy industry, United States Department of Agriculture, is conducting a study of at least 100 representative plants. It is important that the count be kept as low as possible, and although increases during handling may be relatively small it is of considerable help to the plant operator to know where and why any sudden increases are likely to take place.

Data secured from 29 plants studied to date show that certain operations in the plant, such as sterilization of equipment and storage, are more apt to be slighted than others, and that noticeable increases in bacteria take place as a result.

The discovery that decided jumps in bacterial count often take place after the milk has been bottled and while in storage awaiting delivery has led to the further study of temperature conditions in the average storage room. Two men are now engaged in this work and are making observations in a number of storage rooms, noting the differences in temperature in all parts of the room. Daily variations as great as 34 degrees Fahrenheit have been noted.

It is expected that the complete study will reveal the specific operations that need to be watched with particular care to keep the bacterial count of the bottled milk at a minimum. Such a guide as to possible sources of trouble should be of considerable value to the milk plant operator who is not in a position to employ a specialist.

Buckwheat and Products Make Good Dairy Feeds

Ground buckwheat and other buckwheat products are valuable feed for cattle, for they may be used as a partial substitute for, or as a supplement to, wheat bran and gluten feeds, according to the department of animal husbandry at the New York State College of Agriculture at Ithaca, N. Y. The total digestible nutrients in ground buckwheat are worth about the same as those in oats or wheat bran, providing the buckwheat is properly mixed with other feeds. A suitable, medium-protein mixture, containing ground buckwheat, may be made of 200 pounds of ground oats or barley, 200 pounds of ground buckwheat, 100 pounds of cottonseed meal, and 100 pounds of oil meal.

Buckwheat middlings contain 1,532 pounds of total digestible nutrients in a ton and more than 24 per cent of digestible protein. This refers only to the middlings from which the hulls have been removed, and, in this form, some dairymen consider them equal to or better than gluten feed for milk production. A mixture containing buckwheat middlings may be made of 200 pounds of bran or oats, 300 pounds buckwheat middlings, and 100 pounds cottonseed meal.

When comparing the prices of buckwheat feeds with other standard feeds, ground buckwheat may be compared to wheat bran and buckwheat middlings to gluten feed.

Milking Cows Require Some Grain on Pasture

Under average New Jersey conditions pasture alone is not adequate for cows in milk. Experience has shown that they need a grain mixture containing 12 to 16 per cent protein, says Carl B. Bender, assistant dairy husbandman at the experiment station, New Brunswick.

Many of the more successful dairymen follow the practice of feeding sufficient grain to keep the animals from losing flesh because of production stimulated by the pasture grasses. Care is taken not to turn the cows out until the grass is five inches high, and for the first few days they are left out only an hour or two. This is to avoid grassy and garlicky flavors in the milk and to avoid intestinal disorders.

As a means of prolonging the life of pastures the experiment station suggests dividing the area into four or five lots and moving the cows from one to another every five or ten days. In this way the animals are assured of a good supply of fresh grass throughout the season.

Even where pasture grass is ample and fresh, a good supply of clean fresh water has been found highly desirable.

China Buys Dairy Cows

Apparently the revolutions in China are not expected to upset the demand for dairy products. A Vancouver firm, acting for a large dairy concern at Shanghai, reports that within the next two years the Shanghai dairy will add 200 head to its herd of 300 and British Columbia as well as Western Canada breeders will be called on to supply the new stock.

Orders have been received for 30 pure-bred Jerseys and 10 Holstein cows, to be shipped at an early date.

Oldest Member New York Cotton Exchange Honored on Birthday

San Angelo, Aug. 8.—W. L. Black, the only living charter member of the New York cotton exchange, celebrated his eighty-sixth birthday Saturday on his ranch near old Fort McKavett, surrounded by his children and grandchildren and numerous friends.

Among congratulatory messages received was one from Phillip P. Weld, vice-president and acting president of the New York cotton exchange, carrying to the surviving founder of the organization the felicitations of the board of governors.

Black retired from the exchange and from the ranching business and became an advocate of trading in futures in wool. He said he believed the American wool growers never will get a fair price for wool until there is an opportunity to trade in futures or until there is a daily quotation on wool.

A Family Reunion.

Mr. and Mrs. S. L. Grayson had the pleasure of having all of their children at home last week, including Mr. and Mrs. Floyd L. Grayson of Burleson, who were accompanied by her father, W. P. Beavers; Mr. and Mrs. Clarence Grayson of O'Donnell; Mr. and Mrs. Granville Grayson and baby, Billie Jean, of Merkel; Mrs. Ernest Hill, who is here with her mother for the summer and who was joined again this week-end by her husband who is in school at Daniel Baker college at Brownwood, and the three children at home, Misses Neoma and Altie Grayson and Master Deloss Grayson.

Texas streams carry into the Gulf of Mexico approximately 26,913,000 acre-feet every year.

The 1928 Texas wool clip is estimated at 40,000,000 pounds, valued at more than \$12,000,000.

Old Time Circus Man Dies in Denver

Denver, Colo., Aug. 8.—Otto Floto, 66, dean of sportswriters, circus owner, and the first noteworthy sport critic to predict Jack Dempsey's fight career when the former champion was a preliminary fighter, died here Monday, the result of a lengthy illness.

Intimate of John L. Sullivan, Bob Fitzsimmons, Pete Jackson and other early champions of the prize ring Floto was one of the best of fight critics. For 33 years he was sports editor of the Denver Post.

Floto organized the Floto dog and pony show and was interested in many other road circus ventures. The Floto show later became widely known as a circus under the name Sells-Floto. In 1906 he met Kitty Kruger, a bareback rider. They were married and have resided here since.

Born in Cincinnati, O., Jan. 12, 1863, the son of a former president of the Chicago board of education, Floto's ambitions turned toward sport. He left school at an early age and followed training camps and race tracks. His knowledge of sports soon attracted the attention of editors and he entered the newspaper world. He became associated with Charles (Parson) Davies, noted fight promoter, and the two promoted many of the early day important fistic encounters.

HONEYMOON STYLE.

The Isle of Man is to Europe what Niagra Falls is to America. It is the honeymooners' haven. All hotels on the little island are booked until fall, proprietors admit.

It's funny how style affects even a honeymoon choice. One would think that if people ever wanted to be off the beaten track it would be on their honeymoon, but, no, then as ever, they insist on going to the spot which all the rest choose.

Try a Classified Ad in The Mail

"Dry Hole" Hughes Gets Shallow Well

Albany, Texas—After thirty-one dry holes in Shackelford county, A. J. Hughes, widely known oil operator of Albany and Fort Worth and well known among oil companies and operators as "Dry Hole Hughes," drilled in his first commercial producer on the L. H. Hill ranch six miles south of Albany in southeast 1-2 of section two, Lunatic asylum land, from sand at six hundred eighty seven feet and it is good for thirty barrels or more. The well is flowing by small heads with eleven feet of good sand.

Typewriting paper at Merkel Mail office.

Epworth Junior Program.
Song: Prayer. Song: Scripture, Psalm 119:105, by leader, Eloise Manscill. Special music, Mary Grace Dunn. Talk by superintendent, "The Bible Books", by Vivian Lasater. "The Books of the Old Testament," by Opal Huskey. "The Books of the New Testament," by Duncan Briggs. "Our Use of the Bible," by Mollie Frank Touchstone. "Abraham Lincoln on the Bible," by Odell Hunter. "Man's Need Supplied," Kennedy Whiteley. Song: League benediction.

Farm timber in thirty-four East and Northeast Texas counties brought its owners \$6,192,000 in 1928, according to State Forester E. O. Sieck.

Try a Classified Ad in the Mail

Back at the Old Stand

We wish to announce to our former customers that we are back in business at the same old stand on corner of Front Street and will give you the same courteous service that we have always rendered.

Ira Windham GARAGE AND FILLING STATION



Business is NEVER good in a POORLY LIGHTED STORE



Because Trade Follows the Light!

TWO stores, side by side . . . one is dull, dark and dismal, while the other is light, bright, cheerful, and business flourishing. One proprietor is plodding along, wondering why business comes so slowly . . . the other has increased his business considerably, because he has learned with proper lighting merchandise can be more easily displayed and chosen by those who enter his establishment.

—Customers come and go . . . some may buy and some may not, yet an endless stream of prospective buyers flows into the store which is well lighted . . . easily and quickly merchandise is selected with the help of pleasant clerks.

—Consult our illumination engineer . . . he will gladly help you solve your lighting problems . . . then more customers will come into YOUR store for TRADE FOLLOWS THE LIGHT!

West Texas Utilities Company

68 Game Preserves Established in Texas

Austin, Aug. 8.—In an effort to save what portion of wild game life there remains within its borders from destruction, Texas since 1925 has established 68 preserves totaling 3,203,042 acres, where deer, prairie chicken and wild turkey are protected by game wardens operating under a state game, fish and oyster department.

Records in the office of Will J. Tucker, state game, fish and oyster commissioner, reveal that the preserves are scattered over 66 counties in practically all sections of the state.

First step toward the protection of wild game was taken by the legislature in 1925 when the Boyd-Hubby bill was enacted. Under its provisions, 10 per cent of any area in counties might be placed in a game preserve through agreement between the owner and the state for a period of not less than 10 years nor more than 25 years. Game on the preserve at the time is acquired by the state, other animals are added for propagation purposes and trespassing signs are placed on all entrances.

The law became effective on Sept. 1, 1925, and on that date the first preserve was given the state. It included 26,000 acres surrounded by wolf-proof fence, in Taylor county. Jackrabbits were practically the only game left on the ranch at that time, but the state stocked the area with 26 deer and smaller game immediately.

The largest game preserve located on the King Ranch in Jim Wells,

Brooks, Jim Hogg, Starr, Hidalgo and Willacy counties, totals 414,314 acres and is almost as large as the state of Rhode Island.

Four thousand antelope are now being protected on preserves near Amarillo and Presidio and Brewster counties, and 200 mountain sheep are making a last desperate stand in the high peaks of the Guadalupe mountains, Tucker said. About 50 black bear may be found in the high cliffs of the Davis mountains in the almost impenetrable portion of the Big Bend section of Southwest Texas.

To throw a further safeguard around black-tail deer, which may be found in remote sections west of the Pecos river, the legislature passed a law in February prohibiting the killing of any of the animals.

One of the ranches of Congressman Claude Hudspeth of El Paso has been made a game preserve, and here may be found thousands of bob white and Mexican quail.

Protected from hunters, the fast disappearing animals still have another foe to combat—the preying wolves, lions and bobcats. These predatory animals soon learn where game preserves are located, and constant effort of trappers are necessary to safeguard wild game from destruction.

Legal covers at Merkel Mail office

For Tin, Plumbing And Repair Work
See
EARL TEAGUE
Tinner and Plumber
Phone 100
Satisfaction Guaranteed

Health Chief Gives His Keep Cool Ideas

Washington, Aug. 8.—The first item in a hot weather program suggested by Surgeon General Cumming of the public health service is "keep busy."

"Cheerful frame of mind," he explained, is the most important safeguard against heat suffering. He said the easiest way to attain it was to think of things other than the weather.

Of summer diet, he remarked that "the normal palate is a dependable guide; the best things to eat are the things one wants—fruits and vegetables."

He suggested drinking at least six to eight glasses of water daily and praised the modern woman's lightness of dress.

BOTH BATTLED.

San Francisco.—Charles L. Swan and his wife, Mrs. Eleanor Swan, both appeared before Judge Leon Gray for divorce. Charles charged that his wife had been intoxicated more than 100 times and had beat him. Mrs. Swan charged the same. The judge refused both applications.

Try a Classified Ad in the Mail
Try a Classified Ad for Results

West Texas. Maternity Rescue Home

Open to receive any unfortunate girl needing help and seclusion. Strictly private. Address
Lock Box 877
Sweetwater, Texas

Record Crowd Visits The Carlsbad Caverns

Carlsbad Caverns, N. M., Aug. 8.—Breaking all records for previous attendance since the discovery of the underground formation, 1,187 persons inspected the Carlsbad Caverns Sunday.

The former high attendance mark was last Labor Day when 1,037 passed through the caves.

Of the 1,187 who went through the caverns Sunday, 863 were from Texas.

There are 3,136 cities, towns and villages in Texas, with 92,500 business concerns of all kinds.

SATISFACTION



That's what we insist on in our dealings with our customers. With our Cenoco oils and greases, added to an efficient corps of attendants, we have been enabled to give the utmost satisfaction to every customer. If you would be satisfied, we invite you to entrust your motoring needs to us.

EXPERT REPAIRING GREASING, ETC.
Everybody's Garage
TELEPHONE 72

PROFESSIONAL

M. ARMSTRONG, M. D.
Office Over Farmers State Bank
Res. Phone 12. Office 195
Local Surgeon T. & P. For Last 10 Years.
Furnish Drugs From Office.

Dr. Chas. E. Harrison
Practice Limited to
The Eye and its Errors of Refraction
Eyes Examined and Glasses Fitted
PHONE 2020
209 Clinton Bldg. Over Brooks D.G.
ABILENE, TEXAS

Drs. Grimes & Sadler
PHYSICIANS & SURGEONS
HOSPITAL FACILITIES
X-RAY

PHONE DR. GRIMES Res. 165 Of. 163
PHONE DR. SADLER Res. 136 Of. 163

PAULINE JOHNSON
Successor to
G. W. JOHNSON
Insurance—Notary Public
In New City Hall—Front St.
Merkel — Texas

—PILES CURED—
No Knife No Pain No Detention from Work
DR. E. E. COCKRELL
Rectal and Skin Specialist
of Abilene, Texas
Phone No. 359 — Alexander Bldg

YORK AND CAMP
Attorneys-at-Law
Civil Practice in all Courts. Special attention to Land titles and probate matters.
711 and 712 Mims Building
ABILENE, TEXAS

FREE! FREE!
One Large 8x10 Enlargement with each \$5.00 worth of Kodak Finishing

RODDEN'S STUDIO
Roll Developed 10c; Prints 3,4,5c
—ONE DAY SERVICE—
All Work Strictly Guaranteed

T. C. WILSON
...JEWELER...
DIAMONDS WATCHES
116 Chestnut Street Abilene
Phone 5227

Len Sublett
Water well Driller,
all work guaranteed
first-class.

Merkel, Texas
Phone 164w P. O. Box 224

Dr. W. A. BUCKNER
Dentist
Office, Farmers State Bank Bldg.
Phone, Office 195 Residence 231

That Old Trouble Word--"If"

Once upon a time most people were worried a lot by "if." A few still are. You can tell them if you listen to them when they're shopping.

- "If you are sure that rug won't fade—"
- "If you're positive this is pure wool—"
- "If you'll guarantee these eggs as fresh—"
- "If you think this washing machine will work better than the other one—"
- "If—if—if"

The trouble with such people is—they don't read the advertisements. People who do read them do not have to depend upon "ifs" in their buying. They know what they are getting because they have the definite, printed, reiterated assurance of the advertiser.

Most people nowadays do read the advertisements. They shop intelligently and quickly. They know before-hand what they want, why they want it, how much they will have to pay and where to go.

INTELLIGENT BUYERS SUBSTITUTE "KNOW" FOR "IF" BY READING THE ADVERTISEMENTS

IT'S AN ILL WIND, ETC.

There's never a fire or a destructive accident that doesn't bring home to somebody—sometimes the property owner involved, sometimes just a casual observer—the vital importance of adequate, dependable insurance. But why wait for the ill wind to blow in your direction? Why not find out now about property protection and the type of insurance that best meets your particular needs?

A talk with us entails no charge or obligation.

W. O. BONEY
REAL ESTATE, FARM LOANS
FIRE INSURANCE
MERKEL, TEXAS

Consult Your Insurance Agent As You Would Your Lawyer

Dry Cleaning Service!

And that is exactly what we mean in every sense of the world—a modern plant and men thoroughly trained—that is our guarantee of perfect satisfaction.

CITY DRY CLEANERS
"Sudden Service" Kent Street
Phone 189

THE R & R PALACE THEATRE
SWEETWATER, TEXAS

FIRST SUNDAY SHOW SUNDAY, AUGUST 11TH
THE GREAT SPECTACULAR PICTURE IN SOUND

"NOAH'S ARK"

ONLY TWO SHOWS SUNDAY, FIRST SHOW STARTS PROMPTLY AT 2 O'CLOCK

ALSO SHOWING
MOVIETONE NOVELTY ACT
FOX NEWS IN SOUND
OUR THEATRE COOLED BY WASHED AIR (ARTIC-NU-AIR)
LADIES BRING YOUR WRAP. MEN WEAR YOUR COATS

All Roads Lead to Sweetwater Sunday, Come

