

Frontier News Flashes

Department of Journalism & Graphic Arts
University of Houston

Department of Journalism and Graphic Arts
University of Houston
January 25-30, 1860

LETTER FROM BROWNSVILLE:

Capt. Little reports that Cortinas is reorganizing his desperadoes and was camped across the river from Easton (25 miles north of Brownsville) with 150 men. Capt. L. (co) sent two of his men to the river bank to watch his movements and upon their being seen by Cortinas' force, some 15 or more of Cortinas men ran up to the edge of the river on the opposite bank, but did not fire as two scouts took to the chaparral. Capt. L. (co) and his men were anxious to cross the river and give Cortinas another battle, but refrained from the gratification, for the want of authority to do so.

Cortinas has been seen on this side of the river lately with small parties and as he and his men were on foot, they were no doubt on a stealing excursion for horses and cattle. You may rely on it; this trouble is far from its finale.

THE LABOR OF MAKING HOOPS

A correspondent of the Hartford Times gives the following curious facts about the manufacture of steel hoops for ladies skirts:

Mr. Henry S. Washburn, owner of a steel mill, makes some of the finest hoops in the world. He showed us a specimen of No. 62 iron wire finer than a hair. It weighed only seven ounces and was 68,000 feet, or 13 miles, 15 rods, 12 feet and 6 inches in length. It was drawn cold from a piece of iron one-fourth of an inch in diameter.

Mr. Washburn manufactures 600,000 yards a day of steel crinoline or flat wire which is covered already for the ladies skirts. He estimates that 5,000,000 tons of steel and iron are used annually in this way for the ladies of the United States, South America and Mexico. If 10 million of females wear out an average of three skirts a year, the cost is seven and a half millions of dollars.

Washington.—
In the House, democrats and

others endeavored to obtain the withdrawal of the resolution of Mr. Clark of Missouri relative to the Helmer book and a Helperite Speaker, and to substitute one of a less harsh expression.

Mr. Clark refused to withdraw his resolution.

An exciting debate followed during which a pistol fell from the pocket of Mr. Haskins of New York who was speaking energetically at the time. A furious scene followed and a collision that an assault was intended on Mr. Clark. The Sergeant-at-arms restored quiet and explanations followed.

Washington, D.C., Jan. 17:—
Com. Vanderbilt and other members of a committee from New York who came to Washington, D.C. to attempt to promote an organization of the House of Representatives have failed entirely in their efforts.

VA Answers New Pension Queries

How will it affect me? Many thousands of veterans and their dependents are asking this about the new pension law recently enacted by Congress.

The Merkel Mail asked the Veterans Administration for answers to basic questions about this complex legislation. Here are the answers in the first of five installments:

Q. When will the new system of pension payments go into effect?

A. On July 1, 1960. The first checks under the new system will not be mailed before August 1, 1960.

Q. Who will be affected by the new system?

A. All veterans of World War I, World War II and the Korean conflict and their dependents who qualify and begin to receive non-service pensions after June 30, 1960, will be under the new system. Those already on the pension rolls on June 30, 1960, will not be affected unless they choose to come under the new system. They can make this choice at any time, but once the election is made, the pensioner can never revert to the old system.

Q. How does the new law affect those drawing compensation or service-connected benefits?

A. The new law does not affect benefits paid for service-connected disabilities.

Q. Does the new law affect service pensions?

A. No. Service pensions are paid only to Indian War, Civil War and Spanish American War veterans. These pensions are not affected by the new law.

Q. Does the new law change the eligibility requirements for pensions paid to veterans?

A. Not basically. Ninety days active wartime service and an honorable-type discharge are required. The veteran must also be permanently and totally disabled. There are important changes in the methods employed to compute the pensioner's annual income. Under the new law the veteran's estate or "worth" will become an eligibility factor.

Q. Let's go into this a step at a time. What are the criteria for establishing permanent and total disability?

A. The degree of disability may vary according to the age of the veteran. Generally he must have a disability which at his age prevents him from getting regular, full time employment. This disability must be such that doctors do not expect it to improve materially.

Q. What are changes in a veteran's income limits?

A. Under the old law a veteran without dependents could not draw a pension if his annual income exceeded \$1400. Under the new law he may receive some pension if his income is as high as \$1900.

Under the old law a veteran with dependents could not receive a pension if his annual income was more than \$2700. Under the new system his annual income may be as much as \$3000 and he still will be eligible for some pension.



Home Demonstration Notes

By LORETA ALLEN

Taylor County Home Demonstration Agent

The hat making workshop was more fun. I made three hats. As I had never owned three new hats at once, I decided I would give my mother one of them. Now I am waiting for spring so that I can wear my new hats. Blue Bonnet Club has a treat in store because Mrs. Elby Frazier plans to conduct a workshop in her club.

Speaking of spring reminds me that this would be a good time to get that garden plot ready if one could find time dry enough and warm enough. I would never thought I would see the time in Taylor County that we would wish for dry weather. Oh well I would much prefer to wait on wet weather to start a garden than wait because it was too dry. I can just visualize how things will grow when spring does come. I could not resist buying onion plants Saturday because they were such nice looking plants. I will bet I get them set out before too long.

Increased use of windows and glass walls in modern homes call for new and different window treatment, according to Charlotte

Tompkins, extension home furnishings specialists.

Draperies can do much more for windows than dress them up. They can help control light, sound and temperature, and provide privacy.

The newest in drapery fabric is that with the "built-in" lining. The back is coated with aluminum. This serves as an insulator against cold and as a protector from the sun. Other types have a gold metallic backing.

Some drapery fabrics now have milium backings which protect the drapery fabric from radiator heat as well as from showers.

Textured fabrics with or without metallic thread and smooth fabrics are favorites, says the specialist. There is renewed interest in slub weaves.

Designs are traditional or contemporary with floral or abstract motifs. Scenes "brushed on" or penciled designs with an airy appearance are quite popular as well as those oriental in character.

Linen sheers are ideal in color, texture and design for simple furnishings and pine paneling. There are heavier linens, too.

Whatever your window problems, you will find a wide variety of fabrics and ready-made drapes to choose from in the different price ranges.



The way to pay bills

...By CHECK!

Sit at your desk, write checks to pay bills, and mail payments... what could be easier? And in addition to the convenience and time saved, you are protecting your money, avoiding the risk of loss or theft, and keeping accurate records of income and outgo automatically. So be modern and pay modern with a F&M checking account.

THE OLD RELIABLE

Farmers and Merchants
National Bank

Merkel, Texas

Member Federal Deposit Insurance Corporation

Victory "Brand Wagon"



BATTERIES

WE CARRY A FULL LINE OF

PARKS Batteries

AT POPULAR PRICES

High Guarantee at Low Prices

24 HOUR SERVICE

J. L. FISHER

Cosden Higher Octane Station

Hiway 80 West

Phone 218

J. D. HAMILTON Feed & Grain Storage

303 South 15th PHONE OR. 4-4371 Abilene

Field seeds of all kinds VETCH, WINTER PEAS

OATS, BARLEY & RYE

41% COTTONSEED CAKE 20% RANGE CUBES

FERTILIZER 16-20-0 and 13-39-0

ALL TYPES OF INSECT SPRAY, DRENCHES AND SCREW WORM KILLERS.

ALL KINDS OF STOCK SALT AND MINERALS

Wayne Show Calf Feed — Dog Food and Hog Feed

AUTHORIZED WAYNE DEALER
AUTHORIZED BUTLER BUILDING DEALER

Census District Office Opened

Establishment of a district office for the 1960 Census of Population and Housing at 174 Cypress Street, Abilene, was announced today by Director James W. Stroud of the Census Bureau's regional office at Dallas.

Max V. Mosholder will be supervisor of the district office. He will direct a force of 19 crew leaders and 207 census takers in the following counties: Callahan, Comanche, Eastland, Erath, Fisher, Hamilton, Jones, Nolan, Palo Pinto, Parker, Scurry, Shackelford, Stephens and Taylor.

Prior to the start of the census, all households will receive in the mail an Advance Census Report Form, a new census-taking device which is designed to speed up the field canvass and provide more accurate statistics. Distribution of this form, which contains the basic population and housing questions, gives the family a chance to assemble information about each member in advance of the census taker's visit.

SPEED WASH

DO A WEEKS WASH IN 30 MINUTES

USE AS MANY MACHINES AS YOU NEED

20¢ PER LOAD

CHEAPER THAN OWNING
YOUR OWN MACHINE

DRY YOUR WASH 40 lbs. 50c

COIN OPERATED — WASH DAY OR NIGHT

920 No. 2nd

AIR
CONDITIONED

NEXT DOOR TO
MERKEL MAIL

MERKEL

See The Dinah Shore Chevy Show in color Sundays, NBC-TV—the Pat Boone Chevy Showroom weekly, ABC-TV.



IT'S FUN-TASTIC

STEP IN IT—

STEP OUT IN IT

Get the quiet proof of Chevrolet's superior performance on the road—No other car in the low-priced three can match the borne-on-the-wind sensation you get from a ride in the 1960 Chevrolet. But that's not surprising when you consider to what lengths Chevy has gone to provide for your comfort at no extra cost to you. As you drive, count the ways Chevrolet has been thoughtful:
Supple Full Coil suspension—Coil springs at all four wheels melt bumps as no other suspension can. Taking the punch out of rough roads is their only function—they don't have to anchor the rear axle.
Butyl rubber body mounts—Thicker, newly designed body mounts

further insulate you from the road.
Body by Fisher—Only Chevy in its field offers the polish and craftsmanship of Body by Fisher.
Foam cushioned seats—Chevy offers foam cushioned seats in both front and rear in all series but one.
Safety-Girder frame—X-built and not merely X-braced, the Safety-Girder frame affords greater rigidity to minimize twisting and squeaks.
Hydraulic valve lifters—Oil hushed hydraulic valve lifters reduce engine noise to a whisper.
Cushioned steering shaft—A universal joint and cushioned coupling keep those annoying road tremors from the steering wheel.

Precision balanced wheels and tires—Here again Chevy has shown concern for your comfort by eliminating vibration in this vital area—tire life is longer, too.
Easy steering ratio—Chevy's high ratio Ball Race steering takes the work out of steering for you.
Superior weight distribution—Chevy rides better, handles better and stops better because the car's weight is more equally divided between the front and rear wheels.
Wide choice of power teams—Choose from 24 different power combinations to satisfy the itchiest driving foot—more than any other car.

Now—fast delivery, favorable deals! See your local authorized Chevrolet dealer!

BADGER CHEVROLET
Phone 123 Merkel

WHITE SWAN SUMMER GARDEN Sale

Stock up and Save!

We reserve the right to limit quantities



PEACHES	WHITE SWAN YELLOW CLING SLICED or HALVES Big 2 1/2-Size Can	25¢
PEARS	WHITE SWAN HALVES 303 Can	25¢
PORK & BEANS	WHITE SWAN 300 Can	6 for 73¢
GOLDEN CORN	WHITE SWAN CREAM STYLE 303 Can	4 for 69¢
SWEET PEAS	WHITE SWAN GARDEN FRESH 303 Can	5 for 93¢
GREEN BEANS	WHITE SWAN WHOLE BLUE LAKE 303 Can	25¢



Pound Can
59¢
Limit One

LIGHT CRUST
FLOUR
25 lb. bag **\$1.79**

★ **Finest Quality MEATS** ★
ARMOUR'S STAR THICK SLICED

- BACON** 2 lb. pkg. 87c
- FRANKS** 1 lb. pkg. 49c
- ARMOUR'S STAR COUNTRY STYLE **SAUSAGE** - 2 lb. bag 79c
- ARMOUR'S STAR **HAM** - - - 3 lb. can \$2.69
- LEAN TENDER **PORK ROAST** - lb 39c
- FRESH **PORK LIVER** - lb. 25c

KLEENEX 25¢
400 SIZE

- BLUE BONNET **OLEO** 2 lbs. for 49c
- WHITE SWAN—16-oz. Can **GRAPEFRUIT JUICE** - - - 25¢
- WHITE SWAN — 46-oz. Can **ORANGE JUICE** - 3 for. \$1.00
- WHITE SWAN — 18-oz. Glass **APPLE JELLY** - 2 for 49c
- WHITE SWAN — 27-oz. Jar **WHOLE SWEET PICKLES** - 49c

- WHITE SWAN—300 Size **BUTTER BEANS** - 10 for \$1.00
- HERSHEY'S CANDY BARS** - 10 for 39c
- RANCH STYLE—24-oz. Can BEANS** 2 for 39c
- BREEZE** - 29c

PRICES GOOD THROUGH SATURDAY.



AMERICA'S FAVORITE PIE LARD in the green and white carton



3 lb. crtn. **39¢**

3 lb. can **49¢**



MORTON'S **SALAD DRESSING** qt. 29c

SPECIALS FOR THURS. - FRI. and SAT. FEBRUARY 4 - 5 - 6

SATURDAY ONLY 8 a.m.-6 p.m.
Armour's Star
HAM SANDWICHES
Each **10¢**

— F-R-E-E —
DR. PEPPER
WITH EACH HAM SANDWICH

BUY ALL YOU WANT NO LIMIT

THURSDAY ONLY APPRECIATION DAY SPECIAL
SNIDER'S CATSUP
11-oz. Bottle
10¢
LIMIT 2

SO EASY - SO GOOD!
Apple, Peach or Cherry
39¢
Served FREE ALL DAY SATURDAY



- Garden Fresh VEGETABLES**
- RUBY RED **GRAPEFRUIT** 5 lb. bag 29c
 - SUNKIST **LEMONS** - - - lb. 12c
 - FRESH CRISP **CARROTS** - - cello bag 7c
 - CALIFORNIA **ORANGES** - - lb. 12c
 - FRESH GREEN **ONIONS** - - - bunch 5c

REFRIGERATED - PARKING LOT IN REAR - FREE PREMIUMS - CONVENIENT LOCATION

WILSON'S FOOD STORE

Phone 173 - Two Deliveries Daily at 10 a.m. & 4 p.m.

DON'T FORGET TO SAVE YOUR CASH REGISTER TAPES FOR PREMIUMS

BAKE HOT CROSS BUN "LITTLE LOAVES"



Ever since the days of 13th century England, hot cross buns have been a specialty on Good Friday and Easter. In America, these raisin-and-fruit studded buns make an appearance all during Lent. Try them in a new form, baked as "little loaves" in miniature bread pans. The pans are available in dime stores and toy departments.

HOT CROSS BUN LOAVES (Makes 8 Miniature Loaves)

Ingredients:
1/2 cup milk
1/2 cup sugar
1 teaspoon salt
1/4 cup shortening
1/4 cup warm, not hot, water
1 package or cake yeast, active dry or compressed
4 1/2 cups sifted enriched flour (about)
1/4 cup chopped raisins or currants
1/3 cup chopped candied fruit
1 egg yolk

Scald milk. Add sugar, salt and shortening; stir and cool to lukewarm. Measure water into bowl (warm, not hot, water for active dry yeast; lukewarm for compressed). Sprinkle or crumble in yeast; stir until dissolved. Add lukewarm milk mixture. Stir in 2 cups of the flour and beat until smooth; add remaining flour and turn dough out on lightly floured board. Knead until smooth and elastic, about 5 minutes. Place in greased bowl; brush top lightly with melted shortening. Cover and let rise in warm place (85°), free from draft, until doubled in bulk, about 1 hour. Punch dough down and turn out on lightly floured board. Knead the raisins and fruit into the dough. Divide dough into 8 equal pieces; shape into small loaves (elongated rolls). Press into miniature bread pans 4 1/2 x 2 1/2 x 1 1/2 inches. Beat egg yolk and 2 tablespoons cold water together and brush loaves with egg mixture. Cover. Let rise in warm place, free from draft, until doubled in bulk, about 1 1/2 hours. Cut 3 crosses on top of each loaf with sharp knife. Bake in 375-degree oven 25 to 30 minutes. Cool and fill crosses with icing, made by combining 1/2 cup sifted confectioners' sugar with 1 1/2 to 2 teaspoons milk and 1/8 teaspoon vanilla extract.

Winn To Observe 50th Anniversary

Mr. and Mrs. Jno. B. Winn of Trent will be honored on their 50th wedding anniversary with a luncheon in their home Sunday, Feb. 7. Calling hours will be from 2 p.m. to 5 p.m. Hosts will be the couple's children, Mr. and Mrs. H. F. Taylor and Elizabeth Duncan of Houston, and Mr. and Mrs. Jno. B. Winn Jr. of Odessa.

4-H Girls Learn How To Measure

Mrs. Lindly Smith gave a demonstration on correct measuring when the Senior 4-H Club girls met on Jan. 28. The meeting opened with the club motto, pledge and prayer. The next meeting will be on Feb. 2 when members will make fudge in the high school home-making room.

Goodman HD Club

The Goodman Home Demonstration Club met Jan. 22 with Mrs. Cal McAninch, president, presiding. The meeting was opened with a prayer by Mrs. D. L. Butler. The program on "Choosing and Planting Roses" was presented by Mrs. Mary Y. Newberry, county agent, who showed films. Refreshments were served to seven members and one child.

Sixth Grade Students Elect New Officers

The pupils in Mrs. Paul Orson's sixth grade class elected officers for the coming six weeks. Gloria Moore was named president; Wayne Thomson, vice president; Mike Walla, secretary; and Lucky Patton, reporter. Several items of business were also discussed at the meeting.

John C. Patterson of Abilene was a guest in the home of his aunt Mr. and Mrs. T. J. Amazon, Monday.

Linda Leach and Ann Benson, have returned to Texas Tech after spending the mid-semester holidays with their parents. Mr. and Mrs. O. B. Leach and Mr. and Mrs. Carroll Benson. Visiting the girls in their parents' homes were Wanda Addison of Lamesa and Jane Tarver of Ardmore, Okla., who are also students at Texas Tech.

Hunting Season Ends

AUSTIN — With the close of the general quail season Saturday, Jan. 16, all game hunting for the 1959-60 season is over. Rabbits are legal game throughout the state; squirrels in a few areas, but all other game hunting will be in violation, according to the director of law enforcement of the Game and Fish Commission. Shooting, however, will remain open on legal preserves until March 31.

Not only did "the money question" play a major part in the Congressional campaign of 1896 but thereabouts but it was even brought up in county races where the winners could not have possibly, in the performance of their duties, done anything about it. The beloved Robert L. Taylor of Tennessee, governor and United States Senator was fond of relating in his lectures a story about a man who was running for county clerk in the mountains of East Tennessee. While this candidate was speaking, someone called out, "How do you stand on the money question?" The speaker replied, "I am in favor of the gold standard; also I am in favor of the free and unlimited coinage of silver in the ratio of 16 to 1; also I am for greenbacks —" and he paused, then concluded, "and I'm for a little more counterfeit." (He was elected by a landslide.)

Stith HD Club

The Stith Home Demonstration Club met Wednesday, Jan. 27, at the community center. Mrs. Ted Hudson was hostess. Mrs. Paul Bradley gave the devotional. Prayer was by Mrs. C. W. Mashburn. The program on "Parliamentary Procedure" was presented by Mrs. O. B. Leach. Roll call was answered with "I have or have not served on a jury." Mrs. Leach being the only lady present to have done jury service. Articles brought by the women were auctioned off. The proceeds, amounting to \$20.40, was donated to the March of Dimes. The hostess gift was won by Mrs. Tom Hogan. Fifteen members and one visitor, Mrs. Troy Wickerson of Noode, were present.



SENATOR ☆☆☆ Yarborough's Report

The Senate has gotten off to a strong legislative start in the new session with passage of a far-reaching "clean elections" bill by a vote of 59 to 22.

VA Answers New Pension Queries

How will it affect me? Many thousands of veterans and their dependents are asking this about the new pension law recently enacted by Congress. The Merkel Mail asked the Veterans Administration for answers to basic questions about this complex legislation. Here are the answers in the second of five installments.

Q. What are the changes in methods to be used in computing income under the new system?

A. Income received by a veteran or by his widow from any source, with few exceptions, will be considered as income under the new system. In cases where the veteran's spouse has a separate income the new law provides that all such income over \$1200 per year shall be counted as the veteran's income, unless to do so would create a hardship.

Q. What would constitute "hardship" in this instance?

A. If the evidence shows that the entire income is needed for large and unusual family expenses — such as those incurred by serious illness or unusual expenses incurred for the education of children — counting all but \$1200 of the spouse's income as the income of the veteran might be regarded as a hardship. Each case of this nature is considered on its own merits.

Q. What income is specifically exempt by law?

A. Eight categories of income are exempt from consideration in calculating the annual income to determine pension eligibility. They are:

1. Payments of the six months death gratuity by the Service Departments.
2. Donations from public or private relief or welfare organizations.
3. Payments of compensation or pension by the VA.
4. Government life insurance payments and payments of servicemen's indemnity.
5. Social Security lump sum death payments.
6. Payments of an individual under public or private retirement annuity, endowment or similar plans equal to the amount he contributed thereto.
7. Proceeds of fire insurance policies.
8. In the case of widows or children of a deceased veteran there are excluded amounts equal to the amounts paid for settlement of the veteran's just debts, the expenses of his last illness, and the expenses of the veteran's burial less the amount reimbursed by the VA.

TOO LATE TO CLASSIFY

OST—I've lost my little Beagle dog named Tuffy. Her collar has tags from Rotan Vet. Hosp. and from B... Please notify my Uncle Buddy Nell at 257-1 if you find her. Kevin Crowder, age 4. 47-11c

FOR WATER Well Drilling and clean outs see Lester Blair, 205 El Paso Street or B. T. Sublett 705 Oak Street. Tel. 106. 47-4fc.

FOR RENT — Unfurnished 3-room house with bath. \$35 per mo. 306 Kent. Call 183-M or 201. 47-31p.

FOR RENT — Furnished 3-room apartment with garage. 697 Oak. Brooks Patterson. 47-4fc.

FOR RENT — 7-room furnished house with two baths. You pay bills. \$55 per month. Also trailer park space. R. T. Smith. Tel. 383-R. 47-31p.

FOR SALE — 1952 Chevrolet pick up. K. & E. Service Center. 114C No. 1st. 47-4fc.

THE STARR Rest Home needs large clean rags. Anyone having any to dispose of, we would appreciate them for bed and cancer patients. Thank you Call 326. Mary Outlaw.

CARD OF THANKS

We wish to thank our wonderful friends and neighbors for their most kind acts of sympathy during our recent sad bereavement. Especially do we thank Dr. Warren, the nurses and Mr. Starbuck. Mrs. H. Wren and family. 47-11c

A \$2.15 Texas fishing license is required for all fishermen between the ages of 17 and 65. If a winding device is used or if fishing outside the home county.

Extends federal campaign financial reporting requirements for the first time to state and local committees which spend over \$2,500.00. Requires more detailed financial statements be filed with the Federal District Courts as well as with the Clerk of the House and Secretary of the Senate. Places a \$10,000 overall limit on the amount an individual can contribute within a year. Although not a perfect bill, in our opinion it is a good bill. If it passes the House and is signed by the President, it will become effective January 1, 1961.

SPOT SPECIAL

THURSDAY
APPRECIATION DAY ONLY
ENTIRE STOCK OF CHILDREN'S
Jumpink Jack Shoes
SIZES 4 to 8
Values to \$5.00
\$1.98
CHILDREN'S
PASTEL SOX
ALL COLORS
25c pr.
Bragg's

NOTICE!!!

WHOLESALE Portion of
**Merkel Coop Station is still
Owned and Operated by
J. L. FISHER**

PHONE 218

I GIVE YOU TEXAS

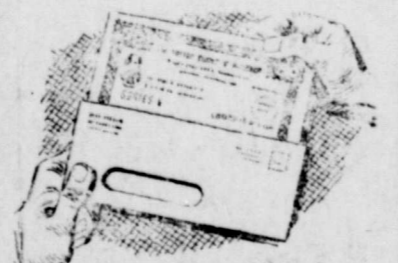
By BOYCE HOUSE

"Free Silver" the national political issue in 1896, also was of course an issue in lesser races. For example, in Tennessee, the brilliant Edward Ward Carmack was the editor of the Memphis Commercial Appeal. According to the story which oldtimers on the staff told, years later, when this chronicler was cub reporter, Carmack was called in by the publisher, who directed him to quit writing editorials in favor of free silver and start writing editorials supporting the gold standard. Carmack's reply in effect was, "I am the editor of this newspaper and I will write only that in which I believe." So he resigned, ran for Congress and defeated the incumbent who campaigned as a "gold bug." The loser contested the election. Since the Republicans were in control of Congress and since the loser's position on the money question was in accord with theirs, Carmack stood an excellent chance of being unseated. "Private John" Allen, of Tupelo, Mississippi, was a member of Congress at that time and he addressed the committee on behalf of Carmack. Allen expressed considerable doubt as to whether the contesting candidate's stand in favor of gold was sincere and then told of a speech he had heard the man make in a previous campaign. On that occasion, the candidate had (Allen said) discussed the repeal by the Republicans of the silver purchase act; then, holding up a silver dollar, he exclaimed: "Silver! Only twice disgraced! Once by Judas Iscariot and the other time by the Republican Party!" (The committee voted to seat Carmack.)

Who Uses Income Tax Form 1040A?

Treasury records show that one out of every four taxpayers use the simplified income tax Form 1040A, says Arthur E. Fogle, Administrative Officer of Internal Revenue Service, Abilene. Revenue's midget (size of an average bank check) tax form may be used by individuals with total income of less than \$10,000, consisting of wages reported on Form W-2 and not more than \$200 in dividends, interest, and wages not subject to withholding. Husband and wife may file a joint 1040A return for '59, if their combined income doesn't exceed the stated limits. Taxpayers using Form 1040A automatically claim the standard 10 per cent deduction allowed for such personal expenses as contributions, interest payments, medical expenses and such. Taxpayers with allowable deductions for these items in excess of 10 per cent of their income for '59 must use the standard Form 1040, if they wish to claim them," Mr. Fogle explained. Taxpayers with incomes under \$5,000 may figure their own tax, or have Revenue do the chore. Taxpayers with incomes of \$5,000 or more must figure their own tax. Form 1040A must not be used when taxpayers claim "head of household" or "surviving spouse" status; dividends received credit or retirement income credit, "sick pay" exclusion; deducts for travel transportation, or "outside salesmen" expense; or estimated tax payment credit. The IRS representative said.

SHARE IN AMERICA



A share in America means more today than ever. It's not only a good investment in the future of your country. It helps protect your future by providing the money so desperately needed to strengthen America's Peace Power.

BUY U.S. SAVINGS BONDS

The U.S. Government does not pay for this advertising. The Treasury Department thanks, for their patriotic donation, The Advertising Council and

If you can afford any 4-door sedan in the old "Low-Price Field,"

THIS RAMBLER WAGON IS YOURS!

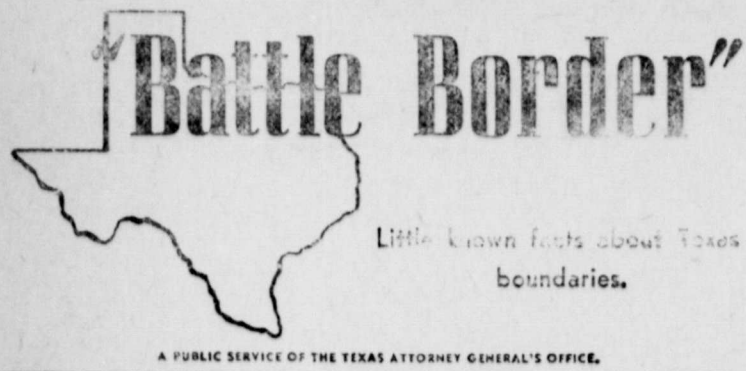
Yes, you can own a Ramblers Six Deluxe Cross Country Station Wagon for little more than you'd pay for the lowest-priced 4-door sedan in the old "Low-Price Field!" So little more, you'd hardly notice the difference in monthly payments! You get big car room and comfort plus small car economy and handling ease. Headroom, shoulder room, leg room for six 6-footers. King-size cargo space. Out turns, out parks any sedan in the old "Low-Price Field." Drive the station wagon that saves on gas and upkeep—has the official highest resale value of all low-priced cars. See the New Standard of Basic Excellence at your Ramblers dealer's now!

Ramblers Offers 16 Compact Station Wagons in 3 Wheelbases.

SAVE HUNDREDS OF DOLLARS

New Ramblers American Station Wagon costs hundreds of dollars less than any wagon produced by the four other major U.S. car makers, according to manufacturers' suggested delivered prices.

PALMER MOTOR CO. 1208 North 1st Street, Merkel Texas 778



Battle Border
Little known facts about Texas boundaries.

(Editor's Note: This is the last in a series of twelve articles outlining the numerous boundary conflicts dating back to 1716, pointing up little known facts which shaped the Texas of today.)

One stormy chapter in the history of our Texas boundaries was written with the unsolicited help of Oklahoma's blustery, colorful Governor William J. "Alfalfa Bill" Murray.

Murray, governor of the Soon-state from 1931-35, figured prominently in the "Bridge War" of 1931 between Texas and Oklahoma.

"The Bridge War grew out of the differences of opinion between Alfalfa Bill and Texas officials concerning the opening of three 'free bridges' spanning the Red River," Attorney General Will Wilson explains.

Built as a joint effort of Texas and Oklahoma they were intended to provide highway travelers with toll-free passage over the river.

In the spring of 1931 three of the new bridges were nearing completion — the Ringgold-Terrel bridge near Wichita Falls, another crossing the river north of Gainesville, and a third span between Denison and Durant, Oklahoma.

By mid-summer the bridges



"Texas sent a county judge to take possession of Santa Fe but the U.S. colonel kicked him out," Will Wilson said.

were still not in use and Alfalfa Bill, less a champion of free bridges, grew impatient with the continued delay.

In spite of the fact that both of each bridge by the Texas borders, the Oklahoma governor ordered the bridges open. He was also conspicuously unimpressed with the fact that the Gainesville bridge was still under construction on the Texas side while the Denison free bridge had been ordered by the Federal Court in Houston not to proceed.

In settlement of certain legal disputes between the owners of the nearby toll bridge and the Texas Highway Commission.

Traffic, swelled by thousands of curious sightseers began to flow across the bridges.

Crossing the Gainesville bridge a large truck found the Texas side impassable, couldn't back off the bridge and so remained suspended over the Red River until morning.

The Ringgold-Terrel free bridge operated without incident.

At Denison, however, Alfalfa Bill's action defied both the State of Texas and the federal

Carroll Hays Earns BA Degree

Carroll Hays, son of Mr. and Mrs. Bill Hays, 1401 Herring Dr., Merkel, completed requirements last week for his bachelor of business administration degree at Hardin-Simmons University.

Young Hays also received his reserve commission in the Army, marking completion of the ROTC program at Hardin-Simmons. The commissions was presented to Hays and four other students during ceremonies Saturday (Jan. 30).

Hays majored in general business and minored in economics at H-SU. He will receive his de-

gree at regular spring commencement exercises next May 30.

Mrs. H. B. Warren of Seymour spent the weekend with her daughter, Mr. and Mrs. Wilbur Loflin, and attended the Loflin-McWilliams wedding Saturday night.

FUNERAL SERVICE INSURANCE

PAYS CASH ANYWHERE
1 Month To 90 Years
\$100.00 To \$500.00

Starbuck Life Insurance Co.

For Butane Gas, Appliances and Tractor Conversions
PHONE 169
1142 North First
H. W. LEMENS

JACK POT WINNERS and LOSERS THIS WEEK

TUESDAY—LOSER	G. C. Merger	5.00
WEDNESDAY—LOSER	C. R. Rogers Jr.	10.00
THURSDAY—LOSER	Mina Riffle	15.00
FRIDAY—LOSER	Mrs. W. C. Hinds	20.00
SATURDAY—LOSER	S. J. Bailey	25.00
MONDAY—LOSER	Dallas L. Hammond	30.00

Nothing To Buy.
All You Have To Do Is Sign Register To Win.
MERKEL DRUG CO.

Who Must File '59 Tax Return?

Requirements for filing Federal income tax returns for 1959 were announced here today by Auther E. Fogle, Jr., of Internal Revenue Service.

To sum it up — "most people with \$600 or more of gross income for 1959 must file a return with Uncle Sam," Mr. Fogle said. Every citizen or resident of the U.S.A. — whether adult or minor — who had \$600 or more gross income in 1959 must file; if 65 or over, \$1,200 or more.

"However," Mr. Fogle continued, "if you're self-employed, you file a return if your self-employment income was \$400 or more, even though your gross income was less than \$600."

The Revenue representative added these potent points: A person with income of less than these amounts should file a '59 return to get a refund if tax was withheld. A married person with income less than her (his) own personal exemption (\$3) should file a joint return with husband or wife to get the smaller tax or larger refund for the couple. Members of Armed Forces should give name, service serial number, and permanent home address.

Area taxpayers are urged to file their returns for '59 with their IRS District Director as soon after January 1, 1960, as possible.

"Although the filing deadline is April 15, folks who wait until the last minute find it more difficult to get technical help the nearer the final day approaches."

"Also," Mr. Fogle said, "last minute filers make more costly errors in their returns."

Checks or money orders for any tax due should be clipped, not stapled, to the return and should be made payable to the "Internal Revenue Service."

Taxpayers with technical problems may have them solved by phoning IRS at OR 4-9146, or by visiting their office at 289 Pine St., Abilene.

Special taxpayer assistance day is every Monday 8:30-12:30.

FEELS FIRM!

PONTIAC-ONLY CAR WITH WIDE-TRACK WHEELS

Wide-Track widens the stance, not the car. With the widest track of any car, Pontiac gives you better stability, less lean and sway, accurate control.

SEE YOUR LOCAL AUTHORIZED PONTIAC DEALER
PALMER MOTOR CO.
1208 No. 1st. Merkel, Texas

WASH IN COOL COMFORT
AIR CONDITIONED
COIN OPERATED
WASHERS & DRYERS
OPEN 24 HOURS
DELUXE LAUNDRY
PICKUP AND DELIVERY

210 KENT ST. PHONE 231
George & Veda West

A Businessman's Handyman

At the office an extension telephone virtually eliminates the race to answer a ringing telephone. In the store or shop, it makes those trips from the back to the front, and vice-versa, unnecessary.

Get the information on this low cost business handyman. Call our business office today.

MERKEL TELEPHONE COMPANY

Dr. James H. Chaney
Dr. Eleanor Weldon
CHIROPRACTORS
211 OAK
Phone 18
Merkel, Texas

INGRAHAM GLASS CO.
AUTO GLASS INSTALLATION, WINDOW GLASS REPLACEMENT, SHOWER DOORS & TUB ENCLOSURES, FURNITURE TOPS, MIRRORS, PATIO DOORS, ALUMINUM STORE FRONTS and ENTRANCES.

Ph. OR 3-8141 141 Burger
Abilene

WHAT IS OF VALUE...

a **NECESSITY**

a **CONVENIENCE**

a **DELIGHT**

and still a **BARGAIN?**

YOUR ELECTRIC SERVICE fits the description perfectly.

Think of all the things it does for you and your family — all the way from running the refrigerator to keeping the kids entertained.

Try counting the jobs you give electricity. You'll see right away that it's just about the biggest bargain in your budget.

It's so inexpensive to cook the modern electric way. The average family served by WTU can cook a complete meal the easy, fast, clean electric way on a Frigidaire range for less than three cents.

In homes served by WTU, the average cost of a kilowatt hour of electrical service is 18% less than it was 10 years ago.

West Texas Utilities Company

HERE IS A VALUE...

For less than 3¢ the average family served by WTU can cook a complete meal the modern electric way... and enjoy the cleanliness and convenience of Electric Living.

FREE WIRING
220 VOLT INSTALLATION FOR RANGES, WATER HEATERS AND CLOTHES DRYERS.

Shop for sunny values at our

DEL MONTE PINEAPPLE SUN FEST

PRICES GOOD THURS. FRI. SAT. FEB. 4th 5 - 6th



SUN FEST SNACK
Del Monte® Pineapple Juice
6-oz. Can **29¢**

DEL MONTE SLICED FLAT PINEAPPLE - - 2 for 32c

DEL MONTE CRUSHED FLAT PINEAPPLE - - 2 for 32c

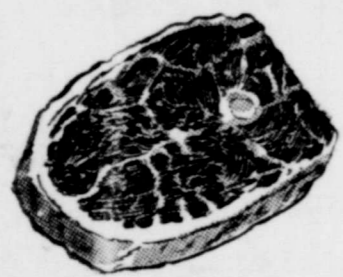
DEL MONTE 29-oz. DRINK PINEAPPLE Grapefruit 25c

DEL MONTE 303 Golden CORN - - 2 for 33c

DEL MONTE 303 SPINACH - - - 2 for 25c

DEL MONTE 303 Garden PEAS - - 2 for 29c

Finest Quality
MEATS



Choice HEAVY BEEF POT ROAST
Lb. **59¢**

CHOICE HEAVY BEEF Sirloin **STEAK** Lb. **89¢**

CHOICE HEAVY BEEF Short **RIBS** Lb. **25¢**

Fresh OYSTERS - - - - - can 79c

Fresh PORK LIVER - - - - - lb. 25c

Not Lean SALT PORK BACON - - - - - lb. 19c

GOOCH BLUE RIBBON **BACON** 2 lbs. **73¢**

ARMOUR'S STAR BONELESS READY TO EAT **PICNIC** 3 LB. CAN **\$1.69**

JOHN'S FRESH Market **SAUSAGE** - lb. 39c

PEACHES

Del Monte 2 Limit 2 1/2 can - 2 for **49¢**

COFFEE

Kimbell's Serving Hot Coffee Sat. Pound Can - - **55¢**

FLUFFO

Golden 3 lb. can - - - **59¢**

PEARS

Del Monte 303 Can - 2 for **49¢**

ZEE

TISSUE 4 roll crtn. - - **33¢**

ZEE Wax Paper

200 Fl. Roll **33¢**

ZEE TOWELS

150 2 for **39¢**

SUNSHINE CRACKERS - lb. 25c

SUNSHINE CANDIES - cello 29c

NABISCO RITZS - - box 25c

- SPECIAL - BUYS -

Del Monte 303 Glass Sliced **BEETS** - - 2 for 25c

Del Monte 303 Whole **G. BEANS** 2 for 49c

Del Monte 14-oz. **CATSUP** - - - 2 for 33c

Lucky Leaf - No. 2 Can **CHERRY** PIE FILLING can 29c

KIMBELL'S Fresh 300 **Blackeye PEAS** - 3 for 39c

BREAKFAST DRINK **TANG** GIANT 12-oz. 59c

YOUNGBLOOD-FROZEN-CUT-UP

Fryers 28-oz. Pkgs. **79¢**

Garden Fresh
Vegetables

Marsh Seedless **GRAPEFRUIT** Pound **5¢**



Golden **BANANAS** - - - lb. 12c

Fresh **CARROTS** - - 2 lbs. 15c

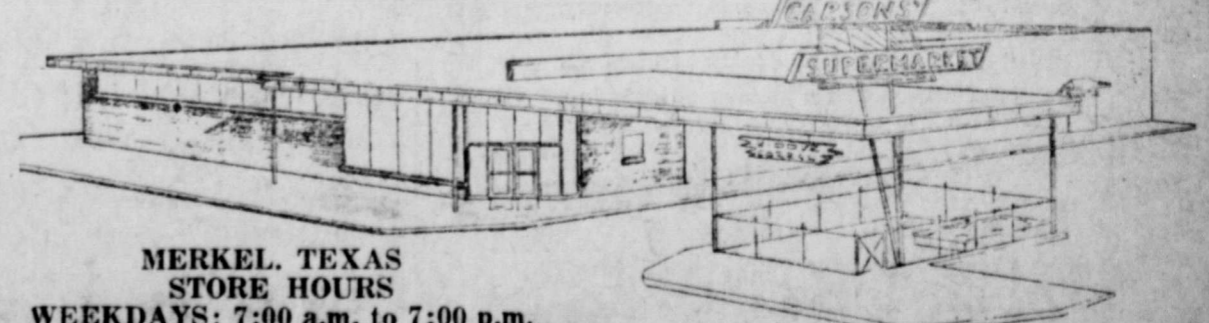
Fresh **CRISP CELERY** - - - lb. 12c

Fresh **TOMATOES** - - - cello 25c

Fresh **NEW POTATOES** - - - lb. 10c

YELLOW ONIONS - - - - lb. 5c

CARSON'S SUPERMARKET



MERKEL, TEXAS STORE HOURS
WEEKDAYS: 7:00 a.m. to 7:00 p.m.
SATURDAYS 7:00 a.m. to 8:30 p.m.

TRADE WITH US AND BANK THE DIFFERENCE

APPRECIATION DAY SPECIAL TIME SALE
Borden's HOMO **MILK** 1/2 Gal. Crtn. - **29¢**
ONLY FROM 4:30 to 5:30 p.m.