

News File  
HC65m, Box 201  
Dark, AR 72852-9501  
8/27/2000  
17

Volume 37, No. 39 50¢ Published Every Sunday at Muleshoe, Bailey County, Texas 79347 50¢ Sunday, Sept. 27, 1998

## Homecoming activities start Monday at MHS

Spirits will be high at Muleshoe High School when Homecoming Week kickoffs off Monday with a full slate of activities.

Of course, the highlight of the week is when the undefeated Mules take on former district rival Dimmitt at 8 p.m. Friday at Benny Douglass Stadium.

"Nothing improves the climate of a school district better than a little success on the football field," MHS principal David Jenkins said. "Homecoming is coming at a super time."

MHS Homecoming Queen candidates are senior Tarah Bell, junior Lynsie Black, junior Lilian Gonzales, senior Krystal Heathington, junior Stacy Locker and senior Ellen Wood. Candidates are selected by the varsity football team.

The Homecoming Court will be introduced and the Homecoming Queen crowned at 7:30 Friday before the start of the football game.

Another homecoming highlight is Thursday's bonfire in the city park. The bonfire procession will leave at 8 p.m. from the high school parking lot.

Friday there is a pep rally at 2:45 p.m. at the Watson Junior High School gym.

The week also includes a daily dress theme for students, teachers and staff.

Monday is Twin Day, Tuesday is Grease (50s) Day, Wednesday is Tie Day, Thursday is Black Out Day (dress in all black) and Friday is Dress to Kill Day.

Homecoming Week is put on by the Muleshoe High School cheerleading squad and cheerleading sponsors Belinda Steinbock and Jennifer Perez.

The public is invited to attend any and all homecoming activities.

## STARTING EARLY



Perla Pina points to one of her favorite book characters Friday at the Dillman Elementary School Library. Pina is learning to read as part of the early childhood program at Dillman.

## Carpenter's lawyer offers second theory

### ■ Claims another Muleshoe murder suspect is killer

By RICK WHITE  
Managing Editor

The defense lawyer for Muleshoe murder suspect Joseph Doyle Carpenter is offering an alternate theory for who killed Faviola Mendoza in April of 1997.

In a pre-trial motion filed in 287th District Court Sept. 17, attorney Daniel W. Hurley proposed that a DNA test would likely show that Gilberto "Tito" Reyes committed the rape and murder of Mendoza, a 20-year-old Muleshoe housewife. Reyes is being held in connection with the March abduction and murder of Yvette Barraz.

Carpenter, 35, is scheduled to go on trial Oct. 12 for Mendoza's murder in the 287th District Court.

In the two-page brief, Hurley is asking the district attorney's office to conduct a DNA test on Reyes, 25, and compare it with evidence gathered in Mendoza's murder case.

"The defendant will show that the characteristics of the killings are so similar that there is probable cause that the two killings are connected," according to the motion. "The defendant contends that this DNA testing should and must be done prior to the trial in his case set for Oct. 12 because the results of the test could show and prove conclusively that Gilberto Reyes is responsible for the murder."

DNA testing has excluded Carpenter as the person likely to have committed the rape, sodomy and killing of Mendoza, according to the defense motion.

Carpenter has been out on \$100,000 bail since June of 1997 while awaiting trial.

District Court Judge Jack W. Young said Thursday he has not ruled on the motion and wouldn't until Reyes hired a lawyer. He would not comment on whether the motion would delay Carpenter's trial.

Reyes was granted a two-week extension to hire a lawyer by Judge Young Wednesday

see **KILLER** on page 3

## PAGE ONE

### A QUICK READ OF THE NEWS

#### Causing mom heartache

MEDINA, Ohio — When Cynthia M. Divecha's 18-year-old son came out to help her haul in groceries from the car, she was understandably shocked.

"Call 911. I'm having a heart attack," Divecha told her son sarcastically. John Divecha, thinking his mother was serious, did.

By the time he discovered his mother was just teasing, John called back, but an officer already was en route to their home.

"I thought he knew I was joking," Divecha said. "But he knows I have been a little stressed lately."

She said her son usually needs considerable prodding to do household chores. "It figures. The first time he actually does something I ask, and it's wrong," Divecha joked.

#### New \$20 bill introduced

WASHINGTON — Redesigned, harder-to-counterfeit \$20 bills were released this week but it may be few weeks before most Americans see the notes spitting out of ATM machines.

The Federal reserve's 12 regional banks have \$40 billion in new notes ready to ship to the nation's banks, savings institutions and credit unions.

#### LOCAL WEATHER

	High	low	Pre.
Tuesday	80	57	—
Wednesday	80	53	—
Thursday	85	63	—
Total to date	7.27 inches		

#### EXTENDED FORECAST

Turning mostly cloudy and cooler Monday with temperatures in the mid 70s. Warming to the mid 80s later in the week with a chance of isolated thunderstorms Tuesday. Lows in the upper 50s to low 60s.

## Wheelabrator subject of PUC inquiry

AUSTIN — Wheelabrator Coal Services Co. is part of a probe by the Texas Public Utility Commission about allegations of mismanagement by SPS fuel contractors.

Last month, the PUC began an inquiry into the billing and other business practices of SPS fuel contractors. Charges billed to SPS contractors are passed on to the utility's customers as part of the fuel cost. The fuel charges that appear on a customers' bills cover not

only the costs of fuels but also the work done by a number of companies.

Wheelabrator handles coal delivered to the Tolk Station and the Harrington Plant in Amarillo under a subcontract with TUCO Inc., which supplies fuel to SPS.

An independent audit performed on Wheelabrator questions about \$4 million in costs in 1995-96 because of insufficient documentation. Amarillo accountant Marilyn Ault also noted a

general lack of cooperation on the part of Wheelabrator. Most of the questions arise over labor costs and proper documentation of maintenance and repairs, according to the audit.

The allegations were discovered as part of routine and periodic audits of SPS subcontractors, according to SPS spokesman Bill Crenshaw.

Ault's report also cites \$203,096 in charges — most of which are for settlements with former employ-

ees — that Wheelabrator must refund.

The costs questioned by Ault include more than \$1.1 million that Bee & Tee Co., Inc. of Albuquerque, N.M. charged to Wheelabrator for labor. Much of the documentation for the charges is either missing or insufficient, according to the report. Bee & Tee contracts to perform maintenance and repair at the Tolk Station and the Harrington Plant.

see **INQUIRY** on page 3

## Farmers Coop gins first bale in county



### First bale

Farmers Coop Gin in Enochs ginned the first bales of cotton in Bailey County Monday. The first bale belong to Larue Davis Farms of Cochran County. Pictured are (l-r) ginners Gilbert Zapata and Chon Zapata, secretary Beverly Layton and gin manager Wade Baker.

ENOCHS — Keith Price was one of the lucky few that was able to grow a dryland cotton crop this summer.

The Enochs farmer produced the first bale of cotton grown in Bailey County from a 140-acre field just west of Highway 214.

Larue Davis Farms of Cochran County actually produced the first bale of cotton ginned in Bailey County, reported Baker.

Both were ginned at the Farmers Coop Gin late Monday afternoon, according to gin manager Wade Baker.

Price's first bale weighed 571 pounds with a yield of 80 pounds per acre. Price planted the crop April 25 using HS 26 seed. His first bale was ginned at about 5 p.m. Monday.

Price was able to get the cotton out of the ground because of a timely rain shortly after planting, according to Baker. He said Price received less than six inches of rain on his farm during the year.

Davis produced a 471-pound bale from a 10-acre dryland patch north of Morton.

Davis planted the crop May 15 using Paymaster 200 seed. It yielded 60 pounds per acre.

see **COTTON** on page 3

## AROUND MULESHOE

### College Night at Muleshoe Sept. 29

A College Night will be held from 5:30-7:30 p.m. Tuesday, Sept. 29 in the Muleshoe High School cafeteria.

College representatives will be available to answer questions and college materials will be available.

### Annual Christmas Bazaar Nov. 13-14

The Moonlight Extension Club of Muleshoe is holding its 20th annual Christmas Bazaar Nov. 13-14 at The Bailey County Coliseum.

Applications for booth space are being accepted until Nov. 2. To request an application form, contact Linda Huckaby, 902 W. 8th Street, Muleshoe, TX 79347.

### Freshman class hosting dinner

The Muleshoe High School freshman class is hosting a pre-game dinner Friday, Oct. 2 when the Mules host Dimmitt in their annual homecoming game.

The dinner featuring brisket, beans, potato salad, hot roll, cobbler, coffee and tea will be served from 5-7 p.m. in the high school cafeteria.

Tickets are \$6 for adults and \$3.50 for children 12-and-under and may be purchased from any freshman class member or at the door. Calls for delivery can be made from 4:30-6:30 p.m. by calling 272-4360.

### Heart Association dinner dance Oct. 7

The Bailey County Chapter of the American Heart Association is sponsoring a dinner dance Saturday, Oct. 17 at the Bailey County Coliseum.

A potato pile-on will be served from 7-8 p.m. followed by the Big Band sound of Bill Case & the Velvetones from 8-10 p.m.

Tickets for the meal and the dance are \$12 and must be purchased in advance. Tickets for the dance only are \$6.

For ticket information, call Nancy Kidd at 272-5448 or Joyce McGehee at 965-2950.

### Help available for paying utility bills

The South Plains Community Action Association, Inc. has funds available from a program called ENTERP/ENTERP Oilovercharge that provide assistance to eligible persons experiencing energy-related emergencies.

Priority shall be given to eligible households with persons 60 years and older and to the handicapped. Applicants need to bring utility bills and proof of income for the last 30 days, which may include checks, check stubs, award letters and employer statements.

For more information, contact SPCAA workers Janie Mejia or Leonor Daniel at (806) 272-7537 from 8 a.m. to 5 p.m. Monday through Friday.

### Lazbuddie FBLA hosting dinner

The Lazbuddie Future Business Leaders of America are holding a dinner Friday, Oct. 2 before and after the varsity

football game

The dinner featuring brisket, potato, beans and roll will start at 5:30 p.m. and continue until after the game.

Tickets are \$6 for a regular plate and \$4.50 for a lite plate.

### Brianne Locker named AP scholar

Brianne Locker, the 1998 valedictorian at Muleshoe High School, was named an AP Scholar by the College Board in recognition for her exceptional achievement on the college-level Advanced Placement examinations

Locker earned the prestigious award by earning an average grade of at least a 3.5 (on a scale of 5) on all AP exams, and grades of 3 or higher on four or more of the exams.

Only about 13 percent of the more than 635,000 students who took the AP examinations in May earned recognition.

### MHS senior class parents' meeting

A meeting for parents of Muleshoe High School seniors will be held at 5:30 p.m., Monday, Sept. 28 in room 11 at MHS.

The purpose of the meeting is to discuss the senior class' pre-game meal before the Shallowater game.

### Pete Laney appreciation barbecue

An appreciation barbecue is being held for Speaker of House Pete Laney at 7 p.m. Tuesday, Sept. 29 at Lamb County Agriculture Building.

To attend, please contact Judy Butler or Jerry Buckley at Littlefield ISD at (806) 385-3844.

### Turner retirement reception Oct. 1

A retirement reception for Bailey County treasurer Dorothy Turner is being held Thursday, Oct. 1 from 3-5 p.m. in the courtroom of the Bailey County Courthouse.

All family, friends and co-workers are invited.

### Band parents sponsoring dance

A school dance sponsored by the parents of Muleshoe High School band members is being held after the football game Friday, Sept. 25 at the American Legion Hall.

The dance is from 10 p.m. to 1 a.m. Music will be provided by KKYC. Admission is \$4.

### Adult Learning Center opening Monday

The Muleshoe Adult Learning Center opened Monday.

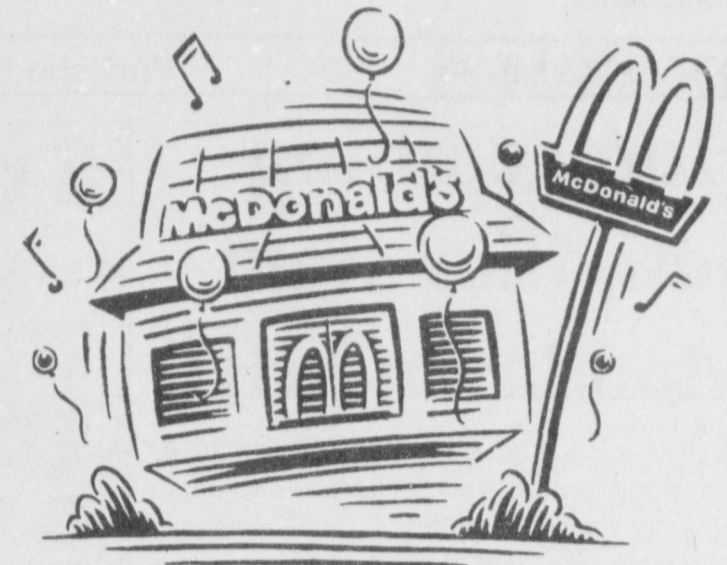
Hours are 8 a.m. to noon, Monday through Thursday, and 6:30-8:30 p.m., Monday and Wednesday.

Any person 17 or older is eligible to attend. GED and ESL courses, as well as math, reading and English courses, are available.


Students need to bring a birth certificate, social security number and photo ID to register.

The deadline for items to appear in *Around Muleshoe* is 5 p.m. Monday for Thursday's edition and 5 p.m. Thursday for Sunday's edition. Items to be placed in the column can be mailed (PO Box 449), called in (272-4536) or faxed (272-3567)

It's not whether you win or lose



It's where you go after the game

Have you had your break today? 



McDonald's of Muleshoe  
1315 W. American Blvd. • 272-3333

### Bailey County Journal USPS 040-200

Established March 31, 1963. Published by Triple S Publishing, Inc. Every Sunday at 304 W. Second, Box 448, Muleshoe, TX 79347. Second Class Postage paid at Muleshoe, TX. POSTMASTER: Send address changes to the Bailey County Journal, P.O. Box 449, Muleshoe, TX 79347. We are qualified members of: Panhandle Press Association, National Newspaper Association, West Texas Press Association and Texas Press Association

WEST TEXAS PRESS ASSOCIATION



MEMBER 1998

PPA

TEXAS PRESS ASSOCIATION

Panhandle Press Association

Scot Stinnett, Publisher

Lisa Stinnett, Vice-President/Comptroller

Rick White, Editor

Leah Bell, Classifieds

Leah Bell, Advertising

© 1990

SUBSCRIPTIONS: Muleshoe Journal and Bailey County Journal  
By Carrier Yearly - \$22.00  
Bailey County — by mail - \$24.00  
Elsewhere - \$26.00  
Advertising Rate Cards on Application

\*Advertisers should check their ad the first day of insertion. The Journals will not be liable for failure to publish an ad or for a typographical error or errors in publications except to the extent of the cost of the ad for the first day of insertion. Adjustment for errors will be limited to the cost of that portion of the ad where the error occurred.\*

## School lunch menus

FOR WEEK OF SEPT. 28-OCT. 2

**MULESHOE**  
**High school & Junior high**  
**Monday**  
Breakfast—Cinnamon roll, fruit juice and milk. Lunch—Corn dog, mx.d. veg., oranges, cookie and milk.  
**Tuesday**  
Breakfast—Bradkfast pizza, fruitor juice and milk. Lunch—Ham & cheese sandwich, baked beans, potato chips, pineapple tidbits and milk.  
**Wednesday**  
Breakfast—Waffles, fruit or juice and milk. Lunch—Fish nuggets, macaroni & cheese, English peas, hot roll and milk.  
**Thursday**  
Breakfast—Scrambled eggs, toast, fruit or juice and milk. Lunch—Tacos, lettuce & tomatoes, corn, mx.d. fruit and milk.  
**Friday**  
Breakfast—French toast sticks, fruit or juice and milk. Lunch—Breaded chicken, mashed potatoes/gravy, green beans, hot roll and milk.  
**DILLMAN & DESHAZO**  
**Monday**  
Breakfast—Cinnamon roll, fruit or juice and milk. Lunch—Corn dog, mx.d. veg., oranges, cookie and milk.  
**Tuesday**

Breakfast—Breakfast pizza, fruit or juice and milk. Lunch—Ham & cheese sandwich, baked beans, potato chips, pineapple tidbits and milk.  
**Wednesday**  
Breakfast—Waffles, fruit or juice and milk. Lunch—Fish nuggets, macaroni & cheese, English peas, hot roll and milk.  
**Thursday**  
Breakfast—Scrambled eggs, toast, fruit or juice and milk. Lunch—Hot dogs, tator wedges, pork-n-beans, sliced apples and milk.  
**Friday**  
Breakfast—French toast sticks, fruit or juice and milk. Lunch—Breaded chicken, nashed potatoes, green beans, hot roll and milk.  
**LAZBUDDIE**  
**Monday**  
Lunch—Subs, chicken strips, mashed potatoes/gravy, green beans, carrots, fruit, salad, jello and milk.  
**Tuesday**  
Lunch—Burritos, tuna sandwich, beef fajitas, refried beans, corn, Spanish rice, fruit, salad, jello and milk.  
**Wednesday**  
Lunch—Hamburgers, BBQ sausage, baked potatoes, broccoli & cheese/chili, ham bits, squash, fruit, salad, jello and milk.

**Thursday**  
Lunch—Pizza, pigs in a blanket, steak fingers, AuGratin potatoes, English peas, hominy, fruit, salad, jello and milk.  
**Friday**  
Manager's special, milk variety (Menu subject to change)  
**THREE WAY**  
**Monday**  
Breakfast—Fruit turnovers and apple cinnamon. Lunch—Fajitas chicken breast, Rice Pilaf, carrots & broccoli, peas, breadsticks, fruit cup and milk.  
**Tuesday**  
Breakfast—Eggs, biscuits and Frosted Cheerios. Lunch—Beef Quesadillas, green salad, pinto beans, Spanish rice, pears and milk.  
**Wednesday**  
Breakfast—Oatmeal blueberry muffin, sausage and Trix. Lunch—Pigs in a blanket, chips, Ranch style beans, pineapple/Mandarin orange and milk.  
**Thursday**  
Breakfast—Malt-O-Meal, toast and assorted cereal. Lunch—Baked chicken, macaroni & cheese, mashed potatoes/gravy, green beans, fruit cobbler and milk.  
Breakfast—Waffles w/ baked bananas and Cocoa puffs. Lunch—Corn dog, fries, baked beans, orange, candy treat and milk.

## BAILEY COUNTY ELECTRIC CO-OP COMMUNITY MEETING

HOW WILL YOU BE PURCHASING ELECTRICITY IN THE FURTURE?

October 5, 1998	Springlake-Earth Auditorium	9:30 a.m.
October 5, 1998	Lazbuddie School Cafeteria	1:30 p.m.
October 6, 1998	Bailey County Coliseum	9:30 a.m.
October 6, 1998	Morton Activity Building	1:30 p.m.

The movement through the Federal and State Government is toward electric industry deregulation. There very well could be a bill passed with some kind of deregulation in the next legislative session. We will be discussing the pro and cons of purchasing electricity and the effect on the electric utility.

### What will you be giving up?

We are concerned that people need to understand the way they will purchase electricity. Please make a point to join us for this very important meeting.

### Muleshoe native Mark Benedict named VP of medical association

Mark Benedict, owner and president of Family Medical Equipment and Supply, has been elected first vice president of the Texas Association of Medical Equipment Dealers.

He will become president of the association in July of 1999.

Benedict, son of Ece and the late Vic Benedict of Muleshoe, has been a member of the Texas Association since 1989 and served for 31/2 years on its board

of directors.

Benedict began his health care career in 1978 as a respiratory therapist. In 1985, he opened B&B Medical Supply, which became Family Medical Equipment and Supplies after a 1995 merger.

The company serves the rural areas of North Texas and Southern Oklahoma with stores in Vernon, Quanah and Altus, Okla.

Benedict serves on the advisory board of the Texoma Community Children's Respite Program and the Methodist Minischool advisory committee. He is chairman of the staff-parish committee of the First United Methodist Church, is active in the Red River Emmaus and Chrysalis Communities and the Boys and Girls Club. He is also a member of the Kiwanis Club of Vernon and a Gideon.

# Combest supports tax relief package

WASHINGTON — U.S. Rep. Larry Combest (R-Texas) expressed his strong support for the upcoming tax relief package helping seniors on Social Security, farmers and ranchers, husbands and wives and small businesses.

The "Taxpayer Relief Act of 1998" sets aside 90 percent of the projected \$1.6 trillion budget surplus for next year's decisions on saving Social Security (\$1.4 trillion) while providing tax cuts from the marriage penalty, removing the tax on interest earned in savings accounts of up to \$5,000 (\$10,000 for married couples), as well as full deductions for health insurance premiums paid by the self employed, including farmers and ranchers.

"Seniors will have the assurance that Social Security will have the funds it needs and families, farmers and small business owners will get tax relief that helps," said Combest. "Give the people their money back and we keep government from spending our surplus into another deficit. This plan also simplifies the tax code, lowers tax penalties on people who have, reduces death taxes and provides tax relief for education and child care. Farmers and ranchers hard hit by drought will not also be hit by harsh consequences of the tax code."

Highlights of the "Taxpayer Relief Act of 1998":

- Protects Social Security by setting aside 90% of the projected budget surplus - about \$1.4 trillion until Social Security has been saved.
- Increases the amount of money seniors can earn without losing Social Security benefits by increasing the earnings limit every year through 2002.
- Provides relief from the marriage penalty for working Americans.
- Provides badly-needed help for farmers and ranchers.
- Helps small business, makes health care more affordable for self-employed individuals, and makes filing tax forms significantly easier.
- Lowers tax penalties on people who save and reduces death taxes.
- Prevents the alternative minimum tax from reducing the benefit of education and family tax credits.

## COTTON

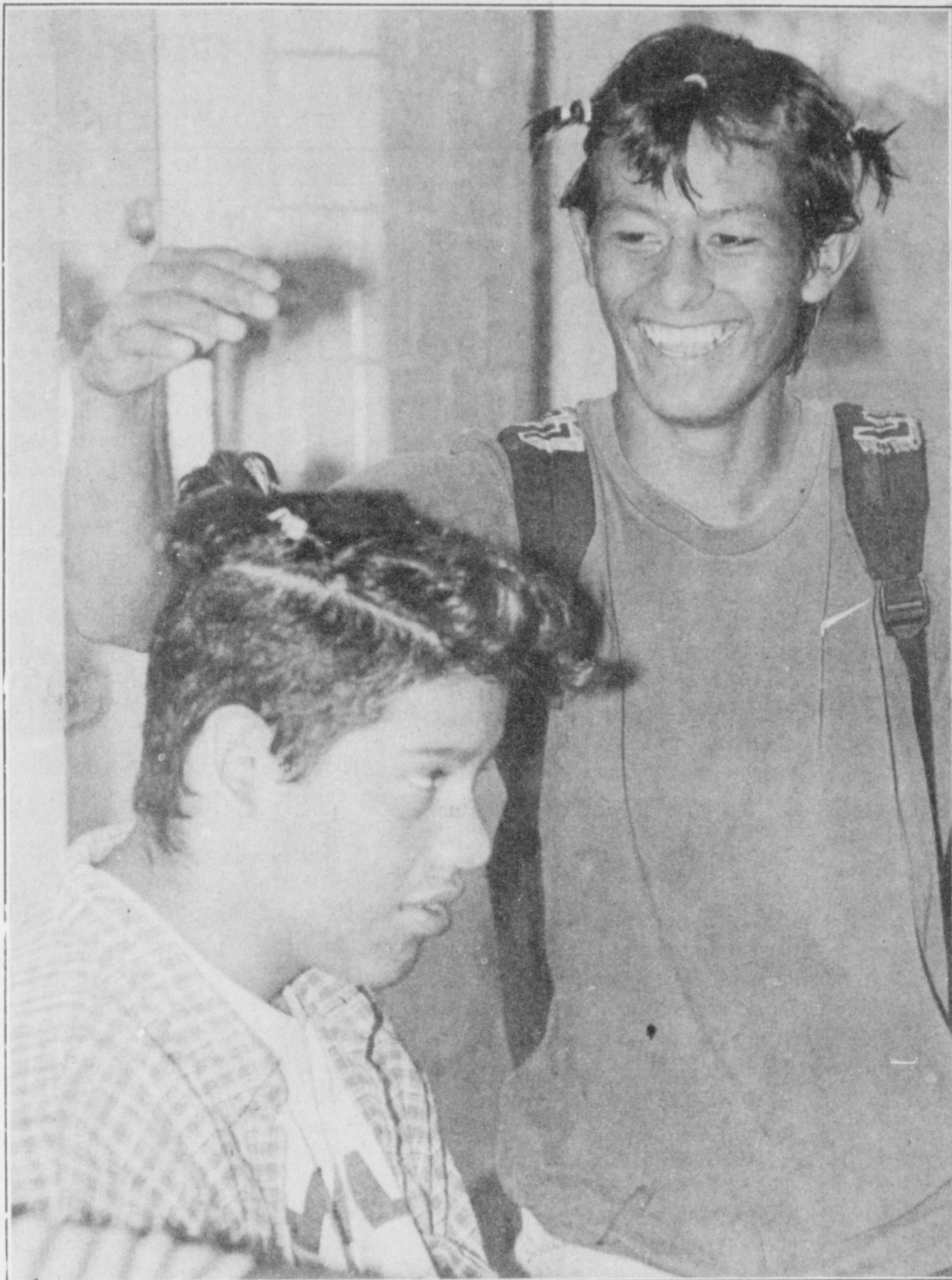
From page 1

The cotton harvest is still a good two weeks away, according to Baker, but looks promising in the Enochs area. Baker predicted yields of 1 1/4 to 1 1/2 bales per acre on irrigated cotton.

The bales were graded at the USDA classing office in Lubbock.

For Price, the numbers were color, 25; length, 31; mike, 46; strength, 26; leaf trash, 1; loan rate, .4865¢.

For Davis, the numbers were color, 32; length, 31; mike, 45; strength, 25.2; leaf trash, 2; loan rate, .4345¢.



### Nice doo

Lucio Soto checks out his handiwork after working on his buddy Andy Alfaro's hair Friday at Muleshoe High School. It was "hair-raising experience day" at the high school.

## Judge rules part of Carpenter's alleged confessions inadmissible

By RICK WHITE  
Managing Editor

A district court judge has ruled that parts of confessions made Muleshoe murder suspect Joseph Doyle Carpenter to law enforcement officials were inadmissible.

The ruling was made Monday following a pre-trial hearing for Carpenter, who is charged in the beating death 20-year-old Faviola Mendoza in April of 1997.

Carpenter, 35, is scheduled to go on trial Oct. 12.

Judge Jack D. Young of the 287th District Court ruled that incriminating oral statements made by Carpenter to then Muleshoe Police Chief Rick Henegar were inadmissible because the police chief violated Carpenter's Constitutional rights to legal representation. The judge did allow similar incriminating statements made by Carpenter to DPS Sgt. Gus Trevino to stand.

Judge Young said Thursday that part of the defense's motion to suppress evidence in the case was denied and part was permitted. He said he would not further discuss the ruling, which was made in open court.

A copy of the ruling was filed Friday with the District Clerk's office in Muleshoe.

District Attorney Johnny Actkinson said Thursday he would not comment on any pending cases.

"It can't do anything but help the defendant because the state does not have a right to appeal," Actkinson said.

He said when the media reports on a case before trial, it makes it hard to pick a fair jury and can cost the County money and time if the trial has to be moved.

"It's a fact that it only helps

the defendant's case and is a direct detriment to the state," Actkinson said.

Carpenter's defense lawyer Dan W. Hurley of Lubbock petitioned the court to suppress separate confessions Carpenter made to an investigator with the Texas Department of Public Safety in Lubbock and Muleshoe Police Chief Rick Henegar. If ruled inadmissible, the confessions can not be used as evidence against the defendant.

In a brief prepared by the district attorney's office, Carpenter is quoted telling Trevino "that he had been out drinking the night of the incident," admitted to the incident being an accident, and that he "did not intend to kill her."

The confession came after Carpenter had been advised by Trevino that he had failed a polygraph test he had taken and after he had been given his Miranda rights, according to the state's brief.

The defense motion contends the incriminating statements

### KILLER

From page 1

during a court appearance.

Young told Reyes that he would appoint a lawyer to represent Reyes if he does not hire one soon. Reyes told the judge a family member was in the process of hiring one.

### INQUIRY

From page 1

Crenshaw said that even if the full \$4 million in costs were found to be unsubstantiated, it would result in a one-time refund of \$1.50 to customers.

An earlier audit that SPS did of TUCO also raises concerns

were made after Trevino positioned his face within two feet of Carpenter's for a period of five to 10 minutes and continuously accused him of lying. Carpenter then asked for a lawyer.

After returning to Muleshoe, Carpenter told Henegar he had gone to Mendoza's house and had sex with her, according to the state's brief. When Henegar asked how Mendoza got hurt, Carpenter said that after he had sex with Mendoza, a fight started and it got out of control.

According to the brief, Carpenter told Henegar: "I hit (Mendoza) with a stick and struck Mendoza with my fist in the back of her head," according to the state's brief.

The defense's motion contended that Henegar violated his Carpenter's 5th Amendment rights by continuing to interrogate him after he asked for a lawyer.

Carpenter has been out on \$100,000 bail since June of 1997 awaiting trial.

"I have no problem with you hiring your own lawyer — in fact I suggest it," Young said. "But I'm not going to wait a whole lot longer for you to hire an attorney."

Young set Reyes' next court appearance for Oct. 1

about charges being passed to the utility's customers as a result of shift reductions by a Wyoming company called ARCO, which supplies coal to TUCO. The audit estimates that SPS is due a \$10.2 million refund.

### Sincere Thanks . . .

We wish to express our thanks to those of you whose friendship, love and concern meant so much to our mother, Ellen Bayless, especially during her illness

Each visit, card and phone call meant so much to her and to us; her children.

We appreciate every act of love and kindness to us when she passed away.

May God Bless You,  
Leta Hall, Myrtie Finley,  
Wanda Doak and Families

A mask  
a day  
still won't  
keep the  
wrinkles  
away!



Happy 40th!

Love Ya,  
Jim, Colleen, Kristal  
& Comet too!

DOES YOUR CORN  
HAVE  
SMUT?



Contact  
Wiedebush & Co.  
to find out about the  
1999 corn line-up

Call  
272-4281

We Can Help!

WIEDEBUSH & CO.

1516 W. American Blvd.

- SMUT Resistant
- Drought Tolerant
- High Yielding

## KENW-TV

Public Television

NOVA celebrates its 25th anniversary season

"Lost at Sea: The Search for Longitude"

"Lost at Sea" tells the story of John Harrison, who spent a lifetime perfecting an accurate timepiece that could be used on shipboard to determine longitude, the East-West position on the Earth's mapping grid. The North-South position, called latitude, is easily measured by sighting the North Star or the noonday Sun. There is no comparable, simple way to fix longitude. As a result, mariners were literally "at sea" about their precise location, often running aground or missing their destinations entirely. In 1714, British authorities were so alarmed by the loss of ships and fortunes due to faulty, inexact navigation that they offered a prize of several million dollars by today's currency for the solution to the vexing problem of longitude. Meanwhile, in rural England an uneducated carpenter and clockmaker named John Harrison set about solving the problem by building a precise clock. After decades of toil to find a solution, his elegant invention, which remains the basis for most modern forms of navigation in the world today, made him an unlikely hero.

"Chasing El Nino!"

Next, Nova premieres "Chasing El Nino!" A massive planet-sized machine controls the world's weather day-by-day, and the climate season by season. It takes an event of staggering proportions to disrupt a machine this large and powerful, a juggernaut with more energy than a million nuclear bombs. Such an event is underway — El Nino. El Nino is second only to the seasons in its effect on global weather. As scientists push to extremes to explore this phenomenon, they are understanding for the first time the extent to which all the world's weather is connected, and just how delicate is the balance.

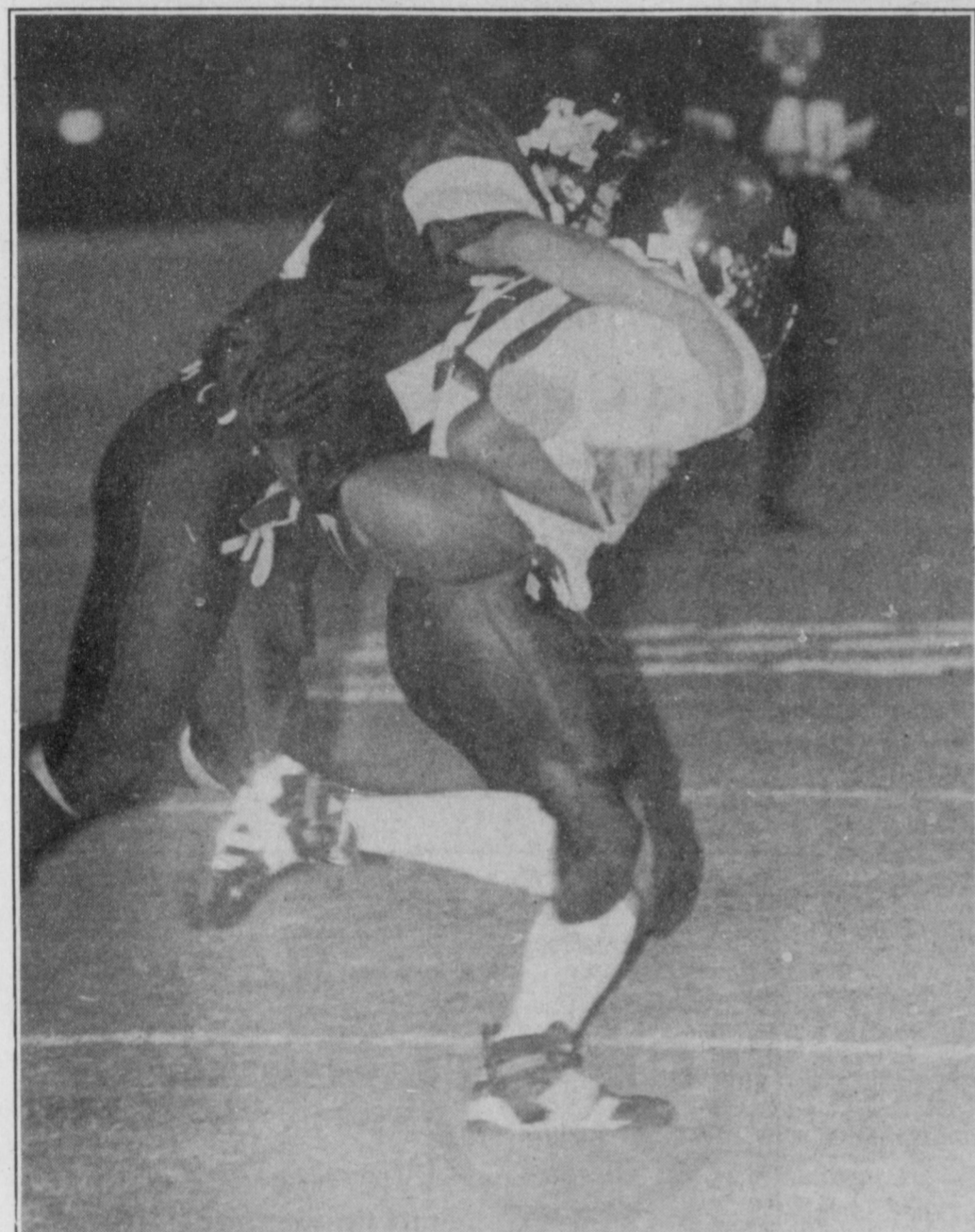
"Terror in Space"

Nova chronicles the life-threatening catastrophes on the Russian Mir as seen through the eyes of U.S. astronauts Jerry Linenger and Michael Foale in "Terror in Space." Linenger was in his second month on Mir when a malfunctioning oxygen generator suddenly sent a blow-torch flame shooting into the cabin, accompanied by splattering molten metal and billowing smoke. Quick reaction by everyone on board contained the blaze, which burned for fourteen terrifying minutes. Linenger returned to Earth in May 1997 aboard the space shuttle that delivered his replacement, Michael Foale, who was fated to have his own dire emergency. Foale's brush with death unfolded as Russian cosmonauts tested a risky procedure for docking an unmanned cargo ship by remote control. In a nightmarish scenario, the cargo ship crashed into Mir, rupturing a wall and damaging the station's solar panels. It took fourteen hours to realign Mir and restore power to their most critical systems. The station has been occupied almost continuously since its launch in 1986.

Nova can be seen Tuesdays at 8:00 p.m., Saturdays at 10:00 p.m., and Sundays at 1:00 a.m.

Channel 3 Television from  
Eastern New Mexico University, Portales, New Mexico

# Another one bites the dust



Special team stripper

A big hit by Muleshoe junior Clint Black causes Tulia's Kevin Gomez to fumble during a kickoff return Friday during the Mules' 28-0 win.

## Muleshoe records 4th-straight shutout by topping Tulia 28-0

Tulia came as close to scoring as any opponent has against Muleshoe this season. It made Muleshoe mad as hornets.

After being held without a first down through three quarters, Tulia's Kevin Gomez turned a short pass into a 71-yard gain to the Muleshoe three-yard line.

But linebacker Greg Pena knifed through on the next play and caused Tulia quarterback Skyler Vaughn to fumble. Jonas Alfaro pounced on the loose ball to keep Muleshoe's shutout string alive.

Muleshoe extended its winning streak to seven games Friday with a hard-earned and methodical 28-0 win against Tulia before a crowd of 2,000 plus at Benny Douglas Stadium.

With its fourth-straight shutout, Muleshoe (4-0) has outscored its opponents 119-0.

"I really wasn't worried about them scoring," Muleshoe coach David Wood said. "I figured we'd come up with a big play or hold them on downs."

Senior quarterback Matt McClanahan rushed for 105 yards and a pair of short touchdowns and Muleshoe's swarming defense held Tulia to seven yards rushing.

"To their credit, they hung a doughnut on us," Tulia coach Eric Wilson

said. "I thought we might be able to get outside and might do some damage."

The Mules also recorded a second-quarter safety when nose guard Matt Turney and Pena tackled Tulia fullback Manuel Rosales in the end zone.

Muleshoe finished with 337 yards of offense against a better-than-advertised Tulia defense.

Vaughn and Gomez did most of the damage for the rebuilding Hornets. Gomez caught three Vaughn passes for 100 yards. Tulia (0-4) finished with 112 yards total yards.

The Mules scored on two of their first three drives and built a 13-0 lead five minutes into the second quarter.

Jesse Reyes capped the Mules' opening drive with a seven-yard scamper. McClanahan picked up three first downs on the crisp, six-play, 48-yard drive.

Pinned in its own end early by a strong wind and Muleshoe's rock-solid defense, Tulia gambled a little later on fourth down. But Dustin Cleavinger and Mitch Mason sniffed out the fake punt and handed the ball over to the Muleshoe offense at the Tulia 37.

Muleshoe took full advantage when McClanahan followed the block of backup center Joey Mata on a fourth-down, quarterback sneak from inside the one-yard line for a 13-0 lead.

A Tulia turnover set up Muleshoe's third score, a three-yard run by Gilbert Vela in the third quarter.

McClanahan capped the scoring with a one-yard run in the fourth quarter.

### AREA STATS

Class 3A				
Team offense				
Team	G	Rush	Pass	Avg.
Friona	3	1031	104	376.3
Muleshoe	3	862	250	370.7
Dimmitt	3	710	211	307.0
Lamesa	3	674	165	279.7
Denver City	3	534	209	247.7
Colorado	3	255	463	239.3
Seminole	3	387	297	228.0
Cooper	3	367	198	188.3
Brownfield	3	148	62	70.0
Team defense				
Friona	3	220	93	104.3
Muleshoe	3	226	113	113.0
Cooper	3	327	45	124.0
Dimmitt	3	472	136	202.7
Denver City	3	492	122	204.7
Colorado	3	447	220	222.3
Seminole	3	503	172	282.3
Lamesa	3	674	173	282.3
Brownfield	3	1023	201	408.0

Individuals			
Rushing			
Player, team	G	C	Yds
Barrios, Lamesa	3	42	450
Vela, Muleshoe	3	59	385
Kendrick, Friona	3	41	379
Grajeda, Friona	3	45	344
Villegas, Denver City	3	51	341
Hill, Dimmitt	3	61	304
Dale, Seminole	3	61	280
Rios, Cooper	3	61	273
Sutton, Dimmitt	3	38	255
McClanahan, Muleshoe	3	59	227

Passing				
Player, team	C	A	Tds	Yds
Hill, Colorado	23	57	1	282
Alvarado, Seminole	21	40	2	269
McClanahan, MHS	16	35	3	250
Villegas, Denver City	15	36	5	209
Finch, Cooper	21	59	2	198
Buckley, Dimmitt	9	32	3	173
Hogg, Lamesa	9	32	1	145
Daniel, Friona	9	22	0	104

Scoring	
Player, team	Points
Kendrick, Friona	30
Villegas, Denver City	26
Grajeda, Friona	26
McClanahan, Muleshoe	26
Barrios, Lamesa	18
Buckley, Dimmitt	19
Flores, Dimmitt	18
Green, Colorado	18

Source: Lubbock Avalanche Journal

## DISTRICT 2-3A ROUNDUP Week 3

**Friona 14, Dimmitt**  
FRIONA — Friona stopped Dimmitt three times inside its 10-yard line and escaped with a 14-0 win against Dimmitt in a battle of unbeaten teams.

Matthew Kendrick led Friona's punishing running attack with 117 yards and scored on runs of 4 and 7 yards for the Chieftains. Friona (3-0) finished with 279 yards rushing. Noel Garjeda added 108 yards.

Beau Hill gained 126 yards for Dimmitt (2-1), which was limited to 151 total yards. Bobcat quarterback Derek Buckley completed just 2 of 10 passes for 23 yards.

**Shallowater 25, Floydada 9**

SHALLOWATER — Justin Stone rushed for 120 yards and three touchdowns to lead Shallowater to a 25-9 win against Floydada.

Stone's 7-yard in the second quarter gave Shallowater a 12-7 halftime lead. Stone added touchdowns jaunts of 1 and 25 yards in the second half. Chris Cody added a 17-yard touchdown pass to Chad Schoor in the second quarter for the Mustangs (2-1).

Michael Black returned a punt 55 yards for a touchdown to give Floydada (1-2) an early

District 2-3A		
	Dist.	All
Muleshoe	0-0	3-0
Friona	0-0	3-0
Littlefield	0-0	2-1
Shallowater	0-0	2-1
Lubbock Cooper	0-0	1-2
Lubbock Roosevelt	0-0	1-2
Results		
Muleshoe	51,	Brownfield 0;
Friona	14,	Dimmitt 0; Littlefield
46,	Slaton 3; Post 34,	Lubbock
Roosevelt 14; Shallowater	25,	Floydada 9; Reagan County
13,	Lubbock Cooper 3	
This week's games		
Tulia	at	Muleshoe, Lubbock
Cooper	at	Lubbock High,
Littlefield	at	Lamesa, Lubbock
Roosevelt	at	Sudan, Shallowater
	at	New Deal, Dalhart at Friona

7-0 lead.  
**Post 34, Roosevelt 14**

POST — Post scored twice in the fourth quarter and held off Lubbock Roosevelt 34-14. Jeff Jackson had pulled the Eagles (1-2) within a touchdown with a 47-yard run.

But Post answered with a 12-yard pass from Branden Conner to Clell Knight and Jay Gorman's 33-yard run.

Eric Rojas added a 69-yard touchdown for Roosevelt.

Post (2-1) outgained Roosevelt 376-188 and recorded nine sacks.

**Littlefield 46, Slaton 3**

LITTLEFIELD — Chris Weaver scored two touchdowns and Littlefield rolled to its second-straight win by hammering winless Slaton 46-3.

Sammy Davis added a pair of touchdown runs for the Wildcats (2-1). Jason Brashear threw his fourth touchdown pass of the season, a 41-yarder to Steven McCain, and Lance Parker added an 80-yard punt return for Littlefield. The Wildcats are averaging a district-high 33 points a game.

Slaton (0-3) was limited to a 36-yard field goal by Arturo Oliveraz and committed four turnovers.

## JV Mules post 4th shutout

TULIA — Chris Vela scored four touchdowns and Muleshoe remained unbeaten with a 35-0 win against Tulia Thursday in a junior varsity game.

The Mules (4-0) have shut-out their first four opponents.

Vela scored on runs of four and 20 yards in the second quarter as Muleshoe built a 20-0 halftime lead. The sophomore tailback also scored on runs of seven and four yards.

Jerrell Otwell added a three-yard touchdown run in the

Muleshoe	35
Tulia	0

fourth quarter to complete the scoring. Otwell also returned a fumble 40 yards to set up a Muleshoe touchdown.

James Barrett completed a two-point conversion pass to wide receiver Lindy Pineda and Michael Woodard kicked an extra point.

The Mules play at Dimmitt next week.



WJHS' Jordan Pool breaks loose Thursday during the 8th-grade Mules' 18-16 loss to Tulia.

*Home Folks Caring For Folks At Home.*

## MULESHOE AREA HOME HEALTH Agency

**Featured Patient**

Clara Lou Milstead was born April 22, 1923 in Plainview, TX. She grew up in there and graduated from Plainview High School. She then attended Wayland Baptist University where she completed her studies and received a degree.

Miss Milstead married Owen Jones on November 3, 1943. Mr. Jones passed away in June of 1987.

The couple moved to Muleshoe in 1949. Mr. Jones worked for Bailey County Electric for many years, as did Clara Lou. Mrs. Jones also worked at Five Area Telephone Cooperative. Clara Lou worked 17 years between the two coops. She retired in 1968, but not before accomplishing many noteworthy feats.

Among the most memorable is the fact that she and three other ladies spent most of 1953 signing people up for the first telephone service in this area. In 1954, Clara Lou put together the first phone directory by herself—selling the advertising, gathering names and taking the directory to be printed. She continued to do this until her retirement.

Mr. and Mrs. Jones parented two sons: Tommy of Houston and Mike of Amarillo. Mrs. Jones has two granddaughters: Jennifer and Katie.

Until her eyes started giving her trouble, Clara Lou enjoyed crocheting and painting t-shirts, but, this is not what most people remember about her. Most remember her volunteer work.

Mrs. Jones volunteers at the Muleshoe nursing home. She reads, helps with exercises, directs devotionals and teaches Sunday school. She says, "I wouldn't give it up for the world."

She and Owen ran the concession stand at ball games for 18 years, and she also volunteers her time distributing commodities for S.P.C.A. When asked why she volunteers so much of her time, Clara Lou says, "My husband always said that a community is only as good as you make it." She took that thought to heart and hasn't looked back.

Mrs. Jones is a former member of the Heart Association and is a current member of the Eastern Star. She is their past Matron. She attends first Baptist Church where she is a member of the Joy Choir and the Women's Missionary Union.

About M.A.H.H.A., Clara Lou says, "I don't know how I would have made it without them. Home health is marvelous!"



**Clara Lou Jones**

*Home Care*



*Home is where the heart is*

Affiliated with:  
Lubbock Methodist Hospital Systems

**24 Hour # 272-3346**  
Local Nurse on call 24 hours a day to offer prompt service.

**Out-Of-Hospital Do Not Resuscitate Packets/ Bracelets Now Available. Call us at 272-3346 or come by 623 W. 2nd for information.**

We accept Medicare, Medicaid and Private Insurance  
**It Is Your Right To Choose The Home Health Agency You Prefer.**

*To receive Home Health Services, talk with your physician or talk with hospital personnel when you are hospitalized.*

## Annual pipeline safety program Oct. 8 at Coliseum

The Pipeline Group's annual "Public Education-Contractor Awareness Program" will be held at 7 p.m. on Oct. 8 at the Bailey County Coliseum.

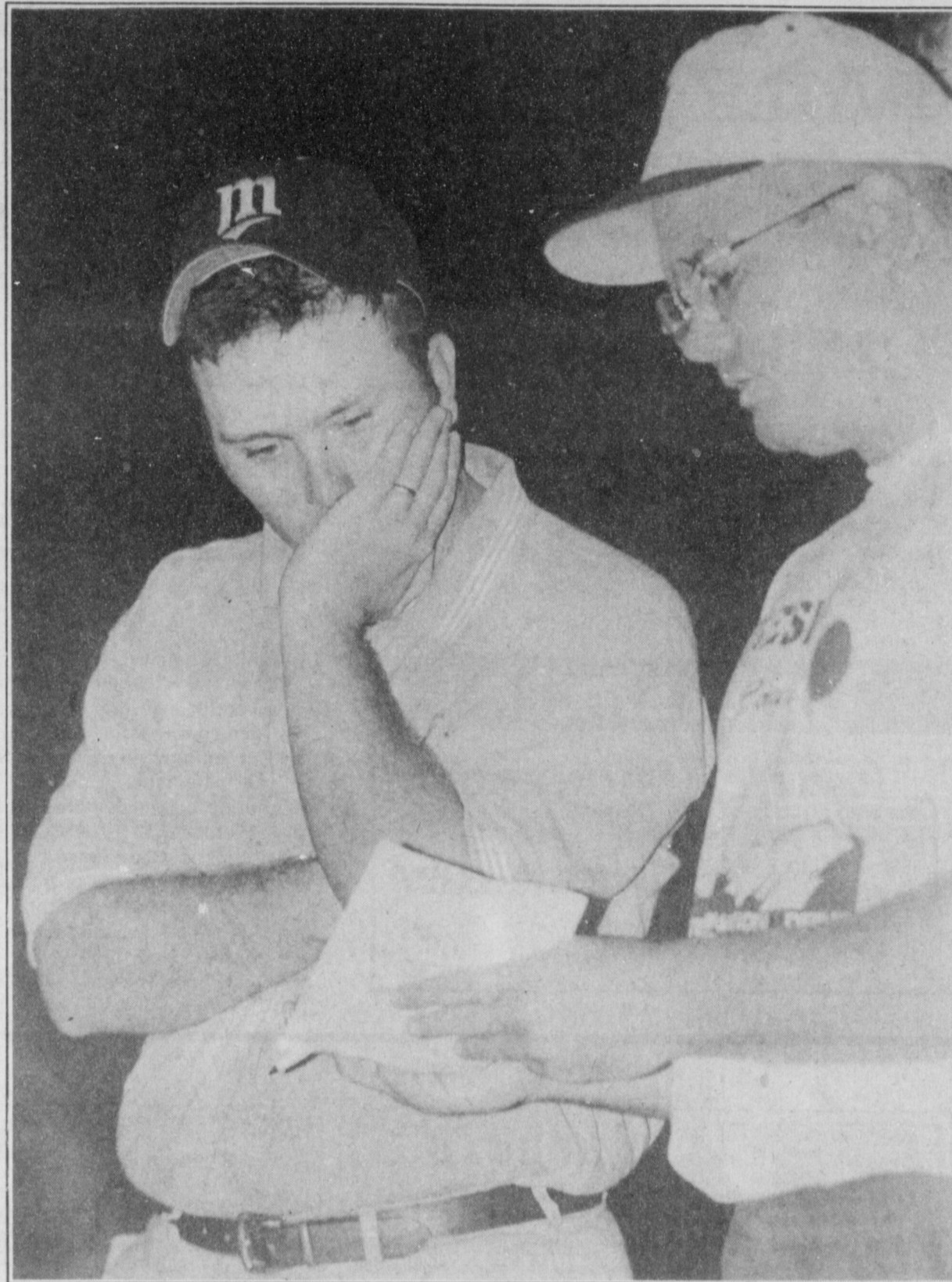
The program will be sponsored by a group of companies with a common goal of preventing accidents and damages to underground pipelines and utilities. A free dinner will be catered by Lavonne Henderson for all persons involved in excavation related activities in Bailey, Castro, Lamb, and Parmer counties.

Following the dinner, a brief safety program will be presented which stresses the importance of accident prevention by identifying pipeline and utility rights of way, use of one-call systems, and the importance of working with pipeline and utility companies to safely excavate in the vicinity of underground facilities.

Each year many lives are injured or lost, plus millions of dollars in repairs and lost products are incurred due to "third party" incidents - someone digging into a pipeline. Thousands of communications, some life-threatening, may be disrupted when expensive fiber-optic cables are damaged or severed. These types of excavation can be financially devastating to the responsible party. This safety program is an attempt to help those who do excavation work to avoid such situations.

Sponsors for the program include: American Pipeline Co., El Paso Natural Gas Co., Natural Gas Pipeline Company of America, Transwestern Pipeline Co., Williams/Mid-America Pipeline Co.

For more information call (800) 982-8752.



### It might work

Muleshoe coach Flint Bigham shows a play to Watson Junior High School coach Kodi Crane Thursday during the 8th-grade Mules' 18-16 loss to Tulia.

## Mule frosh rally past Tulia 29-16

TULIA — Muleshoe rallied from a disastrous second quarter to beat Tulia 29-18 Thursday in a freshman football game.

Tulia scored 18 points in the second quarter with the aid of four Muleshoe turnovers. The Hornets' outburst erased a 15-

0 Muleshoe lead.

Jaime Mendoza scored on runs of 24 and 40 yards in the second half and Muleshoe (4-0) held Tulia scoreless the rest of the way to remain undefeated.

Lincoln Riley ran for one

touchdown and passed for another for the Mules in the first quarter.

Riley's 68-yard touchdown pass gave Muleshoe a 15-0 lead. Riley opened the scoring with an eight-yard run.

MHS plays at Dimmitt next week.

## LETTERS TO THE EDITOR

### Family searching for solider

During the early 1970's Laura Anderson befriended a soldier (from New Mexico) who was stationed at Schofield Barracks, Hawaii. Laura and her husband had this soldier visit their home many times. Members of the Anderson Family and this soldier got to be very close. Laura helped this soldier bring his wife and daughter to Hawaii. The Anderson family let this soldier and his family live in their home until he got government quarters.

This soldier and his wife were in their mid to late 30's. Their daughter was about 12 years old. This all took place some 25 to 27 years ago. By now this soldier should have retired and returned to New Mexico.

Laura recently passed away. Gene Anderson executor of her estate has the job of passing on a personal message and bequeathal from Laura to this soldier. Gene's health and failing memory has caused him to forget family names and where

they lived in New Mexico. This man should now be in his late 50's or early 60's. Gene hopes this man, his wife or daughter will remember the events and contact him.

To prove he is the right person, this man will be able to identify the special area (where Laura worked) when he first met her and how this meeting took place. He will know the place at the beach where the two families stayed (when his family arrived in Hawaii). He will also be able to identify the

quarters where the Anderson family lived, and the type of car Laura drove.

It is very important for Gene to be able to carry out the wishes his wife (passed onto him) just before she died. If you know anyone who was in the Army in Hawaii during the 1970's please pass this article onto them.

If you are this soldier or family please contact us at: Executor of the Estate for Laura Anderson, 6283 Birch Vly, San Antonio, TX. 78242.

### Wonderful help in time of need

Dear Editor:

I was recently sick and had my gall bladder taken out. I was doing fine. But two days later I didn't feel great, my husband went to the Portales football game and I began to feel very sick and disoriented. The only number I could think to call was 9-1-1.

They were here in just minutes. They took such wonderful care of me but also made sure my little boy was taken care of.

May God Bless each of you for helping out on that horrible night.

I am lucky that I have wonderful neighbors like Linda and Joe Tarter and Lonnie and Nelda Merriott.

We love Muleshoe and how fortunate we are to have such a wonderful 9-1-1, EMS and sheriff's department.

— Susan Kerby Muleshoe

### Farm Credit Bank reports record earnings

The Farm Credit Bank of Texas and its affiliated Federal Land Bank Associations and Production Credit Associations reported record loan volume of \$4.194 billion at June 30, 1998.

This is a net increase of \$148.4 million, or 3.7 percent, from the \$ 4.046 billion in gross loan volume outstanding at Dec. 31, 1997.

Loan credit quality remained strong, with overall acceptable credit quality at 96.9 percent at June 30, 1998, compared to 96.6 percent at Dec. 31, 1997.

The bank anticipates some downturn in credit quality in the coming year as a result of the current drought.

**Custom made HOMECOMING MUMS & GARTERS**  
 starting at **\$5** "I also make homecoming rings, wrist corsages & hair clips."  
 by Rosalinda Vela  
 Phone Orders & Layaways Welcome  
**272-3429 • 806 W. Ave J • Muleshoe**

**Rentals for Weddings, Receptions & Quinceañeras**  
**Grecian Columns**  
 Tuxedo rentals and Invitations  
 Call Libby Black at **272-3676** **272-4570**

**MARY'S SEWING SHOP**  
 Home Based • 40 Years Experience • References Available  
 • CUSTOM MADE CLOTHING  
 • ALTERATIONS  
 • BED PILLOWS  
 • CAFE CURTAINS, ETC.  
**272-6819 • 321 W. 3rd St.**  
 Customer Supplies Patterns, Materials & Other Accessories

**Come to our Tent Sale**  
 Saturday, October 3, 1998  
 9 a.m. - 5 p.m.  
**TY BEANIE SPECIAL**  
**The Country House**  
 123 Marshall Howard Blvd.  
 (Hwy. 84 By-Pass) Littlefield, TX  
**UP to 75% Off**  
**\$5 Table - \$10 Table**  
 We will be closed Friday, October 2, 1998  
**Ty Beanie Baby Special**  
**Don't Miss This Sale**

**Prices That Won't BLOW Your Budget**

1991 BUICK PARK AVENUE Loaded! WAS \$9,995 <sup>00</sup> NOW <b>\$8,995<sup>00</sup></b>	1988 CADDY DEVILLE Loaded!! WAS \$5,295 <sup>00</sup> NOW <b>\$4,995<sup>00</sup></b>
1993 CHEVY BLAZER Push button 4x4 One Owner, Nice! WAS \$14,995 <sup>00</sup> NOW <b>\$11,995<sup>00</sup></b>	1992 FORD EXPLORER Fully Loaded!! WAS \$11,995 <sup>00</sup> NOW <b>\$9,995<sup>00</sup></b>
1994 FORD RANGER XLT XLT Super Cab! JUST <b>\$9,995<sup>00</sup></b>	1992 CHEVY SILVERADO Extended Cab, 5-speed, V-8 ONLY <b>\$10,995<sup>00</sup></b>
1995 CHEVY S-10 Extended Cab, NICE TRUCK! ONLY <b>\$10,895<sup>00</sup></b>	1994 CHEVY K-1500 Extended Cab, 4-6, 4x4, loaded VERY NICE! <b>\$17,995<sup>00</sup></b>
1986 FORD F150 SUPER CAB Loaded!! WAS \$3,500 <sup>00</sup> NOW <b>\$2,500<sup>00</sup></b>	1190 FORD F250 SUPER CAB Loaded!! WAS \$9,995 <sup>00</sup> NOW <b>\$7,995<sup>00</sup></b>

Portales' Premier Pre-Owned Vehicle Headquarters  
**TRADER HORN MOTOR COMPANY**  
 620 S. Ave. C • Portales, NM • (505) 359-0947 or (505) 359-1775

**\$50 AWARDED EACH WEEK**



**YOU PLAY!  
WE'LL PAY!**

# BAILEY COUNTY JOURNAL'S FOOTBALL CONTEST

**1<sup>ST</sup> PRIZE \$25  
2<sup>ND</sup> PLACE \$15  
3<sup>RD</sup> PLACE \$10**

NAME: \_\_\_\_\_  
ADDRESS: \_\_\_\_\_  
PHONE: (\_\_\_\_) \_\_\_\_\_

**GAMES OF October 2-5, 1998**

**• RULES •**

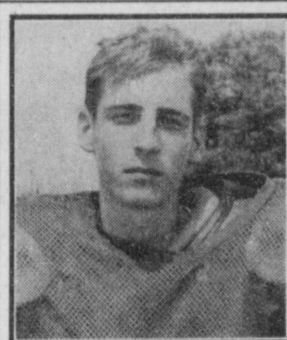
- Circle your choice as the winning team in each of the 18 games below.
- The entry with the most correct selections will win. In the event of a tie, the entry which picks the closest to the actual tie breaker score will win.
- Entries may be mailed to Muleshoe Journal, P.O. Box 449, Muleshoe, TX 79347 or dropped off at the office during business hours (8:30-5:00). Please mark the envelope FOOTBALL CONTEST.
- Entries for this week's contest must be received by the Muleshoe Journal or postmarked by **5 P.M. FRIDAY, OCT. 2, 1998.**
- Muleshoe Journal employees are not eligible to win the contest.
- Decision of the judges will be final.

**TIE BREAKER**



**MINNESOTA  
AT  
GREEN BAY**

Combined Total  
of Both Teams: \_\_\_\_\_

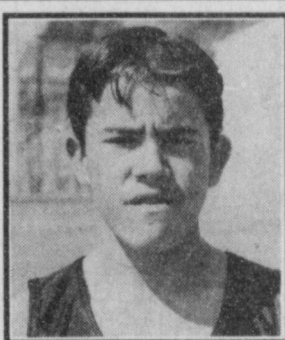


**DECORATORS  
FLORAL & GIFTS**

616 1st • 272-4340

**LUBBOCK  
COOPER AT  
SLATON**

Scott Pollard #30



**SUDDUTH  
FIELD & Co.**

104 W. 2nd • 272-4291

**DIMMITT  
AT  
MULESHOE**

Juan Olguin



**WES TEX  
FEED YARDS**

Custom Cattle Feeding • 272-7555

**FLOYDADA  
AT  
LUBBOCK ROOSEVELT**

Jessica Carpenter

**MCCORMICK  
SEED, INC.**

400 E. Ash Ave. • 272-3156

**JESUS CHAPEL  
AT  
LAZBUDDIE**



Stacy Field

**BOB STOVALL  
PRINTING**

221 E. Ave. B • 272-3373

**MELROSE, NM  
AT  
THREE WAY**



Terrell Herington

**JOE'S  
BOOT SHOP**

106 E. American • 272-7504

**SPRINGLAKE-EARTH  
AT  
TULIA**



Candace Hutto



**HI-PRO  
MULESHOE  
FEED BARN**

311 W. American • 272-5626

**HEREFORD  
AT  
CANYON**

Megan Barrett



**MULESHOE AREA  
HOSPITAL DISTRICT**

708 S. 1st • 272-4524

**SUDAN  
AT  
CANADIAN**

Myndi Heathington



**WEST CAMP  
GIN, INC.**

West Camp • 925-6681

**MORTON  
AT  
SMYER**

Melissa Flores

**TERRA  
DISTRIBUTION**

Mgr. Bruce Bruns • 272-4203

**BAYLOR  
AT  
TEXAS TECH**



Bobbie Benham

**BAILEY COUNTY  
FARM BUREAU**

1612 W. American • 272-4567

**PENN STATE  
AT  
OHIO STATE**



Megan Tipps

**MAPLE  
COOP GIN**

Maple • 927-5501

**IOWA STATE  
AT  
TEXAS**



Kayla Glover

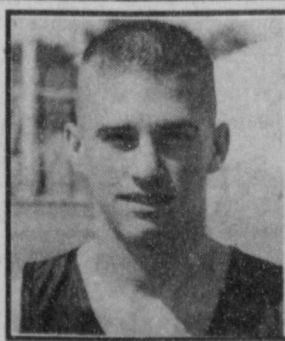


**SHERLEY-ANDERSON  
GRAIN ELEVATOR**

Lazbuddie • 965-2922

**NEW MEXICO STATE  
AT  
ARKANSAS STATE**

Chris Vaughn



**MULESHOE  
MOTOR CO.**

1225 W. American • 272-4251

**FLORIDA  
AT  
ALABAMA**

Dan Williams



**MCDONALD'S  
OF MULESHOE**

1315 W. American • 272-3333

**ARIZONA STATE  
AT  
SOUTHERN CAL**

Randy Bohler

**meet me at  
DAIRY  
QUEEN**

1201 W. American Blvd. • 272-3412

**DALLAS  
AT  
WASHINGTON**



Stephan Shelburne #80

**JAMES CRANE  
TIRE CO.**

107 Main St. • 272-4594

**MIAMA  
AT  
NEW YORK JETS**



Michael Durbin #50

**HIGGINBOTHAM-  
BARTLETT CO.**

215 Main • 272-3351

**SEATTLE  
AT  
KANSAS CITY**



Kyle Atwood #40

## X-Generation has nothing on Agriculture

I guess most folks would think of farming and ranching as a traditional way of life. Maybe even out of tune with current trends. It's true that you rarely see the latest in Calicrate Bander technology reviewed in the Rolling Stones magazine. And when was the last time you heard a teenager say, "Boy, these new fencing pliers are really cool!"

But . . . it appears to me that the fads of the X generation are lining up pretty closely with agricultural customs that have been a mainstay of our way of life for generations.

How about **body piercing**? I have it on direct personal authority (his wife) that a rancher in southeastern Colorado pierced his own nose with baling wire.

How many rancher or farmer types can you think of who have pierced their eyebrow, their navel, ear, tongue, or other more discreet, but not necessarily less vulnerable portions of their anatomy with rusty nails, barb wire, shears, pins, syringe needles or A.I. pipets.

That's pretty modern don't you think? Then there's **extreme sports**. Dirt bikes? Yippie. Try riding a horse, a bramer bull or even a dairy cow.



**BAXTER BLACK**  
ON THE EDGE OF COMMON SENSE

Street luge. Ever get hung up in the stirrup or slid off a grain elevator? Snow boarding. OOO..EE. Try feedin' off the back of a stack wagon for five months in a row where the temp never gets above freezing and the drifts are over your head by January.

Now let's look at **fashion trends**. I wonder if teenagers think bad haircuts are something new? I went to school with some kids whose folks cut their hair with a bowl and dull scissors. I, myself, cut my own hair the day I graduated

from college.

And up until we moved to Texas when I was 9 years old where I got my first cowboy boots, I had to wear those ugly lace up work boots that I see mall crawlers clomping around in.

There are other examples of the similarity between the agrarian way of like and X generation.

**Sport utility vehicles**. New, right? Think International Scout. Think Jeep. Think Dodge power wagon. Suburbans used to be so clunky and truck-like, the only place people would park them in front of their house was Amarillo.

So you add that to the penchant for **unusual salad ingredients** ( my dad insisted lamb's quarter was edible), **the stock market risk** ( farmer's invented the game ) and **tattoos** ( that blue mark on your thigh in the shape of a horse shoe ), it's obvious that the 90's generation has a true affinity for the agrarian society.

And guess what . . . they grew up on McDonald's.

## Bill Clinton and the Nature of Forgiveness

In the midst of the disgusting, pathetic, embarrassing, maddening, and, not least, odd, spectacle unfolding in Washington, I've found myself asking some questions about the nature of forgiveness.

President Clinton is walking a very difficult line.

On one hand, following a very unconvincing apology in which he lashed out at those he deems to be his enemies, at a recent prayer

better men for the job than Gordon MacDonald and Anthony Campolo. Those who dislike Campolo (and most folks who know him or his work either like him a lot or not much at all) generally dislike him because he minces no words. He "tells it" as he believe God tells it in Scripture. He's not the sort of man one could lie to easily, nor would he long allow a counselee to lie to himself.

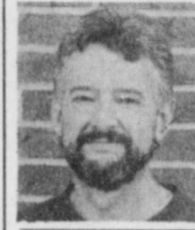
MacDonald is a man I personally hold in high esteem as a gifted pastor who has been broken by his own sin but has submitted humbly to discipline, healing, and rebuilding, and come back stronger than ever. MacDonald understands God's grace. He also understands that as long as any hint of self-justification remains in our souls, no room is there to receive the rich gift of God's genuine justification.

I know nothing about J. Philip Wogaman, pastor of the church Clinton attends in D.C., but I disagree very much with his reasoning as portrayed in *Newsweek* if, as reported, he believes that to call for the president's resignation or impeachment would be judgmental because we are all sinners. Follow that line and you better unlock all prison doors and head for cover.

Campolo and MacDonald are wiser—and more biblical. They are not concerned with Clinton's political rebirth; they are concerned with his soul.

A good friend of mine said, "I can forgive the president, but I cannot trust him." Even Clinton had better be careful about trusting Clinton right now. Anyone who has ever sinned knows that.

*Curtis Shelburne is minister of the 16th & D Church of Christ in Muleshoe.*



**Focus On Faith**  
Curtis Shelburne

breakfast he made a more convincing stab at a statement of repentance, much better given and received than the earlier statement in which he simply tried to stab those who called him accountable.

On the other hand, he still seems to be parsing words and trying to see how many legalities his legal team can stack on the head of a pin. Personally, he says he is repentant. Legally, his "defense" is taking a very different tack. Every time I see Clinton's personal lawyer, honed words dripping from his mouth, or poison oozing from his fangs, whichever you prefer, I have new doubts about the quality of the president's repentance.

This week I've watched and read news reports about the three pastors the president has called together to "hold him accountable" and guide him in spiritual healing.

You'd have a hard time picking

## Muleshoe 4-H officers installed

Muleshoe 4-H Club officers for 1998-99 were installed at the regular September club meeting Sep. 21 at DeShazo School Cafeteria.

The installation was conducted by County Sheriff Cay Plott. Each officer was presented a simulated badge representing their respective offices.

At completion of the ceremony, 4-H Club President Jill Gladden and 1st Vice President Ky Kennedy presented the Sheriff with honorary membership in the Muleshoe 4-H Club and with a certificate and embroidered 4-H clover leaf patch.



**Muleshoe 4-H Club officers**

Muleshoe 4-H Club officers for 1998-1999 are, from left, Ky Kennedy, 1st Vice President for Programs; Marlie Black, Secretary-Treasurer Rhett Kerby, Senior Council Delegate; Brett Bamert, Reporter; Jill Gladden, President; Myndi Heathington, 3rd Vice President for Membership; Brandi Whalin, Junior Council Delegate; Cade Hooten, 2nd Vice President for Recreation; and Erin Gallman, Junior Council Delegate. Youth interested in participating in the 4-H program can contact any of the officers or the County Extension Office at (806) 272-4583.

## Pep to celebrate 75th anniversary October 10

The community of Pep, Texas was established in 1923, some of the pioneers still live in Pep and other near by towns. These pioneers were children of the original pioneers who settled in what was then only prairie land with buffaloes roaming and cattle grazing. The tiny rural town of Pep is located

in the northwest corner of Hockley County on Farm Road 303.

Pep's 75th anniversary will be celebrated on Saturday, October 10, 1998 in the Pep Parish Hall. Registration begins at 9:00 a.m. consisting of floats, antique tractors, cars, buggies, wagons, bicycles, and

the Whiteface High School Band. Those interested in participating in the parade may contact LaFayette Demel at 933-4603 or Jett Major at 894-5027.

Antique items will be on display during the day. Antique plows and other large objects will be displayed north of the parish hall, while smaller antiques will be on display in the old church, located just north of the parish hall.

A brisket dinner with all the trimmings will be served beginning at 11:30 a.m. instead of 1:00 p.m. as was stated earlier. Prices are \$6.00 for adults and \$3.00 for children 10 and under. A silent auction of donated items will be conducted until 3:00 p.m. Other activities to be held include a variety of games and buggy rides.

Souvenirs for sale will include

a 48 X 65 inch tapestry Afghan throw depicting Pep history and a hanging plate of a windmill. A special Pictorial Cancellation commemorating the event will be offered by the Pep Post Office. These and other items will be available throughout the day.

There will be a photo room displaying original pioneers, later families and different events of Pep from 1923 until the present. Anyone having photos they wish to display are encouraged to do so.

For more information concerning the photos or any of the other activities call 933-4696, 933-4344, or 933-4478. All are area code 806.

Make your plans now to join us on Saturday, October 10th. We will still have our annual Thanksgiving Festival which will be on Thursday, November 26th, Thanksgiving Day.

## HOSPITAL ADMISSIONS

Muleshoe Area Medical Center reported admitting the following patients:

**Sept. 17** — Eugene Black, Willard Carter, Richard Cunningham, Hilda Guillen, James Herriage, Elizabeth Lewis and Virgil Tritsch.

**Sept. 18** — Eugene Black, Richard Cunningham, James Herriage and Elizabeth Lewis.

**Sept. 19** — Gumercindo Aguirre, Michael Arreola, Eugene Black, Silvia Black, Salvador Cabrera, James Herriage, Elizabeth Lewis, Gary McCray, and Alma Redwine.

**Sept. 20** — Gumercindo Aguirre, Michael Arreola, Silvia Black, Salvador Cabrera, Gary McCray and Alma Redwine.

**Sept. 21** — Gumercindo Aguirre, Michael Arreola, Silvia Black, Salvador Cabrera and Quinn Weaver.

**Sept. 22** — Salvador Cabrera, Lee Magby, King Doyle and Rose Martin.

**Sept. 23** — William Harmon, Doyle King, Lee Magby, Rose Martin, Angela Wallace and Jo Mayhugh.

**Sept. 24** — William Harmon, Rosie Martin, Jo Mayhugh, Alfred McCarty and Angela Wallace.

## TOPS NEWS

TOPS Chapter #34 met Sept. 17 at the Muleshoe Church of Christ.

Leader Laverne James led the group with the pledge, fellowship song and prayer. Roll call was answered with 13 members, weighing in.

There was a tied for best loser between Lavern James

and Jewel Peeler.

A total of 262 people attended a "Fall Festival" TOPS Convention Sept. 12 in Plainview. Those attending from the Muleshoe chapter were Ruth Clements, Laverne James, Betty Jo Davis, Lucille Harp and Joline Franklin.



## FISH

Now is the time for Pond and Lake Stocking of Hybrid Bluegill, Florida Hybrid Bass, Channel Catfish, Fathead Minnows and Triploid Grass Carp. (Permit required for the Triploid Grass Carp)

We furnish your hauling containers and guarantee live delivery.

### SUPPLIES

Fish feeders, Turtle traps, Fish traps, Liquid fertilizer, Spawning mats, Pond & Lake surveys, and Gift Certificates

### DELIVERY

Thursday, Oct. 1 • 5-6 p.m. • Wiedebush & Co. 1516 W. American Blvd. Muleshoe, TX • 272-4281

To Place Your Order Call:

**Dunn's Fish Farms, Inc.**

(580) 777-2202 • Toll Free 1-800-433-2950

• Fax (580) 777-2899

Or contact Wiedebush & Co. in Muleshoe

Fishery consultant available. Discounts and Free Delivery are available on larger orders.

## FIRST TIME EVER! VALLEY REBATES PLUS FINANCING

### CASH REBATES WITH LOW DOWN PAYMENTS

- \$200 per Drive Unit — Aug. & Sept. delivery (example: 8 towers = \$1600 rebate)
- \$150 per Drive Unit — Oct. delivery
- PLUS Valley offers cash rebates in addition to special financing!

5-Year 5% down OR 7-Year 7% down

Both at 8.75% APR with no annual payment 'til January 2000!

OR

### EVEN LOWER % RATES

5-Year, 6.9% APR 5% down OR 7-Year, 7.5% APR 7% down

Both with no annual payment 'til January 2000! (Rebate not available with this offer.)

SEE YOUR VALLEY DEALER TODAY.  
OFFER ENDS SEPT. 30.



The most trusted name in irrigation™

VALMONT IRRIGATION  
QUALITY SYSTEM  
FOR MANY REASONS

**AMERICAN VALLEY INC.**  
Hwy. 84 • Muleshoe, TX • 272-4266

On new orders only, purchased between Aug. 17 and Sept. 30, 1998. Must take delivery by Oct. 31, 1998 or at Valley's discretion. Limited time/quantity offer, subject to change without notice. Standard finance programs may be used with cash rebates. Financing subject to credit approval and only available in the United States. Certain restrictions apply.

www.valmont.com

Muleshoe Journal  
Classifieds Sell!  
Call us today!  
(806) 272-4536

# BAILEY COUNTY DEVOTIONAL PAGE

1315 W. American Blvd.  
272-3333  
Muleshoe, TX 


 **Decorators Floral & Gifts**  
616 South First 272-4340  
Muleshoe, TX

◆◆◆ **TINO'S** ◆◆◆  
104 W. American Blvd.  
272-7528 • Muleshoe, TX  
Daily Specials Owners: Tino & Linda Campoya

**MULESHOE AREA HEALTHCARE Center**  
"Committed to Caring"  
106 W. Ave. H Muleshoe 272-7578

**SHERLEY-ANDERSON LAZBUDDIE ELEVATOR**  
965-2922 Lazbuddie, TX

**Leal's Tortilla Factory, Inc.**  
"Serving West Texas since 1957"  
107 E. Ash 272-5772 Muleshoe, TX


**TERRA DISTRIBUTION**  
Hwy. 84 • 272-4203  
Muleshoe, Texas   
Bruce Bruns - Mgr.

**MULESHOE FEED BARN**  
311 W. American Blvd.  
Muleshoe, TX 272-5626 


**Shipman's Body Shop**  
Auto Painting • Wrecker Service • Free Estimates  
Tractor Glass & Windshields  
410 N. 1st Muleshoe, TX  
272-4408 FAX 272-3366


**MAPLE COOP GIN**  
927-5501  
Maple, Texas

—Two locations to serve you—  
1900 W. American Blvd. 272-5337  107 E. American Blvd. 272-3978  
Muleshoe, TX

**Christian Center Church**  
Morton Hwy. South 272-3877  
Senior Pastor  Sun. 10:00 AM  
Reydon Stanford Wed. 7:00 PM

**WEST CAMP GIN, INC.**  
Better Ginning & Courteous Service  
 Route 2 Box 1000 • 925-6681  
James Shepard / Phyllis Shepard Muleshoe, TX

**PINNACLE THERAPY SERVICES**  
 Speech/Language, Physical & Occupational Therapies  
305 5th St. • Farwell, TX • (806) 481-CARE

**BRUCE, INC.**  
AIR CONDITIONING   
Hwy. 214 North 272-5114  
Muleshoe, TX TAOL-B003350C, LP08638

**BAILEY GIN COMPANY, INC.**  
946-3397  
Sudan, TX  
Peanut Hawkins, MGR

**Henry Insurance Agency, Inc.**  
"Serving You Since 1964"  
 111 West Avenue B 272-4581  
Muleshoe, TX

**DALE OIL COMPANY, INC.**  
413 W. American Blvd.  
272-5576   
Muleshoe, TX

**WINKLES TRUCKS, INC.**  
Box 757 (806) 247-2724   
Friona, TX

**WESTERN DRUG**  
114 Main 272-3106 Muleshoe

## Facts About The BIBLE BY JOHN LEHTI

### FAITH IN THE PROPHETS

IN BIBLE TIMES THE PEOPLE HAD STEADFAST FAITH IN THE PROPHETS. THIS IS NOT HARD TO BELIEVE WHEN ONE REALIZES THAT THE PROPHETS HAD GREAT TRACK RECORDS. THE PEOPLE CAME TO BELIEVE THESE MEN WERE INFALLIBLE, AND THEY WERE NOT WRONGS! FROM MOSES TO AMOS, TO JEREMIAH, AND THE MANY OTHERS, THE EVENTS THEY PROPHESED CAME TRUE. RICH AND POOR, ROYALTY AND PEASANT, ALL BELIEVED IN THEIR AUTHORITATIVE PROGNOSTICATIONS! SO MUCH SO THAT WHEN KING HEZEKIAH IS CONFRONTED BY THE ASSYRIAN THREAT TO JERUSALEM.....

..... THE FACT THAT ISAIAH HAS PROCLAIMED THAT JERUSALEM SHALL NOT BE HARMED....



...KEEPS KING HEZEKIAH'S FAITH REMAINING STRONG BECAUSE OF ISAIAH'S PROMISE AND WILL NOT GIVE IN TO THIS THREAT OF THE ASSYRIAN ARMY, EVEN AS HE WATCHES THEIR CAMPFIRES AT NIGHT FROM THE WALL OF HIS VENERABLE CITY!



AND HOW RIGHT HE IS. WHEN MORNING COMES THE ASSYRIAN ARMY HAS BEEN STRUCK BY A PLAGUE! (ISAIAH 37: 36)



(113) SAVE THIS FOR YOUR SUNDAY SCHOOL SCRAPBOOK

This devotional & directory is made possible by these businesses who encourage all of us to attend worship services.


- |   |   |
|---|---|
| <p><b>ASSEMBLY OF GOD</b><br/>FIRST ASSEMBLY OF GOD<br/>521 South First Street • 272-3017<br/>Jack Stone, Min. • 272-3984<br/>S.S. 9:45 a.m., W.S. 11 a.m. &amp; 6:30 p.m., Wed. 7:30 p.m.</p> <p><b>BAPTIST</b><br/>CALVARY BAPTIST<br/>1733 W. Ave. C. Rev. Jeff Coffman</p> <p><b>CIRCLE BACK BAPTIST</b><br/>Intersection FM 3397 &amp; FM 298<br/>Jessie Shaver, Min • 946-3676</p> <p><b>FIRST BAPTIST</b><br/>220 West Ave. E.<br/>Stacey Conner, Min.</p> <p><b>FIRST BAPTIST</b><br/>Lazbuddie • 965-2126</p> <p><b>PRIMERA IGLESIA BAUTISTA</b><br/>223 E. Ave. E., Rev. Greg Guzman</p> <p><b>PRIMITIVE BAPTIST</b><br/>621 South First<br/>Elder Cleveland Bass, Min.</p> <p><b>PROGRESS BAPTIST</b><br/>Progress, TX</p> <p><b>PROGRESS SECOND BAPTIST</b><br/>Arthur Hays, Min.<br/>1st &amp; 3rd Sundays</p> <p><b>RICHLAND HILLS BAPTIST</b><br/>17th &amp; West Ave. D<br/>George Malis, Pastor</p> <p><b>ST. MATTHEWS BAPTIST</b><br/>Corner of W. Boston &amp; W. Birch<br/>Floyd R. Monroe, Min.</p> <p><b>THREE WAY BAPTIST</b><br/>927-5467</p> <p><b>TRINITY BAPTIST</b><br/>314 E. Ave. B<br/>Robert Brown, Min.</p> <p><b>CATHOLIC</b><br/>IMMACULATE CONCEPTION<br/>CATHOLIC<br/>805 E. Hickory<br/>Joseph Augustine, Min.</p> <p><b>CHRISTIAN</b><br/>THE CHRISTIAN CENTER<br/>Morton Hwy. • 272-5105<br/>Reydon Stanford, Min.</p> <p><b>CHURCH OF CHRIST</b><br/>LARIAT CHURCH OF CHRIST<br/>Sam Billingsley, Min.<br/>S.S. 10 a.m.; W.S. 11 a.m. &amp; 6 p.m., Wed. 7 p.m.</p> <p><b>LAZBUDDIE CHURCH OF CHRIST</b><br/>Nathan Crawford, Min.<br/>S.S. 9:30 a.m.; W.S. 10:20 a.m. &amp; 5 p.m.; Wed. 7 p.m.</p> | <p><b>MULESHOE CHURCH OF CHRIST</b><br/>22nd &amp; W. American Blvd.<br/>John Knox, Min.<br/>S.S. 9:30 a.m.; W.S. 10:20 a.m. &amp; 6 p.m.;<br/>Wed. 7:30 p.m.</p> <p><b>16th &amp; AVE. D CHURCH OF CHRIST</b><br/>Curtis Shelburne, Min. • 272-4619<br/>W.S. 10:30 a.m. &amp; 1:30 p.m.;<br/>Wed. 7:00 p.m.</p> <p><b>LUTHERAN</b><br/>ST. JOHN LUTHERAN<br/>Lariat, TX<br/>Richard Greenhaner, Min.<br/>S.S. 10:30 a.m.; W.S. 9:30 a.m.</p> <p><b>METHODIST</b><br/>FIRST UNITED METHODIST<br/>HISPANIC MINISTRIES<br/>E. 5th and E. Ave. D<br/>Pastor Benito Cavazos</p> <p><b>FIRST UNITED METHODIST</b><br/>507 W. 2nd St.<br/>Pastor Brad Reeves</p> <p><b>LAZBUDDIE METHODIST</b><br/>965-2121</p> <p><b>EL DEVINO SALVADOR</b><br/>814 W. Ave. C, Muleshoe, TX<br/>Guadalupe Ballinas, Min.</p> <p><b>NAZARENE</b><br/>NEW VISION CHURCH OF THE NAZARENE<br/>814 W. Ave. C • 272-3622<br/>David R. McIntire</p> <p><b>PENTECOSTAL</b><br/>UNITED PENTECOSTAL LIGHTHOUSE<br/>207 East Ave. G • 1-800-454-6051<br/>Pastor McKibben, 10 am Sunday Service<br/>Thursday, 7 pm Bible study</p> <p><b>INTER DENOMINATIONAL NEW COVENANT</b><br/>Plainview Hwy. Jimmy Low, Min.<br/>Steve Claybrook, Assoc. Pastor<br/>W.S. 10 a.m.; Wed. 7 p.m.</p> |
|---|---|

**Lowe's**   
MARKETPLACE 515 W. American Blvd.  
401 W. American Blvd. Muleshoe  
Muleshoe 272-4585 272-4406

**WES-TEX FEED YARDS, INC.**  
Custom Cattle Feeding  
272-7555 Muleshoe, TX

**Muleshoe Area Medical Center**  
"Your Hospital"  
708 S. First St. • 272-4524  
Muleshoe, TX

 "THE FIVE AREA TELEPHONE COOPERATIVE ORGANIZATION"  
West Plains Telecommunications Co.  
Five Area Systems, Inc., Plateau Cellular Network  
Five Area Long Distance - Five Area Internet  
302 Uvalde Muleshoe, USA (806)272-5533

 **JAMES CRANE TIRE CO., INC.**  
107 Main 272-4594  
Mike Hahn Muleshoe, TX

**IRRIGATION PUMPS & POWER**  
**ZIMMATIC CENTER-PIVOTS**  
W. Hwy. 84 272-4483

 **O & C OSONS**  
Erection Sprinkler Ser. Welding & Repair  
Repair & Assemble 909 W. American Blvd.  
Lupe Olivarez 272-5018 272-3475

**AMERICAN AVI INC.**  West Hiway 84  
272-4266  
Muleshoe

**1ST BANK** MEMBER FDIC  
202 South First 272-4515


**BOBO INSURANCE AGENCY**  
108 E. Ave. C 272-4264

 **FIRST TEXAS FLBA MULESHOE**  
"Serving Farmer & Bailey Counties"  
272-3010 • Fax 272-5388  
316 Main • P.O. Box 424 • Muleshoe, TX

**PACO FEED YARD, INC.**  
 Commercial Cattle Feeders  
P.O. Box 956 265-3281  
Friona, TX  
Feller Hughes-Mgr.

**NEEDMORE Co-op Gin Company**  
946-3361 • Sudan, TX

 **SILVER SCREEN VIDEO**  
VCR, PSX, N-64 & Camcorder Rentals  
803 W. American Blvd. • 272-5540 • Muleshoe, TX

**MULESHOE PEA & BEAN, INC.**  
 RR 2 Box 297 272-5589  
Muleshoe, TX

**DAMRON DRUG, INC.**  
308 Main St. 272-4210  
Muleshoe, TX

 **MULESHOE LIVESTOCK AUCTION**  
Muleshoe, TX • Sale Every Saturday  
Clayton Myers • 272-4201

Behold, God is my salvation; I will trust, and not be afraid; for the Lord Jehovah is my strength and my song; he also is become my salvation.  
-Isaiah 12:2

**FARWELL CONVALESCENT CENTER**  
"In Christ's Love, Everyone Is Someone Special"  
305 5th St.  
481-9027 • FARWELL, TX 

 **MULESHOE MOTOR CO.**  
1225 W. American Blvd. 272-4251

**SIMNACHER NATIVE GRASSES**  
Darwin Simnacher Vince Simnacher  
(505) 762-7817 (806) 946-3461  
Thomas Simnacher  
(806) 285-2491

**MENDOZA IRRIGATION SERVICE**  
 272-5511  
Sprinkler Erect, Repair & Move Muleshoe, TX

**LEO'S BLACKSMITH & MACHINE SHOP**  
310 W. AMERICAN BLVD.  
272-4418  
MULESHOE, TX 

**SAIN IRRIGATION & MACHINES**  
Complete Pump Service  
W. American Blvd. 272-4397  
Walt Sain Muleshoe, TX 272-4148

**Springlake Potatoes, Inc.**  
P.O. Box 280 • Springlake, TX  
262-5542



# McKinney, Dodd married Aug. 8

Susan McKinney and Corey Dodd exchanged vows Saturday, Aug. 8, 1998, at Church of Christ in Muleshoe. Curtis Shelborne performed the ceremony.

The bride is the daughter of Shirley and Wayne Henderson and Danny and Karla McKinney. The groom is the son of Gene and Vowerey Carlike.

The bride, given in marriage by Wayne Henderson, wore a white full length gown with beaded bodice, long train, and a veil of lace falling behind her head. She carried a peach flowered bouquet.

Following tradition, for something old she had a handkerchief; something new was a pearl necklace; and something blue was her garter. Susan's hair was styled by Pat Young's Family Hair Salon.

The maid of honor was Melissa Maldonado. The bridesmaids were Julie McCullough, Casie Dodd and Coleen Dodd.

They wore floor length royal blue dresses with empire waists. Each one carried a rose bouquet.

The flower girl was Chelsea Hawkins. The ringbearer was Aaron Hargrave.

The best man was James Carlile. The groomsmen were Donnie Lance, Oscar

Calderon, and Bryan McCormick. The usher was Jake Caswell.

They wore black tuxedos with white cummerbunds. The church was decorated with green vines and peach flowers. Peach and blue bows were tied in silk trees. A memory candle was the focus at the front of the church.

The groom's parents lit one candle then the bride's parents lit another. Later, the couple used the candles to light the memory candle. The bride honored her mother with a rose as she walked down the aisle and honored the groom's mother as well, when leaving the altar.

The wedding music was provided by Belinda Caswell the groom's mother. The wedding music included "Your Still the One."

Registering the guest was Danielle Fischbach.

The bridal table featured a four layer cake with peach flowered bouquet as a center piece. Gold flatware was used and blue sherbert punch was served. Servers were Margie Lance, Mitzi Hawkins and Jodi Hawkins.

The Groom's table featured three chocolate cakes and coffee was served. Servers were Samantha Caswell and Hannah Fischbach.

Following the wedding trip



Susan McKinney and Corey Dodd married Aug. 8

to Ruidoso, N.M., the couple will reside in Lubbock.

Susan is a 1997 graduate of Levelland High School and is currently attending South Plains College. She is currently employed by Norwest Bank in Lubbock.

Corey is a 1996 Graduate of Sundown High School and is currently attending South Plains College. He will begin Texas Tech University in the spring. He is currently employed by Altura Energy in Sundown.

After the reception, compliments of Dent Co., the groom picked up the bride in front of the church in a brand new John Deer tractor and drove her around the block before changing into a pickup.

A household shower was held at the home of Lupe Esqueda in Lubbock on July 25. Another shower was given in the home of Shari Timberlake in Levelland on Aug. 2. A third shower was given by the 16th & Ave. D Church of Christ, Sep. 20.

## OBITUARIES

### VERNON E. SYMCOX

FARWELL — Vernon E. Symcox, 75, of Farwell died Tuesday, Sept. 22, 1998 at Lubbock Methodist Hospital.

A church service was held Friday at the First Baptist Church of Farwell, with Rev. Richard Laverty, pastor of the church, Rev. Howard Rhodes, pastor of First Baptist Church of Dimmitt and Bob Byrd of Farwell, officiating. Burial was held in Muleshoe Memorial Park under the direction of Ellis Funeral Home of Muleshoe.

Mr. Symcox was born April 5, 1923 in Norman, Okla. He married Julia Rundell in Texico, N.M. on Dec. 3, 1950.

He had been a resident of the Farwell community since

1927, moving from Hutchison, Kan. He was a farmer and served in the U.S. Army in World War II. He was a director of the Parmer County Farm Bureau, Parmer County Farmers Home Administration and the Parmer County Tax Equalization Board. He attended First Baptist Church of Farwell.

He is survived by his wife Julia; three sons, Roland Hilcock of Midland, Steven Hilcock of Kentwood, Mich. and James Symcox of San Antonio; four daughters, Judy Kay Murray, Gloria Hutchins, Susan Franse, all of Farwell, and Janice Snell of Muleshoe; 32 grandchildren and 44 great grandchildren.

## REBEKAH NEWS

Nobel Grand Bernie Marts opened lodge with nine members answering roll call. Hostesses for this week were Sister June Green and Sister Thurise Reid.

Sister Bonita reported that her daughter Amanda is doing better. Discussions were held on buying a stove, bus tour, yard sale and ticket sale for our

annual Thanksgiving dinner in November. Rebekah members will be selling tickets to our dinner soon. Yard Sale will be held on Oct. 2 starting at 9 a.m. The location will be announced later.

There being on further business, Chaplain Bonita Rainey closed the lodge with love to all until next week.



Come Check Our Rates!

**WE HAVE MONTHLY AUTO INSURANCE**

*Delton E. Wilhite & Associates*  
INSURANCE AND FINANCIAL SERVICES

1631 West American Blvd. • 272-3652 or 272-5988

*Classifieds* GET THE JOB DONE!

## Girl Scouts ready to start after sign-up

The Muleshoe Girl Scouts registered Sept. 19 at the Girl Scout Building.

Tina Mann, field service director from the Caprock Girl Scout Council in Lubbock, was on hand to answer questions and assist in registering the new girls and adult leaders and assistants.

There are now approximately 30 girls in the program and girls can continue to join the Scouts.

Adults now include Cadet-Senior leader Judy Coffman and assistant Nelda Merriott; Junior leader Sherrie Reeves and her assistants Annette Scheller and Brownie Leader, LeeAnn Eagle and her assistant Elaine Howard. New Daisy leaders are Gayleen Whitworth and her assistant Cassie Crandell. Other helpers are Kara Harkins and Rebecca Howard.

All troop meetings will be at the Girl Scout Building immediately after school.

Cadet-Seniors will meet on the 2nd and 4th Mondays. Juniors will meet on the 1st and 3rd Mondays. Brownies will meet every Thursday. Daisies will meet every Wednesday.

A great year is in store for the Girl Scouts with many exciting events coming up.

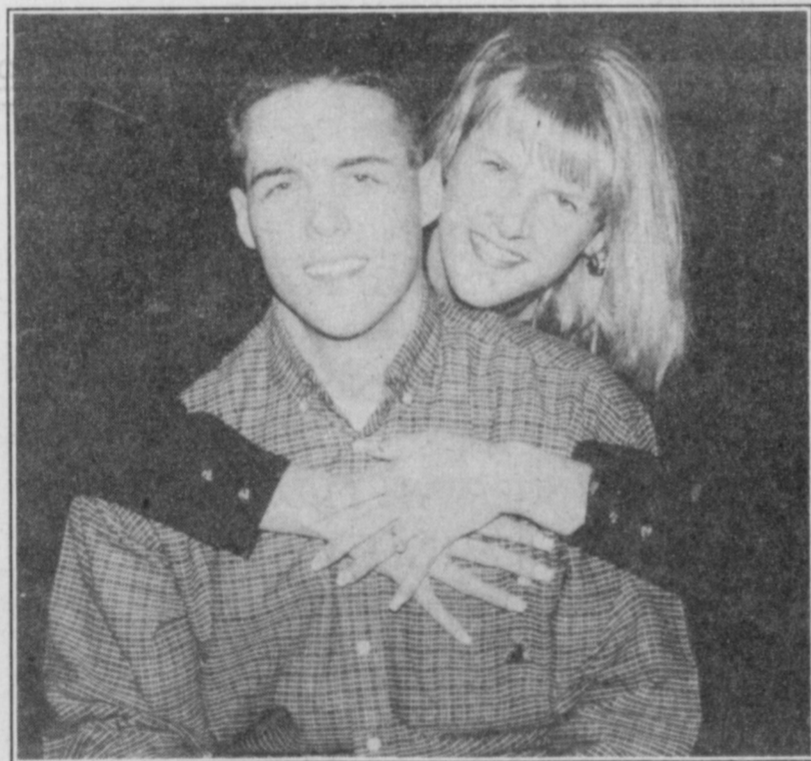
Girls may join by coming to a meeting, adults too, or by calling Service Unit Chairman, Nelda Merriott, 272-4071.

## Social Security Office in Lubbock relocates

The Lubbock Social Security Office moved to a new address last week at Gateway Plaza, 2002 West Loop 289, Suite 100. This is just outside the West Loop on 19th Street, behind McDonald's and Burger King. Office hours are 9 a.m. - 4 p.m., Monday through Friday.

The new phone number is (806) 799-2520.

## ENGAGEMENT



### Schulte — Latham

Nadine Suzette Schulte and Galin Lynn Latham announce their engagement and approaching marriage. The couple will marry Dec. 26, 1998 at the Holy Family Catholic Church in Nazareth. Nadine is the daughter of Elizabeth Schulte and the late Lester Schulte of Dimmitt. Nadine graduated from Dimmitt High School in 1993 and from West Texas A&M University with a bachelor of science degree in exercise and sports science. She is employed by Southwest Texas Methodist Hospital in San Antonio. Galin graduated from Muleshoe High School in 1992 and from West Texas A&M University with a bachelor of science degree in biology. He is currently in his third year of dental school at the University of Texas Health Science Center in San Antonio.

## SCAC NEWS

The Student-Community Action Club (SCAC) met on Sep. 21 at 7 p.m. in the home of Amber Bruns. Thirty SCAC members attended the meeting. The president Amber Bruns, called the meeting to order and asked the chaplain Dustin Cleavinger to give the opening prayer. Amber Bruns, Erin Wilhite, and Robin Cowart read the SCAC constitution, and then the new members introduced themselves.

Old business included our summer fund-raiser: Keepers of the Legend, Open House at

the Coliseum on July 4, and Tour de Muleshoe. All were very successful for SCAC.

Amber Bruns read thank you notes that SCAC received for Kevin Smith, Mrs. Jean Allison, and the Muleshoe Chamber of Commerce.

The citizens of the month for September and October were chosen and will be the next guest speakers. Krystal Heathington and Erin Wilhite will contact the guest speakers.

The next meeting will be Oct. 19 at 7:30 p.m. in the home of Cambri Lewis.

The Journal. Local news about local folks.

**This kid's got a record!**  
his grades.

Pablo knew in a couple of years he would be ready for college. He also knew it would be tough to afford. He even thought about dealing drugs to pay for it. Fortunately for Pablo, two community policing officers took him under their wing. They steered him to counselors and programs that could help him pay for college. Now the only record he'll have is his grades.

**LESS CRIME IS NO ACCIDENT**

It takes you — and programs that work.

Call 1-800-WE PREVENT, and we'll send you a free booklet on how you can support programs in your community that keep kids away from crime and crime away from kids.



**1-800-WE PREVENT**  
www.weprevent.org

Ad Council

TAKE A BITE OUT OF CRIME  
U.S. Department of Justice  
Crime Prevention Coalition of America

# 1998 ROTARY CLUB TEAM ROPING SPONSORS

The Muleshoe Rotary Club would like to thank all of the Sponsors for helping to make the 1998 Rotary Club Team Roping such a great success!

## GOLD SPONSORS

MINSA S.W.  
WES-TEX FEED YARDS  
FIRST BANK, MULESHOE  
PLATEAU WIRELESS, CLOVIS

## SIVLER SPONSORS

MULESHOE STATE BANK  
IRRIGATION PUMPS AND POWER  
-ZIMMATIC CENTER PIVOTS  
FIRST TEXAS FEDERAL LAND BANK  
JOE'S BOOT SHOP AND COUNTRY  
JUNCTION, TONY LAMA BOOTS  
MULESHOE MOTOR COMPANY  
BAMERT SEED COMPANY  
HERITAGE HOUSE INN  
COYOTE LAKE FEED YARD  
KENNETH HENRY INSURANCE  
MULESHOE CO-OP GINS  
MULESHOE ANIMAL CLINIC  
-MULESHOE VET SUPPLY  
LEAL'S MEXICAN RESTAURANT  
McDONALD'S RESTAURANT

## OTHER CONTRIBUTORS

CLT ROPING PRODUCTIONS  
HEREFORD FEED INGREDIENTS, INC.  
HIGHLAND LIVESTOCK

## BRONZE SPONSORS

MULESHOE PEA & BEAN  
LOWE'S MARKETPLACE  
SHUR-GRO PMag LIQUID FEEDS,  
HEREFORD  
BAILEY COUNTY FARM BUREAU  
RICKEY BARRETT, FARM BUREAU  
HI-PRO FEEDS, FRIONA  
WEST PLAINS  
TELECOMMUNICATIONS, INC.  
SPRINGLAKE POTATOES, INC.  
DALE OIL COMPANY  
WESTWAY TRADING CORP., DIMMITT  
B C PRODUCE  
RONNIE HOLT, CROP, LIFE,  
HEALTH INSURANCE  
MARK MORTON, STATE FARM INSURANCE  
PRODUCTION CREDIT ASSN.  
SCOGGIN AG CENTER  
WESTERN "66"  
DR. TOM BONDS, DDS  
DR. ROBERT LEPARD, DDS  
DENT & COMPANY  
AG AVAITION  
ELLIS FUNERAL HOME  
DELTON E. WILHITE & ASSOC  
MULESHOE FEED BARN  
MULESHOE ABSTRACT  
PIZZA HUT, MULESHOE  
HIGGINBOTHAM-BARTLETT  
PRECURE CHIROPRACTIC CLINIC  
ST MARY FAMILY HEALTH CARE CENTER,  
DR. MARK McCLANAHAN



**MULESHOE ROTARY CLUB**  
*Established 1950*  
Meets Each Tuesday at Noon  
Bailey County Coliseum Conference Room



## NURSING HOME NEWS

Thursday morning, Pastor David McIntire and Clara Lou James were back with us for our Devotional/Reflection Time, Karen Cook and Zona Gatewood directed the music.

Thursday afternoon we got ready for our back-to-school ice cream social. The residents helped decorate the tables. We had a real good turn out from the residents' families and all of the good homemade ice cream, cakes and cookies. What a great time we have. Thank you families for making it a special time.

Friday afternoon, the 16th & Ave. D Church of Christ served homemade pies of all our fa-

vorite kinds. We enjoyed the pie as well as the fellowship. Saturday morning, Buster Kittrell was back in the barber shop cutting the men's hair and giving shaves.

Katye Cook, Buster Kittrell, Harold and Mary Jo Burge, Van Orcutt, Nelda Crawford, Elaine, Beulah, Nancy and Daren Cook assisted the residents outside Saturday morning to hear the Mighty Muleshoe Marching Band. The band performed a mini-concert for the residents. Saturday afternoon, Melvin and Wanda Griffin directed the bingo game.

Buster Kittrell taught the

Sunday school class, and Aline Locke went out Sunday to be with her family, who were celebrating Aline's birthday. Sunday afternoon, the Primitive Baptist Church came to have a Gospel singing for the residents.

Monday, Ozell Cherry and Kimberly Dickerson directed the activities. Joe Embry, Rev. and Mrs. Jack Stone and the Youth Minister of the Assembly of God Church came Tuesday to visit Rosa Sneed, Pearl Helmes and other residents.

Pat Watson came Friday morning for our music therapy session and enjoyment.

Claudine Embry, Lanell Stancell, Pat Watson, Ozell Cherry, Karen Cook, Kimberly Dickerson and Joy Stancell shampooed and set the ladies' hair and gave manicures with lots of TLC. Tuesday afternoon, Roy Anzaldua came by and visited Irene Splawn, Andy Hernandez and Alajandro Sisneros.

Wednesday morning, Buster and Wanda Kittrell, Harold and Mary Jo Burge served coffee, juice and donuts to the residents gathered in the day room, as well as those in their rooms. Steve Claybrook, Buster, and Loyce Killingsworth directed

the Singspiration time.

Aline Locke and Jeanetta Hukill were given perms Wednesday. Jackie Scoggins played the piano Wednesday afternoon for the Glenda Jennings sing-a-long. Ruth Clements and Jean O'Brien along with the residents participated in the singing. Nettie Quesenberry's granddaughter, Michelle, brought fresh home grown cherry tomatoes for the residents on Wednesday.

Duane and Linda White and Mrs. Marilyn Wilson visited the Care Center Wednesday afternoon, and Zeffa Shafer was visited by Mrs. Chester

Yerby, and her grandson Robert Shafer, the same afternoon.

The residents having a September birthday were honored Thursday with a party.

Bro. Jack Stone provided the entertainment, and the family of Billy Crouch provided the birthday cake. Lasting Impression gave each lady a corsage and the men a boutonniere. Volunteers Plus and the Activity Department hosted the party.

Residents being honored were Aline Locke 9/10, Billy Crouch 9/16, Hazel Riddle 9/19, Ruth Lackey 9/26, and Altha Turner 9/26.

# Journal Classifieds

REAL ESTATE  
AUTOMOBILES  
HELP WANTED  
GARAGE SALES

## STOP & SHOP

Deadlines are 5 p.m. Monday and Thursday

Call 272-4536

Deadlines are 5 p.m. Monday and Thursday

### LEGALS

The City of Muleshoe is currently accepting bids for Law Enforcement Vehicles. The City will consider two options: the first option will be for the purchase of two (2) vehicles; the second option will be for the lease/purchase of two (2) vehicles. The City will also consider alternate bids on 1998 year model vehicles. Specification sheets may be picked up at City Hall. Bids are due at City Hall no later than 1:30 P.M. on Friday, October 2, 1998. The City reserves the right to accept or reject any and all bids. Published in the Bailey County Journal on September 20 and 27, 1998.

### DAYCARE

Registered daycare. 2 openings. Certified CPR and First Aid. For info. call 272-5866.38s-ttc

### LOST & FOUND

Nice gold necklace found. Call 272-3873.39s-4tpd

### FOR SALE

New 1998 SINGER heavy duty school model. Sews jeans, upholstery, leather, silk, satin. Serge seam finish, button holes, monograms. Was \$439, with ad **ONLY \$186**. New in cartons, full factory warranty. **Singer Sewing Center**, 5418 Slide Road, Lubbock 788-0608. 40s-tch

2 choice cemetery lots at Muleshoe Memorial Park Cemetery (580) 326-2935. 40s-8tch

### FOR SALE

Steel Buildings Storage buildings/grain or machinery Summer clearance/factory direct. 25x30; 30x50; 40x60; 45x70; 51x100; 55 x 120, 60x175. Save thousands! Must liquidate at once! 1-800-221-9594 ext. 975 40s-tch

### HELP WANTED

Need truck drivers to haul cotton seed from Sudan to Lubbock. \$800 per week. CDL required. Call (806) 946-3461, (806) 946-3402, (806) 946-7998.39t-ttc

Pizza Hut is now hiring for waitstaff and delivery drivers. Apply on Mondays from 1 to 5 pm.37t-ttc

Conservation Careers Forest Rangers, Game Wardens, maintenance, etc. No exp. necessary. Now hiring. For info. call (219) 794-0010, ext. 9689, 8 a.m. to 10 p.m. (www.cnijobhelp.com) 38s-5tch

### LOOKING FOR WORK?

#### Help Wanted!

Reporter/Photographer with Journalism background. Must have good people skills. Experience a plus, but not required.

Apply in person at **Muleshoe Journal** 304 W. 2nd St. Muleshoe, TX

### FRESH VEGETABLES

**Green Chili** (roasting available), 1015 sweet onions, tomatoes, melons. DVJ Farms, 202 7th st., Farwell, TX, (806) 481-9420. 28t-23tch

### BUSINESS OPPORTUNITIES

Snickers Candy Route. 50 Locations. \$800-\$1200 solid monthly income. Cost \$2995. www.vendingroutes.com 1-800-963-6123.39t-1tch

### MOBILE HOMES

1985 16x80 mobile home. 3 bedroom, 2 bath, fireplace. Call after 6 p.m. 272-3759. 40s-1tpd

### HELP!

We just had our biggest sale of the year and now we are overrun with previously owned homes. The Boss said to **MOVE THEM** to make room for the new 1999 models. Come to Portales Home for the largest selection of previously owned homes we have EVER had. Call us or come by. (505) 356-5639 or (800) 567-5639. In Clovis, (505) 762-3488.

### SEED

Winter Wheat and Fall Forage Seeds For ALL varieties of Wheat, Rye \* Barley \* Triticale Grazing Blends\* Oats Call 1-800/299-9273 Gayland Ward Seed Co., Inc. Hereford, TX 79045 www.wtr.net/~gws1998 Your choice of Registered, Certified, or Select Seed. Bagged or Bulk. Delivery Available

### SERVICE

Will clean houses, real estate, business. Weekly, bi-weekly. Renee 272-5119. 40s-4tpd

Raul's Painting and Dry Wall. Specializing in residential and commercial painting. References. Free estimates in Parmer and Bailey counties (505) 763-5773. 40s-8tpd

**Sewing and Alterations** All types. One day service on most. 310 W. 16th 272-6764. 35s-ttc

### STORAGE

**PRICE REDUCED** O.B.O Two story, portable office/storage building. 12x16, insulated and wired. \$1,995. To be moved. 902 Juniper. Call 1-800-505-1452.38t-4tch

### VEHICLES

1994 Chevrolet extended cab pickup. Immaculate. \$11,500. To see call (806) 272-5514 or night 272-3418. 40s-4tch

### WANTED

Pasture wanted, corn stalks and wheat for cows and calves. 272-3061. 40s-4tch

### RENT OR SALE

For rent or sale: 3 or 4 bedroom house, 1 1/2 bath. Owner will carry w/good down payment. (806) 655-0200 or 272-4153. 40s-TFC

**BUY IT SELL IT TRADE IT IN THE CLASSIFIEDS**  
Call 272-4536 to get your ad placed in the Muleshoe Journal or the Bailey County Journal

### REAL ESTATE

**LAZBUDDIE AREA**, 640 acres, 4 sprinklers, 4 wells, 400-500 gallons of water with houses or without. With barn, cattle pens. (806) 965-2895.39s-8tpd

3-2 house in Sudan. 400 Smith. Good neighborhood. (806) 227-2132. 40s-4tpd

Approx. 160 acres. 13 miles west on Hwy 1760. (580) 326-2935. 40s-8tch

2 bedroom house for sale. In good condition. Call 272-3962 or 3976.39s-3tch

Nice 3-1-1 brick home, Country Club addition, central heat and refrigerated air, new roof, wooden deck, 272-5879 evenings or leave message.36t-ttc

**PRICE REDUCED:** Nice country 3-2-2. Total electric brick home with shop and barn, on small acreage. 806-272-4975.38s-ttc

145 acre farm, good water, good allotment, excellent grazing. 272-5536 day. 272-5134 night. 35s-ttc

## Jo Ann Chester Realty 806-227-2368

**MASONITE SIDING** —Approx. 1500 sq. ft., plus double garage or 3-1 1/2-2, kitchen, w/ built-ins, large utility-office, basement, storm windows, central heat-air. Will have new roof and septic system; on one acre, and 3-4 more acres available.

**DODD HWY, NORTH OF EARTH BRICK** —Approx. 2160 sq. ft. living, plus 750 sq. ft. double garage w/large work bench and storage room and electric door openers; or 3-1 3/4-2, kitchen w/built-ins, living room w/fireplace, dining, utility, playroom or office, breezeway, upstairs room, central heat-air, storm windows, fenced corner lot.

**1815 W. AVE I, MULESHOE BRICK** —Approx. 2000 sq. ft., plus double garage w/openers; or 3-1 3/4-2, kitchen w/ built-ins, livingroom, den, utility, office, central heat and a large, two year old shop with RV storage w/office and upstairs apartment.

**1003 W. AVE K, MULESHOE BRICK** —Approx. 1830 sq. ft.; or 3-1 3/4-1, kitchen/dining combination, livingroom, den w/fireplace, utility, screened-in porch, fenced corner lot.

119 SW 2ND, EARTH

### REAL ESTATE

**Country Living at It's Best** - 6 miles west of Muleshoe on Highway 1760. Approx. 3500 sq. ft. Gorgeous 3-3-3 Brick home with lots of built-ins, fireplace, central heat, ref. air, sunroom with hot tub, lots of storage, large family room and utility room, every woman's dream. All on 2 1/2 acres. Also 30x50 metal barn with corrals. If you want it, this place has it! **PRICE DROPPED \$5,000!!**



**Great Investment Opportunity** - 25 acres with 3 rent houses, 2 mobile home hook-ups with electric water and cable. Just west of Muleshoe. Reasonably Priced!! Call for more details!!

**South of Clay's Corner** - 160 acres, 2-8" irrigation wells, electric sprinkler system, lays well. Reasonably Priced. Call for more details!!

(806) 481-3846 • Toll Free: 1-888-999-3846  
Ronald Byrd, GRI Licensed Broker Home: (806) 481-9318  
Crista Bass, Sales Associate • Home: (806) 925-6464

The following people have announced their candidacy for the **GENERAL ELECTION TUESDAY, NOV. 3, 1998**

**DISTRICT 287TH JUDGE**  
● Gordon H. Green, Democrat  
**JUSTICE OF THE PEACE PRECINCT NO. 1**  
● Jack Bates, Democrat  
**BAILEY COUNTY CLERK**  
● Sherri Bessire Harrison, Republican  
● Jan Pierce, Democrat  
**DISTRICT CLERK**  
● Elaine Parker, Democrat  
**BAILEY COUNTY COMMISSIONER PRECINCT 4**  
● Jerry Damron, Democrat  
Paid political advertisement

## Nieman Realty

116 E. Ave. C • George Nieman, Broker • 272-5285 or 272-5286

### RICHLAND HILLS — PARK RIDGE

• We have several single and multi-family lots in this area!!!  
• NICE 3-2-2 Brick, Cent. A&H, built-ins, FP, cov. patio, fenced yd. \$50's!!

### HIGHLAND AREA

• JUST LISTED - NICE 2-1-2 carport Mobile home, Cent. heat, evap. air, stove, 2 stor. bldgs., MORE!!! \$10K!! HL-2  
• 3-2-2 Brick, Cent. A&H, built-ins, gas log FP, fenced yd., stor. bldg., MORE!! Price Reduced!! HL-5  
• Nicely Remodeled 3-2-1 Brick home, 2100' +lv. area, Cent. A&H, built-ins, large den w/FP, fenced yd., stor. bldg. \$50's!!! HL-3  
• 2-1-1 carport home, wall furnace heat, evap. air, DW, 5 fans, cov. patio, gas grill, fenced yd., MAKE OFFER!!!  
• 3-2-2 Brick Home, corner lot, wall furnace heat, Cent. Evap. Air, fenced yd., stor. bldgs., MORE!!! HL-4

### LENAU - COUNTRY CLUB AREA

• 2-2-1 Carport home, Cent. A&H, fenced yd., concrete cellar, stor. bldg. !!! \$25K!!! L-2  
• 2-2-2 Brick Home, Cent. A&H, nice carpets, fenced yd. \$40's!!! L-4  
• PRICE REDUCED 2-1-1 Carport Home, wall furnace, nice carpet, storm shelter, stor. bldg., fenced yd. \$19K!!! CC-3  
• 2-1-1 Home, floor furnace, win. ref. air, fenced yd, stor. bldg., \$18,500!! L-1

### COMMERCIAL

• Established Business: Land, Bldg. & Equip., \$75K!!!  
• 56' x 140' tract, approx. 4700' bldg., \$35K!!!  
• NICE R.V. STORAGE, 14' X 40' metal bldg. 12' doors, 50X140 corner lot!  
• SNACK SHACK - Lot, Buildings, furniture & fixtures!!!

### HIGH SCHOOL

• 2-2-2 BRICK, Cent. A&H, built-ins, corner lot, approx. 1800' lv. area!!! \$35K!!! HS-4  
• NEWLY REMODELED 3-1-1 Home, cent. A & H, new carpet &

vinyl, fenced yd., MORE!! \$30's!!! HS-2  
• VERY NICE 3-1-1 Brick, Heat pump, DW, nice carpets, fenced yd., MORE!!! \$30's!!! HS-1  
• NICE 2-1-1 Brick, Heat Pump, nice carpets, well insulated, storm windows & doors. \$30's!!! HS-6  
• VERY NICE 3-1-1 Home, nice carpets and vinyl, heat pump, fans, fenced yd., stor. bldgs., MORE!!! \$30's!!! HS-5  
• 3-2-1 Brick, Heat Pump, built-ins, fans, screened porch!!! \$30's!!! HS-7  
• JUST LISTED- 2-1-2 CP Home, corner lot, metal siding, storm win. & doors, stor. bldg. \$20K!!! HS-8

### RURAL

• Approx. 48 acre tract close to town, irrig. well w/motor, sideroll sprinkler, 2400' metal bldg. w/1800' shed, 448' stor. bldg., 8 sheds, 2 hp. well, pipe corral, squeeze pen, & loading chute! \$50K!!!  
• PRICE REDUCED- NICE 3-2 home, 40 acre tract, Geo. Heat Pump, built-ins, 5" irrig. well, Hi-Pres. lines, sprinkler pipe, barn, pens, tractor & equip!!! \$69K!!!  
• W. of SUDAN-NICE 3-3-2 Brick Home, 5 acre tract on Hwy. 298, Cent. Air & Heat, built-ins, large Quonset Barn, MORE!!! \$95K!!!  
• 5 Acre tract on pavement close to town!  
• LAZBUDDIE-PRICE REDUCED-NICE 3-2-2 Brick Home on pavement, 2200' Lv. area, Cent. A & H, built-ins. FP, large sunroom!! \$70's!!  
• FOR BID: Approx. 4,870 acres (Bailey and Lamb Co.), water rights negotiable, 54 wells (only 2 pumps and motors), approx. 33 circles w/center pivot pads, 40' X 86' tile block barn, 40' X 100' Quonset barn w/elec., 20' X 30' shop, 3 sets pipe corrals, 2 sets wire corrals!  
• Approx. 108 acres on Hwy. 70, approx. 2100' office area, 16,900' of commercial bldg. w/loading dock, 3,400' warehouse!! 2,800' runway!!  
• LARIAT- 240 acres, 3 wells, underground tile, good productive land!!!

### REAL ESTATE

## James F. Hayes & Co.

### AGRICULTURAL REAL ESTATE SERVICES

• 320 Acres Northwest of Muleshoe, Lays good, good soil, 2 center pivot sprinklers, modest home.  
• 320 Acres with exceptional 3 or 4 bedroom home. Large barn, 2 center pivot sprinklers adjacent to above farm.  
• 181 Acres, Bailey County, Center pivot, 2 wells, fronts U.S. Highway 84. Joins 320 acre tract above.

• 160 Acres - Parmer County, North of Muleshoe, Excellent Water. Call for immediate possession.

• 78 acres North of Muleshoe on Highway 214. Has pad for pivot. Lays good. 2 wells.

• 450 Acres - Arch, New Mexico area. C.P. sprinklers. Modest home.\*

• Portales Area Dairy - Double 14 parallel parlor. 875 lock ups. Commodity barn, 2 hay barns, 360 cows, rolling stock. COMPLETE DAIRY. Very good condition.\*

• 480 Acres northwest of Earth. 3 wells, 1- sprinkler nice farm.

• 160 acres of grass Northeast of Muleshoe. Didn't get back in New C.R.P. Call for details

• 160 Acres just north of Muleshoe. 2 irrigation well with new pumps. New underground pipe and wire. Late model Valley Sprinkler. Good F.S.A. payment. Immediate possession possible.

\* In cooperation with a New Mexico Broker

### Vic Coker, Agent

310 Main St. Suite 103 Muleshoe  
Office 272-3100 Home 965-2468  
WHEN LAND INVOLVES COWS AND PLOWS

# MEAT

The Best Prices In Town

PRICES EFFECTIVE SEPTEMBER 23-29, 1998

## MEGA MEAT SALE

CRY-O-VAC WHOLE	
12 LB. AVG.-SLICED FREE	
<b>TOP SIRLOIN STEAK</b> .....LB	<b>\$1.49</b>
ALL SIZES	
<b>TOP SIRLOIN STEAKS</b> .....LB	<b>\$1.68</b>
REGULAR 5 LB. CHUB	
<b>GROUND BEEF</b> .....LB	<b>83¢</b>
LONESTAR PRIDE-BEEF BONELESS	
(8) 7 OZ. STEAKS	
<b>RIB-EYE STEAKS</b> .....3.5 LB. BOX	<b>\$9.99</b>
LONESTAR PRIDE-BEEF	
(6) 10 OZ. STEAKS	
<b>T-BONE STEAKS</b> .....3.75 LB. BOX	<b>\$9.99</b>
JUMBO PACK FRYER	
<b>DRUMSTICKS OR THIGHS</b> .....LB	<b>59¢</b>
BONELESS	
<b>PORK LOIN ROAST</b> .....LB	<b>\$1.99</b>
FARM RAISED	
<b>WHOLE CATFISH</b> .....LB	<b>\$1.99</b>
WHOLE SLAB	
<b>PORK SPARE RIBS</b> .....LB	<b>\$1.49</b>
CLEAR COVE BREADED	
<b>FISH STICKS OR PORTIONS</b> .....LB	<b>\$1.49</b>

BREADED	
<b>CATFISH NUGGETS</b> .....LB	<b>\$1.59</b>
VALUE PACK MARKET REGULAR	
<b>GROUND BEEF</b> .....LB	<b>99¢</b>
VALUE PACK PREFERRED	
<b>GROUND BEEF</b> .....LB	<b>\$1.49</b>
VALUE PACK SUPERB	
<b>GROUND BEEF</b> .....LB	<b>\$1.79</b>
BONELESS	
<b>PORK CUBED STEAK</b> .....LB	<b>\$2.79</b>
BONELESS	
<b>PORK FOR STIR-FRY</b> .....LB	<b>\$2.69</b>
THICK CUT BONELESS	
<b>PORK LOIN CHOPS</b> .....LB	<b>\$2.29</b>
BONELESS	
<b>CHUCK ROAST</b> .....LB	<b>\$1.39</b>
BONELESS	
<b>CALIFORNIA ROAST</b> .....LB	<b>\$1.59</b>
VALUE PACK BONELESS BEEF	
<b>STEW MEAT</b> .....LB	<b>\$1.99</b>
BONELESS THICK CUT	
<b>CHUCK STEAK</b> .....LB	<b>\$1.69</b>
BONELESS	
<b>SIRLOIN TIP ROAST</b> .....LB	<b>\$1.99</b>
BONELESS	
<b>SIRLOIN TIP STEAKS</b> .....LB	<b>\$2.29</b>

BONELESS	
<b>BEEF CUBE STEAKS</b> .....LB	<b>\$2.49</b>
CANADIAN VALLEY	
<b>HOT LINKS</b> .....5 LB. BAG	<b>\$4.99</b>
EXTRA LEAN HICKORY SMOKED	
<b>BAR S SLICED HAM</b> .....1.5 LB	<b>\$4.99</b>
BAR S	
<b>FRANKS</b> .....2 LB	<b>\$2.79</b>
REGULAR OR THICK SLICED	
<b>BAR S MEAT BOLOGNA</b> .....1 LB	<b>\$1.19</b>
BAR S	
<b>BEEF BOLOGNA</b> .....1 LB	<b>\$1.69</b>
BAR S	
<b>CHOPPED HAM</b> .....10 OZ.	<b>\$1.69</b>
REGULAR OR POLISH BUN LENGTH SKINLESS	
<b>BAR S SMOKED SAUSAGE</b> .....12 OZ.	<b>\$1.19</b>
BAR S	
<b>MEXICAN SAUSAGE</b> .....3 LB	<b>\$4.29</b>
ASSORTED	
<b>OWENS SAUSAGE</b> .....1 LB	<b>\$1.99</b>
ASSORTED	
<b>OWENS SAUSAGE</b> .....2 LB	<b>\$3.98</b>

**WE'VE BEEFED UP THE SAVINGS FOR YOU!!**

## FROZEN & DAIRY

BAR S	
<b>AMERICAN CHEESE</b> .....LB	<b>\$2.59</b>
BLUE BONNET	
<b>SPREAD</b> .....48 OZ. TUB	<b>\$1.38</b>
ASSORTED PREMIUM	
<b>MINUTE MAID ORANGE JUICE</b> .....96 OZ. BTL.	<b>\$2.99</b>
ASSORTED	
9 OZ. ORIGINAL OR 11.5 OZ. PIZZA SNACK	
<b>CROISSANT, HOT OR LEAN POCKETS</b> .....YOUR CHOICE	<b>\$1.69</b>
ASSORTED	
<b>PILLSBURY GRANDS! BISCUITS</b> .....17.3 OZ. CAN	<b>99¢</b>
CINNAMON W/ICING, APPLE CINNAMON	
W/ICING, CARAMEL DANISH W/NUTS	
OR ORANGE DANISH	
<b>PILLSBURY ROLLS</b> .....12.4 TO 13.9 OZ	<b>3/\$5</b>
HOT-POCKETS ASSORTED	
<b>TOASTER BREAKS MELTS</b> .....12.7 TO 12.9 OZ	<b>\$1.69</b>
CRINKLE CUT OR GOLDEN FRENCH	
<b>ORE-IDA FRIES</b> .....32 OZ. BAG	<b>2/\$4</b>
GREEN GIANT NIBBLERS	
<b>CORN ON THE COB</b> .....6 EAR PKG	<b>99¢</b>
ASSORTED	
<b>JENO'S CRISP'N TASTY PIZZA</b> .....7.2 TO 8.1 OZ	<b>69¢</b>
THE BIG! AMERICAN OR	
<b>BORDEN CHEESE SINGLES</b> .....12 OZ. PKG	<b>\$1.88</b>
1 LB. ORIGINAL/BEEF OR 5 CT. LOW FAT ORIGINAL	
<b>STATE FAIR CORN DOGS</b> .....YOUR CHOICE	<b>\$1.88</b>
ORE-IDA	
<b>HOT, DYNA OR BAGEL BITES</b> .....7 TO 8 OZ. PKG	<b>2/\$3</b>
ASSORTED	
<b>RED BARON BAKE TO RISE PIZZA</b> .....27.65 TO 30.75 OZ. PKG	<b>\$3.88</b>
ASSORTED	
<b>PATIO MEXICAN DINNERS</b> .....12 TO 13 OZ. PKG	<b>99¢</b>
BATTER DIPPED	
<b>MRS. PAUL'S FISH FILLETS</b> .....20.7 OZ. PKG	<b>\$3.89</b>
ASSORTED	
<b>KRAFT CHUNK CHEESE</b> .....8 OZ	<b>2/\$3</b>
• ORANGE/PINEAPPLE • ORANGE • PINEAPPLE	
<b>TEXSUN JUICE</b> .....46 OZ. CAN	<b>\$1.18</b>
ASSORTED REGULAR OR FAT FREE	
<b>NABISCO NEWTONS</b> .....11 TO 16 OZ	<b>2/\$5</b>
NO TRACK CAT LITTER	
<b>SCOOP AWAY</b> .....7 LB. JUG	<b>2/\$3</b>
ASSORTED KEN-L-RATION	
<b>DOG FOOD</b> .....13.2 OZ	<b>3/\$1</b>
TREE TOP	
<b>APPLE JUICE OR CIDER</b> .....64 OZ. BTL	<b>\$1.99</b>
KEN-L-RATION GRAVY TRAIN-PP\$8.59	
<b>DOG FOOD</b> .....17.61 LB	<b>\$6.88</b>
ALL TYPES	
<b>PEPSI</b> .....6 PACK-24 OZ.	<b>\$1.88</b>
ALL TYPES	
<b>PEPSI</b> .....2 LITER BTL.	<b>79¢</b>

## PRODUCE

NEW CROP	
<b>GRANNY SMITH APPLES</b> .....	<b>5/\$1</b>
LARGE	
<b>GREEN BELL PEPPERS</b> .....	<b>5/\$1</b>
ROMAINE, GREEN OR RED	
<b>LEAF LETTUCE</b> .....HEADS	<b>2/\$1</b>
SELECT SUPER	
<b>CUCUMBERS</b> .....	<b>2/88¢</b>
GARDEN FRESH	
<b>GREEN ONIONS</b> .....BUNCHES	<b>4/\$1</b>
MEDIUM/LARGE	
<b>WHITE ONIONS</b> .....LBS	<b>3/\$1</b>
MINI PEELED	
<b>CARROTS</b> .....1 LB PKG.	<b>69¢</b>
VALENCIA	
<b>ORANGES</b> .....4 LB. BAG	<b>2/\$3</b>
SPARKLETT'S	
<b>DRINKING WATER</b> .....GAL. JUG	<b>2/\$1</b>
FRUIT COCKTAIL, PEACH HALVES/SLICES	
<b>LIBBY'S FRUIT</b> .....16 OZ. CAN	<b>83¢</b>
WHOLE PEELED OR DICED	
<b>LIBBY'S TOMATOES</b> .....16 OZ. CAN	<b>2/\$1</b>
16 OZ.-20 CT. CUPS OR 9"-15 CT. PLATES	
<b>SOLO PARTY PLATES OR CUPS</b> .....YOUR CHOICE	<b>88¢</b>
GLAD	
<b>CLING WRAP</b> .....100 FT. ROLL	<b>\$1.29</b>
PRINTS CORONET	
<b>PAPER TOWELS</b> .....REGULAR ROLL	<b>69¢</b>
OLD EL PASO CHOPPED	
<b>GREEN CHILIES</b> .....7 OZ. CAN	<b>\$1.25</b>
OLD EL PASO MILD OR HOT	
<b>TACO SAUCE</b> .....8 OZ. JAR	<b>99¢</b>
OLD EL PASO	
<b>TACO SHELLS</b> .....18 CT. PKG	<b>2/\$4</b>
OLD EL PASO	
<b>REFRIED BEANS</b> .....31 OZ. CAN	<b>\$1.59</b>
ASSORTED	
<b>SMACK RAMEN NOODLES</b> .....3 OZ. PKGS	<b>8/\$1</b>
BETTY CROCKER ASSORTED	
<b>COOKIE MIX</b> .....17.5 OZ. PKGS	<b>2/\$3</b>
ASSORTED VLASIC	
<b>SANDWICH STACKERS</b> .....16 OZ. JAR	<b>\$1.86</b>
TEXSUN PINK	
<b>GRAPEFRUIT JUICE</b> .....46 OZ. CAN	<b>58¢</b>
ASSORTED FLAVORS	
<b>ALL SPORTS</b> .....32 OZ. BTL.	<b>69¢</b>
ALL TYPES	
<b>DR. PEPPER</b> .....12 PACK-12 OZ.	<b>\$2.99</b>

## HEALTH & BEAUTY

COLGATE	
<b>TOTAL TOOTHPASTE</b> .....4.2 OZ. TUBE	<b>\$2.39</b>
ASSORTED	
<b>COLGATE TOOTHBRUSH</b> .....1 CT.	<b>2/\$5</b>
ASSORTED-ANTI PERSPIRANT	
<b>SPEED STICK GEL</b> .....3 OZ. TUBE	<b>2/\$5</b>
• NON-DROWSY CAPLETS • ORIGINAL CAPLETS/	
TABLETS • SEVERE CONGESTION CAPLETS	
<b>TYLENOL COLD</b> .....24 CT. PKG	<b>\$3.99</b>
WHITE/PASTEL ASSORTED	
<b>ANGEL SOFT BATH TISSUE</b> .....4 ROLL PKG	<b>99¢</b>
ORIGINAL OR LITE	
<b>MRS. BUTTERWORTH'S SYRUP</b> .....24 OZ. BTL	<b>\$2.69</b>
ORIGINAL	
<b>MRS. BUTTERWORTH'S PANCAKE MIX</b> .....32 OZ. BOX	<b>\$1.66</b>
SWEET'N LOW	
<b>SUGAR SUBSTITUTE</b> .....100 CT. PKG	<b>\$1.28</b>
ASSORTED FLAVORS	
<b>LITTLE HUGS DRINKS</b> .....8 OZ. BTL	<b>8/\$1</b>
ASSORTED CLASSICO	
<b>SPAGHETTI SAUCE</b> .....26 OZ. JAR	<b>\$1.88</b>
ORIGINAL OR REDUCED FAT	
<b>BISQUICK BAKING MIX</b> .....40 OZ. BOX	<b>\$1.99</b>
ASSORTED-EXCLUDES DECAF.	
<b>FOLGERS COFFEE</b> .....11.5 TO 13 OZ	<b>\$2.27</b>
WELCH'S	
<b>GRAPE JELLY</b> .....32 OZ. JAR	<b>\$1.29</b>
CREAMY OR EXTRA CRUNCHY	
<b>JIF PEANUT BUTTER</b> .....28 OZ. JAR	<b>\$2.88</b>
100 OZ. LIQUID OR 84 OZ. REGULAR/W-BLEACH POWDER	
<b>FAB ULTRA LAUNDRY DETERGENT</b> .....	<b>\$4.58</b>
ORIGINAL OR ANTI-BACTERIAL	
<b>JOY ULTRA LIQUID</b> .....28 OZ. BTL.	<b>\$1.66</b>
ASSORTED	
<b>FRITOS® CORN CHIPS</b> .....10 OZ. BAG	<b>2/\$3</b>
REGULAR, HOT JALAPENO OR BURRITO	
<b>FRITOS® BEAN DIP</b> .....9 OZ. CAN	<b>2/\$3</b>
COMET LONG GRAIN	
<b>RICE</b> .....14 OZ. BOX	<b>58¢</b>
SELECTED VARIETIES	
<b>BRACH'S CANDY</b> .....5.5 TO 13 OZ. PKG	<b>94¢</b>
SELECTED VARIETIES HERSHEY'S • 16 OZ. • 30 CT. • 20 CT.	
<b>BITE OR SNACK SIZE</b> .....YOUR CHOICE	<b>2/\$5</b>
NABISCO ASSORTED SNACKWELL'S	
<b>CEREAL BARS</b> .....7.8 OZ. PKG	<b>\$1.99</b>
APPLE/CINNAMON OR CHERRY SNACKWELL'S	
<b>STREUSEL SQUARES</b> .....11.8 OZ. PKG	<b>\$1.99</b>
ALL TYPES	
<b>DR. PEPPER</b> .....3 LITER BTL.	<b>\$1.79</b>

Coming Soon... The Great Gobbler Giveaway!!!  
See your local Lowe's Marketplace for details on how to win a **FREE THANKSGIVING MEAL!!!**

WESTERN MONEY UNION TRANSFER<sup>SM</sup>  
The fastest way to send money



**Lowe's MARKETPLACE**

515 W. American Blvd.  
Muleshoe 272-4406

401 W. American Blvd.  
Muleshoe 272-4585

WE RESERVE THE RIGHT TO LIMIT QUANTITIES IN TEXAS