

Badgers Lose Out In Regional Play

LUBBOCK - Merkel saw its chance to advance to the state basketball tournament wash down the drain Friday as the Badgers were defeated by Sanford-Fritch. The Badgers had won Bi-District honors the Tuesday before by defeating Knox City in a close contest. The Badgers suffered only two losses this season. Their season record was 31-2.

The Badgers lost the regional game to Sanford-Fritch 73-63. The Badgers are in Class A.

The Badgers found themselves in foul trouble through most of the contest and had to play cautious against a balanced Sanford-Fritch scoring attack.

Four players fouled out for Merkel, including three starters, Derre Riggan, Robert Morgan, Jackie Sims and Doug Hutchings all went out for the Badgers.

The two teams fought on even terms in the first half, although Merkel went into the dressing room at halftime behind by three, 36-33.

Merkel kept applying the pressure on the Eagles in the third period and midway in the quarter the score was tied 46-46.

Sanford-Fritch then displayed its balanced attack and pulled away from the Badgers. Four players finished in twin figures for the eagles.

Scott Richardson led the way for Sanford-Fritch with 26 points. Steve Aderholt and Terry Sumers scored 13 points apiece.

Morgan was high for Merkel with 27 points before fouling out in the final period.

NOTICE

The phone number of the principals office has been changed. The new number is 928-5511. The number was changed from 928-5833. Persons wishing to call the principals office are reminded to remember the new number.

Merkel Has 3 Boys, 1 Girl on All District

The Merkel Badgers had 3 boys and 1 girl on the 8-A All-District Basketball team for 1975. The teams are as follows.

8-A All District 1975 (Boys)

First Team - Robert Morgan, Merkel; Jackie Sims, Merkel; David Copeland, Merkel; Jerry Jennings, Baird; Kim Gray, rotan; Jeff Pierson, Jim Ned.

8-A All District Team (Girls)

First Team (forwards) - Sheri Price, jr., Baird; Netta Marshall, jr., Jim Ned; Netta Stephan, jr., Merkel; Vicki White, soph., Wylie; Ginger Thornton, soph., Wylie.

Guards - Cindy Freeman, sr., Wylie; Kathy Sherley, sr., Jim Ned; Eva Black, sr., Baird; Maria Gunn, sr., Baird; Becky Mahoney, soph., Wylie.

Merkel placed one guard on second team, Tonya Crenshaw, senior.

Also on the honorable mention team Merkel had Senior Nancy Fudge and Junior Gayla Toliver.

Clarence O. Burks, 66, of Trent, died at 10:30 a.m. Wednesday after a lengthy illness. Services were held at 4 p.m. Saturday, Feb. 27, at the Trent Church of Christ.

T. E. Bonner, minister of Abilene, and the Rev. Wayne Oglesby, pastor of Trent Baptist Church officiated.

Burial was in the Trent Garden of Memories, directed by Starbuck Funeral Home.

Born May 24, 1906, in Taylor County he married the former Fay Hamner March 13, 1929, in Merkel. He was an electrical construction worker.

Survivors include his wife; his mother, Mrs. Agnes Burks of Trent; a sister, Mrs. Marie Estep of Trent and several nieces and nephews.

Clarence O. Burks, 66, of Trent, died at 10:30 a.m. Wednesday after a lengthy illness. Services were held at 4 p.m. Saturday, Feb. 27, at the Trent Church of Christ.

T. E. Bonner, minister of Abilene, and the Rev. Wayne Oglesby, pastor of Trent Baptist Church officiated.

Burial was in the Trent Garden of Memories, directed by Starbuck Funeral Home.

Born May 24, 1906, in Taylor County he married the former Fay Hamner March 13, 1929, in Merkel. He was an electrical construction worker.

Survivors include his wife; his mother, Mrs. Agnes Burks of Trent; a sister, Mrs. Marie Estep of Trent and several nieces and nephews.

Tammy Hudman Named February 'Little Sister'

Tammy Hudman was named "Little Sister of the Month" for February by the Taylor County Young Homemakers. Tammy is the 16-year-old daughter of Mr. and Mrs. W. Paul Hudman, Rt. 1, Merkel. She is a junior at Merkel High School and has been in the band 3 years, member of the FHA 3 years, and is involved in Drama and Choir.

After graduating she plans to attend Hardin-Simmons University.



TAMMY HUDMAN
... honoree

HOUSTON CALF SCRAMBLE B-22



Scramble Winner
Pictured together at the February 22 night performance of the Houston Livestock Show and Rodeo calf scramble are Bobby Marek, Ethel Gage, James Marek and W. C. Griffen. Ethel was one of 388 boys taking part in this year's scramble. The young winner received a \$275 check from his sponsor Char-Mar Farms to be used toward the purchase of a registered calf of his own choosing.

FU Calls For Food Policy Unity

Texas Farmers Union President Jay Naman of Waco, a member of the national executive board of the Farmers Union, has just returned from the Board's meeting in Denver where a statement was issued saying that it is now imperative that farmers and consumers unite to stabilize farm prices at levels to provide farmers a fair return over costs of production, and to assure consumers of an abundant supply of food at reasonable prices.

Tony Dechant, the national president of the Farmers Union, said the executive board's statement concluded that "boom and bust agriculture threatens our abundant and low-cost food supply, as well as the survival of family agriculture."

"Unless something is done - soon - consumers will be competing for short supplies of milk and beef in supermarkets," the statement said.

"The current 'bust' in the beef market will inevitably lead to a shortage of beef," the statement said. "Farmers have lost \$25 billion in the past year in beef. The situation is directly related to 'boom and bust' agriculture that created low grain prices and led to over-expansion of cow herds."

"The dairy situation is slightly different, but the results are similar. Despite skyrocketing costs, the government refuses to underpin milk prices at levels authorized by law."

The Farmers Union statement cautioned against the arbitrary division of farmers and consumers into competing groups. Dechant said, "Farmers are consumers, too," the statement said. "They buy food and clothing and housing like everybody else. And they are very big consumers of such industrial products as machinery, fuels, and fertilizers. Farmers understand the language of consumers, because they speak it."

"High costs of machinery, fuels and fertilizer now require the farmer to invest up to \$300 per acre in their 1975 corn crop, and as much as \$200 per acre in wheat. They must get high enough returns to pay for these when they sell their commodities. If they don't buy these farm inputs, then lower production will result in scarcity and higher costs to all consumers. The farmer's problem today is the consumer's problem tomorrow."

"The U.S. Department of Agriculture recommendation that farmers produce from fence to fence is reckless and foolish in the absence of price floors to assure fair returns over the costs of production," the statement said. "Leaders of labor and consumer groups have expressed their concern over the current situation - and the problems that will be created for urban consumers. They are looking to farmers leadership to give guidance to the farm portion of a commonsense national food policy. The Farmers Union calls on all farm, labor, and consumer groups to join in the project."

High costs of machinery, fuels and fertilizer now require the farmer to invest up to \$300 per acre in their 1975 corn crop, and as much as \$200 per acre in wheat. They must get high enough returns to pay for these when they sell their commodities. If they don't buy these farm inputs, then lower production will result in scarcity and higher costs to all consumers. The farmer's problem today is the consumer's problem tomorrow.

The U.S. Department of Agriculture recommendation that farmers produce from fence to fence is reckless and foolish in the absence of price floors to assure fair returns over the costs of production, the statement said. Leaders of labor and consumer groups have expressed their concern over the current situation - and the problems that will be created for urban consumers. They are looking to farmers leadership to give guidance to the farm portion of a commonsense national food policy. The Farmers Union calls on all farm, labor, and consumer groups to join in the project.

High costs of machinery, fuels and fertilizer now require the farmer to invest up to \$300 per acre in their 1975 corn crop, and as much as \$200 per acre in wheat. They must get high enough returns to pay for these when they sell their commodities. If they don't buy these farm inputs, then lower production will result in scarcity and higher costs to all consumers. The farmer's problem today is the consumer's problem tomorrow.

The U.S. Department of Agriculture recommendation that farmers produce from fence to fence is reckless and foolish in the absence of price floors to assure fair returns over the costs of production, the statement said. Leaders of labor and consumer groups have expressed their concern over the current situation - and the problems that will be created for urban consumers. They are looking to farmers leadership to give guidance to the farm portion of a commonsense national food policy. The Farmers Union calls on all farm, labor, and consumer groups to join in the project.

High costs of machinery, fuels and fertilizer now require the farmer to invest up to \$300 per acre in their 1975 corn crop, and as much as \$200 per acre in wheat. They must get high enough returns to pay for these when they sell their commodities. If they don't buy these farm inputs, then lower production will result in scarcity and higher costs to all consumers. The farmer's problem today is the consumer's problem tomorrow.

The U.S. Department of Agriculture recommendation that farmers produce from fence to fence is reckless and foolish in the absence of price floors to assure fair returns over the costs of production, the statement said. Leaders of labor and consumer groups have expressed their concern over the current situation - and the problems that will be created for urban consumers. They are looking to farmers leadership to give guidance to the farm portion of a commonsense national food policy. The Farmers Union calls on all farm, labor, and consumer groups to join in the project.

High costs of machinery, fuels and fertilizer now require the farmer to invest up to \$300 per acre in their 1975 corn crop, and as much as \$200 per acre in wheat. They must get high enough returns to pay for these when they sell their commodities. If they don't buy these farm inputs, then lower production will result in scarcity and higher costs to all consumers. The farmer's problem today is the consumer's problem tomorrow.

The U.S. Department of Agriculture recommendation that farmers produce from fence to fence is reckless and foolish in the absence of price floors to assure fair returns over the costs of production, the statement said. Leaders of labor and consumer groups have expressed their concern over the current situation - and the problems that will be created for urban consumers. They are looking to farmers leadership to give guidance to the farm portion of a commonsense national food policy. The Farmers Union calls on all farm, labor, and consumer groups to join in the project.

High costs of machinery, fuels and fertilizer now require the farmer to invest up to \$300 per acre in their 1975 corn crop, and as much as \$200 per acre in wheat. They must get high enough returns to pay for these when they sell their commodities. If they don't buy these farm inputs, then lower production will result in scarcity and higher costs to all consumers. The farmer's problem today is the consumer's problem tomorrow.

The U.S. Department of Agriculture recommendation that farmers produce from fence to fence is reckless and foolish in the absence of price floors to assure fair returns over the costs of production, the statement said. Leaders of labor and consumer groups have expressed their concern over the current situation - and the problems that will be created for urban consumers. They are looking to farmers leadership to give guidance to the farm portion of a commonsense national food policy. The Farmers Union calls on all farm, labor, and consumer groups to join in the project.

High costs of machinery, fuels and fertilizer now require the farmer to invest up to \$300 per acre in their 1975 corn crop, and as much as \$200 per acre in wheat. They must get high enough returns to pay for these when they sell their commodities. If they don't buy these farm inputs, then lower production will result in scarcity and higher costs to all consumers. The farmer's problem today is the consumer's problem tomorrow.

The U.S. Department of Agriculture recommendation that farmers produce from fence to fence is reckless and foolish in the absence of price floors to assure fair returns over the costs of production, the statement said. Leaders of labor and consumer groups have expressed their concern over the current situation - and the problems that will be created for urban consumers. They are looking to farmers leadership to give guidance to the farm portion of a commonsense national food policy. The Farmers Union calls on all farm, labor, and consumer groups to join in the project.

Trent Youth Was Calf Scramble Winner

Ethel Gage of Trent, Texas, was one of 16 lucky boys to be a winner in the calf scramble at the February 22 night performance of the Houston Livestock Show and Rodeo.

Ethel received a \$275 certificate from Char-Mar Farms to be used toward the purchase of a registered calf of his own choosing. Under the supervision of Rocklan King he will feed, raise, and care for the calf until next year's show, when he will return it for judging in the calf scramble division and the junior breeding division.

To encourage and further educate 4-H and FFA youngsters in the raising, feeding, and breeding of high quality Texas cattle, the calf scramble was started in 1942. Since its beginning, the calf scramble has paid young winners well over \$1 million to buy more than 7,000 calves to feed and develop.

Tri-City To Meet Monday

There will be a meeting Monday night, March 10 of the Tri-City Baseball Project. The meeting will be held at the Asteroid Restaurant. All managers are requested to attend the 8 p.m. meeting, according to J. C. Carson, group spokesman.

Church Honors Michael Kelly

Sherwood and Myrtle Foster Home for Children at Stephenville, Texas, has received a gift in memory of Michael Kelly from the Merkel Church of Christ.

Richard M. Blythe, Director of Foster Home says that such memorial gifts as the one made by these friends are a major source of the child care agency's support and represent an investment in life as well as a memorial tribute. Foster Home is a multi-service child-care agency located in Stephenville.

Merkelite's Kin Services Held

Frank B. Wilson, 83, of Big Spring, died at 9 a.m. Friday after suffering an apparent heart attack. Services were held at 10:30 a.m. Saturday at Nalley-Pickle Rosewood Chapel.

The Rev. J. E. Sharp, pastor of the First United Methodist Church, and the Rev. C. A. Holcomb, associate pastor of the First United Methodist Church.

Born Dec. 31, 1891, in Chilton, he was a retired engineer from the Texas and Pacific Railroad. He married Annie Buckner, Jan. 15, 1920, in Colorado City. He had been a resident of Big Spring since 1909.

Survivors include his wife; a daughter, Mrs. Mamie Steck of Merkel; three grandsons, Michael Steck of Merkel, Donald Lovelady of Arlington, and Russell Steck of Arizona; two granddaughters, Cynthia Steck of Merkel and Honey Anne Lee of Fort Worth; and four great-grandchildren.

Terry Watson Completes Course

DENVER - Airman Terry L. Watson, son of Mr. and Mrs. Len Boden of Rt. 3, Merkel, has graduated at Lowry AFB, Colo., from the U.S. Air Force supply specialist course conducted by the Air Training Command.

The airman, trained in inventory supplies by use of electronic data processing machines, is being assigned to Dyess AFB for duty with a unit of the Strategic Air Command.

Abilene Savings Applies For Merkel Branch

Abilene Savings and Loan Association of Abilene has filed and amended application with the Savings and Loan Commissioner for permission to open a branch office in Merkel.

The application was made February 27, 1975. Abilene Savings Association now operates a mobile unit that comes to Merkel on Thursdays.

Hearings on the application have been scheduled for the 15th day of April at Austin.

7 MHS Students Named Outstanding Teenagers

The high school students listed below have been selected as Outstanding Teenagers of America for 1975. Selection for the Outstanding Teenagers Awards Program automatically qualifies these students for further state, regional and national honors.

The Outstanding Teenagers, who were nominated by their school counselor, are chosen for excellence in academic achievement and community service. These students will now vie for the Outstanding Teenager of the Year Trophies to be presented in May 1975. Similar trophies will be presented to the state winners. The state winners are selected by the Outstanding Teenagers Awards Selection Committee in cooperation with the Board of Advisors.

The 51 state winners will be eligible for awards totaling \$7,000.00. One boy and one girl will be chosen for national scholarships of \$1,000.00 to the college or university of their choice. Also the ten regional winners will be selected from the remaining state winners to receive \$500.00 regional scholarships.

Under the guidance of the Board of Advisors, the Outstanding Teenagers of America program was created to encourage young people to take full advantage of the opportunities in our country.

The awards are presented each Spring and the biographies of all those honored are recorded in the annual volume, Outstanding Teenagers of America, which is published by Fuller and Dees.

The Outstanding Teenagers are: Jerrie Lynne Stehman, Beverly Annette Mawson, Tonya R. Crenshaw, Tammy Anne Booth, Lisa Jo Gregory, Beverly Gilmore, Wanda Kay Braune.

REMEMBER
CC BANQUET
MARCH 13TH

The Merkel Chamber of Commerce will hold its annual banquet Tuesday evening, March 13th at the Merkel School Cafeteria. Joe D. Jackson will be speaker for the banquet. Jackson is a training instructor for American Airlines in Dallas.

Don Hensley, incoming Chamber President, has urged all citizens to purchase their tickets early so the arrangements committee will be able to complete arrangements.

Tickets are \$3.50 per person and may be purchased from chamber directors or at the Chamber office.

Tri-City To Meet Monday

There will be a meeting Monday night, March 10 of the Tri-City Baseball Project. The meeting will be held at the Asteroid Restaurant. All managers are requested to attend the 8 p.m. meeting, according to J. C. Carson, group spokesman.

Lewis Millett Attended
JP Seminar in Arlington

Two justices of the peace from Region VIII were among the more than 75 judges who participated in a 20-hour basic Texas Justice of the Peace Training Center seminar conducted Feb. 18-21 in Arlington. Judges from Region VIII participating included Judge Lewis L. Millett, Precinct 2, Place 2, of Merkel and Judge Silas E. Clark, Precinct 1, Place 1 of Abilene.

The training center is headquartered on the Southwest Texas State University campus, where part of the seminar sessions are held. The training program is funded through the Governor's Office-Criminal Justice Division. There is no charge to the participating counties.



LEWIS MILLETT, SILAS CLARK
... conferees

Badger Tracks

By WANDA BRAUNE

Basketball season is now over. Friday morning it seemed as if the whole team of Merkel had relocated to the Lubbock Coliseum to watch the Badgers in the Regional tournament. The breaks came more for Sanford-Fritch than for Merkel. Fouls were a big problem that helped decide the outcome of the game. We are sorry that they won't be going to Austin this week, but this group of Badgers has a record that is something to be proud of. The team was made up solely of seniors and four

Jackie Sims, David Copeland, Buddy Morgan, Donald Dye, Derrell Riggan, Randall Howes, Doug Hutchings, Billy Watts and Andy Hart the game at Lubbock was the last of their high school basketball careers. Remember - Badgers are the Very Best! Volleyball and track season are now beginning, so don't be surprised to see those hooded runners around town.

A Student Council committee is drawing up a list of suggestions for the upcoming Tacky Day. If there are any wild and different ideas let Mrs. Baker, Wanda Braune, or Jerrie Stephan know about them.

The Senior English classes have begun work on Mrs. Dudley's Annual Research Paper. Best of luck to the students and Mrs. Dudley please have a little mercy for these busy seniors.

That's all for now -

Catholic Church To Hold Tamale Sale

A tamale sale is being sponsored by the Rosary Society of Our Mother of Mercy Catholic Church. Since the Mexican Dinner last month there have been numerous requests for tamales and the ladies decided at their monthly meeting to make tamales as a money raising project, according to a spokesman. At present the church members are raising money for new church pews.

The tamales will be sold by advance orders only. They will be \$2.00 a dozen and orders must be placed by noon Friday, March 7th. Tamales will be ready for pickup at the church hall from 11:00-2:00 on Saturday, March 8th.

Orders may be placed by calling Mrs. John Brady, 928-5705, Mrs. George Starbuck, 928-4707, or Mrs. Mary Acuna, 298-0675.

STATE CAPITAL Highlights AND Sidelights

by Lyndell Williams
TEXAS PRESS ASSOCIATION

AUSTIN—A Texas presidential preference primary bill finally limped through the House of Representatives after two days of bitter debate.

Opponents assailed it as a winner-take-all measure, disregarding national party regulations aimed at assuring proportional representation among state delegates of presidential candidates.

Proponents argued it will give average voters a more direct voice than they now have in the presidential nominating process.

Impetus for the bill (HB 679) by Rep. Tom Schieffer

of Fort Worth came from supporters of U.S. Sen. Lloyd Bentsen of Texas for president and citizens weary of the political convention process.

Fierce opposition came from Democratic liberals who want to retain the "reformed" convention system, from George Wallace supporters and a few who have little enthusiasm for Bentsen's candidacy. Most Republicans also voted against the bill—quietly.

As sent to the Senate, the measure calls for a vote in May on slates of delegates committed to presidential candidates who file. Elections would be held by senatorial or congressional districts (depending on decision of a state party's executive committee).

Seventy-five percent of Texas' allotted delegates to the national party conventions would be elected directly at the district level, 25 per cent at the state conventions.

Proponents predict Senate passage of a similar bill, but some senators are reluctant. Gov. Dolph Briscoe has given his support, along with Bentsen.

SCHOOL PLANS IN

Governor Briscoe's school finance revision plan hit legislative hoppers this week, and committees of both houses prepared to begin hearings on the high priority topic soon.

Briscoe's bill calls for a "weighed pupil" approach to distributing state aid and would cost \$589.9 million during the next biennium (\$919.9 million overall).

Cost compares with \$2.7 billion for the Texas State Teachers Association school finance bill and about \$1 billion for one proposed by Rep. Dan Kubiak of Rockdale, former House Education chairman.

Briscoe proposed to increase teacher salaries from \$6,600 a year to \$7,430 during the next year and \$7,840 the next. TSTA is aiming for a \$10,000 a year starting teacher salary and Kubiak recommended \$8,400.

The Governor saw his bill as "a proposal to guarantee quality education to every child in Texas, regardless of the income of his parents or the wealth of his community."

BIG, BIG TRUCKS OK'D

The State Senate passed 29-1 legislation to increase the gross weight limit for trucks on main Texas highways from 72,000 to 80,000 pounds.

The lone dissenter, Sen. A. R. Schwartz of Galveston, claimed the new weight would cause highway damage and an additional safety hazard.

Sen. Kent Hance of Lubbock, the sponsor, said the bill merely conforms with new federal load limits for interstate highways and claimed the formula designed will cause little measurable road damage.

The Senate also passed a bill to permit suspensions of "incorrigible" pupils for periods up to a year after notice and hearing and on the showing that they are a threat to safety and disruption of the academic process.

Ford Urges Cooperation for Ag Census

President Ford has issued a Proclamation asking the Nation's farmers and ranchers to give full cooperation with the 1974 Census of agriculture.

"The sole purpose of the Census is to secure general statistical information regarding agriculture and related resources of the country," the Proclamation says, and "Prompt, complete, and accurate response to all official inquiries made by Census officials are of great importance to our country."

Approximately four million report forms have been mailed to farms and ranches in the 50 States, according to Vincent P. Barabba, Director of the Bureau of the Census which conducts the census. The Bureau is part of the U.S. Department of Commerce's Social and Economic Statistics Administration.

Farmers and ranchers are being asked to report on their agricultural operations during 1974. This 1974 count, the Nation's 20th Farm Census in a series that started in 1940, will update data most recently obtained in 1970 for 1969 operations. Primary emphasis will be on obtaining information about farms and ranches with sales of \$2,500 or more annually. Such operations accounted for 98 per cent of the total value of all agricultural products sold in 1969.

Completed forms are to be mailed back as soon as possible. Census by mail allows operators to fill out their reports at their convenience and use their farm business records. Estimates are acceptable and should be reported in the absence of records.

Response to the census is required by law (Title 13, United States Code). By the same law, information furnished on report forms is kept confidential. It may be seen only by sworn Census employees and may be used only for statistical purposes. Even other government agencies cannot obtain or use the report made by any operator. The law also provides that copies retained by the operator are immune from legal process.

Girl Scout News.

By LOYCE BAKER

Troop 313 of the Merkel Junior Scouts met Monday, March 3, at the Scout Hut for their regular weekly meeting. The members made god's eyes symbols out of colorful yarn and dowel sticks.

Sharon Austermann served refreshments to Janice Jacobs, Stacy Seymour, Rene Aiken, Judy Glascock, Nancy Click, Loyce Baker and leader Melba Glascock.

A \$64.1 million quarterly rebate of city sales taxes was announced by Comptroller Robert Bullock—a month earlier than usual.

Attorney General Hill filed new motions to speed release of \$174 million in pollution control funds for Texas which had been impounded by the federal government.

Pam King Selected To Who's Who

Miss Pamela Jan King, daughter of Mr. and Mrs. Dean King of Trent, has been selected to have her biography published in the Ninth Annual Edition of Who's Who Among American High School Students, 1974-75. This nationally recognized honor is awarded to juniors and seniors who have demonstrated leadership in either academics, athletics, extra-curricular activities or community service.

While the number of students selected annually varies from school to school, on a national basis, less than 4% of the junior and senior class students are featured in Who's Who each year. Who's Who is the largest and leading published account of student achievement. It is distributed to colleges and universities, large corporations, major libraries and to the many individuals who are very much interested in tomorrow's leaders.

Pamela is a 16-year-old junior at Trent High School. She is presently serving her class as President and was named "Most Outstanding Student" this year. She has been a member of the National Honor Society for the past two years, is active in sports, and was named to The Society of Distinguished American High School Students.

GOODMAN HD News

By MRS. GARLAND

The Goodman Home Demonstration Club met Friday February 29, in the home of Mrs. Karl Bonneaux, President Mrs. Carl Carey presided over the business session.

"Better Construction Through Proper Care of Equipment" was the program given by Mrs. Garland Price and Mrs. Frank Carter. Proper care and maintenance of their sewing equipment will help the homemaker construct better quality garments. Points on caring for your machine and some new sewing methods shown.

Members and guests attending were Meses, Karl Bonneaux, Dan Butler, Garland Price, Carl Carey, Frank Carter, David Carter, Clayton Dillard, and Miss Shayla Carter.

All members are urged to attend the next meeting. It is to be held March 14th at Mrs. David Carter's. Club officers will be elected. Better come or you may be elected for the job!

CRAWFORD'S PRESENTS THE ALL NEW SPRING AND SUMMER SELECTION OF CHILDREN—GIRLS AND JR. SPORTS GROUP

EASTER FROCKS - SIZE 1 TO 6x AND 7 THROUGH 12
BLOUSES - HALTERS - PANTS
SHORTS MIX OR MATCH

Crawford's

FINE CLOTHING FOR THE FAMILY
Ph. 928-5612 MERKEL, TEXAS 135 Edwards St.

LATE MODELS
USED REF. & FREEZER
MATCHING PAIR
16 CUBIC FT. NO FROST
LIGHT BROWN COLOR
\$395.00
TERMS
Palmer Motor Co.
PH. 928-5113

NOW OPEN
ABC
Playland
1406 S. 11th
MERKEL Ph. 928-5360
ALL AGES OF CHILDREN
Will Pick Up and Deliver To and From School
DROP IN AND VISIT OWNERS
CHRISTIE BARNETT & SARAH LUCAS

SENIOR CITIZENS SCHEDULE EVENTS
1st Monday of Month singing
2nd Tuesday Noon Covered Dish Luncheon.
Game Nights Every Thurs. & 4th Monday
4th Thurs. GAME
Night Reserved for Talented Amateur.

FARMERS UNION INSURANCES
ONE STOP SERVICE FOR ALL YOUR INSURANCE NEEDS
See MACK SEYMORE
102 Edwards
928-5379
Merkel, Texas

For Sale
Badger Inn
Small Business Building and Fixtures
GOOD LOCATION
ACROSS FROM SCHOOL
ON THE HIGHWAY COME BY
MOZETTA DYE MERKEL, TEXAS

RINEY CAFE
AT TRENT, TEXAS ANNOUNCES NEW HOURS
OPEN 10 A.M. til 9 P.M.
"COME IN FOR OUR GOOD 'OLE' HOME COOKING"
RUTH RINEY, owner

(1) New 74 Grand Prix
We have (1) Grand Prix Air and power. STILL NEW
73 CHEVY Monte Carlo, Landau, air and power, factory tape player, radial tires, white with burgandy vinyl top, 28,000 miles. Real clean. ONLY \$3795
74 CHEVY LUV, Mikado Pickup, 4 cylinder, 4 speed, factory air, Winnebago camper shell, 1350 miles. Still New. ONLY \$3695
74 PONTIAC BONNEVILLE 4 dr. sedan, demo air and power, tilt wheel, electric windows, burgandy with burgandy vinyl top, 7,000 miles still like new. ONLY \$4495
1973 PONTIAC Safari, 9 passenger wagon, air and power, Bronze and white color. Nice. ONLY \$2995
1973 CHEVROLET Caprice Classic, 2 door hardtop, air and power, factory tape player, radial tires. Black on black. Real Nice. ONLY \$3295
73 EL CAMINO Estate air, power, cruise control, radial tires, vinyl top, wire wheel covers. Real Nice. ONLY \$3395
1974 OLDS Delta 88 Royal, 4 door, hardtop, air and power, bronze color w/ beige color vinyl top. Real Nice. ONLY \$4294
1972 PONTIAC SAFARI 9 passenger wagon, air & power. This one going for only \$1595
72 PONTIAC Catalina, 4 door sedan, air, power, white with black vinyl top. NICE \$1995
71 PONTIAC Catalina, 4-door sedan, air, power, white color with blue vinyl top \$1695
71 PONTIAC Catalina, 4-door sedan, air, power, white color. GOING FOR ONLY \$1395

We have several other nice used cars, SO COME SEE US.
"We Sell 'Em-We Lease 'Em"
Palmer Pontiac & GMC
MERKEL
MERKEL, TEXAS 928-5113 ABILENE 673-1182

Unification To Dominate TSTA Meeting

HOUSTON - The proposed unification of the Texas State Teachers Association with the National Education Association is again expected to be the top item of business at TSTA's 96th annual convention March 20-22 at the Astrodome Convention Center.

Last year at the state convention in Fort Worth, the association's 1,500-member house of delegates (governing body) approved TSTA-NEA unification, but members rejected it in a mail referendum which followed.

The delegates, however, had kept the door open for another try at unification in case the referendum failed by passing a new business item calling for TSTA officers to continue working to keep TST as the Texas state affiliate of NEA.

The TSTA executive committee and staff are now engaged in an extensive campaign to inform the more than 150,000 TSTA members of the advantages of unification and the probable results if TSTA again rejects the proposal and loses affiliation with NEA next September 1.

The 1975 house of delegates again will consider the issue when it meets March 21 in the first of four scheduled business sessions. If the delegates approve, another statewide referendum will be held.

Carl Rowan, syndicated newspaper columnist and author, will speak at the first general session Thursday night, March 20.

Lesley Stahl, Washington-based news reporter for the Columbia Broadcasting System, will speak at the second session.

Lesley Stahl, Washington-based news reporter for the Columbia Broadcasting System, will speak at the second general session Friday morning, along with Jim Harris, NEA president.

Theme of the convention, expected to attract some 10,000 members and guests, is "TSTA...Changing to Meet the Future."

The association president, Jewel Howard of Dallas, will preside at the convention, an executive committee meeting March 20, and the four sessions of the house of delegates.

Registration will begin at 1:30 p.m. March 20. The convention will be adjourned at the end of the final business session March 22.

To Help Small Businesses SBA Announces Plans

Philip J. O'Jibway, district Director of the Lubbock District Office of the Small Business Administration, announced that the Agency has placed new and strong emphasis on its role as Chief Federal Advocate for small business. "As a result of Public Law 93-386, signed by President Ford on August 23, SBA has created a new nationwide office for Advocacy, which will plead the case of small business before Federal, state and local governments and private sector institutions," O'Jibway said.

"Our new Advocacy approach," the District Director continued, "brings together and expands all advocacy-type activities which were carried out by various SBA offices in the areas of financial, investment, procurement, management, minority enterprise, and disaster relief assistance. The Agency's added concentration on Advocacy is another milestone in SBA's 22 years of

service in counseling, protecting, and championing America's small business community."

"We want small business trade and professional organizations to come to us with the problems of their members, any type of problem," O'Jibway explained. "Moreover, we will be out in the business community searching for these problems. During any economic crisis, the small business community is the first to suffer and the last to recover. Currently, more than 8 million small businessmen and women throughout the nation are struggling against great odds to stay in business and out of the red; and they need all the help they can get."

"We want to help them, we can help them, and we will help them," O'Jibway said. "Small businessmen or small business associations who need assistance should contact their nearest SBA Office at 1205 Texas Avenue, Room 712, Lubbock, Texas, Phone 206-762-7462.

SERVICE Our Specialty
J. L. FISHER FINA SERVICE
TWO LOCATIONS INTERSTATE 20 & WEST HIGHWAY 80
MERKEL AUTO PARTS
921 N. 2nd
WE WELCOME YOUR BUSINESS

We Would Like For Everyone To Know About The Benefits of a Farmers & Merchants Savings Plan. It Will Help You and Your Community Grow

KEEP YOUR SAVINGS DOLLARS AT HOME. SUPPORT MERKEL! SUPPORT YOUR COMMUNITY.

"WE WILL PAY YOU THE HIGHEST RATE OF INTEREST WHICH ANY BANK IS AUTHORIZED TO PAY UNDER PRESENT REGULATIONS."

CERTIFICATES OF DEPOSIT

5%	5 1/2%	6%	6 1/2%	7 1/4%
30 DAYS	90 DAYS	12 MONTHS	30 MONTHS	4 YEARS

A substantial interest penalty is required for early withdrawal of certificate accounts.
"DEPOSITS FULLY INSURED TO \$40,000 BY FEDERAL DEPOSIT INSURANCE CORPORATION"
(Husband and wife may be insured for total of \$120,000.)

Farmers And Merchants National Bank
AMERICA'S BANKERS
MERKEL, TEXAS

**NO FUSS-NO FEATHERS
JUST OUR OWN BRANDS-PRICED LOWER**



INSTANT FOLGERS COFFEE
NO COUPON REQUIRED
6 OZ. JAR **\$1.29**



FOLGERS COFFEE
NO COUPON REQUIRED
1 LB. CAN **95¢**
Limit one

THU-FRI-SAT.- MAR.-6-7-8



**CHILI-HOT BAR-B-Q
POTATO SALAD BEANS
PIMENTO CHEESE**

TOWELS

VIVA
BIG ROLL

49¢

BACON	ARMOUR PAN SIZE	99¢
SAUSAGE	GOOCH GERMAN PKG.	89¢
FRANKS	GOOCH PKG.	63¢
LOIN STEAK	HEAVY BEEF LB.	1.19
ROUND STEAK	HEAVY BEEF LB.	1.19
FRYERS	GRADE A WHOLE LB.	49¢

CRACKERS

1 LB. BOX **59¢**

MILK

EAGLE BRAND 14 OZ. CAN **59¢**

NAPKINS

ZEE ASSORTED 160 COUNT PKG. **49¢**

Spray Starch

PRUF 22 OZ. CAN **49¢**

IVORY SOAP

PERSONAL SIZE 4 FOR **39¢**

Crystal White

LIQUID FOR DISHES 48 OZ. BOTTLE **69¢**

FROZEN FOODS

COSTAL PINK Lemonade 6 OZ. CAN **25¢**

KRINKLE CUT Potatoes 5 LB. BAG **\$1.19**

KEITH'S PRECOOKED FISH STIX 8 OZ. PKG **39¢**



DELICIOUS APPLES LB. **25¢**

CALIFORNIA Avocados EACH **15¢**

TEXAS ORANGES 5 LB. BAG **69¢**

TEXAS GREEN CABBAGE LB. **10¢**

RUSSET SPUDS 10 LB. BAG **69¢**

INSTANT NESTEA 3 OZ. JAR \$1.39	KEEBLER Vanilla Wafers 12 OZ. BOX 59¢
KRAFT'S Macaroni DINNER 7 OZ. BOX 29¢	DELMONTE CRUSHED Pineapple 15 OZ. CAN 39¢
PRINGLES Potato Chips TWIN PACK 89¢	BILTMORE Lunch Meat 12 OZ. CAN 49¢
LARSENS VEG-ALL 303 CAN 29¢	KEN'L'RATION DOG FOOD 6 FOR \$1.19

SHORTENING SWIFT 42 OZ. **\$1.39**
JEWEL CAN

GREEN BEANS DEL-MONTE CUT 303 CAN **59¢**
2 FOR

COCKTAIL HUNT'S 300 SIZE **39¢**

PEARS HUNT'S 300 SIZE **43¢**

CATSUP DEL-MONTE 32 OZ. BOTTLE **69¢**

TOMATO JUICE HUNT'S 14 OZ. CAN **39¢**
2 FOR

OYSTERS GULF BELL 8 OZ. CAN **59¢**

TAMALES GEBHART 303 CAN **59¢**

FLOUR GOLD MEDAL 5 LB BAG **89¢**

MILK MARIGOLD 2% HOMO GAL **\$1.33**
REG. HOMO GAL **\$1.43** PLUS DEP.

ICE CREAM GANDY'S 5 QT. PAIL **\$2.39**

OLEO KRAFT'S PARKAY LB. **63¢**

MIXED NUTS TOM SCOT 13 OZ CAN **69¢**

CAKE MIX DUNCAN HINES BOX **69¢**

TISSUE NICE & SOFT 4 ROLL PKG. **69¢**

USDA APPROVED TO REDEEM FOOD STAMPS



Double Premiums
On WEDNESDAY ON
Purchase of \$2.50
OR MORE IN MERCHANDISE
Save Valuable
Cash Register Tapes
For Premiums

Where Customers Save Their Friends

GET ACTION USE

CLASSIFIEDS

PHONE 928 - 5712

Miscellaneous

FOR MONUMENTS and CEMETERY CURBING
M.A. (Sarg) Noster
1004 Herring Dr.
Merke, Texas
Phone 8-5565

For Sale

Beautiful Brick Home on 2 Lots, 3 bedroom, 1 3/4 bath, double garage, water well with electric pump, fruit trees, 8'x10' Storage House. Shown by appointment only.

Buy Your Prepaid Funeral Plan Direct From The Funeral Home and Save

STARBUCK FUNERAL HOME

4-18 acre home sites for Texas Veterans Approximately \$44 month payment.

2 Bedroom House. Owner will Carry Note.

MERKEL VFW POST 5683 MONTHLY REG MEETING 8:30 P.M. SECOND THURSDAY POST & LADIES AUXILIARY Y'ALL COME NOW!

Linda Cravens
Marge Sheppard
Merke 928-5340

MASONIC MEETINGS

Stated meeting of Merkel Lodge No. 710 on 2nd Saturday and 6th Thursday of each month at 7:30 p.m. Visitors welcome. Members urged to attend.

PETE MORGAN, W.M.
ROY MASHBURN, Sec'y.

FOR SALE - Calves, 7 to 14 days old. Healthy and started on bottle. Free delivery on 10 or more. Area code 214-223-5171 after 7 p.m.

FOR QUALITY work at reasonable prices call Randy's Upholstery, 673-2238, Abilene, 15-tfc

FOR SALE - IH 14 Dsc One-way like new. Good for terraces. Phone 928-4876. 2-1tc

Help Wanted

ESTATE HOUSEHOLD SALE and other items. Some appliances, 406 Locust, Merke, beginning 9:30 a.m. Sat., March 8th through Sun., March 9th. 2-1tc

NEEDED - Parttime waitresses, cooks and dishwashers. Phone Margo 928-4923 or 928-4868. 17-tfc

FOR SALE - 1967 Wurlitzer Organ. Model 4017 with bench. \$500.00. Ph. 928-5306. 53-2tc

WANTED - Mechanic, Good labor rates, good working conditions, Palmer Pontiac GMC. Ph. 928-5113. 33-tfc

HOUSE FOR SALE - 2 bedrm. frame house to be moved. Call after 6 p.m., 928-5075. 2-1tp

HELP WANTED - Budger Inn. Ph. 928-5171 or 928-5085. 2-1tc

FOR SALE - 2 bedrm. Mobile home and lot. Fenced, storage, etc. 411 El Paso. Ph. 928-5374. 2-tfc

CONCRETE WORK. Sidewalks, patios and slab floors. Call Ray or Reuben Delacruz. Ph. 928-5068. 2-4tp

FOR SALE - Used couch and chair. See at 1002 Locust after 5 p.m. Ph. 928-5793. 2-1tc

IRONING WANTED - CALL 928-5909. 2-1tp

FOR SALE - 2 bedrm. Mobile home and lot. Fenced, storage, etc. 411 El Paso. Ph. 928-5374. 2-tfc

Lost & Found

FOR SALE - 2 bedrm. Mobile home and lot. Fenced, storage, etc. 411 El Paso. Ph. 928-5374. 2-tfc

LOST - Red-White face muley Hereford Cow. Branded 13 on Left Hip. Weighs 900 lbs. Lost on the Divide place. Call 846-4305. Noodle. Clarence Melton 2-1tp

FOR SALE - 2 bedrm. Mobile home and lot. Fenced, storage, etc. 411 El Paso. Ph. 928-5374. 2-tfc

Garage Sale

FOR SALE - 2 bedrm. Mobile home and lot. Fenced, storage, etc. 411 El Paso. Ph. 928-5374. 2-tfc

GARAGE SALE - Phillip's Estate Sale - 406 Locust, Sat. and Sun. 9 a.m. to 5 p.m. 2-1tp

FOR SALE - 2 bedrm. Mobile home and lot. Fenced, storage, etc. 411 El Paso. Ph. 928-5374. 2-tfc

For Rent

FOR SALE - 2 bedrm. Mobile home and lot. Fenced, storage, etc. 411 El Paso. Ph. 928-5374. 2-tfc

FOR RENT - Ford tractor equipment. Also gardens plowed. Call after 4:30 p.m. 928-5204. 53-tfc

FOR SALE - 2 bedrm. Mobile home and lot. Fenced, storage, etc. 411 El Paso. Ph. 928-5374. 2-tfc

The Merkel Mail

PUBLISHERS STATEMENT
Established in 1889

Published weekly at 916 N Second St., Merke, Texas
Entered at the Post Office at Merke, Texas, 79536 as second class mail.

Any erroneous reflection upon the character, standing or reputation of any person, firm or corporation, which may appear in the columns of the newspaper will be corrected, gladly, upon being brought to the attention of the publisher.

SUBSCRIPTION RATE: \$4.75 Per Year Taylor and adjoining counties. \$5.50 Per Year outside of Taylor and adjoining counties.

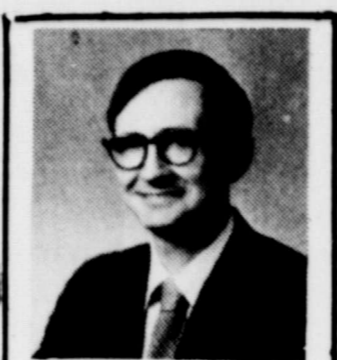
Member of the Texas Press Association and West Texas Press Association.

STEVE LANHAM and CECIL PLYLER Publishers
KAYE LANHAM, Editor

For Classified Rates:
\$1.25 minimum for the first four lines. Excess of 4 lines will be charged at the rate of 8 cents per word.
Cards of Thanks \$1.50 for the first 50 words. 6 cents per word for each additional word. TERMS: Cash in advance unless account is already established. NOTICE of typographical or other errors must be given before the second insertion of claims for refunds or extensions will not be recognized.

PP PRESTIGE HOMES & PROPERTIES

317 N. Willis Suite 20
Abilene 673-6444



INSURANCE LIFE & HEALTH GEORGE STARBUCK 928-4771

* 588 acres near Noodle; 454 native grass, 136 in Love & Cline. Good rolling & bottom land, 2 large tanks, Sweetwater Creek!

* Excellent buy - 3 bedroom older home 1 block from school.

* King-size rooms! 3 bedrooms, den, formal dining, 1 3/4 baths, fireplace, quality carpeting, best area in town!

TRENT - low taxes, friendly people! Charming 3 bedroom, 2 bath home, built-ins. Corner lot. Priced for quick sale!

Shannon Teal... 692-0787
Jewel Nixon... 692-5552
Pauline Bateman... 692-2222
REALTORS

MERKEL BRANCH OFFICE
Pat & Billy Neff
1515 Heath 928-5623
Equal Housing Opportunity

FOR YOUR BUILDING AND REMODELING NEEDS FRED RICHIE 928-5030

All Types Building & Remodeling Work
Albert Gregory 928-5474
Jerry Goode 928-4890

WE PAY 150% OVER FACE VALUE FOR ALL SILVER COINS. (\$2.50 FOR \$1.00 SILVER) (We pay 25c for silver dimes) PRATT'S COIN & STAMP SHOP 2155 S. 1st. Abilene, Tex.

Card of Thanks

OUR HEARTFELT thanks to all who extended comforting sympathy and help during the long illness of Bud. We would like to thank everyone for the beautiful service, floral offerings, prayers, and other kindnesses during our recent sorrow.

Faye Burks
Agnes Burks
Marie Estep 2-1tp

Card of Thanks

MAY WE TAKE this means of thanking each of you who helped to make our Golden Wedding Anniversary so wonderful. We appreciate each card, the flowers, the food, and the calls. It was a perfect day for us.

Newt & Thel Daniel 2-1tp

NEED A New Water Well Drilled? Also Install Meyers Subs & Jacuzzi Jets

ROBERT HIGGINS 928-5998

Catfish Fingerlings
Now Booking Orders
Douglas Fish Farm
Now Open
Sat.-Sun.
Sylvester Texas
PH-993-4644

Mr. and Mrs. Robert Hobbs proudly announce the birth of a daughter, Alisha Kay, born Feb. 16, 1975. She weighed 6 lbs.

Maternal grandparents are Mr. and Mrs. L.S. Tipton, Jr. Paternal grandparents are Mr. and Mrs. Bill Hobbs of Wylie.

Great-grandparents are Mr. and Mrs. Joe Douglas and Mr. and Mrs. Lee Tipton.

SEAT COVER CENTER
*Seat Covers
*Truck Cushions
*Door Panels
*Arm Rests
*Headliners
1056 BUTTERNUT
677-1349 ABILENE

LOOK WHO'S HERE!

NOW OPEN PETE'S PLASTER SHOP
Wholesale & Retail Finished & Greenware
9:00 A.M. To 6:00 P.M.
Monday- Thru - Sat.
502 Kent St. Merke, Tex. Pete & Zel Kirby

Plaster 30% OFF
Paints 20% OFF

Mr. and Mrs. Robert Hobbs proudly announce the birth of a daughter, Alisha Kay, born Feb. 16, 1975. She weighed 6 lbs.

Maternal grandparents are Mr. and Mrs. L.S. Tipton, Jr. Paternal grandparents are Mr. and Mrs. Bill Hobbs of Wylie.

Great-grandparents are Mr. and Mrs. Joe Douglas and Mr. and Mrs. Lee Tipton.

AUTHORIZED DEALER

Allis-Chalmers-Moline-Oliver
Farm Equipment and Forney
Welding Equipment
Shafer Plows - 'Continental Belton Products
677-4349
DOTY FARM EQUIPMENT CO.
366 Chestnut
Nights-Sunday-Holidays 672-2451 - 698-2572

COL. TEX HERRING
(Full Time Auctioneer)
Lawn, Texas Phone 915 583-2244
Catering by Handy-Ann of Abilene

PUBLIC NOTICE

NOTICE OF SALE BY VIRTUE OF AN ORDER OF SALE

THE STATE OF TEXAS
COUNTY OF TAYLOR

DATED February 28, 1975, and issued pursuant to a judgment decree of the District Court of Taylor County, Texas as by the Clerk of said Court on said date in a certain suit No. 34,4931A, and styled State of Texas and Taylor County vs. J. F. Clark, et al and to me directed and delivered as Sheriff of said County, I have on February 28, 1975 Seized, levied upon, and will, on the first Tuesday in April, 1975, the same being the 1st day of said month at the Courthouse door of said County, in the City of Abilene, between the hours of 10 o'clock A.M. and 4 o'clock P.M. on said day, proceed to sell for cash to the highest bidder all of the right, title, and interest of the defendants in such suit in and to the following described real estate levied upon as the property of said defendants, the same lying and being situated in the County of Taylor and State of Texas, to wit:

The following property located in Taylor County: 1 acre out of Abstract 51 of the Edward Dickerson Survey; Part of Section 25, Block 1, Abstract 285 of the S. P. Ry. Co. Survey. The following property located in the City of Abilene: Lot 1, Block 145, Original Townsite; Lot 7, Block 6, Bowyer Addition; Lot 17, Block 1, Stevenson Park Addition (Block 221, Original Townsite); North 12.5' of Lot 14, and all of Lot 15, Lacy Morrow Subdivision of Lot 2, Block 199; Lot 17, Block A, John M. Blackburn Subdivision of Lot 1, Block 201; Northwest 1/4 of Lot 3, Block 1, Over Place Subdivision. The following property located in the City of Bradshaw: Lots 1 and 2, Block 14, All of Block 17, All of Block 28, Lot 10, Block 36, Original Townsite. The following property located in the City of Ovalo: Lots 1, 2, 3, 7, 8 and 14, Block 55, Lot 33, Block 66, Original Townsite. The following property located in the City of Trent: Lots 7 and 8, Block 6, Lot 2 and the East 25' of Lots 16, 17 and 18, Block 23, Lot 7, and the South 1/2 of Lot 8, Block 49, Original Townsite; Lot 21, Block 4, Hale Addition; Part of Lots 1, 2, 3, 4 and 5, Block 1, All of Block 1, Lots

THE MERKEL MAIL Thursday, March 6, 1975

PUBLIC NOTICE

THE STATE OF TEXAS

To any Sheriff or any Constable within the State of Texas - GREETING:

You are hereby commanded to cause to be published once each week for four consecutive weeks, the first publica-

PUBLIC NOTICE

NOTICE TO ALL PERSONS HAVING CLAIMS AGAINST THE ESTATE OF JOSEPHINE BEATRICE EDINS, DECEASED

Notice is hereby given that original Letters Testamentary for the Estate of JOSEPHINE BEATRICE EDINS were issued on the 27th day of January, 1975, in Cause No. 11872, pending in the County Court of Taylor County, Texas, Sitting in Probate to:

TOM J. EDINS
The residence address of such Independent Executor is 1150 Jeanette, Abilene, Texas, 79602.

All persons having claims against this estate which is currently being administered are required to present them within the time and in the manner prescribed by law. DATED the 27th day of January, 1975.

TOM J. EDINS,
Independent Executor of the Estate of Josephine Beatrice Edins

By: **H. L. HAYS, JR.**
Attorney for the Estate 2-1tc

Girl Scouting 63-Years Old March 13th

Girl Scouts EVERYWHERE are celebrating! Sixty-three year ago, March 13, 1912, Girl Scouts of the USA were founded on many of the same ideals that shaped the birth of our Republic. Just as our country has grown, so has Girl Scouting; from 18 girls in Savannah in 1912 to more than 3.3 million girl and adult members in 1975.

To highlight this year's GIRL SCOUT WEEK, March 9-15, Girl Scouts across the country invite all citizens to "GROW WITH US" and join in our work and play and have fun doing it.

The West Texas Girl Scout Council is a participating member of the United Way.

JP Reminds Vets Of TOLL Free Number

Attention Veterans you may call the VA toll free by using the following number: 1-800-792-1110, 7:45 a.m. to 5:00 p.m. Monday - Friday

Attest: Irene Crawford
Clerk, Domestic Relations Court, Taylor County, Texas; By Sandra Van Cleave, Deputy 53-4

Attest: Irene Crawford
Clerk, Domestic Relations Court, Taylor County, Texas; By Sandra Van Cleave, Deputy 53-4

Mobilizing health facilities and manpower to provide more effective maternal and infant care is a major goal of the March of Dimes.

PUBLIC NOTICE

SUMMARY OF PROPOSED CONSTITUTIONAL AMENDMENTS SPECIAL ELECTION APRIL 22, 1975

NUMBER ONE ON THE BALLOT (S.J.R. No. 3)

Repealing Sections 48a, 48b, 51e, and 51f of Article III and Sections 62 and 63 of Article XVI of the Texas Constitution, Article XVI of the Texas Constitution is amended to:

Provide for the revision and consolidation of provisions relating to state and local retirement systems and programs and to provide that all general laws that have established retirement systems and optional retirement programs for public employees and officers in effect at the time of the adoption of this constitutional amendment will remain in effect, subject to the general powers of the Legislature.

Provide that the amount a participating officer or employee contributes to the employee retirement system or the teacher retirement system shall be established by the Legislature but may not be less than 8% of current compensation and providing further that the amount contributed by the state may not be less than 6 nor more than 10% of the aggregate compensation paid to participating persons, except that in an emergency, as determined by the Governor, the Legislature may contribute more than 10% of the aggregate compensation paid to persons participating in state retirement systems.

Provide that the Legislature shall provide for local retirement systems created by any city or county for its officers and employees and shall further provide for a state-wide system of benefits for officers and employees of counties or other political subdivisions of the State which may voluntarily participate, and

to further provide that a state-wide system of benefits shall be provided for officers and employees of cities which may voluntarily participate.

The wording of the proposed amendment as it will appear on the ballot is as follows:

"The constitutional amendment revising and consolidating provisions relating to state and local retirement systems and programs and providing for a maximum state contribution to state systems of 10 percent of the aggregate compensation paid to individuals."

NUMBER TWO ON THE BALLOT (H.J.R. No. 6)

Amending Article III, Section 24 of the Texas Constitution to:

Provide an increase in salary for members of the Legislature from \$400 per month to \$600 per month.

Provide an increase in the per diem rate for members of the Legislature from \$12 to \$30 for each day during each Regular and Special Session of the Legislature.

Provide an increase in the transportation allowance for members from \$10 per mile to the rate prescribed by law for employees of the State of Texas.

The wording of the proposed amendment as it will appear on the ballot is as follows:

"The constitutional amendment setting the salaries of members of the legislature at \$600 per month and setting a per diem of \$30 per day during legislative sessions and a mileage allowance at the same rate provided by law for state employees."

PUBLIC NOTICE

NOTICE OF SALE
BY VIRTUE OF AN ORDER
OF SALE

THE STATE OF TEXAS
COUNTY OF TAYLOR

DATED February 28, 1975 and issued pursuant to a judgment decree of the District Court of Taylor County, Texas by the Clerk of said Court on said date in a certain suit No. 34-492-A, and styled State of Texas and Taylor County vs. Louise N. Ogden, et al and to me directed and delivered as Sheriff of said County, I have on February 28, 1975, Seized, levied upon, and will, on the first Tuesday in April 1975, the same being the 1st day of said month at the Courthouse door of said County, in the City of Abilene, between the hours of 10 o'clock A.M. and 4 o'clock P.M. on said day, proceed to sell for cash to the highest bidder all of the right, title, and interest of the defendants in such suit in and to the following described real estate levied upon as the property of said defendants, the same lying and being situated in the County of Taylor and State of Texas, to wit: The following property located in the City of Abilene: Lot 13, Block B, Hughes Subdivision of Lot 4, Block 186; Lot 14, Block D, John M. Blackburn Subdivision of Lot 1, Block 201; Lot 15, Block 14, north 40' of Lot 16, and all of Lot 17, Block 16, Lots 14 and 15, Block 18, Sears Park Addition; Lots 9 and 10, Block E, Miller & Mouser Subdivision of Block 191 and 192 of the Thomas Addition. The following property located in the Buffalo Gap Estates Section 1 Addition of the City of Buffalo Gap: Lots 16, 17, 18,

21, 24, 25, 26, 29 and 30, Block 2; Lots 8, 9, 10, 11, and 12, Block 3; Lots 1, 2, 3, 4, 5, 6, 7, 8, 9, 10, 11, and 12, Block 5; Lots 3, 4, 5, 9, 10, 11, 12, 13, 14, 15, 16, 17, 18, 19, 20, 21, 22, 23 and 24, Block 6; Lots 1, 2, 3, 4, 5, 6, 7, 8, 10, 16, 17, 18, 19, 20, 21 and 24, Block 7; Lots 6, 7, 8, 11 and 12, Block 8; Lots 1, 2, 3, 4, 5, 6, 7, 9, 10, 11 and 12, Block 9.

Or upon the written request of said defendants or their attorney, a sufficient portion thereof to satisfy said judgment, interest, penalties and costs; subject, however, to the right of redemption, the defendants or any person having an interest therein, to redeem the said property, or their interest therein, at any time within two years from the recording of the deed in the manner provided by law, and subject to any other and further rights to which the defendants or anyone interested therein may be entitled, under the provisions of law. Said sale to be made by me to satisfy the judgment rendered in the above styled and numbered cause, together with interest, penalties, and costs of suit, and the proceeds of said sale to be applied to the satisfaction thereof, and the remainder, if any, to be applied as the law directs.

DATED Abilene, Texas, this the 28th day of February 1975, Jack Landrum by R. P. Blackley SHERIFF, Taylor County, Texas.

2-3tc

H-SU to Hold Regional Band Meeting Saturday

More than 830 high school musicians from 35 schools will be on the Hardin-Simmons University campus Saturday, March 8, to compete in the regional solo and ensemble contest for band and orchestra students.

Bill Owens, assistant professor in brass and music education at H-SU and contest chairman, said this year's contest is drawing the largest number of entries of any ever held.

"We have about 830 entries, and since each ensemble is regarded as only one entry, there will actually be many more students involved," Owens explained.

The entries range from soloists to sextets and even a few larger ensembles, he said.

The students represent 35 schools from towns in an area stretching from Haskell to San Angelo and Lorraine to Abilene. Entries will be from junior high schools through Class AAAA high schools.

Brass and string instruments, as well as piano, will be involved.

The contest will be held from 8 a.m. to 6 p.m. in Caldwell Hall, the School of Music's main building, and in the Cowboy Band Hall.

Judges will be Mrs. Eddie Burkhalsters and Leonard Aillsbrooks of Hurst, Eldon Sonnenberg of Pottsboro, Jerry Finnell of Plano, Bob Pyle of Lawton, Okla., Dee Tucker of Bowie, Jack Rumbley of Dallas, Bob Ganz of Grand Prairie, Carol Nunez of Denton, and Evelyn Edmonds of the H-SU faculty.

H-SU has been host to the regional contest for the past seven years.

Owens said one reason H-SU is considered an ideal host is that the School of Music has a large number of pianos available for the contestants.

IBPA Says USDA Causing Higher Prices

R. L. Moorehead, President of Independent Beef Producers of America advised the directors of the national organization during a meeting in Hugo, Oklahoma that the USDA grading service with their unrealistic and inflationary charges for grading beef, is one of the hidden costs in our food baskets today.

The USDA grading service charge for a packer is \$14.60 per hour and if the packer is not located where the grader is stationed, he must pay the hourly charge to and from the plant plus mileage. These exorbitant charges are ultimately passed on to the consumer in higher prices for meat.

Lee Perkins, Vice President of IBPA stated that he was asking Congress for an investigation of the USDA grading service and their unrealistic charges. Moore stated the USDA should investigate themselves for windfall profits.

Grain Sorghum Meeting Set In Abilene

ABILENE - A quartet of farmers will tell an audience here March 17 of agricultural practices that have put them among the foremost grain sorghum producers in the Rolling Plains.

The quartet - members of a panel - will be among the speakers at a grain sorghum production meeting, 9 a.m. to noon in the Starlite Inn at 3435 S. First St. Sponsors are two: the Grain Sorghum Producers Association of Lubbock, the Grain Sorghum Task Force of the Rolling Plains Economic Program (R-PEP), Task Force Chairman Darryl Schoonmaker of Stamford will preside March 17 as well as moderate reports of the other panelists: J. B. Cooper, Jr. of Roscoe, Neuman Smith of Ballinger, C.O. Richards of Stamford, Elbert Harp of Lubbock, executive director of the producers association and a trio of Texas Agricultural Extension Service specialists will discuss grain sorghum production on the basis of economics, varieties and weed control, fertility and other cultural practices, and situation and outlook.

The specialists are economist Norman W. Brints and agronomist Dr. Hale A. Lovelace of Vernon, and agronomist Dr. Willis B. Gass of San Angelo.

Compere HD Club

The Compere Home Demonstration Club met February 27th at the Noodle Community Center for the regular meeting with five members and one visitor present. Mrs. T. B. Terry was hostess.

Mrs. Hugh Taylor presided for the business meeting. Mrs. Terry gave the devotional. Mrs. Taylor read a poem "I must go shopping today."

Roll call was answered with "What is on top of my machine."

The council report was given by Mrs. Dewey Ramsy, Home Demonstration programs for the yearbook and report of work were discussed and checked by members.

The hostess gift went to Mrs. Clayton Dillard after

'GORILLA GRAFFITI'

By Mrs. Dean King



In like a Lion and so comes the month of March... it means many things to many people... for us, it is our anniversary month (March 29) and for these, it means birthdays: Mar. 2-Tom Stevens; 4th-Rebecca Sipe; 7th-Michael Dock Carriker; 8th-Jimmy Tackett; 10th-Anniversary of Joe and Elizabeth White; 11th-James Holt; 14th-Lynn Neff and Jimmy Adams, Rocky McKinney; 21st-Becky White; 25th-Patricia Boyd; 27th-Greg Beasley; and 29th-Randy Scott, Rocky Brenem, and Janie and Dean King's Anniversary.

For all of us, March means Spring Break... which is really needed by all around this time of the year. Helps students and teachers alike to get a fresh start for the "beginning of the end." After school on Friday, March 21, Trent Schools will dismiss until April 1, with March 31 being an in-service day for teachers.

Along with this being Public School Week, this is also a time for U.L.L. contestant eliminations. In addition to

the usual literary events, this year Trent students will participate in the One-Act Play. Under the direction of Mrs. Raymon Kicard, they will do "Canterby Tales from the Wife of Bath." This will be presented in the Trent auditorium on April 2 for public viewing. Prior to their contest on April 4.

On February 25, the Trent Community Club had their dinner and we served delicious enchiladas and all the trimmings for Family Night. Club President Dean King presided over the business meeting which Bruce Thomas, road and teacher in Trent School, was elected President of the organization for the coming year. Elected as Vice-President was Rocky K. Trent's Vocational Teacher; Secretary will be Neff, who will assume superintendent duties of the school in July; and Treasurer Garnet Wilks, local bank outgoing officers were Loyd Williams, and Tina Harvey in Swelter - if you're still reading - and to the two 'Toad in Trent.

This day at Hardin-Simmons one of our kids will participate in the solo and ensemble contest.

Rebecca, daughter of Mr. and Mrs. Yates Sipe, was sung last Tuesday night, a party to celebrate her 21st birthday. Friends on the 6th, 7th, and 8th came to wish her and enjoy themselves.

And Mike Sturdivant had their new mobile home up - across the street in the First Baptist Church they are really having fun. Letting furniture and fix up. I believe that just Tom VanArsdale are going the "mobile home" route. We'll be looking forward to some tours, folks!

Whose cowboy hat Miss (Globetrotter) got off whose head Saturday at the game in the 2nd? Merkel's own (too) Raymon King. Don't know what cost his hat was - but know the "good guy" between Globetrotter Mel stumped his new hat, and did not have a visitor!

and Ira Sharp had three children home at same time last weekend of Houston. Betty of Spring and Roy Lee of Worth. Know they had a time visiting - and I'd like to guess that lots of singing and piano-playing on...

and a nice visit in Lometa Thursday with some friends former Trent teachers, para and Jon Henderson, 2nd grade son, Jon Miller. We'd like to wish a belated

Happy Birthday to one of the nicest people that we've had the pleasure to know - one of the Trent teachers, Mr. Odell McCoy. He had a birthday on Valentines Day. Understand that Tom Stevens had a nice birthday dinner in the home of his folks, Tuffy and Wanda Stevens on March 2. 'Twas his 18th! And most of his family, plus some friends, were there to help do it up right.

Til next week, you're good - and plenty of it!!!

Estes FLORAL CO
Carolyn Estes
Ph. 928-5039
"Flowers For Every Occasion"

REDUCTION SALE

Pick-up Specials

- 2-74 CHEYENNE SUPERS 1/2 ton. 454 Engine. Automatic. power and air
- 73 CHEVROLET, 1/2 ton. 350 Engine. long wide. standard
- 70 CHEVROLET Custom 1/2 ton. short wide. V-8. Standard
- 70 CHEVROLET Custom 1/2 ton. 6 cylinder. standard
- 72 EL CAMINO 454 Engine. automatic. power and air. Green w/Black vinyl top
- 69 CHEVROLET Custom 1/2 ton. cab and chassis. Dual wheels
- 67 CHEVROLET Custom 1/2 ton long wide. V-8. automatic

Max Murrell Chevrolet Co.
1-20 PH. 928-4736
MERKEL, TEXAS

REDUCTION SALE

PUBLIC NOTICE

NOTICE OF AMENDED APPLICATION AND RESCHEDULED HEARING

Notice is hereby given that ABILENE SAVINGS ASSOCIATION, ABILENE, TAYLOR COUNTY, TEXAS, has amended its application for a branch office FROM 1004 Fourth Street, Goldthwaite, Mills County, Texas, TO: 301 Edwards Merkel, Taylor County, Texas

Notice is further given that the hearing on the application of ABILENE SAVINGS ASSOCIATION, ABILENE, TAYLOR COUNTY, TEXAS, previously scheduled for March 3, 1975 has been rescheduled to be held on the 15th day of April, 1975 at 9:00 a.m. at the office of the Savings and Loan Department of Texas, 1010 Lavaca, Austin, Texas. In the event a written protest is received to the application, the hearing will be convened for the limited purpose of setting a future date to take testimony and receive evidence.

If no written notice of intention to appear in person or by attorney to protest said application is received by the Savings and Loan Commissioner from one or more persons by the 5th day of April, 1975, then the hearing may be dispensed with by order of the Savings and Loan Commissioner.

W. Sale Lewis
Commissioner

ALL TYPES OF INSURANCE

BONEY INSURANCE AGENCY
Phone 8-5151

VACATION YEAR AROUND

Furnished Apartment

Modern Rooms \$40 A Week or \$150 a A Month

Carpet, Color Television, Swimming Pool, Maid Service, Telephone With 24-Hour Switch Board, Restaurant, Use of Country Club & Golf Course.

Retired - Welcome

Big Country Inn
CALL 928-4756 Merkel, Texas

Cemetery Donations

- Mrs. Paul West
- Mr. and Mrs. Tom Allday
- H. R. "Bud" McKeever
- Lum Gilbreath
- Mrs. Wade Ensminger
- Eula Sears and Mrs. Pet Sears Touchstone in memory of Ida Mae West
- Mrs. Trula Cox
- W. E. Wozencraft
- Mary & Opal Derstine
- Ruth Reidenbach
- Bernard & Erma Clark
- Mr. and Mrs. G.W. Hughes in memory of Wilber Criswell
- Frank Breaux
- Ruth Pangle in memory of Dovie Freeman
- Mr. and Mrs. Jack Benningfield
- Mrs. W. E. Reneau
- Mrs. John Toombs, Mrs. Geo. Hunter and Virgie Mae Campbell in memory of Morris Beasley.
- Mr. and Mrs. Billy C. Young
- Floy Steward
- Mr. and Mrs. H. B. Finch
- Mr. and Mrs. H. C. Reid in memory of Joe T. Reagan
- Vannie Hamblet
- N. H. Eoff
- Mr. and Mrs. Louis Butman in memory of Joe T. Reagan
- Mr. and Mrs. Paul Orsborn
- E. J. Orsborn Estate
- Mr. and Mrs. Wm. F. King

business meeting every of quilled. Refreshments were served to one visitor, Mrs. Bess Goodwin from Pittsburg, Kansas. She is a sister of Mrs. Taylor, members present were Mrs. T. B. Terry, Clarence Allen, Hugh Dillard, Clayton Dillard, De Ramsey.

SHOP NOW EASTER

New Spruce Suits
By Stocklee, & Levi

Pastel Blue, Yellow, Brown, Navy

FROM \$3 - \$45.00

Beautiful Shiratch in "Western" dress" FROM \$50 UP

Clearance Continues Through March 8

Items Added to Sales Tables

Good S Ladies Long Sle 1/2

Large Group Mens Jeans Boot-Cut, Flares Solids Checks, Famous Brands

ONLY \$6.98

INTERN HOUSE
MERKEL

HOLDING MONEY FOR QUARTERLY TAX PAYMENT? SEMI-ANNUAL LOAN PAYMENT? INSURANCE PREMIUM?

WE'LL PAY YOU DAILY INTEREST ON THAT MONEY!

The money you're setting aside toward special large payments can be earning its keep in the meantime! Put it in your Sweetwater Savings passbook account to earn 5 1/4% annual earnings, compounded daily from deposit to withdrawal! The money will be readily available when you need it; meanwhile it will earn more money for you every day. Whether it's your company or your family account, put that money to work at Sweetwater Savings!

CURRENT ANNUAL RATES

- 7 3/4% 6 YR. CERT. - \$1000 MIN.
- 7 1/2% 4 YR. CERT. - \$1000 MIN.
- 6 3/4% 30 MO. CERT. - \$1000 MIN.
- 6 1/2% 1 YR. CERT. - \$1000 MIN.
- 5 3/4% 90 DAY ACCT. - \$1000 MIN.
- 5 1/4% NO PENALTY PASSBOOK - SAVINGS INSURED TO \$40,000 BY FSLIC

A substantial interest penalty is required for early withdrawal of certificate accounts

SWEETWATER SAVINGS ASSOCIATION

SWEETWATER ROTAN ROSCOE HAMLIN

FINLEY (BILL) BARNETT
PROGRAM DIRECTOR OF KWFA FOR 8 YEARS

TOP COUNTRY & WESTERN STATION OF THE BIG COUNTRY WIDE VARIETY OF ALL KINDS OF MUSIC ALL GOSPEL ON SUNDAYS FROM SIGN ON UNTIL 1-P.M.

KWFA
MERKEL, TEXAS 79536 MERKEL PH-928-4701

GET ACTION USE

CLASSIFIEDS

PHONE 928 - 5712

Miscellaneous

FOR MONUMENTS and CEMETERY CURBING
M.A. (Sarg) Noster
104 Herring Dr.
Merkel, Texas
Phone 8-5565

Buy Your Prepaid Funeral Plan Direct From The Funeral Home and Save

STARBUCK FUNERAL HOME

MERKEL VFW POST 5683 MONTHLY REG MEETING 8:30 P.M. SECOND THURSDAY POST & LADIES AUXILIARY Y'ALL COME NOW!

MASONIC MEETING

Stated meeting of Merkel Lodge No. 710 on 2nd Saturday and 4th Thursday of each month at 7:30 p.m. Visitors welcome. Members urged to attend.
PETE MORGAN, W.M. ROY MASHBURN, Sec'y.

FOR QUALITY work at reasonable prices call Randy's Upholstery, 673-2238, Abilene.

Help Wanted

NEEDED - Parttime waitresses, cooks and dishwashers. Phone Margo 928-4923 or 928-4868.

WANTED - Mechanic, Good labor rates, good working conditions. Palmer Pontiac GMC. Ph. 928-5113.

HELP WANTED - Badger Inn. Ph. 928-5171 or 928-5085.

CONCRETE WORK. Sidewalks, patios and slab floors. Call Ray or Reuben Delacruz. Ph. 928-5068.

IRONING WANTED - CALL 928-5909.

Lost & Found

LOST - Red-Whiteface muley Hereford Cow. Branded 13 on Left Hip. Weighs 900 lbs. Lost on the Divide place. Call 846-4305, Noodle. Clarence Melton

Garage Sale

GARAGE SALE - Phillip's Estate Sale - 406 Locust, Sat. and Sun. 9 a.m. to 5 p.m.

For Rent

FOR RENT - Ford tractor equipment. Also gardens plowed. Call after 4:30 p.m. 928-5204.

For Sale

Beautiful Brick Home on 2 Lots, 3 bedroom, 1 3/4 bath, double garage, water well with electric pump, fruit trees, 8'x10' Storage House. Shown by appointment only.

4-18 acre home sites for Texas Veterans Approximately \$44 month payment.

2 Bedroom House, Owner will Carry Note.

Linda Cravens Marge Sheppard
Merkel 928-5340

FOR SALE - Calves, 7 to 14 days old. Healthy and started on bottle. Free delivery on 10 or more. Area code 214-223-5171 after 7 p.m.

LOTS FOR SALE in Western Heights and other locations in the city limits in Merkel Contact H. J. Carson or Nolan Palmer.

FOR SALE - IH 14 Disc One-way like new. Good for terraces. Phone 928-4876.

ESTATE HOUSEHOLD SALE and other items. Some appliances. 406 Locust, Merkel, beginning 9:30 a.m. Sat., March 8th through Sun., March 9th.

FOR SALE - 1967 Wurlitzer Organ. Model 4017 with bench. \$500.00. Ph. 928-5306.

HOUSE FOR SALE - 2 bedrm. frame house to be moved. Call after 6 p.m., 928-5075.

FOR SALE - 2 bedrm. Mobile home and lot. Fenced, storage, etc. 411 El Paso. Ph. 928-5374.

FOR SALE - Used couch and chair. See at 1002 Locust after 5 p.m. Ph. 928-5793.

LUCAS & HAYS WELDING
111 Kent
All Types Welding
Ph. 928-5630 or 928-5794

FOR THOSE GOOD SHELL PRODUCTS STOP BY DISHMAN'S SHELL
211 KENT
928-5222
MECHANIC ON DUTY

PP PRESTIGE HOMES & PROPERTIES

317 N. Willis Suite 20
Abilene 673-6444

* 588 acres near Noodle; 454 native grass, 136 in Love & Cline, Good rolling & bottom land, 2 large tanks, Sweetwater Creek!

* Excellent buy - 3 bedroom older home 1 block from school.

* King-size rooms! 3 bedrooms, den, formal dining, 1 3/4 baths, fireplace, quality carpeting, best area in town!

* TRENT - low taxes, friendly people! Charming 3 bedroom, 2 bath home, built-ins. Corner lot. Priced for quick sale!

Shannon Teal... 692-0787
Jewel Nixon... 692-5552
Pauline Butman... 692-2222
REALTORS

MERKEL BRANCH OFFICE
Pat & Billy Neff
1515 Heath 928-5623
Equal Housing Opportunity

FOR YOUR BUILDING AND REMODELING NEEDS
FRED RICHIE
928-5030

All Types Building & Remodeling Work
Albert Gregory
928-5474
Jerry Goode
928-4890

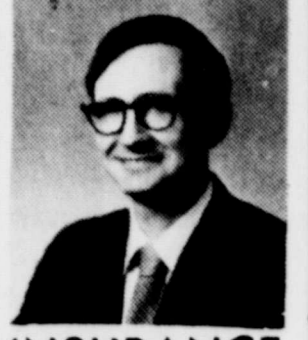
NEED A New Water Well Drilled? Also Install Meyers Subs & Jacuzzi Jets
ROBERT HIGGINS
928-5998

Catfish Fingerlings
Now Booking Orders
Douglas Fish Farm
Now Open
Sat.-Sun.
Sylvester Texas
PH-993-4644

SEAT COVER CENTER
*Seat Covers
*Truck Cushions
*Door Panels
*Arm Rests
*Headliners
1096 BUTTERNUT
677-1349
ABILENE

NOW OPEN PETE'S PLASTER SHOP
Wholesale & Retail Finished & Greenware
9:00 A.M. To 6:00 P.M.
Monday - Thru - Sat.
502 Kent St. Merkel, Tex. Pete & Zet Kirby
Plaster 30% OFF
Paints 20% OFF

AUTHORIZED DEALER
Allis-Chalmers-Moline-Oliver
Farm Equipment and Forney
Welding Equipment
Shafer Plows - Continal Belton Products
677-4349
DOTY FARM EQUIPMENT CO.
366 Chestnut
Nights-Sunday-Holidays 672-2451 - 698-2572



INSURANCE LIFE & HEALTH
GEORGE STARBUCK
928-4771

WE PAY 150% OVER FACE VALUE FOR ALL SILVER COINS. (\$2.50 FOR \$1.00 SILVER (We pay 25c for silver dimes) PRATTS COIN & STAMP SHOP
2155 S. Ist.
Abilene, Tex.

Card of Thanks

OUR HEARTFELT thanks to all who extended comforting sympathy and help during the long illness of Bud.

We would like to thank everyone for the beautiful service, floral offerings, prayers, and other kindnesses during our recent sorrow.

Faye Burks
Agnes Burks
Marie Estep

Card of Thanks

MAY WE TAKE this means of thanking each of you who helped to make our Golden Wedding Anniversary so wonderful. We appreciate each card, the flowers, the food, and the calls. It was a perfect day for us.

Newt & Thel Daniel

LOOK WHO'S HERE!

Mr. and Mrs. Robert Hobbs proudly announce the birth of a daughter, Alisha Kay, born Feb. 16, 1975. She weighed 6 lbs.
Maternal grandparents are Mr. and Mrs. L. S. Tipton, Jr. Paternal grandparents are Mr. and Mrs. Bill Hobbs of Wylie.
Great-grandparents are Mr. and Mrs. Joe Douglas and Mr. and Mrs. Lee Tipton.

PUBLIC NOTICE

NOTICE OF SALE BY VIRTUE OF AN ORDER OF SALE

THE STATE OF TEXAS COUNTY OF TAYLOR

DATED February 28, 1975, and issued pursuant to a judgment decree of the District Court of Taylor County, Texas by the Clerk of said Court on said date in a certain suit No. 34,4931A, and styled State of Texas and Taylor County vs. J. F. Clark, et al and to me directed and delivered as Sheriff of said County, I have on February 28, 1975 Seized, levied upon, and will, on the first Tuesday in April, 1975, the same being the 1st day of said month at the Courthouse door of said County, in the City of Abilene, between the hours of 10 o'clock A.M. and 4 o'clock P.M. on said day, proceed to sell for cash to the highest bidder all of the right, title, and interest of the defendants in such suit in and to the following described real estate levied upon as the property of said defendants, the same lying and being situated in the County of Taylor and State of Texas, to wit:

The following property located in Taylor County: 1 acre out of Abstract 51 of the Edward Dickerson Survey; Part of Section 25, Block 1, Abstract 285 of the S. P. Ry. Co. Survey. The following property located in the City of Abilene: Lot 1, Block 145, Original Townsite; Lot 7, Block 6, Bowyer Addition; Lot 17, Block 1, Stevenson Park Addition (Block 221, Original Townsite); North 12.5' of Lot 14, and all of Lot 15, Lacy Morrow Subdivision of Lot 2, Block 199; Lot 17, Block A, John M. Blackburn Subdivision of Lot 1, Block 201; Northwest 1/4 of Lot 3, Block 1, Over Place Subdivision. The following property located in the City of Bradshaw: Lots 1 and 2, Block 14, All of Block 17, All of Block 28, Lot 10, Block 36, Original Townsite. The following property located in the City of Ovalo: Lots 1, 2, 3, 7, 8 and 14, Block 55, Lot 33, Block 66, Original Townsite. The following property located in the City of Trent: Lots 7 and 8, Block 6, Lot 2 and the East 25' of Lots 16, 17 and 18, Block 23, Lot 7, and the South 1/2 of Lot 8, Block 49, Original Townsite; Lot 21, Block 4, Hale Addition; Part of Lots 1, 2, 3, 4 and 5, Block 1, All of Block 1, Lots

1 and 2, Block 11, Mineral Wells Addition; Lots 30 through 37, Block 3, Lots 8 through 20, 22 through 25, 27 through 29 and part of Lot 30, Block 11, Mineral Wells Addition. The following property being located in the City of Tuscola: Lot 8, Block 17, Original Townsite.

Or upon the written request of said defendants or their attorney, a sufficient portion thereof to satisfy said judgment, interest, penalties and costs; subject, however, to the right of redemption, the defendants or any person having an interest therein, to redeem the said property, or their interest therein, at any time within two years from the recordation of the deed in the manner provided by law, and subject to any other and further rights to which the defendants or anyone interested therein may be entitled, under the provisions of law. Said sale to be made by me to satisfy the judgment rendered in the above styled and numbered cause, together with interest, penalties, and costs of suit, and the proceeds of said sale to be applied to the satisfaction thereof, and the remainder, if any, to be applied as the law directs.

DATED Abilene, Texas, this 28th day of February, 1975.

Jack Landrumby R. P. Blackley, SHERIFF, Taylor County, Texas.

Girl Scouting 63-Years Old March 13th

Girl Scouts EVERYWHERE are celebrating!

Sixty-three year ago, March 13, 1912, Girl Scouts of the USA were founded on many of the same ideals that shaped the birth of our Republic. Just as our country has grown, so has Girl Scouting; from 18 girls in Savannah in 1912 to more than 3.3 million girls and adult members in 1975.

To highlight this year's GIRL SCOUT WEEK, March 9-15, Girl Scouts across the country invite all citizens to "GROW WITH US" and join in our work and play and have fun doing it.

The West Texas Girl Scout Council is a participating member of the United Way.

PUBLIC NOTICE

THE STATE OF TEXAS

To any Sheriff or any Constable within the State of Texas - GREETING:

You are hereby commanded to cause to be published once each week for four consecutive weeks, the first publica-

tion to be at least twenty-eight days before the return day thereof, in a newspaper printed in Taylor County, Texas, the accompanying citation, of which the hereinbelow following is a true copy.

CITATION BY PUBLICATION

THE STATE OF TEXAS To: Bonitta Kelly, Defendant, Greeting:

YOU ARE HEREBY COMMANDED to appear before the Honorable Domestic Relations Court of Taylor County at the Courthouse thereof, in Abilene, Taylor County, Texas, by filing a written answer at or before 10 o'clock A.M. of the first Monday next after the expiration of forty-two days from the date of the issuance of this citation, same being the 4th day of April A.D. 1975, to Plaintiff's Petition filed in said court, on the 3rd day of October A.D. 1974, in this cause, numbered 9864-DR on the docket of said court and styled John Ervin Kelly, Plaintiff, vs. Bonitta Kelly, Defendant.

A brief statement of the nature of this suit is as follows, to wit: Parties of this suit were married on or about August 4, 1962 and on or about September 5, 1971, they separated; following children were born of this marriage, Dominica Gay, 4-22-63; J. Angelo, 9-2-65; John E. 7-29-67; Barri Ann, 3-8-69; Christopher J., 4-22-70; children now reside with respondent; during the marriage, certain community property has been accumulated, petitioner requests the Court to divide the property in an equitable manner; as is more fully shown by Plaintiff's Petition on file in this suit.

If this citation is not served within ninety days after the date of its issuance, it shall be returned unexecuted. The officer executing this writ shall promptly serve the same according to requirements of law, and the mandates hereof, and make due return as the law directs. Issued and given under my hand and the seal of said court at Abilene, Taylor County, Texas, this 29th day of February A.D. 1975. (SEAL)

Attest: Irene Crawford Clerk, Domestic Relations Court, Taylor County, Texas; By Sandra Van Cleave, Deputy, 53-4tc

PUBLIC NOTICE

NOTICE TO ALL PERSONS HAVING CLAIMS AGAINST THE ESTATE OF JOSEPHINE BEATRICE EDINS, DECEASED

Notice is hereby given that original Letters Testamentary for the Estate of JOSEPHINE BEATRICE EDINS were issued on the 27th day of January, 1975, in Cause No. 11872, pending in the County Court of Taylor County, Texas, Sitting in Probate to:

TOM J. EDINS The residence address of such Independent Executor is 1150 Jeanette, Abilene, Texas, 79602.

All persons having claims against this estate which is currently being administered are required to present them within the time and in the manner prescribed by law. DATED the 27th day of January, 1975.

TOM J. EDINS, Independent Executor of the Estate of Josephine Beatrice Edins

By: H. L. HAYS, JR., Attorney for the Estate 2-1tc

JP Reminds

Vets Of TOLL Free Number

Attention Veterans you may call the VA toll free by using the following number 1-800-792-1110.

7:45 a.m. to 5:00 p.m. Monday - Friday

Did you know that the Justice of the Peace has two courts? One Civil and Criminal, and one Small Claims? The Texas Legislature has a bill to increase the jurisdiction of the Small Claims Court to \$500.00. If you are interested write Rep. Elmer Martin.

Mobilizing health facilities and manpower to provide more effective maternal and infant care is a major goal of the March of Dimes.

PUBLIC NOTICE

SUMMARY OF PROPOSED CONSTITUTIONAL AMENDMENTS SPECIAL ELECTION APRIL 22, 1975

NUMBER ONE ON THE BALLOT (S.J.R. No. 3)

Repealing Sections 48a, 48b, 51e, and 51f of Article III and Sections 62 and 63 of Article XVI of the Texas Constitution, Article XVI of the Texas Constitution is amended to:

Provide for the revision and consolidation of provisions relating to state and local retirement systems and programs and to provide that all general laws that have established retirement systems and optional retirement programs for public employees and officers in effect at the time of the adoption of this constitutional amendment will remain in effect, subject to the general powers of the Legislature.

Provide that the amount a participating officer or employee contributes to the employee retirement system or the teacher retirement system shall be established by the Legislature but may not be less than 6% of current compensation and providing further that the amount contributed by the state may not be less than 6 nor more than 10% of the aggregate compensation paid to participating persons, except that in an emergency, as determined by the Governor, the Legislature may contribute more than 10% of the aggregate compensation paid to persons participating in state retirement systems.

Provide that the Legislature shall provide for local retirement systems created by any city or county for its officers and employees and shall further provide for a state-wide system of benefits for officers and employees of counties or other political subdivisions of the State which may voluntarily participate, and

to further provide that a state-wide system of benefits shall be provided for officers and employees of cities which may voluntarily participate.

The wording of the proposed amendment as it will appear on the ballot is as follows: "The constitutional amendment revising and consolidating provisions relating to state and local retirement systems and programs and providing for a maximum state contribution to state systems of 10 percent of the aggregate compensation paid to individuals."

NUMBER TWO ON THE BALLOT (H.J.R. No. 6)

Amending Article III, Section 24 of the Texas Constitution to:

Provide an increase in salary for members of the Legislature from \$400 per month to \$600 per month.

Provide an increase in the per diem rate for members of the Legislature from \$12 to \$30 for each day during each Regular and Special Session of the Legislature.

Provide an increase in the transportation allowance for members from \$10 per mile to the rate prescribed by law for employees of the State of Texas.

The wording of the proposed amendment as it will appear on the ballot is as follows: "The constitutional amendment setting the salaries of members of the legislature at \$600 per month and setting a per diem of \$30 per day during legislative sessions and a mileage allowance at the same rate provided by law for state employees."

The Merkel Mail

PUBLISHERS STATEMENT Established in 1889

Published weekly at 916 N Second St., Merkel, Texas

Entered at the Post Office at Merkel, Texas, 79536 as second class mail.

Any erroneous reflection upon the character, standing or reputation of any person, firm or corporation, which may appear in the columns of the newspaper will be corrected, gladly, upon being brought to the attention of the publisher.

SUBSCRIPTION RATE: \$4.75 Per Year Taylor and adjoining counties. \$5.50 Per Year outside of Taylor and adjoining counties.

Member of the Texas Press Association and West Texas Press Association.

STEVE LANHAM and CECIL FLYLER Publishers KAYE LANHAM, Editor

For Classified Rates:

\$1.25 minimum for the first four lines. Excess of 4 lines will be charged at the rate of 5 cents per word. Cards of Thanks \$1.50 for the first 50 words, 6 cents per word for each additional word. TERMS: Cash in advance unless account is already established. NOTICE of typographical or other errors must be given before the second insertion of claims for refunds or extensions will not be recognized.

PUBLIC NOTICE

NOTICE OF SALE
BY VIRTUE OF AN ORDER
OF SALE

THE STATE OF TEXAS
COUNTY OF TAYLOR

DATED February 28, 1975 and issued pursuant to a judgment decree of the District Court of Taylor County, Texas as by the Clerk of said Court on said date in a certain suit No. 34-492-A, and styled State of Texas and Taylor County vs. Louise N. Ogden, et al and to me directed and delivered as Sheriff of said County, I have on February 28, 1975, Seized, levied upon, and will, on the first Tuesday in April 1975, the same being the 1st day of said month at the Courthouse door of said County, in the City of Abilene, between the hours of 10 o'clock A.M. and 4 o'clock P.M. on said day, proceed to sell for cash to the highest bidder all of the right, title, and interest of the defendants in such suit in and to the following described real estate levied upon as the property of said defendants, the same lying and being situated in the County of Taylor and State of Texas, to wit: The following property located in the City of Abilene: Lot 13, Block B, Hughes Subdivision of Lot 4, Block 186; Lot 14, Block D, John M. Blackburn Subdivision of Lot 1, Block 201; Lot 15, Block 14, north 40' of Lot 16, and all of Lot 17, Block 16, Lots 14 and 15, Block 18, Sears Park Addition; Lots 9 and 10, Block E, Miller & Mouser Subdivision of Block 191 and 192 of the Thomas Addition. The following property located in the Buffalo Gap Estates, Section 1 Addition of the City of Buffalo Gap: Lots 16, 17, 18,

NOTICE

21, 24, 25, 26, 29 and 30, Block 2; Lots 8, 9, 10, 11, and 12, Block 3; Lots 1, 2, 3, 4, 5, 6, 7, 8, 9, 10, 11, and 12, Block 5; Lots 3, 4, 5, 9, 10, 11, 12, 13, 14, 15, 16, 17, 18, 19, 20, 21, 22, 23 and 24, Block 6; Lots 1, 2, 3, 4, 5, 6, 7, 8, 10, 11 and 12, Block 8; Lots 1, 2, 3, 4, 5, 6, 7, 9, 10, 11 and 12, Block 9. Or upon the written request of said defendants or their attorney, a sufficient portion thereof to satisfy said judgment, interest, penalties and costs; subject, however, to the right of redemption, the defendants or any person having an interest therein, to redeem the said property, or their interest therein, at any time within two years from the recordation of the deed in the manner provided by law, and subject to any other and further rights to which the defendants or any one interested therein may be entitled, under the provisions of law. Said sale to be made by me to satisfy the judgment rendered in the above styled and numbered cause, together with interest, penalties, and costs of suit, and the proceeds of said sale to be applied to the satisfaction thereof, and the remainder, if any, to be applied as the law directs.

DATED Abilene, Texas, this the 28th day of February 1975, Jack Landrum by R. P. Blackley SHERIFF, Taylor County, Texas.

IBPA Says USDA Causing Higher Prices

R. L. Moorehead, President of Independent Beef Producers of America advised the directors of the national organization during a meeting in Hugo, Oklahoma that the USDA grading service with their unrealistic and inflationary charges for grading beef, is one of the hidden costs in our food baskets today.

The USDA grading service charge for a packer is \$14.60 per hour and if the packer is not located where the grader is stationed, he must pay the hourly charge to and from the plant plus mileage. These exorbitant charges are ultimately passed on to the consumer in higher prices for meat.

Grain Sorghum Meeting Set In Abilene

ABILENE - A quartet of farmers will tell an audience here March 17 of agricultural practices that have put them among the foremost grain sorghum producers in the Rolling Plains.

The quartet - members of a panel - will be among the speakers at a grain sorghum production meeting, 9 a.m. to noon in the Starlite Inn at 3435 S. First St. Sponsors are two: the Grain Sorghum Producers Association of Lubbock, the Grain Sorghum Task Force of the Rolling Plains Economic Program (R-FEP). Task Force Chairman Darrel Schoonmaker of Stamford will preside March 17 as well as moderate reports of the other panelists: J. B. Cooper, Jr. of Roscoe, Neuman Smith of Ballinger, C.O. Richards of Stamford.

Elbert Harp of Lubbock, executive director of the producers association and a trio of Texas Agricultural Extension Service specialists will discuss grain sorghum production on the basis of economics, varieties and weed control, fertility and other cultural practices, and situation and outlook.

The specialists are economist Norman W. Brints and agronomist Dr. Hale A. Lovelace of Vernon, and agronomist Dr. Willis B. Gass of San Angelo.

Compere HD Club

The Compere Home Demonstration Club met February 27th at the Noodle Community Center for the regular meeting with five members and one visitor present. Mrs. T. B. Terry was hostess.

Mrs. Hugh Taylor presided for the business meeting. Mrs. Terry gave the devotional. Mrs. Taylor read a poem "I must go shopping today."

Roll call was answered with "What is on top of my machine."

The council report was given by Mrs. Dewey Ramsy, Home Demonstration programs for the yearbook and report of work were discussed and checked by members.

The hostess gift went to Mrs. Clayton Dillard after

'GORILLA GRAFFITI'

By Mrs. Dean King



In like a Lion and so comes the month of March... it means many things to many people... for us, it is our anniversary month (March 29) and for these, it means birthdays: Mar. 2-Tom Stevens; 4th-Rebecca Sipe; 7th-Michael Dock Carriker; 8th-Jimmy Tackett; 10th-Anniversary of Joe and Elizabeth White; 11th-James Holt; 14th-Lynn Neff and Jimmy Adams, Rocky McKinney; 21st-Becky White; 25th-Patricia Boyd; 27th-Greg Beasley; and 29th-Randy Scott, Rocky Brenem, and Janie and Dean King's Anniversary.

For all of us, March means Spring Break... which is really needed by all around this time of the year. Helps students and teachers alike to get a fresh start for the "beginning of the end." After school on Friday, March 21, Trent Schools will dismiss until April 1, with March 31 being an in-service day for teachers.

Along with this being Public School Week, this is also a time for U.L.L. contestant eliminations. In addition to

the usual literary events, this year Trent students will participate in the One-Act Play. Under the direction of Mrs. Raymon Kacaid, they will do "Canterbury Tales from the Wife of Bath." This will be presented in the Trent auditorium on April 2 for public viewing, prior to their contest on April 4.

On February 25, the Trent Community Club had their dinner and were served delicious enchiladas and all the trimmings, for Family Night. Club President Dean King presided over the business meeting in which Bruce Thomas, coach and teacher in Trent Schools, was elected President of the organization for the coming year.

Elected as Vice-President was Rocky King, Trent's Vocational Agriculture teacher; Secretary will be Rex Neff, who will assume superintendent duties of the school in July; and Treasurer is Garnet Wilks, local banker. Outgoing officers were Ed. Loyd Williams, and Vernon Beasley.

Hello to Bill and Tina Harvey in Sweetwater - if you're still reading us - and to the two 'Toadies' in Trent.

This Saturday at Hardin-Simmons, some of our kids will participate in the solo and ensemble contest.

Rebecca Sipe, daughter of Mr. and Mrs. Yates Sipe, was surprised last Tuesday night, with a party to celebrate her 12th birthday. Friends came from the 6th, 7th, and 8th grades came to wish her well and enjoy themselves.

This week everyone is getting back in the groove, after being scattered between Austin and Houston... the Houston Stock Show and the Girls' State Tournament both attracted their share of Trentites.

Kathy and Mike Sturdivant have gotten their new mobile home set up - across the street from the First Baptist Church. They are really having fun getting furniture and fixing it up. I believe that Judy and Tom VanArsdale are also going the "mobile home" route. We'll be looking forward to some tours, folksies!!

Know whose cowboy hat Mel Davis (Gibbetrotter) plucked off whose head Saturday night at the game in Abilene? Merkel's own (Trent's, too) Raymon Kincaid's. Don't know what color Ray's hat was - but know he was the "good guy" because when Gibbetrotter Mel almost stomped his new hat, Raymon did not have a visible rigor!!

Vera and Ira Sharp had their three children home at the same time last weekend - Donna of Houston, Betty of Big Spring and Roy Lee of Ft. Worth. Know they had a good time visiting - and I'd venture to guess that lots of singing and piano-playing went on...

Had a nice visit in Lometa Thursday with some friends and former Trent teachers, Barbara and Jon Henderson, and 2nd grade son, Jon Michael.

We'd like to wish a belated

Happy Birthday to one of the nicest people that we've had the pleasure to know - one of the Trent teachers, Mr. Odell McCoy. He had a birthday on Valentines Day.

Understand that Tom Stevens had a nice birthday dinner in the home of his folks, Tuffy and Wanda Stevens on March 2. 'Twas his 18th! And most of his family, plus some friends, were there to help do it up right.

'Til next week, you be good - and plenty of it!!

**Estes
FLORAL CO**
Carolyn Estes
Ph. 928-5039
"Flowers For
Every Occasion"

REDUCTION SALE

Pick-up Specials

- 2-74 CHEYENNE SUPERS 1/2 ton. 454 Engine. Automatic. power and air
- 73 CHEVROLET, 1/2 ton. 350 Engine. long wide. standard
- 70 CHEVROLET Custom 1/2 ton. short wide. V-8. Standard
- 70 CHEVROLET Custom 1/2 ton. 6 cylinder. standard
- 72 EL CAMINO 454 Engine. automatic. power and air. Green w/Black vinyl top
- 69 CHEVROLET Custom 1/2 ton. cab and chassis. Dual wheels
- 67 CHEVROLET Custom 1/2 ton. long wide. V-8. automatic

**Max Murrell
Chevrolet Co.**
1-20 PH. 928-4736
MERKEL, TEXAS

REDUCTION SALE

HOLDING MONEY FOR QUARTERLY TAX PAYMENT? SEMI-ANNUAL LOAN PAYMENT? INSURANCE PREMIUM?



WE'LL PAY YOU DAILY INTEREST ON THAT MONEY!

The money you're setting aside toward special large payments can be earning its keep in the meantime! Put it in your Sweetwater Savings passbook account to earn 5 1/4% annual earnings, compounded daily from deposit to withdrawal! The money will be readily available when you need it; meanwhile it will earn more money for you every day. Whether it's your company or your family account, put that money to work at Sweetwater Savings!

CURRENT ANNUAL RATES

7 3/4% 6 YR. CERT.—\$1000 MIN.	6 1/2% 1 YR. CERT.—\$1000 MIN.
7 1/2% 4 YR. CERT.—\$1000 MIN.	5 3/4% 90 DAY ACCT.—\$1000 MIN.
6 3/4% 30 MO. CERT.—\$1000 MIN.	5 1/4% NO PENALTY PASSBOOK—

SAVINGS INSURED TO \$40,000 BY FSLIC
A substantial interest penalty is required for early withdrawal of certificate accounts



PUBLIC NOTICE

NOTICE OF AMENDED
APPLICATION AND
RESCHEDULED HEARING

Notice is hereby given that ABILENE SAVINGS ASSOCIATION, ABILENE, TAYLOR COUNTY, TEXAS, has amended its application for a branch office FROM 1004 Fourth Street, Goldthwaite, Mills County, Texas, to: 301 Edwards, Taylor County, Texas

Notice is further given that the hearing on the application of ABILENE SAVINGS ASSOCIATION, ABILENE, TAYLOR COUNTY, TEXAS, previously scheduled for a consolidated hearing on March 3, 1975 has been rescheduled to be held on the 15th day of April, 1975 at 9:00 a.m. at the office of the Savings and Loan Department of Texas, 1010 Lavaca, Austin, Texas. In the event a written protest is received to the application, the hearing will be convened for the limited purpose of setting a future date to take testimony and receive evidence.

If no written notice of intention to appear in person or by attorney to protest said application is received by the Savings and Loan Commissioner from one or more persons by the 5th day of April, 1975, then the hearing may be dispensed with by order of the Savings and Loan Commissioner.

W. Sale Lewis
Commissioner

**ALL
TYPES
OF
INSURANCE**

**BONEY
INSURANCE
AGENCY**
Phone 8-5151

**VACATION YEAR AROUND
Furnished Apartment**

Modern Rooms \$40 A Week or
\$150 a A Month

Carpet, Color Television, Swimming
Pool, Maid Service, Telephone With
24-Hour Switch Board, Restaurant, Use
of Country Club & Golf Course.

Retired - Welcome

Big Country Inn
CALL 928-4756 Merkel, Texas

SHOP NOW FOR EASTER
New Spring Leisure Suits
By Stockman, Lee, & Levi
Pastel Blue, Yellow, Camel, Brown, Navy

FROM \$39.95 - \$45.00

Beautiful Shirts to Match in "Western"
or "Dress"
FROM \$7.50 UP

Clearance Sale Continues
Through Sat. March 8
New Items
Added Daily To Sales Tables

Good Selection Ladies Blouses Long & Short Sleeves ONLY 1/2 Price	Large Group Mens Jeans Boot-Cut, Flares Solids Checks, Famous Brands ONLY \$6.98
--	---

**WESTERN HOUSE
MERKEL**

FINLEY (BILL) BARNETT
PROGRAM DIRECTOR
OF
KWFA
FOR
8 YEARS

TOP COUNTRY & WESTERN STATION OF THE BIG COUNTRY
WIDE VARIETY OF ALL KINDS OF MUSIC
ALL GOSPEL ON SUNDAYS FROM SIGN ON UNTIL 1:PM.

KWFA
MERKEL, TEXAS 79536 MERKEL PH-928-4701

If You Like

LOW PRICES



PRICES GOOD
THURSDAY
FRI. & SAT.
MARCH
6-7-8th

CREAMY
CRISCO
3 LB. CAN **179**

WITH \$7.50 OR MORE IN TRADE
EXCLUSIVE OF CIGARETTES

INSTANT COFFEE
FOLGERS
10 OZ. JAR **198**
(1 LIMIT)

You'll Eat These Up

ITS NEW
NABISCO
CHERRY NUT
COOKIES
13 OZ. BAG **83¢**

AMERICAN BEAUTY 7 OZ. **DINNER** 2 BOXES **49¢**

MACARONI CHEESE 10 OZ. **CHEESE** PKG. **83¢**

KRAFT'S CRACKER BARREL 12 OZ. **CHEESE** PKG. **95¢**

KRAFTS COBY CHEDDAR

DEL MONTE PRUNE Juice QT. **59¢**

HUNTS 300 FRUIT COCKTAIL 2 FOR **73¢**

LIBBYS 303 W.K. Golden CORN 2 FOR **69¢**

HUNTS 2 1/2 CAN SPINACH 2 FOR **63¢**

HUNTS 300 WHOLE TOMATOES 2 FOR **59¢**

MISSION 303 Garden PEAS 2 FOR **59¢**

CHIFFON FACIAL TISSUE 200 CT. BOX **43¢**

LIPTON INSTANT TEA 3 OZ. JAR **\$1.29**

WOLF BEEF STEW 15 OZ. CAN **45¢**

AUNT JEMIMA PANCAKE MIX 2 LB. BOX **69¢**

AUNT JEMIMA PANCAKE SYRUP 24 OZ. BOTTLE **1.09**

DEL MONTE CATSUP 20 OZ. BOT. **49¢**

FOLGERS COFFEE (1 LIMIT) POUND CAN **98¢**

JELLO ASSORTED (6 LIMIT) 3 OZ. BOX **53¢**

MIRACLE WHIP QT. JAR (1 LIMIT) **1.09**

MORTON HOUSE CHILI WITH BEANS 24 OZ. CAN **69¢**

FLOUR GLADIOLA 5 LB. BAG **83¢**

DEL MONTE DILL or SOUR PICKLES 22 OZ. JAR **55¢**

FOOTBALL HELMET SPARTUS CLOCK REG. \$16.95

With \$75.00 In Trade Punched Out CARD ONLY **\$9.99** Plus Tax

BORDEN Homo 2 MILK 1/2 GAL. CRTN. **69¢**

BORDEN BUTTER MILK 1/2 GAL. CRTN. **69¢**

PARKAY QUARTER OLEO POUND **69¢**

FROZEN FOODS

WHOLE SUN ORANGE JUICE 12 OZ. CAN **39¢**

OLE SOUTH - ASSORTED COBBLERS 2 LB. PKG. **\$1.19**

BIRDSEYE Cut OKRA 10 OZ. PKG. **35¢**

CHEF BOYDEE ASSORTED PIZZA JUMBO PKGS. **89¢**

BORDENS COTTAGE CHEESE 12 OZ. CRTN. **49¢**

HEAVY CHOICE BEEF

CHUCK ROAST

EXTRA TASTY
EXTRA TENDER
EXTRA GOOD

NABISCO CRACKERS LB. BOX **55¢**

KEN-L-RATION Dog FOOD 6 PACK CRTN. **\$1.29**

VEL KING SIZE LIQUID **73¢**

TANGERINES CALIFORNIA LB. **23¢**

WEIGHT WATCHERS FROZEN TURBOT LB. **98¢**

TIDE FAMILY SIZE BOX **3.39** (1 LIMIT)

CALIFORNIA Avocados 2 FOR **35¢**

RUBY RED Grapefruit LB. **15¢**

FRESH CARROTS CELLO 2 LBS. **39¢**

FRESH RADISHES 2 FOR **19¢**

RUSSETS SPUDS 10 LB. BAG **69¢**

BABY BEEF T-BONE or SIRLOIN LB. **1.09**

GOOCH BR. BACON POUND **1.13**

GOOCH BR. FRANKS 12 OZ. PKG. **63¢**

GOOCH BR. STEAK FINGERS PKG. **79¢**

FRESH BEEF LIVER LB. **89¢**

GOOCH GERMAN STYLE SAUSAGE PKG. **83¢**

OXYDOL GT. BOX **98¢** (1 LIMIT)

PUREX 1/2 GAL. JUG **49¢**

WE WELCOME FOOD STAMPS
SHOP AND SAVE

WE GIVE GIFT BOND STAMPS
Double on Wednesday with \$5.00 or more

CARSON'S SUPER MARKET

MERKEL, TEXAS

FREE DELIVERY MON, WED, FRI

BEST MEATS IN TOWN

th
In
A
in
ve
th
D
te
el
th
ci
M
R
C
ic
p
n
St
Sc
to
R
th
ye
17
Re
th
ne
co
Fr
I
sid
be
clu
ple
wo
wo
at
che
are
this
Stu
Sch
wor
Mr.
has
club
the
prai
for
supp
For
Sei
Mr.
Roch
Merk
Mond
Homo
ness.
Bo
1890,
ried,
in M
21, 1
Mr
kel f
move
a m
Chur
Sur
Theib
Gre.,
of Ho
ters,
of Yul
Huber
Roch
Lizzi
23 g
eral f
great
Ope
Teri
Suc
Open
the Pri
Schools
lowing
ing.
Numi
gistere
building
for H
milies,
102 far
visiting
Stude
played
The
tration
ple in
port th
and for
a succe