

Between you and me



By SARAH ECKOLS

The Merkel Library fund is once again needing contributions from citizens. Any one wishing to contribute to this fund may make deposits at Farmers and Merchants National Bank or take contributions to Benny Melton at the Merkel Chamber of Commerce. Books are a very important part of life and we need to keep our library open. According to Mrs. Pete Morgan, librarian, the Merkel Library has a lending rate of 75 to 100 books per week. We are very fortunate in this nation to have the right to read the printed word freely. Make a contribution today and keep the Merkel Library operating.

The Merkel Christmas parade will be at 2 p.m. Saturday afternoon. Featured in this year's parade will be the McMurry circus pipes. This year's parade is expected to be the biggest and best yet with floats, bicycles, bands and of course, Santa Clause himself, throwing candy to the children.

Prizes will be awarded to the top three floats in the amounts of \$25, \$15 and \$10; bicycles in the amounts of \$5, \$3 and \$2; and house decorations will be judged for \$20, \$10 and \$5 prizes on December 22. Anyone wishing to have his house judged in the area around Merkel should contact the Merkel Chamber of Commerce.

Palmer Motor Company and Max Murrell Chevrolet Company will provide cars in which the Miss Merry Christmas winners will ride.

The Merkel Riding Club will assemble for the parade at 1:30 p.m. at the Assembly of God Church, it has been announced.

This editor finds it difficult to believe that there are only 27 days left in 1975. It is at this time each year that one reflects back on the year ending and looks forward with anticipation at the year to come. 1976 is sure to be filled with much ado about the 200th birthday of the United States. This will be a busy year also in the political world with a summer of conventions to nominate candidates for the top offices in our land. The fall will be filled with campaigning and the election in November.

At this time also, one begins to make plans and resolutions to be kept in the new year. It is common to say to oneself that "This year I'll keep my New Year's resolutions." It is much easier to vow on New Year's Eve than to follow through in the days that follow, however.

Naturally it is exciting to look forward with enthusiasm to the bowl games coming up. Tension is running high in the professional leagues as to who is going to make it to the bowl game of bowl games, the Super Bowl. Being a very pro Cowboy fan myself, I am with Landry all the way. I don't really care who is defending the opposite goal, just so the Cowboys win.

The Living Sermon

I'd rather see a sermon than hear one any day. I'd rather one would walk with me than merely tell the way. The eye's a better pupil and more willing than the ear. Fine counsel is confusing, but example's always clear. The best of all the preachers are the men who live their creeds.

For to see good put in action is what every body needs.

I soon can learn to do it if you'll let me see it done, I can watch your hands in action, but your tongue too fast may run;

The lectures you deliver may be very wise and true, But I'd rather get my lessons by observing what you do, I may not understand the high advice that you may give But there's no misunderstanding how you act and how you live!

Edith Kennedy, Artist Of The Month



DECEMBER ARTIST-OF-THE-MONTH-Edith Kennedy's animal life and western scenery paintings are on display at the Farmers and Merchants National Bank in Merkel. Mrs. Kennedy has been painting for about a year and has studied under Cheryl Kincaid and James Campbell. She also does other types of hand work including leather tool, crochet, knitting and sewing. Mrs. Kennedy's paintings will be on display through December.

Farmers Union Plan Convention Elect Officers

The Taylor County Farmers Union members met Monday, December 1 to elect delegates to attend the Farmers Union State Convention to be held December 4, 5 and 6 in Fort Worth. Those elected as delegates are Mr. and Mrs. J. N. Montgomery of Hamby, Mr. and Mrs. H.

H. McLeod of Trent, Mr. and Mrs. Ford Smith, Jr., Mr. and Mrs. Jack Hogan, Mr. and Mrs. Stanley Toombs, Mr. and Mrs. Connie Mac Seymore, Mr. and Mrs. W. R. Cypert, Billy Bob Toombs, John Ford Hensley, Eddie Sanduskey, Charles Jacobs and Freddie Toombs all of Merkel.

Cotton/ Market Strengthens In Area

The cotton market began strengthening this week, according to B. B. Manly of the Abilene Classing Office. Some cotton sold in most all areas this week, but the highest prices were paid for cotton with a premium mike (3.5 - 4.9). Premium mike cotton sells for 12¢ to 14 1/2¢ per pound above the Government loan rate; cotton that makes 3.2 - 3.3 sells from 13¢ to 14¢ above; 2.7 - 2.9 sells 7¢ to 8¢ above the Government rate. A few bales of grade 41 and 32, staple 34, premium mike sold for 49.50 cents per pound.

Grade 42 continues to be the predominant quality classed with 30 percent. Grades 41, 51, and 52 had around 17 percent each. Forty-one percent was reduced because of bark or grass. Fiber length changed little with 50 percent called 31, 20 percent were shorter, and 31 percent were longer. Micronaire readings were 59 percent within the 3.5 - 4.9 range; twelve percent in 3.3 - 3.4 range; twenty percent in 3.0 - 3.2 range; eight percent 2.7 - 2.9 range, and one percent was lower. Strength tests are as follows: 33 percent 75,000 PSI to 79,000 PSI; 42 percent in the 80,000 PSI to 84,000 PSI range, and 20 percent higher.

About 29,500 samples were classed at the Abilene Classing Office during the week ending November 28, and brings our season total to 62,000. A year ago only 15,200 samples had been classed.

Officers elected for the 1976 year are president, J. N. Montgomery of Hamby; vice president, H. H. McLeod of Trent; publicity director, Mrs. Jack Hogan assisted by Mrs. J. N. Montgomery; adult program directors, Mrs. Ford Smith Jr., Kenneth Hogan and Jimmy Jacobs; youth directors, Mrs. Stanley Toombs, Mrs. Connie Mac Seymore and Mrs. Billy Bob Toombs; legislature directors, Billy Bob Toombs, Loyd Gilmore, R. A. Clemmer and Clovis McElmurray; membership committee, Ford Smith Jr., John Hensley, Lavern Moore and Cramer Reynolds of Merkel; Yates Sipa and Mark Williamson of Trent; Odie Webb and H. F. Flemmings of Tuscola and Eddie Brady of Hamby.

The next Farmers Union meeting will be in Hamby on January 13 at 7 p.m. at the Hamby community center. All Farmers Union members are urged to attend.

Lord's Acre Sale Brings In \$2517

Pioneer Memorial Chapel is happy to announce the tremendous success of the Lord's Acre Sale which is held annually on the Saturday before Thanksgiving. This year's sale, held on November 22, had proceeds of \$2,517.

The people of the Pioneer church wish to express their appreciation to those who contributed to the success of the sale. John B. Hughes, Lord's Acre committee chairman said, "Everybody cooperated to the fullest, making it a very enjoyable occasion."

Among out-of-town guests were Mr. and Mrs. T. C. Duncan of Fort Worth and former Mulberry Canyon residents; also Annie Collins Graftford of Dallas, a former Merkleite; Mr. and Mrs. Adrian Allen of Abilene; Mrs. Robert Brooks of Abilene; Miss Andra Moe Lamb of Abilene and Lt. Col. and Mrs. Roy Smithers of Dyess AFB.

Homemakers Arts & Crafts Sale Saturday

The Taylor County Young Homemakers will hold an arts and crafts sale in the senior citizens building December 6 beginning at 9 a.m. There will be a wide variety of hand-made crafts that will make excellent Christmas gifts. The Young Homemakers urge you to stop by and see their display.

Senior Citizens

The Senior Citizens enjoyed many activities during the past few weeks.

One outstanding event was enjoyed by a large crowd when Mr. and Mrs. Sherman Driggers and Mr. and Mrs. Howard Carson showed films and spoke on their trip to Korea.

A large crowd was present Monday night for the monthly singing. Many reported it as the best.

December activities include a garage sale on Trades Day. Several families plan to have tables of different items which include the Home Maker's Bazaar and Bake Sale. Tables are still available for anyone who would like to make some extra money.

New members are needed and always welcome.

F & M Bank Furnishes Schools With Banking Educational Program

Don W. Hensley, President of Farmers and Merchants National Bank and Mack Fisher, Superintendent of Merkel Schools have announced a new Educational Program now available in the Merkel School System. This Educational Program is being

furnished by the Farmers and Merchants National Bank and was obtained through the Educational Program of the Texas Bankers Association. This Series is entitled "Personal Money Management" and consists of eight visual Educational Units.

"Our Free Enterprise System" and "Economic Literacy" are terms substantially synonymous with "Personal Money Management," and the idea behind the Education Program of Texas Bankers is to teach students of the Merkel School

System the "How" and "Why" of Personal Money Management.

"Everyone knows what money is," Hensley said, "but not everyone knows how it works." Our present economy is geared to a mass market which includes all Americans. Its ebb and flow is decided by the average citizen. What he buys, when he buys, how much he saves, how much he borrows are critical elements which set the trend and direction of our economy. It follows that our citizens should be fully aware of the close interrelation of our economy. Therefore, learning how money works and how best to use it should be a part of every student's basic education. Skill and proficiency in Money Management may well be the key to success in personal happiness and worthy citizenship.

The content of this series of instructional unit furnished to the Merkel School System by the Farmers and Merchants National Bank is designed to give young people practical information that they will need every day in the management of their financial affairs. The techniques of practical money management and professional money management services which are available can be a part of practically any course or subject area:

- Economics
 - Business Education
 - Other Social Sciences
 - Homemaking Education
 - Other Vocational Areas
 - Mathematics
- Units are titled as follows:
- Unit I-Overview of Bank Services
 - Unit II-Borrowing and Financing
 - Unit III-Financial Planning
 - Unit IV-Savings
 - Unit V-Checks and Checking Accounts
 - Unit VI-Bank Credit Cards
 - Unit VII-Banking and the Computer
 - Unit VIII-Flow and Control of Credit

Units I through IV are designed for upper level students, although their concepts can be translated by teachers into language which is compatible with any subject or grade level at which they teach.

Units V through VIII are written on a slightly more elementary level and are appropriate for junior or senior high school grades.

The title of each unit in this series suggests its content.

"These programs are available for use of local service clubs, sororities and other organizations interested in borrowing them," Hensley concluded.



BANKING PROGRAM FOR SCHOOL-Don W. Hensley, president of Farmers and Merchants National Bank in Merkel presents a banking study program to Mack Fisher, superintendent of Merkel School District. The program to be used through out the school system consists of tapes, books and slides.

Bob Gabriel To Perform Religious Concert At First Baptist Church

Bob Gabriel, well-known Music Evangelist in the Merkel-Abilene area, will be at First Baptist Church in

Merkel on Tuesday evening, December 9, for a concert of religious music, pastor Kenneth F. Jones has announced.

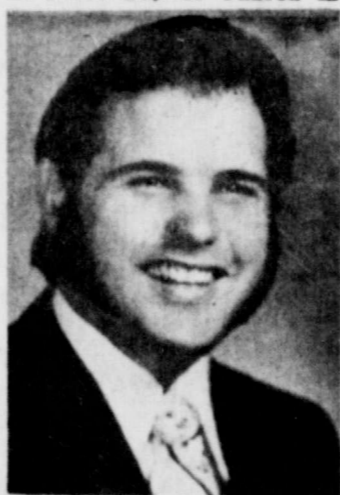
"Beginning at 7:00 p.m., the program will be made up of the hymns and gospel songs that people have come to love so well," Jones said.

Gabriel is a native of Tyler, and was educated at both Tyler Junior College and East Texas Baptist College at Marshall. He is married and the father of two sons. He has been in the field of music evangelism for thirteen years, and has recently led music in revivals in Trent,

Sweetwater and Abilene.

"In his appearance at Merkel's First Baptist Church, Gabriel will be accompanied by Steve Stanfield, a highly talented gospel pianist," Jones said.

"Our belief is that this will be a tremendous opportunity for people of our area to hear a concert that has real spiritual depth and meaning. We extend a cordial invitation to all the people of the Merkel area to attend. Of course there is no admission charge, but opportunity to participate in a free-will offering will be given," Jones concluded.



BOB GABRIEL

Brother Of Area Men Dies In Monahans

T. B. Douglas, 85 of Monahans died November 25 in a Monahans hospital. Douglas was a long-time area resident.

Burial was in Lueders. Survivors include five brothers, Ernest and J. A. of Sweetwater and M. L., Joe and O. R. all of Merkel.

Victory Singers

The Victory Gospel Singers will have their regular second Monday evening singing December 8 at 6:30 at 307 E. Paso Street in Merkel. Nuell King is the December director and all good singers have a special invitation to come and join in. There is always good singing and good arrangements with guests.

Kung Fu Master Plans Martial Arts School In Merkel

Son Nnh Huynh, master of the martial arts of Kung Fu, Tai-Chi-Chuan, kick boxing, karate and Oriental philosophy has come to Merkel with intentions of opening a school of the Oriental martial arts here.

Son Ninh Nuyh, a native of Ben Tre province in South Viet Nam is in Merkel under the sponsorship of Col. (ret.)

Lewis Millett. He has taught French in Vietnamese schools as well as the physical and philosophical martial arts. Son Ninh Huynh was educated at Sai Gon University of Letters.

Son Ninh Huynh directed the Martial Arts Branch of the National Military Police Training Center at Vung-Tau province from 1966 until

1969. He is an official referee and judge of English boxing and Asian kick boxing or Thai boxing. He served as master of Vietnamese Kung Fu and Chinese Tai-Chi-Chuan of Vo Truong Toan high school from 1971 until 1975. During that same period, he was instructor of French and teacher of school activities.

In 1965, Son Ninh Huynh created a special school of martial arts which he named V. N. Yeek-Woo-Do with the main purpose of bringing health, joy, wisdom, courage and knowledge of appreciation of the life and happiness to everybody. He has written and published three books on the martial arts.

Son Ninh Huynh is presently in the process of locating a building in Merkel to house his school. It is anticipated that one will be located soon and an announcement of classes will be made.

Trent Kindergarten

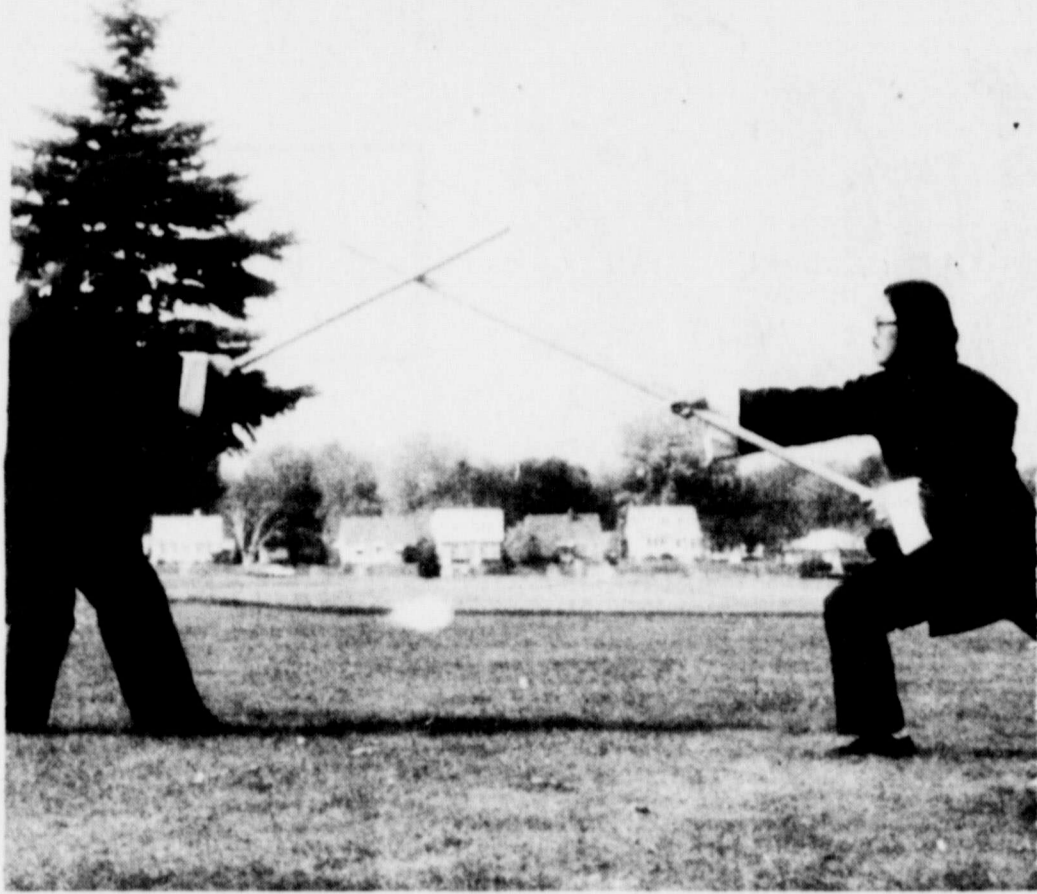
Registration December 15

Trent School will have pre-registration for its kindergarten on Monday, December 15, 1975 from 9:00-10:00 a.m. The following requirements must be met:

1. 5 years of age on or before September 1, 1975
2. birth certificate at

time of registration
3. immunization record or a doctor's written notice that the immunizations have been started at the time of registration
Kindergarten classes will begin January 12, 1976.

STATE CAPITAL
Highlights
AND **Sidelights**
by Lyndell Williams
TEXAS PRESS ASSOCIATION



THE MARTIAL ARTS—Son Ninh Nuyh, master of KungFu, Karati, kick boxing and former director of the National Military Police Training Center of Martial arts in Viet Nam, plans to open a Martial Arts school in Merkel soon. Son Ninh Nuyh has been in the U. S. for about seven months and has decided to make Merkel his home. In the above photograph, Son Ninh Nuyh (right) and his opponent are shown demonstrating the art of self defense with sticks. This method was used against the French when they overtook Viet Nam and the Vietnamese had no other weapons.

AUSTIN — State health programs for the needy may have to be cut back after January 1 unless the State Welfare budget can be altered.

While the department may have \$100 million or more in unspent state and federal funds for 1976-77, the money apparently cannot be transferred from other programs to health services.

Welfare Commissioner Raymond Vowell said a health program deficit in fiscal 1977 may run as high as \$76 million.

Welfare officials said they can operate within the overall appropriations available if they can move funds from program to program. However, the legislature has prohibited such transfers.

The State Board of Public Welfare authorized staff sessions with Gov. Dolph Briscoe and the Legislative Budget Board to seek transfer power.

The alternative, according to Welfare Budget Analyst Wes Hjernevik, is reducing or discontinuing nearly all health services for the aged, blind, disabled and other welfare recipients.

Most of the shortage, Hjernevik said, is due to spiraling medical care costs.

Welfare officials are contemplating reducing hospital stay maximums from 30 to 15 days, discontinuing intermediate care nursing home payments, limiting drug prescriptions to two per month and cutting off payments for glasses, dentures and hearing aids.

Control to State

Texas Air Control Board said the federal govern-

ment is giving the state management of air sampling programs January 1.

The Board will collect for federal study air samples in 14 places — a job now done by the Environmental Protection Agency.

Amarillo, Beaumont, Corpus Christi, Dallas, El Paso, Fort Worth, Houston, Lubbock, Matagorda County, Pasadena, Tom Green County, Austin, San Antonio and Wichita Falls are sampled areas. City workers will be called on to collect information. The Air Control Board samples air at 100 sites in a state program started seven years ago.

Blue Cross Extended

Blue Cross' Medicaid contract with the state was extended 60 days by the State Welfare Board, though the company won't permit audits of its administrative costs.

A company official indicated the state auditor may be permitted at last to check the "methodology" of its accounting system. But he did not say a real audit of the books would be permitted.

Carrillo Sentenced

District Judge O. P. Carrillo has been sentenced to five years imprisonment, five years probation and a \$22,000 fine for filing false income tax returns.

Carrillo still faces impeachment trial by the Senate (now scheduled to begin January 5) and a removal proceeding before

the Texas Judicial Qualifications Commission.

An attorney for Carrillo and his brother, Duval County Commissioner Ramiro Carrillo, also sentenced on an income tax violation, said the conviction will be appealed.

AG Opinions

Waste disposal districts have authority to issue bonds for acquisition, construction and repair of disposal systems subject to review by the attorney general, Atty. Gen. John Hill said.

In other recent opinions, Hill said:

A city may grant automatic rate adjustments to a utility.

Contributions to pay expenses of the Southern Governors Conference in Texas do not have to be reported as campaign or lobby expenditures.

A state university cannot use either appropriated or auxiliary enterprise funds to purchase liability insurance for its administrative officers and regents.

The legislature may constitutionally vest control of the Texas School for the Blind in five members of the State Board of Education.

A lease of federal land to get the purchase price of parking facilities on the site conveys to the lessee no separately taxable real property interest in facilities.

Short Snorts

A three-judge federal court in Austin continued an order blocking im-

plementation of Texas, new voter registration law until it is approved by the U. S. Justice Department.

Ernest Angel of Midia, Mrs. William Staff of Dallas and Ray Barnhart of Houston were selected co-chairmen of the Texas Ronald Reagan presidential campaign committee.

A detailed discussion of effects of the new Federal Voting Rights Act on Texas governmental units is scheduled here December 17 under auspices of the House Elections Committee.

Texas has been voted top state for beautification work in the Keep America Beautiful competition.

Sunday, Day Of The Maniacs On The Highway

By SARAH ECKOLS

The typical American is a good Joe for six days a week. He works hard; he has a good home life, and he minds his own business. But every Sunday afternoon highways all

over America swarm with maniacs. Our "good Joe" suddenly takes on the identity of a Mr. Hyde on wheels when his day of rest and relaxation comes around.

Sunday has only twenty-four hours just like every other day of the week. However, our "good Joe" tries to pack at least thirty-six hours of pleasure into those twenty-four. He tries to make up for the lack of time by pushing the accelerator of his car to the floor. After all, accidents don't really happen to "good Joe American"; they just happen to some other guy he reads about in the newspaper.

Just for fun, let's take a ride with the guy next door. Of course, his name is Joe American. Joe American is a quiet little man (as far as you know). It's Sunday afternoon, and we are going to the country for a picnic with Mother Nature as the hostess. We get into the car, Joe takes off, and our adventure begins. It's early, so Joe is in a good humor—until we reach the open spaces and suddenly Mr. Hyde appears and whamo, our lives will never be the same. When that big transport truck gets in front of us you'd think a cardinal sin had been committed from the way Joe is taking on. The words he uses are not from Webster. Finally we get around the truck and zip—Joe doesn't know that that speed limit was made for him too. Another slow poke! Oh, well there probably isn't anyone coming, so we'll just ignore the no-pass zone and swish—just made it!!! But

that's all that counts; we made it! We're in the clear now. Joe will just take his half out of the middle for a while. Wake up, Joe!!!! Wow! We made another narrow escape!!!! If we don't hurry up and get to that picnic ground I'll be a nervous wreck. Wreck!!!!!! Don't mention that word! We made it! Here is the park. I'm just thanking my lucky stars that I'm here. Tranquilizers, here I come.

Well, Sunday is nearly over and naturally Joe American is in a hurry to get back home. We couldn't have left an hour ago and taken our time. No, we had to have that last little bit of country air and now we have to rush back to the city. Back into the car???? Not me! I'll take the bus! No more of nice Joe American's driving for me! I'll leave the driving to them!



Texas Taxes

By BOB BULLOCK
State Comptroller

Austin—I'm just like every body else when it comes to a bargain. And, like most cigarette smokers these days I sure wish I could find a way to quit paying such high prices for a pack of cigarettes.

Recently this office has been seeing some advertisements offering to sell cigarettes by mail for prices as low as \$2.95 per carton. Some of these advertisements originate in North Carolina.

The real reason those cigarettes are being offered at such low prices is probably that the Texas cigarette tax hasn't been paid on them. Texas law imposes a tax of 18.5 cents per package of cigarettes or \$1.85 per carton.

Legally those cigarettes can't come through the mail unless the tax is paid. The Comptroller is required by law to hunt up folks who buy cigarettes without paying the state tax on them and collect both the tax and a penalty.

Under the law I am required to collect the 18.5 cents per pack tax and then impose a penalty of another 18.5 cents per pack because the purchaser didn't pay the tax in the first place.

Getting the cigarettes through the mail in a plain brown paper wrapper won't work either. Under federal law anyone who ships cigarettes across state lines is required to report the name and address of the purchaser to the state to which the cigarettes were shipped.

Under new regulations my office will soon be getting those reports from out-of-state shippers every month.

A lot of people are also learning the hard way that the bargain cigarettes they buy in the Republic of Mexico aren't bargains when they try to bring them back across the border into Texas.

The Mexican merchant doesn't have to collect the Texas cigarette tax when he sells a package or carton of cigarettes. But it's illegal to bring more than two packages of cigarettes into Texas from Mexico unless they bear the

HOUSEHOLD INSECTS
ROACHES - SILVERFISH
NALLEY'S PEST CONTROL
PH. 928-5702 MERKEL, TEXAS

SAVE \$ \$ \$

ALL SOFA'S 15% OFF
(SOFA - SLEEPER'S 10% OFF)

LANE CEDAR CHESTS 15% OFF

DINETTE SUITS - FROM \$59.95 PRICED AS MARKED

HOOVER VACUUM MODEL 2120	\$59.95 RETAIL	\$44.95 (BOXED)
HOOVER VACUUM MODEL 2017	\$39.95 RETAIL	\$29.95 (BOXED)

NOW THRU CHRISTMAS STARBUCK FURNITURE

W. E. GILMER PAINTING & REMODELING
928-5785

KEEP YOUR SAVINGS DOLLARS AT HOME. SUPPORT MERKEL! SUPPORT YOUR COMMUNITY.

"WE WILL PAY YOU THE HIGHEST RATE OF INTEREST WHICH ANY BANK IS AUTHORIZED TO PAY UNDER PRESENT REGULATIONS."

A good bank has more answers than questions

Offering Six-Year Investment Certificates Paying **7 1/2%**
MINIMUM CERTIFICATE \$1,000 OR MORE

CERTIFICATES OF DEPOSIT

5% 30 DAYS	5 1/2% 90 DAYS	6% 12 MONTHS	6 1/2% 30 MONTHS	7 1/4% 4 YEARS
----------------------	--------------------------	------------------------	----------------------------	--------------------------

WE COMPOUND INTREST EACH DAY ON YOUR DAILY SAVINGS ACCOUNT.

A substantial interest penalty is required for early withdrawal of certificate accounts.
"DEPOSITS FULLY INSURED TO \$40,000 BY FEDERAL DEPOSIT INSURANCE CORPORATION"
(Husband and wife may be insured for total of \$120,000.)

928-4728
THE FARMERS AND MERCHANTS NATIONAL BANK
MERKEL, TEXAS

**OUR QUALITY IS HIGHER...
OUR PRICES LOWER...**

DEC. 4TH, 5TH, 6TH
THURS., FRI., & SAT.,

COFFEE

MARYLAND CLUB \$1.19
(LIMIT ONE) LB



HOT BAR-B-QUE
POTATO SALAD BEANS
PIMENTO CHEESE

SHORTENING SWIFT JEWEL
42 OZ. CAN

\$1.19

ROAST CHUCK LB 89¢
HAMBURGER FRESH GROUND LB 69¢
SHORT RIBS BEEF LB 59¢
BEEF LIVER LB 89¢
FRANKS ARMOUR'S 12 OZ. PKG. 79¢
BACON ARMOUR'S 12 OZ PKG \$1.25

DROMEDARY CHOPPED
DATES 8 OZ. PKG. 89¢
HUNTS
TOMATO SAUCE 8OZ CAN 2 FOR 35¢
LIQUID DETERGENT
ERA 16oz BOTTLE 59¢
LIQUID
JOY 22 OZ. BOTTLE 69¢

Hot Buys On FROZEN FOODS

JIMINEZ SHUCK
TAMALES 12 CRT. PKG 89¢
KEITH'S KRINKLE CUT
POTATOES 2 LB BAG 39¢
KEITH PRE-COOKED
FISH STICKS 8OZ PKG 39¢

A Garden Of Good Things PRODUCE

TEXAS RUBY RED
Grapefruit 2 FOR 25¢
CALIFORNIA SUNKIST
ORANGES LB. 25¢
CALIFORNIA
CARROTS 1 LB BAG 17¢
EAST TEXAS
YAMS LB. 25¢
COLORADO RUSSETT
POTATOES 10 LB BAG 99¢

AUSTEX
CHILI 24 OZ CAN 89¢
ARMOUR'S
VIENNAS 5OZ 2 FOR 65¢
Marshmallow
CREME KRAFT 7OZ JAR 39¢
BEST MAID
Salad Dressing QT 79¢
CRANBERRY RASBERRY
SAUCE 300 CAN 39¢
RANCH STYLE
BEANS 23OZ CAN 39¢
KIMBELL
Salad Cherries 10OZ JAR 49¢
TEXSUN
GRAPEFRUIT JUICE 46OZ CAN 45¢
LIPTON
MUSHROOM ONION
SOUP MIX 2 FOR 49¢

DETERGENT
TIDE \$1.09
GIANT BOX
KEEBLER
Cookies RICH'N CHIPS OR PECAN SANDIES 16OZ BAG 79¢

FLOUR GOLD MEDAL 5 LB BAG 79¢
COFFEE MATE 16OZ JAR \$1.19
TAMALES GEBHARDTS 2 1/2 CAN 59¢
PEACHES CAROLINE SLICED NO 2 1/2 CAN 49¢
CRACKERS NABISCO 1LB BOX 55¢
TOMATOES KIMBELL 303 CAN 29¢
JAM BAMA RED PLUM 18OZ JAR 59¢
PEARS HUNTS HALVES 300 CAN 39¢
FRENCH DRESSING KRAFT 16OZ BOTTLE 89¢

BISCUITS KOUNTRY FRESH 8OZ CAN 2 FOR 25¢
OLEO BLUE BONNET LB 49¢
SPINACH DEL MONTE 303 CAN 29¢
DIP FOREMOST AVOCADO 8OZ CRTN 49¢
BUTTER MILK FOREMOST 1/2 GAL 69¢
WRAPPING PAPER X-MAS 6ft & 3in BY 26in FOIL 23ft 4IN BY 26 OR 3 ROLL PACK YOUR CHOICE 98¢

USDA APPROVED TO REDEEM FOOD STAMPS DELIVERIES DAILY AT 10.00 A.M.

REFRIGERATED AIR 1033 N. SECOND
PARKING LOT IN REAR

Wilson's FOOD STORE

Where Customers Send Their Friends
PHONE 928-5713

Double Premiums
On WEDNESDAY ON
Purchase of \$2.50
OR MORE IN MERCHANDISE
Save Valuable
Cash Register Tapes
For Premiums

GET ACTION USE

CLASSIFIEDS

PHONE 928 - 5712

Miscellaneous

FOR MONUMENTS and CEMETERY CURBING
M.A. (Sarg) Noster
1404 Herring Dr.
Merkel, Texas
Phone 928-5565

Help Wanted

CUSTODIAN WANTED: Immediate opening for school custodian, \$2.36 per hour-2 week paid vacation annually, 5 holidays plus sick leave. Contact Mack Fisher or Obie Coker. Telephone 928-5813.
36-tfc

For Sale

FOR SALE-Farm-150 Acres. Well located parallel to Interstate 20. Most of land in cultivation. Cyrus Pee, 37-tfc
GAS DRYER-Excellent condition, \$75. 1969 Chevrolet, 6 cyl. \$350. Call 928-5855 after 4:30 P.M. All day Saturday and Sunday.
46-4tp

Garage Sale

Let us have your garage sale! If you plan to have a garage sale let us help. However, at this time we are unable to handle anymore clothes on a percentage basis due to our limited space. If you hold it in the youth center we only charge 10 percent of your gross. If you wish to leave the sale entirely up to us we will charge only 50 percent. Proceeds will go to the Merkel Youth Center.
PLEASE HELP US MAKE OUR YOUTH ACTIVITIES A SELF SUPPORTING PROJECT.
For further information call Russell McAnally, Mrs. Leon Harris or Mrs. Larry Justice. Youth Activity Telephone No. 928-5859.
tfc

Buy Your Prepaid Funeral Plan Direct From The Funeral Home and Save

STARBUCK FUNERAL HOME

MERKEL VFV POST 5683 MONTHLY REG. MEETING 8:30 P.M. SECOND THURSDAY POST & LADIES AUXILIARY Y'ALL COME NOW!

SEAMSTRESSES-Now hiring experienced sewing machine operators for new Wilkerson Co. plant. Positions will be filled immediately. Wage Scale-\$2.25 to \$2.40 per hour. Call Logan Cravens or Steve Hamilton at 677-2606.
34-tfc

1967 RANCHERO Pick-up. Air conditioned, vinyl roof, tonneau cover, good condition. Call Logan Cravens after 7:00. 928-4860.
41-tfc

COMPLETE "650" Eaz-Lift Frame Hitch \$100.00. Large Metal Double Door Wardrobe \$40.00. 404 Yucca.
41-1tp

MASONIC MEETING
Stated meeting of Merkel Lodge No. 710 on 2nd Saturday and 4th Thursday of each month at 7:30 p.m. Visitors welcome. Members urged to attend.
BILLY D. DOAN, W.M. ROY MASHBURN, Sec'y

TRAINEEES: If you can sew, you can earn \$2.25 per hour as a sewing machine operator. Call Logan Cravens or Steve Hamilton at 677-2606.
34-tfc

CHRISTMAS Sale on Plaster- Also limited number of paint sets, \$2.50 and 4 vials, \$2.25. 123 Kent Street - 928-5762. Stanfords Plaster Shop.
41-2tc

GARAGE SALE-Friday afternoon - all day Saturday. 607 Yucca.
41-1tp

MERKEL VFW POST 5683 MONTHLY REG. MEETING 8:30 P.M. SECOND THURSDAY POST & LADIES AUXILIARY Y'ALL COME NOW!

TEXAS OIL COMPANY needs dependable person M/F who can work without supervision in Merkel. Contact customers. Age unimportant, but maturity is. We train. Write T. E. Dick, Pres., Southwestern Petroleum, Fort Worth, Texas E. O. E.
41-tfc

FOR SALE-Golf Clubs and Bag. 928-4812.
41-2tc

LADIES HAND BAGS MADE BY Jessie Reagan, 403 Runnels. Make nice Christmas gifts. 928-5940.
39-3tc

NEED HELP? Call the Merkel OUTREACH PROGRAM. 928-5850 or 928-5017.
tfc

SEAT COVER CENTER
*Seat Covers
*Truck Cushions
*Door Panels
*Arm Rests
*Headliners
1056 BUTTERNUT
677-1349
ABILENE

BUILT OUT OF METAL TO LAST
Car Parts Patio Covers
Small Buildings
Security Window Guards
Mobil Home Porches
And For All Your Welding Needs Call John Luckey
928-5149
MERKEL

FOR THOSE GOOD SHELL PRODUCTS STOP BY DISHMAN'S SHELL 211 KENT 928-5222 MECHANIC ON DUTY

PRESTIGE HOMES & PROPERTIES
317 N. Willis Suite 20 Abilene 673-6444
SPANISH 2 bedroom stucco, spacious rooms, fireplace, corner lot near school and churches.
BRICK-3 bedroom, total electric, step-saving "U" shaped kitchen, attached garage.
HOMES in Abilene, Cisco and Gorman.
GARAGE, wrecking yard and home west of Abilene. doing good business, owner wants to retire January 1.
CHOICE acreage in Taylor, Jones, Callahan, Eastland and Erath Co. For details call:
SECTION ranch, western Taylor Co., beautiful water, well improved. Financing available.
Shannon Teal.....692-0787
J. Frank Jones.....673-6532
George Schroeder.677-5713
Jewel Nixon.....692-9787
Pauline Butman...692-2222
REALTORS
MERKEL BRANCH OFFICE
Pat and Billy Neff.928-5623
Equal Housing Opportunity

LEARN TO PAINT FROM BEGINNERS TO INTERMEDIATE CALL RUTH ADAMS AT 673-8739 OR 673-5575

WE SERVICE ALL APPLIANCES Call WESTERN AUTO 928-4815

It's Time To Trim Trees And Cut Grass Low CALL 928-5744 NORMAN ODEN

The Merkel Mail

PUBLISHERS STATEMENT Established in 1889

Published weekly at 916 N. Second St., Merkel, Texas

Entered at the Post Office at Merkel, Texas, 79536 as second class Mail.

Any erroneous reflection upon the character, standing or reputation of any person, firm or corporation, which may appear in the columns of the newspaper will be corrected, gladly, upon being brought to the attention of the publisher.

SUBSCRIPTION RATE: \$4.75 Per Year Taylor and adjoining counties, \$5.50 Per Year outside of Taylor and adjoining counties.

Member of the Texas Press Association and West Texas Press Association.

STEVE LANHAM.....Publisher
Sarah Eckols.....Editor
Martha Sue Justice.....Advertising Sales Manager

For Classified Rates:
\$1.25 minimum for the first four lines. Excess of 4 lines will be charged at the rate of 8 cents per word.
Cards of Thanks \$2.50 for the first 50 words, 6 cents per word for each additional word. TERMS: Cash in advance unless account is already established. NOTICE of typographical or other errors must be given before the second insertion of claims for refunds or extensions will not be recognized.

J. L. FISHER FINA SERVICE TWO LOCATIONS INTERSTATE 20 & WEST HIGHWAY80

ALL TYPES OF INSURANCE BONEY INSURANCE AGENCY Phone 8-5151

FARMERS UNION INSURANCES ONE STOP SERVICE FOR ALL YOUR INSURANCE NEEDS

AUTHORIZED DEALER Lawn & Garden Equipment Allis-Chalmers-Owatonna Hay Machinery Farm Equipment and Fomey Welding Equipment Shafer Plows - Continal Belton Products 677-4349 DOTY FARM EQUIPMENT CO. 366 Chestnut Nights-Sundays-Holidays 672-2451 - 698-2572

PUBLIC NOTICE

THE STATE OF TEXAS

TO: A. T. Halbert, d/b/a You are hereby commanded to appear before the Honorable County Court of Jones County at the Court House, thereof, in Anson, Jones County, Texas, at or before 10 o'clock A. M. of the first Monday next after expiration of forty-two days from the date of the issuance of this citation, same being the 29th, day of December

PUBLIC NOTICE

THE STATE OF TEXAS

To any Sheriff or any Constable within the State of Texas-Greetings:

You are hereby commanded to cause to be published one time in a newspaper printed in Taylor County, Texas, the accompanying citation, of which the herein below following is a true copy.

BY PUBLICATION THE STATE OF TEXAS TO: Thomas Paul Sager, Respondent, (s) Greeting: YOU ARE HEREBY COMMANDED to appear and answer before the Honorable Domestic Relations Court of Taylor County, Texas at the Courthouse in said County, in Abilene, Texas, at or before 10 o'clock A. M. of the Monday next after the expiration of twenty days from the date of service of this citation, then and there to answer the petition of the Jack V. Landreth and wife, Peggy Landreth, Petitioner, filed in said Court on the 22nd, day of October, 1975, against Thomas Paul Sager Respondent (s), and said suit being numbered 11,056-DR on the docket of said Court, and entitled "In the Interest of Thomas Paul Smith aka Thomas Paul Sager, II a Child," the nature of which suit is a request to Terminate Parent-Child Relationship.

Said Thomas Paul Sager, II was born the 21st, day of December, 1973, in Austin, Travis County, Texas. The Court has authority in this suit to enter any judgment or decree in the Child's interest which will be binding upon you, including the termination of the parent-child relationship and the appointment of a conservator with authority to consent to the child's adoption. Issued and given under my hand and seal of said Court at Abilene, Texas, this the 24th, day of November, 1975.

(SEAL) Attest: Irene Crawford District Clerk Domestic Relations Court in Taylor County, Texas. By Sandra Harris Deputy 41-tfc

CEMETERY DONATIONS

The following have made donations to the Merkel Cemetery Association.
Mr. and Mrs. W. R. Cyfert in memory of Golden Cyfert
Mrs. Andy Shouse in memory of Craig Humphrey and Leslie Sumner

Lambda Beta News

The Lambda Beta Chapter of Beta Sigma Phi met Tuesday, November 18 at the home of Faye Jones. Roll call was answered with the reply to the question "Who is your favorite career woman?" Committee reports were given. The program "Women to Whom We Are" was given by captain, Millie Bright, and co-captain, Minyon Seymore. Members present were Mrs. Jim Allday, William Booth, Glen Bright, Rosey Castille, Junior Clark, Obie Coker, Ken Elliott, Richard Hill, Harold Hohertz, Craig Jones, Billy Lucas, Paul Moore, Phil Seymore, Larry Teaff, Bill Whisenhunt, and Lee Yaddow.

PUBLIC NOTICE

THE STATE OF TEXAS

To any Sheriff or any Constable within the State of Texas-GREETING:

You are hereby commanded to cause to be published once each week for four consecutive weeks, the first publication to be at least twenty-eight days before the return day thereof, in a newspaper printed in Taylor County, Texas, the accompanying citation, of which the herein below following is a true copy.

CITATION BY PUBLICATION THE STATE OF TEXAS TO: Milton Epperson, Defendant, Greeting: YOU ARE HEREBY COMMANDED to appear before the Honorable Domestic Relations Court of Taylor County at the Courthouse thereof, in Abilene, Texas, by filing a written answer at or before 10 o'clock A. M. of the first Monday next after the expiration of Twenty (20) days from the date of the issuance of this citation; same, to Plaintiff's Petition filed in said court, on the 12th, day of November A. D. 1975, in this cause, numbered 11,260-DR on the docket of

Notice To Bidders
The City of Merkel will receive sealed bids until 1 p.m. January 12, 1976, on the sale of the following described property:
Lots 1 and 2, Block 7-E; lots 11, 12 and 13, Block 20-A; Lots 9 and 10, Block 20-D all in the College addition to the City of Merkel, Taylor County, Texas.
Minimum bid of \$200 is required per each lot with purchaser assuming all legal costs of transaction.

Merkel Visitors
Mrs. Annie Collins Grafford of Dallas has been the guest of Mrs. Lottie Everett and the whole Butman Ranch family where she visited often when her family operated the Collins Hotel in Merkel. Mrs. Grafford came to the area to attend the Lord's Acre Sale at Pioneer Memorial Chapel and to spend the Thanksgiving holidays with the Butman Ranch family.

Garden Club News
Members of the Merkel Garden Club met in the home of Mrs. Raymond Ferguson, November 20 for an informal afternoon meeting.
Mrs. Leota Sherrill and Mrs. E. J. Patterson told of the District VIII Garden Club meeting in Sweetwater which was held November 11. Attending the district meet were Mrs. Sherrill, Mrs. Clark and Mrs. Opal Freeman.
Attending were Mrs. Tom Allday, Mrs. Oda Clark, Miss Christine Collins, Mrs. Johnny Cox, Mrs. Albert Criswell, Mrs. Lottie Everett, Mrs. Mack Fisher, Miss Nora Foster, Mrs. S. D. Gamble, Mrs. Tom Fox, Mrs. Dee Grimes, Mrs. Allen King, Mrs. E. J. Patterson, Mrs. G. R. Peachy, Mrs. Tom Russom, Mrs. W. T. Sadler, Mrs. John Shannon, Mrs. Charlie Sherrill, Mrs. Aaron Sudderth, Mrs. Jarrett Williams, Mrs. Odie Griffin and Mrs. Ferguson.

LOOK WHO'S HERE!
Mr. and Mrs. Bob Hammond announce the birth of a daughter, Dana Mychele, born November 24 in Abilene. The baby weighed 8 pounds and 1 ounce.
Paternal grandparents are Mr. and Mrs. John Hammond of Merkel and maternal grandparents are Mr. and Mrs. Ray Reed of Floydada.

WE PAY 150% OVER FACE VALUE FOR ALL SILVER COINS. (\$2.50 FOR \$1.00 SILVER) (We pay 25c for silver dimes) PRATTS COIN & STAMP SHOP 2155 S. 1st. Abilene, Texas

TIPS FOR DIPS AND SEASONED SPREADS

Blue Bonnet is introducing a new product that fills today's consumers' need to economize, but still serve wholesome meals and party dishes. The product is Blue Bonnet Spread...which has the flavor and look of margarine, but has 25 per cent less fat and calories. It comes in 2-pound bowls, selling at an average of \$1.25-\$1.30 or .63-.65 per pound.

Ideal as a table spread or as a recipe ingredient, Blue Bonnet Spread is especially delicious in a dip or seasoned spread for bread and crackers. Essentially the same, dips and spreads differ mainly in consistency. Dips must be soft enough not to break the cracker or potato chips used as scoops... but not so soft they drip. Spreads must be soft enough to spread without breaking the crackers or tearing the bread...but not runny.

Suggested here are two dips and a cheese spread. Popular in the Southwest is Guacamole Dip, a seasoned avocado-whipped mixture flecked with chopped tomatoes. Tortilla chips are a perfect partner. Dilly Shrimp Dip combines cream cheese with chopped shrimp and dill. It's good for dunking raw vegetables as well as crackers. Muenster Cheese Spread, with its confetti-like dots of pimiento, is a zesty spread for cocktail rye, pumpernickel or Syrian flat bread.

- GUACAMOLE DIP**
2 (about 12 ounces each) ripe avocados, peeled and cubed
1/4 cup Blue Bonnet Spread
3 tablespoons grated onion
1 tablespoon lemon juice
1 medium clove garlic, crushed
2 teaspoons salt



DILLY SHRIMP DIP
1 can (4-1/2-ounce) small shrimp
1 package (8-ounce) cream cheese, softened
1/3 cup Blue Bonnet Spread
1 tablespoon grated onion
1/4 teaspoon dill weed
Milk
Drain shrimp, rinse and

MUENSTER CHEESE SPREAD
8 ounces Muenster cheese, grated
2 tablespoons finely chopped pimiento
1/4 cup Blue Bonnet Spread
Combine cheese and pimiento. Blend in Blue Bonnet Spread until smooth. Chill until ready to serve. Spread on crackers or use as sandwich filling. Makes about 1-1/2 cups.

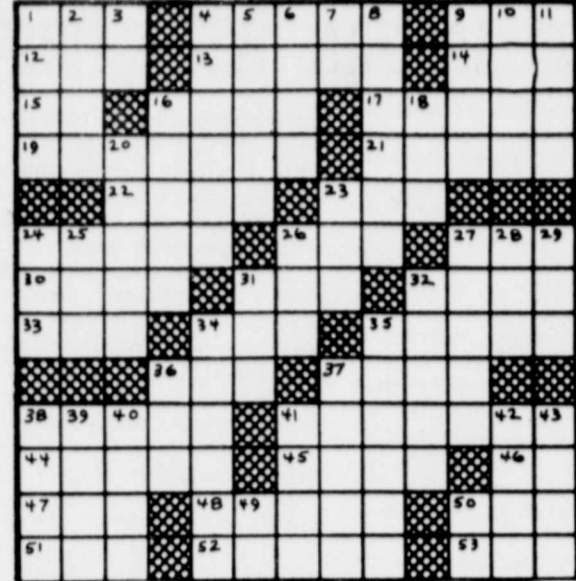
Youth Center Contributions

The following have made contributions to the Merkel Youth Center:
Mrs. Morris Smith
Mrs. Robert Campbell
E. A. Conley
Faye Blair
Mrs. James Allday
Peggy Dennison
Hazel Lay

W. A. Cybert
Mrs. J. C. Sims
Mrs. Mack Seymore
Mrs. D. S. Gregory
Mrs. Otis Griffin
Mrs. Booth Warren
Mrs. Robert Malone
Mrs. June Hogan
Mrs. Everett Williams

Mrs. Don Glascock
Mrs. Tex Barnhart
Mrs. Glen Teaff
Mrs. Dee Moore
We would like to thank all of those who have made donations and helped in other ways at the Youth Center. If we have left any names off the list please let us know.

Crossword Puzzle



- ACROSS**
1. Beam
4. Norse dwarf
9. Japanese sash
12. Number
13. Kingly
14. Stroke gently
15. In
16. Prophet
17. Entertain
19. Error
21. Niggard
22. — and crafts
23. Young boy
24. Roof edges
26. Used to be
27. Animal foot
30. Thwack
31. Burst open suddenly
32. Moon goddess
33. Exclude
34. Utilize
35. Soiled
36. Blackbird
- DOWN**
1. Wander
2. One opposed
3. You: archaic
4. Acts toward
5. Smells strongly
6. Monster
7. Musical note
8. Guanacos
9. Musical work
10. Pedestal
- ACROSS**
11. Roman road
16. Scatter
18. At the center
20. Taste
23. Part of a race
24. Wane
25. Wing
26. Sorrow
27. Money bag
28. Insect
29. Method
31. Greek letter
32. Flaxen cloth
34. Countless
35. Constraint
36. Inclined
37. Surfaces a road
38. Time divisions
39. British title
40. On the ocean
41. Cavern
42. Principle
43. Turn rapidly
49. Gold: Her.
50. Interjection

Party Planning

TIPS

By Jeffrey Carlstead, Former Holiday Inn "Inkeeper of The Year"

No matter how much food you're planning, nor how much help you have, it's always a good idea to have four or five bowls of nuts, olives or candy placed around the room in reach of people in case there's a delay in serving.

LAY-AWAY FOR CHRISTMAS WILSONS JEWELERS

FIGHTING INFLATION

Nuclear Energy Linked To Economic Growth

"Left, right; left, right!" When most Americans hear those words they think of a parade of marching men, in step, a stirring sight in this bicentennial year. But to an economist the words possibly serve to remind him of how our economic and energy growth have been in almost perfect lock step for the past 20 years.

Today, there are 55 operating nuclear plants generating a total of 8 per cent



of our electric power. Interestingly, many major areas such as Chicago and Boston rely on nuclear power for 30 per cent of their electric power.

If you were to make a plot of our annual growth rate, it would show a one-to-one correlation with our economic growth. That energy consumption and standard of living are inextricably tied together is true not only for the United States but for the whole world. Our domestic reserves of oil are limited, and our reserves of gas are being rapidly depleted. Those who have studied the fuel situation often agree that conservation can only go so far and that the answer lies in using more nuclear power and coal.

Public Notice

Pat Castille Will Temporarily Be Taking Care Of Your Lone Star Gas & TV Cable Bills At The Old Ben Franklin Bldg. At 129 Edwards Beginning Monday, December 1st From 9 until 5

KUNG FU KARATE

LEWIS MILLETT- U.S. ARMY'S LEADING INSTRUCTOR ON HAND - TO - HAND COMBAT, BAYONET FIGHTING WILL SPONSOR SON NINH HUYNH

MASTER OF KUNG-FU NATIONAL POLICE INSTRUCTOR, PROFESSOR OF MARTIAL ARTS IN SPECIAL CLASSES TO BEGIN SOON. ALL FORMS OF MARTIAL ARTS- JUDO, KARATE, STICK-FIGHTING & DEFENSE AGAINST WEAPONS WILL BE TAUGHT, WITH SPECIAL CLASSES FOR WOMEN IN THE ART OF SELF- DEFENSE

ONLY PERSONS OF HIGH MORAL CHARACTER WITHOUT POLICE RECORDS WILL BE ALLOWED TO PARTICIPATE PARTICIPATE

WATCH FOR OPENING DATE

Suggestions from Santa



Merkel Mail

Retire Rich.

SAVE 1500 TAX-FREE DOLLARS a year for your retirement and you'll earn up to 7 3/4% at Sweetwater Savings



ANOTHER Sweetwater Savings first... the Individual Retirement Account! We introduced IRA first to allow those persons not participating in a retirement plan (other than Social Security) to retire rich. That chart below, based on a \$1500 annual deposit and 7 3/4% earnings with compounding, indicates just how rich you will be at retirement. Compare Sweetwater Savings IRA earnings with other IRA plans. For details, contact the Sweetwater Savings office nearest you.

BEGINNING AT AGE	TOTAL RESERVES AT AGE 59 1/2	TOTAL RESERVES AT AGE 65
25	266,705.11	417,181.25
30	175,218.49	277,743.45
35	112,891.22	182,748.18
40	70,429.41	118,030.58
45	41,501.37	73,940.30

CURRENT ANNUAL EARNINGS
7 3/4% 5 YR. CERT.—\$1000 MIN. 6 1/2% 1 YR. CERT.—\$1000 MIN.
7 1/2% 4 YR. CERT.—\$1000 MIN. 5 3/4% 90 DAY ACCT.—\$1000 MIN.
6 3/4% 30 NO. CERT.—\$1000 MIN. 5 1/4% NO PENALTY PASSBOOK
A substantial interest penalty is required for early withdrawal of certificate accounts

SWEETWATER SAVINGS ASSOCIATION
SWEETWATER ROTAN ROSCOE HAMLIN

Farmers Union Spokesmen Charge Administration With Neglecting Farm Families

"The Administration's farm and trade policies are totally inconsistent and unacceptable to the needs of the nation's farm families." A fifteen member farmer/rancher committee appointed to draft the preliminary policy statement for the Texas Farmers Union state convention charged the Administration and Secretary Butz today with "proclaiming the 'free market' as the domestic farm policy, on the one hand, and imposing embargo and trade restrictions on the other hand." As the most recent example of the Administration's failure to play by the same rules in conducting international trade policy as in conducting domestic farm policy, the committee called attention to the Soviet grain deal.

The proposed statement and adopted the final version. It will guide the farm organization's position and policies on state and national issues throughout the upcoming year. The theme of the 72nd annual Farmers Union convention, "1976: The Year For Parity and Abundance," will set the tone of the policy discussions that the committee members and delegates will debate. Adequate income protection for farmers and ranchers is of high importance in light of the official governmental policy of all-out production. Many of the recommendations that will be discussed by the farmer/rancher delegates deal with the Farmers Union Plan for Parity and Abundance which will be presented to the Congress in the upcoming year. Other issues which will spark discussion at the policy drafting committee meeting and the state convention deal with issues such as land-use planning; the Administration's attempts to change the rice and peanut programs; priority fuel allocation for agricultural producers; the administration of the disaster program; property taxes and school financing; control of grain exporting to foreign buyers. Other members of the policy drafting committee who will present their recommendations to the Fort Worth convention in addition to Sandusky are: Co-Chairmen Vernon Chandler of Midland and George Lee Streit of

"If the top range of the volume in the Soviet agreement—6 to 8 million tons a year—should turn out to be a limit on grain shipments to the Soviets in the five-year agreement, farmers will continue to experience sharply lower grain prices. A similar situation was created earlier," the committee said, "by the embargo on soybean sales abroad, the embargo on grain sales to Poland and the Soviet Union which preceded the Soviet pact."

Glenn Sandusky of Merkel serves as the District III representative on the policy drafting committee, which met in Waco on Monday and Tuesday November 17 and 18. The members of the policy drafting committee, representing all areas of Texas and different commodity producers, wrote the draft of the general farm organization's guiding document. It incorporated recommendations and resolutions submitted by county Farmers Union local organizations. The delegates to the Texas Farmers Union annual state convention in Fort Worth December 5-6, at the Hilton Inn, will debate

Virtue is like a rich stone, best plain set—Bacon
Boldness is an ill keeper of promise—Bacon
Light gains make heavy purses—Bacon

SENIOR CITIZENS SCHEDULE EVENTS
1st Monday of Month Singing
2nd Tuesday Noon Covered Dish Luncheon
Game Nights Every Thursday & 4th Monday
4th Thur. Game Night Reserved for Talented Amateurs.



CHRISTMAS BAZAAR—Members of Xi Nu Chi chapter of Beta Sigma Phi sorority in Merkel will hold their annual Christmas Bazaar sale December 6 in front of West Texas Utilities Company in downtown Merkel. Shown holding and displaying hand made articles and home baked goods are (left to right) Charlotte Starbuck; Louise DuBose, ways and means chairman and Darla Mawson, president of Xi Nu Chi. Available at the bazaar will be such items as Christmas card holders, holiday placemats, doorknob decorations and holiday breads.

Mrs. Harmon Entertains Fortnightly Study Club

The Fortnightly Study Club met Tuesday, November 25, at 4:00 p.m. in the Fellowship Hall of the Methodist church. As this was guest day, Mrs. Mack Fisher, Mrs. Johnny Cox and the Social Committee were hostesses. Members and guests spent a pleasant social hour enjoying delicious refreshments. In the absence of the president, Mrs. Ray Wilson, Mrs. Comer Haynes, introduced Mrs. Marthe Harmon who gave the program. Mrs. Harmon is the Consumer Information Specialist from Lone

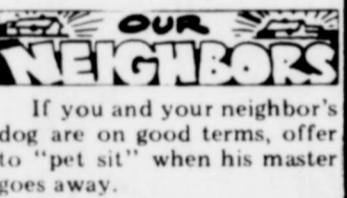
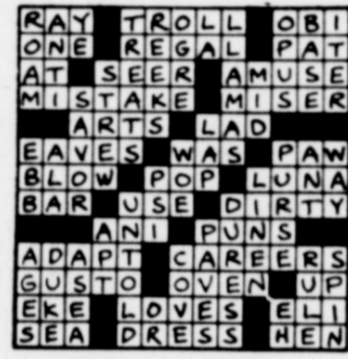
Star Gas. The basis for Mrs. Harmon's demonstration was a pamphlet of Christmas recipes, "Now Comes Christmas." Each member and guest was presented one of these pamphlets. The table was laid with a lovely red cloth and covered in beautifully wrapped goodies in all sorts of containers. The containers were made from egg cartons, waxed paper cartons, rolls from paper towels and all sorts of things that are usually discarded. The wrap-

pings were made from adhesive plastic and freezer wrap then tied with attractive bows of calico, red and green floss and ribbons. Members present were Mesdames John Cain, Johnny Cox, Don Dudley, Andy Shouse, Charles Eager, W. R. Cypert, Comer Haynes, Stanley Toombs, Mack Fisher, S. C. Dixon, S. D. Gamble, Bryan Dunagin, Russell McNally, Charles Knight, Carl Hughes and Miss Christine Collins. Guests included, the speaker Mrs. Harmon and Mesdames Paul West, Joe Alves, Carrol Benson, Ford Smith Jr., Tom Allday, and Miss Novis Whitaker of Abilene.

Mrs. Benson Host Delta Kappa Gamma

Zeta Phi chapter of Delta Kappa Gamma, honorary society for active and retired teachers, held its November meeting in the home of Mrs. Carroll Benson. The program theme was "Opening New Doors." Mrs. W. K. Rutledge, former Abilene school trustee was guest

speaker. Mrs. Lee Nell Gann also spoke. The polished serving table was centered with a Thanksgiving arrangement. The appointments were of copper. Mrs. Mack Fisher and Mrs. Benson are active chapter members from Merkel. Miss Cindy Boone, a future teacher, assisted Mrs. Benson in entertaining.



when in Abilene...
Christmas Shopping's a joy!
at River Oaks
So. 14th & Willis
Everything you're looking for—and more!

THE COUNTRY CLUB OF MERKEL
12 TILL 2
SPECIALS OF THE DAY

TUES. DEC. 9TH ROAST BEEF & CHICKEN FRIED STEAK SERVED WITH POTATOES, VEGETABLE, & DESSERT	\$2.25
TAHITIAN SANDWICH ON TOAST, HAM, TURKEY, & CRAB MEAT COVERED WITH CHEESE SAUCE SERVED WITH SALAD & FRENCH FRIES	\$2.50
WED. DEC. 10TH BEEF STEW SERVED WITH SALAD	\$1.50
CHICKEN FRIED STEAK POTATOE, VEGETABLE & DESSERT	\$2.25
THURS. DEC. 11TH CHICKEN & DUMPLINGS SERVED WITH VEGETABLE, & DESSERT	\$2.25
CHICKEN FRIED STEAK POTATOE, VEGETABLE & DESSERT	\$2.25
FRI. DEC. 12TH CATFISH COLESLAW, POTATOE, VEGETABLE & DESSERT	\$2.25
CHICKEN FRIED STEAK POTATOES, VEGETABLE & DESSERT	\$2.25

PLUS OUR REGULAR MENU SERVING TUES THRU SUNDAY EVERY ONE WELCOME !!

LOIS STAUTZENBERGER
(FORMERLY OF HAUTE COFFIEUR)
NOW AT
NORMA'S BEAUTY SHOP
134 EDWARDS
MONDAY THRU SATURDAY NOON

December Specials on permanents 928-5371

ATTENTION FARMERS
Cal-Tex Will Pay You Top Dollar For Your Milo -- Plus A FREE Trip for Two to Las Vegas or National Rodeo Finals
Be Sure to Register And Get A Ticket When You Bring in Your Milo

Contest Now in Progress. For More Information, contact Ed Sandusky at Ed's Feed and Seed in Merkel, 928-5019 or R.L. Bland at Cal-Tex in Trent, 862-2951.

—Previous Winners—
Mr. & Mrs. Bobby Toliver
Mr. & Mrs. Orval Ely

CAL-TEX FEED YARD
Trent, Texas

COME AND HEAR BOB GABRIEL
IN CONCERT OF HYMNS AND GOSPEL SONGS
FIRST BAPTIST CHURCH OF MERKEL
TUESDAY, DEC. 9, 7:00 P. M.

CONSERVE AND SAVE ON ELECTRIC COOKING

- ★ For best results, use flat bottom utensils with tight fitting covers. Utensils of medium or heavy weight aluminum conduct heat faster, transfer heat evenly and respond quickly to temperature changes.
- ★ Match the utensil to the size of the unit. Use 8 inch units for large utensils. Use 6 inch units for small to average sized pans.
- ★ Use high setting for a quick start for any surface cooking, or to boil water quickly. When cooking temperature is reached, switch to a lower setting.
- ★ Do not pre-heat the oven for roasting or broiling, but do pre-heat the oven to the temperature given in the recipe for baking.

Pick up your FREE copy of "ENERGY CONSERVATION" Booklet from
Frigidaire
Home Environment Division of General Motors.

West Texas Utilities Company
An Equal Opportunity Employer

Remember **REDDY** Supplies the energy—but only YOU can use it wisely!

Texas Farmers Convene In Fort Worth December 5

National Farmers Union President Tony T. Dechant of Denver and recently elected president of the International Federation of Agricultural Producers will be the featured speaker for the 1975 annual convention of the Texas Farmers Union.

The 72nd annual meeting of the state-wide general farm organization will convene in Fort Worth at the Hilton Inn on Friday, December 5. The farmer and rancher delegates will be in Fort Worth to develop the organization's legislative and organizational goals for 1976.

Attorney-General John Hill will open the convention session on Friday morning. He will be followed on the program by Rocky Mountain Farmers Union President John Stencil of Denver.

The theme of the two-day conclave "1976: THE YEAR FOR PARITY AND ABUNDANCE," will be set when Victor Ray, Assistant to the President of National

Farmers Union, presents the "Farmers Union Plan for Parity and Abundance." Ray's multi-media presentation will be followed by a panel discussion and question and answer period. Ray Novak, President of the National Farmers Union Insurance Companies will make his annual report to the delegates and members on Friday morning also. Texas Land Commissioner Bob Armstrong will be the principal speaker for the evening session.

Saturday morning's session will open with a report on Farmers Union Young Couples activities by Gaylon and Margaret Amonett of Lorenzo, Texas Farmers Union President Jay Naman will present his annual report on the status of the Texas Farmers Union to the membership on Friday morning.

Highlighting Saturday morning's activities will be an address by United States

Senator John Tower of Texas. Tower recently introduced a Farmers Union supported bill in the Senate allowing direct marketing of farm commodities to consumers by producers. The entire Saturday afternoon session will be devoted to policy debate and adoption by the convention delegates.

President Tony Dechant will be the speaker for the Western barbeque and concluding session of the convention on Saturday evening. Dechant, who was elected president of the IFAP at its recent Washington, D. C. meeting, now heads the international farm organization consisting of agricultural organizations from virtually every agricultural producing country in the world, in addition to his presidency of the National Farmers Union.

The convention program will also include:

Dr. Bill Black of Texas A & M University who will moderate a panel discussion on "Texas Agricultural Markets and Issues for the 1980's." Black will be assisted by several prominent agricultural commodity experts during the discussion. The marketing seminar will be held on Friday afternoon.

Bobbie Wygant, Anchorperson of KXAS "Inside Area Five" will be the featured speaker for the Ladies Luncheon and Program on Friday.

A special attraction for the young people attending the convention will be a complete tour of the broadcasting facilities of a major radio and television studio. Sherry Leach, Director of Youth and Young Adult activities for National Farmers Union will present a program for the youth members and youth leaders on Saturday morning.

Texas Farmers Union President Jay Naman of Waco has issued an open invitation to all farmers and ranchers to attend the convention to learn first-hand the workings and policy making procedures of a "grass-roots" farm organization.

"The 1975 Texas Farmers Union state convention may well be the most important ever held by this organization. The delegates must write a program which will assure adequate income protection for producers and reasonable food costs for consumers. If farmers are to stay in business and consumers have adequate supplies of food and fiber, then the challenge before the delegates at this convention will be to write a program which will awaken our representatives in Washington to the need for a good farm and food policy," Naman said.



The Consumer Alert

by John L. Hill
Attorney General

AUSTIN—All Texans may benefit in some way from many of the good works performed by legitimate charities. Many of these non-profit organizations sponsor important research into causes and cures of diseases and disabilities that could strike any individual or family.

Other organizations aid in community efforts to improve the quality of life for residents. And most of these and other non-profit groups depend on contributions from individual citizens to continue such worthwhile programs. Estimates of the amount of charitable contributions run almost \$25 billion annually nationwide.

And, as always when funds of such magnitude are involved, there are a few unscrupulous persons who will try to promote their own unworthy causes in order to cash in on the good intentions of others. Our Attorney General's Consumer Protection Division lawyers say this is the time of year in which such persons are most active, too.

Recently, in cooperation with the El Paso district attorney, our office succeeded in putting one such fraudulent "non-profit" organization out of business. We obtained a permanent court injunction dissolving the corporate charter of a company engaged in "unlawful business operations" involving numerous violations of the Texas Deceptive Trade Practices-Consumer Protection Act.

This particular group was posing as a "non-profit" organization of Mexican-American businessmen, and as such was soliciting in connection with many seemingly worthwhile projects such as softball teams for disadvantaged boys and girls, a "thrift shop" for the benefit of handicapped workers, a "church directory" of religious groups, syn-

Man, Collector Of Peculiar Things

By SARAH ECKOLS

Man is peculiar; man is a collector; man needs diversion in the form of hobbies. Therefore man makes hobbies out of collecting the most peculiar things! Let us look at a few of the more peculiar of man's collections.

Travel into the deep, dark jungles of South America with me. As we ride along we see the peculiar collections of the peoples living in Venezuela are in such form as the hides of iguanas, the teeth and the hands of the spider monkey, or perhaps the beautiful feathers of the guacama. Peculiar? Yes, these sound peculiar to you and me, but they are as common as coins and stamps in America.

The glass collector usually specializes in a certain area of glass and classifies it according to time, shape and quality of glass.

These are just a small portion of the various collections I have found to be in existence around the world today. They do seem a bit peculiar, but now look at the collections going on right here in our own classroom, community, and state. Probably if we took

an inventory of the collections owned by the people we know, we would be amused and entertained. You may be sitting next to a collector of plates, states, stamps, lamps, balls, dolls, hats, bats; you may know a seeker of fishes, dishes, shoes, blues, scraps, taps, wraps, maps, songs, gongs; why, everyday you may be exposed to dealers in metals, kettles, cots, lots, foxes, boxes, flowers, towers, birds, words, rings, strings, all kinds of odd little things. Yes, for as many different personalities there are as many different collections no two the same. People do indeed make hobbies of collecting the most peculiar things.



Among certain Arabs, a childless woman often borrows the robe of a woman who has many children, hoping with the robe to acquire the fruitfulness of its owner.

From Venezuela we go across the ocean, half-way around the earth to India. One of the most common collection items in India is ivory in the shapes of elephants, tigers, and the deadly python. Hand-carved teak and rosewood are also popular with the Indians, as are jewels such as the black star sapphire.

In Canada one finds many collections of glass. Glass is collected as figurines, vases, small bottles, and ornaments.

PACKAGE STORE

ALL OF YOUR FAVORITE BEVERAGES
ON THE WEST END OF TOWN -
LAST STOPLIGHT

Come By & Check Our Specials Of The Week

Words on Water

TEXAS WATER QUALITY BOARD
AUSTIN TEXAS 78711

AND THEN THERE'S THE SEPTIC TANK

Regulation of septic tank use in Texas is urgently necessary, both for health reasons, and also for the protection of our lakes and streams.

But, despite all of the discussion of recent months and years regarding septic tanks, they aren't all bad. A septic tank system, when properly installed and maintained, and used under proper conditions, is generally a satisfactory method for household sewage disposal.

That last sentence is the key to the entire matter.

For example, septic tanks installed in low-lying areas, such as around our coastal lands, where the ground is semi-saturated with water most of the time, and completely saturated during periods of heavy rain, septic tanks simply don't work well. When the ground is so full of water that it can't absorb the effluent from the system, nature does its thing, sending the effluent back into the homes, or up into yards or into ditches along roadways.

This presents a health problem, and if the seepage finds its way, via a ditch, into a stream, and then perhaps into a river and on into a bay, it becomes a pollution problem.

On the other hand, let's consider an area where the ground is very rocky, with little soil to absorb the effluent, and we have another type of problem since the effluent can seep for some distances through the rocky terrain and possibly eventually into underground waters or into a stream or lake.

project for the Texas Water Quality Board.

Solutions in some cases can require the installation of only one septic tank to a large tract of land, or the construction of a sewage treatment plant to serve a subdivision, for example, or possible tie-in to a nearby already-operating sewage treatment plant.

The TWQB has issued board orders governing the use of septic tanks around most of our lakes. This has proved to be an extremely helpful measure for protection of the waters in our lakes, and generally, owners of homes using septic tanks have been cooperative by having their systems inspected and certified.

Why do we write about septic tanks? Principally to point out that water pollution abatement and water quality maintenance are not concerned only with large volumes of wastes discharged by cities and industries. Every individual in Texas is involved in some way with keeping our waters clean, and cooperation with the septic tank regulatory program is one way in which a great many concerned individuals can help.

Since Texas is such a large state, with a great variety of ground structure, regulations for the use of septic tanks has been number-one

Turkey Winner Announced

The Lambda Beta Chapter of Beta Sigma Phi announced Saturday, November 22 that the winner of the holiday turkey was Alyce Warren.

The Lambda Beta Chapter would also like to thank everyone who contributed to the success of the Holiday Bread Sale and to the turkey drawing.

OUR FLAG

Historical Highlights

HISTORIC BANNER

JAPAN SURRENDERS

The Stars and Stripes that flew over Pearl Harbor on December 7, 1941, ripped above the United Nations Charter meeting at San Francisco and over the Big Three conference at Potsdam, according to the U.S. Marine Corps Reserve. This same flag was flying over the White House on August 14, 1945, when the Japanese accepted surrender terms.

HOLIDAY SAVINGS SALE AT CRAWFORDS

LAY-A-WAY FOR CHRISTMAS 10% HOLDS ANY ITEM
REGISTER FOR FREE PRIZES DRAWING EVERY SATURDAY
WINNER LAST WEEK
MRS. WALTER HARRIS

- | | | | |
|--------------------------------------|---------------------|---------------------------------|---------------|
| MENS JARMAN
VALUES TO \$26.99 | SHOES \$15.88 | GIRLS 7-14
VALUES TO \$10.99 | JEANS \$6.99 |
| WESTERN
MENS | SHIRTS \$7.99 | GIRLS 7-14
VALUES TO \$10.99 | BLOUSE \$5.99 |
| MENS
DOUBLE KNIT | SHIRTS \$7.99 | VALUES TO \$18.99
SOFT STEP | SHOES \$13.99 |
| BOYS VALUES
TO \$5.99 | JEANS \$5.99 | LADIES
VALUES TO \$16.00 | BLOUSE \$6.99 |
| MENS VALUES
TO \$70.00 | PANTS \$8.99 | VALUES TO \$15.00 | JEANS \$7.99 |
| LEATHER LOOK | JEANS \$3.99 | TEXSHEEN
LINGERIE | |
| THERMAL
TOP OR PANTS
UNDERWARE | SUITS \$55.00 | BABY DOLL PAJAMAS \$7.00 | |
| INSULATED | COATS \$25.00 | WALTZ LENGTH GOWN \$6.00 | |
| NYLON | SHIRTS \$2.99 | LONG DUSTERS \$11.00 | |
| WINDBREAKERS \$5.99 | SHIRTS \$7.99 | | |
| | JEANS \$5.99 | | |
| | PANTS \$8.99 | | |
| | JEANS \$3.99 | | |
| | SUITS \$55.00 | | |
| | COATS \$25.00 | | |
| | SHIRTS \$2.99 | | |
| | SHOES \$19.99 | | |
| | WINDBREAKERS \$5.99 | | |
| | SHIRTS \$7.99 | | |
| | JEANS \$5.99 | | |
| | PANTS \$8.99 | | |
| | JEANS \$3.99 | | |
| | SUITS \$55.00 | | |
| | COATS \$25.00 | | |
| | SHIRTS \$2.99 | | |
| | SHOES \$19.99 | | |
| | WINDBREAKERS \$5.99 | | |

MERKEL'S FAMILY CLOTHING STORE

Crawford's

FINE CLOTHING AND SHOES FOR THE FAMILY

113 EDWARDS PH. 928-5612

DANCE

SATURDAY NIGHT NOVEMBER 22

FROM 9 TIL 1

MERKEL VFW

BILLY KILPATRICK

& THE COUNTRY EXPRESS

MEMBERS & GUEST ARE INVITED

Weekend buys are yours when you take advantage of our 60% discounted out-of-state long distance rates...Saturday (anytime) through Sunday 5 PM. Dialing the one-plus way places you at our sale. During-the-week bargains are also advertised... discounts of 35% for after 5 PM and 60% for after 11 PM out-of-state calls. You may enjoy these savings even though your area is not equipped for direct distance dialing.

end-of-the-week sale

save 60% every weekend

Continental Telephone of Texas
An Equal Opportunity Employer

Accent on Health

Fratris L. Duff, M.D., Director

Creativity takes on its finest forms at Christmas-time as homes are beautified both within and without, and safety should be woven into the finished product.

The Yule season is no time for accidents, asserts the Texas Department of Health Resources. There's a lot of room for a mistake, however. Trees, lights, candles, trees and mantle trimmings, your fireplace and excess paper can be a source of trouble.

Center of most home decorations is the brilliantly lighted and colorful tree, and it should be the place for starting your safety efforts.

In selecting a cut green tree, get one with a good green color. Needles of a fresh tree should be hard to pull from branches, and needles won't break when bent. Bounce the tree hard against the ground and you won't get a shower of needles if the tree is fresh.

Trees should be placed in a base which holds water, and this water should be checked regularly while the tree is up. Before mounting the tree, cut about two inches off the trunk to allow it to better absorb the water.

Placement of trees also is important, says the Department of Health Resources. Keep them away from stoves, fireplaces and radiators which could cause a tree to dry out quickly and perhaps catch fire.

Never use lighted candles on a tree or near other evergreens, decorations or wrapping paper. Candles should be in non-flammable holders and in locations where they cannot be knocked down or blown over.

In selecting lights, check for the Underwriters' Laboratories' "UL" label. On all strings of lights, make certain that all connections are tight and that there are no frayed or bare wires. These could cause short circuits and perhaps a fire--or a shock to the person installing them.

Outdoor lights should be waterproof. They are especially made for the outdoors.

When away from home, or when you go to bed, turn off all lights.

And, never use electric lights on metallic trees.

Trimming for trees and elsewhere in the home should be of flame-retardant material something that won't flare up if accidentally ignited.

If there are small children in the home, care should be taken in selecting decorations. The United States Product Safety Commission urges parents to avoid decorations that are sharp or breakable--including bubbly tree lights. It also warns against trim with small

removable parts if used where children can get at them. Pieces could be swallowed or inhaled. And, trimmings resembling candy could be eaten by a child.

When installing their trees, many people burn the trimmings from branches in their fireplaces. If burned a piece at a time, this shouldn't cause any problem. But piling up a big mound of evergreens could cause popping and crackling and a large number of sparks. So be careful. And always use a screen before the fireplace.

The Product Safety Division of the Department of Health Resources hopes that all clothing will someday be flame resistant. Standards are now in effect for certain types of children's clothing. But until that time, extreme care needs to be taken.

Matches, lighters and candles should be kept out of the reach of children. Children and adults should avoid the wearing of loose, flowing clothes--especially long, open sleeves--near the open flames of a fireplace, stove or candle-lit table.

Here's another reminder about children's toys. Efforts have been made to remove dangerous toys from retail sources. But, a safe toy in the hands of one child may be unsafe if used by a younger one.

When purchasing a toy, look for a warning label stating that the toy isn't recommended for a child under a certain age. If the label warns that the toy is too advanced for the child in mind, the purchaser should heed the warning and find one to fit the child. This will help reduce the chance of injury.

And, once those presents under the tree have been opened, gather up all those wrappings from the tree and fireplace area and remove them from the home.

Christmas should be a joyous occasion. Keep it that way by planning for safety, says the Texas Department of Health Resources. It will add to your enjoyment of the season to know that you and your loved ones are as safe as possible.



EMERGENCY
ONCE THE PAYS OF THE REVOLUTIONARY WAR, DETACHMENTS OF SOLDIERS WERE TEMPORARILY APPOINTED FROM THE RANKS OF THE U.S. ARMY TO SERVE AS MILITARY POLICEMEN IN TIMES OF WAR OR OTHER EMERGENCIES.

Farm-facts

A Weekly Report Of Agri-Business News

Compiled From Sources
Of The Texas Department of Agriculture
John C. White, Commissioner

Cattle On Feed Up, But Numbers Down . . . You May Be The One . . . 98, 98, 40.

Although cattle on feed in Texas and the nation are reported up, the total number of livestock in the nation apparently is on the decline.

The Texas Crop and Livestock Reporting Service notes that cattle and calves on feed for slaughter market in Texas as of Nov. 1 is 13 per cent above a year ago and 18 per cent above a month ago.

Nationwide, cattle and calves on feed in the seven major cattle feeding states total 7,585,000 head; this is 12 per cent above a year ago.

Texas cattle feeders placed 562,000 head into their lots during October; placements are 82 per cent above a year ago. Total number on feed in Texas is set at 1,761,000 head.

Meanwhile, it's expected that the number of cattle and calves in the nation as of Jan. 1, 1976 may be down one to two per cent compared to Jan. 1, 1975.

If it works out that way, it will signal an end to the latest cattle cycle. Livestock officials are hoping that when the build-up begins again, the rate of expansion can be kept in the one to two per cent annual area rather than the three to four per cent increase annually during the past few years.

Feedlot operators have been in somewhat better financial condition recently; it still will be a long, hard winter for the cow-calf operator, but hopefully, things will improve for him later in 1976.

YOU MAY BE THE ONE who has received or will receive, during the next few weeks, a crop or livestock questionnaire from the Texas Crop and Livestock Reporting Service.

If you are one of them, you are requested to fill out the questionnaire as accurately as possible and return it as promptly as possible. They will be the basis for reports on Texas agriculture, so accuracy is essential.

The reports will give those in and out of agriculture a picture of our most basic industry-- Texas agriculture.

98, 98, 40. That isn't a football play or a fertilizer formulation. It is a picture of three major crops in Texas agriculture.

The first 98 is the percentage of completion of wheat seeding for the state. It is virtually finished and is about on average for the past three-year period. Irrigated wheat is making satisfactory growth on the High Plains and is furnishing limited grazing but the dryland crop continues to suffer from short moisture.

From the Low Plains southward, wheat is making good growth and grazing is increasing each week.

The second 98 figure is the percentage of grain sorghum harvest, which is virtually complete for the year. Last year, the crop was only about three-fourths gathered at this time.

While farmers in the northern part of the state have been delayed in harvesting due to high moisture content, farmers in the Rio Grande Valley are ready for harvest of the fall crop of grain sorghum.

**WATCH FOR
ARTS & CRAFTS
SHOW
IN MARCH
DAY TO BE ANNOUNCED
AT A LATER DATE**

Letter To The Editor

I have sent this letter to Radio, T. V. and Newspapers throughout the nation as well as to the President, Congress, Senate and the Supreme Court. I have come to you with a heart full of love--For You, Myself and My Country. Please don't let your petty prejudices stand in your way.

I'm a Californian but more important, I'm an American. I read in the paper the other day that Vice-President Rockefeller loaned New York City sixty-three billion dollars and I asked myself, "Why?" and I asked others, "Why?" No one had the answers. Then I realized why, because it came from his heart for his City, his State and most important for the World.

Now, protect yourself and me too and show Rockefeller and America and the World that you care and send 1, 2 or 3 dollars, no more, in cash if you would like, as anyone who would steal it is stealing from their own mouths, we all know this. Send it to:

Governor of New York
New York, New York

I want you to know that New York has some of the finest services in America and they are having to pay for all the immigrants that we Americans dumped into their laps because we didn't really want them in our cities.

Have the greatest Holidays ever, no matter what religion or color or how intelligent you are. Learn from each other--Learn how to love and care for each other without deceit--Give yourself, not big presents--Give and take each other's love.

Thank you for broadcasting or printing this and to you for listening or reading it.
Good Old Fashioned
American
Thorne Harvey
Smith



If you soak badly stained dish towels in bleach and detergent in the kitchen sink, you'll bleach both towels AND sink.



"Barn-burners" is a term which means destroyers, who, like the storied Dutchman, would burn down their barns to rid themselves of the rats.

GREAT SELECTION

- 73 CADILLAC SEDAN DEVILLE 4-door hardtop.** This one has all the goodies! Black on black, nice. ONLY \$4395
- 75 BUICK LE SABRE 4-door sedan.** Air and power, 24,000 miles, local owner. Real nice, light blue color. ONLY \$4495
- 74 CATALINA Sedan.** Air, power, tilt wheel, cruise, stereo tape player. Bronze with white top. Real nice for \$3495
- 74 PONTIAC GRAND VILLE 4 dr.** This one has all the goodies, white with white vinyl top. real nice \$4395
- 73 PONTIAC CATALINA 4-door sedan.** Air and power, radial tires, 36,000 miles. Beautiful blue color. Real nice. ONLY \$2895
- 1975 CHEVY IMPALA 4-door** Sedan air and power, radial tires, white, blue vinyl top. Real nice, only \$3995
- 74 GMC 1/2 ton, V-8, 4 speed, air, power, beige** \$3495
- 73 PONTIAC CATALINA 4-door hard-top.** Air and power, 33,000 miles. Silver with black vinyl top. Real nice. ONLY \$3395
- 73 PONTIAC VENTURA 2-door, V8, automatic, air and power, yellow color with black vinyl top.** ONLY \$2695
- 73 OLDS 88 4-door Sedan** air and power, AM-FM Stereo, Bronze color, beige vinyl top. Nice, only \$2795

We have Several other nice cars, SO COME SEE US.
"We Sell 'Em-We Lease 'Em"
Palmer Pontiac & GMC
MERKEL
MERKEL, TEXAS 928-5113 ABILENE 673-1182

KRAATZ REPAIR

DAVID KRAATZ - OWNER
AUTO-TRUCK-TRACTOR
COMPLETE REPAIR
SERVICE
WE SPECIALIZE IN
TRACTOR REPAIRING
WE MONITOR CHANNEL 11
CALL LETTERS-KFO-4962
DAY-PHONE - 928-5594 MERKEL
NIGHT-PHONE - 692-3134 TYE

KWFA

We Proudly Present
"America Is"
7:40a.m. and 12:40p.m. and 5:40p.m.

Christmas Greetings from Mr. & Mrs. John Curtis come straight from the heart. Every employee at KWFA appreciates your cheerful consideration during the busy holiday season and wish for you every happiness this Christmas. Not just a wish for Christmas, but for every day in the New Year from KWFA and the entire staff. These glad Tidings have been extended to you from:

Mr. & Mrs. John Curtis, Mr. & Mrs. Finley Barnett,
J.W. Brewer, Jimmy Land, Mac Sipe,
James Chaney, Manuel Hernandez, & Bill Miller, engineer

Early Bird SALE

THE FACTORY OUTLET IS CLORING OUT OUR ENTIRE STOCK OF FALL
YOU CAN SAVE LIKE NEVER BEFORE ON QUALITY MERCHANDISE. WE ARE INVITING
ALL OUR MERKEL AREA CUSTOMERS TO COME IN THIS WEEK BEFORE ANY
ADVERTISING IN ABILENE OR OTHER AREAS. BE FIRST FOR BEST SELECTIONS.
WE ARE TAKING OUR ALREADY LOW PRICES AND SLASHING THEM TO THE BONE.

DOORS OPEN 9 A.M. DEC. 4th 1975
ALL FALL MERCHANDISE REDUCED TO LIQUIDATE!!
LOOK AT THESE BARGAINS

THE T SHIRTS JUST ARRIVED \$4.49 EA.	All unmarked merchandise 20% off	CHILDRENS COATS REG. TO \$12.95 \$8.99
SMOCK & TUNNELS Fancy white & beige holiday blouses reg. \$13.95 \$ 7.99	NO EXCHANGE - NO REFUNDS ALL SALES FINAL	All merchandise now on Lay-a-Way Picked up in 7 days recieve a 10% discount off unpaid balance
Ladies western pants \$3.99 pair	LARGE GROUP PANT SUITS REG. TO \$29.95 \$8.89 to \$14.95	Party Hose 3 pair for \$1
One group blouses 1/2 price	HAND BAGS - ALL \$1 EA.	Two piece set tops & shells \$9.99

BEN FRANKLIN TOWNTOWN



FAVORITE GAMES CHOICE
Monopoly, Scrabble, Battleship! All family favorites! All complete games for all ages. Play real estate, crossword, or naval strategy.

397 each



Raggedy Ann & Andy PHONOGRAPH
Durable, colorful and solid state! Record plays when top is closed. Features on/off switch, speed control.

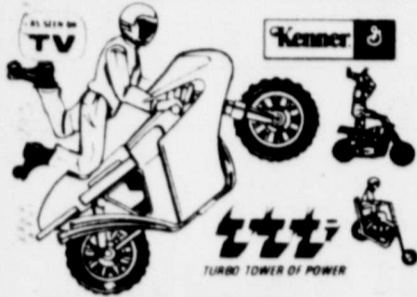
1297 each



Clairol's CRAZY CURLS

The steam styling wand for fast sets. Small, lightweight wand fills with tap water, steams in lasting curl. Thermostatic control.

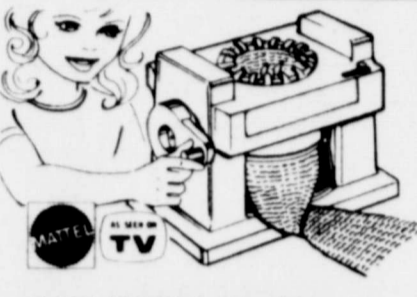
1497 each



The WILD RIDERS

Complete with Wild Rider Cycle, TTP and curved ramp. Pump, tower, release and watch the exciting action.

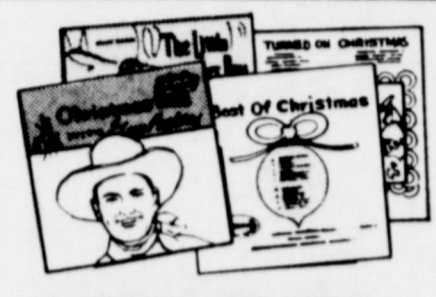
797 each



KNIT MAGIC Machine

Make your own Barbie clothes! Automatic hand crank knitting machine is complete with yarn and instructions.

1097 each



LP STEREO RECORDS

Christmas favorites by many popular artists. Selection includes vocal, religious, instrumental.

199 each



SPEED STUNTER

Roll 'em down the Big Stripes through the loop. No batteries. Easy set-up.

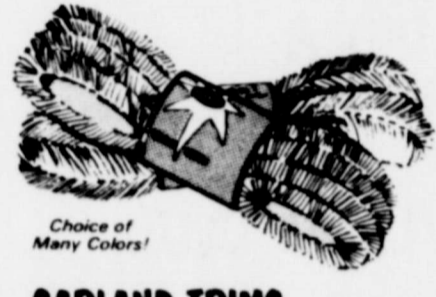
447 each



32-KEY TYPEWRITER

Features new light touch improved type, automatic ribbon reverse and 56 characters. Durable plastic frame.

1297 each



GARLAND TRIMS

20 ft long colored tinsel trims. 4 in. round heavy and full bodied. Cheerful Christmas colors.

177 each



PLASTIC DUMP TRUCK

Sturdy, safe, flexible. Authentic features like hinged tailgate, realistic appearance, deep tread, scuff proof tires.

497 each



TOOTSIE TOY VEHICLE GIFT SETS

Popular vehicle sets any child will love! Choose Camping, Military, Road master or Fire Fighter sets.

297 each



CANDY CANES—Box of 12

All time Christmas favorite. Box of 12, each wrapped.

67¢ each

<p>Corn Husk Dolls Nostalgic charmers! Choose your favorite, dressed in red floral hat or apron.</p> <p>1.00 EACH</p>	<p>Calendar TOWELS EACH Pure linen in lots of colorful patterns. Hemmed edges. About 16 1/2 x 26 in.</p> <p>1.00 EACH</p>	<p>DINNER BELLS EACH Novel gift or collecting idea. Porcelain. Many shapes. Designs 3 1/4 in. high.</p> <p>1.00 EACH</p>	<p>Smart Set JEWELRY Gift boxed rings and pendants. Birthstones, dainty animals.</p> <p>1.00 EACH</p>
<p>1-YEAR DIARY With lock and key. 120 gill edge pages. Floral cover. 4 1/2 x 5 7/8 in.</p> <p>1.00 EACH</p>	<p>22-Oz. BUBBLE BATH Foaming bath oil in gift giving decorator containers.</p> <p>1.00 EACH</p>	<p>Women's BIKINIS EACH Nylon satinettes with dainty embroideries, lacy trims. 5-7.</p> <p>1.00 EACH</p>	<p>Ceramic TABLEWARE Decorative, useful items. Sugar bowl, salt & pepper more.</p> <p>1.00 EACH</p>

\$1.00 GIFTS

<p>DUSTING POWDER 1.00 EACH Cool dusting powder for after bath freshness. 5 oz. size.</p>	<p>FLOCKED ANIMALS 1.00 EACH 3 1/2 in. high animals have realistic fur flocking and details.</p>	<p>ANSHEL Bubble Bath Big 27 oz. bubbling liquid in novelty shaped bottles.</p> <p>1.00 EACH</p>	<p>CAST IRON Art. 1.00 EACH Wide selection, many shapes. Bell, Candle holders, planters, more.</p>
<p>BRITISH STERLING The scent log ends are made of Men's 1/2 oz. size. Perfect for giving.</p> <p>1.00 EACH</p>	<p>PAPER WEIGHTS 2 for 1.00 Oval shape snow globes with 3-D Christmas scenes.</p>	<p>Address Book 1.00 EACH 7 1/2 in. leather like padded cover. 32 pages.</p>	<p>ANTIQUE CLASSICS 1.00 EACH Fine blended colors glassware. Vases, bowls, jars, more.</p>
<p>Salt, Pepper SHAKERS 1.00 EACH Earthenware. Animal shapes: frog, mouse, squirrel.</p>	<p>Boys' BILLFOLDS 1.00 EACH Western style with colorful designs. Leather look grain.</p>	<p>CONTROL TOP PANTY HOSE 1.00 PAIR Control top sheer hose. 4 sizes. Fashion shades.</p>	<p>2-Pc. GIFT SETS 1.00 SET Tantalizing scents in 8 oz. dusting powder, 1.3 oz. perfume.</p>
<p>Mennen's Gift Set For Men 1.00 SET Set includes Skin Bracer and Wild Moss. 1 1/2 oz. each.</p>	<p>WearEver PEN and PENCIL SET 1.00 SET Smart gift idea. Lots of favorite colors.</p>	<p>Cosmetic BAG SETS 1.00 SET 2 piece sets. Choice of colors and prints.</p>	<p>MONKEY POD Serving Trays 1.00 EACH Ideal for parties. Unusual serving pieces, many shapes.</p>

DOUBLE KNIT \$1.77 YD.

DOUBLES & ROLLED

GIFT WRAPS! EXTRAS!

CHRISTMAS GIFT WRAPS

Gay wrap your gifts for pennies apiece!

CHOICE OF

- Jumbo Log Rolls of colorful paper, 60-sq. ft. Foil, 20 sq. ft. All 30-in. wide.
- Big 4-Roll Packs. Child, Traditional, Old Fashion, Hi-Style Designs. 40-sq. ft. All 30-in. wide.

147 each

<p>3-ROLL PACK GIFT WRAPS Choose 3 rolls, 100-sq. ft. paper or 2 rolls paper, 1 foil, 80-sq. ft.</p> <p>197 each</p>	<p>10 PACK GIFT WRAP Big 100 sq. ft. pack. 8 rolls paper, 2 rolls foil. 30 in. wide.</p> <p>257 each</p>
--	--

<p>1000-in. ROLL TUCK TAPE 1/2-in. wide cell lophane tape for easy wrapping.</p> <p>27¢ each</p>	<p>10 PACK CHRISTMAS CARDS Wide selection of designs. With envelopes.</p> <p>88¢ each</p>
--	---

NO IRON SHEETS

FLAT OR FITTED

TWIN SIZE \$2.47
FULL \$3.47
QUEEN SIZE \$5.97

CHRISTMAS GIFT TAGS
Wide selection! Cards, tags, seals in many Yuletide designs.

37¢ pkg

SEALS, TAGS, CARDS, MORE
Foil folders, seals, glitter, even strung tags in child designs.

57¢ pkg

HOLIDAY GIFT TIES
Whimsical figurines, wreaths, foil, flocked holly. For an extra touch.

47¢ pkg

25 CRYSTAL BOWS, 6-SPOOLS RIBBON
Colorful bows and 500 ft. of curling ribbons for a finishing touch to packages.

25 Bows \$43¢
6 Spools Ribbon \$57¢

SIT ON HAMPER - \$2.97

TREES AND TRIMS!



Artificial Scotch Pine TREES

Use them year after year. So realistic you can almost smell the pine! Rich, lush, moss green trees. Flame retardant. Complete with stands. 2, 4, 6-ft. fully assembled. 7-ft. tree comes with 3-ft. assembled top.

2-FOOT SIZE **277**
4-FOOT SIZE **797**
6-FOOT SIZE **1497**
7-FOOT SIZE **1997**

18-FT. VINYL GARLAND TRIMS
Moss green long needle garland mixed with blue/green tinsel. Use inside or out.

197 each

SET OF 3 EXTENSION CORDS
New tamper guard cords in 6, 9 or 12-ft. sizes. Brown or white. UL approved.

177 set

BEN FRANKLIN

WE NOW HAVE master charge

STORE HOURS: MON.-SAT. 7:30A.M. TILL 7:30 P.M.



**Through Our Checkouts
Pass the HAPPIEST CUSTOMERS**

PRICES GOOD
THURSDAY
FRIDAY SATURDAY
DEC. 4, 5, 6TH

CHRISTMAS
TREES
3FT TO 8FT GET
YOURS EARLY
FOR A
GOOD TREE

IMPERIAL
SUGAR
5 LB. BAG **89¢**
WITH \$10 IN TRADE OR MORE
EXCLUSIVE OF CIGARETTES



TEXAS
ORANGES

5 LB. BAG **49¢**

Frozen Foods
CHEF BOYDEE ASSORTED
PIZZA JUMBO EACH **89¢**

AUNT JEMIMA
WAFFLES BOX **49¢**
MORTON MINCE OR PUMPKIN
PIES EA **69¢**

I.G. DAIRY FRESH
HOMO 2 GAL JUG
MILK **\$1.43**
NO DEPOSIT

I.G. DAIRY FRESH
HOMO GAL JUG
MILK **\$1.53**
NO DEPOSIT

CHILI
WOLF PLAIN
NO 2 CAN **79¢**

INSTANT COFFEE
FOLGERS
10 OZ JAR **\$1.98**

TEXAS RUBY RED
GRAPEFRUIT LB **15¢**
FRESH
Green ONIONS 2 FOR **19¢**
WHITE
GRAPES LB **39¢**
COLO. ROME BEAUTY
Red APPLES LB **19¢**
RUSSET
SPUDS 10 LB BAG **89¢**

FLOUR GLADIOLA 5LB BAG **69¢**
COFFE MARYLAND CLUB 1 LB CAN **\$1.19**
SHORTENING SWIFT 42 OZ CAN **\$1.09**
TISSUE NICE & SOFT 4 ROLL CRTN **69¢**

MARS CANDY FUN SIZE LB BAG **\$1.09**
DIAMOND FOIL WRAP 25 FT ROLL **29¢**

PETER PAN 12 OZ
PEANUT BUTTER JAR **63¢**

GRIFFIN 18 OZ
PEACH Preserves GLASS

TRI TRI-VALLEY 303
FRUIT Cocktail 2 FOR **63¢**

TRI-VALLEY 303
PEACHES 2 FOR **59¢**

COMSTOCK NO 2 SIZE
APPLE Pie Filling CAN **59¢**

DEL MONTE 303 CUT
GREEN BEANS 2 FOR **59¢**

BORDENS INSTANT
POTATOES 16OZ BOX **79¢**

CONTADINA 8OZ
TOMATO SAUCE 2 FOR **29¢**

I.G. DAIRY FRESH
IVORY BUTTER 1/2 GAL CRTN **73¢**

LIQUID KING SIZE
GAIN GT BOX **\$1.09**
(1 LIMIT)

CAPSULES
CONTAC 10 CT **\$1.29**
G.E. FLASH
CUBES CTN **\$1.09**

SKINNERS
MACARONI SHORT CUT 12 OZ BAG **33¢**

KRAFT
CHEESE SLICED DELUXE 8OZ PKG **73¢**

KRAFT
Party Mint 8OZ BOX **49¢**

DEL MONTE
PICKLES DILL OR SOUR 22 OZ JAR **43¢**

PIONEER
Corn Bread MIX 24OZ BOX **43¢**

NABISCO
VANILLA WAFERS 12OZ BOX **55¢**

POLACOLOR 2
FILM CTN **\$4.98**

Delicious 'n Meaty!

Spareribs

ARMOUR STAR
HOT DOGS REG OR BEEF
ALL MEAT 12 OZ **69¢**

a Tasty-Bet-for the Budget and You!

98¢ POUND

ROAST STEAK BACON STEAK TURBOT SHORT RIBS

CHOICE BEEF CHUCK LB **89¢**
BABY BEEF **\$1.49**
SIRLOIN OR CLUB **\$1.39**
DECKER'S POUND **\$1.39**
HORMEL PATTIES OR FINGERS 12 OZ **79¢**
WEIGHT WATCHERS FISH LB **98¢**
BEEF LB **65¢**

WE WELCOME FOOD STAMPS
SHOP AND SAVE

WE GIVE GIFT BOND STAMPS
Double on Wednesday with \$5.00 or more

CARSON'S SUPER MARKET
MERKEL, TEXAS
FREE DELIVERY MON, WED, FRI
FRESH VEGETABLES

Santa Calls Editor Asking For Help With Christmas Letters

We received a call from Santa Clause Monday morning asking if we would help him with his yearly Christmas dilemma. This is a very busy time of year for the post office as well as for Santa, Mrs. Clause and the elves at the North Pole. Santa has asked if we could help take some of the load off the post office and be his official letter station in Merkel. "This would be so much help to me and the elves, not to mention the post office," said Santa. "If you will let the boys and girls leave their letters with you and then you could send them all to me at one time, it would be much easier for me to read them," he added.

It was such an honor for us, we, of course, agreed right away. Anything we can do to make Santa's work a bit lighter and to ensure that the boys and girls get their letters to him on time is a pleasure for us.

All you boys and girls (moms, dads, aunts, uncles, grandmas and grandpas too) write to Santa and have Mom bring your letter and put it in the mailbox on our front door or into The Merkel Mail of. Then we will bundle all the letters together and mail the letters together and make sure they reach the North Pole in plenty of time.

"I must make sure the toys are made, the sleigh is in top condition for the trip and that the reindeer are ready for that long flight on Christmas Eve," Santa said. "It makes my work a lot easier if all the children let me know ahead of time what to leave under their tree.

"Of course, I can't always bring everything each child wants," added Santa, "But I will do my best to make this a good Christmas for all the boys and girls in Merkel."

Santa asked me to wish all of you a Merry Christmas and a Happy New Year from him, Mrs. Clause, the elves, the reindeer and all the residents of Christmastown in the North Pole.

We will print as many of the letters to Santa as space will permit in our December 18 and our Christmas editions of The Merkel Mail, and as Official Santa's Helpers, we will send them special delivery to him at the North Pole.

Friends attending were: Mrs. Elmer Patterson, Mr. and Mrs. W. L. Massey, Pam Brian, Jason and Ginger of Merkel; Mrs. Irma McSpadden of Abilene; Mr. and Mrs. Ralph Fitzgerald of Fort Worth; Mr. and Mrs. Jack Wright of Tye; Mr. and Mrs. J. W. Sisk of Levelland.

The reason for the small crowd was that several relatives were away from home for the week end holidays and some had sickness in the family.

Creative decorations and thoughtful extras add spice to a party. For large parties, many Holiday Inns provide decorative menus, flags, party hats, Christmas trees, registration tables, special lighting, portable dance floors, pianos, movie screens, floral arrangements and specially decorated cakes.

One of the most important points to remember about having a large party is to Plan Ahead of Time. Reservations cannot be made too early. Some organizations book party rooms as much as a year in advance.



READ-A-THON WINNERS-Shown are winners in the recently ended MS read-a-thon in which the class of Mrs. Don Hart participated. Left to right (back row) are Stacey Seymore, Maria Moreno, Loyce Baker, Todd Robertson, Paul Kannel and Ann Wooten. Front row are Kristi Alves, Michelle Brown and Mary Fariello.

Merkel Reading Class Raises Money For MS By Reading

Since October 16, thirty sixth graders have read 471 books as a result of the Multiple Sclerosis Read-A-Thon which was sponsored by the Heart of Texas Chapter of the National Multiple Sclerosis Society. These students compose Mrs. Mitzi Hart's reading classes.

The people of Merkel and the surrounding community encouraged the students by signing up as sponsors for their book reading, December 1st, through the 5th, the 254 sponsors were called upon and \$561.37 was collected for Multiple Sclerosis.

The students will be eligible to win prizes on the district level, but as an extra incentive prizes have been awarded on the local level. Twenty-five dollar bonds were presented by Taylor Electric Cooperative, Taylor Telephone Cooperative, and Farmers and Merchants National Bank. These were

awarded to: Paul Kannel who read the most books; Michelle Brown who collected the most money; Kristi Alves for obtaining the most sponsors.

Ten dollar prizes were contributed by Carson Super Market, Wilson's Food Store and Max Murrell Chevrolet. These were awarded to: Ann Wooten, second place on number of books read; Mary Fariello, second on amount of money collected; Loyce Baker, second on number of sponsors.

Third place prizes of \$5.00 each were provided by Hicks Auto Supply, Ben Franklins and West Texas Utilities. These were awarded to: Todd Robertson, the number of books read; Stacey Seymore, the amount of money collected; Maria Moreno, the number of sponsors.

"We feel really proud to be a part of this worthy cause," stated Mrs. Hart. "The students have benefited from their endeavors. The

local support has been tremendous--all we had to do was ask and we received. We are grateful for this support and encouragement from all those who helped us."

"In fact, she continued, "the lady at the Multiple Sclerosis office was very impressed, and she seemed to feel that the students here had responded better than other places so far. I wouldn't be surprised if we have a District winner. At any rate, my sixth graders did their best and they feel really good about it."

The cause of Freedom is the cause of God!-Bowles

Christmas Greetings Start At The Front Door

A special Christmas greeting starts at the front door decorated in holiday style. With just a little extra time and a smidgen of imagination, even a simple doorway can pronounce a warm welcome with expressive creativity, says Denise Biegbeder, housing and home furnishings specialist.

"If the wreath is a family tradition, browse through decorating magazines for unusual ideas. Follow complete directions to the letter or use them as a springboard for original variations," she suggests.

Miss Biegbeder is with the Texas Agricultural Extension Service, The Texas A&M University System.

"If you're a nature-lover, let your wreath express this by using such items as pine cones, shells, sand dollars or cactus skeletons.

"If your family is known for its gourmet meals, accessories from the kitchen might be appropriate--if they are small in scale and cleverly arranged. Wooden spoons or small copper molds held together with copper wire will alert a visitor to the 'goodies' inside.

Ideas for buying a wreath and then decorating it yourself are really simple and fun, the specialist said.

Attach miniature God's Eyes (ojos de Dios) that you've made with toothpicks and metallic thread.

Or wrap apples, oranges or other fruit in plastic and attach them with bright red ribbons.

"Small wooden ornaments, tiny mirrors, or other small items can spruce up any store-bought wreath."

Miss Biegbeder gives the following instructions for decorating a wreath with snowflakes, baskets or balls created with liquid solder.

To make them just take a breakable shape--a small balloon, a hollow egg or an

old glass ornament and sketch the design you want on the outside. Go over it with solder. When the solder has hardened, gently remove the base shape by breaking it gently.

For a flat design--a snowflake, star, angel or Santa figure, draw the outline on wax paper. It will peel away after the solder hardens.

Spray paint the shape with gold or silver and attach it to the wreath (or tree) with fishing line.

Fill the baskets with mock berries, red berries or miniature pine cones.

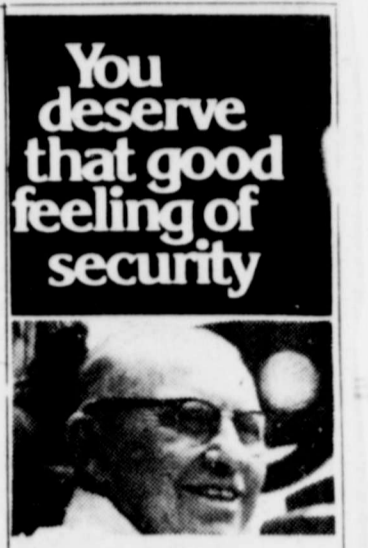
Another idea aside from the wreath uses macrame in the shape of a Christmas tree to hang on the front door.

"A large object with many intricate points can be effective, or you can use the same technique to develop a tree shape to which accessories might be attached.

A completely different approach might be saying Merry Christmas in a different "language"--with ideas based on family heritage, or the traditions and customs of another country, such as Germany, France, Norway or Spain. The local library is sure to have many ideas for adapting.

For the strictly All-American family, the "decorator" can look to the Colonial period for inspira-

tion, to the Victorian era or the Roaring Twenties. "Old Christmas" also can spark creativity, like a favorite from just last year. It can be a guide."



You deserve that good feeling of security

Farm Bureau Insurance provides that good feeling of security with policies that are especially designed to cover the farmers or ranchers individual needs. From fire protection to farm equipment, from automobile to Workmen's Compensation, life or disability. Farm Bureau Insurance can give you that good feeling of security you deserve.

Call your Farm Bureau Insurance agent ... he can give you that good feeling of security.

SENIOR CITIZENS SCHEDULE EVENTS

1st Monday
of Month Singing
2nd Tuesday Noon
Covered Dish
Luncheon
Game Nights
Every Thursday
& 4th Monday
4th Thur. Game
Night Reserved for
Talented Amateurs.

R. Lee Brown
Taylor County
Farm Bureau
Abilene 692-1213
Merkel 928-4885

Merkel News

Mr. and Mrs. J. B. Browning of Stuth had visiting with them this week, his brother, Mr. and Mrs. Fred Browning of Lefors. Fred is a former area resident.

The O. J. Reynolds family reunion was held in the Merkel senior citizens building.

Relatives attending were: Mrs. O. J. Reynolds and Bob of Merkel; a son Robert Reynolds of Palmdale, California; a daughter Mrs. Bonnie Sisk and husband Garland of Odessa; also, Mr. and Mrs. Jim Cosper and Jack Cosper of Tye; Mr. and Mrs. Darrell Watkins, Royce, Douglas, Darla and Dana of Clyde; Mrs. Lillie English of Merkel; Mrs. Fannie Dorough of Trent; Mrs. Billie Milner, Danny, Lavonna and Charla of Abilene.

Friends attending were: Mrs. Elmer Patterson, Mr. and Mrs. W. L. Massey, Pam Brian, Jason and Ginger of Merkel; Mrs. Irma McSpadden of Abilene; Mr. and Mrs. Ralph Fitzgerald of Fort Worth; Mr. and Mrs. Jack Wright of Tye; Mr. and Mrs. J. W. Sisk of Levelland.

The reason for the small crowd was that several relatives were away from home for the week end holidays and some had sickness in the family.



GREAT SCOT!

By Jack House, The Director Teacher's Scotch Information Centre

CHAIN OF EVENTS

Scotland got there first--to the castle business, that is. But it wasn't a Scot who invented the idea of making money out of a castle. It was actually a Danish princess in the time of the Vikings, when they invaded a large part of the Western Isles. This princess built a castle on the Isle of Skye, at Kyleakin, just across the water from the mainland of Scotland.



Then she got her warriors to stretch a long chain across the Kyle (or strait) of Lochalsh, so that ships could not get through unless she had the chain removed. Then she took a toll from every ship which travelled the safe passage between Skye and the mainland.

The Scots, who were very jealous of a foreigner making money in their country, nicknamed her "Saucy Mary." But the time came when the Scots defeated the Vikings at the Battle of Largs in 1263, and Saucy Mary had to give up her castle and her tolls and return to Denmark.

You can still see the ruins of Saucy Mary's headquarters, Teacher's Scotch Information Centre is happy to tell you, on the Isle of Skye. The castle is called Castle Moil. But the only charge today is the fare on the ferry!



When buying green grapes, look for ones with a yellowish cast or straw color with a tinge of amber. They're the sweetest.

Party Planning TIPS

A cardinal rule for cocktail parties is to have more than enough. Plenty of appetizers are needed as basic refreshments for those who drink little and as steady nourishment for those who drink a lot. Leftover liquor will keep.

Creative decorations and thoughtful extras add spice to a party. For large parties, many Holiday Inns provide decorative menus, flags, party hats, Christmas trees, registration tables, special lighting, portable dance floors, pianos, movie screens, floral arrangements and specially decorated cakes.

One of the most important points to remember about having a large party is to Plan Ahead of Time. Reservations cannot be made too early. Some organizations book party rooms as much as a year in advance.

when in Abilene...
Christmas Shopping's a joy!
at River Oaks
So. 14th & Willis
Everything you're looking for and more!

LUNCHEON SERVED TUES. THUR FRI. 12 TO 2

FEATURING 2 DAILY SPECIALS AT \$2.25

TRY OUR TUESDAY NIGHT SPECIAL 6-9

FRIED CHICKEN
FRENCH FRIES, COUNTRY GRAVY
VEGETABLE & HOT ROLL
ALL YOU CAN EAT \$2.25

THURSDAY NIGHT SPECIAL

ITALIAN SPAGHETTI & MEAT SAUCE
PARMESAN TOAST SALAD
ALL YOU CAN EAT \$2.25

EVERY FRIDAY 6-9

FRIED FISH
COLESLAW PINTO BEANS & HOT ROLLS

ASK FOR MORE IF YOU DON'T GET ENOUGH

FRIDAY DECEMBER 12
FRED CALLAWAY
WILL BE PLAYING LIVE FOR YOUR DANCING AND LISTENING ENTERTAINMENT

THE COUNTRY CLUB OF MERKEL

JANUARY CLEARANCE SALE FOR CHRISTMAS BUYING CLEARANCE SALE PRICES ON MANY GIFT SELECTIONS

REST WELL-WHISP -OF-AIR 100% POLYESTER BLANKET FIBERWEAVE DESIGN LIGHTWEIGHT FOR SUMMER AND WINTER 72 x 90 \$5.99

ELECTRIC 2 YEAR GUARANTEE BLANKET FULL BED \$20.99

SUPER SOFT POLYESTER PILLOWS PAIR \$7.29

REVERSIBLE WOVEN SCATTER RUNNER \$1.66

MOST PRECIOUS BED SPREAD FULLBED \$26.99

SUGAR SACK PKG OF 3 DISH TOWELS \$1.99

GIRLS 7-14 JEANS VALUES TO \$11.99 \$6.99

BLOUSES VALUES \$11.99 \$5.99

LADIES JEANS VALUES TO \$14.99 \$7.99

BLOUSES VALUES TO \$16.00 \$6.99

TEXSHEEN LINGERIE

BABY DOLL PAJAMAS \$7.00

SLEEVELESS WALTZ LENGTH GOWN \$6.00

LONG GOWN \$8.00

SHORT DUSTERS \$8.00

LONG DUSTERS \$11.00

VALUES TO \$18.99 LADIES SHOES \$13.99

MENS JARMAN SHOES VALUE TO \$28.99 \$15.88

MENS 100% POLYESTER DOUBLE KNIT SUITS VALUES TO \$70.00 \$55.00

VALUES TO \$55.00 SPORT COAT \$35.00

MENS DOUBLE KNIT PANTS VALUES TO \$20.00 \$8.99

SHIRTS \$2.99

LEATHER LOOK COATS \$25.00

NOCONA BOOTS VALUES TO \$58.00 \$45.00

MENS JEANS \$5.99

HOODED ZIP FRONT SWEATSHIRT \$7.99

BOYS JEANS VALUES TO \$5.99 \$3.99

QUILTED JACKET \$9.99

REGISTER FOR FREE PRIZES DRAWING SATURDAY LAST WEEK WINNER MRS. LEWIS MILLETT

Crawford's

FINE CLOTHING AND SHOES FOR THE FAMILY

113 EDWARDS PH. 928-5612