

See Page 5

for Tye PTO suit



After 42 years of service to the community, Wilson's Food Store, according to their ad, are going out of business.

Ray Wilson, owner of the local grocery store, said Tuesday, "at this time, we are working toward that end. I don't know what steps we will take, final decisions have not been made. At this time, our ad says it all."

Bonds sold

Thursday, January 11, 1979... Merkel, Texas

Demolition starts today

Nine months after a fire gutted Merkel High School the School Board sold \$1.4 million in a special called meeting Tuesday night. Eight separate bids were submitted from financial institutions around Texas. One bid was withdrawn due to pending court litigation. (See page 5 for related story.) The bids broke down to:

Bidders	Effective Interest Rates
C & C Southwest	6.02
Roles Winston & Comp.	6.27
Dean Widdard Reynolds Inc.	6.07
Ft. Worth National Bank	6.14
Farmers & Merchants	6.17
Underwood Newhouse Comp.	6.23
Raucher Pierce Refnes Inc.	6.21
Merrill Lynch	6.22

The Highest bid, and the bid accepted by the board was that of C & C Southwest, manager of a joint agreement between Cullen Bank, Houston and Citizen's National Bank, of Dallas.

The pay off rate for bonds maturing in:	per cent
1981-1986	7.50
1982	7.20
1988-1991	5.50
1992	5.60
1993	5.70
1994	5.80
1995	5.90
1996-2000	6.00

Don Hensley, president of the F & M National Bank made his business open to six of the bidders so that they could call in their bids directly to him and he would seal them and submit them to the board saving the company time and expense in traveling to Merkel. The C & C bid (the highest bid) was received at approximately 5:10 P.M. according to Don Hensley and was the final bid to be turned in.

The bid of C & C was accepted unanimously by the board after the financial advisor for the Merkel School Board, Joe Smith of Abilene, checked the figures and reported them to be correct.

In other business, all related to the new school, the demolition of the old school and middle school gym was discussed.

The company that is responsible for the demolition arrived with some of its equipment Tuesday and by the release time of this newspaper the demolition should have begun. The safety of the students during demolition was discussed and superintendent Raymond Etheridge said that every possible precaution would be taken to insure safety of the students.

In other business, still related to the new school Dr. Etheridge stated that he is keeping in contact with the architects on a daily basis.



This car seems to have made a wrong turn somewhere. The icy roads sent this car through the guard rails and down the embankment. (Staff photo by Glenn Richards)

Merkel youth remains in coma

The Mail reported two weeks ago, a Merkel youth was injured and was listed in critical

condition at Hendrick Medical Center. We did not report the youth's name because he is a juvenile.

The person injured in the wreck is Mike Moreno of 1516 Heath, Merkel. Mike has been flown from Hendrick Medical Center to a San Antonio Hospital, where

he remains in a coma. He has not regained consciousness since the accident. His parents are Mr. and Mrs. Jessie Moreno, Jr.

Industries looking for plant sites...like Merkel

(Second of three parts)

The Texas A&M study of the importance of Interstate Highway to economic development in Texas reported that transportation, availability of land and the availability of buildings or building costs are primary factors in the selection of a plant or warehouse site. Last week our Why Merkel? article pointed out that Merkel should score high in both categories. Since these factors alone account for almost one-half of the reasons why a site location is selected, Merkel will be discovered by industries seeking to benefit from these factors. This week we take a look at two other important factors in the selection of a plant or warehouse location.

Market Factors: Access to customers and market area are by far the most important market considerations in the selection of a business location. Customer access is measured both by time required to provide the service and cost of providing that service; therefore, customer access is tied very closely to the transportation service circle accompanying last week's article indicates that 13 of the State of Texas' 25 metropolitan areas fall within this circle. In 1975, more than 5 million people lived in these 13 cities, all less than a 250 mile distance from Merkel. Another 1,355,000 people live in smaller cities, towns and rural areas in 112 of the 254 Texas counties, within same-day transportation service of Merkel. All of this adds up to the fact that 52 percent of the population of Texas reside within the 250 mile circle of Merkel. Excellent transportation service by rail and truck to population centers beyond the 250 mile circle expand the Merkel market area to metropolitan cities such as Houston, New Orleans, Oklahoma City, Little Rock, Memphis, Kansas City, St. Louis, El Paso and Denver. Because of the attraction of the "Sun Belt" these are some of the fastest growing metropolitan areas in the United States.

Market potential is also important to a decision to select a new plant or warehouse site. A recent report of the Texas Water Development Board projects the 1980 population of Texas to exceed 13 million people. The report further projects that by 1990 more than 15.5 million people will be called Texans. Although figures are not readily available to project population for the same-day 250 mile Merkel service circle, using population growth percentages reported by the Water Development Board almost 7 million people will live within the circle next year. By 1990 more than 8 million people will live in the market area.

Advertisement value of the plant or warehouse site is yet another consideration for locating a business. Furniture manufacturers, clothing industries and food and beverage processors seek sites along the heavily traveled interstate highways to receive the additional benefit of advertisement. According to latest Texas Highway Department figures, 217 vehicles pass by potential plant and warehouse sites in Merkel each day.

Fact C: The market factor is significant to plant and warehouse site selection. Since Merkel is within same-day service to 6.4 million customers and by 1980 more than 8 million people will probably reside within the circle, Merkel should receive high marks by those considering the selection of a business site where the market factor is significant.

Availability of Labor: Although you would expect industrialist to consider the availability of a labor force to be a prime factor in selecting a plant site, the Texas A&M study revealed that for those plants seeking sites along the interstate, that factor was seldom considered to be a primary factor. The opportunity to employ people was, however, a second, third and fourth consideration by many site selectors. It is also interesting to note that when plant owners were

METROPOLITAN AREAS OF TEXAS WITHIN SAME-DAY TRANSPORTATION SERVICE OF MERKEL

Area	POPULATION ESTIMATE 1975
Abilene	130,617
Amarillo	157,004
Austin	396,893
Dallas-Fort Worth	2,527,224
El Paso	201,371
Lubbock	197,248
Midland	69,214
Odessa	97,460
San Angelo	74,534
San Antonio	981,566
Sherman-Denison	78,831
Waco	154,267
Wichita Falls	127,878
Total	5,194,105

Source: U. S. Census Bureau's 1975 estimates of population

REASONS FOR THE PLANT LOCATION	
PERCENT OF MENTIONS BY PLANTS LOCATED ALONG TEXAS INTERSTATE HIGHWAYS	
Land and Building Factors	34.5
Transportation Factor	13.5
Market Factor	28.5
Access to Customers	14.5
Market Potential	7.5
Advertising Value of Site	3.5
Other Market	2.5
Total Market	28.5
Other Factors	25.5
TOTALS	100.5

Reference: Texas Transportation Institute, Research Report 66-2, A Study of Interstate Highways, Frontage Roads and Industry Location.

asked the type of labor market were they looking for they responded: close to professional and technical labor, availability of trained labor, availability of unskilled labor to be trained and the quality of the local area labor market.

Merkel can supply this type of labor market. Within 20 minutes is a supply of professional and technical labor. Due to the location of a military facility, there is an opportunity to employ military dependents. People living on farms seeking ways to obtain additional income are also employable in certain skill categories. Military retirees and young married couples wishing to remain in the area may provide additional employees for selected business activity.

In that we have focused much of our attention upon industries that involve furniture, clothing and food products, it should be pointed out that Changing Horizons, a publication of the Texas Employment Commission, reports that employment in these industries will continue to increase at a much higher rate than other industries. During the period 1975-1980, the Commission projects a 22 percent increase in total employment. However, projected increases for employment in the furniture industry is 50.6 percent, clothing and textile 48.9 percent and food and beverage processing is 33 percent. During this same period, farm workers were projected to decrease by 40 percent. With a decline in farm workers and an increase demand for employees in industries suited for the Merkel area, it seems reasonable that industries such as furniture, clothing and food manufacturers will soon discover Merkel.

Fact D: If a high quality labor force is what plant and warehouse owners are seeking, Merkel and the surrounding area have one to offer.

Therefore, when the labor force is considered in the selection of a business site, Merkel should score high.

Transportation, land, buildings, market and labor availability account for 75 percent of the reasons why a plant or warehouse site is selected. Thus far, Merkel should score high on all of these factors. Why Merkel? will continue next week with a look at the remaining factors such as community characteristics, utilities, taxes, services, and the ever intriguing personal factor.

Blair Water Supply bids out tonight

Rural lovers south of Merkel will be anxious to see what company bids will be awarded to when the Blair Water Supply Co-Operative meets tonight in the Taylor County Electric Co-Op at 7 p.m.

Directors of the Blair Water Supply Corp. will send out bid notices at the meeting. The water line is being funded by a \$396,000 matching federal grant. More than 210 applications for water service have been received by the Blair Water group and any further people interested in being on the line need to contact J.D. Sandusky or any of the board members.

Bids will be opened at the regular February meeting set for Feb. 15th at 7 p.m.

Police report quiet weekend

The Merkel Police had a fairly quiet week-end working three minor accidents in Merkel and assisting the Highway Patrol in covering four tractor trailer mishaps.

One of the truck wrecks caused traffic to be blocked on the 126 overpass. Merkel Police detoured Interstate traffic around the accident

while the wreckage was cleared. The driver and a passenger in the truck were taken to Hendricks Medical Center by the Fire Rescue Truck, in its only run since beginning operation last Friday. The driver of the truck received a head injury while the passenger was diagnosed with back injuries.

What's inside?
Ice, wrecks... Page 2
Classifieds Page 4
Tye PTO suit Page 5

Editorial: Written 70 years ago, still applies

The beginning of a new year should give new life and courage to every individual and enterprise.

There are many people of Merkel and the Merkel country who were disappointed during the year, which has just closed, but this is necessarily a part of everyone's experience in any business in any country. It is the bitter which goes with the sweet, some clouds with the sunshine. These shadows of sorrow have covered many homes in our country, but the rays of sunshine have penetrated others. The year of 1908 was one of the lean ones for the Merkel business man and the Merkel farmer, but let us believe that the present year will be one of peach and plenty. Let us not grieve over the past, but hope for the future.

In summing up, we have many reasons for feeling grateful for favors of the past year and hopeful for the future. Merkel is possessed with many natural advantages over her progressive neighbors and should keep pace in the forward march. Under adverse conditions, much progress has been made and much more is possible. With the proper organization of the progressive citizens of the town and country working for the advancement of their mutual interests, we will go forward at a gait surprising to the most sanguine. It is just a time in the history of one of the best towns in Texas and the most producing lands in the world that tries the courage of its citizenship. The courageous will win and the faint-hearted fail. It is time that offers unprecedented opportunities for profitable investments and these opportunities should be made known to men and capital in other sections. A revival of commercial club interest and a reorganization of the patriotic and progressive citizens should be one of the first steps.

Already there are signs of improvement in business and financial conditions. There are new men and money coming to Merkel and the song of the hammer and the saw will soon be heard in all parts of our little city. Again, an era of civic improvement is assured. Many progressive citizens who have faith in the future, backed by a confidence in the present property values are making investments and improvements. Many citizens have contracted for cement sidewalks and we believe that several miles of this most important improvement will be made within the next few months.

There are other good things in store for us, so let us all work and not worry.

Boys varsity downs Stamford

by glenn Richards

The boys varsity handed Stamford a sound beating by a score of 43-35 here on the 2nd bringing their record to 5-8 on the season and 2-1 in district play.

Mike Sims had 13 points, Kelly Wolfe had 9 points and Ken Wells had 8.

Coach Bartee is now running two different squads, five starters, who all come out and are replaced by another squad.

"It gives the starters a chance to all get a rest and for us to discuss strategy," explained Coach Bartee.

"Our 2nd group did a good job running the ball up and down the court, that's just what they're supposed to do," said Coach Bartee.

The Badgers game with Cohoma was cancelled due to poor weather and the game has been rescheduled for Jan. 20 on a Saturday in Cohoma. Games should start at 5:00.

The Badgers play Wylie here Friday. Games begin at 4:00.

Fire dept. aids stranded travelers

The second ice storm in as many weeks hit Merkel Friday and the storm caused complications for about everyone.

A thin layer of ice made city streets and I-20 hazardous and many folks stayed home over the week-end.

But for Patti and Robert Ditch of San Bernardino, California and about 35 others this ice forced them off of the Interstate into a temporary shelter set up by the Merkel Volunteer Fire Department. The shelter, located at the Merkel Lions Club Building was opened because the Merkel Hotel and the Big Country Inn were filled with motorists that wanted to venture no further.

According to the Ditch's, they heard about the shelter from the Merkel Police and decided to "check in". Mrs. Ditch said they were provided with food, blankets, heat and some good conversations. "We met a few folks in here that we shared common interests and had some good conversation. It did get a little cold inside, but we were well taken care of."

This second ice storm caused the closing of Merkel, Trent, and Tye schools on Thursday, Friday and Monday.

Gibson places two lambs

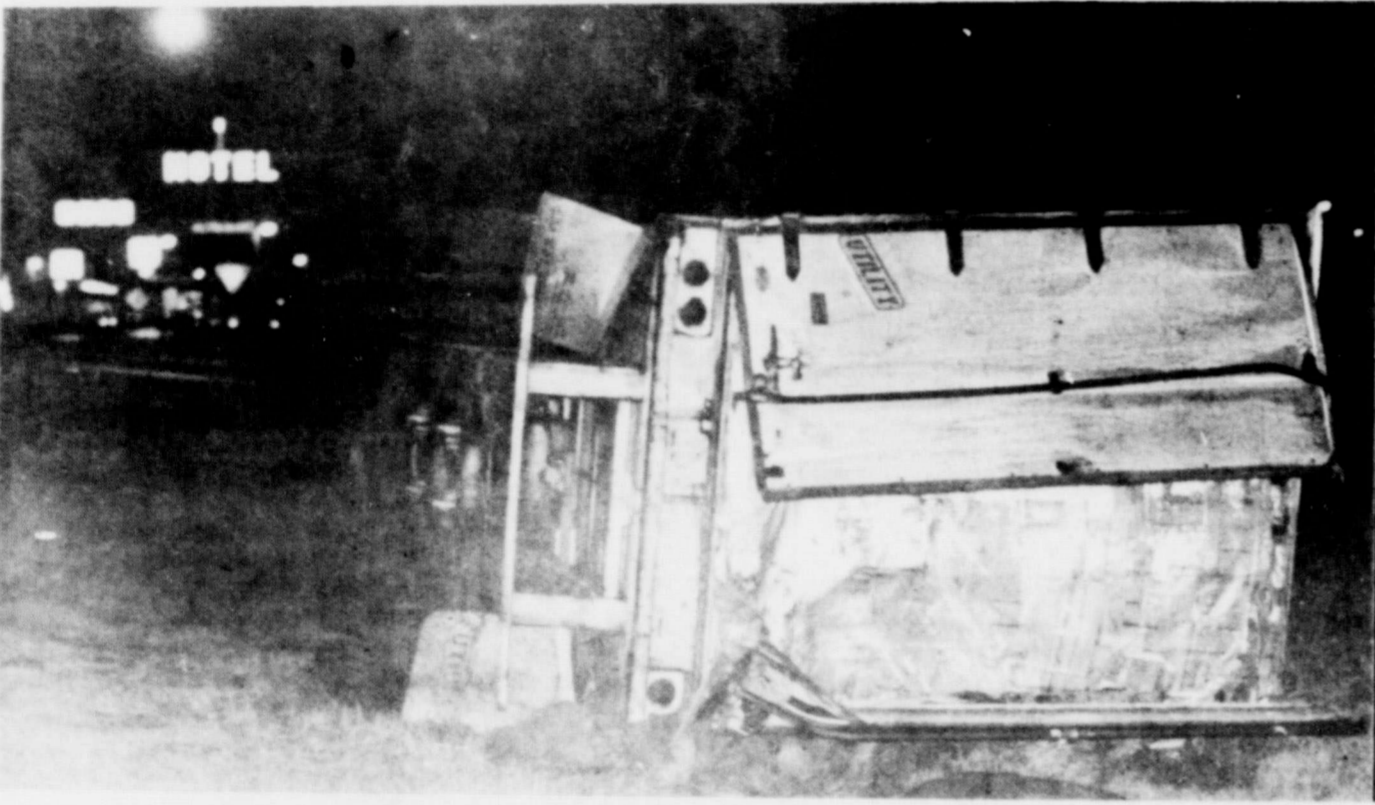
Jay Gibson of Merkel placed two lambs in the fine wool division in the Odessa Stock Show last week-end.

Jay placed 13th and 16th in the contests and his two fine wool lambs

were sold at auction. The Merkel FFA and 4-H Clubs will be participating in the county show this week-end in Abilene and the regional show set for Monday in Abilene.



The bed of this trailer did some ugly things when this truck lost control. There were no injuries. (Staff photo by glenn Richards)



This bell pepper truck ended up in the median after the tractor-trailer jackknifed sending the two occupants of the truck to the hospital. (Staff photo by glenn Richards)



Along with 75 people stranded at the Lion's Club Sunday night, due to poor weather, was a little furry friend who appreciated the warmth just as much. (Staff photo by glenn Richards)

2nd ice storm over

The icy weather came at an inopportune time for the Merkel City Ambulance and only complicated things when the city ambulance developed major engine trouble Friday.

On an ambulance run to Abilene last Friday about a mile west of Tye, the ambulance, that only had to last 60 more days until the new city ambulance was due to arrive, the ambulance threw a rod.

"We heard about an ambulance in Fort Sill, Oklahoma that was for sale," said City Manager J.A. Sadler. Further inquiry on the matter found that to purchase the ambulance, there must first be a stop in Lubbock for the necessary paper work. Mayor Lou David Allen and J.A. Sadler left for Lubbock Thursday around 1:30, and arrived in Fort Sill early Friday morning.

"When we got there, we tried to start the surplus ambulance, but it wouldn't start. When we looked under the hood, the battery and alternator had been removed and the fan belt had been cut," said J.A. Sadler.

J.A. also said that the local authorities were unaware of the condition of the ambulance and it must have been vandalized the previous night.

Rather than waiting the necessary five or six hours to repair the ambulance and drive it on the icy roads, J.A. and Mayor Allen opted to return to Merkel. At present the ambulance in Fort Sill is still on option and the Fire-Rescue truck has been adopted as the new ambulance until a decision has been made on the return trip to Fort Sill.

The Fire-Rescue truck has been used on one run so far and Leroy Austermann feels that it's "a little awkward" but that it will definitely do the job.

Freshmen boys win

The Freshman boys upped their season record to 3-2 by defeating Stamford in a game here on Jan. 2, 39-18.

Scoring for the Merkel

Frosh was Kevin Farmer for 14 pts. and Ed Herrera with 10 pts.

The boys' next game is against Wylie here Friday night.

Calling are Valentines.

You Can Buy This Space For A Special Message To Your Valentine Sweetheart.

Call 928-5712.

NO TIME FOR GOD

I have no time to give my Lord today,
There are a multitude of things to do--
I have no time to read His Word or pray,
I am so busy. Is it thus with you?

When you are called upon to help or serve
Or work or worship or be found in prayer,
Are you too busy for the house of God,
But you find time for many things elsewhere?

Perhaps you have observed though pressed for time,
That those things which you really want to do,
Are given favored place in all your plans,
But God finds not the time, which is His due.

There is not time for everything 'tis true,
And you and I must therefore make a choice
Between the things the world calls us to do
And those in which we hear the Spirit's voice.

If there be first a willing heart to do
Whate'er the Holy Spirit has to say,
Then first things will come first, and there will be
Sufficient time to work, to read, to pray.

-Robert E. Nicholas

CALVARY BAPTIST CHURCH
5th & RUNNELLS ST.
Need a Ride? Call 928-5120

NO FEES NO SERVICE CHARGES

OUR NEW TransAction ACCOUNT CAN RING UP DIVIDENDS ON YOUR CHECKING ACCOUNT MONEY

NEW CONVENIENCE! You can have funds transferred from your checking account at any bank to your TransAction Account or from your TransAction Account to your bank... all by phone the same day you call. Our TransAction Line is open 24 hours a day, 7 days a week.

NEW DIVIDENDS! Your TransAction Account deposits earn dividends at 5 1/4% from the day of deposit to the day of withdrawal. And it's insured to \$40,000. We'll even send you an itemized statement each month showing you just how much your excess cash is earning! Absolutely free. No fees. No service charges.

For information, call or visit one of our offices.
The TransAction account, only at

United Savings OF TEXAS

ABILENE DIVISION

Division Office: 402 CEDAR STREET • 673-5171	Westgate: 278 S. PIONEER DR. • 673-5171	Albany: S. 2ND AT MAIN • 762-2252
Edgewood: 3002 N. 12TH • 673-5171	Coleman: 115 COMMERCIAL • 625-5648	Anson: 1101 E. COURT PLAZA • 823-2401
River Oaks: 3366 S. 14TH • 673-5171	Clisco: 701 AVENUE D • 442-1605	Merkel: 301 EDWARDS AVE • 928-4702

ESLIC

GOING OUT OF BUSINESS SALE

TO THE BEST PEOPLE IN THE WORLD

OUR CUSTOMERS

AFTER 42 YEARS, WE ARE RETIRING! PRICES

SLASHED! COME IN DAILY AND CHECK

OUR SHELF PRICES.

PRESTON
MILK GAL. HOMO \$1.79
 GAL. LOWFAT \$1.69

PRESTON
MILK 1/2 GAL. HOMO .99¢
 1/2 GAL. LOWFAT .93¢

JOHNSON DISPOSABLE
DIAPERS NEWBORN 24 CT \$1.99

WISHBONE
ITALIAN DRESSING 8 OZ 59¢

LIBBYS
SLICED BEETS 5 1/2 OZ 23¢

PIONEER
BISCUIT MIX 2 LB 99¢

DUNCAN HINES
CAKE MIX PKG 79¢

AMERICAN BEAUTY
INSTANT POTATOES 2 L 79¢

HANDYCAN
KOOLAID MAKES 10 QTS \$1.29

COMSTOCK MINCEMEAT
PIE FILLING 24 OZ 99¢

KRAFTS ROKA 8 OZ
BLUE CHEESE DRESSING 79¢

HUNTS ASSORTED FLAVORS
SNACK PACK 4 CAN PACK 79¢

FREEZER DESSERT MAKER
COLDSNAP 8 OZ 89¢

KRAFT QT
MAYONNAISE \$1.39

FRUIT PECTIN
CERTO 6 OZ 69¢

NOTEBOOK
PAPER 200 CT 59¢

WELCHS
GRAPE JUICE 24 OZ 79¢

JELLO 3 OZ 22¢

SHORTENING 3 LB
SNOWDRIFT \$1.89

COFFEE MARYLAND CLUB 2 LB \$4.59

JELLO

6 OZ 44¢

COKE

2 LITER 79¢

TIDE

50% OFF
 FAMILY SIZE \$4.89

NUTS 1 LB PKG

ALMONDS

BRAZILS 1/2 PRICE

ALL SHOTGUN SHELLS

20% OFF

FROZEN FOODS

TURKEYS 1/2 PRICE

1 LB
TATER TOTS 69¢

DONALD DUCK 6 OZ
ORANGE JUICE 49¢

FRESH PRODUCE

RUBY RED 5/
GRAPEFRUIT \$1.00

FANCY
BELL PEPPER EA 19¢

SELECT
CUCUMBERS EA 19¢

NORTH CAROLINA
YAMS LB 29¢

BACON

GOOCH BLUE RIBBON
 LB \$1.59

FRANKS

GOOCH PKG 98¢

GOOCH COUNTRY STYLE
SAUSAGE

LB 98¢

MARKET SLICED
BOLOGNA

LB \$1.19

ROAST

CHUCK
 LB \$1.49

HOT LINKS

GOOCH
 LB \$1.19

USDA APPROVED TO REDEEM FOOD STAMPS

DELIVERIES TUESDAY & FRIDAY AT 10:00 AM

\$5.00 MINIMUM DELIVERY



Where Customers Send Their Friends
 PHONE 928-5713

REFRIGERATED AIR 1033 N. SECOND

SAVE

LOWER OVERHEAD

HOURS 7:30 TO 6:30
 MON. THRU SAT.

Open up a world of Opportunity... MERKEL MAIL Want Ads



FOR SALE

DAMAGED STORAGE buildings, several sizes, big savings this week only. Morgan Buildings, 2775 S. Treadway, Abilene. Call 692-8100.

FOR SALE: Drum Set, 1 bass, 1 snare, 2 mounted toms, 1 floor tom, 2 symbols with stands, and Ghost foot-pedal. Good Condition. Call 928-5228.

FOR SALE: Stove, Super Frigidare Electric Range, self-cleaning oven. Dale Shugart. Call 928-5490.

FOR SALE: 10' x 25' wood building to be moved. \$400 or best offer. Seen at 502 Kent.

HAY FOR SALE: Delivered or pick-up. Also 8 disc Ford one-way plow. Jerry Miller 288-5343.

MISCELLANEOUS

THINGS IN GENERAL is closed til March. Watch for notice of re-opening.

Young Black Bull-Will travel, room and board. Call 928-5307.

FOR RENT

SHANNONSIDE apartments-1,2, and 3 bed room apartments, shag carpet, all electric, dish washer, garbage disposal, central cooling and heating. For more information call 928-5038.

FOR RENT: 2 bedroom house at Noodle. For information call 928-5359 between 7 p.m. and 9 p.m.

REAL ESTATE

LAND FOR SALE? Call Collect - Bill Largent, Farm and Ranch Mgr. at Frances McClure Inc. Realtors, 3157 South 27th Abilene, 698-3211, Night 698-2375.

FOR SALE: New 3 br., 2 bath, 15' x 25' Den with fireplace and vaulted ceiling, builtins, double garage, covered patio, 416 sq ft., mid-forties, 288-4969.

HELP WANTED

HELP WANTED: Part-time waitresses and cook. Call 928-4922 after 2.

LOST & FOUND

STRAYED: Black cow, branded WS on left hip, red tag No. 150, ear marked on right ear, strayed from 5 miles west of Noodle. Call 286-6647.

WANTED

WANTED: Old buildings to tear down. Will clear and haul off for materials. Jack Spradling 928-5051.

CARD OF THANKS

Words cannot express the thanks for the food, flowers, visits, prayers, cards, and love shown during the loss of our loved one. God Bless each and everyone. The Family of Bruno Ueckert

We wish to express our Thank You to everyone that sent cards, phone calls, flowers, and visits in concern of our mother. We wish to thank you for your prayers and kind deeds that were expressed during our sorrow. The Margaret Cooper Family.

We would like to thank all of our friends and neighbors for their prayers, visits, and kind deeds, while Mike was in Intensive Care. The Family of Mike Moreno, Son of Mr. and Mrs. Jesse Moreno, Jr.

MERKEL VFW POST 5683

Monthly Reg. Meeting 8:30 p.m. Second Thursday Post & Ladies Auxiliary

SEAT COVER CENTER

SEAT COVERS TRUCK CUSHIONS DOOR PANELS ARM RESTS HEADLINERS 1056 BUTTERNUT 677-1349 ABILENE

Services

Boot and Shoe Repair. Drop your footwear repair needs at Hardy Food Store. 928-4912. One Week service.

GRANNY'S Playhouse. Licensed Day Care Center. Operated by LVN. Open from 6:30 a.m. to 6 p.m. Drop Ins Welcomed. 207 Orange.

ROOF COATING SERVICE. Rapid Roof, un-layered flexible, weather resistant, acrylic latex roof coating for all roof surfaces. Conklin distributor and applicator, Chip Meroney, Call 915-823-3044 after 5 p.m. for free estimate or information.

GREENBUG SPRAYING. They are around check your fields. Call Diamond Flying Service Phone 915-735-2094. Rotan, Call Gary Diamond.

CHIMNEY NEED CLEANED? Have top hat, wire brushes, and high volume vacuum. Experienced and insured. Jim Lawless, 862-3171.

CERAMIC TILE

No job to big or small. Call 928-4871 between 6 p.m. to 10 p.m. Work Guaranteed.

Would like to babysit. Will take and pick up from school. Call 928-5474. Also night babysitting.

GREGG FISHER PLUMBING

ALL TYPES OF PLUMBING WORK
QUALITY WORK AND REASONABLE PRICES
CALL 928-5379 OR 928-5627

NEED A New Water Well Drilled? Also Install

Meyers Subs & Jacuzzi Jets
ROBERT HIGGINS

FOR ALL YOUR INSURANCE NEEDS...

SEYMORE INSURANCES

102 EDWARDS 928-5379

Auto, Property, General Liability, Crop, Health, Life, Disability, Tax-sheltered retirement, Educational plans

FARMERS UNION SERVICE POINT

Don't Go Away MAD. Tell us about it.

THE MERKEL MAIL

C.B. RADIOS REPAIR SUPPLIES TV REPAIR C.B. ANTENNAS PRICES ARE VERY DEFINITELY COMPETITIVE STEREOS CHANGER & 8 TRACK PLAYERS STANFORD'S ELECTRONICS 123 KENT MERKEL

MERKEL ELECTRIC

FRANK CAMPBELL Phone 928-5291
BILL CAMPBELL Phone 862-3571

CAN HAUL DIRT, ROCK & GRAVEL LEVEL & REPAIR DRIVEWAYS

CALL EVENINGS
Harold Walker
PHONE 928-5872
202 CHERRY

CUSTOM HAY BALING, HAULING & PLOWING

Hay For Sale
Satisfaction Guaranteed
CALL ELAM,
ABILENE 1-915-673-1307

AUTHORIZED DEALER

Lawn & Garden Equipment
Allis-Chalmers-Owatonna
Hay Machinery
Farm Equipment and Forney
Welding Equipment
Shafer Plows - Continal Belton Products
677-4349
DOTY FARM EQUIPMENT CO.
266 Chestnut
Nights-Sundays-Holidays 673-2481 - 698-2872

CENTRAL AIR CONDITIONING?

Buy the name you know and trust
General Electric
AMERINE HEATING AND COOLING
Commercial and Residential
Sales And Service
1108 N. 2nd St.
Merkel, Texas 79536
Phone 928-4876

WE PAY

150 Per Cent Over Face Value For All Silver Coins. (\$2.50 for \$1.00 Silver) (We Pay 25c for silver dimes)
PRATTS COIN & STAMP SHOP
2155 S. 1st
Abilene, Texas

NO JOB TOO BIG OR SMALL

FREE ESTIMATES
BISHOP READY MIX & CONTRACTORS
CALL DAY OR NIGHT 928-5769

PATIOS DRIVES ROADS
SIDEWALKS CURBES TOPSOIL

WE SPECIALIZE IN SEPTIC SYSTEMS ROADS & DRIVES

L. R. MCGEE BACKHOE SERVICES

RT. 3 BOX 94 928-5423

KEN'S RADIO & TV

KEN KRAATZ - OWNER
REPAIR ALL MAKES & MODELS OF TV'S & RADIOS
F.C.C. LICENSED
REASONABLE RATES
PICK - UP & DELIVER
CALL 862-3501, TRENT

PRE-PAID FUNERAL PLANS

CEMETERY HEADSTONES
BURIAL INSURANCE
LIFE INSURANCE
STARBUCK FUNERAL HOME

Any erroneous reflection upon the character, standing or reputation of any person, firm or corporation, which may appear in the Mail will be corrected upon being brought to the attention of the publisher.

The Merkel Mail

Publishers Statement
Established 1889

Published weekly at 916 N. Second St., Merkel, Tx. Entered at the Post Office at Merkel, Texas 79536 as second class mail.

Member of the Texas Press Association and West Texas Press Association

Cloy A. Richards
Melanie Richards,
Glenn Richards
Lillian Pack
Suzy Rister
Cathy Pack

Co. Publisher-Editor
Co. Publisher
Writer-Photographer
Production
Production
Production

SUBSCRIPTION RATES: \$5.00 Per Year Taylor County \$7.25 Per Year outside of Taylor County.

For Classified Rates:
\$1.50 minimum for the first four lines (18 words). Excess of 4 lines will be charged at the rate of 8 cents per word. TERMS: 25 cents discount if bill is paid prior to first insertion.
Card of Thanks: \$3.00 minimum for the first 50 words, 4 cents per word for each additional word. TERMS: Cash in advance unless account is established.
NOTICE: Typographical or other errors must be given before the second insertion or claims for refund or extensions will not be recognized.

PRESTIGE HOMES & PROPERTIES

Merkel 4 acres on pavement NE of town, city water, frontage on 2 roads.
BUDA-3 bedroom home on 30 acres, high on hill overlooking the town. Very attractive home, paneled den, range, dishwasher, central heat, carpeted, attached garage. Chain link yard fence. City water!

LISTINGS NEEDED & APPRECIATED

Billy & Pat Nett 928-5623
Morris Harper 698-9689
Shannon Teal 692-0787
Pauline Butman GRI Realtor 692-2222

Toombs Real Estate

FREDDY TOOMBS (Broker)
116 EDWARDS PH. 928-5921 RES. 928-5998
PEGGY DENNISON RES. 672-6727

Brick, 3 bedroom, 2 bath, den, 2230 square feet or more than an acre. Has all the extras.
2 bedroom, large old house on good street. Water well.
FOR SALE: 2 1/2 X 65 on good lot, water well. SOLD.
Two lots on FM 126 North, close to Country Club. Excellent building site.
VACANT LOTS FOR SALE, for trailer and buildings in all sections of town. Reduced for quick sale.
HOUSE FOR SALE: 2 bedroom, near school, carpet, fireplace, fence, central air, water well.
4 bedroom, 2 stories, 2 baths, 3 car garage. Nice location.
(New) Listings
2 bedroom, 1 1/2 bath, 2 yrs. old, large living room and dining area, 1 1/2 acres, at edge of town on paved road, city water and water well, storage building.

WE HAVE BUYERS AND NEED LISTINGS FOR HOUSES, FARMS, & RANCHES

SEE THE NEW 1979 PONTIACS TODAY!

GOOD SELECTION of USED CARS

78 PONTIAC GRAND PRIX Air and power, AM-FM stereo, rallye wheels, tilt steering wheel, 12,000 miles! Real nice!!	\$6295	75 PLYMOUTH FURY CUSTOM 2 door, air and power, burgandy, white vinyl top. Nice. ONLY	\$2695
78 PONTIAC BONNEVILLE BROUGHAM with all the goodies, special 2 tone burgandy paint	\$7795	74 OLDS '98' 4 door, loaded, real nice	\$2595
78 BONNEVILLE BROUGHAM 2 dr., super loaded with metal electric sun roof, a cream puff	\$8495	74 OLDS DELTA '88' 4 door, air and power, cruise, white with green vinyl top. ONLY	\$2195
78 CHEVY MALIBU 4 dr., V-6 engine, air & power, Green color with white vinyl top. Nice Only	\$4695	73 FORD LT.D. 2 dr. air and power, blue color, only	\$1695
77 CHEVY MONTE CARLO Air and power, 27,000 miles. Red with white landau top. Nice.	\$5095	73 PONTIAC CATALINA 4 dr., air and power, gold and white color, only	\$1495
76 PONTIAC FIREBIRD ESPRIT Air and power, rallye wheels, 28,000 miles. Nice. ONLY	\$4595	72 DODGE MONACO 4 door, air, power, new tires, only	\$1095
		4 PONTIAC LEASE CARS 4 DOOR SEDANS 1974, 75 and 76 models, all have been reconditioned and checked, no better buys anywhere, priced from	\$1695

PALMER PONTIAC & GMC

Merkel 928-5113 Abilene 673-1182

Tye Times

THE MERKEL MAIL

Tye PTO files suit against Merkel ISD

A suit was filed in the 42nd District Court in Abilene yesterday in the behalf of the Tye Parent-Teachers Organization.

Tye residents, claiming non-representation on the Merkel Independent School District (MISD) Board, filed suit yesterday against Merkel School officials and asked in the suit that the court cease any further actions by the Merkel School Board.

The suit, filed Monday in Judge Don Lanes' 42nd District Court by Abilene Attorney Randy Wilson in behalf of the Tye Parent-Teachers Organization, requests that the court make a declaratory judgment concerning part of the Texas Education Code that the suit alleges, gives Tye residents two school board members.

Named in the suit are the school superintendent and the board members. Those named in the suit were delivered copies of the suit by members of the Taylor County Sheriff's Department.

The legal representative for Merkel Schools, Abilene Lawyer Mike Bastersville said, "it is premature to comment on any parts of the suit. We are preparing a letter of responsive pleading to the 42nd Court and until they are filed, we will have no comment."

Notice has also been given to the State Attorney General's office that the suit has been filed. A request is also before the commissioner of the Texas Education Agency for a hearing.

The suit stems from the 1974 consolidation of Merkel and Tye schools. Tye residents claim that they have had no voting school board members since consolidation and that state law says there will be two members appointed.

According to the attorney representing the Tye group, there is no legal case similar on Texas books and that this portion of the law has never been tested. According to Barbara Kotlik, president of the Tye PTO, "We just want the Texas Education Agency to make a ruling on whether or not Tye residents should be appointed to Merkel ISD board positions. We will abide by whatever ruling we receive. We feel our requests to the Merkel board have been neglected."

Mrs. Kotlik stressed that the Tye PTO has never intended to stop the building of the new school, "we just want our questions answered."

Dr. Raymond Etheridge, superintendent said, "The Merkel Independent School District is one district. I am as concerned for education and

growth of children at Tye Elementary as I am at Merkel Elementary."

Etheridge also reported Tuesday that the board would go ahead with the sale of the bonds on Tuesday night (see related story, page one).

The effects of the suit could not be accurately judged concerning the announcement of who will purchase the bonds. In interviews with the Mail, both legal points were argued and conflicting conclusions were drawn from those arguments.

The question is now in the hands of the 42nd District Court and the Texas Education Association.

Tye school news

In addition to our regular "reading, writing and arithmetic" activities, the month of January has been designated "Feed Our Feathered Friends" month as we study a special unit on birds.

Bulletin boards reflect the theme, notebooks will be made by each child, and a bird feeder will be constructed and placed outside the classroom window. On the final Friday in January, popcorn will be popped and enjoyed by the students. Of course, the birds will not be forgotten as they will receive their special share.

Sight words for reading will be studied with the aid of a "Language Master" machine this month. The student can read the sight word aloud and then run the card through the machine. The machine then reads the card aloud correctly to the child so he can check to see if he has read the word correctly.

It will be good to get back into the routine of learning new things after our pro-longed vacation for the holidays. In the teaching profession, every day brings a new and exciting adventure to both student and teacher.

Visitors

Visiting in the home of Mr. and Mrs. Bill Peterson were: Mr. and Mrs. Lee Mack Reynolds of El Paso, Texas; Mr. and Mrs. Butch Wright and three children of Wauka, Tx.; Mr. and Mrs. Oscar Reynolds of Odessa, Tx.; Margie West and son of Abilene; Mr. and Mrs. Ron Schuknecht and three children of Hamby; Sonny Schuknecht and Linda Miller of Abilene; Billie Miner and three children of Abilene; Billy ren of Abilene; Billy Scott, friend of Danny Miner of Abilene; Mr. and Mrs. Danny Faulks and two children of Hawley; Mrs. O.J. Reynolds and son, Bob of Merkel; Fannie Dorough of Trent; L.J. and Lucille Gray of Merkel; Taresia English of Merkel; and Mrs. L.B. English of Merkel.



SHOP ALLSUP'S AND SAVE! **PRICES EFFECTIVE JANUARY 11 THRU 17, 1979**

7 BIG DAYS!!

 <p>HUNT'S MANWICH SANDWICH SAUCE 1 1/2 OZ. CAN 59¢</p>	<p>Hunt-Wesson's COUNT YOUR SAVINGS SALE</p> 	 <p>PURE WESSON OIL 48 OZ. BTL. \$1.89</p>
<p>CHARM SUCKERS 2 FOR 5¢</p> <p>FRITO PIES 65¢</p>	<p>BAR B Q SANDWICHES 99¢</p>	

 <p>HUNT'S HAL./SLIC. PEACHES 2 15 OZ. CANS 89¢</p>	<p>SHURFINE CANNED DRINKS 5 FOR \$1.00</p>	 <p>HUNT'S SPINACH 3 13 1/2 OZ. CANS 89¢</p>
 <p>HUNT'S STEWED TOMATOES 2 14 1/2 OZ. CANS 89¢</p>	<p>CAMPBELL'S CHICKEN NOODLE SOUP 4 FOR 99¢</p>	 <p>HUNT'S KETCHUP 32 OZ. BTL. 89¢</p>
 <p>HUNT'S HAL./SLIC. PEARS 2 15 OZ. CANS 89¢</p>	<p>SHURFINE TOMATO SOUP 4 FOR 99¢</p>	 <p>HUNT'S TOMATO JUICE 46 OZ. CAN 69¢</p>
 <p>HUNT'S WHOLE TOMATOES 2 14 1/2 OZ. CANS 89¢</p>	<p>SHURFINE PEACHES 3 FOR 89¢</p>	 <p>HUNT'S FRUIT COCKTAIL 2 15 OZ. CANS 89¢</p>
 <p>HUNT'S WHOLE NEW POTATOES 3 14 1/2 OZ. CANS 89¢</p>	<p>TACO ROLLS 4 FOR \$1.00</p>	 <p>HUNT'S TOMATO SAUCE 5 3 OZ. CANS 99¢</p>

 <p>ALLSUP'S ICE CREAM 1/2 GAL. NO. CTN. \$1.19</p>	 <p>GIANT PLASTIC CUP OF COKE 32 OZ. SIZE 49¢</p>	 <p>SHORTENING SNOW DRIFT 48 OZ. CAN \$1.49</p>
--	---	--

TYE TRANSMISSION

ALL WORK QUARANTEED

271 AIR BASE RD.
698-7205

STILL GIVING
S & H GREEN STAMPS
CARRY
SOUTHLAND BATTERIES 
GOODYEAR TIRES
FIX FLATS—NEW, USED TIRES FOR SALE—ANTI FREEZE '3" GAL
Raymon Milligan Texaco
FM 707 & I-20 Tye, Texas

Open 24 Hrs.
Westico Travel & Gift
Specializing in:
Turquoise Jewelry
& Texas Instrument Watches
Nocona & Texas Boots
All Types Western Wear
Oglala Sioux Moccasins
We Never Close

Westico Travel Shop
Abilene Truck Stop
Tye, Texas



ARTS BARBER SHOP
TUES - FRI 8:00 - 6:00
SAT 8:00 - 5:00
Closed SUN & MON
NEXT TO SKINNY'S 201 N. STREET

MOBILE HOMES
COME SEE THE MOST FABULOUS DISPLAY OF DOUBLE WIDES IN THE BIG COUNTRY. SIZES UP TO 1904 SQ. FT.

AT LEAST 25 SINGLE WIDES TO CHOOSE FROM
\$8395 & UP.

WE DELIVER, SETUP, AND SERVICE WHAT WE SELL AT NO ADDITIONAL COST.

EL TYE O TRAILER & SALES CORP.
TYE, TX. Ph-AC 915-698-2180

Trent News

Best buys at the grocery market

Except for late-breaking changes due to weather, the best buys at Texas grocery markets this week are citrus fruits, chicken, dry peas and several vegetables, Mrs. Gwendolyn Clyatt reports.

Of course, widespread crop damage by the New Year freeze may drastically change some supplies and prices as farmers begin to assess their losses, she adds.

Mrs. Clyatt is a consumer marketing information specialist with the Texas Agricultural Extension Service, The Texas A&M University System.

FRESH FRUITS-So far, grapefruit is now at top quality and lowest prices. For greatest nutrition, eat the pulp, too.

Other economical fruit choices are oranges, apples, bananas, tangerines, tangelos, pears and pineapple.

POULTRY-Whole fryer chickens are a best buy at meat counters. Egg prices may drop a few cents, but eggs are still an economical buy at current prices.

FRESH VEGETABLES-Best values include turnips, hard-shell squash, cabbage, carrots, broccoli, rutabagas and potatoes.

GROCERY MARKET AISLES-Dry split peas offer nutrition at budget prices.

DAIRY-Features include several cheeses, low-fat milk, half-and-half, sour cream and whipping cream.

BEEF-Best buys are ground beef and beef liver-figured on a cost-per-serving basis.

Most advertised features are chuck roasts, round steaks and liver.

PORK-Prices remain on the high side. Usually the best values are Boston butt roasts, shoulder steaks and quarter loins cut into chops.

CONSUMER WATCHWORDS: Watch weather and crop reports for rapidly changing supply and price trends until the weather stabilizes.

New energy efficient process helps cotton industry



Scientists for Cotton Incorporated are shown testing a new foam finishing process that reduces the amount of energy consumed while treating cotton.

A newly developed method for applying chemical finishes to fabrics could make cotton more competitive in the fiber market, say textile research and development specialists at Cotton Incorporated.

Tests of the foam finishing process show that it significantly reduces the amount of energy consumed in the treatment of cotton-containing fabrics—a factor that should encourage mills to use more cotton.

“As the fiber company representing each American cotton producer, Cotton Incorporated has the goal of making cotton more competitive through research and marketing,” says John D. Turner, manager of finishing research.

“One of our objectives toward this goal has been to find ways to help mills conserve energy in the use of cotton, thus reducing their costs. We feel that foam finishing represents an exciting opportunity for the cotton textile industry and for America’s cotton producers as well.”

Cotton Incorporated’s extensive research in foam finishing has been hailed as a significant contribution to the advancement of finishing technology. After Turner presented his findings to a textile seminar at Clemson University, he was invited to repeat the presentation at the Dec. 8 meeting of the Southeastern region, American Association of Textile Chemists and Colorists, in Atlantic and the Rhode Island AATCC Section, Seekonk, Massachusetts, Jan. 19.

Turner began doing his own independent research on foam finishing after learning of the innovative work being done in this area by the Valchem Division of United Merchants and Manufacturers, Inc. Using a conventional hand-held kitchen mixer, he experimented with various chemical combinations to test the effectiveness of the process with different finishes used on cotton-containing fabrics.

On the day Turner spoke at Clemson, Valchem received its patents for the processes, enabling Turner to make the announcement to the group assembled on the South Carolina campus.

The energy savings come from the use of less water in the application of finishes to the fabric. In the conventional wet pad finishing systems,

a water base equal to 50 to 100 per cent of the weight of the dry fabric is applied. With foam finishing, the amount of water can be reduced to about 25 per cent of the fabric weight.

“What we are doing is cutting the wet pickup by anywhere from 25 per cent to 50 per cent,” says Turner. “The less water on the fabric, the less energy it takes to dry the fabric.”

“You know, if your clothes come out of the washing machine real sopping wet, it will take a long time to dry them. But if they come out barely damp, they will dry very quickly. With foam finishing, the fabric is barely damp.”

The foam finishing process works on almost every type and weight of cotton containing fabric, Turner says. It can be used, he says, in applying virtually any type of finish—durable press, fire retardancy, water repellancy, etc.—that is applied with conventional finishing systems.

While the amount saved varies from fabric to fabric, the energy consumed per pound of fabric is significantly reduced in every case, he adds.

“Foam finishing has added a new dimension to textile finishing,” says Turner. “Energy conservation is just one of several advantages it offers.”

Others include: —More efficient use of chemicals by providing a more uniform finish to the fabric, resulting in more top quality fabric.

—Allowing application of “scavenging agents” to remove the odor of formaldehyde with another wash—thus eliminating another entire drying step.

An entire drying step also can be eliminated by applying the foam finish to wet fabric after it emerges from the bleaching stage.

“In the conventional method, you had to dry the fabric before you put on the finish,” Turner explains. “With foam finishing, you can just give the fabric a good squeeze and then apply the foam on top of the wet fabric.”

“Any time mills can save money in processing cotton fabrics, they’re that much more likely to use more cotton,” says Turner. “That’s why we’re excited about this new foam process and are spreading the word about it to as many mill chemists as we can.”



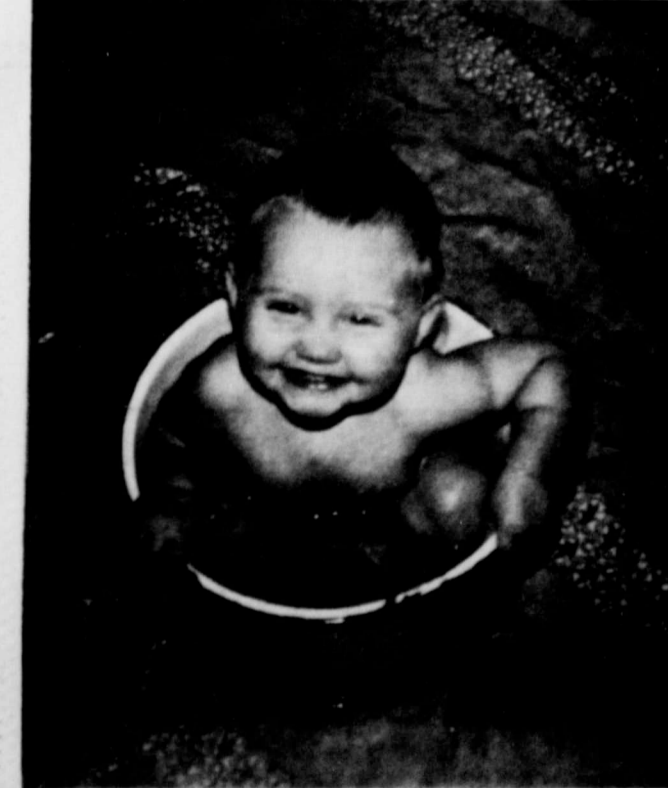
Johnny Ray Watson

Trent U.M.C. to hold revival

The Trent United Methodist Church will hold a revival from January 14-17 starting at 7:00 p.m.

Rev. Ed Chappell, pastor Aldersgate V.M.C. Abilene, will be the

Evangelist throughout the revival and Johnny Ray Watson will supply the music for the revival and a special youth fellowship following each service.



Scarlett Towery, daughter of Tony and Marsha Towery, Rt. 2, Trent, is quite pleased with her bucket of water. Scarlett celebrated her 1st birthday, Jan. 3rd.

Legal Notice

NOTICE TO PUBLIC

Whereas PAYLESS FURNITURE CENTER a partnership of Abilene, Taylor County, Texas, has been and is now incorporated as

PAYLESS FURNITURE CENTER INC.

and, whereas, said PAYLESS FURNITURE CENTER, INC., shall continue to do business at the same location at the address of 1214 North Mockingbird, Abilene, Taylor County, Texas, and, whereas, notice to the public is required by Article 1302-2.02, V.A.T.S.,

You are hereby notified of such incorporation of such firm, its new firm name and its compliance with such law.

47-4tc

CITATION BY PUBLICATION

THE STATE OF TEXAS TO: Larry Kroft, Respondent:

GREETINGS:

YOU ARE HEREBY

COMMANDED to appear

before the Honorable 326th District Court, Taylor County, Texas, at the

Courthouse of said County in Abilene, Texas, at or before 10 o'clock a.m. of the

Monday next after the expiration of 20 days from the date of service of this citation, then and there to answer the petition of Robert T. Burton Attorney for, Petitioner, filed in said Court on the 23rd day of January, 1978, against

Larry Kroft, Respondent, and said suit being numbered 533-C on the docket of said Court, and entitled “In The Interest of Angela Denise Wagner, a Child”, the nature of which suit

Said child was born the 9 day of September, 1969, in Abilene, Texas.

The Court has authority in this suit to enter any judgment or decree in the child’s interest which will be binding upon you, including the termination of the parent-child relationship and the appointment of a conservator with authority to consent to the child’s adoption.

If this citation is not served within ninety days after the date of its issuance, it shall be returned unserved.

The officer executing this writ shall promptly serve the same according to requirements of law, and the mandates hereof, and make due return as the law directs.

Issue and given under

my hand and seal of said Court at Abilene, Texas, this 27th day of October, 1978.

Irene Crawford Clerk, 326th District Court, Taylor County, Texas. By Faye Lyons, Deputy. 43-4tc

CITATION BY PUBLICATION

THE STATE OF TEXAS TO: Thomas F. Dupin and wife, Anna F. Dupin, if living, and if such Defendants be deceased, or either of them, their respective

heirs, devisees, executors, and administrators, Defendants. Greeting:

YOU ARE HEREBY

COMMANDED to appear

before the Honorable 42nd District Court of Taylor County at the Courthouse thereof, in Abilene, Texas, by filing a written answer at or before 10 o'clock A.M. of the first Monday next

after the expiration of forty-two days from the date of the issuance of this citation, same being the 5th day of February AD 1979, to Plaintiff’s

Petition filed in said court, on the 19th day of December A.D. 1978, in this cause, numbered 3,062-A on the docket of said court and styled

Leslie C. Strange, Individually and As Trustee, Plaintiff, vs. Thomas F.

Dupin, and wife, Anna F. Dupin, if living, and if such Defendants be Deceased, or either of them, their respective

heirs, devisees, executors, and administrators, Defendants.

A brief statement of the nature of this suit is as follows, to-wit:

Trespass to try title on the following described property:

Lot 10, Block 21, Section 8, E. L. M. W. O. O. D WEST ADDITION to the City of Abilene, Taylor County, Texas

as is more fully shown by Plaintiff’s Petition on file in this suit.

If this citation is not served within ninety days after the date of its issuance, it shall be returned unserved.

The officer executing this writ shall promptly serve the same according

to requirements of law, and the mandates hereof, and make due return as the law directs.

Issued and given under my hand and the seal of said court at Abilene, Texas, this the 8th day of December AD, 1978.

Attest: Irene Crawford Clerk, 42nd District Court Taylor County, Texas. By Carolyn Feten, Deputy. 46-3tc

CAL TEX
BUYERS OF
CATTLE MILO AND
HAY
ROUTE 2 BOX 128
TRENT, TEXAS
915-862-2951
CUSTOM CATTLE FEEDING

Planters Gin
Where Your Business
is Always Appreciated
M. Red Shafer (mgr.)
TRENT

Star Hardware
Striving to Serve
our Community Better
TRENT 862-2727

HOME STATE BANK
FDIC
TRENT 862-2151

THE M
Chil
situati
L
The
follows
Hi-V:
Juan
Robe
A &
Merl
Ben
Merl
Merl
Murt
Tye
Mr.
Pug
Art's
Tye
Hanc
Dair,
Ken
L.R.
H.W.
Tayl
Pat's
Ann
Dona
Wils
L &
Henc
Walt
Merl
S &
L.J.
Har
at 6
Jam
of 8401
way, p
day, J
the ag
Serv
Thurs
vet Ch
side se
ducted
ment
No. 13
Cemet
Surv
wife, I
Worth
Harris
mothe
ison, M
thers,
Harris
vis H
ter, a
Hamil
Lola
ger, I
Temp
lah Sw
Bov
Mr.
"Budd
Kelly
proud
arriva
ounce
da Cor
1978.
Pat
ents ar
of Har
Scott
Pater
parent
Mrs. I
Mr. an
of Mer
Mate
ents ar
of Tuls
Dale
Merkel



Children always seem to make the best of a bad situation. Even though the roads were too icy for the cars, they were in great shape for homemade sleds. (Staff photo by Cloy A. Richards)



Livestock show promoters listed

The Merkel Livestock Show Donators were as follows:

Hi-Val Farm and Home Supply
 Juan's Garage
 Robert L. Brown (Dallas, Tx.)
 A & A Shell
 Merkel Electric
 Ben Franklin
 Merkel Restaurant and Motel
 Merkel VFW
 Merkel Mail
 Murrell Chev. Co.
 Tye Transmission and Auto Service
 Mr. and Mrs. Alvin E. Braune
 Pug & Leo's
 Art's Barber Shop
 Tye Body Shop
 Handy Food Store
 Dairy Bar
 Ken Law-El Tyo
 L.R. McGee
 H.W. Lemens Inc.
 Taylor Telephone
 Pat's Beauty Shop
 Ann's Flowers
 Donald W. Warren, M.D.
 Wilson Food Store
 Wilson Jewelry
 L & W Snack Bar
 Henderson Grain
 Walter Whisenhunt
 Merkel Locker
 S & T Tire Co.
 L.J. Gray, Jr.

Jordan Welding Service
 Raymond Milligan Texaco
 J.H. Strain & Son
 Tye Post Office Employees
 Bill Love Texaco
 Al Hughes Diesel
 West Texas Vet Supply
 Abilene Ag Service & Supply
 Shetland Hallmark of Abilene
 Farmers & Merchants National Bank
 Crawford's
 Hicks Auto Supply
 Merkel Auto
 Carson's
 Starbuck
 Higginbotham-Bartlett
 Palmer Motor
 Kent Satterwhite
 Joe Higgins
 Farmers Coop Soc. no. 1
 Merkel Drug Co.
 West Texas Utilities
 Boney Ins. Agency
 Buddy & Margart Hunter
 Hodges Farmers Co-Op Gin
 Castille Hardware
 Eraggs
 Cy Pec Ins.
 Stanford Electronics
 Emma's Clothes Closet
 Western Auto
 Ricky Elliott Fina
 Adcock Circle A Western Store

KBGG
 9th Street Grocery
 DuBose Texaco
 Cal-Tex Feed Yard
 Merkel Brick & Lumber
 Jackie Reynolds
 Lone Star Gas
 Mr. and Mrs. Leroy Riney
 Dudley Radio & TV
 Mr. and Mrs. T.J. Neill
 Goode & Gregory Const.

HI-VAL FARM & HOME SUPPLY

FEED
 SEED
 PLUMBING
 HARDWARE
 VET SUPPLIES

"If we don't have it,
 we can get it."

910 N 1st 928-5632

WHAT KIND OF CHRISTIAN ARE YOU?

Some are like wheelbarrows--require being pushed.
 Some are like canoes--need paddling.
 Some are like kites--keep trying to fly away.
 Some are like kittens--more content when petted.
 Some are like footballs--no one knows which way they'll bounce.
 Some are like balloons--full of wind and ready to explode.
 Some are like a dead battery--no energy or power.
 Some are like the weather--unstable and changeable.

HEAR "THE PRIME OF LIFE" WEEKDAYS AT 7:50 a.m. CN KBGG RADIO

MERKEL CHURCH OF CHRIST

818 ASH
 Larry Gill, Minister
 John McKeel, Youth Minister

SUNDAY
 Bible Study 9:45 a.m.
 Worship 10:30 a.m. & 6:00 p.m.
 WEDNESDAY
 Bible Study 7:30 p.m.

Harrison dies

at 80

James Levi Harrison of 8401 Jacksboro Highway, passed away Monday, January 1, 1979 at the age of 80.

Services were at 12:30 Thursday at Mount Olivet Chapel. The graveside services were conducted by White Settlement Masonic Lodge No. 1372 in Mount Olivet Cemetery.

Survivors include: his wife, Ida Harrison, Lake Worth; Son, Fernon E. Harrison, Springtown; mother, Elizabeth Harrison, Merkel; three brothers, Rev. Lynward Harrison, Merkel, Clovis Harrison, Sweetwater, and J.W. Harrison, Hamilton; three sisters; Lola Rodgers, Ballinger, Lena V. Riggan, Tempe, Ariz., and Beulah Swinney, Trent.

YOU'VE GOT A FRIEND

FARMLAND
 INSURANCE

HOME OFFICE: DES MOINES, IOWA

He's your Farmland Insurance agent. And he can help you plan for your future while protecting your family, car, and home. Why not call him? Today!

(Agent Imprint)

Member of the COOP Family

This is the age
 Of the half read page,
 And the quick hash
 And the mad dash.
 The bright night
 With the nerves tight.
 The plane hop
 And the brief stop.
 The lamp tan
 In a short span.
 The brain strain
 And the heart pain.
 And the cat naps
 Till the spring snaps
 And the fun's done!

...Copied

Bowen baby

Mr. and Mrs. David "Buddy" Bowen of Kellyville, Okla., are proud to announce the arrival of a 5 pound 10 ounce daughter, Amanda Corinne, on Dec. 16, 1978.

Paternal grand parents are Kenneth Bowen of Harlingen and Peggy Scott of Springtown. Paternal great grand parents are Mr. and Mrs. D. B. Bowen and Mr. and Mrs. Leon Scott of Merkel.

Maternal grand parents are Mr. Roy Cindie of Tulsa, Okla. and Mrs. Dale B. Shugart of Merkel.

FIRST ASSEMBLY OF GOD NEED A RIDE? CALL 928-5761

SUITS 1/2 OFF
 DRESSES 1/2 OFF
 SWEATERS 1/2 OFF
 LINGERIE 1/2 OFF

CLOSE OUT ON BABY THINGS & PANTIES 1/2 PRICE
 SPRING THINGS 20% OFF

EMMA'S CLOTHES CLOSET

KENNY SLACK & CEDAR GAP EXPRESS COUNTRY & WESTERN BAND

9 - 1 SATURDAY

QUEENA HEARTS CLUB

Final Week Of Our INVENTORY SALE

20% OFF ALL CORNINGWARE

SPECIAL BARGAIN TABLE

RCA TV'S TV'S 17" & UP COST + 10%

CLEARANCE SALE CONTINUES DUE TO WEATHER LAST WEEK THRU SAT. JAN. 13th

CASTILLE HARDWARE & GIFTS

JANUARY CLEARANCE

SAT., JAN. 13-JAN. 31

SAVE 10% - 70% ON FALL MERCHANDISE

ALL MEN'S, WOMEN'S, & CHILDREN'S COATS & VESTS NOW 20% OFF INCLUDES LEATHER & SUEDE

GROUP BOYS PANTS & SHIRTS 20% OFF

LADIES SUITS, SKIRTS, SPORTSWEAR SWEATERS BLOUSES, 20% - 50% OFF

RACK OF LADIES KNIT PANTS, SHELLS \$4.99

GROUP MEN'S WESTERN SHIRTS CHOICE \$8.99

ALL BAILEY FELT & GRIZZLY HATS 20% OFF

GROUP BROKEN SIZES BOOTS VALUES TO \$115.00 SALE \$29.95 - \$59.95

ALL FALL TONY LAMA BOOTS 20% OFF

NO REFUNDS, NO LAYAWAYS, NO EXCHANGES

Circle A Western House

1-20 MC MERKEL, TEXAS VISA 928-4821

We'll Do Our BEST to Help You

SAVE

PRICES GOOD THURSDAY FRI & SAT JAN 11, 12, & 13

NABISCO CRACKERS LB BOX 59¢

M J B COFFEE LB CAN \$1.89 ONE LIMIT WITH \$10.00 IN TRADE OR MORE EXCLUSIVE OF CIGARETTES

COMSTOCK APPLE
PIE FILLING NO 2 CAN 63¢
 HUNTS 2 1/2 CAN
PEACHES 2 FOR 99¢
 DEL MONTE W K 303
GOLDEN CORN 2 FOR 63¢
 DEL MONTE CUT 303
GREEN BEANS 2 FOR 65¢
 DEL MONTE 303
SPINACH 2 FOR 69¢
 VAN CAMPS NO 2
PORK & BEANS 2 FOR 79¢
 CANISTER
KOOLAID 33 OZ CAN \$1.59
 SODA POP
SHASTA 12 OZ CAN 6 FOR \$1.09
 GLADIOLA
POUND CAKE BOX 59¢
 PLANTERS
CHEESE BALLS CAN 53¢
 HORMEL 5 OZ CAN
VIENNA SAUSAGE 2 FOR 79¢
 LIPTON SOUP
LITE LUNCH 2 PACK MIX 53¢

SUDDEN BEAUTY
HAIR SPRAY 12 OZ CAN 89¢
 V I P PEACH OR APRICOT
PRESERVES 63¢
 18 OZ JAR HORMEL
SPAM \$1.19
 12 OZ CAN KRAFT
MARSHMELLOWS 35¢
 10 OZ PKG
 BETTY CROCKER WHITE
SOUR CREAM FROSTING 83¢
 14 OZ MIX

FROZEN FOOD
 BIRDSEYE 9 OZ TUB
COOL WHIP 59¢
 MRS. SMITHS 10 INCH
PIE SHELLS 2 CT 63¢
 BANQUET
POT PIES 8 OZ PKG 59¢
 MRS. SMITHS 26 OZ
APPLE PIES 98¢

INSTANT TEA
LIPTON 4 OZ CAN \$2.59

JEWEL
SHORTENING 42 OZ CAN \$1.19

CASSEROLE
PINTO BEANS 2 LB BAG 49¢

1 G DAIRY FRESH
HOMO MILK GAL JUG \$1.93

Why Our GROUND BEEF
 Makes the Juiciest, Tastiest Hamburgers
 FRESH LEAN GROUND \$1.59

CHOICE BEEF
BACON ARMOUR LB \$1.59
SAUSAGE GOOCH PORK 1 LB \$1.19 2 LB \$2.18
HOT LINKS GOOCH LB \$1.23
FRANKS GOOCH REG OR BEEF 12 OZ 89¢
STEAK CHOICE BEEF RIB LB \$2.29
BRISKET GOOCH TRIMMED LB \$1.39
HAM HORMEL PATTIES 12 OZ CAN \$1.39

LIQUID
JOY GIANT BOTTLE 79¢

DETERGENT
DUZ REG BOX 59¢

FOREMOST
COTTAGE CHEESE 16 OZ CRTN 79¢

DISINFECTANT
LYSOL SPRAY 12 OZ CAN \$1.39

MEADOWLAKE
OLEO LB TUB 53¢

DELMONTE
BANANAS LB. 19¢

DETERGENT
TIDE GIANT BOX \$1.33

RED DELICIOUS
APPLES 3 LB BAG 98¢
 CELLO
CARROTS LB 29¢
 D'ANJOU
PEARS LB 35¢
 YELLOW
ONIONS LB 19¢
 RUSSET
SPUDS 10 LB BAG 98¢

TRY OUR HOT BEEF CHILI AND BAR-B-Q \$1.89

BROASTED CHICKEN
 WE GIVE GIFT BOND STAMPS
 Double on Wednesday with \$5.00 or more
 8 PIECES FEEDS 4

WE WELCOME FOOD STAMPS

CARSON'S SUPER MARKET

FREE Delivery On \$7.50 In Trade Or More