

# The Merkel Mail

Thursday, December 8, 1983...Merkel, Texas

## City crews busy with 9,000 feet of pipe

The city has been busy during the past week with the installation of 9,000 feet of water and sewer lines in a new mobile home park, located on the West edge of the Merkel city limits, immediately North of Old Highway 80.

Tuesday, Robert Harris and Ray King were busy laying sewer lines in the park, expected to have as few as 72 mobile homes and up to 100 units.

WTU had already installed electrical service drops at the park and work was progressing smoothly according to city manager J. A. Sadier.

Also, work on a new pit at the Merkel sanitary landfill was completed Tuesday. The pit was dug by Nobles Construction of Colorado City, the same company that paved Merkel streets recently under a Department of Housing and Urban Development grant.

## Riding club sets turkey shoot

The Merkel Riding Club will be holding a turkey shoot Saturday to help raise money to buy the land the riding arena now sits.

The shoot will be held behind Joe's Boot Wagon 1 mile West of Walls on the North access road to I-20.

You may bring your own guns and ammunition or they will have guns available.

The Riding Club will be participating in the Christmas parade Saturday morning and more information is available on the turkey shoot from any member.



These Merkel Middle School students placed in the Stamford Academic meet held Saturday. They are [front row, left to right] Michele Dudley, 4th in 7th grade math, Diem Tran 1st in science 3rd in math and 4th in number sense. [Back row, left to right] Jana Pettit 2nd in science, Misty Vaughn, 3rd in math, 3rd in science and 4th in number sense and Kristy Elliott, 1st in number sense, 4th in math and science. [Staff photo by Melanie Richards]

## Chamber sets Christmas parade

The annual Merkel Chamber of Commerce Christmas parade will be held Saturday at 10 a.m.

The parade will mark the local arrival of Santa Claus. Trophies will be awarded to

best float and bicycle riders in the parade. The parade will form across from the Assembly of God church starting at 9:30. Merkel High Band director

Randy Tierce told *The Mail* last week that his bands would be represented at the parade.

More information about the parade is available by calling 928-5712.

## Bands set Christmas concerts

The Merkel High "Purple Pride" Band will present their annual Christmas concert Dec. 15 at 7 p.m. in the school auditorium.

This year's concert will differ from those in the past in that there will be an admission charged. The admission will be one canned good (non perishable food item) which will in turn be donated to the Salvation Army

for distribution to needy families.

MISD Band director Randy Tierce said it was also necessary to split the bands this year, because of the number of students participating in band. The middle school band will present their concert Dec. 21 at 1:15 p.m. in the auditorium. The beginning band will have their concert sometime during Feb-

ruary.

The bands will be performing Christmas selections and will include some audience participation numbers to allow every one to get involved in the Christmas spirit.

Tierce said "We want everyone to be sure to come early to get a good seat and bring a canned good to be donated to the needy."

## Merkel Drug fills 500,000th script

It has been with great anticipation that Merkel Drug, in its 65th year, has waited for RX 500,000 to come around. Dec. 1 it was Ron Turner of Merkel who was the recipient of the Rx, filled by Ralph Krieger, free of charge. The half million of original Rx is a milestone of which W. D. Gamble is very proud and one of which his father, Lige (S. D.) would be also.

Many changes have taken place since the store started in 1919. The sidewalks on Saturday were so crowded one could hardly walk. Cars came early on Saturday for parking on the West side of the street so that the afternoon shade would make for more comfort while occupants visited with friends. The store was open every night until 10 and on Saturdays it was open until folks either went home or the midnight movie started.

The store was first located where WTU is today. Saturday

nights usually offered a good fist fight or two in the alley. And when the old firebell at the fire station rang in curfew, kids left the streets.

With tv's coming, things changed a bit. Less night calls and etc. Going to town at late night hours never brought frowns or groans. Folks had to be helped. Maybe once, when a fellow just needed only some shotgun shells.

There was a time when a family traveling through town had a sick baby and called needing some paregoric. After being directed to the house, they knocked on the door and were promptly handed the paregoric from the medicine cabinet and told it was free of charge—a good exchange in the wee hours of a cold winter night.

Then there was that fellow with the .38 pistol at closing time who propelled the druggist to the back, pointed to all he wanted and told the druggist to

put it in a sack. Getting what he wanted, he offered to pay for it. No way was it being sold. Later, after the fellow was taken in Lubbock and a Texas Ranger and the druggist's good friend from childhood, Taylor County Deputy Jack Lowe, were escorting him back to Abilene, he told the lawmen "Now, I want you to know that I was nice to that druggist."

Most folks have been very nice. We are proud of all of our customers. It is still a good Thanksgiving.

## 'Tis the season...

by Cloy A. Richards

Quite a few people are just getting over the flu, cold, whatever hits this time of the year. Tuesday was the first day I have felt 50 per cent happy to be alive in the past week. It was sure nice to taste and smell again.

## MISD board hires architects, financial advisor to plan bond issue

MISD trustees Tuesday night hired the architectural firm of Perkins and Harper and Joe Smith as financial advisor to help plan a school building program here. The board also adopted a timetable for moving into new facilities Sept. 1, 1985, with a bond election being held May, 1984.

The consulting crew of architects and financial advisor is the same core group that planned and implemented the current high school building.

Charles Harper told the board members his firm would begin preliminary work immediately on projected student population figures and said he had seen the 40 acre site purchased by the board and said it was a good location for school facilities. He said his firm would start after Christmas to evaluate the needs of the district from input of local teachers and administrators.

Harper said he would be back during the February board

meeting to report on what they had learned and discuss ideas.

He projected building costs of between \$45 to \$55 per square foot during next summer and said it was hard to get a closer estimate on costs because they changed each month.

Harper also said "It is very important that the board be 100 per cent for a bond election." Board member Jack Riney said "I don't think you have to worry about that here."

Harper was questioned by board member Jack Ferguson on the multi-purpose building constructed in the last bond. Harper told Ferguson "It was as cheap a little play building as we could build. It wasn't a good idea but it was an alternate and we did have the money to build it and the board wanted it. Actually, you ended up with two pretty cheap classrooms out of it."

Joe Smith of the First Southwest Company was retained as financial advisor for the district. His firm will handle the sale and issuance of the bonds, if the voters approve a bond election.

He said he would guess a good interest rate prediction under the given Sept 1985 occupancy would be 9 and three quarters per cent.

Smith explained the district would not be charged for services rendered unless the bond election was approved and the bonds sold. At that time, his firm would receive payment.

During the next two months, Harper and Perkins as well as MISD staffers will begin putting facts and figures together to determine the needs of the district and try to tailor a building plan around those needs.

The next scheduled meeting of the MISD board will be held Dec. 20.



## Year end farm tax strategies

With 1983 winding down, farmers and ranchers need to look at their income tax situations and to consider certain strategies for reducing tax dollars.

"In a year which brought the government's PIK program and severe drought conditions in some areas, farmers and ranchers have much to ponder from an income tax viewpoint," says Dr. James Ahrenholz, economist with the Texas Agricultural Extension Service, Texas A & M University System.

"A general recommendation for tax planning is to try and level out taxable income from year to year to avoid jumping through several tax brackets from one year to the next. Leveling your income from year to year will almost always save tax dollars," he added.

For finding out where one stands on 1983 taxable income, tax tables and schedules reflect a ten per cent reduction from the 1982 rate. Subtract investment credits and other credits after making the calculations. For planning purposes, the 1984 tax rate will be only five per cent less than 1983 rates.

Producers who took part in the PIK program must decide when to receive their entitlements, if they haven't already done so. Those who have received their entitlements may have to report them as 1983 income even though they don't plan to sell their commodities until after the first of the year. It all depends on whether the PIK a producer receives is from his own loan or reserve commodity and whether he has assigned his PIK entitlements to

someone else, the economist explained.

Many PIK participants are facing prospects of higher than usual income and lower than usual expenses. Producers in this situation can take certain steps to reduce their 1983 tax burden: delay additional sales of commodities until 1984 or sell now and take payment next year on a deferred payment contract, and buy supplies ahead before the end of the year.

In addition, income averaging might be a means for lowering the 1983 tax burden, especially if income this year is considerably higher than the past few years.

Producers should also realize that crop insurance proceeds need not be included in income until 1984 if the lost crop normally would have been sold then. This also holds true for profits from forced livestock sale if in an area designated eligible for federal assistance. Proceeds from forced sales of breeding and dairy animals due to drought are not counted as income if they are reinvested in like animals within a two year period.

Some farmers who received advanced deficiency payments on crops in the acreage reduction program will have to repay those before the end of the year or they will count as income, notes Ahrenholz.

A farmer can also reduce his 1983 taxable income by contributing to an Individual Retirement Account or Keough plan.

"To increase deductible expenses for 1983, a cash basis

producer might buy supplies for next year's needs and buy capital items that qualify for a full year's depreciation and investment credit," Ahrenholz advises.

However, if a producer is faced with a low profit or loss situation, he needs to take measures to boost income just to take advantage of personal exemptions and deductions. A single taxpayer under 65 with no dependents pays no tax on the first \$3,300 of income while a married couple with two dependent children can earn up to \$7,400 without owing tax.

"The best way to boost income before the year's end is to sell crops and livestock, even if delivery is delayed until 1984. Keeping advance diversion payments, taking PIK entitlements and selling machinery that has been depreciated out can all generate immediate income," he added.

To keep expenses down, defer payments until after the first of next year if possible. Buy on an installment contract when practical. Also, shifting assets bought before 1981 from a rapid method of depreciation to the straight line method will reduce deductions.

The "Farmer's Tax Guide" from the IRS is the best reference for farmers and ranchers who may want to check on tax points relating to their particular situations.

Ahrenholz also advises producers to check with their tax advisors or accountants now for further information on year-end tax planning.

# Look at your own garden...

by Russell McAnally

Do you ever feel that you are going to find that for which you have been hunting, or have you given up in despair? If you have heard of that "Pot of Gold" at the end of the rainbow, you may still have hope.

The man in Abilene sure doesn't give up easily. He has been hunting for Lake Monsters—Noah's Ark, and the Titanic along with other things. The fact that he hasn't found anything yet doesn't seem to matter. Perhaps he is just hunting for publicity. We should give him credit for finding his lost buffaloes.

I don't remember if "The Garden of Eden" is on the hunted list or not, but I can save him some trouble there because I, seemingly accidental, stumbled right into the middle of the Garden of Eden. I am not sure I had ever hunted for it but when you get there and look around, there will be no doubt in your mind where you are. This past October, we traveled through East Texas, Mississippi, Arkansas and Tennessee. The beauty was breathtaking, and many places could have caused us to believe we had found the Garden

of Eden. There was always something missing.

When I stumbled into the Garden of Eden it was not only a sight to behold, but there was a sense of belonging. All the senses were stimulated, and a sense of complete satisfaction was present. At my feet the grass was lush and green. To my left I saw three kinds of fruit ripening on trees—pears, peaches and plums. In front of me, trees loaded with apricots glistened in the sun. On my right, were apple trees loaded with the proverbial fruit, and grape vines purple with clusters. In another part of the garden, growing side by side with fruit of every color were vegetables of every kind. It was almost unbelievable.

Across the fence were horses, cows and sheep grazing contentedly. Lifting my eyes just a little were the close by mountains with wild deer and turkey and many other forms of wildlife. Just as nearby were great lakes with fish and fishermen in pursuit. Then I turned to a building in the Garden, and entered with caution. To my right, just off the entrance, was a room with ice

boxes and freezers full of fresh and frozen fruit and vegetables, slabs of steak and lumps of roast. In another corner of the room were machines to wash and dry clothes automatically. Going into another room there was every kind of machine to for cooking, warming, toasting, roasting, baking, frying, and another contraption that warmed a bowl of pie but still didn't melt the spoon of ice cream on top of it.

The living area just ahead provided occupants with a box that showed people walking and talking in every part of the whole world. There were plush easy chairs and every means of comfort and warmth. Something caught my eye and I looked around and exclaimed "This is my room—this is my house—this is my garden—right here in Merkel, Texas. It is all mine—for my own good and for my pleasure. I then went to a thing called a telephone and called a lovely friend and talked for some time. Then I knew why, God, when he looked at it all and said "It is good." I started to say "Thank you God, for making this Garden for me," but I thought it best to say "Thank you God for making Me this Garden."

Take another look at Your Garden.

Elementary

Christmas

musical set

The Merkel Elementary students invite all citizens to their Christmas musical program that will be held on Dec. the 13th at 7 pm in the auditorium.

BAKE

SALE

SATURDAY DEC. 10  
FORTNIGHTLY  
STUDY CLUB  
9-12  
AT THE BEN  
FRANKLIN STORE

## NEED INCOME TAX ASSISTANCE?

Soon the holiday season will be over and a new song will be heard throughout the land. "Tis the season to be taxed". As we all know, the Federal Income Tax law becomes more and more complex each year. Your local Certified Public Accountant is aware of the changes and is an experienced expert in taxation and offers a wide range of professional services including Individual, Corporate, Partnership and Fiduciary return preparation.

As the holiday season approaches we remind you that early preparation and compliance with IRS requirements is the safest means to avoid the penalties and interest associated with late filing. Call today to arrange an interview to discuss your income tax preparation needs.

Roger A. Beard

Certified Public Accountant

Member-American Institute of Certified Public Accountants

129 Edwards, Merkel, Texas 79536 (915) 928-5220

## IMMEDIATE DEATH BENEFIT

## GUARANTEED ISSUE

## ONLY ONE HEALTH QUESTION

HAVE YOU RECEIVED TREATMENT AT A HOSPITAL OR BEEN DISABLED IN THE PAST 12 MONTHS, OR RECEIVED TREATMENT OR BEEN ADVISED TO RECEIVE TREATMENT FOR CANCER IN THE PAST 24 MONTHS, OR HAD A HEART ATTACK IN THE PAST 15 MONTHS?

Minimum 1,000 Whole Life Plan Monthly Bank Draft  
Maximum 25,000 Ages 15 - 60 Annual

## CHRIS YOUNG INSURANCE

928-5151 1022 N 1ST 672-2061

## SWEETWATER CATTLE AUCTION

—Cattle Sale—

Every Wednesday

beginning at 11:30 A.M.

JOE HELMS Owner

(915)735-2118 Residence Sweetwater Sale Barn

(915)687-3082 Residence (915)236-6377

Texas T-Brand

# TACOS



3 sale FOR \$1.49

Extra meaty. Extra crunchy. Extra fresh. And now an extra good deal. Come taste the tacos Texans love.



Monday thru Sunday, December 5-December 11.

"Just keeps on getting better."™

© Copyright 1983 Tex. D.D. Co. Council. All rights reserved. TM Trademarks of the Tex. D.D. Co. Council. ® Registered Trademark Am. D.D. Corp.

JOHN DEERE

# BOTTOM-LINE SPECIALS

Big cash rebates...from \$1,000 to \$8,200 on new 50 Series tractors...plus finance charge waiver to March 1, 1984, or take a cash rebate in lieu of waiver



If you've been waiting...now's the time to act. Your savings on a new 50 Series tractor may never be bigger.

The money-saving cash rebates shown here are a big reason you should buy now. But get our bottom-line offer. You'll find the final price of a John Deere 50 Series competes with others that don't compare in quality, durability and resale value.

Use your current tractor toward downpayment for a new 50 Series. Finance with John Deere and finance charges will be waived to March 1, 1984. \* Or on any of the 15 models you can take a cash rebate in lieu of waiver in the amount shown here.

Another option: lease a new tractor with lease payments discounted comparable to the waiver of finance charge value. \*

Now's the time to choose from the models listed here. The best values are available now, and this program will end on January 31, 1984.

Model	Cash Rebate On Purchase	Cash Rebates in Lieu of Waiver		
		Nov. '83	Dec. '83	Jan. '84
40-hp 1250	\$1,000	\$ 175	\$ 125	\$ 75
40-hp 1250 MFWD	1,000	250	175	100
45-hp 2150	2,100	200	150	100
45-hp 2150 MFWD	2,100	275	200	125
50-hp 2255	1,350	225	150	100
55-hp 2350	1,950	250	175	100
55-hp 2350 MFWD	1,950	325	225	150
65-hp 2550	2,700	300	200	125
65-hp 2550 MFWD	2,700	375	275	175
75-hp 2750	2,300	325	225	150
75-hp 2750 MFWD	2,300	490	325	200
85-hp 2950	2,800	425	300	175
85-hp 2950 MFWD	2,800	500	350	200
100-hp 4050	2,100	600	425	250
100-hp 4050 MFWD	2,100	750	525	325
120-hp 4250	2,300	650	475	275
120-hp 4250 MFWD	2,300	800	575	350
140-hp 4450	2,800	700	500	300
140-hp 4450 MFWD	2,800	850	625	375
165-hp 4650	3,100	875	625	375
165-hp 4650 MFWD	3,100	1,050	750	450
190-hp 4850	3,400	975	700	425
190-hp 4850 MFWD	3,400	1,100	800	475
185-hp 8450 4WD	5,700	1,150	825	500
235-hp 8650 4WD	6,400	1,425	1,025	600
300-hp 8850 4WD	8,200	1,800	1,275	775

\*Availability of John Deere financing and leasing plans subject to approval of credit. Leases not eligible for cash rebates or for cash in lieu of waiver. This offer may be reduced in value or withdrawn at any time.

## DEALS YOU CAN FARM WITH

# ABILENE FARM SUPPLY

3526 S TREADAWAY

692-2255

# Church news

## Catholic Church

Don't forget this Thursday (Dec. 8) is the feast of the Immaculate Conception of the Blessed Virgin. It is a Holy Day of Obligation. We will have Mass at 7 pm. If there is a more convenient time for you to attend Mass on that day, let us know and we will schedule a second Mass.

The whole season of Advent is a time for repentance. Besides the regularly scheduled confessions on Sunday morning, we will be hearing confessions after the 7 pm Mass each Wednesday and after the Mass on the feast of the Immaculate Conception.

Mark your calendar for the Guadalupe Festival which St. Vincent church will be celebrating Sunday the 11th. Mass will be celebrated by the Bishop at 2 pm and beginning at 3 they will be serving a Mexican dinner. There will be live music and Folklorio Dancing. There will also be a raffle with \$1000 as the first prize. Festivities will end at 9 pm.

## Calvary Baptist

Calvary's annual Christmas program is Dec. 18 at 6 p.m. Our children, ages 4-13 will be presenting this year's program. Everyone is invited to attend.

It was good to have Rev. and Mrs. J. E. Whisenhunt visiting our service last Sunday morning, as well as other folks. Brother Whisenhunt preached the morning message.

He spoke on "Dilemmas of Life" as described in Psalm 39 and how the Psalmist said "My hope is in Thee" as the answer to life's problems in verse 7.

Brother Whisenhunt is one of Calvary's home missionaries. He has had a part in starting numerous churches across the nation during his years in the ministry, including churches in Colorado City, Crane, Dublin, and other Texas towns.

We are thankful the baptismal waters were stirred again Sunday. We are glad for God's blessings all day Sunday.

## Merkel Methodist

We would like to thank everyone for supporting our bazaar. The youth will be having a lock-in Friday and the Jr. and Sr. UMY will meet Friday at 7 to hold a lock in with youths from Baird, Rotan and Tuscola.

This Sunday is the 3rd Sunday in advent. We will have the Chrismon Tree for the first time. It will be displayed in the sanctuary. Chrismon comes from Christ and Monogram. The tree symbolizes the coming of Jesus and all the ornaments are white and gold on a green living tree and all ornaments will symbolize the birth of Christ.

A charge conference will be held Sunday at 6 p.m. during the evening worship service.

Monday afternoon, the Jubilee Circle will be hosting their Christmas party at the church for all the ladies of the community at 3:30. Special

guest speaker will be Leslie Massey of Abilene.

## Grace Presbyterian

Grace Presbyterian Church has Sunday School at 10 AM and church service at 11 with Dr. Robert Christian, Minister.

**HEART GIFTS**  
By Helen Rice Stiener  
It's not the things that can be bought that are life's richest treasure.

It's just the little "heart gifts" that money cannot measure. A cheerful smile, a friendly word,

A sympathetic nod  
Are priceless little treasures from the storehouse of our God.  
They are the things that can't be bought with silver or with gold.  
For thoughtfulness

and kindness and love are never sold.  
They are the priceless things in life for which no one can pay.  
And the giver finds rich recompense in Giving them away.

**XI NU CHI  
BAKE SALE PLUS**  
DEC 17TH 9 AM AT WTU  
TAKING TELEPHONE ORDERS  
FOR SPECIAL BAKED ITEMS  
928-5303 & 928-4463

**OPEN MONDAY  
DECEMBER 12TH**

**J & J USED CARS  
& GARAGE**

**FULL SERVICE GARAGE**

**OWNED & OPERATED BY  
RAY & LONNIE JOWERS**

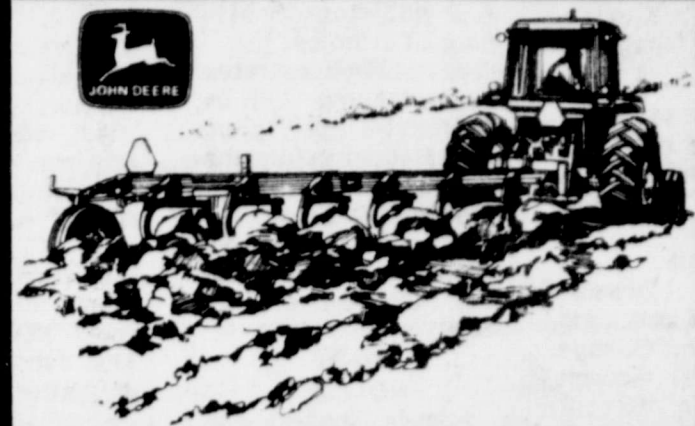
OIL CHANGE NO JOB TO LITTLE OR BIG  
GREASE JOB WORK ON ALL CARS & PICKUPS

MINOR & MAJOR JOBS FLATS FIXED

DAYS 928-4071 NOTARY PUBLIC  
NIGHTS 928-5693 510 KENT

## JOHN DEERE BOTTOM-LINE SPECIALS

Get a 5 or 10 percent discount on these new tillage tools AND pay no finance charge until March 1, 1984



Here's why it makes good dollar-saving sense to buy now. Depending on the tillage tool you choose (see chart below) our dealership will give you our best deal and then deduct another 5 or 10 percent from the latest suggested retail base price. For example, this extra discount on an 18 1/2-foot 235 Disk saves you more than \$1,100.

Finance with John Deere and finance charges will be waived to March 1, 1984. Or lease, and your lease payments will be discounted comparable in value to the waiver of finance charge.

And remember, if you buy during November or December you'll qualify for the 1983 investment tax credit and depreciation.

Machine	Discount from Suggested Retail Price
Moldboard Plows	5 percent
Chisel Plows	10 percent
Field Cultivators	10 percent
Disks	10 percent
Mulch Tillers	10 percent
Mulch Finisher	10 percent

\*Availability of John Deere financing and leasing plans subject to approval of credit. Leases not eligible for cash rebates or for cash in lieu of waiver. This offer may be reduced in value or withdrawn at any time.

## DEALS YOU CAN FARM WITH

### ABILENE FARM SUPPLY

3526 S TREADAWAY  
692-2255

# PRE-Christmas Sale

## TELL CITY SALE

# 20% OFF

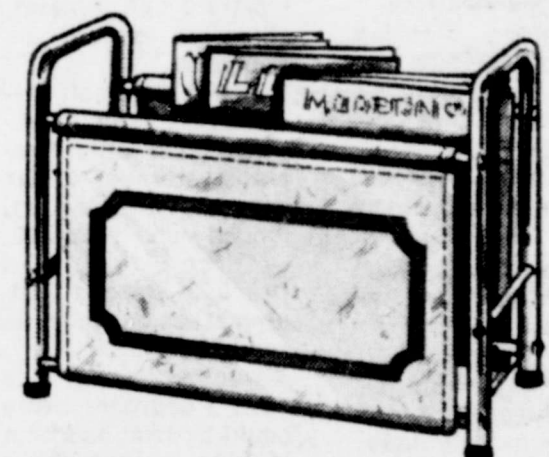
**Our Entire Stock of Tell City Furniture**

Right price! Right time! Right furniture! Famous for quality Tell City furniture now priced for savings. And not just some of it. All of it! Dining rooms. Bedrooms. Occasional and accent pieces. Rockers! Even lamps and accessories. Come in while this sale is going on. The time is limited. And the price is right!



Centurian \$9.95

SET OF 4 INDIVIDUAL SERVERS WITH LIDS  
Rockingham 16 oz. servers. Use for soups, casseroles, candy and snacks. Ovenproof.



BRASS/CANVAS Magazine Rack

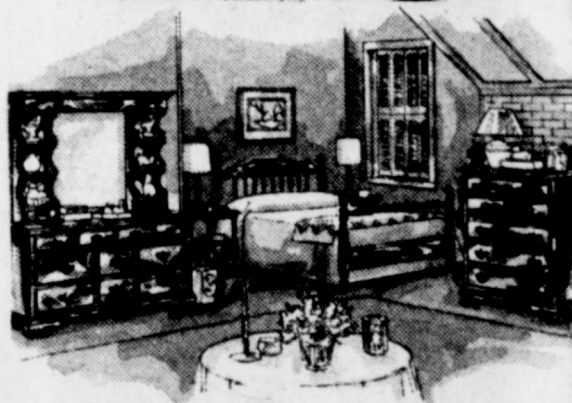
Gleaming brass plated frame and natural canvas with dark brown geometric design. Excellent for magazines, newspapers or records. Ready to assemble. 15-1/2" x 8-1/4" x 12-1/4" tall

Centurian \$5.95



Ancient Lane

SAVE UP TO \$115.00 ON LANE RECLINERS



CHOOSE FROM OUR LARGE SELECTION OF GIFT ITEMS PRICED FROM \$2.00 AND UP AND UP

ALL SALE ITEMS LIMITED TO STOCK ON HAND

# STARBUCK FURNITURE

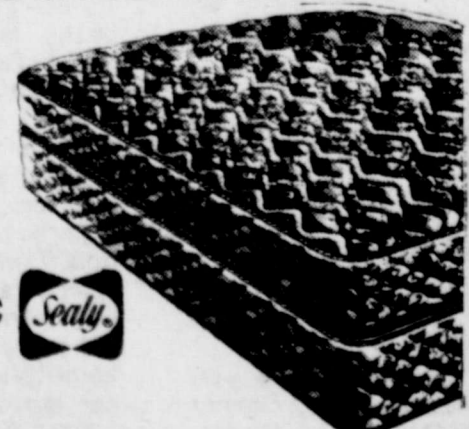
## 1/2 OFF!

## CLEARANCE ON DISCONTINUED SEALY

No. 201 FULL SIZE REG \$109.95 EA PC

\$89.95 EA PC

ROYALE POSTUREPEDIC





## Recent Merkel cemetery donations

The following people have made recent Merkel cemetery donations:

Mr. and Mrs. C. M. Brown in memory of Fred Horton, Clara Popham Taylor, Mr. and Mrs. Weldon McAninch in memory of Mrs. Dishman, The Paxton Hays family in memory of Mike Hester, David and Bessie Gamble in memory of Mike Hester, Syble and Tommy Riney family in memory of Mike Hester.

Also, Mary Mosier in memory of Bud McKeever, Mrs. Trula Cox in memory of Bud McKeever, Mrs. Trula Cox in memory of Bud McKeever, Mr. and Mrs. Edwin Ried in memory of Bud McKeever, Mrs. Paul West in memory of Bud McKeever, Mr. and Mrs. Bill Hays in memory of Mike Hester, Mr. and Mrs. Weldon McAninch in memory of Mike Hester, Mabel McRee in memory of Mike Hester, Mrs. Earl Hughes in memory of Bud McKeever, Mr. and Mrs. David Gamble in memory of Bud McKeever.

Also, Mr. and Mrs. Ray Wilson in memory of Bud McKeever and Mary Howell, Mr. and Mrs. Clayton Dillard in memory of Bud McKeever,

Willia, Craig and Joy Jones in memory of Bud McKeever, Ben and Gary Hicks in memory of Bud McKeever, Fanelle Boney in memory of Mike Hester and Bud McKeever, Easter Sunday School Class in memory of Mike Hester, Comer and Lucy Haynes and Nell Teaff in memory of Bud McKeever, Jessie Higgins and Rubin Dye.

Also, First Baptist TEL class in memory of Bud McKeever, Evelyn Stribling in memory of Leonard Stribling, Mrs. Joe Hartley in memory of Bud McKeever, Alice Howell and Mike Hester, Esther and Howard Carson in memory of Bud McKeever, Mrs. Howell and

Mike Hester, Mr. and Mrs. Jack Boone in memory of Mary Howell.

Also, Madge Dean Stanfield in memory of Mike Hester, Mrs. George T. Moore in memory of Fred Horton, Howard and Evelyn Sligan in memory of Bud McKeever and Fred Horton, Mrs. H. M. Thornton in memory of Mrs. Ollie Skidmore, Arnold and Lillian Armstrong in memory of Alice Howell, Arnold and Lillian Armstrong in memory of Alice Howell, Claude Fleming and family in memory of Bud McKeever and Mrs. Dewee Fleming in memory of Bud McKeever.

Trent Scouts of Pack 185 have been very busy, as evidenced at their November Awards Program. Erik Armstrong and Scott Bloodworth tied for "Scout of the Month," Cub and Webelo Scouts gave the skit "How the Turkey Got His Name". Mrs. Billy Clark served hot chocolate and cupcakes to those attending.

Scouts receiving awards were:

Cub Scouts  
Erik Armstrong-Wolf Badge, Mark Payne-Wolf Badge; Scott Bloodworth-Bear Badge.

Webelo Scouts  
Junior Chavez-Colors, Rafael Tarin-Colors, Jerry Collier-Outdoorsman, Travis Walker-Scholar, Geologist and Artist Pins.

Boy Scouts  
John Thomas-Arrow of Light, Scout Badge, Camping, Cooking, Citizen, First

Aid and Physical Fitness Skill Awards, Dock Carriker-Scout Badge, Cooking, Camping, Citizens Skill Awards and elected Sc-

rite, Mike Payne-Scout Badge, Joe Tarin-Scout Badge, Ricky Tarin-Cooking Skill Award, Lonnie Clark-Cooking Camp-

ing and Communications Skill Awards, Billy Clark-Life Scout Badge and Camping Merit Badge.

## MHS inducts 17 into NHS

Seventeen Merkel High students were inducted into the National Honor Society during recent ceremonies in the school auditorium.

The new members include Donny Brady, Jarry Davis, Tami Elliott, Joan Farliello,

Nanci Galbraith, Todd Hensley, Tim Jacobs, Angie Kelley, Kris Rich, Shelly Sherrill, Shane Smith, Renee Stamper, Kelly Stovall, Becky Teague, Trung Tran, Cindy Williams and Pam Wheeler.

## Glaze-Hall wed in Tye

Laurie LeAnn Glaze and James Ivan Hall exchanged marriage vows Nov. 25 in the Tye Methodist Church with Dewey Hall, uncle of the groom, officiating.

Given in marriage by her father, the bride is the daughter of Mr. and Mrs. Joe Glaze of Rt. 3 Merkel. Parents of the groom and Mr. and Mrs. Don Franklin Hall of Hamlin.

Mrs. Dale Hall of Hamlin, sister-in-law of the groom, was matron of honor. Dailley Ponder of Hamlin was best man.

The reception was hosted by the bride's parents. The groom's parents were hosts for the rehearsal dinner in the home of his grandparents, Mr. and Mrs. William Cliff of Anson.

The bride attended Merkel High. The bridegroom is a graduate of Hamlin High and is employed by M & C Lumber Company. The couple will live in Hamlin.

## Letter to the Editor

Letter to the Editor:  
We would like to express to the family, Donald, Delores and Tammy Cloyd, and to the people of Merkel, the great sorrow we feel in the loss of our dear friend and family member of our E. M. S. organization, with the death of Donnie Cloyd.

Words cannot really express the emptiness we feel without Donnie around to bring a little cheer to our lives. Throughout countless hours of practice and training, we all share together as a group, to lose one of our own is a tragedy very hard to realize.

It seems we as E. M. S. personnel tend to care and treat others but neglect our own health and well being. Donnie was one of a small group of people who dedicated his life to helping others, not only as a Paramedic on our ambulance but also as a dedicated fireman with as much training in the fire department as he spent becoming a Paramedic.

It seems such a waste to see such a caring and loving person die so young. We loved him dearly and will miss him for a long, long time. His name and memory will always remain with us.

Sincerely  
Merkel E. M. S.

**ALLSUP'S**  
CONVENIENCE STORES

- WHILE SUPPLIES LAST
- SELF SERV GAS
- OPEN 24 HOURS FOR YOUR CONVENIENCE
- PRICES EFFECTIVE DECEMBER 8-10, 1983

**FRESH CHRISTMAS TREES**

SPRUCE-BALSAM-FIR-SCOTCH PINE

AS LOW AS **\$8.99**

ALL SIZES GREAT SELECTION WHILE SUPPLIES LAST!

TV COOKED FOOD SPECIAL TENDER BEEF

**BRISKET SANDWICH** EACH **99¢**

**"NAME THE CUP" AND WIN \$500.00!**

ENTER THE NAME THE CUPS CONTEST AT ALLSUP'S!

PICK UP YOUR REUSABLE **32 OZ. CUP**

FILLED WITH YOUR FAVORITE FOUNTAIN DRINK

SEE YOUR LOCAL ALLSUP'S STORES FOR DETAILS!  
NO PURCHASE NECESSARY!  
CONTEST ENDS DEC. 31, 1983

**59¢**

NOW ONLY!

FALL WAREHOUSE SALE

ASSORTED/DECORATOR PAPER

**SCOT TOWELS** BIG ROLL **59¢**

SCHILLING

**BLACK PEPPER** 4 OZ. CAN **49¢**

ASSORTED

**HI-C DRINKS** 46 OZ. CAN **59¢**

NEW! ALLSUP'S

**HOT CHOCOLATE**

READY WHEN YOU ARE!

8 OZ. CUP **19¢**

**COCA-COLA**

(USE PACKAGE CUT)

**SIX PACK \$2.49**

BORDEN'S

**BUTTERMILK** 1/2 GAL. CTN. **\$1.09**

BORDEN'S ASST. DIPS &

**SOUR CREAM** 8 OZ. CTN. **59¢**

BORDEN'S ASST. FLAVORS  
CREAMY & DELICIOUS!

**ICE CREAM**

1/2 GAL. CTN. **\$1.69**

**JOHN DEERE**

## BOTTOM-LINE SPECIALS

Choose a quality used tractor—any make—get our bottom-line deal plus waiver of finance charge to March 1, 1984

Now's the best time to prepare for next season with a quality used tractor. You can upgrade your power, dependability, features and comfort. We're ready to offer you our best bottom-line deal on any make of used tractor over 40 hp. And if you finance with John Deere, finance charge will be waived to March 1, 1984.\*

For 1983 investment tax credit and depreciation deduction, you can buy during November or December and still qualify. Come in and choose the low-hour, late-model used John Deere or other tractor that will make your operation more cost-efficient.

**DEALS YOU CAN FARM WITH**

**ABILENE FARM SUPPLY**

3526 S TREADAWAY  
692-2255

\*Availability of John Deere financing and leasing plans subject to approval of credit.

*WTU wishes you*

**AND SAFE**

*Happy Holidays*



ENJOY YOUR HOLIDAY LIGHTING MORE BY FOLLOWING REDDY'S SAFETY TIPS:

- Never leave your Christmas tree lights unattended. Unplug them when you go to bed or leave the house.
- Use heat-resistant cords with grounding plugs, and do not overload too many lights or appliances on one circuit.
- Use a water-filled stand for live trees and check the water-level daily.
- Do not adjust outdoor lights or tree lights while they are turned on or connected to a power circuit.
- Only purchase lights that have been checked for safety. Look for the Underwriter's Laboratory's or other safety label.

PLEASE REMEMBER... Install and use the special holiday lighting carefully, safely and wisely, so that you, your family and friends can enjoy the spirit and beauty of this special season.

**WEST TEXAS UTILITIES COMPANY**

**WTU**

A Member of The Central and South West System

Remember, REDDY supplies the energy, but only YOU can use it wisely.

### MISD lunch menu

The following is the MISD lunch menu.  
 Dec. 8 spaghetti, buttered corn and seasoned green beans, garlic bread and peas.  
 Dec. 9 Hamburgers, fries and all the trimmings, fruit jello.  
 Dec. 12 Fiesta, buttered corn, lettuce  
**Gilmore in fraternity**

Carolyn Gilmore, a junior criminal justice major from Merkel, was initiated Nov. 17 into Hardin-Simmons University's Theta Chapter of Pi Gamma Mu, a national social science fraternity, according to Dr. Charles Garraway, chapter sponsor.  
 Pi Gamma Mu is open to junior, senior, and graduate social science majors who have maintained a minimum grade point average of 3.0.

### Dillard's visitors

Mr. and Mrs. Wayne Mayes of Houston spent last weekend with his sister and brother-in-law, Mr. and Mrs. Clayton Dillard.

### Milze Brown & Son Paint & Body Works

People in the Abilene area don't have to look far and wide for a firm which is capable of doing the highest quality auto body work and painting. MILZE BROWN & SON PAINT & BODY WORKS at 641 S. Treadaway, phone 673-3933, can refinish and re-paint most ANY car or truck. Their work is well known as being fast, economical AND beautiful!

When you bring your car to this outstanding body and paint shop, you can rest assured that the work will be done to your exact specifications and that the estimate will match the final statement. From a small increase to a roll-over, you can do no better than to trust your car to the experienced pros at MILZE BROWN & SON PAINT & BODY WORKS!

The editors of this 1983 Fall Business Review urge all of our readers to remember that most insurance companies now permit you to choose the body shop you like best. We suggest you choose this one!

### Altman Electric

Jerry Altman-Owner  
 In the electrical oil field area, Experience Counts! When you're looking for better service on your electrical oil field problems call ALTMAN ELECTRIC at 2102 South Treadaway in Abilene, phone 677-7172, and get the job done right the first time!

Featuring the very latest equipment and the most skilled workmen, this recommended company will make short work of the toughest electrical problems. Their years of experience and many satisfactory completions are their best recommendation, but they want YOU to see for yourself! Don't take chances with any of your oil field electrical construction any longer. Call ALTMAN ELECTRIC and relax!

The editors of this 1983 Fall Business Review are pleased to be able to recommend this outstanding firm to all of our readers.

and tomato salad, prune cake with icing.  
 Dec. 13 Chuck-wagon special, cut green beans, buttered carrots, fried apple pie.  
 Dec. 14 chicken fried steak and gravy, creamed potatoes, english peas, hot rolls, mixed fruits.  
 Dec. 15 fried fish with tartar sauce, cole slaw, blackeyed peas, cornbread and pineapple pudding.  
 Dec. 16 Cheeseburgers, fries and trimmings, buns and chocolate no bake cookies.

THE STATE OF TEXAS  
 To any Sheriff or any Constable within the State of Texas  
 GREETING:  
 -You are hereby commanded to cause to be published once each week for four consecutive weeks, the first publication to be at least twenty-eight days before the return day thereof, in a newspaper printed in Taylor County, Texas, the accompanying citation of which the herein below following is a true copy.

CITATION BY PUBLICATION  
 THE STATE OF TEXAS  
 TO: L. Z. Whitney, Defendant, Greeting:  
 YOU ARE HEREBY COMMANDED to appear before the Honorable 104th District Court of Taylor County at the Courthouse thereof in Abilene, Texas, by filing a written answer at or before 10 o'clock A.M. of the first Monday next after the expiration of forty-two days from the date of the issuance of this citation, same being the 14th day of July A.D. 1983, to Plaintiff's Petition filed in said court, on the 14th day of July A.D. 1983, in this cause, numbered 15,592-B on the docket of said court and styled City of Abilene and the State of Texas, Plaintiff, vs. Willie Whitney, Sr. DBA Peyton Place, Defendant.  
 A brief statement of the nature of this suit is as follows, to-wit:  
 Defendants be permanently enjoined from violating the laws of the State of Texas at the location and in the manner previously described; and that the Defendants be ordered by a Mandatory Injunction to abate the violations alleged herein previously as is more fully shown by Plaintiff's Petition on file in this suit.  
 If this citation is not served within ninety days after the date of its issuance, it shall be returned unserved.  
 The officer executing this writ shall promptly serve the same according to requirements of law, and

the mandates hereof, and make due return as the law directs.  
 Issued and given under my hand and the seal of said court at Abilene, Texas, this the 14th day of July A.D. 1983.  
 Attest: Rilla Mahoney Clerk, 104th District Court Taylor County, Texas By Kristi McGinnes, Deputy.

37-4c

FOR YOUR HOLIDAY SHOPPING  
**BRAGGS**  
 WILL BE OPEN EVERY THURSDAY NIGHT  
 UNTIL 8

**ATTENTION HUNTERS AND TRAPPERS  
 FUR BUYER WILL BE IN MERKEL**

AT WYLIE TRUCK STOP EACH WEDNESDAY  
 FROM 10:15 AM TILL 10:30 AM  
 BEGINNING DEC. 14TH

We buy green and dry furs of all kinds. Case skin all furs [Like Opossum]. We also buy deer hides. Well handled furs bring TOP PRICES!

RED VEALE - 20TH YEAR  
 D & W Fur Company Inc.

400 N. Texana                      614 Railway St.  
 Haltettsville, Tx 77964              Lometa, Tx 76853  
 512-798-5057 or 5058              512-752-3258

Largest in Southern USA

**QUEENA HEARTS DANCE**

EVERY FRIDAY 8-12 TO THE MUSIC OF \*HALFBREED\*  
 AND THIS SATURDAY 9-1 DANCE TO LIVINGSTON-WELCH AND THE SWAMPLAND BAND \*  
 AND...EVERY FRIDAY NITE IT'S "QUICK-DRAUGHT MCGRAW" NITE 8-12

WE'RE QUICK ON THE DRAUGHT YOUR MUSTACHE WE'LL TICKLE WITH YOUR CHOICE OF SUDS FOR THREE DIMES AND A NICKEL

**HOOVER Clean Green Convertible Upright**

- All-steel agitator
- Big dispersible bag
- 4-on-the-floor carpet shift

**Full Time Edge Cleaning!**

**\$79<sup>95</sup>**

U4901 5 PC. ATTACHMENTS

**\$19<sup>95</sup>**

**CONVERTIBLE Upright with Headlight**

LIMITED TO STOCK ON HAND

**STARBUCK FURNITURE**

MODEL U4127                      MODEL U4317

**\$109<sup>95</sup>**

201 EDWARDS MERKEL 928-4711

# Special Holiday Discounts



## YOUR CHOICE!

### General Electric Refrigerators Top Mount OR Side-by-Side



**Model TBF22D**  
 22 Cu. Ft. of Storage Convenience, Flexibility  
 • 7.05 cu. ft. freezer, 2 ice trays, removable bin.  
 • One full-width and two adjustable split-level steel shelves.  
 • Controlled climates help keep food fresh up to 15 days.  
 • Two high-humidity jumbo pans for moisture-loving vegetables.  
 • One lower-humidity pan for fruits, berries.

**Model TF20D**  
 Adjustable shelves, convertible meat keeper  
 • 19.6 cu. ft. no-frost refrigerator.  
 • 6.8 cu. ft. freezer with adjustable shelves.  
 • Moist 'N Fresh sealed high-humidity pan.  
 • Meat keeper with adjustable temperature control; convert to vegetable storage.  
 • Automatic Energy saver system helps cut operating cost.  
 • Only 30" wide.

**Your Choice for Only \$869<sup>00</sup>**

### GE large capacity permanent press dryer



**Model DDB100D—Electric**  
 • Large capacity dryer  
 • Four cycles—regular, permanent press, damp dry and denimatic  
 • Three drying selections—normal, low and no-heat  
 • Durable porcelain enamel finish on clothes drum

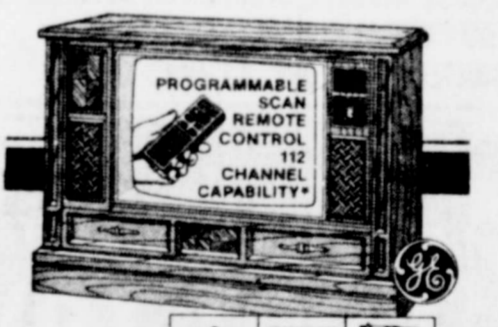
**\$379**

### DUAL WAVE™ Microwave System Designed to Cook From Top and Bottom



**Model JET202D**  
 • Spectacular 1.4 cu. ft. oven cavity  
 • Dual Wave™ microwave system designed for good cooking results  
 • Time Cooking with 60-minute timer with first 10 minutes expanded for added flexibility  
 • Variable Power Level Control for added versatility in cooking and defrosting

**FROM \$319<sup>95</sup>**



**25" Diagonal COLOR CONSOLE**  
 COLOR MONITOR    CHANITZ    AUTOMATIC TUNING    ELECTRONIC SCANNING    PROGRAMMABLE CHANNELS

• In-Line Black Matrix Picture Tube • Sharpness Control • Digital Channel Numbers  
 • Mediterranean Styling • Cabinet Constructed of Pecan-Finish Genuine Hardwood Solids, Wood Composition Board and Simulated Wood Accents  
 \*Including 42 uncracked cable channels

Model 25PC4844P    NOW ONLY **\$795**



**19" Diagonal COLOR TV**  
 COLOR MONITOR    CHANITZ    AUTOMATIC TUNING    ELECTRONIC SCANNING    PROGRAMMABLE CHANNELS

• In-Line Black Matrix Picture Tube • Sharpness Control • Digital Channel Numbers • Walnut Finish on High-Impact Plastic  
 \*Including 42 uncracked cable channels

Model 19PC3742W    NOW ONLY **\$589**

**OUR QUALITY PROMISE**  
 BACKS UP EVERY GE VIDEO PRODUCT WE SELL

WE FINANCE **GECAF**  
 24 MONTHS  
**PALMER PONTIAC**  
**GMC & GE**  
 928-5113

A financing program for General Electric major appliances and video products.



**JOIN SANTA AT THE  
ANNUAL  
CHRISTMAS  
PARADE SATURDAY  
AT 10 am  
DOWNTOWN.**

**SPONSORED BY THE MERKEL  
CHAMBER OF COMMERCE**



*This page brought to you as a public service of The Mail*



**AMAZING!**



**ONE LOW PRICE AFTER ANOTHER!**

PRICES GOOD THURS FRI SAT DEC 9-10 STORE HOURS 7:30 a.m. - 6:30 p.m. MON THRU SAT CLOSED SUNDAY

NABISCO PREMIUM CRACKERS 1 LB BOX 89¢

CREAMY CRISCO 3 LB CAN \$2.29 WITH \$10 IN TRADE OR MORE EXCLUSIVE OF CIGARETTES

MENS GIFT PACK OLD SPICE WHILE THEY LAST \$1.29 EA

PARADE RT S FROSTING 16 OZ CAN 89¢

REYNOLDS 12 IN FOIL WRAP 25 FT ROLL 59¢

MAYPO OR WHEATINA HOT CEREAL BOX 49¢

FROZEN FOODS MRS SMITH 26 OZ APPLE PIES EA \$1.53

PARADE TUNA 6 OZ CXN 69¢

DEL MONTE 303 PEARS HALVES CAN 69¢

PARADE 303 CS GOLDEN CORN 2 FOR 79¢

DEL MONTE 303 SOUR KRAUT 2 FOR 93¢

HUNTS 300 STEWED TOMATOES 2 FOR 53¢

HUNTS 8 OZ TOMATO SAUCE 2 FOR 43¢

HUNTS 46 OZ TOMATO JUICE CAN 83¢

FRESH LIKE 303 CAN VEG ALL 2 FOR 83¢

OLD EL PASO 300 CAN PINTO BEANS 2 FOR 73¢

OCEAN SPRAY 8.5 OZ BOX GRAPEFRUIT DRINK 3 PACK 2 FOR 89¢

VLASIC 16 OZ SWEET PICKLES JAR \$1.19

REG DIET SUGAR FREE COCA COLA 2 LITER BOTTLE 89¢

READY CRUST GRAHAM PIE CRUST 9 IN EA 89¢

COFFEE LIPTONS CRISCO FLOUR

AUNT JEMIMA JUMBO WAFFLES 15 OZ PKG 98¢

MRS GOODCOOKIES 36 CT PKG \$1.19

MORTONS 8 OZ POT PIES 2 FOR 89¢

KRAFTS SINGLE SLICED CHEESE 12 OZ PKG \$1.49

MAXWELL HOUSE 1 LB CAN \$1.89 LIMIT 1

TEA BAGS 100 CT BOX \$2.29

COOKING OIL 32 OZ JUG \$1.79

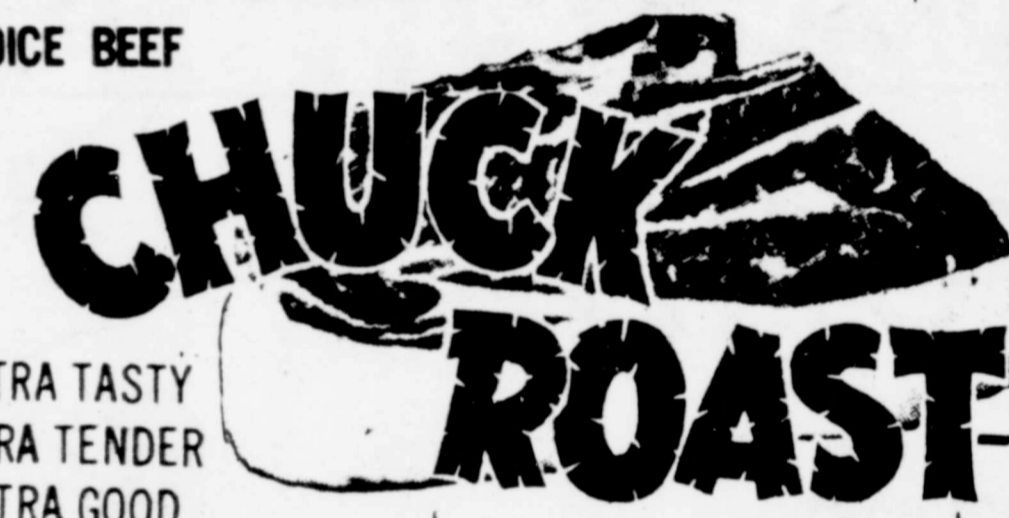
PARADE 5 LB BAG 69¢

MORRISONS CORN KITS 2 FOR 43¢

HUNTS SNACK PACK PUDDING 4 PACK CRTN 93¢

PACE PICANTE SAUCE 24 OZ JAR \$1.63

KRAFTS CHEEZ WHIZ 16 OZ JAR \$1.89



EXTRA TASTY EXTRA TENDER EXTRA GOOD

ARMOUR STAR BONELESS FRANKS REG OR BEEF 12 OZ PKG \$1.19

CHOICE BEEF BONELESS SIRLOIN STEAK LEAN LB \$2.39

CHOICE BEEF BONELESS PACKER TRIM BRISKET LB \$1.69

FRESH CHUCK QUALITY GROUND BEEF LEAN POUND \$1.69

ARMOUR STAR CHICKEN FRIED BEEF PATTIES POUND \$1.59

ARMOUR STAR BACON NO 1 POUND \$1.79

HORMEL LITTLE SIZZLER SAUSAGE 12 OZ PKG \$1.25

FOREMOST HOMO MILK GAL \$2.29

FOREMOST LOWFAT MILK GAL \$2.19

FOREMOST BUTTER MILK 1/2 GAL CRTN \$1.09

PHILADELPHIA CREAM CHEESE 8 OZ PKG 89¢

PETER PAN 18 OZ JAR PEANUT BUTTER EA \$1.43

DELSEY TISSUE 4 ROLL CRTN 89¢

FACIAL TISSUE KLEENEX 250 CT BOX 89¢

ORANGES SUNKIST NAVAL LB 49¢

DETERGENT GAIN GIANT BOX \$1.98

FABRIC SOFTNER BOUNCE 560 CT BOX \$2.69

DISHWASHER SUNLIGHT LEMON KING \$1.69

FRESH CORN ON COB FOR 3 49¢

WASH EX FCY DELICIOUS RED APPLES LB 49¢

FRESH CELLO CARROTS LB 39¢

GOLDEN BANANAS LB 35¢

FRESH TOMATOES LB 59¢

RUSSET SPUDS 10 LB BAG \$1.59

DISINFECTANT LYSOL 15 OZ CAN 89¢

BATH SOAP TONE 2 BARS 98¢

DOUBLE COUPONS ON WEDNESDAY EACH WEEK Will double your savings This offer excludes retail, Get one free, Cigarette or tobacco coupons and Refund Certificates Coupon value cannot exceed value of the item Limit rights reserved Offer good for limited time only

WE WELCOME FOOD STAMPS

CARSON'S SUPER MARKET