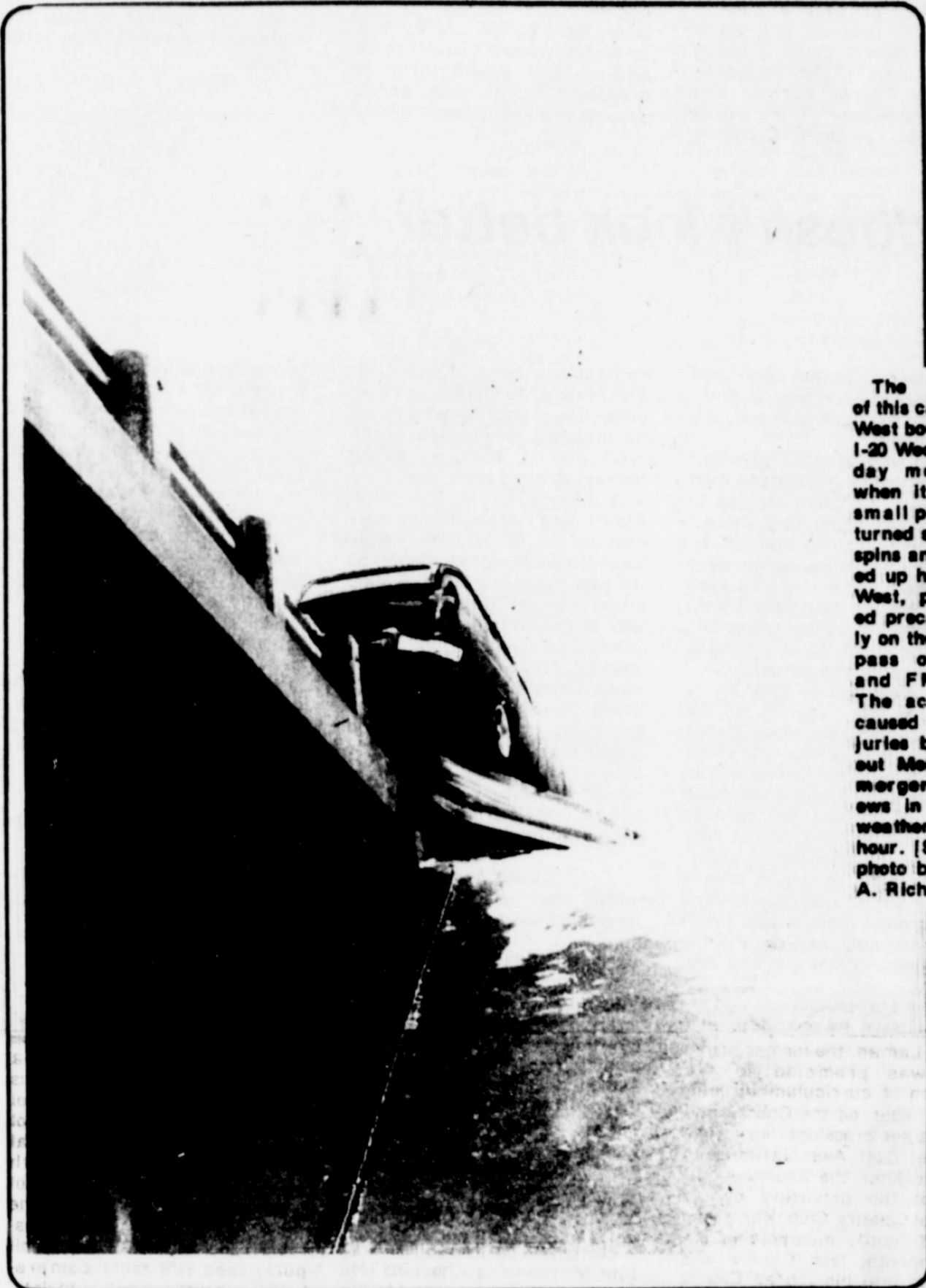


# The Merkel Mail

Thursday, December 29, 1983...Merkel, Texas



The driver of this car was West bound on I-20 Wednesday morning when it hit a small pick-up turned several spins and ended up heading West, perched precariously on the overpass of I-20 and FM 126. The accident caused no injuries but got out Merkel emergency crews in brutal weather for an hour. [Staff photo by Cloy A. Richards]

Scanning '83

## Mail looks at top stories of 1983

by Cloy A. Richards

As is customary with our last edition of the year, we will take a look back at the top stories of 1983.

All in all, a lot of good things happened last year here. We were in the full swing of a federal grant implementation that paved streets, repaired homes, among other things, and dramatic growth at MISD prompted needs of a bond issue from the MISD school board.

We'll take a look at some of the highlights of the past year here.

### JANUARY

Leo Mashburn took over the reigns of the Taylor County Precinct 2 Justice of the Peace position after being elected in November, 1982. A heavy snow hit Merkel January 2. MISD superintendent Bill Everett's contract was extended for one year. The City and Missouri-Pacific Railroad officials announced a joint agreement to share work equipment and labor to fix Merkel railroad crossings. The Merkel school board authorized the purchase of \$23,000 in band uniforms and hired Eddie Lang as middle school principal. David Laman, the former principal was promoted to the position of curriculum director. Work began on the Cherry and Ash street crossings here. The Merkel Golf Association was formed after the financial failure of the privately owned Merkel Country Club. The group had 70 family members in its first month. Don Dudley was settling into his job as County Commissioner, Precinct 2 after the retirement of Joe Dudley after his long-time service to the county. Merkel FFA members swept the top honors in the swine show at the annual county fair. School was shut down for the second time in a month due to a five inch snowfall.

### FEBRUARY

The Merkel City Council announced the way was clear for the paving program to be started under a Department of Housing and Urban Development Block Grant. A disc jockey at local radio station KMIO played a Willie Nelson song "Blue Sky's" for about 10 hours to promote that station's change in ownership and format. Former Merkel High and current ACU pole vaulter Brad Pursley was featured in a "Sports Illustrated" feature. The MISD trustees purchased 40 acres of land located Northwest of Badger Stadium to be used as a potential construction site for new school facilities. High school principal Allen Merritt resigned. John Paul Dudley's entry into the Durac division at the San Antonio Stock Show was named champion. He sold the animal for \$3 per pound.

### MARCH

Members of the First Baptist Church held dedication ceremonies for their 10,000 square foot facility. Merkel police chief Ray Pack made an appeal to City Council for a fourth police officer. Larry Curry was hired as high school principal and Al Mitts was hired as football coach. Superintendent Everett took over the responsibilities as athletic director. A Fairfield truck driver was killed in an I-20 accident here. The school board adopted the policy of 70 as minimum passing grade and added a year of English to the high school curriculum. Lone Star Gas appeared before City council requesting a 5.59 percent rate increase. Merkel's tax rebates for 1982 were announced

8.42 per cent less than 1981 rebates on an annual basis. The Merkel school board re-hired all current MISD teachers.

### APRIL

Bids were let for \$215,903 in the paving project. Bids called for 70 streets to be paved. A local Citizens for Better Government was being organized. Leroy Teaff was elected MISD school board president. The city approved a 5.59 per cent rate hike for Lone Star Gas. The city announced local tax collections for the 1982 tax year were 78 per cent. Robert Harris of Merkel was elected as president of the Mid-Texas Fireman and Fire Marshals' Association. A rash of bomb threats to Merkel school caused headaches for school administrators and local police. The Merkel High boys track team won the district title. Brenda Hohertz was named Miss Merkel. About 75 people attended a local hearing requested by local State Representative Steve Carriker at Heritage Hall here. The meeting was called to allow local reactions to Greyhound's request to close the local bus terminal. The Merkel City Council adopted the new city budget. The MISD school board made the last payment on debts they absorbed when Tye and Merkel school districts consolidated. Greyhound lost their first appeal with the Texas Railroad Commission to close, among others, their Merkel terminal.

### MAY

Thirty-two local men received Life Membership Charters into the local VFW post. The Merkel city council raised local water-sewer-sanitation rates as well as new meter hook-up charges. The city also gave notice it would sell the Mellinger Building at the corner of North 2nd and Edwards. The Merkel High baseball team was pulled out of the baseball playoffs for disciplinary reasons. The team had completed their first year in organized play. The Merkel Development Corporation purchased the Mellinger building and was given 60 days to demolish the building. Don Dudley, Don Hensley, Connie Harris, Don Hart, Joe Dudley and Peggy Gibson received Honorary Chapter Farmer Degrees at the annual FFA banquet. Full implementation of the 100 per cent property tax repercussions were felt and voiced locally after local residents received their first tax statement under the new laws. The wheat harvest started with the price locally at \$3.42 per bushel.

### JUNE

Chera Hohertz, Mamie Steck, Anita Allen and Marilyn Tittle were named their chapter's Woman of the Year in Beta Sigma Phi sororities. The United States Department of Agriculture announced a reduction in their Cheese give-away program- the program had received wide-support locally. High winds and hail damaged 710 acres of local wheat according to the county extension office. Merkel and County officials announced they had cleared a string of burglaries and had recovered \$12,000 worth of stolen property. Those burglaries had come to be known as the "9 to 5" burglaries in and around Merkel and Southern Jones County.

### JULY

Merkel's held its Fourth Annual Fun Day at the city park. \$800 worth of donation tickets at a quarter each were sold. Continental Telephone an-

nounced they wanted a 12 per cent rate increase. Starr Nursing Home began its successful efforts to start a volunteer program in the community. Locally fierce weather was here again as the sky and the ground met in a storm. Funnel clouds were reported in the county but none caused any damage. The Mellinger building was demolished according to an agreement between the City and the Merkel Development Corporation. Other worn down buildings on city and private property were also demolished under the HUD program. The Merkel Little League All Stars went further in competition than they had before bowing in Sectional play.

### AUGUST

Local WTU customers set a kilowatt hours used record in a five day heat wave that saw consecutive 100 plus temperature readings. Merkel High principal Larry Curry announced policy changes to require more math and science instruction. The Central Appraisal District announced Merkel's city taxable evaluation was \$31,792,339.00. That represented a \$1.5 million increase over the previous year. MISD reported a record enrollment of 1,250 plus students. MISD middle school Eddie Lang requested the school board not to hire an additional teacher to help with growth problems at the Middle School because he did not have the space for an additional classroom. The Merkel City Council purchased its most comprehensive insurance policy to date. Included were extensive coverage for Merkel Police, Fire and Emergency Medical Personnel, as well as council members.

### SEPTEMBER

A federal remodeling project was completed at Brickhaven. The Merkel City council purchased a patrol car. Merkel School enrollment had swelled to an all-time record of 1,325. A powerful wind storm, packing gusts of 90 miles per hour hit Merkel and caused extensive damage to many local homes and businesses. Worst hit was the area near Walls Manufacturing, which suffered heavy damage and the building owned by Lawrence-Cannon Drilling was destroyed. Estimates of the damage was set at \$2 million. Trent farmer Danny Freeman had the first bale of cotton ginned in the area at Trent Gin. Two Merkel juvenile girls were kidnapped from the Merkel city park and sexually molested. A Clyde man with a criminal record for child abuse, was later charged in the case after being identified by the girls. The Farmers and Merchants National Bank received the High Performance Band degree by the Bank Administration Institute. The Merkel Assembly of God celebrated its 42nd year. MISD announced they would keep their \$1 per \$100 evaluation tax rate. The Merkel City council announced its 1983 tax rate at .332 per \$100 evaluation. The city also received a letter from the City of Abilene, who supplies water to the City of Merkel, to try and hold consumption as low as possible. Construction began on a new facility for Hi-Val Farm and Home Supply, as well as a mechanics building on Kent Street.

## 1983 year in agriculture saw hard times, an albatross...more

by Bill Braden  
Communications Specialist  
Texas Agriculture Extension  
Service, Texas A & M University

Storm clouds were brewing for Texas farmers and ranchers and the nation's agricultural industry as a whole as 1983 got underway. Those farmers and ranchers who had survived the financial crunch of the previous years were looking for some glimmer of hope for the months ahead.

Before most people had become accustomed to writing "1983" instead of "1982", the government unveiled a new program that over the coming months would be praised by man as resurrecting the farming community and at the same

time cursed by just as many as only a "quick-fix" to a longterm problem.

### PIK is Born

That program was called PIK, for payment-in-kind, the brainchild of Secretary of Agriculture John Block. PIK was designed to attack the huge farm commodity surplus problem that has been plaguing the agricultural industry for the past several years and keeping a downward pressure on market prices. It's concept was to get farmers to reduce production by paying them with surplus commodities- commodities of the same kind they pledged not to produce.

This all seemed well and good at the outset, but the following months proved to be a nightmare for USDA officials involv-

ed in administering this very complex program. And it's costs, initially hailed as minimal when compared to previous government programs, became an albatross at a tab of more than \$12 billion.

The jury is still out on PIK, but it did have a generally positive effect in that it reduced huge stockpiles of major farm commodities and thereby caused some strengthening of market prices. High prices for feed grains, however, spelled higher costs for feedlot operators and livestock owners. All in all, though, PIK did help keep many family farmers alive financially for at least another

Please see Page 2

## Christmas behind us, 84 looms around the corner,

by Cloy A. Richards

And you thought you'd never make it through another one.

You did, and more than likely, in one way or another, you or someone made it a special time of the year in your homes.

I enjoy Christmas, although I have some problems with some of the preparing that goes on.

We had a good time in College Station, my brother spent Sunday and Monday here and we

are taking Suzy to meet him Thursday near San Marcos.

Now, if the batteries will hold their charges, if the track will stay put together, if they don't get tired of this or that ...

Like Dandy Don Merideth was quoted last week in *The Reporter News* "If it's and butts were candy and nuts we'd all have a wonderful Christmas."

Hope you had a lot of both.

We enter 1984. If you were a Texas school student taking English in High School after 1980, chances are you read *The Book*.

You know the one, Big Brother, Newspeak, all of that. Crazy wasn't it.

You sure about that?

Please see Page 2

# Top stories of 1983 reviewed from Mail files

Continues from Page 1

## OCTOBER

Brenda Hohertz, a Merkel High Senior was named Homecoming Queen. Billy Lucas was voted Mr. X and Jeanne (Woodard) Scott was voted Coming Home Queen. Twelve members of the Class of 1933 joined in the homecoming festivities. The Merkel City Council approved the annexation of land on the city's West side along Old Highway 80. The land will be turned into a 100 unit trailer park. The Texas Mid-Continent Oil and Gas Association reported Taylor County royalty owners were paid \$9.6 million in 1982. The City announced it would seek the permission of property owners to tear down

buildings on their property, free of charge if those buildings did not meet minimum safety standards. The Merkel Police Department reported it had solved 58.7 per cent of the cases reported to them in 1983. That rate was at least three times better than the rate of area law enforcement agencies.

## NOVEMBER

MISD trustees hired the architectural and consulting firm of Perkins and Harper of Wichita Falls to study the districts' recent growing student population and to make predictions for the next 5 to 10 year period. Tommy Hayes showed the State Champion Chester White at the Stock Show at the State Fair. The Merkel High Band received Division 2 ratings at UIL marching contests in Abilene.

The Trent Gorillas made the district football playoffs for the sixth straight year. Trent lost to eventual state champion Highland in district play and were eliminated in their first playoff game by Dawson County. The Merkel 7th grade football team ended up undefeated. The varsity ended their season at 2-8. The film, **Independence Day** with footage shot in Anson and Merkel made it's belated appearance to Abilene. MISD officials announced a first-of-it's kind program in cooperation with TSTI-Sweetwater for vocational education. In the pilot program, MISD juniors and seniors will receive credit for their time at TSTI. The City made final, formal acceptance with the paving contractor for the paving program. Emergency Medical per-

sonnel requested the city help to purchase a new communications system, citing downtime with the facilities the city currently shares with the county. The Merkel Chamber of Commerce announced the resignation of Martha Sue Justice and named local insurance man Chris Young as manager. Justice had implemented Fun Day and had been in charge of the city celebration for four years. Sixty-eight Merkel High students completed a CPR course put on by the Merkel Emergency Medical Service. Merkel lost one of it's finest citizens when city employee, fireman and paramedic Donnie Cloyd died of heart failure. Taylor Telephone manager Derrell Farmer was named president of the Texas Statewide Telephone Cooperat-

ives.

## DECEMBER

Amy Irvin was named first team and Kelly Beights and Angie Greer second team in all-district volleyball. The Merkel Fire Department and the city worked out an agreement to purchase a used fire truck from the City of Abilene for \$4,000. Russell Lucas was named first team all-district at cornerback and punter and honorable mention at running back. Joining Lucas were Jay Gibson second team defensive lineman and Sean Woodard 2nd team linebacker. The Merkel School Board hired Harper and Perkins as architects and Joe Smith as advisor and asked them to prepare a list of needs and a proposed building and bond

issue plan to present to MISD voters, if possible, by May 1984. Merkel Drug filled it's half-millionth prescription. The Merkel Chamber of Commerce held it's annual Christmas parade. The Merkel Ambulance Service and the city agreed to share costs on a new radio-communications system for the city and ambulance. Denise Pack was named the recipient of the Taylor Electric Showmanship award at the annual Merkel Livestock Association Stock Show. A snowstorm and five days of record-breaking temperatures left Merkel having it's coldest Christmas season on record.

## Agricultural year was topsy-turvy, 84 doesn't look better

Continues from Page 1

year. But it provided no long term solutions. Improved markets will surely encourage farmers to increase production in 1984, leading to surpluses that could again sound the death knell for many farmers.

### Farmers Ready But Weather Is Not

First skeptical but then encouraged by PIK, many farmers were ready to get 1983 off to a good start. Unfortunately, Mother Nature had other ideas. She intervened abruptly at various times during the spring months, keeping farmers out of their fields by employing a host of tactics, such as late season cold snaps and raging thunderstorms, accompanied by hail and heavy rains. April was too dry; May was too wet. Farmers tried time and again to get their crops up, some replanting two or three times and wondering whether or not they would ever get a crop up.

For farmers in some western areas there was no need to wonder. They never got around to planting due to the drought that persisted. Although some areas had good planting moisture and the farm picture

appeared bright, a relentless summer drought soon turned the tables. The fact that crops were already three weeks or so late due to the adverse spring weather added to farmer's woes. Many crops suffered severely from lack of moisture; some weren't even harvested. Land in western areas that normally produce three fourths to a bale of cotton per acre struggled to yield one sixth of a bale.

But in other areas, wet weather became a problem. Several weeks of wet conditions over parts of South Texas and the Coastal Bend in late July caused some maturing corn and grain sorghum to sprout and brought boll root problems in maturing cotton.

### Two Major Calamities

Surely this was an unforgettable year for South Plains farmers. Seemingly off to a good start, the area's cotton crop was subjected to one of the earliest freezes on record. (Sept. 21) that reduced yields in some counties by 15 to 20 per cent. Then a few weeks later, hail, high winds and heavy rains bombarded the area, leaving

many cotton fields in shreds.

Farmers along the Upper Texas Coast also had their problems in 1983—a big one was Hurricane Alicia. The mid-August storm came ashore in the Galveston area, inflicting damages exceeding \$50 million in crops such as rice, corn, cotton and pecans as it moved inland. The lateness of the crop due to poor spring planting conditions was a key factor in the high damage. Many would already have been harvested during a normal crop year.

### The Unforgettable Drought

Texas as well as other sections of the country, particularly the Midwest, made headlines during 1983 due to a relentless drought that tightened it's stranglehold as the summer wore on. Much of Texas suffered, but the effects of the drought were most devastating in about a 30 county area stretching from San Angelo to El Paso.

This area, dominated by cattle, sheep and goats, was decimated by drought conditions that many seasoned ranchers likened to the 1950's. Not only was the area without rainfall during most of the year, but the

dry stretch extended back well into 1982. Some locations managed only an inch or two of rain in 18 months.

Faced with no grass on which to graze their livestock and high feed costs, ranchers started to do the only thing they could—haul their stock to market. In many cases entire herds were liquidated. Some ranchers held on to a few breeding stock, feeding hay throughout the year. The drought of '83 left a mark that few will ever forget.

### News Not All Bad

Despite the vagaries of the weather and the usual battle between low prices and high production costs, many Texas farmers and ranchers managed to hold their own and perhaps even move forward a bit in 1983. PIK was the salvation of many, particularly in areas where crops suffered weather damage. And in most other areas, crops did reasonably well despite the later-than-normal planting season.

Record-breaking corn and cotton yields were reported in irrigated areas of Southwest Texas, and good crops were also harvested in many southern,

central and coastal counties. The Texas crop picture was also boosted by a good wheat harvest in the spring, an excellent peach crop and a bumper pecan harvest. A good sugar beet crop was harvested in the High Plains, and the sugarcane harvest in the Rio Grande Valley was producing good yields as the year came to a close. A good citrus harvest was also under way in the Valley.

Despite drought conditions in western areas, most livestock made it through the year in good shape. Good hay crops were harvested in many areas and supplies should be sufficient to overwinter herds. 1983 also passed without a case of screw-worms, making it as the first such year in several decades.

### A Look Ahead

Still, there are many unsettling conditions surrounding agriculture, so 1984 will begin much like 1983. While there will not be another PIK, the government will try in some way to entice farmers to hold the line on production to avoid surpluses that in the past have wreaked havoc with market prices.

Farmers know that surpluses are devastating, but they also know they must gamble on the possibility that weather or other calamities could push prices up, as could sudden changes in the export markets.

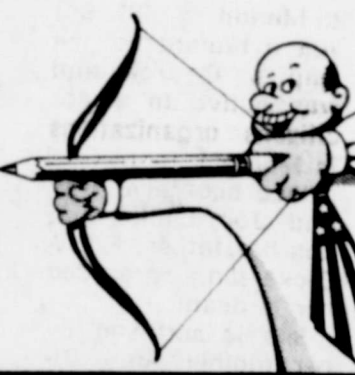
Cattlemen could also be in for better times as the U. S.

economy continues to improve and the herd buildup phase of the cattle cycle continues. Herd liquidations in 1983 due to the drought could prolong the buildup of cattle numbers. However, the 1.5 million or more dairy cows that will be moving to market as a result of the new dairy program will have a dampening effect on cow prices.

Although some economists expect farm income to increase significantly in 1984 (10 to 15 per cent over recent years), a lot of uncertainties remain about the agricultural picture in the year ahead. But then, uncertainties have become a way of life for most farmers and ranchers.

**ACCURACY**

An accurate return means a faster refund.




A PUBLIC SERVICE MESSAGE FROM THE INTERNAL REVENUE SERVICE

**JOHN DEERE**

## BOTTOM-LINE SPECIALS

Big cash rebates...from \$1,000 to \$8,200 on new 50 Series tractors...plus finance charge waiver to March 1, 1984, or take a cash rebate in lieu of waiver

Model	Cash Rebate On Purchase	Cash Rebate in Lieu of Waiver	
		Nov. '83	Dec. '83
40-hp 1250	\$1,000	\$ 175	\$ 75
40-hp 1250 MFWD	1,000	250	175
45-hp 2150	2,100	200	150
45-hp 2150 MFWD	2,100	275	200
50-hp 2255	1,350	225	150
55-hp 2350	1,950	250	175
55-hp 2350 MFWD	1,950	325	225
65-hp 2550	2,700	300	200
65-hp 2550 MFWD	2,700	375	275
75-hp 2750	2,300	325	225
75-hp 2750 MFWD	2,300	450	325
85-hp 2950	2,600	425	300
85-hp 2950 MFWD	2,600	500	350
100-hp 4050	2,100	600	425
100-hp 4050 MFWD	2,100	750	525
120-hp 4250	2,300	650	475
120-hp 4250 MFWD	2,300	800	575
140-hp 4450	2,600	700	500
140-hp 4450 MFWD	2,600	850	625
185-hp 4850	3,100	875	625
185-hp 4850 MFWD	3,100	1,050	750
190-hp 4850	3,400	975	700
190-hp 4850 MFWD	3,400	1,100	800
185-hp 8450 4WD	5,700	1,150	825
235-hp 8650 4WD	6,400	1,425	1,025
300-hp 8850 4WD	8,200	1,800	1,275

\*Availability of John Deere financing and leasing plans subject to approval of credit. Leases not eligible for cash rebates or for cash in lieu of waiver. This offer may be reduced in value or withdrawn at any time.

**DEALS YOU CAN FARM WITH**

## ABILENE FARM SUPPLY

3526 S TREADAWAY  
692-2255

# HAPPY NEW YEAR



Hope this New Year pulls in lots of fulfilled times and lots of love. To all our friends and loyal patrons go our sincere thanks for your valued support.

## STARBUCK FURNITURE

201 EDWARDS
928-4711

# Church news

Calvary Baptist

## Garden club treated to Biblical horticulture topic at meeting

We want to wish everyone a prosperous and Happy New Year as we put the Christ of Christmas in His proper place in our lives.

Our Christmas fellowship was well attended. We had a good time of sharing testimonies, swapping gifts and enjoying the delicious food everyone brought.

We want to invite you to visit with us, Sunday School 10 AM, Morning Worship 11 AM, Evening worship 6 PM. Your always welcome.

The Merkel Garden Club met Dec. 15 in the home of club president Olga Peachey. A noon luncheon was enjoyed by 16 members and four visitors.

Program chairman Becky Rogers introduced the afternoon speaker, Mrs. Robert Christian of Abilene. Mrs. Christian is wife of Dr. Bob Christian, minister of the Presbyterian congregation of Merkel. She is active in church work in Abilene and Merkel.

While in the service, Dr. Christian was stationed in Turkey and Dr. and Mrs. Christian were privileged to travel in the Holy Land.

Merkel Garden Club was fortunate in that Mrs. Christian's topic was on Flowers and Herbs of the Bible. Her remarks came from the heart and at times it was necessary for her to pause to gain composure.

"There are one hundred species of trees, herbs and flowers mentioned in the Bible which are familiar in the modern days," she said.

To mention a few, "Trees of the Lord" there are Cypress, Almonds, Oak, Laurel, Fig, and the Cedars of Lebanon.

So many of the flowering

plants grew so large that they were called trees, the first tulip tree, the Angel Trumpet, a huge plant with different colored blooms which looked much like a cactus bloom. (She had dried branches from this plant)

Mrs. Christian said "The Garden of Eden is a vast park of fruit and vegetables."

She said "The country of Beirut was most beautiful, but now is war torn."

A few of the Bible flowers mentioned included the Iris the Goddess of the Rainbow, the Crown of the Rose (The Hebrew Rose is a bulb)

The pink climbing tree Rose is used commercially for its petals.

The Lilly grows profusely in the valleys. Deer pasture among the Lillys.

The Star of Bethlehem covers the hillsides. Parts of this flower can be eaten.

Mrs. Christian pointed out that the Holy Land was a land of Herbs and spices. Quoting from Genesis 43:11 "Israel said take the best fruits of the land, a little balm and a little honey, spices, myrrh, nuts and almonds."

Garlic is mentioned one time

onin the Bible. Numbers 11:15 "We remember the fish, which we did not eat in Egypt freely; the cucumbers and the melons and the leeks and the onions and the garlick."

The castor bean, sometime called Christ's Palm, is thought to be the plant which sheltered Jonah.

The wine grapes were and still are one of the most important plants.

Gifts were exchanged from a beautiful lighted Christmas tree. A short business meeting concluded the meeting.

Present were visitors Billy South and Bessie Gamble of Merkel and Mrs. Ruth Rytina and Mrs. Bob Christian of Abilene. Members present included Peggy Black, Mary Click, Inez Detrick, Billie Hartley, Lamoine Hughes, Estell Humphreys, Alice King, Olga Peachey, Becky Rogers, Leota Sherell, Muriel Thompson, Mrs. Albert Criswell, Verdie Patterson, Georgia Allday, Lenora Wilburn and Mary Russom.

The next meeting will be Jan. 19, 1984 with Shirley McBride. Subject will be planting a tree at the Starr Nursing Home.

### Tax Counseling for Elderly Meets Special Taxpayer Needs

Tax Counseling for the Elderly (TCE) is a program coordinated by the Internal Revenue Service through which non-profit organizations provide free tax information and assistance to individuals age 60 and over.

Volunteers are specially trained by IRS to help older Americans with the tax credit for the elderly, the double personal exemption, the special treatment of the gain on the sale of a home by an elderly person, the proper method of reporting pension income and paying tax on it when necessary, and other subjects of special interest and concern. These volunteers will also help taxpayers fill out their tax returns.

TCE programs are provided in neighborhood areas which makes getting needed help easier and more convenient. Taxpayers age 60 or over who require assistance should call Internal Revenue Service.

### Employers Must Furnish W-2 Forms To Employees

Every person employed during 1983 should receive a Form W-2, Wage and Tax Statement, from their employer(s) by January 31, 1984. Even employees who worked only part of the year must be furnished statements, the Internal Revenue Service says.

Form W-2 provides a record of the amount of wages that you were paid, and the amount of federal income tax withheld. It also shows the amount of social security (FICA) tax that was withheld from your wages, and any uncollected employee FICA tax on tips.

The form is important because a

copy of it must accompany your tax return as proof of income. Taxpayers who worked for more than one employer during the year must attach a Form W-2 from each employer. Taxpayers who have not received their Form W-2 by mid-February should contact their employer(s). If they are still unable to obtain their Form W-2, they should notify their local IRS office.

Occasionally, a taxpayer receives a Wage and Tax Statement which contains the wrong Social Security number or incorrect dollar amounts. In case of an error, ask that your employer issue a new Form W-2. The employer will issue Form W-2-C, Statement of Corrected Income and Tax Amounts.

A copy of the corrected statement and a copy of any other W-2 forms received should be filed with the income tax return, according to the IRS.



The doughnut was brought over to America from the Netherlands more than 300 years ago by Dutch colonists.

### MEDICAL DEDUCTIONS

Fees for doctors, hospital services, transportation for medical treatment, and medicines and drugs are deductible if you itemize your deductions. For 1983 you may only deduct medical expenses that are more than 5% of your adjusted gross income so be sure to check details in free IRS Publication 502 "Medical and Dental Expenses," available by using the handy order blank in your tax package.



A PUBLIC SERVICE MESSAGE FROM THE INTERNAL REVENUE SERVICE



By: Billy E. Clark, CPA  
112 Edwards Merkel  
928-5663

Business travel is very common in our mobile society and the IRS considers business travel a deductible expense on your income tax return. Prior to this tax year, the requirement to substantiate your deductions were very strict. You not only had to show time, place and business purpose of your trip but also must have receipts for all your expenses.

This often seemed more trouble that it was worth. Beginning this year, you may elect to claim deductions for meal expenses of \$14 per day during your trips away from home.

You may claim these without all the small fast-food receipts. Of course, if you spend more, keep your receipts and claim the higher deduction. & Good Luck.

## When You Buy, Build or Remodel, You Can Save Thousands of Dollars\* on Your Electric Bills over the Life of Your Home if it's a WTU-Approved E.S.P. Home



Some homes on the market may seem to be energy efficient, but before you buy, build or remodel, be sure your new home earns the West Texas Utilities

### "E.S.P. Award"

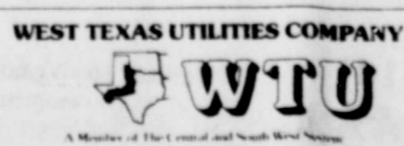
ASK YOUR REALTOR OR BUILDER ABOUT SOME OF THE MOST IMPORTANT ENERGY SAVING FEATURES:

- Ceiling insulation of R-30 and wall insulation of R-16.
- Storm windows or insulated glass.
- Weatherstripping and caulking around all doors and windows.
- Air conditioning with a Seasonal Energy Efficiency Ratio (SEER) of 8.5 or higher.
- Electric heat pump with an SEER of 8.0 or higher.
- Air infiltration control.

#### \*COMPARE BELOW HOW MUCH MONEY AN E.S.P. HOME CAN SAVE YOU OVER A ONE-YEAR PERIOD

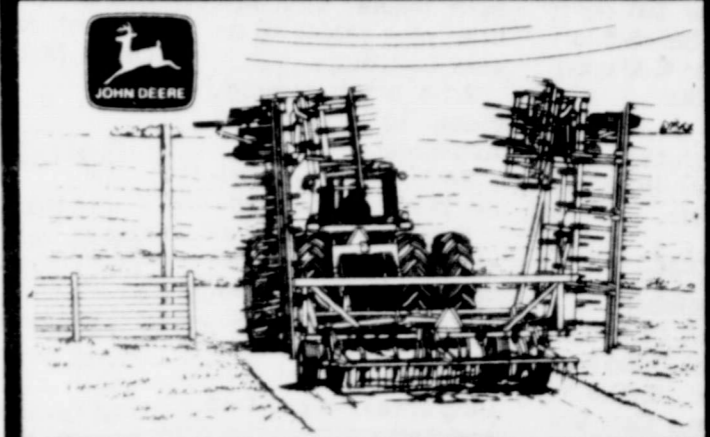
An average 1800 square foot home will cost approximately \$835 per year to heat and cool.  
An E.S.P. HOME of 1800 square feet will cost approximately \$610 per year to heat and cool, which results in an annual savings on electricity costs of 25 percent or more. (Energy savings may vary according to the type of construction of the home, family size and individual energy usage habits.)

Call your local WTU office for additional information on buying, building or remodeling to have an E.S.P. HOME. IT CAN SAVE YOU MONEY ON FUTURE ENERGY BILLS!



## JOHN DEERE BOTTOM-LINE SPECIALS

Get a 5 or 10 percent discount on these new tillage tools AND pay no finance charge until March 1, 1984



Here's why it makes good dollar-saving sense to buy now. Depending on the tillage tool you choose (see chart below) our dealership will give you our best deal and then deduct another 5 or 10 percent from the latest suggested retail base price. For example, this extra discount on an 18 1/2-foot 235 Disk saves you more than \$1,100.

Finance with John Deere and finance charges will be waived to March 1, 1984. Or lease, and your lease payments will be discounted comparable in value to the waiver of finance charge.

And remember, if you buy during November or December you'll qualify for the 1983 investment tax credit and depreciation.

Machine	Discount from Suggested Retail Price
Moldboard Plows	5 percent
Chisel Plows	10 percent
Field Cultivators	10 percent
Disks	10 percent
Mulch Tillers	10 percent
Mulch Finisher	10 percent

\*Availability of John Deere financing and leasing plans subject to approval of credit. Leases not eligible for cash rebates or for cash in lieu of waiver. This offer may be reduced in value or withdrawn at any time.

### DEALS YOU CAN FARM WITH

## ABILENE FARM SUPPLY

3526 S TREADAWAY 692-2255

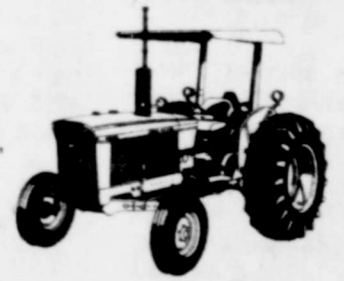
## JOHN DEERE BOTTOM-LINE SPECIALS

Choose a quality used tractor—any make—get our bottom-line deal plus waiver of finance charge to March 1, 1984

Now's the best time to prepare for next season with a quality used tractor. You can upgrade your power, dependability, features and comfort. We're ready to offer you our best bottom-line deal on any make of used tractor over 40 hp. And if you finance with John Deere, finance charge will be waived to March 1, 1984.

For 1983 investment tax credit and depreciation deduction, you can buy during November or December and still qualify.

Come in and choose the low-hour, late-model used John Deere or other tractor that will make your operation more cost-efficient.



\*Availability of John Deere financing and leasing plans subject to approval of credit.

### DEALS YOU CAN FARM WITH

## ABILENE FARM SUPPLY

3526 S TREADAWAY 692-2255



## Christmas went just fine considering the...

by Russell McAnally

How was your Christmas? We look forward to Christmas but sometimes we forget that Christmas is not just Christmas. There is Christmas shopping with anticipation and there is Christmas Eve. The day before Christmas is excitement, but it is also a day for baking and cleaning and cutting wood and rounding up the spare parts. Before you are finished with this the company starts coming in. They think they are doing us a big favor by staying three days. Our Christmas started out like other Christmas occasions. The first setback was the snow and ice and cold that canceled our Christmas program at our church. The second setback was when I removed double windows from our dining room wall to change it into a bay window. By the time I had the window extended about 26 of the intended 30 inches, it started blowing, snowing at almost zero degrees. The bed spread we nailed over the 80 inch opening didn't help much but the quilt really helped. By working two afternoons in 17 degree weather I closed in the outside, and by noon on Christmas Eve I had most of the cracks stopped on the inside. Before the windows were finished, I was informed that the hot and cold water in the kitchen were frozen. There was water in the main bathroom but with the predicted 0 weather it could close off at any time. Our electric, central heating system also refused to work. We still had two propane heaters and

our Franklin fireplace.

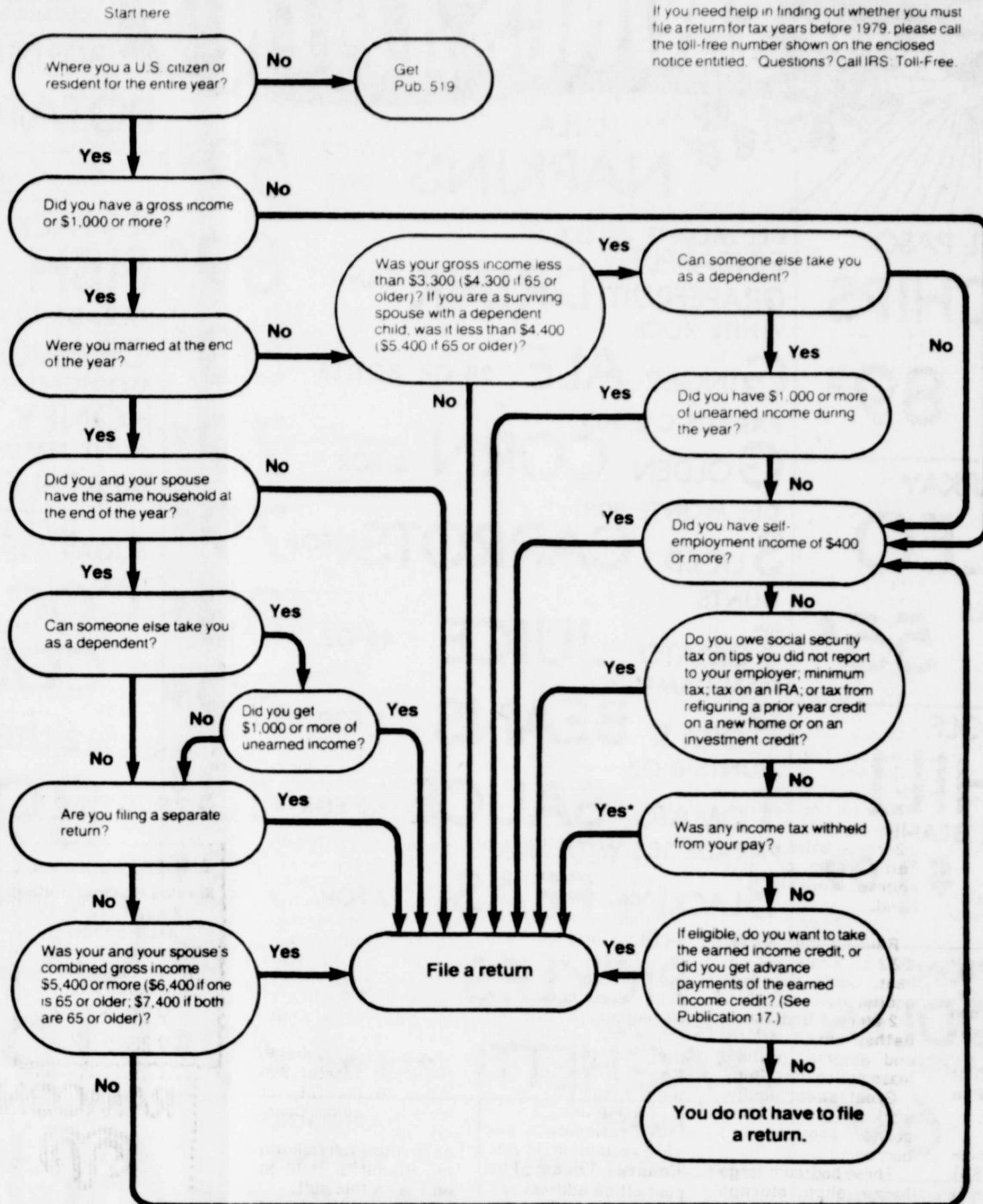
Our daughter, son-in-law and three grandsons, ages 13, 20 and 21 came on Christmas Eve. Two bedrooms were out in the cold and not usable. The other two bedrooms and two beds on the floor in the living area made it a good Christmas night. By praying a lot and leaving a faucet dripping we still had water in the bath room for Christmas Day.

Christmas morning, which was on Sunday, was a glorious day. We had a ten o'clock 45 minute worship service with very good attendance and back home for a delicious Christmas dinner. By 4 o'clock, a son, daughter in-law and three grandchildren arrived. We explained about the frozen kitchen water, the two cold bed rooms and only one bath in operation, but they hardly paid any attention to what I was saying. The knew something would be worked out. We made it fine Christmas night with four mattresses in the living area floor, side by side. They took turns keeping the Franklin fireplace going full blast all night long as we had been doing for a week.

The sounds which came from those pallets—the fact that we had all the water we needed—were all warm and in good health and had good eats everywhere made this a most blessed Christmas. We had it much better than did Joseph and Mary there in the stable when they, with God's help, gave us the Christ Child.

Happy New year.

## Who Must File a Federal Income Tax Return



Follow the arrows to find out whether you must file a Federal income tax return. Answer each question with "Yes" or "No." The answer will lead you to one of two final boxes. File a return or "You do not have to file a return."

If you need help in finding out whether you must file a return for tax years before 1979, please call the toll-free number shown on the enclosed notice entitled "Questions? Call IRS Toll-Free."

### Excess SS Tax May Be Claimed

If you worked for two or more employers during 1983 and received wages totaling more than \$35,700 and more than \$2391.90 of Social Security tax was withheld, you are entitled to claim the excess Social Security tax withheld as a credit against your income tax. If you file a

joint return, you may not add the Social Security tax withheld from your spouse's income to the amount withheld from yours. Figure the credit separately.

However, if you worked for only one employer and more than \$2391.90 was withheld, you may not claim the excess as a credit against your income tax. Your employer should adjust this over-collection with you.

## JOHN DEERE BOTTOM-LINE SPECIALS

Now...an inventory clearance sale on new 40- to 85-hp 50 Series tractors...get bottom-line prices that meet or beat any tractor with competitive specs



Get big savings. Make your move to a new John Deere now, during our inventory clearance sale.

Get a cash rebate on purchase that ranges from \$1,000 to \$2,600 depending on model (see the chart). And that's on top of our good deal to you. Plus...

Use your current tractor toward downpayment for a new 40- to 85-hp 50 Series. Finance with John Deere and finance charges will be waived to March 1, 1984. \* Or...on any of these models

with or without mechanical front-wheel drive (MFWD), you can take an additional cash rebate in lieu of waiver (see chart).

Another option: lease a new tractor with lease payments discounted comparable to the waiver of finance charge value.\*

Come in soon and check out our bottom-line prices on new John Deere 50 Series "Efficiency Expert" tractors.

Model	Cash Rebate On Purchase	Cash Rebate In Lieu of Waiver Nov. '83	Dec. '83	Jan. '84
40-hp 1250	\$1,000	\$175	\$125	\$ 75
40-hp 1250 MFWD	1,000	250	175	100
45-hp 2150	2,100	200	150	100
45-hp 2150 MFWD	2,100	275	200	125
50-hp 2255	1,350	225	150	100
55-hp 2350	1,950	250	175	100
55-hp 2350 MFWD	1,950	325	225	150
65-hp 2550	2,700	300	200	125
65-hp 2550 MFWD	2,700	375	275	175
75-hp 2750	2,300	325	225	150
75-hp 2750 MFWD	2,300	450	325	200
85-hp 2950	2,600	425	300	175
85-hp 2950 MFWD	2,600	500	350	200

\*Availability of John Deere financing and leasing plans subject to approval of credit. Leases not eligible for cash rebates or for cash in lieu of waiver. This offer may be reduced in value or withdrawn at any time.

### DEALS YOU CAN FARM WITH ABILENE FARM SUPPLY

3526 S TREADAWAY

692-2255

# ALLSUP'S CONVENIENCE STORES

WHILE SUPPLIES LAST  
SELF-SERVE GAS  
OPEN 24 HOURS FOR YOUR CONVENIENCE  
PRICES EFFECTIVE DECEMBER 29-31, 1983

ALLSUP'S IS OPEN ALL DAY FOR YOUR CONVENIENCE SHOP ALLSUP'S FOR ALL YOUR PARTY NEEDS

ALLSUP'S SPARKLING ICE LARGE BAG	99¢
BORDEN'S EGG NOG QT. CTN.	99¢
COOKED FOOD SPECIAL AS FEATURED ON TV. CORN DOGS 2 FOR	89¢
BORDEN'S ASST. SOUR CREAM & DIPS 8 OZ. TUB.	59¢
FRIYTO LAY'S REG. \$1.39 TOSTITOS LARGE BAG	\$1.09
BORDEN'S HI-PRO MILK 1/2 GAL. CTN.	\$1.09
ALLSUP'S ASST. FLAVORS ICE CREAM 1/2 GAL. MD. CTN.	\$1.59
POP SPECIAL (USE PACKAGE CUT) COCA-COLA six pack	\$2.49

Shop Allsup's for your last minute Party Needs

ICE, MILK, BREAD, FRESH PRODUCE, FILM & FLASH, SNACKS, SOFT DRINKS, BROWN & SERVE ROLLS, CHIPS & DIPS, & DESSERTS.

Best of the New Year from your Friends at Allsup's



# START OFF '83 with SAVINGS A-PLenty

PRICES GOOD  
WED-THURS-FRI-SAT  
Dec. 28 thru 31  
CLOSED Jan 2nd

STORE HOURS  
7:30 AM - 6:30 PM  
MON thru SAT  
CLOSED SUNDAY

SHAMPOO  
**TEGRIN**  
6.6 OZ BOTTLE \$1.49

DEL MONTE  
**CATSUP**  
32 OZ BOTTLE 79¢

BORDEN WISE 8 OZ  
**POTATO CHIPS** 93¢

WITH \*10 IN TRADE OR MORE  
EXCLUSIVE OF CIGARETTES

LULA  
**NAPKINS** 10 CT PKG 59¢

OLD EL PASO  
**NACHIPS**  
9 OZ BOX 89¢

DEL MONTE 46 OZ  
PINEAPPLE  
GRAPEFRUIT DRINK CAN 89¢

WHITE ROCK  
**GINGER ALE** 28 OZ BOTTLE 53¢

PARADE C S 303  
**GOLDEN CORN** 2 FOR 79¢

DEL MONTE 303  
**SLICED CARROTS** 2 FOR 79¢

HUNTS  
**TOMATO JUICE** 46 OZ 83¢

VAN CAMP 300  
**PORK & BEANS** 2 FOR 69¢

HUNTS 8 OZ  
**TOMATO SAUCE** 2 FOR 43¢

PARADE 300 WITH SNAPS  
**BLACKEYE PEAS** 2 FOR 73¢

VLASIC H B  
**DILL PICKLES** QT \$1.09

SKINNERS THIN  
**SPAGHETTI** 12 OZ PKG 49¢

PARKAY  
**OLEO**  
QUARTERS LB 55¢

WOLF  
**CHILI**  
WITH BEANS  
24 OZ CAN \$1.09

LIPTONS  
**NOODLES**  
IN SAUCE  
ASST PKG 69¢

MRS BUTTERWORTH  
**SYRUP**  
12 OZ BOTTLE 89¢

KRAFT  
MACARONI CHEESE  
**DINNER**  
7.4 OZ BOX 2 FOR 69¢

ARMOURS  
VIENNA  
**SAUSAGE**  
5 OZ CAN 2 FOR 79¢

FROZEN FOODS  
SEA PACK COOKED  
FISH CARRYOUT 2 LBS \$2.29

PARADE 12 OZ  
**ORANGE JUICE** CAN 69¢

MORTONS 9 OZ 2  
**HONEY BUNS** BOXES \$1.00

AUNT JEMIMA  
**WAFFLES** 10 OZ PKG 79¢

DIET SUGAR FREE REG  
**COCA COLA**  
2 LITER 89¢

SOLO  
**PARTY CUPS**  
16 OZ SIZE 20 CT PKG 79¢

PARADE  
**CHEESE**  
1/2 MOON 10 OZ PKG \$1.29

POP RITE  
**POPCORN**  
4 LB BAG \$1.49

SHORTENING  
ALL VEGETABLE  
**PARADE**  
3 LB CAN \$1.69

**COFFEE** MAXWELL HOUSE 1 LB CAN \$1.98 LIMIT 1

**LIPTON** TEA BAG 24 CT BOX \$1.49

**SUNLITE** COOKING OIL 48 OZ JUG \$2.29

**FLOUR** GLADIOLA 5 LB BAG 93¢

ARMOURS STAR  
**WIENERS**  
REG OR BEEF  
12 OZ PKG \$1.29

COUNTRY FRESH  
**BREAD**  
1 LB LOAF 3 FOR \$1.00

FRANKLIN  
**CRUNCH & MUNCH**  
5 OZ BOX 79¢

NICE & SOFT  
**TISSUE**  
6 CT PKG \$1.69

ALPO  
**DOG FOOD**  
CHUNK BEEF 15 OZ CAN 2 FOR 89¢

CHOICE BEEF BLADE CUT  
**CHUCK ROAST** LEAN POUND \$1.59

CHOICE BEEF  
**SIRLOIN STEAK** BONELESS LEAN LB \$2.39

CHOICE BEEF 7-BONE  
**CHUCK ROAST** LEAN POUND \$1.69

CHOICE BEEF  
**ARM ROAST** LEAN POUND \$1.89

FRESH  
**SALT JOWELS** LB 63¢

ARMOUR STAR  
**HAMS** BONELESS COOKED 3 LB CAN \$7.39

OSCAR MAYER MELLO CRISP  
**BACON** POUND \$1.53

GERMAN STYLE  
**SAUSAGE** 12 OZ PKG \$1.39

CASSEROLE  
**BLACKEYE PEAS**  
1 LB BAG 39¢

LIQUID  
**IVORY**  
22 OZ BOTTLE \$1.09

**LETTUCE** FRESH HEAD 69¢

TEXAS GRAPEFRUIT OR 5 LB BAG \$1.09

DETERGENT  
**BOLD-3**  
GIANT BOX \$1.89

SOFTNER  
**DOWNY**  
33 OZ JUG \$1.23

BATH  
**ZEST**  
4 BAR DEAL \$1.59

FRESH  
**BANANAS** LB 29¢

FRESH  
**CUCUMBERS** OR 2 FOR 39¢

FRESH  
**BELL PEPPER**

FRESH  
**CAULIFLOWER** HD \$1.39

FRESH GREEN  
**CABBAGE** LB 19¢

RUSSET  
**SPUDS** 10 LB BAG \$1.59

FOREMOST  
**HOMO MILK** GAL JUG \$2.29

FOREMOST  
**COTTAGE CHEESE** 12 OZ CRTN 69¢

FOREMOST  
**LOWFAT MILK** GAL JUG \$2.19

DOUBLE COUPONS  
ON WEDNESDAY  
EACH WEEK  
Will double your savings  
This offer excludes retail.  
Get one free, Cigarette or tobacco  
coupons and Refund Certificates  
Coupon value cannot  
exceed value of the item  
Limit rights reserved  
Offer good for limited  
time only

WE WELCOME FOOD STAMPS

# CARSON'S

SUPER MARKET