

The Post Dispatch

The Newspaper serving the people of Garza County

Sixty-eighth Year Number 43

USPS 439-620

Newsstand price 50 cents

Wednesday, March 23, 1994

Ill winds predict poor year

Southwesterly winds early Tuesday morning during the annual Taba'na Yuan'e ceremony may have felt better than the sharp northwesterly winds that graced the ceremony last year, but according to the ancient Indian legend, they also predict a poor year for 1994.

A good crowd gathered at the Post City Park Tuesday morning, March 22 to watch Chief Frank Runkles perform the ancient ceremony at dawn. As the sun peaked over the eastern horizon, Runkles knelt and pointed towards the south, southwest, indicating which direction the wind was coming from precisely at dawn. According to legend, the south, southwest wind indicates the coming year will be poor.

Following the completion of the ceremony, a number of people stayed and enjoyed the annual Post Chamber of Commerce pancake and sausage breakfast that follows Taba'na Yuan'e. Chief Runkles said that this year, because of the way spring fell, the first day of spring was actually Sunday, March 20, he also took a reading Monday morning, March 21. The Monday Taba'na Yuan'e or Sunrise Wind was out of the north, northwest indicating an average year.

Pioneers in Garza County began conducting the ceremony in 1906 to help them with their planning of crops for the coming year. Records kept since that time show the predictions to be 92 percent accurate.

Runkles began conducting the local ceremony in 1973.

Taba'na Yuan'e or Sunrise Wind begins before sunrise with the building of a small fire. Only natural materials are used and the fire is lighted with friction by rubbing two sticks together. Following the singing of a tribal prayer of thanks for the fire, Runkles performs a Four Winds dance where he presents a pipe of piece to the four directions of the compass. The pipe is then presented to Mother Earth and to Wakantanka, the Great Spirit Above to seek their blessings.

Grass is then placed on the coals and the direction the dawn wind carries the smoke, Indians used this to predict the coming year.



Dispatch Photo by John Cordson

CHIEF FRANK RUNKLES asks Wakantanka, the Great Spirit to look favorably upon area residents during the coming year. Runkles performed the annual Taba'na Yuan'e or Sunrise Wind ceremony Tuesday, March 22 at the Post City Park. The winds predicted a "poor" year for 1994.

Burning of trash and yard debris illegal

by John Cordson

With the advent of warm weather, a number of local citizens have developed a case of spring fever. The cure for this "disease" is usually a prescription of yard work. Home owners and gardeners begin an annual ritual of cleaning and preparing their yard and homes for the coming summer. As the work progresses, the temptation is there to burn the trash and debris that accumulates.

The problem with this though is that it is against the law. Interim city manager Delbert Rudd warns that not only does the city of Post have an ordinance against the burning of trash, debris or refuse within city limits, it is also against state law.

"The state of Texas now has a law prohibiting outdoor burning without certain conditions," said Rudd.

Permissible outdoor burning without special permits and needs centers around recreational uses (campfires) ceremonial (Tab'a'na Yuan'e) and fires for heat.

The city ordinance has some teeth in it. Violation of the ordinance could result in fines of \$200 per occurrence.

The general prohibition of outdoor burning reads: "No person may cause, suffer, allow, or permit any outdoor burning within the State of Texas, except as provided by 111.101 of this title (relating to Exceptions to Prohibitions of Outdoor Burning). Outdoor disposal or deposition of any material capable of igniting spontaneously shall not be allowed without written permission of the Executive Director of the Texas Air Control Board.

Democratic run-off April 12

Garza County Democratic Chair Lewis Earl has requested permission from the Assistant Attorney General to combine all nine voting precinct locations in the county into a single location for the April 12 Democratic run-off primary.

In Earl's request, he noted that the April 12 Democratic primary ballot in Garza County would consist of but three contested races, none local. The races include that for U.S. Senator between Richard Fisher, and Jim Mattox; the Texas Supreme Court Justice, Place 1 between Raul Gonzalez and Rene Haas; and the Texas Court of Criminal Appeals Judge, Place 2 between Betty Marshal and Gene Kelly.

Early voting in the run-off runs April

4-8. Ballots may be cast at the Garza County Clerk's office in the courthouse. Mail-out ballots became available March 18. They are due in April 5.

Earl said the one-time consolidation of voting places in Garza County does not have the purpose or effect of discriminating due to race, color or membership in a language minority group. He said the consolidation was being requested because of the expected light voter turn-out for the April 12 primary.

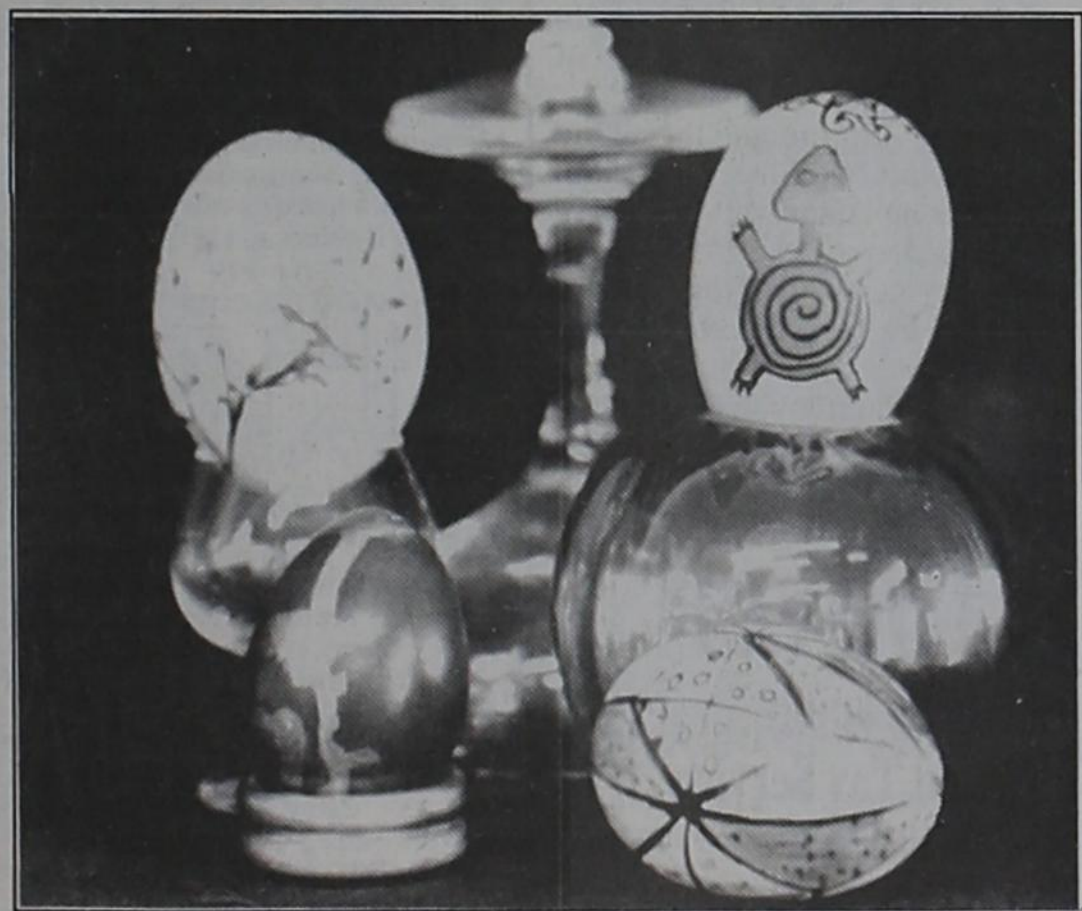
Garza County has 2,965 registered voters. Of these, 779 voted in the March 8 general primary. Earl said he expects no more than 500 people will vote in the April 12 election.

Cancer fundraiser at Hotel Garza

The Garza Unit of the American Cancer Society will hold a wild game tasting dinner at the Hotel Garza this Thursday, March 24 from 5 to 7 p.m.

A number of local couples will provide dishes of wild meats, each prepared especially for the evening. Donations will be accepted for the dinner to help raise funds for the Garza Unit of the American Cancer Society.

Couples hosting the evening are: Rex and Terri Cash, Kurt and D'Linda Chapman, Judge Giles and Nelda Dalby, Charles and Barbara Hardin, Cliff and Deana Kirpatrick, Mark and Lisa Kirpatrick, Jeff and Gena Lott, Bob and Debbie Macy, Mike and Kelly Macy, Charles and Dorothy McCook, Dennis and Debbie Mason, Ben and Paula Miller, Jim and Janice Plummer, Dale and Penny Redman, David and Ann Stelzer and Tommy and Ruth Ann Young.



Dispatch Photo by John Cordson

DETAILED hand painted eggs will be auctioned off March 25 in the annual "Spring Day at the Algeria"

Algerita prepares for Spring Day activities

The second annual "Spring Day at the Algeria" is this Friday, March 25 at the Algeria Art Center here in Post. The day includes two luncheons from 11 a.m. until 12:15 for those who want to catch an early lunch with a late lunch starting at 12:30 p.m.

"It was a big success last year with 150 people enjoying a great lunch and style show," said Sheri Riedel, Post Art Guild member.

The center piece of the "Spring Day" is the hand painted decorative eggs and the style show featuring fashions from local merchants. All of the eggs that are destined to become "heirlooms" are hand-blown and hand painted or decorated by artists belonging to the Post Art Guild. They range in size from very small banty,

beautiful green and soft brown chicken and transparent duck, all the way to large black Emu eggs reports Riedel.

"We are very excited about the style show this year as we have Lily Dales and LaPosta with their new spring clothing," said Riedel.

Riedel adds that local attorney Rafe Foreman has "graciously" offered his auctioneering talents for auction.

"The lunch is still only \$5 and everyone is invited," said Riedel.

The luncheon will consist of numerous salads, meats, pasta, vegetables and fruit. Marie Neff will serve as mistress of ceremonies for the mid-day activities. Door prizes were donated by Jan's, Prairie Flowers, Danish Imports and Maurines.



Dispatch Photo by John Cordson

WILLY's went to (l-r) Jeremy Boreing, Director Award Youth Achievement; Jon Steele, best supporting actor; Steve Davis, best actor; Joan Fariello, best cameo actress; Keren Weaver, accepting for her husband David Weaver, winner of best program cover design for "Father of the Bride"; Alison Hoefler, best actress and supporting actress; Bill Woodard, best cameo actor and the Will McCrary MVP award.

"Natalie Needs a Nightie" choice for best play of 1993 during Garza Theatre's annual Willy awards

The hilarious comedy "Natalie Needs a Nightie" was the voter's choice for three of the top seven honors at the Garza Theatre's eighth annual Willy Awards held Saturday night, March 19 at the Post Community Center. Natalie won top play honors and best supporting actress and actor awards. Jon Steele was the voters choice for best supporting actor for his portrayal of Jimmy in "Natalie Needs a Nightie" while Alison Hoefler was the choice for best supporting actress for her role as Natalie in "Natalie Needs a Nightie".

Hoefler was named the best actress for 1993 for her portrayal of Mother Maria Marthe in "Lillies of the Field". The play won a second Willy when Bill Woodard was awarded the best cameo for his role as Livingston in "Lillies of the Field".

Best actor for last season was Steve Davis who won for his role as Joe Pendleton in "Heaven Can Wait". Newcomer Joan Fariello was awarded a Willy as best cameo actress as Miss Bellamy in "Father of the Bride". Other awards went to Jon Steele, the Garza Theatre Board Award; Bill and Dell Gray, the Cultural Awareness Award, Bill Woodard, the Will McCrary MVP Award and Jay Goswick. David Weaver Jr. won a Willy for his program design for "Father of the Bride" and the Willy for the best set design was awarded for the play "Picnic". In a change from past Willy Awards, persons attending the ceremony voted on the winners for best program and set design.

Entertainment for the Willy Award's ceremony was provided by Bill and Dell Gray, Emily Hataway, Jeremy Boreing, Amy Jones, Anna Wilson, Tim McIntire, Joan Fariello, Jeny Jones and Millie Stewart. The evening's activities included a catered dinner and a silent auction for a number of items donated for the evening.

Rapid Square
Joist Hangers
Fence Adapter

Post Notes

Trailblazers schedule garage sale

The Garza County Trailblazers will hold a garage sale this coming Saturday, March 26 at the Trailblazers Center on Ave 1. The sale begins at 8 a.m. and continues until 2 p.m.

Chennault to demonstrate painting

Well known area artist Robert Chennault will conduct a demonstration of his unique painting technique on Saturday, March 26 at the Sand Creek Fine Arts Gallery, 503 South Broadway in Post. The demonstration will begin at 1 p.m. and conclude at approximately 3:30 p.m. Chennault welcomes beginners as well as professional artists. For more information call 495-2762 or in Lubbock 745-4063.

Benefit for Clary family this Thursday

There will be a chili/bean and cornbread supper this Thursday, March 24 for Leon and Jadene Clary. The supper starts at 5:30 p.m. at the Post Community Center.

Head Start bake sale March 26

The Post Head Start will hold dual bake sales this Saturday, March 26 at United and Winns. They will also be selling raffle tickets for an April 9 drawing. The tickets are good for a chance at \$100 in grocery money. The local Head Start will also accept donations. All proceeds are used for the benefit of the local children enrolled in the program.

Post the subject for Caprock photographers

Caprock Photographers from across the South Plains will go "over the edge" of the Caprock on Sunday, March 27 for a unique and exciting club project. Caprock members will photograph the city of Post and its residents during the day-long project.

Y.E.S. project may be re-activated

Persons interested in participating in the Y.E.S. project should the program be re-activated are asked to call either Labeth Jones or the Extension office at 495-2050.

Improved Pasture seminar March 28

An Improved Pasture seminar and tour will be sponsored by Texas Agricultural Extension offices in Garza, Borden and Scurry Counties on Tuesday, March 28 at 8 a.m. at the Fluvanna Community Center. For more information or to register, please call the Extension office at 495-2050.

WPS offers support group

Women's Protective Services support group for victims of domestic violence is held every Tuesday from 9:30 a.m. until 10:30 for adults who have been emotionally, physically or sexually abused by a spouse, relationship partner or family member. The group meets at the WPS' office located at the Postex, Mill. For more information, call 1-800-736-6491.

Homestead and Ag Exemption underway

The Garza County Tax Appraisal District is reminding property owners that if they have not signed up for their Homestead or Ag Exemption they can go by the Garza County Appraisal District office at 124 E. Main to do so. Also, persons born before in 1928 or before are eligible for the over 65 exemption. Sign-up deadline on these exemptions is April 30, 1994.

Also, rendition statements for personal business property are required to be filed with the Chief Appraiser before April 14, 1994. Forms have been delivered but if someone has not received one, they can contact the Garza County Appraisal District office.

Garza County Service Officer

The Garza County Service officer will be available the third Saturday of each month from 9 a.m. until 4 p.m. at 130 E. Main (upstairs in the old bank building). For an appointment or information call Ann Stelzer at 495-3645 after 6 p.m. or at 495-2444 on the third Saturday of the month.

Chamber sponsoring circus April 17

The Post Chamber of Commerce will sponsor the Allen Brothers Circus Sunday, April 17 here in Post. The big top is scheduled to go up at 8 a.m. April 17 at 410 E. Main and Avenue F. Two performances are scheduled, one at 2 p.m. and the other at 4:30 p.m. Reduced rate tickets may be purchased at either the Post Chamber of Commerce office or the Post Dispatch. Tickets may also be purchased from members of the Post Chamber of Commerce.

Foster parent workshop first week in April

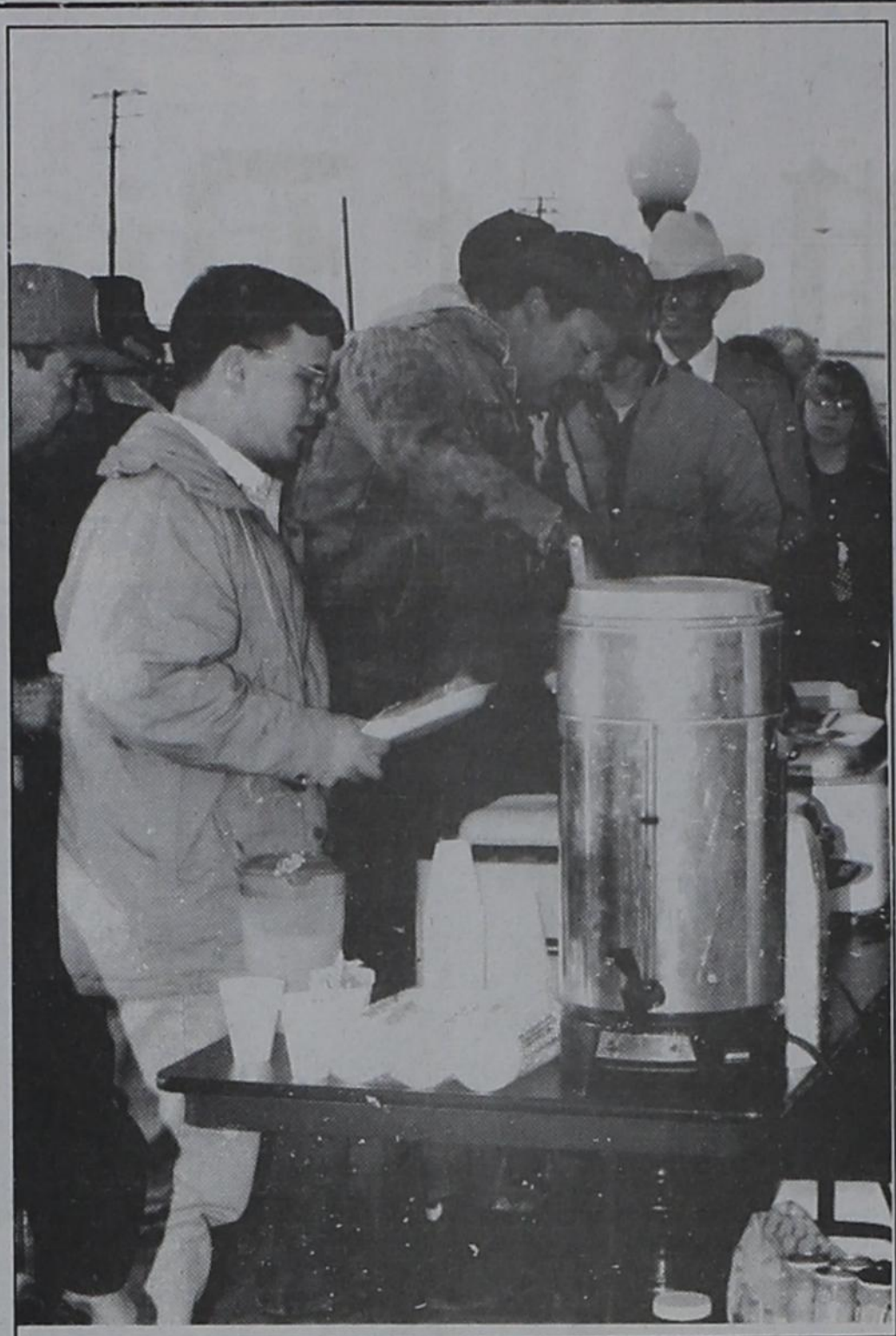
Methodist Home Services will be holding a foster parent workshop on Tuesday, April 5 for anyone interested in learning more about private foster care. The workshop will be held from 7-9 p.m. at Forrest Heights United Methodist Church, 3007 33rd Street, Lubbock. For more information call 792-0099. Interested persons are asked to register by April 4.

Xi Delta Rho establishes scholarship fund

The Xi Delta Rho Chapter of Beta Sigma Phi has established a memorial fund to be used for scholarships for local graduating high school seniors. To make a donation call Karen Palmer at 495-2023 or Jaynie Dickson 495-3422. Both can be reached during the evening hours.

Commodities dist. back to original site

Beginning next Monday, March 21, the commodities distribution held on the third Monday every month will be moving back to its permanent and newly remodeled facility south of the city park. The center will be open for the distribution from 9 - 12 and from 1-3 p.m.



HUNGRY observers of the annual Tabala Tuan'e ceremony enjoyed the Post Chamber of Commerce sponsored pancake and sausage breakfast held following the completion of the ceremony.

Living on the Edge of the Caprock

Develop landscapes to conserve water

With hot, dry weather looming ahead, homeowners and others involved in landscape development should focus on water conservation. Water conservation can be practiced in all areas of landscape development and maintenance, including plant selection, irrigation practices and equipment, and soil preparations. These practices can be aesthetic as well as practical.

Homeowners can lower their landscape water usage in several ways:

- Using native and adapted plants. Native plants often thrive on existing growth conditions and reduce the need for extra irrigation. Many plants have been introduced that show adaptability to soil, rainfall and temperature conditions.
- Taking advantage of innovations irrigation practices and equipment. The landscape irrigation business is experiencing a revolution, with new timing devices, low pressure systems, drip irrigation and other highly specialized water devices focusing on more efficient water usage. Irrigation systems and small ponds and fountains also can effectively use water as an aesthetic addition to a landscape.
- Using mulches for insulation. By providing an insulating layer between the sun jam soil, mulches prevent rapid drying and lower soil temperature in hot weather, which keeps the top soil from crusting or hardening. Low-cost materials such as hay, grass clippings, bark and pine needles are excellent for mulching and can add appeal with texture and color.
- Properly preparing the soil. When soil has been loosened and improved

with plenty of organic material, such as peat, pine bark or compost, it will hold significantly more moisture and release it over a longer period of time. However, organic materials break down over time and need to be supplemented. A compost pile can be a good source of these materials, allowing the homeowner to recycle leaves, grass clippings and other waste to improve the soil.

These are just a few practices that homeowners can use to significantly reduce water usage in their outdoor environment. If any of these ideas bring questions to mind, feel free to call our office at 495-2050.

John Senter
Garza County Extension Agent



Menus

Trail Blazers

- Thursday, March 24**
Meatloaf, mashed potatoes, broccoli w/cheese, wheat roll, dry jello salad, choice of beverage.
- Friday, March 25**
Pork roast, au gratin potatoes, wax or green beans, lettuce/tomato salad, cornbread, banana pudding, choice of beverage.
- Monday, March 28**
Pepper steak, rice, yellow squash, tossed salad, wheat roll, pineapple cake, choice of beverage.
- Tuesday, March 29**
Chicken enchiladas, mexicorn, stewed tomatoes, tossed salad, saltines, orange cake, choice of beverage.
- Wednesday, March 30**
Hamburger steak, brown gravy, macaroni salad, okra & tomatoes, apricots, wheat roll, oatmeal

Post Schools

- Monday, March 28**
Breakfast: Oatmeal, toast, sausage, orange juice, milk.
Lunch: Pochito, tater rounds, broccoli & cheese sauce, chocolate cake, milk.
- Tuesday, March 29**
Breakfast: Cinnamon rolls, fruit, milk.
Lunch: Burritos w/chili & cheese, lettuce & tomato salad, corn, fruit, milk.
- Wednesday, March 30**
Breakfast: Dry cereal, toast & jelly, fruit, milk.
Lunch: Bar-b-que chicken, whipped potatoes, green beans, jello w/fruit, hot rolls, milk.
- Thursday, March 31**
Breakfast: Muffins, fruit, milk
Lunch: Spaghetti w/meat sauce, pinto beans, lettuce salad, rice pudding, garlic toast, milk.
- Friday, April 1**
Breakfast: French toast, fruit, milk.
Lunch: Tuna casserole, blackeye peas, fried okra, ice cream cup, cookie, corn bread, milk.

Note: Children will not be allowed to charge for more than 2 weeks at a time.

✂ clip and save

Lubbock to host Cotton Convention in April

The largest gathering of Texas Cotton industry associates will be at the 87th annual Texas Cotton Ginners' Association (TCGA) Convention & Trade Show. It will bring over 5,000 people to Lubbock, April 8-9. The Convention will be held at the Lubbock Memorial Civic Center. The show's theme, "Technology: Key to Advancement into the 21st Century" will be prevalent in the exhibit hall. Over 175 exhibitors will be at the trade show with the latest technology in the cotton industry.

Exemptions for Cotton Gins" will be conducted at the Civic Center. Regulations on sales tax for gins are undergoing changes and this will be covered in the workshop. This convention is open to the public and admission is free.

According to Tony Williams, Executive Vice President of TCGA, "this was a good year for cotton production in Texas. This year's trade show will promote this and the technology available for future years." The show officially opens at 9 a.m. Friday, April 8 and will run through Saturday evening, concluding with an awards banquet. The banquet will salute the past officers and welcome the new officers into the roll of leaders in our industry.

A tour of Lubbock, with transportation and lunch courtesy of TCGA, will begin at 10:30 a.m. Friday. Antique shopping, lunch at Lakeridge Country Club and a tour and tasting of Llano Estacado Winery will be the highlights of this tour.

Saturday afternoon, the 22nd annual Natural Fibers Fashion Design Competition will be held at Allen Theater of the Texas Tech University campus. This event is sponsored by Texas Food and Fiber Commission.

Also on Saturday, a workshop titled, "Understanding Tax

Tax 'n Facts

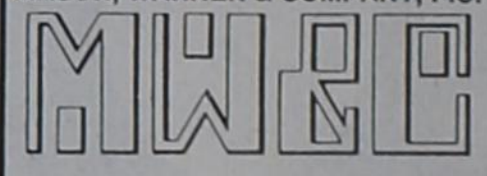
by Terri S. Cash, CPA

MEDICAID, TAXES AND LONG-TERM CARE

Item: nursing-home care is expensive. It is only sometimes deductible as a medical expense, depending on the level of care needed. Continued medical care is deductible; simple custodial care is not.

Only the very rich can afford to pay for nursing care out of pocket over a long period. The government probably can't afford it, either. Those with minimal assets will quickly be covered by Medicaid. But those who are comfortable but not very rich--those with estates between \$100,000 and \$1,000,000--may want to be able to protect some of their assets for their heirs. That's why there is long-term-care insurance to cover the expenses of nursing-home and home-based care. Best bet: buy in one's 60s, before premiums increase sharply. Plan on 10 percent of income for coverage; don't go into savings. Be sure to have at least three years coverage. Under the new tax laws, oldsters will need to cover at least 36 months of nursing months of nursing-home care before Medicaid benefits can kick in. When it comes to tax questions, come to

MASON, WARNER & COMPANY, P.C.



CERTIFIED PUBLIC ACCOUNTANTS
108 SOUTH AVENUE I - POST, TEXAS 79356
806-495-2872

- Jimmie Lee Mason
- J. Reid Warner
- Larry Anderson
- Douglas C. Moore
- Mark Dickson
- Greg Freeman
- Pat Harris
- Gary Lane
- Greg Moore
- 5202 Indiana
- Lubbock - 797-3251

Terri Cash
108 S. Ave I
Post

"Around the corner from Danish Imports"

495-2872

McDonald places third in conference

Southern Nazarene University student Brad R. McDonald placed third in Business principles at the 1994 State Leadership conference of the Oklahoma State Chapter of Phi Beta Lambda, held February 25-27. McDonald is a freshman business math major from Post and is one of ten students from SNU that placed in the top ten.

Bores bore each other too; but it never seems to teach them anything.
—Don Marquis

Caprock Crop Insurance
Let us SERVE YOU
Crop Insurance is our only business!
Max Haney 495-2950 495-4271 Office 495-2527

DOWE MAYFIELD, C.L.U.
C.D. Rates Too Low?
CALL
1-800-658-6130 (toll free)
3305 81st, Suite F, Lubbock

Hudman Funeral Home
615 W. Main 495-2821

Health, Medicare, Life, Mutual Funds, Annuities, CHAMPUS Supplement
Call Harold Craig
495-2995

Lewis D. Moore, O.D.
Complete Family Eye Care, Contact Lenses, Therapeutic Eye Care
—Wednesdays—
9:30 a.m. to 5 p.m.
206 West Main 495-3687

Advertising deadline is 5 p.m. on Monday

Entered at U.S. Post Office, Post, Texas for transmission through the mails as Second Class matter, according to an Act of Congress, March 3, 1879.

Subscription Rates:
In Garza County - \$15 per year
In Texas - \$18 per year
Out of State - \$24 per year

John Cordson, Managing Editor
Deirdre Pittman, Office Manager

Deadline:
Mondays at 5 p.m.
P.O. Box 10
Post, Texas 79356
806-495-2816

Post Publishing Company
Todd W. Newton, President
Member
Texas Press Association
West Texas Press Association

Hoover
Bookkeeping and Tax Service
• Payroll, sales tax
• Quarterly reports, P&L
• Income Tax Returns
495-2894
106 N. Broadway

Farm Bureau Insurance
Insurance For All Your Needs
Life * Auto * Fire * Farm Liability
Health Insurance * Annuities * IRA's

FARM BUREAU INSURANCE

Phone 998-4320 or 998-4591
PAT GREEN, LUTCF, Agency Manager
Danny Preston - G.G. Fillingim

Ted Tatum 915 W 13th, POST - 495-2641

"I Need A Vacation"

Third grade students present musical

With music and song, Post Elementary third grade students presented their rendition of "I Need A Vacation" on Friday, March 4.

The play is based in a school setting where the children have decided they are under too much pressure. They would rather be in other places than in school working so hard. The students dream they are enjoying a leisurely afternoon enjoying fishing and a trip to the beach where they will try their hands at surfing. They also dream about attending numerous camps, a baseball game and a wonderful amusement park.

Alas, the students escape is cut short as they awaken to the fact that they are really back in school. By this time though, the harried teacher is so frustrated that now she is the one in need of a vacation.

The students put on two performances, one in the morning with the second performance in the afternoon.

Before the musical began, two classes of choir chimes played "God Himself Is With Us" and "Jacob's Ladder".

The musical and choir chimes were directed by elementary music teacher Karen Nichols.



ONE of the baseball scenes included: Back; (l-r) Josh Odom, Tye Timmons and Nicole Gray. Middle; Ruben Solis, Ethan Stegall, Paul Michael Gonzales and Pablo Perez Front; Michael Vega and Cody Fox



THE WONDERLAND scene included: Back; (l-r) R.C. Reed, Melissa Arrendondo and Luis Cerda. Front; Erica Rivera and Monica Vega



ONE of the families included: (l-r) Will Reed, Amanda Workman, Chase Tatum, K'Leigh Babb and Tye Mason



THE BEACH scene included: Back; (l-r) Bryan Looney, Seth Redman, Jerrison Moore, Pablo Perez, Daryl Dissinger, Will Reed, Josh Odom and Carlos Hernandez. Front; Chase Tatum, Amanda Workman, Tiffany Hair and Keila Rodriguez.



THE CAMP scene included: Back; (l-r) Jessica Ordonez, Regina Collazo, Stephanie Martinez, Brandi Melton and Amber Hernandez. Middle; Edward Pettet, Jessica Mason and Rachel Hubble Front; Kyzandre Harper, Elizabeth Alaniz and Corina Finnell.



THE OTHER FAMILY scene included: (l-r) Bryan Looney, Shata Munoz, Pablo Perez, Felisha Mendez and Noah Gutierrez.



THE FISHING scene included: Back; (l-r) Traven Smith, Jason Estrada, Ronnie Parrish, Brody Robertson, Brandon Bell, Benjamin Huerta and Matthew White. Front; Patrick Gonzales, Tyler Bennett, Alejandro Moreno, Luis Zubia and Russell Eaton.



TEACHERS AND CHILDREN included: Back; (children) (l-r) Stephanie Saldivar, Emilio Huerta, Brice Easterling, Lance Curtis, Nicole Gray, Eric Alaniz and Shara Egbert. Front; Scottie Armstrong, Meg Bohn, Manuel Saucedo and Sarah Alaway. (Teachers) Kenda Josey and Meg Bohn.



A SECOND BASEBALL scene included: Back; (l-r) Brice Easterling, Clifford Morris, Ishmael Estrada and Kenneth Ratke. Front; Joey Vance, Jeremy Ayala and Jordan Nelson.



"I Need A Vacation"

This Sword Says
We're Your
American
Cancer
Society

Even though there are many cancer organizations, there is only one American Cancer Society. Follow the sword in the battle against cancer. For more information call 1-800-ACS-2345.

THERE'S NOTHING MIGHTIER THAN THE SWORD



STIHL® TRIMMER
SALE

Wallace Lumber
Company, Inc.

119 N. Ave. H 495-2835

JUST \$119.95 after mail-in rebate

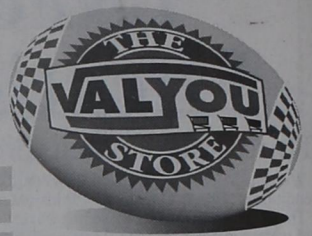
It's Sunshine Season In STIHL TERRITORY Offer good 4/20/94 - 6/18/94



The STIHL FS-36 Gas Trimmer. Rated #1 and Best Buy by leading consumer magazines.



Find EASTER SAVINGS at the VALUE STORE



WED	THU	FRI	SAT	SUN	MON	TUE	WED	THU	FRI	SAT
23	24	25	26	27	28	29	30	31	1	2

Good thru March 8 in Lubbock, Plainview, Levelland, Slaton, Post, Brownfield, Littlefield. Quantity Rights Reserved. No Sale to Dealers.

United Premium Quality Grade A Extra Large

Eggs **.69** doz.

Durkee Food Colors Assorted \$1.68 doz.

GROCERY

United BROWN n SERVE

Rolls **2 for \$1**

12 ct. pkg.

Minute Maid Frozen Orange Juice

Regular, Reduced Acid, With Calcium, Country Style or Pulp Free

.78

10-12 oz.

Betty Crocker Angel Food Cake Mix

Regular, Lemon Custard or Chocolate Swirl

2 for \$4

16-16.75 oz.

Blue Bell Ice Cream or Yogurt

Assorted

2 for \$5

1/2 gal.

Freshlike Canned Vegetables

Cut or French Style Green Beans, Whole Kernel or Cream Style Corn, Garden Sweet Peas or Crinkle Sliced Carrots

5 for \$2

Vacuum Packed 11-13.25 oz.

Nabisco Premium Crackers

Assorted

.88

16 oz.

Nabisco Easy Cheese All Flavors 8 oz. **2 for \$5**

Nabisco Snack Crackers

Better Cheddar, Regular or Low Salt, Swiss Cheese, Bacon Thins, Twigs, Sociables, Chicken in a Biskit, Vegetable Thins, Wheat Thins; Regular, Low Salt, Nutty, Oat Thins or Multi Grain Wheat Thins

\$1.78

7-10 oz.

Nabisco Triscuit Crackers All Flavors 8 oz. **\$1.78**

Campbell's Soup

Cream of Chicken, Cream of Mushroom or Cream of Celery

.68

10.75 oz.

Kraft Salad Dressing

All Flavors

2 for \$4

16 oz.

Kraft Velveeta Shells & Cheese

All Varieties

\$1.78

9.4-12 oz.

Pillsbury "Hungry Jack" Instant Potatoes

2 for \$3

13.5 oz.

Del Monte Asparagus Spears

Regular or Extra Long

2 for \$3

15 oz.

NONFOOD ❖

Saran Wrap

Extra Wide

2 for \$3

65.5 sq. ft.

Cottonelle Soft Super Size Bath Tissue

2 for \$5

6 pk.

Chinet 10 3/8" Dinner Plate - Regular or Compartment 15 ct. or Lunch Plate 25 ct.

2 for \$3

EASTER CANDY!

Brachs Milk Chocolate Rabbit **\$1.39**

Marshmallow Eggs or Rabbits **\$1.69**


Pastel Candy Corn **.99**

M&M Mars Fun Size Snickers, Milky Way or 3 Musketeers **\$1.98**

14 oz.

Hershey's Asst. Eggs Reeses, Almond Joy, Caramel Nut, Mounds or Marshmallow **\$1.89**

6 pk.

Colorado Russet #1
Baking Potatoes
 **2 lbs. \$1**

Fresh Crisp California
Leaf Lettuce
Red, Green, Boston or Romaine
 **2 for \$1**

Garden
PRODUCE ❖
Vine Ripe Large
Tomatoes
 lb. **.79**
Fresh
Asparagus
 **\$1.89**
lb.

 Fresh
Red Ripe California Strawberries
\$1.49
Quart


FROZEN ❖
 Tony's
Italian Pizza
Assorted
2 for \$4
Yellow Box
Tony's Microwave Pizza Assorted **\$1.68**
Tony's Microwave French Bread Pizza Assorted **\$1.38**


 Pet Ritz
CRUMB Cobbler
Apple, Blackberry, Peach or Cherry
2 for \$3
26 oz.
Fine Fare Deep Dish
Pie Crusts
 12 oz. **.98**

Minute Maid
Orange Juice
Regular, Country Style, Pulp Free or with Calcium
 96 oz. **2 for \$5**
Borden's
Whipping Cream
8 oz. **2 for .88**



DAIRY ❖
 Land-O-Lakes
Margarine Quarters
2 for \$1
1 lb.

 Farmland
95% Fat Free
Whole Ham
Boneless, Buffet Style
Half Hams lb. **\$1.59**
\$1.49
lb.
 USDA
Choice
Leg of Lamb
 **Lamb Sirloin Chops** lb. **\$2.98**
\$2.89
lb.

Quality
MEAT ❖
Cook's
Smoked Ham
Shank Portion
 **Butt Portion** lb. **\$1.19**
.95
lb.

United Premium Quality
Grade A
SELF BASTING Turkeys
 10-12 lb. avg. **.69**
lb.
Fine Fare
Cream Cheese
Regular or Lite
 **8 oz. .69**

 Cook's
Basted Turkey Breast
\$1.19
lb.
5-7 lb. avg.

USDA Choice Boneless
Rump Roast
 **\$1.98**
lb.
 **United Choice Beef**
USDA Choice
Eye of Round lb. **\$2.29**

USDA Choice
Prime Rib Roast
Large End
 **\$2.98**
lb.
Small End lb. **\$3.49**

Counselor's Corner



Featuring contributions from the three Post ISD counselors
Daisy Breedlove - Post High School
Sharla Wells - Post Middle School
Dorita Rogers - Post Elementary

"Give sorrow words; the grief that does not speak whispers in the overwrought heart and bids it break." Shakespeare

There are many experiences that are common to us all. One of these is the grief that we suffer when someone close to us dies. Grief develops and goes through specific stages. These stages are: denial, anger, bargaining, depression and acceptance.

When the loss is first anticipated or known the grieving person enters a state of shock. This is a natural defense. The person feels numb, but gradually feelings return. Without this defensive mechanism the pain would be so intense and overwhelming we could not bear to experience it all at one time. As adjustment to the loss is made the shock begins to ebb and feelings begin to return. This initial period may last only a few hours or up to two weeks.

Although anger is frequently experienced during the grieving process, it can be confusing to the griever and to those around him. Logically they both often think that of course if the deceased had his choice he would not have died. Emotions are not based on logic, but rather on our internal needs and feelings. The source of this anger is frustration, because the loss couldn't be prevented, the feelings of helplessness that accompany the loss, the knowledge that things will never be the same again, feelings of abandonment, regrets, feelings of unfairness, "WHY?", and feelings of isolation and/or punishment are all a part of the anger. It is very important that this anger is expressed. If it isn't it can complicate the bereavement, or it can be turned inward and become clinical depression. Both of these conditions frequently need professional help to work through.

Bargaining is an attempt to deny the permanence of the loss. Promises to "lead a better life" or "to wait forever" are sometimes consciously or semi-consciously made with God. It is the futile hope that he will intervene and let the lost loved one return.

The grieving person is sad and depressed. Ways that this is manifested is through sleep disturbances, appetite disturbances, and intense sadness. This is painful for the bereaved as well as those who care about him. Often well-meaning friends will encourage him to "snap out of it, get on with life, don't be morbid and dwell on all that sad stuff, etc." Even though the anguish and heartache is painful it is a very vital and necessary part of the grief process. The loss and hurt have to be faced and resolved.

Loss is a part of life and it is important that we face it and learn from it. If we run away from our sorrow it will remain unresolved and thus a "bundle of woe" we carry forward with us. The sadness that we refuse to let ourselves feel from the innumerable losses small and great can eventually become unwieldy to handle.

Acceptance is reached when the loss has been grieved to the extent that the person has been able to work through his intense pain; accepted the reality of the loss, and adjusted to life without the loved one. This doesn't mean that the loved one isn't missed or that there isn't pain, but rather it is a matter of degree. The pain is less intense and lasts for shorter periods of time. The focus begins to shift from the loss and the past increasingly to interest in the present and future.

There will be set-backs to earlier stages. Although we call these steps or stages of grief they are not progressively built upon each other. Rather it is a shifting back and forth from one to the other. There will be peaks and valleys of painful times. The average time spent in grief is two years. This does not mean that for two years that this is all the person thinks about; but rather that it takes this long for most to adequately come to terms with their loss. If the person after this much time is still enmeshed in the past and is not letting go then professional help should be considered. Many churches have grief groups and if yours does not check around because there is help if you want it.

Dorita Rogers, L.P.C.



Dispatch Photo by John Cordson

WOMAN'S CULTURE CLUB members to tour the Sand Creek Fine Arts Gallery were: (l-r) Peggy Smith, Doll Haire, Donna Craig, Bebe Boren, Katherine Cathcart, host Buster Jones, Nona Lusk, Ruth Hall, Ruby Kirkpatrick, Lillian Potts, Debbie Bain and Maxine Earl.

Culture Club tours local art gallery

by Katherine Cathcart
Members of the Woman's Culture Club met at the Sand Creek Art Gallery March 9 for a tour. Gallery owner and accomplished artist Buster Jones conducted a tour and explained the procedures of several different art mediums.

Jones told the ladies that "art is 90 percent sweat and 10 percent talent."

"Art speaks every language in the world," is one of Jones' favorite quotes.

Lillian Potts and Katherine Cathcart hosted the group at Rosie's Restaurant. Delicious refreshments were served from a table decorated for St. Patrick's Day.

and guests present were: Jones, Ruby Kirkpatrick, Ruth Hall, Nona Doll Haire, Donna Craig, Peggy Lusk, Maxine Earl and the Smith, Debbie Bain, Bebe Boren, hostesses.

DANISH MORTS
GIFTS & COLLECTIBLES

Fill Your Easter Baskets!
Winner of Bunny Door Prize • Carol Payne

Wedding Selections
Mrs. Randy McKee
(nee Amanda Richardson)

201 E. Main VISA/MasterCard/Discover 806-495-2314

Community Calendar

- ☞ **March 23:** Woman's Culture Club, Iva Hudman's home, 604 W Main, 2 p.m.
- ☞ **March 24:** Lions Club, Chaparral Restaurant, 6:30 a.m.
- ☞ **March 24:** American Cancer Society Wild game tasting fund-raiser, Hotel Garza, 5-7 p.m.
- ☞ **March 25:** Baseball versus New Deal, here, 5 p.m.
- ☞ **March 25:** "Spring Day at the Algeria" beginning at 11:30
- ☞ **March 26:** Bicycle safety course, elementary parking lot, noon
- ☞ **March 26:** High school track, boys in Sundown, girls at Lubbock Cooper for Lubbock relays
- ☞ **March 28:** County Commissioners Court, commissioners room, third floor of courthouse, 9 a.m.
- ☞ **March 29:** Baseball versus Abernathy, here, 5 p.m.
- ☞ **March 29:** Rotary Club, 12 noon, Post Community Center
- ☞ **March 31:** Baseball versus Abernathy, there, 5 p.m.
- ☞ **April 1:** Baseball versus Roosevelt, here, 5 p.m.
- ☞ **April 3:** Daylight savings begins 2 a.m.
- ☞ **April 3:** **EASTER SUNDAY**
- ☞ **April 5:** Rotary Club, 12 noon, Post Community Center
- ☞ **April 5:** Post City Council meeting, council chambers, 6:30 p.m.
- ☞ **April 7:** Lions Club, 6:30 a.m. Chaparral Restaurant
- ☞ **April 11:** County Commissioners Court, commissioners room, third floor of courthouse, 9 a.m.

Deadline for inclusion in the coming week's paper is Friday by 5 p.m. (THERE WILL BE NO EXCEPTIONS)

Brown promoted during Feb. 1 ceremonies

Bobby J. Brown was promoted to Master Sergeant during the February 1, 1994 ceremonies at Fort Hood, Texas. Brown's wife, Sherrie and children, Thomas and Melissa honored him with a promotion party on February 5. Mr. and Mrs. Tom Renfro of Lubbock and Mr. and Mrs. A.J. McAlister of Post were in attendance.

Having been stationed at Fort Hood for the past four years, Brown will be on maneuvers this April in Kansas. After completing First Sergeant School at Ft. Bliss in El Paso he will be reassigned to Germany.

Brown, the son of A.J. and Judy McAlister of Post and Howard Brown of Chino Hills, California has been in the U.S. Army for 18 years.

I would like to express my appreciation for your vote of confidence in the election held March 8th. As Commissioner I will strive to make the most of your tax dollars.

Royce Josey

The Circle T Lounge
Country Music Weekend

Friday • Ken Lince & Laredo
Saturday • Texas Knights

COVER \$5 COUPLE \$3 SINGLE

Regular Hours:
Open 12:00p.m. to 12:00a.m. Sun.-F
Sat 12:00p.m. - 2a.m.

9-1 both nights

NEW POOL TABLES & Shuffleboard

Taba'na Yuan'e, the Sunrise Wind Predicts a Poor to Average Year!

CitizensBank wants to help you be prepared.

Don't Miss Out! Be Ready When The Conditions are Right!

Come in now and make arrangements for your '94 Ag loans and financial planning assistance.

Post
495-3545

Lobby Hours 9-3 M-F.
Member FDIC

Drive In Hours 9-6 M-F
9-12 Sat

Slaton
828-6545

Higginbotham-Bartlett Co.
Quality & Service At The Right Price
110 S. Broadway 495-2080

Our Best

16 Oz. Dursban.....	4.97
16 Oz. Savin.....	4.97
16 Oz. Malathion 50.....	5.44
16 Oz. Diazinon.....	5.44

8.97

Grass & Weed Killer Concentrated. Won't wash or leach to nearby plants. Pint. 7144855219(1-12) 24 Oz. Ready to use. 7149252111(1-12) 3.97

7.97

Lawn Food, Plant Food or Evergreen Food
Produce fast results because they're absorbed through the roots. Lawns, plants and evergreens grow faster and stronger. 5 lb. 719307(L23)(1-6) 702154(G13)(1-6) 702984(A33)(1-6)

5.97

Our Best Lawn and Insect Control
Ready to use 10 lb. bag. 764698

Three Days Only!

March 24 - 25 - 26

Find An Egg To Win A Certificate Good For 10 - 20 - 30 - 40 - 50 % Savings on any Store Item !!

Don't Miss These Incredible Savings

LA POSTA'S ANNUAL EASTER EGG HUNT!

412 North Broadway Post, Tx 79356 • (806) 495-2648



Dispatch photo by Lillie Hart

Chamber welcomes new business

Heat Waves Tanning Salon was welcomed to the Post business community during ribbon cutting ceremonies. Heat Waves is located in Manna Square. Pictured are: (l-r) Post Chamber of Commerce secretary Dru Ann Laws, Heat Waves owners Jane Johnson and Dodie Norman, Steve Webb, Jan Crawford and Marvin Butler

SBA financing workshop March 30

There will be a morning workshop on "SBA Financing for Small Business," Wednesday, March 30, in the SBA Conference Room, 1611 10th Street, Suite 200 in Lubbock. The workshop is being sponsored by the U.S. Small Business Administration. Registration begins at 9 a.m. and the program will conclude at 10 a.m.

Subjects for the morning workshop include: "SBA Loan Application," and "Other SBA Programs." There is no registration fee for the workshop but pre-registration is encouraged due to limited space.

Reasonable arrangements for persons with disabilities will be made, if requested in advance.

For more information or registration contact Ruby Abarca at (806) 743-7462 or 1-800-676-1005.



If You See Wendy Payano Tell Her

Happy Birthday!

Anti - Stress Aromatherapy!

Milk Bath, Bubbling Bath, Soaps
Upper Canada Bath Elements...

AIR • EARTH • FIRE • WATER
1.59 TO 12.50

New SPRING Shipments Arriving Daily!
Come in and Enjoy!



Little Luxuries... Small Indulgences...
211 E. Main Calligraphy Service 495-3311

Beef Up Your Word Power

with Dr. Charles Somerville Ethics n. - the principles of honor and morality.



Contingent adj. - depending on something not certain; conditional.

Constituency n. - a body of voters.

Example of usage when the foregoing are combined:
The ethics of politicians are often contingent upon the opinions of their constituency.

Grandparents
Don't forget to come by the Post Dispatch to pick up your grandchildren's Valentine pictures.

Bridal Selections Galore

Kitchen • Bath • Decorative

Easter Bunnies, Eggs, Baskets
All sizes and Prices

Happiness Is...

128 E. Main 9:30 - 5:30 9:30 - 5:00 495-2438
Mon.-Fri. Saturday

Bob Collier Drug Co.

203 E Main Bob Collier
495-2856

We Have :

- 1) A Large Battery Supply to Keep Your Watch Running !
- 2) A Large Prescription Inventory to Keep your Heart Running!
- 3) Also, A Supply of Our New Wonder Drug...
...Milk of Magnesia !

Come See Us

If I talk to you
I would begin to cry
I'll remember the night
My heart almost died.

You took my love for granted
You played with it all the time
But you never did realize
It could hurt you sometime.

I thought our hurt was over
Again you would be mine
But you played me for a fool
And it cost you this time.

There's nothing I wouldn't have done
To make your dreams come true
But you took advantage
Of the love I have for you.

For the rest of your life
You'll be asking yourself
Was it all worth it
Just to please yourself.

I know I wasn't perfect
And I have hurt you too,
But no one will ever love you
As much as I love you.
Good bye.

Lonesome Dove

ALLSUP'S 1.5 LB. LOAF
SANDWICH BREAD
69¢ EACH OR

2\$1
FOR



PRICES EFFECTIVE
MARCH 20-26, 1994

STORE LOCATION



Bloomin' **BUYS!**

ALLSUP'S MONEY ORDERS
UP TO \$299.00 FOR ONLY
19¢

ALL TYPES COCA-COLA
12 OZ. CANS

\$1.79
6 pack



MAMA ANGELINA COMBO PIZZA
5 INCH SIZE

99¢



GRAB-BAGS DORITOS® OR LAY'S® WAVY REGULAR 65¢.....FOR **2\$1.00**

CHUNK OR GRAVY STYLE SHURFINE DOG FOOD 40 LB. BAG..... **\$6.99**

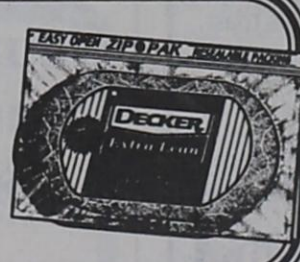
SHURFINE CRISPY RICE CEREAL 13 OZ. BOX..... **\$2.19**

COOKED FOODS SPECIAL OF THE WEEK

ALLSUP'S CORN DOG AND A 20 OZ. NR COKE FOR ONLY **99¢**

DECKER 4 X 6 COOKED HAM 10 OZ. PKG.

\$1.99



ShurFine Bleach 1 Gallon **89¢**

Charmin Bathroom Tissue 4 ctpkg **\$1.29**

ALLSUP'S MILK 1 GAL. **\$1.99**

HAM, EGG & CHEESE OR SAUSAGE, EGG & CHEESE BREAKFAST BURRITOS FOR ONLY **99¢**

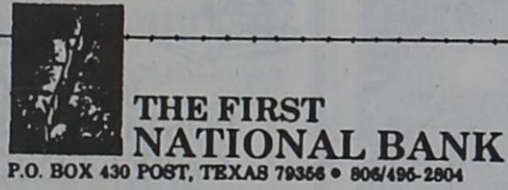
DELICIOUS NEW BREAKFAST ITEM HASH BROWN POTATO EACH **39¢**

ALL PURPOSE SHURFINE FLOUR 5 LB. BAG..... **99¢**
WESTERN FAMILY IBUPROFEN TABLETS 100 CT. BTL..... **\$2.49**

Fitti DIAPERS MEDIUM OR LARGE **\$4.49**

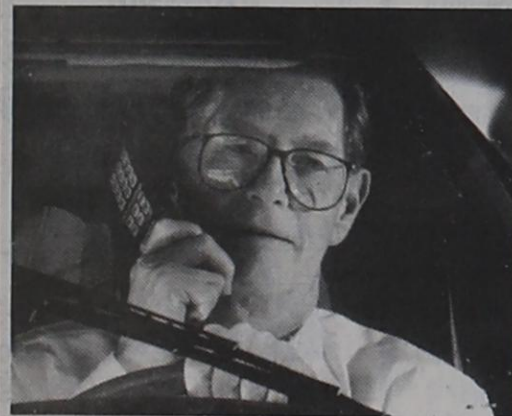
Wanted !!!

One Old Fashioned Springtime Rain to Benefit Area Farmers....The Sooner the Better.



21¢ OF REASSURANCE

Up at the crack of dawn . . .



5 hours on the road
A 30 minute meeting
5 hours back
Road construction
Wind
Rain
Getting late now
And my wife is probably worried sick!

A 21¢ call to let her know I'm okay?

Is it worth it? Is she worth it?

No question!

You can make that call for as low as 21¢ a minute*. It could mean a world of reassurance to someone who is worried. Digital Cellular makes staying in touch easy with quality cellular service at a price you can afford.

Digital Cellular service features:

- Call Waiting
- Call Forwarding
- 6 Second Billing
- Detailed Billing
- Voice Mail
- Follow Me Roaming
- Extended Call Delivery Area
- 24-hour 611 Help Line
- Expanded Toll-Free Long Distance Calling Area
- RoadRoamer Cellular Network®
- Emergency 911 Service

Take a minute. It's important. It's worth it. And it's only a call away. Call 1-800-662-8805 to find out how Digital Cellular can put you on the line for less. *This rate subject to minutes of use and time of day restrictions.

Digital Cellular
OF TEXAS
We're putting you on the line.

Box 53118 • Lubbock, Texas 79453 • 1-800-662-8805 • 806-924-5432
A division of Puka Lambro Telecommunications, Inc.

Obituaries

Ethel Black

Funeral services for Ethel Black, 93, were held Thursday, March 17, 1994 in the Justice-Mason Funeral Home Chapel with Paul Jones, Minister, Post Church of Christ, officiating.

Burial was in Terrace Cemetery under the direction of Justice-Mason Funeral Home.

Black died Tuesday, March 15, 1994 in the Golden Plains Care Center following an illness.

She was born in Nocona and graduated from Spanish Fort High School. She farmed in Garza County from 1921 until 1938 before moving to Phoenix, Arizona where she worked as a seamstress, realtor and beautician. Due to illness, she retired

and returned to Post in 1988. She was a Baptist.

One son, Wayne Stewart, preceded her in death on July 14, 1984.

Survivors include her daughter-in-law, Mildred Stewart of Post; two grandchildren; six great-grandchildren; four great-great grandchildren; two brothers, Travis Black of Oklahoma City, OK, and Ross Black; four sisters, Cora Lee Ash, Betty Murphy, both of Ringold, Connie Nelson of Spokane, WA and Syble Hooker of Bowie.

Pallbearers were Dusty Clary, Timp Browning, Lonnie Gene Peel, Roscoe Moulton and Ruben Solis.

Deamos Altman

Services for Deamos Altman, 73, were held Saturday, March 19, 1994 at the First Baptist Church. Jimmy McGuire, retired senior adult minister of Bacon Heights Baptist Church officiated.

Burial was in Terrace Cemetery under the direction of Hudman Funeral Home.

Altman died Thursday, March 17, 1994 in Garza Memorial Hospital.

He was born October 7, 1920 in Garza County to Benjamin Altman and Lula Maynard. He was a farmer,

World War II Army Veteran, and a Baptist.

Survivors include wife, Jean Land of Post; two daughters, Kay Wallace and Cynthia Taylor of Post; four sons, Don of Lubbock, Duke of Austin, Dennis of Singapore and Ray of Israel; one brother, Elmer Altman of Granbury; three sisters, Mae Harold and Willie Crosby, both of Littlefield; Artie Baxter of Post; 16 grandchildren and four great grandchildren.

Mary Elena Sanchez

Services for Mary Elena Sanchez, 27, were held Tuesday, March 22, 1994 at the Holy Cross Catholic Church with Lawrence Hemp officiating.

Burial was in Terrace Cemetery under the direction of Hudman Funeral Home.

Sanchez died March 20, 1994 at University Medical Center.

She was born in Lubbock on October 10, 1966 to Elias Paiz and

Sally Gutierrez. She was a housewife and a Catholic.

Survivors include husband, Carlos Resendez of Post; parents, Sally Paiz of Post and Elias Paiz of El Paso; one daughter, Nicole Paiz of Post; one brother, Theodore Paiz of Post; and grandparents, Alice Rodriguez, Mary Paiz, both of Post and Adam Paiz of Mathis.

Lewis F. Pierce

Funeral services for Lewis F. Pierce, 91, will be held Wednesday, March 23, 1994 at 2 p.m. at the Church of the Nazarene with Rev. Jim Graham officiating.

Burial will follow at Terrace Cemetery under the direction of Hudman Funeral Home.

Pierce died March 22, 1994 at Garza Memorial Hospital.

He was born February 9, 1903 in Delta, Co. He married Betty Ammons Justice December 20, 1957 in Post. He had been a resident of Post for 37 years and was a Nazarene.

Survivors include wife, Betty of Post; six daughters, Eula McCrary of

Palo Verde, CA, Dorothy Adkins of Big Spring, Ann Jackson of Huntington Beach, CA, Marcella Hair of Post, Virgie Jenkins of Brownfield, Weaver McKamie of Post; five sons, Troy Dean of Medford, OR, Rusty Dean of Post, Pokey Ammons of Lawndale, CA, Sterling Ammons of Front Royal, VA and Corkey Ammons of Post; brothers, Willie Pierce of Commerce, Marion Pierce of Celeste and Lawrence Pierce of Dallas; 37 grandchildren, 69 great grandchildren and 1 great-great grandchild.

Bridal Selections

Mrs. Randy McKee
(nee Amanda Richardson)

**Handy Hardware or
Handy Gifts**

231 E. Main 495-3516

DQ

**Treats
& Eats**

**Chicken Strip
Country Basket**

Four juicy chicken strips, fries, country gravy and Texas toast.

\$2.99

**Grilled
Chicken
Sandwich Combo**

\$2.99

Grilled chicken on a wheat bun, fries and a drink.

On Sale at Dairy Queen® March 21-April 3, 1994

©Reg. TM Am. D.Q. Corp. *Reg. TM Tx. D.Q. Op. Coun. ©Tx. D.Q. Op. Coun. At participating Dairy Queen stores.

CitizensBANK



Member FDIC



Sunday Buffet

11:30am - 1:30pm

402 S. Broadway
495-2844

"Your Hometown
Supermarket"



**EL
Matamoros**

701 N. Broadway

495-3848



Jim Whitney
915/573-2083

**ENERGY
LECTRIC**

**TOTAL OILFIELD
ELECTRIFICATION.**

2401 Ave. T Snyder, Texas
1-800-725-1884 (Snyder)

The 495-3050

Norman Agency

* Insurance you can count on...from the people you can trust *

Auto • Health • Commercial
• Property • Residential

Allstate

204 E. Main after hours, 495-2504

**South Plains
Answering
Service**

495-3069

**Justice-Mason
Funeral Home**

Dee, Janet,
Bryan and Brent
301 West Main
495-2833

"The Newspaper
Serving the People
of Garza County"

This Service Directory is brought to you by area businesses that encourage you to attend worship services this Sunday

Assembly of God

First Assembly of God (Spanish).....407 May St, Post
Sunday School 9:45, Wed 6pm.....Rev. Federico M. Builtron

Baptist

Calvary Baptist Church210 E. 6th, Post 495-2342
First Baptist Church402 W. Main, Post 495-3554
First Baptist ChurchWilson 628-6333
Pleasant Home Baptist ChurchE. 14th & N ave F, Post
.....Rev. Arthur Kelly, Pastor
Templo Bautista315 W. Main, Post 495-2416
Trinity Baptist Church915 N ave O, Post 495-3038
Justiceburg Baptist Church, Sunday @ 11:00, Don Blacklock, Pstr

Catholic

Holy Cross Catholic Church.....Ave K, Post 495-2791

Christian

First Christian Church812 W 13th, Post 495-3716

Church of Christ

Church of Christ108 N ave M, Post 495-2326

Church of God

Church of God of Prophecy602 W 14th, Post 495-3644
Power House Church of God and ChristPine Ave, Post
Iglesia De Dios De La Profecia508 N. Ave. G, Post 495-3735
Bread of Life Church of God314 N. Ave I, Post 495-2237

Church of the Nazarene

Church of the Nazarene202 W 10th, Post 495-3044

Lutheran

St. John Lutheran Church1305 Dickson, Wilson 628-6573
Parsonage628-6244
St. Paul Lutheran ChurchWilson 628-6471

Methodist-United

First United Methodist Church216 W 10th, Post 495-2942
Graham Chapel United MethodistRt. 3 Post 495-3492

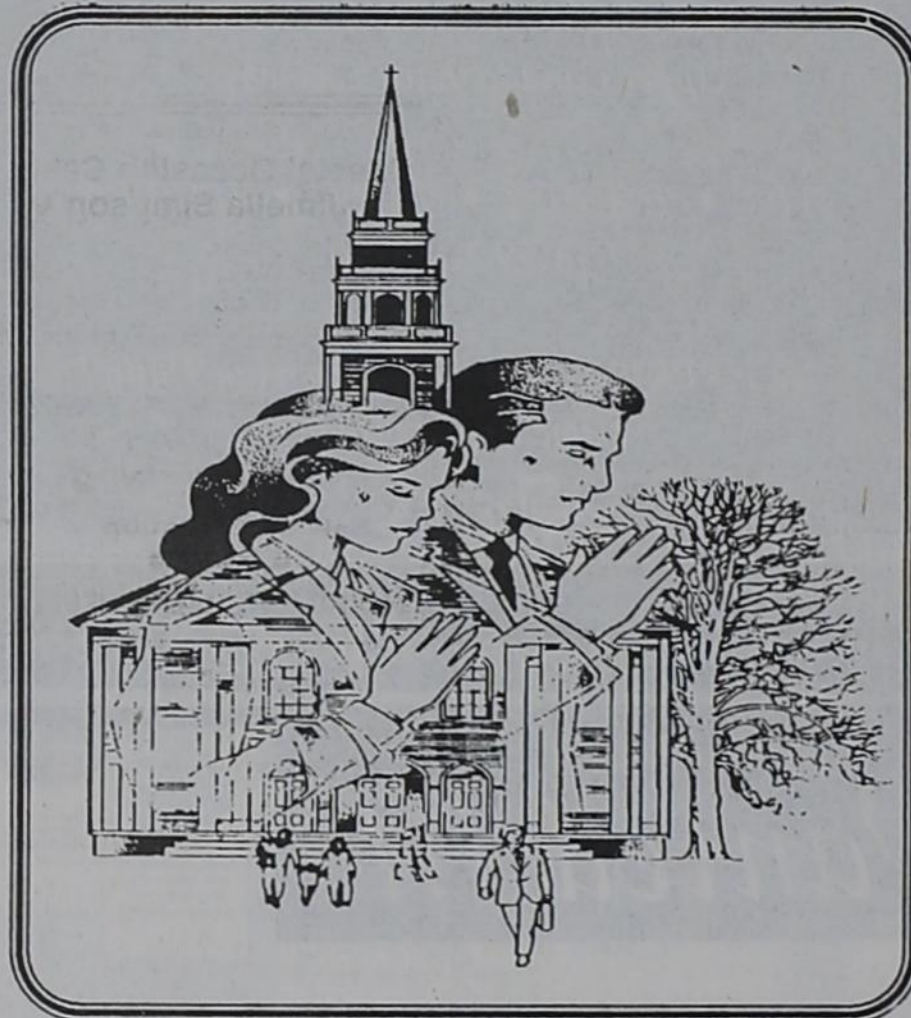
Non-Denominational

Caprock Christian Fellowship.....220 E. Main, Post 495-2765

Presbyterian

Presbyterian Church910 W 10th, Post 495-2135

"If your church is not mentioned in this please send us their information"



**From the Pulpit
Who really cares?**

A caring mother took her little darling to the psychologist because he was having some trouble. The little fellow was high strung and hyper. The doctor recommended a treatment he thought would work. But noticing that the mother was uptight he gave her a bottle of pills and said to take two each day.

Two weeks later when they went back to the doctor to check on her little darling the doctor asked how he was doing. She looked at him, and having been taking two pills a day for two weeks, with glaring eyes said very deliberately, "who cares?"

That same response could be said about God and His church today. "Who cares about God?" "Who cares about the church?" "Who cares about reaching those who do not know God?" The list could go on and on.

I would encourage every one of us to realize that we are not in the battle alone. There are hundreds of thousands of God fearing people in this world that really do care. When you begin to feel alone just remember that many are fighting the same battles, facing the same problems, in the same financial bind, as you are.

Always remember that Jesus said that he would not leave His people alone, but would at all times be with them. with that promise comes his echoing words from Heaven to every born again Christian, "I will not allow you to be tempted more than you are able to bear, but will with every

temptation make a way of escape so that you will be able to bear it."

The church that our wonderful Lord founded is still alive and doing well. Kings and Emperors have tried to stamp it out. But it still stands firm and strong. Shrewd and devious men have tried to do it in from the inside, but the old church Jesus founded is still around. Voices in our day would try to tell us that there is no use for the church, but it is still one of the places people go to find help and God.

Jesus said that "upon this rock Peter, that I am the son of God I will build my church and the gates of Hell will not stand against it" as it moves forward.

•Who cares about God and the church?

Every born again Christian that is concerned about serving God.

•Who cares about God's people?

Everyone who loves and is serving Jesus Christ.

•Who really cares about mankind?

Jesus cares and those that follow him should care.

You are not in this battle alone! There are hundreds of thousands that are right beside you. Don't give up the ship. Hang in there. In due season you will reap if you faint not said the Psalmist. Paul said that he could do all things through Christ Jesus. So can we if we will only stick by our spiritual guns and fight the battles before us.

Rev. Jim Graham



Jim Graham

CHAPARRAL
Steak House & Bar-B-Q
OPEN 7 DAYS A WEEK
Catering for Small or Large Parties
JIM JACKSON, Owner
Ph. 495-3622
Post, Texas



Phone
1-915-573-1133
1-800-552-0691

**Ammons Printing
and Office
Supplies**

121 E Main 495-2743



**PRO
Building Supply**

**Wallace Lumber
Company, Inc.**

119 N. Ave. H 495-2835

"GIVE THANKS
TO THE LORD,
BECAUSE HE IS
GOOD; HIS
LOVE
IS ETERNAL!"

PSALM 107:1

We welcome you and your family to worship with us this Sunday.

**H & M DIRT
Contractors, Inc.**

Clairmont Hwy 495-3293

Dozers • Maintainers
Backhoes • Roustabouting

• Dump Trucks • Loaders
• Excavators

• Frac Tank Rentals

Fully Insured
Jack Hair Owner

**POST HEALTH
CARE CLINIC**

a division of Methodist Hospital
SHEN S. CHEN M.D. A.A.F.P.
MIKE CAHILL PA-C

Certified Rural
Health Clinic
495-3573

After Hours 495-2828

METHODIST HOSPITAL

318 W 8th

**THE FIRST
NATIONAL BANK**

A FULL SERVICE BANK

• 806/495-2804
P.O. BOX 430 POST, TEXAS 79356

**HOTEL
GARZA**

Bed & Breakfast
Weddings - Receptions
Meetings - Retreats
Reunions - Catering
806/495-3962

The Post Dispatch

495-2816

Classified Advertising

Classified Advertising Rates

Paid in advance ads
25¢ per word, \$3.00 minimum (up to 12 words), 25¢ each additional word.

Billed ads . . . 35¢ per word, \$4.20 minimum (up to 12 words), 35¢ each additional word.

DEADLINE IS 5 P.M. MONDAYS FOR ALL AD COPY AND PAYMENTS FOR PAID IN ADVANCE ADS.

Personals

Post Group of Alcoholics Anonymous meets every Thursday night at the First Presbyterian Church, 901 West 10th at 8 p.m. Closed meetings are held except on the last Thursday night of the month, which is an open meeting. We have supper at 7 p.m. and the speaking starts at 8 p.m. Anyone who wishes to talk or ask about an alcohol problem, call 495-3667 or 629-4393.

City County Drug and Alcohol Abuse

A non-profit service organization to assist with treatment placement, referrals, and confidential counseling for the substance abuser, alcoholic or family members concerned about their loved ones drinking or drug addiction. For information or appointment call office 495-3173, a 24 hour number. All call strictly confidential. We Care. Director Colleen Tyler, B.S., C.A.D.A.C., L.C.D.C. Assistant Johanna Waterhouse, B.S.

Post Independent School District invites the Senior Citizens of the district to come by the Superintendent's office and receive a gift of a complimentary general admissions pass that will admit you to all school functions. (You will be asked to present identification so that a pass can be issued in your name).

Spanish Speaking AA

Spanish speaking AA meetings will be held every Tuesday night at the Catholic Church from 8-9 p.m. Come one, come all.

Help Wanted

Experienced nurse aides needed for busy home health agency. Various opportunities available. Lubbock and surrounding counties. Call 792-0192.

Nail Tech and barber to cut ethnic hair. Reasonable booth rent. In Slaton call 828-5993 or 828-4577, leave message.

HELP!!

Need 6 full time and 10 part time people to help me with my business. Full training. Start now. Call 800-828-6058.

Watkins' PRODUCTS

Impeccable Quality Household Products Since 1888. Wholesale or Retail. Free Catalog & Information:
208 S. Main Ave.
Rt. 3, Box 208 - Post, TX 79356
Tel: (806) 495-1118

Get Your MONEY'S WORTH out of your unwanted items. Sell them in the classifieds.

Call **495-2816** to place your ad.

Jobs Wanted

Will keep elderly in my home, treat like family. Certified, references. City limit, call 793-1283.

Homes for Rent

House for rent or lease - 124 N. Ave. O. Call 745-2881.

Apartments for Rent

Apartments for rent - 109 N. Ave. N. Call 495-4061, day or 495-2520 after 5.

Mobile Homes for Rent

3 bedroom trailer - furnished, washer & dryer. \$200/month, security/cleaning deposit required. Call 495-2336. No inside pets. Available April 1.

Homes for Sale

3/2/2 brick home. Call 495-3154, 512-345-0399 or 512-339-2360. Betty Jo Sharp.

Nice brick home, 3 or 4 bedrooms, 2 1/4 baths, central heat and air, carport. For info. call 495-2610 after 5 p.m.

Miscellaneous for Sale

Sofa sleeper with mattress, like new. Gold, brown and green tweed. Have to see to appreciate. Excellent condition. 806 W. 5th, 806-495-2277.

Vehicles for Sale

FOR SALE: 1988 GMC extended cab. 3500 series, new tires, fully loaded, mint condition. Call 495-4154.

1984 Pontiac Fiero, good condition, very clean.

1980 Mercury Cougar, good school car, "needs a little work."

Large Antenna pole. Everything sold "as is". Call 495-2252.

Lost and Found

Reward offered for return of black zippered Starite notebook containing 23 CD's. Lost on Tahoka Hwy. Call 495-3674.

Pets and Supplies

Puppies to give away to good home. 1/2 Lab, 1/2 Cowdog. 505 W. 7th after 4 p.m.

Kitten to give away. Call 495-2664.

Garage Sales

Carport Sale - Saturday, 8:30-? Clothing (birth to adult), furniture, odds & ends. 112 W. 12th. Donna Baker and Judy Massey.

Multi-family sale. East side of mini storage at 4th and Broadway. Lawnmower, dryer, furniture, clothes, tools and more. Saturday, 8 a.m.-?

Saturday, 10 until 7 6 1/2 miles west on Tahoka Hwy 380. Brown brick house on right.

Singer sewing machine in cabinet, ceiling fan with light, range vent, lots more. 119 N. Ave. S, 8:30 to 5.

Legal Notices

NOTICE TO ALL PERSONS HAVING CLAIMS AGAINST THE ESTATE OF WILLIE LEESELL PREWITT BARTLETT

Notice is hereby given that the original Letters Testamentary for the Estate of WILLIE LEESELL PREWITT BARTLETT, deceased were issued on March 4, 1994 in Cause No. 1569, pending in the Probate Court of Garza County, Texas to:

WILLIE LEESELL PREWITT BARTLETT

The residence and business addresses of the Executor is in Garza County, Texas. The address of Executor being Durwood H. Bartlett, 115 North Ave. M., Post, Texas 79356.

All persons having claims against the Estate which is currently being administered are required to present them within the time and in the manner prescribed by law.

Dated this 10th day of March, 1994.

Law office of:
S. RAPE FOREMAN
300 West Main St.
Post, Texas 79356
State Bar No. 07255200
Attorney for the Estate

Birthday • Anniversary • Wedding
"Special Occasion Cakes"
Jimella Simpson
After 5 p.m.
806-495-3318
Post, Texas

Folli's Heating & Air Conditioning
Sales, Installation & Service
TRANE EQUIPMENT
FREE Estimates
Dial 628-6371
Insured and Licensed

Legal Notices

Notice of Application For Fluid Injection Well Permit

Primrose Operating Co., P.O. Box 1391, Wichita Falls, TX 76307 has applied to the Railroad Commission of Texas for a permit to inject fluid into a formation which is productive of oil or gas.

The applicant proposes to inject fluid into the San Andres/Glorietta formation, Dorward Oil Unit #4 lease, Well Number 1. The proposed injection well is located 8 miles SE from Justiceburg in the Dorward Field, in Garza County. Fluid will be injected into strata in the subsurface depth interval from 1958 to 2556 feet.

LEGAL AUTHORITY: Chapter 27 of the Texas Water Code, as amended, Title 3 of the Natural Resources Code, as amended, and the Statewide Rules of the Oil and Gas Division of the Railroad Commission of Texas.

Request for a public hearing from persons who can show they are adversely affected, or requests for further information concerning any aspect of the application should be submitted in writing, within fifteen days of publication, to the Underground Injection Control Section, Oil and Gas Division, Railroad Commission of Texas, Drawer 12967, Capitol Station, Austin, Texas 78711 (Telephone 512/445-1373).

The important thing is not to stop questioning.

—Albert Einstein

General Construction and Repair

Carpentry • Remodeling
Painting • Cement
Roofing • Sheetrock

495-4043

Travis Morgan

"20 Years Experience"

Toby's Painting

-contract service-
any type of paint job
Residential or business
call Toby Torres
495-2122
Mon-Fri. 8:00-5:00

Post Insurance

Serving Post Since 1911

- All Your Insurance Needs
- Auto - Home - Commercial - Bonds
- Quotes available by phone

106 N. Broadway 495-2894



Robert Hall
Chevrolet-Olds-Geo
Jayton, Texas
806-237-2182

SMALL ACREAGE WITH ALL UTILITIES:

1 acre just outside the city limits

HOME FOR ALL SEASONS:

3/2 large living area and kitchen, storage house, greenhouse and wonderful backyard

GREAT LOCATION:

3/2/1 brick fenced yard on quiet street

REDUCED TO SELL:

3/2/1 newly painted inside and out, central air and heat, fenced yard with lots of fruit trees

BUYERS CHOICE:

two 2 bedroom homes \$20,000 or less

Nice Older Home--Reduced to Sell
Good Location, 2 bedroom, 1 bath, Large Living Area, Carport

*Commercial Lots Vicinity of 12th & Ave H.

Mitchell Real Estate

Kim
495-3719

Barbara
495-3987

Mike and Wanda
495-3104

Germania

Farm Mutual
Insurance
Association
Locally served by

Jerry
Taylor

115 N. Ave. H
Post, Texas 79356

495-3330

or

495-3875

New
S & H 2-paddle Dikers
Roll-A-Cone Equipment
8-row Disk Listers
Spring tooth points
Rhino 4-row shredders
10' Hydraulic Blades
5-shank Sub soil plows
BHC 4-shank Panbreakers
BHC Rocap Cultivator
LubTex Sweeps & Disks
ADAMS
Farm Equipment Co.
Idalou Hwy - Lubbock
762-2510

P & L Welding & Machine

Commercial - Farm - Ranch - Oilfield
Field and Shop Welding

- * Portable welding rigs
- * Steel Sell
- * Firetubes (exchange)
- * Saddle, Tail & Wrist Pin Bearing (exchanges)
- * Oilfield Mechanical
- * Portable Weight Arm Boring Machine
- * Gear Box Repairs
- * Pump Repairs

Ralls Hwy in Post

495-3447

The Post Dispatch for

all of your

Photo Copy needs

ONLY **10¢** per copy

Convenient and affordable...great quality. Reducing or enlarging.

123 E. Main

495-2816

TexSCAN

Statewide Classified Advertising Network

More than 300 Texas newspapers for \$250. Call this newspaper for details.

SIMBRAH BULLS REGISTERED, easy calving, thick, good quality and good disposition. Guaranteed ready to work! Reinzar CW Ranch, near San Antonio, 210-324-6659, 214-732-0913.

DRIVERS, TOP OPPORTUNITIES for owner operators in three fleets: Relocation services, blanketwrap and high value products. Outstanding tractor purchase program available. Ask about RSD performance compensation - earn up to 6% more. Tuition-free training for inexperienced drivers. North American Van Lines, 1-800-348-2147, Dept. E-21.

HAROLD IVES TRUCKING hiring drivers. Free driver training. Students welcome. Excellent benefits, excellent equipment, excellent training, excellent opportunity. Come grow with us: 1-800-842-0853.

DRIVERS: FLATBED 48 state OTR. Assigned new conventionals. Competitive pay, benefits. \$1,000 sign on bonus, rider program, flexible time off. Call Roadrunner Trucking 1-800-876-7784.

DRIVERS CELADON TRUCKING runs border to border, Canada to Mexico. We need teams & solos. We pay for your experience! Call for details 1-800-729-9770.

COVENANT TRANSPORT FLEET is expanding. \$500 sign-on bonus (after 90 days). Last year our top team earned over \$95,000. Starting at \$0.27 to \$0.29 per mile. Plus bonuses to \$0.38 per mile. • Paid insurance • Motel/layover pay • Loading/unloading pay • Vacation, deadhead pay • Solos welcome • Truck driving school graduates welcome. Requirements: • Age 23 • 1 yr. verifiable over-the-road • Class A CDL with hazardous materials. 1-800-441-4394/915-852-3357.

INTER/INTRASTATE DRIVERS wanted based in the Houston area. Excellent pay and benefits. Late model assigned conventionals. Contact West Side Transport, 1-800-861-4282, Local 713-456-8615.

WE BUY ROLEX watches working or not, repairs too! Designer's Choice Jewelers, 1-800-324-1650. Gold bullion coins bought/sold. Designer's Choice Jewelers and Coins Kerrville, 1-800-324-1650.

WANT TO BUY pine or hardwood timber in Sabine, San Augustine, Newton, Jasper or Tyler counties. Call day or night 409-584-2163.

YOU CAN OWN your own home! No downpayment on Miles materials, attractive construction financing. Call Miles Homes today, 1-800-343-2884, ext. 1.

ALL STEEL BUILDINGS: Winter warehouse clearance, buy factory direct, many sizes available. 24' - 75' wide any length buy now, free storage until spring, 1-800-825-0316.

SINGLETON SUPPLY METAL Buildings: 24x30x10, \$3,050; 30x40x10, \$4,200; 30x60x12, \$5,995; 40x75x12, \$8,150; 50x100x14, \$12,550. Call for other sizes. Mini-warehouse systems. Competitive pricing. Fast delivery. 1-800-299-6464.

55 ACRES, HILL Country hunting/recreational. Edwards County, end of road, electricity available, Oak/Cedar trees, Deer, turkey, hogs. \$1,000/down, \$140/month (\$20,000-7.99%-30 yrs.) TX-VET. 210-257-5572.

BECOME A PARALEGAL. Join America's fastest growing profession. Lawyer instructed home study. Choice of specialty programs offered. P.C.D.L., Atlanta, Georgia. Free catalogue. 1-800-362-7070, Dept. LC72202.

BE A RADIO announcer. On the job training at local radio stations. Train around work. No experience required. Call toll free recording. Free brochure. 1-800-858-4241.

HAPPY JACK TABLICKS: Prevent fleas Mother Nature's way without pesticides. Chewable & nutritious tablet. For dogs & cats. At farm & feed stores.

SUNQUEST WOLFF TANNING Beds, new commercial-home units from \$199. Lamps, lotions, accessories. Monthly payments low as \$18. Call today, free new color catalog. 1-800-462-9197.

DUTCH STUDENT INTERESTED in sports, computers, Other Scandinavian, European, South American, Japanese high school exchange students arriving August. Become a host family/AISE. Call AISE 817-467-1417 or 1-800-SIBLING.

GOT A CAMPGROUND membership or timeshare? We'll take it. America's most successful resort resale clearinghouse. Call resort sales information toll free hotline 1-800-423-5967.

CRIME PREVENTION PRODUCTS - buy wholesale direct, best prices. Personal, car, home alarms - pepper spray, stun guns, more! Products in demand, fight crime. Free catalog. 1-800-348-0312.

CASH PAID FOR your own finance notes nationwide. Stop collecting payments get all your money now! For free quote and brochure, Centurion Capital, Ruth, 1-800-759-2919.

JOIN OUR CHRISTIAN Singles Outreach organization. Local and worldwide membership. Call 1-800-323-8113, Ext. 617.

ADOPTION: DALLAS AREA couple would like to meet you to discuss open adoption as an option for your child. Call Christy or David collect, 214-240-4700. It's illegal to be paid for anything beyond legal medical expenses.

The Post Dispatch

"Serving the people of Post and Garza County"

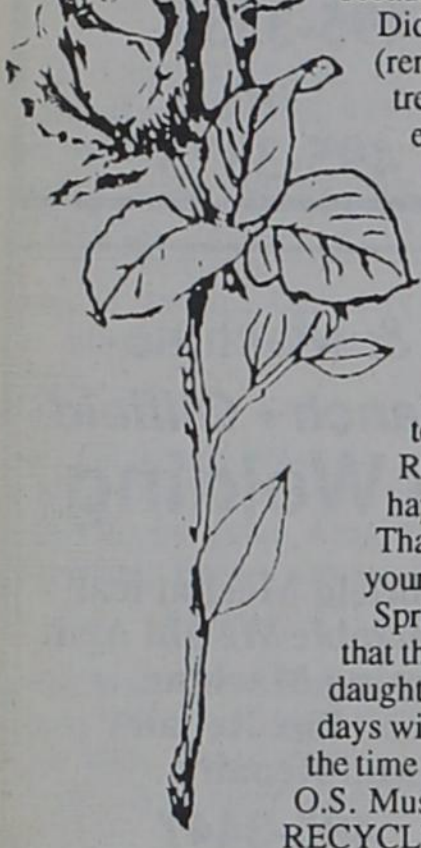
Classified Order Form

It's easy... just fill out this form and return it to us with your check or money order. \$3.00 per ad (up to 12 words) 25¢ per additional word.

Clip and mail to: **The Post Dispatch**
P.O. Box 10
Post, TX 79356

I was impressed with the turn out of recyclers last Wednesday. The Girl Scout troop was there with their short on and their sleeves rolled up ready for work. Thanks again girls, you're good sports and I appreciate you. I would like to challenge more of our restaurants and businesses in town to recycle. The Chaparral Restaurant, Hotel Garza and Garza Memorial Hospital are the only food service entities I know of that are recycling their cans and plastics. If any others in town are recycling, let me know and I will stand corrected. Just remember to rinse out the cans, remove both ends and they will flatten very easily.

The ASCS office and Courthouse are collecting computer and white mixed ledger paper for recycling. Many of the teachers and office staff at the schools are recycling. I have had many calls about the telephone books. We are not able to take the phone books, but I learned yesterday that the Recycling Center in Lubbock will take all phone books between November 19 and December 11. Otherwise just put them in the trash because they are not recyclable.



Did you know that recycling tons of newspaper (remember we recycled 3 tons in 4 hours) saves 80 trees, 44,460 gallons of water, 25 million BTUs of energy and 303 pounds of pollutants from being pumped into the atmosphere?...and that recycled aluminum requires 95% less energy than producing it from bauxite and each recycled can saves the equivalent of half a can of gasoline.

Monday evening, Colleen Tyler, from the Alcohol/Drug Abuse Program here in Post, spoke to the Extension Homemakers (FCE) in the Reddy Room. Her subject had to do with "finding happiness in whatever state you find yourself." Thank you Colleen for your words of wisdom and your time.

Spring break is over with and I heard by the grapevine that the snow was not all it was cracked up to be! My daughter and her friend came to Post to spend three days with me, so my Spring Break was great. We spent the time going up and down Main Street and visiting the O.S. Museum. I sent them back to Austin resolved to RECYCLE!

Radishes, Roots & Rosebuds

by Deanna Lee
Garza County Extension Agent
Home Economics

Back when

10 years ago
March 21, 1984

Post Elementary students won the team first place trophy in the UJL contests held here. The fourth grade picture memory team of Tamara Jones, Sara Hudman, Jason Asbill, Tray Payne, Rubie Perez, Sara Alexander and Jay Mitchell took first place.

Seven fires kept the Post Volunteer fire department busy last week. Their action began with a trailer house fire and ended with a wreck on US 84 north where firemen washed diesel and gasoline from the highway.

For just a few hours, the community center was transformed into a Disney fantasy land with emcee Mary Poppins (Marita Jackson) welcoming the scouts, their fathers and guests to the annual Girl Scout father-daughter banquet.

20 years ago
March 21, 1974

Michael Hass, Post seventh grade student, repeated as Garza County Spelling Bee winner. Camille Wheeler, fifth grade student from Southland, was runner-up. She is also the alternate county champion.

David Morrow, Post eighth grader, won third place.

In a front page feature picture, Mrs. Ray Hodges looked over a model of a locomotive crossing a railroad bridge. The model was part of a public library display contributed by Bud Davis' seventh grade history class. The display also included a model of the Alamo and other historical Texas sites.

Post school trustees at a called meeting, authorized their attorney to draw up a five year lease agreement with the Justiceburg community organization to operate Justiceburg lake at the cost of \$1 per year.

The Post Antelopes rolled up 100 points, one of the highest totals of any Post track team in recent years, finishing second in the class AA division at the West Texas Relays in Odessa.

30 years ago
March 19, 1964

The Post Antelopes placed two players, Danny Pierce, junior and Wendell Johnson, senior, on the first team All-District basketball squad. The Post Does placed three players, Nita Wilson, Dee Ann Walker and Cheryl Martin on the girls All-District team.

The Post Lions Club presented an eye movement and photographic machine to the Post Public Schools for use in the school's reading program.

Showing at the Tower was "Mail Order Bride" and "One Man's Way, the story of Norman Vincent Peale."

40 years ago
March 18, 1954

Jennie Lou Redman, representing Garza County 4-H Clubs, was selected 4-H princess of the South Plains Junior fat stock show. She competed against eight other candidates.

In a front page feature picture, Maxine Durrett, president of the Woman's Culture Club, presented a U.S. Savings Bond which was in excess of \$100 to S.E. Camp, City Park board member. It represented the club's contribution to the park improvement program.

Post students won the first three places in the 1954 county spelling bee. Victor (Sonny) Hudman won first place, Jimmy Short was second and Claudine Carey came in third.

In a feature photograph, five Post 4-H club girls were shown putting



up their National 4-H week window display at Dodson's Jewelry. They were: Janet Blacklock, Beverly Bartlett, Jennie Lou Redman, Sue Stephens and Oncita Jones.

50 years ago
March 23, 1944

Mayor Walter Hyde designated the week beginning April 3 as city-wide clean-up week.

The Post Chamber of Commerce erected two huts for hitchhiking service men. They were located on the north and south sides of Main Street near its intersection with the Lubbock highway.

5 p.m. Monday is deadline for all advertising

Local students graduate, receive honors from Tech

Several local students received degrees during Texas Tech's fall commencement exercises held December 18, 1993. Jennifer Hudman and Ben James Kirkpatrick received their Bachelor of Science in Recreation and Leisure Services. Randy Lewis received a Bachelor of Science in Interdisciplinary Agriculture and Robert Wilson

received his Master of Education in Educational Leadership.

Post students appearing on the Texas Tech President's List include Joel Basinger, Pamela Humble, and Wendy Payano. Students qualifying for the President's list must earn a perfect 4.0 grade point average while maintaining 12 or more semester hours of classwork.

McCOY'S

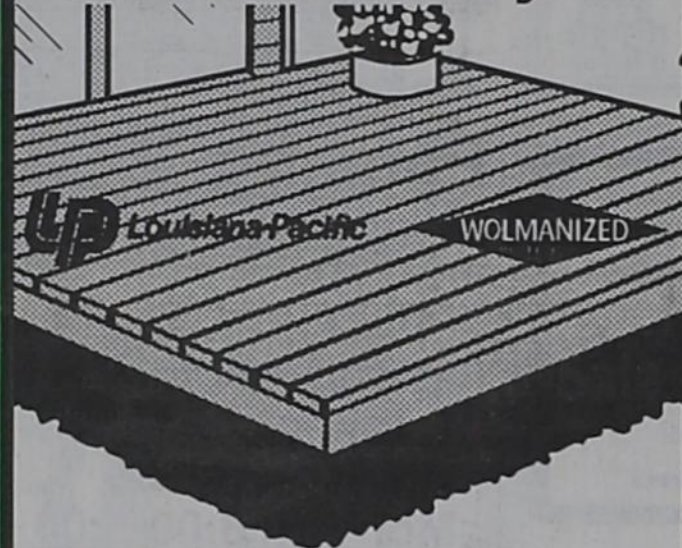
BUILDING SUPPLY CENTERS

whether it's building a deck, adding on to your home, or maybe some work inside the house. Stop by at McCoy's where we want to be your #1 Building Supply Center for 94!

Don't Let The Weekend Pass Ya' By!

Now's the time to spruce up around the house,

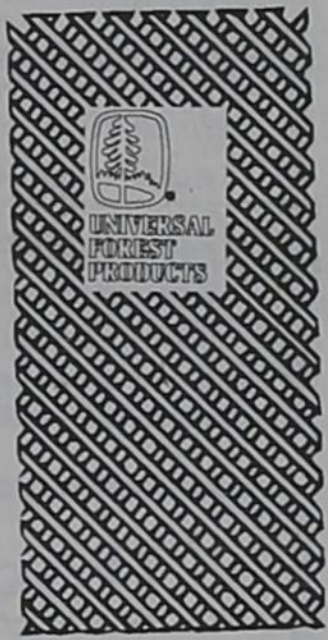
Flat Deck Project



This project includes all #1 grade Wolmanized treated lumber, all hardware, and illustrated instructions.

10 ft. x 10 ft. **213²²**

Lattice Panels

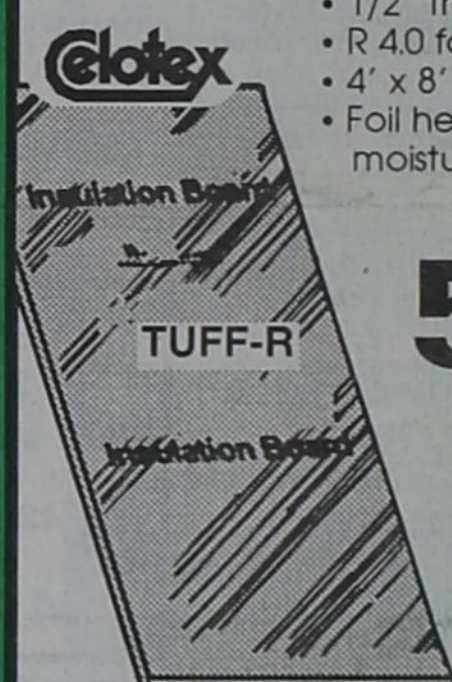


- 5/8" thick
- Treated to 40 CCA for ground contact
- 4' x 8'

9⁹⁹ Sale

Other sizes of Lattice are available - please call for a price

Foam Sheathing



- Foil on both sides
- 1/2" thick
- R 4.0 factor
- 4' x 8' sheets
- Foil helps keep moisture out

5⁷⁹ Sale

!! Opening Soon !!

BOB AND SUZANNE'S GREENHOUSE
THE GARDEN SPOT OF WEST TEXAS.....NO!

WELL AT LEAST THE GARDEN SPOT OF GARZA COUNTY....OK, OK !!

THE GARDEN SPOT OF THE SOUTH SIDE OF U.S. 84 FROM ABOUT OUTLAW PARK TO ALMOST THE GAS PLANT.

Robert Hall Chevrolet-Olds-Geo

is pleased to announce it is an authorized agent of

Digital Cellular of Texas

For Information Call Tra at Robert Hall Chevrolet
(806) 237-2182

- Cellular Phone as low as \$199
- Monthly Fees of \$15

Coverage across the South Plains of Texas
Come by for a FREE demonstration!

"Productivity appraisal" may lower the property taxes on your farm, ranch or timber land!

Texas law allows farmers, ranchers and timber growers to pay property taxes based upon the "production value" of their land rather than on its market value. This "productivity appraisal" means qualified land is taxed based on its ability to produce crops, livestock or timber—not on its value on the real estate market. And it can mean substantial property tax savings.

When is the application deadline?

If your land has never had a productivity appraisal, you must apply to your local appraisal district by April 30 to take advantage of this benefit on your 1994 property taxes. You may get up to 60 extra days if you have a good reason and ask for it by April 30. If you miss this deadline, you may still be able to apply, but you will pay a penalty. Check with your appraisal district office.

Do you need to reapply annually?

If your land already receives agricultural or timber productivity appraisal, you normally don't need to reapply unless the chief appraiser requires you to. If a new application is required, the appraisal district will notify you by mail.

For more information, call or come by:

GARZA COUNTY APPRAISAL DISTRICT
124 EAST MAIN
POST, TX, 79336
Tel: (806) 495-3518

We'll be happy to answer your questions and provide you a free copy of "Texas Property Taxes: Taxpayers' Rights, Remedies, Responsibilities"

in contact
Comptroller's Property Tax Division
P.O. Box 13528
Austin TX 78711-3528

A public service announcement courtesy of this newspaper.

"La valoración productiva" puede reducir los impuestos de su terreno agrícola, ganadero o maderero!

La ley de Texas permite a los granjeros, rancheros y madereros pagar sus impuestos de propiedad basados en "la valoración productiva" del terreno cultivado o sea en su capacidad de producir cosechas, ganado o madera—y no de su valor en el mercado actual. Y esto le puede ahorrar en sus impuestos de propiedad.

¿Cual es la hora del cierre?

Si su terreno nunca ha tenido una valoración productiva, Ud. debe solicitarla a su distrito de valoraciones entre el viernes, 30 de abril, para recibir el beneficio en sus impuestos de propiedad de 1994. Puede recibir hasta 60 días más si tiene una buena razón y si solicita el tiempo adicional antes del 30 de abril. Si pasa de esta fecha, es posible que todavía lo podrá obtener, pero pagará una multa. Pregunte en la oficina de su distrito de valoraciones.

¿Debo solicitarla cada año?

Por lo general, si su propiedad ya recibe una valoración productiva aplicada o maduro, no hay necesidad de pedir una nueva cada año—al menos que se lo pida su jefe de valoraciones. Si una solicitud nueva se requiere, el distrito de valoraciones le mandará un aviso por correo.

Para más información, llame o visite:

GARZA COUNTY APPRAISAL DISTRICT
124 EAST MAIN
POST, TX, 79336
Tel: (806) 495-3518

Con mucho gusto contestaremos a sus preguntas, o le proporcionaremos una copia gratis de:

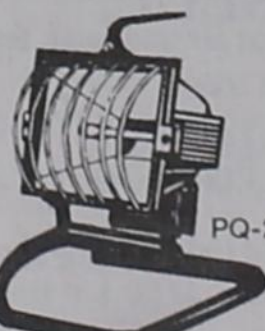
"Impuestos Sobre la Propiedad en Texas: Derechos, Recursos y Responsabilidades del Contribuyente de Impuestos"

o en contacto
Comptroller's Property Tax Division
P.O. Box 13528
Austin TX 78711-3528

Un servicio público de este periódico

Portable Quartz Lighting

- 500 Watt quartz bulb included and installed
- 6 foot grounded cord
- Illuminates up to 9000 sq ft.
- Handy work light for house and commercial uses
- Great light for auto repair, outdoor repair
- Adjustable aiming handle
- Protective lens guard



15⁹⁹ Sale

WaterGuard

- Water repellant
- Contains SunBlock™ U.V. protection
- Mildew resistant coating
- Linseed oil strengthens wood fibers
- Gallon size



8⁹⁹ Sale

Concrete Mix



- (Redi-Mix) concrete
- Available in 80 lb. bag
- Sand, gravel and cement

2¹⁹

We have a full line of Concrete Products - give us a call for a current price

Vent Fan

- 50 CFM
- Removes damaging moisture
- Easy do-it-yourself installation
- Matte-white grille
- Quiet fan
- Attractive styling



11⁹⁹ Sale

Hours

7:30am - 6:00pm Mon.-Fri.
7:30am - 5:00pm Saturday

BUILDING FAMILY VALUES...
Always Closed Sundays

Store Location

Lubbock
Loop 289 West
Johnny Turpin
Manager
792-4484

Plainview
4605 Olton Rd
Joe Sherman
Manager
296-5482

At a Modest Charge. C.O.D.s Welcome.

