

**WINNER**  
of the Distinguished  
Service Award of the  
Vocational Agriculture Teachers  
Association of Texas

# The Bovina Blade

"In The Agricultural Center Of Farmer County"

10¢  
Per  
Single  
Copy

THE NEWSPAPER  
THAT WORKS FOR  
A BIGGER, BETTER  
BOVINA

WEDNESDAY, MARCH 17, 1965

Bovina, Texas

VOL. IX NO. 37

EXPECT CROWD OF NEAR 300--

## Fifth Annual Chamber Banquet Tomorrow

### WHITTLIN'

BY DOLPH MOTEN

Fortunately, Bovina has never been handicapped by, or bothered with irritating parking meters, or any other kind for that matter.

And we're glad. Big city officials are now taking long, hard looks at the no-armed bandits and in some cases, we understand, are deciding to do away with them.

We're convinced that parking meters are about as poor a way for cities to raise funds as we can think of. As we see them, the entire approach is all wrong. You, the potential buyer, are paying the big city for the privilege of spending your money in it, usually, when you feed the always-accepting meter.

No doubt, parking meters are one of the reasons that suburban shopping centers have, and are, enjoying such great success in the larger towns. Shopping centers, you'll notice, don't have parking meters.

We shouldn't, we know, be complaining about the troubles of big cities because Bovina might possibly have a few problems of its own. But still, we've always had a dislike for parking meters and are glad to see that maybe, at long last, they're on their way out.

If they are: Good riddance. Let us be among the first to say we're glad to see them go.

Henry Minter and Bill Denney are fine gentlemen and are doing wonderful jobs for the community in their respective positions of deputy sheriff and city marshal.

But try as we can, we just can't work up the tremendous respect for them that the five-year-old-we-know-best has. He's of the opinion that there can't possibly be anything wrong with anything that the two Bovina lawmen come in contact with.

If all five-year-olds in this community have the same respect for Minter and Denney that he does, and they keep it, there won't be any problems for Bovina law enforcement officials in years to come.

And back a few months ago, when Bill was still fire chief, and city marshal all at the same time, that was a double good deal in the eyes of a youngster. Until now, we just haven't gotten around to telling him that Bill Denney isn't the fire chief anymore. Maybe we should.

We have spent some time trying to explain to him that newspapermen are important, too, but apparently our efforts along that line have all been useless.

Jaycees can get more civic improvement projects done quicker and easier than any other organization designed for that purpose.

A case in point is Bovina's new landing strip. Overnight, without most people in the community even being aware that they were considering such a project, the Jaycees came up with a place for light planes to land safely near Bovina. Nothing fancy, you understand, but adequate for the purpose.

They had it done before most organizations would have gotten a second to a motion to look into it and then see about appointing a committee to investigate further.

We think the success of Jaycees comes from being young and ambitious and not knowing that some things just "can't" (?) be done.

At the same time, Jaycees organizations -- and we're talking about chapters the country over, not just in Bovina -- probably have more projects that flop than do other civic groups.

That's not so bad, either. Babe Ruth, you'll remember, not only hit more homeruns

(Continued On Page 4)

### SUCCEEDS CALDWELL --

## Don Stone New Prexy

Don Stone is new president of Bovina Chamber of Commerce and Agriculture.

He was elected, along with other officers for 1965, at a meeting of the board of directors Monday noon in Bovina Restaurant.

Named vice president was Jay Sherrill. Mrs. Bob Estes was elected recording secretary and Jim Ware is the new treasurer.

Stone succeeds Tom Caldwell as president of the chamber which is now in its fifth year. He was elevated from the post of vice president, which he held during '64.

Jim Russell has served as treasurer of the organization and Mario Trevino has been the recording secretary.

Other members of the 15-member board of directors are Caldwell, Dolph Moten, Gene Ezell, A. M. Wilson, Edward Isaac, Don Sides, C. E. Trimble, Mutt Graham, Leon Gris-som, Wayne Spears and Otis Spears.



TOM LAVIN, guest speaker-entertainer for fifth annual banquet of Bovina Chamber of Commerce and Agriculture.

## Humorous Philosopher Feature Of Program

The yearly banquet of Bovina Chamber of Commerce and Agriculture, which has been called the "social event of the year in Bovina", is all set to unroll tomorrow (Thursday) night at 7:30 in school cafeteria.

This will be the fifth annual. A crowd of near-300 is expected to be in attendance for the banquet.

Tom Lavin of Atlanta, a humorist, philosopher, toastmaster and musician, will be guest speaker-entertainer.

A highlight of the evening's program will be presentation of plaques to outstanding citizens during 1964--the man and woman of the year.

The banquet meal will feature turkey and dressing. It will be prepared by the cafeteria staff and will be served by FHA Chapter members.

Tickets to the banquet, which will have a St. Patrick's day theme as far as decorations are concerned, are \$2.50 each and will be available at the door, announces Jack McCracken, chamber manager-secretary.

Tickets have been sold for the past two weeks by chamber directors and other members.

Don Stone, minister of Bovina Church of Christ and newly-elected chamber president, will serve as master of ceremonies.

He will give the welcome and introduce Lavin. Rev. Harold Morris, pastor of Bovina Methodist Church, will give the invocation. The benediction will be by Rev. Archie Cooper, pastor of Bovina Pentecostal Holiness Church.

McCracken will introduce out-of-town guests. Names of the man and woman of the year will remain secret until the presentations of plaques are made at the conclusion of the program.

This year's attendance total is expected to equal or exceed last year's total of 275. Preparations are being made for 300, McCracken says.

Title of Lavin's show is "Laughing All The Way," which is known as the "fastest 45 minutes in the West." The show includes 20 minutes of new jokes and stories and 25 minutes of the latest music and fun with Lavin at the piano.

This year's guest speaker is executive secretary of National Food Associates, Inc., a national non-profit educational organization with headquarters in Atlanta.

He is a native of Arkansas, but has been a resident of Texas for the past 17 years. His job carries him to over 30 states and actual air travel each year of more than 100,000 miles.

He is a member of the American Society of Association Executives, the United Airlines One Hundred Thousand Mile Club and the Transworld Airlines Ambassador's Club. He has served in almost every office of the Atlanta Lions Club and is a past president. He has appeared in Madison Square Garden in New York City as a performer at the Lions International Convention in 1948, representing Texas in the All-Star Night program.

A trained musician with a bachelor of music and a master of music degrees, he has performed for radio and TV. Lavin is author of "A Concept of Laughter," a collection

(Continued On Page 4)

## Funeral For Fred Corn Held Today

Fred Corn, 59, died at his home here Monday afternoon after suffering a heart attack.

Mr. Corn, a resident of Bovina for the past three years, was employed by Corn's Farm Store.

Funeral services were conducted this (Wednesday) afternoon in Winnsboro. Burial was in Grand Hope Cemetery there.

Mr. Corn was in apparent good health until the time of his death.

Born May 18, 1905, he was a native of East Texas.

Survivors include a son, Charles, of Bovina; two daughters, Mrs. Gerald Tidwell of Fort Worth and Mrs. Edward Fine of Dallas; one brother, Elvin Corn of Dallas; one sister, Mrs. Pearl Moore of Grand Prairie; and 13 grandchildren.



CHAMBER BRASS -- Newly-elected officers of Bovina Chamber of Commerce and Agriculture are shown discussing Thursday night's banquet. Left to right are Don Stone, president; Mrs. Bob Estes, recording secretary; Jay Sherrill, vice president; and Jim Ware, treasurer.

### FOR BOVINA--

## Jaycees Build Landing Strip

Bovina Jaycees are working on a landing strip for small aircraft for Bovina.

The strip is located on George Trimble-owned land. It is on the south side of Running Water Draw approximately a mile east of Oklahoma Lane Road and a mile south of town.

Over the weekend, a small crew of Jaycee workers "laid off" the strip using tires to

mark the runway. The strip is 100 feet wide and a half-mile long.

Jim Ware of Bovina was the first pilot to land on the new strip as he set his plane down there Sunday afternoon.

Jaycees plan to erect a windsock this week and to paint the tires which mark the strip a brilliant orange so they will be more visible from the air.



LANDING STRIPERS -- Shown at the site of Bovina's new landing strip southeast of town are these four who are a part of the group instrumental in getting it ready for use. Left to right are Jim Ware, Bob Fillpot, Charles Smith and Paul Holcomb. The tire in the foreground is one of several used to mark the strip.

### FFA Team First At Olton

Bovina FFA's freshman livestock judging team placed first in that division at a contest at Olton Saturday.

The trio placed fourth in the overall contest. Members of the team were Daryl Kirkpatrick, Bill Caldwell and Galen Hromas.

Some 15 teams were entered in the contest. The Bovina group was high team in swine judging and Kirkpatrick was second high overall individual in the contest.

Competing Tuesday of last week at Pampa, a Bovina team was 23rd in a field of 40. Mike Grissom, Caldwell and Hromas made up that team with Kirkpatrick as alternate.

The boys were accompanied to the contests by John Paul

Jones, chapter advisor.

Bovina FFA will have teams in a land judging contest at Littlefield April 1 and in the Farmer County land judging

(Continued On Page 4)

### 24 UNITS--

## Gateway Plans Labor Housing

Gateway Produce Co. has announced plans to construct 24 labor housing units here.

Charlie Flynn, owner of the vegetable packing company in Bovina, said this week that construction is expected to begin in the next "couple of weeks."

The housing units, to be of tile and steel construction, will be located on Gateway property north of Highway 60 and will face FM Road 2250.

The apartments will be built in one unit which will be 200 feet long and 24 feet wide. Also included in the structure will be a storeroom-washroom combination.

Each unit will consist of a kitchen, bath and bedroom, Flynn points out.

He expects the construction to be completed by May 15. "That's when we'll start needing vegetable workers here," he says.

In addition to the labor housing units, Flynn plans to make improvements to the packing shed itself before another season begins.

The need for labor housing for native workers is a result of the ending of the bracero program which has, heretofore, provided field labor for vegetable crops. The program ended

### Weather by Willie

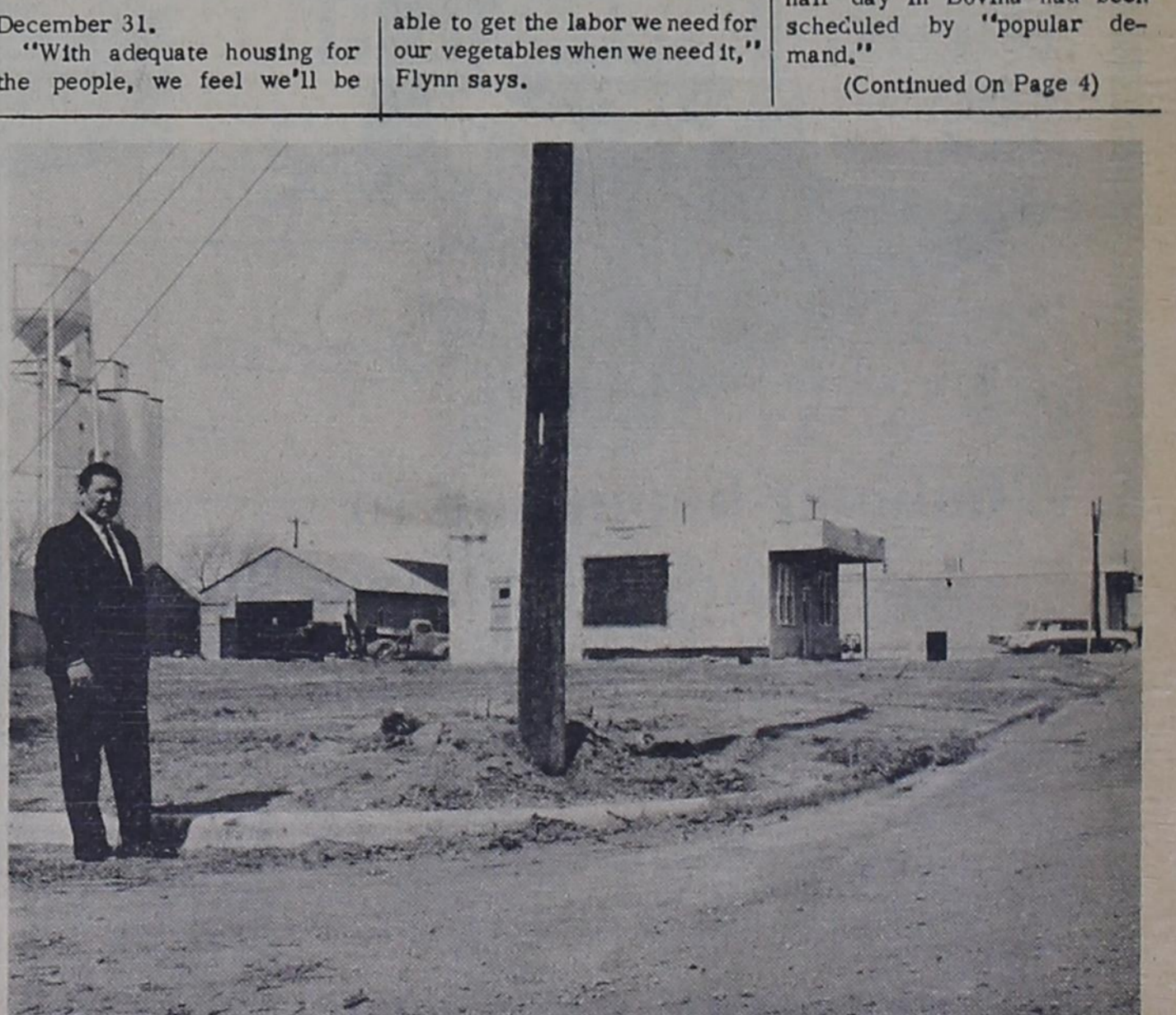
More moisture later this week. In the next 30 days, we'll have above average rainfall. Stay ready!

### License Plates Available Here Thursday Aft.

Motor vehicles license plates will be available in Bovina again tomorrow (Thursday) afternoon from 2 until 5.

Hugh Moseley, Farmer County tax assessor-collector, announces that the additional half day in Bovina had been scheduled by "popular demand."

(Continued On Page 4)



NEW BANK SITE -- Wilson DICuffa of the bank staff is shown at the corner of the site of the new building for Bovina's bank--the northwest corner of Avenue A and Third Street. The present bank building may be seen in the extreme right. Construction is expected to get underway early in April.

# WANT ADS

Mision Bautista, Bovina  
Sercio De La Escuela  
Dominical  
9:45 Mensaje 11:15  
Union de Preparacion,  
6 de la tarde  
Miercoles Servicio  
de Oracion 8 a. m.  
Todos Bien Venidos  
Pastor Ramon Delgado  
37-1tc

Late Model Repressed Singer  
Sewing Machine in walnut con-  
sole. Will zig-zag, blind hem,  
fancy stitches, Etc. 5 payments  
at \$6.72. Will discount for cash.  
Must have good credit. Write  
Credit Mgr. 1114 19th St. Lub-  
bock, Texas. 36-tfnc

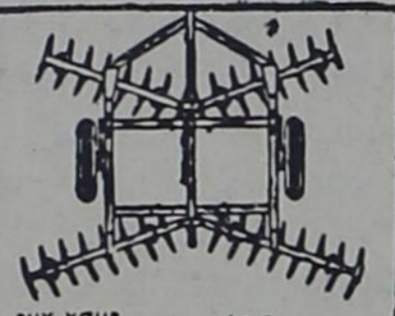
FOR RENT -- Two-bedroom  
house near school. Newly re-  
decorated. Call 238-2461.  
37-1tp

FOR RENT -- Two-bedroom  
home well located in Bovina.  
Phone Tharp 225-4562. 37-1tc

**★ CBS ★ NBC ★ ABC**  
Get All Three  
Major Networks  
To Perfection:  
Get On Cable TV Now!  
\*Low Tie -- On Fee  
As Low As \$12. Down  
\*Low Monthly Rates  
**Clearview Company**  
Of Bovina  
Phone Bovina 238-3592  
Or Friona 247-3271

FOR SALE -- 160 acres dryland  
located two miles west of Strat-  
ford. Legal description SW1/4  
Sec. 195, Blk. 1T. 100 acres is  
tillable, 60 acres grazing.  
Geraldine Priny, 1046 - W 70th  
St., Los Angeles, Calif. 37-4tc

**BUY YOUR KRAUSE** At Bovina  
IMPLEMENT CO.  
BOVINA IMPLEMENT CO.  
Hwy. 60 - 238-2541



FOR SALE OR WILL TRADE  
equity for farm machinery --  
Three bedroom home in Bo-  
vina. Less than two years old.  
See Big Nick Trilen at Ma-  
chinery Supply, Bovina, phone  
238-4861. 11-tfnc

LOST OR STRAYED -- Four  
calves weighing 400 to 500  
pounds. Branded TIT on left  
ribs. L. L. Grissom, phone  
238-3492. 37-2tc

**A-1 Plumbing**  
All Kinds Of Plumbing -  
New Installations and Repairs  
JERRY AND OWEN BURNETT  
404 Ave. C  
Pho. 238-6501

FOR SALE -- '64 Ford Galaxie  
500 2-dr., three-speed trans-  
mission, 390 engine, overdrive,  
Mac Glasscock, phone 238-  
3551. 32-tfnc

FOR SALE BY OWNER -- 160  
A. irrigated farm. Cotton,  
maize and wheat allotments.  
Strong 8" well, underground  
tile, natural gas. Located be-  
tween Hub and Bovina, half  
mile from pavement. Call or see  
D. H. Nelson, Box 604, Friona.  
Phone 247-3108. 27-tfnc

WILSON DRILLING  
--Muleshoe--  
Cess Pools, Pier Holes,  
Construction Man Holes,  
Boat Pits, Test Holes. Sizes  
from 36" to 9' in width and  
up to 50' deep.  
Phone Muleshoe  
Day - 3-0962  
Night - 3-1480 or 3-5910

FOR ALL KINDS of insurance  
and farm loans, see Jim Ware  
at Bovina Insurance in First  
National Bank Building or phone  
238-4382. 33-tfnc

**QUIETLY  
AND  
EFFICIENTLY  
BUILDING  
THE  
BEST  
UNDERGROUND  
IRRIGATION  
SYSTEMS**  
Over The Years  
Under The Same  
Ownership and  
Management

**STANDARD  
CONCRETE PIPE  
COMPANY**  
CHECK carefully the  
quality of the product  
you contract to purchase  
...  
There Is A MATERIAL  
DIFFERENCE In Product  
And Installations!  
**Bovina  
Pho. 238-6911  
Friona  
Pho. 247-28888**

FOR SALE -- '62 olds Super  
88 Fiesta 4-dr. station wagon  
with power and air. A. L. Glass-  
cock, phone 238-3231. 36-tfnc

**Machinery For Sale**  
New 66-Inch  
Shredders each \$275  
9 Ft. Industrial  
Blade With \$175  
3-Point Hook-Up  
**Thomas C. Hartwell  
Machinery Supply**  
Hwy. 60 -- Bovina  
"See Tom For Your Best Deals"

REAL ESTATE LOANS ... with  
old line reliable companies.  
Free appraisal. Best terms.  
Absolutely no service charge  
to the borrower. McCallum Real  
Estate, Bank Building, Phone  
238-2081. 13-tfnc

**Farwell Lodge  
No. 977**  
--BOVINA--  
Stated Meetings  
Second Tuesday  
Of Each Month  
7:30 p. m.  
PRACTICE SESSIONS  
Each Tuesday At 7:30 p. m.  
**Art Mast, W. M.  
J.E. Sherrill, Jr., Secy.**

FOR SALE -- 3500 acres in  
North Central Reagan County,  
level, all tillable, irrigation  
adjoining on two sides, adjoins  
pavement, \$45 per acre. Terms  
or trade. C. R. Elliott, Bovina.  
34-tfnc

**Glyn Carroll  
Pump Sales & Service**  
Also Testhole Drilling  
And Domestic Wells  
- PLAINVIEW -  
Office Pho. CA 3-2664  
Residence Pho. CA 4-6839

## Baseball Game Here Thursday

Seeking Win No. 1, Bovina  
Mustangs baseballers take on  
their second opponent of the  
young season here tomorrow  
(Thursday) afternoon.  
Farwell will furnish the oppo-  
sition. Gametime is 4 p.m.  
Coach Gary Cox has indicated  
that he will start Al Shamblin,

a senior, on the mound for the  
local club.  
The Mustangs dropped their  
season opener to Hereford there  
Tuesday of last week, 16-0.  
Gene Pruitt was the starting  
and losing pitcher. He was  
relieved by Shamblin and Scotty  
Rundell.

Probably starting line-up and  
batting order for the locals  
for tomorrow's game:  
Richard Carson, 1f  
Dean Stanberry, ss  
Randy Jones, 2b  
Gene Pruitt, 1b  
Scotty Rundell, 3b  
Jerry Cooper, c  
Kent Stanberry, cf  
Larry Mitchell, rf  
Al Shamblin, p  
There will be no admission  
charge for the game.



**PIONEER  
BRAND  
Sorghum**  
High yields--Top  
standability and  
uniformity for  
easy harvesting  
**JIM  
HEMKE**  
Phone  
389-2336  
Pleasant Hill

**Welcome**  
To The **Q** Pool  
Snooker  
Dominoes  
Thursday Night Is Family Night  
Fun For All The Family!  
Now In Our New Location  
On East Main Street  
Mr. And Mrs. Fred Langer  
Come On In-The  
Playing's Fine!  
Phone-- 238-8421

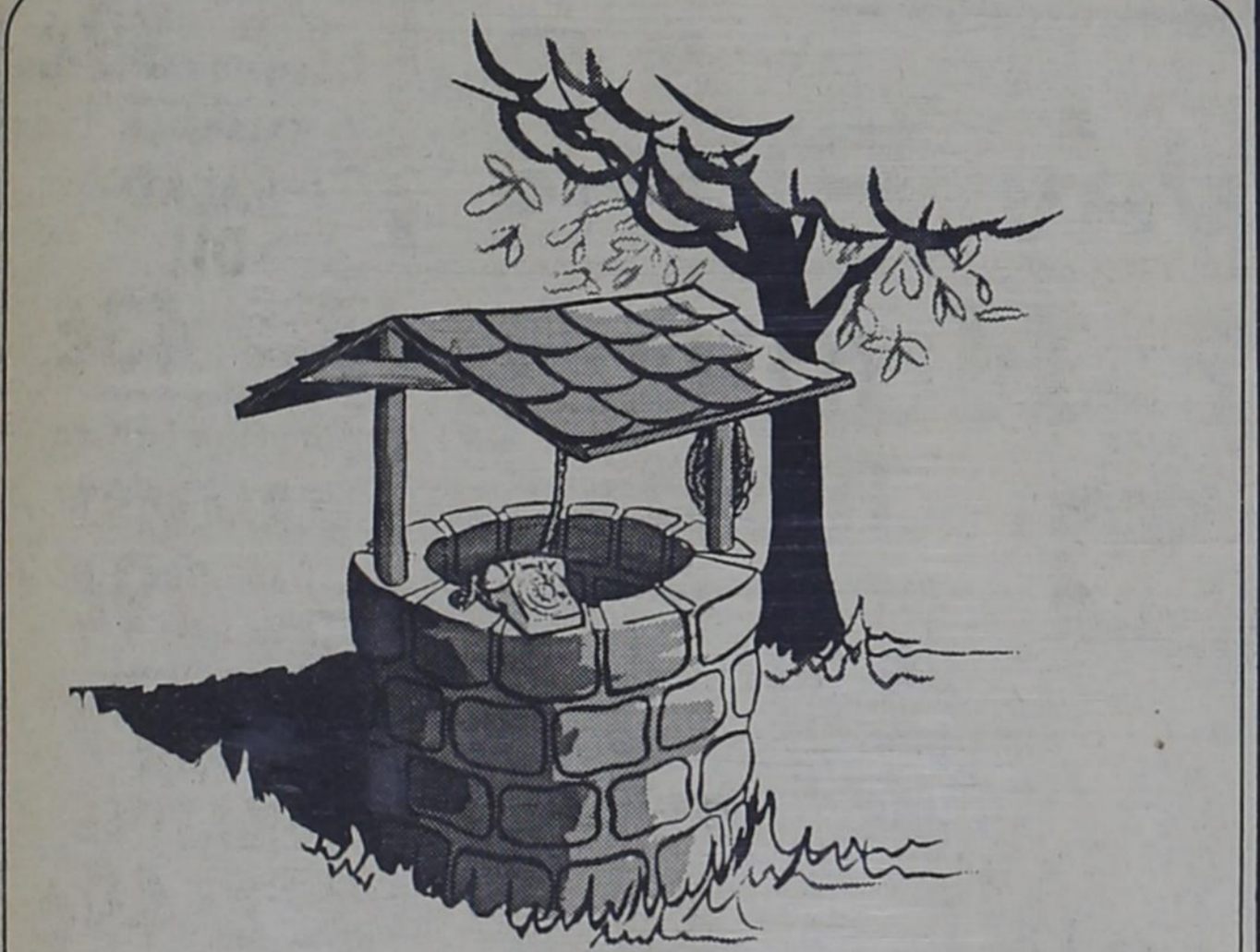
**First National Bank Presents--  
COW POKES** By Ace Reid



These calves ain't pore! They're bred slim so they  
can git thru cedar brakes without skinnin  
themselves up!

**FARM LOANS**  
FOR EQUIPMENT - REPAIRS  
- SPRING NEEDS  
**First National Bank  
of Bovina**  
--Member FDIC--  
"Helping Make A  
Good Community Better"

### COMMUNICATIONS Your Tool for Progress



Whatever happened to  
the Old Oaken Bucket?

One of our towns uses a communications system which  
automatically keeps the local water tower full from a distant  
water supply. In another of our towns the water supply lake  
uses our ELECTRONIC SENTRY® warning unit to notify  
authorities automatically when the water level reaches a low  
point. These are additional examples of how we serve in the  
ever-broadening field of communications. For full information  
about how our communications services can be your Tool for  
Progress, please call our Business Office.

**GENERAL TELEPHONE** 

## ANOTHER REPORT...

I applied Western Ammonia's liquid phosphate  
material 7-21-0 on some of my milo acreage at  
the rate of 200 lbs. per acre combined in a dual  
application with 130 lbs. of ammonia.  
My increase from this type of program was an  
additional 1300 lbs. per acre over my previous  
fertilizer program. A very substantial increase  
of dollars per acre for the dollar invested.  
I was very pleased and plan on using a similar  
program this year.  
Harvey Rials, Castro County Farmer



## ...A REPORT OF SATISFACTION

An important by-product of any company is the man who openly  
admits when he's satisfied with the service. You will find that  
Western Ammonia has the know how, equipment and products to  
give the best satisfaction there is in a fertility program.  
Western is now offering the new high analysis liquid ammonium  
polyphosphate 11-37-0 and new 11-20-0-115 in place of lower  
analysis 7-21-0. You'll find that Western also has a complete  
line of dry fertilizers.

**YOUR LOCAL WESTERN REPRESENTATIVE:**  
Bill Hutto Or Delbert Morris, Pho. 238-4164  
Hub-Lazbuddle, Jerry Eakins Or Dennis Nelson 265-3242

  
**Western Ammonia Corporation**  
Dimmitt, Texas

ANNUAL MEETING--

# Farm Legislation Topic Of GSPA

A report on proposed farm legislation highlighted the annual meeting of Parmer County Grain Sorghum Producers Association last week in Bovina Schools cafeteria.

Bill Nelson, executive vice president of the GSPA, made the report. He had recently returned from a trip to Washington.

Tom Caldwell of Bovina and Ellis Tatum of Black were re-elected to the association's board of directors. Holdover directors are Dub Anthony of Friona, Elmer Hargrove of Farwell and J.D. Kirkpatrick of Bovina.

Anthony spoke at the beginning of the program on activities of the GSPA.

Nelson told his audience that the farm bill was expected to be sent to Congress soon. He pointed out that there is a "growing feeling that the new farm bill must cut the farm budget or it will be vetoed."

"Some form of limiting payments to 'big' farmers will be in the bill or will be introduced by Congress committees. The big hassle will come over whether limits will be in terms

of dollars or acres eligible for certificates," Nelson predicted.

Attending the meeting here were James Roach, A.L. Hartzog, J.B. Sudderth, Bob Estes, G.D. Anderson, Jr., Hargrove, Kirkpatrick, Charles Hawkins, Charlie Owen, J.B. Barrett, Floyd Damron, Jim Russell, Ronald Minyen, Wendell Garner, Grady Sorley, Earl Stevenson, Edwin Lide, Joe VanZandt, Caldwell, Harry Johnson, Earnest Woelfel, and Dolph Moten.

## 4-H Horse Meeting Saturday

Boys and girls interested in the 4-H horse program should attend the meeting Saturday at 2:30 p. m. in the Bovina Roping Arena, announces Joe VanZandt, Parmer County Agent.

The group held its first meeting last week and set this date for the next meeting.

Any boys or girls, age 9 to 19, interested in this type of activity should plan to be present Saturday afternoon, VanZandt says.

The program will start promptly at 2:30 p. m. and should be completed in a couple of hours, according to C. E. Trimble and Wendol Christian, two of several local leaders who are helping with the program.

The Texas State 4-H Round-up will include a quarter horse judging contest for the first time this year, according to VanZandt.

VanZandt said the contest became essential due to the rapid growth of the Texas 4-H Horse program during the past four years.

## Land Auction Here Saturday

A land auction sale is scheduled here Saturday afternoon.

An irrigated half section, owned by Jim and Frank Hemke, who farm in the Pleasant Hill area, will be sold by auction Saturday at 2 p.m.

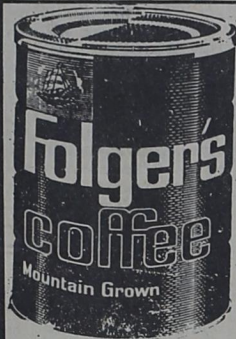
The land is located three miles west of town on FM Road 2290.

Don Gerles will be the auctioneer.

# MARCH of BARGAINS

At WILSON'S

Thursday - Friday - Saturday, March 18 - 19 - 20  
Many Continue Thru Wednesday, March 24.



1 Lb. Can  
4¢ Off Label

# 79¢

## ARMOUR TREET

12 Oz. Can

# 39¢

Borden's Charlotte Freeze

## MELLORINE

1/2 Gal.

# 39¢



1 Qt. Jar

# 39¢

Kraft

## VELVEETA CHEESE

2 Lb. Loaf

# 79¢

## TOILET TISSUE

4 Roll Pkg. **39¢**

# BAKE-RITE SHORTENING 3 Lb. Can **69¢**

FRESHER.....TASTIER

## PRODUCE

Colorado

Fancy Red Rome

## APPLES Lb. **12¢**

California

Crisp Pascal

## CELERY Lb. **12¢**

Mexico Fresh Crisp

## CUCUMBERS Lb. **19¢**

California Red Crispy

## Radishes Bunch **9¢**

## FOOD SALE

Birdseye

## AWAKE

9 Oz. Can

# 29¢

Underwood's

BAR-BQ

BEEF

14 Oz. Pkg.

# 79¢

Colonial

German Chocolate

## CAKE 24 Oz. Size **89¢**



Chopped or Leaf SPINACH

2 10 oz. Pkgs. **29¢**

Armour Zip Top

## POTTED MEAT

2 5 1/2 Oz. Cans

# 35¢

## TOOTH PASTE

6¢ Off Label

# 59¢



## GUARANTEED

TENDER TASTY THRIFTY

## MEATS

## FRESH PORK CHOPS

Center Cut

First Cut

# 69¢

# 39¢

Wilson's Certified

## BACON Lb.

# 59¢

Armour Star

## FRANKS Lb.

# 49¢

Reynolds ALUMINUM FOIL 75 ft. Roll **79¢**

CLOROX Gallon Plastic **63¢**

Shurfine PINEAPPLE JUICE 46 oz. Can **39¢**

Shurfresh SALAD OIL 24 oz. Bottle **43¢**

Supreme Saltine CRACKERS 1 lb. Box **29¢**

Hunt's Solid Pack FANCY TOMATOES 2 No. 2 Cans **49¢**

Tender Crust Angel Food CAKES Reg. 49¢ **39¢**



## KLEENEX TISSUES

5 400-Ct. Boxes **\$1**

Ranch Style

## BEANS

24 Oz. Can

# 23¢

## BREEZE

Detergent

Giant Box

# 75¢

Double Gunn Bros. Stamps Each Wednesday With Purchase Of \$2.50 Or More



# WILSON'S

Phone 238-4781

PARMER COUNTY'S FINEST



SUPER MARKET BOVINA

### BEE GEE

HE PUT IN OUR GOOD GAS ONE DAY - AND SAID "THIS FUEL IS HERE TO STAY!"



## BOVINA WHEAT GROWERS, INC.

Jim Russell, Mgr.-Pho.238-2691

Not Everyone Belongs To A Co-op, BUT EVERYBODY BENEFITS

See Us Now For Your 1965 Fertilizer Needs

**Bovina And Rhea!**

ANNOUNCEMENT -

W. M. Dean, M.D.,  
And  
B. E. Sanderlin, M. D.,  
Wish To Announce

The Association Of  
**HERBERT M. HINCKLEY, M.D.,**  
Formerly Of Littlefield,

In The Practice Of Medicine  
And Surgery At The  
Green Memorial Hospital  
- Muleshoe -

Men's Short-Sleeve  
**SPORT SHIRTS**

By  
**McGregor**

- \* Tapered
- \* Jac
- \* Regular



Sizes Available For

Tall Men, Short Men And

Regular Size Men

From \$3.00 To \$6.00

**Bovina Dry Goods**

"The Store Where Your  
Money's Worth More"

MARCH 25--

**Jaycees Plan  
Officer Election**

Members of Bovina Junior Chamber of Commerce will elect new officers at a Thursday, March 25, meeting of the club.

Nominees for president include Sonny Spurlin, present vice president, and Charles Smith, vice president nominee are John Gamble and Jesse Fulcher. Larry Webb is candidate for secretary.

Running for treasurer are Harold Snell and Billy White-

**License Plates--**

(Continued From Page 1)

The plates will be sold in the city hall.

Auto tags were sold here Thursday of last week and Moseley felt, following that day, that there was sufficient demand here that his crew should return for another half day.

A total of \$3400 worth of vehicle license were sold last Thursday, he announces.

The tags are also available at the tax assessor's office at the courthouse in Farwell.

**FFA Wins--**

(Continued From Page 1)

contest April 7.

Area I judging contest are scheduled for April 10 in Canyon. Jones says the chapter here will enter land judging and livestock judging teams in the area contests.

**Banquet--**

(Continued From Page 1)

of jokes and stories which was published in '61. He performs on both the piano and organ and is a tenor soloist.

He has devoted most of his spare time in the past 15 years to collecting jokes and stories and speaking to civic and service groups in all parts of the nation.

He points out that he will do the last part of his program from the piano because he gets tired standing up.

Previous outstanding citizens have been E. B. Caldwell and Mrs. W. E. Williams in 1964; Warren Morton and Mrs. Margaret Caldwell in 1963; Wendol Christian and Mrs. Lady Armstrong in 1962; and Roy M. Crawford in 1961, the first year the award was made.

Banquet attendance in '63 was 235; in '62, 227; and in '61, 216.

cotton. Bob Holcomb is unopposed in his bid for intra-club director. Candidates for other director posts are John Vaughn, Glenn Hromas and Don Bandy.

Officers who have served the club since it was organized last fall are Bob Fillpot, president; Spurlin vice president; Alfred Moody, secretary; Snell, treasurer; Smith, intra-club director; and Fulcher and Don Owens, directors.

The club's regular meeting for tomorrow (Thursday) night has been postponed because of the conflict the annual banquet of the chamber of commerce and agriculture.

**FHA Freshmen  
Have Dress Review**

"Look What The Wind Blue In" was the theme freshmen homemaking girls chose for their dress review Wednesday afternoon.

Barbara Allen narrated the review while Zeldia Donaldson and Carol Mast played piano selections.

Highlights of the program were three novelty dresses. Judy Sisk modeled a black pin striped dress with straight and safety pins forming the stripes. La Nell Christian modeled a dinner dress with paper plates, spoons and napkins decoration,

**Miss Howard  
Shower  
Tomorrow**

Miss Paula Howard, bride-elect of Don Barnes of Lubbock, will be honored tomorrow (Thursday) with a come and go shower from 3 to 5:30 p.m. in the home of Mrs. Billy Marshall.

All friends of the couple are extended an invitation to attend.

Miss Howard is the daughter of Mr. and Mrs. Buster Howard and is a 1964 graduate of Bovina High.

Hostess for the shower are Mrs. Howard Kelso, Mrs. J.D. Kirkpatrick, Mrs. Frank Edwards, Mrs. Jack Roach, Mrs. J.B. Sudderth, Mrs. Ray Woods, Mrs. Troy Fuller, Mrs. Norvell Strawn, Mrs. J.D. Stevens, Mrs. Mac Glasscock, Mrs. F.M. Crook, Mrs. Billy Marshall, and Mrs. A.L. Hartzog.

**Study Club Hears  
Exchange Students**

Exchange students Alexander Orlovsky of Germany, Bovina High and Brenda Hawker of Australia, Friona High were guest speakers for Bovina Woman's Study Club Thursday.

The club opened the business meeting by reading the club collect. Prayer was given by Mrs. Bill Bradshaw.

Mrs. Bob Estes and Mrs. Buck Ellison were the hostesses. Refreshments of cracker snacks, mixed nuts, Spudnuts, coffee and tea were served.

Members present were Mrs. Clarence Jones, Mrs. J. R. Caldwell, Mrs. Lloyd Battey, Mrs. A. E. Steelman, Mrs. Jack Clayton, Mrs. Bob Estes, Mrs.

Bud Crump, Mrs. A. L. Hartzog, Mrs. Jesse Walling, Mrs. Billy Sudderth, Mrs. Rouel Barron, Mrs. H. L. Ivy, Mrs. Buck Ellison, Mrs. Ovid Lawlis, Mrs. L. W. Quickel, Mrs. Earl Richards, Mrs. Reagan Looney, and Mrs. H. D. Bradshaw. One guest Mrs. Eual Hart, also attended.

**Star Righters  
Plan Dance**

Star Righters Square Dance Club of Bovina had a regular square dance Friday night at the Legion Hall. They were host to several members of the Clovis Y-Square.

A business meeting was held afterward to discuss the coming dance March 9 at the skating rink in Farwell.

It was decided to invite all the area clubs and have admission charge of \$2. Chances on a pair of boots will be sold to raise money to help finance the beginning class.

**Housewarming  
For Britos**

Mr. and Mrs. Sonny Brito were honored recently with a surprise housewarming at their new home here by Mr. and Mrs. J.D. Stevens, Mr. and Mrs. Ben Rejino, Mrs. Jerry Aekins of Hub, Mr. and Mrs. Travis Lloyd, Mr. and Mrs. Gene Brito, Mr. and Mrs. S.A. Brito, Mr. and Mrs. George Cervantez, Janie Aragon, Louis Serna, Mr. and Mrs. Howard Kelso, Mr. and Mrs. Mike Barraza and Mr. and Mrs. Bob Davis of Friona.

Refreshments of punch and cookies were served to the guest. The evening was spent visiting.



**Dilger's  
CLEANERS**  
Parmer County's Finest Cleaning  
GUNN BROS., STAMPS  
BOVINA, TEXAS

**Broken Arm  
Result Of Fall**

Tammy Hutto, five year old daughter of Mr. and Mrs. Ed Hutto, fell Monday afternoon from the slide in the city park and broke her arm. She is in Northwest Texas Hospital in Amarillo. It is believed that she will be released today (Wednesday) or Thursday.

**Whittlin'--**

(Continued from page 1)

than anyone else back in his day, but he struck out the most, too.

He's remembered, though, as a homerun king, not as a strike out leader.

It's a safe bet that you'll enjoy the show of Tom Lavin at the Chamber of Commerce banquet tomorrow (Thursday) night. Attend and see it we're not telling you right. . . .

**C and S  
Chemical**  
Is The Best  
Place When You  
Want

**Fertilizers**

**Insecticides**

**Phone 238-4311**

**FREE!**

**5 Pounds Of  
SUGAR**

- With -

**FILLUP** Of 8 Gallons Or More

**Saturday And Sunday**

**March 20 And 21**

- At -

**Bill Moore's  
Deep Rock  
Service Station**

- All Credit Cards Honored -

Highway 60

Bovina

**NOTICE**

Schedule Of Dates And Places We Will  
Be To Register Motor Vehicles :

DATE	DAY	TIME	PLACE
3-18-65	Thursday	2-5 p.m.	BOVINA Bovina City Hall
3-19-65	Friday	9-5	FRIONA Friona City Hall
3-25-65	Thur.	2-5 p.m.	LAZBUDDIE Sherley-Anderson Elevator

★ ★ ★

NOTE: Please Bring Your Vehicle Titles  
And Last Year's License Receipt.

★ ★ ★

No Title Work, Please.

**HUGH MOSELEY**

Parmer County Tax Assessor-Collector

McCallum Real Estate  
Dean McCallum-Bank Bldg.

# Attend Church This Sunday!

Charles Oil Co.  
Phillips 66 Tires, Batteries

## OKLAHOMA LANE BAPTIST CHURCH



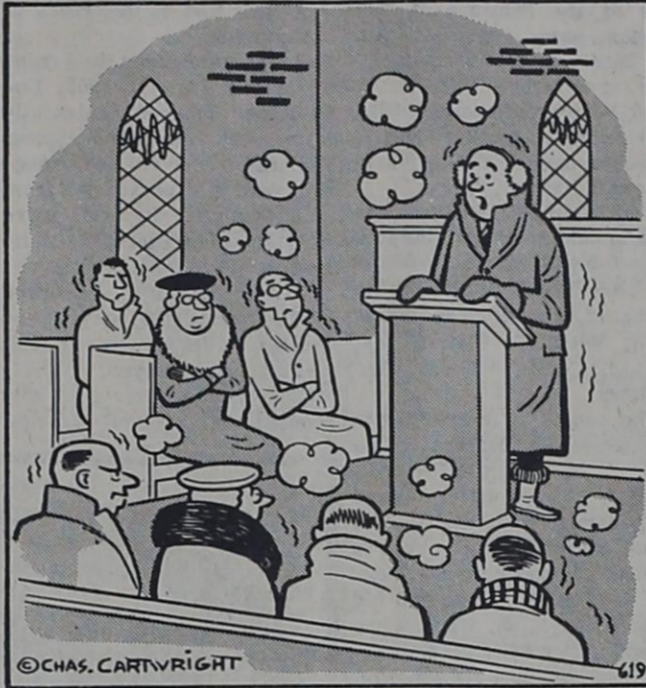
Oklahoma Lane Baptist Church

Sunday School - 10 a.m.  
Morning Worship - 11 a.m.  
Evening Worship - 7:30 p.m.



Ray Wood

## Church Chuckles by CARTWRIGHT



"I have promised to omit needless mention of money from this pulpit, but I feel duty bound, in passing, to touch on our overdue gas bill!"

## This Week's DEVOTIONAL

THE SHAPE OF FAITH  
Hebrews 11:1 "Now faith is the substance of things hoped for, the evidence of things not seen."

The eleventh chapter of Hebrews has been called by many, the "Honor Roll of Faith". It is after the statement of what FAITH is that the writer gives the long list of Men and Women of the Old Testament. So the Shape of Faith is the shape of a man or men. Not just any man, but a man whose life is lived in constant fellowship with God. A man who has been made new through the work of God's Spirit and lives his life under the guidance of that Spirit.

The Shape of faith is not the shape of a creed written, but the shape of a life lived. We may talk about how we believe in some written statements in God's Word but how do we LIVE. Faith is LIFE. Life lived day by day in accordance with the teachings of Christ.

The Shape of faith is the shape of LOVE, love lived in personal experience of men with men. Faith, true faith causes man to love his fellow-man because one loves God. It is not simply saying we love but acting out on the stage of life, our love. As John says, "My little children, let us not love in word, neither in tongue; but in DEED and in truth." I John 3:18.

Be careful, your faith is showing by the life you live.  
Ralph Aday,  
Pastor,  
First Baptist Church

## BIBLE QUIZ

...by Don Stone

This month the high scorer will win: MORE THAN CONQUERORS, by Wm. Hendriksen (\$3.50 value), an interpretation of the book of Revelation.

Mail your completed quiz to Box 422.

- Two of the apostles came out of backgrounds which would have made them natural enemies; one because of his occupation--the other, his religious and political views: One was \_\_\_\_\_, who has been a \_\_\_\_\_ . The other was \_\_\_\_\_, called the "\_\_\_\_\_".
- Knowing these and other potential differences that might arise among these special leaders, Jesus prayed that they might be one, as He and God were one. That prayer is recorded in \_\_\_\_\_ chapter \_\_\_\_\_, verse \_\_\_\_\_.
- This theme of "oneness" is a dominant one in the New Testament. Paul's platform for unity is found in \_\_\_\_\_ where he enumerates seven major points of unity.

Only complete answers will be counted correct. In case of a tie, one winner will be drawn--but beginning this month ALL who get 100% correct will receive a compensatory prize of a religious book. (Our thanks to Mrs. Lee H. Sudderth and Haskell for donating the books. Thanks to Lady Armstrong for the compensatory books.)

## OKLAHOMA LANE METHODIST CHURCH



Oklahoma Lane Methodist Church

Sunday School - 10 a.m.  
Morning Worship - 11 a.m.  
Evening Worship - 7 p.m.



Rev. Douglas W. Gossett

## BOVINA METHODIST CHURCH



Bovina Methodist Church

Sunday School - 9:45 a.m.  
Morning Worship - 11:00 a.m.  
M. Y. F. - 6:00 p.m.



Rev. Harold L. Morris

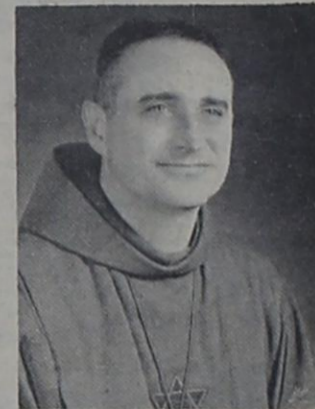
Evening Worship - 7:00 p.m.  
Choir Practice -  
Wednesday - 8 p.m.

## ST. ANN'S CATHOLIC CHURCH



St. Ann's Catholic Church - Bovina

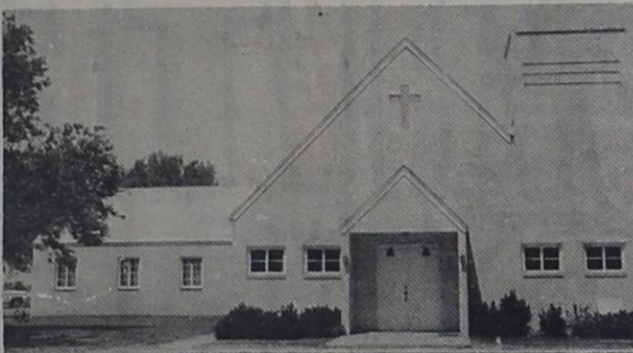
Masses: Sunday 8:30 & 10:30 a.m.  
Weekdays 8:30 a.m. Daily Except  
Tuesday 8 p.m.  
First Friday 8 p.m.  
Holy Days 10 a.m. & 6:30 p.m.



Fr. Claver Giblin S.A.

Confessions: Saturday 4-5 p.m.  
7-8 p.m.  
Before Masses  
Baptisms: 3p.m. Sunday

## ST. JOHN LUTHERAN CHURCH



St. John Lutheran Church LARIAT, TEXAS

--LARIAT--  
Sunday School - 9:30 a.m.  
Morning Worship - 10:30 a.m.



H.F. Peiman, Pastor

## FIRST BAPTIST CHURCH of BOVINA



First Baptist Church of Bovina

SUNDAY Sunday School - 9:45 a.m.  
Morning Worship - 10:55 a.m.  
Training Worship - 6:30 p.m.  
Evening Worship - 7:30 p.m.



Rev. Ralph Aday

--WEDNESDAY--  
Y. W. A. - 5 p.m.  
Youth Choir - 7 p.m.  
Mid-Week Prayer Meeting - 7:30 p.m.  
Adult Choir - 8:30 p.m.

## BOVINA CHURCH of CHRIST



Bovina Church of Christ

SUNDAY BIBLE SCHOOL:  
Morning Classes - 9:45  
Evening Classes - 5:30



Don Stone

SUNDAY WORSHIP:  
Morning - 10:45  
Evening - 6:30  
WEDNESDAY  
Devotional and Classes - 8p.m.

## BOVINA PENTECOSTAL HOLINESS CHURCH



Bovina Pentecostal Holiness Church

Sunday School-- 10:00 a.m.  
Morning Worship-- 11:00 a.m.  
Lifeline Service -- 6:30 p.m.



Rev. Archie Cooper

Evening Worship -- 7:00 p.m.  
Wednesday  
Prayer Meeting -- 8:00 p.m.

## CHURCH PAGE SPONSORS:

<b>Bovina Gin Co.</b> Don Sides, Mgr.	<b>Kerby Welding Service</b> A <input type="checkbox"/> Deal The Year O	<b>S and S Dry Goods</b> - Downtown Bovina -	<b>Mr. &amp; Mrs. C. R. Elliott</b>	<b>Bovina Welding Shop &amp; Blacksmithing</b> - Hwy. 60 -
<b>Mr. &amp; Mrs. J.P. Macon</b>	<b>Bovina Implement Co.</b> Your Massey-Ferguson Dealer	<b>Wilson's Super Market</b> - Gunn Bros. Stamps -	<b>Barbee Cleaners</b> The Most In Dry Cleaning	<b>Mr. &amp; Mrs. Ralph Aday</b>
<b>Mr. &amp; Mrs. Tom Caldwell</b>	<b>Cicero Smith Lumber Co.</b> In Bovina Since 1904	<b>Sherley Grain Co.</b> "Serving Farmer Co. Farmers The Year 'Round"	<b>Oklahoma Lane Farm Supply &amp; Gin</b>	<b>Mr. &amp; Mrs. Buck Ellison</b>
<b>Gateway Produce Co.</b> - Bovina -	<b>Mr. &amp; Mrs. Wilbur Charles</b>	<b>Dairy Freeze</b> Mr & Mrs. Boyd Gilreath	<b>Union Compress And Warehouse Co.</b> -Bovina-	<b>Mr. &amp; Mrs. Harold Morris</b>
<b>Mr. &amp; Mrs. Troy Fuller</b>	<b>Mr. &amp; Mrs. Gene Ezell</b>	<b>Paul Jones Texaco</b> Firestone Tires	<b>Corn's Farm Store</b> - Charles Corn -	<b>Mr. &amp; Mrs. Don Stone</b>
<b>C And S Chemical</b> Third St. Bovina	<b>Mr. &amp; Mrs. O. H. Jones</b>	<b>Bonds Oil Co.</b> Gulf Distributor	<b>Gaines Hardware Co.</b> "Nothing Knocks On Bovina But Opportunity"	<b>A. L. Glasscock Real Estate</b>
<b>Warren Auto Supply</b> Hwy. 60 - Bovina	<b>Bovina Ser. Sta. &amp; Gro.</b> Clifford Leake	<b>Bovina Glass &amp; Paint Co.</b> Hwy. 60 - Ed Dendy, Mgr.	<b>Spudnut Shop</b> The Odis Whites	<b>First National Bank of Bovina</b> - Member FDIC -
<b>Mr. &amp; Mrs. J.D. Kirkpatrick</b>	<b>Bovina Wheat Growers</b> "We Serve To Serve Again"	<b>Bovina Hobby Shop</b> Jack Kesler - Sonny Roach	<b>Bovina Dry Goods</b> Mr And Mrs. Edward Isaac	<b>Hartzog Seed Farms</b> Now Booking Texas 660

"About the only person taxpayer's money these days who is going easy with the is the taxpayer. He has to."

LEGAL NOTICE

THE STATE OF TEXAS

TO: IRA M. COBE and his wife ANNIE E. W. COBE, R. B. GREEN, RICHARD B. GREEN, GRAYSON M-P MURPHY and his wife, MAUD D. MURPHY, and EDWARD G. MARTIN and his wife ANNA B. MARTIN, ANNA BENNETT MARTIN, EPHIAM T. ENGLANT and E. T. ENGLANT, E. P. ENGLANT, WILLIAM S. HOOD and wife, KATHLEEN M. HOOD, JACK CARR and wife ERIE CARR, and all of the unknown wife or wives, and the unknown husband or husbands of the above named parties, and if any of the

same are deceased then their unknown legal representatives, heirs and assigns, and all unknown claimants, Defendants, GREETING: You, and each of you are hereby commanded to appear by filing a written Answer to the Plaintiff's Petition at or before 10:00 o'clock A. M. of the first Monday after the expiration of Forty-two (42) days from the date of the issuance of this citation, same being Monday, the 26th day of April, A. D. 1965, at or before 10:00 o'clock A. M. before the Honorable District Court of Parmer County, Texas, at the courthouse of said County in Farwell, Texas. Said Plaintiff's Petition was filed in said Court upon the 10th day of March, A. D. 1965, in this cause Numbered 2557 on the Docket of said Court, and styled J. W. WRIGHT, Plaintiff, vs. IRA M. COBE, ET AL, Defendants.

The names of the parties to the cause of action are as follows: J. W. Wright is Plaintiff, and A R J Corporation, a Texas Corporation, with its principal office and place of business in Lubbock, Lubbock County, Texas, and Ira M. Cobe and his wife, Annie E. W. Cobe, R. B. Green, Richard B. Green, Grayson M-P, Murphy and his wife, Maud D. Murphy, and Edward G. Martin and his wife Anna B. Martin, Anna Bennett Martin, and Ephiam T. England and E. T. England, E. P. England, William S. Hood and wife, Kathleen M. Hood, Jack Carr and wife Erie Carr, and all of the unknown wife or wives and the unknown husband or husbands of the above named parties, and if any of the same are deceased, then their unknown legal representatives, heirs and assigns, and all unknown claimants, and Dale McCuan and wife, Tom Paul McCuan, who reside in Parmer County, Texas, and Mabel Gordon Williams, formerly Mabel McCuan Caffey, who resides in Los Angeles County, California, ARE DEFENDANTS.

A brief statement of the nature of this suit is as follows, to-wit: Plaintiff brings this suit in trespass to try title alleging that he is the owner in fee simple of: All of Lots 5, 6, 7 and 8, and All of the West ten feet of Lot 4, of Block 2, of the Original Town of Bovina, Parmer County, Texas, said West ten feet of Lot 4 being described by metes and bounds as follows: BEGINNING at the most westerly corner of said Lot 4 for the beginning point; THENCE North 50 deg. 43

min. East along the common boundary line of said Lot and North Street 10 feet to a point; THENCE South 39 deg. 17 min. East, 140 feet to a point on the alleyway in said Block; THENCE South 50 deg. 43 min. West, 10 feet to the most southerly corner of said Lot; THENCE North 39 deg. 17 min. West along the common boundary line of Lot 4 and Lot 5, 140 feet to the place of beginning.

And that on or about the 1st day of March, A. D. 1965, Defendants entered unlawfully upon said land and ejected Plaintiff therefrom and wrongfully withhold possession from said Plaintiff, all as is more fully shown by Plaintiff's Petition on file in this suit. If this citation is not served within ninety (90) days after the date of its issuance it shall be returned unserved. The officer executing this process shall promptly execute

39'ers Honor

Mrs. Tabor

The 39'ers Club met Thursday in the home of Mrs. Bud Crump honoring Mrs. Emmett Tabor with a birthday dinner. Those present were: Mrs. Otis White, Mrs. Nola Read, Mrs. J. W. Wright and Joe Pat, Mrs. Jesse Walling, Mrs. Joe Wilson, Mrs. Paul Jones, Mrs. Robert Read, and Mrs. Crump.

the same according to law, and make due return as the law directs.

ISSUED AND GIVEN under my hand and the seal of said court at my office in Farwell, Texas, this 10th day of March, A. D. 1965.

ATTEST: Dorothy Quickel Clerk District Court, Parmer County, Texas. 37-4tc

REPAIR! REMODEL! Nothing Down - 60 Months To Pay Complete Line Building Supplies Cicero Smith Lumber Co. 238-2671 Bovina

GUARANTEED TO GO thru ice, mud, or snow or WE pay the tow PLUS Guaranteed Against Road Hazards in all 50 States and Canada Firestone Town & Country TIRES Now Only 15.95 PAUL JONES TEXACO SERVICE STATION Highway 60 -BOVINA - Pho. 238-4331

Stop Weeds And Grass In Cotton All Summer Long With Treflan Treflan-The Weather Proof Weed Control For Application Of Treflan On Your Cotton Land. Call Corn's Today! CORN'S Farm Store Highway 86 And Third Street Bovina Phone 238-3181

SAVE 10% with GULF WARRENGAS Save up to 10% OR MORE... on tractor fuel and upkeep costs REDUCE TOTAL TRACTOR COSTS. Save money with Gulf-Warrencas\* fuel over diesel, the so-called economy fuel—and over gasoline, too. Consider all costs. SLASH REPAIR AND UPKEEP COSTS. Cut these costs about one-third with Gulf-Warrencas, compared with gasoline engines. Save more than \$100 a year for 1000 hours of use with a 4-plow tractor. FEWER OIL AND FILTER CHANGES. You go three times as long as diesels and one and one half times as long as gasoline engines between changes. Spark plugs last longer—no foul-up due to fuel residues. Gulf-Warrencas\* is the LP-Gas member of the Gulf family of quality petroleum products. OUR PROMISE! You'll have better living and better farming with Gulf-Warrencas. BONDS OIL CO. Hwy. 60 - Pho. 238-2271

THINKING ABOUT SUMMER? THINK ABOUT GAS AIR CONDITIONING! GAS answers all of your air conditioning needs. First and foremost, it does the job you want air conditioning to do... keeping every room in your house cool and comfortable. And, GAS is so economical. People who own GAS air conditioning know it costs less to operate. Maintenance costs are kept to a minimum, too, because GAS air conditioning has no moving parts to wear out. Should the need occur, you are assured of fast, dependable service because Pioneer stands behind every unit they sell. Sold and Serviced by Pioneer Natural Gas Company NATIONAL GAS AIR CONDITIONING WEEK MARCH 21-27 1965

BIG BRAVE CAR PAPAPOOSE PRICES AT-UM FORD DEALERS WHITE SALE ON NOW HEAP BIG SAVINGS ON MUSTANGS TOO! FRIONA MOTORS Grand & Highway 60 Friona, Texas

Te Re Sugar be New Mexi have ser a record according to figure Nineteen tracts prod 000 and 11, per acre, 5 11,000 acre and production 000 pounds Crady Sou miles south the highest duction figu of sugar per was closely Blake, who northwest 11,664 pou acre. According manager o Corporation many sug areas the "Club" is and notman ers are ab sugar beet content whic to reach suc tion. "We fee Mexico farm job," Little ing beet for operation o E. Shoup Be ford and we ing Individu

# Texas-New Mexico Farmers Set Record 1964 Sugar Beet Crop

Sugar beets in the Texas-New Mexico area last year have set what appears to be a record in sugar production, according to a recent tabulation of figures.

Nineteen individual contracts produced between 10,000 and 11,000 pounds of sugar per acre. Seven contracts made 11,000 to 12,000 pounds per acre and one contract had a production figure of over 12,000 pounds per acre.

Grady Sorley, who farms six miles southeast of Bovina, was the highest producer with a production figure of 12,165 pounds of sugar per acre. This record was closely followed by O.L. Blake, who farms six miles northwest of Friona. He had 11,664 pounds of sugar per acre.

According to D.W. Lillie, manager of the Holly Sugar Corporation at Hereford, in many sugar beet producing areas the "10,000 pound Sugar Club" is an exclusive group and not many sugar beet producers are able to produce the sugar beet tonnage and sugar content which would enable them to reach such an enviable position.

"We feel the Texas-New Mexico farmers did a wonderful job," Lillie said. "In producing beets for the first year's operation of the new Merrill E. Shoup Beet Refinery at Hereford and we think the outstanding individual contracts should

be given the recognition they so justly deserve."

Sorley had two 20-acre fields of beets. The best field raised a total of 728 tons, or 36.4 tons per acre. The sugar content was 16.5 per cent. He said that 20 tons of beets per acre was comparable to two bales of cotton per acre, based on the price of \$10.20 per ton for beets.

Sorley said that beets was an expensive crop to raise and that it took "lots of work" with the cultivating, weeding and thinning. He said that he watered his crop 11 times a year.

He estimated the cost per acre of raising the crop at \$100 per acre besides the cost of harvesting. However, he has increased his beet acreage from 40 acres last year to 60 acres this year. He has just completed the planting.

On his 820-acre farm he also raises wheat, cotton, milo and other grain sorghums. He has been at the present location for the past 10 years.

Other beet growers of the area producing 10,000 to 11,000 pounds of sugar per acre were G.E. Bailey, Durwood Bell, T.M. Caldwell, Albert Cannon, David Grimsley, John B. Taylor, Reuter & Gerk, Richard Pickens, L.L. Schultz, Fritz Smith, Iris Touchstone, B.E. Kendall, Hugh Reynolds, Howard N. Hayes, Herbert Frie-mel, Edwin Axe, Chester Clark, and A.R. Dillard.

Contracts producing over 11,000 pounds of sugar per acre were farmed by Grady Sorley, O.L. Blake, Reuter & Gerk, Howard N. Hayes, John B. Taylor, Steve Struve, George E. Turrentine, J.B. Barrett, and Clyde Renfro.

"Farmers who produce 10,000 or more pounds of sugar per acre are a rarity in the older sugar beet growing area of the United States," Lillie said. "In the first year of Holly Sugar Corporation sugar beet experience in Texas and New Mexico nearly as many contracts were in the 10,000 pound per acre class as are found in some of the older beet growing areas during a life time of sugar beet growing."

The entire Texas-New Mexico sugar beet crop of slightly over 27,000 acres produced an average of 20 tons per acre with a 17 per cent sugar content.

Authorities estimated that about half of next year's crop has already been planted. There are approximately 6,000 acres in Parmer County to be in sugar beets next year. An estimated 2,500 acres will be in sugar beets in New Mexico.

Planting is usually completed during the month of March. Harvesting begins in October and usually lasts until January. Slicing of last year's crop of sugar beets has just been completed at the Holly Refinery in Hereford.

Dave Eddington of Friona is the field representative for the Holly Sugar Corporation in the

Parmer county area. Bill Askman of Clovis is the representative in New Mexico.



**SETS SUGAR RECORD** — Grady Sorley, who farms southeast of Bovina, was the highest producer of sugar per acre last year in the Texas-New Mexico sugar beet growing area. He had a production figure of 12,165 pounds of sugar per acre from 36.4 tons of sugar beets per acre. The sugar content was 16.5 per cent.

## Farm Bureau To Discuss Cotton

As troubles--both domestic and foreign--mount for the nation's cotton growers, and as new and important legislation appears on the horizon in Washington, the eyes of High Plains farmers are turning to current events on the farm front.

Farm Bureau has made recommendations on new legislation which will affect Plains cotton growers, and there will be a meeting in Friona Tuesday night, March 23 to explain that organization's position on cotton.

Harry Hamilton, Parmer County FB president, says "We want to explain and discuss Farm Bureau's viewpoints on cotton." Other Farm Bureau officials have predicted an eventual decline of allotments to 15 acres for all producers if present pending legislation becomes law.

Hamilton says that the Farm Bureau is recommending continuing the price support at 90% of parity, and a program that would not permit cotton to come out of government storage at

less than 115% of the loan value plus storage and handling costs. "This would put mills to buying cotton from the farmer again rather than from the government as they do now, and stop the crop from all going into the loan," he believes.

Hub King, district FB director, will be at the meeting, as will be J.T. Woodson of Gober, who is the state vice-president.

Hamilton hopes for a good turnout. "On the South Plains everybody comes out for a cotton meeting," he says. "Up here it's pretty hard to stir up interest, but we are trying."

**If You're Interested In Buying FARM MACHINERY Call Big Nick Trienen at Machinery Supply**  
Highway 60, Bovina  
Phone 238-4861

**Sooner Craft, Glastron, Crestliner, Traveler, New And Used Boats Home Of Evinrude Boats And Motors Sales And Service CLOVIS BOAT AND MOTOR**  
2106 Prince Highway, Clovis, Ph. 762-2641

# THE HIGH PLAINS FARM AND HOME

## On The Farm In Parmer County

By JOE VAN ZANDT  
County Agent

The results of soil testing efforts has been well received based on the number of soil samples run this winter. Since the first of January we have gotten copies of reports back from 391 soil samples run by the Extension Soil Testing Lab at Lubbock.

We are close to the end of the rush on soil testing for this season. If you are in doubt about your fertilizer program for this year and have two weeks before you want to apply your fertilizer, then I suggest you get some soil samples in the mail today.

The soil test analysis and fertilizer recommendations are made by James Valentine, our Area Soil Chemist and he has at his disposal the best available equipment and result of research and demonstration plots in this area.

As I mentioned a few weeks ago we are interested in demonstrating to our farmers, you and your neighbors, the value of following these soil test recommendations. We have gotten several cooperators lined up already. If you are interested in having a fertilizer demonstration this year in cooperation with the County Agent, please give me a call.

### FRUIT PRODUCTION

Several people have a few fruit trees around their homes and it is not too early to start thinking about how good those peaches, plums, apples or others might taste this summer.

We are not out of danger of losing the crop due to a freeze but you should start making some plans now. First, have you been getting a good crop of fruit? If you have, you are probably in pretty good shape, with continued proper care.

If your fruit production has been poor, what has been your problem? Has your difficulty been insects, diseases, water, or possibly wrong varieties?

We have some good bulletins on insects and diseases of fruit trees that lists the sprays recommended for various insects and diseases. Some of these sprays need to be applied when 75% of the petals have fallen. If you want a copy of our spray recommendations let us know.

If you are wanting to set out some fruit trees this year, you need to do so right now. The following varieties are recommended for this area: Peach-

Dixred, Redhaven, Ranger and Redglobe; Apples-Holland and Red Delicious; Pear-Orient and Keiffer; Plum-Bruce, Methley and Sapa; Cherry-Early Richmond and Montgomery.

We also have a good bulletin on pruning methods that has good suggestions on how to properly prune trees and shrubs around the home.

If you desire a copy of any bulletin give us a call or come by the County Agent's office, CHEMICAL WEED CONTROL.

Are you interested in knowing the recommendations for using weed control chemicals in Texas? We have a new Bulletin-1029 that lists all of the chemical recommendations for just about any crop or land use a person might want. If you desire a copy notify the County Agent's office.

### BEEF CATTLE

A beef cattle program will be held Friday, March 26, in Hereford at the Bull Barn starting at 9:45 a. m.

The program will include discussions and demonstrations on improving present breeding programs and selecting and breeding cattle for functional efficiency.

L. A. Maddox, Extension Animal Husbandman, and Dr. Jan Bonsma, Animal Husbandry professor from Pretoria, South Africa will present the days program.

We can assure you this will be interesting and thought provoking.

### FARM LEGISLATION

We attended a very interesting and informative meeting of the County Grain Sorghum Producers last week.

Dub Anthony presented a very

interesting talk on what the Grain Sorghum Producers Association has accomplished since it was organized.

Bill Nelson also brought us some good information on proposed farm legislation. Bill has just returned from Washington so he had some real good first hand information on current views on the Omnibus Farm Bill.

The following things seemed certain to be in the bill: 1. Some form of limiting payments to "big" farmers. 2. Provisions for a single grain base for feed grains and wheat. 3. A cropland adjustment program for some form of land retirement, and 4. a requested change in the diverted acre and feed grain certificate payments.

Bill stated that groups or individuals that offered suggestions to include the above areas in their recommendations would be a lot better received than suggestions of the fact that you were against one or all of the above programs.

As I see it farm people need to get closer together on their program ideas and be willing to give and take a little here and there. We need to have a positive approach on working out solutions and this farm bill.

The farm bill that Congress passes will greatly affect our future here in Parmer County. As Bill said last week, farmers with a positive approach and a cooperative attitude will get a lot more of attention and cooperation than ones with a negative attitude.

BOYD'S COMPLETE BRAKE and BEAR FRONT END Service

TIRE TRUING  
WHEEL BALANCING AND OVERLOAD SPRINGS  
MONRO-MATIC SHOCKS  
MUFFLERS AND TAIL PIPES  
FACTORY REBUILT POWER BRAKE UNITS-NEW UNIT  
GUARANTEE-EXCHANGED  
**BOYD'S BRAKE SHOP**  
21 Years in Clovis  
221 W. Grand - 763-4326

**LIMITED OFFER!**  
**Hot-R-Cold FIELD COOLER**  
• Hi-Impact Plastic  
• 1/2 Gal. Capacity  
• Easy Pour Spout  
• Metal Carrying Handle  
With Each 8 Gal. Fill-Up  
RED. \$1.39 VALUE  
**Wheeler's Shell Station**  
U.S. Hwy 60 Friona, Texas



# "I'll never own a clothesline again!"

says MRS. JOHN T. GREGG,  
3806 55th ST., LUBBOCK, TEXAS

This discriminating homemaker, mother of two delightful girls, found electric clothes drying the answer to soft, fluffy, dirt-free clothes. A touch of her finger puts Reddy to work converting clean electricity to sunshine-like warmth that dries clothes quickly—and perfectly, every time. You, too, can have these modern clothes drying advantages... with gentle electricity plus a visit to your Reddy Kilowatt Electric Appliance Dealer.

See your Reddy Kilowatt Recommended Appliance Dealer

**REDDY KILOWATT** ELECTRIC APPLIANCE DEALER  
**SOUTHWESTERN PUBLIC SERVICE COMPANY**  
*The ELECTRIC Company*

# CUTS!

The big story behind the big new **CASE** Row Crop 930

Head the new Case 930 Row Crop Comfort King down the furrow... rock his big bottoms down deep... pour it on... and man you've got something great going for you!

Call it power. Call it lugging ability. Call it guts. Whatever the name, it all begins with the massive 6-cylinder tractor engine with its special breed of power. Case high-torque power that gives you the capacity to handle bigger implements and multiple harvests faster and with less down-shifting.

There's a lot more to the 930. Such as the dual-range, eight-speed transmission with five job-tuned speeds in the heavy tillage range. Rear-mounted 48 gallon fuel tank. Hydraulic power steering. Draft-o-matic® implement control. Simple, foolproof hydraulics. And a "command post" that has nine square feet of uncluttered platform space, clear visibility and unbeatable "armchair" comfort.

True these are all big features... but the really outstanding advantage is Case high-torque power—guts. That's the one that gives you the muscle to do bigger jobs faster and more profitably. Stop at your Case dealer. Make him prove it. J. I. Case Co., Racine, Wisconsin.

**CASE**

Case 930 Row Crop: Also 5-gal. 930 and 4-gal. 750 models available.

**MASSIVE ENGINE**—Brawny, 6-cylinder, moderate speed engine delivers maximum usable power punch. Huge 403 cubic inch diesel displacement. 377 cubic inch for gasoline. LP gas engines.

**HIGH-TORQUE LUGGING POWER**—The 930 not only peaks higher than any tractor in its class but maintains higher torque over a broader range of rpm. Transmits double ability to tug and last!

**BRUTE STRENGTH CONSTRUCTION**—Rugged, ribbed block. Husky 7-bearing cast-steel shaft. Heavy-duty power train. Built-in clutch with greater holding surface than competitive 12-inch clutches. Specially hardened rear axle over three inches in diameter.

**POWER-MATCHED DRAFT CONTROL**—Teams with 930 7-hp torque power. Set the draft-o-matic. Level and get precise, boosting traction automatically with minimum depth variation. Smooth. Sensate. Compensates for load changes up to 600 times a minute. Category II 3-point hitch.

See Your Case Dealer For Quality Gold Seal Used Equipment

**OKLAHOMA LANE FARM SUPPLY** Phone Tharp 225-4386

### County 4-H Elimination Contest

The Farmer County 4-H Elimination Contest will be held Saturday, March 20 at Hub Community Center starting at 9:30 a.m.

These contests are open to all Farmer County 4-H members and the winners will be eligible to go to the District Contests in Canyon on April 3.

Most of the contests are set up for team demonstrations of two 4-H'ers. The team demonstrations cannot run for over

12 minutes. There will be contests in the following areas: beef cattle business, civil defense, community improvement, field crops, safety, soil, water and range conservation, and vegetable production.

Some of the individual contests include foods-nutrition and public speaking. A share-the-fun contest is also slated for members to show their entertainment acts or abilities.

4-H members entering these contests should arrive early

and be ready to present their demonstration at 9:30. The order for presenting demonstrations will be decided before 9:30.

### Fish Will Highlight Lenten Menus

Fish will be a major substitute for red meat in the menus of many families during the Lenten season, continuing through April 18.

Mrs. Gwen Clyatt, Extension consumer marketing specialist, reports that inventories of frozen fish, shellfish and canned fish are expected to be adequate to meet the expected demand, although fishing products were approximately 13 per cent less than a year ago at the beginning of 1965.

Fresh supplies should become available this month as spring fishing operations get underway.

In selecting frozen fish, be sure they are frozen solid, have little or no odor, and are wrapped in moisture-vapor proof material.

If fish are bought fresh, they should have bright, clear, slightly bulging eyes, reddish-pink gills, tight, bright, and shiny scales; firm and elastic flesh and a fresh odor.

When comparing costs, the analysis should be made on the basis of servings per pound. The price of a pound of steak or fillet is equal to three times the price of a whole fish or one and one-half times the price of a pound of dressed fish, says Mrs. Clyatt.

Steam is water gone crazy with the heat.



Cricket

### At Home In Farmer County

By CRICKET B. TAYLOR  
County HD Agent

#### 4-H NEWS

The Favorite Food climaxed the end of the Food group work on March 16th for leaders and members.

Although we had many in the food groups only 26 participated, due to various conflicts of activities and other reasons. It was very satisfying to see the nice displays of those 4-H members—how they had developed skill in preparation of food, and meal planning. Not only did they display skills, but they answered questions about foods and what it does for the body that many adults would have difficulty answering. This was due to the study of food in their project work.

Ann Blackstone and Carolyn Herington, juniors will go to Canyon April 3, to display their food. Ann will display her favorite food, Sweet Potato Puffs and Carolyn will exhibit muffins. We are hoping they come back with honors, Katie Blackstone will compete for the District Award with Sweet Potato Pineapple Puffs.

I just wish everyone could have seen the food displays, the attractive table settings and decorations. Mrs. Art Mast of Bovina, made some colored pictures from which we hope to have slides made. Perhaps we can show them in Community 4-H Clubs later.

#### FAMILY LIFE WORKSHOP

After a week of training at Texas A&M University it's good to be back at my desk even though it's hard to see over the stack of mail.

The training conference was developed around the theme

#### "Focus on Families."

Principle speakers were from areas of human relations and human development, family life education and related home economics area, sociology and guidance and counseling and mental health.

It was very valuable information and it will be a challenge to be able to compile and interpret some of it in a form that can be given to various groups within the county, that would like to have programs in the area of Family Life.

#### 4-H CONTESTS

County 4-H Contests will be held in the Hub Community Center building next Saturday, March 20th. Contests will be held in Favorite Food Activities, Share the Fun, Safety, and others. This can be a real good opportunity for girls and boys to gain self confidence in public appearances.

Another opportunity of learning to speak before others has been given to members in food projects. Mrs. C. M. Phipps of Friona, adult food group leader, reported that Jan Jamison, 4-H member, gave the table setting demonstration to her food group, and lead the discussion on Table Manners and Nutrition. This is fine training and it is hoped that more adult leaders will provide opportunity for their members to do this in their project training.

### FCIC Policies Being Drawn

Applications for Federal Crop Insurance on irrigated cotton and grain sorghum are now being accepted in Farmer County. It was announced this week by Ben A. Jordan, Jr., state director, for FCIC.

Under the program, participating farmers are protected against crop losses from natural hazards, Jordan said. He added that nearly 12,000 farmers in 49 Texas counties are carrying almost \$40 million in FCI protection.

Federal Crop Insurance guarantees a basic harvest, pegged at the value of the approximate production costs and pays the difference between actual harvest and the guarantee when the crop is damaged or destroyed. In 1964, crop insurance protected 23 varieties or crops on nearly 15 million acres. Payments for crop losses last year totaled \$30 million.

Surface temperature of the sun averages 10,000 degrees Fahrenheit.

### Farmers Need System To Maximize Profits

Farmers need a system of operations to maximize returns on their places, says James Murphrey, Panhandle area farm management specialist with the Texas Agriculture Extensive Service.

Murphrey says too many farmers jump from one enterprise to another instead of having a definite system. A plan can help the farmer hone his operation into a stable, money making operation, he says.

"The tendency to plunge in and then jump out of different farm enterprises is one of the main faults of big farmers here in the Panhandle," Murphrey says.

According to Murphrey, farmers are more successful when they have a definite system of operation.

A system has many advantages, he says. It stabilizes credit needs, buying and sell-

ing channels, and time income. More important, a system gives a farmer a chance to work on the efficiency of an enterprise.

"For example, when a man has wheat pasture," Murphrey said, "he shouldn't lease it one year, buy steers for it the next year and run cows on the third year."

"Instead, he should pick one system and stick with it. If he stayed with cows or bought steers each year," Murphrey said, "he'd gradually learn the best way to handle them for maximum returns. He'd become a manager rather than gambler."

The management specialist says erratic weather, unstable livestock prices and influences from changing government programs effect the in-and-out characteristics of Panhandle farmers.



Dr. Harold D. Loden, General Manager of Paymaster Seed Farms, Plainview, Texas has been appointed by Secretary of Agriculture Orville Freeman to serve as a member of the Cotton Research Advisory Committee. The committee is made up of ten outstanding businessmen who are actively engaged in either production, processing, merchandising, or utilization of cotton.

The purpose of the Cotton Research Advisory Committee is to review the current research programs of the United States Department of Agriculture and make recommendations regarding USDA research in cotton production, utilization and marketing. The Cotton Research Advisory Committee is one of thirteen such committees appointed by the Secretary of Agriculture to make recommendations on the various research programs of the Department of Agriculture.

Dr. Loden is in Washington, D. C., this week, attending the first meeting of the committee.



ask us about the "Skirt Saver"

by BEVERLY VOGUE

Lucille's "ACRES OF FREE PARKING" Clovis, N. Mex.

HIGHEST CASH PRICES PAID FOR  
Copper - Radiators - Brass - Lead  
Aluminum - Scrap Iron - Tubes  
Steel - Cast - Batteries



1810 W. 7th St. Clovis, N.M.



for Great Grain - HYBRID SORGHUMS for Amazing Grazing!

This is the Year to Try **BONANZA** the Heavyweight Champion!

Also  
NUGGET GRAIN HYBRID - Another big-yielding grain bred by Golden West.  
LEAFY SUE (Sorghum-Sudangrass Hybrid) - Vigorous, palatable, fast recovering hay and grazing hybrid. White-seeded.  
GOLDEN SUE (Sorghum-Sudangrass Hybrid) - Another great hay and grazing hybrid. Red-seeded.  
SWEETIE FORAGE HYBRID - Very sweet, vigorous forage. High tonnage of sweet stalks and leaves PLUS large heads for rich ensilage or bundles.

If you have good soil, moisture and growing season, BONANZA HYBRID GRAIN SORGHUM can deal a clean knockout to any old-fashioned ideas your farmers have about how much high quality, heavyweight grain they can produce on an acre. Big, semi-compact heads - a top yielder with adequate moisture - and sturdy "legs" to withstand the punches thrown by strong winds. Bet your inventory dollars on Bonanza, heavyweight champion!

The productive, popular Golden West Hybrids are produced under isolation that is probably the finest in the industry - in fields surrounded by miles and miles of native grama grass grazing land. Absolute minimum chance for wind-borne sorghum family pollen to contaminate production. In addition, all production is carefully watched and rogued under supervision of our breeder, Joel Tankersley - then purity is verified by winter grow-out tests in Mexico.

Call Us Soon

**GOLDEN WEST SEED CO.**  
Breeder-Growers-Processors-Merchandisers

Phone AC505-482-3859 FARWELL, TEX., TEXICO N.M. AC505-PO 3-7853 CLOVIS, N.M.

Premium List Available

Local women interested in entering items in the Women's Division at the State Fair of Texas are invited to write to Mrs. Leah Jarrett, director of the State Fair women's department for a premium list.

A total of \$11,979.50 is offered in the premium list. The clothing contest alone offers \$550 and the hat contest \$348. Other divisions are: art, \$1,004; designer - craftsman, \$2,402.50; Leathercraft, \$235.50; Hand Painted China, \$594; ceramics, \$180; Creative Hobbies (formerly Miscellaneous arts) \$630; Holiday Corner, \$576; Needlework and Sewing, \$2,951.50; Foods, \$400; Antiques, \$1,404; and Hobby Collections, \$704.

ABSTRACTS  
See JOHNSON ABSTRACT COMPANY in Farwell Fast, Accurate Box 88 Ph. 481-3978

**INSURANCE**  
SAVE MONEY ON ALL OF IT AT **RAYMOND EULER AGENCY**  
715 Main, Friona Ph. 247-2230

**1965 OLDSMOBILE**  
Irrigation Engines  
Factory Hard Seats  
425 Cubic Inch  
**IN STOCK**  
**Wayne Wallace Inc.**  
Cadillac - Oldsmobile  
800 N. Main Clovis

**THIRD ANNIVERSARY SALE**  
Famous **GENERAL TIRES**  
Through Month Of March  
**20% OFF**



36 MONTH FIELD HAZARD GUARANTEE  
The General Tire & Rubber Company guarantees to the original purchaser the Nylon Special first class rear tractor tire against failure resulting from bruise and furrow breaks, snagging or cutting for a period of 36 months from date of purchase when used in normal farm service. Tires approved for adjustment will be repaired free of charge or replaced with a new tire in a like grade and type on a pro rata monthly basis computed on General's current list price at time of adjustment plus all applicable taxes.

**THE GENERAL TIRE**  
**Hereford Butane, Inc.**  
Veterans Park Road EM 4-3367



**WOULD-BE SUPERMARKET DICTATOR**



News Note: Right of food shoppers' free choice threatened by restrictive legislation.

**LET THE CONSUMER DECIDE**

With the re-introduction of the Hart bill for federal regulation of the packaging and labeling of food products the American consumer's right of free choice is once again threatened.

The restrictive nature of the legislation is readily seen in its provisions. It would:

- Establish the weights and quantities for the sale of products.
- Eliminate "cents-off" and other bargain promotions.
- Limit merchandising practices and what can be shown on the package cover.
- Establish standard "serving" sizes.

Actually shoppers already have all the federal protection they need against deceptive practices. The Federal Trade Commission and other agencies and bureaus are extremely diligent in that area and can be expected to continue their operations without any supplementary legislation.

The average housewife is a shrewd buyer and needs no help from a Washington bureaucrat to make her marketing selections. Besides dictating her choice of product sizes and weights, the Hart bill could very well drive prices upward, since any standardization that required re-packaging would be certain to raise manufacturing production costs.

Thus, putting an "unseen federal regulator" in each super-market will only serve to frustrate the shopper and put an added drain on the food budget.

**Farm Income Sag Is Blamed On Program Failure**

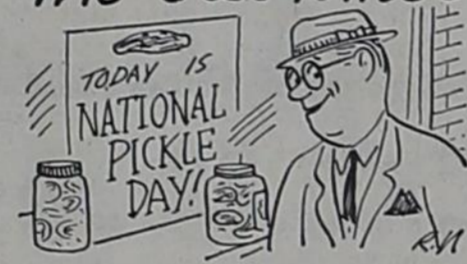
WASHINGTON—Rep. H. R. Gross, (R-Iowa), says that despite the Administration's claims that present farm programs have benefited the farmers the "rosy picture" does not square with the facts.

"The extent to which farmers are being short changed in comparison with other segments of the economy is shown in figures compiled by Carl Wilken, research director for the National Foundation for Economic Stability," he said.

"Wilken estimates the national income for 1964 will total \$509 billion—or \$31½ billion more than the figure for 1963. On the other hand, he says net farm income this year will total \$12½ billion or \$500 million less than in 1963.

"As I have frequently pointed out, agriculture is the nation's basic industry, and the failure of assorted economists and politicians to recognize and eliminate the inequity and injustice that is being perpetrated on the industry is one of the tragedies of our time."

**The Old Timer**



"There are 365 days in a year but more than 3,659 special days are designated for observance."

Sewing skills can win a trip to Bermuda this summer for a homemaker. Members of the National Grange, or other persons who know a member who will sponsor them, can start sewing for the Grange's annual all-cotton sewing contest. A vacation for two in Bermuda is the grand prize in the contest, which opened last month and will close April 30. Entries can be either a dress, a suit or a coordinated skirt and blouse, depending on the class entered. Classes in the contest include one for adults, one for teenagers, and one for adults sewing for persons under 18. Entry blanks and additional information may be obtained from local, county or state Grange organizations.



**AMMO NOTES**

By W. F. "Bill" Bennett  
Agronomist  
Western Ammonia Corporation

**COTTON FERTILIZATION**  
Using the proper method of application of fertilizer for cotton can often mean the difference between profit and loss from that fertilizer application.

The preferred method for application of a phosphate source is in a band with the band being placed on 20 inch centers or within 10 inches of the row on each side. If convenient to do so, it would be desirable to place the phosphorus band even closer to the row. Research has generally shown that a banded application will produce an additional 10 to 20% lint cotton per acre over a broadcast application where the phosphorus is needed.

Dual applications of an ammonium phosphate, either liquid or dry, plus anhydrous ammonia has proven to be one of the best methods available for application of fertilizer for cotton.

Banding of an ammonium phosphate provides one big benefit. This is the combination of nitrogen and phosphorus together in the same fertilizer particle in the same band. It has been definitely shown that this combination of nitrogen and phosphorus will result in a greater uptake of the applied phosphorus by the plant.

The calcium phosphates, 0-20-0 and 0-46-0, can also be applied as a dual application with ammonia, however, such a dual application will result in a decreased water solubility and availability of phosphate, therefore, it would generally be undesirable to band together a calcium phosphate and ammonia. Where calcium phosphates are being used, it would be more desirable to proceed with a broadcast application with a separate application of

ammonia being made.

For time of application of fertilizer for cotton, phosphorus should be applied either preplant or early sidedress when the plant is in the 4 to 6 leaf stage. Nitrogen application can be made up to time of first square. A good method which has been proven to be good is to place the dual application into the sides of the bed prior to watering or sidedress after the cotton is up to a good stand. By applying the fertilizer on 20 inch centers and if replanting is necessary, the fertilizer band is only 10 inches away from the row. Some prefer to wait until they see that they have a good stand of cotton and then make the dual application on 20 inch centers.

In cotton fertilization, for best results, use a completely watersoluble ammonium phosphate in a banded application. The dual application of ammonia with the ammonium phosphate is desirable and saves one trip across the field which saves time and labor costs.

"One way to make money is to forget who you borrowed it from."—Tom Phillips, Pana (Ill.) News Paladium.

**\$300,000 Needed For Screwworm Eradication**

Texas farmers and ranchers have been asked to raise \$300,000 to keep the screwworm eradication program in operation through June.

The Southwest Animal Health Research Foundation set the two-week period beginning March 29 for committees in all Texas counties to ask livestock producers for contributions to keep the popular insect eradication project alive until the Federal government can assume full financial responsibility. Livestock industry leaders are hopeful that with Congress considering a U.S. Department of Agriculture request for \$5 million, this will come about July 1.

Dolph Briscoe, Jr., SWAHRF president of Uvalde, stated his organization had investigated all alternatives before deciding to ask for additional contributions from producers and assured the livestock industry that its funds are vital to the continuation of the eradication project. He said a reduced level of operation during the winter and economies in production of sterile screwworm flies have extended available funds by several months, else a fund drive would have been necessary much earlier.

Eradication experts have estimated that during April, May and June, which in the past has been a time of heavy screwworm activity, 100 million sterile screwworm flies will be needed each week to keep fertile insects from Mexico from reinfesting the Southwest where the livestock pest has been eradicated through use of the sterile male fly technique. Cost of operating at this level will be \$12,000 already appropriated by the Texas Legislature, will match an equal amount of Federal funds to supply the total required.

**Hidden Levies Top Income Tax**

For every dollar in federal income taxes paid by an individual he also pays \$1.29 in other federal taxes, most of which are hidden.

The above formula was arrived at by the Tax Foundation, after months of careful computations.

Thus, a person whose income tax deductions is \$15 a week, pays another \$18 weekly in various other federal taxes, bringing the total tax assessment to \$33 weekly.

Though some of the taxes, such as Social Security, can be seen, the majority of the others are hidden — having been added to the manufacturers' prices on a wide variety of goods, but not shown as separate items in the final purchase.

Marcy Lee's  
Spring Dresses

In Klopman Fabric  
With Old Dominion  
Finish

Sizes 10-18



**THE FASHION SHOP**

6th. and Main

Clovis

**Complete Automotive  
Machine Shop  
SERVICE  
Valve Work-A Speciality  
Crankshaft Grinding  
MOTOR LAB**

311 W. 7th. Elliot Auto Parts Clovis

**ADAMS DRILLING CO.**  
WATER WELL DRILLING  
**LAYNE PUMPS, INC.** PUMP & GEAR HEAD REPAIRS  
ALL MAKES  
Sales & Service DIAL 247-3101  
Frona Nights 247-2513 Texas

**ANNOUNCING- - -  
SNEED SUPPLY**  
Phone 3-4260 Muleshoe, Texas

**DEALER FOR:**  
JOHNSTON PUMPS  
CONTINENTAL ENGINES  
WAGNER SPRINKLER PIPE MOVERS  
REDI RAIN HAND MOVE SPRINKLER SYSTEM  
WHEEL LINES GATED AND FLOW LINES  
UNDERGROUND PLASTIC, ASBESTOS-CEMENT TILE COATED AND WRAPPED ALUMINUM PIPE  
RICE SELF-PRIME LAKE AND TAIL-WATER PUMPS

**WELL DRILLING AND CASING  
SUBMERSIBLE PUMPS  
CHRYSLER, OLDS, CHEVROLET ENGINES  
IRRIGATION ENGINE, GEAR-DRIVE AND PUMP REPAIR WORK.**

We Can Finance A Turn-Key Irrigation Plant And Aluminum Pipe, Or Sprinkler System And Wagner Sprinkler Pipe Movers For Only--

**30% DOWN & 4 CROP PAYMENTS  
DROP BY AND LET US  
MAKE YOU AN ESTIMATE**

**ANOTHER REPORT...**

I applied Western Ammonia's liquid phosphate material 7-21-0 on some of my milo acreage at the rate of 200 lbs. per acre combined in a dual application with 130 lbs. of ammonia.

My increase from this type of program was an additional 1300 lbs. per acre over my previous fertilizer program. A very substantial increase of dollars per acre for the dollar invested.

I was very pleased and plan on using a similar program this year.

Harvey Rials, Castro County Farmer

**...A REPORT OF SATISFACTION**

An important by-product of any company is the man who openly admits when he's satisfied with the service. You will find that Western Ammonia has the know how, equipment and products to give the best satisfaction there is in a fertility program. Western is now offering the new high analysis liquid ammonium polyphosphate 11-37-0 and new 11-20-0-115 in place of lower analysis 7-21-0. You'll find that Western also has a complete line of dry fertilizers.

**YOUR LOCAL WESTERN REPRESENTATIVE:**

Frona Lester Dean 295-3444	Farwell Coopers Gin Lawrence Cooper 481-9158	Hub & Lazbuddie Jerry Eakins 265-3242	Bovina Bill Hutto 238-4164
----------------------------------	---	---	----------------------------------

**Western Ammonia Corporation**  
Dimmitt, Texas

# COTTON TALKS

FROM PLAINS COTTON GROWERS, INC.

As legislators prepare for and take up discussion of cotton legislation and other agricultural programs during this session of Congress, writers and broadcasters will again redouble their efforts to build attention-getting stories around the term "subsidy."

And, if we are to judge the future by the past, we can expect that in a majority of cases the word "subsidy" when used in connection with farm programs and farmers, will carry a derogatory (if not downright defamatory) implication. The misunderstanding that exists in the public mind with regard to this one term is probably responsible for the biggest and ugliest pimple on the much-marred complexion of agriculture's public image.

Looking at the works of some writers and speakers, particularly those who operate from "big-city" bases, one gets the impression that the word "subsidy" was placed in the English language solely for the benefit of agriculture. These people seem irresistibly drawn to such thread-bare phrases as "feeding at the public trough" and "dipping collective cups into the public till." They imply that farmers are the only recipients of subsidies from government, and that such subsidies are purely for the benefit of farmers.

Nothing could be farther from the truth, and anyone who will take the time and effort to seek an honest definition of "subsidy" will find that out.

The part of our Webster's definition which applies to government subsidies is under 3-b: "A government grant to assist a private enterprise deemed advantageous to the public." For our purpose here, the key phrase is "deemed advantageous to the public" -- a phrase too often overlooked by the sensation seekers. All government subsidies, presumably, are meant to be in the interest of the general public, not just the individual or industry in question. In the case of agricultural subsidies, the public benefits by an abundance of food and fiber, and by the maintenance of a strong agricultural economy, without which there is general agreement that our entire economic structure might well tumble about our ears.

For a more detailed and complete definition of subsidies, we find valuable material in a pamphlet entitled "Subsidy and Subsidylike Programs of the U. S. Government," prepared for the Joint Economic Committee, Congress of the United States. For the purposes of that report, subsidies are defined as "an act by governmental unit involving either (1) a payment, (2) a remission of charges, or (3) supplying commodities or services at less than cost or market price with the intent of achieving an economic objective." Under this definition the scope of sub-

sidies broadens considerably, and those who have adopted such holler-than-thou attitudes toward the farm population should begin to see the error of their ways.

Under one or another of the three broad categories listed above, the report cites as subsidies: Grants to business firms and corporations (shipbuilding and ship-operating differential subsidies, Subsidies for carrying mail, etc.); Tax benefits to specific economic groups (depletion allowances to producers of minerals and other extractive industries, accelerated amortization of defense facilities, concessions to small business under the Technical Amendments Act, reduction of income taxes to particular groups and individuals etc.); Indirect assistance to specific economic groups (financing of highway and airport construction, protective tariffs, purchase restrictions under the Buy American Act etc.); Free services or services below cost (postal system, FCC, FTC, ICC, SEC, Bureau of Labor Statistics and many more); Lending and Loan Guarantee programs; Federal aid payments to states and local units (school lunch fund, forestry services, state marine schools etc.); Insurance programs undertaken by government at sub-normal premiums, and a host of others.

Even a cursory glance at this grossly incomplete list of subsidy and subsidylike government programs is sufficient to show that every single citizen of the U. S. is receiving government aid in one form or another. And it should be sufficient to convince those who constantly throw thoughtless rocks at farm programs that they, too, live in glass houses.

## COURTHOUSE NEWS

### INSTRUMENT REPORT

March 8 thru 13, 1965  
 WD, Leonard H. Nettles - M. M. Elder - Lot 3 Blk 3 Staley Add, Friona.

WD, Bernice Loraine Gallman - Kenneth D. Gallman - 10 a of NE/4 Sect 11 Doud & Keefer.

ML Aff., John Farrell Lumber Co. - H. Hollis Horton, Jr. - W 400 ft. of 6.96 a in SW part of Sect 31 TIN R4E.

DT, Oklahoma Lane Farm Supply Co. - Lubbock Cotton Oil Co. - 10 a of SE/4 Sect 21 T10S R2E.

WD, Joe R. Jesko - Andrew J. (Pete) Jesko - W/2 Sect 3 D&K.

DT, Travis Dyer - Griford-Hill-Western - S/2 Sect 24 Synd "A".

WD, Housing Service Corp. - Troy Young - Lots 11 & 12 Blk 4 Bovina.

DT, Troy Young - Housing Service Corp. - Lots 11 & 12 Blk 4 Bovina.

ML, A. S. Grubbs - Parmer Co. Pump Co. - N/2 Sect 1 Sullivan "R".

ML Aff., J. W. Burns - Hollis Horton - W 400 ft. of 6.96 a SW part Sect 31 TIN R4E.

WD, S. Q. Jones - Douglas Frye - Lots 11 & 12 Blk 6 Drake Rev. Sub. Friona.

WD, Dan Ethridge - R. L. Fleming - E 25 ft. Lot 6 Blk 6 & W 55 ft. Lot 7 Blk 6 First Install Staley #3.

DT, L. S. McCarty - F.H.A. - NE/4 Sect 63 Johnson "Z".

WD, J. E. Knight - Bob Burkett - Part SW part of NE/4 Sect 1 T3S R3E.

DT, Glyn Hamilton - Prudential Ins. Co. - S/2 Sect 29 TIN R4E.

ML, Tom Paine Cicero Smith Lumber Co. - 2.06 a of SE/4 Sect 32 T2N R1E.

WD, Bob Burkett - Harold H. Bells - Part of SW part NE/4 Sect 1 T3S R3E.

WD, Virginia Faye Cruger - Vidal Vargas - NW 90 ft Lot 3 Blk 18 O. T. Bovina.

WD, Herman Estes - Billy D. Smith - SE 60 ft. Lot 1 Blk 36 O. T. Bovina.

WD, Emma Minter - Elvin O. Johnston - SE 60 ft. Lot 1 Blk 36 O. T. Bovina.

WD, Emma Minter - Billy D. Smith - Part Lot 1 Blk 36 O. T. Bovina.

WD, Elvin O. Johnston - W. H. Anderson - SE 60 ft. Lot 1 Blk 36 O. T. Bovina.

DT, Verney Towns - Plainview P. C. A. - See Records.

WD, Clyde Magness - C. G. Hromas & L. R. Vincent - S 40 ft. Lot 9 & N 35 ft. Lot 8 Blk 2 Ridgcrest #1 Farwell.

ML, C. G. Hromas - L. R. Vincent - Security State Bank - S 40 ft. Lot 9 & N 35 ft. Lot 8 Blk 2 Ridgcrest #1 Farwell.

ML, Acme Brick Co. - Hollis Horton & Horizon Homes - W 400 ft. of 6.96 a of SW part Sect 31 TIN R4E.

WD, Durward Bell - Edward Isaac - N 120 ft. Lot 4 Blk 90 O. T. Bovina.

WD, W. E. Curtis - J. P. Hukill - SE/4 Sect 64 Johnson "Z".

WD, Lattie M. Harrell - Willard E. Curtis - SE/4 Sect 64 Johnson "Z".

DT, J. P. Hukill - W. E. Curtis & Lattie Harrell - SE/4 Sect 64 Johnson "Z".

WD, Newman Jarrell - Loucille Foster - SW/4 Sect 19 T5S R4E.

DT, Loucille Foster - Newman Jarrell - SW/4 Sect 19 T5S R4E.

DT, Bernard Nelson - Prudential Ins. Co. - NW/4 Sect 16 T10S R2E.

DT, E. R. Little et ux - Prudential Ins. Co. - 631 a of Cap Leagues 465.

ML Aff., Cathy - Fullingim Hardware Co. - H. Hollis Horton - W 400 ft. of 6.96 a of SW part Sect 31 TIN R4E.

WD, Herman Estes - Emma Minter - Part Lot 1 Blk 36 O. T. Bovina.

## Liquid Or Solid? Just Take Your Pick

Are liquid fertilizers as good or better than the solids? C. D. Welch, soil chemist for Texas A&M University's Agricultural Extension Service, says numerous comparisons show liquids comparable to solids when the same amounts of plant nutrients are applied.

And, adds Welch, liquids have advantages as well as disadvantages. They can be handled mechanically and this, says the chemist, is an attractive feature to many users. Because of water needed to produce the solution, more weight may have to be handled in order to supply the same amount of nutrients from solid materials.

Another disadvantage, most fertilizer salts when dissolved are corrosive to distribution equipment; thus requiring special equipment for shipping, storing and applying. Welch suggests that the cost per unit of plant food from liquids and solids be carefully evaluated.

The chemist says one of the most frequently asked questions has to do with nitrogen solutions other than anhydrous ammonia. Several such solutions have been developed for direct application and have proved effective when properly applied, he says.

Solutions containing urea, he cautions, should not be sprayed on the surface of vegetation during the summer when temperatures are high. Spraying urea on dead or dormant plant material increases the chances of losses though little or no burning results, he adds. The best application method for applying urea-containing solutions is to put it into the soil and when this is not possible

it should be dribbled on the soil surface. The least desirable method is by spraying. Liquids mixtures of materials containing one or more of the major nutrients when used in recommended amounts and properly applied, have given results equal to solids, according to Welch. Since liquid fertilizers generally contain the same chemical compounds used in solids, cost and convenience of handling are major points of comparison.

Unless you can get your problem stated in less than 10 words, you don't understand it yourself." - Robert G. Campbell, Littitz (Pa.) Record-Express.

**Dr. William Beene**  
 Optometrist  
 Phone 247-3061 13th. & Cleveland  
 Friona, Texas (South Of Hospital)

fresh from the home of quality!

**LARDY-CAMPBELL** Quality Check DAIRY PRODUCTS

**RITWAY JANITOR SERVICE**  
 Clovis, N. Mex.  
 Carpet shampooing. Free estimate. Cleaning is our only business - not a sideline. Phone 763-6361.



When they build their real homes, we'll be here to help them with home loans. If you need a home loan now, talk it over with us today. We are home loan specialists.

MEMBER OF THE SAVINGS AND LOAN FOUNDATION  
 SPONSOR OF THIS ADVERTISEMENT IN LOOK MAGAZINE

**First Federal Savings & Loan**

HOME OFFICE 4th & FILE CLOVIS, N.M.  
 BRANCH OFFICE 2nd & ABILENE PORTALES, N.M.

Farm and Ranch Loans  
 Long Term Low Interest  
 ETHRIDGE-SPRING Agency, Friona  
 Phone 247-2766

**HARTZOG SEED FARMS**  
 NOW BOOKING  
 Certified Texas 660 Hybrid Milo Seed  
 ★ Triple-Treated  
 For ★ Wireworm ★ Smut ★ And Is Pre-Fertilized

★ Test Grown  
 ★ Extremely High Germination  
 "Texas 660 Does More For More Farmers"

For Farm Delivery, See Paul Craig Or Your Elevator Or Seed Dealer

--Certified Gregg and Austin Cotton Seed Also Available--

**HARTZOG SEED FARMS**  
 Phone Oklahoma Lane Area Code 806 --825-2711

## CAPITAL BRIEFS

**SPEND TO SPEND**—The Department of Agriculture estimates that farmers' incomes for 1965 will total about \$12.6 billion. The department's own budget is more than half of that.

**WARNING**—The Board of Actuaries of Civil Service Retirement Fund reports that since each federal pay raise increases the fund's liability it will go broke before 1990 unless Congress appropriates billions more. The unfunded liability already approaches \$40 billion.

**OUTNUMBERED**—"For every 10,000 people in the United States there are 12 doctors, 11 lawyers and judges, 40 gas station workers and 37 telephone employees," says Rep. J. Arthur Younger (R.-Calif.), "but for the same 10,000 Americans there are 130 federal civilian bureaucrats feeding at the public trough."

"It may be a man's world, but we'll give you odds that it's in his wife's name." - Lee Mildon, Salinas (Calif.) Monterey County News.

**My Neighbors**

If You Have **FARM MACHINERY** TO SELL Call Big Nick Trienen at **Machinery Supply** Highway 60 Bovina Phone 238-4861

**GIBSON'S DISCOUNT CENTER**

"WHERE YOU ALWAYS BUY THE BEST FOR LESS"

111 Park HERFORD Em 4-2630

★ ★ ★ **HEALTH AND BEAUTY AIDS** ★ ★ ★

Alberto-Culver <b>VO5 SHAMPOO</b> Ret. Val. 1.00 <b>47c</b>	Micrin <b>MOUTHWASH</b> 7 Oz. Ret Val. 69c <b>47c</b>
Unbreakable <b>COMBS</b> Ret. 3/39c <b>3/29c</b>	So Soft <b>HAND LOTION</b> 1 Pt. Ret. 1.00 <b>27c</b>
Colgate <b>TOOTHPASTE</b> Family Size Ret. 89c <b>47c</b>	Chiffon <b>LIQUID DETERGENT</b> 1 Qt. Ret. 69c <b>47c</b>
Lanolin Plus <b>HAIR SPRAY</b> 20 Oz. Ret. 1.39 <b>77c</b>	Capri <b>BATH OIL</b> 1/2 Gal. <b>77c</b>
Nutri-Tonic <b>HOME PERMANENT</b> Ret. 2.00 <b>57c</b>	Gibson Malt <b>SPRAY STARCH</b> 18 Oz. <b>37c</b>
Melrose <b>HAND LOTION</b> 16 Oz. Ret 1.50 <b>2/97c</b>	S.C. Johnson's <b>SHOE POLISH</b> 2 Oz. Liq. Ret. 29c <b>9c</b>

**TRYLON GLYCERIN & ROSEWATER CREAM** Ret. 1.75 **\$117**

Complete Assortment <b>Windshield Wiper Blades</b> At Gibson's Low, Low Discount Prices	Parks <b>Metal Tool Box</b> (20 Inch) Reg. Retail \$9.95 Gibson's Special Price <b>\$5.97</b>	Com Techs <b>Tape Printer</b> With 1 Roll Of Tape In The Home Or Office (Extra Rolls Of Tape 89¢ Value For 67¢) All Colors Reg. Retail \$9.95 Gibson's Special Price <b>\$5.97</b>	Crestline <b>Electra Spray ROTARY SPRINKLER</b> Reg. Retail \$5.95 Gibson's Special Price <b>\$3.33</b>
---	---	--	---

**Complete Line BRAKE SHOES**

Reg. \$3.47 Now <b>\$2.77</b>	Reg. \$3.97 Now <b>\$3.00</b>	Reg. \$4.47 Now <b>\$3.66</b>	Reg. \$4.87 Now <b>\$3.97</b>
Reg. \$5.27 Now <b>\$4.33</b>	Reg. \$6.47 Now <b>\$5.27</b>	Reg. \$7.47 Now <b>\$5.97</b>	

With Exchange

**DYNACHROME DAYLIGHT COLOR FILM**

8 M.M. Daylight <b>Color Movie Film</b> Processing Included	Gibson's Reg. Price \$2.67 Now <b>\$1.87</b>	35 M.M. Daylight <b>Color Slide Film</b> Processing Included	Gibson's Reg. Price \$2.95 Now <b>\$1.87</b>
---	--	--	--

Republic Polly Flex Plastic

**STACKING BINS** Reg. Retail \$1.69 Useful For All Kinds Of Storage White-Copper-Beige Gibson's Special **88c**

Super K **BASKET BALL AND GOAL KIT** Reg. Retail 9.95 Gibson's Special Price **\$5.97**

A Complete Stock At Gibson's Discount Prices **Red Wood Plant Buckets And Planter Boxes** At Gibson's Discount Prices

**Catfish Bait** Reg. Retail \$1.00 By Harper Special Price **59c**

HAVE YOU TRIED---  
**GIBSON'S DISCOUNT PHARMACY?**