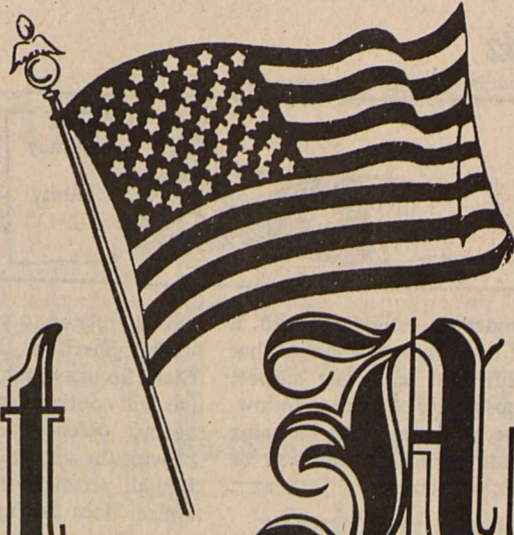




Fire **DIAL**
Police **9-1-1**
E.M.S.



25¢

The Brackett News

Vol. 4 No. 26

Brackettville, Fort Clark, Spofford, and Kinney County, Texas

August 6, 1992

"If a man had half as much insight, as he has hindsight, he would have twice as much foresight"

Seminoles Participate In Smithsonian Festival

26th Annual Festival Of American Folklife Washington, D. C.



Charles Emily Wilson

Members of the Seminole Indian Scout Cemetery Association attended and participated in the 26th Annual Festival of American Folklife held in Washington, D. C., June 26 through July 6, 1992. The Festival was sponsored by the Smithsonian Institute.

Members/officers attending were Mr. and Mrs. William "Dub" Warrior of Del Rio, Ms. Izola Raspberry of St. Louis, Missouri, Gail Clovis Best Poindexter of San Antonio, Ms. "Nina" Alice Fay, Macimiento, Coah., Mexico, Ms. Charles Emily Wilson of Brackettville and Professor of Linguistics Ian Hancock of the University of Texas. Consultants were representatives of the Smithsonian Magazine Diana N'Diarye and Ken Bilsby.

All events and participation of different Ethnic Cultures were held on the National Mall in Washington, D. C. Events included cooking, singing, dancing, storytelling and showing pictures.

Mr. Warrior and Ms. Wilson met in special session with the "Maroons" from different islands. This was very informative and exciting as they shared languages and cultures.

BHS Cheerleaders Attend Camp

Won Spirit Stick Every Day

The Brackett High School Tiger Cheerleaders spent July 21 - 24 at Angelo State University enrolled in a Universal Cheerleader Association Camp.

They learned about 20 new chants, cheers, and dances. They brought home a healthy number of ribbons - 2 excellent ribbons, 8 superior ribbons, and 1 trophy. Of the 200 cheerleaders at the camp, the BHS cheerleaders won the spirit stick **every day**.

Through fund raising activities, the cheerleaders and their sponsor raised \$1200.00 to pay their expenses.

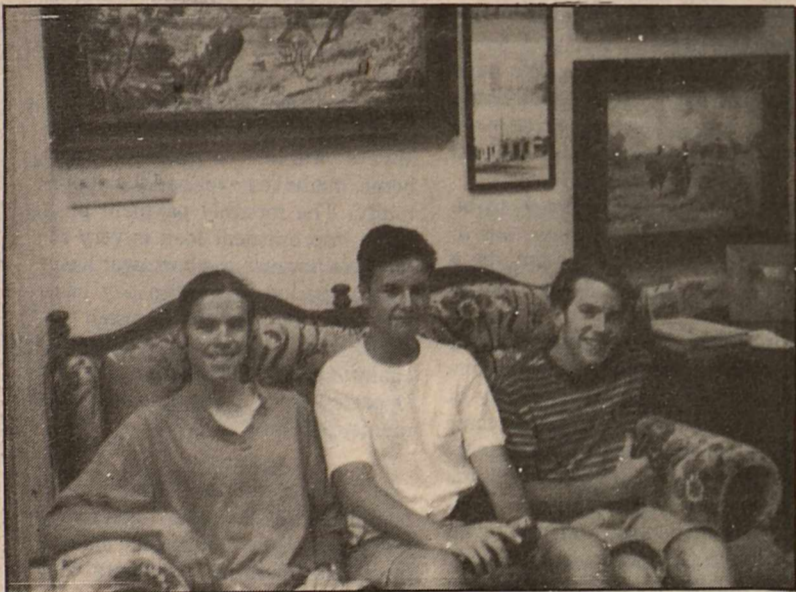
The squad is made up of Debra Frerich, Denice Frerich, Kim Ahrens, Head Cheerleader Theresa Terrazas, Jessica Taylor, Wendy McDaniel, and Amber Davis. Mrs. Mary Petrosky is the sponsor.

Mrs. Petrosky expressed extreme pride in the achievements of the group and was just as equally pleased at the conduct of the young ladies. In her words, "I would not hesitate to take these young ladies anywhere. They were models of good behavior and courtesy. They got along well with each other, with me, and other participants. They were on time and eager to learn at the training sessions. They worked hard and are a credit to our school."



BHS Cheerleaders for 1992-93, clockwise from top left, Jessica Taylor, Wendy McDaniel, Theresa Terrazas, Denice Frerich, Debra Frerich, and Kim Ahrens. Not shown is Amber Davis.

Downings Entertain Student From Spain



From left: Travis Higdon, Alejandro Mateos, and Andrew Higdon visited *The Brackett News* office Tuesday while guests of the Downings. Travis and Alejandro became acquainted through the Rotary International Student Exchange Program.

Jean and Charles Downing are proudly and happily entertaining three young men this week. Two are their grandsons, Travis and Andrew Higdon both of San Antonio. The third young man is Alejandro Mateos of Bureos, Spain.

Travis spent the month of July, 1992, as a guest in Alejandro's home as a participant in the Rotary International Student Exchange program. Alejandro is enrolled in the same program and the two flew back to Texas together.

Mr. Higdon, father of Travis and Andrew, is president of the Oak Hills Rotary Club. Alejandro's father is active in the Rotary Club in Spain.

While Travis was in Spain (in July) his host family took him to Portugal and they also attended the Expo '92.

This is Alejandro's first trip to Texas and he has already "seen the sights" of San Antonio and of

Austin. He will be seeing more of Texas after his brief visit in Kinney County. It is not his first trip to the United States though. In the summer of 1991, he spent a month in the state of New York, sponsored by the Maple Leaf Corporation, a Spanish company. He will be sixteen on December 25 and has two years left in high school.

In 1991, Travis spent time in Norway with the American Field Service Student Program. He will be entering the University of Texas at Austin this month.

Andrew insisted he was not the "forgotten one." Exciting things have been happening to him also. On July 29th he became sixteen years old and now is the proud owner of a Texas Drivers License. He will be a junior at Clark High School (Northside School District) in San Antonio this fall.

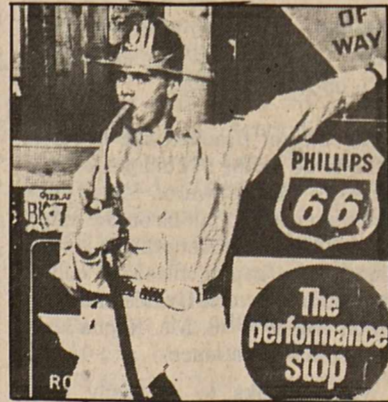


Sponsor Petrosky

First Class Entertainment See These Stars At Variety Show



Natalie Evetts Singer



Dr. Jim Lane Comedian

"Blue Magic" Promotes Spofford Telethon



BLUE MAGIC: From left, Mario Reyna (lead guitar and vocalist), Joe Lopez (bass guitar), Tommy Sanchez (keyboards), Jaime Espinoza (congas, vocals), and Horacio Tristan (drums, vocals) make up the very popular band called "Blue Magic" and their home base is Del Rio.

"Blue Magic" is an international recording group and are well-known both in Mexico and the U. S.

They were at the Telemundo Television Station in Eagle Pass this week filming a commercial to promote the Spofford Benefit Telethon that will air August 8.

The band has just completed recording an album with Cavalry Recording Artists of Brackettville.

Their promotional manager, James Householder, is in Dallas at press time getting the album pressed. The album will be for sale September 15.

Third Annual Variety Show

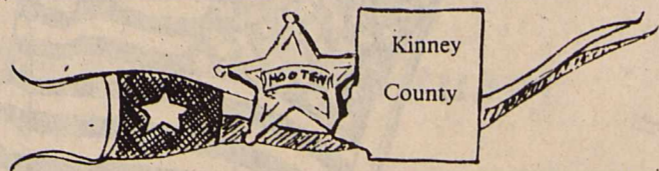
Fort Clark Springs Amphitheatre

August 8, 1992

8:30 P.M.

Sheriff's Corner

By Sheriff Norman H. Hooten



The recent burglary of The Duck Inn on Fort Clark which occurred on the night of July 25, 1992, has been cleared by the Sheriff's Department with the arrests of three Fort Clark youths ranging in ages from 14 to 17. Though no formal charges against the three have been filed as of the time of this writing, the cases are being processed, with two being juvenile cases and one as an adult.

The victim of the crime, Mr. and Mrs. Ronnie Dunnam, lessees of The Duck Inn, have turned in loss and damage claims incurred during the crime which will be presented to the proper authorities with a request for an order of reimbursement. The combined efforts of the Fort Clark Board of Directors, Fort Clark Security, and the Kinney County Sheriff's Department led to the speedy clearing of this case and the arrests of the perpetrators.

Another recent case of vandalism which occurred on Fort Clark near the Teen Center the night of Sunday, August 2, 1992, with the slashing of a tire on the car of Mr. and Mrs. Calvin Oliver has also been cleared by the Sheriff's Department after developing evidence in the case. Again, three juveniles were involved and this case is being processed at the time of this writing. A total of \$52.21 damage required to replace the cut tire was incurred in this senseless act. Reimbursement to the Oliver's has already been made by the parents of two of the youth associated with the incident. An illegal "switch-blade knife" was confiscated from one of the youths and is believed to be the instrument used to cut the tire.

Our investigation into the rural burglaries that occurred during the course of one week a few weeks back

is still under investigation with a couple of new leads developing that has identified at least one suspect with the possibility of more to follow. Due to the evidence in the on-going investigation no new details can be released at this time.

Again we ask parents, grandparents, and/or guardians of young people in our county and community to tighten the strings of permissibility on their children and make them more accountable for their time, their whereabouts, and their actions. This is the most effective way to curb the recent outbreak of crime believed

directly related to young offenders.

The Sheriff's Department, Fort Clark Security and other local officials will continue to take a hard line against offenders in an effort to provide the service that they deserve. Denial, permissiveness, and protectionism does far more to harm the young violators than a good, stiff set down with loss of privileges if and when they do wrong. Laying the blame for their misdeeds on the victims of their wrongdoings or on the law does not correct their attitude and only sets the stage for far more serious consequences in later years.

That's All!

Safety At Railroad Crossings

By JUDITH ZAFFIRINI
State Senator, Dist. 21

According to Confucius, "the cautious seldom err." Travelers on the roads of SD 21 should keep these words in mind and exercise caution while crossings railroad tracks, especially to avoid the mistake of taking unnecessary risks.

Our state leads the nation in miles of railroad track and number of highway-railroad grade crossings. Texas has more than 13,500 public railroad crossings, including 1,420 within the boundaries of the current and future SD 21. Our counties have as many as 357 crossings or as few as two. Webb County alone, for example, has 136 crossings.

The Texas Railroad Commission is taking the lead in promoting railroad crossing safety. Chair Lena Guerrero, Commissioner James Nugent and Commissioner Robert Krueger have instituted several

programs designed to educate the public. As Commissioner Guerrero stresses, "We can avoid accidents at railroad crossings by education and enforcement of the laws."

A priority for the Commission is the school bus grade crossing safety program. A "How-To" pamphlet, developed in conjunction with the U.S. Department of Transportation, is designed for school administrators to use in improving school bus safety at railroad crossings. Effective planning by administrators and enhanced awareness by drivers are essential for protecting children on school buses from the dangers at railroad crossings.

Operation Lifesaver is a nationwide safety education and public information program established in Idaho in 1972 by the Union Pacific Railroad. The program was designed to reduce the number of accidents and deaths at the state's rail crossings at a time when the national average number of crossing-related fatalities was 1,200 annually. In its first year, the program yielded a 39 percent reduction in the state's collision fatalities.

Operation Lifesaver's name and concept quickly spread to 49 states, and in 1986 it became a private, independent program. In 1977, the Texas project became the first in the nation designed as "on-going," rather than limited to 6-12 months.

According to "Signal," a publication of the Texas Safety Association, Operation Lifesaver strives to achieve a better awareness and understanding by the public of the potential hazards at highway-rail crossings if caution is not exercised.

Accidents at railroad crossings are the most severe type of highway accidents. Program personnel report that a car traveling 30 mph needs 78 feet to stop, while the average freight train going 30 mph requires 3,150 feet, or almost two-thirds of a mile, to stop. What's more, the average passenger car weighs only 1 1/2 tons, while the average freight train weighs approximately 6,000 tons.

The statistics underscore why drivers must heed warnings at railroad crossings and not attempt to cross tracks in front of oncoming trains. The few minutes spent waiting for trains to pass are worth avoiding the risks of misjudging their speed.

Another Texas safety program is the "Trooper on the Train" program. An officer of the local law enforcement agency having jurisdiction over each particular segment of a train's route joins a DPS trooper, armed with a video camera and a two-way radio, on the train. When violators of grade crossings signals run in front of the train, their actions are recorded on camera and descriptions of the violating vehicles are radioed to patrol cars stationed in the vicinity of the crossing. Law enforcement officers may board any train at any time on any route, making all trains possible law enforcement transports.

In 1991, the Railroad Commission and Amtrak initiated a near-collision program. Through this effort, Amtrak crews attempt to document a near collision by collecting and telefaxing data such as the date, time of occurrence, location and vehicle identifiers, to the Commission. The vehicle owner is identified and sent a letter emphasizing the dangers associated with ignoring highway/railroad warning devices. Operation Lifesaver brochures are enclosed with the letter.

Railroad Commissioners believe that the near-collision program is an effective warning to careless drivers and a way to increase public awareness of railroad safety.

Travelers on the roads of SD 21 are encouraged to live by the motto of Operation Lifesaver, "At the crossing, look, listen -- and live." Drive safely!



Between Us

By Joe Townsend



It's going to rain. How do I know?

The purple sage is blooming and that's a sign it's going to rain. No, wait a minute, someone says when the purple sage blooms it's a sign it has already rained.

Oh well, both schools of thought are right. The sage blooms before a rain, maybe three months before. And it's true the sage blooms after the rain, maybe three months after a rain.

The truth is the sage blooms out of the new growth. Sometimes it blooms off calendar schedule but the normal time for the sage to bloom is August.

The sage is indeed picturesque. An occasional white sage calls attention to itself.

Then there is the white with a red throat, a pale pink, a rich pink, a pale lavender, a striking pinkish purple and the exotic double bloom in rich red-purple. The thing that attracts attention most is when you see a pasture that is a blanket of solid sage in bloom.

The plant itself is a nondescript gray with no appeal to the eye whatsoever. It's really more of a pest than an asset in the pasture. Only on a very rare occasion when browse, grass and weeds are hard to find will

a goat, sheep or cattle nibble on the sage.

God has programmed the bloom of the sage to enhance nature when the need is at its height. The hottest part of the summer is past. July, normally is the driest month of the year so what better way to bring a spark to a dismal season than for the sage to preen its feathers and show its beauty.

Purple sage has been the object of poetry, of songs, of books, of movies and imaginative folk lore. The next week will see sage at it's most beautiful display unless purchase it rains and washes out the blooms, which looks now to be highly unlikely.

Count yourself fortunate to be able to enjoy such a beautiful panorama of color which much of the world will never see.

Yes, it's going to rain, the sage is in bloom. And yes the sage is blooming because it has rained.

Interest-Free Improvement Loans

The Texas Department of Housing and Community Affairs (TDHCA) announced today that \$1 million is available statewide for home improvement loans. Eligible low income homeowners may borrow up to \$15,000 and pay no interest.

"The Home Improvement Loan Program will help Texans who have always wanted to improve their home, but have never had the opportunity. The monthly payment on a home improvement loan is very affordable because the borrower has a greater period of time to pay back the loan and is not charged interest," said Paul R. Rodriguez, chairman of the board, Texas Department of Housing and Community Affairs.

In order to be eligible, the borrower must meet qualifying guidelines, have a sufficient income to afford monthly payments and make no more than 80 percent of the area median income.

The 72nd Legislature created TDHCA by merging the former Texas Housing Agency and the former Texas Department of Community Affairs. The Community Development Block Grant was also transferred from the Texas Department of Commerce to TDHCA.

The Texas Department of Housing and Community Affairs is dedicated to helping Texans achieve an improved quality of life through the development of better communities.

Persons who are interested in the Home Improvement Loan Program may call the department's toll-free number, 1-800-792-1119.

No two drivers are alike...



BE ALERT

A Public Service Announcement from The Texas Highway Patrol Association

Big Mama Sez!



Years may wrinkle the skin, but to give up interest wrinkles the soul.

PLEASE REMEMBER that we attempt to include something for everyone within the pages of our paper. We realize that that some folks enjoy finding fault and for those readers we thoughtfully include a socially acceptable number of errors within our publication.

TA

MEMBER 1992

The Brackett News welcomes letters to the Editor. The Editor reserves the right to edit all letters submitted for length and context.

Letters will be edited to avoid the use of profanity or libelous statements pertaining to the rights of citizens.

Letters published and columnist's viewpoints do not necessarily reflect the beliefs of this newspaper.

All letters must be signed and include an address and phone number. Thank You!

TEXAS PRESS ASSOCIATION

The Brackett News.

Publisher - Jewel Robinson
Editor - Jean Faulkenberry

507 S. Ann St - Leona Ranch Office
Brackettville TX 78632
512-563-2852
Fax 512-563-9530

The Brackett News (U.S.P.S. 003987) is published weekly on Thursday for \$15 per year by The Brackett News, Inc. P. O. Box 1039, Brackettville TX 78632 Single copies 25¢

Second class postage rates are paid in Brackettville, Texas.

POSTMASTER: Send address changes to

The Brackett News, Inc.
P. O. Box 1039
Brackettville TX 78632-1039
Submission Deadlines:
News Items - Tuesday Noon
Advertising - Tuesday Noon

The quotation found under the Mast Head on the front page is a copy from "The Rear View Mirror," a Fort Worth Newspaper published Wednesday, March 8, 1961.

To subscribe to The Brackett News, please clip this application and mail to: The Brackett News, P. O. Box 1039, Brackettville TX 78632, or drop by our office at 507 S. Ann St. (next to the bank).

Rate is \$15 per year. Please include check or money order with order form. Thank you.

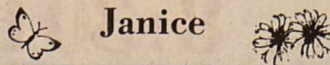
NAME _____

ADDRESS _____

CITY/ST/ZIP _____

Subscribe to **The Brackett News.**

Have a Good Day
Janice



CLAYTON WILLIAMS



JIM MATTOX

Cut Military Advertising

Jim Mattox

Claytie, U. S. Senator David Pryor is on a tear about the millions of dollars the military spends annually on paid television advertising. Senator Pryor says the Army spends \$57 million a year with one New York ad agency trying to recruit new soldiers, when at the same time we are cutting back on our armed forces.

And the Navy spends \$17 million a year, the Marines \$10 million a year, and the AirForce \$25 million a year. The Pentagon says that they must have advertising if we want to keep an all volunteer military.

Maybe being from Arkansas, Senator Pryor is just having some fun taking aim at the New York advertising agencies he says are getting rich off the taxpayer's money. But I'd say he's got a heck of a good point.

Military bases all over this country are being closed. Congress is wrestling with additional cuts in the military after the Cold War's end.

And, with the Pentagon worrying about the unemployment and retraining caused by the cutbacks, why are they spending \$120 million a year on expensive, slick TV advertising?

Go get 'em, Senator Pryor!

The Mayor's Comments

(This letter was read by the Mayor at the "Cord Cutting" implementing 9-1-1 on July 29, 1992.)

The City of Brackettville is very proud to be on the 911 map. Special thanks to Paul Edwards for all his encouragement to put us on the map and not have Brackettville, Kinney County as a gaping blank of communication between Uvalde and Del Rio on Highway 90. Ms. Rocha has been a pillar of patience.

Many thanks to so many that helped, our governing bodies that reversed their decisions and voted "for", to the citizen's helpful input.

We will strive to implement the success of 911 by a joint community effort. The City has in its budget street signs to replace those that are missing. Hopefully, with community effort and help, we will be able to identify all streets, alleys, nooks, and corners for faster location of emergency calls to 911.

Communications means community. Community means helping one another in what needs to be done.

We need all walks of life, all governing representatives, all Law

Clayton Williams

Would you listen to Jim. He's outraged that some of his tax money is being wasted. Usually it's those liberal democrats like Jim that are wasting dollars and proud of it and begging for more.

Listen to this scenario. We have finally got Congress to close some military bases. This year three quarters of a billion dollars was allocated for base closing.

Remarkably, \$15 million is to be used, not to close anything, but to start building a replacement for a hospital at Fort Bragg, North Carolina.

This money was not mentioned in the House or Senate appropriations bill. This directive emerged only in the House-Senate conference committee led by Rep. Bill Hefner, democrat, chairman of the Military Construction Appropriations Subcommittee who just happens to be from North Carolina.

Do you folks out there want the president to have a line item veto? You bet!



Enforcement, which includes DPS and Border Patrol, Medical Teams, Volunteer Fire Department, Schools, Churches, Aging Services, Housing Authority, all within our community, city, county, and Fort Clark Springs. We need our more social groups such as Rotary, Lions, Veterans of Foreign Wars, Chamber of Commerce, Knights of Columbus Masons, Historical Societies, ALL ARE NEEDED. It is my expressed hope that a representative of each of the afore mentioned entities meet and organize an Advisory Council for our futuristic mutual goals.

We can succeed in our mutual goals with a strong united front. We need to establish a strong main team and theme. We must convey a feeling of consistency, progress, and security. We must prepare for the State Park, Kickapoo Caverns, and more tourism, that may and will utilize 911.

Let us analyze our present position, plan for today, tomorrow, and many future tomorrows for the rest of this century. We still have time. SO HELP US GOD!

Most respectfully, I thank you.
Carmen M. Berlanga
Mayor, City of Brackettville

Library Notes



Library Hours
 Mon., Tue., Thu., Fri.
 9:00 a.m. to 5:00 p.m.
 Wed. 10:00 a.m. - 6:00 p.m.

The rockwork on our new building is complete. Hooray! The remainder of the project is expected to take another two months. Kinney County will act as the general contractor. Hopefully, in October, we will be able to move our Texana, Local History, and Genealogy sections into our new addition. I know you are as anxious as we are to see the completion of this worthwhile project.

The new San Antonio circuit videos are in. For the kids, we have *The Brothers Grimm Fairy Tales*, *The Never Ending Story II*, *The Olden Days Coat*, and *An Encyclopedia Brown Mystery*. For the adults we have *The Dragonslayer*, the foreign film *Memories of a Marriage*, the comedy *Monty Python and The Holy Grail*, *This Gun For Hire*, the original *King Kong*, *Star Trek: The Cage*, *The Ghost and Mrs. Muir*, Elvis in *The Flaming Star*, and the musical *Damn Yankees*.

We have a few new books in the library this week. Check out

Gerald's Game Stephen King's new bestseller, *Indiana Jones and The Peril at Delphi*, *Indiana Jones and The Dance of The Giants*, or *Indiana Jones and The Seven Veils* by Rob MacGregor.

Thank you to everyone who donated books and magazines to the library this past week.

On a sadder note, the library staff and volunteers express our greatest sympathies to Richard Mountain whose wife, Ruby, passed away this past week. Mr. Mountain has always been an active friend to the library and we feel for his loss.

As always, we invite you to visit the friendliest little library in Kinney County.

Kinney County Library
 Staff & Volunteers

Unsung Hero

by Joe Townsend



Several years ago a fine lady moved to Fort Clark Springs with her husband.

They built a fine home and soon settled in to make real contributions to Fort Clark Springs and the community.

She had been a longtime member of the Eastern Star and several kindred organizations. She was loyal to her church.

She was a loving wife. She had a rare sense of humor which added levity to any group. She was well loved by all who knew her.

Surely Ruby Mountain is an "Unsung Hero" and now blesses heaven with her presence.

Nutrition Center Menu

MONDAY, AUGUST 10

Pepper Steak
 Creamed Potatoes
 Steamed Cabbage
 Applesauce
 Biscuits

TUESDAY, AUGUST 11

Chicken Sandwiches
 Chips
 Potato Salad
 Fruited Jello

WEDNESDAY, AUGUST 12

Hamburger Stew
 Cauliflower/Cheese
 Pickled Beets
 Pear
 Hot Rolls

THURSDAY, AUGUST 13

Roast Beef
 White Steamed Rice
 Green Beans
 Pudding
 Biscuits

FRIDAY, AUGUST 14

Chicken Patties
 Peas/Onions
 Creamy Noodles
 Prunes
 Hot Rolls

Kurtzs Home After Long Trip

Ray and Cubie Kurtz have just returned from a trip that consisted of over 4,000 miles visiting relatives.

Their first stop was in Ohio where they visited Cubie's sisters and brother, Ann Ross, Louise Josefyzyk, and Bob Riddle.

Then it was on to Germantown, Maryland, to see their son, Jim, daughter-in-law, Lindy, and grandchildren, Erin (age 11) and Justin (age 8).

One of the biggest thrills was seeing some of Washington, D. C., although they feel they just barely hit the surface since there is so much to see. From the Washington area, they drove to Florida to see Ray's two sisters, Jeanne in Osmond Beach and Harriet in Venice.

They both agree, "We enjoyed the cool weather in the East but we sure are glad to get home."

Jim Kurtz Gets Promotion

James O. "Jim" Kurtz, son of Ray and Cubie Kurtz of Fort Clark Springs, has just been promoted to vice president of funeral home operations of the Fort Lincoln Cemetery and Funeral Home.

Mr. Kurtz joined Fort Lincoln in 1990 as director of funeral home operations and was instrumental in

establishing the policies and procedures and developing the staff of the funeral home. He is currently at the Fort Lincoln office in Brentwood, Maryland, with six funeral homes under his direction. He will soon be moving to Silver Springs, Maryland.

His wife, Lindy, is originally from Dallas and they have two children, Erin and Justin.

Just For The Fun Of It

Where were you born: Midland, Texas.

What is your favorite food: Mexican Food.

How do your friends describe you: Friendly.

Describe yourself: Friendly.

What is your favorite movie: *The Alamo & Memphis Belle*.

What is your favorite book: *Rebecca*.

If you could go anywhere, where would you go: England.

What would you like to be if you could change your life: A Surgical Nurse.

If you could change Brackettville, how would you change it: Why change a wonderful place?



Frances Mellor

Book Review



By Mary Mitchell

Walking After Midnight

By Richard Nusser

Mr. Nusser has introduced a character which will remind many of Raymond Chandler's Philip Marlow. He is very human and seems to become involved in spite of anything he does.

This writer has never read any other books by this author, but if you are a dyed-in-the-wool mystery fan, go for it! Excellently written, entertaining, and intriguing.

Bridge Anyone

By NORMA GOULD



The Fort Clark Duplicate Bridge Club met Tuesday, July 28th, with six pairs playing the Howell Movement.

Winning first place was Ruth Wilks and Marge Batchelor.

Second place was won by Ben and Rozetta Pingent.

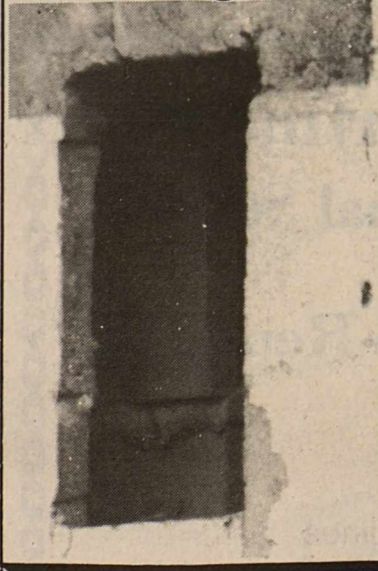
Tina Baugness and Walt Geeze won third place.

Pets make good friends.

Identify The Picture

The first person to come by *The Brackett News* and correctly identify this picture will be given a Brackett News Cap.

No Winner This Week! Look Again!



Answers to Super Crossword

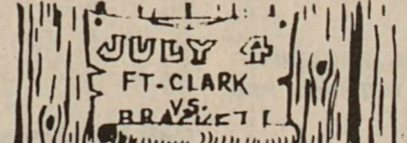
1	2	3	4	5	6	7	8	9	10	11	12	13	14
17	AHEM	THONG	WHAMS	RIEUE									
18	DENY	RADIO	HOTEL	THUR	OMEN								
19	MLTV	UNITS	PUN	BLEW	MOON								
20	IMD	AMSON	ERES	ETAH									
21	COTTI	MERES	ETAH										
22	AMOL	ES	VALIANT	SLEEPS									
23	COTES	MEN	SNORE	KALAI									
24	ENTE	BETE	OR	KOALA	METS								
25	REE	TRAC	OR	KOALA	METS								
26	CO	BATH	VALES	OR	ATINS								
27	BYR	EASY	PETAL	KEIF									
28	STAR	IRS	FTIRE	FARE	LADY								
29	TAL	SIDLE	ERIAUS	DOO									
30	TBITO	EXUGAR	DARRY	BUNT									
31	ELVER	ER	IS	ALLES									
32	SEV	CO	DEW	EST	BRUTE								
33	LU	NE	SLO	ELITE	ALK								
34	HIS	ERRA	PTA	ADOL	AVON								
35	ARAB	ERICA	ROB	CHILD	LESE								
36	LATH	SONAR	ROB	CHILD	LESE								
37	FEET	TRUNK	HOSES										

Church Directory



St. Andrews Episcopal Church: Henderson & Fort, Sunday Church Service 10:30 A.M. Vicar: Rev. Bill Koons, 512-563-2071.
Frontier Baptist Church (A Southern Baptist Church): Sunday Morning Worship 11:00 A.M., Sunday Evening Service 6:00 P.M. Joe Townsend, Pastor, 512-563-2158.
First Baptist Church (A Southern Baptist Church): 307 N. Ann Street. Sunday School 9:45 A.M., Sunday Worship Service 11:00 A.M. and 7:00 P.M., Wednesday Worship 7:00 P.M. Gil Ash, Pastor, 563-2245.
Church of Christ: Sunday School 9:30 A.M., Worship Service 10:30 A.M., Bible Study, Sunday 6:30 P.M., and Wednesday 7:00 P.M.
St. Mary Magdalene Catholic Church: Masses Mon. & Fri. 7:00 A.M. Wed. & Sat. 6:30 P.M., Sunday (Spanish) 8:00 A.M. regular 10:30 A.M. Confessions Wed. & Sat. 6:00 P.M. Religion Classes Wed. 6:00 P.M. Sun. 9:00 A.M. Prayer Meeting (Spanish) Wed. 7:00 P.M. Father David G. Zumaya, Pastor.
First United Methodist Church: "Celebrate and Witness" Morning Fellowship 9:30 A.M. Church School Classes 9:45 A.M. Service of Worship 11:00 A.M. Choir Rehearsal Wed. 5:00 P.M. Gordon Miller Pastor.

Community Calender



AA: Mondays, 8 p.m., Slaton Hall, 109 W. James St.
Al-Anon: CAN HELP. Call 563-9205 for time & location of meetings.
Altar Society: 1st Monday, 5:30 p.m., Parish Hall.
Band Booster Club: 1st Tuesday, 7 p.m., High School Band Hall.
Bass Club: Last Thursday, 7 p.m.
Chamber of Commerce: 2nd Thursday, 7:30 p.m., Cavalry Room
City Council: 2nd Monday, 6:30 p.m., City Hall
Commissioners Court: 2nd Monday, 9 a.m., Court House.
Del Rio Christian Women's Club: 1st Wednesday, 12 noon, Laughlin AFB. Reservations required.
FCS Pot Luck Supper: 3rd Wednesday, 6:30 p.m., NCO Club. Bring covered dish, plates and utensils.
Drivers License: 1st, 3rd & Last Thursdays, 9 a.m.-12 noon; 1-3 p.m., 2nd floor, Court House.
Duplicate Bridge: Tuesday, 7 p.m., Sabre Room
FCS Art Club: Work days Monday and Saturday 11 a.m., Meeting 1st Monday, 1 p.m., Art Studio.
FCS Community Council: 2nd Saturday, 9 a.m., Shafter Hall.
FCS Board of Directors: 3rd Saturday, 9 a.m., Board Room.
FCS Historical Society: 4th Saturday, 10 a.m., Sabre Room.
FCS Museum/Sutler's Store: Saturday & Sunday, 1-4 p.m.
FCS Ladies Luncheon: 2nd Wednesday, noon, Las Moras Restaurant. Make reservations at Adult Center.
FCS VFW & Auxiliary Post #8360: 4th Wednesday, 6:00 p.m. Pot Luck 7:00 p.m. Meeting, NCO Club.
FCS Bingo: Friday, 7:30 p.m., Shafter Hall.
FCS Las Vegas Night: 4th Saturday, 8 p.m., Las Moras Restaurant.
FCS Old Quarry Society: 1st Monday, 7 p.m., Sabre Room.
Friends of Library: No regular schedule. Call Library for information.
KC Historical Preservation Society: 4th Thursday, 7 p.m., Court House.
KC Kickers: 2nd and 4th Thursday, 7:30 p.m., NCO Club.
Knights of Columbus: 1st Sunday, 12 noon, Parish Hall.
Lions Club: 1st and 3rd Thursday, 6:30 p.m., Las Moras Restaurant.
Masonic Lodge #444: 2nd Tuesday, 7 p.m., Lodge Hall, Ann St.
Order of Eastern Star #204: 1st and 3rd Tuesdays, 7:30 p.m., Masonic Hall, 407 Bedell St., Del Rio.
Shriners: 4th Tuesday, 6:30 p.m., Las Moras Restaurant.
Rotary Club: Every Thursday, 12 noon, Las Moras Restaurant.
Methodist Ladies Luncheon: 3rd Wednesday, noon, Slaton Hall. Please make reservations.
BISD School Board: 2nd Monday, 6:30 p.m., Board Room.
Preceptor Theta Sigma Sorority: 3rd Monday, 7:00 p.m.
NA: Thursdays, 7 p.m., St. Andrews Episcopal Church Parish Hall.

CALL WOODY 563-9594

LP GAS

BUTANE PROPANE

1-800-543-2630

"A LOCAL COMPANY"

ROADRUNNER ENERGY

Medical Consultant Specialist
DR. HECTOR A. GUTIERREZ G.
 U.A.N.L. Orthopedic & Fractures Micro Surgery of the Knee
 We Take Medical Insurance

Mon.-Sat. 9:00-8:00 Madero 285 Ote. Acuna, Mexico
 Office Phone: 2-34-60 1 block from International Bridge

Border Federal Credit Union's
4 Easy Lessons
Subject: Automobile Financing

- 1.) Car Facts
- 2.) .25 APR + .25 APR = .50 APR reduction for pre-approved loans and direct deposit with automatic loan payment
- 3.) Low interest rates on new/used vehicles starting at 7.65% APR 24 months
- 4.) Refinancing is available if financed elsewhere

Your Assignment:
 Call or Stop By Today

600 East Gibbs 1-800-580-3503 Bldg. 336
 Del Rio, Texas Laughlin Air Force Base

Western
Air Conditioning of Del Rio

Down This Summer's Heat...

With A Carrier Air Conditioner

3800 Hwy 90 West Del Rio, Texas (512) 775-8582 Lic. # TACLA002906C

GOOD THINGS COME IN SMALL PACKAGES.
 And we're no exception!

We're convenient, personal, fast and friendly. We offer competitive rates on loans and savings. Insured safety.

We're your hometown Bank!

Motor Bank Hours
 Monday and Friday 9 a.m. to 5 p.m.
 Tuesday, Wednesday, Thursday 9 a.m. to 2 p.m.
 Lobby Hours: Monday thru Friday 9 a.m. to 2 p.m.

THE FIRST STATE BANK
 BRACKETTVILLE, TEXAS 78832
 PHONE (512) 563-2451
 MEMBER F.D.I.C.

Energy Efficient Temps

The cost of keeping your home cool in the summer can really add up if you don't watch your thermostat. The Texas Energy Extension Service (EES) may be able to help you regulate your temperatures. EES is a public service program of the Governor's Energy Office and is designed to help Texans make wise decisions regarding energy consumption.

More than 80 publications on various energy-related topics are available for free through Texas EES. The program offers energy workshops to groups ranging from elementary children to businesses to senior citizens. Exhibits providing energy information are displayed at museums, home shows, conferences, and fairs.

For Texas' Sake!
 68 degrees in winter
 78 degrees in summer
 Call the Energy Hotline for more information, 1-800-643-SAVE

To order the free "For Texas' Sake" sticker, please call the Texas Energy Hotline at 1-800-643-SAVE.

Joyce Parker
 (Hair Removal)
 Certified Electrologist

Underarms, bikini line, legs, breasts, facial, men's ears & eyebrows

Tuesday - Wednesday Thursday
 Call for appointment 512-563-9060

MEMBER 1992

TEXAS PRESS ASSOCIATION

Golf News



LADIES DAY
Tuesday, July 28

The lady golfers teed off at 8:00 AM to compete in a Point Par and Handicap Tournament.

First Place - Leslie Houk
2nd place - Mary Stephenson
3rd place - Betty Dennis

Ladies remember to come early next Tuesday for the monthly meeting prior to the 8:00 Tee Time.

MENS DAY
Wednesday, July 29

Format: "Best 2 Ball" - 4 Man ABCD teams

Place between the teams of: Bill Mitchell, Bob Gaston, Clarence Blackburn and Ward Pomeroy and Julian Garza, Carl Spray, Bill Mills and Don Packer

3rd Place - C.M. Smith, Chip Salsman, George Miller and Earl Hall

COUPLES SCRAMBLE
Thursday, July 30

1st place with 61: Charlie Smith, Mary Stephenson, Marti Isenberg and Danny Isenberg

2nd place with 63: Julian Garza, Vicki Nichols, Louise Williamson and E.W. Williamson

3rd place (Tie) with 65: Bill Mills, Odette Mills, P.M. Moore and Evelyn Whitely and Jerry Adams, Betty Dennis, Clarence Blackburn and Lorin Ryan

EXECUTIVE COURSE - PAR 3
FLORIDA SCRAMBLE
Monday, August 3

A tight race for the honors - with four teams in contention. There was only a 3-point spread in the scores.

In first place with a 26 was the team of: Bob Barnett, Shirley Stephenson, Andrea Stephenson and Ernie Hall

A chip off for second place with a 27 (tie). The winners were: Gerald Gallion, Dave Yates, Pat McKelvy and Harold Kaufman

PROFESSOR PHUMBLE'S
ADVICE DEPARTMENT:

When you write the word "misspelled", make sure you haven't misspelled it. It is often misspelled by people who are careless!

COME ON!

Get out of your shell... Take a PEEK at our Classified Ads!
Phone: The Brackett News 512-563-2852



News from...

First Baptist Church

Vacation Bible School Open House
Friday, August 7, 7:00 p.m. Public Invited!

Sunday, August 9, 1992

Immediately following the morning worship service, the church will host a Covered Dish Luncheon. Each family attending should bring their favorite "dish."

ORDINATION SERVICE

3:00 P.M., Sunday, August 9, 1992

First Baptist Church

Services will be held to ordain Gilbert Ash as a minister of the gospel, and as pastor of the church. The public is invited!

Bar-B-Que



Benefit

Brackettville Volunteer Firemen

\$3.50 Per Plate

Sunday
August 16, 1992
Noon Until Gone

City Park

Next To Nutrition Center



You Can't Miss

With an ad in The Brackett News
Hunters Guide

512-563-2852
507 South Ann

P.O. Box 1039
Brackettville, TX 78832

Call for information

Advertising Deadline August 13

TO HOLLER OR - NOT TO HOLLER

(That is the Question)

Have you ever noticed that when it comes to trust, there seems to always be a little distrust? I'm not talking about borrowing money, or setting a date, or anything as simple as that. I'm talking about when someone tells you something that pertains to your health and safety.

Like when a husband tells a wife, "Go on and cut across the corral, that old steer don't even know you're in there." Or, "Just put that new calf between you and his mamma, she won't hit ya."

In the 23 years of blissful marriage that I have shared with the Little Woman, there has been (on occasion) a few misstatements concerning her safety.

I gave up on ever working in unison with the Little Woman several years ago. Simply because she don't take orders worth a damn, not to mention the fact that she completely ignores constructive criticism.

Example: Once I had been shaping some steers for delivery, and there were a couple of them that took the exercise a little personal. They felt that it was a waste of time, so they just jumped out of the pens and headed back to the canyons.

What the steers didn't realize was the fact that they fit my order perfect, and I fully intended to keep 'em in the pen.

The Little Woman had been working the gate for me, things seemed to be going pretty smooth.

When the first steer jumped out of the pens, I hollered for the Little Woman to open the gate to the outside so I could go recapture the silly brahma-cross and bring 'im back.

As I rode past her she hollered to me to quit hollering at her.

I didn't have time to stop and explain that I wasn't hollering to abuse her, I was hollering because I needed to get her attention and get her to hurry up with the gate before that stupid steer got too much distance between me and him.

I roped the steer, and drug 'im back into the pen. Then, I had to jerk 'im down 3 or 4 times to make 'im lay while I took my rope off. This seemed to put old Brahma in a really bad mood.

I finally got 'im into the pen with the cuts, and we proceeded with the proceedings.

About 20 minutes later another one jumped out.

The second verse was about the same as the first, only this time she didn't have the gate open when I rode up to it.

She informed me that I had damn well better quit screaming at her or I would be working the cattle by myself.

Now there is a time to be in control and a time to let the Little Woman THINK she's in control. And this was definitely one of those times when she needed to think she was the boss.

I said in my most passive voice, "Yes, dear, I'm sorry for screaming at you. Now will you please open the damn gate."

I had a little more trouble getting the second steer caught and back to the pens. Me, my horse, and the

steer was hot and mad. I jerked 'im down an extra time or two just for good measure. The last two times, I was pretending he was the Little Woman.

This steer was super mad when I turned 'im loose, so I just left 'im in the big lot with the steers I was gonna keep.

After about an hour more of sorting, we were done and ready to change pens then turn out the culls. I had decided to keep the second jumper cause I had broke a horn and skinned 'im up pretty good when I took the rope off. He was still mad.

I was down on the North end setting up gates when I forgot my earlier training for proper communication. I hollered for the Little Woman to open the gate to the water lot and let the culls out.

She was ignoring me. The second time I really screamed at her.

She started for the gate. I could see smoke coming out of her left ear, and knew I was in for a chewing out when we got to the pickup. She was about a third of the way across the pen when I hollered for her to get close to the fence.

She was so mad at me, she had forgotten about the mad steer.

The steer was on the far end of the pen, and I was a long ways from a gate to get in there with her to keep that stupid steer off of her.

She was just 10 feet from the gate when the steer decided to take out all of his frustration on the human that was walking.

I had loped to the gate and was trying to get to her when I broke the rules again and when I hollered this time, I really hollered, "Get on the fence now."

She turned on me so quick it's a wonder she didn't get whiplash. Bet you can't guess what she said. "I told you to quit hollering at me." BOOM...

I got to her before that steer could get back to her and do any more damage, and got her up on the fence while fighting off the steer.

She was somewhat addled. I got the gate open and let the steers out into the water lot, then started checking the Little Woman over to see if I was gonna have to cook my own meals for a day or two.

She was bruised up a little and her nose was skint something fierce, but other than that she was o.k. When I saw she wasn't hurt too bad, I said in the softest voice I could, "Reckon next time I suggest you get on the fence you will?"

At the time of this wreck, we hadn't been married very long, and it looked like we might not be. We have had our share of problems when we tried to work together. But in a tight, we can and still do. I still holler and she still gets mad. But we don't get seriously killed anymore.

She knows that when I holler, it's for a reason. She also knows that I will not get her hurt on purpose, or at least she thinks she knows.

There has been a time or two that she wasn't sure.

By RICK PERRY
Commissioner

Texas Department Of
Agriculture

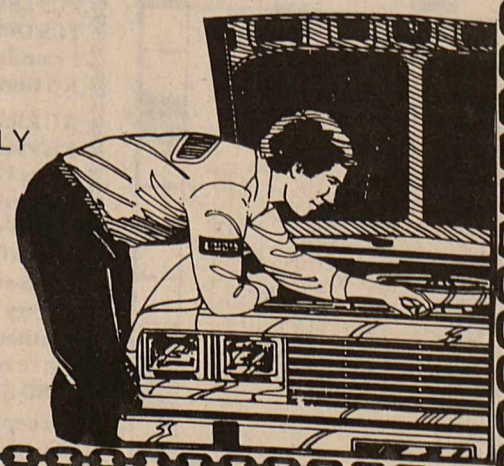
Following Labeled Directions
Important Before Using
Pesticide Products

Commissioner Perry reminded all Texans to read and follow all the labeled directions before using any pesticide product. "All pesticides are labeled for a specific use on a specific pest in a specific place and should only be used according to labeled directions. Take those labels seriously! If you have any doubt, don't use it," Perry said.

Fleas are a problem in scattered areas of the state this summer, and some home owners and pet owners have been battling serious infestations. Perry warned that consumers should not let the control measures be more harmful to themselves or their pets than the fleas.

Last month, an explosion in an Austin apartment was caused when eight insect foggers were set off in the small unit. Heat from the pilot lights of a gas stove triggered the explosion. "Luckily, no one was seriously injured but this was a case of someone not following the labeled directions," reported Perry.

Perry also warned that consumers should be careful when applying a pesticide product to their pets. A flea product that can be used on dogs may be harmful to cats, so check with a veterinarian.



Putting Service Back Into The Service Department
Let Our Service Technicians Provide You With Professional Service
Before Heading To The Open Highway

An Inexpensive Inspection Could Prevent An Expensive Repair

AIR CONDITIONING
SERVICE

- Check Belts
- Check for freon leaks
- Check freon levels

ENGINE COOLANT
SERVICE

- Inspect fan belts, hoses
- Flush Radiator
- Refill Radiator

ENGINE
TUNE-UP

- Precision Tuning
- 4,6,8-Cylinder engines
- Gives maximum efficiency

- OFFICIAL TEXAS INSPECTION STATION • ASK ABOUT OUR 1992 RENTALS
- EMERGENCY UNLOCKING OF VEHICLES • TOWING SERVICE
- COMPLETE AUTO DETAILING AVAILABLE

OIL CHANGE SPECIAL \$15.95

GM VEHICLES ONLY

Includes up to 5 qts oil, oil filter, lubricate chassis, check fluid levels, air filter, belts, hoses and tire pressure!

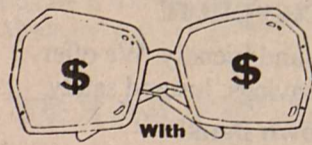
HOWARD
CHEVROLET, Del Rio, TX
2300 HWY. 90 W 775-7503



Keep that great GM feeling with genuine GM parts.

Monday - Friday
8 A.M. - 6 P.M.

Savings You Can See



The Brackett News
563-2852

Visit Historic
Kinney County

1992



HURRY! THIS IS A LIMITED TIME OFFER!



DEL RIO
504 East 10th Street, Del Rio, Texas • 775-1508
Mon - Sat 9-6, Thurs 9-9

KERRVILLE
851 Junction Highway, Kerrville, Texas • 895-2104
Mon - Sat 9-6

PERSONAL PRICE GUARANTEE

Ricks Furniture Company guarantees our customers that if you find the same piece of furniture, by the same manufacturer, from a store in the trading area with like services for less than you paid at Ricks, Ricks will beat the price!

CONVENIENT CREDIT TERMS • GUARANTEED SATISFACTION • PROMPT FREE DELIVERY

STORE WIDE ANNIVERSARY

SALE!

IT'S BACK! OUR STORE WIDE ANNIVERSARY

We've cleared our warehouse of every discontinued, few-of-a-kind, odd, as-is and overstocked item. It's now lining the aisles of our beautiful huge showrooms. Please excuse our cluttered appearance and explore all the exciting bargains signified by Special ANNIVERSARY SALE Tags. In addition to the many special purchases made for this event, virtually all our regular stock of domestic and imported home fashions have been marked with discounts. Interim Markdowns may have been taken.

Register to Win
\$4500.00 in Furniture
Gift certificates given away each week

Special Financing Available

- No Down Payment
- No Payment for 90 Days

PLUS
• Low, Low Monthly Payments

Every week during our 45th Anniversary Ricks will give away a \$250 gift certificate at each location. Grand prize, Sealy Ultra Premium Posturepedic Set (\$1500 value). Must be 18 years or older. Financing subject to credit approval. 21% APR accrues during deferral period. See store for details.

AMERICA'S LEADING BRANDS!

You'll find **SOFAS, SLEEPERS, COMPLETE LIVING ROOMS, BEDROOMS, DINING ROOMS, DINETTES, CHAIRS, RECLINERS, DESKS, ENTERTAINMENT CENTERS, OCCASIONAL TABLES, MATTRESS SETS, CARPETS, WALL SYSTEMS, LAMPS, ACCESSORIES** and much more.

EVERY LIVING ROOM ON Sale!



BUY THE ENTIRE ROOM & SAVE!

Sink in casual, contemporary livingroom all tied together with 3 tables and 2 contemporary lamps.
ONE LOW PRICE!

7 PIECE LIVING ROOM!

- SOFA • LOVESEAT
- 3 TABLES • 2 LAMPS

\$999

ONE LOW PRICE!



SAVE 1/2

4 DRAWER CHEST

Sturdy construction in a rich oak finish. Perfect for any room.

SALE \$39



SAVE 1/2

DESK & CHAIR WITH LAMP

The 3-piece desk set is perfect for business, homework or hobbies. Adjustable white wipe-clean desk top is 24"x36". Two shelves. Chip-proof red electrostatic finish. Upholstered chair with casters. Adjustable lamp is UL LISTED. Easy to assemble.
Table: 36"x24"x28" tall
Chair: 18"x14"x30" tall

\$69

**EVE
LIV
ROOM
Sale**

**EVERY
RECLINER
ON
Sale!**

**Plush Upholstered
HIGH BACK SWIVEL ROCKER**



Traditional fit-anywhere seating featuring a comfortable reversible cushion and tall back.

Sale **\$169**

**"Atlanta" La-Z-Rest™
ROCKER RECLINER**

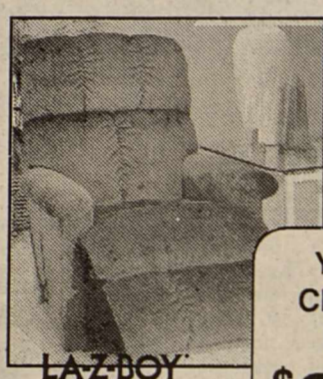
This transitional recliner is big on comfort. With a channel stitched bustle back, padded footrest and contoured arms. Sale **\$299**



**"Birmingham" La-Z-Rest™
ROCKER RECLINER**

Impeccable tailored and button detailed, this traditionally inspired style provides comfort in a classic fashion. With rolled pillow arms and amply padded T-seat. Sale **\$349**

LA-Z-REST
ROCKER RECLINER



**"Paramount"
CHAISE RECLINER**

You'll enjoy the full-body comfort of this casual style that reclines like a chaise. With a channel-stitched headrest, back and footrest, it's eye pleasing as well as body soothing.



**"Odyssey" RECLINA-
ROCKER RECLINER**

For the ultimate in relaxation, this channel-stitched casual design offers a pillowed bustleback, padded arms and ultra-cushioned comfort in every curve.

**YOUR
CHOICE
Sale
\$399**



**CASUAL COUNTRY
LIVING ROOM**

Create a casual, comfortable gathering place in your living area. Traditional button-tufted styling, reversible seat cushions, padded pillow arms and wood accents.

**SOFA \$499
Sale**

**LOVESEAT \$449
Sale** Queen Sleeper Innerspring Mattress Sale \$699

**CHAIR \$299
Sale** Cocktail or End Table Sale \$99



BROYHILL'S NEW SEATING GROUP
Simply delightful. The 80" sofa and 60" love seat are styled with a scalloped back and softly rounded arms. But the floral jacquard fabric is what makes you take notice, with perfectly matched stripes covering box seat cushions and the kick pleat skirt. Matching fringed throw pillows add sophistication to the group.

**SOFA \$599
Sale**

**LOVESEAT \$549
Sale**



SOOTHING SOPHISTICATES
With sleek bustlebacks, channel-stitched details and padded arms, every end reclines to relax you and every detail is calculated to provide comfort.

DOUBLE RECLINING SOFA Sale \$699

DOUBLE RECLINING LOVESEAT Sale \$599

MATCHING RECLINER Sale \$299

QUEEN SLEEPER (Not Shown) Sale \$699

**OVER A MILLION DOLLAR
FURNISHINGS & BEDDING**

**EVERY
DINING ROOM
ON
Sale!**



COUNTRY FLAVOR A charming blend of Natural Woods and Farm House White!

Clean, refreshing country furniture reminiscent of graceful farmhouse life nearly a century ago. Weighty legs, shaped bases, apothecary style drawer fronts, gallery rails, richly textured natural woods against gleaming white...like breakfast on a sun-drenched country morning.

**FARM HOUSE LEG TABLE WITH
FOUR SPINDELECK SIDE CHAIRS Sale \$399**
Table measures 36"x60". Matching China Also Sale Priced. Extra chairs available.

"Vantage Oak" For Your Dining Pleasure.

Broyhill's Vantage Oak creates the perfect setting for family gatherings. Crafted from selected hardwood solids, veneers and grain engraved wood products. The table features laminate tops to insure longevity.



**YOUR CHOICE
TABLE &
4 SIDE CHAIRS
OR
LIGHTED CHINA**

Sale \$499

Extra Chairs Available



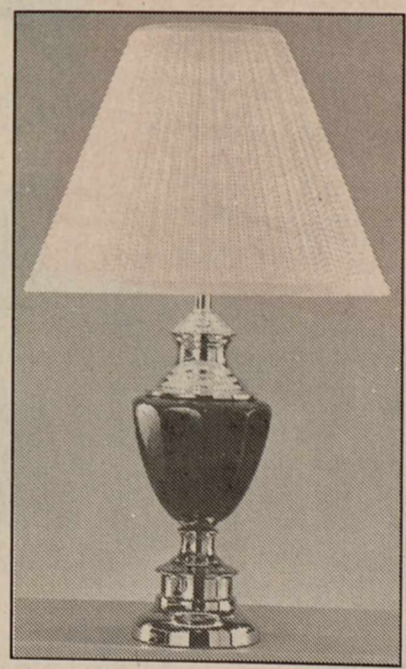
Turn Any Room Into a Guest Room With These Comfortable, Assorted Size Serta Sleeper Sofas

These two sleeper styles are available in three sizes, each with a comfortable twin, full or queen size Serta innerspring mattress. Choose the contemporary sleeper with bun feet and two pillows, or the traditional cushioned sleeper.

TWIN SIZE Your Choice \$399 **FULL SIZE Your Choice \$449** **QUEEN SIZE Your Choice \$499**



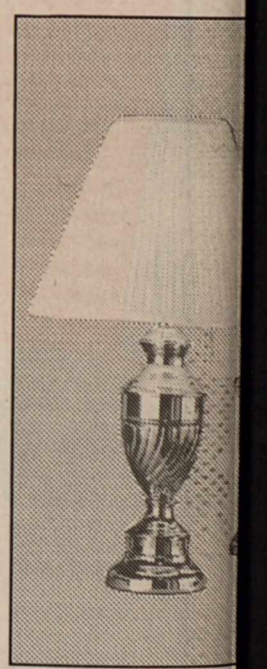
**EVERY
SOFA
ON
Sale!**



BRASS PLATED 31" LAMP

With a beautiful combination of brass and ceramic in your choice of colors with a soft pleated shade.

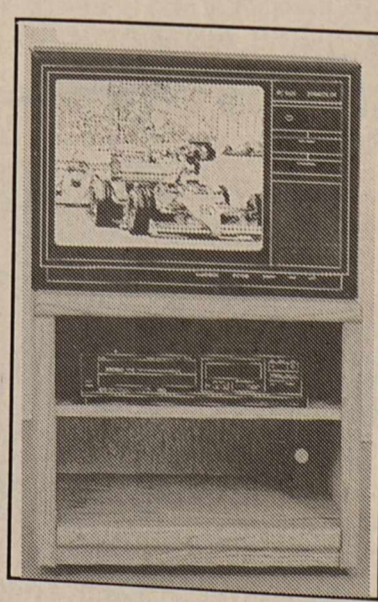
Sale \$49⁹⁵



STYLECRAFT LAMP

Brass plated 28" lamp choice of styles with shades.

YOUR CHOICE \$49⁹⁵



SAVE 1/2! ALL WOOD-NO PARTICLE BOARD VERSATILE OAK CART.

Has one adjustable shelf. Can be used as TV's and VCR, Nintendo, nightstand, end table...you name it. No assembly required.

Sale \$49

EVERY
NG
ON
le!

erw/Serta
address
Table

UP:
eseat
ic is
SS:

20
21
22
23
24
25
26
27
28
29
30
31
32
33
34
35
36
37
38
39
40
41
42
43
44
45
46
47
48
49
50
51
52
53
54
55
56
57
58
59
60
61
62
63
64
65
66
67
68
69
70
71
72
73
74
75
76
77
78
79
80
81
82
83
84
85
86
87
88
89
90
91
92
93
94
95
96
97
98
99
100



CLASSIC TRADITIONAL GROUP
A distinctive panel stripe floral jacquard fabric shows off the classic high back design of this 86-inch sofa and 62-inch loveseat. Also available as a Serta® queen-size sleeper.

SOFA \$499
Sale
LOVESEAT \$449
Sale
SLEEPER \$699
Sale



END UNIT WITH RECLINER CORNER WEDGE AND SLEEPER UNIT
Sale

\$1699

Right Arm Loveseat with full size sleeper unit that has a full size innerspring mattress.

ECLIPSE CORNER GROUP
Action by Lane goes all-out to comfort you in this corner-wrapping contemporary grouping. It features low profile, body-friendly curved arms, triple-layered headrest backs, ultra-cushioned seats and reclining ends with an extension headrest for head-to-toe relaxation.

EVERY TABLE GROUP ON Sale!



NEW AGE STYLING!
Contemporary tables of oak solids and veneers, feature beveled smoke glass tops.
YOUR CHOICE: RECTANGULAR COCKTAIL OR END TABLE
Sofa Table Sale \$129 Square Cocktail Table Sale \$119

QUEEN ANNE CHERRY...WITH A FRENCH ACCENT!



Table tops are cherry veneers with an ash burl border treatment and classy Queen Anne legs. All are finished in a multi-step high gloss lacquer that enhances natural wood graining.

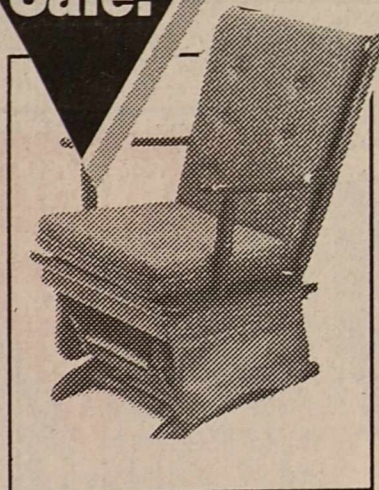
YOUR CHOICE \$119

DOLLARS IN FINE HOME REDUCED FOR THIS SALE!

AMERICA'S LEADING BRANDS!

* See Front Page For Details.

EVERY ROCKER ON Sale!



Traditionally Styled GLIDE ROCKER BY EFI®
Finely crafted of maple finished hardwoods with reversible back and seat cushions.
Sale **\$159**

EVERY OCCASIONAL PIECE ON Sale!



ALL WOOD 4 PC. OAK WALL SYSTEM
Four piece unit includes a center unit that holds up to a 35" monitor TV plus space for VCR and stereo equipment. Each pier cabinet has adjustable shelves. System is tied together with a light bridge.
Measures 84" x 17" x 74".
Sale **\$499**



WARM AND FRIENDLY OAK PEDESTAL TABLES
Nostalgic styling with classic heavy pedestal bases, veneered oak tops and a deeply sheened lacquer finish. Note the generous aprons with route lines and corner detailing (rectangular end table).
YOUR CHOICE: RECTANGULAR END TABLE ROUND END TABLE OVAL COCKTAIL TABLE
Sofa Table Sale \$159
Sale **\$119**

OAK FINISH COMPLEMENTS THE GLASS TOP



Contemporary tables of oak solids and veneers, feature beveled smoke glass tops. This is design that is versatile and striking in its simplicity.

YOUR CHOICE: RECTANGULAR COCKTAIL OR END TABLES
Sofa Table or Square Cocktail Table Sale \$159
Sale **\$129**

DOUBLE PEDESTAL FLAT TOP DESK By Riverside
Handsome classic design that features clean styling and rich wood tones. Crafted of select hardwoods and engraved wood products with NOVACRON® protective topcoat. Five drawers for storage, including two file drawers, and center drawer with built-in pencil tray. Finished on all sides for maximum decorating versatility.



Sale **\$179**

**STORE WIDE
ANNIVERSARY**

SALE!

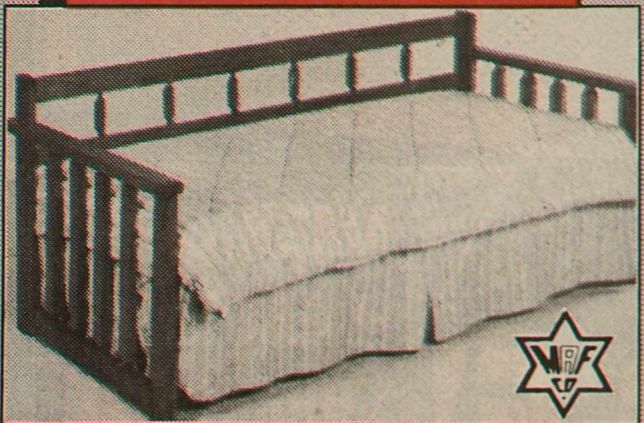
EVERY BED ON SALE!



STURDY SOLID PINE BUNK BED

Double wooden guard rails on both sides of the upper bunk and extra sturdy ladder exceed the newest consumer safety standards. You can also convert it to twin beds as the need arises. Bedding not included.

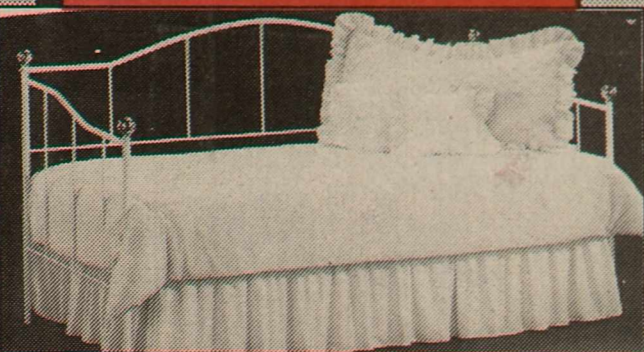
Sale \$179



HONEY PINE DAYBED

Handsome constructed solid pine daybed boasts a rich, lustrous finish. Includes two sides, back and spring deck. Easy to assemble.

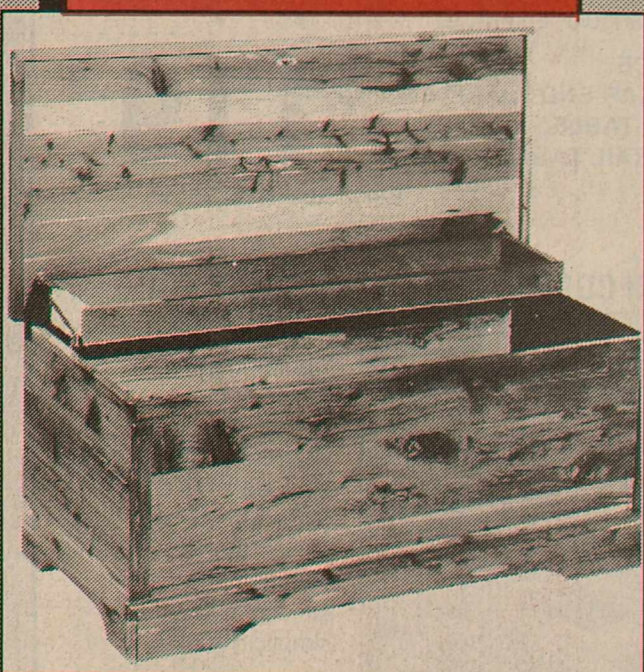
Sale \$179



WHITE CAMEL BACK DAYBED

For beautiful seating and extra sleeping space for holiday guests. Includes two sides, back and spring deck. Easy to assemble.

Sale \$99



NATURAL RED CEDAR CHEST

Your truffles and treasures will be well-protected in this roomy Colonial chest. The dust-proof interior and aromatic fragrance keep clothes moth-free. Lock and key add extra security.

- Large 45x20x19" size
- Natural cedar beauty
- Lock and key security
- Country Colonial look
- Safety lid support

Sale \$199

Shop Early For Best Selections!

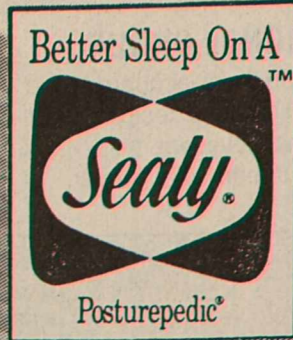
**SEALY CLOSEOUT
SAVINGS UP TO 50% OFF**

Sealy Smooth-Top

TWIN
Ticketed Price \$149⁹⁵ **\$6888** EA. PC.

FULL
Ticketed Price \$199⁹⁵ **\$9888** EA. PC.

QUEEN
Ticketed Price \$499⁹⁵ **\$24888** SET



Sealy Fashion Quilt "Deluxe"

TWIN Ticketed Price \$179 ⁹⁵	QUEEN Ticketed Price \$549 ⁹⁵	KING Ticketed Price \$699 ⁹⁵
\$9995 EA. PC.	\$29995 SET	\$39995 SET

Sealy Fashion Quilt "Supreme"

TWIN Ticketed Price \$209 ⁹⁵	QUEEN Ticketed Price \$649 ⁹⁵	KING Ticketed Price \$899 ⁹⁵
\$11995 EA. PC.	\$37995 SET	\$49995 SET

Sealy "POSTURE POISE"			Sealy "POSTURE AWARD"			Sealy Premium "POSTUREPEDIC"		
TWIN Ticketed Price \$229 ⁹⁵	\$13995 EA. PC.		TWIN Ticketed Price \$249 ⁹⁵	\$15995 EA. PC.		TWIN Ticketed Price \$299 ⁹⁵	\$17995 EA. PC.	
FULL Ticketed Price \$229 ⁹⁵	QUEEN Ticketed Price \$749 ⁹⁵	KING Ticketed Price \$699 ⁹⁵	FULL Ticketed Price \$319 ⁹⁵	QUEEN Ticketed Price \$799 ⁹⁵	KING Ticketed Price \$1149 ⁹⁵	FULL Ticketed Price \$379 ⁹⁵	QUEEN Ticketed Price \$899 ⁹⁵	KING Ticketed Price \$1199 ⁹⁵
\$17995 EA. PC.	\$43995 SET	\$62995 SET	\$21995 EA. PC.	\$49995 SET	\$69995 SET	\$24995 EA. PC.	\$59995 SET	\$79995 SET



**EVERY
HEADBOARD
& BED ON
Sale!**

MASSIVE WARM BROWN LUXURIOUS BEDROOM

You can create a lovely atmosphere and bring warmth and charm of years ago to your own bedroom with Broyhill's Big Valley.

The massive door dresser and drawer chest will solve your storage problems. The magnificent cannonball bed and 2-door night stand will complete the perfect bedroom grouping you'll own with pride.

FULL/QUEEN CANNONBALL BED

Sale \$299

66" Door Dresser and Hutch Mirror.....	Sale \$599
38" 5" Drawer Chest	Sale \$349
Night Stand.....	Sale \$179



DEL RIO
504 East 10th Street, Del Rio, Texas • 775-1508
Mon - Sat 9-6, Thurs 9-9

KERRVILLE
851 Junction Highway, Kerrville, Texas • 895-2104
Mon - Sat 9-6

• Convenient Credit Terms • Guaranteed Satisfaction • Prompt Free Delivery

Brackett ISD Preparing For School Opening

Physicals

BISD ATHLETES were scheduled for Thursday, August 6, at the Medical Clinic in Brackettville.

Girls were to report at 2:00 P.M., and the boys were due at 3:30 p.m.

PUBLIC HEARINGS

On Thursday, July 30, 1992, the Brackett Independent School District held public hearings on three areas vital to school operations for 1992-93 and future years.

The first hearing held at 6:00 p.m. was a review of the proposed budget for 1992-93. The estimated effective tax rate for the BISD will be thirty cents (.30). The 1992 rate was twenty-nine and three quarters cents (.2975). Bob McCall, the district superintendent, noted that the local rate was independent of the County Education District rate.

The local district board of trustees will meet on August 24, 1992, to consider the local tax rate for the 1992-93 school year.

Site based decision making was discussed at the 7:00 p.m. hearing. The site based process was the result of a law passed by the last session of the legislature. It allows the district to develop campus advisory groups to help make decisions on a variety of issues relating to staffing, budgeting, curriculum and instruction. The site based committee has been meeting since May to draw up a plan for the coming year. It will be submitted to the board of trustees for approval at the August 17 meeting.

The state has released the district's report on Academic Excellence Indicators for 1991-92. This report tracks district progress in meeting the state goals in the following areas: Average Daily Attendance, Drop Out Rate, Percent of Students Graduating, College Entrance Test Scores, percent of students planning to attend college, percent of students enrolled in advanced courses, scores on state tests (TAAS and NAPT). Graphs and charts tracking district success in these areas are available at each campus office.

TRAINING FOR CURRICULUM AND INSTRUCTION OFFERED BY THE DISTRICT

The BISD will offer three days of training in curriculum and instruction for the instructional staff on August 10, 11, and 12. The participants are volunteers.

The program will be conducted by Mr. Justo Guajardo, an educational consultant from San Antonio. Teachers will be able to earn Advanced Academic Training Credit if they attend all three days of the seminar.

The program will concentrate on the development of curriculum frameworks in an effort to meet the Commissioner of Education's standard of 90% mastery of TAAS by 1995. Other aspects of the training will include exposure to a variety of teaching methods to help students with different learning styles succeed in the classroom.

JONES ELEMENTARY PRE-REGISTRATION

Pre-Registration for Jones Elementary students for the 1992-93 school year has been set for Friday, August 7, 1992. Any student who was not enrolled at Jones Elementary during the 1991-92 school year may come to the Elementary Office and register between the hours of 8:00 a.m. - 12:00 Noon and 1:00 p.m. - 4:00 p.m.

Please be sure and bring the child's birth certificate, social security number, immunization records, if possible last year's final report card, and address of last school attended. Other school records will be requested from the previous school in writing by Jones Elementary.

CONSTRUCTION PROJECTS NEAR COMPLETION

The renovation and construction projects begun last Spring are nearing completion. The Mittie Jones Elementary School renovation is complete with the exception of three items:

1. Toilet Partitions - These arrived Thursday, July 30.
2. Touch up Painting
3. Door Hardware

District Administrators estimate that everything will be complete early next week with the exception of the door hardware. Mr. Mills, elementary principal, notes that the custodians are moving furniture into the building now and the door hardware will be installed when it arrives.

The Old Gym project is expected to be completed on schedule. The gym being returned to use as a middle school and elementary gymnasium after serving as a cafeteria kitchen and dining area for the past 10 years. Improvements include remodeling of the kitchen area into dressing rooms and storage, refinishing the floor, installation of ventallators, removal of old bleachers and paint and sound treatment.

The major project, the vocational building, may not be completed in time to move in before school starts. This building is 5,000 square feet and includes a classroom, a computer work room, tool storage, vocational office and a 3,000 square foot vocational shop. Bob McCall, school superintendent, noted that the building will allow for the expansion of the district's vocational program. "It will be the best vocational agriculture science building in this area," McCall said.

All of these projects were made possible by a bond issue passed in the Spring of 1991. The issue passed by better than a 2:1 margin. Also in the planning stages are a media center, and an early childhood classroom building. A private grant is being sought for improving athletic facilities at the current track field.

Members of the community are invited and encouraged to come by and see the improvements. The district will host an open house shortly after the projects are completed.

STATE DROPS GRADUATION CREDIT FOR REMEDIAL CLASSES

After forcing school districts to offer a variety of lower level or remedial classes in 1985 under the auspices of House Bill 72, the State Board of Education has accepted the recommendation of the Commissioner of Education and adopted an emergency rule that will prohibit students from earning graduation credit for remedial classes.

Immediately effective for the 1992-93 school year, districts will no longer be able to offer graduation credit for Consumer Mathematics, Fundamentals of Math, Correlated Language Arts I, or Pre-Biology. In later years, the districts will also drop Correlated Language Arts II-IV and Pre-Algebra.

The rationale for the change comes with the realization that students in remedial courses do not get the type of rigorous instruction necessary to the successful completion of state mandated tests such as the TAAS and NAPT. Almost all of the teacher groups and administrators in the state opposes the offering of these courses in 1985.

Students who have taken these courses in previous years will be allowed to count them toward graduation credit. Students may continue to take the courses for the 1992-93 school year as electives.

Questions regarding this change by the SBOE should be directed to the High School Principal, Don Sims or the School Counselor, Susan Harrison.

BRACKETT MIDDLE SCHOOL MENTOR SCHOOL

The Brackett Independent School District Middle School initiative has been recognized by the Texas Education Agency. The Middle School will serve as a Model or Mentor School. The school staff and principal will share their program with other teachers and administrators throughout the state.

The Brackett Middle School project began in 1990 with the commitment by the administration, staff and school trustees to create a unique educational environment for grades 6-8. The program features block scheduling, innovative teaching practices, increased parental involvement, staff development, and increased time for teachers to serve as mentors to students.

A copy of the letter received by the District from Commissioner Meno follows:
Dear Mr. McCall:

It is my extreme pleasure to inform you of the selection of Brackett Middle School as a Texas Middle School Network Mentor School. Brackett Middle School was one of 18 schools selected from a highly competitive group.

Designation as a mentor school will allow the principal and staff the opportunity to share their successes with other middle schools, provide leadership in the statewide middle school restructuring initiative, and gather valuable information about research-based "best practices" from other highly successful middle schools. The Senior Director for Middle School Education, Dr. Melody Johnson, will be contacting

you and your principals concerning contracts for funds, expectations, and scheduled planning sessions.

The success of the middle school initiative is dependent upon strong, committed principals willing to go the extra mile to ensure middle grade students enter the 21st Century as productive, caring adults. Leadership provided by designated mentor principals is critical, not just to the success of their own students, but to that of all of Texas' students.

My sincere congratulations to you, members of your staff, and school community. We are proud of your district's efforts and appreciate your commitment to the Texas Middle School Network initiative.

Sincerely,
/s/ Lionel R. Meno
Commissioner of Education



"MOM! HELP!"
FREE AND REDUCED PRICE MEALS

The Brackett Independent School District today announced its policy for free and reduced price meals for children unable to pay the full price of meals served under the National School Lunch Program. Each school and the Central Office has a copy of the policy, which may be reviewed by any interested party.

The household size and income criteria used for determining eligibility is listed below. Children from households whose income is at, or below the levels shown are eligible for free or reduced price meals.

Application forms are being sent to all homes with a letter to parents or guardians. To apply for free or reduced price meals, households should fill out the application and return it to the school. Additional copies are available at the principal's office in each school. The information provided on the application will be used for the purpose of determining eligibility, and may be verified at any time during the school year by school or other program officials.

Under the provisions of the free and reduced price policy, the Cafeteria Manager will review applications and determine eligibility. Parents or guardians dissatisfied with the ruling of the official may wish to discuss the decision with the determining official on an informal basis. Parents wishing to make a formal appeal may make a request either orally or in writing to Bobby D. McCall, Superintendent, P.O. Box 586, Brackettville, Texas 78832, or telephone 512/563-2491.

The information provided by the household is confidential and will be used only for purposes of determining eligibility and verifying data. In the operation of child feeding programs administered by the U.S. Department of Agriculture, no child will be discriminated against because of race, color, sex, national origin, age or handicap. If any member of a household believes they have been discriminated against, they should write immediately to the Secretary of Agriculture, Washington, D.C. 20250.

BISD Garage Sale

The Brackett Independent School District is cleaning out storerooms.

There will be a garage sale on the north tennis courts on Friday, August 7, 1992. There will be mostly old furniture including student desks. Most of the old equipment is junk, but some may be of value to an antique collection.

Sales will be for cash or checks. All purchased items must be removed by the end of the day on August 7, 1992.

BISD Vindicated By Both UIL And TEA

The Brackett Independent School District received a clean bill of health from both the University Interscholastic League and the Texas Education Agency on grade reporting during the fifth six weeks. A letter was addressed to the University Interscholastic League alleging the District allowed a student to participate in the spring Band contests that was ineligible. Further allegations were that pressure was put on teachers to change grades for some students but not others.

Both state organizations, after talking to teachers and administrators involved and looking at substantial physical evidence determined that the District did not manipulate student grades. The Band was not required to forfeit the Number 1 rating it received at contest.

Superintendent Bob McCall made the following statement when con-

tacted about the complaint: "I am not surprised. I always tell our teachers and administrators to go the extra step to assure the UIL rules are complied with. It has been my experience that complaints always come from within a district. Usually the complaints are made by someone who has a grudge against a coach, sponsor or administrator. More often than not, they have a child that has been declared ineligible and want to ruin the contest for everyone. The UIL and TEA do a remarkable job in reaching the logical conclusion in such cases.

"We welcome the scrutiny. We are not perfect and if we are in violation of any rule established by UIL or TEA we want to correct it. We realize that cheaters may win sometimes, but that is not the message we want to send to students and the community."

DRUGS CAN PUT YOU WITH THE IN-CROWD...



BRACKETT INDEPENDENT SCHOOL DISTRICT School Lunch Prices 1992-93

REDUCED	Breakfast	\$.30
	Lunch	\$.40
REGULAR	Breakfast	\$.50
	Lunch	
	PK-5	\$ 1.10
	6-12	\$ 1.25
GUEST	Lunch	\$ 2.25
EXTRA MILK		\$.20

School Starts August 17

Don't Send Your Child Back To School Without A Complete Professional Eye Examination!

Experts agree that 80% of our knowledge is gained through our vision. Your child may have a vision problem and not be aware of it. If so, learning will be more difficult and his school work will be impaired. A thorough professional eye examination by the experienced specialists at Galo Eye Care Centers is the best way to be sure that your child is properly prepared.

Complete Professional Back To School Eye Examination \$25.00

We Accept All Major Credit Cards

"Students 18 Years Of Age Or Younger"

Primary Care Eye Specialists



But hurry! This offer expires August 31, 1992
Call now for an appointment

512-775-2020 512-774-3344 512-773-5012 512-278-2565
731 S. Main Plaza Del Sol Mall Mall De Las Aguilas 2112 E. Main
Del Rio Del Rio Eagle Pass Uvalde

1992 - 1993 Income Eligibility Guidelines

FAMILY SIZE	ANNUALLY		MONTHLY		WEEKLY	
	FREE	REDUCED PRICE	FREE	REDUCED PRICE	FREE	REDUCED PRICE
1	\$ 8,853	\$ 12,599	\$ 738	\$ 1,050	\$ 171	\$ 243
2	11,947	17,002	996	1,417	230	327
3	15,041	21,405	1,254	1,784	290	412
4	18,135	25,808	1,512	2,151	349	497
5	21,229	30,211	1,770	2,518	409	581
6	24,323	34,614	2,027	2,885	468	666
7	27,417	39,017	2,285	3,252	528	751
8	30,511	43,420	2,543	3,619	587	835
9	33,605	47,823	2,801	3,986	647	920
10	36,699	52,226	3,059	4,353	707	1,005
11	39,793	56,629	3,317	4,720	767	1,090
12	42,887	61,032	3,575	5,087	827	1,175
Each additional family member:						
	+ \$ 3,094	+ \$ 4,403	+ \$ 258	+ \$ 367	+ \$ 60	+ \$ 85

Beyond The Horizon

By Dorothy Payne



M.S. Young, in 1914 went into the rugged Trans-Pecos area in Texas, with 2 burros, which cost \$8.00 and a \$9.00 buggy. Few people knew M.S. Young was Dr. Mary Sophie Young, an instructor in botany at the University of Texas.

Her headquarters on her collecting trips was Valentine, Texas, a remote village of few people. She usually took one of her students from the University to share in the work. She was 42 yrs. old and was often mistaken for a crazy tramp.

In 1872, Mary was the youngest child of an Episcopal priest and his wife, in Glendale, Ohio. She had a house full of brothers, and they would let her tramp with them in the woods, as long as she never complained. She took correspondence courses from the University of Chicago and finally received a Doctorate of Philosophy Degree in 1910 when she was 38 years old.

In two years she became an in-

structor of botany in the Freshman laboratory at the University of Texas. She used the Socratic Method of teaching, answering her students' questions with her own to make them think for themselves.

She carried a .25-caliber colt in the pocket of her shirt and owned a .22-caliber Colt automatic and could supply their camp with rabbits. Casey Tharp was her 17 year old assistant.

On the 1914 trip they covered several hundred miles in less than 6 weeks. Her biggest expense was her train ticket from Marfa back to Austin, which cost \$45. They lived on beans, rice, bacon, biscuits and coffee, buying fruit at the orchards and ranches. They explored the Davis Mountains - Valentine, to Candelaria, to Ruidosa, Texas.

In September 15, 1915, she collected 541 plants in the Chisos Mountains. In 1916 she collected 403 plants in the Guadalupe Moun-

tains area in Texas and New Mexico. In 1918 she went back to the Davis Mountains and collected 386 more plants. Mary kept a complete journal of her trips in the beginning.

She went alone to collect in the Chinati Mountains near Marfa. She was able to bring back 33 plants before her shoes wore out. In February of 1919 she went to the doctor for a minor operation, but found it was cancer and inoperable. She died on March 5, 1919 at 47 yrs. leaving many friends and grateful students she had helped to support.

She collected for only nine years but made unusual contributions to the field of botany. In one of her three trips to Mount Livermore she found, among other specimens, a single, leafless red-purple orchid.

Mary Sophie Young, Texas Trans-Pecos botanist collected many important specimens for Texas University's herbarium. When she was not teaching she was collecting and exchanged specimens with other botanists and in return received thousands of specimens. She published treatises on Plants and Ferns of the Austin area, which was of importance because Austin was the meeting place of eastern and western herbarium specimens.

Make tracks to the nearest recycling center!

Do You Ever Ask These Questions?

"Who will take care of my children while I attend G.E.D. classes?"

"I've never had a job before. How can I get started?"

"Where do I find the training I need to help me find the job I want?"

"I can't decide on a career!"

"I want to get my G.E.D. Where can I go?"

"My family's income is pretty low. Can you help me?"

"What can I do to prepare myself for a job that will pay more than minimum wage?"

"I have trouble motivating myself. What can I do?"

If You Need Help With Getting Ahead...

JTPA

HAS THE ANSWERS!

Call or visit us today at 563-2021

We're located at Kinney County Courthouse

Head 'em up! Move 'em out - through the Classifieds

563-2852

80-212 (1992)

1992 Property Tax Rates in BRACKETT ISD

This notice concerns 1992 property tax rates for BRACKETT ISD. It presents information about three tax rates. Last year's tax rate is the actual rate the taxing unit used to determine property taxes last year. This year's effective tax rate would impose the same total taxes as last year if you compare properties taxed in both years. This year's rollback tax rate is the highest tax rate the taxing unit can set before taxpayers can start tax rollback procedures. In each case these rates are found by dividing the total amount of taxes by the tax base (the total value of taxable property) with adjustments as required by state law. The rates are given per \$100 of property value.

Last year's tax rate:	
Last year's operating taxes	\$ 59,972.71
Last year's debt taxes	\$ 170,245.11
Last year's total taxes	\$ 230,217.82
Last year's tax base	\$ 77,384,140
Last year's total tax rate	\$.2975 /\$100
This year's effective tax rate:	
Last year's adjusted taxes (after subtracting taxes on lost property)	\$ 223,737.64
+ This year's adjusted tax - Base (after subtracting value of new property)	\$ 74,517,394
- This year's effective tax rate	\$.3002 /\$100

In the first year a hospital district or city collects the additional sales tax, it must insert the following lines unless its first adjustment was made last year:

- Sales tax adjustment rate	\$ - - - /\$100
- Effective tax rate	\$.3002 /\$100

x 1.03 = maximum rate unless unit publishes notices and holds hearing \$.3092 /\$100

This year's rollback tax rate:

Last year's adjusted operating taxes (after subtracting taxes on lost property)	\$ 23,969.59
+ This year's adjusted tax base	\$ 74,517,394
- This year's effective operating rate	\$.29216 /\$100
x 1.08 (or add \$.08 for schools) = this year's maximum operating rate	\$.11216 /\$100
- This year's debt rate	\$.26044 /\$100

A school district must insert the following lines:

- This year's rollback rate before adjustment	\$.37260 /\$100
- Rate to recoup lost revenue	\$.05534 /\$100
- Adjusted rollback rate	\$.42794 /\$100
- This year's rollback rate	\$.42794 /\$100

A hospital district or city that collects the additional sales tax, including one that collects the tax for the first time this year, must insert the following lines:

- Sales tax adjustment rate	\$ - - - /\$100
- Rollback tax rate	\$.42794 /\$100

80-212 (1992)

1992 Property Tax Rates in CITY OF SPOFFORD

This notice concerns 1992 property tax rates for CITY OF SPOFFORD. It presents information about three tax rates. Last year's tax rate is the actual rate the taxing unit used to determine property taxes last year. This year's effective tax rate would impose the same total taxes as last year if you compare properties taxed in both years. This year's rollback tax rate is the highest tax rate the taxing unit can set before taxpayers can start tax rollback procedures. In each case these rates are found by dividing the total amount of taxes by the tax base (the total value of taxable property) with adjustments as required by state law. The rates are given per \$100 of property value.

Last year's tax rate:	
Last year's operating taxes	\$ 3,002
Last year's debt taxes	\$ - - -
Last year's total taxes	\$ 3,002
Last year's tax base	\$ 946,598
Last year's total tax rate	\$.3106 /\$100
This year's effective tax rate:	
Last year's adjusted taxes (after subtracting taxes on lost property)	\$ 2,973
+ This year's adjusted tax - Base (after subtracting value of new property)	\$ 900,885
- This year's effective tax rate	\$.3300 /\$100

In the first year a hospital district or city collects the additional sales tax, it must insert the following lines unless its first adjustment was made last year:

- Sales tax adjustment rate	\$ N/A /\$100
- Effective tax rate	\$ - - - /\$100

x 1.03 = maximum rate unless unit publishes notices and holds hearing \$.3399 /\$100

This year's rollback tax rate:

Last year's adjusted operating taxes (after subtracting taxes on lost property)	\$ 2,973
+ This year's adjusted tax base	\$ 900,885
- This year's effective operating rate	\$.3300 /\$100
x 1.08 (or add \$.08 for schools) = this year's maximum operating rate	\$.3564 /\$100
- This year's debt rate	\$ - - - /\$100

A school district must insert the following lines:

- This year's rollback rate before adjustment	\$ N/A /\$100
- Rate to recoup lost revenue	\$ - - - /\$100
- Adjusted rollback rate	\$ - - - /\$100
- This year's rollback rate	\$.3564 /\$100

A hospital district or city that collects the additional sales tax, including one that collects the tax for the first time this year, must insert the following lines:

- Sales tax adjustment rate	\$ N/A /\$100
- Rollback tax rate	\$ - - - /\$100

80-212 (1992)

1992 Property Tax Rates in CITY OF BRACKETTVILLE

This notice concerns 1992 property tax rates for CITY OF BRACKETTVILLE. It presents information about three tax rates. Last year's tax rate is the actual rate the taxing unit used to determine property taxes last year. This year's effective tax rate would impose the same total taxes as last year if you compare properties taxed in both years. This year's rollback tax rate is the highest tax rate the taxing unit can set before taxpayers can start tax rollback procedures. In each case these rates are found by dividing the total amount of taxes by the tax base (the total value of taxable property) with adjustments as required by state law. The rates are given per \$100 of property value.

Last year's tax rate:	
Last year's operating taxes	\$ 106,026.67
Last year's debt taxes	\$ 706,026.67
Last year's total taxes	\$ 812,053.34
Last year's tax base	\$ 16,025,797
Last year's total tax rate	\$.6616 /\$100
This year's effective tax rate:	
Last year's adjusted taxes (after subtracting taxes on lost property)	\$ 106,009.88
+ This year's adjusted tax - Base (after subtracting value of new property)	\$ 16,011,076
- This year's effective tax rate	\$.6620 /\$100

In the first year a hospital district or city collects the additional sales tax, it must insert the following lines unless its first adjustment was made last year:

- Sales tax adjustment rate	\$ N/A /\$100
- Effective tax rate	\$ - - - /\$100

x 1.03 = maximum rate unless unit publishes notices and holds hearing \$.6818 /\$100

This year's rollback tax rate:

Last year's adjusted operating taxes (after subtracting taxes on lost property)	\$ 106,009.88
+ This year's adjusted tax base	\$ 16,011,076
- This year's effective operating rate	\$.6620 /\$100
x 1.08 (or add \$.08 for schools) = this year's maximum operating rate	\$.7149 /\$100
- This year's debt rate	\$ - - - /\$100

A school district must insert the following lines:

- This year's rollback rate before adjustment	\$ N/A /\$100
- Rate to recoup lost revenue	\$ - - - /\$100
- Adjusted rollback rate	\$ - - - /\$100
- This year's rollback rate	\$.7149 /\$100

A hospital district or city that collects the additional sales tax, including one that collects the tax for the first time this year, must insert the following lines:

- Sales tax adjustment rate	\$ N/A /\$100
- Rollback tax rate	\$ - - - /\$100

Schedule A

Unencumbered Fund Balances

The following balances will probably be left in the unit's property tax accounts at the end of the fiscal year. These balances are not encumbered by a corresponding debt obligation.

Type of Property Tax Fund	Balance
GENERAL FUND (MAINTENANCE AND OPERATIONS)	\$ 346,057

Schedule B

1992 Debt Service

The unit plans to pay the following amounts for long-term debts that are secured by property taxes. These amounts will be paid from property tax revenues (or additional sales tax revenues, if applicable).

Description of Debt	Principal or Contract Payment to be Paid	Interest to be Paid	Other Amounts to be Paid	Total Payment
BONDS	\$ 95,000.00	\$ 105,659.50	\$ 1,200.00	\$ 191,939.50
Total required for 1992 debt service				\$ 191,939.50
- Amount (if any) paid from funds listed in Schedule A				\$ - - -
- Excess collections last year				\$ - - -
- Total to be paid from taxes in 1992				\$ 191,939.50
- Amount added in anticipation that the unit will collect only 97% of its taxes in 1992				\$ 5,936.28
- Total Debt Levy				\$ 197,875.78

Schedule A

Unencumbered Fund Balances

The following balances will probably be left in the unit's property tax accounts at the end of the fiscal year. These balances are not encumbered by a corresponding debt obligation.

Type of Property Tax Fund	Balance
N/A	\$ - - -

Schedule B

1992 Debt Service

The unit plans to pay the following amounts for long-term debts that are secured by property taxes. These amounts will be paid from property tax revenues (or additional sales tax revenues, if applicable).

Description of Debt	Principal or Contract Payment to be Paid	Interest to be Paid	Other Amounts to be Paid	Total Payment
NONE	\$ - - -	\$ - - -	\$ - - -	\$ - - -
Total required for 1992 debt service				\$ NONE
- Amount (if any) paid from funds listed in Schedule A				\$ - - -
- Excess collections last year				\$ - - -
- Total to be paid from taxes in 1992				\$ - - -
- Amount added in anticipation that the unit will collect only 97% of its taxes in 1992				\$ - - -
- Total Debt Levy				\$ NONE

Schedule A

Unencumbered Fund Balances

The following balances will probably be left in the unit's property tax accounts at the end of the fiscal year. These balances are not encumbered by a corresponding debt obligation.

Type of Property Tax Fund	Balance
N/A	\$ - - -

Schedule B

1992 Debt Service

The unit plans to pay the following amounts for long-term debts that are secured by property taxes. These amounts will be paid from property tax revenues (or additional sales tax revenues, if applicable).

Description of Debt	Principal or Contract Payment to be Paid	Interest to be Paid	Other Amounts to be Paid	Total Payment
NONE	\$ - - -	\$ - - -	\$ - - -	\$ - - -
Total required for 1992 debt service				\$ NONE
- Amount (if any) paid from funds listed in Schedule A				\$ - - -
- Excess collections last year				\$ - - -
- Total to be paid from taxes in 1992				\$ - - -
- Amount added in anticipation that the unit will collect only 97% of its taxes in 1992				\$ - - -
- Total Debt Levy				\$ NONE

Schedule C

Expected Revenue from Additional Sales Tax

(For hospital districts, cities and counties with additional 1/2-cent sales tax.)

In calculating its effective and rollback tax rates, the unit estimated that it will receive \$ N/A in additional sales and use tax revenues.

Schedule D

State Criminal Justice Mandate (For Counties)

The N/A County Auditor certifies that N/A County has spent \$ N/A in the previous 12 months beginning N/A 19 for the maintenance and operations cost of keeping inmates sentenced to the Texas Department of Criminal Justice. N/A County Sheriff has provided information on these costs, minus the state revenues received for reimbursement of such costs.

This notice contains a summary of actual effective and rollback tax rates calculations. You can inspect a copy of the full calculations at KINNEY COUNTY APPRAISAL DISTRICT, BRACKETTVILLE, TEXAS.

Name of person preparing this notice: MARCUS TIDWELL

Title: CHIEF APPRAISER

Date prepared: 07/28/92

Schedule A

Unencumbered Fund Balances

The following balances will probably be left in the unit's property tax accounts at the end of the fiscal year. These balances are not encumbered by a corresponding debt obligation.

Type of Property Tax Fund	Balance
N/A	\$ - - -

Schedule B

1992 Debt Service

The unit plans to pay the following amounts for long-term debts that are secured by property taxes. These amounts will be paid from property tax revenues (or additional sales tax revenues, if applicable).

Description of Debt	Principal or Contract Payment to be Paid	Interest to be Paid	Other Amounts to be Paid	Total Payment
NONE	\$ - - -	\$ - - -	\$ - - -	\$ - - -
Total required for 1992 debt service				\$ NONE
- Amount (if any) paid from funds listed in Schedule A				\$ - - -
- Excess collections last year				\$ - - -
- Total to be paid from taxes in 1992				\$ - - -
- Amount added in anticipation that the unit will collect only 97% of its taxes in 1992				\$ - - -
- Total Debt Levy				\$ NONE

Schedule A

Unencumbered Fund Balances

The following balances will probably be left in the unit's property tax accounts at the end of the fiscal year. These balances are not encumbered by a corresponding debt obligation.

Type of Property Tax Fund	Balance
N/A	\$ - - -

Schedule B

1992 Debt Service

The unit plans to pay the following amounts for long-term debts that are secured by property taxes. These amounts will be paid from property tax revenues (or additional sales tax revenues, if applicable).

Description of Debt	Principal or Contract Payment to be Paid	Interest to be Paid	Other Amounts to be Paid	Total Payment
NONE	\$ - - -	\$ - - -	\$ - - -	\$ - - -
Total required for 1992 debt service				\$ NONE
- Amount (if any) paid from funds listed in Schedule A				\$ - - -
- Excess collections last year				\$ - - -
- Total to be paid from taxes in 1992				\$ - - -
- Amount added in anticipation that the unit will collect only 97% of its taxes in 1992				\$ - - -
- Total Debt Levy				\$ NONE

FOOT BALL

RESERVED FOOTBALL TICKETS FOR 1992

If you obtained reserved seats in 1991 and wish to keep your seats, call Cindy Brandt at 512/563-2491. Office hours are from 8:00 a.m. to 11:30 a.m. and 12:30 p.m. to 4:00 p.m. Monday through Friday.

If you would like to obtain seats for this season, either call or come by the office during the above specified hours.

There will be five home games this year. Each ticket is \$3.00 per game for a total of \$15.00 per seat for the entire season.

Schedule C

Expected Revenue from Additional Sales Tax

(For hospital districts, cities and counties with additional 1/2-cent sales tax.)

In calculating its effective and rollback tax rates, the unit estimated that it will receive \$ NONE in additional sales and use tax revenues.

Schedule D

State Criminal Justice Mandate (For Counties)

The N/A County Auditor certifies that N/A County has spent \$ N/A in the previous 12 months beginning N/A 19 for the maintenance and operations cost of keeping inmates sentenced to the Texas Department of Criminal Justice. N/A County Sheriff has provided information on these costs, minus the state revenues received for reimbursement of such costs.

This notice contains a summary of actual effective and rollback tax rates calculations. You can inspect a copy of the full calculations at KINNEY COUNTY APPRAISAL DISTRICT, BRACKETTVILLE, TEXAS.

Name of person preparing this notice: MARCUS TIDWELL

Title: CHIEF APPRAISER

Date prepared: 07/24/92

Schedule A

Unencumbered Fund Balances

The following balances will probably be left in the unit's property tax accounts at the end of the fiscal year. These balances are not encumbered by a corresponding debt obligation.

Type of Property Tax Fund	Balance
N/A	\$ - - -

Schedule B

1992 Debt Service

The unit plans to pay the following amounts for long-term debts that are secured by property taxes. These amounts will be paid from property tax revenues (or additional sales tax revenues, if applicable).

Description of Debt	Principal or Contract Payment to be Paid	Interest to be Paid	Other Amounts to be Paid	Total Payment
NONE	\$ - - -	\$ - - -	\$ - - -	\$ - - -
Total required for 1992 debt service				\$ NONE
- Amount (if any) paid from funds listed in Schedule A				\$ - - -
- Excess collections last year				\$ - - -
- Total to be paid from taxes in 1992				\$ - - -
- Amount added in anticipation that the unit will collect only 97% of its taxes in 1992				\$ - - -
- Total Debt Levy				\$ NONE

Fishing Report



AMISTAD: Water clear, 78 degrees, normal level; black bass are fairly good in number to 5 pounds, many small fish caught on spinners early and worms later in the day; striper are slow in 72-90 feet of water in the river channels; crappie are slow; white bass are fair around Castle Canyon; catfish are good in 3-5 feet of water, most catfish are in Zorro or Caballo Canyons.

BRAUNIG: Water clear, 83 degrees, normal level; black bass are good to 8 pounds on live perch; striper are good to 10 pounds, most are in the 5-6 pound range, on tilapia and Rattle Traps; blue catfish are good to 8 pound average on liver and tilapia; yellow catfish are slow; redfish are good to 15 pounds on spoons and shad.

CALAVERAS: Water murky, 90 degrees, normal level; black bass are slow; striper are slow; catfish are good to 5 pounds on shad, chicken livers and Bob's Cheese Baits; redfish are good to 17 pounds on shad, crawfish and perch; corvina are excellent to 17 pounds with a 12 pound average on crawfish, perch and artificials.

CASA BLANCA: Water clear, 83 degrees, 3 feet below normal level; black bass are good to 6 pounds on spinners; crappie are slow; catfish are slow due to heat.

CHOKO: Water 89 degrees, 3 inches above normal level; black bass are fair to 11 1/2 pounds and best areas are Greyhound, Mason and Four Fingers Points near the river channels, best fishing is the first two hours of the day on topwaters lures, spinners and plastic worms; striper are slow; crappie are slow, some caught on live minnows in 15 to 30 feet of water along river channels; white bass are slow; catfish are good in number in 5-10 feet of water off

points and around green willow trees on cheese bait and shrimp.

COLETO CREEK: Water murky, 84 degrees, normal level; black bass are fair early and late to 5 pounds around the weed beds; crappie are good 1 pound each on minnows late; catfish are good to 15 pounds on cheese baits on trotlines.

CORPUS CHRISTI: Water clear, 87 degrees, lake full; black bass are slow to fair to 3 1/2 pounds around pilings in 5 to 8 feet of water on red shad Power Worms; striper are slow; crappie are fair off both state park piers and at the Alice Pump House in 15 feet of water on minnows; white bass are good early under the birds around Goat Island on 1/4 ounce silver spoons and white slab spoons; blue catfish are good to 7 pounds in 3-5 feet of water on trotlines baited with shad; yellow catfish are fair to 14 pounds on trotlines baited with live sunfish in the river channels; waterfowlers are rebuilding duck blinds on the north end of the lake for the special September teal season.

FALCON: Water clear, 86 degrees, normal level; black bass are good through 9 pounds, 7 ounces on worms; striper are schooling on top, some caught in the 5-6 pound range on Knocker Spoons; crappie are slow; white bass are slow; catfish are spotty to 4 pounds on shrimp.

MEDINA: Water clear, 3 inches above normal level; black bass are fair to 3 pounds on Rattle Traps early and Power Worms later in the day; striper are slow; crappie are slow; white bass are slow; catfish are good to 11 pounds on trotlines baited with perch, on rod and reel;

catfish are fair to 3 pounds on shrimp and nightcrawlers.
TEXANA: Water fairly clear in the Highway 59 area, normal level; black bass are good to 3 pounds on Craw Worms; crappie are fairly good on minnows; catfish are very slow.

Lone Star Events

Sept. 4-6—Marfa Lights Festival, Marfa. The mysterious and unexplained Marfa ghost lights are celebrated during a three-day Labor Day weekend festival in this quaint far west Texas ranching community. Enjoy an evening street dance on the courthouse square. Rise early in the morning for a parade. Festivities throughout the day include food and craft booths and music and dancing performances by the Vive El Paso dancers. The lights are visible most nights from a viewing site nine miles east of Marfa on U.S. 90/67. Contact the Marfa Chamber of Commerce, Box 635, Marfa, 79843. 915/729-4942.

Sept. 11-13—8th Brush Country Days Festival, Carrizo Springs. This three-day event guarantees a fun-filled family weekend in the Brush Country of South Texas 115 miles southwest of San Antonio. Look for plenty of spills and thrills as

local ranch cowboys compete in the rodeo. Visitors can enjoy a parade, arts and crafts booths, food booths and games. Enjoy entertainment and dancing every evening under the South Texas stars. Contact Dimmit County Chamber of Commerce, 107 W. Nopal St., Carrizo Springs, 78834. 512/876-5205.

Sept. 12—Kinney County Cowboy Cauldron, Brackettville. The Chamber of Commerce invites you to historic Brackettville, about 90 miles southwest of San Antonio, to enjoy cowboy poetry, stories and music performed by working cowboys. Daily festivities include western arts, crafts and exhibits, barbecue, fiddle and sheep shearing contests, as well as a tortilla toss and cook-off. Come enjoy the fun. Contact the Kinney County Chamber of Commerce, P.O. Box 386, Brackettville, 78832. 512/563-2466.



1992 Property Tax Rates in Kinney County

This notice concerns 1992 property tax rates for Kinney County. It presents information about three tax rates. Last year's tax rate is the actual rate the taxing unit used to determine property taxes last year. This year's effective tax rate would impose the same total taxes as last year if you compare properties taxed in both years. This year's rollback tax rate is the highest tax rate the taxing unit can set before taxpayers can start tax rollback procedures. In each case these rates are found by dividing the total amount of taxes by the tax base (the total value of taxable property) with adjustments as required by state law. The rates are given per \$100 of property value.

	General Fund	Farm to Market/ Flood Control Fund	Special Road/Bridge Fund
Last year's tax rate:			
Last year's operating taxes	\$ 537,256.30	\$ 16,413.56	\$ N/A
Last year's debt taxes	\$ 23,841.69	\$ -	\$ -
Last year's total taxes	\$ 561,098.00	\$ 16,413.56	\$ -
Last year's tax base	\$ 23,022,871	\$ 22,047,817	\$ -
Last year's total tax rate	\$ 2.436 / \$100	\$ 0.745 / \$100	\$ - / \$100

This year's effective tax rate:			
Last year's adjusted taxes (after subtracting taxes on lost property)	\$ 537,620.59	\$ 15,859.17	\$ -
+ This year's adjusted tax (after subtracting value of new property)	\$ 80,233.771	\$ 79,295.838	\$ -
- This year's effective tax rate for each fund	\$ 1,6701 / \$100	\$ 0,2000 / \$100	\$ - / \$100
Total effective tax rate	\$ 1,6901 / \$100		

In the first year a county collects the additional sales tax, it must insert the following lines unless its first adjustment was made last year.

- Sales tax adjustment rate	\$ - - / \$100
- Effective tax rate	\$ 1,6901 / \$100

x 1.03 = maximum rate unless unit publishes notices and holds hearing \$ 7.108 / \$100

This year's rollback tax rate:			
Last year's adjusted operating taxes (after subtracting taxes on lost property and including taxes for state criminal justice mandate)	\$ 514,404.06	\$ 15,994.21	\$ N/A
+ This year's adjusted tax base	\$ 20,233,771	\$ 79,295,838	\$ -
- This year's effective operating rate	\$ 4,411 / \$100	\$ 0,2002 / \$100	\$ - / \$100
x 1.08 = this year's maximum operating rate	\$ 4,764 / \$100	\$ 0,218 / \$100	\$ - / \$100
+ This year's debt rate	\$ 1,071 / \$100	\$ - / \$100	\$ - / \$100
- This year's rollback rate for each fund	\$ 7,995 / \$100	\$ 0,218 / \$100	\$ - / \$100
- This year's total rollback rate	\$ 8,213 / \$100		

A county that collects the additional sales tax, including one that collects the tax for the first time this year, must insert the following lines

- Sales tax adjustment rate	\$ - - / \$100
- Rollback tax rate	\$ 8,213 / \$100

Type of Property Tax Fund	Balance
ROAD AND BRIDGE	\$ 50,000.00
INDIGENT HEALTH AND JURY	\$ 32,000.00

Description of Debt	Principal or Contract Payment to be Paid	Interest to be Paid	Other Amounts to be Paid	Total Payment
OBLIGATION BONDS	\$ 60,000.00	\$ 24,847.50	\$ -	\$ 84,847.50
Total required for 1992 debt service				\$ 84,847.50
- Amount (if any) paid from funds listed in Schedule A				\$ -
- Excess collections last year				\$ -
- Total to be paid from taxes in 1992				\$ 84,847.50
+ Amount added in anticipation that the unit will collect only 97% of its taxes in 1992				\$ 2,624.50
- Total Debt Levy				\$ 87,472.00

Schedule C
Expected Revenue from Additional Sales Tax
(For hospital districts, cities and counties with additional 1/2-cent sales tax)
In calculating its effective and rollback tax rates, the unit estimated that it will receive \$ N/A in additional sales and use tax revenues.

Schedule D
State Criminal Justice Mandate (For Counties)
The County Auditor certifies that KINNEY County has spent \$ - - in the KINNEY County for the maintenance and operations cost of keeping the previous 12 months beginning 19 - - for the maintenance and operations cost of keeping inmates sentenced to the Texas Department of Criminal Justice. Kinney County Sheriff has provided information on these costs, minus the state revenues received for reimbursement of such costs.

This notice contains a summary of actual effective and rollback tax rates calculations. You can inspect a copy of the full calculations at the KINNEY COUNTY APPRAISAL DISTRICT, BRACKETTVILLE, TEX.
Name of person preparing this notice: MARCUS TIDWELL
Title: CHIEF APPRAISER
Date prepared: 07-27-92

HEAR WHAT PEOPLE ARE SAYING BEHIND YOUR BACK



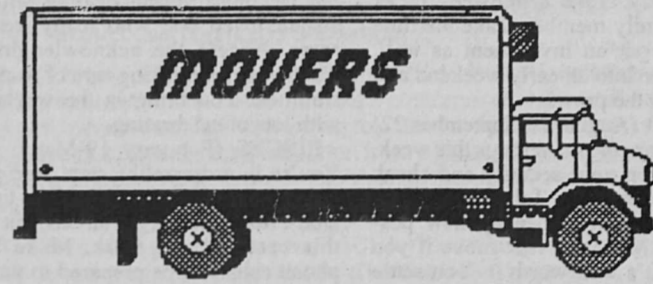
Repairs & Insurance Available On All Brands of Hearing Aids Most Repairs Within 24 Hours

COME IN NOW FOR A FREE HEARING EVALUATION
SOUTHWEST TEXAS HEARING INSTRUMENTS

Plaza del Sol Mall (Next to JCPenney)

774-1272 Mon.-Thurs. 10-5

SALES AND SERVICE, SERVICE, SERVICE.....FREE HEARING TESTS



Name or Address Change?

To insure you don't miss a copy of your Brackett News, send address change to Box 1039, Brackettville TX 78832, or call 512-563-2852.

50% OFF BACK TO SCHOOL

STORES Where You Save As Much As You Spend!

GIRLS' FASHION DRESSES

- 2 pc. sets and jumper sets
- Brights and prints
- Some with jewels, bows and lace trims and belts
- Sizes: 4/6x and 7/14

TICKET PRICE: \$19.99 - \$29.99

YOU PAY \$10 TO \$15

Also Available:

- Toddlers' Dresses
- Sizes: 2 - 4

TICKET PRICE: \$13.99 - \$23.99

YOU PAY \$7 TO \$12

WHILE QUANTITIES LAST!

GIRLS' KNIT TOPS

- Prints and solids
- Turtlenecks, mock turtlenecks, pocket treatments and more
- Sizes: 4/6x - 7/14

TICKET PRICE: \$6.99 - \$15.99

YOU PAY \$3 TO \$8

GIRLS' TWEED PANTS

- Basic and fashion colors
- With pockets and pleats
- Some include belts
- Sizes: 4/6x - 7/14

TICKET PRICE: \$15.99 - \$19.99

YOU PAY \$8 TO \$10

50% OFF EVERY ITEM, EVERY DAY!

BOYS' AND JUNIOR BOYS' SPORT SHIRTS

- Short sleeves
- Permanent press
- Assorted prints
- Sizes: 4 - 7 and 8 - 18

TICKET PRICES: \$11.99 - \$13.99

YOU PAY \$6 AND \$7

BOYS' AND JUNIOR BOYS' CARGO JEANS

- Garment washed
- Cargo pocket
- Full waist
- Sizes: 4 - 7 and 8 - 18

TICKET PRICES: \$11.99 - \$13.99

YOU PAY \$6 TO \$7

BRANDS YOU TRUST!

GIRLS' "GITANO" MIX AND MATCH SEPARATES

- Jewel trims
- Solids and prints
- Purple and fuchsia
- Sizes: 4/6x and 7/14

TICKET PRICE: \$13.99 - \$14.99

YOU PAY \$7 TO \$7.50

MasterCard, VISA, American Express, Discover, Discover cards accepted

SATISFACTION GUARANTEED!

CHILDREN'S BACKPACKS

- Toddler to large sizes
- Bright solids, color blocks and prints
- Zip compartments
- Nylon and leather look

TICKET PRICE: \$9.99 - \$26.99

YOU PAY \$5 TO \$13.50

BOYS' & JUNIOR BOYS' "MANHATTAN" DRESS SLACKS

- Belted and unbelted
- 2, 3 and 4 pockets
- Permanent press
- Sizes: 4 - 7 and 8 - 18

TICKET PRICES: \$19.99 and \$25.99

YOU PAY \$10 AND \$13

LEATHER BELTS - YOU PAY \$2.00

BOYS' & JUNIOR BOYS' DRESS SHIRTS

- Short sleeves
- Permanent press
- Sizes: 4 - 7 and 8 - 18

TICKET PRICES: \$9.99 and \$10.99

YOU PAY \$5 AND \$5.50

ASSORTED TIES - YOU PAY \$2.00

BOYS' 3 PACK BRIEFS

- 100% cotton
- Basic white
- Sizes: 6 - 16

TICKET PRICE: \$5.99

YOU PAY \$3



GIRLS' PANTIES 3 PAIR TO A PACK

- Bright solids and assorted prints
- Flower and animal prints available
- Sizes: 2 - 14

TICKET PRICE: \$3.99 - \$6.99

YOU PAY \$2 TO \$3.50

GIRLS' HAIR ACCESSORIES

- Choose from bows, barrettes, headbands, ponyos and much more

TICKET PRICE: \$1.99 - \$4.99

YOU PAY \$1 TO \$2.50

PRICES YOU CAN BELIEVE!

ASSORTED SOCKS GIRLS' 3 PAIR PACK

- Prints and solids
- Lace, bows and stripe trims
- Sizes: 0-18 mos, 4-6 1/2, 6-8 1/2

TICKET PRICE: \$2.99 - \$5.99

YOU PAY \$1.50 TO \$3

ALWAYS FIRST QUALITY!

GIRLS' SLOUCH & CUFF SOCKS

- Many exciting colors to choose from
- Sizes: 4-6 1/2, 6-8 1/2, 9-11

TICKET PRICE: \$1.99 - \$2.69

YOU PAY \$1 TO \$1.35

50% OFF

La Villita Center
2400 Ave F Del Rio, Texas

Monday - Saturday 10:00 a.m. - 9:00 p.m.
Sunday 11:00 - 6:00 p.m.

Clearance Center

801 S. Main, Del Rio
Monday - Saturday 10:00 a.m. - 6:00 p.m.
Sunday 11:00 a.m. - 5:00 p.m.



Natasha's Stars

ARIES (March 21-April 19) Tune into others and "vibe out" with them all week long. You restore all the mystery and magic to your life. Say yes to the ride on the flying carpet to adventure and more. You may or may not settle down.

TAURUS (April 20-May 20) A flagrant attitude at work could get you into trouble. Realize that trouble is brewing, and do be careful, unless you want the boss to go ballistic. A partner stands behind you, but remember to give them some T.L.C.

GEMINI (May 21-June 20) Be rather cool when dealing with an outrageous member of the opposite sex. Work seems to be a secondary priority right now, with all the fun and games happening. The weekend is designed to heat up your romantic life.

CANCER (June 21-July 22) You not only see life differently, you are able to move in new directions. Your libido goes wild, as your creativity spins out. Romance intensifies because of you. Share a favorite pastime with a special friend.

LEO (July 23-August 22) Chat up a storm and get things done efficiently and quickly. Take a midweek break with a family member. Take the time to check out an investment as well. You cruise into an early weekend and are out on the prowl.

VIRGO (August 23-September 22) Finances are the main focus this week. Build up on your security and check out an investment. Talks toward the end of the week open up new possibilities. Make the first move if you must — it's well worth it. You settle into a more loving mode this weekend.

LIBRA (September 23-October 22) You are the "personality kid" of the

zodiac this week and, boy, do you maximize each and every opportunity. Be careful with that extravagant streak — it could do you in. Otherwise, you get your work done and still have plenty of time for the lighter side of life.

SCORPIO (October 23-November 21) You need to "veg" some before you come to a decision. You're able to resolve a situation because you do your homework. Listen carefully when another opens up to you, because you get long-overdue information.

SAGITTARIUS (November 22-December 21) Open up to the moment and to a very special friendship. Let the good vibrations flow between you and another. You are finally able to see life through brand new eyes. The ups and downs of life become more than apparent when you peak this weekend.

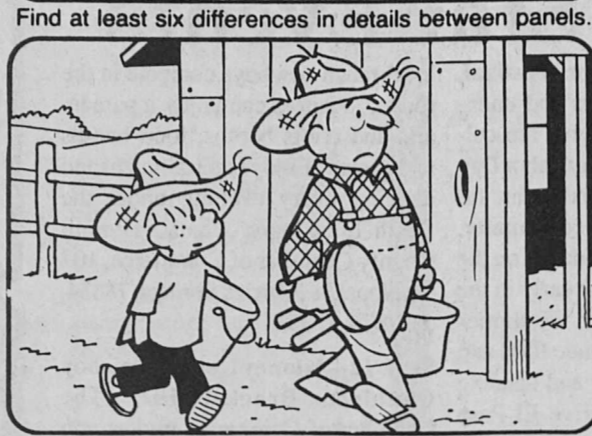
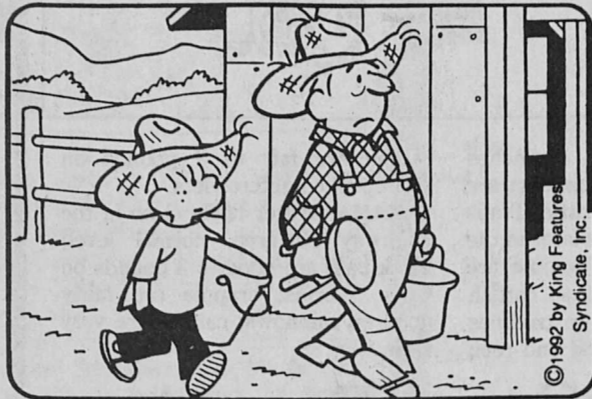
CAPRICORN (December 22-January 19) Allow another to question the alternatives that surround a work situation. This may not be your problem. You plunge into an early weekend and get roped into doing something at the last minute. Go with it and you'll be a happy camper.

AQUARIUS (January 20-February 18) Be more upbeat dealing with a distant loved one who really, really cares. Accept the acknowledgment that comes with taking care of responsibilities. You bring in the weekend with lots of celebrating.

PISCES (February 19-March 20) You're in a dreamlike state, and you feel better than you have in a long time. Don't float away in the clouds, but use this creativity at work. Make key phone calls and be prepared to put in more than your share of work.

©1992 by King Features Synd.

Vision Teaser



Find at least six differences in details between panels.

Differences: 1. Hill is missing; 2. Fence post is moved; 3. Pill is smaller; 4. Barn is wider; 5. Stool is larger; 6. Knit hole is added.

MagicMaze

IT'S GREEK TO ME

E K H E B Y W T R O L J G E B
 Y W U N R S P N K I G D B Z X
 V S Q O O B O M K I G E C A E
 Y A T H E N S C W U S Q P N L
 L J H T S U E Z R F E C N A T
 Y X A D R A C H M A V U O S O
 Q P N N R M K L T O T A L P T
 J H F S E D I P I R U E I E S
 C B Z Y M H X V U D A T S R I
 Q P O M O A T L E D L P P K R
 I H G A H P L A I H P L E D A

Find the listed words in the diagram. They run in all directions—forward, backward, up, down and diagonally.

- | | | | |
|-----------|---------|-----------|----------|
| Aristotle | Delphi | Euclid | Plato |
| Athena | Delta | Euripides | Socrates |
| Athens | Drachma | Homer | Zeus |
| Beta | Epsilon | Parthenon | |

Answers On Page 3

Super Crossword

- | | | | | | | | | | | | | | | | | | | | | | | | | | | | | | | | | | | | | | | | | | | | | | | | | | | | | | | | | | | | | | | | | | | | | | | | | | | | | | | | | | | | | | | | | | | | | | | | | | | | | | | | | | | | | | | | | | | | | | | | | | | | | | | | | | | | | | | | | | | | | | | | | | | | | | | | | | |
|---------------|--------------------|------------------|----------------|----------------------|---------------|-------------------------------|----------------------------|-------------|-------------------|-------------------|--------------|---------------------------|------------------|------------------|----------|--------------------|--------------------|-------------------------|----------------|---------------------|-------------|------------------|--------------------------|----------------|-------------------|----------|-------------------------|--------------------------|--------------|-----------|----------------|-------------------|-------------------------|--------------|---------------------|---------------------|-----------------------|--------------|-----------------|----------------|--------------------|---------------|---------------------------|-----------------------|------------------|------------------------|----------------------|-------------|------------------------------|---------------|-------------------------|--------------|-----------|---------------------|-------------------------|--------------------------|----------------------------|------------|----------------------------|---------------------|--------------|------------------------|-----------------|---------------------|--------------------|-----------------|-------------------------|-----------------------|--------------------------|--------------------------------|---------------------|---------------|---------------------------|------------------|--------------------|---------------------|------|-------------------|------------|--------|------------------|---------------------------------------|----------------|----------------------------|-------------|-------------------------------|-------------------------|--|------------------------|------------------------|-----------------------|-----------------------------|--------------------------------------|-------------------|-----------------|----------------------|---------------------|--------------------|-----------------------|-----------|---------------|-----------------------------|------------------|------------------|--------------------|-----------------|-------------------|-----------------------|------------------------|-----------------------|----------|-------------------|--------------|---------------|--------------------------------|--------------|--------------|-----------------------------|------------|---------------|---------------|---------------------------|------------------|-----------------------------|------------------|-------------------------|-------------|------------------|-------------------------|---------------------|-----------------|-------------|------------------------|------------------------------|-----------------------------|--------------|------------------|------------------|-------------|--------------|---------------------|-------------|----------------------|---------------------------|------------|-------------|------------------------|-----------------|------------------------|-------------------------------|------------------------|--------------------|----------------------------|
| ACROSS | 1 Attention getter | 5 Kind of sandal | 10 Heavy blows | 15 Punish by beating | 19 Contradict | 20 "Days" (Woody Allen movie) | 21 The Shady Rest, for one | 22 Irritate | 23 Caesar's 1,054 | 24 Distinct parts | 25 Habituate | 26 Sign of things to come | 27 "Look, Ma, —" | 29 Play on words | 31 Windy | 33 French novelist | 34 Ponds, to poets | 36 Greenland settlement | 37 Soap plants | 40 Prince of comics | 42 Slumbers | 46 Dove shelters | 47 Sorority-house topic? | 48 Night noise | 50 Region of West | Pakistan | 51 Grafted, in heraldry | 52 Climbing pepper plant | 54 Go by car | 56 Plexus | 57 Female ruff | 58 Trailer-hauler | 60 Australian marsupial | 62 Satisfied | 63 Admiral's sauna? | 65 Glens or valleys | 67 Exhausts gradually | 69 Like pie? | 70 Corolla leaf | 71 Indian hemp | 72 Flight of steps | 75 Discharged | 76 Musical token: "My —?" | 80 Former chess champ | 81 Move sideways | 83 Soap operas, really | 85 Hosp. designation | 86 The same | 88 Region beyond the suburbs | 90 — and Joan | 91 Bat without swinging | 92 Young eel | 94 Deputy | 96 "Rose — rose..." | 97 A walk between trees | 98 "I'll — in My Dreams" | 100 Most refreshing: poet. | 102 Beasts | 103 Crescent-shaped figure | 105 Skier's terrain | 106 Nobelist | 107 Mountain greeting? | 111 School org. | 112 Rap about Baal? | 116 "—, a bone..." | 117 Author Jong | 119 Harbinger of spring | 121 Stratford's river | 122 Narrow strip of wood | 123 Marine detecting apparatus | 124 Son or daughter | 125 — majesty | 126 They're made of clay? | 127 "Saratoga —" | 128 Flexible tubes | 129 Highland tongue | DOWN | 1 African gazelle | 2 Wheel or | tiller | 3 Arthurian lady | 4 Rudy's question: "How Green Was —?" | 5 Has faith in | 6 Capital of North Vietnam | 7 Norse god | 8 — picker (overly fussy one) | 9 Style of folk singing | 10 Peevish person's movie: "Days of —" | 11 Pet name, for short | 12 "...three men in —" | 13 Hollywood's Oberon | 14 Showers as snow and hail | 15 Soundtrack only: "— to Eternity?" | 16 VIP conveyance | 17 Table spread | 18 British actor Leo | 28 Negative replies | 30 "Exodus" author | 32 Take mild exercise | 34 French | impressionist | 35 Swimmer's breathing tube | 37 Sour in taste | 38 Bag or lender | 39 Weasel's cousin | 40 Fodder plant | 41 Musical groups | 43 Fragrant oleoresin | 44 Metal disk or plate | 45 Marks to let stand | 47 Pithy | 49 Topsy's friend | 52 Golf club | 53 Sweetheart | 55 In the ranks of the seniors | 58 Ski lifts | 59 Appraises | 61 First sign of the zodiac | 64 Agnus — | 68 Labor org. | 70 Penetrates | 71 Moslem shrine at Mecca | 72 Filthy places | 73 Word with talk or tennis | 74 — and kicking | 75 Not settled or fixed | 78 Earliest | 77 Mature person | 78 One receiving a gift | 79 English novelist | 82 Caesar's 515 | 84 Bring up | 87 Dawn on "L.A. Law?" | 89 Retreat for unhappy fans? | 91 Burl lives? "The — Fly?" | 93 Debauchee | 95 Unruly tumult | 97 Seed covering | 99 Disquiet | 101 Orthodox | 102 Fair-haired men | 104 Blunder | 106 Roman magistrate | 107 Tone or track lead-in | 108 Dies — | 109 Surfeit | 110 Japanese aborigine | 112 Wading bird | 113 Declare positively | 114 Word with leader or ratio | 115 Cap or pad lead-in | 118 Food container | 120 Exclamation of triumph |
|---------------|--------------------|------------------|----------------|----------------------|---------------|-------------------------------|----------------------------|-------------|-------------------|-------------------|--------------|---------------------------|------------------|------------------|----------|--------------------|--------------------|-------------------------|----------------|---------------------|-------------|------------------|--------------------------|----------------|-------------------|----------|-------------------------|--------------------------|--------------|-----------|----------------|-------------------|-------------------------|--------------|---------------------|---------------------|-----------------------|--------------|-----------------|----------------|--------------------|---------------|---------------------------|-----------------------|------------------|------------------------|----------------------|-------------|------------------------------|---------------|-------------------------|--------------|-----------|---------------------|-------------------------|--------------------------|----------------------------|------------|----------------------------|---------------------|--------------|------------------------|-----------------|---------------------|--------------------|-----------------|-------------------------|-----------------------|--------------------------|--------------------------------|---------------------|---------------|---------------------------|------------------|--------------------|---------------------|------|-------------------|------------|--------|------------------|---------------------------------------|----------------|----------------------------|-------------|-------------------------------|-------------------------|--|------------------------|------------------------|-----------------------|-----------------------------|--------------------------------------|-------------------|-----------------|----------------------|---------------------|--------------------|-----------------------|-----------|---------------|-----------------------------|------------------|------------------|--------------------|-----------------|-------------------|-----------------------|------------------------|-----------------------|----------|-------------------|--------------|---------------|--------------------------------|--------------|--------------|-----------------------------|------------|---------------|---------------|---------------------------|------------------|-----------------------------|------------------|-------------------------|-------------|------------------|-------------------------|---------------------|-----------------|-------------|------------------------|------------------------------|-----------------------------|--------------|------------------|------------------|-------------|--------------|---------------------|-------------|----------------------|---------------------------|------------|-------------|------------------------|-----------------|------------------------|-------------------------------|------------------------|--------------------|----------------------------|

Fishing for a good deal? Catch the great bargains in the classifieds.

The Brackett News
512-563-2852

Happy Birthday

- | | |
|----------|----------------------|
| Aug. 8 | Clinton Brown |
| Aug. 8 | Sally H. Couture |
| Aug. 8 | Midred E. Harvey |
| Aug. 8 | Louise Wood |
| Aug. 9 | Howard Wakefield |
| Aug. 9 | Farrest Parry |
| Aug. 10 | Larry Groce |
| Aug. 10 | Allen Groce |
| Aug. 10 | Vanessa Castillo |
| Aug. 10 | Ashley Castillo |
| Aug. 11 | Ted Seidl |
| Aug. 12 | Andrew T. Stephenson |
| Aug. 12 | Eliase Huntsman |
| Aug. 13 | Nina L. Batson |
| Aug. 13. | Georgia L. Logue |

- | |
|----------------------|
| Clinton Brown |
| Sally H. Couture |
| Midred E. Harvey |
| Louise Wood |
| Howard Wakefield |
| Farrest Parry |
| Larry Groce |
| Allen Groce |
| Vanessa Castillo |
| Ashley Castillo |
| Ted Seidl |
| Andrew T. Stephenson |
| Eliase Huntsman |
| Nina L. Batson |
| Georgia L. Logue |

Answers On Page 3

Service Directory

Davis Hardware & Ranch Supply
 Originally a part of Petersen & Co. Since 1876
 101 East Spring Street P.O. Box 976
 Brackettville, Texas 78832

General Hardware
Pipes & Fencing
Paint

Stock Medicines
Ranch Supplies
Ammunition

Phone: 512-563-2528

PRATT Insurance Agency
Farmers Insurance Group
 2116 Avenue F (LaPaloma Village) Del Rio, TX 78840

*Auto*Home*Life*Fire*Boats
 *Business*Mobile Homes*RV
 SE HABLA ESPANOL

Bill Pratt
Agent (512) 775-5183
Fax # 512-775-5876

Las Vegas \$139.00
 Per Person, Double Occupancy
 September 6 - September 11, 1992
 Includes Transportation
 Some Meals & Free Show Tickets
 Call Genie At 563-9337
 Or
 Georgie At 563-9794

KREIGER Insurance
 General Insurance
 Representing Top Rated Companies

512-563-2408 P.O. Box 5
 BRACKETTVILLE, TEXAS 78832

Season Football Tickets Now On Sale
Administration Office

Come see me in Delightful Del Rio For Your Next New or Used Vehicle

Pete C. Ortiz
 Sales Representative

Brown Automotive Center
 2520 Hwy. 90 West
 Del Rio TX 78840 1-800-725-7550

This Spot Could Be Yours

563-2852

J.W. Pawn Shop
 P.O. BOX 70 -- 118 WEST NORTH ST.
 UVALDE, TEXAS 78801
 512-278-3615

Loans Money On Anything Of Value

Dr. Miguel A. Torres Portales
 Cirujano Dentista
 U.A.N.L.

Dr. Office Hidalgo #365 Ote.
 1/2 Block from International Bridge
 (877) 2-14-71
 We Accept Dental Insurance

Home Phone (877)2-08-22
 Bus. Hours 9:00 AM - 6:00 PM
 Mon. - Sat. Cd. Acuña Mexico
 (Free Examination)

Aug. 8 - Variety Show
 Aug. 16 - Firemen's Bar-B-Q
 Sept. 6 - Car Show
 Sept. 12 - Cowboy Cauldron

LEONA RANCH

Dirie Brown
 Jewel F. Robinson

P.O. Box 1039 Brackettville, TX 78832 507 S. Ann (512) 563-2961

Bud Breen, cowboy, ranch foreman, western movie actor, then artist has been painting pictures that capture the beauty of the open country and ranch life that he loves so well.

Born in Eagle Pass, Texas, Bud grew up on the ranches of South-west Texas.

Bud's Brackettville home is his studio, the kitchen table is his easel and his experiences are his inspiration.

Breen Gallery
 507 South Ann Street
 Brackettville, TX 78832
 (512)563-2961

563-2852

Only \$2.00 for 15 words or less and only .15¢ per word thereafter.

CLASSIFIEDS

FOR SALE 563-2852

REAL ESTATE

O'Rourke Realty
Elsa & Paul O'Rourke
Licensed Brokers
512-563-2713

FCS Memberships and Rentals Available

For Sale: Unfurnished 2 bedroom, 2 bath M.H., exceptional layout of red tile, brick, cement and wrought iron in yard and terrace, water fountain in front. Appliances, washer, dryer, storage shed, FCS membership. Firm \$14,500 cash, or \$17,500 if owner financed with \$2,500 down payment.

For Sale: Unfurnished 2 bedroom, 4 bath Mobile Home in Unit 15. \$16,500.00.

LEASE WANTED

Wanted: Property for long term, year round hunting lease, 200 - 1,000 acres.

Trophy Whitetail Deer
Will pay top money per acre.
Call 1-800-397-8256
Or 512-563-2658
J. D. Cox

FOR SALE

Apartment size refrigerator.
\$75.00. Come by 204 North Street, or call 512-563-9222.

WANTED

Deer Lease - 2500 to 10,000 acres.
Call 512-496-1200. Ask for Don Kuyrkendall.

BOOTHS AVAILABLE

For Cowboy Cauldron
10' x 10', \$25.00
Open 9:00 a.m. Close 6:00 p.m.
Saturday, September 12, 1992
K. C. Chamber of Commerce
P. O. Box 386
Brackettville TX 78832

Don't Drink and Drive!
The Brackett News

WILL BUY

Antiques, old guns, western/military collectibles. Send description, photo (if available), price, and telephone number to:

C.C.A.E.
P. O. Box 1922
Round Rock TX 78680

VILLAGE HOMES

1993 REDMAN HOME introductory special. Save thousands. **Huge** 16x80, 3/2, all the goodies, delivered, A/C, extra extra nice, best price in Texas. Only \$23,950 with 10% down, and only \$265.00 per month. Why pay more. Save at **Village Homes**, 1-800-397-0022.

REPO SPECIAL. HUGE 1900 square foot doublewide, 3/2, fireplace, garden room, really nice. New cost \$52,500. Steal at \$29,950.00 with 10% down and terms to suit. Why pay more. Save at **Village Homes**, 1-800-397-0022.

PROFESSIONAL LONG TERM CARE NURSE

We can offer you:
* COMPETITIVE SALARY
* 92 BED SKILLED NURSING FACILITY
* FULL TIME PHYSICIAN ON STAFF IN HOUSE
* COMPLETE X-RAY & LABORATORY IN HOUSE
* AN ATMOSPHERE OF WORKING AND LEARNING WITH OTHER PROFESSIONALS
* NEW AND MODERN WORKING SPACE (less than 3 years old)

If you meet the requirements of:
A QUALITY NURSE
A PROFESSIONAL NURSE
If you are a quality and professional nurse we want you!

Kathy Walzel R.N.-D.O.N.
CAMP WOOD CONVALESCENT CENTER
"Building A New Texas Tradition"
Camp Wood, TX
512-597-5250

Public Notice

Southwestern Bell Telephone Company is asking the Public Utility Commission of Texas (PUC) for approval to begin charging \$3.00 per bill, for duplicate paper copies of a customer's bill up to 15 pages. If the customer's bill exceeds 15 pages, an additional five cents per page will apply. If the customer's bill is lost or mutilated for reasons other than negligence by the customer, no charge for a duplicate copy will apply if a customer notifies Southwestern Bell within 60 days of the billing date. The effective date of this application is December 4, 1992.

If approved by the PUC, this application will increase the Company's annual revenues by \$835,000, which is an increase of approximately two one-hundredths of 1 percent (.02 percent) in the Company's adjusted revenue for the 12-month period ending December 31, 1991. The application could affect all of the Company's approximately 4.6 million residence customers and all of its approximately 575,000 business customers should they choose to request duplicate copies of their bills.

Persons who wish to intervene or otherwise participate in these proceedings should notify the PUC as soon as possible. The deadline to intervene is August 7, 1992. A request to intervene, participate, or for further information should be mailed to the Public Utility Commission of Texas at 7800 Shoal Creek Blvd., Suite 400N, Austin, Texas 78757. Further information may also be obtained by calling the PUC Public Information Office at (512) 458-0256 or (512) 458-0221 teletypewriter for the deaf.

This matter has been assigned Docket No. 11223.



Southwestern Bell Telephone

GARAGE SALE

Garage Sale
Saturday, August 8
Furniture, Linens, Appliances, Misc.
307 E. Veltman

DO THE FAX THING
The Brackett News
512-563-9538

JOB ANNOUNCEMENT

The Middle Rio Grande Development Council has an opening for a part-time G.E.D. Instructor in Kinney County. This position is responsible for teaching evening classes to eligible JTPA participants on a computer based learning education system.

Applicant will be responsible for (1) pre and post testing of participants; (2) determining proper timing for referral to state examination; (3) maintenance of proper student attendance and progress; (4) ability to counsel students; and (5) teaching a self esteem/motivational component.

Preferable qualifications include: (1) a bachelor's degree from an accredited college or university with a valid TEA Teacher certification; (2) computer literate with ability to instruct on a computer based system; (3) strong communication skills; (4) bilingual in English/Spanish.

Job will be on a contract basis and salary will be based on qualifications. Qualified applicants should mail a resume and application to:

Middle Rio Grande Development Council
P. O. Box 1199
1904 N. First Street
Carrizo Springs TX 78834
Attn: Ramon S. Johnston
Deputy Director Of Administration
Applications will be accepted until August 31, 1992.

MRGDC Is An Equal Opportunity Employer #6331

Classifieds Are Cash

All Classified Ads placed in The Brackett News including garage sales must be paid in advance. Thanks for cooperating

BATTLE OF BULGE

Veterans of the Battle of the Bulge (VBOB) have completed plans for the 11th Annual Reunion in Nashville, Tennessee, October 8 - 11, 1992.

Activities consist of a healthy dose of camaraderie, a trip to the Grand Ole Opry, Memorial Services in honor of those Battle of the Bulge veterans who were killed in action or have since passed away, and many other functions.

Information regarding membership and reunion plans may be obtained by writing to: VBOB, P. O. Box 11129-P, Arlington, VA 22219-2029.

TexSCAN
Statewide Classified Advertising Network
Advertise in 309 Texas newspapers for only \$250.
Reach 3 MILLION Texans. Call this newspaper for details.

SEEKING LAB/X-RAY TECH: Hansford Hospital, progressive 28-bed hospital, 84-bed long-term care facility. Insurance/pension plan. Salary above average, negotiable. Karen Lair, 707 S. Roland, Spearman, TX 79081. 806-659-2535. EOE

SELL, LEASE 20,000 SOFT building, large parking lots, 8.22 acres commercial lots, 8.22 acres commercial lots, \$25,000 Ford Chrysler parts cheap, Hogan 512-446-6608, Rockdale. Location nation's largest aluminum smelter.

URGENT! MUST LIQUIDATE now! Dealer cost motorhomes, travel trailers, fifth wheels, Jayco, Four Winds, Skampar, Malard, Gullstream, Shadow Cruiser. Huge inventory, save thousands \$\$\$\$ 1-800-955-1033.

TURN YOUR MORTGAGE into cash. Tired of just receiving payments on your mortgage or contract? We'll give you cash now! Call Steve... AEF, Inc. 1-800-874-2389.

U.S. POSTAGE STAMP supply route for sale. REQUIREMENTS: \$4,800 to \$36,000 investment -Car -2-10 hrs. per week. BENEFITS: Excellent financial return. No selling. High income potential. Call 24 hrs. 1-800-545-1305.

WOLFF TANNING BEDS new commercial-home units from \$199. Lamps, lotions, accessories monthly payments low as \$18. Call today, FREE NEW color catalog 1-800-228-6292.

MAKE A FRIEND...FOR LIFE! Scandinavian, European, Yugoslavian, South American, Japanese high school exchange students...arriving August...host families needed! American Intercultural Student Exchange. Call Eleanor 817-467-4619 or 1-800-SIBLING.

DRIVERS GO TO work immediately Roadrunner Distributions Services, Inc., Tx. 1-800-285-8267. Competitive pay, new conventionals, medical/dental/vacation etc. ... sign on bonus EOE.

GOT A CAMPGROUND membership or timeshare? We'll take it. America's most successful resort resale clearinghouse. Call resort sales information toll free hotline 1-800-423-5967.

FREE 24 PAGE BOOKLET explains how thousands of people are supplementing their income with a concept called Network Marketing. Outstanding opportunity. Call AD-NET 1-800-359-9426 Ex. 12.

FRIENDLY HOME PARTIES has openings for dem-

onstrators. No cash investment. No service charge. High commission and hostess awards. Two catalogues, over 600 items. Call 1-800-488-4875.

BECOME A PARALEGAL. Join America's fastest growing profession. Work with attorneys. Lawyer instructed home study. The finest paralegal program available. Free catalogue. 1-800-362-7070 Dept. LJ72.

WE BUY NOTES secured by real estate. Have you sold property and financed the sale for the buyer? Turn your note into cash. 1-800-969-1200.

DIETS DONT WORK! BODYWISE does! Boost energy. Reduce body fat. Lower cholesterol. Lose unwanted inches. Increase lean muscle. 100% guaranteed. Costs \$5/day 1-800-475-2616.

WE PAY CASH for owner financed mortgages & trust deeds (nationwide) 713-895-7858, (call refund) Apex Funding.

HUNTERS, 272.6 ACRES bordering large ranch in Terrell County. Whitetail, Muledeer, Quail, Jay, quail. Hills and thick brush canyons. \$99/acre, good owner terms and access. 512-792-4953.

PIONEER STEEL BUILDINGS Fall Special. 24x30x10, \$3,350; 30x40x10, \$4,350; 30x60x12, \$6,231; 40x75x12, \$8,795; 50x100x14, \$13,350 & 100x100x16, \$25,195. All sizes. Erection available. Mini-storage. 1-800-637-5414.

IT'S NOT TOO LATE FOR breast implant victims to file their claims. Call 1-800-833-9121 for free consultation. Carl Waldman. Board Certified Personal Injury Trial Lawyer.

DALLAS BASED DIESEL engine air filter recycling company seeking aggressive self motivated individual for local distributorship. Extremely high profits. \$4,882 cash investment. Mr. Finn, 1-800-248-8362.

ITALIAN HIGH SCHOOL exchange student, boy 17, needs host family. Likes photography, basketball, volleyball, tennis and skiing. ARRIVING IN AUGUST. Call Eleanor 817-467-4619 or 1-800-SIBLING.

TIME SHARE REALES - camp ground resales. Save thousands. Nationwide inventory. Call today, 1-800-874-1442. Universal Vacation Services, Inc.

ADOPTION: LOVING PROFESSIONAL couple wants infant to cherish & love. Will provide secure & happy home for your baby. Call Mindy & Steve anytime 1-800-582-5761. Its illegal to be paid for anything beyond legal/medical expenses.

KINNEY COUNTY LAND CO (512) 563-2446 (512) 563-2447 P.O. Box 1035 Brackettville, Tx 78832

Very attractive stone home on Airport Road on Ft. Clark. 2 bdrm, 2 bath, laundry room. Covered carport, storage. All appliances plus washer & dryer. Only \$51,500.00

Cute 2 bdrm. home on lovely lot on 4th St. Carport, tool shed. Excellent condition. \$21,500.00.

Four bdrm, 1 1/2 bath home close to football field. Large yard and storage bldgs. Perfect for family with school children. \$39,000.00.

Public Notice

Southwestern Bell Telephone Company is asking the Public Utility Commission of Texas (PUC) for approval to offer a new optional service called Remote Access to Call Forwarding (RACF) on a permanent basis beginning September 7, 1992.

RACF is an optional service that is intended for use by residence and business customers. RACF permits a customer who subscribes to the optional service Call Forwarding to activate, deactivate or change the Call Forwarding destination from a location other than the customer's premises. In order for RACF to function, it must be accessed from a push-button telephone.

The proposed monthly rate for RACF for residence customers is \$1.00, and the proposed monthly rate for business customers is \$2.75. These rates are in addition to the rates for basic local exchange service and regular Call Forwarding. (The monthly rates for Call Forwarding are \$2.10 for residence customers and \$2.65 for business customers.)

RACF is expected to generate first-year revenues of approximately \$643,000.

Persons who wish to comment on this application, which has been assigned Tariff Control Number 11316, should notify the PUC by August 28, 1992. Requests for further information should be mailed to the Public Utility Commission of Texas, 7800 Shoal Creek Boulevard, Suite 400N, Austin, Texas 78757, or you may call the PUC Public Information Office at (512) 458-0256 or (512) 458-0221, teletypewriter for the deaf.



Southwestern Bell Telephone

Days Past

by Dorothy Payne



August 25, 1540 - In conjunction with the overland expedition under Corondo, Hernando de Alarcon set out from Acapulco to explore the Sea of Cortes (the Gulf of California) and find a possible water route inland to Cibola. Alarcon entered the Colorado River and made his way up the valley for several weeks, but failed to make contact with Cardenas, who had reached the Grand Canyon.

August, 1619 - On 9-14 August, The Virginia House of Burgesses the first representative assembly in America sat for its first session in Jamestown. Its decisions were subject to approval by the Virginia Company in London. This same month, 20 African blacks were brought to Jamestown on a Dutch ship and bought as indentured servants which would lead to the introduction of black slavery in North America. (The Spanish had already brought African slaves with them to central and south America.

August 27, 1650 - Abraham Wood, Commander of Fort Henry, which the Virginian English had established near the mouth of the Appomattox River, lead a small party to explore the unknown lands to the southwest. They penetrated

only about 100 miles, but brought back word of the possibilities of fur trading and new land.

August 9, 1754 - England countered the "Plan of the Union" with a proposal that the colonies be united under a commander-in-chief for colonial affairs and a separate commissioner for Indian affairs but nothing became of the plan.

August, 1756 - In the opening battle of the expanded war. Montcalm destroyed the English forts at Oswego and George on August 14. In consequence, the English yielded the Mohawk Valley to the French, and settlers there fled to Schenectody and Albany. Many returned when hostilities ended.

August, 1758 - New Jersey established the first Indian reservation in America at Edge Pillock, in Burlington County, for the Unami Indians.

August 2-3, 1763 - In a major setback for Pontiac's forces, the Indians were roundly defeated at the Battle of Bushy Run, near present-day Pittsburgh.

August 14, 1768 - The Treaty of Hard Labor, negotiated at Hard Harbor, South Carolina, moved the frontier west when the Cherokees agreed to it.

SWT Junior College

Offers Enrichment Courses

Many life enrichment courses as well as traditional transfer and vocational/technical programs are being offered by Southwest Texas Junior College for the fall of 1992.

Academic transfer courses are designed for students who want to earn an Associate in Arts or Science degree and/or work toward a baccalaureate degree at a four year institution after leaving the junior college.

Vocational/technical programs at the college include air-conditioning, refrigeration, automobile mechanics, aviation technology, business data processing, business mid-management, business office occupations, business secretarial, cosmetology, farm and ranch management, criminal justice, and vocational nursing. The programs are designed to lead to immediate employment after completion.

Life enrichment courses are usually offered during times convenient for working adults and include a variety of topics ranging from piano to welding. A number of courses are offered in SWTJC's fully developed physical education complex. Included are dance for conditioning, racquetball, weightlifting, bowling, volleyball/softball, water aerobics and swimming.

Racquetball and conditioning, scheduled for Wednesday evenings, is a special course for those who would like to design their own individual exercise program. All SWTJC courses include access to the physical education complex, which features 13 Nautilus machines, free weights, basketball court, racquetball courts, and an indoor swimming pool.

For the artistically inclined the course schedule includes painting on Monday and Wednesday at 12:00 and Monday evenings at 5:30. Other courses include ceramics on Tuesday and Thursday at 9:30 and 12:30, and Thursday at 6:00 p.m. Watercolor is offered on Monday and Wednesday at 9:00 a.m.

Other life enrichment possibilities include welding, Spanish, German, musicianship, piano, woodworking, and theater.

For information contact the admissions office at 512-278-4401.

Small investment, huge return

TexSCAN, the state-wide classified advertising network, is an inexpensive way for you to place your classified advertisement in front of millions of people.

In fact, you will reach more than 3 million readers for only \$10 per word. Call this newspaper for details, today.

TexSCAN
Texas Statewide Classified Ad Network
A service of the Texas Press Association

CLASSIFIEDS BUY IT, SELL IT, FIND IT

THE BRACKETT NEWS 563-2852

Oldest House In Brackettville

Do You Own (Or Know) It?

The Historical Appreciation Committee of the Kinney County Historical Commission is gathering information about the oldest buildings in Brackettville - house, store, or other structure.

Do you have that information? If so please share it with the Commission by mailing the information to P. O. Box 1039, Brackettville, or dropping it off at The Brackett News office.



Meditations

On our small farm in Arkansas we often placed a "Scare-crow" in a watermelon patch or garden. An old hat, coat, and trousers hanging around some "rigging" in the field looked like a man to birds and animals.

The unwanted intruders such as rabbits and crows hesitated to come near such an unfriendly looking "man" who stood in his place day after day.

Young people and adults face "Scare-crows" in life. Opportunities are missed because we still are afraid of the frightful looking obstacles that get in our way.

Fear is often one of our scare-crows. We don't venture out and "take a chance" to be and do something great in life because we are afraid we will fail. Those with less resources often make it because they have the courage to tackle what needs to be done. Move on and you can succeed too!

Discipline is a scare-crow for some. The price of hard work and total dedication may often bring success. Those who simply "drift along" are taken wherever the wind

blows them.

I met Liz Jackson in the Riosa Rehabilitation Center in San Antonio the other day. While Liz was a student in Carrizo Springs, she fell from a horse and sustained a broken neck. She didn't quit. She finished high school. She finished A&M. Liz gets around in a motorized wheelchair. But that vibrant, charming lady invests her life for the well-being of others in her work every day as a counselor because she has discipline.

Unbelief is an ugly scare-crow on the road to success. Hardcore agnosticism and doubting never wins life's battles. The negative-filled skeptic has life paralyzed by refusing to believe in God's goodness and grace. This scare-crow needs to be "moved out of the field of life."

Jesus said the truth this way, "If you have faith as a grain of mustard seed, then you may say to the mountain to move into the sea, and it will happen."

Face life with faith. Don't let the scare-objects stop you. Move on and conquer. You can succeed.

Obituary



Ruby A. Mountain

Although plagued with cancer the last months of her life, Ruby Alene Mountain retained her delightful sense of humor and zest for living until death claimed her Thursday, July 30, 1992, at the age of 80, shortly after she had been re-admitted to Uvalde Memorial Hospital.

Ruby was born October 13, 1911, in Clifford, Illinois. She married Richard A. Mountain on September 17, 1948, in Peoria, Illinois. They lived in Illinois until 1953 and during that time she was employed by Chicago-based Sears.

In 1953, the couple moved to California and Ruby worked at the Naval Missile Base at Pt. Muger, California. She retired in 1972.

In 1983, Ruby and Richard moved to Fort Clark Springs and immediately became an integral part of the community. The Frontier Baptist Church was their church preference and funeral services were held there at 10:00 a.m. Tuesday, August 4, 1992, with her pastor, Joe Townsend officiating.

Interment was in the Las Moras Masonic Cemetery in Brackettville with Del Rio Chapter #204, Order of the Eastern Star, Jean Faulkenberry - Worthy Matron, conducting gravesite rites. Mrs. Mountain was an Eastern Star member for 54 years with the last nine years of her membership in the Del Rio Chapter.

She always proudly wore her "50 year" pin that the chapter presented her. Assisting in the rites were Tom Faulkenberry, Mary Haynes, Dorothy Haga, Ruby Miller, Bobby Schafer, Jean Downing, and Cubie Kurtz.

Pallbearers were James Haga, Ray Kurtz, Richard Schafer, Harold Miller, Charles Downing, and James T. "Happy" Shahan.

Humphreys Funeral Home, Del Rio, directed the services and visitation for family and friends at the Home were from 9:00 a.m. until 9:00 p.m. Monday, August 3.

It is requested that any memorials be sent to Las Moras Masonic Lodge #444 Cemetery Care Fund, Box 392, Brackettville TX 78832.

Frontier Baptist Church

By Joe Townsend

Sunday was another inspirational day at Frontier Baptist Church. The Lord's Supper was observed and the monthly Fellowship Dinner was a highlight.

The pastor's message as usual high-lighted the Bible. He pointed out that salvation is a gift of God. Being a gift man has no part in it. He simply must "believe" (put faith in) Jesus Christ.

If man has to do anything to assist in his redemption it is not a gift. "By grace are ye saved through faith." Not of works lest any man should boast. It is the gift of God through Jesus Christ.

The pastor pointed out that though it is free and completely a gift it is only to those who trust Christ as a personal savior.

It was blessed day at Frontier Baptist Church. Another blessed day is anticipated Sunday at Frontier Baptist Church. Everyone is cordially invited to attend. Come and See.

The Bible Says

"No eye has seen nor ear heard nor the heart of man conceived, what God has prepared for those who love Him."

Those who truly love God and who make Him an integral part of their lives know by rich experience what God can do. Their knowledge is based on what God has done for them in the past. All that God has ever done for anyone is simply a taste of what God can do.

If God can forgive sin and reconcile a soul that has turned his back on God; if God can heal the sick; if God can help financially, to what limits can and will God go to care for and bless his children?

The power of God, His care and His love are totally unlimited. He is able to do more than we can think or conceive. The only block to His abundant blessings is the lack of faith and love for Him.

"No eye has seen nor ear heard, nor the man conceived what God has prepared for those who love Him." I Cor: 2:9

St. Mary Magdalene Catholic Church

Welcome to our new baptized members of our church and to our community. They are; Dominique J. Sanchez, son of Victor Sanchez, and Dora Elia Sanchez, and Christina Marie Nareija, daughter of Javier and Melinda Nareija.

Sunday Aug. 2-8, Knights of the Altar of the Sacred Heart group Raymond Talamantez, Nat Terrazas, Sam Hunt, Jeff Luna, and Daniel Hernandez will service the masses.

KNIGHTS OF COLUMBUS

The Knights of Columbus will have a fund raiser to celebrate Columbus' 500th Anniversary.

Proceeds will be used for charity and council activities.

First prize is a hand made quilt donated by Rosalee Boysen. Mrs. Boysen is a lady of many hobbies, quilting is one of them. Before moving to Brackett she has made them for raffles for organizations to raise funds.

Second prize is a \$100.00 gift certificate donated by Kinney County Wool & Mohair.

Third prize is 2 cases of Pepsi Cola donated by Super S.

Drawing is set for October 12, 1992 Tickets are \$1.00 or 6 for \$5.00. We appreciate your support. Knights Of Columbus Council 8223 Thanks

Commodity Distribution

The Community Council of Southwest Texas, Inc., will be distributing commodities on Tuesday and Wednesday, August 11 & 12, 1992 at the Community council office at 101 S. Ellen St. off of Hwy 90 to the side of the Exxon gas station in Brackettville, Texas. Please Bring Your Own Bag!

All numbers will be served thru the side of the building in the Brackettville office. First Come First Serve.

If you are not an applicant's authorized representative and you are picking up commodities for some one, you are required to bring a dated authorized permission statement every time you pick up for any participant.

Rules for participation in the program are the same for everyone without regard to age, race, color, religion, sex, handicap, national origin, or political belief.

Brown Automotive

HOT JULY SPECIALS

Prices Reduced

EXCELLENT TRANSPORTATION YOUR CHOICE

~~\$2995~~

\$2795

83 Ford Econline Van Engine Rebuilt Automatic

84 Audi 5000 Very Nice Car

86 Plymouth Reliant Stereo, Auto & Air

88 Ford Escort Extra Nice

87 Dodge Omni, One Owner, Automatic & Air

GOOD TRANSPORTATION YOUR CHOICE

~~\$1995~~

\$1795

82 Buick Park Ave Auto & Air

83 Olds Cutlass, 2 Door, Auto & Air

1984 Nissan Pickup 4x4, Runs Good

85 Buick Riviera I 3.0 Good

84 Laser 2 Door Runs Great, Sporty

BARGAIN BASEMENT YOUR CHOICE

~~\$795~~

\$595

79 Pontiac Firebird, 4 Door, Runs Great

86 Dodge Omni, 4 Door GLH Turbo

77 Lincoln Mark V 2 Door, Luxury

82 Toyota Tercel Great Economy

82V/W Quantum, 4 Door

76 Olds, 4 Door, Automatic & Air

74 Cadillac, 2 Door Fleetwood "Big Car"

Mon.-Fri. 8:00 a.m. to 7:00 p.m. Closed Sat.

Open Sun. 12-6 p.m.

1-800-725-7550

512-775-7550

2520 Hwy. 90 W.

In Delightful Del Rio

Firemen's Barbecue Sunday, August 16

2.9% Up to 48 Months A.P.R.

All Full Size Trucks!



C1500 Fleetside Silverado Pickup 2.9% A.P.R.



Sportside Extended - Cab Silverado Pickup 2.9% A.P.R.



Fleetside Long box 2.9% A.P.R.

With Approved Credit

THE Heartbeat OF AMERICA TODAY'S TRUCK IS CHEVROLET

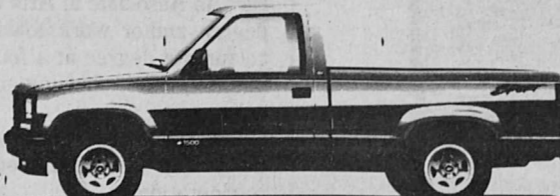
Monday - Friday 8:00 a.m. - 7:00 p.m. Saturday 3:00 p.m. - 6:00 p.m.



Sportside Cheyenne 2.9% A.P.R.



Big Dooley Extended - Cab Silverado Pickup 2.9% A.P.R.



Fleetside Sport Silverado 2.9% A.P.R.



1500 2WD Pickup 2.9% A.P.R.

CHEVROLET HOWARD CHEVROLET DEL RIO, TX 2300 HWY 90 WEST 775-0566



Keep that great GM feeling with genuine GM parts.

Your ONLY hometown dealer who puts you in the driver's seat!