

Wichita Daily Times.

WICHITA FALLS, TEXAS, TUESDAY, MAY 14, 1907

NUMBER 1

MAY BE COMPLETED BEFORE END OF WEEK

ACCEPTED

BEING FOLLOWED EVERY STEP.

IS EXCUSSED

Opposed to Circumstances.

May 14.—With twelve

both the prose-

to be called, the

wood opened this

clock. The third

begin with every

the jury be-

week.

Chicago took

for the defense

was resumed, be-

L. Waggoner. After

Waggoner

by consent. It

examination of J.

venireman, that

circumstantial evi-

properly challenged

Attorney Hawley

saying that the

was largely cir-

challenge was al-

Command—Relieves

May 14.—Briga-

L. Meyer yesterday

of the Department of

Colonel W. R. Hoyt.

had command

since the promotion

McCaskey.

STEEL MAGNATE WEDS.

Sails Today With His Bride for France Magnificent Chateau for Bride.

By Associated Press.

New York, May 14.—William Ellis Corey, president of the United States steel corporation and Mrs. Corey, whose wedding occurred at Hotel Gotham at half past one o'clock this morning left the hotel half an hour later for Hoboken, where they boarded the steamer, Kaiser Wilhelm II, on which they will sail for Europe today. On arrival in Europe they will go directly to Chateau Villigenis, on the outskirts of Paris, where they will reside until the middle of July. The chateau, which is the finest in France, was a wedding present of Corey to his bride, and was given her last night just before the wedding. Its value is said to be about seven million dollars.

The wedding took place early this morning to avoid the thirteenth of the month. The ceremony was performed by Rev. J. L. Clark, congressional minister of Brooklyn. Corey's parents and twenty-five other relatives and friends of the bride and groom witnessed the ceremony and were also at a dinner which preceded the wedding.

RUSSIAN MAY DAY.

Celebrated in St. Petersburg With a General Strike—All Lines of Business Affected—No Disorders.

By Associated Press.

St. Petersburg, May 14.—Workmen in St. Petersburg today generally celebrated the Russian May Day with a one day's strike, most factories closing entirely and others suspending business at noon. Only government works, such as shipyards and ammunition factories were open. The strike is also affecting many of the smaller stores. Street car service was suspended on several lines and most of the newspapers announced the suspension of their afternoon or Wednesday morning editions. No disorders were reported up to noon and none were expected.

Will Prospect for Copper.

A company has been formed among citizens of Seymour and Bomarton for the purpose of testing for copper in the Bomarton country. No brags are being made by the company and no stock is for sale. But they are going ahead quietly and will soon know whether there is good paying copper dirt at Bomarton. A copper mine would be a valuable asset to the resources of this county.—Baylor County Banner.

The Ladies' Aid Society of the Presbyterian church realized the sum of \$24.00 from the sales of their market held last Saturday morning. They were well pleased with the result and thank all who patronized them.

NINETY LIVES ARE LOST.

Flames in Mexico Mine Cut Off Workmen in Shaft.

City of Mexico, May 12.—Ninety men are supposed to have lost their lives in a fire which started in the Jenaris copper mine at Veldreda, in the State of Durango, last Friday night.

The fire is still raging and is said to be beyond control.

Thirty-five bodies have been recovered up to this time. Seventeen miners are known to have escaped.

This information has been conveyed in a dispatch to the Associated Press in Mexico City.

The burning mine belongs to the Guggenheims.

Small Blaze.

The fire department was called out at a few minutes before 5 o'clock Monday afternoon by a small blaze at the rear of Kerr & Hursh's hardware store. The blaze originated from a pile of burning trash on an adjoining lot. The flames had gained a good start in a pile of old boxes and a board fence when discovered.

Prompt action in throwing buckets of water on the blaze averted a serious conflagration, and the flames were extinguished before the arrival of the department.

Contractor Roberts has about finished work on the new concrete curb about the court house. At intervals of about every ten feet in the curb are placed rings for the convenience of those wishing to hitch horses.

SHRINERS FUNERAL TRAIN LEFT SANTA BARBARA DRAPED IN BLACK

DEAD ARE HIDDEN UNDER BANKS OF FLOWERS.

THIRTY THREE BODIES

Are Being Taken to Their Far-Away Homes in the City of Reading, Pennsylvania, for Burial.

By Associated Press.

Santa Barbara, Cal., May 14.—Two coaches filled with mourning Shriners and their wives accompanied by baggage coaches bearing in their caskets the twenty-one victims of the Hondo disaster, formed the funeral train which left this place at 10:40 this morning. Most of the dead are from Reading, Pa. Eleven dead at San Luis, Potosi, were also taken aboard the train. The train was draped in black and the caskets of the dead were hidden under huge banks of flowers sent to the Shriners by nearly every person in Santa Barbara who possessed a flower garden.

THE MARKETS BY TELEGRAPH.

Kansas City Live Stock.

By Associated Press.
Kansas City, May 14.—Cattle receipts, 1500, including 1400 Southern. Market steady to 10 cents lower.
Southern steers 4.00@5.40
Southern cows 3.00@4.25
Stockers and feeders 3.50@5.25
Bulls 3.00@4.50
Calves 3.25@5.50
Western fed steers 4.25@5.50
Western wet cows 3.25@4.60
Sheep—receipts, 8,000. Market steady.
Muttons 5.00@6.75
Lambs 7.00@8.00
Range wethers 5.30@7.00
Fed ewes 4.50@6.75
St. Louis—Wool steady; unchanged.

Chicago Live Stock.

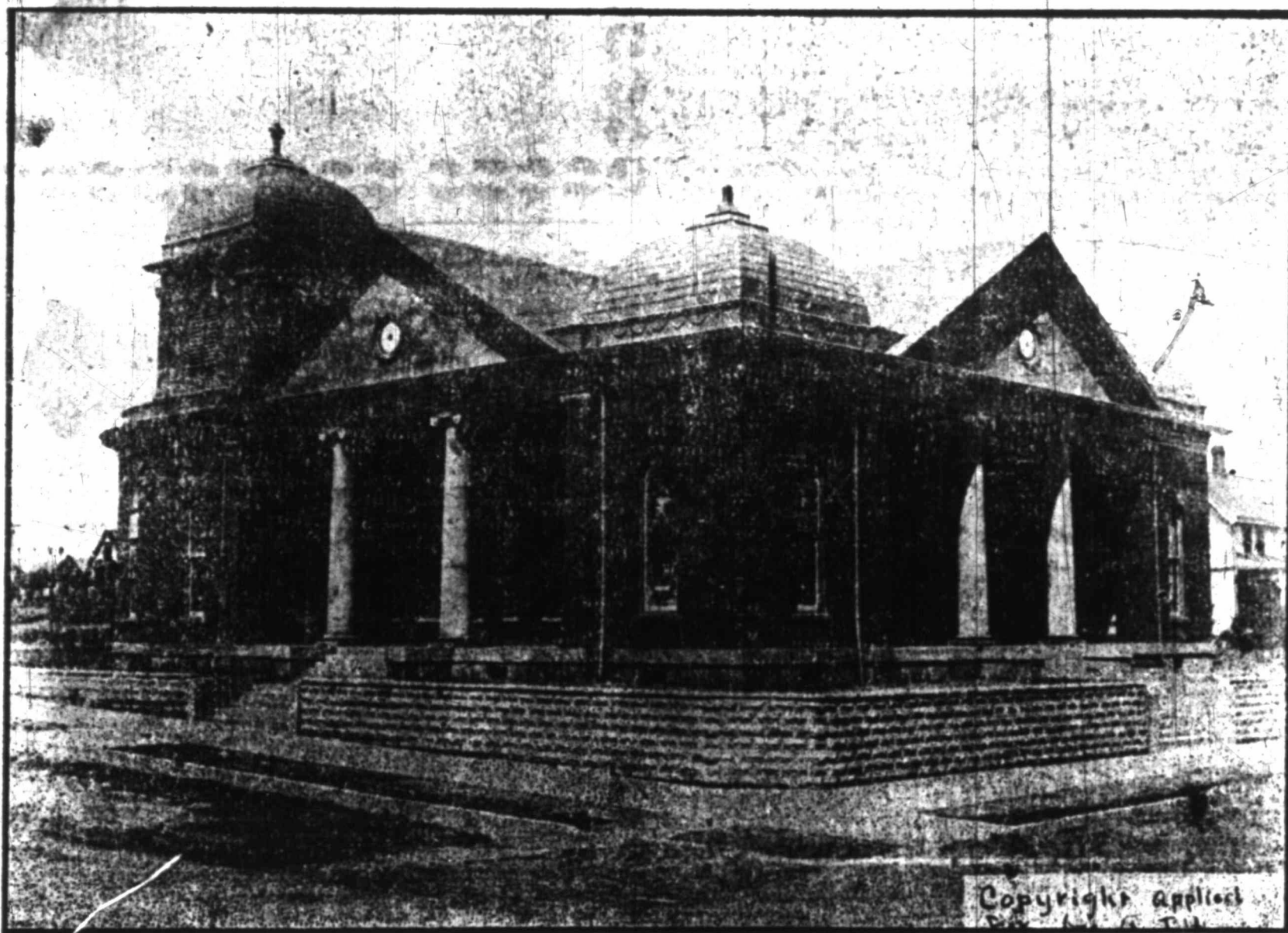
Chicago, Ill., May 14.—Cattle receipts, 24,500; market steady.
Beeves 4.30@6.70
Cows 1.80@4.50
Heifers 2.70@5.40
Calves 4.60@6.00
Good to prime steers 5.40@6.45
Poor to medium 4.30@5.25
Stockers and feeders 4.25@4.75
Sheep, 10,000; market steady.
Western 4.50@7.65
Yearlings 6.75@7.65
Lambs 6.50@8.70
Western 6.50@8.70

Omaha Live Stock.

Omaha, Neb., May 14.—Cattle receipts, 500. Market slow and 10 cents lower.
Western steers 3.50
Texas steers 3.25
Cows and heifers 2.75
Canners 2.50
Stockers and feeders 3.00
Calves 3.00
Bulls 3.00
Sheep—receipts, 6,000. Market steady.
Yearlings 5.75
Wethers 5.40
Ewes 4.75
Lambs 7.50

Chicago Grain.

May wheat 93%; July, 95%
Corn—May, 63%¹/₂; July, 65%¹/₂
—May, 45%; July, 44%¹/₂
May, 16.45; July, 16.55
9.30; July, 9.33%. Rye
July, 9.02%.



FIRST BAPTIST CHURCH, WICHITA FALLS, TEXAS.

—Photo by Haddis

FRENZIED SCENES

MARKED OPENING OF WHEAT PIT THIS MORNING.

TENDENCY WAS UPWARD

At the Start, But Enormous Sales Carried Prices Down.

Chicago, May 14.—A recurrence of yesterday's frenzied excitement characterized the initial transactions on the board of trade today, but the opening quotations showed a much narrower margin than did the first

quotations of yesterday's session. The tendency at the start was upward, but enormous realizing sales quickly carried the prices down from 1 o 3 cents.

CARS ARE RUNNING

On Seven Lines in San Francisco—Seven Hundred Passengers.

By Associated Press.

San Francisco, Cal., May 14.—About twelve cars are running this morning on seven lines of the united railroads. The outlook for the day so far is for peaceful operations. About seven hundred policemen are on duty along the route.

RUEF JURY SELECTED.

Task Has Taken Two Months—Defendant May Be Unable to Stand Strain of Trial.

By Associated Press.

San Francisco, Cal., May 14.—With the selection yesterday afternoon of Henry A. Ruef, a box manufacturer, as the last of the twelve men comprising the jury which is to try Abraham Ruef on a charge of extortion was secured. It has taken nearly two months to secure the jury. Next Monday afternoon when the case is called the physicians will testify as to whether Ruef is in a physical condition to stand the strain of a trial.

CONTRACTS LET TODAY

FOR MATERIAL AND GRADING ON WICHITA FALLS & SOUTHERN.

WILL BEGIN AT ONCE

Work of Construction Starts Immediately, and Road Will be Pushed to Completion.

The contract for 150,000 ties, a number of bridges and a large part of the grading on the new Wichita Falls & Southern railroad were let this afternoon.

Bidders and contractors from all parts of the State were here today to file their bids. Just as we go to press a telephone to Mr. Kell confirms the report that these contracts have been let, but the names of the successful bidders have not yet been made public.

Mrs. H. A. Gausewitz, and Mrs. O. R. Boden of Childress are visiting Mrs. C. M. Andrews on Tenth street.

ARE HEAVILY FINED.

Kansas City Ice Companies Assessed Twenty-Eight Thousand Dollars.

By Associated Press.

Kansas City, Mo., May 14.—Walter A. Powell, judge of the circuit court at Independence, Mo., today assessed fines aggregating \$28,000.00 against the three Kansas City ice companies which on April 30th last, he declared guilty of maintaining a pool to keep the prices of ice up and to restrain the manufacture of that article in violation of the State anti-trust laws.

Later Judge Powell ordered that the charter of the People's Ice Storage & Fuel Company be forfeited and that the concern be ousted from the State. Attorneys for the People's Company announced that an appeal would be taken.

Six Hundred Miners Walk Out at Salt Lake

By Associated Press.

Salt Lake City, May 14.—Six hundred employees of the United States Mining Company's plant of copper and lead smelters at Bingham Junction, about fifteen miles from this

city, walked out of work today. The company refused to raise wages to 15 cents per day. The men were being paid \$1.75 to \$2.00 per day. Copper smelters have

Indignant at Japan's Breach of Faith

The repeated Japanese for return to occupy those buildings, mines and lands. This excuse is not considered honest, because Japan is fully aware that China's helplessness to enforce neutrality, while Japan is in a position to stand the strain of a trial.

80 SQUARE MILES

The Young County Coal Fields Cover
An Immense Area.

THIS MEANS CHEAP FUEL

In Almost Unlimited Quantities--Will Soon Be Tapped
By Our New Railroad.

The building of the new railroad will bring almost to our very doors what is thought will prove to be the largest and most productive coal field that has yet been discovered in the Southwest.

The explorations and investigations of mining experts have discovered the presence of coal under an area covering eighty sections of land between Olney and the Brazos river, most of which lies in Young county. The coal strata has been found to be between thirty-six and fifty-four inches in thickness, and the depth at which it is found varies from its surface outcroppings, in several places, to one hundred feet below the surface of the ground. The coal is said to be of an excellent quality, good for both manufacturing and domestic purposes.

The existence of coal in this territory has been known almost since the first settlement of the country, and for years the inhabitants of that section have mined it in a small way for their own domestic uses. Not until recently, however, were the investigations conducted, which resulted in the discovery of the extent and the importance of the coal deposits.

Local capitalists were the first to be attracted by the possibilities in the development of the new coal field and when their own investigations confirmed the reports that had previously gone forth, they at once began to lease the land in the coal area and it is reported that they already have leases on thousands of acres embraced in the coal area.

Without railroad facilities, the new coal field was as valueless as if it never existed. The business men of this city were quick to see the advantage to Wichita Falls in having a railroad built which would give the most direct connection with the coal deposits. I. H. Kemper, of Galveston, and others associated with him, proposed to build a road from this place to the coal field, provided the citizens of this place would give the enterprise a satisfactory bonus. A meeting of the Wichita Falls business men was called and the bonus asked, \$25,000, was quickly subscribed. Olney followed with a subscription of a bonus of \$20,000 and a few days later Archer City subscribed \$12,000 for the purchase of right-of-way through Archer County. Contracts between the above named towns and the promoters of the new road have been duly signed and the work of construction will begin as soon as a survey can be established.

Engineer J. W. Field, with a corps of surveyors, is already in the field

and as soon as the route is selected and the right-of-way secured, the graders will begin their work.

The new road will be known as the Wichita Falls and Southwestern. It will extend from this city, via Olney and Archer City, to a point at the mouth of Whiskey Creek on the Brazos river. From that terminus, it is the present belief, the line will be extended to Abilene.

The completion of this railroad will give to Wichita Falls an unlimited supply of cheap coal for manufacturing purposes, which, in connection with the excellent railroad facilities already afforded, is destined to attract industrial enterprises which will build in Wichita Falls the best and most prosperous city in Northwest Texas.

Wichita to Belknap.

Graham Leader.

J. A. Kemp and others from Wichita Falls, met the citizens of the Belknap community last Saturday at the coal mines for the purpose of discussing the projected railway from Wichita Falls into the Young county coal fields near Belknap.

A proposition was made and accepted. As we understand it, the citizens of the coal fields give a one-fourth interest in the mineral deposits on 8,000 acres of land, a half-interest in a 640-acre townsite and ten miles right-of-way; on the other hand, Mr. Kemp and his associates agree to build a railway to the place within sixteen months. This is a good, fair proposition, it seems to us, and that it appeared so to the people is evidenced by the fact that they accepted it. The road will doubtless be built at once.

We understand that Olney has also closed up her part of the agreement with the company and that Archer City will do so this week, so the deal may be said to be closed.

Judge A. H. Carrigan was with the Wichita party Saturday. Though not personally interested in the projected railway, he knows all the people and has been instrumental in bringing them together.

We may expect to see a thriving town built out there; just where it is to be located, of course is not determined, but quite probably right about the geographical center of the county.

It will have the effect of vastly increasing the population and wealth of the county and will probably prove a stimulus towards bringing the Mineral Wells road also to this particular section.

We congratulate the people of Belknap, True and Olney communities upon their brilliant prospects for railway connection with the outside world.

The presidential boom started in motion some time ago for Senator Charles A. Culberson seems to have suddenly collapsed and the senior senator from Texas had more to do putting it out of business than either person. In fact, it was started at his suggestion, or by any of his friends. Those responsible for that kind of talk were sincere in what they advocated. The truth of the matter is the boom of Culberson for the Democratic presidential nomination was a sly attempt on the part of a few politicians to defeat the nomination of Bryan. Culberson is an able man, confessed that kind of material required in the make-up of a statesman, competent to preside at the head of a great nation of people like this of ours, as long as the people of the South and East look upon the Southern people generally as there is no hope of ever electing a man to the presidency who can be accomplished by the votes of the South. Culberson is a man who did right when he moved in inauguration purpose of getting the States to send delegates to a national convention nomination of a Southern man to the presidency. The scheme could result—the defeat of Bryan and that is what the promoter trick to start a boom for Culberson, not to secure the man belonging to

that wing of the Democratic party which never votes the Democratic ticket unless it is given the privilege of writing the platform and naming the candidates to stand upon it. Culberson is now holding as high a position as any Southern statesman can ever hope to hold in this day and time, and he is fully aware of the fact that so long as he lives and conducts himself as he has, Texas will honor him with the position as often as it becomes necessary for him to ask it. He also realizes that if the Democratic party has no chance of electing Bryan to the presidency, there is less for the election of any other democrat. It is true he differs with Mr. Bryan on the government ownership question, but Mr. Bryan has repeatedly said in public addresses that he would not insist on a government ownership plank going in the next Democratic platform. The people of the South are not afraid to trust him on that or any other question, and if he wants and will accept the Democratic presidential nomination in 1908, it is his for the asking.

City Property for Sale. Choice Business and Residence Lots, Improved and Unimproved. Liberal terms. N. HENDERSON.

Time Change on Denver. The Denver will make a change in the time card, affecting trains Nos. 7 and 8 about May 15. These trains now run to Toxline, but under the summer schedule will go through to Denver.

Trade with us, where "purity is paramount." We can please you. TREVATHAN & BLAND.

LET US BE NEIGHBORLY.

Some of the good people at Henrietta are much exercised over the success of Wichita Falls in securing the new railroad into the Young county coal fields. Henrietta wanted the railroad herself, and this desire was a perfectly legitimate one. However, Henrietta has failed and Wichita Falls has succeeded. So far as Wichita Falls is concerned, the only regrettable feature of their success is that in her disappointment, Henrietta attributes the efforts of Wichita Falls to improper motives and asserts that the action of the business men here was simply an endeavor to head off the promoters of the Henrietta proposition.

The Times hastens to assure our neighbors over at Henrietta that Wichita Falls is acting entirely in good faith, and that the road will be built and in operation at an early date, and in behalf of the citizens of Wichita Falls extends an invitation to Henrietta citizens to come up and make a trip over the line on the first train.

From the following extract in the Henrietta Review it appears, even yet, that Henrietta is not entirely convinced that the road is to be built to Wichita Falls. Now, the Review will probably refuse to believe the Times, so we reprint an extract from the Archer City Dispatch on the subject.

Henrietta Review.
Ed. S. Hughes, president of the road, and his attorney, K. K. Leggett, of Abilene, were here Wednesday and to them the suggestion was made that they build out northwest through the oil field, striking Red river somewhere in the neighborhood of Charlie. They were favorably impressed with the idea, and acting upon it, the sentiment of some of the people in that direction has been obtained, and of course they are anxious for it to come. The ire of these people has been raised just a little, but by the action of Wichita Falls in endeavoring to head them off by projecting a road from the Falls to Archer, and a small amount of encouragement will build a northwest line, which would break Wichita's heart.

Archer Dispatch.

In the Wichita Falls proposition, we were to give a bonus of \$12,000 and furnish a right-of-way from the north line of the county to within five miles of the south county line, and the road will be put through in 12 months. This proposition was accepted last Monday night. Messrs. Kell, Kemp and other capitalists of Wichita Falls signed the contract with our committee and some four or five other citizens. The Wichita promoters placed themselves under a \$20,000 bond to be here in the given time.

W. E. Forgy, one of the committee, was over on the north side Wednesday seeing the property owners about getting a right-of-way. Nearly every one is willing to help this matter along, since it greatly enhances the value of the property all over the county. There will be very few instances where we will have to pay for a right-of-way.

Our sales on 25c Richelleu coffee is increasing. It pleases others and it will please you. Try it.

TREVATHAN & BLAND.

Larger Than the United States.

Canada is able to present a strong case on the map. It sets forth that it is larger than the United States by 250,000 square miles; contains a third of the area of the British empire; extends over a latitude equal to that between Rome and the North pole; it is as large as thirty United Kingdoms or eighteen Germanys; is larger than Australia and twice the size of British India, and has a seacoast of many thousand miles. In point of size Canada is an immense proposition. There is another big item that suggests a distinct train of thought. The boundary line between Canada and the United States is 3000 miles long, and not a natural barrier. In apophysis sense it is but a mark on paper. Adjoining Canada on the South is a nation of 80,000,000 people, among the most enterprising in the world, and who have advanced the country they inhabit in the first place in wealth and many forms of production. By force of plain business interest Canada buys more from the United States than from any other nation. Yet it is in conference across the sea on plans to shape its economic affairs on a more centralized British basis.

LOCAL OPTION ELECTION

Is Ordered in the Gilbert Creek District June 1.

On the first day of their regular session the county commissioners Monday ordered a local option election in the Gilbert district in which is situated the new town of Burk Burnett.

The election will be held on the 1st day of next June.

The commissioners transacted their regular routine of business Monday and at the end of the regular three days session will adjourn to reconvene for the purpose of making the county tax levy.

The Famous



Dorothy Dodd

SHOES FOR WOMEN

KNOWN THE WORLD OVER FOR ITS
Durability and Faultless
Fitting

Nutt, Stevens & Hardeman,

Sole Agents. Wichita Falls.

T. J. TAYLOR, President.
J. T. MONTGOMERY, 1st V. P.

DR. J. F. REED, Cashier.
T. C. THATCHER, Clerk.

Farmers Bank and Trust Co.

OF WICHITA FALLS, TEXAS.

CAPITAL \$75,000.00

BOARD OF DIRECTORS:

H. G. Karrenbrock, T. W. Roberts, R. H. Suter, J. W. Shuman
R. W. Hyde, Alex Kahn, Joseph Hund, T. J. Taylor
J. T. Montgomery, Dr. J. F. Reed, T. C. Thatcher.

We are now open for business in our building on 7th street, where we will be pleased to meet and greet our friends. We shall pursue a liberal policy to patrons and intend to extend every courtesy and favor in line with a safe and conservative business house, and on this line we solicit and will appreciate a share of your business.

T. C. THATCHER, Cashier.

OUR FAN CIRCUIT

Will start the 15th. Let us fit you to keep cool this Summer. Also let us figure on wiring your house. We guarantee our work !!!!!!!!!!!!!

THE WICHITA FALLS WATER & LIGHT COMPANY.

The St. James

Leading Hotel of City.
J. B. BOWEN, Prop.
G. L. WAGNER, Clerk.
American Plan, \$2.00 per day

MADAM—I CAN'T REFUSE IT—
THE DIAMOND EDGE CUTS TOO EASY



Deere Buggies, Phaetons and Surries are best by test. Guaranteed.
Robertson-Russell Hardware
WICHITA FALLS.

Subscribe for The Daily T

THIS IS THE STORE OF THE PEOPLE

P.H. Pennington Co.

"WE SELL IT FOR LESS"

WICHITA FALLS, TEXAS

ALL THIS WEEK

NEW HINTS FOR CLOSE BUYERS

Table with 3 columns: Gloves, The Special Values, Table Linens. Lists various items and their prices.

CAN'T RESIST THESE PRICES

Table with 3 columns: What Wear, Silks, Gingham. Lists various items and their prices.

PRICES WERE SELECTED AT RANDOM

Table with 3 columns: Neckwear, Corset Cover Embroidery. Lists various items and their prices.

Men's Clothing

\$20.00, \$16.50, \$15.00, \$13.50, \$12.50, \$11.85, \$10.00 DOWN TO \$5.00

Advertisement for National Bank, listing assets and services.

Advertisement for Ice Company, featuring 'ICE! ICE!' and contact information.

Advertisement for Mayfield Lumber Company, listing lumber products.

Advertisement for Reidman Bros., listing picture frames and window glass.

Advertisement for Sherwin-Williams Paint, listing agents and contact info.

NO LONGER ANY DOUBT

Contracts Signed and Bonds Executed Between the Promoters of the Wichita Falls and Southern and Towns Through Which It Passes.

ROAD TO BE COMPLETED BY OCT. 1

As Far as Archer City and to the Coal Fields in Young County By the Early Part of 1908. Contracts for Bridge Material, Ties and Steel Rails Let.

Main article text regarding the road project, mentioning promoters and contracts.

AN OPERA HOUSE

GALVESTON CAPITALISTS WILL SUBMIT PROPOSITION TO BUILD A THEATRE

Main article text regarding the opera house project, mentioning Galveston capitalists.

Death of Mrs. Umberger.

News item regarding the death of Mrs. Umberger.

Inspected Our Improvements.

News item regarding city improvements inspection.

Notice to Subscribers.

Notice regarding newspaper subscriptions.

New Grocery Store.

News item regarding a new grocery store.

Casino tea for ice tea.

Small advertisement for Trevathan & Bland.

BOY ACCIDENTALLY KILLED.

While Two Boys are Scuffling Over Possession of a Gun a Looker-on is Shot.

MAKE READY FOR REUNION.

Decatur Veterans Looking Forward to Event in July.

New Real Estate Firm.

J. C. Ward and J. T. Young have formed a partnership in the real estate business.

Farms the Solution.

For years, twenty to thirty, there has been a steady drift of people from the country to the cities.

Are We to Have a Ball Team?

In the seasons that have passed, Wichita Falls has been represented on the diamond by the best aggregation of ball toppers in Northwest Texas.

The souvenir postage stamps for the Jamestown Exposition are out.

News item regarding postage stamps for the Jamestown Exposition.

Denver Road Appointment.

News item regarding a road appointment in Denver.

Met in New Orleans.

News item regarding a meeting in New Orleans.

Bonham's Cotton Mill.

News item regarding Bonham's cotton mill.

Small advertisement for Moore & Hope.

Wichita Daily Times

By—
The Times Publishing Co.
(Incorporated.)
Printers and Publishers.

Application made for entrance at the postoffice at Wichita Falls, Texas, as mail of the second class.

Officers and Directors:
Frank Kell President
Ed. Howard V. P. and Gen'l Mgr
G. D. Anderson Sec'y and Treas.
H. E. Huff, Wylie Blair, T. C. Thatcher, N. Henderson.

Subscription Rates:
By the year (mail or carrier) .. \$5.00
By the month (mail or carrier) .. 50
By the Week (mail or carrier) .. 15

All subscriptions payable in advance. Advertising rates made known on application.

Telephones:
Business Office 167
Residence 111

Ed. Howard General Manager
H. D. Donnell City Editor

[Those having friends or relatives visiting in or out of the city will confer a favor by reporting same to the Times. Phone—Office, 167. Residence 111.—Editor.]

Wichita Falls, Texas, May 14, 1907.

WHAT WAS REALLY MEANT.

A Wichita Falls paper says in a year or two Burk Burnett station nine miles east of Iowa Park will be as large, if not larger than Iowa Park, and yet you will continue to patronize them—wholesale and retail—newspapers and all. How do you like it? And where will you be when that date comes?—Iowa Park Register.

No offense was meant and we are sorry that any was taken. Brother Register, Iowa Park is a good town and her citizens are enterprising. We really meant to say in that little paragraph that by the time Burk Burnett grew to the size of Iowa Park, the Park would be as large as Wichita Falls, and Wichita Falls as large as—Chicago. Now, will you accept our apology?

ENCOURAGE ENTERPRISE.

The Daily Times is proud of the start it has made and of the amount of patronage bestowed upon its first number. It was not the intention of the management at the start to issue but a six-column, four-page paper, but the pressure brought to bear on our advertising columns forced us to make it an eight-page affair for the first day. We sincerely trust that our live, wide-awake business men who are represented in this issue of the Times will continue to make it necessary for us to issue eight pages daily. Read their ads. They are the kind of people that build towns and are taking the initial step in this direction by first making it possible for this little city of Wichita Falls to have a first class daily paper—one that will not only give all the local news, but the full evening report of the Associated Press. Patronize them. They deserve it. It requires newspapers and railroads to build cities. One is just as essential as the other, and the enterprising business people who help to get both should not be overlooked when it comes to buying your household supplies.

NECESSARILY WORKED UP.

Citizens of Lawton seem to be shifting over the location of the station on the line of the Missouri & Northwestern railroad. The truth of the road assure of Culbertson making no effort to get any townships; nor on the part of any effort to do so defeat them who filed on the various person is can commute and make that kind land.

make-up
to press
Just on Time.
oved this morning and will
for your inspection tomor-

of the most beautiful art
shown in this city.
of the finest lace and
as to be seen on the
baby buggies? Nearly
the of the cele-
ring machines with
of sweet little gowns
of babies that are
St's car of baby bug-
xt p-
one.
he furniture line to
FURNITURE CO.
Home Furnishers.

today at 25c each.
AN & BLAND.

The Old Settler.

The old settler makes his rounds every morning. He takes mental notes of what is going on and compares them with what he remembers. He dropped in at the City Hall this morning, and, after filling his pipe and starting the brain root in full blast, he took a squint at the newspaper, but, finding nothing to interest him, became restless.

"Say, why don't you have a law suit or something to stir up a racket? This is the dullest town I ever saw. That reminds me. When I lived in El Paso, they had a rollicky bunch up before the jefe politico.

One Saturday night they rounded up Juan Reyes for cock fighting on Sunday. Now, Juan could not sabb English and was scared almost to death, for some one had told him that they were trying him for high treason against the government.

"When his case was called he arose trembling in every limb, extended his hands in supplication toward the jefe, and, falling upon his knees, raised his eyes until only the whites were visible and began repeating the Ave Maria!

"Says the jefe, turning to me, 'Come here and see if you can understand his lingo.'

"A yeager!" I shouted to the paralyzed greaser (which is the same as 'Say, you galoot!')

"He let his eyes slowly drop from the ceiling and with a faraway expression, said 'Si, Señor.'

"I told him in Mexican to plead to the jefe instead of the Holy Mother.

"Without waiting to have the charge read, he began: 'May it please his Highness, the most grand and noble jefe Politico, I'm an orphan with a wife and nine children the oldest has the smallpox; the three next in size are down with the measles; the youngest has the whooping cough; my mother-in-law is an invalid; I have a severe attack of asthma; my—'

"Say, Hennessy," said the jefe, 'give the poor man cinco centavos, kick him out the door and tell him if he comes up any more it will be 30 days.'

"Say," said the old settler, turning to the tax collector, "it's a shame for you to hobble around on crutches with the rheumatism, when one dip in the Agua Chilo springs in the City of Mexico would cure you.

"That reminds me. When I was in the City two years ago, a Yankee from Boston was carried from the sleeper on a litter to the spring, situated in the public plaza. The bathing is free. The government will not allow anyone to charge for it. But, a little old dried up man keeps a tent where people can change their clothes. Two Mexicans carried the Yankee into the tent, took off his clothes, then carried him to the spring and dropped him into the water. It was not more than two feet deep, so after spluttering, sneezing and blowing the water from his nostrils he was quiet for about five minutes.

"Then, without warning, like a stone from a catapult, he sprang up out of the water, grabbed the old woman and began walking around the plaza like a wild man from Borneo, shouting this refrain:

"You may talk about the Old Hub where they cap pork and beans, Where old maids are tall, but never grow out of their 'teens, But give me five minutes in Aqua Chilo and a waltz in the plaza, And you can take your Old Hub and old maids and go to blaza—"

"Say, wasn't that great?"

Judge Felder entertained the mayor and city council of Vernon on their visit here yesterday by driving them over the city and lunching at the St. James. They formed a very favorable impression of Wichita Falls and her splendid sidewalks and paved streets, and will follow our example.

Death of Willie Block.
Willie Block, the fourteen-year-old son of J. F. Block, living near the Bowman school house, died at eight o'clock Sunday morning after an illness with bowel troubles.

The funeral was held at the German Evangelical church Monday afternoon.

City Property for Sale. Choice Business and Residence Lots, improved and unimproved. Liberal terms.
N. HENDERSON.

New Street Sprinkler.
A new and up-to-date street sprinkler will soon make its appearance on our streets. The new sprinkler is the property of W. R. Hale and was purchased from the Studebaker Wagon Company through the Wichita Falls Implement Company.

Plover Are Plentiful.
Plover abound in great numbers on the prairie about Wichita Falls and plover hunting is now the favorite pastime with local sportsmen. Fishing in the Big Wichita and Red rivers is also good and Wichita anglers are bringing in some good catches.

BANQUET FOR THE VISITORS

TRADE EXCURSIONISTS TO BE ENTERTAINED ROYALLY.

TOASTS AND SPEECHES

As Accompaniment to Spread Will Draw Closer Pleasant Relations of Hosts and Visitors.

The business men of Wichita Falls are preparing to receive the Kansas City trade excursionists with a warm welcome tonight.

At a mass meeting of the business men of the city, held at the City Hall Monday morning, it was decided with great unanimity to tender their guests a banquet during their visit in this city. At this meeting a reception committee composed of the following citizens was appointed: L. F. Wilson, Mayor T. B. Noble, T. J. Taylor, E. P. Walsh, T. P. Duncan, J. G. Jones, W. E. Skeen, John Hursh, Mr. Hardeman, Wylie Blair, Herbert Hughes, P. P. Langford, W. M. McGregory, Clyde Thatcher, J. T. Montgomery, John Hursh, J. W. Stone, R. S. Rogers and R. P. Hatcher. This committee will meet the guests on their arrival and some of the committee went up to Vernon this afternoon to meet the special and will return with the excursionists.

The banquet will be held at the St. James Hotel at nine o'clock. Mr. L. F. Wilson will act as toastmaster for the occasion and it is expected that speeches and toasts will be made by both visitors and local business men.

The special is expected to arrive at Wichita Falls from the north over the Fort Worth and Denver at 7:30 o'clock this evening. The excursionists will remain in the city over night and will leave southbound over the Denver at 5:45 tomorrow morning.

The visitors will be anxious to meet as many of the local merchants in their stores as possible and it has been requested that the stores be kept open for this purpose until about 9 o'clock.

The excursionists carry with them a first class orchestra and a quintet of vocalists, who will take part in the entertainment tonight.

As has been stated heretofore, the excursionists are men connected with the big wholesale and retail houses in Kansas City, and are out on their annual excursion to promote good feeling in the territory in which their houses do business.

Try a can of our Richelieu pitted cherries, for pies. They are equal to the fresh fruit.

TREATHAN & BLAND.

THREATENING CLOUDS

Drove Many to the Shelter of Storm Houses.

The black, threatening clouds which overhung the sky last night and whose menacing aspect was displayed by the frequent lightning flashes drove many residents of this city to the shelter of storm houses, where they remained until after the danger had passed.

Although the wind attained a considerable velocity, the Times has been unable to learn of any serious damage done by the storm.

Mr. Frank Kell, one of the Wichita railroad promoters, purchased two lots from Sanford Wilson, giving \$100 each for them. The lots lie between the Christian church and the square. Kell also purchased quite a number of lots from J. D. Powell.—Archer Dispatch.

Well! Well! Who Would Have Thought It!

But it seems true, nevertheless. The whole country seems to have been waiting on us. As soon as we signed a contract on the 8th of last May, one year and six days ago today, with R. M. Moore for a house to begin business, the whole country seemed to take on new life. New brick buildings began to go up, more fine residences began to spring up the two new railroads followed, the new broom factory, the new oil mill, the Farmers' cement warehouse, the mattress factory and other enterprises too numerous to mention, and here we are smiling at you through the columns of the new Daily Times, right in the very first issue. But why not be in the first issue? We are first in everything for the good of Wichita Falls and Wichita county. Great is Texas! Great is Wichita county! Great is Wichita Falls!

We are proud of our country and our people. Come to see us. Yours for business,
JOURDAN-WHITE FURNITURE CO.

If you are down town tomorrow stop at our store and see the nice things we have to offer. We can interest you.
TREVATHAN & BLAND.

New Line of UNDERSKIRTS

"THE ELITE"

We are showing them
Silk, Heatherbloom and
Mercerized Satteen from
\$1 to \$17.50

You will notice that the Underskirts are made entirely different from other makes, not having a string to draw around your waist, but made with an adjustable hook and eye fastening they are truly a high-class make, eliminating all the bad features in an Underskirt.



BUY THE ELITE
ROCK & DUKE
The Style Store of Wichita Falls.

THE ELITE GLOVE FITTING UNDERSKIRT
PATENTED JAN 19 1904

Cement Work
I. H. Roberts
General Contractor
Walks, Curbing, Steps,
Floors, Foundations,
Street Crossings, Etc.,
Phone 240.

JOB BARNETT
WHOLESALE AND RETAIL
FURNITURE
CARPETS, MATTINGS, COFFINS.
Wichita Falls, Texas.

Plumbing
Steam and Hot Water Heating estimates made free. All kinds of Plumbing repairing done by practical plumbers. We also carry in stock the Eclipse and the Roberts natural stone germ proof Filters. Located at city hall building. Phone 306.
WICHITA PLUMBING CO.

Save a five or ten dollar bill by buying your spring suit from
W. E. Skeen.

WE CARRY A COMPLETE LINE
of Office Supplies, Stationery, Stationery S
dries, String Musical Instruments, Cut Gl
Hand Painted China, Confections and kind
lines. Inquire at
T. B. NOBLE'S BOOK STORE

A LESSON OF THE TIMES.
To have seen Wichita Falls twenty years ago then see Wichita Falls today is surely a lesson in times. After fifteen years experience in business country we come to the trade offering them what we think to be the best line of goods made, and goods are especially adapted to this country. We will call and let us show you anything in our line that are in need of, and we feel confident that you will be with us that the goods have no superior.
We are able to extend all courtesies in the best reason. Thanking you for past favors, we are,
Very truly yours,
Wichita Falls Implement Co.
Farm Implements, Buggies, Wagons, Harness, and Organs. Also Undertakers and Embalmers.

ANDERSON & PATTERSON
[Successors to Anderson & Beas.]
FIRE INSURANCE
Represent 36 of the best, the strongest and the most reliable liberal Fire Insurance Companies in the world.
We Write all Kinds of Insurance
Fire, Life, Tornado, Health, Accident, etc. Fire Insurance policies taken out with us cover loss by lightning. We solicit your business.
ANDERSON & PATTERSON
Phone 87. 7th Street, Wichita Falls, Texas.

KIRTS
E ELITE

Showing them
ather bloom
d Satteen fr

\$17.5

Notice that th
rts are made
erent from ot
ot having
waist, but ma
d eye fasteni
make, elimin
Underskirt.



THE ELITE
GLOVE FITTING
UNDERSKIRT

COMPLETE

Stationery, Stationery
l Instruments, Cut G
Confections and kin

BOOK ST

OF THE TIMES.

a Falls twenty years
today is surely a lesson
experience in business
trade offering them
of goods made, and go
this country. We ask
anything in our line
el confident that you
ve no superior.
all courtesies in the b
r past favors, we are,
truly yours,
Falls Implemen

gies, Wagons, Harness
akers and Embalmers.

& PATTERS

SURANCE

longest and the most reliable
nies in the world.

& PATTERS

To our Friends, Customers and the General Public:

WE TAKE PLEASURE in greeting you through the medium of our daily paper. Believing it is business wisdom to keep pace with the modern progress of our little city, I have contracted with the present management of the **TIMES** for this space for one year, and will at all times use my best efforts to keep you posted on the latest creations in the Fabric World, assuring you that I will always try to be in position to offer you the latest creations of the best Merchandise at the lowest possible figure consistent with good business policy, and soliciting a continuation of past favors,

Yours very truly,
W. E. SKEEN.

LIST YOUR CITY
PROPERTY
WITH
JACKSON & MOORE
THE WIDE-AWAKE
REAL
ESTATE
MEN!

They will find you a Purchaser



DR. J. W. DUVAL,
SPECIALIST IN
FITTED
SPECTACLES

W. H. FELDER,
-DENTIST-
southwest rooms up stairs on 7th
street and Ohio avenue.
WICHITA FALLS, TEXAS.

STRING OF COTTON GINS

Company Formed for Purpose of Putting up and Operating Seven in Territory Adjacent to Wichita Falls.

THE INCREASED ACREAGE IN COTTON

Augmented by the Building of the New Railroads the Inspiration for this Enterprise.

road center of Northwest Texas. G. W. Wigham of this city has formed a company to be known as G. W. Wigham & Company, for the purpose of putting up and operating a string of ten gins, the largest of which is to be located in this city and is to be a four-seventy-saw plant. The others are to be located at Holliday, Burkburnett, Jolly, Mabeldean and at points across the Red river on the Wichita Falls and Northwestern Railway in Oklahoma. All these enterprises, including the building of the cotton oil mill, were

BITTEN BY SNAKE.

Venomous Moccasin Attacks Wilbur Caskey—Bite Will Not Be Serious.
While driving home the cows on Monday, Wilbur Caskey, the 12-year-old son of T. W. Caskey, living two miles east of this city, was bitten by a moccasin snake. The boy was placed under the care of a physician at once and measures were taken to counteract the poison. The boy is now getting along nicely and it is believed that nothing serious will result from the bite.

Remember in your morning order to try some of our Pure Food Cheese. It is uncolored and strictly full cream.
TREVATHAN & BLAND.

Passenger Conductor C. A. Roberts of the "Denver" is in the city today taking a short rest. He has recently moved his family to Fort Worth, but has not disposed of his property here, and is making arrangements to have two more neat residences constructed on lots adjoining the home he occupied while residing here.

Phone us about your tomorrow's dinner. We have some good food to offer you.
TREVATHAN & BLAND.

the direct result of the increased acreage planted to cotton in this territory and the building of our two new railroads.

It also means the building of a compress at Wichita Falls this fall. Surrounded on every side by one of the best agricultural lands in the world, that will grow almost any crop together with an oil field eighteen miles to the east, and one of the richest coal fields sixty miles south, Wichita Falls should soon become the leading manufacturing city and rail-

Full of Fighting Whiskey.

The police officers were called to the M. K. & T. depot yesterday afternoon to take in charge two intoxicated young men who were making a disturbance. One of the young men put up a desperate fight with the officers and was overpowered only after several blows had been exchanged. At the jail the offenders gave their names as Willie and R. L. Oneal. The former is alleged to be the victim of a mental disorder. They were brought before the corporation court this morning, where R. L. Oneal was assessed a fine and they were allowed to proceed to their home at Caddo, Indian Territory.

Ex-Sheriff H. C. Williams of Young county, in company with his uncle, William A. Williams, of Paris, was in Wichita Falls yesterday. The ex-sheriff was on his way to Iowa Park to bring home his daughter, who has been staying there with her aunt, Mrs. Roney. Mr. Williams lives in the vicinity of the coal field which will be tapped by the new railroad. Last winter he was engaged in the mining of coal himself and brings an enthusiastic report of the extent of coal deposits and the ease with which the coal can be mined. Mr. Williams has accepted an invitation to attend the banquet tonight.

GREAT SPIRITUAL AWAKENING

REVIVAL MEETINGS ON AT THE FIRST BAPTIST CHURCH.

MANY ARE CONVERTED

All Churches in the City Take Part in Services—Large Attendance and Deep Interest Shown.

The revival at the First Baptist church is attracting large crowds and many converts are being made. The various pastors of the city, with their congregations, are attending, and the meeting promises to bear fruit in a general awakening.

Great Day Last Sunday.

Last Sunday was a busy and fruitful day. The Methodist Sunday school marched from their building in a body to attend the children's evangelistic service at the Sunday school hour. This is considered one of the most unique and successful services of the series. The large auditorium was filled. Evangelist Burroughs opened the service with brief testimonials from the children and gradually led on to deeper spiritual feelings. A very large number of the children and young people confessed Christ and agreed to unite with the various churches. Dr. Burroughs encourages counting and declares that much harm has resulted from exaggerated reports of evangelistic work.

"As I see it," he said, "the profession which Christ demands is submission to the ordinance of baptism. It is well enough to give the preacher the hand and in other ways to confess Christ. But baptism is designed to be the first act of public obedience. Men may sign cards, may stand up, may give the preacher their hand, may do anything they will, but if they refuse to follow Jesus in baptism and church membership, I for one will not count them as converts."

The Sunday morning text was in II Kings iv:8: "And Elisha passed to Shunem, where was a great woman." The preacher set forth from the story God's conception of "a great woman," and made a tender and powerful plea for womanly consecration and devotion to God. The great audience was perceptibly moved as the true and great woman of the old type was held up before them.

Scores of people were turned away at night, while an audience numbering near one thousand packed every available space in the building. It was a god sight, with the four local pastors occupying seats on the platform, some thirty people in the choir room and every section of the large building crowded.

Many had fasted and prayed during the afternoon and it was evident when Professor Hyett started the song service that a deep religious fervor was over the people. Under Mr. Hyett's leadership the great audience was soon singing with hearty enthusiasm. By special request he himself sang "A Railroad to Heaven" with marked effect.

About twenty agreed to take membership in the various churches and it is believed that the service will prove fruitful in extending the revival work.

Yesterday's services were of special interest and indications are good for large results this week. Services daily at 4 and 8 p. m.

Quarterly Meeting at Beaver Creek.

The second quarterly conference for the Iowa Park circuit was held at Beaver Creek school house, officially known as Marvin's Chapel, Saturday and Sunday, May 11 and 12.

Those present from other communities were Rev. T. R. Pierce, presiding elder of the Bowie district, Rev. F. L. McGehee, pastor at Iowa Park, E. M. Yeakley and J. B. Winfrey and wife of Iowa Park. Dinner on the ground was had both days, and taken altogether the time was most pleasantly and profitably spent.

Besides the regular routine of church business, E. M. Yeakley, now a teacher in the Iowa Park school, was unanimously recommended to the district conference for license to preach.

Rev. Pierce preached on Saturday morning, the business meeting was held Saturday evening and Saturday night services were conducted by Mr. Yeakley and Rev. McGehee. There were two conversions at the night service. Sunday morning a child was baptized by the presiding elder, after which he preached an excellent sermon and the sacrament was administered.

After dinner had been served Rev. Pierce left for Iowa Park, from whence he proceeded to Wichita Falls, where he had intended preaching Sunday night, but on account of a protracted meeting then in progress, the service was called in.

N. HENDERSON,
Attorney-at-Law.
Office, Kemp & Lasker Block.

You Ought to Know

The truth about Refrigerators and Gasolene Stoves before buying one. You have probably heard of the

Gurney Refrigerator
and

Quick Meal Gasolene Stoves?

They have made their mark as the best that money can buy. Call and let us show you their superiority over other makes.

Our line of Screen Doors, Screen Wire, Water Coolers, Ice Cream Freezers and everything in seasonable goods is complete.

KERR & HURSH.

No trouble to show goods.

WM. CAMERON & Co.,
(INCORPORATED)
Dealers in Lumber, Lime and Cement,
Corrugated Iron and Nails.
C. G. TEVIS, Manager, WICHITA FALLS.

MOORE & RICHOLT

Everything for the Builder

PHONE 19

DALE RANCH

We are now subdividing in 160 acre tracts and offering for sale the Dale Ranch in Clay county, consisting of 13,400 acres, which we consider the finest tract of its size in North Texas. This land is a rich, sandy loam, covered with sage grass. Four miles from Jolly, three from Petrolia, twelve from Wichita Falls and ten from Henrietta. Easy terms. For full particulars, call on or write

BEAN & STONE, Wichita Falls, Tex.

Williams' Barber Shop and Bath House

BEN WILLIAMS, Proprietor. Successor to A. B. HANCOCK
FIRST-CLASS IN EVERY RESPECT—HOT AND COLD BATHS
Hair Cutting.....35c Shave.....
Shampoo.....35c Bath.....
7th Street Wichita Falls

Established 1884 First National Bank Wichita Falls, Texas

U. S. Depository
Capital, Surplus and Profits, - - \$
Regardless of the amount of your business we want it. We have facilities for estate paper.

The Wichita Mill & Manufacturing Co. Manufacturers of High Grade Feedstuffs.



Always in the market for Wheat

Auction Sale Town Lots and Farm Lands

At Burkburnett, the Gateway to the Big Comanche Country

JUNE 6TH 1907

All railroads will make cheap excursion rates for this sale.

Burkburnett is a new town fifteen miles north of Wichita Falls on The Wichita Falls & Northwestern Railway, two miles from Red River. Located on a beautiful sloping rise and in the finest agricultural country in Texas. Burkburnett is just south of the Big Comanche Pasture, just opened. A wagon bridge is being built across Red River, connecting the town with the Big Pasture by Wagon Bridge, which gives Burkburnett all the trade from the Comanche pasture as no title can be had for towns on the railroad across the river. If you want to make money buy a lot in Burkburnett. If you want a good investment, buy a lot at this sale. About 2000 acres of the finest and best Red river farming land near the town will be offered at auction at this sale in 5 to 160 acre blocks. Burkburnett has the best country to draw trade from of any town in Texas. Don't miss this opportunity to buy lots or land at your own price. Remember the date, June, 6th 1907. Barbaqued dinner served by the church ladies. Free transportation from Wichita Falls to Burkburnett.

FOR INFORMATION WRITE:

Red River Valley Townsite Company

WICHITA FALLS, TEXAS

ON TO FREDERICK

Wichita Falls and Northwestern Railroad Will Be Extended.

WILL TAP NEW FIELDS

Advantages Will Accrue To Wichita Falls From Building of New Railroad.

The outlook for Frederick getting Wichita Falls and Northwestern road now looks as bright as the mistle could wish. Already \$11,000 of the \$50,000 that will be required has been subscribed and the balance is being raised. The contract which the parties who asked to sign, provides that they will secure the right-of-way from the Big Pasture to Frederick, terminate at Frederick, and a subsidy to aid the railroad. One-third of amount is to be due when the title, consisting of Messrs. Bell, Carr, McConnell, McHugh, and Houssels, makes a bid to contract with the road to build it into Frederick. The remainder is to be paid on demand and is to be into some bank designated by committee, for payment to the company in compliance with its contract with the road to build it into Frederick and trains run to this point, not later than 1908. All, or as much of amount as is required, is to be paid by the company or by the State.

A right-of-way and securing depot grounds at this point. This morning W. A. Stinson received a letter from President Kell of the railroad company, stating that he will have to know by Saturday whether or not the citizens of Frederick will accept the company's proposition. If not, the road will be built on the original survey, crossing the Frisco about four miles south of Frederick. Some of the Eastern parties interested in the road, according to Mr. Kell, believe it would be more remunerative to the company to build a town of its own at the junction. A meeting of the citizens of Wichita Falls last week thirty thousand dollars was raised for the construction of a road south from that city to the coal fields on the Brazos river, Messrs. Kell, Huff and others interested in the Wichita Falls & Northwestern being among the most liberal givers. The building of these two roads would put Frederick in direct connection with the largest producing oil and coal fields in Texas. Frederick (Okla.) Enterprise.

Believe Tax Payers. Introduced a bill, take away property, passed by the State's legislature, the truth of the matter is that the State's revenue is being cut. When shopping in other things, stop at our store and let us show you the nice things we have to offer. We will appreciate your call. TREVATHAN & BLAND. Clarksville is spending \$100 per month in her leading newspaper advertising the town and surrounding country. This plan can be taken up by other towns with profit. Another town in Eastern Texas made up a purse of \$500 and furnished the editor in their town with a list of 500 names of persons in the trade reach of the town who were not taking the paper with their order to send it to them a year. Now they can reach them for a whole year with their ads cheaper than postage on circulars and letters will amount to. They are live merchants who fully appreciate the worth of advertising. Clarendon Chronicle. No need for pure food laws if you trade with us. Try our Richelleu, Casino and Heinz lines. We are the pure food people. TREVATHAN & BLAND.

TOWN FIGHT ON.

Rock Island Engineer Establishes a Town Near Government Location. Lawton, Okla., May 11.—F. M. English, president of the City National Bank, has just returned from Kell, where he established the Farmers' & Merchants Bank, having obtained permission from the Indian Bureau of the Interior Department to establish it in a movable building, until lots could be purchased at Eschitt, two miles and a half away. The American flag was raised over the building, the first one to float over any portion of the big pasture. Immediately with the shouts of the town people, the bank was opened for business. Just to what proportion will the town fight between these two proposed cities extend it is impossible to even surmise. However, there is a fight on between the Government townsites and the Rock Island railroad and other proposed lines through the pasture reserve. Beginning May 25 the Government will put on a ten days' sale at Eschitt. Already 100 people have assembled into a colony at the townsite of Kell and organized a town. This is located upon the present survey of the extended Rock Island branch on from Chattanooga. Its present terminus, through the pasture reserve and connecting at some point in Texas with the Fort Worth and Denver road.

City Property for Sale. Choice Business and Residence Lots, Improved and unimproved. Liberal terms. N. HENDERSON.

400 POUNDS OF BOOKS

A Present to the Public Library of This City—Uncle Sam the Donor. Mrs. J. A. Richolt, president of the Library Association, informs the Times that the collection of books from the government by that organization through the influence of Congressman John H. Stephens of this district and Mrs. W. C. Sherrod of this city, had arrived and are now at the postoffice. There are fifty volumes in all, and their combined weight is in the neighborhood of 500 pounds. These books give a complete history of the "late unpleasant war," or the war between the States, and have been adopted by the government at Washington as the most complete and accurate account of that most notable event ever put into print. The books came by mail, and the ladies composing the Library Association are elated over this most valuable acquisition to their already fine collection of books.

They Believe in Advertising.

Clarksville Board of Trade has expended one hundred dollars each month since the beginning of the year in advertising the advantages of Clarksville and surrounding country in the leading newspapers and periodicals of Eastern and Southern States, and is now preparing to follow up the work with a handsome booklet showing a number of local scenes and containing a complete description of the city and the country in every way. The book will be arranged after the style of the Texas Almanac and will be used in interesting the hundreds of farmers and others from other sections who have been brought into correspondence by means of advertisements during the past four months. Ladonia News.

Not equal to, but better than others is what we claim for our preserves. Try the line. TREVATHAN & BLAND.

IN AGRICULTURE

Wichita County Offers Unsurpassed Advantages.

SHIPPING ADVANTAGES

Are Unexcelled and Higher Prices Are Paid for Products Than in Other Sections.

No section in the whole Southwest surpasses or equals the Big Wichita and the Red River valleys in the fertility of their soil and the productiveness and diversity of their crops. Here are grown in their fullest productiveness all the agricultural crops that grow anywhere in the Southwest. Among the crops are wheat, oats, alfalfa, cotton, broom corn, watermelons, potatoes, strawberries, peaches, plums, apricots, and all other small fruits and vegetables, with the exception of apples. This is probably the only section in the Union where the crops of the middle and western states flourish with equal productiveness along with cotton and the small garden vegetables of the southern states. Wheat in this country makes an average yield of from fifteen to twenty bushels per acre and the elevator and mills in Wichita Falls receive and ship more wheat than any other city in the State. Oats make an average yield of from thirty-five to sixty bushels, and corn will yield as high as sixty bushels. Cotton makes from half a bale per acre and is rapidly becoming the staple product. The altitude ranges from 900 to 1000 feet and no country is more healthful. The Government station here records an average rainfall during the last ten years of 31 inches, and for the last three years the rainfall has exceeded thirty-three inches. Red River forms the northern boundary of Wichita County and the Big Wichita traverses the southern part. Numerous tributaries of these rivers water the whole country. Skirts of timber, such as cotton wood, pecan, ash and elm border these streams. The greater portion of the land is prairie and the soil is a sandy loam, ranging in color from a deep red to dark brown. On account of the character of the soil and the absence of stumps all kinds of improved machinery can be used to excellent advantage, also the mild climate enables more land here than in almost any other section. Although the land has become too valuable for range uses, all kinds of live stock are fattened for the Fort Worth and Kansas City markets. Five railroads with seven outlets entering Wichita Falls give this section unexcelled shipping advantages and the proximity to the Gulf ports wheat averages from 10c to 15c per bushel higher than in Oklahoma, Kansas and other states. The prices paid for other products are proportionately higher. The foregoing are a few of the points in which this section excels as an agricultural country. Wheat raisers are coming here from the Dakotas and from Minnesota, cotton growers from East Texas, and others come from the middle and eastern states and from all points of the compass. Every year a wider diversity of crops are grown and the people have only begun to learn the agricultural resources of the Wichita country. Land now ranges in value from \$12.50 to \$40 per acre, and at these prices is rapidly being bought and developed by thrifty and progressive farmers. The country is growing in population at a tremendous rate and within a few years Wichita Falls promises to become the mercantile

center of one of the most populous districts in the whole country. It is already the railroad center of Northwest Texas and every effort is being made to secure additional railroad facilities and to land new industries. In view of these facts and many others which might be enumerated the promise is bright that the future growth and prosperity of Wichita Falls will outstrip her former achievements.

City Property for Sale. Choice Business and Residence Lots, Improved and unimproved. Liberal terms. N. HENDERSON.

Counting Uncle Sam's Money. J. M. Chapple in National Magazine. All the money in the Treasury is counted every time a change is made in its higher officials. The last time this occurred was when Treasurer Charles H. Treat took office several years ago. It was then that a remarkable theft was discovered, which had been accomplished by a day laborer, who handled the bags of gold and found means to substitute pieces of lead in place of the precious metal as he passed it out to be weighed. He thought out his plan so well that the weight of the bogus gold was exactly the same as that of the specie removed from the bags, so that when these left his hands for the scales the theft was not detected. Since that time every bag has been opened and every piece of money counted, dollar for dollar. This, however, is not so heavy a task as might be supposed, for, strange as it may seem, a very small proportion of the gold and silver currency is actually located in the hands of Uncle Sam in Washington, but is distributed through the country in reserve centers.

AT ALVORD.

New Stone Quarry Will Be Opened Up by Ft. Worth & Denver Railway. The Fort Worth & Denver will open up a new stone quarry about five miles south of Alvord. The railroad has secured a twenty year lease on what is known as the Pillars quarry. A track is now being built to the quarry and the crusher will be set up at an early date. Nearly three hundred men will be employed in the quarries and Alvord is congratulating herself on the possession of the new industry. The stone from this quarry is said to be well adapted for building purposes. It closely resembles gray granite and can be sawed like Bedford limestone. The Fort Worth & Denver will use this stone in construction work along their line.

Fresh Vegetables.

We receive daily a fresh line of vegetables and are prepared to fill your orders on short notice. All orders delivered. We solicit and will appreciate a share of your vegetable business. Phone 23. T. M. SMITH & CO. At Palace Meat Market.

Plenty of Room at the Top.

Do you know why so many young men idle their time away on the streets? In many instances it is because they have ideas in their heads that they must have good paying jobs the moment they begin work, or else they think it is degrading to accept the place of a beginner at a meagre salary and plenty of work. The men who plan and direct and are paid big salaries, commenced at the bottom. Read history. If that fails to convince look around for living examples. As an instance, Mr. Trice, of the I. & G. N. Railway system. But a few years ago he was a section foreman. Today he is the manager of that great system and is one of the best posted railroad men in the country. There are hundreds of such examples. Vernon Hornet.

LISTEN!

Let us figure with you on

A DIAMOND

We guarantee satisfaction.

GIVE US A TRIAL.

We have just received a new supply of very fine

PERFUMES

Come in and get a spray.

See our FOUNTAIN SPRINGS and HOT WATER BOTTLES.

Remember we have everything in the Drug line and we appreciate your patronage.

ROBERTSON DRUG STORE

Indiana Avenue.

DR. H. A. WALLER

DENTIST

Crown and Bridge work a specialty.

Office—Over Robertson's Drug Store.

Wichita Falls, Tex.

FOR FIRST-CLASS

Plumbing Work

of all kinds call on

A. L. TOMPKINS, The Plumber.

He also carries a nice line of water supply goods, bath-tubs, rubber and cotton water hose, etc. Office on door south of Robertson's drug store. If you want anything done that everybody else has tried and failed, call on us and let us fix it for you. WICHITA FALLS, TEXAS.

W. H. H. THATCHER

STOVES, SHELF WARE AND TINWARE

If one gets worsted the other does. The rich and the poor share the same at Thatcher's Hardware Store. You will find at my place a well assorted stock of Hardware goods at fair prices. Please come and see me, examine my goods, investigate my methods of business and if you are fair-minded you will buy.