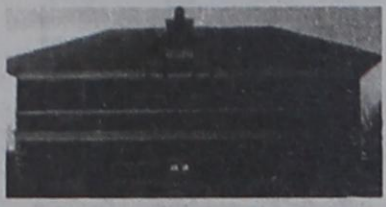


Baird Star

Callahan County Star
888-227-1708 or
254-629-1707
Fax 254-629-2092
telegram@eastland.net

50¢

31¢ By Mail



The Baird Weekly Star,
Established
December 8, 1887

Volume 119, Number 10

Baird, Texas 79504

Thursday, March 2, 2006

Early Voting Sites

Three sites: the Callahan County Courthouse in Baird, the Justices' of the Peace Offices in Clyde and Cross Plains are the sites for the early voting for the Democratic and Republican Primary Elections, which will begin on Tuesday, Feb. 21. Both Republican and Democratic Primary elections will take place this year, at the above locations, according to Callahan County Clerk Jeanie Bohannon who also said that early balloting at any of the three early voting polls will be accepted for any voters in all of the seven county voting precincts.

Early voting at the Callahan County Courthouse in Baird will take place in Room #107 from 8:00 a.m. to 5:00 p.m. Mon-

Continued Inside

Burn Ban is Officially Reinstated by County Effective Feb. 27.

FRIDAY LAST DAY FOR EARLY VOTING CANDIDATES SEEK NAMING FOR GENERAL Primary is Tuesday

Qualified voters have only until Friday at 5 p.m. to vote early at the below designated locations in the Tuesday, March 7th Primary Election.

On that date voters will have to vote at their local voting site, and both parties will vote at the same sites. This election is to determine candidates whose names will appear on the November General Election Ballot.

Traditionally, candidates who win the Primary Election nod and those who do not have opponents from the other party in the General Election are considered elected, barring unforeseen circumstances.

This fact is of particular interest in two county races. Democrat unopposed incumbent County Judge Roger Corn will be the new Judge with no Republican opponent in the General election.

Veteran State



Hwy 283 Construction in Baird on the Cross Plains Hwy.

Representative District #53 Harvey Hilderbran has no opponent in the Republican race, and will also likely represent this district with no opponent in the fall general election since he has no Democrat opponent either, nor will Prct. # 2 Commissioner Bryan Farmer, incumbent District Clerk Sharon Owns, incumbent County Treasurer

Continued Inside

Friday is Last Day to Vote in Primary for State, County, Precincts...

Clyde Views Cracking Down on Buildings in Disarray, and Abandoned Cars

With the possibility of foreclosing on properties which owe back taxes, the City Council of Clyde made no decisions to either approve three ordinances since there was no quorum present.

On the advice of City-hired attorney Jean Shotts, the Structural Standards Code was discussed; she is also working on the proposed Zoning Ordinance and proposed Building Codes. Th maintenance of new construction and remodeled property is the domain of the Structural Standards Code for property Owner, with allowance for the municipal judge to inspect inside and give notice by certified mail of any substand property.

Appeals were made a procedure before the City Council "before taking any action" where standards were not met.

Repair, removal or demolition is an option if the structure is "bad enough", with a time frame set for a minimum of 30 days to a maximum of one year, if the owner brings in a plan of action being taken. Appeal of the owner can be made if the city council takes action with remonstrance to the District Court Judge.

The regulation of unwholesom matter, including weeds, filth or carrion, was the next matter which fell under the Public Nuisance Ordinance, which did not have statutes in existing ordinances for procedures to take for giving notice to property owners. For in fire hazard conditions, the new ordinance would give "the property owners seven days after written notice to mow their property or the city could mow it and charge...owners".

Here Shotts make the statement that Callahan Cty. Appraisal District could foreclose. The proposed ordinance provides for annual notices by certified mail to owners who won't maintain their properties and a lien is applicable if the owners

Baird Head Start Now Accepting Applications

A free child development pre-school program is available to qualifying families through Central Texas Opportunities, Inc. Head Start.

Limited space is available for children three and four years old to help them make the transition to elementary school. Eligible children receive individualized teaching and a variety of educational activities through Creative Curriculum. These stimulate mental, emotional, physical and social growth.

"Central Texas Opportunities, Inc. is a viable and substantial resource for Coleman, Brown, Callahan, Eastland, Comanche, McCulloch and Runnels County."

fails to pay for any work by City of Clyde.

When next to a residential area, the city can mow property through an emergency abatement, according to the new ordinance.

Junked vehicles within the city limits was discussed and this applies to vehicles in Texas which are in a state-right-of-way including on private property. The owner of the land is responsible if not the car's owner. 10 days is the notice time before the city will tow. Appeal before the council is provided by the ordinance under consideration.

Junked vehicles are considered if it's missing its current license tags or inspection stickers, or is dismantled, wrecked or inoperable in any way. Shotts presented a building code proposal for the City of Clyde. Builder Bill Coats recommended that the city council use inspectors through Texas Residential Construction Commission, which regulates the builders and subsumes all construction remodelling businesses. The code is actually expanded by the TRCC as well as maintaining all new construction codes; it requires all builders to warranty all new homes up to 10 years. Inspectors come to the building site three times, the first to require the concrete slab poured to specification, the second to make the sheetrock and electrical/plumbing inspection and the final before completion, which covers everything including the air conditioning and heating and all appliances.

Also discussed with Shotts was the proposed Zoning Ordinance which has been reduced from 120 pages to 30 pages of documents.

The Zoning Ordinance does not have regulations prohibiting parking vehicles on grass instead of driveways according to Shotts, since Mayor Steve Livingston said that any such requirements is "overbearing".

Before approving any Zoning Ordinance, Shotts said the city be required to publish notice of a Public Hearing, one of several meetings of the city council on the proposed Zoning Ordinance according to City Administrator Tim Atkinson.

More currently, on Feb. 14, the Clyde Council approved seven consent agenda items including the ordinance to re-

PROJECT GRADUATION MEETING

There will be a Project Graduation Meeting on March 1, 2006 at 6:00 p.m. in Lauren Rodriguez's classroom in the Baird High School building. If you have some quilt raffle tickets and gas raffle tickets with the money you would like to turn in, please bring them to the meeting.

Wylie Plays Clyde in District 3A Showdown

As of last Fri. night Axtell outplayed Eula and they dropped out of the post season with a record of 27-7.

14 Points were a lead for Hendley of Eula and the final score was 45, 41.

The season isn't over for Clyde who defeated Levelland in 3A area playoffs and Jacob

Agnew got 13 points with 11 in the fourth quarter. Placing with a final win at 51-45 Clyde coach Jay Ray commented that the plays which he excelled in offense, Agnew also played well defensively in the late game especially.

In play on Tues. at Moody Coliseum Wylie

Continued Inside Clyde

AN OUTDOOR ENVIRONMENT BY ANY PERSONS IS PROHIBITED.

2. COMBUSTIBLE MATERIALS SHALL SPECIFICALLY INCLUDE BUT ARE NOT LIMITED, TO FIREWORKS, AND ANY OTHER PYROTECHNIC MATERIAL WHICH IN THE MANNER OR MEANS OF ITS USE COULD RESULT IN A WILDFIRE.

3. PLEASE SEE FOLLOWING ATTACHMENTS A AND B FOR FURTHER RESTRICTIONS ON WELDING AND OUTDOOR GRILLING.

In accordance with the Local Government Code, a person who knowingly or intentionally violates this order, commits a Class C Misdemeanor, punishable by a fine of up to \$500.00.

This Proclamation shall take effect immediately from and after its issuance.

THE PURPOSE OF THIS ORDER IS THE MITIGATION OF PUBLIC SAFETY HAZARD POSED BY WILDFIRES DURING THE CURRENT DROUGHT CONDITIONS BY CURTAILING THE USE OF ALL COMBUSTIBLE MATERIALS.

ORDERED THIS THE 6TH DAY OF JANUARY, 2000:

- (s) Roger Corn, Callahan County Judge.
- (s) Harold Hicks, Commissioner Precinct #1.
- (s) Bryan Farmer, Commissioner Precinct #2.
- (s) Tommy Holnd, Commissioner Prct. #3.
- (s) Doris Grider, Commissioner Pct. #4

ATTACHMENT A
Our County and the community of Cross Plains have been ravaged by fire, fueled by high winds and low humidity. This proclamation was put in place for the protection of the Citizens and their property of

the Citizens and their property in Callahan County. It was not intended to take away a person's livelihood. Welding will be permitted if the proper precautions are taken.

1. The individual welding must have a spotter.
2. Two wet extinguishers must be available.
3. Must have sufficient supply of water on hand at all times.
4. Must have water sprayer available for use.
5. Must wet down sufficient area (and rewet as often as necessary.)

The safety precautions must be taken and also, please use common sense and good judgement if the conditions are windy. If the job is not an emergency put it off until another day.

We are in a disaster situation, violators may be charged with a class C misdemeanor, with a maximum fine of \$500. An individual, or individuals, if fire occurs. If there is a fatality, one could face possible felony charges.

ATTACHMENT B

Our County and the community of Cross Plains have been ravaged by fire, fueled by high winds and low humidity. These restrictions were put in place for the protection of the Citizens and their property in Callahan County.

1. Individual grilling must Attend the Grill at all times.
2. Must have sufficient supply of water on hand at all times.

We are in a disaster situation, violators will be charged with a Class C Misdemeanor, punishable by a fine of up to \$500.00. An individual or individuals could be liable for damages, if fire occurs. If there is a fatality, one could face possible felony charges.

Executive Order of Callahan County

WHEREAS, BY PROCLAMATION ISSUED JANUARY 6, 2006 the Commissioners' Court of

Callahan County declared a state of disaster for Callahan County, resulting from: **The Potential Threat of Wildfires due to Drought and Adverse Weather Conditions:**

WHEREAS, said State of Disaster requires that certain emergency measures be taken pursuant to the Texas Disaster Act of 1975 relating to Emergency Management.

Now, THEREFORE, the following regulations shall take effect immediately upon issuance of this order and shall remain in effect until the state of disaster is terminated.

1. THE USE OF COMBUSTIBLE MATERIALS IN

D.P.S. Report 2-19 until 2-25-

Cases Investigated	48
Warnings	58
Complaints	1
Driving while intoxicated	2
Public intoxication	5
Accidents	1

Baird Little League Announces Fundraiser

Baird Little League has made plans for its 2006 fundraiser. The Little League will be selling T-shirts featuring our three Little League teams, the Coyotes, Mustangs, and Cubs as well as two t-shirts designed for showing your support of the Baird schools, not particular to any one activity. They include the Bear Nation t-shirt which features a red, white, and black flag with a red bear paw on it, and the BHS Iron Cross t-shirt. The t-shirts will

sell for \$13 and \$17 (long sleeve). The order deadline is March 18, 2006. Order forms may be found at the gym during BYB games on Saturdays, or downloaded from the internet at <http://eteamz.active.com/bairdcoyotes/handouts/> where color depictions of the shirts can be viewed. Forms may be returned to the gym on Saturdays, to Baird Little League, PO Box 703, Baird, TEXAS 79504 or to Shane Deel.

Baird Little League Signups Continue

Signups are continuing for Baird Little League for children 5-12. Forms have been sent home from school, may be downloaded from the internet at <http://eteamz.active.com/bairdcoyotes/handouts/>, or

may be picked up Saturdays during the Youth Basketball games. The forms may be returned along with the \$35 registration fee to the elementary office or the gym during the Youth Basketball games. Signups will continue through March

Notice

NOTICE TO CONTRACTORS OF PROPOSED TEXAS DEPARTMENT OF TRANSPORTATION (TXDOT) CONTRACTS
Sealed proposals for contracts listed below will be received by TXDOT until the date(s) shown below, and then publicly read.

CONSTRUCTION/ MAINTENANCE/ BUILDING FACILITIES CONTRACT(S)

Dist./Div: Abilene
Contract 6137-48-001 for STREET SWEEPING in CALLAHAN County, etc will be opened on March 22, 2006 at 1:30 pm at the District Office for an estimate of \$98,170.40.

Plans and specifications are available for inspection, along with bidding proposals, and applications for the TxDOT Prequalified Contractor's list, at the applicable State and/or Dist/Div Offices listed below. If applicable, bidders must submit prequalification information to TxDOT at least 10 days prior to the bid date to be eligible to bid on a project. Prequalification materials may be requested from the State Office listed below. Plans for the above contract(s) are available from TxDOT's website at www.dot.state.tx.us and from reproduction companies at the expense of the contractor.

NPO: 19339
State Office
Constr./Maint. Division
200 E. Riverside Dr.
Austin, Texas 78704
Phone: 512-416-2540

Dist/Div Office(s)
Abilene District
District Engineer
4250 N. Clack
Abilene, Texas 79604-0150
Phone: 325-676-6800

Minimum wage rates are set out in bidding documents and the rates will be part of the contract. TXDOT ensures that bidders will not be discriminated against on the grounds of race, color, sex, or national origin.
(2-23-06, 3-2-06)

Family Van For Sale: Designer
Conversion big engine, '91 GMC family van, 90,000 actual miles, white exterior/gray plush interior, pretty wood trim inside, garaged, clean, 4 captains, convertible couch, electric windows, TV/cassette, call 254-629-2413 to see after 6

Country Cowboy Church
710 N. Seaman Eastland
254-639-2155
Coffee & Donuts.....10:45 a.m.
Worship Service.....11:00 a.m.
Wednesday Night Bible Study...6:30 p.m.
Pastor Chad Gosnell

BRANDON'S DC-7ER SERVICE
Clearing Grubbing Raking Plowing
Tanks Lakes Roads Fence Rows
ALL TYPES (817) 578-4155
DIRT WORK (254) 653-7469

Medals Compare Little to the Valor of St Srg. Jeremiah Cottle

Staff Sargent Jeremiah Cottle, United States Air Force, was tops at whatever he did.

A glance at his medals and accomplishments during almost 9 years of USAF service underline that fact.

To name a few: Jeremiah Cottle flew over 30 combat mission in support of relief and humanitarian efforts in Bosnia, earning the USAF Air Medal.

He completed over 90 combat sorties during the Kosovo campaign delivering critical supplies, earning the USAF Achievement Medal and the Aerial Achievement Medal (four times).

He was awarded the Air Force Commendation Medal for support of Operation Enduring Freedom and Operation Iraqi Freedom during the month of June to August of 2003.

Add to that: Meritorious Unit Award, Outstanding Unit Award, Combat

Masonic Lodge Consignment Auction Set for March 11 in Clyde

Clyde Masonic Lodge along with the help of local auctioneer Rocky Ash are planning on having a consignment auction on Sat., March 11th at 10:00 a.m.. The purpose of the auction is to raise funds for scholarships for a Clyde and Eula senior. The Clyde Lodge has been giving the Marabough B. Lamar Metal and scholarship since 1989.

There will be a 10% commission fee for anything consigned to the auction. Donations of items will be accepted.

We have already had donations of a rototiller, Ford 3 point 2 bottom mboard plow, high lift farm jack, round bale of fertilized coastal hay, a room refrigerated air conditioner, 2 smoked brisquets, a used girls bicycle, a Cannon Copy machine.

Anyone wishing to sign or donate something to this auction can Contact: Bill Giles at 893-4409, Bob Young at 893-4909

I'M MAD!!!
At Banks who don't give House Loans because of Bad Credit, Problems or New Employment, I do, Call L.D. Kirk, HOME-LAND MORTGAGES (254)-947-4475...



Readiness Medal, Air Force Good Conduct Medal, NCO Professional Award

The lists goes on and on. "He was highly respected," said wife Lora, "and nominated for many awards."

Both he and Lora were active and dedicated members of the military community.

"We believed in what we were doing," Jeremiah says.

Staff Sergeant Cottle cared about the young air men in his squadron, and was there for them whenever they needed help.

Jeremiah and Lora Cottle came from families proud of their military background.

"When I left college to join the USAF, I embarked on a great adventure," Jeremiah wrote. "I followed in the footsteps of my dad (Vietnam), granddad (WWII), and great granddad (WWI). I successfully continued our proud military heritage...."

During the summer months of 2003, while overseas on a secret mission supporting Operation Iraqi Freedom, SSGT Cottle became ill (possibly from an injury). After several days of lying alone in a hotel, he was taken

to a local hospital.

He was then med-evacuated to the United States, and after arrival at Lackland AFB in San Antonio, he was given bed rest. Eventually he was admitted to a hospital for an MRI and treatment for pain.

Apparently he had been infected with a virus that caused the lower part of his brain to swell. The swelling pressed his spinal cord against his spinal column, causing numerous health complications, similar to that of a stroke.

After 10 months of trying to treat the condition with medications, surgery was set for August 2, 2004.

Jeremiah Cottle states that several inches of his skull and the back half of the C1 vertebrae were removed, as well as increasing the amount of space around the spinal cord.

For three weeks following the surgery, doctors struggled attempting to stop the spinal fluid leak through his neck and trying to control the swelling from the surgery.

On August 23, 2004, he Continued inside...
St.Srg. Cottle



House Leveling & Foundation Repair
By David Lee & Co.
Professional Work Since 1967
Free Estimates
No Payment Until Work Is Satisfactorily Completed
• Solid Slab • Pier & Beam • Concrete Piers • Block & Pad • Floor Bracing Steel Piers To Bedrock
Work Guaranteed Insurance Claims Licensed & Bonded
254-629-2267 1-888-486-8588
254-965-5635 915-675-6369
www.davidleeandco.com

CALLAHAN COUNTY BAIRD STAR
Publication No. (USPS 085-520)
©2006 Eastland County Newspapers, Inc.
(254) 629-1707/ 1-888-227-1708
211 Market St. Baird, TX 79504
Periodical Postage Paid at Baird, Texas under Act of Congress in March, 1870.
Published every Thursday
Publisher.....H.V. & Gaynell O'Brien
Editor..... H.V. O'Brien
POSTMASTER: Send address changes to Callahan County Star, 211 Market St., Baird, TX 79504.
SUBSCRIPTION RATES
\$16 per year in Callahan County; \$18 per year for Counties Adjoining Callahan \$22 Elsewhere

Callahan County (Baird) Star Classifieds

Mobile Homes For Sale

No Down Payment
Brand New Homes
All Single/Double Models
The Conditions:
No Late Payments-No Chargeoffs Last 12 Mo.
TRINITY HOMES
Abilene, TX RBI 34909
325-672-1490
1-866-672-1499
\$29,995

3 BR Double Wide Repo Delivered/Set on Your Lot
5 Other Repos Available!
\$19,995 FOB Abilene
Brand New 2 BR/2 Bath
5 Bedrooms/3 Bath
Payments Less than Rent
All Homes Priced Low!!
16 Other Brand New Homes On Display Today!
TRINITY HOMES
Abilene, Tx RBI 34909
325-672-1490
1-866-672-1499

For Sale:

Web Press Time available call 254-629-1707.

Ladies Justin Chukka Boots. Copper and Rustic color. Size 5-10 medium, \$64.99 at Johnson's Dry Goods, Cross Plains, TX.

Help Wanted, cont.

DQ in BAIRD has openings for day and night shifts. Looking for friendly and dependable workers. Flexible hours, vacation and holiday pay. Smoke and drug free working environment. Drug test required. Please call District Manager, Mercedes Cypert 940-550-5724.

Help Wanted

Looking for **Responsible NEWSPAPER DELIVERY FOR BAIRD, CLYDE & CROSS PLAINS**
Contract Labor
Call
254-629-1707

Help Wanted

Local trucking company seeks drivers. Home 4 nights/wk. CDL-A. 888-258-1670.

Farm & Ranch Work Lots Shredded Lot Clean Up Fencing - Painting General Construction



Owner Steve Broyles
Residential - Commerical - Farm
Free Estimates
254-629-5487 or 254-442-1558

Ann Williams Real Estate

601 Conrad Hilton Abilene www.annwilliamsrealestate.com
254-442-1880

15 Acres open with scattered oaks, water wells, deer, turkey, hogs, dove, quail. \$65,000.
29 Acres with 2-story cabin, water wells, deer, turkey, hogs, dove, quail. \$65,000.
31 Acres overlooking Lake Cisco, paved road frontage, large hill, public boat ramp directly across from the property, excellent view of Lake Cisco and beyond. \$49,500.
38 Acres mostly wooded with oak, live oak, spanish oak, hills, that overlooks two creeks that cut through the property, water wells, deer, turkey, hogs, dove, quail. \$57,000.
50 Acres mostly wooded with oak and mesquite, 2 ponds, some open area and pecan trees, wildlife includes deer, turkey, hogs, dove, quail. \$75,736.
51 Acres wooded & open with 2 fields, Interstate 20 road frontage, seasonal creek, wildlife includes deer, turkey, hogs, dove & quail. \$61,200.
58 Acres with 4 BR, 2 bath, water wells, property is mostly wooded with oaks and mesquite, deer, turkey, hogs, dove, quail. \$130,000.
60 Acres by Lake Cisco, over half a mile of road frontage, that is within 200 yds of Lake Cisco shoreline, mostly wooded, water wells, deer, turkey, hogs, dove, quail. \$72,000.
65 Acres mostly wooded with oak trees, elevation changes from hill top down to lower land, paved road frontage, wildlife includes deer, turkey, hogs, dove, quail. \$1,195 per acre.
77 Acres completely wooded, water well, wildlife includes deer, turkey, hogs & dove. \$115,000.
80 Acres mostly wooded with oak trees, 2 ponds with 1 being stocked with fish, remote, wildlife includes deer, turkey, hogs, dove, quail. \$160,000.
81 Acres wooded with oak & mesquite trees with a very large hill, 1 pond, creek. This property is surrounded by large fences, great hunting property, wildlife includes deer, turkey, hogs, dove, duck & quail. \$104,895.
83 Acres 95% wooded with oak trees, small pond, good property for hunting or a home site, wildlife includes deer, turkey, hogs, dove & quail. \$165,825.
84 Acres by Desdemona mostly wooded with post oak, live oak, spanish oak, hills, canyons, good creek that cuts through the middle, 1 smaller coastal field. Water well, one pond, potential lake site. Wildlife includes deer, turkey, hogs, dove, quail. \$1,595 per acre.
93 Acres Stephens County, mostly wooded with live oak & mesquite trees, hills, water line, electricity, big views including parts of Lake Daniels, deer, turkey, hogs, dove, quail. \$1,195 per acre.
101 Acres with house several coastal fields, several wooded areas with oak, pecan & cottonwood trees, 3 ponds, water well, deer, turkey, hogs, dove, duck & quail. \$160,000.
103 Acres Comanche County, wooded, water well, creek, 1 turn most of year round, 3 ponds, 3 water wells, oak, pecan, live oak, live oak, water well, deer, turkey, hogs, dove, duck, quail. \$1,300 per acre.
127 Acres mostly wooded with oak trees, water well, deer, turkey, hogs, dove, duck & quail. \$221,885.
127 Acres mostly wooded with oak trees, water well, deer, turkey, hogs, dove, duck & quail. \$221,885.
151 Acres with house, mostly wooded with oak and mesquite, several smaller fields, creeks, hills, 3 water wells, 3 ponds, 3 BR, 2 bath home with outbuildings. Deer, turkey, hogs, dove, duck, quail. \$221,885.
166 Acres approximately 60% wooded with oak and mesquite & 40% open, pond, creek, deer, turkey, hogs, dove, quail. \$176,550.
217 Acres 65% fields & grassland, ponds, creek, hill, 35% oak & mesquite timber, Stephens Co., deer, turkey, hogs, dove, duck, quail. \$260,400.
225 Acres high fence mostly wooded with oak trees, several fields, nice mobile home, superior genetic whitetail & fallow deer were brought onto the ranch, blinds, feeders, hills, two ponds, very nice property. \$419,000.
275 Acres mostly wooded with oaks and mesquite, hills, creek, 2 ponds, water well, very nice property, wildlife includes deer, turkey, hogs, dove, duck, quail. \$328,625.

COMMERCIAL
Approx. 2496 sq. ft. (per cad) bldg. with several rooms and CH/A on Conrad Hilton. Can be used for commercial or residential. Only 22,000. Call for details.
Duplex on 1 1/2 lots with 1 BR, living room, kitchen and 3/4 bath. CH/A on each side. \$32,000.
3 commercial buildings and a carport on several lots. \$42,000. Call for details.
Downtown building with approx. 5700 sq. ft. plus more sq. footage upstairs for storage. Call to details.
Large restaurant, approx. 3752 sq. ft. (per cad) with 3 dining rooms, 2 CH/A units, eqpt. and furniture included for \$85,000. On approx. 2 acres. Call for details.

HOMES
2 BR, 1 3/4 bath home, vinyl siding, double carport with attached storage, fenced backyard. Reduced to \$22,500.
3 BR, 2 bath home with double carport, workshop or storage bldg., lg. trees. \$27,500.
3 BR, 1 3/4 bath home, carpet just been replaced, double carport w/attached storage, corner lot, large trees. \$28,500.
2 BR, 1 bath home, separate LP, detached garage with storage, lg. trees. \$29,500.
2 BR, 1 bath home, separate office or den, CH/A, carport, storage bldg., corner property, lg. kitchen with many nice cabinets. Reduced to \$32,000.
Duplex on 1 1/2 lots with 1 BR, living room, kitchen, 3/4 bath and CH/A on each side, it can be used as single family home. \$32,000.
3 BR, 1 bath home, separate dining room, lg. trees, CH/A, carport, garage, privacy fenced backyard. \$35,000.
3 BR, 1 3/4 bath home, large rooms, CH/A, fireplace, double pane windows, enclosed back porch, metal siding, double garage, reduced to \$29,500.
2 BR, 1 1/2 bath home, large rooms, separate LP, DR and den, many kitchen cabinets, double carport, 2 storage bldgs., fenced backyard, very spacious inside & out.
3 BR, 1 3/4 bath home, recently remodeled, double pane windows, porch across front, carport, fenced backyard, storage bldg., corner lot, lg. trees. \$59,500.
Spacious 3 BR, 1 3/4 bath home with CH/A, wall decorated and landscaped, 2 living areas or dining room, lg. utility room. \$62,000.
3 BR, 1 3/4 bath home, double carport, double carport, shop or storage bldg., lg. corner property. \$62,000.
3 BR home, lg. rooms, fireplace, double pane windows, bathroom recently remodeled, surrounded by large oak trees, water well, deer, turkey, hogs, dove, duck & quail. \$63,500.
3 BR, 2 bath home, ready built, CH/A, WB hr, patio, double carport, privacy fenced backyard, storage bldg., city water plus water well. \$75,000.
5 BR, 2 bath, 2 story home. Lots of character, formal DR, office, lg. rooms, mostly wooden floors, 2 CH/A units, surrounded by large oak trees, lg. corner property, several fireplaces, fenced backyard. REDUCED TO \$76,500.
4 BR, 2 1/2 bath home with CH/A, woodburning fireplace, large living room, covered patio, carport, garage, and other extras on corner lot. \$78,900.

HOMES WITH SMALL ACREAGE
Adjoins Airport - Large 3 BR brick home on 3 fenced acres with CH/A has full bath, 3/4 bath and 1/2 bath, separate dining room, lg. kitchen with many nice cabinets, utility room, enclosed back porch, double garage, water well, deer, turkey, hogs, dove, duck & quail, many nice oak and other trees. \$50 x 50' metal building, many nice oak and other trees.
Just Outside of Town on 13 acres, 3 BR, 2 bath home with CH/A and WBFP. Many nice kitchen cabinets, great view of lake, lg. utility room, lg. corner property, partially wooded plus some coastal.
2 BR Home, CH/A, partially furnished, water well, storage building, dock, large oak trees. \$56,000.
Beautiful spacious 2 BR, 1 3/4 bath home, CH/A, WBFP, great view of lake from DR, LR, den & Master BR, lg. landscaped yard, tall oak trees, dock, shop, storage bldg., many extras. Must See! Large 4 BR, 1 3/4 bath 2 story home. 2 CH/A units, fireplace, several extra closets, balcony off master BR, large oak trees, shop, 4 vehicle carport, covered boatdock with boat lift, septic recently replaced.
Beautifully landscaped frontyard and backyard surrounds this large beautiful 2 story, 3 BR, 4 bath home with WBFP and 2 CH/A units. Large kitchen with many nice cabinets and builtins. Garage, boat dock, 2 decks, plant room, sprinkler system, many large oak trees and many extras.

Ann Williams, Broker Jimmy Williams

Callahan County (Baird) Star

**Cont. from Page 1
Early Voting**

day through Fridays, including 12:00 noon until 1:00 p.m..

In Clyde voting will be at 208 Oak St., from 8:00 a.m. until 5:00 weekdays at the Clyde J.P. Office, but closed for noon.

The Cross Plains' office of the Justice of the Peace (425 S. Main St.) will be the site for early voting, which will be closed for noon.

In Callahan County, Early voting will be from Feb. 21, until Friday, March 3.

The Republican and Democratic main Primary Election in Callahan County will be on Tuesday, March 7, at the six precinct locations listed but excluding Pct. 5, which will cast ballots at the Baird light Plant on the March 7th date. Polling will open at 7:00 a.m. and continue until 7:00 p.m. on that Tuesday.

The E-Slate electronic voting machines including the 10 new ones, approved for purchase by the County Commissioners in January, with the 17 original E-Slate machines are used as distributed among the six voting locations in Callahan County, with the majority placed at Clyde, Baird, and Cross Plains.

Republicans will be voting for three nominees for the

primary on the ballot, including an open unopposed Justice of the Peace Precinct #1 slot which is held by Incumbent Clyde resident Roy Lee Chapman.

Those running on the Republican ballot for contested races are: Rodger Hart, Burlie Taylor and Robert Hill, all running for nomination for the Cross Plains Justice of the Peace office, and those running for the contested Cross Plains Pct. #4 Commissioner race are Larry Tennon, Reggie Pillans and Cliff Kirkham.

In addition to the already seated office-holders below those Democrats announcing their candidacy for the General Election's races are Donna Bell for County Clerk and Elvan Goode for Commissioner Pct. 4.

The Democratic Primary election voters will see seven various candidates seeking votes in seven separate nominations for candidacy in the county's general election, including: County Judge, Incumbent Roger Corn, unopposed; incumbent Prct. #2 Commissioner Bryan Farmer, unopposed; incumbent District Clerk Sharon Owens, unopposed; incumbent County Treasurer Dianne Alexander, unopposed and incumbent #3 Justice of the Peace Steve Odom-unopposed.

Candidates in primary...Continued

Dianne Alexander and incumbent #3 Justice of the Peace Steve Odom: all unopposed in the Fall General Election.

D E M O C R A T S : announcing their intention for candidacy are Donna Bell for County Clerk and Elvan Goode for Commissioner Prct. 4.

Those announcing candidacy for the Republican ballot for contested races are: Rodger Hart, Bulie Taylor, and Robert Hill, all running for nomination for the Cross Plains J.P. office and those announcing candidacy for the Contested Cross Plains #4 Commissioner race are Larry Tennon, Reggie Pillans and Cliff Kirkham.

Unopposed for election on the Republican ballot is Roy Chapman running for the Justice of the Peace, Prct. No. 1.

Announcing for County Republican chair is Pat Chrane. The same spot on the Democratic ballot is open to Jon E. Hardwick for County Chairman.

Incumbent Texas Senior Sen. Kay Bailey Hutchison is unopposed for re-nomination on the Republican ballot.

Three seek nomination on the Democratic ballot to oppose her in November. They are Barbara Ann Radnofsky, Darrel Reece Hunter and Gene Kelly.

Incumbent U.S. Congressman Randy Neugebauer has no Republican opponent and will face the winner of the three-man Democratic Primary. They are Chris Bell, Bob Gammage and Rashad Jafer.

Tex. Lt. Gov. David Dewhurst is opposed by Tom Kelly for the Republican nomination, and will face the winner of the Democratic candidates in the Primary. They are Benjamin Z. Grant, Adrian DeLeon and Maria Luise Alvarado.

Democrat David Van Os will face Incumbent Republican Greg Abbott in the fall, as neither has Primary opponents.

The same is true for Democrat Fred Head and Incumbent Republican Comptroller Susan Combs. Neither has Primary opponents; Democrat Valinda Hathcox will face Incumbent Republican Jerry Patterson in the fall for Commissioner of the General Land Office.

Democrats Hank Gilbert and Koecadee Melton, Jr. seek the nomination to oppose Incumbent Republican Todd Staples for Commissioner of Agriculture.

Republicans Buck Warner and Elizabeth Ames Jones will nomination to oppose unopposed Dale

Henry in November for Railroad Commissioner.

Incumbent Republican Wallace Jefferson is unopposed for nomination and there are no Democratic candidates.

Republicans Steve Smith and Don Willett seek nomination to oppose Democrat William E. Bill Moody for Justice, Supreme Court, Place 2 in November.

Incumbent Republican Judges David M. Madina, Nathan Hecht and Phil Phonson, Places 4, 6 and 8, Supreme Court are unopposed in both parties.

Republicans Sharon Keller and Tom Price seek nomination to oppose Democrat J. R. Molina for Presiding judge, Court of Criminal Appeals.

Republican Barbara Parker Harvey is unopposed for judge, Criminal Appeals, Place 7, and Terry Keel, Robert W. Francis and Charles Holcomb are candidates for Place 8 on that Court. There are not Democratic candidates for the spot.

Incumbent Republican 11th Court of Appeals Chief Justice Jim R. Wright and Justice Rick Strange are unopposed. Justice Strange is seeking the unexpired term of Justice Wright who was named to fill the unexpired term of Resigned Chief

Justice Bud Arnot, and now is sole candidate for a full term.

The Republican ballot offers four yes or no initiatives: requiring voter photo identification; a proposal to amend the constitution protecting private property from being taken for economic purposes; a cap on government spending without voter approval; and reducing the 10% appraisal cap to 5%.

The Democratic ballot offers two referendums: increasing minimum wage to \$5.15; and right to trial by jury in civil cases.

The Precinct #1 Justice of the Peace Place which Chapman holds is for the Clyde municipality.

The Precinct #3 J.P. place sought for by Odom is for Baird.

The Precinct #4 Commissioners seat sought by Hart, Taylor and Hill Democrats, and Tennon, Pillans, and Kirkham, Republicans and Commissioners' seat sought by Goode all are for the city of Cross Plains.

Ray said, "Our record speaks for itself. I know we are disappointed and we wanted this game bad, but they were obviously the better team and they are going to represent our district well at the regional tournament," at United Spirit Arena at Lubbock.

Wylie's coach Russell Perkins commented: "They [Clyde] are one of, if not, the best teams in the state."

Clyde--Luke Hawk 1 5-8 7, Hunter Yates, 1 0-0 2, Wes Liles - 0 1-2 1, Blake Watts 6 3-4 24, Brandt Poulin 2 5-6 9 Jacob Agnew 0 2-2 2. Totals 13 16-22 45

Wylie: Jeff Wilkerson 1 0-2 2; Cody English 1 2-2 5, Gary Edwards 2 0-1 4, Michael Strong 1 0-0-2 Adam Sisneros 4 1-2 5 Case Keenum 8 6-0 23 Matt Smith 8 3-4 15 Cory Davis 1 0-0 2 Totals 24 12-20 62

Clyde 7 10 10 14-25 Wylie 7 17 20 18-62

3 pointers: Clyde 3 (Watts 3); Wylie 2 (English, Keenum/ Fouls total-Clyde 18 Wylie 20. Fouled out: Hawk---Technicals : None Wylie seasons stands: 28-2

Clyde defeated in Regional quarterfinal Cont. from Page 1...

was district-rival and the game was at 7:30 at ACU.

Clyde fell in this last of season and third defeat in as many games to the Wylie--Bulldogs.

According to Clyde Bulldogs coach Jay Ray: the point was that "their inside play" was not taken credit enough. "We know that they were good, but in the first two games it had been Keenum and the perimeter play [whose productivity Clyde focused on limiting]-that made the difference." In order to limit the outside shots, Clyde used: (according to AbilenR-N sportswriter Jason Weddle) a "tight man-man-defense instead of the zone (press) it had shown in the team's previous two meetings.

Clyde's post players came out against Wylies big and tall-compared to Clyde's short and scrappy-and Clyde's pressed the perimeter of the court so that according to Weddle: "the post entry lob pas was consistently open for Wylie."

The score came out 62-45 finally and Wylie will play Glen Rose at Texas Tech at 7 p.m. tomorrow, Friday in the Regional Semi-Finals.

Early in the game, neither team could get much steam up offensively and in the first quarter there were more fouls for both than points scored.

7-7 was the first quarter box, and in the second

PROVIDING FOR THE REGULATION AND REMOVAL OF JUNKED VEHICLES WITHIN THE CITY PROVIDING A SEVERABILITY CLAUSE, PROVIDING FOR THE REPEAL OF ORDINANCES IN CONFLICT HERewith, PROVIDING FOR PUBLICATION AND PROVIDING AN EFFECTIVE DATE.

6. Consider and act upon adopting AN ORDINANCE OF THE CITY OF CLYDE PROVIDING FOR THE REGULATION OF WEEDS, FILTH, CAR-RION AND OTHER UN- WHOLESOME MATTER; PROVIDING FOR NOTICE OF CIOLATION TO THE OWNERS OR OCCUPANTS OF PROPERTY; PROVIDING FOR THE ABATEMENT OF SUCH CONDITIONS; PROVIDING FOR FILING A STATEMENT OF LIEN FOR THE COST OF ABATEMENT, PROVIDING CRIMINAL PENALTIES FOR NONCOMPLIANCE, PROVIDING FOR REPEAL OF ORDINANCES IN CONFLICT HERewith, PROVIDING FOR PUBLICA-TION AND PROVIDING FOR AN EFFECTIVE DATE OF SAID ORDINANCE.

7. Consider and act upon adopting A RESOLUTION OF THE CITY COUNCIL OF THE CITY OF CLYDE, TX, ADOPTING THE HART INTERCIVICS eSLATE VOTING SYSTEM AS FOR THE CITY OF CLYDE, TX, ELEC-TIONS; AND PROVIDING FOR AN EFFECTIVE DATE.

7. Consider AND ACT UPON adopting A RESOLUTION OF THE CITY COUNCIL OF THE CITY OF CLYDE, TX, AUTHORIZING A GENERAL (REGULAR) MUNICIPAL ELECTION TO BE HELD ON MAY 13, 2006 FOR THE PURPOSE OF ELECTING THREE (3) CITY COUNCIL MEMBERS AT LARGE , BY THE QUALIFIED VOTERS OF THE CITY OF CLYDE, RE-SPECTIVELY, DESIGNATING ELECTION PRE-CINCTS; APPOINTING

5. consider and act upon adopting AN ORDINANCE OF THE CITY COUNCIL OF THE CITY OF CLYDE, TX,

Cont. from Page 1...

Clyde Cleanup Begins

ove dilapidated buildings, junked cars and control weeds as well as to approve the Jan. regular council meeting, an ordinance to reissue revenue refunding bonds, authorizing a Clyde City Council election for May 13, 2006 and a resolution adopting the e-Slate electronic voting system for the municipal council election.

The consent agenda items are as outlined below:

2. Consider and act upon adopting AN ORDINANCE AUTHORIZING THE ISSUANCE OF CITY OF CLYDE, TX COMBINATION TAX AND REVENUE REFUNDING BONDS, SERIES 2006; APPROVING AN OFFICIAL STATEMENT, AUTHORIZING THE EXECUTION OF A PURCHASE AGREEMENT AND AN ESCROW AGREEMENT MAKING PROVISIONS FOR THE SECURITY THEREOF; AND ORDAINING OTHER MATTERS RELATING TO THE SUBJECT.

4. CONSIDER AND ACT UPON adopting AN ORDINANCE OF THE CITY COUNCIL OF THE CITY OF CLYDE, TX, ADOPTING THE CITY OF CLYDE STRUCTURAL STANDARDS FOR THE CONTINUED USE AND OCCUPANCY OF STRUCTURES WITHIN THE CITY OF CLYDE AND PROCEDURES FOR THE ABATEMENT OF SUBSTANDARD STRUCTURES REGARDLESS OF THE DATE OF CONSTRUCTION AND IMPOSING CIVIL AND CRIMINAL PENALTIES FOR NONCOMPLIANCE; PROVIDING FOR AN EFFECTIVE DATE OF SAID ORDINANCE, PROVIDING A SEVERABILITY CLAUSE AND PROVIDING FOR THE PUBLICATION OF THE CAPTION AND PENALTY.

5. consider and act upon adopting AN ORDINANCE OF THE CITY COUNCIL OF THE CITY OF CLYDE, TX,

ELECTION OFFICIALS; ESTABLISH PAY RATES FOR ELECTION WORKERS; PROVIDING FOR NOTICE OF SAID ELECTION; PROVIDING FOR THE USE OF DIRECT RECORDING ELECTRONIC VOTING MACHINES; PROVIDING FOR EARLY VOTING; ESTABLISHING REGULAR BUSINESS HOURS OF THE CITY SECRETARY'S OFFICE ON THE FIRST TWO DAYS OF EARLY VOTING BY PERSONAL APPEARANCE; PROVIDING A SEVERABILITY CLAUSE; AND PROVIDING AN EFFECTIVE DATE.

By motion of Councilman Frank Peck, seconded by Councilman Rodger Brown, the council members approved the consent agenda items listed above.

Only two city council members were present with Clyde mayor absent, but Mayor pro tem Natalie Hermes presided. Members there were Frank Peck and Rodger Brown.

Concerning citizens' comments, Wesley Morris, owner of Wes' Automotive, spoke concerning the junk vehicle ordinance, which passed.

Also, John Caraway commented on the junked vehicle-inside city limits-ordinance and about residents' need to maintain property to mid-city street or alleyway.

Bob Young talked about the law which regulates state-owned right-of-way and also about empty garbage cans being scattered down city and state streets locally.

The meeting was adjourned at 7:24 with a majority vote by motion of Councilman Peck seconded by Brown.

Help Wanted

Career stalled out? Get a new start with Richeson Restaurants. 49-unit company now hiring for Manager at our Albany DQ.

Need to love working with people, meeting new people, drug and smoke-free environments. Apply by calling Mercedes Cypert 940-550-5724.

Thanks for reading the STAR

Obituaries

Irene Christian

CLYDE- Irene Gibson Christian, died Saturday, February 25, 2006 at a Colorado City care center.

Funeral services were held at 10 a.m. Monday, February 27, 2006 at the Oak Street Baptist Church in Colorado City with Rev. Jackie Brem officiating. Graveside rites were held at 2:30 p.m. at the Clyde Cemetery under the direction of Bailey Funeral Home of Clyde.

Mrs. Christian was born August 16, 1913 in Callahan County to John J. and Myrla (Loveless) Gibson. She was the seventh child of eight children. She attended schools in Eagle Cove and Denton Valley. She was the widow of H.A. OBobO Christian, whom she married December 14, 1932 in Baird. They moved to Colorado City from Clyde in 1960. Mrs. Christian was a very

family-oriented person, taking great pleasure in her children, grandchildren and great-grandchildren. She was a member of the Oak Street Baptist Church in Colorado City.

Survivors include two daughters, Johanna May and husband Doug of Clyde and Sherry Anderson of Colorado City; four grandchildren, Jimmy May and wife Lisa of The Colony, TX, Chris May of Comanche, Staff Sg. Zachary Anderson, who is currently serving in the U.S. Army in Iraq, and Jed Anderson of Lubbock; and two great-grandchildren, Asha Bibby of Comanche and Jacob May of The Colony.

Memorials may be made to Oak Street Baptist Church P.O. Box 703, Colorado City, Texas 79521 or to Odyssey Healthcare, 1003 FM 700 Big Spring, Texas 79720.

Obituaries

Dauphene McWatters



from 1955 until 1967, where she sold insurance, Avon, was a seamstress. They moved to Eastland in the early 1970's where she owned Granny's Café on the corner of Commerce and Dixie and was the head cook at Eastland Manor nursing home. In 1973 they moved to Dallas where she worked as a seamstress out of her home. During this time she designed and made formal dresses for the reigning Miss Texas who went on to win the Miss U.S.A. title. In the late 1970's they moved to Ranger where she baked pies and donuts and sold them out of her house, as well as selling them to local stores and truck stops. Mr. McWatters preceded her in death in 1986. She was a member of the Liberty Baptist Church.

CISCO - Dauphene McWatters, 87, of Cisco and formerly of Eastland and Ranger, passed away on Saturday, February 25, 2006, in a Cisco nursing home.

Services will be 1:30 p.m. Wednesday, March 1, 2006 at the Edwards Funeral Home Chapel in Eastland with burial in Eastland City Cemetery.

Mrs. McWatters was born in June 4, 1918 in Canton to George & Dorra (Cox) Gilliam. She graduated from Roosevelt High School in Canyon, and then attended Draughan's Business School in Lubbock. She married Ralph McWatters in 1952 and they lived in Odessa

Survivors include a son, Preston Oliphint of Orange Grove, TX; daughter, Olene Knight of Cisco; stepchildren, Sherry Stewart of Ohio, Mary Jo Ross of Lubbock and Ordie Gentry of Olton, TX; 9 grandchildren; 9 great-grandchildren; several great-great-grandchildren; and numerous nieces and nephews.

Raymond F. 'Smitty' Smith



Raymond F. "Smitty" Smith, 85, passed away February 27, 2006 at Eastland Memorial Hospital.

Funeral services will be held at 2 p.m. Thursday, March 2, 2006 in the Kimbrough Funeral Home Chapel with Rev. Bob Ferguson officiating. Burial will follow in Oakwood Cemetery under the direction of Kimbrough Funeral Home. Visitation will be from 5 to 7 p.m. at the funeral home on Wednesday, March 1.

Mr. Smith was born August 19, 1920 in San Benito, Texas to William Raymond and Judy (Roots) Smith. Raymond attended school in San Benito where he graduated in 1939. Before entering the Navy, he worked as a

welder and a machinist. In the early part of 1942, he enlisted in the US Navy and trained at San Diego NTC for three weeks, then went aboard the USS Pennsylvania where he served the remainder of his Navy tenure. He was classified as a Ship fitter in the R Div. and made SF/3c shortly after going aboard and was put in charge of the welding shop, he later advanced to SF/2c and went to Underwater Burning and Welding School. He was then appointed Ship's Chief Diver. He participated in operations of the ship, which were Attu, Kiska, Makin, Kwajalien, Eniwetok, Siapan, Tinian, Guam, Peleliu, Anguar, Leyte, Surigao Strait and Luzon. He was on board when the ship was torpedooed at Okinawa on August 12, 1945; he supervised underwater operations at that time and had been promoted to Chief Ship fitter at Meritorious Mast on February 15, 1945. He received numerous awards commendations for meritorious service and underwater operations. He was discharged on November 11, 1945. He worked as a welder

and machinist at El Paso Natural Gas until his retirement.

He is survived by his wife, Jeanette "Jan" Smith of Cisco; three sons, Gene and wife Velia Conger, Stan and wife Anna Callahan and Greg Callahan all of Cisco; sister, Betty Mae Carmichael of Austin; two nephews, Venoi Cain of Corpus Christi and Billy Cain of Denham Spring, Louisiana; 13 grandchildren, Austin, Colton, Taylor, Cooper and Montana

Thursday, March 2, 2006

Conger, Tyler, Stanley and Lauren Callahan all of Cisco. Whitney Callahan of McKinney, Chelisa Callahan of Illinois, Wilmer and Calvin Brewer of Austin; four great-grandchildren, Sirena, Harley, Michael and Hayden of Austin.

He was preceded in death by his parents; a sister, Jeanette Cain; and daughter, Tammy Stallion.

Pallbearers are Jackie Conger, Johnny Conger, Brad Turnbow, Ron Pipkin, Scott Roscoe and Kenneth Fields.

Jack Poynor

Jack Poynor, 73, passed from this life on February 25, 2006. He was at home surrounded by his loving family.

He was born in Ranger, Texas on October 14, 1932 to Dean Dorman and Nancy Jane Kiser Poynor. He married Barbara Garrett on November 9, 1981. They had 24 beautiful and loving years together.

Survivors include his wife of the home, Barbara Garrett Poynor and J. Taylor and Haley Garrett; a daughter, Cynthia Buie and her husband Garry and two grandsons Bryan and Jake Buie of Hobbs, NM; a daughter, Cathy Truelove and her husband Dan; four granddaughters, Shelby, Shannon, Shea Hutchinson and Laci Truelove; one grandson, Justin Truelove and great-granddaughter Leah Staggs of Red Oak, TX; a daughter Tracy Hahn and her husband Mike and grandson Matthew Hahn of Carrollton, TX; a son John Garrett and his wife Kristy of Hobbs, NM; a daughter Holli Garrett Hammer and her husband Jerry of Brussels, Belgium; a brother D.D. Poynor and his wife Darlene of Big Lake, TX; a sister Ruth Franklin of Ranger, TX and one niece and seven nephews.

He was preceded in death by both his parents and two brothers Willie D. and Wesley Poynor.

Jack moved to Hobbs, New Mexico in 1959 to open a new branch for The Cabot Corporation. In 1960, he opened the new Unit Shop for Watson Truck and Supply as the Rig Service Manager. Soon after in 1965, Baxter Breaux of Odessa, TX, approached Jack about forming Pemco of New

Mexico, Inc. because of Jack's innovative derrick design. By 1970, he and his first wife became the sole owners. In 1978, he offered his son-in-law, Garry Buie, a partnership in Pemco of New Mexico, Inc. At the time of his death, he was still active in the company. His knowledge of the well servicing industry was known throughout the United States, with competitors often saying "Jack is the most knowledgeable man about rig repairs and designs." If anyone ever had a question, Jack was the first to be called. Over the years he passed on his knowledge to Garry, who along with his wife Cynthia, will continue to own and operate Pemco.

A celebration of his life will be held on March 2, 2006 at the First United Methodist Church located at 200 East Snyder in Hobbs, New Mexico at 2 p.m. with Pastor Jack Lott officiating. Following the service, interment will be held at Prairie Haven Cemetery. May Funeral Home will hold visitation from 9 a.m. to 7 p.m. on Wednesday, March 1, 2006.

Pallbearers are Ray Flowers, A.A. Aaron, Gale Holliman, Pat McDonald, Bryan Buie, and Jack Buie. Honorary pallbearers will be Billy Baker, Jerry Belcher, Billy South, Earl Chapman, Tom Jones, Guy Baber, Sr., and the employees of Pemco of New Mexico.

In lieu of flowers, donations may be made to The Chorus of Angels in care of Joe Arrington Cancer Research and Treatment Center, attention Darlene Condren, 4101 22nd Place, Lubbock, TX. 79410 or Emmanuel Baptist Church P.O. Box 718, Hobbs, NM 88240.

Never Paint Again!
VINYL SIDING & WINDOW REPLACEMENT
 FREE ESTIMATES • FINANCING AVAILABLE
FARM & HOME BUILDERS
 5206 HICKORY - HICO, TEXAS 76457
 1-254-796-4507 OT TOLL FREE 1-866-219-1923

Mary Youvonne McMillan
 Texas Real Estate Broker
 254-442-3846 254-653-8102 cell
 NEED NEW HOME & ACREAGE LISTINGS. IF YOU WANT TO SELL WE WILL DO IT FOR YOU. www.mcmillanrealestate.net
 1108 Ave. A, Cisco. Neat brick home, 2 BR, CH/A, 250x115 lot, only \$35,000.
 28.177 ac; old building, access to electricity and water; one stock tank, no minerals on Hwy. 6 N. of Cisco to right of Country Club Rd., sign on property, \$70,442 firm.
 4 lots w/2 buildings 1000 Block of W. 8th, Cisco. Gas tanks gone. \$24,000.
 813 Conrad Hilton - Commercial Bldg. - \$22,500.
 95 acres +/- -Scranton area; 1/2 shinnery, 1/2 open, 1/2 owned minerals being conveyed w/sale, \$159,125.

Discount RATES without discount SERVICE.
 It's no accident more people trust State Farm to insure their cars. Call today.
 Eddie M. McMillan
 State Farm Agent
 Cisco, TX 76437
 Bus: 254-442-1671
 eddie.mcmillan.b3vl@statefarm.com
 LIKE A GOOD NEIGHBOR STATE FARM IS THERE.®
 Providing Insurance and Financial Services
 State Farm Mutual Automobile Insurance Company (not in NJ), Bloomington, IL 5-104

MAJESTIC THEATRE
 629-1322
WALK THE LINE
JOAQUIN PHOENIX
REESE WITHERSPOON
ROBERT PATRICK
PG-13
 STEREO SURROUND
 Fri. • Sat. • Sun. • Mon.
 All Shows: 7:30 p.m. - \$4.00
 10 - Admission Passes - \$35.00
 5 - Admission Gift Pass - \$20.00
 Adults Only Balcony Ticket - \$5.50

AMERI-TEX
 3102 W. Walker
 Breckenridge, TX 76424
A/C HEATING & ELECTRICAL
 COMMERCIAL & RESIDENTIAL
254-559-1299
 Carl Guynes cell 254-559-4204
 TECH 20918 VTACLB016576E
 Chris Diaz cell 254-559-4205

Big Country Cycles
254-442-3909
Motorcycle Cruisers Sales & Service
WE SELL AND INSTALL MAJOR NAME BRANDS OF MOTORCYCLE AND TRUCK ACCESSORIES

Accessorize your ride!
www.bigcountrycycles.com
 Commercial discounts available
 Service Road & Ave L Cisco, Texas 5-22

Ford HOOD KING MOTOR CO. Ford
 1308 E. Main Eastland 254-629-1786
 All prices +TT&L

<p>2005 Ford Focus ZX4 SE 4 Dr., Auto, All Power 2 To Choose From</p> Sale Price \$11,995⁰⁰	<p>2005 Ford Taurus & Mercury Sable All Power, V6, Auto 3 To Choose From</p> Sale Price \$12,995⁰⁰	<p>2005 Ford Crown Victoria LX Leather, Loaded, Stk. # P7054</p> Sale Price \$14,995⁰⁰
<p>2005 Lincoln Town Car Signature Loaded, Stk. #P2489</p> Sale Price \$24,995⁰⁰	<p>2005 Ford Freestar Vans 3rd Seat, Rear Air 2 To Choose From</p> Sale Price \$14,995⁰⁰	<p>2004 Ford F350 Crew Cab XLT Diesel, Auto, 4x4, Stk. #6T6427A</p> Sale Price \$21,995⁰⁰



The Shiloh Quartet

Shiloh In Concert At First Baptist Church, Eastland Sunday

On Sunday, March 5, First Baptist Church of Eastland will host an incredible evening of inspiring Christian music at its' finest when they open their doors for Shiloh in concert beginning at 6 p.m.

Celebrating 10 years of ministry and considered by many as the premier male quartet from the State of Texas, Shiloh is a group who is definitely "on the rise" in Christian music today. The history of Shiloh has given them an unusual and very unique position in Christian music. Shiloh first came together out of the same local church and choir ministry, and they have been blessed with an extraordinary and unbelievable storyline. Through diverse personal circumstances, God brought each member together from four distinctively different walks of life and He has placed in each of them an incredible vision for people. Collectively, it has always been Shiloh's desire to bring laughter, encouragement, joy, and true sense of victory in Christ to all music lovers and concert goers across the country. Through their personal walk and declaration of their relationship with Christ, added and blended with their unique musical talent, Shiloh has an exceptional way of sharing a very real and relevant message of the personal need for Christ. Because of their dedication and faithfulness of service, God has produced a ministry that has reached far beyond the borders of their home state of Texas. Shiloh's ministry now extends around the world! During the ministry life of Shiloh, they have had the opportunity of performing and ministering to hundreds of thousands of individuals nationally, as well as internationally. A testimony of that impact was their participation in ministry opportunities during the 2000 Summer Olympics held in Sydney, Australia, as well as their recent missionary journey to Venezuela and future plans for their 2006 Holy Land Tour.

With the completion of their seventh recording project, Shiloh is on the path to even greater success as they celebrate 10 years. Their accomplishments and recognitions continue to grow. From 2004 to present, Shiloh has had 5 consecutive singles reach the Top 80 radio charts, and their single "Take Me to Jesus" reached the Top 40. They were also nominated by Singing News Fans as Top 5

nominee for Horizon Group of the year in 2005. Shiloh was also recognized by Southern Gospel Music Fanfair/US Gospel News fans as a Top 5 nominee in 10 of the 21 music categories at the 2005 awards. What makes this group special is how their program encourages individuals through testimony and incredible songs. Shiloh has been able to bridge a gap stylistically and provide all age groups with a great variety in music styles. More important than the style of music which is performed, Shiloh's ministry illustrates how relevant a real

relationship with Christ can be, and how important and wonderful worship of Christ is in the life of a victorious Christian.

Make plans to come and worship with us at First Baptist Church of Eastland as we host Shiloh on Sunday, March 5, at 6 p.m. in our evening worship service. For more information regarding this incredible group, please visit their website at www.shilohquartet.com

For more information regarding this exciting concert event, please contact First Baptist Church of Eastland, 405 S. Seaman St., 254-629-3355.



A HELPING HAND--During hard times good people show up to help. Shortly, after the fires in Cross Plains and Eastland County a hay drive was established by members of The Cowboy Church of Brownwood and Shawn Hohertz (325-642-7500).

This load was donated by Wes Marty owner of Marty Charolais in Cleburne, TX. After hearing about the devastation, Wes volunteered to donate a load of hay for the farmers and ranchers victimized by recent fires. This load of hay was delivered to the Texas Cattle Exchange in Eastland. Mr. Bill Horn is handling the disbursements of the donations. Jerry Richardson of Brownwood donated the transportation for this load.

Kokomo News

By Zelda Jordan

Wasn't the rain wonderful that we received on Friday and Saturday? The answer to our prayers. Around two inches fell here in the community. And I heard a report or two of some small hail during the thunderstorm that came through Friday night. The wind was real high on Monday, but at least the sand and "black stuff" didn't blow, thanks to the rain. Let's keep rain in our prayers as we need a lot more to bring the grass up and stop all the fire danger.

Bro. Jim Haggard of Strawn preached at the Kokomo Baptist Church on

Sunday, February 26th. My apology to James Hunter and Bro. Haggard for having the wrong name in last week's paper. I was given the wrong information.

Judy and Sarah Porter and Scarlett Torres of Austin visited on Sunday with Oren and Norma Webb. They had lunch at Rafter H BBQ in Eastland to celebrate Norma's birthday.

Margie and Gary Bragg of Comanche visited with Betty and Larry Strube.

Joe and Glynda Bond visited in Copperas Cove with Shannon, Stephanie, Raegan, Sydnie and Joey Bond and

Raegan and Sydnie returned home with them for a visit. Glynda, Raegan and Sydnie met Stephanie and Joey in Goldthwaite on Friday for the girls to return home.

Glenda Black of Abilene spent Tuesday night with Zelda Jordan. Norma and Oren Webb visited with Zelda on Monday.

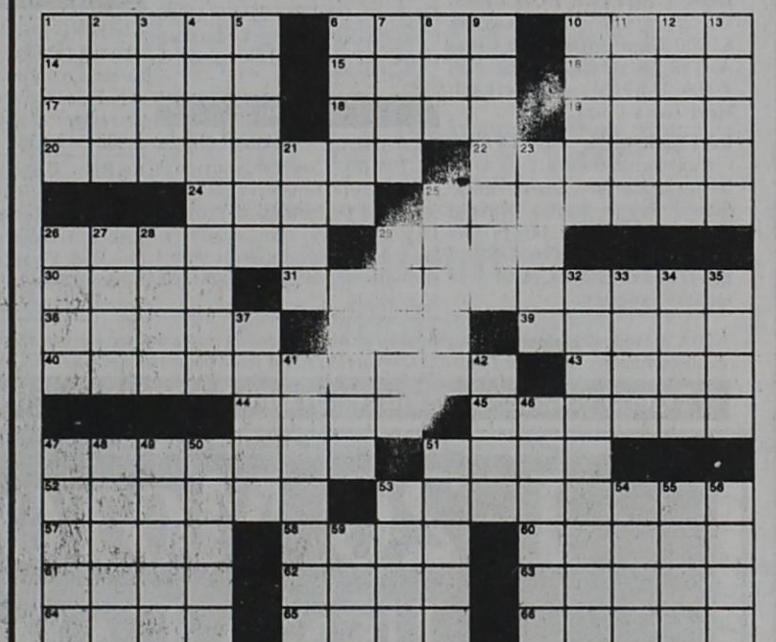
Kenneth and Maggie Eaves of Eastland visited with Delmon Eaves.

Oren and Norma Webb visited with Woodrow and Helen Browning.

Several in the community have been "under the weather" with cold symptoms during this past week, including this correspondent. Remember us, and all others who are ill, in your prayers.

★ ANOTHER MIKE JONES AUCTION ★
★ TODD WEB PRESS ★ LIVE/ONLINE ★
PRIME COMMERCIAL PROP / DOWNTOWN SMTHVILLE
TUESDAY • MARCH 7 • 9:45 AM
205 E. ST (LOOP 230) SMITHVILLE 78957
REAL ESTATE • VEHICLES • EQUIPMENT
 Goss Community Web Press w/ Goss SSC Folder w/Head Perf & Circumventuals, Drop Down Ink Fontains, Softening System & Guards • Rolled Paper Inventory-50# Offset (13 1/2-35"), 30# Newsprint (14 1/2-35"), Hi-Brite 32, 45# (17 1/2-35") • Stoesser Auto Plate Bender • 91 INTL 24 • Suzuki Grand Vitara • Challenge Knife Trimmers • Panther Image Setters
MJAuctions.com ★ 972-387-1110

CROSSWORD PUZZLE



- Across
- Sherman, '70s teen idol, singer and one of the stars of the TV show, Here Come the Brides.
 - Gray, played Colonel Wilma Deering on the TV show, Buck Rogers in the 25th Century.
 - Center of population, commerce and culture.
 - A drama set to music; consists of singing with orchestral accompaniment and an orchestral overture and interludes.
 - Anything that serves as an enticement.
 - A member of the Native American tribe living south of Lake Erie in the 17th century.
 - Any of several varieties of two related vines, cucumis melo or citrullus lanatus, widely cultivated for their edible fruit.
 - To actively second or encourage (as an activity or plan).
 - Any of various small, similar or related birds.
 - Covers so as to inhibit, suppress or extinguish.
 - To disarrange or rumple.
 - To surrender possession of, especially by treaty.
 - Fills joints in masonry with mortar.
 - Bent backwards.
 - A river in northeast England flowing generally east to the North Sea.
 - An island in Indonesia, east of Java.
 - Any standards of measurement or judgment.
 - Having a certain width from side to side.
 - An area of soft, naturally waterlogged ground.
 - A mollusk, having a muscular foot on which it slowly glides out.
 - Repeats, duplicates or reproduces, especially for experimental purposes.
 - The bone of the forearm on the side opposite the thumb.
 - Structural members that support the shape of something.
 - Kay, former lead vocalist of the alternative rock group Letters To Cleo.
 - Carmen, replaced Pamela Anderson on Baywatch and was married to Dennis Rodman.
 - To remain undecided or unsettled.
 - Passes along by or as if by relay.
 - A volcanic island of Indonesia between Sumatra and Java.
 - Eggs or young of a parasitic insect, such as a louse.
 - Abbreviation for the Institute of Electrical and Electronics Engineers.
 - A ringlike coral island and reef that nearly or entirely encloses a lagoon.
 - Either of two eastern North American plum trees or shrubs, having dark purple fruit.
 - Threatening or ominous.
- Down
- Slang for old car.
 - Nancy, nominated for a Tony for leading actress in the musical, Urinetown, the Musical.
 - Bartok, Hungarian composer of "Bluebeard's Castle."
 - Of or relating to the bronchi, the bronchia or the bronchioles.
 - A native or inhabitant of New England.
 - To make proud or joyful.
 - Applies pressure and friction to a surface.
 - Anger; wrath.
 - Irritates; vexes.
 - A constellation in the equatorial region of the Southern Hemisphere near Aquarius and Eridanus.
 - Of or relating to Ireland or its people, language or culture.
 - A descriptive name or epithet.
 - Affirmative replies.
 - Mary Baker, founder of the Church of Christ.
 - Removes from a place or position occupied.
 - Any of numerous grasslike plants of the family Cyperaceae, having solid stems, leaves in three vertical rows and spikelets of inconspicuous flowers, with each flower subtended by a scale-like bract.
 - Abbreviation for abbreviation.
 - Infrequently occurring; uncommon.
 - A sharp hollow sound, as of a horse's hoof striking the pavement.
 - Proceeds rapidly; hurries.
 - Overwhelms as if with a flood; swamps.
 - To demand or ask for a meeting of.
 - Archaic plural of cow.
 - To kill violently.
 - Not clean.
 - Vulgar; Bullhistle.
 - John, plays Adam Kane on the TV show, Mutant X.
 - The capital of Turkey.
 - Haeckel, a German biologist who coined the words, "phylum, phylogeny and ecology."
 - Pinheiro, a Brazilian pop bossa nova singer.
 - Brand, a Los Angeles Clippers power forward.
 - Examines carefully, as in planning a crime.
 - Plunders or pillages.
 - Any of various brown, often very large, seaweeds of the order Laminariales.
 - Large amounts or numbers.
 - Another name for margarine.
 - Baldwin, star of the movie, The Shadow.
 - Self-esteem or self-image.

This puzzle sponsored by
EBAA IRON INC
 P. O. Box 877 Eastland, TX 76448

Eastland County's Gift & Antique Stores

At Aunt Jane's you're sure to find something for somebody. Items including: Victorian, wicker & rattan furniture, mirrors, pillows, glassware, antique and collectable toys, jewelry, dolls, antique clothing & hats, antique paintings, Coca-Cola © collectables, Porter Twin Disc Music Box Cds & Tapes, Nick-knacks & more.

Aunt Jane's is open Thursday through Saturday from 10:00 a.m. to 5:00 p.m.

Aunt Jane's 604 Conrad Hilton
 Cisco, TX 254-442-1637

The Man's Store
 Antiques and Collectibles

Furniture, Porcelain, Gold and Silver Jewelry, Cast Iron, Glass, and Other Fine Collectibles.

616 Conrad Hilton Ave.
 Cisco, TX 76437
 254-442-2209
 Mon - Sat 10:00 to 5:00

Aunt Jane's

Antiques, Furniture, Toys, Glassware, Jewelry

604 Conrad Hilton
 Cisco, Tx
 254-442-1637
 Thur. Fri. Sat. 10-5

Charlie's Woodshop
 Antiques and Wood works

1306 Conrad Hilton Ave.
 Cisco Texas
 254-631-3807

Be Apart of Eastland County's Antique Section

Contact
Gary Grady
 At 254-629-1707

To Be placed into the Gifts & Antique Section contact Gary Grady at 254-629-1707

Eastland / Callahan County Newspapers
 215 South Seaman - Eastland, Tx 76448

Tidbits...By H.V.O.

ARE YOU Czech? If not, if you want to learn more about the Texas Czech Genealogical Society you're welcome to a get-together in Fayetteville on March 18, at which you can trace your background, tour two old, old churches, enjoy a barbequed chicken lunch and hear guest speakers. Cost, \$7; information, call Joann at 713-817-4679...Maybe we should have genealogical meetings in our county.

OUR FRIEND, Mr. Carl Bailey of Cisco shares a communique that he initiated on social security and other economic issues and the reply to him from the White House. Deborah K. Hair, special assistant to the president and director of correspondence and presidential messages, wrote in part to Mr. B.: Thank you for letting President Bush know your views. Hearing from a diverse group of Americans is important to the President. He has an aggressive agenda and his Administration is working hard to change the tone and direction in Washington. President Bush wants a Federal government that is active, but not limited; engaged, but not overbearing. The President welcomes information from Americans across the country, and he values your input." Mr. Bailey now considers himself among a "diverse group of Americans."

WRITER BAILEY also includes a copy of a letter from the Denver Post: Reasons to disapprove of President Bush - To the approximately 40 percent of people who approve of the job President Bush is performing, may I offer that the following is what this administration and the Republican Congress have given us over the last five years:

- Invasion of a sovereign nation
- Thousands of dead and injured
- Billions of dollars wasted
- Social Security debacle
- Medicare supplement

- mess**
- Largest deficit in history
 - U.S. isolated from world
 - Malpractice suits disabled
 - Bankruptcy declaration disabled
 - Illegal immigration rampant
 - Spying on Americans
 - Outing U.S. agents
 - Overextended military
 - Largest-ever gap between rich and poor
 - Highest oil and gas prices ever
 - Highest medical costs ever
 - Halliburton
 - Osama Bin Laden free and taunting
 - A China that's an economic and military threat
 - An aura of fear hanging over the nation
 - The response to the Katrina catastrophe
- I just want to know that that 40 percent is thinking.
Vivian Taylor, Aurora

A WELCOME note from Pearson Grimes III, an Eastland County native now of Houston, who recalls to us his memories of delivering the local newspapers "back in the '50's". He describes how the paper boys folded their papers in the alley which separated the newspaper from a locker plant, slaughter house. "We'd watch the cows being killed (with a mighty sledge hammer blow to the forehead)

and their organs, etc., thrown into various tubs. Being small town boys we thought nothing of it. Through the years, when occasionally relating this experience, I have thoroughly horrified my friends, particularly the ladies." (The business was still in operation when we came here in '61, and we had to keep our back doors tightly closed on certain days.)

RAINFALL in '05 in the 17-county West Central Texas National Weather Service Station (San Angelo area that does not include Callahan or Eastland Counties) ranged from 12 to 30 inches- the most of which fell in one month. Our area, out of Fort Worth Station, will probably report even less, and **THE BURN BAN IS STILL IN EFFECT.**

Here's something to clip and tape to your refrigerator door:
Know the warning signs for Heart Attack & Stroke: Heart Attack:
• Uncomfortable pressure, fullness, squeezing or pain in the center of the chest that lasts more than a few minutes, or goes away and comes back.
• Pain or discomfort in one or both arms, the back, neck, jaw, or stomach.
• Shortness of breath with or without chest discomfort.
• Other signs such as breaking out in a cold sweat, nausea, or lightheadedness.
Stroke:

- * Sudden numbness or weakness of the face, arm or leg, especially on one side of the body.
 - * Sudden confusion, trouble speaking or understanding.
 - * Sudden trouble seeing in one or both eyes.
 - * Sudden trouble walking, dizziness, loss of balance or coordination.
 - * Sudden severe headache with no known cause.
- For more info, contact your nearest AHA or call: 1-800-AHA-USA 1-(1-800-242-8721) or online at www.americanheart.org
- A RECENT** mention here of a song we heard (for the first time) at the graveside service for the mother of a friend has brought interesting response from several readers. The song was "Supper Time", and we guessed that the version we heard was a recording by the late Johnny Cash. We were moved by the words and the message, and so commented...Enthusiastic Polly Alexander of Ranger, a highly qualified singer herself, came bounding (and those who know Polly, understand the word "bounding") into the office last week with a copy of the sheet music and a tape of a friend's version of the song. The song was copyrighted in 1950 (as a poem?), author unlisted, and put to music in 1968 by Singspiration, Inc. Polly also shared that Roland Smith sang the song at her daddy's (Clarence Mitchell, a fiddler) funeral and Al Anderson of Cisco and the late Bob Weeks of Eastland accompanied

him...The first verse of the song recalls how one is called in at dusk from play by a mother who has supper ready "at set of sun." The second verse tells how at her bedside with angel wings winning the air, "she heard the call for supper time in heaven." In the third verse the writer has visions of his mother, "yonder", and her familiar voice again, "The banquet table's ready up in heaven. It's supper time upon the golden shore." In the chorus, the last words are "The shadows lengthen fast; we're going home at last."...Who can't but associate this with youthful memories of being called in when darkness fell, scrub ball, kick-the-can or tree climbing ended, and it was time to head in for supper. (Does anybody write songs with heart today?)

Thursday, March 2, 2006

TEXAS STATEWIDE CLASSIFIED ADVERTISING NETWORK

TexSCAN

TextScan Week of February 26, 2006

ADOPTION
Note: It is illegal to be paid for anything beyond medical and legal expenses in Texas adoption.
PREGNANT? CONSIDERING ADOPTION? Talk with caring people specializing in matching birthmothers with families nationwide. Expenses paid. Toll free 24/7. Abby's One True Gift Adoptions, 1-866-413-6292.

AUCTIONS
1956 FORD THUNDERBIRD to be auctioned at the 25th Annual Cox Collector Car Auction, Branson, Missouri April 21, 22, 23. Consignment or bidding information: 1-800-335-3063. www.bronsonauction.com

BUSINESS OPPORTUNITY
ALL CASH CANDY ROUTE. Do you earn \$800 in a day? Your own local candy route. 30 machines and candy. All for \$99.95. 1-888-625-5481, Multi Vend, LLC.

DRIVER-SIGN-ON BONUS! \$2,000 - Regional Solos. \$5,000 - OTR Teams. \$1,000 - Contractors. Great home time. Health insurance and 401(k). Class-A CDL required. 1-888-253-1872. US Xpress, www.xpressdriver.com.

DRIVERS-CDL TRUE LEASE TO OWN PROGRAM. Low payments/short term lease. Average \$1.11/mile plus fuel surcharge. No hazmat. No forced dispatch. FFE Transportation, 1-888-864-0012.

DRIVERS/DRIVING SCHOOL graduates wanted. Tuition reimbursement. No waiting for trainer career. Passenger policy. No NYC. Guaranteed home time. Dedicated and regional available. USA Truck, 1-866-483-3413.

DRIVERS - MORE HOMETIME Regional/OTR. More money. Job security. Dedicated runs. Immediate benefits. 6 months T/I Class A-CDL. Call Wendy or Bob, 1-800-666-0380. www.natflight.com

DRIVERS! NEW YEAR, NEW CAREER! Top pay and great home time. OTR. Regional & Dedicated. 30 machines and candy. All for \$99.95. 1-888-625-5481, Multi Vend, LLC.

"FREE ENERGY" - THE WORLD'S NEXT HOT COMMODITY! Renewable Utilities, Ltd. offers impressive financial rewards for connected direct sales leaders. No investment. Info 24/7 at 1-800-329-4980.

DRIVERS - PAY INCREASE! \$1,000 sign-on for experienced OTR. Dedicated and Regional available also. Owner/Operators, Teams & CDL grads welcome. USA Truck, 1-866-483-3413.

DRIVERS - OTR \$4,000 Sign-on Bonus! Regional/OTR. We're FFE! Good money, good home, strong benefit package. No Hazmat. 1-800-569-9232. Students welcome.

DRIVER
O/O's - SAMMONS pay 100% Tarping-stopoffs-Fuel Surcharge. Detention Pay! Pay 75% of 100% of gross. Zero down Lease Purchase. 12 month OTR required. 1-800-457-2349.

FOR SALE
DRIVER-CDL DRIVERS - Run Southern half of U.S. Better home time. Better equipment. Texas based Knight Terminals. Phone interviews available. 1-888-446-5289. 7 days/week. CDL Class-A, 6 months experience.

SAWMILLS FROM ONLY \$2,795.00. Convert your logs to valuable lumber with your Norwood portable band sawmill. Log skidders also available. www.norwoodindustries.com. Free information: 1-800-578-1363. Ext. 300 N.

WOLFF TANNING BEDS. Buy direct and save. Full body units from \$22 a month. FREE color catalog. Call today. 1-800-842-1305. www.wp.eistan.com

HELP WANTED
COOL TRAVEL JOB! One month paid training. \$500 Sign-on Bonus. Must be free to travel and start today. 1-800-596-0996. Jaguar Personnel.

DEFEND OUR HOMETOWN and provide disaster relief in the Texas Army National Guard! Up to \$10K enlistment bonus, paid career training for valuable job skills, 100% tuition assistance, up to \$20K student loan repayment. Accepting high school juniors and seniors, college students and graduates. Call today, 1-800-GO-GUARD. Or visit www.TXARNG.com

A FAST TRACK to a sales career. Travel the USA as you develop skills in Outside Sales. Paid training, transportation, lodging furnished. Call Success Express Sales, Inc. today. 1-877-646-5050.

HOME BUILDERS
MAKE OWNING A new home a reality today! Low down. Low interest rate. Low monthly payments. Visit United-Bilt Homes or call 1-800-756-2506. UBH.com

HUNTING
HUNT ELK, RED STAG, WHITETAIL, BUFFALO, WILD BOAR. Our season: Nov. 5-31/06. Guaranteed license. \$5,000 copy in two days. No-Game/No-Pay policy. Days 1-314-209-9800; evenings 1-314-293-0610. High Adventure Ranch.

MISCELLANEOUS
AIRLINE MECHANIC - Rapid training for high paying Aviation career. FAA predicts severe shortage. Financial aid if qualify - job placement assistance. Call AIM 1-888-349-5387.

EARN DEGREE ONLINE from home. Medical, Business, Paralegal, Computers, Criminal Justice. Job placement. Computer provided. Financial aid if qualify. 1-866-858-2121. www.onlineinstitute.com

MOBILE HOMES
GOT LAND? ZERO-ZILCH-NADA. Keep your cash if you own land. We finance. 90 days no pay. Single and Doublewide homes. Bad credit OK. Call 1-281-355-0648. Zero down. International Homes.

NOTICES
CLOCK & WATCH ENTHUSIASTS: Learn about timepieces. Join the National Association of Watch & Clock Collectors. Visit our website at www.nawcc.org or call 1-717-684-8261.

REAL ESTATE
A BARGAIN - 75 Acres - \$39,900. Rolling hills, good brush, rock mule, trophy deer habitat. Good highway access. Easy terms. Perfect for hunting retreat. Texas Land & Ranches, 1-877-542-6642.

AFFORDABLE HILL COUNTRY hunting property. Why lease when you can own? 1-800-876-9720. www.ranchenterprisesltd.com

NEW TO MARKET - 100 Acres - HUNTING RANCH. First chance to own hunting retreat. Big buck area, plus turkey, dove, quail and more. Very private with EZ highway access. \$49,900 w/financing. 1-866-899-5263.

668+ ACRES, 130 miles west of Del Rio, shared water well, \$245 per acre. End of road, mule deer, owner financed, 5% down. 1-800-885-4578. www.ranchenterprisesltd.com

STEEL BUILDINGS
BUILDING SALE! "Go Direct Save!" 20x26 now \$5100. 25x30 \$6800. 30x40 \$10,600. 40x60 \$16,600. Extensive range of sizes and models. Doors/accessories optional. Pioneer 1-800-668-5422.

STEEL BUILDINGS - FACTORY deals. Save \$\$\$ 40'x60' to 100'x200'. Example: 50'x100'x12' = \$3,600/sq.ft. 1-888-467-4443. www.rigidbuilding.com

Run Your Ad In TexSCAN!
Statewide Ad.....\$450
99 Newspapers, 1 Million Circulation
North Region Only.....\$195
100 Newspapers, 250,000 Circulation
South Region Only.....\$195
100 Newspapers, 250,000 Circulation
West Region Only.....\$195
100 Newspapers, 250,000 Circulation
To Order: Call This Newspaper direct, or call Texas Press Service at 1-800-720-4768 Today!

Eastland County Veterans

Check For Your Name

www.ecvet.com

See Our Sponsors

Cross Plains 254-725-7361 **BI-RITE AUTO** 4th Block E. of Light, Hwy 36

NEW INVENTORY

99 Ford F250, 4 dr., Super Cab, 5.4 V8, auto, O.D., 129k miles, super nice & clean.....\$6495
96 Mercury Cougar XR7, fully loaded, 4.6 V8, sun roof, etc. (pearl white).....\$3250
02 Windstar V6, 7 Pass., dual air, power seat, looks, windows, tilt, cruise, 4 doors, (silver) power extendable brake and gas pedales.....\$6995
01 Windstar V6, 7 Pass., power locks, windows, tilt, cruise, A/C, 92k miles, (white).....\$6500
94 Ford Diesel F350 Crew Cab, looks, runs good, (automatic), red.....\$4750
91 Ford F250 V8, automatic, runs good, (tan).....\$1595
98 Windstar V6, 7 Pass., looks, runs very good (maroon).....\$3900
95 Chevy Tahoe 4x4 V8, runs good, nice inside, weak paint.....\$3550

GAS TRUCKS

01 Ford F150 4.6 V8, auto., looks & runs good, (white).....\$4950
96 Ford F250 V8, auto., runs good, (white).....\$2695
96 Dodge Dakota 4x4, V6 in good condition, roll bar, (white), auto.....\$3750
82 Ford F350 Dually, 351 V8, auto., runs good, weak paint, blue & white.....\$1395
80 GMC 1/2 Ton V8, runs good.....\$1250

DIESEL TRUCKS

97 Ford F250 Power Stroke Diesel, super duty, 5 sp., looks, runs good (white).....\$5750
95 Ford F350 Power Stroke Diesel, Dually, flat bed, 5 sp., (white).....\$4500
94 Ford F250 Turbo Diesel Super Cab, 5 sp., gray & white, looks & runs good.....\$4500
91 Ford F350 Crew Cab Diesel, 5 sp., very nice truck, (red).....\$4750
89 Ford F250 Super Cab Diesel, auto., looks & runs good, (blue & white).....\$3250
89 Ford F250 Flat Bed Diesel, auto., runs good, weak paint.....\$2500
85 Ford F350 Crew Cab Diesel, a good work truck for only.....\$1595

AUTOMOBILES

99 Ford Taurus 3.0 V6, 4 dr., looks & runs good, (white).....\$3350
96 Dodge Intrepid V6, 4 dr., fully loaded, looks & runs good.....\$2650
97 Thunderbird 3.8, V6, looks, runs good (green).....\$2795
99 Ford Crown Victoria like new condition, (wife's car) kept in garage.....\$5500
96 Mercury Mystique, 4 cyl., 4 dr., looks, runs good (blue).....\$2250
96 Mercury Cougar XR7, 4.6 V8, runs good (white).....\$2450
95 Mercury Cougar XR7, 4.6 V8, runs good (purple).....\$2350
94 Olds Cutlass 4 dr., V6, looks & runs very good, (white).....\$1995
91 Ford Crown Victoria, 4 dr., a very good car, (lt. blue).....\$1395
90 Lincoln Town Car in good condition, (white), a good buy for only.....\$1395
96 Ford Taurus 3.0 V6, 4 dr., looks, runs good, (white).....\$2595

VANS

97 Ford Aerostar, 7 Pass., V6 in good condition (light blue).....\$2750
97 Plymouth Voyager, 7 Pass., V6 in good condition (white).....\$2750
95 Plymouth Voyager, 7 Pass., V6, in good condition (green).....\$2350
95 Chevy Lumina Venture Mini Van, V6, 7 Pass., runs good (green).....\$1950
93 Isuzu Rodeo, 4 cyl., runs good, looks fair.....\$1750

WE BUY - SELL - TRADE & FINANCE
OPEN MON., TUES., WED., THURS & SAT. 9-6; CLOSED FRI. & SUN.
Phone 254-725-7361 Cell Phone 325-669-0999

Crossword Answers

BOBBY ERIN CITY
OPERA LURE ERIE
MELON ABET TITS
BLANKETS TOUSLE
CEDE SLUSHES
ARCHED TEES
BALL YARDSTICKS
BROAD BOG SNAIL
REPLICATES ULNA
RIBS HANLEY
ELECTRA PEND
RELAYS KRAKATOA
NITS TEEEE ATOLL
SLOE UGLY RENEE
TANS MOPPS ASSOOC

Piano, Fiddle, Suzuki Violin & Beginning Guitar Lessons
Children & Adults
Melissa Jackson
254-629-2721
Music Degree TCU
5-104

CUSTOM HOME BUILDERS SINCE 1980

Let Us Build Your New Home or Room Addition
If You Can Dream It, We Can Build It!

T. J. CLARK CONSTRUCTION CO., INC.
(254) 734-2755
P. O. Box 176 111 E. Roberts St.
Gorman, TX 76454

General Building Contractors - All Work Guaranteed
Custom Homes - Remodeling - Commercial - Industrial - Farm
Financing - Free Estimates - Design, Engineering & Plan Services

I-20 MOTORS USED CARS

19th & I-20 Cisco, Texas
Shop (254) 442-4262 Home (254) 442-2578 Mobile (817) 999-5272

03 Ford F150 short bed, auto, air, AM/FM CD, cruise, tilt, 72K.....\$8500
03 Chevy Malibu LS auto, air, AM/FM CD, electric windows, locks, seats, cruise, tilt, 60K.....\$6995
03 Chevy Malibu auto, air, 35K, AM/FM, cass., cruise.....\$6995
03 Ford Escort ZX2 auto, air, AM/FM, CD, cruise, 34K.....\$6500
03 Chevy Venture LS (Van) auto, air, AM/FM.....\$7995
03 Ford Escort ZX2 (2 dr.), 4 cyl./5 sp., air, AM/FM, cass., 77k.....\$4995
02 Ford F150 6 cyl., short bed, auto, air, AM/FM, cruise, 67K.....\$7995
02 Dodge Caravan auto, front & rear air, AM/FM, CD, elect. windows & locks, cruise.....\$6950
01 Mercury Marquis auto, air, AM/FM, elec. windows, locks, seats, cruise, tilt.....\$6995
01 Escort Zx2 auto, air, AM/FM, cass., 54K.....\$4995
01 Ford XL F250, 3/4Ton, auto, air, AM/FM.....\$5950
00 Mustang Convertible, auto, air, AM/FM/CD/cass., elect. windows, locks & seats, cruise.....\$6550
00 Taurus Wagon auto, air, AM/FM cass., elec. windows, locks, seats, cruise.....\$4995
99 Chevy Venture LS Van, auto, air, AM/FM/CD, elect. windows, locks, auto sliding doors, cruise, 66K.....\$5995
98 Ford Explorer Sport, 2 dr., 6 cyl., 5 sp., air, 86k.....\$4250
97 Ford Escort 4 dr., auto, air, AM/FM, 74k.....\$3250
87 Dodge Raider 4x4, 4 cyl., 5 sp.....\$2995
84 Ford Ranger V6, auto.....\$1250

Warranty May Be Purchased On All Vehicles Other Selections Available

Caring for a seriously ill person is very stressful. Whether they are at home, in the hospital, or in a nursing home, it is a difficult time for the primary caregiver as well as the immediate family. Hospice care is an important source of help and support to patients, caregivers, and their families in this situation. A team of healthcare professionals and counselors works together to assist families in caring for their loved ones. However, one of the most valuable members of the hospice team is not a healthcare professional or a trained counselor. It is the hospice volunteer.



VEDA ADAMS

Hospice volunteers are individuals in the community who give their time and talents to help others in their time of need. After some training by the hospice team, they assist patients and their families in a variety of ways such as reading to patients, running errands, or delivering supplies. Volunteers also help without having direct contact with the patients. They bake cookies for grief support group meetings, address envelopes, and file charts.

Veda Adams of Olden has been a Girling Hospice volunteer for several months. A retired nurse, Mrs. Adams is able to give several hours a week visiting patients and has become a vital part of the team. Girling Hospice would like to thank Mrs. Adams for all her time, her delicious cookies, and her beautiful smile that blesses the patients, their families, and the Girling team.

Girling Hospice of Eastland is always in need of more volunteers. Anyone who is interested in learning more about the Girling Hospice Volunteer Program can call the Girling office at 629-1268.

AREA MEDICAL DIRECTORY

Cisco Medical Clinic Now accepting new patients

We have a friendly, local staff ready to serve the medical needs of Cisco and the surrounding communities.

- Child and adult medicine
- Employment, school, camp and athletic physicals
- Texas Health Steps
- Immunizations
- Minor emergencies
- In-house lab collection
- Same day appointments
- Medicare, Medicaid and most insurance accepted
- Walk-ins welcome

James L. Slayton, Jr. DO
Board certified in Internal Medicine

Charles Stephenson, PA

Conveniently located at
1619 Highway 206, Cisco Texas
254-442-1441

To Advertise On The
Medical Page Call 254-629-1707

Gentle Family DENTIST

Accepting New Patients
Joe K. Reed, DDS
Over 30 years experience
In Baird Accepts
MEDICAID
& Most Dental Insurance
1-866-854-1173 • 325-854-1173

Hair Removal

Cindy Wheat Koenig
Cisco Family Chiropractic Care
254-442-4878

Birth Control Patch ALERT!

"FDA says birth control patch raises blood clot risk" - Dallas Morning News. If you or a loved one has suffered blood clot related injuries or death while using the Ortho Evra birth control patch, we may be able to help. Call toll-free today for a free and confidential consultation.

Call now.
1-800-882-1402
OTSTOTT & JAMISON, P.C.
"TEXAS LAWYERS FOR TEXANS"
Principal offices in Dallas, Texas. Some cases are likely to be referred.

Know Your Facts Regarding CHF

By Ron Pipkin, RN and Rhonda Pipkin, RN

All of the organs in the body are important, but when you think of the heart, its functions and problems, you might think about "the pump" not working right. You can see how important it is to "know your facts."

The heart in fact is our body's "pump." When heart failure begins to occur, you'll find the heart not pumping or circulating blood properly. The heart is all muscle, except for 4 valves precisely designed to stop backflow, and electrical pathways for conduction or "jump starting" purposes. Heart failure doesn't mean the heart has stopped - instead, the definition for heart failure is "the heart as a pump is weaker than normal and blood moves through the heart at a slower rate with pressure to the heart increasing. As a result the heart cannot pump enough oxygen and nutrients to meet the body's needs.

Heart failure occurs when the heart muscle weakens from damage or overwork. The heart will become enlarged over time from the extra work. Because the heart is unable to pump as strongly, the kidneys respond by causing the body to retain fluid (water-weight gain) and retain sodium. If fluid builds up in the arms, legs, ankles, feet, lungs, or abdomen, the body becomes congested. This is how we get the term "Congestive Heart Failure or CHF."

Knowing your facts about what causes CHF early onset may prevent the condition or lessen the effects or recurrences if you've already been diagnosed.

Coronary Artery Disease (CAD), a disease of the arteries that supply blood and oxygen to

to heart causes decreased blood flow to the heart muscle. If the arteries become blocked

the heart becomes starved for oxygen and nutrients. This is a sure set-up for an impending heart attack.

Heart Attack - (MI), a medical emergency where a coronary artery becomes suddenly

blocked - stopping the blood flow to the heart muscle thereby causing damage to the

muscle directly. Heart attacks leave scar tissue where the damaged heart muscle is and

in turn this can create its own problems such as (dyskinesia) improper movement of the

heart muscle in that

scarred area.

Cardiomyopathy - a condition related to damage of the heart muscle from other causes

such as alcohol and/or drug abuse, and bacterial infections, or viruses.

Conditions that overwork the heart and cause CHF are - high blood pressure, valve disease, thyroid disease, kidney disease, diabetes or heart defects present at birth, can all cause heart failure.

Signs/Symptoms usually associated with Congestive Heart Failure are:

weight gain unexplained swelling of legs or ankles shortness of breath fatigue restlessness excessive urination at night elevated blood pressure dry cough

For questions or comments please write us at knowyourfacts@sbcglobal.net and we'll be glad to assist you with your health care questions. This is a service provided for Eastland County. Referenced material: Client Teaching Guide for Home Health Care.

Go With The Best
★ ★ TRI-STAR ★ ★
HOME CARE
Gives Quality Care

- ★ Home Health Care
- ★ Primary Care
- ★ C.B.A.

Cisco, TX 76437
Telephone (254) 442-4996

CHIROPRACTIC

FOR BETTER HEALTH

STEPHEN G. BARRY D.C. CHIROPRACTOR

LIVE AND LEARN AND PASS IT ON

Our lives begin to end the day we become silent about things that matter.
--Martin Luther King, Jr.

Good health improves your quality of life. Millions have found chiropractic care to be the treatment of choice for their headaches, back pain, or injuries following automobile, athletic or work related accidents. To schedule an appointment call 629-1771.
Office hours: Monday - Friday 8-12; 2-6
(Closed Thursday afternoon)
Medicare, Auto/Health Insurance, Work Comp. Accepted

BARRY CHIROPRACTIC CLINIC
961 E. Main # Eastland, TX # 254-629-1771

Chiropractor
Jimmy L. Carpenter D.C.

Office Hours Tues. & Sat.:
Tues. - 9:00 a.m. till 12:00
1:30 p.m. till 5:00 p.m.
(After 5:00
by appointment only)
Sat.: 8:00 a.m. till 12:00 Noon

Massage Therapist
Linda Walls R.M.T.

By Appointment:
Monday thru Saturday

Advertise In The Classifieds

Avi T. Deshmukh, M.D., F.A.C.S.
Board Certified in Urology

Frank V. Terrell, M.D.
Da-Thuy Van, D.O.
General Ophthalmology & Ophthalmic Surgery

Eastland Memorial Hospital

For Appointment call
(254) 629-2601

FREE PROSTATE CANCER SCREENING

Saturday, March 11, 2006 • 8:00 a.m.

Daugherty Street Church of Christ (Old Sanctuary)
309' S. Daugherty • Eastland

All PSA Bloodwork will be done from 7:45 - 8:15 only!

Dr. Deshmukh, a specialist in urology, will present important information about prostate cancer, including risk factors, preventive measures and symptoms to watch for.

Reservations are required for this screening.
(254) 631-5254
8 a.m. to 5 p.m. Mon.-Fri.

EASTLAND MEMORIAL HOSPITAL

■ Prostate cancer is the leading cause of cancer death among men in America. One out of every five men will develop prostate cancer. If diagnosed early, a cure is possible. That's why Eastland Memorial Hospital and Avi T. Deshmukh, M.D., F.A.C.S. are offering a free prostate cancer screening for all men - but, specifically for men ages 45 and older. The screening will include the PSA blood test, an important diagnostic tool for early detection.

TALK on PROSTATE CANCER
Avi T. Deshmukh, M.D., F.A.C.S.
Diplomate of American Board of Urology

Days Dwindle To Savor Grand Ole Opry Exhibit At New County Museum

10 to 4 Tues.-Fri. 10 to 2 Saturdays

The public has only until March 10 to enjoy the Grand Ole Opry Exhibit at the Eastland County Museum "On the Square."

The extensive exhibit, the first in what is hoped to be a long series of outstanding public offerings at the Museum, will be shipped to Red Cloud, Neb. for its next showing. It came to Eastland from West Virginia.

Attendance at the opening events on Feb. 2nd and 3rd which featured an elaborate array of local talent, has been high and the viewers of the Exhibit which extends from the First to the Second floor of the restored Old Bank Building has been steady, Manager Ed Allcorn reports.

School groups are especially being invited to tour the Exhibit to get a feel for Early American Music, and to see photos of musical stars that are so much a part of the American heritage. School officials are invited to contact the center in advance (254-629-3600) to make arrangements for the special tours.

The Exhibit is from Mid-America Arts and Alliance Exhibits USA, partially funded by Texas Humanities. Mr. Allcorn and Volunteers conduct special showings of the Exhibit, as well as of the established display of the Museum proper. Every town in the county will have exhibits in the County Museum as the facility develops.

Sustaining support for the Museum's operating budget are being sought to be able to show on applications to available grants that there is strong local support. Grants and bequests will help further develop the Museum facility, and make a permanent

showcase for future special exhibits which will be brought to Eastland County for the enjoyment of locals and visitors.

Grand Ole Opry comprises sixty photographs from a collection of nearly five thousand taken by Gordon Gillingham during the 1950s. The images provide an inside look at the history of one of America's most beloved and enduring entertainment traditions. Gillingham photographed the Grand Ole Opry during its heyday as the most popular country music stars of the era took to the stage every Saturday night. His images capture the spirit of the Opry: the informal atmosphere of the show, the camaraderie of the performers, the distinctive look of country music, and the sheer joy of performance. The photographs also capture some of the events that placed Nashville at the forefront of the country music industry--including the annual Disc Jockey Convention held by the Country Music Disc Jockey Association, the WSM radio guest disc jockey series, and the *Grand Ole Opry's* television show.

Grand Ole Opry is a name synonymous with country music the world over. The longest radio show ever, the Opry has been broadcast on Nashville's WSM radio every Saturday night since its premiere in November 1925. In American popular culture, the Grand Ole Opry has come to represent more than just a weekly entertainment series--it now embodies the heart, soul, and traditions of country music in all of its forms.

Originally created as the "WSM Barn Dance" radio program in 1925 and then renamed two years later by George D. Hay, the Grand Ole Opry began with the unscheduled performance of a seventy-eight-year old championship fiddler, Uncle Jimmy Thompson.

The Grand Ole Opry grew to become the radio home of the most popular and influential country music artists, such as Roy Acuff, Ernest Tubb, Bill Monroe, and Minnie Pearl--all would anchor the show into the 1980s and 1990s. The early format of the show consisted of a number of acts performing for an extended amount of time, each introduced by an announcer. Along the way, commercial sponsors began to underwrite portions of the show, but even today the basic structure of the program has remained remarkably unchanged.

During the 1920s and early 1930s, the Grand Ole Opry attracted local, mostly amateur "old-time" or "hillbilly" musicians who wanted a chance to perform on the radio. As barn dance radio programs and record companies spread the rustic sounds across the country, it became possible for more and more musicians to earn a living playing music. This development brought more polished acts to the Opry, and while the amateurs still held spots on the lineup each week, several professional acts joined them. When WSM boosted their radio signal to 50,000 Watts, the station became even more attractive.

The Grand Ole Opry reached an even larger audience as WSM began to ac-

quire contracts with the NBC network, which by 1943 had placed a segment of the show on 143 radio stations. This same year the show--with an ever-growing and rowdy audience that had made it unwelcomed elsewhere--moved its performances into the Ryman Auditorium. The somewhat dilapidated Victorian tabernacle would host the Opry until 1974. Country music had become an economic boom, and the business that had been scattered from coast to coast began to centralize in Nashville, largely due to the presence of WSM and the Opry.

After some lean years with low attendance, the show was revitalized in 1974 with a move to a new location at the center of an entertainment complex outside of Nashville--the Grand Ole Opry House at Opryland USA. The Ryman Auditorium, however, is still used for winter season performances. As the country music industry in Nashville has moved further away from its traditional roots, the Opry has become a touchstone for the fans and artists who choose to honor the traditions and the legendary artists of the genre.

The Opry goes on today, alive and well in Nashville, Tenn.

Desdemona News

By Vonnice Guthery

Desdemona monthly musical was held last Saturday night at the Community Center. We appreciate all the musicians, singers and visitors that attends each month. There was several out of town visitors. Thanks to all the ladies that donate food each month for the concession stand.

Dorothy Roberts is in the Harris Southwest Hospital in Fort Worth recovering from a recent heart attack. She is resting much better at the present time. Friends in Desdemona sends Get Well wishes to Dorothy.

Clyde Wright of DeLeon is recovering from recent hip replacement surgery. She attended school in Desdemona and graduated with the Class of 1928. Friends in Desdemona sends Get Well wishes to Clyde.

Desdemona Firemen Benefit will be held on Saturday, March 25 at the Community Center School Gym. The benefit will be in connection with the regular March monthly musical. Stew and cornbread will be served by donation only. Serving time begins at 5 p.m. followed by country and western music at 6 p.m. Make plans to attend and show your appreciation for our local firemen.

"Hogtown" area received 2" rain during the past weekend. Every drop appreciated after being dry for months!

Continue to pray for rain.

Justin and Rachael Stanford missionaries from Indonesia were guest speakers last Sunday at the First Baptist Church in Desdemona. A covered dish luncheon at annex was served following the morning service.

Dixie Pack--we missed you last Saturday night at our musical. Hope you are feeling better.

There is a lot of sickness in our area at the present time. Colds, pneumonia, sinus problems and some recovering from surgery. Remember the sick and shut-ins with your cards and prayers.

James and Freda Riggs, Mike and Mary Riggs and daughter, Jordan was in Corpus Christi over the weekend to attend the wedding of their granddaughter and daughter, Callie Riggs.

"Friendship is like the seed put into the soil - the more one sows, the greater the harvest."

Have a nice day, Vonnice.



Enduring Quality for Timeless Value

Solitaire Is Having A Huge Inventory Reduction Sale!

3 and 4 Bedroom Models Starting at \$39,900 Including Air, Delivery and Setup. Prices will never be this low again!

Hurry to Solitaire Homes of Abilene 2150 W. Overland Trail Abilene, TX 79603 325-677-3113 FBI 32987 STK#853

Photos By Terry Simmons
Commercial • Passport • Portraits • Weddings
35MM • Digital • Video
Located in Heaven Sent Floral & Gifts
937 E. Main Street Eastland, TX 76448
254-631-6894
254-629-2111

GREAT RATES for every interest

Going Your Way Auto Loans

Need a new ride? At First Financial Bank, you'll find flexible financing designed to keep you rolling right along. So, give us a call - We're going your way!

NEW VEHICLE RATES AS LOW AS
5.981%
ANNUAL PERCENTAGE RATE

FIRST FINANCIAL BANK

EASTLAND • RANGER • RISING STAR

Member First Financial Bankshares, Inc. A Family Of Community Banks



www.ffb-eastland.com 254-629-6100

James & Debby Whalley are proud to announce their partnership with Hart & Associates Tax Firm. James will be providing premier tax and bookkeeping services for the surrounding area. Free tax preparation will also be provided for individuals who have lost their home due to the recent fires (some restrictions may apply). For an appointment with James call.



Cisco Office: (254) 442-2631 Clyde Office: (325) 893-1860

Leon River Cowboy Church

"Just Good Folks Trying To Live For The Lord"



Pastor Paul Howie
254-631-3661

Texas Cattle Exchange

Becoming An Immovable Rock

9:30 a.m. Coffee/Donuts
9:45 Adult & Youth Bible Study
11:00 a.m. Worship

OBITUARIES

Billie R. Strickland

Billie (Bill) R. Strickland, age 76, died Friday, Feb. 24, 2006 at the Hendrick Medical Center in Abilene. Funeral services were to be at 2:00 p.m. at Higginbotham Chapel in Cross Plains with David Wallace officiating; burial followed in the Burkett Cemetery.

He was born June 6, 1929, in Burkett, TX to Tom and Ollie (zirkle) Strickland. He married Joyce Wright on June 29, 1946 in Cross Plains and they had four children. Joyce preceded him in death on February 11, 1999. He then married Shirley Hunter on June 6, 2003. He worked in the oil fields as a driller, and was a member of the Church of Christ.

**Continued from Classifieds
Courage after Combat**

was finally released from the hospital.

"Six months later on February 28, 2005, the Medical Evaluation Board informed me that I was not recovering fast enough and I had 8 days to out-process the base and 20 days to look for a new home In less than one month, my pay went from \$3,200 to \$850, and I was put on an approximate 10 month waiting list to receive my VA benefits. Shocked, my wife and I started trying to figure out what we were going to do," he states.

Jeremiah Cottle, who had given so much through his service to this country, and to his fellow service men and women, would learn that during his surgery no individuals from his squadron or chain of command came to be with his wife, or offer her support.

He says that after two weeks in the hospital, he made a phone call to his squadron to let them know that "I was still alive".

After that, several individuals came to check

He is survived by his wife, Shirley of Burkett; sons, Randy Strickland and wife Dena of Cross Plains; Bo Strickland of Burkett; daughter, Jan Baker of Abilene; stepdaughter Kim Hunter of Coleman; sisters, Mary Hightower of Cisco; Tootsie Rhodes of Breckenridge; brothers, Sonny Strickland of Doss; Eddie Strickland of Burkett; 11 grandchildren and 13 great grandchildren.

He was preceded in death by his parents, first wife, Joyce; son Jerry, 2 brothers Tom and Jack.

on him. Apparently neither the first Sergeant nor the Commander had informed the squadron of his condition.

Jeremiah and Lora Cottle started trying to figure out how they were going to survive financially. They sold their truck, car, a house bought 4 years earlier in San Antonio, and anything else they could.

They made the decision to return to Moran, Texas, where Jeremiah grew up and graduated from high school, to live with his grandparents, James and Julie Cottle. They applied for food stamps to feed themselves.

Jeremiah and Lora both expressed their gratitude to the grandparents for their help. "Without them, we would have literally been homeless," Lora said.

On days when he's feeling well enough, Jeremiah helps his grandfather with small chores on the ranch just outside Moran.

The fresh air and space is good for him, Lora says, but the family is living in cramped conditions, and they desperately want their own home.

The grandparents have given acreage to build a home on, but the financial means are not there to build or hire someone to do it. Jeremiah is not physically able to do the work.

"My children desperately need a place to call 'home',

Pete Golson

Pete Golson, age 87, passed away on Fri., February 24, 2006 at the Rising Star Nursing Center. Funeral services were at 11:00 a.m., Monday, Feb. 27, 2006 at the Higginbotham Chapel in Cross Plains with Max Evans officiating; burial followed in the Burkett Cemetery.

Pete was born on May 27, 1918 in Coleman Cty, TX to Marion A. (Bud) and Lola Keller Golson. He graduated from Burkett High School in 1936 where he played basketball. He also played baseball and basketball for commercial teams. He married Nora Lee Pope in Coleman on November 18, 1940. He farmed and worked in the oil field and drove for Sewalt Butane Company for 31 years. Pete enjoyed his grandkids and extended family, raising flowers and making music with the band at Jean's Feed Barn

and to have the security to know that they are not going to be ripped from their way of life and moved because of money. This move has greatly affected them and it is tearing at me because there is nothing I can do about it." Jeremiah says.

They have no place to store their household goods, which are still in storage in Abilene. They have been informed that they will soon have to pay approximately \$400 a month for the storage.

Complicating the situation is the fact that Jeremiah must constantly take medications for his pain. Lora drives him to many medical appointments, some of which are in Dallas. (The Cottles are using a leased vehicle at the moment, and badly need a car of their own.)

Jeremiah was informed that his condition may never improve. Visual problems, cognitive issues, and a loss of short term memory are several results of his condition, which the family deals with on a daily basis. He can not be left alone.

every Thursday night.

He is survived by his son Bobby Golson and wife Linda of Cross Plains; grandchildren, Glenn Golson and wife Carolyn of Lawn; Billy Golson and wife Kathy of Lawn; Scott Cupit of Waco; Kayla Rodgers and husband Joe of Waco; Stacey Pancake and husband Jody of Cross Plains; Jeremy Box and wife Debbie of Cross Plains; Jeremy Box and wife Debbie of Georgetown; 13 great-grandchildren; as well numerous nieces and nephews.

He was preceded in death by his parents; wife Nora, brother O'Dell, and sister Juanity.

The family received friends and relatives from 6 to 8 p.m. on Sunday, Feb. 26, 2006 at the funeral home in Cross Plains for a time of visitation.

Lora's chances of working are very limited, as the 2 boys, James, 8 yrs. and Jeremiah, 5 yrs., both have medical problems. James has been diagnosed with Aspergers Syndrome, a variant of Autistic Disorder.

"I can accept that I sacrificed these things for my country and that this was part of the risk involved when I took the oath," Jeremiah says. "What I cannot accept is that my family has to sacrifice their lives as well."

After a long period of trying to expedite the process of receiving VA benefits - Jeremiah corresponded with various legislators - he will now be receiving his benefits. This will include a certain amount of back-pay.

However, the amount of his military retirement will be deducted from his monthly benefits, he says, and the back-pay will never cover the expenses the family has incurred in their struggle to survive.

But even in the midst of his own difficulties, Jeremiah Cottle still thinks about how to help service men and

Clyde Comes back in O.T. for Win at Snyder's Scurry County Coliseum to Defeat Greenwood

A second-half rally allowed, with O.T., the Clyde Bulldogs to clear another hurdle, this time against Midland Greenwood, to win 58-53, in extra minutes.

Actually trailing by 13 pts. in the third quarter, a time out attempt by Coach Jay Ray, worked wonders to pull beside in OT. and Clyde bested Midland 7-2 with J.R. Carr scoring five of Clyde's seven.

Quoting Ray, "The kids responded defensively and that's kind of what pulled us out...allowing [us] to set-put them a little bit in overtime and J.R. Carr hit a couple of baskets and also hit a few...free throws down the stretch..." Clyde plays Levelland next, but it is still to be determined.

Emergency Farm Fire Loan Applications Being Accepted

Applications for emergency farm loans caused by extreme wildfire threat that occurred on December 1, 2005, and continuing, are being accepted at the Farm Service Agency (FSA) office located in Anson, Richard G. Young said.

"Callahan is one of 9 primary counties in Texas recently named by the President of the United States eligible for loans to cover part of actual production losses resulting from extreme wildfire threat that occurred on December 1, 2005, and continuing."

Richard G. Young said, "Farmers may be eligible for loans of up to 100% of their actual losses or the operating loan needed to continue the agricultural business, whichever is less. For farmers unable to obtain credit from private commercial lenders, the interest is 3.75 percent."

"As a general rule, a farmer must have suffered at least a 30 percent loss of production to be eligible

for a FSA emergency loan," Richard G. Young said. Farmers participating in the Federal Crop Insurance program will have a figure in proceeds from those programs in determining their loss.

"Applications for loans under the emergency designation will be accepted until September 11, 2006 but farmers should apply as soon as possible. Delays in applying could create backlogs in processing and possibly over into the new farming season," Richard G. Young said.

FSA is a credit agency of the United States Department of Agriculture. It is authorized to provide disaster emergency loans to recognized farmers who work at and rely on farming for a substantial part of their living. Eligibility is extended to individual farmers who meet U.S. citizen requirements and to farming partnerships, corporations or cooperatives in which U.S. citizenship requirements are met by holding a majority interest.

The FSA office in Anson is open from 8 a.m. to 4:30 p.m., Monday - Friday.

Locations for Primary Voting, March 7th, 2006
(Democratic & Republican)
Precinct #1-Clyde Lions Club Bldg.
Precinct #2-Eula Lions Club Bldg
Precinct #3 & #5, Baird Light Plant
Precinct #4-Cross Plains Community Center
Precinct #6-Clyde Southside Baptist Church
Precinct #7-Oplin Community Center

women facing the future with disabilities.

It would take a change in regulations, Jeremiah says, but if disabled military members awaiting retirement could be transferred to medical hold until their VA benefits became active, it would help them and their families significantly.

"It would take so little, to help so much," he says.

What about recent funding cuts to VA?

"The funding should be restored immediately!" Jeremiah says, adding that he also does not agree with military retirement being deducted from VA benefits.

(A recent law allowing military personnel to receive both apparently only applies to those who have served 20 years.)

When ask about their future plans, Jeremiah and Lora only shake their heads.

"We had plans" Lora says quietly.

Still, as a Christian family, Jeremiah and Lora

are very grateful for one thing: "We have lost everything that we have worked for because of this (the events) ... fortunately we still have each other."

Ed. Note: Vicky Field, Texas State Representative for the Severely Wounded, states:

"I believe we are the only country that gives so much to the entire world to major catastrophes and disasters, but we must know that we have a Tsunami in our own country and that is with our men and women who have so freely gone out to serve our country and come home wounded and devastated.

They gave so freely of themselves to serve in order that we could have the kind of lifestyle we have today."

Please, as individuals, groups, and communities, reach out to our disabled veterans. They scarified for us, now it is time for us to help them.

Please contact this newspaper if you would like to help Jeremiah Cottle and his family. We will be happy to provide information.

**Callahan County:
Eula-BOYS**

Eula Boys Defeat Menard Due Largely to Second-Half Full Court Press

Sloan Hendley leading all scorers with a game total of 35 Points, with Menard's player Michael Williamson in second with a total of 14; the Eula Tigers defeated Menard in a Tuesday game of Class A bi-district playoffs allowing them to go on to compete with either Axtell or Goldwaith.

The score ended at 79-41 with Eula allowing only four points in the third quarter.

This is a victory for the boy's allowing them to continue competition and go for their personal best.

LOCAL BASKETBALL

Menard	9	15	4	13-41
Eula	15	17	26	19-79

Eula- Cory Higgins 2, Kasey Bartlett 4, Chance Dement 3, Sloan Hendley 35, Riley Samford 6, Phelipe Ochoa 2, Aaron Swanner 6, Colby Marcee 6, Scott Reid 8, Michael Archa 7.

Menard-Craig Bean 3, Adam Saucedo 3, Lance Kothmann / Michael Williamson 14, OJ. Condarco 6, Roy Garrett 8.

Records-Menard 14-13, Eula 27-6

'Go Bears'

Beryllium Alert!

You may be one of the hundreds of thousands of workers exposed to Beryllium. Beryllium can cause lung disease. If you or a loved one have ever been diagnosed with lung disease that you think may have been caused by Beryllium exposure, you may be entitled to compensation.

Call Now 866-960-5000

Law Offices of Jeffrey D. Slakter www.berylliumattorneys.com

Principal Offices in Dallas, Texas. Cases will likely be referred.

Baird Baseball Roster 2006

Feb. 23-25	Olney Tour.	TBA	
Feb. 27	Abilene H.S. JV	H.	4:30
March 2-4	Eastland Tour.	TBA	
March 6	Abilene H.S. J.V.	H	4:30
March 9-11	Anson Tour.	TBA	
March 14	Eastland	H	1:00
March 16	Anson	H	12:00
March 20	Eula*	T	4:00
March 24	Cross Plains	H	4:30
March 27	Ranger*	T	4:00
March 31	Albany*	H	4:00
April 3	A.C.H.S.%	T	6:00
April 7	Gorman*	T	5:00
April 11	Eula*	H.	5:00
April 13	Snyder	T	7:00
April 17	Cross Plains*	T	4:00
April 21	Ranger*	H	5:00
April 25	Albany*	T	5:00
April 28	Tolar	T	6:00
May 2	Gorman	H	5:00

Lady Bears 2006 Softball Schedule

Date	Opponent	Place	Time
March 7	Ranger	There	4:30
March 10-11	Breckenridge Tourn.	There	TBA
March 14	Gorman	There	4:30
March 16	Albany	Here	10:00
March 24	Eula	Here	4:30
March 28	Anson JV	There	5:30
March 31	Ranger	Here	4:30
April 4	Albany	There	4:30
April 7	Gorman	Here	4:30
April 11	Stamford	Here	4:30
April 14	Eula	There	10:00

Coaches: Julie Young and Amanda Whitaker

Baird Baseball Roster 2006

1-Chris Whitworth	Fr.	IF/P	5'8"	130	R/R	----
2-Blan Scott	Sr.	P/C/IF	6'0"	179	R/R	3L
3-Chance Rodriguez	Sr.	P/C/IF	6'0"	175	R/R	----
4-Cody Gibbs	Jr.	OF/IF	5'8"	140	R/R	----
5-Jesse Mendez	Fr.	OF/IF	5'8"	140	R/R	----
6-Justin English	Soph.	OF/IF	6'1"	155	R/R	----
7-Chris Cogburn	Jr.	P/SS	5'8"	140	R/R	2L
8-Chris English	Jr.	OF	5'11"	165	R/R	----
9-Justin Patterson	Jr.	3B/OF	5'11"	160	R/R	2L
10-Rustin Williams	Soph.	Utility	5'9"	150	R/R	1L
11-Tim Ringhoffer	Soph.	Utility	5'9"	135	R/R	----
12-Tyler Orlando	Jr.	IF/P/C	6'0"	165	R/R	----
13-Cody Shouse	Sr.	IF/OF	5'6"	145	R/R	1L
14-Thomas Chararria	Soph.	1B/P	6'2"	230	R/R	1L
15-Tyler Culp	Jr.	IF/OF	6'1"	180	R/R	----
16-Garrett Jennings	Fr.	Utility	6'2"	175	L/R.	----

Head Coach-Bryan Webb

Assistant Coach: Billy Floyd

Office 854-1400 ext 316
Cell 669-2410
Home 893-2932

Office 854-1400 ext 419
Cell 325-235-6004
Home 893-2932

Superintendent: Cliff Gardner
Principal: Vic Orlando Mascot:

Bears
District 8A Region 1

Statician: Sandra Carter
School Colors: Red & White

State Regulates Placement Of Campaign Signs Along Highways

Texans take pride in their beautiful state, especially during the spring when everyone can enjoy the beautiful wildflowers that grow along the highway rights of way. However, during campaign season, the landscape blooms with a special kind of flower * the political sign.

Texas Department of Transportation officials want to make sure citizens and candidates are aware of the laws regulating their placement on state highway right of way.

Under Texas law, it is a class C misdemeanor to place any sign on state highway right of way. The penalty for violating this law is a fine of up to \$500 per sign.

It is legal to place a campaign sign on private property adjacent to state highways with landowners' permission.

Restrictions require that signs be constructed of lightweight material and limited to 50 square feet in size. Signs may be placed as early as 90 days prior to an election and must be removed within 10 days after an election.

TxDOT officials say the laws are intended to reduce clutter along highways so that official traffic control signs and vehicles approaching intersections are clearly visible for the safety of all the

traveling public.

According to Mary Beth Kilgore, Abilene District public information officer, signs in the public right of way include posting signs on trees, telephone poles, traffic signs, and other objects on the right of way.

"TxDOT's regulatory authority allows the immediate removal of a sign placed on state highway right of way without prior notice, if the sign is not authorized by state law or approved by the department. Signs posing potential safety hazards will be removed as soon as possible by TxDOT employees, a county sheriff or a constable, depending on jurisdiction," Kilgore said.

Texas is subject to the Federal Highway Beautification Act of 1965. Under the federal law, if the state fails to control signage visible from interstate and other federally-funded highways, Texas may be subject to sanctions of up to 10 percent of its federal transportation construction funds.

If you have questions regarding placement of political signs in Callahan County, call TxDOT's Callahan County maintenance section at 325/854-1353, or Kristy Gardner, the Abilene District's highway beautification coordinator, at 325/676-6831.

Texas Department of State Health Services

Immunization clinics in Callahan County Monday-March 6th
Baird Cafetorium--400 We. 7th
from 10:00 a.m. to 12 noon

Wednesday, March 8th
Clyde First Baptist Church--216 Austin, Clyde
from 10 a.m. to noon & 1:30 to 3 p.m.

Please bring child's Immunization Records

If Child is on Medicaid or CHIP, please bring card.

For more Information: call 325-754-4945

Meals On Wheels In Need Of Donations

The Callahan County Nutrition Project as well as the Meals on Wheels is in need of donations, due to the increases in fuel, food and repairs and a need to stay in budget. The project delivers food to those who cannot travel to the Center to have their lunch and serves about 200 meals a day while the Center serves about 150. Donations to the program may be sent to the Callahan County Nutrition Project, Ste. 302 Courthouse Baird, TX 79504.

Your support of this project is much appreciated. Several fund-raisers are in progress at the present time, such as quilts, cook books. If you choose to donate in this way.

You may contact: Project Director Katie Dunn, 854-5658 at the Office in the Courthouse or one of the site managers, Bruce Bell, Baird Center 854-1937, Vickey Burns, Clyde 893-4556 or Kathy Anderson, Cross Ploaine, 254-725-6521.

Emergency Farm Drought Applications Being Accepted

"Applications for emergency farm loans caused by drought that occurred on April 1, 2005, and continuing, are being accepted at the Farm Service Agency (FSA) office located in Anson," Richard G. Young said.

"Callahan is one of 19 contiguous counties in Texas recently named by the Secretary of Agriculture eligible for loans to cover part of actual production losses resulting from drought that occurred on April 1, 2005, and continuing."

Richard G. Young said, "Farmers may be eligible for loans of up to 100% of their actual losses or the operating loan needed to continue the agricultural business, whichever is less. For farmers unable to obtain credit from private commercial lenders, the interest is 3.75 percent."

"As a general rule, a farmer must have suffered at least a 30 percent loss of production to be eligible for a FSA emergency loan," Richard G. Young said. Farmers participating in the Federal Crop Insurance program will have to figure in proceeds from those programs in determining their loss.

"Applications for loans under the emergency designation will be accepted until September 25, 2006 but farmers should

Silas Ray Floyd

CROSS PLAINS- Silas Ray Floyd, 65, of Cross Plains, Texas died Sunday, February 26, 2006 at his home.

Graveside services were held at 2:30 p.m. Tuesday, February 28, 2006 at Belle Plaine Cemetery directed by Parker Funeral Home of Baird.

Silas was born to William J. Floyd and Beulah (Seaton) Floyd on May 25, 1940 in Baird, Texas. He attended school in Baird. He served ten years in the United States Navy. He worked in the oil field and then worked for Frito-Lay until he retired.

He is survived by his wife, Frances Floyd of Cross Plains, Texas; three sons, Frankie Floyd and wife, Charlene of Cisco, Waylon Floyd and wife, Lisa of Cross

Plains, and Robert Floyd of Coleman; three daughters, Theresa Baker, Lydia Palos and Esther Floyd all of Cross Plains; one sister, Lilimae (Red) Nettles of Putnam; nine grandchildren and four great-grandchildren.

He was preceded in death by his parents William J. Floyd and Beulah Floyd; two brothers, Odren Floyd and William D. Floyd; three sisters, Janice Stockton, Evadean Floyd and Wanda Arnold; one granddaughter Naomi Ruth Pales and one grandson, Jason Thomas.

Our Papa will be missed and loved all of the rest of our lives.

Memorials may be made to: Hospice of the Big Country, 4601 Hartford Abilene, Texas 79605.

Auction

AUCTION SATURDAY, MARCH 4, 2006 Corinth Baptist Church- Between Cisco & Eastland 10:00 a.m. Sale

Items: 10 Round, Cafe' type tables, Manual miter box & saw, Leather Love Seat, Old World Books, New Pocket knives, Metal Toy VW's, Nice Costume Jewelry, Wood Picture Frames

(new and used). Books, Baker's Rack, Wood and metal, nice, Some nice old, unique furniture, Old Aluminum Windows, Chairs, Clothes, Small Appliances, Granite coated Roaster, Wooden Texas Clock, Playpen, Pet Carrier, Linens, Material, Stuffed toys, Old RC Cola Signs, New Tools, Dishes of all kinds, Wooden Shelves, New and Used Tools, End table-Mag. Rack-Lamp, Small Old Kerosene Lantern, Old Coal heated Clothes Iron, Old Well Bucket, Deep Fryer on legs, Some Old Glassware, Console Television, 12 Gauge Pump Shotgun, Ostrich & Emu Eggs (Shell Only)

This is only a partial listing, we have a lot of miscellaneous items, and will have other things donated before the sale. I think we will have a Chevrolet auto. This sale will be held rain or shine as it will be mostly inside or under cover. All profit will be for the improvement of the building of Corinth Baptist Church. We are looking forward to seeing you on the 4th of March.

Call 254-629-1956 for other information.

AUCTION WILL BE CONDUCTED BY FRED TUCKER- AUCTIONEER LICENSE 7965 and LEE YADDOW-AUCTIONEER LICENSE 11486

Tornado Safety Rules

If at home...

If you have a tornado safe room or engineered shelter go there immediately.

Go at once to a windowless, interior room; storm cellar; basement; or lowest level of the building.

If there is no basement; interior room; storm cellar; basement; or lowest level of the building.

Get away from the windows. Get under a piece of sturdy furniture such as a workbench or heavy table or desk and hold on to it.

Use arms to protect head and neck. If in a mobile home, get out and find shelter elsewhere.

If at work or school:

Go to the area designated in your tornado plan. The most interior room, on the lowest floor without windows.

Avoid places with wide-san roofs such as auditoriums, cafeterias, large hallways, or shopping malls.

Get under a piece of sturdy furniture such as a workbench or heavy table or desk and hold on to it.

Get down low with your head against the wall and use your arms to protect head and neck.

If outdoors:

If possible, get inside a building.

If shelter is not available or there is no time to get indoors, lie in a ditch or low-lying area or crouch near a strong building. Be aware of the potential for flooding.

If in a car:

Never try to out-drive a tornado in a car or truck.

Get out of the car immediately and take shelter in a nearby building.

If there is no time to get indoors, get out of the car and lie in a ditch or low-lying area away from the vehicle. Be aware of the potential for flooding.

apply as soon as possible. Delays in applying could create backlogs in processing and possibly over into the new farming season," Richard G. Young said.

FSA is a credit agency of the United States Department of Agriculture. It is authorized to provide disaster emergency loans to recognized farmers who work at and rely on farming for a substantial part of their living. Eligibility is extended to individual farmers who meet U.S. citizen requirements and to farming partnerships, corporations or cooperatives in which U.S. citizenship requirements are met by holding a majority interest.

The FSA office in Anson is open from 8 a.m. to 4:30 p.m., Monday through Friday.

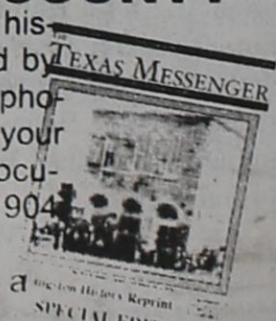
Renew Your Subscription

BULLETIN - SPECIAL ANNOUNCEMENT - BULLETIN AVAILABLE IMMEDIATELY FOR GIFTING AND PERSONAL LIBRARIES THE LANGSTON HISTORY OF EASTLAND COUNTY

The original, mother lode of the history of Eastland County edited by Jerry Eckert with added data, photos and more! A chance to own your own copy of this rare, rare document. Very few copies of the 1904 original are in existence today.

Reprinted by Ready Print as a SPECIAL ISSUE of the TEXAS MESSENGER Available immediately at the Eastland Telegram and Cisco Press \$7.00 per copy until Jan. 1st, then \$10.00 each.

(Mailed at \$5.00 additional, shipping and handling) **BULLETIN - SPECIAL ANNOUNCEMENT - BULLETIN**



March 3, 4 & 5
First Friday, Saturday & Sunday Monthly
Antiques • Arts & Crafts • Food

OLD MILL TRADE DAYS
Post, Texas • U.S. Hwy 84 & Texas 207 • 806-495-3529

Newspaper Deadlines
Tuesdays by 5 p.m.
Classifieds \$5.00 for 1 time and \$3.00 each time after 1st time (Not over 25 words)

Stay informed, Read

THOSE WISHING TO RECEIVE AID FROM FEDERAL AID FOR WILDFIRE VICTIMS MAY CONTACT:

***FEDERAL EMERGENCY MANAGEMENT AGENCY ASSISTANCE HOTLINE (800-621-3362)**

FEMA HOTLINE FOR THE HEARING IMPAIRED: (800)462-7585
***FEMA WEB SITE: WWW.FEMA.GOV**

FARMERS AND RANCHERS MAY CONTACT U.S. DEPT. OF AGRICULTURE HAY HOTLINE FOR ASSISTANCE (877)429-1998