

Enough New Industry for 250 New Jobs Is 1957 Goal of Chamber of Commerce

Industry Committee Named for New Year

C. B. Pruet, president of the Chamber of Commerce, has set the ambitious goal of securing enough new business and industry for Ranger during the year 1957 to provide a minimum of 250 new jobs, and has set machinery in motion to make a serious attempt to reach the goal before the year is out.

An Industrial Committee has been appointed to go after the new business, and it is headed by Wilson Guest, cashier of the Commercial State Bank as chairman. Other members are Lester Crossley, City Manager; Morris Newnam, owner of the Ranger Frozen Food Locker and Turkey Processing Plant; Jake Lawson, manager of Lone Star Gas Company, and Norman Wright, editor of the Ranger Times. Pruet will also serve on the committee in his capacity as president of the Chamber of Commerce.

Although the program sounds like a big one, it is nevertheless within the realms of accomplishment, given a few breaks and a streak of luck plus a lot of hard work and cooperation on the part of Ranger citizens.

A total of 250 new jobs would provide an additional payroll for Ranger of something approximating \$600,000 to \$750,000 a year.

In going after this new business, the Chamber of Commerce and the Industrial Committee has several factors in its favor. In the first place, small manufacturing concerns are being forced to leave the larger cities.

In the Dallas-Fort Worth area, for example, small manufacturing plants are having to compete with such commercial giants as Chance-Vought Aircraft, Temco Aircraft, Convair Air Craft and General Motors for labor, and they can't begin to match these big companies in the matter of wages.

The smaller companies are therefore being left holding the bag as far as securing personnel is concerned, and they are being forced to move to areas where the wage scale is within their means.

The smaller plants are also being hit hard by big-city taxes and insurance rates and this also cuts into their operations to such an extent that they are having to seek cheaper places in which to do business.

There are literally hundreds of smaller concerns ready to move to more favorable locations and many of these firms are known. As a matter of fact, lists are available in which they are named, and it is these smaller manufacturing plants which the Ranger Chamber of Commerce wishes to interest in this city, more especially plants which specialize in the manufacture of textiles.

Within a reasonable radius of Ranger, there is a large pool of labor available, as brought out by a survey made by the Chamber of Commerce several months ago. The tax rate in Ranger is very favorable to small industry compared to what it is in the large cities, and there are plenty of ready-made

(Continued on Page Two)

WHAT'S...



COOKING?

By NORMAN WRIGHT
Go as far as you can see, and when you get there you'll see farther.
—Elbert Hubbard

It is entirely possible that the Chamber of Commerce can realize its goal of securing enough new industry for Ranger in 1957 to provide at least 250 new jobs if it has the full cooperation of the people of Ranger.

And that cooperation would take the form of shucking any sort of a defeatist feeling that anybody might have and set aside one year in which they would resolve to boost Ranger and say something good about Ranger every time the slightest opportunity presented itself.

It is a hard thing to say, but Ranger's own citizens provide one of the biggest problems it has to overcome, so long as they insist on stabbing the city in the back every chance they get.

That is an easy thing to do. That can be done in any city in the world because all of them have their faults and none of them are perfect. Look for something to kick about and dear brothers and sisters you can find it all around you.

Take for example the City of Dallas which would seem to the outsider to have everything in the world it could wish for, yet to hear some of its citizens talk, and to read their letters to the newspapers, one would think Dallas was the last jumping-off place on earth and a city of avoid as one would the plague.

Not a living soul in Dallas can stand its water situation and they don't hesitate to say so; they don't like their county officials, nor their city officials, and they don't like the taxes they have to pay and the rules they have to live under. They also come to blows on such things as dog quarantines and watering lawns on certain days and garbage collection, and their schools are torn from top to bottom over the segregation issue. They fuss over paving issues and one-way streets and parking problems and there are plenty of people who will tell you that Dallas is the deadiest place on earth.

Yes, if you are looking for something to find fault with, you can find it and it doesn't take a smart man or woman to do it. Every place has its faults. But if the people of Ranger would just realize how fortunate they were in what they have, and devote just one year to telling other people about it, there would be a tremendous change here. Make it a point for once to talk about the good things instead of to belly-ache about what's not so good. It could very easily mean money in your own pocket and cash in your own bank account.

Ranger merchants should never (Continued on Page 2)

Poll Taxes Available At C. E. May Office

Poll Taxes for the year 1957 are now available at the office of C. E. May Insurance, 214 Main Street, it has been announced. They will remain on sale through January 31, which is the last day to purchase them.

These Poll Tax Receipts have been placed in Ranger by the County Tax Collector for the convenience of the people of this city and surrounding communities. Unless a person gets a free vote this year by reason of just turning voting age, or unless he is exempt because of old age, a poll tax receipt is absolutely necessary if a person expects to have anything to say about any public issues that are apt to arise in 1957.

One thing that is sure to come up is the election of a United States Senator to take the place of Price Daniel, and that is not expected to be very far off.

Brashear Bill Will Seek Redistricting

Paul Brashear, state representative from the 76th District, left Monday for Austin where he will begin his second term in the House of Representatives with the opening of the Texas Legislature today.

Brashear said he will again introduce a bill which would add Calahan County to the 91st District Court, which presently includes only Eastland County. His bill would also add Shackelford County to the Stephens County District Court. Brashear introduced a similar bill at the last session, but it failed to pass. The Cisco legislator said he felt the move would strengthen the Eastland court.

Brashear won his first term of office by crusading against doing away with the 91st District Court, after Omar Burkett, then representative from this district, had introduced a bill which would have abolished the court.

Brashear, who took office in January 1955, served on the committees on agriculture, military and veterans affairs, penitentiaries, examinations of comptrollers and treasurers accounts, and legislative districts during the past session of the legislature.

The first two weeks of the legislative session will be devoted principally to organization and appointment of committees, Brashear said.

"The Legislature will be faced with many problems," he said. "It is impossible to forecast the exact events of a legislative session, but the water situation will likely be the major problem this session. Appropriations, insurance laws, workmen's compensation, safety laws and other factors will be brought before the body. It is obvious that an increase in appropriations and salaries will bring an increase in taxes.

"During the last session approximately 2000 bills were introduced, and this session is due to follow much the same pattern. It is almost physically impossible for members of the House and Senate to be thoroughly familiar with every bill they are to vote on; therefore, we must rely on those

(Continued on Page 2)

Orchard Field Day Set For February

An orchard field day will be held in Rising Star either Thursday, Feb. 14 or the following Thursday, J. M. Cooper, county agent, revealed this week.

Cooper said the program would be in line with the series of farm meetings which the Rising Star Chamber of Commerce is sponsoring to stimulate interest in a sounder and more diversified agriculture.

The orchard field day will consist of a forenoon of talks and discussions of peach, grape and other fruit growing led by A&M Extension department state workers, and an afternoon of on-the-grounds demonstrations of orchard practices in a Rising Star orchard.

Invited to appear on the program are U. Randolph of the Grape Experiment Station at Montague, known as the leading grape research specialist in the county;

Ranger Fire Dep't Called to Breck Blaze

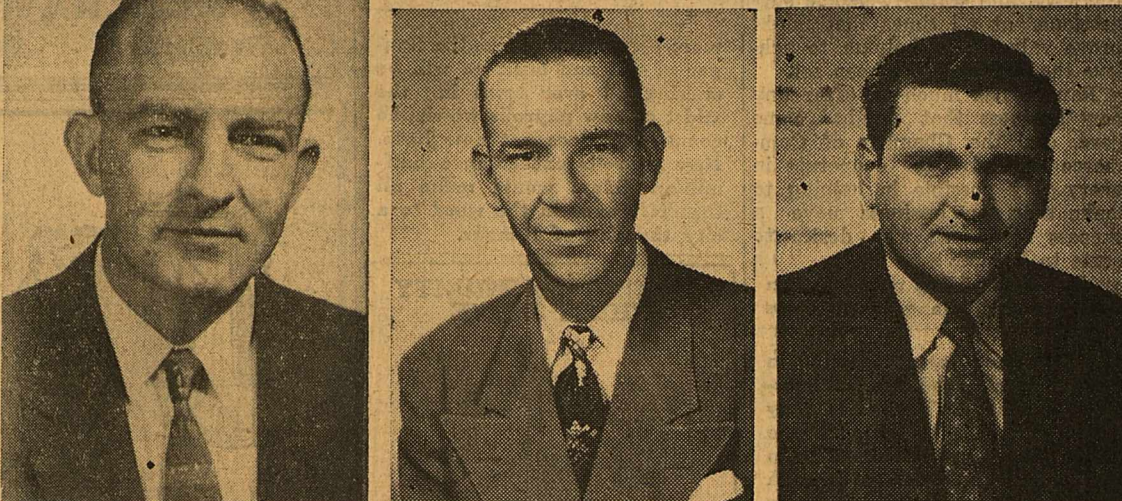
The Ranger Fire Department was called to Breckenridge Sunday to assist in fighting a fire that destroyed the S. T. Swenson building across the street from the courthouse.

The fire alarm came at about 5:45 p.m., and the building which was destroyed covered a half block and housed four businesses, Hart's Insurance Agency, the Little Kitchen Cafe, Truett Carter Barber Shop and the Ray Wood Gulf Service Station. It also served as a storage warehouse for the Southwestern Bell Telephone Co.

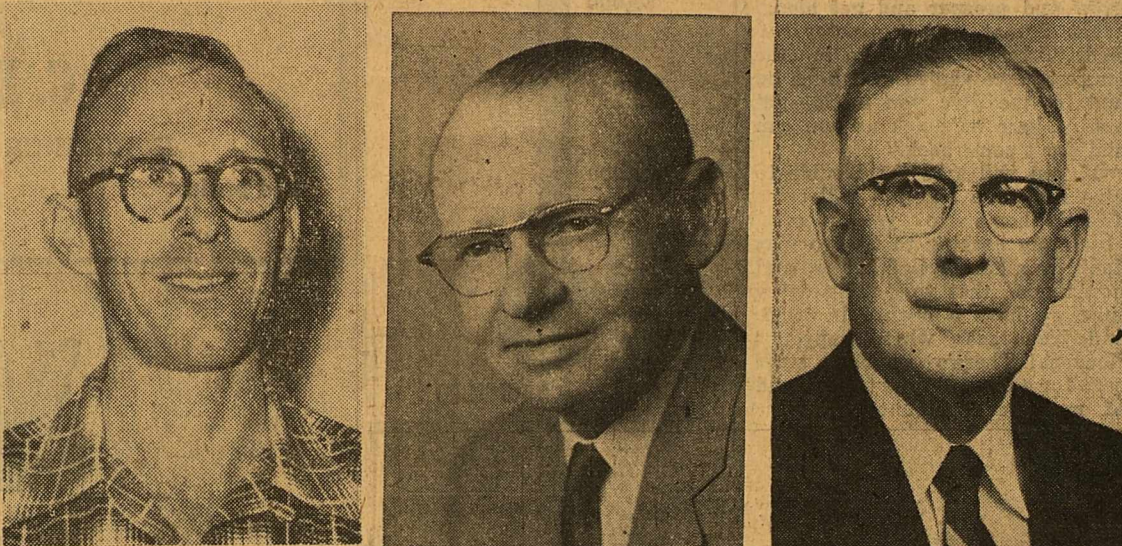
In addition to Ranger, firefighting equipment was also called in from Cisco, Eastland and Graham. It is thought the fire started in the kitchen of the cafe, which was closed Sunday, spreading from there to the telephone company storage room.

— FOR —
Fine Furniture, Floor Coverings, G.E. Appliances, It's Coats Furniture & Carpet, Ltd., Eastland.

Industrial Committee for 1957



WILSON GUEST, Cashier Commercial State Bank; LESTER CROSSLEY, Ranger City Manager; MORRIS NEWNAM, Food Locker Head.



JAKE LAWSON, Manager Lone Star Gas; NORMAN WRIGHT, Editor Ranger Times; C. B. PRUET, President Chamber Commerce.

County to Realize Half Million from Oil Hike

Humble announced an increase which averages about 35 cents a barrel. Other crude oil buyers are expected to match the increase. According to the annual report of the Oil and Gas Division of the Railroad Commission of Texas, Eastland County alone is producing more than one million barrels of oil each year. The price increase in the West Central area, which covers 35 counties with Eastland County the most centrally located, came as a welcomed surprise to local producers.

H. W. Porter of Irish Drilling Co. said, "The increase of the cost of completing wells has worked a very definite hardship on the small oil operator, and the increase of 35 cents per barrel will more than pay the operating costs of producing the oil and operating the leases." Other area oil men joined in agreement that the increase would be a great help in Eastland County.

The price increase went into immediate effect. This is the first general increase in crude purchase prices since June, 1953. Humble's announcement said the immediate cause of the hike was the firm's inability to meet demand requirements which have developed since the start of the Suez crisis. Since 1953 the average price of crude has been \$2.82 a barrel.

Eastland County has been more active during the past two or three months than at any other period in several years. Harding Brothers of Dallas have several exceptionally good wells completed within the past month on some of their leases north of Eastland. On the Jim Beard farm north of Eastland, Stanley Pirtle and associates have completed an "excellent" well. A deeper completion has just been made between Eastland and Ranger, and a number of other wells have been completed in Eastland County within the past three or four months.

Local oilmen also pointed out that the increase put new life into the stock market. Porter said that many manufacturing concerns are now acquiring oil stock to save tax money.

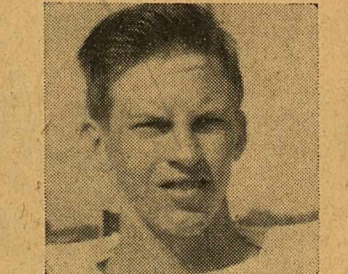
Oil shares boomed in late trading after Humble Oil posed the increase. On the American Exchange prices rose on volume of 1,020,000 shares compared with 670,000 Wednesday. Standard Oil of New Jersey, of which Humble is an affiliate, was up 1 3/8 at 59 3/8.

It didn't hurt Ranger a bit in the world when the major oil companies finally decided to increase prices of crude oil, because Ranger and Eastland County producers will increase their gross income by at least a half-million dollars in 1957, it has been estimated by a number of prominent producers in the area.

The quickest way to buy, rent, sell or trade is to say something about it in the Times Classified Section where everybody looks.

Wide publicity is being given to the turkey meeting to be held here on Thursday evening, Jan. 17, as R. V. Galloway, secretary of the Chamber of Commerce has sent publicity releases to 25 newspapers in the Ranger area, together with invitations to members of the Central Texas Turkey Growers Association and the Texas Turkey Federation, sponsors of the meeting.

The meeting is also being "plugged" by several radio stations, including Murray Cox on WFAA. The business men of Ranger will serve a turkey barbecue dinner to all turkey growers attending in the cafeteria at Ranger Junior College, beginning at 6 p.m., Jan. 17. Dr. D. E. Davis of the Research Laboratory of Texas A & M will be chief speaker and will give an illustrated lecture on how to control diseases in turkey flocks. The County Extension Service is also a co-sponsor of the meeting.



PAUL HINDS, Star RHS Athlete

Paul Hinds Wins Two Athletic Honors Recently

Paul Hinds, star Ranger High School athlete, won two athletic honors over the week-end when it was announced Sunday that he had been given honorable mention by the Texas Sports Writers Association as one of the outstanding backs on the All-State AA football team, and when it was announced by the coaches Saturday night that he had been selected for the All-Tournament team in the basketball tournament held Friday and Saturday at Olden.

The Olden All-Tournament team consisted of Paul Hinds, Ranger; Dale Slatton, Eastland; Pete Mendez, Putnam; Eddie Munn, Olden, and Buddy Starr, Scranton. Scranton won the tournament after downing Ranger in the finals. The Bulldogs went into the final quarter of the last game leading by 10 points, but the lads from Scranton managed to stage a full court press and Ranger seemed to lose all control of the ball.

Mrs. Ellison Dies
Mrs. J. D. Ellison, 84, of Teague, sister of A. Lewis of Ranger, died at 10:30 p.m. Monday, it was learned here today. Funeral will be at 2:00 p.m. Wednesday at Teague.

BOATS & MOTORS
Evinrude, Lone Star, Cadillac, Chriscraft Boats
L & J SUPPLY CO.

RE SURE—SEE
Don Pierson Olds-Cadillac
Eastland
Quality Cars at Volume Prices

Robert E. Harrell Services Held Monday At 3 p.m.

Funeral services for Robert E. Harrell, 65, were held at the First Christian Church of Ranger at 3 p.m. Monday with the Rev. Ralph E. Perkins, pastor of the First Baptist Church officiating. Burial was in Evergreen Cemetery under direction of Killingsworth Funeral Home.

Mr. Harrell passed away in a Ranger hospital on Saturday, Jan. 5, at 5:00 p.m., following a long illness of several months. He was a prominent citizen of Ranger, having moved here from Tennessee in 1920, and he was well known all over this area of West Texas, having been engaged in the ranching business for several years and a breeder of pure-bred cattle. He later conducted a dairy business that reached over a large section of this area.

Mr. Harrell was born on August 5, 1891, at Surgoinsville, Tennessee, and was married on March 11, 1911, to Miss Ida Frances Vaughn of that same city, and the couple moved to Ranger 37 years ago. Mr. Harrell was a member of the First Christian Church and the Ranger Masonic Lodge No. 738. He was also a past Worshipful Master of the Lodge.

Survivors include his wife and two daughters, Mrs. Howard H. Oliver and Miss Inez Harrell, both of Ranger; one sister, Mrs. Beulah Martin of Pocatello, Idaho, and one granddaughter, Miss Dorothy Ann Oliver of Ranger.

Pallbearers were Dalton Covington, Cy Landers, George Beighley, W. H. Stevenson, B. S. Dudley, Jr., W. H. Clarke and James Townzen.

Honorary pallbearers were Walter Murray, B. S. Dudley, Sr., V. V. Cooper, Jr., G. B. Rush and H. C. Wilkinson.

Rangers to Host Rams In Season Opener Wed.

Ranger Junior College Rangers will open their conference basketball season with the San Angelo Rams Wednesday night, Jan. 9, at 8 o'clock at the city gymnasium. The Rangers, who have been handicapped all season by lack of height, suffered another blow this week when Phillip Stovall, starting center, had to quit school due to illness in his family.

Probable starting lineup Wednesday night will include Bubba Canuteson, James Tull, Jim May, Doug Jordan and Weldon Curbo. The Rams are led by two former University of Texas freshmen, Joy Howley and La Rue Robinson, both of whom were All-American players while attending MacCallum of Austin. The Rangers scoring punch comes from James Tull and Bubba Canuteson.

In their last non-conference game the Rangers put up a good fight against Harding-Simmons before losing 62-70. Canuteson was high point man with 26, followed by Tull and Darnell with 12 points each.

TV HEADQUARTERS
RCA, Admiral, Philco, Zenith
Free Delivery and Convenient Terms. Good Trade-Ins, too!
L & J SUPPLY CO.

Bulldogs Open Season Tonight Against Winters

The Ranger High School Bulldogs open their conference basketball season tonight, Tuesday, against Winters at the city gymnasium.

The program will get under way early, not later than 7 o'clock, because the "B" teams of both schools will lead off the festivities.

The Bulldogs have developed into a pretty fair bunch of country ball players, as was shown in the tournament held at Olden last week-end when the Rangers last went all the way to the finals, losing only to Scranton after going into the final quarter with a 10-point lead and blowing it.

Everyone is invited out to see the annual basketball game and will be a jam-up good ball game.

Killingsworth's
Morticians
Serving Ranger Since 1918
Insurance — Birth to 90 Yrs.
Phone 29

The Ranger Times

ELM STREET—RANGER, TEXAS ESTABLISHED JUNE 1, 1919
Refered as second class matter at the postoffice at Ranger, Texas under the act of Congress of March 3, 1879

TIMES PUBLISHING COMPANY
Published Tri-Weekly—Tuesdays - Thursdays - Sundays
JOE DENNIS and ONOUS DICK, Publishers
NORMAN WRIGHT, Editor

One week by carrier in city .15
One month by carrier in city .65
One year by mail in County 3.50
One year by mail in State 4.95
One year by mail out of State 6.95

NOTICE TO PUBLIC—Any erroneous reflection upon the character, standing or reputation of any person, firm or corporation which may appear in the columns of this newspaper will be gladly corrected upon being brought to the attention of the publishers.

CLASSIFIED

All Classified Ads Must Be Paid For In Advance.

FOR RENT -

TRANSIENT ROOMS and 3 and 4 room apartments. Gholson Hotel. Phone 9506.

FOR RENT: Modern furnished house, 705 Blundell.

FOR RENT: Four room modern house, Caddo Hwy. Garage, 5 acres. Call 250-R.

FOR RENT: Two bedroom furnished house. Phone 208-J. Glenn West, after 3 p.m.

FOR RENT: Re-decorated 2-bed room house. Phone 66-W.

FOR RENT: Five room modern house with garage. Call 359.

FOR RENT: Modern four room house, 518 South Austin St. Phone 467-J.

MISC. FOR SALE -

WHY DELAY? Use our convenient terms, repair or modernize now, pay later. Burton-Lingo Co.

DANDY LETTER FILE. Handy for keeping track of daily correspondence. \$1.85. Ranger Times. Phone 224.

FOR SALE: One new bedroom suite, one used, and one stove in good condition. Call 318.

REAL ESTATE -

FOR SALE: Nearly new 2-bedroom house with long term loan. Low interest rate. \$900.00 for equity, balance like rent. C. E. May Insurance & Real Estate. Phone 418.

NEW JOBS-

(Continued From Page 1)

buildings here in which to house them.

In addition to an abundance of labor prospects, Ranger has plenty of water, electricity and gas, and above all it has plenty of good transportation facilities, being on the main line of the T&P and on Highway 80 if motor freight shipments are preferred.

The Industrial Committee is already in contact with several concerns that have shown an interest in moving to Ranger, and the committee plans to make an increasing number of contacts in the weeks to come. Under the direction of Wilson Guest it is going to work on the theory that the more contacts made the better the chances of landing something.

Both the Chamber of Commerce and the Industrial Committee enlist the help and cooperation of every person in Ranger to the campaign to bring new business to this city, and would welcome suggestions at all times that might prove valuable in helping to achieve the goal that has been set.

Ranger has much to offer any new business that might come here, and the Chamber of Commerce is ready to cooperate in every way possible in helping to make any new business move a success for those who desire to come to Ranger.

If a goal of 250 new jobs can be achieved, Ranger will once

more be very much like the Ranger of old and business will be stirring all over town in the midst of new payrolls which the community does not now have. New payrolls exceeding a half-million dollars would make all the difference in the world to a city the size of Ranger.

They seemed very interested in Ranger and asked a lot of questions about it. They said they were surprised to learn all the things he mentioned to them and said they had been through here a lot of times and never realized all that.

Just such stuff as that goes a long way toward helping Ranger grow and prosper and get along. What if that cafe proprietor had said, "listen, Bub, you're in the lousiest place you've ever been in, and let me give you a tip—get out of here as quick as you can and don't come back." If you will take the trouble to give Ranger a boost, it will come directly home to you. It costs absolutely nothing to try, so why don't we all resolve right here and now to do that very thing every time we have a chance in 1957, and just see what happens? Heavens! There's enough stuff here for a dozen towns to be proud of, much less just one!

1920 Club Meets Thursday

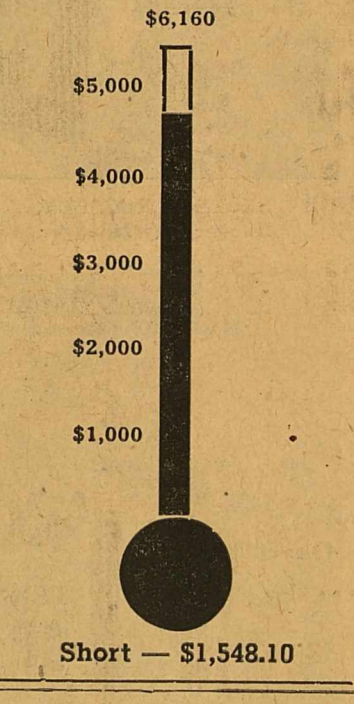
The 1920 Club held its first regular meeting of the year Thursday, January 3, at the Community Club House. The program was on safety education and youth conservation. Mrs. B. A. Tunnell, year-book chairman, gave Safety Hints for the Home for roll call.

Mrs. C. B. Pruet, leader for the day's program, introduced a panel consisting of Mrs. George Rushton, who spoke on New Insights into the Teen-Ager; Mrs. Judson Hardy who discussed The Case for Driver Education; and Mrs. G. B. Rush, whose topic was Family Hobbies for Family Fun.

The following members were present: Mmes. R. A. Jameson, Floyd Killingsworth, Charles Hummel, J. S. McDowell, A. W. Brazda, C. B. Pruet, George Rushton, Judson Hardy, A. N. Larson, B. A. Tunnell, G. B. Rush, R. L. Hamrick Bill Clem, Misses Vivian Simmons and Anna McEver.

more be very much like the Ranger of old and business will be stirring all over town in the midst of new payrolls which the community does not now have. New payrolls exceeding a half-million dollars would make all the difference in the world to a city the size of Ranger.

RANGER COMMUNITY CHEST DRIVE



CARD OF THANKS

We wish to express our deepest appreciation and thanks to everyone for the beautiful flowers, food, kind words and sympathy in the loss of our loved one, Homer Squyres. Especially do we wish to thank Sister Morris for her service.

Mr. and Mrs. W. L. Squyres
Mr. and Mrs. N. B. Squyres
Mr. and Mrs. R. O. Squyres
Mr. and Mrs. J. D. Cox
Mr. and Mrs. C. O. Braddon
Mr. and Mrs. Tuttle

BRASHEAR-

(Continued from Page 1)

who are informed about certain issues in an effort to vote properly. This means that all citizens can take an active part in the next session of the legislature. The benefit of your thinking on issues that you are interested in, either as a businessman or as an individual, will be tremendous help and most welcome.

The 76th District is made up of Eastland, Callahan and Shackelford counties.

SINCE 1884

... it has been our privilege to render a service to this community as monument builders.

ALEX RAWLINS & SONS
Weatherford Phone 4-2726 Texas

Like anything else, Automobile Insurance should properly fit the needs of the owner. Etna's nationwide service is important to the motorist who wants and needs the best.

C. E. MAY
INSURANCE - REAL ESTATE
214 Main Phone 418

DIXIE Drive-In
EASTLAND RANGER HIGHWAY

Box Office Opens 6:45
Show Starts 7:00
Box Office Closes 9:00

Admission—50c . . . Children Under 12—Free
SUNDAY - MONDAY - TUESDAY, JAN. 6 - 7 - 8

IT'S THE MOST... THE GREATEST...

Rock, Pretty Baby!

STARRING SAL MINEO • JOHN LUAKA • JOHN SAXON • PATTELS

EDWARD C. PLATT • FAY WRAY • ROD MCKUEN
A UNIVERSAL-INTERNATIONAL PICTURE

Tuesday Is Bargain Day—Adults 25c Plus Color Cartoon

WEDNESDAY - THURSDAY, JAN. 9 - 10

IT'S GOT LOVE... LAUGHTER... FUN!

UNIVERSAL-INTERNATIONAL Presents
MAUREEN O'HARA JOHN FORSYTHE and TIM HOVEY

Everything But the Truth

in Eastman COLOR
with FRANK FAYLEN • LES TREMAYNE • PHILIP BOURNEUF

PLUS: Color Cartoon

Pontiac put a new "OH" in smo-o-oth...

with an All-New Notion in Motion!

Take your first heart-lifting run in America's Number One Road Car and the miles whisper by so quietly and effortlessly only your eyes tell you that you're on the move. Never before have power, ride and handling been in such perfect balance with each other. Here's road-hugging lift and length so precisely controlled that corners magically change to curves... and curves to straightaways. With Pontiac's exclusive Strato-Streak power and its perfect running mate, Strato-Flight Hydra-Matic, you enjoy the security of constant and instant command of the most modern performance team on the road—cradled in a Level-Line Ride that floats you along like a leaf on a mill pond. And it's all yours proved as no other car in history—by a rugged 100,000-Mile Marathon Test Run! Doesn't this suggest that now's a wonderful time to come in and see what you've been missing?

AMERICA'S NUMBER ONE ROAD CAR!

B. & W. PONTIAC
PINE AT RUSK RANGER PHONE 939

WARM UP

THOSE HARD-TO-HEAT AREAS

with quick clean ELECTRIC HEAT

Whether it's the home workshop, bathroom, play room, nursery or any other place in your home . . . when you need extra warmth for comfort . . . a portable electric heater gives it to you instantly. Just plug in, flip a switch and soothing electric heat quickly chases away the chill. Ideal for warming up those hard-to-heat areas around your home. For extra warmth when you need it this winter, get a portable electric heater.

Your favorite electric appliance dealer has a variety of portable electric heaters from which to choose. See him soon!

TEXAS ELECTRIC SERVICE COMPANY
A. N. LARSON, Manager

E. Myrl Squires Visits Junior College Campus

E. Myrl Squires, son of Mrs. S. E. Squires of Ranger was a recent visitor of Ranger Junior College campus.

Squires, an ex-student of RJC, was prominent in clubs and campus organizations while here. He was a 1946-47 Phi Theta Kappa member, president of the sophomore class, a student council member, and president of the Peregrinity Club.

He received both his A.B. and M.A. degrees from George Washington University, Washington, D. C.

... student of George Washington University, D. C. Squires took a Department of Education Near East Summer Seminar at American University of Beirut, Lebanon and attended the school of advanced international studies, John Hopkins University, Washington, D. C.

He plans to go to the Middle East in 1957 to complete dissertation for his Ph. D. degree. The subject will be "The Economic Development of Kuwait."

GUESTS IN HICKS HOME

Mr. and Mrs. John Hicks had as guests during the holidays, Mr. and Mrs. John Alexander and Joy of Lovington, N. M., and Mr. and Mrs. Johnnie Hicks of Fort Worth. They had as guests Sunday Mr. and Mrs. J. B. Cox of Eastland.

Looking Back on 1956-

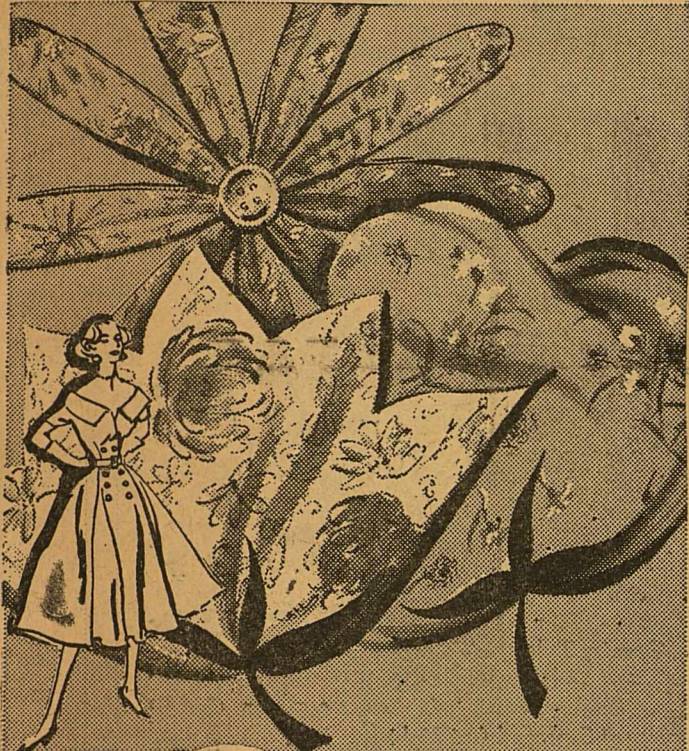
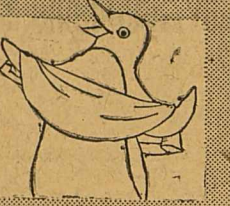
... the inventory shows that the scales weighed out a good portion of the better things for us to enjoy. While the mistakes we made stick out like a sore thumb and our failures almost overwhelm us, yet these discouragements are small indeed when compared to the unhappiness and tragic experiences of some who happen to live in other countries. We are glad we live right here in Eastland County where we have had the opportunity to serve a host of loyal customers for more than 30 years.

EARL BENDER & COMPANY
Eastland (Abstracting since 1923) Texas

PENNEY'S

ALWAYS FIRST QUALITY!

JANUARY WHITE GOODS SPECTACULAR!

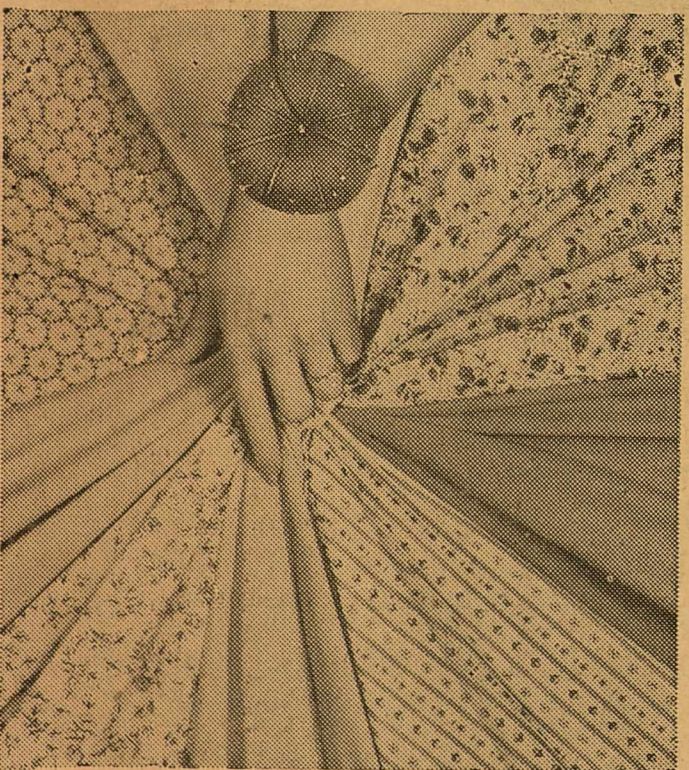


Penney's mixed bouquet of "REGULATED" COTTONS

Proud Penney perfectionist prints and go-together solids—unmatched at this low price—to interpret softly into the new dress silhouettes. Such easy care crease-resistant, sanforized, machine washable!

79c

Yard



One-time special! Cottons and rayons!

See for yourself what beautiful fabrics you'll find in generous dress and blouse lengths! Designs and colors for every sewing need! Compare for style, quality, value!

4 yards \$1

Women's Activities

January 8
The Ruth Sunday school class of the First Baptist Church will meet in the home of Mrs. W. E. Herweck, Tuesday, Jan. 8 at 7 p.m. for a business meeting and social. Each member is urged to be present.

January 8
The Mary Martha Sunday School class of the First Baptist Church will meet in the home of Mrs. E. L. Hargrave Tuesday evening, 7:30. All members are urged to be present.

Tuesday, January 8
The Young School PTA will meet Tuesday evening at 7:30 p.m. in the Young school auditorium. Robert Craig will be speaker and the 6th grade will present the program.

January 8
The Dorcus Sunday School class of the First Baptist Church will meet in the home of Mrs. W. S. Adamson Tuesday evening at 7.

January 9
The New Era Club will meet Wednesday, Jan. 9, 4 p.m. for a book review by Mrs. W. A. Lewis. Hostesses will be Mmes. B. S. Dudley, Jr., B. S. Dudley, Sr. They will meet in the home of Mrs. B. S. Dudley, Jr.

January 9
The Dutch Club will meet Wednesday morning, 8 a.m. at King's Cafe. Members are urged to remember gifts for shut-ins.

Coach Weir Has Charge of RJC Assembly

Coach Fred Weir was in charge of the assembly Thursday, January 3, at Ranger Junior College for the student body and faculty. George Alford gave the invocation.

Talent for the assembly was arranged from the college students by Coach Weir. Featured on the program was Kay Vaughn who gave a superb exhibition of twirling. Gene Ashcraft sang a solo, "Any-way I Wonder" and the three Cleffs, Bubba Canuteson, Tommy Stark and Dan Mitchell sang arrangements of three songs, "True Love," "16 Tons," and "Beautiful Brown Eyes."

Dead Week At RJC As Students Cram for Exams

Students are in a serious mood on the RJC Campus this week as dead week rolled in with all of its non-activities of no dates, no socials, and no shows.

The only break in the week of study will be a conference basketball tilt Wednesday with San Angelo.

Examinations have been scheduled for January 14-17.

Evening classes will have examinations January 14 and 15.

Registration for the spring semester will be held January 21 and 22 for both day and evening classes.

RJC Masquers Attempt Theatre In the Round

Ranger Junior College Masquers will hold tryouts for two one-act plays to be presented in the round at Ranger Hall early next semester, according to George Alford, Chairman of the drama department.

Officers of this popular dramatic organization are as follows: President, Beth Grace; Vice President, Charlotte Clark; Secretary-Reporter, Marie Chambers; Student Council Representative, Doris Nabors.

Some 20 junior college students are in this organization. Membership in the Masquers is open to any student taking speech or any student interested in drama.

BARBER SHOP
IT PAYS to LOOK WELL!
Courteous Service
TONY'S BARBER SHOP
223 1/2 Main - Phone 108

Faith, Hope And Charity Class Meets

The Faith, Hope and Charity Sunday school class of the East-side Baptist Chapel met in the chapel Thursday evening at 7:30.

Mrs. C. A. Strong led the opening prayer. Mrs. Kenneth Hardy gave the devotional.

After a short business session, presided over by Mrs. Herman Stroud, coffee and donuts were served to Mmes. M. W. Herweck, Joe Harper, Ray Suggs, L. D. Sum-

Debs Enjoy Spaghetti Dinner

Mrs. R. L. Hamrick, sponsor of the Debs at Ranger Junior College entertained 26 members of the popular girl's organization Friday evening with a dinner in her home at 509 Elm.

A delicious spaghetti dinner was served to Gay Nell Loper, Hazel Adams, Cecil Lynn Dobbs, Mary Hinds, Glenda Forehand, Barbara Nichols, Mary Maddux, Evelyn Jones, Dorothy Daws, Marie Chambers, Charlotte Clark, Doris Nabors, Elpidia Gonzales, Mary Lou Wright, Wilma Elliot, Shirley Matlock, Donna Blackwell, Thelma Ed-

Happy Go Lucky Club Meets

The Happy Go Lucky club met in the home of Mrs. Bob Gore for the election of officers.

Refreshments were served to the following: Bobby Gore, Robin Hood, Denise Huling, Duane Parnell, Janice Stephens, Raynell Suggs, Dana Summers, Sherry Vinson, Dona Hardy, Mrs. Bill Hood and Mrs. Gore.

wards, Sonja Irwin, Kay Vaughn, Jackie Cornelison, Janice Curbo, Anita Humphreys, Betty Wells, Dorothy Stagner and Patsy Shaf-

—THE PECAN— STATE TREE OF TEXAS

Plant Papershell Pecan Trees for your own pleasure and profit, and to provide a natural endowment for your children and grandchildren.

FREEMAN PECAN NURSERY
R. F. D. NO. 1
10 Miles Southeast of Ranger

DOUBLE D&A GREEN STAMPS WEDNESDAY

WITH PURCHASE OF \$2.50 OR MORE

FRESH PRODUCE SALE!

Here's more proof that your savings at WORTH FOOD MART are STOREWIDE! This week we're featuring health-giving, thrifty fresh produce. Garden-fresh vegetables and "just picked" fruits to make your cool-weather meals more nourishing, and at BIG SAVINGS!

Prices Effective Tues. & Wed.

- KRAFT CHEESE SPREAD
- VELVEETA 2 Lb. Pkg. 89c
- KRAFT CHEESE—2 1/2 Oz. Pkg. 19c
- GRATED AMERICAN 19c
- KRAFT CHEESE—1 1/2 Oz. Pkg. 19c
- GRATED PARMESAN 19c
- KRAFT'S—8 Oz. Pkg.
- AMERICAN CHEESE 31c
- OLD ENGLISH CRAFT CHEESE Lb. 37c
- KRAFT CHEESE
- ROKA SPREAD 5-Oz. Glass 27c
- KRAFT SALAD DRESSING
- MIRACLE WHIP Quart 59c
- WHOLE KERNEL
- NIBLET'S CORN 12-Oz. Can 16c
- COMSTOCK SLICED
- PIE APPLES No. 2 Can 27c
- COOL WEATHER TREAT
- FRITO CHILI No. 2 Can 53c
- CELLO-WRAPPED
- PINTO BEANS 1-Lb. Pkg. 13c
- TRY WONDERFUL NEW—2 1/2 Oz. Can
- COMET CLEANSER 22c
- NABISCO PREMIUM
- SALTINES 1-Lb. Box 27c

potatoes

U. S. NO. 1 RUSSETS

10 Lb. Cello Bag 49c

GREEN CABBAGE Firm Heads Lb. 1c

TEXAS RED GRAPEFRUIT Lb. 10c

FRESH, TENDER COLLARD GREENS 2 Bunches 15c

LARGE BUNCHES BEST FOR JUICE

GREEN ONIONS 2 Bchs. 15c

FLORIDA ORANGES Lb. 10c

CAULIFLOWER Snowball, Crisp Heads Lb. 19c

MEDIUM SIZE TENDER, CLEAN

CALAVOS Each 29c

CRISP, RED SPINACH Cello Pkg. 19c

RADISHES Cello Pkg. 5c

FANCY YAMS Lb. 17c

Cooking Apples Fancy Rome Beauty Lb. 15c

Frozen Foods!

T. V. DINNER SWANSON—Chicken, 11-Oz. Pkg. 69c

Beef or Turkey

GRAPE JUICE WELCH'S 2 6-Oz. Cans 37c

picnics

FULLY COOKED SWIFT'S PREMIUM Lb. 35c

CALF CHUCK ROAST Worth Quality Lb. 33c

CALF RIB CHOPS Worth Quality Lb. 59c

Sliced Bacon Swift's 1-Lb. Pkg. 45c

CALF SIRLOIN STEAK Worth Quality Lb. 59c

SLICED PORK LIVER Fresh Lb. 19c

PERCH FILLETS FROZEN TASTE O'SEA Pkg. 39c

INTRODUCTORY OFFER

SAVE 19¢ FOR ENJOYING RATH BEEF STEAKS

VEAL CHOP-ETTES

NOW BOTH FOR 69¢

Health & Beauty Aids!

Jergen's Lotion

For Lasting Skin Protection on Cool Days 6-Oz. Botl. Plus Tax 49c

PHILLIP'S MILK OF MAGNESIA 12-Oz. Botl. 43c

4-WAY COLD TABLETS 12-Ct. Pkg. 25c

FLETCHER'S CASTORIA 12-Oz. Botl. 39c

lovely nylons

BY SUPERMARKET

with the amazing DOUBLE YOUR MONEY BACK guarantee

\$1.25 and \$1.50 VALUES FOR ONLY 89c and 99c

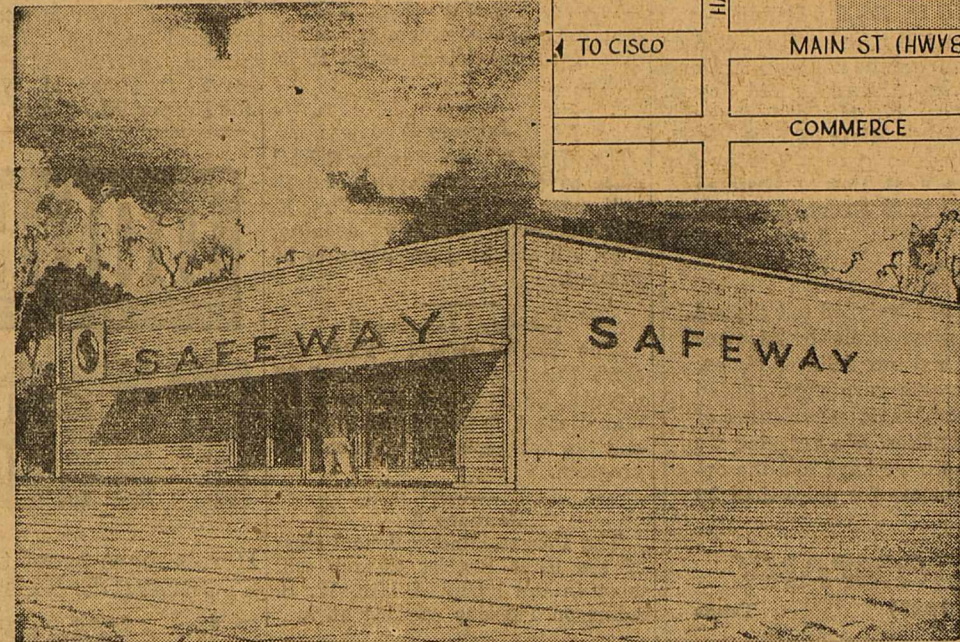
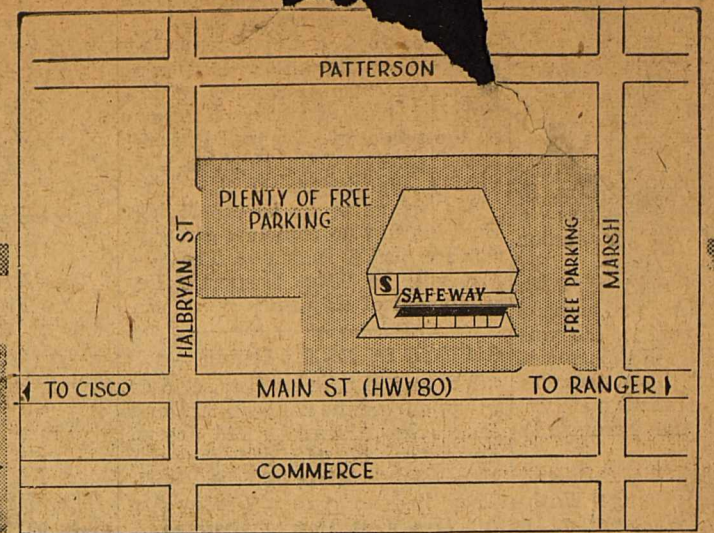
** 51 Gauge 15 Denier ** 50 Gauge 15 Denier

** 60 Gauge Stretch ** 400 Needle Seamless

** Insured, Warranted Nylons

WORTH FOOD MART

NEW SAFEWAY... 504 E. MAIN STREET in EASTLAND ...



Prices effective Monday, Tuesday and Wednesday, January 7-8-9.

SAVE-A-TAPE

This is Safeway's wonderful new plan to get exciting premiums. You can get many of the items you've always wanted for your home. All you do is save the green cash register tapes you get when you shop Safeway. It's Quick, It's Easy and the premiums are all FREE.

FREE STARTER ENVELOPE

This Starter envelope furnished free by Safeway and is worth \$3.00 in tapes.



GRAND OPENING

CELEBRATION SALE!

Grand Opening Values

Taste Tells Catsup	Perk Up Plain Foods	2	14-Oz. Bottles	25¢
Shortening	Velkay. For Flaky Pastry and Pies	3	-Lb. Ctn.	51¢
Shortening	Mrs. Tucker's. For All Your Baking	3	-Lb. Ctn.	55¢
Snowdrift	Shortening. Better for Your Baking and Frying	3	-Lb. Can	93¢

Safeway Good Buys

Skylark Bread	Regular Sliced White	1 1/2-Lb. Loaf	25¢
Skylark Bread	Butter and Egg	1-Lb. Loaf	19¢
Raisin Bread	Skylark	1-Lb. Loaf	25¢
Cloverleaf Rolls	Skylark 6 & 6 Brown and Serve	12-Oz. Pkg.	23¢
Buttermilk Biscuits	Skylark 12-Count Brown and Serve	9-Oz. Pkg.	18¢
Coffee Cake	Curtis	11-Oz. Pkg.	29¢
Cinnamon Rolls	Curtis 8-Count	9-Oz. Pkg.	20¢
Margarine	Coldbrook	1-Lb. Pkg.	23¢



Sleepy Hollow Syrup

Delicious with Waffles or Pancakes 24-Oz. Bottle **56¢**

Grade A Eggs	Breakfast Gems Large	Doz.	57¢
Shady Lane Butter	Delicious on Toast	1-Lb. Pkg.	75¢
Nut Roll	Pillsbury Nut	11-Oz. Pkg.	41¢
Cinnamon Rolls	Pillsbury Quick	8 1/2-Oz. Can	25¢
Wisconsin Cheese	Sharp Cheddar	Lb.	57¢
Longhorn Cheese	Wis.	Lb.	53¢

Look at These Buys

Highway Peaches	Sliced or Halves	No. 2 1/2 Can	19¢
Gardenside Corn	Cream Style Golden or White	3 No. 303 Cans	25¢
Banjo Hominy	White	No. 300 Can	5¢
Standard Tomatoes	Perky Flavor	3 No. 303 Cans	25¢
Brookdale Salmon	Chum	1-Lb. Can	39¢
Dog Food	Vets	1-Lb. Can	5¢
Airway Coffee	Full-Flavored	1-Lb. Pkg.	87¢
Nob Hill Coffee	Economize with the Best	1-Lb. Pkg.	95¢
Edwards Coffee	Full Flavor — Full Value	1-Lb. Can	\$1.03
Instant Coffee	Edwards	2-Oz. Jar	51¢
Pinto Beans	Sunny Hills	4 -Lb. Cello	29¢



FRANKFURTERS

Swift Premium 1-Lb. Cello **45¢**

Veal Cutlets Just the Meat for Dinner Tonight Lb. **79¢**

Pork Back-Bone Fresh, Country Style Lb. **39¢**

Jumbo Sliced Bologna Seasoned Just Right 8-Oz. Pkg. **19¢**

Ground Beef Economy Lb. **29¢** **Neuhoff Smokies** Perky Flavor Pkg. 12-Oz. **49¢**

Calf Round or Swiss Steak U.S. Gov't Graded Lb. **69¢** **Dry Salt Jowl** Perfect for Seasoning Lb. **15¢**

Sirloin Steak Calif. U.S. Gov't Graded Lb. **75¢** **Sliced Bacon** Thick Northern Cured 2 -Lb. Pkg. **95¢**

Pork Sausage Wingate Reg. or Hot 1-Lb. Roll **33¢** **Sliced Salami** Large 8-Oz. Pkg. **29¢**

Pork Roast Boston Butt Lb. **49¢** **Somerset Chili** Full-Wrap 1-Lb. Pkg. **45¢**

Kitchen Craft Flour Better For All Your Baking 10-Lb. Bag **87¢**

Kitchen Craft Flour Tender Pies and Pastry 25-Lb. Bag **\$1.80**

Kitchen Craft Flour Self Rising 10-Lb. Bag **89¢**

From Safeway's Drug Dept.

Shave Cream	Rise Push Button Lather	6 1/2-Oz. Can	59¢
After Shave Lotion	Colgate Spiced Tax Incl.	Giant Bottle	60¢
Liquid Shampoo	Prall	3 1/2-Oz. Bottle	60¢
Hair Dressing	Brylcreem Tax Incl.	4-Oz. Tube	57¢
Hand Lotion	Trushay Tax Incl.	5-Oz. Bottle	54¢
Revlon Clean & Clear	Cleansing Lotion	5 1/2-Oz. Bottle	\$1.41
Baby Oil	Johnson and Johnson	5-Oz. Bottle	49¢
Baby Powder	Johnson and Johnson	9-Oz. Can	49¢
Baby Shampoo	Johnson and Johnson	4-Oz. Bottle	59¢

Safeway's Dairy Products

Lucerne Milk	Homogenized	1/2-Gal. Ctn.	49¢
Buttermilk	Lucerne	1/2-Gal. Ctn.	40¢
Chocolate Drink	Lucerne	Qt. Ctn.	25¢
Half & Half	Lucerne	Pt. Ctn.	28¢
Coffee Cream	Lucerne	1/2-Pt. Ctn.	21¢
Whipping Cream	Lucerne	1/2-Pt. Ctn.	29¢
Cottage Cheese	Blossom Time Reg. Farm Chive	16-Oz. Ctn.	25¢

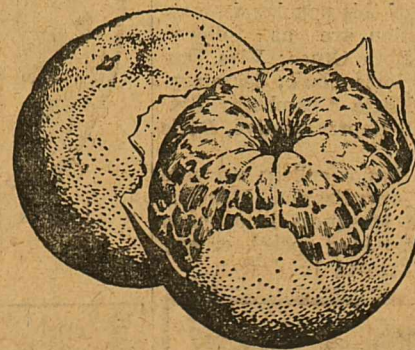
Pillsbury Biscuits

Buttermilk or Sweetmilk 3 8-Oz. Cans **19¢**

Florida Oranges

These Safeway Oranges are specially good because they're from the top pick of the Florida Crop.

8 -Lb. Bag **39¢**



New Potatoes

Full of Flavor. They Cook Up Fluffy

2 Lbs. **15¢**

Snowy Cauliflower

White Heads

Lb. **17¢**

Crisp Lettuce	Crackling Sweet	Lb.	23¢
Delicious Apples	Red	Lb.	23¢
Rutabagas	Full Flavored	Lb.	7¢

Bel-air Frozen Foods

Baby Limas	10-Oz. Pkg.	27¢
Brussel Sprouts	8-Oz. Pkg.	27¢
Whole Okra	10-Oz. Pkg.	25¢
Orange Juice	2 6-Oz. Cans	39¢
Orange & Grapefruit Juice	2 6-Oz. Cans	35¢
Grapefruit Juice	2 6-Oz. Cans	31¢
Tangerine Juice	6-Oz. Can	19¢
Frozen Peas	10-Oz. Pkg.	21¢
Blackeye Peas	10-Oz. Pkg.	25¢
Leaf Spinach	12-Oz. Pkg.	20¢

Shop  **SAFEWAY**