

THE RANGER TIMES

★ Gateway To
Lake Leon ★

38TH YEAR

SEEKING COMMUNITY BETTERMENT SINCE 1919

RANGER, TEXAS, THURSDAY, JANUARY 31, 1957

PRICE FIVE CENTS

Lights to Shine for Mothers Tonight

WHAT'S...



COOKING?

By NORMAN WRIGHT
The Featherlight Corporation might very well become within the not too distant future one of the most outstanding industries in Ranger.

Every big wheel in the Featherlight organization, including the president, the board of directors, and all the plant managers from other places, were in Ranger Saturday looking over the set-up here.

All of the executive personnel also had a meeting to discuss future expansion for Featherlight, and the road ahead of them offers unlimited opportunities that are within their reach right now.

Take a pencil and paper and sit down to make a list of all the different things that can be manufactured out of the Featherlight Aggregate being made here in Ranger and you'll find it is impossible to come to a stopping place.

Instead of selling only the Aggregate, Featherlight has reached the decision to manufacture some of the products themselves that can be made from this Aggregate. Already they have a plant in Waco manufacturing huge concrete pipe to be used in storm sewers and allied jobs — pipe so big a person can stand up and walk inside a section of it.

They also have plants in Lubbock, Abilene, Midland and San Antonio, but none of them are as big as the Ranger plant. Some of them are manufacturing building blocks made from the Aggregate, and studies are being made to put a beautiful glaze on these blocks, in colors, that could almost revolutionize the building industry.

Featherlight has not announced any new plans for Ranger, but it is a known fact that anything they decide to make, they can make it in Ranger cheaper than anywhere else. The reason for that is, they are sitting squarely on top of their supply of raw material here, and there is enough of it to last a lifetime. In other places, there is quite a hauling problem involved in getting the raw material to the place where it is processed, and that costs money.

In Ranger there is no transportation expense at all. If the company gets into a manufacturing business requiring a great outlay of money to guess where that plant will be located.

Out of all the things that can be made from Featherlight Aggregate, the big money lies in the field of pre-stress material. That includes huge beams and pillars and supports to be used in bridge building, and the chief customers are states engaged in building roads. Pre-stress material can also be used in the erection of buildings. In manufacturing items of this type, a lot of aggregate is used, and it is logical to assume that any plant so engaged would wish to be close to an everlasting supply.

The State of Texas has already announced that more and more pre-stress material will be (Continued on Page Two)

Weather Reports

Mostly cloudy and warmer Thursday afternoon, night and most of Friday, but turning colder Friday night. High Thursday in the 50s Low Thursday night 45. High Friday in the 60s.

SERVICE

Pamper your car with quality service from our experienced mechanics. All cars—fast, efficient, economical. Call 802 today.
Don Pierson Olds-Cadillac Eastland

Entire Featherlight Executive Staff In Ranger Visiting Plant

The entire executive staff of the Featherlight Corporation, including President E. G. Kingsberry, the board of directors, and all the managers of plants at Lubbock, Abilene, Midland, San Antonio and Waco, were in Ranger Saturday visiting the Ranger plant which is the biggest of all the Featherlight installations.

The group first met in Eastland Friday at the Connellee Hotel where an executive meeting was

held before making the inspection trip to Ranger.

Purpose of the meeting, according to Charles Bomar, local plant superintendent stockholder and director, was to organize all Featherlight plants as a unit and to plan for future expansion.

Bomar said the corporation was planning to get into many new fields of allied industries in connection with the Featherlight Aggregate, and that Ranger was included in the expansion plans.

Already several of the Featherlight plants are extensively engaged in block-making, but they are also taking on the manufacture of concrete pipe, and are planning to enter into pre-cast and pre-stress work on a large scale.

Biggest expansion of all would be getting into pre-stress work, Bomar said. This is the manufacture of heavy reinforced concrete beams to be used in the construction of bridges in the place of steel, and Bomar said the State of Texas had already announced that this type of construction material would be used almost exclusively in the future in bridge-building because tests have proved that pre-stress material was as serviceable as steel and was less expensive.

Although Bomar did not state positively in so many words that Ranger would be the site of a pre-stress plant, he said the layout here was under serious consideration, along with several other Featherlight locations.

While the directors were visiting the plant in Ranger it was decided to add another kiln immediately to the Aggregate plant here, bringing the total to eight.

When asked how long he expected the supply of shale to last Featherlight Corporation in the Ranger area north of town, Bomar said there was so much of it it would not be used up during the lifetime of anybody around here now.

Only Few Hours Remain To Pay 1957 Poll Tax

Only a few hours remain on this, the last day of January, to pay Poll Tax for the year 1957.

In addition to paying them at the county seat, Ranger residents may also pay them at the office of C. E. May, 214 West Main Street. As far as is known, neither the court house nor the May office will be open any longer than the regular time tonight, Thursday.

There will be two elections within the near future, both of which will require a poll tax in order to vote. One is the Senatorial election, and the other is the city election for mayor and a slate of commissioners. Both elections will be held on April 2.

King Kove To Re-Open Under New Managers

Mrs. W. D. Poarch, known to hundreds of people throughout Eastland County as the operator of the Connellee Hotel Coffee Shop, has announced the re-opening of King Kove Drive-In Restaurant and Dining Room on Highway 30 East. The re-opening will take place Saturday, at which time free coffee and doughnuts will be served the public from 9 a.m. until 2 p.m.

Mrs. Poarch will cater to discriminating people who like good eating, and will serve the finest in lunches, dinners and short orders, it is said.

An invitation is extended by Mrs. Poarch to everyone to visit King Kove, and to watch for publication of her Sunday Menu in Sunday's Times.

County Singers Songfest Set For Rising Star

Henry Carter, president of the Eastland County Singing Convention, wishes to remind all singers that the quarterly songfest will be held at Rising Star on April 14, instead of at Eastland, as is customary for the Spring meeting. Rising Star extends an invitation for the Spring meet, and singers voted to accept it at the mid-winter convention held at Sabano on January 13.

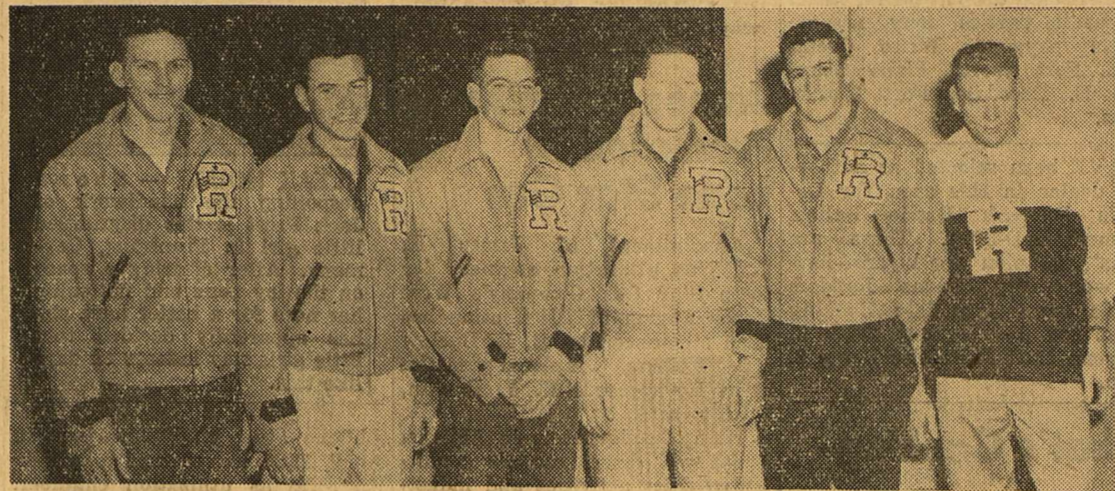
The Eastland County association has been in continuous existence for more than 40 years, and is one of the oldest in the state. Only one of the original organizers is known to still be living and he is Uncle Jim Lyles of Mangum.

Carter said a splendid all-day program was being prepared for the Spring meeting, which will be open to all those who wish to attend.

Santa Claus Is Down At Last

Everybody can rest at ease for a while now because good old Santa Claus has been taken down from his pedestal at the East end of Main Street and placed in storage until next year. The National Guard truck with a derrick and which finally got back in town, and Wilson Guest lost no time in removing old Saint Nick from his perch. Santa had been the cause of Wilson getting a lot of phone calls.

All-District Ranger Bulldogs Sport New Football Jackets



ALL-DISTRICT BULLDOGS: Shown above are the six Ranger Bulldogs who were selected as All-District players in 7-AA this past football season. They are, left to right, Paul Hinds, Dan Cruse, David Wharton, Gene Bagwell, John Hagaman and Jerry Cantrell. Photo was made at assembly exercises at High School Tuesday when 29 Bulldogs were awarded Jackets and Letters. The Bulldogs wound up the 1956 football season in a tie with Winters for second place. (Capps Studio Print).

29 Bulldogs Awarded Jackets In Assembly Exercises Tuesday

Twenty-nine beautiful grey, woolen jackets, with big Maroon outlined R's, were presented to Ranger High School football lettermen in ceremonies held at the assembly program Tuesday morning at 10:30.

Sixteen jackets and letters were awarded to members of the "A" team, 11 jackets, almost identical with the others were awarded members of the reserve team, the two team managers received jackets, and the two coaches received big Maroon blankets.

The jackets were presented by retiring head coach Boone Yarbrough who had a good word to say for each Bulldog as he walked to the stage to accept his award. Yarbrough was assisted by coach Harold Barrett, who is stepping into the head coaching position next year.

Members of the "A" team receiving jackets were Wayne Jowers, Charles Bonney, Gene Bagwell, David Wharton, Gerald

Shockey, Charles Tibbels, Boone Yarbrough, Jr., Robert Veal, Lee King, Charles Wolford, Jerry Bradford, Dan Cruse, John Hagaman and Paul Hinds. By request, Jerry Don Cantrell was awarded a blanket instead of a jacket, because Cantrell said he had three Bulldog jackets already.

Receiving jackets and letters for reserve awards were Jerry Underwood, Joe Bradford, Jerry Anderson, Robert Powell, Walter Hutchins, Homer Montgomery, Fidancino Andrade, Charles Veal, David Russell, Jack Rawls and Jimmy Swinney.

Johnny Chestnut and Jack Hazard were awarded jackets and letters as managers.

Coach Yarbrough presented Coach Barrett with a blanket, and Barrett in turn presented a blanket to Yarbrough. Barrett said of Coach Yarbrough that during all the years he had been associated with him as a player and as an assistant coach he had found him

to be an ideal coach and an ideal man that young people could follow with confidence.

Yarbrough thanked all the players and students of the High School for the excellent support they had given him during the four years that he served as head coach, and said if Coach Barrett received the same kind of support, Ranger could expect more outstanding things from the Bulldogs in the future.

Prior to awarding the jackets, Coach Barrett asked that all Junior High School boys who had gone out for football this past year, and who had stayed out, come forward to the stage, and some 40 or 50 youngsters were awarded letters for their work. Barrett said it was an outstanding group of young students upon which the hopes of the Bulldogs would be built in the future, and he said he was expecting great things from them in the years to come.

Ranger Junior College Names 23 Lettermen

Purple and grey letter jackets were received by twenty-three lettermen of the 1956 Rangers in an assembly on Friday January 25, at Ranger Junior College.

Head Coach Tom Hestand and Backfield Coach Fred Weir presented first-year letter jackets to Douglas Jordan of Rusk, Bud Remyse, Arlington, Lionel Crisp, Midland, Jack Rutledge, Crystal City, Butch Kainee, Granger, Joe Karkoska, Granger, Mickey Poteat, Cooper, Robert James, Snyder, Shorty McLaren, Graham, Jim Baccus, Sudan, Don Davis, Temple, Gerald Dunn, Fort Worth, Frank Sims, Abilene, and Billy Beebe of Oakley Union.

Earning their second letters for Ranger Junior College were Buddy Hightower Fort Worth, Jim Mangum, Carbon, Dan Mitchell, Ranger, Eddie Jo James Granger, Teddy Henderson, Austin, John Butler, Rusk, Lonnie Wood, Wellington, Ronald Darnell, Eunice, New Mexico, and J. D. "Snag" Hanson of Eastland.

Price for adults will be 60c, and price for students will be 30c. All proceeds go to the Senior class.

Cast Chosen For RJC Play By 'Masquers'

George Alford chairman of the Speech and Drama Department of Ranger Junior College has announced the cast for the first spring production to be staged by The Masquers a hillbilly comedy entitled "Coming Round the Mountain."

The play will be presented in the early spring with the following cast:

Maw Jenkins Beth Grace; Pap Jenkins, Tommy Sutton; Daisy Jenkins, Betty Wells; Zeki Bemis, Gene Ashcraft; Dynamite Ann, Marie Chambers; Mrs. Hortense Belmont Cliff, Anita of Humphrey; Millicent Lovell, Sonia Irwin; Carey Newbold, Rover Flowers.

Doris Nabers will be assistant to the director, and Charlotte Clark will be property manager.

Bulldogs Down Cisco 77-39; Tied for First

Ranger High School Bulldogs played basketball Tuesday night like Coach Boone Yarbrough was wanting them to play all season, with everybody getting in on the scoring, and downing Cisco 77-39 to move into a first place tie with Ballenger who walloped Winters 64-45. Coleman had an open date.

As usual, Paul Hinds was high point man with 27, followed by David Wharton with 14, and Tibbels came charging through with 13. Heretofore Hinds and Wharton have been making the lion's share of the points which has been good enough to win most occasions, but not quite good enough on several other occasions when the Bulldogs dropped close two and four-point decisions.

Yarbrough has been preaching to his guards to come on through and charge the basket on those occasions when the opposition was all absorbed in covering Hinds and Wharton, and the tactics have paid off during the last two games.

Every man on the club is a shot-maker, and when they're all shooting they're a hard aggregation to beat and it is going to take quite a bit of doing to keep them from copping the basketball championship of District 7-AA.

As it stands now, Ballinger is going to be the tough nut to crack. The Bearcats have beat the Bull-

dogs once, over here, and Ranger must play them again next Tuesday night over there. The thing that makes the Ballenger club is a 6-foot 9-inch center who gets the tip-off nine times out of ten, then races for the basket where somebody tosses him the ball which he takes about ceiling high far out of reach of anybody else, and it drops through the basket. He doesn't have to shoot. He just drops the ball and it falls through the hoop.

Coach Yarbrough thinks if the Bulldogs can hold this center to 10 or 12 points Tuesday night they can win over Ballenger, and that will leave them with only one game to play, with Coleman, which will take place here Friday night, February 8, closing the season.

License Plates To Go On Sale In County Friday

New motor vehicle license plates for 1957 will go on sale in Eastland County at the courthouse Friday where tags will be available for all those seeking low numbers. It will not be until about the 10th of the month that new plates will be on sale in Ranger, and they will be available at the office of C. E. May, Tax Collector J. C. Allison said that plates brought here will begin with the number 5500.

For the first time in many years the new license plates will be colored differently from the traditional yellow and black. They will have a white background with black letters and numerals, and a black star.

Last Day To Pay Your Poll Tax

RE SURE—SEE
Don Pierson Olds-Cadillac Eastland
Quality Cars at Volume Prices

Fire Siren to Signal Start of March at 7

Junior College Party Nets \$50 For March Dimes

A fund-raising party sponsored jointly by Ranger Junior College faculty and the student body last Thursday evening at the Student Union Building netted another \$50 for the March of Dimes.

In charge of arrangements were Doris Nabers and Donald Crisp. Music was furnished by a New Combo consisting of Al Lotspeich on the bass, Brent Waldrip, trumpet, Dan Mitchell, guitar and Gene Ashcraft, clarinet. Kent Watson and Roger Flowers were vocalists.

Cake Walks, door prizes and the Bunny Hop added to the evening's fun. A floor show featured Kent Watson, of Ralls, singing "Honey, Don't," "Love Me Tender," "I Want You, I Need You, I Love You," and "Mystery Train." Roger Flowers and Kent Watson sang "Young Love."

Another guest was Jim Nabers of Desdemona who sang "Don't Be Cruel" and "When My Blue Moon Turns to Gold Again." Jitterbug exhibitions were done by Jim May, Sonja Irwin and Ronald Miller, while Jim May and Doris Nabers did a pop number.

Cakes, candy and prizes were donated by members of the faculty students and interested citizens of Ranger.

Beta Sigma Phi Acknowledges Gift Donors

Members of Ranger's Rho Pi Chapter, Beta Sigma Phi, wish to express their thanks publicly to Ranger business firms who donated prizes to be given away at the sorority's bingo game last Saturday night for the March of Dimes.

Those donating prizes were as follows:

The Fixit Shop, King's Cafe, Pulley's Jewelry, Arterburn's Hardware, Lone Star Gas Company, Gray's Boot Shop, Mathena's Flower Shop, Worth Food Mart, Young's Beauty Shop, ABC Floral, Bob Bailey's Texaco Station, Duke & Ayres, Ranger Lumber Company.

Robinson Food Market, Dr. Puffer Company, Morris George Gift Products, H. H. Vaughn Station, Winnie's Beauty Shop, Vie's Beauty Shop, Montgomery Ward Company, Swaney's Pharmacy, The Globe, Mrs. C. Penny Co., Woods Grocery, Tommie's Grocery.

Campbell's Humble Station, Crawford's Rexall Drug, White Auto, Adams Grocery, C. D. Hartnett Co., Motley's Grocery, O. K. Grocery, Penn's Service Station.

(Continued on Page Two)

Funeral Services For Mrs. Plumley To Be Friday

Funeral services for Mrs. Maud E. Plumley, 75, a resident of Ranger since 1919, will be held at 2 p.m. Friday in Killingsworth's Chapel with the Rev. Herman Boyd, pastor of the Methodist Church, officiating. Burial will be in Evergreen Cemetery.

Mrs. Plumley passed away at 12:40 p.m. Tuesday. She was born June 1, 1881, in Carthage, Ill., and was married to Harold E. Plumley in Fort Morgan, Colo., on March 18, 1906. Mr. Plumley died Feb. 26, 1935.

She was a member of the Methodist Church.

Survivors include three sons, Francis H. of New Braunfels, Major Roy R., who is stationed in Germany, and Robert C. of Odessa; one daughter, Mrs. C. E. Kerr of Louisville, Ky., one sister, Mrs. Floss House of Allyn, Wash.; 10 grand, and two great-grandchildren.

Funeral services will be James Higginbotham, Willard Swaney, John Tibbels, Arthur Deffebach, Vernon Deffebach and A. L. Stiles.

When the fire siren sounds over Ranger tonight at 7 o'clock signaling the start of the Mother's March against polio, it is requested that residents from one end of town to the other turn on their porch lights to signify their participation in the final event that will write a glorious finish to this city's month-long campaign for the National Foundation for Infantile Paralysis.

Mothers from every section of the city will begin a house-to-house canvass in cooperation with a persuasive army of 3,000,000 other American mothers in this country who will visit 30,000,000 homes across the length and breadth of the United States for the March of Dimes.

In Ranger the traditional Mothers' March is sponsored by the 1947 Club, and club members are assisted by mothers from many other organizations as they unite in a common purpose in the fight against polio.

Basil O'Connor, president of the National Foundation, has said, these marching mothers are the inspiring heroines in the fight against polio. In years past, they have gathered the March of Dimes funds which backed vital polio research work and aid for patients. These same women are out to finish the polio job by urging everyone to contribute to the fight until it is finally won, and the disease is banished forever.

Ranger has been divided into 15 areas, and mothers marching tonight include Mrs. John T. Robertson, Mrs. James Ratliff, Mrs. Bob Earnest, Mrs. Morris Newnham, Mrs. J. P. Morris, Mrs. A. P. Thomas, Jr., Mrs. Garrett Hise, Mrs. Morris Campbell, Mrs. Bill Anderson, Mrs. Ronald Pruet, Mrs. Judson Hardy, Mrs. George Rushton, Mrs. Tom Hestand, Mrs. Charles Milliken, Mrs. Calvin Lipkin, Mrs. Dallas Hutson, Mrs. Bill Clem, Mrs. Edwin Lummas, Mrs. C. E. May Jr., Mrs. Harold Barrett, Mrs. Walter Arterburn, Mrs. Wilson Guest, Mrs. F. P. Brasher Jr., Mrs. W. P. Watkins, Mrs. James Townzen, Mrs. Sam Ails, Mrs. Joe Collins, Mrs. Bill Ivey, and Mrs. Morris George.

The Glenn Addition and Tiffin Road will be worked by members of the National Guard.

The March will go on regardless of weather, and when the Mothers call, it is requested that everyone make some sort of contribution, no matter how small.

It is realized that many have already contributed to the March of Dimes, but a generous response to this final wind-up of the drive is earnestly solicited.

Mrs. Harold Barrett, chairman of the Mothers' March, has requested that all mothers report to the City Hall as soon as they have worked their respective areas, where their collections will be received and counted. Mrs. Charles Milliken is president of the 1947 Club sponsoring the drive, and Mrs. J. A. Bates is County Chairman. Wilson Guest is general over-all chairman of the drive in Ranger, and will coordinate all donations at the end of the drive.

The Times will publish every contribution that is turned in by the various organizations to Mr. Guest.

Wishing You A Happy Ground Hog Day Eve

Ere this newspaper comes off the press again, dear customers, it will be Ground Hog Day, and may we take this opportunity to wish for you a very merry one, and many happy returns of this glorious occasion.

Turn unwanted stuff around your house into cash money by selling it through Times Classified ads.

FOR — Fine Furniture, Floor Coverings, C.E. Appliances, It's Coats Furniture & Carpet. Ltd., Eastland.

Killingsworth's Morticians Serving Ranger Since 1918 Insurance — Birth to 90 Yrs. Phone 29

BOATS & MOTORS
Evinrude, Lone Star, Cadillac, Chrysler Boats
L & J SUPPLY CO.

The Ranger Times

ELM STREET—RANGER, TEXAS ESTABLISHED JUNE 1, 1919
 Entered as second class matter at the postoffice at Ranger, Texas under the act of Congress of March 3, 1879
 TIMES PUBLISHING COMPANY
 Published Tri-Weekly—Tuesdays - Thursdays - Sundays
 JOE DENNIS and ONOUS DICK, Publishers
 NORMAN WRIGHT, Editor

One week by carrier in city	.15
One month by carrier in city	.45
One year by mail in County	3.50
One year by mail in State	4.95
One year by mail out of State	6.95

NOTICE TO PUBLIC—Any erroneous reflection upon the character, standing or reputation of any person, firm or corporation which may appear in the columns of this newspaper will be gladly corrected upon being brought to the attention of the publishers.

CLASSIFIED

All Classified Ads Must Be Paid For In Advance.

FOR RENT -

TRANSIENT ROOMS and 3 and 4 room apartments. Gholson Hotel. Phone 9506.

FOR RENT: House. Four rooms and bath. Mrs. Needham, 420 Marston St. Phone 163-J.

FOR RENT: Modern, nicely furnished house. 705 Blundell.

FOR RENT: Large, clean apartment. 3 blocks from Main, bills paid. 309 Elm.

FOR RENT: Two bedroom redecorated house and garage. Call 66-W.

FOR RENT: Extra nice bedrooms. Reasonable rates. Paramount Hotel. Phone 9503.

MISC. FOR SALE -

WHY DELAY? Use our convenient terms, repair or modernize now, pay later. Burton-Lingo Co.
 DANDY LETTER FILE. Handy for keeping track of daily correspondence. \$1.85. Ranger Times. Phone 224.

CALL 224 FOR CLASSIFIED ADS

Native trees, shrubs and plants that we could probably furnish you in the size that you would like: live oak, post oak, black jack, red bud, pecan, hack berry, native elm, persimmon, willow, plum, prickly ash, red hall, black hall, algerita berry bush, shinyahall, cactus and others. We welcome your inquiry. Penney Nursery and Landscape Service, 1003 West 16th Street, Cisco.

FOR SALE: Fresh infertile eggs, priced right. East of Olden, T. L. Lockhart.

FOR SALE: Cheap. Garden tractor and tools. J. B. Craig. Phone 661.

FOR SALE: Stock rack for 1/2 ton pick-up. Like new, 1/2 price. Phone 687-W-1. Ranger.

HELP WANTED

OPPORTUNITY FOR PERSON RETIRED or needing extra income. A good Rawleigh Business is hard to beat. Opening now in Ranger. See W. A. Hester, Route No. 2, Box 34, Cisco or write Rawleigh's Dept., TXA-1024-505 Memphis, Tenn.

READ THE CLASSIFIEDS

AUTOS FOR SALE

AUTOS FOR SALE
NEW IMPORTED STATION WAGONS, \$1595.
 40 miles per gallon, 80 miles per hour. Sedans, hard tops, speedsters, also new Nash Rambler sedans and station wagons. Local service and parts. Tom's Sport Cars, Eastland.

MISC. WANTED -

WANTED to buy. Small house to move. Call 59.

IRONING WANTED. Phone 241-R

SPECIAL NOTICES

WE WILL have in this vicinity soon, one small used Spinnet Piano and one small upright piano, which responsible parties may assume monthly payments. Write Credit Dept., Fort Worth Piano Sales, 2100 E. Rosedale, Fort Worth, Texas.

I HAVE been selected as authorized dealer in this area for DeWitt's Babcock Bessie Pullets (formerly HD-300). These are Texas' champion egg layers—having won every Texas Random sample egg test to date. Booking orders for delivery any week in the year. Bart J. Frasier Route 2, Cisco.

What's Cooking-

(Continued from Page 1)

used in the building of roads than heretofore. It will take the place of steel in bridge construction simply because it is cheaper than steel and it could be more plentiful because steel is becoming harder and harder to get. Pre-stress material is also as strong as steel and perhaps stronger, because it has withstood the most severe tests.

Let there be no misunderstanding let it be said here and now that Featherlight has not said any of this was coming to Ranger, any more than to say that Ranger was

under serious consideration for any future expansion the plant might make. The suggestion that Ranger might one day be the site of a huge manufacturing plant making pre-stress material is based solely on the fact that an unlimited supply of the raw material is here, and every other condition and requirement is favorable from the standpoint of transportation, labor, gas, electricity and water. It would be hard to pass up such an ideal location for any plant that already has so much to go on, and with a future secured from the standpoint of raw material.

If any such plant should ever be established here, it would be a tremendous push for Ranger. It would almost put Ranger over the top. Everything else that Ranger gathered after that would be frosting on the cake. And we feel like it's all coming, folks. Yes, Sir, it's all on the way!

James H. Smith Promoted By Lone Star Gas

Appointment of James H. Smith as utilization engineer for Lone Star Gas Company's West Texas Region of Distribution has been announced by E. L. Buelow of Abilene, regional manager. He succeeds H. V. Rankin, Dulong said.

With headquarters in Abilene, Smith will direct gas air conditioning sales activities and industrial gas installations throughout Lone Star's West Texas Region consisting of some 100 town and cities in the Eastland, Ranger, Cisco, Abilene, Ballinger, Brownwood, Childress, Colorado City, San Angelo, Seymour, Snyder, Stamford, Sweetwater, Vernon and Wichita Falls districts. Smith, a licensed engineer with a mechanical engineering degree from Texas Technological College, began his career with Lone Star at Wichita Falls in 1950. He was transferred to Abilene December 1, 1953, to participate as sales engineer in the gas industry's



BLEAK HOUSE — Shown despoiling the handiwork of Jack Frost is this disgruntled little girl in Frankfurt, Germany. After clearing a space on the icy pane and flattening her nose for a better look, she has apparently decided that little girls stay indoors on days like this.

Abilene "test city" project. In April, 1956, he returned to Wichita Falls as utilization engineer. He was reared in Moran. Mr. and Mrs. Smith have two children.

Beta Sigma-

(Continued From Page 1)

Ranger Furniture Exchange, Ranger Auto Store, Sweetbriar, Inc., Western Auto Store, Betty's Flower Shop, Burton-Lingo Lumber Co., Moffett Electric, Page Plumbing Co., Ranger Dry Cleaners, Ranger Farm Store, Ranger Jewelry, Tip Top Feed & Hatchery, Capps Studio, El Rancho Coffee Shop, Linda's Beauty Shop, Pat Thomas Sinclair Agent, Don Ervin Jewelry. Editor's Note: We've probably left somebody out, so blame us.

Third Annual Grain Drying Short Course

COLLEGE STATION — The third annual short course on grain drying and storage will be held in the Memorial Student Center on the campus of Texas A&M College, January 31 and February 1. It is sponsored by the Department of Agriculture Engineering and the Texas Agricultural Extension Service.

According to W. S. Allen, extension agricultural engineer and program chairman, the subjects to be covered this year have been mainly selected for drying and storage equipment dealers, manufacturer representatives, and operators of grain drying equipment and storage structures for both farm and commercial use.

Among the subjects up for discussion are "The Outlook for Grains in 1957; Southwest Storage Outlook for 1957; Farm Storage Costs; The ASC Facility Loan Program; Rice Drying Studies; Recommendations on Drying and Storing Grain Sorghum; Aeration of Commercial Storage Facilities for Grain Sorghum and Rice; Economic Considerations in Storing Rice in Commercial Elevators and Gaseous Fumigation."

The speakers will include research and extension personnel of the Texas A&M College System; T. J. Cunningham, deputy director for programs, Commodity Stabilization Service, Dallas; Jack Bradshaw, State Agricultural Stabilization Office; Agricultural Marketing Service Engineers Reed Hutchinson and D. L. Calderwood; and Dr. E. E. Ivy, entomologist, Michigan Chemical Corporation. The last four named speakers all headquartered at College Station.

Oil Industry To Break All Records In '57

MIDLAND — The domestic oil industry will be called on to break all drilling and production records in 1957, yet must accomplish this in the face of serious economic disadvantages, the president of the Independent Petroleum Association of America said.

Robert L. Wood, Midland oil man and president of IPAA, told directors of the association in a year-end statement that U. S. oil producers probably will be required to produce about 3 billion barrels of oil in 1957. This means, he pointed out, "that we should find and develop at least 4 1-2 billion barrels of petroleum liquids this year. At least one and a half barrels of new domestic reserves must be discovered and developed for each barrel produced, if we are to maintain proved reserves in keeping with our growing needs and in preparedness for any emergency."

Developments in 1956, Wood said, showed clearly that to have adequate oil supplies for any emergency we must have a government policy "which will limit petroleum imports below the excessive levels which exist prior to the Suez dispute."

CALL 224 FOR CLASSIFIEDS

Friday & Saturday Specials

FRUIT STAND

Highway 80 West - Ranger

ORANGES 5-lb. bag 21c
 GRAPEFRUIT 5-lb. bag 21c
 RED - WHITE POTATOES 10-lb. bag 35c

FRESH DRESSED Fryers Lb. 31c

Always Open On Sundays

DAIRY PRODUCTS AND GOOD LINE OF GROCERIES

PENNEY'S

ALWAYS FIRST QUALITY!



Combed pastel gingham check. Sizes 9 to 15, 12 to 20, 14 1/2 to 24 1/2.



Lot 329: 5-yard sweep cotton prints. Sizes 14 to 20, 14 1/2 to 24 1/2, 46 to 52.



Lot 329: 5-yard sweep cotton prints. Sizes 14 to 20, 14 1/2 to 24 1/2, 46 to 52.

Penney's carousel of cottons whirls you into spring!

OUR EXCLUSIVE BRENTWOODS BETTER FOR STYLING! FABRICS! FOR YOUR BUDGET!

Your best cotton buys... still at this amazing low budget price! They're machine washable easy to iron, designed for ease of motion! They're in the newest styles and colors. That's why value-wise, fashion-wise misses, women and half-sizes choose Brentwoods.

279



BIG MAC ARMY TWILLS FOR MEN IN MOTION!

The right weight, the right fit! Big Macs are expertly proportion sized. Completely Sanforized, reinforced stitching, sturdy zipper flaps. Vat dyed, mercerized, machine washable.

3.29 8 1/2-oz. twill pants sizes to 50
 2.69 6-oz. twill shirts, sizes 14 to 17

BIG MAC CHAMBRAYS

1.89

Durable, heavyweight work shirts fully cut over Penney's own patterns! Long tails stay put, don't ride up! Sanforized... machine washable. Button flap pockets.

Golden Esso Extra

has the highest octane rating of any gasoline.

Modern cars, especially the 1957 models, have engines with very high compression ratios (9 to 1, and higher!).

These engines require a gasoline that's better than the best of "premium" gasolines, better than the "supers."

The one gasoline—the only one—that permits every high compression engine to deliver its full power output is Humble's Golden Esso Extra.

It is the world's finest automotive fuel... with the highest octane rating of any gasoline.

Protect the value of your automobile investment—use the gasoline that gives you added value from full performance. Fill up at the golden pump under your neighbor's Humble sign.

If you answer yes to any one of these questions, you should try Golden Esso Extra—world's finest gasoline.

- Does your car knock on "premium" gasoline?
- Is your car air-conditioned? (On an average the engine pulls a 3-ton air conditioner.)
- Does the engine have a compression ratio of 9 to 1, or higher?
- Does your car have more than one carburetor or a "Power-Pack"?
- Is the engine rated at 200 horsepower or higher?

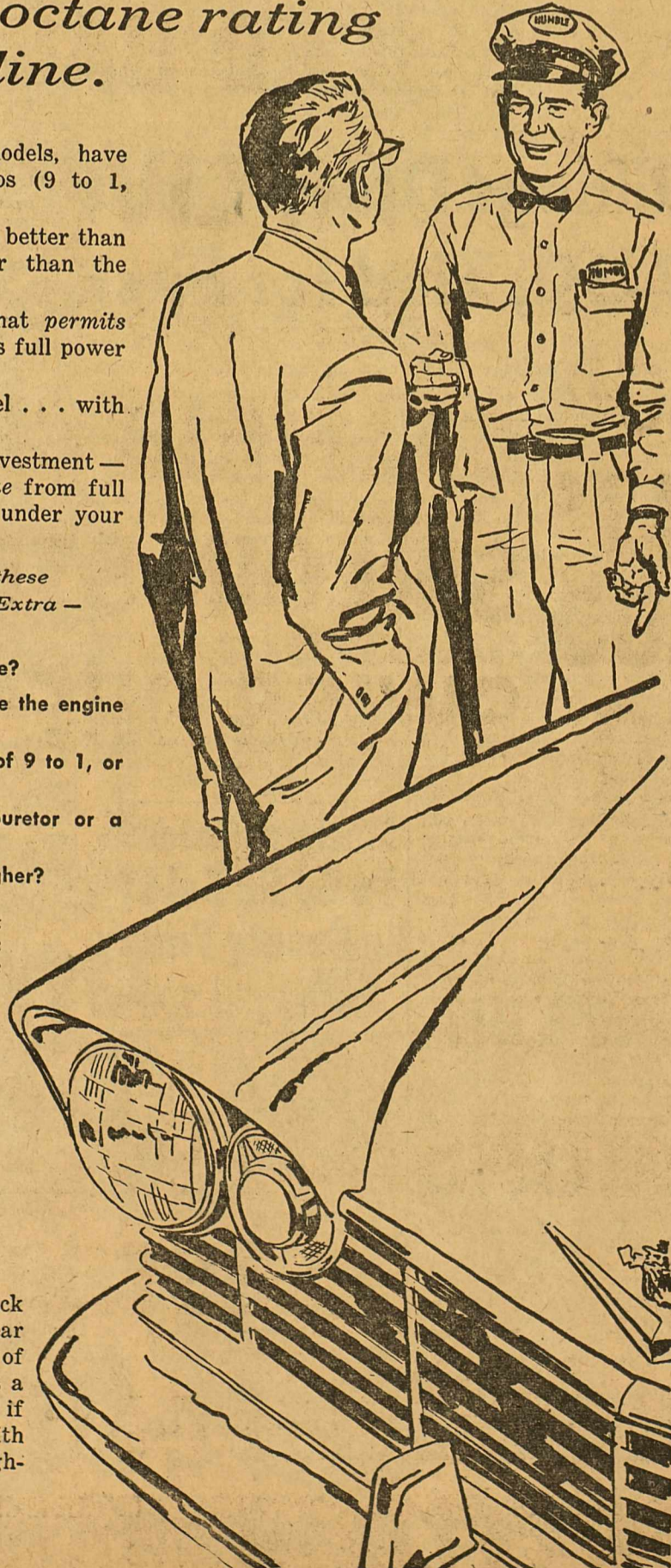
(These points become even more important as you add miles to a new car. Anti-knock requirements increase when you pass the break-in period.)



HUMBLE OIL & REFINING COMPANY

Don't let a "knock you can't hear" rob your car of power!

Engineers call it "trace knock," a knock so faint that only a trained technician can hear it. But like all knocks, it robs your engine of power, forecasts engine damage. If yours is a modern car in any price class—especially if it's a 1957 model—prevent "trace knock" with Golden Esso Extra, the gasoline with the highest octane rating ever.



MAJESTIC

Friday and Saturday
 THE STARK TRUTH ABOUT JUVENILE GANG-WAR!

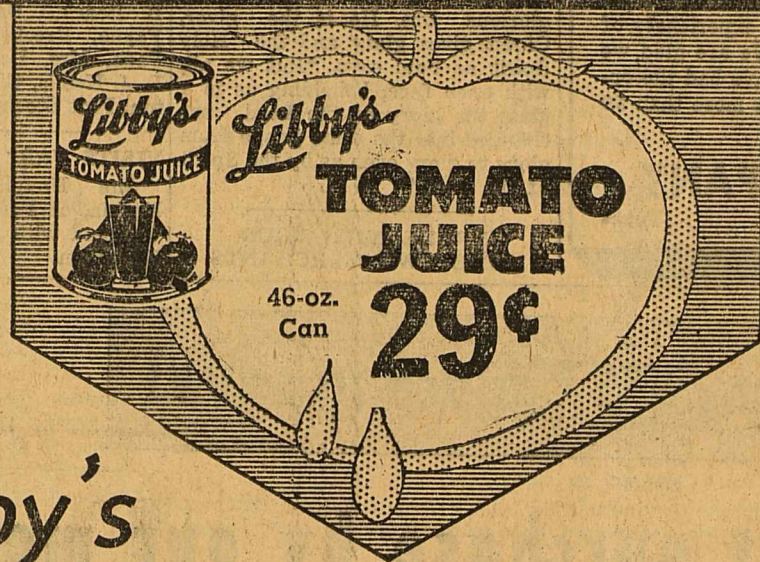
RUMBLE ON THE DOCKS

JAMES DARREN - LAURIE CARROLL
 A COLUMBIA PICTURE

BILL HALEY and His Comets DON'T KNOCK THE ROCK

WORTH FOOD MART

BEST BUY DAYS



Libby's

- | | | | |
|--------------------------------|----------|--------------|------------|
| GREEN BEANS WHOLE | 5 | No. 303 Cans | \$1 |
| SWEET PEAS GARDEN | 6 | No. 303 Cans | \$1 |
| GOLDEN CORN CREAM STYLE | | No. 303 Can | 15¢ |
| FRUIT COCKTAIL | 5 | No. 303 Cans | \$1 |

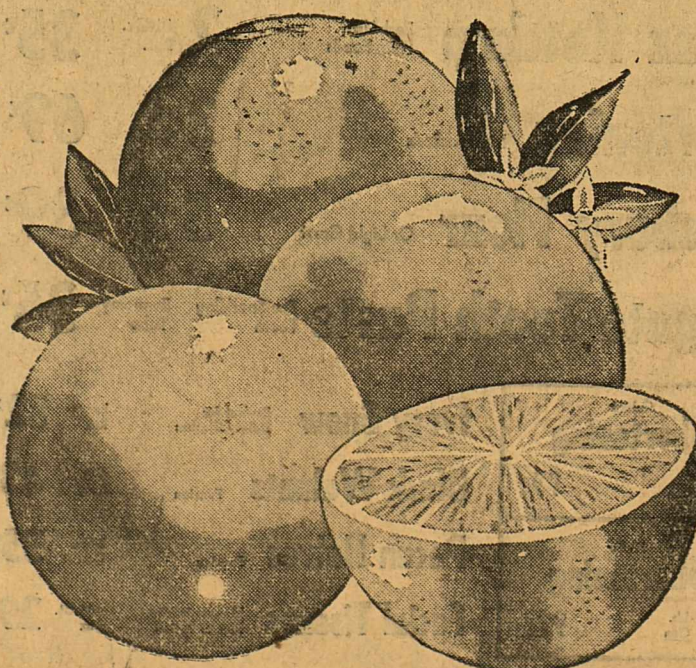
Libby's Frozen Foods Specials!

- | | | | |
|---|----------|-----------------|---------------|
| SLICED STRAWBERRIES | 3 | 10-Oz. Pkgs. | 69¢ |
| FRUIT PIES Apple, Cherry, Peach
Pineapple, Boysen Berry, Blueberry | 5 | 10 1/2-oz. Pies | \$1.00 |
| MEAT PIES Chicken, Beef or Turkey | 5 | 8-oz. Pies | \$1.00 |
| GREEN PEAS | 3 | 10-oz. Pkgs. | 47¢ |
| ORANGE JUICE | 6 | 6-oz. Cans | \$1.00 |
| CHOPPED BROCCOLI
CREAM STYLE CORN
GOLDEN CUT CORN
SPINACH Leaf or Chopped | 6 | 10-oz. Pkgs. | \$1 |
| BROCCOLI SPEARS
CAULIFLOWER
BABY LIMA BEANS
FORDHOOK LIMAS | 3 | 10-oz. Pkgs. | 69¢ |
| WHOLE BABY OKRA OR BLACKEYED PEAS | 4 | Pkgs. | 1.00 |

FLORIDA PINEAPPLE ORANGES

LOADED WITH VITAMINS

2 Lbs. **15¢**



- | | | | | | |
|---|-----|------------|---------------------------|-----------------|------------|
| RED FAMOUS TEXAS GRAPEFRUIT | Lb. | 10c | RUTABAGA | Waxed Minn. Lb. | 5¢ |
| SUNKIST LEMONS Large Juicy | Lb. | 19c | TOMATOES Firm Ripe | Ctn. | 23c |
| CELERY HEARTS Cello Pkg. | | 29c | BEETS GARDEN FRESH | 2 Bnchs. | 25c |
| YELLOW ONIONS Danver's Med. Size | Lb. | 6c | Potatoes | Lb. | 5¢ |
| | | | LETTUCE Firm Heads | Lb. | 19c |

- | | | | | | |
|---|----------------|------------|---|-------------|------------|
| LIBBY'S FANCY CUT BEETS | 2 No. 303 Cans | 25c | LIBBY'S GARDEN VEGETABLES | No. 303 Can | 19c |
| LIBBY'S CREAM STYLE WHITE CORN | 2 No. 303 Cans | 37c | LIBBY'S KRAUT | No. 303 Can | 15c |
| LIBBY'S Sliced or Halves PEACHES | No. 303 Can | 25c | LIBBY'S UNPEELED APRICOTS HALVES | No. 303 Can | 29c |
| LIBBY'S PEARS | No. 303 Can | 31c | LIBBY'S CRUSHED PINEAPPLE | No. 2 Can | 27c |
| LIBBY'S Grapefruit Sections | No. 303 Can | 20c | LIBBY'S CHOPPED BEEF | 12-Oz. Can | 37c |
| LIBBY'S BEEF STEW | 24-Oz. Can | 43c | LIBBY'S VIENNA SAUSAGE 1/2 Size | 2 Cans | 37c |
| LIBBY'S KOSHER DILL PICKLES | 22-Oz. Jar | 35c | LIBBY'S PINEAPPLE JUICE | 46-Oz. Can | 29c |

Prices Effective THURSDAY, FRIDAY & SATURDAY

FRYERS

ARMOUR'S STAR WHOLE or CUT-UP Lb. **33¢**

- | | | |
|--|---------------|------------|
| ARMOUR'S STAR SLICED BACON | Lb. | 59¢ |
| FRESH SLICED PORK LIVER | Lb. | 23¢ |
| PORK ROAST Lean Boston Butt | Lb. | 45¢ |
| WORTH QUALITY CALF RIB CHOPS | Lb. | 59¢ |
| WORTH QUALITY CALF SIRLOIN STEAKS | Lb. | 69¢ |
| KRAFT SLICED SWISS CHEESE | 6-Oz. Pkg. | 37¢ |
| PHILLY CREAM CHEESE | 2 8-Oz. Pkgs. | 25¢ |

Save as You Spend with **S.N.** Green Stamps

CALL 224 FOR CLASSIFIEDS



Like anything else, Automobile Insurance should properly fit the needs of the owner. Aetna's nationwide service is important to the motorist who wants and needs the best.

MAKE SURE IT FITS



C. E. MAY

INSURANCE - REAL ESTATE

214 Main

Phone 418

Clyde Garrett Brings Message To SS Workers

Clyde Garrett, of Eastland, brought the inspirational message to a large group of Sunday school workers of the First Baptist Church Wednesday night. According to actual count it was one of the largest number in attendance in the past year.

Mr. Garrett spoke on the service rendered by various groups in New Testament times. He told of the comparison of the Sunday school workers teaching visiting, and working with their classmates to the work of the four neighbors who brought the "Impotent" man to Jesus for healing. Or, the feeding of the "Five Thousand" to the feeding of the world of God to the classes. Teachers stand between their class and the throne of God as they represent their Christ as teachers of His blessed word. Humility, said Mr. Garrett, is a

Christian virtue that is made manifest in obedience to Christ and His entire program. "Serving others is to be more cherished than silver and gold and the life of the soul, indestructible and everlasting, will not perish with 'moth, rust, and neither can it be stolen." Invest in souls of men, guide them to the Christ teach them the word of God, and enlist them to work for God.

The worship hour in the main auditorium was well attended and after gospel singing there was a quartet, Mmes. Wayland Jowers, F. R. King, J. B. Houghton, and Mr. J. N. Sutton, singing "All on the Altar."

The pastor brought the fifth in a series of Gospel sermons on "Glorification." Glorification, he said, is the end results of the resurrection of the Child of God. God offers man all there is in the truly glorious life. He is the giver, Christ gives glory and the Holy Spirit as Paul says, "But we all, with open face, beholding as in a glass the glory of the Lord, are changed into the same image from glory to glory even as by the Spirit of the Lord."

ATTEND FUNERAL

Out of town friends and relatives who attended the R. J. Rains funeral were: Mr. and Mrs. Joe E. Graham, Mr. and Mrs. R. J. Darnell, Ft. Worth; Mr. and Mrs. G. A. Sutphen, Alton, G. A., Jr., and Mrs. Wallace Sutphen, Los Angeles, Calif.; Mr. and Mrs. K. F. Kirk, Miss Claudia Perdue, Abilene; Mr. and Mrs. David Perdue, Jane, Sue and Vickie, Archer City; Mr. and Mrs. E. T. Lowe and Jerry, Wichita Falls; Mr. and Mrs. Clyde Rains and Shirley, Mr. and Mrs. Guy Vinson, Mr. and Mrs. Delbert Vinson, Mr. and Mrs. Daw Andrews and Linda, Mrs. Vaudine Borton, Granbury; Mrs. Lowell Rains, Weatherford; Mr. Clyde Garrett, Eastland; Mr. and Mrs. J. W. Rains, Mrs. Van Young, Mr. and Mrs. F. L. Rains and Randy, Odessa; Mr. and Mrs. Leonard Wells, Irving; Mrs. Lizzie B. Roark, Dallas; Mrs. J. H. Payne, Breckenridge; Mrs. Jack Page, Mrs. Derwood Morris, Mr. L. J. Nelms, Cisco; Mr. A. P. Tipton, Fort Stockton.

VISITS PARENTS

Jim Houghton and daughter, Marcia, of Fort Worth, spent the weekend with Mr. and Mrs. J. B. Houghton.

Youth Crusade To Meet In Sutton Home

On Saturday night, Feb. 2, at 7:30 p.m., the Youth Crusade will meet in the home of C. N. Sutton, 440 Pine Street. An hour and a half program has been planned and all the young people and their dates are invited to attend this splendid program. It is not necessary to make a reservation, just bring your dates, or come "stag," just so you come, come on and enjoy a fine Saturday night program. College, high school and junior students are welcome.

The Youth Crusade group has been having fine programs and a good time each Saturday night. Something different each time has promoted a great interest. Everyone is invited.

CARD OF THANKS

We wish to express our thanks to everyone for the many kindnesses shown us at the death of our loved one Mrs. Jessie P. Jenkins.

To the Eastside Baptist Chapel, New Hope Baptist Church and the people of Lacasa Community for serving meals. We shall be forever grateful to the men who worked all day in the bitter cold digging the grave.

The Jenkins Family Mr. and Mrs. Joe B. Harper Mr. and Mrs. O. F. Sides Mrs. Cordia Lambert.

VISITING PARENTS

Mr. and Mrs. Bill Brazda of Dallas are visiting his parents, Dr. and Mrs. A. W. Brazda between semesters at SMU.

Looking Back on 1956-

... the inventory shows that the scales weighed out a good portion of the better things for us to enjoy. While the mistakes we made stick out like a sore thumb and our failures almost overwhelm us, yet these discouragements are small indeed when compared to the unhappiness and tragic experiences of some who happen to live in other countries. We are glad we live right here in Eastland County where we have had the opportunity to serve a host of loyal customers for more than 30 years.

EARL BENDER & COMPANY

Eastland (Abstracting since 1923) Texas

TRADE WITH YOUR HOMETOWN MERCHANTS

FREE!

WONDERFUL PREMIUMS WITH SAVE-A-TAPE!

Just save the tapes you get when you shop Safeway. Save your tapes in the handy envelope furnished free by Safeway and is worth \$3.00 in TAPES!

Here are just a few of the many items from which you may choose.

- Roller Skates
- Electric Skillet
- Electric Toaster
- Combination Grill and Waffle Baker
- Popmaster Corn Popper with Corn

Pinto Beans	Sunny Hills	2-Lb. Cello	25¢
Large Lima Beans	Sunny Hills	2-Lb. Cello	38¢
Blackeye Peas	Sunny Hills	2-Lb. Cello	31¢
Lifebuoy Soap	Regular Size	2 Bars	19¢
Lifebuoy Soap	Bath Size	2 Bars	27¢
Rinso Blue	Detergent	Large Box	31¢
Supersuds Detergent	Large Size	Box	32¢

Win a Glorious Hawaiian Vacation

Get your entry blank at Safeway

Sliced White Bread	Skylark Regular	24-Oz. Loaf	25¢
Slenderway Bread	Skylark	1-Lb. Loaf	24¢
Skylark Raisin Bread	Always Fresh	1-Lb. Loaf	25¢

Hand Lotion	Hinds Honey and Almond, Tax Incl.	4 1/2-Oz. Bot.	55¢
Listerine Antiseptic		7-Oz. Bot.	49¢
Rubbing Alcohol		16-Oz. Bot.	19¢

Farm Fresh Produce

Ruby Red Grapefruit

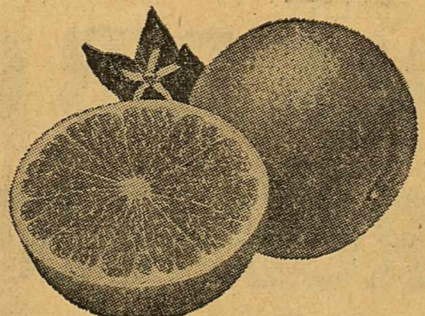
Grand for breakfast, in luncheon and dinner salads, or when fresh fruit is your dessert.

Bulk 10¢

Anjou Pears	Lb.	19¢
Golden Ripe Bananas	Lb.	15¢
Red Potatoes	Bulk	5¢
Crisp Lettuce	Firm Heads	Lb. 19¢

Pie Fillings	Lucky Leaf Cherry	No. 2 Can	39¢
Lemonade	Sunkist Concentrate	6-Oz. Can	19¢
Corn Starch	Argo	1-Lb. Box	16¢
Dreft Detergent	Pink	Large Box	31¢
Dash Detergent	For a Whiter Wash	25-Oz. Box	39¢
Ad Detergent	Perfect for Automatics	24-Oz. Box	39¢
Niagara Starch	Makes Ironing Easier	12-Oz. Box	21¢
Delsey Tissue	Soft	4 Roll Pat.	51¢
Kotex Napkins	Kotex Regular Junior or Super	12-Ct. Box	35¢

Argo Starch	Gloss	12-Oz. Box	12¢
Linit Starch	Add the Finishing Touch	12-Oz. Box	16¢
Comet Cleanser	For All Household Cleaning	2 2 1/2-Oz. Cans	43¢
Spic and Span	Cleaner	16-Oz. Box	27¢
Kraft Salad Oil		Pl. Bot.	35¢



Peaches	Castle Crest Sliced or Halves	No. 2 1/2 Can	33¢
Kellogg Cereal	Special K	6 1/2-Oz. Box	29¢
Parsons Ammonia	Sudsy	32-Oz. Bot.	25¢
Sandwich Spread	Lunch Box	16-Oz. Jar	34¢
Kitchen Craft Flour		5-Lb. Bag	39¢

Good Buys!

Edwards Coffee	Reg. Drip, or Filt.	1-Lb. Can	\$1
Instant Coffee	Edwards	6-Oz. Jar	\$1.31
Lucerne Milk	Homogenized	1/2-Gal. Ctn.	49¢
Half and Half	Lucerne	Pl. Ctn.	28¢
Cottage Cheese	Blossom Time, Reg. Farm, Chive	16-Oz. Ctn.	25¢
Nabisco Cookies	Pure Chocolate Pinwheel	12 1/2-Oz. Pkg.	53¢
Krispy Crackers	Sunshine	1-Lb. Box	27¢
Dog Food Meal	Katco	5-Lb. Box	69¢

Safeway's Frozen Foods

Bel-air Okra	Frozen Whole	3-10-Oz. Pkgs.	69¢
Bel-air Green Peas	Frozen	3-10-Oz. Pkgs.	53¢
Blackeye Peas	Bel-Air Frozen	3-10-Oz. Pkgs.	69¢
Bel-air Spinach	Frozen Leaf	3-12-Oz. Pkgs.	49¢

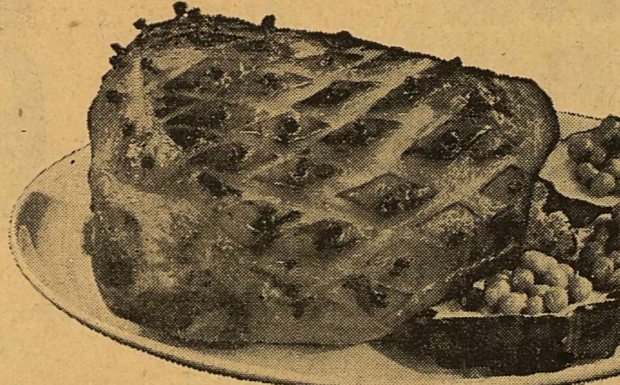
Libby's Corn
Cream Style, White or Golden
2 No. 303 Cans 25¢

Special on-the-spot purchase by our meat experts brings you this week's finest meat value!

SMOKED PICNICS

One of the most economical - as well as one of the most popular - of Safeway's meat values. Versatile, too! First serve it oven-baked just like ham; next serve it sliced or on sandwiches - finally, cook the shank-end with beans!

6 to 8 Lbs. Averages
Whole Only Lb. 29¢



Round Beef Steak	Bone-in, U.S. Choice Heavy Steers	Lb.	69¢
Calf Chuck Roast	U.S. Government Graded	Lb.	35¢
Thick Sliced Bacon	Northern Cured	2-Lb. Pkg.	\$1.10
Jumbo Sliced Bologna	Ready to Eat	16-Oz. Pkg.	39¢

Ground Beef	Ground Fresh Daily	Lb.	29¢
Calf Short Ribs	Or Brisket - U.S. Gov't Graded	Lb.	23¢
Calf Rib Chops	U.S. Gov't Graded	Lb.	59¢
Pork Sausage	Wingate, Regular or Hot	2-Lb. Ball	65¢
Pork Roast	Boston Butt	Lb.	49¢
Pork Spareribs	Fresh, Small-Lean	Lb.	53¢
Frankfurters	Stainless	3-Lb. Pkg.	\$1.00
Luncheon Meat	Sliced - Picnic, Pimento or Spiced Luncheon	8-Oz. Pkg.	29¢

Safeway Good Buys!

Sandwich Spread	Lunch Box	32-Oz. Jar	57¢
Glenview Prunes	Large	1-Lb. Cello	37¢
Seedless Raisins	Vine Crest	2-Lb. Cello	41¢
Dried Apples	Glenview	8-Oz. Cello	35¢
Velkay Shortening		3-Lb. Ctn.	55¢

Safeway's Special Buys!

Honeybird Cherries	Red Sour Fitted	2 No. 303 Cans	35¢
Anthem Peas	Early June 2 1/2"	2 No. 303 Cans	35¢
Heinz Ketchup	Perk Up Plain Foods	2 14-Oz. Bot.	35¢
Shortening	Mrs. Tucker's	3-Lb. Ctn.	69¢
Pillsbury Flour	Or Light Crust	5-Lb. Pkg.	39¢
Colgate Tooth Paste	For Sparkling Teeth	Economy Tube	35¢

Shortening	Crisco	3-Lb. Can	99¢
Shortening	Fluffo	3-Lb. Can	99¢
Ivory Snow	Perfect for Dainty Clothes	Large Box	32¢
Black Walnuts	Fusion	4-Oz. Can	43¢
Pecan Halves	Fusion	3-Oz. Can	35¢
Facial Tissues	Kleenes White, Pink or Yellow	400-Ct. Box	29¢

Prices effective January 31, February 1 and 2

SAFeway's your BEST place to save!

Women's Activities

February 4

Members of the WSCS of the First Methodist Church will meet in Circles Monday afternoon at 3. Circle No. 1, Mrs. W. M. Brown, leaders, will meet with Mrs. W. A. Robinson; Circle No. 2, Mrs. Lee Dockery, leader, will meet with Mrs. E. H. Mills; Circle No. 3, Mrs. F. S. Pearsall, leader, will meet with Mrs. B. A. Tunnel; the Business Women's Circle will meet at 7:30 p.m. with Mrs. Vernon Deffebach. Mrs. Jess Weaver is leader.

February 7

Members of the 1920 Club will meet Thursday, Feb. 7, at 3:30 p.m. at the Community Club house for the annual business meeting and election of officers.

February 12

The Parent-Teachers Association of Young School will meet Tuesday, Feb. 12, 7:30 p.m. Miss Young's second grade will present the room program.

February 12

The 1947 Club will meet Tuesday, Feb. 12, 4 p.m. at the Community Club House for a musical program presented by the Breckenridge Boys Choir. Hospitality committee will be Mmes. Bill Clem, Morris George and Judson Hardy.

February 13

The New Era Club will meet Wednesday, Feb. 13, 4 p.m. with Mrs. L. L. Bruce with Mrs. Lee Russell as co-hostess.

Gorman Showers Fete Billy Joe Dennis and Wife

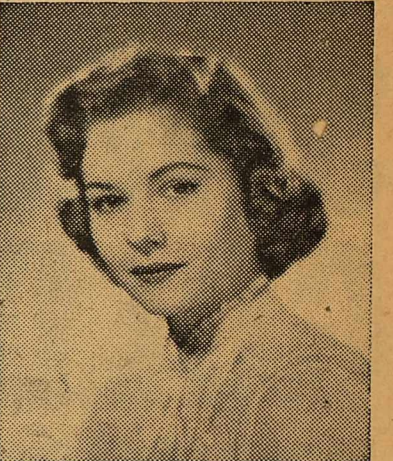
On January 18, the Midway Baptist Church of Gorman was the scene of a bridal shower honoring Mr. and Mrs. Billy Joe Dennis of Eastland. Mrs. Dennis is the former Joyce Tucker.

The shower began at 7 p.m. and many gifts were received by the new bride and groom. After gifts were opened they were displayed to those present.

Refreshments were then served to the guests and honorees. January 19 Mr. and Mrs. T. E. Hogan honored the newly weds at their beautiful home in Gorman. The many useful gifts were displayed in the lovely dining room and refreshments were served to the guests.

The hostesses for this occasion were Mmes. T. E. Hogan, Lee Anglin, Walter Goodwin and C. B. Brown all of Gorman.

Gifts were listed in the brides book of white leather.

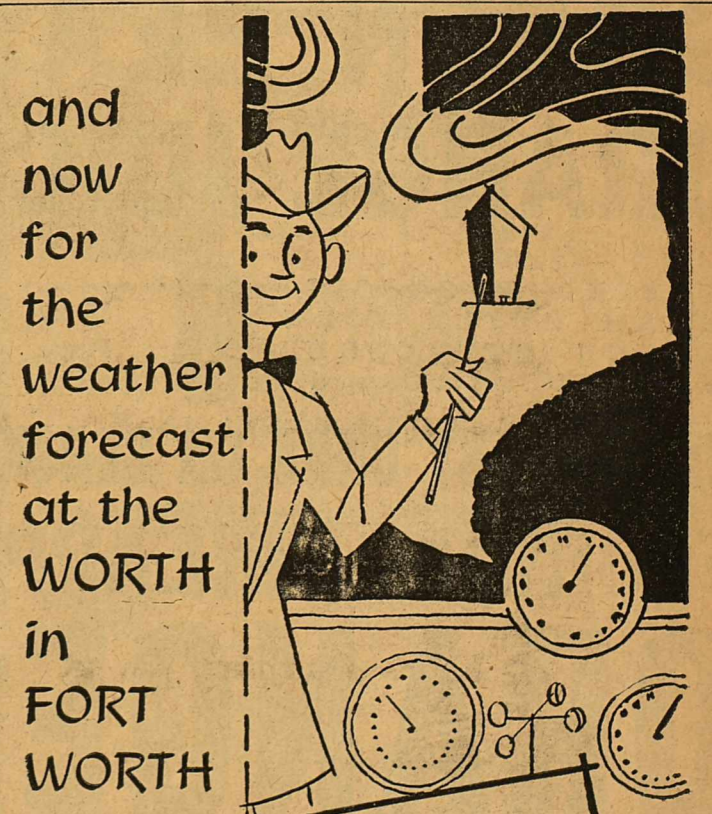


Your Portrait is the Perfect Valentine

and there's just time to have it made for Valentine's Day! Phone for your appointment now.

CAPPS STUDIO

104 Rusk Ranger



and now for the weather forecast at the WORTH in FORT WORTH

ABSOLUTELY PERFECT-NOW AND ALWAYS! WITH YEAR AROUND AIR-CONDITIONING

worth hotel

JACK FARRELL MANAGER FORT WORTH, TEXAS

WMU Meets For Luncheon

Members of the WMU of the First Baptist church met Tuesday morning at the church for a regular meeting and covered dish luncheon. Mrs. Ralph Perkins gave the devotional which was followed by a short business session presided over by Mrs. Sammie Elder.

Mrs. Frank Arrandale introduced the program and discussed the new mission study book. Mrs. E. Wilson Guest reviewed the junior

mission book, "It's Your Turn." Mrs. A. W. Reuser reviewed the intermediate book, "The Trail of Itching Feet." Mrs. Perkins discussed the young peoples book, "Twentieth Century Pioneers." Following the benediction by Mrs. Elder the luncheon was held.

SPENT TUESDAY HERE

Mrs. Don Cook and Mrs. M. E. Ewing of Wichita Falls spent Tuesday night with Mr. and Mrs. B. J. Ogden and Mr. and Mrs. E. C. Ewing.

LOOK WHO'S NEW



Mr. and Mrs. D. R. Perrin of 1009 W. Shady Dr., Irving, announce the arrival of a baby girl born at St. Paul's Hospital, Dallas, Jan. 19, at 11:52 a.m. The baby was named Donna Kay and weighed 6 pounds and 12 ounces. Grand parents are Mrs. Margaret Hughes and Mrs. B. P. Perrin, both of Ranger.

Mr. and Mrs. W. M. McElroy of Wichita Falls are the parents of a 7 pound 13 ounce boy born Jan. 25. Mr. and Mrs. W. E. Herweck of Ranger are great grandparents.

Mrs. Hagaman Gives Columbia Study Club Review

Mrs. C. E. May Sr., and Miss Beulah Harrison were co-hostesses to the members of the Columbia Study Club Tuesday afternoon in the home of Mrs. May.

Mrs. W. L. Downtain presented Mrs. Leslie Hagaman who reviewed "Texas Sheep Men" by Mauldin.

An arrangement of achacia and yellow ranunchas centered the

CARD OF THANKS

To our many friends who were so kind to us during the darkest days of our lives we thank you, from the depths of our hearts. Each word of sympathy, the food, and the beautiful floral offerings were appreciated more than you will ever know.

May God bless each one of our prayer.

Mildred and Glenda Rains
Weldon and Phyllis Rains.

Bible Study Meets With Mrs. G. D. Falls

The following members and guests were present: Mmes. Hagaman, Downtain, Matthews, Kuykendall, McAnelly, James Cosper, Bill Clem, F. P. Brasher Jr., T. C. Wylie, Al Larson, L. R. Pearson, J. P. Morris, M. L. King and the hostesses.

Bible Study Meets With Mrs. G. D. Falls

The ladies of Merriman Baptist Church met Tuesday afternoon with Mrs. G. D. Falls for their weekly Bible study.

The opening prayer was led by Mrs. Falls and the devotional was the 36th chapter of Genesis. Refreshments were served to the following: Mmes. Bonnie Rodgers, Jack Walker, C. J. Cole, A. E. Dawson, Ruby Ainsworth, Ruby Eschberger, and Mrs. Falls.

HOSPITAL NEWS



Mrs. C. E. May, Sr. of Ranger and Cellest Scott of Fort Worth are new patients in the West Texas Clinic.

Freland Gene Wallace is a new medical patient in the Ranger General Hospital.

NEWS FROM STAFF

By Mrs. M. O. Hazard

Mr. and Mrs. Lee Bishop from Cross Plains, were the guests of Mr. and Mrs. T. E. Pope Friday evening.

Mrs. A. J. Fox was visiting with relatives in Eastland Monday.

Mr. and Mrs. Jid Blackwell of Cheaney were guests Saturday evening of the T. E. Pops.

Mr. and Mrs. Walter Duncan and Mrs. M. O. Hazard attended the Workers Conference at the First Baptist Church in Carbon Tuesday.

Mr. and Mrs. T. E. Pope had as guests for dinner Sunday their niece, Mrs. Walter Mitchell and Mr. Mitchell.

J. W. Mounce was a business visitor in Ranger Tuesday.

Mrs. Wayne White visited in Eastland Monday with her mother, Mrs. Agnes Williamson and Mrs. Virgil Massengill.

T. E. Pope accompanied by Sam Beggs, from Cisco and Bill Greenhaw, from Desdemona went to Gorman and DeLeon on business recently.

Miss Annie Parsons visited in Eastland Sunday afternoon with Mr. and Mrs. Bemous Brewer.

Mr. and Mrs. M. O. Hazard visited in Eastland Wednesday with his sister, Mrs. Pearl Bourland.

The T. E. Pops visited Sunday evening in the home of Mr. and Mrs. Arthur Johnson.

T. E. Pope was in Cisco Thursday on business.

Quite a number in the community have been suffering from colds.

Mr. and Mrs. Allen Crosby had as guests Thursday evening their sons, A. G. Crosby and family from Eastland and Lonnie Crosby and family from Cisco.

Mr. and Mrs. L. G. Powell visited in Weatherford Sunday with Mrs. Powell's brother-in-law and sister, Mr. and Mrs. L. E. Puryear.

Mr. and Mrs. J. H. (Slim) Adams from Desdemona were visiting recently with Mrs. Adams mother, Mrs. Zona Griffin.

Mr. and Mrs. T. E. Pope were in Ranger Tuesday afternoon to attend the funeral of W. T. Johnson at the Second Baptist Church.

Use Curtains, Cut Brooder Costs In Half

COLLEGE STATION — Cost of brooding chicks in infrared-lamp brooders can be cut almost in half if the brooders are fitted with side curtains. W. L. Ulich, extension agricultural engineer, says a recently completed test in Indiana proved the value of fitting infrared brooders with curtains when used by commercial producers.

No significant differences in gains nor feed efficiencies between chicks reared in brooders with or without curtains was noted. But, Ulich said the tests showed that brooders without side curtains required 93 percent more electrical energy than those fitted with curtains.

The materials used for these energy-saving curtains—white vinyl plastic, clear vinyl plastic and 32-gauge aluminum sheeting—all proved equally effective in

cutting production costs. Clear plastic curtains have the added advantage of visibility.

The brooders used in the tests were of home-made plywood construction, fitted with four 250-watt lamps mounted under a 4 x 4 foot plywood top. Thermostats controlling the lamps were set to maintain the same air temperatures under all the brooders in the tests.

The lamp-controller systems used in the experiments were a proportional-time modulator, a commercial brooder "wafer" type and a commercial high-sensitivity thermostat. The proportional-time modulator type gave a slightly greater cost advantage, amounting to .2 cents per chick when compared with the high-sensitivity regulator and .9 cents per chick better than the wafer-type thermostat.

The tests were conducted in four 10' x 12' insulated colony houses and in one 26' x 132' house separated by wire partitions into seven 12' x 26' pens.

READ THE CLASSIFIEDS



Box Office Opens 6:45
Show Starts 7:00
Box Office Closes 9:00

Admission—50c . . . Children Under 12—Free
WEDNESDAY - THURSDAY, JAN. 30 - 31



PLUS: Color Cartoon

FRIDAY - SATURDAY, FEBRUARY 1-2



PLUS: Color Cartoon and Sports Reel

Hodges Oak Park 4-H Club Meets

The Hodges Oak Park 4-H Club met in the sixth grade room Tuesday morning with the president, Sue Graham, presiding.

The club motto, pledge, and prayer were said. Nancy Boen, secretary, called the roll, which was answered with each girl telling what she needed most for her wardrobe.

It was decided that the group would sponsor a bake sale.

Charlene Echert gave a demonstration on matching clothes.

The group was dismissed by Sue Graham.

CARD OF THANKS

We wish to express our heartfelt thanks to everyone who gave so much in expressions of sympathy and kindnesses at the death of Bill Johnson.

May God bless all of you in our prayer.

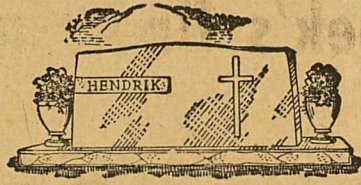
Mrs. Bobbie Johnson and Billy Mr. and Mrs. Arthur Johnson
Mr. and Mrs. Wallace Johnson
Mrs. Oma Merritt

—THE PECAN— STATE TREE OF TEXAS

Plant Papershell Pecan Trees for your own pleasure and profit, and to provide a natural endowment for your children and grandchildren.

FREEMAN PECAN NURSERY

R. F. D. NO. 1
10 Miles Southeast of Ranger



SINCE 1884

... it has been our privilege to render a service to this community as monument builders.

ALEX RAWLINS & SONS

Weatherford Phone 4-2726 Texas

sweet
(just look)

smooth
(ah, that velvety V8)

sassy
(just drive it)

This is the car that's fresher and friskier from its own special look to the way it takes to the road.

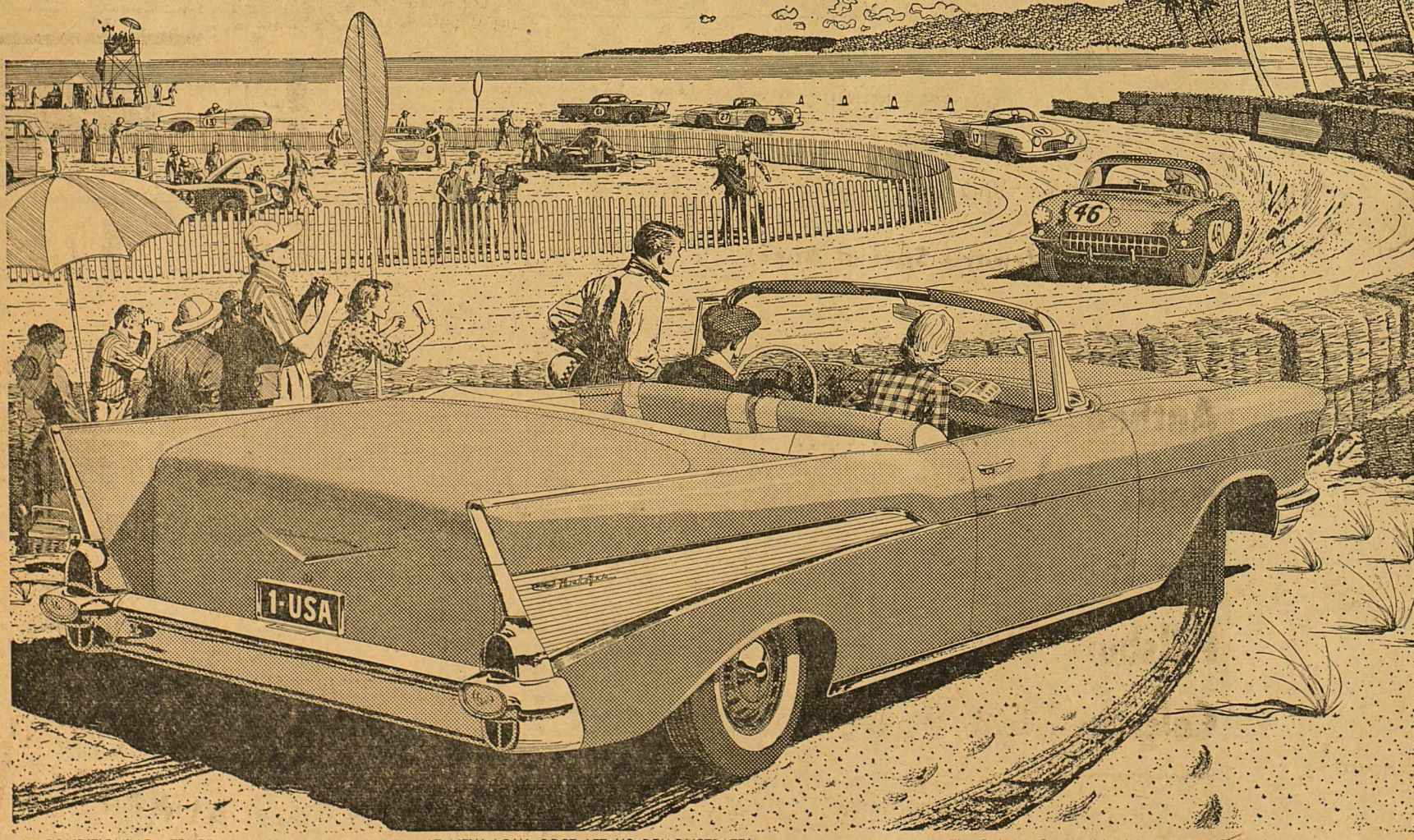
Those words—sweet, smooth and sassy—seem to fit this new Chevy right down to its tubeless tires. In the first place, it looks the part. It has a crisp, alert appearance—as trim and functional as an arrow. You can tell that the styling isn't just going along for the ride. It's right in keeping with Chevrolet's own special fresh and frisky ways.

And this is one car that looks as good close up as it does across the street. It's built the way you've come to expect a Chevrolet to be built.

But a Chevy isn't just something that's nice to look at. You'll see what we mean when you sample Chevrolet's cat-quick reflexes and solid way of going. Horsepower options, you know, range up to 245*. Come drive a Chevy!



*270-h.p. high-performance V8 engine available at extra cost.



AIR CONDITIONING—TEMPERATURES MADE TO ORDER—AT NEW LOW COST. LET US DEMONSTRATE!

The Bel Air Convertible (above). The Chevrolet Corvette (at right).

Only franchised Chevrolet dealers display this famous trademark

ANDERSON CHEVROLET CO.

Sales—CHEVROLET—Service

111 S. Austin Street

RANGER

Phone 14

ARTERBURN'S HARDWARE AND FURNITURE

120 Main

Phone 945

Robinson Food Market

Specials for Fri. and Sat. Only

WE DELIVER

121 North Rusk Street

Phone 162

FRESH DRESSED FRYERS EXTRA NICE

lb.	45c
Fresh Pork Chops lb.	59c
Home Made All Pork Sausage 2-lbs.	95c

KRAFTS VELVEETA CHEESE 2 Lbs. 79c

FANCY HOME KILLED CALF From Our Own Feed Lot

Loin Steak	lb. 59c
T-Bone Steak	lb. 65c
Club Steak	lb. 59c

FRESH COUNTRY EGGS BIG WHITE Doz. 39c

Del Monte — 303 Can Fruit Cocktail 2 for 49c	Kounty Kist Whole Grain Corn 2 for 39c
--	--

RUFFY DOG FOOD 13 Cans 1.00

Imperial Pure Cane Sugar 5-lbs.	49c
Fresh Crisp Carrots pkg. cello . . .	9c

WE DELIVER - Phone 162
RAIN OR SHINE

BARBER SHOP

IT PAYS to LOOK WELL

Courteous Service

TONY'S BARBER SHOP
223 1/2 Main - Phone 108

Uncle Sam Asks Quick Filing of Your Tax Return

Early filing of your 1956 income tax return will help Uncle

Sam and yourself, A. E. Fogle, Jr. of Internal Revenue Service. The tax returns should be accompanied by a check, for any tax due, payable to Internal Revenue Service, 2101 Pacific Avenue, Dallas, Texas.

"The vast bulk of this area's taxpayers will find no difficulty in making out their own returns," Fogle said. "But for those who have difficulty, our office stands ready to give help or advice."

"To obtain aid and avoid the last minute crowds, call or come in now while our personnel are better able to assist you."

"It's true that the filing deadline is April 15, but little or nothing is gained by waiting until the last minute to pay up. Taking care of your payments now will help your government to carry on its important defense and construction programs and many other activities, and will let you plan your budget for the rest of the year with assurance."

New Ford Trucks Go On Display Friday At King Motor Co. Here

Ford's new 1957 truck line, originally not scheduled for production until 1958, will be introduced by Ford dealers Friday offering nearly 300 different models, the Ford line represents the biggest change in the history of the company, and cost \$77,000,000 to design and put into production.

"We have made this great change in our truck line because we believe truck users are on the threshold of vast improvement in delivering goods to the American public," said Robert S. McNamara, Ford Motor Company vice president and Ford Division general manager.

"To help truck operators make this progress, Ford has launched this new line a year ahead of its original 1958 scheduled introduction," he explained.

Cutting one year off the design and production schedule cost Ford an extra \$5,000,000, it was disclosed.

The new Ford truck line features new "Styleside" pickup models with streamlined load area 25 per cent bigger than last year; a new series of six tiltcab transport truck models which are the lowest priced in the industry; a new Ranchero model which combines passenger car styling and comfort with all-around pickup truck utility; greater payload capacities in medium and heavy duty models; and an expanded parcel delivery series.

Engine power throughout the line has been raised an average of 8 per cent to help truck operators stay abreast of modern traffic flow. Engines have been redesigned for better breathing. They have a new rotor oil pump for more effective lubrication, a dry-type air filter that is more easily cleaned, new economical heavy duty carburetors, and lighter flywheels to permit faster acceleration. Hydraulic clutches are a new feature, standard for the whole line at no added cost.

Four basic power plants are offered, with 27 different modifications available for special hauling service. Light duty models have new hypoid rear axles, with pinion gears straddle-mounted for longer life. All engines, transmission, driveline and frame components have been redesigned to take more punishment.

Recognizing the trucking in-

struction programs and many other activities, and will let you plan your budget for the rest of the year with assurance."

The IRS representative stressed that careful reading of the instructions, accompanying the forms recently mailed out, will enable most taxpayers to prepare their own returns, often in less than an hour.

dustry's need for greater payloads, better maneuverability, and reduced maintenance time and cost, Ford engineers discarded their former cab-over-engine design. The new tilt-cab series is the result of this change. Designers shifted 1,100 pounds of vehicle weight to the strengthened front axles of the tilt-cab units. This shift means extra payload of more than a half-ton can be hauled. The tilt-cab tractor's length is only 80 inches, meaning it can handle trailers up to 37 feet long within legal road limits. Reduced length cuts turning radius, and makes handling easier. The whole cab rises out of the way for service, and mechanics can do ordinary maintenance jobs in as much as three hours less time than on old-style models.

As with the tilt-cab models, greater cargo space has been built into conventional Ford trucks because total cab and front end length is 2-2 1/2 inches less than last year, permitting a longer body on the rear. With over-all height reduced nearly 3-1 1/2 inches, Ford truck cabs will be easier to enter than any other make. Though height came down, ground clearance was increased an inch.

Redesign of the new vehicles from the ground up provided opportunity to improve the driver's compartment more than in any previous series.

1957 Egg Crop To Exceed 1956 Record

COLLEGE STATION—National egg production in 1957 is likely to exceed the 1956 record output of 189 million cases by 2 percent, according to Texas A&M Extension Economists and Poultry Marketing Specialists. Lower egg prices observed in late 1956 are expected to continue through the first quarter of the new year.

In the first half of 1957, output will come from about the same

number of layers as a year earlier, but with a higher per-bird rate of lay. Present out-look indicates 1957 summer and fall prices will likely be near 1956 levels, since production after late summer probably won't be up much from 1956 figures.

TRADE WITH YOUR HOMETOWN MERCHANTS

Montgomery Ward EXTRA VALUE QUALITY LOW PRICES

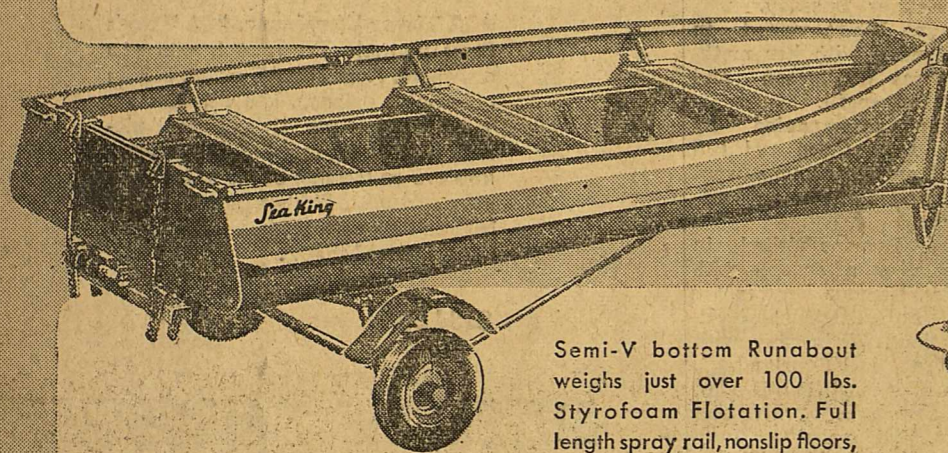
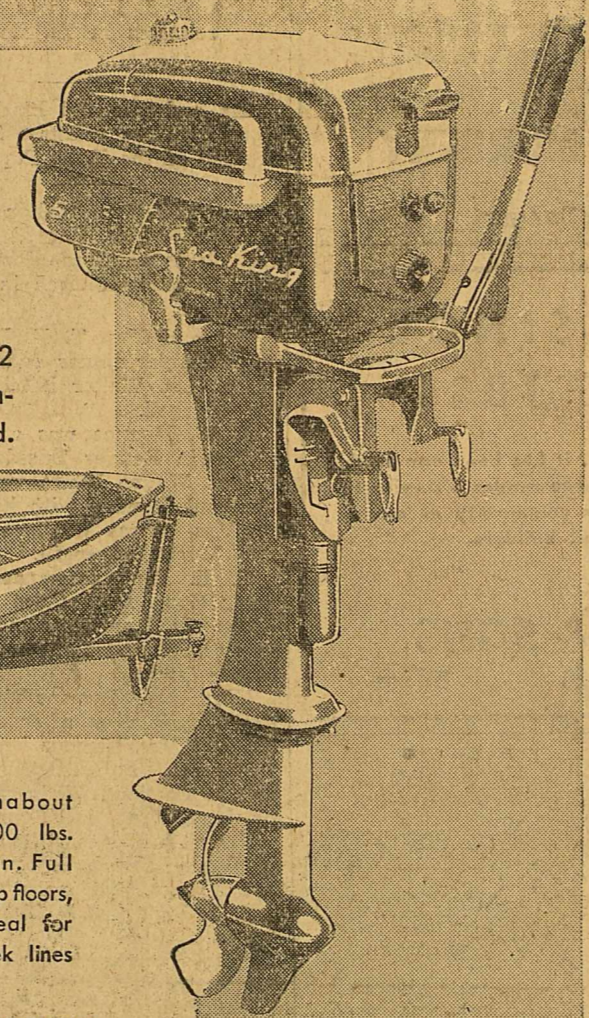
PAY-IN-MAY

lay-away sale

save \$55 on Wards 5 HP Sea King outboard motor

SALE 154.44

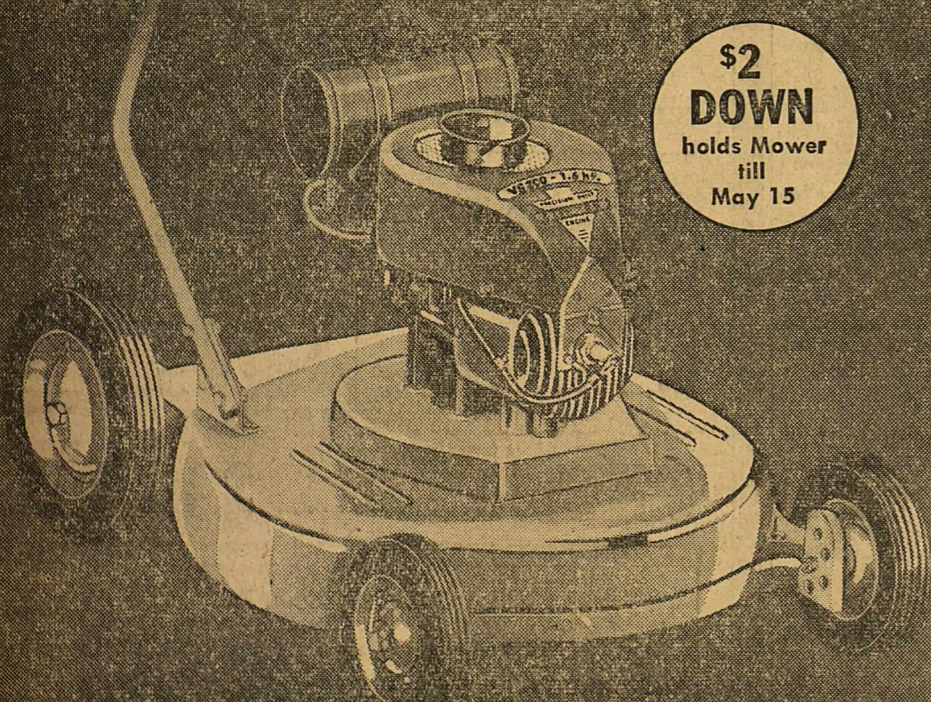
Quiet trolling smoothness plus high speed zip—1 1/2 to 12 M.P.H. Shift from neutral to forward or reverse for complete maneuvering control. Rewind starter; spring mounted.



12-ft. Sea King aluminum boat is lightweight, speedy
SALE 188.00

Semi-V bottom Runabout weighs just over 100 lbs. Styrofoam flotation. Full length spray rail, nonslip floors, Douglas fir seats. Ideal for fishing. Slim and sleek lines yet strong.
Sea King Deluxe 14' Boat Trailer **129.88**

power mowers
new low prices! same Ward quality



\$2 DOWN holds Mower till May 15

SALE

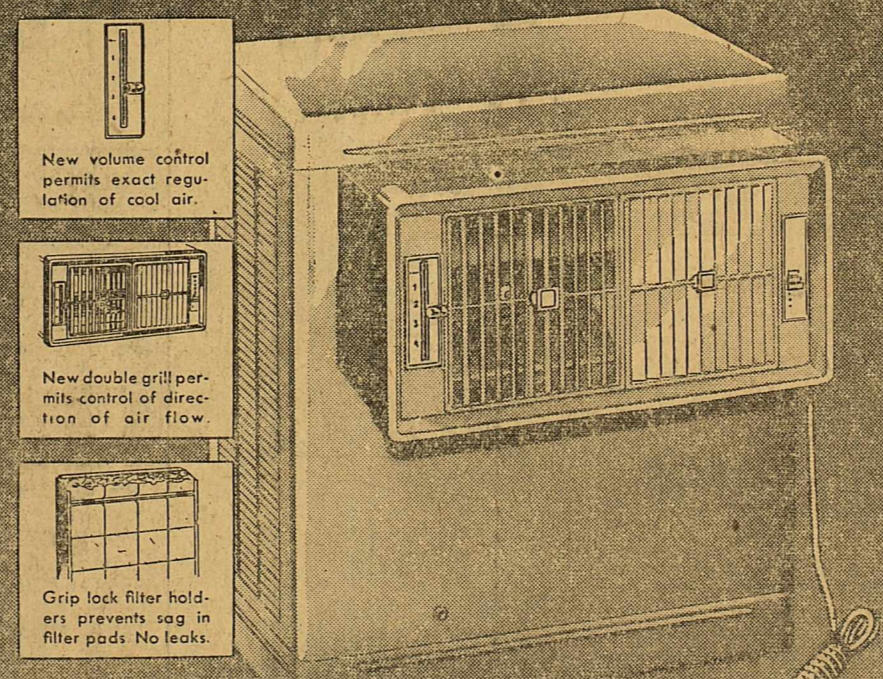
1.6 HP 18-inch rotary mower, formerly 69.95

39.77

- Double power action engine with rope starter
- Cutting height adjustable from 1 to 3 inches.
- Recessed wheel design for extra close side trimming
- Extra strong aluminum frame; floating type steel handle

SAVE \$13 on 1 1/4 HP 4-cycle 19" rotary—was 87.00. Automatic recoil starter; leaf mulcher included. **74.77**

1957 coolers
with air flow volume control



- New volume control permits exact regulation of cool air.
- New double grill permits control of direction of air flow.
- Grip lock filter holders prevents sag in filter pads. No leaks.

SALE

Ward's new sensational evaporative cooler cools 4 to 5 rooms... 4000 cu. ft. per minute

124.88

Regularly 145.50... only \$5 down holds 'til May 15

Will fit into any double-hung window. 100% hot-dipped galvanized steel for long and useful service. Lightweight, full length filters remove easily for cleaning and servicing. The new grille adds beauty to your room... no unsightly vanes. Smart two-tone grey enamel finish. Live cool, sleep cool during all summer.

O. K. GROCERY MARKET

Friday and Saturday Specials

501 W. Main I. G. A. Phone 214

BAKE-RITE Shortening 3 Lb. Can 79c

SILVER-BELL OLEO Lb. 23c **BONELESS ROLLED VEAL-ROAST Lb. 49c**

Pinto Beans 2 lbs. 28c **APRIL SHOWER—303 Can Peas 19c**

LARGE Navy Beans lb. 14c **MARSHALL—303 Can Cut Green Beans 16c**

LARGE Lima Beans lb. 19c **KOHINOR Country Gentleman—303 Can Corn 18c**

Blackeye Peas lb. 15c **MARSHALL—303 Can Pork & Beans 9c**

COMET Cleanser 15c **COLOROX Bleach 19c** **STA-PUFF Rinse 45c**

GREEN LABEL—CHICKEN OF SEA—Can TUNA 32c **AMERICAN OIL—Can Sardines 10c**

BEAUTY—Tall Can Pink Salmon 59c **COVE—Can Oysters 43c**

SWIFTS PREMIUM BACON CELLO PKG. Lb. 59c

FRONER—Pkg. Fish Sticks 39c **FROZEN—Lb. Cod Fillets 43c**

JEAN'S—24-Count Cello Bag Frozen Rolls 39c **FROZEN—Lb. Perch Fillets 39c**

SWIFT'S BROOFGFIELD—Lb. Pkg. Link Sausage 59c **FROZEN—Lb. Cat Fish 59c**

SELECTED CHUCK ROAST Lb. 39c

Fresh CORNED BEEF lb. **100 PERCENT GROUND MEAT 33c**

Selected SIRLOIN STEAK . . lb. 65c **Selected BRISKET lb. 19c**

SWIFT'S—Pkg. Brown-N-Serve Sausage 49c **Lb. 33c**

RUSSETT POTATOES 10 Lb. Cello Bag 39c

FANCY WASHED Carrots . . 3 cello bags 25c **YELLOW Onions lb. 6c**

RUBY RED Grapefruit 2 for 9c **ROME BEAUTY Apples 2 lbs. 25c**