

## "Spirit of Ranger" To Present Winter Concert December 19

"THE SPIRIT OF RANGER", under the direction of public school band director, Richard Helmcamp, will present a winter concert Tuesday evening, 7:30, Dec. 19th

in the high school auditorium. Tickets will be on sale this week and can be purchased from members of the band. Price of admission will be 50 cents for adults and 25 cents

for students (this includes college students). The band will appear in new concert uniforms for the first time when it presents its program. Mr. Helmcamp will announce the schedule of musical selections in the Sunday issue of the RANGER TIMES.

The public is invited and urged to attend the concert and see the "SPIRIT OF RANGER" in its first public concert this year.



## In this corner, with COLLINS

We had a phone call Monday from Mrs. C. R. Neeley and she informed us that Teddy will appear on the Johnny Carson TV Show Wednesday night, the 13th. She also said that she had received a card from Teddy and that he would appear on the Mike Douglas Show soon. We are proud of Teddy and his appearance on TV has given Ranger a big name.

The Ranger Times will publish its Christmas Edition Dec. 24 and we are in the process of selling Christmas greeting ads. If we fail to contact any of you please call 647-1101 for your ad. We do not want to over look any one.

Don't forget the turkey shoot that is being sponsored by the local Jaycees starting Thursday afternoon at 5 p. m. The shoot will be held Thursday through Saturday and a gift certificate valued at \$5 will be given each hour and the Grand Prize in the children's division will be a single shot .22 and an automatic .22 will be awarded in the adult division.

The Times is continuing to receive Santa letters and the latest one is from Darrell Fox. The letter reads:  
Dear Santa  
Please bring me a fire truck again this year and no pajamas please.  
Love, Darrell Fox.

Mr. and Mrs. B. R. Christmas and Mrs. B. D. Moore will leave early Thursday for Denver City to attend the funeral of Mrs. W. L. Weaver sister-in-law of Mr. and Mrs. Christmas. Interment will be in a cemetery in Hobbs, N.M. Mrs. Weaver died early Tuesday in a hospital in Muleshoe.

## Baptist Choir Is Planning Cantata For December 17

"Transcending Love," a Christmas cantata, will be presented by the choir of the First Baptist Church at 7 p. m. Sunday, Dec. 17.

Written in 1957 by John Peterson, this contemporary opus is particularly adapted to choirs of small churches and is gaining favor with audiences each year.

Directing the program is Larry Hunt with John Langford as narrator, accompanists are Jimmy Watkins, organist, and Mrs. F. P. Brasher Jr., pianist. Soloists include Polly Alexander, Joyce Hunt, Lee Russell and Larry Hunt.

In employing melody to recount a miracle, it is the desire of participants to portray the true spirit of the first Christmas and invite area residents to share with them this inspiring experience, said a spokesman for the group.

## Final Rites Held Mon. For Mrs. Conner

Funeral for Mrs. Cassie Alameda Conner, 69, sister of Mrs. J. W. Dillard of Ranger, was held at 1 p. m. Monday in Nalley-Pickle Funeral Home Chapel in Big Spring. Burial was in Odessa City Cemetery.

Mrs. Conner died at 9:30 a. m. Saturday in a Big Spring hospital following a lengthy illness.

Survivors include two sons three sisters, nine grandchildren and six great-grandchildren.

The Dillard family attended final rites.

## Rangers Win Odessa Tourney

Ranger Junior College Rangers ran their record to 10-0 in Odessa last weekend as they defeated New Mexico Junior College 107-79 and taking the Odessa Junior College basketball tournament.

Ulric Cobb scored 28 points for the Rangers, but was supported by Jim McCloud, Solomon McMillian and Stanley Thompson to give Ranger four players in double figures. McCloud got 26, McMillian 21, and Thompson 10.

## Ranger Invited To Have Special Stock Show Day

FORT WORTH — The Ranger Chamber of Commerce has been invited to select a "Special Day" to be honored by the 1968 Southwestern Exposition and Fat Stock Show, Jan. 26 through Feb. 4.

"Special Days" is a long standing tradition of the Fort Worth Stock Show. It's our way of showing our appreciation to communities and people of Texas and Oklahoma for making the Fort Worth Stock Show and Rodeo one of the world's biggest and best," commented W. R. Watt, show president and manager.

Included in the invitation is a reservation for a block of rodeo tickets to be sold locally. The seats are in a block to insure all residents will be sitting together for their spotlighted introduction at the Rodeo. A Cowgirl Sweetheart can be selected to ride in the Grand Entry and be introduced during the "Special Day" rodeo performance. The local riding club may go with the "Special Day" delegation and ride in the Rodeo Grand Entry.

Featured entertainer of the 1968 Fort Worth Rodeo will be Rex Allen, star of western movies, TV and records. For his Fort Worth appearance Rex Allen will be accompanied by the "Men of the West" well known Western musicians. An outstanding array of specialty acts has been lined up for the '68 Rodeo, including a spectacular demonstration of "Big Loop" roping, Championship trick and fancy riding and a most unusual exhibition of Dressage riding.

Rodeo action fans will find plenty of excitement as over 450 top cowboys compete on some of the world's roughest bucking stock for a rodeo purse of nearly \$75,000 in prize money and entry fees.

Doors open on the 72nd edition of the Fort Worth Stock Show at 4 p. m., Friday, Jan. 26. Livestock entries for cattle, horses, sheep, and swine close Dec. 15, 1967. Poultry, rabbit and pigeon entries close Jan. 15, 1968.

## Swine Producers Are Invited To Baird Meeting

All swine producers in the Big Country area have been invited to attend a pork producers organization meeting at the district courtroom in Baird on Tuesday, Dec. 19, at 7 p. m., according to an announcement.

All producers from Callahan, Taylor, Jones, Runnels, Coleman, Eastland, Shackelford and Stephens County will be encouraged to join the Area Pork Producers Association.

Purpose of this association will be to locally promote the production, improvement, and sale of pork products, according to a spokesman.

All details pertaining to organization, responsibilities and issues will be explained at the Baird meeting. Euel Linder, director of the National Pork Producers Assn., and Buddy Winters, president of the Texas Assn., both of Lubbock, will be on hand to direct the program.

## Rangers Topple Murray State 79-63 For No. 11

The Ranger Junior College Rangers stopped Murray State of Oklahoma 79-63 here Tuesday night in a battle of previously undefeated teams.

The victory was a Ranger's 11th in a row this season. Murray had won its first seven starts.

The Rangers were ahead 39-29 at halftime, but upped the cushion to as high as 22 points after intermission.

Ulric Cobb netted 28 points to lead the winners and Robert Spivey chipped in 16. Two others were in double figures. Jim McLeod with 13 and Stan Thompson with 10.

Ernie Simmons led the losers with 20.

Mr. and Mrs. M. E. Owen of Fort Worth were weekend guests of their parents, Mr. and Mrs. Maurice E. Owen and Mr. and Mrs. David B. Allsup.

## A SEASON OF GOOD CHEER

Christmas, the season of "Peace on Earth, Good Will Toward Men" is, for the most part, a time of reunion of family and friends within that first and most sacred of all institutions, the home.

Each year there are those who cannot observe the season amid the joys of health and health. Illness strikes and tragedy rides the highways, even for those enroute "home for Christmas" and at times the anticipated happy time is spent upon a hospital bed where even the presence of family and friends fails to ease the physical pain and mental anguish of the unfortunate victim.

On the scene is a staff of skilled and capable workers, banded together in a common cause - the relief of human suffering. Just as sickness is no respecter of persons, hospitals are no respecter of days for the work must be done. One such institution is Ran-

## City Commission, Study Committee Encourage Citizens to Vote for Tax

Some weeks ago the City Commission of Ranger appointed a committee to study the feasibility of a one percent sales tax and also to study with them the needs of the city.

The committee, composed of Lloyd Bruce, Wayne Matthews, Dr. W. P. Watkins, Glyn Gaudin, and James Rutliff, met with the city commission and expressed their unanimous desire that a one percent sales tax election be held.

Mayor Morris Newham explained to the Commission at that time the city was still faced with over \$400,000 in bonded indebtedness that was refunded in 1946, which was created in the twenties, and is due in March of 1970.

## TCU Official Visits In Schools Of Two Towns

FORT WORTH — Mrs. Jewel Carr Power, assistant director of admissions at Texas Christian University was in Eastland and Ranger on Dec. 11 and talked with students in area schools.

A member of TCU's admissions staff since 1962, the counselor is a former newspaper woman and served as director of Christian education for a San Angelo church before coming to TCU.

The TCU staff member was in Eastland High School at 10:30 a. m. At 1 p. m. she talked with students at Ranger Junior College, and at 2:30 p. m. she was at Ranger High School.

Now in its 95th year, TCU offers more than 2 degrees in 80 fields of study, including the doctoral degrees in chemistry, history, physics, psychology, mathematics and English. A teaching force of about 500, with 55 per cent of full-time faculty holding earned Ph. D. degrees, offers a total of 2,000 courses through undergraduate day school, Evening College, Brite Divinity School and the Graduate School.

General Hospital where the Christmas season will be more bearable for the sick and afflicted in our midst because of the combined effort of 33 capable persons who, if they are able to make the sufferer a little more comfortable, the day a little brighter and disappointments a little less acute, will experience a joyous Christmas.

Members of the staff are Charlotte Ainsworth, Lottie Ainsworth, Ed Allgood, Sarah Alford, Mabel Barnes, Wilma Basnam, Hazel Biegley, Clara Bilman, Mary Frances Cope, Elnor Crawford, Ora Crawford, Dora Dempsey, Catherine Evans, Ess Green, Nettie Grissom, Rowena Hall, Nell Harrell, Dorothea Harris, Doris Herrington, Leona Hill, Gene Jensen, Rachel Jacoby, Iva Mackey, Bettie Morris, Ruth Nichols, Mary Mitchell, Betty Noth, Lillie Ogle, Nellie Sharp, Faye Turner, Ovella Turner and Jean Walker.



KENNETH PAIR  
New RJC Football Coach



RON BUTLER  
New RJC Athletic Director

## New Head Coach Is Named At Ranger Junior College

The RJC Board of Regents has announced the appointment of Coach Kenneth Pair as the new head football coach at the college.

The appointment becomes effective June 1, 1968. The board also named Coach Ronald Butler as the new Athletic Director at RJC Butler's appointment also becomes effective next June.

The two appointments were necessary to fill the vacancies created by the resignation of Thomas J. Duvall who now holds both positions. Duvall has resigned effective next June.

Pair came to RJC last fall

## Bulldogs Defeat Mavericks, 52-45

The Ranger Bulldogs were victorious here Monday night as they defeated the Eastland Mavericks 52-45 in the Ranger Junior College gymnasium.

Charlie Orms of the Bulldogs, was high point man with 22 points. Tom Fox, 11 had 10 points and Bobby Sipes had 10 points. High point man for the Mavs was Steve Lund with 14 points.

The Eastland Mavericks defeated the Ranger girls by a score of 40-17. High scorer for Eastland was Kachy Kincaid with 11 points. Donna Mansworth got 6 points to be the high scorer for the Ranger team.

after holding coaching positions in El Paso, Stephenville and Hamilton. He holds bachelor's and master's degrees from Stephen F. Austin College. Mrs. Pair teaches at the Ranger Public Schools.

Butler is in his fourth year at RJC. He also holds both degrees from Stephen F. Austin. He currently serves as head basketball coach and will continue in that position in addition to serving as Athletic Director.

## Ministerial Alliance To Meet Monday December 18; 9 a.m.

Members of Ranger Ministerial Alliance are reminding of a meeting to be held at Bryan's Steak and Coffee Shop at 9 a. m. Monday, Dec. 18, according to announcement of Alliance officers.

Principle item of business will be selection of new officers for the coming year and all members are urged to be present. The Alliance is open to pastors of all churches in Ranger.

## RJC Christmas Concert Is Success Here Mon.

The combined talent of more than sixty young musicians was employed to produce Ranger Junior College Music Department's Annual Christmas Concert presented in Ranger High School Auditorium on Monday evening.

The versatility of the group was displayed during a score of numbers ranging from the pianissimo strains of seasonal selections by the Collegiate Singers and Concert Choir to the rhythm of the Concert Band and spirited rendition of popular numbers by the Stage Band.

Prolonged applause of a large audience expressed appreciation for the first concert in which the four groups

have appeared together, and to Mr. Axton Roan, director of the bands and Mr. Edmond Lewis, director of the choir.

## Bonuses Taxable For SS Income Report Purposes

Many employers give their workers Christmas bonuses. Some have not been sure whether social security tax should be withheld on this additional payment. Almost without exception a bonus represents covered earnings, reports R. H. Tukey Jr., District Manager of the Social Security Administration in Abilene.

Employees who are receiving monthly social security benefits (even though they are also doing some work) are also reminded that any bonus they receive must be included in total earnings when they complete their annual reports to the Social Security Administration. These annual reports are due between Jan. 1 and April 15.

Information regarding the reformation of "special payments" may be obtained by contacting the folks at the district office at Room 2321 Federal Building. Office hours are 9 to 5 week days with extended hours until 7 p. m. on Tuesdays. OR, a representative of that office may be contacted when he is at a nearby community. A schedule of visits is posted at all post offices.

## Advent Being Observed At First Christian

The Holy Season of Advent is being observed during the morning worship services at First Christian Church, according to announcement of the pastor, Rev. Gary Shoemaker.

The traditional wreath and candles create the setting for a period of meditation, climaxing on Sunday, Dec. 24.

## IN RANGER PUBLIC SCHOOLS Attendance Report Reveals 97 Percent Students In Class

The attendance report for the second six weeks of school in the Ranger Public Schools reveals that 97 per cent of all students were in school each day while the average membership was 619 on the rolls.

If the attendance continues this good the school will qualify for an additional teacher next school year. Supt. James R. Clark said. Presently the district qualifies for 23 teaching units but the high enrollment and average daily attendance will qualify the school for 24 teaching units next year.

Average membership by grades at Hodges Primary was 75 in the first, 60 in the second and 62 in the third for

a total average membership of 197.

At Young Elementary the enrollment by grades averaged 51 in the fourth, 52 in the fifth and 47 in the sixth for a total average membership of 150.

The junior high had 55 in the seventh and 46 in the eighth for a total of 101.

The senior high had 57 in the ninth, 54 in the tenth, 42 juniors and 38 seniors for a total average membership of 191.

Broken down by race the white average membership was 603 and the Negro membership was 16.

This is down from the first six weeks by only two students.

Auto Loans At Low Bank Rates FIRST STATE BANK Ranger, Texas



RANGER TIMES

Street, Ranger, Texas 76470 — Established June 1, 1919

Published Semi-Weekly — Sundays and Thursdays

Table with subscription rates: One week by carrier in city .15, One month by carrier in city .65, One year by mail on Ranger RFD Routes 3.50, One year by mail in county 4.95, One year by mail in state 4.95, One year by mail out of state 6.95

NOTICE TO PUBLIC — Any erroneous reflection upon the character, standing or reputation of any person, firm or corporation which may appear in the columns of this newspaper will be gladly corrected upon being brought to the attention of the publishers.

CLASSIFIED

For Sale: Limited number, new edition, Texas Almanac, \$1.75 the copy, at the Times Office. For Sale: Road material, driveway material, concrete rock, sewer line rock and agriculture limestone. For Sale: Wood, clean used 13-inch tires — 600x13s and 650x13s, \$3 each. For Sale: Five ton Carrier central heating and cooling unit, water cooled. For Sale: Like Leon cabin. For Sale: One 20-gauge pump shotgun, heaters, 1 range, oil drums, pecans, one overhead door, 8x7 ft. Arnold Gohlke, 605 Walnut, tel. 647-3103 in evenings

DEER LEASES: By the day. Contact J. H. Greer, Tel 647-3663. For Sale: Boys' 26 inch bicycle. \$12. Call 647-3586. For Sale: A good neighborhood grocery and market. For Sale: 1959 model gas range. Call 647-3455.

Notice: Lou's Ceramics. Green wire slip supplies. Inquire about free beginner's course in a fascinating hobby. Make your own Christmas gifts or get them ready made. 310 E. Sadosa, 629-2359, Eastland. Notice: Learn to fly in Cub J-3 two Piper tri-pacers, and Cessna Skylane. Charter trips, airplane rentals. Commercial pilot, flight instructor on duty. Cisco Flying Service, Cisco Municipal Airport. Notice: Painting, papering, sheet rock, taping, bedding, texture, and carpentry repair. Free estimates. C. O. Raiford, Box 963, Brownwood. Call 643-5126. Mr. and Mrs. O. M. Franklin spent Monday in Fort Worth.

NOTICE CISCO STEAM LAUNDRY now has answering service in Ranger. Pickup and delivery every day. For fast service call 647-1380

ELECTROLUX Factory Authorized Sales & Service Free Home Demonstrations — No charge for service calls JACK BEDFORD Box 72, Cottonwood, Texas 79504

The Week Ahead In Ranger THURSDAY

6:30 a. m. — Jaycees breakfast, Bryan's Steak and Coffee Shop. 12:05 p. m. — Lions Club, Bryan's Steak & Coffee Shop. 2:30 p. m. — Martha Dorcas 6:30 p. m. — AAUW Christmas dinner, home of Mrs. E. H. Bobo. Class of the First Methodist Church, meets in home of Mrs. J. S. McDowell. 7:00 p. m. — Rotary Club Christmas Dinner at Lone Cedar Country Club. 7:30 p. m. — Oddfellows. 7:30 p. m. — Rho Pi Christmas Party, Community Club House. 9:30 p. m. — Ranger Garden Club, home of Mrs. David B. Allsup.

FRIDAY

6:30 p. m. — Rebekah and Odd Fellows Pot Luck Supper at Lodge Hall.

SATURDAY

2:30 p. m. — Dorcas Class of First Baptist Church meets in the home of Mrs. George Robinson.

SUNDAY

Attend the church of your choice.

MONDAY

Bullock Quilting Club. 3:00 p. m. — WSCS Prayer Group, at First Methodist Church.

TUESDAY

10:00 a. m. — Community Art Group, Community Club House. 7:00 p. m. — Xi Zeta Nu Christmas dinner, home of Mrs. David B. Allsup.

WEDNESDAY

9:30 a. m. — Ladies Bible Class, Mesquite and Rusk St. Church of Christ. 12:05 p. m. — Rotary Club, Bryan's Steak & Coffee Shop. 4:00 p. m. — Boy Scout Troop No. 10, First Methodist Church. 7:00 p. m. — Elks Club.

LOST: Ladies brown strap purse. Contains billfold, driver's license, glasses and case. Reward. Call 647-1522 or 647-1329.

FRUIT CAKES: Anyone desiring famous Corsicana De Luxe Fruit Cakes may contact Mrs. W. C. Sanders, phone 647-3577, after 4 p. m.

Real Estate Homes for Sale

Off. 629-1725 Nite 629-1926 Farms and Ranches Have farms and ranches, any size, bottom land or pecanus.

M. L. TERRELL REAL ESTATE

311 1/2 W. Main - Eastland, Tex. Rentals

FOR LEASE: Shamrock Service Station on West Main in Eastland. Contact Larry Panzer, Box 395, Sweetwater. Call BE 4-2114, Area Code 917. 39 FOR RENT: Unfurnished duplex apply at 200 East Valley.

IF YOU WANT work but cannot give full time we have just the thing you need. Write Avon Mgr. Box 13446, Ft. Worth

Harris Monument

1504 W. Main 629-2487 Quality and Service Eastland, Texas

CARD OF THANKS

I'd like to thank everyone who sent me cards and letters and the many people who called my home during my recent hospitalization in Denver. Sgt. K. W. Jameson.

New Arrivals

Mr. and Mrs. Voncile Eakin of Anchorage, Alaska are the parents of twin daughters, Anolia and Gladys, weighing 4 pounds, three ounces and four pounds one ounce, born Sunday, Dec. 10 in a hospital in Anchorage.

Paternal grandparents are Mr. and Mrs. Carl Eakin of Ranger. The daughters are the couple's first children.

Mr. and Mrs. Cecil Townsend have returned to their home in Kermit following a visit in the home of Mmes. J. B. Shirley and Elizabeth Moore.

Mrs. Goforth and Mr. J. Williams Married Dec. 9

Double ring vows uniting Mrs. Connie Pittman Goforth and Mr. James Williams were exchanged at 7 p. m., Saturday, Dec. 9 in the home of the officiating minister in White Rock. The bride is a former resident of Ranger; the groom is a resident of Garland. Both are employed by Texas Instruments, Inc. Following a wedding trip to Arkansas, the couple will reside in Plano.

Mrs. Carl Lummus Is Hostess For Christmas Dinner

Mrs. Carl Lummus was hostess for the Christmas dinner and program for Christian Women's Fellowship, First Christian Church, at her home at 12:30 p. m. Tuesday, Dec. 12. Mrs. B. G. Pirkle, president, conducted a short business meeting. The impressive program was presented by Mmes. B. S. Dudley Sr and C. L. Dinesmore. Christmas project, packing a box of children's socks for the Juliet Fowler Home in Dallas is in progress and will be mailed in the near future. Guests for the day were Mmes. Sherwood and Wilder of Abilene, district officers of CWF. Members attending were Mmes. C. L. Dinesmore, B.S. Dudley Sr., Ada Eaves, Luna Lane, Ben Patterson, Dick Jones, B. G. Pirkle and the hostess.

HOSPITAL News

Patients in Ranger General Hospital Wednesday morning W. J. Herrington. L. S. Waddinton. Rickey Reese. Wynndle Hughes. Mrs. J. E. Bryan. Mrs. Mabel Keller. Mrs. Roy Northcutt. Mrs. Sodie Jones. Mrs. Frona Ames. Mrs. Nora Shipman. Mrs. Mary Mitchell. Mrs. R. C. Wilson. Ed Dixon. Lewis Dawson. J. R. Welch. Kenneth Clark. Don Walton. Mrs. Julia Freeman. Mrs. Gloria Olivera and baby boy. Mrs. Ellen Cole. Mrs. Chas. Alexander and baby girl. Mrs. V. E. McGinn. Mrs. Cordie Wood. Mrs. Letha Buckbee. Mrs. Annie Stephenson. Mrs. Emma Vaughn. Henry Davenport. Tom Koonce. C. D. Ervin. E. P. Robinson. Dan Walton.

GINGER ROGERS IN "HELLO DOLLY" AT MUSIC HALL IN DALLAS DEC. 26-30



Ginger Rogers, eternally young and always amazing, will bring her entertaining talent to Dallas Dec. 26-30 in Broadway's smash hit "Hello Dolly." The State Fair Music Hall in Dallas will be one of the few places in which producer David Merrick will present Miss Rogers, who has starred in the famed musical in New York and comes to Dallas direct from Las Vegas and the West Coast. Tickets may be obtained by writing to the State Fair Box Office at Titcher's, P. O. Box 895, Dallas, Texas 75201

State Capital NEWS

AUSTIN—Texas will almost double its population—to nearly 18,000,000 by 1990 — and its population growth trend. By 1990 both the Houston and the combined Dallas-Fort Worth metropolitan areas will have populations of more than 3,000,000. That nearly equals the entire U. S. of 1970. All seven of the state's biggest standard metropolitan statistical areas will see massive growth.

Their publication, Texas 90 An Economic Profile of Texas to 1990, includes these high lights: New factory growth will bolster the Texas economy more powerfully than any other factor between 1967 and 1969 as the state becomes constantly more dependent on manufacturing. Value added by manufacture (a measure of the difference in value between the raw materials that flow into a factory and the goods shipped out) will increase to \$37,500,000 a year.

Due for rapid expansion is the work force—although not uniformly in all industries. Most dynamic employment growth will be in the service industries: laundries, barber and beauty shops, auto repairs, transportation, hotel management, recreation, professional services, etc. Texas agriculture will approximately double its output (cash receipts from farm marketings are seen as reaching nearly \$5,000,000,000 in

1990), although farm employment probably will decrease. Texas cities will lead the population growth trend. By 1990 both the Houston and the combined Dallas-Fort Worth metropolitan areas will have populations of more than 3,000,000. That nearly equals the entire U. S. of 1970. All seven of the state's biggest standard metropolitan statistical areas will see massive growth.

Once more Gov. John Connally's plans are the No. 1 topic of state capitol speculation. In a press conference here Connally vigorously denied rumors he may be the next U. S. Secretary of Defense. He plans to serve out his term as governor. But less than 12 hours later in Washington, he acknowledged the secretary's job "would be very difficult to turn down" if offered. With the rumor mill still buzzing, he flew to France on a promotional mission for HemisFair '68, the world's fair in San Antonio next year.

Before he left Texas, Connally had kind words to say about two men who have been mentioned as prospects to succeed him: former Congressman Frank Ikard of Wichita Falls (who has stated he does not intend to run) and Secretary of State John L. Hill (who indicates that he plans to announce by mid-January).

Actual declared-candidate list picked up one new name: State Rep. Don Gladden, Fort Worth liberal, announced for lieutenant governor against House Speaker Ben Barnes. Gladden said he would like to run on a ticket headed by Sen. Ralph Yarborough as a candidate for governor. Houston attorney Don Yarborough another likely gubernatorial seek the governor's office

if the senator does. Texas Supreme Court will review a Harris County case in which a dealer in foreign cars claimed \$862,000 in damages to his cars from flood waters which he said city of Houston could have controlled by a culvert. High court also agreed to take careful look at a Jefferson County suit by a man who claims his vision was damaged by an improperly-fitted pair of contact lenses. Court of Criminal Appeals ordered a new trial for a man imprisoned for 30 years, because his lawyer made an inadequate defense, mainly had appeared in court only ed no law office, and actual-tive in 10 years. Federal Judge Jack Roberts held Mooney Aircraft Corp. Kerrville plane builders, cannot recover \$291,000 in income taxes and interest the firm claims it paid under protest.

Secretary of State Hill, after extended study, has sanc-

Christmas Salads Are Being Prepared For Season Holidays

No holiday menu is complete without salad, another item which, prepared in advance, saves the careful hostess needless worry at serving time. For the Christmas season there is a variety of salads that are colorful, flavorful and nutritious. Ranger hostesses will be rating compliments of guests with these taste-tempting recipes:

TANGY SALAD Mrs. W. N. Miller 1 package Lime Jello. 1 cup hot water. 1 No. 2 can crushed pineapple. 1 cup diced celery. Dash of salt. Dissolve jello in hot water. Drain syrup from pineapple and add water to make one cup. Combine with celery, pineapple and salt and add to jello mixture. Chill until thick, brush bowl with shortening, pour mixture into it and chill until set. Unmold on salad greens and serve with a dressing made of 1 cup sour cream, 2 tablespoons diced bell peppers, 2 tablespoons pimento, 1 teaspoon sugar and 2 teaspoons lemon juice.

CRANBERRY SALAD Miss Jewell Newnam 1 pound fresh cranberries. 2 cups sugar. 1/4 teaspoon salt. 2 three-ounce pkgs. cherry jello. 1 cup boiling water. 1 cup cold water. 2 cups diced celery. 1 cup chopped nuts. 1 No. 2 can crushed pineapple. Grind cranberries, add sugar, salt and juice from pineapple. Let stand for two hours. Dissolve jello in hot water, add cold water and stir into cranberry mixture. Add celery, pineapple and nuts and chill until firm.

CHRISTMAS JELLO SALAD Mrs. J. B. Houghton, Sr. 1 package each of: Lime, cherry and orange Jello. tioned five brands of low-cost electronic voting devices for use in Texas elections. Systems are IBM Votomatic, Seismograph Vote Recorder, Datamedia Vote-A-Corder VIP-A-Maker and Cubic Votronics Vote Counter. Advocates of the electronic devices point out that they insure fast, accurate counting and cost only \$185 (or less) each as compared with conventional voting machines which sell for \$1,900.

Sgt. and Mrs. K. W. Jameson arrived in Ranger on Saturday and will spend the Christmas with his parents, Mr. and Mrs. A. M. Jameson. Mrs. Elizabeth Stroud, Ronnie and Robert and Mrs. Don Schamp were weekend guests of Mr. and Mrs. D. L. Milner of San Angelo. Mrs. R. E. Barker will leave this weekend to spend the Christmas holidays in the home of her daughter, Mrs. Clara Landers of Sweetwater. Mr. and Mrs. Marlin Morris and family of Euless were weekend guests of her parents, Mr. and Mrs. James R. Clark.

SAVE \$10.00 Reg. \$54.95 NOW \$44.95 Special: Water heater, 30 gal, gas, 10 year, Warranty, glass lined. MONTGOMERY WARD Ranger, Texas

FOR A NICE CHRISTMAS GIFT GIVE AN ELECTROLUX CLEANER Factory Authorized SALES & SERVICE FREE DEMONSTRATION No charge for Service Calls H. L. HEROD Call 647-3100 In RANGER

By Popular Demand JAYCEE TURKEY SHOOT TO BE HELD THURS. — SAT. DECEMBER 14 - 15 - 16

Thurs. and Fri. 5:00 to 10:00 Saturday 9:00 a.m. to 10:00 p.m. \$1.00 FOR 3 SHOTS \$5.00 GIFT CERTIFICATE TO BE AWARDED EACH HOUR GRAND PRIZE Single Shot .22 To Child Automatic .22 to Adult With Highest Score Sponsored By RANGER JAYCEES

DON ERVIN WE SELL THE GOOD WATCH CARAVELLE MAIN STREET STORE - RANGER Invites You To See Our Fine Collection of Quality Watches by Bulova and Caravelle. ALSO SHOWING FINE DIAMOND RINGS and BRIDAL SETS A LARGE SELECTION of STONE RINGS CUSTOM FITTED SPEIDEL BRACELETS FLATWARE AT POPULAR PRICES IMPORTED HAND CUT LEAD CRYSTAL BISQUE FIGURINES and ART WARES FAMOUS SHAEFFER & CROSS WRITING INSTRUMENTS A GIFT FOR EVERYONE ON YOUR SHOPPING LIST SEE US FIRST AND SAVE

RANGER THE BIG STORE WILL BE OPEN WED. DECEMBER 13 UNTIL 8 P.M.

Montgomery Ward THE BIG STORE WILL BE OPEN WED. DECEMBER 13 UNTIL 8 P.M.

JOE SAYS: It is better to know nothing than to know what ain't so. JOE CULPEPPER of Hood King Motor Co., also says: "See me for the best automobile deal."



## Pecan Bake Show Is Called Good Success

"Success" was the title of the 1967 Pecan Bake Show and centerpiece arrangements held in conjunction with the 1968 Eastland County Pecan Bake Show on Dec. 8 and 9 in Cisco. Some 71 top entries in the foods division (Adult and Youth) was exhibited with 11 centerpiece entries.

Champion honors in the adult foods division went to Mrs. Paul Butts of Cisco with a prize ribbon winning pecan pie. Mrs. Glenn Jordan of Kokomo entered "Martha Washington" chocolate candy which stole the reserve grand champion ribbon.

The Moseley sisters of Olden shared top honors in the youth food division. Dollie Moseley was Grand Champion with a candy entry. Patsy took reserve champion with a cherry nut bread entry. Both girls are active in the Olden 4-H Club and are daughters of Mr. and Mrs. Pat Moseley, Olden.

Other winners in the Foods divisions were:

**ADULT DIVISION:**  
Cakes — 1st, Mrs. Bernard Cisco; 2nd, Mrs. D. F. Eaves, Kokomo.

Pies — 1st, Mrs. Paul Butts, Cisco; 2nd, Mrs. G. C. Flaherty, Cisco; 3rd, Mrs. Genoa Brown, Eastland.

Nut Breads — 1st, Mrs. Jack Lusk, Eastland; 2nd, Mrs. G. C. Flaherty, Cisco; 3rd, Mrs. Albert Hendricks, Kokomo.

Candy — 1st, Mrs. Glenn Jordan, Kokomo; 2nd, Mrs. Paul Butts, Cisco; 3rd, Mrs. J. V. Heyser Jr., Cisco.

Cookies — 1st, Mrs. Lon Horn, Eastland; 2nd, Mrs. J. L. Morrow, Kokomo; 3rd, Mrs. Anton White, Cisco.

GRAND CHAMPION — Mrs. Paul Butts, Cisco.  
RESERVE CHAMPION — Mrs. Glenn Jordan, Kokomo.  
**YOUTH DIVISION**  
Cakes — 1st, Dollie Moseley, Olden.  
Pies — 1st, Thresa Tankersley, Eastland.  
Nut Breads — 1st, Patsy Moseley, Olden; 2nd, Brenda Browder, Gonman; 3rd, Kay Green, Cisco.  
Candy — 1st, Dollie Moseley, Ranger; 2nd, Debbie Medley, Rising Star; 3rd, Barbara Boyd, Cisco.  
Cookies — 1st, Caryn Lee, Cisco; 2nd, Lynne Phippen, Cisco; 3rd, Sharon Harrelson, Rising Star.

GRAND CHAMPION — Dollie Moseley, Olden.  
RESERVE CHAMPION — Patsy Moseley, Olden.  
Winners in the Pecan Centerpiece arrangements were: 1st, Mrs. R. W. Merket, Cisco; 2nd, Mrs. C. L. Webb, Cisco; 3rd, Mrs. Leo Clinton, Cisco.

## Lone Cedar Club Is Planning Two Holiday Dances

The Dave Howard Trio will provide music for a Christmas dance to be held at Lone Cedar Country Club on Saturday, Dec. 23. Brenda Barnett, vocalist, will also appear. Miss Barnett has appeared at Casa Del Sol, the Petroleum Club, and several other clubs in the Fort Worth-Dallas area. Providing music for the New Year's dance will be the Rush Robinson Trio from Fort Worth. The dance will be held Saturday night, Dec. 30, and a midnight breakfast buffet will be served.

**SINGING IN GORMAN**  
H. A. (Pete) Tyrone has announced that the regular 3rd Sunday singing will be held in Gorman at 1:30 p. m., Dec. 17.  
Tyrone said, "This will be a good singing. Everybody is invited and urged to come early."



there's still time to...  
shop Wards 1967 Christmas Catalog  
**JUST CALL**  
Ranger — 647-3227  
Eastland — 639-1333  
Cisco May Call Collect — 647-1833

**BATTERY**  
TROUBLES?  
CALL  
**HORTON TIRE CO.**  
629 - 1420  
\$8.95 and up plus tax

**USED TIRES \$3 And Up**  
**The Big Store**  
Wards - Ranger

**WANTED**  
PROSPECTS FOR  
● Vinyl Insulating Windows  
● Plastic and Insulating Siding  
● Aluminum Replacement Windows  
● Aluminum and Steel Siding  
● Fry Roofing  
● Fiberglass Insulation  
**J. H. TURNER**  
Home Improvement Company  
442-3262 — Cisco

**THE 56 MILLION-DOLLAR CHRISTMAS GIFT BOOKS!**  
Some 45 national and industrial pavilions at HemisFair are free. Bonus Books admit you to rides and special attractions; the Tower of the Americas, Mororail, films, theme exhibits and much more. Adult or Child Books, some with grounds admission, \$3 to \$11.

HemisFair Bonus Books and tickets. A this-year-only gift. Available at:  
MONTGOMERY WARD  
TEXAS ELECTRIC  
LONE STAR GAS  
**HEMISFAIR 1968 WORLD'S FAIR**  
SAN ANTONIO, APR 6 - OCT 6

## SMOKED PICNICS whole - 6 to 8 lbs lb 33c

**BOSTON BUTT**  
Pork Roast lb 49c  
PLUMROSE — 4½ OZ. PKG.  
Sliced HAM 59c

**AF BRAND**  
Sliced BACON lb 59c  
JRB Whole Hog —  
Pork Sausage 2 lb pkg 1.29

**DECKER'S JUMBO**  
FRANKS lb 59c  
THIN BREAKFAST SLICES  
Smoked PICNICS lb 39c

**DECKER'S**  
HOT LINKS lb 69c  
DANKWORTH'S BEEF & VEAL — 20 OZ PKG  
STEAKS 99c

## HAMBURGER PATTIES pkg of 10 99c

**FOLGER'S — ALL GRINDS**  
COFFEE 1 lb can 69c

**LIBBY'S — 1½ CANS**  
Minted Pineapple 4 cans \$1  
Libby's Low Calorie — No. 303  
PEACHES 5 cans \$1  
Libby's — NO 2½  
Pumpkin Pie Mix 3 cans \$1  
LIBBY'S — 24 OZ.  
BEEF STEW can 67c  
LIBBY'S — NO. 303  
KRAUT 5 cans \$1 3 for \$1



**LIBBY'S — 15 OZ.**  
Corn Beef Hash can 49c  
LIBBY'S PLA — 7¾ OZ.  
Stuffed OLIVES jar 49c  
LIBBY'S — NO. 7  
Buttered CARROTS 5 cans \$1  
LIBBY'S — NO. 2  
Buttered PEAS 4 cans \$1  
LIBBY'S — NO. 2  
Buttered CORN 4 cans \$1

**SHURFINE** FOREMOST  
FLOUR 5 lb bag 39c ICE CREAM ½ gal 69c

**LIBBY'S BUTTERED — NO. 2**  
PEAS & CARROTS 4 cans \$1  
LIBBY'S SLOPPY JOE — 15¼ OZ.  
BEEF or PORK can 59c

26 OZ. BOXES  
MORTON'S SALT 2 for 25c  
LIPTON'S 6-OZ.  
INSTANT TEA jar 99c  
ADAMS' EXTRACT — 1½ OZ. BOTTLE  
VANILLA 39c

**\*\* FROZEN FOOD FEATURES \*\***  
Morton's Ass't. Flavors Morton's Bread  
Cream Pies 3 for 89c Dough pkg 59c

**CHOCKS IRON — 25 COUNT — Reg. 1.00**  
VITAMINS bottle 79c  
STYLE 24 HOUR — 1.50 SIZE  
DEODORANT 89c  
HAIR SPRAY — REG. 79c  
LUSTRE CREAM 49c  
TOOTHPASTE — REG. 95c SIZE  
CREST MINT tube 69c

**\* FOREMOST DAIRY FEATURES \***  
FOREMOST — 2 LB. CARTON FOREMOST — ½ GAL  
Cottage Cheese 49c Buttermilk 39c

**\* MIX OR MATCH \***  
Del Monte Whole New 303  
POTATOES can 5 \$1  
Trappey Cut 303  
OKRA can  
LE GRAND No 303  
CORN can  
Renown Sliced No 303  
GREEN BEANS can

Admiral - Packed In Oil  
SARDINES No 300  
Sea Side 300  
BUTTER BEANS can 6 \$1  
Shurfine 300  
BLACK EYE PEAS can  
Ranch Style 15 Oz  
BEANS Can

Shurfine No. 300  
PORK & BEANS can 7 \$1  
Gold Tip Cut 303  
GREEN BEANS can  
Gold Tip 300  
Sliced BEETS can  
Van Camp No. 2  
HOMINY can

**Garden Fresh Produce Features!**  
RUSSET  
POTATOES 10 lbs 49c

**YELLOW**  
Onions lb 10c  
Lettuce .... head 15c  
Sweet Potatoes 2 lbs ..... 25c  
Rome Apples.. lb 19c

**MEXICO FRESH**  
PINEAPPLE 3 for \$1



**J.R.B. SUPER MARKETS**  
BONUS STAMP CARD  
THIS CARD IS WORTH 1000 STAMPS IF COMPLETELY PUNCHED OUT  
BY (SAMPLE CARD) 196  
(Date Card Expires)

\$5	\$5	\$5	\$5	\$5	\$5	\$5	\$5	\$5	\$5	\$5	\$5	\$5	\$5	\$5	\$5	\$5	\$5	\$5	\$5	\$5
\$1	\$1	\$1	\$1	\$1	\$1	\$1	\$1	\$1	\$1	\$1	\$1	\$1	\$1	\$1	\$1	\$1	\$1	\$1	\$1	\$1
.50	.50	.50	.50	.50	.50	.50	.50	.50	.50	.50	.50	.50	.50	.50	.50	.50	.50	.50	.50	.50

**Get Your J.R.B. S&W Green Stamp Bonus Cards Today - Worth 1,000 FREE Stamps If Punched Out Within One Month.**  
Double S&W Green Stamps with purchases of \$2.50 or more Wednesdays!  
PRICES GOOD Thru Saturday DECEMBER 16

**J.R.B. SUPER MARKETS**  
S&W GREEN STAMPS WITH EVERY PURCHASE  
MEMBER AFFILIATED FOOD STORES  
PRICES GOOD IN RANGER  
Quantity Rights Reserved - No Sale To Dealers

**PLAY Super Santa THIS YEAR**  
Give EXTRA Gifts with  
S&W GREEN STAMPS  




**CRISCO**  
SHORTENING  
3 lb can 69c



## Out of Civil Appeals

Following proceedings had in the Court of Civil Appeals, Eleventh Supreme District of Texas:

**MOTIONS SUBMITTED**  
Louis Southwestern Railway Company et al v. City of Tyler et al. Appellants' motion to consolidate causes for submission and oral argument only; Smith.  
St. Louis Southwestern Railway Company et al v. City of Tyler et al. Appellants' motion for additional time for presentation of oral argument; Smith.  
Louis Southwestern Railway Company et al v. City of Tyler et al. Appellants' motion for extension of time to file Appellee's briefs; Dallas.  
Henry L. Seale et al v. Major Oil Company. Agreed motion for extension of time to file briefs; Dallas.

**MOTIONS OVERULED**  
Romer Franklin v. Thornton's Stores et al. Appellant's motion for rehearing; Taylor.  
Charles W. Sommer et al v. Mrs. Roberta Richardson. Appellants' motion for extension of time to file record; Throckmorton.

The following proceedings were had in the Court of Civil Appeals, Eleventh Supreme District of Texas:

**APPEAL DISMISSED**  
Albert C. Wagner v. Dorothy Jean Taylor Dellinger Lancaster et vir; Dallas.

**MOTIONS SUBMITTED**  
Albert C. Wagner v. Dorothy Jean Taylor Dellinger Lancaster et vir. Agreed motion to dismiss the appeal; Dallas.

In Re Estate of D. M. Cogdell, deceased. Agreed motion for extension of time to file appellant's briefs; Scurry.

**MOTIONS GRANTED**  
Albert C. Wagner v. Dorothy Jean Taylor Dellinger Lancaster et vir. Agreed motion to dismiss the appeal; Dallas.

In Re Estate of D. M. Cogdell, deceased. Agreed motion for extension of time to file appellant's briefs; Scurry.

tion for extension of time to file appellant's briefs; Scurry

**CASES SUBMITTED**  
Leslie D. Bond v. Joseph H. Snow et al; Taylor.  
Donald Ray Atkinson et al v. Wesley D. Rister; Jones.  
Mrs. Ray B. Bishop et al v. Commonwealth County Mutual Insurance Company; Taylor.  
Mrs. Roxie Basket et al v. Mrs. Vera Clifford et vir; Shackelford.

## Santa Letters

Dear Santa,  
I want a stringy bike for Christmas. I want it with a banana seat. I want a pair of boots to wear to school. I want Johnny Eagle Magumba also. I want a Kodak Instamatic Camera. I want a racing car set also. I will have some cookies and a glass of milk for you on the coffee table.

Your friend,  
David Umbeson.

Dear Santa Claus,  
I want a Christmas clipboard and records,  
Your friend,  
Donna Steurt.

Dear Santa Claus,  
I want a saddle and some games to play with. Thank you for sending the toys. I will leave you a cookie and milk out. I'm in the Third Grade.

Yours truly,  
Patricia Highsmith.

Dear Santa Claus,  
I want a Johnny Express for Christmas. I will leave you a glass of milk on the chair.

Love,  
Johny Sides

Dear Santa Claus,  
I want a bike and some games that are fun. I want a football suit and some football shoes and some clothes and I want a race set. Thank you for everything.

Your friend,  
Danny Monroe.

Dear Santa Claus,  
I want a bike and a coat, some clothes and shoes too. And I want to thank you for the things I had last year.

Your friend,  
Sharon Ainsworth.

Mrs. James Thomas of Los Angeles is visiting in the home of her sister, Mrs. W.O. McMillian. On Tuesday the ladies went to Big Lake where Mrs. McMillian's daughter, Mrs. Jimmy Martin was scheduled to undergo surgery.

Recent guests in the home of Mr. and Mrs. Albert Hise were their grandson, Larry Van Stevern and Phil Farris, students at Texas Tech, Lubbock.

Mrs. Chas. Lacey of Fort Worth was a guest in the home of her mother, Mrs. Ora Holder from Thursday until Sunday of last week. The ladies went to Desdemona for a visit in the home of Mrs. Ida Holder.

Rex Brown of DeLeon is visiting in the home of his grandparents, Mr. and Mrs. W. M. Brown.

## Vietnam Marine's Clip Gives Vivid Description Of Young Men in War

(Editor's note: This article appeared in the Sea Tiger, paper of the Third Marine Amphibious Force in Vietnam. Mr. and Mrs. Bill Wyatt received the paper from their son, Lance Cpl. serving in Viet Nam.)

This may be your finest hour, for you are about to meet a "grunt".

Doff your cap, if you will; wave a flag; choke back a sob in your throat; wipe away a tear from your eye, for this is the man who is fighting your war.

He is the Marine up front, the one who is sticking his nose in the mud each day, every day. He is the one who sees the enemy at 25 yards, he is the one who knows what it feels like to be shot at close range by small arms.

He is the one who dies a thousand times when the night is dark and the moon is gone. And he is the one who dies every day and forever when an enemy rifle beeches flame.

If you have ever slogged through a sticky paddy, or waded a stream carrying 60 rounds of ammunition, a canteen, a rifle and a pack with enough field rations and spare clothing to last a week, you know why they call him a "grunt". It's fairly obvious.

But look at him well and know him, for he is really something. He wears, in dirty dignity, a helmet and a flak jacket and a faded uniform. His hands are ripped and torn from contact with barbed wire. His wrists are swollen from mosquito bites.

His pockets are full and his boots are mud-caked and his eyes never stand still; they move and squint and twitch. He is nervous, aware of every sound. For he operates in a never-never world where the difference between death and one more tomorrow often depends upon what he sees or does not see, what he hears or does not hear.

The "Grunt" is the man who lives as close to the war as it is possible to get. His rank varies, but mostly he is a private, a corporal, or a lance corporal or a sergeant.

He likes the Air Force because planes give him a measure of protection. He likes artillery outfits because they can knock the bejabbers out

of an enemy platoon. He cares about supply outfits only to the extent that they can provide him with something to eat and more ammunition to shoot.

He lives first for the day when his tour will be up and he can get out of this country. He lives next for an in-country R and R (rest and rehabilitation). He'd like to get his hands on a can of cold beer because it would drive the heat from his throat and ease the corroding pain in his gut. He'd like to feel the softness of a woman.

But he is a grunt and if he can live through today then there will be tomorrow. And if he can live through enough tomorrows there will be the R and R, the cold beer, the feel of a woman, the end of his tour.

The grunt as he stands in dirty, muddy majesty, is as fine a fighting man as ever produced. He is young, tough, intelligent. And he knows how to kill.

But he is a lot more than that. There is something of the builder in these young men. They speak, sometimes of what must be done to South Viet Nam to make it right and workable. They speak, sometimes of government and how it must work. And, if you are

lucky, you may get a grunt to speak his mind about the war. He may tell you many things in language largely unprintable. But it may or may not be surprising to learn that, for the most part, he understands why he is here and he believes in the purposes that put him here. And that is something, because if you take a grunt out of his muddy, water-filled bunker, remove his helmet, his flak jacket, his field uniform, take away his rifle, clean him up and dress him in a sport shirt, slacks and loafers, you have got the kid who was playing on last year's high school football team.

He is a national asset to be cherished.

**NEW ARRIVALS**

Mr. and Mrs. Coleman Williamson are the parents of a son, Alan Duaine, weight eight pounds, eight ounces, born at 4:40 a. m. Sunday Dec. 10 in Ranger General Hospital.

Maternal grandparents are Mr. and Mrs. Roy Wells of Ranger.

This is the couple's third child.

Mr. and Mrs. Victor Olivera of Strawn are the parents of a son, weight seven pounds, one and one-half ounces, born at 12:34 a. m. Tuesday, Dec. 12 in Ranger General Hospital.

This is the couple's first child.

Sylvia Thomas and Kendra Jecons of Abilene were weekend guests in the home of Mr. and Mrs. L. L. Bruce.

**NEW GADGET**



**DUPLICATES and ADDRESSES**  
Prints 5 colors at once

**DUPL-ADDRESS**

See it at **THE RANGER TIMES**

**NOW IS THE TIME TO BUY...**



**Whirlpool is the one**

**ICE-MAGIC**

**NO-FROST**  
14.2 CU. FT. DELUXE REFRIGERATOR-FREEZER



- Automatic Ice Maker
- No-Frost Refrigerator
- 105-lb. No-Frost Freezer
- Bushel-Size Twin Crispers

**DURING THIS 10-DAY SALE...**

**\$288**

**NO CASH DOWN WITH TRADE EASY TERMS!**

**MIRRO-MATIC**

**3 QUART ELECTRIC TEFLON COATED CORN POPPER**



Finished with DuPont TEFLON... no-stick cooking... no-scour cleaning... Pops corn, worms soup, many other uses.

**4.98**

10 DAYS ONLY!

**NEW! POLY-FEET PERCOLATOR**



4 TO 8-CUP ELECTRIC REG. \$12.95

Choice of colors... Yellow, ivory or persimmon.

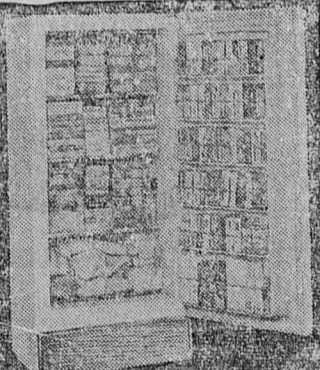
**5.88**

10 DAYS ONLY!

**10 DAYS ONLY...**

**Whirlpool**

**"BOOKSHELF" FREEZER**



- Freezes & Stores up to 374 Pounds
- Four Full Width Shelves
- Adjustable Temperature
- Porcelain-Enamel Interior

**\$166.**

**HURRY!**

**L-O-N-G, EASY TERMS DURING THIS SALE!**

**Ranger Frozen Food Center**


## THE RANGER STORY

A book printed by the Ranger Times, contains a history of Ranger during the famous Oil Boom in 1917. The book also contains several pictures of the oil boom and of Ranger and the Merriman Cemetery.

**SOLD AT THE RANGER TIMES**

**PRICE - ONLY \$1.00**

**SANTA CLAUS TOLD ME HE STOPS AT GREER'S FIRST**



- TONY LAMA BOOTS
- BRADFORD HATS
- WESTERN WEAR
- DRESSES
- ACME BOOTS
- MEEKER BLLFOLDS
- LEVIS ALL-SIZES
- SADDLES SADDERLY
- WINTER COATS
- MOCCASINS

**GREER'S**

**LEVI HEADQUARTERS**

205 Main  
MI7-1123  
Ranger

**WARD'S The Big Store**

**In Ranger Will Be Open Wednesday, Dec. 13 until 8:00 p.m.**

**Continuing their Talk of the Town Sale.**

**Buy Bonds where you work.**

**He does.**



Why do our servicemen buy U.S. Savings Bonds? Their reasons are the same as yours and mine: saving for the future, supporting freedom. And because they're fighting for freedom, too, maybe servicemen see the need more clearly than many of us. Buy Bonds. In more than one way, it makes you feel good.

maturity of just 4½ years (redeemable after one year), are available on a one-for-one basis with Savings Bonds. Get all the facts where you work or bank.

**U.S. Savings Bonds, new Freedom Shares**

**New Freedom Shares**

Now, when you join the Payroll Savings Plan or the Bond-a-Month Plan, you are eligible to purchase the new type U.S. Savings Notes—Freedom Shares. Freedom Shares pay 4.74% when held to

The U.S. Government does not pay for this advertisement. It is presented as a public service in cooperation with the Treasury Department and The Advertising Council.



# Railroad Taxes Total \$27,435 in This County

Current annual taxes paid to the various government agencies by Texas railroads in Eastland County totaled \$27,435, it is announced by the Texas Railroad Association. That amount was the county's share of the more than \$10,000,000 the railroads paid in Texas on their own right of way and other property. The biggest railroad contribution was to the school systems throughout the state. Large sums were also distributed to city, village and county governments and for road and bridge funds. In addition, of course, was the large total in taxes the

railroads' 33,410 Texas employees contributed on their own property. The vast majority of rail workers, many of whom live in Eastland County, own their own homes. "With the future of our country and state depending to a great extent upon the education of our youth, I am delighted that nearly half of the taxes paid by the railroads go to support the schools," said Walter Caven, general counsel of the Texas Railroad Association. "Recognizing this need for education, many of the railroads operating in Texas also make scholarships available to a large number of students every year."



## HOMEMAKERS' HINTS

By JANET MEYERS  
Home Demonstration Agent

Christmas is just around the corner! Selection and buying of gifts is in many people's minds these days. Popular and always welcomed gifts are the homemade goodies from the kitchen.

One pound fruit cakes and larger, decorated with candied fruits and nuts, and wrapped in cellophane are beautiful and most acceptable. A box of homemade jams, preserves, or jellies put up in uniform jars and wrapped in holiday attire would be hard to resist.

Other ideas for Christmas gifts are wooden bowls with Texas or better yet, Eastland County, pecans and a nutcracker. I have written below some hints on fruit cakes. Since fruit cakes are the popular holiday cake, I felt this information might be of help.

**DECORATING FRUIT CAKES:**  
Cakes may be decorated by placing extra pieces of fruit or nuts on the top either scattered or in a set design. Decorations should be added when the cake is almost finished.

## THE GORDON SPOT

By DeMarquis (Dee) Gordon  
Eastland County Extension Agent



The Nimrod Neighbors Progressive Club had their annual Thanksgiving dinner Monday night, Nov. 20. My family and I attended and enjoyed a wonderful evening with the folks at Nimrod. They cooked two turkeys and had dressing plus all the other good things that go with a Thanksgiving dinner.

The people at Nimrod have a lot of pride in their community and enjoy working and having fellowship together. The same is true of the folks at Scranton. Both communities have annual tours in the spring to show every one the improvements made in their communities.

Peanut harvest was about 55 or 60 per cent complete in Eastland County on Nov. 22. A lot of peanuts were harvested during the last

## James Williams Graduated From Marine Course

Hospitalman James R. Williams, USN, son of USAF Colonel (Ret.) and Mrs. Eugene F. Williams of 610 Dixie, Eastland, was graduated from the Field Medical Service School, Marine Corps Base at Camp Pendleton, Calif.

The five-week course is designed to instruct Navy medical men attached to Marine units under combat care of casualties under combat conditions.

During the course he received instruction in practical field medicine, evacuation of wounded, logistics and special medical procedures for nuclear and chemical warfare.

Upon completion of the school the students are assigned as combat corpsmen with Marine units in the United States or with Marine Corps combat forces overseas.

## DESEMOMONA NEWS

Mr. Roy Guthery entered the Gorman Hospital last Thursday for a series of tests. Mr. Paul (Shorty) Fox remains a hospital patient after an accident at a hay bailer when he lost a finger.

A son was born to Mr. and Mrs. Sherman Sides on Nov. 17 at De Leon.

Lanny Baker, Tim Tarpler, Buster Hamilton, and J. M. Crosley of McMurry College spent the weekend with Lanny's parents, Mr. and Mrs. Stanley Baker.

Mr. and Mrs. Gaylen Grissom and their daughters, Kerry June and Terry Joan of Odessa, visited last week with her grandmother, Mrs. Ethel Keith and the Pug Gutherys.

Mrs. Neta Gee spent a few days recently with her children in Fort Worth.

Miss Brenda Roberts of Dallas was a weekend visitor with her parents, Mr. and Mrs. Morgan Roberts.

Mr. and Mrs. A. B. Baylus of Kemmit visited one day last week with their daughter, Mr. and Mrs. Stanley Baker.

Mrs. Ethel Keith has been staying with her sister, Ina Jones at Olden, while Mr. Roy Jones is a patient in the Eastland Hospital.

Mr. and Mrs. Henry Connell and Gregg of Monahan spent a night this week with Mr. and Mrs. Pug Guthery and girls.

## Jottings & Dottings

By Assistant County Agents

The Eastland County 4-H Council elected officers for 1968 at their meeting held recently. Miss Sharon Stedum of the Eastland 4-H Club was elected chairman for 1968. The Boy's vice-chairman will be Tommie Lee of the Cisco 4-H Club and the Girl's vice-chairman will be Brenda Browder of the Gorman 4-H Club. The secretary for the 1968 Council will be Scott Miller of the Morton Valley 4-H Club. Sandy Ingram of the Cisco 4-H Club will be responsible for keeping the girl's treasury and Carter Hunsell of the Rising Star 4-H Club will be responsible for keeping the boy's treasury. Information Chairman for the 1968 4-H Council will be Kay Green of the Cisco 4-H Club. We are looking forward to working with this council in making 1968 "the best year yet."

The Eastland County 4-H Council will sponsor a Christmas Party for all of the Eastland County 4-H's, on Monday night Dec. 18. Make Plans To Attend!!

Eastland County will have two scramblers to participate in the San Antonio Livestock Show Calf Scramble on Feb. 9. These boys Eddy Arnold of Eastland, and Tommy Bibb of Rising Star entered essays in the contest and thereby won the opportunity. Good luck to these boys.

I have received catalogs from the following livestock shows and you will want to notice the entry deadline dates.

Houston Fat Stock Show—Feb. 21-Mar. 3; Entry Deadline, Dec. 31.

Sand Hills Hereford & Quarter Horse Show—Dec. 31-Jan. 7; Entry Deadline Dec. 15.

San Angelo Fat Stock Show—Mar. 6-10; Entry Deadline Feb. 19.

I have not received other show catalogs but will include the additional information in this column as I receive it.

can trees. I hope you will select 40 nuts and enter them in the show. There will be no entry fee. Ribbons are given for the first three place entries of each variety, native or seedling pecan.

IDEAL CHRISTMAS GIFT... GIVE ENTERTAINMENT THIS YEAR  
INTERSTATES  
BOOK OF THEATRE TICKETS ON SALE NOW

INTERSTATES  
**MAJESTIC**  
EASTLAND PH. MA 9-1120

THURSDAY — FRIDAY — SATURDAY  
Thur. & Fri. Open 5:15 — Sat Open 1:45  
Thur & Fri. Show 5:45 - 9:10 - Sat. Show 2:15-5:40-9:05

TARZAN... SWINGING INTO THE MOST DANGEROUS ADVENTURES OF ALL TIME!  
**TARZAN AND THE GREAT RIVER**  
A PARAMOUNT PICTURE IN PANAVISION AND COLOR

Plus Thur & Fri. at 7:15 — Sat. at 3:45 - 7:10

A wisp of boy... A ton of bear. And a whole angry town trying to tear them apart...  
PARAMOUNT PICTURES  
THE TWIN TOWNS PRODUCTION  
**GENTLE GIANT**  
COLOR

SPECIAL SATURDAY LATE SHOW  
BOX OFFICE OPEN 10:45 P. M.  
SHOW STARTS 11 P. M.  
ALL SEAT \$1

**SPRE**  
An Escape from Reality  
DAMONE MANSFIELD PROWSE  
MEMBERS OF THE RICKS... THE FAY... THE IN SET...  
COLOR

RAWLINS SINCE 1884  
**Monuments**  
WEATHERFORD PHONE LY 4-2726

IF WE MAY ASSIST YOU, CALL US COLLECT OR MAIL THIS AD  
NAME \_\_\_\_\_ PHONE \_\_\_\_\_  
ADDRESS \_\_\_\_\_ CITY \_\_\_\_\_

**RANGER DRIVE-IN THEATRE**  
Adults 60c — Kiddies Under 11 FREE  
SHOW STARTS AT 7:00 P.M.

FRIDAY — SATURDAY — SUNDAY  
DECEMBER 15 — 16 — 17

"YOU ARE GOING TO ENJOY 'ALFIE' VERY MUCH."  
—LIFE Magazine

PARAMOUNT PICTURES presents  
**ALFIE**  
(RECOMMENDED FOR MATURE AUDIENCES)  
MICHAEL CAINE as ALFIE  
MILICENT MARTIN • JULIA FOSTER • JANE ASHER • SHIRLEY ANNE FIELD  
VIVIAN MERCHANT • ELEANOR BRON • WITH SHELLEY WINTERS AS RUBY  
TECHNICOLOR • TECHNISCOP • A LEWIS GILBERT PRODUCTION  
SCREENPLAY BY BILL NATHAN BASED ON THE PLAY ALFIE BY BILL NATHAN • MUSIC BY SONNY ROLLINS • PRODUCED AND DIRECTED BY LEWIS GILBERT

**WARD'S**  
The Big Store

In Ranger Will Be Open Wednesday, Dec. 13 until 8:00 p.m.

Continuing their Talk of the Town Sale.

**RANGER**  
MONTGOMERY WARD  
THE BIG STORE  
WILL BE OPEN  
WED. DECEMBER 13  
UNTIL 8 P.M.

**AUCTION SALE**  
THE MEN'S SHOP  
EASTLAND  
Saturday, Dec. 16, 1967  
BEGINNING AT 1 P. M.  
EVERYTHING WILL BE SOLD TO THE HIGHEST BIDDERS: — LOTS OF GOOD MERCHANDISE LEFT, INCLUDING: Sports coats, Overcoats, All weather Coats, Dress & Sport Shirts, Underwear, Belts, Ties, Felt and Straw Hats and much more.  
JAMES WRIGHT  
LICENSED AUCTIONEER

**MONDAY NIGHT MEN'S HANDICAP LEAGUE**

Team	W	L
Dodge Boys	80	32
Eastland Auto Parts	77	35
TESCO Distribution	62	60
Hoffmann Well Service	60	52
Kay Chevrolet	60	52
Village Barber Shop	60	52
TESCO Transmission	58	54
Permanian Oilers	57	55
KERC	46	66
Hollywood Vassarette	44	68
Southern TV	36	76
Tommie's Grocery	32	80
<b>High Team Three Games</b>		
Eastland Auto Parts	2951	
Hoffmann Well Service	2897	
Dodge Boys and TESCO		2896
Distribution		2896
<b>High Individual Three Games</b>		
Howard Langford	805	
Clyde Benton	582	
Benny Skinner	562	
<b>High Team Game</b>		
TESCO Transmission	1046	
TESCO Distribution	1042	
Eastland Auto Parts	1028	
<b>High Individual Game</b>		
Clyde Benton	224	
Howard Langford	222	
Jerry Cates	213	

**FREE ESTIMATES ON New Roof Only**  
Repair of Your Old Roof  
Residential and Commercial  
★ ★ ★  
**EASTLAND ROOFING CO.**  
Call Noble Squiers  
629-2370

**USED TIRES \$3 And Up**  
**The Big Store**  
Wards - Ranger

**SANTA'S HELPERS**  
**GIFT WRAP**  
YOUR CHRISTMAS MALE!

2.98 9.98 4.00 5.98

Free Gift Wrapping  
*The Giving is Easy!*  
**HARELIKS** For Better Values  
EASTLAND, TEXAS



# COURT NEWS

**Instruments Filed**  
Ervin F. Agnew to Estate of H. A. Nichols et ux, deceased, deed of trust.  
Melvin Adams to Texas Electric Service Co., easement and right of way.  
Ann Adams et vir to Ollie Shirley et vir, bill of sale.  
Willie Arnold Bender, individual and as independent executrix of estate of Earl Bender, to V. T. Moser, release abstract of judgment.  
Otto Bendorf to Jesse H. Reynolds, assignment of oil and gas lease.  
C. V. Brown et ux to Federal Land Bank of Houston, deed of trust.  
Johnny Cook, Jr., et ux to First State Bank of Rising Star, deed of trust.  
Jess E. Cearley to R. V. Galloway, deed of trust.  
Herman Cupp et ux to the United States, deed of trust.  
Commercial State Bank of Ranger to First State Bank of Ranger, certified copy of the amendment to articles of association.  
Imogene Dudley to Weldon (J. W.) Roach, deed of trust.  
Mrs. Vera Doyle to J. A. Putnam et ux, warranty deed.  
G. M. Daniel to E. E. Daniel, power of attorney.  
E. D. Ford et al to State of Texas, deed.  
First National Bank in Cisco to Buster E. Hanson, release deed of trust.  
W. V. Fenter et ux to LeRoy Livingston et ux, warranty deed.  
Federal Land Bank of Houston to Victor C. Yates et ux, partial release deed of trust.  
Francis W. Fengler to Thos. A. Munnerlyn et ux, warranty deed.  
First National City Bank, trustee, to Texas Central Railroad Co., release deed of trust.  
Arnold H. Gohlke to L. R. Gohlke, M. D., warranty deed.  
E. H. Harrison et al to Ina Mae Foster et al, resignation and appointment of trustee.

Joseph W. Horton to Bertha H. Porter et al, quit claim deed.

Mrs. W. L. Johl, executrix of estate of H. A. Nichols et ux, deceased, to Ervin F. Agnew, release deed of trust.

Marshall H. Jones to W. S. Kendall, Jr., et ux, release deed of trust and vendor's lien.

W. S. Kendall, Jr., et ux to Clara E. Frye, warranty deed.  
Troy Lamb et ux to State of Texas, deed.

Missouri - Kansas - Texas Railway Co. to Texas Central Railway Co., certified copy of deed.

Missouri - Kansas - Texas Railway Co., to M. E. Shell, certified copy bill of sale.

J. N. Nisbett et ux to Frank Snodgrass, Jr., warranty deed.  
Stanley H. Peavy, Jr., vs. Ben H. Lemaster, abstract of judgment.

Jesse H. Reynolds to Petroleum Corp. of Texas, right of way and easement.  
Ruby F. Rutledge to Johnny Lattin Cook, Jr., warranty deed.

C. A. Russell et ux to J. L. Musgrove Construction Co., Inc., to First Federal S&L, Ranger, mechanic and materialman's lien and assignment.

Rockwell Lumber Co. to Tom Stamey, partial release abstract of judgment.  
State of Texas vs. C. W. Hoffmann et al, notice of its pends.

J. W. Stevens to W. W. Shirley et ux, warranty deed.  
W. W. Shirley et ux to First National Bank in Cisco, deed of trust.

Werdna G. Stansell to J. Clyde Stansell, warranty deed.  
Werdna G. Stansell to Carroll W. Stansell, warranty deed.

Maxine Stamey et vir to C. A. Russell et ux, warranty deed.  
Texas Water Rights Commission to Ben Hamner, permit to appropriate state water.

Charles W. Taylor to R. G. Robinson, warranty deed.  
Texas Central Railway Co. to Missouri - Kansas - Texas Railway Co., quit claim deed.

United States to J. H. Rupe, notice of federal tax lien.  
United States to Paul W. and Johnnie R. Riffle, notice of federal tax lien.

J. E. Whiteside et al to B.

## LOOKING County HD Agent Is Nominee For Outstanding Young Women

At Agriculture  
By GILBERT MEREDITH

(This is one of a series of articles dealing with agricultural programs in Eastland County.)  
Last week I spent three days at our state office in College Station. I carried all 1966 aerial photographs for Eastland County to photocopy individual farms to be used for certification of acreages in 1968. I returned with 44,000 prints of farms and part farms in Eastland County. I was able to visit with section heads in the state office, which I am always happy to do, so that we can discuss our farm program problems. The State Office Compliance Division has been most helpful in working with the Eastland County Committee to try to have the tolerance provision for 1968 changed. They were of the opinion, last week, that the tolerance provision would not be changed for 1968.

1968 peanut allotments were mailed out last week and several producers have been to the office inquiring about them. The peanut allotment factor was just in excess of 100 percent and small increases resulted in individual farms. The 1968 allotment for Eastland County is 39,004 acres.

Several producers have inquired about sale and lease of peanut allotment for 1968. So far as we know this bill has not been approved by Congress. If it is approved producers will be notified as quickly as possible.

Applications for 1968 new farm allotments are currently being accepted by this office. Details on eligibility are available and will be furnished interested applicants.

I would estimate that peanut harvest is better than 90 percent complete as of Dec. 7, and should be complete by Dec. 15 if the weather remains clear. Yields on the average are a little better than our 5-year average of 749 pounds. Marketing of peanuts will continue and should be about complete by Jan. 15, 1968.

It looks like a record for cover crops planted this year. The final date to plant and report the cover crop is Dec. 20. Some 150 farms have not sent their report back to this office.

I visited the new peanut drying and storage plant in Pioneer last Sunday. The visit was most interesting. The Pioneer Co-op was organized by about 50 farmers in that area. The latest equipment has been installed. It was noted that lots of peanuts from counties as far away as Jones County were being received. The construction of this facility is certainly an asset to the Pioneer Community and to Eastland County.

More than 1600 years ago, there was a St. Nicholas, a Turkish bishop whose works of charity made him a legend in his own lifetime. Martyred in A. D. 342, he became the patron saint of all children and of three nations, Greece, Holland, and Belgium.

J. Greenhaw, assignment oil and gas lease.  
Golda Wilson to Carl D. Gorr, warranty deed.

Juanita Willis dba Willis Pool and Chemical, Inc., vs. June Bunch dba Green Acres No. 1 and No. 2 and Sunrise Manor, abstract of judgment.  
Wallace H. Yates et al, trustee and independent executor, to State of Texas, deed.  
Edna Zellars et al to Ruby Rutledge, warranty deed.

**Marriage Licenses**  
Robert Childers Jackson and Shara Dee Newby.  
Bobby Lee Adkins and Carolyn Sue Stroud.  
Larry Gene Paulk and Joan Marie Cornett.

Norris Brown and Waldine Stephenson.  
Elmer Otto Ellyson and Johnnie Paulette Preece.  
Barney Rue Alderson and Mrs. Bessie Laverne Sharp.

**Suits Filed**  
Anna K. Richardson vs. Joe Wilson Richardson, divorce and custody of minor children.  
New Car Registrations  
Harold Fritts, Stephenville, Plymouth.  
Delton H. Killebrew, Eastland, Rebel.  
C. B. Chaney, Cisco, International tank.  
M. E. Campbell, Cisco, Chevrolet.  
Ivan Webb, Cisco, Chevrolet.

Alvin Kitchens, Cisco, Ford.  
Wayne Tipton, Cisco, Ford.

## Albany Nativity To Be Presented Dec. 18, 19, 20

Since 1939 the commemoration of the birth of Christ, the people of Albany have presented the Albany Nativity, a dramatic retelling of the Christmas story. Produced by the Fort Griffin Fandangle Association, it is free to the public, and two performances will be held each evening at 7:30 and 8:45 p. m. on Dec. 18, 19, and 20.

Tickets are available from the Fandangle, Box 185, Albany, Texas 76430. Requests should include a stamped, self-addressed envelope and specify choice of date and performance hour.

## 1968 Farm Allotment Applications Now Being Accepted By ASCS Office

Applications for the new 1968 farm allotments are now being accepted, according to Jesse G. Meredith, manager of the Agricultural Stabilization and Conservation Service office in Eastland.  
Producers interested should file this request as soon as possible, he said. Regulations provide that to be eligible the applicant must own and operate the farm and make more than 50 per cent of his income from the farm. In addition, for peanuts the applicant must have two years out of the past five years of peanut production experience. Additional information may be obtained by contacting the ASCS Office, Mr. Meredith said.  
December 20 is the final date to report cover crop practices, and reports made after that date will not be eligible for cost-shares, he reported.  
Producers were reminded that sales of wool, unshorn lambs and mohair must be completed by Dec. 31, and applications filed in the ASCS office not later than Jan. 31, 1968 to qualify for the 1967 incentive payments.

## Letters TO THE EDITOR

The 15th annual Eastland County Pecan Show has come and gone, and according to all who took part or viewed the prize nuts, including the experts who judged the 191 entries, this was the best show ever held in our many good shows.

The majority of the nuts cannot be grown north of the Mason Dixon Line and the quality and quantity can't be matched anywhere. Truly, the pecan has a right to represent the great state of Texas as the tree.

To all who helped to make our show the great success that it was — Cisco Chamber of Commerce, Cisco Jaycee, First National Bank in Cisco, Cisco Garden Club, Eastland County Home Demonstration Clubs, West Texas Utility Co., J. D. Yardley, the judge and to all our many good friends and members — the Pecan Growers Association wishes to express gratitude and appreciation.

Everything was handled without a hitch. Let us hope more of the good pecans take care of our heritage.  
Sincerely  
Arthur Ellington, President.  
De Gordon, Secretary.

"O Little Town of Bethlehem" was written by Phillips Brooks in 1868 while he was rector of the Church of Holy Trinity in Philadelphia.

**40% DISCOUNT**  
Hand-Made Western Boots  
FINEST QUALITY LEATHER  
And WORKMANSHIP

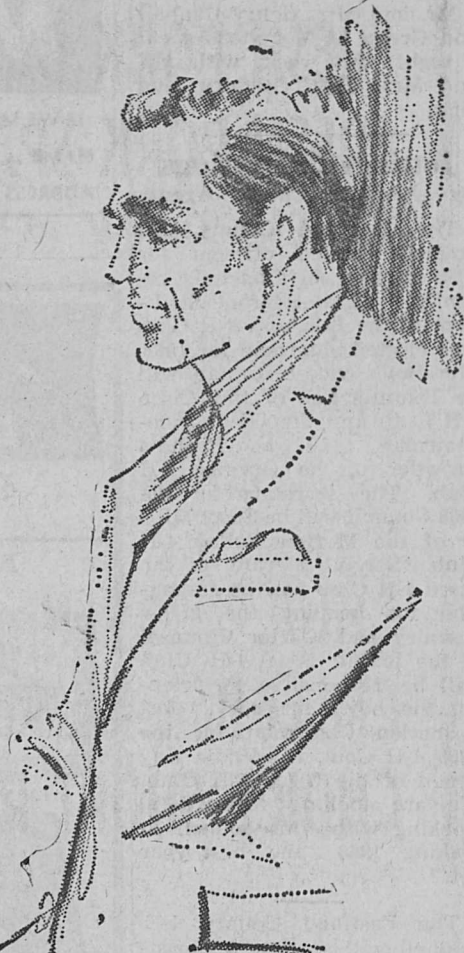
**CISCO BOOT COMPANY**  
416 AVE. D  
South of Victor Hotel  
Open 9-12 P. M.  
1-5 P. M.

Regular \$39.95 BOOTS  
Now 23.97

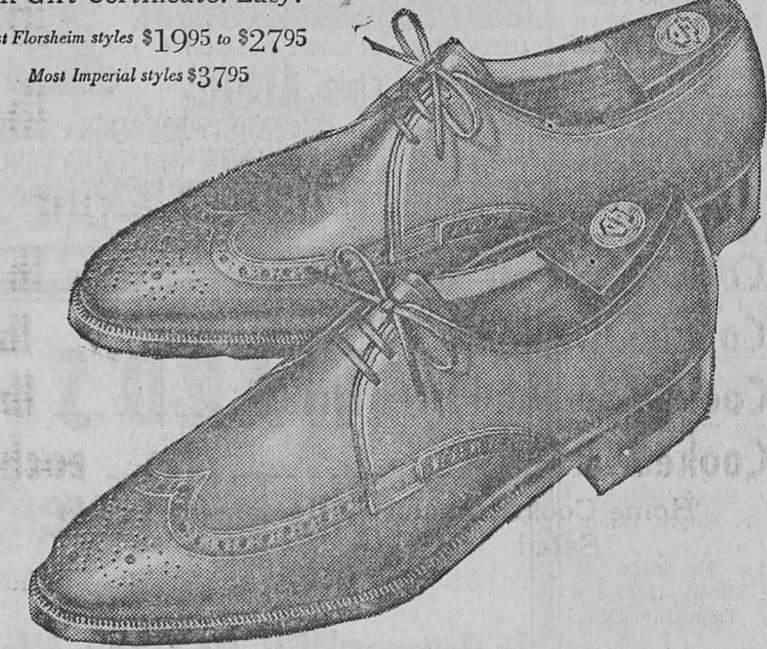
Regular \$42.95 BOOTS  
Now 25.77

**Buy Now And Save \$ \$ \$**

For A Christmas He'll Remember: Florsheim shoes



He can't forget how well you remembered when he enjoys his new Florsheim Shoes all through the year. Men appreciate quality. In fact, more men wear Florsheim Shoes than all other quality makes combined. And you'll appreciate the ease of selecting his Florsheim Shoes — just use the convenient Florsheim Gift Certificate. Easy!



**THE MAN'S STORE**  
Bob Elliott  
CISCO, TEXAS

RANGER **TALK OF THE TOWN CHRISTMAS SALE**  
Open Wednesday Night Until 8 p.m.

The Big Store

**MISSSES 100% Combed Cotton SHIFTS - 3 For \$9** Reg. 3.99

**MISSSES Pom - Pom House SLIPPERS 99¢** Sizes 5-9 — Reg. 1.79

**ENTIRE STOCK MEN'S TIES**  
1/2 Regular 99c — Now 49c  
1/2 Regular \$1.00 — Now 50c  
1/2 Regular \$1.50 — Now 75c  
**50% OFF**

**REGULAR - 4.95 CIGARETTE TABLE**  
Marble Effect Cigarette Table  
Save Now At This Low, Low Price **\$2**

**ZEBCO Rod & Reel Set** Reg. 15.45 Suc. Retail Price - \* 404 Big Bee 2 pc glass rod \* 100 yd 15lb test **8.99**

**20% OFF On Boy's & Girl's 26" BICYCLES**  
Reg. 31.99 — Now 25.59  
Reg. 41.99 — Now 33.59  
Reg. 47.99 — Now 38.39

**DOORBUSTERS!**  
ONE GROUP - MISSES STACK — REG SALE  
HEELS and PUMPS - CALFS 5.99 3.00  
and PATENTS - Broken Sizes 6.99 3.50  
7.99 4.00

**ENTIRE STOCK MEN'S BELTS**  
1/2 Regular 99c — NOW 49c  
1/2 Regular 1.50 — NOW 75c  
1/2 Regular 2.00 — NOW \$1  
**50% OFF**

**PIECE GOOD'S SALE!!**  
Whipped - Reg. \$1.49 Yd — 1.22  
PRINTS — Reg. 1.99 Yd. 1.66

**ELECTRIC POPCORN POPPER — 4 Qt** Decorated Drive-In SERVING TRAYS  
Polished 2.88  
Aluminum Reg. 4.99 **4 FOR 49¢**

**SAVE - 4.49 CHILD'S DELUXE TABLE & 2 CHAIRS** 8.00 Reg. 12.49

Have tea parties just like mother! Spills wipe off 18x24" plastic-coated top. 2 vinyl upholstered chairs.

Double holster set loaded for action! Gun barrels revolve, shoot **1.88** Reg. 2.49

**WARD'S CHRISTMAS APPLIANCE BONANZA!!**

Save \$20 — 19" PORTABLE TV 16,500 Watts - Tinted Glass 6 1/4 in. Speaker — Regular \$149.95 **\$129**

\$30 OFF — 30" GAS RANGE Feflon Cook-Top Griddle Elect. Clock & Timer - Reg. 239.95 **\$209**

SAVE \$44 — AUTOMATIC WASHER 8 Push Button Cycles — 5 Wash-Rinse Temps - Reg. 204.95 **\$160**

\$40 OFF - AUTOMATIC WASHER Our Best — 12 Cycle, 3 Speed 16 Pound Capacity — Reg. 299.95 **\$259**

\$10 OFF TABLE MODEL CLOCK RADIO Solid State - Appliance Outlet Luminous Clock Hands - Reg. 32.95 **22.95**

SAVE \$60 — 15 CU. FT. CHEST FREEZER Fiberglass Insulation - Deluxe 2 Lock Keys — Regular 229.95 **\$169**

\$30 OFF — 14.5 CUT FT. REFRIGERATOR Freezer - Frostless - Vegetable Crispers - Built in Door Shelves - Reg. 299.95 **\$269**

SAVE \$40 - 23" CONSOLE B&W TV Tinted Glass - Walnut or Maple Built in UHF & VHF — Reg. 219.95 **\$179**

**DRASTIC REDUCTIONS ON OUR THRIFT FLOOR (2nd Floor)**

Reg. 6.99 - 7.99 - 8.99 ONE RACK DRESS RIOT (Limit One) **\$1**  
Be Here Early!!

Reg. 2.99 CHILDREN'S TENNIS SHOES - WHITE Broken Sizes - Save 66% - Limit One **\$1**

REGULAR 2.49 — SHEET BLANKETS 80"x90" — 100% COTTON Save Now — Limit One Only **\$1**

**THE BIG STORE — EASTLAND COUNTIES' LARGEST ONE - STOP FAMILY CHRISTMAS STORE!!!**



# Winners Announced For County Pecan Show

A total of 191 entries from Eastland, Comanche, and Jones Counties were entered in the annual Eastland County Pecan Show which was held Friday and Saturday in the "Chicken on the Run" in the old Daniels Hotel Building in Cisco, Tex.

C. E. Smith, commercial grower from Rising Star, swept the show with first place winners in three of four classes. He took the over-all grand champion plaque and the champion plaques in both the in-shell and the shelling classes.

The in-shell pecan was the Chocotaw variety and the shelling, the Brake variety. He was also reserve champion with the Apache variety.

Sam Kimmell of Cisco, a director of the Eastland Pecan Growers Association, took the plaque for native pecans, which he sells commercially from several hundred trees on his ranch land, north of Cisco.

The first three place entries of each variety were as follows:

Apache: 1. C. E. Smith, Rising Star; 2. H. C. Wilkinson, Ranger; 3. Womack's Nursery, De Leon.

Altman: 1. W. V. Fenter, Rising Star.  
Burkett: 1. R. H. Ricks, Rising Star; 2. H. C. Wilkinson, Ranger; 3. Dale Carlile, Cisco.  
Barton: 1. Ray Burns of Gorman; 2. H. C. Wilkinson, Ranger.  
Brake: 1. C. E. Smith, Rising Star.  
Comanche: 1. Earl Walker, Cisco; 2. Roy Camfield, Cisco; 3. C. E. Smith, Rising Star.  
Chocotaw: 1. C. E. Smith, Rising Star; 2. Roy Camfield, Cisco; 3. Ray Burns, Gorman.  
Caper 64: 1. C. E. Smith, Rising Star.  
Cooper: 1. R. L. Ricks, Scranton.  
Delmas: 1. R. W. Merket, Cisco; 2. Nath Pirkle, Ranger; 3. C. E. Smith, Rising Star.  
Desirable: 1. Les Wallace, Gorman.  
Eastern Schley: 1. C. E. Smith, Rising Star; 2. Mrs. Doss Alexander, Rising Star; 3. R. L. Ricks, Scranton.  
Humble: 1. C. E. Smith, Rising Star; 2. R. H. Hicks, Rising Star; 3. Dale Carlile, Cisco.  
Halbert: 1. Mrs. Doss Alexander, Rising Star; 2. C. E. Smith, Rising Star; 3. C. T. Barton, Rising Star.  
John Garner: 1. C. E. Smith, Rising Star; 2. Mrs. Doss Alexander, Rising Star; 3. Dale Carlile, Cisco.  
Kincaid: 1. Mrs. Doss Alexander, Rising Star.  
Merket Special: 1. R. W. Merket, Cisco; 2. Roy Camfield; 3. C. E. Moats, Cisco.  
Mahan: 1. Ray Burns, Gorman; 2. Dale Carlile, Cisco; 3. Johnson Smith, Jastland.  
Mohawk: 1. C. E. Smith, Rising Star.  
McCulley: 1. C. E. Smith, Rising Star.  
Pereque: 1. C. E. Smith, Rising Star.  
Pioneer: 1. Mrs. Doss Alexander, Rising Star.  
Ranger: 1. C. E. Smith, Rising Star.  
San Saba Improved: 1. Mrs. Doss Alexander, Rising Star; 2. C. E. Smith, Rising Star; 3. Chester Marrs, Ranger; 3. James Fry, Cisco.  
Sioux: 1. Womack Nursery, De Leon; 2. C. E. Smith, Rising Star.  
Success: 1. J. T. Gilbreth, Abilene; 2. Earl Walker, Cisco; 3. C. E. Smith, Rising Star.  
Scranton: 1. R. L. Ricks, Scranton.  
Squirrels' Delight: 1. Roy Camfield, Cisco; 2. Mrs. Doss Alexander, Rising Star; 3. C. F. Smith, Rising Star.  
Texas Prolific: 1. Emil Reich, Cisco; 2. R. L. Ricks, Scranton; 3. Mrs. Doss Alexander, Rising Star.  
Wichita: 1. C. E. Smith, Rising Star; 2. Womack's Nursery, De Leon; 3. G. T. Sipe, Hamlin.

Western Schley: 1. Eastland County Courthouse; 2. C. E. Smith, Rising Star; 3. H. C. Wilkinson, Ranger.  
Williamson: 1. Chester Marrs, Ranger.  
Known Cross In-Shell: 1. 2 and 3. C. E. Smith, Rising Star.  
Known Cross Shelling: 1. 2 and 3. C. E. Smith, Rising Star.  
Unrecognized Seedlings: In-Shell: 1. and 3. C. E. Smith, Rising Star; 2. R. L. Ricks, Scranton.  
Unrecognized Seedlings: Shelling: 1. R. L. Ricks, Scranton; 2. and 3. Mrs. Doss Alexander, Rising Star.  
Natives: 1. Sam Kimmell, Cisco; 2. Earl Walker, Cisco; 3. R. L. Ricks, Scranton.  
Judges were Dr. Benton Story of A&M University and Tom DeLman of Stephenville Experimental Station.  
Officers and directors of the growers association honored the new queen, Miss Joan Kelly of Eastland, outgoing queen, Miss Susie Morgan of Cisco, and the 1968 runner-up Miss Kathy Kincaid of Eastland, with a luncheon at The Spot Restaurant with the Cisco First National Bank as the host for the affair.  
In speaking to the luncheon group, Dr. Story complimented the pecan show on the "excellent quality" on display, saying that the Eastland County show compared favorably with the specimens shown at the 1966 State Pecan Show.

# Bridge Players Meet Sunday At Lone Cedar Club

Lone Cedar Duplicate Bridge Club was host Sunday afternoon to 23 tables of bridge players from a wide area of West Texas. Lloyd London of Cisco directed the play.

Winners overall were: first, Mrs. C. C. Woodson and Mrs. Gertrude Dingle, both of Brownwood; second, Mrs. A. F. Knatpenberger and Mrs. W. B. Fultz, both of Graham; third, I. S. Bays of Brownwood and Gus Froussard of Gorman; fourth, Mrs. Bertie Goodwin of Colorado City and Mrs. Elizabeth Ferguson of Cisco; fifth, Mrs. J. L. McDonald of Stephenville and Mrs. James Horton of Eastland.

Silver serving trays in diminishing sizes were presented to the winners. Players participating were from Abilene, Ballinger, Breckenridge, Blanket, Brownwood, Cisco, Coleman, Colorado City, Eastland, Gorman, Graham, Newcastle, Ranger, Stephenville, and Winters.

The word "carol" means to dance in a ring. The man who popularized this practice was the beloved St. Francis of Assisi, the 13th century Saint who led villagers in joyous celebration—in caroling.

# NEW TELEPHONE BOOK

Closes Soon!

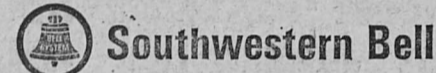


CALL NOW

for extra listings, changes in your present listing, or to order additional service.

MR. BUSINESSMAN: Be sure you are adequately represented in the Yellow Pages of the new directory — make it easy for buyers to find YOU when they're ready to buy.

Call today—don't delay—  
new book goes to press soon!



Eastland County's Family Store  
EASTLAND & RANGER

## GIFT HINTS FOR SANTA

**BOYS' Corduroy Jackets**

SHERPA PILE LINED WASHABLE

Makes A Perfect Gift For The Boys On Your List

Permanent Press For Easy Care — Many Styles And Colors To Choose From

GIFT WRAPPED

**\$3.50 to \$6**

**Warm Fuzzy Lined HOUSE SHOES**

SO COMFORTABLE — PINK — BUBBLE BLUE

SIZES 6 TO 10

**\$3**

**Softie Pixie Type WOMEN'S SHOES**

MANY STYLES ASSORTED COLORS ALL SIZES

**\$1**

**Men's Fleece Lined Grey SWEATSHIRTS**

WASHABLE — WARM FOR WINTER DAYS

Sizes — SMALL - MEDIUM - LARGE

**1.50**

**Infants Corduroy CRAWLABOUTS**

MANY COLORS WASHABLE SNAP CROTCH

**\$1**

**Boy's Fleece Lined SWEATSHIRTS**

GREY WASHABLE

SIZES 6 to 16

**\$1**

GIVE

**Hanes Hosiery**

Makes A Perfect Gift

Seamless In All Fall Shades

**1.50 - 1.65**

**SANTA HELPER SPECIAL**

Christmas Cards For All

10c to \$1.00

GET FREE TICKETS HERE

**BRAY'S Dept. Store**

**SLEDGE RETAIL MARKET**

**Choice Meats at Savory Savings**

FRESH PORK ROAST .....	lb 45c
FRESH PORK BACK BONE .....	lb 49c
FRESH PORK SPARE RIBS .....	lb 59c
FRESH PORK STEAK .....	lb 49c
FRESH PORK SLICED BACON .....	lb 59c
CHOICE LOIN STEAK .....	lb 79c
CHOICE PIN BONE .....	lb 69c
CHOICE SEVEN STEAK .....	lb 59c
Choice Boneless Rump or PP ROAST	lb 73c
CHOICE SHORT RIBS .....	lb 39c
CHOICE CALF LIVER .....	lb 39c
SMOKED HOT LINKS .....	lb 49c
ALL MEAT SLICED BOLOGNA .....	lb 49c

**PLENTY PIT COOKED BAR-B-QUE**

Pit Cooked SLICED BEEF .....	lb 1.29
Pit Cooked CHIPPED BEEF .....	lb 89c
Pit Cooked Smoked HOT LINKS .....	lb 79c
Pit Cooked FRYERS .....	each 99c

Home Cooked Beans — Homemade Potato Salad — Homemade Chili

Christmas Orders For SMOKED TURKEYS — Should Be Placed This Week.

**SLEDGE RETAIL MARKET**

At Earnest Packing Company

210 S. Lamar Eastland



### FAVORITE RECIPES

The recipe here is a favorite of some Madison Countian. The Madisonville Meteor likes to run proven recipes from local cooks, those that their families ask for most often.

**COOKING A VENISON ROAST**  
(Recipe from Texas Wild-life, repeated again this deer hunting season on request.)  
By now, in Texas, there are

a couple of hundred thousand deer, white-tailed and mule deer, dressed, packaged and ready for preparation for the table. Recently I saw a woman look at a large roast from a yearling buck like it was something from another planet. Venison is a tender, tasty, rich and delicious meat if it is properly prepared. This year try this recipe for your roast: Use a roast of 2 pounds or more; 1 onion, chopped fine;

two-thirds cup of salad oil; 1/2 cup lemon juice; 1 teaspoon salt; 3 slices of bacon; horseradish.  
Make a marinade of onion, salad oil, lemon juice and salt. Put the meat in a large bowl and pour on the sauce. Cover and place in refrigerator for 24 hours. Remove, transfer meat to a baking pan and cover with bacon slices.  
Roast in a 325 F. degree oven for 20 to 30 minutes per

pound, or until done. Baste often with marinade. Serve with the cooked marinade on a hot platter with plenty of horseradish.  
Piping hot, with rolls or biscuits, and a green salad, venison cooked this way will offer you a tempting surprise. When the roast is cold, place in refrigerator, wrapped in foil. It may then be sliced for sandwiches or for cold cuts at night.

For the very best in venison, the deer should be field dressed immediately after killing, and the carcass hung to cool. Be very careful to keep hair and dirt from touching the meat. An inexpensive cheese-cloth type game sack, (costing about one dollar) should be in every hunter's coat pocket to be drawn over the carcass after it has been hung up to cool. This keeps flies and other insects away from your venison.  
Always transport your trophy in the trunk of your car rather than across the hood or fender.  
The younger the deer the more delicious the meat. Best use for a big old buck is to turn him into chili meat or mixed with pork fat for stuffed smoked sausage.

The words of "What Child is This?" are sung to the old English tune "Greensleeves" which was popular before the time of Queen Elizabeth. It was one of the best liked tunes of its day and Shakespeare mentions it twice in "The Merry Wives of Windsor."  
There is no record of any commemoration of Christmas during the life of Christ.

# SAFEWAY LOW PRICES EVERY DAY Plus SPECIALS!

**Sirloin Steak**  
USDA Choice Grade Heavy Beef. Tender and juicy—Lb. **95¢**

**T-Bone Steak**  
or Club Steak **\$1.09**  
USDA Choice Grade Heavy Beef.—Lb.

**Chicken Hens** 39¢  
**Game Hens** 69¢  
**Pork Roast** 45¢  
**Boneless Ham** 99¢  
**Boneless Roast** 89¢  
**Rump Roast** \$1.19  
**Ground Chuck** 69¢  
**Sliced Bacon** 65¢

**USDA Choice Grade Heavy Beef Sale!**

**Porterhouse Steak** 1.29  
**Standing Rib Roast** 79¢  
**Rib Steaks** 89¢  
**Chuck Steak** 69¢

**Rath Bacon** 69¢  
**Thick Sliced Bacon** 1.38  
**All Meat Franks** 59¢  
**Canned Picnics** 2.19  
**Canned Hams** 2.99  
**Lunch Meat** 31¢  
**Smorgas Pak** 89¢  
**Beef Patties** 89¢  
**Pacific Coast Oysters** 98¢  
**Honeysuckle Turkeys** 49¢  
**Fresh Fryers** 29¢

**WINNERS!! IRISH INTERNATIONAL SWEEPSTAKES WINNERS!!**

**Steeplechase**  
PROGRAM #303

**Congratulations to \$2,500 WINNER**  
Grand National Sweepstakes!  
**Mary Carter**  
811 Dallas Street  
Wichita Falls, Texas

**Congratulations to New \$1000.00 Winners!**

**Mrs. A. B. Batchelor** Fort Worth  
**James D. Cain** Dallas  
**Henry H. Smith**  
**Mrs. L. L. Watters**  
**Theresa Serrano**  
**Bettie R. Mann**  
**Mims Dickson**  
**Mrs. Corine Harrison**  
**C. W. Debus**  
**Pat Simmons**  
**W. C. Briley, Jr.**  
**Mrs. Joe Mankin**

**Mrs. Leo Barnett**  
**Julian Mesa, Jr.**  
**Otto Clements**  
**Robert La Barge**  
**J. H. Sellers**  
**Mrs. Danny E. Spence**  
**Nancy Athy Roberts**  
**Mrs. E. B. Wilson**

**Mrs. M. Berry**  
**Mrs. M. Flores**  
**Mrs. A. B. Gathings**  
**Willie D. Davis**  
**Lee R. Maxwell**  
**Inez Blanton**  
**W. J. Whitehead**  
**E. L. Smith**

**E. W. Moore**  
**Hattie Davidson**  
**Mrs. Bertha Taylor**  
**Edith Hines**  
**Mrs. Norbert Rohmer**  
**David M. Evens**  
**Mrs. W. H. George**  
**Mae Hue Sneed**

**Carl Mae Smith**  
**Clara Schoppa**  
**Mrs. M. Massey**  
**Frank Thom**  
**M. Stropeni**  
**Mrs. Claud R. Johns**  
**Ray L. Willis**  
**H. O. Eaton**  
**Joe Ponder**



**Smoked Hams** 55¢  
Whole or Full Shank Half. Dry Cure. Samuel's Mohawk. 14 to 18-Lb. Avg. (Full Butt Half—Lb. 59¢) —Lb.

**LOW EVERYDAY PRICES!**

**Enriched Flour** 39¢  
**Soda Crackers** 19¢  
**Biscuits** 8¢  
**Table Salt** 9¢

**Gift Idea from Safeway**  
Gift Orders come in a range of denominations which are usable by almost everyone. Wonderful for Holiday Gifts to anyone, these orders are redeemable by every Safeway store.

**Compare Everyday Low, Low Prices!**

**White Bread** 27¢  
**Facial Tissues** 19¢  
**Kotex Napkins** 34¢  
**Liquid Bleach** 39¢

**"RAIN CHECKS"**  
Guarantee you'll get Safeway Specials. If we happen to ever run out of a special item we have advertised, just ask the clerk for a "Raincheck." With it you can buy at the special price as soon as we get the item back in stock.

**"Sure Winner" Coffee** 49¢  
**"Big Winner" Margarine** 10¢  
**"Pacesetter" Miracle Whip** 39¢

**Mix or Match! TOWN HOUSE JUICES**  
3 for 99¢

**Compare Everyday Low Prices!**

**Dog Food** 8¢  
**Cake Mixes** 38¢  
**Corn Meal** 39¢  
**TV Dinners** 59¢  
**Gerber Baby Food** 6/65¢  
**Spam** 53¢  
**Pinto Beans** 28¢  
**Instant Breakfast** 69¢  
**Prune Juice** 48¢  
**Fruit Cocktail** 39¢

**SAFEWAY PRODUCE IS ALWAYS FRESH!**

**Apples** 8.99¢  
**Bananas** 2.29¢  
**Oranges** 2.29¢  
**Tangerines** 19¢  
**Pineapples** 39¢  
**Potatoes** 10.59¢  
**Yellow Onions** 2.25¢

**Compare Non-Food Values!**

**Cantreze Nylons** 2 for \$1  
**Gillette Blades** 59¢  
**Gleem** 75¢

**Compare Bakery Values!**

**Butter & Egg Bread** 2 for 49¢  
**Pecan Ring** 39¢

**Compare Dairy Values!**

**Fresh Milk** 95¢

**Everyday Frozen Food Values!**

**Cream Pies** 29¢  
**Banquet Dinners** 39¢  
**Sausage Pizza** 75¢  
**Orange Juice** 2 for 29¢

**Be a Winner! Shortening** 49¢

**Champion! Green Peas** 4 for 85¢

**"Sure Winner" Cigarettes** \$3.15

**SAFEWAY**