



Ranger Times

© 1991 Eastland County Newspapers Inc.

50¢

McCleskey No. 1 - October 1917
Ora. B. Jones No. 3 - November 1985

Volume 87 Number 97

"City Of Flowing Gold" Thursday, December 5, 1991

The Cross Timbers Civic Chorale To Present Its 12th Annual Holiday Concert



THE CROSS TIMBERS CIVIC CHORALE: Front Row (L to R) Ann Harney of Strawn and Andrea Bennett of Thurber and Back Row (L to R) Polly Alexander and Tom Page of Ranger. Not pictured are Chorale members Trudy Griffin and Ruby Stewart.

The Cross Timbers Civic Chorale will present its 12th annual holiday concert on Saturday, Dec. 7 at 7:30 p.m. in the Clyde H. Wells Fine Arts Center on the campus of Tarleton State University. In addition to the Chorale's traditional presentation of Handel's "Messiah," this year's program will also feature "A Feast of Carols" by Randall Alan Bass.

Created in 1980, the Choral is under the direction of TSU Director of Choirs, Dr. Charles Rives. There are no auditions for the Chorale and the group is made up entirely of volunteer of volunteer amateur singers who donate their time and voices for the joy of performing. The membership includes representatives from Erath and a number of surrounding counties including Palo Pinto, Eastland, Comanche, Hood, and Parker.

The Chorale practices once a week beginning in early October and proceeds from the concert are used to help finance the annual presentation. The Chorale is sponsored by the University's Department of Fine Arts and Speech and the Cross Timers Fine Arts Council.

Professional musicians are brought in to accompany the Chorale and this year marks the first time that amateur vocalists will take the features roles in the "Messiah" performance.

READ THE CLASSIFIEDS

The Community Clothes Closet will be open Saturday, December 7th from 9-12 a.m., if weather permits.

Christmas in Ranger

The Ranger Chamber of Commerce would like to announce the following Christmas Schedule:

Saturday, December 7th—Santa Claus arrives at 1:00 p.m. at Mott's. He will spend time with the children there until 2:30 p.m. when he will depart for Bill's Dollar Store. He will continue to visit until 4:00 p.m. and then he will depart back to the North Pole. Children visiting Santa will receive a candy cane.

Monday, December 9th—5:30 p.m.; Caroling begins in front of the Western Manor Nursing Home. Everyone is invited

to join in this Christmas Celebration. We will walk down Main Street to the Museum, where we will join the mayor and city council members as they light the Ranger Christmas Tree. This will officially mark the beginning of the Christmas Season in Ranger.

Also, on that day the Chamber will host an Open House at the Museum from 11:00 a.m. until 5:00 p.m. Please come and visit and enjoy some Christmas goodies.

Every business in Ranger is encouraged to host an Open House and help spread the Christmas Spirit throughout our

town. Just pick a day and time and call Bob down at the Chamber office (647-3091) and the newspaper offices. The schedule of Open Houses will be displayed in the newspapers so citizens can make each and every one.

The Chamber is also attempting to outline the museum in Christmas lights this year. If you have extra or unused outdoor lights please donate or loan to the Chamber. You can take them by the chamber office between 10 and 2 or by King Insurance. Let's try and make this the Best Christmas in Ranger!

Annual Christmas At The Gholson To Be Held December 9th

"Christmas is in the Air" and with that joyous season comes the delightful holiday music that everyone enjoys. The '47 Club of Ranger is once again sponsoring their Annual Christmas at the Gholson, featuring the sounds of the Ranger Junior College Band, under the direction of Mr. Bob Johnson. This annual event has become a favorite activity for Ranger and Eastland County. People from all around the area arrive at the Gholson Hotel in order to catch the sounds of the season. This year's event will be held on Monday, December 9th at 7:00 p.m. The '47 Club will serve refreshments after the concert.

The event will be even more special with the added attraction of the Eastland County Brass Quintet. The Quintet is composed of Bill Swinney, Band Director at Cisco Junior College, Barry Thomas and Kyle Smith, both Ranger Junior College students. Jim Cockburn, counselor at RJC and Bob Johnson, director. The Quintet has reached great levels of popularity over the past year and has once again been asked to play at Polo on the Prairie again this year. They have a very distinct and melodious sound which I am sure will please every listener's ears. Their program will include the following pieces:

elbel; Three Traditional Christmas Carols: ("Go Tell It On The Mountain," "God Rest Ye Merry Gentlemen," and "I Saw Three Ships.") arranged by Henderson; A Christmas Jazz Suite: (Jolly Old Saint Nicholas, "We Wish You A Merry Christmas," and "Jingle Bells.") arranged by Franckenpohl; and The Saint's Alleluiah arranged by Henderson.

The Stage Band will perform the following selections after the Quintet has completed their concert.

**"Away In A Manger" arranged by Curnow; "Bugler's Holiday" arranged by Leroy Anderson and will feature solo performance by Barry Thomas, Marina Martinez and Rusty Newby; "A Holiday Celebration" (O Come All Ye Faithful, O Little Town Of Bethlehem, Hark! The Herald Angels Sing and Silent Night) arranged by Bullock; "Winter Holiday," arranged by Swearingen, and "Christmas Classics" arranged by Swearingen.

As you have read, the night will be filled with music for everyone and your are even invited to sing along during part of the program. So don't forget, write it down on your calendar: Monday, December 9th, 7:00 P.M. "Christmas at the Gholson." Everyone is invited to come and enter the Christmas Season on a Joyous Note!

**KANON by Pach-

THOUSANDS READ THE RANGER TIMES ALL WEEK LONG!

RANGER TIMES

RANGER TIMES MEMBER 1991
and Weekly Chronicle TEXAS PRESS
Publication No. (USPS 455-400) ASSOCIATION
647-1101 P.O. Box Ranger, Texas 76470
©1991 Eastland County Newspaper Co.

POSTMASTER: Send address changes to Ranger Times P. O. Box 118, Ranger, Texas 76470.

Second Class Postage paid at Ranger, Texas, under Act of Congress in March, 1870. Published every Thursday and Sunday.

SUBSCRIPTION RATES:

In Eastland County \$18.00; Adjoining Counties \$23.00; In Texas \$25.00; Out of Texas \$35.00. No Out of U.S. Without APO.

Publishers Mr. and Mrs. H. V. O'Brien
Editor-Cisco Joan Elliott
Editor-Eastland H. V. O'Brien
Editor-Ranger Carlotta Wilson
Editor-Rising Star Carolyn Ratliff
Editor - Baird Debbie Smedley
Office Staff Margaret Hallmark
Office Staff Sheila McCoy
Computer Operator Ladonna Clement
Advertising Representative Tim Hull
Production Supervisor Ted Rogers
Production Raymond McCoy
Production John McCoy
Feature Writer Viola Payne
Commercial Printing Hale Dunson

TOYS FOR TOTS '91

The Ranger Fire Dept. is proud to sponsor the 11th Annual Toys For Tots Program. The registration dates are December 1st through December 15th, 9 a.m. to 5 p.m. at the Fire Dept.

No phone registration allowed.

If you would like to donate canned goods, new toys or money to this great cause, come by:

RANGER FIRE DEPT.
500 HWY. 80 EAST
RANGER, TEXAS 76470

Non emergency phone number 647-1505.

Thanks,
Darrell Fox
Fire Chief

County Resource Assc. To Meet Dec. 5

The Eastland County Resources Association will meet Thursday, Dec. 5, 12 noon at Eastland Memorial Library, 210 S. Lamar. The public is invited to attend and bring reports of community service activities. Current projects for the Resource Association include a Travel Fund for ill and disabled children and assistance to the County Food Pantry.

The Association meeting will be informal - bring a sack lunch if you wish. Corrie Cowley will be in charge of the meeting.

Retired Teachers To Meet December 9th

The Eastland County Retired Teachers and Associates will meet Monday, Dec. 9, 11:30 a.m. at K-Bob's Steak House in Eastland. Lena Stockton will present a

program on Christmas Decorations.

Each person is reminded to bring a canned item of food or paper goods for the Community Food Pantry.

Notice Masons

There will not be a stated meeting on Thursday, December 4th through 7th.

Notice in last issue of monthly magazine. A called meeting to pay bills will be held at a later date.

Pastoral Care and Counseling Center Broke A 20 Year Record

The Pastoral Care and Counseling Center broke a 20 year record in October for number of hours of service to the community. Five years ago we averaged

approximately 275 hours of service each month, with four therapists. In October, our 11 therapists provided 1,040 hours of service.

Eastland County is OPEN

For Business

OPEN HOUSE CALENDER
Saturday, December 7 -- 1:00 p.m. Santa arrives at Mott's
Santa arrives at Bills Dollar Store at 2:30 p.m.
Monday, December 9 -- 1:00 until 6:00 P.M. Open House at Chamber of Commerce and Roaring Ranger Museum
Monday, December 9 -- 5:30 p.m. in front of Western Manor
Caroling to the Community tree down Main Street. Everyone invited.
Monday, December 9 -- 6:00 p.m. Tree Lighting
Monday, December 9 -- 7:00 p.m. "Christmas at the Gholson"

Child Protection

The Eastland County Child Protective Services Board assists with the care and planning of our local children who are in foster care due to abuse and/or neglect.

In order for our children to have a happy Christmas, we need your financial help.

Each year, Christmas gifts are obtained through the support of community organizations, citizens and businesses.

Each child is busily preparing a Christmas list and your generosity will make it possible to obtain these gifts.

These tax deductible donations can be made to the Eastland County Child Protective Services, 1331 E. Main, St. Eastland, TX 76448. If you have any questions, please call Alice Prichard at 629-3317.

Thank you for your interest in the foster children of Eastland County.

Obituaries

Graydon Abbott

STRAWN— Graydon H. Abbott, 85, died Saturday, Nov. 30, 1991, in a Ranger nursing home. Services were at 2:30 p.m. Tuesday, Dec. 3, 1991, in the First Baptist Church with the Rev. Fred Keese officiating. Burial was in Mount Marion Cemetery, directed by Edwards Funeral Home. Mr. Abbott was born and attended school in Scranton. He graduated from barber school in Dallas and moved to Strawn in 1956. He worked as a barber in Strawn and opened his own shop in 1960. He and

his wife owned and operated a beauty and barber shop for many years until he retired in 1977. He was a member of First Baptist Church. He was the widower of Rachel Patricia Abbott. Survivors include two sons, Brook Abbott of Katie and Shawer Abbott of Strawn; a daughter, Terry Lee of Strawn; three brothers, Gordon Abbott of Dallas; Guy Abbott of Cisco, and O.M. Abbott Jr. of Brownwood; a sister, Irene Deal of San Antonio; eight grandchildren; and 11 great-grandchildren.

A.T. Barron

RANGER— A.T. Barron, 58, died Sunday at an Abilene hospital. Services were held at 2 p.m. Tuesday at Eastside Baptist Church with the Rev. Jerry Speer officiating and the Rev. David Jordan assisting. Burial was in Evergreen Cemetery, directed by Edwards Funeral Home. Mr. Barron was born near Bluff Dale in Erath County. He graduated from Huckaby High School and was a member of Huckaby Baptist Church. He lived in Ranger since 1958 where he owned and operated

B&D Trucking Company and Ranger Stone and Ranger Clay Company. Survivors include his wife, Dorothy Barron of Ranger; his mother, Matilda Stewart of Stephenville; two sons, Brent Barron of Houston and Allen Barron of Eastland; four daughters, Leisa Wright of Eastland, Cheryl Coleman of Breckenridge, Vicki Jones of Ranger and Melody Boyd of Breckenridge; a brother, Richard Stewart of Stephenville; 14 grandchildren; a niece and a nephew.

Hilda K. Ice

OLNEY— Hilda Kathryn Ice, 84, died Saturday at an Abilene nursing home. Services were held at 2 p.m. Monday at First United Methodist Church with the Rev. Robert Richmond officiating and assisted by the Rev. Gary Torian. Burial was in Restland Cemetery, directed by Lunn Funeral Home. Mrs. Ice was born in Moundsville, Va. She was a homemaker and a Methodist. She was a resident of Abilene since 1950.

Survivors include two sons, Jim Ice of Abilene and Phil Ice of Tomball; a daughter, Myra Sue Pruet of Oxford, Miss.; a sister, Phyllis Gray of Abilene; eight grandchildren; and 13 great-grandchildren.

**CHILD ABUSE
24 HOUR HOTLINE
1-800-252-5400**

Melba Watson

RISING STAR— Melba "Sue" Watson, 51, died Friday, Nov. 29, 1991 in her home. Services were held at 4 p.m. Saturday, Nov. 30, 1991 at Higginbotham Funeral Home Chapel in Cross Plains with the Rev. Dick Williams officiating. Burial was in Rising Star Cemetery. Mrs. Watson was born and lived her life in Rising Star. She was a homemaker and a member of the Baptist church. Survivors include her husband, Donald Watson of Rising Star; five sons, Donald Joe Watson, Rich-

ard Lee Watson, and David Earl Watson, all of Ennis, Darryl Edward Watson of Cedar Creek, and Dustin Edward Watson of Rising Star; four brothers, Damon Benson of Amarillo, Robert Benson of Brownwood, Charlie Benson of Frankston, and Cleo Benson of Ennis; four sisters, Myrtle Parker of Lake Chandler, Billie Williams of Rising Star, Naomia Cain of Rising Star, and Lorine Clark of Buchanan Lake; her mother, Haddie Benson of Rising Star; and five grandchildren.

Tillie Miller

CISCO— Tillie Tonne Miller, 87, died in a Lubbock hospital Thursday, Nov. 28, 1991. Funeral services were at 10 a.m. Saturday, Nov. 30, 1991, at Methodist Church of Eunice, New Mexico. Burial was in Eunice Cemetery. She was born June 7, 1909, in San Antonio, and moved to Eastland County

with her parents, Fritz and Matilda Tonne, at an early age. Survivors include a son Louis Miller, of Eunice, N.M.; two daughters, Louise Miller of Eunice, N.M. and Lucille Crabtree of Port Worth; a sister, Irma Tonne Grenwelle of Cisco; and several nieces and nephews in the Cisco area.

Jessie O. Hancock

DUBLIN— Mrs. Jessie Ola Hancock, 82, of Dublin, died Sunday, December 1, 1991, at her residence in Dublin. Services were held at 2 p.m. Tuesday, December 3, 1991, at the Harrell Memorial Chapel with Steve Johnson and Jack Fowler officiating. Burial was in Old Dublin Memorial Park, under the direction of Harrell Funeral Home of Dublin. She was born November 1, 1909, in Comanche County. She married David Marion Hancock on April 2, 1927, in Dublin.

She was a homemaker, and a member of Edna Hill Baptist Church. She was preceded in death by her husband, David, on July 5, 1985; and by three sons, Choyle, David B. and Danny Lynn. Survivors include three sons, Leonard M. Hancock and Richard (Pitt) Hancock of Dublin, and Gayle Hancock of Jacksonville; a daughter, Janis Keith of Carbon; 15 grandchildren; and 12 great grandchildren.

**CHILD ABUSE
24 HOUR HOTLINE
1-800-252-5400**

**IT'S THE LAW!
SEATBELTS
Buckle Up
for Safety!**

DESDEMONA NEWS By Vonnie Guthery

Desdemona First Baptist Church will present a Christmas musical titled "Destination Christmas" on Sunday evening, Dec. 15, 1991 at 6:00 p.m. Refreshments for all following the program. Everyone invited. Cast members are: Dad-Dan Collum, Mom - Janine Hornbeck, Nathan - Robert Lewis, Patrick - Chris Fox, Carrie - Misty Wortham, Pete - Joe Wortham, Gabriel - Lisa Rainey, Michael - Dakota Brown, Granny - Vonnie Guthery, Karen - Mindy Keck.

Edna Lee Munn was buried Friday, Nov. 22 in the Desdemona Cemetery. A sister, Mary Adams lives in De Leon.

Wanona Perrin Buckley, age 64, was buried Sat., Nov. 23 in Crane. Survived by three daughters, Sherian Ann McFadden of Crane, Ramona Powell of Garland, Lenora Pritschow of Plano, a brother, Bob Perrin, a

sister, Deola Fox of Sundown. Wanona attended school in Desdemona. Roy Phillips was buried Wednesday, Nov. 27 in the Desdemona Cemetery. Survived by his wife, Pat Phillips, three daughters, Dolly Boehme of Fort Worth, Roi Sue Phillips of De Leon and Elizabeth Phillips of Desdemona.

Our sincere sympathy goes out to these families. Remember them with your cards and prayers.

Bill McCarty of Odessa visited Tuesday with Bernard and Ann Keith.

Thanksgiving day visitors with L. C. and Mary Lou Landers were their children and grandchildren. Don and Annette Landers of Springtown; Ronnie, Sandy, Stacey, Jodie, Sandra, Chrystal and Levi Landers of Merit; Clifton, Renea, Kavin, Dustin and Jerry Landers of Watauga; Mark, Tomara, Chrystal

and Marque Landers of Southlake. Ladies monthly social will be a Christmas luncheon in the lovely home of Dorothy Greenhaw on Monday, Dec. 9. Bring a small gift wrapped.

Visitors with Pug and Vonnie Guthery on Thanksgiving day were De, Vicki, Nikki, Keitha, and Derek Robinett of De Leon; Bill and Tami Sanders, Robyn Griffith, Bernard and Ann Keith, Wayne and Karen Eaves, Angela Creed, Belinda, Sonja and Kandice Martin all of Desdemona, Holly Creed of Dallas.

Visitors with Bob and Merlene on Thanksgiving Day were Eva Williams and Willie Holmes of Stephenville; Gary and Linda Barker of Teague; Marsha Johnson, Billy and Chris of Andrews,

Wayne and Mildred Barker, Theo Barker of De Leon; Jim and Debi Koeller and Tyler of San Antonio; Ronnie Debbie Barker, January, Misty and Whitney of Meridan.

Thanksgiving visitors with Mary Alice Ficklen was her son, Robert Ficklen and Tara of Dallas.

Visiting Robert and Ima Brown were their children, David and Fran Singer, Kristi, Leslie and Lindsey of Hamilton, Robert Alton and Jana Brown, Michelle, Preston and Julie of Fort Worth.

Visiting the holidays with Joe and Pat Cummings were Mark and Julie of Waco; Steve and Sherri Brown, Jennifer and Jon of Highland, David Brown of Stephenville, Jim and Elizabeth Cowan, David and Calvin of Belton.

Your Special Invitation...



If you like to hear about...

Jesus

The pastor, and international speaker, John C. Jones presents the "living Christ" through the message of "faith" weekly. The congregation is a inter-denomination worship center where people from all walks of life and religious experience come to study God's Word.

A Church of "Signs & Miracles"

Service Times
Sunday 10:30 a.m. 6:00 p.m.
Wednesday 7:30 p.m.

"Where going to church is fun"

This week, join those who drive from a 100 mile radius each week to attend a church that is "Delightfully Charismatic."

608 E. 8th
Cisco, Texas
Ph. 442-2673 Ph. 442-4479

GREER'S WESTERN STORE RANGER

- Nocona & Tony Lama Lizard Skin Cowboy Boots - Reg. \$260.00 - Were \$215.00 - NOW \$199.98
- Brush Popper Shirts..... \$29.98
- Balbaum Beaver Fur Felt Hats - \$60.00 - \$65.00 - \$75.00
- Western Sports Coats - Reg. \$150.00 - Were \$119.98 - NOW \$99.98
- Blanket Lined Roper Jackets..... \$69.98
- Blanket Design Jackets..... \$59.98
- Quilted Holofil Jackets..... \$69.98

Montana Ice Hurricane Wash Wranglers
Reg. \$29.98 - NOW \$19.98

All Kids Boots Roper & Cowboy
Sizes 8 1/2 - 6
\$10.00 OFF
Acme & Durango

Levi Hopsack Jeans
Reg. \$23.98
NOW \$14.98

CLOSEOUTS
All Mens Lee Jeans \$14.98
Group of Mens Western Shirts \$12.98
Limited Sizes

GREAT LOOKING LADIES WESTERN KNIT TOPS



Christmas Sale

Rocky Mountain Jeans
Entire Stock - \$10⁰⁰ OFF

Lace-Up Ropers
by
Tony Lama and Diamond J
NOW - \$69⁹⁸

Rocky Mountain and Banjo Blouses
NOW - \$5⁰⁰ OFF

Justin Ropers
by
Diamond J
\$64⁹⁸

FREE
Christmas Wrapping

Fishing Outdoors

by Terry L. Wilson

"MOUNTAIN LION REPORTS INCREASING"

Winter seems to be here folks, and area lakes water temperatures are low. But this doesn't mean the fishing will be all poor. As normal we can look for the bass bites to come a little deeper and be a lot lighter. These fish will feed during winter but prefer an easier meal. One that they don't have to use much energy to catch. Most anglers choose a jig with pork which is an excellent choice. But these early freezes put the shad die off in full swing. Anglers can capitalize on this using jigging spoons Johnson Silver minnows, Rat-Z-Traps and leaded crank baits. All of these can be worked at different depths which will allow you to get below the balls of shad.

To minimize your search head for the north or northeast side of the lake. Fish may not be on the bank but should be setting out in good numbers in 7 feet of water or more. A slow presentation with whatever bait you choose will increase your bites. And be sure to really watch your line close, because there won't be a good thump most of the time. I have along with many other anglers began using Berkley's XT Solar Line to increase my above water visibility. Don't let the color of this high visibility line scare you folks it goes almost invisible even in the show tanks at our Boat & R.V. Shows.

Next cast I will try to have a few winter tournaments listed for those of us with cabin fever.

Reports of mountain lion sightings in Texas appear to be on the increase with the Texas Parks and Wildlife Department's nongame resources program receiving several calls during October and November.

Calls have come from remote areas of western Travis County and near Dripping Springs and Hamilton Pool in Hays County. A deer hunter recently harvested a 7-foot, 9 inch mountain lion in the Pineywoods of East

Texas. Reports of mountain lions, also called cougars, also have increased in South Texas.

Much of Texas, with abundant deer populations in large, unoccupied areas coupled with cover and water, provides potentially good lion habitat. Most people will never see this wide-ranging secretive cat, but some citizens residing in these remote areas of the state might.

Under most circumstances, mountain lions do not frequent areas with a great deal of human activity. However, since wild animals are known to be unpredictable, it is recommended that humans living near lion habitat alert themselves to certain behavior, which could minimize the likelihood of injury.

While in mountain lion habitat, travel in groups and make enough noise to avoid surprising the animal. A sturdy walking stick can be used to ward off an oncoming lion. Keep children close to you at all times. Never approach a mountain lion.

If you run across a lion some suggestions include: stay calm (use a confident, but calm voice); pick all children up off the ground immediately (a child's rapid movement when frightened may provoke an attack); do not run (try to back away from the lion slowly); face the lion and remain in an upright position; enlarge your image (do not crouch down or try to hide).

If a mountain lion behaves aggressively; arm yourself (grab a stick, throw rocks, speak louder and more firmly - convince the lion that you're not prey, but in fact area danger to it); fight back, but remain standing up.

Anyone reasonably sure they have seen a mountain lion, or anyone that has killed one, should report it immediately to the nearest TPWD office. You also may call the nongame resources program in Austin at 1-800-792-1112, ext. 4771, or (512)389-4771.

Terry L. Wilson

Gramm Announces REA Loan

U. S. Sen. Phil Gramm announced the award of a \$56,127,000 low-interest loan to Brazos Electric Power Cooperative Inc. in Waco.

The loan guarantee from the Federal Financing Bank is provided by the Rural Electrification Administration and will enable the company to upgrade its electric facilities.

Specifically, the funds will be used to construct new lines, substations and transmission projects and reimburse the company for previous construction costs.

"I believe in assuring that Texans get a fair return on the tax dollars we send to Washington," Gramm said. "So I am pleased that this loan will provide permanent improvements which will benefit rural Texans."

Brazos Electric Power Cooperative Inc. serves customers in Walker, Grayson, Brazos, Ellis, Freestone, Grimes, Hill, Hood, Johnson, Leon, Limestone, Navarro, Robertson, Madison, Bell, Bosque, Brown, Coryell, Falls, Hamilton, Lam-

pasas, Milam, McLennan, Mills, San Saba and Archer counties.

Also, Baylor, Foard, Knox, Wilbarger, Clay, Childress, Cottle, Dickens, Hall, Hardemann, Kent, Motley, Burleson, Waller, Callahan, Haskell, Comanche, Eastland, Erath, Jack, Montague, Garza, Palo Pinto, Parker, Somervell, Stephens, Shackelford, Stonewall, Throckmorton, Wise, Young, Crosby, King, Denton, Collin, Cooke, Dallas, Williamson, Montgomery and Tarrant counties.

REA operates both electrification and telephone service programs and has provided low-interest loans and loan guarantees to small companies and cooperatives for over 50 years. The agency was authorized by Congress to carry out a special rural loans and grants program to promote economic development and job creation.

Cisco Press - Eastland
Telegram - Ranger Times -
Rising Star Star - Callahan
County Star

Thursday,
December 5, 1991

Weekly Specials Pull Shoppers Into Stores

The kind of shopper grocery stores love scans the Sunday and Wednesday ads looking for specials on the foods her family likes.

Then she goes to the store - determined to buy only the sale items.

"But every time I go to the store for something on special, I buy something else," she says. "Sometimes I spend \$18. Sometimes \$20 or \$25."

She is, in industry lingo, a cross-shopper and impulse buyer, the kind grocery marketing people hope will respond to their ads. Grocers use these and other terms to describe their shoppers' buying habits.

Cross-shoppers, say grocery marketing experts, go to different stores. Impulse buyers,

enticed by low prices or mouth-watering displays, go home with items they hadn't planned to buy.

And newspaper specials are designed to bring shoppers into stores.

"Of course, specials are lures," says an international retail consulting firm. "Supermarket strategy is to offer a product below or at cost to drive traffic into the store. The obvious motive is the hope that consumers will impulse purchase other items of a higher (profit) margin - and maybe even switch stores."

Switching stores is a crucial issue right now for grocers who are struggling to keep their market shares in this hotly competitive market.

Special Treatment
Advertised specials are

at the center of the fray. The fact that turkey ads began showing up 15 days before Thanksgiving - the key food holiday - shows the intensity in the marketplace. Usually, the turkey ads appear less than two weeks before the holiday.

"This market is driven by weekly specials," says the president of Minyard Food Stores Inc. "And it's amazing what kind of lures you're seeing right now."

This year, the lures included free or cheap turkeys with a minimum purchase.

Grocers say this isn't "specials war," but to some astute shoppers, that's what it appears to be.

"Look at the price of toilet paper or coffee or meat," says special shoppers. "When one store comes down 30 percent on the price of a product and next week another

store comes down 40 percent, it looks like a war to me."

One shopper looks at grocery ads and sometimes will shop several times during the week to buy sale items. She is the grocery store anathema, the "cherry picker" who can walk out of a store without additional purchases unless a minimum is required.

What pulls her and other shoppers into the stores?

What Shoppers Want

As shoppers plan for holidays, traditional foods such as turkey, ham, sweet potatoes, beans, cranberries, pumpkin, baking supplies and nuts are ad stars.

Popular special items at other times of the year include round steak, brisket, bath tissue, frozen dinners, bread, ground beef, coffee, sugar, whole fryers, bananas, milk and diapers.

September Daily Crude Production Average Down

Texas crude oil production averaged 1,709,223 barrels daily in September, according to preliminary figures released by Railroad Commission Chairman Lena Guerrero. September 1990 preliminary production was 1,731,603 barrels daily.

This figure compares with preliminary August production of 1,729,945 barrels daily. Final production reports for August indicated average production at 1,747,771 barrels daily.

The preliminary Texas

oil production figure for September is 51,276,689 barrels, down from 53,646,328 barrels in August. September 1990 preliminary Texas oil production figure was 51,948,098 barrels.

Guerrero said the state's top producing counties, rank ordered by preliminary September production, were: Gaines, 3,426,958 barrels; Andrews, 2,866,738 barrels; Ector, 2,856,863 barrels; Yoakum, 2,647,260 barrels; Hockley, 2,445,796 barrels; Gregg, 2,388,240 barrels; Pecos, 1,903,000 barrels; Crane, 1,443,057 barrels; Scurry, 1,018,124 barrels; and Burleson, 1,008,852 barrels.

Total crude oil production in Eastland County for September was listed at 66,908.

Lingerie Factory Outlet

SAVE 40% - 70%

For all your lingerie needs...

- Panties
- Gowns
- Robes
- Slips
- Camisoles
- Beach Cover-Ups
- Terry Robes
- Pajamas
- Teddies



Lacy Lady

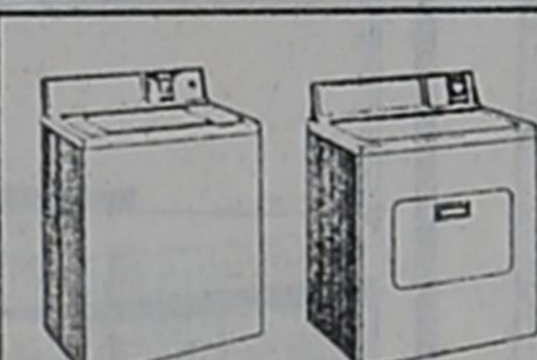
Exit 330, I-20 Cisco
(817) 442-3627

Portable T.V.'s Bank Beds Refrigerators

Color Vision INC.

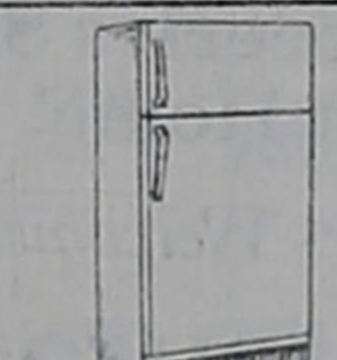
957 E. Main, Eastland

629-1632



Washers & Dryers
\$17⁹⁹ wk

Come by and see our New Inventory also save on our pre-rented items.



Refrigerators
Starting at \$15⁹⁹ wk

Consoles, T.V.'s
Starting at \$15⁹⁹ wk

Stereos 100 Watt
Starting at \$19⁹⁹

Free Delivery
No-Credit
Check

RENT TO OWN

Free Service
Early Pay-Off
Plan

Living Room Suites Bedroom Suites

Rust Processing & Country Meats

New Ownership
Keith and Stacy Reich
Backed by
Elmer and Dorece Rust

Open Weekdays 8:00-5:30; Sat. 9-2

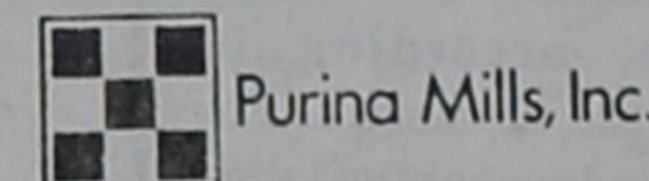
- Custom processing • All Cuts of Beef & Pork •
- Fresh Lunch Meat & Cheese Sliced To Your Order •
- Fresh Ground Hamburger • Pork Sausage •
- Thanksgiving and Christmas Turkeys and Hams •

Turkey 11 lbs. \$13.95
Smoked Turkey 9 lbs. \$15.95
Gooch E-Z Slice Ham
10-15 lbs. \$2.89 a lb.

817-442-3495

We Accept Food Stamps

At Purina, Cattle Business Means Business.



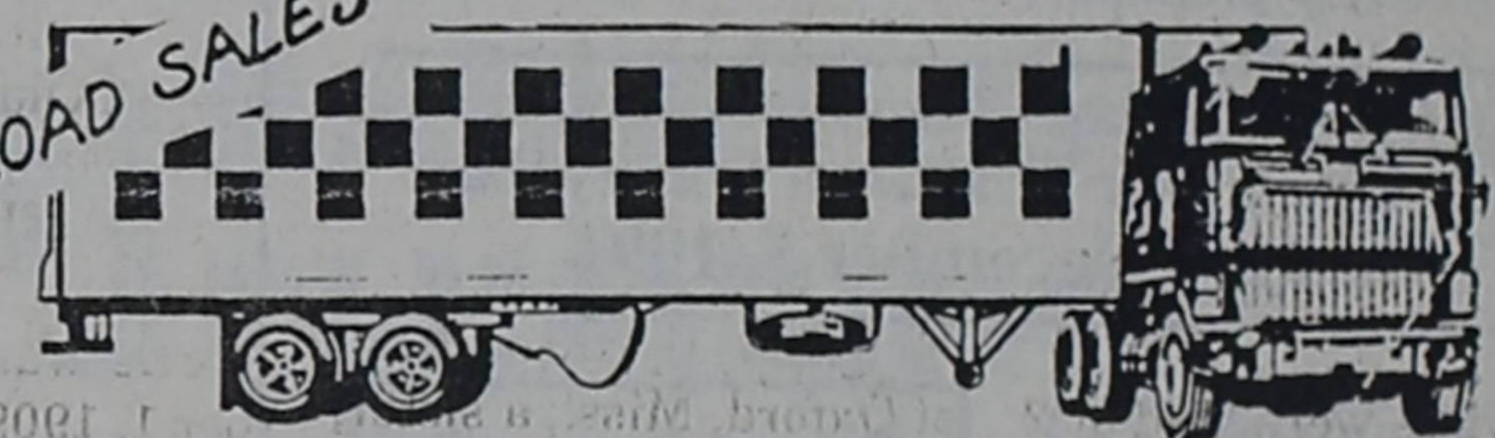
Call Us Today!

(915)
698-7045
or
691-9629

Savings on all

quality Purina products

TRUCKLOAD SALES



Lillie's Coffee Pot Ranger, Texas

Open all day Thursday, Nov. 28, 6 a.m. to 10 p.m.

Come join us, Thanksgiving Dinner served at 11 a.m. to 3 p.m. Ham or Turkey plus all the trimmings, includes salad bar, pumpkin pie and drink. Adult-\$5⁹⁵ Children under 12-\$3⁹⁵

Come in and see our newly remodeled dining room. Make your reservations today!

647-3171

THERE IS STILL A DIFFERENCE AT FOOD PLAZA

INSURANCE AVAILABLE

We are interested in hiring persons who possess the following qualities:

- Personal Integrity & Dependability.
- Willingness To Work & Contribute To A Progressive Organization.
- An Ability To Work In A Fast Paced Work Environment.
- An Outgoing Personality With An Eagerness To Serve The Public.
- Personal Schedule Flexibility.
- Personal Phone Number.
- High School Diploma or Equivalent.

If You Feel You Meet All Of These Criteria, Please Apply At:
The Former J & W Kwik Stop
I-20, Hwy 6
The New Food Plaza
(Drug Screening Required).

Fire Safety Can Save Holiday Spirit

'Tis the season to be jolly, so keep the holiday spirit uncharred this December by practicing fire safety at home and in the workplace.

On the average, a Christmas tree caught fire somewhere in Texas every day last December, and each fire caused about \$42,000 in property damage, according to State Fire Marshal Ernest A. Emerson. "During the holiday months of 1990, 32 residential fires related to Christmas trees caused 13 civilian injuries, two fire service injuries and property damage totalling \$1.4 million," he said. "Another 19 residential fires involved holiday decorations and caused property damage amounting to \$97,000. In business properties, there were six fires that caused damage of \$68,000."

Emerson warned consumers that natural Christmas trees are particularly dangerous. "All of the Christmas tree fires reported during holiday months in 1990 were natural products, not artificial trees," he said. Emerson urged Texans to prevent holiday tragedies by removing fire hazards commonly associated with Christmas trees and holiday decorations. According to statistics from the Texas Fire Incident Reporting System (TEXFIRS), the top four reported causes of holiday fires in 1990 were:

1. Electrical problems,

including short circuits or ground faults in cords, plugs, lights, switches and receptacles, which caused 18 fires.

2. Candles left unattended or used too close to trees or decorations, which caused 11 fires.

3. Children playing with fire materials such as matches, candles, fireworks and lighters, which caused nine fires.

4. Placing Christmas trees too close to heat sources such as fireplaces, portable heating equipment, electric lamps and candles, which caused eight fires.

TEXFIRS is a standardized reporting system coordinated by the State Fire Marshal's Office through which 320 Texas fire departments report on fire incidents, causes, casualties and property loss.

Other fire hazards don't take a holiday during this season, according to TEXFIRS statistics. For example two persons died in Christmas Day 1990 fires. Also, on Christmas Eve and Christmas Day in 1990, fire departments responded to 30 cooking-related fires in residences, about 50 percent more than on average days.

The State Fire Marshal's Office recommends the following guidelines to reduce the risk of holiday fires:

- Keep your natural tree as fresh as possible. Buy early, when

trees are fresh. Don't buy trees with loose needles or brown spots. To keep the tree fresh, cut the base of the tree at a 45-degree angle, place the base in a bucket of water and keep outdoors until ready to decorate. After the tree indoors, keep the tree in a water-containing base. Check the water level every day to keep the tree well watered. Remove the tree promptly after the holiday or when it becomes dry.

- Never leave lighted candles unattended, especially with children in the home. Store matches and lighters out of the reach of children.

- Always turn off Christmas lights before leaving home or going to sleep. Never leave lights on when no one is at home.

- Keep your tree (natural or artificial), decorations and presents away from heat sources, such as fire-

places, candles, heaters and lamps.

- Carefully inspect light strings, cords, plugs and receptacles. Check for worn or frayed insulation and loose connections. If the item is damaged, throw it away.

- Don't overload electrical circuits or extension cords. Read and follow directions on cord labels regarding connecting light strings and extension cords.

- Use plastic holders for stringing lights. Avoid nailing through wires or wrapping wires around nails.

- Use only lights that have been laboratory tested. Check for UL or Factory Mutual labels.

- Remember general safety rules throughout the holiday season:

1. Check your smoke alarm each week. If you don't have a smoke alarm, buy and install one. (State law requires the installation of smoke alarms in

rental property.)
2. Keep all heating equipment at least three feet away from any combustible items, especially upholstered furniture, bedding, Christmas trees and decorations.

3. Be sure that smoking materials are extinguished completely and disposed of properly. This is especially important if holiday guests, most importantly those who have been drinking, have been smoking in your home.

The Office of the State Fire Marshal is a division of the Texas Commission on Fire Protection. The functions of the commission are to conduct fire investigations and fire safety inspections, license several fire safety related industries, gather information on fires in Texas, conduct fire safety information programs, oversee fire service training and education standards, and administer an emergency funding program for fire departments.

RANCH HOUSE RESTAURANT



We are taking orders to prepare your Holiday Meal. Turkey (10-12 lb.), Dressing, Homemade Rolls & Pies. Come by and place your order

607 E. I-20 Cisco 442-2855

Cisco Press - Eastland Telegram - Ranger Times - Rising Star - Callahan County Star
Thursday, December 5, 1991

AUCTION NOTICE
Due to icy roads our Dec. 1 Auction was postponed until Dec. 8 at 1:00 P.M.
COOK AUCTION SERVICE
Jasper Cook 9634
817-442-3154

MOBILE HOME TRANSPORTING
Complete Moves & Setups
Moving Throughout Texas
• Tie Downs
• Blocking & Leveling
* Licensed
* Bonded
* Insured
18 Years Experience
817-893-6753

Grandpaw's Tool Shed Rental

WINTER SPECIAL

CHAIN SAWS \$12⁰⁰ day

1304 E. Main Eastland
Travis Chapman 629-3363

A beary special offer from Hallmark!



Christmas boy or girl bear only \$3⁹⁹ with any \$5⁰⁰ Hallmark purchase.

While supplies last.

Heather's Hallmark
Hwy 80 E., Eastland 629-3521

Home of the Lobo Burger!
The Best Groceries Since You Left Home!
Call In Orders Welcomed
R.D.'s Restaurant
901 Conrad Hilton Cisco, TX 442-4425
Open Mon.-Fri. 9 a.m. - 8 p.m.
Sat. 9 a.m. - 5 p.m.
Daily Plate Lunch Specials
Evening Supper Specials
Use this ad to register for FREE Turkey!

DRAWING DEC 23

Rompers • Bullfrog Fashions • L.A. Gear Sweatshirts

KIDS COUNTRY

201 S. Lamar (Inside J & J Building)
Hours: Mon.-Fri. 9:00-11:30; 12:30-6:00; Sat. 9:00-2:00

WE'VE GOT IT!
Boys & Girls Clothing - Sizes Newborn to size 14

Mickey & Minnie Mouse Duffle Bags & Purses
Ninja Turtle Stocking Stuffers

EVERYTHING IS ON SALE 10-50% OFF

Special selection of sleepwear arriving daily including:
Boys pajamas & girls lacy gowns & gown sets.

Free Gift Wrap

Leggings • Capri Tights • Dance Wear

The Earth Stove Sale Price \$1299⁰⁰ w/this ad



BayView®
Model BV400C Features
• EPA Certified
• Catalytic
• Gold Plated etched side glass
• Large Gold Plated glass door
• 500 CFM variable speed blower
• Catalytic Temperature Probe
• Auto fan with manual override
• Built in flue by-pass damper
• Zero clearance fireplace approval
* Accepts up to 24" log

E.D.C.O.
817-559-2273
FM 3099 #204 Breckenridge, TX

Installation Available

Other models to choose from

D. J.'s Firewood Service
Custom Cut
Delivered & Stacked
Cut any size 12" to 24"
\$1 a mile after 10 mile radius.
\$70⁰⁰ Cord
\$40⁰⁰ Rick
Call: 817-629-2805
Oak - Mesquite
Also: Tree Trimming and Removal

EASTLAND GREAT TIMES
I-20 Access, Eastland 629-3921

Call anytime for private or birthday parties

Skating Lessons, Group Rates

Tuesday & Thursday Matinee 3:30 to 5:30 For After School

Family Night Thursdays 7-9 p.m.

Christian Fellowships Tues. 7-9 p.m. \$2.75

Enlarged, wood floor rink - new games

Fun & Games • Skating • Raquetball

FAMILY DOLLAR
Family Dollar Stores, Inc.
1002 Conrad Hilton Ave. Cisco, TX
1,790 Discount Stores and Growing

Christmas Layaway Special \$1 Down

WAC Comm state r ing de convey county

Bible Ans By Dr. M

QUEST Kings, cl verse 19 Elisha w twelve yo yoke mea means h pulling h kind of j have in tl ANSV that it al: with the oxen). A means, h plowing a front of) lowed wit and pair: he stayed keep an e The An correct; this pas "...whos being do of oxen, twelfh. A pair: could eas of those usually frame wi share at plowma holding wooden wooden; the neck and was plow. So to have: of the tre the hard branch guiding The n the acc that he ous, har the only can end being preache and tha God ma leave ev Elijah a his plac (HAV QUEST DR. M. BOX 2 76437). REA CLA

QUEST Kings, cl verse 19 Elisha w twelve yo yoke mea means h pulling h kind of j have in tl ANSV that it al: with the oxen). A means, h plowing a front of) lowed wit and pair: he stayed keep an e The An correct; this pas "...whos being do of oxen, twelfh. A pair: could eas of those usually frame wi share at plowma holding wooden wooden; the neck and was plow. So to have: of the tre the hard branch guiding The n the acc that he ous, har the only can end being preache and tha God ma leave ev Elijah a his plac (HAV QUEST DR. M. BOX 2 76437). REA CLA

QUEST Kings, cl verse 19 Elisha w twelve yo yoke mea means h pulling h kind of j have in tl ANSV that it al: with the oxen). A means, h plowing a front of) lowed wit and pair: he stayed keep an e The An correct; this pas "...whos being do of oxen, twelfh. A pair: could eas of those usually frame wi share at plowma holding wooden wooden; the neck and was plow. So to have: of the tre the hard branch guiding The n the acc that he ous, har the only can end being preache and tha God ma leave ev Elijah a his plac (HAV QUEST DR. M. BOX 2 76437). REA CLA

QUEST Kings, cl verse 19 Elisha w twelve yo yoke mea means h pulling h kind of j have in tl ANSV that it al: with the oxen). A means, h plowing a front of) lowed wit and pair: he stayed keep an e The An correct; this pas "...whos being do of oxen, twelfh. A pair: could eas of those usually frame wi share at plowma holding wooden wooden; the neck and was plow. So to have: of the tre the hard branch guiding The n the acc that he ous, har the only can end being preache and tha God ma leave ev Elijah a his plac (HAV QUEST DR. M. BOX 2 76437). REA CLA

QUEST Kings, cl verse 19 Elisha w twelve yo yoke mea means h pulling h kind of j have in tl ANSV that it al: with the oxen). A means, h plowing a front of) lowed wit and pair: he stayed keep an e The An correct; this pas "...whos being do of oxen, twelfh. A pair: could eas of those usually frame wi share at plowma holding wooden wooden; the neck and was plow. So to have: of the tre the hard branch guiding The n the acc that he ous, har the only can end being preache and tha God ma leave ev Elijah a his plac (HAV QUEST DR. M. BOX 2 76437). REA CLA

QUEST Kings, cl verse 19 Elisha w twelve yo yoke mea means h pulling h kind of j have in tl ANSV that it al: with the oxen). A means, h plowing a front of) lowed wit and pair: he stayed keep an e The An correct; this pas "...whos being do of oxen, twelfh. A pair: could eas of those usually frame wi share at plowma holding wooden wooden; the neck and was plow. So to have: of the tre the hard branch guiding The n the acc that he ous, har the only can end being preache and tha God ma leave ev Elijah a his plac (HAV QUEST DR. M. BOX 2 76437). REA CLA

QUEST Kings, cl verse 19 Elisha w twelve yo yoke mea means h pulling h kind of j have in tl ANSV that it al: with the oxen). A means, h plowing a front of) lowed wit and pair: he stayed keep an e The An correct; this pas "...whos being do of oxen, twelfh. A pair: could eas of those usually frame wi share at plowma holding wooden wooden; the neck and was plow. So to have: of the tre the hard branch guiding The n the acc that he ous, har the only can end being preache and tha God ma leave ev Elijah a his plac (HAV QUEST DR. M. BOX 2 76437). REA CLA



WACO — The 41-member Texas Farm Bureau Resolutions Committee met here this past week to edit and consolidate state resolutions and national recommendations for the voting delegates to consider Dec. 3-4 at the 58th annual TFB convention in Lubbock. The Resolutions were submitted by county FBs.

Shown in the photo are the state and county FB leaders who served on the committee.

Front row, l-r: TFB Vice President Don Smith, Sulphur Springs; the committee chairman; State directors Aubery Rasor, Gruver, committee secretary; C. H. Dowdy, Wichita Falls; Leo C. Williams, Ranger; Russ Arnold, Trinity; Bob Stallman, Columbus, committee vice chairman; and David Krebs, Portland; and Steve Moore, Roscoe, the state Young Farmer & Rancher Committee chairman.

Second row, l-r: Harold Dean Morton, Dumas; Robert L. Jackson, Adrian; Earl Foerster, Slaton; Beth Clements, Leveland; Aaron J. Hinsley, Crowell; Q. Richards, Paducah; Frank Commiato, Jr., Kerens; and B. W. Steele, Glen Rose.

Third row, l-r: Eddy Finnell, Gilmer; James Miller, Sulphur Springs; Thomas Peters, Cooper; David Robbins, Fort Stockton; Robert Brown, Tennyson; John David McClure, Graford; Maarten X. Cromer, San Saba; and Anna Belle Madson, Moody.

Fourth row, l-r: Richard Cortese, Temple; James Eddy, Lampasas; James L. Smith, Beaumont; Felix Parmley, Nacogdoches; Anton Haner, Tarpley; Mike Whitwell, Cotulla; and John Earl Smith, Quemado.

Top row, l-r: Barney A. Eilers, Carmine; Keith Johnson, Victoria; Obert Sagebiel, Cuero; Ronald Starry, Edna; Mark Riser, George West; and Dennis Goldsberry, Donna.

SWINDLERS ARE CALLING



Don't be fooled by appearances! Ask questions and confirm the information before you spend any money.

For a free copy of the brochure, Swindlers are Calling, call 800-621-3570, or 800-572-9400 (in Illinois)

REMEMBER PEARL HARBOR



December 7, 1941

Eastland Telegram, Ranger Times, Cisco Press, Rising Star, Callahan County Star Thursday, December 5, 1991

Read The Classifieds

Bible Questions Answered
By Dr. M.H. Clark

QUESTION: "In First Kings, chapter 19 and verse 19, it says that Elisha was plowing with twelve yoke of oxen. If a yoke means a pair, that means he had 24 oxen pulling his plow. What kind of plows did they have in those days?"

ANSWER: Observe that it also adds, "and he with the twelfth (yoke of oxen)." As a man of some means, he had servants plowing along "before" (in front of) him, and he followed with the 12th yoke and pair of oxen. No doubt he stayed behind so as to keep an eye on their work.

The Amplified Bible has correctly paraphrased this passage this way: "...whose plowing was being done by twelve yoke of oxen, and he drove the twelfth."

A pair of big strong oxen could easily pull the plows of those days. The plow usually had a wooden frame with an iron plowshare attached to it. The plowman guided it by holding on to the single wooden handle. A heavy wooden yoke went across the necks of the two oxen and was fastened to the plow. Some were able only to have a pointed branch of the tree to plow through the hard ground, the other branch serving as the guiding handle.

The main point about the account of Elisha is that he was an industrious, hard-working man, the only kind of man who can endure the rigors of being a prophet or preacher of God's Word, and that his devotion to God made him willing to leave everything to follow Elijah and prepare to take his place.

(HAVE A BIBLE QUESTION? WRITE TO: DR. M.H. CLARK, P.O. BOX 222, CISCO, TX 76437).

READ THE CLASSIFIEDS

Come in and celebrate
Christmas with
Poe Floral
Poinsettias
Fresh Christmas Garland
Silk and Fresh Christmas Wreaths
Silk Arrangements

609 W. Main Eastland 629-1711

Survival chances for heart attack victims

Only 5% of heart attack victims treated by emergency medical services survive.

60% of heart attack victims can be saved if treated quickly, according to American Heart Association

Heart attack is the leading cause of death in the U.S.

About 1.5 million Americans will suffer heart attacks this year; 550,000 will die; 350,000 will die before reaching a hospital

485,000 emergency medical technicians in U.S., one for every 476 people

What is CPR

Mouth-to-mouth breathing and chest compression; if someone you know has a heart attack, call medical rescue service immediately; administer CPR, if trained



SOURCE: American Heart Association

The Earth Stove

Stoves & Inserts
Prices starting at
\$399⁰⁰

Model 1003CL Features
* EPA Certified
* Long burning catalytic
* Built in flue by-pass damper
* Gold plated glass door
* Accepts up to 18" log
* Optional blower system

EPA Certified

Installation Available

Other models to choose from

E.D.C.O.
817-559-2273
FM 3099 #204
Breckenridge, TX

Cut your corporate travel costs and increase your lodging value.

AMERISUITES

AMERICA'S • AFFORDABLE • ALL-SUITE • HOTEL

WHY SETTLE FOR JUST A ROOM!

Amarillo	\$42
(1-40 East of Coulter)	
San Antonio-North	\$45
(1-10 at Fredericksburg)	
San Antonio-Airport	\$51
(281 North at Airport)	
El Paso	\$51
(1-10 and Lomaland Drive)	
Irving	\$51
(Airport Freeway and Esters Rd.)	

PLUS
Earn **\$50.00** savings bond when you join AmeriClub, our frequent guest club, and stay 10 times.

Additional benefits include:

FREE!
CONTINENTAL BREAKFAST BUFFET • AIRPORT TRANSPORTATION AT MOST LOCATIONS
MORNING NEWSPAPER • COURTYARD SWIMMING POOL AND SPA

RESERVATIONS
TOLL FREE: 1-800-255-1755
(ask for schedule 6 program)
Bring this ad for immediate member benefits.
Rates based on single occupancy and do not include tax.

...and think about helping the American Cancer Society get people on the Road to Recovery, as a volunteer driver. Even if you can't stop for long. Call your local American Cancer Society office for details.

1-800-ACS-2345

AMERICAN CANCER SOCIETY TEXAS DIVISION, INC.

RANDY GATTIS PLUMBING

Residential & Commercial Repairs
Remodeling & New Construction
Electric Sewer & Sink Cleaning Machines
Water Heaters & Plumbing Fixtures
State Licensed - Master License - M-18038

Free Estimates
Call: 442-1688 24 hrs/day
106 Ave. I Cisco, Texas

DON'T OVERLOOK YOUR INSURANCE NEEDS

Serving Eastland County Since 1919

CONTACT
D.L. KINNAIRD
GENERAL INSURANCE

629-2544 104 N. Lamar 629-8606
Sallie Kinnaird Mike Perry

Give A Gift that will be enjoyed all year...

\$89⁰⁰*

Novatel 3100 Series TRANSPORTABLE

*Requires NEW Southwestern Bell Mobile Systems phone activation. Basic, Corporate or Association rate plans. Some restrictions may apply. Local Eastland No. Available (629-2995)

- 911 Emergency Dialing
- Automatic Call Re-dial
- Triple Electronic Lock
- Missed Call Counter
- Call Timer
- 3 year Warranty

CSSI
1-800-588-2774

WIDE AREA PAGING

An Authorized Agent Of

When It Comes To Christmas Candy, Mrs. Davies Cooks At Thistle Hill

In Texas, when it comes to country music, Bob Willis is still the king. But when it comes to cooking candy at Christmas, that holiday happening has another monarch -

Martha Davies of Dallas. The irony is that Mrs. Davies does her Christmas candy cooking in Fort Worth at the city's historic Thistle Hill, 1509 Pennsylvania Avenue.

And she'll be in the kitchen there from 10 a.m. until 4:00 p.m. every day of the Texas Heritage's holiday tour and open house, December 6-15. "This year's Christmas open house theme is 'Electra's Edwardian Christmas,'" said Mrs. Davies recently. "Thistle Hill, one of the last remaining residences of the

wealthy cattle barons who made this city's Silk Stocking Row famous, will be completely decorated as we think Electra Waggoner Wharton, the first owner, might have decorated it when she lived here."

While an expected 6,000 plus guests from across Texas leisurely tour this annual Christmas gift to the public, the tantalizing odor of cinnamon and chocolate will tempt them to abandon all hope of dieting.

"Calories consumed during Christmas don't count," reminds Mrs. Davies. That's good news. Even better is the news that the two kinds of still-warm fudge and the homemade cinnamon rolls - good enough to die for and all baked right on the premises that day - will be for sale in the docent's pantry.

During the 10 days of the annual Thistle Hill holiday tour Mrs. Davies bakes approximately 16 dozen cinnamon rolls and stirs up 16 pounds of fudge - every day.

"That's a lot of mixing and stirring," she agreed. "Thank goodness for food processors."

Mrs. Davies first fell in love with Thistle Hill six years ago when she visited the mansion during an annual flower show. It was love at first visit and even though she and her husband have moved to Dallas, where they are renovating a 64-year-old home, she drives back and forth to discharge her docent responsibilities at Thistle Hill.

The recipes for the cinnamon rolls and White Christmas Fudge she's preparing during the Christmas tour are found in the Thistle Hill Cookbook, "Recipes Stenciled in Time." The cookbook was published during the year Mrs. Davies was president of the Thistle Hill docents and several of the published recipes are from her own kitchen.

The other fudge recipe on sale at Thistle Hill during the tour is Fantasy Fudge, aka Mamie Eisenhower Fudge, and several other names. This recipe is found on the label of the marshmallow creme jar.

"When we first began making fudge available during the Christmas open house, I thought the fact that so many people have the Fantasy Fudge recipe would hamper sales," Mrs. Davies said. "I was wrong. Both of the fudges we make are very popular items."

The White Christmas Fudge recipe came from Mrs. Davies' Minnesota grandmother. "But I must tell you, I modernized it. The only thing I didn't change was the texture and the fabulous taste," she said.

Guests attending this year's sixth annual open house will be able to visit

the historic mansion's third floor ballroom - open to the public for the first time in decades. But, the ballroom and the tasty goodies are just part of the excitement.

Fifteen Christmas trees, glittering with exotic decorations, will be on display to provide beauty and clever ideas for home holiday decorating.

Each tree will be decorated to match its setting. Two seven-and-a-half-foot-tall trees will be on the newel posts on either side of the mansion's entrance hall stairs. Ten more trees will surround a fountain in the solarium. The parlor will feature an unusual feather tree, decorated with feathers and Edwardian-style ornaments of the period. The upstairs living room will contain a tree decorated with peacock feathers and ornaments.

In addition to the Christmas trees, guests may view a variety of antique collections, loaned by private collectors, and displayed throughout the mansion.

"Children will particularly enjoy seeing the three-story Victorian dollhouse, donated to Thistle Hill by Deborah Moncrief," said Davies. "The dollhouse is authentically furnished and has a circular staircase. It will also be decorated for Christmas."

Hours for the Christmas open house in the historic Fort Worth landmark are from 10 a.m. to 4 p.m., weekdays, and from 1 to 4 p.m., on Sundays. On Friday and Saturdays, December 13-14, Thistle Hill also will be open from 6 to 9 p.m.

Admission is \$7 for adults, \$2 for children under 12. Tickets are available at the door. Groups are welcome. For additional information, please call (817) 366-1212.

"We're inviting people from across Texas to come to Fort Worth for a day, or for a weekend," said Mrs. Davies. "We hope large and small groups will plan shopping and sight-seeing trips here. Thistle Hill's annual Christmas open house is a project of Texas Heritage, Inc., and proceeds from the tour pay for the continued renovation and upkeep of Thistle Hill."

For those unfortunates

unable to visit Fort Worth for this year's holiday tour, and an opportunity to buy their own fudge or cinnamon rolls, Mrs. Davies offers these recipes for White Christmas Fudge and for Thistle Hill Cinnamon Rolls.

White Christmas Fudge

3 cups sugar
1/2 lb. Brazil nuts
1 1/2 sticks margarine
1/2 lb. pecans
1 5 1/3-oz. evaporated milk
1/2 lb. walnuts
1 7-oz. jar marshmallow creme
1/4 lb. candied red cherries
1 1/2 teaspoon vanilla flavoring
1/4 lb. candied green cherries

Chop nuts coarsely. Halve red and green cherries. Butter a 9x13" shallow pan. Combine sugar, margarine and evaporated milk in a large kettle. Stir over medium heat until smooth and melted. Bring to a boil, and cook 5 minutes, stirring constantly or until candy thermometer registers 238 degrees (soft ball stage). Remove from heat and quickly stir in marshmallow creme. Add vanilla, and all the nuts and cherries. Stir well; mixture will be stiff. Press into prepared pan and cool. When cool, cut into small squares. Makes 3 pounds.

Thistle Hill Cinnamon Rolls
Rapid mix cool rise white

1 tablespoon salt
bread to make 2 loaves
3 pkgs. active yeast
6 to 7 cups flour
1/4 cup melted margarine
4 tablespoons sugar
2 cups very warm water (120 to 130 degrees)
1 1/2 cups powdered sugar

Use mixer with dough hook. Put 1/2 cups flour, sugar, salt and yeast in bowl. Add margarine and water. Attach dough hook and mix (knead) at speed two for 15 minutes. Let rise until doubled in bulk. Roll bread dough into rectangle, drizzle with 1/2 cup melted margarine. Mix 1 1/2 cups powdered

sugar and 1 tablespoon cinnamon. Sprinkle this over dough. Add nuts and raisins if desired. Roll jellyroll fashion. Slice and let rise until double in bulk. Bake at 350 degrees for 20 to 25 minutes.

Read The Classifieds

TAKE A MOMENT TO THINK ABOUT BREAST CANCER.

Approximately one in every nine women will develop breast cancer in her lifetime. Learn the facts about a disease that touches all our lives. For further information regarding early detection, call (800) 221-2141 weekdays, 9:00 a.m. - 5:00 p.m. (central time zone).

Y-ME
National Breast Cancer Hotline

Cisco Press - Eastland Telegram - Ranger Times - Rising Star - Callahan County Star
Thursday, December 5, 1991

817/629-3631 OPEN 8:00 - 5:30 SAT. 8:00 - 12:30

EXPRESS PHOTO
SAME DAY PHOTO PROCESSING
COLOR, BLACK & WHITE, PHOTO REPRODUCTION

601 W. Main

BILL CULVERHOUSE, OWNER

Wedding Sports Studio Pictures Passports I D Cards Immigration pictures

Serving all your photographic needs



Something Special
Open M-S 10:00-5:30

New Shipments Arriving Daily For Your Christmas Shopping

Gift Certificates Free Home Delivery For Christmas

Just Arrived

Broom Skirts Sweaters • Jewelry Christmas Knit Wear • Candies String Jackets • Knit Suits P. Jammies in a Jar • Hair Twistees Custom Wood Entertainment Center Stocking Stuffers Potpourri • Gift Baskets

115 W. Main Eastland 629-8030

UP TO AN ADDITIONAL \$1400'S OFF THESE ALREADY LOW LOW PRICES**

PIERCE FORD DEMO SALE!

NOW TILL DEC. 31, 1991

1991 F150 Super Cab XLT Lariat A/T \$13,805* (MSRP \$18,643) Loaded! Plus Chrome Brush Guard & Chrome Bumper. Sik#2717	1992 Crown Victoria LX V-8, A/T \$18,603* (MSRP \$22,353) Loaded! Sik#2776
1991 Explorer XLT V-6, A/T \$17,847* (MSRP \$20,818) Loaded! Sik#2890	1991 Ranger XLT Supercab V-6, A/T \$13,273* (MSRP \$16,701) Loaded! Sik#2826

YOU MUST BRING THIS AD WITH YOU TO GET THESE DEALS!

442-1566

* Just add T, T, & L. prices are valid only if financed through dealership sources, and factory rebates & incentives assigned to dealer. Other advertised promotions not applicable to these sales prices.
** Subject to vehicle & individual buyer qualifications from Ford Motor Co.

UP TO AN ADDITIONAL \$1400'S OFF THESE ALREADY LOW LOW PRICES**

HAVE A REAL TREE CHRISTMAS

NOW - Renew the Tradition...

choose 'n cut your own special Christmas Tree

HAVE A REAL TREE CHRISTMAS

ENJOY THE EXPERIENCE!

RANGER: elders pine Crossroad Tree Farm Open 9-5 Mon. - Sat. 1-5 Sun. Tel. 647-3624, 3657	DE LEON: virginia pine Evergreen Acres Christmas Tree Farms Open 12-5 Mon. - Fri. 10-5 Sat. & Sun. Tel. 893-6085
DIRECTIONS: In Ranger, take Hwy. 80 E. to FM 571. Go 4 miles. Turn left on County road. HAYRIDES ON WEEKENDS Hal & Mary Walton	DIRECTIONS: In De Leon, turn north on McKinney from Hwy. 6. Follow signs. COFFEE & HOT CHOCOLATE Gerry & Kathy Enzerink

Live Potted Trees Available
MEMBERS TEXAS CHRISTMAS TREE GROWERS ASSOCIATION

Buddy Aaron
Managing General Agent
Grand Council

108 S. Seaman
P. O. Box 392
Eastland, Texas 76448
Business (817) 629-8533
Home (817) 629-1086

CONTACT BUDDY AARON ABOUT GUARANTEED ANNUITIES - SAME PRINCIPLE AS C.D. OR SAVINGS

Minimum \$5,000 to Maximum \$500,000.
Same Rate of 8.3% Annual and 8% Monthly on \$5,000 to \$500,000.

OUR CHRISTMAS CATALOG OFFERS EASY SHOPPING FOR YOUR BUSY HOLIDAY SEASON

With so much to do, and so little time as you get ready for the holidays, shopping Catalog could be one of your smartest ideas. Where else can you do all your Christmas shopping with just a toll-free phone call?

You'll also enjoy the convenience of fast, usually 2-3 day delivery, and if you like, we can deliver your order to any address in the US, or to any APO/FPO address. And you can charge your order to your JCPenney Charge, VISA, MasterCard or American Express.

CALL TOLL-FREE ANY TIME! 1-800-222-6161
or 629-2618

JCPenney Catalog
Fashion comes to life™

Shady Oaks Shopping Center - Eastland

Gaines Automotive
Hi Tech Care For Hi Tech Cars

Heater & A C Cooling System
Engine Tune • Complete Analysis

Hours: Mon.-Fri. 8:00 till 5:30 Sat. 8:00 till Noon
314 W. Main

State Inspection Station
Eastland

Owner Blake Gaines
629-1008

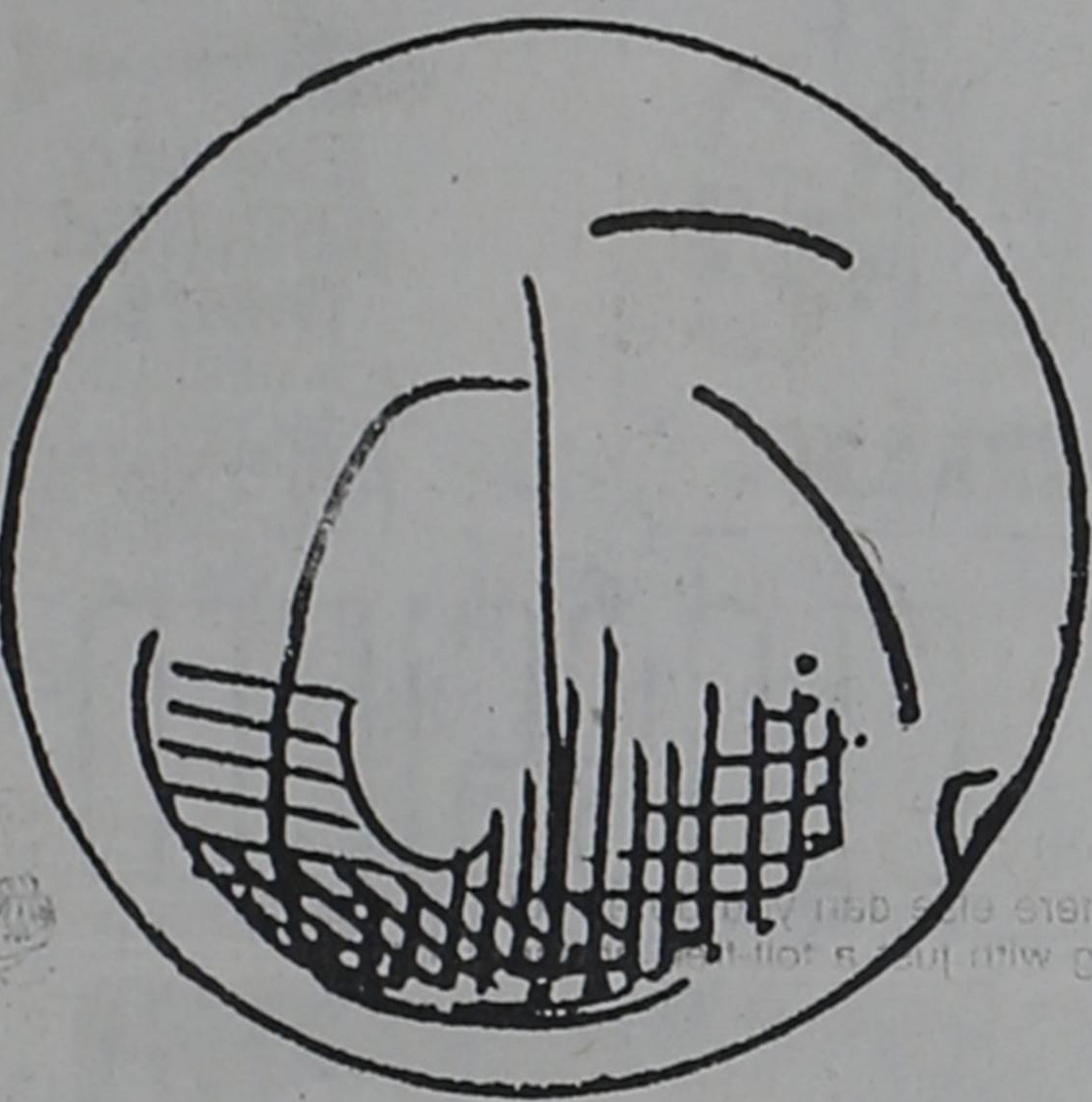
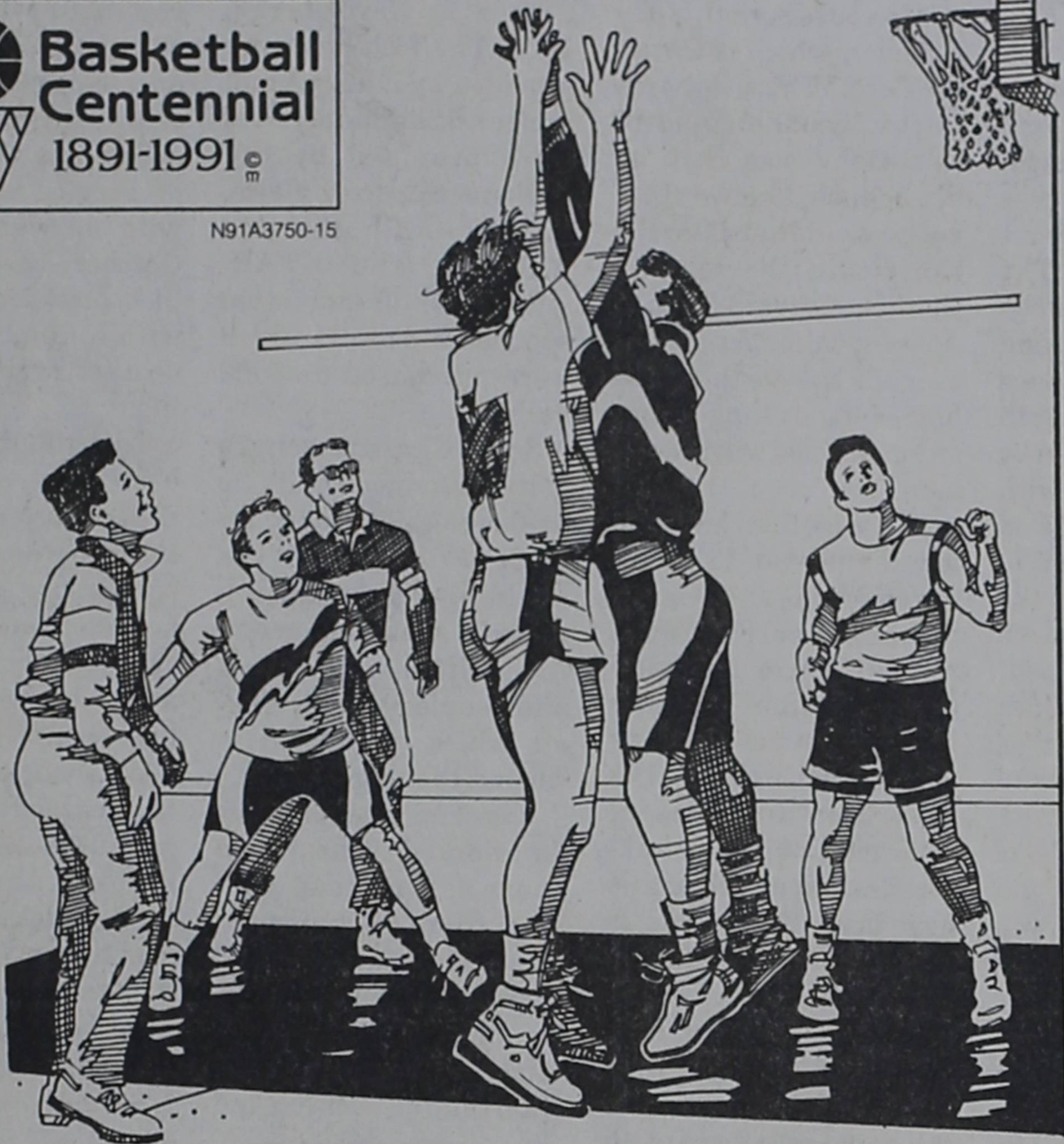
A-1 BUILDERS
Building & Remodeling

- ROOFING
- SIDING
- METAL BUILDINGS
- PLUMBING
- ELECTRICAL
- CONCRETE

Commercial * Residential
Jerry Maston • Owner 629-8148

BASKETBALL '91

Basketball Centennial
1891-1991



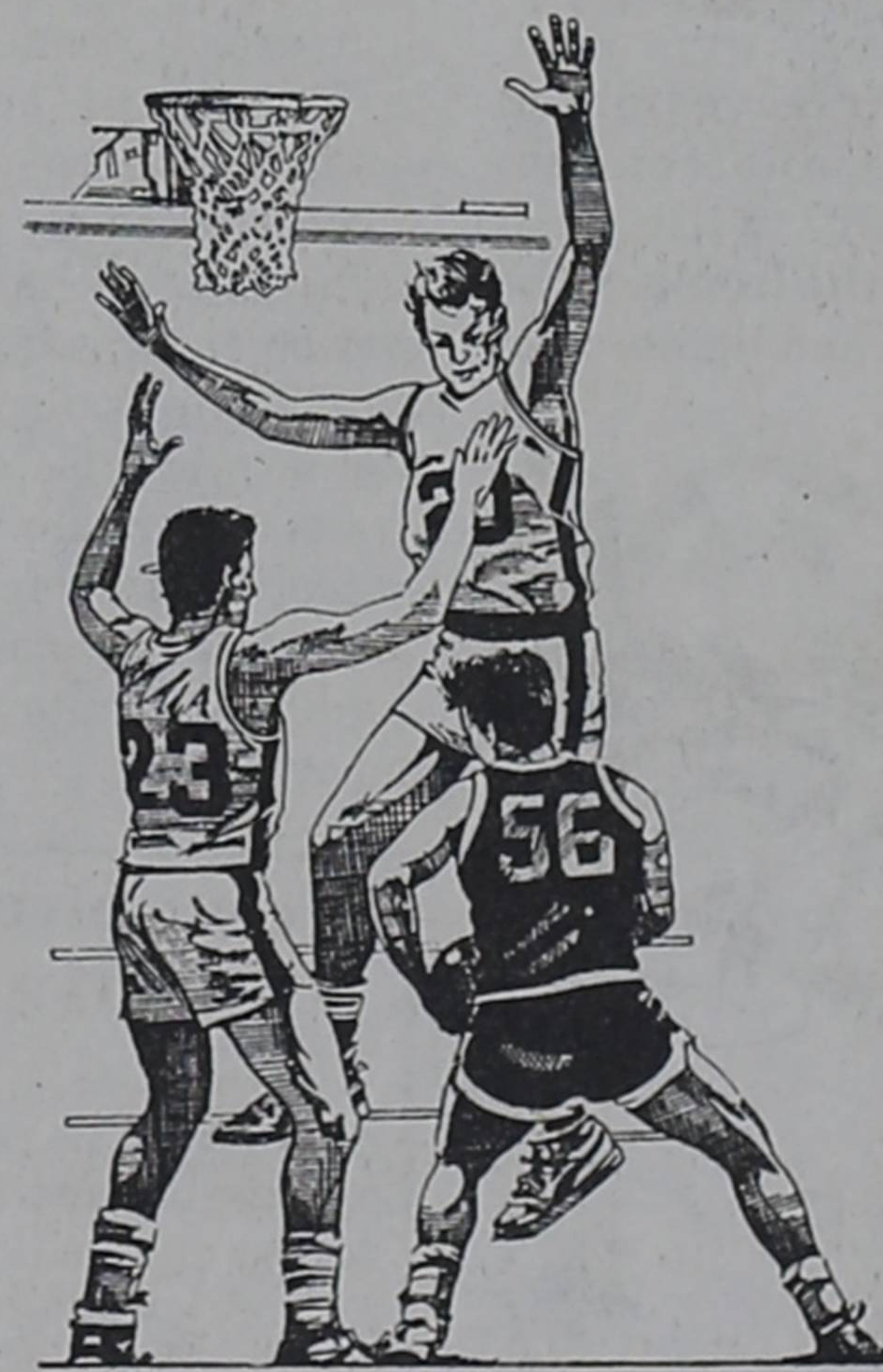
1991-92 RJHS BASKETBALL SCHEDULE

DATE	OPP	SITE	TIME
Nov. 18	Graford T		4:00
25	Graford H		4:00
Dec. 2	Eula T		4:00
9	Breckenridge H		5:00 Girls
9	Breckenridge T		5:00 Boys
16	Breckenridge T		5:00 Girls
16	Breckenridge H		5:00 Boys
Jan. 6	Eastland H		4:00
11	Eastland 7th Tournament		
13	DeLeon H		5:00 Girls
13	DeLeon T		5:00 Boys
20	Cisco H		5:00 Girls
20	Cisco T		5:00 Boys
25	Eastland 8th Tournament		
27	Eastland T		4:00
Feb. 3	DeLeon T		5:00 Girls
3	DeLeon H		5:00 Boys
10	Cisco T		5:00 Girls
10	Cisco H		5:00 Boys

RANGER HIGH SCHOOL BASKETBALL 1991-1992

DATE	OPP	SITE	TIME
Nov. 19	Hico T		5:00 VG, JVG
22	Baird T		4:00 VB/G, JVB/VG
23	Albany T		10:00 9th boys
25	Coleman T		6:00 9th boys
26	Tolar H		5:30 VB/G, JVB
Dec. 2	Coleman H		6:00 9th boys
3	Albany T		4:00 VB/G, JVB/VG
5-7	CJC Tournament		VB/G
9	Eastland T		6:30 9th girls
10	Albany H		4:00 VB/G, JVB/VG
12-14	Glen Rose Tournament		VB
12-14	Huckaby Tournament		VG, JVG
12 & 14	Gorman Tournament		JVB, 9th girls
17	Eastland T		6:00 VG, JVG
19-21	Eastland Tournament		VB/G
30	Merkel T		5:00 VB, JVB
Jan. 3	Coleman H		4:00 VB/G, JVB/VG
4	Albany H		10:00 9th boys
7	Bangs T		5:00 VB/G, JVB/VG
10	Cisco H		4:00 VB/G, JVB/VG
13	DeLeon T		after Jr. High 9th boys
13	DeLeon H		after Jr. High 9th girls
14	DeLeon H		4:00 VB/G, JVB/VG
17	Goldwaithe T		5:00 VB/G, JVB/VG
21	San Saba H		5:00 VB/G, JVG
24	Eastland H		4:00 VB/G, JVB/VG
25	Albany 9th Tournament		9th boys
27	Eastland H		6:30 9th girls
28	Coleman T		5:00 VB/G, JVB/VG
31	Bangs H		5:00 VB/G, JVB
Feb. 3	DeLeon H		after Jr. High 9th boys
3	DeLeon T		after Jr. High 9th girls
4	Cisco T		4:00 VB/G, JVB/VG
7	DeLeon T		4:00 VB/G, JVB/VG
11	Goldwaithe H		5:00 VB/G, JVG
14	San Saba T		5:00 VB/G, JVB
18	Eastland T		6:00 VB, JVB

1991-92 RANGER JUNIOR COLLEGE MEN'S BASKETBALL SCHEDULE
DATE DAY OPPONENT SITE TIME
Th-F-S Nov 28-29-30 Odessa Tour Odessa
Sat Dec 7 SWCC Ranger 8:00
Sat Jan 11 Collin Plano 8:00
Wed Jan 15 Temple Ranger 8:00
Sat Jan 18 Weatherford Weatherford 8:00
Wed Jan 22 Cisco Cisco 8:00
Sat Jan 25 Hill Ranger 8:00
Wed Jan 29 MCC Waco 8:00
Sat Feb 1 Grayson Ranger 8:00
Wed Feb 5 SWCC Terrell 8:00
Sat Feb 8 Collin Ranger 8:00
Wed Feb 12 Temple Temple 8:00
Sat Feb 15 Weatherford Ranger 8:00
Wed Feb 19 Cisco Ranger 8:00
Sat Feb 22 Hill Hillsboro 8:00
Wed Feb 26 MCC Ranger 8:00
Sat Feb 29 Grayson Sherman 8:00



1991-92 RANGER JUNIOR COLLEGE WOMEN'S BASKETBALL SCHEDULE
DATE DAY OPPONENT SITE TIME
Th-F-S Nov. 28-29-30 Odessa Odessa TBA
Sat Dec 7 SWCC Ranger 6:00
Wed Jan 15 Temple Ranger 6:00
Sat Jan 18 Weatherford Weatherford 6:00
Wed Jan 22 Cisco Cisco 6:00
Sat Jan 25 Hill Ranger 6:00
Wed Jan 29 MCC Waco 6:00
Sat Feb 1 Grayson Ranger 6:00
Wed Feb 5 SWCC Terrell 6:00
Wed Feb 12 Temple Temple 6:00
Sat Feb 15 Weatherford Ranger 6:00
Wed Feb 19 Cisco Ranger 6:00
Sat Feb 22 Hill Hillsboro 6:00
Wed Feb 26 MCC Ranger 6:00
Sat Feb 29 Grayson Sherman 6:00

BASKETBALL



BASKETBALL '91

BASKETBALL



Ranger Auction Company
Thomas Seay 434-2978
Jackie Gentry 647-3247

Adams Grocery & Market
114 N. Austin
647-1144

BOND TOWN
FM Rd. 2461
647-5200

G. E. Railcar Repair Service
NE of City
647-3223

Mathews Pharmacy
300 Hwy 80 W.
647-1115

Gary's Automotive
Ewy 80 W. 647-3003

Ranger Times
211 Elm
647-1101

Edwards Funeral Home
211 Pine Street
647-1133

Fire Safety Can Save Holiday Spirit

'Tis the season to be jolly, so keep the holiday spirit uncharred this December by practicing fire safety at home and in the workplace.

On the average, a Christmas tree caught fire somewhere in Texas every day last December, and each fire caused about \$42,000 in property damage, according to State Fire Marshal Ernest A. Emerson. "During the holiday months of 1990, 32 residential fires related to Christmas trees caused 13 civilian injuries, two fire service injuries and property damage totaling \$1.4 million," he said. "Another 19 residential fires involved holiday decorations and caused property damage amounting to \$97,000. In business properties, there were six fires that caused damage of \$68,000."

Emerson warned consumers that natural Christmas trees are par-

ticularly dangerous. "All of the Christmas tree fires reported during holiday months in 1990 were natural products, not artificial trees," he said.

"It's important to remember that cut trees are not living and that it's essential to keep them as moist as possible. The longer a tree is kept in the home, the more likely it will be involved in a fire," Emerson added. "In fact, about half of the Christmas tree fires occurred on Christmas Eve, Christmas Day or after, even through the first two weeks of January."

Emerson urged Texans to prevent holiday tragedies by removing fire hazards commonly associated with Christmas trees and holiday decorations. According to statistics from the Texas Fire Incident Reporting System (TEXFIRS), the top four reported causes of holiday fires in 1990 were:

1. Electrical problems, including short circuits or ground faults in cords, plugs, lights, switches and receptacles, which caused 18 fires.

2. Candles left unattended or used too close to trees or decorations, which caused 11 fires.

3. Children playing with fire materials such as matches, candles, fireworks and lighters, which caused nine fires.

4. Placing Christmas trees too close to heat sources such as fireplaces, portable heating equipment, electric lamps and candles, which caused eight fires.

TEXFIRS is a standardized reporting system coordinated by the State Fire Marshal's Office through which 320 Texas fire departments report on fire incidents, causes, casualties and property loss.

Other fire hazards don't take a holiday during this season, according to TEXFIRS statistics. For example, two persons died in Christmas Day 1990 fires. Also, on Christmas Eve and Christmas Day in 1990, fire departments responded to 30 cooking related fires in residences, about 50 percent more than on average days.

The State Fire Marshal's Office recommends the following guidelines to reduce the risk of holiday fires:

* **Keep your natural tree as fresh as possible.** Buy early, when trees are fresh. Don't buy trees with loose needles or brown spots. To keep the tree fresh, cut the base of the tree at a 45 degree angle, place the base in a bucket of water and keep outdoors until ready to decorate. After the tree is indoors, keep the tree in a water containing base. Check the water level every day to keep the tree well watered. Remove the tree promptly after the holiday or when it becomes dry.

* **Never leave lighted candles unattended, especially with children in the home.** Store matches and lighters out

of the reach of children.

* **Always turn off Christmas lights before leaving home or going to sleep.** Never leave lights on when no one is at home.

* **Keep your tree (natural or artificial), decorations and presents away from heat sources,** such as fireplaces, candles, heaters and lamps.

* **Carefully inspect light strings, cords, plugs and receptacles.** Check for worn or frayed insulation and loose connections. If the item is damaged, throw it away.

* **Don't overload electrical circuits or extension cords.** Read and follow directions on cord labels regarding connecting light strings and extension cords.

* **Use plastic holders for stringing lights.** Avoid nailing through wires or wrapping wires around nails.

* **Use only lights that have been laboratory tested.** Check for UL or Factory Mutual labels.

* **Remember general safety rules throughout the holiday season:**

1. Check your smoke alarm each week. If you don't have a smoke alarm, buy and install one. (State law requires the installation of smoke alarms in rental property.)

2. Keep all heating equipment at least three feet away from any combustible items, especially upholstered furniture, bedding, Christmas trees and decorations.

3. Be sure that smoking materials are extinguished completely and disposed of properly. This is especially important if holiday guests, most importantly those who have been drinking, have been smoking in your home.

The Office of the State Fire Marshal is a division of the Texas Commission on Fire Protection. The functions of the commission are to conduct fire investigations and fire safety inspections, license several fire safety related industries, gather information on fires in Texas, conduct fire safety information programs, oversee fire service training and education standards, and administer an emergency funding program for fire departments.

Christmas Nativity Story To Be Held At Strawn First Baptist Church

Jim Troutman, pastor of First Baptist Church, Strawn, announces the church will present two performances of "The Christmas Nativity" on Friday evening, December 13th. The panorama depicting this wonderful event, the night Jesus was born, will be on the front lawn of the church. The First presentation will be from 6:00 to 6:45 p.m. and the second performance will begin at 7:00 to 7:45 p.m. This will be a new presentation filled with the music and songs of Christmas. The cast of characters will include members of the church portraying the happenings of that special night, almost 2,000 years ago, when the most wonderful thing on earth happened.

The still life scenes, of the complete nativity, will be in full view and you will be able to pause and meditate on the true meaning of Christmas.

The star will radiate above the stable in glowing celebration of the Savior's birth. Jesus then a tiny Babe, lying in a manger is truly the light of the world. Joseph a just and humble man will be standing at her side. Live animals will share the stable, there will be the tired faithful donkey Mary rode and the sheep resting quietly in peace

Sen. Bob Glasgow Has Been Appointed To A Panel To Study The Texas Court System

State Senator Bob Glasgow has been appointed to a panel established by the Texas Supreme Court to study the Texas court system and make recommendations on how the system can be made more efficient.

Sen. Glasgow, D-Stephenville, was appointed to the Citizens Commission on the Texas Judicial System by the nine-member Texas Supreme Court. In its order

with the world.

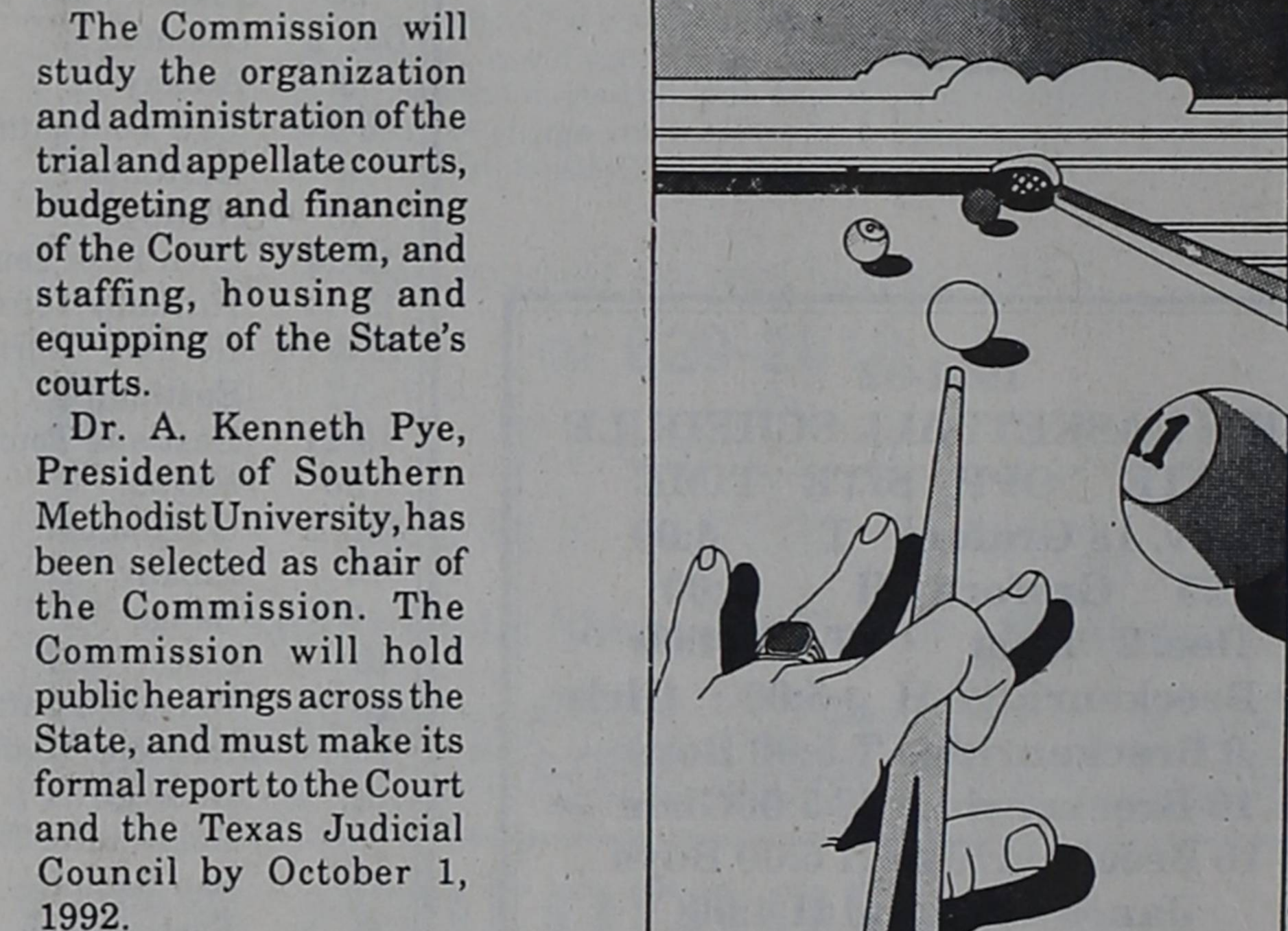
The shepherds have come to see this tiny Babe the angel spoke of saying: "Unto you is born this day a Savior, which is Christ the Lord." The shepherds can't fully understand all this Babe was born to accomplish, the words of joy he would speak to the world and the love he would have for all people. A sweet calmness spread over all the earth as the host of angels sang "Peace on earth, good will toward men."

The Wise Men have followed the star to where the child was and "Curly" the camel from Kendrick's Amphitheatre & Religious Diorama Museum will have made this long journey with them. The Wise Men will present their gifts of gold, frankincense and myrrh to this new born King. This is the kind of gifts in days of old a worshiper would bring. The gifts of man can never compare with the gift God gave to lift the hopes and fears of all who respond. His gift was his Son, a gift of hope and life for all mankind to receive.

Refreshments will be served in the Fellowship Hall of the church from 6:00 to 8:00 p.m. and we invite everyone to come inside and fellowship with friends and neighbors.

CLASSIFIED

IT'S A SURE SHOT!



To Help You Make The Ranger Times Classifieds Ads Work Harder For You:

AD WRITING TIPS

"The More You Tell - The More You Sell"

Include answers to as many of the points noted in each type of ad shown below for maximum response to your reader ad. A national survey by the CLASSIFIED ADVERTISING MANAGERS' ASSOCIATION has shown these are the features that people want to know when answering an ad. They are listed in order of importance.

- AUTOS FOR SALE**
 - Make
 - Year
 - Model
 - Body Style
 - Motor (V-8? Horsepower?)
 - Transmission
 - Power Equipment
 - Finish
 - Mileage
 - Previous Use (One Owner?)
 - Mechanical Condition
 - Accessories
 - Tires, Battery
 - Interior
 - Price, Terms, Down Payment
- RENTALS**
 - Location
 - Number Of Rooms
 - Bath, Shower
 - Garage
 - Heating
 - Air Conditioning
 - Furnishings
 - Utilities Furnished
 - Elevator
 - Neighborhood
 - Convenience To Schools, Stores
 - And Transportation
 - Children Accepted
 - Pets Allowed
 - Privileges - Phone, Kitchen, Laundry, Television, Etc.
 - When Available
 - Price
- MERCHANDISE AND MISCELLANEOUS FOR SALE**
 - Item
 - Brand Name
 - Size
 - Age
 - Color
 - Condition
 - Specifications
 - Previous Usage
 - Upholstery
 - Finish
 - Accessories & Attachments
 - Hours To See Offering
 - Price
- LIVESTOCK AND PETS**
 - Kind Of Animal
 - Breed
 - Age
 - Size Or Weight
 - Color, Markings
 - Registered
 - Price
- REAL ESTATE**
 - Location
 - Construction (Frame? Brick?)
 - Architecture, Landscaping
 - Number Of Rooms, Description
 - Number Of Bedrooms
 - Condition, Age
 - Possession Date
 - Convenience To Stores, Schools and Transportation
 - Lot Size, Zoning
 - Garage
 - Bathrooms
 - Kitchen (Disposal?)
 - Basement, Recreation Room
 - City Sewer, Utilities
 - Heating
 - Firplace
 - Plumbing
 - Built Ins, Closets
 - Features For Children
 - Price, Terms, How Much Down?
- FARM ITEMS**
 - Item
 - Make (Brand Name)
 - Model
 - Year
 - Condition
 - Overhauled
 - Attachments
 - Hours Of Previous Use
 - Paint
 - Price
- BUSINESS SERVICES**
 - Kind Of Service
 - Experience
 - Special Equipment
 - Trained Personnel
 - Guarantee
 - Follow-Up Service
 - Hours
 - Insured? Bonded?
 - Prices

Legal Notice

CITATION BY PUBLICATION THE STATE OF TEXAS

TO: Billy Casey, P. O. Box 244, Ranger, TX 76470, Defendant, Greeting:

YOU (AND EACH OF YOU) ARE HEREBY COMMANDED to appear before the 91st District Court Eastland, Texas of Eastland County at the Courthouse thereof, in Eastland, Texas, by filing a written answer at or before 10 o'clock A.M. of the first Monday next after the expiration of two days from the date of the issuance of this citation, same being the 6th day of January A.D. 1992, to Plaintiff's Petition filed in said court, on the 13th day of May A.D. 1991, in this cause, numbered 34,659 on the docket of said court and styled Joe L. Walraven, Plaintiff, vs. Bill Casey, Defendant.

A brief statement of the nature of this suit is as follows, to-wit:

This is a suit on a note made by Billy Casey dated May, 19, 1988 in the prin-

cipal sum of \$3,538.00. Plaintiff also seeks interest, attorney's fees, court costs and collection costs.

If this citation is not served within ninety days after the date of its issuance, it shall be returned unserved.

The officer executing this writ shall promptly serve the same according to requirements of law, and the mandates hereof, and make due return as the law directs.

Witness, Bill Miers, Clerk of the 91st District Court of Eastland County, Texas.

Issued and given under my hand and the seal of said court at Eastland, Texas, this the 19th day of November A.D. 1991.

Bill Miers, Clerk, 91st District Court Eastland Eastland County, Texas.

By Shirley Mantooth, Deputy. (11-28, 12-5, 12-12, 12-19)

Seasons Greetings!

IN HOW MANY LANGUAGES CAN YOU SAY "MERRY CHRISTMAS"?

A. Danish	—	Sarbatoni veselic
B. Finnish	—	Boas Festas
C. French	—	Feliz Navidad
D. German	—	Gud Jul
E. Hawaiian	—	Buone Feste Natalizie
F. Dutch	—	Houska Joula
G. Hungarian	—	Nadolig Llawen
H. Irish	—	Boze Narodzenie
I. Italian	—	Nodlaig mhaith chugnat
J. Swedish	—	Mele Kalikimaha
K. Polish	—	Frohliche Weihnachten
L. Portuguese	—	Glaedlig Jul
M. Romanian	—	Joyeux Noel
N. Spanish	—	Vrolyk Kerstfeest
O. Welsh	—	Kelences Karacsonyi unnepek

Answers Below

MAKE IT A YEARLONG GREETING WITH WELCOME NEWS FROM HOME

We'll Announce Your Gift With A Card

CALL TODAY!
Callahan Star 854-1008
Cisco Press 442-2244

Answers to the "Merry Christmas" quiz:
K. Joyeux Noel; E. Vrolyk Kerstfeest; G. Glaedlig Jul; D. Frohliche Weihnachten; A. Sarbatoni veselic; B. Boas Festas; F. Houska Joula; H. Nadolig Llawen; I. Nodlaig mhaith chugnat; J. Mele Kalikimaha; L. Joyeux Noel; M. Vrolyk Kerstfeest; N. Vrolyk Kerstfeest; O. Kelences Karacsonyi unnepek.

Eastland Telegram 629-1707
Ranger Times 647-1101
Rising Star 643-4141

Newspaper Deadlines

In order for us to provide our readers with a more efficient and better publication, our deadlines are:

- THURSDAY EDITION 5 P.M. MONDAY
- SUNDAY EDITION 5 P.M. THURSDAY
- If Proofs Are Needed the Deadline is 12 Noon

FISH

Now is the time for Pond and Lake Stocking Hybrid Bluegill, Florida Hybrid Bass, Channel Catfish, Fathead Minnows, Black Crappie. The Hybrid Bluegill will REACH the weight of 2 1/2 to 3 lbs. We furnish your Hauling Containers. We guarantee live delivery. Supplies - Fish Feeders, Turtle Traps, Liquid Fertilizer, Commercial Fish Cages, Bug-Light Feeders. Delivery will be Tues., Dec. 12 at the times listed for the following towns & locations.
Cisco - Farm & Ranch Supply, 8:00-9:00 a.m., 442-2535.
Ranger - H & R Feed, 10:00-11:00 a.m., 647-5311.
Rising Star - Pioneer Farmers Coop, 12:00-1:00 p.m., 725-6564.
Cross Plains - Cross Plains Grain & Peanut Co., 2:00-3:00 p.m., 725-7345.
Santa Anna - Simmons Feed & Supply, 4:00-5:00, 348-3168.
Call Your Local Feed Store To Place Your Order Or Call: 405/777-2202
TOLL FREE 1-800-433-2950
Fishery consultant available.
Special Deliveries on large ponds & lake orders.
DUNN'S FISH FARM
P.O. Box 85
Fittstown, OK 74842

RANGER TIMES
Thursday, December 5, 1991

STATE FARM INSURANCE

State Farm Sells Life Insurance.
Jim Wortman
214 S. Seaman
Eastland
629-1096

STATE FARM INSURANCE COMPANIES
Home Offices: Bloomington, Illinois

Pastoral Care And Counseling Center Raised Over \$20,000 At Fashion Show And Dinner

The Pastoral Care and Counseling Center raised \$20,425 from the Dinner and Fashion Show that was held in the Civic Center on November 7, 1991. The fashions were provided by Dillards and underwriting and services were provided by the Abilene Reporter-News, Texas Photocomp, R.S.V.P., and KTAB, along with 30 individual sponsorship tables which were purchased at \$500 each.

Sam's Club sponsored a golf tournament and two raffles to raise money for underwriting and the Walmart Foundation added a matching grant. In addition, individuals and couples bought tickets which all helped in raising the money.

Board member Joy Jordan worked thousands of hours as chairman with help from co-chairman, Inez Floeck and several board and staff committee heads to make this fundraiser a wonderful, entertaining evening and

a total success.

Pastoral Care and Counseling Center provides counseling services on a sliding-fee scale at two centers in Abilene, and one in Cisco, Albany, and Sweetwater. Five years ago they averaged approximately 275 hours of service each month, with no waiting list. In October, their 11 therapists provided 1,040 hours with a number of people on a list awaiting an opening.

This rapid growth has been very exciting and they are proud of the reputations which their centers enjoy. Although the hours of service have increased so quickly the average hourly fee is nearly 20% less than it was just 10 years ago. For this reason they are grateful to the community for helping them provide these much needed services to Big Country residents who may not otherwise be able to get the quality help they need.

they won't mix.

Let's not pollute our ocean of air like we polluted theirs.

AMERICAN LUNG ASSOCIATION

CLASSIFIED

IT'S A SURE SHOT!

To Help You Make The Ranger Times Classifieds Ads Work Harder For You:

AD WRITING TIPS

"The More You Tell - The More You Sell"

Include answers to as many of the points noted in each type of ad shown below for maximum response to your reader ad. A national survey by the CLASSIFIED ADVERTISING MANAGERS' ASSOCIATION has shown these are the features that people want to know when answering an ad. They are listed in order of importance.

- AUTOS FOR SALE**
 - Make
 - Year
 - Model
 - Body Style
 - Motor (V-8? Horsepower?)
 - Transmission
 - Power Equipment
 - Finish
 - Mileage
 - Previous Use (One Owner?)
 - Mechanical Condition
 - Accessories
 - Tires, Battery
 - Interior
 - Price, Terms, Down Payment
- RENTALS**
 - Location
 - Number Of Rooms
 - Bath, Shower
 - Garage
 - Heating
 - Air Conditioning
 - Furnishings
 - Utilities Furnished
 - Elevator
 - Neighborhood
 - Convenience To Schools, Stores
 - And Transportation
 - Children Accepted
 - Pets Allowed
 - Privileges - Phone, Kitchen, Laundry, Television, Etc.
 - When Available
 - Price
- MERCHANDISE AND MISCELLANEOUS FOR SALE**
 - Item
 - Brand Name
 - Size
 - Age
 - Color
 - Condition
 - Specifications
 - Previous Usage
 - Upholstery
 - Finish
 - Accessories & Attachments
 - Hours To See Offering
 - Price
- LIVESTOCK AND PETS**
 - Kind Of Animal
 - Breed
 - Age
 - Size Or Weight
 - Color, Markings
 - Registered
 - Price
- REAL ESTATE**
 - Location
 - Construction (Frame? Brick?)
 - Architecture, Landscaping
 - Number Of Rooms, Description
 - Number Of Bedrooms
 - Condition, Age
 - Possession Date
 - Convenience To Stores, Schools and Transportation
 - Lot Size, Zoning
 - Garage
 - Bathrooms
 - Kitchen (Disposal?)
 - Basement, Recreation Room
 - City Sewer, Utilities
 - Heating
 - Firplace
 - Plumbing
 - Built Ins, Closets
 - Features For Children
 - Price, Terms, How Much Down?
- FARM ITEMS**
 - Item
 - Make (Brand Name)
 - Model
 - Year
 - Condition
 - Overhauled
 - Attachments
 - Hours Of Previous Use
 - Paint
 - Price
- BUSINESS SERVICES**
 - Kind Of Service
 - Experience
 - Special Equipment
 - Trained Personnel
 - Guarantee
 - Follow-Up Service
 - Hours
 - Insured? Bonded?
 - Prices

**CHILD ABUSE
24 HOUR HOTLINE
1-800-252-5400**

**Calendar
of Events**

A Public Service from Eastland/Callahan County Newspapers and The Majestic Theatre.

WED., DEC. 4

7:00 Kiwanis, Eastland.
8:00-4:00 Senior Citizens, Cisco, Eastland, Ranger.
9:15-11:00 Community Bible Study, First Baptist Church, Eastland.
12:00 Kiwanis, Ranger.
12:00-1:00 Community Bible Study, First United Methodist Church, Eastland.
5:30 Overeaters Anonymous, 629-8773.
7:30 Support Group, Gorman.

THURS., DEC. 5

8:00-3:00 Senior Citizens, Eastland, Gorman, Rising Star.
8:30-4:30 Dept. of Human Services Assistance, Rising Star.
12:00 County Resource, Eastland.
12:00 Lions, Ranger.
12:00 Noon, Thursday Afternoon Study Club luncheon in Eastland.
6:00 City Commissioners, Gorman.
7:00 Stephens County Genealogy Society, Breckenridge.
7:00 Volunteer Fire Dept., Olden.
7:00-10:30 Forty Plus Dance, Cisco.
7:30 Eastland County Bass Club, Eastland.
7:30 The Shadow Majestic Theatre of the Air, KEAS 97.7.
7:30 Masonic Lodge, Ranger.
8:00 Narcotics Anonymous, Eastland.

FRI., DEC. 6

8:00-4:00 Senior Citizens, Ranger, Cisco.
7:00 Christmas Madrigal Dinner in Cisco.
7:30 All I Want For Christmas, Rated G, Majestic Theatre.

SAT., DEC. 7

8:30 Eastland County Hay Show & Auction.
10:00 Christmas Music Fantasy Parade, Breckenridge.
6:00 Bingo, Rising Star.
6:00 Country Western Musical, Sipe Springs.
7:00 Carbon Cemetery Assoc., School Cafeteria in Carbon.
7:30 All I Want For Christmas, Rated G, Majestic Theatre.
8:00 Alcoholics Anonymous, Eastland.
8:00 Al Anon, Eastland.

For Deletions or Additions Call Faye Spurlen at Majestic Theatre, 629-2102

Eastland County Bass Club

The Eastland County Bass Club will hold its regular monthly meeting on Thursday, Dec. 5, at the Eastland National Bank. The meeting will start at 7:30 p.m. and all members are urged to be there as many important items will be discussed. The next scheduled ECBC monthly interclub tournament will be Sunday, Dec. 15. Interested anglers will meet at Double Vision Restaurant in Eastland for the drawing for the lake to be fished and the drawing will take place at 6 a.m.

This past September the ECBC sent its Top Six Anglers to the Honey Hole Top Six Team Tournament held on Sam Rayburn and we hope to be able to send the top six to Richland-Chambers this October. After three monthly tournaments, the Top Six are: 1st, Gary Harton; 2nd, Al Senterfit; 3rd, Butch Willingham; 4th, Melvin Crabtree; 5th, Shannon Kendall; and 6th, James Mayes. These places are still wide open and all club members are still in the running for the Top Six places and also the Angler of the Year. These final places won't be decided until the August monthly tournament.

The top six places are determined by the anglers who catch the most pounds of fish during our monthly tournaments with the angler weighing in the most pounds being declared Angler of the Year.

The lakes that the ECBC members fish must be in a 35 mile radius of Eastland; however, twice in the year a lake in a 100 mile radius may be drawn and the same lake cannot be fished two months in a row.

Interested anglers wanting to join the ECBC are welcome to do so at the monthly meetings, the day of the club tournament, or by contacting any member that they might know. The membership fee covers husband, wife and children under 18 still living at home and an extra incentive of a years paid subscription to Honey Hole Magazine. We

have several of the anglers wives competing with us now and we would like to see more and to also get members kids involved.

Any needing more information about our club or any of its activities can call Gary Harton at 647-3888 or Butch Willingham at 442-3142.

Defensive Driving

Eastland County Defensive Driving classes will be held Saturday, Dec. 14, from 8:30 a.m. until 4:30 p.m. in the Mt. Top Church Family Center, located at 600 E. 8th Street in Cisco. The fee is \$20. Call now for early registration at 442-4479 and leave name and phone number, or call 442-2673 after 10 a.m.

Eastland County Hay And Auction Show December 7

Next Saturday, Dec. 7th, is a very important date for you to remember.

December 7 is the date for the Eastland County Livestock Raisers Association hay show and auction. Judging of the hay will begin at 8:30 a.m. by Dr. George Alston, Extension Specialist with the Texas Agricultural Extension Service. He will present a program on feeding values of the various hays at 9:30 a.m. At 10:00 a.m., the auction will begin. Programs showing the proteins of the various lots of hay will be available. Plaques and ribbons will be awarded to the winning entries.

The hay show and sale will be at the Eastland County Livestock Raisers Association

showgrounds, located on FM 3101.

The hay auction will provide an opportunity to purchase hay that has been tested for protein quality, and will provide much needed funds to pay for livestock show facilities. The success of this hay sale is vital to the Eastland County Livestock Show and their attempt to provide a good place for the youth of Eastland County to exhibit livestock and have other youth activities.

Please show your support of this worthwhile event by being present for the hay show and sale. We will have a tractor to load hay for you.

Subscribe To Your Local Newspaper

Read The Classifieds

Eastland Telegram, Cisco Press, Ranger Times, The Rising Star Thursday, December 5, 1991

**CHILD ABUSE
24 HOUR HOTLINE
1-800-252-5400**

EASTLAND MEMORIAL HOSPITAL'S AMBULATORY CARE SERVICES in cooperation with Hendrick Medical Center Proudly Announces the Addition of

SPEECH-LANGUAGE PATHOLOGY SERVICES by Licensed Clinical Speech-Language Pathologists providing Evaluation and Treatment of All Ages
Specializing in:
Aphasia
Articulation
Developmental Speech and Language
Hearing Impairment
Stuttering
Voice
Laryngectomy
Feeding and Swallowing

Friday Appointments Available

For Information Contact
Eastland Memorial Hospital
304 S. Daugherty
Eastland, TX 76448
817-629-2601

Eastland Memorial Hospital To Offer Prostate Screenings

Prostate problems are common in adult men. It is estimated that about 50 thousand men will die of prostate cancer in 1991, and about 200 thousand new cases will be diagnosed. Although there are three common diseases of the prostate that cause symptoms and need treatment, the most worrisome is prostate cancers.

Cancer of the prostate is very slow growing and may cause no symptoms in early stages. Modern research has offered us different blood test, ultrasound and x-rays to diagnose cancer of the prostate in its early stages. Rectal examination by a physician is very important, to feel for any cancer that may not cause any symptoms. Cancer of the prostate can cause a variety of symptoms, blockage to the flow of urine, burning, urgency, blood in the urine, and frequency

of urination. Prostate cancer in the advanced stages tend to spread to the back and hip bones and may cause bony pains. Prostate cancer also tends to run in families.

The National Cancer Institute has recommended that every man above the age of fifty years undergo yearly rectal examinations for screening purposes. It is important that if one has any symptoms of prostate disease, that he be thoroughly examined by a physician. The physician may then perform a variety of tests to diagnose the problem and treat it appropriately.

Eastland Memorial Hospital will again sponsor a screening for prostate problems at no charge to the public. The next screening is scheduled for December 20, 1991, from 3:00 to 5:00 p.m. in the Ambulatory Service De-

partment of the hospital. The first part of the screening will be educational with a lecture and slide presentation followed by individual screenings by Avi T. Deshmukh, M.D., Urologist. Seating is limited so call Eastland Memorial Hospital, at 629-2601 to reserve a seat.

Sheriff's News

The Eastland County Sheriff's Office reports the burglaries of a home and a ranch occurring around Nov. 23.

The burglaries are still under investigation.



Radio Shack SINCE 1921 AMERICA'S TECHNOLOGY STORE™ JOYFULLY-PRICED CHRISTMAS GIFTS! SALE!

MEMOREX™ World's Smallest, Lightest Full-Size VHS Camcorder. Save \$100. \$899. Reg. 999.00. Low As \$30 Per Month.

MEMOREX 8mm Binocular Style Camcorder. Save \$100. \$699. Reg. 799.00. Low As \$25 Per Month.

TRIAUSIC Pocket LCD Color TV. \$30 Off. \$119.95. Reg. 149.95. Low As \$15 Per Month.

TANDY 20MHz 386SX Computer With 85MB Hard Drive. SUPER VALUE! \$1299. Low As \$40 Per Month.

TANDY Our Fastest 80-Column Printer for Home or Office. Cut \$70. \$249.95. Low As \$15 Per Month.

Notebook With 20MB Hard Drive. Save \$500. \$1699. Low As \$52 Per Month.

10% to 50% OFF SELECTED COMPUTER PERIPHERALS & SOFTWARE

REALISTIC Portable CD Player. Save \$50. \$119.95. Low As \$15 Per Month.

REALISTIC Dual-Cassette System. \$70 Off. \$149.95. Low As \$15 Per Month.

DUOFONE Cordless Telephone With Paging. 25% Off. \$59.95. Reg. 79.95. Low As \$15 Per Month.

DUOFONE Dual-Cassette Phone Answering Machine. Cut 31%. \$54.95. Low As \$15 Per Month.

REALISTIC AM/FM Stereo Cassette Player. Cut 33%. \$39.95. Reg. 59.95.

Radio Shack 109 Lights Play Your Favorite Tunes. SPECIAL PURCHASE! \$1.99. Reg. 2.99.

REALISTIC AM/FM Headset Weighs Only 6 Oz. 45% Off. \$21.95. Reg. 39.95.

MICRONA™ Rugged Jumbo LCD Display Watch. Cut 30%. \$6.95. Reg. 9.95.

Radio Shack Adjust-a-tilt™ Pocket Calculator. Cut 30%. \$6.99. Reg. 9.99.

TOY WONDERLAND NOW OPEN! SHOP EARLY AND SAVE!

FANTASTIC ELECTRONIC TOYS PRICES START AS LOW AS \$2.99

- (1) Fun Lantern II. \$2.99
- (2) Wire-Controlled Hover Buggy. \$6.95
- (3) Wire-Controlled Walking Dinosaur. \$6.95
- (4) Pocket Repeat Game. Cut 27%. \$7.95
- (5) Turbo Raceway. 23% Off. Reg. 12.95. \$9.95
- (6) Sea Battle™. Cut 23%. Reg. 12.95. \$9.95
- (7) Robie™ the Bank. \$9.95
- (8) Laser Sword. Save the Planet! \$9.95
- (9) Flying Choppers. \$12.95
- (10) Handheld "Rap" Mike. \$19.95
- (11) Stack Challenge Game. \$19.95
- (12) RC 4x4 Truck. \$47.95

Plus Dozens of Other Exciting Gifts

Check Your Phone Book for the Radio Shack Store or Dealer Nearest You

105 W. Main, St. Eastland. Eastland Office Supply/Radio Shack Dealer 629-8942

PUBLIC SALE!

NEW, UNSOLD SCHOOL SEWING MACHINES WITH SIMULATED PROFESSIONAL SERGING STITCH!

SINGER EDUCATION DEPARTMENT placed orders in an anticipation of large school sales. Due to budget cuts, these sales were unsold. These machines must be sold! All machines offered are the most modern machines in the SINGER line. These heavy-duty machines sew on all fabrics.

LEVIS • CANVAS • UPHOLSTERY • NYLONS • STRETCH • VINYL • SILK • Even Sews on Leather! THESE MACHINES ARE NEW WITH A 25-YEAR WARRANTY!

YOUR PRICE WITH THIS AD... **\$198.00** ... I DAY ONLY... Fri., Dec. 6

Reference Retail \$429 • Machines Available at Location!

With the new SINGER Machine, you just set the dial code and see magic happen. Straight sewing, zigzag, built-in buttonhole (any size), invisible blind hem, monogram, satin stitch, embroider applique, sews on buttons and snaps, top stitch.

ALL OF THIS AND MORE WITHOUT THE NEED OF OLD-FASHIONED CAMS OR PROGRAMMER

Professional Serging Stitch

Bill's Dollar Store ONE DAY SALE ONLY Fri., Dec. 6; 9 a.m. - 5 p.m. 647-1712 Main St. Ranger

Factory Demonstrators Will Be On Hand!

Special Sweat Shirt Applique

Cash, Check or Layaway for these incredible prices. 2% surcharge for all major credit cards. ***Limited quantity of Sergers on hand, starting at \$288***

Guest Slot

By HVO

ARMY POST Christensen Barracks on the Czechoslovakian Border and just up the hill from Wagner's opera house town of Bayreuth, was a beehive of rumor and speculation when we were there as to whether it would survive the "drawdown" of forces in Germany now underway.

We have since learned from Amy that the announcement has been made: it will be closed by May 15, as will the post in Northern Germany where she and Capt. Vince were to report in mid-December when he finishes the special school he's now attending. So it is doubly good that we visited when we did because they'll obviously be coming out of this ideal Bavarian locale. (They have a placque that reads: Home is where the Army sends you.) They love the area and we enjoyed every minute. Bayreuth is a bustling university town of 71,000 except in August when the annual Wagner Festival, founded in 1876, brings thousands and thousands of

IT WAS A pleasure to meet Cpl. Tim Harris of Amarillo recently when we visited Headquarters of the Christensen Barracks near Bayreuth, Germany. Harris is the grandson of Mr. Rudolph Schaefer of Cisco, and cousin to Mrs. Lloyd (Betty) McGrew also of Cisco. His mother is Norma Schaefer Harris, and she and her husband John live in Amarillo. Tim has been in Germany since August.

your advertising dollars do better in
the classifieds

CHILD ABUSE
24 HOUR HOTLINE
1-800-252-5400

Thomas Chiropractic Office Has Moved

Now at 418 Foch, Eastland
(Corner of Marsh & Foch)

Open 8-5, Mon.-Wed.-Fri.
By Appointment - Tues. & Thurs.
We accept Medicare, Medicaid,
Most Insurance

Call 629-3311 or 629-3471



WAIT!!

Check With Us Before You Buy.
Local Owned Business For 35 Years
Siding: Vinyl - Steel - Aluminum
Windows: Storm - Replacements - Thermal Break
Sun Rooms - Solariums

100% FINANCING AVAILABLE
NO DOWN PAYMENT TO QUALIFIED BUYERS
ON INSTALLED (labor and material) JOBS

For Free Estimates Call 442-2077, or
If Out of Town Call 1-800-772-8532

CERTIFIED TEXAS VETERANS LAND BOARD CONTRACTOR

S & M Supply - Reynolds Manufacturing
105 East Eighth
Cisco, Texas 76437

visitors for the only performances ever held in the 1,900 seat theatre. Tickets are available only years in advance.

The university is recognized worldwide, and three names stand out in Bayreuth's cultural heritage. The composer Richard Wagner, the poet Jean Paul and the Margravine Wilhelmine (sister of Frederick the Great of Prussia and wife of the Marquis of Brandenburg) all lived, worked and found their last resting place at Bayreuth as did Franz Liszt. The twin towers of the Stadtkirche Castle are symbols of Bayreuth, and one of its many treasures is the Eremitage, now a picturesque park outside of town, and formerly the rural refuge of the Bavarian nobility.

Of the Baroque opera houses that have remained intact, the Margravian Opera House downtown is one of the most beautiful, and still used today year around. It originally served as scene for a wedding reception. The Wagner Festival House is world famous not for its beauty, but for the acoustics and technical possibilities of its stage. It was the New Palace built by Wilhelmina that attracted Wagner to Bayreuth in the first place. Her theatre wasn't suitable for his operas, so he built the Festival House, a plain, almost intimidating building; unpadded seats and no wall decorations, but near perfect acoustics. Ideal musically, but unsuccessful, financially, it is said, because the great composer gave away so many lifetime passes in exchange for building financing. He had split with his major benefactor, Bavarian King Ludwig (the Dream-King castle builder) and was pretty much on his own.

Wagner's villa is now a museum. Others are the Jean Paul Museum, the Museum of Freemasons, a Museum of Typewriters and Museum of historical farming equipment.

Down the hill on the other side of the Barracks is a Guesthouse, known locally as Mom's where the troopers' families go for outstanding meals: cordon blue, etc. And there are great numbers of factories: crystal, porcelain, nutcrackers, etc., near by. And we learned that the officers wives know every antique and/or junk store for miles around and they scour them regularly for

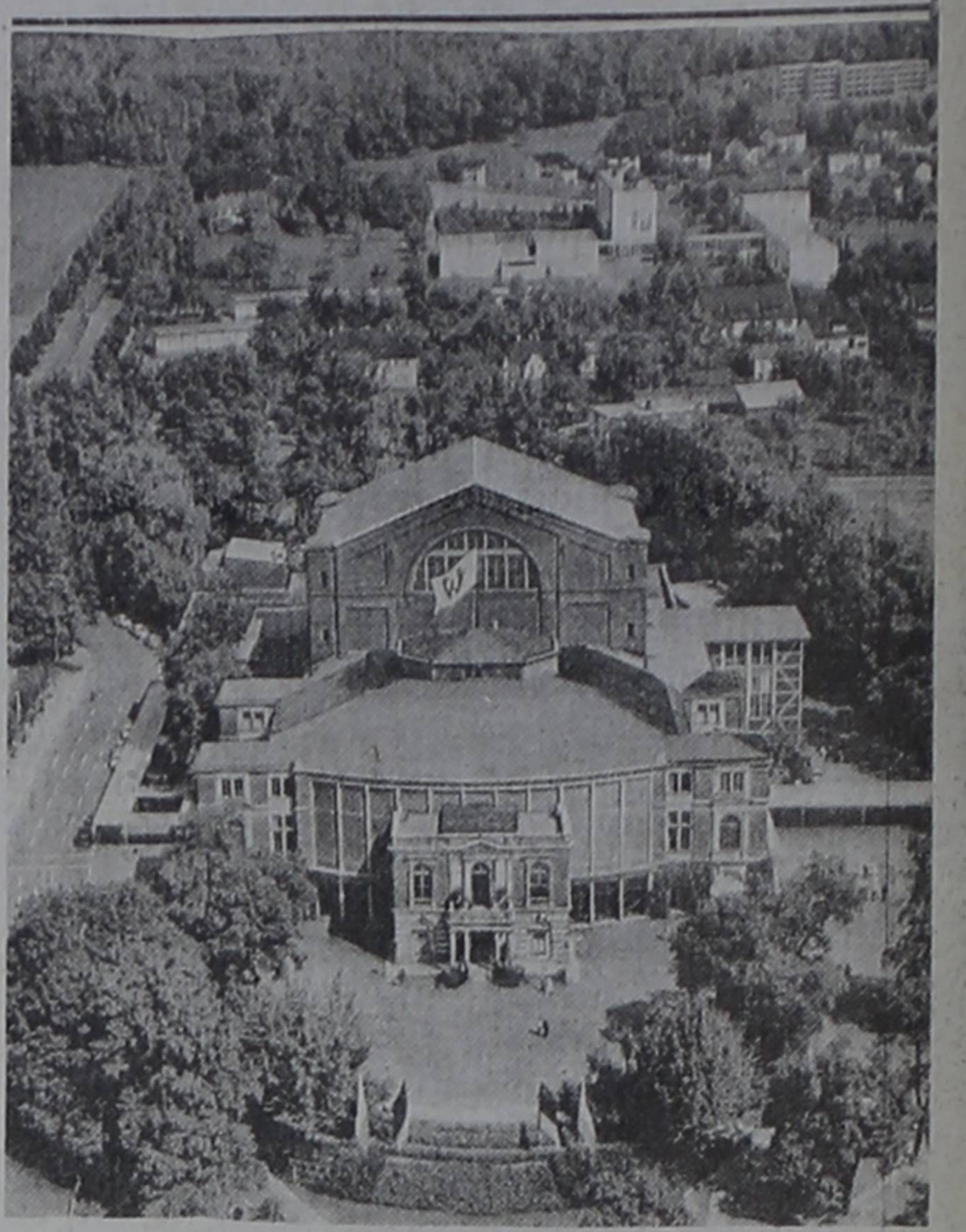
great finds in old German treasures.

The post is a complete American village with 4-story condo of military families, close-knit and supportive in their two-bedroom homes. Probably German built, the beautiful hardwood floors are outstanding, and all are flanked by a giant children's playground. The Child Care Development Center, where Amy is a Supervisor, is across the street. Full laundry in basement. Hospitals in nearby Bayreuth and in Nurnberg.

Their television? One channel: Armed Forces Network which had news from CNN Headline and Army/Europe news, and assorted network offerings; no commercials; just public-service.

Except for mailings from home, their newspaper is European edition Stars and Stripes. In Bindloch, a McDonalds; Community Club is an all-rank eating/drinking spot; a bowling alley offers fast food and slot machines, which apparently are in most posts there. Amy took us to headquarters to visit, and Gaynell attended an officers wives meeting with her. Guess this will all be turned over to the Germans soon. Sold or donated?

Cisco Press - Eastland Telegram-Ranger-
Times-Rising Star And Callahan County Star
Thursday, December 5, 1991

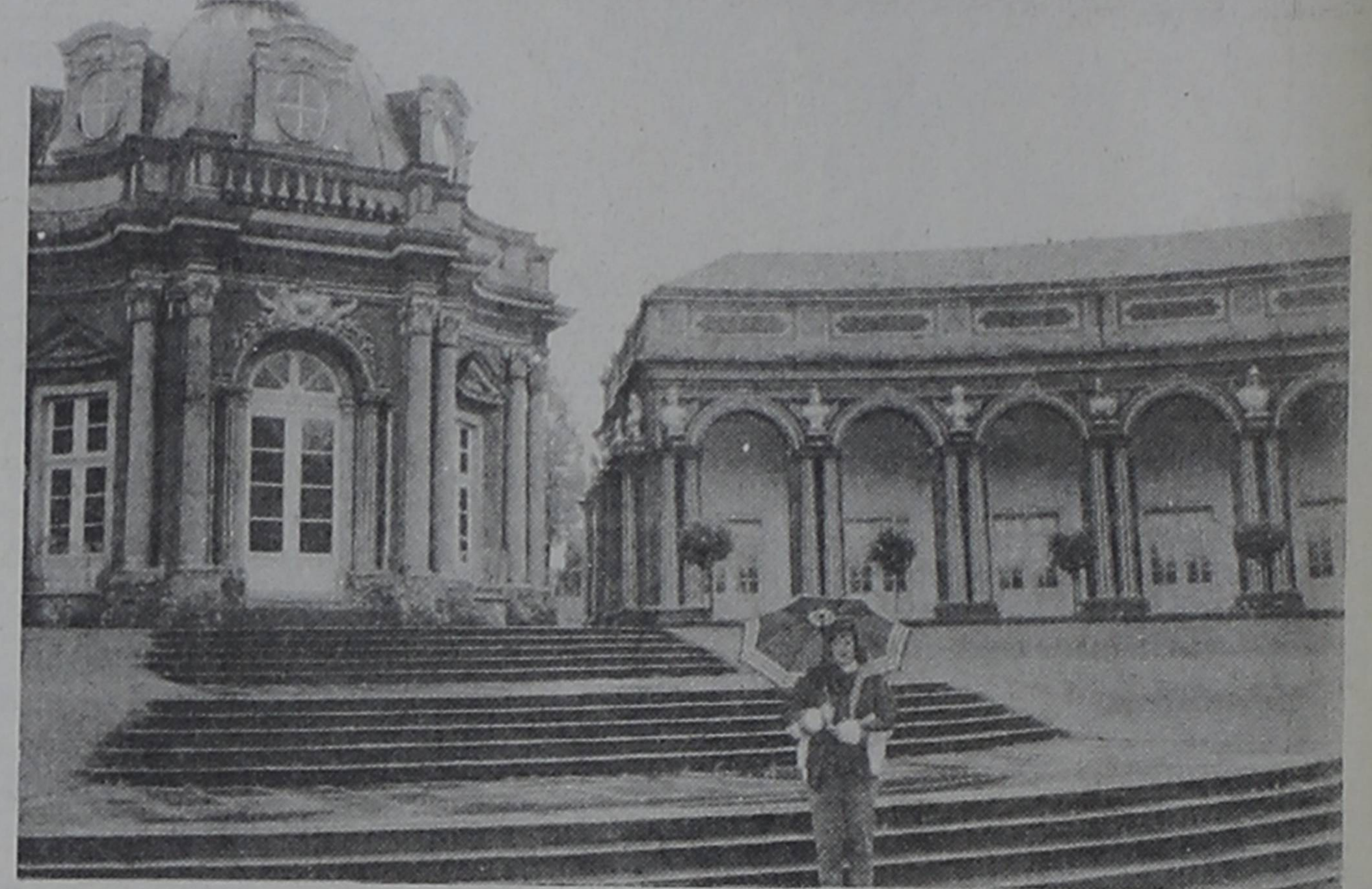


WAGNER'S BAYREUTH OPERA HOUSE

State Industry Hearing Dec. 6

The Railroad Commission of Texas will hear comments from motor carriers, shippers, and other interested persons on the motor transportation industry in Texas as its annual state-of-the-industry hearing set for Dec. 6 in Austin.

Chairman Lena Guerrero and Commissioners James E. (Jim) Nugent and Robert Krueger will open the hearing at 9:30 a.m. at the Commission headquarters in the William B. Travis Building. Some 300 people attended the hearing last year.



AMY AT THE HERMITAGE

Use
The
Classifieds

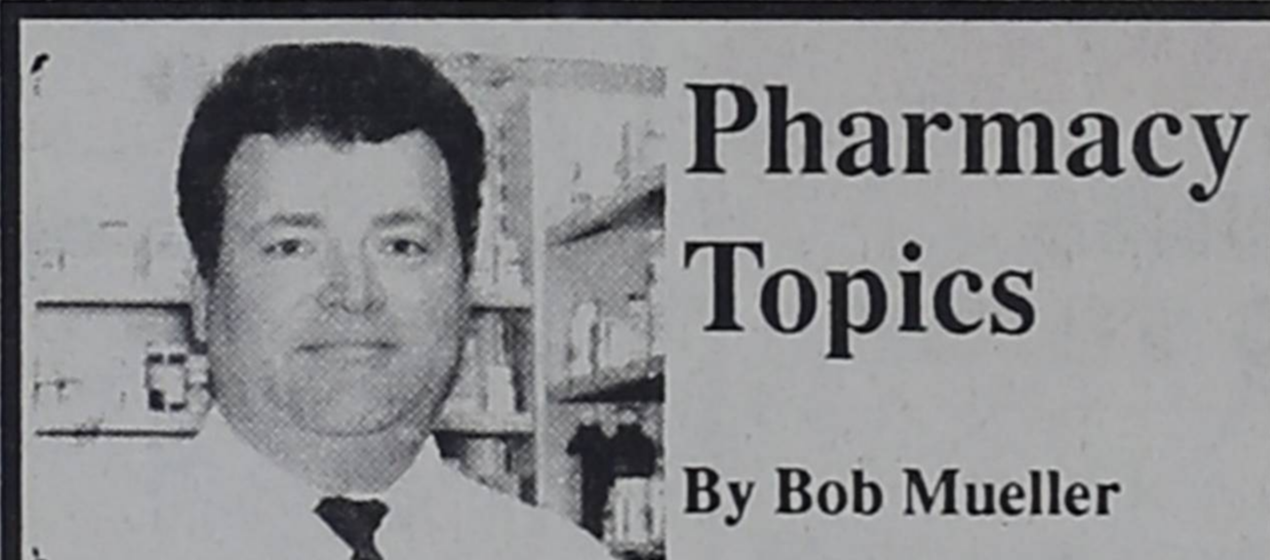


MAJESTIC THEATRE

629-1322



Fri. • Sat. • Sun. • Mon.
All Shows: 7:30 p.m. - \$3.00
We Now Offer 5-Admission Gift Passes - \$10



Pharmacy Topics

By Bob Mueller

New laser procedure -- transmyocardial revascularization -- creates new pathways to bring blood to the heart when arteries are clogged beyond angioplasty. Therapy is being done at Seton Medical Center in Daly City, California, and St. Luke's Hospital in Milwaukee.

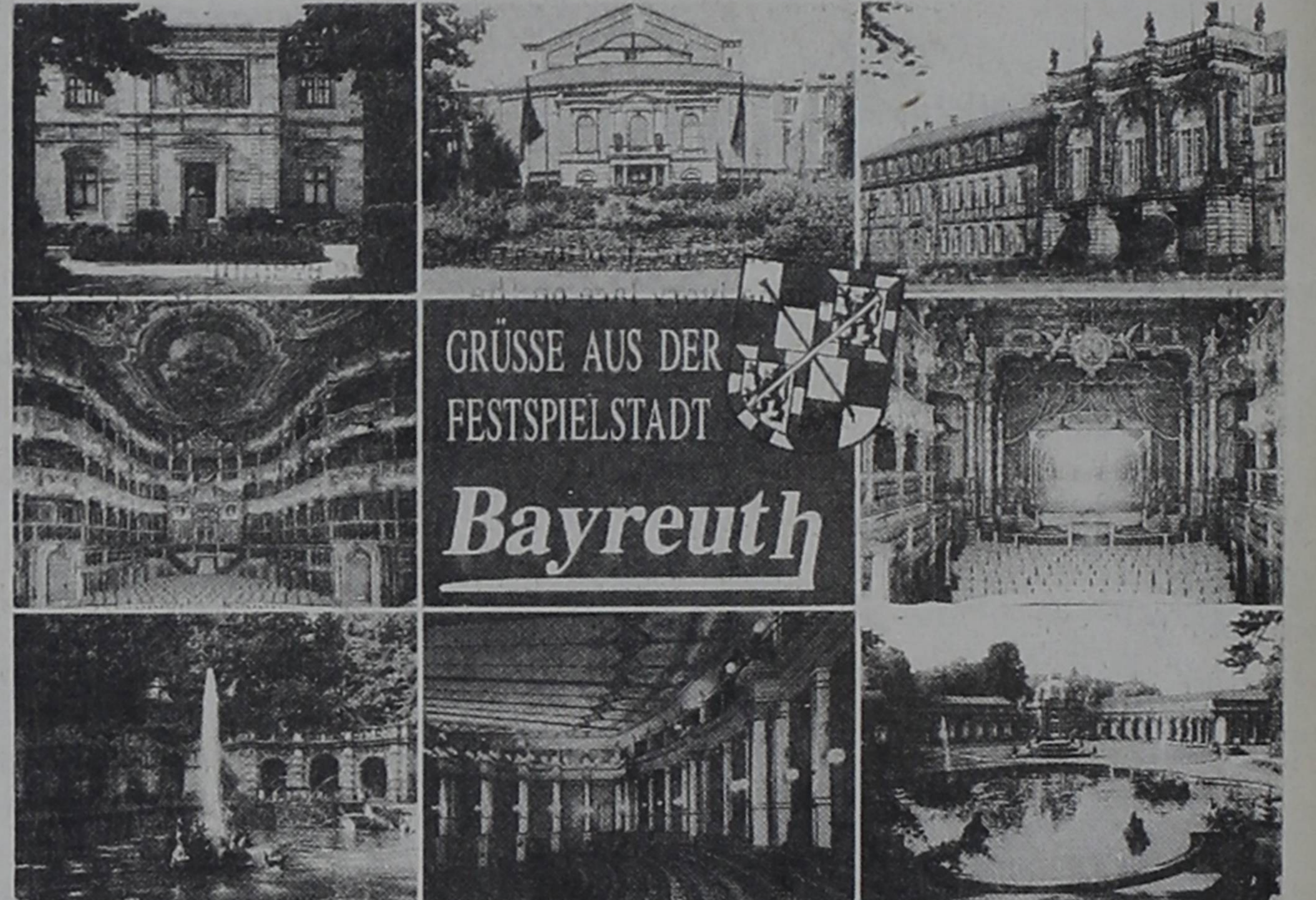
Exercise alone, even without medication, seems to reduce blood pressure in people with moderate hypertension, the British medical journal Lancet reports. Study was done at Radcliffe Hospital, Oxford, England.

Migraine and tension headaches may be the same thing, according to a report by the American Association for the Study of Headache. New research suggests that stress may not be the cause of headache but a result of chemical changes produced by the headache.

Blood-glucose levels in diabetics fluctuate less if injections are given in just one area of the body instead of various sites, researchers at the Department of Medicine at the University of Minnesota found. Blood flow and absorption differ at each site.

Diabetics know they can count on us for fresh insulin, syringes, and the test materials they need. We're health headquarters at Wal-Mart Pharmacy, Hwy. 80 East, Eastland, 629-3347.

cersb104



GRÜSSE AUS DER
FESTSPIELSTADT
Bayreuth

I-20 MOTORS

19th & I-20
Cisco, Texas
(817) 442-4262 or 442-2161

- | | |
|--|---|
| 87 Mercury Topaz, 4 door, all wheel drive, auto, air, cruise.....\$3350 | 89 Escort, 4 spd., w/air, nice car.....\$3495 |
| 87 Ford Ranger Pickup, 5 sp., air, nice pickup....\$3350 | 85 GMC Cargo Van w/tilt, cruise, auto, air.....\$2995 |
| 89 Tempo 4 dr, auto, air, cruise, tilt, AM/FM Cassette, 1 owner.....\$4250 | 83 Oldsmobile, Delta 88 Royale Brougham, 4 dr., auto, air, extra clean car.....\$2250 |
| 81 Chevy Luv Pickup, 5 sp., deisel.....\$2550 | 87 Plymouth Horizon, auto, air, clean car.....\$2250 |
| 88 Chevy Celebrity Wagon, extra clean, fully loaded, auto, air.....\$4550 | 87 Ranger XLT Long Bed, 5 sp., air, cruise.....\$3950 |
| 85 Ford Ranger Pickup, 5 Sp, air, 62,000 miles....\$2250 | 83 Nissan Pickup, King Cab.....\$1950 |
| 89 Ford Festiva, air, extra nice.....\$3250 | 86 Audi, 4 dr., loaded..\$4250 |
| 89 Ford Tempo Auto, air, AM/FM cassette, Elect. windows, locks & seats, cruise, 61,000 miles, one owner.....\$4550 | 77 Chevy Blazer, auto, air, 4 WD, excellent condition.....\$2250 |
| | 77 Ford Granada auto, air, good clean car.....\$795 |

Also For Sale: Lake Cabin
South of Lake Cisco.
Other Cars To Choose
From

6-104

Wedding Bells



Bulgerin - Hurst

Claudia Diane Bulgerin, the daughter of Dr. and Mrs. H. J. Bulgerin of Eastland, Texas, and Roy Neal Hurst, the son of Mr. & Mrs. John Sanders of Hamilton, Texas, were united in marriage at seven o'clock on the evening of November 30, 1991, in the First United Methodist Church of Eastland.

Reverend David Bulgerin, uncle of the bride, performed the double ring ceremony. Pastor Keith Bulgerin, the bride's twin brother, assisted.

The sanctuary, decorated with brass candelabras accented with greenery, featured two large fresh flower arrangements of Protea, Red Roses, Stargazer, and Calla Lillies. Pews were adorned with ivory bows and hurricane lamps. Votive candles lined the chancel rail.

Traditional wedding music was played by Dr. Robert Matthews of Eastland, Texas.

Soloist, Darrell Bateman of Lubbock, Texas, sang "I Will Be There" and "The Father Says I Do".

The bride, given in marriage by her parents, wore a Victorian floor length candlelight satin gown featuring a fitted bodice of lace and seed pearls. The back of the gown was adorned with a beautiful bow which flowed into a cathedral train. Her veil was fingertipped illusion held in place by a headpiece of seed pearls and sculpted glass roses. She wore her mother's blue wedding garter and carried a 1960 penny in her shoe given her by her father. The Victorian bouquet of cascading fresh white and red roses was accented with greenery, antique lace, and ivory ribbon.

Eastland Telegram,
Ranger Times, Cisco Press
Thursday,
December 5, 1991

Here's A Laugh



"If they're so crazy about me, how come they never give me 'The Wave'?"

Sponsored by Joe Hudspeth's Goodyear

liams of Eastland, Texas, and Steve Bulgerin, brother of the bride, of Weatherford, Texas. Keith and Craig Roberson of Lubbock, Texas, served as Junior Groomsmen.

Ushers were Don Bulgerin, brother of the bride, of Tyler, Texas, Curtis Bulgerin, brother of the bride, of Round Rock, Texas, and Jeremiah Hill, nephew of the bride, of Weatherford, Texas.

The groom, groomsmen, and ushers were dressed in dark gray pin striped tuxedos with ivory shirts and matching bow ties and cummerbunds.

The reception was held at Lone Cedar Country Club following the ceremony. Borderline, a band out of Brownwood, provided the music for entertainment and dancing.

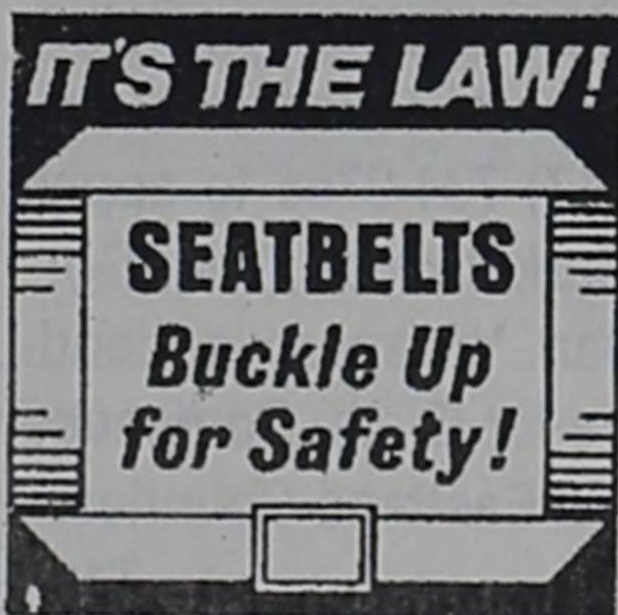
The bride's table, centered by a three-tiered and arched wedding cake, was adorned with the bride's bouquet. Attending the bride's table were Stephanie Stone of Lubbock, Texas, Dianna Wright of Dallas, Texas, and Marion Fike of Amarillo, Texas. Danelda Gevara of Eastland, Texas, served as Bridal Coordinator.

The groom's table, adorned with a red-checked tablecloth and a fire hat flower arrangement, featured a cake in the shape of a fire engine to commemorate the groom's work with fire departments throughout Texas. Attending the groom's table was Karla Mouritsen, sister of the groom, of Dallas, Texas. Loy Roberson of Lubbock, Texas, served as Groomsmen Coordinator.

Parents of the groom, Mr. and Mrs. John Sanders, hosted the rehearsal dinner at Lone Cedar Country Club on the previous evening.

After a wedding trip to Dallas, the couple will make their home in Weatherford, Texas.

Read The Classifieds



Our new line should put an end to a few others.



Our newest skin care products help eliminate the little lines that occur over time and protect skin from further damage.

Stop by and find out more. Because when it comes to skin care, it's never too early—or too late—to get started.

MERLE NORMAN
COSMETIC STUDIOS

We know how beautiful you can be.

Hwy 80 E. Eastland
629-3533

ENGAGEMENTS



Cain - Walker

Tony Cain and Mr. and Mrs. Wes Davis of San Angelo announce the engagement and approaching marriage of their daughter, Ginger Renee Cain to Kent Walker, son of Tena and Dale Walker of Carbon.

The couple plan to be married Dec. 14, 1991 at Trinity University Chapel in San Antonio, with Rev. Judd officiating the ceremony.

The bride-elect is from San Antonio and has a Bachelor of Business Administration degree at Texas A & M University

and a Masters degree in Healthcare Administration from Trinity University. She is currently employed by Humana Women's and Children's Hospital in San Antonio.

The groom-elect is from San Antonio and has a Bachelor of Arts degree from the University of Texas in Austin and has a medical degree from the University of Texas Health and Science Center. He is currently employed by Bexas Co. Hospital Dist. in San Antonio. He is the grandson of Mrs. Crickett Walker of Carbon.



M.H. Perry Insurance

104 N. Lamar
Eastland, TX

Phone 629-1566

- Life Insurance
- Hospitalization
- Group
- Cancer
- Supplement
- Medicare

CER104



Weekes - Felan

Mrs. Joe Weekes of Ranger announces the engagement of her daughter, Joy, to Trey Felan, son of Mr. and Mrs. Fred Felan of Bertram.

The bride-elect graduated from Ranger High School and is employed by the Ranger Independent School District.

The prospective bridegroom graduated from

Burnet High School and St. Edward's University with a bachelor's degree. He received a master's degree from Tarleton State University and is employed by TSU as a coach.

A December 21st wedding is planned at the First Baptist Church in Ranger.

Rodgers - Cervantez

Together with our parents, Mr. and Mrs. John Rodgers of Carbon and Mrs. Ana Dominguez of Abilene, we are pleased to announce our upcoming marriage on Dec. 21, 1991.

The wedding will be at

6:00 p.m. at the Conrad Hilton Hotel in Cisco.

Since there will be no local invitations sent, we personally invite all friends and relatives to attend.

Joanna Rodgers & Ande Cervantez

Use The Classifieds

Eastland County Family Planning Clinic Dec. 12

The regular Family Planning Clinic will be held Thursday, December 12th. Applications are taken from 9:00 a.m. until 5:00 p.m. Family Planning services available in this clinic will include: consultation, physical exam with a Pap test, laboratory examination, appropriate methods of birth control, birth control supplies and education regarding birth control and continuing supervision.

This program provides services to income eligible clients and charges a small co-pay fee. Private patients are welcome to participate.

The clinic is held monthly at 1509 Hwy. 80, Cisco.

Central Texas opportunities, Inc. of Coleman, Texas is the provider for the Texas Department of Human Services.

For more information concerning this clinic please call 442-4522.

Use The Classifieds

D.L. Kinnaird General Insurance Since 1919
Contact us if you want to save money on all your insurance needs
Call 629-2544 E104

To Kids of All Ages:

We'll print your letters to Santa in our special Holiday Section and then send them along to the North Pole! Write to him care of this newspaper and look for your letter on December 22.

PARENTS: Get your child's Santa Letter to us in time for our special 'Dear Santa' Holiday Section. The deadline for letters is 5:00 p.m. Thursday, December 12.

CISCO PRESS
'Dear Santa'
P. O. Box 1072
Cisco, TX 76437

EASTLAND TELEGRAM
'Dear Santa'
P. O. Box 29
Eastland, TX 76448

RANGER TIMES
'Dear Santa'
P. O. Box 118
Ranger, TX 76470

County Classified Section

Thursday, December 5, 1991

HOMES

161 ACRES Lots bottom land, 60 tillable, well fenced, 1/2 mile Sabanna, good deer hunting, lots big oak, pecans. \$550 ac. Agent owned.

80.5 ACRES, 7 mi NE Rising Star, 30 Coastal, app. 1/2 cultivation, well fenced, lots road frontage \$560 per acre.

95.43 ACRES, 20 cultivated. 3-1 frame home, 4 mi of Carbon, good barn, native grasses. \$70,000, \$14,000 down, 10% interest.

62 ACRES m/1, about 1/2 cult., good peanut/melon land, some coastal, lots road front, with new fence. \$500 acre, liberal terms, agent owned.

70.3 ACRES 7 mi. E. Hwy 36, timber, coastal, 3 water taps applied for, well fenced, barn, tanks, \$500 acre, cash or equity/GI assumption.

182 ACRES Desdemona, most native pasture, rolling, liveoak, deer, 2 BR frame home, FREE natural gas, barns, corrals, fine well, \$600 Acre, 1/4 down, LOTS pavement.

54.35 ACRES E. Carbon, most all good coastal, near pavement, well fenced, good well, 1 tank, minerals, \$750 Acre cash or (?) terms.

APP. 1.5 ACRE E. Carbon, 2 BR frame home, clean, big oak trees, small barn, walls insulated, cop water meter, fruit/pecans, just off hwy. Just \$20,000.

We WANT your listings 35 Yrs. in Business COGBURN REALTY

DE LEON 893-6666
893-5898 893-2642
RS105

FOR SALE: 3 BR, Brick, CH/CA, ceiling fans, fireplace, corner lot & 1/2. \$24,500. Call 629-1027 or 629-1786. Ask for Randy.

3-2-2, 7 yr. old brick on 7.25 ac. Sitting on a crest with beautiful view of Eastland Co. hill country. Between Eastland and Cisco. New carpet, Jacuzzi in Master bath, ceiling fans, and satellite dish. Real quality! \$90,000 (817) 735-4811 or (817) 370-7669.

FOR SALE OR RENT: 3 BR, 1 bath, fenced backyard, \$17,000 or \$250 a month, plus \$100.00 deposit. 203 S. Connellee. Call 647-5273 or 629-3514.

For trade for close in country place. Well located 4 BR, double carport, central heat and air. Fenced backyard with big work shop and storage building. 629-1156.

HOMES

FOR SALE BY OWNER 3 BR, 2 bath, 2 car carport, brick home on large corner lot. Large den with rock fireplace patio with built in smoker. 629-8301.

FOR SALE: 14 x 65 Mobile Home with built on roof and corner lot. Built in appliances, fruit trees, fenced yard, CH & air, carport and storage buildings. Days- 629-1786; evenings - 629-1027.

FOR SALE: Three bedrooms, 1 3/4 bath house, central heat & air, new storm windows and doors, good location, 502 W. 7, Cisco. \$13,900. Call 442-1258 or 915-646-0289.

FOR SALE: 3 BR 1 1/2 bath older home needs some repair. 702 W. 8th, Cisco. 629-2995.

FOR RENT: 3 BR house on 4 acre land with shop building. Call 442-1660.

NOVEMBER SPECIAL 2 Weeks off, 1st monthly rent. 2BR, 2 bath, washer, dryer hookups, earth tone decor, school bus. Located behind Pizza Inn. Call Shirley 629-3164.

FOR RENT OR SALE: 3 BR, 1 1/2 bath, 505 S. Seaman, kitchen range, 3 heaters, ceiling fans, carpet, curtains, no pets, deposit, references. Call after 9 a.m., 629-3445 - \$275 rent.

For Rent: In Cisco partially furnished small 3 room house. Call (915) 893-4717.

FOR RENT IN OLDEN: 1,200 sq. ft. home. Central H/A. Ceiling fans, good carpet, large kitchen. Inquire at 639-2481. Terms negotiable.

APARTMENT FOR RENT: Sabine Terrace Apts, 1, 2 & 3 Bedroom apartments, nice neighborhood. Conveniently located near schools, 629-2518. All bills paid. Equal housing opportunity. 600 W. Sadosa.

MAVERICK APTS. 1, 2 & 3 BR with W/D hookups. Basic TV cable and free HBO. Close to all Eastland schools. Also under new management Marsh Apartments, 2 bedroom, 2 bath townhouses. Call Keisha at 629-1913 for details.

2 BR Mobile Home for Rent - Appliances, furnished. Call 629-2943 or 653-2021 after 5:00 or leave message.

FOR RENT

FOR RENT: 2 bdrm deluxe apts., appliances, fenced back yard, extra storage, \$210 per month. Call Ron Butler Sr. at 647-3234 or 647-3511 after 5:00 p.m.

FOR RENT: We have a wide range of apartments and houses. One to fit every need. Furnished or unfurnished by the week or month. Call and ask for Darlene or Tammie first for clean modern living and low, low prices. 629-2805.

NOW AVAILABLE! Furnished and unfurnished 1 AND 2 bedroom; like new; carpet and drapes; frig, dishwasher, range and disposal; water, trash pickup and TV cable paid. Choice neighborhood. See and compare Royal Oaks Apartments, 1304 Royal Lane, Cisco, 442-3232.

COLONY II APARTMENTS One and two bedroom. Unfurnished. Move in now!! Designer decorated, energy efficient with modern appliances, central H/A, Laundry, large play area. Conveniently located near schools, churches, shopping. Resident mgr. Family living at its best, in a quiet neighborhood! 500 Sadosa, 629-1473, Equal Housing Opportunity.

FOR RENT: No deposit with utilities paid. 3 or 2 bedroom mobile home. Refrigerator, stove, washer, dryer furnished. Sunshine Valley. Leona Morton, 442-1365.

ATTENTION: If you are looking for a clean and attractive newly remodeled apartment at a reasonable rate try Flamingo Apartments in Cisco. Fully furnished kitchenettes. All bills paid. Starting at \$47.50 per week. Must see to appreciate. Call 442-9902 or 629-2805.

FOR RENT: Air conditioned building, \$150.00 per mo. Located at 710 Ave. E., Cisco. Call 442-3407.

FOR RENT

Apt. for Rent: 1 BR, CH/A, washer and dryer connections, ceiling fans, not pets. Real Nice. \$175.00. 210 N. Walnut, Eastland. Call 629-2995.

FOR RENT: Small unfurnished 2 BR, 1 bath, large utility w/washer & dryer connections. Nice & clean. Call 647-1922 or 647-3878. If no answer, please leave message on machine.

EASTLAND, 3 BRs, 1 extra large, spacious living area. Yard with pecans and fruit trees. Inside city limits. 214-341-8833.

HELP WANTED: LVN needed for the 2 to 10 shift. Apply in person at Western Manor Nursing Home, 460 W. Main in Ranger.

COOK NEEDED. Apply in person 700 S. Ostrom, Eastland, ask for Janice Carmack or Peggy Pryor. EOE.

Newly remodeled 61 bed nursing home in Rising Star, 6 leadership of RN Director of Nurses, competitive salary, excellent working conditions. Contact Russell Gray, 817-643-6700.

HELP WANTED: Opening for 3 LVN starting at 8.75 hr. Apply in person to Debra Foster DON, Canterbury Villa, Cisco. 1404 Front St.

FUEL DESK CASHIER - Experienced cashiers wanted. Interstate truckstop at Cisco Texas has immediate opening for person who enjoys public, willing to work different shifts, and has solid c-store background. Starts \$4.30/hr. with paid vacation. Salary negotiable based upon experience. High School education or equivalent required. (Drug screening required). If qualified, apply in person at the truckstop or send application to Chappel, Inc. P. O. Box 1151, Brownwood, TX 76804 (Ph. 915-646-9120).

HELP WANTED: Nurses Aides, all shifts. Apply in person at Canterbury Villa, Cisco, 442-4202.

HELP WANTED: 50% share for local home telephone sales. Every local home a prospect. Give name, address and telephone number in letter only to Sales, Box 29, Eastland, 76448. Ideal for mothers at home, part-time, clubs, organizations, etc. for fund raising. Representatives welcome in Clyde, Cross Plains, Brownwood, Putnam, Strawn, Mingus, Gordon, Moran, Gorman, Olden, Desdemona and Carbon.

HELP WANTED - RN needed for DON 40 hours per week, competitive wages, equal opportunity employer, contact De Leon Nursing Home, 205 E. Ayers, De Leon, Tx 817-893-6676.

Experienced welders needed. Apply in person only. W.W. Gate & Panel, Hwy 80 E., Eastland.

FOR SALE: A nice custom and polytone PA system, guitars, guitar cases, fiddles, banjo, piano, 77 Toyota motor home. We also buy musical instruments and furniture. 611 E. 8th, Cisco. Call (817) 442-3407.

FOR SALE: Recliner, chair, console TV. Call 629-2611 daytime or 629-3418 at night.

FOR SALE: 1985 Plymouth Reliant, 4 door, sedan, radio and air. \$2,250.00. Will take trade-in. Call 442-1806 or 442-1366.

HELP WANTED

SALES PEOPLE NEEDED!! No experience necessary. Must Be: 21 yrs or older, have driver's license, have H.S. or GED. Pierce Ford, Cisco 442-1566

NEEDED RN Relief Sat. & Sun. Hours 6-2 or 2-10. Salary competitive. Contact Russell Gray, Rising Star Nursing Center 817/643-6700.

HELP WANTED: If you are a registered nurse and interested in working at a nursing facility with good working conditions and competitive pay. Apply in person at Western Manor, 460 W. Main, Ranger.

HELP WANTED: RN for weekend work. More hours can be given if necessary. Apply in person at Canterbury Villa, Cisco, 442-4202.

RN DIRECTOR OF NURSES 102 Bed nursing facility is accepting applications for RN Director, 5 days a week and weekend coverage. Salary is negotiable, many benefits, vacation, health and dental insurance, stock plan, retirement. If interested in long term care, please contact Peggy Pryor for appointment. 629-1779. EOE.

HELP WANTED: 50% share for local home telephone sales. Every local home a prospect. Give name, address and telephone number in letter only to Sales, Box 29, Eastland, 76448. Ideal for mothers at home, part-time, clubs, organizations, etc. for fund raising. Representatives welcome in Clyde, Cross Plains, Brownwood, Putnam, Strawn, Mingus, Gordon, Moran, Gorman, Olden, Desdemona and Carbon.

HELP WANTED - RN needed for DON 40 hours per week, competitive wages, equal opportunity employer, contact De Leon Nursing Home, 205 E. Ayers, De Leon, Tx 817-893-6676.

Experienced welders needed. Apply in person only. W.W. Gate & Panel, Hwy 80 E., Eastland.

FOR SALE: A nice custom and polytone PA system, guitars, guitar cases, fiddles, banjo, piano, 77 Toyota motor home. We also buy musical instruments and furniture. 611 E. 8th, Cisco. Call (817) 442-3407.

FOR SALE: Recliner, chair, console TV. Call 629-2611 daytime or 629-3418 at night.

FOR SALE: 1985 Plymouth Reliant, 4 door, sedan, radio and air. \$2,250.00. Will take trade-in. Call 442-1806 or 442-1366.

FOR SALE: 1985 Plymouth Reliant, 4 door, sedan, radio and air. \$2,250.00. Will take trade-in. Call 442-1806 or 442-1366.

FOR SALE: 1985 Plymouth Reliant, 4 door, sedan, radio and air. \$2,250.00. Will take trade-in. Call 442-1806 or 442-1366.

FOR SALE: 1985 Plymouth Reliant, 4 door, sedan, radio and air. \$2,250.00. Will take trade-in. Call 442-1806 or 442-1366.

FOR SALE: 1985 Plymouth Reliant, 4 door, sedan, radio and air. \$2,250.00. Will take trade-in. Call 442-1806 or 442-1366.

HELP WANTED

HELP WANTED: 25% share self-starting, imaginative representatives to assist local firms increase sales and help stimulate area's economic growth through consistent, traffic-building occasions and events. Honesty and enthusiasm are great assets. Send name, address, telephone and brief qualifications to Sales, Box 29, Eastland, TX 76448. Representatives welcome in Clyde, Cross Plains, Brownwood, Putnam, Strawn, Mingus, Gordon, Moran, Gorman, Olden, Desdemona and Carbon.

HELP WANTED: If you are a registered nurse and interested in working at a nursing facility with good working conditions and competitive pay. Apply in person at Western Manor, 460 W. Main, Ranger.

HELP WANTED: RN for weekend work. More hours can be given if necessary. Apply in person at Canterbury Villa, Cisco, 442-4202.

RN DIRECTOR OF NURSES 102 Bed nursing facility is accepting applications for RN Director, 5 days a week and weekend coverage. Salary is negotiable, many benefits, vacation, health and dental insurance, stock plan, retirement. If interested in long term care, please contact Peggy Pryor for appointment. 629-1779. EOE.

HELP WANTED: 50% share for local home telephone sales. Every local home a prospect. Give name, address and telephone number in letter only to Sales, Box 29, Eastland, 76448. Ideal for mothers at home, part-time, clubs, organizations, etc. for fund raising. Representatives welcome in Clyde, Cross Plains, Brownwood, Putnam, Strawn, Mingus, Gordon, Moran, Gorman, Olden, Desdemona and Carbon.

HELP WANTED - RN needed for DON 40 hours per week, competitive wages, equal opportunity employer, contact De Leon Nursing Home, 205 E. Ayers, De Leon, Tx 817-893-6676.

Experienced welders needed. Apply in person only. W.W. Gate & Panel, Hwy 80 E., Eastland.

FOR SALE: A nice custom and polytone PA system, guitars, guitar cases, fiddles, banjo, piano, 77 Toyota motor home. We also buy musical instruments and furniture. 611 E. 8th, Cisco. Call (817) 442-3407.

FOR SALE: Recliner, chair, console TV. Call 629-2611 daytime or 629-3418 at night.

FOR SALE: 1985 Plymouth Reliant, 4 door, sedan, radio and air. \$2,250.00. Will take trade-in. Call 442-1806 or 442-1366.

FOR SALE: 1985 Plymouth Reliant, 4 door, sedan, radio and air. \$2,250.00. Will take trade-in. Call 442-1806 or 442-1366.

FOR SALE: 1985 Plymouth Reliant, 4 door, sedan, radio and air. \$2,250.00. Will take trade-in. Call 442-1806 or 442-1366.

FOR SALE: 1985 Plymouth Reliant, 4 door, sedan, radio and air. \$2,250.00. Will take trade-in. Call 442-1806 or 442-1366.

FOR SALE: 1985 Plymouth Reliant, 4 door, sedan, radio and air. \$2,250.00. Will take trade-in. Call 442-1806 or 442-1366.

FOR SALE: 1985 Plymouth Reliant, 4 door, sedan, radio and air. \$2,250.00. Will take trade-in. Call 442-1806 or 442-1366.

FOR SALE

Clean fertilized coastal hay, in the barn. Square or round bales. \$2.50. 817-442-1818.

24 Ft. Cabin Cruiser. New V-6 Buick OMC sterndrive tandem wheel trl. \$3,600.00. 629-3254 or 629-1440 after 6:00 p.m.

Seasoned Wood for sale, 629-1827.

NEW SHIPMENT Australian oil skin drover coats. Medium, large and extra large. Brown only. \$175.00. Free gift wrap. Johnson's Dry Goods, Cross Plains.

MEN'S 5-BUCKLE Arctic rubber boots, fleece lining, to fit over cowboy boots. \$31.99. Johnson's Dry Goods, Cross Plains.

FOR SALE: Copy Machines. Need service. Come by 215 S. Seaman to see.

FREE ESTIMATE: Mastic vinyl siding, storm, replacement, prime windows. Carports, patio covers. Over 20 years experience, Otis Coleman Aluminum 817-629-1644.

FOR SALE: Quality business and/or personal cards. Order at this newspaper office.

BOOKS FOR SALE at Eastland Telegram. 1/2 price, different varieties.

FAMOUS COPYRIGHTED Stop-Smoking for Good Personal Letter sent direct to you or to a loved one. It's working for thousands. \$5. (total). Write Smoking, Box 29, Eastland, TX 76448.

VALUABLE, HISTORIC Tapestry Paintings in this area? All over Southwest. Book tells story and what to look for. \$17.00 (total). Write Paintings, Box 29, Eastland, TX 76448.

REMEMBER WHAT AMERICA DID in the Middle East! Get a large "Middle East Crisis" wall map today at 1/2 price at the Eastland Telegram.

FOR SALE: Recliner, chair, console TV. Call 629-2611 daytime or 629-3418 at night.

FOR SALE: 1985 Plymouth Reliant, 4 door, sedan, radio and air. \$2,250.00. Will take trade-in. Call 442-1806 or 442-1366.

FOR SALE: 1985 Plymouth Reliant, 4 door, sedan, radio and air. \$2,250.00. Will take trade-in. Call 442-1806 or 442-1366.

FOR SALE

FOR SALE: Baby bed, clothes 653-2489. T98

Baby Calves for sale. \$70.00 and up. Call 817-734-2610. T104

FOR SALE: 1968 Ford Custom. Good tires, and excellent mechanical condition. Call 442-3215. \$350. T97

FOR SALE: 1985 Plymouth Reliant, 4 door, sedan, radio and air. \$2,250.00. Will take trade-in. Call 442-1806 or 442-1366. C104

INSIDE-SALE: Putnam, Exit 319. Go south 880 3rd St., turn right to 3rd St. C97

GARAGE SALE: 1511 Railroad Ave., Cisco. All day Friday, Dec. 6th, and till 1:00 p.m. Sat., 7th. Boat, baby bed, glassware, cookware, heaters, small cars in boxes, books, 5-gal. bottles, jewelry, apt. size washer, antenna pole and lots of other misc. C97

Let us sell your merchandise. Cars, trailers, furniture, appliances, anything of value. 1701 W. Commerce, (Hwy 80 W), Eastland. 629-2027. Pete's Auction Service #10369 Next Sale Sat., Dec. 7 T98

WANTED: Lake Leon Lot(s). Water and sewer available. 915-576-2695. T98

WANTED: Seamstress to sew women's 3-piece suits. Call 629-2611 day or night. T98

WANTED: Cisco distributor for Fort Worth Star Telegram. Call 817-968-7854. C98

Dr. Carpenter's office in Rising Star will be closed 2nd week in December (9-13). T99

Use the Classifieds

Use the Classifieds

Use the Classifieds

Use the Classifieds

FOR SALE: and. Furn. collectib. Estates. Antiques, Eastland every day
Tired of Cl... ping? Let you. We roasted a... nuts. We a... and pear... ship any... showing... Call us. V... give you... 8:00 to 3... 9:00 to 3... mas. Pai... Peanut C... 6 West... 76454. (8...
I'm not re... debts oth... Ru...
NOTICE: for your organiza and prof local pro commiss ested, dr ganizatio LOCAL Eastland name of tact.
Thanks prayers, words o ing the il of our i mother a mother, Rev. J John Cl words of Th Do
Words o my appre one for visits, phone ca every a during hospital ing hom each of T Dor
This space co
If what I happ wo

ANTIQUES

FOR SALE: Antiques glass and furniture and other collectibles. "We Buy Estates." The House of Antiques, 908 S. Bassett, Eastland, Texas. Open every day. 817-629-1124. T104

MISC.

Tired of Christmas Shopping? Let us finish it for you. We have flavored, roasted and in-shell peanuts. We also have candy and peanut butter. We can ship anywhere with a card showing you as sender. Call us. We'll be happy to give you prices. Hrs. M-F, 8:00 to 5:00. Saturday 9:00 to 3:00 until Christmas. Parnell's Peanuts, Peanut Corporation, Hwy. 6 West, Gorman, TX 76454. (817) 734-2757. T100

NOTICES

I'm not responsible for NO debts other than mine. Rusty Tabor C98

NOTICE: FUND RAISING for your church, club or organization can be easy and profitable, selling a local product at a good commission rate. If interested, describe your organization in a letter to LOCAL SALES, Box 29, Eastland, TX 76448, with name of person to contact. T104

THANK YOU

Thanks for all your prayers, food, cards and words of kindness during the illness and death of our mother, grandmother and great-grandmother. A special thanks to Rev. Jerry McNeil and John Clinton for their words of comfort. The family of Dollie Cooper C97

Words cannot express my appreciation to everyone for your prayers, visits, cards, flowers, phone calls and food and every act of kindness during my stay in the hospital and since coming home. May God bless each of you. Thank You Dorothy Tonne C97



THANK YOU

To: Dr. Gohlke, Office Staff, all friends and relatives of Trudie Walker.

Please accept our heartfelt appreciation for the prayers, food, flowers, help and loving kindness shown during the illness and death of our mother. Daughters, Mary Kennedy Linda Dodson

Tribute to Trudie Walker from her five grandchildren

Written by only granddaughter, Pamela Speights from Abilene

MEMORIES OF CHILDHOOD WITH GRANDMA

Watermelon and pop-sicles in the ice box

Learning to skate in her front yard

Orange slice candy

Playing in the mountain of leaves in the back yard

Freshly baked homemade rolls

The best peach cobbler in the world

Helping with a Garage Sale

Every night, 8:00, a coke float in front of the TV

Sitting on the back porch and exploring the world of snails and worms and turtles

Barbie doll clothes made by hand

Playing checkers with the grandkids

Eating the best white bread and honey sandwich ever

Flying kites Grandma bought at Gibson's

Getting money for the popsicle man coming down the street

Garage "sailing"

Snowcones on hot summer days

Bluebonnets in the yard

Big porches

Trusting her teenage Granddaughter with the car

Making a baby doll for her great-granddaughter

Quilts made with love and Marshmallows!

Marshmallow fights and cold wash rags in the face to wake you up in the mornings and laughter and hugs... and unconditional love.

CHILD ABUSE 24 HOUR HOTLINE 1-800-252-5400

Mountain Top Church To Serve Eastland County Area Lawmen's Assoc. Christmas Banquet

Pastor John C. Jones of the Mountain Top Church announces that the 1991 Eastland County Area Lawmen's Association Christmas Banquet will be held at the Mountain Top Church Family Center in Cisco, Tx.

For a number of years, Pastor John C. Jones and the Mountain Top Church Congregation have been privileged to sponsor and serve an annual Christmas Banquet to show honor to all those who serve in Law Enforcement including Law Enforcement Officers, Judges, Justice of Peace, District

Attorneys Office, etc.

The Banquet is scheduled for December 11th at 7:00 p.m. in the Mountain Top Family Center located at 600 E. 8th, Cisco, Tx. The turkey and dressing dinner is free of charge to all those in the Area Lawmen's Association. During the banquet, the December meeting for the Lawmen's Association will be held. This annual Christmas banquet is one more way for the Mountain Top Congregation to say "Thank you" to all those who serve and protect our County!

READ THE CLASSIFIEDS



ADOPTION: A LOVING ALTERNATIVE. Choose the best home for your baby from several approved families. Medical, legal, housing and emotional support available for you. Call collect: Susan/Benny 512-448-2946, Margara/Mark 1-800-584-3235, Gail/Solve 512-335-3780. It's illegal to pay for anything beyond legal/medical expenses.

DEER HUNTERS SPECIAL: 25 acres, \$795/acre, wooded, excellent hunting, adjoins large ranch. Texas veteran of owner financing, prime acreage. Fox Realty, 600 Buchanan Dr., BURNET, TX 1-800-725-3699.

AIRCRAFT MECHANIC CAREER TRAINING: Secure career, day/night classes, financial aid, relocation services, job placement, high starting pay, call collect 713-820-9470.

TRACERS WANTED: No experience necessary. Part-time. Own hours. Process FHA Mortgage rollovers. 1-800-776-5872 or 1-800-927-9965.

WOLFF TANNING BEDS: New commercial-home units from \$199. Lamps, lotions, accessories. Monthly payments low as \$18. Call today. FREE NEW color catalog. 1-800-228-6292.

SENTINEL BUILDINGS: All-steel building kits, color walls, engineer certified plans. 30X50X12... \$4,785; 40X60X14... \$6,127; 40X75X16... \$9,535; 50X60X14... \$8,097; 50X80X16... \$10,765; 60X100X16... \$14,918. FREE BROCHURES 1-800-327-0790.

COVENANT TRANSPORT: Hiring tractor trailer drivers - 1 yr. O.T.R. experience - Single 19-22¢ East coast pay - Incentive pay - Benefits package - Minimum age 23

Eastland Telegram, Cisco Press, Ranger Times, Thursday, December 5, 1991

Squires Roofing Contractors
45 Years In Service
Carbon - Eastland
653-2397 653-2354

Read The Classifieds

Remodeling - Siding
Windows and Doors
Jobbers For All Sides
Reynolds, Mastic and B.M.D.
Siding, Windows, and Doors
Also Remodeling & Add-Ons.
Cover Facers and Overhang on Brick Homes.
All Work Guaranteed.
Butler & Fox
Phone 629-2149 or 629-2814

NITA DANSBY REAL ESTATE CO.
(817) 893-6441

COUNTRY SHOWPLACE - 4-2 1/2-3 Custom Brick Home on 15 Acres in Gorman. Extras include WBFP, Total Electric, Hot Tub, Tree House, Corrals, Storage Bldg, Fenced & Landscaped Yard! \$135,000.
331 PERSHING, GORMAN - 2-1-1 Frame on Large Corner Lot. \$12,000.
401 KENT, GORMAN - 3-1-1 Frame; Extra Clean! New carpet - Possible owner financing with down payment. \$28,500.
518 N. KENT, GORMAN - 3-2-1 Frame & Brick with CH; Fresh paint. \$29,500.
4-3-2 BRICK ON 6 ACRES; edge of Gorman. \$78,500.
56.5 ACRES, Hwy 679, S. of Gorman, Hwy. Frontage; Coastal & trees! \$550 per A.
80 ACRES N. of Rucker - All may be cultivated! 3 wells; 20% down, 10% APR. \$500 per A.
160 ACRES - S. of Hwy. 2921. Peanut pdg.; 120 A. tillable. Terms to qualified! \$650 per A.

Eastland County Has Been Awarded Federal Funds For Emergency Food And Shelter Programs

Eastland County has been chosen to receive \$9,717.00 to supplement emergency food and shelter programs in the area.

The selection was made by a National Board that is chaired by the Federal Emergency Management Agency (FEMA) and consists of representatives from the Salvation Army, American Red Cross, Council of Jewish Federations, Catholic Charities, USA, National Council of Churches of Christ in the USA and United Way of America which will provide the administrative staff and function as fiscal agent. The board was charged to distribute funds appropriated by Congress to help expand the capacity of food and shelter programs in high-need areas around the country.

A local board made up of (Mike Zuniga, Jr., Central Texas Opportunities, Inc.; Judge Scott Bailey, County Judge; Susie Thomas, Eastland Goodfellows; and Mike Perry and Mary Jo Williams of Salvation Army will determine how the funds awarded to Eastland County are to be distributed among the emergency food and shelter programs run by local service organizations in the area. The local board is responsible for recommending agencies to receive these funds and any additional funds available under this phase of the program.

Under the terms of the grant from the National Board, local governmental or private voluntary organizations chosen to receive funds must: 1) be

non-profit, 2) have an accounting system and conduct an annual audit, 3) practice nondiscrimination, 4) have demonstrated the capability to deliver emergency food and/or shelter programs, and 5) if they are a private voluntary organization, they must have a voluntary board.

Qualifying organizations are urged to apply. Eastland County has distributed Emergency Food and Shelter funds previously with Central Texas Opportunities, Inc. Multi-Purpose Center participating.

Further information on the program may be obtained by contacting:

Mike Zuniga, Jr., Executive Director Central Texas Opportunities, Inc. P. O. Box 820 Coleman, TX 76834 (915) 625-4167



Paul Williams Roofing Co.
• FREE Estimates •
• All Work Guaranteed •
• Hot Tar & Gravel Composition •
• Shingles • T-Locks • Wood Shingles •
25 Years Experience In Eastland Area
Paul Williams Carbon, Texas
817-639-2330
If No Answer Call 817-629-1020

Keys Made Locks Changed or Repaired
ELROD'S MOBILE LOCK SHOP
423 W. Main Ranger, Texas 76470
Phone 647-3444
Bonded Locksmith
Auto - Residential - Commercial

TRADERS CORNER
We Buy & Sell Used Furniture • Tools •
• Appliances • Heaters & A.C.s •
Much! Much! More!
Come by 219 W. Main Ranger Tx or Call 647-3270

Rescue Line
Battered, abused, alcoholism, suicidal, divorced, troubled marriage, etc.
There is free help for Eastland County Women
Listen to KVMX 97 F.M. 442-4479 6:00-7:00 Monday night

1	2	3	4	5	6	7
8	9	10	11	12	13	14
15	16	17	18	19	20	21
22	23	24	25	26	27	28
29	30					

CLUES ACROSS
1. Happen again (5)
5. Thick soup (5)
8. Nullify (5)
9. Tendency (5)
10. Sufficient (5)
11. Satire (5)
12. Calorie-controlled eating (4)
15. Sheen (6)
17. Nautical (5)
18. Be victorious over (6)
20. Lofty (4)
25. Burial place (5)
26. Pledge; promise (5)
27. Suave (5)
28. Twofold (5)
29. Corroded (5)
30. Wary (5)

CLUES DOWN
1. Impede (6)
2. Invent (6)
3. Wireless (5)
4. Pry (5)
5. Frolicsome (7)
6. Reiterate (6)
7. Appeal (6)
13. Frozen water (3)
14. Headgear (3)
15. Slack (3)
16. Mat (3)
17. Disobedient (7)
18. Medical man (6)
19. Renowned (6)
21. Mad; crazy (6)
22. Barely (6)
23. Custom (5)
24. Insurgent (5)

Sponsored by Eastland Drug

J and J Air Conditioning & Appliances

Maytag Appliances, and Frigidaire Appliances

201 So. Lamar 629-2251

License # TA CLB002300C

CER104-77

Keeping Up With Our Folks

By Weems Dykes

Ray and Betty Pryor had their daughter Jennifer and her husband Don Wilson and grandsons Stephen and Cory visit them during the Thanksgiving holidays from Plano, Texas. The Don Wilson family ate Thanksgiving dinner with Don's parents, and then visited with Ray and Betty. The Pryors had Betty's Aunt Ethel Leveridge eat Thanksgiving dinner, she lives in Abilene at the University Inn Retirement Center, also, Mrs. Frances Cole and Mrs. Bonnie Hill joined them in the festivities.

Ray worked for 38 years before he retired from the Victor Cornelius Printing Company in 1989.

Betty has worked for Jack Frost in the Frost Law Firm for 31 years and for Cyrus? Frost since 1978 and still works for them as legal secretary.

Ray and Betty are natives of Eastland, having finished high school here, Ray is the son of Ben and Ethel Pryor, has a brother Bill living in Eastland and also E.J. of Midland.

Betty's maiden name is Jones and her father Ernest served as County Clerk and also operated an ice house in Eastland.

Both are active members in the First United Methodist Church, Ray serves on the Board of Trustees and Betty on the Administrative Board and Activities Committee.

Ray has served as past President of the Lions Club with 30 years perfect attendance, and also as a Boy Scout leader. He is now retired from these wonderful organizations.

Ray has been all over the world having served in the Navy and Marines, visited many of the states in the United States and finds Eastland the best place to live of all, he said, "This is my home, I'm living in the same house since 1952, I was born in Eastland, I'll die here and will be buried here beside my lovely wife Betty as so

beautifully expressed in the O.T. Book of Ruth."

Your Columnist has known Ray and Betty since 1945, wonderful people and dear friends not only to me but to everyone.

Rev. W.E. Hallenbeck and wife Stella had Thanksgiving Dinner with their daughter Linda and her husband J.T. Horn and sons Scott and Adam. Scott attends Tarleton University and Stephenville and Adam is a senior student at Eastland High School.

Stella grew up in Olden where her father O.C. Cox pumped oil wells for Mobil Oil Company. W.E. was reared on the W. Emsy Hallenbeck Ranch also known as the John Davis Ranch between the communities of Freedom and Union. Rev. Hallenbeck served as minister of the Church of God in Eastland for 20 years or more, its headquarters is located in Anderson, Indiana. He served as minister for 4 years in Ardmore, Oklahoma and in Flagstaff, Arizona for 3 years, Cisco 5 years and in Abilene for three years. The Church of God in Eastland is the Camp Inspiration Church of God on old Hwy. 80 going west toward Cisco.

W.E. served on the Eastland School Board and circulated the petition for successful integration of the Eastland School System without incident. He and your Columnist were part of the Race Relations Sunday observance at the old First Baptist Church on Plummer Street in Eastland in February of 1947.

He and Stella have sung at hundreds of funerals in Eastland County, and W.E. has also conducted hundreds of funerals in Eastland, Cisco, Gorman, Rising Star and many communities.

W.E. preached the first sermon at the time they started the Homecoming of the Classes.

Though W.E. and Stella are retired they are still

active members of the Eastland Senior Center and the AARP and also helping the sick and needy. They are active members of the Clyde Fisher, Ellis Head and wife Dealie, and pianist Annice Locke. Annice was a superb pianist known throughout Texas at singing Conventions.

W.E. and Stella have many pleasant memories of their ministry, visiting the hospitals, rest homes, they are a people of compassion and love, and a couple who find wonderful support in life from each other.

We salute you for giving your love in service to the people of Eastland County and elsewhere for Jesus Christ.

Jodee and Patricia Flippin and their children Dawn, Angela and James visited in the home of Jodee's parents Tom and Wanda Flippin of the Pioneer Community for Thanksgiving, and had the traditional dinner of turkey and dressing and

accessories plus pumpkin, pecan and other pies for dessert.

Jodee's sister Denise and husband Johnny Hubbard and son Jonathan from Rising Star also joined in the family festivities of food visiting, laughter and watching the football game between the Cowboys and the Stealers.

Jodee and Patricia's son David is a student in Cisco Junior College and works for the Stevens Co. in Eastland. Their daughter, Dawn is a senior in Eastland High School and works at Pizza Inn and also plays basketball for the Mavericks, Angela is a junior student in E.H.S. and plays basketball and works at the skating rink and at Lone Cedar Country Club. James is a sixth grade student in Junior High School.

Jodee attends Tarleton University and is working toward a secondary degree in History. Patricia is employed at Eastland Manor.

Hats off to Jodee and Patricia for not only loving their children, taking time to play with them, but also letting them take responsibility as part of the work force in the market place.

RANGER

Glenn Wilson and wife Debbie spent a quiet Thanksgiving day with their children Amy, Adam, and Nathan.

They enjoyed the traditional foods of Thanksgiving, turkey and dressing, blueberry pie and iced tea. They spent a quiet day at home enjoying being with their family.

Glenn is the Principal of the Ranger Elementary School and Debbie serves as Secretary in the Ranger High School.

Mrs. Beverly Stewart spent Thanksgiving with her son Gene Hendrix and family of Sweetwater, Texas. For food they had turkey and dressing and all the trimmings. Others present were Beverly's parents Arthur and Una Beck of Ranger, Beverly's

children, Debbie Sharp and their children, Betty and Gary of Ranger, Sam Hendrix, Joe Hendrix and boys, Jason and Cody of Odessa, Tim Stewart and son Justin of Ranger, Sue and Bob Simmons of Lake Leon and son Tommy of Cisco who coaches at Cisco Junior College, her daughter Sujean Uhlhorn, son Troy and daughters, Kenna and Jennifer of Lake Leon, Katherine and Leroy Andreas of Ft. Worth and Gene and Trudy and children, Brad, Terran, Bobbie Jean, and Loren of Sweetwater. Also Stachia and Raney and Sommer Sharp from Ranger.

The family exchanged memories, humor and love as members of their family group.

Keith and Julie Wheeler and children Jeremy and Kandi of Luling, Texas spent Thanksgiving with Julie's parents Fred and Mary Moseley of Ranger. Keith teaches high school math and coaches football, basketball, and baseball for the Luling School System. Julie serves as secretary for the Luling Superintendent of Schools. The family lives about eleven miles out in

the Country and have horses, cows, and a dog named Bullet. They are enjoying being out in the country and love their work in Luling.

Also present was Randy from Mentzon, Texas and wife Ann teaches second grade in Mentzon, and Lynn and Sara who are cross country runners, James teaches history and coaches basketball, football in Burkburnett, Texas. The Moseley's son Bill works for Dr. Blazor, Veterinarian of Ranger. Only child that didn't get to come home was, Elaine Brown of Round Mountain, which is between Johnson City and Marble Falls, Texas.

They enjoyed being together as family for the Thanksgiving holidays.

A Gift to the
AMERICAN CANCER SOCIETY
MEMORIAL
PROGRAM
means so much in cancer control.
1-800-ACS-2345
Credit Cards Accepted

DEBT CONSOLIDATION SERVICES
If you don't have the money to pay your bills, let us show you how to pay your bills with the money you have!
Abilene 915-698-7688 3-104

Hospital Report

EASTLAND MEMORIAL HOSPITAL Admissions
November 29, 1991
James H. Boggus
Julian Z. Ruiz
Jim D. Turner
Dismissals
Edna May Barnes
Clara C. Conger
Baby Boy Conger
Jim D. Turner
Admissions
November 30, 1991
Pearla E. Agnew
Susie W. Walker
Baby Boy Walker
Dismissals
Vernie M. Allen
Sunny M. Butler
Joseph H. Dreinhoffer
Ira E. Maupin
Garvice L. Pou
Admissions
December 1, 1991
Williard T. Liles
Anita Olvera
Baby Girl Olvera
Dismissals
Pearla E. Agnew
Susie W. Walker
Baby Boy Walker
Admissions
December 2, 1991
Ima C. Howard
Leonard M. Pounds
Russell S. Sutton
Dismissals
Sopha B. Eudy

Opening Soon

Budget Inn Restaurant

Breakfast & Lunch
Good home cooked specials

Clean facility and good friendly service.

Stop by
and see us
and have a cup

Under New Management

I-20 W. Acces Rd Judy Dean Ranger 3-102

White Elephant Restaurant

I-20 Cisco



The White Elephant Restaurant wishes everyone in the Big Country a Happy Holiday Season and also wish to advise that we will be as usual open 24 hours a day 7 days a week.

Our Thanksgiving menu will include Turkey, Dressing and all the trimmings, plus a generous portion of pumpkin pie for

\$5.25



Our Christmas dinner will be Baked Ham and all the goodies for

\$5.25

Of course, kids under 10 as always eat for \$2.50. And remember we serve you, you don't have to serve yourself off a buffet.

Our daily luncheons go on as usual.

Cisco Press - Eastland Telegram - Ranger Times

Thursday, December 5, 1991

Harris Home Health Erath County

Cares for their patients from hospital to home.

Our special services include:

- Skilled Nursing
- Physical Therapy
- Speech Pathology
- Occupational Therapy
- Medical Social Services
- Home Health Aide Services

"We care...and caring makes a difference."

Call Lynn Vaughn - Director
817-965-2588 or 1-800-869-3812

THE ONLY CERTIFIED

For The Freshest Cut Christmas Tree

Visit **White's ACE Hardware**

Plantation Grown Douglas Fir

Best Choice for Color, Shape, Scent

All Sizes In Stock

Special! Montana Douglas Fir

6-7'
\$9.95 Open 7 Days A Week

White's ACE Hardware
and Garden Center

504 EAST MAIN • EASTLAND, TEXAS 76440
817-629-3373

Open 7 Days A Week

HOURS: 8:00 A.M. to 6:00 P.M. Monday - Saturday
1:00 P.M. to 5:00 P.M. Sunday

WE BELIEVE BY AMERICA!

The following were of Appeal...
Motion G
11-90-2
ala-Nava
ment I
Corpora
Appelle
tion for
to file m
ing.
A
11-90-4
Villarue
Lopez v.
Harris. (C
Dickenso
11-90-1
Moreno v.
Harris. (O
Opinion).
11-91-1
Alex Fiel
Opinion).
11-91-1
Alex Fiel
Texas. - T
riam Opir
11-91-1
Alex Fiel
Texas. - T
riam Opir
11-91-1
Alex Fiel
Texas. - T
riam Opir
Affir
and H
Reman
11-90-0
Joseph B
State of T
(Opinion
enson).
Affir
11-89-1
Eugene
State of
(Per Curi
Motio
&
11-90-
Pinto Co
Ray Cock
Jackson
II.
Appellar
Temj
Old I
Pop ce
played a
in holid
this co
Americ
corn to
first Th
and sine
have ma
holiday
snowy v
garlands
died pop
And w
more fe
family p
ing pop
holiday s
There
festive fi
ball-ma
your fam
pop corn
Jolly Ti
ioned Po
ipe (belo
gifts! Si
confectio
phane or
tie with
Corn Be
stocking
tin with
you've g
ess gift.
The k
snowme
out of po
snowma
hat, San
cap and
with can
late eye
ears anc
Or yo
halls v
wreaths
pop corn
gether i
mold a
harden.
red and
Old-I
C
2 qua
Time Po
1 cup
1 1/2 cup

11th Court Of Appeals

The following proceedings were had in the Court of Appeals, Eleventh District of Texas:

Motion Submitted & Granted

11-90-242-CV Jose Zavala-Nava v. A.C. Employment Inc. and Centron Corporation. - Palo Pinto. Appellee's (Centron) motion for extension of time to file motion for rehearing.

Affirmed

11-90-077-CR Pedro Villaruel a/k/a Pedro Lopez v. State of Texas. - Harris. (Opinion by Judge Dickenson).

11-90-109-CR Blas Moreno v. State of Texas. - Harris. (Per Curiam Opinion).

11-91-178-CR Michael Alex Fields v. State of Texas. - Taylor. (Per Curiam Opinion).

11-91-179-CR Michael Alex Fields vs. State of Texas. - Taylor. (Per Curiam Opinion).

11-91-180-CR Michael Alex Fields v. State of Texas. - Taylor. (Per Curiam Opinion).

Affirmed In Part and Reversed & Remanded In Part

11-90-062-CR Michael Joseph Bitgood Easton v. State of Texas. - Harris. (Opinion by Judge Dickenson).

Affirmed On Remand

11-89-076-CR Earl Eugene Wilcots, Sr. v. State of Texas. - Dallas. (Per Curiam Opinion).

Motions Submitted & Granted

11-90-127-CV Palo Pinto Co. et al v. Charlie Ray Cockburn, Stonewall Jackson & O. H. Gilbert, II. - Palo Pinto. Appellant's motion to

supplement record.

11-91-045-CR Billy Joe Riggins v. State of Texas. - Scurry. State's motion for extension of time to file brief.

11-91-046-CR Billy Joe Riggins v. State of Texas. - Scurry. State's motion for extension of time to file brief.

11-91-097-CR Reginald Wayne Starks v. State of Texas. Appellant's third motion or extension of time to file brief. - Anderson.

11-91-098-CR Marvin Ray Edwards v. State of Texas. Appellant's third motion for extension of time to file brief. - Anderson.

11-91-154-CV Tarrant Bank v. Mark B. Miller and Julie A. Miller. Appellant's motion for extension of time to file brief. - Brown.

11-91-157-CR Edward Resendez, Jr. v. State of Texas. State's motion for extension of time to file brief. - Taylor.

11-91-161-CR Kevin Patrick Wheeler v. State of Texas. State's motion for extension of time to file brief. - Jones.

Motion Submitted & Overruled

11-91-021-CV Service Lloyds Insurance Company v. Phillip Berry. Appellant's motion for rehearing.

Cases Submitted
11-90-233-CV Arthur W. Carson v. Larry D. Robertson. - Taylor.

11-90-265-CV Norman E. Crittendon v. Floyd E. Miller. - Taylor.

11-91-106-CV Arthur W. Carson v. Warden George Waldron, and G. Crawford. - Anderson.

'All I Want For Christmas' Has Message For All Ages

At first glance the movie "All I Want For Christmas" seems to be an offering just for young people - something to entertain the kids during the holiday season.

But actually it is geared for grown-ups as well as young people - a picture with a real message. This G admission film will show at the Majestic in Eastland nightly from Friday, Dec. 6 through Monday, Dec. 9 with curtain time at 7:30 each evening. Tickets will be \$3 at the box office.

The picture is a comedy about two New York City children who launch a hilarious scheme to get what they most want this holiday season - their divorced parents together

with them again.

A number of young actors star in this film: Harley Jane Kozak, James Sheridan, Ethan Randall. Famous actress Lauren Bacall also has a role in the picture.

The desire to have the O'Fallon family together for the holidays is shared by Ethan (Randall) 13, a practical older brother,

and adorable Hallie (Thora Birch) 7, who knows how to charm her way out of a difficult situation. As Ethan and Hallie embark on their adventure, almost nothing goes as they had planned.

You won't be able to guess the outcome of this fast-moving picture. Take time to enjoy it.

Putnam Musical To Be Friday

The regular Putnam musical will be held Friday, Dec. 6, in the Putnam Schoolhouse. Serving will begin at 5:30 p.m., and the music will begin at 6

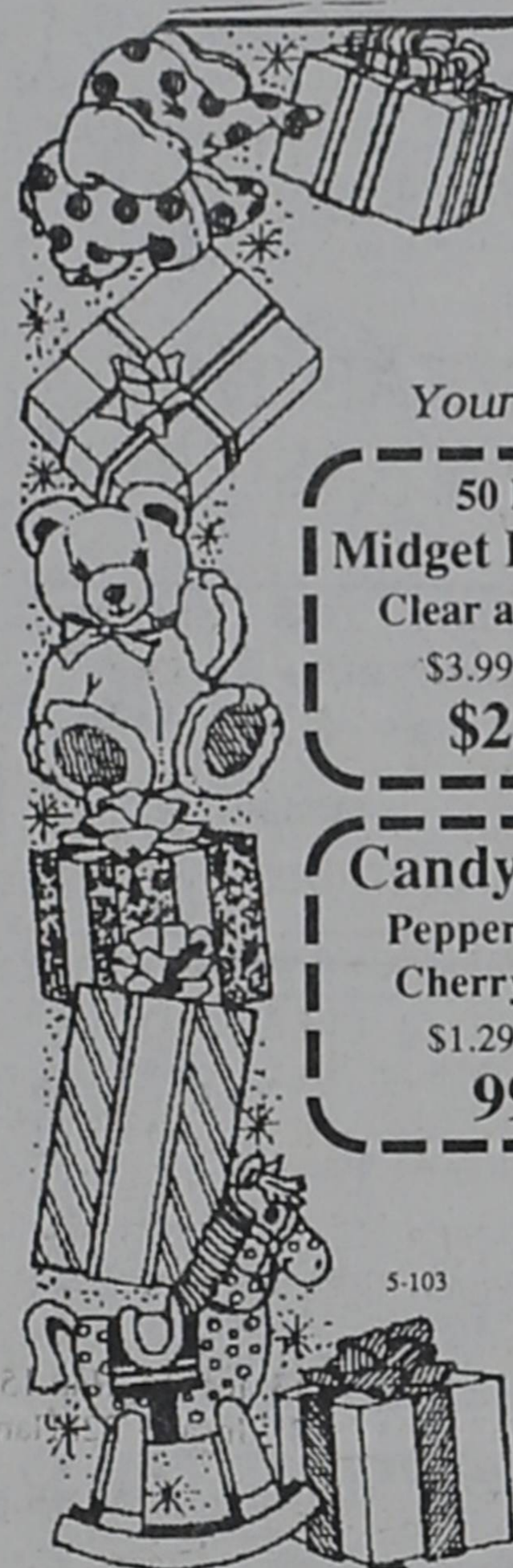
o'clock. Gene Kniffen will be master of ceremonies. Everyone is invited to attend. There is no admission charge.

Cisco Press - Eastland Telegram - Ranger Times - Rising Star - Callahan County Star Thursday, December 5, 1991



Ethan O'Fallon (Ethan Randall) and his sister Hallie (Thora Birch) make plans to get what they want most for Christmas - to have their parents back together. See how their plans work out in this delightful Paramount picture, scheduled for the Majestic Dec. 6-9.

READ THE CLASSIFIEDS



5-10 MOTT'S 5-10 Cisco

Open Sundays till Christmas
10 AM-6 PM

Your Neighborhood, Friendly, Easy To Shop Store

50 Lite Midget Light Set Clear and Asst. \$3.99 Value \$2.99	Queen Anne Chocolate Covered Cherries \$1.99 Value \$1.44	25 Count Christmas Star Bows Our Price 67¢
Candy Canes Peppermint or Cherry 12 ct. \$1.29 Value 99¢	100 Lite Midget Light Set All Colors & Clear \$5.00 Value \$4.99	25 Lite Outdoor Light Set Asst. Colors & Clear \$8.99 Value Our Price \$6.99
4 1/2 foot Norway Pine Tree \$19.99 Value Our Price \$16.99	Liquid Potpourri Asst. Frag. 16 oz. \$2.99 Value \$1.99	Boxed Christmas Cards 50% OFF Manufacturers Suggested Selling Price

Tempt The Tastebuds With Old Fashioned Popcorn Balls

Pop corn has always played a significant role in holiday festivities in this country. Native Americans introduced pop corn to the Pilgrims at the first Thanksgiving feast and since then, Americans have made pop corn a key holiday feature—from snowy white pop corn garlands to golden candied pop corn balls.

And what could be a more festive and fun family project than making pop corn balls this holiday season?

There's no end to the festive fun that pop corn ball-making can add to your family's holiday. And pop corn balls made with Jolly Time's Old Fashioned Pop Corn Ball recipe (below) make perfect gifts! Simply wrap your confections in red cellophane or plastic wrap and tie with red ribbons. Pop Corn Balls make ideal stocking-stuffers, or fill a tin with several and you've got a cheery hostess gift.

The kids can create snowmen or Santa faces out of pop corn balls. Give snowman a safety cone hat, Santa a sugar cone cap and decorate both with candy-coated chocolate eyes and gumdrop ears and lips.

Or you can deck the halls with pop corn wreaths. Place just-made pop corn balls close together in a buttered ring mold and let the ring harden. Finish with a big red and green bow.

Old-Fashioned Pop Corn Balls

2 quarts popped Jolly Time Pop Corn
1 cup sugar
1/3 cup light or dark corn

syrup
1/3 cup water
1/4 cup butter or margarine
1/2 teaspoon salt
1 teaspoon vanilla

Keep popped pop corn warm in 200°F oven while preparing syrup. In 2-quart saucepan, stir together sugar, corn syrup, water, butter and salt. Cook over medium heat, stirring constantly, until mixture comes to a boil. Continue cooking without stirring until temperature reaches 270°F on a candy thermometer or until a small amount of syrup dropped into very cold water separates into threads, which are hard but not brittle. Remove from heat. Add vanilla; stir just enough to mix through hot syrup. Slowly pour over pop corn, stirring to coat every kernel.

Cool just enough to handle. Working quickly, heap about 1 cup pop corn mixture into large sphere of Jolly Time Pop Corn Ball Maker. Press with smaller sphere to shape into balls. Release and cool on wax paper-lined surface. Wrap in cellophane, plastic wrap or plastic bag; tie with ribbon. Makes 8-12 medium pop corn balls.

Confetti Pop Corn Balls: Stir food coloring into syrup before adding to popped pop corn.

Flavor variations: Stir almond, peppermint, orange or any other favorite flavor extract into syrup in place of vanilla before adding to popped pop corn.

**CHILD ABUSE
24 HOUR HOTLINE
1-800-252-5400**



CHIROPRACTIC FOR BETTER HEALTH

DR. STEPHEN G. BARRY
CHIROPRACTOR

MEDICAL RESEARCH SUPPORTS CHIROPRACTIC

The *British Medical Journal* reports that Chiropractic treatment of low back pain, which affects 75 million Americans, is superior to the standard regimen administered by medical doctors.

The study, published in the summer of 1990, indicated that chiropractic manipulation can relieve severe back pain quicker and at lower cost than medical treatment. Chiropractic patients experienced less pain and disability and missed fewer days work.

At Barry Chiropractic Clinic we

are committed to not only getting you free of back pain but treating those conditions which cause your pain. No symptom can be more depressing than persistent back pain. Don't delay treatment when help is readily available.

In the interest of better health from the office of:

Dr. Stephen G. Barry
-Chiropractor-
951 E. Main, Eastland
629-1771

Lay-A-Way Now For Christmas



**IAMS®
PET FOODS**



Special
10 gal. Tank set
\$39.95

Tanks of all sizes and supplies for fresh & salt water fish


Fish, Birds and small animals

We carry name brands



Complete fish diet
World's leading fish food
All natural ingredients

Pat's Pot Luck
200 E. Plummer, Eastland
629-1984



Budget Host

629-2655 I-20 Eastland

Grandma's Kitchen

I-20 Exit 343

OPEN
M-S 6:00 a.m.-2:00 p.m.
5:00 p.m.-10:00 p.m.
Sun. 6:00 a.m.-3:00 p.m.

BREAKFAST \$1.99

Eggs, Bacon, Hashbrowns & Toast

DAILY LUNCH SPECIALS \$3.50

Senior Citizens Save 10% On Mondays

SUNDAY SPECIALS \$5.50

Served From 11:00 AM - 3:00 PM

Banquet Room Available For Holiday Parties



Lemon Tree Boutique

612 Conrad Hilton 442-3294

Drastic Reduction on New Fall Merchandise Due To Our Economic Crunch.

Several Groups of Sportswear 1/4 - 1/3 - 1/2 OFF

All Dresses 1/4 Off All Lingerie 40% Off

Sale tables with miscellaneous items.
Big selection of items for after Thanksgiving Sale.

